

The Effectiveness of China's National Forest Protection Program and National-level Nature Reserves, 2000 to 2010: PREPRINT

Guopeng Ren^{a,1}, Stephen S. Young^{b,1}, Lin Wang^{a,1}, Wei Wang^{c,1}, Yongcheng Long^d, Ruidong Wu^e, Junsheng Li^c, Jianguo Zhu^{a,2}, Douglas W. Yu^{a,f,2}

5 ^a State Key Laboratory of Genetic Resources and Evolution, Kunming Institute of Zoology, Chinese Academy of Sciences, Kunming, Yunnan 650223 China

^b Department of Geography, Salem State University, Salem, MA 01970 USA

^c State Key Laboratory of Environmental Criteria and Risk Assessment, Chinese Research Academy of Environmental Sciences, Beijing 100012 China

10 ^d China Program, The Nature Conservancy, Kunming, Yunnan 650031 China

^e Yunnan Key Laboratory of International Rivers and Transboundary Eco-Security, Yunnan University, Kunming, Yunnan, China

^f School of Biological Sciences, University of East Anglia, Norwich Research Park, Norwich, Norfolk, NR47TJ UK

¹ These authors contributed equally to this work.

15 ² To whom correspondence should be addressed. Douglas Yu, Tel: +44 7510308272 and +86 18608717369, email: dougwyu@gmail.com and douglas.yu@uea.ac.uk; Jianguo Zhu, Tel: +86 87165190776, email: zhu@mail.kiz.ac.cn.

Keywords: avoided deforestation, China, covariate matching, biodiversity conservation policy, effectiveness of protected areas, national parks, empirical evaluation, spatial spillovers, Asia, governance, soil erosion

20 **Running title:** Deforestation and protected areas in China

Author contributions: JGZ, GPR, SSY, and DWY designed the study. GPR, SSY, LW produced the land cover and forest change datasets. WW and JSL provided the national nature reserve dataset. SSY and DWY wrote the first draft, and all authors made extensive contributions to the text.

25 **Abstract**

There is profound interest in knowing the degree to which China's institutions are capable of protecting its natural forests and biodiversity in the face of economic and political change. China's two most important forest protection policies are its National Forest Protection Program (NFPP) and its National-level Nature Reserves (NNRs). The NFPP was implemented in 17
30 provinces starting in the year 2000 in response to deforestation-caused flooding. We used MODIS data (MOD13Q1) to estimate forest cover and forest loss across mainland China, and we report that 1.765 million km² or 18.7% of mainland China was covered in forest (12.3%, canopy cover > 70%) and woodland (6.4%, 40% ≤ canopy cover < 70%) in 2000. By 2010, a total of 480,203 km² of forest+woodland was lost, amounting to an annual deforestation rate of 2.7%.
35 The forest-only loss was 127,473 km², or 1.05% annually. The three most rapidly deforested provinces were outside NFPP jurisdiction, in the southeast. Within the NFPP provinces, the annual forest+woodland loss rate was 2.26%, and the forest-only rate was 0.62%. Because these loss rates are likely overestimates, China appears to have achieved, and even exceeded, its NFPP target of reducing deforestation to 1.1% annually in the target provinces. We also assemble the
40 first-ever polygon dataset for China's forested NNRs (n=237), which covered 74,030 km² in 2000. Conventional unmatched and covariate-matching analyses both find that about two-thirds of China's NNRs exhibit effectiveness in protecting forest cover and that within-NNR deforestation rates are higher in provinces that have higher overall deforestation.

\body

45 **Introduction**

China covers one of the greatest ranges of ecological diversity in the world, in total containing perhaps 10% of all species living on Earth (1). Maintaining much of this biodiversity is a substantial cover of natural forest, but China's biodiversity, ecosystem services, and natural
50 landscapes are being degraded at a rapid rate, due to a combination of swift economic growth and institutional constraints (2-5). With the decline of its natural forests, China has witnessed a deterioration in biodiversity, with at least 200 plant species lost, 15-20% of China's higher plant species endangered, 233 vertebrate species on the edge of extinction, and more than 61% of wildlife species suffering habitat loss (1, 6, 7). On the other hand, China has made important

political commitments to conservation as a signatory of the major international biodiversity
55 treaties such as the Convention on Biological Diversity (CBD) and the Convention on
International Trade in Endangered Species of Wild Fauna and Flora (CITES), as well as
implementing many domestic conservation laws and regulations, establishing a Ministry of
Environmental Protection, and targeting conservation programs for charismatic species such as
panda, tiger, multiple primates, and cranes.

60 Arguably the most important class of conservation measures in China has been its forest-
protection policies. During the 1970s to 1990s, with weak forest-protection laws and
enforcement, the annual logging rate is estimated to have ranged from 2.67% to 3.36%, and the
annual deforestation rate from 1994 to 1996 is estimated to have been as high as 3.0% (8). This
extensive deforestation contributed to severe water and wind erosion of soil, so that by the early
65 1990s, approximately 38% of China's total land area was considered badly eroded (9-11). In
particular, deforestation and cultivation on steep slopes in Yunnan and western Sichuan
provinces led to the devastating 1998 flood in the Yangtze River basin (12-15).

In response, mainland China piloted the Natural Forest Protection Program (NFPP) in 1998
across 12 of 31 total provinces to prevent the further loss of forest cover and to expand
70 afforestation. In 2000, the NFPP (2000-2010) was formally implemented across 17 provinces in
three regions, (1) the upper reaches of the Yangtze River (Tibet, Yunnan, Sichuan, Guizhou,
Chongqing, and Hubei provinces), (2) the upper and middle reaches of the Yellow River
(Qinghai, Gansu, Ningxia, Shaanxi, Shanxi, Henan, and Inner Mongolia), and (3) the key state-
owned forestry regions (Heilongjiang, Inner Mongolia, Jilin, Xinjiang, and Hainan) (Fig. 1, Fig.
75 2 inset). A total of 96.2 billion RMB (~ US\$14.5 billion) was budgeted to implement the NFPP
from 2000 through 2010 (9, 10, 16-18), and the final expenditure (2000-2010) ended up growing
to 118.6 billion RMB (19, 20).

The NFPP's main objective related to reducing deforestation was to reduce commercial timber
extraction by 62.1% (i.e. from 13.518 million m³ in 1997 to 1.128 million m³ by the year 2000 in
80 the upper reaches of the Yangtze River and the upper and middle reaches of the Yellow River;
and from 18.532 million m³ in 1997 to 11.017 million m³ by the year 2003 in the key state-
owned forestry region). This reduction included a ban on commercial logging on 0.445 million
km² (17, 18). Given that the annual logging rate during 1994-1996 across mainland China was

3.0% (8), to achieve a 62.1% reduction in logging in the NFPP zone implies that the annual
85 deforestation rate within the NFPP zone needed to be reduced to 1.1% ($=3.0\% \times (1-62.1\%)$)
during 2000-2010. To judge the effectiveness of the NFPP, we can compare this target against the
achieved deforestation rate.

China also protects natural forest within its nature reserve (NR) network. Starting with its first
NR in 1956, China has established 2,669 NRs as of year 2012, covering 14.9% of China's land
90 area (1.43 million km²) (21). 363 of them are National-level Nature Reserves (NNRs), which are
meant to cover the most important ecosystems and areas for biodiversity in China and
consequently receive the highest level of protection and state budget. NNRs account for 62.9%
of the area of all NRs (21). This level of coverage puts China close to the upper range of the
global mean coverage (10.1-15.5% of a nation's land area) (22, 23), although a large fraction is
95 accounted for by a handful of reserves on the plateaus of Tibet, Xinjiang, and Qinghai (23) (Fig.
1).

However, the effectiveness of China's NFPP and NNR programs in protecting natural forest is
disputed (24-26). Even the precise borders of the NNRs have been mostly unknown to the public,
and estimates of China's forest cover between 2000 and 2010 have varied by a factor of 1.7
100 (1,209,000-2,054,056 km²), in part due to varying definitions (27-30). Moreover, because
economic development typically takes precedence over biological conservation at local
governance levels (6), it is widely reported that natural forest continues to be cleared or
converted to plantations, especially rubber and fruit trees (5, 31-34), which directly contravenes
the NFPP's primary policy goal of reducing the loss of standing forest.

105 Given China's high absolute endowment of biodiversity and forest cover and the profound
domestic and international interest in knowing the degree to which modern China's governing
institutions are capable of protecting biodiversity, (1) we mapped annual forest cover over the
whole of mainland China from 2000 through 2010, using a uniform remote sensing dataset
(231.7 m resolution MODIS product, MOD13Q1) and the *randomForest* algorithm (35-38), (2)
110 we quantified deforestation across mainland China with a three-year moving window in the
NFPP-era from 2000 to 2010, and (3) we used both conventional unmatched and covariate-
matching analyses (39, 40) to estimate how much closed forest in the NNRs avoided
deforestation during the logging-ban era.

Estimates of forest-cover loss provide rare quantitative measures of the effectiveness of China's
115 nature-protection institutions, due to the NFPP's public, quantitative deforestation reduction
targets, and because NNR status prohibits deforestation outright.

Results

Forest cover and loss 2000-2010. In 2000, 1.765 million km² or 18.7% of mainland China was
covered in forest (12.3%, defined here as canopy cover $\geq 70\%$) or woodland (6.4%, $40\% \leq$
120 canopy cover $< 70\%$) (Fig. 1). Consistent with previous reports (41-43), most of the forest and
woodland cover was located in the northeast, followed by the southwest and then the southeast;
just five provinces accounted for 46% of forest and woodland cover (Heilongjiang *HL*, Yunnan
YN, Inner Mongolia *NM*, Sichuan *SC*, and Tibet *XZ*) (Fig. 2).

From 2000 to 2010, we recorded forest loss and ignored any subsequent afforestation because
125 our goal is to measure the effectiveness of the NFPP and NNRs in reducing and preventing any
loss, respectively, of already standing forest. Also, in China, most afforestation and reforestation
is to monoculture plantations, which provide less biodiversity, carbon storage, and other
ecosystem services (31, 44-46).

We define *narrow-sense deforestation* (δ_{forest}) as clearance of forest to non-wooded land, and
130 *broad-sense deforestation* ($\delta_{\text{forest+woodland}}$) is defined as clearance of forest+woodland to non-
wooded land. $\delta_{\text{forest+woodland}}$ is a less reliable measure, due to a higher probability of mis-
registration (**Methods, SI Text 1 for further details**). For the same reason, we did not attempt
to record whether forest converted to woodland or woodland to forest.

Most narrow-sense deforestation occurred in the southeast, with the top three provinces of
135 Guangdong *GD*, Hunan *HN*, and Guangxi *GX* (all non-NFPP) alone accounting for 36.0% of
 δ_{forest} (Figs. 1, 2). The next two provinces with the highest δ_{forest} values, Heilongjiang *HL* and
Inner Mongolia *NM*, are designated key state-owned forest regions within the NFPP, have the
highest proportion of forest cover in the country and accounted for 17.1% of δ_{forest} from 2000 to
2010 (Fig. 2). For the 27 mainland provinces with forest area larger than 1000 km² in 2000,
140 provincial forest cover did not explain deforestation rate (linear regression, $R^2 = 0.06$, $F_{1,25} =$
1.63, $p = 0.23$).

From 2000 to 2010, $\delta_{\text{forest+woodland}}$ was 480,203 km², or 27.2% of the original forest+woodland cover, resulting in 1.285 million km² or 13.6% of mainland China remaining under original forest or woodland in 2010. The top five provinces for deforestation were all in the south and southwest, again including the same three non-NFPP provinces, Guangdong *GD*, Hunan *HN*, and Guangxi *GX*, plus two NFPP provinces, Yunnan *YN* and Sichuan *SC*, which collectively were responsible for 47.3% of $\delta_{\text{forest+woodland}}$ (Figs. 1, 2).

Testing NNR effectiveness. We evaluated the effectiveness of the NNRs at the individual reserve level and collectively at the provincial level, as NNRs are managed at both scales. At each level we used both *unmatched* and *matched* (=‘covariate matching’) sampling methods (39, 40) to estimate δ_{forest} by sampling pixels that were forest in the year 2000 and determining if these pixels were deforested (neither forest nor woodland) in 2010. In brief, the unmatched method randomly samples a set number of forested pixels in year 2000 inside the NNR and again outside the NNR (10-100 km from the NNR border) and compares how many pixels inside and outside remained forested in 2010. The matched sampling method also compares a set number of pixels inside and outside of the NNRs, but pairs of inside and outside pixels are matched by characteristics such as elevation, slope, and distance to forest edge. The matched method is more effective at isolating the effect of reserve status *per se* because it controls for nature reserves being more likely to have been sited in more remote and less productive areas, thus deriving part of their protection from greater inaccessibility.

237 of China’s 363 NNRs contained sufficient natural forest both inside and outside their borders to be evaluated (**Methods**). The 237 NNRs, which enclosed a total area of 74,030 km² of forest in the year 2000, prevented 4,073 km² of forest loss (Fig. 3a), as evaluated by the unmatched approach, or prevented 3,148 km² (Fig. 3b), as evaluated by the matched approach. The two methods largely concurred; the unmatched method judged 167 NNRs to be effective (i.e. prevented a statistically significant amount of forest loss, $p < 0.05$, paired t-test with *fdr* correction, Supplementary Table S1), and the matched method found the same for 158 NNRs. 137 NNRs were found effective under both methods, and 188 NNRs were judged effective by at least one method (**SI Text 2** for per-NNR results).

We also measured the pooled effectiveness of NNRs at the provincial governance level, including all provinces with forest cover greater than 1000 km², thus excluding Shandong,

Jiangsu, Tianjin and Shanghai for lack of 1000 km² forest cover, and Ningxia where forest cover was almost exclusively located in NNRs, preventing comparison. Pooled NNRs in 23 of 26 provinces were effective ($p < 0.05$, paired t-test with *fdr* correction) in protecting any forest cover, as evaluated by either approach (unmatched: 12 of 26 provinces; matched: 17 of 26) (Fig. 4). As a natural result of comparing inside-NNR pixels against those outside, the higher the deforestation rate in the province, the more effective did the NNRs appear to be in that province (linear regression, unmatched: $R^2 = 0.49$, $F_{1,24} = 23.44$, $p < 0.001$; matched: $R^2 = 0.71$, $F_{1,24} = 59.81$, $p < 0.001$) (Fig. 4).

180 Discussion

Although the loss of biodiversity and natural forests are global concerns, the institutions for managing and conserving these resources mostly originate domestically, especially in large countries like China, which have endogenously developed legal and political systems. During 2000-2010, we estimate that already extant, mostly natural forest cover declined from 12.3% to 10.9% of mainland China, and original forest+woodland cover declined from 18.7% to 13.6%. From 2000 to 2010, this translates to a 1.05% annual loss rate and a half-life of 65 years for forest only, and to a 2.84% annual loss rate and a 24-year half-life for forest+woodland.

Most of the narrow-sense deforestation (δ_{forest}) occurred in the 14 non-NFPP provinces (annual rate 2.07% during 2000-2010), especially in southeastern China (Figs. 1 and 2), while the annual rate across the 17 NFPP provinces was 3.3 times lower, at 0.62%. Moreover, within the NFPP provinces, most of the narrow-sense deforestation was concentrated in two provinces, Heilongjiang *HL* and Inner Mongolia *NM*, in northeastern China (Fig. 2), which were designated in the NFPP as “key state-owned forest regions”. Logging was not as strictly banned in this region as in the watersheds of the Yangtze and Yellow rivers.

Broad-sense deforestation ($\delta_{\text{forest+woodland}}$) was similarly higher in the non-NFPP provinces, especially in southeastern China (annual rate 4.26% during 2000-2010), than in the NFPP provinces (2.26%). However, two NFPP provinces, Yunnan *YN* and Sichuan *SC*, through which the Yangtze river passes and which house a high fraction of China’s biodiversity (23), also show high levels of $\delta_{\text{forest+woodland}}$ (Fig. 2).

200 Although not a focus of our analysis, several studies suggest that an important driver of forest loss across all provinces is replacement by tree plantations (31, 32, 34, 42, 47), especially *Eucalyptus*, to meet high demand for wood products (48-50). In Yunnan *YN*, Guangdong *GD* and Hainan *HI*, which have tropical to subtropical climates, rubber plantations are also an important driver (34, 51). Northwest Yunnan *YN* and western Sichuan's *SC* woodland loss is more difficult
205 to explain, although there was pressure on forests from increases in tourism and living standards, which was met in part by the construction of traditional, wooden guesthouses and the use of wood for fuel in the Tibetan regions of Yunnan, Sichuan, and Qinghai (52). It also appears that some 1970s-era planted forests in Sichuan and Yunnan were given permission to be logged.

Of course, provinces differ in many more ways than whether they were included in the NFPP, so
210 we cannot unambiguously attribute lower deforestation in the NFPP provinces to the success of that program. However, we can observe that our estimates for the 2000-2010 annual rates of broad- and narrow-sense deforestation in the NFPP provinces ($\delta_{\text{forest+woodland}} = 2.26\%$, $\delta_{\text{forest}} = 0.62\%$) approach and more than achieve, respectively, the target of reducing NFPP-zone annual deforestation to 1.1% (Fig. 2). In addition, comparison with Hansen et al.'s (43) recent Landsat-based analysis of global forest cover gives us further reason to believe that China more than
215 achieved their NFPP reduction.

Hansen et al. (43) used 30-meter-resolution Landsat imagery to analyze forest change between 2000 and 2012 at the global scale. Their estimates for China are consistent with ours in terms of year-2000 forest cover (this study: 1.765 million km² 40-100% tree cover; Hansen et al.: 1.702
220 million km² 26-100% tree cover) and the spatial distribution of cover and subsequent loss (Figs. 1 from the two studies). However, Hansen et al. found much lower deforestation rates than we did, which is likely explained by the smaller pixel sizes afforded by Landsat images (30 x 30 m = 900 m²), relative to MODIS (231.7 x 231.7 m = 53685 m²). Partial deforestation in a MODIS pixel is sometimes scored as whole-pixel deforestation, leading to overestimates. Most of the
225 deforestation in China captured by Hansen et al. (43) was in small patches, often a few Landsat pixels in size. Where there are large contiguous patches of deforestation such as in Heilongjiang, our estimates are much closer to theirs. A second possible explanation is that we count forest loss each year, and if forest is cut in 2001 and replanted to fast growing rubber or eucalyptus, within a short time, the newly reforested area will have a signature of forest cover and could be missed by

230 their annual percent tree cover filter. Quantifying the contributions of these two factors will need analysis of the EarthEngine Landsat data, when they become available.

The key takeaway is that Hansen et al.'s analysis strongly suggests that our analysis is conservative and that China therefore likely overachieved its NFPP deforestation reduction target for both forest and woodland ecotypes.

235 Our analysis of China's forested NNRs lets us conclude that NNR designation also successfully *reduced* deforestation in most provinces and in approximately two-thirds of NNRs (Figs. 3, 4) but have not collectively *prevented* deforestation outright. Moreover, total avoided deforestation (estimated range 3148-4073 km², Fig. 3) amounts to around just half the area of Shanghai municipality (6340 km²). This small number derives from the simple fact that China's NNR areal
240 coverage is biased away from forest ecosystems (Fig. 1) ([23](#), [53](#)).

On the other hand, our analysis of NNR effectiveness is conservative for two reasons. We did not differentiate natural (e.g. fire, insects) from anthropogenic causes of forest loss. In particular, Sichuan's SC NNRs were found to be ineffective (Fig. 4), but this is partly due to landslides from the 2008 Wenchuan earthquake, which caused forest loss within some NNRs ([54](#)). Also, we
245 only analyzed national-level reserves and had to ignore provincial, municipal and county-level reserves due to missing polygon data. Thus, some of our outside-NNR pixels might have been in these lower-level reserves, which, if protected, would have reduced the inferred effectiveness of the NNRs. We also emphasize that we did not analyze woodland loss alone, due to limitations of our data, and it is possible that NNR effectiveness could be lower in this forest-cover class.

250 The effectiveness of the NNRs varies across provinces (Figure 4). In part, this is the natural consequence of using matching methods; an NNR that successfully protects forest cover inside its borders will appear more effective the greater the deforestation rate outside its borders. Thus, estimated effectiveness is greater in non-NFPP provinces, particularly in the deforestation hotspot of Guangdong *GD*, Hunan *HN*, and Guangxi *GX* (**Results**, Fig. 4). Importantly, we
255 observe that the deforestation rate *inside* NNRs is positively correlated with deforestation in the province as a whole (linear regression, unmatched: $R^2 = 0.49$, $F_{1,24} = 23.44$, $p < 0.001$; matched: $R^2 = 0.71$, $F_{1,24} = 59.81$, $p < 0.001$). We speculate that causality runs in the direction of generally

laxer forest-protection governance at the provincial level (e.g. not being an NFPP province) leading to lower levels of protection inside NNRs as well.

260 Hainan *HI* provides a clear example of how the matched method can correct for the tendency of the unmatched method to overestimate NNR effectiveness (Fig. 4) (40). Hainan's forested NNRs are all located at higher elevations, which are unsuitable for rubber and other tropical plantations, and are directly surrounded by converted lowlands (26). An interesting counterexample is given by NNRs in Qinghai *QH* and Gansu *GS*, which were deemed *more* effective by the matched
265 method than by the unmatched method (Fig. 4). This is because Qinghai's and Gansu's NNRs happen to be located on flatter and lower altitude sites, rendering them more vulnerable than neighboring forests. When the matched method is used to compare with unprotected sites of equal vulnerability, these NNRs are deemed to be effective. We note that, overall, deforestation rates in these two grassland-dominated provinces are some of the highest in China, despite being
270 NFPP provinces.

In summary, our study provides the first assessment of China's two most important forest-protection policies. Since the introduction of the NFPP in 2000, at what could be considered the beginning of the modern era of environmental protection in China, the annual forest loss rate has declined to, at most, a moderately low 1.05% across the country, but the annual forest+woodland
275 loss rate is higher in non-NFPP and in two NFPP provinces, Sichuan *SC* and Yunnan *YN*, which are biodiversity hotspots in China. Our results are consistent with many geographically focused analyses in China (31, 32, 34, 42, 47, 51, 55) reporting that natural forests are being replaced by plantations, with the added nuance that it appears to be mostly woodland that is being replaced. The NFPP has been renewed for 2011-2020, and it will be instructive to continue monitoring the
280 performance of this second stage of the NFPP (19, 20).

The reason that NNRs in China have not been comprehensively assessed earlier is because most nature reserves in China, even the national-level reserves, do not have published borders. Establishing a public and standardized database of all nature-reserve borders is a key conservation priority for China. Another urgent priority is to establish or upgrade nature reserves
285 in the south and east of China, where coverage is clearly inadequate and where deforestation rates are highest (23). Finally, it is instructive to compare China with Brazil, which in 2007 implemented a series of institutional and legal reforms, including a near-real-time satellite

monitoring system based on MODIS data, to detect and deter deforestation in the Brazilian Amazon. It is estimated that from 2007 to 2011, these reforms reduced expected deforestation by 59-75%, with no reduction in agricultural production (56). Like Brazil, China's demonstrated ability to implement complex and large-scale policy mechanisms, combined with an advanced technological and scientific infrastructure, provides a clear opportunity for China to continue improving its protection of environmental quality, wildlife, and forests across its entire landscape.

295 **Materials and Methods**

Remote sensing data. The MOD13Q1 dataset has 12 layers, including a 16-day composite of red (620–670 nm), near infrared (NIR: 841–876 nm), and mid-infrared (MIR: 2105–2155 nm) reflectance, Normalized Difference Vegetation Index (NDVI), and Enhanced Vegetation Index (EVI) at 231.7 m resolution, and it is designed to provide consistent spatial and temporal comparison of vegetation conditions (57). We employed MOD13Q1 to map land cover and deforestation over mainland China from 2000-2010. Low-quality pixels due to clouds and shadows were filled by the mean values of the previous and the next scenes.

Classification scheme and training data definition. Using Arc2Earth software (<http://www.arc2earth.com/>), we were able to synchronize our MODIS data with high-resolution images in Google Earth (<http://www.google.com/earth>), and then in ArcGIS (Ver. 10.0, ESRI) we digitized and visually assigned 13869 polygons (minimal edge > 500 m) to three classes: (1) forest (tree canopy cover $\geq 70\%$), (2) woodland (tree canopy cover < 70% and tree+shrub cover $\geq 40\%$), and (3) non-wooded land (tree cover < 40%, including open shrub, grassland, farmland, urban, open water, etc.).

Land-cover mapping. Because of the large quantity of MODIS data, we partitioned mainland China into 34 contiguous regions to minimize the number of different MODIS tiles needing to be stitched together. Using 23 scenes of MOD13Q1 product per year and the Google Earth training data, we used the *randomForest* algorithm to classify annual land cover over mainland China from 2000 through 2010 (36, 37, 58). For each year, producer's accuracies in all 34 regions were $\geq 92\%$.

Deforestation detection. We used three-year moving windows to adjudge forest loss (forest to non-forest, non-woodland). Only if the first year of a window was forest and the next two years were non-forest and non-woodland was a pixel classed as having been deforested in that window, but if any two of the three years were classed as forest, then the pixel remained closed forest in this window. Our three-year moving window is useful for cases where forest cover is distributed over small patches relative to MODIS pixel size (231.7 m), as we found for one NNR in Gansu. Mis-registration between consecutive years might make some patches appear to get deforested and then later reforested, and our methodology would classify this pixel as deforested because we do not consider reforestation. The three-year window minimizes this mis-registration effect.

To assess change-detection accuracy, we sampled 200 random deforestation pixels in four regions (two in southern China, one in eastern China and one in northeastern China), which could be independently classed as deforested or not using high-resolution imagery in Google Earth. User accuracies were $\geq 90\%$ in all four regions.

Terrain data. The Shuttle Radar Topography Mission (SRTM) dataset was downloaded from the USGS (<http://srtm.usgs.gov/index.php>) and re-projected to the Albers conic equal area projection for all 34 regions at 90 m resolution. Elevation, slope and a topographic position index (TPI) were calculated from the 90 m resolution SRTM. The TPI of a focal pixel was defined as the difference between its elevation and the mean elevation of all pixels in an 11 X 11 grid centered on the focal pixel. TPI identifies pixels that are either higher (peaks) or lower (gorges) than the surroundings and thus captures local inaccessibility.

NNR data. The Chinese Research Academy of Environmental Sciences delineated and merged boundary polygons of all NNRs on behalf of the Ministry of Environmental Protection (MEP). Data sources are the NNR Master Plans finished and reported to the MEP by each NNR under the Regulations on Nature Reserves of the People's Republic of China. These polygons are currently the best available data on NNR borders, but boundary accuracies do vary because about 20% of the NNRs still have low technological capacity for mapping.

NNR effectiveness. At the end of 2012, there were 363 NNRs in mainland China. 241 of them contained at least 10 km² of forest cover and were distributed over 29 provinces. Of these, 4 NNRs in two provinces (Ningxia and Tianjin) were omitted because not enough closed forest

could be found outside the reserve borders for us to evaluate effectiveness. For the unmatched method, we sampled n_1 pixels of forest in year 2000 inside an NNR, and n_2 pixels outside the NNRs (≥ 10 km and ≤ 100 km from the reserve borders). $n_1 = \min(2000, 50\% * N_1)$, where N_1 is the total number of forest pixels inside all NNRs within a province. $n_2 = \min(10000, 50\% * N_2)$, where N_2 is the total number of forest pixels outside all of the NNRs within a province. The 10 km buffer was used to remove any leakage effects, in which deforestation banned in the reserve spills over to just outside the reserve (59, 60) or where deforestation is *lower* next to reserve borders, possibly due to governance or isolation spillovers (26, 61). Restricting pixels to within 100 km and to the same province was used to ensure that matching pixels were chosen from similar bioclimatic and governance regimes. Some of the n_1 and n_2 pixels were deforested (changed to neither forest nor woodland) in 2010. The effectiveness of NNRs within a province was calculated as $\text{Effectiveness.unmatched} = \text{deforestation.rate.outside} - \text{deforestation.rate.inside}$, where $\text{deforestation.rate.outside} = (\text{number of pixels converted to non-forest outside NNR})/n_2$ and $\text{deforestation.rate.nnr} = (\text{number of pixels converted to non-forest inside NNR})/n_1$. For the matched method (also known as ‘covariate matching’) (40), our four covariates were: elevation above sea level, TPI, slope, and distance to forest edge. For each within-NNR pixel, we found matching outside-NNR pixels (40, 62) within calipers (allowable differences) of ≤ 200 m of elevation, ≤ 15 m of TPI, and ≤ 5 degrees of slope. The outside-NNR pixel with the shortest Mahanobis distance was deemed the best match (40). For the provincial-level analyses, we resampled 10 times and used the mean. For the individual NNR analyses, we resampled 20 times and used the mean. The effectiveness of NNRs within a province was calculated as $\text{Effectiveness.matched} = (\text{mean deforestation rate of matched samples outside all NNRs}) - (\text{mean deforestation rate of matched samples within all NNRs})$. Further methodological details are in SI Text.

Acknowledgments. This study was supported by Yunnan Province (20080A001), the Chinese Academy of Sciences (0902281081, KSCX2-YW-Z-1027), the National Natural Science Foundation of China (31272327, 31170498), the Ministry of Environmental Protection of China (20120928), the Ministry of Science and Technology of China (2012FY110800), the University of East Anglia, and the State Key Laboratory of Genetic Resources and Evolution at the Kunming Institute of Zoology, Salem State University (SSU). We thank Matthew Clark for guidance on *randomForests* and Tommy O’Connell, Sujan Joshi, and Zhenyang Hua for assistance with digitizing Google Earth ground truth data. Without the free dataset and software from NASA Land Processes Distributed Active Archive Center (LP DAAC), USGS/Earth

Resources Observation and Science (EROS) Center, Sioux Falls, South Dakota
380 (<https://lpdaac.usgs.gov>), there would be no study.

References

1. World Bank ed (2001) *China: air, land, and water* (Washington, DC: World Bank).
2. Economy EC (2007) The great leap backward? The costs of China's environmental crisis. *Foreign Affairs*:38-59.
- 385 3. Liu JG, Li SX, Ouyang ZY, Tam C, & Chen XD (2008) Ecological and socioeconomic effects of China's policies for ecosystem services. *P Natl Acad Sci USA* 105(28):9477-9482.
4. Kahn J & Yardley J (26 August, 2007) As China roars, pollution reaches deadly extremes. *New York Times*.
5. Wang S, *et al.* (2007) Carbon sinks and sources in China's forests during 1901-2001. *J Environ Manage* 85(3):524-537.
- 390 6. Liu JG & Diamond J (2005) China's environment in a globalizing world. *Nature* 435(7046):1179-1186.
7. Ministry of Environmental Protection of the People's Republic of China (2010) 2010 Report on the state of the environment in China. <http://jcs.mep.gov.cn/hjzl/zkgb/2010zkgb/> (in Chinese, last accessed October 22, 2013).
8. Li SC & Yang QY (2000) Socioeconomic factors determining China's deforestation rates. *Geographical Research (in Chinese with English abstract)* 19(1):1-7.
- 395 9. Zhang PC, *et al.* (2000) China's forest policy for the 21st century. *Science* 288(5474):2135-2136.
10. Zhang P (1999) Discussion on the national programme for natural forests conservation. *Scientia Silvae Sinicae (in Chinese with English abstract)* 35(2):124-131.
11. Ministry of Environmental Protection of the People's Republic of China (1992) 1992 Report on the state of the environment in China. http://jcs.mep.gov.cn/hjzl/zkgb/1996/200211/t20021115_83142.htm (in Chinese, last accessed October 22, 2013)
- 400 12. Zong YQ & Chen XQ (2000) The 1998 flood on the Yangtze, China. *Natural Hazards* 22(2):165-184.
13. Zhang JM, Gao G, & Chen Y (2001) Climate background of flooding and waterlogging and disaster inducing factors of the Yangtze valley. *Resource Science (in Chinese with English Abstract)* 23(3):73-77.
- 405 14. Yu FL, Chen ZY, Ren XY, & Yang GF (2009) Analysis of historical floods on the Yangtze River, China: Characteristics and explanations. *Geomorphology* 113(3-4):210-216.
15. Dai SB & Lu XX (2010) Sediment deposition and erosion during the extreme flood events in the middle and lower reaches of the Yangtze River. *Quatern Int* 226(1-2):4-11.
16. Zhang Z (2002) Background, proceeding and strategy of Natural Forest Protection Programme. *Forestry Economics (in Chinese with English abstract)* (1):36-39.
- 410 17. State Forestry Administration (2000) *The implementation plan of the natural forest protection project in the upper reaches of the Yangtze River, and the upper and middle reaches of the Yellow River (in Chinese)*.
18. State Forestry Administration (2000) *The implementation plan of the natural forest protection project in the key state-owned forest regions of Northeast China, Inner Mongolia, etc. (in Chinese)*.
- 415 19. State Forestry Administration (2010) *The phase II implementation plan of the natural forest protection project in the key state-owned forest regions of Northeast China, Inner Mongolia, etc.* <http://www.forestry.gov.cn/ZhuantiAction.do?dispatch=content&id=485662&name=trlbhgc> (in Chinese, last accessed October 22, 2013).
20. State Forestry Administration (2010) *The phase II implementation plan of the natural forest protection project in the upper reaches of the Yangtze River, and the upper and middle reaches of the Yellow River.* <http://www.forestry.gov.cn/ZhuantiAction.do?dispatch=content&id=485662&name=trlbhgc> (in Chinese, last accessed October 22, 2013).
- 420 21. Ministry of Environmental Protection of the People's Republic of China (2013) 2012 Report on the state of the environment in China. <http://www.mep.gov.cn/gkml/hbb/qt/201306/W020130606578292022739.pdf> (in Chinese, last accessed in October 22, 2013).
- 425 22. Soutullo A (2010) Extent of the global network of terrestrial protected areas. *Conserv Biol* 24(2):362-363.

23. Wu RD, *et al.* (2011) Effectiveness of China's nature reserves in representing ecological diversity. *Front Ecol Environ* 9(7):383-389.
- 430 24. Trac CJ, Harrell S, Hinckley TM, & Henck AC (2007) Reforestation programs in southwest China: Reported success, observed failure, and the reasons why. *J Mt Sci* 4(4):275-292.
25. Liu JG, *et al.* (2001) Ecological degradation in protected areas: The case of Wolong Nature Reserve for giant pandas. *Science* 292(5514):98-101.
26. Wang W, *et al.* (2013) Effectiveness of nature reserve system for conserving tropical forests: a statistical evaluation of Hainan island, China. *Plos One* 8(2).
- 435 27. Department of Forest Resources Management SFA (2005) The Sixth National Forest Resources Inventory and the Status of Forest Resources *Green China (in Chinese with English abstract)* (2):10-12.
28. Department of Forest Resources Management SFA (2010) The Seventh National Forest Resources Inventory and the Status of Forest Resources *Forest Resource Management (in Chinese with English abstract)* (1):1-8.
- 440 29. Hansen MC, Stehman SV, & Potapov PV (2010) Quantification of global gross forest cover loss. *P Natl Acad Sci USA* 107(19):8650-8655.
30. World Bank (2001) Trading economics. (<http://www.tradingeconomics.com/china/forest-area-percent-of-land-area-wb-data.html> (accessed September 2, 2013)).
- 445 31. Xu JC (2011) China's new forests aren't as green as they seem. *Nature* 477(7365):370-370.
32. Li WH (2004) Degradation and restoration of forest ecosystems in China. *Forest Ecol Manag* 201(1):33-41.
33. Xu JT, Tao R, & Amacher GS (2004) An empirical analysis of China's state-owned forests. *Forest Policy Econ* 6(3-4):379-390.
34. Li HM, Aide TM, Ma YX, Liu WJ, & Cao M (2007) Demand for rubber is causing the loss of high diversity rain forest in SW China. *Biodivers Conserv* 16(6):1731-1745.
- 450 35. Bartholome E & Belward AS (2005) GLC2000: a new approach to global land cover mapping from Earth observation data. *Int J Remote Sens* 26(9):1959-1977.
36. Clark ML, Aide TM, Grau HR, & Riner G (2010) A scalable approach to mapping annual land cover at 250 m using MODIS time series data: A case study in the Dry Chaco ecoregion of South America. *Remote Sens Environ* 114(11):2816-2832.
- 455 37. Breiman L (2001) Random forests. *Mach Learn* 45(1):5-32.
38. Liaw A & Wiener M (2002) Classification and Regression by randomForest. *R news* 2(3):18-22.
39. Joppa LN, Loarie SR, & Pimm SL (2008) On the protection of "protected areas". *P Natl Acad Sci USA* 105(18):6673-6678.
- 460 40. Andam KS, Ferraro PJ, Pfaff A, Sanchez-Azofeifa GA, & Robalino JA (2008) Measuring the effectiveness of protected area networks in reducing deforestation. *P Natl Acad Sci USA* 105(42):16089-16094.
41. Richardson SD (1990) *Forests and forestry in China: changing patterns of resource development* (Island Pr).
42. Song C & Zhang Y (2010) Forest cover in China from 1949 to 2006. *Reforesting Landscapes*, (Springer), pp 341-356.
- 465 43. Hansen MC, *et al.* (2013) High-resolution global maps of 21st-century forest cover change. *Science* 342(6160):850-853.
44. Chazdon RL (2008) Beyond deforestation: Restoring forests and ecosystem services on degraded lands. *Science* 320(5882):1458-1460.
45. Perfecto I & Vandermeer J (2010) The agroecological matrix as alternative to the land-sparing/agriculture intensification model. *P Natl Acad Sci USA* 107(13):5786-5791.
- 470 46. Rudel TK (2009) Tree farms: Driving forces and regional patterns in the global expansion of forest plantations. *Land Use Pol.* 26(3):545-550.
47. Wang G, Innes JL, Lei J, Dai S, & Wu SW (2007) China's forestry reforms. *Science* 318(5856):1556-1557.
48. Tang MS (2005) Speeding the utilization of fast-growing plantation to promote development of forestry industry in Hunan. *China Forest products industry (in Chinese)* 32(6):48-50.
- 475 49. Lin Y (2001) A review on ecotlogical effects of *Eucalyptus* plantation in Guangdong province. *Forestry Science and Technology (in Chinese with English abstract)* 17(4):32-36.
50. Zhang J, Wei X, Fu F, & Luo S (2012) Survey and economic benefit evaluation on fast-growing and high-yielding *Eucalyptus SPP* plantation in Guangxi. *Forestry Economics (in Chinese with English abstract)* (9):34-37.
- 480

51. Zhai DL, Cannon CH, Slik JWF, Zhang CP, & Dai ZC (2012) Rubber and pulp plantations represent a double threat to Hainan's natural tropical forests. *J Environ Manage* 96(1):64-73.
52. Brandt JS, *et al.* (2012) Using Landsat imagery to map forest change in southwest China in response to the national logging ban and ecotourism development. *Remote Sens Environ* 121:358-369.
- 485 53. Joppa LN & Pfaff A (2009) High and far: biases in the location of protected areas. *Plos One* 4(12).
54. Vina A, *et al.* (2011) Effects of natural disasters on conservation policies: The case of the 2008 Wenchuan earthquake, China. *Ambio* 40(3):274-284.
55. Zhai DL, Xu JC, Dai ZC, Cannon CH, & Grumbine R (2012) Increasing tree cover while losing diverse natural forests in tropical Hainan, China. *Reg Environ Change*:1-11.
- 490 56. Assunção J, Gandour C, & Rocha R (2013) DETERring deforestation in the Brazilian Amazon: environmental monitoring and law enforcement. (Climate Policy Initiative www.climatepolicyinitiative.org (last accessed in Nov 11, 2013)).
57. Solano R, Didan K, & Jacobson A (2010) MODIS vegetation index user's guide (MOD13 series). Version 2.00. (http://vip.arizona.edu/documents/MODIS/MODIS_VI_UsersGuide_01_2012.pdf (accessed 26/June/2013)).
- 495 58. Dorais A & Cardille J (2011) Strategies for incorporating high-resolution Google Earth Databases to guide and validate classifications: Understanding deforestation in Borneo. *Remote Sens-Basel* 3(6):1157-1176.
59. Nagendra H (2008) Do parks work? Impact of protected areas on land cover clearing. *Ambio* 37(5):330-337.
- 500 60. Wittemyer G, Elsen P, Bean WT, Burton ACO, & Brashares JS (2008) Accelerated human population growth at protected area edges. *Science* 321(5885):123-126.
61. Gaveau DLA, *et al.* (2009) Evaluating whether protected areas reduce tropical deforestation in Sumatra. *J Biogeogr* 36(11):2165-2175.
- 505 62. Nolte C, Agrawal A, Silvius KM, & Soares BS (2013) Governance regime and location influence avoided deforestation success of protected areas in the Brazilian Amazon. *P Natl Acad Sci USA* 110(13):4956-4961.

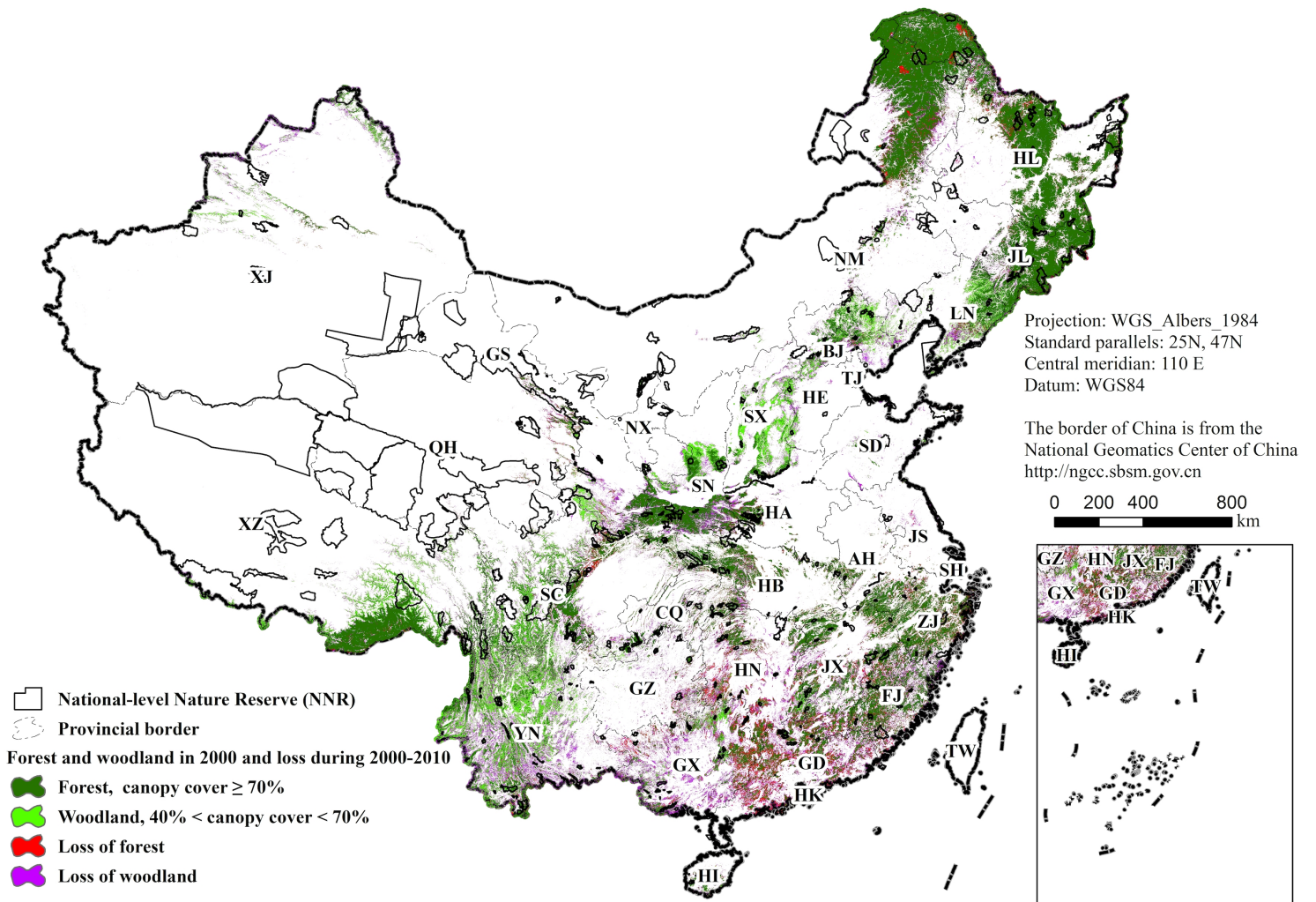
Figure Legends

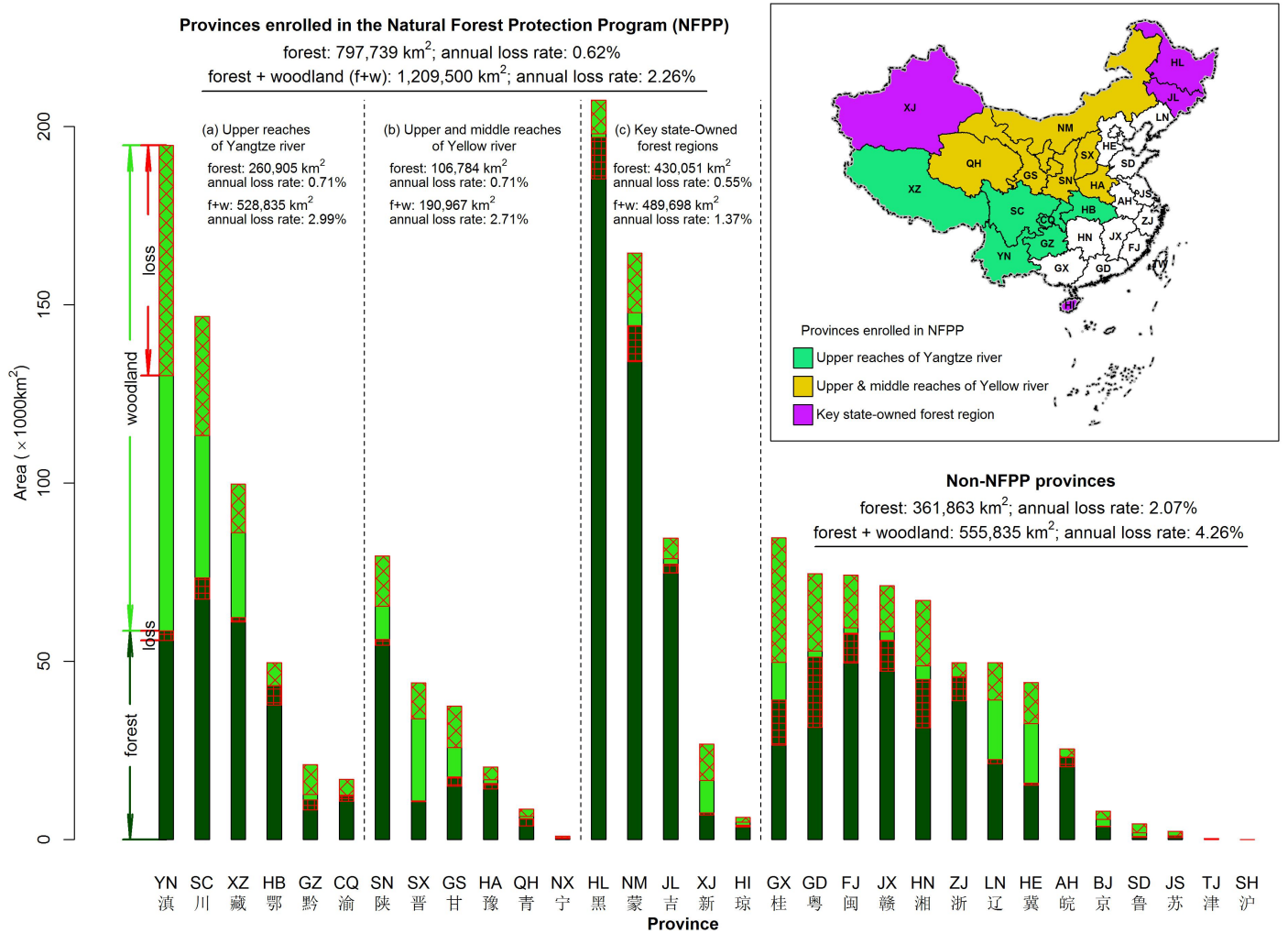
Fig. 1. Map of forest and woodland coverage over mainland China in year 2000 and loss during
510 2000-2010. AH-Anhui, BJ-Beijing, CQ-Chongqing, FJ-Fujian, GD-Guangdong, GS-Gansu, GX-
Guangxi, GZ-Guizhou, HA-Henan, HB-Hubei, HE-Hebei, HI-Hainan, HL-Heilongjiang, HN-
Hunan, JL-Jilin, JS-Jiangsu, JX-Jiangxi, LN-Liaoning, NM- Inner Mongolia, NX-Ningxia, QH-
Qinghai, SC-Sichuan, SD-Shandong, SH-Shanghai, SN-Shaanxi, SX-Shanxi, TJ-Tianjin, XJ-
Xinjiang, XZ-Tibet, YN-Yunnan, ZJ-Zhejiang. A high-resolution version is in SI Text 3.

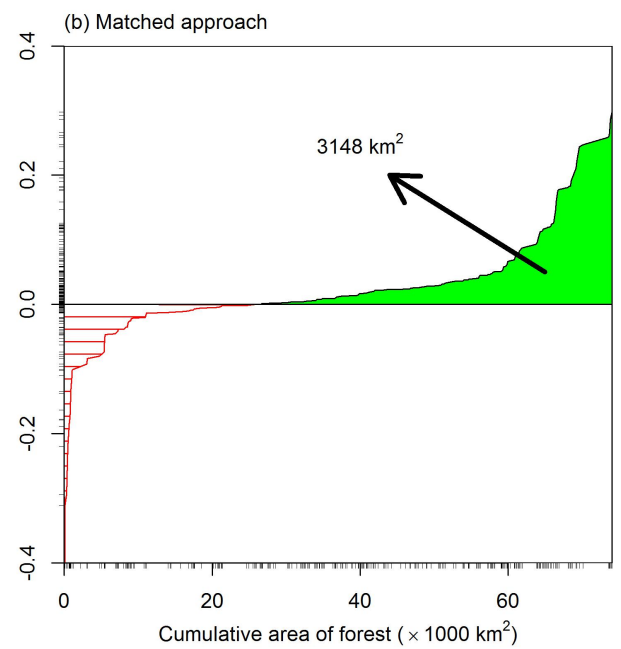
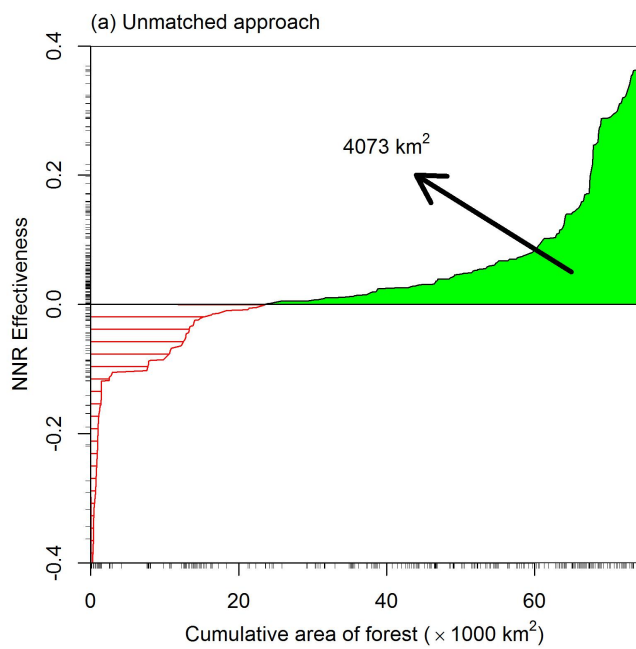
Fig. 2. Forest and woodland coverage over mainland China in year 2000 and loss during 2000-
2010, subdivided by province and by National Forest Protection Program (NFPP) status. Inset:
515 NFPP-enrolled provinces.

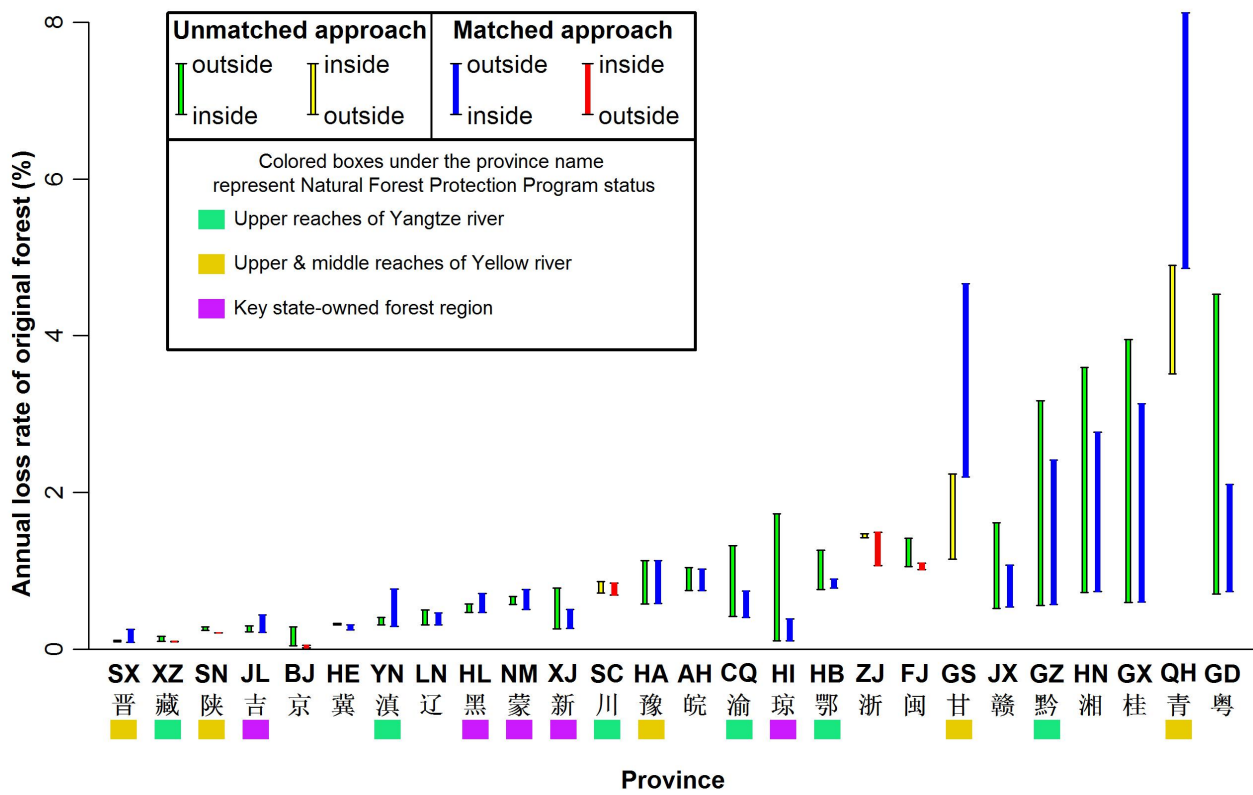
Fig. 3. Effectiveness of National-level Nature Reserves (NNRs) in protecting forest cover during
2000-2010. Calculation details are described in **Methods: NNR Effectiveness**. NNRs are
520 ordered from lowest (negative) to highest (positive) effectiveness. Rug lines (small ticks) along
the X-axis indicate each NNR's contribution to total forest cover. Rug lines along the Y-axis
indicate each NNR's effectiveness. (A) Unmatched method. (B) Matched method.

Fig. 4. Effectiveness of National-level Nature Reserves (NNRs) in protecting forest cover during
2000-2010, pooled by province. Provinces are aligned from left to right by each province's
525 deforestation rate. For each province, effectiveness is estimated using matched and unmatched
methods. For blue and green bars, the deforestation rate inside the NNRs is lower than outside
the NNRs. For red and yellow bars, the deforestation rate inside the NNRs is higher than outside
the NNRs. Most provinces show a lower deforestation rate inside the NNRs, indicating a
protective effect of the province's NNRs. Color bars below each province indicate National
530 Forest Protection Program (NFPP) status (color scheme follows Figure 2 inset).









The Effectiveness of China's National Forest Protection Program and National-level Nature Reserves, 2000 to 2010:

Supporting Information

Guopeng Ren^{a,1}, Stephen S. Young^{b,1}, Lin Wang^{a,1}, Wei Wang^{c,1}, Yongcheng Long^d, Ruidong Wu^e, Junsheng Li^c, Jianguo Zhu^{a,2}, Douglas W. Yu^{a,f,2}

^a State Key Laboratory of Genetic Resources and Evolution, Kunming Institute of Zoology, Chinese Academy of Sciences, Kunming, Yunnan 650223 China

^b Department of Geography, Salem State University, Salem, MA 01970 USA

^c State Key Laboratory of Environmental Criteria and Risk Assessment, Chinese Research Academy of Environmental Sciences, Beijing 100012 China

^d The Nature Conservancy, China Program, Kunming, Yunnan 650031 China

^e Yunnan Key Laboratory of International Rivers and Transboundary Eco-Security, Yunnan University, Kunming, Yunnan, China

^f School of Biological Sciences, University of East Anglia, Norwich Research Park, Norwich, Norfolk, NR47TJ UK

¹ These authors contributed equally to this work.

² To whom correspondence should be addressed. Douglas Yu, Tel: +44 7510308272 and +86 18608717369, email: dougwyu@gmail.com and douglas.yu@uea.ac.uk; Jianguo Zhu, Tel: +86 87165190776, email: zhu@mail.kiz.ac.cn.

Supporting Text 1. Methods

SI 1.1 Terrain data and processing

The Shuttle Radar Topography Mission (SRTM) dataset was downloaded from NASA (earthexplorer.usgs.gov, accessed during May-November 2012) and reprojected to the Albers conic equal area projection for all 34 regions at 90 m resolution. Elevation, slope and topographic position index (TPI) were derived from the 90 m resolution SRTM using the raster package (1) in R v. 2.15 (2). The TPI of a pixel was defined as the difference between the elevation and the focal mean using a 11 by 11 Gaussian filter (F , eq. 1-2).

$$F = (f_{ij})_{n \times n}, \quad n = 2r + 1; \quad r = 5 \quad (1)$$

$$f_{ij} = e^{-[(i-r+1)^2 + (j-r+1)^2]/r^2} / \sum_{i=1}^n \sum_{j=1}^n e^{-[(i-r+1)^2 + (j-r+1)^2]/r^2}, \quad i, j = 1, 2, \dots, n \quad (2)$$

SI 1.2 Remote Sensing data and processing

We employed MOD13Q1 to map land cover and deforestation over mainland China from 2000-2010, because this global dataset allows consistent spatial and temporal comparison of vegetation conditions since February 2000 (3). For each year there are 23 scenes, from day 001 to day 353. Year 2000, however, did not start processing data until scene 049 (missing 001, 017, 033). Each scene of the MOD13Q1 dataset has 12 layers, including a 16-day composite of red (620–670 nm), near infrared (NIR: 841–876 nm), and mid-infrared (MIR: 2105–2155 nm) reflectance, Normalized Difference Vegetation Index (NDVI), and Enhanced Vegetation Index (EVI) at 231.7 m resolution (3). To cover all of mainland China for each scene, 19 tiles (H23V04-05, H24V04-06, H25V03-06, H26V03-06, H27V04-06, and H28V05-07) of MOD13Q1 data were needed (Figure S1). For all 19 tiles, we downloaded 274 scenes (from 2000-049, 2000-065, ..., 2011-353, 2012-001) from the NASA Echo Reverb Data Portal (reverb.echo.nasa.gov/reverb/) in June 2012. Low-quality pixels of five layers (NDVI, EVI, MIR, NIR, red) in each scene of MOD13Q1 data, due to clouds and shadows, were filled by the mean values of the previous and the next scenes using the *raster* package (1) in *R*, thus achieving a filled MOD13Q1 dataset.

We use the 1:4,000,000 border of mainland China from the National Geomatics Center of China (ngcc.sbsm.gov.cn, accessed in May 22, 2003) and reprojected to an Albers conic equal area projection (WGS Albers 1984 projection, WGS84 datum with the standard parallels 25N, 47N, and central meridian 110E), which is the common projection used with geographic data across China. Therefore, mainland China was partitioned into 34 regions for land cover mapping and change detection (Figure S2). Then we reprojected and mosaiced all 274 scenes of filled MOD13Q1 data for each of the 34 regions to the same Albers conic equal area projection using nearest-neighbor resampling. All these processing were conducted using the *raster* package and the MODIS Reprojection Tool (lpdaac.usgs.gov/tools/modis_reprojection_tool, accessed in May 15, 2012).

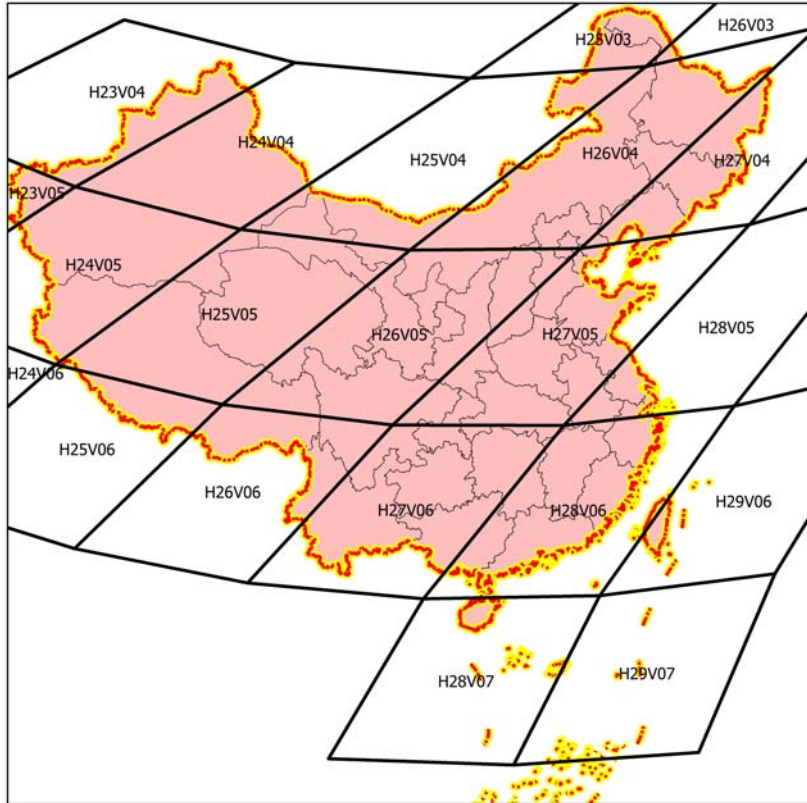


Figure S1. The 19 tiles of MOD13Q1 covering mainland China.

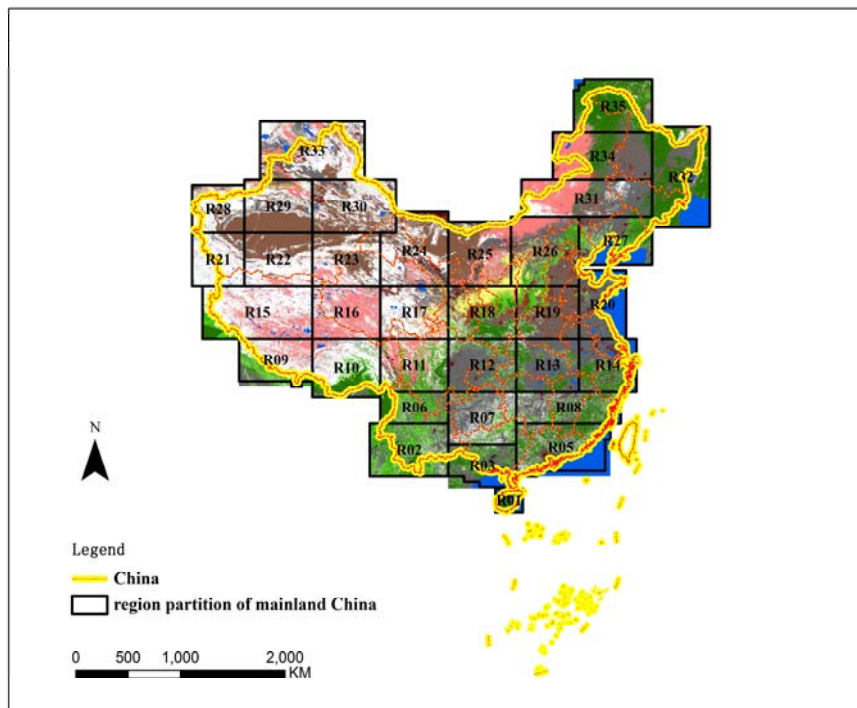


Figure S2. Partitioning of mainland China for land cover mapping

SI 1.3 Land cover mapping and deforestation detection

Classification scheme

We define the training data for classification (4). We classified all of mainland China into (1) non-wooded land (tree canopy cover <40% and tree + shrub cover < 60%, or rubber plantation), and (2) forest (tree canopy cover \geq 70%) and woodland ($40\% \leq$ tree canopy cover < 70% and tree + shrub cover \geq 60%). Forest and woodland included conifer forest and woodland, broadleaved forest and woodland, and mixed forest and woodland. Non-wooded land included urban (built-up land), agricultural land, grassland, open-water, perennial snow or ice, etc. Rubber plantations, with a regular canopy texture in high resolution images, could be distinguished from other forests and woodland. Therefore, we combined rubber plantation with non-wooded land in this study.

Training set definition

Training reference data came from high resolution imagery in Google Earth (GE, www.earth.google.com). GE now provides extensive coverage of China with high resolution imagery from DigitalGlobe. Many land cover studies adjudge GE to be accurate reference data (5-7). GE data were also used for some post-classification accuracy assessments. We accessed GE in ArcGIS software (V. 10.0, ESRI) through the ArcGIS plug-in Arc2Earth (www.arc2earth.com, last accessed in November 14, 2013).

By visual interpretation of high resolution images from GE, we digitized 13,869 polygons (with a minimal edge wider than 500 m) across mainland China and environs, labeling as forest (tree canopy cover \geq 70%), woodland ($40\% \leq$ tree canopy cover < 70% and tree + shrub cover \geq 60%), or non-wooded land (tree canopy cover <40% and tree + shrub cover < 60%, or rubber plantation). These polygons were also labeled with detailed land cover types (such as conifer forest). We took these polygons as "ground-truth" data, as other studies have done (6, 7).

Within each cell of one degree in longitude and one degree in latitude, we attempted to obtain 5 or more forest and woodland polygons if possible (Figure S3).

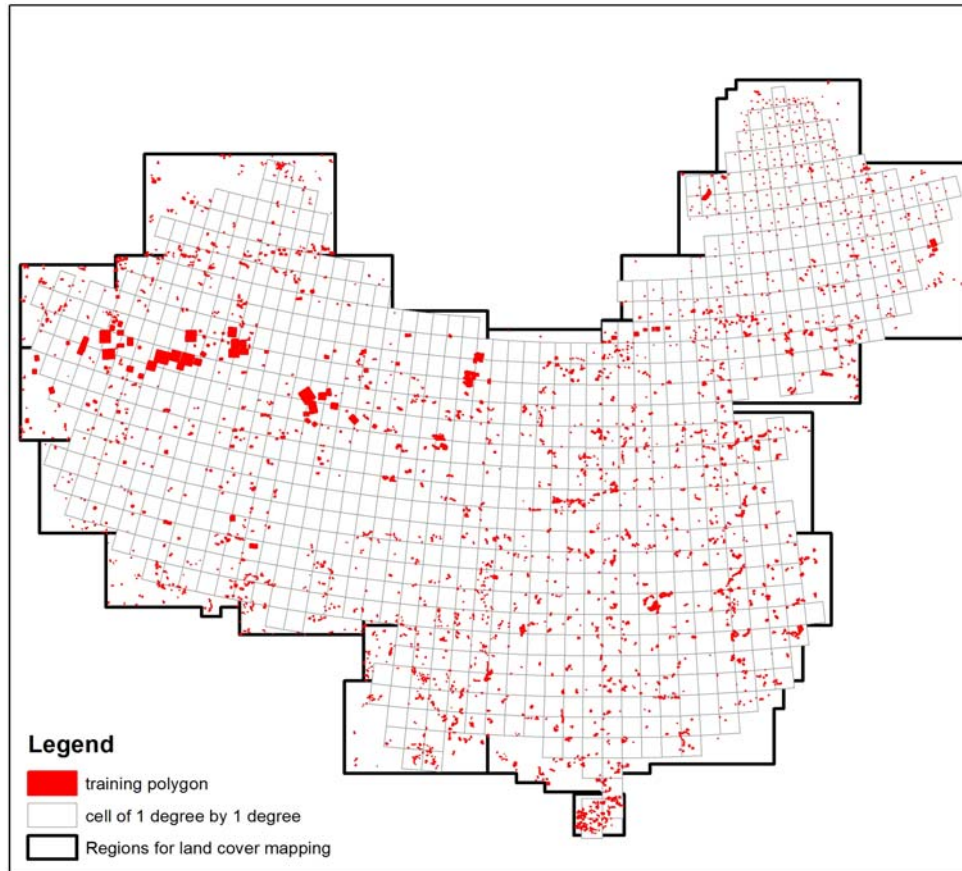


Figure S3. Training data by visual interpretation of high resolution images

Land-cover mapping

We mapped land cover across mainland China region by region for each year from 2000-2011 using the *randomForest* algorithm (7, 8). For each year, 23 scenes of the five filled MOD13Q1 layers (NDVI, EVI, MIR, NIR, and red) were used as input except the year 2000 (only 19 filled scenes). The GE “ground-truth” data were used as training data for all years. These training data are imperfect because a few pixels might have changed from 2000-2010, and it is infeasible to verify the training data in the field. We performed land cover classification using the default parameters of the *randomForest* function in the *RandomForest* package (9). The producer's accuracies of land cover maps in all 34 regions in all 12 years were higher than 92%.

Deforestation detection

We used three-year moving windows to adjudge forest loss (forest to non-wooded land). Only if the first year of a window was forest and the next two years were non-forest and non-woodland was a pixel classed as having been deforested in that window. To assess deforestation change-detection accuracy, we sampled 200 random deforested pixels in four

regions (two in southern China, one in eastern China and one in Northeastern China), and these were checked with Google Earth. The user's accuracy of deforestation detection was higher than 90% in all four regions, which demonstrated good change detection.

SI 1.4 Evaluation of the effectiveness of National-level Nature Reserves (NNRs)

NNR data

One mission of the Ministry of Environmental Protection (MEP) of the People's Republic of China is to “Guide, coordinate and supervise the environmental protection of various kinds of nature reserves”

(english.mep.gov.cn/About_SEPA/Mission/200803/t20080318_119444.htm), which includes archiving and monitoring the management plans of all NNRs. The Chinese Research Academy of Environmental Sciences (CRAES) was authorized by the MEP to use the management plans to digitize the boundaries of all NNRs. We evaluated the effectiveness of NNRs in protecting forest for each NNR and each province by comparing deforestation rates inside and outside NNRs, using both unmatched and matched approaches.

Unmatched approach

To estimate the deforestation rate of each of the 363 NNRs, we sampled N_{inside} forested pixels inside each NNR in the year 2000 (Eq. 3). We also sampled $N_{outside}$ pixels outside each NNR (in a buffer zone ≥ 10 km from all NNRs and ≤ 100 km from the NNR) (Eq. 4). Let n_{inside} and $n_{outside}$ be the N_{inside} and $N_{outside}$ pixels, respectively, that changed to non-wooded land in the year 2010. The effectiveness of an NNR in preventing forest loss during 2000-2010 is given by Equation 5. We call this the “unmatched approach”.

$$N_{inside} = \text{maximum}(1000, 50\% * M_{inside}) \quad (3)$$

$$N_{outside} = \text{maximum}(1000, 50\% * M_{outside}) \quad (4)$$

$$Effectiveness = n_{outside}/N_{outside} - n_{inside}/N_{inside} \quad (5)$$

We only evaluated NNRs with more than 10 km² forest cover in the year 2000 both inside and outside the NNR (both N_{inside} and $N_{outside} > 186 = 10/0.2317 * 0.2317$). We therefore analyzed only 237 of 363 NNRs. For each analyzed NNR, we repeated this procedure 20 times.

At the province level, we sampled at most 2000 or 50% of the within-NNR-forested pixels in the year 2000 within each province. We also sampled at most 10,000 or 50% of the outside-NNR-forested pixels in the year 2000 within each province, in a buffer zone ≥ 10 km and ≤ 100 km from all NNR borders within each province. 26 of 31 provinces could be so analyzed, omitting Shanghai, Tianjin, Ningxia, Jiangsu, and Shandong because of too few forest pixels outside the NNRs. For each of the remaining 26 provinces, we repeated this procedure 10 times.

Matched approach

The unmatched approach assumes that NNR borders have been sited randomly, which is untrue (10). To control for environmental differences between pixels inside NNRs and outside NNRs, we also employed a matched approach, also known as covariate matching (10, 11). Our covariates included elevation above sea level, TPI (topographic position index), slope, and distance to forest edge. For each sample pixel from an NNR, 1) we found all matching pixels outside the NNR within calipers (allowable differences) of ≤ 200 m of elevation, ≤ 15 m of TPI, and ≤ 5 degrees of slope; and 2) of these pixels, we chose the inside pixel's match as the outside pixel with the shortest Mahanobis distance (10). We repeated this procedure 20 times per NNR. We also repeated the analysis at the provincial level, pooling all NNRs within a province and repeating the procedure 10 times.

The matched approach is considered a more reliable gauge of NNR protective efficacy (10, 12) because it partials out the confounding effect of protection by terrain inaccessibility *per se*, but since it is not yet possible in China to avoid sampling pixels in provincial- municipal- and county-level nature reserves, which also receive some degree of protection, the matched approach is likely to be somewhat conservative. We thus consider both methods in order to bracket the true effectiveness of NNR protection.

Supporting Text 2. Results

Table S1. Effectiveness of the 237 NNRs in preventing deforestation. **Prov:** province key for each of the 237 NNRs. See Main Text Figure 1 legend for translation to full province names.

Defor. NNR: annual deforestation rate inside the NNR. **Eff. Unmat.:** effectiveness of the NNR

evaluated by unmatched approach. **Eff. mat.:** effectiveness of the NNR evaluated by the matched approach. **Sample size inside/outside:** the number of sampled pixels inside and outside the NNR. **Sample matched rate:** percentage of sampled pixels inside the NNR which could be matched to a pixel outside the NNR. **p-value unnm.:** the possibility of the effectiveness of the NNR evaluated by unmatched approach that is equal to zero by t-test (N=20). **p-value unnm.:** the possibility of the effectiveness of the NNR evaluated by matched approach that is equal to zero by t-test (N=20).

Prov.	Defor. NNR	Eff. Unmat.	Eff. Mat.	Sample size inside	Sample size outside	Sample matched rate	p-value unnm.	p-value mat.
AH	0.061	0.048	0.023	1000	10000	0.966	0.000	0.000
AH	0.057	0.053	0.020	1000	10000	0.918	0.000	0.000
AH	0.041	0.068	0.018	589	10000	0.899	0.000	0.000
AH	0.197	-0.086	-0.062	471	10000	0.883	0.000	0.000
BJ	0.007	0.024	-0.004	1000	10000	0.840	0.000	0.000
BJ	0.000	0.031	0.001	375	10000	0.920	0.000	0.008
CQ	0.034	0.103	0.036	1000	10000	0.961	0.000	0.000
CQ	0.027	0.110	0.017	1000	10000	0.988	0.000	0.000
CQ	0.116	0.020	-0.043	1000	10000	0.886	0.000	0.000
CQ	0.167	-0.032	-0.035	801	10000	0.924	0.000	0.000
CQ	0.031	0.105	0.100	323	10000	1.000	0.000	0.000
FJ	0.002	0.145	0.050	1000	10000	0.970	0.000	0.000
FJ	0.005	0.140	0.022	1000	10000	0.856	0.000	0.000
FJ	0.264	-0.117	-0.096	1000	10000	1.000	0.000	0.000
FJ	0.003	0.144	0.038	1000	9999	0.997	0.000	0.000
FJ	0.023	0.123	0.085	1000	9999	0.999	0.000	0.000
FJ	0.101	0.046	-0.005	1000	10000	1.000	0.000	0.097
FJ	0.030	0.116	-0.003	1000	10000	0.961	0.000	0.192
FJ	0.032	0.115	0.051	1000	10000	0.974	0.000	0.000

FJ	0.008	0.140	0.117	972	10000	1.000	0.000	0.000
FJ	0.005	0.143	0.028	833	10000	0.994	0.000	0.000
GD	0.036	0.363	0.069	1000	9998	0.923	0.000	0.000
GD	0.087	0.311	0.114	1000	9998	0.964	0.000	0.000
GD	0.211	0.187	0.002	846	9998	0.999	0.000	0.633
GD	0.028	0.369	0.190	649	9999	0.998	0.000	0.000
GD	0.417	-0.021	0.037	211	9999	1.000	0.001	0.000
GS	0.183	-0.064	-0.045	1000	10000	0.982	0.000	0.000
GS	0.222	-0.103	0.259	1000	10000	0.928	0.000	0.000
GS	0.410	-0.291	0.088	1000	10000	0.930	0.000	0.000
GS	0.277	-0.156	0.221	1000	10000	0.925	0.000	0.000
GS	0.033	0.087	0.020	1000	10000	0.941	0.000	0.000
GS	0.276	-0.155	0.196	887	10000	0.978	0.000	0.000
GS	0.545	-0.426	-0.084	506	10000	0.998	0.000	0.000
GS	0.625	-0.506	-0.002	264	10000	0.913	0.000	0.841
GX	0.207	0.152	-0.012	1000	10000	0.904	0.000	0.073
GX	0.064	0.298	0.147	1000	9999	0.989	0.000	0.000
GX	0.007	0.354	0.176	1000	10000	0.926	0.000	0.000
GX	0.040	0.320	0.120	1000	9999	0.991	0.000	0.000
GX	0.040	0.320	0.183	1000	10000	0.990	0.000	0.000
GX	0.019	0.342	0.247	1000	10000	0.995	0.000	0.000
GX	0.002	0.360	0.078	973	10000	0.888	0.000	0.000
GX	0.000	0.362	0.298	919	9999	0.998	0.000	0.000
GX	0.084	0.275	0.082	909	9999	0.947	0.000	0.000
GX	0.006	0.355	0.072	865	10000	0.927	0.000	0.000
GX	0.040	0.320	0.267	623	10000	0.996	0.000	0.000
GX	0.531	-0.168	-0.137	443	10000	0.954	0.000	0.000
GX	0.578	-0.217	-0.312	312	10000	0.975	0.000	0.000
GX	0.296	0.065	0.123	141	9999	1.000	0.000	0.000

GZ	0.047	0.251	0.036	1000	10000	0.938	0.000	0.000
GZ	0.013	0.287	0.178	1000	10000	0.987	0.000	0.000
GZ	0.353	-0.054	-0.189	1000	10000	0.992	0.000	0.000
GZ	0.092	0.207	0.120	1000	10000	0.997	0.000	0.000
GZ	0.003	0.295	0.023	1000	10000	0.974	0.000	0.000
GZ	0.009	0.290	0.120	825	10000	0.998	0.000	0.000
GZ	0.100	0.198	0.159	466	10000	0.953	0.000	0.000
HA	0.031	0.085	0.023	1000	10000	0.998	0.000	0.000
HA	0.132	-0.015	0.000	1000	10000	0.999	0.000	0.895
HA	0.014	0.102	0.014	1000	10000	0.972	0.000	0.000
HA	0.079	0.038	0.008	1000	10000	1.000	0.000	0.013
HA	0.108	0.009	0.026	1000	10000	0.999	0.000	0.000
HA	0.034	0.081	0.038	1000	10000	0.964	0.000	0.000
HA	0.107	0.011	0.043	558	10000	0.997	0.000	0.000
HA	0.162	-0.045	-0.057	379	10000	1.000	0.000	0.000
HA	0.073	0.043	-0.002	347	10000	0.933	0.000	0.739
HB	0.037	0.092	0.022	1000	10000	1.000	0.000	0.000
HB	0.118	0.012	-0.025	1000	10000	0.977	0.000	0.000
HB	0.056	0.073	0.047	1000	10000	0.979	0.000	0.000
HB	0.134	-0.005	-0.006	1000	10000	1.000	0.103	0.065
HB	0.038	0.091	0.013	1000	10000	1.000	0.000	0.000
HB	0.027	0.102	0.024	1000	10000	0.753	0.000	0.000
HB	0.055	0.074	0.013	1000	10000	0.988	0.000	0.000
HB	0.163	-0.033	-0.021	1000	10000	0.998	0.000	0.000
HE	0.005	0.031	0.006	1000	10000	0.998	0.000	0.000
HE	0.009	0.026	0.008	1000	10000	1.000	0.000	0.000
HE	0.006	0.030	0.000	1000	10000	1.000	0.000	1.000
HE	0.054	-0.018	0.009	1000	10000	0.705	0.000	0.003
HE	0.000	0.036	0.004	815	10000	0.999	0.000	0.000

HE	0.091	-0.056	0.017	602	10000	0.999	0.000	0.054
HE	0.000	0.036	0.005	429	10000	0.993	0.000	0.000
HE	0.129	-0.093	0.001	376	10000	1.000	0.000	0.864
HE	0.000	0.036	0.011	144	10000	0.967	0.000	0.000
HE	0.084	-0.048	-0.052	93	10000	0.996	0.000	0.000
HI	0.026	0.148	0.017	1000	7820	0.998	0.000	0.000
HI	0.004	0.171	0.017	1000	7820	0.999	0.000	0.000
HI	0.004	0.171	0.026	1000	7818	0.997	0.000	0.000
HI	0.006	0.170	0.002	1000	7821	0.951	0.000	0.047
HL	0.012	0.049	0.040	1000	10000	1.000	0.000	0.000
HL	0.062	-0.001	-0.011	1000	10000	1.000	0.730	0.013
HL	0.231	-0.169	-0.110	1000	10000	1.000	0.000	0.000
HL	0.003	0.058	0.023	1000	10000	1.000	0.000	0.000
HL	0.032	0.029	-0.004	1000	10000	1.000	0.000	0.017
HL	0.014	0.047	0.051	1000	10000	1.000	0.000	0.000
HL	0.007	0.055	0.014	1000	10000	1.000	0.000	0.000
HL	0.022	0.039	-0.005	1000	10000	0.999	0.000	0.010
HL	0.001	0.060	0.017	1000	10000	1.000	0.000	0.000
HL	0.008	0.053	0.002	1000	10000	1.000	0.000	0.028
HL	0.001	0.060	0.004	1000	10000	1.000	0.000	0.000
HL	0.085	-0.024	0.014	1000	10000	1.000	0.000	0.008
HL	0.069	-0.008	-0.013	1000	10000	1.000	0.002	0.000
HL	0.035	0.026	-0.001	1000	10000	1.000	0.000	0.824
HL	0.029	0.032	0.022	1000	10000	1.000	0.000	0.000
HL	0.128	-0.067	0.097	1000	10000	1.000	0.000	0.000
HL	0.009	0.052	0.004	1000	10000	1.000	0.000	0.000
HL	0.059	0.002	0.013	1000	10000	1.000	0.186	0.000
HL	0.035	0.026	0.028	1000	10000	1.000	0.000	0.000
HL	0.334	-0.273	-0.163	540	10000	1.000	0.000	0.000

HL	0.404	-0.343	-0.047	170	10000	1.000	0.000	0.024
HL	0.146	-0.085	-0.080	69	10000	1.000	0.000	0.000
HN	0.043	0.288	0.244	1000	10000	0.941	0.000	0.000
HN	0.163	0.170	0.118	1000	10000	0.998	0.000	0.000
HN	0.044	0.288	0.211	1000	10000	0.895	0.000	0.000
HN	0.057	0.276	0.262	1000	10000	0.995	0.000	0.000
HN	0.019	0.311	0.107	1000	10000	0.990	0.000	0.000
HN	0.041	0.290	0.067	1000	10000	1.000	0.000	0.000
HN	0.085	0.247	0.183	1000	10000	0.996	0.000	0.000
HN	0.010	0.322	0.118	1000	10000	0.913	0.000	0.000
HN	0.030	0.300	0.122	1000	10000	0.994	0.000	0.000
HN	0.086	0.246	0.292	1000	10000	1.000	0.000	0.000
HN	0.113	0.217	0.033	1000	10000	0.908	0.000	0.000
HN	0.063	0.269	0.286	1000	10000	0.993	0.000	0.000
HN	0.221	0.109	-0.013	946	10000	0.993	0.000	0.003
HN	0.157	0.172	0.047	828	10000	0.969	0.000	0.000
HN	0.007	0.324	0.112	723	10000	0.906	0.000	0.000
HN	0.404	-0.071	0.039	477	10000	1.000	0.000	0.000
HN	0.448	-0.119	-0.022	224	10000	1.000	0.000	0.030
JL	0.008	0.025	0.009	1000	10000	1.000	0.000	0.000
JL	0.030	0.002	-0.009	1000	10000	1.000	0.039	0.000
JL	0.042	-0.009	0.036	1000	10000	1.000	0.000	0.000
JL	0.007	0.025	0.003	1000	10000	0.893	0.000	0.016
JL	0.013	0.020	0.007	1000	10000	1.000	0.000	0.001
JL	0.013	0.020	0.009	1000	10000	1.000	0.000	0.001
JL	0.027	0.005	0.009	1000	10000	1.000	0.000	0.000
JL	0.007	0.026	0.002	1000	10000	0.999	0.000	0.081
JL	0.057	-0.024	-0.041	1000	10000	0.996	0.000	0.000
JL	0.057	-0.024	0.041	1000	10000	1.000	0.000	0.000

JX	0.032	0.132	0.000	1000	10000	0.997	0.000	0.888
JX	0.093	0.070	0.045	1000	10000	0.997	0.000	0.000
JX	0.005	0.159	0.030	1000	10000	0.650	0.000	0.000
JX	0.013	0.150	0.032	1000	10000	0.942	0.000	0.000
JX	0.022	0.143	0.059	1000	10000	0.999	0.000	0.000
JX	0.004	0.160	0.026	1000	10000	0.965	0.000	0.000
JX	0.101	0.064	0.080	1000	10000	1.000	0.000	0.000
JX	0.006	0.159	0.030	1000	10000	0.976	0.000	0.000
JX	0.011	0.154	0.048	995	10000	0.998	0.000	0.000
LN	0.001	0.052	0.017	1000	10000	0.999	0.000	0.000
LN	0.037	0.016	0.117	955	10000	1.000	0.000	0.000
LN	0.000	0.053	0.016	695	10000	0.999	0.000	0.000
LN	0.243	-0.190	-0.102	221	10000	1.000	0.000	0.000
LN	0.140	-0.087	-0.047	114	10000	0.996	0.000	0.000
NM	0.065	0.007	0.029	1000	10000	1.000	0.001	0.000
NM	0.004	0.068	0.024	1000	10000	1.000	0.000	0.000
NM	0.088	-0.017	0.024	1000	10000	1.000	0.000	0.000
NM	0.176	-0.105	-0.077	1000	10000	0.996	0.000	0.000
NM	0.005	0.067	0.050	1000	10000	0.999	0.000	0.000
NM	0.024	0.049	0.063	1000	10000	1.000	0.000	0.000
NM	0.115	-0.043	-0.074	1000	10000	0.007	0.000	0.526
NM	0.184	-0.112	0.052	603	10000	0.588	0.000	0.001
NM	0.185	-0.113	0.040	130	10000	0.998	0.000	0.007
QH	0.430	-0.104	0.181	1000	10000	0.933	0.000	0.000
QH	0.469	-0.141	-0.178	111	10000	0.840	0.000	0.000
SC	0.069	0.007	0.019	1000	10000	0.992	0.000	0.000
SC	0.000	0.076	0.008	1000	10000	0.996	0.000	0.000
SC	0.021	0.055	0.004	1000	10000	0.980	0.000	0.022
SC	0.015	0.061	0.009	1000	10000	0.990	0.000	0.000

SC	0.006	0.070	0.012	1000	10000	0.993	0.000	0.000
SC	0.050	0.026	0.126	1000	10000	0.947	0.000	0.000
SC	0.001	0.075	0.059	1000	10000	0.954	0.000	0.000
SC	0.295	-0.219	-0.219	1000	10000	0.991	0.000	0.000
SC	0.049	0.028	0.026	1000	10000	0.980	0.000	0.000
SC	0.064	0.013	-0.027	1000	10000	0.986	0.000	0.000
SC	0.044	0.031	0.076	1000	10000	0.979	0.000	0.000
SC	0.133	-0.056	-0.021	1000	10000	0.990	0.000	0.000
SC	0.090	-0.014	-0.038	1000	10000	0.974	0.000	0.000
SC	0.438	-0.362	-0.294	1000	10000	0.973	0.000	0.000
SC	0.014	0.061	0.002	1000	10000	0.970	0.000	0.172
SC	0.127	-0.050	0.066	752	10000	0.988	0.000	0.000
SC	0.012	0.065	0.041	615	10000	0.985	0.000	0.000
SC	0.744	-0.668	-0.610	580	10000	0.970	0.000	0.000
SC	0.176	-0.099	-0.043	531	10000	0.991	0.000	0.000
SC	0.022	0.054	-0.007	312	10000	1.000	0.000	0.002
SC	0.007	0.068	0.039	295	10000	0.995	0.000	0.000
SC	0.021	0.054	0.010	273	10000	0.994	0.000	0.002
SD	0.398	-0.317	-0.179	694	2192	0.999	0.000	0.000
SD	0.046	0.033	-0.007	467	2192	1.000	0.000	0.005
SN	0.012	0.019	-0.001	1000	10000	0.992	0.000	0.470
SN	0.000	0.031	0.019	1000	10000	1.000	0.000	0.000
SN	0.036	-0.005	0.005	1000	10000	1.000	0.000	0.018
SN	0.028	0.003	0.032	1000	10000	0.964	0.030	0.000
SN	0.141	-0.110	-0.100	1000	10000	0.958	0.000	0.000
SN	0.003	0.029	0.002	1000	10000	0.993	0.000	0.001
SN	0.050	-0.019	-0.012	1000	10000	0.980	0.000	0.000
SN	0.000	0.031	0.004	1000	10000	1.000	0.000	0.000
SN	0.064	-0.033	-0.008	1000	10000	0.732	0.000	0.011

SN	0.054	-0.023	-0.035	1000	10000	0.992	0.000	0.000
SN	0.000	0.031	0.006	1000	10000	1.000	0.000	0.000
SN	0.023	0.008	-0.005	1000	10000	0.982	0.000	0.001
SN	0.011	0.019	0.000	1000	10000	0.989	0.000	0.627
SN	0.052	-0.021	-0.025	1000	10000	0.975	0.000	0.000
SN	0.055	-0.024	-0.038	580	10000	0.998	0.000	0.000
SX	0.007	0.006	0.006	1000	10000	0.996	0.000	0.000
SX	0.029	-0.016	-0.008	1000	10000	0.996	0.000	0.000
SX	0.005	0.007	0.001	982	10000	0.997	0.000	0.294
SX	0.000	0.013	0.001	940	10000	1.000	0.000	0.004
SX	0.000	0.013	0.006	518	10000	1.000	0.000	0.000
SX	0.012	0.000	0.051	468	10000	0.977	0.842	0.000
XJ	0.004	0.079	0.029	1000	10000	0.968	0.000	0.000
XJ	0.117	-0.035	-0.035	1000	10000	1.000	0.000	0.000
XZ	0.038	-0.019	-0.020	1000	10000	0.951	0.000	0.000
XZ	0.004	0.015	0.027	1000	10000	0.984	0.000	0.000
XZ	0.013	0.006	-0.002	1000	10000	0.980	0.000	0.199
XZ	0.005	0.014	0.013	1000	10000	0.976	0.000	0.000
XZ	0.018	0.001	0.026	291	10000	0.965	0.548	0.000
YN	0.029	0.015	-0.010	1000	10000	0.982	0.000	0.000
YN	0.011	0.031	-0.003	1000	10000	0.978	0.000	0.005
YN	0.033	0.011	-0.020	1000	10000	0.963	0.000	0.000
YN	0.130	-0.087	0.004	1000	10000	0.965	0.000	0.260
YN	0.014	0.028	0.015	1000	10000	0.998	0.000	0.000
YN	0.030	0.013	0.013	1000	10000	0.998	0.000	0.000
YN	0.000	0.043	0.006	1000	10000	0.979	0.000	0.000
YN	0.032	0.012	0.093	1000	10000	0.996	0.000	0.000
YN	0.002	0.041	0.003	1000	10000	0.998	0.000	0.002
YN	0.138	-0.094	0.048	1000	10000	0.910	0.000	0.000

YN	0.000	0.043	0.010	768	10000	1.000	0.000	0.000
YN	0.009	0.034	0.003	763	10000	1.000	0.000	0.014
YN	0.034	0.009	0.008	492	10000	0.885	0.000	0.003
YN	0.065	-0.021	-0.029	438	10000	1.000	0.000	0.000
YN	0.004	0.039	0.112	427	10000	0.991	0.000	0.000
YN	0.013	0.030	0.008	263	10000	0.936	0.000	0.002
YN	0.009	0.035	0.124	163	10000	0.996	0.000	0.000
ZJ	0.220	-0.075	-0.092	1000	9999	1.000	0.000	0.000
ZJ	0.073	0.072	0.078	1000	9999	0.997	0.000	0.000
ZJ	0.025	0.119	0.045	1000	9999	0.998	0.000	0.000
ZJ	0.081	0.064	0.058	952	9999	1.000	0.000	0.000
ZJ	0.006	0.138	0.053	917	9999	0.776	0.000	0.000
ZJ	0.002	0.143	0.018	517	9999	0.900	0.000	0.000
ZJ	0.102	0.042	-0.004	289	9999	0.988	0.000	0.376
ZJ	0.232	-0.088	-0.135	191	9999	1.000	0.000	0.000

References

1. Hijmans RJ & van Etten J (2011) raster: Geographic analysis and modeling with raster data. (<http://cran.r-project.org/web/packages/raster/index.html>).
2. R Core Team (2012) R: A language and environment for statistical computing (version 2.15.2)[Computer software]. Vienna, Austria: R Foundation for Statistical Computing.
3. Solano R, Didan K, & Jacobson A (2010) MODIS Vegetation Index User's Guide (MOD13 Series). Version 2.00. (http://vip.arizona.edu/documents/MODIS/MODIS_VI_UsersGuide_01_2012.pdf (accessed 26/June/2013)).
4. Reese HM, *et al.* (2002) Statewide land cover derived from multiseasonal Landsat TM data - A retrospective of the WISCLAND project. *Remote Sens Environ* 82(2-3):224-237.
5. Aide TM, *et al.* (2013) Deforestation and Reforestation of Latin America and the Caribbean (2001-2010). *Biotropica* 45(2):262-271.
6. Dorais A & Cardille J (2011) Strategies for Incorporating High-Resolution Google Earth Databases to Guide and Validate Classifications: Understanding Deforestation in Borneo. *Remote Sens-Basel* 3(6):1157-1176.
7. Clark ML, Aide TM, Grau HR, & Riner G (2010) A scalable approach to mapping annual land cover at 250 m using MODIS time series data: A case study in the Dry Chaco ecoregion of South America. *Remote Sens Environ* 114(11):2816-2832.
8. Breiman L (2001) Random forests. *Mach Learn* 45(1):5-32.
9. Liaw A & Wiener M (2002) Classification and Regression by randomForest. *R News* 2(3):18-22.

10. Andam KS, Ferraro PJ, Pfaff A, Sanchez-Azofeifa GA, & Robalino JA (2008) Measuring the effectiveness of protected area networks in reducing deforestation. *P Natl Acad Sci USA* 105(42):16089-16094.
11. Nolte C, Agrawal A, Silvius KM, & Soares BS (2013) Governance regime and location influence avoided deforestation success of protected areas in the Brazilian Amazon. *P Natl Acad Sci USA* 110(13):4956-4961.
12. Joppa LN, Loarie SR, & Pimm SL (2008) On the protection of "protected areas". *P Natl Acad Sci USA* 105(18):6673-6678.