

Relic DNA, Carini, et al. 2016

**Title:**

**Relic DNA is abundant in soil and obscures estimates of soil microbial diversity**

**Authors:**

Paul Carini<sup>1\*</sup>, Patrick J. Marsden<sup>2</sup>, Jonathan W. Leff<sup>1,3</sup>, Emily E. Morgan<sup>1</sup>, Michael S. Strickland<sup>4</sup>, Noah Fierer<sup>1,3\*</sup>

**Affiliations:**

<sup>1</sup>Cooperative Institute for Research in Environmental Sciences, University of Colorado, Boulder, CO 80309

<sup>2</sup>Department of Chemistry, Metropolitan State University of Denver, Denver, CO 80217

<sup>3</sup>Department of Ecology and Evolutionary Biology, University of Colorado, Boulder, CO 80309

<sup>4</sup>Department of Biological Sciences, Virginia Tech University, Blacksburg, VA 24061

\*Corresponding Authors: Paul Carini ([Paul.Carini@gmail.com](mailto:Paul.Carini@gmail.com)) and Noah Fierer ([Noah.Fierer@colorado.edu](mailto:Noah.Fierer@colorado.edu))

**One Sentence Summary:** Soils can harbor substantial amounts of DNA from dead microbial cells; this ‘relic’ DNA inflates estimates of microbial diversity and obscures assessments of community structure.

# **Abstract:**

It is implicitly assumed that the microbial DNA recovered from soil originates from living cells. However, because relic DNA (DNA from dead cells) can persist in soil for weeks to years, it could impact DNA-based analyses of microbial diversity. We examined a wide range of soils and found that, on average, 40% of prokaryotic and fungal DNA was derived from the relic DNA pool. Relic DNA inflated the observed prokaryotic and fungal diversity by as much as 55%, and caused misestimation of taxon abundances, including taxa integral to key ecosystem processes. These findings imply that relic DNA can obscure treatment effects, spatiotemporal patterns, and relationships between taxa and environmental conditions. Moreover, relic DNA may represent a historical record of microbes formerly living in soil.

# **Main text:**

Microbes play critical roles in terrestrial biogeochemistry and the maintenance of soil fertility. Microbiologists, mycologists, biogeochemists, and ecologists now routinely use DNA-based approaches to determine the composition and diversity of soil microbial communities using molecular methods that include amplicon (marker gene) sequencing, quantitative polymerase chain reaction (qPCR), and shotgun metagenomics. These methods have advanced our understanding of terrestrial microbiology in a myriad of ways, by: *i*) revealing that thousands of unique microbial taxa can inhabit a single gram of soil (1-3); *ii*) uncovering novel soil microbial diversity (4, 5); and *iii*) identifying putative functions of uncultivated taxa (6). As DNA sequencing costs continue to plummet, the use of molecular methods to describe soil microbial diversity aimed at answering both basic and applied research questions will become even more commonplace.

Linking the activities of microbes to soil processes first necessitates distinguishing living cells (both metabolically active and dormant) from those that are dead. Most molecular investigations of soil microbial diversity make the implicit assumption that the total pool of DNA extracted from soil is derived exclusively from living cells contributing to, or potentially contributing to, biogeochemical transformations. However, total microbial DNA can originate from both living and dead cells. Previous work has shown that extracellular DNA and DNA from dead or partially degraded organisms can persist in soils for weeks to years (reviewed in (7-9)). The longevity and size of this extracellular DNA pool is controlled by a myriad of soil factors. For example, complex physical factors such as soil mineralogy, pH and ionic strength control the sorption of DNA to the soil matrix, as well as the molecular integrity of the DNA itself (10, 11). This sorbed DNA can be protected from removal by microbes that use it as a source of transformable genetic material or for nutrition (reviewed in (12)).

Given the potential for extracellular DNA to persist in soil, we hypothesized that DNA from dead microbes (which we term ‘relic DNA’) may obscure DNA-based estimates of the diversity and structure of soil microbial communities (13, 14). Such effects should be most apparent if relic DNA is abundant and if the taxa represented in the relic DNA pool are not reflective of the taxa present as living cells. It is important to

distinguish living microbes from dead microbes because ecological definitions of community-level diversity and structure are meant to encompass organisms actually alive at a site, not both the living and extinct organisms. Here, we used a propidium monoazide (PMA)-based approach (15, 16) to remove relic DNA from a broad range of soil types. We report the amount of microbial DNA derived from relic DNA pools and show how relic DNA affects the observed richness and composition of microbial communities. We also identify which soil characteristics are linked to greater relic DNA effects and discuss the implications of relic DNA on molecular analyses of microbial communities in soil and other environments.

We tested the effect of relic DNA on estimation of microbial diversity by analyzing 31 soils collected from a broad range of ecosystem types across the United States, selected to encompass a wide variety of edaphic characteristics (Supplementary Table S1). Subsamples of each soil were either treated with PMA ( $n=5$ ) or left untreated ( $n=5$ ). PMA is a DNA intercalating molecule that is generally excluded by cells with intact membranes, but binds extracellular DNA and DNA of cells with compromised cytoplasmic membranes (15). After exposure to light, intercalated PMA covalently binds and permanently modifies DNA, rendering it un-amplifiable by the polymerase chain reaction (PCR) (15). We used quantitative PCR (qPCR) to calculate the amount of relic DNA by subtracting the number of amplifiable prokaryotic 16S rRNA gene copies or fungal internal transcribed spacer 1 (ITS) amplicon copies in untreated samples (total DNA = DNA from living cells + relic DNA) from the number of gene copies in PMA-treated samples (DNA from living cells only). Microbial communities were characterized by high-throughput sequencing of amplified rRNA gene regions (16S rRNA for prokaryotes or the ITS region for fungi) from both PMA treated and untreated soils. We compared estimates of microbial richness, overall community composition, and taxon abundances after standardizing all libraries to equivalent sequencing depths (see materials and methods in Supplementary Materials).

Relic DNA represented a large fraction of microbial DNA in many soils. Across all 31 soils,  $40.7 \pm 3.75\%$  (mean  $\pm$  SE;  $n=155$ ) of amplifiable prokaryotic 16S rRNA genes were derived from the relic DNA pool (Fig. 1A). Similar patterns were observed for fungi, where  $40.5 \pm 4.12\%$  (mean  $\pm$  SE;  $n=155$ ) of fungal ITS amplicons originated from the relic DNA pool (Fig. 1B). There are a number of lines of evidence that suggest these estimates of the amounts of relic DNA found in soil are conservative. First, when we experimentally added naked DNA to soil, our approach completely removed the naked DNA from most soil samples, but only reduced (did not completely remove) naked DNA added to soils which were found to contain high levels of relic DNA (Fig. S1A). Second, because not all dead cells have compromised membranes (17), PMA may not infiltrate all dead cells. Conversely, it is unlikely our approach removes DNA from intact cells because: *i*) numerous studies have shown that the effects of PMA on intact microbial cells are minimal and PMA overwhelmingly targets extracellular DNA or DNA from dead cells (15, 16, 18); *ii*) our own tests confirmed PMA treatment did not lead to significant reductions in the amounts of DNA coming from live bacterial or fungal cells (Fig.

S1B,C); and *iii*) if PMA inflated estimates of the amount of relic DNA by entering live cells, we would expect to detect relic DNA in all soils studied, which was not the case (Fig. 1A,B).

Removal of relic DNA significantly reduced estimates of microbial diversity. Across all samples,  $13.9 \pm 1.20\%$  (mean  $\pm$  SE;  $n=155$ ) of the total prokaryotic richness (number of taxa) was found in the relic DNA pool (Fig.1C). In other words, nearly 14% of the taxa were no longer living in soil and were exclusively recovered in the relic DNA pool. In 24 of the soils tested, the prokaryotic richness was significantly lower, by as much as 55%, after relic DNA was removed (two-tailed  $t$  test  $q$  value  $\leq 0.05$ ) (Fig. 1C). The percent of prokaryotic taxa exclusively found in the relic DNA pool was positively correlated with the proportional abundance of 16S rRNA genes present in the relic DNA pool (Fig. S2A). That is, soils with more relic DNA tended to have lower richness once relic DNA was removed. Similar results were observed when we analyzed fungal DNA. The relic DNA pool contributed  $12.4 \pm 1.97\%$  (mean  $\pm$  SE;  $n=152$ ) of the total fungal richness across all soils (Fig. 1D). The relic DNA contribution to estimates of fungal richness was significant in 14 soils (two-tailed  $t$  test  $q$  value  $\leq 0.05$ ), and removal of relic DNA reduced estimates of fungal diversity by up to 52% (Fig. 1D).

The removal of relic DNA can substantially reduce estimates of soil microbial diversity, indicating that the most commonly used molecular methods for assessing soil microbial diversity lead to inflated richness estimates due to the detection of DNA from dead cells. Although an average of  $\sim 40\%$  of the total prokaryotic and fungal DNA was derived from relic DNA pools (Fig. 1A,B), the effect of relic DNA removal on fungal richness was variable across the soils examined (Fig. 1D) and there was no significant correlation between the percent of fungal relic DNA and the percent of fungal taxa found exclusively within the relic DNA pool (Fig. S2B). These between-sample differences in the magnitude of the effects of relic DNA on estimates of fungal diversity may be a product of differences in the temporal turnover of fungal communities at individual sites. If turnover in the fungal community composition is minimal, removal of relic DNA should have little effect on estimated fungal taxonomic richness as the relic DNA pool would reflect the diversity found in the pool of DNA extracted from intact fungal cells. This suggests that targeted analyses of the relic DNA pool could be used to identify taxa that once lived in soil, but are no longer alive due to changes in soil conditions, or to discriminate between endemic microbes and those microbes that have been transported into soils that can not support their growth.

We found that estimates of microbial community composition were also significantly influenced by the presence of relic DNA. Soil source was the strongest predictor of community differences (PERMANOVA  $R^2=0.727$ ,  $P \leq 0.001$  for prokaryotes;  $R^2=0.646$ ,  $P \leq 0.001$  for fungi). That is, we could discriminate between the distinct microbial communities found in the different soils, regardless of whether relic DNA was removed or not (Fig. S3A-D). However, the effect of relic DNA removal on community composition was significant for both prokaryotic and fungal communities (PERMANOVA

$R^2=0.004$ ,  $P \leq 0.001$  for prokaryotes;  $R^2=0.002$ ,  $P \leq 0.001$  for fungi). On an individual soil basis, the composition of prokaryotic communities was significantly affected by the removal of relic DNA in all 31 of the soils tested (PERMANOVA  $R^2=0.10-0.23$ ,  $q$  value  $\leq 0.05$ ) (Fig. 2A). In 21 of the 31 soils, removal of relic DNA also had a significant effect on the composition of fungal communities (PERMANOVA  $R^2=0.10-0.22$ ,  $q$  value  $\leq 0.05$ ) (Fig. 2B). The effects of relic DNA on the composition of both prokaryotic and fungal communities were positively correlated (Fig. 2C), highlighting that the magnitude of these relic DNA effects on microbial community composition were similar for both prokaryotic and fungal communities.

The relative abundances of numerous key microbial lineages changed after the removal of relic DNA, but the taxa that changed, and the direction of observed shifts, varied across soils. For example, in a New Hampshire grassland (soil 25), Actinobacteria and  $\alpha$ -Proteobacteria significantly increased in relative abundance after relic DNA was removed, but Verrucomicrobia decreased (Fig. 3). In many cases, the changes in estimated relative abundances after relic DNA removal were large, often approaching or exceeding 25% (Fig. 3). The relative abundances of  $\alpha$ -Proteobacteria were consistently and significantly greater after relic DNA removal (Mann-Whitney  $U$  two-tailed  $P \leq 0.05$ ) (Fig. S4A), suggesting that the abundances of viable or dormant  $\alpha$ -Proteobacteria are underestimated in many soil studies. In contrast, agaricomycete fungi were significantly less abundant after relic DNA was removed (Mann-Whitney  $U$  two-tailed  $P \leq 0.05$ ) (Fig. S4B), suggesting Agaricomycetes are less abundant than commonly thought. Together, these results show that the effects of relic DNA removal vary depending on the taxon in question, are not predictable *a priori*, and will vary depending on the particular soil studied.

Relating the abundances of microbial taxa or protein-coding genes to soil biogeochemical process rates has been challenging, hindering attempts to link microbial communities to the ecosystem-level processes they can control (19). Because the abundances of living microbial populations may be much higher or lower than is apparent from estimates of relative abundances derived from total DNA analyses, our results show that relic DNA likely obscures correlations between the abundances of individual microbial taxa (or their functional genes) and key biogeochemical processes. We found evidence of this when we compared the relative abundances of prokaryotes integral to soil nitrification before and after relic DNA was removed. For instance, ammonia oxidizing archaea classified as '*Ca. Nitrosphaera*' and nitrite oxidizing bacteria classified as *Nitrospira spp.* changed by  $>25\%$  in several soils after relic DNA was removed (Fig. S5A,B). Similarly, the relative abundance of *Glomeraceae*, a family of arbuscular mycorrhizal fungi, increased by  $>25\%$  in 2 soils and decreased by  $>25\%$  in 7 soils (Fig. S5C). Thus, by removing relic DNA prior to investigating relationships between specific soil processes and DNA-based quantification of microbial abundances, researchers may uncover more robust associations between microbes and key soil processes.

Because relic DNA can result in the overestimation of soil microbial diversity (Fig. 1), change assessments of overall community composition (Fig. 2), and alter the observed abundances of individual taxa (Fig. 3), we investigated which edaphic characteristics were predictive of the presence of relic DNA. Consistent with previous studies (reviewed in (11)), we show that edaphic characteristics influencing electrostatic interactions between DNA and soil particles were significant predictors of the presence of microbial relic DNA (Table 1). For example, soils with few exchangeable bases, especially  $K^+$  and  $Ca^{2+}$ , were likely to contain relic DNA from both prokaryotic and fungal sources (Table 1, Fig S6). While soils with low pH, electrical conductivity and cation exchange capacity were more likely to harbor relic DNA, this pattern was stronger for prokaryotes than for fungi (Table 1). Moreover, pH predicted the change in both prokaryotic and fungal community composition after relic DNA removal (Fig. S7). These results highlight that, although the effects of relic DNA are variable across different soil types, it is especially important to account for relic DNA in acidic soils, or in soils with few exchangeable base cations (below *ca.* 40 meq 100 g<sup>-1</sup>).

Our finding that relic DNA can lead to significant overestimation of soil microbial diversity and reduce the ability to accurately quantify prokaryotic and fungal community structure has several important implications. First, it suggests that the actual microbial diversity in soil is lower than often reported. Second, relic DNA may obscure subtle spatiotemporal patterns or treatment effects in microbial communities. For example, shifts in soil microbial communities across seasons, or with plant species growing on a site, are often difficult to detect from DNA-based analyses (20, 21). Similarly, long-term soil transplant experiments designed to study effects of climate change on soil microbial communities have showed little change in microbial community composition (22). Our ability to detect such shifts in soil microbial communities should increase if the ‘noise’ generated from non-living microbes is reduced by first removing relic DNA. Finally, the extreme diversity of soil microbial communities presents multiple computational problems for metagenomic assembly and analysis (23). Our data shows that a significant portion of this diversity is coming from relic DNA pools, suggesting that removal of relic DNA from samples prior to shotgun metagenomic analyses will result in improved metagenomic assemblies and improve our ability to infer the genomic attributes of undescribed soil microbes (24).

Relic DNA dynamics may have important ramifications for understanding community composition and processes in other ecosystems besides soil. For example, deep sea sediments also harbor large amounts of extracellular DNA (25), suggesting the removal of relic DNA would also affect diversity estimates in the deep biosphere. Specific analysis of the relic DNA pool in deep biosphere samples may have particular utility as a ‘fossil record’ to distinguish extinct microbial taxa from living organisms and more accurately reconstruct the subsurface paleome (26, 27). More generally, relic DNA likely influences studies where DNA from dead organisms may be abundant or where DNA is particularly resistant to degradation, including studies of the microbial diversity

# Relic DNA, Carini, et al. 2016

found on aquatic particles, on mineral surfaces, in the human body, and in the built environment.

## References and notes:

1. L. F. W. Roesch *et al.*, Pyrosequencing enumerates and contrasts soil microbial diversity. *The ISME Journal*. **1**, 283–290 (2007).
2. J. Gans, M. Wolinsky, J. Dunbar, Computational improvements reveal great bacterial diversity and high metal toxicity in soil. *Science*. **309**, 1387–1390 (2005).
3. N. Fierer *et al.*, Metagenomic and Small-Subunit rRNA Analyses Reveal the Genetic Diversity of Bacteria, Archaea, Fungi, and Viruses in Soil. *Applied and Environmental Microbiology*. **73**, 7059–7066 (2007).
4. C. T. Brown *et al.*, Unusual biology across a group comprising more than 15% of domain Bacteria. *Nature*. **523**, 208–211 (2015).
5. M. D. M. Jones *et al.*, Discovery of novel intermediate forms redefines the fungal tree of life. *Nature*. **474**, 200–203 (2011).
6. R. Mackelprang *et al.*, Metagenomic analysis of a permafrost microbial community reveals a rapid response to thaw. *Nature*. **480**, 368–371 (2011).
7. K. M. Nielsen, P. J. Johnsen, D. Bensasson, D. Daffonchio, Release and persistence of extracellular DNA in the environment. *Environ. Biosafety Res.* **6**, 37–53 (2007).
8. G. Pietramellara *et al.*, Extracellular DNA in soil and sediment: fate and ecological relevance. *Biol Fertil Soils*. **45**, 219–235 (2008).
9. D. J. Levy-Booth *et al.*, Cycling of extracellular DNA in the soil environment. *Soil Biology and Biochemistry*. **39**, 2977–2991 (2007).
10. A. Ogram, G. S. Sayler, D. Gustin, R. J. Lewis, DNA adsorption to soils and sediments. *Environ. Sci. Technol.* **22**, 982–984 (1988).
11. K. Saeki, T. Kunito, Adsorptions of DNA molecules by soils and variable-charged soil constituents. *Current research* (2010).
12. K. M. Nielsen, L. Calamai, G. Pietramellara, in *Nucleic Acids and Proteins in Soil* (Springer Berlin Heidelberg, 2006), vol. 8 of *Soil Biology*, pp. 141–157.
13. A. Agnelli *et al.*, Distribution of microbial communities in a forest soil profile investigated by microbial biomass, soil respiration and DGGE of total and extracellular DNA. *Soil Biology and Biochemistry*. **36**, 859–868 (2004).

# Relic DNA, Carini, et al. 2016

- 276 14. G. Dlott, J. E. Maul, J. Buyer, S. Yarwood, Microbial rRNA:rDNA gene ratios may  
277 be unexpectedly low due to extracellular DNA preservation in soils. *Journal of*  
278 *Microbiological Methods*. **115**, 112–120 (2015).
- 279 15. A. Nocker, C.-Y. Cheung, A. K. Camper, Comparison of propidium monoazide  
280 with ethidium monoazide for differentiation of live vs. dead bacteria by selective  
281 removal of DNA from dead cells. *Journal of Microbiological Methods*. **67**, 310–320  
282 (2006).
- 283 16. A. Nocker, P. Sossa-Fernandez, M. D. Burr, A. K. Camper, Use of propidium  
284 monoazide for live/dead distinction in microbial ecology. *Applied and*  
285 *Environmental Microbiology*. **73**, 5111–5117 (2007).
- 286 17. G. A. Cangelosi, J. S. Meschke, Dead or Alive: Molecular Assessment of  
287 Microbial Viability. *Applied and Environmental Microbiology*. **80**, 5884–5891  
288 (2014).
- 289 18. A. Nocker, T. Richter-Heitmann, R. Montijn, F. Schuren, R. Kort, Discrimination  
290 between live and dead cells in bacterial communities from environmental water  
291 samples analyzed by 454 pyrosequencing. *Int. Microbiol.* **13**, 59–65 (2010).
- 292 19. J. D. Rocca *et al.*, Relationships between protein-encoding gene abundance and  
293 corresponding process are commonly assumed yet rarely observed. *The ISME*  
294 *Journal*. **9**, 1693–1699 (2015).
- 295 20. X. Zhang, A. Barberán, X. Zhu, G. Zhang, X. Han, Water Content Differences  
296 Have Stronger Effects than Plant Functional Groups on Soil Bacteria in a Steppe  
297 Ecosystem. *PLoS ONE*. **9**, e115798–12 (2014).
- 298 21. K. M. Docherty *et al.*, Key Edaphic Properties Largely Explain Temporal and  
299 Geographic Variation in Soil Microbial Communities across Four Biomes. *PLoS*  
300 *ONE*. **10**, e0135352–23 (2015).
- 301 22. B. Bond-Lamberty *et al.*, Soil Respiration and Bacterial Structure and Function  
302 after 17 Years of a Reciprocal Soil Transplant Experiment. *PLoS ONE*. **11**,  
303 e0150599–16 (2016).
- 304 23. A. C. Howe *et al.*, Tackling soil diversity with the assembly of large, complex  
305 metagenomes. *Proceedings of the National Academy of Sciences*. **111**, 4904–  
306 4909 (2014).
- 307 24. K. S. Ramirez *et al.*, Biogeographic patterns in below-ground diversity in New  
308 York City's Central Park are similar to those observed globally. *Proc. R. Soc. B*.  
309 **281**, 20141988 (2014).
- 310

# Relic DNA, Carini, et al. 2016

- 311 25. A. Dell'Anno, R. Danovaro, Extracellular DNA plays a key role in deep-sea  
312 ecosystem functioning. *Science*. **309**, 2179–2179 (2005).
- 313 26. M. J. L. Coolen *et al.*, Evolution of the plankton paleome in the Black Sea from the  
314 Deglacial to Anthropocene. *Proceedings of the National Academy of Sciences*.  
315 **110**, 8609–8614 (2013).
- 316 27. F. Inagaki, H. Okada, A. I. Tsapin, K. H. Nealson, Microbial survival: the paleome:  
317 a sedimentary genetic record of past microbial communities. *Astrobiology*. **5**, 141–  
318 153 (2005).
- 319 28. W. D. Kemper, R. C. Rosenau, in *Methods of soil analysis.*, A. Klute, Ed.  
320 (Madison, WI, ed. 2, 1986).
- 321 29. J. W. Leff *et al.*, Consistent responses of soil microbial communities to elevated  
322 nutrient inputs in grasslands across the globe. *Proc. Natl. Acad. Sci. U.S.A.* **112**,  
323 10967–10972 (2015).
- 324 30. R. C. Edgar, UPARSE: highly accurate OTU sequences from microbial amplicon  
325 reads. *Nat Meth.* **10**, 996–998 (2013).
- 326 31. R. C. Edgar, Search and clustering orders of magnitude faster than BLAST.  
327 *Bioinformatics*. **26**, 2460–2461 (2010).
- 328 32. D. McDonald *et al.*, An improved Greengenes taxonomy with explicit ranks for  
329 ecological and evolutionary analyses of bacteria and archaea. *The ISME Journal*.  
330 **6**, 610–618 (2011).
- 331 33. K. Abarenkov *et al.*, The UNITE database for molecular identification of fungi-  
332 recent updates and future perspectives. *New Phytol.* **186**, 281–285 (2010).
- 333 34. Q. Wang, G. M. Garrity, J. M. Tiedje, J. R. Cole, Naive Bayesian classifier for  
334 rapid assignment of rRNA sequences into the new bacterial taxonomy. *Applied*  
335 *and Environmental Microbiology*. **73**, 5261–5267 (2007).
- 336 35. J. W. Leff, mctoolsr: Microbial Community Data Analysis Tools, (available at  
337 [github.com/leffj/mctoolsr](https://github.com/leffj/mctoolsr)).
- 338 36. J. D. Storey, A direct approach to false discovery rates. *Journal of the Royal*  
339 *Statistical Society: Series B (Statistical Methodology)*. **64**, 479–498 (2002).
- 340 37. F. E. Harrell Jr, C. Dupont, Hmisc: Harrell Miscellaneous, (available at  
341 <http://CRAN.R-project.org/package=Hmisc>).
- 342 38. S. J. Blazewicz, R. L. Barnard, R. A. Daly, M. K. Firestone, Evaluating rRNA as an  
343 indicator of microbial activity in environmental communities: limitations and uses.  
344 **7**, 2061–2068 (2013).

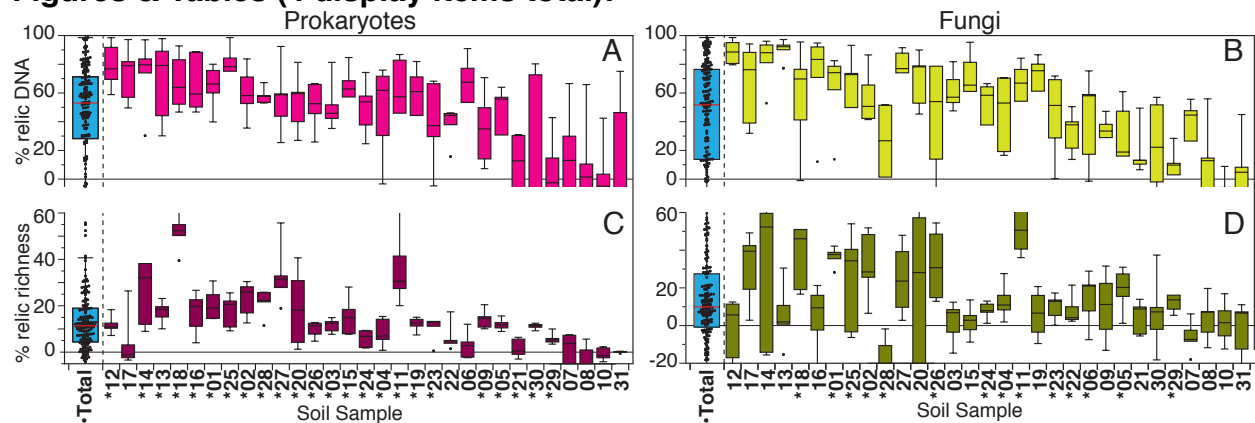
# Relic DNA, Carini, et al. 2016

345  
346  
347  
348  
349  
350  
351  
352  
353  
354  
355  
356  
357  
358  
359  
360  
361  
362  
363  
364  
365  
366  
367  
368  
369  
370  
371  
372  
373  
374  
375  
376  
377  
378  
379  
380  
381  
382  
383  
384  
385  
386  
387  
388

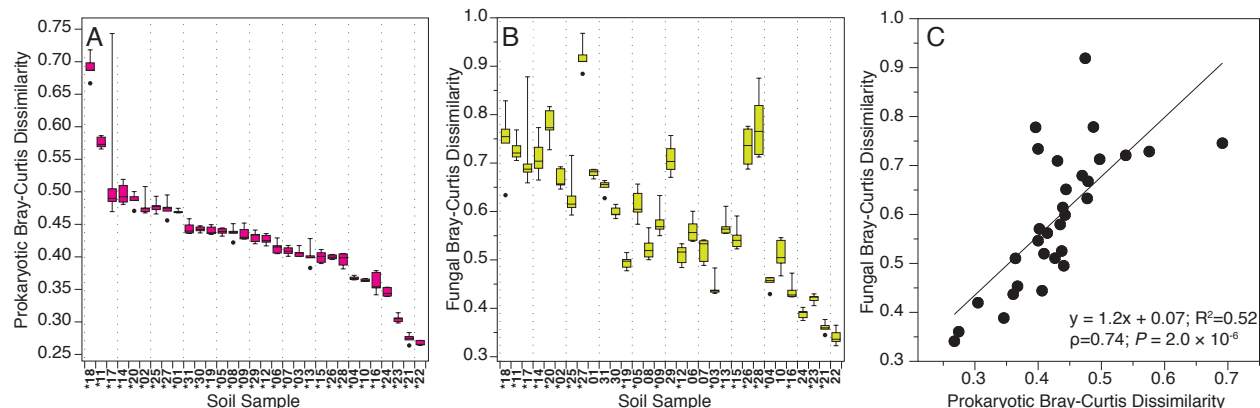
## Acknowledgements:

Raw sequence data are available in the Sequence Read Archive at the National Center for Biotechnology Information (project accession no. SRP070563). We thank Stuart Grandy and Jörn Schneckner at University of New Hampshire, Cliff Bueno de Mesquita and Lara Vimercati at the University of Colorado Boulder, Eric Skokan at Black Cat Farms, and Kendra McLachlan at Kansas State University for soil collection or access to collection sites. We also thank Jessica Henley, Robin Hacker-Cary and Kristen Vaccarello for assistance with DNA extractions. Soil tests were preformed at Colorado State University's Soil, Water and Plant Testing Laboratory. Sequencing was performed at the University of Colorado BioFrontiers Institute's Next-Gen Sequencing Core Facility. Funding to support this work was provided by the National Science Foundation (DEB 0953331, EAR 1331828, DUE 1259336, EAR 1461281), and a Visiting Postdoctoral Fellowship award to P.C. from the Cooperative Institute for Research in Environmental Sciences.

# Figures & Tables (4 display items total):

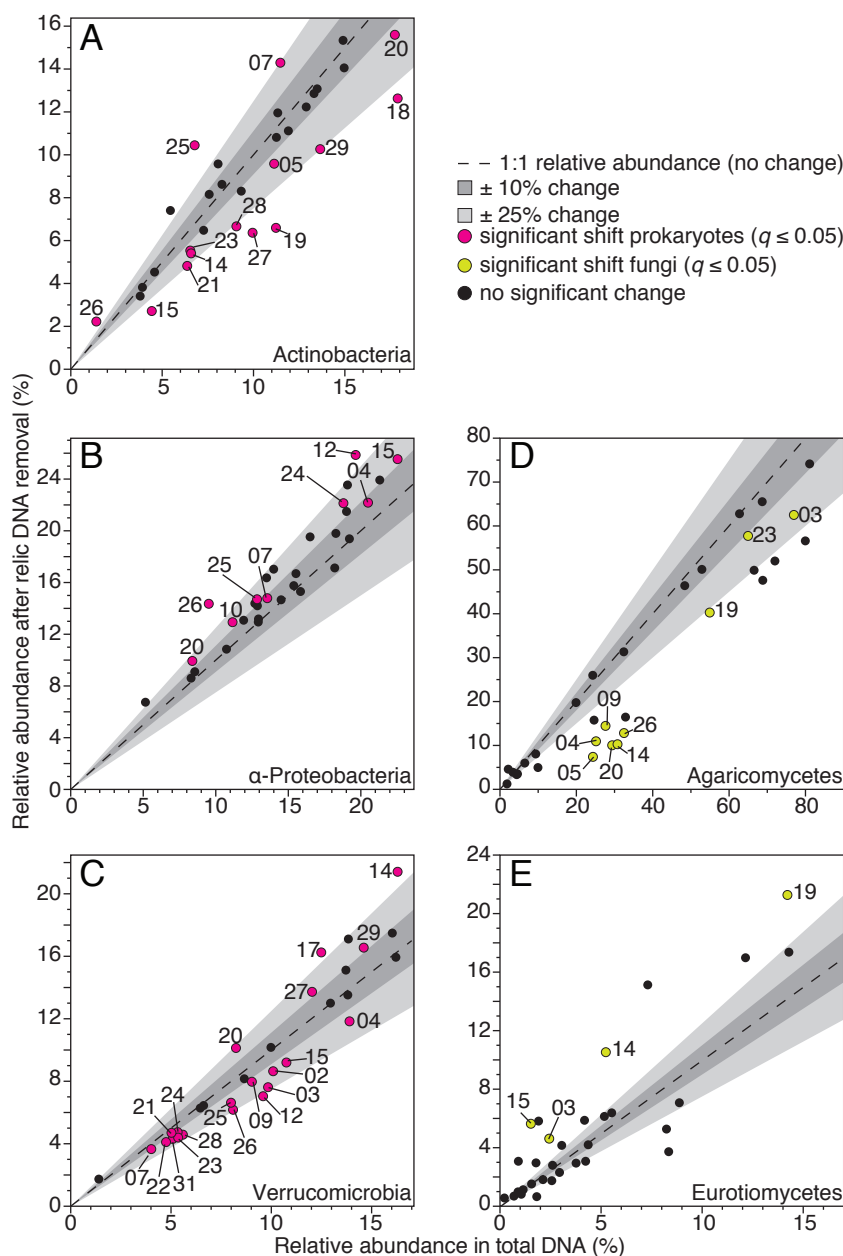


**Figure 1:** Relic DNA inflates estimation of soil microbial diversity. Percent of total prokaryotic 16S rRNA gene copies (A) or fungal ITS copies (B) in the relic DNA pool. Percent of total prokaryotic (C) or fungal (D) richness in relic DNA pool. Soils are ordered from left to right by decreasing mean percent prokaryotic relic DNA. (\*) denotes significant differences in richness after relic DNA was removed (two-tailed  $t$  test  $q \leq 0.05$ ). (•) Denotes significant richness differences after relic DNA removal across all soils (two-tailed  $t$  test  $P \leq 0.05$ ). Some box plots are truncated, see Supplementary Dataset S1 for complete dataset.



**Figure 2:** Relic DNA removal has a significant effect on community structure. Mean dissimilarity in soil prokaryotic (A) and fungal (B) communities after relic DNA removal, relative to untreated soils. Soils in A & B are ordered from left to right by decreasing order of the mean dissimilarity for prokaryotic communities. (\*) denotes significant community differences between relic and total DNA pools (PERMANOVA  $q \leq 0.05$ ). C) Mean dissimilarity in prokaryotic communities is correlated with the associated dissimilarity in fungal communities.

# Relic DNA, Carini, et al. 2016



**Figure 3:** The relative abundances of key microbial lineages change after removal of relic DNA. Points are the mean relative abundances of Actinobacteria (A); α-Proteobacteria (B); Verrucomicrobia (C); Agaricomycetes (D); and Eurotiomycetes (E) before and after relic DNA removal. The relative abundances of colored points are significantly different (two-tailed Mann-Whitney U  $q \leq 0.05$ ) after relic DNA removal. Numbers correspond to soil sample (Supplementary Table 1). All significant changes in taxa comprising  $\geq 5\%$  of the total prokaryotic and  $\geq 3\%$  of the fungal communities across all soils are shown. In all plots, dashed lines represent no change in relative abundances (1:1 line). The dark grey shaded region represents  $\pm 10\%$  change; light grey shaded region represents  $\pm 25\%$  change. See Supplementary Dataset S1 for the mean relative abundances  $\pm$ SE of each taxon in each soil.

# Relic DNA, Carini, et al. 2016

## Tables:

Table 1: *P* values for logistic regression models fitting edaphic characteristics to the presence ( $\geq 20\%$  of total DNA) or absence of relic DNA.

Soil Characteristic	Prokaryotic	Fungal
MWD <sub>w</sub>	0.062	N/S
pH	0.048	N/S
Electrical conductivity (mmhos cm <sup>-1</sup> )	0.042	N/S
NO <sub>3</sub> <sup>-</sup> -N (ppm)	0.014	0.025
K (ppm)	0.011	0.061
Exchangeable Ca <sup>2+</sup> (meq 100 g <sup>-1</sup> )	0.010	0.043
Exchangeable Mg <sup>2+</sup> (meq 100 g <sup>-1</sup> )	0.012	N/S
Exchangeable Na <sup>+</sup> (meq 100 g <sup>-1</sup> )	0.097	0.044
Exchangeable K <sup>+</sup> (meq 100 g <sup>-1</sup> )	0.008	0.022
Total exchangeable bases (meq 100 g <sup>-1</sup> )	0.008	0.036
Cation exchange capacity (meq 100 g <sup>-1</sup> )	0.046	N/S

All relationships are inverse, except Mean Weight Diameter (MWD<sub>w</sub>).

N/S: Not Significant at  $P \leq 0.1$