

Minimal Tool Set for a Prokaryotic Circadian Clock

Nicolas M Schmelling¹, Robert Lehmann², Paushali Chaudhury³, Christian Beck², Sonja V Albers³, Ilka M Axmann^{*1}, and Anika Wiegard¹

¹Institute for Synthetic Microbiology, Cluster of Excellence on Plant Sciences (CEPLAS), Heinrich-Heine-University Duesseldorf, Universitaetsstr. 1, 40225 Duesseldorf, Germany

²Institute for Theoretical Biology, Humboldt University Berlin, Invalidenstr. 43, 10115, Berlin, Germany

³Molecular Biology of Archaea, University of Freiburg, Institute of Biology II, Schaeenzlestr.1, 79104 Freiburg, Germany

February 14, 2017

Abstract

Background

Circadian clocks are found in organisms of almost all domains including photosynthetic Cyanobacteria, whereby large diversity exists within the protein components involved. In the model cyanobacterium *Synechococcus elongatus* PCC 7942 circadian rhythms are driven by a unique KaiABC protein clock, which is embedded in a network of input and output factors. Homologous proteins to the KaiABC clock have been observed in Bacteria and Archaea, where evidence for circadian behavior in these domains is accumulating. However, interaction and function of non-cyanobacterial Kai-proteins as well as homologous input and output components remain mainly unclear.

Results

Using a universal BLAST analyses, we identified putative KaiC-based timing systems in organisms outside as well as variations within Cyanobacteria. A systematic analyses of publicly available microarray data elucidated interesting variations in circadian gene expression between different cyanobacterial strains, which might be correlated to the diversity of genome encoded clock components. Based on statistical analyses of co-occurrences of the clock components homologous to *Synechococcus elongatus* PCC 7942, we propose putative networks of reduced and fully functional clock systems. Further, we studied KaiC sequence conservation to determine functionally important regions of diverged KaiC homologs. Biochemical characterization of exemplary cyanobacterial KaiC proteins as well as homologs from two thermophilic Archaea demonstrated that kinase activity is always present. However, a KaiA-mediated phosphorylation is only detectable in KaiC1 orthologs.

Conclusion

Our analysis of 11,264 genomes clearly demonstrates that components of the *Synechococcus elongatus* PCC 7942 circadian clock are present in Bacteria and Archaea. However, all components are less abundant in other organisms than Cyanobacteria and KaiA, Pex, LdpA, and CdpA are only present in the latter. Thus, only reduced KaiBC-based or even simpler, solely KaiC-based timing systems might exist outside of the cyanobacterial phylum, which might be capable of driving diurnal oscillations.

1 Introduction

2 Life on Earth is under the influence of changing environmental conditions, which not only pose a chal-
3 lenge to organisms, but also present a chance of adaptation and therefore a possible fitness advantage over
4 competitors [1, 2]. Using inner timing systems organisms can coordinate their physiology and behavior
5 according to the daily recurring changes. Simple timing systems work in an hour glass like fashion and
6 need to be reset every day by environmental stimuli, whereas true circadian clocks generate self-sustained

*Ilka.Axmann@hhu.de

and temperature-compensated 24-hour rhythms of biological activities [3, 4].

Circadian clocks are found in many eukaryotes such as algae, plants and mammals [5]. Even though circadian clocks seem like a conserved trait in evolution, differences in the protein components, involved in circadian timing, suggest a convergent evolution of timing mechanisms [5]. For many years it has been believed that something as complex as a circadian clock could not have been evolved in unicellular organisms like prokaryotes [5, 6, 7]. However, the existence of temperature compensated 24-hour rhythms of cell division in *Synechococcus* sp. WH 7803 and circadian nitrogen fixation in *Cyanothece* sp. PCC 8801 proved otherwise [8, 9, 10, 11, 12]. The molecular basis of the cyanobacterial circadian clock was intensively investigated in *Synechococcus elongatus* PCC 7942 (hereafter *Synechococcus* 7942), where the core clockwork resembles a posttranslational oscillator [13, 14, 15]. In contrast, eukaryotic circadian rhythms are believed to be mainly based on transcriptional-translational feedback loops. However, findings on post-translational systems are accumulating [16, 17, 18] and might exist also in Archaea [16].

Light is assumed to be the driving stimulus in circadian clock entrainment [19]. In *Synechococcus* 7942, contrary to eukaryotic circadian clock systems, a photoreceptor in the input pathway of the clock could not be detected thus far. Instead, *Synechococcus* 7942 cells sense light indirectly through the redox and energy state of the cell [20]. Here, two metabolic components are considered to play a major role [21]: The ATP to ADP ratio and the redox state of the plastoquinone (PQ) pool [22, 23]. The core of the circadian clock in *Synechococcus* 7942 consists of three proteins KaiA, KaiB and KaiC. KaiC monomers are composed of two domains, which assemble into two hexameric rings [24, 25]. The C-terminal ring is capable of autophosphorylation and -dephosphorylation [26, 27]. KaiC phosphorylation is stimulated by the interaction with KaiA [28, 29], and additionally, affected by the ATP/ADP ratio of the cell [30]. KaiB inhibits the activating effect of KaiA and initializes dephosphorylation [31]. Altogether, KaiC hexamers phosphorylate and dephosphorylate rhythmically during the course of a day. The binding of oxidized quinones to KaiA has been suggested to stop the clock directly by causing KaiA aggregation [32, 33].

The KaiABC core clock is embedded into a network of input and output pathways. The input factors that interact with the core clock are Pex, LdpA, PrkE, NhtA, IrcA, CdpA [20, 34, 35, 36, 37, 38]. Output factors are SasA, LabA, LalA, CpmA, Crm, RpaA, and RpaB, as well as CikA, which is functioning both in input and output pathway of the circadian clock [39, 40, 41, 42, 43, 44, 45, 46, 47, 48, 49, 50, 51].

Sequence analysis indicated that at least three different types of timing systems are present in Cyanobacteria, (i) a KaiABC-based system as in *Synechococcus* 7942, (ii) a reduced system with a KaiBC core and a reduced set of input/output factors as in *Prochlorococcus* and (iii) a reduced KaiABC system as in *Synechococcus* sp. WH 8102, which despite including all three *kai* genes, has the same input/output factors as the reduced KaiBC system [52]. Furthermore, multiple *kai* genes can exist in an organism [53, 54]. In *Synechocystis* sp. PCC 6803 (hereafter *Synechocystis* 6803) for example, three copies of both *kaiB* and *kaiC* are found. KaiA, KaiB1 and KaiC1, most similar to the *kai* genes of *Synechococcus* 7942 [55, 56], are thought to resemble the core clock. KaiB3 and KaiC3 are thought to function as fine tuning factors for the circadian clock in *Synechocystis* 6803, whereas no circadian function has been found for KaiB2 and KaiC2 [56]. However, recently *kaiC2*-dependent adaptive growth and diurnal rhythms of nitrogen fixation were observed in *Rhodospseudomonas palustris* [57]. Homologs of *kaiB* and *kaiC* genes also exist in other Bacteria and even Archaea, where a shortend KaiC most often resembles only one domain [53]. An archaeal one-domain KaiC homolog was shown to form a hexameric ring, similar to the two duplicated domains of *Synechococcus* 7942 KaiC [58]. In *Haloferax volcanii* the transcripts of four *kaiC* homologs display diurnal accumulation profiles [59]. However, the function of non-cyanobacterial Kai-proteins is mainly unclear, so far. Although some of the input- and output factors were also found in prokaryotes other than cyanobacteria [49, 52, 60, 61], it is unknown whether the Kai homologs outside the cyanobacterial phylum or the additional cyanobacterial Kai homologs interact with (other) in- and output factors.

In this study, we performed BLAST analyses to first identify possible KaiC-based timing systems in organisms outside of Cyanobacteria and second to explore variations in circadian clocks within Cyanobacteria. Further, we examined variations in circadian gene expression between different cyanobacterial strains using microarray data. Together, this aims at decoding the correlation between Kai proteins and additional clock components. Based on the co-occurrence of clock components known from *Synechococcus* 7942 we propose putative networks of reduced and fully functional clock systems. Further, we used the sequence information of KaiC and its homologs in Cyanobacteria to determine the similarities at important sites of the protein. We chose cyanobacterial KaiC proteins as well as homologs from two thermophilic Archaea and demonstrated that kinase activity is always present. However, a KaiA-mediated phosphorylation is only detectable in cyanobacterial KaiC1 homologs.

64 Materials and Methods

65 Programming languages

66 The programming languages Python (version 3.5.1) and R (version 3.2.3) were used in this work. The
67 processing and analysis of the microarray time series datasets was performed using R. Regarding the
68 distribution analysis, the Biopython project ([62]; version 1.66) was used to download from GenBank
69 as well as to work with FASTA files. Besides Biopython, the Python packages: IPython ([63] version
70 4.1.1) as an interactive Python environment with the IPython notebook; numpy and scipy ([64]; version
71 1.10.4, version 0.17.0) for numerical operations; matplotlib ([65]; version 1.5.1) for data visualization; and
72 pandas ([66]; version 0.17.1) for data analyses were used. The Python code necessary to reproduce the
73 BLAST analyses is available on GitHub (<http://doi.org/10.5281/zenodo.229910>).

74 Reciprocal BLAST and NCBI

75 The coding sequences of all entries in the genbank protein database [67], which were labeled as "Complete
76 Genome" or "Chromosome", were downloaded from the NCBI FTP server (version May 2016). These
77 sequences, including the coding sequences of *Synechococcus elongatus* PCC 7942 and *Synechocystis* sp.
78 PCC 6803, were used to construct a custom protein database for the homology search. Further, pro-
79 tein sequences of the 23 clock related proteins (Table S1), from *Synechococcus elongatus* PCC 7942 and
80 *Synechocystis* sp. PCC 6803, respectively, were checked against the entries in the Cyanobase Database
81 to ensure correctness [68] (version May 2016). These 23 protein sequences were used as queries for a
82 search of homologs within the custom protein database, applying the standalone version of BLASTP
83 2.2.30+ [69] (May 2016, [dx.doi.org/10.17504/protocols.io.grnbv5e](https://doi.org/10.17504/protocols.io.grnbv5e)) with standard parameter (wordsize:
84 3, substitution matrix: BLOSUM62). The 10,000 best hits with an e-value of 10^{-5} or lower were filtered
85 for further analyses. The first BLAST run returned circa 65,000 hits for all 23 cyanobacterial proteins
86 combined.

87 These hits were used as queries for a second reverse BLASTP run, searching for homologs in *Synechococ-*
88 *cus* 7942 or *Synechocystis* 6803 genomes using the same parameters as above with an altered e-value of
89 10. Only hits with the original query protein as best reversal hit were accepted for further analyses, thus
90 minimizing false positive results.

91 Raw and processed data is available on figshare (<https://dx.doi.org/10.6084/m9.figshare.3823902.v3>,
92 <https://dx.doi.org/10.6084/m9.figshare.3823899.v3>).

93 Testing of co-occurrence

94 Co-occurrence of circadian clock proteins was examined by using the right-sided Fisher's exact test [70].
95 For each of the 94 cyanobacterial strains, all identified homologous clock genes were gathered into one
96 set. The phylogenetic distribution of cyanobacteria in the NCBI genbank database is very imbalanced.
97 Some genera (e.g. *Prochlorococcus* and *Synechococcus*) are covered better than others. To avoid selection
98 bias, we removed sets with identical combinations of genes, resulting in 69 unique clock systems. Null
99 hypothesis of Fisher's exact test is a pairwise independent distribution of the proteins across all clock
100 systems. P-values were corrected for multiple testing after Benjamini-Hochberg [71] with an excepted
101 false discovery rate of 10^{-2} . We denote that due to the nature of statistical testing, proteins appearing in
102 almost all clock systems are always virtually independent to others. All proteins were clustered according
103 to their corrected p-values.

104 Microarray analysis

105 The diurnal expression program of six cyanobacterial strains was probed using microarray time series
106 datasets (Table S3). Unfortunately, the data for the two reported *Synechocystis* 6803 experiments by
107 Labiosa and colleagues [72] and Kucho and coworkers [73] could not be obtained. The study by Toepel
108 and coworkers [74] had to be discarded due to the employed ultradian light cycles (6:6 LD cycles). The
109 *Synechocystis* 6803 datasets, the *Synechococcus* 7942 dataset of Ito and colleagues, and the *Anabaena*
110 sp. PCC 7120 dataset were l2m transformed, while the *Cyanothece* ATCC 51142 datasets are only
111 available after transformation. The two biological replicates of the *Anabaena* sp. PCC 7120 dataset were
112 concatenated for the following analyses [75], similar to the *Synechocystis* 6803 dataset [76]. Expression
113 profiles were smoothed using a Savitzky-Golay lowpass filter, as proposed by Yang and colleagues [77],
114 in order to remove pseudo peaks prior to the detection of periodic genes. Diurnally oscillating expression
115 profiles were detected using harmonic regression analysis [78]. The derived p-values for each gene is
116 based on the assumption of a linear background profile as compared to the sinoidal foreground model.

After multiple hypothesis testing correction according to Benjamini-Hochberg [71], all datasets yielded significantly oscillating genes ($q \leq 0.05$) except for *Microcystis aeruginosa* PCC 7806, with 7 samples the shortest dataset.

Multiple sequence alignment

Multiple sequence alignments were constructed by the standalone version of CLUSTAL Omega 1.2.1-1 [79] using 20 iterations, while only one iteration was used to construct the guide tree (May 2016, [dx.doi.org/10.17504/protocols.io.gschwaw](https://doi.org/10.17504/protocols.io.gschwaw)). The sequences for the alignments were obtained from the processed data generated, as described in the method section "Reciprocal BLAST and NCBI". Afterwards the alignments were adjusted to *Synechococcus* 7942 sequence with Jalview [80] and edited multialignments were used to create WebLogos [81].

Cloning, heterologous expression and purification of Kai proteins

To express KaiC1 proteins from *Synechocystis* sp. PCC 6714, *Nostoc punctiforme* ATCC 29133, *Cyanothecce* sp. PCC 7424 as well as KaiC3 from *Cyanothecce* sp. PCC 7424, *Microcystis aeruginosa* PCC 7806, *Pyrococcus horikoshii* OT3 PH0833, and *Thermococcus litoralis* DSM5473, the respective *kaiC* genes were amplified by PCR from genomic wildtype DNA. The ORFs and primers are listed in Table S4. Amplified sequences were ligated into BamHI and NotI restriction sites of the plasmid pGEX-6P-1 (GE Healthcare). For *P.horikoshii* and *T.litoralis* KaiC3 the amplified PCR products were ligated into pETDuet1 Vector using BamHI/HindIII and PstI/HindIII restriction enzymes in MCS1 respectively. *Escherichia coli* DH5 α or BL21 (DE3) cells were transformed with the resulting plasmids (pGEX-kaiC1-*Sy6714*, pGEX-kaiC1-*Npun29133*, pGEX-kaiC1-*Cy7424*, pGEX-kaiC3-*Cy7424*, pGEX-kaiC3-*Mic7806*, pSVA3151, pSVA3152). For expression of GST-fused KaiA-7942 and KaiC-7942 pGEX derivatives, kindly provided by T. Kondo (Nagoya University, Japan), were used. Expression of GST-Kai proteins occurred at 37 °C and 200 rpm in Terrific broth medium containing 100 μ g ampicillin ml⁻¹. GST-KaiA-7942 expression was induced with 1 mM isopropyl β -D-thiogalactopyranoside (IPTG) and carried out overnight, whereas GST-KaiC homologs were expressed for 72 hours without induction. Cells were harvested and lysed in ice-cold extraction buffer (50 mM Tris/HCl (pH 8), 150 mM NaCl, 0.5 mM EDTA, 1 mM DTT, 5 mM MgCl₂ and 1 mM ATP). Recombinant GST-Kai proteins were affinity purified using Protino Glutathione Agarose 4B (Macherey-Nagel) as described in Wiegand and colleagues [55]. During the procedure the GST-tag was removed with PreScission protease in cleavage buffer (50 mM Tris/HCl (pH 8), 150 mM NaCl, 1 mM EDTA, 1 mM DTT, 5 mM MgCl₂ and 0.5 mM ATP). Homogeneity of the recombinant proteins was controlled by separating them via SDS-PAGE. If it was not sufficient, proteins were further purified by anion-exchange chromatography using a MonoQ 5/50 GL or ResourceQ column (GE Healthcare). After dialysis in reaction buffer (20 mM Tris/HCl (pH 8), 150 mM NaCl, 0.5 mM EDTA, 5 mM MgCl₂, and 1 mM ATP) protein concentration was determined using infrared spectroscopy (Direct detect, Merck Millipore). Proteins were stored at -20 °C. For His-tagged KaiC3 homologs, *E. coli* BL21 (DE3) RIL cells were transformed with pSVA3151 (*P.horikoshii*) and pSVA3152 (*T.litoralis*), and grown as preculture overnight at 37 °C in LB medium containing ampicillin (50 μ g ml⁻¹) and chloramphenicol (34 μ g ml⁻¹). Fresh medium containing antibiotic was inoculated with 0.1 % preculture and grown at 37 °C to an OD₆₀₀ of 0.7. After induction with 0.3 mM of IPTG, growth was continued for 16 hours at 16 °C. Cells were collected by centrifugation, frozen in liquid nitrogen, and, after storage at -80 °C, resuspended in 50 ml lysis buffer (50 mM Hepes-NaOH, pH 7.2, 150 mM NaCl) containing Complete EDTA-free protease inhibitor cocktail (Roche) together with DNase I and lysed by sonication. Cell debris were removed by centrifugation at 4 °C for 30 min at 20,000 x g. Further Ni-NTA (Sigma Aldrich, Seelze, Germany) based purification was performed using columns equilibrated in purification buffer (50 mM Hepes-NaOH, pH 7.2, 150 mM NaCl). For the removal of unspecifically bound protein columns were washed with 15 column volumes of equilibration buffer including 10 mM imidazole. *T.litoralis* KaiC3 was eluted in the same buffer with 150 mM imidazole containing equilibration buffer, whereas for *P.horikoshii* KaiC3 the elution was carried out in 20 mM MES pH 6.2, 150 mM NaCl, 150 mM imidazole as this protein is stable in low pH buffer. Further purification of *T.litoralis* KaiC3 was achieved by size exclusion chromatography using Superdex 200 10/300 GL. *P.horikoshii* KaiC3 was incubated at 50 °C for 20 min and centrifuged for 15 min at 10,000 x g. Subsequently, the supernatant was dialyzed overnight against 20 mM MES pH 6.2, 150 mM NaCl buffer. As a quality control, proteins were separated via SDS-PAGE and pure proteins were frozen in liquid nitrogen and kept at -80 °C.

170 ***In vitro* phosphorylation assays**

171 To investigate KaiA dependent phosphate uptake 12 μ g of KaiC-7942, KaiC1-*Sy*6714, KaiC1-*N*29133,
 172 KaiC1-*Cy*7424, KaiC3-*Cy*7424, KaiC3-*Mic*7806, KaiC3-*T.lit* or KaiC3-*P.hor* were mixed with 10 μ Ci
 173 γ -P³²-ATP in 60 μ l Tris reaction buffer (20 mM Tris/HCl (pH 8), 150 mM NaCl, 0.5 mM EDTA, 5
 174 mM MgCl₂, 1 mM ATP) in the presence or absence of 6 μ g KaiA-7942. 10 μ l aliquots were taken after
 175 0, 0.75, 1.5, 3 and 22 hours of incubation at 30 °C and reaction was stopped by adding SDS-sample
 176 buffer. Proteins were separated in high-resolution polyacrylamide gels (10 % T, 0.67 % C) by SDS-PAGE
 177 (modified from [82]), stained with Coomassie brilliant blue and subjected to autoradiography. Signals
 178 were analyzed using a Fujifilm FLA-3000 (FUJIFILM). To analyze *in vitro* phosphorylation of KaiC3-*T.lit*
 179 and KaiC3-*P.hor* at higher temperatures, 10 μ g of the recombinant proteins were incubated with 10
 180 μ Ci γ -P³²-ATP in 50 μ l HEPES reaction buffer (50 mM HEPES (pH 7.2), 150 mM NaCl, 5 mM MgCl₂, 1
 181 mM ATP) or 50 μ l MES reaction buffer (50 mM MES (pH 6), 150 mM NaCl, 5 mM MgCl₂, 1 mM ATP),
 182 respectively, at 75 °C. After 0, 5, 10 and 15 minutes 10 μ l aliquots were taken and analyzed by SDS-
 183 PAGE and autoradiography as described above. Comprehensive protocols are available on protocols.io
 184 (dx.doi.org/10.17504/protocols.io.g3gbyjw, doi.org/10.17504/protocols.io.gysbxwe).

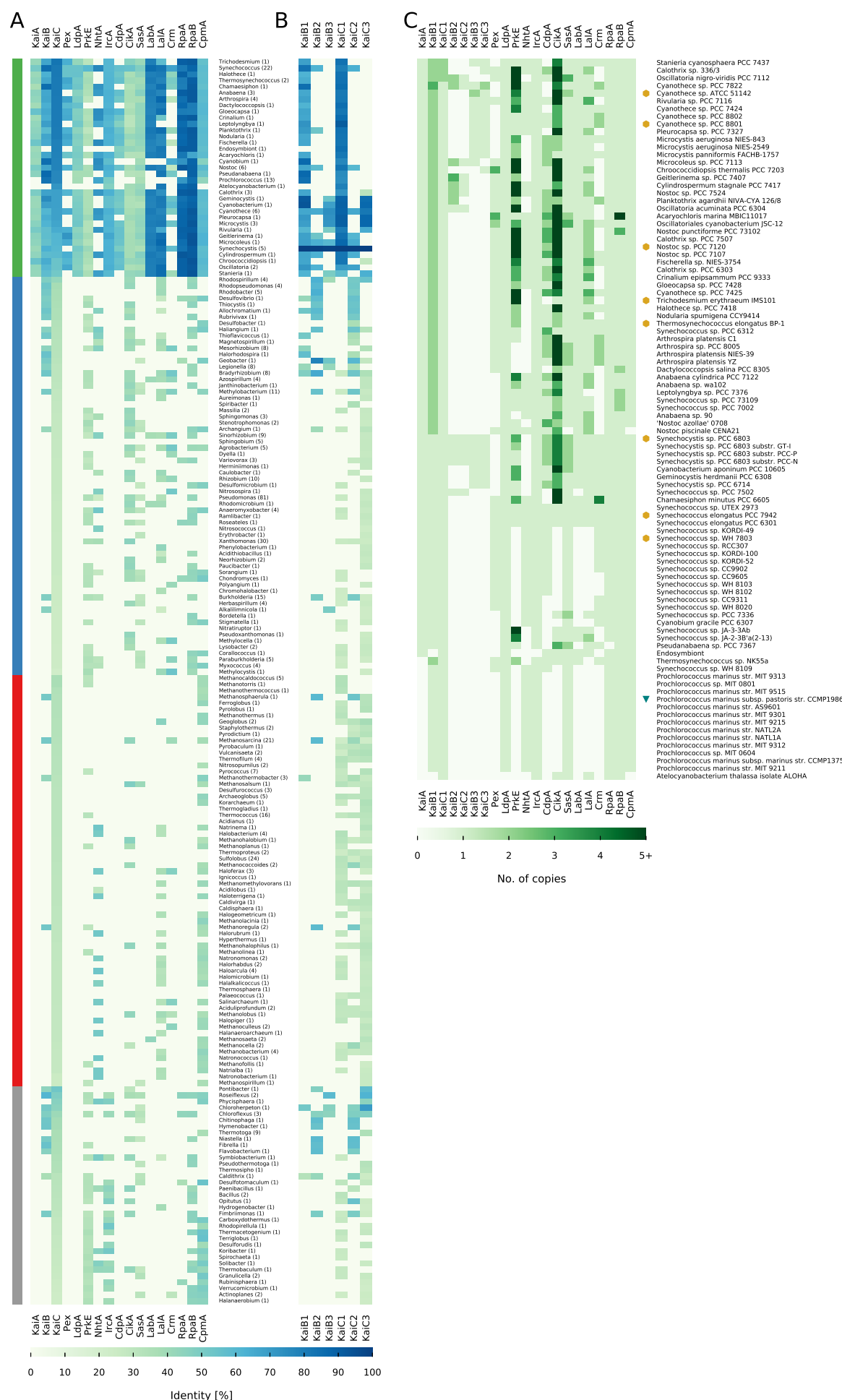
Results and Discussion

Most complete set of circadian clock orthologs in Cyanobacteria

Circadian rhythms are reported for many Cyanobacteria and first sequence analyses revealed that the core genes, known from *Synechococcus* 7942, are conserved in almost all cyanobacterial species [4, 53, 55, 83]. Even though daily rhythms seem to be conserved in Cyanobacteria, composition and quantity of corresponding genes on the genome level show high variability [54]. Dvornyk and colleagues first attempted to describe the variety of cyanobacterial core circadian clock systems in 2003 [53]. Since then, the amount and depth of sequencing data increased manifold, which allowed us to perform a detailed analysis of the KaiC-based circadian clock including the input and output pathways. The circadian clock proteins of *Synechococcus* 7942 (Table S1) and the three diverged KaiB and KaiC homologs from *Synechocystis* 6803 (Table S1) were the basis for our analysis. Their protein sequences served as basis for a reciprocal best hit BLAST analysis. Organisms with at least one homolog to KaiC were retained for further analysis. This stringent filter was essential since KaiC represents the core of the circadian clock in *Synechococcus* 7942. These organisms were grouped by their corresponding genus for a first overview of the homolog distribution (Fig. 1A). We found homologs in Cyanobacteria, Proteobacteria, Archaea, as well as other Bacteria such as *Chloroflexi*. This finding is in good agreement with previous studies [53, 55, 84]. However, our comprehensive study identified a plethora of new bacterial and archaeal genera harboring homologs to the circadian clock genes (Fig. 1A). Nevertheless, Cyanobacteria represent the phylum with the highest degree of sequence similarity and integrity of the system followed by Bacteria, mostly Proteobacteria. In Archaea, homologs to only a fraction of core genes could be identified (Fig. 1A).

Core circadian clock factors KaiB and KaiC beyond the phylum of Cyanobacteria

Four out of seventeen studied factors are exclusively found in Cyanobacteria (Fig. 1A). One of these factors is KaiA, as previously reported in studies with a smaller sample size [53, 84]. However, even some Cyanobacteria, like *Candidatus Atelocyanobacterium thalassa* (previously named Cyanobacterium UCYN-A), and all representatives from the genus *Prochlorococcus* lack *kaiA* (Fig. 1A) [54]. Interestingly, multiple copies of *kaiA* in a single cyanobacterial genome could not be identified. This is of special interest, because we could observe strong sequence length variations for KaiA (Fig. 5A, C) and multiple copies for the other core proteins KaiB and KaiC have been reported (Fig. 1B) [53, 54, 55]. With the *kaiA*-lacking *Candidatus Atelocyanobacterium thalassa* and a *kaiA*-containing cyanobacterial endosymbiont [85] only two out of 94 studied Cyanobacteria do not contain a *kaiB*, whereas a third of the cyanobacterial genera contain multiple copies of *kaiB* and *kaiC* (Fig 1B, C). There are a few exceptional cyanobacteria like *Gloeobacter violaceus* [86], which are even lacking the *kaiC* gene and are thus not detected in this analysis due to the previously described filtering criteria. However, all Cyanobacteria having homologs to *kaiB* and *kaiC* are coding for at least one pair of proteins most similar to KaiB1 and KaiC1 from *Synechocystis* 6803 (Fig. 1B, C), which is consistent with previous studies [53, 55]. Only *Cyanothece* sp. PCC 7822 has homologs similar to all three *kaiB* and *kaiC* copies from *Synechocystis* 6803 (Fig. 1C). The majority (67.68%) of the bacterial genera, outside of the cyanobacterial phylum, encode KaiC3-like proteins. Approximately half of them also contain additional KaiC homologs, most similar to KaiC1, KaiC2, or sometimes even both (Fig. 1B). This observation does not hold true for KaiB homologs, here KaiB2 is the major KaiB homolog (75.86%). One group of organisms, all belonging to the phylum of *Bacteroidetes*, stands out in this analysis, because they encode only proteins similar to KaiB2/KaiC2 (Fig. 1B). Archaeal genera show mainly homologs with highest identity to KaiC1 or KaiC3. Furthermore, almost all of the Archaea have multiple copies of the KaiC protein. Whereas only four have homologs to KaiB, which is either similar to KaiB2 or in thermophilic *Methanothermobacter* similar to KaiB1 (Fig. 1B).



7
Figure 1:

Figure 1: **Distribution of circadian clock proteins.** (A,B) Shown are the mean sequence similarities of each protein for each genus that contains a KaiC homolog from *Synechococcus* 7942. The genera are sorted by their group and KaiC similarity. The number in parenthesis represents the number of individual genomes per genus. (A) shows the mean similarities for the circadian clock proteins of *Synechococcus* 7942. (B) shows the mean similarities for the circadian clock proteins of *Synechocystis* 6803. The four taxonomic main groups are highlighted: Cyanobacteria (Green), Proteobacteria (Blue), Archaea (Red), Other (Grey). (C) shows the number of homologs for each protein in each cyanobacterium. Copy numbers higher than five were condensed. Cyanobacterial strains with true circadian clocks [87, 73, 74, 88, 75, 89, 90, 8, 91, 92, 93] are highlighted with a yellow hexagon and the strain with hourglass like timing mechanism [94] with a green triangle. We could not find references for all strains, however, we identified strains with circadian rhythms, which are not listed here as their genomes are still not fully assembled.

229 Circadian clock factors solely involved in cyanobacterial input pathways

230 Multiple clock input factors are present in all four taxonomic groups namely PrkE, NhtA, and CikA. The
 231 latter also acts in the output of the circadian clock (Table S2, Fig. 1A) [36, 37, 44]. The prevalence of
 232 CikA is in good agreement with its tremendous effect on resetting the circadian clock in *Synechococcus*
 233 7942 [37], where its interaction with the Kai complex is mediated by additional proteins [36, 38]. CikA
 234 destabilizes in the presence of oxidized quinones and thereby integrates information about the cellular
 235 redox state into the oscillator [36]. Naturally, CikA-lacking *Prochlorococcus* are not able to reset their
 236 timing mechanism in continuous light [94], pointing at the importance of this factor. However, single
 237 mutations in *sasA* can restore circadian properties in *Synechococcus* 7942 *cikA* mutants and it has been
 238 suggested that a simpler network with modified interactions of the other clock proteins can exist [95].
 239 The input factors Pex, LdpA, and CdpA are found to be unique for cyanobacteria (Fig. 1A), confirming
 240 a previous analysis of *ldpA* [96]. Hence, with Pex, a transcriptional repressor of *kaiA* [34], and LdpA, a
 241 redox-sensing protein [20] two factors, which sense the cellular metabolic state of the circadian clock in
 242 *Synechococcus* 7942, are missing outside of the cyanobacterial phylum. LdpA is also the only input factor
 243 present in the reduced but functional timing system of *Prochlorococcus* [54, 83]. This might indicate the
 244 necessity of this factor for the entrainment of the clock [60]. Nevertheless the possibility of a functional
 245 clock without Pex and LdpA remains, since LdpA and Pex mutants in *Synechococcus* 7942 are only
 246 altered in their period length [97, 35] and Pex is also missing in the KaiA-lacking *Prochlorococcus* and the
 247 KaiA-containing *Synechocystis* 6803 (Fig. 1A). In *Synechococcus* 7942 the third unique cyanobacterial
 248 input factor, CdpA, influences phase resetting and acts in parallel to CikA [38]. Since CdpA seems to be
 249 essential in *Synechococcus* 7942 [38], it likely has a prior role in processes other than phase resetting and
 250 is hence dispensable for input pathways in other organisms than Cyanobacteria.
 251 Altogether, the absence of three important input factors outside of the cyanobacterial phylum suggests
 252 that other entrainment systems might be used for putative timing systems. In *Rhodobacter sphaeroides*,
 253 which displays circadian gene expression rhythms, a histidine kinase is encoded in an operon with *kaiBC*
 254 and was suggested as a candidate for transducing the redox signal to KaiBC [98]. Further, the direct
 255 entrainment by the ATP/ADP ratio [30, 99] might be the primary mechanism to synchronize the circadian
 256 clock with metabolism and the environment.

257 Central output factors are missing in Archaea and non-cyanobacterial genera

258 The output pathway of the circadian clock in *Synechococcus* 7942 involves eight proteins (see Fig. 7).
 259 RpaA serves as a key regulator [43]. Its activity is indirectly modulated depending on the phosphorylation
 260 state and the ATPase activity of KaiC [44, 100]. SasA (antagonistically to CikA) connects the core clock
 261 to RpaA, which in turn regulates global gene expression, including the *kaiBC* promoter [41, 43, 44, 101].
 262 LabA, CrmA and RpaB are also known to affect RpaA [42, 46, 47, 50, 101]. CpmA modulates *kaiA*
 263 expression by an unknown mechanism [49]. In contrast to the unique cyanobacterial input factors, we
 264 found none of the eight output proteins exclusively in Cyanobacteria. Homologs of five factors (SasA,
 265 CikA, LalA, CrmA, CpmA) are present in all four investigated taxonomic groups (Table S2). CpmA is
 266 a member of a superfamily essential for purine biosynthesis and thus likely to have orthologs in other
 267 organisms [49]. However, RpaA and RpaB are not present in Archaea and SasA is only found in the
 268 methanogenic genera *Methanospirillum*, and *Methanosalsum*. Hence, the entire central output pathway is
 269 missing in Archaea (Fig. 1A). In addition, orthologs for RpaA are found in only nine non-cyanobacterial
 270 genera, questioning whether another transcription factor might read out the putative core timer in other
 271 Bacteria (Fig. 1A). A previous BLAST search by Dvornyk and colleagues revealed that SasA homologs in
 272 non-cyanobacterial prokaryotes lack the KaiB-like domain [61]. This finding is confirmed in our analysis,
 273 indicating that stimulations of SasA homologs by KaiC outside of Cyanobacteria are very unlikely, because

interaction occurs via this KaiB-like domain, which adopts a thioredoxin-like fold [39, 102]. Altogether, our analysis reveals that possible circadian clocks of Bacteria and Archaea must use an output pathway that is different from the one described in *Synechococcus* 7942.

Co-occurrence analysis hints at the core module for circadian timing

The previous analysis revealed substantial differences in the composition of the clock components between Cyanobacteria, other Bacteria, and Archaea. Even within Cyanobacteria there is a huge variety in the composition of the potential circadian clocks (Fig. 1C). Cyanobacteria have either a severely reduced timing systems, such as the one in *Prochlorococcus*, a standard system as seen in *Synechococcus* 7942, or an inflated system as found in *Synechocystis* 6803 (Fig. 1C). This trichotomy of systems raises questions about essentiality and pairwise co-occurrence of circadian clock proteins. These questions were answered in a series of right-sided Fisher's exact tests. To avoid systematic biases due to an overrepresentation of closely related strains [103], we extracted 69 unique combinations of the 21 circadian clock factors as described in materials and methods.

Within these 69 unique systems two factors are always present: (i) KaiC, because we selected for organisms containing at least one KaiC-like protein and (ii) RpaB, which is associated with cell size and circadian gene expression [42, 51]. RpaB competes for promoter binding sites with RpaA and its phosphorylated state is thought to inhibit the phosphorylation of RpaA [47]. Other factors present in the majority ($\geq 90\%$) of the observed unique clock systems are KaiA, KaiB, LdpA, IrcA, CikA, SasA, RpaA and CpmA. Because of their abundance, most of these factors show no pairwise co-occurrence. For example RpaA and RpaB are found in 68 and all 69 clock systems, respectively. Thus their joint presence comes to no surprise. Instead, the finding confirms essential roles in global transcription regulation of Cyanobacteria [104]. With Fisher's exact test we seek to identify gene pairs rather unexpectedly co-occurring in a smaller subset of organisms. Such findings can indicate a common function in the circadian clock system. Only KaiA and CikA, out of the most abundant factors, show significant co-occurrence with other factors.

Within the input pathway we detected three significantly co-occurring pairs (Fig. 2): (i) CikA and its interaction partner PrkE [38] (ii) PrkE and CdpA and (iii) the *kaiA* repressor Pex and CdpA. The first two results are in good agreement with a previous study [38]. Within the output pathway, there is a significant co-occurrence between LabA and its ortholog LalA. Interestingly, we identified several significant co-occurrences between factors of the input and the output pathway. CikA, which functions in the input and output of the clock, co-occurs significantly with LabA, and LalA (Fig. 2). This fits well in the overall picture as CikA and LabA are thought to regulate the activity of RpaA [44, 50]. Additionally, PrkE shows also significant occurrences with both LabA and LalA (Fig. 2). Furthermore, CdpA was found to co-occur significantly with LabA. (Fig. 2) This is of special interest since PrkE and CdpA are only known as interaction partners of CikA, and both are involved in phase resetting, and cell division, respectively [38]. This result, however, hints at potential increased involvement of PrkE and CdpA in the RpaA regulation and supports the view of an integrated network with overlapping interactions of input and output factors [105]. Notably, no co-occurrence of NhtA and LdpA was detected, although it was suggested that NhtA might be involved in assembly of the iron-sulfur cofactor of LdpA [38]. Significant co-occurrences with core factors could only be observed between KaiA and LalA (Fig. 2). However, KaiA shows a strong, but not significant, co-occurrence with CikA ($p = 0.0105$). Lastly, we also found significant co-occurrences between KaiB2 and KaiC2 as well as KaiB3 and KaiC3 (Fig. 2). This indicates two distinct function of the two pairs. In this context it is worth mentioning that *kaiB2*-containing archaeal genomes always encode a KaiC2 homolog.

In summary, we identified a conserved set of factors (Fig. 2), both in input and output that show significant co-occurrences. This set, composed of KaiA, PrkE, CdpA, CikA, LabA, and LalA, is found in Cyanobacteria with a true circadian clock such as *Synechococcus* 7942 and *Synechocystis* 6803 [73] but is missing in cyanobacterial strains with reduced timing mechanisms such as *Prochlorococcus*. Additionally, PrkE, CikA, LabA, and LalA are also missing in most marine *Synechococcus* species. This finding hints at the importance of these factors for the functionality of a circadian clock. On the other hand, NhtA and Crm seem to play only a minor or extending role in clock regulation, because they are neither always present nor show significant co-occurrence with other factors.

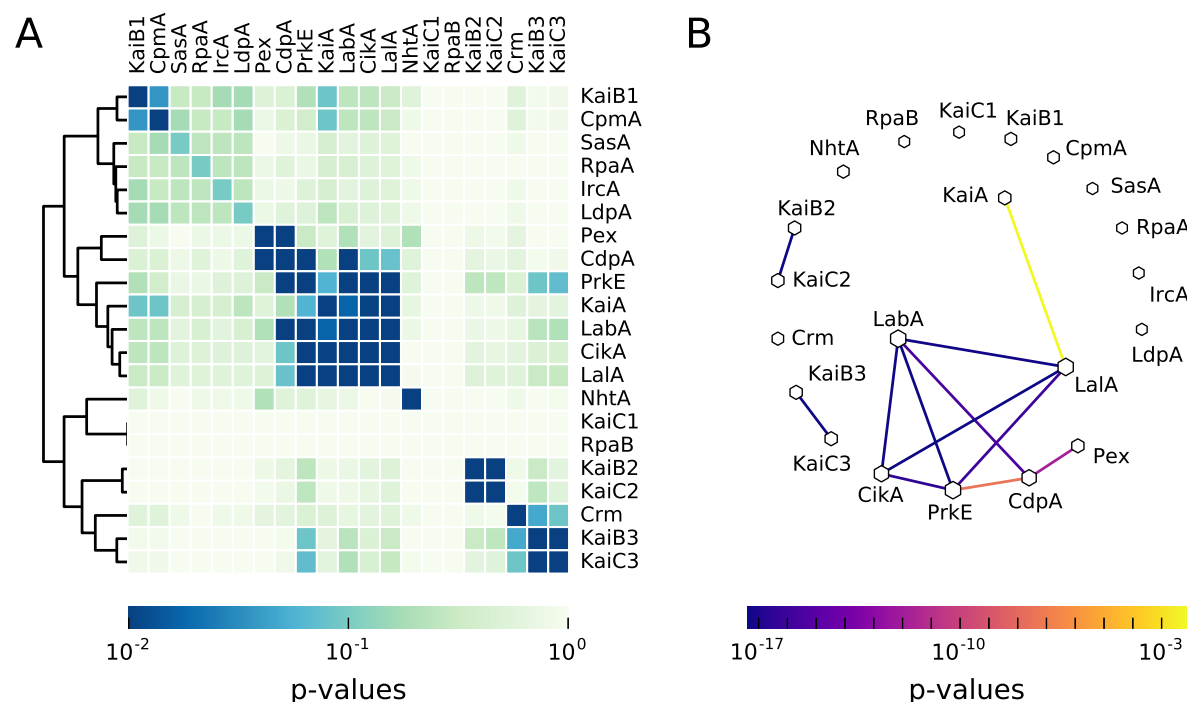


Figure 2: **Co-occurrence of circadian clock proteins in cyanobacteria.** (A) The p-values, calculated by pair-wise Fisher's exact tests, are visualized in a heatmap. Only p-values ≤ 0.01 are considered as significant. Proteins are sorted by a hierarchical agglomerative clustering algorithm. (B) Network of significant co-occurring circadian clock factors in cyanobacteria, calculated in regard to the results of the pair-wise Fisher's exact test. The line color corresponds to the level of significance. Missing links are those that had a higher p-value than 0.01. Node size is proportional to the degree of that node.

A systematic analysis of circadian expression in Cyanobacteria

Genome-wide time-resolved expression measurements in a range of cyanobacterial strains have repeatedly indicated substantial fractions of genes with circadian regulation patterns [106, 107, 87]. Considering that all Cyanobacteria share the challenge of a photoautotrophic lifestyle, which requires major changes in the metabolism between day and night, one might expect a common transcriptional regulatory pattern. Thus, we compared a total of nine published microarray time-series datasets of different cyanobacterial strains under constant light or diurnal light conditions (for details see Table S3), which were available and applicable for this analysis. Not all of the chosen microarray experiments were conducted under constant light conditions, which leads to a combination of circadian-clock regulated and light-induced genes. We therefore refer to genes with oscillating expression as diurnally regulated instead of circadian. For allowing a direct comparison, we reprocessed the raw-data and subjected the resulting expression time series to a harmonic regression oscillation detection. This method assumes a sinusoidal shape of circadian expression profiles and uses linear expression profiles as background, yielding estimates of the peak phase and amplitude of each gene.

In a first step we compared biological replicate datasets to establish the reproducibility of strain-specific circadian expression programs. Similarity between two circadian expression programs was established using the circular correlation coefficient ρ_{ccc} as described by Jammalamadaka and Sarma [108] applied to estimated peak expression phases. The following analyses were limited to genes with oscillating expression profiles in both compared datasets since only in these cases phase and amplitude estimates are meaningful descriptors. Direct comparison of the oscillation phases and amplitudes indicates good reproducibility between two respective measurements in form of statistically significant elevated correlation of the diurnal expression patterns in *Synechococcus* 7942 ($\rho_{ccc} = 0.61$, $p \ll 0.01$), *Synechocystis* 6803 ($\rho_{ccc} = 0.31$, $p \ll 0.01$), and *Cyanothece* sp. ATCC 51142 ($\rho_{ccc} = -0.51$, $p \ll 0.01$) (Figure 4 top row). While the *Synechocystis* 6803 datasets show significant similarity, the correlation is diminished by the distinct concentration of expression phases during the day in the beck14 [109] dataset compared to the leh13 [76] measurements. Interestingly, both *Cyanothece* sp. ATCC 51142 datasets exhibit a good agreement of peak expression phases with large early day and early night clusters, but the large negative

correlation emphasizes the presence of a significant number of anti-phasic gene pairs. The corresponding oscillation amplitude values exhibit high statistically significant correlations ($\rho_{ccc} > 0.77$) for all three datasets (Fig. 3 bottom row).

This observation motivated the second step of the analysis, the comparison of expression patterns between different cyanobacterial strains. To facilitate this comparison, the prediction of homologous genes in the cyanobacterial clade by Beck and colleagues [109] was used as starting point. We focused first on the set of genes with oscillating expression patterns in all datasets. The estimate of the core diurnal genome based on the presented data collection spans 95 genes (Table S5), which are mostly involved in central metabolic processes. Most strikingly, 18 out of 64 genes annotated by Cyanobase [68] as “ribosomal protein” genes in *Synechocystis* 6803 fall into the core diurnal set, furthermore seven out of 27 genes annotated with “photosystem II”. The remaining diurnally expressed genes are found interspersed across the metabolic network. While genes coding for parts of photosystem II, the RNA polymerase, or the ribosomal proteins can be expected to serve important roles in the adaptation to photic and aphotic phases, this analysis ascribes similar importance to other metabolic processes e.g. in the repair of UV-damaged Photosystem II centers (*slr1390*) [110], in the phosphate transport system (*pstB2*), pyrimidine and arginine biosynthesis (*sll1498*), or the glycolysis/gluconeogenesis via the fructose-bisphosphate aldolase (*sll0018*). Marker gene candidates for a working clock can be derived from the core diurnal genome. Importantly, less confidence can be placed in genes which exhibit peak expression phases shortly past dawn since these can either be clock regulated or simply induced by light. Two high confidence candidates are the light-independent protochlorophyllide reductase subunit ChlB and the fructose-bisphosphate aldolase *fbp*. Indeed, *fbp* also shows circadian expression patterns in *Clamydomonas reinhardtii* [111] and *Arabidopsis thaliana* where its late-night peaks may reflect the great importance of these aldolases in higher plants for the mobilization of plastidic starch [112]. Particularly in higher plants, the mobilization of starch, the conversion into sucrose, and its transport to other parts of the plant occur mainly at night.

The group of 15 “hypothetical protein” genes in the core diurnal genome constitutes an excellent candidate set for novel clock-driven genes in strains with a working core clock. Interestingly, several of these genes are implicated with cell division, such as the YlmG-related hypothetical gene *ssl0353*, which is required for proper distribution of nucleoids in cyanobacteria and chloroplasts [113]. Similarly, the hypothetical protein *slr1577* is suggested to function in the separation of chromosomes during cell division (Uniprot entry P74610). For the gene *slr1847* (Uniprot entry P73057) a DNA binding capability is suggested, which could therefore regulate expression, aid nucleoid organization, or protect the DNA.

The core clock genes *kaiA*, *kaiB*, and *kaiC* are a good starting point for a detailed comparative expression analysis. Only the *kaiB1* is significantly oscillating in all considered datasets. Interestingly, the *kaiA* gene features only very low amplitude expression oscillations and is arrhythmic in the vijayan09 *Synechococcus* 7942 dataset. The expression phases vary from dawn (*Microcystis aeruginosa* PCC 7806) to morning (*Synechocystis* 6803), over midday (stoeckel08 dataset of *Cyanothece* sp. ATCC 51142), and dusk (ito09 dataset of *Synechococcus* 7942), into night (*Anabaena* sp. PCC 7120). The observed expression phases of *kaiB1* are comparable to those of *kaiA*, but with significantly larger amplitude in *Synechococcus* 7942 datasets. The phase of the *kaiB1* homolog in *Prochlorococcus marinus* MED4 peaks before dawn, comparable to *Anabaena* sp. PCC 7120. The *kaiC1* expression phases and amplitudes match those of *kaiB1*, with the notable exception of *Cyanothece* sp. ATCC 51142 for which antiphasic late-night peaks are observed. In *Prochlorococcus marinus* MED4, *kaiC1* peaks during the early night in contrast to the late night phase of *kaiB1*.

Many aspects agree well with previous knowledge. In *Synechococcus* 7942, the core clock genes *kaiB* and *kaiC* are arranged in the *kaiBC* operon resulting in similar expression patterns [114, 115, 116], while *Cyanothece* sp. ATCC 51142 features the *kaiAB1C1* operon [117]. Interestingly, *Cyanothece* sp. ATCC 51142 features consistent anti-phasic expression of *kaiB1* and *kaiC1* whereas the remaining strains show co-expression, hinting at *Cyanothece*-specific post-transcriptional regulation of *kaiB1* or *kaiC1*. Oscillations in the *kaiA* gene expression, as reported by Ishiura and colleagues, feature small expression amplitudes compared to *kaiB* and *kaiC* [118]. In fact, *kaiA* consistently falls below the threshold of 2-fold expression change for the classification as circadian oscillator, which is commonly employed in microarray studies.

In the second step we generalized the detailed analysis of expression phases as presented for the core diurnal genome. We applied the circular correlation measure to all possible combinations of expression datasets. The resulting distribution reveals a clear separation between pairs of biological replicate datasets, featuring large numbers of shared oscillating genes and more extreme correlations (Fig. 4 red), and pairs of different cyanobacterial strains with fewer shared oscillating genes and much less extreme correlation coefficients (Fig. 4 blue). The only exception to this separation is the *Cyanothece* sp. ATCC 51142 dataset stoeckel08 (Fig. 4 green), which shares many oscillating genes with both *Synechocystis* 6803 datasets (leh13, beck14). The corresponding correlation coefficients are, however, similarly small

413 compared to other inter-strain pairs. The full set of pairwise phase comparisons, which underlay this
 414 analysis are shown in Figure S1. This result indicates that the diurnal peak expression phase is not
 415 preserved amongst homologous genes in the cyanobacterial clade but might instead be tuned according
 416 to the metabolic gene outfit and the environmental needs of the respective strain.

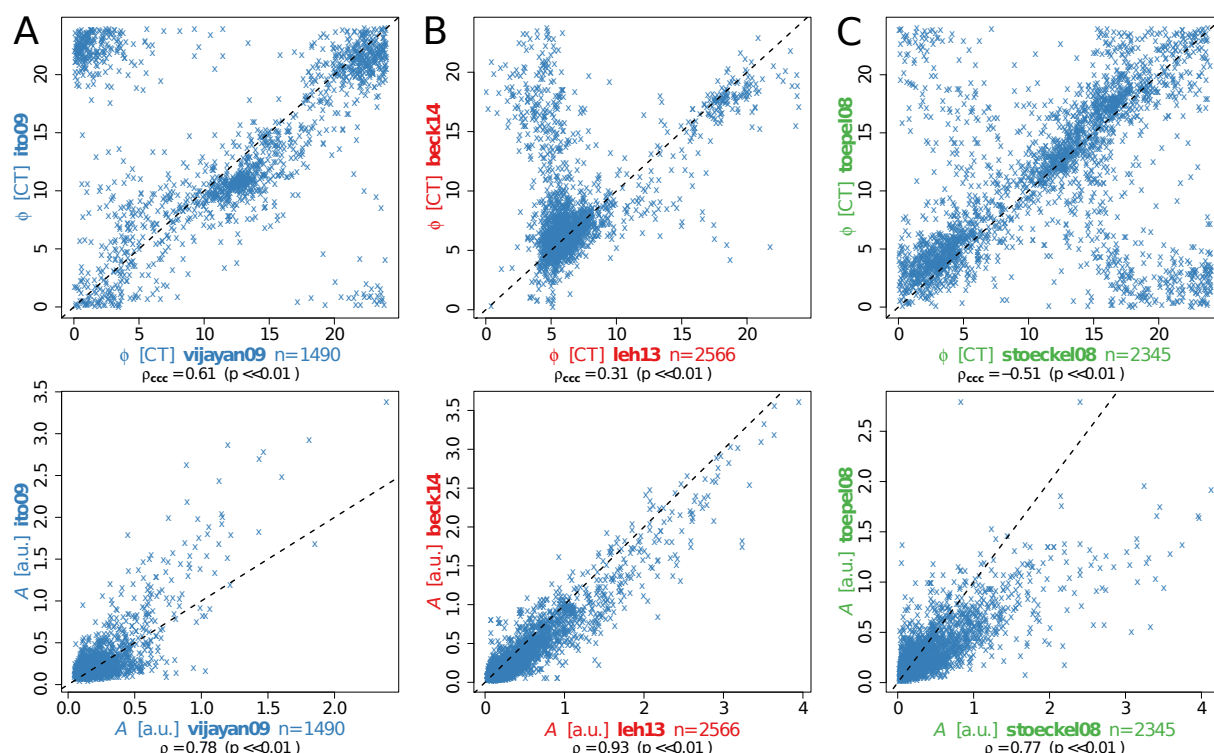


Figure 3: Phase and amplitude reproducibility of diurnal genes within cyanobacterial strains. Comparison of expression phase ϕ (top, [CT]) and amplitude A (bottom, [a.u.]) of diurnal genes shared between independent datasets of the same cyanobacterial strain. (A) *Synechococcus* datasets of Vijayan and colleagues [119] (x-axis) and Ito and coworkers [87] (y-axis), (B) *Synechocystis* in the datasets of Lehmann and coworkers [76] (x-axis) and Beck and colleagues [109] (y-axis), and (C) *Cyanothece* in Stöckel and colleagues [120] (x-axis) and Toepel and colleagues [121] (y-axis). The number of genes n found to oscillate significantly and the corresponding Pearson correlation coefficient ρ between ϕ and A is provided below each panel, followed by the respective p-value for ρ differing from 0. For ϕ , the circular correlation coefficient ρ_{ccc} is also provided. Axis labels are shown in the strain-specific color.

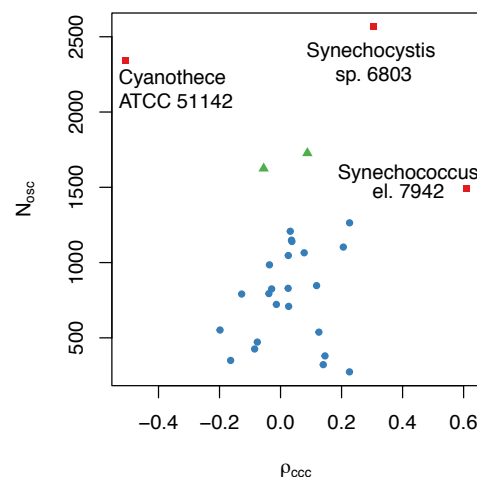


Figure 4: **Expression phase similarity versus number of shared oscillating genes.** The comparison is carried out between all dataset combinations. Biological replicate experiments available for three cyanobacterial strains show a large number of shared oscillating genes as well as large correlation coefficients (red). The comparison of the stoeckel08 dataset (*Cyanotherce*) with both *Synechocystis* datasets is marked in green. The remaining comparisons between various strains are shown in blue.

Core circadian clock proteins, KaiA, KaiB, KaiC, vary in number and length

The previously observed diversity of circadian clocks within Cyanobacteria, and between other Bacteria and Archaea prompted further sequence analyses of the core clock proteins KaiA, KaiB and KaiC. Length comparisons gave rise to some new features of variations between the core factors of the circadian clock (Fig. 5). As described in the preceding, our BLAST analysis detected KaiA exclusively in Cyanobacteria. Interestingly, we could distinguish three subtypes of KaiA. While the sequence length of most KaiA is around 300 amino acids (AA) (*Synechococcus* 7942: 284 AA) some strains have shortened homologs with a length of roughly 200 and 100 AA, respectively (Fig. 5A, C). Truncated KaiA proteins are almost exclusively found in members of the order *Nostocales*. Similar results were reported previously by Dvornyk and colleagues, who also observed a higher degree of polymorphism for the *kaiA* gene in comparison to *kaiB* and *kaiC* [52, 53]. Multiple alignments of the KaiA proteins (Fig. S2) verified that the truncated KaiA proteins have a shortened N-terminal sequence, which functions in the complete protein as the amplitude amplifier [122]. However, all of these KaiA orthologs contain the C-terminal part important for clock oscillation [122].

Distribution of the KaiB protein length reveals two distinct groups. The KaiB homologs are either as long as the one from *Synechococcus* 7942 (102 AA) or about 250 AA in length (Fig. 5B, C). *Microcoleus* sp. PCC 7113 even has a KaiB with the length of 381 AA. KaiB homologs with query length are present in all four groups (Fig. 5B). Elongated KaiB proteins are mainly present in Cyanobacteria in the subclass *Oscillatoriothypicidae* and the order *Nostocales*, specifying findings of Dvornyk [53] (Fig. 5C). BLAST analyses using the KaiB homologs from *Synechocystis* 6803 revealed that elongated variants are most similar to KaiB1. Elongation via concatenation of two KaiB was ruled out by visually inspecting alignments with two artificially concatenated KaiB1. Instead the elongated KaiB1 have a ~150 AA N-terminal extension. BLAST searches of the N-terminal region showed no homologous sequences in other organisms than Cyanobacteria, and no putative conserved domains could be identified. However, the N-terminal part is highly conserved within the Cyanobacteria having this KaiB variant. Interestingly, those *Nostocales* with an elongated KaiB1, also show a truncated KaiA.

The KaiC protein from *Synechococcus* 7942 is 519 AA in length and is build up by two domains, the CI and CII domain, which have a high similarity and are connected by a linker-domain [123, 124]. The C-terminal CII domain of KaiC comprises the interaction sites with KaiA as well as the specific phosphorylation sites [29, 125, 126, 127]. KaiC homologs were detected with lengths varying between 101 AA and 741 AA (Fig. 5A, B). There are KaiC homologs in Archaea representing the whole observed length spectrum of KaiC, whereas bacterial KaiCs are almost always about 500 AA in length (Fig. 5A, B). Furthermore, in Bacteria and Archaea KaiB (and KaiA in Cyanobacteria) is only found when a 'full-length' KaiC is present. In these bacterial organisms the length of KaiC is almost constant, regardless of the length of KaiA and KaiB homologs (Fig. 5A, B). However, in KaiB-possessing Archaea additional shorter KaiC homologs are found (Fig. 5B).

Moreover, the length distribution of KaiC revealed a substantial amount of KaiC homologs with a length of circa 250 AA, which is approximately the length of one KaiC domain. This KaiC variant is mainly found in Archaea, but also in a few Bacteria. In these bacterial species no KaiB homolog could be identified. Shorter KaiC homologs do not contain the important phosphorylation sites for maintaining the oscillator function. Therefore, they might not restore the full functionality of the *Synechococcus* 7942 KaiC, but can rather answer questions about the evolution of KaiC [53]. Regarding the evolution of KaiC, two valid hypotheses exist, both of which state that KaiC arose from a shorter ancestral *recA* gene followed by a gene duplication and fusion. However, on the one hand Leipe and colleagues [128] hypothesize that an ancestral single-domain KaiC originated in Bacteria, was transferred into Archaea, where its two-domain version originated, and a second lateral transfer event introduced the double domain KaiC into cyanobacteria. On the other hand Dvornyk and coworkers [53] argue in a follow up study that KaiC has to be of cyanobacterial origin. Given the amount of new genomic data further studies would help to unravel the evolutionary history of KaiC.

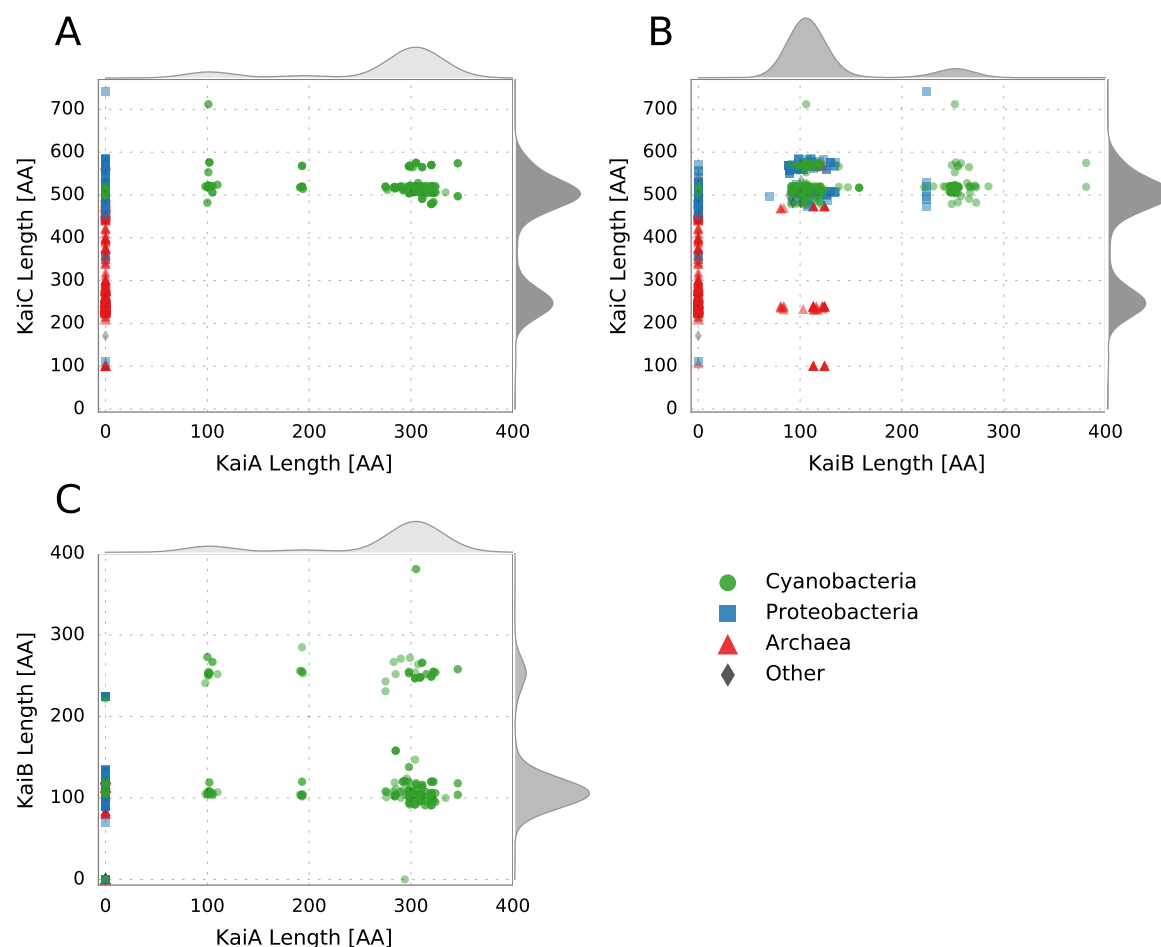


Figure 5: Protein length distribution of the circadian clock factors from *Synechococcus* 7942 and its homologs. The four taxonomic main groups are highlighted: Cyanobacteria (Green), Proteobacteria (Blue), Archaea (Red), Other (Grey). The curves outside of the plot represent the cumulative density distribution of the respective protein. (A) KaiC length distribution in dependency of the KaiA length. (B) KaiC length distribution in dependency of the KaiB length. (C) KaiB length distribution in dependency of the KaiA length.

Conserved motifs and activities in the cyanobacterial KaiC subgroups

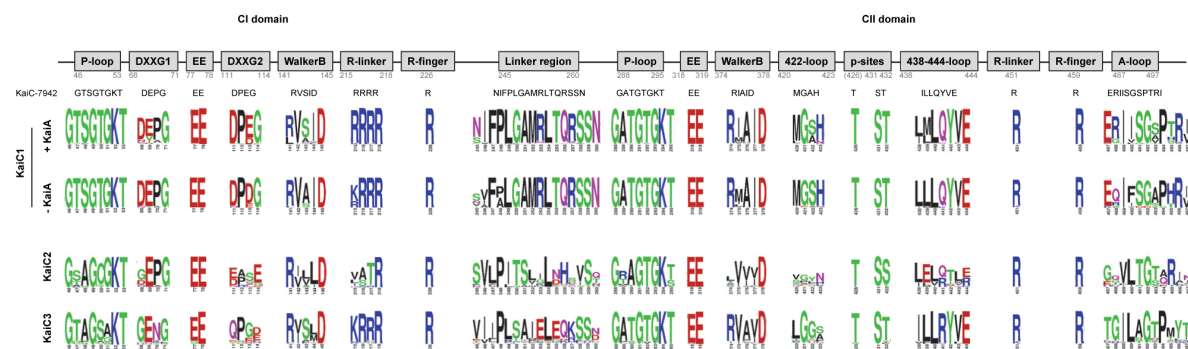
For KaiC2 homologs outside of the cyanobacterial phylum an involvement in stress response (*Legionella pneumophila* [129]) and adaptive growth under rhythmic conditions (*Rhodospseudomonas palustris* [57]) has been demonstrated. Both proteins display autophosphorylation and KaiC2 from *Rhodospseudomonas palustris* shows elevated ATPase activity [57]. Nevertheless, the function of cyanobacterial KaiC2 and

KaiC3 homologs remains unclear. We already demonstrated that KaiC2 and KaiC3 from *Synechocystis* 6803 displays kinase activity, which is independent of KaiA, whereas KaiC1 behaved like its *Synechococcus* 7942 ortholog [55]. Those activities could also be predicted from the C-terminal amino acid sequences [55]. To test whether general features of the three KaiC subgroups can be predicted, multiple alignments of the cyanobacterial KaiC1, KaiC2 and KaiC3 sequences were constructed. A WebLogo analysis revealed that relevant motifs for phosphorylation and dephosphorylation in the CII domain are highly conserved. The ATP-binding Walker Motif A (P-loop in Fig. 6A, GXXXXGKT, [118, 130, 131]) is present in all three KaiC subgroups. Strikingly, the respective sequence of KaiC-7942 (GATGTGKT) shows almost no modifications in KaiC1 and KaiC3 proteins. Furthermore, catalytic glutamates (EE in Fig. 6A, [132, 133]), the R-finger contacting the γ -phosphate of ATP [134], and the truncated Walker motif B (WalkerB in Fig. 6A, [26, 118, 131]), were found in all cyanobacterial KaiC subgroups. Notably, the arginine residue of the *Synechococcus* 7942 Walker B motif is not conserved in KaiC2 homologs. Serine and subsequent threonine are the dominant phosphorylation sites in KaiC1 and KaiC3 proteins, like S431 and T432 in KaiC-7942 [125, 126], whereas KaiC2 homologs display two serine residues. In some KaiC3 homologs a tyrosin is present as second phosphorylation site. T426, which is important for dephosphorylation of KaiC-7942 [125, 132, 135, 136], is also highly conserved. Therefore, phosphorylation and dephosphorylation via autokinase [26], ATP synthase and ATPase activity [27, 132], respectively, are very likely for all cyanobacterial KaiC homologs. The same holds true for the N-terminal ATPase activity: We observed high conservation of the Walker motif A (P-loop in Fig. 6A), the catalytic glutamate residues (EE in Fig. 6A) and the R-finger in the CI domains of all cyanobacterial KaiC subgroups. The presence of the R-linker in CI domains of KaiC1 and KaiC3 homologs indicate a structural coupling of the N-terminal CI and the C-terminal CII-domain as it was demonstrated for *Thermosynechococcus* KaiC [134], whereas KaiC2 homologs lack the R-linker in CI.

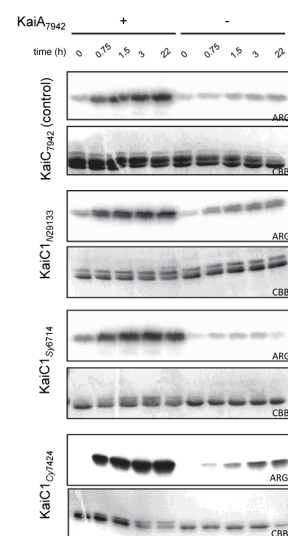
KaiC homologs from the genus *Prochlorococcus* were classified as KaiC1 orthologs in our BLAST analysis (Fig. 1B). However, *Prochlorococcus* strains do not contain KaiA, and KaiC from *Prochlorococcus marinus* MED4 was demonstrated to phosphorylate independently of KaiA due to a modified A-loop sequence [83]. Therefore, we compared WebLogos of the A-loop sequence [28] for KaiC1 orthologs from Cyanobacteria with and without KaiA (Fig. 6A). The most obvious difference to KaiC1 proteins from cyanobacterial strains with KaiA is the presence of neutral glutamine in the second position, instead of a positively charged arginine. In KaiC2 and KaiC3 Weblogos motifs are even less conserved as already described for the *Synechocystis* 6803 representatives [55]. Interestingly, the KaiC3 WebLogo motif does not display any charged residue anymore. The absence of A-loop residues that are important to keep it in the buried state [28] indicate that the KaiA-independent phosphorylation is characteristic for KaiC2 and KaiC3 homologs. This is supported by the low conservation of the 438-444-loop and/or the 422-loop, which are part of the interaction network that mediates inhibition of phosphorylation by the buried A-loops in *Synechococcus* 7942 [28, 124]. The high conservation of these loops in KaiA-lacking strains remains enigmatic.

To test this hypothesis, phosphate uptake as an exemplary KaiC activity was analyzed for representative cyanobacterial KaiC1 and KaiC3 proteins by incubation with γ -P³²-ATP at 30 °C in the presence and absence of *Synechococcus* 7942 KaiA (KaiA-7942). The well-studied KaiC from *Synechococcus* 7942 (KaiC-7942) served as control. As demonstrated in Figure 6B and 6C all recombinant KaiC proteins incorporated phosphate over time. The intrinsic kinase activity of KaiC1 homologs from *Nostoc punctiforme* ATCC 29413 (KaiC1-N294133), *Synechocystis* sp. PCC 6714 (KaiC1-Sy6714), and *Cyanothece* sp. PCC 7424 (KaiC1-Cy7424) was stimulated by KaiA-7942, similar to KaiC-7942 (Fig. 6B). As expected, KaiA had no effect on autophosphorylation of KaiC3 from *Cyanothece* sp. PCC 7424 (KaiC3-Cy7424) and *Microcystis aeruginosa* PCC 7806 (KaiC3-Mic7806, Fig. 6C). To extend the analysis to non-cyanobacterial proteins, KaiC3 from the hyperthermophilic Archaea *Thermococcus litoralis* (KaiC3-T.lit) and *Pyrococcus horikoshii* (KaiC3-P.hor), which show optimal growth at 85 °C and 98 °C [137, 138], were analyzed in a similar way. Again both recombinant KaiC3 proteins displayed phosphorylation at 30 °C, which was independent of KaiA-7942 (Fig. 6C). Incubation at 75 °C indicated that the two archaeal KaiC3 homologs display kinase activity also at high growth temperatures (Fig. 6D). Hence kinase activity of KaiC proteins seems to be well-conserved, independent of the growth conditions of the strains, they are originating from.

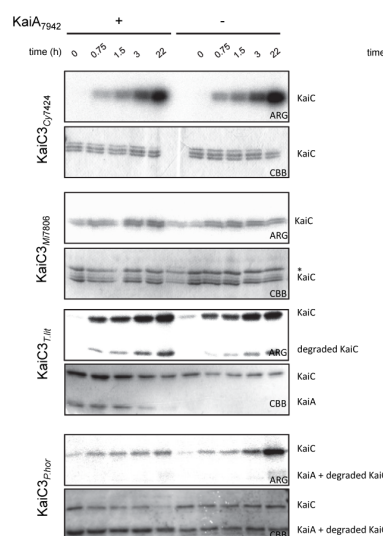
A



B



C



D

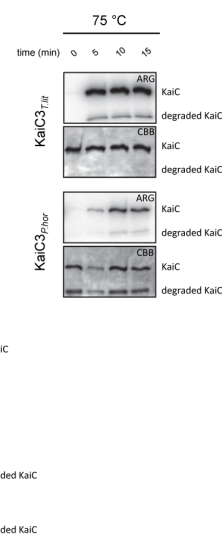


Figure 6: Activity of diverged KaiC homologs. (A) Conservation of important motifs in cyanobacterial KaiC1, KaiC2 and KaiC3 homologs based on a WebLogo analyses. Motifs in KaiC1 homologs are displayed for proteins from organisms, which encode a KaiA protein or lack KaiA, respectively. Numbers indicate the residues in KaiC-7942. Properties of the residues are displayed as follows: polar (green), neutral (purple), basic (blue), acidic (red), and hydrophobic (black). (B,C) Phosphate uptake analyses of selected KaiC1 (B) and KaiC3 (C) homologs at 30 °C in dependence of KaiA. KaiC proteins were incubated with or without KaiA-7942 in the presence of γ - P^{32} -ATP. After 0, 0.75, 1.5, 3, and 22 hours samples were separated via SDS-PAGE, stained with Coomassie (CBB), and subjected to autoradiography (ARG). The asterisk indicates a contaminating protein. (D) Kinase activity of archaeal KaiC3 homologs at 75 °C. KaiC3 proteins from *Thermococcus litoralis* and *Pyrococcus horikoshii* were incubated with γ - P^{32} -ATP and autophosphorylation was analyzed after 0, 5, 10, and 15 minutes. Shown are the Coomassie stained proteins (CBB) and autoradiography (ARG).

Conclusion

A core module for circadian regulation

Our analysis of 11,264 genomes clearly demonstrates that components of the *Synechococcus* 7942 circadian clock are present in various bacteria and archaea. However, the frequency of Kai-clock related proteins is highest in Cyanobacteria. In fact KaiA, Pex, LdpA, and CdpA are exclusive to organisms of this phylum. In other organisms, e.g. *Rhodobacter sphaeroides*, reduced KaiBC-based clock systems are likely able to drive circadian oscillations [98]. An even simpler system solely dependent on KaiC might enable diurnal rhythms in *Haloferax volcanii* [59], probably using the ATP/ADP ratio for clock entrainment. Predictions for KaiC activities based on sequence alignments and motif analyses were validated through biochemical experiments. We confirmed kinase activity for ‘full-length’ KaiC proteins composed of one CI and one CII domain, even in organism without *kaiA* or *kaiB*. KaiA from *Synechococcus* 7942 enhanced KaiC-phosphorylation only in strains naturally possessing a *kaiA* gene.

Our co-occurrence analysis hints to a conserved extension set for circadian regulation, which is present in cyanobacteria with observed circadian behavior and absent in cyanobacteria having a diurnal, hourglass-like lifestyle only (see also Fig. 7). A diurnal core set, which is important to enable an hourglass-like timing system that resets every day, might be composed of KaiB, KaiC, LdpA, IrcA, SasA, RpaA, RpaB, and CpmA. However, our identified circadian core set, which potentially enables a self-sustained clock, additionally consists of KaiA, the two input factors CdpA, and PrkE as well as the input and output factor CikA, and the output factors LabA, and LalA.

The systematic comparison of microarray timeseries datasets indicates that the diurnal peak expression phase is not conserved amongst homologous genes in the cyanobacterial clade. Instead, the expression phase may be tuned according to the gene outfit and varying environmental needs. The analysis yielded a set of 95 genes in the core diurnal genome, which can be considered critical for the adaptation to day and night. Particularly the subset of non-light induced genes are prime candidates for circadian clock marker genes. This set furthermore contains several hypothetical genes, which are interesting candidates for novel clock-driven genes.

The gained insights about the diversity within the composition of the components involved in the circadian protein clock as well as the diversity on the sequence level of the core factors call for further modification and simplification of the clock. The exponential increase of molecular tools for synthetic applications in recent years sets the stage for such ambitious projects. A future goal could be the reduction of complexity by removing as many factors as possible so that an integration of a circadian clock in synthetic and industrially valuable organisms becomes feasible.

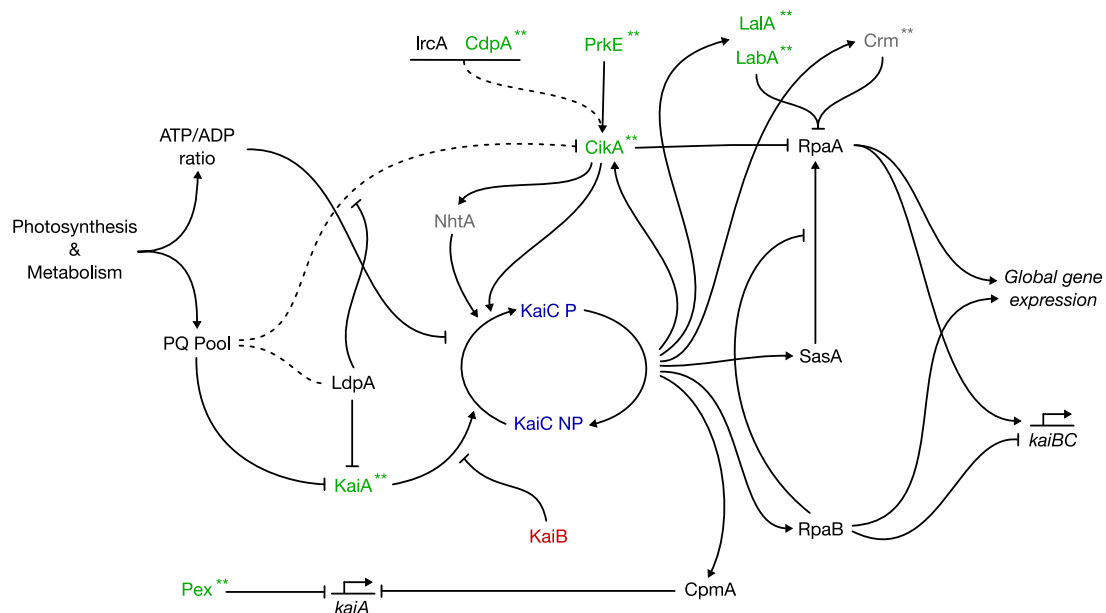


Figure 7: **Schematic overview of the circadian clock in *Synechococcus* 7942.** Shown are the protein interactions based on [20, 34, 35, 36, 37, 38, 39, 40, 41, 42, 43, 44, 45, 46, 47, 48, 49, 50, 51]. The plastoquinone pool and ATP/ADP ratio serve as input signals to entrain the circadian clock with the environment and metabolic state of the cell. The signals are recognized by the input factors LdpA and Cika and the core clock factors KaiA and KaiC. Other input factors are Pex, and the Cika interaction partner NhtA, PrkE, IrcA, and CdpA. The stimulating effect of KaiA on KaiC is antagonized by KaiB. The output of the clock is comprised by SasA, Cika, RpaA, RpaB, LabA, LalA, Crm, and CpmA. SasA interacts with KaiC and further phosphorylates RpaA, whereas Cika acts as a phosphatase on RpaA. RpaA is also regulated by LabA, Crm, and RpaB. RpaA together with RpaB controls global gene expression as well as the expression of the *kaiBC* cluster. CpmA is a transcriptional regulator of *kaiA*. The seven most interconnected factors we found in our co-occurrence analysis are highlighted in green. Factors colored in light grey showed no co-occurrence in the Fisher's exact test and are present in < 90% of all observed systems. Asterisks (**) indicate the factors missing in *Prochlorococcus*.

556 **Declarations**

557 **Acknowledgement**

558 We thank Mariam Yazdanyar for help with protein expression and purification. We are very grateful
 559 to Elke Dittmann, Wolfgang Lockau, and Wolfgang R. Hess for providing genomic DNA of *Microcystis*
 560 *aeruginosa* PCC 7806 and *Nostoc punctiforme* ATCC 294133, *Cyanothece* PCC 7424, and *Synechocystis*
 561 PCC 6714, respectively. This work was supported by DFG grants AX 84/1-3 and EXC 1028 to NMS,
 562 AW and IMA. ERC starting grant (Nr. 311523, Archaelum) for PC and SVA. RL was supported by the
 563 grant "CyanoGrowth" funded by the German Federal Ministry of Education and Research (reference:
 564 FKZ 0316192 to Ralf Steuer).

565 **Author contributions**

566 IMA and AW supervised the study. NMS, CB, and RL designed and NMS and RL carried out bioinformatic data analyses. AW designed and performed sequence analysis and *in vitro* experiments. AW and
 567 PC cloned, expressed, and purified recombinant proteins. NMS, RL, CB, AW, and IMA prepared the
 568 manuscript. PC and SVA contributed to the interpretation of the data and provided intellectual input.
 569 All authors read and approved the final manuscript.

571 **Competing interests**

572 The authors declare that they have no competing interests.

References

- [1] Y. Ouyang, C. R. Andersson, T. Kondo, S. S. Golden, and C. H. Johnson. Resonating circadian clocks enhance fitness in cyanobacteria. *Proceedings of the National Academy of Sciences of the United States of America*, 95(15):8660–4, 1998.
- [2] M. A. Woelfle, Y. Ouyang, K. Phanvijhitsiri, and C. H. Johnson. The adaptive value of circadian clocks: an experimental assessment in cyanobacteria. *Current Biology*, 14(16):1481–6, 2004.
- [3] M. J. Simons. The evolution of the cyanobacterial posttranslational clock from a primitive "phoscillator". *Journal of Biological Rhythms*, 24(3):175–82, 2009.
- [4] J. L. Ditty, S. B. Williams, and S. S. Golden. A Cyanobacterial Circadian Timing Mechanism. *Annual Review of Genetics*, 37(1):513–543, 2003.
- [5] C. H. Johnson, P. L. Stewart, and M. Egly. The cyanobacterial circadian system: from biophysics to bioevolution. *Annual Review of Biophysics*, 40:143–67, 2011.
- [6] S. S. Golden and S. R. Canales. Cyanobacterial circadian clocks—timing is everything. *Nature Review Microbiology*, 1(3):191–9, 2003.
- [7] C. S. Pittendrigh. Temporal organization: reflections of a Darwinian clock-watcher. *Annual Review of Physiology*, 55:16–54, 1993.
- [8] B. M. Sweeney and M. B. Borgese. A circadian rhythm in cell division in a prokaryote, the cyanobacterium *Synechococcus* WH7803. *Journal of Phycology*, 25(1):183–186, 1989.
- [9] A. Mitsui, S. Kumazawa, A. Takahashi, H. Ikemoto, S. Cao, and T. Arai. Strategy by which nitrogen-fixing unicellular cyanobacteria grow photoautotrophically. *Nature*, 323(6090):720–722, 1986.
- [10] T. C. Huang and T. J. Chow. New Type of N-2-Fixing Unicellular Cyanobacterium (Blue-Green-Alga). *FEMS Microbiology Letters*, 36(1):109–110, 1986.
- [11] N. Grobbelaar, T. C. Huang, H. Y. Lin, and T. J. Chow. Dinitrogen-Fixing Endogenous Rhythm in *Synechococcus* Rf-1. *FEMS Microbiology Letters*, 37(2):173–177, 1986.
- [12] T. C. Huang and T. J. Chow. Characterization of the Rhythmic Nitrogen-Fixing Activity of *Synechococcus* sp. Rf-1 at the Transcription Level. *Current Microbiology*, 20(1):23–26, 1990.
- [13] J. Tomita, M. Nakajima, T. Kondo, and H. Iwasaki. No transcription-translation feedback in circadian rhythm of KaiC phosphorylation. *Science*, 307(5707):251–4, 2005.
- [14] M. Nakajima, K. Imai, H. Ito, T. Nishiwaki, Y. Murayama, H. Iwasaki, T. Oyama, and T. Kondo. Reconstitution of circadian oscillation of cyanobacterial KaiC phosphorylation *in vitro*. *Science*, 308(5720):414–5, 2005.
- [15] J. L. Ditty, S. R. Canales, B. E. Anderson, S. B. Williams, and S. S. Golden. Stability of the *Synechococcus elongatus* PCC 7942 circadian clock under directed anti-phase expression of the *kai* genes. *Microbiology*, 151(8):2605–2613, 2005.
- [16] R. S. Edgar, E. W. Green, Y. Zhao, G. van Ooijen, M. Olmedo, X. Qin, Y. Xu, M. Pan, U. K. Valekunja, K. A. Feeney, E. S. Maywood, M. H. Hastings, N. S. Baliga, M. Merrow, A. J. Millar, C. H. Johnson, C. P. Kyriacou, J. S. O'Neill, and A. B. Reddy. Peroxiredoxins are conserved markers of circadian rhythms. *Nature*, 485(7399):459–64, 2012.
- [17] J. S. O'Neill and A. B. Reddy. Circadian clocks in human red blood cells. *Nature*, 469(7331):498–503, 2011.
- [18] J. S. O'Neill, G. van Ooijen, L. E. Dixon, C. Troein, F. Corellou, F.-Y. Bouget, A. B. Reddy, and A. J. Millar. Circadian rhythms persist without transcription in a eukaryote. *Nature*, 469(7331):554–8, 2011.
- [19] C. R. McClung. Circadian Rhythms in Plants. *Annual Review of Plant Physiology and Plant Molecular Biology*, 52:139–162, 2001.

- 619 [20] N. B. Ivleva, M. R. Bramlett, P. A. Lindahl, and S. S. Golden. LdpA: a component of the circadian
620 clock senses redox state of the cell. *The EMBO Journal*, 24(6):1202–1210, 2005.
- 621 [21] G. K. Pattanayak and M. J. Rust. The Cyanobacterial Clock and Metabolism. *Current Opinion*
622 *in Microbiology*, 18:90–95, 2014.
- 623 [22] Y.-I. Kim, D. J. Vinyard, G. M. Ananyev, G. C. Dismukes, and S. S. Golden. Oxidized quinones
624 signal onset of darkness directly to the cyanobacterial circadian oscillator. *Proceedings of the*
625 *National Academy of Sciences of the United States of America*, 109(44):17765–17769, 2012.
- 626 [23] Y. Hihara, K. Sonoike, M. Kanehisa, and M. Ikeuchi. DNA microarray analysis of redox-responsive
627 genes in the genome of the cyanobacterium *Synechocystis* sp. strain PCC 6803. *Journal of Bacte-*
628 *riology*, 185(5):1719–25, 2003.
- 629 [24] F. Hayashi, H. Suzuki, R. Iwase, T. Uzumaki, A. Miyake, J. R. Shen, K. Imada, Y. Furukawa,
630 K. Yonekura, K. Namba, and M. Ishiura. ATP-induced hexameric ring structure of the cyanobac-
631 terial circadian clock protein KaiC. *Genes to Cells*, 8(3):287–96, 2003.
- 632 [25] T. Mori, S. V. Saveliev, Y. Xu, W. F. Stafford, M. M. Cox, R. B. Inman, and C. H. Johnson.
633 Circadian clock protein KaiC forms ATP-dependent hexameric rings and binds DNA. *Proceedings*
634 *of the National Academy of Sciences of the United States of America*, 99(26):17203–8, 2002.
- 635 [26] T. Nishiwaki, H. Iwasaki, M. Ishiura, and T. Kondo. Nucleotide binding and autophosphorylation
636 of the clock protein KaiC as a circadian timing process of cyanobacteria. *Proceedings of the National*
637 *Academy of Sciences of the United States of America*, 97(1):495–499, 2000.
- 638 [27] T. Nishiwaki and T. Kondo. Circadian autodephosphorylation of cyanobacterial clock protein KaiC
639 occurs via formation of ATP as intermediate. *Journal of Biological Chemistry*, 287(22):18030–18035,
640 2012.
- 641 [28] Y.-I. Kim, G. Dong, Jr. Carruthers, C. W., S. S. Golden, and A. LiWang. The day/night switch
642 in KaiC, a central oscillator component of the circadian clock of cyanobacteria. *Proceedings of the*
643 *National Academy of Sciences of the United States of America*, 105(35):12825–30, 2008.
- 644 [29] R. Pattanayek, D. R. Williams, S. Pattanayek, Y. Xu, T. Mori, C. H. Johnson, P. L. Stewart, and
645 M. Egli. Analysis of KaiA-KaiC protein interactions in the cyanobacterial circadian clock using
646 hybrid structural methods. *The EMBO Journal*, 25(9):2017–28, 2006.
- 647 [30] M. J. Rust, S. S. Golden, and E. K. O’Shea. Light-driven changes in energy metabolism directly
648 entrain the cyanobacterial circadian oscillator. *Science*, 331(6014):220–3, 2011.
- 649 [31] Y. Kitayama, H. Iwasaki, T. Nishiwaki, and T. Kondo. KaiB functions as an attenuator of KaiC
650 phosphorylation in the cyanobacterial circadian clock system. *The EMBO Journal*, 22(9):2127–34,
651 2003.
- 652 [32] S. B. Williams, I. Vakonakis, S. S. Golden, and A. C. LiWang. Structure and function from
653 the circadian clock protein KaiA of *Synechococcus elongatus*: a potential clock input mechanism.
654 *Proceedings of the National Academy of Sciences of the United States of America*, 99(24):15357–62,
655 2002.
- 656 [33] T. L. Wood, J. Bridwell-Rabb, Y. I. Kim, T. Gao, Y. G. Chang, A. LiWang, D. P. Barondeau,
657 and S. S. Golden. The KaiA protein of the cyanobacterial circadian oscillator is modulated by
658 a redox-active cofactor. *Proceedings of the National Academy of Sciences of the United States of*
659 *America*, 107(13):5804–9, 2010.
- 660 [34] S. Kutsuna, T. Kondo, and S. Aoki. A Period-Extender Gene, *pex*, That Extends the Period
661 of the Circadian Clock in the Cyanobacterium *Synechococcus* sp. Strain PCC 7942. *Journal of*
662 *Bacteriology*, 180(8):2167–2174, 1998.
- 663 [35] S. Kutsuna, T. Kondo, H. Ikegami, T. Uzumaki, M. Katayama, and M. Ishiura. The circadian
664 clock-related gene *pex* regulates a negative *cis* element in the *kaiA* promoter region. *Journal of*
665 *Bacteriology*, 189(21):7690–7696, 2007.
- 666 [36] N. B. Ivleva, T. Gao, A. C. LiWang, and S. S. Golden. Quinone sensing by the circadian input
667 kinase of the cyanobacterial circadian clock. *Proceedings of the National Academy of Sciences of*
668 *the United States of America*, 103(46):17468–17473, 2006.

- 669 [37] O. Schmitz, M. Katayama, S. B. Williams, T. Kondo, and S. S. Golden. CikA, a bacteriophy-
670 tochrome that resets the cyanobacterial circadian clock. *Science*, 289(5480):765–768, 2000.
- 671 [38] S. R. Mackey, J. S. Choi, Y. Kitayama, H. Iwasaki, G. Dong, and S. S. Golden. Proteins found in
672 a CikA interaction assay link the circadian clock, metabolism, and cell division in *Synechococcus*
673 *elongatus*. *Journal of Bacteriology*, 190(10):3738–3746, 2008.
- 674 [39] H. Iwasaki, S. B. Williams, Y. Kitayama, M. Ishiura, S. S. Golden, and T. Kondo. A KaiC-
675 interacting sensory histidine kinase, SasA, necessary to sustain robust circadian oscillation in
676 cyanobacteria. *Cell*, 101(2):223–233, 2000.
- 677 [40] R. M. Smith and S. B. Williams. Circadian rhythms in gene transcription imparted by chromosome
678 compaction in the cyanobacterium *Synechococcus elongatus*. *Proceedings of the National Academy*
679 *of Sciences of the United States of America*, 103(22):8564–9, 2006.
- 680 [41] N. Takai, M. Nakajima, T. Oyama, R. Kito, C. Sugita, M. Sugita, T. Kondo, and H. Iwasaki.
681 A KaiC-associating SasA-RpaA two-component regulatory system as a major circadian timing
682 mediator in cyanobacteria. *Proceedings of the National Academy of Sciences of the United States*
683 *of America*, 103(32):12109–12114, 2006.
- 684 [42] M. Hanaoka, N. Takai, N. Hosokawa, M. Fujiwara, Y. Akimoto, N. Kobori, H. Iwasaki, T. Kondo,
685 and K. Tanaka. RpaB, another response regulator operating circadian clock-dependent tran-
686 scriptional regulation in *Synechococcus elongatus* PCC 7942. *Journal of Biological Chemistry*,
687 287(31):26321–26327, 2012.
- 688 [43] J. S. Markson, J. R. Piechura, A. M. Puszyńska, and E. K. O’Shea. Circadian control of global
689 gene expression by the cyanobacterial master regulator RpaA. *Cell*, 155(6):1396–1408, 2013.
- 690 [44] A. Gutu and E. K. O’Shea. Two Antagonistic Clock-Regulated Histidine Kinases Time the Acti-
691 vation of Circadian Gene Expression. *Molecular Cell*, 50(2):288–294, 2013.
- 692 [45] Y. Taniguchi, T. Nishikawa, T. Kondo, and T. Oyama. Overexpression of *lalA*, a paralog of
693 *labA*, is capable of affecting both circadian gene expression and cell growth in the cyanobacterium
694 *Synechococcus elongatus* PCC 7942. *FEBS Letters*, 586(6):753–759, 2012.
- 695 [46] J. S. Boyd, J. R. Bordowitz, A. C. Bree, and S. S. Golden. An allele of the *crm* gene blocks
696 cyanobacterial circadian rhythms. *Proceedings of the National Academy of Sciences of the United*
697 *States of America*, 110(34):13950–5, 2013.
- 698 [47] J. Espinosa, J. S. Boyd, R. Cantos, P. Salinas, S. S. Golden, and A. Contreras. Cross-talk and
699 regulatory interactions between the essential response regulator RpaB and cyanobacterial circadian
700 clock output. *Proceedings of the National Academy of Sciences of the United States of America*,
701 page 201424632, 2015.
- 702 [48] F. Moronta-Barrios, J. Espinosa, and A. Contreras. *In vivo* features of signal transduction by
703 the essential response regulator RpaB from *Synechococcus elongatus* PCC 7942. *Microbiology*,
704 158(5):1229–37, 2012.
- 705 [49] M. Katayama, N. F. Tsinoremas, T. Kondo, and S. S. Golden. *cpmA*, a gene involved in an output
706 pathway of the cyanobacterial circadian system. *Journal of Bacteriology*, 181(11):3516–3524, 1999.
- 707 [50] Y. Taniguchi, M. Katayama, R. Ito, N. Takai, T. Kondo, and T. Oyama. *labA*: a novel gene
708 required for negative feedback regulation of the cyanobacterial circadian clock protein KaiC. *Genes*
709 *and Development*, pages 60–70, 2007.
- 710 [51] F. Moronta-Barrios, J. Espinosa, and A. Contreras. Negative control of cell size in the cyanobac-
711 terium *Synechococcus elongatus* PCC 7942 by the essential response regulator RpaB. *FEBS Letters*,
712 587(5):504–9, 2013.
- 713 [52] V. Dvornyk. *The Circadian Clock Gear in Cyanobacteria: Assembled by Evolution*, book section 14,
714 pages 241–258. Springer, Berlin Heidelberg, 2009.
- 715 [53] V. Dvornyk, O. Vinogradova, and E. Nevo. Origin and evolution of circadian clock genes in
716 prokaryotes. *Proceedings of the National Academy of Sciences of the United States of America*,
717 100(5):2495–2500, 2003.

- 718 [54] I. M. Axmann, S. Hertel, A. Wiegard, A. K. Dörrich, and A. Wilde. Diversity of KaiC-based timing
719 systems in marine Cyanobacteria. *Marine Genomics*, 14:3–16, 2014.
- 720 [55] A. Wiegard, A. K. Dörrich, H. T. Deinzer, C. Beck, A. Wilde, J. Holtzendorff, and I. M. Ax-
721 mann. Biochemical analysis of three putative KaiC clock proteins from *Synechocystis* sp. PCC
722 6803 suggests their functional divergence. *Microbiology*, 159(5):948–958, 2013.
- 723 [56] S. Aoki and K. Onai. *Circadian clocks of Synechocystis sp. strain PCC 6803, Thermosynechococcus*
724 *elongatus, Prochlorococcus spp., Trichodesmium spp. and other species*, book section 15, pages
725 259–282. Springer Berlin Heidelberg, 2009.
- 726 [57] P. Ma, T. Mori, C. Zhao, T. Thiel, and C. H. Johnson. Evolution of KaiC-Dependent Time-
727 keepers: A Proto-circadian Timing Mechanism Confers Adaptive Fitness in the Purple Bacterium
728 *Rhodospseudomonas palustris*. *PLoS Genetics*, 12(3):e1005922, 2016.
- 729 [58] H. J. Kang, K. Kubota, H. Ming, K. Miyazono, and M. Tanokura. Crystal structure of KaiC-like
730 protein PH0186 from hyperthermophilic archaea *Pyrococcus horikoshii* OT3. *Proteins*, 75(4):1035–
731 9, 2009.
- 732 [59] M. Maniscalco, J. Nannen, V. Sodi, G. Silver, P. L. Lowrey, and K. A. Bidle. Light-dependent
733 expression of four cryptic archaeal circadian gene homologs. *Frontiers in Microbiology*, 5:79, 2014.
- 734 [60] I. Baca, D. Sprockett, and V. Dvornyk. Circadian input kinases and their homologs in cyanobacte-
735 ria: Evolutionary constraints versus architectural diversification. *Journal of Molecular Evolution*,
736 70(5):453–465, 2010.
- 737 [61] V. Dvornyk, H. W. Deng, and E. Nevo. Structure and molecular phylogeny of *sasA* genes in
738 cyanobacteria: Insights into evolution of the prokaryotic circadian system. *Molecular Biology and*
739 *Evolution*, 21(8):1468–1476, 2004.
- 740 [62] P. J. Cock, T. Antao, J. T. Chang, B. A. Chapman, C. J. Cox, A. Dalke, I. Friedberg, T. Hamel-
741 ryck, F. Kauff, B. Wilczynski, and M. J. de Hoon. Biopython: freely available Python tools for
742 computational molecular biology and bioinformatics. *Bioinformatics*, 25(11):1422–3, 2009.
- 743 [63] F. Pérez and E. Granger. IPython: A System for Interactive Scientific Computing, Computing in
744 Science and Engineering. *Computing in Science and Engineering*, 9(3):21–29, 2007.
- 745 [64] S. van der Walt, S. C. Colbert, and G. Varoquaux. The NumPy Array: A Structure for Efficient
746 Numerical Computation. *Computing in Science and Engineering*, 13(2):22–30, 2011.
- 747 [65] J. D. Hunter. Matplotlib: A 2D Graphics Environment. *Computing in Science and Engineering*,
748 9(3):90–95, 2007.
- 749 [66] W. McKinney. Data structures for statistical computing in Python. In *Proceedings of the 9th*
750 *Python in Science Conference*, volume 445, pages 51–56.
- 751 [67] D. A. Benson, I. Karsch-Mizrachi, D. J. Lipman, J. Ostell, and D. L. Wheeler. GenBank. *Nucleic*
752 *Acids Research*, 36:25–30, 2008.
- 753 [68] M. Nakao, S. Okamoto, M. Kohara, T. Fujishiro, T. Fujisawa, S. Sato, S. Tabata, T. Kaneko,
754 and Y. Nakamura. CyanoBase: the cyanobacteria genome database update 2010. *Nucleic Acids*
755 *Research*, 38:379–381, 2010.
- 756 [69] S. F. Altschul, T. L. Madden, A. A. Schaffer, J. Zhang, Z. Zhang, W. Miller, and D. J. Lipman.
757 Gapped BLAST and PSI-BLAST: a new generation of protein database search programs. *Nucleic*
758 *Acids Research*, 25(17):3389–402, 1997.
- 759 [70] R. A. Fisher. On the Interpretation of χ^2 from Contingency Tables, and the Calculation of P.
760 *Journal of the Royal Statistical Society*, 85(1):87–94, 1922.
- 761 [71] Y. Benjamini and Y. Hochberg. Controlling the False Discovery Rate: A Practical and Powerful
762 Approach to Multiple Testing. *Journal of the Royal Statistical Society. Series B (Methodological)*,
763 57(1):289–300, 1995.
- 764 [72] R. G. Labiosa, K. R. Arrigo, C. J. Tu, D. Bhaya, S. Bay, A. R. Grossman, and J. Shrager. Exami-
765 nation of diel changes in global transcript accumulation in *Synechocystis* (Cyanobacteria). *Journal*
766 *of Phycology*, 42(3):622–636, 2006.

- 767 [73] K.-I. Kucho, K. Okamoto, Y. Tsuchiya, S. Nomura, M. Nango, M. Kanehisa, and M. Ishiura. Global
768 analysis of circadian expression in the cyanobacterium *Synechocystis* sp. strain PCC 6803. *Journal*
769 *of Bacteriology*, 187(6):2190–9, 2005.
- 770 [74] J. R. Toepel, J. E. McDermott, T. C. Summerfield, and L. A. Sherman. Transcriptional analysis
771 of the unicellular, diazotrophic cyanobacterium *Cyanothece* sp. 51142 grown under short day/night
772 cycles. *Journal of Phycology*, 45(3):610–20, 2009.
- 773 [75] H. Kushige, H. Kugenuma, M. Matsuoka, S. Ehira, M. Ohmori, and H. Iwasaki. Genome-wide
774 and heterocyst-specific circadian gene expression in the filamentous Cyanobacterium *Anabaena* sp.
775 strain PCC 7120. *Journal of Bacteriology*, 195(6):1276–84, 2013.
- 776 [76] R. Lehmann, R. Machné, J. Georg, M. Benary, I. M. Axmann, and R. Steuer. How cyanobacteria
777 pose new problems to old methods: challenges in microarray time series analysis. *BMC Bioinfor-*
778 *matics*, 14:133, 2013.
- 779 [77] Q. Yang, B. F. Pando, G. Dong, S. S. Golden, and A. van Oudenaarden. Circadian gating of the
780 cell cycle revealed in single cyanobacterial cells. *Science*, 327(5972):1522–1526, 2010.
- 781 [78] P. O. Westermarck and H. Herzel. Mechanism for 12 hr rhythm generation by the circadian clock.
782 *Cell Reports*, 3(4):1228–38, 2013.
- 783 [79] F. Sievers, A. Wilm, D. Dineen, T. J. Gibson, K. Karplus, W. Li, R. Lopez, H. McWilliam,
784 M. Remmert, J. Soding, J. D. Thompson, and D. G. Higgins. Fast, scalable generation of high-
785 quality protein multiple sequence alignments using Clustal Omega. *Molecular Systems Biology*,
786 7:539, 2011.
- 787 [80] A. M. Waterhouse, J. B. Procter, D. M. A. Martin, M. Clamp, and G. J. Barton. Jalview Version
788 2—a multiple sequence alignment editor and analysis workbench. *Bioinformatics*, 25(9):1189–1191,
789 2009.
- 790 [81] G. E. Crooks, G. Hon, J.-M. Chandonia, and S. E. Brenner. WebLogo: A Sequence Logo Generator.
791 *Genome Research*, 14(6):1188–1190, 2004.
- 792 [82] U. K. Laemmli. Cleavage of structural proteins during the assembly of the head of bacteriophage
793 T4. *Nature*, 227(5259):680–5, 1970.
- 794 [83] I. M. Axmann, U. Dühring, L. Seeliger, A. Arnold, J. T. Vanselow, A. Kramer, and A. Wilde.
795 Biochemical evidence for a timing mechanism in *Prochlorococcus*. *Journal of Bacteriology*,
796 191(17):5342–5347, 2009.
- 797 [84] M. Loza-Correa, L. Gomez-Valero, and C. Buchrieser. Circadian clock proteins in prokaryotes:
798 hidden rhythms? *Frontiers in Microbiology*, 1:130, 2010.
- 799 [85] T. Nakayama, R. Kamikawa, G. Tanifuji, Y. Kashiya, N. Ohkouchi, J. M. Archibald, and Y. In-
800 agaki. Complete genome of a nonphotosynthetic cyanobacterium in a diatom reveals recent adap-
801 tations to an intracellular lifestyle. *Proceedings of the National Academy of Sciences of the United*
802 *States of America*, 111(31):11407–11412, 2014.
- 803 [86] Y. Nakamura, T. Kaneko, S. Sato, M. Mimuro, H. Miyashita, T. Tsuchiya, S. Sasamoto,
804 A. Watanabe, K. Kawashima, Y. Kishida, C. Kiyokawa, M. Kohara, M. Matsumoto, A. Matsuno,
805 N. Nakazaki, S. Shimpo, C. Takeuchi, M. Yamada, and S. Tabata. Complete Genome Structure
806 of *Gloeobacter violaceus* PCC 7421, a Cyanobacterium that Lacks Thylakoids. *DNA Research*,
807 10(4):137–145, 2003.
- 808 [87] H. Ito, M. Mutsuda, Y. Murayama, J. Tomita, N. Hosokawa, K. Terauchi, C. Sugita, M. Sugita,
809 T. Kondo, and H. Iwasaki. Cyanobacterial daily life with Kai-based circadian and diurnal genome-
810 wide transcriptional control in *Synechococcus elongatus*. *Proceedings of the National Academy of*
811 *Sciences of the United States of America*, 106(33):14168–73, 2009.
- 812 [88] T. Elvitigala, J. Stöckel, B. K. Ghosh, and H. B. Pakrasi. Effect of continuous light on diurnal
813 rhythms in *Cyanothece* sp. ATCC 51142. *BMC Genomics*, 10:226, 2009.
- 814 [89] T. Shi, I. Ilikchyan, S. Rabouille, and J. P. Zehr. Genome-wide analysis of diel gene expression
815 in the unicellular N₂-fixing cyanobacterium *Crocospaera watsonii* WH 8501. *The ISME Journal*,
816 4(5):621–632, 2010.

- [90] S. S. Golden, M. Ishiura, C. H. Johnson, and T. Kondo. Cyanobacterial Circadian Rhythms. *Annual Review of Plant Physiology and Plant Molecular Biology*, 48:327–354, 1997.
- [91] Y.-B. Chen, J. P. Zehr, and M. Mellon. Growth and nitrogen fixation of the diazotrophic filamentous nonheterocystous cyanobacterium *Trichodesmium sp.* IMS 101 in defined media: Evidence for a circadian rhythm. *Journal of Phycology*, 32(6):916–923, 1996.
- [92] T. Roenneberg and E. J. Carpenter. Daily rhythm of O₂-evolution in the cyanobacterium *Trichodesmium thiebautii* under natural and constant conditions. *Marine Biology*, 117(4):693–697, 1993.
- [93] K. Onai, M. Morishita, S. Itoh, K. Okamoto, and M. Ishiura. Circadian Rhythms in the Thermophilic Cyanobacterium *Thermosynechococcus elongatus*: Compensation of Period Length over a Wide Temperature Range. *Journal of Bacteriology*, 186(15):4972–4977, 2004.
- [94] J. Holtzendorff, F. Partensky, D. Mella, J.-F. Lennon, W. R. Hess, and L. Garczarek. Genome streamlining results in loss of robustness of the circadian clock in the marine cyanobacterium *Prochlorococcus marinus* PCC 9511. *Journal of Biological Rhythms*, 23(3):187–199, 2008.
- [95] R. K. Shultzaberger, J. S. Boyd, T. Katsuki, S. S. Golden, and R. J. Greenspan. Single mutations in *sasA* enable a simpler $\Delta cikA$ gene network architecture with equivalent circadian properties. *Proceedings of the National Academy of Sciences of the United States of America*, 111(47):E5069–75, 2014.
- [96] V. Dvornyk. Molecular evolution of *ldpA*, a gene mediating the circadian input signal in cyanobacteria. *Journal of Molecular Evolution*, 60(1):105–112, 2005.
- [97] M. Katayama, T. Kondo, J. Xiong, and S. S. Golden. *ldpA* Encodes an Iron-Sulfur Protein Involved in Light-Dependent Modulation of the Circadian Period in the Cyanobacterium *Synechococcus elongatus* PCC 7942. *Journal of Bacteriology*, 185(4):1415–1422, 2003.
- [98] H. Min, H. Guo, and J. Xiong. Rhythmic gene expression in a purple photosynthetic bacterium, *Rhodobacter sphaeroides*. *FEBS Letters*, 579(3):808–12, 2005.
- [99] T. Nishiwaki-Ohkawa, Y. Kitayama, E. Ochiai, and T. Kondo. Exchange of ADP with ATP in the CII ATPase domain promotes autophosphorylation of cyanobacterial clock protein KaiC. *Proceedings of the National Academy of Sciences of the United States of America*, 111(12):4455–60, 2014.
- [100] G. Dong, Q. Yang, Q. Wang, Y. I. Kim, T. L. Wood, K. W. Osteryoung, A. van Oudenaarden, and S. S. Golden. Elevated ATPase activity of KaiC applies a circadian checkpoint on cell division in *Synechococcus elongatus*. *Cell*, 140(4):529–39, 2010.
- [101] Y. Taniguchi, N. Takai, M. Katayama, T. Kondo, and T. Oyama. Three major output pathways from the KaiABC-based oscillator cooperate to generate robust circadian *kaiBC* expression in cyanobacteria. *Proceedings of the National Academy of Sciences of the United States of America*, 2010.
- [102] I. Vakonakis, D. A. Klewer, S. B. Williams, S. S. Golden, and A. C. LiWang. Structure of the N-terminal Domain of the Circadian Clock-associated Histidine Kinase SasA. *Journal of Molecular Biology*, 342(1):9–17, 2004.
- [103] Y. Shi, G. W. Tyson, J. M. Eppley, and E. F. DeLong. Integrated metatranscriptomic and metagenomic analyses of stratified microbial assemblages in the open ocean. *The ISME Journal*, 5(6):999–1013, 2011.
- [104] A. Wilde and Y. Hihara. Transcriptional and posttranscriptional regulation of cyanobacterial photosynthesis. *Biochimica et Biophysica Acta - Bioenergetics*, 2015.
- [105] R. K. Shultzaberger, J. S. Boyd, S. Diamonad, R. J. Greenspan, and S. S. Golden. Giving Time Purpose: The *Synechococcus elongatus* Clock in a Broader Network Context. *Annual Review of Genetics*, 49(1):485–505, 2015.
- [106] Y. Liu, N. F. Tsinoremas, C. H. Johnson, N. V. Lebedeva, S. S. Golden, M. Ishiura, and T. Kondo. Circadian orchestration of gene expression in cyanobacteria. *Genes and Development*, 9(12):1469–78, 1995.

- 867 [107] M. A. Woelfle and C. H. Johnson. No Promoter Left Behind: Global Circadian Gene Expression
868 in Cyanobacteria. *Journal of Biological Rhythms*, 21(6):419–431, 2006.
- 869 [108] S. R. Jammalamadaka and A. SenGupta. *Topics in Circular Statistics*. World Scientific, 2001.
- 870 [109] C. Beck, S. Hertel, A. Rediger, R. Lehmann, A. Wiegard, A. Kölsch, B. Heilmann, J. Georg,
871 W. R. Hess, and I. M. Axmann. Daily expression pattern of protein-encoding genes and small
872 non coding RNAs in *Synechocystis sp.* strain PCC 6803. *Applied and Environmental Microbiology*,
873 80(17):5195–5206, 2014.
- 874 [110] O. Cheregi, C. Sicora, P. B. Kos, P. J. Nixon, and I. Vass. The FtsH protease is required for
875 the repair of Photosystem II in the cyanobacterium *Synechocystis sp.* PCC 6803 damaged UV-B
876 radiation. *BMC Plant Biology*, 5(1):1–2, 2005.
- 877 [111] S. Jacobshagen, J. R. Whetstine, and J. M. Boling. Many but not all genes in *Chlamydomonas*
878 *reinhardtii* are regulated by the Circadian Clock. *Plant Biology*, 3(6):592–597, 2001.
- 879 [112] S. L. Harmer, J. B. Hogenesch, M. Straume, H.-S. Chang, B. Han, T. Zhu, X. Wang, J. A. Kreps,
880 and S. A. Kay. Orchestrated Transcription of Key Pathways in *Arabidopsis* by the Circadian Clock.
881 *Science*, 290(5499):2110–2113, 2000.
- 882 [113] Y. Kabeya, H. Nakanishi, K. Suzuki, T. Ichikawa, Y. Kondou, M. Matsui, and S.-Y. Miyagishima.
883 The YlmG protein has a conserved function related to the distribution of nucleoids in chloroplasts
884 and cyanobacteria. *BMC Plant Biology*, 10(1):1–13, 2010.
- 885 [114] K. Imai, T. Nishiwaki, T. Kondo, and H. Iwasaki. Circadian rhythms in the synthesis and
886 degradation of a master clock protein KaiC in cyanobacteria. *Journal of Biological Chemistry*,
887 279(35):36534–9, 2004.
- 888 [115] H. Iwasaki, T. Nishiwaki, Y. Kitayama, M. Nakajima, and T. Kondo. KaiA-stimulated KaiC
889 phosphorylation in circadian timing loops in cyanobacteria. *Proceedings of the National Academy*
890 *of Sciences of the United States of America*, 99(24):15788–93, 2002.
- 891 [116] D. Zwicker, D. K. Lubensky, and P. R. Ten Wolde. Robust circadian clocks from coupled protein-
892 modification and transcription-translation cycles. *Proceedings of the National Academy of Sciences*
893 *of the United States of America*, 107(52):22540–5, 2010.
- 894 [117] D. Memon, A. K. Singh, H. B. Pakrasi, and P. P. Wangikar. A global analysis of adaptive evolution
895 of operons in cyanobacteria. *Antonie van Leeuwenhoek*, 103(2):331–346, 2013.
- 896 [118] M. Ishiura, S. Kutsuna, S. Aoki, H. Iwasaki, C. R. Andersson, A. Tanabe, S. S. Golden, C. H.
897 Johnson, and T. Kondo. Expression of a gene cluster *kaiABC* as a circadian feedback process in
898 cyanobacteria. *Science*, 281(5382):1519–23, 1998.
- 899 [119] V. Vijayan, R. Zuzow, and E. K. O’Shea. Oscillations in supercoiling drive circadian gene expression
900 in cyanobacteria. *Proceedings of the National Academy of Sciences of the United States of America*,
901 106(52):22564–8, 2009.
- 902 [120] J. Stöckel, E. A. Welsh, M. Liberton, R. Kunnvakkam, R. Aurora, and H. B. Pakrasi. Global
903 transcriptomic analysis of *Cyanothece* 51142 reveals robust diurnal oscillation of central metabolic
904 processes. *Proceedings of the National Academy of Sciences of the United States of America*,
905 105(16):6156–6161, 2008.
- 906 [121] J. Toepel, E. Welsh, T. C. Summerfield, H. B. Pakrasi, and L. A. Sherman. Differential transcrip-
907 tional analysis of the cyanobacterium *Cyanothece sp.* strain ATCC 51142 during light-dark and
908 continuous-light growth. *Journal of Bacteriology*, 190(11):3904–3913, 2008.
- 909 [122] T. Uzumaki, M. Fujita, T. Nakatsu, F. Hayashi, H. Shibata, N. Itoh, H. Kato, and M. Ishiura.
910 Crystal structure of the C-terminal clock-oscillator domain of the cyanobacterial KaiA protein.
911 *Nature Structural and Molecular Biology*, 11(7):623–631, 2004.
- 912 [123] H. Iwasaki, Y. Taniguchi, M. Ishiura, and T. Kondo. Physical interactions among circadian clock
913 proteins KaiA, KaiB and KaiC in cyanobacteria. *The EMBO Journal*, 18(5):1137–1145, 1999.

- 914 [124] M. Egli, R. Pattanayek, J. H. Sheehan, Y. Xu, T. Mori, J. A. Smith, and C. H. Johnson. Loop-
915 loop interactions regulate KaiA-stimulated KaiC phosphorylation in the cyanobacterial KaiABC
916 circadian clock. *Biochemistry*, 52(7):1208–20, 2013.
- 917 [125] Y. Xu, T. Mori, R. Pattanayek, S. Pattanayek, M. Egli, and C. H. Johnson. Identification of
918 key phosphorylation sites in the circadian clock protein KaiC by crystallographic and mutage-
919 netic analyses. *Proceedings of the National Academy of Sciences of the United States of America*,
920 101(38):13933–8, 2004.
- 921 [126] T. Nishiwaki, Y. Satomi, M. Nakajima, C. Lee, R. Kiyohara, H. Kageyama, Y. Kitayama,
922 M. Temamoto, A. Yamaguchi, A. Hijikata, M. Go, H. Iwasaki, T. Takao, and T. Kondo. Role
923 of KaiC phosphorylation in the circadian clock system of *Synechococcus elongatus* PCC 7942. *Pro-
924 ceedings of the National Academy of Sciences of the United States of America*, 101(38):13927–32,
925 2004.
- 926 [127] I. Vakonakis and A. C. LiWang. Structure of the C-terminal domain of the clock protein KaiA in
927 complex with a KaiC-derived peptide: implications for KaiC regulation. *Proceedings of the National
928 Academy of Sciences of the United States of America*, 101(30):10925–30, 2004.
- 929 [128] D. D. Leipe, L. Aravind, N. V. Grishin, and E. V. Koonin. The Bacterial Replicative Helicase
930 DnaB Evolved from a RecA Duplication. *Genome Research*, 10(1):5–16, 2000.
- 931 [129] M. Loza-Correa, T. Sahr, M. Rolando, C. Daniels, P. Petit, T. Skarina, L. Gomez Valero, D. Dervins-
932 Ravault, N. Honoré, A. Savchenko, and C. Buchrieser. The *Legionella pneumophila* kai operon
933 is implicated in stress response and confers fitness in competitive environments. *Environmental
934 Microbiology*, 16(2):359–381, 2014.
- 935 [130] R. Pattanayek, J. Wang, T. Mori, Y. Xu, C. H. Johnson, and M. Egli. Visualizing a circadian clock
936 protein: crystal structure of KaiC and functional insights. *Molecular Cell*, 15(3):375–88, 2004.
- 937 [131] J. E. Walker, M. Saraste, M. J. Runswick, and N. J. Gay. Distantly related sequences in the
938 alpha- and beta-subunits of ATP synthase, myosin, kinases and other ATP-requiring enzymes and
939 a common nucleotide binding fold. *The EMBO Journal*, 1(8):945–51, 1982.
- 940 [132] M. Egli, T. Mori, R. Pattanayek, Y. Xu, X. Qin, and C. H. Johnson. Dephosphorylation of the
941 core clock protein KaiC in the cyanobacterial KaiABC circadian oscillator proceeds via an ATP
942 synthase mechanism. *Biochemistry*, 51(8):1547–58, 2012.
- 943 [133] Y. Kitayama, T. Nishiwaki-Ohkawa, Y. Sugisawa, and T. Kondo. KaiC intersubunit communication
944 facilitates robustness of circadian rhythms in cyanobacteria. *Nature Communications*, 4:2897, 2013.
- 945 [134] R. Pattanayek, Y. Xu, A. Lamichhane, C. H. Johnson, and M. Egli. An arginine tetrad as mediator
946 of input-dependent and input-independent ATPases in the clock protein KaiC. *Acta Crystallo-
947 graphica Section D: Biological Crystallography*, 70(5):1375–90, 2014.
- 948 [135] R. Pattanayek, T. Mori, Y. Xu, S. Pattanayek, C. H. Johnson, and M. Egli. Structures of KaiC
949 circadian clock mutant proteins: a new phosphorylation site at T426 and mechanisms of kinase,
950 ATPase and phosphatase. *PLoS One*, 4(11):e7529, 2009.
- 951 [136] Y. Xu, T. Mori, X. Qin, H. Yan, M. Egli, and C. H. Johnson. Intramolecular regulation of phos-
952 phosphorylation status of the circadian clock protein KaiC. *PLoS One*, 4(11):e7509, 2009.
- 953 [137] A. Neuner, H. W. Jannasch, S. Belkin, and K. O. Stetter. *Thermococcus litoralis* sp. nov.: A new
954 species of extremely thermophilic marine archaeobacteria. *Archives of Microbiology*, 153(2):205–207,
955 1990.
- 956 [138] J. M. Gonzalez, Y. Masuchi, F. T. Robb, J. W. Ammerman, D. L. Maeder, M. Yanagibayashi,
957 J. Tamaoka, and C. Kato. *Pyrococcus horikoshii* sp. nov., a hyperthermophilic archaeon isolated
958 from a hydrothermal vent at the Okinawa Trough. *Extremophiles*, 2:123–130, 1998.