

# SENSITIVITY OF NEURONS IN THE MIDDLE TEMPORAL AREA OF MARMOSSET MONKEYS TO RANDOM DOT MOTION

Tristan A. Chaplin<sup>1,2</sup>, Benjamin J. Allitt<sup>1</sup>, Maureen A. Hagan<sup>1,2</sup>, Nicholas S. Price<sup>1,2</sup>, Ramesh Rajan<sup>1,2</sup>,  
Marcello G.P. Rosa<sup>1,2</sup>, Leo L. Lui<sup>1,2</sup>

- 1- Neuroscience Program, Biomedicine Discovery Institute and Department of Physiology, Monash University, Clayton, VIC 3800, Australia
- 2- ARC Centre of Excellence for Integrative Brain Function, Monash University Node, VIC 3800, Australia

**Abbreviated title:** Sensitivity of marmoset MT to random dot motion

**Correspondence:** Leo L. Lui,  
Department of Physiology, Monash University  
Clayton, VIC 3800, Australia.

**E-mail:** Leo.Lui@monash.edu

**Manuscript length:** 29 pages

**Key words:** marmoset, Middle Temporal Area, motion, random-dot, multi-electrode arrays.

**Word count:** Abstract: 246

**Acknowledgements:** This project was funded by the Australian Research Council (DE130100493 to LL; CE140100007 to MR) and by the National Health and Medical Research Council of Australia (APP1066232 to LL and APP1083152 to MR). Tristan Chaplin was funded by an Australian Postgraduate Award. We thank Katrina Worthy for the histological work. We also thank Janssen-Cilag for the donation of sufentanil citrate.

## Abstract

Neurons in the Middle Temporal area (MT) of the primate cerebral cortex respond to moving stimuli. Their sensitivity to noisy motion signals is often characterized by using random-dot stimuli, where the coherence of the motion signal is manipulated. In macaques, this has allowed the calculation of "neurometric" thresholds, which can be compared to the animal's behavioral performance. There has been growing interest in the marmoset monkey, a species in which area MT is fully exposed on the surface of the brain, but responses of MT neurons to random-dot stimuli with noise have not been characterized. In sufentanil/nitrous oxide anesthetized marmosets, we found that MT neurons show a wide range of neurometric thresholds, similar to observations in macaques, and that the thresholds of the most sensitive neurons can account for the behavioral performance of macaques and humans. We also investigated factors that contributed to the wide range of observed thresholds. The difference in firing rate between responses to motion in the preferred and null directions was the most effective predictor of neurometric threshold, whereas the direction tuning bandwidth had no correlation with the threshold. We also showed that it is possible to obtain good neurometric thresholds using stimuli that were not highly optimized for each neuron, as is often necessary when recording from large populations of neurons. These results demonstrate that marmoset MT shows an essential similarity to macaque MT, and suggests that it is capable of representing motion signals that would allow for comparable motion-in-noise judgments.

## Introduction

The study of the neurophysiological correlates of motion perception has proven to be one the most powerful methodologies for understanding the relationship between the activity of neurons and perception. Motion can be easily parameterized in terms of direction and speed, and, using random dot stimuli (Newsome et al. 1989; Britten et al. 1992; Pilly and Seitz 2009), noise can be introduced in a manner that allows for meaningful comparisons between the responses of neurons and perception (Parker and Newsome 1998). Such physiological studies have targeted the middle temporal area (MT) of the cerebral cortex, where the majority of neurons are direction selective (Allman and Kaas 1971; Dubner and Zeki 1971; Maunsell and Van Essen 1983; Albright 1984). Britten et al., (1992, 1996) used the spiking information obtained from MT neurons to decode the direction of noisy moving stimuli, and found that a substantial number of MT neurons show similar sensitivity as human and monkey observers (Newsome et al. 1989; Britten et al. 1992, 1996). However, when comparable time scales were considered, individual neuronal thresholds proved to be generally worse than behavioral thresholds (Cohen and Newsome, 2009), which is compatible with the notion that the activity of many cells needs to be combined to account for perception.

All studies to date that have investigated the sensitivity of MT neurons to random dot stimuli have been performed in macaque monkeys. However, there is now a growing interest in the marmoset, a small New World monkey, with characteristics that facilitate some types of experiments that are not easily achievable in macaques. Firstly, marmosets reproduce and reach maturity relatively quickly, and are amenable to genetic manipulation techniques (Sasaki et al. 2009; Okano et al. 2012) and studies that manipulate development (Yu et al. 2013). Secondly, the marmoset cerebral cortex contains few very sulci compared to macaques, with most visual areas, including MT, fully exposed on the outer surface of the brain (Rosa and Elston, 1998; Solomon and Rosa, 2014). This allows the use of planar and laminar electrode arrays and imaging techniques to record from large populations of neurons (Sadakane et al. 2015; Solomon et al. 2015; Zavitz et al. 2016).

Furthermore, it has recently been shown that marmosets can be trained to perform visual discrimination tasks while controlling eye movements (Mitchell et al. 2014) opening the door for the recording of a large number of MT neurons while monkeys are engaged in a motion discrimination task.

Many features of marmoset MT, such as heavy myelination, its first order retinotopic map and the high incidence of direction selective neurons are common to all primates (Rosa and Elston 1998). However, marmoset area MT is 4-5 times smaller than the macaque homolog, and some details of response properties, including receptive field sizes and preferred spatial frequencies, are different from those in reported in macaques (see Lui et al., 2015, for review). Whether these differences affect the ability of marmoset MT neurons to segregate signal from noise in random dot motion has yet to be tested. Moreover, the reason why some MT neurons have better neurometric thresholds than others has not yet been explored in detail, in any primate species. Using a large sample of neurons, obtained using either sequential recordings with single electrodes or parallel recordings with arrays, we explored these questions.

# Methods

## Animals and surgical preparation

Single and multi-unit extracellular recordings were obtained from 11 marmoset monkeys in area MT. Several of these animals were also used for unrelated anatomical tracing and auditory physiology experiments.

Experiments were conducted in accordance with the Australian Code of Practice for the Care and Use of Animals for Scientific Purposes, and all procedures were approved by the Monash University Animal Ethics Experimentation Committee.

The preparation for electrophysiology studies of marmosets has been described previously (Bourne and Rosa 2003; Yu and Rosa 2010). Briefly, anesthesia was induced with alfaxalone (Alfaxan, 8 mg/kg), allowing a tracheotomy, vein cannulation and craniotomy to be performed. After all surgical procedures were completed the animal was administered an intravenous infusion of pancuronium bromide (0.1 mg/kg/h; Organon, Sydney, Australia) combined with sufentanil (6-8 µg/kg/h, adjusted to ensure no physiological responses to noxious stimuli; Janssen-Cilag, Sydney, Australia) and dexamethasone (0.4 mg/kg/h; David Bull, Melbourne, Australia), and was artificially ventilated with a gaseous mixture of nitrous oxide and oxygen (7:3). The electrocardiogram and level of cortical spontaneous activity were continuously monitored. Administration of atropine (1%) and phenylephrine hydrochloride (10%) eye drops (Sigma Pharmaceuticals, Melbourne, Australia) resulted in mydriasis and cycloplegia. Appropriate focus and protection of the corneas from desiccation were achieved by means of hard contact lenses selected by streak retinoscopy.

## Electrophysiology, data acquisition and pre-processing

We used three different types of electrodes – single parylene-coated tungsten microelectrodes with exposed tips of 10 µm (in 3 marmosets; Microprobe, MD), a grid-like “Utah” electrode array (in 1 marmoset, Blackrock Microsystems, UT) and single shaft linear arrays (in 7 marmosets; NeuroNexus, MI). Recordings made with the single electrode were made at intervals of at least 100µm. The Utah array, consisting of 96 electrodes arranged in 10x10 grid separated by 400 µm, was implanted covering approximately two thirds of MT. The linear arrays consisted of 32 electrodes separated by 50 µm. MT recording sites were identified

during experiments using anatomical landmarks and the retinotopic map, and were confirmed by histological examination of electrode tracks.

Electrophysiological data was recorded using a Cereplex system (Blackrock Microsystems, MD) with a sampling rate of 30 kHz. Each channel was high-pass filtered at 750 Hz and spikes initially identified based on threshold crossings. Units were sorted offline using Offline Sorter (Plexon Inc., TX). Units were classified manually as single units if they showed good separation on the (2 component) principal components analysis plot, and were confirmed by inspection of the inter-spike interval histogram and consistency of waveform shape over time. Any remaining threshold crossings were classified as multi-unit activity.

Neurons were considered to be responsive if the stimulus-evoked activity was significantly greater than the spontaneous rate (Wilcoxon rank sum test,  $p < 0.05$ ). We excluded five single units from adjacent channels from the linear array dataset since it was apparent they were duplicated across two channels, based on their sharp cross correlogram peak and high signal correlation (Bair et al. 2001).

## **Stimuli**

Stimuli were presented on a VIEWPixx3D monitor (1920 x 1080 pixels; 520 x 295 mm; 120 Hz refresh rate, VPixx Technologies) positioned 0.35 to 0.45 m from the animal on an angle to accommodate the size and eccentricity of the receptive field(s). All stimuli were generated with MATLAB using Psychtoolbox-3 (Brainard 1997).

Stimuli consisted of random dots presented either in circular apertures or full screen. Dots were white and displayed on a black background, and were  $0.2^\circ$  in diameter. The density was such that there were on average 0.5 dots per  $^\circ^2$ . Dot coherence was controlled by randomly choosing a subset of “noise” dots on each frame, which were displaced to random positions within the stimulus aperture. The remaining “signal” dots were moved in the same direction with a fixed displacement.

## Determination of receptive fields

Receptive fields were quantitatively mapped using a grid of either static flashed squares or small apertures of briefly presented moving dots. For single-electrode recordings, stimuli were restricted to the excitatory receptive field; for array recordings, stimuli covered the full screen, so as to cover as many neurons' receptive fields as possible.

## Quantitative Tests

We conducted a series of tests to determine direction selectivity, speed tuning and neurometric thresholds. All stimuli were presented for 500 ms with an inter-stimulus interval of 1000 ms. Direction and speed tuning tests used at least 8 repeats of each stimulus type, while neurometric thresholds tests used 25 repeats.

*Single electrode recordings:* We tested for direction selectivity by presenting a circular aperture of random dots that moved in 1 of 8 directions at 8°/s. Speed tuning was then tested using random dot stimuli with speeds of 2-128°/s moving in the preferred direction. The neurometric threshold was determined by using stimuli with motion coherences of 0-100% at a near-preferred speed, in both preferred (calculated by vector sum; Ringach et al., 2002) and null directions.

*Multi-electrode recordings:* To test for direction selectivity and speed tuning, we used 100% coherence dots with all combinations of 12 directions and a range of speeds (1-128°/s). To determine neurometric thresholds, we used full-screen dots with 12 possible directions, a speed of 20°/s and motion coherences of 0-100%. The axis of motion that was closest to the preferred/null was used for both these analyses.

## Data Analysis

*Direction Tuning:* The preferred direction was calculated using a vector sum of normalized above-spontaneous spiking rates (Ringach et al. 2002). We used four approaches to quantify direction selectivity. First, we calculated a direction index (DI):

$$DI = 1 - \frac{R_{null}}{R_{pref}} \quad (1)$$

where  $R_{\text{pref}}$  and  $R_{\text{null}}$  are the above-spontaneous spike rates in the preferred and null directions, respectively. DI is greater than 0 and generally less than 2, with values closer to 1 indicating stronger direction selectivity. Second, circular variance (CV) was calculated as 1 minus the length of the vector sum of normalized above-spontaneous spiking rates (Ringach et al. 2002). Third, neurons were classified as direction selective using the Rayleigh test ( $p < 0.05$ ). Finally, tuning bandwidth was calculated using the standard deviation of a Gaussian function fit to the direction tuning curve using least squares regression (responses of an example neuron and with fitting is shown in Figure 1A). This function included a vertical offset parameter, which effectively removes responses to motion in the null direction. As in Nover et al. (2005), the curve was fit with the complete set of trial spike rates, rather than the means, and we fitted the square root of the spikes rates to the square root the Gaussian function to homogenize the variance of spike rates (Prince et al. 2002). Only neurons that were classified as direction selective using the Rayleigh test and whose Gaussian fit  $R^2$  value exceeded 0.8 were included for bandwidth analyses.

*Speed Tuning:* Speed tuning data was fit with a lognormal function (Nover et al. 2005) of the form:

$$R(s) = R_0 + A \times \exp\left[\frac{-\log(q(s))^2}{2\sigma^2}\right] \quad (2)$$

where

$$q(s) = \frac{s+s_0}{s_p+s_0} \quad (3)$$

$R_0$ ,  $A$ ,  $s_0$ ,  $s_p$  and  $\sigma$  were free parameters. The preferred speed was given by  $s_p$ ,  $\sigma$  was the width the speed tuning and  $s_0$  was an offset to fit the zero speed condition. The  $R_0$  parameter provided a vertical offset and  $A$  is a scaling parameter.

Curves were fit by minimizing the squared error using the Matlab function *lsqcurvefit*. Similar to the direction tuning fits, the speed tuning curve was fitted with the complete set of trial spike rates, rather than the means, and we fitted the square root of the spikes rates to the square root of Equation 2. Only neurons whose lognormal fit  $R^2$  value exceeded 0.8 and who's preferred speed was within the range of speeds tested were included for speed analyses (Figure 1E).



*Neurometric Thresholds:* In order to quantify the neuron's susceptibility to noise, we employed ideal observer analysis to determine performance of MT neurons in a direction discrimination task (Britten et al. 1992). For each level of coherence, we calculated the area under the Receiver Operator Characteristic (aROC) curve for the distributions of responses to the preferred and null directions. The aROC values were fitted using least squares regression with two variants of the Weibull function, resulting in a neurometric curve that described the neuron's performance with respect to coherence (an aROC plot of an example neuron is shown in Figure 2B).

$$p = 1 - 0.5 \exp[-(c/\alpha)^\beta] \quad (4)$$

$$p = \delta - (\delta - 0.5) \exp[-(c/\alpha)^\beta] \quad (5)$$

where  $p$  was the probability of correctly discriminating the direction of motion at coherence  $c$ ,  $\alpha$  was the coherence of threshold performance ( $p=0.82$ , convention established by Britten et al., 1992),  $\beta$  controls slope and  $\delta$  was the asymptotic level of performance (less than 1). Since Equation 5 has an extra free parameter, we used an F-test to decide whether to reject the use of the Equation 5 over Equation 4. The  $\alpha$  was limited between 0 and 3, the  $\beta$  was limited to be between 0 and 10, and the  $\delta$  was limited be between 0 and 1. Neurons that did not have an aROC of at least 0.82 at 100% coherence cannot have a threshold (i.e.  $p(c=100)<0.82$ ), and were excluded from analyses of thresholds, as was any neuron whose threshold exceeded 100% (since curving fitting does not guarantee the function will fit all data points perfectly).

To obtain error bars for aROCs plots, we employed a bootstrapping method (Uka and DeAngelis 2003). Briefly, we resampled with replacement the trials at each coherence level to obtain new sets of spike rates. These new set of rates were used to calculate aROCs as described previously. This procedure was repeated 1000 times and the 95% percentile of the bootstrapped aROCs was used as the error bars in plots.

*Detection Thresholds:* In order to determine how well neurons could detect motion in the preferred direction versus random motion, we calculated aROC comparing the distribution of spikes evoked by each coherence

with the distribution of spikes evoked by zero coherence. As for neurometric thresholds, we fit a Weibull function to these data to determine the detection threshold.

*Rate thresholds:* Rate thresholds were determined by fitting a power function of the form:

$$r = c^p \quad (6)$$

where  $r$  is the normalised firing rate of the neuron,  $c$  is the coherence, and  $p$  is a free parameter that determine the shape of the function. The  $p$  parameter was limited to be greater than zero, and thus the value of  $r$  is always zero when coherence is zero, and always equal to one when coherence is 100%. As in the direction and speed tuning curve fitting, we fit the square root of this function to the square root of each trial rate. We calculated the rate threshold by inverting the function to determine the coherence level in which the firing rate is 50% of the maximum.

*Null aROC:* The null aROC was calculated as the aROC between the zero coherence condition and the null direction 100% coherence condition. Thus a neuron whose null direction firing rate was less than the zero coherence (e.g. Figure 2A left) would have an aROC less than 0.5, whereas a neuron whose null direction firing rate was greater than the zero coherence condition (e.g. Figure 2A right) would have an aROC greater than 0.5.

*Statistics:* We used non-parametric statistics in nearly all correlations and statistical tests. Correlations were Spearman's rho ( $\rho$ ). Tests between two groups were made with Wilcoxon's Rank Sum. Tests between 3 groups were made with the Kruskal-Wallis test. The only exception to the use of non-parametric statistics was when we determined the relationship between thresholds and the preferred minus null firing rates, in which we calculated the line of best fit and used Pearson's linear correlation.

To calculate the running median of the off axis thresholds, we used sliding windows of 15 degrees in size and conducted a series of Wilcoxon's Rank Sum tests. We started at 90 from the preferred-null axis and the

direction offset was determined by offset by the first point in which the neurometric thresholds were not significantly different to the preferred direction's neurometric thresholds.

## Histology

At the end of the recordings, the animals were given an intravenous lethal dose of sodium pentobarbitone and, following cardiac arrest, were perfused with 0.9% saline, followed by 4% paraformaldehyde in 0.1 M phosphate buffer pH7.4. The brain was post-fixed for approximately 24 hours in the same solution, and then cryoprotected with fixative solutions containing 10%, 20%, and 30% sucrose. The brains were then frozen and sectioned into 40  $\mu$ m coronal slices. Alternate series were stained for Nissl substance and myelin (Gallyas 1979). The location of recording sites was reconstructed by identifying electrode tracks, depth readings recorded during the experiment, and, in the case of single electrode penetrations, by electrolytic lesions performed at the end of penetrations. In the experiment where a Utah array was used, flat mounted sections (obtained as described in Rosa et al., 1991) were used to identify electrode locations. Finally, in experiments using linear arrays, the array shank was coated in DiI, allowing visualization under a fluorescence microscope prior to staining of the sections. Area MT was defined by heavy myelination (Rosa and Elston 1998). The majority of neurons reported here were histologically confirmed to be in MT, but for some penetrations in which the histology was unclear, neurons were included on the basis of their receptive field progression and direction tuning.

## Results

### Sample size

A total of 807 recordings from MT single and multi-units (single electrodes:  $n=50$ ; linear arrays:  $n=672$ ; Utah array:  $n=85$ ) were obtained. Of these, 514 (single electrodes:  $n=42$ ; linear arrays:  $n=387$ ; Utah array:  $n=85$ ) were tested for analyses of neurometric thresholds, and 584 were used for speed selectivity tests (single electrodes:  $n=46$ ; linear arrays:  $n=538$ ; Utah array:  $n=0$ ). For 300 units (42/258/0) we collected data for direction, threshold and speed.

### Marmoset MT neurons are highly direction selective

We characterized the responses of marmoset MT neurons to moving random dot stimuli in a set of equally spaced directions of motion (e.g. Figure 1A). First, we examined the direction selectivity of all responsive neurons with two measures: DI and CV, since these measures can be applied to any neuron (i.e. are not limited to direction selective neurons and do not require good curve fitting). DI only compares the response of the preferred and null directions responses, whereas CV gives a more general measure of direction selectivity using all directions of motion. The median DI was 0.78 (Figure 1B), and the median CV was 0.66 (Figure 1C). Next, we measured direction tuning bandwidth, which is similar to CV in that it measures the broadness of direction tuning, but unlike CV, is not affected by motion in the null direction. We measured bandwidth in a subset of neurons that were both direction selective and had good bandwidth fits ( $n=220$ ), and found the median bandwidth in this subpopulation was  $100^\circ$  (Figure 1D). Finally, we calculated the preferred speed of speed tuned neurons ( $n=237$ , Figure 1E), and found that the distribution of preferred speeds followed a lognormal distribution, with a median of  $19^\circ/\text{s}$  (Figure 1F).

### Marmoset MT neurons show a wide range of neurometric thresholds

We wanted to determine marmoset MT neurons' ability to indicate the direction of motion, i.e. how accurately an ideal observer can determine the direction of motion, from one of two opposing directions, using the recorded spike rates. When the coherence of motion was reduced, the "performance" of the neuron was invariably degraded. Figure 2A shows the responses of two example neurons to changes in coherence along

the preferred axis of motion, and Figure 2B shows the corresponding aROC plots of these two neurons. We then calculated the neurometric threshold, which indicates the coherence level where the neuron's performance was at 82%. Therefore neurons must have an aROC of at least 0.82 at 100% coherence in order to have a neurometric threshold. In our data set of 514 neurons, 260 (51%) met this criterion, of which 40 were classified as single units (single electrodes: n=4; linear arrays: n=20; Utah array: n=16). Thresholds varied from 15% to 100% coherence, with a median of 61% coherence (Figure 2C). The thresholds obtained with single electrode recordings, in which the stimulus size and speed was optimized for each recording, were significantly lower than those obtained with arrays, ( $p=0.02$ , medians 47% & 64% respectively, Figure 2C, black and white bars), although the distribution of thresholds obtained with arrays spanned a wider range, and included thresholds that were lower than those revealed by single electrode recordings. There was no statistically significant difference in thresholds between single and multi-units ( $p=0.16$ ).

### **Neurometric thresholds are strongly affected by maximum firing rates**

Since MT neurons displayed a wide range of neurometric thresholds, we investigated the neurophysiological factors that might predict the neurometric thresholds of MT neurons. First, we examined the relationship between firing rate and neurometric threshold. The simple mean firing rate in the preferred direction proved to be a reasonable predictor of neurometric threshold ( $p=-0.56$ , Figure 3A), even without taking into account the spontaneous or the null direction firing rates. However, since some neurons with high firing rates in the preferred direction also have high firing rates in the null direction, we also tested if the difference in firing rate between the preferred and null direction proved to be a stronger predictor of threshold. Moreover, to account for Poisson-like variability of neuronal responses, in which trial to trial variability scales with mean firing rate (Churchland et al. 2010), we used the difference between the square root of the preferred and null rates. This formula proved to be a very good predictor of neurometric threshold ( $p=0.80$ , Figure 3B) and accounted for over 60% of the variance in the neurometric thresholds. Thus, the neurometric threshold was predicted reliably even if only the firing rates of the preferred and null directions are known, even without testing at coherences lower than 100%. We also compared thresholds to the ratio of the null to the preferred rate (i.e. instead of the difference) and found that it was an inferior predictor ( $p=0.60$ , Figure 3C).

The above analysis only included cells that had neurometric thresholds. Fifteen percent of cells (77/514) were excluded because they were not significantly direction selective. This proportion is similar to previous reports (see Solomon and Rosa, 2014). The remaining 177 units (34% of the data set) were direction selective neurons that were not sensitive enough to achieve a threshold. We extended our analyses to include these neurons, and found that both non-direction selective cells ( $p < 0.001$ ) and direction selective cells without thresholds ( $p < 0.001$ ) had lower maximal firing rates than cells with thresholds (Figure 3D). The maximum firing rates of these two groups were not significantly different from each other ( $p = 0.543$ ). The result reaffirms that cells with high firing rates are likely to be sensitive to noise. We also investigated the difference between square root of the preferred and null rates. Naturally, the non-direction selective cells were significantly lower than the other two groups; moreover, there was a significant separation for this metric for the cells with and without thresholds ( $p < 0.001$ ). Therefore, the difference between responses to the preferred and null directions was also a reliable predictor of whether a cell was sensitive enough to have a threshold.

We also investigated whether neurons that have sharper direction tuning (i.e. smaller tuning bandwidths) may have better thresholds. We found only a very weak correlation between bandwidth and threshold ( $\rho = 0.14$ ,  $p = 0.047$ , Figure 3E), and this small effect disappeared when controlling for firing rate with a partial correlation ( $\rho = -0.05$ ,  $p = 0.455$ ), since there was a very weak correlation between firing rate and bandwidth ( $\rho = 0.14$ ,  $p = 0.048$ ), i.e. neurons that have higher firing rates also tended to have narrower tuning bandwidths.

Since the array threshold tests were performed using a single speed, we investigated whether the poorer neurometric thresholds came from units that preferred much slower or faster speeds than the test speed used ( $20^\circ/\text{s}$ ). For this analysis we used a subset of 50 neurons from the linear array recordings, which had both neurometric thresholds and speed tuning, and had similar preferred directions for the two sets of the tests (to ensure that the electrode position relative to the neurons had not changed over time). Figure 3F shows that neurons that preferred slow or fast speeds did not tend to have poorer thresholds than those that preferred speeds closer to  $20^\circ/\text{s}$ , and there was no correlation between threshold and the absolute log ratio of the preferred speed to  $20^\circ/\text{s}$ . ( $\rho = 0.06$ ,  $p = 0.691$ ). Therefore it is not likely that using a non-preferred speed affected the neurometric thresholds, as long as the stimulus drove the neurons' responses sufficiently.

In summary, we found that the difference in spike rates in response to the preferred and null directions was the most reliable predictor of the sensitivity of the neuron to noise, in comparison with the rate in preferred direction alone, the null-preferred spike rate ratio, and the tuning bandwidth. We also found that neurons' sensitivity to signal within noise was relatively robust to speed relative to the neurons' preferred speed.

### **Detection thresholds are also strongly affected by maximum firing rates**

Next we investigated the performance of MT neurons for detecting the presence of motion in noise. Here we asked at what coherence could MT neurons could reliably detect the presence of motion in the preferred direction from the random (0% coherence) stimulus, by calculating detection thresholds (the coherence level at which the neuron's aROC for motion versus random motion was 0.82). Among the 238 units used in this analysis, the median detection threshold was at 58% coherence. Again, the difference in firing rates was a strong predictor ( $\rho=-0.56$ , Figure 4A), while tuning bandwidth showed no correlation with detection threshold ( $\rho=-0.08$ ,  $p=0.257$ ).

Since firing rates increase monotonically with increases in coherence in the preferred direction of motion (Figure 2A), we wanted to characterize the steepness of this curve in order to assess a neuron's sensitivity to noise in a rate-independent manner. We devised a rate threshold, which is the coherence level at which a neuron reaches 50% of the difference between the preferred direction and zero coherence firing rate (Figure 4B). Rate thresholds varied from 50% to 94% coherence with a median of 73%; hence all neurons were supra-linear (e.g. Figure 4B). Rate threshold was correlated with detection threshold ( $\rho=0.56$ ), as expected. However, this result could also have been influenced by firing rates, as neurons with low rate thresholds also had larger firing rate differences ( $\rho=-0.25$ ,  $p<0.001$ , Figure 4C). To test if rate threshold had any influence that was independent of firing rate, we calculated the partial correlation of the detection threshold versus the rate threshold controlled for the firing rate difference, and found that the correlation was still present ( $\rho=0.52$ ,  $p<0.001$ ). The combination of these two factors largely determines the detection threshold. Finally, we also tested to see if rate threshold was related to bandwidth, and found there was only a moderate correlation ( $\rho=-0.22$ ,  $p=0.002$ , Figure 4D), with more broadly tuned neurons having better rate thresholds.

## Responses to motion in the null direction can influence neurometric threshold

In the context of judging opposite directions of motion, we have shown above that the responses to the null direction are as important as responses to the preferred - it is the separation between the preferred and null responses that determines the neurometric threshold. We also observed that, in some neurons, the relationship between coherence and firing rate was monotonic (e.g. Figure 2A left) along the preferred axis of motion (that is, the firing rate was lower for the null direction at 100% coherence than at zero coherence), while in other neurons (e.g. Figure 2A right) there was a “U-shaped” response – the null direction produced a higher firing rate than the zero coherence. Neurons with a U-shaped coherence curve, all other factors being equal, will have higher neurometric thresholds, since the firing rate is increasing in both the preferred and null directions with increases in coherence. This would lead to a larger degree of overlap in their spike count distributions.

We characterized this phenomena by calculating a “null aROC” – the aROC between the null direction and the zero coherence condition. Thus, a null aROC that is less than 0.5 is monotonic (e.g. Figure 2A left), and values greater than 0.5 represent U-shaped curves (e.g. Figure 2A right). We found a moderate correlation between null aROC and neurometric threshold ( $\rho=0.33$ ,  $p<0.001$ , Figure 5A), which was still present in the partial correlation controlling for firing rate difference ( $\rho=0.26$ ,  $p<0.001$ ). We plotted normalized, population-averaged coherence curves (where 1 is maximal firing rate, 0 is spontaneous), and it became apparent that the U-shaped response was primarily due to multi-unit recordings from the arrays that used full screen stimuli, instead of apertures optimized for a single RF (Figure 5B, yellow line). The null aROCs of the single electrode recordings and the single unit array recordings were similar, but the multi-unit array recordings were significantly higher than both the single electrode and the single unit array recordings ( $p<0.001$ , Kruskal-Wallis test, post hoc Rank Sum tests  $p=0.234$ ,  $p<0.001$  and  $p=0.031$  respectively, Figure 5C). These grouping of single/multi-units and single-electrodes/arrays did not have significant effect on the motion in the preferred direction, with very similar detection thresholds across groups ( $p=0.934$  Kruskal-Wallis test, Figure 5D). However it seems that the full-screen recordings suppressed the responses at and near zero coherence (Figure 5B, yellow and red lines compared to blue lines), consistent with previous findings (Hunter and Born 2011).



## Neurometric thresholds are robust for offsets in direction of motion

The use of multi-electrode arrays allowed us to collect a large volume of data at non-optimal axis of motion.

This in turn allowed us to investigate the effect of motion direction with respect to the direction of the preferred-null axis on neurometric threshold. For example, the neuron in Figure 1A has a best axis of motion centered on the 0-180° axis; however, if one were to present stimuli at the 45-135° axis, would the neuron still be reasonably good at encoding these directions of motion? We found that the neurometric threshold generally increases for direction offsets greater than 20° (Figure 6), as this was the point of which the median off axis threshold is statistically different to the median preferred direction threshold ( $p < 0.05$ ). However, MT neurons were still fairly reliable at encoding direction of motion up to 60° off axis. Note that, in these analyses, we obtained thresholds that exceeded 100% coherence, which, while are not properly constrained (since coherence cannot exceed 100%), does allow us to investigate the changes in neurometric threshold with non-optimal stimuli. The maximum threshold here is limited to 300%, since it was the constraint used in the curve fitting.

We calculated the partial correlation of the off axis threshold versus the preferred axis threshold controlled for the direction offset and found a clear correlation ( $\rho = 0.43$ , Figure 6, colors representing preferred axis threshold). Thus neurons with the best optimal-direction thresholds have the best off axis thresholds. We also investigated the effect of tuning bandwidth, hypothesizing that more broadly tuned neurons would have better off axis thresholds. We found there was only a weak relationship in the partial correlation when controlling for direction offset ( $\rho = -0.14$ ,  $p < 0.001$ ), and when controlling with both off axis direction and standard threshold ( $\rho = -0.16$ ,  $p < 0.001$ ).

In summary, we find here that neural sensitivity of MT neurons to signal in noise was relatively robust to changes in direction. Neurons are just as sensitive up to 20° from the preferred direction of motion and contain useful information at least up to 60° from the preferred axis of motion.

## Discussion

We have characterized the direction selectivity of marmoset monkey MT neurons to random-dot motion stimuli. The majority of the responses were highly direction selective, as reported by previous studies in this species, using various types of stimuli (luminance and coherent motion-defined bars: Lui et al., 2012; gratings: Lui et al., 2007a; Davies et al., 2016; random dots: Solomon et al., 2011; See Lui and Rosa, 2014, for a review). Building upon these findings, we studied the extent to which the responses are influenced by different levels of random-dot motion noise. Based on ideal observer analysis, we found that MT neurons show a wide range of sensitivities, with some neurons having a neurometric threshold as low as 15% coherence, to those neurons that could not reach unambiguous detection of the direction even in the absence of noise. Moreover, we found that the neural sensitivity could be reliably predicted simply from the responses to the preferred and null directions, while direction tuning bandwidth did not predict neurometric threshold. Finally, the sensitivity of many neurons was reasonably robust, allowing correct discrimination even upon presentation of non-optimal directions, speeds and stimulus sizes.

## Comparison with the macaque monkey neurometric thresholds

The macaque monkey is the only primate species for which comprehensive analyses including neurometric functions has been achieved for the sensitivity of MT neurons to motion. The increasing use of marmosets in visual neuroscience demands knowledge of the similarities, and potential differences between these species, which have evolved independently from a common ancestor for approximately 35 million years (Schrago 2007).

In the macaque, Britten et al. (1992, 1996) reported a majority of neurons with better neurometric thresholds than those reported here. However, those studies used much longer display times (2 seconds), which resulted in better neurometric thresholds. Our results are similar to those obtained in behaving macaque in a study that used similar display times (Cohen and Newsome 2009): these authors found that on average the neurometric threshold was 53%, which compares well to the present results (63%). Moreover, the shorter display times, in accordance with integration to bound decision making theories (Roitman and Shadlen 2002) did not have a substantial effect on monkeys' behavioral performance. On average, the animals tested showed sensitivity that

was more than twice as high as sensitivity as the average MT neuron, achieving behavioral mean thresholds of less than 25% coherence. Taken together, our results suggest that marmoset MT neurons encode sufficient information about the direction of motion for the animals to perform the behavioral task as well as macaques and humans.

### **Factors affecting neurometric and detection thresholds**

We also examined a number of factors that can affect neurometric and detection thresholds. We found that the difference in the square root of firing rates (which accounts for Poisson-like variability) of the preferred and null directions at 100% coherence could quite accurately predict the sensitivity of the neuron to noise, accounting for more than 60% of the variance (Figure 3B). Therefore it is possible to accurately predict a neuron's sensitivity to noise without testing a range of coherences. Moreover, there was a large population of direction selective cells (34%) that did not have definable thresholds because the differences in the square root of preferred and null direction rates were too small (Figure 3C, lower).

The difference in firing rates was also a very good predictor for detection thresholds (Figure 4A). For detection thresholds, we also calculated a rate threshold in order to characterize each neuron's response to changes in coherence in a rate-independent way (Figure 4B), but this measure is still somewhat correlated with firing rates (Figure 4C). The fact that all neurons showed supra-linear response increases in coherence in the preferred direction makes it difficult for neurons with low (maximum) firing rates to have low neurometric thresholds, as neurons will not substantially increase their firing rates until coherences of over 50%. However, despite the fact that all neurons were supra-linear, and rate threshold spanned a narrow range, some neurons were less sensitive to noise, which impact on the neuron's ability to detect motion independent of spike rate. Interestingly, neurons that were more tolerant to noise also tended to have slightly broader tuning bandwidths, suggesting neurons that are better at integrating directions of motion may also be more tolerant to noise.

In macaques, it was found that neurons that carry most task relevant information, or the most sensitive neurons, are more correlated with behavioral choice independent of stimulus (Britten et al., 1996). Whether these behavioral correlations may arise from neurons that contribute to the task, or through neuron-to-neuron

correlations within the decision pool (see Nienborg et al., 2012), the sensitivity of each neuron presumably has to be learned by downstream by the decision circuit (Law and Gold 2008). Our results suggest that a simpler strategy may be possible; the most sensitive neurons can simply be identified by their higher firing rates; thus potentially contributing more to synaptic integration downstream. Optimal read-out of population activity to form a perceptual decision posits that the neurons that carry the more task relevant information have a larger contribution to the decision pool (e.g. Graf et al., 2011, Zavitz et al., 2016), and these weights could be assigned using a relatively straightforward mechanism, based on maximum firing rates. The relative homogeneity in rate threshold means that neurons that carry the most task relevant information at 100% coherence are also likely to carry the most information in situations with noise. Therefore, a coherence-invariant read-out template, with weights based on responses to the 100% coherent stimulus could, in theory, generalize to other coherences. This strategy would imply that a decision can be formed without knowing the coherence of the stimulus *a priori*.

### **Comparison with the macaque monkey direction selectivity and speed tuning**

At first sight, our analysis of direction selectivity seems to indicate the marmoset MT neurons are less direction selective than macaque MT. For example, measures of DI in macaque by Albright (1984) report a much higher mean value, in excess of 1, compared to our median of 0.78. However, our measurement of CV (median = 0.66) is very similar to other reports in macaques (approximately 0.7 in macaques, Cui et al., 2013). The median direction tuning bandwidth reported here was only slightly broader than what was reported in macaques by Albright (1984): 100° compared to 83°. Moreover, it should be noted that our measurements of DI and CV include all responsive units in our dataset, and the use of arrays meant that our recordings were not biased towards highly active units. Therefore our data likely constitute an unbiased description of direction selectivity in MT. Finally, while having minimal effects on the responses to the preferred direction, the full screen presentation together with multi-unit recordings may increase the responses to the null direction relative to the preferred direction (Figure 5). This could subsequently lower the DI in comparison to studies that use stimuli tailored to the size of the classical receptive field, which was the method employed by the vast majority of studies to date that examined the responses of MT cells (e.g. Albright, 1984; Britten et al., 1992, 1996; DeAngelis and Uka, 2003).

We also investigated the preferred speeds of marmoset MT neurons. In general, the range of preferred speeds was similar to those found in the macaque. However, the median optimal speed in marmosets was higher than that of reported in macaques (Nover et al. 2005), similar to results obtained with gratings (Lui et al. 2007a). The distribution of preferred speeds in the present data followed a normal distribution on a logarithmic scale (Figure 1F; see also Lui and Rosa, 2014). This is in contrast to the log-uniform distribution reported for the macaque MT, which is consistent with speed discrimination performance where just-noticeable speed differences scales with the pedestal or reference speed (Nover et al. 2005). This suggests another hypothesis to be tested behaviorally, namely that the just noticeable differences may not scale uniformly across slow, medium and fast speeds. Alternatively, these apparent differences in the distribution of speed tuning in marmosets and macaques maybe caused by differential sampling of visual space in these studies, since neurons with foveal receptive fields tend to prefer slower speeds than those set in the periphery in both species (Maunsell and Van Essen 1983; Lui et al. 2007a).

### **Multi-electrode arrays vs. single contact electrodes**

The use of multi-electrode recordings allowed us to collect large amounts of data on the responses at non-optimal directions. We showed that neural sensitivity was relatively robust with respect to the direction of motion. Neurons were not significantly worse at determining opposite directions of motion, when stimuli moved in directions up to 20° off their optimal, and were able to provide reliable information up to 60° from optimal. These results reveal slightly higher (worse) thresholds than those reported in the macaque (Britten and Newsome 1998), although, as argued above, this may reflect the exact experimental conditions (e.g., longer view times). However, the rate of increase of neurometric threshold with respect to direction away from the optimal preferred-null axis is comparable in the two species. The larger data set in the present study may be more representative of the sensitivities if MT neurons to non-optimal directions.

We did not observe a significant decline in neural sensitivity with respect to the magnitude of the difference between the test speed (20°/s) and the neuron's preferred speed, suggesting that neural sensitivity is quite robust to variations in this parameter. However, this result must be interpreted with caution. First, we chose a

test speed that was approximately the mean preferred speed of MT neurons. Therefore, this result may not necessarily be generalizable to very low or high speeds. Second, in order for neurons to be included in this analysis they had to be responsive at 20°/s and satisfy the inclusion criteria; thus, it remains a possibility that more neurons were excluded at non-optimal speeds. Nonetheless, our results show that MT neurons are able to contribute to direction discrimination of non-optimal direction and speed, having implications on the neural pool that contributes the formation of perceptual decision.

There were some differences in results between the single electrode and the array recordings, with the single electrode recordings having a better median neurometric threshold compared to the arrays. The use of electrode arrays meant that we did not bias our recordings to large, highly active neurons (Carandini et al. 2005). This resulted in a large dataset that included many low firing rate single and multi-units (which may be bypassed in exploration with a single electrode due to a perceived lack of responsiveness). Furthermore, the use of full screen stimuli to cover many receptive fields, imposed by different receptive fields during array recordings, seems to not only suppress responses to lower coherence stimuli, which is in line with a previous study (Hunter and Born 2011), but also all coherences in the null direction of single units (Figure 5B, red line). Excitation above the 0% coherence stimulus in the null direction (“U-shaped responses”) were more commonly observed for full screen multi-units (Figure 5). This could be explained by a combination of tuned and un-tuned gain normalization mechanisms, which have been demonstrated in MT (Simoncelli et al. 1998; Rust et al. 2006), and have been implicated in size tuning (Born and Bradley 2005), including in marmosets (Lui et al. 2007b). The balance of excitation and inhibition here depends on stimulation inside and outside the classical receptive field. Also, multi-units by definition encompass the activity of multiple neurons, the combination of which may lead to excitation in the null direction in combination with stimulation outside the classical receptive field. As the majority of our recordings with multi-electrodes were multi-units, this factor, combined with our demonstration that responses to the null direction affected the sensitivity of MT neurons, provides further explanation as to why neurons recorded with multi-electrode arrays were somewhat less sensitive to motion signals embedded in noise.

## References

- Albright TD.** Direction and orientation selectivity of neurons in visual area MT of the macaque. *J Neurophysiol* 52: 1106–30, 1984.
- Allman JM, Kaas JH.** Representation of the visual field in striate and adjoining cortex of the owl monkey (*Aotus trivirgatus*). *Brain Res* 35: 89–106, 1971.
- Bair W, Zohary E, Newsome WT.** Correlated firing in macaque visual area MT: time scales and relationship to behavior. *J Neurosci* 21: 1676–97, 2001.
- Born RT, Bradley DC.** Structure and function of visual area MT. *Annu Rev Neurosci* 28: 157–189, 2005.
- Bourne JA, Rosa MGP.** Preparation for the in vivo recording of neuronal responses in the visual cortex of anaesthetised marmosets (*Callithrix jacchus*). *Brain Res Protoc* 11: 168–177, 2003.
- Brainard DH.** The Psychophysics Toolbox. *Spat Vis* 10: 433–6, 1997.
- Britten KH, Newsome WT.** Tuning bandwidths for near-threshold stimuli in area MT. *J Neurophysiol* 80: 762–770, 1998.
- Britten KH, Newsome WT, Shadlen MN, Celebrini S, Movshon JA.** A relationship between behavioral choice and the visual responses of neurons in macaque MT. *Vis Neurosci* 13: 87–100, 1996.
- Britten KH, Shadlen MN, Newsome WT, Movshon JA.** The Analysis of Visual Motion: A Comparison of Neuronal and Psychophysical Performance. *J Neurosci* 12: 4745–4765, 1992.
- Carandini M, Demb JB, Mante V, Tolhurst DJ, Dan Y, Olshausen B a, Gallant JL, Rust NC.** Do we know what the early visual system does? *J Neurosci* 25: 10577–97, 2005.
- Churchland MM, Yu BM, Cunningham JP, Sugrue LP, Cohen MR, Corrado GS, Newsome WT, Clark AM, Hosseini P, Scott BB, Bradley DC, Smith MA, Kohn A, Movshon JA, Armstrong KM, Moore T, Chang SW, Snyder LH, Lisberger SG, Priebe NJ, Finn IM, Ferster D, Ryu SI, Santhanam G, Sahani M, Shenoy KV.** Stimulus onset quenches neural variability: a widespread cortical phenomenon. *Nat Neurosci* 13: 369–378, 2010.
- Cohen MR, Newsome WT.** Estimates of the contribution of single neurons to perception depend on timescale and noise correlation. *J Neurosci* 29: 6635–48, 2009.
- Cui Y, Liu LD, Khawaja FA, Pack CC, Butts DA.** Diverse Suppressive Influences in Area MT and

Selectivity to Complex Motion Features. *J Neurosci* 33: 16715–16728, 2013.

**Davies AJ, Chaplin TA, Rosa MGP, Yu H-H.** Natural motion trajectory enhances the coding of speed in primate extrastriate cortex. *Sci Rep* 6, 2016.

**DeAngelis GC, Uka T.** Coding of horizontal disparity and velocity by MT neurons in the alert macaque. *J Neurophysiol* 89: 1094–111, 2003.

**Dubner R, Zeki SM.** Response properties and receptive fields of cells in an anatomically defined region of the superior temporal sulcus in the monkey. *Brain Res* 35: 528–32, 1971.

**Gallyas F.** Silver staining of myelin by means of physical development. *Neurol Res* 1: 203–9, 1979.

**Hunter JN, Born RT.** Stimulus-dependent modulation of suppressive influences in MT. *J Neurosci* 31: 678–686, 2011.

**Law C-T, Gold JI.** Neural correlates of perceptual learning in a sensory-motor, but not a sensory, cortical area. *Nat Neurosci* 11: 505–513, 2008.

**Lui LL, Bourne JA, Rosa MGP.** Spatial and temporal frequency selectivity of neurons in the middle temporal visual area of new world monkeys (*Callithrix jacchus*). *Eur J Neurosci* 25: 1780–92, 2007a.

**Lui LL, Bourne JA, Rosa MGP.** Spatial summation, end inhibition and side inhibition in the middle temporal visual area (MT). *J Neurophysiol* 97: 1135–48, 2007b.

**Lui LL, Dobiecki AE, Bourne JA, Rosa MGP.** Breaking camouflage: responses of neurons in the middle temporal area to stimuli defined by coherent motion. *Eur J Neurosci* 36: 2063–76, 2012.

**Lui LL, Mokri Y, Reser DH, Rosa MGP, Rajan R.** Responses of neurons in the marmoset primary auditory cortex to interaural level differences: comparison of pure tones and vocalizations. *Front Neurosci* 9, 2015.

**Lui LL, Rosa MGP.** Structure and function of the middle temporal visual area (MT) in the marmoset: Comparisons with the macaque monkey. *Neurosci. Res.* (2014). doi: 10.1016/j.neures.2014.09.012.

**Maunsell JHR, Van Essen DC.** Functional properties of neurons in middle temporal visual area of the macaque monkey. I. Selectivity for stimulus direction, speed, and orientation. *J Neurophysiol* 49: 1127–47, 1983.

**Mitchell JF, Reynolds JH, Miller CT.** Active vision in marmosets: a model system for visual neuroscience. *J Neurosci* 34: 1183–94, 2014.



**Newsome WT, Britten KH, Movshon JA.** Neuronal correlates of a perceptual decision. *Nature* 341: 52–54, 1989.

**Nienborg H, R. Cohen M, Cumming BG.** Decision-related activity in sensory neurons: correlations among neurons and with behavior. *Annu Rev Neurosci* 35: 463–483, 2012.

**Nover H, Anderson CH, DeAngelis GC.** A logarithmic, scale-invariant representation of speed in macaque middle temporal area accounts for speed discrimination performance. *J Neurosci* 25: 10049–60, 2005.

**Okano H, Hikishima K, Iriki A, Sasaki E.** The common marmoset as a novel animal model system for biomedical and neuroscience research applications. *Semin Fetal Neonatal Med* 17: 336–40, 2012.

**Parker AJ, Newsome WT.** Sense and the single neuron: probing the physiology of perception. *Annu Rev Neurosci* 21: 227–277, 1998.

**Pilly PK, Seitz AR.** What a difference a parameter makes: a psychophysical comparison of random dot motion algorithms. *Vision Res* 49: 1599–612, 2009.

**Prince SJD, Pointon AD, Cumming BG, Parker AJ.** Quantitative analysis of the responses of V1 neurons to horizontal disparity in dynamic random-dot stereograms. *J Neurophysiol* 87: 191–208, 2002.

**Ringach DL, Shapley RM, Hawken MJ.** Orientation selectivity in macaque V1: diversity and laminar dependence. *J Neurosci* 22: 5639–51, 2002.

**Roitman JD, Shadlen MN.** Response of neurons in the lateral intraparietal area during a combined visual discrimination reaction time task. *J Neurosci* 22: 9475–89, 2002.

**Rosa MGP, Elston GN.** Visuotopic organisation and neuronal response selectivity for direction of motion in visual areas of the caudal temporal lobe of the marmoset monkey (*Callithrix jacchus*): middle temporal area, middle temporal crescent, and surrounding cortex. *J Comp Neurol* 393: 505–27, 1998.

**Rosa MGP, Gattass R, Soares JGM.** A quantitative analysis of cytochrome oxidase-rich patches in the primary visual cortex of Cebus monkeys: topographic distribution and effects of late monocular enucleation. *Exp Brain Res* 84: 195–209, 1991.

**Rust NC, Mante V, Simoncelli EP, Movshon JA.** How MT cells analyze the motion of visual patterns. *Nat Neurosci* 9: 1421–1431, 2006.

**Sadakane O, Masamizu Y, Watakabe A, Terada S-I, Ohtsuka M, Takaji M, Mizukami H, Ozawa K,**

- Kawasaki H, Matsuzaki M, Yamamori T.** Long-Term Two-Photon Calcium Imaging of Neuronal Populations with Subcellular Resolution in Adult Non-human Primates. *Cell Rep* 13: 1989–1999, 2015.
- Sasaki E, Suemizu H, Shimada A, Hanazawa K, Oiwa R, Kamioka M, Tomioka I, Sotomaru Y, Hirakawa R, Eto T, Shiozawa S, Maeda T, Ito M, Ito R, Kito C, Yagihashi C, Kawai K, Miyoshi H, Tanioka Y, Tamaoki N, Habu S, Okano H, Nomura T.** Generation of transgenic non-human primates with germline transmission. *Nature* 459: 523–7, 2009.
- Schrago CG.** On the time scale of new world primate diversification. *Am J Phys Anthropol* 132: 344–354, 2007.
- Simoncelli EP, Heeger DJ, Heeger DJ.** A Model of Neuronal Responses in Visual Area MT. *Vision Res* 38: 743–761, 1998.
- Solomon S, Tailby C, Gharaei S, Camp A, Bourne JA, Solomon SG.** Visual motion integration by neurons in the middle temporal area of a New World monkey, the marmoset. 23: 5741–5758, 2011.
- Solomon SG, Rosa MGP.** A simpler primate brain: the visual system of the marmoset monkey. *Front Neural Circuits* 8: 96, 2014.
- Solomon SS, Chen SC, Morley JW, Solomon SG.** Local and Global Correlations between Neurons in the Middle Temporal Area of Primate Visual Cortex. *Cereb Cortex* 25: 3182–3196, 2015.
- Uka T, DeAngelis GC.** Contribution of middle temporal area to coarse depth discrimination: comparison of neuronal and psychophysical sensitivity. *J Neurosci* 23: 3515–3530, 2003.
- Yu H-H, Chaplin TA, Egan GW, Reser DH, Worthy KH, Rosa MGP.** Visually Evoked Responses in Extrastriate Area MT after Lesions of Striate Cortex in Early Life. *J Neurosci* 33: 12479–12489, 2013.
- Yu H, Rosa MGP.** A simple method for creating wide-field visual stimulus for electrophysiology: Mapping and analyzing receptive fields using a hemispheric display. *J Vis* 10: 1–16, 2010.
- Zavitz E, Yu H-H, Row EG, Rosa MGP, Price, Nicholas SC.** Rapid Adaptation Induces Persistent Biases in Population Codes. *J Neurosci* 36: 4579–4590, 2016.

Figure 1: Responses of MT neurons to moving stimuli. A: Example direction tuning plot showing response with respect to direction. The highest firing rate is centered at 0 degrees and the best fitting Gaussian function to determine the tuning bandwidth is also displayed. Vertical lines show the preferred direction, error bars are standard error of the mean. B: Distribution of Direction Index (DI) of all neurons. C: Distribution of Circular variance (CV) of all neurons. D: Distribution of Direction tuning bandwidth of direction selective neurons. E: Example speed tuning plot. The best-fitting lognormal function (Nover et al. 2005) is shown, these were used to determine the preferred speed of the neuron (the peak of the function). Error bars are standard error of the mean. F: Preferred speeds of speed tuned neurons. In all histograms, population medians are indicated by the black line.

Figure 2: A: Responses of one neuron (left panel) and a second example neuron (right panel) to varying levels of coherence in the preferred (positive x-axis) and null directions (negative x-axis), error bars are standard error of the mean. B: Neurometric curves. Same neurons as A, data points represent aROC values with at each coherence level. The best fitting Weibull curves are shown, and the coherence level in which they reach an aROC of 0.82 is designated the neurometric threshold, shown as horizontal and vertical lines. Error bars are the 95% CI determined by bootstrapping. C: Stacked histogram of single electrode (black) and arrays (white) neurometric thresholds, with medians shown as solid and dotted lines respectively. The overall population median is shown as a dashed line. There was significant difference between the medians of the two electrode types ( $p=0.02$ ).

Figure 3: Factors affecting neurometric thresholds. A: Neurometric thresholds are shown with respect to the maximum firing rate of the neuron. Thresholds are strongly affected simply by the mean firing rate ( $\rho=-0.56$ ,  $p<0.001$ ). B: Neurometric thresholds are shown with respect to the difference in the square root of the firing rate of the preferred and null directions, showing a stronger relationship than in A. This relationship was well described by a logarithmic function:  $\text{threshold} = -0.29 \log(\sqrt{\text{pref. rate}} - \sqrt{\text{null rate}}) + 0.9$  (Pearson's correlation  $r=0.81$ ) as indicated by the line of best fit. C: Neurometric threshold are shown with respect to the ratio between the null and preferred direction firing rates, showing a weaker relationship than B ( $\rho=-0.60$ ,  $p<0.001$ ). D: Distributions of above spontaneous firing rates (top) and differences in the square root of the firing rate of the preferred and null directions for three classes of neuron – those with definable thresholds

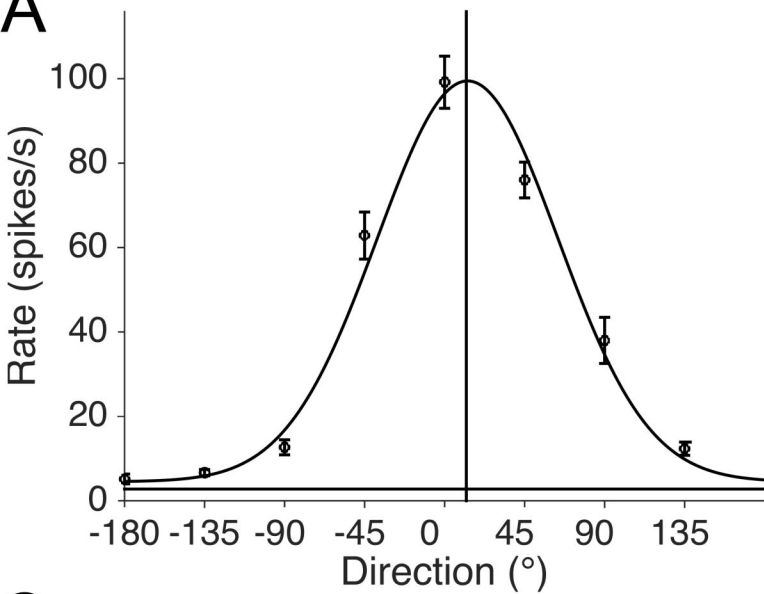
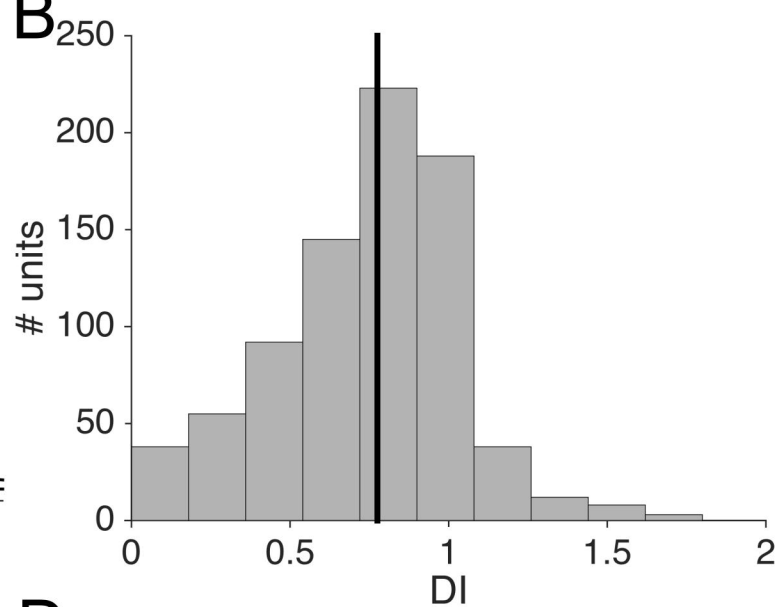
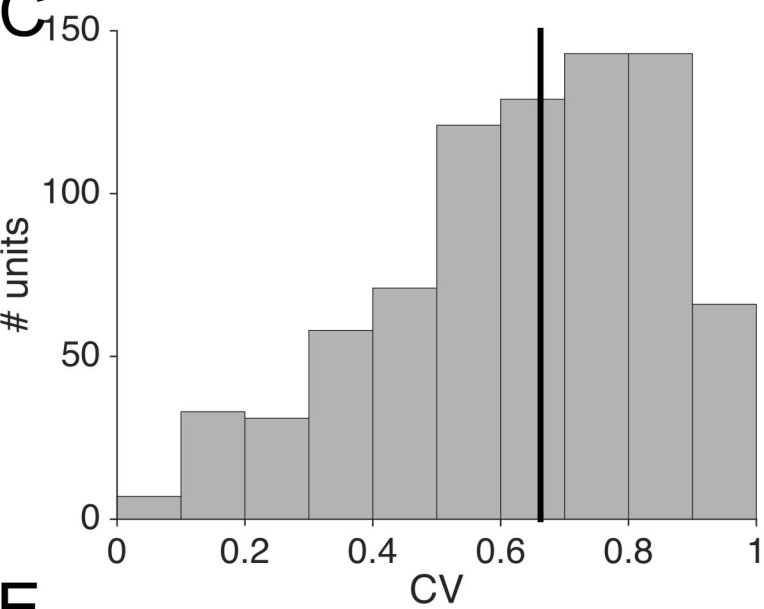
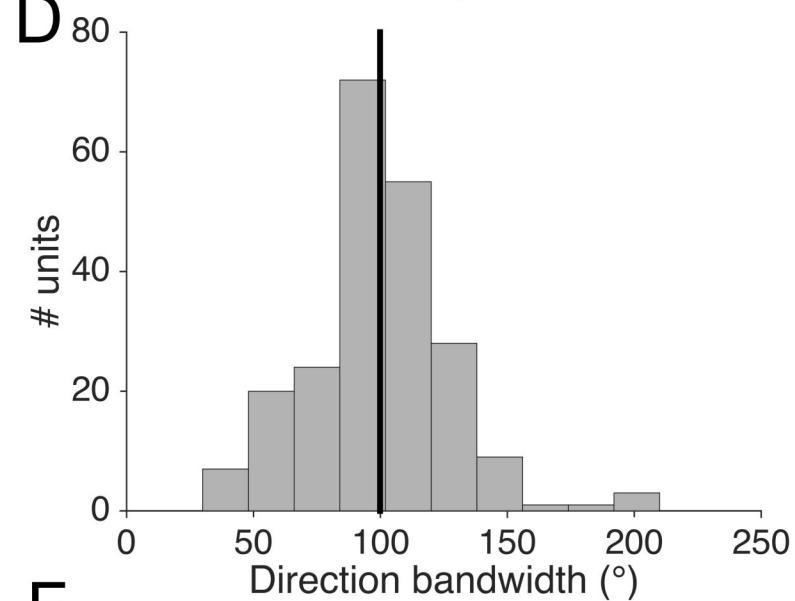
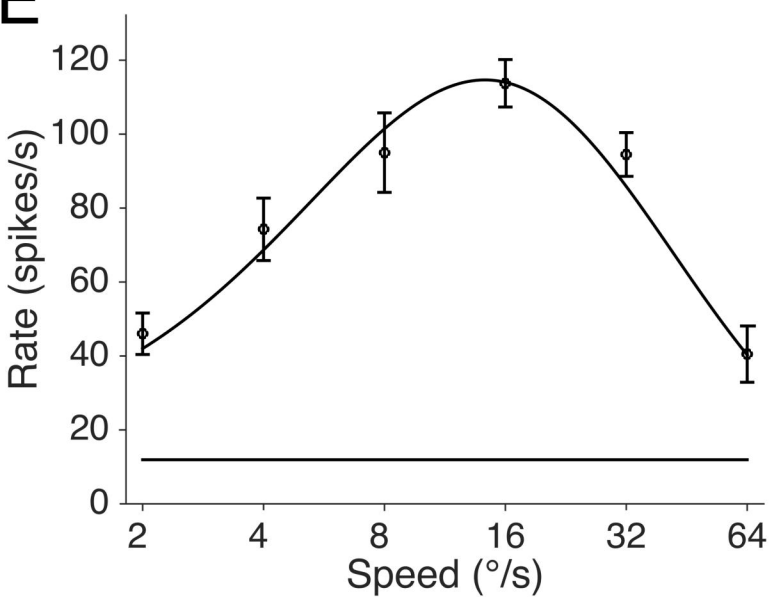
(blue), direction selective cells without definable thresholds (red) and non direction selective cells (yellow, “non-DS”). Direction selective cells that did not have thresholds had both lower above spontaneous firing rates and lower differences in firing rates ( $p < 0.001$  &  $p < 0.001$  respectively). E: Neurometric thresholds are shown with respect to direction tuning bandwidth. A small but significant relationship was found here ( $\rho = 0.14$ ,  $p = 0.047$ ), but it was not present when controlling for difference in firing rate ( $\rho = -0.05$ ,  $p = 0.455$ ). F: Neurometric threshold (measured at  $20^\circ/\text{s}$  as indicated by black line), are show with respect to the preferred speed of each neuron. There was no significant relationship between preferred speed and neurometric threshold ( $\rho = 0.06$ ,  $p = 0.691$ ).

Figure 4: Factors affecting detection thresholds. A: Detection thresholds are shown with respect to the difference in the square root of the firing rate in the preferred direction and at zero coherence. As in Figure 5B, this relationship was well described by a logarithmic function:  $\text{threshold} = -0.26 \log(\sqrt{\text{pref. rate}} - \sqrt{\text{null rate}}) + 0.86$  (Pearson’s correlation  $r = 0.77$ ), as shown by the line of best fit. B: An example neuron demonstrating how rate thresholds were calculated. The normalized firing rate is plotted against coherence for motion in the preferred direction, error bars indicate standard error of the mean. The best fitting power function is also displayed. The rate threshold is the coherence level when the best fitting function reaches 50% of its maximum firing rate, as indicate by the black lines. C: Scatter plot showing the detection threshold (colored bar) as a combination of the rate threshold and the difference in firing rate. Neurons with the best detection thresholds have greater firing rate differences ( $r = -0.56$ ,  $p < 0.001$ ) and lower rate thresholds ( $r = 0.56$ ,  $p < 0.001$ ). D: Rate thresholds are shown with respect to bandwidths, showing a very weak but statistically significant relationship ( $\rho = -0.22$ ,  $p = 0.002$ ).

Figure 5: Effects of stimulus size and unit type on responses to the preferred and null direction. As indicated in legend, neurons are grouped into three types – multi-units from the single electrode in which we optimized the stimulus size (blue), single units from the arrays in which we used full screen stimuli (red) and multi-units from the arrays in which we used full screen stimuli (yellow). A: Neurometric thresholds are shown with respect to the null aROCs for the three groupings. B: Normalized, population averaged firing rates are shown with respect to coherence for the three types of recordings. C: Distributions of the null aROCs for the three types of recordings, vertical black lines indicate medians, black lines linking histograms indicate a statistically

significant difference in the medians ( $p < 0.01$ ). D: Distribution of detection thresholds (Figure 6A) for the three groupings, no statistically significant difference was found here ( $p > 0.05$ ).

Figure 6: Thresholds calculated all axis of motion, not just the preferred. Thresholds are shown with respect to the offset in direction from the preferred direction. The median optimal direction threshold is plotted as the red horizontal line, the running median is plotted in green. The direction offset in which the population median threshold is significantly different to the optimal direction threshold is plotted as a red vertical line. Data points are colored for threshold in the preferred-axis of motion.

**A****B****C****D****E****F**