

# Proteomics of phosphorylation and protein dynamics during fertilization and meiotic exit in the *Xenopus* egg

Marc Presler<sup>1</sup>, Elizabeth Van Itallie<sup>1</sup>, Allon M. Klein<sup>1</sup>, Ryan Kunz<sup>2</sup>, Peg Coughlin<sup>1</sup>, Leonid Peshkin<sup>1</sup>, Steven P. Gygi<sup>2</sup>, Martin Wühr<sup>1-4</sup>, Marc W. Kirschner<sup>1,4</sup>

1) Department of Systems Biology, Harvard Medical School, Boston, MA 02115, USA

2) Department of Cell Biology, Harvard Medical School, Boston, MA 02115, USA

3) Department of Molecular Biology, The Lewis-Sigler Institute for Integrative Genomics, Princeton University, Princeton, NJ 08544

4) Correspondence: [marc@hms.harvard.edu](mailto:marc@hms.harvard.edu), [wuhr@princeton.edu](mailto:wuhr@princeton.edu)

## Summary

Fertilization triggers release from meiotic arrest and initiates events that prepare for the ensuing developmental program. Protein degradation and phosphorylation are known to regulate protein activity during this process. However, the full extent of protein loss and phospho-regulation is still unknown. We examined absolute protein and phospho-site dynamics after fertilization by mass spectrometry-based proteomics. To do this, we developed a new approach for calculating the stoichiometry of phospho-sites from multiplexed proteomics that is compatible with dynamic, stable and multi-site phosphorylation. Overall, the data suggest that degradation is limited to a few low abundance proteins. However, this degradation promotes extensive dephosphorylation that occurs over a wide range of abundances during meiotic exit. We also show that eggs release a large amount of protein into the medium just after fertilization, most likely related to the blocks to polyspermy. Concomitantly, there is a substantial increase in phosphorylation likely tied to calcium activated kinases. We identify putative degradation targets as well as new components of the block to polyspermy. The analytical approaches demonstrated here are broadly applicable to studies of dynamic biological systems.

## Introduction

For over a century, the highly synchronous events of fertilization have provided a useful system for many aspects of cellular regulation, especially protein degradation and phosphorylation. The destruction of Cyclin-B and other proteins is catalyzed by the anaphase promoting complex (APC/C), which promotes M-phase exit (1). The two activators of the APC are Cdc20 and Cdh1. In the egg, the cell cycle typically involves only Cdc20 (2). While the list of known Cdh1 substrates continues to grow (3), the Cdc20 target list remains small (4, 5). It is of considerable interest to characterize the minimal set of Cdc20 substrates that powers the early cell cycle. Kinase activity is equally key to this regulation. Cyclin-B degradation promotes mitotic exit by inhibiting the activity of Cyclin-dependent Kinase 1 (Cdk1). There is a bulk loss of phosphorylation following egg activation (6). The identities of the vast majority of these phosphoproteins remain undiscovered. However, there is a strong expectation that this regulation reflects the reversal of Cdk1 phosphorylation. Fertilization employs regulation not common to other cell cycles. There are timed waves of phosphorylation that correspond to the release of cortical granules just after fertilization. This release is calcium sensitive, and may reflect increases in the activity of Protein Kinase C (7, 8) and CaMKII (9). An account of the secreted proteins, their function, and their upstream signaling components is limited. To investigate these unknown aspects of degradation, release, and modification of proteins at fertilization comprehensively, we employed mass spectrometry (MS) in *Xenopus laevis* eggs. Recent advances in multiplexed proteomics (10, 11) allow quantitative comparisons of multiple conditions using Tandem Mass Tags (TMT) (12, 13). Our recent work demonstrates the power of proteomics in *Xenopus* for studies of early development (14-16). Though fertilization has been studied before with MS (17-20), the approaches were either qualitative or neglected phosphorylation. With an enrichment step (21-23), it is feasible to measure relative changes in a large number of phosphoproteins. However, such studies are of limited utility without measuring site stoichiometry. Relying on fold change alone for phosphorylation studies will not distinguish between ten-fold relative changes from 1%

occupancy to 10% versus 10% to 100%. Several approaches are available (24-26), but none of these are able to determine occupancies of peptides measured with multiplexed MS or that have multiple phosphorylated residues. This paper introduces new biological findings about fertilization and cell cycle progression, but it also introduces new methods for measuring absolute stoichiometry of phospho-sites, widely applicable to MS protein modification studies.

## Results

### Quantitative proteomics of egg activation and meiotic exit

The large (1.2 mm) *Xenopus laevis* egg offers superb synchrony and sufficient material (~25µg of non-yolk protein per egg (27)) for proteomic and phosphoproteomic studies. To capture the progression of the rapid fertilization response, metaphase-arrested eggs were activated with electroshock and snap-frozen every two minutes (Fig. 1A). We chose electrical activation over sperm addition to maximize time resolution by avoiding the asynchrony of sperm penetration through the jelly coat (28). The early morphological and molecular events to our knowledge are equivalent between fertilization and parthenogenetic activation (29, 30), hence we use the terms interchangeably here. More than 99% of eggs activate with a standard deviation of <15 sec using this approach (Fig. S1, Movies 1-4). Time points were processed for analysis by TMT-MS (Fig. 1B). Phosphopeptides were enriched on a Titanium Dioxide column; the flow-through was used for protein-level MS. We multiplexed the TMT-labeled time points before enrichment to eliminate errors that arise from variation between columns. Protein-level MS was performed with four biological replicates, and phospho-level MS was performed in biological triplicate. We quantified ~8,700 proteins and ~3,500 phospho-sites on 1,700 proteins. Less than 1% of detected proteins showed abundance changes (Fig. 1C). 40 proteins cluster as decreasing over time, while 8 unexpectedly show an apparent increase (Fig. 1D) (to be discussed below). Protein phospho-sites are notably more dynamic, with ~15% of modified residues changing (Fig. 1E). There is clear evidence for parallel dephosphorylation and phosphorylation. The phospho-site changes overwhelmingly occur on stable proteins, thus they reflect actual changes in phosphorylation level rather than protein level.

### Protein loss following fertilization

We sought to determine whether additional proteins beyond the known cell cycle targets are degraded. We identify 29 unique genes that significantly decrease abundance (Table S1, Table S2). To establish statistical significance, we calculated a randomization-based False Discovery Rate (FDR) (Fig. S2) and set a cutoff of 1%. Specifically, we find known APC<sup>Cdc20</sup> substrates, including Cyclin-B1, Cyclin-B2, Geminin (31), Securin (32, 33), and the β-TRCP substrate EMI2 (34) decrease significantly (Fig. 2A). Previously, we estimated the absolute abundances of ~11K protein in the frog egg (14), which allowed us to estimate absolute rates of degradation for these proteins. We see a small delay of ~2-4 minutes between fertilization and initiation of degradation of the APC substrates. EMI2, whose destruction is required for APC activity, declines without delay. It is reduced by 30% by 4 minutes after activation, when Cyclin-B1/2 and Securin begin to decline. EMI2 is stoichiometric with the least abundant components of the APC (14). Therefore, a ~30% decline of EMI2 leads to a 30% increase in the maximal activity of APC. This activity must therefore be sufficient to initiate degradation. All observed putative APC/C<sup>Cdh1</sup> substrates, such as CDC20 (35-37), PLK1 (5), Aurora A/B (38, 39) (Fig. S3), are stable. The total loss of the known APC/C<sup>Cdc20</sup> substrates is ~3,000 pg (or 250 nM), which are degraded at a rate of ~150 pg/min. From single molecule measurements of the proteasome (40), we estimate the reactions responsible for protein degradation are approximately diffusion-limited for the reaction (see Methods). Since it is possible to competitively delay substrate degradation by adding peptide fragments of Cyclin B (31, 41-43), the reaction in the egg may be near saturation.

### Classifying candidate novel degradation targets

Annotation of the decreasing proteins suggested that some candidate proteins were released from the cell rather than degraded (Table S2). To test this hypothesis, we harvested the egg media in time series after egg activation (Fig. 2B). Proteins that appeared in the media and disappeared from the cell were classified as released (Fig. 2C, Fig. S4). Release from the egg is the major source of protein loss rather than degradation (Fig. 2D). We found only six proteins that decreased abundance with no evidence for release (see Table S3 and Methods section for full classifications and rationale). To determine whether these proteins are degraded through the ubiquitin-pathway, we performed ubiquitin pull-downs with a di-glycine antibody (44) and analyzed

the samples by MS. Two proteins of the six were ubiquitinated that were not previously known degradation targets (Fig. 2D, blue). The gene SSX2IP is the most promising candidate for a novel APC substrate. SSX2IP is a centrosomal protein (45) with roles in the primary cilium (46) with a similar abundance to Cyclin B (60nM) and contains a confident D-box prediction (4). Ciliary defects occur when Cdc20 is depleted (47). SSX2IP may provide a mechanism for linking Cdc20 to the ciliary phenotypes. The other candidate is NPDC1, a neuronal protein with some association with cell cycle components (48) containing a weak D-box motif. However, it is localized to synaptic vesicles in neurons, which may suggest association with exocytosis machinery rather than degradation (though we do not detect it in the media). At the level of sensitivity in this study, the numbers of putative APC/C<sup>Cdc20</sup> substrates is indeed very small. All of them are below 100nM in the egg. To estimate the sensitivity of our study, we compared the proteins identified using TMT-MS to those identified by the more sensitive (but semi-quantitative) label-free approach in the frog egg (14) (Fig. S5). At 50nM, we detect 95% of the proteins with TMT-MS that we do with label free, and still detect 50% at 10nM. While we cannot rule out additional substrates, the data does suggest that any we did not detect are at low concentrations.

### Proteins released from the egg

By contrast to the relatively small mass and small number of proteins degraded after fertilization, there is a substantial reduction in cytosolic protein due to release into the medium. We detect expected cortical granule components like an Interlectin2 homolog, as well as the proteases Ovostacin (49) and Ovochymase (50) whose function is thought to be inhibition of further sperm binding by cleaving the extracellular Zona Pellucida (ZP) gene family (51). We detect ZP2, 3 and 4 homologs (52) as released, which are likely to be cleaved peptide fragments that have diffused into the media (Fig. S4). Therefore, at least two mechanisms are responsible for the release of protein from the interior of the egg and from its surface: exocytosis of cortical granules and proteolysis of the specialized extracellular matrix. We would not detect change for proteins that are trapped in the perivitelline space. We detect several proteins previously unknown to be released from the egg at fertilization, including several protease inhibitors. One examples is Ovostatin (AM2 homolog) (53), which was previously shown to have anti-trypsin activity in the sea urchin egg (54). There are additionally a small number of other annotated protease inhibitors that decrease in the egg but are not detected in the medium. We surmise that these are released as well, rather than degraded (Table S3). One example is Riddle4 (55) with known functions reported later in development (56). While the secretion of proteases is well-recognized mechanism, the release of endogenous protease inhibitors in response to fertilization was not known. Another previously unknown released protein is a FCGBP homolog (Fig. 2D), which is similar to Zonadhesin (57, 58) that binds to the ZP proteins. It is likely extracellular and liberated by proteolysis. To compare the measured release of protein with the major morphological events of fertilization, the cell cortex of activated eggs was imaged by electron microscopy (EM) every 15 seconds (Fig. 2E). The release of cortical granules shows a 1 min delay, but between 75 and 90 seconds ~40% of the vesicles fuse with the outer membrane. By 10 min, the majority (~60%) of vesicles have fused (Fig. S6). This is consistent with the generally faster rates of released proteins (Fig. 2D) and with previous work (8).

### Observed protein increase is a phosphorylation artifact

A cluster of 8 proteins appear to accumulate post-fertilization (Fig. 1D), 7 of which show a significant increase in abundance after the FDR analysis (Table S4). Many of these proteins are typically stable and not expected to be synthesized during anaphase (e.g., NUP35, a nucleoporin (59)), leading us to search for an alternative explanation. Protein trends are determined from the sum of all unmodified peptides trends. We noticed the individual peptides of these 7 proteins were nearly all stable except one or two peptides that increased per protein. This discrepancy can occur from the loss of a modification on that particular peptide. The relative abundance of the unmodified peptide must increase if the modified form decreases, due to conservation. Indeed, for three of these proteins, we can directly show the loss of phosphorylation that causes the increase in the unmodified peptide (Fig. S7). Overall, we have evidence that 6 of the 7 apparently increasing proteins have phosphopeptides showing dramatic decreases in phosphorylation. Therefore, we conclude that the increasing protein trends are most likely caused by dephosphorylation rather than rapid protein synthesis. We controlled for phosphorylation artifacts in protein loss as well, and found evidence for only two proteins (Table S3).

## A method for evaluating phospho-site occupancy

The phospho-MS data (Fig. 1E) show the fold change of ~500 dynamic and ~3,000 stable phosphorylation sites. While relative trends of phospho-forms have utility, they are often difficult to interpret. For example, a 2-fold increase in the occupancy of a residue from 1% to 2% appears identical to the same fold increase from 50% to 100%. These two cases can have very different functional implications. It is not possible to directly determine stoichiometry from simple ratios of MS measurements without expensive spike-in standards (60). This is because the unmodified and modified forms of a species ionize at different efficiencies and hence their total MS signal cannot be directly compared (Fig. 3A). It is nonetheless possible to infer the absolute stoichiometry of a site by invoking the principle of mass conservation, which states that the total abundance of each peptide equals the sum of all modified and unmodified forms of the peptide. This principle results in one constraint – a simple linear equation – for each pair of conditions in the experiment. By solving these conservation equations, we can infer the occupancy ratio from the measured relative ratios of change between conditions (Mathbox Eq. 1-3). Approaches invoking mass conservation were previously reported in (24, 61) for a simple case of two phospho-forms and two conditions, giving two linear equations to be solved for the stoichiometries of each form. Here, we extend the solution and broaden its utility: (i) to include cases where the number of conditions is larger than the number of observed phospho-forms; (ii) to establish a statistical measure of confidence in the results; and (iii) to cases with multiple phospho-forms, which were not calculable by previous approaches.

Briefly, the method takes advantage of the fact that when the number of conditions exceeds the number of possible phospho-forms, the system (Eq. 4) is over-determined (Fig. S8) and the problem becomes one of multivariate linear regression. Thus, an estimated solution to the system can be determined through slope-fitting, as visualized in Fig. 3B and Fig. S9. This extends to fitting a hyperplane in higher dimensional space for more than two phosphoforms (Fig. 3C). The ability to incorporate many measurements under different conditions enables a more accurate calculation of occupancy than one measurement alone. The “over-determination” of the system is key to reporting confidence intervals. We are able to estimate error in the fit coefficients using bootstrapping (62) (Supplementary Information, and Fig. S10). Solving for multi-site occupancy is not possible if the number of conditions is less than the number of phospho-forms, as the system is underdetermined. Therefore, our ability to calculate multisite stoichiometries is enabled by measuring multiple conditions by multiplex-MS.

## Applying occupancy calculation

We have applied this method to some of the phosphorylation dynamics in the period following egg activation. Fig. 4A shows the relative dynamics of phospho-sites on the kinases NEK3 and PAK2, as well as transcription factors SOX3 and YBX2. The amount of relative change for each set is nearly identical. However, YBX2 and NEK3 sites change phosphorylation for only a small fraction of its residues, whereas the residues on SOX3 and PAK2 change substantially. These are selected examples of many important regulatory proteins with discrepancies between relative and absolute changes (Fig. S11). A proof-of-principle multi-site phosphorylation stoichiometry calculation is shown for a CaMKII- $\gamma$  peptide (Fig. 4B) with an unmodified ( $P^1$ ), single ( $P^2$ ), and double phosphorylated ( $P^3$ ) form. We estimate the occupancy of the  $P^1$  form with high confidence; the confidence intervals for the  $P^2$  and  $P^3$  forms are wide but non-overlapping, so we are able to conclude that the  $P^2$  form is more occupied than the  $P^3$ . This highlights the utility of confidence intervals, especially as error increases in higher dimensional spaces. A general consideration when applying this method is that it is most effective under conditions where the relative changes are substantial. For stable sites, the minimization is unreliable and gives wide confidence intervals. To extend the use of this approach for stable sites, we repeated the fertilization time course and artificially induced dynamics with a nonspecific phosphatase treatment of two conditions (25) (Fig. S12, Methods). We used a heat labile phosphatase, which allowed us to inactivate the phosphatase activity for subsequent experimental steps. Three examples of calculations of stable occupancies using this method are shown in Fig. 4C. In total, we calculate confident stoichiometries (+/- 25% occupancy of 95% confidence intervals) for ~500 sites (15% of dataset); ~150 of these are dynamic. With these data, we are able to compare stable versus regulated sites, which was difficult with previous approaches. For increasing, decreasing or stable phospho-sites (classified by their relative trends), we show the cumulative distribution of their occupancy at 0 minutes (Fig. 4D). The majority of sites that increase have a low initial occupancy. The distribution of sites that decrease is skewed toward higher occupancy, though there is more density of lower occupied sites than reported in previous studies (24, 63). Interestingly, the stable site

distribution is the most highly occupied class. However, the apparent difference between the distribution of stable sites and decreasing sites is perhaps more subtle than it appears. The apparent lack of intermediate occupancies is largely a product of applying confidence interval cutoffs to stable sites (Fig. S13).

### **Protein phosphorylation dynamics following egg activation**

To explore the function of the regulated sites, we performed motif and gene set enrichment analysis (GSEA) on the dominant trends of the dataset: increasing and decreasing stoichiometries. We were careful to exclude misleading trends that occur during multisite phosphorylation where, for example, the increase of a single form is actually the loss of a double form (Fig. S14, Methods). Since relative trends are sufficient for motif and GSEA, we used all the data to increase statistical power. The minimal motifs for Cdk1 and MAP kinases (S/T-P) explain ~70% of the decreasing sites (Fig. 5A). We show several examples of the absolute dynamics for these phospho-sites, calculated from our estimated site occupancies and protein concentrations (14). The majority of these show substantial loss of phosphate, which is consistent with the expected reversal of mitotic phosphorylation (Fig. 5B). The rates of the trends align with cell cycle events. The majority of proteins are dephosphorylated with a half-time of ~10 min (some with <5 min) with minimal delay after egg activation. This matches the timing of sister chromatid separation in anaphase (30) and the half time of CyclinB1/2 degradation (Fig. 2A). GSEA of the dephosphorylated proteins are annotated with cell cycle, spindle and nuclear pore functions (Fig. 5C, specific examples in Fig. S15). In parallel, we also see a strong signal for increasing phosphorylation. The (S/T-P) motifs are under-represented in this class. Instead, the minimal motif for the Calcium sensitive CaMKII is enriched, explaining 25% of the sites (Fig. 5D). Many of the increasing phosphorylation trends are fast, with half-times of 5 min or ~2 min (Fig. 5E). These are matched temporally with the calcium wave, exocytosis events (Fig. 2E), and cortical actin rearrangement (64-66). Indeed, the phosphorylated proteins are enriched for Actin-binding GO terms; all of the members of this set are also annotated as “Cell Periphery” (Fig. 5F) (Table S5).

### **Nucleoporin dephosphorylation corresponds to sequence of post-mitotic NPC assembly**

There are many intriguing vignettes in the data. One example is the rates of dephosphorylation of nuclear pore sub-complexes (Fig. 5G, Fig. S16). During entry into mitosis, nucleoporin phosphorylation promotes Nuclear Pore Complex (NPC) disassembly (67). The sequence of post-mitotic NPC reassembly may be controlled by differential reversal of the mitotic phosphorylation (68). Our observations give some support for this hypothesis. Rates of dephosphorylation on nucleoporin phospho-sites cluster by regions (69) of the NPC (Fig. 5G) (discussed further in Fig. S16). These rates mostly conform to the sequence of assembly (70, 71). The fast dephosphorylation (~2-5 min half times) of inner basket and nuclear ring components (e.g., NUP153) is consistent with their early roles in NPC assembly (72). The slower dephosphorylation (~10 min half time) of the Core Scaffold components (e.g., NUP188) is consistent with their later recruitment (Fig. S16). One notable exception is that while NUP98 is reported to be an intermediate assembly step, it is dephosphorylated rapidly (4 min half time). Phosphorylation of NUP98 was previously shown to be rate limiting for NPC disassembly (73); it may be that its dephosphorylation is required or limiting for reassembly as well. There are two important caveats to the kinetic discrepancies: 1) nucleoporins or nucleoporin partial complexes may function outside the nuclear pore (e.g., NUP98 at the spindle) (74, 75); 2) the nuclear envelope in the egg is packaged in structures called annulate lamellae (76). Our observations may reflect this, rather than the canonical post mitotic reassembly. Nevertheless, these differential rates provide new information on how NPC reassembly may be regulated in the egg and by extension in other circumstances.

### **Calcium-sensitive responses show substantial differences in occupancy**

The data also offer insights into the pattern of calcium-initiated signaling. The calcium wave peaks in cytosolic concentration around 5 minutes post-fertilization and declines thereafter (77). Fig. 5H shows a set of relative phosphorylation changes from a larger cluster (Fig. 1E) that correlates with the calcium wave. A prominent example is CaMKII- $\gamma$ , which is important for egg activation in the mouse (78), though the role of its phosphorylation is unclear. Three additional proteins with phospho-sites that correlate with the calcium wave are shown (Fig. 5H). While the relative changes are nearly overlapping, the stoichiometries are very different. The two translational regulators (CIRBP, EIF4ENIF1) show phospho-sites that change on a small fraction (<2%) of the proteins. In contrast, over half of the molecules of gamma subunit of CaMKII and ENAH (an Ena/Vasp actin binding protein) are phosphorylated, supporting the hypothesis that the increasing

phosphorylation class is related to calcium signaling and the remodeling of cortical actin. A possible explanation for the low stoichiometry of the changes on CIRBP and EIF4ENIF1 is that this site of modification plays no significant role in regulation; perhaps these sites are modified through promiscuous activity of calcium-dependent kinases (e.g., CAMKII, PKC). Alternatively, the modification may be highly localized.

### The absolute changes of protein phosphorylation, degradation, and release

The data allow comparison of the absolute changes in the diverse yet connected processes occurring in parallel at fertilization (Table 1). We estimate the total change resulting from protein degradation as ~300 nM (~0.01% of the total protein mass), which is dwarfed by a nearly 50-fold higher loss (~1%) from protein release (roughly consistent with older estimates (8, 79)). The change in phosphorylation, which is associated with both degradation and release, is ~7,000nM. This number is an underestimate, as we capture only a fraction of the total dynamics. Nevertheless, this is an order of magnitude higher than the changes due to protein degradation. Unlike protein degradation, where there was a strong correlation between low abundance and instability (Fig. 2D), we see large changes in phospho-occupancy for proteins that span a 1000-fold range of concentration (Fig. 5B, E). This is striking evidence that phosphorylation has the capacity to change the activity of many abundant proteins within minutes. Protein degradation, even with an active E3 ligase like the APC, can only work so quickly on a small number of low abundance proteins, which seem to be core to cell cycle progression.

## Discussion

We measured the absolute protein and phospho-site dynamics at fine time resolution after fertilization. The data reveal a small number of degraded substrates and substantial changes in protein dephosphorylation related to the cell cycle. We also detect release of protein related to the slow block to polyspermy and parallel increases in phosphorylation, which may be linked to the calcium wave. To aid in interpreting the data, we developed a new method for estimating phospho-site stoichiometry using multiplexed MS.

The phosphorylation data are compatible with a recent cell cycle model, which describes a quantitative model for the cell cycle oscillator in the *Xenopus* egg (80). Earlier experiments demonstrated the oscillation (81, 82), but a satisfactory explanation of how it oscillated depended on several features, including a time delay (about 15min) between activation of Cdk1 and activation of APC and then a small delay in the destruction of targets once APC is activated (<2min). Our measurements are strikingly consistent with fast Cdk1 inhibition, as we see immediate commencement of dephosphorylation at hundreds of proline-directed sites with no obvious delay. A discrepancy is that we see a small delay (~2-4 min) in the degradation of APC substrates like CyclinB1/2, which is presumably required to inactivate Cdk1.

The substrate specificity of the APC is thought to be conferred by the cofactors Cdh1 and Cdc20. We show that all detected APC<sup>Cdh1</sup> substrates are indeed stable in the frog egg, where Cdh1 is not expressed. The inhibition of APC<sup>Cdh1</sup> promotes S-phase entry (83) in the conventional cell cycle; the absence of Cdh1 and resulting stability of its substrates may assist in the bypassing of the G1 phase to S phase during the cleavage divisions in the early embryo. The data suggest APC<sup>Cdc20</sup> drives meiotic exit through the degradation of a small number of low abundance targets.

All other detected degradation targets (e.g., EMI2) are also at low abundance, suggesting that the amount of protein degradation is small overall. However, if there is a global increase in protein synthesis at equilibrium with protein degradation, we would underestimate the flux of degradation. Protein synthesis at egg activation is reported in flies and mice (18, 84, 85), but our data shows no evidence for a burst of synthesis of any of 8,700 individual proteins. Our previous work also showed that new proteins comprise a small fraction of the frog embryo even hours post fertilization (15). In principle, 2 $\mu$ M of new protein could accumulate in ~20 mins (~7 $\mu$ M/hr, a rate measured later in development) (86). If this occurred during the first cell cycle, we would expect to identify many of these proteins given our sensitivity limits (Fig. S5).

In addition to measuring the extent of protein degradation and synthesis following fertilization, our proteome-wide approach unveiled unexpected components of the slow block to polyspermy. Early studies established that protease activity is essential for this event; the inhibition of proteases leads to polyspermy (87). Paradoxically, we found that eggs release multiple endogenous protease inhibitors in response to fertilization. Though protease inhibitors were recently found in the perivitelline space of *Xenopus* eggs (88), their function was not addressed. There are several possible functions for released inhibitors: 1) they could

prevent activity of the proteases inside the cortical granules, 2) they might control the activity of the proteases post-release, 3) they may act to block the sperm acrosome reaction (89).

Our application of quantitative proteomics to fertilization highlighted several general considerations for interpreting MS data. We concluded that phosphorylation dynamics can confuse the analysis of protein trends, giving the appearance of change in stable proteins. In principle, dynamics in any high stoichiometric modification (e.g., acetylation) could cause this same ambiguity on the protein level. On the phospho-site level, a source of ambiguity is that a *decreasing* trend of a singly-phosphorylated form results from an *increasing* multi-phosphorylated form (Fig. S14). This general possibility must be considered when interpreting the direction of a given phospho-site trend. This phenomenon was discussed previously (90); our data provides clear examples.

The utility of measuring phospho-occupancy is well-recognized (24, 25, 61). However, current approaches are not able to estimate occupancy for multi-phosphorylated peptides, stable sites, or sites measured with multiplexed proteomics. More fundamentally, these methods do not give statistical information (i.e., confidence intervals), which makes interpreting the estimates difficult. Our approach provides a unified analytical and experimental framework to address these limitations. Though we developed this approach to exploit the power of multiplexed proteomics, the advancements are compatible with other methodologies. For example, label-free phospho-proteomics typically have lower measurement precision but are conducive to high-throughput formats (91). The additional conditions, in principle, give increased statistical power with the use of the regression framework. The higher sensitivity of label free and other techniques (10) could mitigate a limitation of this approach, which is the low efficiency of measuring both the unmodified and phosphorylated peptides. Other methods for calculating phospho-stoichiometry, such as motif-targeting proteomics (92), could also incorporate this framework. Finally, the principles of the calculation could be extended to acetylation or ubiquitination, though we expect more success if occupancies are often >1%. These approaches can increase the power of the proteomics for analysis of posttranslational modification in diverse settings.

## Materials and Methods

### Egg activation procedure

Female *X. laevis* were induced with 700 U HCG. After 14 hrs, eggs were harvested, washed with 1x MMR (Marc's Modified Ringers), de-jellied with Cysteine (2% w/v, pH 8.0), and then kept in dishes with agar beds to avoid the eggs sticking to the dish. Eggs were placed in open-faced gel box with a 3% agar bed in 0.1X MMR and electroshocked by applying an electric field of ~3 Volts/cm for one second. Thirty eggs were collected every two minutes until 18 minutes. The excess media was removed and samples were flash frozen in liquid nitrogen. For the phosphatase treatment experiment, the time series was 0 min, 2 min, 4 min, 6 min, 8 min, 10min, 14 min, and 18 min, with replicates of the 0 min and 18 min time points that were treated with phosphatase during sample preparation. Each biological replicate was performed on separate days with different frogs (termed EA, EA<sub>p2</sub>, EA<sub>p3</sub>, EA<sub>p5b</sub>, where EA stands for "Electro-Activation" and the 'p' denotes an experiment where phospho-enrichment occurred). The research with *X. laevis* was performed under the oversight of the Harvard Medical Area Institutional Animal Care and Use Committee.

### Supernatant time series

Eggs were processed and electro-activated as described above with some exceptions. 1) Eggs were placed in 0.01x MMR, to reduce the salt concentrations after the lyophilization and resuspension steps described below. 2) An additional ~10mM of calcium was added to the media to assist in any wound healing caused by the electroshock. 3) The electric field was doubled to ~6 Volts/cm to account for less conductive media. Eggs did not activate at 3 Volts/cm, as above. 4) ~1,000 eggs were used instead of 300 to increase the signal of protein in the supernatant. Following electroshock, the media was kept well-mixed by gently rocking the gel-box on the long axis by hand. Several mixing methods were tested by mixing with dye beforehand. The same time series was taken by extracting 2 mL of media and flash freezing with liquid nitrogen. We replaced the volume of media removed for harvesting at each time point, and normalized afterward to account for the shifts in concentration from removing mass in the media with each time point. We lyophilized the collected media samples to prevent unwanted proteolysis from the released proteases. The experiment was done in triplicate with clutches from three different frogs on the same day, and then processed in parallel as described in the MS sample preparation section below, except without the alkylation and protein precipitation step.

## General sample preparation for mass-spectrometry

Samples were prepared essentially as previously described (14, 16). Frozen eggs were lysed with 250 mM sucrose, 1% NP40 substitute (Sigma), 5mM EDTA (pH 7.2), 1 Roche complete mini tablet (EDTA-free), 20 mM HEPES (pH 7.2), 10  $\mu$ M Combretastatin 4A, and 10  $\mu$ M Cyochalasin D while frozen (14). All buffers were made with HPLC water. Eggs were lysed by pipetting up and down forty times with a 200  $\mu$ L pipette tip, vortexed at maximum speed for 10 seconds, incubated on ice for 10 minutes, and again vortexed for 10 seconds. Lysates were clarified by centrifugation at 4,000 RCF at 4°C for 4 minutes in a tabletop centrifuge. The cytoplasmic and lipid layers were mixed by gentle flicking and removed from the pelleted yolk. To the lysate, HEPES (pH 7.2) was added to 100 mM, and SDS was added to 2% (w/v) to provide additional buffering capacity and to denature the sample. The samples were reduced with 5 mM DTT for 20 minutes at 60°C. Cysteines were alkylated with 15 mM NEM for 20 minutes at room temperature (RT). Excess NEM was reacted with an additional 5 mM DTT at RT. Proteins were isolated by methanol/chloroform precipitation (93). The protein pellet was resuspended (~5 mg/mL) in 6 M Guanidine HCl 50mM EPPS, pH 8.5 with gentle pipetting and heated to 60°C for five minutes. For approximately 100-400  $\mu$ g protein per condition the sample was diluted to 2 M Guanidine with 5mM EPPS, pH 9.0 and digested with LysC (Wako Chemicals) at 20ng/ $\mu$ L at RT for 14 hours. Next, we diluted Guanidine HCl to 0.5 M with 5mM EPPS pH 9.0 and digested further additional LysC at 20 ng/ $\mu$ L for ~15 minutes at RT, then added 10 ng/ $\mu$ L of sequencing grade Trypsin (Roche) and co-incubated at 37°C for 8 hours in an incubator. For each sample ~100-400  $\mu$ g of peptides were dried down in a SpeedVac and resuspended with 100-150  $\mu$ L of 500 mM EPPS, pH 8.0 respectively. If a pH is of ~8.0 is not achieved, an additional ~25-50mM of HCl was added. For labeling, to each sample we added 15-50  $\mu$ L of TMT stock solution (0.2 mg/40  $\mu$ L ACN) and incubated at RT for 2 hours (10  $\mu$ g:1.5  $\mu$ L peptide to TMT). Thereafter, we quenched the reaction with 10 mM Hydroxylamine for 15 minutes. All conditions were combined and acidified by addition of phosphoric acid to 5% and were clarified by spinning at 21K RCF for 20 minutes. Samples were subjected to C18 solid-phase extraction (50mg, SPE) (SepPak, Waters) to desalt and isolate peptides. To reduce sample complexity, peptides were resuspended in a 10 mM sodium carbonate buffer (pH 8.0), then fractionated by medium pH reverse-phase HPLC (Zorbax 300Extend-C18, 4.6 X 250 mm column, Agilent) using an Acetonitrile gradient from 5% - 39%. With a flow rate of 0.8 mL/min, fractions were collected into a 96 well-plate every 38 seconds, then pooled into 24 fractions by combining alternating wells from each column of the plate. Each fraction was dried and resuspended in 20  $\mu$ L of 1% phosphoric acid. Peptides from each fraction were desalted and extracted once more with reverse-phase purification, resuspended in 10  $\mu$ L 1% formic acid. ~4  $\mu$ L per fraction were analyzed by LC-MS.

## Phosphatase treatment

To phosphatase treat some samples without affecting the untreated conditions after multiplexing or at any subsequent steps, we made use of a thermally unstable phosphatase, which can easily be inactivated. We used the temperature labile Shrimp Alkaline Phosphatase (Affymetrix, product #78390). To minimize volume added to the samples, the phosphatase was concentrated to ~4U /  $\mu$ L on a 5K Amicon Ultra filter, spun at 4°C. Since the supplied buffer contains Tris, which can interfere with TMT labeling, we exchanged this buffer with 10mM EPPS at pH 8.0 and stored the enzyme in 50% glycerol. We see no activity loss from the buffer exchange, as assayed by p-nitrophenyl phosphate (pNPP) hydrolysis. Following completion of trypsin digestion, we allowed the temperature to cool to RT then added 10mM MgCl 0.1mM EDTA, 5mM EPPS pH 8.5. To the two phosphatase treated conditions, we added enzyme at a ratio of 3:1 peptide to phosphatase units and incubated for 12 hours at RT without purifying the peptides away from the proteases. The incubation is done in the presence of proteases as the dephosphorylated peptide creates a better substrate and allows for proteolysis of an otherwise missed cleavage caused by the charge of the phospho-group. Allowing for further cleavage of dephosphorylated peptides mimics the effect of an endogenous phosphatase more closely; otherwise the forms with missed cleavages will have lower abundance in the untreated samples and confound analysis. We determined that at RT, LysC does not destroy phosphatase, while Trypsin does but at a reduced rate. The 3:1 ratio used gives sufficient activity while avoiding any proteolysis of the phosphatase from dominating the MS signal. After incubation, samples were lyophilized to dryness, and resuspended per the TMT-MS protocol discussed above. Importantly, all samples were incubated for 5 minutes to 65° C to destroy phosphatase activity in a water bath (inhibition under these conditions was confirmed beforehand with pNPP activity assays). Samples were cooled to RT before proceeding with the MS sample preparation.



## Phospho-peptide enrichment

TMT-labeled peptides were desalted and dried down into a pellet, which was resuspended in Binding Buffer (85% 11.1M Lactic Acid, 50% Acetonitrile, pH ~1.5-2.0) at 10 mg/mL and spun for 30 minutes at 21K RCF at RT. 5  $\mu$ m Titanium Dioxide microspheres (GL Sciences 5020-75000) were added at 8:1 peptide to bead ratio (by weight) and washed 3x with 1 mL of Binding Buffer. Peptides were added to dried Titanium Dioxide beads and incubated for 1 hr at RT with constant agitation. PTFE membrane filters (0.2  $\mu$ m low-binding hydrophilic, Millipore UFC30LG25) were washed three times with Binding Buffer, then used to filter the TiO<sub>2</sub> microspheres, spinning at no more than 10K rcf until dryness. The first flow-through was used for a second serial enrichment as described below (A and B enrichments). The final flow-through was saved and used as a protein replicate. The A and B enrichments were each washed twice with two column volumes of 50% Acetonitrile, 0.1% Trifluoroacetic Acid and then twice with 25% Acetonitrile, 0.1% Trifluoroacetic Acid. Phosphopeptides were eluted from the beads 3 times with 1 column volume of 50-200mM of KH<sub>2</sub>PO<sub>4</sub>, pH 10. Beads were incubated in elution buffer for 5 minutes before elution with occasional agitation; the 3 eluates were combined (the A and B enrichments remained separated), acidified with 10% formic acid and 0.5% TFA and desalted on C18 SepPak. We found if more than ~15 mg of beads were used in one filter, the specificity of the enrichment suffered as the column clogs and causes the washes and elution to be less efficient. Therefore, for the second two experiments, we split the sample onto 10 columns processed in parallel for the primary enrichment. Since the peptides are pre-labeled and already multiplexed, the measured peptide ratios are unaffected by splitting the samples. For the secondary enrichment (or the 'B' enrichment), the washing steps were performed in an Eppendorf tube and the beads were removed by pelleting. The A and B enrichments and the flow-through were desalted. The flow-through sample was fractionated with HPLC as described above. For the enriched samples, peptides were subjected to an offline Strong Cation Exchange fractionation adapted from Dephoure and Gygi (94). Peptides were re-suspended in Buffer A (7mM KH<sub>2</sub>PO<sub>4</sub>, pH 2.65 and 30% ACN) and loaded onto 20 $\mu$ m, 30 angstrom PolySulfoethyl A beads (Nest Group, BMSE2003). Salt cuts were made by mixing appropriate ratios of Buffer A with Buffer B (7mM KH<sub>2</sub>PO<sub>4</sub>, pH 2.65, 30% ACN, and 350 mM KCl) for Enrichment A: 0, 5, 10, 20, 40, 60, and 350mM, for Enrichment B: 0, 5, 10, 40, 350. Fractions were desalted on STAGE tips and analyzed by mass spectrometry.

## LC-MS analysis

Analysis performed essentially as previously described (14, 16), with the main modification being the use of 5-notch MS3 on the protein-level and 3-notch MS3 on the phospho-level (95). Phosphorylation searches were performed with differential modification of +79.9663304104 on Serine and Threonine. Tyrosine was excluded as we found the majority of the mapped tyrosine sites were erroneous identifications. Phospho-sites were localized with in-house software based on Ascore (96). Peptides with multiple phospho-sites are reported as "composite sites" and noted with a ";" delimiting each modified residue. All searches (for the protein replicates, phospho replicates, supernatant, ubiquitin pull downs) were mapped to a single Protein Map and subjected to one Linear Discriminator/ProteinSieve Analysis to control the false discovery rate. Raw data is provided in Table S6, processed protein and phosphorylation data in Table S7 and S8 respectively. See accession section for a link to the unprocessed spectra.

## Estimating a false discovery rate for protein loss

The full methodology is detailed and visualized in Fig. S2. The false discovery rate cutoff was calculated by comparing the geometric distance of the experimental data along with iteratively randomized data to an idealized degradation trend. The FDR is defined as the chance that a random trend could appear at a certain cosine distance from an idealized degradation trend.

## Classification of released proteins and novel APC substrates

We classified a protein as released (rather than degraded) either by direct experimental evidence, annotation, or evidence in the literature. In most cases, a protein that decreased in the egg could be clearly detected as increasing in abundance in the media. There were several cases where a protein decreased in the egg that we did not detect in the media, but these were clearly annotated as secreted proteins or were of a similar class as proteins for which we had direct evidence. For example, we infer the Exocyst gene family are released into the media because vesicle trafficking and components of the exocytosis machinery were detected recently in the perivitelline space in frogs (88). To be classified as a novel APC substrate, we

imposed the following criteria: the protein passes a 1% FDR threshold for decreasing abundance, had no evidence (direct or from literature) of release from the egg, no evidence of a specious trend from phosphorylation (this was established by looking for reciprocal phosphorylations, or more generally, whether all the detected peptides behaved similarly, as a modification induced trend will often occur only on one of the detected peptides, whereas the rest are flat), and was ubiquitinated.

### Estimating maximal degradation rates of the APC/Proteasome

$[sub] \xrightleftharpoons[(2)dub]{(1)APC} [sub - ub] \xrightarrow{(3)proteasome} X$  The reaction scheme for ubiquitination-dependent degradation of a substrate by the protein is shown on the left. It is difficult to estimate the  $K_{cat}$  for the APC (Reaction 1) or de-ubiquitination activity (Reaction 2).

However, we can approximate the rate of the proteasome reaction (Reaction 3). We estimate  $1/K_{degradation}$  as ~80 seconds, given that  $1/K_{degradation} = N \times (1/([Proteasome] \times K_{on}) + 1/K_{cat})$ .  $N$ , number of times a substrate must bind before degradation occurs, is ~6;  $K_{on}$  was measured at  $\sim 10^5 \text{ M}^{-1} \text{ s}^{-1}$ ;  $K_{cat}$  is ~20 seconds per substrate bound (40). The proteasome concentration is  $\sim 1 \mu\text{M}$  in the frog egg (14). For  $[Substrate_{Ubiqu}]$ , though we cannot infer from rates 1 and 2, we can estimate that 1% or at most 10% of the substrate concentration is modified at steady state (97). The total concentration of known APC substrates is  $\sim 400 \text{ nM}$ , therefore  $[Substrate_{Ubiqu}] = 4\text{-}40 \text{ nM}$ . The rate of degradation is  $\sim 3\text{-}30 \text{ nM/min}$  (or  $[Substrate_{Ubiqu}] / K_{degradation}$ ). Our estimated rate of degradation from the data is  $\sim 14 \text{ nM/min}$ , or  $150 \text{ pg/min}$  (Fig. 2A), and the original concentration estimates contain  $\sim 2$  fold error (14). Thus, with these parameters, an estimate of the upper bound of the degradation rate overlaps with the range measured from the data.

### Phospho-Stoichiometry code

The full principle and methodology is included in the Supplementary Information. The MATLAB implementation for whole datasets can be found at <https://github.com/marcpresler/OccupancyMS>. The Total Least Squares regression package (98) is adapted from File ID: #31109 on MathWorks File Exchange. Output data is shown in Table S9.

### Additional methods included in Supplementary Information

EM imaging time series, data normalization, calculating absolute changes, K-means clustering, multi-site artifact correction, Motif and Gene set enrichment analysis.

### Author Contributions

Conceptualization: MP, MW, MWK. Experiments: MP, EV, MW, PC, RK. Analysis: MP, EV, MW, LP. Stoichiometry method: MP, AMK, MW, EV. Writing: MP, EV, MW, AMK, MWK. Supervision: MW, SPG, MWK.

### Acknowledgements

This work was supported by NIH grants R01GM103785 and R01HD073104 to M.W.K. We thank Chris Rose and Joao Paulo for help with mass spectrometers and the Gygi lab computational team for bioinformatics support, Ying Lu, Tao Wu, and Tim Mitchison for helpful discussion, Katy Hartman, John Ingraham, and Randy King for insight and inspiration toward the stoichiometry calculation, and Becky Ward for critical comments on the manuscript. We thank the PRIDE team for proteomic data distribution.

### Accession Numbers

The mass spectrometry proteomics data have been deposited to the ProteomeXchange Consortium via the PRIDE (99) partner repository with the dataset identifier PXD006639.

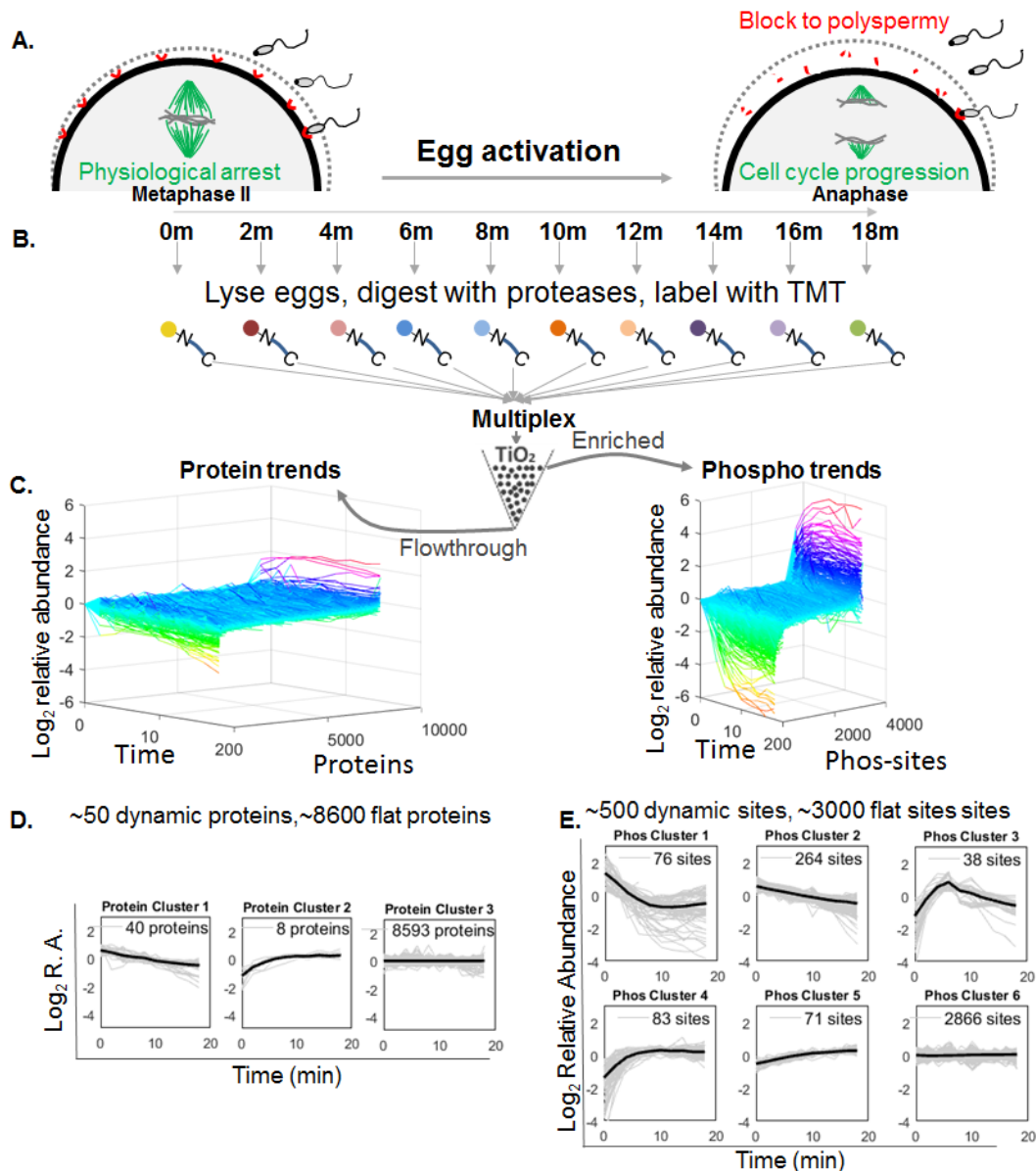
## References

1. Izawa D & Pines J (2011) How APC/C-Cdc20 changes its substrate specificity in mitosis. *Nature cell biology* 13(3):223-233.
2. Tunquist BJ & Maller JL (2003) Under arrest: cytostatic factor (CSF)-mediated metaphase arrest in vertebrate eggs. *Genes & development* 17(6):683-710.
3. Singh SA, et al. (2014) Co-regulation proteomics reveals substrates and mechanisms of APC/C-dependent degradation. *The EMBO journal* 33(4):385-399.
4. Liu Z, et al. (2012) GPS-ARM: computational analysis of the APC/C recognition motif by predicting D-boxes and KEN-boxes. *PLoS One* 7(3):e34370.
5. Sivakumar S & Gorbsky GJ (2015) Spatiotemporal regulation of the anaphase-promoting complex in mitosis. *Nature reviews. Molecular cell biology* 16(2):82-94.
6. Karsenti E, Bravo R, & Kirschner M (1987) Phosphorylation changes associated with the early cell cycle in *Xenopus* eggs. *Developmental biology* 119(2):442-453.
7. Tokmakov AA, Stefanov VE, Iwasaki T, Sato K, & Fukami Y (2014) Calcium signaling and meiotic exit at fertilization in *Xenopus* egg. *Int J Mol Sci* 15(10):18659-18676.
8. Bement WM & Capco DG (1989) Activators of protein kinase C trigger cortical granule exocytosis, cortical contraction, and cleavage furrow formation in *Xenopus laevis* oocytes and eggs. *The Journal of cell biology* 108(3):885-892.
9. Markoulaki S, Matson S, & Ducibella T (2004) Fertilization stimulates long-lasting oscillations of CaMKII activity in mouse eggs. *Developmental biology* 272(1):15-25.
10. Wuhr M, et al. (2012) Accurate multiplexed proteomics at the MS2 level using the complement reporter ion cluster. *Analytical chemistry* 84(21):9214-9221.
11. McAlister GC, et al. (2014) MultiNotch MS3 enables accurate, sensitive, and multiplexed detection of differential expression across cancer cell line proteomes. *Analytical chemistry* 86(14):7150-7158.
12. Thompson A, et al. (2003) Tandem mass tags: a novel quantification strategy for comparative analysis of complex protein mixtures by MS/MS. *Analytical chemistry* 75(8):1895-1904.
13. McAlister GC, et al. (2012) Increasing the multiplexing capacity of TMTs using reporter ion isotopologues with isobaric masses. *Analytical chemistry* 84(17):7469-7478.
14. Wuhr M, et al. (2014) Deep Proteomics of the *Xenopus laevis* Egg using an mRNA-Derived Reference Database. *Current biology : CB* 24(13):1467-1475.
15. Peshkin L, et al. (2015) On the Relationship of Protein and mRNA Dynamics in Vertebrate Embryonic Development. *Developmental cell* 35(3):383-394.
16. Wuhr M, et al. (2015) The Nuclear Proteome of a Vertebrate. *Current biology : CB* 25(20):2663-2671.
17. Kronja I, et al. (2014) Quantitative proteomics reveals the dynamics of protein changes during *Drosophila* oocyte maturation and the oocyte-to-embryo transition. *Proceedings of the National Academy of Sciences of the United States of America* 111(45):16023-16028.
18. Kronja I, et al. (2014) Widespread changes in the posttranscriptional landscape at the *Drosophila* oocyte-to-embryo transition. *Cell Rep* 7(5):1495-1508.
19. Krauchunas AR, Horner VL, & Wolfner MF (2012) Protein phosphorylation changes reveal new candidates in the regulation of egg activation and early embryogenesis in *D. melanogaster*. *Developmental biology* 370(1):125-134.
20. Guo H, et al. (2015) Phosphoproteomic network analysis in the sea urchin *Strongylocentrotus purpuratus* reveals new candidates in egg activation. *Proteomics* 15(23-24):4080-4095.
21. Kettenbach AN & Gerber SA (2011) Rapid and reproducible single-stage phosphopeptide enrichment of complex peptide mixtures: application to general and phosphotyrosine-specific phosphoproteomics experiments. *Analytical chemistry* 83(20):7635-7644.
22. Thingholm TE, Jorgensen TJ, Jensen ON, & Larsen MR (2006) Highly selective enrichment of phosphorylated peptides using titanium dioxide. *Nat Protoc* 1(4):1929-1935.
23. Fila J & Honys D (2012) Enrichment techniques employed in phosphoproteomics. *Amino Acids* 43(3):1025-1047.
24. Olsen JV, et al. (2010) Quantitative phosphoproteomics reveals widespread full phosphorylation site occupancy during mitosis. *Science signaling* 3(104):ra3.
25. Wu R, et al. (2011) A large-scale method to measure absolute protein phosphorylation stoichiometries. *Nature methods* 8(8):677-683.
26. Curran TG, Zhang Y, Ma DJ, Sarkaria JN, & White FM (2015) MARQUIS: a multiplex method for absolute quantification of peptides and posttranslational modifications. *Nat Commun* 6:5924.
27. Gurdon JB, Wakefield, L. (1986) Microinjection of amphibian oocytes and eggs for the analysis of transcription. *Microinjection and Organelle Transplantation Techniques* ed J. E. Celis AG, A. Loyer (Academic Press, London).
28. Bernardini G, Andrietti F, Camantini M, & Cosson MP (1988) *Xenopus* spermatozoon: correlation between shape and motility. *Gamete Res* 20(2):165-175.

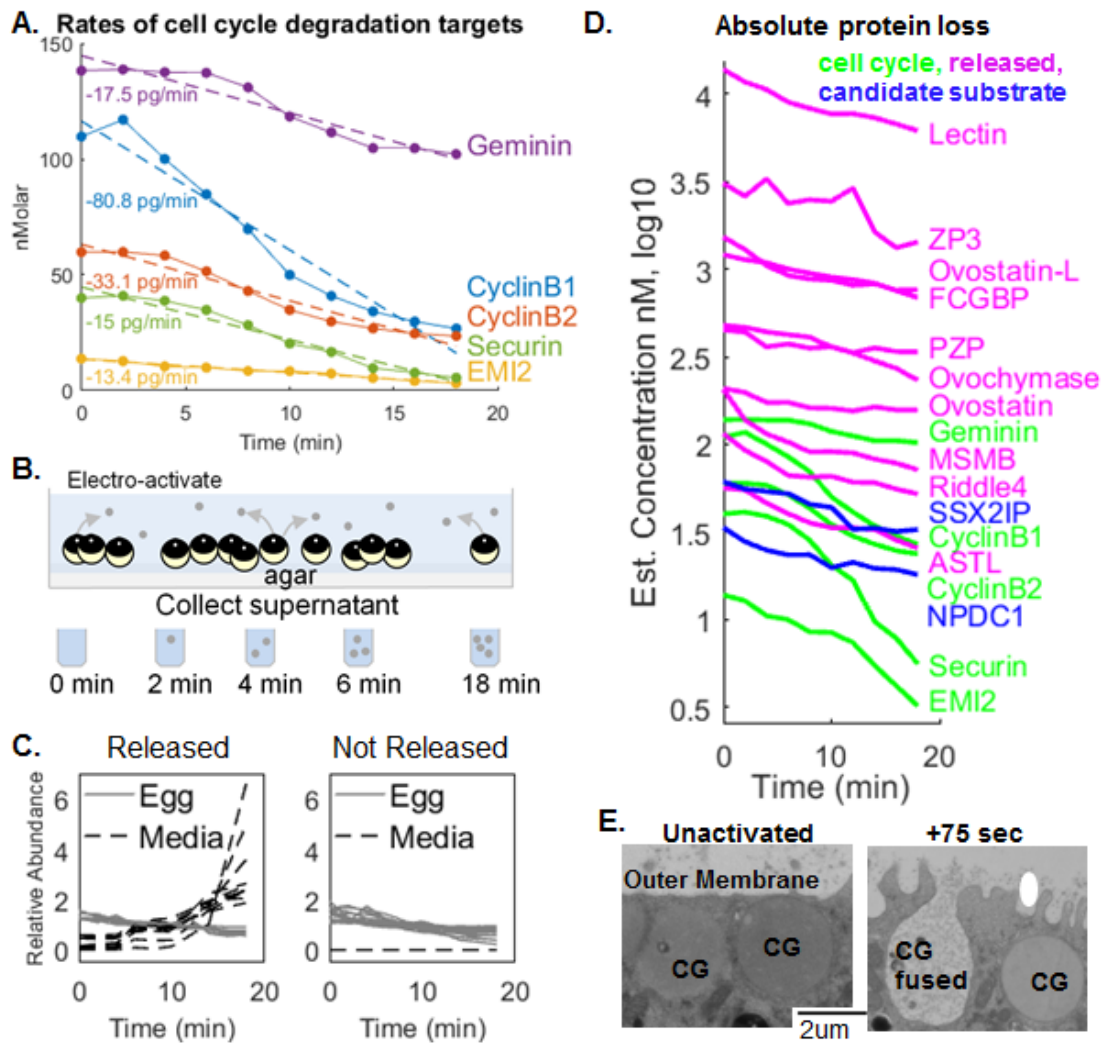
29. Gerhart J, Wu M, & Kirschner M (1984) Cell cycle dynamics of an M-phase-specific cytoplasmic factor in *Xenopus laevis* oocytes and eggs. *The Journal of cell biology* 98(4):1247-1255.
30. Ubbels GA, Hara K, Koster CH, & Kirschner MW (1983) Evidence for a functional role of the cytoskeleton in determination of the dorsoventral axis in *Xenopus laevis* eggs. *Journal of embryology and experimental morphology* 77:15-37.
31. McGarry TJ & Kirschner MW (1998) Geminin, an inhibitor of DNA replication, is degraded during mitosis. *Cell* 93(6):1043-1053.
32. Zou H, McGarry TJ, Bernal T, & Kirschner MW (1999) Identification of a vertebrate sister-chromatid separation inhibitor involved in transformation and tumorigenesis. *Science* 285(5426):418-422.
33. Cohen-Fix O, Peters JM, Kirschner MW, & Koshland D (1996) Anaphase initiation in *Saccharomyces cerevisiae* is controlled by the APC-dependent degradation of the anaphase inhibitor Pds1p. *Genes & development* 10(24):3081-3093.
34. Hansen DV, Tung JJ, & Jackson PK (2006) CaMKII and polo-like kinase 1 sequentially phosphorylate the cytostatic factor Emi2/XErp1 to trigger its destruction and meiotic exit. *Proceedings of the National Academy of Sciences of the United States of America* 103(3):608-613.
35. Fang G, Yu H, & Kirschner MW (1998) Direct binding of CDC20 protein family members activates the anaphase-promoting complex in mitosis and G1. *Molecular cell* 2(2):163-171.
36. Prinz S, Hwang ES, Visintin R, & Amon A (1998) The regulation of Cdc20 proteolysis reveals a role for APC components Cdc23 and Cdc27 during S phase and early mitosis. *Current biology : CB* 8(13):750-760.
37. Shirayama M, Zachariae W, Ciosk R, & Nasmyth K (1998) The Polo-like kinase Cdc5p and the WD-repeat protein Cdc20p/fizzy are regulators and substrates of the anaphase promoting complex in *Saccharomyces cerevisiae*. *The EMBO journal* 17(5):1336-1349.
38. Floyd S, Pines J, & Lindon C (2008) APC/C Cdh1 targets aurora kinase to control reorganization of the mitotic spindle at anaphase. *Current biology : CB* 18(21):1649-1658.
39. Stewart S & Fang G (2005) Destruction box-dependent degradation of aurora B is mediated by the anaphase-promoting complex/cyclosome and Cdh1. *Cancer Res* 65(19):8730-8735.
40. Lu Y, Lee BH, King RW, Finley D, & Kirschner MW (2015) Substrate degradation by the proteasome: a single-molecule kinetic analysis. *Science* 348(6231):1250834.
41. Holloway SL, Glotzer M, King RW, & Murray AW (1993) Anaphase is initiated by proteolysis rather than by the inactivation of maturation-promoting factor. *Cell* 73(7):1393-1402.
42. King RW, *et al.* (1995) A 20S complex containing CDC27 and CDC16 catalyzes the mitosis-specific conjugation of ubiquitin to cyclin B. *Cell* 81(2):279-288.
43. van der Velden HM & Lohka MJ (1993) Mitotic arrest caused by the amino terminus of *Xenopus* cyclin B2. *Molecular and cellular biology* 13(3):1480-1488.
44. Kim W, *et al.* (2011) Systematic and quantitative assessment of the ubiquitin-modified proteome. *Molecular cell* 44(2):325-340.
45. Barez F, *et al.* (2013) The centriolar satellite protein SSX2IP promotes centrosome maturation. *The Journal of cell biology* 202(1):81-95.
46. Klinger M, *et al.* (2014) The novel centriolar satellite protein SSX2IP targets Cep290 to the ciliary transition zone. *Molecular biology of the cell* 25(4):495-507.
47. Wang W, Wu T, & Kirschner MW (2014) The master cell cycle regulator APC-Cdc20 regulates ciliary length and disassembly of the primary cilium. *Elife* 3:e03083.
48. Sansal I, Dupont E, Toru D, Evrard C, & Rouget P (2000) NPDC-1, a regulator of neural cell proliferation and differentiation, interacts with E2F-1, reduces its binding to DNA and modulates its transcriptional activity. *Oncogene* 19(43):5000-5009.
49. Burkart AD, Xiong B, Baibakov B, Jimenez-Movilla M, & Dean J (2012) Ovastacin, a cortical granule protease, cleaves ZP2 in the zona pellucida to prevent polyspermy. *The Journal of cell biology* 197(1):37-44.
50. Lindsay LL & Hedrick JL (1995) Isolation and characterization of ovochymase, a chymotrypsin-like protease released during *Xenopus laevis* egg activation. *Developmental biology* 167(2):513-516.
51. Dunbar BS, *et al.* (1994) The mammalian zona pellucida: its biochemistry, immunochemistry, molecular biology, and developmental expression. *Reprod Fertil Dev* 6(3):331-347.
52. Lindsay LL, Yang JC, & Hedrick JL (2002) Identification and characterization of a unique *Xenopus laevis* egg envelope component, ZPD. *Development, growth & differentiation* 44(3):205-212.
53. Nagase H & Harris ED, Jr. (1983) Ovostatin: a novel proteinase inhibitor from chicken egg white. II. Mechanism of inhibition studied with collagenase and thermolysin. *J Biol Chem* 258(12):7490-7498.
54. Yamada Y & Aketa K (1988) Ovostatin, an endogenous trypsin inhibitor of sea urchin eggs: purification and characterization of ovostatin from eggs of the sea urchin, *Strongylocentrotus intermedius*. *Gamete Res* 19(3):265-275.
55. The UniProt C (2017) UniProt: the universal protein knowledgebase. *Nucleic acids research* 45(D1):D158-D169.

56. Lim JC, Kurihara S, Tamaki R, Mashima Y, & Maeno M (2014) Expression and localization of Rdd proteins in *Xenopus* embryo. *Anat Cell Biol* 47(1):18-27.
57. Johansson ME, Thomsson KA, & Hansson GC (2009) Proteomic analyses of the two mucus layers of the colon barrier reveal that their main component, the Muc2 mucin, is strongly bound to the Fcgbp protein. *Journal of proteome research* 8(7):3549-3557.
58. Gasper J & Swanson WJ (2006) Molecular population genetics of the gene encoding the human fertilization protein zonadhesin reveals rapid adaptive evolution. *Am J Hum Genet* 79(5):820-830.
59. Toyama BH, *et al.* (2013) Identification of long-lived proteins reveals exceptional stability of essential cellular structures. *Cell* 154(5):971-982.
60. Chaube R (2014) Absolute quantitation of post-translational modifications. *Front Chem* 2:58.
61. Steen H, Jebanathirajah JA, Springer M, & Kirschner MW (2005) Stable isotope-free relative and absolute quantitation of protein phosphorylation stoichiometry by MS. *Proceedings of the National Academy of Sciences of the United States of America* 102(11):3948-3953.
62. Tu JSaD (1995) *The Jackknife and Bootstrap* (Springer-Verlag) 1st Ed.
63. Sharma K, *et al.* (2014) Ultradeep human phosphoproteome reveals a distinct regulatory nature of Tyr and Ser/Thr-based signaling. *Cell Rep* 8(5):1583-1594.
64. Sun QY & Schatten H (2006) Regulation of dynamic events by microfilaments during oocyte maturation and fertilization. *Reproduction* 131(2):193-205.
65. Bement WM, Sokac AM, & Mandato CA (2003) Four-dimensional imaging of cytoskeletal dynamics in *Xenopus* oocytes and eggs. *Differentiation* 71(9-10):518-527.
66. Sokac AM, Co C, Taunton J, & Bement W (2003) Cdc42-dependent actin polymerization during compensatory endocytosis in *Xenopus* eggs. *Nature cell biology* 5(8):727-732.
67. Guttinger S, Laurell E, & Kutay U (2009) Orchestrating nuclear envelope disassembly and reassembly during mitosis. *Nature reviews. Molecular cell biology* 10(3):178-191.
68. Antonin W, Ellenberg J, & Dultz E (2008) Nuclear pore complex assembly through the cell cycle: regulation and membrane organization. *FEBS Lett* 582(14):2004-2016.
69. Raices M & D'Angelo MA (2012) Nuclear pore complex composition: a new regulator of tissue-specific and developmental functions. *Nature reviews. Molecular cell biology* 13(11):687-699.
70. Dultz E, *et al.* (2008) Systematic kinetic analysis of mitotic dis- and reassembly of the nuclear pore in living cells. *The Journal of cell biology* 180(5):857-865.
71. Mackay DR & Ullman KS (2011) Coordinating postmitotic nuclear pore complex assembly with abscission timing. *Nucleus* 2(4):283-288.
72. Meszaros N, *et al.* (2015) Nuclear pore basket proteins are tethered to the nuclear envelope and can regulate membrane curvature. *Developmental cell* 33(3):285-298.
73. Laurell E, *et al.* (2011) Phosphorylation of Nup98 by multiple kinases is crucial for NPC disassembly during mitotic entry. *Cell* 144(4):539-550.
74. Franks TM & Hetzer MW (2013) The role of Nup98 in transcription regulation in healthy and diseased cells. *Trends Cell Biol* 23(3):112-117.
75. Cross MK & Powers MA (2011) Nup98 regulates bipolar spindle assembly through association with microtubules and opposition of MCAK. *Molecular biology of the cell* 22(5):661-672.
76. Sutovsky P, Simerly C, Hewitson L, & Schatten G (1998) Assembly of nuclear pore complexes and annulate lamellae promotes normal pronuclear development in fertilized mammalian oocytes. *Journal of cell science* 111 (Pt 19):2841-2854.
77. Nuccitelli R, Yim DL, & Smart T (1993) The sperm-induced Ca<sup>2+</sup> wave following fertilization of the *Xenopus* egg requires the production of Ins(1, 4, 5)P<sub>3</sub>. *Developmental biology* 158(1):200-212.
78. Backs J, *et al.* (2010) The gamma isoform of CaM kinase II controls mouse egg activation by regulating cell cycle resumption. *Proceedings of the National Academy of Sciences of the United States of America* 107(1):81-86.
79. Wolf DP (1974) The cortical response in *Xenopus laevis* ova. *Developmental biology* 40(1):102-115.
80. Yang Q & Ferrell JE, Jr. (2013) The Cdk1-APC/C cell cycle oscillator circuit functions as a time-delayed, ultrasensitive switch. *Nature cell biology* 15(5):519-525.
81. Hara K, Tydeman P, & Kirschner M (1980) A cytoplasmic clock with the same period as the division cycle in *Xenopus* eggs. *Proceedings of the National Academy of Sciences of the United States of America* 77(1):462-466.
82. Murray AW & Kirschner MW (1989) Dominoes and clocks: the union of two views of the cell cycle. *Science* 246(4930):614-621.
83. Hsu JY, Reimann JD, Sorensen CS, Lukas J, & Jackson PK (2002) E2F-dependent accumulation of hEmi1 regulates S phase entry by inhibiting APC(Cdh1). *Nature cell biology* 4(5):358-366.
84. Cascio SM & Wassarman PM (1982) Program of early development in the mammal: post-transcriptional control of a class of proteins synthesized by mouse oocytes and early embryos. *Developmental biology* 89(2):397-408.
85. Latham KE, Garrels JI, Chang C, & Solter D (1991) Quantitative analysis of protein synthesis in mouse embryos. I. Extensive reprogramming at the one- and two-cell stages. *Development* 112(4):921-932.

86. Lee G, Hynes R, & Kirschner M (1984) Temporal and spatial regulation of fibronectin in early *Xenopus* development. *Cell* 36(3):729-740.
87. Schuel H & Schuel R (1987) Benzohydroxamic acid induces polyspermic fertilization in the sea urchin *Arbacia punctulata*. *Cell Biol Int Rep* 11(3):189-196.
88. Danilchik M & Tumarkin T (2017) Exosomal trafficking in *Xenopus* development. *Genesis* 55(1-2).
89. Penn A & Gledhill BL (1972) Acrosomal proteolytic activity of amphibian sperm. A direct demonstration. *Exp Cell Res* 74(1):285-288.
90. Solari FA, Dell'Aica M, Sickmann A, & Zahedi RP (2015) Why phosphoproteomics is still a challenge. *Mol Biosyst* 11(6):1487-1493.
91. Humphrey SJ, Azimifar SB, & Mann M (2015) High-throughput phosphoproteomics reveals in vivo insulin signaling dynamics. *Nature biotechnology* 33(9):990-995.
92. Tsai CF, *et al.* (2015) Large-scale determination of absolute phosphorylation stoichiometries in human cells by motif-targeting quantitative proteomics. *Nat Commun* 6:6622.
93. Wessel D & Flugge UI (1984) A method for the quantitative recovery of protein in dilute solution in the presence of detergents and lipids. *Analytical biochemistry* 138(1):141-143.
94. Dephoure N & Gygi SP (2011) A solid phase extraction-based platform for rapid phosphoproteomic analysis. *Methods* 54(4):379-386.
95. Erickson BK, *et al.* (2015) Evaluating multiplexed quantitative phosphopeptide analysis on a hybrid quadrupole mass filter/linear ion trap/orbitrap mass spectrometer. *Analytical chemistry* 87(2):1241-1249.
96. Beausoleil SA, Villen J, Gerber SA, Rush J, & Gygi SP (2006) A probability-based approach for high-throughput protein phosphorylation analysis and site localization. *Nature biotechnology* 24(10):1285-1292.
97. Dimova NV, *et al.* (2012) APC/C-mediated multiple monoubiquitylation provides an alternative degradation signal for cyclin B1. *Nature cell biology* 14(2):168-176.
98. Bednarova IPaD (2010) Total Least Squares Approach to Modeling: A Matlab Toolbox. *Acta Montanistica Slovaca* 15(2):pp. 158-170.
99. Vizcaino JA, *et al.* (2016) 2016 update of the PRIDE database and its related tools. *Nucleic acids research* 44(D1):D447-456.



**Figure 1: Experimental overview.** A) Fertilization and egg activation releases metaphase-arrested oocytes into anaphase and initiates the block to polyspermy. We mimicked fertilization via electrical activation to maximize synchrony. B) Upon activation, protein dynamics and phospho-site dynamics were measured every two minutes with multiplexed proteomics. C) Modified waterfall plots displaying the trend of every protein and phospho-site in the dataset, sorted by clusters shown below. D/E) K-means clustering to summarize classes of protein and phosphorylation trends.

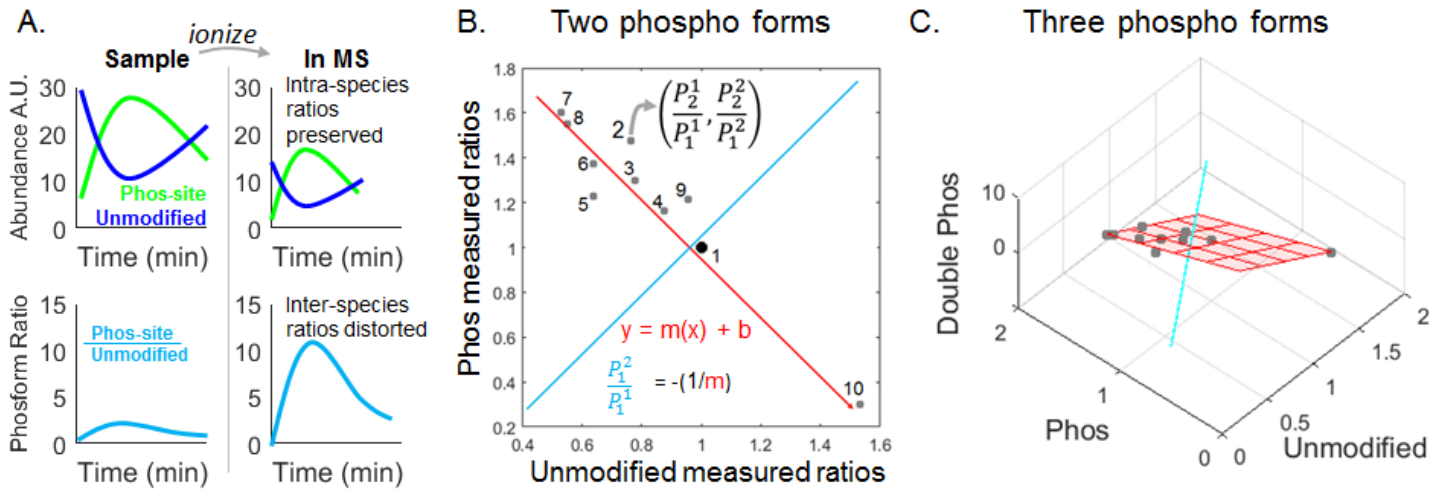


**Figure 2: Protein loss by degradation and release.** A) Time series of known degradation targets plotted by their absolute changes. Dashed lines represent a linear fit to the approximate zero-order kinetics. B) Experiment design to test for protein secretion upon fertilization. C) Time series for proteins detected in both the egg and supernatant or the egg alone. D) Time series of protein loss plotted by their absolute abundance and classified by the mechanism of loss. E) Time series electron microscopy images of the cortical granules (CG) on the egg cortex.



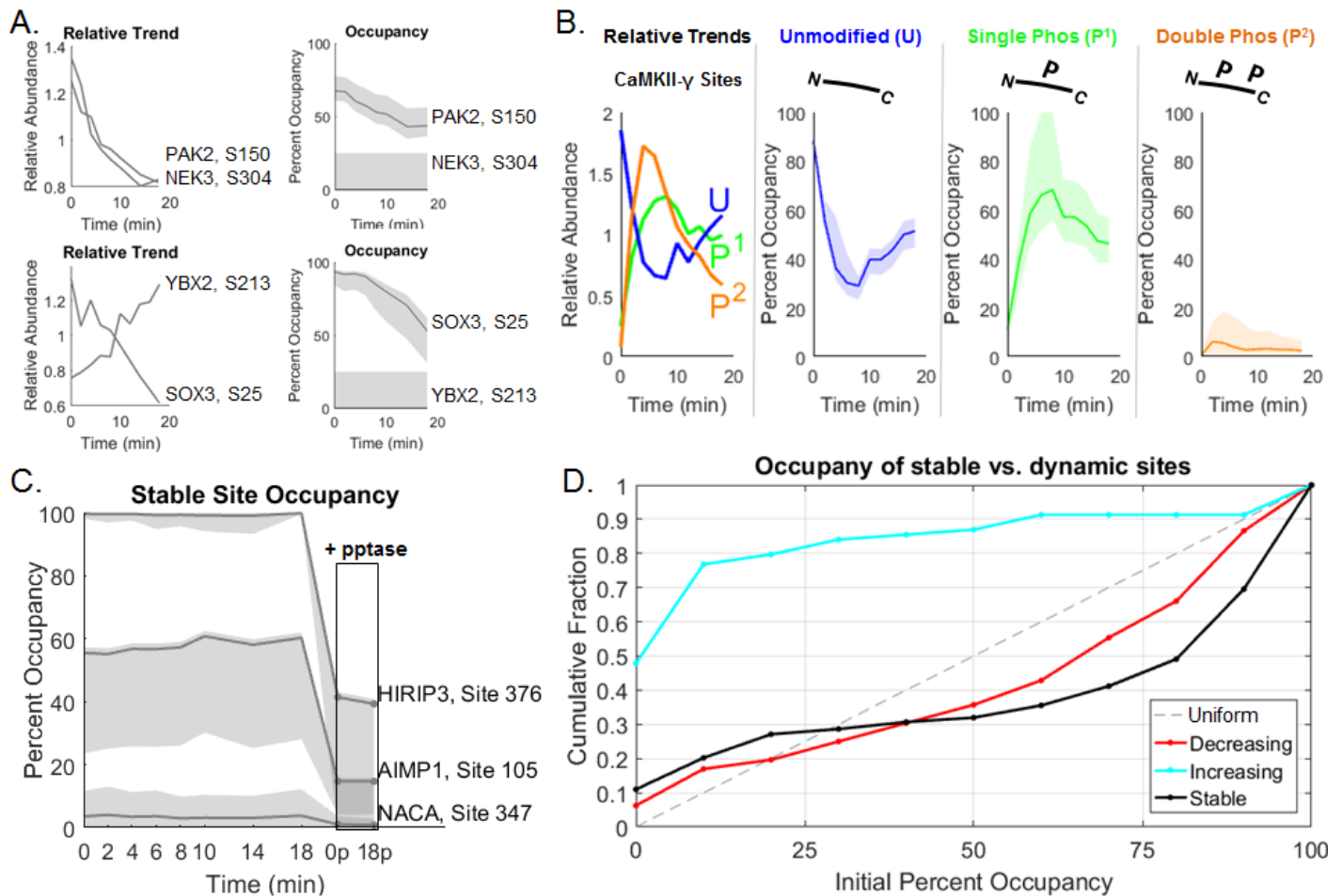
|                                   |  |     |
|-----------------------------------|--|-----|
| Measured parameters:              | $\frac{P_i^1}{P_1^1}, \dots, \frac{P_i^j}{P_1^j}; \quad c_{i,1} = \frac{T_i}{T_1}$   | (1) |
| Conservation constraint:          | $\left(\sum_{j=1}^M P_1^j\right) c_{i,1} = \sum_{j=1}^M P_i^j$   | (2) |
| Expression of (1) in (2):         | $0 = \sum_{j=1}^M P_1^j \left(\frac{P_i^j}{P_1^j} - c_{i,1}\right)$  | (3) |
| Rearrange Eq. (3) in vector form: | $0 = \left(\left[\frac{P_i^1}{P_1^1}, \dots, \frac{P_i^M}{P_1^M}\right] - \bar{1}c_{i,1}\right) \cdot [P_1^1, \dots, P_1^M]$ | (4) |

**Mathbox: The geometric relationship between the measured peptide form ratios and their unknown absolute values.** Let  $P_i^j$  equal the absolute abundance of form  $j$  in condition  $i$ , where  $j = 1, \dots, M$ , 1 = unmodified and  $M$  is the number of forms, and where  $i = 1, \dots, N$ , where  $N$  is the number of measurements.  $\frac{P_i^1}{P_1^1}$  is the MS signal at condition  $i$  normalized by the reference condition  $i = 1$ .  $c_{i,1}$  is the ratio of the protein T change (Eq. 1). The sum of all peptide forms is conserved or scaled by  $c$  (Eq. 2). Eq. 1 into Eq. 2 yields Eq. 3, which is written in vector form as Eq. 4. Eq. 4 shows that the vector of absolute values is orthogonal to the  $M-1$  dimensional subspace containing the measured ratios. When  $M = 2$ , this subspace is a line (Fig. 3B). For  $M > 2$ , this subspace is an  $M-1$  dimensional plane. For over-determined systems ( $N > M$ ), this subspace can be estimated with regression (Fig. 3, SI).

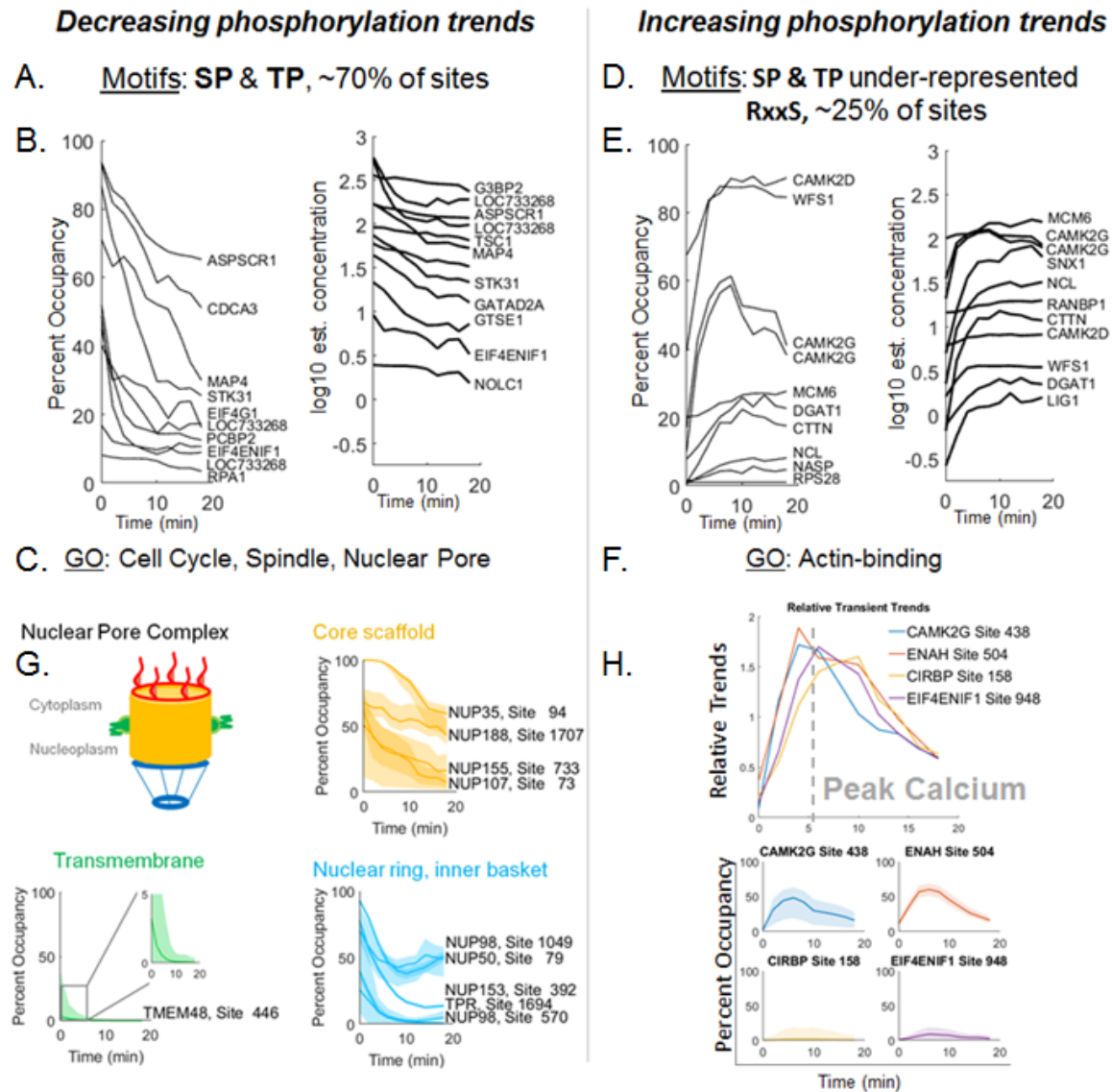


**Figure 3: Calculation of phospho-stoichiometry from multiplexed phospho-dynamics measurements.**

Demonstrating a graphical approach to estimating phospho-site occupancy of multiplexed data. A) Phospho-site occupancy cannot be directly calculated from the raw signal from the mass spectrometer because each species ionizes at different efficiencies. However, the relative changes between conditions are preserved. B-C) Visualization and estimating solutions to the over-determined system from multiplexed-MS data. B) For each condition, the measured ratio of change of the unmodified ( $P^1$ ) and single phosphorylated ( $P^2$ ) forms define coordinates in a 2D plane (see Mathbox). The solution to the over-determined system can be estimated by regression. The unknown  $P^2/P^1$  ratio is the negative inverse of the fit line slope (see Eq. 4, Fig. S8, and Supplementary Information). C) For more than two P forms, the known ratios define a higher dimensional plane (e.g., a 2-dimensional plane is fit in 3D space, defined by the  $P^1$ ,  $P^2$ , and double form  $P^3$ ).



**Figure 4: Occupancy of phosphorylation over time post-fertilization.** A) Time series of two kinases (NEK3, PKA2) and transcription factors (SOX3, YBX2) demonstrating how similar relative changes can give different occupancy changes. 95% confidence intervals are shown as shaded area. B) Phospho-occupancy time series of a multi-phosphorylated CaMKII- $\gamma$  peptide. C) Stoichiometry of three stable sites estimated with phosphatase treatment. Treated conditions are replicates of the 0 and 18min time points (boxed). D) Cumulative distributions of the occupancies at 0 minutes for phospho-sites that increase, decrease, or are stable. Uniform distributions would lie on the dotted line.



**Figure 5: Phospho dynamics following egg activation.** A) Motif enrichment analysis of decreasing trends ( $p < 0.01$ ). B) Example time series of proline-directed phosphorylation plotted as occupancy and absolute phosphate dynamics. C). Gene Set Enrichment Analysis (GSEA) of GO terms for dephosphorylated proteins ( $p < 0.01$ ). D) Motif analysis as in A. E) Examples of increasing phosphorylation plotted as in B. F) GSEA as in C. G) Phospho occupancy trends showing dephosphorylation of Nuclear Pore Complex (NPC) regions (color-coded), with confidence intervals. H) Relative and phospho-occupancy time series of proteins showing transient trends corresponding to the peak of Calcium concentrations.

**Table 1:** Total absolute change of each class of dynamic

| Class of Dynamic      | Absolute Change | % of Proteome |
|-----------------------|-----------------|---------------|
| Secretion             | 13,000 nM       | ~1%           |
| Protein Degradation   | 300 nM          | 0.01%         |
| Total Phosphorylation | 6,800 nM        | 0.3%          |
| Decreased             | 4,200 nM        | -             |
| Increased             | 2,600 nM        | -             |