

Saccharomyces cerevisiae as a Platform for Assessing Sphingolipid Lipid Kinase Inhibitors

Yugesh Kharel*, Sayeh Agah*, Anna J. Mendelson*, Oluwafunmilayo T. Eletu*, James Gesualdi*, Jeffrey S. Smith#, Webster L. Santos^ and Kevin R. Lynch*#

Departments of Pharmacology* and Biochemistry & Molecular Genetics#, University of Virginia, Charlottesville, Department of Chemistry and VT Center for Drug Discovery^, Virginia Tech, Blacksburg

Contact: Kevin R. Lynch (krl2z@virginia.edu; t: 1-434-924-2840)

Abstract

Successful medicinal chemistry campaigns to discover and improve sphingosine kinase inhibitors require a robust assay for screening chemical libraries and for determining rank order potencies. Existing assays for these enzymes are laborious, expensive and/or low throughput. The toxicity of excessive levels of phosphorylated sphingoid bases for the budding yeast, *Saccharomyces cerevisiae*, affords an assay wherein inhibitors added to the culture media rescue growth in a dose-dependent fashion. Herein, we describe a simple, inexpensive, and high throughput assay for assessing inhibitors of sphingosine kinase types 1 and 2 as well as ceramide kinase and for testing enzymatic activity of sphingosine kinase type 2 mutants. The assay was validated using recombinant enzymes and generally agrees with rank order of potencies of existing inhibitors.

Introduction

The sphingolipid kinases (sphingosine kinase (SphK) and ceramide kinase (CerK)), which are members of the fructose-6-phosphate kinase superfamily, catalyze the transfer of phosphate from ATP to the primary hydroxyl of sphinganine, sphingosine, phytosphingosine (SphK) or dihydroceramides and ceramides (CerK). Most, perhaps all, eukaryotes have two sphingosine kinase genes. In contrast, only a single ceramide kinase gene has been identified but not all eukaryotes have ceramide kinase activity. There has been much speculation that these enzymes could be therapeutic targets, but their validation as such requires drug-like inhibitors, the discovery of which is dependent in part on robust biochemical assays.

A widely used assay for sphingolipid kinases involves incubating the enzyme with sphingosine and γ - ^{32}P ATP (or γ - ^{33}P ATP), extracting non-polar compounds such as lipids with an organic solvent mixture and detecting the radioactive product by autoradiography after normal phase thin layer chromatography [1]. In our experience this assay is reliable, sensitive and can be used with either recombinant enzymes or cell/tissue lysates. However, the assay is cumbersome, time consuming and too low throughput to support a medicinal chemistry campaign. Alternative assays have been developed to obviate the use of radioactive substrate and/or to eliminate the organic solvent extraction step. Such assays use fluorescently labeled [2] or biotinylated [3] substrates or capture the radiolabeled S1P on cation exchange paper [4], on streptavidin-coated paper [3] or even on the walls of a 96 well plate [5]. Further, mass spectrometry based methods have been described [6], and kits for detection of the ADP product are available (e.g. Promega's ADP-Glo™ Kinase Assay). All of these assay procedures are more expensive and mostly lower throughput relative to the yeast-based assay discussed herein.

Given our need for a higher throughput, inexpensive assay for sphingosine kinases to assess new chemical entities, our attention was drawn to a recent report by Kashem *et al.* [7] describing the use of the budding yeast, *Saccharomyces cerevisiae*, as a platform to screen for human SphK1 inhibitors.

This assay takes advantage of the toxicity of excessive levels of phosphorylated LCBs (Long Chain Bases, *i.e.* sphinganine, phytosphingosine) to *S. cerevisiae* [8-11]. In wild type yeast, phospho-LCB levels are kept in check by two catabolic enzymes – a phosphatase (encoded by the *LCB3* gene) and a lyase (encoded by *DPL1*). Mutant yeast null for these gene products have high levels of phospho-LCBs and are reported to grow poorly [8,9] or not at all [11]. However, if the genes encoding the endogenous phospho-LCB generating kinases (*LCB4*, *LCB5*) are deleted also, then normal growth is restored to the quadruple null mutant strain [8].

Introduction of SphK1-encoding DNA under the control of a galactose-inducible promoter in the *LCB3Δ DPL1Δ LCB4Δ LCB5Δ* mutant strain results in severely retarded growth in media where the sole fermentable carbon source is galactose. Importantly, Kashem *et al.* [7] demonstrated that growth of such a yeast strain expressing human SphK1 can be rescued in a dose dependent fashion by adding an SphK1 inhibitor to the growth media. This result suggests that the products of the enzyme (phospho-LCBs), rather than forced expression of the human protein, are responsible for the toxicity. Herein, we report the extension of the initial findings of Kashem *et al.* to additional sphingolipid kinases, disclose uses of the assay beyond screening for SphK1 inhibitors and present our view of the assay's limitations and advantages.

Materials & Methods

The yeast strains used in this study include JS1256 (*MATa his3Δ1 leu2Δ0 met15Δ0 ura3Δ0*) and CBY169 (*MATa leu2-3,112 ura3-52 his4 trp1 rme1 dpl1Δ::TRP1 lcb3Δ::LEU2 lcb4Δ::kanMX lcb5Δ::kanMX*) (provided by Kyle Cunningham). The CBY169 strain was modified further by replacement of the *PDR5* gene with a selectable marker (confers resistance to clonazepam) to generate strain KYA1 (*MATa leu2-3,112 ura3-52 his4 trp1 rme1 dpl1Δ::TRP1 lcb3Δ::LEU2 lcb4Δ::kanMX lcb5Δ::kanMX pdr5Δ::natMX*).

The plasmids *pGAL-HsSPHK1*, *pGAL-HsSPHK2*, *pGAL-MmSphk1*, *pGAL-MmSphk1L277M*, *pGAL-MmSphk2*, *pGAL-HsCERK* and *pGAL-SK2_MOD* used in this study were constructed by sub-cloning DNA encoding the indicated translational open reading frames into the pYES2-FLAG-URA expression vector (provided by Dr. Cungui Mao). The encoded proteins all have an amino terminal FLAG epitope tag (DYKDDDDK) and their expression is under the control of the *GAL1,10* promoter. Excepting human and mouse SphK2, the DNA sequences are synthetic (from GeneWiz LLC (South Plainfield, NJ)) and were optimized for expression in *S. cerevisiae*. The Genbank accession designations are as follows:

lipid kinase	protein	nucleotide
human SPHK1	NP_001136074	KY_859176
human SPHK2	NP_001191089	NM_001204160
mouse Sphk1	NP_035581.1	KY_859177
mouse Sphk1 Leu277Met	none	KY_859178
mouse Sphk2	NP_001166032	NM_001172561.1
human CERK	NP_073603	KY_859179
human SK2_MOD	none	

Yeast containing the desired plasmid were selected and maintained on synthetic complete media lacking uracil (SC-URA) with 2% glucose as the fermentable carbon source. After overnight growth at 30°C in this media, the cultures were diluted 1:100 into SC-URA media supplemented with 2% galactose and various concentrations of test inhibitor. After a further 24-48 hours incubation at 30°C, the extent of growth was assessed by measuring absorbance at 600 nm. Assays were conducted

using either 3 or 5 mL of media in 16x150 mm glass tubes or 0.1 mL of media in Nunc U-bottom 96 well plates (VWR catalog # 62409-116) sealed with a gas-permeable membrane (Breathe Easy Plate Seals, VWR catalog # 102097-158). Tubes were incubated in a rotating drum while plates were agitated using a plate mixer. A_{600} for 96-well plate cultures was determined using a Molecular Devices SpectraMax M5 plate reader. Test compounds were dissolved in DMSO at 40-50 mM and diluted into water containing 0.1% fatty acid free bovine serum albumin. In all cases, the DMSO concentration in the assay was less than 1% (v/v).

Construction of human SphK2 deletion mutants

To facilitate construction of deletion mutants of human SphK2, we altered the underlying DNA sequence to introduce a set of unique restriction enzyme sites that, on cutting and re-ligation, maintained the translational open reading frame (confirmed in each case by DNA sequencing). While some of the nucleotide changes were translationally silent, the altered human SphK2 (termed 'SK2_MOD') DNA encoded five amino acid changes (Glu71Asp, Gly138Ser, Glu146Asp, Glu437Gly, Gly623Ala).

Determination of protein expression

The expression of plasmid-encoded sphingolipid kinases was determined using the protocol of Zhang *et al.* [12]. Yeast cells expressing deletion mutants of N-terminal FLAG-tagged human SphK2 were grown overnight on SC-URA media with 2% glucose. The cultures were diluted 1:100 into SC-URA media supplemented with 2% galactose in presence of an SphK2 inhibitor (0.5 μ M SLM6031434) for 24-48 hours. Cells from 1 mL culture fluid were collected by centrifugation, re-suspended in 2 mL of 2M lithium acetate and incubated on ice for 5 minutes. This procedure was repeated and cells were suspended in 2 mL of 0.4M NaOH and incubated on ice for 5 minutes, re-centrifuged and the pellets were re-suspended in 0.25 mL of 1X Laemmli buffer and heated to 95°C for 5 minutes. After clarification by centrifugation, the supernatant fluid (10-15 μ L) was loaded on 4-20% polyacrylamide gels and the resolved proteins were transferred onto a nitrocellulose membrane. Membranes were blocked with 5% (w/v) non-fat dried skimmed milk powder in TBS (Tris-buffered saline, pH 7.4) containing 0.1% Tween 20 for 1 hour at room temperature. After rinsing, membranes were incubated with monoclonal anti-FLAG M2-peroxidase antibody (Sigma #A8592) for an additional hour. After washing three times in TBS, the blot was developed by chemiluminescence using a commercial kit (PerkinElmer Western Lightning).

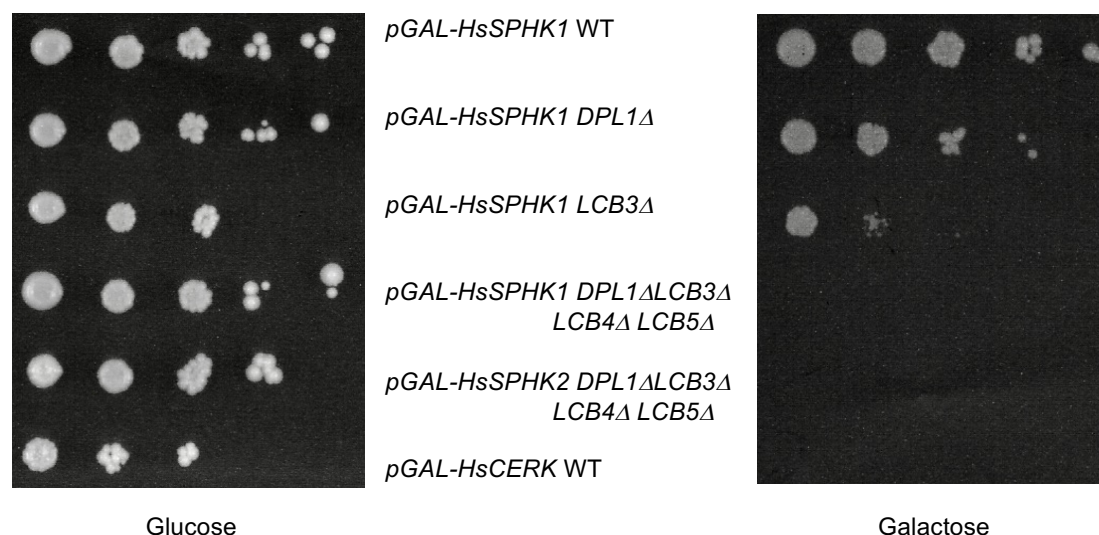


Fig. 1: Serial dilutions of yeast strains plated onto glucose and galactose SC media.

Results

In adapting this assay platform, we first attempted to replicate the results of Kashem *et al.* [7] using both human SphK1 and SphK2. We were successful in this undertaking, specifically, we observed that forced expression of either human isoform in the quadruple null strain inhibited growth, while expression of a sphingosine kinase was not severely growth inhibitory so long as at least one LCB-phosphate catabolic gene was intact (Fig. 1).

We then tested three widely used SphK inhibitors: PF-543 (SphK1 selective), SKI-II (non-selective) and ABC294640 (SphK2 selective) as well as Genzyme compound 9ab (SphK1 selective) (see Table 1 for structures and literature citations) using the CBY169 strain transformed with either human SphK1 or SphK2 encoding plasmids. Only 9ab restored full growth of the human SphK1 expressing strain in galactose media (Fig. 2A) with an EC_{50} value of 0.9 μ M, which is similar to the K_i value (1.4 – 1.7 μ M) that we determined for this compound using recombinant human SphK1 [5].

We reasoned that the failure of PF-543, SKI-II and ABC294640 to rescue growth was due either to cytotoxicity or failure of the compounds to accumulate (penetration – (extrusion + metabolism)) sufficiently in the yeast cells. To assess toxicity, we cultured the CBY169 strain without plasmids in galactose media with these three compounds at concentrations up to 100 μ M. We found that SKI-II, when present at concentrations above 3 μ M, inhibited growth (not shown), which obviates the use of this assay for assessing this low potency (K_i 12 - 30 μ M [5]) compound. In an attempt to increase accumulation of compounds in the yeast cells, we modified CBY169 to generate a new strain (KYA1) wherein *PDR5* was deleted. *PDR5p* is an ABC (ATP Binding Cassette) transporter that confers on resistance to a variety of xenobiotics [20]. This gene is commonly deleted in *S. cerevisiae* to decrease extrusion of test compounds. As shown in Fig. 2B, PF-543 restored full growth of the KYA1 strain expressing human SphK1 in a dose dependent manner, albeit with a EC_{50} value (5.7 μ M) that is some three log orders higher than the reported K_i value of this compound [12]. ABC294640, although not cytotoxic, failed to rescue growth of KYA1 yeast expressing HsSphK2 at concentrations up to 100 μ M (not shown).

To investigate the yeast assay further, we tested additional inhibitors, for example, VPC96091, SLP7111228 and SLC5111312 on human SphK1 expressing yeast (CBY169 strain). As documented in Fig. 3A, each of these compounds restored full growth and the rank order potency of the compounds was the same as determined at recombinant human SphK1 (SLP111228 > VPC96091 > SLC5111312) [4,16,17]. In addition, we tested SLC5111312 and SLM6031434 at human SphK2 and found both compounds fully rescued growth in a dose dependent manner (Fig. 3B) and with the same rank order potency as established with K_i values (SLM6031434 > SLC5111312). Unlike PF-543, the potency of SLM6031434 was the same regardless of the *PDR5p* status (CBY169 vs. KYA1 strains) (Fig 3C).

We next asked whether ceramide kinase (CerK) expression effects the growth of *S. cerevisiae* and, if so, whether this phenotype could be relieved by adding a CerK inhibitor to the media. To our knowledge, neither ceramide kinase activity nor the predicted products of the enzyme (dihydroceramide 1-phosphate, phytoceramide 1-phosphate) have been observed in *S. cerevisiae*. When we drove expression of human CerK in our standard laboratory strain (JS1256) by culturing *pGAL-HsCERK* harboring yeast in galactose media, the cultures failed to grow (see Fig. 1) but full growth was restored by addition of the CerK inhibitor, NVP-231 [19] to the culture media (Fig 3D). This result suggests that human CerK expression is toxic to yeast due to dihydroceramide 1-P and/or phytoceramide 1-P accumulation rather than toxicity of the foreign protein. We note that a problem intrinsic to ceramide biochemistry, *i.e.* the difficulty in manipulating naturally occurring ceramides, which are water-insoluble, is circumvented with the yeast assay.

Table 1: Inhibitors used in this study

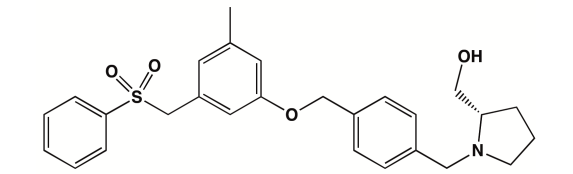
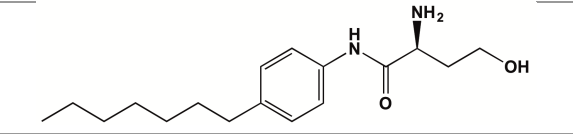
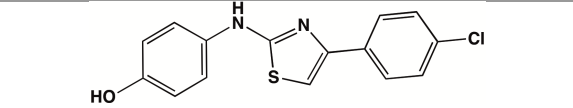
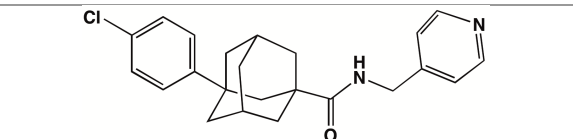
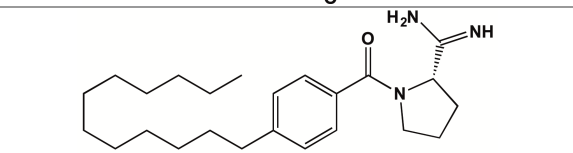
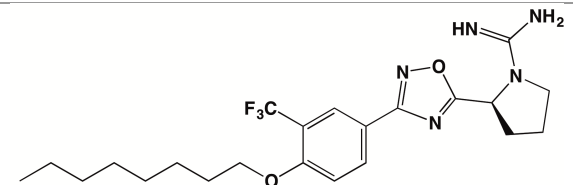
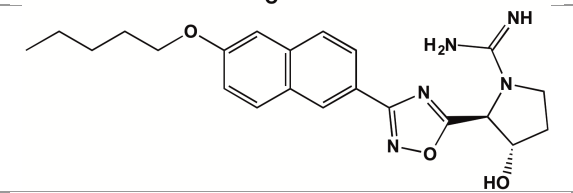
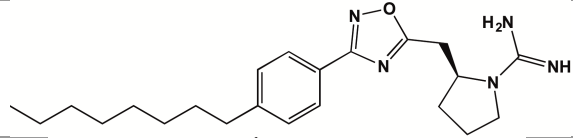
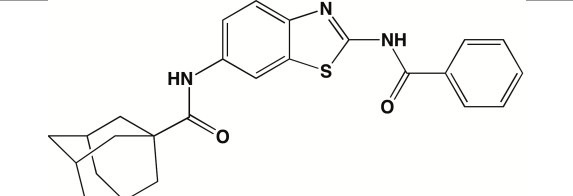
Name	selectivity (human ortholog)	structure	citation
PF-543	SphK1		13
9ab	SphK1		14
SKI-II	dual		15
ABC294640	SphK2		16
VPC96091	SphK1		17
SLM6031434	SphK2		4
SLC5111312	dual		4
SLP7111228	SphK1		18
NVP-231	CerK		19

Fig. 2 A - Rescue of growth of strain CBY169 expressing human SphK1 by 9ab; B- rescue of growth of strain KYA1, but not CBY169, expressing human SphK1 by PF-543

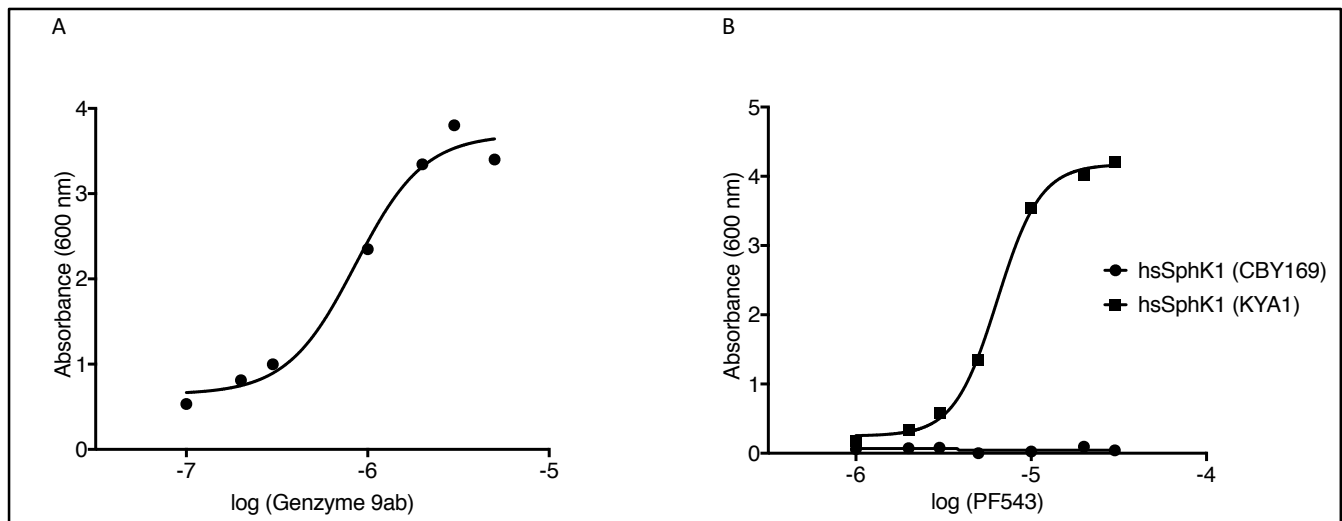
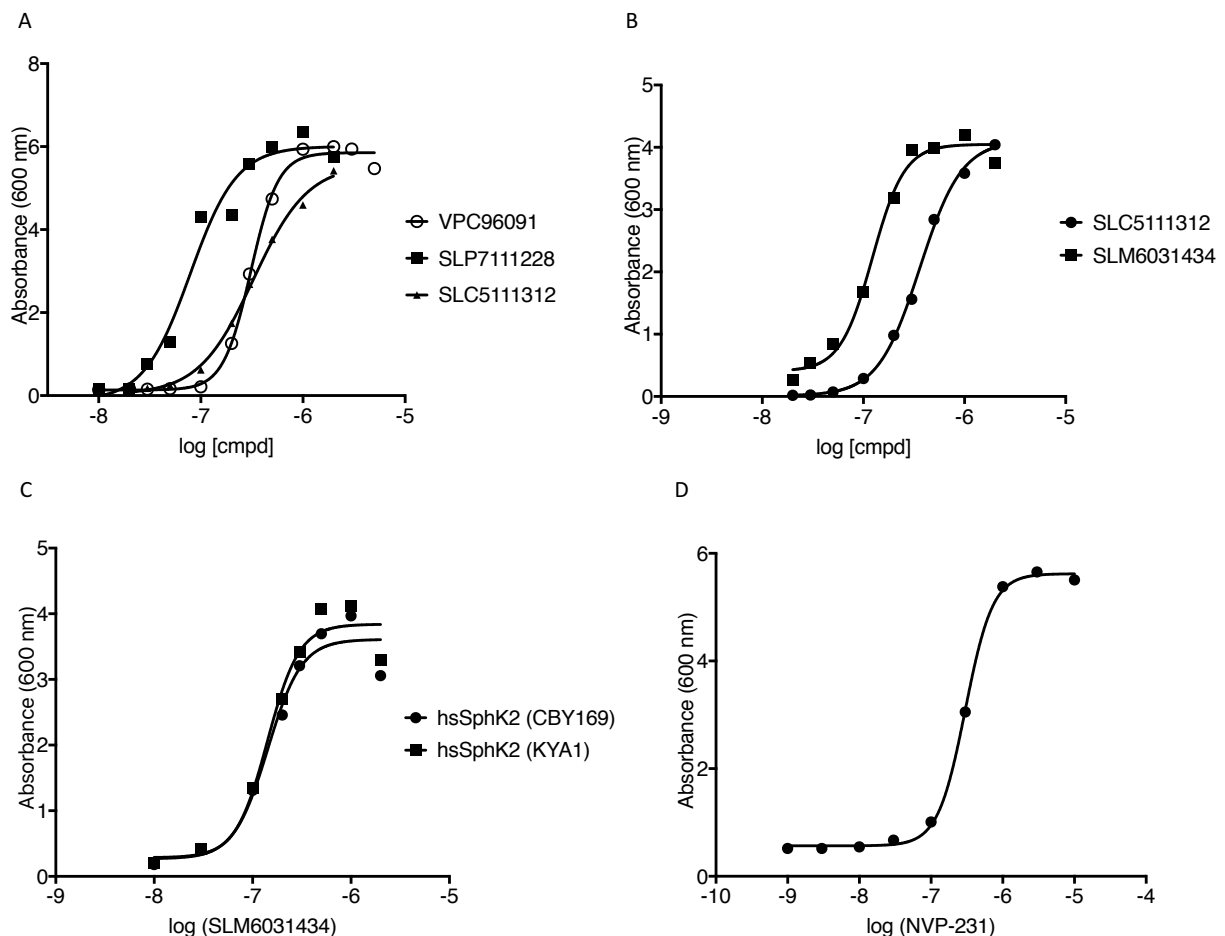
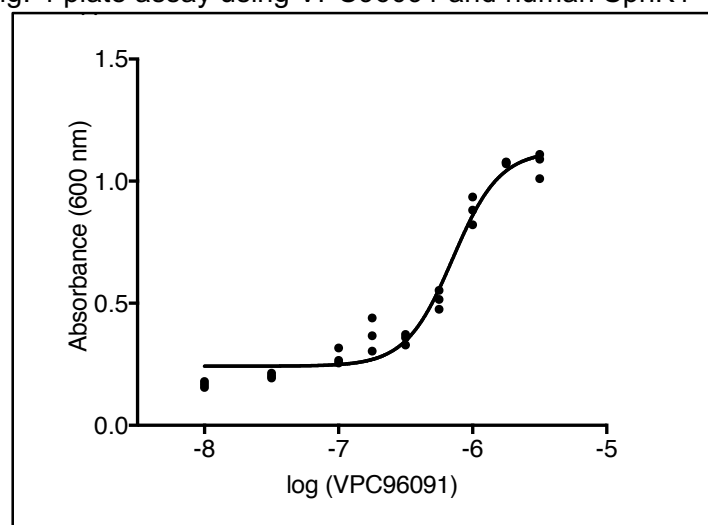


Fig. 3 A – rescue of human SphK1-expressing yeast, B, C – rescue of human SphK2-expressing yeast and D – rescue of CerK-expressing yeast; C compares CBY169 and KYA1 strains; all other strains were CBY169



The data presented in Figures 2 and 3 are from single point assays, that is, only one determination was made at each inhibitor concentration. To estimate the variability of the assay in our hands, we performed 4 independent assays wherein the SphK2 selective inhibitor, SLM6031434, was used to rescue growth of human SphK2-expressing CBY169 strain yeast and compared the EC_{50} values so determined. These values were (in nM) 78, 127, 142, 144 (mean = 123, 95% confidence interval 92-153 nM). A second estimation of variability was achieved by performing the assay in 96 well plates whereby the SphK1 inhibitor, VPC96091, was assayed in triplicate. The variation among the data points is shown in Fig. 4. We note that the yeast cultures in the plates achieve nearly the same density as in individual 16 x 150 mm tubes, but this is not revealed in the maximum absorbance measurements from plate readings because of the limited linear range of the plate reader (culture media from tube assays was diluted 10-fold prior to determining A_{600}).

Fig. 4 plate assay using VPC96091 and human SphK1

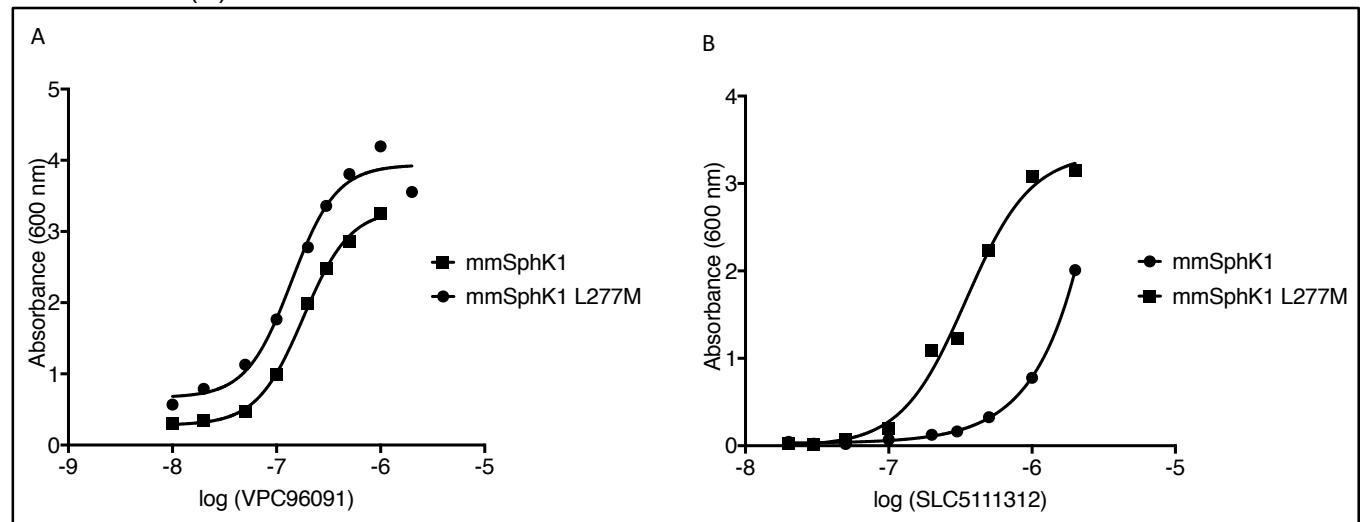


Encouraged by our success with *S. cerevisiae* as an inhibitor assessment tool, we considered further applications of the yeast system for investigating sphingolipid kinase biology. The yeast system enables rapid interrogation of mutant enzymes for activity (*i.e.* inhibition of growth on galactose) and, if active, the potency of inhibitors at mutant enzymes (*i.e.* rescue of growth by inhibitors). We used this property of the system to investigate two questions: First, what amino acids are responsible for species difference in the potency of SphK1 inhibitors, specifically the lower potency of some SphK1 inhibitors at mouse (vs. human) SphK1? Second, what is the minimum size of a functional SphK2 enzyme, specifically, could we generate a functional SphK2 (72 kDa) that is the same size as SphK1 (48 kDa)?

We have observed that SLC5111312 is equi-potent at human and rat SphK1 and SphK2, but a SphK2 selective inhibitor in the mouse due to its decreased potency at mouse SphK1 [4]. Such properties are more than a mere curiosity because numerous disease models are available only the mouse, but we have few potent mouse SphK1 inhibitors. Alignment of the human, rat and mouse SphK1 amino acid sequences reveals that position 277 is leucine in mouse but methionine in human and rat. The crystal structures of human SphK1 [21,22] indicate that this amino acid contributes to the sphingosine binding site in the enzyme. To test the hypothesis that Leu277 is responsible for low potency of SLC5111312 at mouse SphK1, we obtained the mouse SphK1 L277M mutant, determined that its expression was, as expected, growth inhibitory for the CBY169 and KYA strains, and determined the potency of two inhibitors at the mutant and WT mouse enzymes. As depicted in Fig. 5A, VPC96091, which is an

SphK1 inhibitor that does not discriminate between the mouse and human orthologs, is equipotent at wild type and mutant (L277M) mouse SphK1 while SLC5111312 is distinctly more potent at the mutant mouse SphK1 (5B). The EC_{50} values for SLC5111312 were similar for the mutant mouse enzyme and the human enzyme (see Fig. 3B).

Fig. 5 Rescue of mouse SphK1 and mouse SphK1L277M expressing yeast with VPC96091 (A) or SLC5111312 (B).

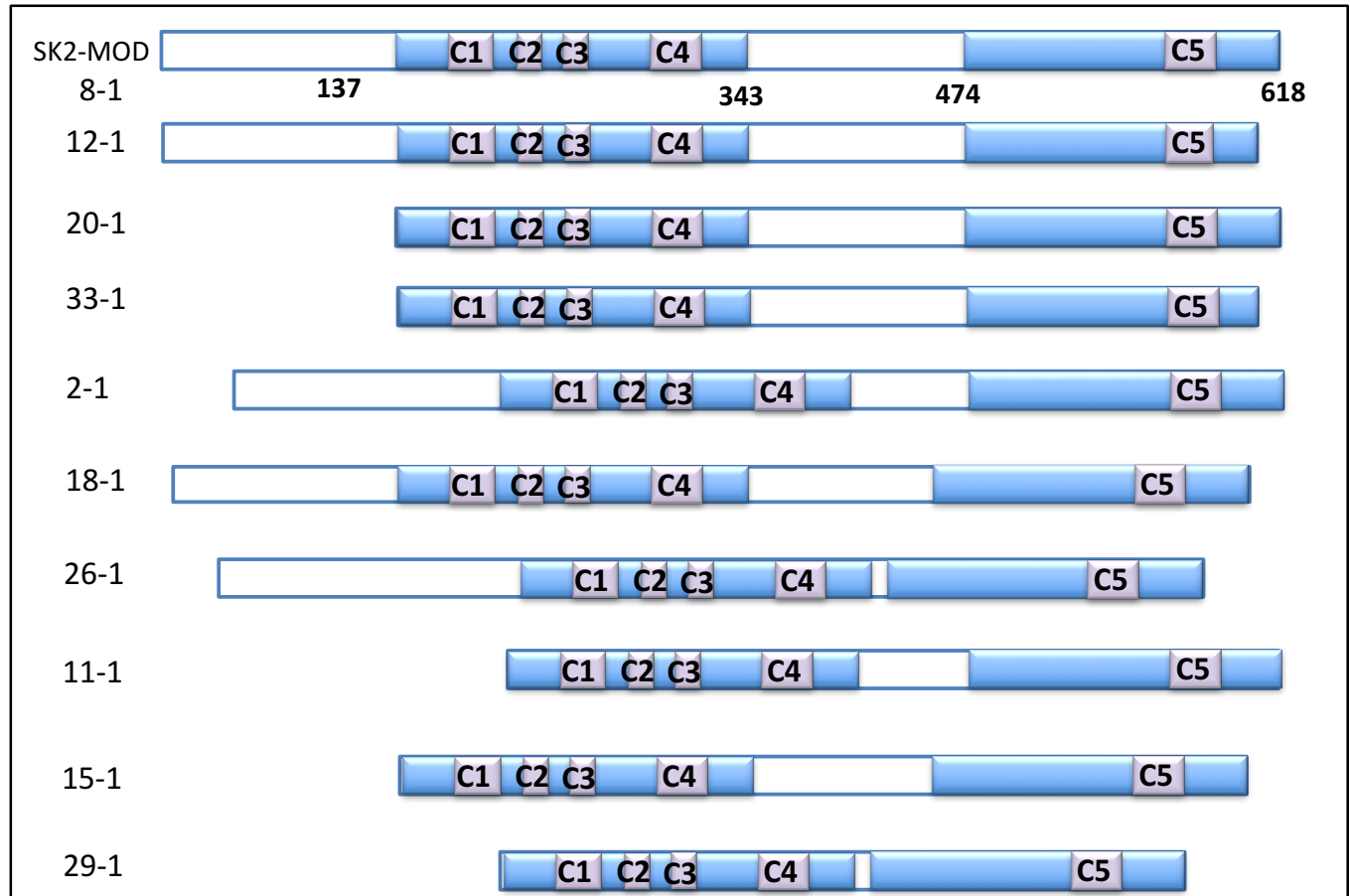


Human SphK2 is considerably larger than human SphK1 due to an extended (about 130aa) N-terminus and a centrally located 135aa segment. Because both enzymes catalyze the same reactions with similar kinetic constants [23], we hypothesized that deletion of much of the additional amino acid residues in SphK2 would not eliminate enzyme activity. However, we were less confident in predicting whether growth inhibition driven by smaller SphK2 mutants, if observed, would be rescued by SphK2 inhibitors. To estimate the minimal size of functional human SphK2, we modified the encoding DNA to generate a set of mutants lacking portions of the non-SphK1 overlapping amino acids of human SphK2. The deleted regions are illustrated in Fig. 6A.

The expression of each deletion mutant was confirmed by western blotting (Fig. 6B). Each deletion mutant was tested in the yeast assay for activity (inhibition of growth on galactose media) and, if active, for rescue by the SphK2-selective inhibitor, SLM6031434. The concentration activity curves from the rescue experiment are presented as Fig. 7, and the results of the deletion study are summarized in Table 2.

As presumed, the replacement of 5 amino acid residues in the course of generating SK2_MOD from wild type human SphK2 did not impact the assay results. To our surprise, nearly all the deletion mutants did not grow on galactose (suggesting functional enzyme) and all except mutant 15-1 were rescued to some extent by the SphK2 inhibitor, SLM6031434, albeit in some cases with diminished potency. For example, in mutant 11-1, 191 aa were deleted (125 aa from the N-terminus, 66 aa from the central segment) and the enzyme was functional and fully rescued by SLM6031434 with about a 3-fold loss of potency. Deletion of the 44 aa C-terminal region (437-481) of the central segment had a particularly severe, negative effect on the potency of the inhibitor (e.g. mutants 26-1, 29-1 and 15-1). Only a single deletion mutant – that lacking both the N-terminal and C-terminal segments (mutant 33-1) – grew on galactose solid media (not shown), which indicates that the 33-1 mutant enzyme has low or absent kinetic activity in yeast. An observation that we do not understand is the consistently high background of mutant species 20-1 (N-terminal deletion) on galactose liquid media.

Fig. 6A Diagram of human SphK2 deletion mutants; 8-1 represents SphK2_MOD. Shading indicates regions are common to human SphK1 and 2 (ca. 50% identical aa) while open bars indicate sequence unique to SphK2. C1-C5 indicate amino acid stretches that are conserved among sphingosine kinases across multiple vertebrate species [23].



6B –Expression of deletion mutants: Yeast were grown to saturation in galactose media supplemented with 0.5 μ M SLM6031434 except 33-1, which grew in galactose media without inhibitor. The volume of yeast extract (see Methods) loaded onto the gel was as follows: 8-1, 12-1, 18-1 26.1, 0.002 mL; 11-1 0.003 mL; 2-1, 20-1 0.004 mL; 29-1 0.02 mL; 22-1 0.01 mL. Note that growth of deletion mutant 15-1 was not rescued by SLM6031434.

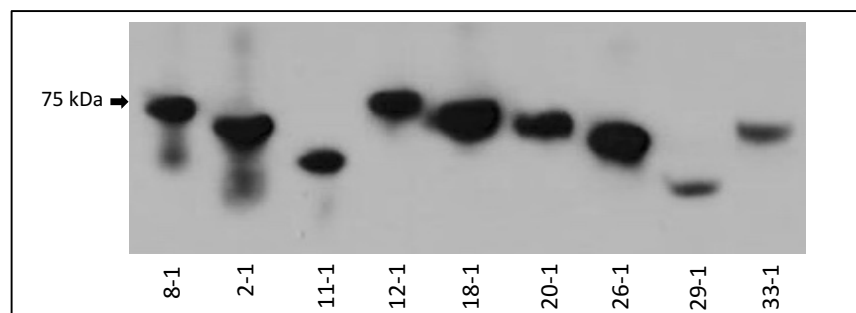


Fig. 7 Rescue curves of SK2_MOD deletions mutants by SLM6031434 on the CBY169 strain background.

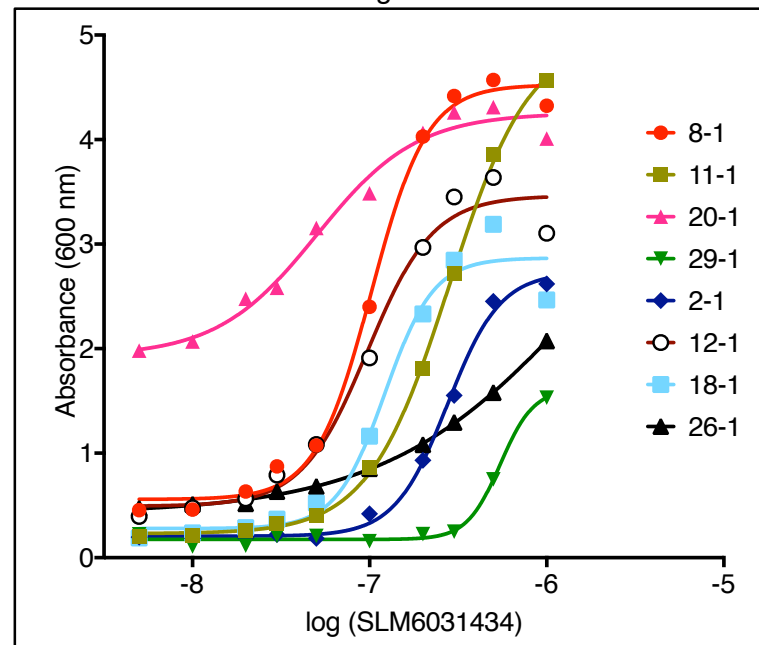


Table 2 – Activity of human SphK2 deletion mutants

Mutant designation	Deleted segment (aa)	growth on galactose	Rescue by SLM6031434 (EC ₅₀ (μM))	Expression (FLAG epitope)
-	full length (wild type hSK2)	no	0.14	+
8-1	full length (hSK2_MOD)	no	0.10	+
20-1	12 - 137**	no	0.05	+
2-1	371 - 436	no	0.28	+
18-1	437 - 481	no	0.10	+
26-1	371 - 481	no	> 1	+
12-1	623 - ter	no	0.10	+
11-1	12 - 137 & 371 - 436	no	0.28	+
15-1	12 - 137 & 437 - 481	no	none	n.d.
29-1	12 - 137 & 371 - 481	no	> 1	+
33-1	12 - 137 & 623 - ter	yes	-	+

* numbering includes 12 aa N-terminal FLAG sequence, n.d. not determined

Discussion

Saccharomyces cerevisiae provides a convenient platform for assessing sphingolipid kinase inhibitors. The yeast-based assay is inexpensive and it requires neither specialized equipment nor radioactive material. Although not rapid (24-48 hours), we have found the assay to be robust. For example, we were unable to achieve sufficient growth of the quadruple null (CBY169) strain seed cultures in media containing raffinose as the fermentable carbon source as recommended by Kashem *et al.* [7]. We investigated extending the incubation time of the raffinose media seed cultures as well as growing overnight seed cultures in glucose media and switching to raffinose media for two hours before starting the assay. Ultimately, we settled on the expedient strategy of growing 5 mL overnight seed cultures in

glucose media and simply diluting (1:100) these cultures into galactose media to begin our assay. This maneuver probably is responsible for the high, and somewhat variable background (A_{600} 0.05 – 0.5) in the assay, but there remains a 10-fold differential between minimal and maximal (A_{600} 5-6) responses in the tube assay. Further, we did find consistently that both mouse SphK1 and mouse SphK2 grew slower in galactose media than their human orthologs, which necessitated a 40-48 hour rather than a 24 hour assay time but did not otherwise negatively influence the assay. The assay is readily reduced to a 96 well format and Kashem *et al.* have reported that the assay can be reduced further to a 384 well format using a viability dye in conjunction with a fluorescence based plate reader [7].

The initial application of the assay was to screen chemical libraries for inhibitors of human SphK1 [7]. Our studies predict that screening for other sphingolipid kinase inhibitors would also be feasible with this assay – indeed, we have done so with a trypanosomatid sphingosine kinase (Kharel, Agah, Santos and Lynch, unpublished). Screening requires only that compounds accumulate in yeast and not be overtly cytotoxic – success is not strongly dependent on a correlation of inhibitor affinities and the EC_{50} values determined with the assay. Kashem *et al.* [7] suggest that a failure of cytotoxic compounds to be detected is a positive feature of the assay. We agree, but only to the extent that cytotoxicity in yeast predicts cytotoxicity in mammalian cells rather than reflecting some peculiarity of yeast biology, which would be an impediment rather than an advantage.

In contrast to screening chemical libraries, the usefulness of this assay in assessing new chemical entities from a sphingolipid kinase inhibitor medchem campaign depends more strongly on the facility of the yeast assay in reporting rank order potencies that approximate the rank order potencies based on inhibitor affinities. In this regard, we are encouraged by our results with one chemical scaffold (1-guanidino-2-phenyloxadiazolpyrrolidines, *e.g.* SLM6031434) but we are concerned about the (*R*)-prolinol scaffold (1-benzyl-2-methanolpyrrolidines, *e.g.* PF-543). However, we have not tested sufficient numbers of (*R*)-prolinol compounds to ascertain whether the large discrepancy between the EC_{50} and K_i values of PF-543 is an outlier or illustrative of that scaffold.

Among the salient limitations of the yeast assay are those of any cell-based assay. Namely, the assay reports EC_{50} values rather than K_m , V_{max} or k_{cat} values of inhibitors, test compounds must not be markedly cytotoxic at the concentrations tested and compounds must accumulate to some extent in the yeast. Cytotoxicity is readily discerned by testing compounds for an effect on growth of strains without lipid kinase expression. For example, we found that an early generation dual SphK inhibitor, SKI-II, is toxic for yeast strain CBY169 at concentrations of $> 3 \mu M$ in our assay. Further, we found that compounds such as SLM6031434, SLC5111312 and SLP7111228, which share a pedant 1-guanidino-2-phenyloxadiazolpyrrolidine group, are likewise toxic at concentrations $> 2-3 \mu M$. In the former case, full growth curves cannot be generated and thus an EC_{50} value for SKI-II cannot be determined with this assay. In contrast, as documented in Fig. 2-5, the higher potency guanidino compounds do yield full curves, and thus EC_{50} values are obtained.

Lack of accumulation of a test compound in *S. cerevisiae* is also problematic. If lack of accumulation is due to active extrusion (rather than failure to penetrate and/or metabolism), elimination of candidate transporters, *e.g.* PDR5p, sometimes provides relief. For example, the human SphK1 inhibitor, PF-543, did not rescue growth of human SphK1-expressing yeast unless the *PDR5* gene was deleted (see Fig. 2B). In contrast, the potency of the SphK2 inhibitor, SLM6031434, was not different in the presence (CBY169 strain) or absence (KYA1) of *PDR5* (Fig. 3C), but other 1-guanidino-2-phenyloxadiazolpyrrolidine compounds were substantially more potent with the KYA1 strain (unpublished data). Since new chemical entities that are extruded by PDR5p are not recognizable *a priori*, prudence dictates that library screening and assessment of new chemical entities be conducted with *PDR5Δ* strains, *e.g.* KYA1. Our failure to detect activity of ABC294640 at human or mouse SphK2 occurred with both the CBY169 and KYA1 strains, thus we do not know whether this SphK2 inhibitor

compound is metabolized rapidly by yeast, fails to penetrate the cell or is extruded by another transporter.

Another limitation is the toxicity of DMSO (dimethylsulfoxide) for *Saccharomyces cerevisiae* at concentrations > 2% (v/v) in SC media. This toxicity could be nettlesome in screening chemical libraries, which are often arrayed in this solvent. In addition, some exogenous lipid kinases might not be expressed in yeast due to proteolysis or their forced expression might be toxic independent of enzyme activity. Protein expression is readily determined using antisera directed against the N-terminal FLAG epitope (see Fig. 6B) and non-enzyme related toxicity can be assessed with catalytically inactive mutant enzymes, but either scenario obviates the assay as a tool to study enzyme inhibitors. In our experience to date, which includes the sphingolipid lipid kinases described herein as well as two trypanosomatid sphingosine kinases, we have yet to encounter either of these limitations.

Finally, the success of the yeast platform for interrogating sphingosine and ceramide kinases encourages development of further applications. For example, the assay could be readily formatted to screen for S1P lyase inhibitors by introducing an ortholog of *DPL1* via a second *pGAL* plasmid. However, such assays are based on inhibiting yeast growth, and thus nonspecific cytotoxic compounds must be eliminated in a second screen. One could also use the yeast platform to screen for mammalian cDNAs that encode for ceramide 1-phosphate phosphatase, which is apparently lacking in yeast, or for additional S1P phosphatases. The yeast sphingolipid kinase assay could also be formatted so that a structure-activity relationship assay of mammalian ABC extrusion transporters could be undertaken.

Literature Cited

- 1) Pitson SM, Moretti PA, Zebol JR, Vadas MA, D'Andrea RJ, Wattenberg BW. A point mutant of human sphingosine kinase 1 with increased catalytic activity. *FEBS Letters* **509**, 169–173 (2001)
- 2) Billich A, Ettmayer P. Fluorescence-based assay of sphingosine kinases, *Analytical Biochemistry* **326**, 114–119 (2004)
- 3) Roberts JL, Moretti PA, Darrow AL, Derian CK, Vadas MA, Pitson SM. An assay for sphingosine kinase activity using biotinylated sphingosine and streptavidin-coated membranes. *Analytical Biochemistry* **331**, 122–129 (2004)
- 4) Kharel Y, EA Morris EA, Thorpe SB, JL Tomsig JL, Santos WL, Lynch KR. Sphingosine kinase type 2 and blood sphingosine 1-phosphate levels. *J Pharmacology & Experimental Therapeutics* **355**, 23-31 (2015) [PMID: 26243740]
- 5) Kharel Y, Mathews TP, Kennedy AJ, Houck JD, Macdonald TL, Lynch KR. A rapid assay for assessment of sphingosine kinase inhibitors and substrates. *Analytical Biochemistry* **411**, 230–235 (2011)
- 6) Highkin MK, Yates MP, Nemirovskiy OV, Lamarr WA, Munie GE, Rains JW, Masferrer JL, Nagiec MM. High-throughput screening assay for sphingosine kinase inhibitors in whole blood using RapidFire(R) mass spectrometry. *J Biomolecular Screening* **16**, 272–277 (2011)
- 7) Kashem MA, Kennedy CA, Fogarty KE, Dimock JR, Zhang Y, Sanville-Ross ML, Skow DJ, Brunette SR, Swantek JL, Hummel HS, Swindle J, Nelson RM. A high-throughput genetic complementation assay in yeast cells identified selective inhibitors of sphingosine kinase 1 not

- found using a cell-free enzyme assay. *Assay & Drug Development Technologies* **14**, 39-49 (2016) [PMID: 26426296]
- 8) Kim S, Fyrst H, Saba J. Accumulation of phosphorylated sphingoid long chain base results in cell growth inhibition in *Saccharomyces cerevisiae*. *Genetics* **156**, 1519-1529 (2000) [PMID: 11102354]
 - 9) Skrzypek MS, Nagiec MM, Lester RL, Dickson RC. Analysis of phosphorylated sphingolipid long-chain bases reveals potential roles in heat stress and growth control in *Saccharomyces*. *J Bacteriology* **181**, 1134–1140 (1999) [PMID: 9973338]
 - 10) Pinto WJ, Srinivasan S, Shepherd S, Schmidt A, Dickson RC, Lester RL. Sphingoid long-chain base auxotrophs of *Saccharomyces cerevisiae*: genetics, physiology and a method for their selection. *J Bacteriology* **174**, 2565-2574 (1992) [PMID: 1556075]
 - 11) Zhang X, Skrzypek MS, Lester RL, Dickson RC. Elevation of long chain base phosphates kills *Saccharomyces cerevisiae* cells. *Current Genetics* **40**, 221-233 (2001) [PMID: 11795842]
 - 12) Zhang T, Lei J, Yang H, Xu K, Wang R, Zhang Z. An improved method for whole protein extraction from yeast *Saccharomyces cerevisiae*. *Yeast* **28**, 795-798 (2011) [PMID: 21972073]
 - 13) Schnute ME, McReynolds MD, Kasten T, Yates M, Jerome G, Rains JW, Hall T, Chrencik J, Kraus M, Cronin CN, Saabye M, Highkin MK, Broadus R, Ogawa S, Cukyrne K, Zawadzke LE, Peterkin V, Iyanar K, Scholten JA, Wendling J, Fujiwara H, Nemirovskiy O, Wittwer AJ, Nagiec MM. Modulation of cellular S1P levels with a novel, potent and specific inhibitor of sphingosine kinase-1. *Biochemical J* **444**, 79-88 (2012) [PMID: 22397330]
 - 14) Xiang Y, Asmussen G, Booker M, Hirth B, Kane Jr JL, Liao J, Noson KD, Yee C. Discovery of novel sphingosine kinase 1 inhibitors. *Bioorganic & Medicinal Chemistry Letters* **19**, 6119-6121 (2009) [PMID: 19800228]
 - 15) French KJ, Schrecengost RS, Lee BD, Zhuang Y, Smith SN, Eberly JL, Yun JK, Smith CD. Discovery and evaluation of inhibitors of human sphingosine kinase. *Cancer Research* **63**, 5962-5969 (2003) [PMID: 14522923]
 - 16) French KJ, Zhuang Y, Maines LW, Gao P, Wang W, Beljanski V, Upson JJ, Green CL, Keller SN, Smith CD. Pharmacology and antitumor activity of ABC294640, a selective inhibitor of sphingosine kinase-2. *J Pharmacology & Experimental Therapeutics* **333**, 129-139 (2010) [PMID: 20061445]
 - 17) Kharel Y, Mathews TP, Gellett AM, Tomsig JL, Kennedy PC, Moyer ML, Macdonald TL, Lynch KR. Sphingosine kinase type 1 inhibition reveals rapid turnover of circulating sphingosine 1-phosphate *Biochemical J* **440**, 345-353 (2011) [PMID: 21848514]
 - 18) Patwardhan NN, Morris EA, Kharel Y, Raje MR, Gao M, Tomsig JL, Lynch KR, Santos W. Structure-activity relationship studies and *in vivo* activity of guanidine based sphingosine kinase inhibitors: Discovery of SphK 1 and 2 selective inhibitors. *J Medicinal Chemistry* **58**, 1879-1899 (2015) [PMID: 25643074]

- 19) Graf C, Klumpp M, Habig M, Rovina P, Billich A, Baumruker T, Oberhauser B, Bornancin F. Targeting ceramide metabolism with a potent and specific ceramide kinase inhibitor. *Molecular Pharmacology* **74**, 925-932 (2008) [PMID: 18612076]
- 20) Ernst R, Klemm R, Schmitt L, Kuchler K. Yeast ATP-binding cassette transporters: cellular cleaning pumps. *Methods Enzymology* **400**, 460-484 (2005) [PMID: 16399365]
- 21) Wang Z, Min X, Xiao SH, Johnstone S, Romanow W, Meininger D, Xu H, Liu J, Dai J, An S, Thibault S, Walker N. Molecular basis of sphingosine kinase substrate recognition and catalysis. *Structure* **21**, 798-809 (2013) [PMID: 23602659]
- 22) Wang J, Knapp S, Pyne NJ, Pyne S, Elkins JM. Crystal structure of sphingosine kinase 1 with PF-543. *ACS Medicinal Chemistry Letters* **5**, 1329-1333 (2014) [PMID: 25516793]
- 23) Baker DL, Pham TC, Sparks MA. Structure and catalytic function of sphingosine kinases: analysis of site-directed mutagenesis and enzyme kinetics. *Biochimica Biophysica Acta* **1831**, 139-146 (2013) [PMID: 23000541]

Contributions of Authors: SA developed the yeast assay initially in both the tube and 96 well plate formats, JG performed assays, YK generated most of the SphK and CerK plasmids, performed assays and analyzed data, KRL performed assays, served as the project leader and wrote the manuscript, AJM deleted *PDR5* in the CBY169 strain to generate the KYA1 strain and performed assays, OTE performed assays, WLS provided test compounds and JSS provided facilities and general advice on *Saccharomyces cerevisiae* biology. All authors participated in editing the manuscript.

Grant support: NIH R01 GM104366 & NIH R01 GM121075 to KRL & WLS, NIH R01 GM075240 to JJS, University of Virginia Summer Research Internship Program fellowship to JG.

Acknowledgements: The authors thank Kyle Cunningham, Johns Hopkins University, for his gift of strain CBY169, John Swindle, CompleGen, Seattle, WA and Marek Nagiec, Broad Institute, Boston, MA for their advice and to Cungui Mao, Stony Brook University Cancer Center, Stony Brook, NY for his gift of pYES2-FLAG/URA3 plasmid DNA.

Declared competing interests of authors: none

Reagent availability: The KYA1 strain with resident plasmids described are available on request. The pYES2 plasmids with sphingolipid kinase inserts described will be deposited with Addgene.