

The RacGAP β Chimaerin is essential for cerebellar granule cell migration

Jason A. Estep¹, Wenny Wong², Yiu-Cheung E. Wong², Brian M. Loui² and Martin M. Riccomagno^{1, 2, 3}

1. Cell, Molecular and Developmental Biology Program,

2. Neuroscience Program, Department of Cell Biology and Neuroscience, University of California, Riverside, CA 92521, USA.

3. Corresponding Author: Martin M. Riccomagno, martinmr@ucr.edu

Abstract

During mammalian cerebellar development, postnatal granule cell progenitors proliferate in the outer part of the External Granule Layer (EGL). Postmitotic granule progenitors migrate tangentially in the inner EGL before switching to migrate radially inward, past the Purkinje cell layer, to achieve their final position in the mature Granule Cell Layer (GCL). Here, we show that the RacGAP β -chimaerin is expressed by a small population of late-born, premigratory granule cells. β -chimaerin deficiency causes these cells to become arrested in the EGL, where they differentiate and form ectopic clusters of neurons. These clusters are mainly composed of granule cells and recruit aberrantly projecting mossy fibers. Collectively, these data suggest a role for β -chimaerin as an intracellular mediator of Cerebellar Granule Cell radial migration.

Keywords: neuronal migration, cerebellum, RacGAP, chimaerin

Introduction

Proper morphogenesis of the vertebrate Central Nervous System (CNS) relies on the tight spatiotemporal control of cell proliferation, differentiation, migration and guidance events. In the mammalian cerebellum, Granule Cells (GCs) undergo a prolonged and highly stereotyped migration that begins embryonically and completes late postnatally ¹. In the mouse, beginning at embryonic day 12 (E12), granule cell precursors (GCPs) are born from the rhombic lip and migrate tangentially to cover the cerebellar anlage ², forming a secondary germinal zone, the External Granule Layer (EGL). Postnatally, GPCs in the EGL exit the cell cycle and travel inwards, splitting the EGL into an upper, mitotically active (outer EGL, oEGL) and a lower, migratory layer (inner EGL, iEGL) (**Fig. 1A**). These postmitotic GCPs grow two horizontal processes and migrate tangentially in all directions, before growing a third perpendicular leading process. Using this leading process GCPs migrate radially inward along Bergmann Glial fibers, past the Purkinje Cell (PC) Layer, to occupy their final location in the mature Granule Cell Layer (GCL) ^{3,4}. Cerebellar GC migration has been shown to be influenced by a wide set of guidance cues, including the chemokine SDF-1 ⁵, Slit2/Robos ⁶, Plexins/Semaphorins ⁷⁻⁹, bone-derived neurotrophic factor (BDNF) ¹⁰, Vascular Endothelial Growth Factor (VEGF) ¹¹, and others. However, the cytosolic machinery responsible for effecting and directing the cellular response downstream of these ligand-receptor pairs remains largely unexplored.

The Rho family of small G-Proteins, or GTPases, play essential roles in vertebrate CNS development, influencing a wide range of developmental processes, including cell migration, cell polarity, axon pathfinding, and dendritic remodeling through their ability to modulate cytoskeletal structure ^{12,13}. GTPases exists in two states: an active GTP-bound state and inactive GDP-bound state ¹⁴. Precise subcellular regulation of GTPase activity is essential in maintaining

proper cellular function, and neurons achieve this using positive regulators, Rho Guanine Nucleotide Exchange Factors (or RhoGEFs) and negative regulators, Rho GTPase Activating Proteins (or RhoGAPs) ^{14,15}. Disruption of RhoGTPase activity or their regulators' function has been associated with a broad array of behavioral and developmental disorders ^{15,16}. The chimaerin family of RhoGAPs consists of two genes: α -chimaerin (*CHN1*) and β -chimaerin (*CHN2*). They are unique among the estimated 70 RhoGAP members in their specific GAP activity toward Rac family GTPases, which are key modulators of actin filaments ¹⁷. In neural development, α -chimaerin has been shown to play roles in Ephrin-mediated circuit formation ¹⁸⁻²⁰, cortical migration ²¹, optic tract axon guidance ^{22,23}, and hippocampal dendritic arbor pruning ²⁴. The *in vivo* role of β -chimaerin in neural development was unexplored until recently, where it was shown to effect hippocampal dentate gyrus axon pruning by regulating Rac1 activity downstream of Sema3F/Neuropilin-2 signaling ²⁵. Of note, β -chimaerin has been shown to be strongly expressed in GCs in the adult ²⁶, but its function during cerebellar morphogenesis is unknown. Here, we show a functional requirement for β -chimaerin during cerebellar development. We find that β -chimaerin is necessary for a small subset of granule cells to complete their migratory route from the EGL to the GCL.

Results

β -chimaerin is specifically expressed in the Granule Cell Layer of the mouse cerebellum

β -chimaerin has been previously shown to be expressed in the adult cerebellum²⁶. To explore the developmental expression profile of β -chimaerin in the cerebellum, we performed *in situ hybridization* in *C57/BL6J* mice to visualize β -chimaerin (*Chn2*) messenger RNA (mRNA) at several postnatal stages (**Fig. 1B-G**). We found *Chn2* mRNA was strongly expressed in the GCL at all the postnatal ages tested. Interestingly, we observed *Chn2* expression in small clusters of cells in the Molecular Layer (ML) of postnatal day 18 (P18) animals (**Fig. 1F**). This stage represents one of the last postnatal stages before the EGL dissolves. This ML expression did not persist into adulthood, disappearing by P35 (**Figure 1G**).

β -chimaerin deficient mice display ectopic neuronal clusters on the cerebellar surface

As *Chn2* transcript was found to be robustly expressed in the cerebellum at all postnatal stages examined, we asked whether β -chimaerin played a functional role during cerebellar development. We took advantage of a previously generated knock-in mouse that expresses beta-galactosidase (β gal) from the endogenous *Chn2* locus, rendering the *Chn2* gene inactive²⁵. We generated adult (P35) mice homozygous for a *Chn2* null allele (*Chn2*^{-/-}) and compared their cerebellar structure to WT (*Chn2*^{+/+}) littermate controls (**Fig. 2A,B**). We observed no gross alterations to cerebellar lobulation or cortical lamination in *Chn2*^{-/-} mutants. However, we did see large clusters of cells aggregating in the ML of mutant animals (**Fig. 2B**, white arrows). These clusters strongly co-labeled with the pan-neuronal marker NeuN and an antibody raised against β gal, indicating that these clusters may consist of ectopic *Chn2*-expressing GCs (**Fig. 2 D,E**). Sparse NeuN labeling was also seen in the ML of both WT and *Chn2*^{-/-} genotypes (**Fig. 2D,E**),

and likely represents the stellate and basket cells known to occupy this region. We next asked if β -chimaerin function is required in a dose-dependent manner for normal cerebellar development, we quantified the number of neuronal ectopias in $Chn2^{+/-}$, $Chn2^{+/-}$, $Chn2^{-/-}$ adult animals. We found a highly significant increase in the number of ectopias in $Chn2^{-/-}$ mutants as compared to WT and $Chn2^{+/-}$ animals ($p < 0.01$ for both comparisons) (**Fig. 2C**).

The adult cerebellum can be organizationally divided into four domains: Anterior, Central, Posterior, and Central. Each region, in turn, is physically divided into lobules, totaling ten, numbered I-X in mice²⁷. Closely examining the P18 *in situ hybridization* data, we noticed that the majority of ML *Chn2* transcript expression occurred in more posterior sections, particularly Lobules VII-IX and the fissures separating them (data not shown). Therefore, we asked if the NeuN-positive clusters we observed in $Chn2^{-/-}$ followed a similar pattern of distribution. Indeed, we found that NeuN-positive ectopias were more prevalent in the fissure separating lobules VII and VIII and on the posterior side of lobule IX (**Fig. 2F** for schematic and percent distribution). These two locations collectively account for approximately 45% of all ectopic clusters scored ($n=1068$ ectopias across nine $Chn2^{-/-}$ animals). Collectively, these data suggest that *Chn2* is expressed by a small subset of late radially migrating GCs prior to their arrival to the GCL, and that loss of β -chimaerin function causes these cells to fully arrest in the EGL.

The ectopic clusters contain mature granule cells, but not other types of cerebellar neurons

While the prior data suggest that the neuronal ectopias observed in $Chn2^{-/-}$ mutants contain *Chn2* expressing cells, we sought to more thoroughly examine the composition of these ectopias. To test for the presence of mature GCs, we made use of the marker Gamma-Amino

Butyric Acid Receptor subunit $\alpha 6$ (GABAR $\alpha 6$) (**Fig. 3A,B**). Most cells in the neuronal ectopias in *Chn2*^{-/-} animals colabeled with GABAR $\alpha 6$, confirming the presence of mature, fully differentiated GCs. To explore the possibility of other cell types contributing to the composition of these ectopic clusters, we immunolabeled with antibodies raised against the Purkinje Cell marker Calbindin, but did not find any Calbindin⁺ cells within the clusters (**Fig. 3C,D**). Interestingly, Purkinje cell dendrites failed to invade the space occupied by the neuronal clusters (**Fig. 3D**). We also immunolabeled for the general GABAergic interneuron marker Parvalbumin (**Fig. 3E,F**) and found no co-labeling in the neuronal ectopias. Finally, we immunolabeled with the GABAergic marker Glutamic Acid Decarboxylase 67 (GAD67) (**Fig. 3G,H**). No GAD67⁺ cell bodies were detected in the ectopic clusters. We did detect evenspread ML labeling of GAD67-positive processes, even in areas containing neuronal ectopias, suggesting these ectopias could potentially receive GABAergic input from stellate or basket cells (**Fig. 3G,H**). Collectively, these data suggest that the neuronal ectopias found in *Chn2*^{-/-} animals are composed primarily of GCs, but not other cerebellar neuronal types.

During radial migration, GCPs in the iEGL migrate along Bergmann glial fibers to navigate toward the GCL⁴. Failure of GCPs to properly associate with glial tracts, or errors in glial scaffold architecture itself could inhibit GC radial migration, and could explain the ectopic phenotype observed in *Chn2*^{-/-} mutants. Therefore, we examined the structure of the glial scaffolds surrounding ectopic clusters using an antibody raised against Glial Fibrillary Acidic Protein (GFAP) (**Fig. 4A,B**). We observed no gross alterations to Bergmann Glial structure, arguing against the possibility of an architectural cause underlying the phenotype. However, upon co-labeling with β gal, which strongly marks most cells in neuronal clusters (**Fig. 2E**), we can observe many individual cells clinging to single GFAP-positive tracts even in the adult (**Fig.**

4B, white arrowheads). This observation reinforces the idea that GCPs lacking β -chimaerin function stall during radial migration.

Granule cell ectopias recruit presynaptic partners

In the mature cerebellar circuit, granule cells in the GCL receive glutamatergic input from mossy fibers originating from the spinal cord, pontine nucleus, and other CNS regions. GCs in turn provide glutamatergic input onto local purkinje cell dendrites¹. Since the neuronal ectopias contain differentiated, GABA α 6-positive GCs (**Fig. 3B**), we asked if they could form local circuits. We assayed for the expression of the synaptic marker vesicular glutamate transporter 2 (Vglut2), which labels a subset of cerebellar glutamatergic synapses, and found robust colabeling with β gal-positive cells within neuronal ectopias (**Fig. 5A,B**). Furthermore, Vglut2 staining in the ectopias displayed a pattern highly reminiscent of the rosette structures formed by mossy fiber terminals.

To test whether the Vglut2-positive staining on the ectopic neuronal clusters indeed represented mossy fiber synaptic terminals, we performed stereotactic injections of an Adenosine Associated Virus expressing a Synapsin-promoter-driven Enhanced Green Fluorescent Protein cassette (AAV-Syn-EGFP) into the pontine nucleus. In contrast to control animals, where all observed EGFP-positive axon terminals were restricted to the GCL, we observed EGFP-positive axons extending beyond the GCL in *Chn2*^{-/-} mutants (**Fig. 5C,D**, dotted line demarks outer boundary of the GCL). Furthermore, the EGFP⁺ axons innervated the ectopias, demonstrating that ectopic GCs could successfully recruit pontine axon fibers. Additionally, under high magnification we found that these terminals co-labeled with Vglut2, suggesting that these represent mossy fiber terminals (**Fig. 5E,F**).

External Germinal Layer structure and proliferation is normal in early postnatal *Chn2*^{-/-} mice

During cerebellar development granule cells undergo a stepwise maturation process. At embryonic stages, mitotically active granule cell precursors expand across the cerebellar anlage from their point of origin at the rhombic lip to generate the EGL proper. Postnatally, these precursors become postmitotic and extend two horizontal processes, moving inward to generate the inner EGL as a distinct population from the more superficial precursors that remain mitotically active in the outer EGL. In the inner EGL these postmitotic precursors will migrate tangentially, eventually arresting and growing a third perpendicular process. They then begin migrating radially inward, past the PC layer, to form the mature GCL. Given the complex migratory path GCPs take in their development, we asked if an earlier, more subtle defect in EGL structure may precede the development of neuronal ectopias.

We examined P10 *Chn2*^{-/-} and control animals for the overall distribution of GCPs. We first immunolabeled with antibodies against the transcription factor Pax6, which is active in GCPs in the EGL and maturing GCs in the GCL. We noticed no major difference in Pax6 distribution between *Chn2*^{-/-} mutants and controls in the lobules that more frequently develop ectopias (**Fig. 6 A, B**). We also examined the expression profile of the cell adhesion molecule L1-NCAM (L1), which labels migrating granule cells in the inner EGL⁸. We found no major difference in its distribution between *Chn2*^{-/-} mutants and controls (**Fig. 6 C, D**). These results suggest that there is no altered distribution of GCPs preceding the development of neuronal ectopias. As stated earlier, one possible explanation of ectopia formation is alterations to Bergmann glial tracts. We analyzed the structure of the Bergmann glial scaffold using an

antibody against GFAP and found no structural differences in the lobules that more frequently develop neuronal ectopias (**Fig. 6 E-F**). Collectively, these results suggest that there are no major early postnatal lamination or architectural defects that could predispose certain GCs to arrest.

During mammalian cerebellar development, granule cell precursors normally continue to proliferate postnatally in the oEGL²⁸. Is proliferation of GCs disrupted during development? We analyzed the distribution of proliferating GPCs in early postnatal animals (P10) two hours post BrDU injection. Proliferating cells were only found in the oEGL in both *Chn2*^{-/-} and WT animals (**Fig. 7A,B**). The density of proliferating GCs in *Chn2*^{-/-} and WT animals was comparable (T-test, ns) suggesting that early postnatal GPCs proliferate normally. To test whether the cells that form the ectopias continue to be mitotically active in the adult, we performed BrDU injections in P35 *Chn2*^{-/-} and WT animals (**Fig. 7C,D**). No proliferating cells were found in the neuronal ectopias, suggesting these ectopic neuronal clusters consist entirely of post-mitotic cells (**Fig. 7C,D**).

Cerebellar Structure in mice expressing hyperactive β -chimaerin

Genetic ablation of *Rac1* and *Rac3* results in severe disruption of cerebellar granule cell migration^{29,30}. Could increasing β -chimaerin RacGAP activity cause similar phenotypes? To test whether enhanced β -chimaerin activity could also affect cerebellar development, we made use of a knock-in mouse that harbors a hyperactive *Chn2* allele. This allele consists of a single amino acid substitution introduced into the endogenous gene locus²⁵. The I130A substitution yields a protein with a more “open” conformation, which renders it more sensitive to induction³¹. We collected adult (P35) mice that were homozygous for the hyperactive allele (*Chn2*^{I130A/I130A}) and stained for the mature granule cell marker GABAR α 6 (**Fig. 8A,B**) and glutamatergic synapse

marker Vglut2 (**Fig. 8 C,D**) to label fully differentiated GCs and glutamatergic synapses, respectively. In contrast to *Chn2*^{-/-} mutants, *Chn2*^{I130A/I130A} animals did not develop ectopic clusters of cells. Further, GC lamination appeared no different from controls. We next looked for other errors in cerebellar structure or lamination by immunostaining for the markers GFAP (**Fig. 8 E,F**), Parvalbumin (**Fig. 8G,H**), and GAD67 (**Fig. 8I,J**). We found no difference in the Bergmann Glial scaffold or GABAergic cell populations, respectively. Collectively, these data suggest that hyperactivity of β -chimaerin does not negatively affect cerebellar morphogenesis.

Discussion

Here we show that the RacGAP β Chimaerin is essential for cerebellar GC development. Many ligand-receptor pairs have been shown to regulate GC proliferation and migration, but less is known about the cytoplasmic effectors that link these extracellular signals with the cytoskeleton⁵⁻⁹. Guided by the previously reported robust expression of *Chn2* in the adult GCL²⁶, we examined whether this cytoplasmic protein could be playing a functional role during cerebellar development. We found that the genetic ablation of *Chn2* results in the formation of ectopic clusters of neurons in the outer ML. These ectopias are primarily formed by GCs. Since we initially established that *Chn2* was mainly expressed in the GCL of early postnatal and adult cerebella (**Fig. 1**), which represents the mature post-migratory GC population, how could the mispositioned ectopic GCs appear on the outside edge of the cerebellum? Interestingly, a small subset of late pre-migratory GCs expressed *Chn2* mRNA in the outer EGL. Based on the distribution and location of the *Chn2* expressing cells, and the co-localization of β Gal with NeuN and α 6 in the *Chn2*^{-/-} ectopic neuronal clusters, it is likely that the *Chn2*⁺ late pre-migratory cells are the ones that fail to migrate inwardly in *Chn2*^{-/-} animals.

RhoGTPases have been shown to regulate neuronal migration in a variety of neuronal systems^{12,13,15}. In particular, the small G-proteins Rac1 and Rac3 are required for proper granule cell migration^{29,30}. To our knowledge, β Chimaerin is one of the first RacGAPs to be shown to participate in granule cell migration^{12,15}. Notably, only a small subset of cells in the more caudal cerebellum is affected in *Chn2*^{-/-} mutants. Given the essential role of Rac during cerebellar morphogenesis, other RhoGAPs and GEFs are likely to be involved in regulating these migratory events in other areas of the cerebellum. While genetic ablation of *Rac1* and *Rac3* reduces the overall level of active Rac, removal of β Chimaerin, a RacGAP known to negatively regulate Rac1-GTP levels in neurons^{25,32}, is probably moving the scale in the opposite direction. Thus, balanced Rac activity might be essential for proper GC migration. In this regard, expression of a hyperactive version of β Chimaerin (I130A) from the endogenous *Chn2* locus was not enough to disrupt GC migration (**Fig. 8**). This could be in part due to the regionally and temporally restricted expression of *Chn2* in premigratory GCs.

This novel role of *Chn2* during cerebellar development is the newest addition to a growing list of functional requirements for these RacGAPs during neural development: chimaerins have been shown to regulate axon guidance, pruning in the hippocampus, and cortical lamination¹⁸⁻²⁴. While in the cortex *Chn1* is required for radial migration of most excitatory neurons²¹, in the cerebellum, *Chn2* is required for migration and positioning of a small subpopulation of GCs, displaying remarkable specificity. The functional requirement of chimaerins during a variety of developmental processes in a wide array of CNS circuits highlights the importance of this small family of RacGAPs during neural circuit formation.

As mentioned above, only a subset of granule cells are susceptible to an arrest in migration in *Chn2*^{-/-} cerebella, while the GC population at large is phenotypically normal. Are

these ectopic cells able to recruit the right presynaptic partners in a sea of normally positioned GCs? The surprising answer to this question appears to be yes. Anterograde labeling of the pons using viral approaches revealed that the ectopic clusters found in *Chn2*^{-/-} cerebella were innervated by pontine axon fibers, one of the normal presynaptic partners for cerebellar GCs (**Fig. 5**). These ectopic presynaptic terminals are Vglut2⁺ and display the rosette morphology characteristic of normal pontine mossy fibers. Whether these synaptic terminals are active and mature remains to be explored.

Materials and Methods

Animals and Genotyping

The day of birth in this study is designated as postnatal (P) day 0. The generation of *Chn2*^{-/-} and *Chn2*^{I130A/+} mice has been described elsewhere²⁵. Genotyping of *Chn2*^{-/-} mice was performed by PCR using the following primers: *Chn2*KO1: 5'-CAGCCTGGTCTACAGAGTGAG-3'; *Chn2*KO2: 5'-GCATTCCACCACTGAGCTAGG-3'; *Chn2*KO3: 5'-GTAGGCTAAGCATTGGCTGGC-3'. Genotyping of the *Chn2*^{I130A/+} knock-in mice was performed by PCR using the following primers: *Chn2*KIF: 5'-CCAAGCCCAGCTTTAGAGTGGGC-3'; *Chn2*KIR: 5'-GAAGGCCCTCCTTTGCTCTGAG-3'.

Immunohistochemistry

Mice were perfused and fixed with 4% paraformaldehyde for 2 hours at 4°C, rinsed and sectioned on a vibratome (150 µm). Immunohistochemistry of floating parasagittal cerebellar sections was carried out essentially as described³³. The primary antibodies used were: rabbit anti-calbindin (Swant at 1:2500), anti-parvalbumin (Swant at 1:2000), rabbit anti-calretinin (Swant at 1:2000), chicken anti-βGal (AVES labs at 1:2000), chicken anti-GFP (AVES labs at 1:1000), rabbit anti-GFAP (abcam at 1:1000), guinea pig anti-vGlut2 (Millipore at 1:1000), rabbit anti-α6 (Millipore at 1:1000, discontinued), Mouse anti-GAD67 (Millipore at 1:500), rat anti-L1 (Millipore at 1:500) and mouse anti-pax6 (Developmental Studies Hybridoma Bank at 1:200). Sections were then washed in 1 X PBS and incubated with secondary antibodies and TOPRO-3 (Molecular Probe at 1:600 and 1:2000, respectively). Sections were washed in PBS and mounted using vectorshield hard-set fluorescence mounting medium (Vector laboratories). Confocal fluorescence images were taken using a Leica SPE II microscope.

***In situ* Hybridization**

In situ hybridization was performed on floating cerebellar vibratome sections (150 μ m thickness) using digoxigenin-labeled cRNA probes, essentially as described for whole-mount RNA *in situ* hybridization³⁴. Generation of the *Chn2* cRNA probes has been described in²⁵

Injectons of AAV

Synapsin-EGFP AAV8 was obtained from the University of North Carolina viral core. The concentrated viral solution (0.2 μ l), was delivered into the pons by stereotactic injection (0.25 μ l per min), using the following coordinates: anterior-posterior, -5.1 mm; lateral, ± 0.6 mm; and vertical, -4.1 mm. For all injections, Bregma was the reference point.

BrDU labeling

BrdU labeling agent was purchased from Life Technologies (#000103) and was delivered via intraperitoneal injection at 1ml BrdU solution/100g animal weight, following manufacturer instructions. Brains were perfused and collected 2hrs post injection for proliferation assessment, or as adults for pulse-chase experiments. Perfused brains were fixed for 2 hours and sectioned on a vibratome (150 μ m thickness). Sections underwent antigen retrieval: incubated in 1M HCl in 1xPBS for 30 mins at room temperature, washed 3x10 min in 1xPBS, incubated in 10mM sodium citrate for 30min at 80C, and washed 3x10min in 1xPBS. Following antigen retrieval, immunohistochemistry was performed as described above using a mouse monoclonal antibody anti-BrDU (Invitrogen, clone BU-1, MA3-071 at 1:250).

References

- 1 Chedotal, A. Should I stay or should I go? Becoming a granule cell. *Trends in neurosciences* **33**, 163-172, doi:10.1016/j.tins.2010.01.004 (2010).
- 2 Wingate, R. Math-Map(ic)s. *Neuron* **48**, 1-4, doi:10.1016/j.neuron.2005.09.012 (2005).
- 3 Kawaji, K., Umeshima, H., Eiraku, M., Hirano, T. & Kengaku, M. Dual phases of migration of cerebellar granule cells guided by axonal and dendritic leading processes. *Mol Cell Neurosci* **25**, 228-240, doi:10.1016/j.mcn.2003.10.006 (2004).
- 4 Yacubova, E. & Komuro, H. Cellular and molecular mechanisms of cerebellar granule cell migration. *Cell Biochem Biophys* **37**, 213-234 (2003).
- 5 Zhu, Y. *et al.* Role of the chemokine SDF-1 as the meningeal attractant for embryonic cerebellar neurons. *Nat Neurosci* **5**, 719-720, doi:10.1038/nn881 (2002).
- 6 Guan, C. B., Xu, H. T., Jin, M., Yuan, X. B. & Poo, M. M. Long-range Ca²⁺ signaling from growth cone to soma mediates reversal of neuronal migration induced by slit-2. *Cell* **129**, 385-395, doi:10.1016/j.cell.2007.01.051 (2007).
- 7 Friedel, R. H. *et al.* Plexin-B2 controls the development of cerebellar granule cells. *J Neurosci* **27**, 3921-3932, doi:10.1523/JNEUROSCI.4710-06.2007 (2007).
- 8 Kerjan, G. *et al.* The transmembrane semaphorin Sema6A controls cerebellar granule cell migration. *Nat Neurosci* **8**, 1516-1524, doi:10.1038/nn1555 (2005).
- 9 Renaud, J. *et al.* Plexin-A2 and its ligand, Sema6A, control nucleus-centrosome coupling in migrating granule cells. *Nat Neurosci* **11**, 440-449, doi:10.1038/nn2064 (2008).
- 10 Borghesani, P. R. *et al.* BDNF stimulates migration of cerebellar granule cells. *Development* **129**, 1435-1442 (2002).
- 11 Ruiz de Almodovar, C. *et al.* Matrix-binding vascular endothelial growth factor (VEGF) isoforms guide granule cell migration in the cerebellum via VEGF receptor Flk1. *J Neurosci* **30**, 15052-15066, doi:10.1523/JNEUROSCI.0477-10.2010 (2010).
- 12 Govek, E. E., Hatten, M. E. & Van Aelst, L. The role of Rho GTPase proteins in CNS neuronal migration. *Dev Neurobiol* **71**, 528-553, doi:10.1002/dneu.20850 (2011).
- 13 Govek, E. E., Newey, S. E. & Van Aelst, L. The role of the Rho GTPases in neuronal development. *Genes Dev* **19**, 1-49, doi:10.1101/gad.1256405 (2005).
- 14 Cherfils, J. & Zeghouf, M. Regulation of small GTPases by GEFs, GAPs, and GDIs. *Physiol Rev* **93**, 269-309, doi:10.1152/physrev.00003.2012 (2013).
- 15 Huang, G. H., Sun, Z. L., Li, H. J. & Feng, D. F. Rho GTPase-activating proteins: Regulators of Rho GTPase activity in neuronal development and CNS diseases. *Mol Cell Neurosci* **80**, 18-31, doi:10.1016/j.mcn.2017.01.007 (2017).
- 16 Bai, Y., Xiang, X., Liang, C. & Shi, L. Regulating Rac in the nervous system: molecular function and disease implication of Rac GEFs and GAPs. *Biomed Res Int* **2015**, 632450, doi:10.1155/2015/632450 (2015).
- 17 Yang, C. & Kazanietz, M. G. Chimaerins: GAPs that bridge diacylglycerol signalling and the small G-protein Rac. *Biochem J* **403**, 1-12, doi:10.1042/BJ20061750 (2007).
- 18 Beg, A. A., Sommer, J. E., Martin, J. H. & Scheiffele, P. alpha2-Chimaerin is an essential EphA4 effector in the assembly of neuronal locomotor circuits. *Neuron* **55**, 768-778, doi:10.1016/j.neuron.2007.07.036 (2007).
- 19 Iwasato, T. *et al.* Rac-GAP alpha-chimerin regulates motor-circuit formation as a key mediator of EphrinB3/EphA4 forward signaling. *Cell* **130**, 742-753, doi:10.1016/j.cell.2007.07.022 (2007).

- 20 Wegmeyer, H. *et al.* EphA4-dependent axon guidance is mediated by the RacGAP alpha2-chimaerin. *Neuron* **55**, 756-767, doi:10.1016/j.neuron.2007.07.038 (2007).
- 21 Ip, J. P. *et al.* alpha2-chimaerin controls neuronal migration and functioning of the cerebral cortex through CRMP-2. *Nat Neurosci* **15**, 39-47, doi:10.1038/nn.2972 (2011).
- 22 Ferrario, J. E. *et al.* Axon guidance in the developing ocular motor system and Duane retraction syndrome depends on Semaphorin signaling via alpha2-chimaerin. *Proc Natl Acad Sci U S A* **109**, 14669-14674, doi:10.1073/pnas.1116481109 (2012).
- 23 Miyake, N. *et al.* Human CHN1 mutations hyperactivate alpha2-chimaerin and cause Duane's retraction syndrome. *Science* **321**, 839-843, doi:10.1126/science.1156121 (2008).
- 24 Buttery, P. *et al.* The diacylglycerol-binding protein alpha1-chimaerin regulates dendritic morphology. *Proc Natl Acad Sci U S A* **103**, 1924-1929, doi:10.1073/pnas.0510655103 (2006).
- 25 Riccomagno, M. M. *et al.* The RacGAP beta2-Chimaerin selectively mediates axonal pruning in the hippocampus. *Cell* **149**, 1594-1606, doi:10.1016/j.cell.2012.05.018 (2012).
- 26 Leung, T., How, B. E., Manser, E. & Lim, L. Cerebellar beta 2-chimaerin, a GTPase-activating protein for p21 ras-related rac is specifically expressed in granule cells and has a unique N-terminal SH2 domain. *J Biol Chem* **269**, 12888-12892 (1994).
- 27 Sudarov, A. & Joyner, A. L. Cerebellum morphogenesis: the foliation pattern is orchestrated by multi-cellular anchoring centers. *Neural development* **2**, 26, doi:10.1186/1749-8104-2-26 (2007).
- 28 Fujita, S. Quantitative analysis of cell proliferation and differentiation in the cortex of the postnatal mouse cerebellum. *J Cell Biol* **32**, 277-287 (1967).
- 29 Nakamura, T. *et al.* Novel role of Rac-Mid1 signaling in medial cerebellar development. *Development* **144**, 1863-1875, doi:10.1242/dev.147900 (2017).
- 30 Tahirovic, S. *et al.* Rac1 regulates neuronal polarization through the WAVE complex. *J Neurosci* **30**, 6930-6943, doi:10.1523/JNEUROSCI.5395-09.2010 (2010).
- 31 Canagarajah, B. *et al.* Structural mechanism for lipid activation of the Rac-specific GAP, beta2-chimaerin. *Cell* **119**, 407-418, doi:10.1016/j.cell.2004.10.012 (2004).
- 32 Griner, E. M. *et al.* A novel cross-talk in diacylglycerol signaling: the Rac-GAP beta2-chimaerin is negatively regulated by protein kinase Cdelta-mediated phosphorylation. *J Biol Chem* **285**, 16931-16941, doi:10.1074/jbc.M109.099036 (2010).
- 33 Polleux, F. & Ghosh, A. The slice overlay assay: a versatile tool to study the influence of extracellular signals on neuronal development. *Sci STKE* **2002**, pl9, doi:10.1126/stke.2002.136.pl9 (2002).
- 34 Matisse, M. P., Epstein, D. J., Park, H. L., Platt, K. A. & Joyner, A. L. Gli2 is required for induction of floor plate and adjacent cells, but not most ventral neurons in the mouse central nervous system. *Development* **125**, 2759-2770 (1998).

Figure Legends

Figure 1: β -chimaerin expression in the postnatal cerebellum. (A) Developmental maturation of cerebellar granule cells. At early postnatal stages, mitotically active granule cell precursors (GCPs, yellow) populate the outer External Granule Layer (EGL). Postmitotic granule cell precursors (green) move to the inner EGL, where they grow two horizontal processes and migrate tangentially to expand across the surface of the cerebellum. These cells eventually grow a third perpendicular process and begin migrating radially inward along Bergmann glial fibers, past the Purkinje Cell layer (PCL, red triangles), to form the mature Granule Cell Layer (GCL). Mature granule cells (blue) extend their axons back to the Molecular Layer (ML) to produce parallel fibers that provide Glutamatergic inputs on Purkinje Cell dendrites. (B-G) *In situ* hybridization in C57/BL6J mice using a probe against β -chimaerin (*Chn2*) transcript. *Chn2* shows robust expression in the GCL at all postnatal stages. Notably, we detected expression in the EGL at P18, but this expression did not persist in adult (P35) animals. Scale bar, 50 μ m for all.

Figure 2: β -chimaerin deficiency causes neuronal ectopic clusters to form along the cerebellar folia in an asymmetrical pattern. (A,B) Immunofluorescence of the pan-neuronal marker NeuN in adult (P35) WT and *Chn2*^{-/-} animals. Ectopic clusters of neurons are observed in the ML in *Chn2*^{-/-} animals (white arrows), but these mutants display no other changes in overall cerebellar structure. Scale bar, 500 μ m. (C) Quantification of the average number of neuronal ectopias per 150 μ m section across genotypes. There is a highly significant difference among the three genotypes (ANOVA, p<0.001). While there appears to be a step-wise increase in the average number of ectopias found in *Chn2*^{+/+}, *Chn2*^{+/-}, and *Chn2*^{-/-} mice, only *Chn2*^{-/-}

show a significant increase in the frequency of ectopias as compared to *Chn2*^{+/+} and *Chn2*^{+/-} animals (**p<0.01 for both comparisons, Tukey HSD test). **(D,E)** Immunofluorescence with antibodies recognizing both NeuN and betagalactosidase (beta-gal) reveal that these neuronal ectopias strongly co-label with both markers. **(E)** Schematic and graph representing the percent distribution of ectopic clusters across the cerebellum in *Chn2*^{-/-} animals. The cerebellum may be divided into four principle regions: Anterior (blue), Central (Green), Posterior (Yellow), and Nodal (Red); each region may be further divided into several individual folds, or Lobules (I-X). We found that ectopias most commonly occur in posterior and nodal lobules and fissures, with enrichment in the fissure separating lobules VII-VIII and on the posterior side of lobule IX (collectively accounting for 45% of all ectopias scored; n=1068 ectopias across nine animals).

Figure 3: Ectopic clusters contain mature granule cells, but not other types of cerebellar neurons. **(A, B)** Immunofluorescence of the mature granule cell-specific marker GABARa6, with betagalactosidase (beta-gal) and DAPI as counterstains. Beta-gal positive ectopias contain large numbers of differentiated granule cells. **(C-H)** Immunofluorescence for the PC marker Calbindin **(C,D)** and the general interneuron markers Parvalbumin **(E,F)** and GAD67 **(G,H)**, with beta-gal and DAPI as counterstains. Neuronal ectopias do not co-label with any of these three markers and therefore do not contain PCs, stellate, or basket cells that normally occupy the ML. Interestingly, Purkinje cell dendrites appear to avoid invading the clusters. Scale bar, 50μm for all.

Figure 4: Bergmann Glial tracts are not disrupted in β-chimaerin null animals. **(A,B)** Immunofluorescence of the glial cell marker GFAP, with beta-gal and DAPI as counterstains.

The Bergmann Glial scaffold, which radially migrating GCPs adhere to during their migration from the iEGL to GCL, does not appear disrupted in *Chn2*^{-/-} mutants. Of note, beta-gal immunoreactive cells may be seen collected on individual glial tracts (white arrowheads), suggesting some β -chimaerin deficient GCs may initiate but fail to complete radial migration. Scale bar, 50 μ m.

Figure 5: Neuronal Ectopias are contacted by pontine mossy fibers. (A,B)

Immunofluorescence of the presynaptic marker glutamate vesicular transporter (Vglut2), with beta-gal and DAPI as counterstains. Ectopias robustly label with Vglut2, suggesting they may form synapses with mossy fibers. Scale bar, 50 μ m. **(C,D)** Injection of AAV-Syn-EGFP into the pons reveals that neuronal ectopias are innervated by aberrant mossy fibers. AAV-syn-EGFP injections into the pontine nucleus of adult (P35) animals label mossy fibers innervating the cerebellar cortex. We found that mossy fibers improperly projected into the ML in β -chimaerin deficient animals (white arrowheads). Scale bar, 100 μ m. **(E,F)** Higher-resolution image showing that these mossy fibers make direct contact with neuronal ectopias and are surrounded by Vglut2-positive processes. Scale bar, 50 μ m.

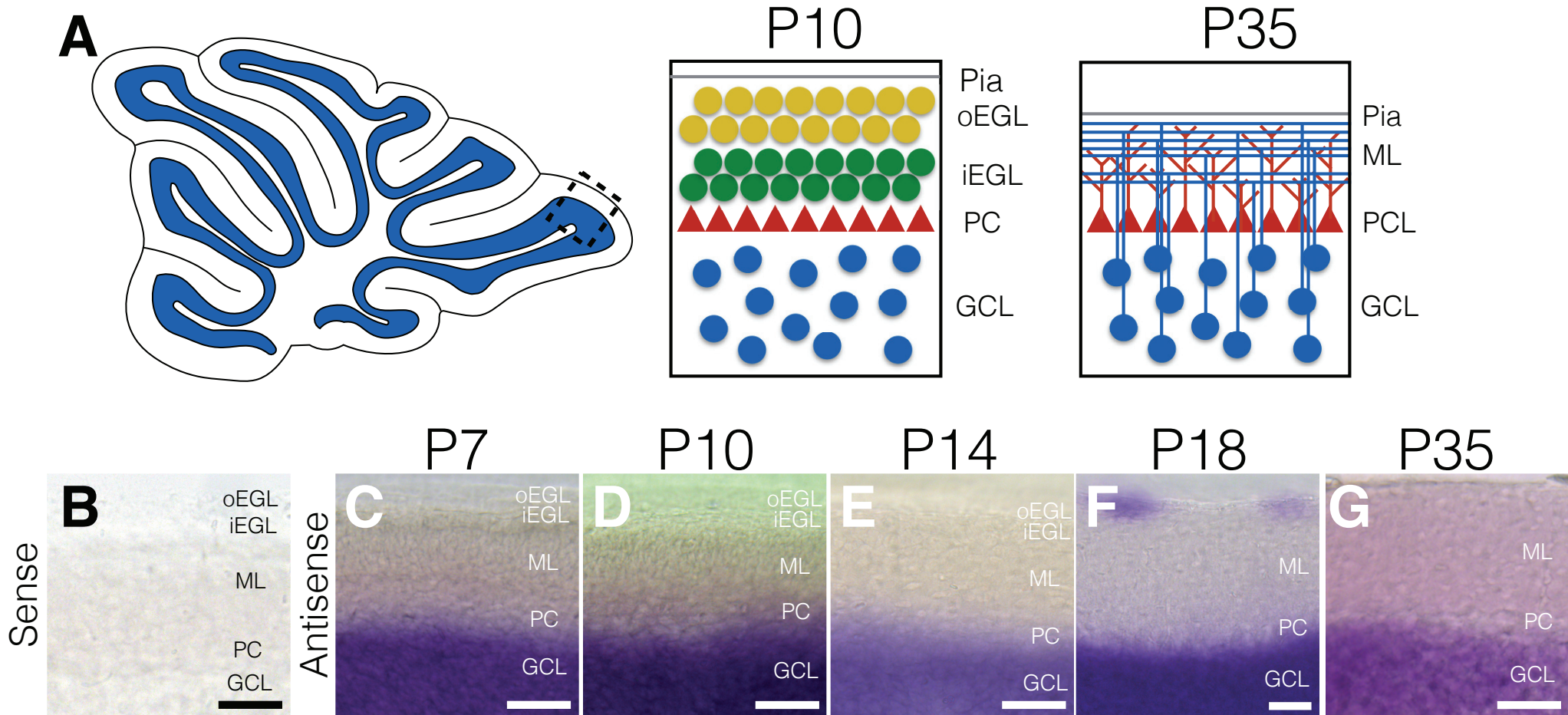
Figure 6: Early postnatal cerebellar structure is unaltered in β -chimaerin deficient animals. (A-D)

Immunofluorescence on early postnatal (P10) *Chn2*^{-/-} mutants with an antibody targeting the transcription factor Pax6, which identifies both GCPs in the EGL as well as GCs in the GCL **(A,B)** or the cell adhesion molecule NCAM-L1 (L1), which labels tangentially migrating GCPs in the iEGL **(C,D)**. At these early postnatal stages, neither Pax6 nor L1 reveal any differences in GCP distribution. **(E,F)** Immunofluorescence with the glial marker GFAP,

counterstained with beta-gal and DAPI. The Bergmann glial scaffold appears unaffected. Scale bar, 50µm for all.

Figure 7: Cell proliferation in β -chimaerin deficient animals. (A-D) BrdU, a thymidine analog that incorporates specifically into cells in the S-phase of mitosis, was injected into either early postnatal stages (P10) (A,B) or adult (P35) (D,E) and allowed to incorporate for two hours prior to animal collection. (A,B) We found there is no apparent difference in the distribution of proliferating, BrdU-positive GCPs in the oEGL between *Chn2*^{-/-} mice and controls. (C,D) In adult (P35) animals, neuronal ectopias do not contain proliferating cells, suggesting that they are composed entirely of postmitotic cells. Scale bar, 50µm for all.

Figure 8: Cerebellar structure is unaffected in β -chimaerin hyperactive mutants. (A-J) We took advantage of a mouse homozygous for a hyperactive allele of the β -chimaerin gene (*Chn2*^{I130A/I130A}) and examined its adult (P35) cerebellar structure. We observe no difference in the mature granule cell marker GABAR α 6 (A,B), the glutamatergic synaptic marker Vglut2 (C,D), the glial marker GFAP (E,F), or the interneuron markers Parvalbumin (G,H) and GAD67 (I,J). Scale bar, 50µm for all.



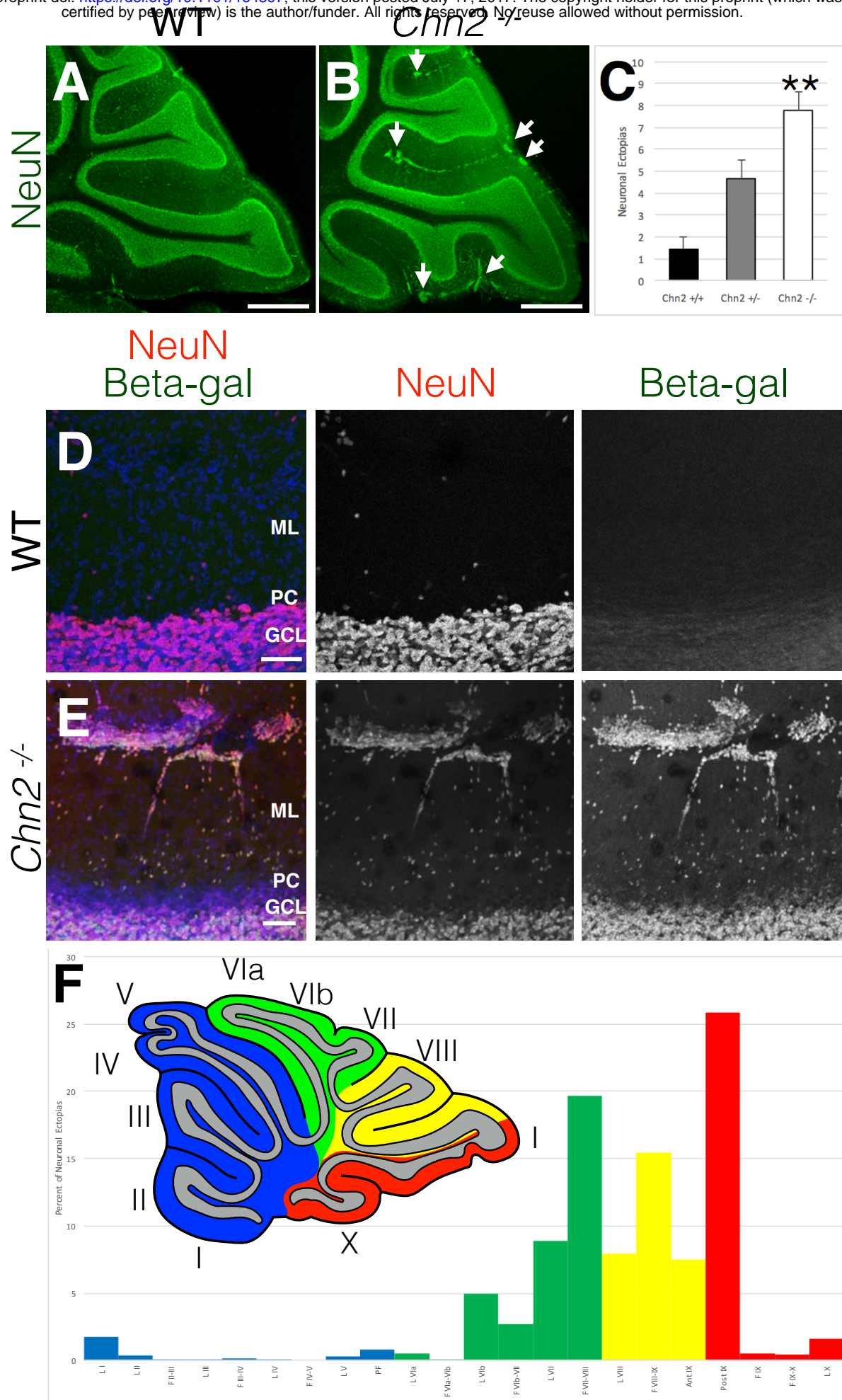


Figure 2

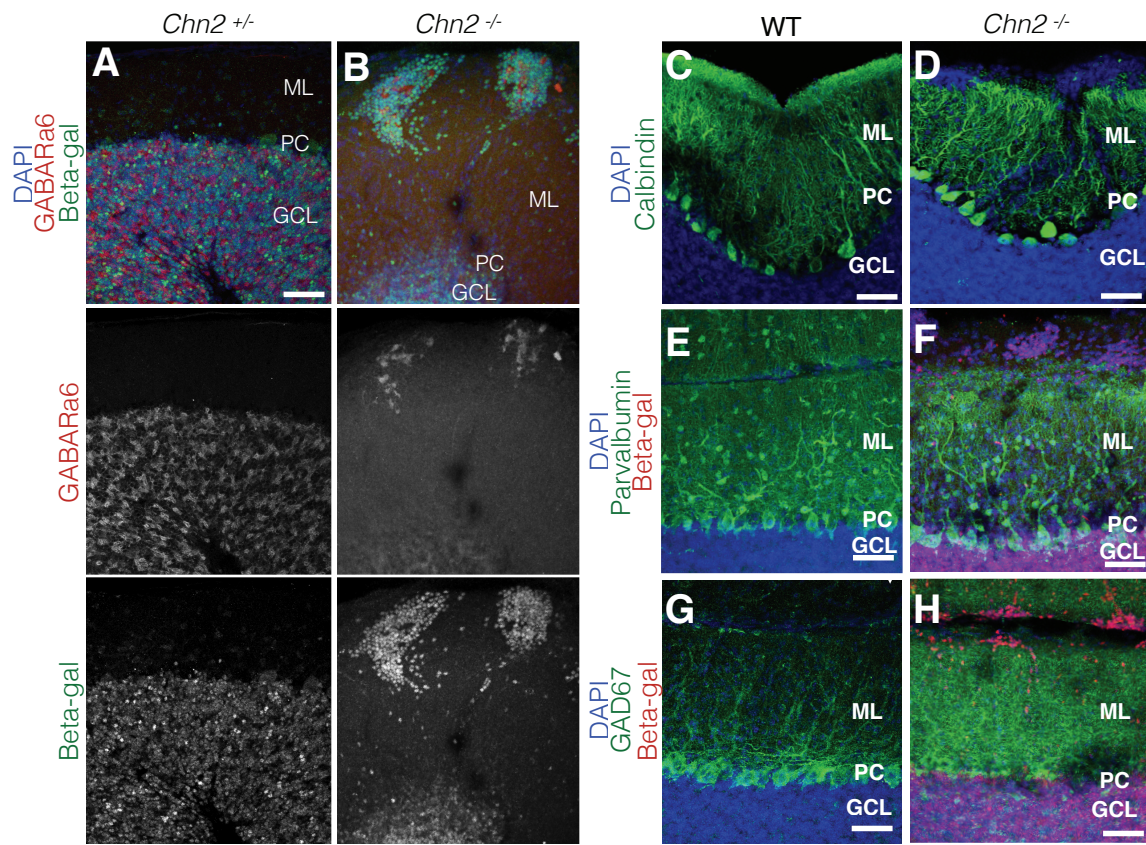


Figure 3

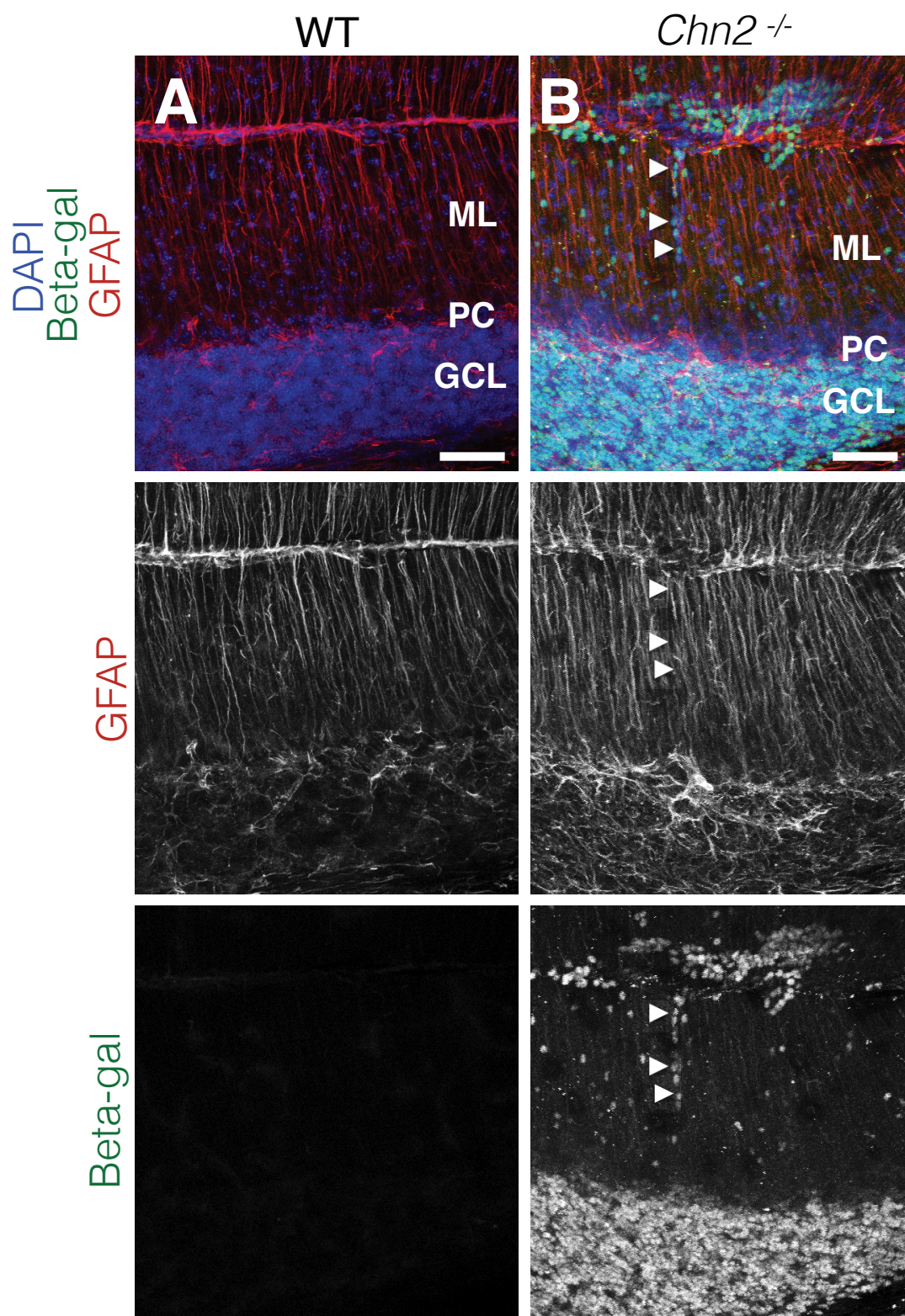


Figure 4

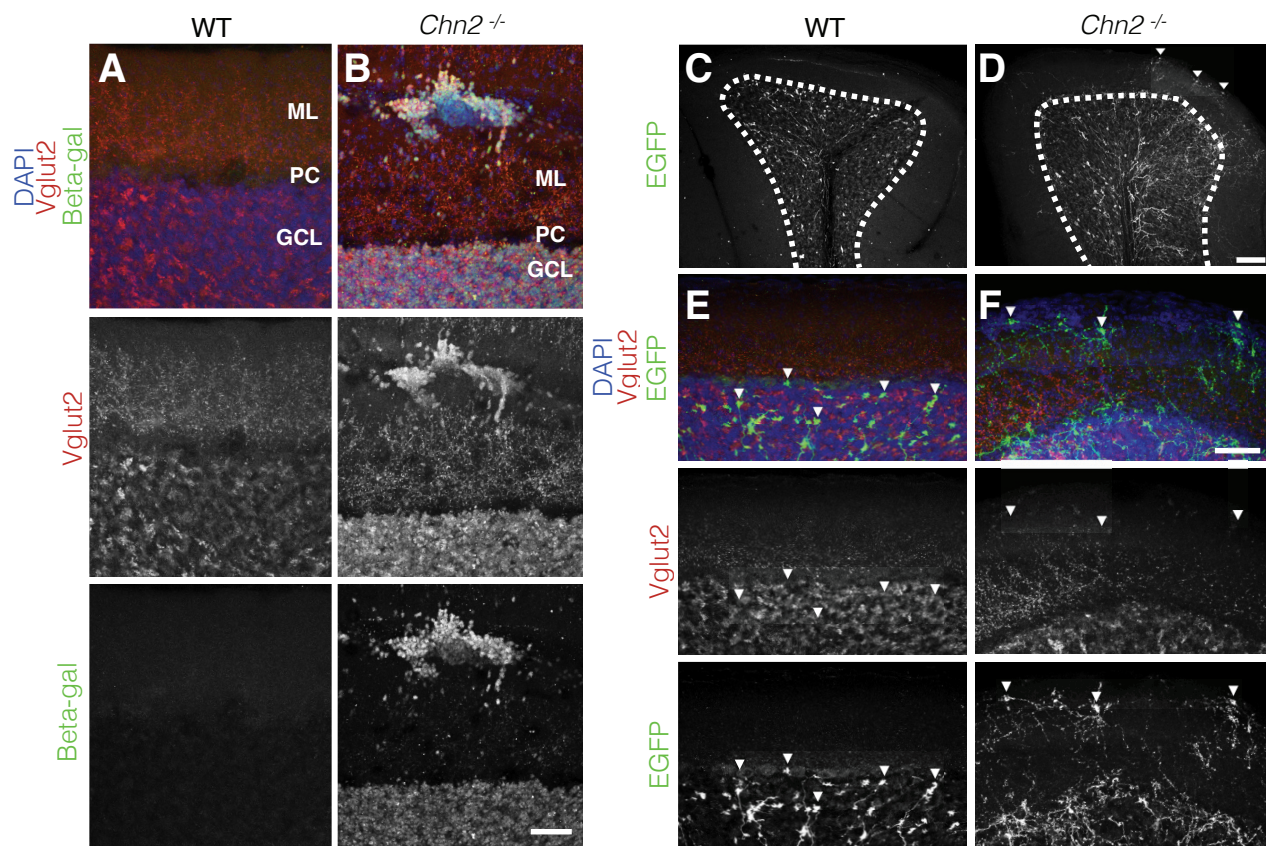


Figure 5

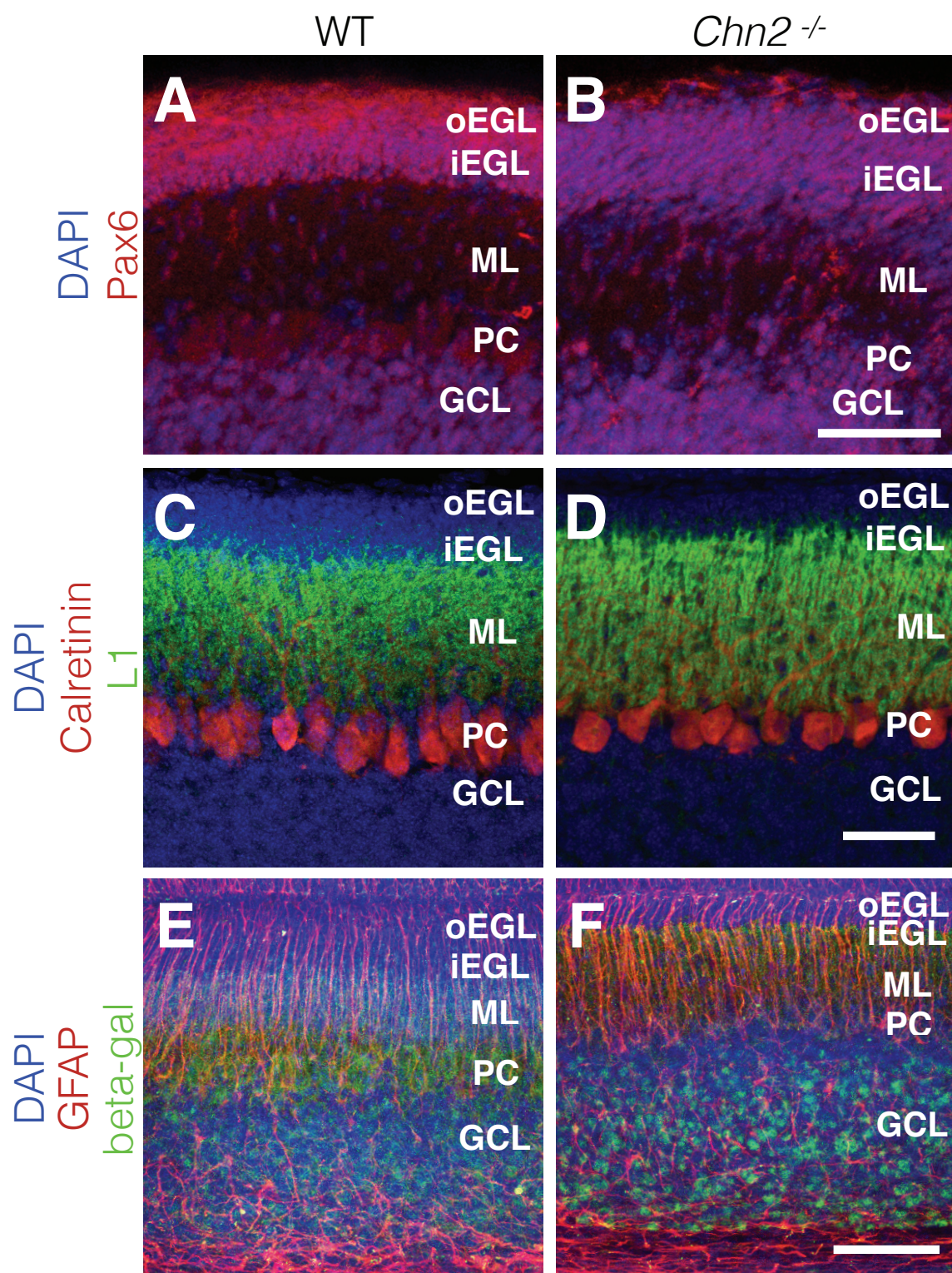


Figure 6

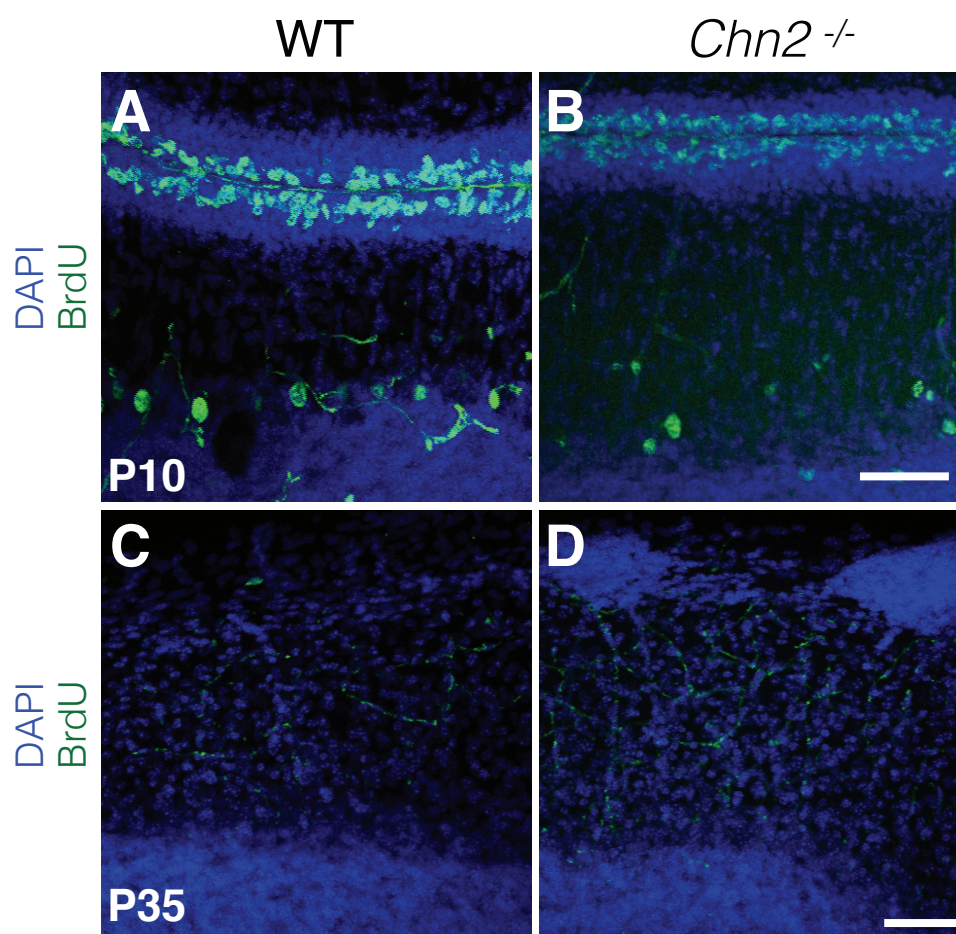


Figure 7

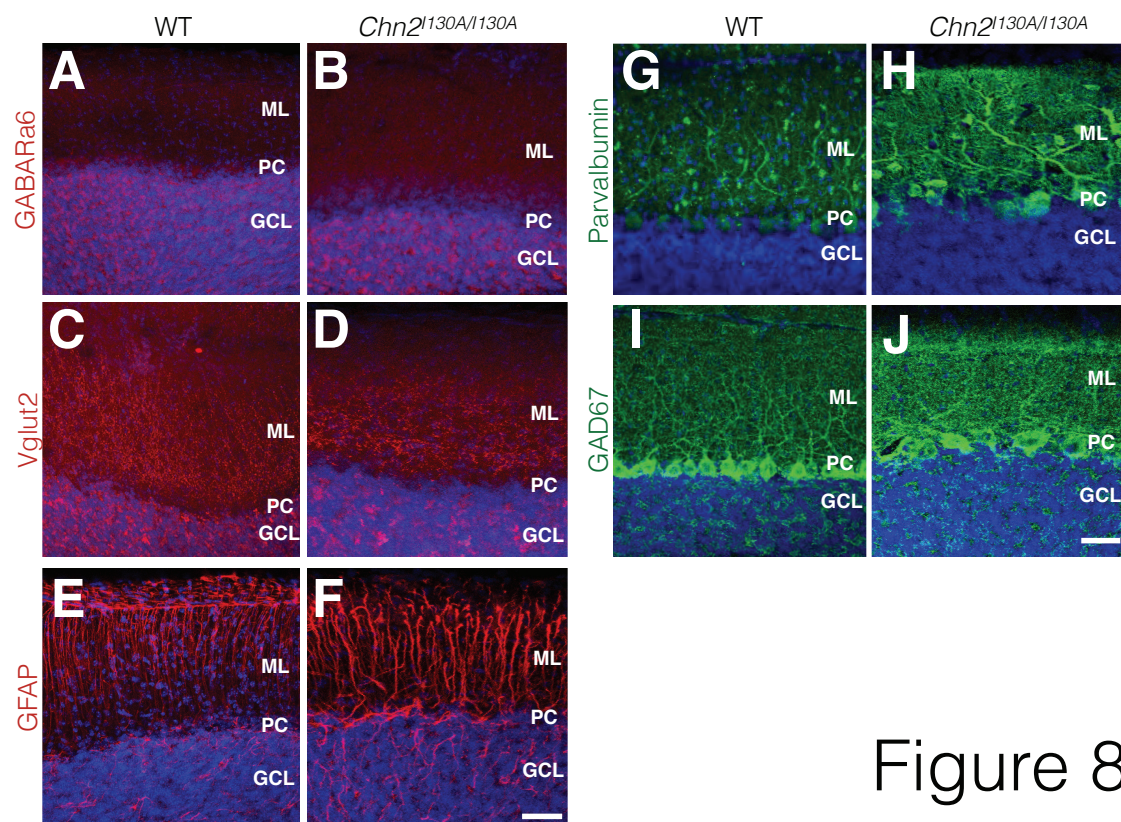


Figure 8