

1 **Potential impact of sexual transmission of Ebola virus on the epidemic in West**

2 **Africa**

3

4 **Authors**

5 Jessica L. Abbate^{1,2,3 *}

6 Carmen Lia Murall^{4 *}

7 Heinz Richner¹

8 Christian L. Althaus⁵

9

10 *These authors contributed equally to this article.

11

12 **Affiliations**

13 1. Institute for Ecology and Evolution, University of Bern, Bern, Switzerland

14 2. UMR MIVEGEC (UMR CNRS 5290, IRD 224, UM), Institute for Research of
15 Development (IRD), Montpellier, France

16 3. UMR UMMISCO (UMI 209 IRD-UPMC), Bondy, France

17 4. Max-Planck Institute for Dynamics and Self-Organization, Gottingen, Germany

18 5. Institute of Social and Preventive Medicine (ISPM), University of Bern, Bern,
19 Switzerland

20

21 **Key Words:** Ebola virus, epidemiology, emerging infectious disease, sexually
22 transmitted infection, mathematical modeling, basic reproductive number

Abstract

Ebola virus RNA can persist in seminal fluids of male convalescent patients after they recover from Ebola virus disease (EVD). We developed a novel compartmental EVD transmission model, Monte Carlo simulations, and performed sensitivity analyses to assess the potential impact of sexual transmission on the epidemic dynamics. Though few extra cases are expected due to sexual transmission from male survivors, the length of the epidemic tail is significantly affected. Fitting the model to weekly incidence data from Sierra Leone, we found that a 0.1% per sex act transmission probability and a convalescence period of 3 and 6 months could extend the EVD epidemic by 83 days (95% CI: 68–98 days) and 540 days (95% CI: 508–572 days), respectively. The latter would double the current length of the epidemic in Sierra Leone and highlights the importance of ongoing surveillance efforts in West Africa.

Introduction

Recent reports suggesting the potential for sexual transmission of Ebola virus from convalescent survivors have raised a number of important questions regarding its impact on the final phase of the epidemic in West Africa [1,2]. Even once the worst hit countries of Guinea, Liberia, and Sierra Leone are declared free of Ebola virus disease (EVD), rare cases may still arise from the large number of remaining survivors. Perhaps the most crucial element for bringing the epidemic to an end is maintaining vigilance in the community and preventing new chains of transmission. Historically occurring in sparsely-populated isolated communities, often killing the vast majority of victims [3], the unprecedented number of cases – and survivors – in densely populated urban areas presents novel challenges for bringing the outbreak to an end. Although sexual transmission of EVD is likely to be rare, it is important to investigate its potential impact on the transmission dynamics in general, and on the tail of the ongoing epidemic in particular.

Follow-up studies on survivors of the 1995 outbreak in the Democratic Republic of Congo [4] and the 2000 [5] and 2007 [6] outbreaks in Uganda have raised awareness of what is now being termed “post-Ebola syndrome” (post-Ebola sequelae) – debilitating illnesses from myalgia to uveitis – which can persist for at least 21 months after the onset of symptoms. Though the virus is no longer detected in the blood after symptoms disappear, active (replicating) virus has been documented in ocular fluid, rectal fluids, vaginal fluids, and semen [4,7]. Two recent reports indicate that this is also the case for survivors of the current (2013-2015) epidemic in West Africa, having documented

ongoing viremia in ocular [8] and seminal [1] fluids many months after falling ill. Importantly, molecular evidence from a woman who contracted EVD in Liberia after unprotected vaginal intercourse with a survivor nearly 6 months after his recovery from EVD supports the hypothesis that direct sexual transmission from asymptomatic convalescent survivors can and does occur [2]. Transmission to sexual partners was never confirmed in earlier outbreaks, but was suspected to have occurred in at least one instance [4]. Similarly, cases of sexual transmission of other hemorrhagic fever infections, notably by the closely related Marburg virus, have been suspected in the past [9,10].

Of particular epidemiological interest is the question of how long active Ebola virus in semen, vaginal, and rectal fluids of convalescent survivors poses a threat for sexual transmission. The previous studies identified active virus as late as 82 days after onset of symptoms in seminal fluid from one male patient; samples positive for viral RNA were identified as late as 29 days (rectal) and 33 days (vaginal) after onset of symptoms in one female patient of six sampled, and 101 days after onset of symptoms in seminal fluid from four out of five male patients [4,7]. The studies from the West African outbreak, showing viremia in semen 4-6 months after onset of symptoms in 65% of men tested (7-9 months in 26%) [1] and confirming occurrence of transmission from a survivor 179 days after onset of symptoms [2], suggest that sexual transmission from convalescent men may pose a threat for far longer than previously anticipated.

Sexual transmission of Ebola virus from convalescent survivors is likely a rare event, but researchers have warned that it is feasible and should be considered in epidemiological

models that are used to predict the trajectory of the outbreak [11]. To this end, we devised a novel mathematical model of EVD transmission and studied the epidemic dynamics in absence and presence of sexual transmission from convalescent men. To obtain baseline parameter estimates in the absence of sexual transmission, we fitted the model to weekly incidence of confirmed and probable cases from Sierra Leone (as reported from the patient database by the World Health Organization [12]; Table 1, Fig. S1); the largest population of recovering survivors from the current West Africa epidemic. We performed sensitivity analysis to understand the impact of key unknown parameters, such as the duration of the convalescent period and the transmission probability per sexual contact. We also performed Monte Carlo simulations to explore the impact of sexual transmission on the epidemic tail in Sierra Leone.

Methods

Transmission model. We extended a SEIR (susceptible-exposed-infected-recovered) modeling framework, which has been extensively used to describe EVD transmission [13–15], by adding a component for sexual transmission from convalescent survivors who maintain active Ebola virus replication (Fig. 1). The resulting SEICR model has five states: susceptible, S , exposed, E , symptomatic and infectious, I , convalescent, C , fully recovered and immune, R , and dead, D . The model is represented by the following set of ordinary differential equations (ODEs):

$$\begin{aligned}
 \frac{dS}{dt} &= -\beta(t)SI - \beta_s p C \frac{S}{N} \\
 \frac{dE}{dt} &= \beta(t)SI + \beta_s p C \frac{S}{N} - \sigma E \\
 \frac{dI}{dt} &= \sigma E - \gamma I \\
 \frac{dC}{dt} &= (1-f)\gamma I - \alpha C \\
 \frac{dR}{dt} &= \alpha C \\
 \frac{dD}{dt} &= f\gamma I
 \end{aligned}
 \tag{1}$$

where $N = S + E + I + C + R$ denotes the total population size. We assumed the non-sexual transmission rate, $\beta(t)$, to be initially constant (β_0) before it starts to decay exponentially due to the effect of control interventions and behavior change after time τ : $\beta(t) = \beta_1 + (\beta_0 - \beta_1)e^{-k(t-\tau)}$ [13]. The sexual transmission parameter, β_s , can be described as the product of two parameters ($\beta_s = \eta q$) that we will consider separately: η is the per sex act transmission probability of Ebola virus from convalescent men, and q is the daily rate at which they engage in sexual intercourse. The number of convalescent individuals are scaled by p , which is the proportion of convalescent survivors who are sexually active men. $1/\sigma$ and $1/\gamma$ represent the average durations of incubation and symptomatic infection, respectively. f is the case fatality rate. The average duration after which convalescent patients recover completely and shed no further replicating Ebola virus from their body is given by $1/\alpha$. We assumed that sexual transmission is frequency-dependent [16–18], i.e., the probability that the sexual partner of a convalescent man is susceptible is given by S/N .

Model parameters. The basic reproductive number, R_0 , for the SEICR model can be calculated using the next-generation matrix method [19,20] and is given by

$$R_0 = \frac{\beta S_0}{\gamma} + \frac{(1-f) p \beta_s}{\alpha},$$

where S_0 is the initial number of susceptible individuals (see *Supplementary Material*).

When α goes to infinity or either $\beta_s = 0$ or $p = 0$, the equation reduces to the basic reproductive number in absence of sexual transmission: $R_{0,N} = \frac{\beta S_0}{\gamma}$. Thus, the second

term represents the contribution of sexual transmission from convalescent patients to the overall R_0 : $R_{0,C} = \frac{(1-f) p \beta_s}{\alpha}$.

We fitted the deterministic EVD transmission model to weekly incidence of confirmed and probable cases in Sierra Leone as reported in the WHO patient database [12] (*Supplementary Material* Fig. S1). The data set was extended with weekly incidence from the situation report for the most recent weeks when no data was available in the patient database. In order to account for variability in the accuracy of reporting, we assumed that the number of reported cases follows a negative binomial distribution with mean as predicted by the model and dispersion parameter ϕ [21]. We derived maximum likelihood estimates (MLE) of the following model parameters [15,22]: the baseline transmission rate β_0 , the time τ at which transmission starts to drop, the rate k at which transmission decays, and the dispersion parameter ϕ . For the fitting procedure, we assumed that there were no sexual transmission events, i.e., we set β_s to zero. The basic reproductive number in absence of sexual transmission is $R_{0,N} = \beta_0 N_0 / \gamma$, and the reproductive number in presence of partially effective control interventions is $R_{1,N} =$

$\beta_1 N_0 / \gamma$, with N_0 being the population size of Sierra Leone. The other parameters were based on published values from the literature (Table S1). We explored value ranges for sexual transmission parameters (Table 1) based on information from the current epidemic [23] and studies of human immunodeficiency virus [24,25].

Deterministic model and sensitivity analysis. We solved the system of ODEs numerically using the function *ode* from the *deSolve* package in the R software environment for statistical computing [26]. We compared the following response variables of the model: the epidemic peak number of exposed, E , acute, I , and convalescents, C , cases; the cumulative number of EVD cases, deaths, and recoveries; the date at the epidemic peak; the daily and cumulative incidence of sexual transmission; and the date at which the last symptomatic case either died or entered into convalescence (“day of last case”). We defined the day of last case as the time when the number of symptomatic and infectious individuals, I , dropped below 0.5. We considered the following parameters for the sensitivity analysis: the per sex act transmission probability of Ebola virus from convalescent men (η), the proportion of convalescent survivors who are sexually active men (p), the rate at which they engage in sexual intercourse (q), and the rate at which convalescent patients recover completely and shed no further replicating Ebola virus from their body (α). The sensitivity of the response variables to changes in R_0 was explored simultaneously as a comparison. We generated 1000 parameter combinations from the uniform ranges, log-transformed $[0.5x - 2x]$ for the parameter values for η , p , q , and α , given in Table 1 via Latin hypercube sampling using the Huntington and Lyrantzis correlation correction method (function *lhs* from R package

pse) [27]. We then calculated partial rank correlation coefficients (PRCCs) using 50 bootstrap replicates [28].

Monte Carlo simulations. We performed stochastic simulations of the SEICR model with and without sexual transmission using Gillespie's algorithm [29]. We specifically investigated the following response variables from the simulations: the cumulative number of EVD cases, the size and date of the epidemic's peak incidence (daily number of new symptomatic infections), and the date of last case (last day that symptomatic infections, I , fell below 1). Summary statistics were based on the results of 1000 simulation runs for each transmission scenario. We calculated the average of the peak and total cumulative number of EVD cases by including all simulations runs, i.e., also the simulations that rapidly go extinct. In contrast, the average dates of the epidemic peak and last case were based on the simulated epidemic trajectories over which 50 or more cases were accumulated.

Results

Contribution of sexual transmission to overall R_0 . Using the baseline parameter values from Table 1, the reproductive number of a convalescent infection, $R_{0,C}$, is 0.0024. This corresponds to only 0.12% of the overall R_0 of 2.0224. Increasing the convalescent period from 3 to 6 months, the contribution of $R_{0,C}$ (0.0051) to the overall R_0 rises to 0.25%. The equation for $R_{0,C}$ (see *Methods*) illustrates that doubling the per sex act transmission probability has the same impact as doubling the convalescent period. It is important to note that the relative contribution of sexual transmission to the overall reproductive

number rises as the effective reproductive number drops during the epidemic due to the effects of control interventions (see *Supplementary Material*, Fig. S2).

Effect of sexual transmission parameters on epidemic dynamics. The two key unknown parameters of sexual transmission are the per sex act transmission probability, η , and the rate at which convalescent survivors fully recover, α . Both parameters were found to have very small effects on the peak number of infected or exposed patients (Fig. 2A; Fig. 3A; Figs. 4A, 4B, 4C; Fig. S2; Fig. S3). The duration of the convalescent period has the biggest impact on the peak number of convalescent individuals, while η does not (compare Fig. 2A and Fig. 3A). The total number of recovered individuals is reached more slowly the longer the convalescent period (Fig. 2B), which is not an effect caused by η (Fig. 3b). While the convalescent periods ($1/\alpha = [3 - 9 \text{ months}]$) and the low values of η ($\eta = [0.0005 - 0.002]$) we explored create very few extra cases (Fig. 2B and Fig. 3B), sensitivity analyses revealed that a higher per sex act transmission probability, a higher proportion of sexually active convalescent individuals, p , or a higher frequency of sex acts, q , could have larger impacts on the total number of cases than would proportional increases in the convalescent period (see *Supplementary Material*, Fig. S3A). Sensitivity analyses also revealed that these sexual transmission parameters could produce a small delay on the epidemic peak, more so than by changes in the convalescent period (see *Supplementary Material*, Fig. S3B).

The number of sexual transmission events expected from the baseline scenario ($\eta = 0.001$ and $1/\alpha = 3 \text{ months}$) is 31.2, the majority of which will occur around the peak of the

epidemic (Fig. 2C and Fig. 3D) and thus likely go undetected. Doubling either η or $1/\alpha$ results in almost equal increases in the incidence and cumulative number of sexual transmission events (Fig. 2C, 2D and Fig. 3C, 3D), with either leading to roughly double the number of sexually transmitted cases over the course of the whole epidemic (> 60 cases). It should be noted that the total number of cases increases more than by simply the number of sexual transmission events, because each sexual transmission event results in a new potential cluster of non-sexual transmission. The day of last case is affected more by the convalescent period than the per sex act transmission probability (represented by vertical lines in Fig. 2A and Fig. 3A), a result confirmed by the sensitivity analysis (see *Supplementary Material*, Fig. S3A). The tail of the epidemic will depend on a small number of events that are likely to be affected by stochastic processes, thus we used Monte Carlo simulations to explore this behaviour.

Impact of sexual transmission on the epidemic tail. We performed stochastic simulations of the EVD transmission model to investigate the epidemic dynamics when the number of new cases becomes small, i.e, during the tail of the epidemic. Comparing model simulations while assuming a convalescent period of 3 months to those without sexual transmission confirmed the deterministic results that sexual transmission from convalescent survivors does not lead to a significant increase in the cumulative number of infected cases (non-STI: 11,092 \pm 627 cases; STI: 10,944 \pm 642 cases; Wilcoxon rank sum test: $W = 491990$, $p = 0.53$), nor the size (non-STI: 77 \pm 4.1 new cases per day; STI: 75 \pm 4.2 new cases per day; $W = 493710$, $p = 0.62$) or timing (non-STI: day 187

+/- 0.9; STI: day 187 +/- 0.9; $t = 0.19$, $df = 1017.4$, $p = 0.85$) of the epidemic peak incidence (Fig. 4A, 4B, 4C). Strikingly, this conservative period of potential sexual transmission, which has recently been shown to extend well beyond 3 months in at least 65% of patients [1], extended the average date on which the last active case could be detected by nearly three months (non-STI: 548 +/- 4.0 days; STI: 630 +/- 6.6 days; difference: 83 days [95% CI: 68-98 days], $t = -10.8$, $df = 867.97$, $p < 0.0001$; Fig. 4D, 4E, 4G, 4H). The width of the tail (s.d. = 151 days) was such that 23.4% of the 529 simulated epidemics that accumulated at least 50 cases still experienced symptomatic individuals 730 days (two years) after the start of the epidemic (Fig. 4H). When the convalescent period was extended from 3 months to 6 months, the projected length of the epidemic increased to a mean of 1088 days (+/- 15.5), with 84.0% of the 538 sustained epidemics taking over two years to end (Fig. 4F, 4I). Importantly, there is greater variance in the tail of the epidemic when sexual transmission is considered, and this uncertainty grows with the length of the convalescent period (Fig. 4G, 4H, 4I).

Discussion

Our study shows that sexual transmission of Ebola virus from convalescent men could have a profound effect on the duration of the epidemic in Sierra Leone. Using a mathematical transmission model, we found that an average duration of the convalescent period of 3 months, and a per sex act transmission probability of 0.1% could extend the EVD epidemic in Sierra Leone by 83 days (95% CI: 68–98 days). Such a scenario would be consistent with the occurrence of a small number of sexual transmission events during the end-phase of the epidemic. So far, the reported cases of sexual transmission of EVD

remain rare [1,2]. Hence, the per sex act transmission probability of Ebola virus from male convalescent survivors is unlikely to be higher than 0.1%, but might well be below this value. Our sensitivity analysis indicates that the duration of the EVD epidemic is heavily influenced by the period during which convalescent men can transmit sexually, calling for a better understanding of the persistence and duration of infectivity of Ebola virus RNA in convalescent patients.

To our knowledge, this is the first study using mathematical modeling to assess the potential impact of sexual transmission of Ebola virus on the epidemic in West Africa. We extended an accepted modeling framework that has been widely used to describe the epidemic trajectories of EVD outbreaks and epidemics [13–15]. We performed sensitivity analysis to account for the considerable uncertainty in key unknown parameters regarding sexual transmission. Given that chance will play a crucial role in sexual transmission of Ebola virus, we used stochastic simulations to explore the expected variability in the tail of the epidemic. In the absence of a better understanding of sexual transmission of EVD, mathematical modeling currently remains the only tool to explore its potential impact on the epidemic trajectory.

Our study provides a preliminary picture of the potential epidemiological consequences of sexual transmission of Ebola virus on the epidemic in West Africa. Consequently, there are a number of limitations that should be considered when interpreting the results. First, we limited our analysis to sexual transmission from convalescent men who remain infectious through the presence of Ebola virus in their semen. However, our modeling

277 framework could be easily extended to account for transmission by other routes, e.g.,
 278 through infectious vaginal secretions from female survivors. Second, we assumed a
 279 homogeneously mixing population to describe both non-sexual and sexual transmission
 280 of EVD. Spatial structure might play an important role in the spread of EVD [30] as close
 281 contact with infected bodily fluids is typically required even for non-sexual transmission.
 282 In particular, close contact limited to family or community members during the
 283 convalescence period, often accompanied by decreased activity levels due to post-Ebola
 284 sequelae, may help limit the chances of sexual transmission. Third, asymptomatic
 285 infection may occur [31], and is predicted to lower epidemic projections due to increased
 286 levels of immunity in the population [32]. Fourth, the model does not incorporate
 287 potential heterogeneity in sexual behavior [16], and we assumed that all sexually active
 288 male survivors have the same average numbers of sex acts per month. The assumed
 289 frequency of sex acts (8.3 sex acts per month) came from a study of heterosexual couples
 290 in sub-Saharan Africa [24], and is on the high end of estimates gathered from studies of
 291 other populations (e.g., [24,33,34], but see the wide range in individual frequencies in
 292 [35]); the sexual activity of convalescent Sierra-Leonean EVD survivors has not been
 293 reported. Fifth, EVD is known to exhibit superspreading characteristics [36,37], and we
 294 did not include this in our model. Superspreading events could lead to explosive regrowth
 295 of the epidemic after the occurrence of a new case through sexual transmission [36]. On
 296 the other hand, 72% of infected individuals in transmission chains in Guinea did not
 297 generate further cases [36], suggesting that some cases of sexual transmission of EVD
 298 might not be detected at all. Sixth, we assumed a single compartment for convalescent
 299 survivors with an exponentially distributed period of convalescence. Recent data

indicates that the time during which convalescent men remain positive for Ebola virus RNA could be better described by a unimodal distribution [1]. Seventh, it remains to be determined whether the virus found in semen of male convalescent survivors is replication competent, and the time window during which these men remain infectious could be shorter than the duration they remain positive for Ebola virus RNA. Finally, like other negative-sense single-stranded RNA ((-)ssRNA) viruses [38], the species currently circulating in West Africa has been estimated to have high substitution rates [39–41]. This rapid evolution detected throughout the current outbreak zone suggests that within- or between-host adaptation of the virus leading to pro-longed persistence in the seminal fluids is possible.

Awareness of the potential for sexual transmission has led to WHO issuing recommendations that ask convalescent men to abstain from sexual activity as much as possible and to use condoms for up to 6 months after the onset of symptoms [42]. Condom use and social awareness of the risks of sexual transmission during convalescence should have an impact on the per sex act transmission probability (η) and the frequency of sex acts (q), respectively. Our results show that condom use should reduce the number of sporadic sexual transmission events during the tail of the epidemic and after discharge of all remaining symptomatic individuals. However, the time during which the public health community must stay vigilant is not reduced because these interventions will not affect the time during which convalescent survivors can shed infectious virus ($1/\alpha$). This is especially poignant since adherence to these recommendations will never be 100%. Better knowledge about the rate at which

convalescent survivors recover completely and shed no further replicating Ebola virus from their body is thus urgently needed to plan continued surveillance efforts.

The EVD epidemic in Sierra Leone was declared to be over on 7 November 2015 [43]. Our modeling results show that sporadic events of sexual transmission of Ebola virus – potentially leading to small transmission clusters – could continue to occur in the months to come. Sexual transmission of EVD is likely to be rare, but recent events such as the suspected infection of a 16-year-old girl through sexual transmission in Makeni, Sierra Leone, during September 2015 exemplify the continued risks [44]. In addition, the considerable uncertainty around the infectivity of convalescent men who test positive for Ebola virus RNA, and the duration of this period, asks us to remain vigilant. We must monitor and quantify this phenomena in order to help us better prepare health networks, and to provide convalescent survivors with sound advice that balances protection of the community with the harm that could come from unnecessary stigmatization [45–47]. As more data about the convalescent survivors of EVD becomes available, this and future mathematical modeling studies will help to better understand the potential epidemiological consequences of sexual transmission on the EVD epidemic in West Africa.

Funding statement

JLA received post-doctoral support from the University of Bern and a grant from the French National Research Agency (ANR JC "STORY"). CLA received funding through an Ambizione grant from the Swiss National Science Foundation (project 136737). The

346 funders had no role in study design, analysis, decision to publish, or preparation of the
347 manuscript.

348

References

1. Deen GF, Knust B, Broutet N, Sesay FR, Formenty P, Ross C, et al. Ebola RNA Persistence in Semen of Ebola Virus Disease Survivors — Preliminary Report. *N Engl J Med*. 2015; doi:10.1056/NEJMoa1511410
2. Mate SE, Kugelman JR, Nyenswah TG, Ladner JT, Wiley MR, Cordier-Lassalle T, et al. Molecular Evidence of Sexual Transmission of Ebola Virus. *N Engl J Med*. 2015; doi:10.1056/NEJMoa1509773
3. Pourrut X, Kumulungui B, Wittmann T, Moussavou G, Délicat A, Yaba P, et al. The natural history of Ebola virus in Africa. *Microbes Infect*. 2005;7: 1005–14. doi:10.1016/j.micinf.2005.04.006
4. Rowe AK, Bertolli J, Khan AS, Mukunu R, Muyembe-Tamfum JJ, Bressler D, et al. Clinical , Virologic , and Immunologic Follow-Up of Convalescent Ebola Hemorrhagic Fever Patients and Their Household Contacts , Kikwit , Democratic Republic of the Congo. *J Infect Dis*. 1999;179 Suppl: 28–35.
5. Clark D V, Kibuuka H, Millard M, Wakabi S, Lukwago L, Taylor A, et al. Long-term sequelae after Ebola virus disease in Bundibugyo, Uganda: a retrospective cohort study. *Lancet Infect Dis*. Elsevier Ltd; 2015;3099: 1–8. doi:10.1016/S1473-3099(15)70152-0
6. Bausch DG, Towner JS, Dowell SF, Kaducu F, Lukwiya M, Sanchez A, et al. Assessment of the risk of Ebola virus transmission from bodily fluids and fomites. *J Infect Dis*. 2007;196 Suppl : S142–S147. doi:10.1086/520545
7. Rodriguez LL, De Roo A, Guimard Y, Trappier SG, Sanchez A, Bressler D, et al. Persistence and genetic stability of Ebola virus during the outbreak in Kikwit,

372 Democratic Republic of the Congo, 1995. J Infect Dis. 1999;179 Suppl : S170–6.
373 doi:10.1086/514291

374 8. Varkey JB, Shantha JG, Crozier I, Kraft CS, Lyon GM, Mehta AK, et al.
375 Persistence of Ebola Virus in Ocular Fluid during Convalescence. N Engl J Med.
376 2015;372: 2423–2427. doi:10.1056/NEJMoa1500306

377 9. Ergonul O, Battal I. Potential sexual transmission of Crimean-Congo hemorrhagic
378 fever infection. Jpn J Infect Dis. 2014;67: 137–8. Available:
379 <http://www.ncbi.nlm.nih.gov/pubmed/24647261>

380 10. Slenczka W, Klenk HD. Forty Years of Marburg Virus. J Infect Dis. 2007;196:
381 S131–135. doi:10.1086/520551

382 11. Rogstad KE, Tunbridge A. Ebola virus as a sexually transmitted infection. Curr
383 Opin Infect Dis. 2015;28: 83–85. doi:10.1097/QCO.0000000000000135

384 12. World Health Organization. Ebola data and statistics: Data on new cases per epi
385 week for Sierra Leone [Internet]. 2015 [cited 18 Nov 2015]. Available:
386 [http://apps.who.int/gho/data/node.ebola-sitrep.ebola-country-SLE-](http://apps.who.int/gho/data/node.ebola-sitrep.ebola-country-SLE-20151118?lang=en)
387 [20151118?lang=en](http://apps.who.int/gho/data/node.ebola-sitrep.ebola-country-SLE-20151118?lang=en)

388 13. Chowell G, Hengartner NW, Castillo-Chavez C, Fenimore PW, Hyman JM. The
389 basic reproductive number of Ebola and the effects of public health measures: the
390 cases of Congo and Uganda. J Theor Biol. 2004;229: 119–126.
391 doi:10.1016/j.jtbi.2004.03.006

392 14. Althaus CL. Estimating the Reproduction Number of Ebola Virus (EBOV) During
393 the 2014 Outbreak in West Africa. PLOS Curr Outbreaks. 2014; 1–9.
394 doi:10.1371/currents.outbreaks.91afb5e0f279e7f29e7056095255b288

- 395 15. Althaus CL, Low N, Musa EO, Shuaib F, Gsteiger S. Ebola virus disease outbreak
396 in Nigeria: Transmission dynamics and rapid control. *Epidemics*. Elsevier B.V.;
397 2015;11: 80–84. doi:10.1016/j.epidem.2015.03.001
- 398 16. Anderson RM, May RM. *Infectious Diseases of Humans: Dynamics and Control*.
399 Oxford: Oxford Univeristy Press; 1991.
- 400 17. Thrall PH, Antonovics J. Polymorphism in sexual versus non-sexual disease
401 transmission. *Proc R Soc B Biol Sci*. 1997;264: 581–587.
- 402 18. Garnett GP. An introduction to mathematical models in sexually transmitted
403 disease epidemiology. *Sex Transm Infect*. 2002;78: 7–12. doi:10.1136/sti.78.1.7
- 404 19. Diekmann O, Heesterbeek JAP. *Mathematical Epidemiology of Infectious*
405 *Diseases*. Chichester: John Wiley and Sons; 2000.
- 406 20. Diekmann O, Heesterbeek J a, Metz J a. On the definition and the computation of
407 the basic reproduction ratio R_0 in models for infectious diseases in heterogeneous
408 populations. *J Math Biol*. 1990;28: 365–382. doi:10.1007/BF00178324
- 409 21. Kucharski AJ, Camacho A, Flasche S, Glover RE, Edmunds WJ, Funk S.
410 Measuring the impact of Ebola control measures in Sierra Leone. *Proc Natl Acad*
411 *Sci*. 2015;112: 201508814. doi:10.1073/pnas.1508814112
- 412 22. Althaus CL. Rapid drop in the reproduction number during the Ebola outbreak in
413 the Democratic Republic of Congo PrePrints. *PeerJ Prepr*. 2015;3: e1418.
414 doi:10.7717/peerj.1418
- 415 23. WHO Ebola Response Team. Ebola Virus Disease in West Africa — The First 9
416 Months of the Epidemic and Forward Projections. *Engl New J Med*. 2014;371:
417 1481–1495. doi:10.1056/NEJMoa1411100

- 418 24. Gray RH, Wawer MJ, Brookmeyer R, Sewankambo NK, Serwadda D, Wabwire-
419 Mangu F, et al. Probability of HIV-1 transmission per coital act in monogamous,
420 heterosexual, HIV-1-discordant couples in Rakai, Uganda. *Lancet*. 2001;357:
421 1149–1153. doi:10.1016/S0140-6736(00)04331-2
- 422 25. Wawer MJ, Gray RH, Sewankambo NK, Serwadda D, Li X, Laeyendecker O, et
423 al. Rates of HIV-1 transmission per coital act, by stage of HIV-1 infection, in
424 Rakai, Uganda. *J Infect Dis*. 2005;191: 1403–1409. doi:10.1086/429411
- 425 26. R Core Team. R: A Language and Environment for Statistical Computing
426 [Internet]. Vienna, Austria: R Foundation for Statistical Computing; 2014.
427 Available: <http://www.r-project.org/>
- 428 27. Chalom A, Prado PIKL. pse: Parameter space exploration with Latin Hypercubes
429 [Internet]. 2014. Available: <http://cran.r-project.org/package=pse>
- 430 28. Blower SM, Dowlatabadi H. Sensitivity and Uncertainty Analysis of Complex
431 Models of Disease Transmission: An HIV Model, as an Example. *Int Stat Rev*.
432 1994;62: 229–243. doi:10.2307/1403510
- 433 29. Gillespie DT. Exact Stochastic Simulation of couple chemical reactions. *J Phys*
434 *Chem*. 1977;81: 2340–2361. doi:10.1021/j100540a008
- 435 30. Merler S, Ajelli M, Fumanelli L, Gomes MFC, Piontti APY, Rossi L, et al.
436 Spatiotemporal spread of the 2014 outbreak of Ebola virus disease in Liberia
437 and the effectiveness of non-pharmaceutical interventions: a computational
438 modelling analysis. *Lancet Infect Dis*. Elsevier Ltd; 2015;3099: 1–8.
439 doi:10.1016/S1473-3099(14)71074-6

- 440 31. Leroy EM, Baize S, Volchkov VE, Capron M, Debré P, McCormick JB, et al.
441 Human asymptomatic Ebola infection and strong inflammatory response. *Lancet*.
442 2000;355: 2210 – 2215.
- 443 32. Bellan SE, Pulliam JRC, Dushoff J, Meyers LA. Ebola control: effect of
444 asymptomatic infection and acquired immunity. *Lancet*. Elsevier Ltd; 2014;384:
445 1499–1500. doi:10.1016/S0140-6736(14)61839-0
- 446 33. Blower SM, Boe C. Sex acts, sex partners, and sex budgets: implications for risk
447 factor analysis and estimation of HIV transmission probabilities. *J Acquir Immune*
448 *Defic Syndr*. 1993;6: 1347–1352.
- 449 34. Althaus CL, Choisy M, Alizon S, CSF group. Number of sex acts matters for
450 heterosexual transmission and control of Chlamydia trachomatis. *PeerJ Prepr*.
451 2015;3: e1164. doi:10.7287/peerj.preprints.940v1
- 452 35. Smith J, Nyamukapa C, Gregson S, Lewis J, Magutshwa S, Schumacher C, et al.
453 The Distribution of Sex Acts and Condom Use within Partnerships in a Rural Sub-
454 Saharan African Population. *PLoS One*. 2014;9: e88378.
455 doi:10.1371/journal.pone.0088378
- 456 36. Althaus CL. Ebola superspreading. *Lancet Infect Dis*. 2015;15: 507–508.
457 doi:10.1016/S1473-3099(15)70135-0
- 458 37. Toth DJ a, Gundlapalli A V, Khader K, Pettey WBP, Rubin M a, Adler FR, et al.
459 Estimates of Outbreak Risk from New Introductions of Ebola with Immediate and
460 Delayed Transmission Control. *Emerg Infect Dis J*. 2015;21: 1402.
461 doi:10.3201/eid2108.150170

- 462 38. Duffy S, Shackelton L a., Holmes EC. Rates of evolutionary change in viruses:
463 patterns and determinants. *Nat Rev Genet.* 2008;9: 267–276. doi:10.1038/nrg2323
- 464 39. Gire SK, Goba A, Andersen KG, Sealfon RSG, J PD, Kanneh L, et al. Genomic
465 surveillance elucidates Ebola virus origin and transmission during the 2014
466 outbreak. *Science* (80-). 2014;345: 1369–1372. doi:10.1126/science.1259657
- 467 40. Park DJ, Dudas G, Wohl S, Goba A, Whitmer SLM, Andersen KG, et al. Ebola
468 Virus Epidemiology, Transmission, and Evolution during Seven Months in Sierra
469 Leone. *Cell.* 2015;161: 1516–1526. doi:10.1016/j.cell.2015.06.007
- 470 41. Tong Y-G, Shi W-F, Liu D, Qian J, Liang L, Bo X-C, et al. Genetic diversity and
471 evolutionary dynamics of Ebola virus in Sierra Leone. *Nature.* 2015;524: 93–96.
472 doi:10.1038/nature14490
- 473 42. World Health Organization. WHO website [Internet]. Available:
474 <http://www.who.int/reproductivehealth/topics/rtis/ebola-virus-semen/en/>
- 475 43. World Health Organization. WHO Ebola Situation Report (11 November 2015).
476 [Internet]. 2015. Available: [http://apps.who.int/ebola/current-situation/ebola-](http://apps.who.int/ebola/current-situation/ebola-situation-report-11-november-2015)
477 [situation-report-11-november-2015](http://apps.who.int/ebola/current-situation/ebola-situation-report-11-november-2015)
- 478 44. Reuters News Agency. Hundreds quarantined as Ebola returns to north Sierra
479 Leone district. Sept 14. 2015. Available:
480 [http://www.reuters.com/article/2015/09/14/us-health-ebola-leone-](http://www.reuters.com/article/2015/09/14/us-health-ebola-leone-idUSKCN0RE1P620150914)
481 [idUSKCN0RE1P620150914](http://www.reuters.com/article/2015/09/14/us-health-ebola-leone-idUSKCN0RE1P620150914)
- 482 45. Davtyan M, Brown B, Folayan MO. Addressing Ebola-related Stigma: Lessons
483 Learned from HIV/AIDS. *Glob Health Action.* 2014;7: 1–4.
484 doi:10.3402/gha.v7.26058

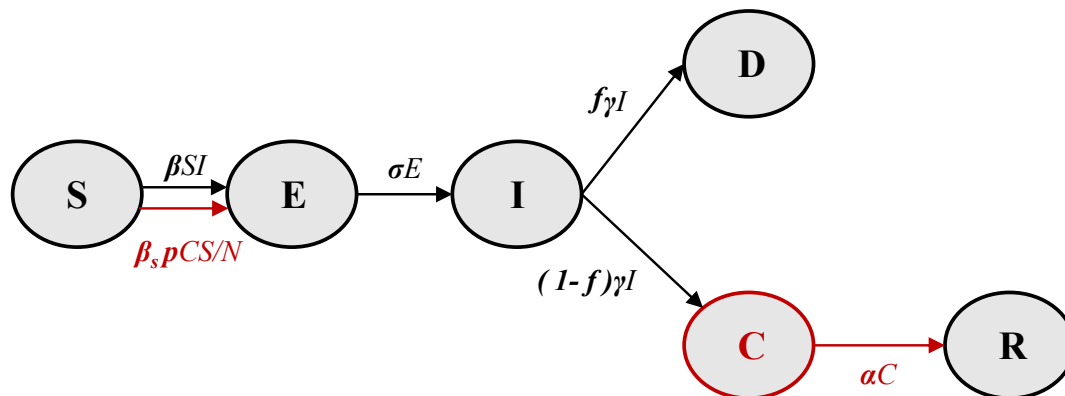
- 485 46. Obilade TT. Ebola Virus Disease Stigmatization; The Role of Societal Attributes.
486 Int Arch Med. 2015;8: 1–19. doi:10.3823/1613
- 487 47. Sprecher A. Handle Survivors with Care. N Engl J Med. 2015;
488 doi:10.1056/NEJMe1512928
- 489

490 **Table 1: Model parameters describing EVD transmission in Sierra Leone.** The
491 indicated parameter ranges are used for the sensitivity analysis (partial rank correlation
492 coefficients, PRCC) only.

Table S1: Model parameters describing EVD transmission in Sierra Leone. The indicated parameter ranges are used for the sensitivity analysis (partial rank correlation coefficients, PRCC) only.

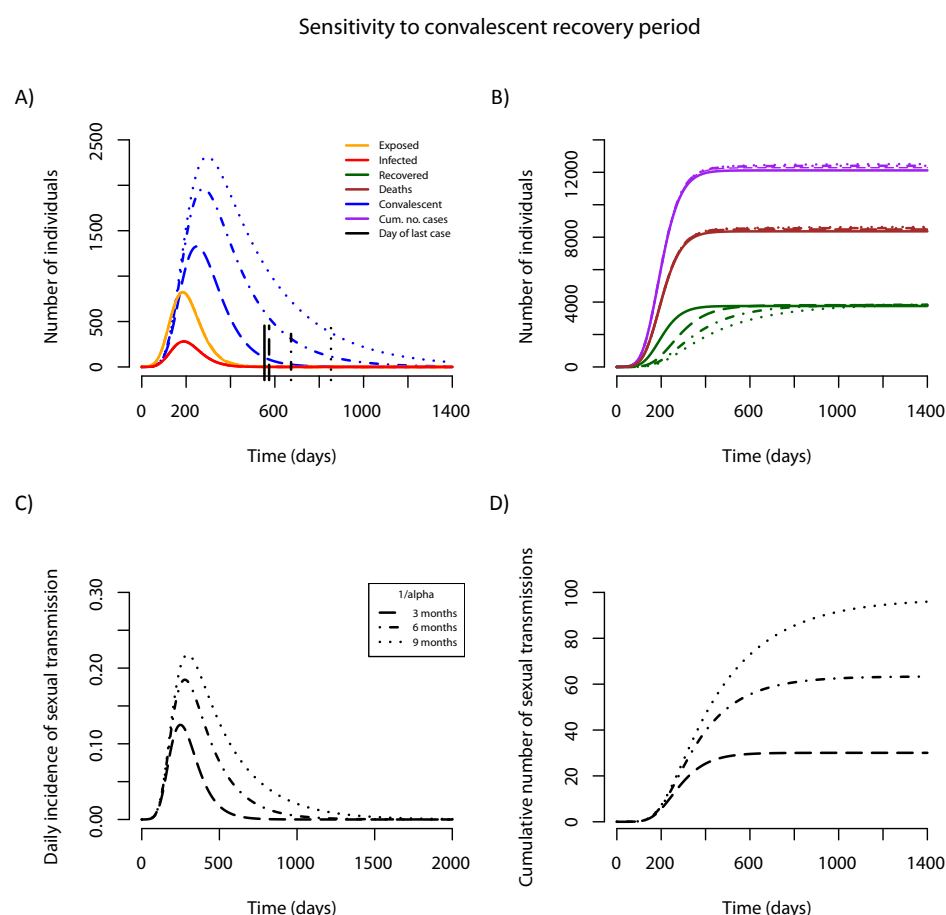
| Parameter | | Value (Range) | Comments and References |
|---|------------|---|---|
| Basic reproductive number without sexual transmission | $R_{0,N}$ | 2.13 (1.26 - 2.53) | Estimated - Range explores estimates from (2, 12) |
| Basic reproductive number in presence of control interventions | $R_{1,N}$ | 0.67 | Estimated |
| Date of onset of symptoms in index case | | April 23, 2014 | (2, 12, 13) |
| Rate at which transmission rate decays | k | 0.011 d ⁻¹ | Estimated |
| Time at which transmission rate starts to decay | τ | 51.0 d | Estimated |
| Incubation period | $1/\sigma$ | 11.4 d | (14) |
| Infectious period | $1/\gamma$ | 3.9 d | Together with the incubation period results in a generation time of 15.3 d (14) |
| Dispersion parameter | ϕ | 0.050 | Estimated |
| Initial population size | N_0 | 6.316x10 ⁶ | Based on 2014 estimate (15) |
| Sexual transmission probability (per coital act) | η | 0.001 (0.0005 – 0.002) | Roughly based on sexual transmission probability of HIV per coital act from infected men (16) |
| Case fatality rate | f | 0.69 | (14) |
| Frequency of sex acts | q | 0.272 d ⁻¹ (0.136 – 0.544) | 8.27 coital acts per month (17) |
| Proportion of convalescent survivors who are infectious and sexually active | p | 0.347 (0.1725-0.694) | Of 47.4% male survivors, 73.1% are aged 15-45 (14) |
| Rate at which convalescent survivors recover completely | α | 1/87.35 d ⁻¹ (1/174.7 – 1/43.7) | 3 months after onset of symptoms (18, 19) and assuming an infectious period of 3.9 days |

494 **Figure 1. Schematic illustration of EVD transmission model including sexual**
 495 **transmission from convalescent patients.** The elements in black form the base model
 496 without sexual transmission [13–15]. The red elements (convalescent individuals and
 497 additional transmission term) were added to account for sexual transmission.

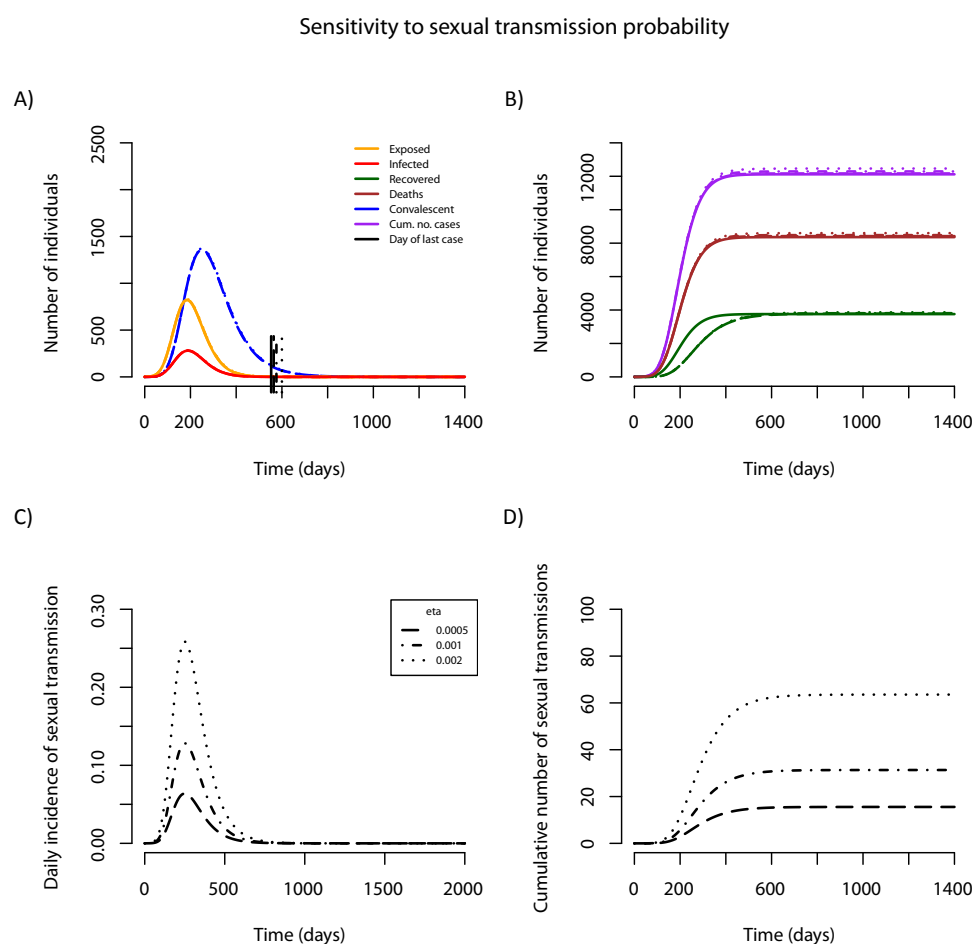


498

499 **Figure 2. Effect of convalescent period on EVD epidemics.** The average duration of
500 the convalescent period ($1/\alpha$) is varied between 3 and 9 months. (A, B): Epidemic
501 trajectories in presence (broken lines) and absence of sexual transmission (solid lines).
502 Vertical lines mark the day of last symptomatic case. (C) Daily incidence of sexual
503 transmission. (D) Cumulative number of sexual transmission events. Note that the
504 vertical axes vary across panels.



506 **Figure 3. Effect of per sex act transmission probability on EVD epidemics.** The per
507 sex act transmission probability (η) is varied between 0.05% and 0.2%. (A, B): Epidemic
508 trajectories in presence (broken lines) and absence of sexual transmission (solid lines).
509 Vertical lines mark the day of last symptomatic case. (C) Daily incidence of sexual
510 transmission. (D) Cumulative number of sexual transmission events. Note that the
511 vertical axes vary across panels.



512

513

514

515 **Figure 4. Impact of convalescent period on the tail of the EVD epidemic.** Monte
516 Carlo simulations of the weekly incidence of new cases (A, B, C) and the sporadic

occurrence of sexual transmission events at the epidemic tail (D, E, F), assuming no sexual transmission (A, D), and sexual transmission with a 3 (B, E) and 6 months (C, F) convalescent period. Thin red lines show the result of 200 simulated trajectories, with corresponding mean (thick blue line) and standard errors (thin blue lines). Black dots denote incident cases in Sierra Leone as reported by the WHO [12]. The thick red lines in (D), (E), and (F) highlight a single representative trajectory, and the dark red dots along the horizontal axis indicate a sexual transmission event. Histograms of the day of the last EVD case from 1,000 simulated epidemics in absence of sexual transmission (G) and for a convalescent period of 3 (H) and 6 (I) months.

