

The case for species selection

2

Carl Simpson¹

4

¹University of Colorado Museum of Natural History and Department of Geological Sciences,
6 University of Colorado, Boulder 265 UCB Boulder, CO 80309

8 email: carl.simpson@colorado.edu

10

Keywords: Macroevolution, punctuated equilibrium, microevolution, species selection, species
12 sorting

14

Abstract The mere existence of speciation and extinction make macroevolutionary processes possible. Speciation and extinction introduce discontinuities in the microevolutionary change within lineages by initiating, disrupting, and terminating the continuity of species lineages. Within a clade, speciation and extinction become potent means of macroevolution in and of themselves. This process, termed species selection, is a macroevolutionary analogue of natural selection, with species playing an analogous part akin to that played by organisms in microevolution. That said, it has proven difficult to think about levels of selection. The concept of species sorting was introduced to help our thinking on this issue by identifying two aspects inherent in hierarchical systems can confuse our attempts to understand them: uncertainty in the level that selection acts and uncertainty about if the pattern of selection is in fact caused at all. Thanks to insights from evolutionary transitions in individuality, we now know more about how to identify the level of selection and how to parse the causal structure in hierarchical evolutionary circumstances. We know that if the fitness of organisms causes the fitness of more inclusive species then they must covary. However, there is no evidence of such a covariance between fitnesses at these two levels. This covariance is just not observed; neither between cells and organisms nor between organisms and species. Rather, speciation and extinction rates appear to be completely divorced from organismal fitness. With this insight, the concept of species sorting shrinks so that it only covers the two processes of species selection and drift. I argue that we are better off focusing on understanding the processes of species selection and drift and that there is therefore no further need for the concept of species sorting.

How are trends produced?

36 Macroevolution as a field of study, took shape in the 1970s because of punctuated equilibrium.
37 Punctuated equilibrium (Eldredge and Gould 1972) helped us to look at the fossil record at a
38 slightly different angle than we did previously, and with this new look, familiar patterns took
39 on new meaning and novel phenomena became obvious possibilities. Of all the aspects of
40 macroevolution, it was large-scale trends that benefited the most from punctuated equilibrium.

41 For decades before punctuated equilibrium, trends were not well understood. There were too
42 many patterns to make sense of and there was no conceptual framework. Looking back, it seems
43 like there was close to a one-to-one relationship between patterns and processes, for example
44 “orthogenesis” the pattern and “orthoevolution” the theory, where every particular pattern was
45 thought to be underpinned by a general process that produced it. The “law” of morphological
46 evolution, for example Cope’s rule, Williston’s law (Gregory 1935), etc. are all of this time. G.
47 G. Simpson (1944, 1953) succeeded in breaking this myopic view of trends by recognizing their
48 statistical nature inherent in the bushy proliferation of species. His key insight was that patterns
49 can vary over time and phylogeny without the need for a separate processes to explain all the
50 variation. A single large-scale process could give rise to inconsistent smaller-scale patterns as
51 different branches of a clade evolve independently and yet, still produce an overall trend.

52 Punctuated equilibrium further distilled Simpson’s statistical view of trends by identifying
53 a single process that is flexible enough to produce most types of trends. Stanley’s (1975, 1979)
54 idea of species selection is this type of process. It was first recognized because punctuated
55 equilibrium suppresses any tendency for microevolution to underpin trends. The logic goes
56 like this: if incessant microevolution did not in fact lead to sustained change within species
57 (there is stasis instead), then there must be some more inclusive process that could shepherd
58 populations of species and cause a trend. The shepherding process of species selection that
59 Stanley identified maybe sufficient to produce many of the examples of trends we know from
60 the fossil record because it can act in many directions and magnitudes. Species selection can act
61 to produce trends when morphological stasis within species is common. It can move populations
62 of species if there is no inherent bias in the phenotypic direction of speciation. It can even act
63 when species evolve gradually and speciate directionally (McShea 2004, Simpson 2010b).

64 For Stanley, natural selection at the organismal level is more than a metaphor for species
65 selection. For him the two levels of selection are isomorphic and species selection is as real a
66 phenomenon as natural selection is. Selection among organisms and selection among species
67 are essentially the same process, but they occur at hierarchically separate levels of organization.
68 Populations of variable organisms, with the addition of natural selection, will show evolutionary
69 change. And in just the same way, but with different players, populations of variable species
70 with the addition of species selection results in macroevolutionary trends.

71 Not everyone has embraced species selection (e.g., Coyne and Orr 2004, Williams 1992).
72 There are two hurdles to the acceptance of species selection, one philosophical and the other
73 practical.

74 Many are philosophically opposed to the idea of species selection because of their belief

76 that an understanding of all features of life and the physical world comes only by reducing ev-
77 erything to their lowest constituent parts. Although reductionism has been a powerful scientific
78 tool, it is not the only one (Deutsch 2013). To me, this philosophical hurdle is easily passed
79 without delving into philosophical argument, but rather can be shown to be false by using only
80 paleobiological observations. Species selection has been empirically demonstrated in an in-
81 creasing number of studies (e.g., Simpson and Harnik 2009; Goldberg et al. 2010; Mayrose
82 et al. 2011; Powell and MacGregor 2011; Rabosky and McCune 2010; Simpson 2010, 2013).
83 The irreducibility of speciation and extinction require us to reject a reductionist interpretation
84 of these results.

85 The practical hurdle is more difficult, but it is also possible to pass. As scientists, we want
86 to be certain that we can positively recognize species selection when it occurs and not be fooled
87 by some other phenomenon that can mimic it. A major step toward this goal came with the con-
88 ceptual distinction between sorting and selection (Vrba and Gould 1986). Sorting's utility came
89 from its recognition of two sources of uncertainty; the uncertainty about the level at which se-
90 lection acts in any given situation, and the uncertainty about the causes of selective patterns. At
91 the time of Vrba and Gould's paper, both uncertainties were rampant. Sorting provided a help-
92 ful way to think and discuss macroevolutionary patterns without devolving into an argument
93 about the causes of those patterns before we had the tools to test those arguments. This was a
94 big advantage at the time because few macroevolutionary patterns had been well documented.
95 Sorting has traditionally lumped both sources of uncertainty together—any uncertainty about
96 the level of selection or if differential diversification is caused or uncaused would classify a
97 pattern as sorting.

98 My goal with this paper is to re-evaluate species sorting in light of current concepts, meth-
99 ods, and empirical results. I will argue that, we can be much more certain about the levels at
100 which selection acts because of what we have learned about macroevolution over the last 30
101 years. For example, the demonstrable irreducibility of speciation and extinction shows that an
102 emergent fitness view of levels of selection is correct. This means that any pattern of differ-
103 ential diversification is due to processes acting at the same level as diversification and not as a
104 byproduct of selection at lower levels.

105 The concept of sorting also encompasses uncertainty in the type of causation of differential
106 diversification, it recognizes differential diversification as an interesting pattern and does not
107 distinguish between a caused selective pattern and a chance stochastic pattern. I think this
108 source of uncertainty is conceptually simpler to understand if we do away with the concept
109 of sorting and instead contrast the two macroevolutionary processes that underpin it: caused
110 selection with non-caused drift. Drift in macroevolution, as it is within organismal populations,
111 is an ephemeral and chance pattern of fitness that induces directional proliferation.

112 The gain by including species selection in our conceptual arsenal of macroevolution is at
113 least as great as the ones that Simpson and punctuated equilibrium brought to trends. We can
114 evaluate if species selection is real or not, as well as its relative frequency and importance in
115 structuring macroevolutionary patterns, including patterns that I call non-trends, those patterns
116 of major large-scale stability because of complex underlying dynamics where species selection

116 and microevolution interact. One example of a non-trend is the stable frequency of coloniality
and photosymbiosis in scleractinian corals (Simpson 2013). In this case, species selection and
118 microevolutionary trait change act in concert to constrain the relative frequency of colonial-
ity and photosymbiosis over 200 million years. Non-trends are phenomena that can only be
120 recognized by studying species selection.

Irreducible macroevolution

122 There are two known phenomena that are common in macroevolution but that are absent from
microevolution—speciation and extinction. If speciation and extinction were absent, evolu-
124 tionary patterns that take place over macroevolutionary time-scales would not be very different
from the expectation of current neontological theory. In this counterfactual world, large-scale
126 patterns would all be uniformitarian and result from the accumulation of the microevolutionary
processes that we can observe directly today. But speciation and extinction actually happen.
128 And as a consequence, the new dynamics characteristic of macroevolution become apparent.
The macroevolutionary patterns we actually observe are not simply the accumulation of mi-
130 croevolutionary change because speciation and extinction introduce a threshold between micro-
and macroevolution. This threshold arises because macroevolution occurs by changes within a
132 *population of species*.

With every speciation event, a new independently evolving lineage is added. And with every
134 extinction a species is removed. This may sound trivial, but these events are important because
they have the ability to dominate the evolution within a population of species. Adding and
136 subtracting species can change the distribution of traits in a population of species faster and in
more ways than changes can be made with fixed species numbers.

138 Speciation

Let's look at speciation first. Speciation is the splitting of one or a set of interconnected popula-
140 tions into independently evolving populations. Speciation frees new species from demographic
and genetic connections to other species, and allows the new species to follow their own path
142 and evolve independently. This independence of mode among species directly affects all pat-
terns of macroevolution that happen within whole populations of species. Independence makes
144 it more difficult to explain large scale pattern as the cumulative effect of patterns happening
within species.

146 Consider a hypothetical example, a single species of rabbit is evolving ever longer ears
over time. After a million years, this rabbit species branches off a descendent species and both
148 ancestor and descendent species coexist after the speciation event. The descendent, which is
free to evolve independently from its ancestor, evolves shorter and shorter ears over time as
150 its ancestor continues on its trajectory toward long ears length. The average ear length in the
population of rabbit species will at first be a function only of the ancestral species and later, after

152 speciation, the average ear length is a function of the two coexisting species (Fig. 1). In this
154 example with the ear length of one species increasing and the other decreasing, the average does
not change much after the speciation event as the net difference between both species increases
as they diverge from each other in length.

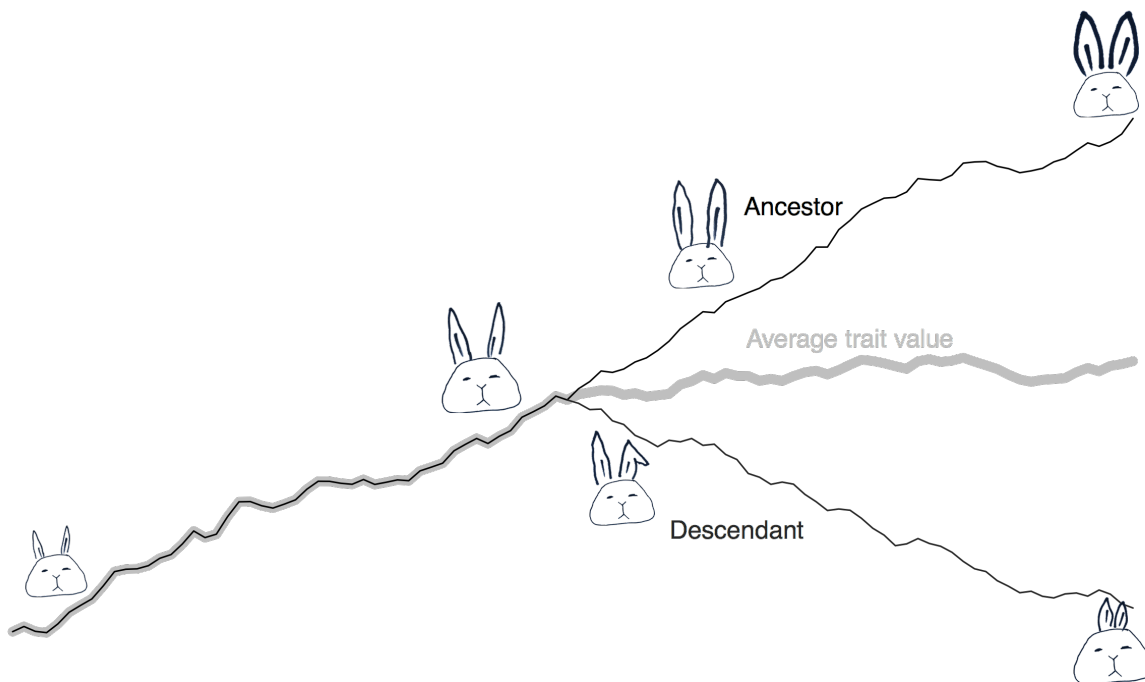


Figure 1: A cartoon of an anagenetically evolving rabbit species and its independently evolving daughter. The vertical axis shows rabbit ear length' and time is shown on the horizontal axis and moves from left to right. The graph depicts the mean ear length of the population of species. When there is only one species, the mean ear length exactly tracks the single ancestral species until speciation. After speciation the mean incorporates the sizes of both independently evolving species. The more independent species there are in a population, the less the evolution of any one species contributes to changes in the overall mean among species. The lesson here is that for anagenesis to play a major part in a macroevolutionary trend, a significant proportion of the species within the population must show similar patterns of morphological change overtime—which is difficult when they are all evolving independently. This issue occurs in this simple two-species example, but it gets ever more difficult to overcome as the species within a population become more numerous

156 Macroevolutionary trends are patterns that occur in populations of species, so any variation
158 in evolutionary trajectory among species could easily cancel out the evolutionary change of
others as the ancestor and descendent species of rabbits did to each other in the example. The

more species are involved the stronger this averaging effect becomes. Only in a clade of one, is there is no averaging effect and only in this extremely rare case is the evolution of a species the same as the evolution of a clade.

The causes of speciation rates

With each new species that evolves, not only is there the potential for the new species evolve independently from all the others. But there is also the potential for the rate of speciation to change with its introduction. Any variation in speciation rates within the species in a population has the potential to induce a trend.

Differential speciation (and extinction) constitute the raw material for species selection and sorting. Traits associated with species with relatively high speciation rates will increase in frequency over time. Simultaneously, traits associated with species that have relatively lower speciation rates will decrease in frequency. The pattern of covariation between rate variation and trait variation determines how the relative frequency of traits will change over time (Arnold and Frisrup 1982, Simpson 2010b, 2013, Simpson and Miller 2012), just as the covariance between fitness and trait variation among organisms determines how trait values will change by natural selection (Lande and Arnold 1983, Price 1970, Price 1972, Rice 2004).

Differential speciation can change the frequencies of any type of trait that it covaries with. It does not matter if the trait is emergent and inexpressible by single organisms, like geographic range size, or if the traits are attributes of individual organisms, like ear length. As long as there is a covariance between speciation rates and trait values, there will be a macroevolutionary change.

This ability for differential speciation to shepherd all types of traits, from organismal to emergent, has caused a lot of conceptual problems. Some researchers have restricted species selection only to the case where differential diversification directly covaries with emergent traits. Otherwise there is no way to tell if natural selection among organisms is the actual cause of the differential speciation. Vrba's effect hypothesis (Vrba 1980, Vrba 1983) encapsulates this view, and states that any covariation between differential speciation and organismal traits must be caused by the effects of organismal-level natural selection percolating upward to the level of speciation. Restricting species selection to act only on emergent traits is thought by some to eliminate the possibility of confusing it with the effect hypothesis.

However there is a different school of thought that focuses on emergent fitness rather than emergent traits. This view recognizes a broader set of patterns as indicating species selection (Jablonski 2008). For this school, differential speciation is emergent fitness. For them it is important to note that the cause of differential speciation will always be at the species level. Traits at any level can covary with speciation rates and macroevolve, but organismal level traits do so by hitchhiking with a covarying intermediary trait.

Which of the two alternative conceptual frameworks, emergent traits or emergent fitness, is biologically most realistic? To test between these differences we need to know how differential speciation relates to differential organismal fitness. I see two mutually exclusive possibilities.

198 First, differential speciation could be reducible to differential organismal fitness so that high
speciation rates would be caused by high organismal fitness. Alternatively, organismal fitness
200 and differential speciation could be independent features of life. In this case, the two things
are hierarchically nested, within species, the constituent organisms have their fitnesses, while
202 at the same time species have their speciation rates. The key to answering one way or the other
is in identifying any link between the fitness of species (differential speciation rates) with the
204 fitnesses of organisms within populations.

If there is a link between organismal fitness and speciation rates, then there will be a positive
206 correlation between fitness and speciation rate. One way to identify such a correlation is to
see if the temporal patterns of organismal fitness match the temporal patterns of speciation
208 rates. If organismal fitness increases over time and these fitnesses are linked to speciation, then
speciation rates should also increase over time.

210 It is not tractable to empirically measure organismal fitness over the lifetime of a species.
Instead, we must turn to theoretical expectations on the temporal pattern of fitness (e.g., Orr
212 2009). There has been long argument within the microevolutionary community about how
fitness changes over time. Wright, claimed that average fitness always increases in proportion
214 to the slope of the fitness landscape. As populations climb the hills of the fitness landscape,
they follow the steepest slope. And even as the landscape changes over time, the population
216 will always take the steepest path upslope, and therefore always increases over time. Fisher
(Fisher 1930) argued that there is more to the change in fitness than the slope of the fitness
218 landscape. He argues that the rate of fitness increase is also proportional to the additive genetic
variance, a pattern known as Fisher's fundamental theorem. This means that traits with more
220 variation will evolve faster than those with less variation. This structure of the genetic variance
combines with the slope of the fitness landscape to determine the rate of fitness increase. In
222 Fisher's case variances are always zero or positive, so it converges with Wright's view that the
first order long-term expectation of fitness change is that it will increase over time, although how
224 quickly the population climbs is modulated by both the variance in Fisher's view and modulated
by the change in the fitness landscape in Wright's view.

226 Since Fisher's time we have developed more theory detailing the importance of the specific
structure of genetic variation. Certain genetic interactions like epistasis and linkage disequi-
228 librium, as well as population interactions like frequency dependence, can lead to a temporary
decline in fitness. Even if these declines in fitness occur in specific genotypes within the species'
230 population, the mean fitness of all members of a species will likely increase as genotypes re-
place each other successionaly over time. So the long-term trajectory of organismal fitness
232 should follow Fisher's and Wright's expectations.

If speciation rate is linked to organismal fitness by upward causation (as expected given the
234 effect hypothesis) it too should increase over the lifetime of the species. The easiest way to
empirically measure this temporal pattern in speciation rate would be to tally the frequencies
236 of speciation events over a species' lifetime. Although this has rarely been done, two
recent studies have looked into the relative timing of speciation in the fossil record (Liow and
238 Ergon 2015) and with molecular phylogenetics (Hagen et al. 2015). With the few examples

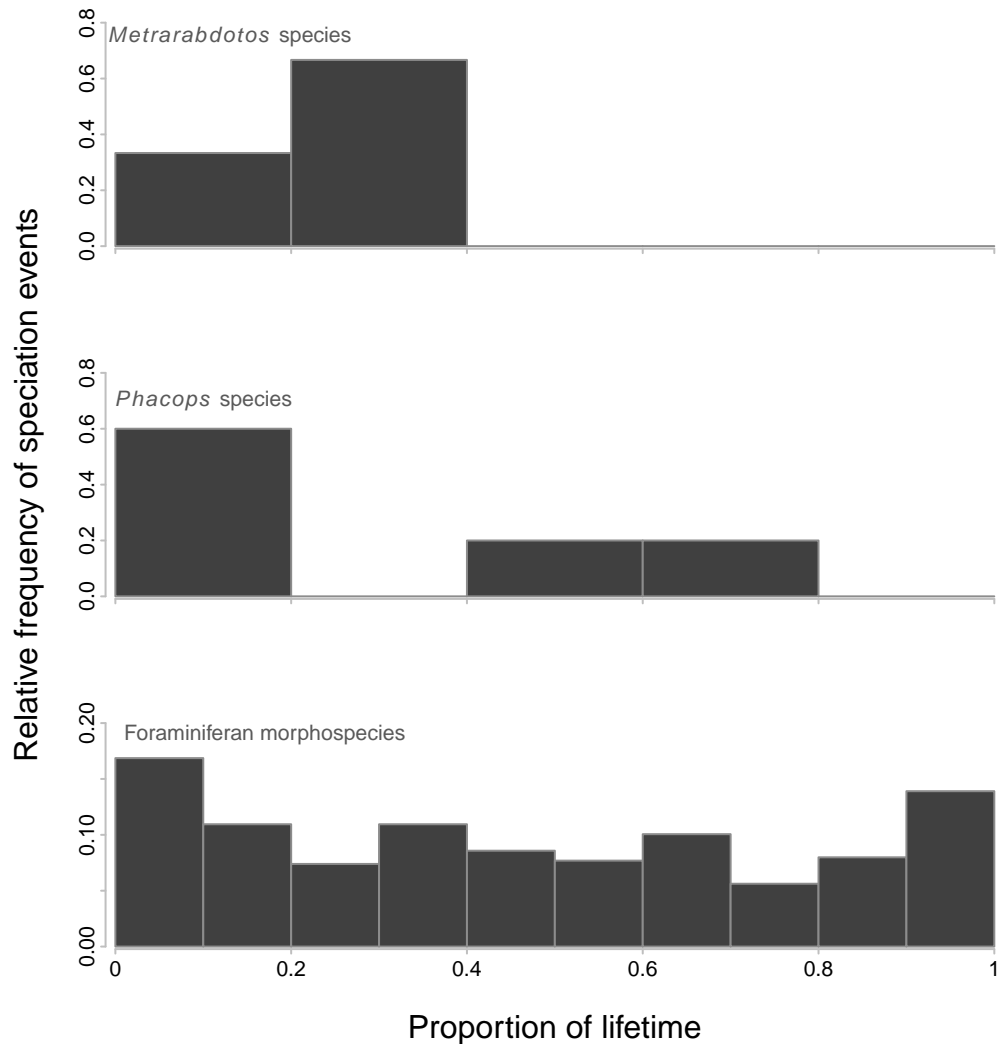


Figure 2: A tabulation of the relative frequency of speciation events during the relative age (lifetime) of ancestors. The three groups of fossils shown here have are based on phylogenies with explicit ancestor-descendent relationships defined. The top panel shows the relative frequency of the timing of speciation events within the cheilostome bryozoan *Metrarabdotos* (Cheetham et al. 2007). The middle panel shows the relative frequency of the timing of speciation in the trilobite *Phacops* (Eldredge 1972). The bottom panel shows the relative frequency of the timing of speciation for species of macroperforate planktonic foraminifera (Aze et al. 2011).

240 of species-level phylogenies including explicit ancestors available in the fossil record Liow and Ergon (2015) fit models of age-dependent speciation (including the frequency of speciation

given a temporal duration) and identify several different patterns of age-dependence. In some
242 groups biased toward the early part of the ancestor's lifetime, and others they find that long-lived
species have higher speciation rates. Using molecular phylogenies of extant species, Hagen et
244 al. (2015) found that the frequency of speciation is ubiquitously biased toward the beginning of
an ancestor's lifetime—a result counter to the expectation of a link between organismal fitness
246 and speciation rates.

Here are a few additional examples that are useful in identifying how the pattern of speci-
248 ation over the lifetime of ancestral species can vary. One example, planktonic macroporiferate
foraminiferans (Aze et al. 2011) show a uniform patterning of speciation along the lifetime of
250 ancestors (Fig. 2)—speciation is as likely to occur early in an ancestor's lifetime as it is toward
the end (similar to the pattern Liow and Ergon 2015 found). The phylogeny links ancestor-
252 descendant pairs of morphospecies together and records the timing of first and last appearance of
each morphospecies in the geological record. Here, I measured when, relative to the ancestor's
254 lifetime, speciation occurred. The timing of speciation in the cheilostome bryozoan *Metrarab-*
dotos (Cheetham 1986, Cheetham et al. 2007) provides a second example. In *Metrorabdotos*
256 the timing of speciation is clustered in the first half of species lifetimes (Fig. 2). This result
is different than the old-age dependent speciation Liow and Ergon find for *Metrarabdotos*, be-
258 cause they identify a tendency for longer-lived species to have more descendants independent
of when those descendant species were budded off. Lastly, speciation in the trilobite genus
260 *Phacops* (Eldredge 1971, 1972) is clustered early in the lifetime of ancestors (Fig. 2).

These three examples, as well as the patterns seen in Liow and Ergon (2015) and Hagen et al
262 (2015) reject the possibility that speciation is reducible to organismal fitness. Like cell-division
and sexual reproduction, organismal fitness and speciation are independent processes that occur
264 together in a hierarchically nested arrangement of organisms within species. The two levels of
fitness may interact, but they are independent, and caused independently.

266 **The causes of extinction**

Compared to the irreducibility of speciation, extinction seems, at first glance, to be easily re-
268 ducible. After all, a species of must be extinct if all its constituent organisms are dead. Nev-
ertheless, this line of thought leads to the false conclusion that species go extinct due to the
270 same causes from which organisms die. In the end our conclusions about the reducibility of
extinction should focus on distinguishing its causes compared to those that cause organismal
272 fitness.

The causal link between death and extinction is tenuous. Organisms die from the numerous
274 things that can kill them; it could be predation, disease, starvation, accident, the weather, fights,
or old age that does the deed for any particular organism. The cause of death will always
276 vary from organism to organism within a population. The net effect of all this death is that
the population may shrink if the birth rate is not sufficiently high to replace the numbers that
278 are killed. Population decline maybe a common cause of the extinction, but organisms never

280 die from population decline, and population decline is never caused by organismal death alone
because birth rate plays a major role in population growth. It's the relative balance between
282 birth, death, and lifespan of organisms that determines population growth rate and consequently
extinction.

Moreover, extinction can be guaranteed for a species prior to the collapse of its populations,
284 as is the case when populations are below a minimum viable population size. In this situation
extinction is caused by the population crossing a threshold of viability. Organisms within the
286 population do not, however, die from being a part of an inviable population. Instead, they
succumb for any number of more mundane reasons. The Pinta Island tortoises went extinction
288 for a very different reason than the heart failure that killed Lonesome George.

There can be a positive correlation between organismal fitness and population growth rates.
290 This correlation, termed the Allee effect, is particularly important in frequency dependent and
limited populations. The existence of this effect is likely an example of downward causation,
292 where the fitness of organisms are influence by their population context.

Two paleobiological patterns suggest other causes of extinction that don't percolate up from
294 organismal fitness. The first, termed Van Valen's law (or the law of constant extinction) is a
characteristic pattern of extinction that emerges among genera or families within a higher taxon
296 (Raup 1975, Van Valen 1973). Van Valen identified a distinctive log-linear pattern in the age-
frequency distributions of the majority of fossil higher taxa. The log-linearity in this distribution
298 means that, within a higher taxon, genera (or families) of all ages share the same probability of
extinction. A long lifetime does nothing to buffer genera or families from extinction. Van Valen
300 was quite surprised with this result because natural selection among organisms is expected to
increase their fitness (and consequently their adaptedness) over time as their populations evolve.
302 If true, Van Valen's law shows that extinction is decoupled from the patterns of organismal
fitness. Van Valen proposed the Red Queen's Hypothesis to give a possible mechanism for this
304 decoupling by invoking the importance of competitive interactions among species, genera, or
families within an adaptive zone. The biotic environment is so shifty and complex that even
306 ever increasing fitness within a species does not necessarily increase higher fitness relative to
other competing species.

308 The second paleobiological pattern is the symmetric rise and fall of species and genera
(Foote 2007, Foote et al. 2007, Jernvall and Fortelius 2004, Liow et al. 2010, Liow and Stenseth
310 2007). On average, the occupancy or range size of species rises from a low initial value to a
peak halfway through the lifetime and subsequently falls until extinction occurs. As with the
312 age-independence of extinction, the rise-and-fall pattern cannot be explained by changes in
organismal fitness because those are expected to increase over the lifetime of a species. The
314 cause of the rise and fall pattern is not currently known. From interval to interval there is
a correlation between the second order changes in occupancy and a change in environments
316 (Foote 2014). But I think that this environmental cause is unlikely generalize to the first-order
rise-and-fall pattern that plays out over lifetimes, because any time the environment changes in
318 one direction, species of young and old ages are both affected. When species are lined up from
birth to death, rather than from the time in the past they occur, the effect of any specific event

320 of environmental change that is experienced by young and old alike will be smeared across the
lifetime and on average cancels out. As with the Red Queen, biotic interactions among species
322 may be critical to understand the rise-and-fall pattern (Simpson 2010a).

As we have seen, extinction is a clearly emergent phenomenon. The features it has are not
324 the same as the features of traits that are ambiguously emergent. Often in ambiguous cases,
variability plays a part in the irreducibility of a phenomenon consisting of traits that are re-
326 ducible. For example, body size is an organismal trait, yet because it is relatively invariant
within a species, it can also behave similar to an emergent trait—the species has a characteristic
328 body size that can be selective (Van Valen 1975). Extinction is emergent for the opposite reason
and in spite of the variable causes of death of its constituents.

330 Differential extinction can change the frequencies of traits over time by culling species away.
It can also act in conjunction with differential speciation through selective net diversification.
332 Most of the patterns of selectivity that speciation can produce occurs inversely with extinction.
Unlike speciation, extinction's power to create trends is immediate because the loss of species
334 immediately culls the trait distribution.

The many levels of selection

336 The philosophical issue that prevents the easy recognition of species selection hinges on a sus-
picion that species selection is reducible to natural selection. Any confusion about the level at
338 which selection acts in any given scenario would get in the way of a useful theory.

The concept of species sorting incorporates this uncertainty about the level of selection
340 by being agnostic about the level that differential speciation and extinction rates are caused.
It recognizes and highlights the pattern of differential diversification without concern about the
342 level of selection that causes the pattern. But the fact that speciation and extinction are emergent
removes this uncertainty about the level at which selection acts. Any pattern of differential
344 speciation, extinction, and diversification are themselves emergent because these differentials
are created by emergent patterns of speciation and extinction and not caused by organismal
346 fitness. Speciation and extinction are the macroevolutionary analogues of birth and death in
organismal fitness, and as such constitute an emergent species-level fitness. Organismal and
348 species level fitnesses occur together in much the same way that zooid and colony level fitnesses
both occur in colonial organisms (Simpson 2011, 2012). Fitness represents a demographic
350 process at each level that it occurs. As a consequence, any trait that covaries with diversification
rates has the potential to change by species selection.

352 This certainty in the level at which species selection acts—at the species level due to emer-
gent and differential diversification—helps us make the next step and solve the practical prob-
354 lem, which is how to recognize species selection when it occurs.

Selection and drift—the caused and the uncaused

356 The concept of species sorting incorporates another source of uncertainty about differential
diversification—uncertainty about how the rate differentials are caused. There are two ways to
358 be uncertain about these causes. First, are the traits associated with the rate differential acting to
directly cause the rates or are they a part of a chain of causation that links the traits we measure
360 to diversification, essentially hitchhiking with some unmeasured intermediaries? And second,
are the differential rate patterns caused at all or are they temporary random associations and
362 therefore uncaused. Hitchhiking is likely to be extremely common in nature. Most species are
likely to have a number of emergent traits and a significant number of organismal traits that
364 covary with each other. Selection in a multivariate regime can be quite complex with characters
evolving due to their interactions with each other and with fitness. Even if a trait is evolving
366 only by hitchhiking through a covariation with the trait that is the target of selection, it can
effect the outcome of the selective process. The resulting evolutionary change will deviate from
368 the trajectory that would have occurred if the target of selection was able to vary independently
with the hitchhiking trait. In other words, the structure of covariation between selection and
370 many evolving traits is important in determining the response to selection (Lande and Arnold
1983, Rice 2004). Chance associations between traits and fitness are also common in microevo-
372 lution and known as drift. Drift mimics natural selection and it can easily lead to evolutionary
changes in small populations, where common stochastic differences in fitness between organ-
374 isms can take on a large effect. Drift is the same at the species level. With the emergent fitness
approach, selection, whether direct or via hitchhiking, and drift are the only two processes en-
376 compassed by species sorting. Selection and drift are real evolutionary processes but sorting is
a conceptualization of our scientific knowledge. As such, sorting can be a useful tool to keep us
378 asking the right questions and organizing our uncertainty. But only selection and drift are evo-
lutionary processes. If we recognize both processes of selection and drift, then the concept of
380 sorting becomes a redundant and imprecise conception of actual macroevolutionary processes.

Conclusions

382 We know that life has hierarchical structure that has a physical manifestation and also an expres-
sion in processes like fitness. The physical manifestation is simply cells within bodies, bodies
384 within populations, populations within species, and species within populations of species. The
expression of hierarchical structure in terms of fitness occurs because the parts and wholes
386 contained in that list can be added by birth or speciation, subtracted by death or extinction, or
expand in size by the births and death of constituent parts. The physical manifestations are
388 what does the evolving where as the demographic changes expressed by fitness are involved in
causing that evolution.

390 To understand how to distinguish between selection and drift as well as understand the
causal structure that associates traits and fitness, we need to have a precise way to calculate
392 patterns of selection and microevolution. I'll provide a framework to do this in a companion

paper (Simpson, Species selection on evolving characters). I think that this framework will
394 help us to understand how all the processes that we know about interact with each other. With
that knowledge, we can then focus in real-world situations and apply this macroevolutionary
396 framework to understand what's going on. My hope is that this framework will give us a way to
use mismatches between empirical observations and theoretical predictions as well as the other
398 surprising results to enrich our knowledge of macroevolution. For too long, the field has used
empirical observations as evidence for or against two fixed and opposing conceptual positions.
400 With this framework I hope that empirical observations will be used to extend past these two
conceptual positions develop and refine our understanding of macroevolution.

402 Acknowledgments

Thanks to Doug Erwin, Dan McShea, Chris Haufe, Sarah Tweedt, Rachel Warnock, and Jenna
404 Rolle for discussion and comments. This paper was born from listening to Warren Allmon's
questions to my talk during the Florida NAPC in 2014. I realized that certain parts of macroevo-
406 lutionary theory have developed quickly over the years but that many of those ideas and argu-
ments have not received enough attention in print. It's time to get them out of the shadows so
408 we can see if they are worth developing further.

References

- 410 Arnold, A. J., and K. Fristrup. 1982. The Theory of Evolution by Natural Selection: A
Hierarchical Expansion. *Paleobiology* 8(2):113-129.
- 412 Aze, T., T. H. Ezard, A. Purvis, H. K. Coxall, D. R. Stewart, B. S. Wade, and P. N. Pearson.
2011. A phylogeny of Cenozoic macroperforate planktonic foraminifera from fossil
414 data. *Biological Reviews* 86(4):900-927.
- Cheetham, A. H. 1986. Tempo of evolution in a Neogene bryozoan: rates of morphologic
416 change within and across species boundaries. *Paleobiology* 12(2):190-202.
- Cheetham, A. H., J. Sanner, and J. B. Jackson. 2007. *Metrarabdotos* and related genera (Bry-
418 ozoa: Cheilostomata) in the late Paleogene and Neogene of Tropical America. *Journal*
of Paleontology 81(sp67):1-91.
- 420 Coyne, J. A., and H. A. Orr. 2004. *Speciation*. Sinauer Associates Sunderland, MA.
- Deutsch, D. 2013. Constructor theory. *Synthese* 190(18):4331-4359.
- 422 Eldredge, N. 1972. Systematics and evolution of *Phacops rana* (Green, 1832) and *Phacops*
iowensis Delo, 1935 (Trilobita) from the Middle Devonian of North America. *Bulletin*
424 of the American Museum of Natural History 147(2).

- 426 Eldredge, N., and S. J. Gould. 1972. Punctuated equilibria: an alternative to phyletic gradualism. P. 115. In T. J. M. Schopf, ed. *Models in paleobiology*. Freeman, Cooper, San Francisco.
- 428 Fisher, R. A. 1930. *The genetical theory of natural selection*. Oxford University Press.
- 430 Foote, M. 2007. Symmetric waxing and waning of marine invertebrate genera. *Paleobiology* 33(4):517-529.
- 432 Foote, M. 2014. Environmental controls on geographic range size in marine animal genera. *Paleobiology* 40(3):440-458.
- 434 Foote, M., J. S. Crampton, A. G. Beu, B. A. Marshall, R. A. Cooper, P. A. Maxwell, and I. Matcham. 2007. Rise and fall of species occupancy in Cenozoic fossil mollusks. *Science* 318(5853):1131-1134.
- 436 Goldberg, E. E., J. R. Kohn, R. Lande, K. A. Robertson, S. A. Smith, and B. Igić. 2010. Species selection maintains self-incompatibility. *Science* 330(6003):493-495.
- 438 Gregory, W. K. 1935. Williston's law' relating to the evolution of skull bones in the vertebrates. *American Journal of Physical Anthropology* 20(2):123-152.
- 440 Hagen, O., K. Hartmann, M. Steel, and T. Stadler. 2015. Age-dependent speciation can explain the shape of empirical phylogenies. *Systematic Biology*:syv001.
- 442 Jablonski, D. 2008. Species selection: theory and data. *Annual review of ecology, evolution, and systematics* 39:501-524.
- 444 Jernvall, J., and M. Fortelius. 2004. Maintenance of trophic structure in fossil mammal communities: site occupancy and taxon resilience. *American Naturalist* 164(5):614-24.
- 446 Lande, R., and S. J. Arnold. 1983. The measurement of selection on correlated characters. *Evolution* 37(6):1210-1226.
- 448 Liow, L. H., and T. Ergon. 2015. Fitting Ancestral Age-Dependent Speciation Models to Fossil Data. Pp. 432-460. In W. D. Allmon, and M. M. Yacobucci, eds. *Species and Speciation in the Fossil Record*. University of Chicago Press.
- 450 Liow, L. H., H. J. Skaug, T. Ergon, and T. Schweder. 2010. Global occurrence trajectories of microfossils: environmental volatility and the rise and fall of individual species. *Paleobiology* 36(2):224-252.
- 452 Liow, L. H., and N. Stenseth. 2007. The rise and fall of species: implications for macroevolutionary and macroecological studies. *Proc Roy Soc Lond B* 274(1626):2745-2752.
- 454

- 456 Mayrose, I., S. H. Zhan, C. J. Rothfels, K. Magnuson-Ford, M. S. Barker, L. H. Rieseberg,
and S. P. Otto. 2011. Recently formed polyploid plants diversify at lower rates. *Science*
458 333(6047):1257-1257.
- McShea, D. W. 2004. A Revised Darwinism. *Biol Philos* 19:45-53.
- 460 Orr, H. A. 2009. Fitness and its role in evolutionary genetics. *Nature Reviews Genetics*
10(8):531-539
- 462 Powell, M. G., and J. MacGregor. 2011. A geographic test of species selection using plank-
tonic foraminifera during the Cretaceous/Paleogene mass extinction. *Paleobiology* 37(03):426-
464 437.
- Price, G. R. 1970. Selection and covariance. *Nature* 227:520-21.
- 466 Price, G. R. 1972. Extension of covariance selection mathematics. *Annals of Human Genetics*
35(4):485-490.
- 468 Raup, D. 1975. Taxonomic Survivorship Curves and Van Valen's Law. *Paleobiology* 1(1):82-
96.
- 470 Rabosky, D. L., and A. R. McCune. 2010. Reinventing species selection with molecular
phylogenies. *Trends in Ecology & Evolution* 25(2):68-74.
- 472 Rice, S. H. 2004. *Evolutionary Theory: Mathematical and Conceptual Foundations*. Sinauer
Associates, Sunderland, Massachusetts U.S.A.
- 474 Simpson, C., and P. G. Harnik. 2009. Assessing the role of abundance in marine bivalve
extinction over the post-Paleozoic. *Paleobiology* 35(4):631-647.
- 476 Simpson, C. 2010a. The contribution of dispersal ability to the expansion of geographic range.
2010 Geological Society of America Annual Meeting Abstracts with Programs.
- 478 Simpson, C. 2010. Species selection and driven mechanisms jointly generate a large-scale
morphological trend in monobathrid crinoids. *Paleobiology* 36(3):481-496.
- 480 Simpson, C. 2011. How many levels are there? How insights from evolutionary transitions
in individuality help measure the hierarchical complexity of life. Pp. 199-226. In B.
482 Calcott, and K. Sterelney, eds. *The Major Transitions in Evolution Revisited*. MIT
Press, Cambridge, Massachusetts.
- 484 Simpson, C. 2012. The evolutionary history of division of labour. *Proceedings of the Royal
Society B: Biological Sciences* 279(1726):116-121.
- 486 Simpson, C. 2013. Species selection and the macroevolution of coral coloniality and photo-
symbiosis. *Evolution* 67(6):1607-1621.

- 488 Simpson, C., and J. Miller. 2012. Species selection in the molecular age. Pp. 116-134. In
J. Miller, and R. Asher, eds. From clone to bone: the synergy of morphological and
490 molecular tools in paleobiology. Cambridge University Press, New York.
- Simpson, G. G. 1944. Tempo and Mode in Evolution. Columbia University Press, New York.
- 492 Simpson, G. G. 1953. The Major Features Of Evolution. Columbia University Press New
York.
- 494 Stanley, S. M. 1975. A theory of evolution above the species level. Proceedings of the National
Academy of Science, USA 72(2):646-650.
- 496 Stanley, S. M. 1979. Macroevolution. W. H. Freeman and Company, San Francisco.
- Van Valen, L. 1973. A new evolutionary law. Evolutionary Theory 1(1):1-30.
- 498 Van Valen, L. 1975. Group Selection, Sex, and Fossils. Evolution 29(1):87-94.
- Vrba, E. S. 1980. Evolution, species and fossils: how does life evolve. South African Journal
500 of Science 76(2):61-84.
- Vrba, E. S. 1983. Macroevolutionary trends: new perspectives on the roles of adaptation and
502 incidental effect. Science 221(4608):387-389.
- Vrba, E. S., and S. J. Gould. 1986. The Hierarchical Expansion of Sorting and Selection -
504 Sorting and Selection Cannot Be Equated. Paleobiology 12(2):217-228.
- Williams, G. C. 1992. Natural selection: Domains, levels and challenges. Oxford University
506 Press.