

# Early transcriptome response to brown streak virus infection in susceptible and resistant cassava varieties

Ravi B. Anjanappa<sup>1\*</sup>, Devang Mehta<sup>1\*</sup>, Michal J. Okoniewski<sup>2,3</sup>, Alicja Szabelska<sup>3,4</sup>, Wilhelm Gruissem<sup>1</sup> and Hervé Vanderschuren<sup>1,5</sup>

<sup>1</sup>Department of Biology, ETH Zurich, Switzerland; <sup>2</sup> ID Scientific IT Services, ETH Zurich, Switzerland; <sup>3</sup> Functional Genomics Center Zurich, Zurich, Switzerland; <sup>4</sup>Department of Mathematical and Statistical Methods, Poznan University of Life Sciences, Poland; <sup>5</sup>AGROBIOCHEM Department, Gembloux Agro-Bio Tech, University of Liège, Belgium

\*These authors contributed equally to this work

## Author for correspondence:

Hervé Vanderschuren

Tel: +32 81 62 25 71/ +41 44 632 87 25

Email: [herve.vanderschuren@ulg.ac.be/](mailto:herve.vanderschuren@ulg.ac.be)  
[hvanderschuren@ethz.ch](mailto:hvanderschuren@ethz.ch)

## Summary

- Cassava brown streak disease is caused by cassava brown streak viruses (CBSVs), which are responsible for significant cassava yield losses in eastern sub-Saharan Africa.
- We inoculated CBSV-susceptible and -resistant cassava varieties with a mixed infection of CBSVs using top-cleft grafting. Virus titres in grafted scions were monitored in a time course experiment. We performed RNA-Seq of the two cassava varieties at the earliest time-point of full infection in the susceptible scions. A meta-analysis of the current RNA-Seq dataset and selected, previously reported, crop-virus RNA-Seq datasets was performed to investigate similarities in gene expression regulation.
- Genes encoding proteins in RNA silencing and salicylic acid pathways were regulated in the susceptible cassava variety but transcriptional changes were limited in the resistant variety. After infection, genes related to callose deposition at plasmodesmata were regulated and callose deposition was significantly reduced in the susceptible cassava variety.
- The differences in transcriptional responses to CBSV infection in susceptible and resistant varieties indicate that resistance involves callose deposition at plasmodesmata but does not trigger typical anti-viral defence responses. Our meta-analysis of selected host-potyvirus and cassava-virus infections reveals comparable host responses across pathosystems only at similar time points after infection or infection of a common host.

Key words: cassava, potyvirus, RNA-Seq, transcriptome, virus resistance, salicylic acid, RDR1, callose

## Introduction

Cassava brown streak disease (CBSD) is one of the most damaging cassava virus diseases in Africa causing harvest losses of up to 70% in susceptible varieties (Hillocks *et al.*, 2001; Legg *et al.*, 2011). Ongoing CBSD outbreaks are threatening cassava production in sub-Saharan Africa (Legg *et al.*, 2011; Legg *et al.*, 2014) and the recent spread of CBSD into central Africa (Bigirimana *et al.*, 2011; Mulimbi

*et al.*, 2012) indicates that it could soon become a major constraint to cassava production in all sub-Saharan cassava growing regions.

The characteristic symptoms of CBSD include leaf chlorosis and dry hard necrosis in roots, thus affecting both the quality and yield of the edible storage roots. CBSD is caused by two phylogenetically distinct cassava brown streak virus species: *Cassava brown streak virus* (CBSV) and *Ugandan cassava brown streak virus* (UCBSVs)

(Mbanzibwa *et al.*, 2011), collectively referred to as CBSVs. CBSVs are (+) ssRNA viruses belonging to the genus *Ipomovirus*, family Potyviridae (Monger *et al.*, 2001; Mbanzibwa *et al.*, 2009), and are transmitted by whiteflies (Maruthi *et al.*, 2005). They consist of a ~9 kb genome with a single open reading frame encoding a large poly-protein, which is co- and post-translationally cleaved into ten viral proteins (Winter *et al.*, 2010). CBSV and UCBSV differ in virulence in both controlled and field conditions, with CBSV generally accumulating to higher titres in most host genotypes (Winter *et al.*, 2010; Mohammed *et al.*, 2012; Kaweesi *et al.*, 2014; Ogwok *et al.*, 2015). Two recent field analyses of different cassava genotypes for the presence of CBSV and UCBSV found that both viruses co-occurred in a majority of tested genotypes (Ogwok *et al.*, 2015; Kaweesi *et al.*, 2014).

The release of a cassava reference genome (Prochnik *et al.*, 2012) has opened up new opportunities to perform large-scale characterization of the cassava transcriptome and proteome (Allie *et al.*, 2014; Maruthi *et al.*, 2014; Vanderschuren *et al.*, 2014). Cassava varieties differing in resistance against cassava geminiviruses (CMGs) were recently analysed in a time course experiment to identify pathways that are differentially regulated during South African cassava mosaic virus (SACMV) infection (Allie *et al.*, 2014). Similarly, a late (one year post-infection) time point comparative transcriptome analysis was reported of transcripts differentially expressed in a susceptible variety (Albert) and a variety (Kaleso) classified as moderately resistant but displaying mild CBSV symptoms after CBSV infection (Maruthi *et al.*, 2014). The late time point study found no regulation in cassava homologs of known R-gene analogues, any NBS-LRR genes, nor genes encoding proteins of the anti-viral RNA silencing pathway. We recently characterised KBH 2006/18 and KBH 2006/26, which are two resistant elite breeding lines with immunity to a mixed infection of CBSV and UCBSV (Anjanappa *et al.*, 2016). Interestingly, KBH 2006/18 and KBH 2006/26 show no symptoms or hypersensitive response upon infection, even at 16-weeks post graft-inoculation (Anjanappa *et al.*, 2016).

Here we used two cassava varieties contrasting for CBSV resistance (i.e. 60444 and KBH2006/18) to characterize the transcriptome response at an early time-point of CBSV and UCBSV co-infection. We report an in-depth characterisation of pathways and genes regulated in compatible and incompatible

cassava-ipomovirus interactions and present biochemical evidence to explain the inhibition of virus intercellular movement in the resistant breeding line KBH 2006/18. Our data provide new insights into the cassava-CBSV interaction and identify commonalities in plant responses to virus infection.

## Material and Methods

### Plant material and virus inoculation

The elite CBSV-resistant cassava breeding variety KBH 2006/18 was obtained from IITA (Tanzania) and the susceptible variety 60444 from the ETH cassava germplasm collection. Cassava plants were grown under greenhouse conditions (27°C, 16h light, 60% humidity). Infected 60444 stem cuttings with mixed infection of the CBSV isolate TAZ-DES-01 (KF878104) and the UCBSV isolate TAZ-DES-02 (KF878103) were used to inoculate KBH 2006/18 and 60444 plants using a previously described top-cleft grafting method (Moreno *et al.*, 2011; Anjanappa *et al.*, 2016). KBH 2006/18 and 60444 plants were also top-cleft grafted onto virus-free 60444 rootstocks as mock controls. Individual leaves (the second leaf from the point of graft union) were collected from scions of CBSV- and mock-infected plants at 28 days after grafting (dag) and at 60 dag (Supplementary Figure 1).

### RT-qPCR

RNA was extracted from cassava leaves using a modified CTAB RNA extraction protocol (Moreno *et al.*, 2011). One µg of DNaseI-treated total RNA was reverse-transcribed using the RevertAid First Strand cDNA Synthesis Kit (Thermo-Fisher) according to the manufacturer's instructions. RT-qPCR was performed with SYBR Green dye (Thermo-Fisher) using a 7500 Fast Real Time PCR System (Applied Biosystems). Three independent biological replicates were analysed for each time-point. The relative expression level of individual genes in each sample was calculated as previously described (Moreno *et al.*, 2011; Vanderschuren *et al.*, 2012). Primers used to validate differentially expressed genes and to quantitate virus titres are listed in Supplementary Table 1.

### Illumina RNA-Seq and data analysis

Library preparation and sequencing were performed as follows: 5 µg of total RNA extract was treated with DNase according to manufacturer instructions (Qiagen, RNase-free DNase Kit) and subsequently

column purified using the RNeasy Plant Mini Kit (Qiagen). RNA quality was assessed using a Qubit® (1.0) Fluorometer (Thermo-Fisher) as well as a Bioanalyzer 2100 (Agilent). Samples with a RNA integrity number (RIN) above 6 were used for sequencing. One µg of total RNA was polyA enriched and mRNA libraries were synthesized using a TruSeq RNA Sample Prep Kit v2 (Illumina). Cluster generation was done using 10 pM of pooled normalized libraries on the cBOT with TruSeq PE Cluster Kit v3-cBot-HS (Illumina) and subsequently Illumina HiSeq 2000 sequencing was performed to generate the reads.

### Sequence assembly, mapping to the cassava genome and identification of differentially expressed genes (DEGs)

The raw read files were trimmed using the trim sequence tool in the CLC Genomics Workbench v8.5 and settings declared in Notes S1. Unique trimmed reads were mapped to the *M. esculenta* reference genome AM560-2 v6.0 available on Phytozome ([www.phytozome.jgi.doe.gov](http://www.phytozome.jgi.doe.gov)) using the transcriptomics toolbox in the CLC Genomics Workbench v8.5. Empirical analysis of differentially expressed reads was performed using default parameters to identify differentially expressed genes (DEGs) between control non-infected and CBSV-infected scions. DEGs were then filtered based on a FDR-corrected P-value of <0.01 and a fold-change of ≥2. DEGs were annotated in the CLC Workbench using the Phytozome GFF3 annotation file ([www.phytozome.jgi.doe.gov](http://www.phytozome.jgi.doe.gov)).

### Identification of de novo assembled transcripts (dnATs)

Read mapping of trimmed reads was performed using the transcriptomics toolbox in the CLC Genomics Workbench v8.5 with settings described in Notes S1 but with “Maximum number of hits for a read = 10”, allowing for more stringent detection of unmapped reads. Unmapped reads for each cassava variety were pooled and assembled using Trinity (Grabherr *et al.*, 2011) with default settings. Assembled contigs were then size-filtered and contigs greater than 1000 nt were classified as *de novo* assembled transcripts (dnATs). Differential expression of dnATs between infected and mock-infected samples was determined using STAR (Dobin *et al.*, 2013).

### Determination of full-length virus genomes from RNA-Seq analysis

Unmapped reads (described previously) were assembled into contigs using the CLC Genomics Workbench *de novo* assembly tool. The assembled contigs were BLASTed against published CBSV (HG965221.1) and UCBSV (HG965222.1) genomes to identify full length virus genomes. Two full length genomes corresponding to CBSV (TAZ-DES-01; KF878104) and UCBSV (TAZ-DES-02; KF878103) were obtained as single assembled contigs. The two full-length viral genomes were used to map reads from each individual sample (Fig. S1) using CLC Genomics Workbench read mapping to contigs tool in order to estimate virus read counts per sample and read count distribution across the virus genomes.

### β-1,3-glucanase enzymatic assay

Leaf samples from three independent cassava scions were collected and soluble proteins were extracted from 100 mg of leaf powder in 300 µl of extraction buffer (20 mM HEPES, pH 8.0, 5 mM MgCl<sub>2</sub> and 1 tablet/50 ml buffer of EDTA-free protease inhibitor) and quantitated using the BCA assay. The amount of glucose content released by the activity of β-1,3-glucanase in a known amount of soluble proteins in presence of the substrate laminarin (*Laminaria digitata*, Sigma-Aldrich) was then measured spectrophotometrically at 540 nm (Ramada *et al.*, 2010). β-1,3-glucanase specific activity was subsequently calculated, with 1 unit (U) of activity representing the amount of enzyme required to produce 1 µmol of reducing sugar per minute.

### Quantification of plasmodesmata-associated callose

Leaf sections from uninfected and infected scions were stained overnight with Aniline blue (Merck) using a previously described method (Guenoun-Gelbart *et al.*, 2008). Stained leaf samples were then examined using a Zeiss LSM 780 laser confocal microscope with a 40X water-immersion objective. Callose accumulation was detected at an excitation of 405 nm and emission between 413 and 563nm was recorded. Callose quantification and deposit counting was performed as described by Zavaliev & Epel (2015) for eight replicate images per plant variety and treatment condition.

## PFAM-based meta-analysis

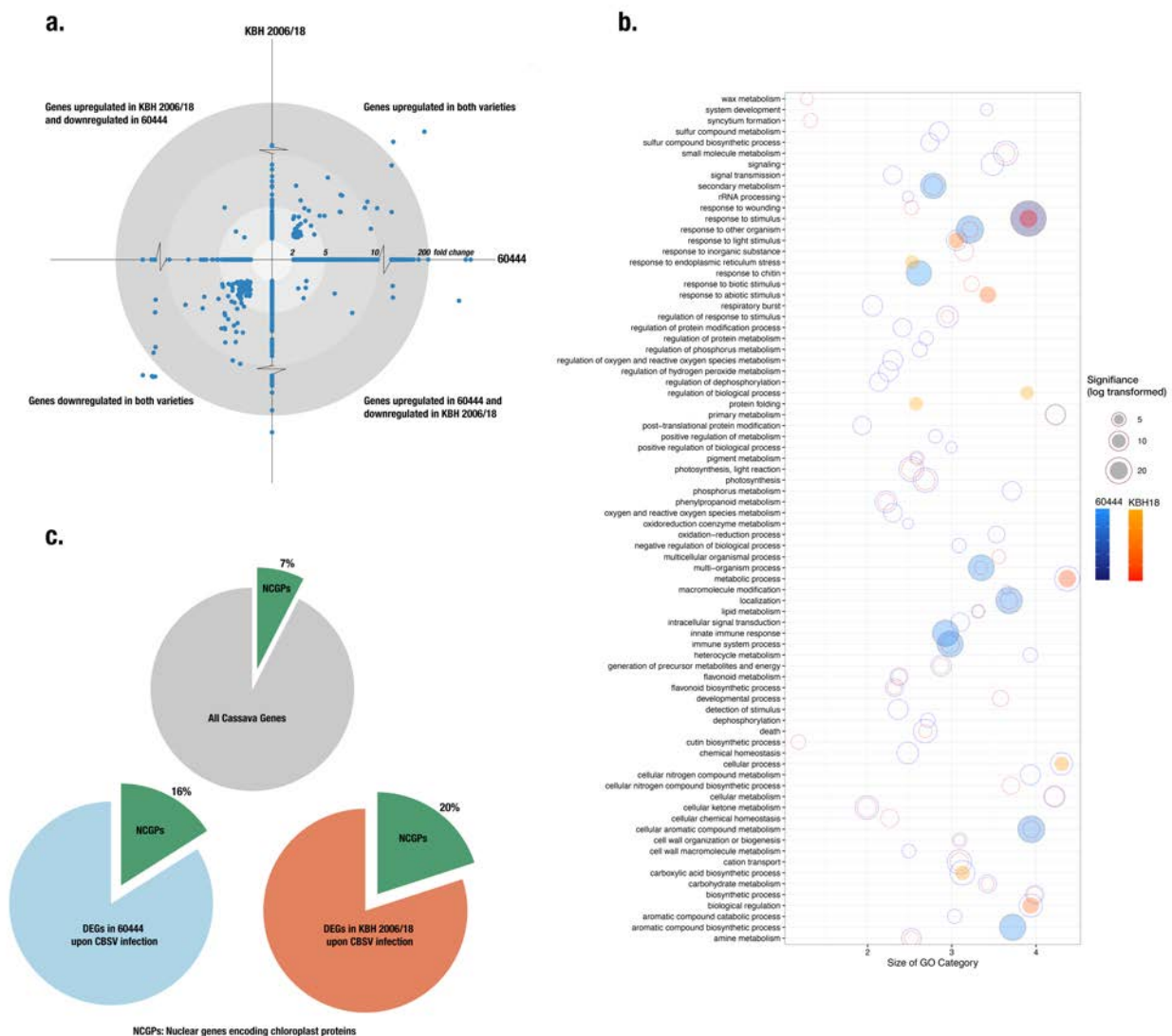
For Pfam-based meta-analysis, RNA-Seq DEG data were downloaded from published reports (Allie et al., 2014; Rubio et al., 2015 a,b; Maruthi et al., 2014) and filtered using an absolute fold-change of  $\geq 2$ . Pfam annotations for genomes of each species were obtained from Phytozome annotation files ([www.phytozome.jgi.doe.gov](http://www.phytozome.jgi.doe.gov)). Commonly regulated Pfams were determined by constructing a 5-set Venn diagram and the resulting Pfam overlaps between pairs of sets were used to calculate a

pairwise similarity matrix.

## Results:

### CBSV inoculation induces greater transcriptome modulation in susceptible cassava

Following successful grafting of 60444 and KBH2006/18 virus-free scions onto rootstocks with a mixed infection of CBSV (TAZ-DES-01) and UCBSV (TAZ-DES-02) (CBSV-infection in



**Figure 1:** Gene regulation in susceptible (60444) and resistant (KBH 2006/18) cassava varieties at 28 dag and mixed CBSV and UCBSV infection. a. Fold change of differentially expressed genes (DEGs) (FDR<0.05, fold change  $\geq 2$ ) in both varieties. Fold change of DEGs in 60444 from the X-coordinate and in KBH 2006/18 from the Y-coordinate. b. Functional characterization of DEGs based on gene ontology (GO) of biological processes. Significantly enriched GO categories in 60444 and KBH 2006/18 were first reduced based on semantic similarity (REVIGO; [revigo.irb.hr](http://revigo.irb.hr)) and then plotted. Blue circles represent GO categories enriched in 60444 and orange circles those in KBH 2006/18; overlapping blue and orange circles represent GO categories enriched in both 60444 and KBH 2006/18. Circles for the top 10 significantly enriched categories are shaded. c. Proportion of nuclear-encoded chloroplast genes (NECGs) differentially regulated after infection. 6% of the cassava genome consists of NECGs while 16% of the 60444 and 20% of the KBH 2006/18 DEGs after infection are NECGs.



short), we performed a time course sampling of the scions at 16, 22 and 28 days after grafting (dag) (Fig. S1). We assessed virus titres in inoculated and mock scions at the selected time points. Virus infection reached homogenous titre levels across the three biological replicates only at 28 dag in inoculated 60444 scions (Fig. S2). No virus was detected in KBH 2006/18 scions (Fig. S2), consistent with previous results (Anjanappa *et al.*, 2016). Notably, we did not observe CBSV symptoms in any inoculated plant at 28 dag. Samples from 60444 and KBH2006/18 scions at 28 dag were selected for transcriptome analysis.

Gene expression in 60444 and KBH 2006/18 from non-inoculated and CBSV-inoculated scions collected at 28 dag was analysed using Illumina HiSeq 2000 sequencing. Total RNA from the second emergent leaf immediately after the graft-union was used for RNA-Seq analysis, with three independent replicates per condition and plant variety. A total of 1,254,619,280 reads with 100-bp paired-ends were generated from the 12 samples, ranging from 77 to 121 million reads per sample. On average, 93.4% of the total reads were successfully mapped to the cassava reference genome (*M. esculenta* AM560-2 v6.0). The reads not mapped to the reference genome were assembled *de novo* using Trinity (Grabherr *et al.*, 2011). The size-selected Trinity-assembled contigs, referred to as *de novo* assembled transcripts (*dnATs*), were subsequently blasted against the NCBI nucleotide collection to provide gene descriptions. The *dnATs* were then used for differential gene expression analysis using STAR (Dobin *et al.*, 2013). None of the *dnATs* appeared to be differentially regulated in compatible and incompatible cassava-CBSV pathosystems (Table S2).

A total of 1,292 genes in 60444 and 585 genes in KBH 2006/18 were differentially expressed at 28 dag, reflecting a higher number of modulated genes in the compatible host-virus interaction (Table S3). Over 68% of all differentially expressed genes (DEGs) were up-regulated in variety 60444 while only 30% were up-regulated in KBH 2006/18. A total of 158 DEGs were common between both varieties, and a major proportion (99 DEGs) of these were down-regulated (Fig. 1a). Among the DEGs found in both plant varieties, only 12 genes were differently regulated (i.e. up-regulated in 60444 and down-regulated in KBH 2006/18 or vice-versa) (Fig.1a).

## Comparison and validation of RNA-Seq data

The RNA-Seq expression results of three significantly regulated genes (*PLASMODESMATA LOCATED PROTEIN 1* (*PDL1*), *CALRETICULIN 1B* (*CRT1B*), *HEAT SHOCK PROTEIN 17.6* (*HSP17.6*)) and one non-significantly regulated gene (*CALRETICULIN 3* (*CRT3*)), were confirmed using RT-qPCR on the same RNA samples used for sequencing. Fold-change values (comparing infected and non-infected samples) for these RNAs were similar to those observed in the RNA-Seq analysis (Fig. S3). We used unmapped reads to *de novo* assemble the full-length virus genomes of CBSV (TAZ-DES-01) and UCBSV (TAZ-DES-02). Full-length virus genome contigs were used for read counts to estimate virus abundance in each sample used for RNA-Seq (Fig. S4). Read counts detected for CBSV (TAZ-DES-01) and UCBSV (TAZ-DES-02) indicated that CBSV (TAZ-DES-01) was more prevalent than UCBSV (TAZ-DES-02) in two of the three inoculated 60444 scions. The read count analysis confirmed the absence of both CBSVs in the inoculated KBH2006/18 scions (Table S4).

## Gene sets enriched in resistant and susceptible cassava

We performed Gene Set Enrichment Analysis using the PlantGSEA toolkit (Yi *et al.*, 2013) to identify significantly enriched gene ontology (GO) categories and KEGG pathways (Table S4). Significantly enriched GO categories (Biological Process) were then summarized and visualized based on semantic similarity using REVIGO (Supek *et al.*, 2011) (Fig. 1b). As expected, genes related to stimulus response, immune system process and photosynthesis were significantly regulated in both the susceptible and resistant plant varieties (Fig. 1b).

We also examined KEGG-annotated pathways enriched after virus infection in both varieties by mapping DEGs onto enriched KEGG pathways using Pathview (Luo & Brouwer, 2013) (Table S4). In both resistant and susceptible varieties, genes in photosystem I and II as well as the light harvesting complex are down-regulated. Pathways related to phenylalanine metabolism, phenylpropanoid biosynthesis and downstream products of phenylpropanoid biosynthesis were enriched in the infected 60444 scions along with several genes involved in plant-pathogen interactions. In KBH 2006/18, the cyanoamino metabolism, starch and sucrose metabolism pathways were enriched. Interestingly, the phenylpropanoid pathway was also

overrepresented in KBH 2006/18, but it showed an opposite response as compared to the infected 60444 variety.

A recent transcriptome study identified the downregulation of nuclear genes encoding chloroplast proteins (NGCPs) as a key response to PAMP (specifically, bacterial pathogen) perception (Shi *et al.*, 2015). Considering the overrepresentation of chloroplast-related genes (TAIR GO:0009507) in our data sets, we further investigated the relative abundance of NGCP transcripts regulated by CBSV infection. In 60444, 7% of all cassava NGCPs (193 out of 2682 cassava NGCPs), which represent 15% of the total DEGs, were regulated upon infection. In KBH 2006/18, 19% of all DEGs are NGCPs (Fig. 1c). In both varieties, a majority of NGCPs were down-regulated (Table S4), indicating that CBSV inoculation induces a chloroplastic response, as observed with other PAMPs in Arabidopsis (Göhre *et al.*, 2012; Zheng *et al.*, 2012; de Torres Zabala *et al.*, 2015).

### CBSV infection modulates callose deposition at plasmodesmata

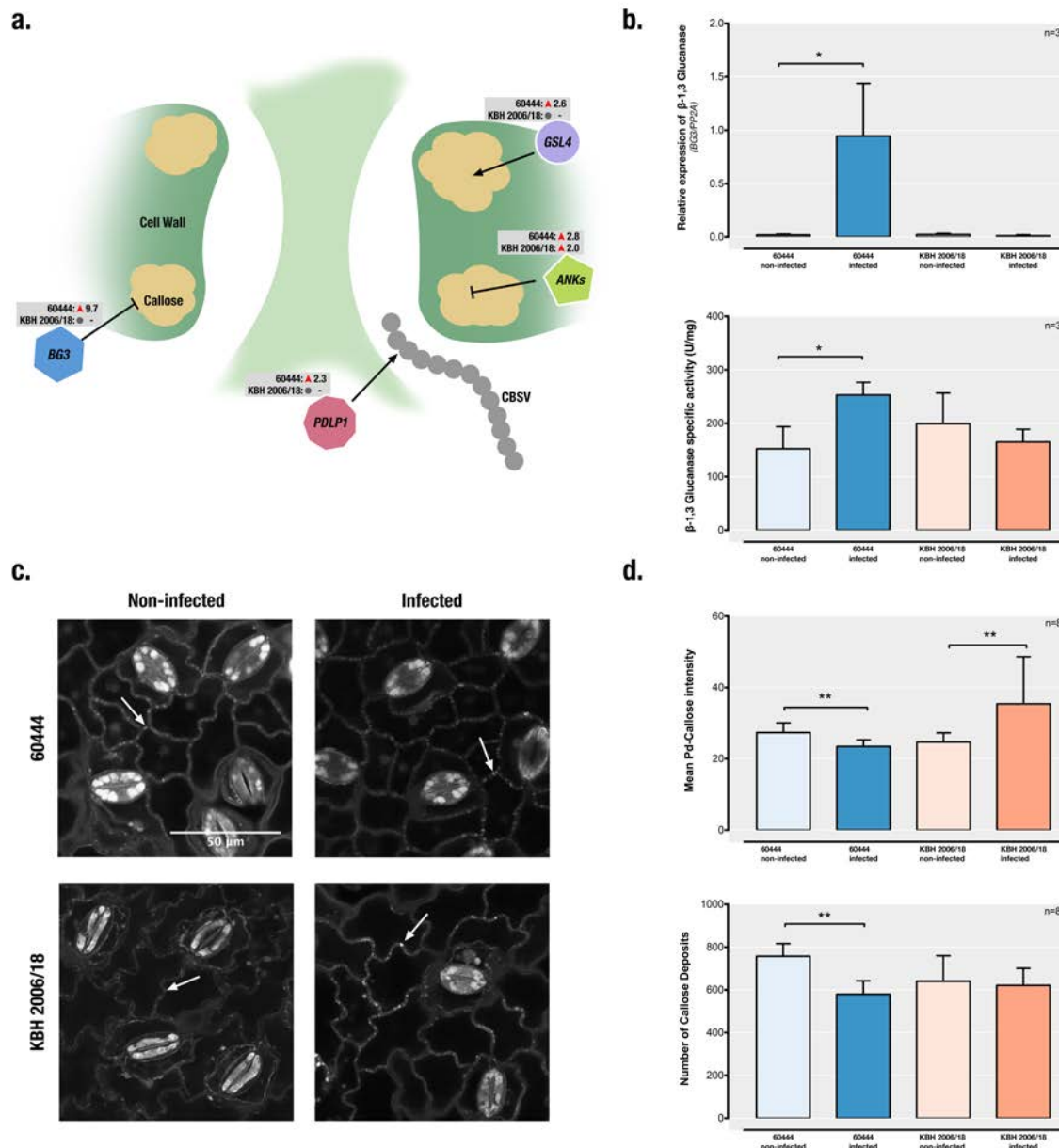
In a previous study investigating the cassava-CBSV pathosystem we found that KBH 2006/18 allows transmission of CBSVs through the stem vasculature while no virus can be detected in KBH 2006/18 leaves (Anjanappa *et al.*, 2016). This suggests that the resistance of KBH 2006/18 to CBSVs involves at least restriction of inter-cellular virus movement from vascular tissues to mesophyll cells. Here we find that transcript levels of genes involved in virus movement and callose deposition at plasmodesmata were regulated in infected 60444 but not KBH 2006/18 leaves. The transcript level of  $\beta$ -1,3-

*GLUCANASE (BG3)* encoding an enzyme which degrades callose at the plasmodesmata (Iglesias & Meins Jr, 2000), was 9.7-fold up-regulated in 60444 (Fig. 2a). ANKYRIN REPEAT FAMILY PROTEINS (ANKs) allow viral movement through plasmodesmata by promoting callose degradation (Ueki *et al.*, 2010). We also found an upregulation of two different cassava ANKs, Manes.11G035500 (3.8-fold) in 60444 and Manes.05G056700 (2.03-fold) in KBH 2006/18. The expression of *PLASMODEMATA-LOCATED PROTEIN 1 (PDLP1)*, which is a positive regulator of virus cell-to-cell movement, was upregulated in infected 60444. PDLP1 binds to viral movement proteins and helps the formation of viral movement tubules at the plasmodesmata (Amari *et al.*, 2010), thereby facilitating virus cell-to-cell movement. In contrast,

the expression of a possible negative regulator of plasmodesmata permeability, *GLUCAN SYNTHASE LIKE 4 (GSL4)* (Maeda *et al.*, 2014), was also up-regulated by 2.6-fold in 60444 (Fig. 2a).

We further characterized *BG3* expression levels at 60 dag to follow the regulation of this gene in infected and symptomatic 60444 leaves. Up-regulation of *BG3* expression was attenuated at 60 dag as the CBSV infection progressed. Consistently, no significant change of *BG3* expression was observed in KBH 2006/18 leaves at 60 dag (Fig. 2b). The higher *BG3* transcript levels resulted in a 38% increase in *BG3* enzymatic activity in infected 60444 leaves (Fig. 2b).

In order to understand the functional implications of the simultaneous upregulation of positive (*PDLP1*, *GSL4*) and negative (*BG3*, *ANKs*) regulators of callose deposition upon CBSV infection, we stained



**Figure 2:** Regulation of callose deposition at plasmodesmata in susceptible (60444) and resistant (KBH 2006/18) cassava varieties after CBSV-infection. **a.** Schematic depiction of a plasmodesmata used by viruses for intercellular movement. Also shown are genes encoding key enzymes significantly regulated after infection (*BG3*: *GLUCANASE*, encoding a callose-degrading  $\beta$ -1,3-glucanase; *GSL4*: *GLUCAN SYNTHASE-LIKE 4*, encoding a callose synthesis enzyme; *PDL1*: *PLASMODEMATA-LOCATED PROTEIN 1*, encoding a protein involved in virus movement across the plasmodesmata and in callose synthesis; *ANKs*: *ANKYRIN REPEAT FAMILY PROTEINS*, encoding proteins that are negative regulators of callose deposition) with their fold-changes based on RNA-Seq analysis at 28 dag. **b.** (*upper panel*) RT-qPCR analysis of *BG3* mRNA at 60 dag. 60444 leaves were symptomatic for virus infection at this time-point. (*lower panel*) *BG3* enzymatic activity also significantly increases after infection in 60444 and is unchanged in KBH 2006/18 at 60 dag. **c.** Aniline blue staining for detection of callose deposits. Leaf samples from 60444 were stained and visualized using a confocal laser scanning microscope at 400X magnification. Callose deposits are visible as small bright dots along the cell walls (white arrowheads). **d.** (*upper panel*) Quantitation of callose deposits at plasmodesmata in 60444 and KBH 2006/18 at 60 dag, observed after aniline blue staining and microscopy. Infection results in a decrease in the amount of callose deposited at the plasmodesmata in 60444 and an increase in KBH 2006/18. (*lower panel*) The number of callose deposits found in microscopic images. Infection also decreases in the number of callose deposits in 60444. (\*,  $P < 0.05$ ; \*\*,  $P < 0.01$ , Un-paired t-test.)

callose in leaf tissue from 60444 and KBH 2006/18 at 60 days after grafting (Fig. 2c). This revealed a significant decrease in plasmodesmata-associated callose deposition in epidermal cells of infected 60444 leaves and a strong increase in the amount of plasmodesmata-associated callose deposition in KBH 2006/18.

### Salicylic acid defence and lignin biosynthesis pathways are regulated in response to CBSVs

Overall, we found that in the susceptible cassava variety 60444 defence pathways were more extensively regulated during CBSV infection as compared to the resistant variety KBH 2006/18. Transcript levels for several genes encoding the enzymes involved in lignin and SA biosynthesis were up-regulated in the compatible cassava-CBSV interaction and not regulated or down-regulated in the incompatible interaction (Fig. 3). Both SA and lignin biosynthetic pathways follow the phenylpropanoid pathway, which was enriched in our initial KEGG pathway gene-set analysis (Table S4).

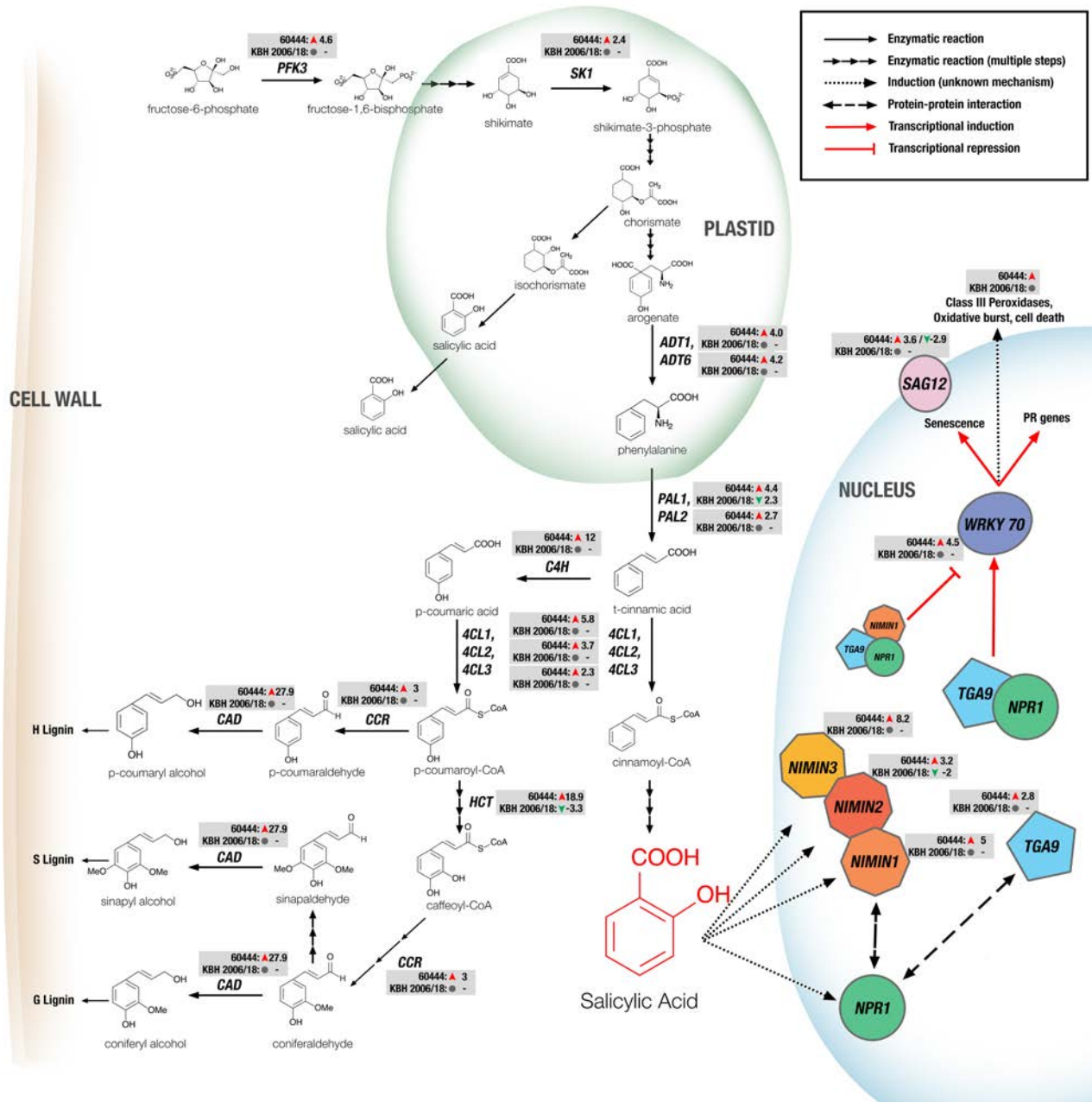
SA biosynthesis in plants begins in the chloroplast with the shikimate pathway for synthesis of aromatic amino acids, which in turn is fed by fructose-1,6-bisphosphate (Fig. 3). Although fructose-1,6-bisphosphate is probably not a limiting precursor for SA biosynthesis, we did observe a 4.6-fold up-regulation of the PHOSPHOFRUCTOKINASE 3, a gene involved in the conversion of fructose-6-phosphate to fructose-1,6-bisphosphate in the susceptible variety. We also observed a 2.4-fold up-regulation of the *SHIKIMATE KINASE 3*, responsible for the conversion of shikimate to shikimate-3-phosphate. Previous genetic studies in *Arabidopsis* and *Nicotiana benthamiana* (reviewed by Chen *et al.*, 2009) have indicated that pathogen-

induced SA synthesis is catalysed by ISOCHORISMATE SYNTHASE (ICS) to convert chorismate to isochorismate, which is then used to produce SA by an unknown mechanism. An alternative pathway for SA biosynthesis from chorismate involves its conversion to aroenate, which is the substrate of AROENATE DEHYDRATASE (ADT) to produce phenylalanine. *ADT1* and *ADT6* were upregulated in 60444 after CBSV infection, suggesting that virus-induced SA synthesis in cassava, unlike in *N. benthamiana* (Catinot *et al.*, 2008), might proceed through the phenylalanine pathway rather than via isochorismate. PHENYLALANINE AMMONIOLYASE (PAL), which catalyses the conversion of phenylalanine to cinnamic acid, is a key enzyme in the synthesis of both lignin and SA. Indeed, quadruple *pal* mutants with only 10% PAL activity produced about 50% less SA and were more susceptible to biotic stress (Huang *et al.*, 2010). We find that *PAL1* (Manes.10G047500) and *PAL2* (Manes.07G098700) were 4.4-fold and 2.7-fold up-regulated, respectively, in 60444. In contrast, *PAL1* was downregulated 2.3-fold in KBH 2006/18. Cinnamic acid is the substrate at the branch point of the SA and lignin biosynthesis pathways. Ligation of cinnamic acid to Coenzyme A by 4-COUMARATE:COA LIGASE (4CL) leads to SA biosynthesis via both peroxisomal  $\beta$ -oxidative and cytosolic non-oxidative pathways. The conversion of cinnamic acid first to p-coumaric acid by CINNAMATE-4-HYDROXYLASE (C4H) and then ligation of Coenzyme A to p-coumaric acid by 4CL produces p-coumaroyl-CoA, which is a phenylpropanoid pathway precursor (Widhalm & Dudareva, 2015). In our study, *4CL1* (Manes.14G151400, Manes.04G095300), *4CL2* (Manes.11G071800), *4CL3* (Manes.09G127000.1) and *C4H* (Manes.02G227200) were all up-regulated in CBSV-infected 60444 (Fig. 3).



SA is a key regulator of plant defence responses and has been implicated in various mechanisms resulting in the hypersensitive response (HR) and systemic acquired resistance (SAR) (reviewed in Vlot *et al.*, 2009). One such mechanism is the NPR1-dependent response (Vlot *et al.*, 2009), which

involves the SA-induced activation and nuclear localisation of NPR1 to activate the transcription of genes for pathogenesis-related proteins, including BG3. NPR1 interacts with various members of the TGA family of transcription factors, which together activate the expression of WKRY transcription



**Figure 3:** Regulation of genes encoding proteins of the salicylic acid synthesis and signalling and the lignin synthesis pathways in cassava after virus infection. Significantly regulated genes are depicted together with their mRNA fold-change based on RNA-Seq analysis in susceptible (60444) and resistant (KBH 2006/18) cassava varieties after infection. *PFK3*: PHOSPHOFRUCTOKINASE 3; *SK1*: SHIKIMATE KINASE 1; *ADT1*, *ADT6*: AROGENATE DEHYDRATASE 1 & 6; *PAL1*, *PAL2*: PHENYLALANINE AMMONIOLYASE 1 & 2; *C4H*: CINNAMATE-4-HYDROXYLASE; *4CL1*, *4CL2*, *4CL3*: 4-COUMARATE-CoA LIGASE 1, 2 & 3; *HCT*: HYDROXYCINAMOYL-CoA SHIKIMATE/QUINATE HYDROXYCINAMOYL TRANSFERASE; *CCR*: CINNAMOYL COA REDUCTASE 1; *CAD*: CINNAMOYL ALCOHOL DEHYDROGENASE; *NPR1*: NON-EXPRESSION OF PR GENES 1; *NIMIN1*, *NIMIN2*, *NIMIN3*: NIM1-INTERACTING; *TGA9*: TGACG MOTIF-BINDING PROTEIN 9; *WRKY70*: WRKY DNA-BINDING PROTEIN 70; *SAG12*: SENESCENCE-ASSOCIATED GENE 12.

factors (Vlot *et al.*, 2009). We find that *TGA9* (Manes.04G004100) expression was up-regulated by 2.8-fold in CBSV-infected 60444, together with the upregulation of two cassava *WRKY70* genes (Manes.07G142400 by 4.5-fold and Manes.10G002200 by 2.5-fold). In Arabidopsis, *WRKY70* is an SA-induced transcription factor that activates the expression of several pathogenesis-related genes, including genes encoding a peroxidase and senescence-associated proteins (*SAG12*, *SAG21*, *SAG24*, *SAG29*) (Li *et al.*, 2004; Ülker *et al.*, 2007). In CBSV-infected 60444, *SAG12* (Manes.16G038400) was upregulated 3.6-fold (Fig. 3, Table S3). Similarly, the genes encoding 10 out of 14 Class III peroxidases (Prxs, or PR-9 subfamily), which are involved in SA-induced pathogen defence responses (Almagro *et al.*, 2009), were upregulated (Fig. 3).

Lignins are polymers of aromatic compounds and integral components of the plant cell wall. They have a role in defence against microbial and fungal pathogens (Vanholme *et al.*, 2010; Miedes *et al.*, 2014). Lignin synthesis is often induced in plant immune responses (Malinovsky *et al.*, 2014). We find several genes encoding enzymes involved in the production of phenylpropanoid intermediates and their conversion to the three monolignols that were up-regulated after CBSV infection in 60444 (Fig. 3, Table S3).

### **The antiviral RNA silencing pathway is up-regulated in the compatible cassava-CBSVs interaction**

RNA silencing is a major defence mechanism against plant viruses (Wang *et al.*, 2012), especially against RNA viruses, whose genomes and their replicative forms can be directly targeted by RNA-induced Silencing Complexes (RISCs) and DICER-LIKE (DCL) proteins (Waterhouse & Fusaro, 2006). RNA silencing is thought to begin with the synthesis and formation of long dsRNA molecules, which are substrates of DCL proteins in plants (Fig. 4) (Pumplin & Voinnet, 2013). In Arabidopsis, four DCL proteins are involved in RNA silencing, of which DCL2 and DCL4 have overlapping functions in antiviral defence (Garcia-Ruiz *et al.*, 2010). However, DCL4 alone is sufficient for antiviral RNA silencing (Garcia-Ruiz *et al.*, 2010). DCL2 appears to be required for the production of secondary small interfering RNAs (siRNAs) (Parent *et al.*, 2015). We find that the expression of three cassava *DCL2* genes was increased in CBSV-infected 60444

(Manes.12G002700 by 2.4-fold, Manes.12G002800 by 3.3-fold, Manes.12G003000 by 3.3-fold).

ARGONAUTE (AGO) are essential proteins of the RNA Induced Silencing Complexes (RISCs), which are involved in the sequence-specific silencing of genes by RNA degradation, inhibition of translation and epigenetic modifications. Of the 10 AGO proteins known in plants, AGO2 has a broad and likely specific role in antiviral silencing (Jaubert *et al.*, 2011; Carbonell *et al.*, 2012; Scholthof *et al.*, 2011). Expression of the cassava *AGO2* gene (Manes.07G023100) was 17.5-fold up-regulated in CBSV-infected 60444 scions. A gene expressing AGO5 (Manes.04G011400), which is another but less well characterised AGO protein, was also up-regulated 2.3-fold. The virus-induced increased expression of *AGO2* and *AGO5* in cassava is similar to *N. benthamiana*, in which Potato Virus X infection increases *AGO5* expression and AGO5 acts synergistically with AGO2 to suppress virus infection to a greater degree than the other AGO proteins (Brosseau & Moffett, 2015).

RNA-DEPENDENT RNA POLYMERASE 1 (RDR1) is an important component of the post-transcriptional gene silencing (PTGS) immune response to virus infections and is involved in the defence of various classes of viruses, including potyviruses. (Rakhshandehroo *et al.*, 2009; Garcia-Ruiz *et al.*, 2010; Wang *et al.*, 2010; Lee *et al.*, 2016). RDRs catalyse the synthesis of the antisense strand in the conversion of viral RNA to a long dsRNA template that can be processed by DCLs. PTGS is often initiated by siRNAs binding to a target and recruiting RDRs, which then results in the production of further long dsRNA templates for the production of secondary siRNAs. This mechanism, also known as transitivity or silencing amplification, is largely facilitated by RDR6, and possibly also RDR1 (Wang *et al.*, 2010). We find that expression of *RDR1* (Manes.17G084800) was highly up-regulated (38.5-fold) in CBSV-infected 60444 scions (Fig. 4). The steep up-regulation of *RDR1* was sustained at all three early time points (Fig. S5). The precise role of RDR1 in virus resistance has not yet been established, and one study in particular (in *N. benthamiana*) demonstrated a repressor function of RDR1 in antiviral silencing (Ying *et al.*, 2010). It is also possible that RDR1 contributes to virus resistance by targeting host genes. Cao *et al.* (2014) identified 369 genes as potential RDR1 targets and validated the *RDR1*-dependent reduction in transcription of *PHOTOSYSTEM II LIGHT HARVESTING*

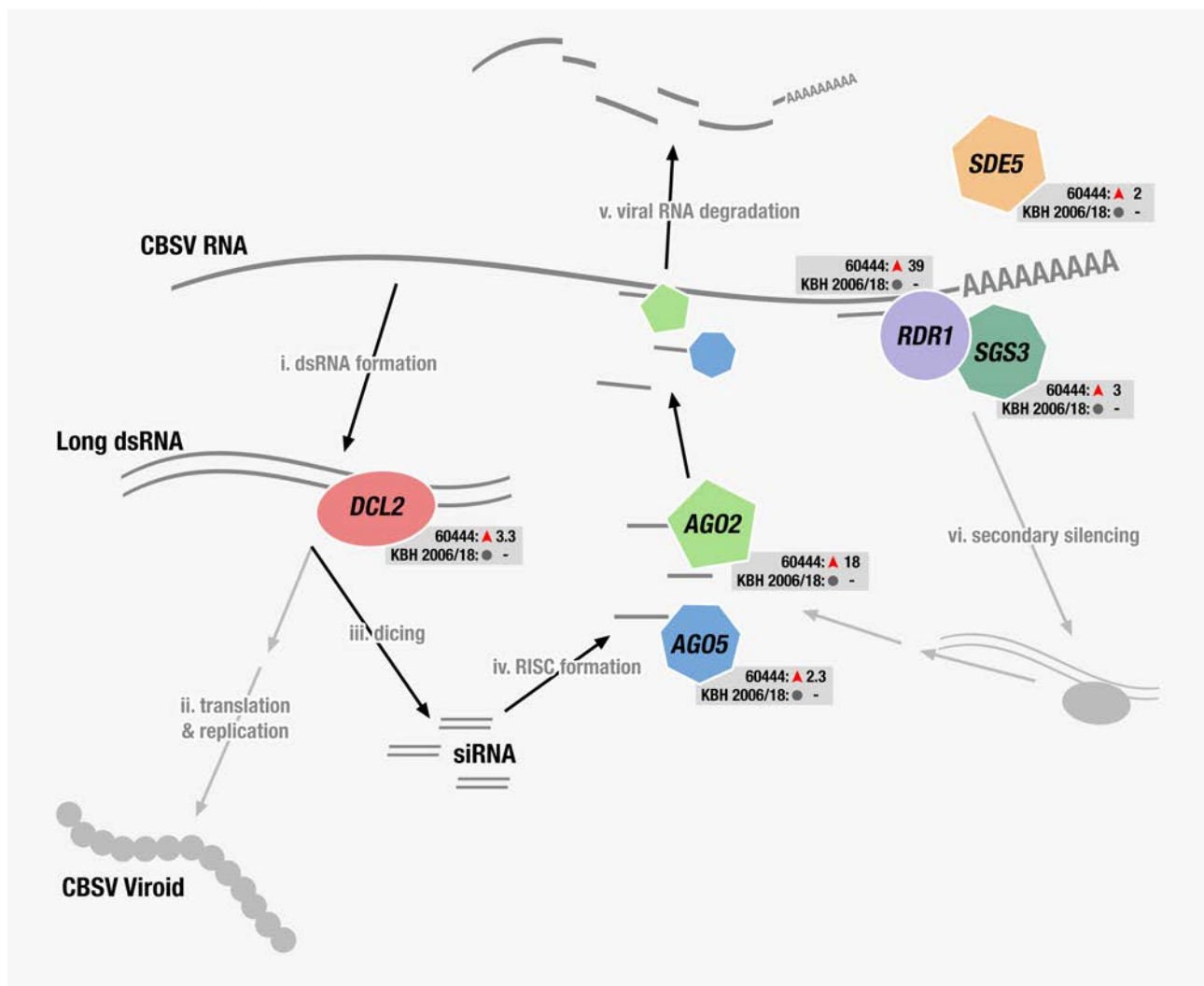
*COMPLEX B1.3 (LHCB1.3)* gene in response to potyvirus infection. We consistently observed a 3.4-fold downregulation of *LHCB1.3* (Manes.17G066700) in CBSV-infected 60444 scions. However, of the 26 putative RDR1 target genes (out of the 369 genes identified by Cao et al., (2014)) regulated in our study, only 13 were down-regulated (Table S6).

The expression of the PTGS-related genes *SILENCING DEFECTIVE 5 (SDE5)* and *SUPPRESSOR OF GENE SILENCING 3 (SGS3)* were also significantly up-regulated in CBSV-infected 60444 (Fig. 3, Table S3) but not changed in CBSV-infected KBH 2006/18. *AGO2* and *RDR1*, which are both up-regulated in CBSV-infected 60444, are also induced by SA signalling pathways (Lewsey et al., 2010; Jovel et al., 2011; Hunter et al., 2013; Lee et al., 2016), which is consistent with the

upregulation of several cassava genes involved in SA synthesis and signalling pathways after CBSV infection.

### Similar transcript regulation in selected host-potyvirus and cassava-virus pathosystems

We performed a comparative analysis of the DEGs we detected above with other RNA-Seq studies of host-virus pathosystems to understand similarities and differences in gene expression regulation. The studies we selected involved naturally occurring crop-virus interactions with detectable host responses to potyvirus infections and comparable RNA-Seq data sets (late-stage cassava-CBSV infection, Maruthi et al., 2014; early-stage peach and late-stage apricot infection with Plum Pox Virus, Rubio et al., 2015a,b). We also included an



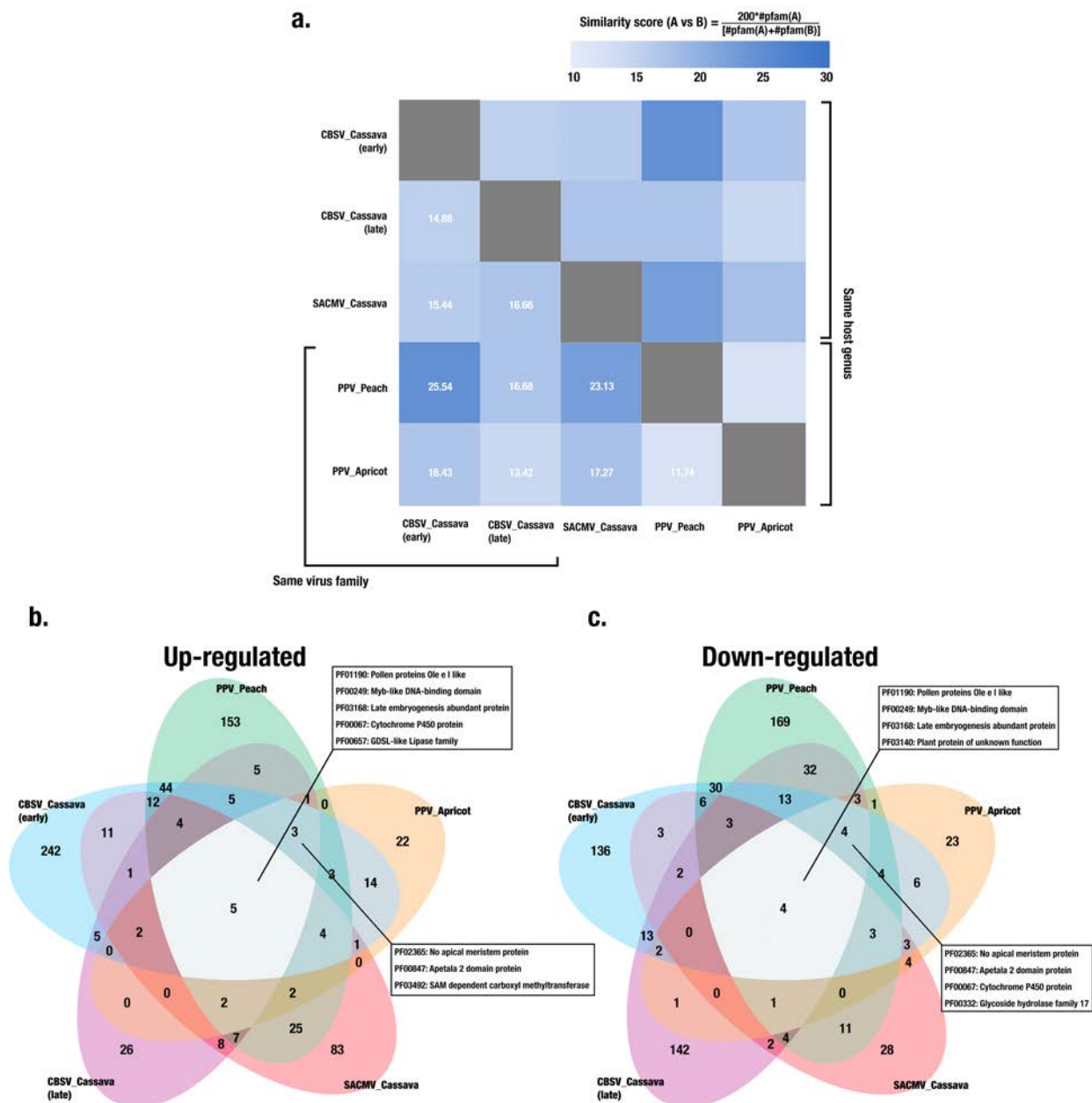
**Figure 4:** Schematic depiction of the antiviral RNA silencing pathway with DEGs encoding proteins that function in antiviral defence. Genes significantly regulated in variety 60444 after inoculation are shown together with their mRNA fold-change based on RNA-Seq analysis. These genes were not regulated in variety KBH 18/2006. *DCL2*: DICER-LIKE 2, *AGO5*: ARGONAUTE 5, *AGO2*: ARGONAUTE 2, *RDR1*: RNA DEPENDENT RNA POLYMERASE 1, *SGS3*: SUPPRESSOR OF GENE SILENCING 3, *SDE5*: SILENCING DEFECTIVE 5.



RNA-Seq study of cassava infected with South African Cassava Mosaic Virus, a ssDNA geminivirus pathosystem (Allie et al., 2014), to compare the response of cassava to two different

virus types.

We first filtered DEGs from all datasets according to our differential expression criteria (fold change



**Figure 5:** Comparison of transcriptome changes in different virus-host systems. We compared our RNA-Seq of CBSV-infected cassava with three other poty virus-plant transcriptome studies (late-stage cassava-CBSV infection, Maruthi et al., 2014; early-stage peach and late-stage apricot infection with Plum Pox Virus, Rubio *et al.*, 2015a,b). In addition, we included a RNA-Seq study of cassava infected with South African Cassava Mosaic virus, a ssDNA geminivirus pathosystem (Allie et al., 2014), to compare the response of cassava to two different virus types. **a.** Pairwise similarity matrix of numbers of DEGs in each pathosystem, based on comparison of Pfam identifiers associated with each gene. A pairwise percentage similarity score was computed by multiplying the DEGs in one pathosystem with 200 and then dividing this number by the sum of the DEGs in both pathosystems that were compared. **b.** and **c.** Venn diagrams were constructed using the Pfam identifiers associated with DEGs from all five studies. The figure shows specific Pfam identifiers common to all five studies as well as those common to all potyvirus studies. **b.** Up-regulated DEGs. **c.** Down-regulated DEGs.



>2; FDR <0.01) and used Pfam identifiers (Finn *et al.*, 2015) matching each DEG as a common term to compare gene expression between cassava and the two *Prunus* species. This allowed us to construct a similarity matrix based on a pairwise similarity percentage score, where 100% denotes complete similarity (Fig. 5a, grey boxes). The greatest pairwise similarity (25.54%) was found between peach and cassava RNA-Seq datasets obtained within two-months post-infection. Interestingly, we found more common Pfam identifiers between our early time-point cassava-CBSV dataset and the early time-point cassava-SACMV dataset rather than between the two cassava-CBSV datasets. Also, the two cassava-CBSV datasets and the two *Prunus* datasets had a lower degree of similarity than most other pairs, indicating a strong temporal component to the modulation of host gene expression after virus infection. Our meta-analysis did not reveal a strong dependence of host gene expression changes on either RNA or DNA virus or host genus.

We next compared up- and down-regulated DEGs separately across the five datasets (Fig. 5b,c; Table S5) and found five Pfam identifiers in common for up-regulated and four for down-regulated DEGs. Of these, three Pfams that contained genes in both the up- and down-regulated data-sets in all pathosystems included PF01190 (pollen protein Ole e I-like), PF00249 (Myb-like DNA-binding domain) and PF03168 (late embryogenesis-abundant protein). While PF01190 represents a largely uncharacterised protein family, the other two identifiers comprise stress response genes. Genes belonging to PF00067 are up-regulated in all pathosystems and this Pfam comprises the cytochrome P450 protein family, which includes members involved in the synthesis of plant defence compounds. Genes encoding members of the GDSL-like lipase family (PF00657) are also up-regulated in all pathosystems and are required for systemic ethylene-mediated resistance (Kwon *et al.*, 2009; Kim *et al.*, 2013).

In addition to the Pfams common to all RNA-Seq datasets, genes in another three Pfams were found up- and four were down-regulated in all potyvirus infection studies (Fig. 5b,c). Of these, genes belonging to PF02365 (NO APICAL MERISTEM protein) and PF00847 (APETALA 2 domain protein) were found in both the up- and down-regulated data sets.

## Discussion

We show that the transcriptional response of cassava to CBSV infection was significantly stronger in the susceptible 60444 variety than the resistant KBH 2006/18 variety. This is similar to results reported earlier for extreme virus resistance in potato (Goyer *et al.*, 2015). To ensure that our dataset represents the earliest time-point of complete virus infection, we first measured virus titres in the inoculated scions at three time-points until we found consistent infection in all 60444 plants (Fig. S2). This allowed us to analyse changes in gene expression prior to symptom development, and thus early in the infection process. While graft inoculation may delay infection until the graft junction is fully established, we previously demonstrated consistent infection using the top-grafting method (Moreno *et al.*, 2011; Vanderschuren *et al.*, 2012; Anjanappa *et al.*, 2016). Graft virus transmission using field-infected rootstocks or scions was necessary because no infectious CBSV clones are available (Mohammed *et al.*, 2012; Vanderschuren *et al.*, 2012; Wagaba *et al.*, 2013; Anjanappa *et al.*, 2016). Although the lack of detectable virus titres in KBH 2006/18 indicates the absence of viral replication in the resistant cultivar, we observed a transcriptional response to graft-inoculation. It is currently unknown if this is due to the local recognition of viral RNAs and/or proteins, which are mobilized in the vascular tissues after the graft was established, or to an extended systemic response transmitted by the CBSV-susceptible rootstock to the CBSV-resistant scion.

Based on the DEGs in the susceptible variety, 60444, we found that CBSV infection increases the expression of genes encoding SA synthesis enzymes, which likely increases SA levels that activate SA-regulated genes involved in antiviral responses. Our data suggest that in CBSV-infected cassava SA is synthesized via the phenylalanine rather than the isochorismate pathway. Additionally, we found genes encoding proteins of the DCL2/AGO5/AGO2-mediated anti-viral silencing response were upregulated in CBSV-infected 60444 but not KBH 2006/18. The silencing response may be amplified as indicated by the strong upregulation of the gene encoding RDR1, but it is also possible that RDR1 assists in the repression of RDR6-mediated silencing amplification (Ying *et al.*, 2010).

The susceptible 60444 and resistant KBH 2006/18 varieties differed strongly in callose deposition at plasmodesmata during CBSV infection. While DEGs associated with virus movement through plasmodesmata were found only in CBSV-infected

60444, callose deposition at plasmodesmata was reduced in 60444 and increased in KBH 2006/18, which could only be partially explained by the detected DEGs. Nevertheless, the results are consistent with the limitation of CBSV movement in KBH2006/18 from stems into leaves (Anjanappa *et al.*, 2016). An efficacious CBSV infection of susceptible 60444 variety thus involves a virus-induced reduction in callose deposition at the plasmodesmata that is absent in the resistant KBH2006/18 variety.

The meta-analysis of our RNA-Seq dataset and other plant-virus RNA-Seq datasets revealed a low level of similarity in host transcriptome responses to different virus types and at different time-points of infection. A previous transcriptome-based meta-analysis of plant-virus interactions compared transcriptional responses in *Arabidopsis* after infection with different virus species (Rodrigo *et al.*, 2012). Their results indicated a correlation between host transcriptome response and virus phylogeny, with closely related viruses generating transcript regulation of similar host genes. Since our analysis did not involve a model plant, we managed differences in genome annotations in different species by using Pfam identifiers. While Pfam identifiers reduce resolution because they represent protein families instead of specific genes, this approach does not require identification of exact gene orthologs across multiple species. Thus, this allows the comparison of transcriptome regulation between different viruses and plant species. Overall, we found only a small number of common Pfam identifiers, even between different hosts of the same genus or between viruses of the same family. However, based on the numbers of common Pfam identifiers, there was strong temporal impact on gene regulation after virus infection, indicating that earlier transcript-level changes are perhaps most diagnostic to infection by different viruses. Pfam identifiers that were found in common across the selected pathosystems did not relate to classical defence pathways but rather to protein families implicated in developmental processes. A previous review of expression-profile studies also found commonalities within developmental genes across various compatible pathosystems (Whitham *et al.*, 2006). The common regulation of developmental genes might describe similarities in symptom development or downstream signalling processes rather than in primary immune responses across different host-virus interactions.

Together, our study suggests that analysis of early time-points during virus-host interactions captures the emerging impact of virus replication on host gene expression. For example, our RNA-Seq dataset from scion leaves 28 days after grafting revealed a broad immune response (including SA and RNA silencing pathways) in the susceptible cassava 60444 variety that was not found in susceptible cassava plants after a long-term infection (Maruthi *et al.*, 2014). Our meta-analysis of different RNA-Seq datasets also showed significant differences in transcriptome responses at different times after infection. The absence of a detectable immune response in the resistant KBH 2006/18 variety suggests that even earlier time-points after infection should be analysed, preferably using *Agrobacterium* with infectious CBSV clones or infections of protoplasts followed by transcriptomics or proteomics. The Pfam-based meta-analysis also identified interesting protein families, such as meristem identity proteins (NAM and *Apetala2*), which were regulated in different host-potyvirus interactions and at different time points after infection. Understanding the functions of these proteins in host-virus interactions might reveal conserved developmental responses to virus infections across different taxa. Our Pfam-based comparison methodology also makes larger scale comparison of crop RNA-Seq studies possible, with the aim of developing a more comprehensive understanding of conserved responses of non-model plants to different biotic and abiotic stresses.

#### Author contributions

HV and RBA designed the research. RBA performed the experiments. Data analysis, collection and interpretation were performed by DM, RBA, MO, AS and HV. DM, RBA and HV wrote the manuscript. WG commented and edited the manuscript.

#### Acknowledgements

The authors would like to thank Asuka Kuwabara for assisting with the microscopy, Kamil Sklodowski for help with the image analysis, and Matthias Hirsch-Hoffman for bioinformatics data management. We also thank Irene Zurkirchen for support in the glasshouse and R. Glen Uhrig for helpful comments on the manuscript. We gratefully acknowledge the support of our research by ETH Zurich. Ravi B. Anjanappa was supported by the Research Fellow Partnership Programme of ETH Global. Devang Mehta is supported by the European Union's Seventh Framework Programme for research, technological development, and demonstration (EU GA-2013-608422-IDP BRIDGES).

#### References

Allie F, Pierce E J, Okoniewski M, Rey C. 2014. Transcriptional analysis of South African cassava mosaic virus-infected susceptible and tolerant landraces of cassava highlights differences in resistance, basal defense and cell wall associated genes during infection. *BMC Genomics* 15: 1006.

Almagro L, Gómez Ros L V., Belchi-Navarro S, Bru R, Ros Barceló A,

- Pedreño MA. 2009. Class III peroxidases in plant defence reactions. *Journal of Experimental Botany* 60: 377–390.
- Amari K, Boutant E, Hofmann C, Schmitt-Keichinger C, Fernandez-Calvino L, Didier P, Lerich A, Mutterer J, Thomas CL, Heinlein M, et al. 2010. A family of plasmodesmal proteins with receptor-like properties for plant viral movement proteins. *PLoS Pathogens* 6: 1–10.
- Anjanappa RB, Mehta D, Maruthi MN, Kanju E, Gruissem W, Vanderschuren H. 2016. Characterization of brown streak virus-resistant cassava. *Molecular Plant-Microbe Interactions* 29: 527–534.
- Bigirimana S, Barumbanze P, Ndayinzamaso P, Shirima R, Legg JP. 2011. First report of cassava brown streak disease and associated Ugandan cassava brown streak virus in Burundi. *New Disease Reports* 24: 26.
- Brosseau C, Moffett P. 2015. Functional and Genetic Analysis Identify a Role for Arabidopsis ARGONAUTE5 in Antiviral RNA Silencing. *The Plant Cell* 27: 1742–54.
- Cao M, Du P, Wang X, Yu Y-Q, Qiu Y-H, Li W, Gal-On A, Zhou C, Li Y, Ding S-W. 2014. Virus infection triggers widespread silencing of host genes by a distinct class of endogenous siRNAs in Arabidopsis. *Proceedings of the National Academy of Sciences of the United States of America* 111: 14613–8.
- Carbonell A, Fahlgren N, Garcia-Ruiz H, Gilbert KB, Montgomery TA, Nguyen T, Cuperus JT, Carrington JC. 2012. Functional analysis of three Arabidopsis ARGONAUTES using slicer-defective mutants. *The Plant Cell* 24: 3613–29.
- Catinot J, Buchala A, Abou-Mansour E, Métraux J-P. 2008. Salicylic acid production in response to biotic and abiotic stress depends on isochlorismate in *Nicotiana benthamiana*. *FEBS Letters* 582: 473–478.
- Chen Z, Zheng Z, Huang J, Lai Z, Fan B. 2009. Biosynthesis of salicylic acid in plants. *Plant Signaling & Behavior* 4: 493–496.
- Dobin A, Davis CA, Schlesinger F, Drenkow J, Zaleski C, Jha S, Batut P, Chaisson M, Gingeras TR. 2013. STAR: Ultrafast universal RNA-seq aligner. *Bioinformatics* 29: 15–21.
- Finn RD, Coghill P, Eberhardt RY, Eddy SR, Mistry J, Mitchell AL, Potter SC, Punta M, Qureshi M, Sangrador-Vegas A, et al. 2015. The Pfam protein families database: towards a more sustainable future. *Nucleic Acids Research* 44: D279–D285.
- Garcia-Ruiz H, Takeda A, Chapman EJ, Sullivan CM, Fahlgren N, Bremel KJ, Carrington JC. 2010. Arabidopsis RNA-dependent RNA polymerases and dicer-like proteins in antiviral defense and small interfering RNA biogenesis during Turnip Mosaic Virus infection. *The Plant Cell* 22: 481–96.
- Göhre V, Jones AME, Sklenář J, Robatzek S, Weber APM. 2012. Molecular Crosstalk Between PAMP-Triggered Immunity and Photosynthesis. *Molecular Plant-Microbe Interactions* 25: 1083–1092.
- Goyer A, Hamlin L, Crosslin JM, Buchanan A, Chang JH. 2015. RNA-Seq analysis of resistant and susceptible potato varieties during the early stages of potato virus Y infection. *BMC Genomics* 16: 472.
- Grabherr MG, Haas BJ, Yassour M, Levin JZ, Thompson DA, Amit I, Adiconis X, Fan L, Raychowdhury R, Zeng Q, et al. 2011. Full-length transcriptome assembly from RNA-Seq data without a reference genome. *Nature Biotechnology* 29: 644–52.
- Guenoune-Gelbart D, Elbaum M, Sagi G, Levy A, Epel BL. 2008. Tobacco mosaic virus (TMV) replicase and movement protein function synergistically in facilitating TMV spread by lateral diffusion in the plasmodesmal desmotubule of *Nicotiana benthamiana*. *Molecular Plant-Microbe Interactions* 21: 335–45.
- Hillocks RJ, Raya MD, Mtunda K, Kiozia H. 2001. Effects of brown streak virus disease on yield and quality of cassava in Tanzania. *Journal of Phytopathology* 149: 389–394.
- Huang J, Gu M, Lai Z, Fan B, Shi K, Zhou Y-H, Yu J-Q, Chen Z. 2010. Functional analysis of the Arabidopsis PAL gene family in plant growth, development, and response to environmental stress. *Plant Physiology* 153: 1526–1538.
- Hunter LJR, Westwood JH, Heath G, Macaulay K, Smith AG, Macfarlane S a, Palukaitis P, Carr JP. 2013. Regulation of RNA-dependent RNA polymerase 1 and isochlorismate synthase gene expression in Arabidopsis. *PLoS ONE* 8: e66530.
- Iglesias VA, Meins Jr F. 2000. Movement of plant viruses is delayed in a b-1,3-glucanase-deficient mutant showing a reduced plasmodesmatal size exclusion limit and enhanced callose deposition. *The Plant Journal* 21: 157–166.
- Jaubert M, Bhattacharjee S, Mello AFS, Perry KL, Moffett P. 2011. ARGONAUTE2 mediates RNA-silencing antiviral defenses against Potato virus X in Arabidopsis. *Plant Physiology* 156: 1556–64.
- Jovel J, Walker M, Sanfaçon H. 2011. Salicylic acid-dependent restriction of Tomato ringspot virus spread in tobacco is accompanied by a hypersensitive response, local RNA silencing, and moderate systemic resistance. *Molecular Plant-Microbe Interactions* 24: 706–718.
- Kaweesi T, Kawuki R, Kyaligonza V, Baguma Y, Tusiime G, Ferguson ME. 2014. Field evaluation of selected cassava genotypes for cassava brown streak disease based on symptom expression and virus load. *Virology Journal* 11: 216.
- Kim HG, Kwon SJ, Jang YJ, Nam MH, Chung JH, Na Y-C, Guo H, Park OK. 2013. *GDSL Lipase 1 modulates plant immunity through feedback regulation of ethylene signaling*.
- Kwon SJ, Jin HC, Lee S, Nam MH, Chung JH, Kwon S II, Ryu CM, Park OK. 2009. GDSL lipase-like 1 regulates systemic resistance associated with ethylene signaling in Arabidopsis. *The Plant Journal* 58: 235–245.
- Lee W-S, Fu S-F, Li Z, Murphy AM, Dobson EA, Garland L, Chaluvadi SR, Lewsey MG, Nelson RS, Carr JP. 2016. Salicylic acid treatment and expression of an RNA-dependent RNA polymerase 1 transgene inhibit lethal symptoms and meristem invasion during tobacco mosaic virus infection in *Nicotiana benthamiana*. *BMC Plant Biology* 16: 15.
- Legg JP, Jeremiah SC, Obiero HM, Maruthi MN, Ndyetabula I, Okao-Okuja G, Bouwmeester H, Bigirimana S, Tata-Hangy W, Gashaka G, et al. 2011. Comparing the regional epidemiology of the cassava mosaic and cassava brown streak virus pandemics in Africa. *Virus Research* 159: 161–170.
- Lewsey MG, Murphy AM, Maclean D, Dalchau N, Westwood JH, Macaulay K, Bennett MH, Moulin M, Hanke DE, Powell G, et al. 2010. Disruption of two defensive signaling pathways by a viral RNA silencing suppressor. *Molecular Plant-Microbe Interactions* 23: 835–45.
- Li J, Brader G, Palva ET. 2004. The WRKY70 Transcription Factor: A Node of Convergence for Jasmonate-Mediated and Salicylate-Mediated Signals in Plant Defense. *The Plant Cell* 16: 319–331.
- Luo W, Brouwer C. 2013. Pathview: An R/Bioconductor package for pathway-based data integration and visualization. *Bioinformatics* 29: 1830–1831.
- Maeda H, Song W, Sage T, Dellapenna D. 2014. Role of callose synthases in transfer cell wall development in tocopherol deficient Arabidopsis mutants. *Frontiers in Plant Science* 5: 46.
- Malinovskiy FG, Fangel JU, Willats WGT. 2014. The role of the cell wall in plant immunity. *Frontiers in Plant Science* 5: 178.
- Maruthi MN, Bouvaine S, Tufan HA, Mohammed IU, Hillocks RJ. 2014. Transcriptional Response of Virus-Infected Cassava and Identification of Putative Sources of Resistance for Cassava Brown Streak Disease. *PLoS ONE* 9: e96642.
- Maruthi MN, Hillocks RJ, Mtunda K, Raya MD, Muhanna M, Kiozia H, Rekha AR, Colvin J, Thresh JM. 2005. Transmission of Cassava brown streak virus by Bemisia tabaci (Gennadius). *Journal of*



- Phytopathology* 153: 307–312.
- Mbanzibwa DR, Tian YP, Tugume AK, Mukasa SB, Tairo F, Kyamanywa S, Kullaya A, Valkonen JPT. 2009. Genetically distinct strains of Cassava brown streak virus in the Lake Victoria basin and the Indian Ocean coastal area of East Africa. *Archives of Virology* 154: 353–359.
- Mbanzibwa DR, Tian YP, Tugume a K, Patil BL, Yadav JS, Bagewadi B, Abarshi MM, Alicai T, Changadeya W, Mkumbira J, et al. 2011. Evolution of cassava brown streak disease-associated viruses. *The Journal of General Virology* 92: 974–87.
- Miedes E, Vanholme R, Boerjan W, Molina A. 2014. The role of the secondary cell wall in plant resistance to pathogens. *Frontiers in Plant Science* 5: 358.
- Mohammed IU, Abarshi MM, Muli B, Hillocks RJ, Maruthi MN. 2012. The symptom and genetic diversity of cassava brown streak viruses infecting cassava in East Africa. *Advances in Virology* 2012: 1–10.
- Monger WA, Seal S, Cotton S, Foster GD. 2001. Identification of different isolates of Cassava brown streak virus and development of a diagnostic test. *Plant Pathology* 50: 768–775.
- Moreno I, Gruissem W, Vanderschuren H. 2011. Reference genes for reliable potyvirus quantitation in cassava and analysis of Cassava brown streak virus load in host varieties. *Journal of Virological Methods* 177: 49–54.
- Mulimbi W, Phemba X, Assumani B. 2012. First report of Ugandan cassava brown streak virus on cassava in Democratic Republic of Congo. *New Disease Reports* 26: 11.
- Ogwok E, Alicai T, Rey MEC, Beyene G, Taylor NJ. 2015. Distribution and accumulation of cassava brown streak viruses within infected cassava (*Manihot esculenta*) plants. *Plant Pathology* 64: 1235–1246.
- Parent JS, Bouteiller N, Elmayan T, Vaucheret H. 2015. Respective contributions of Arabidopsis DCL2 and DCL4 to RNA silencing. *The Plant Journal* 81: 223–232.
- Pumplin N, Voinnet O. 2013. RNA silencing suppression by plant pathogens: defence, counter-defence and counter-counter-defence. *Nature Reviews Microbiology* 11: 745–60.
- Rakhshandehroo F, Takeshita M, Squires J, Palukaitis P. 2009. The influence of RNA-dependent RNA polymerase 1 on potato virus Y infection and on other antiviral response genes. *Molecular Plant–Microbe Interactions* 22: 1312–1318.
- Ramada MH., Lopes FA., Ulhoa CJ, Silva R dN. . 2010. Optimized microplate  $\beta$ -1,3-glucanase assay system for *Trichoderma* spp. screening. *Journal of Microbiological Methods* 81: 6–10.
- Rodrigo G, Carrera J, Ruiz-Ferrer V, del Toro FJ, Llave C, Voinnet O, Elena SF. 2012. A meta-analysis reveals the commonalities and differences in arabidopsis thaliana response to different viral pathogens. *PLoS ONE* 7.
- Rubio M, Ballester AR, Olivares PM, De Moura MC, Dicenta F, Martínez-Gómez P. 2015a. Gene expression analysis of plum pox virus (Sharka) susceptibility/resistance in apricot (*Prunus armeniaca* L.). *PLoS ONE* 10: 1–16.
- Rubio M, Rodríguez-Moreno L, Ballester AR, de Moura MC, Bonghi C, Candresse T, Martínez-Gómez P. 2015b. Analysis of gene expression changes in peach leaves in response to Plum pox virus infection using RNA-Seq. *Molecular Plant Pathology* 16: 164–176.
- Scholthof HB, Alvarado VY, Vega-Arreguin JC, Ciomperlik J, Odokonyero D, Brosseau C, Jaubert M, Zamora A, Moffett P. 2011. Identification of an ARGONAUTE for antiviral RNA silencing in *Nicotiana benthamiana*. *Plant Physiology* 156: 1548–1555.
- Shi B, Lin L, Wang S, Guo Q, Zhou H, Rong L, Li J, Peng J, Lu Y, Zheng H, et al. 2015. Identification and regulation of host genes related to Rice stripe virus symptom production. *New Phytologist* 209: 1106–1119.
- Supek F, Bosnjak M, Skunca N, Smuc T. 2011. Revigo summarizes and visualizes long lists of gene ontology terms. *PLoS ONE* 6.
- de Torres Zabala M, Littlejohn G, Jayaraman S, Studholme D, Bailey T, Lawson T, Tillich M, Licht D, Bölter B, Delfino L, et al. 2015. Chloroplasts play a central role in plant defence and are targeted by pathogen effectors. *Nature Plants* 1: 15074.
- Ueki S, Spektor R, Natale DM, Citovsky V. 2010. ANK, a host cytoplasmic receptor for the Tobacco mosaic virus cell-to-cell movement protein, facilitates intercellular transport through plasmodesmata. *PLoS Pathogens* 6.
- Ülker B, Shahid Mukhtar M, Somssich IE. 2007. The WRKY70 transcription factor of Arabidopsis influences both the plant senescence and defense signaling pathways. *Planta* 226: 125–137.
- Vanderschuren H, Moreno I, Anjanappa RB, Zainuddin IM, Gruissem W. 2012. Exploiting the combination of natural and genetically engineered resistance to cassava mosaic and cassava brown streak viruses impacting cassava production in Africa. *PLoS ONE* 7: e45277.
- Vanholme R, Demedts B, Morreel K, Ralph J, Boerjan W. 2010. Lignin biosynthesis and structure. *Plant Physiology* 153: 895–905.
- Vlot AC, Dempsey DA, Klessig DF. 2009. Salicylic Acid, a Multifaceted Hormone to Combat Disease. *Annual Review of Phytopathology* 47: 177–206.
- Wagaba H, Beyene G, Trembley C, Alicai T, Fauquet CM, Taylor NJ. 2013. Efficient transmission of cassava brown streak disease viral pathogens by chip bud grafting. *BMC Research Notes* 6: 516.
- Wang M-B, Masuta C, Smith N a., Shimura H. 2012. RNA Silencing and Plant Viral Diseases. *Molecular Plant–Microbe Interactions* 25: 1275–1285.
- Wang X-B, Wu Q, Ito T, Cillo F, Li W-X, Chen X, Yu J-L, Ding S-W. 2010. RNAi-mediated viral immunity requires amplification of virus-derived siRNAs in *Arabidopsis thaliana*. *Proceedings of the National Academy of Sciences of the United States of America* 107: 484–9.
- Waterhouse PM, Fusaro AF. 2006. Viruses face a double defense by plant small RNAs. *Science* 313: 54–55.
- Whitham S a, Yang C, Goodin MM. 2006. Global impact: elucidating plant responses to viral infection. *Molecular Plant–Microbe Interactions* 19: 1207–1215.
- Widhalm JR, Dudareva N. 2015. A familiar ring to it: Biosynthesis of plant benzoic acids. *Molecular Plant* 8: 83–97.
- Winter S, Koerbler M, Stein B, Pietruszka A, Paape M, Butgereitt A. 2010. Analysis of cassava brown streak viruses reveals the presence of distinct virus species causing cassava brown streak disease in East Africa. *Journal of General Virology* 91: 1365–1372.
- Yi X, Du Z, Su Z. 2013. PlantGSEA: a gene set enrichment analysis toolkit for plant community. *Nucleic Acids Research* 41: 98–103.
- Ying X-B, Dong L, Zhu H, Duan C-G, Du Q-S, Lv D-Q, Fang Y-Y, Garcia JA, Fang R-X, Guo H-S. 2010. RNA-dependent RNA polymerase 1 from *Nicotiana tabacum* suppresses RNA silencing and enhances viral infection in *Nicotiana benthamiana*. *The Plant Cell* 22: 1358–72.
- Zavaliev R, Epel BL. 2015. Imaging callose at plasmodesmata using aniline blue: quantitative confocal microscopy. In: Heinlein M, ed. *Plasmodesmata: Methods and Protocols, Methods in Molecular Biology*. New York: Springer Science+Business Media, 105–119.
- Zheng XY, Spivey NW, Zeng W, Liu PP, Fu ZQ, Klessig DF, He SY, Dong X. 2012. Coronatine promotes *Pseudomonas syringae* virulence in plants by activating a signaling cascade that inhibits salicylic acid accumulation. *Cell Host & Microbe* 11: 587–596.



## Supporting Information:

The following Supporting Information is available for this article:

Fig. S1: Experimental scheme for the study

- Schematic representation of the workflow for RNA-seq study.
- Workflow for callose quantitation, enzymatic assay and expression analysis for  $\beta$  1,3 Glucanase.

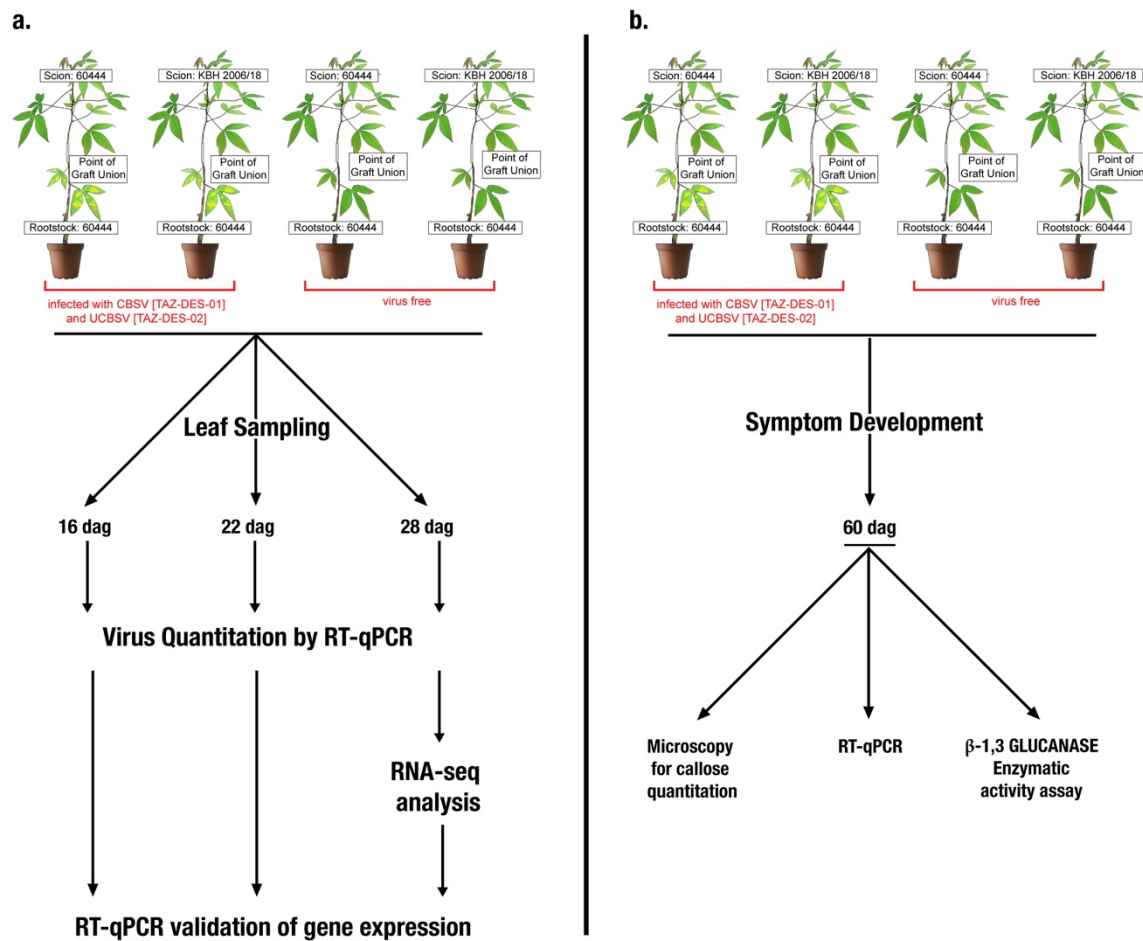


Fig. S2: CBSV quantitation at 3 different time points after grafting

RT-qPCR quantitation of virus titre ( $\log_2$  fold change relative to reference gene mePP2A) from individual leaves from 3 independent biological replicates at three different time points after grafting.

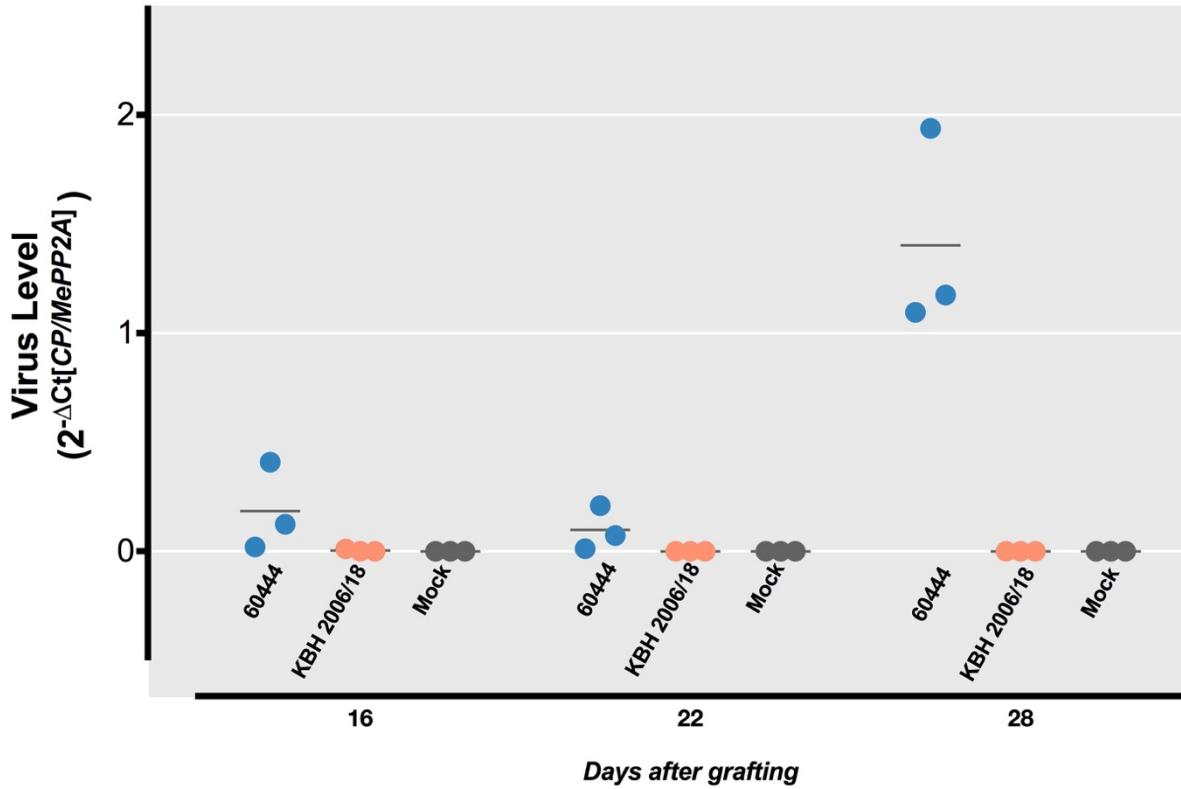
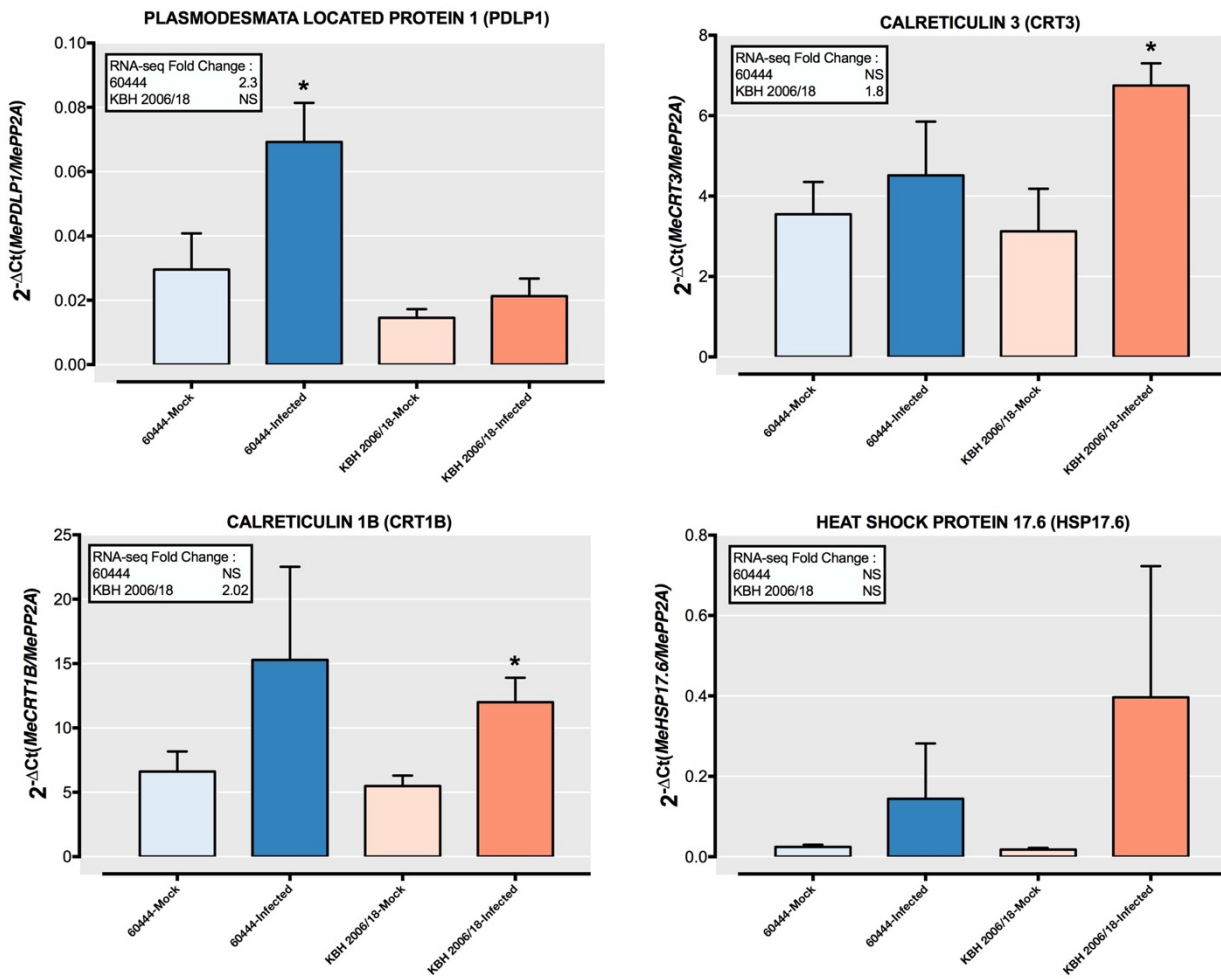


Fig S3: Validation of RNA-seq data by RT-qPCR

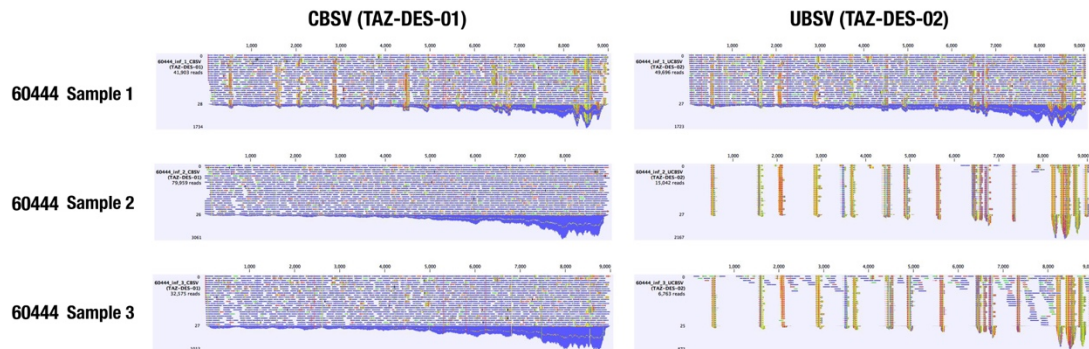
RT-qPCR for four genes was performed on the same samples that were used for RNA-seq analysis.



**Fig. S4: Virus read counting from unmapped RNA-seq reads**

Unmapped reads from each sample sent for RNA-seq were mapped to the two *de novo* assembled virus genomes. **a.** Read distribution across virus genomes for 60444 samples. **b.** Read counts for all samples in the compatible (60444) and incompatible (KBH 2006/18) virus-host interaction.

**a.**



**b.**

Variety	Sample No.	Reads Mapping to:	
		CBSV (TAZ-DES-01)	UCBSV (TAZ-DES-02)
<b>60444</b>	<b>1</b>	<b>41,903</b>	<b>46,696</b>
	<b>2</b>	<b>79,959</b>	<b>15,042</b>
	<b>3</b>	<b>32,575</b>	<b>6,763</b>
<b>KBH 2006/18</b>	<b>1</b>	<b>9</b>	<b>6</b>
	<b>2</b>	<b>7</b>	<b>11</b>
	<b>3</b>	<b>3</b>	<b>1</b>



Fig. S5: RT-qPCR based RDR1 transcript expression across the three time points

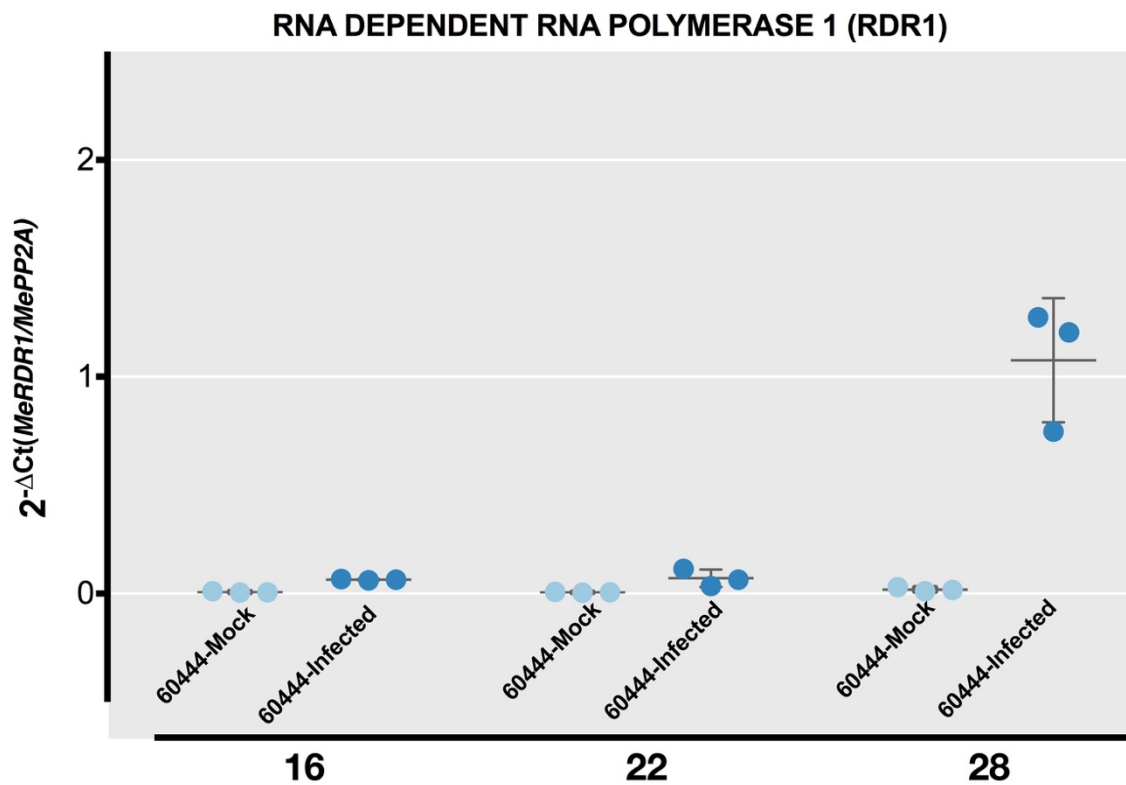


Table S1 Primers used in the study

Gene Id	Gene	Primer Name	Forward	Reverse
	<i>CBSV COAT PROTEIN</i>	CBSV-CP3	GAAGTTGAGAATTGGGCCATC	CAGCTCTCCACGATTTCTCATT
Manes.09G039900	<i>PROTEIN PHOSPHATASE 2A-4</i>	MePP2A	TGCAAGGCTCACACTTTCATC	CTGAGCGTAAAGCAGGGAAG
Manes.17G084800	<i>RNA-DEPENDENT RNA POLYMERASE 1</i>	MeRDRP1	CAAATCAAACAACACCAGCCTAGA	GCCTCCTCTGCCTGTAATGG
Manes.13G040200	<i>PLASMODESMATA-LOCATED PROTEIN 1</i>	MePDLP1	AAAGGTGAAGCAGTCAATTCCAA	CAAAGCAGCACACAGCAAGAA
Manes.07G031600	<i>TOBAMOVIRUS MULTIPLICATION 1</i>	MeTOM1	ACACAGGCATGCATCTGGATAT	GAACCGGCTGAGCATGATAAA
Manes.06G107800	<i>CDC48</i>	CDC48	TGACAGAAATGGATGGCATGAC	GAAAGCGGGAGGCTTCATCT
Manes.08G112000	<i>CALRETICULIN 1B</i>	MeCRT1b	AAGGGTCCATGGAAGCAAAA	CACCTGCCACAACCTCAATACCA
Manes.13G003400	<i>CALRETICULIN 3</i>	MeCRT3	CATGGAGGCCCAAGAGAATC	CAGCCTCACCTGCCAACT
Manes.16G083600	<i>17.6 KDA CLASS II HEAT SHOCK PROTEIN</i>	MeHSP17.6	GGAAAGAAGGGTTGGCAAGTT	TCGATGGTCTTGGGCTTTTT
Manes.08G054400	<i>B-1,3-GLUCANASE 3</i>	MeBG3 F	GCGGAGGAGCTTTGGAGATT	CAGTGGGTTTTCCAGGCTTCT

Tables S2-S5 have been deposited as separate files.

**Table S2: Significantly differentially expressed genes from RNA-seq analysis**

List of significant (FDR <0.01) and differentially expressed genes (infected vs mock) with fold change >2. Annotations displayed are from Phytozome cassava genome V6.

**Table S3: Identification and differential expression of De novo assembled transcripts**

List of denovo assembled transcripts with a contig length >1000 and associated log2 fold change values and statistics.

**Table S4: Gene set analysis results**

Significantly enriched gene ontology categories (BP and MF), significantly enriched KEGG pathways and list of nuclear encoded chloroplast genes (NECGs) for 60444 and KBH 2006/18.

**Table S5: Comparison of multiple virus-host RNA-seq studies**

Datasets from four RNA-seq studies. Common up and down-regulated PFAMs across the fpathosystems compared.

**Table S6: DEGs in the study that match putative RDR1 targets based on Cao *et al.*, 2014.**

**Notes S1: RNA-Seq analysis settings**

*Read Mapping Parameters (CLC Genomics Workbench 8.05):*

Ref seq: Mesculenta_305_v6 (phytozome)	Create report = Yes
Mapping type = Also map to inter-genic regions	Create fusion gene table = No
Mismatch cost = 2	Create list of unmapped reads = Yes
Insertion cost = 3	<i>Empirical analysis of differential gene expression (CLC Genomics Workbench 8.05):</i>
Deletion cost = 3	
Length fraction = 0.8	Total count filter cutoff = 5.0
Similarity fraction = 0.8	Estimate tagwise dispersions = Yes
Global alignment = No	Comparisons = All pairs
Auto-detect paired distances = Yes	FDR corrected = Yes
Strand specific = Both	
Maximum number of hits for a read = 1	DEG Filters: FDR value < 0.01
Count paired reads as two = No	FC (abs) >2

Expression value = RPKM  
 %%Expression values used for calculations will be RPKM values.

Calculate RPKM for genes without transcripts =  
 Yes