

The maternal genetic make-up of the Iberian Peninsula between the Neolithic and the Early Bronze Age

Anna Szécsényi-Nagy^{1*}, Christina Roth², Guido Brandt³, Cristina Rihuete-Herrada⁴, Cristina Tejedor-Rodríguez⁵, Petra Held², Íñigo García-Martínez-de-Lagrán⁵, Héctor Arcusa Magallón⁵, Stephanie Zesch⁶, Corina Knipper⁷, Eszter Bánffy⁸, Susanne Friederich⁹, Harald Meller⁹, Primitiva Bueno Ramírez¹⁰, Rosa Barroso Bermejo¹⁰, Rodrigo de Balbín Behrmann¹⁰, Ana M. Herrero-Corral¹¹, Raúl Flores Fernández¹², Carmen Alonso Fernández¹³, Javier Jiménez Echevarria¹³, Laura Rindlisbacher¹⁴, Camila Oliart⁴, María-Inés Fregeiro⁴, Ignacio Soriano⁴, Oriol Vicente⁴, Rafael Micó⁴, Vicente Lull⁴, Jorge Soler Díaz¹⁵, Juan Antonio López Padilla¹⁵, Consuelo Roca de Togores Muñoz¹⁵, Mauro S. Hernández Pérez¹⁶, Francisco Javier Jover Maestre¹⁶, Joaquín Lomba Maurandi¹⁷, Azucena Avilés Fernández¹⁷, Katina T. Lillios¹⁸, Ana Maria Silva¹⁹, Miguel Magalhães Ramalho²⁰, Luiz Miguel Oosterbeek²¹, Claudia Cunha²², Anna J. Waterman²³, Jordi Roig Buxó²⁴, Andrés Martínez²⁵, Juana Ponce Martínez²⁵, Mark Hunt Ortiz²⁶, Juan Carlos Mejías-García²⁶, Juan Carlos Pecero Espín²⁶, Rosario Cruz-Auñón Briones²⁶, Tiago Tomé²⁷, Eduardo Carmona Ballester²⁸, João Luís Cardoso²⁹, Ana Cristina Araújo³⁰, Corina Liesau von Lettow-Vorbeck³¹, Concepción Blasco Bosqued³¹, Patricia Ríos Mendoza³¹, Ana Pujante³², José I. Royo-Guillén³³, Marco Aurelio Esquembre Beviá³⁴, Victor Manuel Dos Santos Goncalves³⁵, Rui Parreira³⁵, Elena Morán Hernández³⁵, Elena Méndez Izquierdo³⁶, Jorge Vega de Miguel³⁷, Roberto Mendiña García³⁷, Victoria Martínez Calvo³⁸, Oscar López Jiménez³⁸, Johannes Krause³, Sandra L. Pichler¹⁴, Rafael Garrido-Pena³¹, Michael Kunst³⁹, Roberto Risch⁴, Manuel A. Rojo-Guerra⁴⁰, Wolfgang Haak³, Kurt W. Alt^{41,42*}

¹Laboratory of Archaeogenetics in the Institute of Archaeology, Research Centre for the Humanities, Hungarian Academy of Sciences, Budapest, Hungary

²Department of Anthropology, Johannes Gutenberg University, Mainz, Germany

³Max Planck Institute for the Science of Human History, Jena, Germany

⁴Departamento de Prehistoria, Universitat Autònoma de Barcelona, Barcelona, Spain

⁵Arcadia-General Foundation of Valladolid University, Valladolid, Spain

⁶German Mummy Project, Reiss-Engelhorn-Museen, Mannheim, Germany

⁷Curt-Engelhorn-Zentrum Archäometrie gGmbH, Mannheim, Germany

⁸Romano-Germanic Commission, German Archaeological Institute, Frankfurt am Main, Germany

⁹State Office for Heritage Management and Archaeology Saxony-Anhalt and State Museum of Prehistory, Halle, Germany

¹⁰Departamento de Historia y Fil, Universidad de Alcalá de Henares, Alcalá de Henares, Spain

- ¹¹Departamento de Prehistoria, Universidad Complutense de Madrid, Madrid, Spain
- ¹²Professional Archaeologist, Parla (Madrid), Spain
- ¹³Cronos SC Arqueología y Patrimonio, Burgos, Spain
- ¹⁴Integrative Prehistory and Archaeological Science, University of Basel, Basel, Switzerland
- ¹⁵Museo Arqueológico de Alicante-MARQ, Alicante, Spain
- ¹⁶Departamento de Prehistoria y Arqueología, Historia Antigua, Filología Griega y Filología Latina, Universidad de Alicante, Alicante, Spain
- ¹⁷Departamento de Prehistoria, Arqueología, Historia Antigua, Historia Medieval y Ciencias y Técnicas Historiográficas, Universidad de Murcia, Murcia, Spain
- ¹⁸Department of Anthropology, University of Iowa, Iowa City, Iowa, United States of America
- ¹⁹Research Center for Anthropology and Health, University of Coimbra, Coimbra, Portugal
- ²⁰Laboratório Nacional de Energia e Geologia, I.P., Museu Geológico, Lisboa, Portugal
- ²¹Instituto Politécnico de Tomar, Escola Superior de Tecnologia de Tomar, Tomar, Portugal
- ²²Bolsista PCI, Coordenação de Ciências Humanas, Museu Paraense Emílio Goeldi, Belém, Brazil
- ²³Department of Natural and Applied Sciences, Mount Mercy University, Cedar Rapids, Iowa, United States of America
- ²⁴Arrago Ltd., Barcelona, Spain
- ²⁵Museo Arqueológico de Lorca, Lorca, Spain
- ²⁶Departamento de Prehistoria y Arqueología, Universidad de Sevilla, Sevilla, Spain
- ²⁷Universidade Federal do Pará, Campus Universitário do Guamá, Belém, Brazil
- ²⁸Servicio Territorial de Cultura de Valladolid, Valladolid, Spain
- ²⁹Departamento de Ciências Sociais e de Gestão, Universidade Aberta, Lisboa, Portugal
- ³⁰Research Centre in Biodiversity and Genetic Resources (CIBIO-InBIO) & Directorate-General for Cultural Heritage (DGPC), Lisboa, Portugal
- ³¹Departamento de Prehistoria y Arqueología, Universidad Autónoma de Madrid, Madrid, Spain
- ³²Arqueología Estudios, Murcia, Spain
- ³³Technical archaeologist, Gobierno de Aragón, Zaragoza, Spain
- ³⁴Arpa Patrimonio Ltd., Alicante, Spain
- ³⁵Centro de Arqueologia da Universidade de Lisboa (Uniarq), Lisboa, Portugal
- ³⁶Grupo de Investigación HUM-949 TELLUS, Prehistoria y Arqueología en el Sur de Iberia, Universidad de Sevilla, Sevilla, Spain
- ³⁷ARGEA Ltd., Madrid, Spain
- ³⁸GIPSIA Ltd., Toledo, Spain
- ³⁹German Archaeological Institute Madrid, Madrid, Spain
- ⁴⁰Departamento de Prehistoria y Arqueología, Universidad de Valladolid, Valladolid, Spain
- ⁴¹Center for Natural and Cultural History of Man, Danube Private University, Krems, Austria
- ⁴²Department of Biomedical Engineering and Department of Environmental Science, Basel University, Basel, Switzerland

*Corresponding authors: szecsenyi-nagy.anna@btk.mta.hu, kurt.alt@unibas.ch

Abstract

Agriculture first reached the Iberian Peninsula around 5700 BCE. However, little is known about the genetic structure and changes of prehistoric populations in different geographic areas of Iberia. In our study, we focused on the maternal genetic makeup of the Neolithic (~ 5500-3000 BCE), Chalcolithic (~ 3000-2200 BCE) and Early Bronze Age (~ 2200-1500 BCE). We report ancient mitochondrial DNA results of 213 individuals (151 HVS-I sequences) from the northeast, central, southeast and southwest regions and thus on the largest archaeogenetic dataset from the Peninsula to date. Similar to other parts of Europe, we observe a discontinuity between hunter-gatherers and the first farmers of the Neolithic. During the subsequent periods, we detect regional continuity of Early Neolithic lineages across Iberia, however the genetic contribution of hunter-gatherers is generally higher than in other parts of Europe and varies regionally. In contrast to ancient DNA findings from Central Europe, we do not observe a major turnover in the mtDNA record of the Iberian Late Chalcolithic and Early Bronze Age, suggesting that the population history of the Iberian Peninsula is distinct in character.

17 Introduction

18 The changeover from a hunter-gatherer lifestyle to a productive mode of subsistence first emerged
 19 around 10,000 BCE in the Near East¹⁻³. This so-called ‘Neolithic transition’ brought about
 20 fundamental changes in economy, social structure, demography and human health, and laid the
 21 foundations for agrarian societies and thus for ancient civilizations. Over the course of the 7th and 6th
 22 millennia BCE, agriculture spread from the Balkans to Central Europe. Another route of
 23 dissemination ran along the Mediterranean coastlines of Greece, Italy and the south of France to the
 24 Iberian Peninsula and north to the Paris Basin and Central Europe⁴. However, the process of
 25 Neolithisation was non-linear, with the archaeological record documenting influences of local
 26 cultural traditions⁵. In Iberia, the Neolithic transition, which began around 5700 BCE, appears to
 27 have been complex, and Mesolithic and farming communities coexisted and interacted for as long as
 28 two millennia⁶.

29 The artefactual remains, mainly ceramic, attest to the different origins and modes of Neolithisation
 30 on the Iberian Peninsula. On one hand stands a Mediterranean maritime colonization by Neolithic
 31 pioneers characterized by ceramic with clear parallels to the *Ligurian Impressa* collections of Italian
 32 origin⁷⁻⁹. Some Early Neolithic sites were also located in the hinterland, suggesting further routes of
 33 dissemination through the Pyrenees and/or along major rivers, such as the Ebro^{10,11}. On the other
 34 hand, North African influences and contacts are tangible in the southern Iberian Neolithic^{12,13}. All in
 35 all, Iberia appears a melting pot of influences and groups, combining Neolithic lifeways and with
 36 indigenous mechanisms of adaptation¹⁴.

37 In the Early Neolithic, we can observe common features shared over large areas, but also some
 38 regionally restricted phenomena¹⁵. In the whole territory, for example, there existed sophisticated
 39 systems of agriculture and livestock handling, with adaptable crops^{16,17} and seasonal strategies in
 40 flock management¹⁸⁻²⁰. The groups of the *Franco-Iberian Cardial* and the *Epicardial* pottery styles
 41 appeared at this time and recent studies have revealed mutual diachronic influences in the material
 42 culture and economies of these cultures^{15,21}.

43 An increasing number of burials from that epoch have come to light in the last years²²⁻²⁴. The oldest
 44 are individual inhumations, sometimes grouped in cemeteries²⁵. It is also common to find human
 45 remains in caves, which were increasingly used for collective burials²⁶. From the late 5th millennium
 46 BCE onward, burial monuments appeared, and megalithic tombs became widespread²⁷. This
 47 phenomenon links Iberia with other parts of Europe, indicating long-distance networks of
 48 communication. Meanwhile, certain parts of northeast Iberia maintained individual inhumations in
 49 pits, mostly in small cemeteries²⁸. Besides megalithic tombs, ditched enclosures extending over more

than 100 hectares started to dominate the landscapes of southern and central Iberia from 3300 to 3100 BCE, highlighting another widely spread European phenomenon^{29,30}. During the Iberian Chalcolithic period (3000-2200 BCE), fortified settlements with stone walls and semi-circular bastions appeared in the western and southern parts of the Peninsula, while elsewhere, open settlements were still extant³¹. The diversity in settlement and burial types suggests the existence of social structures with different levels of complexity³². At the same time, as exchange networks, circulated precious goods such as ivory from Africa and even Asia to Iberia³³.

From ca. 2600 BCE onwards, the so-called 'Bell Beaker Phenomenon' became manifest with its characteristic pottery, copper weapons, gold ornaments, and other prestige goods, an archaeological reflection of important social and economic changes which spread across vast regions of western and central Europe³⁴. Iberia's Bell Beaker assemblages are among the richest and most diverse in western Europe³⁵, both in terms of settlements and burials³⁶. It has thus long been a focus of archaeological research, commencing from migrationist hypotheses and leading up to current social explanations, where the Bell Beaker phenomenon is perceived as a package of prestigious objects exchanged and consumed by elite groups and displayed on special occasions³⁷.

Around 2200 BCE, the Chalcolithic settlement and funerary practices were suddenly discontinued, particularly in the western and southern part of Iberia, where most of the ditched and fortified settlements were abandoned and collective sites and megalithic tombs were replaced by individual burials³¹. El Argar groups began to emerge in southeast Iberia, with large and massively fortified urban centers like La Bastida (Murcia, n. 28 on Fig. 1)³⁸, which managed to control a territory of over 35,000 km² during the following 650 years.

With regard to its population history, the Iberian Peninsula has been the focus of several recent archaeogenetic studies³⁹⁻⁴⁴. Studies focusing not only on mtDNA but also on Y chromosome markers have supported the model of a pioneer colonization in the north-eastern coastal regions of the Iberian Peninsula at the onset of the Iberian Neolithic^{39,45}. On the other hand, the northern part of Spain (Cantabrian fringe) attested to a rather complex Neolithic transition⁴². Recent mtDNA and genome-wide analyses have put an emphasis on the genetic affinity and shared Near Eastern ancestry between the early Iberian farmers and the contemporary Central European Linearbandkeramik (LBK) population⁴⁶⁻⁴⁸. The latest mtDNA and genomic studies have revealed increased subsequent admixture of hunter-gatherer elements during the local middle Neolithic (La Mina; Alto de Reinoso, n. 51-52 on Fig. 1)^{44,47} and the Chalcolithic (El Portalon; El Mirador, n. 60-62. on Fig. 1) again reminiscent of processes observed in Central Europe^{41,49,50}.

Despite numerous research projects being carried out over the past years, the Neolithic settlement history of Europe can still only be explained at a broad scale^{47,49,51–54}. Regional transects through time detailing the developments and the course of the Neolithic in central Germany^{55–57} and in the Carpathian Basin⁵⁸ have mostly been examined by mitochondrial DNA (mtDNA) control region data. Our project completes the latter series by focusing on the archaeological models and hypotheses that have been put forward for the Iberian Peninsula, and where diachronic (i.e. ‘through time’) sampling of ancient DNA allows the detection of demographic changes and discontinuities between 5700 and 1500 BCE. Essential research questions focus on three levels: i) the individual sites, ii) the Iberian Peninsula as a scene of Neolithic transition and iii) a comparison with contemporaneous ancient and modern-day Europeans. A key question of our study of the mtDNA diversity on the Iberian Peninsula through time was to examine to what extent regional and supra-regional cultural groups could be recognized as genetically identifiable entities, as shown in other areas of Europe^{46,55}. A related question was whether the cultural breaks that can be seen, for instance, at the end of the Neolithic and Chalcolithic periods, were also accompanied by human population turnovers.

96

97

Results

We processed ancient DNA samples of 318 human individuals from prehistoric Iberia and generated reproducible mitochondrial hypervariable region haplotypes (HVS-I, np 16020-16401) from 151 individuals following strict authentication criteria (see Methods). MtDNA haplogroup classification of further 62 samples was based on multiplex typing single nucleotide polymorphisms (SNPs) (Fig. 1, Supplementary Table S1-4). The DNA amplification and reproduction success of the HVS-I showed strong differences among samples from diverse regions of the Iberian Peninsula: the highest amplification success rates were observed in northeast Iberia (NEI) and higher altitude regions of central Iberia (CI) (71-78%), while especially the southern part of the Iberian Peninsula (southeastern Iberian (SEI) group and southwest Iberia (SWI) had very low amplification success rates (20-43%).

We merged these data with previously published HVS-I mtDNA results from 125 prehistoric individuals (Supplementary Table S5, S15), and separated the HVS-I dataset of 238, and mtDNA haplogroup information of 305 prehistoric Iberian individuals into geographically and chronologically defined groups (see Methods). The resulting haplogroup compositions of these groups are presented in Fig. 2.

Haplogroup based analyses

The Iberian pre-Neolithic mtDNA substrate is still poorly understood. Recent NGS studies described hunter-gatherers belonging to haplogroup U5b in north Iberia^{43,59}, while the suggested pre-farming presence of haplogroups H, N and U4⁴² will need to be verified by NGS-based whole mitogenome analyses. Therefore, we used Holocene period hunter-gatherers from Central, West and North Europe as proxy for the Iberian pre-Neolithic mtDNA substrate in our quantitative analyses (Fig. 2, Supplementary Table S6, S15). This continental hunter-gatherer dataset (HG_HOL, n=35) contains predominantly U haplogroups (U5b and U5a dominated, but also R, U2, U4, U* were observed^{53,57,58,60-63}). In Iberia, haplogroup U5b was found most frequently in the CI Neolithic dataset (19.4%; n=62), and showed also relative high frequency in the CI Chalcolithic (19.9%; n=79) and NEI Chalcolithic-Early Bronze Age groups (14.8%; n=27).

The haplogroup composition of the Iberian Neolithic population shows similarities to the Early Neolithic data from Anatolia (6500-6000 BCE), the Carpathian Basin (5800-4900 BCE), and Central Europe (5500-4000 BCE, represented by the central German Mittelelbe-Saale region)^{49,55,58}. Haplogroups K, J, T2, HV, V and X are observed in comparable frequencies in Iberian and Central European groups. However, the proportion of haplogroup H is higher in the Iberian Early Neolithic

(EN) (22.2%; n=27) than in Central Europe (15%; n=160), while the frequency of N1a is very low (3.7% compared to 9.3% in Central Europe). Another difference with regards to Central Europe is the occurrence of haplogroup N* in Neolithic NEI (Supplementary Tables S6, S15).

We used the haplogroup frequencies of the studied groups for principal component analyses (PCA, see Methods). When compared to published ancient DNA data from the Near East, the western Anatolian Neolithic population is most similar to Central European Early-Middle Neolithic populations and to the Neolithic of northeast Iberia (Fig. 3, Supplementary Fig. S1-2), but it also shows some affinities with further Iberian farmers through common EN haplogroups (e.g. K, J, T2)⁴⁹. The presence of haplogroup N* in the Pre-Pottery Neolithic in Syria and in NEI can also be interpreted in this light^{39,64}, but this link needs to be verified by whole mitogenome analyses. Haplogroup compositions of all other Iberian groups are highly similar to each other, resulting in clusters on the PCA plots and Ward clustering tree. Our largest Iberian datasets are from Neolithic and Chalcolithic of CI (n=62 and 79), which show an elevated frequency of U5b (19.4 and 13.9%) compared to the NEI Neolithic. Interestingly, we also observe probable hunter-gatherer haplogroups U2 and U4, whereas the characteristic EN haplogroups N*, N1a are missing in the CI region. The southeastern Iberian dataset (n=48) contains eight Late Neolithic individuals with haplogroups K, H and U5b and 28 individuals from the Chalcolithic and 12 from the Early Bronze Age (EBA). Similarly to the CI groups it shows a mixture of haplogroups of the NEI group, but some of them (N*, N1a, U3) are missing in SEI.

The number of Neolithic and Chalcolithic SWI samples (n=12 and n=31) is too small to estimate the population dynamics in the region reliably (Supplementary Table S6). The combined dataset shows a predominance of haplogroup K (35.7%) and high frequency of haplogroups H, J and T (16.7-14.3-14.3%).

As Middle Neolithic (~ 4500-3500 BCE) and Late Neolithic (~ 3500-3000 BCE) periods of most sites are not separable at the current state of archaeological research, we combine these data in our analyses (MLN). Fisher's exact (p=0.5473) and population continuity (p=0.3385-0.3722) tests confirm the connection between the EN and MLN periods of Iberia in general.

Some of the Iberian Neolithic mtDNA haplogroups (U2, N*, N1a) are not observed in the successive Chalcolithic Iberian population (n=156), whereas others maintain a steady frequency (V, T2, X) throughout 3500 years. An interesting exception is haplogroup L1b in the Late Chalcolithic Central Iberia at the site Camino de las Yeseras (n. 57 on Fig. 1), near Madrid. This group is most frequent in today's West-Central Africa⁶⁵, and hints at a connection to the North-West African coasts in prehistoric times.

In contrast to U5b, haplogroup U5a (common in Central European Mesolithic and Late Neolithic^{55,57,66}) appears first in the 3000-2500 BCE period of central Iberia. Other typical Central European and Carpathian Basin Neolithic haplogroups such as H5, T1, W and U8, which are observed in later Central European Neolithic periods, are missing from the entire prehistoric Iberian dataset. These qualitative differences account for the separation of most of the Iberian prehistoric groups from the Central European Neolithic and Early Bronze Age populations along the second component of the PCA, shown on Figure 3.

Tests of population continuity and Fisher's exact test between the whole Iberian Early and Late Chalcolithic datasets result in non-significant p values ($p=0.5444-0.5578$ and 0.9779), which support population continuity between the two periods. Unfortunately, a finer chronological separation of the Chalcolithic (CHA) dataset cannot be achieved for all samples and therefore we consider only a subset of the CHA dataset ($n=71$ for Early and $n=47$ for Late CHA) in this analysis (Supplementary Table S8).

We also tested whether this continuity could be the result of data merging across bigger geographic distance. However, the genetic continuity during the Early to Late Chalcolithic transition also holds at regional scale, as our population continuity test cannot reject continuity between the Neolithic (containing mainly Late Neolithic) and CHA groups of central Iberia ($p=0.6033-0.6143$), and NEI ($p=0.9038-0.7835$). This continuous genetic makeup is also supported by non-significant ($p=0.2264$ and 0.4484) differences in haplogroup compositions (Supplementary Table S7-8).

The Early Bronze Age sample set in the Iberian prehistoric transect is still very small (a total of $n=37$ individuals from all four regions studied). At the mtDNA haplogroup level the EBA does not show new influences or population changes at the onset of the Iberian Bronze Age according to results from Fisher's test and test of population continuity, when both the entire Peninsula and southeastern Iberia in particular were considered (Supplementary Table S7-8).

A more detailed analysis of H sub-haplogroups focuses on 17 SNPs in the coding region of the human mitogenome. The largest proportion of the H individuals belongs to the subhaplogroup H1 (65.1%), and the second largest group is subhaplogroup H3 (14%), while 18.6% of the H individuals cannot be assigned to any of the subgroups included in the H-PLEX assay (see Methods, Supplementary Table S3-4)⁶⁷. H3 was detected in Chalcolithic individuals from central, southeast and southwest Iberia. H1 was observed in each period and region, but more frequently in the Chalcolithic and Early Bronze Age than in the Neolithic. The comparative ancient H data from the European prehistory is too sparse for in-depth statistical analyses. However it becomes apparent from our results that the H diversity in prehistoric Iberia is different from the H diversity of Central

Europe^{55,58,68,69}, and more similar to the Neolithic populations in France^{70,71}. Notably, common Central European subhaplogroups H5 and H7^{68,69} have not yet been observed in Southwest Europe.

Overall, we do not observe direct links between the Central European Late Neolithic (chronologically comparable to the Chalcolithic in Iberia) and the Iberian (entire and late) CHA groups at the haplogroup level, and thus cannot confirm a Late Chalcolithic expansion toward Central Europe as suggested by haplogroup H mitogenome data⁶⁸.

Haplotype and sequence based analyses

The mtDNA variation in prehistoric Iberia is further explored by HVS-I sequence and haplotype analyses of 238 individuals from the peninsula. The haplotype diversity of the hunter-gatherer populations of Central Europe (HG_PLEI (Pleistocene): Hd=0.879; n=29, HG_HOL (Holocene): Hd=0.931; n=35) provides the baseline for this comparative series. The diversity is lower in the Early Neolithic of Iberia (Hd=0.926; n=27) but increases in the following Middle-Late Neolithic (Hd=0.933; n=74) and Chalcolithic periods (Hd=0.944; n=118). The Early Bronze Age shows again a lower diversity (Hd=0.917; n=16), although this could be the result of the small number of individuals (Supplementary Table S9). The haplotype diversity among the regional groups is the lowest in the SWI Neolithic-Chalcolithic group in Iberia, and that along with the detected common basal J and K haplotypes could cause potential bias in lineage sharing results presented below.

The haplotype sharing (SHA) between the larger chronological groups detects no hunter-gatherer contribution in the EN group of Iberia, and a low level of hunter-gatherer maternal lineages in the MLN periods (6.8%) (Table 1). During the MLN, several new hunter-gatherer-type U5b lineages appear. Between the two successive Neolithic periods, the haplotype sharing amounts to 50%, and 43.2% of the MLN lineages are already present in the EN (as seen from our ancestral SHA). In the Chalcolithic period, we also observe a strong ancestral EN contribution (44.9%), with only 14.4% of the lineages originating from later Neolithic periods. The continuity of lineages is also seen in the smaller EBA dataset, which shows close connections to EN, MLN and CHA periods, and in which only 18.8% of the haplotypes are new (Table 1, Supplementary Table S10).

The Iberian early farming groups share generally high number of lineages (38.3-82.4%) with each other (Supplementary Fig. S3). The Central European Early Neolithic has the highest number of shared haplotypes comparing to the northeast Iberian groups, but the sharing is also high with prehistoric southeast Iberian groups. In contrast, lineage sharing with Holocene period hunter-gatherers is highest in the mostly Chalcolithic southeast Iberian group (8.6%) and in CI Neolithic

(6.7%). Concerning temporal succession in NEI region, the proportion of hunter-gatherer lineages increases (from 0 to 4.8%) during the Chalcolithic period (Supplementary Table S10).

Continuity between Neolithic and Chalcolithic groups is reflected by the amount of shared lineages between the two periods in CI (61.2%), but both CI groups also share many lineages with all other Iberian groups (Supplementary Table S10).

Genetic distances (F_{ST}) are generally low among the Iberian prehistoric groups, and none of them are significant (Supplementary Table S11). We observe the shortest distances from Central European EN-MN in northeast Iberia. By plotting the HVS-I based genetic distances after multidimensional scaling (MDS, Supplementary Fig. S4), large-scale relationships are displayed. Here, the NEI populations are within the cluster of the other Iberian groups, whereas the Central European and French datasets form a cluster that is slightly offset. Interestingly, MDS shows that some groups (e.g. NEI Neolithic) appear less differentiated from the remaining populations when compared to haplogroup-based PCA. The clustering of the groups on the MDS plot was therefore tested by the analysis of molecular variance. The best-supported groupings (i.e. with the highest variance among the clusters and lowest within the clusters) were evaluated by iteratively alternating the composition of the groupings. The Iberian groups differentiated from an EN Central European- Carpathian Basin and a MLN-EBA Central European- LN French clusters in this analysis as well, and can be further divided into a Neolithic-Chalcolithic CI and a NEI-SEI-SWI clusters (Supplementary Table S12).

We further compared HVS-I sequences of three larger chronological groups (EN, MLN and CHA) of the Iberian Peninsula with 133 modern populations. Genetic distances to modern-day populations are generally low, and restricted to certain region(s) of Europe (Supplementary Fig. S5, Supplementary Table S13). The Early Neolithic shows relatively high affinity to modern Afghanistan, Palestine, Iran, and Turkey ($F_{ST} = 0.00173-0.00428$), but also high affinities to several European populations (e.g. Italian, French but also Belorussian). The genetic distances to modern populations increase with the MLN and CHA periods, but show general similarity to modern-day Europe. Recent genomic studies have highlighted the similarity of early farmers to modern South Europeans⁷², especially to modern day Sardinians^{47,49}. This picture is not reflected in our mtDNA dataset, where Sardinians rank only the 67th closest to the Iberian EN group out of 133 modern populations, and 46th from the MLN group (Supplementary Table S13).

Discussion

During the Last Glacial Maximum, the Iberian Peninsula, just as Southeast Europe and the Italian Peninsula, formed a classic Glacial Refuge Area for European populations, well documented by archaeological evidence⁷³⁻⁷⁵. Therefore, it is assumed that parts of today's European population are the descendants of the residents of these refugia. This theory is based on coalescence date estimates for some mtDNA lineages (H1, H3, V, U5b1), which predate the Neolithic expansion, and also the high abundances of these lineages in Iberia today⁷⁶⁻⁸⁰. However, the Franco-Cantabrian glacial refuge theory has not yet been confirmed by ancient mtDNA or genomic analyses, and more Iberian Pleistocene and especially Holocene samples need to be investigated at full mitogenomic resolution.

With the end of the Last Ice Age and the beginning of the Holocene ~12,000 BCE, a common European Mesolithic population emerged, which also included a distinct signal of Near Eastern origin⁵⁹. The indigenous Iberian late Upper Paleolithic and Mesolithic populations were represented by whole mitogenome haplotypes assigned to haplogroup U5b from Northern Spain^{43,59}.

The Iberian Peninsula is characterized by diverse landscapes with distinct economic potentials. During the initial phase of Neolithisation, first farmers probably arrived in northeast Iberia primarily along the Mediterranean route and from there spread along the coastline and rivers (e.g., the Ebro Valley) into the hinterland^{7-9,81}. Our genetic data support a substantial influx of Neolithic immigrants to northeastern Spain, where farmer lineages are most abundant and diverse, and on to other regions, like the SEI and CI. We found the persistence of 'hunter-gatherer' mtDNA haplogroups in the Neolithic to be strongest in Central Iberia. These genetic results match the archaeological data on the mode of Neolithisation described for these areas, so that the fully established Neolithic Iberian communities had distinct hunter-gatherer components^{16,82,83}. The further the early farmers advanced into the inner/central and southern parts of the Peninsula, the higher the proportion of indigenous HG lineages. Geography appears to have been a decisive factor in the advance of Neolithic lifeways. Prehistoric central Iberia (southern and northern Meseta, Ambrona Valley), however, was never an isolated region surrounded by mountains, but rather an important hub for innovations and impulses coming into Iberia⁸⁴. On a genetic level, Neolithic central Iberia showed corresponding mitogenomic connections to northeast and southeast Iberian regions (Supplementary Table S7).

The Pyrenees are also an area of special interest with regard to the route of immigration of the first farmers. This study includes ten samples from the cave site of Els Trocs, dated to the Early and Middle Neolithic²⁰. Due to the considerable temporal differences between the occupations, the respective sample sets can be considered as genetically independent. The ¹⁴C data of the six individuals from the earliest phase cluster closely (Supplementary Information). Genome-wide analyses of five of these EN individuals revealed the group to be early Neolithic immigrants^{47,49,50}.

Haplogroups N1a, J, T2, K and V appear, while the typical Iberian HG mtDNA haplogroup U5b is missing. Therefore, we suspect the presence of a (still) isolated EN group at Els Trocs. The isolated geographic position in the Pyrenees suggests immigration of this community from north of the Pyrenees (or even from Central Europe via the Rhone Valley) rather than from the west along the Mediterranean coastline. This alternative gateway to Spain has also been proposed based on archaeobotanical evidence^{17,85}. The first and (to our knowledge) sole Iberian appearance of the mtDNA haplogroup N1a in an adult from Els Trocs, which matches identical HVS-I N1a haplotype in Anatolia and Central Europe, might have arrived on the continental route^{47,49,55,86}. The shared roots between Southwest and Central Europe were especially conspicuous in the Northeast Iberian EN group, as the agreement in the common mtDNA haplogroups such as V, J, K, T2 and X suggests.

The transition from the EN to the MLN is documented in recent ancient genomic studies, which described an increase of hunter-gatherer elements in the farming populations of central Iberia during the MLN period at the site of La Mina and the Chalcolithic sites of El Mirador and El Portalón^{41,47,49}. The Iberian Middle Neolithic genomic data are still too scarce (concentrated on a single site La Mina) to draw general conclusions about admixture with late hunter-gatherers⁴⁷. La Mina people had 18.9-22.8% HG ancestry double than the EN individuals from Els Trocs (6.8-11%)⁵⁰, and also higher than their contemporaries in Central Europe. These HG proportion further increased in the CHA to 27%⁵⁰. In our study, we could support the general continuity of maternal lineages between MLN-CHA periods. The increase of HG maternal lineages through time is not seen on large scale SHA (Table 1), but observable in regional groups, such as in NEI, where the F_{ST} from HG_HOL decreases and the amount of HG_HOL haplotypes increases from the Neolithic to the CHA_EBA periods (0-4.76%). The same trend can be seen in our F_{ST} analyses where the CI_CHA (F_{ST} =0.17406) appear closer to the HG_HOL group than the CI_Neo group (F_{ST} =0.21267) (Supplementary Table S7-8, S11).

According to the data currently available, the homogeneity of Chalcolithic ancient DNA results suggests that human mobility and genetic mixing had generally increased in Iberia by the Chalcolithic. Although we analyzed four geographically separated CHA groups in the northeast, central as well as in the southeast and southwest of the Iberian Peninsula, they did not exhibit any significant differences except for the comparison of the central and the southeastern group (Fisher's test results in Supplementary Table S7, Fig. 2).

The detection of the 'African' Lb1 haplogroup at the Late Chalcolithic site Camino de las Yeseras (Madrid, central Iberia) is remarkable, given that ivory adornments of African origin have also been documented at this and other contemporaneous sites⁸⁷⁻⁸⁹. The observation of a western-central

‘African’ haplogroup alongside African artefacts and raw materials in Copper Age Iberia indicate long distance exchange that at least occasionally seem to have involved mobility of individuals and/or gene flow.

The Bell Beaker phenomenon was a decisive element in the Iberian Chalcolithic, lasting from the Late CHA to the EBA (2600 -1800 BCE)^{35,36}. Our tests of population continuity and Fisher’s tests between Early and Late CHA periods supported population continuity between the two phases. However, our data structure did not allow studying the Early to Late CHA population changes at a regional scale, so that further studies might reveal local variation with regard to individuals with Bell Beaker / non-Bell Beaker cultural affiliations. Interestingly, we did not find evidence for direct genetic links between Chalcolithic Iberia and contemporaneous Central Europe. Links between the two regions had previously been suggested based in particular on Bell Beaker elements present across a wide geographic range^{90–92}, as well as by the maternal genetic analyses of the El Mirador site⁴⁰.

Interestingly, we also do not find evidence for influx in the East to West direction, as none of the investigated Chalcolithic individuals show ‘steppe ancestry’, which seen in contemporaneous Central European Corded Ware and Bell Beaker groups, suggesting that eastern influxes did not reach the Iberian Peninsula until later periods⁴⁹. An evaluation of this unexpected observation will require further in-depth palaeogenetic studies.

Around 2200 BCE, the emergence of El Argar groups was evidently preceded by a break in Chalcolithic cultural traditions in southeast Iberia. Yet there are no apparent new influences or signals of substantial population change on the mtDNA haplogroup level at this time, so that the observed changes may either be due to an upheaval of existing social structures or an influx of groups that cannot be distinguished from the local population at the present level of genetic resolution, e.g., from southeastern Europe, as previously proposed for El Argar. Unraveling these apparently contradictory data will certainly require further in-depth analyses both on the archaeological and the archaeogenetic level.

Conclusion

The present study, based on 213 new and 125 published mtDNA data of prehistoric Iberian individuals suggests a more complex mode of interaction between local hunter-gatherers and incoming early farmers during the Early and Middle Neolithic of the Iberian Peninsula, as compared to Central Europe. A characteristic of Iberian population dynamics is the proportion of autochthonous hunter-gatherer haplogroups, which increased in relation to the distance to the Mediterranean coast. In contrast, the early farmers in Central Europe showed comparatively little admixture of contemporaneous hunter-gatherer groups. Already during the first centuries of Neolithic transition in Iberia, we observe a mix of female DNA lineages of different origins. Earlier hunter-gatherer haplogroups were found together with a variety of new lineages, which ultimately derive from Near Eastern farming groups. On the other hand, some early Neolithic sites in northeast Iberia, especially the early group from the cave site of Els Trocs in the central Pyrenees, seem to exhibit affinities to Central European LBK communities. The diversity of female lineages in the Iberian communities continued even during the Chalcolithic, when populations became more homogenous, indicating higher mobility and admixture across different geographic regions. Even though the sample size available for Early Bronze Age populations is still limited, especially with regards to El Argar groups, we observe no significant changes to the mitochondrial DNA pool until the end of our time transect (1500 BCE). The expansion of groups from the eastern steppe^{47,93}, which profoundly impacted Late Neolithic and EBA groups of Central and North Europe, cannot (yet) be seen in the contemporaneous population substrate of the Iberian Peninsula at the present level of genetic resolution. This highlights the distinct character of the Neolithic transition both in the Iberian Peninsula and elsewhere and emphasizes the need for further in depth archaeogenetic studies for reconstructing the close reciprocal relationship of genetic and cultural processes on the population level.

Materials

The studied sites are distributed across the Iberian Peninsula, with an emphasis on the archaeologically relevant regions on the Mediterranean coasts, in central and northern Spain and in southern Portugal (Fig. 1). We targeted representative sites from the Mesolithic, Neolithic, Chalcolithic and the Early Bronze Age to cover 4,000 years of prehistory on the Iberian Peninsula. Given that the southern European climate is usually unfavorable for DNA preservation, we implemented a flexible sampling scheme contingent on amplification successes, extending sampling from sites with good ancient DNA preservation and/or including additional sites to obtain sufficient data. Sample specific context information were supplied by our colleagues and project partners in Portugal and Spain or collected from previously published papers. All archaeological sites, relevant radiocarbon dates, and individuals incorporated in the present study are listed in Supplementary Table S1-2.

Altogether, 318 individuals from 57 archaeological sites in Spain, Portugal and Morocco were sampled and analyzed for this study. Whenever possible we preferred samples from recent excavations over those that had been held at museum collections for prolonged periods of time. Teeth and bone samples were taken under clean conditions in Iberian museums, at the Institute of Anthropology at Johannes Gutenberg University in Mainz, or directly on site in the case of La Mina, Arroyal, Els Trocs and in part at La Bastida. Mitochondrial profiles of 37 individuals from our project (Alto de Reinoso (n=27), La Mina (n=5) and Els Trocs (n=5) were previously published by our research team^{44,47,49}. Here we also report additional samples from the sites of La Mina and Els Trocs.

The chronological classification of the burials was based on the archaeological data. In order to avoid possible problems due to terminological inconsistencies, we used temporal (from Mesolithic to Early Bronze Age; based on relative chronology and absolute dating) and geographic groupings to assess the population mitogenetic data from the Iberian Peninsula. We further distinguished groups based on contextual archaeological evidence, e. g. subsistence strategies, such as hunter-gatherers vs. early farmers. We targeted collecting two to three teeth from each skeleton and sampled bone only when teeth were not available.

Methods

Ancient DNA sample preparation

Standard sample preparation protocols were used during the ancient DNA work in the Institute of Anthropology in Mainz⁵⁵. Samples were first UV irradiated for 30 min each side and then, the surface was removed by shot-blasting with aluminium-oxide-abrasive. Samples were then ground to fine powder using a mixer mill (Retsch). The milling process was controlled by hydroxylapatite blank controls, which were treated as samples in the subsequent DNA extraction and amplification steps. Series of samples were tested from each archaeological site, and the amplification success defined any further ancient DNA work. In general, A and B samples from different teeth or bone fragments per individual were analyzed independently. In the sole case is the site of Cova del Cantal, A and B samples, i.e. repeat extractions, derived from the same bone fragment.

Ancient DNA extraction and amplification

Of the total 48 extraction batches, 25 were performed using the phenol-chloroform DNA extraction method⁵⁵ and 23 using the silica based DNA extraction protocol⁶⁸.

We combined different sets of primer pairs for the amplification of the HVS-I of the mitochondrial genome. Well-preserved samples were amplified in two segments (np 16046-16401), average preserved samples in four fragments (np 15997-16409) and samples with very fragmented DNA content were amplified with a combination of six overlapping primer pairs. All HVR I-II primers are listed in Table S11 in Alt et al.⁴⁴, PCR, amplicon purification and sequencing protocols were the same as reported in Brandt et al.⁵⁵. 40% of the PCR products were cloned using pUC18 vectors and *E.coli* cells^{55,86}, and these clones were re-amplified and re-sequenced.

In order to get precise basal mitochondrial haplogroup determinations, we used the GenoCoRe22 multiplex PCR and ABI PRISM® SNaPshot® typing protocol⁵⁶, and typed 22 coding region positions of the mitochondrial genome. Samples assigned to the haplogroup H, were further sub-typed used the H-PLEX17 focusing on 17 sub-haplogroup H defining single nucleotide polymorphisms (SNPs)⁶⁷. Note that recent mitochondrial phylogeny updates have complicated the interpretation of typing results: the H1 defining variant G3010A is now also reported for subhaplogroups H30b, H65a, H79a, H105a (Phylotree Build 17).

Samples belonging to haplogroup U were also tested for six coding region SNPs via multiplex amplification and single base extension protocols, and further categorized into subhaplogroups U2, U3, U4, U5, U5a, U5b, and U8 (Supplementary Table S4). Haplogroup T were also further typed in the coding region for information on T1 or T2 sub-haplogroups (C12633A-T1 and A11812G-T2) and sequenced separately⁶⁹. Conditions of the U and T-Plexes are as follows: PCRs were set up in a

volume of 25 μ I, containing 1 x PCR Gold buffer, 8 mM $MgCl_2$, 0.02 μ g BSA, 500 μ M dNTPs, 0.02 μ M of each primer, 2 U AmpliTaq Gold® DNA polymerase, and 2- 3 μ I DNA extract. Cycling conditions were 95°C for 10 minutes, and 35 cycles of 95°C for 30 seconds, 56°C for 30 seconds, and 65°C for 30 seconds, followed by a final adenylation step at 65°C for 10 minutes for the U-Plex and 32 cycles and an annealing temperature of 59°C for the H-PLEX17. Amplification success was checked via gel electrophoresis. Purification and SBE-reactions for the U-Plex was set up according to the GenoCoRe22 protocol.

Individuals with consistent HVS-I profiles from both samples were amplified over the whole HVS-I at least three times from at least two independent extracts, producing between 6-18 independent and overlapping amplicons (depending on the primer pairs used). PCR products that showed ambiguous nucleotide positions were cloned to monitor possible background contaminations and DNA damage. In addition, for those individuals of the sites Alto de Reinoso and La Mina that showed the same HVS-I haplotype, we also amplified and sequenced the HVS-II region via four overlapping primer pairs⁴⁴.

Authenticity and contamination

To monitor contamination, sample mix up and other potential errors we used the following authentication strategy: 1. All HVS-I haplotypes were replicated from at least two independent DNA extracts obtained from two skeletal elements from nearly all sampled individuals. The HVS-I fragment was amplified by numerous overlapping PCR amplicons. PCR products with ambiguous sequences were cloned, and 4-8 clones per PCR were sequenced. 2. Due to the applied primer-systems, amplification of the HVS-I enabled the identification of contiguous sequences with 6-10 SNP calls in the overlapping regions. 3. The final haplogroup call was based on several independent amplifications targeting different loci of the mitochondrial genome (HVS-I and coding region SNPs). In all reproducible and reported cases, the HVS-I sequences confirmed the haplogroup assignment by the GenoCoRe22 SNP typing (and vice versa), as did the results of the H-PLEX17, U-Plex and T-Plex assays. 4. All haplotypes could be placed in the mitochondrial phylogeny (www.phylotree.org). In all cases where ancient haplotypes differed from the current representative haplotypes on the mtDNA phylotree by private mutations, the latter were double-checked by several PCRs and by sequencing in combination with other SNPs. 5. Characteristic post-mortem DNA damage-derived substitutions (C>T, G>A) were observed, but these substitutions were neither reproducible nor consistent across sequence assemblies and could easily be distinguished from true SNPs. 6.

Altogether 51 of the 2376 (2.15%) blank controls were contaminated during the course of the three-year investigation. No contamination could be detected in any of the multiplex PCRs. Of the 51 contaminated blanks, 0.96% (17 out of 1764) were PCR blanks, 6.4% (20 out of 311) hydroxyapatite milling blanks, and 4.7% (14 out of 301) extraction blanks. All contaminated blanks were sequenced and compared to haplotypes of samples analyzed along with these PCR extraction blanks. Fourteen individuals that were amplified from two extraction events had to be excluded from further analyses due to signs of potential contamination. 7. The HVS-I region was sequenced from all relevant co-workers (archaeologists, anthropologists and geneticists) (Supplementary Table S14) and compared with samples and blanks. None of the samples matched with the haplotype of the main processor of the samples (C.R.), although co-workers with common haplotypes (basal J, H-rCRS) cannot be ruled out as possible source of contamination. However, we find no signs of systematic contamination by these workers and consider it unlikely that samples that share these haplotypes were affected in various independent experiments whilst parallel samples were not. 8. Ten samples were captured for whole mitogenomes⁴⁷, and these results corresponds to the PCR and clone based sequence results (Supplementary Table S16).

Population Genetic Analyses

Reference populations and clustering of the Iberian data

We split pre-Neolithic samples of Western and Central Europe into two temporal groups: a Pleistocene group (HG_PLEI, before 10,000 BCE)^{60,63}, a Holocene group (HG_HOL, after 10,000 BCE) from Central and North Europe^{53,57,58,60–62}. The Iberian hunter-gatherer dataset (n=3) is too small to form a separate statistical group^{43,59}. As comparative ancient populations we used Neolithic (5800-4900 BCE) datasets from the Carpathian Basin (CB_EN)^{58,62}, Early (GER_EN, 5500-4000 BCE), Middle (GER_MN, 4000-2650 BCE) and Late Neolithic (GER_LN, 2800-2050 BCE) series from Central Germany^{53,55,56,86,94,95} and from Central European Early Bronze Age period (CEU_EBA, 2200-1550 BCE)^{55,93}. From France, we included two Neolithic groups from the 4th and 3rd millennium BCE (FRA_GUR and TRE)^{70,71}. From the Eastern European steppe, we included an mtDNA dataset associated with the Yamnaya culture (YAM, 3000-2500 BCE)^{47,93,96}. Published HVS-I and haplogroup data are presented in Supplementary Table S15.

From the Iberian Peninsula we used all published mtDNA data that were secured by SNPs from the control region of the mtDNA^{39,40,44,45,47–49,97}, and combined them with our results. The dataset from Cova de Montanissel was only used in haplogroup based tests, due to insufficiently reproduced HVS-

I results⁹⁸. We divided the ancient Iberian dataset into the following geographical groups: southwest Iberia (SWI), southeast Iberia (SEI), central Iberia (CI), northeast Iberia (NEI). For sufficiently large sample numbers, we further sub-divided these into the following chronological groups: Early Neolithic (EN, ~ 5700-4500 BCE), Middle and Late Neolithic (MLN, ~ 4500-3000 BCE), Early Chalcolithic (~ 3000-2600 BCE), Late Chalcolithic (~ 2600-2200 BCE), and Early Bronze Age (EBA, ~ 2200-1500 BCE). Where the chronology could not be defined precisely, we classified the samples into Neolithic (Neo) and Chalcolithic (CHA) periods. Note the differences in chronological terminology between Central Europe and the Iberian prehistory, mostly due to the absence of a distinct ‘Chalcolithic’ period in the archaeological terminology used in Central Europe (Fig. 1).

MtDNA haplogroup frequency based tests

We used principal component analysis (PCA) to visualize the relationships between relative haplogroup compositions of the Iberian and other prehistoric datasets. PCA has the benefit of reducing the complexity of the entire dataset while maintaining an accurate representation of its variability. PCA was performed with 16 ancient populations comparing haplogroup frequencies of 25 mtDNA haplogroups (see Supplementary Table S6), and calculated in R version 3.1.3⁹⁹, using a customized *prcomp* function.

Hierarchical clustering was used to construct clusters of the predefined prehistoric datasets, based on similarities (distances) between their haplogroup compositions. This analysis helps interpreting the PCA plots in form of dendrograms. Clustering of haplogroup frequencies was performed using Ward type algorithm and Euclidean distance measurement method. The result was visualized as a dendrogram with the *pvclust* package in R.2.13.1¹⁰⁰. Cluster significance was evaluated by 10,000 bootstrap replicates. Significance of each cluster was given as an AU (Approximately Unbiased) p-value, in percentage.

Fisher’s exact test is a nonparametric test for statistical significance¹⁰¹. The null hypothesis for each Fisher’s exact test was that the Iberian groups belonged to the same population. The resulting p-value thus described the probability of obtaining the observed haplogroup compositions if both groups were part of the same metapopulation. Fisher’s exact test was performed with absolute frequencies of the haplogroups observed in the Iberian dataset. We used all haplogroup results per group in this analyses and tested a series of pairwise comparisons of Iberian chronological and geographic groups, using *fisher.test* function in R v.3.0.3⁹⁹.

The test of population continuity explores whether genetic differences between two populations from two or more consecutive time periods can be adequately explained by genetic drift alone or whether a discontinuity between the two populations has to be assumed⁵⁵. The tests were performed for pairs of chronological groups in specific regions (central Iberia, northeast Iberia). It was also performed for the entire Iberian time transect, using ‘metapopulations’ from consecutive pairs of chronological periods (HG_HOL, EN, MLN, CHA (early and late), EBA). Effective population sizes $N_e=1000$, 10000 were tested, calculating with differences between terminal dates of the chronological periods. Further parameters of the tests are presented in Supplementary Table S8.

MtDNA HVS-I sequence based tests

We also characterized the Iberian populations with standard diversity indices that were calculated in DnaSP¹⁰². The HVS-I sequence range between np 16048-16410 was used for the calculations (Supplementary Table S9).

Shared haplotype analysis¹⁰³ examines the occurrence of identical lineages in different populations. For the ancestral shared haplotype analysis (ancestral SHA), we took the relative chronology of the studied groups into account and tracked first appearance of any given lineage and their transmission (or presence/absence) in subsequent, i.e. later populations. SHA and ancestral SHA were performed as described in⁵⁸. Levelplot of the percentage of shared lineages was visualized in R version 3.1.3, using level plot function. First, we considered the same groups that were counted in the F_{ST} analysis. In the next step, we assembled all Iberian regions, and we differentiated chronological groups of the Iberian prehistory (Supplementary Table S10). These groups were put into chronological order and ancestral haplotypes were determined. A major drawback of this process is the limited resolution of H-rCRS haplotypes. . On the other hand, available haplogroup definitions of H, V, HV and U haplotypes were used to separate these HVS-I sequences.

F_{ST} values (‘fixation indexes’) measure the amount of genetic structuring/differentiation in populations. With F_{ST} values we aimed to test whether pairs of populations were genetically distinct, and panmixia could be ruled out as basal assumption. F_{ST} values between pairs of prehistoric populations were calculated using reproduced HVS-I sequences (np 16056-16390) in Arlequin v. 3.5, applying a Tamura and Nei substitution model with a gamma parameter of 0.117¹⁰³. F_{ST} p values were calculated based on 10000 permutations, and post hoc adjusted to correct for multiple comparison by the Benjamini and Hochberg method, using the function *p.adjust* in R. 3.0.3¹⁰⁴.

Multidimensional scaling (MDS) was used to translate the distances/dissimilarities between multidimensional objects, represented by F_{ST} values, into spatial (Euclidean) distances and to visualize them in two-dimensional space. MDS was performed in R v. 3.1.3 using *metaMDS* function in *vegan* library¹⁰⁵. Distance matrix was calculated based on Slatkin F_{ST} values, which F_{ST} values were calculated using HVS-I sequences (np 16056-16390) in Arlequin v. 3.5, applying a Tamura and Nei substitution model with a gamma parameter of 0.117¹⁰³. We included 16 ancient groups in this analysis (Supplementary Table S11), but excluded the Holocene group, which had the greatest genetic distances from the other Central European and Iberian populations, and thus compressed the other parts of the MDS plot.

Analysis of molecular variance (AMOVA), based on HVS-I sequences (np 16056-16390), was performed between a subset of the Iberian and the Central European prehistoric groups used in the MDS (HG groups and YAM were left out). The “among clusters” and “within clusters” variance, F_{CT} , F_{SC} and their p values were computed in Arlequin v. 3.5¹⁰³. Geographic and chronological groups were arranged into different models, consisted of 2-5 clusters that were assumed as plausible from the MDS plot, and AMOVA was conducted for each arrangement (Supplementary Table S12).

We calculated F_{ST} values between modern and three prehistoric Iberian populations and mapped the genetic distances by interpolating between the geographic coordinates of modern populations. We calculated genetic distances (F_{ST} values) randomly choosing a maximum of 140 sequences per population ($n = 17494$ sequences altogether), in order to balance the differences in sample sizes, and calculated F_{ST} values between prehistoric Iberian (EN, MLN, CHA) and 133 present-day populations. The analysis was performed in Arlequin v. 3.5, using a uniform sequence length (np 16068–16365), and a Tamura & Nei substitution model with a gamma value of 0.177 (Supplementary Table S13)¹⁰³. F_{ST} values were combined with longitudes and latitudes according to context information from the literature. The F_{ST} values and coordinates were interpolated with the Kriging method implemented in Arcmap ArcGIS version 10.3.

References

1. Lemmen, C., Gronenborn, D. & Wirtz, K. W. A simulation of the Neolithic transition in Western Eurasia. *J. Archaeol. Sci.* **38**, 3459–3470 (2011).
2. Bellwood, P. *First farmers: the origins of agricultural societies*. (Blackwell, 2005).
3. Özdoğan, M. The beginning of the Neolithic economies in southeastern Europe: an Anatolian perspective. *J. Eur. Archaeol.* **5**, 1–33 (1997).
4. Zilhão, J. Radiocarbon evidence for maritime pioneer colonization at the origins of farming in west Mediterranean Europe. *Proc Natl Acad Sci U S A.* **98**, 14180–14185 (2001).
5. Bocquet-Appel, J.-P., Naji, S., Linden, M. Vander & Kozłowski, J. K. Detection of diffusion and contact zones of early farming in Europe from the space-time distribution of 14C dates. *J. Archaeol. Sci.* **36**, 807–820 (2009).
6. Jiménez Guijarro, J. *Cazadores y campesinos: la neolitización del interior de la Península Ibérica*. (Real Academia de la Historia., 2010).
7. Bernabeu-Aubán, J., Molina-Balaguer, L., Esquembre-Bebíá, M. A., Ortega, J. R. & Boronat-Soler, J. de D. in *De Méditerranée et d'ailleurs... Mélanges offerts à Jean Guilaine* 83–95 (Archives d'Écologie Préhistorique, 2009).
8. García Borja, P., Aura Tortosa, J. E., Bernabeu Aubán, J. & Jordá Pardo, J. F. Nuevas perspectivas sobre la neolitización en la Cueva de Nerja (Málaga-España): La cerámica de la sala del vestíbulo. *Zephyrus* **66**, 109–132 (2010).
9. Guilaine, J., Manen, C. & Vigne, J.-D. *Pont de Roque-Haute. Nouveaux regards sur la néolithisation de la France méditerranéenne*. (Archives d'Écologie Préhistorique, 2007).
10. Fernández-Eraso, J. El Neolítico inicial en el País Vasco meridional. Datos recientes. *Kobie. Ser. Anejos* **6**, 181–190 (2004).
11. Utrilla-Miranda, P. in *El Paisaje en el Neolítico mediterráneo* 179–208 (Saguntum Extra-5, 2002).
12. Manen, C., Marchand, G. & Carvallo, A. F. Le Néolithique ancien de la péninsule Ibérique: vers une nouvelle évaluation du mirage africain? in *Congrès du centenaire: Un siècle de construction du discours scientifique en Préhistoire* **3**, 133–151 (Société préhistorique française, 2007).
13. Morales, J. *et al.* The origins of agriculture in North-West Africa: macro-botanical remains from Epipalaeolithic and Early Neolithic levels of Ifri Oudadane (Morocco). *J. Archaeol. Sci.* **40**, 2659–2669

- 635 (2013).
- 636 14. García-Martínez de Lagrán, Í. Recent Data and Approaches on the Neolithization of the Iberian
637 Peninsula. *Eur. J. Archaeol.* **18**, 429–453 (2015).
- 638 15. Rojo-Guerra, M. A., Garrido, R. & García Martínez de Lagrán, Í. *El Neolítico en la Península Ibérica y su*
639 *contexto europeo*. (Ed. Cátedra, 2012).
- 640 16. Rojo-Guerra, M. A., Kunst, M., Garrido Pena, R., García-Martínez de Lagrán, I. & Morán Dauchez, G.
641 *Paisajes de la memoria: asentamientos del Neolítico antiguo en el Valle de Ambrona (Soria, España)*.
642 (Servicio de Publicaciones de la Universidad de Valladolid, 2008).
- 643 17. Zapata, L., Peña-Chocarro, L., Pérez-Jordà, G. & Stika, H.-P. Early neolithic agriculture in the Iberian
644 Peninsula. *J. World Prehistory* **18**, 283–325 (2004).
- 645 18. Fernández Eraso, J. La actividad pecuaria en la Rioja Alavesa durante la Prehistoria Reciente. *Cuad.*
646 *Arqueol. la Univ. Navarra* **18**, 159–171 (2010).
- 647 19. Oms-Arias, F. X. Caracterizació tècnica, tipològica i cronològica de les ceràmiques del Neolític antic de
648 la Cova Colomera (Prepirineu de Lleida). *Arch. Prehistotira Levantina* **XXVII**, 51–80 (2008).
- 649 20. Rojo-Guerra, M. Á. *et al.* Pastores trashumantes del Neolítico antiguo en un entorno de alta montaña:
650 secuencia crono-cultural de la Cova de Els Trocs, San Feliú de Veri (Huesca). *Boletín del Semin. Arte y*
651 *Arqueol.* **LXXIX**, 9–55 (2013).
- 652 21. Bernabeu-Aubán, J. & Martí-Oliver, B. in *La transition Néolithique en Méditerranée* (eds. Manen, C.,
653 Perrin, T. & Guilaine, J.) 419–438 (Archives d'Écologie Préhistorique, 2014).
- 654 22. Rojo-Guerra, M. *et al.* in *Del neolític a l'edat del bronze en el mediterrani occidental: Estudis en*
655 *homenatge a Bernat Martí Oliver* 181–210 (Valencia (Provincia). Diputación Provincial, 2016).
- 656 23. Bernabeu-Auban, J. in *Restos de vida, restos de muerte: la muerte en la Prehistoria* (eds. Soler Mayor,
657 B. & Pérez Fernández, A.) 45–54 (Museu de Prehistoria, 2010).
- 658 24. Garrido-Pena, R. & Rojo-Guerra, M. in *Funerary Practices in the Iberian Peninsula from the Mesolithic*
659 *to the Chalcolithic. BAR International Series 2417* (eds. Gibaja, J. F., Carvalho, A. F. & Chambon, P.) 21–
660 28 (2012).
- 661 25. García-Gazolaz, J. & Sesma Sesma, J. in *La Tierra te sea leve, Arqueología de la muerte en Navarra.*
662 *Museo de Navarra, Pamplona, exposición, 27 de noviembre de 2007-30 de abril de 2008.* 49–58
663 (Institución Príncipe de Vian, 2007).
- 664 26. Garrido-Pena, R., Rojo Guerra, M., Tejedor-Rodriguez, C. & García-Martínez de Lagrán, I. in *El neolítico*

- 665 *en la Península Ibérica y su contexto europeo* (eds. Rojo Guerra, M. Á., Garrido Pena, R. & García-
666 Martínez de Lagrán, I.) 143–174 (Cátedra, 2012).
- 667 27. Rojo-Guerra, M. A. in *Iberia: protohistory of the Far West of Europe: from Neolithic to roman conquest*
668 43–69 (Universidad de Burgos, Servicio de Publicaciones e Imagen Constitucional, 2014).
- 669 28. Martin, A. in *Sépultures et sociétés. Du Néolithique à l'Histoire* (ed. Guilaine, J.) 45–67 (2009).
- 670 29. Márquez Romero, J. E. & Jiménez Jáimez, V. *Recintos de fosos: Genealogía y significado de una*
671 *tradición en la Prehistoria del suroeste de la Península Ibérica (IV-III milenios AC)*. (Universidad de
672 Malaga. Servicio de Publicaciones, 2010).
- 673 30. Valera, V. in *2200 BC – A climatic breakdown as a cause for the collapse of the old world? Tagungen*
674 *des Landesmuseums für Vorgeschichte Halle 12* (eds. Meller, H., Arz, H. W., Jung, R. & Risch, R.) 409–
675 427 (Landesamt für Denkmalpflege und Archäologie Sachsen-Anhalt, Landesmuseum für
676 Vorgeschichte, 2015).
- 677 31. Lull, V., Micó, R., Rihuete Herrada, C. & Risch, R. in *2200 BC – A climatic breakdown as a cause for the*
678 *collapse of the old world? Tagungen des Landesmuseums für Vorgeschichte Halle 12* (eds. Meller, H.,
679 Arz, H. W., Jung, R. & Risch, R.) 365–407 (Landesamt für Denkmalpflege und Archäologie Sachsen-
680 Anhalt, Landesmuseum für Vorgeschichte, 2015).
- 681 32. Garcia Sanjuán, L. & Murillo-Barroso, M. Social complexity in copper age southern Iberia (ca. 3200-
682 2200 cal b.c.): Reviewing the ‘state’ hypothesis at Valencina de la Concepción (Seville, Spain).
683 *Prehistory Iberia. Debating Early Soc. Strat. State*. 119–140 (2013). doi:10.4324/9780203072035
- 684 33. Schuhmacher, T. X. Elfenbeinobjekte des Chalkolithikums und der Frühen Bronzezeit auf der
685 Iberischen Halbinsel. Studien zu Herkunft, Austausch, Verarbeitung und sozialer Bedeutung von
686 Elfenbein. *Iberia Archaeologica* **16**, 610 (2012).
- 687 34. Besse, M. & Strahm, C. The components of the Bell Beaker complex. in *Bell Beakers today: pottery,*
688 *people, culture, symbols in prehistoric Europe. Proceedings of the International colloquium Riva del*
689 *Garda (Trento, Italy) 11-16 May 1998 / Vol. 1*. (ed. Nicolis, F.) (2001).
- 690 35. Rojo Guerra, M., Garrido-Pena, R. & García-Martínez de Lagrán, I. *El Campaniforme en la Península*
691 *Ibérica y su contexto europeo = Bell beakers in the Iberian Peninsula and their European context*.
692 (Universidad de Valladolid, Secretariado de Publicaciones e Intercambio Editorial, 2005).
- 693 36. Garrido-Pena, R. in *Iberia. Protohistory of the far west of Europe: from Neolithic to Roman conquest*
694 (ed. Almagro, M.) 113–124 (Universidad de Burgos. Fundación Atapuerca, 2014).
- 695 37. Garrido-Pena, R. in *Social Inequality in Iberian Late Prehistory. BAR International Series 1525*. (eds.

- 696 Díaz-del-Río, P. & García Sanjuán, L.) 81–96 (2006).
- 697 38. Lull, V., Micó, R., Rihuete, C. & Risch, R. The La Bastida fortification: new light and new questions on
698 Early Bronze Age societies in the western Mediterranean. *Antiquity* **88**, 395–410 (2014).
- 699 39. Gamba, C. *et al.* Ancient DNA from an Early Neolithic Iberian population supports a pioneer
700 colonization by first farmers. *Mol. Ecol.* **21**, 45–56 (2012).
- 701 40. Gómez-Sánchez, D. *et al.* Mitochondrial DNA from El Mirador cave (Atapuerca, Spain) reveals the
702 heterogeneity of Chalcolithic populations. *PLoS One* **9**, e105105 (2014).
- 703 41. Günther, T. *et al.* Ancient genomes link early farmers from Atapuerca in Spain to modern-day
704 Basques. *Proc. Natl. Acad. Sci.* **112**, 11917–11922 (2015).
- 705 42. Hervella, M. *et al.* Ancient DNA from hunter-gatherer and farmer groups from Northern Spain
706 supports a random dispersion model for the Neolithic expansion into Europe. *PLoS One* **7**, e34417
707 (2012).
- 708 43. Sánchez-Quinto, F. *et al.* Genomic affinities of two 7,000-year-old Iberian hunter-gatherers. *Curr. Biol.*
709 **22**, 1494–9 (2012).
- 710 44. Alt, K. W. *et al.* A Community in Life and Death: The Late Neolithic Megalithic Tomb at Alto de Reinoso
711 (Burgos, Spain). *PLoS One* **11**, e0146176 (2016).
- 712 45. Lacan, M. *et al.* Ancient DNA suggests the leading role played by men in the Neolithic dissemination.
713 *Proc Natl Acad Sci U S A.* **108**, 18255–9 (2011).
- 714 46. Brandt, G., Szécsényi-Nagy, A., Roth, C., Alt, K. W. & Haak, W. Human paleogenetics of Europe – The
715 known knowns and the known unknowns. *J. Hum. Evol.* **79**, 73–92 (2014).
- 716 47. Haak, W. *et al.* Massive migration from the steppe was a source for Indo-European languages in
717 Europe. *Nature* **522**, 207–211 (2015).
- 718 48. Olalde, I. *et al.* A common genetic origin for early farmers from mediterranean cardial and central
719 european LBK cultures. *Mol. Biol. Evol.* **32**, 3132–3142 (2015).
- 720 49. Mathieson, I. *et al.* Genome-wide patterns of selection in 230 ancient Eurasians. *Nature* **528**, 499–503
721 (2015).
- 722 50. Lipson, M. *et al.* Parallel ancient genomic transects reveal complex population history of early
723 European farmers. *bioRxiv* (2017).
- 724 51. Olalde, I. *et al.* Derived immune and ancestral pigmentation alleles in a 7,000-year-old Mesolithic
725 European. *Nature* **507**, 225–8 (2014).

- 726 52. Skoglund, P. *et al.* Genomic diversity and admixture differs for Stone-age Scandinavian foragers and
727 farmers. *Science* **344**, 747–750 (2014).
- 728 53. Lazaridis, I. *et al.* Ancient human genomes suggest three ancestral populations for present-day
729 Europeans. *Nature* **513**, 409–413 (2014).
- 730 54. Lazaridis, I. *et al.* Genomic insights into the origin of farming in the ancient Near East. *Nature* **536**,
731 419–424 (2016).
- 732 55. Brandt, G. *et al.* Ancient DNA reveals key stages in the formation of Central European mitochondrial
733 genetic diversity. *Science* **342**, 257–261 (2013).
- 734 56. Haak, W. *et al.* Ancient DNA from European early Neolithic farmers reveals their Near Eastern
735 affinities. *PLoS Biol.* **8**, e1000536 (2010).
- 736 57. Bramanti, B. *et al.* Genetic discontinuity between local hunter-gatherers and central Europe's first
737 farmers. *Science* **326**, 137–40 (2009).
- 738 58. Szécsényi-Nagy, A. *et al.* Tracing the genetic origin of Europe's first farmers reveals insights into their
739 social organization. *Proc. R. Soc. B* **282**, 20150339 (2015).
- 740 59. Fu, Q. *et al.* The genetic history of Ice Age Europe. *Nature* **534**, 200–205 (2016).
- 741 60. Posth, C. *et al.* Pleistocene Mitochondrial Genomes Suggest a Single Major Dispersal of Non-Africans
742 and a Late Glacial Population Turnover in Europe. *Curr. Biol.* **26**, 827–33 (2016).
- 743 61. Bollongino, R. *et al.* 2000 years of parallel societies in Stone Age Central Europe. *Science* **342**, 479–81
744 (2013).
- 745 62. Gamba, C. *et al.* Genome flux and stasis in a five millennium transect of European prehistory. *Nat.*
746 *Commun.* **5**, 5257 (2014).
- 747 63. Fu, Q. *et al.* A revised timescale for human evolution based on ancient mitochondrial genomes. *Curr.*
748 *Biol.* **23**, 553–559 (2013).
- 749 64. Fernández, E. *et al.* Ancient DNA Analysis of 8000 B.C. Near Eastern Farmers Supports an Early
750 Neolithic Pioneer Maritime Colonization of Mainland Europe through Cyprus and the Aegean Islands.
751 *PLoS Genet.* **10**, e1004401 (2014).
- 752 65. Rosa, A. & Brehm, A. African human mtDNA phylogeography at-a-glance. *J. Anthropol. Sci.* **89**, 25–58
753 (2011).
- 754 66. Posth, C. *et al.* Pleistocene mitochondrial genomes suggest a single major dispersal of non-africans
755 and a late glacial population turnover in Europe. *Curr. Biol.* **26**, 827–833 (2016).

- 756 67. Martínez-Cruz, B. *et al.* Evidence of pre-Roman tribal genetic structure in Basques from uniparentally
757 inherited markers. *Mol. Biol. Evol.* **29**, 2211–22 (2012).
- 758 68. Brotherton, P. *et al.* Neolithic mitochondrial haplogroup H genomes and the genetic origins of
759 Europeans. *Nat. Commun.* **4**, 1764 (2013).
- 760 69. Keerl, V. A River Runs Through It- Ancient DNA Data on the Neolithic Populations of the Great
761 Hungarian Plain. Doctoral thesis. (Johannes Gutenberg University Mainz, 2015). at
762 <<http://ubm.opus.hbz-nrw.de/volltexte/2015/4115/>>
- 763 70. Rivollat, M. *et al.* When the Waves of European Neolithization Met: First Paleogenetic Evidence from
764 Early Farmers in the Southern Paris Basin. *PLoS One* **10**, e0125521 (2015).
- 765 71. Lacan, M. *et al.* Ancient DNA reveals male diffusion through the Neolithic Mediterranean route. *Proc*
766 *Natl Acad Sci U S A.* **108**, 9788–91 (2011).
- 767 72. Skoglund, P. *et al.* Origins and genetic legacy of Neolithic farmers and hunter-gatherers in Europe.
768 *Science* **336**, 466–469 (2012).
- 769 73. Dolukhanov, P. *The early Slavs*. (Longman, 1996).
- 770 74. Housley, R. A., Gamble, C. S., Street, M. & Pettitt, P. Radiocarbon evidence for the Lateglacial human
771 recolonisation of northern Europe. *Proc. Prehist. Soc.* **63**, 25–54 (1997).
- 772 75. Gamble, C., Davies, W., Pettitt, P., Hazelwood, L. & Richards, M. The Archaeological and Genetic
773 Foundations of the European Population during the Late Glacial: Implications for. *Cambridge*
774 *Archaeol. J.* **15**, 193 (2005).
- 775 76. Torroni, a *et al.* A signal, from human mtDNA, of postglacial recolonization in Europe. *Am. J. Hum.*
776 *Genet.* **69**, 844–52 (2001).
- 777 77. Achilli, A. *et al.* The molecular dissection of mtDNA haplogroup H confirms that the Franco-Cantabrian
778 glacial refuge was a major source for the European gene pool. *Am. J. Hum. Genet.* **75**, 910–8 (2004).
- 779 78. Pereira, L. *et al.* High-resolution mtDNA evidence for the late-glacial resettlement of Europe from an
780 Iberian refugium. *Genome Res.* **15**, 19–24 (2005).
- 781 79. Soares, P. *et al.* The archaeogenetics of Europe. *Curr. Biol.* **20**, R174–183 (2010).
- 782 80. Achilli, A. *et al.* Saami and Berbers--an unexpected mitochondrial DNA link. *Am. J. Hum. Genet.* **76**,
783 883–6 (2005).
- 784 81. Martins, H. *et al.* Radiocarbon dating the beginning of the Neolithcis in Iberia: new results, new
785 problems. *J. Mediterr. Archaeol.* **28**, 105–131 (2015).

- 786 82. Alday Ruiz, A. The Neolithic in the Iberian Peninsula: An explanation from the perspective of the
787 participation of Mesolithic communities. *Zephyrus* **69**, 75–94 (2012).
- 788 83. Carvalho, A. F. in *On Pre- and Earlier History of Iberia and Central Europe* (eds. Armbruster, T. &
789 Hegewisch, M.) 45–61 (Studien zur Archäologie Europas Band 11, 2010).
- 790 84. Bueno, P., Barroso, R. & Balbín, R. in *The Megalithic Architectures of Europe* (eds. Laporte, L. & Scarre,
791 C.) 157–166 (Oxbow Books, 2015).
- 792 85. Stika, H. P. Early Neolithic agriculture in Ambrona, Provincia Soria, central Spain. *Veg. Hist.*
793 *Archaeobot.* **14**, 189–197 (2005).
- 794 86. Haak, W. *et al.* Ancient DNA from the first European farmers in 7500-year-old Neolithic sites. *Science*
795 **310**, 1016–1018 (2005).
- 796 87. Liesau, C., Banerjee, A. & Schwarz, J. O. in *Yacimientos calcolíticos con campaniforme de la región de*
797 *Madrid: nuevos estudios. Madrid.* (eds. Blasco, C., Liesau, C. & y Ríos, P.) 381–386 (Universidad
798 Autónoma de Madrid, 2011).
- 799 88. Liesau von Lettow-Vorbeck, C. in *Analysis of the economic foundations of the social supremacy of the*
800 *Beaker groups. Proceedings of the XVII UISPP World Congress (1-7 September, Burgos, Spain). Volume*
801 *6. Session B36.* (eds. Guerra, E. & Liesau, C.) 69–93 (Archaeopress Archaeology, 2016).
- 802 89. Schuhmacher, T. X., Cardoso, J. L. & Banerjee, A. Sourcing African ivory in Chalcolithic Portugal.
803 *Antiquity* **83**, 983–997 (2009).
- 804 90. Delibes-De-Castro, G. Reinterpretación del ajuar campaniforme de Villar del Campo: Nuevos
805 elementos de juicio para la valoración de la incidencia centro europea en el mundo de Ciempozuelos.
806 *Celtiberia* **XXVIII**, 267–286 (1978).
- 807 91. Garrido-Pena, R. *El Campaniforme en la Meseta Central de la Península Ibérica (c. 2500-2000 A.C.). BAR*
808 *International Series* **892**, (2000).
- 809 92. Fitzpatrick, A. P. in *Celtic from the West 2: Rethinking the Bronze Age and the Arrival of Indo-European*
810 *in Atlantic Europe*, (eds. Koch, J. T. & Cunliffe, B.) 41–70 (Oxbow, 2013).
- 811 93. Allentoft, M. E. *et al.* Population genomics of Bronze Age Eurasia. *Nature* **522**, 167–172 (2015).
- 812 94. Lee, E. J. *et al.* Emerging genetic patterns of the European Neolithic: perspectives from a late Neolithic
813 Bell Beaker burial site in Germany. *Am. J. Phys. Anthropol.* **148**, 571–579 (2012).
- 814 95. Haak, W. *et al.* Ancient DNA, Strontium isotopes, and osteological analyses shed light on social and
815 kinship organization of the Later Stone Age. *Proc Natl Acad Sci U S A.* **105**, 18226–31 (2008).

96. Wilde, S. *et al.* Direct evidence for positive selection of skin, hair, and eye pigmentation in Europeans during the last 5,000 y. *Proc Natl Acad Sci U S A.* **111**, 4832–4837 (2014).
97. Omrak, A. *et al.* Genomic Evidence Establishes Anatolia as the Source of the European Neolithic Gene Pool. *Curr. Biol.* **26**, 270–275 (2016).
98. Simon, M. *et al.* The Presence of Nuclear Families in Prehistoric Collective Burials Revisited: The Bronze Age Burial of Montanissell Cave (Spain) in the Light of aDNA. *Am. J. Phys. Anthropol.* **146**, 406–413 (2011).
99. R Core Team. R: A language and environment for statistical computing. R Foundation for Statistical Computing. Vienna, Austria. <http://www.r-project.org/> (2012).
100. Suzuki, R. & Shimodaira, H. pvclust: Hierarchical Clustering with P-Values via Multiscale Bootstrap Resampling. R package version 1.3-2. <http://CRAN.R-project.org/package=pvclust> (2014).
101. Fisher, R. A. On the interpretation of χ^2 from contingency tables, and the calculation of P. *J. R. Stat. Soc.* **85**, 87–94 (1922).
102. Librado, P. & Rozas, J. DnaSP v5: a software for comprehensive analysis of DNA polymorphism data. *Bioinformatics* **25**, 1451–2 (2009).
103. Excoffier, L. & Lischer, H. E. L. Arlequin suite ver 3.5: a new series of programs to perform population genetics analyses under Linux and Windows. *Mol. Ecol. Resour.* **10**, 564–567 (2010).
104. Benjamini, Y. & Hochberg, Y. Controlling the False Discovery Rate: A Practical and Powerful Approach to Multiple Testing. *J. R. Stat. Soc. Ser. B* **57**, 289–300 (1995).
105. Oksanen, J. *et al.* vegan: Community Ecology Package. R package version 2.2-1. <http://CRAN.R-project.org/package=vegan> (2015).

Acknowledgement

Concerning research in the Alto Ribatejo, authors wish to thank to Fundação para a Ciência e Tecnologia for the support for research on the dawn of farming in the Tagus valley (project “Moving Tasks Accross Shapes” – PTDC/EPH-ARQ/4356/2014), as well as the Geosciences Centre of Coimbra University (strategic project UID/Multi/00073/2013).

Financial statement

This study was funded by the German Research Foundation (Grant no. AI 287/14-1).

845

846 **Author contribution**

847 K.W.A., R.R. and W.H. conceived the study. C.R. performed the ancient DNA work. A.S-N.
 848 analyzed the data. C. T-R., Í. G-M-d-L., H. A. M., P. B. R., R. B. B., R. d. B. B., A. M. H-C., R. F.
 849 F., C. A. F., J. J. E., L. R., C. O., M. I. F., I. S., O. V., R. M., V. L., J. S. D., J. A. L. P., C. R-d-T. M.,
 850 M. S. H. P., F. J. J. M., J. L. M., A. A. F., K. T. L., A. M. S., M. M. R., L. M. O., V. M. D. S. G., C.
 851 C., A. W., J. R. B., A. M., J. P. M., M. H. O., J. C. M-G., J. C. P. E., R. C-A. B., T. T., E. C. B., J. L.
 852 C., A. C. A., C. L. v. L-V., C. B. B., P. R. M., A. P., J. I. R-G., M. A. E. B., R.P., E. M. H., E. M. I.,
 853 J. V. d. M., R. M. G., V. M. C., O. L. J., and M.K. provided samples, anthropological and
 854 archaeological information. S. Z., C. K. and P. H. performed further bioarchaeological analyses. G.
 855 B., E. B., S. F., H. M., J. K., C. R. H. gave critical input to the version to be submitted. A.S-N., W.
 856 H., R.R., R.G-P., M.A.R-G., A. M. H-C., S. L. P. and K.W.A wrote the paper. All authors have read
 857 and commented the manuscript.

858

859 **Competing interest**

860 The authors declare no competing interest.

861 **Data and materials availability**

862 Consensus HVS-I DNA sequences were uploaded to NCBI GenBank under the accession numbers
 863 KY446554 - KY446703.

864

865

Figures legends

Figure 1. Map of the studied sites, including the published reference data and timing of archaeological periods on the Iberian Peninsula and in Central Europe.

Geographic regions, also differentiated in the mtDNA analyses, are indicated as: NEI: northeast, SEI: southeast, SWI: southwest Iberia. Numbers on the map are colored according to the chronological periods, represented in the lower part of the figure. For the Central European chronology we used records from the most important comparative region of Central German Mittelelbe-Saale⁵⁵. See Supplementary Table S5 for details. Site codes: 1. Moita do Sebastião, 2. Galeria da Cisterna (Almonda cave), 3. Gruta de Nossa Senhora das Lapas, 4. Gruta do Cadaval, 5. Gruta das Alcobertas, 6. Gruta do Poço Velho, 7. Gruta dos Ossos, 8. Tholos de Pai Mogo I, 9. Hipogeu de Monte Canelas I, 10. Hipogeu de Monte Canelas III, 11. Bolores, 12. Gruta de Malgasta, 13. Valencia Area 9, 14. Gruta do Carvalhal de Turquel, 15. Cobre las Cruces, 16. Cova de l'Or, 17. Cova de la Sarsa, 18. Cova d'en Pardo, 19. Molinos del Papel, 20. Cova del Barranc del Migdia, 21. Cova del Cantal, 22. Camino de Molino, 23. Fuente Alamo, 24. Lorca-Los Tintes, 25. Lorca-Madre Mercedarias, 26. Lorca-Castillo de Lorca, 27. Rincón de Moncada, 28. La Bastida, 29. Tabayá, 30. Illeta dels Banyets, 31. Cova Bonica, 32. Can Sadurní, 33. Cova d'Avellaner, 34. Els Trocs, 35. Sant Pau de Camp, 36. Barranc d'en Rifà, 37. Balma de Sargantana, 38. Cova de la Ventosa, 39. Cova de Montanissel, 40. Miguel Vives, 41. Can Gambús, 42. Chaves, 43. Valdescusa, 46. Alto de Rodilla, 47. Fuente Celada, 48. Fuente Pecina 1, 49. Fuente Pecina 2, 50. Fuente Pecina 4, 51. Alto de Reinoso, 52. La Mina, 53. La Tarayuela, 54. El Juncal, 55. Arroyal I, 56. El Hundido, 57. Camino de las Yeseras, 58. Humanejos, 59. Valle de las Higueras, 60-61. El Portalon, 62. El Mirador, 63. Es Forat de ses Aritges.

Figure 2. MtDNA haplogroup composition of the prehistoric Iberian groups. Abbreviations: Hunter-gatherers in Europe from the Holocene (HG_HOL), northeast Iberian Neolithic (NEI_Neo), northeast Iberian Chalcolithic and Early Bronze Age (NEI_CHA_EBA), central Iberian Neolithic (CI_Neo), central Iberian Chalcolithic (CI_CHA), southwest Iberian Neolithic (SWI_Neo), southwest Iberian Chalcolithic (SWI_CHA), southeast Iberian Neolithic (SEI_Neo), Chalcolithic and Bronze Age (SEI_CHA_EBA). Relative haplogroup frequencies are presented in Supplementary Table S6. The background map of Iberian Peninsula was downloaded from Wikipedia (https://en.wikipedia.org/wiki/File:Relief_Map_of_Spain.png#file) and modified in Adobe Illustrator CS6 software.

899

900 **Figure 3. Principal component analysis based on haplogroup frequencies of 955 individuals**
 901 **from 16 prehistoric groups.** The first two components display 36.6% of the total variance. Groups
 902 are colored according to their geographical positions: brown: Iberia, purple: France, ochre: Central
 903 and East-Central Europe, yellow: Eastern Europe and Near East. For abbreviations of Iberian groups,
 904 see legend of Figure 2. Further abbreviations: Central and North European hunter-gatherers from the
 905 Holocene (HG_HOL), Neolithic Anatolia (ANAT) Yamnaya (YAM), Early Neolithic Carpathian
 906 Basin (CB_EN), Early Neolithic Germany (GER_EN), Middle Neolithic Germany (GER_MN), Late
 907 Neolithic Germany (GER_LN), Early Bronze Age Central Europe (CEU_EBA), Neolithic Gurgy site
 908 in France (FRA_GUR), Neolithic Treilles culture in France (TRE). For further information see
 909 Supplementary Table S6.

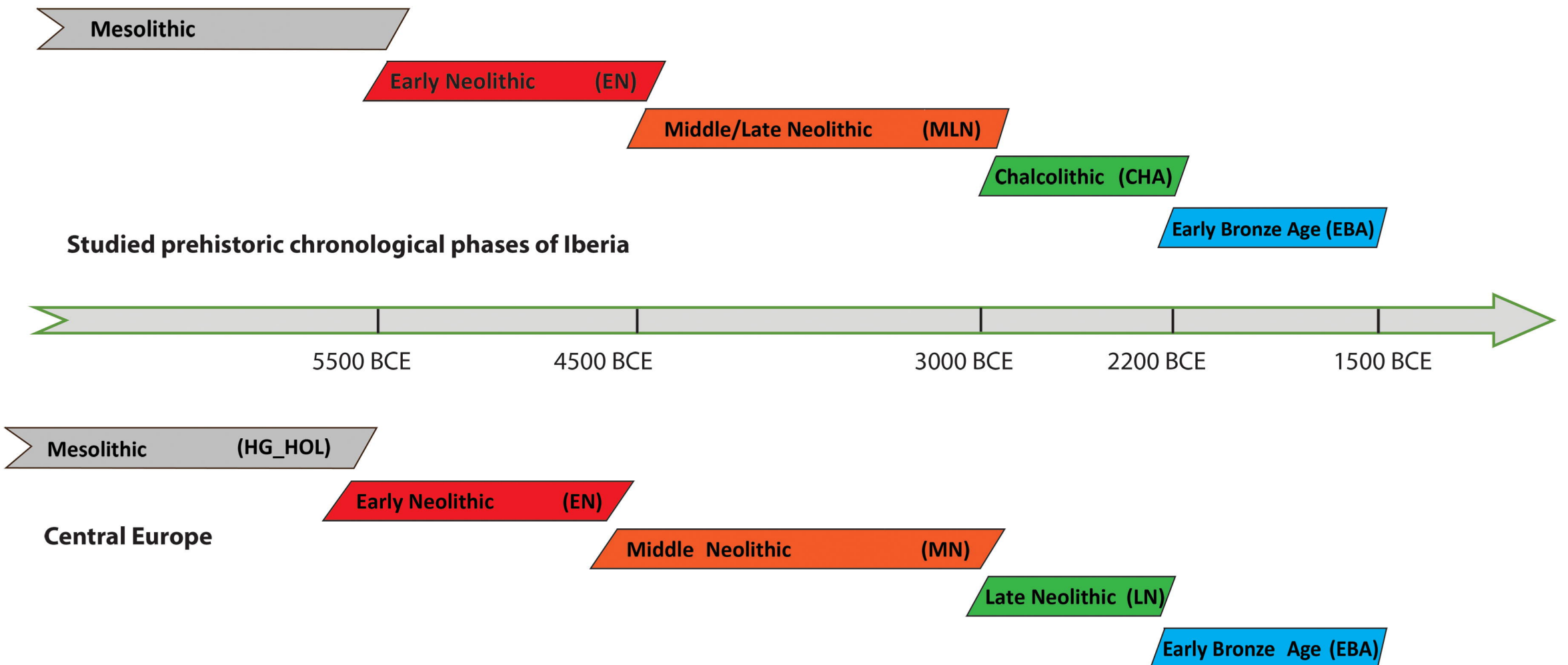
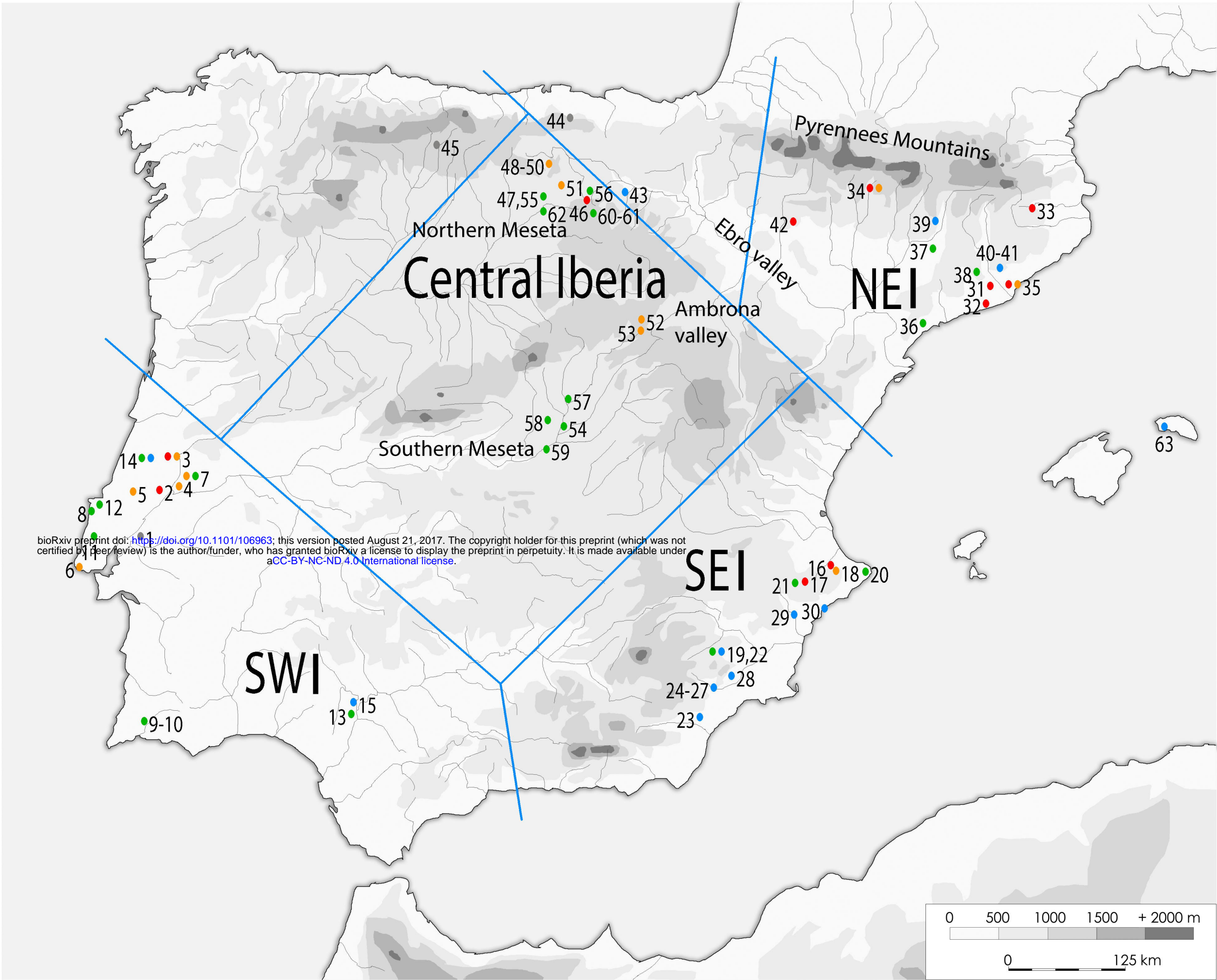
910

911

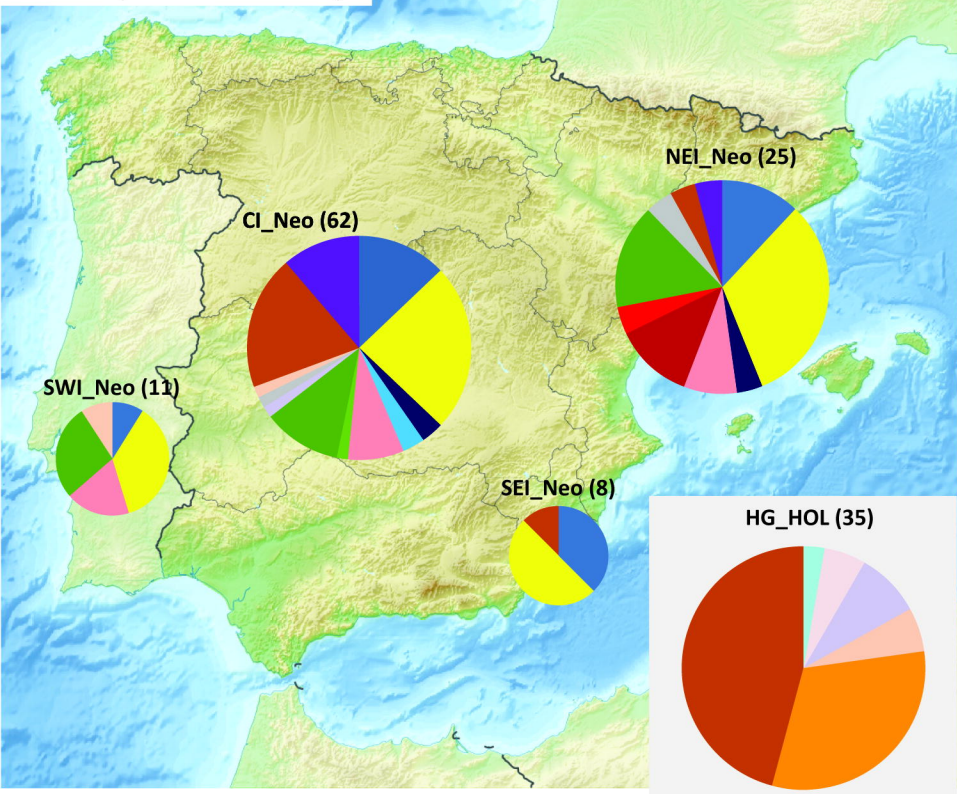
912 **Tables**

A: SHA			Detected in the following populations:				
		n sample	HG_HOL	EN	MLN	CHA	EBA
mtDNA lineages:	HG_HOL	35	100	0	6,756757	5,084746	0
	EN	27	0	100	50	53,38983	28,125
	MLN	74	31,42857	66,66667	100	52,54237	25
	CHA	118	34,28571	66,66667	66,21622	100	40,625
	EBA	16	0	33,33333	31,08108	43,22034	100
B: ancestral SHA			Detected in the following populations:				
		n sample	HG_HOL	EN	MLN	CHA	EBA
mtDNA lineages:	HG_HOL	35	100				
	EN	27	0	100			
	MLN	74	6,756757	43,24324	50		
	CHA	118	5,084746	44,91525	14,40678	35,59322	
	EBA	16	0	56,25	18,75	6,25	18,75

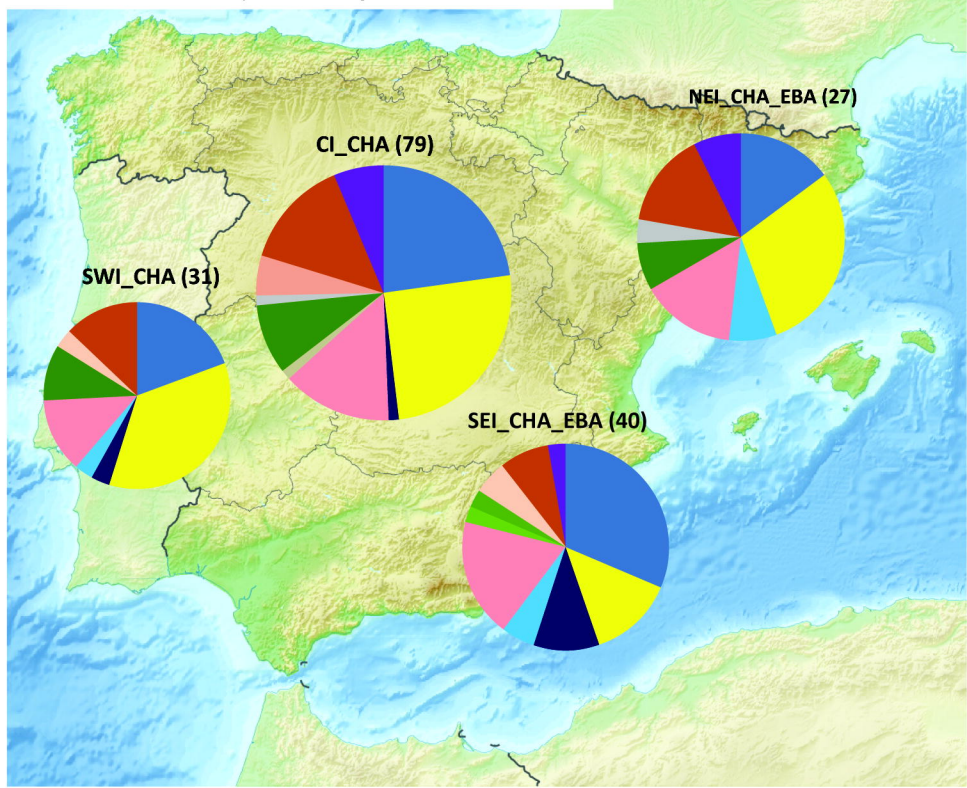
913 **Table 1. Results of shared haplotype analysis (SHA): percentage of shared HVSI haplotypes**
914 **among the Iberian chronological groups (A), and ancestral haplotype analysis with the studied**
915 **Iberian groups (B). Abbreviations: HG_HOL- hunter-gatherers, EN-Early Neolithic, MLN-Middle**
916 **and Late Neolithic, CHA-Chalcolithic, EBA-Early Bronze Age, all in Iberia. For further details, see**
917 **Supplementary Table 10 and Methods.**



Neolithic (ca. 5500- 3000 BCE)



Chalcolithic and Early Bronze Age (ca. 3000-1500 BCE)



MtDNA haplogroups:

R H K V HV J L N N1a T T2 U U2 U3 U4 U5a U5b X

