

1 **Antimicrobial Resistance Profile and *mcr-1* Gene Detection in *Salmonella* Isolates from**
2 **Poultry in Bangladesh: Molecular and Bioinformatics Characterization**

3
4
5 **Md Bashir Uddin^{a*} †, S M Bayejed Hossain^a †, Mahmudul Hasan^b †, Mohammad Nurul Alam^a, Mita**
6 **Debnath^c, Ruhena Begum^d, Sawrab Roy^e, Ahmed Harun-Al-Rashid^f, Md. Shahidur Rahman**
7 **Chowdhury^a, Md. Mahfujur Rahman^a, Md. Mukter Hossain^a, Mohammed Yousuf Elahi**
8 **Chowdhury^g and Syed Sayeem Uddin Ahmed^{h*}**
9

10
11
12 ^aDepartment of Medicine, Sylhet Agricultural University, Sylhet-3100, Bangladesh

13 ^bDepartment of Pharmaceuticals and Industrial Biotechnology, Sylhet Agricultural University,
14 Sylhet-3100, Bangladesh

15 ^cKazi Farms Poultry Laboratory, Gazipur-1700, Bangladesh

16 ^dBangladesh Livestock Research Institute, Savar, Dhaka-1341, Bangladesh

17 ^eDepartment of Microbiology and Immunology, Sylhet Agricultural University, Sylhet-3100,
18 Bangladesh

19 ^fDepartment of Aquatic Resource Management, Sylhet Agricultural University, Sylhet-3100,
20 Bangladesh

21 ^gDepartment of Medicine and Surgery, Chattogram Veterinary and Animal Sciences University,
22 Chattogram-4225, Bangladesh

23 ^hDepartment of Epidemiology and Public Health, Sylhet Agricultural University, Sylhet-3100,
24 Bangladesh

25
26 †The first three authors contributed equally to this work

27
28 *Corresponding authors

29 E-mail address: bashir.vetmed@sau.ac.bd [MB Uddin]

30 : ahmedssu.eph@sau.ac.bd [SSU Ahmed]

31
32 **Running title:**

33 ***mcr-1* gene Detection in Salmonella in Poultry**

34

35 **Antimicrobial Resistance Profile and *mcr-1* Gene Detection in *Salmonella* Isolates from**
36 **Poultry in Bangladesh: Molecular and Bioinformatics Characterization**

37
38

39

40 **Abstract**

41 Antimicrobial resistance gene *mcr-1* has been disseminated globally since its first discovery in
42 Southern China in late 2015. However, the *mcr-1* gene had not been identified previously in
43 *Salmonella* isolates from poultry in Bangladesh. Here, we aimed to explore antimicrobial
44 resistance gene *mcr-1* in *Salmonella* isolates. Eighty two *Salmonella* isolates were isolated and
45 characterized from suspected poultry specimens received from different zones of the country. A
46 phenotypic disc diffusion assay with 15 antimicrobial agents was performed following CLSI
47 standard. The disk diffusion assay showed that, all of the isolates presented high resistance to
48 colistin (92.68%), oxytetracycline (86.59%), co-trimoxazole (76.83%), ciprofloxacin (73.17%)
49 and enrofloxacin (65.85%). Further, randomly selected 10 *Salmonella* isolates were analyzed by
50 polymerase chain reaction (PCR) targeting genus-specific *invA* and antimicrobial (colistin)
51 resistance *mcr-1* genes. Five were confirmed for the presence of the *mcr-1* gene belonging to
52 *Salmonella* spp. Further, sequencing followed by phylogenetic analysis revealed divergent
53 evolutionary relation between the LptA and MCR proteins rendering them resistant to colistin.
54 Three-dimensional homology structures of MCR-1 proteins were constructed and verified using
55 different bioinformatics tools. Moreover, molecular docking interactions suggested that, MCR-1
56 and LptA share a similar substrate binding cavity which could be validated for the functional
57 analysis. The results represent here is the first molecular and *in silico* analysis of colistin
58 resistance *mcr-1* gene of *Salmonella* in poultry in Bangladesh, which may emphasize the
59 importance of the study on antibiotic resistance genes requiring for national monitoring and
60 strategic surveillance in the country.

61

62 **Keywords:** Antimicrobial resistance, *mcr-1* gene, *Salmonella*, Poultry, Bangladesh

63

64

65 **Introduction**

66 Poultry (mainly broiler and layer) farming is an important avenue in fostering agricultural
67 growth and has becoming a major contributing sector for potential income generation and
68 poverty alleviation in Bangladesh (1, 2). Eggs and poultry meats are most acceptable and largely
69 consumed animal products to meet dietary nutritional requirements throughout the country (3,
70 4). In spite of significant improvement, there is a potential threat of diseases due to bacterial
71 infections that can result a huge economic loss in this sub-sector (5, 6). Among them,
72 infections with *Salmonella* spp. are the most commonly reported problem in poultry that cause
73 food borne illness to human and remain as persistent threat to both human and animal health (6–
74 8) . Globally, 94 million human affected cases were estimated due to *Salmonella* spp. leading to
75 155,000 deaths every year (9, 10).

76

77 Salmonellosis is endemic in nature causing morbidity and mortality in poultry. It is very
78 significant by virtue of the fact that, it can be transmitted vertically from parent to offspring; this
79 makes its control a challenge. Although vaccination and good hygiene practices are most
80 effective ways to prevent salmonellosis (11), antibiotics are extensively using either as a growth
81 promoter or prophylaxis and therapeutics in poultry industry of Bangladesh (12, 13). Indeed, the
82 widespread misapplication and nonjudicious use of antimicrobial drugs in poultry settings,
83 culminating the development of antimicrobial resistant pathogens like *Salmonella* (Gyles, 2008,
84 Cantas et al., 2013; Antunes et al., 2016).

85

86 Antimicrobial resistant *Salmonella* of poultry can harbor as a major risk and vehicle for
87 dissemination of these pathogens to humans (16, 17). Standard culture, biochemical and
88 serological methods are usually employed for isolation and identification of *Salmonella* species.
89 However, the *invA* encoding invasion gene, commonly involved in bacterial virulence, is
90 accountable and routinely used for the detection of *Salmonella* spp. (18). Moreover, the *invA*
91 sequences are distinctive to the genus *Salmonella* and diagnosed by polymerase chain reaction
92 (PCR) is a preferred diagnostic method due to its reliable sensitivity, specificity and detection
93 speed (19, 20).

94

95 Of note, poultry is usually incriminated in outbreaks of human Salmonellosis. Therefore, the
96 detection of *Salmonella* species in poultry production chain particularly at the farm level is an
97 issue of great concern. Furthermore, the resistance of some *Salmonella* serotype to multiple
98 antibiotics (15) makes the study on antibiotic susceptibility profile and its antimicrobial
99 resistance gene, a great priority (21). So far, *mcr-1* positive *Enterobacteriaceae* (MCRPE) has
100 been found in animal, food, human and environment in over 25 countries across 4 continents
101 (22–25). As far as literature mining is concerned from PubMed search regarding poultry in
102 Bangladesh, no data was found on the molecular characterization and antimicrobial resistance
103 gene detection in *Salmonella*.. Therefore, the present study has undertaken to detect colistin
104 resistance *mcr-1* gene for the first time in *Salmonella* isolates and its associated drug resistance
105 pattern of commonly used antibiotics.

106

107 In this study, morphological and biochemical techniques were generated and phenotypic and
108 genotypic characteristics of isolates were explored using antimicrobial susceptibility testing,
109 PCR, nucleotide analysis, bioinformatics and structural modeling of bacterial genetics. The
110 phylogenetic relationships between local isolates and published data sets from different corner of
111 the world were analyzed. Additionally, molecular docking of phosphatidylethanolamine
112 substrate with MCR-1 and LptA were investigated. Focus has been given on antimicrobial
113 resistance *mcr-1* gene involved in multidrug leading to colistin resistance.

114

115

116

117

118

119 **Materials and methods**

120

121 **Ethical standards**

122 The research has been conducted in accordance with the Institutional Ethics Committee of Kazi
123 Farms Group, Dhaka and Sylhet Agricultural University (SAU), Sylhet, Bangladesh.

124

125 **Study area and sampling**

126 The study was conducted from January to June 2019 at popular poultry zones of Bangladesh:
127 Gazipur, Narsingdi, Tangail and Brahmanbaria (**Figure 1**). Samples of dead and sick birds were
128 collected and transferred to the customer service lab at Kazi Farms Group, Gazipur, Bangladesh.
129 Postmortem was conducted immediate after receiving samples with their anamnesis and clinical
130 information in accordance with the standard guidelines by a veterinarian. During postmortem,
131 liver and intestinal samples were collected and immediately sent for further analysis. For sick
132 live birds, blood was collected for serum separation before the postmortem examination.

133

134 **Isolation and biochemical identification of bacterial isolates**

135 Before isolation of *Salmonella* spp, samples were initially screened out by Rapid Serum Plate
136 Agglutination Test (RSPAT; ID Vet, France) followed by clinical and postmortem findings.
137 Liver and intestinal samples from 100 suspected samples were subjected to a pre-enrichment step
138 by combining with 225 mL Buffered Peptone Water (BPW) in a ratio of 10 fold dilutions and
139 incubated at 37°C for 24 hours (h). For *Salmonella* specific pre-enrichment, culture were further
140 transferred to Modified Semi-solid Rappaport Vassiliadis (MSRV; Hi Media, India) and
141 Tetrathionate Broth (TTB; Hi Media, India) consecutively and incubated at 42°C for 24 h.
142 Following enrichment, a loop of enriched broth was initially streaked on Xylose-Lysine-
143 Desoxycholate (XLD; Hi Media, India) agar and colonies (single pinkish) were streaked on
144 *Salmonella-Shigella* (SS) agar, incubated at 37°C for 24 h. *Salmonella* colonies were identified
145 by physical and biochemical properties using Gram's stain, catalase and indole tests as
146 previously described (Dashti et al., 2009; Sobur et al., 2019). For further confirmation, 4-6
147 suspected *Salmonella* colonies from each samples were tested biochemically by dilution
148 streaking and stab onto Triple Sugar Iron (TSI) agar (Merck, Germany) and incubation at 37°C
149 for 16-24 h (28, 29).

150

151 **Antimicrobial susceptibility testing**

152 *Salmonella* isolates were examined for phenotypic antibiogram using 15 antimicrobial agents by
153 Kirby–Bauer disk diffusion method as previously described (30). In a brief, isolates were grown
154 on Mueller-Hinton (MH) agar (Hi Media, India) and incubated for 16-18 h at 37°C. McFarland
155 0.5 standards were maintained for culture suspension of individual isolate. Discs were placed on
156 the agar surface using a sterile forceps and incubated at 37°C for 18 hours. The tested results

157 were interpreted by measuring the zones of inhibition and scored as sensitive, intermediate and
158 resistant according to the CLSI (CLSI, 2019) (**Table 1**). Isolates that were found resistant against
159 at least 3 classes of antibiotics considered as multidrug resistance (MDR) *Salmonella* spp (**Table**
160 **2**) (32).

161

162

163 **Extraction of Bacterial genomic DNA**

164 Among 82 *Salmonella* isolates, 10 isolates were randomly subjected to molecular
165 characterization for the identification of resistance genes. For this, bacterial DNA was extracted
166 by boiling-centrifugation method as described earlier (27, 33). In a brief, a loop full of overnight
167 cultured bacterial suspension was transferred into 1.5 mL microcentrifuge tube and centrifuged
168 at 13,000 rpm for 1 min. The supernatant was discarded and 1 mL of sterile ultrapure water was
169 added and vortexed. The suspension was heated at 100°C for 8~10 min in a heating block and
170 then immediately cooled on ice for 5 min. Cell debris from the cell lysates were pelleted by
171 centrifugation at 13,000 rpm for 1 min and remaining supernatant was used as DNA templates
172 for PCR assays.

173

174 **Polymerase Chain Reaction (PCR) and gel electrophoresis**

175 Extracted DNA was subjected to PCR for the initial confirmation of *Salmonella* isolates using
176 specific primers (**Table 3**) targeting *invA* gene with the expected amplicon size of 100 bp. A
177 PCR assay was further performed with confirmed 10 *Salmonella* isolates to detect the presence
178 of antimicrobial resistance gene *mcr-1*. In this case, 2 targeting primer sets (**Table 4**) were
179 designed for covering frame reading of antimicrobial (colistin) resistance gene *mcr-1* with the
180 allocated 2 amplicon sizes (1197 bp and 799 bp). Both PCR assays were performed in 20 mL
181 reaction mixture containing 5 µM of each forward and reverse primer and 5 µL of extracted
182 genomic DNA as template. *Salmonella* positive plasmid (5 µL) used as positive controls (PC)
183 and sterile molecular grade water was used as negative controls (NC) to detect cross-
184 contamination during DNA purification and PCR. To optimize PCR reaction, lambda DNA
185 amplification (1000 bp) was used as internal control (IC). PCR was performed using PCR
186 thermocycler (Bio-Rad, United States); conditions for amplification of *invA* and *mcr-1* genes
187 were listed in **Supplementary Table 1 & 2**. The amplified products were visualized by gel

188 electrophoresis using 1.5% agarose gel and viewed under UV transilluminator in Gel
189 Documentation System (Bio-Rad, United States). For *mcr-1* gene, PCR products of 2 primer sets
190 were purified (Addbio Inc., product code: 10078, South Korea) and used as direct sequencing.
191 Two sequences of each sample was assembled for covering frame reading of *mcr-1* gene and
192 checked with BLAST and annotated to GenBank. In the case of *invA* gene, 10 representative
193 amplicons of *invA* gene fragments were sequenced to confirm the identity of *invA* gene using
194 BLAST (**Supplementary File 1**). DNA sequencing was done by commercial sequencing
195 company SolGent (Daejeon, Republic of Korea).

196

197

198

199 **Sequence acquisition, multiple sequence alignment and phylogenetic analysis**

200 *BLASTp* search (<https://blast.ncbi.nlm.nih.gov/Blast.cgi>) was employed to retrieve the
201 homologous sequences of the MCR-1 and MCR-1 like proteins from the NCBI database using
202 six SAUVM MCR-1 proteins translated from the *mcr-1* genes of *Salmonella spp.* Sequences
203 were carefully categorized into MCR-1 and MCR-1 Like proteins of *Salmonella*, *E. coli* strains,
204 strains containing LptA (formerly named EptA) and others (**Supplementary File 2 and 3**).
205 Multiple sequence alignment of SAUVM*mcr-1* proteins and retrieved *mcr-1* of *Salmonella*
206 species were performed using T-Coffee with default parameters (34). Maximum Likelihood
207 Method of MEGA X (35) was employed to construct a phylogenetic tree using aligned sequences
208 of MCR-1 from ClustalW (36). Results were validated using 500 bootstrap replicates.

209

210 **Transmembrane topology analysis, structural modelling, refinement and validation**

211 To predict the transmembrane helices of MCR-1 proteins, TMHMM server
212 (<http://www.cbs.dtu.dk/services/TMHMM/>) was used with standard parameters. The topology
213 was given as the position of the transmembrane helices differentiated by 'i' and 'o' when the
214 loop is on the inside and outside respectively (37). Three dimensional (3D) modelling of
215 SAUVM MCR-1 proteins were performed by I-TASSER which functions by identifying
216 structure templates from the Protein Data Bank (PDB) library. I-TASSER simulations generate
217 large ensemble of structural conformations based on the pair-wise structure similarity. The

218 confidence of each model is quantitatively measured by C-score (38). To enhance the accuracy
219 of the predicted structures, refinement was performed using ModRefiner (39) followed by FG-
220 MD refinement server (40, 41). Finally, the refined structures were also validated using Verified
221 3D (42, 43), ERRAT (44) and Ramachandran Plot Assessment server (RAMPAGE) (45, 46).

222

223 **Molecular docking of PE substrate with *mcr-1* and LptA**

224 The chemical structure of Phosphatidylethanolamine (PE) (ZINC identification number [ID]:
225 ZINC32837869) was sampled from the ZINC database (47) while the 3D structure of LptA
226 (PDB ID: 5FGN; Organism: *Neisseria meningitidis*), the best template of SAUVM MCR-1 were
227 retrieved from the RCSB Protein Data Bank (PDB) server (48). Binding interactions of the PE in
228 the MCR-1 LptA was investigated by molecular docking using Autodock Vina algorithm in
229 PyRx software (49). OpenBabel (version 2.3.1) was used to convert the output PDBQT files in
230 PDB format. PyMol and Discovery Studio software were used to optimize and visualize the
231 protein structures and ligand binding interaction patterns (50, 51).

232

233 **Nucleotide Sequence Accession Number**

234

235 The sequences of five *mcr-1* genes of *Salmonella* spp. isolated from poultry were deposited into
236 the GenBank database with the Accession No. MN873694, MN873695, MN873696, MN873697
237 and MN873698 for SAUVM_S6, SAUVM_S7, SAUVM_S8, SAUVM_S9 and SAUVM_10,
238 respectively.

239

240 **Results**

241 **Confirmation of *Salmonella* spp. and their antimicrobial susceptibility**

242

243 *Salmonella* isolates were confirmed by morphological (Gram's stain), cultural (MacConkey,
244 XLD and S-S agar media) and biochemical (catalase, indole and TSI agar slants test)
245 characteristics as previously described (29). A total of 82 *Salmonella* isolates were differentiated
246 and confirmed following their morphological and biochemical properties. Out of 82 isolates, 10
247 were further confirmed for the presence of *invA* virulence genes, which is accountable for sal-
248 monellosis. PCR (using specific primer listed in **Table 3**) was conducted as a confirmatory

249 detection tool and found 10 out of 10 (100%) suspected *Salmonella* isolates were *invA* gene (100
250 bp) positive. Amplified DNA fragment of 100 base pairs were considered as positive for
251 *Salmonella* isolates (**Figure 2**). All the *Salmonella* isolates (n=82) were subjected to antibiotic
252 resistance profiling to 15 antimicrobials (**Table 1**). In general, a considerable percentage of
253 resistance was observed across the entire isolates in disk diffusion assay according to the
254 standard of CLSI (31). Specifically, high resistances were found against colistin (92.68%),
255 oxytetracycline (86.59%), co-trimoxazole (76.83%), ciprofloxacin (73.17%) and enrofloxacin
256 (65.85%). Isolates were shown 100% susceptible to the Ceftriaxone (CTR, 30ug), Fosfomycin
257 (FOS, 50µg), Norfloxacin (NOR, 10µg), Levofloxacin (LEV, 5µg), Azithromycin (AZM, 15µg),
258 and Neomycin (NEO, 10µg) antimicrobials. Only 1 isolate (1/82, 1.22%) was resistant to
259 Lincomycin (LIN, 10µg). Other isolate intermediately resistant to Amoxicillin (AML, 10µg),
260 Streptomycin (STR, 10µg) and Lincomycin (LIN, 10µg). Although, there were some variations,
261 some antibiotic profiles were common among isolates. The multidrug resistant (MDR) patterns
262 were also evaluated among *mcr-1* positive *Salmonella* spp against different antimicrobial classes.
263 All the isolates (100%) showed MDR against 3 antimicrobial classes (colistin, oxytetracycline
264 and ciprofloxacin) (**Table 2**).

265

266

267 **Detection of colistin resistance *mcr-1* gene**

268 *Salmonella* isolates were further evaluated for the presence of the *mcr-1* gene through PCR using
269 *mcr-1* specific primers (**Table 4**). Five samples were likely to carry colistin resistance *mcr-1*
270 among 10 randomly selected *Salmonella* isolates obtained from chickens (**Figure 3**). In Sanger
271 sequencing demonstration, sequence found 100% identical with *mcr-1* gene accessed in the
272 NCBI database and *mcr-1* gene described by Liu et al. (2016).

273

274 **Sequence acquisition, multiple sequence alignment and phylogenetic analysis**

275 In order to analyze sequence similarities, phylogeny and structural insights of *mcr-1* gene
276 products, the respective translated MCR-1 proteins were employed in different bioinformatics
277 studies. A total of 52 homologous sequences of the MCR-1 and MCR-1 like proteins were
278 retrieved from the NCBI database, while 44 sequences were employed to phylogenetic analysis
279 including SAUVM-MCR-1 proteins. Again, 8 MCR-1 proteins of *Salmonella* spp were aligned

280 with SAUVM-MCR-1 proteins for further analysis. The evolutionary relation inferred via
281 phylogeny analysis has been given in **Figure 4**. The phylogenetic analysis revealed that, all of
282 the MCR-1 and MCR-1 like proteins were distinctly categorized into 2 major groups;
283 chromosomally-encoded LptA and plasmid encoded MCR types, indicating a divergent
284 evolutionary relation between the LptA and MCR proteins.

285

286 **Transmembrane topology analysis, structural modelling, refinement and validation**

287 Prediction of transmembrane helices is of utmost importance in functional analysis of protein.
288 Therefore, TMHMM server was applied for predicting transmembrane helices in *mcr-1* genes of
289 *Salmonella* isolates. TMHMM predicted that, there were five transmembrane domain in the
290 SAUVM-MCR-1 proteins; TMhelix1 (13-35), TMhelix 2 (50-72), TMhelix 3 (79-101), TMhelix
291 4 (123-145) and TMhelix 5 (158-180) which were spanned in the inner membrane region
292 (**Figure 5**). The structure of SAUVM-MCR-1 proteins were modeled using I-TASSER server,
293 where *N. meningitis* EptA (PDB ID 5FGN) acted as the structural template. SAUVM-MCR-1
294 proteins showed 35.4% (35.6%) identity to EptA, and their modelled structure possesses a
295 coverage score of 96% compared with that of EptA. Refinement was performed to enrich the
296 quality of predicted structures beyond the accuracy. After refinement Ramachandran plot
297 analysis revealed that, 83.3% residues were in the favored, 12.4% residues in the allowed while
298 only 4.3% residues were in the outlier region (**Figure 6**). Moreover, ERRAT showed 94.4%
299 quality factor (**Supplementary Figure 1A and 1B**) and Verify3D suggested that, 94.74% of the
300 residues had averaged 3D-1D score ≥ 0.2 (**Supplementary Figure 2**).

301

302 **Molecular docking of PE substrate with MCR-1 and LptA**

303 The grid box was set to $82.0138\text{\AA} \times 82.7041\text{\AA} \times 82.471\text{\AA}$ (x, y and z) with 1\AA spacing
304 between the grid points, while other parameters were default. Though, molecular docking of PE
305 substrate with SAUVM-MCR-1 and LptA generated five docking binding conformation for each
306 but the binding pattern with lower energy had been selected (PE & MCR-1: -3.4kcal/mol and PE
307 & LptA: -3.6kcal/mol). Again, it was demonstrated that Leu 64, Tyr 179 and Phe 183 were the

308 key interactive molecules in PE binding cavity of SAUVM MCR-1 whereas Ser 61, Tyr 174, Phe
309 181, Val 192 and Ser 194 were for LptA (**Figure 7**).

310

311

312 **Discussion**

313

314 *Salmonella* is the primary and leading cause of food borne diseases globally; accounting for 78
315 million affected and 59 thousand deaths annually (52, 53). This is an endemic food borne disease
316 in South Asian countries like Bangladesh (54, 55). A broad range of food stuff has been
317 associated with such illness. Among them, food from animal sources, especially poultry is in
318 main list. Due to its potential to cause enteric disease, the detection of *Salmonella* isolates in
319 poultry is of great concern which are globally recognized as food borne zoonoses (52, 55, 56).
320 The severity and length of such diseases could reduce by antimicrobial therapeutics in human
321 (53) and poultry as well (57, 58). However, the rising of antimicrobial-resistant that is,
322 antimicrobials commonly prescribed to treat *Salmonella* are losing its ability to stop growing or
323 killing of *Salmonella* has become a significant public health issue now days (Islam and Shiraj-
324 um-mahmuda, 2016; Ahmed et al., 2019 Wasyl et al., 2015; Iwamoto et al., 2017). As a result,
325 standard treatment become ineffective, infections persist, and may increases chance of spreading
326 to others (53, 61). Therefore, antimicrobial resistance is of great concern and challenging for any
327 country. So far, Bangladesh requires baseline data on resistant bacteria like *Salmonella* and their
328 molecular detection from various sources (e.g. poultry) to develop effective strategies against
329 antimicrobial resistance and its hazards.

330

331 In the present study, to explore morphological, biochemical and molecular detection of
332 antimicrobial resistant *Salmonella* and their genes in poultry, samples were obtained from both
333 broiler and layer birds that were dead or clinically sick. Initial screening for infection has been
334 done on the basis of clinical history, signs and postmortem findings. Among 100 suspected
335 samples from different poultry zones of the country, 82 found positive for *Salmonella* spp. which
336 was not unexpected as previous studies found that, even apparently healthy commercial poultry
337 and their surrounding environment can carry *Salmonella* spp. in Bangladesh (62, 63).

338 Molecular methods were optimized for rapid identification of *Salmonella* isolates and its
339 resistance genes in poultry using specific primers followed by nucleotide sequencing and
340 phylogenetic analysis. The virulence of *Salmonella* is linked to a combination of various factors,
341 for example, *invA* virulence gene in the inner membrane of bacteria that are necessary for
342 invasion of epithelial cells (18, 19). In this study, detection of virulence *invA* gene (10 out of 10
343 isolates) in the isolated *Salmonella* indicates the pathogenic nature of these isolates.

344 Resistance of *Salmonella* spp. to antimicrobials is an emerging threat in developing as well as
345 developed countries (7). It is therefore necessary to determine the resistance patterns of isolates
346 to minimize resistance hazards. In this study, antibiotic susceptibility results showed 100% of the
347 *Salmonella* isolates were resistant to colistin and oxytetracycline. This high resistance rates
348 reflect widespread use of these antibiotics in animal feed and are consistent with other reports
349 (25, 64). And rate of resistance to ciprofloxacin (80.49%) and enrofloxacinin (74.39%) deserves
350 attention because *Salmonella* spp. resistance to these antibiotics may cause human infection too
351 (58). However, previous studies reported that, *Salmonella* isolates were sensitive to ciprofloxacin
352 (7, 62, 65). Similar results were observed in amoxicillin and doxycycline antimicrobials. These
353 antimicrobials resistance against *Salmonella* isolates might designate the over use or abuse of
354 these antibiotics (14, 15, 58). On the other hand, *Salmonella* isolates found to be susceptible to
355 ceftriaxone, fosfomycin, neomycin, levofloxacin, norfloxacin and azithromycin which is in line
356 with previous reports (64, 66). It may be because; these antibiotics are not commonly used for
357 therapeutic purposes in veterinary medicine. . The present study represented that, 100% of the
358 *mcr-1* positive isolates were MDR. Similar findings were reported on MDR in *Salmonella*
359 isolates from Bangladesh and different parts of the world (29, 67–72). Due to the indiscriminate
360 victimization of antimicrobial agents, MDR strains may apparently be occurred with high
361 incidence in this area which is a serious concern for veterinary medicine and also for human
362 health since direct transmission of resistant isolates from animals to humans has been confirmed
363 (73).

364
365 Since early 1980s, colistin has been widely used in agricultural sector in China (25, 74), caused
366 the initial emergence and spread of *mcr-1* worldwide (25, 68, 75, 76). In this study, an
367 unexpected presence of (5 out 10 samples) colistin resistance *mcr-1* gene was detected in
368 *Salmonella* spp. from poultry specimens (e.g. liver, intestine). This higher rate of *mcr-1* in

369 chicken *Salmonella* isolates was surprising and suggested that *mcr-I* might already be
370 widespread in food animals in Bangladesh. However, we do not have actual data on
371 antimicrobial usage on the farms where the samples originated. Therefore, the presence of *mcr-I*
372 gene may suggest frequent use of colistin and possibly other antimicrobials in the poultry
373 industry in this region. A recent study has been reported 28% of poultry samples harbored *mcr-I*
374 in China which has linked between human and animals (25). Subsequent study found an
375 unexpected high prevalence (24.8%) of *mcr-I* in retail chicken meat samples in Netherlands
376 (77). Following that work, investigations by other scientists have confirmed the presence of *mcr-*
377 *I* in *Salmonella* isolates recovered from mussels and poultry (77–80). The high prevalence of the
378 *mcr-I* gene in *Enterobacteriace* isolates of poultry is certainly concerning for a country like
379 Bangladesh where antimicrobial use in both human and animals may be poorly regulated.
380 Therefore, the recent emergence of colistin resistance has triggered an international review and
381 recommendations for restrictions of colistin use in farm animals (68, 81).

382
383 While, detailed study on molecular mechanisms of antimicrobial resistance is lacking, we aimed
384 to address *mcr-I* using integrative approaches ranging from nucleotide analysis, bioinformatics
385 and structural modeling of bacterial genetics. The detection of new *mcr-I*-harbouring *Salmonella*
386 isolates adds new knowledge to the newly-emerging issue of colistin resistance *mcr-I* genes. It
387 furthering our understanding on homology, structure and validation of the *mcr-I* genes present in
388 *Salmonella* isolates. It was reported that, colistin resistance *mcr-I* gene is present in a multidrug-
389 resistant plasmid (82) and *mcr-I* genes of this study found somewhat similar to a recently-
390 isolated plasmid from China (25). These facts imply that, multidrug resistant bacteria with
391 colistin resistance will eventually evolve a fact that deserves close attention.

392
393 Thus, we are awfully interested in determining the multiple sequence alignments for *mcr-I* genes
394 in *Salmonella* spp. isolated from poultry. In order to avoid hits from very closely related species,
395 retrieved sequences of *Salmonella* species were excluded from the phylogeny study and those
396 were only aligned with SAUVM *mcr-I* proteins. The multiple sequence alignments of SAUVM
397 *mcr-I* proteins clearly indicated that, they belongs to the Mobilized Colistin Resistance (MCR)
398 protein family with putative conserved sites [**Supplementary File 2**].

399

400 We experimentally validated the expression of colistin resistance *mcr-1* of *Salmonella* isolates
401 (**Figure 3A and 3B**), suggesting the possibility of evolutionary path for the *mcr-1* genes.
402 To address this concern, we conducted phylogenetic analyses. The phylogeny indicates a
403 divergent evolutionary pattern between the LptA and MCR-1 including MCR-1 like proteins.
404 The constructed phylogenetic tree provides information about ancestral origin and diversification
405 of the MCR-1 proteins in different organism divided into chromosomally-encoded LptA and
406 plasmid encoded MCR types indicating a divergent evolutionary relation between the LptA and
407 MCR proteins (Figure 4). Further, MCR proteins group were divided into 2 apparent subgroups,
408 one of which features MCR-1 proteins mostly of *E. coli* strains including SAUVM MCR-1 and
409 the other one comprising small subclade of MCR-2 with MCR-1 proteins from diverse
410 organisms. All of the SAUVM MCR-1 proteins were closely related to the *E. coli* MCR-1
411 sharing the position in the same clade. However, SAUVM MCR-1 and LptA fall into 2 separate
412 subclades within the tree which indicated the low sequence identity, also reported by previous
413 studies (83, 84). Despite the fact that, *E. coli* MCR-2 proteins were mostly aligned with MCR-1
414 proteins of non *E. coli* groups. Again, the Z1140 locus of *E. coli* O157:H7, a member of the
415 PEA lipid a transferases lacking a role in colistin resistance apparently formed individual clade
416 in the phylogeny which strengthened the findings. For understanding the structural insight, 3D
417 homology modeling of five of SAUVM MCR-1 proteins were constructed using *Neisseria*
418 meningitidis LptA as structural template and five distinct transmembrane helices spanned in the
419 inner membrane region were identified which was also reported by different studies (68, 84).
420 Again, molecular interactions between Phosphatidylethanolamine (PE) substrate with MCR-1
421 and LptA had been investigated as colistin resistance proteins. MCR-1, MCR-2 and LptA were
422 found to share similar PE lipid substrate-recognizing cavity. Ligand-binding interaction pattern
423 of PE substrate with SAUVM-MCR-1 and LptA revealed that, both proteins exhibited similar
424 localization of PE binding sites spanning from 175-195 region in which Phe, Tyr and Ser
425 residues were abundantly found.

426

427 The data we present represents a first comprehensive glimpse of antimicrobial (colistin)
428 resistance *mcr-1* genes among poultry originated *Salmonella* isolates in Bangladesh. This study
429 provides further substantial evidence for the need of implementation of risk-management

430 strategies and the need to review the extensive use of colistin in food animals for urgently
431 advocated and implemented in this country.

432

433

434 **Acknowledgements**

435 We thank customer service lab at Kazi Farms Group, Gazipur, Bangladesh for their technical
436 support.

437

438

439 **Funding**

440 This research did not receive any specific grant from funding agencies in the public or not-for-
441 profit sectors.

442

443 **Reference**

- 444 1. BLRI. 2016. Annual Report 2016: Bangladesh Livestock Research Institute
445 (<http://blri.portal.gov.bd>).
- 446 2. Hamid MA, Rahman MA, Ahmed S, Hossain KM. 2016. Status of Poultry Industry in
447 Bangladesh and the Role of Private Sector for its Development. *Asian J Poult Sci* 11:1–13.
- 448 3. Rahman MM, Huque KS, Das NG, Khan MYA. 2017. Comparative market supply of
449 protein from livestock and fish in the selected urban areas of Rajshahi district in
450 Bangladesh. *Res Agric Livest Fish* 4:29–36.
- 451 4. Uddin J, Hossain K, Hossain S, Saha K, Jubya FT, Haque R, Billah B, Talukder AA,
452 Parvez AK, Dey SK. 2019. Bacteriological assessments of foodborne pathogens in poultry
453 meat at different super shops in dhaka, bangladesh. *Ital J Food Saf* 8:15–20.
- 454 5. Haque AKMZ, Kabir SML, Siddiqua A, Hussain AZMI. 2018. Prevalence of Salmonella
455 in dressed and cooked broiler meat of different grocery shops , hotels and restaurants in
456 Gazipur and Dhaka city of Bangladesh 2:40–44.
- 457 6. El-Sharkawy H, Tahoun A, El-Gohary AEGA, El-Abasy M, El-Khayat F, Gillespie T,
458 Kitade Y, Hafez HM, Neubauer H, El-Adawy H. 2017. Epidemiological, molecular
459 characterization and antibiotic resistance of Salmonella enterica serovars isolated from
460 chicken farms in Egypt. *Gut Pathog* 9:1–12.
- 461 7. Asif M, Rahman H, Qasim M, Khan TA, Ullah W, Jie Y. 2017. Molecular detection and
462 antimicrobial resistance profile of zoonotic Salmonella enteritidis isolated from broiler
463 chickens in Kohat, Pakistan. *J Chinese Med Assoc* 80:303–306.
- 464 8. Cosby DE, Cox NA, Harrison MA, Wilson JL, Jeff Buhr R, Fedorka-Cray PJ. 2015.

- 465 Salmonella and antimicrobial resistance in broilers: A review. *J Appl Poult Res* 24:408–
466 426.
- 467 9. Quesada A, Reginatto GA, Español AR, Colantonio LD, Burrone MS. 2016.
468 Antimicrobial resistance of *Salmonella* spp isolated animal food for human consumption.
469 *Rev Peru Med Exp Salud Publica* 33:32–44.
- 470 10. González F, Araque M. 2019. Molecular typing, antibiotic resistance profiles and biocide
471 susceptibility in *Salmonella enterica* serotypes isolated from raw chicken meat marketed
472 in Venezuela. *Germs* 9:81–88.
- 473 11. Ahmed AO, Raji MA, Mamman PH, Kwanashie CN, Raufu IA, Aremu A, Akorede GJ.
474 2019. Salmonellosis: Serotypes, prevalence and multi-drug resistant profiles of
475 *Salmonella enterica* in selected poultry farms, Kwara State, North Central Nigeria.
476 *Onderstepoort J Vet Res* 86:1–8.
- 477 12. Adesiyun A, Webb L, Musai L, Louison B, Joseph G, Stewart-Johnson A, Samlal S,
478 Rodrigo S. 2014. Resistance to antimicrobial agents among *Salmonella* isolates recovered
479 from layer farms and eggs in the Caribbean region. *J Food Prot* 77:2153–2160.
- 480 13. Sarker YA, Hasan MM, Paul TK, Rashid SZ, Alam MN, Sikder MH. 2018. Screening of
481 antibiotic residues in chicken meat in Bangladesh by thin layer chromatography. *J Adv
482 Vet Anim Res* 5:140–145.
- 483 14. Cantas L, Shah SQA, Cavaco LM, Manaia CM, Walsh F, Popowska M, Garelick H,
484 Bürgmann H, Sørum H. 2013. A brief multi-disciplinary review on antimicrobial
485 resistance in medicine and its linkage to the global environmental microbiota. *Front
486 Microbiol* 4:1–14.
- 487 15. Antunes P, Mourão J, Campos J, Peixe L. 2016. Salmonellosis : the role of poultry meat.
488 *Clin Microbiol Infect* 22:110–121.
- 489 16. Rahmani M, Peighambari SM, Svendsen CA, Cavaco LM, Agersø Y, Hendriksen RS.
490 2013. Molecular clonality and antimicrobial resistance in *Salmonella enterica* serovars
491 Enteritidis and Infantis from broilers in three Northern regions of Iran. *BMC Vet Res* 9.
- 492 17. Chai SJ, Cole D, Nisler A, Mahon BE. 2017. Poultry: The most common food in
493 outbreaks with known pathogens, United States, 1998-2012. *Epidemiol Infect* 145:316–
494 325.
- 495 18. Kadry M, Nader SM, Dorgham SM, Kandil MM. 2019. Molecular diversity of the *invA*
496 gene obtained from human and egg samples. *Vet World* 12:1033–1038.
- 497 19. Sharma I. 2016. Detection of *invA* Gene in Isolated *Salmonella* from Marketed Poultry
498 Meat by PCR Assay. *J Food Process Technol* 07.
- 499 20. Vaneechoutte M, Van Eldere J. 1997. The possibilities and limitations of nucleic acid
500 amplification technology in diagnostic microbiology. *J Med Microbiol* 46:188–194.
- 501 21. Elkenany R, Elsayed MM, Zakaria AI, El-Sayed SAES, Rizk MA. 2019. Antimicrobial
502 resistance profiles and virulence genotyping of *Salmonella enterica* serovars recovered
503 from broiler chickens and chicken carcasses in Egypt. *BMC Vet Res* 15:1–9.

- 504 22. Wang Y, Zhang R, Li J, Wu Z, Yin W, Schwarz S, Tyrrell JM, Zheng Y, Wang S, Shen Z,
505 Liu Z, Liu J, Lei L, Li M, Zhang Q, Wu C, Zhang Q, Wu Y, Walsh TR, Shen J. 2017.
506 Comprehensive resistome analysis reveals the prevalence of NDM and MCR-1 in Chinese
507 poultry production. *Nat Microbiol* 2.
- 508 23. Gad AH, Abo-Shama UH, Harclerode KK, Fakhr MK. 2018. Prevalence, serotyping,
509 molecular typing, and antimicrobial resistance of *Salmonella* isolated from conventional
510 and organic retail ground poultry. *Front Microbiol* 9:1–10.
- 511 24. Clothier KA, Kim P, Mete A, Hill AE. 2018. Frequency, serotype distribution, and
512 antimicrobial susceptibility patterns of *Salmonella* in small poultry flocks in California. *J*
513 *Vet Diagnostic Investig* 30:471–475.
- 514 25. Liu YY, Wang Y, Walsh TR, Yi LX, Zhang R, Spencer J, Doi Y, Tian G, Dong B, Huang
515 X, Yu LF, Gu D, Ren H, Chen X, Lv L, He D, Zhou H, Liang Z, Liu JH, Shen J. 2016.
516 Emergence of plasmid-mediated colistin resistance mechanism MCR-1 in animals and
517 human beings in China: A microbiological and molecular biological study. *Lancet Infect*
518 *Dis* 16:161–168.
- 519 26. Sobur A, Hasan M, Haque E, Mridul AI, Noreddin A, El Zowalaty ME, Rahman T. 2019.
520 Molecular detection and antibiotyping of multidrug-resistant *Salmonella* isolated from
521 houseflies in a fish market. *Pathogens* 8.
- 522 27. Dashti AA, Jadaon MM, Abdulsamad AM, Dashti HM. 2009. Heat treatment of bacteria:
523 A simple method of DNA extraction for molecular techniques. *Kuwait Med J* 41:117–122.
- 524 28. Gunasegaran T, Rathinam X, Kasi M, Sathasivam K, Sreenivasan S, Subramaniam S.
525 2011. Isolation and identification of *Salmonella* from curry samples and its sensitivity to
526 commercial antibiotics and aqueous extracts of *Camelia sinensis* (L.) and *Trachyspermum*
527 *ammi* (L.). *Asian Pac J Trop Biomed* 1:266–269.
- 528 29. Wajid M, Saleemi MK, Sarwar Y, Ali A. 2019. Detection and characterization of
529 multidrug-resistant *Salmonella enterica* serovar *Infantis* as an emerging threat in poultry
530 farms of Faisalabad, Pakistan. *J Appl Microbiol* 127:248–261.
- 531 30. Bauer A, Kirby W, Sherris JC TM. 2018. Antibiotic Susceptibility Testing by a
532 Standardized Single Disk Method. *Am J Clin Pathol* 45:493–496.
- 533 31. CLSI. 2019. Clinical and Laboratory Standards Institute; supplement M100: Performance
534 standards for antimicrobial susceptibility testing *Clinical Microbiology Newsletter*.
- 535 32. Sweeney MT, Lubbers B V., Schwarz S, Watts JL. 2018. Applying definitions for
536 multidrug resistance, extensive drug resistance and pandrug resistance to clinically
537 significant livestock and companion animal bacterial pathogens. *J Antimicrob Chemother*
538 73:1460–1463.
- 539 33. Langata LM, Maingi JM, Musonye HA, Kiiru J, Nyamache AK. 2019. Antimicrobial
540 resistance genes in *Salmonella* and *Escherichia coli* isolates from chicken droppings in
541 Nairobi, Kenya. *BMC Res Notes* 12:1–6.
- 542 34. Notredame C, Higgins DG, Heringa J. 2019. T-coffee: A novel method for fast and
543 accurate multiple sequence alignment. *Microb Pathog* 130:19–37.

- 544 35. Kumar S, Stecher G, Li M, Knyaz C, Tamura K. 2018. MEGA X: Molecular evolutionary
545 genetics analysis across computing platforms. *Mol Biol Evol* 35:1547–1549.
- 546 36. Larkin MA, Blackshields G, Brown NP, Chenna R, Mcgettigan PA, McWilliam H,
547 Valentin F, Wallace IM, Wilm A, Lopez R, Thompson JD, Gibson TJ, Higgins DG. 2007.
548 Clustal W and Clustal X version 2.0. *Bioinformatics* 23:2947–2948.
- 549 37. Hasan M, Ghosh PP, Azim KF, Mukta S, Abir RA, Nahar J, Hasan Khan MM. 2019.
550 Reverse vaccinology approach to design a novel multi-epitope subunit vaccine against
551 avian influenza A (H7N9) virus. *Microb Pathog* 130:19–37.
- 552 38. Zhang Y. 2008. I-TASSER server for protein 3D structure prediction. *BMC*
553 *Bioinformatics* 9:1–8.
- 554 39. Azim KF, Hasan M, Hossain MN, Somana SR, Hoque SF, Bappy MNI, Chowdhury AT,
555 Lasker T. 2019. Immunoinformatics approaches for designing a novel multi epitope
556 peptide vaccine against human norovirus (Norwalk virus). *Infect Genet Evol* 74:103936.
- 557 40. Xu D, Zhang Y. 2011. Improving the physical realism and structural accuracy of protein
558 models by a two-step atomic-level energy minimization. *Biophys J* 101:2525–2534.
- 559 41. Hasan M, Azim KF, Begum A, Khan NA, Shammi TS, Imran AS, Chowdhury IM, Urme
560 SRA. 2019. Vaccinomics strategy for developing a unique multi-epitope monovalent
561 vaccine against Marburg marburgvirus. *Infect Genet Evol* 70:140–157.
- 562 42. Moslem N, Hossein G. 2014. Numerical simulation of tire/soil interaction using a verified
563 3D finite element model. *J Cent South Univ* 21:817–821.
- 564 43. Elengoe A, Abu Naser M, Hamdan S. 2014. Modeling and docking studies on novel
565 mutants (K71L and T204V) of the ATPase domain of human heat shock 70 kDa protein 1.
566 *Int J Mol Sci* 15:6797–6814.
- 567 44. Colovos C, Yeates TO. 1993. Verification of protein structures: Patterns of nonbonded
568 atomic interactions. *Protein Sci* 2:1511–1519.
- 569 45. Hasan M, Islam S, Chakraborty S, Mustafa AH, Azim KF, Joy ZF, Hossain MN, Foyshal
570 SH, Hasan MN. 2019. Contriving a chimeric polyvalent vaccine to prevent infections
571 caused by herpes simplex virus (type-1 and type-2): an exploratory immunoinformatic
572 approach. *J Biomol Struct Dyn* 0:000.
- 573 46. Lovell SC, Davis IW, Adrendall WB, de Bakker PIW, Word JM, Prisant MG, Richardson
574 JS, Richardson DC. 2003. Structure validation by C alpha geomF. Altschul, S., Gish, W.,
575 Miller, W., W. Myers, E., & J. Lipman, D. (1990). Basic Local Alignment Search Tool.
576 *Journal of Molecular Biology*.etry: phi,psi and C beta deviation. *Proteins-Structure Funct*
577 *Genet* 50:437–450.
- 578 47. Irwin JJ, Shoichet BK. 2005. ZINC--a free database of commercially available compounds
579 for virtual screening. *J Chem Inf Model* 45:177–182.
- 580 48. Deshpande N, Address KJ, Bluhm WF, Merino-Ott JC, Townsend-Merino W, Zhang Q,
581 Knezevich C, Xie L, Chen L, Feng Z, Green RK, Flippen-Anderson JL, Westbrook J,
582 Berman HM, Bourne PE. 2005. The RCSB Protein Databa Bank: A redesigned query

- 583 system and relational database based on the mmCIF schema. *Nucleic Acids Res* 33:233–
584 237.
- 585 49. Dallakyan, S and Olson AJ. 2014. Small-molecule library screening by docking with
586 PyRx, p. 243–250. *In* *Chemical Biology*.
- 587 50. Temml V, Kaserer T, Kutil Z, Landa P, Vanek T, Schuster D. 2014. Pharmacophore
588 modeling for COX-1 and-2 inhibitors with LigandScout in comparison to Discovery
589 Studio. *Future Med Chem* 6:1869–1881.
- 590 51. L DeLano W. 2002. Pymol: An open-source molecular graphics tool. *Newsl Protein*
591 *Crystallogr* 40.
- 592 52. Havelaar AH, Kirk MD, Torgerson PR, Gibb HJ, Hald T, Lake RJ, Praet N, Bellinger DC,
593 de Silva NR, Gargouri N, Speybroeck N, Cawthorne A, Mathers C, Stein C, Angulo FJ,
594 Devleeschauwer B, Adegoke GO, Afshari R, Alasfoor D, Baines J, Balakrishnan K,
595 Hamza WM Bin, Black RE, Bolger PM, Chaicumpa W, Cravioto A, Döpfer D, Ehiri JE,
596 Fazil A, Ferreccio C, Fèvre EM, Hall G, Kasuga F, Keddy KH, Lanata CF, Lei H, Liu X,
597 Manyindo B, Nasinyama G, Ongolo-Zogo P, Pitt JI, Rokni MB, Sripa B, van Leeuwen R,
598 Verger P, Willingham AL, Zhou XN, Aspinall W, Buchanan R, Budke C, Caipo ML,
599 Carabin H, Cole D, Cooke RM, Crump JA, El-Jardali F, Fischer-Walker C, Fürst T,
600 Haagsma JA, Hall AJ, Henao O, Hoffmann S, Jensen H, Jessani N, Koopmans MPG,
601 Levine MM, de Noordhout CM, Majowicz S, McDonald SA, Pires S, Scallan E, Sripa B,
602 Thomas MK, Verhoef L, Wu F, Zeilmaker M. 2015. World Health Organization Global
603 Estimates and Regional Comparisons of the Burden of Foodborne Disease in 2010. *PLoS*
604 *Med* 12:1–23.
- 605 53. Bythwood TN, Soni V, Lyons K, Hurley-Bacon A, Lee MD, Hofacre C, Sanchez S,
606 Maurer JJ. 2019. Antimicrobial Resistant *Salmonella enterica* Typhimurium Colonizing
607 Chickens: The Impact of Plasmids, Genotype, Bacterial Communities, and Antibiotic
608 Administration on Resistance. *Front Sustain Food Syst* 3:1–15.
- 609 54. Tanmoy AM, Westeel E, De Bruyne K, Goris J, Rajoharison A, Sajib MSI, van Belkum
610 A, Saha SK, Komurian-Pradel F, Endtz HP. 2018. *Salmonella enterica* serovar typhi in
611 Bangladesh: Exploration of genomic diversity and antimicrobial resistance. *MBio* 9:1–17.
- 612 55. Islam KBMS, Shiraj-um-mahmuda S. 2016. Antibiotic Usage Patterns in Selected Broiler
613 Farms of Bangladesh and their Public Health Implications. *J Public Heal Dev Ctries*
614 2:276–284.
- 615 56. Ahmed I, Rabbi MB, Sultana S. 2019. Antibiotic resistance in Bangladesh: A systematic
616 review. *Int J Infect Dis* 80:54–61.
- 617 57. OIE. 2019. World Organisation for Animal Health: Prevention, detection, and control of
618 *Salmonella* in poultry *Terrestrial Animal Health Code*, Chapter 6.6. pp.1-6.
- 619 58. Clifford K, Desai D, da Costa CP, Meyer H, Klohe K, Winkler A, Rahman T, Islam T,
620 Zaman MH. 2018. Antimicrobial resistance in livestock and poor quality veterinary
621 medicines. *Bull World Health Organ* 96:662–664.
- 622 59. Wasyl D, Kern-Zdanowicz I, Domańska-Blicharz K, Zajac M, Hoszowski A. 2015. High-

- 623 level fluoroquinolone resistant *Salmonella enterica* serovar Kentucky ST198 epidemic
624 clone with IncA/C conjugative plasmid carrying blaCTX-M-25 gene. *Vet Microbiol*
625 175:85–91.
- 626 60. Iwamoto M, Reynolds J, Karp BE, Tate H, Fedorka-Cray PJ, Plumblee JR, Hoekstra RM,
627 Whichard JM, Mahon BE. 2017. Ceftriaxone-resistant nontyphoidal salmonella from
628 humans, retail meats, and food animals in the United States, 1996–2013. *Foodborne*
629 *Pathog Dis* 14:74–83.
- 630 61. Tribble DR. 2017. Resistant pathogens as causes of traveller’s diarrhea globally and
631 impact(s) on treatment failure and recommendations. *J Travel Med* 24:S6–S12.
- 632 62. Parvej MS, Rahman M, Uddin MF, Nazir KNH, Jowel MS, Khan MFR, Rahman MB.
633 2016. Isolation and Characterization of *Salmonella Enterica* Serovar Typhimurium
634 Circulating Among Healthy Chickens of Bangladesh. *Turkish J Agric - Food Sci Technol*
635 4:519.
- 636 63. Rahaman MT, Rahman M, Rahman MB, Khan MFR, Hossen ML, Parvej MS, Ahmed S.
637 2014. Poultry *Salmonella* Specific Bacteriophage Isolation and. *Dep Microbiol Hyg*
638 *Bangladesh Agric Univ Mymensingh, Bangladesh* 12:107–114.
- 639 64. Zhang L, Fu Y, Xiong Z, Ma Y, Wei Y, Qu X, Zhang H, Zhang J, Liao M. 2018. Highly
640 prevalent multidrug-resistant *Salmonella* from chicken and pork meat at retail markets in
641 Guangdong, China. *Front Microbiol* 9:1–9.
- 642 65. Pormohammad A, Nasiri MJ, Azimi T. 2019. Prevalence of antibiotic resistance in
643 *Escherichia coli* strains simultaneously isolated from humans, animals, food, and the
644 environment: A systematic review and meta-analysis. *Infect Drug Resist* 12:1181–1197.
- 645 66. Sinwat N, Angkittitrakul S, Chuanchuen R. 2015. Characterization of Antimicrobial
646 Resistance in *Salmonella enterica* Isolated from Pork, Chicken Meat, and Humans in
647 Northeastern Thailand. *Foodborne Pathog Dis* 12:759–765.
- 648 67. Mthembu TP, Zishiri OT, El Zowalaty ME. 2019. Molecular detection of multidrug-
649 resistant *Salmonella* isolated from livestock production systems in South Africa. *Infect*
650 *Drug Resist* 12:3537–3548.
- 651 68. Maciucă IE, Cummins ML, Cozma AP, Rimbu CM, Guguianu E, Panzaru C, Licker M,
652 Szekely E, Flonta M, Djordjevic SP, Timofte D. 2019. Genetic Features of mcr-1
653 Mediated Colistin Resistance in CMY-2-Producing *Escherichia coli* From Romanian
654 Poultry. *Front Microbiol* 10:1–15.
- 655 69. Gieraltowski L, Higa J, Peralta V, Green A, Schwensohn C, Rosen H, Libby T, Kissler B,
656 Marsden-Haug N, Booth H, Kimura A, Grass J, Bicknese A, Tolar B, Defibaugh-Chávez
657 S, Williams I, Wise M, Braden C, Brown AC, Burnworth L, Crawley A, Douris A, Frink
658 S, Goldman D, Hung-Fan M, Kiang D, Lew S, Nakao J, Needham M, Tauxe R, Wong M,
659 Allen L, Atkinson R, Behravesh CB, Becker K, Blackstock A, Folster J, Gilliss D, Holt K,
660 Leifert R, Lidgard J, Poe A, Pringle J, Probert W, Rickard M, Robertson K, Trees E,
661 Vetter D, Vugia D. 2016. National outbreak of multidrug resistant *Salmonella* Heidelberg
662 infections linked to a single poultry company. *PLoS One* 11:1–13.

- 663 70. van den Berg RR, Dissel S, Rapallini MLBA, van der Weijden CC, Wit B, Heymans R.
664 2019. Characterization and whole genome sequencing of closely related multidrug-
665 resistant *Salmonella enterica* serovar Heidelberg isolates from imported poultry meat in
666 the Netherlands. *PLoS One* 14:1–20.
- 667 71. Salmonella R, Ugwu MC, Omanukwue C, Chimezie C, Okezie U, Ejikeugwu CP,
668 Nnnabuife-iloh E, Esimone CO. 2019. Poultry Farm and Poultry Products as Sources of
669 Multiple Antimicrobial-. *J Trop Dis* 7:3–7.
- 670 72. Akhi MA, Das NC, Banik A, Abony M, Juthi M, Uddin ME. 2019. Detection of Drug-
671 resistant *S. aureus* from Poultry Samples Collected from Different Areas of Bangladesh.
672 *Microbiol Res J Int* 29:1–10.
- 673 73. Marshall BM, Levy SB. 2011. Food animals and antimicrobials: Impacts on human health.
674 *Clin Microbiol Rev* 24:718–733.
- 675 74. Wang Y, Tian GB, Zhang R, Shen Y, Tyrrell JM, Huang X, Zhou H, Lei L, Li HY, Doi Y,
676 Fang Y, Ren H, Zhong LL, Shen Z, Zeng KJ, Wang S, Liu JH, Wu C, Walsh TR, Shen J.
677 2017. Prevalence, risk factors, outcomes, and molecular epidemiology of *mcr-1*-positive
678 Enterobacteriaceae in patients and healthy adults from China: an epidemiological and
679 clinical study. *Lancet Infect Dis* 17:390–399.
- 680 75. Wang R, Van Dorp L, Shaw LP, Bradley P, Wang Q, Wang X, Jin L, Zhang Q, Liu Y,
681 Rieux A, Dorai-Schneiders T, Weinert LA, Iqbal Z, Didelot X, Wang H, Balloux F. 2018.
682 The global distribution and spread of the mobilized colistin resistance gene *mcr-1*. *Nat*
683 *Commun* 9:1–9.
- 684 76. Kempf I, Jouy E, Chauvin C. 2016. Colistin use and colistin resistance in bacteria from
685 animals. *Int J Antimicrob Agents* 48:598–606.
- 686 77. Schrauwen EJA, Huizinga P, van Spreuwel N, Verhulst C, Kluytmans-van den Bergh
687 MFQ, Kluytmans JAJW. 2017. High prevalence of the *mcr-1* gene in retail chicken meat
688 in the Netherlands in 2015. *Antimicrob Resist Infect Control* 6:4–8.
- 689 78. Sakdinun P, Sriwongsa N, Wongmuk S. 2018. Detection of colistin resistance and *mcr-1*
690 gene in *Salmonella* isolated from feces of poultry in western Thailand during 2013-2016
691 28:1–10.
- 692 79. Quesada A, Ugarte-Ruiz M, Iglesias MR, Porrero MC, Martínez R, Florez-Cuadrado D,
693 Campos MJ, García M, Píriz S, Sáez JL, Domínguez L. 2016. Detection of plasmid
694 mediated colistin resistance (MCR-1) in *Escherichia coli* and *Salmonella enterica* isolated
695 from poultry and swine in Spain. *Res Vet Sci* 105:134–135.
- 696 80. Lima T, Domingues S, Da Silva GJ. 2019. Plasmid-mediated colistin resistance in
697 *salmonella enterica*: A review. *Microorganisms* 7:1–17.
- 698 81. Liu Y, Liu JH. 2018. Monitoring Colistin Resistance in Food Animals, An Urgent Threat.
699 *Expert Rev Anti Infect Ther* 16:443–446.
- 700 82. Malhotra-Kumar S, Xavier BB, Das AJ, Lammens C, Butaye P, Goossens H. 2016.
701 Colistin resistance gene *mcr-1* harboured on a multidrug resistant plasmid. *Lancet Infect*
702 *Dis* 16:283–284.

703 83. Gao R, Hu Y, Li Z, Sun J, Wang Q, Lin J, Ye H, Liu F, Srinivas S, Li D, Zhu B, Liu YH,
704 Tian GB, Feng Y. 2016. Dissemination and Mechanism for the MCR-1 Colistin
705 Resistance. PLoS Pathog 12:1–19.

706 84. Xu Y, Wei W, Lei S, Lin J, Srinivas S, Feng Y. 2018. An evolutionarily conserved
707 mechanism for intrinsic and transferable polymyxin resistance. MBio 9:1–18.

708

709

710

711 **Figure legends**

712 **Figure 1: A map of Bangladesh showing locations of the sampling sites under selected**
713 **districts.** The areas where the *mcr-1* gene has been screened are highlighted in red.

714 **Figure 2: PCR amplification of *invA* gene of *Salmonella* isolates.** In all isolates (S1~S10), a
715 fragment of 100 bp (*invA* gene) was detected. Lane M: DNA ladder. Lane PC: positive control
716 for *invA* gene; Lane NC: negative control for *invA* gene; Lanes S1-S10, amplified gene of *invA* in
717 the tested isolates. [S1~10=*Salmonella* isolate 1~10].

718 **Figure 3: PCR amplification of antimicrobial (colistin) resistance *mcr-1* gene of *Salmonella***
719 **isolates.** In *Salmonella* (S6~S10) isolates a fragment of (A) 1197 bp and (B) 799 bp was
720 detected. Lane M: DNA ladder. Lane NC: negative control for *mcr-1* gene. [S6~10=*Salmonella*
721 isolate 6~10].

722 **Figure 4: Phylogeny analysis showing ancestral origin and diversification of MCR-1 and**
723 **MCR-1 like proteins.** *BLASTp* search (<https://blast.ncbi.nlm.nih.gov/Blast.cgi>) was employed to
724 retrieve the homologous sequences of the MCR-1 and MCR-1 like proteins from the NCBI
725 database using amino acid sequences of six SAUVM-MCR-1 proteins. Sequences were
726 carefully categorized into the MCR-1 and MCR-1 Like proteins of *Salmonella*, *E. coli* strains,
727 strains containing LptA (formerly named EptA) and others. Maximum Likelihood Method of
728 MEGA X was employed to construct a phylogenetic tree using aligned sequences of MCR-1
729 from CLUSTALW.

730 **Figure 5: Transmembrane topology prediction of SAUVM-S6-MCR-1 protein.** TMHMM
731 server (<http://www.cbs.dtu.dk/services/TMHMM/>) was used to predict the (A) transmembrane

732 helices of MCR-1 proteins. **(B)** The topology was given as the position of the transmembrane
733 helices differentiated by ‘i’ and ‘o’ when the loop is on the inside and outside, respectively.

734 **Figure 6: Modelled structures of SAUVM-MCR-1 proteins and Validation.** **(A)** Three
735 dimensional (3D) modelling of SAUVM-MCR-1 proteins (SAUVM_S6~S10) were performed
736 by I-TASSER which functions by identifying structure templates from the PDB library. The
737 confidence of each model is quantitatively measured by C-score. From these models of MCR-1
738 proteins, SAUVM_S10 model was randomly selected, **(B)** analysed and structures validated with
739 Ramachandran Plot Assessment server (RAMPAGE).

740 **Figure 7: Ligand-binding interaction pattern of PE substrate with colistin resistance MCR-**
741 **1 and LptA.** The modeled ribbon structure for PE substrate with MCR-1 protein. The ribbon
742 structure was given via PyMol software. In both **(A)** and **(B)** cases, the substrates tend to bind in
743 the groove of MCR-1 and LptA mostly spanning from 175-195 region, in which Phe, Tyr and
744 Ser residues were abundantly found in the substrate binding region for PE interaction. **(B)**
745 Ligand-binding interaction revealed that both MCR-1 and LptA proteins exhibited similar
746 localization of PE binding sites (SAUVM-MCR-1: Leu 64, Tyr 179, Phe 183; LptA: Ser 61, Tyr
747 174, Phe 181, val 192, Ser 194).

748

749 **Supplementary Files**

750 **Supplementary File 1:** Amplicons of 100bp *invA* gene sequence of *Salmonella* isolates
751 (S6~S10).

752 **Supplementary File 2:** Retrieved sequences of MCR-1 and MCR-1 like proteins.

753 **Supplementary File 3:** The multiple sequence alignments of SAUVM-MCR-1 proteins with
754 putative conserved sites of other *Salmonella* MCR-1.

755 **Supplementary File 4:** Supplementary Table S1, S2 and S3.

756 **Supplementary File 5:** Structure validation by ERRAT and Verify3D server.

757

758

759

760

761

762

763

Figure 1

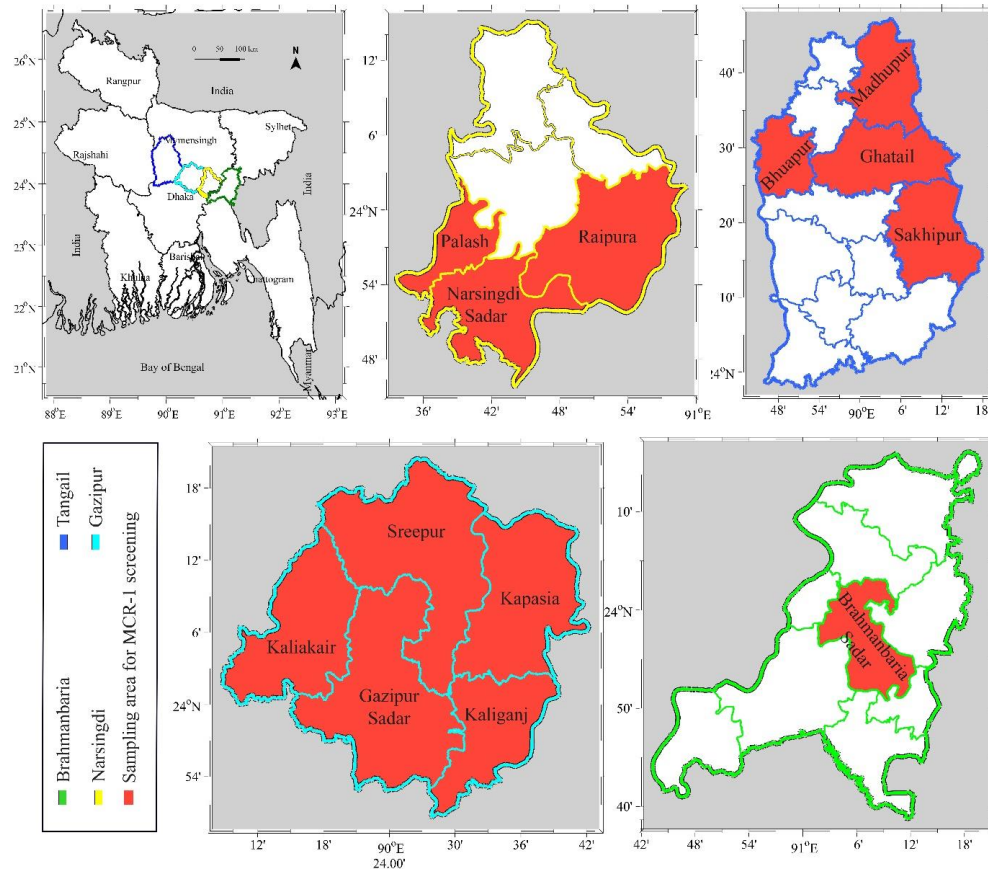


Figure 1: A map of Bangladesh showing locations of the sampling sites under selected districts. The areas where the *mcr-1* gene has been screened are highlighted in red.

Figure 2

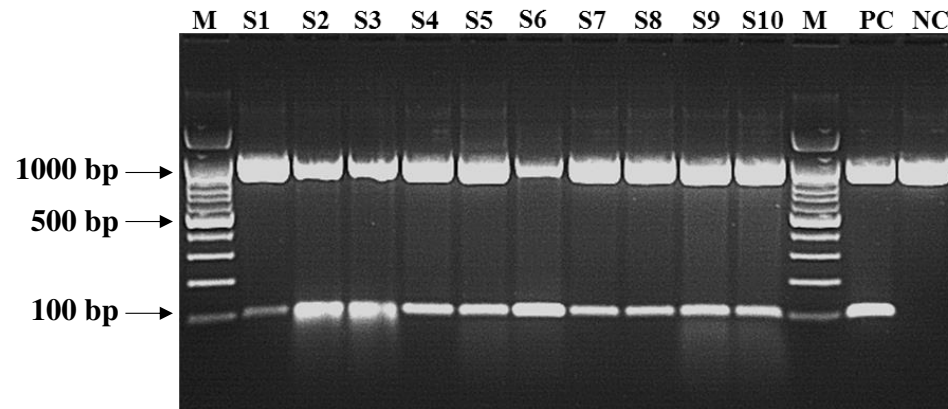


Figure 2: PCR amplification of *invA* gene of *Salmonella* isolates. In all isolates (S1~S10), a fragment of 100 bp was detected. Lane M: DNA ladder. Lane PC: positive control for *invA* gene; Lane NC: negative control for *invA* gene; Lanes S1-S10, amplified *invA* gene in tested isolates. [S1~10=*Salmonella* isolate 1~10]

Figure 3

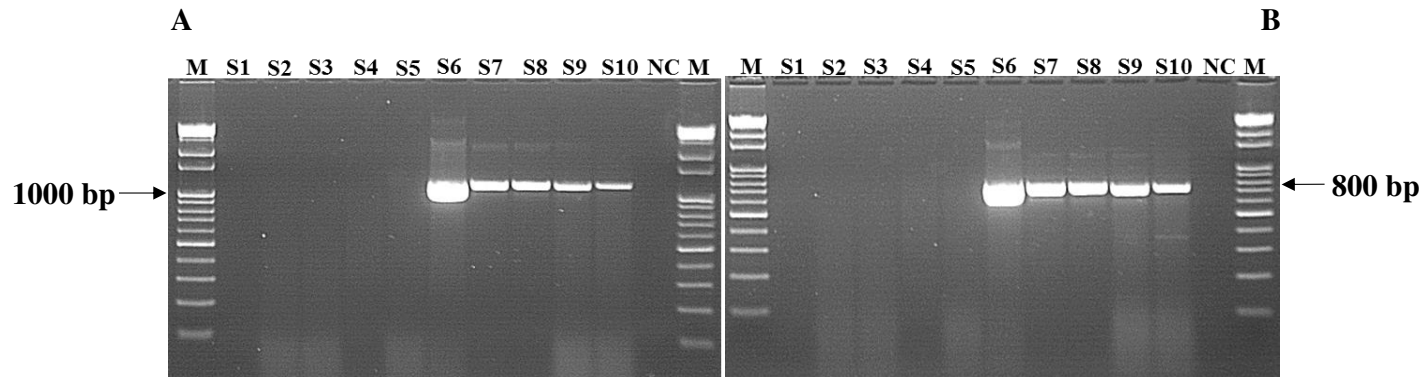


Figure 3: PCR amplification of antimicrobial (colistin) resistance *mcr-1* gene of *Salmonella* isolates. Amplified gene of *mcr-1* in the tested isolates. In *Salmonella* (S6~S10) isolates, (A) a fragment of 1197 bp; and (B) a fragment of 799 bp was detected. Lane M: DNA ladder. Lane NC: negative control for *mcr-1* gene. [S6~10=*Salmonella* isolate 6~10]

Figure 4

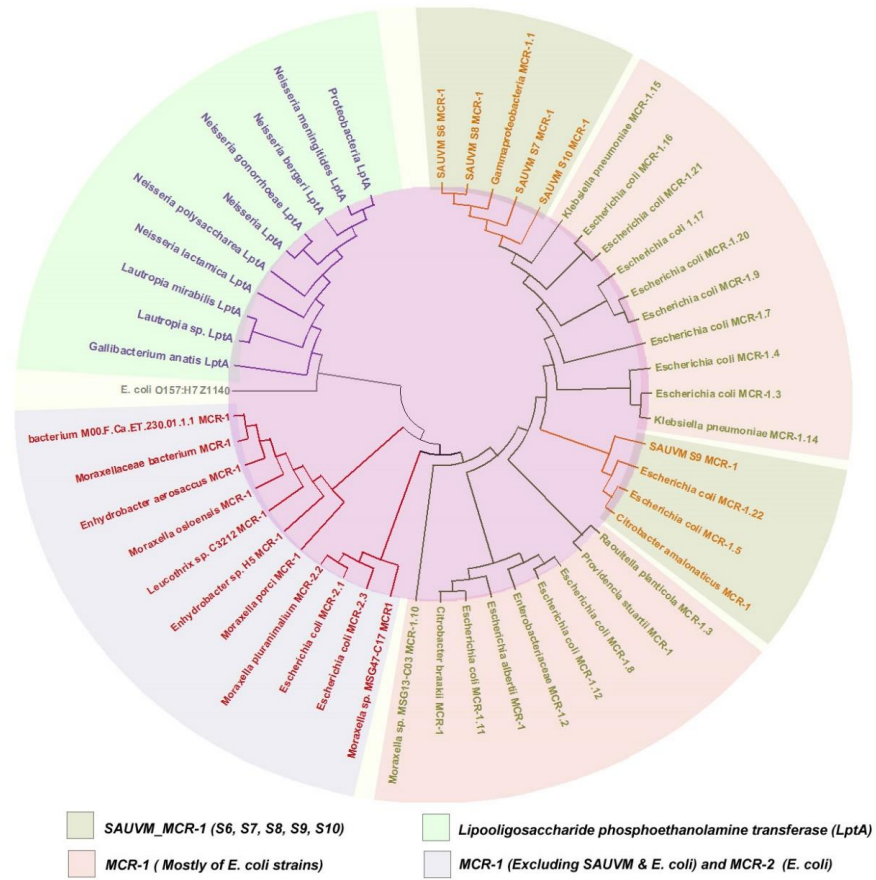
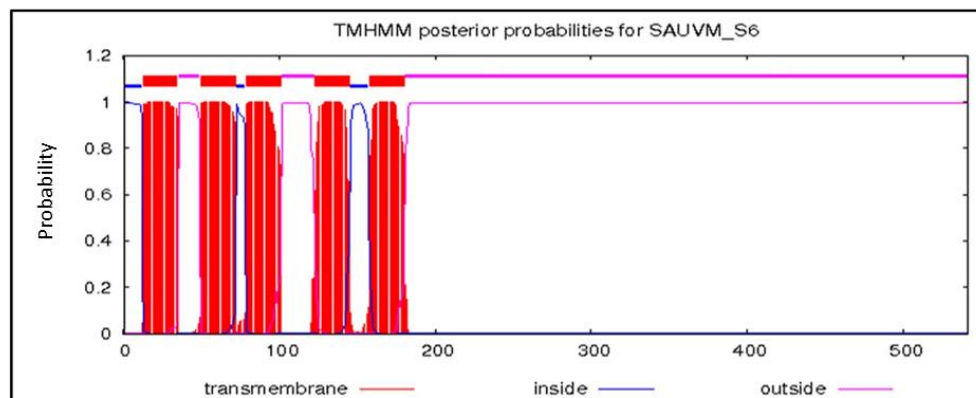
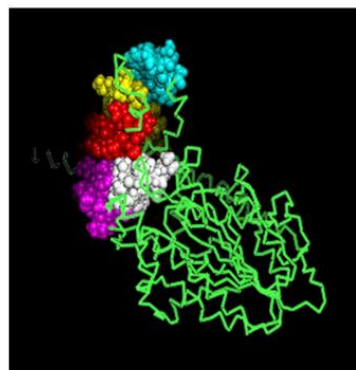
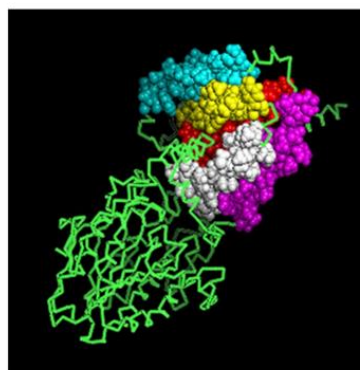


Figure 4: Phylogeny analysis showing ancestral origin and diversification of MCR-1 and MCR-1 like proteins

Figure 5



(A)



- TMhelix 1(13-35)
- TMhelix 2(50-72)
- TMhelix 3(79-101)
- TMhelix 4(123-145)
- TMhelix 5(158-180)

(B)

Figure 5: Transmembrane topology prediction of SAUVM_S6-MCR-1 protein

Figure 6

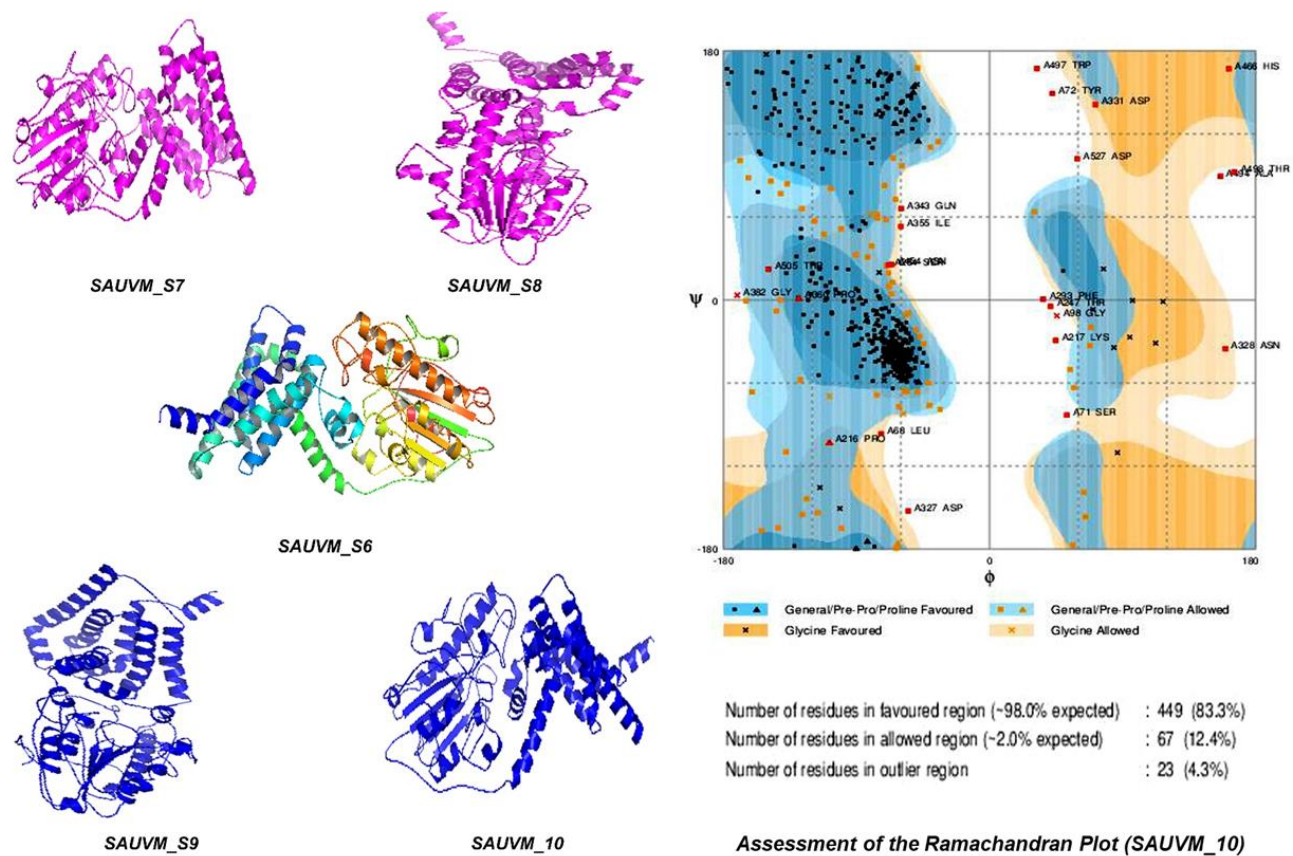


Figure 6: Modelled structures of SAUVM-MCR-1 proteins and validation

Figure 7

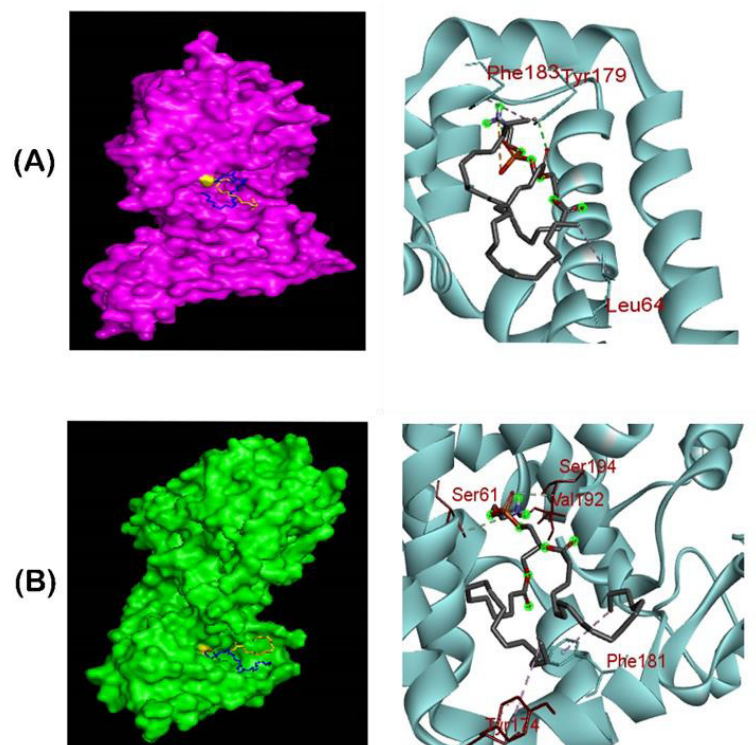


Figure 7: Ligand-binding interaction pattern of PE substrate with MCR-1 and LptA

Table 1: Antimicrobial susceptibility pattern of *Salmonella* isolates (n=82).

Antibiotics	Susceptible (S)		Intermediate (I)		Resistant (R)		I+R
	No. of isolates	%	No. of isolates	%	No. of isolates	%	
Penicillins /β-Lactamase inhibitor							
Amoxicillin (AML,10μg)	29	35.37	48	58.54	5	6.10	64.63
Mcrolides							
Azithromycin (AZM,15μg)	80	97.56	2	2.44	0	0.00	2.44
Aminoglycosides							
Streptomycin (STR,10μg)	25	30.49	45	54.88	12	14.63	69.51
Neomycin (NEO,10μg)	82	100.00	0	0.00	0	0.00	0.00
Quinolones							
Ciprofloxacin (CIP,5μg)	16	19.51	6	7.32	60	73.17	80.49
Levofloxacin (LEV,5μg)	82	100.00	0	0.00	0	0.00	0.00
Fluoroquinolones							
Enrofloxacin (ENR,10μg)	21	25.61	7	8.54	54	65.85	74.39
Norfloxacin (NOR,10μg)	82	100.00	0	0.00	0	0.00	0.00
Tetracyclins							
Oxytetracycline (OTC,30μg)	3	3.66	8	9.76	71	86.59	96.34
Doxycycline (DOX,30μg)	27	32.93	16	19.51	39	47.56	67.07
Lincosamide							
Lincomycin (LIN,10μg)	59	71.95	22	26.83	1	1.22	28.05
Phosphonic							
Fosfomycin (FOS,50μg)	82	100.00	0	0.00	0	0.00	0.00
Folate Pathway Inhibitor							
Co-trimoxazole (COT,25μg)	9	10.98	10	12.20	63	76.83	89.02
Polymyxins							
Colistin (COL,10μg)	0	0.00	6	7.32	76	92.68	100.00
Cephalosporin							
Ceftriaxone (CTR,30ug)	82	100.00	0	0.00	0	0.00	0.00

% = percentage (number of isolates/total number of isolates tested).

Table 2: Multidrug resistant patterns among the *mcr-1* positive *Salmonella* spp isolated from poultry farms in Bangladesh

<i>Salmonella</i> isolates	Multidrug resistant patterns	No. of antibiotic classes to which the tested isolates exhibits resistance (<i>n</i> = 7)
S-6	COL+OTC+COT+CIP+STR	5
S-7	COL+OTC+COT+CIP	4
S-8	COL+OTC+AZM+CIP+STR	5
S-9	COL+OTC+COT+CIP	4
S-10	COL+OTC+COT	3

COL = Colistin, OXT = Oxytetracycline, AZM= Azithromycin, COT= Co-trimoxazole, CTR=Ceftriaxone, CIP = Ciprofloxacin, STR = Streptomycin.
Resistant if, Colistin: ≤ 10; Tetracycline: ≤ 11; Azithromycin: ≤ 12; Ceftriaxone: ≤ 14; Ciprofloxacin: ≤ 20; Streptomycin: ≤ 11.
Multidrug resistant patterns was determined according to the recommendations by CLSI zone diameter interpretation criteria (nearest whole mm).

Table 3: Primer sequence for *invA* gene detection in *Salmonella* isolates

Target gene	Primer name	Primer sequence (5' – 3')	Amplicon Size (bp)
Lambda (Internal control)	LF	CAGATCTCCAGCACGGA ACTATTGAGTACGAACG	1000
	LR	GCATAAAATGCGGGGATTCACTGGCTGC	
<i>invA</i>	SF	TAATGCCAGACGAAAGAGCGT	100
	SR	GATATTGGTGT TTTATGGGGTTCGTT	

Lambda primer: In 20 ul PCR reaction forward and reverse primer used as 10 uM each and lambda DNA 500 pg

Table 4: Primer sequence for *mcr-1* gene detection in *Salmonella* isolates

Target gene	Primer name	Primer sequence (5' – 3')	Amplicon Size (bp)
<i>mcr-1</i>	mcr1-P1F	CAGTATGGGATTGCGCAATGATT	1197
	mcr1-P1R	TTATCCATCACGCCTTTTGAGTC	
<i>mcr-1</i>	mcr1-P2F	TGTCGATACCGCCAAATACCAAG	799
	mcr1-P2R	GGAGTGTGCGGTGGGTTTG	