

1 **Title: Experimental infection of cattle with SARS-CoV-2**

2 **Authors:** Lorenz Ulrich, Kerstin Wernike, Donata Hoffmann, Thomas C. Mettenleiter, Martin

3 Beer

4 **Affiliation:** Friedrich-Loeffler-Institut, Greifswald – Insel Riems, Germany (L. Ulrich, K.

5 Wernike, D. Hoffmann, T. Mettenleiter, M. Beer)

6

7 **Abstract**

8 Six cattle (*Bos taurus*) were intranasally inoculated with SARS-CoV-2 and kept together with

9 three naïve in-contact animals. Low-level virus replication and a specific sero-reactivity were

10 observed in two inoculated animals, despite the presence of high antibody titers against a bovine

11 betacoronavirus. The in-contact animals did not become infected.

12

13 **Keywords:** COVID-19, SARS-CoV-2, coronavirus, cattle, experimental infection, serology

14 **Text**

15 After spill-over from a yet unknown animal host to humans, a global pandemic of an
16 acute respiratory disease referred to as “coronavirus disease 2019 (COVID-19)” started in
17 Wuhan, China, in December 2019 (1, 2). As causative agent, a novel coronavirus designated
18 severe acute respiratory syndrome coronavirus 2 (SARS-CoV-2) was identified (3). Since the
19 beginning of the pandemic, the role of livestock and wildlife species at the human-animal
20 interface was discussed, with a special focus on the identification of susceptible species and
21 potential reservoir or intermediate hosts. Until now, natural or experimental infections
22 demonstrated the susceptibility of fruit bats (*Rousettus aegyptiacus*), ferrets, felids, dogs and
23 minks, while pigs, chicken and ducks could not be infected (4-6). Besides ducks, chicken and
24 pigs, major livestock species with close contact to humans are ruminants including a global
25 population of ca. 1.5 Billion of cattle. In bovines, non-SARS betacoronaviruses are widespread
26 (7, 8) with seroprevalences reaching up to 90% (9). The course of infection is usually subclinical
27 (7). However, it is yet unknown whether any ruminant species including cattle is susceptible to
28 SARS-CoV-2 infection or whether there is any cross-reactivity of antibodies against bovine
29 coronaviruses (BCoV) to SARS-CoV-2.

30

31 **This study**

32 To examine the susceptibility of cattle for SARS-CoV-2 and to characterize the course of
33 infection under experimental conditions, six 4-5 months old, male Holstein-Friesian dairy calves
34 were intranasally inoculated under BSL3-conditions with 1×10^5 tissue culture infectious dose
35 50% (TCID₅₀) of SARS-CoV-2 strain “2019_nCoV Muc-IMB-1” (GISAID

36 ID_EPI_ISL_406862, designation “hCoV-19/Germany/BavPat1/2020”) at 1ml per nostril, using
37 a vaporization device (Teleflex Medical, Germany). 24 hours after inoculation three contact
38 cattle, that were separated prior to infection, were re-introduced. Body temperature and clinical
39 signs were monitored daily and nasal, oral and rectal swabs were taken on days -1, 2, 3, 4, 6, 8,
40 12 and 20, and blood samples on days -1, 6, 12 and 20 after infection.

41 Swabs (Medical Wire & Equipment, UK) were immediately resuspended in 1.25ml
42 serum-free cell culture medium supplemented with penicillin, streptomycin, gentamycin, and
43 amphotericin B. Nucleic acid was extracted from 100µl of swab fluid using the NucleoMag Vet
44 kit (Macherey-Nagel, Germany), and subsequently tested by the real-time RT-PCR “nCoV_IP4”
45 targeting the RNA-dependent RNA polymerase (RdRp) gene (10). Positive results were
46 confirmed by a second real-time RT-PCR based on an E gene target (11). Serum samples were
47 tested by indirect immunofluorescence (iIFA) and virus neutralization assays (VNT) against
48 SARS-CoV-2 as described before (5), and by an ELISA based on the receptor-binding domain
49 (RBD) of SARS-CoV-2 (12). In addition, the sera were investigated by iIFA using CRFK cells
50 (L0115, collection of cell lines in veterinary medicine (CCLV), Insel Riems) infected with
51 BCoV strain Nebraska as antigen matrix and by VNT against this BCoV strain on MDBK cells
52 (L0261, CCLV).

53 All animals tested negative for the presence of SARS-CoV-2 RNA in swab samples and
54 SARS-CoV-2-specific antibodies in serum prior to infection. None of the inoculated cattle, nor
55 any of the contact animals showed any clinical, disease-related symptoms. Body temperature,
56 feed intake and general condition remained in a physiological range throughout the study.
57 However, two of the inoculated animals became productively infected demonstrated by the
58 detection of viral RNA in nasal swabs. One animal (number 776) tested positive on days 2 and 3

59 after inoculation with quantification cycle (Cq) values of 29.97 (day 2) and 33.79 (day 3), and
60 another calf (number 768) on day 3 only (Cq 38.13) (Figure 1A). These animals scored positive
61 only in the nasal swabs. Oral and rectal swabs taken simultaneously, as well as specimens
62 collected from every other animal, remained negative throughout the study period.

63 Serum samples were tested with a SARS-CoV-2 RBD-specific indirect ELISA. An
64 increase in reactivity was observed for animal 776 from day 12 onwards (Figure 1B) indicating
65 seroconversion. Serum taken on day 20 from this animal confirmed the positive ELISA findings
66 with a low iIFA titer of 1:4, and a visible, although not complete, inhibition of viral replication in
67 VNT (serum dilution 1:2). Animal 768 showed only a slightly increased ELISA-reactivity at day
68 20, while iIFA and VNT remained negative. This could be related to the test sensitivity or a
69 possible restriction of replication to the upper respiratory tract.

70 The other animals remained negative throughout the study in all applied SARS-CoV-2-
71 specific serological tests.

72 In addition, the BCoV status of the cattle was tested. As confirmed by VNT, all animals
73 had neutralizing antibodies against BCoV prior to SARS-CoV-2 infection, but the titers differed
74 markedly between individual animals (Figure 1D). Surprisingly, three animals showed an
75 increase in antibody titers against BCoV in iIFA and two also in the VNT (Figure 1). In order to
76 exclude an effect of the SARS-CoV-2 infection, nasal swabs were tested for BCoV by a generic
77 RdRp-based RT-PCR (13). Animal 842 reacted positive one day prior to SARS-CoV-2 infection
78 and 2 days post infection. The presence of a non-SARS-BCoV, which induced the increase in the
79 anti-BCoV titer in this animal (Figure 1) and presumably infected animal 774, was confirmed by
80 sequencing. However, no interference of the bovine coronavirus with the applied SARS-CoV-2

81 tests was observed, since all animals tested negative in SARS-CoV-2 tests prior to infection
82 (Figure 1). Hence, there is presumably no detectable serological cross-reactivity between BCoV
83 and SARS-CoV-2 in the used assays. Moreover, two animals with high BCoV sero-response
84 were PCR-positive for SARS-CoV-2 RNA after inoculation, whereas those with lower BCoV-
85 specific titers could not be infected, further confirming a lack of any cross-reactivity or cross-
86 protection.

87 In conclusion, our findings demonstrate that under our experimental conditions cattle
88 show low susceptibility to SARS-CoV-2, since two out of six animals appear to be infected as
89 demonstrated by SARS-CoV-2-genome detection in nasal swabs and specific seroconversion.
90 However, there is no indication that cattle play any role in the human pandemic nor are there
91 reports of naturally infected bovines. This correlates with the rather low genome loads we
92 detected after experimental intranasal infection of cattle and the absence of transmission to any
93 of the direct in-contact animals. Nevertheless, in regions with high numbers of cattle and high
94 case numbers in humans, like the US or South America, close contact between livestock and
95 infected animal owners or caretakers could lead to anthro-po-zoonotic infections of cattle, as it
96 was already described for highly susceptible animal species like mink, felids or dogs (6, 14).
97 Besides, age, husbandry practices and underlying health conditions of the animals should be
98 considered, when assessing the risk of virus circulation within bovine populations. Hence, cattle
99 may be included in outbreak investigations if there is any indication of direct contact to SARS-
100 CoV-2, e.g. by infected farmers or staff. Beside direct detection by PCR, serological screenings
101 with sensitive and specific ELISA-systems should also be taken into consideration. In this
102 context, the wide distribution of another coronavirus in cattle is of special interest, especially
103 since the presence of one virus did not protect from infection with another betacoronavirus in

104 this study. Double infections of individual animals might potentially lead to recombination
105 events between SARS-CoV-2 and BCoV, a phenomenon already described for other pandemic
106 coronaviruses (15). A resulting chimeric virus, comprising characteristics of both primarily
107 respiratory viruses, could present an additional threat for both human and livestock populations
108 and should therefore be monitored.

109

110 **Acknowledgments**

111 We thank Doreen Schulz, Bianka Hillmann, Mareen Lange and Constantin Klein for
112 excellent technical assistance and the animal caretakers for their dedicated work. The study was
113 supported by intramural funding of the German Federal Ministry of Food and Agriculture
114 provided to the Friedrich-Loeffler-Institut and resources of the VetBioNet consortium (grant
115 agreement No. EU731014), an initiative of the European Commission's Horizon 2020 program.

116 **Ethical Statement**

117 The experimental protocol was assessed and approved by the ethics committee of the
118 State Office of Agriculture, Food Safety, and Fisheries in Mecklenburg-Western Pomerania
119 (permission number MV/TSD/7221.3-2-010/18).

120

121 **References**

- 122 1. WHO. COVID-19 strategy update - 14 April 2020. Online available:
123 <https://www.who.int/publications-detail/covid-19-strategy-update---14-april-2020>; last accessed:
124 16 May 2020. 2020.

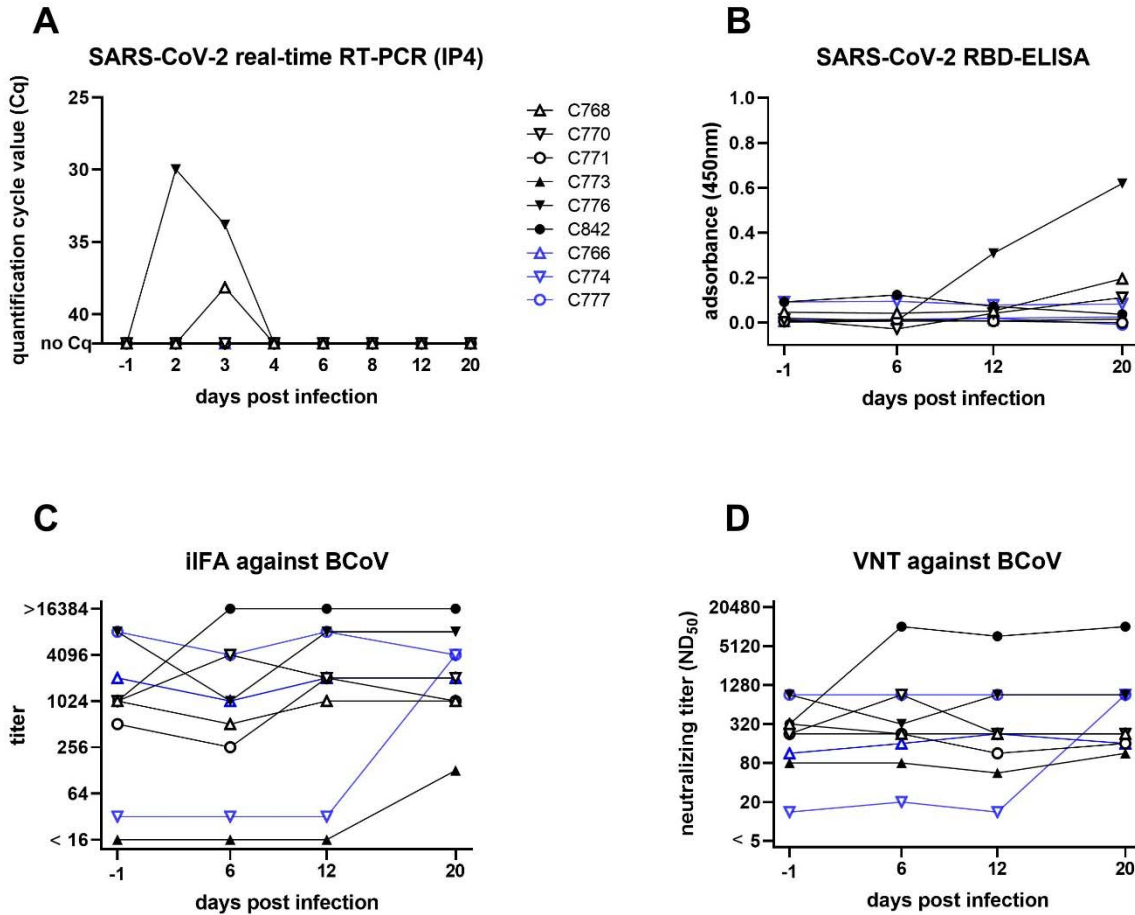
- 125 2. Andersen KG, Rambaut A, Lipkin WI, Holmes EC, Garry RF. The proximal origin of
126 SARS-CoV-2. *Nature medicine*. 2020 Apr;26(4):450-2.
- 127 3. Zhu N, Zhang D, Wang W, Li X, Yang B, Song J, et al. A Novel Coronavirus from
128 Patients with Pneumonia in China, 2019. *N Engl J Med*. 2020 Feb 20;382(8):727-33.
- 129 4. Shi J, Wen Z, Zhong G, Yang H, Wang C, Huang B, et al. Susceptibility of ferrets, cats,
130 dogs, and other domesticated animals to SARS–coronavirus 2. 2020;368(6494):1016-20.
- 131 5. Schlottau K, Rissmann M, Graaf A, Schön J, Sehl J, Wylezich C, et al. SARS-CoV-2 in
132 fruit bats, ferrets, pigs, and chickens: an experimental transmission study. *The Lancet Microbe*.
133 2020.
- 134 6. Oreshkova N, Molenaar RJ, Vreman S, Harders F, Oude Munnink BB, Hakze-van der
135 Honing RW, et al. SARS-CoV-2 infection in farmed minks, the Netherlands, April and May
136 2020. *Euro Surveill*. 2020 Jun;25(23).
- 137 7. Hodnik JJ, Ježek J, Starič J. Coronaviruses in cattle. *Tropical animal health and*
138 *production*. 2020 Jul 17:1-8.
- 139 8. Tizard IR. Vaccination against coronaviruses in domestic animals. *Vaccine*. 2020 Jul
140 14;38(33):5123-30.
- 141 9. Boileau MJ, Kapil S. Bovine coronavirus associated syndromes. *The Veterinary clinics of*
142 *North America Food animal practice*. 2010 Mar;26(1):123-46, table of contents.
- 143 10. WHO. Coronavirus disease (COVID-19) technical guidance: Laboratory testing for 2019-
144 nCoV in humans. Online available: [https://www.who.int/emergencies/diseases/novel-coronavirus-](https://www.who.int/emergencies/diseases/novel-coronavirus-2019/technical-guidance/laboratory-guidance)
145 [2019/technical-guidance/laboratory-guidance](https://www.who.int/emergencies/diseases/novel-coronavirus-2019/technical-guidance/laboratory-guidance), last accessed: 16 May 2020. 2020.
- 146 11. Corman VM, Landt O, Kaiser M, Molenkamp R, Meijer A, Chu DKW, et al. Detection of
147 2019 novel coronavirus (2019-nCoV) by real-time RT-PCR. *Euro Surveill*. 2020 Jan;25(3).

- 148 12. Freuling CM, Breithaupt A, Mueller T, Sehl J, Balkema-Buschmann A, Rissmann M, et
149 al. Susceptibility of raccoon dogs for experimental SARS-CoV-2 infection. bioRxiv : the preprint
150 server for biology. 2020.
- 151 13. Dominguez SR, O'Shea TJ, Oko LM, Holmes KV. Detection of group 1 coronaviruses in
152 bats in North America. *Emerg Infect Dis.* 2007 Sep;13(9):1295-300.
- 153 14. Sailleau C, Dumarest M, Vanhomwegen J, Delaplace M, Caro V, Kwasiborski A, et al.
154 First detection and genome sequencing of SARS-CoV-2 in an infected cat in France.
155 *Transboundary and emerging diseases.* 2020 Jun 5.
- 156 15. Forni D, Cagliani R, Clerici M, Sironi M. Molecular Evolution of Human Coronavirus
157 Genomes. *Trends in microbiology.* 2017 Jan;25(1):35-48.

158

159 Address for correspondence: Martin Beer, Institute of Diagnostic Virology, Friedrich-
160 Loeffler-Institut, Südufer 10, 17493 Greifswald – Insel Riems, Germany; email:
161 martin.beer@fli.de

162



163

164 Figure 1. Characterization of a SARS-CoV-2 infection in cattle. Animals directly inoculated are

165 shown in black, while in-contact animals are depicted in blue. Individual animals are indicated

166 by the same symbol in every figure panel. (A) Viral load in nasal swabs measured by real-time

167 RT-PCR. Cattle 776 and 768 presented with detectable viral loads in nasal swabs on day 2 and/or

168 3. (B) Results of an RBD-based SARS-CoV-2 ELISA for sera taken on days -1, 6, 12 and 20.

169 (C+D) Serological status towards bovine coronavirus. Cattle 842, which tested positive for

170 BCoV in the nasal swab by RT-PCR, presented with a titer increase in both indirect

171 immunofluorescence (iIFA) (C) and virus neutralization test (VNT) (D). Pre-infection antibody

172 titers against BCoV did not influence infection with SARS-CoV-2, as cattle 776 and 768, which

173 tested positive for SARS-CoV-2 genome (panel A), showed no infection related reaction of
174 BCoV antibody titers.