

Suppression of amyloid- β secretion from neurons by *cis*-9, *trans*-11-octadecadienoic acid, an isomer of conjugated linoleic acid

Saori Hata ^{1,2}, Kazunori Kikuchi ³, Kuniyuki Kano ^{4,5}, Haruka Saito ¹, Yuriko Sobu ¹, Shoichi Kinoshita ¹, Takashi Saito ^{6,7}, Takaomi C. Saido ⁶, Yoshitake Sano ⁸, Hidenori Taru ¹, Junken Aoki ^{4,5}, Hiroto Komano ⁹, Taisuke Tomita ³, Shunji Natori¹⁰, and Toshiharu Suzuki^{1,*}

1. Laboratory of Neuroscience, Graduate School of Pharmaceutical Sciences, Hokkaido University, Sapporo 060-0812, Japan., 2. Biomedical Research Institute, National Institute of Advanced Industrial Science and Technology (AIST), Tsukuba 305-8566, Japan., 3. Department of Neuropathology and Neurosciences, Graduate School of Pharmaceutical Sciences, The University of Tokyo, Tokyo 113-0033, Japan., 4. Molecular and Cellular Biochemistry, Graduate School of Pharmaceutical Sciences, Tohoku University, Sendai 980-8578, Japan., 5. Health Chemistry, Graduate School of Pharmaceutical Sciences, The University of Tokyo, Tokyo 113-0033, Japan., 6. Laboratory for Proteolytic Neuroscience, RIKEN Center for Brain Science Institute, Wako 351-0198, Japan., 7. Department of Neurocognitive Science, Institute of Brain Science, Nagoya City University Graduate School of Medical Sciences, Nagoya 467-8601, Japan., 8. Department of Applied Biological Science, Faculty of Science and Technology, Tokyo University of Science, Noda 278-8510, Japan., 9. Division of Neuroscience, School of Pharmacy, Iwate Medical University, Yahaba-cho 028-3694, Japan., 10. Graduate School of Pharmaceutical Sciences, The University of Tokyo, Tokyo 113-0033, Japan.

*Correspondence should be addressed to; Toshiharu Suzuki (ORCID 0000-0002-1655-2374), Laboratory of Neuroscience, Graduate School of Pharmaceutical Sciences, Hokkaido University. Kita 12-Nishi6, Kita-ku, Sapporo 060-0812, Japan
E-mail: tsuzuki@pharm.hokudai.ac.jp Phone: +81-11-706-3250, Fax: +81-11-706-4991

Running title: Suppression of A β generation by CLA

Keywords: conjugated linoleic acid, Alzheimer's disease, amyloid- β , APP, BACE1

Abbreviations used: APP, amyloid- β protein precursor; AD, Alzheimer's disease; CLA, conjugated linoleic acid; LA, linoleic acid; BACE1, β -site APP-cleaving enzyme 1; NMDA, N-methyl-D-aspartate; AMPA, α -amino-3-hydroxy-5-methyl-4-isoxazolepropionic acid; MTT, 3-(4,5-di-methylthiazol-2-yl)-2,5-diphenyltetrazolium bromide, yellow tetrazole; LDH, lactate dehydrogenase; ELISA, enzyme-linked immunosorbent assay; LPC, lysophosphatidylcholine

Abstract

Conjugated linoleic acid (CLA) comprises several geometric and positional isomers of the parental linoleic acid (LA). Two of the isomers, cis-9, trans-11 CLA (c9,t11 CLA) and trans-10, cis-12 CLA (t10,c12 CLA) exert various biological activities. However, the effect of CLA on generation of neurotoxic amyloid- β (A β) protein remains unclear. We found that c9,t11CLA significantly suppressed generation of A β in primary cultures of mouse neurons. CLA treatment did not affect the levels of β -site APP-cleaving enzyme 1 (BACE1), a component of active γ -secretase complex presenilin 1 amino-terminal fragment (PS1 NTF), or A β protein precursor (APP) in cultured neurons. BACE1 activity in lysate of neurons treated with c9,t11 CLA, but not t10,c12 CLA, decreased slightly, although c9,t11 CLA did not directly affect the activity of recombinant BACE1. Interestingly, localization of BACE1 and APP in early endosomes increased in neurons treated with c9,t11 CLA; concomitantly, the localization of both proteins was reduced in late endosomes, where APP is predominantly cleaved by BACE1. c9,t11 CLA and t10,c12 CLA appeared to be incorporated into membrane phospholipids, as the level of CLA-containing lysophosphatidylcholine (CLA-LPC) increased dramatically in neurons incubated with CLA. Taken together, our findings indicate that accumulation of c9,t11 CLA-LPC, but not t10,c12 CLA-LPC, in neuronal membranes suppresses amyloidogenic cleavage of APP, thereby contributing to preservation of brain neurons by suppressing neurotoxic A β production in aged subjects.

Introduction

Conjugated linoleic acid (CLA) is found in meat products from ruminants. Symbiotic bacteria living in the rumens of these animals generate various CLA isomers by biohydrogenating polyunsaturated fatty acids such as linoleic acid (LA). Cis-9, trans-11 CLA (c9,t11 CLA) and trans-10, cis-12 CLA (t10,c12 CLA) are the most common naturally occurring products (reviewed by **den Hartigh, 2019**). CLA exerts a range of biological activities: the intake of CLA is beneficial for cardiovascular health and may also help to prevent cancers and inflammation (reviewed by **Bhattacharya 2006**). The biological activities of these compounds are also observed in the central nervous system; in animal studies, CLA exerts beneficial effects on brain disorders. CLA protects neurons from excitotoxicity caused by excess glutamate (**Hunt 2010**), improves or preserve memory (**Gama 2015; Binyamin 2019**), and prevents age-dependent neurodegeneration (**Monaco 2018**), although it remains unclear to what extent CLA is incorporated into the brain (**Fa 2005**). In many studies, CLA has been used as mixture of isomers; consequently, the detailed biological activities of individual CLA isomers remain unclear.

In Alzheimer's disease (AD), the most common neurodegenerative disorder in the aged population, the two major pathological hallmarks are senile plaques and neurofibrillary tangles (NFTs) in the brain (**Scheltens 2016**). Senile plaques are formed by extracellular accumulation of their principal component, amyloid- β ($A\beta$), whereas NFTs are intracellular aggregates of highly phosphorylated tau, a microtubule-associated protein (**Mucke & Selkoe 2012**). Soluble $A\beta$ oligomers are thought to trigger neuronal impairment by attacking synapses prior to the appearance of pathological remarks in brain (**Beniloval 2012**). Therefore, $A\beta$ generation is thought to be a primary cause of AD onset.

$A\beta$ is generated from amyloid- β protein precursor (APP) by serial proteolytic cleavages. APP is a type I membrane protein; in neurons, it contains 695 amino acids (APP695), whereas other tissues express the splicing variants APP770 and APP751 at lower levels (**Iijima et al, 2000**). All APP isoforms are subject to post-translational modifications, including *N*-glycosylation in the ER and *O*-glycosylation and phosphorylation in the Golgi complex. Mature APP (mAPP) with *N*- and *O*-glycosylation is cleaved by secretases in the late secretory pathways, whereas immature APP (imAPP) with *N*-glycosylation alone resides in the ER and *cis*-Golgi compartment (**Suzuki & Nakaya, 2008; Thinakaran & Koo, 2008**).

APP is cleaved by α -secretase, primarily on the plasma membrane, to generate the membrane-associated carboxy-terminal fragment CTF α ; this is termed the non-amyloidogenic pathway. In the amyloidogenic pathway, APP that escapes from cleavage on the plasma membrane is subject to endocytosis and alternative cleavage by β -secretase (BACE1) in endosomes to generate CTF β (Cole and Vassar, 2008). CTF β , including the entire A β sequence, is further cleaved by the γ -secretase complex, yielding A β peptides that are secreted into the extracellular milieu. The γ -secretase complex cleaves APP CTF at the ϵ -site to release the APP intracellular domain fragment (AICD) into the cytoplasm. The remaining membrane-associated N-terminal region is subject to further processing by the carboxypeptidase-like activity of the γ -secretase complex to generate various types of A β with different carboxyl-terminal γ -cleaved sites, including the strongly neurotoxic and aggregation-prone A β 42 (QiTakahara et al, 2005; Takami & Funamoto 2012). Mutations of AD causative genes, including *PSENs* and *APP*, alter A β generation (Mullan et al, 1992; Goate et al, 1991; Forman et al, 1997), and a protective Icelandic mutation of *APP* decreases β -cleavage and facilitates β' -cleavage of APP, thereby decreasing production of neurotoxic A β 1-40 and A β 1-42 (Jonsson et al, 2012; Kimura et al, 2016). Accordingly, A β generation is considered to be a primary cause of AD.

Although it remains controversial whether A β generation is altered in patients with sporadic AD, several lines of evidence support the idea that APP processing or APP secretase activities are altered in these cases (Yanagida et al, 2009; Kakuda et al, 2012; Kakuda et al, 2020; Hata et al, 2011; Hata et al, 2020). One cause of changes in APP cleavage and secretase activity is membrane lipid composition. Experimental variation of the proportions of various membrane lipids can alter the C-terminal speciation of A β (Quintero-Monzon et al, 2011; Holmes et al, 2012), and the cholesterol level in membrane microdomains (detergent-resistant membranes, DRMs) is reduced in AD brains (Molander-Melin et al, 2005; Hata et al, 2020). Because the substrates and enzymes related to AD pathobiology are all membrane proteins that are subject to membrane trafficking in neurons (Suzuki et al., 2006), lipids and/or fatty acids may play important roles in the metabolism and functions of AD-related membrane proteins, and thus in cognitive functions (Snowden et al, 2017).

In this study, we explored the effect of the most common naturally occurring CLA isomers, c9,t11 CLA and t10,c12 CLA, on amyloid- β (A β) generation in primary cultured mouse neurons. In order to determine the specific effects of each compound, highly pure samples of each isomer were used.

Experimental procedures

Materials

Animals and primary cultured neurons and glia

All animal studies were conducted in compliance with the ARRIVE guidelines (approved #13-0096 in the Animal Studies Committee of Hokkaido University). C57BL/6J mice (RRID:IMSR_JAX:000664; CLEA-Japan, Tokyo, Japan) and *App*^{NL-F/NL-F} mice (C57BL/6-App<tm3(NL-F)Tcs, RRID:IMSR_RBRC06343) (Saito et al, 2014) were housed in a specific pathogen-free (SPF) environment with a microenvironment vent system (Allentown Inc., Allentown, NJ, USA).

Mixed mouse cortical and hippocampal neurons were cultured using a modification of a previous method (Bartlett and Banker, 1984). Briefly, the cortex and hippocampus of mice at embryonic day 15.5 were dissected, and neurons were dissociated in a buffer containing papain and cultured at 5×10^4 cells/cm² in Neurobasal Medium (Cat#21103049, Gibco/Thermo Fisher Scientific, Waltham, MA, USA) containing 2% (v/v) B-27 Supplement (Cat#17504044, Gibco/Thermo Fisher Scientific), Glutamax I (4 mM, Cat#35050061, Gibco/Thermo Fisher Scientific), heat-inactivated horse serum (5% v/v, Cat# 26050088, Gibco/Thermo Fisher Scientific), and penicillin–streptomycin (Cat#35050061, Gibco/Thermo Fisher Scientific) on Costar 6-well plates (Cat#3516, Corning, Corning, NY, USA) or Nunc Lab-Tek II Chambered Coverglass (Nalgene Nunc/Thermo Fisher Scientific, Rochester, NY, USA) coated with poly-L-lysine hydrobromide (Cat#P2636, Sigma-Aldrich, St. Louis, MO, USA) (Chiba et al, 2014). Neurons cultured for the indicated periods (expressed as days *in vitro*, DIV) were treated with LA (Cat#L1376, Sigma-Aldrich), c9,t11 CLA (Cat# 16413, Sigma-Aldrich), or t10,c12 CLA (Cat#90145, Cayman Chemical, Ann Arbor, MI, USA). In a separate study, neurons were cultured for 24 h with LA, c9,t11 CLA, or t10,c12 CLA (10 μ M) in the presence of human A β 40 (20 nM, Cat#4307-v, Peptide Institute, Osaka, Japan). To quantify exogenous human A β 40, the levels of A β in the medium were assayed by sandwich ELISA (sELISA). Cell viability was evaluated by the MTT assay (Cat #M009, Dojindo Molecular Technologies, Inc., Kumamoto, Japan), and cell toxicity was evaluated using the LDH Cytotoxicity Detection Kit (Cat #MK401; Takara Bio, Shiga, Japan).

Antibodies, immunoblotting, immunostaining, and A β assay

Mouse monoclonal anti- α -tubulin (clone 10G10, 1:2000, Cat#M017-25031, Fujifilm-Wako, Osaka, Japan), rabbit monoclonal anti-BACE1 (1: 500, D10E5 Cat#5606, RRID:AB_1903900; Cell Signaling Technologies, Danvers, MA, USA), mouse monoclonal anti-EEA1 (1:500, clone 14, Cat #610457, RRID: AB_397830, BD Biosciences, San Jose, CA, USA), rabbit polyclonal anti-EEA1 (1:500, H-300, Cat#sc-33585, RRID: AB_2277714, Santa Cruz Biotechnology, Dallas, TX, USA), mouse monoclonal anti-Rab7 (1:500, Cat#ab50533, RRID: AB_882241, Abcam, Cambridge, UK), rabbit monoclonal anti-Rab7 (1:500, D95F2, Cat#9367, RRID: AB_1904103, Cell Signaling Technologies), and mouse monoclonal anti-APP (1:500, 22C11; Cat#Mab348, RRID: AB_94882, Merck Millipore/Sigma, Burlington, MA, USA) antibodies were purchased from the indicated suppliers. Rabbit polyclonal anti-APP (1:10,000, 369; **Oishi et al, 1996**) and rabbit polyclonal PS1 NTF (1:10,000, Ab14; **Xu et al, 1998**) antibodies were kindly supplied by Dr. S. Gandy. The amounts of protein were measured using a BCA protein assay kit (Cat#23225, Thermo Fisher Scientific). Proteins were resolved by Tris-glycine buffered sodium dodecyl sulfate (SDS)-polyacrylamide gel electrophoresis (8% and 15% polyacrylamide gels) and transferred onto nitrocellulose membrane (Cat# P/N66485, Paul Corp., Pensacola, FL, USA) for immunoblotting. Membranes were blocked in 5% non-fat dry milk (barcode 4 902220 354665, Morinaga Milk Industry, Tokyo, Japan) in TBS-T (20 mM Tris-HCl [pH 7.6], 137 mM NaCl, 0.05% Tween 20 [sc-29113, Nacalai Tesque, Kyoto, Japan], probed with the indicated antibodies in TBS-T, and washed with TBS-T. Immunoreactive proteins were detected using Clarity Western ECL substrate (Cat#1705061, Bio-Rad, Hercules, CA, USA) and quantitated on a LAS-4000 (FUJIFILM, Tokyo, Japan). Results are derived from independent experiments, and numbers of experiments (n) are indicated in the figure legends.

Primary neurons from wild-type mice were cultured *in vitro* for 9–12 days (DIV 9–12) and treated with 10 μ M LA or CLA for 24 h. Neurons were fixed with 4% paraformaldehyde in PBS, treated with 0.2% Triton X-100 in PBS, and blocked with 1% horse serum and 1% goat serum in PBS. The neurons were incubated with the indicated primary antibodies for 12 h, followed by incubation with Alexa Fluor 488-conjugated donkey anti-mouse IgG (Cat#A-21202, RRID: AB_141607, Invitrogen/Thermo Fisher Scientific), Alexa Fluor 546-conjugated goat anti-mouse IgG (Cat#A-11003, RRID: AB_2534071, Invitrogen/Thermo Fisher Scientific), Alexa Fluor 488-conjugated donkey anti-rabbit IgG (Cat#ab150065, Abcam), and Alexa Fluor 546-conjugated goat anti-rabbit IgG (Cat#A-11010, RRID: AB_2534077, Invitrogen/Thermo Fisher Scientific). Fluorescence images were acquired on a

fluorescence microscope (BZ-X710; Keyence, Osaka, Japan), and quantitative analysis and colocalization efficiency were performed with Fiji/ImageJ and the Colco2 Fiji plugin (ImageJ-Fiji-ImgLib; <http://Fiji.sc> or <http://imageJ.net>).

Mouse monoclonal anti-A β 40 (4D1) and A β 42 (4D8) carboxy-terminal specific antibodies were as described (Tomita et al, 1998). The Fab' fragment of rabbit polyclonal anti-mouse A β (1-16) IgG conjugated with horseradish peroxidase (Cat#27720, IBL, Fujioka, Japan) was used for the detection of mouse A β 40. Biotinylated mouse monoclonal anti-human A β (1-16) IgG 82E1 was purchased from IBL (Cat#10326, RRID: AB_1630806) and used for detection of human A β . Mouse A β 40 was quantified by sELISA consisting of 4D1 and anti-mouse A β (1-16), and human A β 42 was quantified by sELISA consisting of 4D8 and 82E1 (Mizumaru et al, 2009).

In vitro β -secretase assay

BACE1 activity was examined using the β -secretase activity assay kit (Abcam, Cat. #ab65357). In short, neurons were homogenized with BACE1 extraction buffer (contents are not opened), and the lysate (100 μ g protein) or 4 μ g of recombinant human BACE1 (Cat. # 931-AS; R&D Systems, Minneapolis, MN) in extraction buffer was incubated at 37°C for 1 h with a secretase-specific peptide conjugated to two reporter molecules. After the reaction was stopped, Ex/Em (335 nm/495 nm) was measured.

LC-MS/MS analysis

Neurons (DIV 10, $\sim 5 \times 10^5$ cells) derived from wild-type mice were treated with 10 μ M LA or CLA for 24 h. Lipids were recovered with acidic methanol (pH 4.0, 200 μ L) that contained 1 μ M 17:0-LPC as an internal standard and stored at -80°C. LC-MS/MS analysis was performed as described previously (Kano et al, 2019) with some modifications. Briefly, LC was performed using a C18 column (CAPCELL PAK C18 (1.5 mm I.D. \times 250 mm; particle size, 3 μ m) with gradient elution using solvent A (5 mM ammonium formate in 95% (v/v) water, pH 4.0) and solvent B (5 mM ammonium formate in 95% (v/v) acetonitrile, pH 4.0) at 150 μ L/min. Gradient conditions were as follows: hold 50% B for 0.5 min, linear gradient to 100% B over 18 min, hold 100% B for 7 min, and then return to the initial condition. MS analysis was performed by selective reaction monitoring (SRM) in positive mode. LA- and CLA-LPC SRM transitions were as follows: Q1 m/z 520.34, Q3 m/z 184.0.

Statistical analysis

Data are expressed as means \pm SE. Statistical differences were assessed using Student's t-test or one-way ANOVA, combined with the Tukey–Kramer post-hoc test and Dunnett's test for multiple comparisons (GraphPad Prism 8 software). A p value of <0.05 was considered significant. No sample size calculation or tests for normal distribution or outliers were performed. The study was not pre-registered.

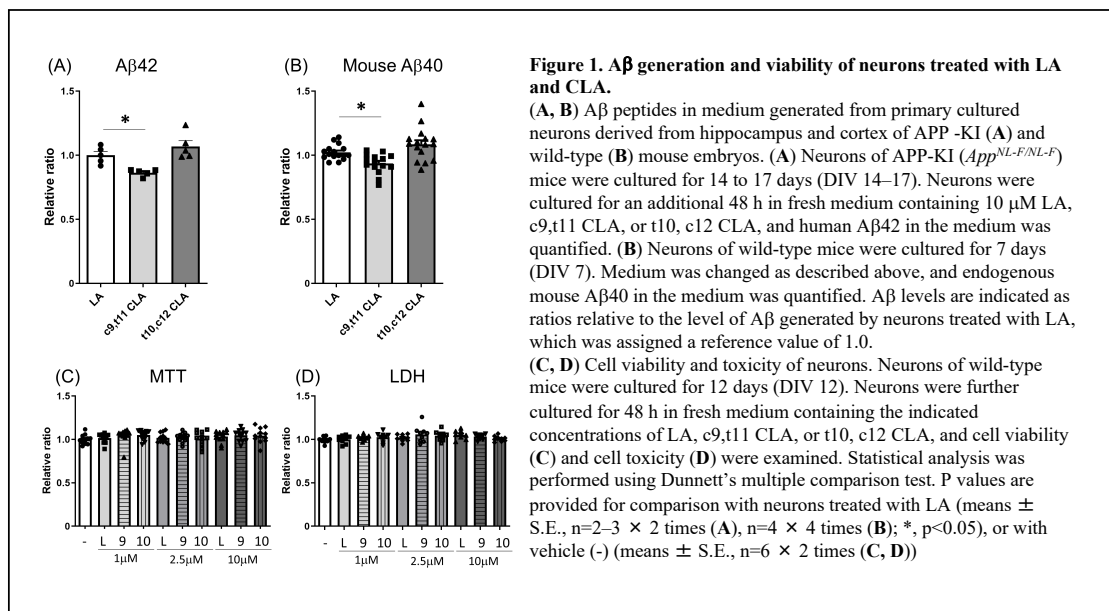
Results

Suppression of A β generation in neurons treated with c9,t11 CLA

To explore the effect of CLA on A β generation, we treated mixed cortical and hippocampal neurons (DIV 14–17) from human APP knock-in mice (*App*^{NL-F/NL-F}) with 10 μ M LA, c9,t11 CLA, or t10,c12 CLA for 48 h, and then quantified humanized A β 42 secreted into medium by sELISA (**Fig. 1A**). Interestingly, c9,t11 CLA decreased A β 42 generation significantly relative to LA, but t10,c12 CLA had no effect on A β 42 generation. This observation shows that c9,t11 CLA, but not t10,c12 CLA, has the ability to suppress A β generation. We did not quantify humanized A β 40 because the APP-KI mouse predominantly generates A β 42 (**Saito et al, 2014**). To confirm the effect of c9,t11 CLA on A β generation, we treated mixed cortical and hippocampal neurons (DIV7) from wild-type (WT) mice for 24 h with 10 μ M LA, c9,t11 CLA, or t10,c12 CLA, and then assessed endogenous mouse A β 40 secreted from neurons (**Fig. 1B**). Generation of mouse A β 40 was significantly lower in neurons treated with c9,t11 CLA, but not t10,c12 CLA, than in neurons treated with LA, indicating that the suppression of A β generation by c9,t11 CLA was reproducible. Levels of endogenous mouse A β 42 were too low to quantify using cultured neurons.

We next assessed the viability of neurons after treatment with CLA and LA. To this end, we treated neurons (DIV 12) from wild-type mice with the indicated concentration of LA, c9,t11 CLA, t10,c12 CLA, and then examined cell viability by MTT assay (**Fig. 1C**). There were no significant differences among neurons treated with CLA and LA at any concentration. In addition, we measured the levels of lactate dehydrogenase (LDH), an indicator of cytotoxicity and plasma membrane injury, in the medium of mouse primary neurons cultured in the presence of LA and CLA. Again, we detected no significant differences among the conditions (**Fig. 1D**). These data indicate that treatment of neurons with LA and CLA does not affect cell viability, and that the

decrease in A β generation in neurons treated with c9,t11 CLA was not due to changes in cell viability.



c9,t11CLA does not promote A β degradation in medium of primary cultured neurons and glial cells

Extracellular A β is subject to clearance by cellular uptake and proteolytic degradation (**Saido and Leissring, 2012**). The lower levels of A β in the medium of neurons treated with c9,t11 CLA could have been the result of faster clearance of A β from the medium. To explore this possibility, we investigated whether A β clearance or degradation was facilitated by CLA treatment of neurons and glial cells. For this purpose, we treated primary cultured neurons (DIV10–12) and glia of WT mice with or without LA, c9,t11 CLA, and t10,c12 CLA for 24 or 48 h in the presence of human A β . Media were collected at the indicated times, and A β contents were examined by sELISA or immunoblotting. In media from neurons (**Fig. 2**) and glia (**Supplementary Fig. S1A, B**), A β levels were slightly lower than in cell-free media alone. However, the magnitudes of the decrease were almost identical between cells treated with LA and CLA. As in the case of neurons, the viability of glia was not affected by treatment with LA or CLA (**Supplementary Fig. S1C**). Although primary cultured neurons may include small numbers of glial cells, these observations indicates that the reduced level of A β in medium of neurons treated with c9,t11 CLA was not due to A β clearance or degradation by neurons and glia, which secrete A β degrading enzymes (**Kidana et al, 2018**).

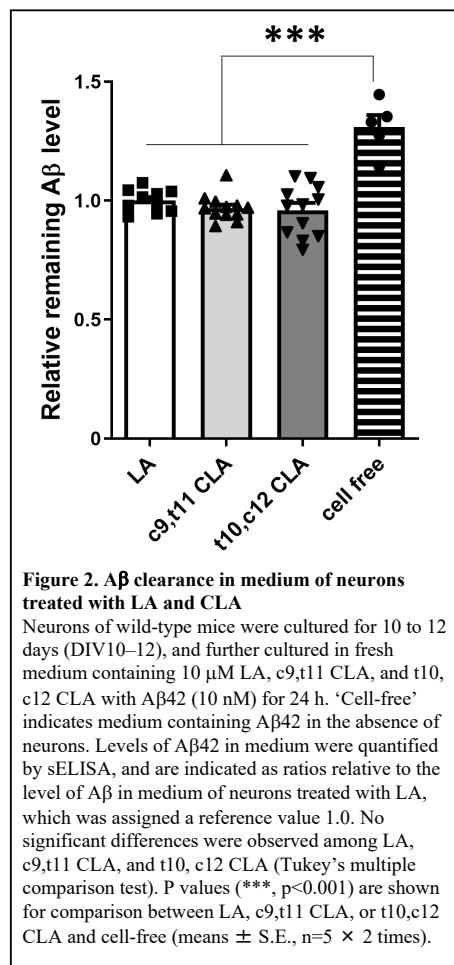
c9,t11 CLA decreases BACE1 activity in neuronal lysate, but not *in vitro*

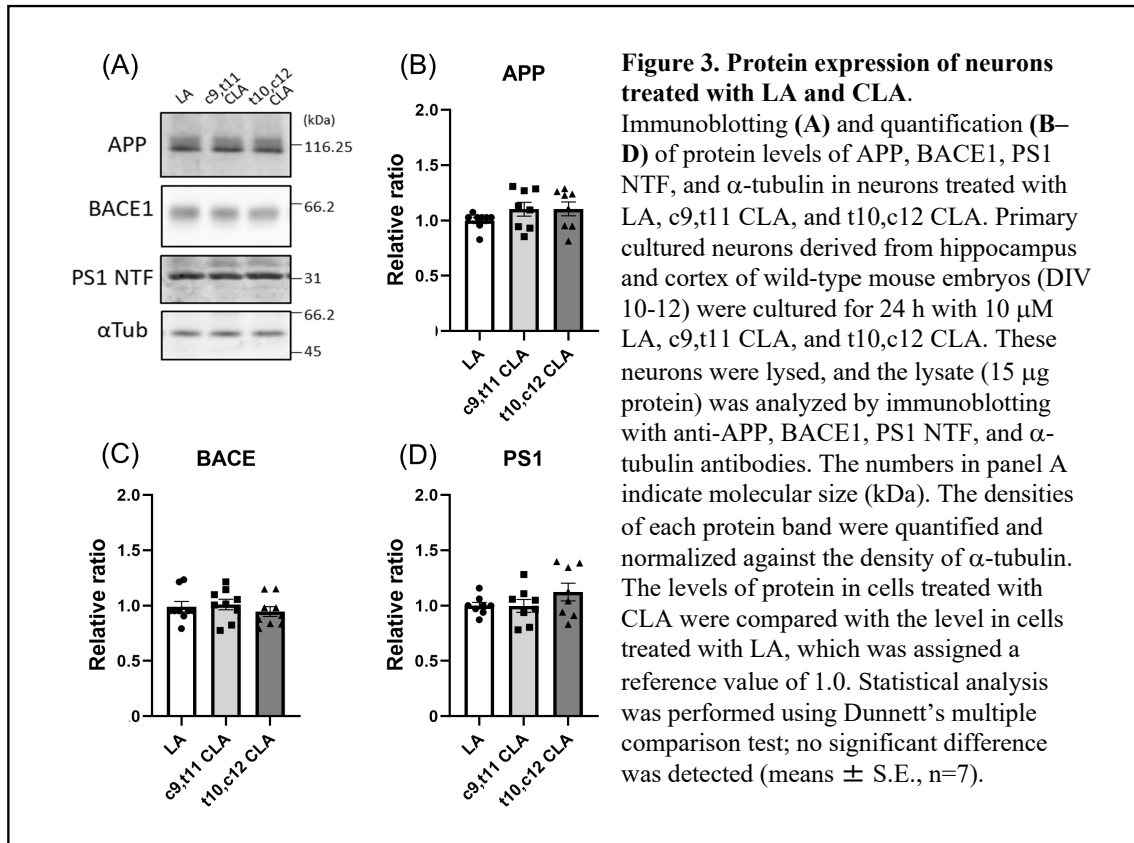
To investigate how neurons treated with c9,t11 CLA decrease A β generation, we first assessed the level of β -site APP-cleaving enzyme (BACE1), which is the enzyme primarily responsible for amyloidogenic cleavage of APP (Vassar et al, 1999; Kimura et al, 2016). Because CLA alters expression of BACE1 but not ADAM10/ α -secretase in SH-SY5Y cells (Li et al, 2011), we examined protein expression of APP, BACE1, and presenilin 1 amino terminal fragment (PS1 NTF), a catabolic component of active γ -secretase complex, in neurons treated with CLA and LA. The levels of these proteins, as well as α -tubulin (used as a loading control), were measured by immunoblotting with the corresponding antibodies (Fig. 3A). Cellular levels of APP, BACE1, and PS1 NTF were almost identical among neurons treated with LA, c9,t11 CLA, and t10,c12 CLA, and no significant differences were observed (Fig.

3B–D). These results suggest that differences in the levels of substrate APP and APP-cleaving enzymes are not the primary cause of the reduction in A β generation in neurons treated with c9,t11 CLA.

Next, we examined BACE1 activity. Specifically, we assayed lysates of wild-type mouse neurons treated with CLA and LA for BACE1 activity *in vitro*. We treated primary cultured neurons (DIV 9–12) from wild-type mice with 10 μ M LA, c9,t11 CLA, or t10,c12 CLA for 24 h and assayed their lysates for BACE1 activity (Fig. 4A). BACE1 protein level was not affected by treatment with CLA or LA (Fig. 3), but lysates prepared with this assay system revealed that BACE1 enzyme activity was slightly but significantly reduced in neurons treated with c9,t11 CLA, but not t10,c12 CLA, relative to those treated with LA (Fig. 4A).

We next investigated whether c9,t11 CLA directly affects BACE1 activity *in vitro* (Fig. 4B). To this end, we incubated recombinant BACE1 with or without LA, c9,t11 CLA, and t10,c12 CLA, and then assayed enzymatic activity following addition of the BACE1 substrate. In the presence of LA or CLA, BACE1 activity was slightly





higher than in the vehicle (DMSO) control. However, we observed no remarkable differences in BACE1 activity among enzyme solutions containing LA, c9,t11 CLA, and t10,c12 CLA (Fig. 4B). These results clearly show that c9,t11 CLA does not directly and specifically activate BACE1. The slight increase of BACE1 activity in the presence of LA and CLA may be due to stabilization of BACE1, which is a membrane protein and could therefore be stabilized in the presence of lipids.

It is difficult to reasonably interpret these results. The differences in BACE1 activity in the neuronal lysates used in this study may reflect alterations of membrane lipid composition or intracellular localization of BACE1 following treatment of neurons with c9,t11 CLA. Therefore, we next explored the localization of BACE1 and APP in neurons, and also analyzed the membrane lipid compositions of neurons.

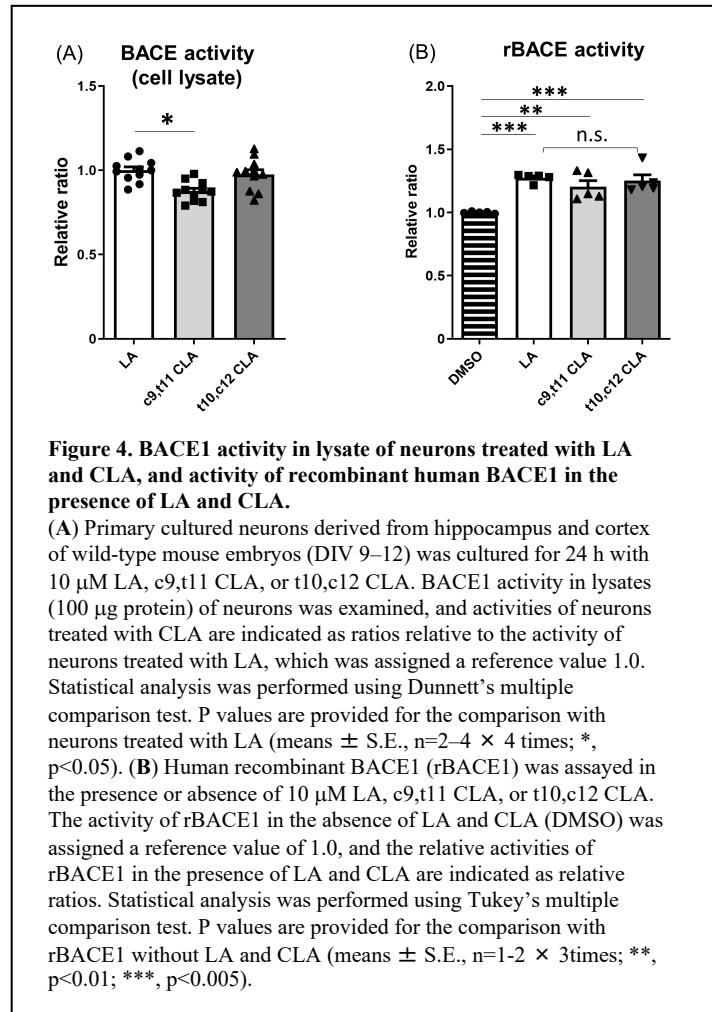
Reduced localization of APP with BACE1 in late endosomes of neurons treated with c9,t11 CLA

APP cleavage by BACE1 occurs in detergent-resistant membrane domains (DRMs) or lipid rafts (Cordy et al, 2003; Puglielli et al, 2003; Kalvodova et al, 2005; Saito et al, 2008) of acidic organelles following plasma membrane endocytosis of APP (Cole and Vassar, 2008). Hence, we first examined the localization of APP and BACE1 in

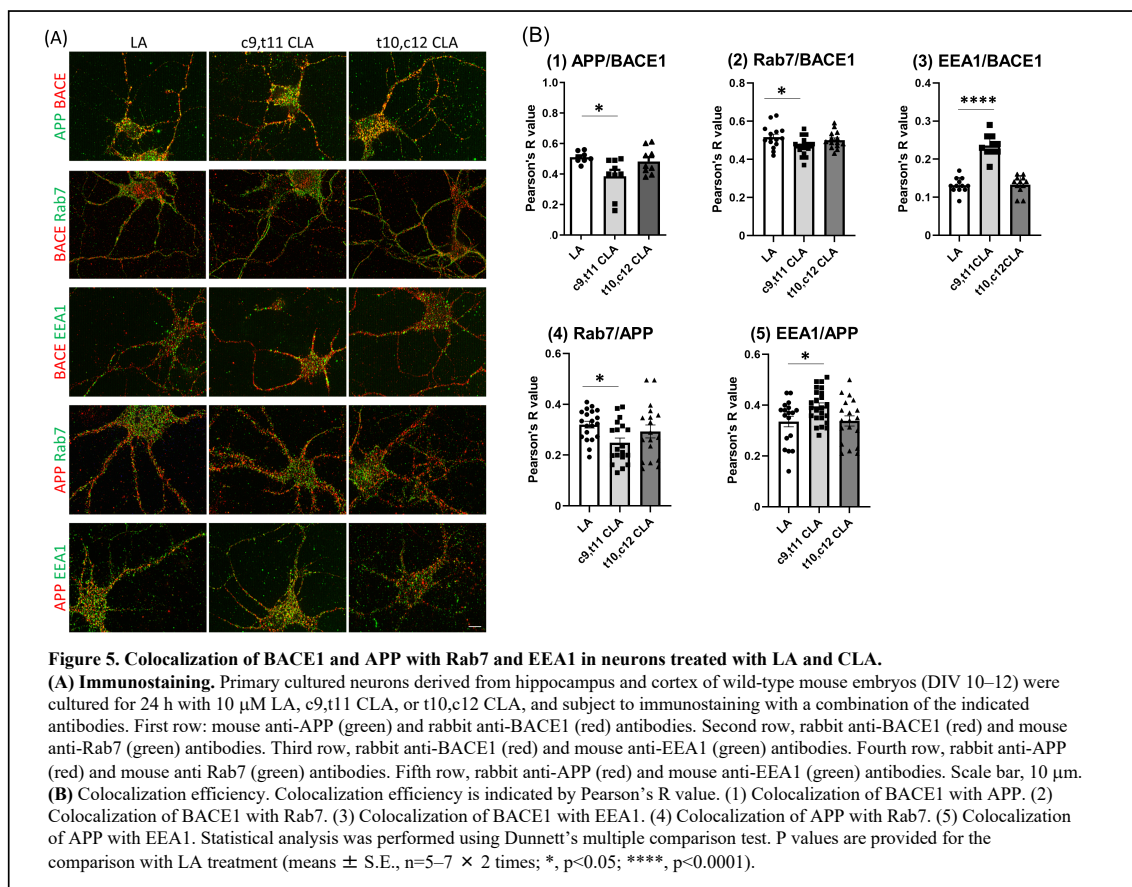
neurons with or without CLA or LA treatment, and compared the colocalization efficiency of APP with BACE1 among the samples (Fig. 5). Colocalization of APP with BACE1 in neurons is shown (Fig. 5A, first row). Moderate colocalization with a Pearson's R value of ~0.5 was observed in neurons treated with LA (a value of 1.0 indicates perfect colocalization, 0 indicates random localization, and -1 indicates perfect exclusion). However, Pearson's R value was significantly lower in neurons treated with c9,t11 CLA than in those treated with LA, whereas t10,c12 CLA had no effect (Fig. 5B (1)). The

observation suggests that colocalization of BACE1 with APP decreased in neurons treated with c9,t11 CLA.

We next examined colocalization of BACE1 with Rab7, a late endosomal marker (Fig. 5A, second row). Interestingly, colocalization between BACE1 and Rab7 significantly decreased in neurons treated with c9,t11 CLA, but not t10,c12 CLA or LA (Fig. 5B (2)), suggesting less localization of BACE1 in late endosomes, where BACE1 cleaves APP in an acidic milieu. We also examined colocalization of BACE1 with EEA1, an early endosomal marker (Fig. 5A, third row). In contrast to Rab7, colocalization of BACE1 with EEA1 remarkably increased in neurons treated with c9,t11 CLA relative to those treated with t10,c12 CLA, or LA (Fig. 5B (3)). These observations suggest that membrane transport of BACE1 into late endosomes from early endosomes may be delayed, and that BACE1 tends to remain in early endosomes, resulting in weaker BACE1 activity.



We also analyzed the localization of APP with Rab7 and EEA1 (**Fig. 5A, fourth and fifth rows**). Colocalization of APP with Rab7 decreased significantly in neurons treated with c9,t11 CLA, whereas colocalization of APP with EEA1 was greater in neurons treated with c9,t11 CLA than in those treated with t10,c12 CLA or LA (**Fig. 5B (4) and (5)**). These alterations were identical to those observed for BACE1. Overall, these findings imply that the decrease in colocalization of APP with BACE1 in late endosomes, where BACE1 actively cleaves APP, causes the reduction in A β generation in neurons treated with c9,t11 CLA.



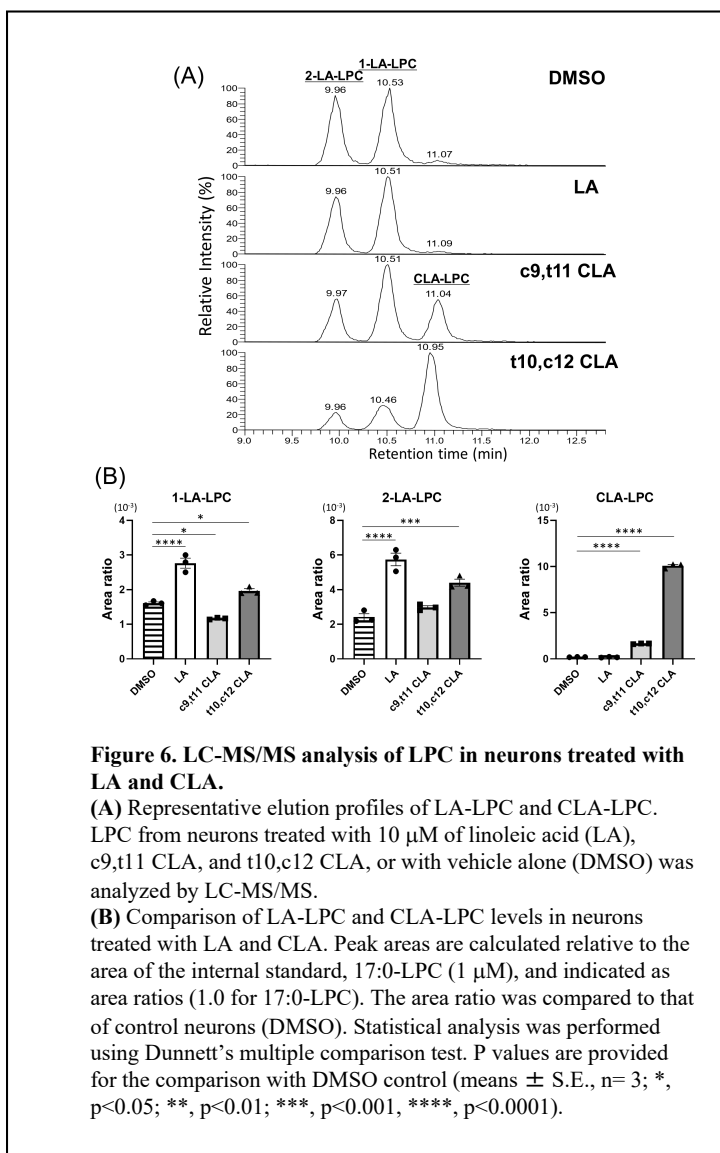
Altered phospholipid composition of neurons treated with CLA

The regulation of the transition from early to late endosomes and membrane protein trafficking into the late endosome from the early endosome is controversial, and the details of how APP and BACE1 are regulated remain unknown. In general, membrane lipid composition affects the localization and function of membrane proteins. Therefore, we used a reverse-phase LC/MS system to analyze phosphatidylcholine (PC), a major lipid constituent of the membrane, in neurons treated with LA or CLA. In neurons cultured in the presence of LA (18:2) or CLA (18:2), the peak of the corresponding PC species (*i.e.* 18:2-containing PC species) increased (data not shown). However, we

could not determine the level of PC-containing CLA because CLA- and LA-containing PC could not be satisfactorily separated by our reverse-phase LC (data not shown). Therefore, we focused our analysis on lysophosphatidylcholine (LPC), which has only one acyl group at the *sn*-1 or *sn*-2 position of the glycerol backbone. Because LPC has only one acyl chain, we expected that LA- and CLA-containing LPC could be separated using our current LC methods. In control DMSO (vehicle)-treated neurons, we observed two peaks of LA-LPC corresponding to 1-LA-LPC and 2-LA-LPC (Okudaira et al, 2014) (**Fig. 6A**). The levels of both 1-LA-LPC

and 2-LA-LPC were significantly higher in cells treated with LA than in those treated with control DMSO (**Fig. 6B**), suggesting that exogenous LA is incorporated into LPC.

In cells treated with c9,t11 CLA or c10,t12 CLA, we detected an extra peak with a delayed retention time (**Fig. 6A**). The peak appearing in neurons treated with c9,t11 CLA had a retention time slightly different from that of the peak in neurons treated with t10,c12 CLA in several previous studies, although the two peaks were not separated clearly in our LC system. The retention time of CLA on reverse-phase LC is longer than that of LA (**Banni et al, 1994**), suggesting that these extra peaks correspond to CLA-LPCs. The peak in c9,t11 CLA-treated neurons was assigned as c9,t11CLA-LPC, and the peak observed in t10, c12 CLA-treated neurons as t10,c12 CLA-LPC.



We compared the levels of LA-LPC and CLA-LPC in neurons treated with LA or CLA to those in control neurons as an area ratio relative to 17:0-LPC (**Fig. 6B**). Again, the levels of both 1-LA-LPC and 2-LA-LPC were dramatically increased by treatment with LA, whereas the level of 1-LA-LPC decreased modestly following treatment with c9,t11 CLA, and the level of 2-LA-LPC increased modestly following treatment with t10,c12 CLA. The levels of CLA-LPC(s) were greatly increased by treatment with either c9,t11 CLA or t10,c12 CLA. These results suggest that, as with LA, CLA is also incorporated into membrane phospholipids including PC. Because LPCs make up 0.1–1% of PCs in many cell types, including neurons, it is likely that some CLA-PC was converted to CLA-LPC. Thus, phospholipids containing c9,t11 CLA, but not t10,c12 CLA, may change membrane lipid composition, leading to reduction in A β generation by regulating the localization and function of APP and BACE1.

Discussion

Conjugated linoleic acid (CLA), which comprises various positional and stereoisomers of octadecadienoic acid, exerts multiple bioactive functions. Since the discovery of its anticarcinogenic effects (**Pariza and Hargraves 1985**), subsequent studies revealed additional biological activities that suppress adiposity (**den Hartigh et al, 2013**), atherosclerosis (**Bruen et al, 2019**), diabetes (**Clement et al, 2002**), and inflammation (**Viladomiu et al, 2016**) (reviewed in **Bhattacharya et al, 2006; den Hartigh 2019**). In many of these studies, CLA was used *in vivo* or *in vitro* as an isomeric mixture consisting largely of c9,t11 CLA and t10,c12 CLA. The activities of CLA are also beneficial to the central nervous system and in neurons. A mixture of the two major CLA isoforms, c9,t11 CLA and t10,c12 CLA, is incorporated into rat brain following a single-dose gavage (**Fa et al, 2005**). In addition, a diet containing CLA increases phospholipase A2 expression and activity in rat hippocampus, which correlates with memory enhancement (**Gama et al, 2015**). Furthermore, in a mouse model of neuropsychiatric lupus, CLA supplementation suppressed age-associated neuronal damage *in vivo* (**Monaco et al, 2018**), and c9,t11 CLA increased the proliferation of neural progenitor cells *in vitro* (**Wang et al, 2011**). Administration of puniic acid, from which CLA is generated as a metabolite, preserves memory and decreases A β accumulation in a mouse model of AD (**Binyamin et al, 2019**). Together, this evidence supports the idea that CLA can prevent neurodegenerative disease in aged populations. The most common age-associated neurodegenerative disease is AD, and the neurotoxicity of A β oligomers is believed to trigger the impairment of neurons.

However, the evidence supporting a role for CLA in AD prevention and care is limited, and it remains unclear how CLA prevents neurons in AD pathologies and which isomer plays an important role in neuronal function for AD pathobiology. Therefore, in this study, we focused our analysis on the influence of CLA on A β generation in neurons.

Our major finding was that c9,t11 CLA suppressed A β generation, and that this effect was specific for c9,t11 CLA but not t10,c12 CLA. The activity of c9,t11 CLA was confirmed for two A β species in two types of mouse primary cultured neurons: endogenous mouse A β 40 in neurons of wild-type mice and humanized A β 42 in human (*App^{NL-F/NL-F}*) APP-KI mice (Saito et al, 2014). c9,t11 CLA did not affect the viability of mouse neurons. Because CLA exerts multiple biological activities in cells and individual subjects (reviewed by den Hartigh, 2019), the reduction in A β generation in neurons mediated by c9,t11 CLA may be the consequence of various biological functions. Among them, we observed that the opportunity of APP to interact with BACE1 in the late endosome was reduced in neurons treated with c9,t11 CLA. This was due to reduced localization of BACE1 and APP into late endosomes, where APP is subject to amyloidogenic cleavage by BACE1, along with alteration of membrane phospholipid composition. Our study provides the first evidence that CLA is incorporated into LPC in neuronal membranes. Although structural analyses of the compounds have not yet been completed, c9,t11 CLA-LPC and t10,c12CLA-LPC are potentially generated as is LA-LPC. Therefore, a membrane lipid composition modified with c9,t11 CLA-LPC, but not t10,c12 CLA-LPC, may contribute to suppression of amyloidogenic processing of APP. Because CLA can be incorporated in many other lipids in the cells, including phospholipids, tri-, di-, and mono-acyl glycerols, and cholesteryl esters, we cannot rule out the possibility that other lipid components in the membrane may be effective for suppressing A β generation.

In a separate study in which an AD mouse model was fed c9,t11 CLA, c9,t11 CLA-LPC was detected in brain membranes, concomitant with a reduction in amyloid plaques (Fujita et al, submitted elsewhere). It remains unclear whether the biological effects of c9,t11 CLA observed *in vivo* are due to the same effect observed in cultured neurons in this study. Nonetheless, taken together with Fujita's report, our results indicate that intake of high-purity c9,t11 CLA protects neurons in aged subjects from injury by toxic A β . Another major isoform, t10,c12 CLA, has a remarkable ability to decrease adiposity (Park et al, 1999; den Hartigh et al, 2013), but a CLA mixture containing t10,c12 CLA induces fatty liver (Clement et al, 2002; Pang et al, 2019). By contrast, induction of fatty liver and reduction of body fat were not observed in mice fed diets containing highly pure c9,t11 CLA (Sano et al., unpublished observation).

Therefore, administration of a CLA mixture containing both c9,t11 CLA and t10,c12 CLA to aged subjects may not be beneficial for long-term health. Intake of diets and/or supplements including highly purified c9,t11 CLA, or at least limited amounts of t10,c12 CLA alone, may be effective for preventing neurodegenerative disease such as AD without peripheral side effects.

Funding

This work was supported in part by KAKENHI, Grants-in-Aid for Scientific Research from JSPS (grant numbers 18H02566 to T.S., JP18K07384 to S.H. and 20K07047 to K.K.), the Strategic Research Program for Brain Sciences from AMED [grant number 20dm0107142h0005 for T.S.], the Naito Foundation (S.H.), LEAP from AMED (JP17gm0010004 to K.K. and J.A.), and The Translational Research program: Strategic PRomotion for practical application of INnovative medical Technology (TR-SPRINT) from AMED (Y.S.).

Conflict of Interest

All authors declare no conflict of interest.

References

- Banni, S., Day, B.W., Evans, R.W., Corongiu, F.P. and Lombardi, B. (1994) Liquid chromatographic-mass spectrometric analysis of conjugated diene fatty acids in a partially hydrogenated fat. *J. Am. Oil Chem. Soc.* **71**, 1321-1325.
- Bartlett W. P. and Banker G. A. (1984) An electron microscopic study of the development of axons and dendrites by hippocampal neurons in culture. I. Cells which develop without intercellular contacts. *J. Neurosci.* **4**, 1944-1953.
- Beniloval I., Karran E. and De Strooper B. (2012) The toxic A β oligomer and Alzheimer's disease: an emperor in need of clothes. *Nat. Neurosci.* **15**, 349-357.
- Bhattacharya A., Banu J., Rahman M., Gausey J. and Fernands G. (2006) Biological effects of conjugated linoleic acids in health and disease. *J. Nutrit. Biochem.* **17**, 789-810.
- Binyamin O., Nitzan K., Frid K., Ungar Y., Rosenmann H. and Gabizon R. (2019) Brain targeting of 9c, 11t-conjugated linoleic acid, a natural calpain inhibitor, preserves memory and reduces A β and p25 accumulation in 5XFAD mice. *Sci. Reprt.* **9**, 18437.
- Bruen R., Curley S., Kajani S., Lynch G., O'Reilly M. E., Dillon E. T., Fitzsimons S., Mthunzi L., McGillicuddy F. C. and Belton O. (2019) Different monocyte phenotypes result in proresolving macrophages in conjugated linoleic acid-induced attenuated progression and regression of atherosclerosis. *FASEB J.* **33**, 11006-11020.
- Chiba K., Araseki M., Nozawa K., Furukori K., Araki Y., Matsushima T., Nakaya T., Hata S., Saito Y., Uchida S., Okada Y., Nairn A. C., Davis R. J., Yamamoto T., Kinjo M., Taru H. and Suzuki T. (2014) Quantitative analysis of APP axonal transport in neurons: role of JIP1 in enhanced APP anterograde transport. *Mol. Biol. Cell* **25**, 3569-3580.

- Clement L., Poirier H., Niot I., Bocher V., Guerre-Millo M., Krief S., Staels B. and Besnard P. (2002) Dietary trans-10, cis-12 conjugated linoleic acid induces hyperinsulinemia and fatty liver in the mouse. *J. Lipid Res.* **43**, 1400-1409.
- Cole S. L. and Vassar R. (2008) The role of amyloid precursor protein processing by BACE1, the b-secretase, in Alzheimer Disease pathophysiology. *J. Biol. Chem.* **283**, 29621-29625.
- Cordy J. M., Hussain I., Dingwall C., Hooper N. M. and Turner A. J. (2003) Exclusively targeting β -secretase to lipid rafts by GPI-anchor addition up-regulates β -site processing of the amyloid precursor protein. *Proc. Natl. Acad. Sci. U.S.A.* **100**, 11735-11740.
- den Hartigh L. J., Han C. Y., Wang S., Omer M. and Chait A. (2013) 10E, 12Z-conjugated linoleic acid impairs adipocyte triglyceride storage by enhancing fatty acid oxidation, lipolysis, and mitochondrial reactive oxygen species. *J. Lipid Res.* **54**, 2964-2978.
- den Hartigh L. J. (2019) Conjugated linoleic acid effects on cancer, obesity, and atherosclerosis: A review of pre-clinical and human trials with current perspectives. *Nutrients* **11**, 370.
- Fa M., Diana A., Carta G., Codeddu L., Melis M. P., Murru E., Sogos V. and Banni S. (2005) Incorporation and metabolism of c9,t11 and t10,c12 conjugated linoleic acid (CLA) isomers in rat brain. *Biocim. Biophys. Acta.* **1736**, 61-66.
- Forman, M. S., Cook, D. G., Leight, S., Doms, R. W. and M-Y, V. Lee. (1997) Differential effects of the Swedish mutant amyloid precursorprotein on β -amyloid accumulation and secretion in neurons and nonneuronal cells. *J. Biol. Chem.* **272**, 32247-32253.
- Fujita Y., Shen X., Kano K., Sato C., Hatakeyama H., Ota Y., Kikuchi K., Yasuno W., Kikuchi K., Kushima M., Tomita T., Suzuki T., Aoki J., Zou K., Natori S. and Komano H. (2020) Dietary *cis*-9, *trans*-11-conjugated linoleic acid reduces amyloid

β -protein accumulation accompanied with the upregulation of anti-inflammatory cytokines in Alzheimer's disease model mice. *Submitted to elsewhere*

- Gama M. A. S., Rapposo N. R. B., Mury F., Lopes F. C. F., Dias-Neto E., Talib, L. L. and Gattaz W. (2015) Conjugated linoleic acid-enriched butter improved memory and up-regulated phospholipase A2 encoding-genes in rat brain tissue. *J. Neural. Transm.* **122**, 1371-1380.
- Goate, A., Chartier-Harlin, M-C., Mullan, M., Brown, J., Crawford, F., Fidani, L., Giuffra, L., Haynes, A., Irving, N., James, L. et al. (1991) Segregation of a missense mutation in the amyloid precursor protein gene with familial Alzheimer's disease. *Nature* **349**, 704-706.
- Hata S., Fujishige S., Araki Y., Taniguchi M., Urakami K., Peskind E., Akatsu H., Araseki M., Yamamoto K., Martins N. R., Maeda M., Nishimura M., Levey A., Chung K. A., Montine T., Leverenz J., Fagan A., Goate A., Bateman R., Holtzman D. M., Yamamoto T., Nakaya T., Gandy S. and Suzuki T. (2011) Alternative processing of γ -secretase substrates in common forms of mild cognitive impairment and Alzheimer's disease: Evidence for γ -secretase dysfunction. *Ann. Neurol.* **69**, 1026-1031.
- Hata S, Hu A, Piao Y, Nakaya T, Taru H, Morishima-Kawashima M, Murayama S, Nishimura M. and Suzuki T. (2020) Enhanced amyloid- β generation by γ -secretase complex in detergent-resistant membrane microdomain accompanied by the reduced cholesterol level. *Human. Mol. Gene.* **29**, 382-393.
- Holmes O., Paturi S., Wenjuan Y., Wolfe M. S. and Selkoe D. J. (2012) Effects of membrane lipids on the activity and processivity of purified γ -secretase. *Biochemistry* **51**, 3565-3575.
- Hunt W. T., Kamboj A., Mojska H., Gielecinsk I. and Tokark A. (2010) Protection of cortical neurons from excitotoxicity by conjugated linoleic acid. *J. Neurochem.* **115**, 123-130.
- Iijima K., Ando K., Takeda S., Satoh Y., Seki T., Itohara S., Greengard P., Kirino Y., Nairn A. C. and Suzuki T. (2000) Neuron-specific phosphorylation of Alzheimer's

β -amyloid precursor protein by cyclin-dependent kinase 5. *J. Neurochem.* **75**, 1085-1091.

Jonsson T., Atwal J. K., Steinberg S., Snaedal J., Jonsson P.V., Bjornsson S., Stefansson H., Sulem P., Gudbjartsson D., Maloney, J. et al. (2012) A mutation in APP protects against Alzheimer's disease and age-related cognitive decline. *Nature* **488**, 96-99.

Kakuda N., Shoji, M., Arai, H., Furukawa, K., Ikeuchi, T., Akazawa, K., Takami, M., Hatsuda, H., Murayama, S., Hashimoto, Y. et al. (2012) Altered γ -secretase activity in mild cognitive impairment and Alzheimer's disease. *EMBO Mol. Med.* **4**, 344-352.

Kakuda N., Yamaguchi H., Akazawa K., Hata S., Suzuki T., Hatsuta H., Murayama S., Funamoto S. and Ihara Y. (2020) γ -Secretase activity is associated with Braak senile plaque stages. *Am. J. Pathol.* **190**, 1323-1331.

Kalvodova L., Kahya N., Schwille P., Eehalt R., Verkade P., Drechsel D. and Simons K. (2005) Lipids as modulators of proteolytic activity of BACE: involvement of cholesterol, glycosphingolipids, and anionic phospholipids in vitro. *J. Biol. Chem.* **280**, 36815-36823.

Kano, K., Matsumoto, H., Inoue, A., Yukiura, H., Kanai, M., Chun, J., Ishii, S., Shimizu, T. and Aoki, J. (2019) Molecular mechanism of lysophosphatidic acid-induced hypertensive response. *Sci. Rep.* **9**, 2662

Kidana K., Tatebe T., Ito K., Hara N., Kakita A., Saito T., Takatori S., Ouchi Y., Ikeuchi T., Makino T., Saido T. C., Akishita M., Iwatsubo T., Hori Y. and Tomita T. (2018) Loss of kallikrein-related peptidase 7 exacerbates amyloid pathology in Alzheimer's disease model mice. *EMBO Mol. Med.* **10**, e8184.

Kimura A., Hata S. and Suzuki T. (2016) Alternative selection of β -site APP-cleaving enzyme 1 (BACE1) cleavage sites in amyloid β -protein precursor (APP) harboring protective mutations within the A β sequence. *J. Biol. Chem.* **291**, 24041-24053.

- Li Y-C., Chen Q., Wan X-Z., Yang X-L., Liu X. and Zhong L. (2011) Effect of conjugated linoleic acid on cleavage of amyloid precursor protein via PPAR γ . *Neurol. Sci.* **32**, 1095-1101.
- Mizumaru C., Saito Y., Ishikawa T., Yoshida T., Yamamoto T., Nakaya T. and Suzuki T. (2009) Suppression of APP-containing vesicle trafficking and production of β -amyloid by AID/DHHC-12 protein. *J. Neurochem.* **111**, 1213-1224.
- Molander-Melin M., Blennow K., Bogdanovic N., Dellheden B., Mansson J-E. and Fredmann P. (2005) Structural membrane alteration in Alzheimer brains found to be associated with regional disease development; increased density of gangliosides GM1 and GM2 and loss of cholesterol in detergent-resistant membrane domains. *J. Neurochem.* **92**, 171-182.
- Monaco A., Ferrandino I., Boscanino F., Cocca E., Cigliano L., Maurano F., Luongo D., Spagnuolo M. S., Rossi M. and Bergamo P. (2018) Congugated linonoleic acid prevents age-dependent neurodegeneration in a mouse model of neuropsychiatric lupus via the activation of an adaptive response. *J. Lipid. Res.* **59**, 48-57.
- Mucke L. and Selkoe D.J. (2012) Neurotoxicity of amyloid β -protein: synaptic and network dysfunction. *Cold Spring Harb. Perspect. Med.* **2**, a006338.
- Mullan M., Crawford F., Axelman K., Houlden H., Lilus L., Winblad B. and Lannfelt L. (1992) A pathogenic mutation for probable Alzheimer's disease in the APP gene at N-terminus of β -amtloid. *Nat. Genet.* **1**, 345-347.
- Oishi M., Nairn A. C., Czernik A. J., Lim G. S., Isohara T., Gandy S. E., Greengard P. and Suzuki T. (1997) The cytoplasmic domain of the Alzheimer's β -amyloid precursor protein is phosphorylated at Thr654, Ser655 and Thr668 in adult rat brain and cultured cells. *Mol. Med.* **3**, 111-123.
- Okudaira M., Inoue A., Shuto A., Nakanaga K., Kano K., Makide K., Saigusa D., Tomioka Y. and Aoki J. (2014) Separation and Quantification of 2-acyl-1-lysophospholipids and 1-acyl-2-lysophospholipids in Biological Samples by LC-MS/MS. *J. Lipid. Res.* **55**, 2178-92

- Pang K., Zhu Z., Zhu S. and Han L. (2019) A high dose of conjugated linoleic acid increase fatty liver and insulin resistance in lactating mice. *PLoS One* **14**, e0214903
- Pariza M. W. and Hargraves W. A. (1985) A beef-derived mutagenesis modulator inhibits initiation of mouse epidermal tumors by 7,12-dimethylbenz[α]anthracene. *Carcinogenesis* **6**, 591-593.
- Park Y., Storkson J. M., Albright K. J., Liu W. and Pariza M. W. (1999) Evidence that the trans-10, cis-12 isoformer of conjugated linoleic acid induces body composition changes in mice. *Lipids* **34**, 235-241.
- Puglielli L., Ellis B. C., Saunders A. J. and Kovacs D. M. (2003) Ceramide stabilizes beta-site amyloid precursor protein-cleaving enzyme 1 and promotes amyloid β -peptide biogenesis. *J. Biol. Chem.*, **278**, 19777-19783.
- Qi-Takahara Y., Morishima-Kawashima M., Tanimura Y., Dolios G., Hirotsu N., Horikoshi Y., Kametani F., Maeda M., Saido T. C., Wang R. et al. (2005) Longer forms of amyloid β protein: implications for the mechanism of intramembrane cleavage by γ -secretase. *J. Neurosci.* **25**, 436-445.
- Quintero-Monzon O., Martin M. M., Fernandez M. A., Cappello C. A., Krzysiak A. J., Osenkowski P. and Wolf M. S. (2011) Dissociation between the processivity and total activity of γ -secretase: Implications for the mechanism of Alzheimer's disease-causing presenilin mutations. *Biochemistry* **50**, 9023-9035.
- Saido T. C. and Leissring M. A. (2012) Proteolytic degradation of amyloid β -protein. *Cold Spring Harb. Perspect Med.* **2**, a006379.
- Saito T., Matsuba Y., Mihira N., Takano J., Nilsson P., Itohara S., Iwata N. and Saido T. C. (2014) Single App knock-in mouse models of Alzheimer's disease. *Nat. Neurosci.* **17**, 661-663.
- Saito Y., Sano Y., Vassar R., Gandy S., Nakaya T., Yamamoto T. and Suzuki T. (2008) X11 proteins regulate the translocation of amyloid β -protein precursor (APP) into detergent-resistant membrane and suppress the amyloidogenic cleavage of APP by β -site-cleaving enzyme in brain. *J. Biol. Chem.* **283**, 35763-35771.

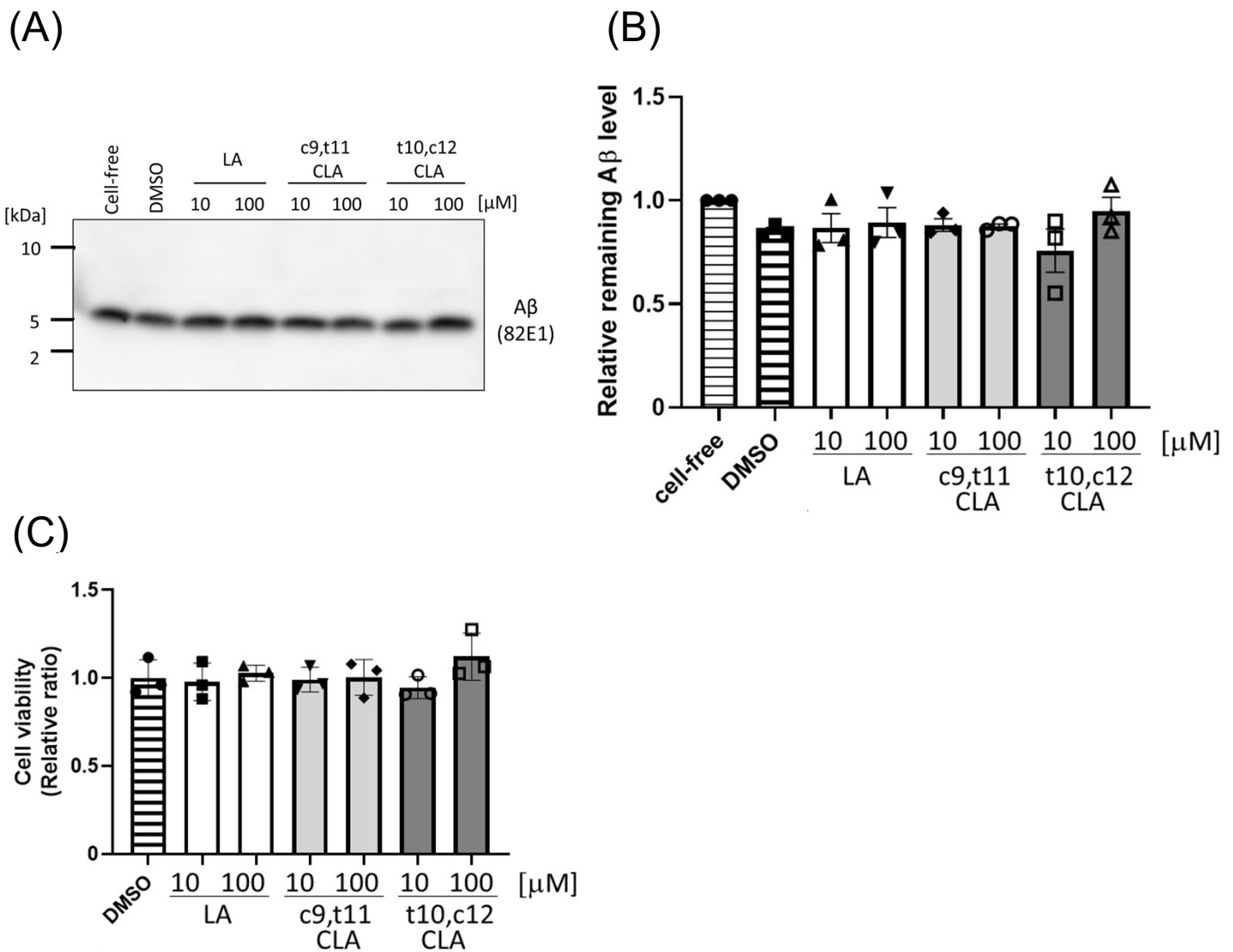
- Scheltens P., Blennow K., Breteler M. M., de Strooper B., Frisoni G. B., Salloway S. and Van der Flier W. M. (2016) Alzheimer's disease. *Lancet* **388**, 505-517.
- Snowden S. G., Ebshiana A. A., Hye A., Pletnikova O., O'Brien R., Troncoso J., Legido-Quigley C. and Thambisetty M. (2017) Association between fatty acid metabolism in the brain and Alzheimer disease neuropathology and cognitive performance: A nontargeted metabolomic study. *PLOS Med.* **14**, e1002266
- Suzuki T., Araki Y., Yamamoto T. and Nakaya T. (2006) Trafficking of Alzheimer's disease-related membrane proteins and its participation in disease pathogenesis. *J. Biochem.* **139**, 949-955.
- Suzuki T. and Nakaya T. (2008) Regulation of amyloid β -protein precursor by phosphorylation and protein interaction. *J. Biol. Chem.*, **283**, 29633-29637.
- Takami M. and Funamoto S. (2012) γ -Secretase-dependent proteolysis of transmembrane domain of amyloid precursor protein: successive tri- and tetrapeptide release in amyloid β -protein production. *Inter. J. Alzheimer's Dis.* 591392.
- Thinakaran G. and Koo E. (2008) Amyloid precursor protein trafficking, processing, and function. *J. Biol. Chem.*, **283**, 29615-29619.
- Tomita S., Kirino Y. and Suzuki T. (1998) Cleavage of Alzheimer's amyloid precursor protein (APP) by secretases occurs after O-glycosylation of APP in the protein secretory pathway. Identification of intracellular compartments in which APP cleavage occurs without using toxic agents that interfere protein mechanism. *J. Biol. Chem.* **273**, 6277-6284.
- Vassar R., Bennett B. D., Babu-Khan S., Kahn S., Mendiaz E. A., Denis P., Tepow D. B., Ross S., Amarante P., Loeloff R., Luo Y., Fisher S., Fuller J., Edenson S., Lile J., Jarosinski M. A., Biere A. L., Curran E., Burgess T., Louis J. C., Collins F., Treanor J., Rogers G. and Citron M. (1999) Beta-secretase cleavage of Alzheimer's amyloid precursor protein by the transmembrane aspartic protease BACE. *Science* **286**, 735-741.

Viladomiu M., Hontecillas R. and Bassaganya-Riera J. (2016) Modulation of inflammation and immunity by dietary conjugated linoleic acid. *Eur.J. Pharmacol.* **785**, 87-95.

Wang H., Liu T., Wang J., Qi Y., Ge D. and Guan S. (2011) Isomer-specific effects of conjugated linoleic acid on proliferative activity of cultured neural progenitor cells. *Mol. Cell. Biochem.* **358**, 13-20.

Xu H., Gouras G. K., Grenfield J. P., Vincent B., Naslund J., Mazzarelli L., Fried G., Jovanovic J. N., Seeger M., Relkin, N. R., Liao F., Checler F., Buxbaum J. D., Chait B. T., Thinakaran G., Sisodia S. S., Wang R., Greengard P. and Gandy S. (1998) Estrogen reduces neuronal generation of Alzheimer β -amyloid peptide. *Nat. Med.* **4**, 447-451.

Yanagida K., Okochi M., Tagami S., Nakayama T., Kodama T. S., Nishitomi K., Jiang J., Mori K., Tatsumi S., Arai, T. et al. (2009) The 28-amino acid form of an APLP1-derived A β -like peptide is a surrogate marker for A β 42 production in the central nervous system. *EMBO Mol. Med.* **1**, 223-235.



Supplementary Figure S1. Aβ clearance in medium of glia treated with LA and CLA.

Primary cultured glial cells were prepared from cortex of 1–2-day post-natal mouse brains and cultured for 15 days. Glial cells (largely astrocytes) of wild-type mice were cultured for 48 h in fresh medium containing 10 or 100 μM LA, c9,t11 CLA, or t10,c12 CLA with 20 nM Aβ40.

(A, B) Aβ in medium was quantified by immunoblotting with anti-human Aβ antibody (82E1). Band densities are indicated as ratios relative to the level of Aβ in medium in the absence of cells, which was assigned a reference value 1.0. No significant difference was observed among LA, c9,t11 CLA, and t10, c12 CLA using Dunnett's multiple comparison test (n=3), although Aβ levels tend to be lower in the presence of cells than in cell-free medium (1.0). Numbers (panel A, left side) indicate molecular size (kDa).

(C) Cell viability was assayed by staining with Alamar blue (Cat. #DAL1025, Thermo Fisher Scientific, Waltham, MA, USA), and is indicated as the ratio relative to the level of cells without treatment (DMSO), which was assigned a reference value of 1.0. No significant difference was observed among LA, c9,t11 CLA, and t10,c12 CLA (Dunnett's multiple comparison test; n=3).