

SARS-CoV-2 RBD mutations, ACE2 genetic polymorphism, and stability of the virus-receptor complex: The COVID-19 host-pathogen nexus

Dana Ashoor*, Nouredine Ben Khalaf*, Maryam Marzouq*, Hamdi Al Jarjanazi*, and M.Dahmani Fathallah*#

* Department of Life Sciences, Health Biotechnology Program # King Fahad Chair for Health Biotechnology, College of Graduate Studies, Arabian Gulf University, PO Box 26671, Manama, Kingdom of Bahrain

^ Environmental Monitoring and Reporting Branch, Ontario Ministry of the Environment, Conservation and Parks, Toronto, Ontario, Canada.

D.A and NBK have equally contributed to this work

Correspondence: d.fathallah@agu.edu.bh; Tel.: Tel: +973 17 239602

Fax: +973 17 239484

Abstract: SARS-CoV-2 infectivity is determined by the virus Spike protein RBD binding to the ACE2 receptor. Meanwhile, marked infection rate differences were reported between populations and individuals. To understand this disease dynamic, we used a computational approach to study the implications of both SARS-CoV-2 RBD mutations and ACE2 polymorphism on the stability of the virus-receptor complex. We used the 6LZG PDB RBD/ACE2 3D model, the mCSM platform, the LigPlot+ and PyMol software to analyze the data on SARS-CoV-2 mutations and ACE variants retrieved from GISAID and Ensembl data banks. We observed that out of 351 RBD point mutations 83% destabilizes the complex according to free energy ($\Delta\Delta G$) differences. We also spotted variations in the patterns of polar and hydrophobic interactions between the mutations occurring in 15 out of 18 contact residues. Similarly, comparison of the effect on the complex stability of different ACE2 variants showed that the pattern of molecular interactions and the complex stability varies also according to ACE2 polymorphism. We infer that it is important to consider both ACE2 variants and circulating SARS-CoV-2 RBD mutations to assess the stability of the virus-receptor association and evaluate infectivity. This might offers a good molecular ground to mitigate the virus spreading.

Keywords: COVID-19; SARS-CoV-2; Angiotensin Converting Enzyme 2 receptor; Spike; Receptor Binding Domain; virus-host interaction; SARS-CoV-2 mutations.

1. Introduction

The emergent coronavirus, called Severe Acute Respiratory Syndrome Coronavirus 2 (SARS-CoV-2) has been spreading globally and efficiently since late 2019 [1]. SARS-CoV-2 is a new member of the coronaviruses family that includes SARS coronavirus (SARS-CoV) and Middle East Respiratory Syndrome coronavirus (MERS-CoV) [2]. SARS-CoV-2 is the etiologic agent of the ongoing coronavirus disease (COVID-19) pandemic that claimed over a million life to date [3]. The number of active cases per 100 thousand population estimates the prevalence of COVID-19 while the incidence is the number of new cases per time unit. The prevalence and incidence rate are good indicators for the tracking of infectious outbreaks [4]. Indeed, they are very useful to evaluate the effectiveness of the mitigation efforts in the control of the disease spreading [5]. Even though the spreading of the SARS-CoV-2 virus is global, the

prevalence/incidence of the disease varies throughout the world, for some regions being more severely hit than others [1, 3, 5]. Even the overall case fatality ratio of COVID-19 varies between location and intensity of transmission [6-8]. Such discrepancies may be due to several factors that affect the virus infectious potency (infectivity) such as the health care prevention system organization and the stringency of the confinement measures [9], as well as the economic differences. Nevertheless, other important factors intrinsic to the virus structure and the host genetic background are crucial determinants of the SARS-CoV-2 infectivity. SARS-CoV-2 Invasion of human host cell is essentially but not exclusively mediated by the interaction of the virus capsid spike protruding S protein with the Angiotensin Convertase Enzyme 2 (ACE2) [10, 11]. ACE2 is expressed on the surface of various human body cell-types [12, 13] where it displays a zinc metalloproteinase activity [14]. The interaction ACE2/SARS-CoV-2 occurs through the receptor-binding domain (RBD) sequence of the S1 chain of the spike protein [15, 16]. This functional domain is highly prone to mutations [17]. Meanwhile, the human ACE2 receptor gene that is located on chromosome X is highly polymorphic with hundreds of genetic variants identified to date in various populations [18]. Noteworthy are the 1700 ACE2 variants reported in the Chinese populations though few variants are highly frequent and the majority of them are very rare [19]. Interestingly some ACE2 variants was shown to be significantly associated with the onset of diseases such arterial hypertension, diabetes mellitus, cerebral stroke, coronary artery disease, heart septal wall thickness and ventricular hypertrophy all considered as comorbidity factors of COVID-19 [20-23]. The complexity of the SARS-CoV-2 S protein association with the ACE2 receptor is highlighted in a number of X-ray crystallography models. These are namely the 6LZG (SARS-CoV-2 Spike RBD /ACE2) complex, the 2AJF (SARS-CoV Spike RBD /ACE2) complex [24], the 6M0J (SARS-CoV-2 Spike RBD /ACE2) complex, and the 6VW1 (chimeric SARS-CoV/SARS-CoV-2 Spike RBD /ACE2) complex [25]. These models have different resolution and are available at RCSB Protein Data Bank (<https://www.rcsb.org/>). Studies using these models have shown that the affinity of the RBD SARS-CoV-2 to the human ACE2 varies between ACE2 genetic variants suggesting that some people might be genetically protected where others are susceptible to COVID-19 [26] [19]. Indeed, by measuring the ACE2 affinity for SARS-CoV-2 Spike using docking simulations, Calcagnile et al. [23] showed that ACE2 variant S19P, which is more frequent in Africans and K26R more frequent in Europeans, are respectively protective and predisposing genetic factors to COVID-19. Meanwhile, other studies denied the association between ACE2 genetic polymorphism and the susceptibility to SARS [27] and to COVID-19 [28]. Nevertheless, considering that the virus-host-cell interaction involves specific contacts between two structurally defined molecular entities, it is very likely that the interaction between the SARS-CoV-2 and the human cell surface receptor ACE2 is determined by the genetic variations of both the pathogen and the receptor interacting sequences. This can reflect a higher magnitude of complexity in the interplay between this new viral pathogen and its human host.

In this paper, we report a computational study designed to examine this postulate. We first compiled the mutations observed in different isolates of the SARS-CoV-2 S protein RBD region and studied their implications on the stability of the complex that the virus forms with the numerous genetic variants of the ACE2 receptor. This study included 351-point mutations reported in the SARS-CoV-2 (Wuhan strain) RBD domain as of September 2020. Secondly, we assessed the stability of the complex between these mutations and ACE2 isoform 1. The analysis showed that the majority of these mutations destabilize the complex. Then we studied the structural basis of the molecular interactions and observed significant variations in the patterns of polar and hydrophobic bonds between 18 RBD mutated contact residues and their partners at the interface of the complex with ACE2 Isoform 1. Comparison of the effect of different ACE2 genetic variants in association with different RBD mutated forms on the complex stability showed that the virus-receptor complex stability varies also according to the ACE2 genetic variants. We inferred from these data that both ACE2 receptor genetic polymorphism and the circulating SARS-CoV-2 RBD genetic type determine the stability of the virus-receptor association and might affect the infectivity of SARS-CoV-2.

This could explain why COVID-19 affects some populations and individuals more than others. Furthermore, these molecular interaction patterns highlight the level of complexity of the interplay between SARS-CoV-2 and its major ACE2 receptor. In addition, our data offer a ground for defining the best prevention strategies against the spreading of the virus.

2. Materials and Methods

2.1. SARS-CoV-2 S protein RBD mutations and ACE2 genetic variants data retrieval

We first retrieved the mutations located at the SARS-CoV-2 Spike protein RBD region, Wuhan strain (NCBI Reference: YP_009724390.1). The data was obtained from the SARS-CoV-2 Spike protein mutation table compiled by the Singapore Bioinformatics Institute (SBI) at (https://mendel.bii.a-star.edu.sg/METHODS/corona/beta/MUTATIONS/hCoV-19_Human_2019_WuhanWIV04/hCoV-19_Spike_new_mutations_table.html) based on sequence information provided by GISAID initiative (<https://www.gisaid.org/>). As of September 2020, 351 missense mutations in the RBD region were reported. Data for genetic variants of ACE2 was from the Ensembl dbSNP and UNIPROT database.

To identify the amino acids differences in the spike RBD between the new Wuhan strain SARS-CoV-2 and previously known SARS-CoV (NCBI Reference: YP_009825051.1), the sequence of the RBD domain of both viruses was determined using Pfam sequence analysis (<https://pfam.xfam.org/>) of the S full -protein. SARS-CoV-2 RBD protein sequence was aligned with SARS-CoV RBD protein using Clustal Omega alignment tool (<https://www.ebi.ac.uk/Tools/msa/clustalo/>). The locations of the variant amino acids were identified and the reported mutations of SARS-CoV-2 at these locations were examined for possible reversed mutations to the SARS-CoV sequence. The effect of these mutations on the complex stability with the human ACE2 receptor was examined as described in the next section.

2.2. RBD mutation effect analysis

The PDB structure (PDB ID 6LZG) of the complex formed between the SARS-CoV-2 Spike protein RBD and the human ACE2 receptor isoform 1 was downloaded from the RCSB database (<https://www.rcsb.org/>). ACE2 isoform 1 sequence correspond to the ACE2 sequence that was used to generate the 6LZG 3D model. This structural complex model was taken as reference model for this study. The structure was cleaned from water and heteroatoms using PyMol software (PyMol Molecular). The mCSM server, a web server (<http://biosig.unimelb.edu.au/mcsm/>) that predicts the effects of mutations in proteins using graph-based signatures platform [29] was used to evaluate the effect of the mutations reported in the RBD domain on the stability of the virus-receptor complex. The prediction relies on graph-based signatures that encode distance patterns between atoms and are used to represent the protein residue environment and to train predictive models. The models predict the stability changes through free energy ($\Delta\Delta G$) difference due to a single nonsynonymous substitution in the amino acid chain of the protein-protein complex. Finally, mutations were ranked by their $\Delta\Delta G$ values. Site Directed Mutator server (SDM) (<http://marid.bioc.cam.ac.uk/sdm2/>) [30] was used to create the 23 contact residues mutants and chain replacement was used to build the complexes using PyMol [7, 31]. Interacting residues in the generated structures, involving polar and hydrophobic interactions from both receptor and ligand, were determined using LigPlot+ software [32] and PyMol software was used to illustrate the interacting interface in presence of the most destabilizing mutations in the RBD.

2.3. hACE2 variants analysis

The protein sequence for human ACE2 Isoform 1 (hACE2) was downloaded from the Uniprot data bank (<https://www.uniprot.org/>) (Uniprot ID: Q9BYF1-1) and used as a reference sequence in this study. We analyzed 231 human ACE2 SNPs causing protein sequence variations reported in Calcagnile et al., [23] and collected from the Ensembl dbSNP and UNIPROT database. We used the PDB structure (PDB ID 6LZG), LigPlot+ software [32], and mCSM server (<http://biosig.unimelb.edu.au/mcsm/>) in order to identify possible amino acid substitutions that affect the virus-receptor complex stability, and their interaction pattern. We then built protein complexes (hACE2/RBD) using SDM server and Pymol software to analyze S protein mutations effect on complex stability for selected hACE2 variants with predicted destabilizing effect on the original complex. We used LigPlot+ and PyMol softwares to analyze the molecular interactions at the complex interface.

3. Results

3.1. SARS-CoV-2 S protein RBD mutations retrieval

This study focused on the investigation of the structural variations of the Spike's RBD of the SARS-CoV-2 virus from the first reported Wuhan strain (NCBI Reference: YP_009724390.1). Alignment of the SARS-CoV surface glycoprotein and SARS-CoV-2 spike RBD sequence showed 74% identity and one insertion (V483) Figure 1. Search up to September 30, 2020 of the GISAID data bank yielded 351 non-synonymous mutations with some positions changing from one up to eight different residues as shown in Figure 2. Out of these mutations, 24 are reverse mutations to the SARS-CoV RBD sequence.

SARS-CoV-2	330	PNITNLCPFGVEVFNATRFASVYAWNKRISNCVADYSVLVNSASFSTFKCYGVSPTKLND	389
SARS-CoV	317	PNITNLCPFGVEVFNATKFPVYAWERKKISNCVADYSVLVNSTFFSTFKCYGVSATKLND	376
		*****:* *****:*****:***** *****	
SARS-CoV-2	390	LCFTNVYADSFVIRGDEVRIAPGQTGKIADYNYKLPDDFTGCVIWNNSNLDKVGNGY	449
SARS-CoV	377	LCFSNVYADSFVVKGGDVRQIAPGQTGVIADYNYKLPDDFMGCVLWNTNRIDATSTGNY	436
		:**:***:***** ***** *****:***:***:***	
SARS-CoV-2	450	NYLYRLFRKSNLKPFFERDISTEIYQAGSTPCNGVEGFNCYFPLQSYGFQPTNGVGYPYR	509
SARS-CoV	437	NYKYRYLRHGKLRPFERDISNVPFSPDGKPCFP-PALNCYWLNDYGFYTTTGIGYPYR	495
		** ** *:***:***:*****. :. . .** .:***:***:*** *:*****	
SARS-CoV-2	510	VVLSFELLHAPATVCGPKKSTNLVKNKCVNFNGLTGTGVLTESNKKFLPFQGFGRDI	569
SARS-CoV	496	VVLSFELLNAPATVCGPKLSTDLIKNCVNFNGLTGTGVLTPSSKRFQPFQGFGRDV	555
		*****:***** **:***:***** ***** *:*** *****:	
SARS-CoV-2	570	ADTTDAVRDPQTLE	583
SARS-CoV	556	SDFTDSVRDPKTSE	569
		:* ***:***** *	

Figure 1. Sequence alignment of SARS-CoV-2 and SARS-CoV receptor binding domains (RBD). Star (*) = identical residue, Column (:) = conserved substitutions, Dot (.) = semi-conserved substitutions.

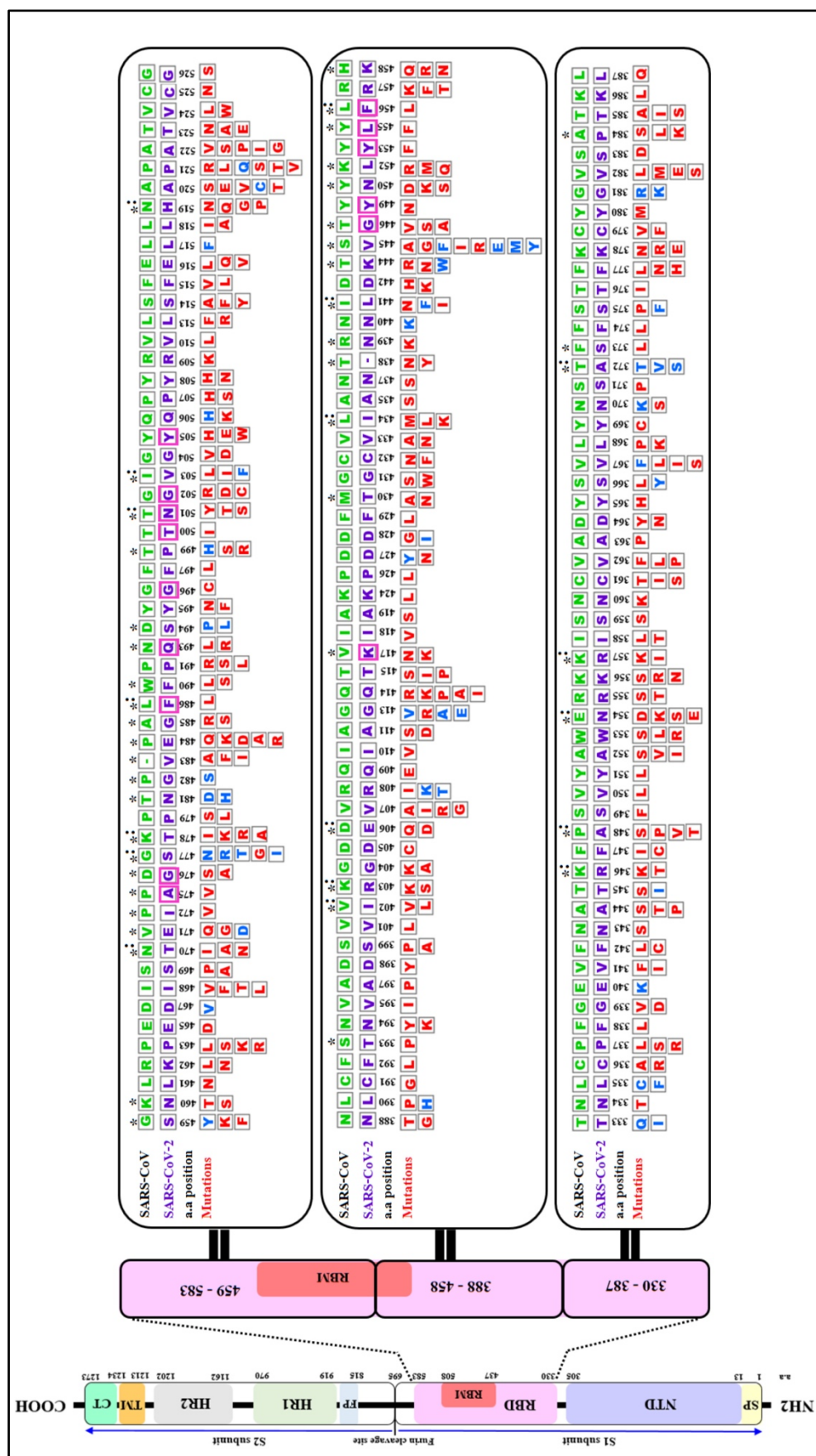


Figure 2. A Schematic diagram of the of SARS-CoV-2 S spike protein sequence (purple letters) and the mutations reported as of September 2020 in the Receptor Binding Domain (RBD) aligned with SARS-CoV sequence (green letters). The S protein is cleaved into S1 and S2 subunit at the polybasic furin cleavage site. Stabilizing and destabilizing mutations of the RBD domains are represented with blue and red letters respectively. Asterisks display amino acid variations between SARS-CoV-2 and SARS-CoV RBDs. Magenta boxes highlighted the positions of the 15 (out of 18) contact residues where mutations were reported as of September 2020. Colons indicate reverse mutations to SARS-CoV sequence. Empty box with dashes (-) represent an insertion of a valine (V) at position 483 of SARS-CoV-2. Signal peptide (SP), N-terminal domain (NTD), Receptor-Binding Domain (RBD), Receptor-Binding Motif (RBM), Fusion Peptide (FP), Heptad Repeat 1 (HR1), Heptad Repeat 2 (HR2), Transmembrane Domain (TM) and Cytoplasmic Tail (CT) a.a (amino acid). The RBD sequence analyzed in this diagram corresponds to residues 333-527 of the S protein RBD in the structure PDB ID 6LZG.

3.2. Analysis of the RBD mutations effect on the S protein/ACE2 complex stability

The PDB ID 6LZG model of the complex RBD S protein (Wuhan strain sequence)/Human ACE2 isoform 1 was selected for this study since it displayed the best resolution (2.5 Å) of the complexes available in the PDB database. The LigPlot+ analysis of the interactions showed that there are 18 residues of SARS-CoV-2 interacting with the hACE2 receptor, (Supplementary Table 1), with ten of them forming polar bonds with the receptor. In addition, these 18 contact residues have one or more hydrophobic interactions with the hACE2 receptor except for G446 as it forms only one polar interaction with Q42 of ACE2 receptor. A total of 12 polar bonds and 65 hydrophobic interactions were identified at the complex interface as shown in Figure 3. These interactions involve the 18 contact residues (Supplementary Table 1). Out of these residues, 15 showed multiple mutations as highlighted in Figure 2.

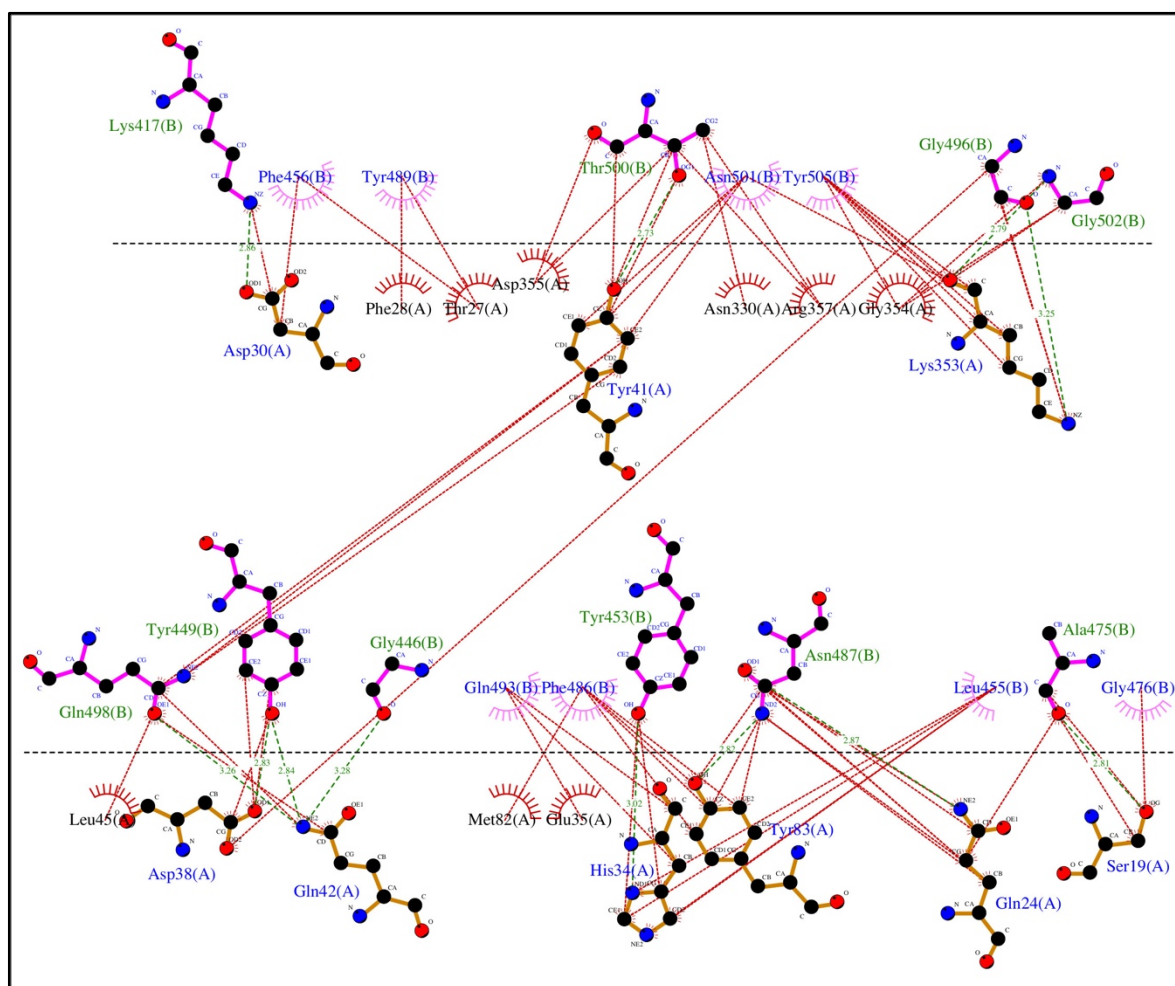


Figure 3. Representation of the polar and hydrophobic interactions between SARS-CoV-2 spike RBD of the Wuhan strain (chain B) and hACE2 isoform 1 receptor (chain A) of the complex structure (PDB ID 6LZG). The dotted green lines show the polar interactions, and the dotted red lines the hydrophobic interactions.

The complete set of data on the effect of the SARS-CoV-2 RBD 351 mutations on the complex stability are displayed in Supplementary Material 1. Figure 4 shows the distribution of the Free energy difference of all analyzed mutations. We observe that, out of the 351 mutations reported in the GISAID server (by September 2020), 83% of the mutations were classified as “Destabilizing”, and 17% were classified as “Stabilizing” according to their $\Delta\Delta G$ value. Energy difference values ranged from 0.788 Kcal/mol (T333Q, most stabilizing) to -2.482 Kcal/mol (G502R, most destabilizing). Among the destabilizing mutations, three mutations were classified as “Highly destabilizing” with $\Delta\Delta G$ values less than -2.0 Kcal/mol (G502R, N501Y and Y505E) (Supplementary Material 1). Furthermore, this analysis showed that among the mutations that reversed to SARS-CoV RBD sequence, mutation A372T is predicted to have a relatively good stabilizing effect on the complex with hACE2 isoform 1 as shown by the value of the $\Delta\Delta G$ (+0.508) Figure 2

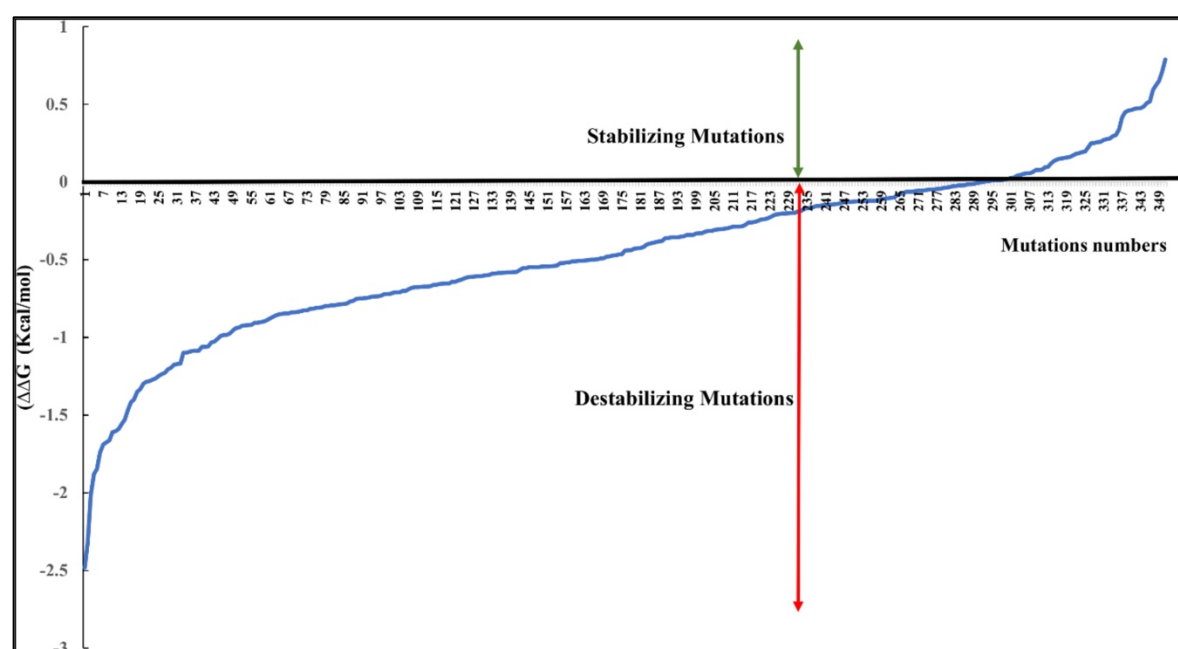


Figure 4. Distribution of the free energy $\Delta\Delta G$ differences of the reported 351 nonsynonymous substitution in the protein sequence of the hACE2-SARS-COV-2 S RBD complex.

SDM generated complexes for the S protein mutants were used to establish the molecular interaction patterns using LigPlot+. Out of the mutations affecting the 18 interacting residues only six mutations (K417N, G446A, Y449N, Y453R, Q493R, and T500I), predicted as destabilizing mutations, cause polar bond differences (Supplementary Table 1). Three out of these residues were shown to be conserved residues between SARS-CoV-2 and SARS- CoV (Y449, Y453, and T500). Figure 5 shows the differences in polar interactions between these mutants and the human ACE2 receptor as compared to the reference complex. Inter-chain polar bonds are shown to be missing in all the mutated structures at the complex interface level except for Q493R, as a new polar interaction with E35 of ACE2 receptor was introduced. For the hydrophobic interactions, the most stabilizing and destabilizing mutations were analyzed (40 mutants) and the results showed that the interaction patterns did not change for the mutations that occurred out of the contact residues. Figure 6 shows the hydrophobic interaction changes in comparison to Wuhan SARS-CoV-2 strain for the Spike/ACE2 complex for mutations that occurred in contact residues. Mutations in contact

residue N501, G502 and Y505 were shown to be the most destabilizing mutations according to $\Delta\Delta G$ predictions. Ranked from the highest destabilizing to the lowest these mutations are G502R, N501Y, Y505E, N501T and N501S with the following respective $\Delta\Delta G$ s (-2.482, -2.317, -2.014, -1.689, -1.589 Kcal/mol). The least destabilizing mutant among the contact residues is L455F with a $\Delta\Delta G$ of -0.124 Kcal/mol. Interestingly, all of these mutants have no missing polar interactions. However, they contain extra hydrophobic interactions compared to the original complex. Polar bonds seem to be important for maintaining the complex stability between RBD and hACE2 receptor, which explain the high-energy difference, predicted by mCSM, however gaining extra hydrophobic interactions highly affect the complex stability (Supplementary Table 1).

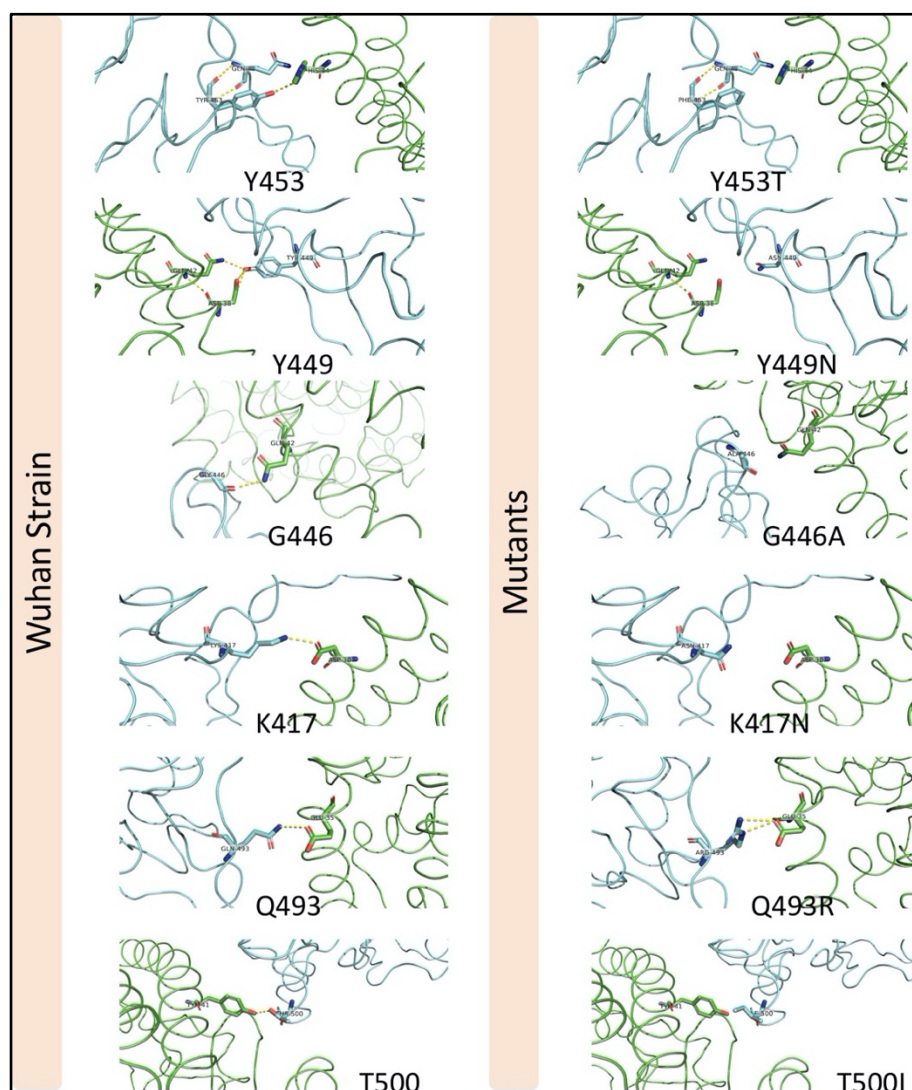


Figure 5. Mutations in the SARS-COV-2 RBD sequence causing changes in the pattern of polar interactions with the human ACE2 receptor. Original and mutated residues (K417N, G446A, Y449N, Y453R, Q493R, and T500I) are represented in sticks. Protein chains are shown in cartoon representation (RBD; Blue / hACE2; Green). Polar interactions are shown with yellow dashes.

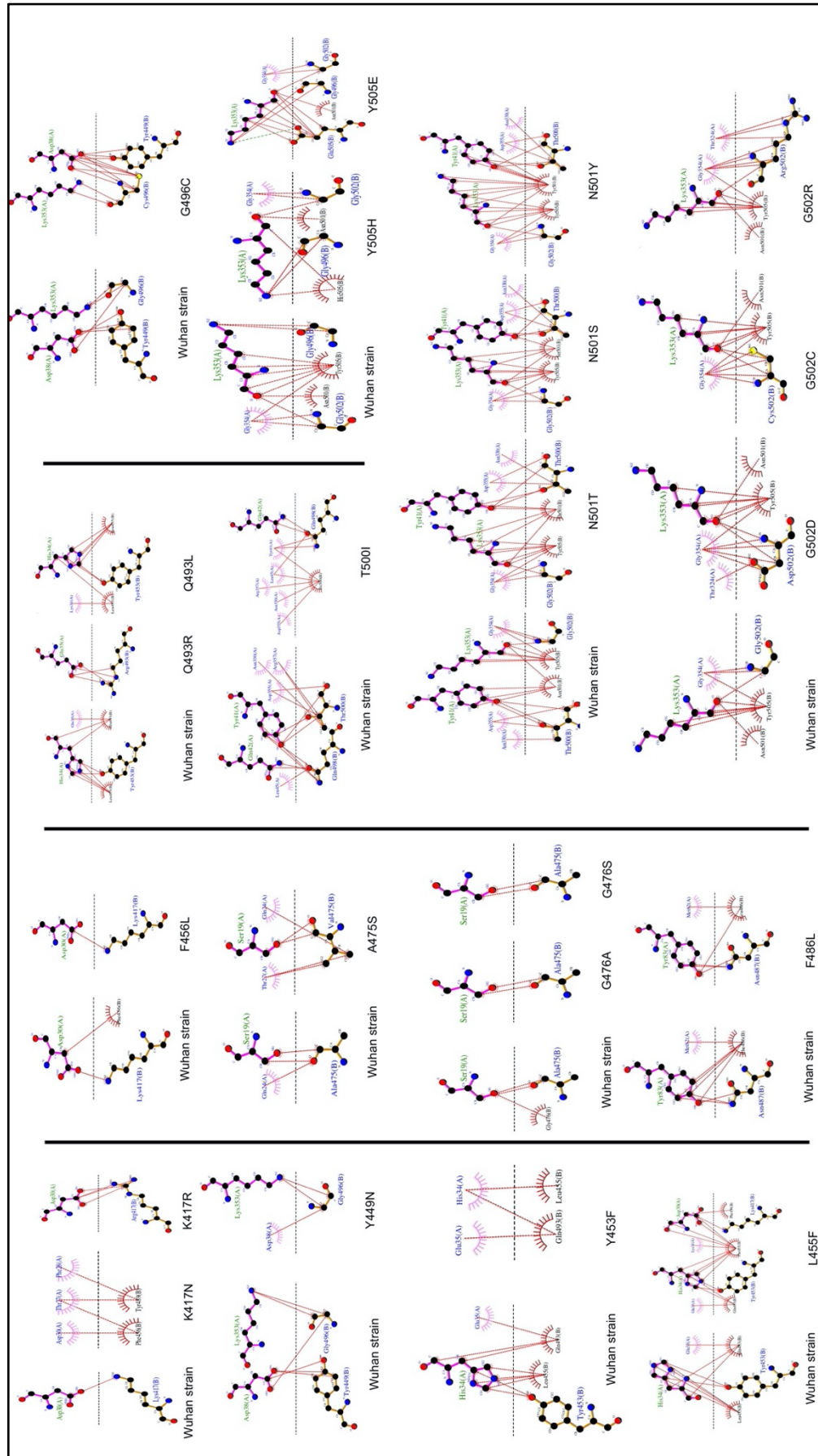


Figure 6. Representation of the hydrophobic interaction of SARS-CoV-2 spike RBD (chain B) with hACE2 receptor (chain A) of the 6LZG complex. Hydrophobic bonds are represented in Red lines and Salt bridges in dotted green lines.

3.3. Analysis of the effect of ACE2 genetic polymorphism on the S protein/ACE2 complex stability

The analysis of the effect of hACE2 variants on the SARS-CoV2/hACE2 complex stability showed that out of 231 variants, 203 (88%) are destabilizing (Supplementary Material 2). Out of these, six variants (D355A, W163R, D355N, G405E, G377E and Y252N) have highly destabilizing effect with a $\Delta\Delta G$ less than -2.0 Kcal/mol (Supplementary Material 2).

The analysis of the hACE2 residues involved in the interaction of the receptor with the SARS-CoV-2 Spike's protein, showed that variants D355A, D355N, E35K, F40L, E35D, M82I, S19P and T27A are destabilizing variants (Supplementary Material 2), with the D355A and D355N, predicted as being highly destabilizing (-2.775 Kcal/mol and -2.342 Kcal/mol, respectively). Interaction analysis showed that D355 establishes a network of intramolecular polar interactions with hACE2' Y41, G326, N331, L351 and R357 in addition to the polar interaction with the Spike' T500 Figure 7A. Meanwhile, variant D355A Figure 7B, causes the loss of this interaction network, suggesting that this mutation strongly destabilizes the complex, which is in line with the $\Delta\Delta G$ prediction. The D355N mutation interaction analysis Figure 7C shows that N355 maintains only three polar bonds with hACE2 R357, Y41 and Spike T500.

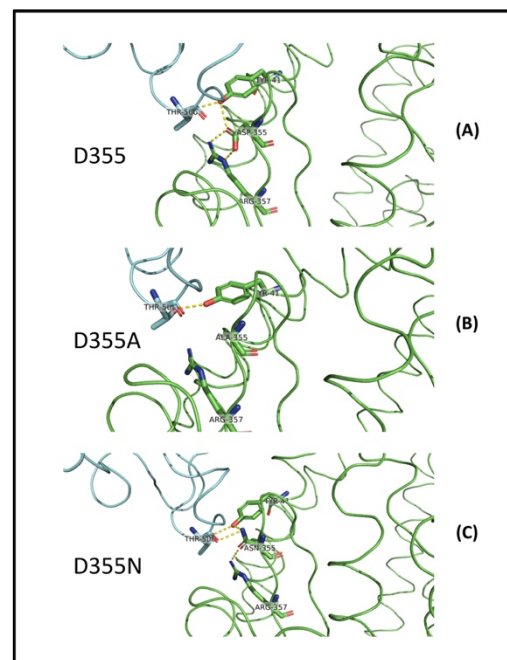


Figure 7. Genetic variations in the human ACE2 receptor sequence causing changes in the pattern of polar interactions with the SARS-COV-2 Wuhan strain RBD sequence. Original D355 (A) and variant D355A (B) and D355N (C) are shown in sticks representation. Protein chains are shown in cartoon representation (RBD; Blue / hACE2; Green). Polar interactions are represented by yellow dashes.

The eight hACE2 variants in residues involved in the interaction interface of the receptor with the SARS-CoV-2 Spike's protein were screened for their effect against all the reported S protein mutations (Supplementary Material 2). Results showed a significant change in energy prediction (threshold set at 20% change in $\Delta\Delta G$) for some variants against Spike mutants compared to the hACE2 isoform 1, as shown in Figure 8. In fact, D355N was predicted to have more destabilizing effect with mutants N501T, N501S and G502D with $\Delta\Delta G$ values reduced by 34, 39 and 22% respectively, compared to hACE2 isoform 1. In addition, the variant is predicted to be less destabilizing with the mutant G502C with a $\Delta\Delta G$ value increased by 37%. Similarly, variants T27A, M82I, and S19P show a less destabilizing effect with Spike mutants F456L, F486L and G476S/A, respectively.

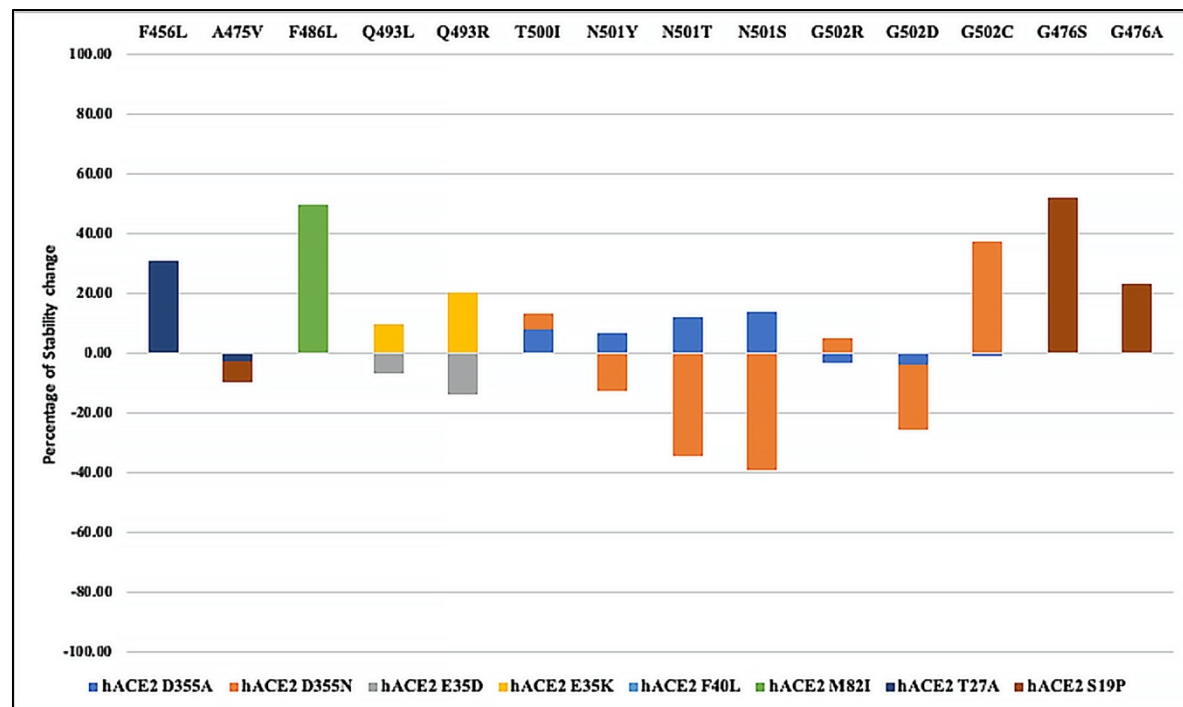


Figure 8. Percentage variation in predicted $\Delta\Delta G$ of complexes involving hACE2 interacting residues variants with selected SARS-CoV-2 Spike's protein RBD mutants, as compared to the complex formed with isoform 1. Percentage of 20% change was set as a threshold.

Table 1 summarizes the variations of molecular interactions numbers and patterns between the SARS-CoV-2 RBD mutations occurring in the 18 residues the virus engages to interact with the ACE2 isoform1 and the eight variants found to be significantly destabilizing when tested against the Wuhan RBD sequence in comparison to hACE2 isoform1. The number and position of polar and hydrophobic bonds in addition to the salt bridges characterize each interaction pattern. The most striking interactions variations concern SARS-CoV-2 RBD mutants N501T and N501S and ACE2 variant D355N. Interactions with corresponding residues are detailed in Supplementary Table 2.

Table 1. Variation of the number of polar and hydrophobic interactions between 24 different SARS-CoV-2 spike RBD mutations that occurred in the 18 contact residues with nine hACE2 genetic variants. P: polar, H: hydrophobic. In Red are the interactions that diverge the most from the Wuhan virus RBD sequence and ACE2 isoform1. The green shows the less divergent interactions patterns.

RBD sequence residues		ACE2 variants															
		Isoform 1		D355A		D355N		E35D		E35K		F40L		M82I		T27A	
		P	H	P	H	P	H	P	H	P	H	P	H	P	H	P	H
Ref. sequence	SARS-CoV-2 Wuhan strain	12	65	12	64	13	68	13	65	12	65	12	65	12	65	12	64
Mutations	K417N	11	64	11	63	12	67	12	64	11	64	11	64	11	64	11	63
	K417R	12	68	12	67	13	71	13	68	12	68	12	68	12	68	12	67
	G446A	11	65	11	64	12	68	12	65	11	65	11	65	11	65	11	64
	Y449N	10	62	10	61	11	65	11	62	10	62	10	62	10	62	10	61
	Y453F	11	59	11	58	12	62	12	59	11	59	11	59	11	59	11	58
	L455F	12	70	12	69	13	73	13	70	12	70	12	70	12	70	12	69
	F456L	12	64	12	63	13	67	13	64	12	64	12	64	12	64	12	63
	A475V	12	68	12	67	13	71	13	68	12	68	12	68	12	68	12	66
	G476S	12	64	12	63	13	67	13	64	12	64	12	64	12	64	12	63
	G476A	12	64	12	63	13	67	13	64	12	64	12	64	12	64	12	63
	F486L	12	62	12	61	13	65	13	62	12	62	12	62	12	62	12	61
	Q493R	13	66	13	65	14	69	12+ 1salt	62	12	62	13	66	13	66	13	65
	Q493L	12	64	12	63	13	67	12	64	12	64	12	64	12	64	12	63
	G496C	12	71	12	70	13	74	13	71	12	71	12	71	12	71	12	70
	T500I	11	61	11	58	11	60	12	59	11	59	11	59	11	59	11	58
	N501T	12	66	12	65	13	69	13	66	12	66	12	66	12	66	12	65
	N501S	12	65	12	64	13	68	13	65	12	65	12	65	12	65	12	64
	N501Y	12	72	12	71	13	75	13	72	12	72	12	72	12	72	12	71
	G502D	12	69	12	68	13	72	13	69	12	69	12	69	12	69	12	68
	G502C	12	68	12	67	13	71	13	68	12	68	12	68	12	68	12	67
	G502R	12	70	12	69	13	73	13	70	12	70	12	70	12	70	12	69
	Y505H	12	61	12	60	13	64	13	61	12	61	12	61	12	61	12	60
	Y505E	12+ 1salt	66	12+ 1salt	65	13+ 1salt	69	13+ 1salt	66	12+ 1salt	66	12+ 1salt	66	12+ 1salt	66	12+ 1salt	65

4. Discussion

As the COVID-19 pandemic progresses, it is becoming more and more important to understand the molecular basis of viral infectivity of the SARS-CoV-2, the etiologic agent of the disease. This is crucial to evaluate correctly the virus capacity to invade the host cell and exploit its molecular machinery to replicate and produce infectious viral progeny that may invade other cells and lead to disease progression [15]. It is also important to investigate the difference in susceptibility to the infection considering the differences observed in the disease prevalence between various regions of the world as well as inter individual variability [33-35]. This necessitates a multidisciplinary approach that would be the most appropriate to get the best insights into SARS-CoV-2 infectivity. These insights will likely guide the appropriate response of public health authorities worldwide to combat the pandemic [36, 37]. The genetic variability of a specific virus receptor that affect its infective power was demonstrated for the human immunodeficiency virus (HIV). Indeed, in humans the CD4 receptor variant (C868T) and the CCR5 receptor CCR5-Δ32 variant confer respectively susceptibility and resistance against certain HIV strains [38]. Other studies on group 2 coronavirus that causes hepatitis in mouse showed that the viral receptor allelic variants were associated with altered virus binding and hence with host susceptibility [39]. Similarly, it was reported that rs73635825

(S19P) and rs143936283 (E329G) alleles of the hACE2 receptor may offer some level of resistance/protection against the infection because of a low affinity to the virus RBD region [23, 34]. Nevertheless, most of the accumulated evidences suggesting that genetic polymorphism of the ACE2 gene may be associated to susceptibility or protection from SARS-CoV-2 [19, 23, 27] are based on comparative studies of the molecular interactions between ACE2 variants and a single genetic type of the virus. Hence, not considering the high number of mutations in the RBD region of the virus. In this work, we have considered both the SARS-CoV-2 variability introduced by spontaneous mutagenesis and the natural genetic variation of the ACE2 receptor [40]. Indeed, we have compiled 351 non-synonymous natural mutations that occurred in the SARS-CoV-2 Wuhan strain S protein RBD region as of September 2020. This high number of mutations in a relatively short time suggest a genetic instability of the virus receptor-binding domain knowing that RNA-viruses have low mutagenesis rate. We showed that over eighty percent of these mutations destabilizes the complex with ACE2 isoform 1. This data suggests that the crushing number of SARS-CoV-2 naturally occurring genetic changes are most likely making the virus less infective. We also found that 24 mutations are reverse mutations to the SARS-CoV RBD sequence. Fourteen of these reversed mutations showed a destabilizing effect on the SARS-CoV-2 RBD/hACE2 complex while four of them were stabilizing mutations. This would partially explain the difference in infectivity of SARS-CoV and SARS-CoV-2 observed from epidemiological and clinical data [3].

On another hand, studies of SARS-CoV-2 RBD/ACE2-isoform 1 complexes focusing on the mutations in the RBD contact residues showed that only six mutants (K417N, G446, Y449N, Y453R, Q493 and T500I), predicted as destabilizing mutations, cause polar bond changes. Previous studies reported 17 residues in the SARS-CoV-2 RBD to be involved in the interaction with the ACE2 receptor. Fourteen of these residues are conserved between SARS-CoV and SARS-CoV-2 with eight residues being contact residues [41, 42]. In this study, we found that 18 residues in the RBD region are involved in the interaction with the ACE2 receptor. The interaction pattern did not change for the mutations that occurred in non-contact residues, which suggest that these residues act as a structural scaffold that is important for the virus binding to its receptor. Polar bonds seem to be important for maintaining the complex stability between RBD and hACE2 receptor, which explain the high-energy difference, predicted by mCSM. In addition, out of the 18 described contact residues, ten different mutations occurring in conserved residues between SARS-CoV-2 and SARS-CoV (Y449N, Y453R, G496C, T500I, G502D, G502C, G502R, Y505H, Y505E, and Y505W) are predicted to be destabilizing mutations. This is consistent with the fact that conserved residues are important to maintain the overall correct RBD domain three-dimensional fold needed for efficient binding to the ACE2 receptor. The loss of polar bonds constitutes an important factor in protein-protein interaction.

Besides, the analysis of the effect of hACE2 variants on the SARS-CoV-2 Wuhan Strain/ACE2 complex stability showed that out of 231 variants, 88% are predicted to be destabilizing. Eight ACE2 variants of ACE2 residues involved in the interaction interface of the receptor with the SARS-CoV-2 Spike's protein are destabilizing. Variants D355A and D355N predicted as highly destabilizing are potentially protective. Analysis of the molecular bonds showed that D355 establishes a network of polar interactions with ACE2 residues Y41, G326, N331, L351 and R357 and Spike' T500. The substitution of the 355 aspartic acid by an alanine (D355A) causes the loss of this interaction network. This predicts a strong destabilization of the complex, which is in line with the $\Delta\Delta G$ prediction. Meanwhile, mutation D355N shows that Asparagine 355 maintains only three polar bonds with hACE2 R357, Y41 and Spike T500, which likely makes this variant the most, destabilizing one of the RBD/ACE2 complex of the RBD mutations studied. This result suggest that this variant is potentially more resistant to the virus attachment. In addition, in our study ACE2 variant S19P more frequent in Africans and reported to be a protective genetic variant [23], showed the lowest number of interactions with the different spike RBD mutants Table 1. Therefore, if we consider our findings together with the literature report on the genetic susceptibility to SARS-CoV-2 infection, we

can argue that there is no absolute susceptible or protective ACE2 genetic variant. Indeed, the same given ACE2 variant might protect from a virus genetic type and be susceptible to another depending on the molecular interactions engaged between the genetic type of the circulating virus and an individual's receptor genetic variant. This may explain the striking individual difference observed globally in clinical presentations with some patients remaining asymptomatic, whilst others developing the disease (COVID-19) considering that all have the same comparable baseline risk. Hence, we believe it reasonable to call for a close follow up of the virus circulating genotype along with individual genetic testing of the population ACE2 polymorphism to evaluate the virus infectivity and estimate individual or group of people risk of developing the disease. Promoting the development of genetic tests aimed at specifically identifying the circulating virus molecular type and the individual ACE2 genetic variant or the general population dominant variants may be a reasonable strategy for stratifying the risk of infection and/or unfavorable disease progress. Nevertheless, further structural characterization of the SARS-CoV-2 RBD mutants and their interactions with various ACE2 genetic variants should reveal more insights about the mode of binding to the ACE2 receptor and their effect on complex stability and virus infectivity.

Author Contributions: Dana Ashoor and Nouredine Ben Khalaf: *In Silico* analysis, methodology, data curation, writing and editing (both authors contributed equally to this work). Maryam Marzouq: Mutations' review, Illustrations figures and tables, revision. Hamdi Al Jarjanazi: primary and secondary data retrieval formatting and management. M.Dahmani Fathallah: Project conception, work design, data analysis, writing, editing, and supervision.

All authors have read and agreed to the submitted version of the manuscript.

Conflicts of Interest: The authors declare no conflict of interest.

References

1. Elflein, J. Coronavirus (COVID-19) disease pandemic- Statistics & Facts Availabe online: <https://www.statista.com/topics/5994/the-coronavirus-disease-covid-19-outbreak/> (accessed on
2. Chan, J.F.; Kok, K.H.; Zhu, Z.; Chu, H.; To, K.K.; Yuan, S.; Yuen, K.Y. Genomic characterization of the 2019 novel human-pathogenic coronavirus isolated from a patient with atypical pneumonia after visiting Wuhan. *Emerging microbes & infections* 2020, 9, 221-236, doi:10.1080/22221751.2020.1719902.
3. EDCDP. COVID-19 situation update worldwide, as of 13 October 2020. Availabe online: <https://www.ecdc.europa.eu/en/geographical-distribution-2019-ncov-cases> (accessed on
4. Noordzij, M.; Dekker, F.W.; Zoccali, C.; Jager, K.J. Measures of disease frequency: prevalence and incidence. *Nephron. Clinical practice* 2010, 115, c17-20, doi:10.1159/000286345.
5. Roser, M., Ritchie, H., , Ortiz-Ospina, E., and Hasell, J. . Coronavirus Pandemic (COVID-19). Availabe online: <https://ourworldindata.org/coronavirus> (accessed on
6. Lewnard, J.A.; Lo, N.C. Scientific and ethical basis for social-distancing interventions against COVID-19. *The Lancet. Infectious diseases* 2020, 20, 631-633, doi:10.1016/S1473-3099(20)30190-0.

7. Verity, R.; Okell, L.C.; Dorigatti, I.; Winskill, P.; Whittaker, C.; Imai, N.; Cuomo-Dannenburg, G.; Thompson, H.; Walker, P.G.T.; Fu, H., et al. Estimates of the severity of coronavirus disease 2019: a model-based analysis. *The Lancet. Infectious diseases* 2020, 20, 669-677, doi:10.1016/S1473-3099(20)30243-7.
8. Ruan, S. Likelihood of survival of coronavirus disease 2019. *The Lancet. Infectious diseases* 2020, 20, 630-631, doi:10.1016/S1473-3099(20)30257-7.
9. Koo, J.R.; Cook, A.R.; Park, M.; Sun, Y.; Sun, H.; Lim, J.T.; Tam, C.; Dickens, B.L. Interventions to mitigate early spread of SARS-CoV-2 in Singapore: a modelling study. *The Lancet. Infectious diseases* 2020, 20, 678-688, doi:10.1016/S1473-3099(20)30162-6.
10. Belouzard, S.; Millet, J.K.; Licitra, B.N.; Whittaker, G.R. Mechanisms of coronavirus cell entry mediated by the viral spike protein. *Viruses* 2012, 4, 1011-1033, doi:10.3390/v4061011.
11. Alifano, M.; Alifano, P.; Forgez, P.; Iannelli, A. Renin-angiotensin system at the heart of COVID-19 pandemic. *Biochimie* 2020, 174, 30-33, doi:10.1016/j.biochi.2020.04.008.
12. Walls, A.C.; Park, Y.J.; Tortorici, M.A.; Wall, A.; McGuire, A.T.; Veesler, D. Structure, Function, and Antigenicity of the SARS-CoV-2 Spike Glycoprotein. *Cell* 2020, 181, 281-292 e286, doi:10.1016/j.cell.2020.02.058.
13. Zhao, Y.; Zhao, Z.; Wang, Y.; Zhou, Y.; Ma, Y.; Zuo, W. Single-Cell RNA Expression Profiling of ACE2, the Receptor of SARS-CoV-2. *American journal of respiratory and critical care medicine* 2020, 202, 756-759, doi:10.1164/rccm.202001-0179LE.
14. Tipnis, S.R.; Hooper, N.M.; Hyde, R.; Karran, E.; Christie, G.; Turner, A.J. A human homolog of angiotensin-converting enzyme. Cloning and functional expression as a captopril-insensitive carboxypeptidase. *The Journal of biological chemistry* 2000, 275, 33238-33243, doi:10.1074/jbc.M002615200.
15. Yan, R.; Zhang, Y.; Li, Y.; Xia, L.; Guo, Y.; Zhou, Q. Structural basis for the recognition of SARS-CoV-2 by full-length human ACE2. *Science* 2020, 367, 1444-1448, doi:10.1126/science.abb2762.
16. Lan, J.; Ge, J.; Yu, J.; Shan, S.; Zhou, H.; Fan, S.; Zhang, Q.; Shi, X.; Wang, Q.; Zhang, L., et al. Structure of the SARS-CoV-2 spike receptor-binding domain bound to the ACE2 receptor. *Nature* 2020, 581, 215-220, doi:10.1038/s41586-020-2180-5.
17. Nelson-Sathi, S.; Umasankar, P.K.; Sreekumar, E.; Radhakrishnan Nair, R.; Joseph, I.; Nori, S.R.C.; Philip, J.S.; Prasad, R.; Navyasree, K.V.; Ramesh, S., et al. Mutational landscape and in silico structure models of SARS-CoV-2 Spike Receptor Binding Domain reveal key molecular determinants for virus-host interaction. *bioRxiv : the preprint server for biology* 2020, 10.1101/2020.05.02.071811, 2020.2005.2002.071811, doi:10.1101/2020.05.02.071811.
18. Cao, Y.; Li, L.; Feng, Z.; Wan, S.; Huang, P.; Sun, X.; Wen, F.; Huang, X.; Ning, G.; Wang, W. Comparative genetic analysis of the novel coronavirus (2019-nCoV/SARS-CoV-2) receptor ACE2 in different populations. *Cell discovery* 2020, 6, 11, doi:10.1038/s41421-020-0147-1.
19. Lippi, G.; Lavie, C.J.; Henry, B.M.; Sanchis-Gomar, F. Do genetic polymorphisms in angiotensin converting enzyme 2 (ACE2) gene play a role in coronavirus disease 2019 (COVID-19)? *Clinical chemistry and laboratory medicine* 2020, 58, 1415-1422, doi:10.1515/cclm-2020-0727.
20. Kowalczyk, S.; Broer, A.; Tietze, N.; Vanslambrouck, J.M.; Rasko, J.E.; Broer, S. A protein complex in the brush-border membrane explains a Hartnup disorder allele. *FASEB journal : official publication of the Federation of American Societies for Experimental Biology* 2008, 22, 2880-2887, doi:10.1096/fj.08-107300.

21. Lu, N.; Yang, Y.; Wang, Y.; Liu, Y.; Fu, G.; Chen, D.; Dai, H.; Fan, X.; Hui, R.; Zheng, Y. ACE2 gene polymorphism and essential hypertension: an updated meta-analysis involving 11,051 subjects. *Molecular biology reports* 2012, 39, 6581-6589, doi:10.1007/s11033-012-1487-1.
22. Pinheiro, D.S.; Santos, R.S.; Jardim, P.; Silva, E.G.; Reis, A.A.S.; Pedrino, G.R.; Ulhoa, C.J. The combination of ACE I/D and ACE2 G8790A polymorphisms reveals susceptibility to hypertension: A genetic association study in Brazilian patients. *PloS one* 2019, 14, e0221248, doi:10.1371/journal.pone.0221248.
23. Calcagnile, M.; Forgez, P.; Iannelli, A.; Bucci, C.; Alifano, M.; Alifano, P. ACE2 polymorphisms and individual susceptibility to SARS-CoV-2 infection: insights from an in silico study. *bioRxiv : the preprint server for biology* 2020, 10.1101/2020.04.23.057042, 2020.2004.2023.057042, doi:10.1101/2020.04.23.057042.
24. Wang, Q.; Zhang, Y.; Wu, L.; Niu, S.; Song, C.; Zhang, Z.; Lu, G.; Qiao, C.; Hu, Y.; Yuen, K.Y., et al. Structural and Functional Basis of SARS-CoV-2 Entry by Using Human ACE2. *Cell* 2020, 181, 894-904 e899, doi:10.1016/j.cell.2020.03.045.
25. Goodsell, D.S.; Zardecki, C.; Di Costanzo, L.; Duarte, J.M.; Hudson, B.P.; Persikova, I.; Segura, J.; Shao, C.; Voigt, M.; Westbrook, J.D., et al. RCSB Protein Data Bank: Enabling biomedical research and drug discovery. *Protein science : a publication of the Protein Society* 2020, 29, 52-65, doi:10.1002/pro.3730.
26. Othman, H.; Bouslama, Z.; Brandenburg, J.T.; da Rocha, J.; Hamdi, Y.; Ghedira, K.; Srairi-Abid, N.; Hazelhurst, S. Interaction of the spike protein RBD from SARS-CoV-2 with ACE2: Similarity with SARS-CoV, hot-spot analysis and effect of the receptor polymorphism. *Biochemical and biophysical research communications* 2020, 527, 702-708, doi:10.1016/j.bbrc.2020.05.028.
27. Chiu, R.W.; Tang, N.L.; Hui, D.S.; Chung, G.T.; Chim, S.S.; Chan, K.A.; Sung, Y.-m.; Chan, L.Y.; Tong, Y.-k.; Lee, W.-s.J.C.c. ACE2 gene polymorphisms do not affect outcome of severe acute respiratory syndrome. 2004, 50, 1683-1686.
28. Lopera Maya, E.A.; van der Graaf, A.; Lanting, P.; van der Geest, M.; Fu, J.; Swertz, M.; Franke, L.; Wijmenga, C.; Deelen, P.; Zhernakova, A., et al. Lack of Association Between Genetic Variants at ACE2 and TMPRSS2 Genes Involved in SARS-CoV-2 Infection and Human Quantitative Phenotypes. *Frontiers in genetics* 2020, 11, 613, doi:10.3389/fgene.2020.00613.
29. Pires, D.E.; Ascher, D.B.; Blundell, T.L. mCSM: predicting the effects of mutations in proteins using graph-based signatures. *Bioinformatics* 2014, 30, 335-342, doi:10.1093/bioinformatics/btt691.
30. Worth, C.L.; Preissner, R.; Blundell, T.L. SDM--a server for predicting effects of mutations on protein stability and malfunction. *Nucleic acids research* 2011, 39, W215-222, doi:10.1093/nar/gkr363.
31. The PyMOL Molecular Graphics System, Version 2.4, Schrödinger, LLC. .
32. Laskowski, R.A.; Swindells, M.B. LigPlot+: multiple ligand-protein interaction diagrams for drug discovery. *Journal of chemical information and modeling* 2011, 51, 2778-2786, doi:10.1021/ci200227u.
33. Hoffmann, M.; Kleine-Weber, H.; Schroeder, S.; Kruger, N.; Herrler, T.; Erichsen, S.; Schiergens, T.S.; Herrler, G.; Wu, N.H.; Nitsche, A., et al. SARS-CoV-2 Cell Entry Depends on ACE2 and TMPRSS2 and Is Blocked by a Clinically Proven Protease Inhibitor. *Cell* 2020, 181, 271-280 e278, doi:10.1016/j.cell.2020.02.052.
34. Hussain, M.; Jabeen, N.; Raza, F.; Shabbir, S.; Baig, A.A.; Amanullah, A.; Aziz, B. Structural variations in human ACE2 may influence its binding with SARS-CoV-2 spike protein. *Journal of Med. Viro.* 2020.

35. Hou, Y.; Zhao, J.; Martin, W.; Kallianpur, A.; Chung, M.K.; Jehi, L.; Sharifi, N.; Erzurum, S.; Eng, C.; Cheng, New insights into genetic susceptibility of COVID-19: an ACE2 and TMPRSS2 polymorphism analysis. *BMC Medicine*. 2020, 18, 1-8. doi:10.1186/s12916-020-01673-z
36. Frieden, T.R.; Lee, C.T. Identifying and Interrupting Superspreading Events-Implications for Control of Severe Acute Respiratory Syndrome Coronavirus 2. *Emerging infectious diseases* 2020, 26, 1059-1066, doi:10.3201/eid2606.200495.
37. Hellewell, J.; Abbott, S.; Gimma, A.; Bosse, N.I.; Jarvis, C.I.; Russell, T.W.; Munday, J.D.; Kucharski, A.J.; Edmunds, W.J.; Funk, S., et al. Feasibility of controlling COVID-19 outbreaks by isolation of cases and contacts. *The Lancet. Global health* 2020, 8, e488-e496, doi:10.1016/S2214-109X(20)30074-7.
38. Marmor, M.; Hertzmark, K.; Thomas, S.M.; Halkitis, P.N.; Vogler, M. Resistance to HIV infection. *Journal of urban health : bulletin of the New York Academy of Medicine* 2006, 83, 5-17, doi:10.1007/s11524-005-9003-8.
39. Ohtsuka, N.; Taguchi, F.J.J.o.v. Mouse susceptibility to mouse hepatitis virus infection is linked to viral receptor genotype. 1997, 71, 8860-8863.
40. Li, Q.; Cao, Z.; Rahman, P. Genetic variability of human angiotensin-converting enzyme 2 (hACE2) among various ethnic populations. *Molecular genetics & genomic medicine* 2020, 8, e1344, doi:10.1002/mgg3.1344.
41. Walls, A.C.; Park, Y.-J.; Tortorici, M.A.; Wall, A.; McGuire, A.T.; Veisler, D.J.C. Structure, function, and antigenicity of the SARS-CoV-2 spike glycoprotein. 2020.
42. Lan, J.; Ge, J.; Yu, J.; Shan, S.; Zhou, H.; Fan, S.; Zhang, Q.; Shi, X.; Wang, Q.; Zhang, L.J.N. Structure of the SARS-CoV-2 spike receptor-binding domain bound to the ACE2 receptor. 2020, 581, 215-220.