

Cerebral μ -opioid and CB₁-receptor systems have distinct roles in human feeding behavior

Short title: Eating behavior and central opioid and cannabinoid receptors

Keywords: eating behavior, opioid system, endocannabinoid system, positron emission tomography, brain imaging

Tatu Kantonen^{1,2}, MD, Tomi Karjalainen¹, DSc (Tech), Laura Pekkarinen^{1,3}, MD, Janne Isojärvi¹, MSc, Kari Kalliokoski¹, PhD, Valtteri Kaasinen^{1,2}, MD, PhD, Jussi Hirvonen¹, MD, PhD, Pirjo Nuutila^{1,3}, MD, PhD, and Lauri Nummenmaa^{1,4}, PhD

¹*Turku PET Centre, University of Turku, Finland*

²*Clinical Neurosciences, Turku University Hospital, Finland*

³*Department of Endocrinology, Turku University Hospital, Finland*

⁴*Department of Psychology, University of Turku, Finland*

Corresponding author:

Tatu Kantonen

Turku PET Centre c/o Turku University Hospital, P.O. Box 52, FI-20521 Turku, Finland

Email: taskan@utu.fi, Tel: +358 (0)504911870, ORCID ID: orcid.org/0000-0002-2336-0426

Eating behavior and central opioid and cannabinoid receptors

Abstract

Eating behavior varies greatly between healthy individuals, but the neurobiological basis of these trait-like differences in feeding remains unknown. Central μ -opioid receptors (MOR) and cannabinoid CB₁-receptors (CB₁R) regulate energy balance via multiple neural pathways, promoting food intake and reward. Because obesity and eating disorders have been associated with alterations in brain's opioid and endocannabinoid signaling, the variation in MOR and CB₁R systems could potentially underlie distinct eating behavior phenotypes, also in non-obese population. In this retrospective positron emission tomography (PET) study, we analyzed [¹¹C]carfentanil PET scans of MORs from 92 healthy subjects (70 males and 22 females), and [¹⁸F]FMPEP-*d*₂ scans of CB₁Rs from 35 subjects (all males, all also included in the [¹¹C]carfentanil sample). Eating styles were measured with the Dutch Eating Behavior Questionnaire (DEBQ). We found that lower cerebral MOR availability was associated with increase in external eating – individuals with low MORs reported being more likely to eat in response to environment's palatable food cues. CB₁R availability was negatively associated with multiple eating behavior traits. We conclude that although MORs and CB₁Rs overlap anatomically and functionally in the brain, they have distinct roles in mediating individual feeding patterns.

Introduction

Obesity is one of the leading public health issues, resulting from individuals' long-term excessive energy intake in relation to energy expenditure (1). Yet, humans vary greatly in their choices and habits related to food intake quantity and quality i.e. eating behavior (2, 3). Trait-like eating behaviors have been associated with multiple clinical eating disorders in addition to obesity (4-7), but also non-obese individuals vary in how they control their feeding (8). Interacting with peripheral hormones, central nervous system (CNS) integrates hunger and satiety signals with environmental stimuli for regulating food intake (1). Large-scale genome-wide association studies have identified limbic system, hippocampus and hypothalamus to be key regions in the CNS contributing to individual's body mass index (BMI) and eating behavior (9, 10). Central regulation of feeding is however constantly challenged by the modern environment characterized by abundance of palatable and energy-dense food products, promoting feeding independently of metabolic needs (11, 12).

Palatability and hedonic properties of food are centrally mediated by μ -opioid receptor (MOR) system (13, 14). Both endogenous and exogenous opioids stimulate feeding, especially via hedonic hotspots of nucleus accumbens, insula and frontal cortex (15-18). Conversely, opioid antagonists reduce food intake and related hedonic responses in rodents (18) and humans (19, 20). Human positron emission tomography (PET) studies have revealed that obesity associates with decrease of MORs in appetite regulating brain areas (21, 22), and insular MORs are lowered in patients with bulimia nervosa proportionally to fasting behavior (23). Central MOR system function varies considerably also in healthy humans (24), and traits linked with feeding control such as impulsivity are associated with MOR availability (25). Nevertheless, the association between the MOR system and specific patterns of eating behavior remains elusive.

Feeding is also regulated by brain's endocannabinoid system, which overlaps anatomically and functionally with the central MORs (26). The most abundant central cannabinoid receptors are the CB₁-receptors (CB₁Rs), which regulate food intake through circuits of ventral striatum, limbic

Eating behavior and central opioid and cannabinoid receptors

system and hypothalamus (27, 28). Functional interplay between MOR and CB₁R systems is highlighted in animal studies, where CB₁R-antagonists and MOR-antagonists have synergistic effect on reducing food intake (29), and CB₁R-antagonist can be used to block MOR-agonist induced food intake and vice versa (30). MOR-agonists also directly increase endocannabinoid concentration and CB₁R-agonists increase opioid concentration in the brain, including nucleus accumbens (31, 32). In humans, CB₁R-antagonist rimonabant showed promise as an anti-obesity drug, but was withdrawn due to psychiatric side effects (33). More nuanced understanding of CB₁R system and feeding is clearly required to enable further pharmacological advancement.

The current study

Accumulating evidence suggests that variation in central MOR and CB₁R function could be linked to feeding and pathological eating behavior traits in humans, but it remains unresolved what facets of feeding they govern in humans. Individual differences in eating patterns can be conceptualized based on the psychological mechanisms that contribute to or attenuate development of overweight. In such conceptualization, *emotional eating* refers to reactive overeating to distress or negative emotions, while *external eating* refers to tendency to overeat in response to attractive food-cues. Finally, *restrained eating* refers to the tendency to eat less than desired (34-36). The emotional and external overeating are based on psychosomatic and externality theories of eating behavior, while restrained eating dimension centers around food intake self-inhibition (37). Such consistent patterns contribute to differences in weight gain and maintenance (34, 38), and they can be measured using The Dutch Eating Behavior Questionnaire (DEBQ) (37). Here we compiled 92 [¹¹C]carfentanil PET scans targeting the MOR system and 35 [¹⁸F]FMPEP-*d*₂ PET scans of CB₁R system and corresponding Dutch Eating Behavior Questionnaire (DEBQ) data in a retrospective PET database study. We tested whether the MOR and CB₁R availabilities in food-intake-regulating brain areas associate with individual eating behavior traits measured with DEBQ.

Materials and Methods

Subjects

The study subjects were historical controls retrieved from the AIVO neuroinformatics database (<http://aivo.utu.fi>), a large-scale molecular image database hosted by Turku PET Centre. We identified all the [^{11}C]carfentanil and [^{18}F]FMPEP- d_2 baseline PET studies accompanied with completed DEBQ form (37). Exclusion criteria were neurologic and psychiatric disorders, current use of medications that could affect CNS or abuse of alcohol or illicit drugs. Subjects were not preselected on the basis of weight or eating habits. Final sample consisted of 92 subjects (70 males and 22 females) scanned with [^{11}C]carfentanil from five distinct projects with three different PET scanners. The [^{18}F]FMPEP- d_2 sample consisted of 35 males, all of which were also all included in the [^{11}C]carfentanil male sample. All subjects of the [^{18}F]FMPEP- d_2 subsample were nonsmoking males, while in the [^{11}C]carfentanil sample seven females smoked. All [^{18}F]FMPEP- d_2 scans were carried out with GE Discovery VCT PET/CT (GE Healthcare). The original data were acquired between 2011 and 2019. Characteristics of the study sample are summarized in **Table 1**, and the information of smoking status and PET scanners are detailed in **Supplementary Table 1**. The study was conducted in accordance with the Declaration of Helsinki and approved by the Turku University Hospital Clinical Research Services. The subjects had signed written informed consent forms and completed the DEBQ forms as a part of the original study protocols.

Table 1. Characteristics of the studied subjects.

	[^{11}C]carfentanil scans					
	Males (n = 70)			Females (n = 22)		
	mean	SD	range	mean	SD	range
Age (years)	27.4	7.5	19–58	47.7	10.0	20–59
BMI (kg/m^2)	24.5	2.8	19–31	23.7	3.1	18–31
Total DEBQ score	67.0	12.8	40–109	73.4	12.8	46–97
Emotional eating score	21.0	6.8	13–40	22.1	5.7	13–32
External eating score	24.7	6.5	10–43	25.0	5.4	13–34

Eating behavior and central opioid and cannabinoid receptors

Restrained eating score	21.3	5.5	11–39	26.2	5.5	10–33
Injected activity (MBq)	277.0	77.9	223–508	352.3	125.5	234–519

[¹⁸ F]FMPEP- <i>d</i> ₂ scans			
Males (n = 35)			
	mean	SD	range
Age (years)	25.9	4.3	21–35
BMI (kg/m ²)	24.5	3.1	19–31
Total DEBQ score	68.6	14.5	43–109
Emotional eating score	20.7	7.4	13–40
External eating score	27.1	6.0	14–43
Restrained eating score	20.8	5.6	12–32
Injected activity (MBq)	187.9	12.8	147–215

Eating behavior assessment with the DEBQ

The Dutch Eating Behavior Questionnaire (DEBQ) (37) was used to quantify eating behavior. The DEBQ is a 33-item questionnaire with Likert-type scoring in each item (response options ranging from 1–5, from “Never” to “Very often”). It is divided in three dimensions measuring different behavioral traits: Emotional eating, External eating and Restrained eating (34–36). The DEBQ subscales have good internal consistency, dimensional validity and test-retest reliability (4, 7, 37, 39).

Image processing and modeling

PET images were pre-processed similarly using automated processing pipeline, Magia (40). [¹¹C]carfentanil data preprocessing has been described previously (24). MOR availability was expressed as [¹¹C]carfentanil binding potential (BP_{ND}), which is the ratio of specifically bound radioligand to that of nondisplaceable radioligand in tissue (41). Occipital cortex served as the reference region (42). CB₁R availability was expressed as [¹⁸F]FMPEP-*d*₂ volume of distribution (V_T), which was quantified using graphical analysis by Logan (43). The frames starting at 36 minutes and later since injection were used in the model fitting, since Logan plots became linear after 36

Eating behavior and central opioid and cannabinoid receptors

minutes (43). Plasma activities were corrected for plasma metabolites as described previously (44). The code for PET data processing pipeline (Magia) is available at <https://github.com/tkkarjal/magia>.

Statistical analysis

The primary study question was whether the DEBQ subscales (Emotional eating, External eating, Restrained eating) or Total DEBQ scores are associated with [^{11}C]carfentanil BP_{ND} or [^{18}F]FMPEP- d_2 V_{T} values. First, we used nonparametric approach with SnPM13 (<http://niso.org/Software/SnPM13/>) to create full-volume linear regression models for BP_{ND} and V_{T} values. We used $p < 0.05$ as the cluster-defining threshold, and only report clusters large enough to be statistically significant at FWE $p < 0.05$. 5000 permutations were used to estimate the null distribution. We created distinct models for Total DEBQ score and all the subscale scores. Because age influences [^{11}C]carfentanil binding (24, 45) and different PET scanners may yield slightly different BP_{ND} estimates (46), both age and PET scanner were added as nuisance covariates to [^{11}C]carfentanil models. Only age was added as a covariate in [^{18}F]FMPEP- d_2 V_{T} models, since all [^{18}F]FMPEP- d_2 scans were acquired with the same PET scanner. To rule out the possible effects of sex, smoking and BMI, we replicated the [^{11}C]carfentanil full volume analysis with these additional covariates. The [^{18}F]FMPEP- d_2 models were also replicated with BMI as additional covariate (there were no smokers or females in the [^{18}F]FMPEP- d_2 data).

We used Bayesian hierarchical modeling to analyze effects of eating styles on MOR and CB $_1$ R availability in *a priori* regions of interest (ROIs). FreeSurfer (<http://surfer.nmr.mgh.harvard.edu/>) was used to extract 10 bilateral ROIs based on known regions with high density of MORs (24) and CB $_1$ Rs (47): amygdala, caudatus, cerebellum, dorsal anterior cingulate cortex, insula, middle temporal cortex, nucleus accumbens, orbitofrontal cortex, putamen, and thalamus. The Bayesian models were estimated using the R package brms (<https://cran.r-project.org/web/packages/brms/index.html>) that utilizes the Markov chain Monte Carlo sampling of RStan (<https://mc-stan.org/users/interfaces/rstan>).

Eating behavior and central opioid and cannabinoid receptors

For both tracers, we created models separately for the Total DEBQ score as well as its subscales, adjusting for age. [^{11}C]carfentanil BP_{ND} and [^{18}F]FMPEP- d_2 V_T were log-transformed to improve model fit (24). For both tracers, we estimated varying (random) intercepts for the subjects and ROIs, and varying (random) slopes across ROIs for the predictor of interest (e.g. Total DEBQ score) and age. Compared to a model where the regionally specific effects would be estimated using interaction term for ROI, the hierarchical model produces results that are partially pooled towards each other, thus accounting for the multiple comparisons performed (48). For both tracers, we also estimated regionally varying (random) residual variances. For [^{11}C]carfentanil data, we also estimated regionally varying (random) intercepts for the scanners. For [^{18}F]FMPEP- d_2 data, the scanner-adjustment was not needed because the data were acquired using a single scanner. We used the standard normal distribution as a prior distribution for the regression coefficients of the predictors to provide regularization. The standard normal distribution was also used as the prior distribution for the standard deviation of the group-level (random) effects. Otherwise we used the default priors of brms. We used 1000 warmup samples, 1000 post-warmup samples and 10 chains, thus totaling 10 000 post-warmup samples. The sampling parameters were slightly modified to facilitate convergence (*adapt_delta* = 0.999; *max_treedepth* = 20). The samplings produced no divergent iterations and the Rhats were all 1.0, suggesting that the chains converged successfully.

Results

Mean distribution of MORs and CB₁Rs is shown in **Figure 1**. Total DEBQ score correlated with all the subscales of DEBQ ($r = 0.76$ – 0.62). Correlations between the DEBQ subscales were positive but only modest, strongest being between Emotional and External eating ($r = +0.33$). BMI had a significant correlation only with Restrained eating ($r = +0.27$). Correlations with p-values are presented in **Supplementary Figure 1** and **Supplementary Table 2**.

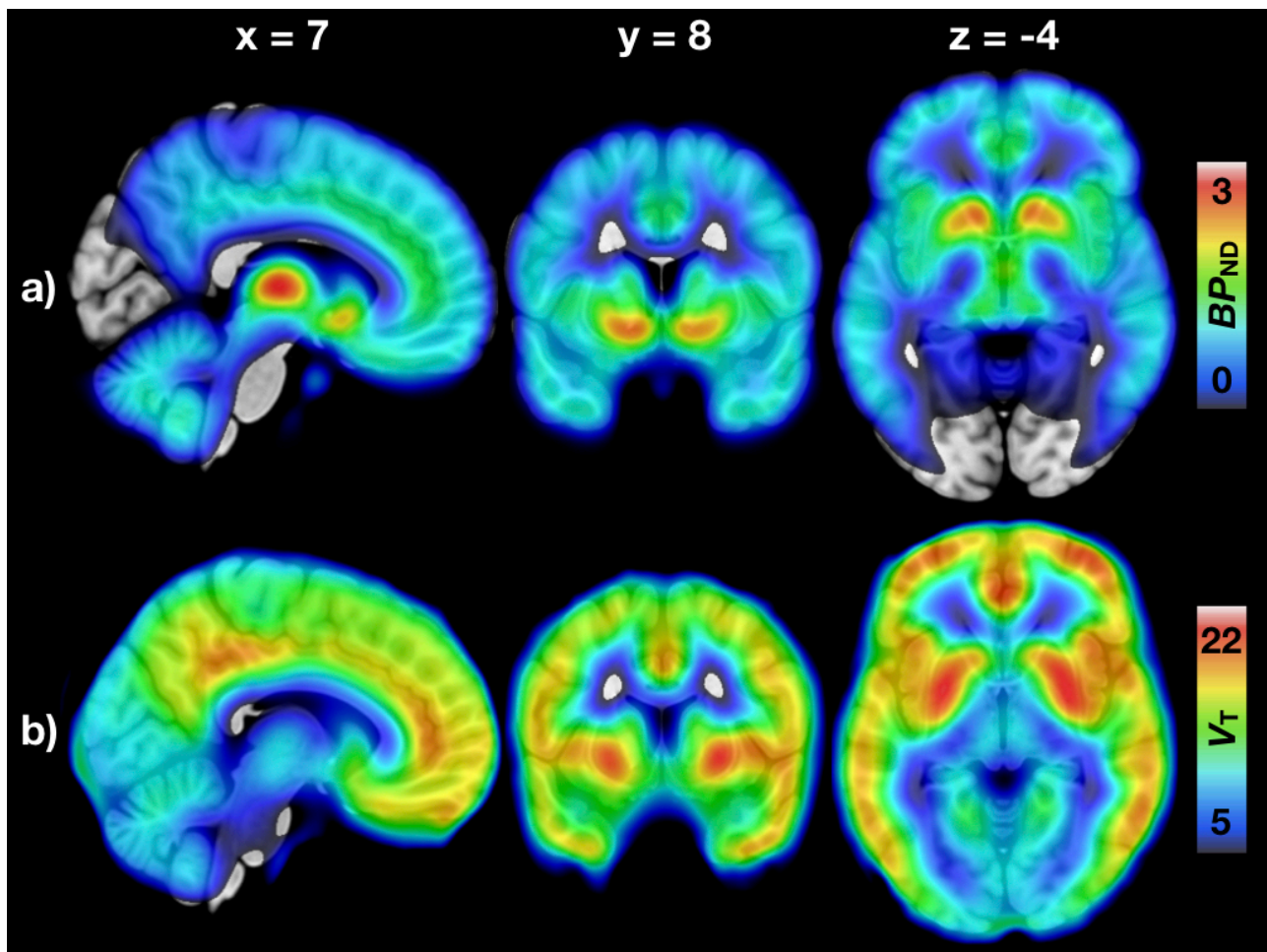


Figure 1. Mean distribution of central μ -opioid and CB₁-receptors. a) Mean binding potential (BP_{ND}) of the 92 subjects (70 males and 22 females) studied with [¹¹C]carfentanil. b) Mean volume of distribution (V_T) of the 35 males studied with [¹⁸F]FMPEP- d_2 .

Associations between μ -opioid receptor availability and eating behavior

Eating behavior and central opioid and cannabinoid receptors

Higher External eating score was associated with lower [^{11}C]carfentanil BP_{ND} bilaterally in multiple brain areas (**Figure 2**). Cortical associations were found in cingulate and frontotemporal areas, while subcortical effects were prominent in nucleus accumbens, caudate, putamen, insula, hippocampus and amygdala. Associations with Total DEBQ or other subscale scores were not statistically significant. Results were essentially similar when controlling for sex, smoking and BMI. We also checked the association of External eating and BP_{ND} in subsamples of 70 males and 22 females. In males, the association was similar to that of the full sample (**Supplementary Figure 2**), while in the female subsample there were no significant associations, likely due to limited statistical power.

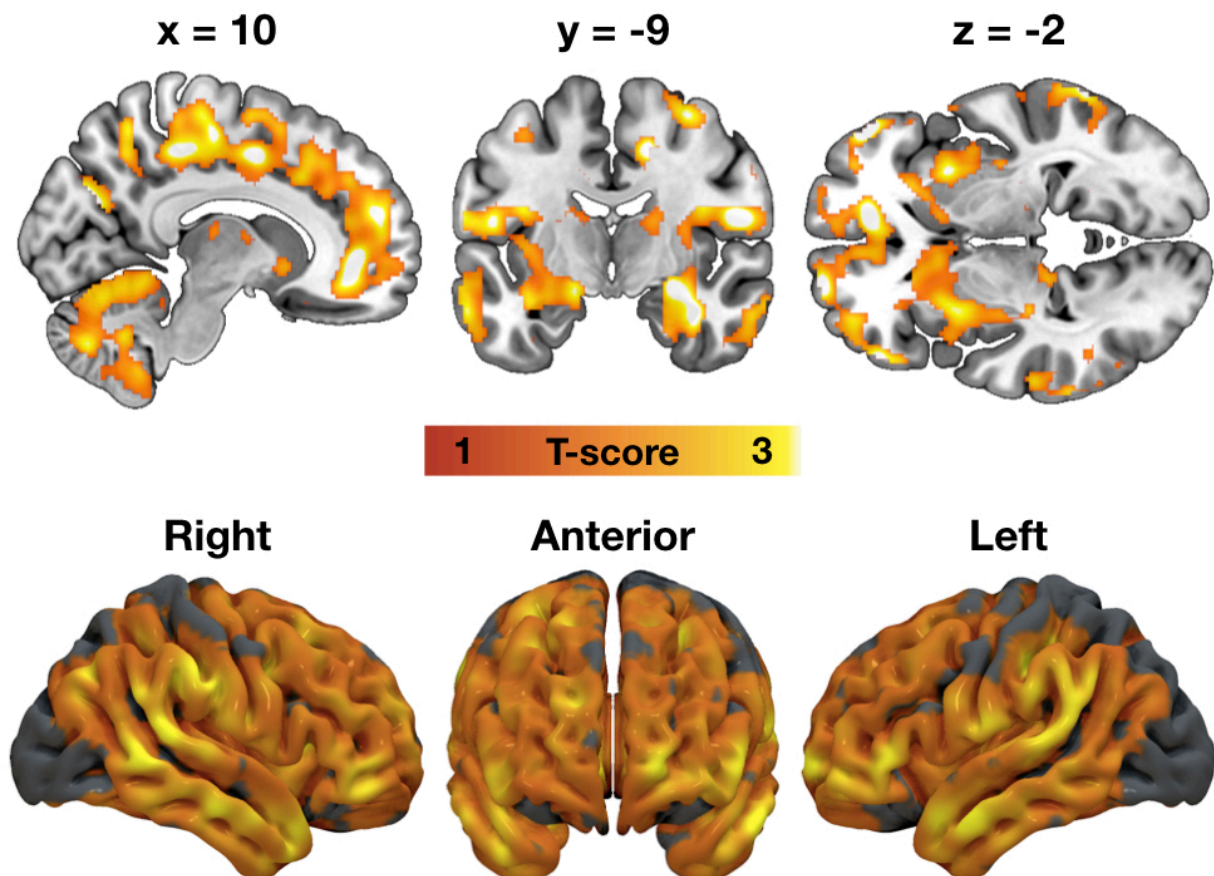


Figure 2. Association between External eating and decreased μ -opioid receptor availability. Brain regions where lower [^{11}C]carfentanil binding potential (BP_{ND}) associated with higher External eating score, age and PET scanner as nuisance covariates. Shown are clusters where $p < 0.05$, FWE corrected at cluster level.

Eating behavior and central opioid and cannabinoid receptors

Associations between CB₁-receptor availability and eating behavior

Total DEBQ score was associated with lower [¹⁸F]FMPEP-*d*₂ V_T in multiple brain regions including bilateral anterior cingulate cortex, nucleus accumbens, caudate, putamen, insula, hippocampus, amygdala and thalamus (**Figure 3**). Full-volume associations with distinct DEBQ subscales and V_T were not statistically significant. Controlling for BMI did not alter the results.

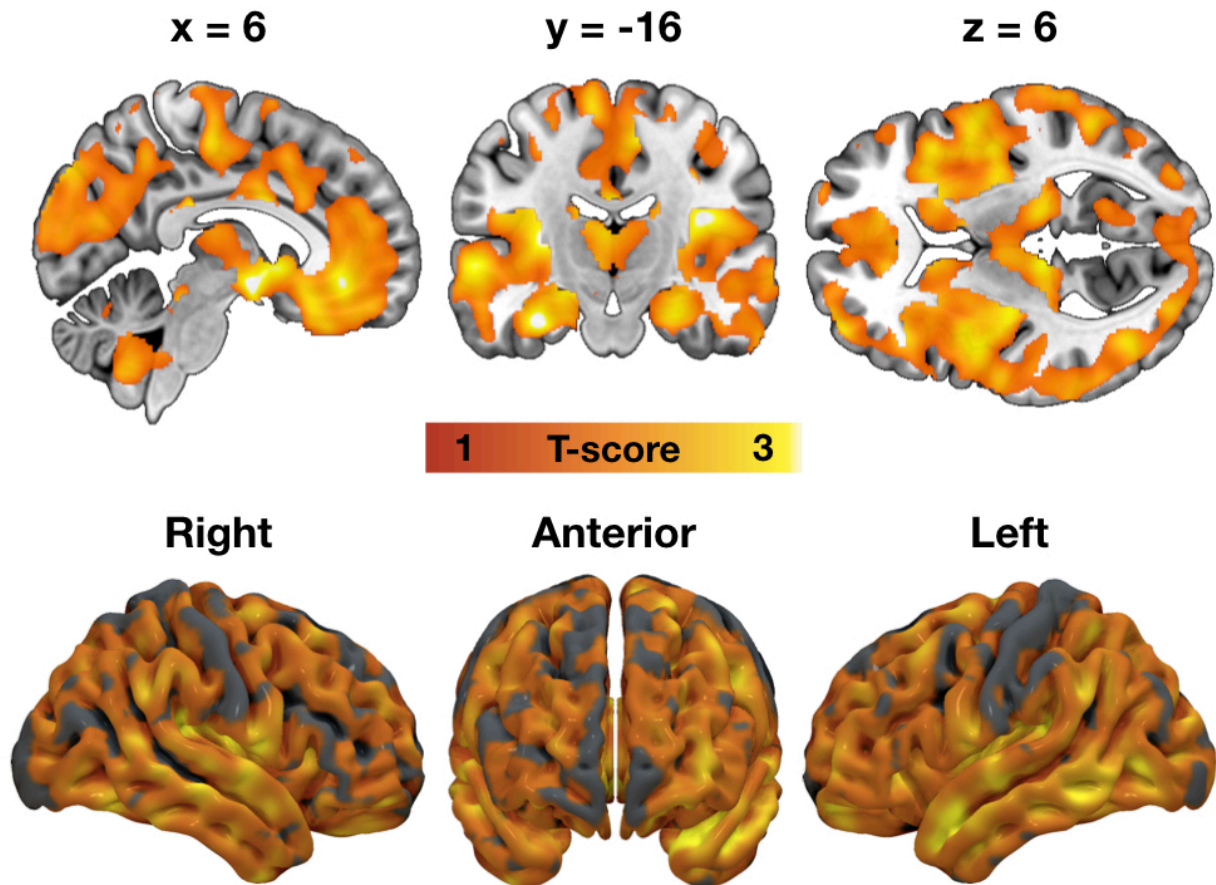


Figure 3. Total Dutch Eating Behavior Questionnaire (DEBQ) score associated with decreased CB₁-receptor availability. Brain regions where lower [¹⁸F]FMPEP-*d*₂ volume of distribution (V_T) associated with higher Total DEBQ score, age as a nuisance covariate. Shown are clusters where $p < 0.05$, FWE corrected at cluster level.

Regional analysis of central receptor availability and eating behavior

Eating behavior and central opioid and cannabinoid receptors

Results of the ROI-analysis were consistent with the full volume results for both tracers (**Figure 4**).

For [^{18}F]FMPEP- d_2 , the association directions of all DEBQ subscales were negative, but the 95% confidence intervals overlapped with zero. Visualization of the regional relationships in representative ROIs is presented in **Figure 5**.

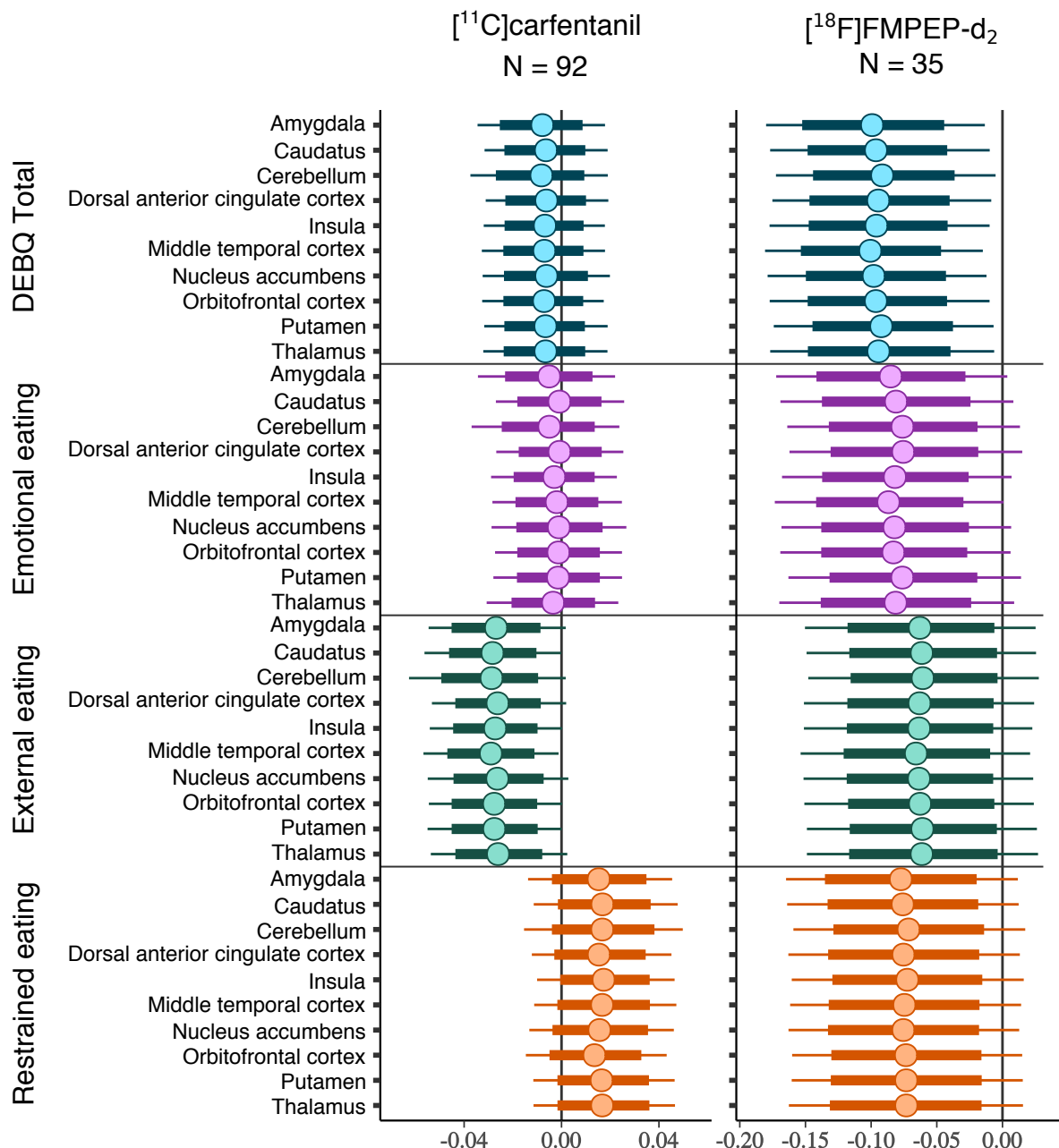


Figure 4. Regional associations between Total DEBQ and subscale scores with μ -opioid and CB₁-receptor availabilities. The figure shows posterior distributions of the regression coefficients for Total DEBQ and subscale scores on log-transformed [^{11}C]carfentanil binding potential (BP_{ND}) and

Eating behavior and central opioid and cannabinoid receptors

$[^{18}\text{F}]$ FMPEP- d_2 volume of distribution (V_T) in 10 regions of interest. Age (and PET scanner for $[^{11}\text{C}]$ carfentanil data) are controlled as covariates. The colored circles represent posterior means, the thick horizontal bars 80% posterior intervals, and the thin horizontal bars 95% posterior intervals.

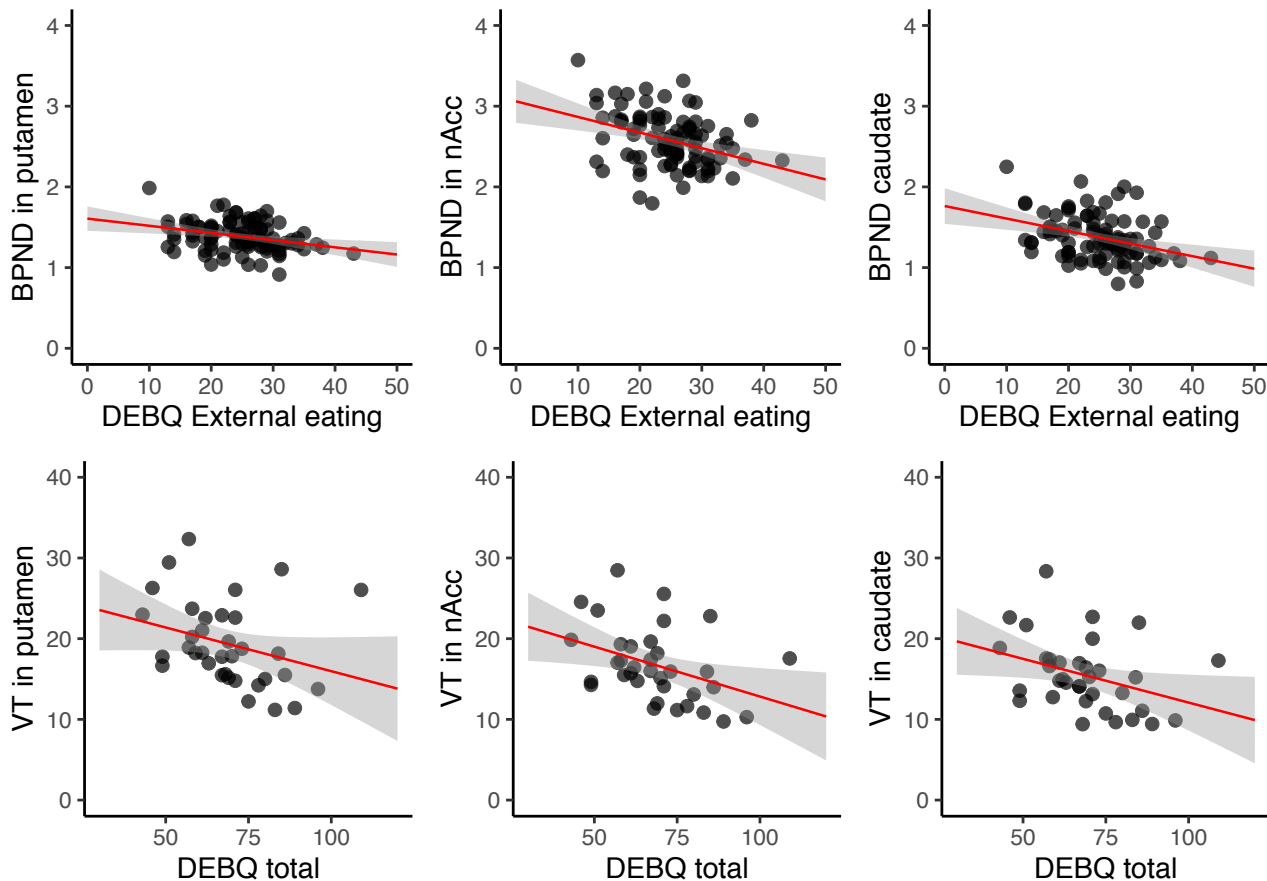


Figure 5. Visualization of regional associations in three representative regions of interest. Upper row: Scatterplots show the associations of External eating score and $[^{11}\text{C}]$ carfentanil binding potential (BP_{ND}) in putamen, nucleus accumbens (nAcc) and caudate (92 subjects, LS-regression line with 95% CI). Lower row: Scatterplots show the associations of Total DEBQ score and $[^{18}\text{F}]$ FMPEP- d_2 volume of distribution (V_T) in putamen, nucleus accumbens (nAcc) and caudate (35 subjects, LS-regression line with 95% CI).

Discussion

Our main finding was that higher DEBQ scores were associated with lower central availability of μ -opioid and CB₁-receptors in healthy, non-obese humans. MOR and CB₁R systems however showed distinct patterns of associations with specific dimensions of self-reported eating: While CB₁Rs were associated in general negatively with different DEBQ subscale scores (and most saliently with the Total DEBQ score), MORs were specifically and negatively associated with externally driven eating only. Our results add support to the view that endogenous opioid and endocannabinoid systems underlie interindividual variation in feeding, with distinct effects on eating behavior measured with DEBQ.

Central μ -opioid receptors and external eating behavior

External eating – the tendency to feed when encountering palatable food cues such as advertisements – was associated with lowered MOR availability in cortico-limbic and striatal regions, which are major brain areas processing environmental food cues and mediating reward (49). A bulk of studies have shown that these regions are activated by mere perception of food cues or anticipation of feeding (50-52), and our recent work shows that lowered MOR availability is associated with amplified hemodynamic responses to food images in the same regions (14). Higher score on external eating is associated with increased food craving (53) and cue-induced palatable food intake (35, 54), and may also contribute to short-term weight gain (38). Altogether these results suggest that central MOR system has an important role in modulating particularly this kind of impulsive feeding that may lead to overweight.

Previous PET studies have established that feeding triggers endogenous opioid release in humans (21, 55). Binge eating disorder (BED) is accompanied with downregulated central MORs and high External and Emotional eating scores (56). Morbid obesity is also associated with lowered central MOR availability (21, 22), possibly reflecting receptor downregulation due to repeated

Eating behavior and central opioid and cannabinoid receptors

overstimulation following feeding. In minipigs, already 12 days of high sucrose intake and following central endogenous neurotransmitter release downregulates MORs in cingulate and prefrontal cortices, nucleus accumbens and elsewhere in striatum (57). The present findings extend the role of MORs in obesity and eating disorders to different feeding patterns in healthy subjects.

Healthy humans vary considerably in central MOR availability (24), and it is also possible that lowered MOR availability constitutes a genetically determined (58) risk factor for externally driven eating behavior. In healthy humans, trait impulsivity is associated with central MOR availability (25). Increased cue-reactivity is prevalent feature of behavioral addictions (59), and patients with BED and pathological gambling have reduced availability of central MORs as measured with *in vivo* PET (60). It is thus possible that subjects with lower MOR availability are susceptible for increased external eating in modern environment where they are consistently bombarded with feeding cues in advertisements and food shelves in supermarkets (11). However, the present data are purely cross-sectional and longitudinal human studies are needed to further disentangle the causes and the effects between the decrease of MORs in relation to external eating.

Central CB₁-receptors and eating behavior

Higher Total DEBQ score associated with lower availability of central CB₁Rs, and ROI-level modeling suggested a consistent negative association with all DEBQ subscales. Compared with the [¹¹C]carfentanil model, wider posterior distributions reflect the uncertainty arising from smaller [¹⁸F]FMPEP-*d*₂ sample size. Brain's endocannabinoid system is a major homeostatic signaling system, with CB₁Rs abundant in all known food intake regulating central regions (61). In previous brain PET studies, lowered CB₁R availability has been associated with increased BMI (62), while globally upregulated CB₁Rs have been found in anorexia nervosa (63). These opposite phenotypes on body adiposity spectrum could potentially result from corresponding alterations from CB₁R-regulated food intake behaviors. Indeed, stimulation of CB₁Rs by pharmacological agonists or

Eating behavior and central opioid and cannabinoid receptors

endocannabinoids promotes food intake and amplifies the rewarding properties of feeding (64). In contrast, antagonism of the CB₁Rs by rimonabant (withdrawn anti-obesity drug, Acomplia) effectively reduces food intake and increases energy expenditure, but in many patients with the cost of psychiatric symptoms (e.g. depressive mood, suicidality, anxiety) (61). Accordingly, the endocannabinoid system function has been connected to several other essential behavioral processes in addition to feeding (e.g. stress-coping, emotion regulation, pain perception) (65, 66). Being this diverse and complex regulatory system, it may not be possible to pinpoint single distinct aspect of food intake behavior mediated by CB₁Rs. Rather, our results add support to central CB₁Rs role in regulation of multiple eating behavior traits, with implications on both homeostatic and hedonic feeding (67).

Limitations and methodological considerations

The [¹¹C]carfentanil data were pooled from three PET scanners, which may produce minor variance in outcome measures (46). However, this was accounted for in the analyses by adding the PET scanner as a nuisance covariate to all full-volume and regional analyses. The sample studied with [¹¹C]carfentanil consisted predominantly of males, and our statistical power was compromised for detecting potential sex differences. Also all subjects of the [¹⁸F]FMPEP-*d*₂ subsample were males, and thus conclusions regarding CB₁Rs might not be generalizable to females. Eating behavior was assessed by self-reports, rather than by direct observations. DEBQ has however been found to successfully identify clinically relevant eating styles (4, 5). Our study had a cross-sectional design, and although we found evidence of eating behavior's association with MOR and CB₁R systems, whether these receptor systems' alterations directly promote future weight gain is to be examined in longitudinal studies. Finally, in a single PET scan it is not possible to determine the exact proportions for causal factors to the altered receptor availability, which could potentially be affected by changes in receptor density, affinity or endogenous ligand binding.

Eating behavior and central opioid and cannabinoid receptors

Conclusions

Low cerebral MOR availability is associated with increased externally triggered eating behavior. Modern obesogenic environment may promote food consumption via engaging the opioidergic link of the reward circuit whose tone is linked with this kind of impulsive eating. Central CB₁Rs are in turn associated with multiple eating behavioral traits measured with DEBQ, consistent with endocannabinoid system's role as a major homeostatic regulatory system at the intersection of feeding, emotion and behavior.

Acknowledgements

This work was supported by Academy of Finland grants (#332225, #304385, and #294897 to LN) and Sigrid Juselius Foundation. The work was also funded by Centre of Excellence of Cardiovascular and Metabolic Diseases supported by Academy of Finland (PN). We are grateful to Emil Aaltonen Foundation, Finnish Cultural Foundation (Southwest Finland Fund), and Jenny and Antti Wihuri Foundation for personal grants to TaK. We thank Turunmaa Duodecim Society, Turku University Hospital Foundation for Education and Research, and Jalmari and Rauha Ahokas Foundation for personal grants to LP. We are grateful to Academy of Finland (grant #256836) and Finnish Alcohol Research Foundation for personal grants to VK. The manuscript has been posted on preprint server bioRxiv (<https://www.biorxiv.org>).

Disclosures

The authors declare no competing financial interests.

Author contributions

Eating behavior and central opioid and cannabinoid receptors

TaK: Corresponding and first author, study design, study coordination, data acquisition, data modeling, statistical analysis, interpretation of the results, tables and figures, main writer of the manuscript. ToK: Study design, data modeling, statistical analysis, interpretation of the results, figures, writing of the manuscript. LP: Data acquisition, interpretation of the results, writing of the manuscript. JI: Data acquisition, interpretation of the results, writing of the manuscript. KK: Interpretation of the results, writing of the manuscript. VK: Interpretation of the results, writing of the manuscript. JH: Data modeling, interpretation of the results, writing of the manuscript. PN: Study design, study coordination, interpretation of the results, writing of the manuscript. LN: Study design, study coordination, statistical analysis, interpretation of the results, figures, writing of the manuscript, supervision of the study.

Supplementary Material

Supplementary Material accompanies this paper.

References

1. Guyenet SJ, Schwartz MW (2012): Regulation of Food Intake, Energy Balance, and Body Fat Mass: Implications for the Pathogenesis and Treatment of Obesity. *The Journal of Clinical Endocrinology & Metabolism*. 97:745-755.
2. Larson N, Story M (2009): A review of environmental influences on food choices. *Annals of Behavioral Medicine*. 38:56-73.
3. French SA, Epstein LH, Jeffery RW, Blundell JE, Wardle J (2012): Eating behavior dimensions. Associations with energy intake and body weight. A review. *Appetite*. 59:541-549.
4. Wardle J (1987): Eating style: a validation study of the Dutch Eating Behaviour Questionnaire in normal subjects and women with eating disorders. *Journal of psychosomatic research*. 31:161-169.
5. Baños RM, Cebolla A, Moragrega I, Van Strien T, Fernández-Aranda F, Agüera Z, et al. (2014): Relationship between eating styles and temperament in an Anorexia Nervosa, Healthy Control, and Morbid Obesity female sample. *Appetite*. 76:76-83.
6. Barrada JR, Van Strien T, Cebolla A (2016): Internal structure and measurement invariance of the Dutch eating behavior questionnaire (DEBQ) in a (nearly) representative Dutch community sample. *European Eating Disorders Review*. 24:503-509.
7. Cebolla A, Barrada JR, van Strien T, Oliver E, Baños R (2014): Validation of the Dutch Eating Behavior Questionnaire (DEBQ) in a sample of Spanish women. *Appetite*. 73:58-64.
8. Yeomans MR, Leitch M, Mobini S (2008): Impulsivity is associated with the disinhibition but not restraint factor from the Three Factor Eating Questionnaire. *Appetite*. 50:469-476.
9. Silventoinen K, Konttinen H (2020): Obesity and eating behavior from the perspective of twin and genetic research. *Neuroscience & Biobehavioral Reviews*. 109:150-165.
10. Locke AE, Kahali B, Berndt SI, Justice AE, Pers TH, Day FR, et al. (2015): Genetic studies of body mass index yield new insights for obesity biology. *Nature*. 518:197-206.
11. Berthoud H-R (2012): The neurobiology of food intake in an obesogenic environment. *Proc Nutr Soc*. 71:478-487.
12. Hill JO, Peters JC (1998): Environmental contributions to the obesity epidemic. *Science (New York, NY)*. 280:1371-1374.
13. Gosnell BA, Levine AS (2009): Reward systems and food intake: role of opioids. *Int J Obes (Lond)*. 33 Suppl 2:S54-58.
14. Nummenmaa L, Saanijoki T, Tuominen L, Hirvonen J, Tuulari JJ, Nuutila P, et al. (2018): μ -opioid receptor system mediates reward processing in humans. *Nature Communications*. 9:1500.
15. Smith KS, Berridge KC (2007): Opioid limbic circuit for reward: interaction between hedonic hotspots of nucleus accumbens and ventral pallidum. *Journal of neuroscience*. 27:1594-1605.
16. Castro DC, Berridge KC (2017): Opioid and orexin hedonic hotspots in rat orbitofrontal cortex and insula. *Proceedings of the National Academy of Sciences*. 114:E9125-E9134.
17. Mena JD, Sadeghian K, Baldo BA (2011): Induction of hyperphagia and carbohydrate intake by μ -opioid receptor stimulation in circumscribed regions of frontal cortex. *Journal of Neuroscience*. 31:3249-3260.

Eating behavior and central opioid and cannabinoid receptors

18. Nogueiras R, Romero-Pico A, Vazquez MJ, Novelle MG, Lopez M, Dieguez C (2012): The opioid system and food intake: homeostatic and hedonic mechanisms. *Obes Facts*. 5:196-207.
19. Yeomans MR, Gray RW (2002): Opioid peptides and the control of human ingestive behaviour. *Neuroscience and biobehavioral reviews*. 26:713-728.
20. Ziauddeen H, Chamberlain SR, Nathan PJ, Koch A, Maltby K, Bush M, et al. (2013): Effects of the mu-opioid receptor antagonist GSK1521498 on hedonic and consummatory eating behaviour: a proof of mechanism study in binge-eating obese subjects. *Mol Psychiatry*. 18:1287-1293.
21. Burghardt PR, Rothberg AE, Dykhuis KE, Burant CF, Zubieta J-K (2015): Endogenous Opioid Mechanisms Are Implicated in Obesity and Weight Loss in Humans. *The Journal of Clinical Endocrinology & Metabolism*. 100:3193-3201.
22. Karlsson HK, Tuominen L, Tuulari JJ, Hirvonen J, Parkkola R, Helin S, et al. (2015): Obesity is associated with decreased mu-opioid but unaltered dopamine D2 receptor availability in the brain. *J Neurosci*. 35:3959-3965.
23. Bencherif B, Guarda AS, Colantuoni C, Ravert HT, Dannals RF, Frost JJ (2005): Regional μ -opioid receptor binding in insular cortex is decreased in bulimia nervosa and correlates inversely with fasting behavior. *Journal of Nuclear Medicine*. 46:1349-1351.
24. Kantonen T, Karjalainen T, Isojärvi J, Nuutila P, Tuisku J, Rinne J, et al. (2020): Interindividual variability and lateralization of μ -opioid receptors in the human brain. *NeuroImage*. 217:116922.
25. Love TM, Stohler CS, Zubieta J-K (2009): Positron emission tomography measures of endogenous opioid neurotransmission and impulsiveness traits in humans. *Archives of general psychiatry*. 66:1124-1134.
26. Cota D, Tschöp MH, Horvath TL, Levine AS (2006): Cannabinoids, opioids and eating behavior: the molecular face of hedonism? *Brain research reviews*. 51:85-107.
27. Bermudez-Silva FJ, Cardinal P, Cota D (2012): The role of the endocannabinoid system in the neuroendocrine regulation of energy balance. *Journal of psychopharmacology*. 26:114-124.
28. Mechoulam R, Parker LA (2013): The endocannabinoid system and the brain. *Annual review of psychology*. 64:21-47.
29. Rowland NE, Mukherjee M, Robertson K (2001): Effects of the cannabinoid receptor antagonist SR 141716, alone and in combination with dexfenfluramine or naloxone, on food intake in rats. *Psychopharmacology*. 159:111-116.
30. Solinas M, Goldberg SR (2005): Motivational Effects of Cannabinoids and Opioids on Food Reinforcement Depend on Simultaneous Activation of Cannabinoid and Opioid Systems. *Neuropsychopharmacology*. 30:2035-2045.
31. Solinas M, Zangen A, Thiriet N, Goldberg SR (2004): Beta-endorphin elevations in the ventral tegmental area regulate the discriminative effects of Delta-9-tetrahydrocannabinol. *The European journal of neuroscience*. 19:3183-3192.
32. Vigano D, Valenti M, Cascio MG, Di Marzo V, Parolaro D, Rubino T (2004): Changes in endocannabinoid levels in a rat model of behavioural sensitization to morphine. *The European journal of neuroscience*. 20:1849-1857.
33. Di Marzo V, Després J-P (2009): CB1 antagonists for obesity—what lessons have we learned from rimonabant? *Nature Reviews Endocrinology*. 5:633-638.
34. Van Strien T, Herman CP, Verheijden MW (2009): Eating style, overeating, and overweight in a representative Dutch sample. Does external eating play a role? *Appetite*. 52:380-387.

Eating behavior and central opioid and cannabinoid receptors

35. Van Strien T, Peter Herman C, Anschutz D (2012): The predictive validity of the DEBQ - external eating scale for eating in response to food commercials while watching television. *International Journal of Eating Disorders*. 45:257-262.
36. Van Strien T, Frijters JE, Van Staveren WA, Defares PB, Deurenberg P (1986): The predictive validity of the Dutch restrained eating scale. *International Journal of Eating Disorders*. 5:747-755.
37. Van Strien T, Frijters JE, Bergers GP, Defares PB (1986): The Dutch Eating Behavior Questionnaire (DEBQ) for assessment of restrained, emotional, and external eating behavior. *International journal of eating disorders*. 5:295-315.
38. Van Strien T, Peter Herman C, Verheijden MW (2012): Eating style, overeating and weight gain. A prospective 2-year follow-up study in a representative Dutch sample. *Appetite*. 59:782-789.
39. Malesza M, Kaczmarek MC (2019): One year reliability of the Dutch eating behavior questionnaire: an extension into clinical population. *Journal of Public Health*. 1-7.
40. Karjalainen T, Tuisku J, Santavirta S, Kantonen T, Bucci M, Tuominen L, et al. (2020): Magia: Robust Automated Image Processing and Kinetic Modeling Toolbox for PET Neuroinformatics. *Frontiers in Neuroinformatics*. 14.
41. Innis RB, Cunningham VJ, Delforge J, Fujita M, Gjedde A, Gunn RN, et al. (2007): Consensus nomenclature for in vivo imaging of reversibly binding radioligands. *Journal of cerebral blood flow and metabolism : official journal of the International Society of Cerebral Blood Flow and Metabolism*. 27:1533-1539.
42. Frost JJ, Douglass KH, Mayberg HS, Dannals RF, Links JM, Wilson AA, et al. (1989): Multicompartmental Analysis of [¹¹C]-Carfentanil Binding to Opiate Receptors in Humans Measured by Positron Emission Tomography. *Journal of Cerebral Blood Flow & Metabolism*. 9:398-409.
43. Logan J (2000): Graphical analysis of PET data applied to reversible and irreversible tracers. *Nuclear Medicine and Biology*. 27:661-670.
44. Lahesmaa M, Eriksson O, Gnad T, Oikonen V, Bucci M, Hirvonen J, et al. (2018): Cannabinoid type 1 receptors are upregulated during acute activation of brown adipose tissue. *Diabetes*. 67:1226-1236.
45. Zubieta JK, Dannals RF, Frost JJ (1999): Gender and age influences on human brain mu-opioid receptor binding measured by PET. *Am J Psychiatry*. 156:842-848.
46. Nummenmaa L, Karjalainen T, Isojärvi J, Kantonen T, Tuisku J, Kaasinen V, et al. (2020): Lowered endogenous mu-opioid receptor availability in subclinical depression and anxiety. *Neuropsychopharmacology*.
47. Terry GE, Hirvonen J, Liow J-S, Zoghbi SS, Gladding R, Tauscher JT, et al. (2010): Imaging and quantitation of cannabinoid CB1 receptors in human and monkey brains using ¹⁸F-labeled inverse agonist radioligands. *Journal of Nuclear Medicine*. 51:112-120.
48. Gelman A, Hill J, Yajima M (2012): Why we (usually) don't have to worry about multiple comparisons. *Journal of Research on Educational Effectiveness*. 5:189-211.
49. Berthoud H-R, Münzberg H, Morrison CD (2017): Blaming the brain for obesity: integration of hedonic and homeostatic mechanisms. *Gastroenterology*. 152:1728-1738.
50. Nummenmaa L, Hirvonen J, Hannukainen JC, Immonen H, Lindroos MM, Salminen P, et al. (2012): Dorsal striatum and its limbic connectivity mediate abnormal anticipatory reward processing in obesity. *PloS one*. 7:e31089.
51. Stice E, Spoor S, Bohon C, Small D (2008): Relation between obesity and blunted striatal response to food is moderated by Taq1A A1 allele. *Science (New York, NY)*. 322:449-452.

Eating behavior and central opioid and cannabinoid receptors

52. Stice E, Spoor S, Bohon C, Veldhuizen MG, Small DM (2008): Relation of reward from food intake and anticipated food intake to obesity: a functional magnetic resonance imaging study. *Journal of abnormal psychology*. 117:924.
53. Burton P, Smit HJ, Lightowler HJ (2007): The influence of restrained and external eating patterns on overeating. *Appetite*. 49:191-197.
54. Anschutz DJ, Van Strien T, Van De Ven MOM, Engels RCME (2009): Eating styles and energy intake in young women. *Appetite*. 53:119-122.
55. Tuulari JJ, Tuominen L, de Boer FE, Hirvonen J, Helin S, Nuutila P, et al. (2017): Feeding Releases Endogenous Opioids in Humans. *J Neurosci*. 37:8284-8291.
56. Joutsa J, Karlsson HK, Majuri J, Nuutila P, Helin S, Kaasinen V, et al. (2018): Binge eating disorder and morbid obesity are associated with lowered mu-opioid receptor availability in the brain. *Psychiatry Research: Neuroimaging*. 276:41-45.
57. Winterdahl M, Noer O, Orłowski D, Schacht AC, Jakobsen S, Alstrup AK, et al. (2019): Sucrose intake lowers μ -opioid and dopamine D2/3 receptor availability in porcine brain. *Scientific reports*. 9:1-11.
58. Weerts EM, McCaul ME, Kuwabara H, Yang X, Xu X, Dannals RF, et al. (2013): Influence of OPRM1 Asn40Asp variant (A118G) on [¹¹C]carfentanil binding potential: preliminary findings in human subjects. *Int J Neuropsychopharmacol*. 16:47-53.
59. Antons S, Brand M, Potenza MN (2020): Neurobiology of cue-reactivity, craving, and inhibitory control in non-substance addictive behaviors. *Journal of the Neurological Sciences*. 415:116952.
60. Majuri J, Joutsa J, Johansson J, Voon V, Alakurtti K, Parkkola R, et al. (2017): Dopamine and Opioid Neurotransmission in Behavioral Addictions: A Comparative PET Study in Pathological Gambling and Binge Eating. *Neuropsychopharmacology*. 42:1169-1177.
61. Bermudez-Silva FJ, Viveros MP, McPartland JM, Rodriguez de Fonseca F (2010): The endocannabinoid system, eating behavior and energy homeostasis: The end or a new beginning? *Pharmacology Biochemistry and Behavior*. 95:375-382.
62. Hirvonen J, Goodwin RS, Li CT, Terry GE, Zoghbi SS, Morse C, et al. (2012): Reversible and regionally selective downregulation of brain cannabinoid CB1 receptors in chronic daily cannabis smokers. *Mol Psychiatry*. 17:642-649.
63. Gérard N, Pieters G, Goffin K, Bormans G, Van Laere K (2011): Brain Type 1 Cannabinoid Receptor Availability in Patients with Anorexia and Bulimia Nervosa. *Biological Psychiatry*. 70:777-784.
64. Richard D, Guesdon B, Timofeeva E (2009): The brain endocannabinoid system in the regulation of energy balance. *Best Practice & Research Clinical Endocrinology & Metabolism*. 23:17-32.
65. Di Marzo V (2008): Targeting the endocannabinoid system: to enhance or reduce? *Nature Reviews Drug Discovery*. 7:438-455.
66. Lutz B, Marsicano G, Maldonado R, Hillard CJ (2015): The endocannabinoid system in guarding against fear, anxiety and stress. *Nature Reviews Neuroscience*. 16:705-718.
67. Quarta C, Mazza R, Obici S, Pasquali R, Pagotto U (2011): Energy balance regulation by endocannabinoids at central and peripheral levels. *Trends in Molecular Medicine*. 17:518-526.