

1 15-PGDH Regulates Hematopoietic and Gastrointestinal Fitness During Aging

2 Won Jin Ho^{1,2**}, Julianne N.P. Smith^{2**}, Young Soo Park², Matthew Hadiono², Kelsey Christo²,
3 Alvin Jogasuria², Yongyou Zhang², Alyssia V. Broncano², Lakshmi Kasturi², Dawn M. Dawson²,
4 Stanton L. Gerson^{2,3}, Sanford D. Markowitz^{2,3}, Amar B. Desai²

5

6 ¹Sidney Kimmel Comprehensive Cancer Center, Johns Hopkins University

7 ²Department of Medicine, and Case Comprehensive Cancer Center, Case Western Reserve
8 University, Cleveland OH 44106 USA

9 ³University Hospitals Seidman Cancer Center, Cleveland OH 44106 US

10 ** Denotes co-first author

11 -Denotes co-corresponding author

12 *Correspondence:

13 Amar B. Desai

14 amar.desai@case.edu

15

16 Running title: 15-PGDH Mediates Age Related Hematopoietic And GI Function

17

18 Authorship Contributions:

19 Won Jin Ho: Conception and Design, Collection of Data, Data Interpretation, Manuscript Writing

20 Julianne N.P. Smith: Collection of Data, Data Interpretation, Manuscript Writing

21 Young Soo Park: Data Interpretation

22 Matthew Hadiono: Collection of Data

23 Kelsey Christo: Collection of Data

24 Alvin Jogasuria: Collection of Data

25 Yongyou Zhang: Collection of Data

26 Alyssia V. Broncano: Collection of Data

27 Lakshmi Katsuri: Collection of Data

28 Dawn M. Dawson: Data Interpretation

29 Stanton L. Gerson: Conception and Design, Data Interpretation

30 Sanford D. Markowitz: Conception and Design, Data Interpretation, Manuscript Writing

31 Amar B. Desai: Conception and Design, Data Interpretation, Manuscript Writing, Final Approval
32 of Manuscript

1 **ABSTRACT**

2 Emerging evidence implicates the eicosanoid molecule prostaglandin E2 (PGE2) in conferring a
3 regenerative phenotype to multiple organ systems following tissue injury. As aging is in part
4 characterized by loss of tissue stem cells' regenerative capacity, we tested the hypothesis that
5 the prostaglandin-degrading enzyme 15-hydroxyprostaglandin dehydrogenase (15-PGDH)
6 contributes to the diminished organ fitness of aged mice. Here we demonstrate that genetic loss
7 of 15-PGDH (*Hpgd*) confers a protective effect on aging of murine hematopoietic and
8 gastrointestinal (GI) tissues. Aged mice lacking 15-PGDH display increased hematopoietic
9 output as assessed by peripheral blood cell counts, bone marrow and splenic stem cell
10 compartments, and accelerated post-transplantation recovery compared to their WT
11 counterparts. Loss of *Hpgd* expression also resulted in enhanced GI fitness and reduced local
12 inflammation in response to colitis. Together these results suggest that 15-PGDH negatively
13 regulates aged tissue regeneration, and that 15-PGDH inhibition may be a viable therapeutic
14 strategy to ameliorate age-associated loss of organ fitness.

15

16 **KEY WORDS:** Prostaglandins, PGE2, Hematopoietic Stem Cells, Intestinal Stem Cells, Colitis

17

18 **ARTICLE SUMMARY:** 15-PGDH as a Driver of Age-Related Tissue Dysfunction

19

20

1 **INTRODUCTION**

2 In the process of aging, organs gradually lose their overall fitness. A significant cause of
3 this is decreased regenerative capacity and, thus, the accumulation of damage over time. This
4 loss of capacity results from acquired and genetic factors, and is hastened by both behavioral
5 and environmental factors [1]. One hallmark of aging in mammalian models is stem cell
6 exhaustion, which is characterized by degenerative changes in tissue stem cells, stem cell
7 niches, and signaling pathways responsible for maintaining tissue homeostasis. This process is
8 particularly relevant in organ systems that undergo continuous self-renewal such as the bone
9 marrow (BM) and the gastrointestinal (GI) tract.

10 Hematopoietic stem cells (HSCs) are derived from the BM and are tasked with ensuring
11 a consistent output of differentiated blood cell types throughout the lifetime of an organism. Self-
12 renewal, differentiation to mature progeny, and proliferation in response to infection, stress, or
13 injury, must be balanced in order to provide lifelong hematopoietic function. At homeostasis,
14 HSCs maintain genomic stability and avoid replicative stress by existing in a quiescent state,
15 enforced by both HSC intrinsic and microenvironmental cues. As an organism ages, however,
16 HSC function declines due to a number of factors, including the accumulation of DNA damage,
17 epigenetic alteration, metabolic changes, loss of cell polarity, exposure to increased basal
18 inflammation, and niche dysfunction [2-8]. As a result, self-renewal capacity declines, myeloid
19 and platelet differentiation predominates at the expense of lymphoid differentiation, and clonal
20 hematopoiesis can emerge [9] [10] [11] [12] [13]. In mouse models, aging is characterized in
21 part by a significantly impaired ability of hematopoietic stem cell populations to engraft and
22 differentiate following transplantation [11] [14] [9], further demonstrating that HSC function
23 declines with age, despite an overall increase in phenotypic HSC number [15] [11].

24 A potential role for Prostaglandin E2 (PGE2) in modulating hematopoietic function at
25 steady state and post-hematopoietic stem cell transplantation (HST) has been demonstrated by:

1 i) effects of PGE2 on hematopoiesis in zebrafish; ii) increased effectiveness of donor HSCs
2 treated *ex vivo* with PGE2 analogs prior to HST (in both murine models and non-human
3 primates); and iii) protective effects of injected PGE2 in mice receiving sublethal irradiation [16]
4 [17] [18] [19] [20] [21] [22] [23]. Significantly, our work has shown *in vivo* that the prostaglandin-
5 degrading enzyme 15-PGDH plays a major role in regulating BM PGE2 and in regulating a
6 PGE2-controlled pathway of downstream cytokines, including CXCL12 [24] and Stem Cell
7 Factor (SCF) [25], which are key components of the BM stem cell niche [26] [27]. We have
8 characterized highly-potent *in vivo* active 15-PGDH inhibitors, and we have shown that this 15-
9 PGDH inhibition (PGDHi) accelerates hematopoietic regeneration by up to 6 days faster
10 following HST. Notably we have already demonstrated that PGDHi following transplantation of
11 aged donors into aged recipients promotes accelerated hematopoietic recovery, suggesting that
12 activity of this pathway is conserved in the aging hematopoietic system [26].

13 Over the course of an organism's lifespan, the GI tract undergoes constant basal
14 regeneration, in part as defense against injurious foreign substances, pathogens, and other
15 insults. Through complete turnover of the intestinal epithelium every 3-5 days, the GI tract is
16 able to maintain proper functioning while sustaining various biochemical and mechanical stress
17 [28]. However, studies utilizing mice models and human samples have suggested that with age,
18 GI fitness declines, as represented by a relative reduction in mucosal heights and accumulation
19 of genetic mutations in its stem cell population. These changes indicate that aging renders the
20 GI tract less functional, with decreased regenerative capacity and increased vulnerability to
21 pathological insults [29-33].

22 In the GI tract, several studies have clearly demonstrated the importance of PGE2 in
23 maintaining the intestinal stem cell niche, especially in relation to its interaction with the Wnt
24 cascade [34-36]. Furthermore, in the context of inflammatory bowel diseases (IBD), several
25 human epidemiologic studies and animal model experiments have suggested that PGE2

1 signaling pathways serve to protect and/or repair the GI tract [37-39]. Based on this cumulative
2 evidence, we hypothesized that bolstering PGE2 signaling may augment organ fitness as well
3 as enhance tissue repair in the elderly.

4 We have previously characterized 15-hydroxyprostaglandin dehydrogenase (15-PGDH),
5 the enzyme responsible for the rate-limiting step of PGE2 degradation, as a potential
6 therapeutic target to augment tissue regeneration in models of bone marrow transplant and IBD
7 [40]; these findings have further established the positive role of PGE2 and the negative role of
8 15-PGDH in organ self-renewal. Thus, in this study, we explore the hypothesis that 15-PGDH
9 may in fact be a negative regulator of age-related fitness. Indeed, we demonstrate for the first
10 time that genetic ablation of 15-PGDH protects mice from natural age-related changes and
11 improves injury responses in the bone marrow and the colon.

12

13 **MATERIALS AND METHODS:**

14

15 **Mice:**

16 Mice studies were conducted in the Case Animal Resource Center with animal care and
17 procedures performed under a protocol approved by and in accordance with guidelines of Case
18 Western Reserve University's Institutional Animal Care and Use Committee. The animals were
19 housed in standard microisolator cages and maintained on a defined irradiated diet (Prolab
20 Isopro RMH 3000) and autoclaved water. 15-PGDH knockout mice were maintained on an FVB
21 background as previously described [41] and were always compared to control FVB wild-type
22 mice. Identities of 15-PGDH knockout and wild-type mice were confirmed by genotyping as
23 previously described [42].

24

25 **PGE2 Measurement in Mouse Tissues:**

1 Solid tissues were harvested, rinsed in ice-cold PBS containing indomethacin (5.6 $\mu\text{g}/\text{ml}$), and
2 snap frozen in liquid nitrogen. Marrow was flushed into 1.5ml ice cold PBS with indomethacin,
3 pelleted at 2000 rpm for 5 minutes in an Eppendorf centrifuge, and snap frozen over liquid
4 nitrogen. Frozen colons were pulverized over liquid nitrogen prior to further homogenization. All
5 frozen samples were placed in Eppendorf tubes in cold PBS with indomethacin and were
6 homogenized using a conical tip electric pestle. The suspension was sonicated in an ice water
7 containing bath sonicator for 5 min using cycles of 20 second of sonication with 20 seconds of
8 cooling, followed by centrifugation for 10 minutes at 13,200 rpm. The PGE2 level of the
9 supernatant was measured using a PGE2 ELISA Kit (R&D Systems, cat. # KGE004B) and
10 normalized to total protein concentration measured by BCA assay (Thermo Scientific, cat.
11 #23225) and expressed as ng PGE2/mg total protein. Each sample was assayed in duplicates.

12

13 **Peripheral Blood and Marrow Hematopoietic Analysis:**

14 Peripheral blood was collected from mice via submandibular bleeding and blood counts were
15 recorded using the Hemavet 950fs (Drew Scientific). Blood counts were tabulated graphically
16 with error bars corresponding to standard error of the means and compared using 2-tailed t-
17 tests. Bone marrow cellularity was determined using hemocytometer under light microscope.
18 Total marrow was incubated with lineage markers (CD3, CD4, B220, Ter119, CD11b) and
19 Sca1⁺/c-Kit⁺ cells in lineage negative cells determined via flow cytometry on a BD LSRII
20 instrument (BD Biosciences). Data was analyzed on FlowJo software (Treestar). Values were
21 tabulated graphically with error bars corresponding to standard error of the means and
22 compared using 2-tailed t-tests.

23

24 **CFU-S Assay:**

25 15 month old 15-PGDH WT and KO were sacrificed and marrow flushed for transplantation into
26 lethally irradiated 8-week old FVB WT mice. 200K total cells were injected via tail vein. At day

1 12, mice were sacrificed and spleens harvested and weighed. Isolated spleens were fixed in
2 Bouin's solution for 10 minutes and transferred to 10% formalin for 24 hours. Colony counts
3 were recorded after fixation.

4

5 **Hematopoietic Competitive Repopulation Assay:**

6 One million whole bone marrow cells from 14 month old WT or 15-PGDH KO mice (CD45.1)
7 were mixed with 6 month old WT FVB (CD45.2) mice at a 1:1 ratio and injected via tail vein into
8 lethally irradiated 2 month old WT FVB CD45.1 recipients. At eight and twenty weeks post-
9 transplant, the mouse chimerism was measured via peripheral blood measuring
10 CD45.1/CD45.2. At twenty weeks, the animals were sacrificed to measure marrow chimerism as
11 well as LSK compartment chimerism using the CD45.1 and CD45.2 markers. Values were
12 tabulated graphically with error bars corresponding to standard error of the means and
13 compared using 2-tailed t-tests.

14

15 **Gross Measurements of Small Intestine and Colon Lengths:**

16 To measure both small intestine and colon lengths in mice, the distance from the proximal end
17 of the duodenum to the ileocecal junction and the distance from colocecical junction (the point of
18 ileocecal junction) to the rectum were measured, respectively, after rinsing out the luminal
19 debris with ice cold PBS and laying them on a moist non-stick surface.

20

21 **Colon Histology and Immunohistochemistry:**

22 To perform histological analyses, the harvested colons were fixed in formalin in "swiss-roll"
23 fashion and paraffin embedded. Other organs were also harvested and formalin-fixed paraffin-
24 embedded. Histological morphology of the organs from wild-type and knockout mice were
25 compared upon hematoxylin eosin staining. To characterize the distribution of mucin,
26 PAS/Alcain blue staining was performed. The colons were further analyzed for steady-state

1 proliferative state and degree of damage by immunohistochemical staining of Ki67 and H2AX,
2 respectively. Tissue sections were baked for 40-60 minutes at 60°C followed by
3 deparaffinization and rehydration by brief incubations in xylene and serial ethanol dilutions.
4 Antigen retrieval was performed using Antigen Retrieval Solution (DAKO) at >98°C in steamer.
5 Nonspecific peroxide reaction was blocked by 10 minute in peroxidase block, and nonspecific
6 antibody staining was blocked by Rodent Block M solution (Biocare Medical, Concord, CA).
7 After washing the slides in TBS with Tween (TBS-T), primary antibody incubation with anti-Ki67
8 rabbit anti-mouse (SP6; ThermoFisher Scientific; 1:200 dilution) was performed for 1 hour at
9 room temperature. For H2AX, sections were incubated with anti-phospho-H2AX rabbit anti-
10 mouse (Ser139; Cell Signaling; 1:450 dilution) overnight at 4°C. Slides were again washed in
11 TBS-T two times followed by incubation with anti-rabbit EnVision detection kit (DAKO) for 1 hour
12 in room temperature. Sections were exposed to DAB and were counterstained in hematoxylin
13 and TBS-T.

14

15 **Image Analyses:**

16 Images were captured using microscope model via SPOT Ver.5.2 software (Sterling Heights,
17 MI). To measure the crypt heights, ImageJ software was used. Mean crypt height for each
18 mouse was calculated by averaging 30-50 randomly selected full crypt heights for proximal,
19 middle, and distal thirds of the colons (total 90-150 crypts per mouse). Amount of Alcian-Blue
20 stain was quantified by area per mucosal tissue area using thresholding settings on ImageJ.
21 Particle analysis function was used to quantify the number of goblet cells per millimeter length of
22 mucosa. To compare the steady-state proliferative state and degree of DNA damage, the
23 number of Ki67-positive cells and phospho-H2AX-positive cells per crypt were manually
24 quantified in and averaged over approximately 50 random crypts from each mouse. For H2AX
25 quantification, any cell with at least one positive focus was considered positive.

26

1 **Colon Injury Model:**

2 To examine whether aged KO mice withstand overt colon injury better than the WT, aged-
3 matched male mice were exposed to 2% w/v dextran sodium sulfate (MP Biochemicals) in
4 drinking water for seven days. The matched pairs were co-housed prior to the study. The mice
5 were observed for clinical indices of colonic injury by measuring the weights, stool consistency
6 (scored 0-3), and bleeding severity (scored 0-3) on a daily basis from onset of DSS and for
7 three additional days following the switch to normal drinking water on the eight day of
8 experiment. Mice were sacrificed on day 10 to analyze other markers of colonic injury, i.e. colon
9 lengths, histological scores of crypt destruction, and the levels of inflammatory cytokines.

10

11 **Histological Assessment of Cryptitis:**

12 To histologically assess crypt destruction along the entire length of the colon, the harvested
13 colons were cut open longitudinally and laid flat inside agar blocks, which were formalin-fixed
14 paraffin-embedded for sectioning. Crypt destruction, i.e. cryptitis, was semi-quantitatively
15 scored by the product of the severity of crypt loss (0: normal, 1: lower one third, 2: lower two
16 thirds, 3: full crypt but intact epithelium, 4: loss of the epithelial layer) and the longitudinal extent
17 of the colon involved (0: 0%, 1: 25%, 2: 50%, 3: 75%, 4: 100%).

18

19 **Cytokine Measurements in the DSS-treated Colons:**

20 Since DSS colonic injury predominantly affects the distal portion, distal two-centimeter length of
21 each colon was harvested, rinsed in cold PBS, snap frozen, and pulverized over liquid nitrogen.
22 The samples were further homogenized using a conical tip electric pestle in 20mM Tris-buffer
23 containing 150mM NaCl, 1mM EDTA, 1mM EGTA, 1% Triton X-100, 1% phosphatase inhibitor
24 cocktail 2 (Sigma), 1% phosphatase inhibitor 3 (Sigma), and 1X HALT protease inhibitor cocktail
25 (ThermoFisher Scientific). The homogenized samples were centrifuged at 12,000 rpm for 12
26 minutes, and the resulting supernatants were assayed for specific cytokines using the mouse

1 pro-inflammatory cytokine panel detected via Mesoscale SECTOR® Imager 2400 multiplex
2 analyzer (Mesoscale Discovery) following the manufacturer's protocol. Levels of cytokines were
3 normalized to the total amount of protein in the samples quantified by BCA assay (pg
4 cytokine/mg total protein).

5

6 **RESULTS:**

7

8 **Aged 15-PGDH KO mice display elevated PGE2 in multiple organs**

9 We have previously reported that basal PGE2 doubles in young (2-3 month) mice
10 lacking 15-PGDH [27]. To determine if the loss of 15-PGDH also results in elevated PGE2 in
11 aged mice, PGE2 levels were measured in multiple organs of aged (15 month) wildtype
12 littermate (WT) and 15-PGDH knockout (KO) mice. PGE2 levels in aged WT mice were
13 consistent with our previously published analysis of young WT animals from the same colony
14 [27]. Aged 15-PGDH KO mice demonstrated a similar increase in PGE2 levels as observed in
15 young KO versus WT animals, with bone marrow (1.77 fold), spleen (1.65 fold), lung (1.39 fold),
16 and colon (1.83 fold) all demonstrating significant increases in total PGE2 when compared to
17 aged-matched, gender-matched WT counterparts (**Figure 1A-D**). This indicates that genetic
18 loss of 15-PGDH results in a consistent increase in PGE2 levels throughout the lifetime of the
19 animal.

20

21 **White blood cells and HSPCs are increased in aged 15-PGDH KO mice**

22 Young 15-PGDH KO mice display significantly increased total neutrophil counts over WT
23 littermate controls [27]. Here, we examined peripheral blood counts in an aged KO and WT
24 colony (19-23 month). As expected, aged mice displayed higher absolute neutrophil counts
25 compared to young mice from the same colony [27], and consistent with our findings in younger
26 mice, white blood cells (WBCs) and neutrophils (NE) were significantly increased in aged mice

1 lacking 15-PGDH (**Figure 2A-B**). Aging was associated with a decrease in lymphocyte counts
2 when aged WT mice were compared to young animals in the same colony [27], however, aged
3 KO mice demonstrated a notable trend toward increased lymphocytes ($P = 0.06$) when
4 compared to aged WT controls (**Figure 2C**). We also examined a colony of middle-aged (13-15
5 month) KO and WT mice and also observed significantly increased neutrophils counts (data not
6 shown). Analysis of other blood cell compartments revealed no impact of 15-PGDH loss on
7 platelets and a decrease in red blood cells and hemoglobin (from 13.4g/dL to 12.2g/dL;
8 **Supplemental Figure 1A**). These results establish that in the absence of 15-PGDH, greater
9 numbers of mature neutrophils and immune cells are maintained in the peripheral blood, even in
10 extremely aged mice.

11 To determine if aged 15-PGDH KO mice display any changes in hematopoietic tissues
12 that may underlie the increase in circulating WBCs, we next analyzed the BM and spleen of
13 aged animals. Although the BM cellularity of aged mice lacking 15-PGDH was not significantly
14 different (**Supplemental Figure 1B**), loss of 15-PGDH altered the marrow composition with
15 significant increases observed in the numbers of Ly6C^{hi} monocytes, neutrophils, and CD4⁺ T
16 lymphocytes, as well as trends towards increased resident macrophages, and CD8⁺ T
17 lymphocytes (**Supplemental Figure 2**).

18 To directly determine whether hematopoiesis is impacted by the loss of 15-PGDH, we
19 quantified HSCs in the marrow and spleen of aged KO mice. In spite of the unchanged BM and
20 splenic cellularity, a significant 2-fold increase was observed in both the hematopoietic stem and
21 progenitor cell (HSPC) pool as a whole, identified as Lineage⁻ Sca1⁺ c-Kit⁺ (LSK) cells, and in a
22 subset enriched for long-term HSCs (LT-HSCs; identified as LSK CD48⁻ CD150⁺ cells), was
23 observed in the marrow (**Figure 2D-E**). Moreover, the spleens of aged KO mice also displayed
24 a 1.9-fold increase in hematopoietic stem and progenitor cells (**Figure 2F**; $P = 0.05$). Colony-
25 forming analysis showed trends towards increased frequencies of myeloid and erythroid
26 progenitors in the marrow and spleen of aged 15-PGDH KO mice over WT littermate controls

1 **(Supplemental Figure 3)**. Collectively, these data demonstrate that loss of 15-PGDH results in
2 expansion of the phenotypic HSPC pool, which correlates with an increase in circulating white
3 blood cells.

4 5 **Loss of 15-PGDH increases CFU-S post-BMT**

6 To more rigorously compare the functional stem cell capacity of bone marrow from 15-
7 PGDH WT and KO aged mice, we quantitated their respective abilities to generate
8 hematopoietic colonies in vivo when used as donors in BM transplantation assays. In this assay,
9 hematopoietic colonies arising in the spleens of transplant recipients were scored 12 days post-
10 transplant. In a BM transplant, hematopoietic stem and progenitor cells must first home and
11 engraft in the recipient spleen where they proliferate to form macroscopic colonies containing
12 myeloid, erythrocytic, granulocytic, and megakaryocytic lineages, all deriving from a single
13 hematopoietic stem cell. To determine whether genetic ablation of 15-PGDH impacts the
14 capacity of aged hematopoietic stem and progenitor cells to appropriately home and engraft, we
15 analyzed colony forming units spleen (CFU-S) post-transplant. Although aged mice did not
16 demonstrate a reduction in CFU-S compared to young counterparts [26], we found that the BM
17 of aged (15 month) PGDH KO mice demonstrates a significant 1.38-fold increase in the total
18 number of CFU-S 12 days post-transplant (**Figure 3A-B**) and a 1.25-fold increase in total
19 spleen weight (**Figure 3C**), indicating that the homing and early engraftment capacity of aged
20 KO HSPC is superior to that of WT. Thus, while a standard feature of hematologic aging is the
21 progressive impairment of aged HSC repopulating capacity (reviewed in [43]), these data
22 suggest that age-related HSC dysfunction may be reversed in mice deficient in 15-PGDH.

23 24 **The BM of aged 15-PGDH KO mice displays increased repopulating activity**

25 Based upon the observed increase in CFU-S capacity, we next assessed the long-term
26 repopulating capacity of the BM of aged (13 month) PGDH KO mice by competitive

1 transplantation (**Figure 3D**). Although the BM from 6-month-old competitor mice outcompeted
2 donor marrow from either aged WT or KO mice, analysis of peripheral blood chimerism 8 weeks
3 post-transplant revealed a significant advantage of BM from KO animals ($34.1 \pm 2.2\%$ vs.
4 $28.0 \pm 1.3\%$; **Figure 3E**). When the mice were sacrificed at week 20, peripheral blood cells
5 derived from aged BM comprised only 20% of the recipient peripheral blood and levels were not
6 significantly impacted by 15-PGDH (data not shown). However, aged KO cells demonstrated
7 superior total BM reconstitution (1.75 fold greater representation; **Figure 3F**) and, strikingly, also
8 showed significantly superior reconstitution of the marrow LSK compartment (1.43-fold greater
9 representation, **Figure 3G**). These data suggest that loss of 15-PGDH confers an intrinsic
10 survival and proliferation advantage to aged HSPCs, which results in enhanced fitness of the
11 stem cell pool upon transplantation.

12

13 **Loss of 15-PGDH does not result in the accumulation of DNA damage in the BM**

14 DNA damage and impaired DNA damage repair pathways underlie aspects of HSC
15 aging (reviewed in [44]). Additionally, rounds of HSC proliferation can result in replication stress
16 and accumulation of DNA damage [2]. To determine whether increased hematopoietic output
17 observed in aged 15-PGDH KO mice leads to DNA damage, we analyzed phosphorylation of
18 histone H2AX by immunohistochemistry. We found no evidence of DNA damage accumulation
19 (**Supplemental Figure 4**), indicating that the enhanced activity of HSPCs in aged 15-PGDH KO
20 mice is not correlated with DNA damage.

21

22 **Mice lacking 15-PGDH exhibit superior colonic fitness with age**

23 Colon crypt height is a measure of colonic fitness as the intestinal epithelium is
24 constantly undergoing repair [31], and is closely linked with intact absorptive function.
25 Therefore, we compared colonic crypt height in aged WT and KO mice. Consistent with our
26 hypothesis, in mice between 10-23 months of age, crypt height was significantly higher in KO

1 versus WT mice ($P = 0.003$; **Figure 4A-C**). However, Ki67 expression was not significantly
2 different, suggesting that increased crypt height is not due to enhanced steady-state
3 proliferation as a result of lacking 15-PGDH (**Supplemental Figure 5**). This is consistent with
4 the known pro-proliferative impact of PGE2 specifically in the context of injury [40]. Furthermore,
5 DNA damage as assessed by phospho-H2AX foci showed was not significantly different
6 between WT and KO mice (**Supplemental Figure 6**). Since PGE2 is known to upregulate
7 intestinal mucin expression and exocytosis, and mucin plays an important protective role
8 against epithelial injury [45-47], mucin content was also measured in the colons of aged mice.
9 While 15-PGDH did not impact mucin levels in the proximal colon (**Supplemental Figure 7**), KO
10 mice demonstrated approximately two-fold higher levels of PAS/Alcian Blue staining in the distal
11 colon (**Figure 4D-F**), suggesting 15-PGDH KO mice are protected from age-associated loss of
12 distal colon barrier function. Based on our previous observations that genetic knockout as well
13 as chemical inhibition of 15-PGDH provides resistance against colonic injury in mice [40], the
14 current findings indicate that the lack of 15-PGDH benefits overall colon fitness upon aging. This
15 increase in colonic fitness likely owes to enhanced protection from and self-renewal in response
16 to tissue damage over time, rather than increased steady-state proliferation.

17

18 **Aged 15-PGDH KO mice demonstrate superior resistance against overt colonic injury**

19 As an alternative test of tissue fitness, we compared response to dextran sodium sulfate
20 (DSS)-induced colon injury in aged 15-PGDH WT versus KO animals. In previous studies, we
21 had demonstrated that 10-12 week old 15-PGDH KO mice were highly resistant to mucosal
22 injury in this DSS-induced colitis model, showing less tissue damage and faster tissue recovery
23 [27]. To determine if this increased mucosal fitness was sustained in aged mice, we
24 administered DSS to 17-23 month-old male mice using a schedule of 7 days administration of
25 DSS, followed by three days of recovery prior to sacrifice (**Figure 5A**). Aged WT mice suffered
26 persistent weight loss (**Figure 5B**) and elevated clinical indices of disease activity, as scored by

1 weight loss, stool consistency, and rectal bleeding (**Figure 5C**), and both weight loss and
2 disease activity were strongly ameliorated in KO mice. Moreover, reduction of colon length is a
3 key index of integrated colitis activity in the DSS model, and loss of 15-PGDH was associated
4 with markedly better retention of colon length on study day 10, with a 1.9 centimeter increase in
5 this measure in KO relative to WT ($P=0.01$; **Figure 5D**; and **Supplemental Figure 8**).
6 Histologically, cryptitis in the distal colons was also ameliorated in KO mice ($P=0.001$; **Figure**
7 **5E**; and **Supplemental Figure 9**). These findings correlated with reduced inflammation in the
8 colons of KO mice, as measured by reduced TNF α and IL1 β (**Figure 5F-G**), as well as trends
9 towards reductions in CXCL1, IL6, and IFN γ , (**Supplemental Figure 10**). As to the enhanced
10 protection in the aged KO mice, the higher overall mucin content observed in the distal colons of
11 aged KO mice provides one potential underlying mechanism. Given that DSS colitis induces
12 injury principally in the distal colon, we also evaluated the number of goblet cells in the distal
13 colon (cells positive for PAS/Alcian Blue) as yet another metric for the differences between the
14 aged KO versus WT mice in their baseline ability to respond to injury. Consistent with the
15 superior resistance of KO mice to DSS colitis, KO mice exhibited nearly two-fold higher
16 numbers of goblet cells per length of mucosa in the distal colon (**Figure 5H**). In summary, by
17 every measure of disease activity in the DSS colitis model, elderly (17-23-month-old) 15-PGDH
18 KO mice maintained the resistance to colon injury that was initially demonstrated by young KO
19 mice.

21 **DISCUSSION**

22 In summary, we have shown that loss of 15-PGDH enhances hematopoietic and GI
23 fitness with age as demonstrated through enhanced steady-state hematopoiesis, an increase in
24 hematopoietic stem cell engraftment and proliferation post-transplant, and a more robust
25 healing of mucosal injury in the colon. Along with our recent discovery that inhibition of 15-
26 PGDH results in a more robust tissue stem cell proliferation in models of injury [27], 15-PGDH

1 may in fact function as a negative regulator of age-related stem cell fitness. Thus, inhibiting 15-
2 PGDH and, in turn, increasing PGE2 becomes a potential approach not only to better maintain
3 age-related organ fitness but also to treat disease conditions affected by age. Indeed, during the
4 preparation of this manuscript, Blau and colleagues published that 15-PGDH inhibition (PGDHi)
5 increases muscle mass and exercise performance in murine models of sarcopenia. This
6 independent validation of PGDHi efficacy in aging models is an exciting development
7 demonstrating the wide applicability of this strategy [48].

8 Our data demonstrate that aged 15-PGDH KO bone marrow shows both a short-term
9 increase in hematopoietic engraftment and proliferation, via the CFU-S assay, as well as a long-
10 term competitive advantage in engraftment, via the 20-week competitive repopulation assay.
11 These datasets strongly imply that the number of functional HSCs in the 15-PGDH KO mouse
12 have higher fitness and engraftment potential than their WT counterparts. Aged HSCs also
13 demonstrate a shift in differentiation capacity towards the myeloid lineage; with decreased
14 output of lymphoid cells, aging is associated with overall functional decline of the adaptive
15 immune system [10] [49] [13]. Our results show that 15-PGDH KO mice demonstrate a
16 sustained increase in myeloid with no decrease in lymphoid cell types with age compared to the
17 WT mice, suggesting that the KO HSC population better maintains its differentiation potential to
18 produce both lineage cell types. Although our data do not directly address whether 15-PGDH
19 negatively regulates hematopoiesis via HSC-autonomous or microenvironmental actions, BM
20 lacking 15-PGDH maintains a functional advantage upon transplantation, and thus 15-PGDH-
21 dependent regulation does not require constant involvement of non-hematopoietic cell types.
22 Human BM transplant recipients are often aged individuals receiving either autologous
23 transplants or allogeneic transplants from an aged sibling donor, and increasing age is a
24 significant risk factor in treatment-related mortality and acute and chronic graft-versus-host
25 disease [50] and in poor long term prognosis. These studies demonstrate that marrow of aged

1 15-PGDH KO mice is more robust in supporting BM engraftment and suggest that the small
2 molecule 15-PGDH inhibitor, SW033291, that we have previously reported, may be of value in
3 supporting BM transplantation when either the donor or recipient is elderly.

4 Moreover, several conditions associated with hematopoietic aging, including
5 myeloproliferative disorders and myelofibrosis, are typified by the emergence of clonal
6 proliferations with a growth advantage over normal HSCs. It will be intriguing in future studies to
7 examine whether strategies to inhibit 15-PGDH would in these disease contexts restore a
8 growth advantage to normal hematopoietic stem and progenitor cells and their progeny.

9 In the GI tract, aging is associated with declining self-renewal capacity [31, 32, 51-53].
10 Consistent with the protective and proliferative effects of PGE₂ on the GI epithelium associated
11 with both mucin production and Wnt signaling [34], we find that aged 15-PGDH knockout mice
12 markedly resisted against and recovered faster from colitic injury than did aged wild-type mice.
13 While we have previously made similar observations in young mice, these new observations
14 support that 15-PGDH remains a significant negative regulator of tissue regeneration after injury
15 in aged mice. In humans, the incidence of IBD in the elderly has been steadily increasing, with
16 approximately 15-20% of IBD cases now in individuals over 65 years of age [54]. Elderly IBD
17 patients are at higher risk for hospitalization, longer stays, and worse outcome [54]. Moreover,
18 elderly IBD patients show greater adverse effects from systemic steroids and less benefit from
19 standard therapies [54]. The present studies support that small molecule 15-PGDH inhibitors,
20 which are currently in preclinical development, may offer an alternative strategy for treated IBD
21 in the therapeutically challenging setting of the elderly patient.

22 In summary, these findings support that 15-PGDH continues to play a significant role as
23 a negative regulator of tissue regeneration throughout life, from both young age through elderly
24 age in mouse models, and moreover, that inhibiting 15-PGDH provides a therapeutic target for
25 reversing some aspects of tissue decline and capacity for repair in the aging organism. The

1 preclinical development of small molecule 15-PGDH inhibitors provides the potential that
2 ultimately this model may be testable in humans.

3

4 **Acknowledgments**

5 This work was supported by NIH grants R35 CA197442, R00 HL135740, and T32 EB005583,
6 and by the Radiation Resources Core Facility (P30CA043703), the Hematopoietic Biorepository
7 and Cellular Therapy Core Facility (P30CA043703), the Tissue Resources Core Facility
8 (P30CA043703), and the Cytometry & Imaging Microscopy Core Facility of the Case
9 Comprehensive Cancer Center (P30CA043703).

10

11

12 **Conflict of Interest Disclosures:**

13 The authors (A. Desai, S.L. Gerson, and S.D. Markowitz) hold patents relating to use of 15-
14 PGDH inhibitors in bone marrow transplantation that have been licensed to Rodeo
15 Therapeutics. Drs. Markowitz and Gerson are founders of Rodeo Therapeutics, and Drs.
16 Markowitz, Gerson, and Desai are consultants to Rodeo Therapeutics. Conflicts of interest are
17 managed according to institutional guidelines and oversight by Case Western Reserve
18 University. No conflict of interest pertains to any of the remaining authors.

19

20

21 **REFERENCES**

- 22 1. Sharpless, N.E. and R.A. DePinho, *How stem cells age and why this makes us grow old*. Nat Rev
23 Mol Cell Biol, 2007. **8**(9): p. 703-13.
- 24 2. Flach, J., et al., *Replication stress is a potent driver of functional decline in ageing*
25 *haematopoietic stem cells*. Nature, 2014. **512**(7513): p. 198-202.
- 26 3. Walter, D., et al., *Exit from dormancy provokes DNA-damage-induced attrition in haematopoietic*
27 *stem cells*. Nature, 2015. **520**(7548): p. 549-52.

- 1 4. Florian, M.C., et al., *Aging alters the epigenetic asymmetry of HSC division*. PLoS Biol, 2018.
2 **16**(9): p. e2003389.
- 3 5. Ho, T.T., et al., *Autophagy maintains the metabolism and function of young and old stem cells*.
4 Nature, 2017. **543**(7644): p. 205-210.
- 5 6. Guidi, N., et al., *Osteopontin attenuates aging-associated phenotypes of hematopoietic stem*
6 *cells*. EMBO J, 2017. **36**(10): p. 1463.
- 7 7. Kovtonyuk, L.V., et al., *Inflamm-Aging of Hematopoiesis, Hematopoietic Stem Cells, and the Bone*
8 *Marrow Microenvironment*. Front Immunol, 2016. **7**: p. 502.
- 9 8. Ho, Y.H. and S. Mendez-Ferrer, *Microenvironmental contributions to hematopoietic stem cell*
10 *aging*. Haematologica, 2020. **105**(1): p. 38-46.
- 11 9. Liang, Y., G. Van Zant, and S.J. Szilvassy, *Effects of aging on the homing and engraftment of*
12 *murine hematopoietic stem and progenitor cells*. Blood, 2005. **106**(4): p. 1479-87.
- 13 10. Linton, P.J. and K. Dorshkind, *Age-related changes in lymphocyte development and function*. Nat
14 Immunol, 2004. **5**(2): p. 133-9.
- 15 11. Morrison, S.J., et al., *The aging of hematopoietic stem cells*. Nat Med, 1996. **2**(9): p. 1011-6.
- 16 12. Rando, T.A., *Stem cells, ageing and the quest for immortality*. Nature, 2006. **441**(7097): p. 1080-
17 6.
- 18 13. Schultz, M.B. and D.A. Sinclair, *When stem cells grow old: phenotypes and mechanisms of stem*
19 *cell aging*. Development, 2016. **143**(1): p. 3-14.
- 20 14. Dykstra, B., et al., *Clonal analysis reveals multiple functional defects of aged murine*
21 *hematopoietic stem cells*. J Exp Med, 2011. **208**(13): p. 2691-703.
- 22 15. de Haan, G., W. Nijhof, and G. Van Zant, *Mouse strain-dependent changes in frequency and*
23 *proliferation of hematopoietic stem cells during aging: correlation between lifespan and cycling*
24 *activity*. Blood, 1997. **89**(5): p. 1543-50.
- 25 16. North, T.E., et al., *Prostaglandin E2 regulates vertebrate haematopoietic stem cell homeostasis*.
26 Nature, 2007. **447**(7147): p. 1007-11.
- 27 17. Hagedorn, E.J., et al., *Getting more for your marrow: boosting hematopoietic stem cell numbers*
28 *with PGE2*. Exp Cell Res, 2014. **329**(2): p. 220-6.
- 29 18. Hoggatt, J., et al., *Prostaglandin E2 enhances hematopoietic stem cell homing, survival, and*
30 *proliferation*. Blood, 2009. **113**(22): p. 5444-55.
- 31 19. Hoggatt, J., et al., *Recovery from hematopoietic injury by modulating prostaglandin E(2)*
32 *signaling post-irradiation*. Blood Cells Mol Dis, 2013. **50**(3): p. 147-53.
- 33 20. Goessling, W., et al., *Prostaglandin E2 enhances human cord blood stem cell xenotransplants*
34 *and shows long-term safety in preclinical nonhuman primate transplant models*. Cell Stem Cell,
35 2011. **8**(4): p. 445-58.
- 36 21. Cutler, C., et al., *Prostaglandin-modulated umbilical cord blood hematopoietic stem cell*
37 *transplantation*. Blood, 2013. **122**(17): p. 3074-81.
- 38 22. Porter, R.L., et al., *Prostaglandin E2 increases hematopoietic stem cell survival and accelerates*
39 *hematopoietic recovery after radiation injury*. Stem Cells, 2013. **31**(2): p. 372-83.
- 40 23. Ikushima, Y.M., et al., *Prostaglandin E(2) regulates murine hematopoietic stem/progenitor cells*
41 *directly via EP4 receptor and indirectly through mesenchymal progenitor cells*. Blood, 2013.
42 **121**(11): p. 1995-2007.
- 43 24. Sugiyama, T., et al., *Maintenance of the hematopoietic stem cell pool by CXCL12-CXCR4*
44 *chemokine signaling in bone marrow stromal cell niches*. Immunity, 2006. **25**(6): p. 977-88.
- 45 25. Broudy, V.C., *Stem cell factor and hematopoiesis*. Blood, 1997. **90**(4): p. 1345-64.
- 46 26. Desai, A., et al., *A second-generation 15-PGDH inhibitor promotes bone marrow transplant*
47 *recovery independently of age, transplant dose and granulocyte colony-stimulating factor*
48 *support*. Haematologica, 2018. **103**(6): p. 1054-1064.

- 1 27. Zhang, Y., et al., *TISSUE REGENERATION. Inhibition of the prostaglandin-degrading enzyme 15-*
2 *PGDH potentiates tissue regeneration.* Science, 2015. **348**(6240): p. aaa2340.
- 3 28. Creamer, B., R.G. Shorter, and J. Bamforth, *The turnover and shedding of epithelial cells. I. The*
4 *turnover in the gastro-intestinal tract.* Gut, 1961. **2**: p. 110-8.
- 5 29. Warren, P.M., M.A. Pepperman, and R.D. Montgomery, *Age changes in small-intestinal mucosa.*
6 *Lancet*, 1978. **2**(8094): p. 849-50.
- 7 30. Hohn, P., H. Gabbert, and R. Wagner, *Differentiation and aging of the rat intestinal mucosa. II.*
8 *Morphological, enzyme histochemical and disc electrophoretic aspects of the aging of the small*
9 *intestinal mucosa.* Mech Ageing Dev, 1978. **7**(3): p. 217-26.
- 10 31. Jurk, D., et al., *Chronic inflammation induces telomere dysfunction and accelerates ageing in*
11 *mice.* Nat Commun, 2014. **2**: p. 4172.
- 12 32. Greaves, L.C., et al., *Mitochondrial DNA mutations are established in human colonic stem cells,*
13 *and mutated clones expand by crypt fission.* Proc Natl Acad Sci U S A, 2006. **103**(3): p. 714-9.
- 14 33. Nootboom, M., et al., *Age-associated mitochondrial DNA mutations lead to small but*
15 *significant changes in cell proliferation and apoptosis in human colonic crypts.* Aging Cell, 2010.
16 **9**(1): p. 96-9.
- 17 34. Fevr, T., et al., *Wnt/beta-catenin is essential for intestinal homeostasis and maintenance of*
18 *intestinal stem cells.* Mol Cell Biol, 2007. **27**(21): p. 7551-9.
- 19 35. Castellone, M.D., et al., *Prostaglandin E2 promotes colon cancer cell growth through a Gs-axin-*
20 *beta-catenin signaling axis.* Science, 2005. **310**(5753): p. 1504-10.
- 21 36. Cohn, S.M., et al., *Crypt stem cell survival in the mouse intestinal epithelium is regulated by*
22 *prostaglandins synthesized through cyclooxygenase-1.* J Clin Invest, 1997. **99**(6): p. 1367-79.
- 23 37. Bjarnason, I., et al., *Side effects of nonsteroidal anti-inflammatory drugs on the small and large*
24 *intestine in humans.* Gastroenterology, 1993. **104**(6): p. 1832-47.
- 25 38. Allgayer, H., K. Deschryver, and W.F. Stenson, *Treatment with 16,16'-dimethyl prostaglandin E2*
26 *before and after induction of colitis with trinitrobenzenesulfonic acid in rats decreases*
27 *inflammation.* Gastroenterology, 1989. **96**(5 Pt 1): p. 1290-300.
- 28 39. Morteau, O., et al., *Impaired mucosal defense to acute colonic injury in mice lacking*
29 *cyclooxygenase-1 or cyclooxygenase-2.* J Clin Invest, 2000. **105**(4): p. 469-78.
- 30 40. Zhang, Y., et al., *TISSUE REGENERATION. Inhibition of the prostaglandin-degrading enzyme 15-*
31 *PGDH potentiates tissue regeneration.* Science. **348**(6240): p. aaa2340.
- 32 41. Yan, M., et al., *15-Hydroxyprostaglandin dehydrogenase inactivation as a mechanism of*
33 *resistance to celecoxib chemoprevention of colon tumors.* Proc Natl Acad Sci U S A, 2009.
34 **106**(23): p. 9409-13.
- 35 42. Myung, S.J., et al., *15-Hydroxyprostaglandin dehydrogenase is an in vivo suppressor of colon*
36 *tumorigenesis.* Proc Natl Acad Sci U S A, 2006. **103**(32): p. 12098-102.
- 37 43. Mejia-Ramirez, E. and M.C. Florian, *Understanding intrinsic hematopoietic stem cell aging.*
38 *Haematologica*, 2020. **105**(1): p. 22-37.
- 39 44. Beerman, I., *Accumulation of DNA damage in the aged hematopoietic stem cell compartment.*
40 *Semin Hematol*, 2017. **54**(1): p. 12-18.
- 41 45. Van der Sluis, M., et al., *Muc2-deficient mice spontaneously develop colitis, indicating that MUC2*
42 *is critical for colonic protection.* Gastroenterology, 2006. **131**(1): p. 117-29.
- 43 46. Belley, A. and K. Chadee, *Prostaglandin E(2) stimulates rat and human colonic mucin exocytosis*
44 *via the EP(4) receptor.* Gastroenterology, 1999. **117**(6): p. 1352-62.
- 45 47. Hokari, R., et al., *Vasoactive intestinal peptide upregulates MUC2 intestinal mucin via*
46 *CREB/ATF1.* Am J Physiol Gastrointest Liver Physiol, 2005. **289**(5): p. G949-59.
- 47 48. Palla, A.R., et al., *Inhibition of prostaglandin-degrading enzyme 15-PGDH rejuvenates aged*
48 *muscle mass and strength.* Science, 2020.

- 1 49. Rossi, D.J., et al., *Cell intrinsic alterations underlie hematopoietic stem cell aging*. Proc Natl Acad
2 Sci U S A, 2005. **102**(26): p. 9194-9.
- 3 50. Popplewell, L.L. and S.J. Forman, *Is there an upper age limit for bone marrow transplantation?*
4 Bone Marrow Transplant, 2002. **29**(4): p. 277-84.
- 5 51. Drozdowski, L. and A.B. Thomson, *Aging and the intestine*. World J Gastroenterol, 2006. **12**(47):
6 p. 7578-84.
- 7 52. Greaves, L.C., et al., *Defects in multiple complexes of the respiratory chain are present in ageing*
8 *human colonic crypts*. Exp Gerontol, 2010. **45**(7-8): p. 573-9.
- 9 53. Taylor, R.W., et al., *Mitochondrial DNA mutations in human colonic crypt stem cells*. J Clin Invest,
10 2003. **112**(9): p. 1351-60.
- 11 54. Sturm, A., et al., *European Crohn's and Colitis Organisation Topical Review on IBD in the Elderly*. J
12 Crohns Colitis, 2016.

13

14

15

16 **Figure Legends:**

17

18 **Figure 1. Aged PGDH KO mice display elevated PGE2 (and reduced inflammatory**
19 **cytokines).** (A-D) PGE2 levels were quantified in bone marrow (BM), spleen, lung, and colon
20 tissue lysates obtained from 12-15 month old FVB wildtype littermates (WT), and 15-PGDH
21 knockout (KO) mice. N = 4 mice/group.

22

23 **Figure 2. White blood cells and HSPCs are increased in aged PGDH KO mice.** (A-C) White
24 blood cell (WBC), neutrophil (NE), and lymphocyte (LYMPH) levels were measured in the
25 peripheral blood of aged (19-23 months old) WT and PGDH KO mice by complete blood count
26 analysis. N = 12 mice/group. (D-F) Fold change in the number of BM Lin⁻ c-Kit⁺ Sca1⁺ (LSK
27 cells), and Lin⁻ c-Kit⁺ Sca1⁺ CD48⁻ CD150⁺ (phenotypic LT-HSCs) in aged (14-20 months old;
28 median age: 18mos.) PGDH KO relative to WT littermates. (H) Fold change in the number of
29 splenic LSK cells in aged (14-20 months old; median age: 18mos.) PGDH KO relative to WT
30 littermates. N = 6-8 mice/group, 2 independent experiments.

31

1 **Figure 3. Aged 15-PGDH KO marrow shows enhanced engraftment and hematopoietic**
2 **repopulation. (A)** Representative gross images of the spleen of WT recipient mice 12 days
3 post-transplantation of aged (15 months old) WT or PGDH KO BM. **(B)** Hematopoietic colony
4 forming units on the spleen (CFU-S) were scored. N = 9 mice/group. **(C)** Day 12 recipient
5 spleen weights were measured. **(D)** Schematic depicts the competitive transplantation of aged
6 (14 months old) CD45.1+ PGDH KO or WT littermate control BM with the BM of young (6
7 months old) CD45.2+ competitor mice. **(E)** Peripheral blood repopulation 8wks post-transplant
8 was analyzed as percent CD45.1+ chimerism in peripheral blood in mice that received either
9 WT control or PGDH KO BM. **(F)** BM chimerism was analyzed 20wks post-transplant as the
10 percent CD45.1+ of total BM cells. **(G)** LSK chimerism was analyzed 20wks post-transplant as
11 the percent CD45.1+ of BM LSK cells. N = 5 mice/group.

12
13 **Figure 4. Crypt fitness is superior in aged PGDH KO mice. (A)** Bar graphs represent crypt
14 heights compared between WT and PGDH KO mice (10-23 months of age; N = 8-9
15 mice/group). P=0.003 for unpaired t-test. **(B-C)** Representative histologic images of murine
16 colon crypts. H&E for WT and PGDH KO are shown. Scale bar: 200µm. **(D-E)** Representative
17 PAS-Alcian Blue stains performed to visualize mucin content in WT and PGDH KO distal colons
18 are shown. **(F)** Positive PAB-Alcian Blue stains are quantified per unit length for mice with at
19 least 12 months of age. N = 4 mice/group. P=0.008 for unpaired t-test.

20
21 **Figure 5. Aged PGDH KO mice show less severe DSS colitis. (A)** Experimental schema for
22 assaying DSS colitis. **(B)** Mouse weights relative to day one of the experiment across time are
23 shown for WT and PGDH KO mice. Mean±SEM, N = 5 mice/group, *P<0.05, unpaired t-test. **(C)**
24 Disease activity indices (DAI) for the DSS colitis are shown for WT and PGDH KO mice.
25 Mean±SEM, N = 5 mice/group, *P<0.05, unpaired t-test. **(D)** Gross colon lengths resulting from
26 DSS exposure on day 10 are shown, Mean±SEM, N = 5 mice/group, *P=0.01, unpaired t-test.

1 **(E)** Cryptitis scores from histological analysis are shown. Mean±SEM, N = 4 mice/group.
2 ***P=0.001, unpaired t-test. **(F)** TNF α and **(G)** IL1 β inflammatory cytokine content within the
3 distal colons (pg/mg total protein) are quantified. P-values by unpaired t-tests. Mean±SEM, N =
4 5 mice/group. **(H)** Number of goblet cells per mucosa length (mm) in the distal colon is
5 quantified. ***P=0.001, unpaired t-test. Mean±SEM, N = 4 mice/group.

6

7 **Supplementary Figure Legends:**

8

9 **Supplementary Figure 1. Loss of 15-PGDH does not impact aged marrow and spleen**
10 **cellularity. (A)** Platelet (PLT), red blood cell (RBC), and hemoglobin (HGB) quantification by
11 complete blood count analysis in aged (19-23 months old) WT and PGDH KO mice. N = 12
12 mice/group. **(B)** Fold change in the BM cellularity per hindlimb and cellularity per spleen of aged
13 (14-20 months old; median age: 18mos.) PGDH KO mice relative to WT littermates. N=6-8
14 mice/group.

15

16 **Supplementary Figure 2. Monocytes, neutrophils, and CD4 T lymphocytes are increased**
17 **in the marrow of aged PGDH KO mice. (A-D)** Fold change in the numbers of myeloid cell
18 populations in the BM of aged (14-20 months old; median age: 18mos.) PGDH KO relative to
19 WT mice: Ly6C^{hi} monocytes (defined as CD11b⁺ Ly6C^{hi} cells), CD11b⁺ macrophages (M Φ ;
20 defined as CD11b⁺, F4/80⁺, Ly6C^{lo}, SSC^{lo} cells), CD11b^{lo/-} M Φ s (defined as CD11b^{lo/-}, F4/80⁺
21 SSC^{lo} cells), and neutrophils (defined as CD11b⁺ F4/80⁻ Ly6G^{hi} cells). **(E-G)** Fold change in the
22 numbers of lymphoid cell populations in the BM of aged PGDH KO relative to WT mice: B220⁺
23 cells (identified as CD11b⁻ B220⁺ cells), CD4⁺ T lymphocytes (identified as CD11b⁻, CD3e⁺,
24 CD4⁺ cells), and CD8⁺ T lymphocytes (identified as CD11b⁻, CD3e⁺, CD8⁺ cells). N = 6-8 mice
25 per group.

26

1 **Supplementary Figure 3. Aged 15-PGDH KO marrow and spleen displays trends towards**
2 **increased myeloid and erythroid colony-forming activity. (A-B)** Fold change in the numbers
3 of burst-forming units-erythroid (BFU-E) and colony-forming units granulocyte-macrophage
4 (CFU-GM) derived from the BM of aged (14-20 months old; median age: 18mos.) PGDH KO
5 relative to WT littermate control mice. **(C-D)** Fold change in the numbers of BFU-E and CFU-GM
6 derived from the spleen of aged (14-20 months old; median age: 18mos.) PGDH KO relative to
7 WT littermate control mice. N = 3-8 mice/group.

8
9 **Supplementary Figure 4. Hematopoietic DNA damage does not accumulate in steady-**
10 **state BM of aged PGDH KO or WT littermate control mice.** Representative images of
11 immunohistochemical phosphorylated histone H2AX staining (brown) in the murine testes as a
12 positive control (left) and in hindlimb BM sections from aged (21-22 months old) WT and PGDH
13 KO mice (right).

14
15 **Supplementary Figure 5. Loss of PGDH does not impact steady-state epithelial cell**
16 **proliferation.** Quantification of Ki67 by immunohistochemistry for aged (≥ 12 months of age)
17 mouse colons are shown. Mean \pm SEM, N = 5 mice/group (50-60 crypts per mouse quantified).
18 Representative staining results for both groups are shown.

19
20 **Supplementary Figure 6. PGDH does not influence the accumulation of DNA damage in**
21 **steady-state colonic crypts.** Quantification of γ H2AX by immunohistochemistry for aged (≥ 12
22 months of age) mouse colons are shown. Mean \pm SEM, N = 5 mice/group (50-60 crypts per
23 mouse quantified). Representative staining results for both groups are shown.

24
25 **Supplementary Figure 7. Mucin content is greater in the colons of PGDH KO versus WT**
26 **mice.** Representative images of PAS/Alcian Blue staining for proximal and distal mucin are

1 shown. Quantification of proximal mucin content is graphed. Mean±SEM, N = 4 mice/group.

2 **P=0.008 in distal colon by unpaired t test.

3

4 **Supplementary Figure 8. Gross colon morphology at day 10 of DSS colitis. A**

5 representative photograph of gross colons at day 10 of DSS colitis are shown for WT and

6 PGDH KO.

7

8 **Supplementary Figure 9. Distal colon histology at day 10 of DSS colitis.** Additional

9 representative distal colon cryptitis micrographs at day 10 of DSS colitis are shown for WT and

10 PGDH KO.

11

12 **Supplementary Figure 10. Inflammatory cytokine levels are attenuated in the colons of**

13 **aged PGDH KO mice upon being injured by DSS.** Quantification of CXCL1, IL6, IFN γ , and

14 IL10 in the distal colons (pg/mg total protein) at day 10 of DSS colitis are compared.

15 Mean±SEM, N = 5, P values obtained by unpaired t-tests.

Figure 1. Aged PGDH KO mice display elevated PGE2

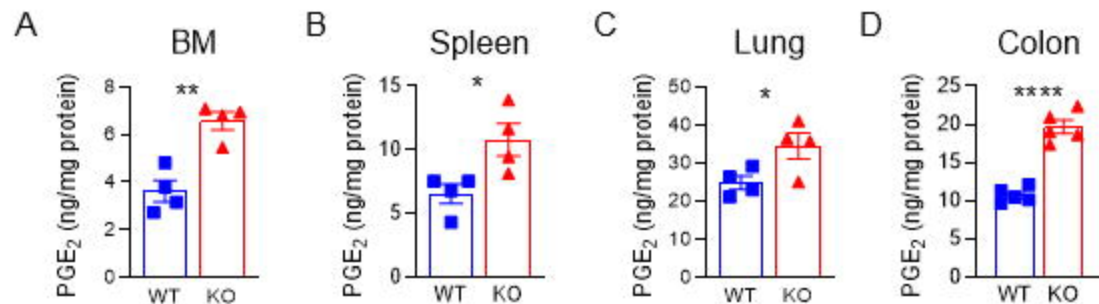


Figure 1. Aged PGDH KO mice display elevated PGE₂. (A-D) PGE₂ levels were quantified in bone marrow (BM), spleen, lung, and colon tissue lysates obtained from 12-15 month old FVB wildtype littermate (WT), and 15-PGDH knockout (KO) mice. N = 4 mice/group.

Figure 2: White blood cells and HSPCs are increased in aged PGDH KO mice

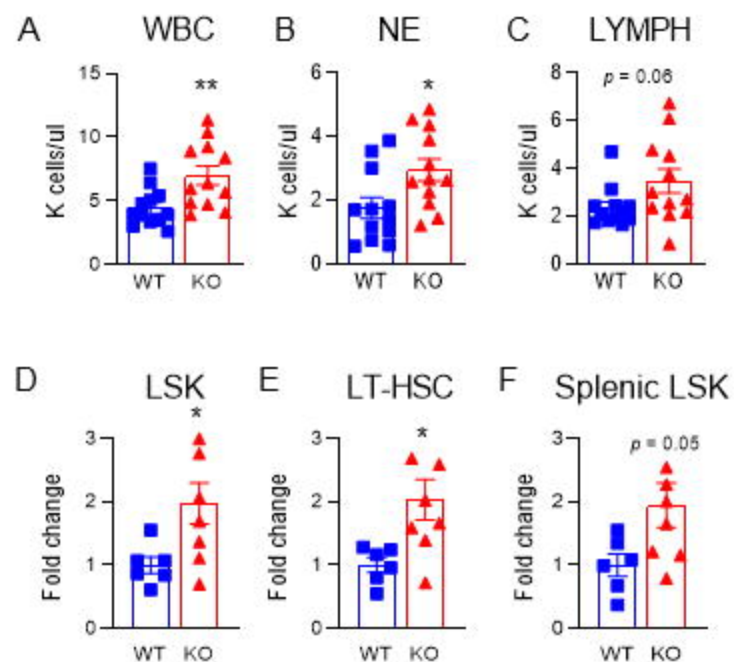


Figure 2. White blood cells and HSPCs are increased in aged PGDH KO mice. (A-C) White blood cell (WBC), neutrophil (NE), and lymphocyte (LYMPH) counts were measured in the peripheral blood of aged (19-23 months old) WT and PGDH KO mice by complete blood count analysis. N = 12 mice/group. (D-F) Fold change in the number of BM Lin⁻ c-Kit⁺ Sca1⁺ (LSK cells), and Lin⁻ c-Kit⁺ Sca1⁺ CD48⁻ CD150⁺ (phenotypic LT-HSCs) in aged (14-20 months old; median age: 18mos.) PGDH KO relative to WT littermates. (H) Fold change in the number of splenic LSK cells in aged (14-20 months old; median age: 18mos.) PGDH KO relative to WT littermates. N = 6-8 mice/group, 2 independent experiments.

Figure 3: Aged 15-PGDH KO marrow shows enhanced engraftment and hematopoietic repopulation

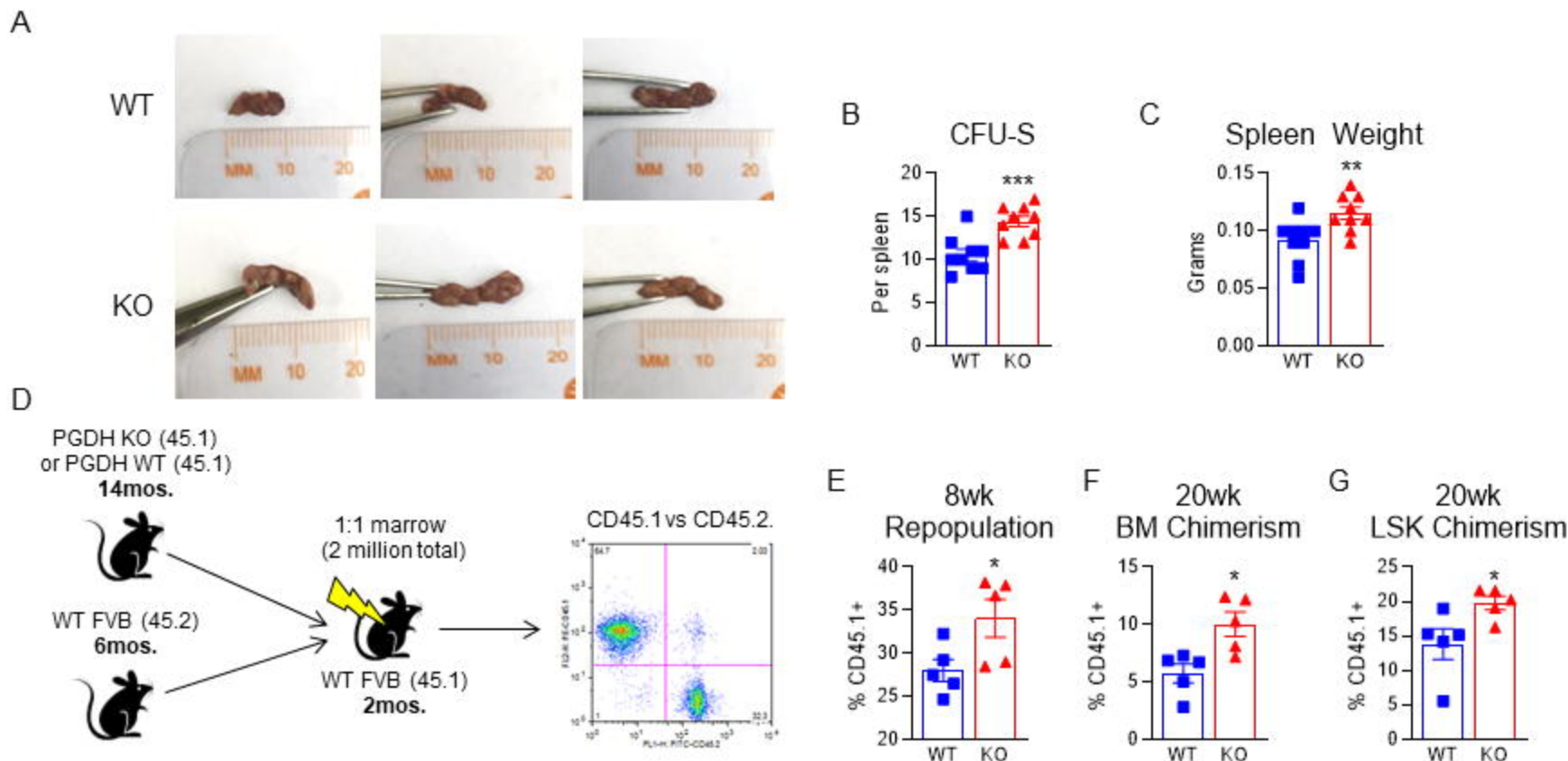


Figure 3. Aged 15-PGDH KO marrow shows enhanced engraftment and hematopoietic repopulation. (A) Representative gross images of the spleen of WT recipient mice 12 days post-transplantation of aged (15 months old) WT or PGDH KO BM. (B) Hematopoietic colony forming units on the spleen (CFU-S) were scored. N = 9 mice/group. (C) Day 12 recipient spleen weights were measured. (D) Schematic depicts the competitive transplantation of aged (14 months old) CD45.1+ PGDH KO or WT littermate control BM with the BM of young (6 months old) CD45.2+ competitor mice. (E) Peripheral blood repopulation 8wks post-transplant was analyzed as percent CD45.1+ chimerism in peripheral blood in mice that received either WT control or PGDH KO BM. (F) BM chimerism was analyzed 20wks post-transplant as the percent CD45.1+ of total BM cells. (G) LSK chimerism was analyzed 20wks post-transplant as the percent CD45.1+ of BM LSK cells. N = 5 mice/group.

Figure 4. Crypt fitness is superior in aged PGDH KO mice

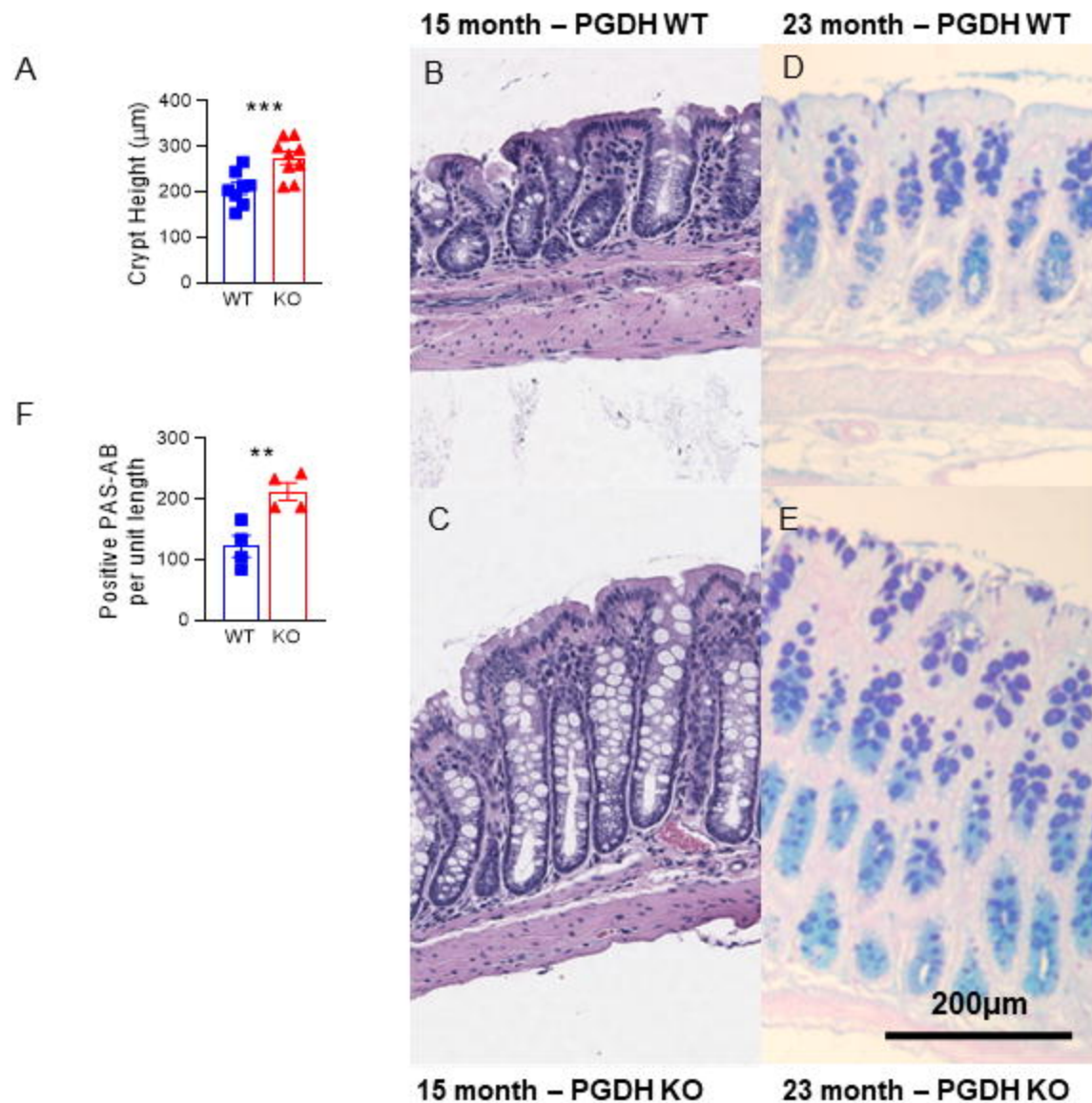


Figure 4. Crypt fitness is superior in aged PGDH KO mice. (A) Bar graphs represent crypt heights compared between WT and PGDH KO mice (>10 months of age; N = 8-9 mice/group). P=0.003 for unpaired t-test. (B-C) Representative histologic images of murine colon crypts. H&E for WT and PGDH KO are shown. Scale bar: 200µm. (D-E) Representative PAS-Alcian Blue stains performed to visualize mucin content in WT and PGDH KO distal colons are shown. (F) Positive PAB-Alcian Blue stains are quantified per unit length for mice with at least 12 months of age. N = 4 mice/group. P=0.008 for unpaired t-test.

Figure 5. Aged PGDH KO mice show less severe DSS colitis

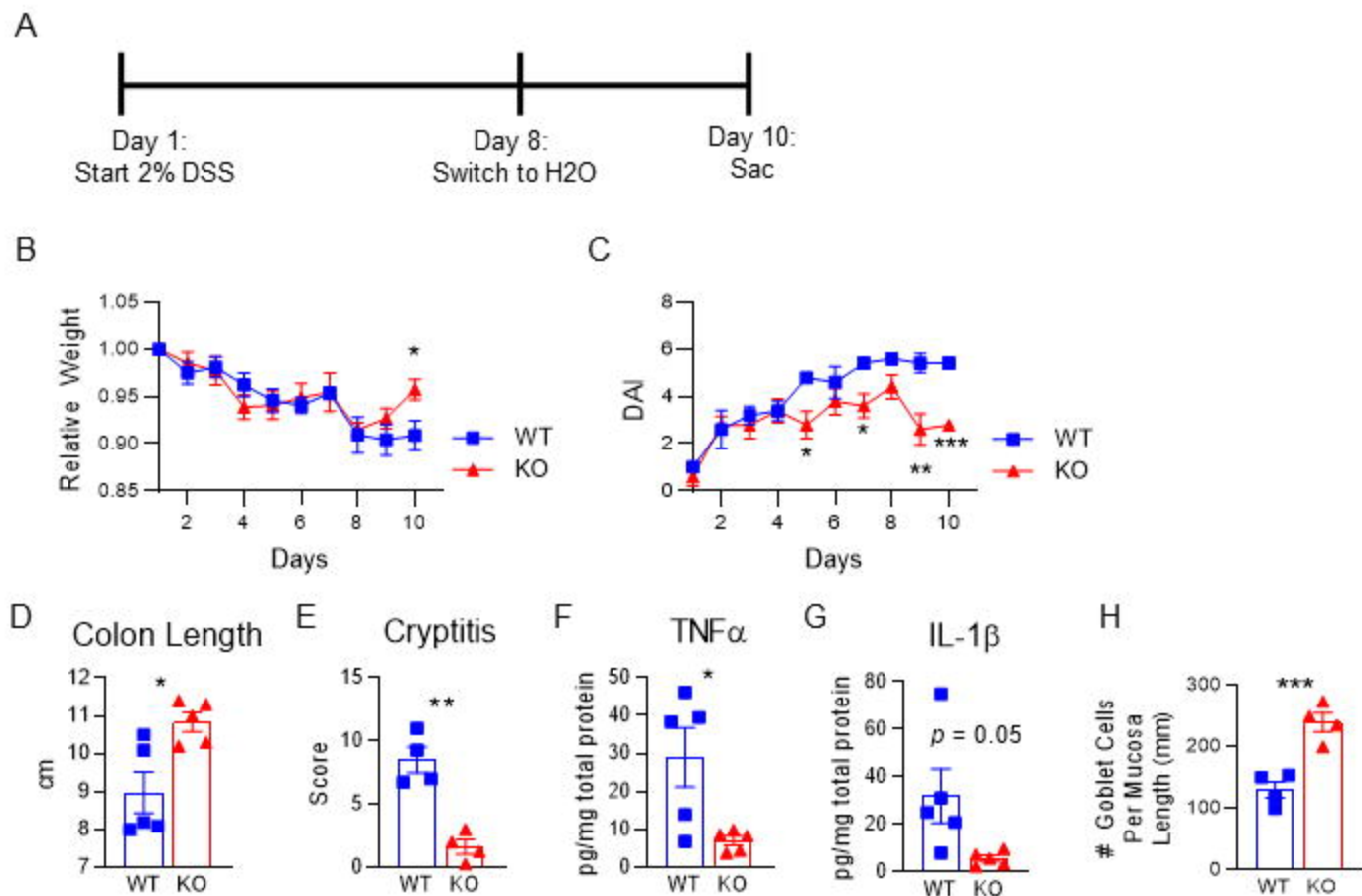
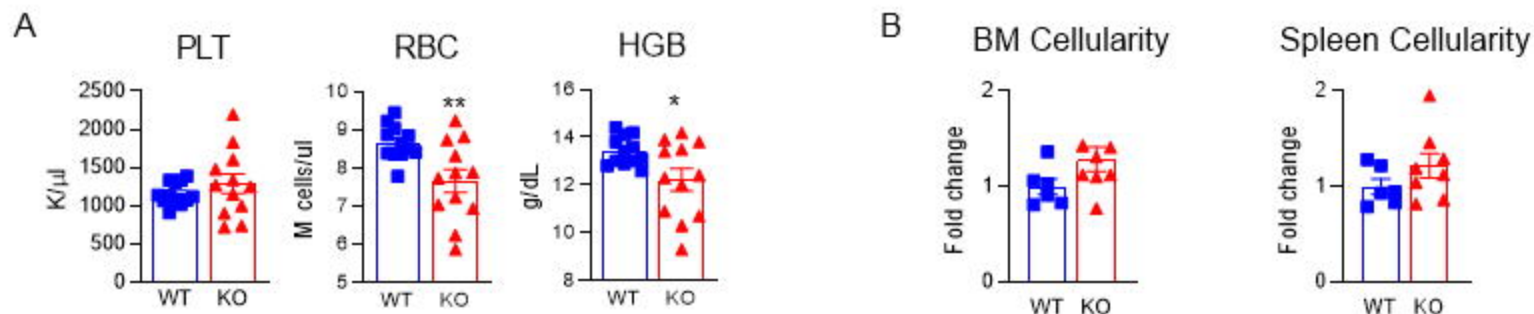


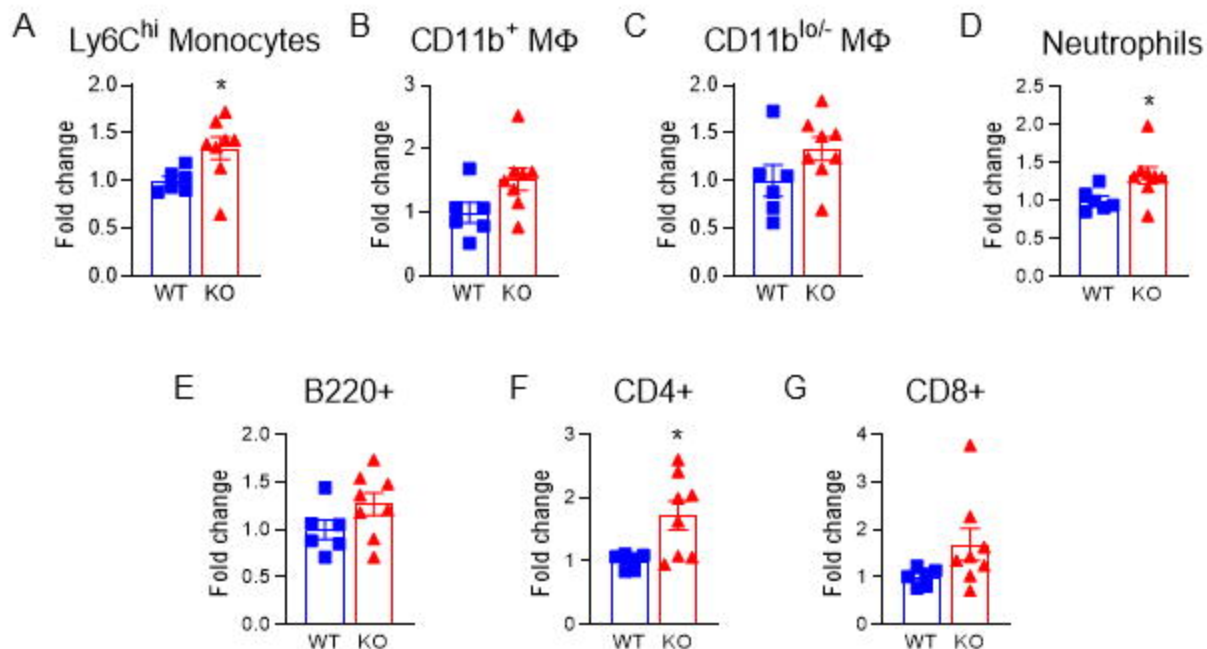
Figure 5. Aged PGDH KO mice show less severe DSS colitis. (A) Experimental schema for assaying DSS colitis. (B) Mouse weights relative to day one of the experiment across time are shown for WT and PGDH KO mice. Mean \pm SEM, N = 5 mice/group, *P<0.05, unpaired t-test. (C) Disease activity indices (DAI) for the DSS colitis are shown for WT and PGDH KO mice. Mean \pm SEM, N = 5 mice/group, *P<0.05, unpaired t-test. (D) Gross colon lengths resulting from DSS exposure on day 10 are shown, Mean \pm SEM, N = 5 mice/group, *P=0.01, unpaired t-test. (E) Cryptitis scores from histological analysis are shown. Mean \pm SEM, N = 4 mice/group. ***P=0.001, unpaired t-test. (F) TNF α and (G) IL1 β inflammatory cytokine content within the distal colons (pg/mg total protein) are quantified. P-values by unpaired t-tests. Mean \pm SEM, N=5. (H) Number of goblet cells per mucosa length (mm) in the distal colon is quantified. ***P=0.001, unpaired t-test.

S1. Loss of 15-PGDH is associated with reduced circulating RBCs but no change in marrow and spleen cellularity in aged mice



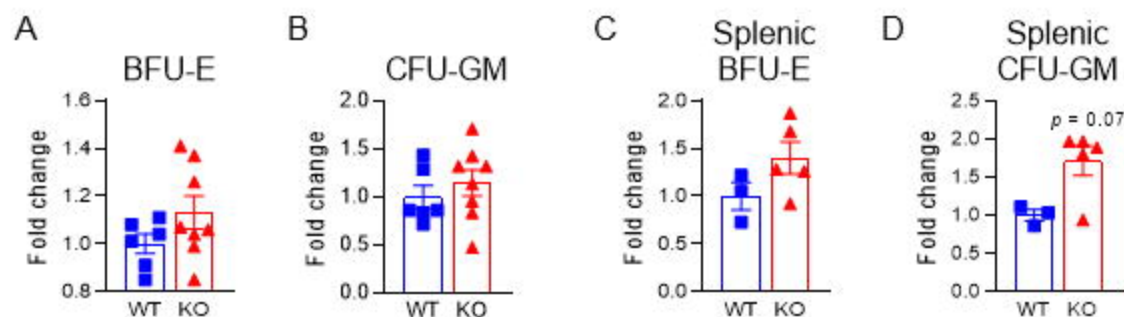
Supplementary Figure 1. Loss of 15-PGDH does not impact aged marrow and spleen cellularity. (A) Platelet (PLT) and red blood cell (RBC) quantification by complete blood count analysis in aged (19-23 months old) WT and PGDH KO mice. N = 12 mice/group. (B) Fold change in the BM cellularity per hindlimb and cellularity per spleen of aged (14-20 months old; median age: 18mos.) PGDH KO mice relative to WT littermates. N=6-8 mice/group.

S2. Monocytes, neutrophils, and CD4 T lymphocytes are increased in the marrow of aged PGDH KO mice



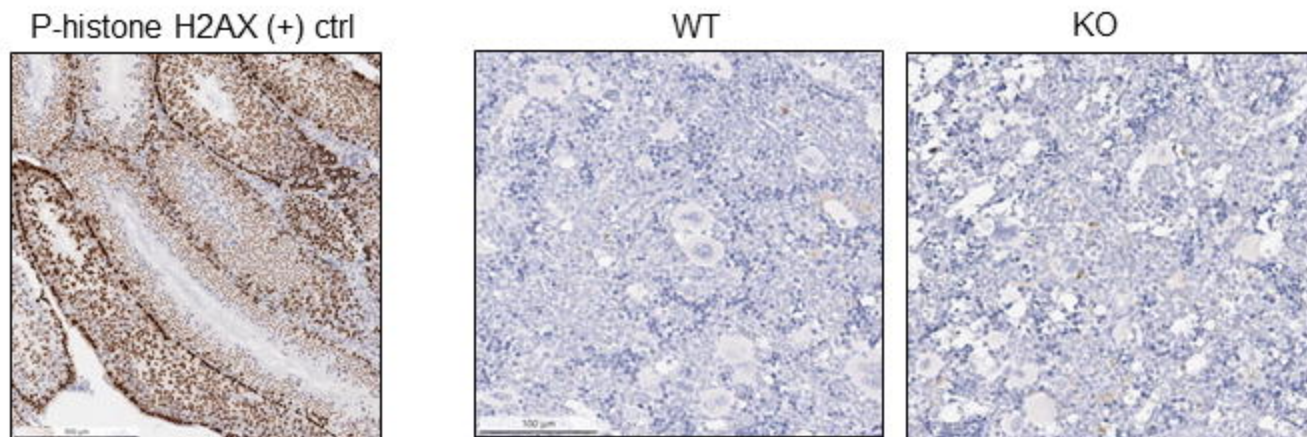
Supplementary Figure 2. Monocytes, neutrophils, and CD4 T lymphocytes are increased in the marrow of aged PGDH KO mice. (A-D) Fold change in the numbers of myeloid cell populations in the BM of aged (14-20 months old; median age: 18mos.) PGDH KO relative to WT mice: Ly6C^{hi} monocytes (defined as CD11b⁺ Ly6C^{hi} cells), CD11b⁺ macrophages (MΦ; defined as CD11b⁺, F4/80⁺, Ly6C^{lo}, SSC^{lo} cells), CD11b^{lo/-} MΦs (defined as CD11b^{lo/-}, F4/80⁺ SSC^{lo} cells), and neutrophils (defined as CD11b⁺ F4/80⁻ Ly6G^{hi} cells). (E-G) Fold change in the numbers of lymphoid cell populations in the BM of aged PGDH KO relative to WT mice: B220⁺ cells (identified as CD11b⁻ B220⁺ cells), CD4⁺ T lymphocytes (identified as CD11b⁻, CD3e⁺, CD4⁺ cells), and CD8⁺ T lymphocytes (identified as CD11b⁻, CD3e⁺, CD8⁺ cells). N = 6-8 mice per group.

S3. 15-PGDH KO marrow shows enhanced myeloid and erythroid colony-forming activity



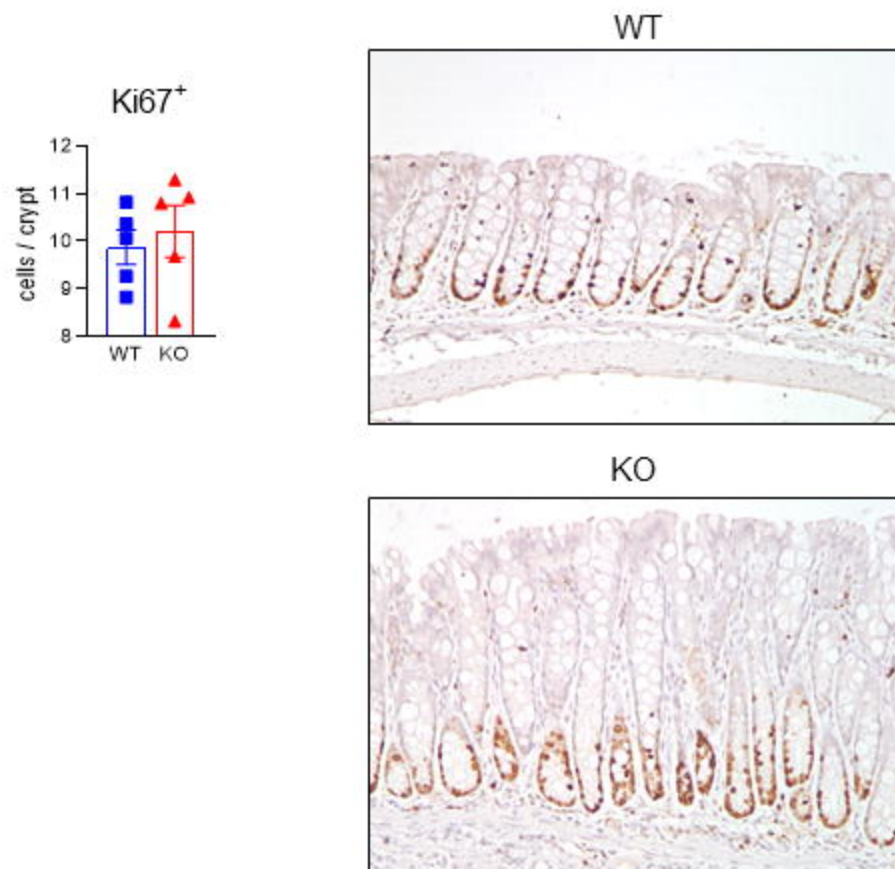
Supplementary Figure 3. Aged *Hpgd*^{-/-} marrow and spleen displays trends towards increased myeloid and erythroid colony-forming activity. (A-B) Fold change in the numbers of burst-forming units-erythroid (BFU-E) and colony-forming units granulocyte-macrophage (CFU-GM) derived from the BM of aged (14-20 months old; median age: 18mos.) PGDH KO relative to WT littermate control mice. (C-D) Fold change in the numbers of BFU-E and CFU-GM derived from the spleen of aged (14-20 months old; median age: 18mos.) PGDH KO relative to WT littermate control mice. N = 3-8 mice/group.

S4. Hematopoietic DNA damage is not discernible by marrow H2AX staining in either aged WT or PGDH KO mice



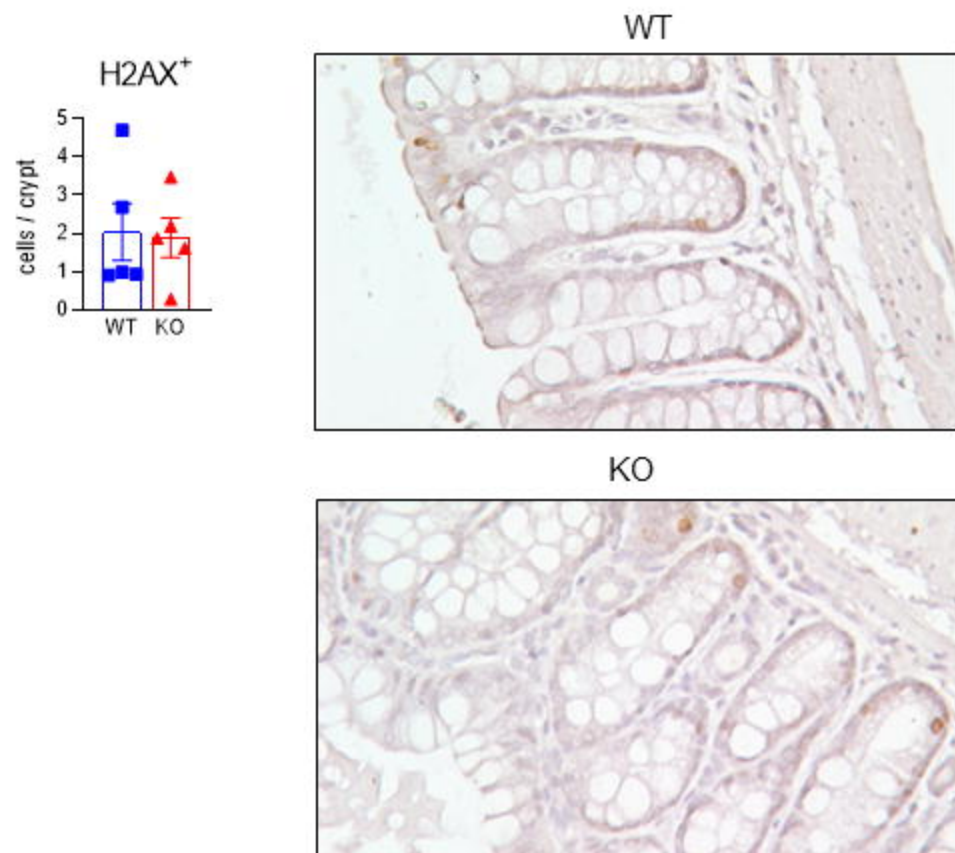
Supplementary Figure 4. Hematopoietic DNA damage does not accumulate in steady-state BM of aged PGDH KO or WT littermate control mice. Representative images of immunohistochemical phosphorylated histone H2AX staining (brown) in the murine testes as a positive control (left) and in hindlimb BM sections from aged (21-22 months old) WT and PGDH KO mice (right).

S5. Loss of PGDH does not impact steady-state epithelial cell proliferation



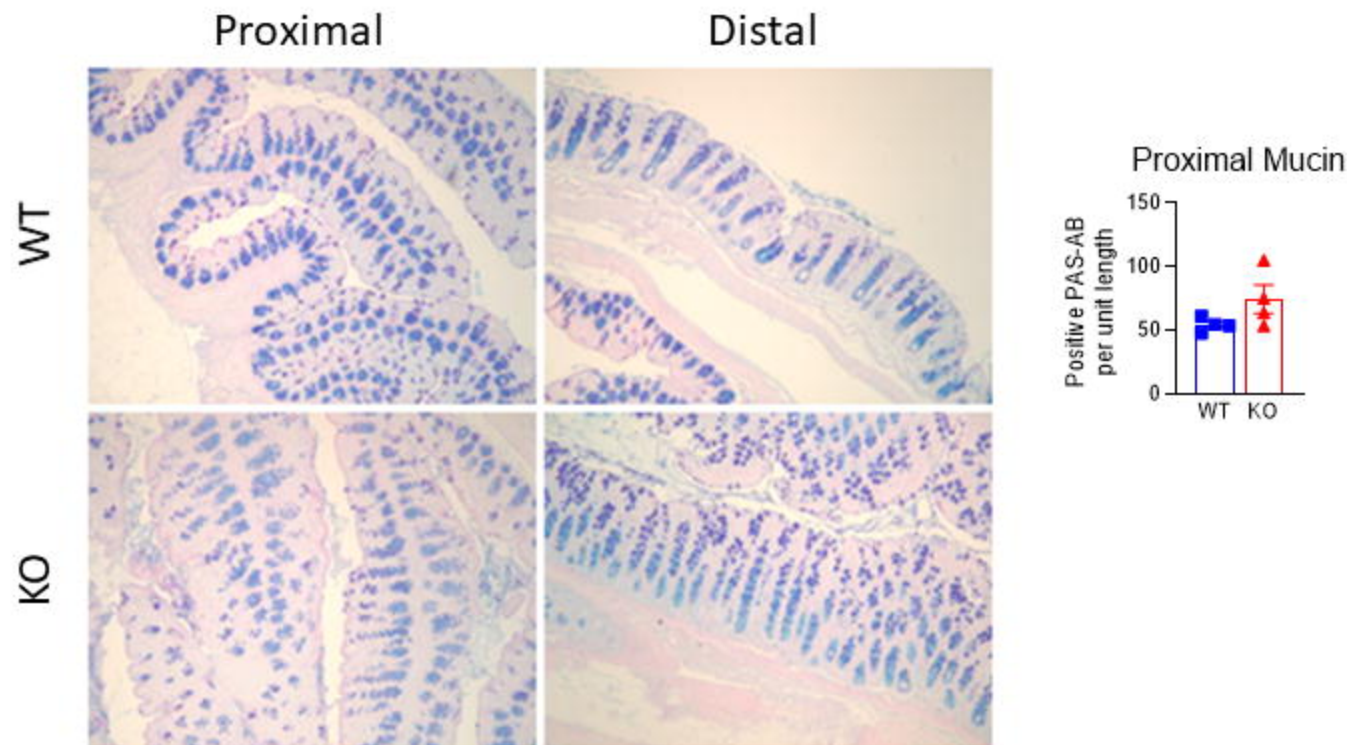
Supplementary Figure 5. Loss of PGDH does not impact steady-state epithelial cell proliferation. Quantification of Ki67 by immunohistochemistry for aged (≥ 52 weeks of age) mouse colons are shown. Mean \pm SEM, N = 5 mice/group (50-60 crypts per mouse quantified). Representative staining results for both groups are shown.

S6. PGDH does not influence the accumulation of DNA damage in steady-state colonic crypts



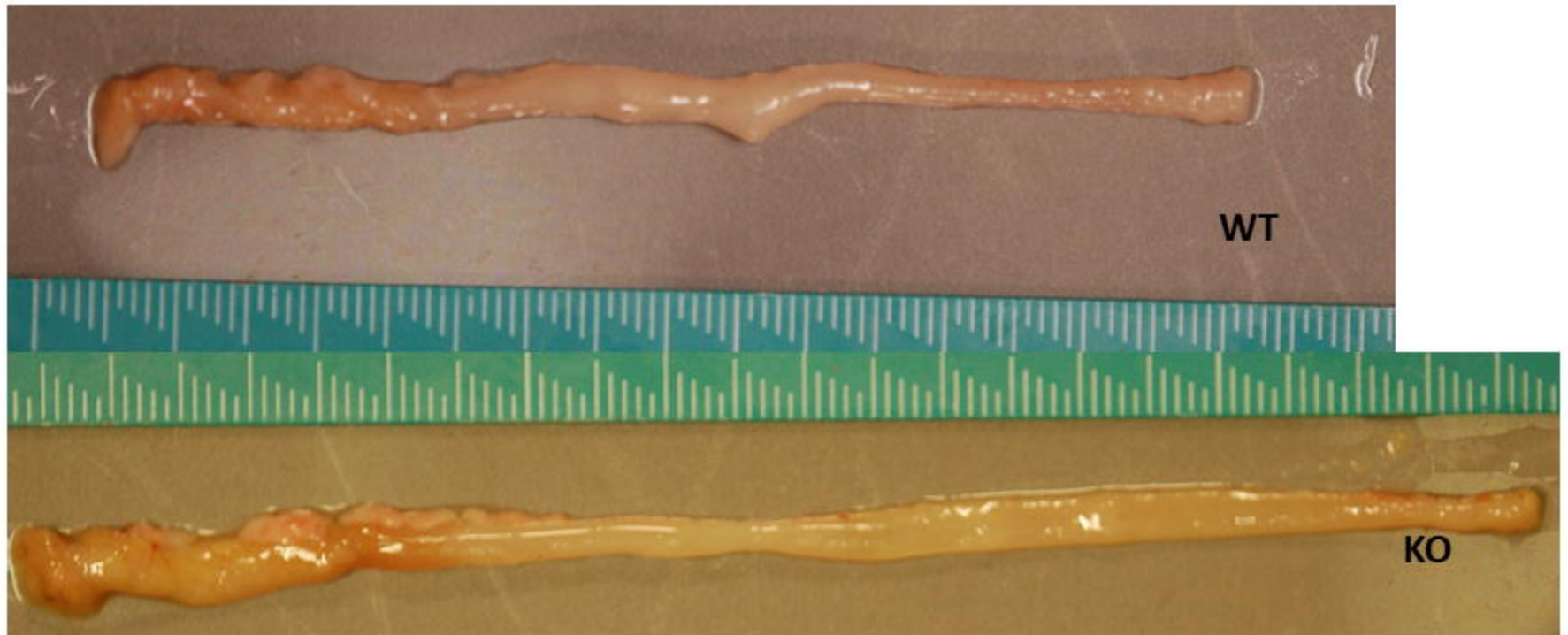
Supplementary Figure 6. Loss of PGDH does not influence the accumulation of DNA damage in steady-state colonic crypts. Quantification of γ H2AX by immunohistochemistry for aged (≥ 52 weeks of age) mouse colons are shown. Mean \pm SEM, N = 5 mice/group (50-60 crypts per mouse quantified). Representative staining results for both groups are shown.

S7. Mucin content is greater in the colons of PGDH KO versus WT mice



Supplementary Figure 7. Mucin content is greater in the colons of PGDH KO versus WT mice. Representative images of PAS/Alcian Blue staining for proximal and distal mucin are shown. Quantification of proximal mucin content is graphed. Mean±SEM, N = 4 mice/group. **P=0.008 in distal colon by unpaired t test.

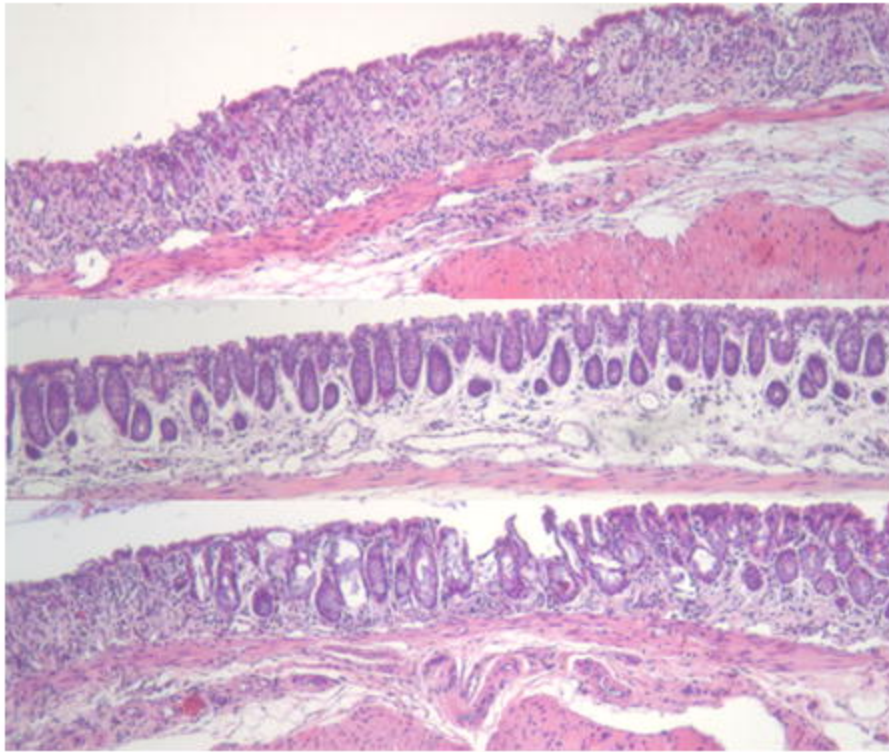
S8. Gross colon morphology at day 10 of DSS colitis



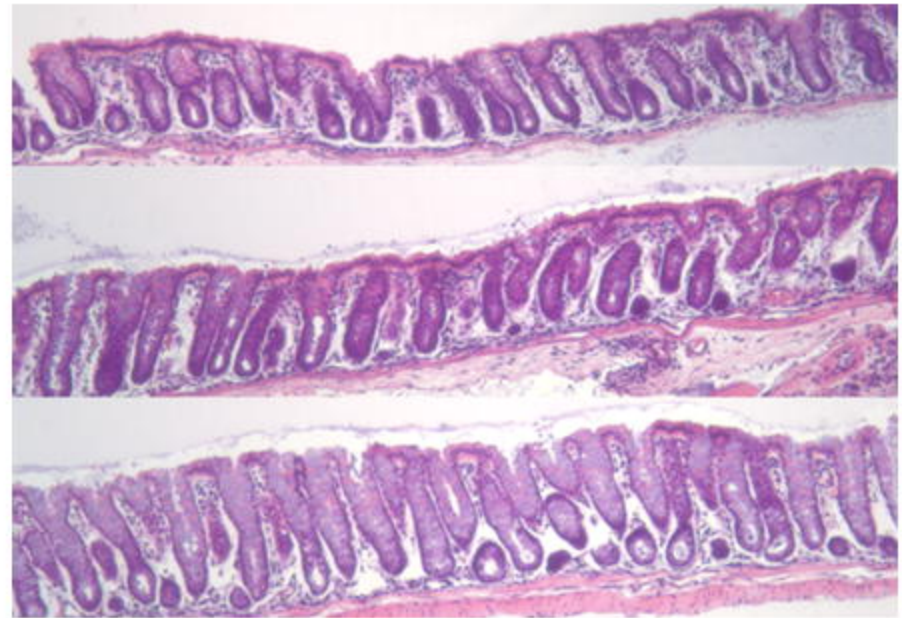
Supplementary Figure 8. Gross colon morphology at day 10 of DSS colitis. A representative photograph of gross colons at day 10 of DSS colitis are shown for WT and PGDH KO.

S9. Distal colon histology at day 10 of DSS colitis

WT

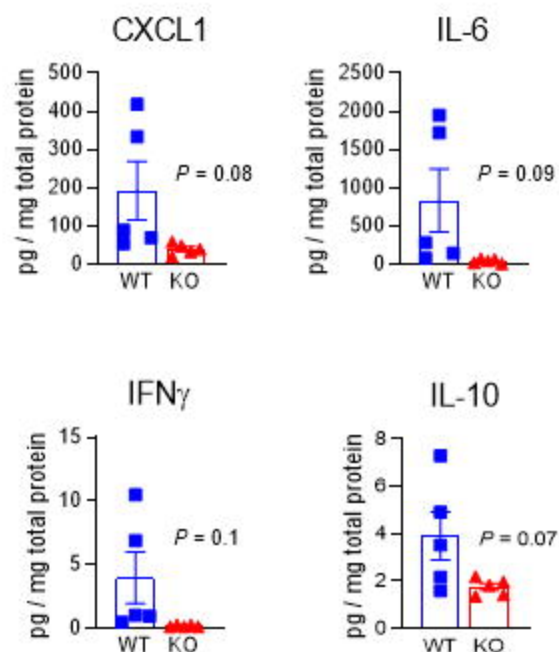


KO



Supplementary Figure 9. Distal colon histology at day 10 of DSS colitis. Additional representative distal colon cryptitis micrographs at day 10 of DSS colitis are shown for WT and PGDH KO.

S10. Inflammatory cytokine levels are attenuated in in the colons of aged PGDH KO mice at day 10 of DSS colitis



Supplementary Figure 10. Inflammatory cytokine levels are attenuated in the colons of aged PGDH KO mice upon being injured by DSS. Quantification of CXCL1, IL6, IFN γ , and IL10 in the distal colons (pg/mg total protein) at day 10 of DSS colitis are compared. Mean \pm SEM, N = 5, P values obtained by unpaired t-tests.