

Title: The three-dimensional landscape of chromatin accessibility in Alzheimer's disease

5 **Authors:** Jaroslav Bendl^{1,2,3,4,5§}, Mads E. Hauberg^{2,4,7,8,9§}, Kiran Girdhar^{1,2,3,4,5§}, Eunju Im^{10,11}, James M. Vicari^{1,2,3,4,5}, Samir Rahman^{1,2,3,4,5}, Pengfei Dong^{1,2,3,4,5}, Ruth Misir^{1,2,3,4,5}, Steven P. Kleopoulos^{1,2,3,4,5}, Sarah M. Reach^{1,2,3,4,5}, Pasha Apontes^{1,2,3,4,5}, Biao Zeng^{1,2,3,4,5}, Wen Zhang^{1,2,3,4,5}, Georgios Voloudakis^{1,2,4}, Ralph A. Nixon^{10,11,12,13}, Vahram Haroutunian^{2,4,6,14}, Gabriel E. Hoffman^{1,3,5}, John F. Fullard^{1,2,3,4,5*}, Panos Roussos^{1,2,3,4,5,10,14*†}

Affiliations:

10 ¹Pamela Sklar Division of Psychiatric Genomics, ²Friedman Brain Institute, ³Icahn Institute for Data Science and Genomic Technology, ⁴Department of Psychiatry, ⁵Department of Genetics and Genomic Science, ⁶Department of Neuroscience, Icahn School of Medicine at Mount Sinai, New York, NY 10029, USA

⁷Department of Biomedicine, Aarhus University, Aarhus, 8000, Denmark.

15 ⁸The Lundbeck Foundation Initiative of Integrative Psychiatric Research (iPSYCH), Aarhus University, Aarhus, 8000, Denmark

⁹Centre for Integrative Sequencing (iSEQ), Aarhus University, Aarhus, 8000, Denmark

¹⁰Center for Dementia Research, Nathan Kline Institute for Psychiatric Research, Orangeburg, NY 10962, USA

20 ¹¹Department of Psychiatry, ¹²Department of Cell Biology, New York University Langone Health, New York, NY 10016, USA

¹³New York University Neuroscience Institute, New York, NY 10003, USA

¹⁴Mental Illness Research Education and Clinical Center (MIRECC), James J. Peters VA Medical Center, Bronx, New York, 10468, USA

25 §Equally contributing first authors.

*Equally contributing senior authors.

†Correspondence to: P.R. (panagiotis.roussos@mssm.edu)

Dr. Panos Roussos

30 Department of Psychiatry and Friedman Brain Institute

Department of Genetics and Genomic Sciences and Institute for Data Science and Genomic Technology

Icahn School of Medicine at Mount Sinai

1470 Madison Avenue

35 New York, NY, 10029, USA

Abstract

40 Much is still unknown about the neurobiology of Alzheimer’s disease (AD). To better understand
AD, we generated 636 ATAC-seq libraries from cases and controls to construct detailed genome-
wide chromatin accessibility maps of neurons and non-neurons from two AD-affected brain
regions, the entorhinal cortex and superior temporal gyrus. By analyzing a total of 19.6 billion read
pairs, we expanded the known repertoire of regulatory sequences in the human brain. Multi-omic
45 data integration associated global patterns of chromatin accessibility with gene expression and
identified cell-specific enhancer-promoter interactions. Using inter-individual variation in
chromatin accessibility, we define *cis*-regulatory domains capturing the 3D structure of the
genome. Multifaceted analyses uncovered disease associated perturbations impacting chromatin
accessibility, transcription factor regulatory networks and the 3D genome, and implicated
transcriptional dysregulation in AD. Overall, we applied a systematic approach to understand the
50 role of the 3D genome in AD and to illuminate novel disease biology that can advance diagnosis
and therapy.

55 Alzheimer's Disease (AD) is a chronic neurodegenerative disorder characterized, clinically, by
cognitive decline and, neuropathologically, by accumulation of amyloid beta (A β) plaques and
intracellular neurofibrillary tangles. Although a growing number of common and rare genetic risk
variants have been identified (*1*), the neurobiological causes and substrates of AD in the vast
60 majority of the population remain unknown. As such, additional approaches should be considered
in an attempt to better understand the molecular mechanisms that mediate this debilitating disease.
Abnormalities in the epigenomic regulation of brain function could result from primary genetic
and non-genetic causal factors and epiphenomena, including changes secondary to disease
progression. Thus, the epigenome could elucidate disease mechanisms, especially in late-onset
AD, where there can be a gap of multiple decades before the initial changes in brain function
65 become clinically apparent.

A number of recent studies have identified AD-associated epigenomic changes (*2–6*). These
studies, however, have been limited to bulk tissue and have only examined one brain region at a
time. This, naturally, impedes identification of brain region and cell-type specific disease
signatures. Furthermore, although analyses of bulk tissue can identify apparent changes in gene
70 expression and the epigenome, bulk tissue level changes can reflect alterations in cell composition
rather than changes in the function of individual cells. This is particularly important for
neurodegenerative diseases, including AD, where disease progression involves neuronal loss.

Due to the inherent difficulty in obtaining fresh specimens, most molecular studies of the human
brain are restricted to frozen post-mortem samples. Working with frozen material is not without
75 its challenges, including the loss of cytoplasm (and, with it, many cell-specific antigens) as a
consequence of freeze-thawing. Nevertheless, an increasing number of human brain studies have
employed cell-type specific nuclear markers to isolate nuclei of interest via Fluorescence-
Activated Nuclear Sorting (FANS) (*7–9*). Using FANS to study individual cell-types increases the
power to identify cell-specific, disease-associated changes and, importantly, mitigates the
80 aforementioned changes in cell type composition.

In this study, we expanded the panel of genomic assays in the Mount Sinai Brain Bank AD
(MSBB-AD) cohort (*10*), a collection of human post-mortem brain samples from individuals who
have been deeply phenotyped, both clinically and histopathologically. In particular, we generated
genome-wide maps of chromatin accessibility using ATAC-seq from neuronal and non-neuronal
85 nuclei isolated by FANS from the entorhinal cortex (EC) and superior temporal gyrus (STG) of
AD cases and controls. Both brain regions are affected in AD, with the EC showing earlier and
more severe pathological changes and neuronal loss (*11*). We initially used these data to expand
the repertoire of identified cell type specific regulatory regions and studied their relationship to
gene expression. We then examined the shared and distinct molecular mechanisms associated with
90 clinical dementia and neuropathological lesions. Subsequently, we identified regulatory genomic
signatures associated with AD, including variability in discrete open chromatin regions (OCRs),
transcription factor (TF) regulatory networks and *cis*-regulatory domains (CRDs). AD-associated
signatures showed brain-region and cell-type specificity, implicating non-coding regulatory
regions within AD genetic risk loci that participate in a variety of biological pathways as well as
95 changes in transcription factor regulation.

Results

Population-scale datasets of brain region and cell type specific chromatin accessibility expand the repertoire of known human brain regulatory elements

100 We performed ATAC-seq profiling in neuronal (NeuN+) and non-neuronal (NeuN-) nuclei isolated by FANS from the STG and EC of AD cases (n=153) and controls (n=56) derived from the Mount Sinai NIH Brain and Tissue Repository (Fig. 1A). All samples were part of the MSBB-AD cohort, which has been extensively analyzed as part of Accelerating Medicines Partnership - Alzheimer's Disease (AMP-AD) project and have additional functional omics data, including whole genome sequencing and multiregional RNA-seq profiling (10) (Data S1). The individuals were selected to represent the full spectrum of clinical and pathological severity (Data S2) based on the following phenotypes: (1) case-control status defined using the Consortium to Establish a Registry for Alzheimer's Disease (CERAD) criteria (12); (2) Braak AD-staging score for progression of neurofibrillary neuropathology (Braak & Braak-score or BBScore) (13, 14); (3) mean density of neuritic plaques (plaque mean); and (4) assessment of dementia and cognitive status based on clinical dementia rating scale (CDR) (15). These phenotypes were moderately correlated (fig. S1), indicating shared and distinct disease processes.

115 We processed 403 brain dissections from 2 brain regions to yield a total of 773 neuronal (NeuN+) and non-neuronal (NeuN-) FANS-sorted samples (fig. S2). Chromatin accessibility in each sample was then determined through ATAC-seq profiling. Extensive quality control of ATAC-seq libraries based on cell-type, sex, and genotype concordance, as well as sample quality metrics and sequencing depth, yielded a total of 636 samples constituting a total of 19.6 billion read pairs with an average of 30.8 million non-duplicated read pairs per library (fig. S3 and S4, Data S3). Given the large differences in chromatin accessibility profiles between the two cell types (Fig. 1B, fig. S5), neuronal and non-neuronal samples were considered separately for subsequent downstream analysis. A total of 315,630 neuronal and 205,120 non-neuronal open chromatin regions (OCRs) were identified, respectively. One reason for this high number of OCRs is the sequencing depth in the aggregated read files used for peak calling. The OCRs were proximal to genes (Fig. 1C) and, as expected, showed enrichment in known cell type markers (Fig. 1D).

125 Next, we compared our extensive catalog of OCRs to previous reference studies from the Roadmap Epigenomics Project (18), Cancer Atlas (19), and the Brain Open Chromatin Atlas (20). We identified 157,944 novel OCRs (126,903 neuronal and 68,054, partially overlapping, non-neuronal OCRs), thereby expanding the repertoire of known OCRs in human brain tissue/cells by 58%. In addition, 61.1% of the OCRs identified in this study overlapped with previously observed regulatory elements detected in the OCR reference repositories (Fig. 1E), highlighting the consistency of our results with published datasets. We found a higher (median Jaccard $J=0.21$) overlap between OCRs from the reference studies and non-neuronal OCRs compared to neuronal OCRs (median Jaccard $J=0.14$), indicating that our open chromatin atlas significantly expands our knowledge of the neuroepigenome (Fig. 1F, fig. S6). Overall, we have generated the largest resource of chromatin accessibility in the central nervous system to date and expanded the repertoire of identified cell type specific regulatory sequences in the human brain.

135

Proximal and distal chromatin accessibility explains variation in gene expression

140 Chromatin structure is integral to transcriptional regulation, with chromatin accessibility
regulating gene expression by facilitating, or inhibiting, binding of the transcriptional machinery.
Given the availability of RNA-seq data from the same individuals and brain region homogenates
from which we generated our cell-type specific ATAC-seq data, we sought to quantify the relative
145 contribution of proximal (i.e. promoter) and distal (i.e. enhancer) chromatin accessibility to
transcriptional variance. We applied variance decomposition models to each of 20,709 expressed
RNA-seq genes using the covariance of OCRs at transcription start sites (TSSs) and distal
regulatory elements as inputs (fig. S7). We analyzed neuronal and non-neuronal OCRs separately,
but included OCRs and gene expression from two brain regions (STG and EC) and corrected for
donor effects by adding inter-individual covariance in the models.

150 In this model, more than 70% of expression variance (76.1% for neuronal and 71.7% for non-
neuronal) was explained by promoter and enhancer OCRs, confirming that gene expression is
broadly associated with chromatin accessibility (Fig. 2, A to B). To assess the validity of these
findings, we permuted our dataset and, as expected, found that little variance was attributed to the
epigenome in this shuffled analysis (fig. S8 and S9). The proportion of expression attributed to
155 enhancer OCRs was twice as large in neuronal samples (Fig. 2C, Data S4), confirming a larger
impact of distal regulatory mechanisms in neuronal cell types (20). In contrast, a higher proportion
of expression variance in non-neuronal samples was attributed to promoter OCRs. Gene set
enrichment analysis of the genes with the highest proportion of variance explained by promoter
OCRs showed enrichment with known cell type markers (fig. S10A).

160 The proportion of expression attributed to inter-individual covariance was similar for neuronal
(mean 13.4%) and non-neuronal (mean 13.7%) samples. We hypothesized that the inter-individual
covariance was, in part, driven by genetic regulation of gene expression (21). In order to test this
hypothesis, we estimated, for each gene, the fraction of gene expression variation explained by the
cis-genetic component via training transcriptomic imputation models with the EpiXcan method
165 (17) in an independent RNA-seq + SNP-array dataset, comprised of human postmortem brains
from the PsychENCODE Consortium (22); the cross validation R-squared (R^2_{CV}) model is known
to be a good proxy for how much of the expression variance is driven by *cis*-genetic variation (23).
Here we observed significant correlations between per-gene inter-individual covariance and R^2_{CV}
in neuronal (Spearman $\rho=0.22$, P -value= 1.3×10^{-54} , fig. S10B) and non-neuronal (Spearman
170 $\rho=0.16$, P -value= 3.7×10^{-30} , fig. S10C) OCRs. The remaining covariance was unexplained and was
found to be larger in non-neuronal (mean 14.6%) compared to neuronal (mean 10.5%) samples.
Overall, these results suggest that gene expression in human brain tissue is associated with global
patterns of chromatin accessibility that differ between neuronal and non-neuronal cells.

175 **Neuronal and non-neuronal enhancer–promoter interactions regulate the majority of human brain expressed genes**

Having shown that our data capture the transcriptional regulation associated with global patterns
of proximal and distal chromatin accessibility, we next sought to determine enhancer-promoter (E-
P) interactions. E-P contacts have, with some success, been inferred from genomic distance and
Hi-C derived chromatin loops (24). To improve upon this, however, the “activity-by-contact”
180 (ABC) approach (25) model was employed, which quantifies the regulatory impact of enhancers
quantitatively by assuming proportionality with both E-P contact frequency (inferred from Hi-C)
and enhancer activity (inferred from chromatin accessibility and H3K27ac histone modification).

185 To apply this approach using our ATAC-seq data, we generated cell type-specific ChIP-seq and Hi-C data.

190 Across the neuronal and non-neuronal datasets, we identified 37,056 and 38,233 E-P interactions, respectively. We determined that at least 63% of the expressed genes (13,135 of 20,709) were linked to one or more distal OCR (OCR_{ABC}) (Fig. 3A, fig. S11A, Data S5). While the majority of these enhancers were predicted to interact with a single gene, about one quarter seemingly regulated two or more genes (Fig. 3B, fig. S11B). Jointly, the enhancers that participate in E-P interactions cover 13.2-13.3Mb in each cell type (0.45-0.46% of the genome). On average, 43-47% of the E-P links were shared between neurons and non-neurons, whereas 83-90% of E-P links were shared across brain regions when comparing within the same cell type, with a high correlation of ABC score (fig. S11F). Among the predicted OCR_{ABC} enhancers, only 25% were linked to the nearest gene, clearly demonstrating the shortcomings of purely distance based regulatory annotation (Fig. 3F, fig. S11C). Still, the frequency of E-P links decreased sharply with distance and 86% were within 100kb (Fig. 3, C to E, fig. S11, D to E) (26).

200 To corroborate the results of our regulatory analyses, we compared distal OCRs predicted to participate in E-P interactions (OCR_{ABC}) with a subset of distal OCRs not predicted to take part in such interactions but matched by distance to nearest TSS and OCR width (OCR_{other}). We used orthogonal evidence for E-P interactions assigned based on fine mapping of GTEx eQTL analysis. OCR_{ABC}, but not OCR_{other}, were found to be enriched in fine-mapped eQTLs from GTEx (27) (OR 1.5-1.8, P -value $< 10^{-45}$, fig. S12A, Data S6). When compared based on chromatin states from the Roadmap Epigenomics Project, OCR_{ABC} showed a relative depletion in repressed chromatin states as opposed to OCR_{other} (fig. S12, B to C). Finally, chromatin accessibility at predicted promoter regions was significantly more highly correlated with accessibility at OCR_{ABC} than accessibility at OCR_{other} (Fig. 3G, fig. S11G).

AD associated epigenetic changes vary markedly by cell type and brain region

210 To explore AD-associated changes in chromatin accessibility, we performed differential analyses across multiple phenotypes (case/control status, BBScore, plaque mean and CDR) considering the brain regions (STG/EC) separately, or in combination, to increase statistical power (Fig. 4A, fig. S13, Data S7). EC neurons showed the highest number of associations across all AD phenotypes, with 19,336 OCRs (6.1%) associated with one or more AD phenotype(s) (Fig. 4B). For STG neurons, the corresponding number was 10,490 (3.3%), highlighting the regional specificity of AD-associated epigenetic changes. For non-neurons, the number of significant associations was markedly smaller, with STG and EC non-neurons jointly showing an association in 4,625 OCRs (2.3%) for one or more AD phenotype(s). Thus, the epigenomic changes in AD vary markedly by cell type and brain region. In terms of phenotypes, CDR and PlaqueMean identified the highest number of differential OCRs (Fig. 4B, Data S7 and S8) and, furthermore, yielded the highest π_1 estimates, i.e. the highest estimates of the true proportion of differential OCRs (Data S9). These phenotypes, therefore, appear better powered to assay disease changes than the dichotomous case-control status.

225 Epigenetically perturbed regulatory regions in AD were located near transcripts as well as in intergenic regions, suggesting that a combination of proximal and distal regulatory elements contribute to AD (Fig. 4C, Data S7). For both neurons and non-neurons, we found a higher fraction of AD-associated OCRs in the promoter area compared to all OCRs tested (Fig. 4C, fig. S14).

230 However, a higher proportion of epigenetically perturbed regulatory regions in AD were located
in proximity to the transcription start sites in non-neuronal compared to neuronal OCRs (Fisher's
exact one-sided P -value= 1.07×10^{-169}). We then examined the robustness of our differential
chromatin accessibility analysis by checking the concordance (based on correlation of OCR fold-
change) with three epigenetic studies of AD in human postmortem brains (3) and iPSC-derived
neurons (3, 28) (fig. S15). We found significant concordance with an average Pearson coefficient
of 0.31, while higher correlations were observed in neuronal compared to non-neuronal analysis
235 (mean Pearson correlation of 0.38 vs 0.22).

While it is well-established that AD genetic risk variants are enriched in OCRs in microglia and
astrocyte genes (29), the relationship with quantitative regulation of chromatin accessibility in AD
is less clear. Besides considering the relationship between AD risk variants and OCRs genome-
wide, the detailed phenotype data of our samples allowed us to explore the relationship between
240 genetic risk variation and AD-associated OCRs using LD-score partitioned heritability (30). Here,
we found the set of all non-neuronal OCRs and the PlaqueMean-associated non-neuronal OCRs to
be significantly enriched in AD genetic variants, even when accounting for the general genetic
context of the OCRs (Fig. 4D). Interestingly, disease-associated non-neuronal OCRs showed a
higher heritability coefficient than other OCRs highlighting the overlap between AD genetic risk
245 variants and the subsequent epigenetic perturbations seen in the disease. Finally, we saw moderate
enrichment when we overlapped OCRs with common variants of AD co-heritable traits, such as
neuroticism, insomnia or bipolar disorder (29) (fig. S16, Data S10).

250 **AD associated epigenetic changes are concordant with gene expression alterations**

To investigate changes in gene expression, we reprocessed 833 homogenate RNA-seq samples
from four brain regions (including STG, EC, IFG - inferior frontal gyrus, and FP - frontal pole) in
a highly overlapping set of individuals (fig. S17). The differential analysis was performed across
multiple phenotypes as with the ATAC-seq data. A deconvolution parameter was added to account
255 for differences in cell type composition in the bulk tissue, driven by the neuronal loss associated
with disease progression (fig. S18 and S19). A higher proportion of genes was differentially
expressed in EC and FP (24.4% and 21.5% of expressed genes, respectively), followed by STG
and IFG (8.1% and 3.0% of expressed genes, respectively) (fig. S20, Data S11).

Comparing the epigenomic changes at transcription start sites with the changes in gene expression,
260 revealed strong correlations (Fig. 4E, fig. S21). This concordance was higher for non-neuronal
than neuronal samples (Pearson correlation of 0.31 and 0.14, respectively), suggesting that bulk
tissue transcriptome studies in AD capture expression changes in non-neurons better than in
neurons. Two illustrative examples demonstrating decreased chromatin accessibility and gene
expression for AD cases through differentially regulated OCRs in promoters and distal intergenic
265 regions are shown in Fig. 4F. *NYAPI* (Neuronal Tyrosine Phosphorylated Phosphoinositide-3-
Kinase Adaptor 1), represents a late onset AD GWAS-linked candidate gene (31) that plays a role
in the regulation of PI3K signaling pathway in neurons and controls cytoskeletal remodeling in
outgrowing neurites (32). Loss of *CCKBR* (Cholecystokinin B Receptor) negatively affects spatial
reference memory (33) and has repeatedly been identified among the top hits in differential gene
270 expression analyses between AD cases and controls (34–36).

Epigenome and transcriptome AD perturbations are enriched for biological processes and canonical pathways

275 To elucidate biological processes implicated in AD, we performed gene set enrichment analyses for our two ATAC-seq cell types, bulk RNA-seq, as well as the aforementioned GWAS study (29). We did this separately for each phenotype (fig. S22 and S23), and aggregated these by taking the most significant association across all phenotypes (Fig. 5, fig. S24).

280 The AD-associated changes in gene expression seen in RNA-seq implicated very general molecular pathways, such as “Oxidative Phosphorylation” and “Translation”. On the other hand, chromatin accessibility pointed to more specific molecular pathways. For example, using neuronal ATAC-seq we identified “the endocytotic role of NDK, phosphins and dynamin” and “RHO GTPase activation of PAKs”, among the top associations. Interestingly, PAKs (p21-activated kinases) are abundant in the brain where they have been associated with cell death and survival signaling (37). The non-neuronal ATAC-seq samples implicated “establishment of the blood-brain barrier”, which was also nominally significant with neuronal ATAC-seq, RNA-seq, and the AD GWAS. The blood-brain barrier has a purported role in the initiation and maintenance of chronic inflammation during AD (38). Other pathways associated with multiple assays included “regulation of neutrophil activation” and “regulation of localization of FOXO transcription factors”. Of note, the latter is involved in cell death and longevity (39, 40), and one member of the gene set, FOXO3 (41), showed at least a nominal association across all assays. Within these top gene sets, the top genes (e.g. *ABCA7*, *BINI*, and *PICALM*) often showed an association across multiple assays (Fig. 5). We further highlight the top genes regardless of whether they were a member of one of the top gene sets or not (fig. S25, Data S12).

295 Finally, to examine changes in brain function, we performed a targeted gene set enrichment analysis using the synaptic gene ontology resource (42) (fig. S23 and S24). This implicated both pre- and post-synaptic dysfunction in post-mortem brain function. For the AD GWAS, synaptic dysfunction was also implicated, which, to the best of our knowledge, has not previously been reported. Of particular interest, “synaptic vesicle cycle” was significant in both the GWAS and RNA-seq, as well as in neuronal ATAC-seq, highlighting the shared enrichment of fundamental neuronal functions between the genetic drivers and subsequent chromatin accessibility and gene expression profiling in post-mortem brain.

Cell type-specific transcription factor regulatory networks are perturbed in AD

305 Using footprinting analyses (43) we systematically examined transcription factor (TF) activity patterns underlying cell type differences and AD-related chromatin changes. We utilized 431 TF motifs, which, due to sharing of binding motifs, represented 798 TFs. TFs clustered into two cell type-specific groups with predominantly neuronal and non-neuronal regulatory patterns, complemented by a third group lacking cell-type specificity (Fig. 6, A to B, fig. S26A, Data S13). The TF cell specificity identified here was broadly concordant with existing literature (Data S14). 310 For instance, Fos and Jun family members form an AP-1 heterodimer that is implicated in neuronal activity linked to learning and memory processes (44, 45). In contrast, Activating Transcription Factor 3 (ATF3) transcriptionally represses and regulates pro-inflammatory astrocytic and microglial activity (46). Genomic screen homeobox (GSX2), as a further example, acts as a gatekeeper of adult neurogenesis by mediating the recruitment in to the cell cycle of multipotent

315 NSCs that can give rise to both neuronal and non-neuronal cells ([47](#), [48](#)). Corroborating our
findings, the TF cell type specificities identified here were also highly concordant (Fig. 6A,
Spearman $\rho = 0.87$, P -value $< 10^{-15}$) with TF footprinting analyses performed in the BOCA study
(Brain Open Chromatin Atlas, ([20](#))). Next, we leveraged differences in footprinting signals from
320 neuronal and non-neuronal samples (bound/unbound status per transcription factor binding site),
to identify a set of 1,432 and 1,834 genes whose transcription were controlled exclusively by TFs
in our neuronal and non-neuronal TF clusters, respectively (Data S15). Convincingly, these genes
showed enrichment in known cell type markers of the appropriate cells (fig. S26B).

Having broadly characterized TF activity in the two cell types, we then sought to examine TF
dynamics in AD. For this, we constructed TF regulatory networks (TFRNs) for each cell type and
325 brain region by analyzing actively bound TF motifs within proximal regulatory regions of genes
representing the aforementioned 798 TFs. Due to high similarity of the network topology across
brain regions (Jaccard J of 0.84 and 0.93 for neuronal and non-neuronal TFRNs, respectively), we
subsequently merged TFRNs from the same cell type, resulting in a neuronal and a non-neuronal
TFRN. Here, we identified a total of 26,976 and 40,348 unique, directed TF-to-TF interactions
330 among the 431 analyzed TF motifs for neuronal and non-neuronal TFRNs, respectively, with a
moderate overlap among the two networks (Jaccard $J=0.56$).

Using the neuronal and non-neuronal TFRN topology of directed TF-to-TF interactions and TF
risk scores based on RNA-seq (across four AD-related phenotypes) and GWAS ([29](#)) data, we
identified high-scoring subnetworks associated with AD (based on empirical P -value <0.05) (Fig.
335 6C). For each cell type, we subsequently combined the resulting subnetworks derived from the
five TF risk scores into consensus subnetworks. Overall, we identified 46 and 45 TF motifs
enriched in AD risk genes for the neuronal and non-neuronal TFRNs, respectively. To whittle
down a list of candidate TF genes represented by the TF motifs prioritized by the TFRN analysis,
we filtered out genes that were not differentially expressed between AD cases and controls (Fig.
340 6C, fig. S27). The resultant set of 56 TF genes shows a notable overlap with three studies that
sought to identify AD regulatory hubs based on transcriptomics and epigenomics data ([49–51](#)).
We found the TF gene USF2 to be highlighted in all three studies, as well as in our data, where
AD perturbation on TFRN was supported by both GWAS and RNA-seq evidence.

Genes regulated by USF2 were enriched primarily in lysosomal dependent protein degradation
345 pathways, which are processes known to be affected in AD ([52](#)) (Fig. 6D). While the literature on
USF2 is very limited, there is evidence that USF2 plays a role in regulating lysosomal gene
expression ([53](#)). To further support the link between USF2 and lysosomal dysfunction, we
evaluated the effects of USF2 knockdown and over-expression on key components of the
lysosomal pathway essential for maintaining lysosomal pH ([54](#)) and activity in a human neuronal
cell line, SH-SY5Y. We found a reduction in the abundance of the members of the V0 (V0b, V0d1)
350 and V1 (V1D, V1E1, V1G1, V1H) subunits of v-ATPase, which are responsible for maintaining
intra-lysosomal pH (fig. S28, A to D), indicating impairments in lysosomal enzyme function.
Convincingly, we observed changes in protein abundance in the opposite direction when USF2
was overexpressed (fig. S28, E to H). v-ATPase hydrolyzes ATP via its V1 domain and uses the
355 energy released to transport protons across membranes via its V0 domain. This activity is critical
for pH homeostasis and generation of a membrane potential that drives cellular metabolism ([55](#)).
Accordingly, reduced levels of V1 sector v-ATPase subunits on lysosomes isolated from USF2
knockdown cells lowered the rate of ATP hydrolysis of v-ATPase by ~60% (fig. S28, I). The
ATPase activity decline is expected to block proton translocation via the V0 sector ([56](#)) and impair

360 acidification of lysosomes, as we observed (fig. S28, J to K). The increased level of V0a1 may be a compensatory, but incomplete, response to the loss of V1 subunits. Taken together, these findings suggest that the TF USF2 plays a role in maintaining pH dependent lysosomal function via v-ATPase activity.

365 **Three-dimensional chromatin interactions from population-level maps of chromatin accessibility**

Studying correlation structures in chromatin accessibility at the population level has yielded high-resolution maps of *cis*-regulatory domains (CRDs) in lymphoblastoid cell lines (57). We employed this approach to explore the coordinated activity and chromatin organization of neuronal and non-neuronal OCRs in the adult human brain and its perturbations in AD (Fig. 7A, fig. S29 to S31). Initially, we explored the correlation of chromatin accessibility between pairs of OCRs and found that they decrease in frequency with genomic distance, which is in accordance with our ABC analyses of enhancer-promoter interactions (fig. S32A). Subsequently, we used adjacency constrained hierarchical clustering (58, 59), across both brain regions, to identify 13,671 STG neuronal, 13,334 EC neuronal and 8,861 STG non-neuronal, 8,688 EC non-neuronal CRDs, which included 37-39% of all OCRs (Fig. 7B, Data S17). Each CRD contained an average of 8 OCRs, but this varied substantially (29-30% with 5 or fewer OCRs; 44-45% with 9 or more OCRs). As expected, CRDs showed higher similarity across brain regions (Jaccard J of 0.33 for neurons and 0.34 for non-neurons) than across cell types (Jaccard J of 0.10 for STG and 0.10 for EC) (Fig. 7C).

380 Next, we examined the composition of our CRDs and found 22% of OCRs within neuronal CRDs to be promoters, whereas 27% of OCRs within non-neuronal CRDs were promoters (fig. S32B). The remaining OCRs were enhancers. Further, a higher fraction of neuronal CRDs contained only enhancers, compared to non-neurons (fig. S32C). For example, ~40% of CRDs that include 8-10 OCRs are only enhancers in neurons, while non-neurons have a lower fraction (~30%) (fig. S32D). On average, within each neuronal CRD, a promoter coordinated with ~3.5 enhancers, whereas an enhancer coordinated with ~0.93 promoters. For non-neuronal CRDs, a promoter coordinated with ~3 enhancers, whereas an enhancer coordinated with ~1.1 promoters. Thus, the coordinated activity of OCRs within a CRD included a higher proportion of putative enhancers in neurons when compared to non-neuronal samples.

390 Hi-C has been considered the gold standard in establishing the three-dimensional (3D) genomic structure (60). We compared CRDs to cell type-specific Hi-C-derived Topologically Associated Domains (TADs) to investigate the efficiency with which CRD captured the 3D genome. CCCTC-binding factor (CTCF) binding sites at TAD boundaries enhance contact insulation between regulatory elements of adjacent TADs (61). Both CRD and TAD boundaries were enriched in CTCF binding sites, with the former showing the highest density (Fig. 7D). Furthermore, there was a marked overlap between CRD and TAD boundaries (fig. S32, E and G). While TADs capture the spatial organization of the genome at the scale of hundreds of kb (mean of 413kb in neurons; 409kb in non-neurons), CRDs represent finer-scale regulatory clusters on the order of tens of kb (mean of 92kb in EC neurons; 87kb in STG neurons; 117kb in non-neurons; 123kb in non-neurons) (Fig. 7E). We leveraged Hi-C to divide the genome into A and B compartments, which are known to be associated with active and inactive chromatin, respectively (62), and confirmed that CRDs were enriched in type A compartments (fig. S32H). To explore the regulatory interactions within each CRD, we leveraged the outcome of the ABC analysis and found enrichment of E-P

405 interactions that are within the same CRDs (Fig. 7F). Enrichment of CRDs with E-P interactions decreased sharply with distance, and interactions were not significantly enriched beyond ~500kb for neurons and ~250kb for non-neurons. Additionally, the correlation was higher for OCR interactions that have support for Hi-C loops and diminished with distance (fig. S32I).

410 In conclusion, interrogating inter-individual correlation between OCRs elucidates the coordinated activity of *cis*-regulatory elements and identified thousands of CRDs. These CRDs are highly concordant with, but substantially smaller than Hi-C-defined TADs, indicating that a CRD is a functional unit of the 3D genome, capturing intra-chromosomal interactions of active regulatory elements with higher spatial resolution.

415 **Differential analysis of CRDs defined perturbations of the three-dimensional genome in AD**

We next took advantage of the CRD outcome to explore the association of AD with perturbations of the 3D genome. We performed differential analyses of CRDs across all AD-related phenotypes considering the brain regions (STG/EC) separately (fig. S29, Data S17). The AD epigenomic changes in CRDs varied markedly by cell type, brain region, and phenotype (Fig. 8A, Data S18), and showed similar patterns with the changes observed in the single OCR analysis (Fig. 4A). For instance, EC neurons showed the highest number of associations across all AD phenotypes, followed by STG neurons and then non-neuronal CRDs. The highest number of significant CRDs (n=2,603) was observed for the CDR phenotype in EC neurons and involved 26,365 OCRs (21.6%) that were also dysregulated (Fig. 8A). On average, across every phenotype, brain region, and cell type, dysregulation of the 3D genome in AD spanned 92.5 Mb or 3% of the genome (fig. S33, A to B). For the Plaque mean phenotype, perturbations of CRDs in EC neurons spanned 362.7 Mbp, or 12.1% of the genome, suggesting that restructuring of the 3D genome is widespread in these regions of the AD brain.

430 Having shown that the 3D genome is significantly altered in AD, we asked if AD-associated structural epigenomic perturbations cause transcriptional changes in nearby genes. For this, we mapped OCRs within CRDs to genes using the E-P interactions of our ABC analysis (Data S5). We next correlated changes in OCR accessibility with changes in gene expression and found our ABC-mapped CRD-derived OCRs to show a similar degree of correlation to genes when compared to the single OCR analysis (fig. S33, C to D). Using CRDs as the functional unit, we identified dysregulation of the transcriptome in AD (Fig. 8B, Data S18), which show similar cell type, brain region, and phenotype specificity as the epigenetically defined perturbations (Fig. 8A). Transcriptome-defined CRD perturbations were highly reproducible (range of π_1 estimates from 0.39 to 0.88) in an independent gene expression dataset from the Religious Orders Study and Memory and Aging Project cohort (63) (fig. S34A, B). Gene set enrichment analysis for the transcriptome-defined CRD perturbations identified significant associations for multiple canonical pathways, including AD, cell adhesion molecules from the immunoglobulin family, chemokine receptors CXCR3 and CXCR4, SHC adaptor proteins, glutamate metabolic processes, and G protein coupled receptors (fig. S34, C to D).

445 A previous study reported a larger effect for tau-related changes in H3K9ac peaks located in Hi-C defined type A (active) compared to B (inactive) compartments (3). To elaborate on this finding, we characterized the spatial organization of differential CRDs in higher order chromatin structures i.e. type A vs. B compartments. Consistent with previous results (3), differentially upregulated

CRDs in AD were enriched for type A compartments (Fig. 8C); in contrast, downregulated CRDs were enriched in B compartments. Spatial organization of differential CRDs was further corroborated by a negative correlation between the magnitude of AD-related phenotypic effects of CRDs that had no overlap with segments of nuclear lamina compared to those that had an overlap (lamina is associated with repressive chromatin) (64) (fig. S34E). An illustrative example of a differentially upregulated CRD in EC neurons associated with BBScore is shown in Fig. 8D. The spatial organization of this CRD was observed in type A (active) compartments in neurons and it involved proximal and distal OCRs regulating *EPB41L1*, which were all upregulated in more severe tau pathology (based on BBScores). The *EPB41L1* gene, encoding the Band 4.1-like protein 1 (also known as Neuronal protein 4.1) (65), links cell adhesion molecules to G protein coupled receptors at the neuronal plasma membrane (66) and has been associated with neurofibrillary tangles in AD brains (67).

450

455

460

Discussion

Here we provide an extensive characterization of the cell type and regional chromatin regulatory landscape in human brain tissue derived from AD cases and controls. This resource increases our
465 current understanding of the gene expression regulatory mechanisms in the human brain and deepens our understanding of AD etiopathogenesis. We initially utilized 19.6 billion read pairs from 636 individual ATAC-seq libraries to identify hundreds of thousands of cell type specific regulatory regions, expanding the annotation of the chromatin accessibility landscape in the brain from previous large-scale efforts (*18–20*).

470 Studying the epigenome at the population level allowed for broad inferences about gene regulation in the human brain. In fact, chromatin accessibility explained, globally, over 70% of the variance in gene expression. Building on this observation, we generated additional epigenome datasets and performed integrative analysis to define cell-specific enhancer-promoter interactions. This analysis identified putative links for more than half of the protein-coding genes in the genome,
475 expanding previous efforts to catalogue E-P interactions in the human brain (*7*) and further increasing our understanding of the cell type-specific regulome in brain tissue. This valuable resource can be leveraged in future studies to better understand how genetic variation can affect regulatory regions, and to link these risk variants to specific genes.

480 AD is a highly complex disease, where both genetic and environmental factors, either directly or indirectly, shape the molecular perturbations that drive disease progression. In this study we explored the shared and distinct molecular mechanisms associated with clinical dementia and neuropathological lesions. We identified regulatory genomic signatures associated with AD, including variability in discrete open chromatin regions, TF regulatory networks and *cis*-regulatory domains.

485 Disease-associated changes to chromatin accessibility were extensive, involving thousands of regulatory sequences, many of which displayed specificity for a given cell-type and/or brain region. In addition to overlapping with AD common risk variation and gene expression perturbations revealed by bulk tissue analysis, these epigenetic changes also revealed additional cell-type specific AD associated molecular perturbations. Of note, common genetic variants
490 related to the non-neuronal epigenome showed the most pronounced changes in AD, particularly so for non-neurons of the entorhinal cortex. Importantly, our FANS strategy accounts for the neuronal loss in AD and more precisely quantifies epigenetic dysregulation compared to bulk tissue studies, which, without applying deconvolution approaches, cannot distinguish molecular signatures arising through changes in cell type composition.

495 By applying footprinting analyses (*43*), we generated TFRNs and identified AD perturbations related to TF activity patterns that captured changes in gene expression and genetic variation in AD. This approach has the potential to elucidate biology as an aggregate of the multitudinous disease signals telling the story of gene dysregulation and dysfunction. As an example, we highlighted a putative role for USF2 in Alzheimer's disease. This TF was predicted, in silico, to
500 affect lysosomal genes, an observation that was supported by subsequent validation experiments using a human neuronal cell line.

Further, we used covariance of epigenetic changes to infer *cis*-regulatory domains, where OCRs work in concert to regulate nearby or more distant genes. These domains also recaptured chromosomal conformation information as evidenced by their overlap with Hi-C derived TADs.

505 Using these domains to investigate changes in gene co-regulation structures turned out to be a
powerful tool for interrogating epigenetic changes in AD. Of note, perturbed domains were
enriched in active “A” compartments of the genome and depleted in inactive “B” compartments.
On a more general level, we saw a disease associated decrease in both chromatin accessibility and
gene expression for the lamina associated domains. This is in accordance with previous reports
510 (3), but we do not yet understand the biological significance of this finding.

Collectively, this study augments our knowledge of the pathogenesis of AD, but also represents a
valuable omics resource. With this cell specific map of chromatin accessibility, the MSBB-AD
cohort contains information at the level of genetics, epigenomics and gene expression, which can
be applied to downstream studies both genome wide and the single gene level, and, in time, should
515 contribute to improved diagnosis and/or treatment of the disease.

Materials and methods summary

520 The dataset of 636 ATAC-seq samples generated from postmortem human brains of 209 individuals represents a new addition to the panel of genomic assays in the Mount Sinai Brain Bank AD cohort. Brain tissue dissections spanning two brain regions were FANS-sorted to isolate DAPI positive neuronal (NeuN+) and non-neuronal (NeuN-) nuclei. ATAC-seq libraries were generated using an established protocol (68) and processed through our bioinformatics pipeline (fig. S2). We applied the variance component analysis (69) to quantify the proportion of gene expression variation that is attributable to promoter, enhancer and individual covariance. To predict enhancer-promoter interactions, we employed the “activity-by-contact” method that is based on the combination of frequency (derived from Hi-C) and enhancer activity (derived from ATAC-seq and H3K27ac CHIP-seq). To avoid the inflation of false discovery rate in the differential chromatin accessibility analysis, we applied *dream* (70), which properly accounts for correlation structures of repeated measures in the study designs utilizing cross-individual testing. For gene sets enrichment analysis with general (71) and synaptic (42) ontology gene sets, we employed *cameraPR* (72) that is taking into account test statistics from the differential analysis. Transcription factors involved in the regulation of gene expression were identified by footprinting analysis in *TOBIAS* (43) and modeled as a regulatory network. Then, *HotNet* (73) was used to find altered subnetworks containing TF motifs that are highly dysregulated between AD cases and controls based on transcriptomics and GWAS weights. Lastly, *decorate* (59) was used to identify co-regulated clusters of OCRs and run the differential analysis to find dysregulated AD-related clusters.

540

References

1. S. J. Andrews, B. Fulton-Howard, A. Goate, Interpretation of risk loci from genome-wide association studies of Alzheimer's disease. *Lancet Neurol.* **19**, 326–335 (2020).
- 545 2. S. J. Marzi *et al.*, A histone acetylome-wide association study of Alzheimer's disease identifies disease-associated H3K27ac differences in the entorhinal cortex. *Nat. Neurosci.* **21**, 1618–1627 (2018).
3. H.-U. Klein *et al.*, Epigenome-wide study uncovers large-scale changes in histone acetylation driven by tau pathology in aging and Alzheimer's human brains. *Nat. Neurosci.* **22**, 37–46 (2019).
- 550 4. G. Gasparoni *et al.*, DNA methylation analysis on purified neurons and glia dissects age and Alzheimer's disease-specific changes in the human cortex. *Epigenetics Chromatin.* **11**, 41 (2018).
5. P. Li *et al.*, Epigenetic dysregulation of enhancers in neurons is associated with Alzheimer's disease pathology and cognitive symptoms. *Nat. Commun.* **10**, 2246 (2019).
- 555 6. T. Raj *et al.*, Integrative transcriptome analyses of the aging brain implicate altered splicing in Alzheimer's disease susceptibility. *Nat. Genet.* **50**, 1584–1592 (2018).
7. A. Nott *et al.*, Brain cell type-specific enhancer-promoter interactome maps and disease-risk association. *Science.* **366**, 1134–1139 (2019).
8. Y. Jiang, A. Matevosian, H.-S. Huang, J. Straubhaar, S. Akbarian, Isolation of neuronal chromatin from brain tissue. *BMC Neurosci.* **9**, 42 (2008).
- 560 9. A. Kozlenkov *et al.*, Substantial DNA methylation differences between two major neuronal subtypes in human brain. *Nucleic Acids Res.* **44**, 2593–2612 (2016).
10. M. Wang *et al.*, The Mount Sinai cohort of large-scale genomic, transcriptomic and proteomic data in Alzheimer's disease. *Sci. Data.* **5**, 180185 (2018).
- 565 11. J. H. Morrison, P. R. Hof, Life and death of neurons in the aging brain. *Science.* **278**, 412–419 (1997).
12. G. G. Fillenbaum *et al.*, Consortium to Establish a Registry for Alzheimer's Disease (CERAD): the first twenty years. *Alzheimers Dement.* **4**, 96–109 (2008).
13. H. Braak, E. Braak, Neuropathological stageing of Alzheimer-related changes. *Acta Neuropathol.* **82**, 239–259 (1991).
- 570 14. H. Braak, I. Alafuzoff, T. Arzberger, H. Kretschmar, K. Del Tredici, Staging of Alzheimer disease-associated neurofibrillary pathology using paraffin sections and immunocytochemistry. *Acta Neuropathol.* **112**, 389–404 (2006).
15. J. C. Morris, The Clinical Dementia Rating (CDR): current version and scoring rules. *Neurology.* **43**, 2412–2414 (1993).
- 575 16. A. Zeisel *et al.*, Brain structure. Cell types in the mouse cortex and hippocampus revealed by single-cell RNA-seq. *Science.* **347**, 1138–1142 (2015).
17. W. Zhang *et al.*, Integrative transcriptome imputation reveals tissue-specific and shared biological mechanisms mediating susceptibility to complex traits. *Nat. Commun.* **10**, 3834

- 580 (2019).
18. Roadmap Epigenomics Consortium *et al.*, Integrative analysis of 111 reference human epigenomes. *Nature*. **518**, 317–330 (2015).
 19. M. R. Corces *et al.*, The chromatin accessibility landscape of primary human cancers. *Science*. **362** (2018), doi:10.1126/science.aav1898.
 - 585 20. J. F. Fullard *et al.*, An atlas of chromatin accessibility in the adult human brain. *Genome Res*. **28**, 1243–1252 (2018).
 21. G. E. Hoffman, E. E. Schadt, variancePartition: interpreting drivers of variation in complex gene expression studies. *BMC Bioinformatics*. **17**, 483 (2016).
 22. M. J. Gandal *et al.*, Transcriptome-wide isoform-level dysregulation in ASD, schizophrenia, and bipolar disorder. *Science*. **362** (2018), doi:10.1126/science.aat8127.
 - 590 23. S. Nagpal *et al.*, TIGAR: an improved bayesian tool for transcriptomic data imputation enhances gene mapping of complex traits. *Am. J. Hum. Genet.* **105**, 258–266 (2019).
 24. J. E. Moore, H. E. Pratt, M. J. Purcaro, Z. Weng, A curated benchmark of enhancer-gene interactions for evaluating enhancer-target gene prediction methods. *Genome Biol.* **21**, 17 (2020).
 - 595 25. C. P. Fulco *et al.*, Activity-by-contact model of enhancer-promoter regulation from thousands of CRISPR perturbations. *Nat. Genet.* **51**, 1664–1669 (2019).
 26. B. Mifsud *et al.*, Mapping long-range promoter contacts in human cells with high-resolution capture Hi-C. *Nat. Genet.* **47**, 598–606 (2015).
 - 600 27. F. Hormozdiari *et al.*, Leveraging molecular quantitative trait loci to understand the genetic architecture of diseases and complex traits. *Nat. Genet.* **50**, 1041–1047 (2018).
 28. K. R. Bowles *et al.*, 17q21.31 sub-haplotypes underlying H1-associated risk for Parkinson’s disease and progressive supranuclear palsy converge on altered glial regulation. *BioRxiv* (2019), doi:10.1101/860668.
 - 605 29. I. E. Jansen *et al.*, Genome-wide meta-analysis identifies new loci and functional pathways influencing Alzheimer’s disease risk. *Nat. Genet.* **51**, 404–413 (2019).
 30. H. K. Finucane *et al.*, Partitioning heritability by functional annotation using genome-wide association summary statistics. *Nat. Genet.* **47**, 1228–1235 (2015).
 - 610 31. B. W. Kunkle *et al.*, Genetic meta-analysis of diagnosed Alzheimer’s disease identifies new risk loci and implicates A β , tau, immunity and lipid processing. *Nat. Genet.* **51**, 414–430 (2019).
 32. K. Yokoyama *et al.*, NYAP: a phosphoprotein family that links PI3K to WAVE1 signalling in neurons. *EMBO J.* **30**, 4739–4754 (2011).
 33. X. Chen *et al.*, Cholecystokinin release triggered by NMDA receptors produces LTP and sound-sound associative memory. *Proc Natl Acad Sci USA*. **116**, 6397–6406 (2019).
 - 615 34. X. Li, J. Long, T. He, R. Belshaw, J. Scott, Integrated genomic approaches identify major pathways and upstream regulators in late onset Alzheimer’s disease. *Sci. Rep.* **5**, 12393 (2015).

- 620 35. E. Castillo *et al.*, Comparative profiling of cortical gene expression in Alzheimer’s disease patients and mouse models demonstrates a link between amyloidosis and neuroinflammation. *Sci. Rep.* **7**, 17762 (2017).
36. M. Hokama *et al.*, Altered expression of diabetes-related genes in Alzheimer’s disease brains: the Hisayama study. *Cereb. Cortex.* **24**, 2476–2488 (2014).
- 625 37. P. M. Chan, E. Manser, PAKs in human disease. *Prog. Mol. Biol. Transl. Sci.* **106**, 171–187 (2012).
38. R. D. Bell, B. V. Zlokovic, Neurovascular mechanisms and blood-brain barrier disorder in Alzheimer’s disease. *Acta Neuropathol.* **118**, 103–113 (2009).
39. Z. Yuan *et al.*, Regulation of neuronal cell death by MST1-FOXO1 signaling. *J. Biol. Chem.* **284**, 11285–11292 (2009).
- 630 40. E. L. Greer, A. Brunet, FOXO transcription factors at the interface between longevity and tumor suppression. *Oncogene.* **24**, 7410–7425 (2005).
41. A. E. Webb, A. Kundaje, A. Brunet, Characterization of the direct targets of FOXO transcription factors throughout evolution. *Aging Cell.* **15**, 673–685 (2016).
- 635 42. F. Koopmans *et al.*, SynGO: An Evidence-Based, Expert-Curated Knowledge Base for the Synapse. *Neuron.* **103**, 217-234.e4 (2019).
43. M. Bentsen *et al.*, ATAC-seq footprinting unravels kinetics of transcription factor binding during zygotic genome activation. *Nat. Commun.* **11**, 4267 (2020).
- 640 44. S. D. Vann, M. W. Brown, J. T. Erichsen, J. P. Aggleton, Fos imaging reveals differential patterns of hippocampal and parahippocampal subfield activation in rats in response to different spatial memory tests. *J. Neurosci.* **20**, 2711–2718 (2000).
45. J. P. Aggleton, M. W. Brown, M. M. Albasser, Contrasting brain activity patterns for item recognition memory and associative recognition memory: insights from immediate-early gene functional imaging. *Neuropsychologia.* **50**, 3141–3155 (2012).
- 645 46. P. Förstner *et al.*, Neuroinflammation after Traumatic Brain Injury Is Enhanced in Activating Transcription Factor 3 Mutant Mice. *J. Neurotrauma.* **35**, 2317–2329 (2018).
47. M. Götz, M. Nakafuku, D. Petrik, Neurogenesis in the Developing and Adult Brain-Similarities and Key Differences. *Cold Spring Harb. Perspect. Biol.* **8** (2016), doi:10.1101/cshperspect.a018853.
- 650 48. A. López-Juárez *et al.*, Gsx2 controls region-specific activation of neural stem cells and injury-induced neurogenesis in the adult subventricular zone. *Genes Dev.* **27**, 1272–1287 (2013).
49. M. R. Rahman *et al.*, Network-based approach to identify molecular signatures and therapeutic agents in Alzheimer’s disease. *Comput. Biol. Chem.* **78**, 431–439 (2019).
- 655 50. G. K. Acquah-Mensah, R. C. Taylor, Brain in situ hybridization maps as a source for reverse-engineering transcriptional regulatory networks: Alzheimer’s disease insights. *Gene.* **586**, 77–86 (2016).
51. L. Qin *et al.*, Ethnicity-specific and overlapping alterations of brain hydroxymethylome in Alzheimer’s disease. *Hum. Mol. Genet.* **29**, 149–158 (2020).

- 660 52. B. R. Malik, D. C. Maddison, G. A. Smith, O. M. Peters, Autophagic and endo-lysosomal dysfunction in neurodegenerative disease. *Mol. Brain*. **12**, 100 (2019).
53. T. Yamanaka *et al.*, Genome-wide analyses in neuronal cells reveal that upstream transcription factors regulate lysosomal gene expression. *FEBS J*. **283**, 1077–1087 (2016).
54. D. E. Johnson, P. Ostrowski, V. Jaumouillé, S. Grinstein, The position of lysosomes within the cell determines their luminal pH. *J. Cell Biol*. **212**, 677–692 (2016).
- 665 55. S. R. Hayek, H. S. Rane, K. J. Parra, Reciprocal Regulation of V-ATPase and Glycolytic Pathway Elements in Health and Disease. *Front. Physiol*. **10**, 127 (2019).
56. S. Couoh-Cardel, E. Milgrom, S. Wilkens, Affinity purification and structural features of the yeast vacuolar atpase vo membrane sector. *J. Biol. Chem*. **290**, 27959–27971 (2015).
- 670 57. O. Delaneau *et al.*, Chromatin three-dimensional interactions mediate genetic effects on gene expression. *Science*. **364** (2019), doi:10.1126/science.aat8266.
58. C. Ambroise, A. Dehman, P. Neuvial, G. Rigaiil, N. Vialaneix, Adjacency-constrained hierarchical clustering of a band similarity matrix with application to genomics. *Algorithms Mol. Biol*. **14**, 22 (2019).
- 675 59. G. E. Hoffman, J. Bendl, K. Girdhar, P. Roussos, decorate: Differential Epigenetic Correlation Test. *Bioinformatics* (2020), doi:10.1093/bioinformatics/btaa067.
60. M. Yu, B. Ren, The Three-Dimensional Organization of Mammalian Genomes. *Annu. Rev. Cell Dev. Biol*. **33**, 265–289 (2017).
61. S. S. P. Rao *et al.*, A 3D map of the human genome at kilobase resolution reveals principles of chromatin looping. *Cell*. **159**, 1665–1680 (2014).
- 680 62. E. Lieberman-Aiden *et al.*, Comprehensive mapping of long-range interactions reveals folding principles of the human genome. *Science*. **326**, 289–293 (2009).
63. P. L. De Jager *et al.*, A multi-omic atlas of the human frontal cortex for aging and Alzheimer’s disease research. *Sci. Data*. **5**, 180142 (2018).
64. W. Meuleman *et al.*, Constitutive nuclear lamina-genome interactions are highly conserved and associated with A/T-rich sequence. *Genome Res*. **23**, 270–280 (2013).
- 685 65. L. D. Walensky *et al.*, A novel neuron-enriched homolog of the erythrocyte membrane cytoskeletal protein 4.1. *J. Neurosci*. **19**, 6457–6467 (1999).
66. F. F. Hamdan *et al.*, Excess of de novo deleterious mutations in genes associated with glutamatergic systems in nonsyndromic intellectual disability. *Am. J. Hum. Genet*. **88**, 306–316 (2011).
- 690 67. R. K. Sihag *et al.*, Evidence for the association of protein 4.1 immunoreactive forms with neurofibrillary tangles in Alzheimer’s disease brains. *Brain Res*. **656**, 14–26 (1994).
68. J. D. Buenrostro, B. Wu, H. Y. Chang, W. J. Greenleaf, ATAC-seq: A Method for Assaying Chromatin Accessibility Genome-Wide. *Curr. Protoc. Mol. Biol*. **109**, 21.29.1-21.29.9 (2015), doi:10.1002/0471142727.mb2129s109.
- 695 69. H. Yoshida *et al.*, The cis-Regulatory Atlas of the Mouse Immune System. *Cell*. **176**, 897-912.e20 (2019).

70. G. E. Hoffman, P. Roussos, dream: Powerful differential expression analysis for repeated measures designs. *Bioinformatics* (2020), doi:10.1093/bioinformatics/btaa687.
- 700 71. A. Liberzon *et al.*, Molecular signatures database (MSigDB) 3.0. *Bioinformatics*. **27**, 1739–1740 (2011).
72. C. W. Law *et al.*, RNA-seq analysis is easy as 1-2-3 with limma, Glimma and edgeR. [version 3; peer review: 3 approved]. *F1000Res*. **5** (2016), doi:10.12688/f1000research.9005.3.
- 705 73. M. A. Reyna, M. D. M. Leiserson, B. J. Raphael, Hierarchical HotNet: identifying hierarchies of altered subnetworks. *Bioinformatics*. **34**, i972–i980 (2018).

Acknowledgments: We thank the patients and families who donated material for these studies. We thank the members of the Roussos laboratory for thoughtful advice and critique and the computational resources and staff expertise provided by the Scientific Computing at the Icahn School of Medicine at Mount Sinai.

Funding: Supported by the National Institute on Aging, NIH grants R01-AG067025 (to P.R. and V.H.), R01-AG065582 (to P.R. and V.H.) and R01-AG050986 (to P.R.). J.B. was supported in part by NARSAD Young Investigator Grant 27209 from the Brain & Behavior Research Foundation. G.E.H. was supported in part by NARSAD Young Investigator Grant 26313 from the Brain & Behavior Research Foundation, P.D. was supported in part by NARSAD Young Investigator Grant 29683 from the Brain & Behavior Research Foundation. S.P.K. is a recipient of an NIH LRP award. Research reported in this paper was supported by the Office of Research Infrastructure of the National Institutes of Health under award numbers S10OD018522 and S10OD026880. The content is solely the responsibility of the authors and does not necessarily represent the official views of the National Institutes of Health.

Author contributions: R.A.N., V.H. and P.R. conceived of and designed the project. V.H. provided human brain tissue. J.F.F. and P.R. designed experimental strategies for epigenome profiling in human postmortem tissue. R.M., S.K., S.M.R. and J.F.F. performed ATAC-seq data generation. S.R. performed Hi-C data generation. P.A. performed ChIP-seq data generation. E.I., J.V. and R.A.N. performed USF2 in vitro validation studies. J.B., M.E.H., K.G., G.E.H. and P.R. designed analytical strategies. J.B., M.E.H., K.G., and G.E.H. conducted initial bioinformatics sample processing and quality control. J.B., M.E.H., K.G., and G.E.H. developed and performed all downstream omics data analyses and interpreted results. B.Z. performed eQTL fine-mapping analysis. W.Z. and G.V. performed transcriptome imputation analysis. J.B., M.E.H., K.G., G.E.H., J.F.F. and P.R. wrote the manuscript with the help of all authors. G.E.H., J.F.F., and P.R. supervised overall data generation and analysis.

Competing interests: The authors declare no competing interests.

Data and materials availability: Raw (FASTQ files) and processed data (BigWig files, peaks, and raw / normalized count matrices) are available via the AD Knowledge Portal (<https://adknowledgeportal.org>). The AD Knowledge Portal is a platform for accessing data, analyses, and tools generated by the Accelerating Medicines Partnership (AMP-AD) Target Discovery Program and other National Institute on Aging (NIA)-supported programs to enable open-science practices and accelerate translational learning. The data, analyses and tools are shared early in the research cycle without a publication embargo on secondary use. Data is available for general research use according to the following requirements for data access and data attribution (<https://adknowledgeportal.org/DataAccess/Instructions>). External validation sets: MSBB RNA-seq of postmortem brains (Synapse ID: [syn3157743](https://synapse.org/syn3157743)), H3K9ac ChIP-seq of postmortem brains (Synapse ID: [syn4896408](https://synapse.org/syn4896408)), ATAC-seq iPSC-derived neurons overexpressing MAPT gene (GEO [GSE97409](https://www.ncbi.nlm.nih.gov/geo/query/acc.cgi?acc=GSE97409)), fine-mapped eQTLs (https://alkesgroup.broadinstitute.org/LDSCORE/LDSC_QTL/, version "FE_META_TISSUE_GTEEx_Brain_MaxCPP"), CTCF ChIP-seq on human neural cell (GEO [GSE127577](https://www.ncbi.nlm.nih.gov/geo/query/acc.cgi?acc=GSE127577)), The Cancer Genome Atlas (<https://gdc.cancer.gov/about-data/publications/ATACseq-AWG>), BOCA - brain epigenome atlas (<https://icahn.mssm.edu/boca>).

Supplementary Materials:

Materials and Methods

Figures S1-S34

Data S1-S18

755 References (74-119)

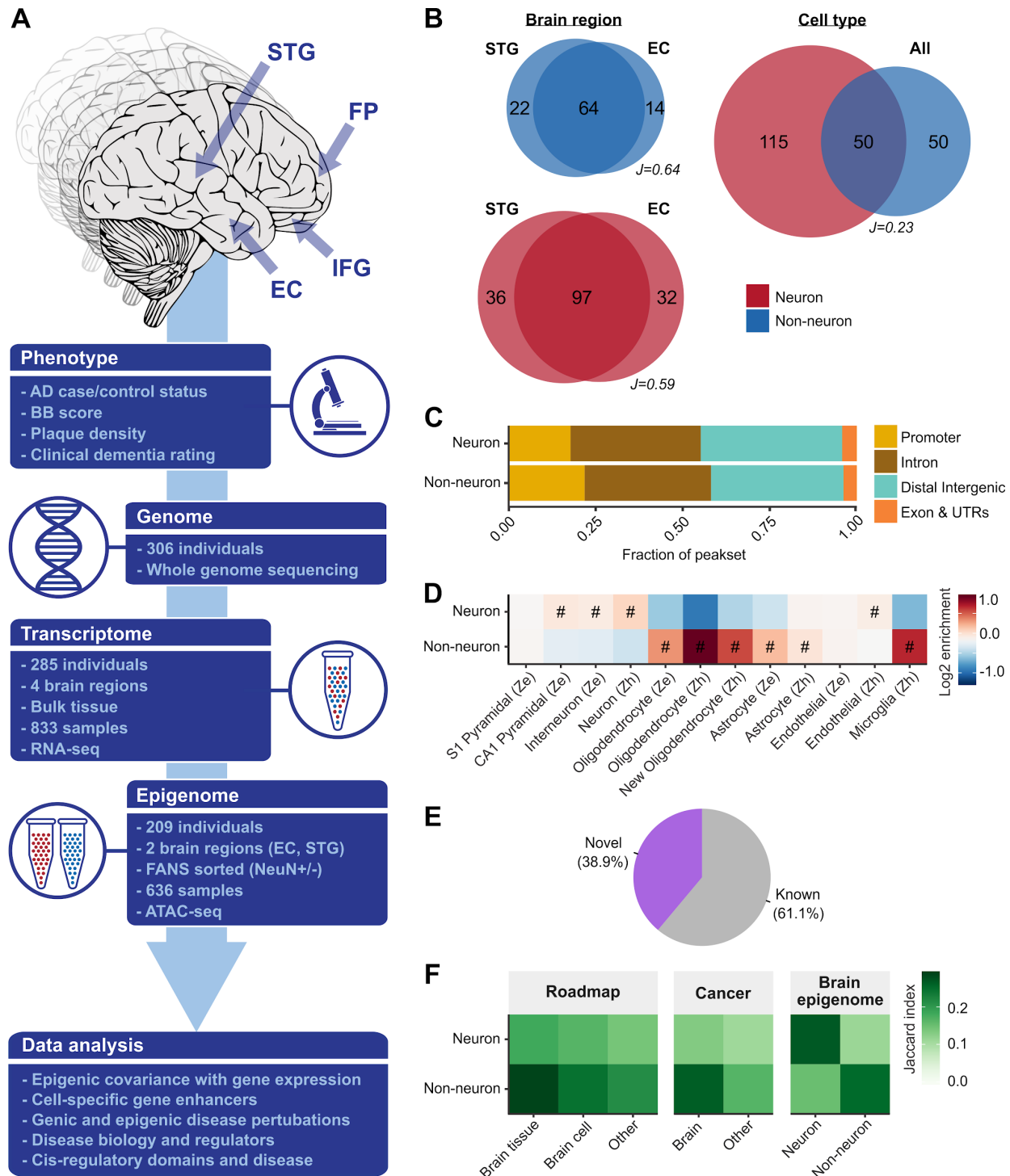


Fig. 1. Large-scale chromatin accessibility analysis in the human brain. (A) Description of the study design. ATAC-seq was performed on neuronal (NeuN+) and non-neuronal (NeuN-) nuclei isolated from two different brain regions (STG and EC) in MSBB-AD samples. Existing RNA-seq profiling in the same cohort was performed on bulk tissue derived from four different brain regions (EC, IFG, FP and STG). All samples have genomic and AD-related phenotypic data. (B) Venn diagrams by cell type and brain region summarizing the overlap in megabases of OCRs. “J” indicates the Jaccard index between the respective OCRs. (C) Proportions of neuronal and non-neuronal OCRs stratified by genomic context. (D) Heatmap showing enrichment of neuronal and non-neuronal OCRs with cell type specific markers from “Ze”: Zeisel (16) and “Zh”: Zhang (17). “#”: Test wide significant at FDR<0.05 “·”: Nominally

760

765

significant at P -value <0.05 . **(E)** Novelty of OCRs compared to known OCRs from the union of three broad OCR resources (Roadmap Epigenomics Consortium, The Cancer Genome Atlas, and a brain epigenome atlas). **(F)** Overlap of neuronal and non-neuronal OCRs with sets of reference studies (as in panel E). For this, we considered only the known OCRs.

770

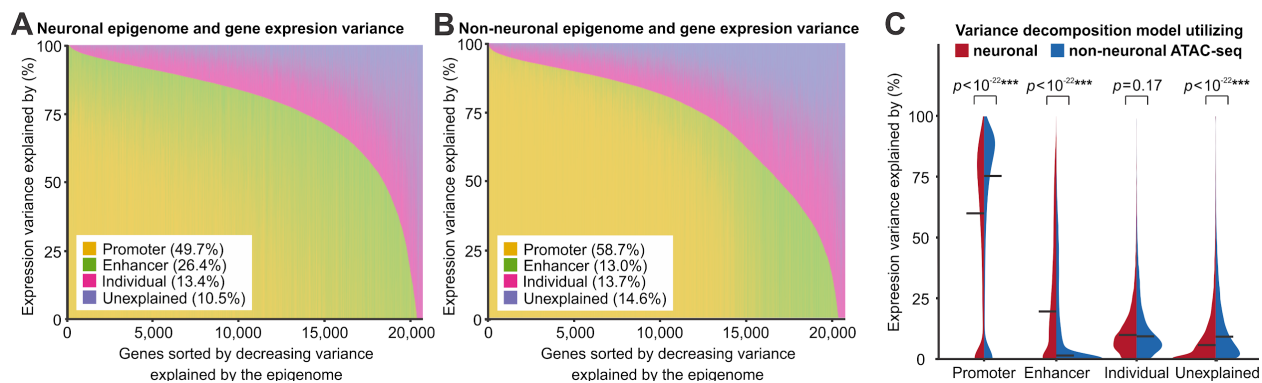
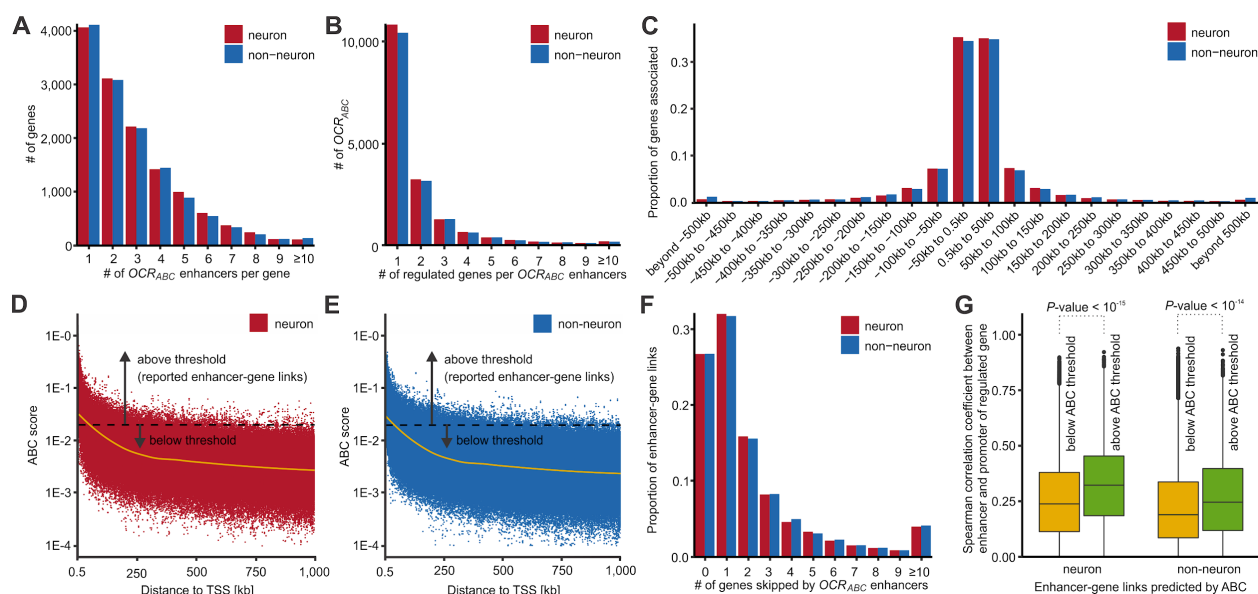


Fig. 2. Variance component analysis of gene expression. The analysis was built upon (A) neuronal and (B) non-neuronal open chromatin dataset. Genes, i.e., columns, are sorted by decreasing proportion of variance explained by epigenome (enhancer and promoter), with the mean variance explained by each component shown in parentheses. (C) Comparison of variance explained by each component across all RNA-seq genes. A Wilcoxon signed-rank test was used to test the differences between models using neuronal and non-neuronal ATAC-seq. Horizontal lines in the violin plot indicate median values.

775



780

Fig. 3. Linking distal regulatory OCRs (OCR_{ABC}) to genes using Activity-By-Contact (ABC) method. (A) Histogram of the number of OCR_{ABC} linked per gene. **(B)** Histogram of the number of genes linked per OCR_{ABC}. **(C)** Histogram of distance of OCR_{ABC} to the TSS of regulated genes. **(D-E)** Scatterplot of genomic distance vs ABC score of enhancer-gene links for **(D)** neurons and **(E)** non-neurons. The dashed black line denotes the minimum ABC score for an enhancer-gene link to be reported as a valid association. The solid yellow line is LOESS (local regression) fit. **(F)** Histogram of the number of genes “skipped” by an OCR_{ABC} to reach their linked genes. **(G)** Correlation between enhancer OCRs and promoter OCRs of linked genes from the ABC method, for links that did not meet the cut-off (low scores, OCR_{other}) versus those that did (high scores, OCR_{ABC}). *P*-values were calculated by t-test from correlation values converted to *Z*-scores. The center line indicates the median, the box shows the interquartile range, whiskers indicate the highest/lowest values within 1.5x the interquartile range, and potential outliers from this are shown as dots.

785

790

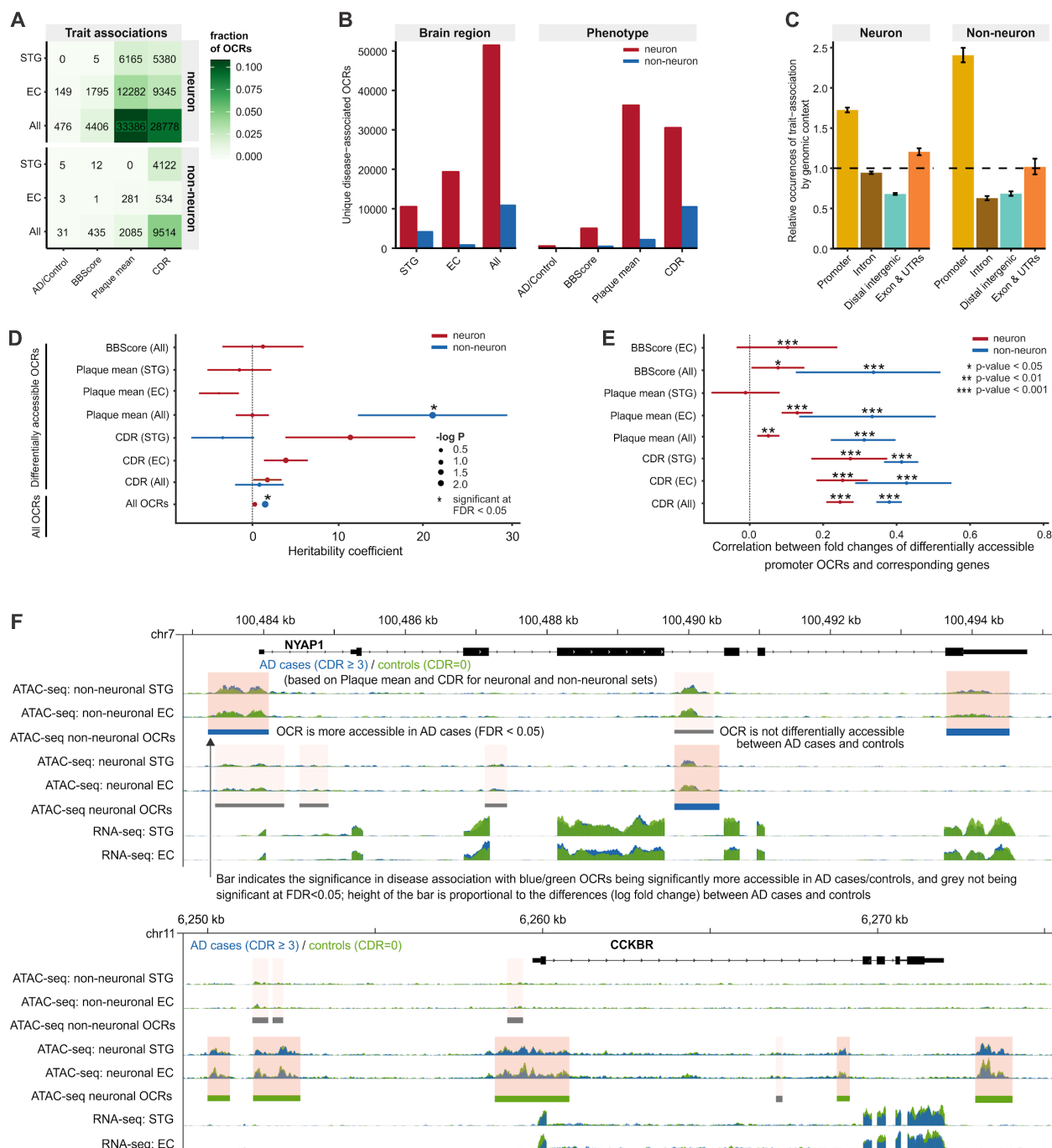
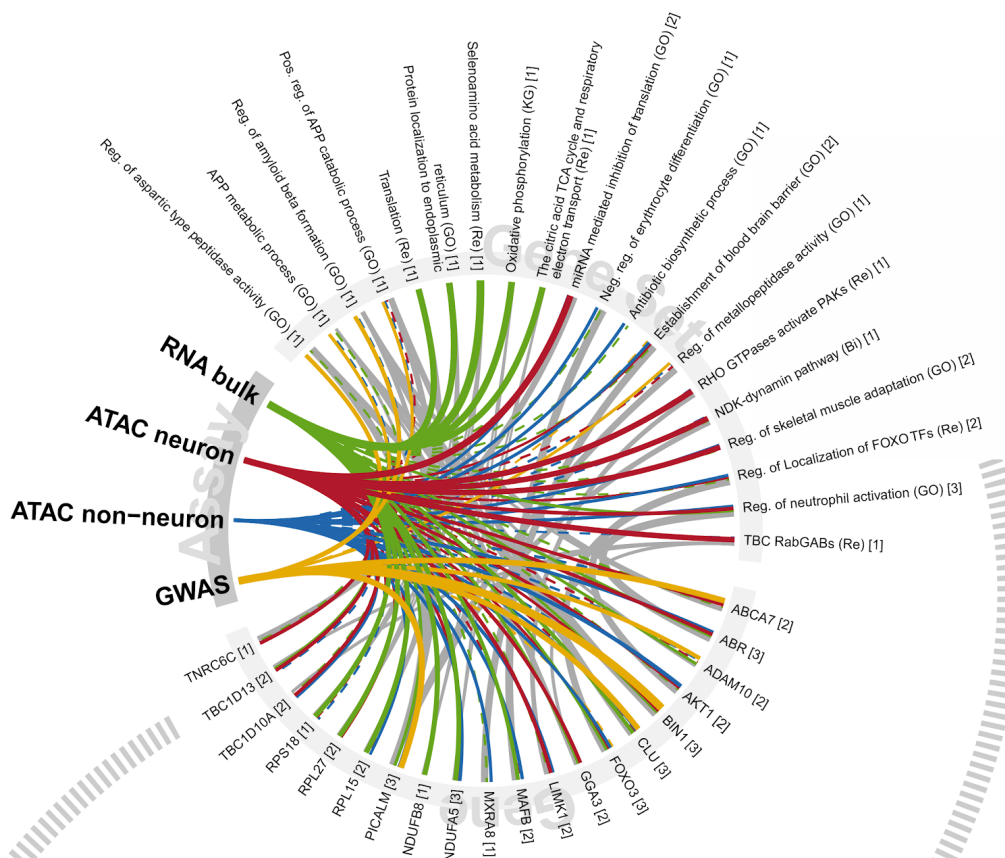


Fig. 4. Disease-associated chromatin changes. (A) Disease-associated OCRs stratified by cell type, brain regions, and AD-related phenotypes. (B) Disease-associated OCRs stratified by brain regions or AD-related phenotypes (C) genetic context of disease-associated OCRs. (D) Enrichment of common genetic variants in AD with disease-associated OCRs when assayed by LD-score regression. Only sets of OCRs covering at least 0.05% of the genome were tested. Positive coefficients signify enrichment. “*”: FDR significant after correction across all tests. (E) Correlation between disease-associated chromatin changes at promoters (ATAC-seq) and disease-associated changes in gene expression (RNA-seq) at the corresponding genes. Pearson correlations were used and only comparisons with over 100 differential OCRs and genes were tested. (F) Examples of changes in chromatin accessibility and gene expression near the genes encoding *NYAP1* and *CCKBR*.

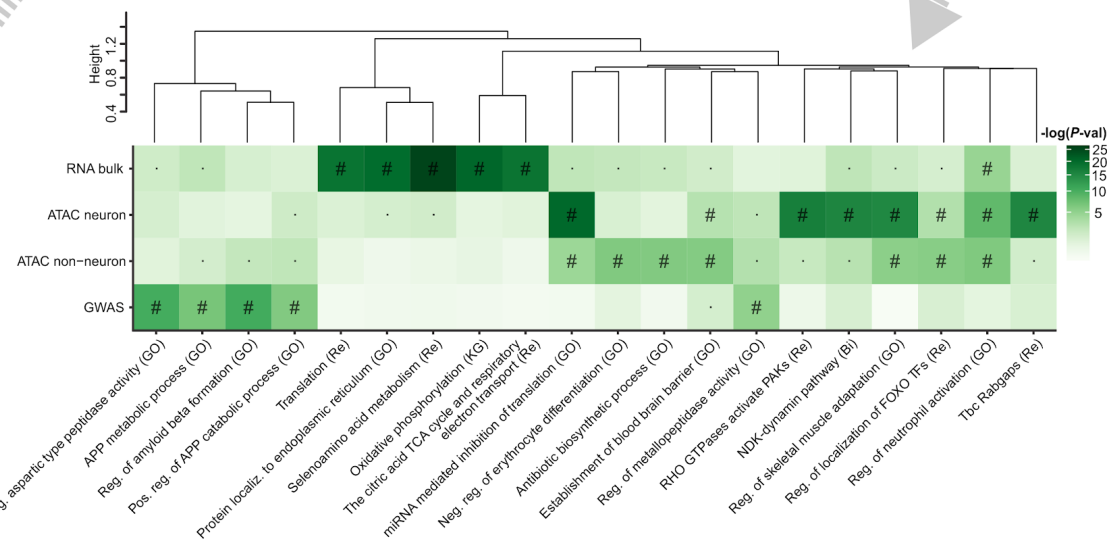
795

800

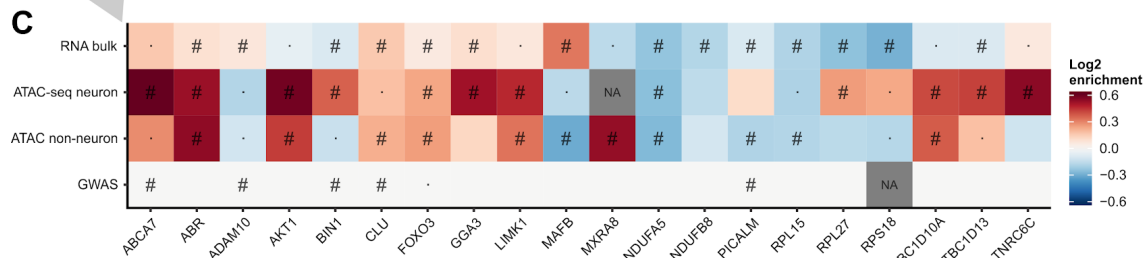
A



B



C



805 **Fig. 5. Gene set enrichment analysis using general gene sets.** (A) Top five gene sets of the four overall assays and
the top genes within these. Thickness indicates the strength of association. A full line indicates significance at
FDR<5%, whereas a dashed line indicates nominal significance. Grey lines between genes and gene sets indicate gene
set membership and the thickness is inversely proportional to the size of the gene set. The numbers in square brackets
810 indicate the number of assays in which the gene or gene set was found significant at FDR<5%. The gene sets are
clustered based on the constituent member genes. FDR throughout is calculated for all tests within one assay (e.g. all
contrasts analyzed in ATAC Neuron times the number of gene sets tested). (B) heatmap of *P*-values for the associated
gene sets. (C) Heatmap of fold changes in chromatin accessibility/gene expression and significance of change. The
GWAS associations are genetic variants, which might increase or decrease or otherwise alter gene function. Thus no
815 colors are applied to these. “#” Significance at FDR<5%. “· ·”: Nominal significance. “NA”: not available. “Bi”:
Biocarta. “GO”: Gene Ontology. “KG”: Kegg. “Re”: Reactome. The ApoE- and MHC-loci were excluded from the
GWAS analysis, as is customary. Not all genes have an OCR directly linked to it in neuron and non-neuron ATAC-
seq.

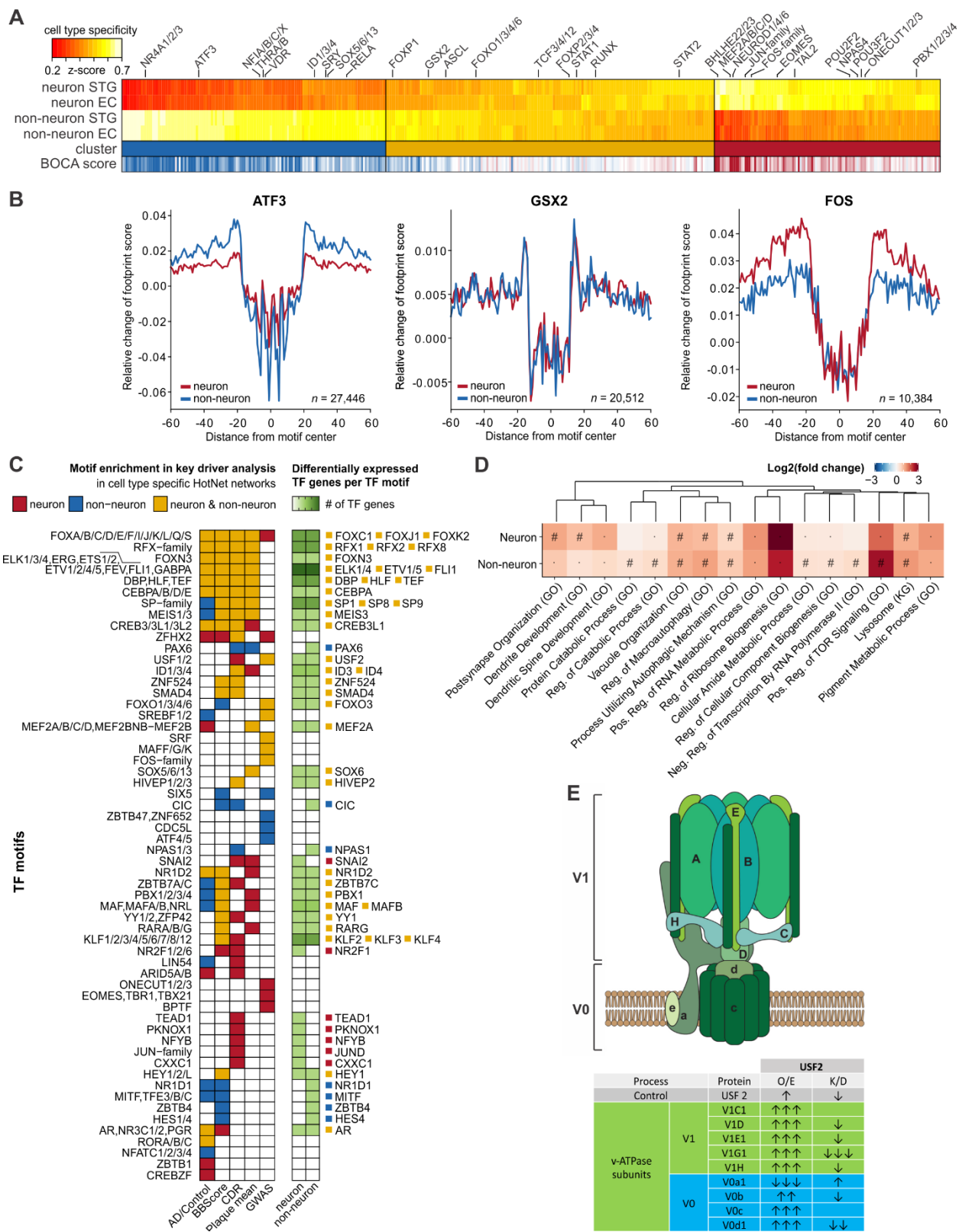


Fig. 6. Mapping of transcription factors to cell types and AD-related phenotypes. (A) Hierarchical clustering of transcription factor motifs based on a cell type specificity score across neuronal and non-neuronal promoter OCRs. High specificity scores indicate high specificity to the given cell type. The concordance with Brain Open Chromatin Atlas is indicated as “BOCA score“ ranging from blue (strong non-neuronal signal) to red (strong neuronal signal). Select motifs are further described in Data S14. (B) Aggregated footprint scores across all potential transcription factor binding sites for three motifs that represent the three major clusters of TFs according to cell type specificity. (C) Left: Overview of TF motifs whose neuronal and/or non-neuronal TFRNs show enrichment in AD genes. Right: subsequent prioritization of specific TF genes. The TF genes highlighted here meet the criteria of (1) significant correlation of their RNA-seq with TF regulatory targets and (2) significantly different TF gene expression between AD cases and controls. “TF”: transcription factor. (D) Heatmap showing top ten pathways for neuronal and non-neuronal genes regulated by USF2 transcription factor with general gene sets. “#”: FDR < 0.05 “ · ”: nominal *P*-value < 0.05. (E) Top: Schematic of the V0 and V1 subunits of the v-ATPase complex responsible for maintaining lysosomal pH. Bottom: Summary of western blot data in SH-SY5Y human neuroblastoma cells transfected with siUSF2 or stable overexpression of USF2. Arrow direction indicates protein level increase or decrease while the number of arrows represents statistical significance by Student’s two-tailed unpaired t-test, i.e. one arrow: *P*-value<0.05; two arrows: *P*-value<0.005; three arrows: *P*-value<0.0005.

825

830

835

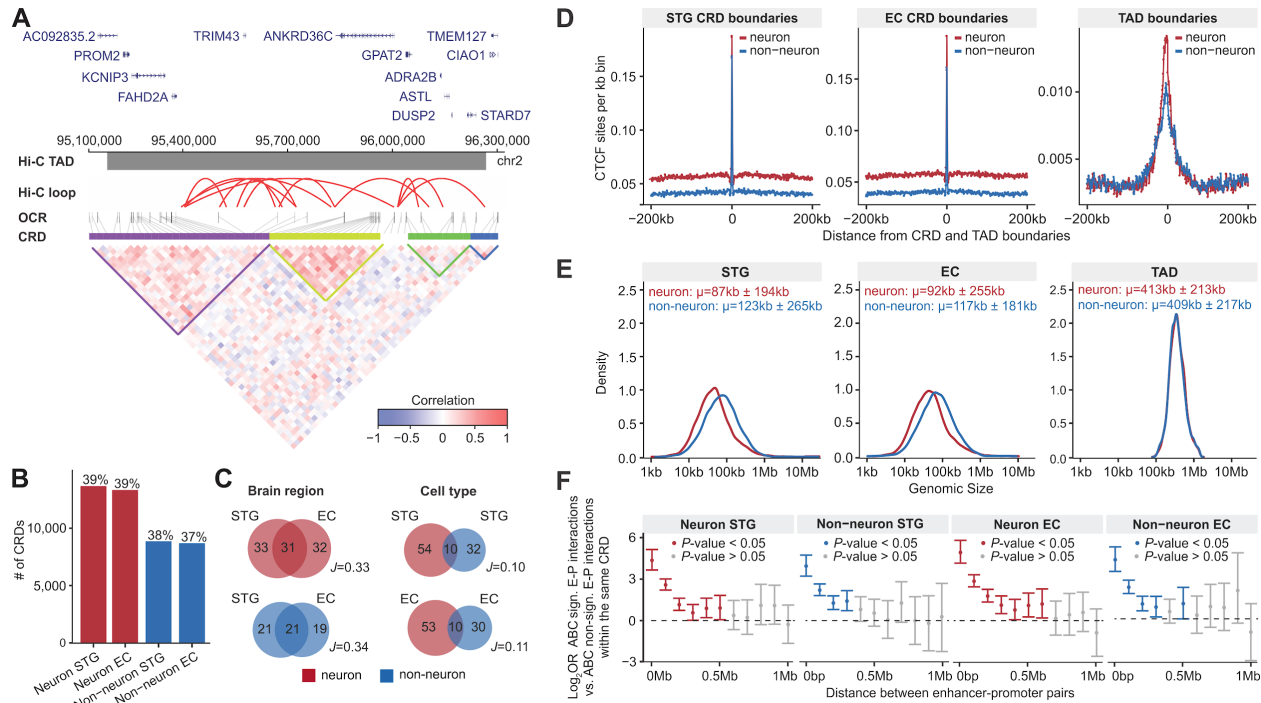


Fig. 7. Definition of neuronal and non-neuronal cis-regulatory domains. (A) An example of cis-regulatory domains in STG neurons identified by estimating the interindividual correlation structure between nearby OCRs. From top to bottom: genes that are present in the locus; a single Hi-C TAD (dark gray horizontal bar) and Hi-C loops (red arcs); OCRs (gray vertical bars); CRDs, where each colorbar represents a different regulatory domain; correlation matrix of OCRs including colored triangles that highlight CRDs. (B) Number of CRDs stratified by cell type and brain region. The percentage is the fraction of OCRs that was within CRDs to the total number of OCRs. (C) Venn diagrams by cell type and brain region summarizing the overlap of CRDs. “J” indicates the Jaccard index between the respective CRDs. (D) CTCF density at and around CRD and TAD boundaries. (E) Size distribution of cell type and region specific CRDs and cell type specific TADs. (F) Associations of enhancer-promoter regions (ABC method) that are within the same CRDs. The odds ratios with their 95% confidence intervals are plotted as a function of the distance between enhancer and gene TSSs. P-values are estimated based on a two-sided Fisher’s exact test. CRD: cis-regulatory domain; TAD: topologically associating domain; kb: kilobase; and Mb: megabase.

840

845

850

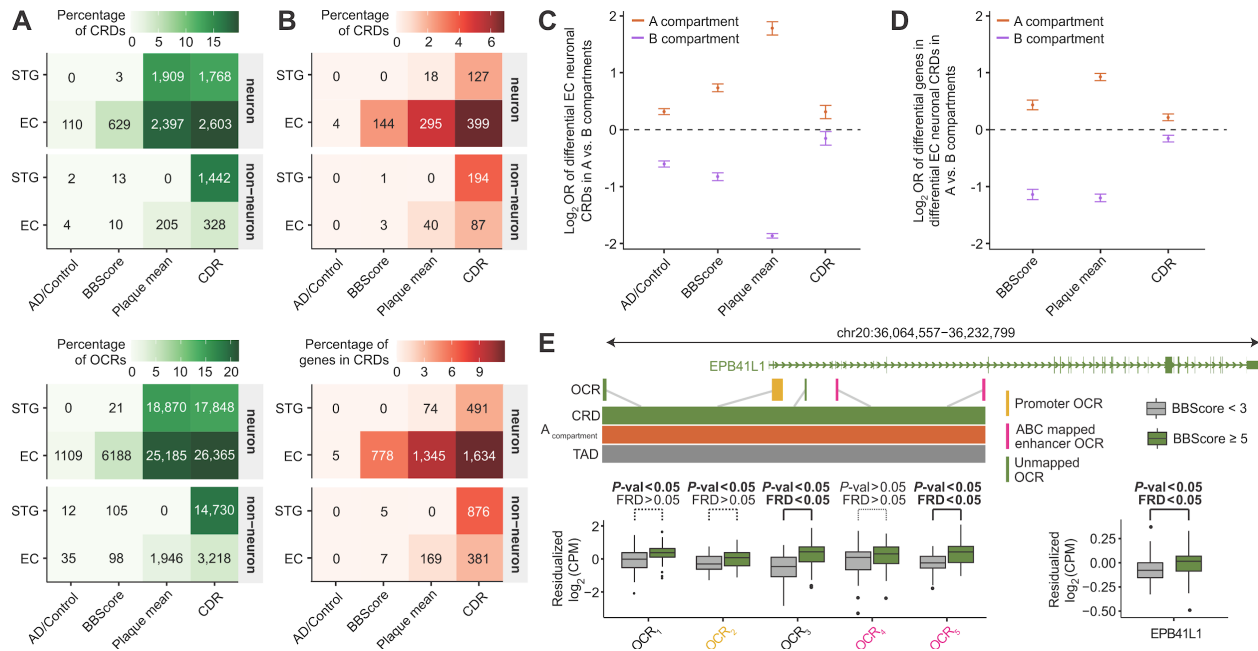


Fig. 8. Disease-associated perturbations in CRDs. (A) Counts of CRDs and OCRs within CRDs that are associated with AD-related phenotypes stratified by cell type and brain regions. (B) Counts of CRDs and genes mapped to CRDs using the ABC model, that showed association with AD-related phenotypes in both epigenomic and transcriptomic levels using differential CRD test, stratified by brain region and cell type. (C) Odds ratios of disease associated EC neuronal CRDs to be in A compartments vs. B compartments, measured for each AD related phenotype. (D) Odds ratios of disease associated genes in EC neuronal CRDs to be in A compartments vs. B compartments, measured for each AD related phenotype. (E) Examples of changes in OCR expression and gene expression near the *EPB41L1* gene in BBScore associated CRD in EC neurons. Promoter and enhancer annotations of OCRs were obtained from ChIPSeeker and ABC results.

855

860