

# SARS-CoV2, a threat to marine mammals? A study from Italian seawaters

Tania Audino\*, Carla Grattarola\*, Cinzia Centelleghè<sup>o</sup>, Simone Peletto\*, Federica Giorda\*, Caterina Lucia Florio\*, Maria Caramelli\*, Maria Elena Bozzetta\*, Sandro Mazzariol<sup>o</sup>, Giovanni Di Guardo<sup>§</sup>, Giancarlo Lauriano<sup>+</sup>, Cristina Casalone\*

\* Istituto Zooprofilattico Sperimentale del Piemonte Liguria e Valle d'Aosta

<sup>+</sup> Italian National Institute for Environmental Protection and Research (ISPRA), via Vitaliano Brancati 60, 00144, Rome, Italy.

<sup>o</sup> Department of Comparative Biomedicine and Food Science, University of Padua, Padua, Italy.

<sup>§</sup> Faculty of Veterinary Medicine, University of Teramo, Italy.

**Corresponding author:** Cristina Casalone & Giancarlo Lauriano

**Email:** [cristina.casalone@izsto.it](mailto:cristina.casalone@izsto.it), [giancarlo.lauriano@isprambiente.it](mailto:giancarlo.lauriano@isprambiente.it)

**Author Contributions:** C.C., G.L., C.G, S.M and A.T. conceived of the study; S.P. performed the bioinformatics and genetic analysis; G.L. and C.G. performed the geo-mapping and characterized wastewater treatment plants; C.C., C.L.F. and C.Ce. performed immunohistochemical analysis. All authors wrote and edited the manuscript.

**Competing Interest Statement:** the authors declare that they have no known competing financial interests or personal relationships that could have appeared to influence the work reported in this paper.

**Keywords:** SARS-CoV-2; ACE2; COVID 19; Marine mammals; Italian Wastewater management-species

## Abstract

Zoonotically transmitted coronaviruses were responsible for three disease outbreaks since 2002, with the “Severe Acute Respiratory Syndrome Coronavirus-2” (SARS-CoV-2) causing the dramatic “Coronavirus Disease-2019” (CoViD-19) pandemic, which affected public health, economy, and society on a global scale. The impacts of the SARS-CoV-2 pandemic permeate into our environment and wildlife as well; in particular, concern has been raised about the viral occurrence and persistence in aquatic and marine ecosystems. The discharge of untreated wastewaters carrying infectious SARS-

CoV-2 into natural water systems that are home of sea mammals may have dramatic consequences on vulnerable species.

The efficient transmission of coronaviruses raise questions regarding the contributions of virus-receptors interactions. The main receptor of SARS-CoV-2 is Angiotensin Converting Enzyme-2 (ACE-2), serving as a functional receptor for the viral spike (S) protein. This study was aimed, through the comparative analysis of the ACE-2 receptor with the human one, at assessing the susceptibility to SARS-CoV-2 of the different species of marine mammals living in Italian waters. We also determined, by means of immunohistochemistry, ACE-2 receptor localization in the lung tissue from different cetacean species, in order to provide a preliminary characterization of ACE-2 expression in the marine mammals' respiratory tract.

Furthermore, in order to evaluate if and how wastewater management in Italy may lead to susceptible marine mammal populations being exposed to the virus, geo-mapping data of wastewater plants, associated to the identification of specific stretches of coast more exposed to extreme weather events, overlapped to marine mammal population data, were carried out. Results showed the SARS-CoV-2 exposure for marine mammals inhabiting Italian coastal waters. Thus, we highlight the potential hazard of reverse zoonotic transmission of SARS-CoV-2 infection, along with its impact on marine mammals regularly inhabiting the Mediterranean Sea, whilst also stressing the need of appropriate action to prevent further damage to specific vulnerable populations.

### **Significance Statement**

Growing concern exists that SARS-CoV-2, as already ascertained for its SARS-CoV and MERS-CoV “predecessors”, originated from an animal “reservoir”, performing thereafter its spillover into mankind, that was possibly anticipated by viral “passage” into a secondary animal host. Within the dramatic SARS-CoV-2 pandemic context, hitherto characterized by over 110 million cases and almost 2,500,000 deaths on a global scale, several domestic and wild animal species have been reported as susceptible to natural and/or experimental SARS-CoV-2 infection. In this respect, while

some marine mammal species are deemed as potentially susceptible to SARS-CoV-2 infection on the basis of the sequence homology of their ACE-2 viral receptor with the human one, this study addresses such a critical issue also in stranded sea mammal specimens.

## **Introduction**

On March 11, 2020, the World Health Organisation (WHO) officially declared the “novel CoronaVirus Disease” (CoViD-19) outbreak, caused by the “Severe Acute Respiratory Syndrome Coronavirus-2” (SARS-CoV-2), a global pandemic. In Europe, Italy was one of the Countries where the earliest cases of CoViD-19 were reported, representing at the same time the third European Nation most infected at present, with 2,466,813 cases, more than 90,000 of which fatal, at the date of January 28, 2021 (<https://www.ecdc.europa.eu/en/geographical-distribution-2019-ncov-cases>). Several works report confirmed the presence of SARS-CoV-2 RNA in stools and urine from infected patients (La Rosa et al 2020; Sun et al 2020; Xiao et al 2020) with some reports confirm the presence of both SARS-CoV and SARS-CoV-2 genome fragments in wastewater, sewage sludge, and river waters around the world (Wang et al 2005, Tran et al 2020, Collivignarelli et al 2020). SARS-CoV-2 can remain active for up to 25 days at 5 °C in water sources, based on *in vitro* studies (Shutler et al., 2020), and can survive in water, in a wide range of pH values (3-10) at room temperature (Chin et al 2020). Contaminated water sources can deliver the equivalent of >100 SARS-CoV-2 genome copies with 100 mL or less water in Countries with a high prevalence of SARS-CoV-2 infection (Shutler et al., 2020).

These data increase the possibility that wastewater, besides representing a potential, non-invasive early warning tool for monitoring the status and trends of SARS-CoV-2 infection (Wurtzer et al 2020; Randazzo et al 2020), may also provide a significant spreading vehicle for this coronavirus (La Rosa et al., 2020). Domestic wastewaters are managed through different treatments: i) primary (sedimentation), ii) secondary (biological), that combines aeration tanks with secondary sedimentation to retain the activated sludge, iii) tertiary (more stringent), that includes various

processes used to further reduce pathogen concentrating and ensure virus-free effluent, e.g. sand filtration and disinfection. The available data, referring to Spain, Italy (Rimoldi et al 2020; La Rosa et al 2020), France (Wurtzer et al 2020) and Ecuador (Guerrero-Latorre et al 2020), suggest that non treated, primary treated and, in some cases, also secondary treated wastewater effluents may represent a risk factor for SARS-CoV-2 transmission (Randazzo et al 2020, Rimoldi et al 2020). These investigations emphasize the limitations of the conventional wastewater treatment processes in reducing SARS-CoV-2 RNA with the possible spread in the aquatic environment including marine waters. Two studies, in fact, have documented the presence of SARS-CoV-2 RNA in an Italian and a Japanese river, without viral isolation (Rimoldi et al 2020; Haramoto et al 2020). Furthermore, it should be noted that extreme weather events (e.g. heavy rainfalls, storms, and floods) associated to global warming, can play a relevant role. Specifically, the rapid warming reported in the last decades in the Mediterranean Sea basin (Gallus et al, 2018), may occasionally flush untreated or not efficiently treated sewage into rivers and coastal waters when treatment plants reach their capacity and start to fail (Funari et al 2012). These events could represent a possible risk for susceptible species living close to the shore, as marine mammals.

These aquatic species, in fact, were recently added to a long list of animal species susceptible to natural and/or experimental SARS-CoV-2 infection (Di Guardo, 2020; Mathavarajah et al, 2020). In details, experimental infections and binding-affinity assays between the “receptor binding domain” (RBD) of the SARS-CoV-2 spike (S) protein and its receptor, angiotensin-converting enzyme-2 (ACE-2), demonstrate that SARS-CoV-2 has a wide host range due to the high similarity of this protein among difference species (Cao et al, 2020; Zappulli et al., 2021). Among those animals species showing a higher similarities with the human ACE-2 RBDs (Luan et al., 2020; Nabi and Khan, 2020, Mathavarajah et al 2020), marine mammals seems to have a higher binding efficiency (Mathavarajah et al 2020) and, for these reasons, an infection can be caused by low viral concentration, as those likely present in wastewater (Mordecai et al 2020).

The present study is aimed to evaluate the susceptibility of marine mammals stranded along the Italian coastlines to SARS-CoV-2 comparing the amino acid sequences of their ACE-2 receptor and assessing the possible menaces to their conservation related to the anthropogenic transmission of SARS-CoV-2. The presence of the ACE-2 receptor molecule in lung tissue of stranded sea mammals by means of immunohistochemistry (IHC) considering the abundance and distribution patterns of the viral receptor, considering that more receptor availability could enhance viral entry into cells; alternatively, ACE-2 may play a protective role against lung (and cardio-vascular) injury through its enzymatic activity (Albini et al., 2020).

## Results

### 1. *Susceptibility of the marine mammal species examined to SARS-CoV-2*

Our analyses have predicted which species of Mediterranean Sea mammals living in Italian waters are most susceptible to SARS-CoV-2 infection by assessing the primary sequence homology level of their ACE-2 receptor with the human one.

At present, in the whole Mediterranean Sea, 12 marine mammal species are listed as regular: 11 Cetaceans (*Balaenoptera physalus*, *Physeter macrocephalus*, *Ziphius cavirostris*, *Globicephala melas*, *Orcinus orca*, *Grampus griseus*, *Tursiops truncatus*, *Stenella coeruleoalba*, *Delphinus delphis*, *Delphinus capensis*, *Steno bredanensis*) and 1 Pinniped (*Monachus monachus*). Moreover, the presence of other three species is considered as irregular (*Balaenoptera acutorostrata*, *Pseudorca crassidens*, *Megaptera novaengliae*) (Table 1).

Out of the 15 aforementioned species, the ACE-2 amino acid sequence was available on the NCBI database for 8 of them (*B. physalus*, *P. macrocephalus*, *Z. cavirostris*, *G. melas*, *O. orca*, *T. truncatus*, *B. acutorostrata*, *M. novaengliae*).

Among the species lacking ACE-2 sequence-related data, no informations were publicly available before our study on *S. coeruleoalba* (a species commonly occurring around the world in temperate waters), for which these data were obtained experimentally.

Based on 25 amino acid residues selected, the sequences collected from the 9 concerned species, as compared with the corresponding ones from the human ACE-2 receptor, are shown in Table 2. Based upon the primary structure homology level of their ACE-2 molecule with the human one, the majority of *Cetacea* species analysed (7/9 species) were predicted to be highly susceptible to SARS-CoV-2 infection (*B. physalus*; *G. melas*; *T. truncatus*; *O. orca*; *S. coeruleoalba*; *B. acutorostrata*; *M. novaengliae*), with the remaining two species (*P. macrocephalus*; *Z. cavirostris*) being predicted as “medium susceptibility” species (Table 3).

More in detail, in all examined marine mammal genomes the binding residues D30 and M82 of ACE 2 were both mutated; however, these two mutations did not apparently exert a prominent destabilizing effect on the affinity of SARS-CoV-2 S protein’s RBD to ACE-2 (Damas et al, 2020), not affecting the predicted susceptibility of the concerned cetacean species to SARS-CoV-2. Instead, the L79 and M82 mutations detected in (*P. macrocephalus* as well as in *Z. cavirostris*) impacted the binding affinity of the virus to ACE-2, thereby decreasing the predicted susceptibility of the latter two species to SARS-CoV-2 infection (Table 3).

The IUCN status for the investigated species is available at a different geographic range. The killer whale (*O.orca*) from the Gibraltar Strait subpopulation is the only Critically Endangered species in the Mediterranean Sea.

Fin whale (*B.physalus*), common bottlenose (*T.truncatus*) and striped dolphins (*S.coeruleoalba*) are all Vulnerable at the Mediterranean scale but display a different assessment at the Italian range (Near threatened and Least Concern, respectively).

Pilot whale (*G.melas*) and Cuvier's beaked whale (*Z.cavirostris*) are Data Deficient at both scales, with no differences between Mediterranean and Italian ranges being reported for the status of the sperm whale (Endangered).

Finally, both minke (*B.acutorostrata*) and humpback (*M.novaengliae*) whales have not been assessed for the Mediterranean Sea, given their irregular occurrence in the Basin.

The results of the comparison between IUCN conservation status and SARS-CoV-2 susceptibility for the 9 herein investigated cetacean species are summarized in Table 3.

## **2. *Wastewater treatment plants conditions, hydrogeological vulnerability, and risk to marine mammals species in Italian seas***

The identification of wastewater treatment plants and the assessment of the municipality contribution in terms of untreated or not sufficient treated wastewater discharge into natural water systems can help to predict the potential hotspots for a spillover event.

In Italy, wastewaters are treated by primary, secondary, and more stringent treatment plants (WWTPs).

Considering the potential risk of plants located in big municipalities (agglomerations  $\geq 150\ 000$  p.e.), we have found that the big municipalities of the northern and central Regions of our Country rely mostly on more stringent treatment plants, with few exceptions (Fig 1 SM), represented in particular by the city of Trieste, in North-Eastern Italy with a predominance of primary treatment plants, as well as by the city of Pescara, in Central Italy, with a majority of secondary treatment plants.

By contrast, the big municipalities in Southern Italy have a large number of secondary treatment plants and, in some cities (Catania, Cosenza), a rate of wastewaters not collected in sewerage systems

is reported, along with a rate not submitted to treatments or characterized by lack of information (Catania).

Considering the potential release of SARS-CoV-2 (as well as of other oro-fecally transmitted, viral and non-viral agents) into the effluents of primary and secondary plants upstream of relevant rivers, we identified the North Adriatic Sea and the Ligurian Sea as basins at risk for potential introduction of effluents into the Po and Arno rivers. Moreover, considering the location of some plants with low sanitization guarantees close to the shores of central and southern Italy, we recognized an additional risk factor for the Central Adriatic Sea, the Northern and Southern Ionian Sea, and the South-Eastern Tyrrhenian Sea.

Taking into account the urban wastewater treatment plants from agglomerations  $\geq 2000$  p.e (UWWTD) and, focusing in particular on their location along the entire shoreline, we identified that some coastal areas, with a prevalence of primary and secondary plants, appear at high risk, as well as the water basins on which they overlook (Ligurian Sea, Central Adriatic Sea, South-Eastern Tyrrhenian Sea, Northern and Southern Ionian Sea and Sicilian Channel) (Fig. 2 SM).

More in detail, focusing on plants with more stringent treatments, as disinfection (chlorination, UV, ozonisation), sand filtration, micro filtration (e.g. membrane filtration), or other types of unspecified additional treatment, we considered the potential risk of UWWTD not applying the disinfection, along with their location close to the shores, and we recognized at risk the basins of the Northern Adriatic Sea, the Central Adriatic Sea, and the Central Tyrrhenian Sea (Fig. 3 SM).

Moreover, considering the coastal areas more exposed to landslides and flood hazard, we identified the coastline of the Ligurian Sea and of the Central and South-Eastern Tyrrhenian Sea as sites potentially at risk for occasional over-flooding of sewage treatment plants and release of wastewater not fully treated, which may transfer, at their turn, microbial pathogens from distant sources to coastal waters. (FIG.4 SM)



Overall, we identified some high-risk areas for a potential SARS-CoV-2 spillover to sea mammals, as summarized in Figure 1, which correspond to (clockwise) the Northern Adriatic and Central Adriatic Seas, the Northern and Southern Ionian Sea, the Strait of Sicily, and the whole Tyrrhenian and the Ligurian Seas.

The risk areas indicated by the study host several cetacean species, as shown in Fig. 1. The map has been created considering the data available in the IV Italian Report to the Habitat Directive; given the irregular status of both minke and humpback whales, coupled with the occurrence of pilot and killer whales, these species are not reported in the map.

From the map is clear the overlap between the inferred risky areas with the main distribution of the species; noteworthy, the concerned map should be viewed as a synthesis and a generalization of the available data on cetaceans' distribution in the seas around the Italian peninsula. In this respect, more detailed data are available, even on a small-scale base and these would increase the species range displayed in Figure 1. In such a context, a suitable area for the fin whale should be much more extended on a seasonal basis to all the Ligurian Sea, representing a well know summer fishing ground for this species (Panigada et al., 2017)

The distribution of the *P. macrocephalus* overlaps the North Tyrrhenian and the Ligurian Seas, *B. physalus* distribution overlaps the North Tyrrhenian Sea, the Ligurian Sea and the Strait of Sicily, and *T. truncatus* distribution overlaps the Ligurian sea, the whole Tyrrhenian Sea area, the Strait of Sicily, the North and Central Adriatic Sea.

*S. coeruleoalba* distribution overlaps the Ligurian sea, the whole Tyrrhenian Sea area, the Strait of Sicily and the Ionian Sea.

*Z. cavirostris* overlaps the North Tyrrhenian Sea.

*G. griseus* distribution overlaps the Ligurian Sea, the Strait of Sicily and the Ionian Sea.

### 3. *Immunohistochemical (IHC) characterization and pulmonary location of ACE-2*

Because ACE2 protein shares its role as cellular receptor of SARS-CoV-2, several researches have been focusing on ACE2 expression in various organs, especially in respiratory system which can be the entrance of SARS-CoV-2.

ACE-2 receptor was already been described and IHC characterized in numerous mammalian species; unlike terrestrial mammal, the lungs of cetaceans undergo anatomical and physiological adaptations that facilitate extended breath-holding during dives. For these reasons and to investigate the presence and location of ACE-2 receptor in marine mammals, lung tissue of 7 cetacean species were IHC tested (Table 6).

All the examined species showed lung tissue immunolabelling for ACE-2 antibody. In particular, the most remarkable finding of IHC investigations was the detection of ACE-2 expression on the surface of alveolar (type I pneumocytes) and bronchiolar epithelial cells. Furthermore, ACE-2-specific immunoreactivity (IR) was observed in endoalveolar macrophages as well as in the endothelium and in smooth muscle cells of pulmonary vessels (Figs 2-3).

The results of this study should be considered as a preliminary starting point for further studies.

## **Discussion**

In general, the conservation status of the Mediterranean cetaceans is under pressure from anthropogenic disturbance and the populations of the species highlighted in the study are greatly impacted by several sources of human activities. Incidental mortality in fishing operations, collisions with ship, ingestion of debris, seismic surveys, naval exercises, chemical pollution, and viral infections are just some of the threats faced by the cetaceans inhabiting the Mediterranean Sea Basin (Fossi et al., 2005; Cozar et al., 2015; Panigada et al., 2006 Di Guardo & Mazzariol, 2013). Most of

the aforementioned factors can have a direct effect on the individuals, while indirect effects on the medium long-term period are represented by a general habitat degradation.

Marine mammals may be exposed to environmental stressors such as chemical pollutants, harmful algal biotoxins and emerging or resurging pathogens; this phenomenon may be related to complex factors such as climate change, toxins, and immunosuppression, with coastal marine mammals particularly at risk since many inhabit an environment more affected by human activity (Bossart, 2006). Besides threats of anthropic origin menacing their conservation, infectious diseases represent a global issues, in particular morbilliviruses (Van Bresse et al., 2014; Duignan et al. 2014). These RNA viruses, currently endemic in the Mediterranean, showed in the recent years an apparently increased tendency to cross species infection causing epidemic events in different species through spill-over events. Phylogenetic analyses support the idea of a common ancestor of morbillivirus affecting aquatic animals, namely cetacean morbillivirus (CeMV) with those reported in terrestrial ones and recent reports of this virus in more terrestrial animals (i.e. otters and seals) suggest a travel back to land of this virus (Di Guardo and Mazzariol 2019)

Impact of human on wildlife during a global pandemic may include the potential transmission of novel virus to susceptible animals (Mathavarajah et al. 2020). In our study we identified species of marine mammals living along italian coastline and we evaluate the conservation of the SARS-CoV-2 viral ACE-2 receptor across species.

It has been shown how ACE-2 variability explains why certain species are susceptible to SARS-CoV-2, while others are not (Mathavarajah and Delleire, 2020); ACE-2, an extracellular peptidase originally characterized as SARS-CoV receptor, has been subsequently identified as the main SARS-CoV-2 receptor. The S protein binding region is located in the ACE-2 catalytic site (Li et al, 2005), with some amino acid residues at a particular position in the human ACE-2 sequence playing a crucial role in virus-host cell interaction (Li et al, 2020, Wan et al, 2020); these binding residues

determine the degree of susceptibility, thus likely representing the main drivers for cross-species transmission (Wan et al, 2020).

Our analyses revealed that a group of closely related cetaceans (*O orca*, *G melas*, *T truncatus* and *S coeruleoalba*) is predicted to be highly susceptible to the virus, hence at potential risk of acquiring SARS-CoV-2 infection whenever exposed to the viral pathogen. One of the main aim of this study was to evaluate ACE-2 abundance and distribution, by means of IHC, in cetacean lungs, thereby supporting our parallel and comparative investigations on ACE-2 amino acid sequences, aimed at assessing the susceptibility of marine mammals to SARS-CoV-2 infection; in this respect, IHC analyses could identify a number of potential routes of infection for SARS-CoV-2, along with the viral spread and replication sites throughout the body. Given the IR patterns found, the expression of ACE-2 in macrophages and their role in antiviral defense mechanisms (as in the case of SARS-CoV-2 infection) should be emphasized; Abassi et al. have hypothesized that, while lung macrophages play an important role in antiviral defense mechanisms, they could also serve as a “Trojan horse” for SARS-CoV-2, thus enabling viral anchoring within the pulmonary parenchyma. A variable expression of ACE-2 on macrophages among individuals might also govern the severity of SARS-CoV-2 infection (Abassi et al, 2020), although additional studies are required. Our findings suggest that ACE-2 expression can vary between different lung regions and between individuals (in particular, if they belong to different species).

Reports of pathogens of terrestrial origins in marine mammals has already been observed, as the case of *Toxoplasma gondii*, *Salmonella typhimurium*, *Listeria monocytogenes* and often an exposure to untreated wastewater was deemed to be the possible source (Grattarola et al, 2019, Grattarola et al, 2016).

As other fecal pathogens, SARS-CoV-2 is through the sewage system, thereby gaining access into wastewater treatment plants, whenever existing, and/or, more in general, the aquatic environment.

In this respect, Italy is characterized by heterogeneous geographic systems, with sea surface waters surrounding the Italian peninsula. Spaces and distances granted to the hydrographic network by the mountains and by the sea are mostly very modest, making the territory particularly exposed and vulnerable to alluvial events, known as sudden floods or flash floods, often triggered by short and intense weather phenomena ([https://www.isprambiente.gov.it/files2018/pubblicazioni/rapporti/rapporto-dissesto\\_idrogeologico/Rapporto\\_Dissesto\\_Idrogeologico\\_ISPRA\\_287\\_2018\\_Web.pdf](https://www.isprambiente.gov.it/files2018/pubblicazioni/rapporti/rapporto-dissesto_idrogeologico/Rapporto_Dissesto_Idrogeologico_ISPRA_287_2018_Web.pdf)). Compared to the unpredictability of flood events, there is still a sort of repetition in the occurrence of the events themselves, and some portions of our National territory, due to the morphological characteristics and use of soil, are configured as hydrological hazard-prone areas, including coastal areas.

The present study identified some high-risk areas where insufficient wastewater treatment may occur in the vicinity of marine mammals, putting them at risk for infection by a fecally transmitted zoonotic pathogen like SARS-CoV-2 when they swim and feed. It is clear that several data and information are still missing as the survival time into the marine environment and the effects of marine currents and dilution factors which can lower the possibility of infection. Furthermore it should be noted that SARS-CoV-2 has been found in wastewater, there is no data on its actual possibility of survival and dispersion in seawater.

Analyzing wastewater management practices in Italy, we identified that some wastewater treatment plants in the vicinity of marine mammals utilizing tertiary treatment, which rules out the possibility of virus exposure in these areas. However there were locations (the coastline of the Ligurian Sea and of the Central and South-East Tyrrhenian Sea) that bordered marine mammals population at risk for occasionally over-flooding of sewage treatment plants and release of wastewater not fully treated. The number of areas identified at risk could be underestimated, as we considered areas characterized by inadequate treatments, while in some cases other coexisting conditions, like problematic sewage overflow or pipe exfiltration, represent a risk. Overall, considering all these factors we identified some high -risk areas for a potential virus spillover (Figure 1), which correspond to North Adriatic

Sea, Ligurian Sea, Central Adriatic Sea, North and South Ionian Sea, Central Tyrrhenian Sea, South-East Tyrrhenian Sea, Sicilian Channel.

The impact of a possible viral spillover could have on coastal marine mammal communities remains to be determined. Our study, in fact, confirm a high susceptibility of sea mammals to SARS-CoV-2 infection based on the receptor homology, as reported in previous studies (Mathavarajah et al.,2020). The effects of SARS-CoV-2 on marine mammals are currently unknown, although coronavirus infections have been reported in marine mammals prior to the CoViD-19 pandemic (De Caro et al., 2020,). Infections with other coronaviruses are indeed recognized as a cause of liver and lung disease (Mihindikulasuriya et al., 2008), while gammacoronaviruses were retrieved from fecal samples of three Indo-Pacific bottlenose dolphins (*Tursiops aduncus*) (Woo et al., 2014) (Zappulli et al., 2020). Since many cetacean species are social, such as *Tursiops truncatus* (bottlenose dolphin) and *Stenella coeruleoalba* (striped dolphin), their high susceptibility to SARS-CoV-2 suggests that their populations could be especially vulnerable to intra-species transmission of this novel coronavirus. Among the species with a high susceptibility to SARS-CoV-2 infection, the common bottlenose dolphin could result the most impacted cetacean, given its distribution along the continental shelf and along the entire Italian coastline. Moreover, the behaviour and the size of the pods of the species could play an important role in the spread of the virus among the specimens in the pod; both striped and common bottlenose dolphins are gregarious species and this ecological feature may facilitate the SARS-CoV-2 spread among the animals through their close interactions.

Along all the Italian coasts, the most common species is *T. truncatus* (Reeves & Notarbartolo, 2006); the species is the only regular for the Northern Adriatic Sea (Bearzi et al., 2004) and then distributed in the Ligurian Sea, the whole Tyrrhenian Sea (Lauriano et al., 2015; Gnone et al., 2011), the Sicily Strait, and the Ionian Sea. Since *T. truncatus* is an “inshore” species, the risk of acquiring SARS-CoV-2 infection, which like many others is characterized by a “land-to-sea” transmission epidemiological pathway, appears to be greater than for “offshore” species. This would candidate

bottlenose dolphins among the most reliable “sentinels” for an “early” detection of SARS-CoV-2 infection in marine mammals.

*S. coeruleoalba*, the most abundant species in the Mediterranean Sea (Aguilar, 2000), displays an offshore distribution (Notarbartolo di Sciara, 2016) and is then regular in the Southern Adriatic Sea, Ionian Sea, including the Sicily Strait, all the Tyrrhenian Sea, and the Ligurian Sea along with *B. physalus* (Panigada et al., 2017). The fin whale distribution ranges from north to south feeding grounds in summer and winter, respectively, as it has been described by satellite telemetry (Panigada et al., 2017) and boat-based observations (Canese et al., 2006).

Even if a decline in the population of *D. delphis*, has been reported for the Mediterranean Sea (Bearzi et al., 2003), the species is still regularly observed in the Tyrrhenian Sea.

Infection susceptibility can hinder the conservation status of the species; indeed, the fin whale is listed as Vulnerable in the IUCN (Mediterranean and Italian range), since a population abundance decline has been inferred in the last years. The decline is a major concern for the Mediterranean sub population (Panigada et al., 2017); hence epidemic disease, as already documented for morbilliviral infection (Mazzariol et al., 2016), would represent a plague. A worst situation would be expected for the Critically Endangered killer whale, given the extremely low number of individuals left in the subpopulation confined in the Gibraltar Strait (Esteban and Foote, 2019). Even if the analysis for the sperm whale revealed a medium susceptibility, the low number of individuals within the population and the Endangered IUCN Mediterranean and Italian status, foresee a high-risk degree for such species.

## **Conclusion and future directions**

By highlighting the vulnerability of marine mammals to SARS-CoV-2 infection, the scientific community hopes to shape policy decisions regarding wastewater management around the world, in order to help protect at-risk marine mammal species that may be exposed to this coronavirus.

Regarding Italian situation, additional measures of treating the wastewater in those areas where they are insufficient or inadequate (Ligurian Sea, Central Adriatic Sea, South-Eastern Tyrrhenian Sea, Northern and Southern Ionian Sea and Sicilian Channel) would help protect the species and reduce the probability of them being exposed to SARS-CoV-2.

In summary, there is an urgent need to increase SARS-CoV-2 infection's surveillance in free-ranging cetaceans and also to screen stranded specimens for such infection, particularly in cases of mass stranding or unusual behaviour.

Further studies are needed in cetaceans to provide a more in-depth insight into SARS-CoV-2 susceptibility, also in relation to the escalating levels of anthropogenic stressors to which they are exposed.

Considering the economic costs of the present pandemic, greater efforts to improve wastewater treatment, specifically with the removal or inactivation of viral contaminants on a global scale, should be regarded as a priority.

This is made even more urgent by the new SARS-CoV-2 variants which have emerged in the United Kingdom as well as in Brazil and South Africa, with the S protein's mutations carried by them leading to greater viral transmission/transmissibility rates and, possibly, also to increased pathogenicity.

These variants, which are rapidly spreading around the world, have also been isolated and sequenced on the Italian territory; in this respect, viral genome sequencing from wastewater can detect new SARS-CoV-2 variants before they are detected in infected patients. Consequently, analysing sewage and run-off waters can help detect and track the spread of new SARS-CoV-2 variants posing a risk to human health and, potentially, also to the health and conservation status of wild animal species and populations, including sea mammals.

## **Materials and Methods**



## 1. ***Evaluation of the susceptibility to SARS-CoV-2 of the different species of marine mammals in Mediterranean Sea through comparative ACE-2 receptor analysis***

### **ACE-2 protein sequences in marine mammals' analysis**

We analysed the ACE-2 receptor of the marine mammal species residing in the Mediterranean by means of available genomes on NCBI database. A list of ACE-2 orthologs from *Cetacea* was downloaded from the NCBI website (<https://www.ncbi.nlm.nih.gov/gene/59272/ortholog/?scope=7742>). ACE-2 coding DNA sequences were extracted from available or recently sequenced genome assemblies, with the help of genome alignment tool (BLAST) and the translated protein sequences were checked against human or within family ACE-2 orthologs.

### **Species distribution along the Italian coastline**

Several sources on cetacean species occurrence and distribution are available for the Mediterranean Sea and for the seas around the Italian peninsula; nonetheless, keeping in mind the aims of this work, we decided to refer to the official updated synthesis available in the IV Reporting of the Habitat Directive (Lauriano, 2019) (Table 1).

Species distribution and range maps were created using a standard 10x10 km ETRS89 grid (projection ETRS LAEA 5210) and a specifically designed “range tool” (<http://discomap.eea.europa.eu/App/RangeTool/>).

### **Assessment of species susceptibility to SARS-CoV-2 infection**

Of the species listed in Table 1, we examined marine mammal species that encompassed all publicly available reference and scaffold genomes.

For species lacking genome sequences, ACE-2 primers were designed by identifying conserved regions from a multiple alignment of cetacean ACE-2 mRNA sequences (Table 4).

Moreover, for species in which the genome sequence was lacking, we decided to determine experimentally the ACE-2 receptor sequence, based on species distribution and samples' availability. Since striped dolphin represents the most common cetacean in the Mediterranean Sea and considering the samples availability in the "Centro di Referenza Nazionale per le Indagini Diagnostiche sui Mammiferi Marini Spiaggiati" (C.Re.Di.Ma.) tissue bank, we proceeded with the analyses on this species.

### **Molecular analyses (PCR and Sequencing)**

Striped dolphin brain and lung samples were submitted to total RNA extraction using the TissueLyser II (QI-AGEN) and highspeed shaking in Eppendorf tubes with stainless steel beads (5 mm diameter, QIAGEN). Homogenates were centrifuged at 14,000 rpm for 3 min to remove tissue debris. Supernatants were used for RNA extraction by AllPrep DNA/RNA Mini kit (QIAGEN) according to the manufacturer's instructions. RNA was eluted in a final volume of 100 µl of elution buffer and stored at -80 °C until analyzed.

Total RNA was reverse transcribed into cDNA using the High-Capacity cDNA Reverse Transcription kit (Thermo Fisher) according the manufacturer's protocol.

ACE-2 primers were designed using Primer3 software from a multiple alignment of cetacean ACE-2 mRNA sequences. ACE-2 conserved regions were identified flanking the nucleotide triplets of interest. Two primer pairs were designed amplifying two ACE-2 gene fragments (Table 4).

The reaction system used for PCR amplification was 50 µL, consisting of ACE2 primers 2,50 µL, 1X Buffer 2,50 µL, MgCl<sub>2</sub> 2 µL, dNTPs 0,50 µL, AmpliTaq Gold 0,20 µL, cDNA 2,50 µL, H<sub>2</sub>O 12,30 µL.

The reaction was performed with the following PCR conditions: 5 min at 95 °C; 40/48 cycles of 30 s at 94°C, 30 s at 55 °C,30 s at 72 °C; 7 min at 72 °C.

The amplification products were analyzed by electrophoresis, in a GelRed (Biotium) staining 2% agarose gel, visualized under UV light transillumination (Gel-Doc UV transilluminator system Bio-Rad) and then identified by their molecular weights.

Amplicons were purified using the NucleoSpin Gel and PCR Clean-up kit (Macherey-Nagel) and submitted to cycle-sequencing reaction by BigDye Terminator v.3.1 Cycle Sequencing kit (Thermo Fisher). Dye-labelled amplicons were purified using the BigDye XTerminator Purification kit (Thermo Fisher) and capillary electrophoresis was performed on a ABI 3130 XL Genetic Analyzer (Applied Biosystems).

Sequences were manually inspected using the Sequencing Analysis v. 5.2 software. A dataset in .fasta format was created using the newly generated sequences and ACE-2 homologue sequences available in GenBank. The dataset was aligned using BioEdit v7.2.5 software for identification of the ACE-2 amino acid residues of interest.

### **Assessment of species susceptibility to SARS-CoV-2 infection**

We used the set of rules developed by Damas et al. 2020 for predicting the likelihood of SARS-CoV-2 S protein binding to cetacean ACE-2.

This study identified the ACE-2 amino acid residues involved in binding to SARS-CoV-2 S protein that were previously reported to be critical for the effective binding of ACE-2 to SARS-CoV-2 S protein's RBD. These residues include S19, Q24, T27, F28, D30, K31, H34, E35, E37, D38, Y41, Q42, L45, L79, M82, Y83, N330, K353, G354, D355, R357, and R393. The known human ACE-2 RBD glycosylation sites N53, N90, and N322 were also included in the analysed amino acid residue set.

Regions of the human ACE-2 protein sequence interacting with the SARS-CoV-2 S protein were highlighted and compared with the amino acid composition of protein sequences of marine mammals selected for the study (Table 2).

Species were classified in one of five categories: very high, high, medium, low, or very low susceptibility.

## **Cross-referencing of conservation status and susceptibility**

We cross-referenced the International Union for Conservation of Nature (IUCN) Red list of Threatened Species (<https://www.iucnredlist.org>; accessed July 31, 2020) to better understand which at risk species could be also susceptible to the virus. For each species, we looked at the Global, Mediterranean and Italian (Fortuna et al, 2013) assessment, in order to determine their IUCN Red List Category. The Mediterranean IUCN status is under review (Table 5).

### **2. *Geo-mapping of Italian wastewater plants, stretches of coast and species at risk***

To identify high-risk areas for SARS-CoV-2 viral spillover in Italy, we overlaid geo-mapping data of Italian wastewater plants with local marine mammal population data.

In order to assess the potential viral infection level of water bodies entering the sea, we firstly considered quality sewage treatment procedures and location of the Italian wastewater plants. Subsequently, we took into account the coastal areas more frequently exposed to effect of global warming (e.g. heavy rainfalls, storms, and floods) and consequently at high risk of flush untreated or not efficiently treated sewage into rivers and coastal water.

For the first purpose, we referred to the European Environmental Agency thematic page (<https://www.eea.europa.eu/themes/water/european-waters/water-use-and-environmental-pressures/uwwtd>), focusing on our Country. We used the urban wastewater treatment map based on provisional data on the implementation of the Urban WasteWater Treatment Directive (UWWTD) in EU Countries from 2018, which were reported by the concerned Countries in 2020.

To search for data on wastewater plants with poor quality sewage treatment procedures, we considered both the urban wastewater treatment pathways in big cities (agglomerations  $\geq 150\ 000$  population equivalent (p.e.) and the urban wastewater treatment plants from agglomerations  $\geq 2000$  p.e.

Regarding the type of treatment, in both cases we focused on primary and secondary treatment plants, which give no guarantees of virus inactivation, to locate first level risk areas.

In order to identify risk areas at a higher level of detail, we focused on treatment plants (reported for agglomerations  $\geq 2.000$  p.e.) with more stringent treatments (e.g. disinfection, sand filtration and other), selecting the location of plants that apply a type of sanitation other than disinfection (by chlorination or UV or ozonisation).

For the cartographic return/mapping, to build the first layer, we considered the sites most at risk overall.

To identify the coastal areas more involved in extreme weather events, we referred to the 2018 edition of the report prepared by the Italian Institute for Environmental Protection and Research (ISPRA) [https://www.isprambiente.gov.it/files2018/pubblicazioni/rapporti/rapporto-dissesto-idrogeologico/Rapporto\\_Dissesto\\_Idrogeologico\\_ISPRA\\_287\\_2018\\_Web.pdf](https://www.isprambiente.gov.it/files2018/pubblicazioni/rapporti/rapporto-dissesto-idrogeologico/Rapporto_Dissesto_Idrogeologico_ISPRA_287_2018_Web.pdf)), providing an updated overview on landslide and flood hazards throughout the Country.

The distribution maps were overlaid with data of the wastewater treatment plants and on the coastal areas potentially more involved in extreme weather events.

Using this approach, we were able to determine each geographic area and surroundings, where wastewater effluents and overflows may pose marine mammals at risk from anthropogenic SARS-CoV-2 transmission.

### 3. ***Immunohistochemistry***

Previous studies on SARS-CoV-2 have shown that ACE-2 is the receptor through which the virus enters cells. In order to understand the patterns of ACE-2 protein expression in the lung tissue and if this is relevant to the possibility of acquiring and developing SARS-CoV-2 infection by cetaceans, we carried out *ad hoc* IHC investigations on different species of cetaceans (Table XX), based on pulmonary tissue samples' availability at the Mediterranean Marine Mammal Tissue Bank

(MMMTB) of the University of Padua (Legnaro, Padua, Italy). IHC staining for ACE-2 was performed as outlined here below.

In order to evaluate the IR patterns of ACE-2, lung tissue sections from different species of cetaceans, previously formalin-fixed and paraffin embedded, were sectioned and hydrated through xylenes; endogenous peroxidase was blocked using a 3% hydrogen peroxide solution. Heat-induced antigen retrieval was performed using citrate buffer bath (PH 6.1) at 97° C for 15 min. After cooling to room temperature, sections were incubated with blocking serum (VECTASTAIN ABC Kit, pk-4001) for 20 min before being incubated overnight with the primary anti-ACE-2 antibody (a polyclonal antibody raised in rabbits and diluted 1:2000, ab15348 Abcam) at 4°C in Tris-Buffered Saline (TBS) containing Tween. The next day, after washing with TBS buffer, sections were first incubated with the secondary antibody for 30 min, then with prepared VECTASTAIN ABC Reagent; subsequently, the final detection was carried out with Diaminobenzidine (DAB, Dako K3468) as chromogen for 5 minutes. Sections were then counterstained with Mayer's hematoxylin for a better visualization of tissue morphology. Adequate positive and blank control tissues were utilized in each run.

## **Acknowledgments**

We thank the Italian Ministries of Health who supported this study under research projects (grants IZS PLV 05/19 RC, IZS PLV 06/20 RC)

## **References**

1. La Rosa, G., Iaconelli, M., Mancini, P., Bonanno Ferraro, G., Veneri, C., Bonadonna, L., Lucentini, L., Suffredini, E., 2020. First detection of SARS-CoV-2 in untreated wastewaters in Italy. *Sci Total Environ.* 736:139652. <https://doi.org/10.1016/j.scitotenv.2020.139652>
2. Sun, J., Zhu, A., Li, H., Zheng, K., Zhuang, Z., Chen, Z., and Li, Y.M., 2020. Isolation of infectious SARS-CoV-2 from urine of a COVID-19 patient. *Emerg Microbes Infect* 9 (1), 991–993. <https://doi.org/10.1080/22221751.2020.1760144>

3. Xiao, F., Sun, J., Xu, Y., Li, F., Huang, X., Li, H., Zhao, J., Huang, J., Zhao J., 2020. Infectious SARS-CoV-2 in Feces of Patient with Severe COVID-19. *Emerg Infect Dis.* 26(8):1920-1922. [https:// doi:10.3201/eid2608.200681](https://doi.org/10.3201/eid2608.200681)
4. Wang, X.W., Li, J.S., Jin, M., Zhen, B., Kong, Q.X., Song, N., Xiao, W.J., Yin, J., Wei, W., Wang, G.J., Si, B.Y., Guo, B.Z., Liu, C., Ou, G.R., Wang, M.N., Fang, T.Y., Chao, F.H., Li, J.W., 2005. Study on the resistance of severe acute respiratory syndrome-associated coronavirus. *J. Virol. Methods* 126, 171–177. [https// doi: 10.1016/j.jviromet.2005.02.005](https://doi.org/10.1016/j.jviromet.2005.02.005).
5. Tran H.N., Le G.T., Nguyen D.T., Juang R.S., Rinklebe J., Bhatnagar A., Lima E.C., Iqbal H.M.N., Sarmah A.K., Chao H.P., 2021. SARS-CoV-2 coronavirus in water and wastewater: A critical review about presence and concern. *Environ Res.* 2021 Feb;193:110265. [https// doi:10.1016/j.envres.2020.110265](https://doi.org/10.1016/j.envres.2020.110265)
6. Collivignarelli M.C., Collivignarelli C., Miino M.C, Abbà A., Pedrazzani R., Bertanza G., 2020. SARS-CoV-2 in sewer systems and connected facilities *Process Saf. Environ. Prot.*, 143, pp. 196-203, [https//doi: 10.1016/j.psep.2020.06.049](https://doi.org/10.1016/j.psep.2020.06.049)
7. Shutler J., Zaraska K., Holding T., Machnik M., Uppuluri K., Ashton I., Migdal L., Dahiya R., 2020. Risk of SARS-CoV-2 infection from contaminated water systems medRxiv preprint doi: <https://doi.org/10.1101/2020.06.17.20133504>.t
8. Chin, A.W.H., Chu, J.T.S., Perera, M.R.A., Hui, K.P.Y., Yen, H.-L., Chan, M.C.W., Peiris, M. and Poon, L.L.M. 2020. Stability of SARS-CoV-2 in different environmental conditions. *The Lancet Microbe* 1(1), E10.
9. Wurtzer S., Marechal V., Mouchel J.M., Maday Y., Teyssou R., Richard E., Almayrac J.L., Moulin L., 2020 Evaluation of lockdown impact on SARS-CoV-2 dynamics through viral genome quantification in Paris wastewaters medRxiv 2020.04.12.20062679; <https://doi.org/10.1101/2020.04.12.20062679>

10. Randazzo W., Truchado P., Cuevas-Ferrando E., Simón P., Allende A., Sánchez G., 2020 SARS-CoV-2 RNA in wastewater anticipated COVID-19 occurrence in a low prevalence area. *Water Res.* 2020;181:115942. [https:// doi:10.1016/j.watres.2020.115942](https://doi.org/10.1016/j.watres.2020.115942)
11. Rimoldi S.G., Stefani F., Gigantiello A., Polesello S., Comandatore F., Mileto D., Maresca M., Longobardi C, Mancon A., Romeri F., Pagani C., Cappelli F., Roscioli C., Moja L., Gismondo M.R., Salerno F., 2020. Presence and infectivity of SARS-CoV-2 virus in wastewaters and rivers. *Sci Total Environ.* 2020;744:140911. [https// doi:10.1016/j.scitotenv.2020.140911](https://doi.org/10.1016/j.scitotenv.2020.140911)
12. Guerrero-Latorre L., Ballesteros I., Villacrés-Granda I., Granda M.G., Freire-Paspuel B., Ríos-Touma B., 2020. SARS-CoV-2 in river water: Implications in low sanitation countries, *Science of The Total Environment*, 2020; 743:14083, <https://doi.org/10.1016/j.scitotenv.2020.140832>.
13. Haramoto, E., Malla, B., Thakali, O., Kitajima, M., 2020. First environmental surveillance for the presence of SARS-CoV-2 RNA in wastewater and river water in Japan. *Sci. Total Environ.* 737, 140405.
14. Gallus, W.A., Jr, Parodi, A. and Maugeri, M., 2018. Possible impacts of a changing climate on intense Ligurian Sea rainfall events. *Int. J. Climatol*, 38: e323-e329. <https://doi.org/10.1002/joc.5372>
15. Funari E., Manganelli M., Sinisi L. 2012. Impact of climate change on waterborne diseases. *Ann Ist Super Sanita.* 2012;48(4):473-87. [https//doi: 10.4415/ANN\\_12\\_04\\_13](https://doi.org/10.4415/ANN_12_04_13). PMID: 23247142.
16. Di Guardo, G., 2020. Animal models and pathogenetic insights to CoViD-19. *J Comp Pathol.* 179, e1. <https://doi.org/10.1016/j.jcpa.2020.06.002>
17. Mathavarajah S., Stoddart A.K., Gagnon G.A., Dellaire G. 2020. Pandemic danger to the deep: The risk of marine mammals contracting SARS-CoV-2 from wastewater. *Sci Total*



- Environ. 2020;760:143346. [https://doi: 10.1016/j.scitotenv.2020.143346](https://doi.org/10.1016/j.scitotenv.2020.143346). Epub ahead of print. PMID: 33160659; PMCID: PMC7598747
18. Cao, Y., Li, L., Feng, Z., Wan, S., Huang, P., Sun, X., Wen, F., Huang, X., Ning, G., Wang W., 2020. Comparative genetic analysis of the novel coronavirus (2019-nCoV/SARS-CoV-2) receptor ACE2 in different populations. *Cell Discov* 6, 11. <https://doi.org/10.1038/s41421-020-0147-1>
19. Zappulli, V., Ferro, S., Bonsembiante, F., Brocca, G., Calore, A., Cavicchioli, L., Centellegh, C., Corazzola, G., De Vreese, S., Gelain, M., Mazzariol, S., Moccia, V., Rensi, N., Sammarco, A., Torrigiani, F., Verin, R., Castagnaro, M. 2020. Pathology of Coronavirus Infections: A Review of Lesions in Animals in the One-Health Perspective. *Animals*. 10. 10.3390/ani10122377.
20. Luan, J, Jin, X, Lu, Y, Zhang, L. 2020. SARS-CoV-2 spike protein favors ACE2 from Bovidae and Cricetidae. *J Med Virol*. 2020; 92: 1649– 1656. <https://doi.org/10.1002/jmv.25817>
21. Nabi G, Khan S. 2020. Risk of COVID-19 pneumonia in aquatic mammals. *Environ Res*. 2020;188:109732. [https://doi:10.1016/j.envres.2020.109732](https://doi.org/10.1016/j.envres.2020.109732)
22. Mordecai, G. J. and Hewson, I. 2020. Coronaviruses in the sea. *Frontiers in Microbiology* 11, 6pp. <https://doi.org/10.3389/fmicb.2020.01795>
23. Albin, A., Di Guardo, G., McClain Noonan, D., Lombardo M. 2020. The SARS-CoV-2 receptor, ACE-2, is expressed on many different cell types: implications for ACE-inhibitor- and angiotensin II receptor blocker-based cardiovascular therapies. *Internal and Emergency Medicine* 15, 759–766
24. Panigada, S., Donovan, G.P. Druon. J.N., Lauriano, G., Pierantonio, N., Pirotta, E., Zanardelli, M., Zerbini, A. N. and G. Notarbartolo di Sciara. 2017. Satellite tagging of Mediterranean fin

whales: working towards the identification of critical habitats and the focussing of mitigation measures. Scientific Report

25. Fossi, M.C., Marsili, L., Lauriano, G., Fortuna, C., Canese, S., Neri, G., Ancora, S., Leonzio, C., Romeo, T., Jiménez, B. 2004. Assessment of toxicological status of a SW Mediterranean segment population of striped dolphin (*Stenella coeruleoalba*) using skin biopsy. *Marine Environmental Research* 58: 269–274.
26. Cózar A, Sanz-Martín M, Martí E, González-Gordillo JI, Ubeda B, Gálvez JÁ, Irigoien X., Duarte C.M., 2015. Plastic Accumulation in the Mediterranean Sea. *PLoS ONE* 10(4): e0121762. <https://doi.org/10.1371/journal.pone.0121762>
27. Panigada, S., Pesante, G., Zanardelli, M., Capoulade, F., Gannier, A., & Weinrich, M. T. 2006. Mediterranean fin whales at risk from fatal ship strikes. *Marine Pollution Bulletin*, 52(10), 1287-1298.
28. Di Guardo, G., & Mazzariol, S. 2013. Dolphin Morbillivirus: a lethal but valuable infection model. *Emerging microbes & infections*, 2(11), e74.
29. Gregory D. Bossart, 2006. Division of Marine Mammal Research and Conservation, Harbor Branch Oceanographic Institution, Ft. Pierce, FL, USA - 2006 - Marine Mammals as Sentinel Species for Oceans and Human Healthn – Oceanography VL - 19 <https://doi.org/10.5670/oceanog.2006.77>
30. Van Bresse, M.-F.; Duignan, P.J.; Banyard, A.; Barbieri, M.; Colegrove, K.M; De Guise, S.; Di Guardo, G.; Dobson, A.; Domingo, M.; Fauquier, D.; Fernandez, A.; Goldstein, T.; Grenfell, B.; Groch, K.R.; Gulland, F.; Jensen, B.A; Jepson, P.D; Hall, A.; Kuiken, T.; Mazzariol, S.; Morris, S.E; Nielsen, O.; Raga, J.A; Rowles, T.K; Saliki, J.; Sierra, E.; Stephens, N.; Stone, B.; Tomo, I.; Wang, J.; Waltzek, T.; Wellehan, J.F. 2014. Cetacean Morbillivirus: Current Knowledge and Future Directions. *Viruses* 2014, 6, 5145-5181. <https://doi.org/10.3390/v6125145>

31. Duignan, P.J.; Van Bresseem, M.-F.; Baker, J.D.; Barbieri, M.; Colegrove, K.M.; De Guise, S.; De Swart, R.L.; Di Guardo, G.; Dobson, A.; Duprex, W.P.; Early, G.; Fauquier, D.; Goldstein, T.; Goodman, S.J.; Grenfell, B.; Groch, K.R.; Gulland, F.; Hall, A.; Jensen, B.A.; Lamy, K.; Matassa, K.; Mazzariol, S.; Morris, S.E.; Nielsen, O.; Rotstein, D.; Rowles, T.K.; Saliki, J.T.; Siebert, U.; Waltzek, T.; Wellehan, J.F.X. 2014. Phocine Distemper Virus: Current Knowledge and Future Directions. *Viruses* 2014, 6, 5093-5134. <https://doi.org/10.3390/v6125093>
32. Di Guardo, G., Mazzariol S., 2019. “Cetacean morbillivirus: A Land-to-Sea Journey and Back?.” *Virologica Sinica* vol. 34,3 (2019): 240-242. <https://doi:10.1007/s12250-019-00128-x>
33. Mathavarajah, S. and Dellaire, G. 2020. Lions, tigers and kittens too: ACE2 and susceptibility to COVID-19. *Evolution, Medicine, and Public Health*, 101-113. <https://doi.org/10.1093/emph/eoaa021>
34. F. Li, W. Li, M. Farzan, S.C. Harrison. 2005. Structure of SARS coronavirus spike receptor-binding domain complexed with receptor, *Science*, 309 (5742), pp. 1864-1868
35. Wan Y, Shang J, Graham R, Baric RS, Li F. 2020. Receptor Recognition by the Novel Coronavirus from Wuhan: an Analysis Based on Decade-Long Structural Studies of SARS Coronavirus. *J Virol*. 2020 Mar 17;94(7):e00127-20. <https://doi: 10.1128/JVI.00127-20>.
36. Abassi Z, Knaney Y, Karram T, Heyman SN. 2020. The Lung Macrophage in SARS-CoV-2 Infection: A Friend or a Foe?. *Front Immunol*. 2020;11:1312. <https://doi:10.3389/fimmu.2020.01312>
37. Grattarola C, Gallina S, Giorda F, et al. First report of Salmonella 1,4,[5],12:i:- in free-ranging striped dolphins (*Stenella coeruleoalba*), Italy. *Sci Rep*. 2019;9(1):6061. Published 2019 Apr 15. doi:10.1038/s41598-019-42474-6

38. Grattarola C, Giorda F, Iulini B, Pintore MD and others, 2016. Meningoencephalitis and *Listeria monocytogenes*, *Toxoplasma gondii* and *Brucella* spp. coinfection in a dolphin in Italy. *Dis Aquat Org* 118:169-174. <https://doi.org/10.3354/dao02957>
39. Decaro N, Lorusso A, 2020. Novel human coronavirus (SARS-CoV-2): A lesson from animal coronaviruses, *Veterinary Microbiology*, Volume 244,2020, <https://doi.org/10.1016/j.vetmic.2020.108693>
40. Mihindukulasuriya, K.A., Wu, G., St Leger, J., Nordhausen, R.W., Wang, D., 2008. Identification of a novel coronavirus from a beluga whale by using a panviral microarray. *J. Virol* 82 (10), 5084–5088. <https://doi.org/10.1128/JVI.02722-07>.
41. Reeves, R. & Notarbartolo di Sciara, G. 2006. The Status and Distribution of Cetaceans in the Black Sea and Mediterranean Sea. IUCN Centre for Mediterranean Cooperation, Málaga, Spain. 137 pp.
42. Bearzi, G., Holcer, D., & Notarbartolo di Sciara, G. 2004. The role of historical dolphin takes and habitat degradation in shaping the present status of northern Adriatic cetaceans. *Aquatic Conservation: Marine and Freshwater Ecosystems*, 14(4), 363-379.
43. Lauriano, G., Pierantonio, N., Donovan, G., Panigada, S. 2014. Abundance and distribution of *Tursiops truncatus* in the Western Mediterranean Sea: an assessment towards the Marine Strategy Framework Directive requirements, *Marine Environmental Research*. 100: 86–93 [https://doi: 10.1016/j.marenvres.2014.04.001](https://doi:10.1016/j.marenvres.2014.04.001)
44. Gnone, G., Bellingeri, M., Dhermain, F., Dupraz, F., Nuti, S., Bedocchi, D., Wurtz, M. 2011. Distribution, abundance, and movements of the bottlenose dolphin (*Tursiops truncatus*) in the Pelagos Sanctuary MPA (north-west Mediterranean Sea). *Aquatic Conservation: Marine and Freshwater Ecosystems*, 21(4), 372-388.
45. Aguilar A, 2000. Population biology, conservation threats and status of Mediterranean striped dolphins (*Stenella coeruleoalba*) *Journal of Cetacean Research* 2(1):17-26

46. di Sciara, G. N., Hoyt, E., Reeves, R., Ardron, J., Marsh, H., Vongraven, D., and Barr, B. (2016) Place-based approaches to marine mammal conservation. *Aquatic Conserv: Mar. Freshw. Ecosyst.*, 26: 85– 100. [https://doi: 10.1002/aqc.2642](https://doi.org/10.1002/aqc.2642).
47. Canese, S., Cardinali, A., Fortuna, C. M., Giusti, M., Lauriano, G., Salvati, E., & Greco, S. (2006). The first identified winter feeding ground of fin whales (*Balaenoptera physalus*) in the Mediterranean Sea. *Marine Biological Association of the United Kingdom. Journal of the Marine Biological Association of the United Kingdom*, 86(4), 903.
48. Bearzi, G., Reeves, R. R., Notarbartolo-Di-Sciara, G., Politi, E., Canadas, A. N. A., Frantzi, A., & Mussi, B. (2003). Ecology, status and conservation of short-beaked common dolphins *Delphinus delphis* in the Mediterranean Sea. *Mammal Review*, 33(3-4), 224-252.
49. Mazzariol, S., Centelleghes, C., Beffagna, G., Povinelli, M., Terracciano, G., Cocumelli, C., Pintore, A., Denurra, D., Casalone, C., Pautasso, A., Di Francesco, C. E., & Di Guardo, G. (2016). Mediterranean Fin Whales (*Balaenoptera physalus*) Threatened by Dolphin MorbilliVirus. *Emerging infectious diseases*, 22(2), 302–305. <https://doi.org/10.3201/eid2202.15-0882>
50. Esteban R, Verborgh P, Gauffier P, Alarcón D, Salazar-Sierra JM, Giménez J, Foote AD, de Stephanis R. 2016. Conservation Status of Killer Whales, *Orcinus orca*, in the Strait of Gibraltar. *Adv Mar Biol.* 2016;75:141-172. doi: 10.1016/bs.amb.2016.07.001. Epub 2016 Aug 25. PMID: 27770983

## Figures and Tables

**Table 1: Marine mammal species inhabiting Italian seas.**

Regular	Irregular
<b>Cetacea</b>	
<i>Balaenoptera physalus</i>	<i>Balaenoptera acutorostrata</i>
<i>Physeter macrocephalus</i>	<i>Pseudorca crassidens</i>
<i>Ziphius cavirostris</i>	<i>Megaptera novaengliae</i>
<i>Globicephala melas</i>	
<i>Orcinus orca</i>	
<i>Grampus griseus</i>	
<i>Tursiops truncatus</i>	
<i>Stenella coeruleoalba</i>	
<i>Delphinus delphis</i>	
<i>Delphinus capensis</i>	
<i>Steno bredanensis</i>	
<b>Pinnipedia</b>	
<i>Monachus monachus</i>	

**Table 2: Primary sequences of ACE-2 from marine mammals and their comparison with human ACE-2**

	19	24	27	28	30	31	34	35	37	38	41	42	45	53	79	82	83	90	322	330	353	354	355	357	393
<i>Homo sapiens</i>	S	Q	T	F	D	K	H	E	E	D	Y	Q	L	N	L	M	Y	N	N	N	K	G	D	R	R
<i>Balaenoptera physalus</i>	S	Q	T	F	Q	K	H	E	E	D	H	E	L	N	I	T	Y	N	N	N	K	G	D	R	R
<i>Physeter macrocephalus</i>	S	Q	T	F	Q	K	H	E	E	D	Y	Q	L	N	T	T	Y	N	N	N	K	G	D	R	R
<i>Ziphius cavirostris</i>	P	K	T	F	Q	K	H	E	E	D	Y	Q	L	N	T	T	Y	N	N	N	K	G	D	R	R
<i>Globicephala melas</i>	S	R	T	F	Q	K	R	E	E	D	Y	Q	L	N	I	T	Y	N	N	N	K	G	D	R	R
<i>Tursiops truncatus</i>	S	R	T	F	Q	K	R	E	E	D	Y	Q	L	N	I	T	Y	N	N	N	K	G	D	R	R
<i>Stenella coeruleoalba</i>	S	R	T	F	Q	K	R	E	E	D	Y	Q	L	N	I	T	Y	N	N	N	K	G	D	R	R
<i>Balaenoptera acutorostrata</i>	S	Q	T	F	Q	K	H	E	E	D	Y	R	L	N	I	T	Y	N	N	N	K	G	D	R	R
<i>Orcinus orca</i>	S	R	T	F	Q	K	R	E	E	D	Y	Q	L	N	I	T	Y	N	N	N	K	G	D	R	R
<i>Megaptera novaengliae</i>	S	Q	T	F	Q	K	R	E	E	D	Y	E	.	N	.	T	Y	N	N	N	K	G	D	R	R

Color legend:

Non-conservative replacement
Conservative replacement

**Table 3: Susceptibility of marine mammal species under study to SARS-CoV-2.**

	Order	Species	IUCN status	No. non-conservative replacements	No. residues identical to human		Predicted susceptibility to SARS-CoV 2
<b>R e g u l a r</b>	Cetacea	<i>B. physalus</i>	<b>VU</b> (med, 2010) (VU it, 2013)	1	20	D30Q, Y41H, Q42E, L79I, <b>M82T</b>	High
	Cetacea	<i>P. macrocephalus</i>	<b>EN</b> (med, 2006) (EN it, 2013)	2	22	D30Q, <b>L79T, M82T</b>	Medium
	Cetacea	<i>Z. cavirostris</i>	<b>DD</b> (med, 2006) (DD it, 2013)	2	20	S19P, Q24K, D30Q, <b>L79T, M82T</b>	Medium
	Cetacea	<i>G. melas</i>	<b>DD</b> (med, 2010) (DD it, 2013)	1	20	Q24R, D30Q, H34R, L79I, <b>M82T</b>	High
	Cetacea	<i>T. truncatus</i>	<b>VU</b> (med, 2009) (NT it, 2013)	1	20	Q24R, D30Q, H34R, L79I, <b>M82T</b>	High
	Cetacea	<i>Orcinus orca</i>	<b>DD</b> (med, 2019)	1	20	Q24R, D30Q, H34R, L79I, <b>M82T</b>	High
	Cetacea	<i>S. coeruleoalba</i>	<b>VU</b> (med, 2010) (LC it, 2013)	1	20	Q24R, D30Q, H34R, L79I, <b>M82T</b>	High
<b>I r r e g u l a r</b>	Cetacea	<i>B. acutorostrata</i>	LC (gl 2018)	1	21	D30Q, Q42R, L79I, <b>M82T</b>	High
	Cetacea	<i>M. novaengliae</i>	LC (gl. 2018)	1	21	D30Q, H34R, Q42E, L79I, <b>M82T</b>	High

**Table 4: PCR assays for ACE-2 characterization in marine mammals and related primers.**

Primer	Nucleotide sequence (5'-3')	Amplicon size (bp)
CetACE2_19-90 F	CTCCTTCTCAGCCTTGTTGC	285 bp
CetACE2_19-90 R	CTGAAGGRCCTGCAATTGAC	
CetACE2_322-393 F	AGTCCTGGGATGCAAAGAGG	492 bp
CetACE2_322-393 R	AGACCATTCTCCTCCACTTT	

**Table 5: IUCN status of the marine mammal species under investigation according to geographic range.**

<i>Balaenoptera acutorostrata</i> (Minke whale)	LC (gl, 2018)
<i>Megaptera novaeangliae</i> (Humpback whale)	LC (gl, 2018)
<i>Orcinus orca</i> (Killer whale)	CE (Strait of Gibraltar subpopulation, 2019) DD (gl, 2017)
<i>Pseudorca crassidens</i> (False killer whale)	NT (gl, 2018)
<i>Steno bredanensis</i> (rough-toothed dolphin)	LC (gl, 2018)
<i>Delphinus delphis</i> (short beaked common dolphin)	EN (it, 2013), EN (med, 2003), LC (gl, 2008)
<i>Delphinus capensis</i> (long beaked common dolphin)	EN (it, 2013), EN (med, 2003), LC (gl, 2008)
<i>Physeter macrocephalus</i> (Sperm whale)	EN (it, 2013), EN (med, 2006), VU (gl, 2008)
<i>Balaenoptera physalus</i> (Fin whale)	VU (it, 2013), VU (med, 2010), VU (gl, 2018)
<i>Tursiops truncatus</i> (Common bottlenose dolphin)	NT (it, 2013), VU (med, 2009), LC (gl, 2018)
<i>Stenella coeruleoalba</i> (Striped dolphin)	LC (it, 2013), VU (med, 2010), LC (gl, 2018)
<i>Globicephala melas</i> (Pilot whale)	DD (it, 2013), DD (med, 2010), LC (gl, 2018)
<i>Grampus griseus</i> (Risso's dolphin)	DD (it, 2013), DD (med, 2010), LC (gl, 2018)
<i>Ziphius cavirostris</i> (Cuvier's beaked whale)	DD (it, 2013), DD (med, 2006), LC (gl, 2008)
<i>Monachus monachus</i>	DD (it, 2013), CR (med, 2008), EN (gl, 2015)

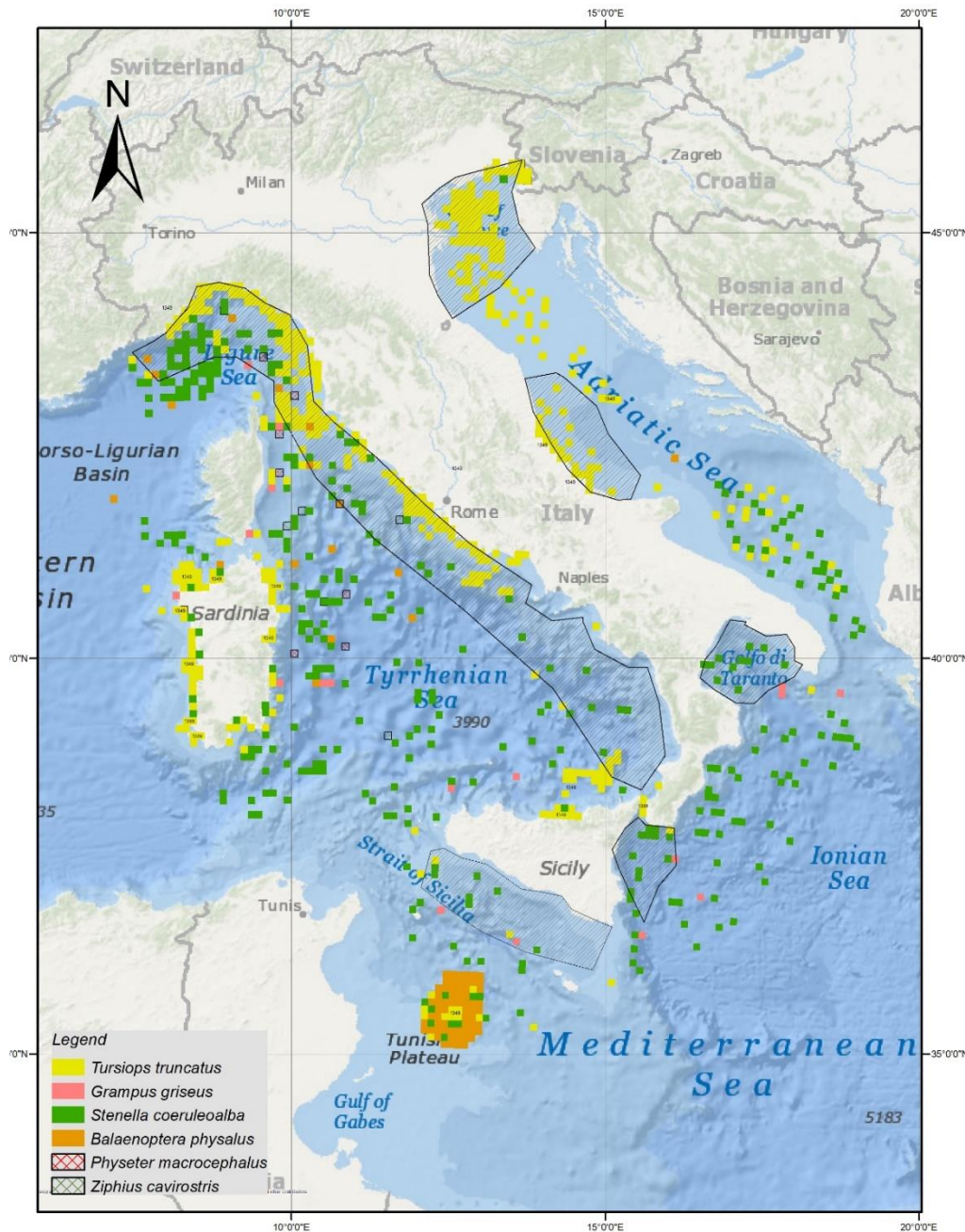
gl = global; med = Mediterranean; it= Italian

IUCN legend:        **DD**    Data deficient  
                           **LC**    Least concern  
                           **VU**    Vulnerable  
                           **NT**    Near Threatened  
                           **EN**    Endangered



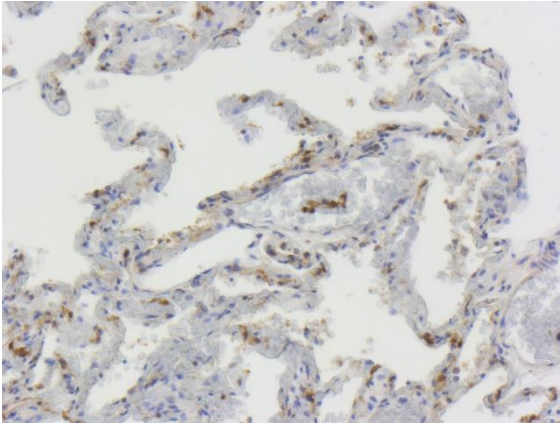
**Tab 6: Immunohistochemical (IHC) characterization and pulmonary location of ACE-2**

<b>Species</b>	<b>IHC Results – LUNG samples</b>
<i>Ziphius cavirostris</i>	bronchiolar epithelial cells and alveolar macrophages +
<i>Tursiops truncatus</i>	bronchiolar epithelial cells +
<i>Stenella coeruleoalba</i>	bronchiolar epithelial cells and alveolar macrophages +
<i>Grampus griseus</i>	bronchiolar epithelial cells +
<i>Pseudorca crassidens</i>	bronchiolar epithelial cells and alveolar macrophages +
<i>Balenoptera physalus</i>	bronchiolar epithelial cells +
<i>Delphinus delphis</i>	bronchiolar epithelial cells +

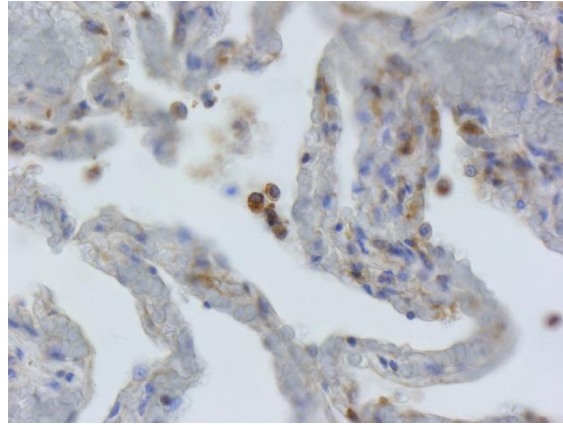


**Figure 1.** Geographic distribution of the marine mammal species under study, along with the risky areas for SARS-CoV-2 spillover.

The risky areas have been inferred through a combination of UWWT maps (<https://www.eea.europa.eu/themes/water/european-waters/water-use-and-environmental-pressures/uwwtd>), coupled with landslide and flood hazards ([https://www.isprambiente.gov.it/files2018/pubblicazioni/rapporti/rapporto-dissesto-idrogeologico/Rapporto\\_Dissesto\\_Idrogeologico\\_ISPRA\\_287\\_2018\\_Web.pdf](https://www.isprambiente.gov.it/files2018/pubblicazioni/rapporti/rapporto-dissesto-idrogeologico/Rapporto_Dissesto_Idrogeologico_ISPRA_287_2018_Web.pdf)). The concerned species' distribution has been derived from the 4th Italian Report to the Habitat Directive (Lauriano 2019)



**10X**



**20X**

**Figures 2-3:** Bottlenose dolphin (*Tursiops truncatus*). Lung. Positive immunoreactivity within type I pneumocytes from the alveolar respiratory epithelium and in alveolar macrophages. ACE-2 immunohistochemistry, Mayer's hematoxylin counterstain, 10X and 20X objectives.