

## **Convergent evolution of SARS-CoV-2 spike mutations, L452R, E484Q and P681R, in the second wave of COVID-19 in Maharashtra, India**

Sarah Cherian<sup>1, #</sup>, Varsha Potdar<sup>1, #</sup>, Santosh Jadhav<sup>1</sup>, Pragya Yadav<sup>1</sup>, Nivedita Gupta<sup>2</sup>, Mousmi Das<sup>1</sup>, Partha Rakshit<sup>3</sup>, Sujeet Singh<sup>3</sup>, Priya Abraham<sup>1\*</sup>, Samiran Panda<sup>2</sup> and NIC team<sup>@</sup>

# Equal authorship

\* Corresponding author

<sup>1</sup> ICMR-National Institute of Virology, Pune

<sup>2</sup> Indian Council of Medical Research, N. Delhi

<sup>3</sup> National Centre for Disease Control, New Delhi

@ Sucheta Patil, Prachi Jagtap, Bhagyashri Kasabe, Ujjaini Shah, Trupti Sanjeev, Gayatri Divekar, Kalpita Korabu, Sunil Shelkande, Pooja Shinde, Sayed Zakiuddin, Veena Vipat, Sheetal Jadhav, Krutika Iyengar, Vinita Malik, Sonali Bhorekar, Abhinendra Kumar, Rima Sahay, Anita Shete, M.L.Choudhary from National Influenza Center (NIC)

## Abstract

As the global severe acute respiratory syndrome coronavirus 2 (SARS-CoV-2) pandemic expands, genomic epidemiology and whole genome sequencing are being constantly used to investigate its transmissions and evolution. In the backdrop of the global emergence of “variants of concern” (VOCs) during December 2020 and an upsurge in a state in the western part of India since January 2021, whole genome sequencing and analysis of spike protein mutations using sequence and structural approaches was undertaken to identify possible new variants and gauge the fitness of current circulating strains.

Phylogenetic analysis revealed that the predominant clade in circulation was a distinct newly identified lineage B.1.617 possessing common signature mutations D111D, G142D, L452R, E484Q, D614G and P681R, in the spike protein including within the receptor binding domain (RBD). Of these, the mutations at residue positions 452, 484 and 681 have been reported in other globally circulating lineages. The structural analysis of RBD mutations L452R and E484Q along with P681R in the furin cleavage site, revealed that these may possibly result in increased ACE2 binding and rate of S1-S2 cleavage resulting in better transmissibility. The same two RBD mutations indicated decreased binding to select monoclonal antibodies (mAbs) and may affect their neutralization potential. Experimental validation against a wider panel of mAbs, sera from vaccinees and those that recovered from natural infection needs to be studied.

The emergence of such local variants through the accumulation of convergent mutations during the COVID-19 second wave needs to be further investigated for their public health impact in the rest of the country and its possibility of becoming a VOC.

## Introduction

The severe acute respiratory syndrome coronavirus 2 (SARS-CoV-2) surface spike (S) protein mediates entry into host cells by binding to the host receptor angiotensin-converting enzyme 2 (ACE2) via its receptor-binding domain (RBD). Crystal structures of SARS-CoV-2 S protein or its RBD complexed with ACE2 from different hosts reveal that the RBD contains a core and a receptor-binding motif (RBM) which forms contacts with ACE2<sup>1</sup>. A number of naturally selected mutations in the RBM have been shown to affect infectivity, human-to-human transmission, pathogenesis and immune escape<sup>2</sup>.

As the global SARS-CoV-2 pandemic expands, genomic epidemiology and whole genome sequencing are being constantly used to investigate the transmissions and evolution. The expansion of the genome-wide diversity resulted in delineation of the viral strains into clades, lineages, and sub-lineages. Clades G/GH/GR/GV/GRY as per the Global Initiative on Sharing All Influenza Data (GISAID) database (<https://www.gisaid.org/>)<sup>3</sup> possess a common mutation D614G in the spike protein. The mutation was shown to result in significantly higher human host infectivity and better transmission efficiency to the virus<sup>4,5</sup>. Three recently emerged “variants of concern” (VOCs) of SARS-CoV-2 are the UK-variant 501Y.V1/B.1.1.7, South Africa variant 501.V2/ B.1.351 and Brazilian variant 501Y.V3/P.1 (alias of lineage B.1.1.28.1). These variants are known to possess multiple mutations across the genome, including several in the S protein and its RBD such as N501Y, E484K and K417N/T<sup>5-7</sup>. Multiple SARS-CoV-2 variants are now seen to be circulating globally.

The potential introduction and consequence of these emerging variants in the country is vital to support the public health response. The National Influenza Centre at the ICMR-National Institute of Virology, Pune, as an apex laboratory of the Indian Council of Medical Research (ICMR) has been continuously involved in the SARS-CoV-2 diagnostics and monitoring the genomic evolution of this virus. In addition, the ICMR-NIV, Pune is also one among the ten national laboratories of the Indian SARS-CoV-2 Consortium on Genomics (INSACOG), Ministry of Health and Family Welfare, Government of India, catering to western India. In the backdrop of the global emergence of VOCs and an upsurge in Maharashtra, a state in the western part of India, enhanced sequencing was undertaken. This was to identify possible new variants and

analyze spike protein mutants, in particular, to gauge the fitness of current circulating strains, using bioinformatics sequence and molecular structural approaches.

## Materials and methods

The State of Maharashtra (latitude 19°39' N, longitude 75°18'E) is located in west central India, in the north western part of the Indian Subcontinent. Since the end of January 2021, a concentrated spurt in COVID-19 cases was noted in several districts of Maharashtra (**Suppl. Fig. 1**). As per the State Government directives, samples from international travelers and 5% of surveillance samples from the positive cases with Ct value <25 including those from clusters, long haulers, mild/moderate/severe and deceased cases, were referred to the ICMR-NIV, Pune for whole genome sequencing. Nasopharyngeal swabs (n=733, November 25, 2020- March 31, 2021) were processed for whole genome sequencing.

Briefly, nucleic acid extraction was performed using 280 µL of each sample in duplicate by Qiagen viral RNA extraction protocol and quantified RNA was further processed for template preparation using the Ion Chef System. Purified template beads were submitted to meta transcriptome next-generation sequencing (NGS) in the Ion S5 platform (ThermoFisher Scientific) using an Ion 540™ chip and the Ion Total RNA-Seq kit v2.0, as per the manufacturer's protocol (ThermoFisher Scientific)<sup>8</sup>. Sequence data was processed using the Torrent Suite Software (TSS) v5.10.1 (ThermoFisher Scientific, USA). Coverage analysis plugins were utilized to generate coverage analysis report for each of the samples. Reference-based reads gathering, and assembly were performed for all the samples using Iterative refinement meta-assembler (IRMA)<sup>9</sup>. A subset of the samples (were also sequenced on the Illumina machine and analyzed using on the CLC Genomics Workbench version 20 (CLC, Qiagen) as described elsewhere<sup>10</sup>. Of 733 whole genomes obtained, 598 were considered for different analyses based on coverage of  $\geq 93\%$  of the genome. For each whole genome sequence, the GISAID Clade assignment, was done using CoVsurver: Mutation Analysis of hCoV-19 (<https://www.gisaid.org/epiflu-applications/covsurver-mutations-app/>). For lineage assignment, the web application ie., Phylogenetic Assignment of Named Global Outbreak LINEages (PangoLIN) COVID-19 Lineage Assigner (<https://pangolin.cog-uk.io/>), was implemented<sup>7</sup>. The 598 genomes were aligned using MUSCLE and a Maximum Likelihood phylogenetic tree was constructed using IQ-tree v1.6<sup>11,12</sup>, employing the GTR as the substitution model and 1,000

bootstrap replications. The average frequency of nonsynonymous mutations in the genomes over the period from 1st December, 2020 to 31<sup>st</sup> March, 2021 was calculated, considering Wuhan as the reference strain.

For further structural characterization of the S protein mutations, the crystal structure of SARS-CoV-2 S glycoprotein complexed with ACE2 was obtained from the protein data bank (PDB ID: 7A98<sup>13</sup>). The top ten mutations in the S protein were mapped using Biovia Discovery studio visualizer 2020. To assess the effect of noted RBD mutations on ACE2 binding, the crystal structure of SARS-CoV-2 spike RBD domain complexed with ACE2 (PDB ID: 6LZG<sup>14</sup>) was used. For assessment of the noted mutations on binding to neutralizing antibodies, the SARS-CoV-2 spike RBD domain complexed with two selected mAbs REGN10933/ P2B-2F6 were retrieved (PDB ID: 6XDG; resolution 3.90Å and 7BWJ; resolution 2.65 Å respectively)<sup>15,16</sup>. Point mutations were carried out using Biovia Discovery studio visualizer 2020 and the structures of the complexes were subjected to energy minimization using macro model tool in Schrodinger 2020 using default parameters. The molecular interactions between the RBD-ACE2 interface, within the RBD and between the neutralizing mAbs-RBD were analyzed using non-bonded interactions tool in Biovia Discovery studio visualizer 2020.

## Results

The genomic surveillance for the spurt in the COVID-19 cases in Maharashtra was carried out to identify the circulating lineages/VOCs and identify possible functionally-significant mutations in the spike protein.

PangoLIN lineage classification of 598 whole genomes revealed the presence of 47 lineages (**Supplementary Table 1**), all within GISAID clade G, evident from the D614G mutation in the S protein. Lineages B.1.617 (n=273), B.1.36.29 (n=73), B.1.1.306 (n=67), B.1.1.7 (n=31), B.1.1.216 (n=24), B.1.596 (n=17), B.1 (n=17), B.1.1 (n=15) and B.1.36 (n=12) were found to be the predominant lineages (**Supplementary Figure 1**). Phylogenetic analysis revealed four sub-clusters within B.1.617 that could be linked to mutations specific to the spike region (**Figure 1**). Among these, cluster B.1.617:C (n=107), included majority of the strains from eastern part of Maharashtra while B.1.617:B (n=80) also included sequences from major cities like Pune, Thane and Aurangabad, more on the western part of the State. The frequency of mutations L452R and

E484Q within the RBD and mutations G142D and P681R within the spike but outside the RBD region, increased from January 2021 (**Figure 2**). The P681R is noted in the S1-S2 furin-cleavage site. A mutation H1101D specific to clusters B.1.617: A and B.1.617:B, was not noted in January 2021 (**Figure 1**). The B.1.617:C cluster possessed a T95I-specific mutation. Notably a small cluster of B.1.617 (n=21) emerged in late March and did not possess the E484Q mutation. This clustered with lineage B.1.596 and shared common mutations T19R and D950N in the spike protein. A synonymous mutation D111D was observed to be co-occurring with the RBD mutations L452R and E484Q and it was absent in the cluster that did not possess E484Q (Figure 1). Based on the monthly averages of non-synonymous mutation events when compared to the Wuhan reference strain NC\_045512.2, an increased frequency of non-synonymous mutations was noted in February 2021 (**Figure 3**).

The key mutations in the S protein are mapped on a furin-cleaved structure of the S protein (**Figure 4**). The structural implications of the RBD mutations (L452R and E484Q) were analyzed in terms of interaction with the ACE2 receptor and neutralizing antibodies that are known to have interactions with these residues. Effect of the E484Q mutation is noted in terms of disruption in an electrostatic bond of the spike RBD residue E484 with K31 in the ACE2 interaction interface (**Figure 5A, Supplementary Table 2**). The intramolecular interactions in the wild strain indicate that the L452 residue is involved in a hydrophobic interaction with L492 which forms another hydrophobic contact with F490. These residue interactions form a hydrophobic patch on the surface of the RBD. The L452R mutation abolishes the hydrophobic interaction with L492 of the RBD. Estimation of the minimized energies of the wild and mutant structures of RBD complexed with ACE2 showed energy values of -93732.305 kcal/mol and -94543.180 kcal/mol respectively.

The mutations L452R and E484Q are seen to disrupt the interfacial interactions of spike RBD with specific neutralizing antibodies (**Figure 5B, C; Supplementary Table 3**). The heavy chain of monoclonal antibody REGN10933 interacts with the RBD by making two hydrogen bonds (H-bonds) between E484 of the RBD and Y53 and S56 of the antibody. Residue Y453 of the RBD makes an H-bond with D31 of the heavy chain of the antibody. The RBD mutation E484Q disrupts the 2 H-bonds with S56 and Y53 (**Figure 5B**). Residues L452 and E484 possess direct contacts with the mAb P2B-2F6 (**Figure 5C**). The intermolecular interactions of the wild-type

complex indicate that L452 is involved in hydrophobic interactions with residues I103 and V105 of the heavy chain of the antibody. Residue E484 forms H-bonds with N33 and Y34 of the light chain as well as a salt bridge and H-bond interaction with R112 side chain of the light chain. The L452R mutation breaks the hydrophobic interactions with both residues I103 and V105 and also disrupts the H-bond and electrostatic interaction with R112.

## Discussion

In addition to the three global VOCs, some of the global variants of interest (VUIs) include B.1.525/ VUI-202102/03 that emerged in UK ([https://cov-lineages.org/global\\_report\\_B.1.525.html](https://cov-lineages.org/global_report_B.1.525.html)), B.1.1.49 that emerged in Denmark ([https://cov-lineages.org/lineages/lineage\\_B.1.1.49.html](https://cov-lineages.org/lineages/lineage_B.1.1.49.html)) and A.23.1 that was first detected in Uganda ([https://cov-lineages.org/global\\_report\\_A.23.1.html](https://cov-lineages.org/global_report_A.23.1.html)). The potential consequences of emerging variants are increased transmissibility, increased pathogenicity and the ability to escape natural or vaccine-induced immunity<sup>17,18</sup>. With this background, we sequenced and analyzed the whole genomes of SARS-CoV-2 from different districts of Maharashtra where a surge in COVID-19 activity was noted since the end of January 2021 after a gap of almost four months.

Phylogenetic and sequence analyses revealed that only a small proportion of sequences majorly in the month of December 2020, were detected as the VOC B.1.1.7, UK-variant. On the other hand, the B.1.617 lineage possessing common signature mutations G142D, L452R, E484Q, D614G and P681R, in the spike protein could be linked to the increase in the proportion of non-synonymous mutations in February 2021. In addition, districts in western Maharashtra, such as Pune, Mumbai, Thane and Nashik showed presence of multiple lineages in circulation in comparison to the dominance of lineage B.1.617 in eastern Maharashtra (Supplementary figure 1). The co-occurrence of synonymous mutations with the non-synonymous mutations observed is interesting and being reported<sup>19,20</sup>. Notably D111D was found to be associated with the signature mutations.

The structural analysis of the effect of RBD mutations L452R and E484Q towards ACE2 binding, revealed decrease in intra-molecular and intermolecular contacts with respect to the wild-type. However, the hydrophobic L452 residue mutation to the hydrophilic 452R might help in interaction with water molecules and overall stabilization of the complex, as was reflected in

the lower minimum energy of the mutant complex. Another significant mutation P681R in the furin cleavage site, resulting in enhancement of the basicity of the poly-basic stretch, might help in increased rate of membrane fusion, internalization and thus better transmissibility. *In vitro* and/or *in vivo* studies to understand the phenotypic effects of the mutant strains would be vital in this regard. Structural analysis further showed that the two RBD mutations L452R and E484Q may decrease the binding ability of REGN10933 and P2B-2F6 antibodies to the variant strains, compared to that in the wild-type strain. A recent report<sup>21</sup> revealed that the L452R mutation reduced or abolished neutralizing activity of 14 out of 35 RBD-specific mAbs including three clinical stage mAbs. Another recent study<sup>22</sup> has demonstrated that the mutation L452R can escape from human leukocyte antigen (HLA)-24-restricted cellular immunity and can also increase viral infectivity, potentially promoting viral replication. The combination of the two RBD mutations noted in this study could affect the neutralization of the select mAbs. The neutralizing potential of a wider range of mAbs against the strains of lineage B.1.617 needs to be assessed. Further the level of neutralization efficacy of sera from vaccinees of different vaccine formulations and those who experienced natural infection also needs to be studied.

Mutations at both the residue positions 452 and 484 individually have been reported earlier. L452R has been noted in California lineages B.1.427 and B.1.429 while E484K mutation is common to the three VOCs having global impact. E484Q has also been reported in several sequences in the GISAID with the earliest strain noted in Denmark. P681H is one of the mutations in the UK-variant B.1.1.7 while P681R is one of the mutations in the VUI lineage A.23.1. The unique combination of mutations L452R, E484Q and P681R noted in this study is an indication of convergent evolution.

To summarize, the study investigated the S protein mutations associated with the COVID-19 cases in Maharashtra observed since the month of February 2021. The continuous increase in positivity could be attributed to signature mutations in the spike protein and functionally significant co-occurring mutations. As per GISAID submissions, the B.1.617 lineage has been reported from several countries including UK, USA, Switzerland, Germany, Singapore etc. However, the emergence of such local variants during the COVID-19 second wave in India needs to be further investigated for their public health impact and its possibility of becoming a VOC.



**Funding:** Intramural funding of the Indian Council of Medical Research-National Institute of Virology, Pune, supported this work.

**Acknowledgement:** Authors are grateful to the Director Health Services of Maharashtra and State Integrated Disease Surveillance Program (IDSP) for coordination of samples. We also acknowledge the cohesive efforts of NIC staff. The authors also acknowledge the support of Dr. Balram Bhargava, Secretary, Department of Health Research, Government of India and Director General, Indian Council of Medical Research, N. Delhi.

**Competing interests:** No competing interest exists among the authors.

### References:

1. Shang J, Ye G, Shi K, et al. Structural basis of receptor recognition by SARS-CoV-2. *Nature*. Nature Publishing Group; **2020**; 581(7807):221–224.
2. Wan Y, Shang J, Graham R, Baric RS, Li F. Receptor Recognition by the Novel Coronavirus from Wuhan: an Analysis Based on Decade-Long Structural Studies of SARS Coronavirus. Gallagher T, editor. *J Virol*. **2020**; 94(7):e00127-20, /jvi/94/7/JVI.00127-20.atom.
3. Elbe S, Buckland Merrett G. Data, disease and diplomacy: GISAID’s innovative contribution to global health. *Global Challenges*. Wiley Online Library; **2017**; 1(1):33–46.
4. Korber B, Fischer WM, Gnanakaran S, et al. Tracking Changes in SARS-CoV-2 Spike: Evidence that D614G Increases Infectivity of the COVID-19 Virus. *Cell*. **2020**; 182(4):812–827.e19.
5. Volz E, Hill V, McCrone JT, et al. Evaluating the Effects of SARS-CoV-2 Spike Mutation D614G on Transmissibility and Pathogenicity. *Cell*. **2021**; 184(1):64–75.e11.
6. Leung K, Shum MH, Leung GM, Lam TT, Wu JT. Early transmissibility assessment of the N501Y mutant strains of SARS-CoV-2 in the United Kingdom, October to November 2020. *Eurosurveillance*. European Centre for Disease Prevention and Control; **2021**; 26(1):2002106.
7. Rambaut A, Holmes EC, O’Toole Á, et al. A dynamic nomenclature proposal for SARS-CoV-2 lineages to assist genomic epidemiology. *Nature Microbiology*. Nature Publishing Group; **2020**; 5(11):1403–1407.
8. Potdar V, Vipat V, Ramdasi A, et al. Phylogenetic classification of the whole-genome sequences of SARS-CoV-2 from India & evolutionary trends. *Indian Journal of Medical Research*. **2021**; 153(1):166.

9. Shepard SS, Meno S, Bahl J, Wilson MM, Barnes J, Neuhaus E. Viral deep sequencing needs an adaptive approach: IRMA, the iterative refinement meta-assembler. *BMC genomics*. Springer; **2016**; 17(1):708.
10. Yadav PD, Potdar VA, Choudhary ML, Nyayanit DA, Agrawal M, Jadhav SM, et al. Full-genome sequences of the first two SARS-CoV-2 viruses from India. *Indian J Med Res* 2020; 151: 200-9.
11. Edgar RC. MUSCLE: multiple sequence alignment with high accuracy and high throughput. *Nucleic Acids Research*. **2004**; 32(5):1792–1797.
12. Nguyen L-T, Schmidt HA, Haeseler A von, Minh BQ. IQ-TREE: A Fast and Effective Stochastic Algorithm for Estimating Maximum-Likelihood Phylogenies. *Molecular Biology and Evolution*. **2015**; 32(1):268–274.
13. Benton DJ, Wrobel AG, Xu P, et al. Receptor binding and priming of the spike protein of SARS-CoV-2 for membrane fusion. *Nature*. **2020**; 588(7837):327–330.
14. Wang Q, Zhang Y, Wu L, et al. Structural and Functional Basis of SARS-CoV-2 Entry by Using Human ACE2. *Cell*. **2020**; 181(4):894-904.e9.
15. Hansen J, Baum A, Pascal KE, et al. Studies in humanized mice and convalescent humans yield a SARS-CoV-2 antibody cocktail. *Science*. American Association for the Advancement of Science; **2020**; 369(6506):1010–1014.
16. Ju B, Zhang Q, Ge J, et al. Human neutralizing antibodies elicited by SARS-CoV-2 infection. *Nature*. Nature Publishing Group; **2020**; 584(7819):115–119.
17. Greaney AJ, Loes AN, Crawford KHD, et al. Comprehensive mapping of mutations in the SARS-CoV-2 receptor-binding domain that affect recognition by polyclonal human plasma antibodies. *Cell Host Microbe*. **2021**; 29(3):463-476.e6.
18. Garcia-Beltran WF, Lam EC, St Denis K, et al. Multiple SARS-CoV-2 variants escape neutralization by vaccine-induced humoral immunity. *Cell*. **2021**; .
19. Sarkar R, Mitra S, Chandra P, et al. Comprehensive analysis of genomic diversity of SARS-CoV-2 in different geographic regions of India: an endeavour to classify Indian SARS-CoV-2 strains on the basis of co-existing mutations. *Arch Virol*. **2021**; 166(3):801–812.
20. Zeng H-L, Dichio V, Horta ER, Thorell K, Aurell E. Global analysis of more than 50,000 SARS-CoV-2 genomes reveals epistasis between eight viral genes. *PNAS*. National Academy of Sciences; **2020**; 117(49):31519–31526.
21. McCallum M, Bassi J, Marco A, et al. SARS-CoV-2 immune evasion by variant B.1.427/B.1.429. *bioRxiv [Preprint]*. 2021 Apr 1:2021.03.31.437925. doi: 10.1101/2021.03.31.437925. PMID: 33821281; PMCID: PMC8020983.

22. Motozono C, Toyoda M, Zahradnik J, et al. An emerging SARS-CoV-2 mutant evading cellular immunity and increasing viral infectivity. bioRxiv 2021.04.02.438288; doi: <https://doi.org/10.1101/2021.04.02.438288>.

### **Legends to figures and Tables:**

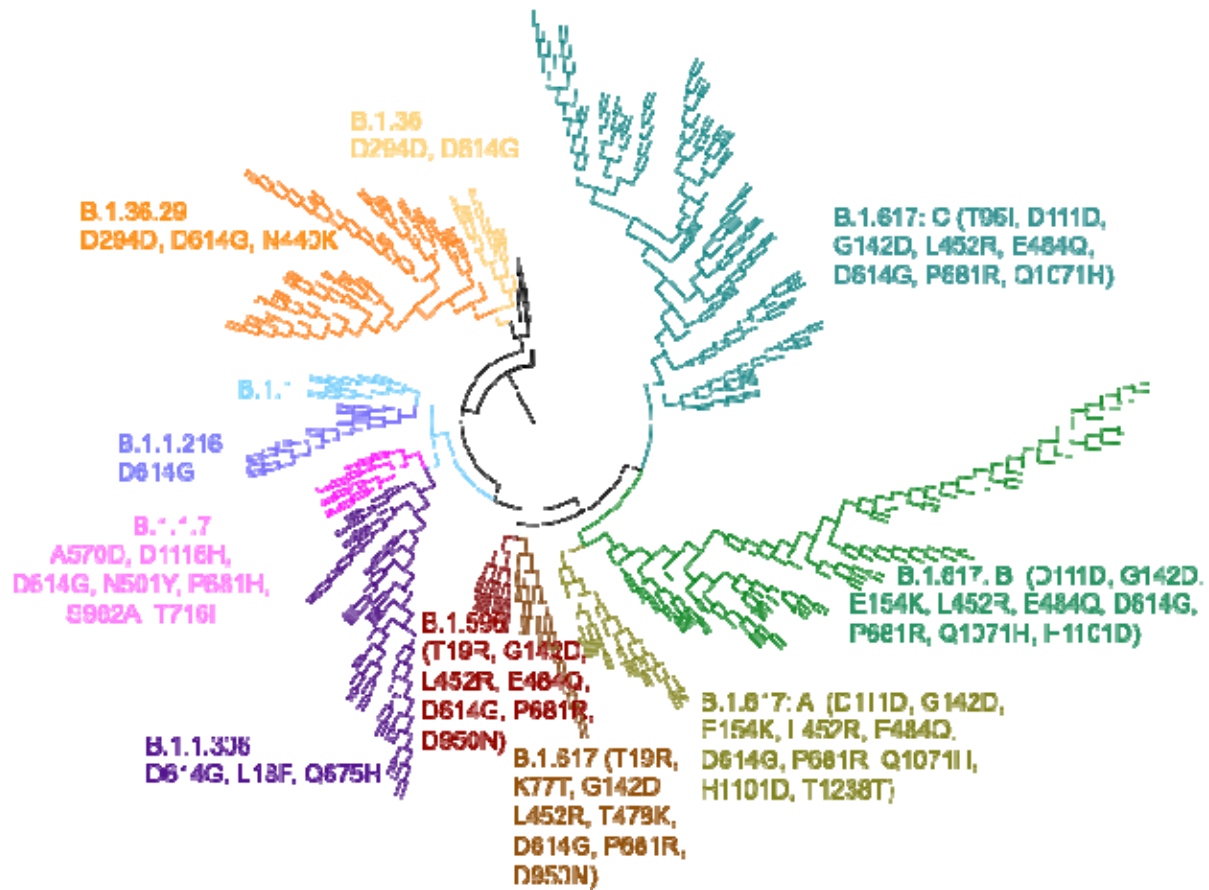
**Figure 1:** Maximum-likelihood tree of representative SARS-CoV-2 genomes depicting PangoLIN lineages and the co-occurring mutations in the spike protein in the sub-clusters of lineage B.1.617.

**Figure 2:** Monthly average of non-synonymous mutations (trend-line) against the total SARS-CoV-2 samples studied (blue bars).

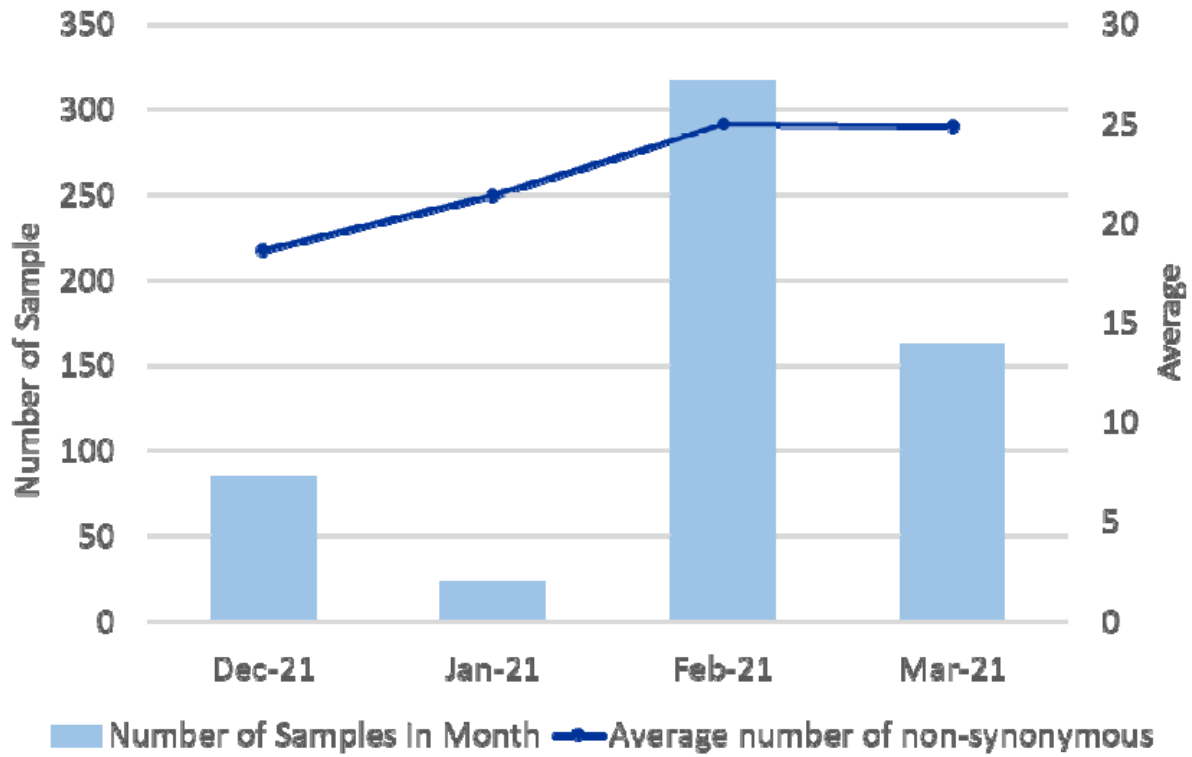
**Figure 3:** Trend of major mutations in the spike protein from December, 2020 to March, 2021.

**Figure 4:** Mapping of key mutations on the furin-cleaved crystal structure of SARS-CoV-2 spike glycoprotein (grey surface view) in complex with ACE2 (brown solid ribbon). RBD region shown in green

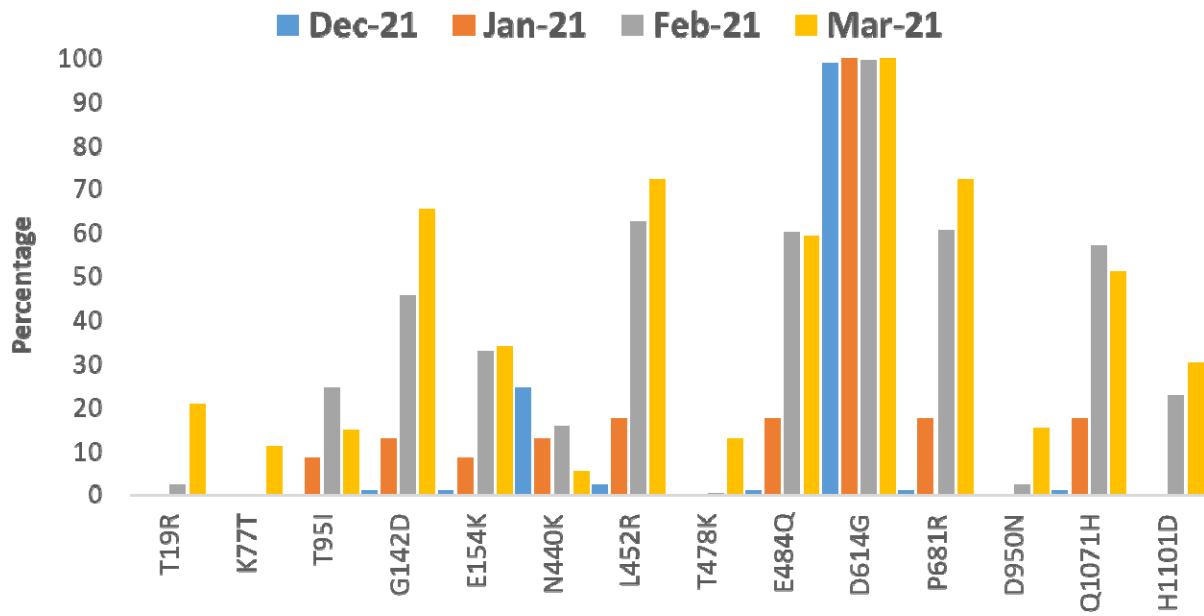
**Figure 5:** (A) Key interactions between ACE2-RBD involving major mutational hotspots in the RBD (B) Interactions between RBD-mAb REGN10933 (C) Interactions between RBD-mAb P2B-2F6. wt, corresponds to wild-type strain and mt, mutant strain. In (A), also shown are the intra-molecular contacts in a hydrophobic patch of the RBD region (surface displayed in grey color). In (B) and (C) blue represents heavy chain and red, light chain.



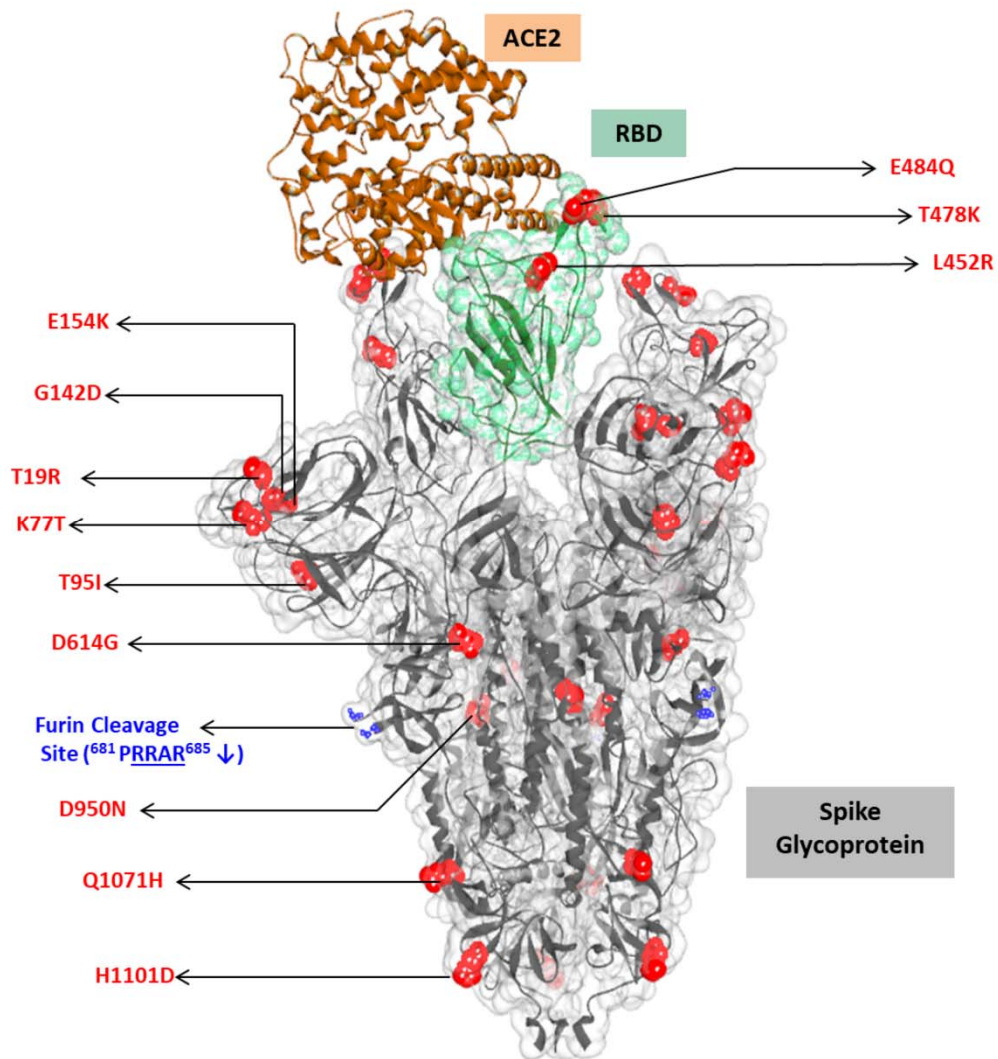
**Figure 1:** Maximum-likelihood tree of representative SARS-CoV-2 genomes depicting PangoLIN lineages and the co-occurring mutations in the spike protein in the sub-clusters of lineage B.1.617.



**Figure 2:** Monthly average of non-synonymous mutations (trend-line) against the total SARS-CoV-2 samples studied (blue bars).

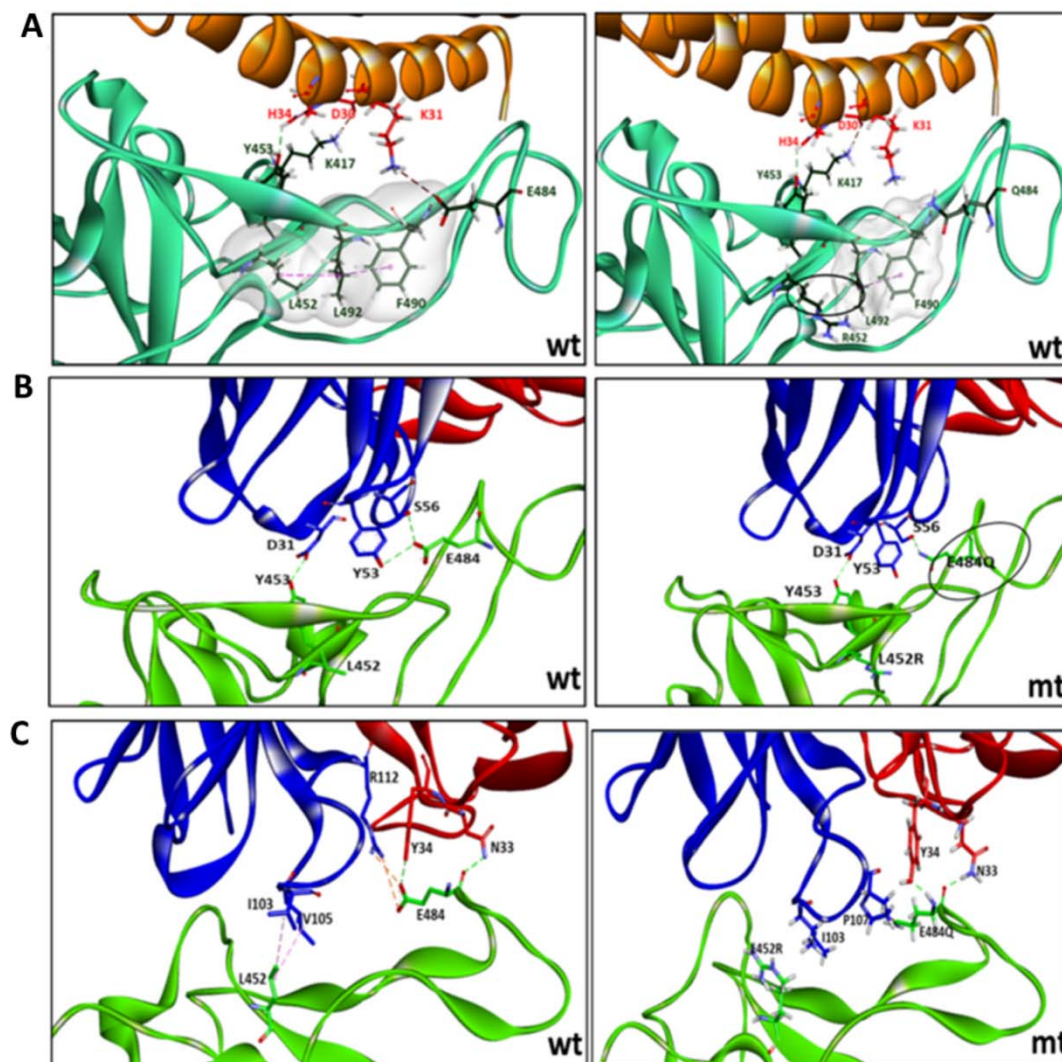


**Figure 3:** Trend of major mutations in the spike protein from December, 2020 to March, 2021.



**Figure 4:** Mapping of key mutations on the furin-cleaved crystal structure of SARS-CoV-2 spike glycoprotein (grey surface view) in complex with ACE2 (brown solid ribbon). RBD region shown in green

**Figure 5:** (A) Key interactions between ACE2-RBD involving major mutational hotspots in the RBD (B) Interactions between RBD-mAb REGN10933 (C) Interactions between RBD-mAb P2B-2F6. wt, corresponds to wild-type strain and mt, mutant strain. In (A), also shown are the intra-molecular contacts in a hydrophobic patch of the RBD region (surface displayed in grey color). In (B) and (C) blue represents heavy chain and red, light chain.





### **Legends to supplementary material:**

**Supplementary Figure 1:** The distribution of predominant PangoLIN lineages in the **labelled** districts of Maharashtra. The size of the pie charts is proportional to the number of genome sequences from the particular district.

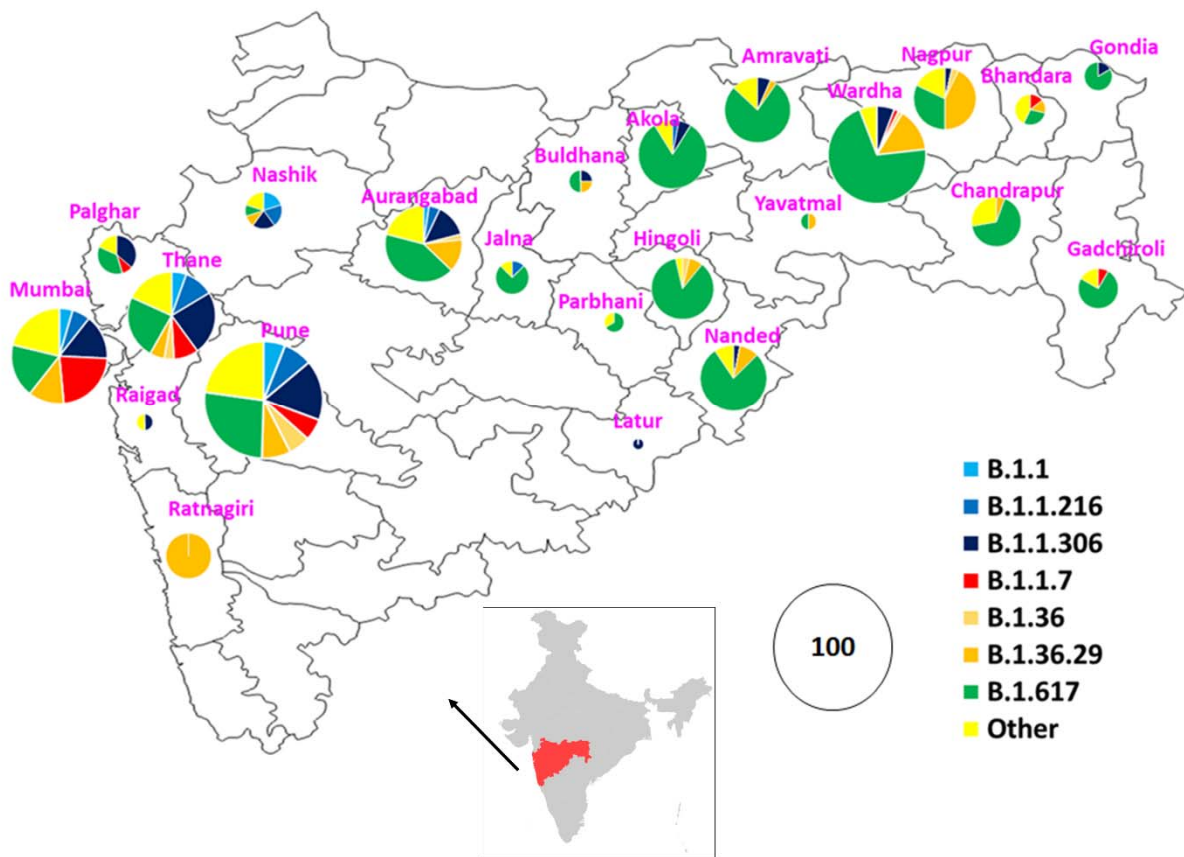
**Supplementary Figure 2:** Structural complexes of RBD-ACE2 and RBD-Fab. **A.** RBD - ACE2 (PDB Id-6LZG), **B.** RBD - mAb REGN10933(PDB Id-6XDG) **C.** RBD - mAb P2B-2F6(7bwj)

**Supplementary Table 1:** List and details of whole genome sequences used in the study

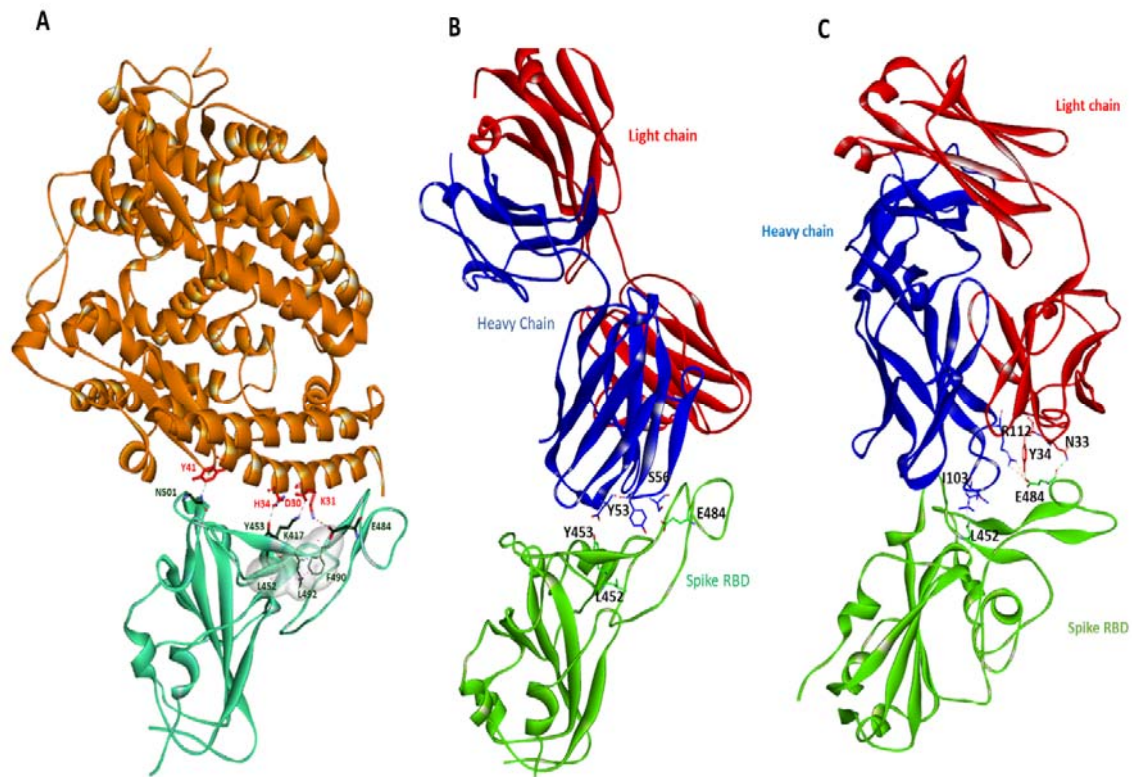
**Supplementary Table2:** Intra and inter-molecular interactions of wild and mutant spike RBD of SARS-CoV-2 with ACE2. The bonds that are highlighted indicate those that are disrupted in the mutant strain

**Supplementary Table3:** Intermolecular interaction of neutralizing antibodies with wild and mutant spike RBD of SARS-CoV-2

### **Supplementary Material**



**Figure S1:** The distribution of predominant PangoLIN lineages in the labelled districts of Maharashtra. The size of the pie charts is proportional to the number of genome sequences from the particular district.



**Figure S2:** Structural complexes of RBD-ACE2 and RBD-Fab. **A.** RBD - ACE2 (PDB Id-6LZG), **B.** RBD - mAb REGN10933(PDB Id-6XDG) **C.** RBD - mAb P2B-2F6(7bwj)

**Supplementary Table 1:** List and details of whole genome sequences used in the study

<b>SAMPLE_ID</b>	<b>Sample</b>	<b>State</b>	<b>District</b>	<b>Month</b>	<b>Lineage</b>
RNA-3540 Maharashtra Ratnagiri Feb-21 B.1.36.29	RNA-3540	Maharashtra	Ratnagiri	Feb-21	B.1.36.29
RNA-3547 Maharashtra Buldhana Aug-20 B.1.36.29	RNA-3547	Maharashtra	Buldhana	Aug-20	B.1.36.29
RNA-3560 Maharashtra Nagpur Feb-21 B.1.596	RNA-3560	Maharashtra	Nagpur	Feb-21	B.1.596
RNA-3584 Maharashtra Wardha Aug-20 B.1.1.306	RNA-3584	Maharashtra	Wardha	Aug-20	B.1.1.306
RNA-3586 Maharashtra Mumbai B.1	RNA-3586	Maharashtra	Mumbai	#N/A	B.1
RNA-3542 Maharashtra Ratnagiri Feb-21 B.1.36.29	RNA-3542	Maharashtra	Ratnagiri	Feb-21	B.1.36.29
RNA-3449 Maharashtra Mumbai Feb-21 B.1.1.7	RNA-3449	Maharashtra	Mumbai	Feb-21	B.1.1.7
RNA-3459 Maharashtra Mumbai Feb-21 B.1.1.7	RNA-3459	Maharashtra	Mumbai	Feb-21	B.1.1.7
RNA-3465 Maharashtra Mumbai Feb-21 B.1.1.7	RNA-3465	Maharashtra	Mumbai	Feb-21	B.1.1.7
RNA-3455 Maharashtra Mumbai Feb-21 B.1.1.7	RNA-3455	Maharashtra	Mumbai	Feb-21	B.1.1.7
RNA-3462 Maharashtra Mumbai Jan-21 B.1.1.7	RNA-3462	Maharashtra	Mumbai	Jan-21	B.1.1.7
RNA-3458 Maharashtra Mumbai Feb-21 B.1.1.7	RNA-3458	Maharashtra	Mumbai	Feb-21	B.1.1.7
RNA-3461 Maharashtra Mumbai Dec-20 B.1.1.7	RNA-3461	Maharashtra	Mumbai	Dec-20	B.1.1.7
RNA-3463 Maharashtra Mumbai Feb-21 B.1.1.7	RNA-3463	Maharashtra	Mumbai	Feb-21	B.1.1.7
RNA-	RNA-	Maharashtra	Mumbai	Jan-21	B.1.1.7

3472 Maharashtra Mumbai Jan-21 B.1.1.7	3472	ra			
RNA-3483 Maharashtra Mumbai Jan-21 B.1.1.7	RNA-3483	Maharasht ra	Mumbai	Jan-21	B.1.1.7
RNA-3567 Maharashtra Wardha Feb-21 B.1.617	RNA-3567	Maharasht ra	Wardha	Feb-21	B.1.617
RNA-3545 Maharashtra Buldhana Feb-21 B.1.617	RNA-3545	Maharasht ra	Buldhana	Feb-21	B.1.617
RNA-3551 Maharashtra Buldhana Feb-21 B.1.617	RNA-3551	Maharasht ra	Buldhana	Feb-21	B.1.617
RNA-3556 Maharashtra Nagpur Feb-21 B.1.617	RNA-3556	Maharasht ra	Nagpur	Feb-21	B.1.617
RNA-3555 Maharashtra Nagpur Feb-21 B.1.617	RNA-3555	Maharasht ra	Nagpur	Feb-21	B.1.617
RNA-3577 Maharashtra Wardha Feb-21 B.1.617	RNA-3577	Maharasht ra	Wardha	Feb-21	B.1.617
RNA-3563 Maharashtra Nagpur Feb-21 B.1.617	RNA-3563	Maharasht ra	Nagpur	Feb-21	B.1.617
RNA-3573 Maharashtra Wardha Feb-21 B.1.617	RNA-3573	Maharasht ra	Wardha	Feb-21	B.1.617
RNA-3571 Maharashtra Wardha Feb-21 B.1.617	RNA-3571	Maharasht ra	Wardha	Feb-21	B.1.617
RNA-3565 Maharashtra Wardha Feb-21 B.1.617	RNA-3565	Maharasht ra	Wardha	Feb-21	B.1.617
RNA-3570 Maharashtra Wardha Feb-21 B.1.617	RNA-3570	Maharasht ra	Wardha	Feb-21	B.1.617
RNA-3568 Maharashtra Wardha Feb-21 B.1.617	RNA-3568	Maharasht ra	Wardha	Feb-21	B.1.617
RNA-3569 Maharashtra Wardha Feb-21 B.1.617	RNA-3569	Maharasht ra	Wardha	Feb-21	B.1.617
RNA-3521 Maharashtra Nashik Feb-	RNA-3521	Maharasht ra	Nashik	Feb-21	B.1.617

21 B.1.617					
RNA-3575 Maharashtra Wardha Feb-21 B.1.617	RNA-3575	Maharashtra	Wardha	Feb-21	B.1.617
RNA-3554 Maharashtra Buldhana Feb-21 B.1.36.29	RNA-3554	Maharashtra	Buldhana	Feb-21	B.1.36.29
RNA-3527 Maharashtra Ratnagiri Feb-21 B.1.36.29	RNA-3527	Maharashtra	Ratnagiri	Feb-21	B.1.36.29
RNA-3535 Maharashtra Ratnagiri Feb-21 B.1.36.29	RNA-3535	Maharashtra	Ratnagiri	Feb-21	B.1.36.29
RNA-3529 Maharashtra Ratnagiri Feb-21 B.1.36.29	RNA-3529	Maharashtra	Ratnagiri	Feb-21	B.1.36.29
RNA-3528 Maharashtra Ratnagiri Feb-21 B.1.36.29	RNA-3528	Maharashtra	Ratnagiri	Feb-21	B.1.36.29
RNA-3544 Maharashtra Ratnagiri Feb-21 B.1.36.29	RNA-3544	Maharashtra	Ratnagiri	Feb-21	B.1.36.29
RNA-3536 Maharashtra Ratnagiri Feb-21 B.1.36.29	RNA-3536	Maharashtra	Ratnagiri	Feb-21	B.1.36.29
RNA-3541 Maharashtra Ratnagiri Feb-21 B.1.36.29	RNA-3541	Maharashtra	Ratnagiri	Feb-21	B.1.36.29
RNA-3532 Maharashtra Ratnagiri Feb-21 B.1.36.29	RNA-3532	Maharashtra	Ratnagiri	Feb-21	B.1.36.29
RNA-3537 Maharashtra Ratnagiri Feb-21 B.1.36.29	RNA-3537	Maharashtra	Ratnagiri	Feb-21	B.1.36.29
RNA-3531 Maharashtra Ratnagiri Feb-21 B.1.36.29	RNA-3531	Maharashtra	Ratnagiri	Feb-21	B.1.36.29
RNA-3533 Maharashtra Ratnagiri Feb-21 B.1.36.29	RNA-3533	Maharashtra	Ratnagiri	Feb-21	B.1.36.29
RNA-3534 Maharashtra Ratnagiri Feb-21 B.1.36.29	RNA-3534	Maharashtra	Ratnagiri	Feb-21	B.1.36.29
RNA-3538 Maharashtra Ratnagiri Feb-21 B.1.36.29	RNA-3538	Maharashtra	Ratnagiri	Feb-21	B.1.36.29

RNA-3445 Maharashtra Mumbai Feb-21 B.1.525	RNA-3445	Maharashtra	Mumbai	Feb-21	B.1.525
RNA-3523 Maharashtra Nashik Feb-21 B.1.1.306	RNA-3523	Maharashtra	Nashik	Feb-21	B.1.1.306
RNA-3512 Maharashtra Nashik Feb-21 B.1.36.29	RNA-3512	Maharashtra	Nashik	Feb-21	B.1.36.29
RNA-3582 Maharashtra Wardha Feb-21 B.1.36.29	RNA-3582	Maharashtra	Wardha	Feb-21	B.1.36.29
RNA-3576 Maharashtra Wardha Feb-21 B.1.36.29	RNA-3576	Maharashtra	Wardha	Feb-21	B.1.36.29
RNA-3557 Maharashtra Nagpur Feb-21 B.1.36.29	RNA-3557	Maharashtra	Nagpur	Feb-21	B.1.36.29
RNA-3558 Maharashtra Nagpur Feb-21 B.1.36.29	RNA-3558	Maharashtra	Nagpur	Feb-21	B.1.36.29
RNA-3507 Maharashtra Nashik Feb-21 B.1.1.316	RNA-3507	Maharashtra	Nashik	Feb-21	B.1.1.316
RNA-3505 Maharashtra Pune Feb-21 B.1.36.22	RNA-3505	Maharashtra	Pune	Feb-21	B.1.36.22
RNA-3550 Maharashtra Buldhana Feb-21 B.1.1.306	RNA-3550	Maharashtra	Buldhana	Feb-21	B.1.1.306
RNA-3509 Maharashtra Nashik Feb-21 B.1.1.306	RNA-3509	Maharashtra	Nashik	Feb-21	B.1.1.306
RNA-3513 Maharashtra Nashik Feb-21 B.1.36.24	RNA-3513	Maharashtra	Nashik	Feb-21	B.1.36.24
RNA-3506 Maharashtra Pune Feb-21 B.1.1.216	RNA-3506	Maharashtra	Pune	Feb-21	B.1.1.216
VOC-38 Maharashtra Nagpur Dec-20 B.1.36.29	VOC-38	Maharashtra	Nagpur	Dec-20	B.1.36.29
VOC-39 Maharashtra Nagpur Dec-20 B.1.36.29	VOC-39	Maharashtra	Nagpur	Dec-20	B.1.36.29
VOC-112 Maharashtra Mumbai Dec-20 B.1.1.7	VOC-112	Maharashtra	Mumbai	Dec-20	B.1.1.7
VOC-66 Maharashtra Mumbai Dec-	VOC-66	Maharashtra	Mumbai	Dec-20	B.1.1.7

20 B.1.1.7					
VOC-70 Maharashtra Mumbai Dec-20 B.1.1.7	VOC-70	Maharashtra	Mumbai	Dec-20	B.1.1.7
VOC-7 Maharashtra Pune Dec-20 B.1.1.7	VOC-7	Maharashtra	Pune	Dec-20	B.1.1.7
VOC-65 Maharashtra Mumbai Dec-20 B.1.1.7	VOC-65	Maharashtra	Mumbai	Dec-20	B.1.1.7
VOC-84 Maharashtra NA Dec-20 B.1.1.7	VOC-84	Maharashtra	NA	Dec-20	B.1.1.7
VOC-49 Maharashtra Nashik Dec-20 B.1.1	VOC-49	Maharashtra	Nashik	Dec-20	B.1.1
VOC-114 Maharashtra Mumbai Dec-20 B.1.160	VOC-114	Maharashtra	Mumbai	Dec-20	B.1.160
VOC-82 Maharashtra NA Dec-20 B.1.1.306	VOC-82	Maharashtra	NA	Dec-20	B.1.1.306
VOC-37 Maharashtra Pune Dec-20 B.1.177.81	VOC-37	Maharashtra	Pune	Dec-20	B.1.177.81
VOC-120 Maharashtra Mumbai Dec-20 B.1.1.294	VOC-120	Maharashtra	Mumbai	Dec-20	B.1.1.294
VOC-75 Maharashtra Mumbai Dec-20 B.1.1.306	VOC-75	Maharashtra	Mumbai	Dec-20	B.1.1.306
VOC-106 Maharashtra Pune Dec-20 B.1.177.16	VOC-106	Maharashtra	Pune	Dec-20	B.1.177.16
VOC-48 Maharashtra Nashik Dec-20 B.1.1.216	VOC-48	Maharashtra	Nashik	Dec-20	B.1.1.216
VOC-50 Maharashtra Nashik Dec-20 B.1.1.216	VOC-50	Maharashtra	Nashik	Dec-20	B.1.1.216
VOC-173 Maharashtra Pimpri Dec-20 B.1.1.7	VOC-173	Maharashtra	Pimpri	Dec-20	B.1.1.7
VOC-172 Maharashtra Pimpri Dec-20 B.1.1.7	VOC-172	Maharashtra	Pimpri	Dec-20	B.1.1.7
VOC-73 Maharashtra Mumbai Dec-20 B.1.524	VOC-73	Maharashtra	Mumbai	Dec-20	B.1.524
VOC-211 Maharashtra Thane Dec-20 B.1.36	VOC-211	Maharashtra	Thane	Dec-20	B.1.36
2019nCoV-286757 Maharashtra Pune Dec-20 B.1.36	2019nCoV-286757	Maharashtra	Pune	Dec-20	B.1.36



2019nCoV-282393 Maharashtra Pune Dec-20 B.1.36.28	2019nCoV-282393	Maharashtra	Pune	Dec-20	B.1.36.28
2019nCoV-281734 Maharashtra Pune Dec-20 B.1.36.29	2019nCoV-281734	Maharashtra	Pune	Dec-20	B.1.36.29
2019nCoV-290248 Maharashtra Pune Jan-21 B.1.36.29	2019nCoV-290248	Maharashtra	Pune	Jan-21	B.1.36.29
2019nCoV-290257 Maharashtra Pune Jan-21 B.1.36.29	2019nCoV-290257	Maharashtra	Pune	Jan-21	B.1.36.29
2019nCoV-286687 Maharashtra Pune Dec-20 B.1.36.29	2019nCoV-286687	Maharashtra	Pune	Dec-20	B.1.36.29
2019nCoV-282387 Maharashtra Pune Dec-20 B.1.36.29	2019nCoV-282387	Maharashtra	Pune	Dec-20	B.1.36.29
2019nCoV-274033 Maharashtra Pune Dec-20 AE.3	2019nCoV-274033	Maharashtra	Pune	Dec-20	AE.3
2019nCoV-287775 Maharashtra Pune Dec-20 B.1.1.7	2019nCoV-287775	Maharashtra	Pune	Dec-20	B.1.1.7
2019nCoV-289128 Maharashtra Pune Jan-21 AE.3	2019nCoV-289128	Maharashtra	Pune	Jan-21	AE.3
2019nCoV-288840 Maharashtra Pune Jan-21 B.1.1	2019nCoV-288840	Maharashtra	Pune	Jan-21	B.1.1
2019nCoV-280822 Maharashtra Pune Dec-20 B.1.1.306	2019nCoV-280822	Maharashtra	Pune	Dec-20	B.1.1.306
2019nCoV-286036 Maharashtra Pune Dec-20 B.1.1.148	2019nCoV-286036	Maharashtra	Pune	Dec-20	B.1.1.148
2019nCoV-290239 Maharashtra Pune Jan-21 B.1.1.306	2019nCoV-290239	Maharashtra	Pune	Jan-21	B.1.1.306
2019nCoV-289435 Maharashtra Pune Jan-21 B.1.1.306	2019nCoV-289435	Maharashtra	Pune	Jan-21	B.1.1.306
2019nCoV-285164 Maharashtra Pune Dec-20 B.1.36.28	2019nCoV-285164	Maharashtra	Pune	Dec-20	B.1.36.28
2019nCoV-	2019nCoV-	Maharashtra	Pune	Jan-21	AE.3

289547 Maharashtra Pune Jan-21 AE.3	V-289547	ra				
2019nCoV-285059 Maharashtra Pune Dec-20 B.1.36.9	2019nCoV-285059	Maharasht ra	Pune	Dec-20		B.1.36.9
2019nCoV-276219 Maharashtra Pune Dec-20 B.1.1	2019nCoV-276219	Maharasht ra	Pune	Dec-20		B.1.1
2019nCoV-281229 Maharashtra Pune Dec-20 B.1.36.28	2019nCoV-281229	Maharasht ra	Pune	Dec-20		B.1.36.28
2019nCoV-282472 Maharashtra Pune Dec-20 B.1.1.303	2019nCoV-282472	Maharasht ra	Pune	Dec-20		B.1.1.303
2019nCoV-289122 Maharashtra Pune Jan-21 B.1.1.306	2019nCoV-289122	Maharasht ra	Pune	Jan-21		B.1.1.306
2019nCoV-274948 Maharashtra Pune Dec-20 B.1.36	2019nCoV-274948	Maharasht ra	Pune	Dec-20		B.1.36
2019nCoV-282789 Maharashtra Pune Jan-21 AE.6	2019nCoV-282789	Maharasht ra	Pune	Jan-21		AE.6
2019nCoV-276813 Maharashtra Pune Dec-20 B.1.1.216	2019nCoV-276813	Maharasht ra	Pune	Dec-20		B.1.1.216
2019nCoV-286002 Maharashtra Pune Dec-20 B.1.1.306	2019nCoV-286002	Maharasht ra	Pune	Dec-20		B.1.1.306
2019nCoV-284281 Maharashtra Pune Dec-20 B.1.1.216	2019nCoV-284281	Maharasht ra	Pune	Dec-20		B.1.1.216
2019nCoV-275555 Maharashtra Pune Dec-20 B.1.1.306	2019nCoV-275555	Maharasht ra	Pune	Dec-20		B.1.1.306
2019nCoV-274672 Maharashtra Pune Dec-20 B.1.1.216	2019nCoV-274672	Maharasht ra	Pune	Dec-20		B.1.1.216
2019nCoV-285629 Maharashtra Pune Dec-20 B.1.1.306	2019nCoV-285629	Maharasht ra	Pune	Dec-20		B.1.1.306
2019nCoV-280527 Maharashtra Pune Dec-20 B.1.36	2019nCoV-280527	Maharasht ra	Pune	Dec-20		B.1.36
2019nCoV-283552 Maharashtra Pune Dec-	2019nCoV-283552	Maharasht ra	Pune	Dec-20		B.1.36.28

20 B.1.36.28					
2019nCoV-277854 Maharashtra Pune Dec-20 B.1.1.272	2019nCoV-277854	Maharashtra	Pune	Dec-20	B.1.1.272
2019nCoV-282137 Maharashtra Pune Dec-20 B.1.1.306	2019nCoV-282137	Maharashtra	Pune	Dec-20	B.1.1.306
2019nCoV-277925 Maharashtra Pune Dec-20 B.1.1.306	2019nCoV-277925	Maharashtra	Pune	Dec-20	B.1.1.306
2019nCoV-273465 Maharashtra Pune Dec-20 B.1.1.306	2019nCoV-273465	Maharashtra	Pune	Dec-20	B.1.1.306
2019nCoV-289130 Maharashtra Pune Jan-21 B.1.1.306	2019nCoV-289130	Maharashtra	Pune	Jan-21	B.1.1.306
2019nCoV-277856 Maharashtra Pune Dec-20 B.1.1	2019nCoV-277856	Maharashtra	Pune	Dec-20	B.1.1
2019nCoV-290266 Maharashtra Pune Jan-21 B.1.1	2019nCoV-290266	Maharashtra	Pune	Jan-21	B.1.1
2019nCoV-276959 Maharashtra Pune Dec-20 B.1.1.216	2019nCoV-276959	Maharashtra	Pune	Dec-20	B.1.1.216
2019nCoV-284488 Maharashtra Pune Dec-20 B.1.1	2019nCoV-284488	Maharashtra	Pune	Dec-20	B.1.1
2019nCoV-280290 Maharashtra Pune Dec-20 B.1.1.216	2019nCoV-280290	Maharashtra	Pune	Dec-20	B.1.1.216
2019nCoV-286132 Maharashtra Pune Dec-20 B.1.1.216	2019nCoV-286132	Maharashtra	Pune	Dec-20	B.1.1.216
VOC-227 Maharashtra Mumbai Dec-20 A.21	VOC-227	Maharashtra	Mumbai	Dec-20	A.21
VOC-288 Maharashtra Mumbai Dec-20 B.1.36.28	VOC-288	Maharashtra	Mumbai	Dec-20	B.1.36.28
SEQ-728 Maharashtra Nagpur Dec-20 B.1.36.29	SEQ-728	Maharashtra	Nagpur	Dec-20	B.1.36.29
SEQ-732 Maharashtra Nagpur Dec-20 B.1.36.29	SEQ-732	Maharashtra	Nagpur	Dec-20	B.1.36.29

SEQ-740 Maharashtra Nagpur Dec-20 B.1	SEQ-740	Maharashtra	Nagpur	Dec-20	B.1
SEQ-730 Maharashtra Nagpur Dec-20 B.1.36	SEQ-730	Maharashtra	Nagpur	Dec-20	B.1.36
SEQ-734 Maharashtra Nagpur Dec-20 B.1.36.8	SEQ-734	Maharashtra	Nagpur	Dec-20	B.1.36.8
VOC-86 Maharashtra Thane Dec-20 B.1.1.45	VOC-86	Maharashtra	Thane	Dec-20	B.1.1.45
VOC-41 Maharashtra Nagpur Dec-20 B.1.36.29	VOC-41	Maharashtra	Nagpur	Dec-20	B.1.36.29
VOC-68 Maharashtra Mumbai Dec-20 B.1.36.29	VOC-68	Maharashtra	Mumbai	Dec-20	B.1.36.29
VOC-40 Maharashtra Nagpur Dec-20 B.1.36.29	VOC-40	Maharashtra	Nagpur	Dec-20	B.1.36.29
VOC-42 Maharashtra Nagpur Dec-20 B.1.36.29	VOC-42	Maharashtra	Nagpur	Dec-20	B.1.36.29
VOC-72 Maharashtra Mumbai Dec-20 B.1.36.29	VOC-72	Maharashtra	Mumbai	Dec-20	B.1.36.29
VOC-36 Maharashtra Mumbai Dec-20 B.1.36.29	VOC-36	Maharashtra	Mumbai	Dec-20	B.1.36.29
VOC-117 Maharashtra Mumbai Dec-20 B.1.36.29	VOC-117	Maharashtra	Mumbai	Dec-20	B.1.36.29
VOC-67 Maharashtra Mumbai Dec-20 B.1.36.29	VOC-67	Maharashtra	Mumbai	Dec-20	B.1.36.29
VOC-92 Maharashtra Aurangabad Dec-20 B.1.1.306	VOC-92	Maharashtra	Aurangabad	Dec-20	B.1.1.306
VOC-85 Maharashtra Thane Dec-20 B.1.36.8	VOC-85	Maharashtra	Thane	Dec-20	B.1.36.8
VOC-119 Maharashtra Mumbai Dec-20 B.1.1.216	VOC-119	Maharashtra	Mumbai	Dec-20	B.1.1.216
VOC-113 Maharashtra Mumbai Dec-20 B.1.177.16	VOC-113	Maharashtra	Mumbai	Dec-20	B.1.177.16
VOC-47 Maharashtra Nashik Dec-20 B.1.1	VOC-47	Maharashtra	Nashik	Dec-20	B.1.1
VOC-137 Maharashtra Thane Dec-	VOC-137	Maharashtra	Thane	Dec-	B.1.1.216

20 B.1.1.216		ra		20	
VOC-138 Maharashtra Thane Dec-20 B.1.1.216	VOC-138	Maharasht ra	Thane	Dec-20	B.1.1.216
VOC-171 Maharashtra Pune Dec-20 B.1.1.7	VOC-171	Maharasht ra	Pune	Dec-20	B.1.1.7
VOC-170 Maharashtra Pune Dec-20 B.1.128	VOC-170	Maharasht ra	Pune	Dec-20	B.1.128
VOC-370 Maharashtra Mumbai Feb-21 B.1.1.59	VOC-370	Maharasht ra	Mumbai	Feb-21	B.1.1.59
VOC-336 Maharashtra Mumbai Jan-21 B.1.1.306	VOC-336	Maharasht ra	Mumbai	Jan-21	B.1.1.306
VOC-369 Maharashtra Thane Jan-21 B.1.1	VOC-369	Maharasht ra	Thane	Jan-21	B.1.1
VOC-331 Maharashtra Mumbai Jan-21 B.1.1.216	VOC-331	Maharasht ra	Mumbai	Jan-21	B.1.1.216
GSEQ-117 Maharashtra Pune Feb-21 B.1.617	GSEQ-117	Maharasht ra	Pune	Feb-21	B.1.617
GSEQ-116 Maharashtra Pune Feb-21 B.1.617	GSEQ-116	Maharasht ra	Pune	Feb-21	B.1.617
GSEQ-127 Maharashtra Pune Feb-21 B.1.617	GSEQ-127	Maharasht ra	Pune	Feb-21	B.1.617
GSEQ-18 Maharashtra Akola Jan-21 B.1.617	GSEQ-18	Maharasht ra	Akola	Jan-21	B.1.617
GSEQ-134 Maharashtra Pune Feb-21 B.1.617	GSEQ-134	Maharasht ra	Pune	Feb-21	B.1.617
GSEQ-144 Maharashtra Pune Feb-21 B.1.617	GSEQ-144	Maharasht ra	Pune	Feb-21	B.1.617
GSEQ-142 Maharashtra Pune Feb-21 B.1	GSEQ-142	Maharasht ra	Pune	Feb-21	B.1
GSEQ-143 Maharashtra Pune Feb-21 B.1.617	GSEQ-143	Maharasht ra	Pune	Feb-21	B.1.617
GSEQ-76 Maharashtra Akola Feb-21 B.1.617	GSEQ-76	Maharasht ra	Akola	Feb-21	B.1.617
GSEQ-119 Maharashtra Pune Feb-21 B.1.617	GSEQ-119	Maharasht ra	Pune	Feb-21	B.1.617
GSEQ-33 Maharashtra Akola Feb-21 B.1.617	GSEQ-33	Maharasht ra	Akola	Feb-21	B.1.617
GSEQ-35 Maharashtra Akola Feb-21 B.1.617	GSEQ-35	Maharasht ra	Akola	Feb-21	B.1.617
GSEQ-69 Maharashtra Akola Feb-21 B.1.617	GSEQ-69	Maharasht ra	Akola	Feb-21	B.1.617
GSEQ-30 Maharashtra Akola Feb-	GSEQ-30	Maharasht	Akola	Feb-	B.1.617

21 B.1.617		ra		21	
GSEQ-128 Maharashtra Pune Feb-21 B.1.617	GSEQ-128	Maharasht ra	Pune	Feb-21	B.1.617
GSEQ-63 Maharashtra Akola Feb-21 B.1.617	GSEQ-63	Maharasht ra	Akola	Feb-21	B.1.617
GSEQ-56 Maharashtra Akola Feb-21 B.1.617	GSEQ-56	Maharasht ra	Akola	Feb-21	B.1.617
GSEQ-66 Maharashtra Akola Feb-21 B.1.617	GSEQ-66	Maharasht ra	Akola	Feb-21	B.1.617
GSEQ-10 Maharashtra Akola Feb-21 B.1	GSEQ-10	Maharasht ra	Akola	Feb-21	B.1
GSEQ-31 Maharashtra Akola Feb-21 B.1.617	GSEQ-31	Maharasht ra	Akola	Feb-21	B.1.617
GSEQ-25 Maharashtra Akola Feb-21 B.1.617	GSEQ-25	Maharasht ra	Akola	Feb-21	B.1.617
GSEQ-38 Maharashtra Akola Feb-21 B.1.617	GSEQ-38	Maharasht ra	Akola	Feb-21	B.1.617
GSEQ-14 Maharashtra Akola Jan-21 B.1.617	GSEQ-14	Maharasht ra	Akola	Jan-21	B.1.617
GSEQ-20 Maharashtra Akola Feb-21 B.1.617	GSEQ-20	Maharasht ra	Akola	Feb-21	B.1.617
GSEQ-39 Maharashtra Akola Feb-21 B.1.617	GSEQ-39	Maharasht ra	Akola	Feb-21	B.1.617
GSEQ-34 Maharashtra Akola Feb-21 B.1.617	GSEQ-34	Maharasht ra	Akola	Feb-21	B.1.617
GSEQ-8 Maharashtra Akola Feb-21 B.1.617	GSEQ-8	Maharasht ra	Akola	Feb-21	B.1.617
GSEQ-36 Maharashtra Akola Feb-21 B.1.617	GSEQ-36	Maharasht ra	Akola	Feb-21	B.1.617
GSEQ-123 Maharashtra Pune Feb-21 B.1.36.29	GSEQ-123	Maharasht ra	Pune	Feb-21	B.1.36.29
GSEQ-136 Maharashtra Pune Feb-21 B.1	GSEQ-136	Maharasht ra	Pune	Feb-21	B.1
GSEQ-41 Maharashtra Akola Feb-21 B.1.1.335	GSEQ-41	Maharasht ra	Akola	Feb-21	B.1.1.335
GSEQ-15 Maharashtra Akola Jan-21 B.1.1.303	GSEQ-15	Maharasht ra	Akola	Jan-21	B.1.1.303
GSEQ-131 Maharashtra Pune Feb-21 A.21	GSEQ-131	Maharasht ra	Pune	Feb-21	A.21
GSEQ-120 Maharashtra Pune Feb-21 B.1.1.306	GSEQ-120	Maharasht ra	Pune	Feb-21	B.1.1.306
GSEQ-115 Maharashtra Pune Feb-21 B.1.1.306	GSEQ-115	Maharasht ra	Pune	Feb-21	B.1.1.306
GSEQ-122 Maharashtra Pune Feb-21 B.1.1.306	GSEQ-122	Maharasht ra	Pune	Feb-21	B.1.1.306

GSEQ-57 Maharashtra Akola Feb-21 B.1.1.216	GSEQ-57	Maharasht ra	Akola	Feb-21	B.1.1.216
GSEQ-114 Maharashtra Pune Feb-21 B.1.36	GSEQ-114	Maharasht ra	Pune	Feb-21	B.1.36
GSEQ-46 Maharashtra Akola Feb-21 B.1.1.306	GSEQ-46	Maharasht ra	Akola	Feb-21	B.1.1.306
GSEQ-137 Maharashtra Pune Feb-21 B.1.36.22	GSEQ-137	Maharasht ra	Pune	Feb-21	B.1.36.22
GSEQ-126 Maharashtra Pune Feb-21 B.1.36	GSEQ-126	Maharasht ra	Pune	Feb-21	B.1.36
GSEQ-111 Maharashtra Pune Feb-21 B.1.1.216	GSEQ-111	Maharasht ra	Pune	Feb-21	B.1.1.216
GSEQ-23 Maharashtra Akola Feb-21 B.1.617	GSEQ-23	Maharasht ra	Akola	Feb-21	B.1.617
GSEQ-141 Maharashtra Pune Feb-21 B.1.617	GSEQ-141	Maharasht ra	Pune	Feb-21	B.1.617
GSEQ-145 Maharashtra Pune Feb-21 B.1.617	GSEQ-145	Maharasht ra	Pune	Feb-21	B.1.617
GSEQ-37 Maharashtra Akola Feb-21 B.1.617	GSEQ-37	Maharasht ra	Akola	Feb-21	B.1.617
GSEQ-113 Maharashtra Pune Feb-21 B.1.617	GSEQ-113	Maharasht ra	Pune	Feb-21	B.1.617
GSEQ-130 Maharashtra Pune Feb-21 B.1.617	GSEQ-130	Maharasht ra	Pune	Feb-21	B.1.617
GSEQ-11 Maharashtra Akola Feb-21 B.1.617	GSEQ-11	Maharasht ra	Akola	Feb-21	B.1.617
GSEQ-47 Maharashtra Akola Feb-21 B.1.617	GSEQ-47	Maharasht ra	Akola	Feb-21	B.1.617
GSEQ-13 Maharashtra Akola Feb-21 B.1.617	GSEQ-13	Maharasht ra	Akola	Feb-21	B.1.617
GSEQ-81 Maharashtra Akola Feb-21 B.1.617	GSEQ-81	Maharasht ra	Akola	Feb-21	B.1.617
GSEQ-32 Maharashtra Akola Feb-21 B.1.617	GSEQ-32	Maharasht ra	Akola	Feb-21	B.1.617
GSEQ-16 Maharashtra Akola Jan-21 B.1.617	GSEQ-16	Maharasht ra	Akola	Jan-21	B.1.617
GSEQ-24 Maharashtra Akola Feb-21 B.1.617	GSEQ-24	Maharasht ra	Akola	Feb-21	B.1.617
GSEQ-55 Maharashtra Akola Feb-21 B.1.617	GSEQ-55	Maharasht ra	Akola	Feb-21	B.1.617
GSEQ-133 Maharashtra Pune Feb-21 B.1.1.306	GSEQ-133	Maharasht ra	Pune	Feb-21	B.1.1.306
GSEQ-140 Maharashtra Pune Feb-21 B.1.36	GSEQ-140	Maharasht ra	Pune	Feb-21	B.1.36
GSEQ-112 Maharashtra Pune Feb-21 B.1.1.306	GSEQ-112	Maharasht ra	Pune	Feb-21	B.1.1.306

GSEQ-67 Maharashtra Akola Feb-21 B.1.1.306	GSEQ-67	Maharasht ra	Akola	Feb-21	B.1.1.306
GSEQ-125 Maharashtra Pune Feb-21 B.1.1.326	GSEQ-125	Maharasht ra	Pune	Feb-21	B.1.1.326
GSEQ-201 Maharashtra Amravati Feb-21 B.1	GSEQ-201	Maharasht ra	Amravati	Feb-21	B.1
GSEQ-255 Maharashtra Nagpur Feb-21 B.1.596	GSEQ-255	Maharasht ra	Nagpur	Feb-21	B.1.596
GSEQ-267 Maharashtra Aurangabad Feb-21 B.1.596	GSEQ-267	Maharasht ra	Aurangabad	Feb-21	B.1.596
GSEQ-224 Maharashtra Amravati Feb-21 B.1.617	GSEQ-224	Maharasht ra	Amravati	Feb-21	B.1.617
GSEQ-246 Maharashtra Amravati Feb-21 B.1.617	GSEQ-246	Maharasht ra	Amravati	Feb-21	B.1.617
GSEQ-257 Maharashtra Nagpur Feb-21 B.1.617	GSEQ-257	Maharasht ra	Nagpur	Feb-21	B.1.617
GSEQ-244 Maharashtra Amravati Feb-21 B.1.617	GSEQ-244	Maharasht ra	Amravati	Feb-21	B.1.617
GSEQ-251 Maharashtra Nagpur Feb-21 B.1.617	GSEQ-251	Maharasht ra	Nagpur	Feb-21	B.1.617
GSEQ-243 Maharashtra Amravati Feb-21 B.1.617	GSEQ-243	Maharasht ra	Amravati	Feb-21	B.1.617
GSEQ-248 Maharashtra Amravati Feb-21 B.1.617	GSEQ-248	Maharasht ra	Amravati	Feb-21	B.1.617
GSEQ-208 Maharashtra Amravati Feb-21 B.1.617	GSEQ-208	Maharasht ra	Amravati	Feb-21	B.1.617
GSEQ-250 Maharashtra Nagpur Feb-21 B.1.617	GSEQ-250	Maharasht ra	Nagpur	Feb-21	B.1.617
GSEQ-222 Maharashtra Amravati Feb-21 B.1	GSEQ-222	Maharasht ra	Amravati	Feb-21	B.1
GSEQ-216 Maharashtra Amravati Feb-21 B.1.617	GSEQ-216	Maharasht ra	Amravati	Feb-21	B.1.617



GSEQ-211 Maharashtra Amravati Feb-21 B.1.617	GSEQ-211	Maharashtra	Amravati	Feb-21	B.1.617
GSEQ-199 Maharashtra Pune Feb-21 B.1.335	GSEQ-199	Maharashtra	Pune	Feb-21	B.1.335
GSEQ-205 Maharashtra Amravati Feb-21 B.1.617	GSEQ-205	Maharashtra	Amravati	Feb-21	B.1.617
GSEQ-213 Maharashtra Amravati Feb-21 B.1.617	GSEQ-213	Maharashtra	Amravati	Feb-21	B.1.617
GSEQ-228 Maharashtra Amravati Feb-21 B.1.128	GSEQ-228	Maharashtra	Amravati	Feb-21	B.1.128
GSEQ-242 Maharashtra Amravati Feb-21 B.1.617	GSEQ-242	Maharashtra	Amravati	Feb-21	B.1.617
GSEQ-202 Maharashtra Amravati Feb-21 B.1.617	GSEQ-202	Maharashtra	Amravati	Feb-21	B.1.617
GSEQ-227 Maharashtra Amravati Feb-21 B.1.617	GSEQ-227	Maharashtra	Amravati	Feb-21	B.1.617
GSEQ-258 Maharashtra Nagpur Feb-21 B.1.617	GSEQ-258	Maharashtra	Nagpur	Feb-21	B.1.617
GSEQ-238 Maharashtra Amravati Feb-21 B.1.617	GSEQ-238	Maharashtra	Amravati	Feb-21	B.1.617
GSEQ-249 Maharashtra Amravati Feb-21 B.1.617	GSEQ-249	Maharashtra	Amravati	Feb-21	B.1.617
GSEQ-204 Maharashtra Amravati Feb-21 B.1.617	GSEQ-204	Maharashtra	Amravati	Feb-21	B.1.617
GSEQ-237 Maharashtra Amravati Feb-21 B.1.617	GSEQ-237	Maharashtra	Amravati	Feb-21	B.1.617
GSEQ-209 Maharashtra Amravati Feb-21 B.1.617	GSEQ-209	Maharashtra	Amravati	Feb-21	B.1.617
GSEQ-233 Maharashtra Amravati Feb-21 B.1.617	GSEQ-233	Maharashtra	Amravati	Feb-21	B.1.617
GSEQ-234 Maharashtra Amravati Feb-	GSEQ-234	Maharashtra	Amravati	Feb-21	B.1.617

21 B.1.617					
GSEQ-236 Maharashtra Amravati Feb-21 B.1.617	GSEQ-236	Maharashtra	Amravati	Feb-21	B.1.617
GSEQ-203 Maharashtra Amravati Feb-21 B.1.617	GSEQ-203	Maharashtra	Amravati	Feb-21	B.1.617
GSEQ-259 Maharashtra Nagpur Feb-21 B.1.617	GSEQ-259	Maharashtra	Nagpur	Feb-21	B.1.617
GSEQ-212 Maharashtra Amravati Feb-21 B.1.617	GSEQ-212	Maharashtra	Amravati	Feb-21	B.1.617
GSEQ-247 Maharashtra Amravati Feb-21 B.1.617	GSEQ-247	Maharashtra	Amravati	Feb-21	B.1.617
GSEQ-256 Maharashtra Nagpur Feb-21 B.1.36.29	GSEQ-256	Maharashtra	Nagpur	Feb-21	B.1.36.29
GSEQ-252 Maharashtra Nagpur Feb-21 B.1.36.29	GSEQ-252	Maharashtra	Nagpur	Feb-21	B.1.36.29
GSEQ-223 Maharashtra Amravati Feb-21 B.1.36.29	GSEQ-223	Maharashtra	Amravati	Feb-21	B.1.36.29
GSEQ-266 Maharashtra Aurangabad Feb-21 B.1.1.216	GSEQ-266	Maharashtra	Aurangabad	Feb-21	B.1.1.216
GSEQ-261 Maharashtra Aurangabad Feb-21 B.1.1.306	GSEQ-261	Maharashtra	Aurangabad	Feb-21	B.1.1.306
GSEQ-254 Maharashtra Nagpur Feb-21 B.1.1.354	GSEQ-254	Maharashtra	Nagpur	Feb-21	B.1.1.354
GSEQ-265 Maharashtra Aurangabad Feb-21 B.1.1.306	GSEQ-265	Maharashtra	Aurangabad	Feb-21	B.1.1.306
GSEQ-226 Maharashtra Amravati Feb-21 B.1.1.306	GSEQ-226	Maharashtra	Amravati	Feb-21	B.1.1.306
GSEQ-229 Maharashtra Amravati Feb-21 B.1.1.306	GSEQ-229	Maharashtra	Amravati	Feb-21	B.1.1.306
GSEQ-260 Maharashtra Aurangabad Feb-21 B.1.1.340	GSEQ-260	Maharashtra	Aurangabad	Feb-21	B.1.1.340

GSEQ-264 Maharashtra Aurangabad Feb-21 B.1.1.306	GSEQ-264	Maharashtra	Aurangabad	Feb-21	B.1.1.306
GSEQ-268 Maharashtra Aurangabad Feb-21 B.1.1.306	GSEQ-268	Maharashtra	Aurangabad	Feb-21	B.1.1.306
SEQ-258 Maharashtra Mumbai Dec-20 B.1.210	SEQ-258	Maharashtra	Mumbai	Dec-20	B.1.210
GSEQ-373 Maharashtra Thane Feb-21 B.1.617	GSEQ-373	Maharashtra	Thane	Feb-21	B.1.617
GSEQ-379 Maharashtra Thane Feb-21 B.1.617	GSEQ-379	Maharashtra	Thane	Feb-21	B.1.617
GSEQ-398 Maharashtra Wardha Feb-21 B.1.617	GSEQ-398	Maharashtra	Wardha	Feb-21	B.1.617
GSEQ-399 Maharashtra Wardha Feb-21 B.1.617	GSEQ-399	Maharashtra	Wardha	Feb-21	B.1.617
GSEQ-382 Maharashtra Thane Feb-21 B.1.617	GSEQ-382	Maharashtra	Thane	Feb-21	B.1.617
GSEQ-393 Maharashtra Wardha Feb-21 B.1.617	GSEQ-393	Maharashtra	Wardha	Feb-21	B.1.617
GSEQ-386 Maharashtra Wardha Feb-21 B.1.617	GSEQ-386	Maharashtra	Wardha	Feb-21	B.1.617
GSEQ-391 Maharashtra Wardha Feb-21 B.1.617	GSEQ-391	Maharashtra	Wardha	Feb-21	B.1.617
GSEQ-361 Maharashtra Navi_Mumbai Feb-21 B.1.617	GSEQ-361	Maharashtra	Navi_Mumbai	Feb-21	B.1.617
GSEQ-390 Maharashtra Wardha Feb-21 B.1.617	GSEQ-390	Maharashtra	Wardha	Feb-21	B.1.617
GSEQ-392 Maharashtra Wardha Feb-21 B.1.617	GSEQ-392	Maharashtra	Wardha	Feb-21	B.1.617
GSEQ-293 Maharashtra Aurangabad Feb-21 B.1.617	GSEQ-293	Maharashtra	Aurangabad	Feb-21	B.1.617
GSEQ-	GSEQ-	Maharashtra	Aurangabad	Feb-	B.1.617

291 Maharashtra Aurangabad Feb-21 B.1.617	291	ra		21	
GSEQ-298 Maharashtra Aurangabad Feb-21 B.1.617	GSEQ-298	Maharasht ra	Aurangabad	Feb-21	B.1.617
GSEQ-385 Maharashtra Yavatmal Feb-21 B.1.617	GSEQ-385	Maharasht ra	Yavatmal	Feb-21	B.1.617
GSEQ-366 Maharashtra Navi_Mumbai Feb-21 B.1.617	GSEQ-366	Maharasht ra	Navi_Mumb ai	Feb-21	B.1.617
GSEQ-371 Maharashtra Thane Feb-21 B.1.36.29	GSEQ-371	Maharasht ra	Thane	Feb-21	B.1.36.29
GSEQ-294 Maharashtra Aurangabad Feb-21 B.1.36.29	GSEQ-294	Maharasht ra	Aurangabad	Feb-21	B.1.36.29
GSEQ-292 Maharashtra Aurangabad Feb-21 B.1.36.29	GSEQ-292	Maharasht ra	Aurangabad	Feb-21	B.1.36.29
GSEQ-297 Maharashtra Aurangabad Feb-21 B.1.36.29	GSEQ-297	Maharasht ra	Aurangabad	Feb-21	B.1.36.29
GSEQ-397 Maharashtra Wardha Feb-21 B.1.36.29	GSEQ-397	Maharasht ra	Wardha	Feb-21	B.1.36.29
GSEQ-296 Maharashtra Aurangabad Feb-21 B.1.36.29	GSEQ-296	Maharasht ra	Aurangabad	Feb-21	B.1.36.29
GSEQ-300 Maharashtra Aurangabad Feb-21 B.1.36.29	GSEQ-300	Maharasht ra	Aurangabad	Feb-21	B.1.36.29
GSEQ-375 Maharashtra Thane Feb-21 B.1.36.29	GSEQ-375	Maharasht ra	Thane	Feb-21	B.1.36.29
GSEQ-401 Maharashtra Wardha Feb-21 B.1.36.29	GSEQ-401	Maharasht ra	Wardha	Feb-21	B.1.36.29
GSEQ-360 Maharashtra Navi_Mumbai Feb-21 B.1.1.7	GSEQ-360	Maharasht ra	Navi_Mumb ai	Feb-21	B.1.1.7
GSEQ-378 Maharashtra Thane Feb-21 B.1.1.7	GSEQ-378	Maharasht ra	Thane	Feb-21	B.1.1.7
GSEQ-381 Maharashtra Thane Feb-	GSEQ-381	Maharasht ra	Thane	Feb-21	B.1.1.7

21 B.1.1.7					
GSEQ-369 Maharashtra Thane Feb-21 B.1.1.389	GSEQ-369	Maharashtra	Thane	Feb-21	B.1.1.389
GSEQ-359 Maharashtra Navi_Mumbai Feb-21 B.1.1.216	GSEQ-359	Maharashtra	Navi_Mumbai	Feb-21	B.1.1.216
GSEQ-384 Maharashtra Thane Feb-21 B.1.1.306	GSEQ-384	Maharashtra	Thane	Feb-21	B.1.1.306
GSEQ-363 Maharashtra Navi_Mumbai Feb-21 B.1.1.306	GSEQ-363	Maharashtra	Navi_Mumbai	Feb-21	B.1.1.306
GSEQ-370 Maharashtra Thane Feb-21 B.1.1.306	GSEQ-370	Maharashtra	Thane	Feb-21	B.1.1.306
GSEQ-383 Maharashtra Thane Feb-21 B.1.1.306	GSEQ-383	Maharashtra	Thane	Feb-21	B.1.1.306
GSEQ-295 Maharashtra Aurangabad Feb-21 B.1.36.22	GSEQ-295	Maharashtra	Aurangabad	Feb-21	B.1.36.22
GSEQ-286 Maharashtra Latur Feb-21 B.1.1.306	GSEQ-286	Maharashtra	Latur	Feb-21	B.1.1.306
GSEQ-380 Maharashtra Thane Feb-21 B.1.1.306	GSEQ-380	Maharashtra	Thane	Feb-21	B.1.1.306
GSEQ-377 Maharashtra Thane Feb-21 B.1.1.216	GSEQ-377	Maharashtra	Thane	Feb-21	B.1.1.216
GSEQ-372 Maharashtra Thane Feb-21 B.1.1.216	GSEQ-372	Maharashtra	Thane	Feb-21	B.1.1.216
GSEQ-425 Maharashtra Gadchiroli Feb-21 B.1.335	GSEQ-425	Maharashtra	Gadchiroli	Feb-21	B.1.335
GSEQ-432 Maharashtra Bhandara Feb-21 B.1.596	GSEQ-432	Maharashtra	Bhandara	Feb-21	B.1.596
GSEQ-431 Maharashtra Bhandara Feb-21 B.1.596	GSEQ-431	Maharashtra	Bhandara	Feb-21	B.1.596
GSEQ-413 Maharashtra Sevagram Feb-21 B.1.617	GSEQ-413	Maharashtra	Sevagram	Feb-21	B.1.617

GSEQ-424 Maharashtra Gadchiroli Feb-21 B.1.617	GSEQ-424	Maharashtra	Gadchiroli	Feb-21	B.1.617
GSEQ-403 Maharashtra Sevagram Feb-21 B.1.617	GSEQ-403	Maharashtra	Sevagram	Feb-21	B.1.617
GSEQ-419 Maharashtra Gadchiroli Feb-21 B.1.617	GSEQ-419	Maharashtra	Gadchiroli	Feb-21	B.1.617
GSEQ-420 Maharashtra Gadchiroli Feb-21 B.1.617	GSEQ-420	Maharashtra	Gadchiroli	Feb-21	B.1.617
GSEQ-422 Maharashtra Gadchiroli Feb-21 B.1.617	GSEQ-422	Maharashtra	Gadchiroli	Feb-21	B.1.617
GSEQ-423 Maharashtra Gadchiroli Feb-21 B.1.617	GSEQ-423	Maharashtra	Gadchiroli	Feb-21	B.1.617
GSEQ-374 Maharashtra Thane Feb-21 B.1.617	GSEQ-374	Maharashtra	Thane	Feb-21	B.1.617
GSEQ-406 Maharashtra Sevagram Feb-21 B.1.617	GSEQ-406	Maharashtra	Sevagram	Feb-21	B.1.617
GSEQ-365 Maharashtra Navi_Mumbai Feb-21 B.1.617	GSEQ-365	Maharashtra	Navi_Mumbai	Feb-21	B.1.617
GSEQ-387 Maharashtra Wardha Feb-21 B.1.617	GSEQ-387	Maharashtra	Wardha	Feb-21	B.1.617
GSEQ-402 Maharashtra Sevagram Feb-21 B.1.617	GSEQ-402	Maharashtra	Sevagram	Feb-21	B.1.617
GSEQ-388 Maharashtra Wardha Feb-21 B.1.617	GSEQ-388	Maharashtra	Wardha	Feb-21	B.1.617
GSEQ-394 Maharashtra Wardha Feb-21 B.1.617	GSEQ-394	Maharashtra	Wardha	Feb-21	B.1.617
GSEQ-400 Maharashtra Wardha Feb-21 B.1.617	GSEQ-400	Maharashtra	Wardha	Feb-21	B.1.617
GSEQ-414 Maharashtra Sevagram Feb-21 B.1.617	GSEQ-414	Maharashtra	Sevagram	Feb-21	B.1.617
GSEQ-	GSEQ-	Maharashtra	Wardha	Feb-	B.1.617

395 Maharashtra Wardha Feb-21 B.1.617	395	ra		21	
GSEQ-405 Maharashtra Sevagram Feb-21 B.1.617	GSEQ-405	Maharasht ra	Sevagram	Feb-21	B.1.617
GSEQ-417 Maharashtra Sevagram Feb-21 B.1.617	GSEQ-417	Maharasht ra	Sevagram	Feb-21	B.1.617
GSEQ-410 Maharashtra Sevagram Feb-21 B.1.617	GSEQ-410	Maharasht ra	Sevagram	Feb-21	B.1.617
GSEQ-416 Maharashtra Sevagram Feb-21 B.1.36.29	GSEQ-416	Maharasht ra	Sevagram	Feb-21	B.1.36.29
GSEQ-407 Maharashtra Sevagram Feb-21 B.1.36.29	GSEQ-407	Maharasht ra	Sevagram	Feb-21	B.1.36.29
GSEQ-428 Maharashtra Bhandara Feb-21 B.1.36.29	GSEQ-428	Maharasht ra	Bhandara	Feb-21	B.1.36.29
GSEQ-396 Maharashtra Wardha Feb-21 B.1.1.7	GSEQ-396	Maharasht ra	Wardha	Feb-21	B.1.1.7
GSEQ-427 Maharashtra Gadchiroli Feb-21 B.1.1.7	GSEQ-427	Maharasht ra	Gadchiroli	Feb-21	B.1.1.7
GSEQ-404 Maharashtra Sevagram Feb-21 B.1.1.306	GSEQ-404	Maharasht ra	Sevagram	Feb-21	B.1.1.306
GSEQ-356 Maharashtra Vasai_Virar Feb-21 B.1.1.306	GSEQ-356	Maharasht ra	Vasai_Virar	Feb-21	B.1.1.306
GSEQ-358 Maharashtra Navi_Mumbai Feb-21 B.1.1.306	GSEQ-358	Maharasht ra	Navi_Mumb ai	Feb-21	B.1.1.306
GSEQ-362 Maharashtra Navi_Mumbai Feb-21 B.1.1.306	GSEQ-362	Maharasht ra	Navi_Mumb ai	Feb-21	B.1.1.306
GSEQ-364 Maharashtra Navi_Mumbai Feb-21 B.1.1.306	GSEQ-364	Maharasht ra	Navi_Mumb ai	Feb-21	B.1.1.306
GSEQ-412 Maharashtra Sevagram Feb-21 B.1.36	GSEQ-412	Maharasht ra	Sevagram	Feb-21	B.1.36
GSEQ-465 Maharashtra Aurangabad Mar-	GSEQ-465	Maharasht ra	Aurangabad	Mar-21	B.1.596

21 B.1.596					
GSEQ-471 Maharashtra Aurangabad Mar-21 B.1.596	GSEQ-471	Maharashtra	Aurangabad	Mar-21	B.1.596
GSEQ-483 Maharashtra Gondia Feb-21 B.1.617	GSEQ-483	Maharashtra	Gondia	Feb-21	B.1.617
GSEQ-482 Maharashtra Gondia Feb-21 B.1.617	GSEQ-482	Maharashtra	Gondia	Feb-21	B.1.617
GSEQ-463 Maharashtra Aurangabad Feb-21 B.1.617	GSEQ-463	Maharashtra	Aurangabad	Feb-21	B.1.617
GSEQ-478 Maharashtra Gondia Feb-21 B.1.617	GSEQ-478	Maharashtra	Gondia	Feb-21	B.1.617
GSEQ-481 Maharashtra Gondia Feb-21 B.1.617	GSEQ-481	Maharashtra	Gondia	Feb-21	B.1.617
GSEQ-468 Maharashtra Aurangabad Mar-21 B.1.617	GSEQ-468	Maharashtra	Aurangabad	Mar-21	B.1.617
GSEQ-464 Maharashtra Aurangabad Mar-21 B.1.617	GSEQ-464	Maharashtra	Aurangabad	Mar-21	B.1.617
GSEQ-470 Maharashtra Aurangabad Mar-21 B.1.617	GSEQ-470	Maharashtra	Aurangabad	Mar-21	B.1.617
GSEQ-480 Maharashtra Gondia Feb-21 B.1.617	GSEQ-480	Maharashtra	Gondia	Feb-21	B.1.617
GSEQ-473 Maharashtra Nanded Mar-21 B.1.617	GSEQ-473	Maharashtra	Nanded	Mar-21	B.1.617
GSEQ-474 Maharashtra Nanded Feb-21 B.1.617	GSEQ-474	Maharashtra	Nanded	Feb-21	B.1.617
GSEQ-469 Maharashtra Aurangabad Mar-21 B.1.36.29	GSEQ-469	Maharashtra	Aurangabad	Mar-21	B.1.36.29
GSEQ-476 Maharashtra Nanded Feb-21 B.1.36.29	GSEQ-476	Maharashtra	Nanded	Feb-21	B.1.36.29
GSEQ-475 Maharashtra Nanded Feb-21 B.1.36.29	GSEQ-475	Maharashtra	Nanded	Feb-21	B.1.36.29



GSEQ-472 Maharashtra Nanded Mar-21 B.1.1.306	GSEQ-472	Maharashtra	Nanded	Mar-21	B.1.1.306
GSEQ-430 Maharashtra Bhandara Feb-21 B.1.596	GSEQ-430	Maharashtra	Bhandara	Feb-21	B.1.596
GSEQ-467 Maharashtra Aurangabad Mar-21 B.1.596	GSEQ-467	Maharashtra	Aurangabad	Mar-21	B.1.596
GSEQ-421 Maharashtra Gadchiroli Feb-21 B.1.241	GSEQ-421	Maharashtra	Gadchiroli	Feb-21	B.1.241
GSEQ-426 Maharashtra Gadchiroli Feb-21 B.1.617	GSEQ-426	Maharashtra	Gadchiroli	Feb-21	B.1.617
GSEQ-462 Maharashtra Aurangabad Feb-21 B.1.617	GSEQ-462	Maharashtra	Aurangabad	Feb-21	B.1.617
GSEQ-418 Maharashtra Gadchiroli Feb-21 B.1.617	GSEQ-418	Maharashtra	Gadchiroli	Feb-21	B.1.617
GSEQ-355 Maharashtra Vasai_Virar Feb-21 B.1.617	GSEQ-355	Maharashtra	Vasai_Virar	Feb-21	B.1.617
GSEQ-408 Maharashtra Sevagram Feb-21 B.1.617	GSEQ-408	Maharashtra	Sevagram	Feb-21	B.1.617
GSEQ-415 Maharashtra Sevagram Feb-21 B.1.617	GSEQ-415	Maharashtra	Sevagram	Feb-21	B.1.617
GSEQ-411 Maharashtra Sevagram Feb-21 B.1.36.29	GSEQ-411	Maharashtra	Sevagram	Feb-21	B.1.36.29
GSEQ-409 Maharashtra Sevagram Feb-21 B.1.36.29	GSEQ-409	Maharashtra	Sevagram	Feb-21	B.1.36.29
GSEQ-354 Maharashtra Vasai_Virar Feb-21 B.1.1.7	GSEQ-354	Maharashtra	Vasai_Virar	Feb-21	B.1.1.7
GSEQ-353 Maharashtra Vasai_Virar Feb-21 B.1.1.306	GSEQ-353	Maharashtra	Vasai_Virar	Feb-21	B.1.1.306
GSEQ-351 Maharashtra Vasai_Virar Feb-21 B.1.1.306	GSEQ-351	Maharashtra	Vasai_Virar	Feb-21	B.1.1.306
GSEQ-	GSEQ-	Maharashtra	Vasai_Virar	Feb-	AE.7

352 Maharashtra Vasai_Virar Feb-21 AE.7	352	ra		21	
GSEQ-477 Maharashtra Gondia Feb-21 B.1.1.306	GSEQ-477	Maharasht ra	Gondia	Feb-21	B.1.1.306
GSEQ-357 Maharashtra Navi_Mumbai Feb-21 B.1.1.306	GSEQ-357	Maharasht ra	Navi_Mumb ai	Feb-21	B.1.1.306
GSEQ-680 Maharashtra Thane Mar-21 B.1.1.214	GSEQ-680	Maharasht ra	Thane	Mar-21	B.1.1.214
GSEQ-799 Maharashtra Wardha Mar-21 B.1.617	GSEQ-799	Maharasht ra	Wardha	Mar-21	B.1.617
GSEQ-623 Maharashtra Parbhani Feb-21 B.1	GSEQ-623	Maharasht ra	Parbhani	Feb-21	B.1
GSEQ-811 Maharashtra Wardha Mar-21 B.1.596	GSEQ-811	Maharasht ra	Wardha	Mar-21	B.1.596
GSEQ-757 Maharashtra Aurangabad Mar-21 B.1.596	GSEQ-757	Maharasht ra	Aurangabad	Mar-21	B.1.596
GSEQ-703 Maharashtra Posheri_Palghar Mar-21 B.1	GSEQ-703	Maharasht ra	Palghar	Mar-21	B.1
GSEQ-745 Maharashtra Jalna Mar-21 B.1.617	GSEQ-745	Maharasht ra	Jalna	Mar-21	B.1.617
GSEQ-684 Maharashtra Thane Mar-21 B.1.617	GSEQ-684	Maharasht ra	Thane	Mar-21	B.1.617
GSEQ-665 Maharashtra Thane Jan-21 B.1	GSEQ-665	Maharasht ra	Thane	Jan-21	B.1
2019nCoV-294622 Maharashtra Pune Feb-21 B.1.617	2019nCoV-294622	Maharasht ra	Pune	Feb-21	B.1.617
2019nCoV-295035 Maharashtra Pune Mar-21 B.1.617	2019nCoV-295035	Maharasht ra	Pune	Mar-21	B.1.617
2019nCoV-294309 Maharashtra Pune Feb-21 B.1.617	2019nCoV-294309	Maharasht ra	Pune	Feb-21	B.1.617
2019nCoV-294402 Maharashtra Pune Feb-21 B.1.617	2019nCoV-294402	Maharasht ra	Pune	Feb-21	B.1.617

GSEQ-782 Maharashtra Sevagram Mar-21 B.1.617	GSEQ-782	Maharashtra	Sevagram	Mar-21	B.1.617
GSEQ-754 Maharashtra Aurangabad Mar-21 B.1	GSEQ-754	Maharashtra	Aurangabad	Mar-21	B.1
GSEQ-838 Maharashtra Gadchiroli Mar-21 B.1.617	GSEQ-838	Maharashtra	Gadchiroli	Mar-21	B.1.617
GSEQ-755 Maharashtra Aurangabad Mar-21 B.1.617	GSEQ-755	Maharashtra	Aurangabad	Mar-21	B.1.617
GSEQ-795 Maharashtra Sevagram Mar-21 B.1.617	GSEQ-795	Maharashtra	Sevagram	Mar-21	B.1.617
GSEQ-743 Maharashtra Jalna Mar-21 B.1.617	GSEQ-743	Maharashtra	Jalna	Mar-21	B.1.617
GSEQ-749 Maharashtra Jalna Mar-21 B.1.617	GSEQ-749	Maharashtra	Jalna	Mar-21	B.1.617
GSEQ-793 Maharashtra Sevagram Mar-21 B.1.617	GSEQ-793	Maharashtra	Sevagram	Mar-21	B.1.617
2019nCoV-294251 Maharashtra Pune Feb-21 B.1.617	2019nCoV-294251	Maharashtra	Pune	Feb-21	B.1.617
GSEQ-694 Maharashtra Thane Mar-21 B.1.93	GSEQ-694	Maharashtra	Thane	Mar-21	B.1.93
GSEQ-760 Maharashtra Aurangabad Mar-21 B.1.617	GSEQ-760	Maharashtra	Aurangabad	Mar-21	B.1.617
GSEQ-759 Maharashtra Aurangabad Mar-21 B.1.617	GSEQ-759	Maharashtra	Aurangabad	Mar-21	B.1.617
GSEQ-762 Maharashtra Aurangabad Mar-21 B.1.617	GSEQ-762	Maharashtra	Aurangabad	Mar-21	B.1.617
GSEQ-758 Maharashtra Aurangabad Mar-21 B.1.617	GSEQ-758	Maharashtra	Aurangabad	Mar-21	B.1.617
GSEQ-763 Maharashtra Aurangabad Mar-21 B.1.617	GSEQ-763	Maharashtra	Aurangabad	Mar-21	B.1.617
GSEQ-	GSEQ-	Maharashtra	Hingoli	Feb-	B.1.617

638 Maharashtra Hingoli Feb-21 B.1.617	638	ra		21	
GSEQ-702 Maharashtra Posheri_Palghar Mar-21 B.1.617	GSEQ-702	Maharasht ra	Palghar	Mar-21	B.1.617
GSEQ-812 Maharashtra Wardha Mar-21 B.1.617	GSEQ-812	Maharasht ra	Wardha	Mar-21	B.1.617
GSEQ-742 Maharashtra Jalna Mar-21 B.1.617	GSEQ-742	Maharasht ra	Jalna	Mar-21	B.1.617
2019nCoV-294340 Maharashtra Pune Feb-21 B.1.617	2019nCoV-294340	Maharasht ra	Pune	Feb-21	B.1.617
GSEQ-787 Maharashtra Sevagram Mar-21 B.1.617	GSEQ-787	Maharasht ra	Sevagram	Mar-21	B.1.617
GSEQ-814 Maharashtra Wardha Mar-21 B.1.617	GSEQ-814	Maharasht ra	Wardha	Mar-21	B.1.617
GSEQ-649 Maharashtra Hingoli Feb-21 B.1.617	GSEQ-649	Maharasht ra	Hingoli	Feb-21	B.1.617
GSEQ-756 Maharashtra Aurangabad Mar-21 B.1.617	GSEQ-756	Maharasht ra	Aurangabad	Mar-21	B.1.617
GSEQ-836 Maharashtra Gadchiroli Mar-21 B.1.617	GSEQ-836	Maharasht ra	Gadchiroli	Mar-21	B.1.617
GSEQ-786 Maharashtra Sevagram Mar-21 B.1.617	GSEQ-786	Maharasht ra	Sevagram	Mar-21	B.1.617
GSEQ-804 Maharashtra Wardha Mar-21 B.1.617	GSEQ-804	Maharasht ra	Wardha	Mar-21	B.1.617
GSEQ-803 Maharashtra Wardha Mar-21 B.1.617	GSEQ-803	Maharasht ra	Wardha	Mar-21	B.1.617
GSEQ-808 Maharashtra Wardha Mar-21 B.1.617	GSEQ-808	Maharasht ra	Wardha	Mar-21	B.1.617
GSEQ-699 Maharashtra Thane Mar-21 B.1.617	GSEQ-699	Maharasht ra	Thane	Mar-21	B.1.617
GSEQ-813 Maharashtra Wardha Mar-	GSEQ-813	Maharasht ra	Wardha	Mar-21	B.1.617

21 B.1.617					
GSEQ-792 Maharashtra Sevagram Mar-21 B.1.36.29	GSEQ-792	Maharashtra	Sevagram	Mar-21	B.1.36.29
GSEQ-806 Maharashtra Wardha Mar-21 B.1.36.29	GSEQ-806	Maharashtra	Wardha	Mar-21	B.1.36.29
GSEQ-697 Maharashtra Thane Mar-21 B.1.1.7	GSEQ-697	Maharashtra	Thane	Mar-21	B.1.1.7
2019nCoV-294645 Maharashtra Pune Feb-21 B.1.1.7	2019nCoV-294645	Maharashtra	Pune	Feb-21	B.1.1.7
GSEQ-698 Maharashtra Thane Mar-21 B.1.1.216	GSEQ-698	Maharashtra	Thane	Mar-21	B.1.1.216
GSEQ-700 Maharashtra Thane Mar-21 B.1.1	GSEQ-700	Maharashtra	Thane	Mar-21	B.1.1
GSEQ-674 Maharashtra Thane Mar-21 B.1.1.306	GSEQ-674	Maharashtra	Thane	Mar-21	B.1.1.306
GSEQ-783 Maharashtra Sevagram Mar-21 B.1.1.306	GSEQ-783	Maharashtra	Sevagram	Mar-21	B.1.1.306
GSEQ-788 Maharashtra Sevagram Mar-21 B.1.1.306	GSEQ-788	Maharashtra	Sevagram	Mar-21	B.1.1.306
2019nCoV-293269 Maharashtra Pune Feb-21 B.1.1.306	2019nCoV-293269	Maharashtra	Pune	Feb-21	B.1.1.306
GSEQ-720 Maharashtra Mumbai Mar-21 B.1.1	GSEQ-720	Maharashtra	Mumbai	Mar-21	B.1.1
GSEQ-752 Maharashtra Jalna Mar-21 B.1.540	GSEQ-752	Maharashtra	Jalna	Mar-21	B.1.540
GSEQ-744 Maharashtra Jalna Mar-21 B.1.1.216	GSEQ-744	Maharashtra	Jalna	Mar-21	B.1.1.216
GSEQ-696 Maharashtra Thane Mar-21 B.1.36	GSEQ-696	Maharashtra	Thane	Mar-21	B.1.36
2019nCoV-294575 Maharashtra Pune Feb-21 B.1.617	2019nCoV-294575	Maharashtra	Pune	Feb-21	B.1.617

2019nCoV-295647 Maharashtra Pune Mar-21 B.1.617	2019nCoV-295647	Maharashtra	Pune	Mar-21	B.1.617
2019nCoV-295545 Maharashtra Pune Mar-21 B.1.617	2019nCoV-295545	Maharashtra	Pune	Mar-21	B.1.617
2019nCoV-296386 Maharashtra Pune Mar-21 B.1.617	2019nCoV-296386	Maharashtra	Pune	Mar-21	B.1.617
2019nCoV-296092 Maharashtra Pune Mar-21 B.1.617	2019nCoV-296092	Maharashtra	Pune	Mar-21	B.1.617
GSEQ-635 Maharashtra Hingoli Feb-21 B.1.617	GSEQ-635	Maharashtra	Hingoli	Feb-21	B.1.617
GSEQ-846 Maharashtra Nanded Mar-21 B.1.617	GSEQ-846	Maharashtra	Nanded	Mar-21	B.1.617
GSEQ-622 Maharashtra Parbhani Feb-21 B.1.617	GSEQ-622	Maharashtra	Parbhani	Feb-21	B.1.617
GSEQ-850 Maharashtra Nanded Mar-21 B.1.617	GSEQ-850	Maharashtra	Nanded	Mar-21	B.1.617
GSEQ-800 Maharashtra Wardha Mar-21 B.1.617	GSEQ-800	Maharashtra	Wardha	Mar-21	B.1.617
GSEQ-704 Maharashtra Palghar Mar-21 B.1.617	GSEQ-704	Maharashtra	Palghar	Mar-21	B.1.617
2019nCoV-295702 Maharashtra Pune Mar-21 B.1.617	2019nCoV-295702	Maharashtra	Pune	Mar-21	B.1.617
GSEQ-723 Maharashtra Mumbai Mar-21 B.1.617	GSEQ-723	Maharashtra	Mumbai	Mar-21	B.1.617
GSEQ-847 Maharashtra Nanded Mar-21 B.1.617	GSEQ-847	Maharashtra	Nanded	Mar-21	B.1.617
GSEQ-643 Maharashtra Hingoli Feb-21 B.1.617	GSEQ-643	Maharashtra	Hingoli	Feb-21	B.1.617
2019nCoV-296597 Maharashtra Pune Mar-21 B.1.617	2019nCoV-296597	Maharashtra	Pune	Mar-21	B.1.617
GSEQ-	GSEQ-	Maharashtra	Parbhani	Feb-	B.1.617

626 Maharashtra Parbhani Feb-21 B.1.617	626	ra		21	
2019nCoV-296989 Maharashtra Pune Mar-21 B.1.617	2019nCoV-296989	Maharashtra	Pune	Mar-21	B.1.617
GSEQ-640 Maharashtra Hingoli Feb-21 B.1.617	GSEQ-640	Maharashtra	Hingoli	Feb-21	B.1.617
2019nCoV-295874 Maharashtra Pune Mar-21 B.1.36.29	2019nCoV-295874	Maharashtra	Pune	Mar-21	B.1.36.29
GSEQ-845 Maharashtra Nanded Mar-21 B.1.36.29	GSEQ-845	Maharashtra	Nanded	Mar-21	B.1.36.29
2019nCoV-292717 Maharashtra Pune Feb-21 B.1.36.29	2019nCoV-292717	Maharashtra	Pune	Feb-21	B.1.36.29
GSEQ-717 Maharashtra Boisar Mar-21 B.1.36.29	GSEQ-717	Maharashtra	Boisar	Mar-21	B.1.36.29
GSEQ-693 Maharashtra Thane Mar-21 B.1.1.7	GSEQ-693	Maharashtra	Thane	Mar-21	B.1.1.7
GSEQ-816 Maharashtra Alibag Feb-21 B.1.1.306	GSEQ-816	Maharashtra	Alibag	Feb-21	B.1.1.306
GSEQ-820 Maharashtra Alibag Mar-21 B.1.1.372	GSEQ-820	Maharashtra	Alibag	Mar-21	B.1.1.372
2019nCoV-296531 Maharashtra Pune Mar-21 B.1.1	2019nCoV-296531	Maharashtra	Pune	Mar-21	B.1.1
GSEQ-679 Maharashtra Thane Mar-21 B.1.1.306	GSEQ-679	Maharashtra	Thane	Mar-21	B.1.1.306
GSEQ-666 Maharashtra Thane Mar-21 B.1.1.306	GSEQ-666	Maharashtra	Thane	Mar-21	B.1.1.306
GSEQ-667 Maharashtra Thane Mar-21 B.1.1.306	GSEQ-667	Maharashtra	Thane	Mar-21	B.1.1.306
GSEQ-676 Maharashtra Thane Feb-21 B.1.1.306	GSEQ-676	Maharashtra	Thane	Feb-21	B.1.1.306
GSEQ-721 Maharashtra Mumbai Mar-	GSEQ-721	Maharashtra	Mumbai	Mar-21	B.1.1

21 B.1.1					
GSEQ-719 Maharashtra Mumbai Mar-21 B.1.1	GSEQ-719	Maharashtra	Mumbai	Mar-21	B.1.1
GSEQ-923 Maharashtra Chandrapur Mar-21 B.1.617	GSEQ-923	Maharashtra	Chandrapur	Mar-21	B.1.617
SEQ-739 Maharashtra Nagpur Dec-20 B.1.617	SEQ-739	Maharashtra	Nagpur	Dec-20	B.1.617
GSEQ-880 Maharashtra Chandrapur Feb-21 B.1.617	GSEQ-880	Maharashtra	Chandrapur	Feb-21	B.1.617
GSEQ-927 Maharashtra Chandrapur Mar-21 B.1.617	GSEQ-927	Maharashtra	Chandrapur	Mar-21	B.1.617
GSEQ-875 Maharashtra Chandrapur Mar-21 B.1	GSEQ-875	Maharashtra	Chandrapur	Mar-21	B.1
GSEQ-928 Maharashtra Chandrapur Mar-21 B.1.617	GSEQ-928	Maharashtra	Chandrapur	Mar-21	B.1.617
GSEQ-925 Maharashtra Chandrapur Mar-21 B.1.617	GSEQ-925	Maharashtra	Chandrapur	Mar-21	B.1.617
GSEQ-922 Maharashtra Chandrapur Mar-21 B.1.617	GSEQ-922	Maharashtra	Chandrapur	Mar-21	B.1.617
GSEQ-1014 Maharashtra Aurangabad Feb-21 B.1.617	GSEQ-1014	Maharashtra	Aurangabad	Feb-21	B.1.617
GSEQ-1015 Maharashtra Aurangabad Feb-21 B.1.617	GSEQ-1015	Maharashtra	Aurangabad	Feb-21	B.1.617
GSEQ-877 Maharashtra Chandrapur Feb-21 B.1.617	GSEQ-877	Maharashtra	Chandrapur	Feb-21	B.1.617
GSEQ-929 Maharashtra Chandrapur Mar-21 B.1	GSEQ-929	Maharashtra	Chandrapur	Mar-21	B.1
GSEQ-924 Maharashtra Chandrapur Mar-21 B.1	GSEQ-924	Maharashtra	Chandrapur	Mar-21	B.1
GSEQ-876 Maharashtra Chandrapur Feb-21 B.1	GSEQ-876	Maharashtra	Chandrapur	Feb-21	B.1



GSEQ-886 Maharashtra Chandrapur Feb-21 B.1.617	GSEQ-886	Maharashtra	Chandrapur	Feb-21	B.1.617
SEQ-724 Maharashtra Nagpur Dec-20 B.1.36.29	SEQ-724	Maharashtra	Nagpur	Dec-20	B.1.36.29
GSEQ-881 Maharashtra Chandrapur Feb-21 B.1.36.29	GSEQ-881	Maharashtra	Chandrapur	Feb-21	B.1.36.29
GSEQ-1013 Maharashtra Aurangabad Feb-21 B.1.1.306	GSEQ-1013	Maharashtra	Aurangabad	Feb-21	B.1.1.306
SEQ-735 Maharashtra Nagpur Dec-20 B.1.1.306	SEQ-735	Maharashtra	Nagpur	Dec-20	B.1.1.306
GSEQ-1017 Maharashtra Aurangabad Mar-21 B.1.36	GSEQ-1017	Maharashtra	Aurangabad	Mar-21	B.1.36
GSEQ-882 Maharashtra Chandrapur Feb-21 B.1.1.354	GSEQ-882	Maharashtra	Chandrapur	Feb-21	B.1.1.354
GSEQ-1016 Maharashtra Aurangabad Feb-21 B.1.1	GSEQ-1016	Maharashtra	Aurangabad	Feb-21	B.1.1
SEQ-664 Maharashtra Nagpur Sep-20 B.1	SEQ-664	Maharashtra	Nagpur	Sep-20	B.1
2019nCoV-297093 Maharashtra Pune Mar-21 B.1.241	2019nCoV-297093	Maharashtra	Pune	Mar-21	B.1.241
GSEQ-1129 Maharashtra Palghar Mar-21 B.1.617	GSEQ-1129	Maharashtra	Palghar	Mar-21	B.1.617
GSEQ-926 Maharashtra Chandrapur Mar-21 B.1.617	GSEQ-926	Maharashtra	Chandrapur	Mar-21	B.1.617
GSEQ-884 Maharashtra Chandrapur Feb-21 B.1.617	GSEQ-884	Maharashtra	Chandrapur	Feb-21	B.1.617
2019nCoV-297094 Maharashtra Pune Mar-21 B.1.617	2019nCoV-297094	Maharashtra	Pune	Mar-21	B.1.617
GSEQ-852 Maharashtra Nanded Feb-21 B.1.617	GSEQ-852	Maharashtra	Nanded	Feb-21	B.1.617
GSEQ-	GSEQ-	Maharashtra	Chandrapur	Feb-	B.1.617

883 Maharashtra Chandrapur Feb-21 B.1.617	883	ra		21	
GSEQ-878 Maharashtra Chandrapur Feb-21 B.1.617	GSEQ-878	Maharasht ra	Chandrapur	Feb-21	B.1.617
GSEQ-1140 Maharashtra Thane Mar-21 B.1.1.306	GSEQ-1140	Maharasht ra	Thane	Mar-21	B.1.1.306
GSEQ-1131 Maharashtra Palghar Mar-21 B.1.1.306	GSEQ-1131	Maharasht ra	Palghar	Mar-21	B.1.1.306
SEQ-259 Maharashtra Mumbai Dec-20 B.1.210	SEQ-259	Maharasht ra	Mumbai	Dec-20	B.1.210
GSEQ-1301 Maharashtra Nanded Mar-21 B.1.617	GSEQ-1301	Maharasht ra	Nanded	Mar-21	B.1.617
GSEQ-1302 Maharashtra Nanded Mar-21 B.1.617	GSEQ-1302	Maharasht ra	Nanded	Mar-21	B.1.617
GSEQ-1308 Maharashtra Nanded Mar-21 B.1.617	GSEQ-1308	Maharasht ra	Nanded	Mar-21	B.1.617
GSEQ-1315 Maharashtra Nanded Mar-21 B.1.617	GSEQ-1315	Maharasht ra	Nanded	Mar-21	B.1.617
GSEQ-1300 Maharashtra Nanded Mar-21 B.1.617	GSEQ-1300	Maharasht ra	Nanded	Mar-21	B.1.617
GSEQ-1312 Maharashtra Nanded Mar-21 B.1.617	GSEQ-1312	Maharasht ra	Nanded	Mar-21	B.1.617
GSEQ-1297 Maharashtra Nanded Mar-21 B.1.617	GSEQ-1297	Maharasht ra	Nanded	Mar-21	B.1.617
GSEQ-1320 Maharashtra Nanded Mar-21 B.1.617	GSEQ-1320	Maharasht ra	Nanded	Mar-21	B.1.617
GSEQ-1318 Maharashtra Nanded Mar-21 B.1.617	GSEQ-1318	Maharasht ra	Nanded	Mar-21	B.1.617
GSEQ-1303 Maharashtra Nanded Mar-21 B.1.617	GSEQ-1303	Maharasht ra	Nanded	Mar-21	B.1.617
GSEQ-1304 Maharashtra Nanded Mar-	GSEQ-1304	Maharasht ra	Nanded	Mar-21	B.1.617

21 B.1.617					
GSEQ-1296 Maharashtra Nanded Mar-21 B.1.617	GSEQ-1296	Maharashtra	Nanded	Mar-21	B.1.617
GSEQ-1311 Maharashtra Nanded Mar-21 B.1.617	GSEQ-1311	Maharashtra	Nanded	Mar-21	B.1.617
GSEQ-1316 Maharashtra Nanded Mar-21 B.1.617	GSEQ-1316	Maharashtra	Nanded	Mar-21	B.1.617
GSEQ-1161 Maharashtra Mumbai Mar-21 B.1.617	GSEQ-1161	Maharashtra	Mumbai	Mar-21	B.1.617
GSEQ-1162 Maharashtra Mumbai Mar-21 B.1.617	GSEQ-1162	Maharashtra	Mumbai	Mar-21	B.1.617
GSEQ-1164 Maharashtra Mumbai Mar-21 B.1.617	GSEQ-1164	Maharashtra	Mumbai	Mar-21	B.1.617
GSEQ-1294 Maharashtra Nanded Mar-21 B.1.596	GSEQ-1294	Maharashtra	Nanded	Mar-21	B.1.596
GSEQ-1307 Maharashtra Nanded Mar-21 B.1.617	GSEQ-1307	Maharashtra	Nanded	Mar-21	B.1.617
GSEQ-1295 Maharashtra Nanded Mar-21 B.1.617	GSEQ-1295	Maharashtra	Nanded	Mar-21	B.1.617
GSEQ-1309 Maharashtra Nanded Mar-21 B.1.617	GSEQ-1309	Maharashtra	Nanded	Mar-21	B.1.617
GSEQ-1163 Maharashtra Mumbai Mar-21 B.1.617	GSEQ-1163	Maharashtra	Mumbai	Mar-21	B.1.617
GSEQ-1165 Maharashtra Mumbai Mar-21 B.1.617	GSEQ-1165	Maharashtra	Mumbai	Mar-21	B.1.617
GSEQ-1306 Maharashtra Nanded Mar-21 B.1.617	GSEQ-1306	Maharashtra	Nanded	Mar-21	B.1.617
GSEQ-1299 Maharashtra Nanded Mar-21 B.1.177.42	GSEQ-1299	Maharashtra	Nanded	Mar-21	B.1.177.42
GSEQ-1313 Maharashtra Nanded Mar-21 B.1.177.17	GSEQ-1313	Maharashtra	Nanded	Mar-21	B.1.177.17

GSEQ-771 Maharashtra Mumbai Mar-21 B.1.36.29	GSEQ-771	Maharashtra	Mumbai	Mar-21	B.1.36.29
GSEQ-901 Maharashtra Hingoli Feb-21 B.1.36.29	GSEQ-901	Maharashtra	Hingoli	Feb-21	B.1.36.29
GSEQ-634 Maharashtra Hingoli Feb-21 B.1.36	GSEQ-634	Maharashtra	Hingoli	Feb-21	B.1.36
GSEQ-668 Maharashtra Thane Mar-21 B.1.1.306	GSEQ-668	Maharashtra	Thane	Mar-21	B.1.1.306
GSEQ-673 Maharashtra Thane Mar-21 B.1.1.306	GSEQ-673	Maharashtra	Thane	Mar-21	B.1.1.306
GSEQ-681 Maharashtra Thane Mar-21 B.1.1.306	GSEQ-681	Maharashtra	Thane	Mar-21	B.1.1.306
GSEQ-692 Maharashtra Thane Mar-21 B.1.1	GSEQ-692	Maharashtra	Thane	Mar-21	B.1.1
GSEQ-768 Maharashtra Mumbai Mar-21 B.1.1.216	GSEQ-768	Maharashtra	Mumbai	Mar-21	B.1.1.216
GSEQ-810 Maharashtra Wardha Mar-21 B.1.617	GSEQ-810	Maharashtra	Wardha	Mar-21	B.1.617
GSEQ-639 Maharashtra Hingoli Feb-21 B.1.617	GSEQ-639	Maharashtra	Hingoli	Feb-21	B.1.617
GSEQ-892 Maharashtra Hingoli Feb-21 B.1.617	GSEQ-892	Maharashtra	Hingoli	Feb-21	B.1.617
GSEQ-900 Maharashtra Hingoli Feb-21 B.1.617	GSEQ-900	Maharashtra	Hingoli	Feb-21	B.1.617
GSEQ-904 Maharashtra Hingoli Feb-21 B.1.617	GSEQ-904	Maharashtra	Hingoli	Feb-21	B.1.617
GSEQ-899 Maharashtra Hingoli Feb-21 B.1.617	GSEQ-899	Maharashtra	Hingoli	Feb-21	B.1.617
GSEQ-894 Maharashtra Hingoli Feb-21 B.1.617	GSEQ-894	Maharashtra	Hingoli	Feb-21	B.1.617
GSEQ-	GSEQ-	Maharashtra	Hingoli	Feb-	B.1.617

897 Maharashtra Hingoli Feb-21 B.1.617	897	ra		21	
GSEQ-650 Maharashtra Hingoli Feb-21 B.1.617	GSEQ-650	Maharasht ra	Hingoli	Feb-21	B.1.617
GSEQ-636 Maharashtra Hingoli Feb-21 B.1.617	GSEQ-636	Maharasht ra	Hingoli	Feb-21	B.1.617
GSEQ-766 Maharashtra Aurangabad Mar-21 B.1.617	GSEQ-766	Maharasht ra	Aurangabad	Mar-21	B.1.617
GSEQ-794 Maharashtra Wardha Mar-21 B.1.617	GSEQ-794	Maharasht ra	Wardha	Mar-21	B.1.617
GSEQ-890 Maharashtra Hingoli Feb-21 B.1.617	GSEQ-890	Maharasht ra	Hingoli	Feb-21	B.1.617
GSEQ-778 Maharashtra Mumbai Mar-21 B.1.617	GSEQ-778	Maharasht ra	Mumbai	Mar-21	B.1.617
GSEQ-637 Maharashtra Hingoli Feb-21 B.1.617	GSEQ-637	Maharasht ra	Hingoli	Feb-21	B.1.617
GSEQ-651 Maharashtra Hingoli Feb-21 B.1.617	GSEQ-651	Maharasht ra	Hingoli	Feb-21	B.1.617
GSEQ-727 Maharashtra Thane Feb-21 B.1.617	GSEQ-727	Maharasht ra	Thane	Feb-21	B.1.617
GSEQ-731 Maharashtra Jalna Feb-21 B.1.617	GSEQ-731	Maharasht ra	Jalna	Feb-21	B.1.617
GSEQ-775 Maharashtra Mumbai Mar-21 B.1.617	GSEQ-775	Maharasht ra	Mumbai	Mar-21	B.1.617
GSEQ-687 Maharashtra Thane Mar-21 B.1.617	GSEQ-687	Maharasht ra	Thane	Mar-21	B.1.617
GSEQ-891 Maharashtra Hingoli Feb-21 B.1.617	GSEQ-891	Maharasht ra	Hingoli	Feb-21	B.1.617
GSEQ-732 Maharashtra Thane Mar-21 B.1.617	GSEQ-732	Maharasht ra	Thane	Mar-21	B.1.617
GSEQ-889 Maharashtra Hingoli Feb-21 B.1.617	GSEQ-889	Maharasht ra	Hingoli	Feb-21	B.1.617

GSEQ-653 Maharashtra Hingoli Feb-21 B.1.617	GSEQ-653	Maharashtra	Hingoli	Feb-21	B.1.617
GSEQ-790 Maharashtra Wardha Mar-21 B.1.617	GSEQ-790	Maharashtra	Wardha	Mar-21	B.1.617
GSEQ-896 Maharashtra Hingoli Feb-21 B.1.617	GSEQ-896	Maharashtra	Hingoli	Feb-21	B.1.617
GSEQ-807 Maharashtra Wardha Mar-21 B.1.617	GSEQ-807	Maharashtra	Wardha	Mar-21	B.1.617
GSEQ-776 Maharashtra Mumbai Mar-21 B.1.596	GSEQ-776	Maharashtra	Mumbai	Mar-21	B.1.596
GSEQ-785 Maharashtra Wardha Mar-21 B.1.596	GSEQ-785	Maharashtra	Wardha	Mar-21	B.1.596
GSEQ-773 Maharashtra Mumbai Mar-21 B.1.596	GSEQ-773	Maharashtra	Mumbai	Mar-21	B.1.596
GSEQ-764 Maharashtra Aurangabad Mar-21 B.1	GSEQ-764	Maharashtra	Aurangabad	Mar-21	B.1
GSEQ-734 Maharashtra Thane Mar-21 B.1.596	GSEQ-734	Maharashtra	Thane	Mar-21	B.1.596
GSEQ-777 Maharashtra Mumbai Mar-21 B.1.596	GSEQ-777	Maharashtra	Mumbai	Mar-21	B.1.596
GSEQ-733 Maharashtra Thane Mar-21 B.1	GSEQ-733	Maharashtra	Thane	Mar-21	B.1
GSEQ-902 Maharashtra Hingoli Feb-21 B.1.617	GSEQ-902	Maharashtra	Hingoli	Feb-21	B.1.617
GSEQ-730 Maharashtra Jalna Mar-21 B.1.617	GSEQ-730	Maharashtra	Jalna	Mar-21	B.1.617
GSEQ-685 Maharashtra Thane Mar-21 B.1.617	GSEQ-685	Maharashtra	Thane	Mar-21	B.1.617
GSEQ-672 Maharashtra Thane Mar-21 B.1.617	GSEQ-672	Maharashtra	Thane	Mar-21	B.1.617
GSEQ-	GSEQ-	Maharashtra	Hingoli	Feb-	B.1.36.29

893 Maharashtra Hingoli Feb-21 B.1.36.29	893	ra		21	
GSEQ-663 Maharashtra Thane Mar-21 B.1.1.7	GSEQ-663	Maharasht ra	Thane	Mar-21	B.1.1.7
GSEQ-840 Maharashtra Bhandara Mar-21 B.1.1.7	GSEQ-840	Maharasht ra	Bhandara	Mar-21	B.1.1.7
GSEQ-682 Maharashtra Thane Mar-21 B.1.1.216	GSEQ-682	Maharasht ra	Thane	Mar-21	B.1.1.216
GSEQ-784 Maharashtra Wardha Mar-21 B.1.1.354	GSEQ-784	Maharasht ra	Wardha	Mar-21	B.1.1.354
GSEQ-686 Maharashtra Thane Mar-21 B.1.177.42	GSEQ-686	Maharasht ra	Thane	Mar-21	B.1.177.4 2
GSEQ-772 Maharashtra Mumbai Mar-21 B.1.36.29	GSEQ-772	Maharasht ra	Mumbai	Mar-21	B.1.36.29
GSEQ-842 Maharashtra Bhandara Mar-21 B.1.617	GSEQ-842	Maharasht ra	Bhandara	Mar-21	B.1.617
GSEQ-887 Maharashtra Hingoli Feb-21 B.1.1.354	GSEQ-887	Maharasht ra	Hingoli	Feb-21	B.1.1.354
GSEQ-781 Maharashtra Wardha Mar-21 B.1.474	GSEQ-781	Maharasht ra	Wardha	Mar-21	B.1.474
GSEQ-767 Maharashtra Aurangabad Mar-21 B.1.1.216	GSEQ-767	Maharasht ra	Aurangabad	Mar-21	B.1.1.216
GSEQ-797 Maharashtra Wardha Feb-21 B.1.617	GSEQ-797	Maharasht ra	Wardha	Feb-21	B.1.617
GSEQ-644 Maharashtra Hingoli Feb-21 B.1.617	GSEQ-644	Maharasht ra	Hingoli	Feb-21	B.1.617
GSEQ-888 Maharashtra Hingoli Feb-21 B.1.617	GSEQ-888	Maharasht ra	Hingoli	Feb-21	B.1.617
GSEQ-798 Maharashtra Wardha Feb-21 B.1.1.306	GSEQ-798	Maharasht ra	Wardha	Feb-21	B.1.1.306
GSEQ-843 Maharashtra Bhandara Mar-	GSEQ-843	Maharasht ra	Bhandara	Mar-21	B.1.617

21 B.1.617					
GSEQ-854 Maharashtra Nanded Feb-21 B.1.617	GSEQ-854	Maharashtra	Nanded	Feb-21	B.1.617
GSEQ-690 Maharashtra Thane Feb-21 B.1.617	GSEQ-690	Maharashtra	Thane	Feb-21	B.1.617
GSEQ-1087 Maharashtra Thane Mar-21 B.1	GSEQ-1087	Maharashtra	Thane	Mar-21	B.1
GSEQ-1105 Maharashtra Thane Mar-21 B.1.617	GSEQ-1105	Maharashtra	Thane	Mar-21	B.1.617
GSEQ-1185 Maharashtra Alibag #N/A B.1.617	GSEQ-1185	Maharashtra	Alibag	#N/A	B.1.617
GSEQ-954 Maharashtra #N/A Nov-20 B.1.36.29	GSEQ-954	Maharashtra	NA	Nov-20	B.1.36.29
GSEQ-956 Maharashtra #N/A Nov-20 B.1.36	GSEQ-956	Maharashtra	NA	Nov-20	B.1.36
GSEQ-955 Maharashtra #N/A Nov-20 B.1.36	GSEQ-955	Maharashtra	NA	Nov-20	B.1.36
GSEQ-959 Maharashtra #N/A Nov-20 B.1.36	GSEQ-959	Maharashtra	NA	Nov-20	B.1.36
GSEQ-958 Maharashtra #N/A Nov-20 B.1.36.29	GSEQ-958	Maharashtra	NA	Nov-20	B.1.36.29
GSEQ-957 Maharashtra #N/A Nov-20 B.1.36.29	GSEQ-957	Maharashtra	NA	Nov-20	B.1.36.29
GSEQ-1079 Maharashtra Mumbai Mar-21 B.1.1.306	GSEQ-1079	Maharashtra	Mumbai	Mar-21	B.1.1.306
GSEQ-1080 Maharashtra Mumbai Mar-21 B.1.617	GSEQ-1080	Maharashtra	Mumbai	Mar-21	B.1.617
GSEQ-1081 Maharashtra Mumbai Mar-21 B.1.1.306	GSEQ-1081	Maharashtra	Mumbai	Mar-21	B.1.1.306
GSEQ-2712 Maharashtra Yavatmal Feb-21 B.1.36.29	GSEQ-2712	Maharashtra	Yavatmal	Feb-21	B.1.36.29



VOC-1121 Maharashtra Mumbai Dec-20 B.1.36.29	VOC-1121	Maharashtra	Mumbai	Dec-20	B.1.36.29
GSEQ-6571 Maharashtra Mumbai Mar-21 B.1.1.306	GSEQ-6571	Maharashtra	Mumbai	Mar-21	B.1.1.306
SEQ-29188TCM Maharashtra Melghat Jan-21 B.1.1.421	SEQ-29188TCM	Maharashtra	Melghat	Jan-21	B.1.1.421

**Supplementary Table2:** Intra and inter-molecular interactions of wild and mutant spike RBD of SARS-CoV-2 with ACE2. The bonds that are highlighted indicate those that are disrupted in the mutant strain

<b>Spike RBD with ACE2 (6LZG.pdb) (wild)</b>			
<b>Interactions</b>			
<b>Sr. No.</b>	<b>RBD-Wild Type</b>	<b>ACE2</b>	<b>Type</b>
1	K417	D30	Hydrogen Bond; Electrostatic
<b>2</b>	<b>E484</b>	<b>K31</b>	<b>Electrostatic</b>
3	A475	S19	Hydrogen Bond
4	N487	Q24	Hydrogen Bond
5	T500	Y41	Hydrogen Bond
6	G496	K353	Hydrogen Bond
7	Y449	D38	Hydrogen Bond
8	Y449	Q42	Hydrogen Bond
9	N487	Y83	Hydrogen Bond
10	Q493	E35	Hydrogen Bond
11	Q498	Q42	Hydrogen Bond
12	Q498	Q42	Hydrogen Bond
13	G502	K353	Hydrogen Bond
14	Y453	H34	Hydrogen Bond
15	F486	Y83	Hydrogen Bond
16	N501	Y41	Hydrogen Bond
17	L455	H34	Hydrophobic
18	F486	Y83	Hydrophobic
19	Y505	K353	Hydrophobic
20	F486	M82	Hydrophobic
21	Y489	K31	Hydrophobic
22	Y505	K353	Hydrophobic
<b>23</b>	<b>L452-L492</b>	<b>-</b>	<b>Hydrophobic</b>

24	F490-L492	-	Hydrophobic
<b>Spike RBD with ACE2 (6LZG.pdb) (L452R &amp; E484Q Mutant)</b>			
<b>Interactions</b>			
<b>Sr. No.</b>	<b>RBD-Mutant Type</b>	<b>ACE2</b>	<b>Type</b>
1	K417	D30	Hydrogen Bond; Electrostatic
2	A475	S19	Hydrogen Bond
3	N487	Q24	Hydrogen Bond
4	T500	Y41	Hydrogen Bond
5	G496	K353	Hydrogen Bond
6	Y449	D38	Hydrogen Bond
7	Y449	Q42	Hydrogen Bond
8	N487	Y83	Hydrogen Bond
9	Q493	E35	Hydrogen Bond
10	Q498	Q42	Hydrogen Bond
11	Q498	Q42	Hydrogen Bond
12	G502	K353	Hydrogen Bond
13	Y453	H34	Hydrogen Bond
14	F486	Y83	Hydrogen Bond
15	N501	Y41	Hydrogen Bond
16	L455	H34	Hydrophobic
17	F486	Y83	Hydrophobic
18	Y505	K353	Hydrophobic
19	F486	M82	Hydrophobic
20	Y489	K31	Hydrophobic
21	Y505	K353	Hydrophobic
22	F490-L492	-	Hydrophobic

**Supplementary Table3:** Intermolecular interaction of neutralizing antibodies with wild and mutant spike RBD of SARS-CoV-2

A	<b>Spike RBD with Antibody REGN10933 (Wild)</b>		
	<b>Interactions</b>		
	<b>RBD</b>	<b>Antibody</b>	<b>Type</b>
1	GLU484	H: TYR53	Hydrogen Bond
		H:SER56	
2	LYS417	H:ASP31	Hydrogen Bond
		H:THR28	
3	PHE486	L: LEU94	Hydrophobic
		H: ARG100	Electrostatic
		H:TYR59	Hydrogen bond
4	TYR489	H: TYR53	Hydrophobic
	TYR489	H:TYR33	Hydrogen Bond
5	TYR453	H:ASP31	Hydrogen Bond
6	LYS417	H:ASP31	Hydrogen Bond
7	ALA475	H:MET104	Hydrophobic bond
B	<b>Spike RBD with Antibody REGN10933 (Mutant)</b>		
	<b>Interactions</b>		
	<b>RBD</b>	<b>Antibody</b>	<b>Type</b>
1	LYS417	H:ASP31	Hydrogen Bond
		H: THR28	
2	TYR453	H :ASP31	Hydrogen Bond
3	PHE486	H: ARG100	Hydrogen Bond
		L: LEU94	
		H:TYR59	
4	ALA475	H:MET104	Hydrophobic bond
5	TYR489	H:TYR53	Hydrophobic
6	GLN484	H:SER56	Hydrogen bond

7	CYS488	H:TYR33	Hydrogen bond
C	<b>Spike RBD with Antibody P2B-2F6(Wild)</b>		
	<b>Interactions</b>		
	<b>RBD</b>	<b>Antibody</b>	<b>Type</b>
1	LEU452	H: ILE103	Hydrophobic
		H:VAL105	
2	GLU484	L: ASN33	Hydrogen bond
		L:TYR34	
3	GLU484	H:ARG112	Hydrogen bond; Electrostatic
4	PHE490	H: VAL106	Hydrophobic
		H:PRO107	
5	TYR449	H: SER31	Hydrogen bond
6	ASN450	H: SER30	Hydrogen bond
		H:SER31	
7	GLY447	H: TYR27	Hydrogen bond
D	<b>Spike RBD with Antibody P2B-2F6 A(Mutant)</b>		
	<b>Interactions</b>		
	<b>RBD</b>	<b>Antibody</b>	<b>Type</b>
1	GLN484	L: ASN33	Hydrogen bond
		L: TYR34	
2	ASN450	H: SER30	Hydrogen bond
		H:SER31	
3	PHE490	H: VAL106	Hydrophobic
		H: PRO107	