

Mechanosensitivity of nucleocytoplasmic transport

One sentence summary: Force application to the nucleus leads to nuclear accumulation of proteins by differentially affecting passive versus facilitated nucleocytoplasmic transport.

Authors:

Ion Andreu^{1,2}, Ignasi Granero-Moya^{1,3*}, Nimesh R. Chahare¹, Kessem Clein⁴, Marc Molina Jordàn^{1,3}, Amy E. M. Beedle^{1,5}, Alberto Elosegui-Artola^{1,5,6,7}, Xavier Trepap^{1,3,8,9}, Barak Raveh⁴, Pere Roca-Cusachs^{1,3}.*

Affiliations:

¹Institute for Bioengineering of Catalonia (IBEC), the Barcelona Institute of Technology (BIST), 08028 Barcelona, Spain

²Universidad de Navarra, TECNUN Escuela de Ingeniería, Manuel de Lardizabal 15, 20018, Donostia-San Sebastián, Spain

³Universitat de Barcelona, 08036 Barcelona, Spain

⁴ School of Computer Science and Engineering, The Hebrew University of Jerusalem, 9190416, Jerusalem, Israel

⁵Department of Physics, King's College London, London, WC2R 2LS, UK

⁶Harvard John A. Paulson School of Engineering and Applied Sciences, Harvard University, Cambridge, MA, 02138, USA

⁷ Cell and Tissue Mechanobiology Laboratory, The Francis Crick Institute, London, NW1 1AT UK

⁸ Institució Catalana de Recerca i Estudis Avançats (ICREA), Passeig de Lluís Companys, 23, 08010 Barcelona

⁹ Centro de Investigación Biomédica en Red en Bioingeniería, Biomateriales y Nanomedicina (CIBER-BBN), 08028 Barcelona, Spain

* Both authors contributed equally to this work

Correspondence to Ion Andreu (iandreu@ibecbarcelona.eu) or Pere Roca-Cusachs (proca@ibecbarcelona.eu)

Abstract: Mechanical force controls fundamental cellular processes in health and disease, and increasing evidence shows that the nucleus both experiences and senses applied forces. Here we show that nuclear forces differentially control both passive and facilitated nucleocytoplasmic transport, setting the rules for the mechanosensitivity of shuttling proteins. We demonstrate that nuclear force increases permeability across nuclear pore complexes, with a dependence on molecular weight that is stronger for passive than facilitated diffusion. Due to this differential effect, force leads to the

translocation into or out of the nucleus of cargoes within a given range of molecular weight and affinity for nuclear transport receptors. Further, we show that the mechanosensitivity of several transcriptional regulators can be both explained by this mechanism, and engineered exogenously by introducing appropriate nuclear localization signals. Our work sets a novel framework to understand mechanically induced signalling, with potential general applicability across signalling pathways and pathophysiological scenarios.

Main Text: Cells sense and respond to mechanical stimuli from their environment by a process known as mechanosensing, which drives important processes in health and disease (1–3). Growing evidence shows that the cell nucleus is directly submitted to force (4–6), and can act as a mechanosensor (7). Force applied to the nucleus (henceforth termed nuclear force for simplicity) can affect chromatin architecture (8), the accessibility of the transcription machinery (9), the conformation of nucleoskeletal proteins such as lamins (10), or cell contractility (11, 12). Further, forces transmitted to cells, and specifically nuclei, affect the nucleocytoplasmic localization of transcriptional regulators involved in different signalling pathways (13). As proposed for MRTF-A (14, 15) β -catenin (16, 17) or YAP (18–20) this can be due to force-induced changes in affinity for binding partners in the nucleus or cytoplasm, regulating the ability to translocate between the two compartments. Alternatively, the force sensitive step could be the translocation itself, as suggested also for YAP (6) and MyoD (21). This opens the hypothesis that nucleocytoplasmic transport could be mechanosensitive *per se*, independently of any specific signalling pathway. This would enable a general mechanism by which nuclear force could control the nuclear localization of proteins, and thereby transcription. However, whether there is such a mechanism, how it operates, and how it allows for directionality and molecular specificity, remains unknown.

Nucleocytoplasmic transport takes place through Nuclear Pore Complexes (NPCs) in two main ways, passive and facilitated diffusion. Passive diffusion is important for small proteins, but is progressively impaired as the molecular weight (MW) of the protein increases (22–24). This impairment of diffusion is given by a meshwork of disordered proteins within NPCs called FG nups, which form what is commonly termed the NPC permeability barrier. Transport of large proteins takes place through facilitated diffusion, which is mediated by nuclear transport receptors or karyopherins. These can be importins (mediating active nuclear import) or exportins (mediating active nuclear export) (25). Karyopherins specifically interact with FG nups, and thereby undergo fast facilitated diffusion through pores. Then, they transport proteins (cargo) by binding to specific sequences in the cargo molecule, termed nuclear localisation signals (NLS, for proteins binding to importins) or nuclear export signals (NES, for proteins binding to exportins). Selective binding only in the import or export direction (for importins and exportins, respectively) is enabled by the dependence of binding/unbinding events on

the phosphorylation status of the small GTPase Ran (either GTP, predominant in the nucleus, or GDP, predominant in the cytoplasm). For importins, transport is often mediated by a complex formed by importin β , (which interacts with FG nups), importin α (which binds importin β), and the cargo (which binds importin α through an NLS) (25).

To isolate how nuclear force affects nucleocytoplasmic transport, we studied different artificial constructs undergoing both passive and facilitated diffusion, but devoid of binding domains to partners in either the cytoplasm or nucleus. First, we used a light inducible nuclear export construct (LEXY) (26) (Fig. 1A). Without excitation, the construct presents a weak NLS (cMyc^{P1A} NLS) fused to a mCherry and a folded LOV2 domain from *Avena sativa* phototropin-1 (AsLOV2). Under excitation with light (488 nm), the AsLOV2 domain unfolds to present a C-terminal encoded nuclear export signal (NES) that is stronger than the NLS. We transfected the construct in mouse embryonic fibroblasts (MEFs). To control the mechanical environment, cells were seeded on soft or stiff fibronectin-coated polyacrylamide gels (Young's modulus of 1.5 and 30 kPa, respectively). Before photoactivation ($t=0$), with only the NLS active, the nuclear to cytoplasmic ratio (N/C ratio) was higher for cells on stiff substrates (Fig. 1B,C). Upon excitation by light, the construct exited the nucleus to similar final N/C ratios in both conditions, although the speed of N/C change (variation of N/C ratio per second) was higher for the stiff substrate (Fig. 1B-D). Once light excitation stopped, the reverse process occurred, with N/C ratios increasing faster for the stiff substrate, until restoring original values (Fig. 1E). We then co-transfected cells with DN-KASH, a dominant-negative domain of nesprin that prevents binding between nesprin and sun, two fundamental components of the Linker of Nucleus and Cytoskeleton (LINC) complex (4). By disrupting the LINC complex, DN-KASH has been shown to prevent force transmission to the nucleus on stiff substrates (6). DN-KASH overexpression led cells on stiff substrates to behave like those on soft substrates (Fig. 1B-E), demonstrating that the effect of stiffness was mediated by force transmission to the nucleus.

These results strongly suggest that nucleocytoplasmic transport is indeed generally affected by nuclear force, but do not distinguish between the roles of passive and facilitated diffusion (since the ~45 kDa LEXY construct is likely still able to diffuse passively). To dissect the different contributions, we first used constructs undergoing only purely passive diffusion, and regulated their diffusivity through their MW. These constructs were composed of a Green Fluorescent Protein (GFP), attached through a short linker to between zero and six repeats of the 7 kDa bacterial Protein A (PrA) (Fig. 1F). PrA is inert and purely diffusive in eukaryotic cells, as shown previously (23) and also confirmed by the complete fluorescence recovery of the constructs after photobleaching either nucleus or cytoplasm (Fig. S1E). As such, these constructs have been previously used to study the progressive decrease in diffusion through NPCs with increasing molecular weight (MW) (23). When we transfected the constructs in cells, the N/C ratios of all proteins were ≈ 1 regardless of MW and substrate stiffness (Fig. 1 G,H).

This result shows that steady state concentrations of passively diffusing proteins were not mechanosensitive (where mechanosensitivity is defined throughout the manuscript as the fold change in a given magnitude in stiff versus soft substrates). However, this does not provide information on diffusion kinetics. To assess this, we adapted a previously described method and model (20) based on Fluorescence Loss in Photobleaching (FLIP, Fig. 1I). Briefly, by progressively photobleaching the cell cytoplasm while simultaneously acquiring images, one can fit the resulting fluorescence decay curves in both cytoplasm and nucleus to an appropriate kinetic model, thereby obtaining nuclear import and export rates (see methods and Fig. S1). As expected, both import and export rates decreased with MW (Fig. 1J,K). Interestingly, rates increased with substrate stiffness, and this effect decreased for increasing MW (Fig. 1J,K). Confirming that this was mediated by nuclear force, DN-KASH overexpression had the same effect as reducing substrate stiffness (Fig. S2). Thus, nuclear force weakens the permeability barrier of NPCs (i.e., increases diffusion), and the effect is more important for molecules with low MW (high diffusivity). Nevertheless, and because diffusion is non-directional, this does not affect the steady state nucleocytoplasmic distribution of molecules.

Next, we assessed how nuclear force affected facilitated transport. To this end, we first assessed the behaviour of the protein directly interacting with FG nups, importin β , by transfecting cells with importin β -GFP. As expected by its affinity to FG nups, importin β -GFP localized at the nuclear membrane (Fig. 2D). Of note, the optical diffraction limit did not allow us to resolve the immediate vicinity of the nuclear membrane, where likely very fast kinetics are taking place. Thus, import/export rates in FLIP experiments quantified only the kinetics of importin β molecules passing through nuclear pores and getting released in the bulk of either the nucleus or cytoplasm. Still, both import and export rates showed a high mechanosensitivity (Fig. 2A,B), similarly to that of highly diffusive passive molecules (Fig. 1J,K). Because importin β exhibits facilitated diffusion both in the import and export directions, import and export rates were largely symmetrical, leading to uniform concentrations inside and outside the nucleus regardless of substrate stiffness (Fig. 2C).

Then, we studied the behaviour of cargo proteins undergoing facilitated diffusion. To this end, we added NLS sequences to the different GFP-PrA constructs (Fig. 2E). To regulate facilitated diffusion, we used different previously described functional NLS sequences with varying levels of affinity for importin α (27). The sequences ranged from that of the simian virus 40 (SV40), with very high affinity (which we termed H_NLS), to progressively lower affinities obtained by different point mutations in the sequence (which we termed M_NLS and L_NLS, for medium and low affinity). This approach allowed us to independently control passive and facilitated diffusion by regulating the number of PrA repeats and the NLS sequence, respectively. Interestingly, the mechanosensitivity of such constructs can be already predicted from the kinetic behaviour of passively diffusing molecules (Fig. 1G,H) and importin β (Fig. 2C), even if

both showed uniform nucleo-cytoplasmic distributions regardless of stiffness. Indeed, a cargo molecule with an NLS should have a high mechanosensitivity in the import direction (because it enters the nucleus with importin β), but a low mechanosensitivity in the export direction if its MW is above ~ 40 kDa (because it exits the nucleus through passive diffusion, which loses mechanosensitivity as MW increases).

By taking L_NLS-EGFP-2PrA (41 kDa) as a starting point, we confirmed this prediction: this molecule had a higher mechanosensitivity in import than export rates, leading to an increase in N/C ratios with stiffness (Fig. 2F-I). Confirming that this was mediated by nuclear force, the same effects on rates were observed when comparing cells with and without DN-KASH overexpression (Fig. S2). Further, the increase in N/C ratios was replicated by applying force to the nucleus of cells seeded on soft gels with an Atomic Force Microscope (AFM) (Fig. 2J,K). Interestingly, the fast decrease in N/C ratio upon force release in the AFM experiment shows that this mechanism is reversible in the timescale of seconds. As a control, force application with the AFM had no effect on the equivalent purely diffusive construct (Fig. 2J,K).

For the specific case of L_NLS-EGFP-2PrA, our results thus show that nuclear accumulation with force of NLS-cargo proteins is explained by a higher mechanosensitivity of facilitated versus passive diffusion. To understand this differential behaviour, we hypothesized that it may arise from the role of MW. Indeed, passive diffusion is strongly impaired as MW increases (23), whereas facilitated diffusion is expected to have a milder dependence on cargo MW (28–30). Thus, one could expect a scheme (summarized in fig. 3A) in which passive diffusion decreases both in magnitude and in mechanosensitivity as MW increases (as measured in fig. 1J,K) whereas facilitated transport is not affected by MW. To verify this hypothesis, we measured import and export rates of constructs containing the L_NLS sequence and different MW (Fig. 3B,C). Indeed, import rates (dominated by active transport, fig. 3B) had a much milder dependence on MW than export rates (dominated by diffusion and with very similar behaviour to that of purely diffusive constructs, Fig. 3C).

With these elements, we can generate a simple conceptual prediction of how nucleocytoplasmic transport should depend on force, MW, and NLS affinity. To this end, we assume that N/C ratios are given by the ratio of import and export rates, where export rates are purely passive and import rates have additive contributions of both passive and facilitated diffusion. Then, we assume as experimentally verified that **i)** MW decreases passive import and export rates (which are equal), **ii)** Nuclear force increases passive import and export rates, but the effect disappears as MW increases, **iii)** facilitated import rates increase with nuclear force and with NLS sequence affinity, but do not depend on MW. We also assume that there is a limit to the efficiency of active facilitated transport, and therefore **iv)** N/C ratios saturate and cannot increase above a given level. With these assumptions, we can plot two simple diagrams showing how N/C ratios should depend on MW and NLS affinity before applying force to the nucleus (Fig.

4A), and their fold change with force, i.e., their mechanosensitivity (Fig. 4B). According to this framework, for low MW or a weak NLS, passive diffusion dominates over facilitated import, leading to N/C ratios close to 1 independently of nuclear force. For high MW or a strong NLS, facilitated import dominates over diffusion, leading to high, saturated N/C ratios, also independently of nuclear force. However, when passive and facilitated transport rates are comparable they depend differently on force, leading to mechanosensitive N/C ratios. As MW decreases (and passive diffusion increases) progressively higher facilitated import rates are required to match passive diffusion rates, and thus the “mechanosensitive zone” is placed along a diagonal in fig. 4B.

We then verified the different predictions by using the different constructs. First, increasing MW in proteins with a fixed NLS sequence (L_NLS) should progressively increase their N/C ratio, because the relative contribution of passive diffusion progressively decreases. Additionally, mechanosensitivity should be maximum at an intermediate range of MW between the high passive diffusion regime (low MW) and the saturated regime (high MW). Both trends were observed (Fig. 4C,F,I). Second, increasing MW in proteins with a fixed NLS sequence of higher affinity (M_NLS) should show the same trends found in low affinity NLS constructs. However, the point of maximum mechanosensitivity should happen at a lower MW, because the higher affinity NLS can more easily overcome the purely diffusive regime. This was also confirmed (Fig. 4G,J). Finally, increasing NLS affinity in proteins with a fixed MW (41 kDa) should progressively increase their N/C ratios, because the contribution of facilitated diffusion increases. In this case, mechanosensitivity should also be maximum at an intermediate range of NLS affinity, between the regime dominated by passive diffusion (low NLS affinity) and the saturated regime (high NLS affinity). This was also verified (Fig. 4H,K).

Beyond the simple proposed conceptual framework, and given the complexity of the nucleocytoplasmic transport cycle, we then sought to understand if our experiments could indeed be explained merely by changes in NPC permeability, in both passive and facilitated diffusion. To this end, we developed a computational model, considering the known properties of importin-mediated nucleocytoplasmic transport (see methods). To model the effects of force in passive diffusion, we took the experimentally measured passive diffusion rates as a function of force and MW from fig. 1J,K. For facilitated diffusion, we simply assumed that force reduces the time required for importin-cargo complexes to cross nuclear pores (in a MW-independent way), without changing any other parameter. Affinity between the NLS sequence and importin α was modelled by through the binding rate k_{on} . The model correctly predicted the increase of N/C ratios, and of their mechanosensitivity, with MW and NLS affinity (Fig. 4L-O). In contrast, the model did not capture the progressive saturation of N/C ratios at force-independent levels for high MWs or strong NLS sequences, and the associated decrease in mechanosensitivity. Instead, increasing NLS affinity to very high values in the model led to a collapse (rather than saturation) of both N/C ratios and mechanosensitivities, since

very strongly bound cargo can exit the nucleus before unbinding from importins (Fig. S3). Interestingly, this leads to an increase of not only import but also export rates with increasing NLS affinity, something which we did observe in experiments (Fig. S3). Independently of the discrepancy between saturation and collapse in model and experiment, this effect on export rates can explain the loss of mechanosensitivity at very high N/C ratios: if export rates are mediated by facilitated rather than passive diffusion, then their dependency on force is the same as that of import rates, and the overall effect on N/C ratios cancels out.

Given the observed mechanosensitivity of active nuclear import, one might expect a similar (but reversed) behaviour for active export. To test this, we developed constructs by combining PrA repeats with different NES signals of different strength (31). N/C ratios changed as expected with MW and NES strength (by following the opposite trends than NLS constructs, fig. S4A-I). The mechanosensitivity of the constructs also behaved in the opposite way, with constructs leaving (rather than entering) the nucleus with force (Fig. S4G-I). Consistently, import and export rates of NES constructs also had opposite trends with MW than NLS constructs: export rates were largely independent of MW, whereas import rates showed a strong dependence, mimicking diffusive constructs (Fig. S4J,K). Interestingly, mechanosensitivity of the NES constructs was systematically milder than that of the NLS constructs. This is consistent with the behaviour of the light inducible construct (Fig. 1B), which had a stiffness-dependent localization when controlled by active import (no light excitation) but not when controlled by active export (under light excitation).

Finally, we evaluated whether nucleocytoplasmic transport can explain the reported mechanosensitivity of different transcriptional regulators. Recent work has identified several transcriptional regulators which localize to the nucleus with force in different contexts, including YAP (6, 32), twist1 (33), snail (34), SMAD3 (35), GATA2 (36), and NF κ B (37). If their mechanosensitivity is explained by regulation of nucleocytoplasmic transport with nuclear force, then it should be abolished by preventing either force transmission to the nucleus (by overexpressing DN-KASH) or nucleocytoplasmic transport (by overexpressing either DN-Ran, a dominant-negative version of Ran (38), or by treatment with importazole, a drug which blocks active import by importin β (39)). For the case of YAP, we previously showed that its mechanosensitivity is abrogated by both factors (6). Regarding the rest, GATA2 and NF κ B exhibited a very low mechanosensitivity in our system (Fig. S5G,K), but SMAD3, Snail, and Twist1 showed a clear response (Fig. S5A-F and Fig. 5A,B). In all cases, mechanosensitivity was abrogated by DN-KASH, DN-RAN, or importazole (Fig. S5A-F and Fig. 5A,B). Interestingly and consistent with our finding that NLS constructs were more mechanosensitive than NES constructs, SMAD3 mechanosensitivity was higher for cells treated with TGF β (which induces SMAD3 nuclear import) than with lapatinib (which induces SMAD3 nuclear export) (40).

Thus, the mechanosensitivity of several transcriptional regulators is indeed controlled by force-induced effects in nucleocytoplasmic transport. Our proposed mechanism also has the stronger implication that mechanosensitivity can be engineered simply by selecting the appropriate levels of affinity to importins. To verify this, we took twist1 as a convenient model, since its NLS sequences are well described, and their function can be abolished with simple point mutations (41). Further, its mechanosensitivity depends on its binding to G3BP2, which retains twist1 in the cytoplasm (33). We first overexpressed wild-type twist1 in cells, which retained the mechanosensitivity of endogenous twist1 (Fig. 5C-F). Then, we overexpressed a G3BP2 binding deficient mutant, mutG3BP2. As expected, this led to high N/C ratios on both soft and stiff substrates, thereby losing mechanosensitivity. Confirming the role of nucleocytoplasmic transport, the NLS dead mutant (mutNLS, still under the control of G3BP2), lost the nuclear localization in both soft and stiff substrates, thereby also losing mechanosensitivity (Fig. 5C-F). We then assessed whether we could restore twist1 mechanosensitivity by rescuing twist mutNLS not with its endogenous NLS, but by exogenously adding our different characterized NLS sequences (plus an additional ultra-low affinity sequence, UL_NLS). Indeed, adding NLS sequences of different strength mimicked the effects seen in fig. 4: as the NLS strength increased, nuclear localization progressively increased, and mechanosensitivity was highest at a low strength (L_NLS), where it was almost as high as in the endogenous case. Thus, simply substituting the endogenous twist1 NLS with an exogenous one of the appropriate strength, not regulated by any twist-1 related signalling mechanism, recapitulates its mechanosensitivity.

Our work shows that force regulates nucleocytoplasmic transport by weakening the permeability barrier of NPCs, affecting both passive and facilitated diffusion. Because MW affects more passive than facilitated diffusion, this generates a differential effect on both types of transport that enables force-induced nuclear localization of cargo. Three important open questions emerge from our findings. First, although NPCs have been reported to be flexible and thus potentially deformable under force (42–44), and their apparent size is bigger in nuclei under force (6), the specific structural changes in NPC structure induced by force, and how they weaken the permeability barrier, remain to be understood. In this regard, a recent preprint showed that the NPC central channel can constrict upon energy depletion in cells, which is likely related with a decrease in mechanical tension in the nucleus (45). Second, the exact set of properties that confer mechanosensitivity to transcriptional regulators or other proteins remains to be fully explored. The different transcriptional regulators discussed here range in size from over 20 kDa (for twist) to over 60 kDa (for YAP), thereby encompassing almost the full range of weights analyzed with our designed constructs. However, diffusivity through NPCs depends not only on MW but also on surface charges (46) and protein mechanical properties (47), which could play major roles. Finally, why facilitated export is less affected than facilitated import may be related to the different interactions between

importins and exportins with FG-nups (48) or to the asymmetric manner in which NPCs deform (45), but is also unclear. Beyond these questions, our work demonstrates a general mechanism of mechanosensitivity, with incorporated specificity through molecular properties such as the NLS sequence and MW. Although other mechanisms (such as differential binding to nuclear or cytosolic proteins) can generate mechanosensitive nuclear translocation (14, 16), our mechanism is consistent with the behaviour of several transcriptional regulators, and has potential general applicability. Our findings suggest that interfering with nucleocytoplasmic transport may be an avenue to regulate or abrogate mechanically-induced transcription in several pathological conditions. Perhaps even more excitingly, they open the door to design artificial mechanosensitive transcription factors, to enable mechanical control of transcriptional programs at will.

Methods

Cell culture and reagents

Mouse embryonic fibroblasts (MEFs) were cultured as previously described (49), using Dulbecco's modified eagle medium (DMEM, Thermofischer Scientific, 41965-039) supplemented with 10% FBS (Thermofischer Scientific, 10270-106), 1% penicillin-streptomycin (Thermofischer Scientific, 10378-016), and 1.5% HEPES 1M (Sigma Aldrich, H0887). Cell cultures were routinely checked for mycoplasma. CO₂-independent media was prepared by using CO₂-independent DMEM (Thermofischer Scientific, 18045 -054) supplemented with 10% FBS, 1% penicillin-streptomycin, 1.5% HEPES 1M, and 2% L-Glutamine (Thermofischer Scientific, 25030-024). Media for AFM experiments was supplemented with Rutin (ThermoFischer Scientific, 132391000) 10 mg/l right before the experiment. Importazole (Sigma Aldrich) was used at 40 μ M concentration for 1 h (50). Cells were transfected the day before the experiment using Neon transfection device (ThermoFischer Scientific) according to manufacturer's instructions. Cells were seeded ~4 h before the experiment.

Antibodies and compounds

For primary antibodies, we used Anti Twist antibody (Twist2C1A, Santa cruz, sc-81417) 1:200, Mouse monoclonal antibody to SNAIL + SLUG - N-terminal (CL3700, abcam, ab224731) 1:200, rabbit polyclonal anti SMAD3 (Cell Signaling, 9513) 1:40, Rabbit polyclonal antibody to GATA2 (Abcam, ab153820) 1:200, rabbit polyclonal Anti-NF-kB p65 antibody (abcam, ab16502) 1:200. The secondary antibodies used were Alexa Fluor 488 anti-mouse (A-11029; Thermo Fischer Scientific) and Alexa Fluor 555 anti-rabbit (A-21429; Thermo Fischer Scientific), diluted 1:200.

Plasmids

If not referred otherwise, plasmids were constructed via standard molecular biology methods. **LEXY plasmids:** NLS-mCherry-LEXY (pDN122) was a gift from Barbara Di Ventura & Roland Eils (Addgene plasmid # 72655 ; <http://n2t.net/addgene:72655> ; RRID:Addgene_72655) (26). **Nuclear transport plasmids:** NLS, NES, or nought combinations with different molecular weight modules were designed as following: Localization signal plus GGGGS linker, EGFP, and different

amount of Protein A from *Staphylococcus aureus* modules. Nuclear Localization Signals sequences were extracted from Hodel *et al.* (2001)(27). Nuclear Export Signals were extracted from Kanwal *et al.* (2004)(31). Protein A domain sequences were used originally in Timney *et al.* (2016) (23) and were kindly provided to us by the Laboratory of Cellular and Structural Biology at the Rockefeller University. For more detailed information see table S1. **DN-KASH DN-RAN:** DN (Dominant negative)-KASH was described previously as EGFP-Nesprin1-KASH in Zhang *et al.*, (2001) (51). DN (Dominant negative)-RAN (Addgene plasmid # 30309, described as pmCherry-C1-RanQ69L) was a gift from Jay Brenman (52). **Twist mutants:** pBABE-puro-mTwist was a gift from Bob Weinberg (Addgene plasmid # 1783 ; <http://n2t.net/addgene:1783> ; RRID:Addgene_1783) (53). mTwist was cloned into a pEGFP-C3 backbone and a V5 tag was included at the N-terminal. The different mutants were constructed by adding the corresponding NLS sequences and/or changing the indicated codons. For more detailed information see table S1.

Polyacrylamide gels

Polyacrylamide gels were prepared as previously described (54), and coated using a protocol adapted from the literature (55). Briefly, gels were covered with a mix containing 10% HEPES 0.5M Ph 6, 0.002% BisAcrylamide (BioRad), 0.3% 10 mg/ml N-hydroxysuccinimide (NHS, Sigma Aldrich) in dimethyl sulfoxide (DMSO, Sigma Aldrich), 1% Irgacure 2959 (BASF), 0,0012% Di(trimethylolpropane)tetra-acrylate (Sigma Aldrich), in milliQ water. Different concentrations of acrylamide and bis-acrylamide were used to obtain different stiffness gels. For 1.5 kPa gels we used 5,5% acrylamide and 0,04% bis-acrylamide; for 30 kPa we used 12% acrylamide and 0,15% bis-acrylamide. Gels were then illuminated with UV light for 10 minutes. After exposure, gels were washed once with HEPES 25mM Ph 6 and once with PBS. Gels were then incubated with 10 µg/ml of fibronectin in PBS overnight at 4°C, UV treated in the hood for 10 minutes, once with PBS and immediately used. The rigidity of the gels was measured using Atomic Force Microscopy as previously described (56).

Immunostaining

Immunostainings were performed as previously described (6). Cells were fixed with 4% paraformaldehyde for 10 minutes, permeabilized with 0.1% Triton X-100 for 40 minutes, blocked with 2% Fish-Gelatin in PBS 1X for 40 minutes, incubated with primary antibody for 1 hour, washed 3X with Fish-Gelatin-PBS for 5 minutes, incubated with secondary antibody for 1 hour, washed with Fish-Gelatin-PBS 3X for 5 minutes, and mounted using ProLong Gold Antifade Mountant (ThermoFischer Scientific).

Steady state image acquisition and analysis

Cells were imaged with a Nikon Eclipse Ti inverted confocal microscope using a 60x water immersion objective 1.2 NA. Nuclear to cytoplasmic (N/C) ratios were quantified manually by segmenting the nucleus using Hoechst (immunostaining) or taking advantage of the GFP tagged construct (live cells) by the following formula:

$$\frac{N}{C} = \frac{I_{nucleus} - I_{background}}{I_{cytoplasm} - I_{background}}$$

Where $I_{nucleus}$ and $I_{cytoplasm}$ are the mean fluorescence intensity of the nucleus and the cytoplasm respectively. ROIs in the nucleus and in the cytoplasm were selected manually next

to each other, close to the nuclear membrane. $I_{background}$ is the mean intensity of the background far from the cell.

Mechanosensitivity was calculated once for each of the repeats using the following formula:

$$mechanosensitivity = \frac{N/C \text{ stiff substrate}}{N/C \text{ soft substrate}}$$

Live cell AFM experiments

Live cell AFM experiments were carried out as previously described (6). Briefly, AFM experiments were carried out in a Nanowizard 4 AFM (JPK) mounted on top of a Nikon Ti Eclipse microscope. Polystyrene beads of 20 μm were attached using a non-fluorescent adhesive (NOA63, Norland Products) to the end of tipless MLCT cantilevers (Veeco). The spring constant of the cantilevers was calibrated by thermal tuning using the simple harmonic oscillator model. Experiments were carried out on cells previously transfected with the EGFP construct and incubated with Hoechst 33342 (Invitrogen), and seeded on gels on compliant gels. For each cell, the nucleus was identified by using the Hoechst fluorescence signal, and a force of 1.5 nN was applied to the nucleus. Once the maximum force was reached, the indentation was kept constant under force control, adjusting the z height by feedback control. An image was acquired every 10s by an Orca ER camera (Hamamatsu) and a 60X (NA = 1.2) objective.

Photoactivation experiment and quantification

Photoactivation experiments were done with a Zeiss LSM880 inverted confocal microscope using a 63X 1.46 NA oil immersion objective. An argon laser was used with 561 nm wavelength for acquisition and 488 nm laser for stimulation. For the experiment 4 images were obtained before stimulation, then followed by 19 images during stimulation and 18 images for recovery. All images were acquired every 30 s and during the stimulation period the 488 nm laser was irradiated to the whole field of view during 1 s at 100% laser power.

To obtain the entry and exit speed a single exponential equation was fitted to the N/C ratio of each cell:

$$n/c(t) = (n/c)_0 e^{-kt}$$

Where $(n/c)_0$ is the initial ratio of the stimulation or recovery phase and k is the entry or exit speed. The curve was fitted to the whole stimulation or recovery phase.

FRAP Data Acquisition and Analysis

Estimation of mobile fraction of proteins was done using fluorescence recovery after photobleaching (FRAP) experiments. FRAP involves bleaching a region of interest (ROI) and then tracing recovery of fluorescence in that region with respect to time. Image acquisition was done with a Zeiss LSM880 inverted confocal microscope using a 63X 1.46 NA oil immersion objective and a 488nm wavelength argon laser at 100% lase power. We acquired images every 60 ms. We bleached and acquired images acquired every 60 ms for 12s. We use two ROIs for our experiments: first is the circular 14-pixel diameter ($\sim 6.9 \mu\text{m}^2$) region being bleached (ROIF), and second is the cell area segmented manually (ROIC). The data for ROIs consist of the fluorescence integrated density as a function of time from images acquired before and after photobleaching.

For further analysis, we normalize the fluorescence intensities of ROIs using the double normalization method (57). Double normalization corrects for photobleaching during the post bleach imaging and normalizes recovery fluorescence with a pre bleach signal. Double normalized intensity (I) for recovery signal can be calculated by using following formula.

$$I = \frac{F}{F_0} \times \frac{C_0}{C}$$

where (F) and (C) are the fluorescence integrated densities of ROIF and ROIC respectively for post bleach imaging, and (F_0) and (C_0) correspond to pre bleach imaging. Mobile fraction (mf) represents the fraction of molecules that are free to diffuse. It is estimated by using the first timepoint after bleaching of (I_0) and the median of the last twenty timepoints (I_f) in the following expression:

$$mf = \frac{I_f - I_0}{1 - I_0}$$

FLIP Model

Fluorescence loss in photobleaching (FLIP) is used to assess import and export rates of the different constructs. FLIP experiments involve continually bleaching of a region of interest (ROIb) and tracking signal loss from different regions. Quantification of these curves yields the transport dynamics between nucleus and cytoplasm. We set up experiments and analysis motivated from (20) for determining the rate of nuclear import and export.

To model the FLIP data, we developed a system of Ordinary Differential Equations (ODEs) describing change in protein concentration between two compartments i.e., the nucleus and the cytoplasm. These two compartments are linked with boundary fluxes going in (Q_i) and out (Q_e) of the nucleus (Fig S1).

We assume that the proteins remain in unbound and mobile state in each compartment. During steady state cells maintain a constant ratio (α) for protein concentration between nucleus (n) and cytoplasm (c), and the flux between both compartments is equal.

$$\alpha = \frac{n}{c}$$

$$Q_e = Q_i$$

During photobleaching the transport equations for the number of molecules in nucleus (N) and cytoplasm (C) can be described as follows, where (Q_b) is the number of molecules being bleached per unit time.

$$\begin{aligned} \frac{dN}{dt} &= -Q_e + Q_i \\ \frac{dC}{dt} &= +Q_e - Q_i - Q_b \end{aligned}$$

The fluxes are proportional to the concentration of the compartment, times a rate coefficient. Here, k_e' , k_i' are export and import rate coefficients respectively and η' is the bleaching rate:

$$Q_e = k_e' n \quad Q_i = k_i' c \quad Q_b = \eta' c$$

Because these rates (in units of volume per unit time) will depend on the size of the compartment, we define normalized rates as $k_e = k'_e/V_n$, $k_i = k'_i/V_n$, $\eta = \eta'/V_n$, where V_n is the volume of the nucleus. Thus:

$$Q_e = V_n k_e n \quad Q_i = V_n k_i c \quad Q_b = V_n \eta c$$

This enables us to rewrite transport equations in terms of concentration.

During bleaching,

$$V_n \frac{dn}{dt} = -V_n k_e n + V_n k_i c$$

$$V_c \frac{dc}{dt} = +V_n k_e n - V_n k_i c - V_n \eta c$$

Where V_c is cytoplasm volume. During steady state,

$$V_n k_e n = V_n k_i c$$

$$k_e \frac{n}{c} = k_i$$

$$k_e = \frac{k_i}{\alpha}$$

One can further simplify these by using ratio of nuclear volume to cytoplasm volume $\beta = \frac{V_n}{V_c}$

$$\frac{dn}{dt} = -k_e n + k_i c$$

$$\frac{1}{\beta} \frac{dc}{dt} = +k_e n - k_i c - \eta c$$

By substituting k_i , we get following equation to solve ultimately:

$$\frac{dn}{dt} = -(\mathbf{k}_e)n + (\mathbf{k}_e\alpha)c$$

$$\frac{dc}{dt} = +(\beta\mathbf{k}_e)n - (\beta\mathbf{k}_e\alpha + \beta\eta)c$$

We then solve these equations numerically using MATLAB function ode15s, and fit them to the experimental data to get import/export rates and bleaching rates. Variables in bold are the unknowns to be fitted with fminsearch function in (MATLAB (R2020b) Natick, Massachusetts: The MathWorks Inc.).

FLIP Imaging and Analysis

For quantification of FLIP (Fluorescent Loss In Photobleaching) experiments, we followed the fluorescence intensities of three different regions, segmented manually: nucleus, cell, and background. Image acquisition was done with a Zeiss LSM880 inverted confocal microscope using a 63X 1.46 NA oil immersion objective and a 488nm wavelength argon laser. We used a ROI of 17 x 17 (~12.9 μm^2) pixels. 10 baseline images were acquired. Then, 40 images of 512 x 512 pixels were acquired every 3 seconds. The power of the laser used to bleach was adjusted to result in the same bleaching rate η . Due to differences in cell morphology, this corresponded to 60% power for cells on 1.5 kPa substrates, and 100% power for cells on 30 kPa substrates. This difference occurred because cells were more rounded on soft gels and therefore thicker in the z axis, leading to a taller column of cytoplasm affected by photobleaching. Cells with

beaching rates above 0.12 were discarded. We note that differences in obtained rates between 1.5/30 kPa substrates were reproduced when comparing cells at 30 kPa with/without DN KASH overexpression, where cell morphologies and bleaching laser power was not altered. In the mathematical model, the transport between nucleus and cytoplasm is modelled as transport between two compartments, where the cytoplasm is continuously bleached. We assume that the concentration of protein is uniform in each compartment and that during steady state (before photobleaching) the ratio (α) between nucleus and cytoplasm's protein concentration is constant. The regions of interest identified for nucleus and cytoplasm were narrow rings around the nucleus, either inside or outside of the nucleus. The average fluorescence intensity of these regions was used as a proxy for nuclear concentration (n) and cytoplasmic concentration (c). The intensities were corrected for background noise, and normalized by the total integrated cell intensity. Experimental data for n and c was used to solve equations XX (number the equations in former section), as explained above. The ratio of concentrations at steady state (α) was taken as n/c at the initial timepoint (before photobleaching). To calculate the ratio of nuclear to cytoplasmic volume (β), we first took confocal stacks of cells with labelled nuclei (with DAPI) and whole cell (with GFP), seeded on both 1.5 kPa and 30 kPa gels. In those cells, we noted an excellent correlation between the nuclear/cytoplasmic ratio volume ratio β , and the nuclear/cytosolic area ratio, calculated with nuclear and cytosolic areas at a representative central slice of the cell (Fig. S1). Thus, in FLIP experiments we measured area ratios from images, and converted this to volume ratios using the experimental correlation.

To solve for unknown variables, we use curve fitting technique with weighted least square method. The experimental data for concentrations (n, c) is fitted to solution of ODEs (nf, nc). The objective function was formulated for minimizing sum of squares of residuals of model and experimental data. This function was weighted by time and compartment concentration to avoid bias in the fitting. Here, w_n, w_c, n, c , and nf, cf are all a function of time t and ϵ is a scalar constant.

$$\min_{k_1, \eta} f = \sum_t w_n (n - n_f)^2 + w_c (c - c_f)^2$$
$$w_n = \frac{1}{(t + \epsilon) \sum_t n} \quad w_c = \frac{1}{(t + \epsilon) \sum_t c}$$

We use `fminsearch` function of MATLAB to minimize the objective function. For each iteration, n_f, c_f is calculated using `ode15s` solver.

Modelling of mechanosensitive nucleocytoplasmic transport

Initial conceptual model

To obtain a first understanding of how mechanical force should affect nucleocytoplasmic transport of constructs with NLS sequences, we developed a simple conceptual model. For this, we simply assumed that:

$$\frac{n}{c} = \frac{k_i}{k_e} = \frac{k_p + k_f}{k_p} \text{ if } \frac{n}{c} < \left(\frac{n}{c}\right)_{sat}$$
$$\frac{n}{c} = \left(\frac{n}{c}\right)_{sat} \text{ otherwise}$$

Where n/c is the nuclear to cytoplasmic concentration ratio of a given construct, k_p is a passive diffusion rate through NPCs which decreases with increasing MW (and is equal in the export and

import direction), k_f is a facilitated diffusion rate which depends on the strength of the NLS sequence (and does not depend on MW) and $\left(\frac{n}{c}\right)_{sat}$ is a maximum, saturated value for n/c ratios. Note that facilitated and passive diffusion are assumed to have additive contributions to total import rates. The effect of force applied to the nucleus is introduced by increasing k_p by two-fold at the lowest MW (arbitrarily set to have to have a value of $k_p=1$ in the absence of force) and by a progressively smaller amount as MW increases, until having a negligible effect at the highest MW (arbitrarily set to have a value of $k_p=0.015$ in the absence of force). Force also increases k_f by 2-fold, in this case independently of MW. After applying these effects of force, mechanosensitivity is calculated as:

$$mechanosensitivity = \frac{\left(\frac{n}{c}\right)_{stiff}}{\left(\frac{n}{c}\right)_{soft}}$$

Graphs in fig. 4A,B were calculated by calculating n/c and mechanosensitivity for a range of values of k_p (1-0.015 before force application) and k_f , (16-0.12 before force application). The choice of values is arbitrary, and merely intends to show the relative effects when either k_f or k_p dominate the overall n/c ratio. Accordingly, no specific numerical values are shown in the graphs.

Kinetic mathematical model of transport.

The kinetic model of nucleocytoplasmic transport (Fig. SM1, Tables SM1-SM3) was constructed following a canonical description of the nucleocytoplasmic transport process (25, 58–60). A system of ordinary differential equations (Table SM1) is used to describe passive diffusion of unbound cargo molecules through NPCs; Ran-mediated facilitated diffusion of cargo:importin complexes through NPCs, and maintenance of the RanGTP gradient across the nuclear envelope through NTF2-mediated import of RanGDP (61, 62), RanGAP-mediated hydrolysis of RanGTP to RanGDP in the cytoplasm (38), and chromatin-bound RCC1 (RanGEF) mediated conversion of RanGDP to RanGTP in the nucleus (63). During passive diffusion, unbound cargo molecules diffuse in either direction at a rate proportional to their concentrations, in accordance with Fick's law (23, 64). During facilitated diffusion, cargo:importin complexes interact with docking sites on NPCs, diffuse across the nuclear envelope and release cargo by interacting with RanGTP. Docking rate to the NPC is proportional to the number of available docking sites. Cargo and importin molecules also associate and dissociate spontaneously in a non-Ran dependent manner.

Model parametrization: The kinetic model of transport provides a simplified minimal description of the transport process based on a set of canonical assumptions (25, 58–60). It is not meant to reproduce precise empirical values, rather to characterize dependencies among key biophysical parameters that determine NPC transport kinetics on soft and stiff surfaces. Nonetheless, the model has been carefully parametrized to reproduce key features of transport, and it is remarkably robust to changes in its parameter values. Unless stated otherwise, all simulations were conducted using the mean measured nuclear and cytoplasmic volumes of 627 fL and 2194 fL in our dataset. Passive diffusion rates for different cargo molecules of different sizes were also obtained from measurements (Fig. 1J,K). The cargo concentration was estimated to be in the range 0.01-0.1 μM , based on comparison of GFP fluorescence values and reference fluorescence of purified GFP. This is much lower than the $\sim 10 \mu M$ physiological concentrations of importins such as Kap β 1 (65, 66), and the estimated 5-20 μM concentration of RanGTP

concentration in HeLa cells (60), thus precise values of these parameters are expected to have limited effect. Indeed, doubling or halving Ran concentration had limited qualitative effect on our model results (Results not shown). The Ran cycle kinetic parameters were fitted to reproduce a robust nuclear:cytoplasmic RanGTP ratio of >500 (60), starting from a 1000:1 ratio. The number of dock sites per NPC was estimated from the thousands of FG binding sites per NPC and the large fraction of cargo and NTR molecules found in mass-spectrometry measurements in native NPCs (67).

Simulation code. Our simulations were implemented in Python (version 3.6). They are fully reproducible; the source code and the run parameters can be found in https://github.com/huji.ac.il/ravehb-lab/npctransport_kinetic/ (run03 was used to produce model results in this manuscript).

Table SM1. Ordinary differential equations (ODEs) of a kinetic model of transport. Subscripts N and C indicate nuclear and cytoplasmic localization. Subscript NPC indicates localization to the NPC, and subscripts NPC-C and NPC-N indicate sub-localization at the nuclear and cytoplasmic sides of the NPC, respectively. Bracketed variables are in units of concentration (for either the nucleus or the cytoplasm) and non-bracketed variables indicate actual numbers of molecules (for NPC-docked molecules) (Table S1). N_A is Avogadro's number.

ODEs	Processes described
$[\dot{C}_N] = -\pi_{passive}[C_C] \cdot \frac{V_C}{V_N}$ $[\dot{C}_C] = -\pi_{passive}[C_N] \cdot \frac{V_N}{V_C}$	Passive diffusion of unbound cargo through the NPC
$\dot{C}_{I_{NPC-N}} = \sigma_{on} \cdot (N_{dock} - C_{I_{NPC}}) \cdot [C_I_N]$ $- \sigma_{off} \cdot C_{I_{NPC-N}}$ $+ \varphi \cdot (C_{I_{NPC-C}} - C_{I_{NPC-N}})$ $- \alpha [GTP_N] C_{I_{NPC-N}}$ $\dot{C}_{I_{NPC-C}} = \sigma_{on} \cdot (N_{dock} - C_{I_{NPC}}) \cdot [C_I_C]$ $- \sigma_{off} \cdot C_{I_{NPC-C}}$ $+ \varphi \cdot (C_{I_{NPC-N}} - C_{I_{NPC-C}})$ $[\dot{C}_N] = [GTP_N] \cdot \left(\frac{\alpha C_{I_{NPC-N}}}{N_A \cdot V_N} + \beta [C_I_N] \right)$ $+ k_{off} [C_I_N]$ $[\dot{C}_N] = -\beta [GTP_N] [C_I_N] - k_{off} [C_I_N]$ $- \sigma_{on} \cdot (N_{dock} - C_{I_{NPC}}) \cdot [C_I_N] / (N_A \cdot V_N)$ $+ \sigma_{off} \cdot C_{I_{NPC-N}} / (N_A \cdot V_N)$	Facilitated diffusion: - Docking and undocking of cargo:importin complexes to and from NPCs, resp. - NPC traversal of NPC-docked cargo:importin complexes between cytoplasmic and nuclear ends of the NPC - RanGTP-dependent and RanGTP-independent dissociation of cargo:importin complexes in the nucleus and NPC
$[\dot{C}_C] = k_{off} [C_I_C]$ $[\dot{C}_C] = -k_{off} [C_I_C]$ $- \sigma \cdot (N_{dock} - C_{I_{NPC}}) \cdot [C_I_C] / (N_A \cdot V_C)$ $+ \sigma_{off} \cdot C_{I_{NPC-C}} / (N_A \cdot V_C)$	Non-RanGTP dependent dissociation of cargo molecules from importin molecules in the cytoplasm
$[\dot{C}_N] = k_{on} [C_N]$ $[\dot{C}_C] = k_{on} [C_C]$ $[\dot{C}_N] = -k_{on} [C_N]$ $[\dot{C}_C] = -k_{on} [C_C]$	Association of cargo molecules to importin molecules, assuming $[I] \gg [C]$ (see Model parametrization)
$[\dot{GTP}_N] = \gamma [GDP_N] - (\delta + \epsilon) [GTP_N]$ $- [GTP_N] \cdot \left(\frac{\alpha C_{I_{NPC-N}}}{N_A \cdot V_N} + \beta [C_I_N] \right)$ $[\dot{GTP}_C] = \epsilon [GTP_N] \cdot \frac{V_N}{V_C} - \eta [GDP_C]$ $+ [GTP_N] \cdot \left(\frac{\alpha C_{I_{NPC-N}}}{N_A \cdot V_C} + \beta [C_I_N] \cdot \frac{V_N}{V_C} \right)$ $[\dot{GDP}_N] = \delta [GTP_N] + \zeta [GDP_C] \cdot \frac{V_C}{V_N}$	Ran cycle: - RCC1 (RanGEF) mediated exchange of RanGDP to RanGTP - RanGAP-mediated hydrolysis of RanGTP to RanGDP - Residual reverse conversion of nuclear RanGTP to RanGDP - NTF2-mediated transport of RanGDP (symmetric for export and import, results in net import due to concentration gradient) - export of importin-bound RanGTP following an import cycle

$$[G\dot{D}P_C] = \eta[GTP_C] - \zeta[GDP_N] \cdot \frac{V_N}{V_C} \quad (\text{the exported importins are not modeled explicitly})$$

$$[G\dot{D}P_C] = -\zeta[GDP_N] \cdot \frac{V_N}{V_C}$$

Table SM2. Kinetic model variables.

Variable name	Description
C	cargo molecules (unbound)
CI	cargo:importin complex (bound)
GTP	RanGTP
GDP	RanGDP

Table SM3. ODE model coefficients.

Model coefficient	Description	Value*	units
α	Rate of GTP-dependent conversion of NPC-docked cargo:importin complex to nuclear cargo	10^6	$M^{-1}sec^{-1}$
β	Rate of GTP-dependent conversion of nuclear cargo:importin complex to nuclear cargo	10^6	$M^{-1}sec^{-1}$
γ	Rate of exchange of GDP_N to GTP_N by RCC1	1000	sec^{-1}
δ	Rate of residual exchange of GTP_N to GDP_N by RCC1	0.2	sec^{-1}
ϵ	Rate of RanGTP passive export	0.5	sec^{-1}
ζ	Rate of NTF2-mediated RanGDP transport	1.0	sec^{-1}
η	Rate of RanGAP-mediated hydrolysis of RanGTP to RanGDP	500.0	sec^{-1}
k_{on}	Rate of cargo association to importin molecules	0.001-3.83**	sec^{-1}
k_{off}	Rate of dissociation of cargo:importin complexes	0.05	sec^{-1}
$\pi_{passive}$	Passive diffusion rate (permeability)	0.03-0.16***	sec^{-1}
σ_{on}	Rate of docking of cargo:importin complexes to NPC	50×10^6	$sec^{-1}M^{-1}$
σ_{off}	Rate of undocking of cargo:importin complexes from NPC	3000.0	sec^{-1}
φ	Traversal rate of cargo:importin complexes across the NPC	15.0 (soft) 150.0 (stiff)	sec^{-1}
N_{dock}	Number of docking sites on NPCs	500	-
N_{NPC}	Number of NPC molecules per cell	2000	-
$[Ran]_{cell}$	Total concentration of RanGTP and RanGDP in the entire cell	20	μM
$[C]_{cyto,t=0}$	Initial cytoplasmic concentration of cargo molecules****	0.1	μM
V_N	Nuclear volumen	627×10^{-15}	L
V_C	Cytoplasmic volume	2194×10^{-15}	L
Δt	Simulation timestep	0.001	sec
τ	Simulation time	100	sec

* unless stated otherwise for specific runs

** 0.054 sec^{-1} for weak NLS, 0.205 sec^{-1} for medium NLS

*** according to measurements of actual passive diffusion rates for different cargo molecules (Fig. 1J,K)

**** the initial nuclear concentration is zero in all runs

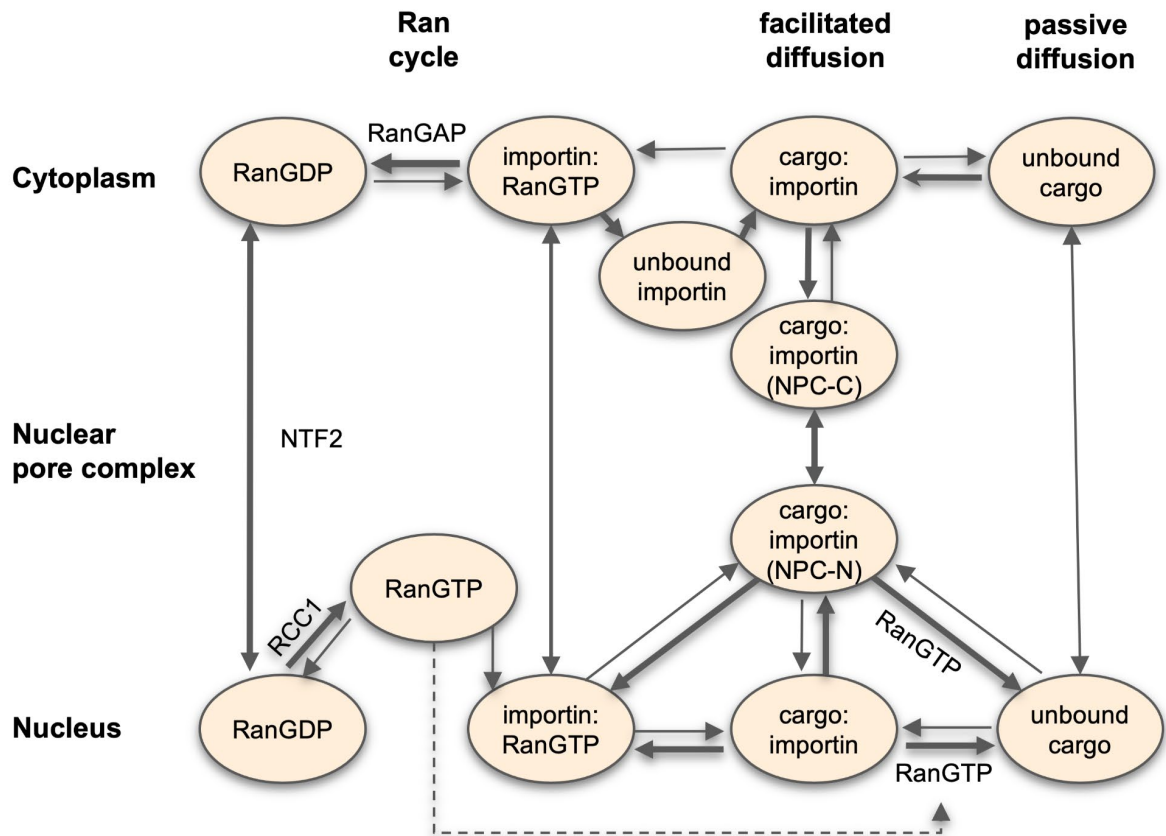


Fig. SM1. Kinetic model of import through the NPC. The concentration of importin molecules is not modeled explicitly (see Text), except to indicate whether cargo molecules are in the bound or unbound state, but they are shown here for completeness.

Statistical Analysis

Statistical analysis was performed with GraphPad Prism 9.0.0. When testing data with a 2-way ANOVA, we transformed the data ($y = \log_{10}(y)$) which showed smaller residuals, and therefore better statistical power, when transformed.

References:

1. F. Broders-Bondon, T. H. N. Ho-Boulidoires, M. E. Fernandez-Sanchez, E. Farge, Mechanotransduction in tumor progression: The dark side of the force. *J. Cell Biol.* **217** (2018), pp. 1571–1587.
2. O. Hamant, T. E. Saunders, Shaping Organs: Shared Structural Principles across Kingdoms. *Annu. Rev. Cell Dev. Biol.* **36**, 385–410 (2020).
3. J. D. Humphrey, M. A. Schwartz, G. Tellides, D. M. Milewicz, Role of mechanotransduction in vascular biology: focus on thoracic aortic aneurysms and dissections. *Circ Res.* **116**, 1448–1461 (2015).
4. M. L. Lombardi, D. E. Jaalouk, C. M. Shanahan, B. Burke, K. J. Roux, J. Lammerding, The interaction between nesprins and sun proteins at the nuclear envelope is critical for force transmission between the nucleus and cytoskeleton. *J. Biol. Chem.* **286**, 26743–26753 (2011).
5. P. T. Arsenovic, I. Ramachandran, K. Bathula, R. Zhu, J. D. Narang, N. A. Noll, C. A. Lemmon, G. G. Gundersen, D. E. Conway, Nesprin-2G, a Component of the Nuclear LINC Complex, Is Subject to Myosin-Dependent Tension. *Biophys. J.* **110**, 34–43 (2016).
6. A. Elosegui-Artola, I. Andreu, A. E. M. Beedle, A. Lezamiz, M. Uroz, A. J. Kosmalska, R. Oria, J. Z. Kechagia, P. Rico-Lastres, A. L. Le Roux, C. M. Shanahan, X. Trepast, D. Navajas, S. Garcia-Manyes, P. Roca-Cusachs, Force Triggers YAP Nuclear Entry by Regulating Transport across Nuclear Pores. *Cell.* **171**, 1397-1410 e14 (2017).
7. T. J. Kirby, J. Lammerding, Emerging views of the nucleus as a cellular mechanosensor. *Nat. Cell Biol.* **20**, 373–381 (2018).
8. M. M. Nava, Y. A. Miroshnikova, L. C. Biggs, D. B. Whitefield, F. Metge, J. Boucas, H. Vihinen, E. Jokitalo, X. Li, J. M. García Arcos, B. Hoffmann, R. Merkel, C. M. Niessen, K. N. Dahl, S. A. Wickström, Heterochromatin-Driven Nuclear Softening Protects the Genome against Mechanical Stress-Induced Damage. *Cell.* **181**, 800-817.e22 (2020).
9. A. Tajik, Y. Zhang, F. Wei, J. Sun, Q. Jia, W. Zhou, R. Singh, N. Khanna, A. S. Belmont, N. Wang, Transcription upregulation via force-induced direct stretching of chromatin. *Nat Mater.* **15**, 1287–1296 (2016).
10. J. Swift, I. L. Ivanovska, A. Buxboim, T. Harada, P. C. Dingal, J. Pinter, J. D. Pajerowski, K. R. Spinler, J. W. Shin, M. Tewari, F. Rehfeldt, D. W. Speicher, D. E. Discher, Nuclear lamin-A scales with tissue stiffness and enhances matrix-directed differentiation. *Science (80-)*. **341**, 1240104 (2013).
11. A. J. Lomakin, C. J. Cattin, D. Cuvelier, Z. Alraies, M. Molina, G. P. F. Nader, N. Srivastava, P. J. Sáez, J. M. Garcia-Arcos, I. Y. Zhitnyak, A. Bhargava, M. K. Driscoll, E. S. Welf, R. Fiolka, R. J. Petrie, N. S. De Silva, J. M. González-Granado,

- N. Manel, A. M. Lennon-Duménil, D. J. Müller, M. Piel, The nucleus acts as a ruler tailoring cell responses to spatial constraints. *Science* (80-.). **370**, eaba2894 (2020).
12. V. Venturini, F. Pezzano, F. Català Castro, H.-M. Häkkinen, S. Jiménez-Delgado, M. Colomer-Rosell, M. Marro, Q. Tolosa-Ramon, S. Paz-López, M. A. Valverde, J. Weghuber, P. Loza-Alvarez, M. Krieg, S. Wieser, V. Ruprecht, The nucleus measures shape changes for cellular proprioception to control dynamic cell behavior. *Science* (80-.). **370**, eaba2644 (2020).
 13. E. Kassianidou, J. Kalita, R. Y. H. Lim, The role of nucleocytoplasmic transport in mechanotransduction. *Exp. Cell Res.* **377**, 86–93 (2019).
 14. X. H. Zhao, C. Laschinger, P. Arora, K. Szaszi, A. Kapus, C. A. McCulloch, Force activates smooth muscle alpha-actin promoter activity through the Rho signaling pathway. *J. Cell Sci.* **120**, 1801–1809 (2007).
 15. C. Y. Ho, D. E. Jaalouk, M. K. Vartiainen, J. Lammerding, Lamin A/C and emerin regulate MKL1–SRF activity by modulating actin dynamics (2013), doi:10.1038/nature12105.
 16. M. E. Fernandez-Sanchez, S. Barbier, J. Whitehead, G. Bealle, A. Michel, H. Latorre-Ossa, C. Rey, L. Fouassier, A. Claperon, L. Brulle, E. Girard, N. Servant, T. Rio-Frio, H. Marie, S. Lesieur, C. Housset, J.-L. Gennisson, M. Tanter, C. Menager, S. Fre, S. Robine, E. Farge, Mechanical induction of the tumorigenic [bgr]-catenin pathway by tumour growth pressure. *Nature.* **523**, 92–95 (2015).
 17. C. Gayrard, C. Bernaudin, T. Dejardin, C. Seiler, N. Borghi, Src- and confinement-dependent FAK activation causes E-cadherin relaxation and beta-catenin activity. *J. Cell Biol.* (2018), doi:10.1083/jcb.201706013.
 18. M. Aragona, A. Sifrim, M. Malfait, Y. Song, J. Van Herck, S. Dekoninck, S. Gargouri, G. Lapouge, B. Swedlund, C. Dubois, P. Baatsen, K. Vints, S. Han, F. Tissir, T. Voet, B. D. Simons, C. Blanpain, Mechanisms of stretch-mediated skin expansion at single-cell resolution. *Nature.* **584**, 268–273 (2020).
 19. L. Chang, L. Azzolin, D. Di Biagio, F. Zanconato, G. Battilana, R. Lucon Xiccato, M. Aragona, S. Giulitti, T. Panciera, A. Gandin, G. Sigismondo, J. Krijgsveld, M. Fassan, G. Brusatin, M. Cordenonsi, S. Piccolo, The SWI/SNF complex is a mechanoregulated inhibitor of YAP and TAZ. *Nature.* **563**, 265–269 (2018).
 20. N. Ege, A. M. Dowbaj, M. Jiang, M. Howell, S. Hooper, C. Foster, R. P. Jenkins, E. Sahai, Quantitative Analysis Reveals that Actin and Src-Family Kinases Regulate Nuclear YAP1 and Its Export. *Cell Syst.* **6**, 692-708.e13 (2018).
 21. E. Jacchetti, R. Nasehi, L. Boeri, V. Parodi, A. Negro, D. Albani, R. Osellame, G. Cerullo, J. F. R. Matas, M. T. Raimondi, The nuclear import of the transcription factor MyoD is reduced in mesenchymal stem cells grown in a 3D micro-engineered niche. *Sci. Reports 2021 111.* **11**, 1–19 (2021).
 22. P. L. Paine, C. M. Feldherr, Nucleocytoplasmic exchange of macromolecules. *Exp. Cell Res.* **74**, 81–98 (1972).

23. B. L. Timney, B. Raveh, R. Mironska, J. M. Trivedi, S. J. Kim, D. Russel, S. R. Wente, A. Sali, M. P. Rout, Simple rules for passive diffusion through the nuclear pore complex. *J. Cell Biol.* **215**, 57–76 (2016).
24. D. Mohr, S. Frey, T. Fischer, T. Güttler, D. Görlich, Characterisation of the passive permeability barrier of nuclear pore complexes. *EMBO J.* **28**, 2541–2553 (2009).
25. B. Cautain, R. Hill, N. De Pedro, W. Link, Components and regulation of nuclear transport processes. *FEBS J.* **282** (2015), pp. 445–462.
26. D. Niopek, P. Wehler, J. Roensch, R. Eils, B. Di Ventura, Optogenetic control of nuclear protein export. *Nat. Commun.* **7**, 1–9 (2016).
27. M. R. Hodel, A. H. Corbett, A. E. Hodel, Dissection of a nuclear localization signal. *J. Biol. Chem.* **276**, 1317–1325 (2001).
28. S. K. Lyman, T. Guan, J. Bednenko, H. Wodrich, L. Gerace, Influence of cargo size on Ran and energy requirements for nuclear protein import. *J. Cell Biol.* **159**, 55–67 (2002).
29. K. Ribbeck, D. Görlich, The permeability barrier of nuclear pore complexes appears to operate via hydrophobic exclusion. *EMBO J.* **21**, 2664–2671 (2002).
30. A. R. Lowe, J. J. Siegel, P. Kalab, M. Siu, K. Weis, J. T. Liphardt, Selectivity mechanism of the nuclear pore complex characterized by single cargo tracking. *Nature.* **467**, 600–603 (2010).
31. C. Kanwal, S. Mu, S. E. Kern, C. S. Lim, Bidirectional on/off switch for controlled targeting of proteins to subcellular compartments. *J. Control. Release.* **98**, 379–393 (2004).
32. S. Dupont, L. Morsut, M. Aragona, E. Enzo, S. Giulitti, M. Cordenonsi, F. Zanconato, J. Le Digabel, M. Forcato, S. Bicciato, N. Elvassore, S. Piccolo, Role of YAP/TAZ in mechanotransduction. *Nature.* **474**, 179–183 (2011).
33. S. C. Wei, L. Fattet, J. H. Tsai, Y. Guo, V. H. Pai, H. E. Majeski, A. C. Chen, R. L. Sah, S. S. Taylor, A. J. Engler, J. Yang, Matrix stiffness drives epithelial-mesenchymal transition and tumour metastasis through a TWIST1-G3BP2 mechanotransduction pathway. *Nat. Cell Biol.* **17**, 678–688 (2015).
34. K. Zhang, W. R. Grither, S. Van Hove, H. Biswas, S. M. Ponik, K. W. Eliceiri, P. J. Keely, G. D. Longmore, Mechanical signals regulate and activate SNAIL1 protein to control the fibrogenic response of cancer-associated fibroblasts. *J. Cell Sci.* **129**, 1989–2002 (2016).
35. T. Furumatsu, T. Kanazawa, Y. Miyake, S. Kubota, M. Takigawa, T. Ozaki, Mechanical stretch increases Smad3-dependent CCN2 expression in inner meniscus cells. *J. Orthop. Res.* **30**, 1738–1745 (2012).
36. A. Mammoto, K. M. Connor, T. Mammoto, C. W. Yung, D. Huh, C. M. Aderman, G. Mostoslavsky, L. E. H. Smith, D. E. Ingber, A mechanosensitive transcriptional mechanism that controls angiogenesis. *Nature.* **457**, 1103–1108 (2009).
37. S. Ishihara, M. Yasuda, I. Harada, T. Mizutani, K. Kawabata, H. Haga, Substrate

- stiffness regulates temporary NF- κ B activation via actomyosin contractions. *Exp. Cell Res.* **319**, 2916–2927 (2013).
38. F. R. Bischoff, C. Klebe, J. Kretschmer, A. Wittinghofer, H. Ponstingl, RanGAP1 induces GTPase activity of nuclear Ras-related Ran. *Proc. Natl. Acad. Sci. U. S. A.* **91**, 2587–2591 (1994).
 39. J. F. Soderholm, S. L. Bird, P. Kalab, Y. Sampathkumar, K. Hasegawa, M. Uehara-Bingen, K. Weis, R. Heald, Importazole, a small molecule inhibitor of the transport receptor importin- β . *ACS Chem. Biol.* **6**, 700–708 (2011).
 40. H. F, S. Q, L. Y, X. L, X. C, C. F, W. H, L. H, C. Z, L. F, Z. XH, F. XH, H. JJ, L. S, C. YG, HER2/EGFR-AKT Signaling Switches TGF β from Inhibiting Cell Proliferation to Promoting Cell Migration in Breast Cancer. *Cancer Res.* **78**, 6073–6085 (2018).
 41. S. Singh, A. O. Gramolini, Characterization of sequences in human TWIST required for nuclear localization. *BMC Cell Biol.* **10**, 47 (2009).
 42. M. Kampmann, G. Blobel, Three-dimensional structure and flexibility of a membrane-coating module of the nuclear pore complex. *Nat. Struct. Mol. Biol.* **16**, 782–788 (2009).
 43. S. R. Solmaz, G. Blobel, I. Melcák, Ring cycle for dilating and constricting the nuclear pore. *Proc. Natl. Acad. Sci. U. S. A.* **110**, 5858–5863 (2013).
 44. C. B. Wolf, M. Mofrad, Mechanotransduction: Role of nuclear pore mechanics and nucleocytoplasmic transport. *Cell. Mechanotransduction Divers. Perspect. from Mol. to Tissues*, 417–437 (2013).
 45. C. E. Zimmerli, M. Allegretti, V. Rantos, S. K. Goetz, A. Obarska-Kosinska, I. Zagoriy, A. Halavatyi, J. Mahamid, J. Kosinski, M. Beck, *bioRxiv*, in press, doi:10.1101/2020.07.30.228585.
 46. S. Frey, R. Rees, J. Schünemann, S. C. Ng, K. Fünfgeld, T. Huyton, D. Görlich, Surface Properties Determining Passage Rates of Proteins through Nuclear Pores. *Cell.* **174**, 202-217.e9 (2018).
 47. E. Infante, A. Stannard, S. J. Board, P. Rico-Lastres, E. Rostkova, A. E. M. Beedle, A. Lezamiz, Y. J. Wang, S. G. Breen, F. Panagaki, V. S. Rajan, C. Shanahan, P. Roca-Cusachs, S. Garcia-Manyes, The mechanical stability of proteins regulates their translocation rate into the cell nucleus. *Nat. Phys.* **2019 159**, 15, 973–981 (2019).
 48. I. V. Aramburu, E. A. Lemke, Floppy but not sloppy: Interaction mechanism of FG-nucleoporins and nuclear transport receptors. *Semin. Cell Dev. Biol.* **68** (2017), pp. 34–41.
 49. P. Roca-cusachs, E. Puklin-faucher, N. C. Gauthier, N. Biais, Integrin-dependent force transmission to the extracellular matrix by α -actinin triggers adhesion maturation (2013), doi:10.1073/pnas.1220723110.
 50. J. F. Soderholm, S. L. Bird, P. Kalab, Y. Sampathkumar, K. Hasegawa, M. Uehara-Bingen, K. Weis, R. Heald, Importazole, a small molecule inhibitor of the

- transport receptor importin- β . *ACS Chem. Biol.* **6**, 700–708 (2011).
51. Q. Zhang, J. N. Skepper, F. Yang, J. D. Davies, L. Hegyi, R. G. Roberts, P. L. Weissberg, J. A. Ellis, C. M. Shanahan, Nesprins: a novel family of spectrin-repeat-containing proteins that localize to the nuclear membrane in multiple tissues (2001).
 52. N. Kazgan, T. Williams, L. J. Forsberg, J. E. Brenman, Identification of a Nuclear Export Signal in the Catalytic Subunit of AMP-activated Protein Kinase. *Mol. Biol. Cell.* **21**, 3433–3442 (2010).
 53. J. Yang, S. A. Mani, J. L. Donaher, S. Ramaswamy, R. A. Itzykson, C. Come, P. Savagner, I. Gitelman, A. Richardson, R. A. Weinberg, Twist, a master regulator of morphogenesis, plays an essential role in tumor metastasis. *Cell.* **117**, 927–939 (2004).
 54. R. Oria, T. Wiegand, J. Escribano, A. Elosegui-Artola, J. J. Uriarte, C. Moreno-Pulido, I. Platzman, P. Delcanale, L. Albertazzi, D. Navajas, X. Trepas, J. M. García-Aznar, E. A. Cavalcanti-Adam, P. Roca-Cusachs, Force loading explains spatial sensing of ligands by cells. *Nature.* **552**, 219–224 (2017).
 55. J. N. Lakins, A. R. Chin, V. M. Weaver, Exploring the link between human embryonic stem cell organization and fate using tension-calibrated extracellular matrix functionalized polyacrylamide gels. *Methods Mol. Biol.* **916**, 317–350 (2012).
 56. A. Elosegui-Artola, E. Bazellières, M. D. Allen, I. Andreu, R. Oria, R. Sunyer, J. J. Gomm, J. F. Marshall, J. L. Jones, X. Trepas, P. Roca-Cusachs, Rigidity sensing and adaptation through regulation of integrin types. *Nat. Mater.* **13**, 631–637 (2014).
 57. M. A. Rapsomaniki, P. Kotsantis, I. E. Symeonidou, N. N. Giakoumakis, S. Taraviras, Z. Lygerou, EasyFRAP: An interactive, easy-to-use tool for qualitative and quantitative analysis of FRAP data. *Bioinformatics.* **28**, 1800–1801 (2012).
 58. S. Kim, M. Elbaum, A Simple Kinetic Model with Explicit Predictions for Nuclear Transport. *Biophys. J.* **105**, 565–569 (2013).
 59. T. Jovanovic-Talisman, A. Zilman, Protein Transport by the Nuclear Pore Complex: Simple Biophysics of a Complex Biomachine. *Biophys. J.* **113** (2017), pp. 6–14.
 60. D. Görlich, M. J. Seewald, K. Ribbeck, Characterization of Ran-driven cargo transport and the RanGTPase system by kinetic measurements and computer simulation. *EMBO J.* **22**, 1088–1100 (2003).
 61. S. A. B. A, M. IG, Nuclear import of Ran is mediated by the transport factor NTF2. *Curr. Biol.* **8**, 1403–1406 (1998).
 62. K. Ribbeck, G. Lipowsky, H. M. Kent, M. Stewart, D. Görlich, NTF2 mediates nuclear import of Ran. *EMBO J.* **17**, 6587–6598 (1998).
 63. R. L. K. J, H. A, W. A, Structural basis for guanine nucleotide exchange on Ran by

- the regulator of chromosome condensation (RCC1). *Cell*. **105**, 245–255 (2001).
64. K. Ribbeck, D. Görlich, Kinetic analysis of translocation through nuclear pore complexes. *EMBO J*. **20**, 1320 (2001).
 65. L. E. Kapinos, B. Huang, C. Rencurel, R. Y. H. Lim, Karyopherins regulate nuclear pore complex barrier and transport function. *J. Cell Biol*. **216**, 3609–3624 (2017).
 66. A. Paradise, M. K. Levin, G. Korza, J. H. Carson, Significant Proportions of Nuclear Transport Proteins with Reduced Intracellular Mobilities Resolved by Fluorescence Correlation Spectroscopy. *J. Mol. Biol*. **365**, 50–65 (2007).
 67. S. J. Kim, J. Fernandez-Martinez, I. Nudelman, Y. Shi, W. Zhang, B. Raveh, T. Herricks, B. D. Slaughter, J. A. Hogan, P. Upla, I. E. Chemmama, R. Pellarin, I. Echeverria, M. Shivaraju, A. S. Chaudhury, J. Wang, R. Williams, J. R. Unruh, C. H. Greenberg, E. Y. Jacobs, Z. Yu, M. J. de la Cruz, R. Mironska, D. L. Stokes, J. D. Aitchison, M. F. Jarrold, J. L. Gerton, S. J. Ludtke, C. W. Akey, B. T. Chait, A. Sali, M. P. Rout, Integrative structure and functional anatomy of a nuclear pore complex. *Nat. 2018 5557697*. **555**, 475–482 (2018).

Acknowledgments

We thank S. Usieto for technical support, and JF Abenza, L Rosetti, G Ceada, S. Garcia-Manyes, M. Rout and the members of the Roca-Cusachs and Trepas lab for useful feedback and discussions. We acknowledge funding from the Spanish Ministry of Science and Innovation (PGC2018-099645-B-I00 to X.T., BFU2016-79916-P and PID2019-110298GB-I00 to P. R.-C.), the European Commission (H2020-FETPROACT-01-2016-731957), the European Research Council (CoG-616480 to X.T.), the Generalitat de Catalunya (2017-SGR-1602 to X.T. and P.R.-C.), The prize “ICREA Academia” for excellence in research to P.R.-C., Fundació la Marató de TV3 (201936-30-31), and “la Caixa” Foundation (Agreement LCF/PR/HR20/52400004). IBEC is a recipient of a Severo Ochoa Award of Excellence from MINCIN.

Author contributions:

I.A. and P.R.-C. conceived the study; I.A. and P.R.-C. designed the experiments; I.A., I.G.-M., M.M.J., A.E.M.B., and A.E.-A. performed the experiments; I.A., I.G.-M., N.R.C., X.T., B.R. and P.R.-C. analyzed the experiments; I.G.-M. designed and cloned all constructs, N.R.C. implemented the FLIP analysis software, K.C. and B.R. implemented the kinetic model of transport, and I.A., I.G.-M., and P.R.-C. wrote the manuscript. All authors commented on the manuscript and contributed to it.

Competing interests: Authors declare they have no competing interests.

Figures:

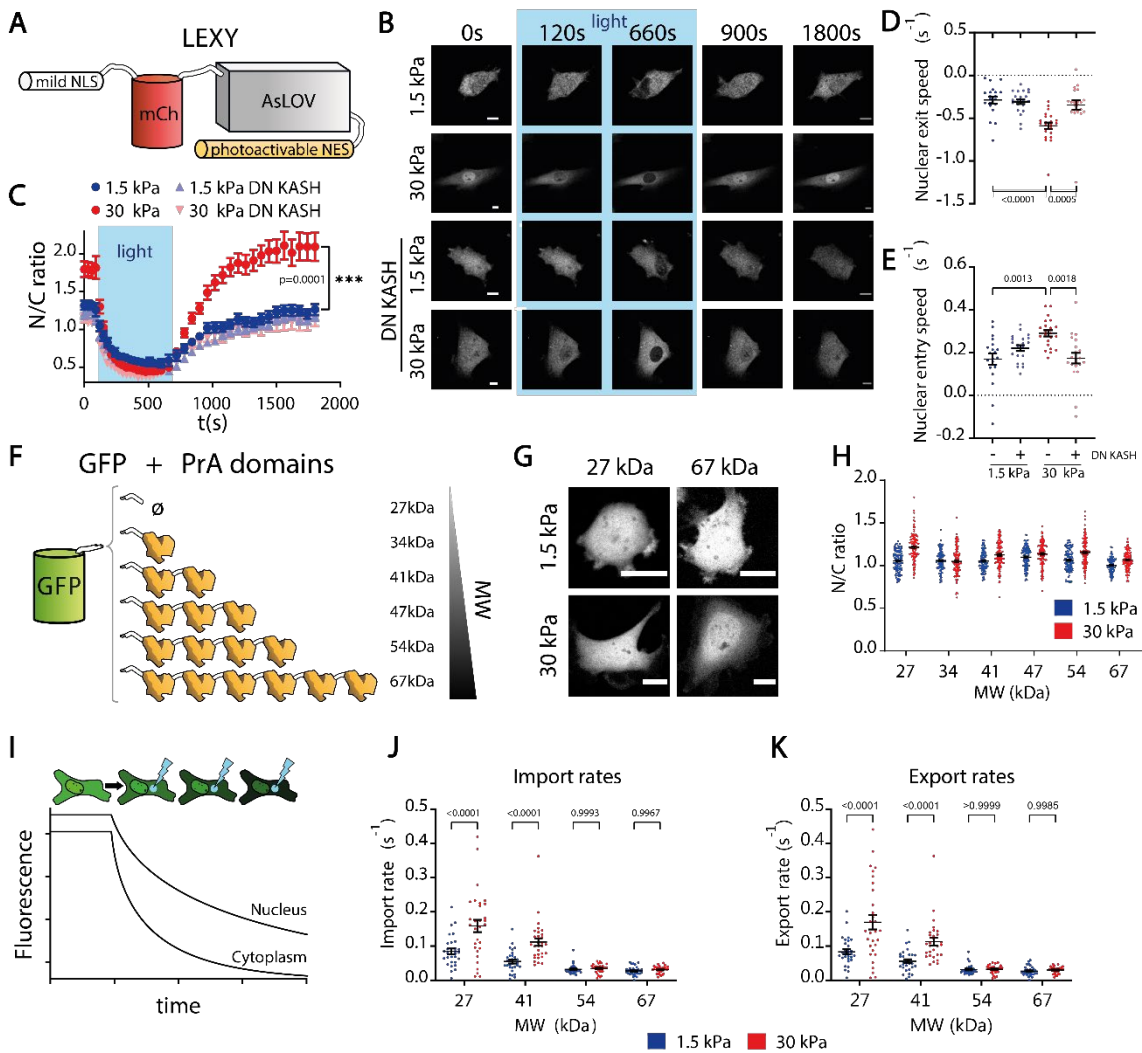


Figure 1. Nucleocytoplasmic transport is mechanosensitive. **A)** Cartoon of light-activated nucleocytoplasmic shuttling construct. Mild NLS is always active, NES is activated only upon light excitation. **B)** Time sequences of construct fluorescence before, during, and after excitation for cells seeded on 1.5/30 kPa substrates, with or without DN KASH overexpression. **C-E)** Corresponding quantifications of N/C ratios, and speeds of exit and subsequent re-entry of constructs into the nucleus (expressed as change in N/C ratios/s). ($N \geq 20$ cells per condition from 3 independent experiments, p-values calculated with Mann-Whitney test; in C) the bar indicates the statistical significance between the last timepoint of 1.5kPa and 30kPa values). **F)** Cartoon of constructs with EGFP and different amount of repeats of PrA domains. **G)** Images showing fluorescence of indicated constructs on 1.5/30 kPa substrates. **H)** N/C ratios of constructs on 1.5/30 kPa substrates as a function of MW. $N=120$ cells from 3 independent experiments. Significant effect of stiffness and MW was observed ($p < 0,0001$ and $p < 0,0001$; computed via 2-way ANOVA). **I)** Cartoon depicting FLIP measurements: a laser photobleaches a region of the cell cytoplasm, and fluorescence intensities are recorded over time in nucleus and cytoplasm. Resulting curves are fitted to a kinetic model to obtain import and export rates (see methods). **J,K)** Import and

export rates on 1.5 and 30 kPa substrates as a function of MW of the constructs. N=30 cells from 3 independent experiments. The effects of both substrate stiffness and MW were significant in both (J,K) cases (all p-values<0.0001). Scale bars, 20 μ m. Data are mean \pm S.E.M.

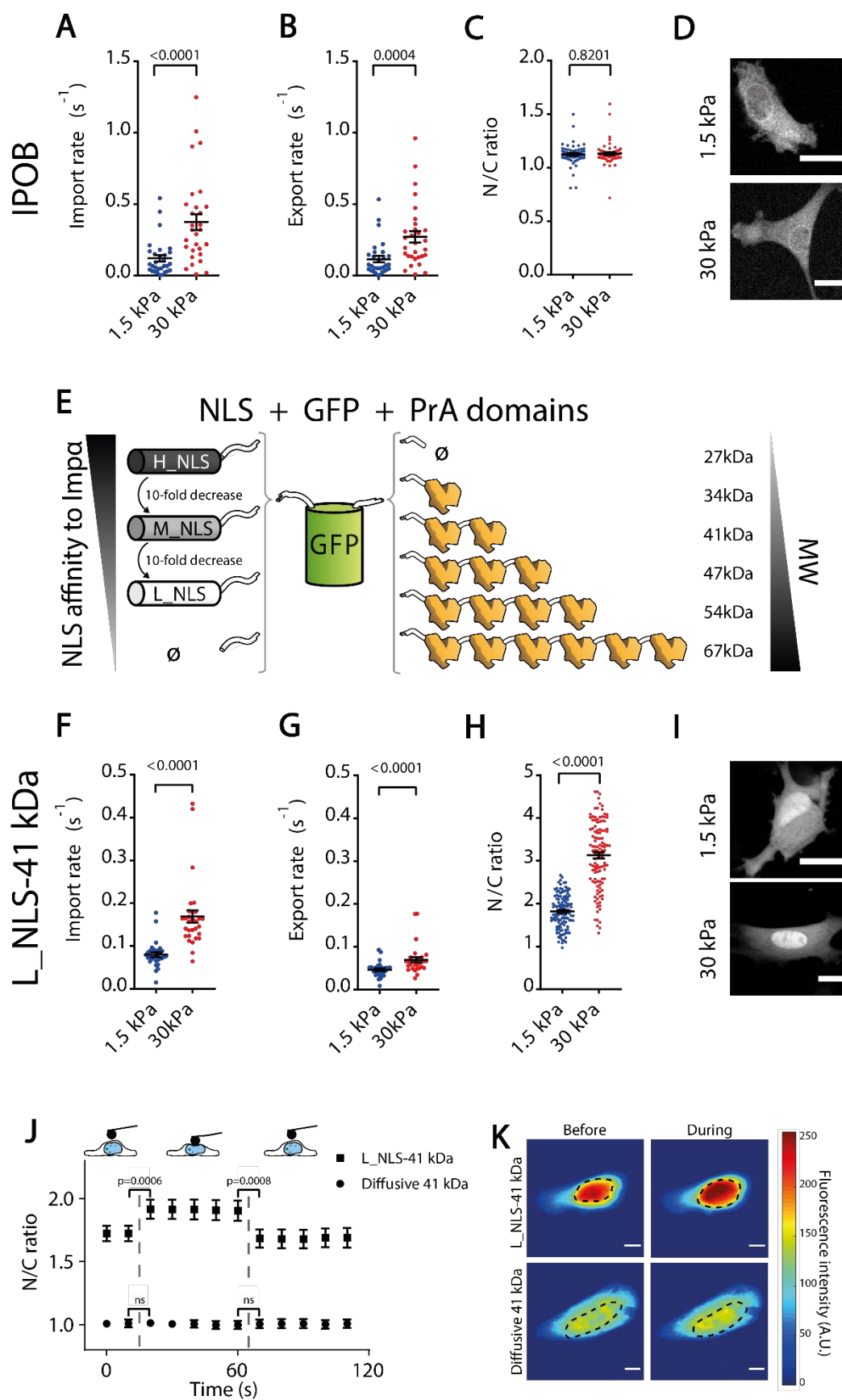


Figure 2. Higher mechanosensitivity of facilitated import versus passive diffusion explains force-induced nuclear translocation. A-C) Import rates (A), export rates (B),

and resulting N/C ratios (C) of importin β -GFP for cells on 1.5/30 kPa substrates. N=30, 30, and 60 cells from 3 independent experiments. p-values calculated with Mann-Whitney test. **D)** Corresponding importin β -GFP images. **E)** Cartoon of constructs with EGFP, different number of repeats of PrA domains, and NLS of different affinities to importin α . **F-H)** Import rates (F), export rates (G), and resulting N/C ratios (H) of L_NLS-41 kDa construct for cells on 1.5 and 30 kPa substrates N=30, N=30, N=120 cells from 3 independent experiments respectively each. p-values calculated with Mann-Whitney test. **I)** Corresponding images of L_NLS-41 kDa construct. **J)** N/C ratios of L_NLS-41 kDa or diffusive 41 kDa constructs in cells seeded on 1.5 kPa gels before, during, and after nuclear deformation with AFM. N= 16 cells from 3 independent experiments. p-values were calculated with a paired t-test. **K)** Corresponding images of constructs before and during force application, dotted line marks nucleus outline. Scale bars 20 μ m. Data are mean \pm S.E.M.

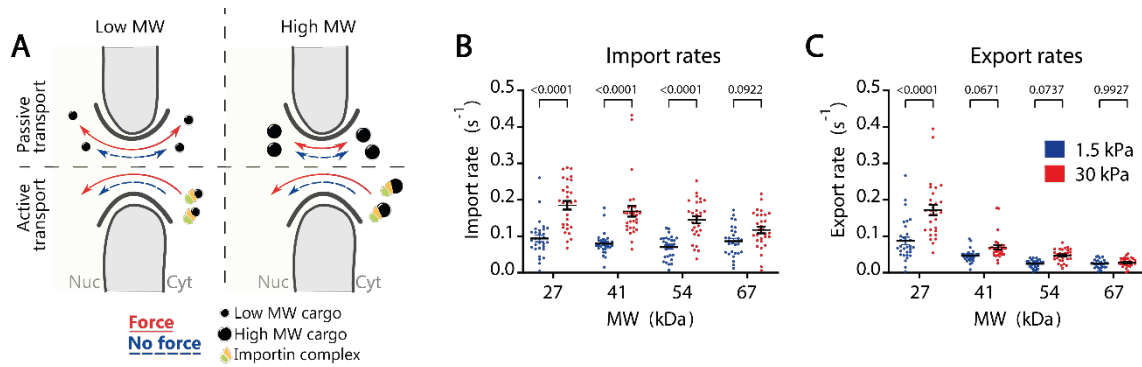


Figure 3. Forces to the nucleus increase facilitated and passive transport rates differentially. **A)** Cartoon summarizing the effects of nuclear force and MW on active and passive transport. Passive transport decreases with MW, and depends on force only for low MW molecules. Active transport does not depend on MW, and depends on force regardless of MW. **B)** Import rates (mediated by facilitated transport) of L-NLS constructs with different molecular weights. The effect of substrate stiffness and MW tested $p < 0.0001$ and $p = 0.0004$. **C)** Export rates of L-NLS constructs (mediated by passive transport) with different molecular weights. The effect of substrate stiffness and MW tested $p < 0.0001$ and $p < 0.0001$. $N = 30$ from 3 independent experiments. p -values from Two-way ANOVA. Data are mean \pm S.E.M.

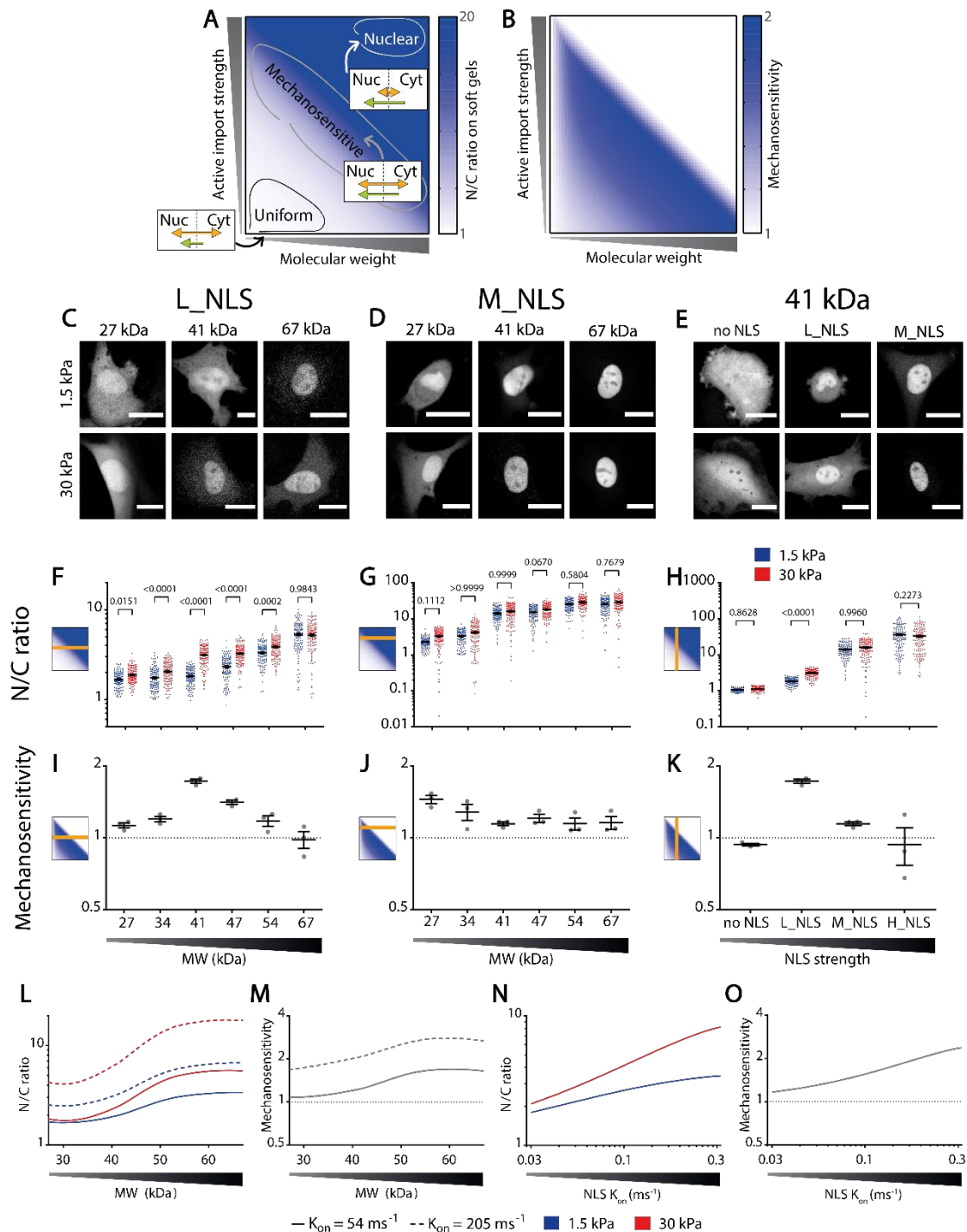


Figure 4. Balance between affinity to importins and MW defines the mechanosensitivity of nuclear localization. **A,B)** Qualitative prediction of how MW and affinity to importins should affect N/C ratios (A) on soft substrates and their mechanosensitivity (B) (see methods). Mechanosensitivity is defined as $(N/C)_{stiff}/(N/C)_{soft}$. **C-E)** Representative examples of construct distribution in cells seeded in substrates of 1.5kPa or 30kPa, for L-NLS constructs at different MW, M-NLS constructs at different MW, and 41kDa constructs at different NLS strengths. **F-H)** N/C ratios corresponding to the same conditions as C-E. **I-K)** Mechanosensitivity corresponding to the same conditions as C-E. **L-M)** Model predictions of N/C ratios (L) and mechanosensitivities (M) for NLS of different affinities for importin α (modelled

through the binding rates k_{on} between the NLS and importin α , with values of 54 and 205 ms^{-1}) as a function of MW. **N-O**) Model predictions of N/C ratios (N) and mechanosensitivities (O) for 41kDa constructs, as a function of increasing NLS strength.

Statistics: All data were produced in 3 different repeats. F) N= 120 cells from 3 independent experiments. Both MW ($p < 0,0001$) and Stiffness ($p < 0,0001$) effects tested significant. G) N= 120 cells from 3 independent experiments. Both MW ($p < 0,0001$) and Stiffness ($p = 0,0015$) effects tested significant. H) N= 120 cells from 3 independent experiments. Both NLS strength ($p < 0,0001$) and Stiffness ($p = 0,0012$) effects tested significant. Adjusted p-values from 2-way ANOVA; Šídák's multiple comparisons test. Scale bars: 20 μm . Data are mean \pm S.E.M.

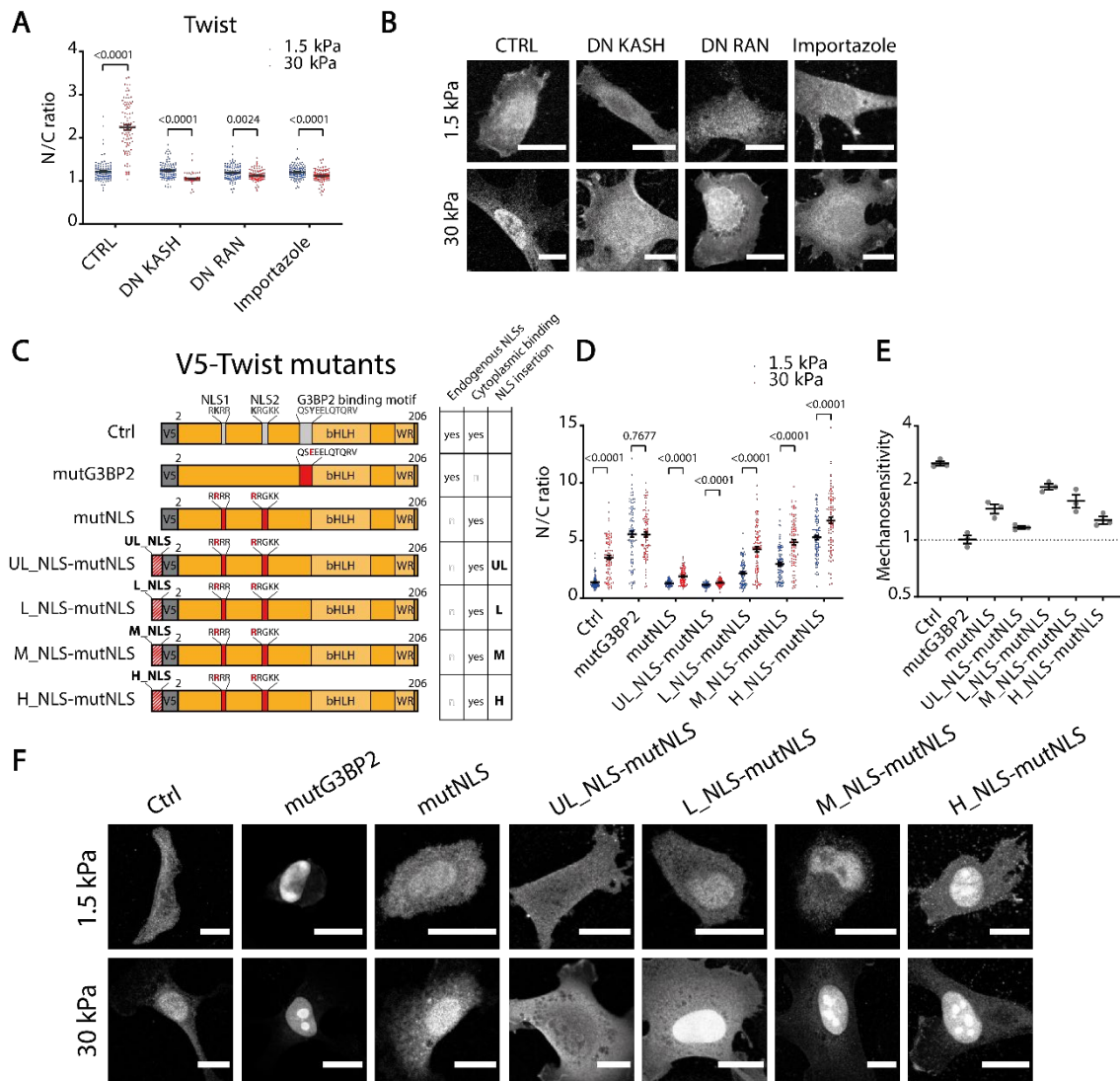


Figure 5. The mechanosensitivity of twist1 can be re-engineered with exogenous NLS sequences. **A)** N/C ratios of endogenous twist1 for cells on 1.5/30 kPa substrates, and under indicated treatments. N= 100 cells from 3 independent experiments. p-values from Mann-Whitney tests, corrected for multiple tests in the intracondition comparisons. **B)** Corresponding images of twist1 distribution. **C)** Scheme of different twist1 mutants. Mutations inactivating both NLS sequences and the G3BP2 binding motif are indicated in red. **D)** N/C ratios of transfected twist1 mutants for cells on 1.5/30 kPa substrates. N= 90 cells from 3 independent experiments. p-values from Mann-Whitney tests, corrected for multiple tests. **E)** Corresponding construct mechanosensitivities, defined as $(N/C)_{stiff}/(N/C)_{soft}$ (N= 3 experiments). **F)** Corresponding images showing the distribution of the different mutants. Scale bars, 20 μ m, data are mean \pm S.E.M.

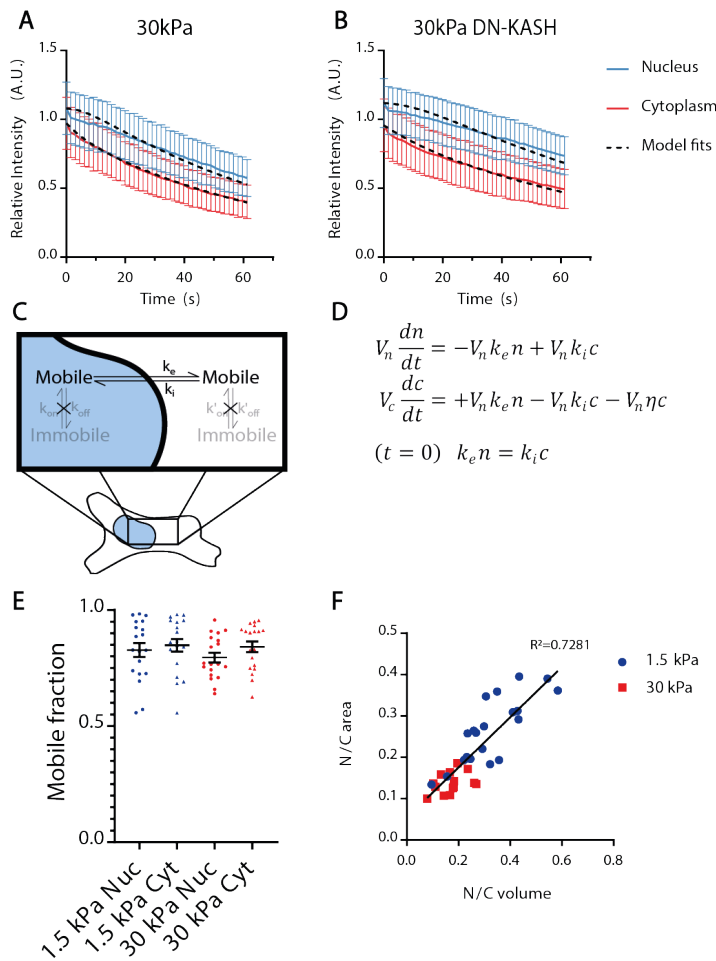


Figure S1. Fluorescence Loss in Photobleaching (FLIP) technique. **A,B)** Examples of curves showing fluorescence intensity as a function of time in the nucleus and cytoplasm in FLIP experiments on cells transfected with the diffusive 41kDa construct and seeded on 30 KPa in control condition (A) and with DN-KASH overexpression (B). Data represent the median fluorescence intensity and Standard Deviation of the compartments (nucleus/cytoplasm), normalized with the median of the whole cell before the beginning of photobleaching, and corrected for background signal. Each curve depicts a representative experiment of one cell each. **C,D)** Cartoon and equations describing the model used for fitting curves as in A,B, and calculating import and export rates. The model considers the molecules to freely diffuse inside the nuclear and cytoplasmic compartments (see methods). **E)** Mobile fraction of the L_NLS 41kDa construct in the nucleus (Nuc) and cytoplasm (Cyt) of cells seeded on 1.5/30 kPa gels. N=19 cells from 3 independent experiments, lines show mean \pm S.E.M. **F)** For cells seeded on 1.5 and 30 kPa gels, correlation between nuclear to cytosolic ratios of volume, and of areas as measured in confocal slices used for FLIP measurements; regression equation $y = 0,6075 x + 0,05375$. N=20 (1.5kPa) and N=14 (30kPa) cells from 2 independent experiments. Black line shows the linear regression.

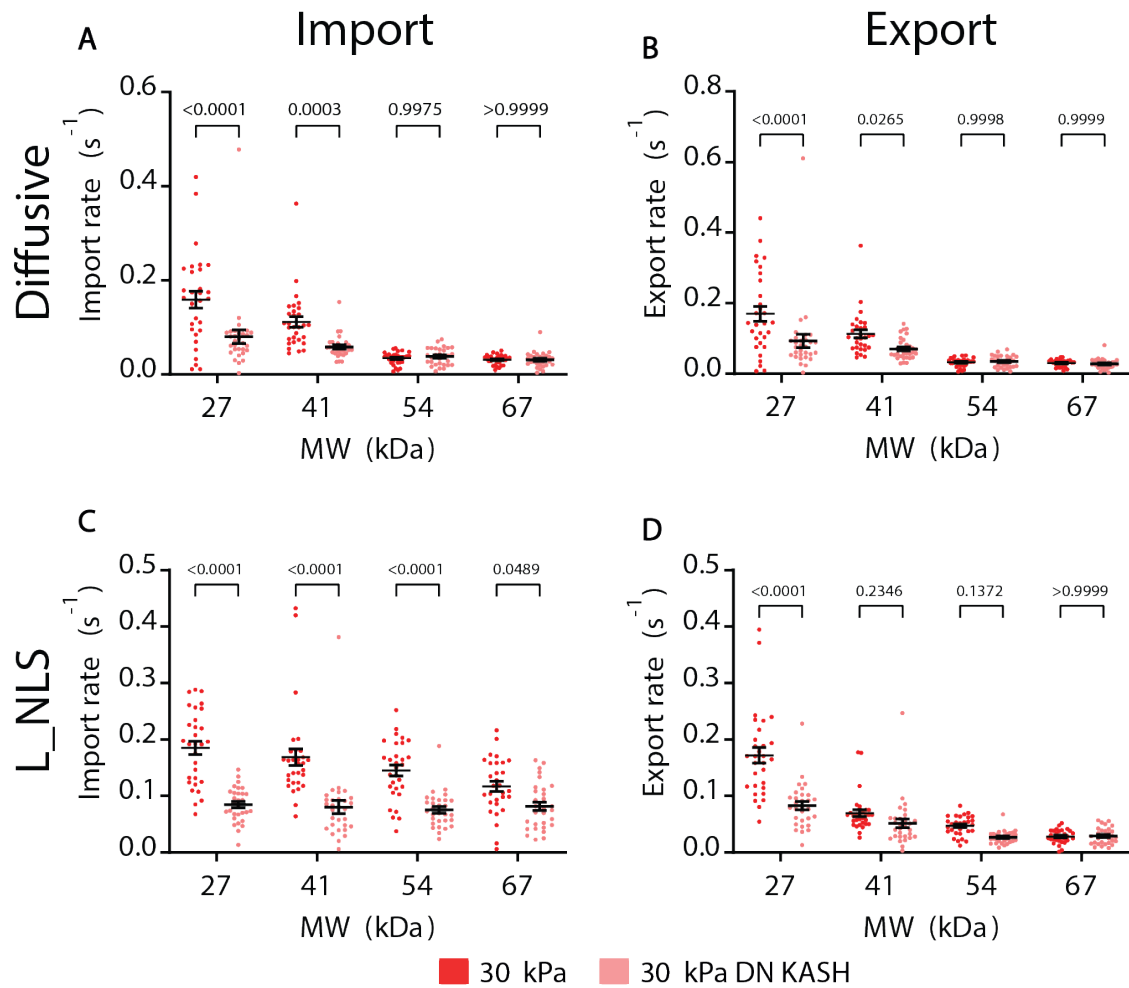


Figure S2. Blocking nuclear to cytoskeletal force transmission with DN-KASH recapitulates the effects of substrate stiffness on transport rates. A,B) Import and export rates of diffusive constructs for cells seeded on 30 kPa gels, with or without DN-KASH overexpression. In A, both MW ($p<0,0001$) and Stiffness ($p<0,0001$) effects tested significant. In B, both MW ($p<0,0001$) and Stiffness ($p=0,0002$) effects tested significant. C,D) Import and export rates of constructs containing L_NLS for cells seeded on 30 kPa gels, with or without DN-KASH overexpression. In C, both MW ($p=0,0025$) and Stiffness ($p<0,0001$) effects tested significant. In D, both MW ($p<0,0001$) and Stiffness ($p<0,0001$) effects tested significant. N= 30 cells from 3 independent experiments. p-values from Two-way ANOVA. Data are mean \pm S.E.M.

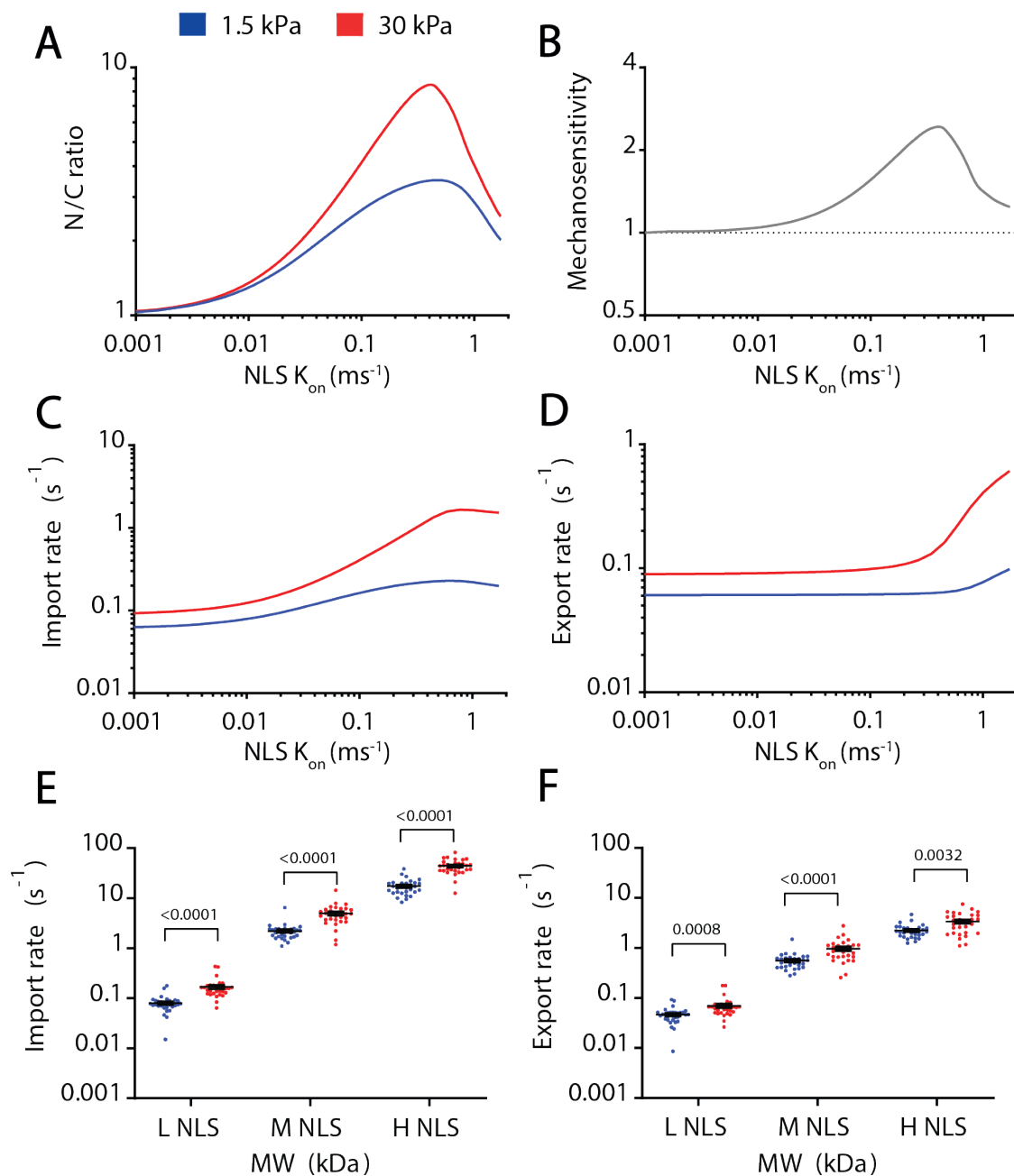


Figure S3. Effect of the affinity of the NLS signal in import and export rates. (A-D) Model predictions for N/C ratios (A), mechanosensitivities (B), import rates (C) and export rates (D) for 41kDa constructs as a function of NLS affinity (modelled by the binding rate k_{on} between the NLS and importin α). **E-F)** Experimental Import and export rates of 41 kDa constructs containing NLS signals of different affinity for importin β . In both cases (E,F), NLS strength and substrate stiffness effects tested significant ($p < 0,0001$). $N = 30$ cells from 3 independent experiments. p -values from Two-way ANOVA. Data are mean \pm S.E.M.

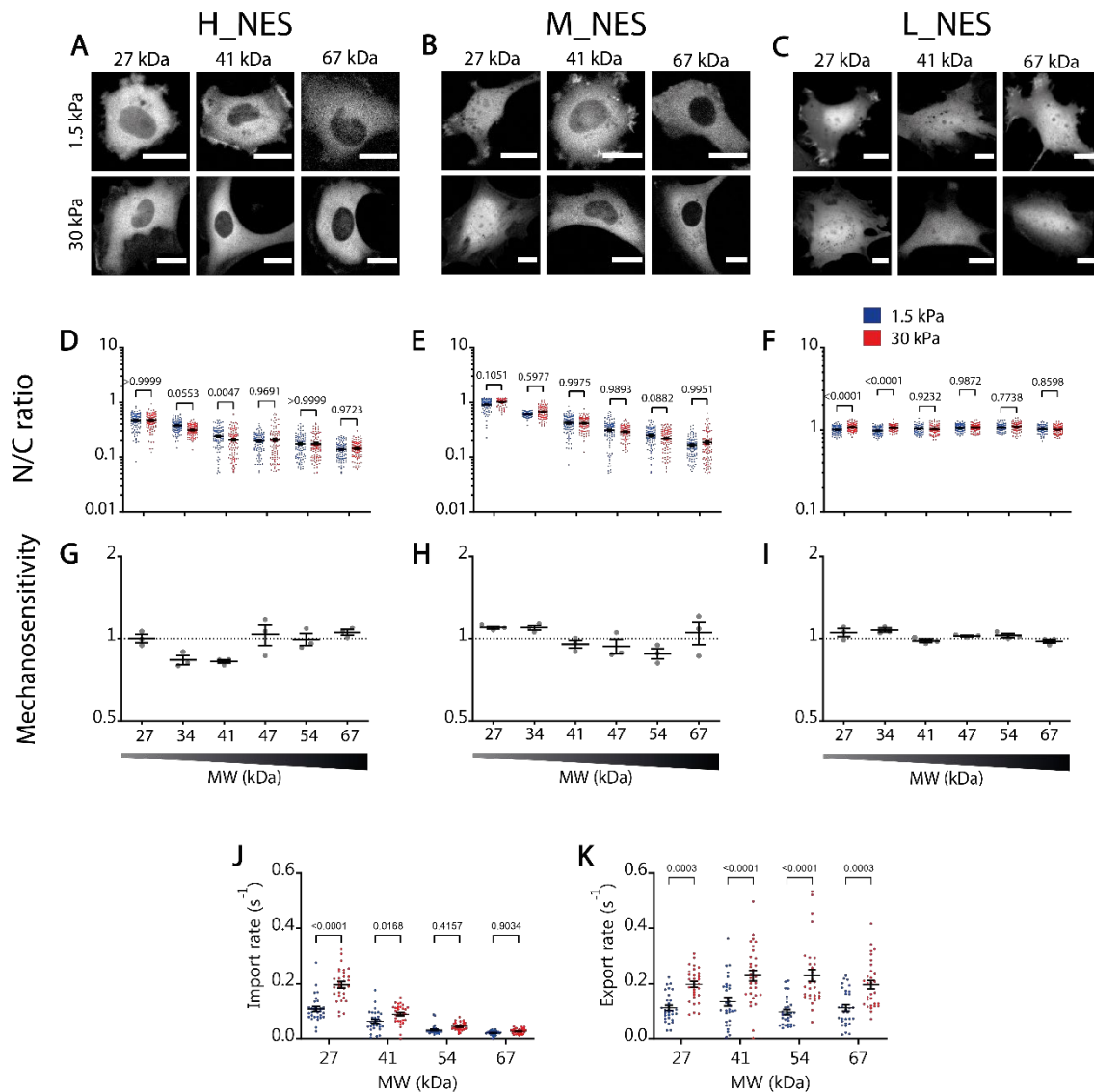


Figure S4. Balance between affinity to Exportin1 and MW defines the mechanosensitivity of nuclear localization in constructs containing NES signals. A-C) Representative examples of construct distribution in cells seeded in substrates of 1.5kPa or 30kPa, for H_NES constructs at different MW, M_NES constructs at different MW, and L_NES constructs at different MW. **D-F)** N/C ratios corresponding to the same conditions as A-C. **G-I)** Mechanosensitivity corresponding to the same conditions as A-C. Mechanosensitivity is defined as $(N/C)_{stiff}/(N/C)_{soft}$. **J,K)** For M_NES constructs, import rates (mediated by passive transport) and export rates (mediated by facilitated transport) as a function of molecular weight.

Statistics: All data were produced in 3 different repeats. D) N= 90 cells from 3 independent experiments. Both MW ($p<0,0001$) and Stiffness ($p=0,0162$) effects tested significant. E) N= 120 cells from 3 independent experiments. Only MW effects tested significant ($p<0,0001$). F) N= 90 cells from 3 independent experiments. Both MW ($p<0,0001$) and Stiffness ($p=0,0001$) effects tested significant. Adjusted p-values from 2-way ANOVA; Šidák's multiple comparisons test. Scale bars: 20 μ m. Data are mean

±S.E.M. J,K) Substrate stiffness effects tested significant in both cases (J,K; $p < 0,0001$); MW only tested significant for import (J; $p < 0,0001$).

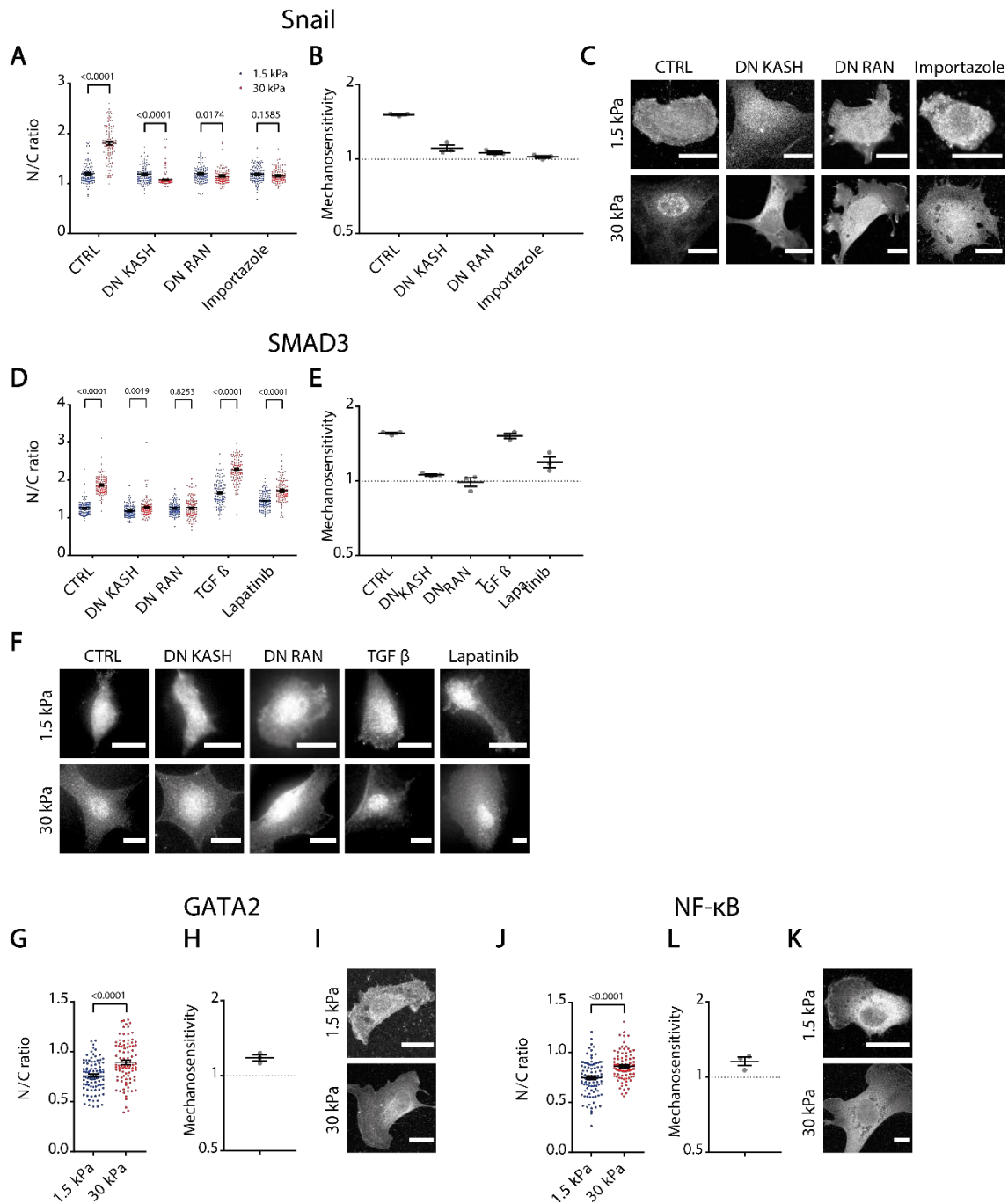


Figure S5. Mechanosensitivity of transcriptional Regulators. A-C) For Snail stainings at different conditions, quantifications of N/C ratios on 1.5/30 kPa substrates (A, N= 100 cells from 3 independent repeats), corresponding mechanosensitivities for the 3 different repeats (B), and representative images (C). **D-F)** For SMAD3 stainings at different conditions, quantifications of N/C ratios on 1.5/30 kPa substrates (D, N= 100 cells from 3 different repeats), corresponding mechanosensitivities for the 3 different repeats (E), and representative images (F). **G-I)** For GATA2 stainings at different conditions, quantifications of N/C ratios on 1.5/30 kPa substrates (G, N= 90 cells from 3 independent repeats), corresponding mechanosensitivities for the 3 different repeats (H), and representative images (I). **J-L)** For NF- κ B stainings at different conditions,

quantifications of N/C ratios on 1.5/30 kPa substrates, (J, N= 90 cells from 3 independent repeats), corresponding mechanosensitivities for the 3 different repeats (K), and representative images (L). Scale bars, 20 μ m, data are mean \pm S.E.M. p-values from corrected multiple Mann-Whitney (A,D) and Mann-Whitney (G,J) tests.

Table S1

Name	Description	Code
Diffusive 27kDa (EGFP)	EGFP	IG062/P522
Diffusive 34kDa	EGFP-1PrA	IG024/P277
Diffusive 41kDa	EGFP-2PrA	IG025/P278
Diffusive 47kDa	EGFP-3PrA	IG026/P279
Diffusive 54kDa	EGFP-4PrA	IG027/P280
Diffusive 67kDa	EGFP-6PrA	IG028/P281
L_NLS 27kDa	SV40A4-EGFP	IG065/P525
L_NLS 34kDa	SV40A4-EGFP-1PrA	IG058/P311
L_NLS 41kDa	SV40A4-EGFP-2PrA	IG032/P285
L_NLS 47kDa	SV40A4-EGFP-3PrA	IG059/P312
L_NLS 54kDa	SV40A4-EGFP-4PrA	IG060/P313
L_NLS 67kDa	SV40A4-EGFP-6PrA	IG061/P314
M_NLS 27kDa	SV40A5-EGFP	IG064/P524
M_NLS 34kDa	SV40A5-EGFP-1PrA	IG029/P282
M_NLS 41kDa	SV40A5-EGFP-2PrA	IG031/P284
M_NLS 47kDa	SV40A5-EGFP-3PrA	IG033/P286
M_NLS 54kDa	SV40A5-EGFP-4PrA	IG034/P287
M_NLS 67kDa	SV40A5-EGFP-6PrA	IG044/P297
H_NLS 27kDa	SV40-EGFP	IG063/P523
H_NLS 34kDa	SV40-EGFP-1PrA	IG070/P530
H_NLS 41kDa	SV40-EGFP-2PrA	IG030/P283
H_NLS 47kDa	SV40-EGFP-3PrA	IG071/P531
H_NLS 54kDa	SV40-EGFP-4PrA	IG072/P532
H_NLS 67kDa	SV40-EGFP-6PrA	IG073/P533
L_NES 27kDa	Adeno_NES-EGFP	IG068/P528
L_NES 34kDa	Adeno_NES-EGFP-1PrA	IG046/P299
L_NES 41kDa	Adeno_NES-EGFP-2PrA	IG040/P293
L_NES 47kDa	Adeno_NES-EGFP-3PrA	IG049/P302
L_NES 54kDa	Adeno_NES-EGFP-4PrA	IG050/P303
L_NES 67kDa	Adeno_NES-EGFP-6PrA	IG052/P305
M_NES 27kDa	MAPK_NES-EGFP	IG066/P526
M_NES 34kDa	MAPK_NES-EGFP-1PrA	IG074/P534
M_NES 41kDa	MAPK_NES-EGFP-2PrA	IG038/P291
M_NES 47kDa	MAPK_NES-EGFP-3PrA	IG075/P535
M_NES 54kDa	MAPK_NES-EGFP-4PrA	IG077/P537
M_NES 67kDa	MAPK_NES-EGFP-6PrA	IG051/P304

H_NES 27kDa	HIV_NES-EGFP	IG067/P527
H_NES 34kDa	HIV_NES-EGFP-1PrA	IG045/P298
H_NES 41kDa	HIV_NES-EGFP-2PrA	IG039/P292
H_NES 47kDa	HIV_NES-EGFP-3PrA	IG041/P294
H_NES 54kDa	HIV_NES-EGFP-4PrA	IG042/P295
H_NES 67kDa	HIV_NES-EGFP-6PrA	IG043/P296
Control V5-Twist	V5-Twist	IG106/P641
mut GBP2 V5-Twist	V5-Twist Y107E	IG110/P645
H_NLS-mutNLS V5-Twist	SV40-V5-mTwist K38R K73R	IG115/P669
M_NLS-mutNLS V5-Twist	SV40A5-V5-mTwist K38R K73R	IG116/P670
mutNLS V5-Twist	V5-mTwist K38R K73R	IG117/P677
L_NLS-mutNLS V5-Twist	SV40A4-V5-mTwist K38R K73R	IG118/P678
UL_NLS-mutNLS V5-Twist	SV40A3-V5-mTwist K38R K73R	IG119/P679