

# **Historical specimens and the limits of subspecies phylogenomics in the New World quails (Odontophoridae)**

**Jessie F. Salter<sup>a,\*</sup>, Peter A. Hosner<sup>b,c</sup>, Whitney L. E. Tsai<sup>d</sup>, John E. McCormack<sup>d,e</sup>, Edward L. Braun<sup>c</sup>, Rebecca T. Kimball<sup>c</sup>, Robb T. Brumfield<sup>a</sup>, and Brant C. Faircloth<sup>a</sup>**

<sup>a</sup> Museum of Natural Science and Department of Biological Sciences, Louisiana State University, Baton Rouge, Louisiana, USA

<sup>b</sup> Natural History Museum of Denmark, Center for Global Mountain Biodiversity, and Center for Macroecology, Evolution, and Climate, University of Copenhagen, Copenhagen, Denmark

<sup>c</sup> Department of Biology, University of Florida, Gainesville, Florida, USA

<sup>d</sup> Moore Laboratory of Zoology, Occidental College, Los Angeles, California, USA

<sup>e</sup> Biology Department, Occidental College, Los Angeles, California, USA

\* Corresponding author at: Natural History Museum of Los Angeles County, 900 W Exposition Blvd., Los Angeles, California 90007, USA. E-mail address: [jessie.salter@gmail.com](mailto:jessie.salter@gmail.com) (J.F. Salter).

## **Abstract**

As phylogenomics focuses on comprehensive taxon sampling at the species and population/subspecies levels, incorporating genomic data from historical specimens has become increasingly common. While historical samples can fill critical gaps in our understanding of the evolutionary history of diverse groups, they also introduce additional sources of phylogenomic uncertainty, making it difficult to discern novel evolutionary relationships from artifacts caused by sample quality issues. These problems highlight the need for improved strategies to disentangle artifactual patterns from true biological signal as historical specimens become more prevalent in

phylogenomic datasets. Here, we tested the limits of historical specimen-driven phylogenomics to resolve subspecies-level relationships within a highly polytypic family, the New World quails (Odontophoridae), using thousands of ultraconserved elements (UCEs). We found that relationships at and above the species-level were well-resolved and highly supported across all analyses, with the exception of discordant relationships within the two most polytypic genera which included many historical specimens. We examined the causes of discordance and found that inferring phylogenies from subsets of taxa resolved the disagreements, suggesting that analyzing subclades can help remove artifactual causes of discordance in datasets that include historical samples. At the subspecies-level, we found well-resolved geographic structure within the two most polytypic genera, including the most polytypic species in this family, Northern Bobwhites (*Colinus virginianus*), demonstrating that variable sites within UCEs are capable of resolving phylogenetic structure below the species level. Our results highlight the importance of complete taxonomic sampling for resolving relationships among polytypic species, often through the inclusion of historical specimens, and we propose an integrative strategy for understanding and addressing the uncertainty that historical samples sometimes introduce to phylogenetic analyses.

## Introduction

Phylogenomic studies during the previous two decades have used increasing numbers of loci to resolve relationships at finer and finer taxonomic scales from families (Hackett et al., 2008) to genera (Burleigh et al., 2015) to species (Harvey et al., 2020). Although some of these deeper relationships are still debated (Reddy et al., 2017), the attention of phylogenetics has begun to turn towards resolving relationships at and below the species level (Harvey et al., 2016). Dense sampling at the species and subspecies levels has historically been limited by the cost of generating sequence data and the availability of tissues suitable for DNA extraction. However,

improvements in sequencing and laboratory techniques have provided solutions to both problems by reducing the unit cost of sequencing and enabling the collection of genome-scale data from contemporary and historical sources, such as museum specimens (Bi et al., 2013; Derkarabetian et al., 2019; Faircloth et al., 2015; McCormack et al., 2017; Ruane and Austin, 2017; Tsai et al., 2019b). Historical specimens are often used to fill sampling gaps left by rare, endangered, or extinct taxa that lack available tissues, and their inclusion in phylogenomic analyses can dramatically reshape our understanding of the evolutionary history, systematics, and taxonomy of organismal groups (Salter et al., 2020). Yet, for all the opportunities museum specimens offer, they also introduce novel methodological challenges and potential sources of error in downstream phylogenomic analyses, particularly when a study focuses on resolving fine-scale differences among species and subspecies.

For example, previous studies incorporating historical specimens have noted several recurrent issues associated with sample quality that manifest as failures to detect some loci, shorter contigs assembled for detected loci, and DNA damage within assembled contigs (Hosner et al., 2016; Moyle et al., 2016; Oliveros et al., 2019; Salter et al., 2020; Smith et al., 2020; Swanson et al., 2019). These effects can lead to analytical issues like abnormally long branch lengths (McCormack et al., 2012), alternative placements of taxa between concatenated and coalescent analyses (Moyle et al., 2016; Oliveros et al., 2019; Salter et al., 2020), and consistent placement of historical samples as sister to all remaining taxa within certain clades (Moyle et al., 2016; Oliveros, 2015). Discordant topologies that include historical samples are especially vexing because it can be unclear whether legitimate differences arise from more complete taxonomic sampling or whether the incorporation of sequencing and assembly errors from lower quality samples is driving spurious results. Unresolved differences in placement can also leave lingering uncertainty surrounding the evolutionary history of lineages that might be important targets for conservation or additional study (Salter et al., 2020). Although these issues have been noted

repeatedly, few studies (Moyle et al., 2016; Oliveros, 2015; Smith et al., 2020) have explored mechanisms for addressing these apparent analytical artifacts.

Here, we use historical and contemporary specimens to reconstruct a subspecies phylogeny of a highly polytypic group of birds, the New World quails (Odontophoridae). New World quails are small (140-170g) terrestrial birds found in forest and grassland habitats from southern Canada to southeastern Brazil and northern Argentina (Brennan et al., 2020; Carroll, 1994). Originally named for the serrated edge of their mandible (from the Greek *odonto*, tooth, *phor*, bearer, i.e. tooth-bearer) (Johnsgard, 1988), New World quails are distinguished by their complex plumage patterns and occasional head ornamentation, ranging from crests to teardrop-shaped plumes to single-feather “spikes.” The family reaches peak diversity in southern Mexico and Central America, where 17 species are found and up to eight species may co-occur (Johnsgard, 1988).

The taxonomic status of the New World quails has long been the subject of debate. Although New and Old World quails have been recognized as distinct clades since the first comprehensive taxonomy of quails and partridges (Ogilvie-Grant, 1893), phenotypic similarities between New and Old World quail species resulted in the description of New World quails as either a tribe (Odontophorini; Verheyen, 1956) or a subfamily (Odontophorinae; Ogilvie-Grant, 1896) within the pheasants (Phasianidae). Based on comparative osteological evidence, Holman (1961) argued New World quails warranted recognition as a distinct family, an idea validated by DNA-DNA hybridization analyses (Sibley and Ahlquist, 1986, 1985) that showed New World quails were more divergent from Old World galliformes than other New World taxa such as turkeys and grouse. More recent molecular studies of Galliformes have confirmed the placement of New World quails as sister to pheasants (Phasianidae; Cox et al., 2007; Hosner et al., 2016; Kimball and Braun, 2014; Wang et al., 2013). Surprisingly, these results also revealed a sister relationship between the clade of New World quails and African (Old World) partridges in the genus

*Ptilopachus* (Cohen et al., 2012; Crowe et al., 2006; Hosner et al., 2015), calling into question whether the sister lineage of pheasants consists of only “New World” species. Dating analyses and inferred rates of sequence evolution suggest *Ptilopachus* and the New World quails diverged from an Old World common ancestor 32 Ma, coincident with the existence of the Beringian land bridge between the Nearctic and Palearctic (Hosner et al., 2015). Because referring to Odontophoridae as “New World” quail is inconsistent with the inclusion of *Ptilopachus*, we will refer to the group as “odontophorids”.

Similar to higher level galliform taxonomy, early systematics within odontophorids used comparative osteology (Holman, 1961) and species ecology (Johnsgard, 1973) to describe the relationships among genera. Both classification schemes identified two major clades (Gutiérrez et al., 1983): the *Odontophorus* group, comprising the genera *Odontophorus*, *Rhynchortyx*, *Dactylortyx*, and *Cyrtonyx*; and the *Dendrortyx* group, comprising the genera *Dendrortyx*, *Philortyx*, *Oreortyx*, *Colinus*, and *Callipepla* (Fig. 1A and 1B). Although molecular studies of odontophorids have validated the general membership of each clade, most recent studies suggest the monotypic genus *Rhynchortyx* is sister to both clades (Fig. 1C) while the arrangement of genera within each clade has differed (Cohen et al., 2012; Crowe et al., 2006; Hosner et al., 2015). The most complete molecular phylogeny of odontophorids (Hosner et al., 2015) included sequence data from three mitochondrial and eight nuclear loci from 23 species and recovered strong support across analyses for intergeneric relationships (Fig. 1C).

At the species-level, relationships within odontophorids are less clear. For example, the numbers of odontophorid species and subspecies have fluctuated dramatically through time (Fig. 2), largely due to the difficulty of ascribing consistent taxonomic boundaries to a group that displays remarkable phenotypic variability (Johnsgard, 1988). As a result, different taxonomies recognize anywhere from 27 to 35 species distributed among ten genera (Carroll, 2019; Clements et al.,

2019; Dickinson and Remsen, 2013; Johnsgard, 1988). This uncertainty is magnified at the subspecies level, where 126 to 145 subspecies of odontophorids are recognized, primarily based on variation in plumage and disjunctions in geographic ranges (Carroll, 2019; Clements et al., 2019; Dickinson and Remsen, 2013; Johnsgard, 1988). To put this incredible phenotypic diversity in context, odontophorids are more polytypic than 89% of all other bird families (Dickinson and Remsen, 2013), when controlling for family size, including the famously polytypic pheasants. Interestingly, this diversity is not distributed evenly across the family: 13 species of odontophorids are monotypic, while the three species of bobwhites (genus *Colinus*) include 44 subspecies – approximately one-third the total diversity of the entire family (Dickinson and Remsen, 2013). Previous genetic studies with subspecies-level sampling of odontophorids have included only three genera comprising less than half of all subspecies (*Callipepla*, Zink and Blackwell, 1998; *Colinus*, Williford et al., 2016, 2014; and *Dendrortyx*, Tsai et al., 2019a) and, with the exception of *Dendrortyx* (Tsai et al., 2019a), all have used a small number of mitochondrial loci (Williford et al., 2016, 2014; Zink and Blackwell, 1998). Furthermore, within the two most polytypic genera, *Odontophorus* and *Colinus*, different analyses have produced equivocal results, often with low support (Hosner et al., 2015; Williford et al., 2016, 2014). As a result, it is unclear whether the lack of resolution within these relatively young clades (4-5 Ma; Hosner et al., 2015; Williford et al., 2016) reflects real biological signal arising from differences in locus histories due to incomplete lineage sorting or introgression, or whether the lack of resolution is simply due to low power of the small number of loci sampled.

Incomplete sampling at the species and subspecies level combined with analyses including few independent loci have limited our understanding at all taxonomic levels within odontophorids and obscured how evolutionary processes may have shaped the remarkable phenotypic diversity observed in this group, but sampling efforts have been limited by lack of access to fresh tissues for many range-restricted and increasingly rare taxa. Sixty-nine percent of odontophorid species

have experienced population declines during the past century, and 31% of species are listed as near-threatened or vulnerable by the IUCN (IUCN, 2020). However, historical collections of odontophorids are extensive (>40,000 specimens listed on VertNet.org as of February 2021) due to their popularity as game birds. The extensive availability of historical specimens makes odontophorids an ideal taxonomic group to address some of the larger questions about the role of sample quality in phylogenomic analyses at the species and subspecies level, which we investigate by performing an analysis of ultraconserved elements (UCEs) collected from 42 modern tissues, 83 historical specimens, and six published genomes representing 115 odontophorid taxa (88% of all subspecies) from 83 states/provinces in 22 countries.

## Methods

### *Taxonomy*

For the sake of clarity throughout the manuscript, we followed version 4 of the Howard and Moore taxonomy (Dickinson and Remsen, 2013), which recognizes 10 genera, 33 species, and 131 subspecies of odontophorids.

### *Sampling and DNA extraction*

We collected new sequence data from 120 samples, including 78 toepads from historical specimens and 42 tissues (Table 1). To avoid re-sampling historical specimens, we also incorporated published sequence data from five individuals (Tsai et al., 2019b), and we harvested UCE loci from whole genome assemblies (Table 1) for six additional individuals using Phyluce (Faircloth, 2016) following the Phyluce Tutorial III guidelines (Faircloth, 2015). Whenever possible, we sampled two individuals of each monotypic odontophorid species. Our final sampling

design included sequence data collected from 42 tissues, 83 toepads (collected between 1906-1996), and six published genomes spanning 125 ingroup samples corresponding to 115 of the 131 subspecies of odontophorids (88%) and six outgroup species from other families in Galliformes and the sister order Anseriformes (Table 1).

We extracted total DNA from tissues using a Qiagen DNeasy Blood & Tissue Kit following the manufacturer's instructions, and we extracted total DNA from toepads of historical museum specimens using a phenol-chloroform protocol (Tsai et al., 2019b).

### *Sequence capture and next-generation sequencing*

We prepared genomic libraries from all DNA extracts and performed target enrichment of ultraconserved elements (UCEs; Faircloth et al., 2012) from genomic libraries following the protocol outlined in Salter et al. (2020). In brief, we sheared tissue samples using a QSonica ultrasonicator to a peak size distribution of 400 to 600 bp. We did not shear toepad samples because they already had a peak size distribution of 100 to 300 bp due to DNA degradation (McCormack et al., 2015). We prepared dual-indexed genomic libraries of each sample using the KAPA Hyper Prep library preparation kit (F. Hoffman-LaRoche AG, Basel, Switzerland) and custom indexes (Glenn et al., 2019). We combined the libraries into fourteen pools containing between six and eight samples for enrichment, and we kept tissues and toepads in separate pools. We enriched each library pool for 5,060 UCE loci using a MYbaits\_Tetrapods-UCE-5K kit (Daicel Arbor Biosciences, Ann Arbor, MI) following a protocol modified from Faircloth et al. (2012) (Faircloth et al., 2018). After enrichment, we performed 16 cycles of PCR recovery. To remove adapter-dimers, we processed each enriched pool with a Qiagen GeneRead Size Selection Kit, which removes fragments below 150 bp. We then ran post-enrichment pools on a Bioanalyzer to verify peak size distributions and ensure the absence of adapter-dimers. Finally, we quantified



pools free of adapter-dimers using the KAPA qPCR quantification kit, and we combined pools at equimolar ratios prior to collecting sequence data using two lanes of 150-bp paired-end (PE150) sequencing on an Illumina HiSeq 3000 (Oklahoma Medical Research Foundation, Oklahoma City, OK).

### *Bioinformatic processing, assembly, and alignment of UCEs*

After receiving demultiplexed reads from the sequencing facility, we used illumiprocessor (Faircloth, 2013), a wrapper around Trimmomatic (Bolger et al., 2014), to remove adapter sequences from the data and trim raw reads for quality. We followed this same procedure to incorporate reads from the five toepad samples sequenced by Tsai et al. (2019a). Because some libraries received a larger number of FASTQ reads than others, we used seqtk (Li, 2012) to randomly downsample libraries having more than 1.5 million cleaned read pairs (i.e., 3 million reads, in total). We then assembled the data using iter0 v1.1.2 (Faircloth, 2018), a guided iterative assembly approach designed to improve assembly of target enrichment data. To start the assembly process, iter0 uses bwa (Li and Durbin, 2009) to seed reads with a reference sequence and assemble loci using SPAdes (Bankevich et al., 2012); each subsequent round of assembly uses the assembled contigs from the previous iteration as the seed. We performed five iterations of assembly with iter0 using the UCE probe sequences we targeted during enrichment as the initial seed, and after five rounds of assembly we discarded contigs with less than 5x coverage. To check assembled libraries for the correct species identification and potential contamination, we ran the phyluce program match-contigs-to-barcodes (Faircloth, 2016) using a *Colinus virginianus* COI sequence (NCBI GenBank DQ432859.1) as a reference. We then input extracted contigs that matched the reference COI to NCBI BLAST (Johnson et al., 2008) to compare the extracted sequences to those present in NCBI GenBank, confirm the identity of each sample, and check for any contaminating (different species identity) COI sequences. Following assembly, we

used phyluce v1.6.7 (Faircloth, 2016) to export the UCE loci into a database, from which we created an incomplete matrix of loci across all samples. We aligned the incomplete matrix with mafft v7.407 (Kato and Standley, 2013) using default parameters and internally trimmed the alignment with the -automated1 option in trimAl v1.4.rev15 (Capella-Gutiérrez et al., 2009), before creating a matrix of loci where every locus had at least 75% taxon occupancy.

#### *UCE phylogenies with concatenated and coalescent methods.*

After concatenating loci in the 75% complete data matrix, we used raxml-ng v0.9.0 (Kozlov et al., 2019) to estimate a maximum likelihood (ML) tree from the unpartitioned data. We estimated 20 ML trees, selected the tree that best fit the data, and we estimated branch support on the best fitting tree by bootstrapping with the autoMRE function, which checks for convergence every 50 bootstraps. The analysis converged after 100 bootstrap replicates, and we reconciled the best ML tree with the bootstrap replicates using raxml-ng. We collapsed nodes with <70% bootstrap support (Hillis and Bull, 1993).

To account for heterogeneous gene/locus histories in our UCE data, we also used a coalescent-based approach to estimate a species tree. Specifically, we selected SVDquartets (Chifman and Kubatko, 2014) for these analyses because our dataset included many historical samples, which have fewer loci and shorter contigs than tissue samples (Table 1), and SVDquartets is less sensitive to these types of missing data than gene tree reconciliation methods (Hosner et al., 2016; Moyle et al., 2016; Oliveros et al., 2019; Salter et al., 2020; Sayyari et al., 2017). To infer the SVDquartets tree, we used PAUP\* v4.0a166 (Swofford, 2002) to evaluate all quartets by singular value decomposition and perform bootstrap analysis (svdq evalq=all bootstrap nthreads=12). We collapsed nodes with <70% bootstrap support (Hillis and Bull, 1993).

### *Subset phylogenies with concatenated and coalescent methods*

We observed several inconsistencies between the concatenated ML topology and the SVDquartets topology (hereafter “complete” datasets) within the *Odontophorus* and *Colinus* clades that we hypothesized were spurious results caused by the inclusion of low-quality historical samples, which can have a higher noise to signal ratio. Specifically, we suspected that strongly conflicting results were caused by the “toepad effect” where short, low-quality UCE contigs assembled from toepad DNA extracts are sometimes resolved as sister to remaining taxa within a clade. Because sequence variability and phylogenetic informativeness increase with distance from the core conserved UCE region (Faircloth et al., 2012) and many toepad samples lack these variable flanking regions, we suspect that toepad samples in other portions of the tree may be responsible for the toepad effect by pulling problematic taxa towards them due to the degree of sequence similarity shared between the relatively short, core UCE regions that are commonly enriched from toepads. To investigate these effects, we subsampled the concatenated dataset output by trimAl to produce two subclades, which we rooted on the most closely related taxa that were stable across the complete ML and SVDquartets analyses: (1) an *Odontophorus* group, rooted on *O. balliviani* and *O. atrifrons*, and (2) a *Colinus* group, which we rooted on *Callipepla* sp. To subsample the trimAl data matrix, we used GNU Grep with regular expressions, and we inferred concatenated and coalescent-based trees using raxml-ng and SVDquartets with parameters that were identical to those applied to the entire concatenated matrix. In both trees, we collapsed nodes with <70% bootstrap support (Hillis and Bull, 1993).

### **Results:**

#### *Recovery of UCEs*

After demultiplexing and trimming the raw reads, we obtained an average of 1.8 million read pairs (range 249,076 - 23,331,061) for tissue samples and 3 million read pairs for toepad samples (range 420,216 - 13,531,186) (Table 1). After downsampling sequence files, we assembled an average of 4,212 (4,126-4,368 95 CI) contigs for tissue samples and 4,043 (3,971-4,115 95 CI) contigs for toepad samples. From the assembled contigs, we identified an average of 4,087 UCE loci, which was consistent across sample types (Table 1); however, the average contig length of the loci differed between sample types: 912 bp (870-954 bp 95 CI) for tissues; 378 bp (360-396 bp 95 CI) for toepads; and 757 bp (614-900 bp 95 CI) for contigs extracted from genome sequences (Table 2). We enriched a total of 3,884 UCE loci shared by at least 98 ingroup and outgroup taxa, which we concatenated into a 75% complete data matrix that comprised 2,005,421 total characters and included 274,886 parsimony informative sites (13.7%).

### *Concatenated UCE phylogeny*

The ML tree we inferred from 3,884 concatenated UCE loci was well resolved and strongly supported for most generic and species-level relationships (Fig. 3A; see Supplementary Fig. S1 for branch lengths). Consistent with previous molecular phylogenies (Cohen et al., 2012; Crowe et al., 2006; Hosner et al., 2015), we resolved *Ptilopachus* as sister to all New World species, and, within the New World clade, we resolved the monotypic genus *Rhynchortyx* as sister to the *Odontophorus* and *Dendrortyx* groups.

Within the *Odontophorus* group, we resolved the branching order as *Cyrtonyx*, *Dactylortyx*, and *Odontophorus*, and within *Odontophorus*, we resolved the northernmost species, *O. guttatus*, as sister to two clades: one comprising five predominantly lowland tropical forest species (*O. stellatus*, *O. capueira*, *O. erythrops*, *O. melanotis*, and *O. gujanensis*) and one comprising nine montane-associated species (*O. balliviani*, *O. atrifrons*, *O. leucolaemus*, *O. dialeucos*, *O.*

*melanonotus*, *O. hyperythrus*, *O. speciosus*, *O. columbianus*, and *O. strophium*), although support for the branch uniting these two clades was low. We also observed two instances of non-monophyletic species that we detected as a result of subspecies-level sampling: *Cyrtonyx ocellatus* was nested within *C. montezumae*, and *Odontophorus melanotis* was nested within *O. erythrops* (Fig. 3A, Supplementary Fig. S1).

Within the *Dendrortyx* group, we resolved *Oreortyx*, *Dendrortyx*, *Philortyx*, and *Callipepla* + *Colinus* as successive sister groups, and species-level relationships were consistent with previous studies of each genus (Tsai et al., 2019a; Williford et al., 2016; Zink and Blackwell, 1998).

At the subspecies-level, resolution was more variable across the tree, although results were generally consistent with the broad biogeographic patterns of each species' distribution (Supplementary Fig. S1). For example, within *Cyrtonyx*, the ML analysis resolved two well-supported clades: one comprising the three subspecies of *C. montezumae* from the southwestern U.S. and northern Mexico (*C. m. mearnsi*, *C. m. merriami*, *C. m. montezumae*) and a second clade comprising *C. ocellatus* of southern Mexico and Central America along with the two Oaxacan subspecies of *C. montezumae* (*C. m. sallei*, *C. m. rowleyi*), which are more similar in plumage to *C. ocellatus* and are sometimes considered a separate species named *C. sallei* (Carroll, 2019). Similarly, we recovered a south-north grade among the two subspecies of *O. erythrops* in Ecuador and Colombia and the two subspecies of *O. melanotis* in Central America, consistent with previous treatments of all four taxa as subspecies of *O. erythrops* (Johnsgard, 1988). Within *Colinus cristatus*, the ML analysis strongly supported two clades: one comprising 13 subspecies of eastern Panama and northern South America and a sister clade comprising the six Central American subspecies of the *C. [cristatus] leucopogon* group (Fig. 4E, Supplementary Fig. S1), which are sometimes treated as a separate species (Carroll, 2019; Johnsgard, 1988).

We observed a similar pattern within *C. virginianus*, the most polytypic odontophorid species: a well-supported split between eight subspecies north of Mexico's Transvolcanic belt and eleven subspecies south of this barrier, although we were generally unable to resolve phylogenetic relationships among subspecies within either of these clades.

### *Coalescent UCE phylogeny*

The tree we inferred with SVDquartets was well resolved, strongly supported, and largely congruent with the topology we reconstructed with the ML analysis, particularly at the species level (Fig. 3B; see Supplementary Fig. S2 for the uncollapsed topology). In particular, the SVDquartets tree improved support for the sister relationship between the two major *Odontophorus* clades (lowland tropical forest + montane-associated species). At the species level, only two areas of the coalescent tree disagreed with the ML topology: among the seven species in the montane-associated *Odontophorus* clade and within *Colinus*. Within the montane *Odontophorus* clade, the SVDquartets analysis resolved *O. strophium* + *O. columbianus* as sister to remaining lineages in the clade and suggested a sister relationship between *O. dialeucos* and *O. speciosus*, although this relationship was poorly supported. In contrast, the ML analysis resolved the Central American species *O. leucolaemus* and *O. dialeucos* as successive sister lineages to the remaining sister clades of trans-Andean species (*O. melanonotus* + *O. hyperythrus*) and cis-Andean species (*O. speciosus*, *O. strophium* + *O. columbianus*). Within *Colinus*, the major difference was that the SVDquartets analysis resolved *C. virginianus aridus* of northwestern Mexico as sister to all other taxa within *Colinus*.

We observed more discordance between the ML and SVDquartets topologies at the subspecies-level, although most of this discordance existed in parts of either tree having low support (Supplementary Fig. S3). In general, the SVDquartets analysis was less precise, and the lower

support values collapsed to a number of polytomies, as seen in *Cyrtonyx*, *Callipepla californica*, and *Dendrortyx macroura* (Supplementary Fig. S3). Despite these areas of low support, the ML and SVDquartets topologies largely agreed in the arrangement of subspecies groups within highly polytypic species, such as *C. cristatus* and *C. virginianus* (Fig. 4).

#### *Subset concatenated and coalescent phylogenies*

For the two clades in which we observed species-level discordance between the ML and SVDquartets trees inferred from the complete dataset, these conflicts were largely resolved when we inferred trees using only those subsets of taxa (Fig. 4). In the *Odontophorus* group, the ML and SVDquartets trees inferred using subclade data both resolved a branching order consistent with the ML topology inferred using the complete dataset, placing the Central American species *O. leucolaemus* and *O. dialeucos* as successive sister lineages to the clade comprising three South American groups, including *O. strophium* + *O. columbianus* (Fig. 4C-D). Although the subset SVDquartets tree could not resolve the polytomy between *O. hyperythrus* + *O. melanonotus*, *O. speciosus*, and *O. strophium* + *O. columbianus*, this topology was consistent with both ML trees and resolved the major discordance observed in the complete SVDquartets tree, which initially suggested *O. strophium* + *O. columbianus* were sister to other taxa within this group (Fig. 3B, Fig. 4B).

Within the *Colinus* clade, there were two major differences between the ML and SVDquartets trees inferred with the complete dataset: (1) the placement of *C. cristatus panamensis* in a polytomy in the SVDquartets tree; and (2) the placement of *C. virginianus aridus* sister to all remaining *Colinus* in the SVDquartets trees (Fig. 3B, Fig. 4F). Both the ML and SVDquartets trees inferred with subclade data resolved the *C. [cristatus] leucopogon* clade as sister to the two South American clades of *C. cristatus*, and placed *C. c. panamensis* within one of these South American

clades, consistent with the complete ML tree (Fig. 4G-H). Within *C. virginianus*, the ML subset tree inferred subspecies relationships consistent with the complete ML tree, including sister clades of subspecies from southern Mexico and subspecies from northern Mexico + USA, and the placement of *C. v. aridus* within the northern clade of subspecies (Fig. 4G). The subset SVDquartets tree also resolved northern and southern clades of subspecies, consistent with both ML trees, although it placed *C. v. aridus* as sister to the clade of subspecies from southern Mexico (Fig. 3H). Although this placement differs from the ML topologies, the subset analysis resolved the implausible placement of *C. v. aridus* in the complete SVDquartets tree and the major discordance between the SVDquartets and ML trees inferred with the complete dataset (Fig. 4, Fig. 3E-F).

## Discussion:

### *High-level odontophorid phylogeny is stable across studies, methods, and data types*

Across all analyses, we resolved topologies that are consistent with previous studies of major odontophorid clades (Cohen et al., 2012; Crowe et al., 2006; Hosner et al., 2015). Our results from thousands of nuclear loci support the sister relationship between the African genus *Ptilopachus* and the remaining New World odontophorids (Cohen et al., 2012; Crowe et al., 2006; Hosner et al., 2015). Similarly, within the New World clade, we resolved the monotypic genus *Rhynchortyx* as sister to the *Odontophorus* group and the *Dendrortyx* group, a pattern that is generally consistent with previous phylogenetic hypotheses based on morphology and ecology (Johnsgard, 1973). We included representatives of all currently recognized odontophorid species and most analyses inferred consistent, highly-supported relationships at the species level with two notable differences between our UCE topologies, which we discuss below.



Due to a lack of contemporary genetic material, previous molecular phylogenies of odontophorids included just eight of the fifteen described species in *Odontophorus*, the most species-rich genus in the family, with different analyses inferring different topologies for five of the sampled species (Hosner et al., 2015). By including historical specimens, we were able to sample 36 individuals representing all 15 species and all 20 described subspecies (29 taxa in total) for complete taxonomic sampling of *Odontophorus* (Dickinson and Remsen, 2013), and our results across all analyses suggest there are three main lineages within the genus: (1) the northernmost species, *O. guttatus*; (2) a clade of five predominantly lowland tropical forest species; and (3) a clade of nine montane-associated species. These results are consistent with a coalescent topology inferred from a combined mito-nuclear dataset for eight species (Hosner et al., 2015), and with the biogeographic hypothesis that *Odontophorus* had a Central American ancestor (ca. 5.8 Ma) that colonized South America multiple times and diversified rapidly following closure of the Isthmus of Panama (Hosner et al., 2015).

Because we sampled all species, our results refute previous hypotheses that grouped *Odontophorus* species by plumage (Johnsgard, 1988), and they highlight the recurrence of different plumage elements in multiple, presumably independent, radiations – suggesting a shared genomic framework underlying the “mix-and-match” appearance of the 29 taxa in this genus. Johnsgard (1988) recognized three species groups within *Odontophorus* based on shared plumage themes: dark-backed species with rufous fronts (*O. hyperythrus*, *O. melanonotus*, *O. speciosus*, and *O. erythrops/melanotis*); species with prominent crests and chestnut plumage lacking a white throat (*O. capueira*, *O. stellatus*, *O. gujanensis*, and *O. balliviani*); and dark-backed species with striking black-and-white throats and facial patterns (*O. atrifrons*, *O. leucolaemus*, *O. dialeucos*, *O. strophium*, and *O. columbianus*). Our results support some of these relationships, but our results also highlight that similar plumage patterns exist between non-sister lowland and montane species, as well as identifying several previously overlooked plumage similarities

between species that our results suggest are closely-related. For example, we resolved a sister relationship between two highly disjunct species, *O. atrifrons* and *O. balliviani*. *Odontophorus atrifrons* is extremely range restricted, inhabiting the subtropical montane forests of northern Colombia and northwestern Venezuela, whereas *O. balliviani* is more broadly distributed throughout montane subtropical forests in southeastern Peru and northern Bolivia (Johnsgard, 1988). Although Johnsgard characterized these species as belonging to two distinct plumage groups, they share a rufous crown and distinctive white, diamond-shaped streaking across the chest. Similar disjunct distributions are observed within other Andean bird species, such as Golden Grosbeaks (*Pheucticus chrysogaster*) (Brewer, 2020) and Red-rumped Bush-Tyrants (*Cnemarchus erythropygius*) (Schulenberg and Kirwan, 2020), and may reflect a history of extinction in the intermediate populations.

#### *Discordant UCE topologies are artifacts of low-quality historical samples*

Our dataset is composed of 66% historical samples (Table 1), and we observed many of the sample quality issues noted in previous studies incorporating this type of material (Moyle et al., 2016; Oliveros et al., 2019; Salter et al., 2020; Swanson et al., 2019). Fortunately, we only recovered species-level topological conflicts in two clades: *Odontophorus* and *Colinus*.

Within both *Odontophorus* and *Colinus*, we observed a previously-noted pattern of discordance that we refer to as the “toepad effect”: in SVDquartets analyses, low-quality samples often aggregate as sister to all other members of the clade in which concatenated analyses place them (Moyle et al., 2016; Oliveros et al., 2019; Salter et al., 2020). By all metrics, the four taxa (represented by six historical samples) that showed this pattern in our analyses (*O. strophium*, *O. columbianus*, *C. virginianus aridus*, and *C. cristatus panamensis*) were among the lowest quality historical samples in our dataset: all six samples fell below the 95% confidence interval for cleaned

read pairs, number of UCEs, and average contig length (Table 1, Table 2). Three of these samples were collected during the early 1920s, placing them among the oldest samples we sequenced (median collection year 1954), and although the remaining three samples were collected between 1947-1952, specimen preparation and long-term storage conditions can have significant impacts on DNA degradation and quality in addition to sample age (Hall et al., 1997; McCormack et al., 2017; Wandeler et al., 2007).

We further examined the causes of this discordance by analyzing subsets of these data to assess whether spurious relationships could be resolved by reducing the noise to signal ratio introduced with the inclusion of distantly-related taxa. The results of our subset-based phylogenies provide compelling evidence that in our dataset, these “toepad effects” are artifacts of sample quality, rather than biological signal. In *Odontophorus*, the concatenated and coalescent subclade trees resolved the discordance we observed among the topologies inferred with the complete dataset, and the subclade topologies ultimately supported the relationships we observed in the complete ML tree (Fig. 4A-D). Although we observed differences in bootstrap support for relationships within *Odontophorus*, such as the polytomy between *O. hyperythrus* + *O. melanonotus*, *O. speciosus*, and *O. strophium* + *O. columbianus* in the subset SVDquartets tree, these differences do not change the relationships or their phylogeographic interpretation within this group (Fig. 4C-D).

Within *Colinus*, the subset topologies resolved the polytomy of *C. cristatus panamensis*, the Central American *C. [cristatus] leucopogon* clade, and the South American *C. cristatus* clade that we observed in the complete SVDquartets tree, and inferred a placement of *C. cristatus panamensis* consistent with the complete ML tree (Fig. 4E-H). Although the discordant placement of most low-quality samples in our dataset was ameliorated by the subset analyses, some combination of missing loci, exceptionally short contigs, and perhaps other DNA damage proved

particularly recalcitrant for *C. virginianus aridus*. Though much improved from the complete SVDquartets tree, the placement of *C. v. aridus* in the subclade SVDquartets tree differs from both ML trees (Fig. 4E-H). Based on the original description of *C. v. aridus* as an intermediate form between *C. v. texanus* and *C. v. maculatus* and its distribution between these two subspecies (Aldrich, 1942), the topology inferred in the ML trees is consistent with our expectations of the relationships among these subspecies; however, we were unable to completely resolve the placement of this sample due to poor data quality.

Our results also underscore the importance of sampling multiple historical specimens within each taxon, when possible. For example, because we resolve the sister relationship of *O. strophium* + *O. columbianus* across all analyses, we are confident that this relationship is not a “toepad effect”, but likely reflects biological signal and confirms previous hypotheses of a close relationship between these species based on plumage (Johnsgard, 1988). Whereas previous examples of the “toepad effect” have been noted with a single sample per taxon, our results suggest that including multiple toepad samples per taxon can help distinguish between the effects of low-quality samples (as in *C. v. aridus*) and true phylogenetic signal. Considering our results, we advocate for an integrative approach to examining the causes of topological discordance as large datasets encompassing samples of heterogeneous quality become commonplace in phylogenomics.

### *Odontophorid taxonomy is largely congruent with genetic data*

The impressive phenotypic diversity among odontophorids, especially in male plumage, has contributed to historical fluctuations in odontophorid taxonomy, especially at the subspecies-level (Fig. 2). However, both our ML and coalescent phylogenies using UCEs demonstrate that current taxonomy is largely consistent with the genetic relationships within and among most species of odontophorids (Fig. 3), although we did find two examples of species that were not monophyletic.

All analyses (Supplementary Fig. S3) failed to recover *Cyrtonyx montezumae* and *C. ocellatus* as reciprocally monophyletic, instead suggesting these taxa form a grade from north to south. In our concatenated UCE ML tree, the three northernmost *C. montezumae* subspecies form one clade, sister to a clade of *C. ocellatus* and the two Oaxacan subspecies, *C. m. rowleyi* and *C. m. sallei* (Supplementary Fig. S1). Although the SVDquartets analysis recovered a different topology (Supplementary Fig. S2), it still did not support the reciprocal monophyly of *C. montezumae* and *C. ocellatus*, suggesting that population-level sampling and further investigation of plumage, morphology, and vocal data are needed to assess species boundaries within this genus. Based on the available evidence, our results support merging *C. montezumae* and *C. ocellatus* into *C. montezumae* (Vigors, 1830). Similarly, neither our ML or SVDquartets analyses resolved *Odontophorus melanotis* and *O. erythrops* as reciprocally monophyletic (Supplementary Material S3), suggesting these taxa constitute a single species (*O. erythrops*, Gould, 1859), consistent with previous classifications (Johnsgard, 1988). Both of these examples highlight the importance of complete taxon sampling for accurate systematic analysis of polytypic species.

In birds, subspecies designations have traditionally been used to describe diagnosable geographic differences among populations in some morphological or behavioral trait, such as plumage color or song (Mayr, 1982). These subspecies may come into contact in some part(s) of their range, and there is the presumption that gene flow would occur wherever populations come into contact. If gene flow is occurring, this begs the question of how well subspecies relationships can be resolved in a strictly bifurcating phylogenetic framework (reviewed in Phillimore and Owens, 2006), especially with highly conserved genetic markers such as UCEs (Harvey et al., 2016; Smith et al., 2014). Although we could not resolve all subspecies relationships, we were pleasantly surprised by the concordance of well-resolved geographic structure within most polytypic species across all analyses. For example, although the relationships among the eight *O. gujanensis* subspecies differed slightly between the ML and SVDquartets trees

(Supplementary Fig. S3), all analyses resolved three groups consistent with the major geologic provinces of the region (Silva et al., 2019): a Central American / northeastern Colombian group (*O. g. castigatus* and *O. g. marmoratus*); a group from west of the Negro and Madeira rivers in the Amazonian foreland basins (*O. g. buckleyi*, *O. g. medius*, *O. g. rufogularis*, and *O. g. pachyrhynchus*); and a group from east of the Negro and Madeira rivers in the Guiana and Brazilian shields (*O. g. gujanensis* and *O. g. simonsi*) (Supplementary Fig. S3). We observed a similar pattern in *Dactylortyx thoracicus*, for which we sampled nine of the eleven mostly allopatric subspecies, and our analyses consistently resolved the three taxa found north of the Isthmus of Tehuantepec (*D. t. devius*, *D. t. melodus*, and *D. t. pettingilli*) as sister to a group comprising three pairs of geographically adjacent sister taxa found south of the Isthmus: *D. t. chiapensis* + *D. t. dolichonyx* from Chiapas; *D. t. sharpei* + *D. t. paynteri* from the Yucatan peninsula; and *D. t. fuscus* + *D. t. conoveri* from Honduras (Supplementary Fig. S3). In contrast to these patterns, our results also highlighted several polytypic species with little discernible structure across analyses, such as among the five subspecies of *Oreortyx pictus* or *Callipepla californica*, suggesting a review of subspecies designations in these species is warranted.

The power of thousands of genome-wide loci to resolve geographic structure among shallow evolutionary lineages is exemplified in our results for *Colinus*. The three species of bobwhites in the genus *Colinus* epitomize many of the extremes and challenges of odontophorid diversity and taxonomy: together, these three species comprise 44 subspecies described by differences in male plumage, half of which belong to *C. virginianus* (Dickinson and Remsen, 2013). The evolutionary relationships among subspecies within *Colinus* remain largely unclear (Ellsworth et al., 1989; Eo et al., 2009; Evans et al., 2009; Williford et al., 2016, 2014), potentially due to the recent origin of this genus (~5 MA; Hosner et al., 2015; Williford et al., 2016) and the limited power of the few genetic markers surveyed in prior studies. In contrast to these previous studies, we found strong evidence of geographic population structure within all three species.

Across all analyses, our results suggest the nineteen subspecies of *C. cristatus* compose three well-supported clades, consistent with previous analyses of mitochondrial data (Williford et al., 2016): (1) the six-subspecies *leucopogon* group from Central America; (2) the nine-subspecies *cristatus* group ranging from eastern Panama to the west slope of the Eastern Cordillera and the Caribbean slope of Colombia and Venezuela; and (3) the four-subspecies *sonnini* group ranging from the east slope of the Eastern Cordillera to the Guiana Shield. In contrast to a previous mitochondrial analysis, which resolved the *sonnini* group as sister to *leucopogon* + *cristatus* (Williford et al., 2016), both our complete and subclade ML and SVDquartet analyses suggest the *leucopogon* group is sister to the remaining subspecies that comprise the *sonnini* + *cristatus* group (Fig. 4E-H). Species limits within *Colinus* have long been debated (see Johnsgard, 1988), and although these data are insufficient to make taxonomic recommendations for this complex group, we note that dating analyses estimate the deepest divergences within *C. cristatus* are consistent with the timing of divergence between *C. nigrogularis* and *C. virginianus* (~2.5 MYA; Williford et al., 2016), suggesting species limits have been applied inconsistently across the genus.

Our results also shed new light on the contentious relationships within *C. virginianus*, the most polytypic odontophorid. Historically, 24 subspecies of *C. virginianus* have been described by male plumage (Carroll, 2019), of which 22 are currently recognized (Dickinson and Remsen, 2013), and we collected genomic sequence data from 19 of them. We did not include samples of *C. v. marilandicus* and *C. v. mexicanus*, because these subspecies are often synonymized within *C. v. virginianus*, and we did not include samples of *C. v. nelsoni*, which is often synonymized within *C. v. insignis* (Carroll, 2019). Due to its significance as a game bird in the U.S. and Mexico, *C. virginianus* is one of the most intensively studied bird species (Guthery, 1997), yet previous efforts to understand the relationships among subspecies have yielded equivocal results (Ellsworth et



al., 1989; Eo et al., 2009; Evans et al., 2009; Williford et al., 2016, 2014), often finding little evidence of genetic structure. Two possible explanations for findings of panmixia within *C. virginianus* are its recent Pleistocene origin (~1.5 MYA; Hosner et al., 2015; Williford et al., 2016) and the long history of human-mediated translocations within this species (Whitt et al., 2017). Previous studies have also relied on few genetic markers, which may be insufficiently powerful to resolve shallow genetic structure (Zarza et al., 2016). This is the first study to use thousands of nuclear loci to assess the relationships within *C. virginianus*, and despite shallow divergences, we recover consistent, well-supported geographic structure across all analyses (Fig. 4E-H, Supplementary Fig. S3).

Both our ML and SVDquartets trees using UCEs recover the deepest divergence within *C. virginianus* to be along Mexico's Transvolcanic Belt, a known biogeographic barrier for birds and other terrestrial taxa (Marshall and Liebherr, 2000; Morrone, 2010), with eight subspecies forming a northern clade and eleven subspecies forming a southern clade. In contrast to the bold white facial patterning typical of *C. virginianus* males in the northern part of their range, seven subspecies of *C. virginianus* males have nearly to completely black heads and throats, including six subspecies from Oaxaca and Chiapas (*atriceps*, *coyoleos*, *harrisoni*, *insignis*, *nelsoni*, and *salvini*) and the isolated Sonoran desert subspecies *C. v. ridgwayi*, prompting speculation that all black-throated subspecies are closely related (Aldrich, 1946). However, our results suggest that *C. v. ridgwayi* is most closely related to a group of subspecies from Texas and northern Mexico (Fig. 4E-H, Supplementary Fig. S3), consistent with previous findings of shared mitochondrial haplotypes among these populations (Williford et al., 2016). Although our analyses could not resolve all relationships within the southern clade, they do confirm that black- and white-throated subspecies do not form reciprocally monophyletic clades (Fig. 4E-H, Supplementary Fig. S3), suggesting that black throat color may have been gained or lost multiple times within *C. virginianus*.



Our results across all of *Colinus* demonstrate both the power and limitations of phylogenomics for resolving subspecies relationships. By sampling thousands of genome-wide loci from just a single individual per subspecies, we found strong evidence of geographic structure and differentiation among groups of subspecies where previous studies sampling fewer markers have not, highlighting the need for greater sampling of the genome at a finer population scale to disentangle the complex evolutionary history of this genus and inform possible taxonomic revisions.

## Conclusions

We demonstrate the power of UCE phylogenomics to resolve relationships ranging from family-level to below species-level using comprehensive taxonomic sampling of historical museum specimens. While placements of most historical samples were concordant between concatenated and coalescent analyses, we showed that discordant topologies were artifacts of poor sample quality and could be largely resolved by inferring trees using subsets of only those taxa in discordant clades. Within odontophorids, our results affirm previous findings at the genus-level and provide new resolution of species-level relationships, which are largely concordant with current taxonomy. At the subspecies-level, we demonstrate that UCE phylogenomics can resolve consistent, well-supported geographic structure across analyses in most polytypic species, and we highlight the need for increased population-level sampling in several key species complexes, especially within *Odontophorus* and *Colinus*.

## Acknowledgements

We thank the following institutions and people who provided tissue and toepad loans to make this work possible: American Museum of Natural History (AMNH - Paul Sweet & Tom Trombone);

Academy of Natural Sciences of Drexel University (ANSP - Nate Rice); Florida Museum of Natural History (FLMNH - Andy Kratter); Field Museum of Natural History (FMNH - Ben Marks, Shannon Hackett, & John Bates); University of Kansas Biodiversity Research Institute (KU - Mark Robbins); Natural History Museum of Los Angeles County (LACM - Kimball Garrett); Louisiana State University Museum of Natural Science (LSU - Donna Dittmann, Van Remsen, & Fred Sheldon); Moore Laboratory of Zoology (MLZ - James Maley); Museo de Zoología 'Alfonso L. Herrera' (UNAM - Adolfo Navarro Sigüenza); National Museum of Natural History (USNM - Christopher Milensky); University of Washington Burke Museum (UWBM - Sharon Birks); Western Foundation of Vertebrate Zoology (WFVZ - René Corado); and the Yale Peabody Museum (YPM - Kristof Zyskowski). Marguerite Poché provided assistance with the lab work.

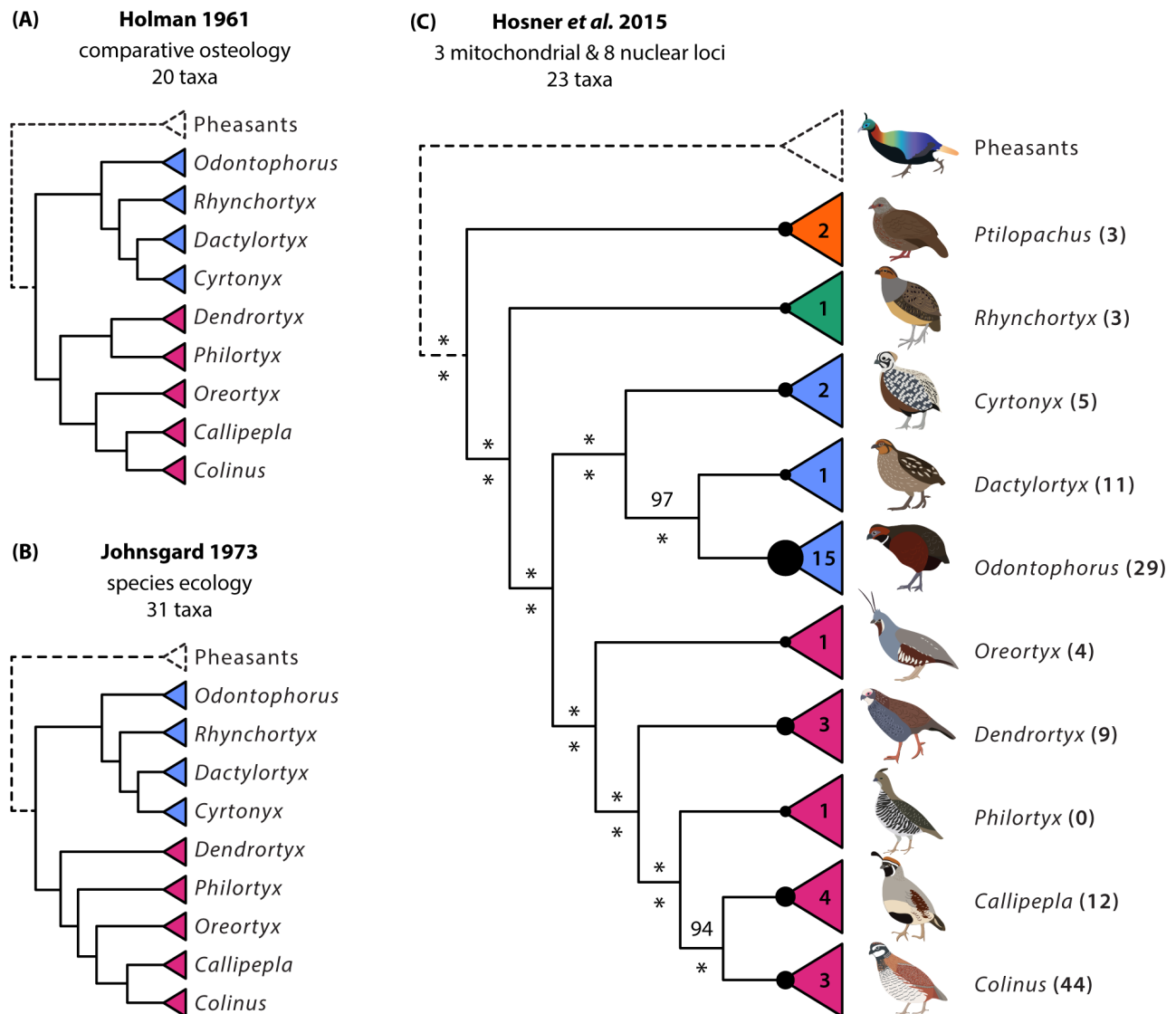
**Funding statement:** This research was supported by startup funds from LSU to B.C.F. and by National Science Foundation (NSF) DEB-1655624 to B.C.F and R.T.B. R.T.K. and E.L.B. were supported by NSF DEB-1118823 and DEB-1655683. J.F.S. was supported by a Carrie Lynn Yoder Superior Graduate Student Scholarship from the Louisiana State University Department of Biological Sciences. P.A.H. acknowledges support from Villum Fonden research grant no. 25925. Portions of this research were conducted with high performance computational resources provided by Louisiana State University (<http://www.hpc.lsu.edu>). Funders had no role in creating or approving manuscript content.

**Ethics statement:** Animal tissues used in this research were collected from museum specimens and are not subject to Institutional Animal Care and Use Committee approval.

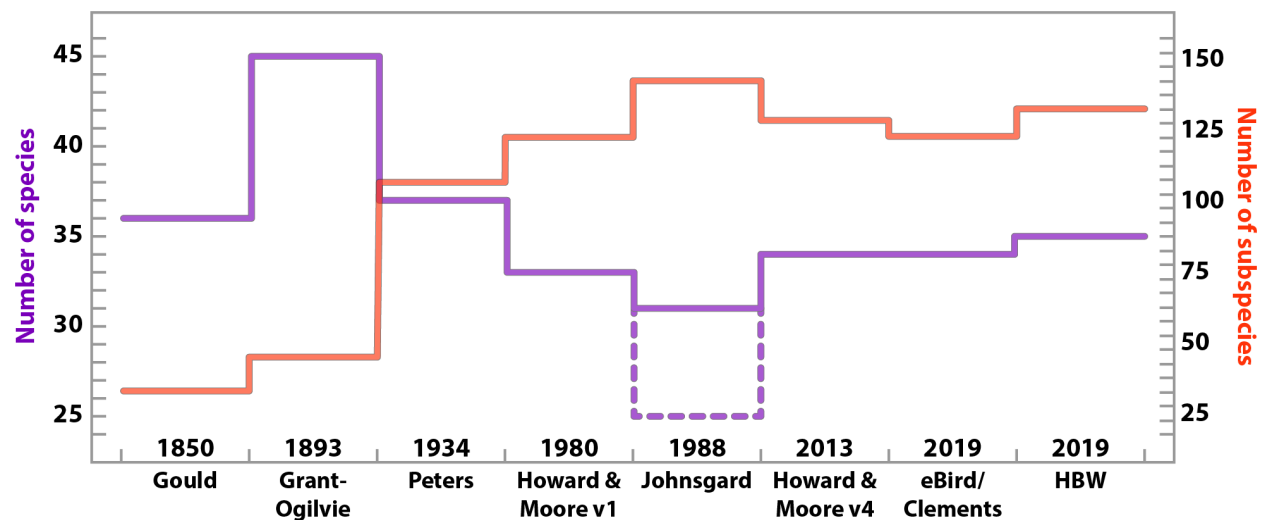
**Author contributions:** J.F.S., P.A.H., E.L.B., R.T.K. and B.C.F. designed the study. J.F.S., P.A.H., W.L.E.T., J.E.M., E.L.B., and R.T.K. contributed samples. J.F.S. collected and analyzed

the data with assistance from B.C.F. J.F.S., R.T.B., and B.C.F. wrote the paper with edits from all authors. B.C.F. and R.T.B. contributed funds and supervised the research.

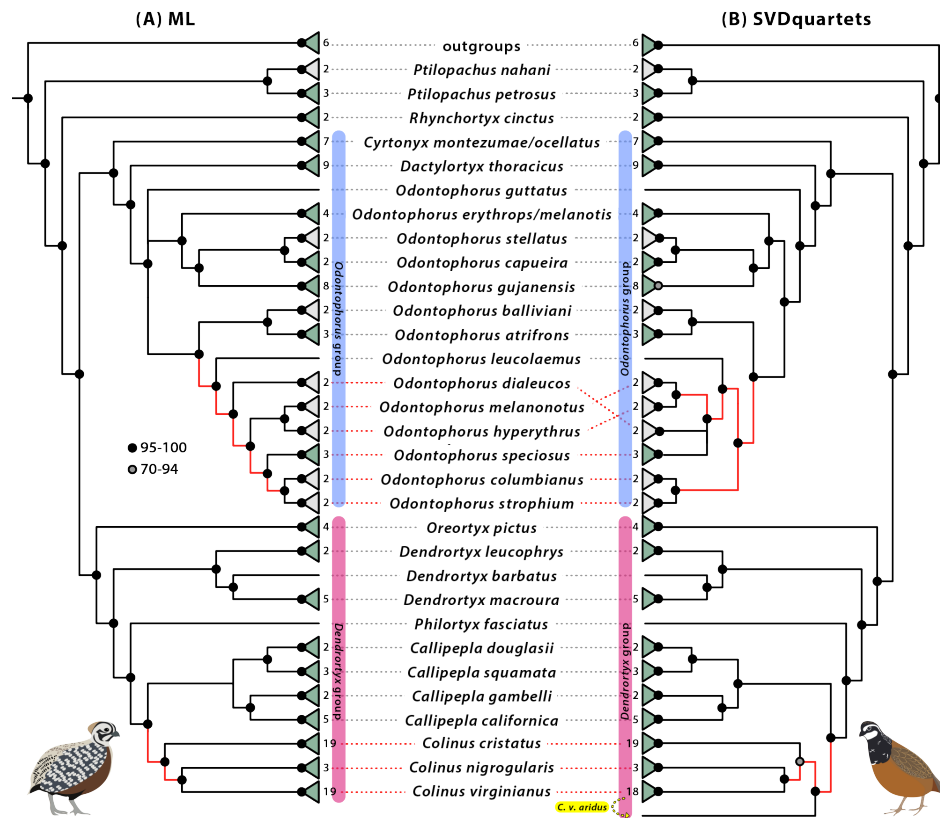
**Data availability:** Raw sequencing reads will be available from the National Center for Biotechnology Information (NCBI) Sequence Read Archive (BioProject PRJNA 777908) upon publication. The PHYLUCE computer code used in this study is available from <https://github.com/faircloth-lab/phylyce>. Other custom computer code, DNA alignments, analysis inputs, and analysis outputs will be available through Dryad upon publication.



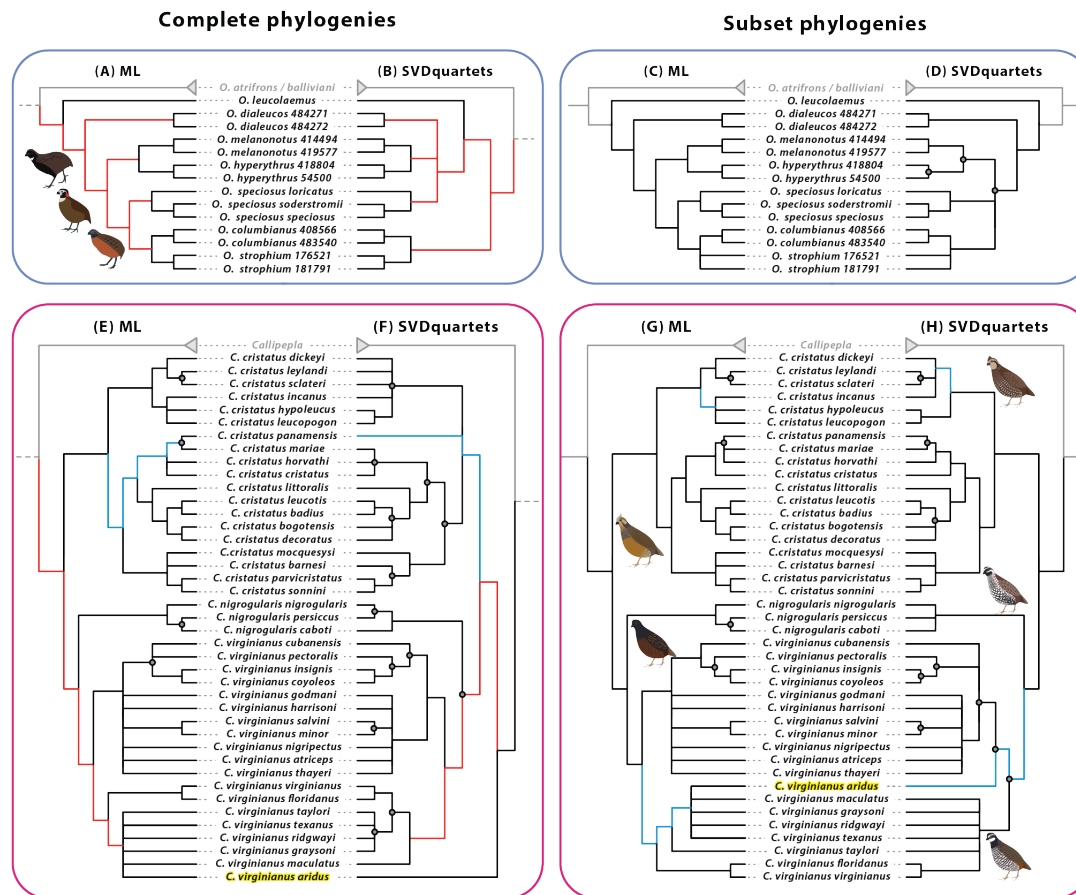
**Fig. 1.** Previous hypotheses of odontophorid relationships based on morphology, ecology, and molecular markers. *Odontophorus* group is shown in blue; *Dendrortyx* group in pink. **(A)** Holman's (1961) phyletic hypothesis based on comparative osteology. **(B)** Johnsgard's (1977) phyletic hypothesis based on species ecology. **(C)** Hosner's (2015) phylogenetic hypothesis based on molecular sequence data. Circles at the base of each genus are scaled to the number of species (shown in triangles); number of subspecies shown in parentheses after each genus. Maximum likelihood (ML) bootstrap support values shown above each node; Bayesian posterior probability shown below. Asterisks indicate 100% ML bootstrapping support / posterior probability.



**Fig. 2.** Changes in odontophorid taxonomy through time with different classification schemes (x-axis). The number of species (purple) is shown on the left axis; the number of subspecies (red) is shown on the right axis. Publication year is listed above the x-axis. Dotted line at Johnsgard (1988) shows the number of species when closely-related allopatric species are collapsed to subspecies. HBW = Handbook of the Birds of the World Alive.



**Fig. 3.** Cladogram of species-level relationships of 125 odontophorid taxa inferred with **(A)** maximum likelihood (ML) analysis and **(B)** SVDquartets analysis of 3,884 nuclear ultraconserved element loci. Gray triangles depict multiple individuals of the same monotypic species; green triangles depict collapsed subspecies relationships. Numbers next to terminal tips indicate the number taxa in collapsed group. Rounded boxes bracketing species names correspond to species groups in Fig. 1. Black circles indicate nodes with >95% bootstrap support; gray circles = 70-94% bootstrap support; branches with <70% bootstrap have been collapsed. Red branches indicate conflicting relationships; yellow highlighting and yellow arrow indicate placement of *C. v. aridus* as sister to remaining *Colinus* in the SVDquartets topology. For a subspecies-level comparison of these trees, see Supplementary Fig. S3. For branch lengths and the uncollapsed ML tree, see Supplementary Fig. S1; for the uncollapsed SVDquartets tree, see Supplementary Fig. S2.



**Fig. 4.** Cladogram of discordant subspecies-level relationships inferred with maximum likelihood (ML) analysis and SVDquartets analysis of 3,884 nuclear ultraconserved element loci within **(A-D)** *Odontophorus* and **(E-H)** *Colinus*. Left panels **(A, B, E, F)** zoom in on the relationships inferred for these clades in analyses of the complete 131 taxon dataset (Fig. 3, Supplementary Fig. S3); right panels **(C, D, G, H)** show relationships inferred using only the subset of taxa depicted. Nodes with >95% bootstrap support are unlabeled; gray circles = 70-94% bootstrap support; nodes with <70% bootstrap support have been collapsed to polytomies. Red branches indicate conflicting species relationships; blue branches indicate conflicting subspecies relationships. Note position change of *C. virginianus aridus* (highlighted in yellow) between complete and subset phylogenies. For branch lengths and the uncollapsed ML tree of all taxa, see Supplementary Fig. S1; for the uncollapsed SVDquartets tree of all taxa, see Supplementary Fig. S2.

**Table 1.** Sample information and sequencing statistics. Type refers to type of material: T = tissue; S = sequence; for toepads, the year of collection is given.

Species / subspecies	Museum / Source	Catalog No.	Type	Read Pairs	Contigs	UCEs	Avg. Locus Length	Collection Locality
<i>Anas platyrhynchos</i>	GenBank	SAMN 10245527	S	-	4,215	4,195	695	-
<i>Anseranas semipalmata</i>	GenBank	SAMN 12253809	S	-	4,099	4,081	663	-
<i>Callipepla californica achrustera</i>	UWBM	81488	T	791,079	4,440	4,416	953	Baja California Sur, Mexico
<i>Callipepla californica brunnescens</i>	LSU	B-29626	T	1,451,824	4,342	4,318	1,003	Nevada, USA
<i>Callipepla californica californica</i>	LSU	B-17959	T	1,246,781	4,395	4,369	1,007	California, USA
<i>Callipepla californica canfieldae</i>	LSU	B-34531	T	488,930	4,204	4,176	968	California, USA
<i>Callipepla californica catalinensis</i>	LACM	19812	1941	1,901,089	4,061	4,039	322	Santa Catalina Island, California, USA
<i>Callipepla douglasii bensoni</i>	LSU	B-59474	T	1,004,915	4,411	4,387	1,012	Sonora, Mexico
<i>Callipepla douglasii douglasii</i>	UWBM	81316	T	429,620	4,364	4,340	697	Sinaloa, Mexico
<i>Callipepla gambelii fulvipectus</i>	UWBM	90862	T	1,156,937	4,330	4,304	1,008	Sinaloa, Mexico
<i>Callipepla gambelii gambelii</i>	LSU	B-62399	T	1,323,662	4,424	4,397	1,024	Texas, USA
<i>Callipepla squamata castanogastris</i>	LSU	B-64166	T	1,205,069	4,432	4,408	1,057	Texas, USA



Species / subspecies	Museum / Source	Catalog No.	Type	Read Pairs	Contigs	UCEs	Avg. Locus Length	Collection Locality
<i>Callipepla squamata pallida</i>	UWBM	77730	T	249,076	4,011	3,993	780	Arizona, USA
<i>Callipepla squamata squamata</i>	KU	29970	1951	879,187	3,899	3,882	311	San Luis Potosi, Mexico
<i>Chauna torquata</i>	GenBank	SAMN 12253900	S	-	4,225	4,204	711	-
<i>Colinus cristatus badius</i>	FMNH	419219	1956	5,266,442	4,229	4,209	394	Cauca, Colombia
<i>Colinus cristatus barnesi</i>	AMNH	325203	1939	1,776,636	4,378	4,356	361	Barinas, Venezuela
<i>Colinus cristatus bogotensis</i>	FMNH	103888	1950	2,650,689	4,307	4,290	378	Cundinamarca, Colombia
<i>Colinus cristatus cristatus</i>	FMNH	414969	1941	2,931,306	4,292	4,275	336	La Guajira, Colombia
<i>Colinus cristatus decoratus</i>	WFVZ	22004	1968	2,270,955	4,258	4,234	430	Cesar, Colombia
<i>Colinus cristatus dickeyi</i>	LACM	80996	1964	2,189,662	3,970	3,950	333	Guanacaste, Costa Rica
<i>Colinus cristatus horvathi</i>	FMNH	400048	1920	1,783,542	4,175	4,158	291	Merida, Venezuela
<i>Colinus cristatus hypoleucus</i>	LSU	B-52857	T	7,580,091	4,285	4,265	482	Zacapa, Guatemala
<i>Colinus cristatus incanus</i>	AMNH	813158	1967	2,891,436	4,161	4,145	336	Guatemala
<i>Colinus cristatus leucopogon</i>	UWBM	103378	T	1,682,655	4,379	4,353	1,105	Copan, Honduras
<i>Colinus cristatus leucotis</i>	FMNH	419663	1958	3,327,168	4,286	4,269	401	Huila, Colombia
<i>Colinus cristatus leylandi</i>	FLMNH	30517	1946	1,801,942	3,692	3,679	251	Francisco Morazan, Honduras
<i>Colinus cristatus littoralis</i>	USNM	386764	1945	4,543,969	4,220	4,192	499	Magdalena, Colombia

Species / subspecies	Museum / Source	Catalog No.	Type	Read Pairs	Contigs	UCEs	Avg. Locus Length	Collection Locality
<i>Colinus cristatus mariae</i>	FMNH	400209	1913	1,548,414	4,166	4,148	300	Chiriqui, Panama
<i>Colinus cristatus mocquerysi</i>	LACM	35924	1958	3,442,312	4,041	4,023	338	Monagas, Venezuela
<i>Colinus cristatus panamensis</i>	AMNH	233102	1925	2,178,271	3,769	3,713	320	Veraguas, Panama
<i>Colinus cristatus parvicristatus</i>	FMNH	425597	1976	3,467,525	4,327	4,302	534	Meta, Colombia
<i>Colinus cristatus sclateri</i>	FMNH	371183	1970	1,405,122	4,197	4,173	329	Managua, Nicaragua
<i>Colinus cristatus sonnini</i>	FMNH	391236	T	23,331,061	4,494	4,467	901	Amapa, Brazil
<i>Colinus nigrogularis caboti</i>	FLMNH	18476	1973	3,517,697	4,252	4,227	430	Yucatan, Mexico
<i>Colinus nigrogularis nigrogularis</i>	WFVZ	21000	1969	4,618,473	4,323	4,299	528	Cayo, Belize
<i>Colinus nigrogularis persiccus</i>	KU	577	T	1,350,192	4,395	4,368	1,054	Yucatan, Mexico
<i>Colinus virginianus aridus</i>	LACM	77830	1947	1,566,793	3,451	3,396	321	Tamaulipas, Mexico
<i>Colinus virginianus atriceps</i>	MLZ	50749	1950	3,416,655	4,284	4,265	349	Guerrero, Mexico
<i>Colinus virginianus coyoleos</i>	FLMNH	30512	1953	2,470,229	4,008	3,991	274	Oaxaca, Mexico
<i>Colinus virginianus cubanensis</i>	FMNH	371181	1959	2,800,259	4,300	4,281	340	Pinar del Rio, Cuba
<i>Colinus virginianus floridanus</i>	LSU	B-48982	T	1,321,106	4,439	4,411	1,010	Florida, USA
<i>Colinus virginianus godmani</i>	AMNH	768798	1962	3,725,131	4,263	4,238	364	Oaxaca, Mexico

Species / subspecies	Museum / Source	Catalog No.	Type	Read Pairs	Contigs	UCEs	Avg. Locus Length	Collection Locality
<i>Colinus virginianus graysoni</i>	USNM	573690	1977	13,531,186	4,316	4,296	732	Nayarit, Mexico
<i>Colinus virginianus harrisoni</i>	WFVZ	16994	1965	2,530,556	4,321	4,299	386	Oaxaca, Mexico
<i>Colinus virginianus insignis</i>	FLMNH	30515	1953	3,231,160	4,150	4,135	301	Chiapas, Mexico
<i>Colinus virginianus maculatus</i>	FMNH	415417	1941	2,937,623	4,213	4,195	352	Tamaulipas, Mexico
<i>Colinus virginianus minor</i>	WFVZ	8855	1962	4,347,086	4,298	4,281	431	Chiapas, Mexico
<i>Colinus virginianus nigripectus</i>	WFVZ	7776	1959	3,201,973	4,313	4,292	413	Morelos, Mexico
<i>Colinus virginianus pectoralis</i>	KU	23722	1946	2,449,134	4,270	4,252	312	Veracruz, Mexico
<i>Colinus virginianus ridgwayi</i>	YPM	70184	1951	3,840,880	4,266	4,245	420	Sonora, Mexico
<i>Colinus virginianus salvini</i>	LACM	80966	1971	2,304,983	4,230	4,207	389	Aviary
<i>Colinus virginianus taylori</i>	LSU	B-62466	T	1,375,447	4,352	4,329	1,011	Texas, USA
<i>Colinus virginianus texanus</i>	LSU	B-54856	T	596,233	4,453	4,427	948	Texas, USA
<i>Colinus virginianus thayeri</i>	KU	45784	1964	3,094,952	4,262	4,242	417	Guerrero, Mexico
<i>Colinus virginianus virginianus</i>	GenBank	SAMN 09044008	S	-	-	4,573	1,120	Louisiana, USA
<i>Coturnix japonica</i>	FMNH	463188	T	1,080,202	4,318	4,292	884	Captive
<i>Cyrtonyx montezumae mearnsi</i>	FLMNH	45132	T	1,450,779	4,380	4,358	1,009	Arizona, USA

Species / subspecies	Museum / Source	Catalog No.	Type	Read Pairs	Contigs	UCEs	Avg. Locus Length	Collection Locality
<i>Cyrtonyx montezumae merriami</i>	AMNH	804738	1906	1,813,431	3,558	3,545	258	Veracruz, Mexico
<i>Cyrtonyx montezumae montezumae</i>	MLZ	22602	1939	3,447,980	4,177	4,162	338	Guanajuato, Mexico
<i>Cyrtonyx montezumae rowleyi</i>	WFVZ	19138	1967	4,072,474	4,330	4,306	495	Oaxaca, Mexico
<i>Cyrtonyx montezumae sallei</i>	AMNH	778476	1961	3,138,779	4,032	4,008	401	Jalisco, Mexico
<i>Cyrtonyx ocellatus</i>	FLMNH	4315	1946	2,521,812	3,934	3,919	289	Morazan, Honduras
<i>Cyrtonyx ocellatus</i>	MLZ	56792	1954	2,883,032	4,278	4,260	350	Chiapas, Mexico
<i>Dactylortyx thoracicus chiapensis</i>	FLMNH	30054	1947	2,970,682	3,864	3,853	315	Chiapas, Mexico
<i>Dactylortyx thoracicus conoveri</i>	FMNH	412668	1937	3,021,859	3,974	3,958	371	Olancho, Honduras
<i>Dactylortyx thoracicus devius</i>	WFVZ	4577	1959	3,177,198	3,995	3,969	540	Jalisco, Mexico
<i>Dactylortyx thoracicus dolichonyx</i>	MLZ	36952	1943	2,611,157	4,110	4,091	367	Chiapas, Mexico
<i>Dactylortyx thoracicus fuscus</i>	FMNH	412669	1937	3,021,895	4,167	4,150	340	Tegucigalpa, Honduras
<i>Dactylortyx thoracicus melodus</i>	MLZ	45995	1947	2,388,679	4,306	4,290	405	Guerrero, Mexico
<i>Dactylortyx thoracicus paynteri</i>	YPM	13023	1951	3,965,704	3,964	3,941	467	Quintana Roo, Mexico
<i>Dactylortyx thoracicus pettingilli</i>	MLZ	38766	1943	4,509,113	4,065	4,046	363	San Luis Potosi, Mexico

Species / subspecies	Museum / Source	Catalog No.	Type	Read Pairs	Contigs	UCEs	Avg. Locus Length	Collection Locality
<i>Dactylortyx thoracicus sharpei</i>	FMNH	215965	1951	2,687,978	3,961	3,932	434	Yucatan, Mexico
<i>Dendrortyx barbatus</i>	UNAM	24556	T	974,224	4,321	4,297	952	Mexico
<i>Dendrortyx leucophrys hypospodius</i>	WFVZ	53075	1996	5,398,898	3,370	3,345	384	San Jose, Costa Rica
<i>Dendrortyx leucophrys leucophrys</i>	MLZ	26402	1934	557,857	3,166	3,155	373	Francisco Morazan, Honduras
<i>Dendrortyx macroura diversus</i>	WFVZ	4576	1959	5,195,088	3,989	3,969	536	Jalisco, Mexico
<i>Dendrortyx macroura griseipectus</i>	MLZ	30358	1941	420,216	3,067	3,054	346	Mexico, Mexico
<i>Dendrortyx macroura inesperatus</i>	MLZ	46105	1947	500,914	3,158	3,147	404	Guerrero, Mexico
<i>Dendrortyx macroura macroura</i>	MLZ	46880	1947	767,043	3,470	3,458	424	Puebla, Mexico
<i>Dendrortyx macroura oaxacae</i>	MLZ	65301	1965	472,917	2,932	2,916	356	Oaxaca, Mexico
<i>Gallus gallus</i>	GenBank	SAMN 00000795	S	-	4,314	4,296	698	-
<i>Odontophorus atrifrons atrifrons</i>	FMNH	405057	1927	3,013,730	4,154	4,139	323	Magdalena, Colombia
<i>Odontophorus atrifrons navai</i>	USNM	372441	1942	1,692,609	4,004	3,989	277	La Guajira, Colombia
<i>Odontophorus atrifrons variegatus</i>	LACM	40827	1962	3,998,487	4,222	4,202	395	Santander, Colombia
<i>Odontophorus balliviani</i>	KU	21232	T	1,032,001	4,469	4,442	962	Puno, Peru

Species / subspecies	Museum / Source	Catalog No.	Type	Read Pairs	Contigs	UCEs	Avg. Locus Length	Collection Locality
<i>Odontophorus balliviani</i>	YPM	38340	1956	2,516,854	4,227	4,206	450	Cochabamba, Bolivia
<i>Odontophorus capueira capueira</i>	YPM	66400	1961	5,728,379	4,238	4,216	486	Misiones, Argentina
<i>Odontophorus capueira plumbeicollis</i>	FMNH	395742	T	6,929,116	4,363	4,337	984	Brazil
<i>Odontophorus columbianus</i>	FMNH	408566	1956	2,601,073	3,486	3,475	254	Carabobo, Venezuela
<i>Odontophorus columbianus</i>	USNM	483540	1955	543,405	3,299	3,242	273	Venezuela
<i>Odontophorus dileucos</i>	USNM	484271	1964	4,104,166	4,312	4,293	435	Panama
<i>Odontophorus dileucos</i>	USNM	484272	1964	4,384,715	4,291	4,270	408	Panama
<i>Odontophorus erythrops erythrops</i>	LSU	B-7868	T	1,350,803	4,435	4,412	1,040	El Oro, Ecuador
<i>Odontophorus erythrops parambae</i>	LSU	B-1412	T	1,230,732	4,440	4,416	997	Darien, Panama
<i>Odontophorus gujanensis buckleyi</i>	ANSP	186791	T	931,813	4,474	4,459	441	Sucumbios, Ecuador
<i>Odontophorus gujanensis castigatus</i>	FMNH	408884	1931	2,395,695	3,255	3,217	276	Puntarenas, Costa Rica
<i>Odontophorus gujanensis gujanensis</i>	LSU	B-35494	T	694,040	4,434	4,413	862	Mato Grosso, Brazil
<i>Odontophorus gujanensis marmoratus</i>	LACM	40594	1961	4,252,551	4,205	4,185	432	Magdalena, Colombia
<i>Odontophorus gujanensis medius</i>	AMNH	DOT-14437	T	764,410	4,466	4,447	995	Amazonas, Brazil

Species / subspecies	Museum / Source	Catalog No.	Type	Read Pairs	Contigs	UCEs	Avg. Locus Length	Collection Locality
<i>Odontophorus gujanensis pachyrhynchus</i>	LSU	B-11238	T	1,006,320	4,437	4,417	990	Ucayali, Peru
<i>Odontophorus gujanensis rufogularis</i>	LSU	B-40408	T	576,970	4,283	4,260	820	Loreto, Peru
<i>Odontophorus gujanensis simonsi</i>	LSU	B-15196	T	707,114	3,272	3,258	813	Santa Cruz, Bolivia
<i>Odontophorus guttatus</i>	FLMNH	4312	1949	2,223,632	3,983	3,973	271	Oaxaca, Mexico
<i>Odontophorus hyperythrus</i>	FMNH	418804	1951	2,520,157	4,225	4,206	336	Antioquia, Colombia
<i>Odontophorus hyperythrus</i>	YPM	54500	1957	3,895,349	4,291	4,273	423	Cauca, Colombia
<i>Odontophorus leucolaemus</i>	USNM	652312	T	998,587	4,484	4,464	981	Chiriqui, Panama
<i>Odontophorus melanonotus</i>	FMNH	414494	1940	2,685,292	4,249	4,234	356	Pinchincha, Ecuador
<i>Odontophorus melanonotus</i>	FMNH	419577	1957	3,128,562	4,184	4,170	375	Narino, Colombia
<i>Odontophorus melanotis melanotis</i>	FMNH	412694	1966	1,864,623	4,254	4,239	332	Bocas del Toro, Panama
<i>Odontophorus melanotis verecundus</i>	LSU	31069	1963	945,462	4,340	4,314	314	Olancho, Honduras
<i>Odontophorus speciosus loricatus</i>	FMNH	433045	T	879,664	4,448	4,418	948	Cuzco, Peru
<i>Odontophorus speciosus soderstromii</i>	WFVZ	42447	1987	3,230,882	3,927	3,907	564	Morona Santiago, Ecuador
<i>Odontophorus speciosus speciosus</i>	LSU	B-43621	T	902,333	3,734	3,715	822	San Martin, Peru

Species / subspecies	Museum / Source	Catalog No.	Type	Read Pairs	Contigs	UCEs	Avg. Locus Length	Collection Locality
<i>Odontophorus stellatus</i>	LSU	B-9314	T	709,643	3,149	3,133	807	Pando, Bolivia
<i>Odontophorus stellatus</i>	LSU	B-27503	T	989,421	3,564	3,547	801	Loreto, Peru
<i>Odontophorus strophium</i>	AMNH	176521	1920	2,394,953	4,178	4,161	320	Bogota, Colombia
<i>Odontophorus strophium</i>	AMNH	181791	1923	1,846,844	3,935	3,917	278	Cundinamarca, Colombia
<i>Oreortyx pictus confinis</i>	LSU	B-59654	T	1,130,780	3,944	3,926	773	Baja California, Mexico
<i>Oreortyx pictus pictus</i>	UWBM	66924	T	757,813	4,451	4,429	950	Washington, USA
<i>Oreortyx pictus plumifer</i>	UWBM	86733	T	824,244	4,465	4,440	1,010	California, USA
<i>Oreortyx pictus russellii</i>	LSU	B-6421	T	732,203	3,303	3,286	837	California, USA
<i>Oxyura jamaicensis</i>	GenBank	SAMN 04270837	S	-	4,274	4,250	656	-
<i>Philortyx fasciatus</i>	UNAM	27429	T	793,648	4,495	4,470	986	Mexico
<i>Ptilopachus nahani</i>	LACM	67857	1967	3,917,333	4,206	4,188	398	Western Region, Uganda
<i>Ptilopachus nahani</i>	LACM	75763	1970	5,225,360	4,164	4,141	472	Western Region, Uganda
<i>Ptilopachus petrosus brehmi</i>	LACM	41663	1960	7,239,213	3,982	3,960	390	Moyen-Chari, Chad
<i>Ptilopachus petrosus florentiae</i>	LACM	80630	1965	6,430,092	4,276	4,256	438	Rift Valley, Kenya
<i>Ptilopachus petrosus major</i>	FMNH	68965	1927	5,120,149	3,872	3,847	323	Gojjam, Ethiopia
<i>Rhynchortyx cinctus australis</i>	LSU	B-29992	T	546,267	2,723	2,707	792	Esmeraldas, Ecuador
<i>Rhynchortyx cinctus cinctus</i>	LSU	B-1389	T	1,145,554	3,907	3,890	834	Darien, Panama



**Table 2.** Summary statistics of sequencing output by sample type. Values represent mean  $\pm$  95% confidence interval. Toepads were collected between 1906-1996.

Sample type	No. of samples	Avg. clean read pairs	Avg. contigs	Avg. UCE loci	Avg. contig length (bp)	Avg. collection year
Tissues	42	1,802,937 $\pm$ 1,111,737	4,212 $\pm$ 127	4,190 $\pm$ 127	912 $\pm$ 42	-
Toepads	83	3,099,816 $\pm$ 385,186	4,043 $\pm$ 336	4,023 $\pm$ 73	378 $\pm$ 18	1954 $\pm$ 3
Sequences	6	-	4,225 $\pm$ 71	4,267 $\pm$ 133	757 $\pm$ 143	-

## References

- Aldrich, J.W., 1946. The United States Races of the Bob-White. *Auk* 63, 493–508.
- Aldrich, J.W., 1942. New Bobwhite from Northeastern Mexico. *Proceedings of the Biological Society of Washington* 55, 67–70.
- Bankevich, A., Nurk, S., Antipov, D., Gurevich, A.A., Dvorkin, M., Kulikov, A.S., Lesin, V.M., Nikolenko, S.I., Pham, S., Prjibelski, A.D., Pyshkin, A.V., Sirotkin, A.V., Vyahhi, N., Tesler, G., Alekseyev, M.A., Pevzner, P.A., 2012. SPAdes: a new genome assembly algorithm and its applications to single-cell sequencing. *J. Comput. Biol.* 19, 455–477.
- Bi, K., Linderroth, T., Vanderpool, D., Good, J.M., Nielsen, R., Moritz, C., 2013. Unlocking the vault: next-generation museum population genomics. *Mol. Ecol.* 22, 6018–6032.
- Bolger, A.M., Lohse, M., Usadel, B., 2014. Trimmomatic: a flexible trimmer for Illumina sequence data. *Bioinformatics* 30, 2114–2120.
- Brennan, L.A., Hernandez, F., Williford, D., 2020. Northern Bobwhite (*Colinus virginianus*). *Birds of the World*.
- Brewer, D., 2020. Golden Grosbeak (*Pheucticus chrysogaster*), in: del Hoyo, J., Elliott, A., Sargatal, J., Christie, D.A., de Juana, E. (Eds.), *Birds of the World*. Cornell Laboratory of Ornithology, Ithaca, NY, USA. <https://doi.org/10.2173/bow.gobgro1.01>
- Burleigh, J.G., Kimball, R.T., Braun, E.L., 2015. Building the avian tree of life using a large-scale, sparse supermatrix. *Mol. Phylogenet. Evol.* 84, 53–63.
- Capella-Gutiérrez, S., Silla-Martínez, J.M., Gabaldón, T., 2009. trimAl: a tool for automated alignment trimming in large-scale phylogenetic analyses. *Bioinformatics* 25, 1972–1973.
- Carroll, J.P., 2019. New World Quails (Odontophoridae), in: Hoyo, J., Elliott, A., Sargatal, J., Christie, D.A., Juana, D., E. (Eds.), *Handbook of the Birds of the World Alive*. Lynx Edicions, Barcelona.
- Carroll, J.P., 1994. Family Odontophoridae (New World Quails), in: Elliott, A., Sargatal, J. (Eds.),

- Handbook of the Birds of the World. Lynx Edicions, Barcelona, pp. 412–433.
- Chifman, J., Kubatko, L., 2014. Quartet inference from SNP data under the coalescent model. *Bioinformatics* 30, 3317–3324.
- Clements, J.F., Schulenberg, T.S., Iliff, M.J., Roberson, D., Fredericks, T.A., Sullivan, B.L., Wood, C.L., 2019. The eBird/Clements checklist of birds of the world: v2019.
- Cohen, C., Wakeling, J.L., Mandiwana-Neudani, T.G., Sande, E., Dranzoa, C., Crowe, T.M., Bowie, R.C.K., 2012. Phylogenetic affinities of evolutionarily enigmatic African galliforms: the Stone Partridge *Ptilopachus petrosus* and Nahan's Francolin *Francolinus nahan*, and support for their sister relationship with New World quails. *Ibis* 154, 768–780.
- Cox, W.A., Kimball, R.T., Braun, E.L., Klicka, J., 2007. Phylogenetic position of the New World quail (Odontophoridae): eight nuclear loci and three mitochondrial regions contradict morphology and the Sibley-Ahlquist tapestry. *Auk* 124, 71–84.
- Crowe, T.M., Bowie, R.C.K., Bloomer, P., Mandiwana, T.G., Hedderson, T.A.J., Randi, E., Pereira, S.L., Wakeling, J., 2006. Phylogenetics, biogeography and classification of, and character evolution in, gamebirds (Aves: Galliformes): effects of character exclusion, data partitioning and missing data. *Cladistics* 22, 495–532.
- Derkarabetian, S., Benavides, L.R., Giribet, G., 2019. Sequence capture phylogenomics of historical ethanol-preserved museum specimens: Unlocking the rest of the vault. *Mol. Ecol. Resour.* 19, 1531–1544.
- Dickinson, E.C., Remsen, J.V., Jr. (Eds.), 2013. The Howard & Moore Complete Checklist of the Birds of the World, 4th ed. Aves Press, Eastbourne, U.K.
- Ellsworth, D.L., Roseberry, J.L., Klimstra, W.D., 1989. Genetic Structure and Gene Flow in the Northern Bobwhite. *Auk* 106, 492–495.
- Eo, S.H., Wares, J.P., Carroll, J.P., 2009. Subspecies and units for conservation and management of the northern bobwhite in the eastern United States. *Conservation Genetics* 11, 867–875.

- Evans, K.O., Smith, M.D., Burger, L.W., Chambers, R.J., Houston, A.E., Carlisle, R., 2009. Release of Pen-reared Bobwhites: Potential Consequences to the Genetic Integrity of Resident Wild Populations, in: National Quail Symposium Proceedings.
- Faircloth, B.C., 2018. iter. Github.
- Faircloth, B.C., 2016. PHYLUCE is a software package for the analysis of conserved genomic loci. *Bioinformatics* 32, 786–788.
- Faircloth, B.C., 2015. PHYLUCE Tutorial III: Harvesting UCE Loci From Genomes.
- Faircloth, B.C., 2013. Illumiprocessor: a trimmomatic wrapper for parallel adapter and quality trimming. <https://doi.org/10.6079/J9ILL>
- Faircloth, B.C., Branstetter, M.G., White, N.D., Brady, S.G., 2015. Target enrichment of ultraconserved elements from arthropods provides a genomic perspective on relationships among Hymenoptera. *Mol. Ecol. Resour.* 15, 489–501.
- Faircloth, B.C., McCormack, J.E., Crawford, N.G., Harvey, M.G., Brumfield, R.T., Glenn, T.C., 2012. Ultraconserved elements anchor thousands of genetic markers spanning multiple evolutionary timescales. *Syst. Biol.* 61, 717–726.
- Faircloth, B., Glenn, T., McCormack, J., Harvey, M., Sorenson, L., Alfaro, M., White, N., S I 2012
- Seqcap, Biosciences, M./ A., Salter, J., Oliveros, C., 2018. UCE Enrichment. Louisiana State University.
- Glenn, T.C., Nilsen, R.A., Kieran, T.J., Sanders, J.G., Bayona-Vásquez, N.J., Finger, J.W., Pierson, T.W., Bentley, K.E., Hoffberg, S.L., Louha, S., Garcia-De Leon, F.J., Del Rio Portilla, M.A., Reed, K.D., Anderson, J.L., Meece, J.K., Aggrey, S.E., Rekaya, R., Alabady, M., Belanger, M., Winker, K., Faircloth, B.C., 2019. Adapterama I: universal stubs and primers for 384 unique dual-indexed or 147,456 combinatorially-indexed Illumina libraries (iTru & iNext). *PeerJ* 7, e7755.
- Guthery, F.S., 1997. A philosophy of habitat management for northern bobwhites. *J. Wildl. Manage.* 61, 291–301.

- Gutiérrez, R.J., Zink, R.M., Yang, S.Y., 1983. Genic Variation, Systematic, and Biogeographic Relationships of Some Galliform Birds. *Auk* 100, 33–47.
- Hackett, S.J., Kimball, R.T., Reddy, S., Bowie, R.C.K., Braun, E.L., Braun, M.J., Chojnowski, J.L., Cox, W.A., Han, K.-L., Harshman, J., Huddleston, C.J., Marks, B.D., Miglia, K.J., Moore, W.S., Sheldon, F.H., Steadman, D.W., Witt, C.C., Yuri, T., 2008. A phylogenomic study of birds reveals their evolutionary history. *Science* 320, 1763–1768.
- Hall, L.M., Willcox, M.S., Jones, D.S., 1997. Association of enzyme inhibition with methods of museum skin preparation. *Biotechniques* 22, 928–30, 932–4.
- Harvey, M.G., Bravo, G.A., Claramunt, S., Cuervo, A.M., Derryberry, G.E., Battilana, J., Seeholzer, G.F., McKay, J.S., O'Meara, B.C., Faircloth, B.C., Edwards, S.V., Pérez-Emán, J., Moyle, R.G., Sheldon, F.H., Aleixo, A., Smith, B.T., Chesser, R.T., Silveira, L.F., Cracraft, J., Brumfield, R.T., Derryberry, E.P., 2020. The evolution of a tropical biodiversity hotspot. *Science* 370, 1343–1348.
- Harvey, M.G., Smith, B.T., Glenn, T.C., Faircloth, B.C., Brumfield, R.T., 2016. Sequence Capture versus Restriction Site Associated DNA Sequencing for Shallow Systematics. *Syst. Biol.* 65, 910–924.
- Hillis, D.M., Bull, J.J., 1993. An Empirical Test of Bootstrapping as a Method for Assessing Confidence in Phylogenetic Analysis. *Syst. Biol.* 42, 182–192.
- Holman, J.A., 1961. Osteology of living and fossil New World quails (Aves, Galliformes). University of Florida.
- Hosner, P.A., Braun, E.L., Kimball, R.T., 2015. Land connectivity changes and global cooling shaped the colonization history and diversification of New World quail (Aves: Galliformes: Odontophoridae). *J. Biogeogr.* 42, 1883–1895.
- Hosner, P.A., Faircloth, B.C., Glenn, T.C., Braun, E.L., Kimball, R.T., 2016. Avoiding Missing Data Biases in Phylogenomic Inference: An Empirical Study in the Landfowl (Aves: Galliformes). *Mol. Biol. Evol.* 33, 1110–1125.

IUCN, 2020. The IUCN Red List of Threatened Species.

Johnsgard, P.A., 1988. Quails, Partridges, and Francolins of the World. Oxford University Press.

Johnsgard, P.A., 1973. Grouse and quails of North America. University of Nebraska.

Johnson, M., Zaretskaya, I., Raytselis, Y., Merezuk, Y., McGinnis, S., Madden, T.L., 2008. NCBI BLAST: a better web interface. *Nucleic Acids Res.* 36, W5–9.

Katoh, K., Standley, D.M., 2013. MAFFT multiple sequence alignment software version 7: improvements in performance and usability. *Mol. Biol. Evol.* 30, 772–780.

Kimball, R.T., Braun, E.L., 2014. Does more sequence data improve estimates of galliform phylogeny? Analyses of a rapid radiation using a complete data matrix. *PeerJ* 2, e361.

Kozlov, A.M., Darriba, D., Flouri, T., Morel, B., Stamatakis, A., 2019. RAXML-NG: a fast, scalable and user-friendly tool for maximum likelihood phylogenetic inference. *Bioinformatics* 35, 4453–4455.

Li, H., 2012. seqtk. Github.

Li, H., Durbin, R., 2009. Fast and accurate short read alignment with Burrows-Wheeler transform. *Bioinformatics* 25, 1754–1760.

Marshall, C.J., Lieberr, J.K., 2000. Cladistic biogeography of the Mexican transition zone. *J. Biogeogr.* 27, 203–216.

Mayr, E., 1982. Of What Use Are Subspecies? *Auk* 99, 593–595.

McCormack, J.E., Maley, J.M., Hird, S.M., Derryberry, E.P., Graves, G.R., Brumfield, R.T., 2012. Next-generation sequencing reveals phylogeographic structure and a species tree for recent bird divergences. *Molecular Phylogenetics and Evolution* 62, 397–406.

McCormack, J.E., Rodriguez-Gomez, F., Tsai, W.L.E., Faircloth, B.C., 2017. Turning older museum specimens into genomic resources with next-generation sequencing, in: Webster, M.S. (Ed.), *The Extended Specimen: Emerging Frontiers in Collections-Based Ornithological Research*. University of California Press, Oakland, CA.

McCormack, J.E., Tsai, W.L.E., Faircloth, B.C., 2015. Sequence capture of ultraconserved

elements from bird museum specimens. *Mol. Ecol. Resour.* <https://doi.org/10.1111/1755-0998.12466>

Morrone, J.J., 2010. Fundamental biogeographic patterns across the Mexican Transition Zone: an evolutionary approach. *Ecography* 33, 355–361.

Moyle, R.G., Oliveros, C.H., Andersen, M.J., Hosner, P.A., Benz, B.W., Manthey, J.D., Travers, S.L., Brown, R.M., Faircloth, B.C., 2016. Tectonic collision and uplift of Wallacea triggered the global songbird radiation. *Nat. Commun.* 7, 12709.

Ogilvie-Grant, W.R., 1893. Catalogue of the Game Birds (Pterocletes, Gallinae, Opisthocomi, Hemipodii) in the collection of the British Museum, in: *Catalogue of the Birds in the British Museum*. British Museum (Natural History), London.

Ogilvie-Grant, W.R., 1896. A hand-book to the game-birds. Lloyds Natural History, London.

Oliveros, C.H., 2015. Phylogenomics of rapid avian radiations (Doctor of Philosophy). University of Kansas.

Oliveros, C.H., Field, D.J., Ksepka, D.T., Barker, F.K., Aleixo, A., Andersen, M.J., Alström, P., Benz, B.W., Braun, E.L., Braun, M.J., Bravo, G.A., Brumfield, R.T., Chesser, R.T., Claramunt, S., Cracraft, J., Cuervo, A.M., Derryberry, E.P., Glenn, T.C., Harvey, M.G., Hosner, P.A., Joseph, L., Kimball, R.T., Mack, A.L., Miskelly, C.M., Peterson, A.T., Robbins, M.B., Sheldon, F.H., Silveira, L.F., Smith, B.T., White, N.D., Moyle, R.G., Faircloth, B.C., 2019. Earth history and the passerine superradiation. *Proc. Natl. Acad. Sci. U. S. A.* 116, 7916–7925.

Phillimore, A.B., Owens, I.P.F., 2006. Are subspecies useful in evolutionary and conservation biology? *Proc. Biol. Sci.* 273, 1049–1053.

Reddy, S., Kimball, R.T., Pandey, A., Hosner, P.A., Braun, M.J., Hackett, S.J., Han, K.-L., Harshman, J., Huddleston, C.J., Kingston, S., Marks, B.D., Miglia, K.J., Moore, W.S., Sheldon, F.H., Witt, C.C., Yuri, T., Braun, E.L., 2017. Why Do Phylogenomic Data Sets Yield Conflicting Trees? Data Type Influences the Avian Tree of Life more than Taxon Sampling. *Syst. Biol.* 66, 857–879.

- Ruane, S., Austin, C.C., 2017. Phylogenomics using formalin-fixed and 100+ year-old intractable natural history specimens. *Mol. Ecol. Resour.* 17, 1003–1008.
- Salter, J.F., Oliveros, C.H., Hosner, P.A., Manthey, J.D., 2020. Extensive paraphyly in the typical owl family (Strigidae). *Auk* 137, ukz070.
- Sayyari, E., Whitfield, J.B., Mirarab, S., 2017. Fragmentary Gene Sequences Negatively Impact Gene Tree and Species Tree Reconstruction. *Mol. Biol. Evol.* 34, 3279–3291.
- Schulenberg, T.S., Kirwan, G.M., 2020. Red-rumped Bush-Tyrant (*Cnemarchus erythropygius*), in: Hoyo, J., Elliott, A., Sargatal, J., Christie, D.A., de Juana, E. (Eds.), *Birds of the World*. Cornell Laboratory of Ornithology, Ithaca, NY, USA. <https://doi.org/10.2173/bow.rrbtyr1.01>
- Sibley, C.G., Ahlquist, J.E., 1986. Phylogeny of non-passerine birds, based on DNA comparisons.
- Sibley, C.G., Ahlquist, J.E., 1985. The relationships of some groups of African birds, based on comparisons of the genetic material, DNA, in: Schuchmann, K.-L. (Ed.), *Proceedings of the International Symposium on African Vertebrates*. Zoolische Forschung und Museum Alexander Koenig, Bonn.
- Silva, S.M., Peterson, A.T., Carneiro, L., Burlamaqui, T.C.T., Ribas, C.C., Sousa-Neves, T., Miranda, L.S., Fernandes, A.M., d'Horta, F.M., Araújo-Silva, L.E., Batista, R., Bandeira, C.H.M.M., Dantas, S.M., Ferreira, M., Martins, D.M., Oliveira, J., Rocha, T.C., Sardelli, C.H., Thom, G., Rêgo, P.S., Santos, M.P., Sequeira, F., Vallinoto, M., Aleixo, A., 2019. A dynamic continental moisture gradient drove Amazonian bird diversification. *Sci Adv* 5, eaat5752.
- Smith, B.T., Harvey, M.G., Faircloth, B.C., Glenn, T.C., Brumfield, R.T., 2014. Target capture and massively parallel sequencing of ultraconserved elements for comparative studies at shallow evolutionary time scales. *Syst. Biol.* 63, 83–95.
- Smith, B.T., Mauck, W.M., Benz, B.W., Andersen, M.J., 2020. Uneven Missing Data Skew Phylogenomic Relationships within the Lories and Lorikeets. *Genome Biol. Evol.* 12, 1131–1147.
- Swanson, M.T., Oliveros, C.H., Esselstyn, J.A., 2019. A phylogenomic rodent tree reveals the



- repeated evolution of masseter architectures. *Proc. Biol. Sci.* 286, 20190672.
- Swofford, D.L., 2002. PAUP\*. Phylogenetic Analysis Using Parsimony (\*and Other Methods). Sinauer Associates, Sunderland, Massachusetts.
- Tsai, W.L.E., Mota-Vargas, C., Rojas-Soto, O., Bhowmik, R., Liang, E.Y., Maley, J.M., Zarza, E., McCormack, J.E., 2019a. Museum genomics reveals the speciation history of *Dendrortyx* wood-partridges in the Mesoamerican highlands. *Mol. Phylogenet. Evol.* 136, 29–34.
- Tsai, W.L.E., Schedl, M.E., Maley, J.M., McCormack, J.E., 2019b. More than skin and bones: comparing extraction methods and alternative sources of DNA from avian museum specimens. *Mol. Ecol. Resour.* <https://doi.org/10.1111/1755-0998.13077>
- Verheyen, R., 1956. Contribution à l'anatomie et à la systématique des Galliformes. *Bulletin de l'Institut Royal des Sciences Naturelles de Belgique* 32, 1–24.
- Wandeler, P., Hoeck, P.E.A., Keller, L.F., 2007. Back to the future: museum specimens in population genetics. *Trends Ecol. Evol.* 22, 634–642.
- Wang, N., Kimball, R.T., Braun, E.L., Liang, B., Zhang, Z., 2013. Assessing phylogenetic relationships among galliformes: a multigene phylogeny with expanded taxon sampling in Phasianidae. *PLoS One* 8, e64312.
- Whitt, J.G., Johnson, J.A., Reyna, K.S., 2017. Two centuries of human-mediated gene flow in northern bobwhites. *Wildl. Soc. Bull.* 41, 639–648.
- Williford, D., Deyoung, R.W., Honeycutt, R.L., Brennan, L.A., Hernández, F., 2016. Phylogeography of the bobwhite (*Colinus*) quails. *Wildlife Monographs* 193, 1–49.
- Williford, D., Deyoung, R.W., Honeycutt, R.L., Brennan, L.A., Wehland, H.F., M, E., Sands, J.P., Demaso, S.J., Miller, K.S., Perez, R.M., 2014. Contemporary genetic structure of the northern bobwhite west of the Mississippi River. *J. Wildl. Manag.* 78, 914–929.
- Zarza, E., Faircloth, B.C., Tsai, W.L.E., Bryson, R.W., Klicka, J., McCormack, J.E., 2016. Hidden histories of gene flow in highland birds revealed with genomic markers. *Mol. Ecol.* 25, 5144–5157.

Zink, R.M., Blackwell, R.C., 1998. Molecular Systematics of the Scaled Quail Complex (Genus *Callipepla*). *Auk* 115, 394–403.