

Mapping Protein Dynamics at High-Resolution with Temperature-Jump X-ray Crystallography

Alexander M. Wolff¹, Eriko Nango^{2,3#}, Iris D. Young^{4,5}, Aaron S. Brewster⁵, Minoru Kubo^{2,6}, Takashi Nomura^{2,6}, Michihiro Sugahara², Shigeki Owada^{2,17}, Benjamin A. Barad^{4†}, Kazutaka Ito⁷, Asmit Bhowmick⁵, Sergio Carbajo^{8,9}, Tomoya Hino^{10,11}, James M. Holton^{5,12,13}, Dohyun Im¹⁴, Lee J. O’Riordan⁵, Tomoyuki Tanaka^{2,14}, Rie Tanaka^{2,14}, Raymond G. Sierra⁸, Fumiaki Yumoto^{16^}, Kensuke Tono^{2,15}, So Iwata^{2,14}, Nicholas K. Sauter⁵, James S. Fraser⁴, Michael C. Thompson^{1#}

1. Department of Chemistry and Biochemistry, University of California, Merced, Merced, CA, USA
 2. RIKEN SPring-8 Center, 1-1-1 Kouto, Sayo-cho, Sayo-gun, Hyogo, 679-5148, Japan
 3. Institute of Multidisciplinary Research for Advanced Materials, Tohoku University, Aoba-ku, Sendai 980-8577, Japan
 4. Department of Bioengineering and Therapeutic Sciences, University of California, San Francisco, San Francisco, CA, USA
 5. Molecular Biophysics and Integrated Bioimaging Division, Lawrence Berkeley National Laboratory, Berkeley, CA, USA
 6. Department of Life Science, Graduate School of Science, University of Hyogo, Hyogo 678-1297, Japan
 7. Laboratory for Drug Discovery, Pharmaceuticals Research Center, Asahi Kasei Pharma Corporation, 632-1 Mifuku, Izunokuni-shi, Shizuoka 410-2321, Japan.
 8. Linac Coherent Light Source, SLAC National Accelerator Laboratory, Menlo Park, CA, USA.
 9. Department of Electrical and Computer Engineering, University of California, Los Angeles, Los Angeles, CA, USA.
 10. Department of Chemistry and Biotechnology, Graduate School of Engineering, Tottori University, 4-101, Koyama-cho Minami, Tottori 680-8552, Japan
 11. Center for Research on Green Sustainable Chemistry, Tottori University, Tottori, Japan
 12. Department of Biochemistry and Biophysics, University of California San Francisco, CA, USA
 13. SSRL, SLAC National Accelerator Laboratory, Menlo Park, CA, USA
 14. Department of Cell Biology, Graduate School of Medicine, Kyoto University, Yoshidakonoe-cho, Sakyo-ku, Kyoto 606-8501, Japan
 15. Japan Synchrotron Radiation Research Institute, 1-1-1 Kouto, Sayo, Hyogo 679-5198, Japan
 16. Structural Biology Research Center, Institute of Materials Structure Science, KEK/High Energy Accelerator Research Organization, Tsukuba, Ibaraki 305-0034, Japan
- †Present address: Department of Integrative Structural and Computational Biology, Scripps Research, San Diego, CA, USA
^Present address: Ginward Japan K.K., Tokyo, Japan

- correspondence: eriko.nango.c4@tohoku.ac.jp, mthompson30@ucmerced.edu

Abstract

Understanding and controlling protein motion at atomic resolution is a hallmark challenge for structural biologists and protein engineers because conformational dynamics are essential for complex functions such as enzyme catalysis and allosteric regulation. Time-resolved crystallography offers a window into protein motions, yet without a universal perturbation to trigger conformational changes the method has been limited in scope. Here we couple a solvent-based temperature jump with time-resolved crystallography to visualize structural motions in lysozyme, a dynamic enzyme. We observed widespread atomic vibrations on the nanosecond timescale, which evolve on the sub-millisecond timescale into localized structural fluctuations that are coupled to the active site. An orthogonal perturbation to the enzyme, inhibitor binding, altered these dynamics by blocking key motions that allow energy to dissipate from vibrations into functional movements linked to the catalytic cycle. Because temperature-jump is a universal method for perturbing molecular motion, the method demonstrated here is broadly applicable for studying protein dynamics.

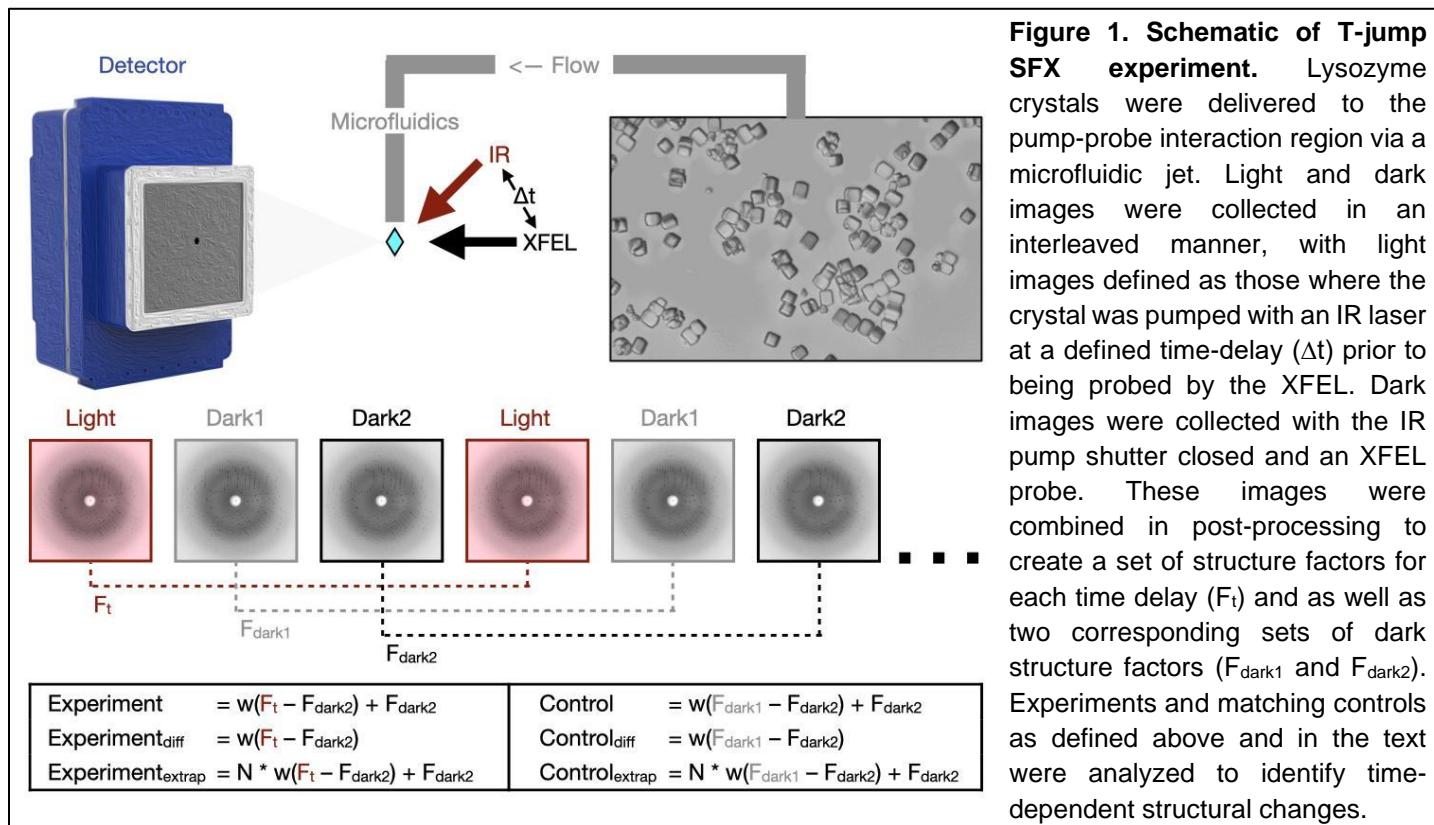
Main

Conformational dynamics drive ubiquitous protein functions, such as enzyme catalysis, signal transduction, and allosteric regulation¹. The study of protein motions is critical to our mechanistic understanding of these fundamental biological phenomena, and the ability to rationally control protein motions is a frontier for protein engineers who seek to design biomolecules with increasingly complex functions. Nevertheless, accurately modeling protein motions with atomic resolution remains a longstanding challenge for the field of structural biology². This challenge arises because data from imaging techniques such as X-ray crystallography and cryoEM are inherently ensemble-averaged over space and time³. Thus, information about spatiotemporal coupling between observed alternate conformations is lost, and intermediate states that are only transiently populated at equilibrium remain invisible. For this reason, high-resolution structural information is often combined with spectroscopic measurements. Despite the power of such integrative approaches, it can be difficult to correlate spectroscopic observables with specific features of molecular structures. Time-resolved X-ray crystallography (TRX) overcomes these challenges by obtaining high-resolution information in both the spatial and temporal domains⁴⁻⁶. In this pump-probe technique, a rapid perturbation drives molecules out of conformational equilibrium, then structural snapshots are captured as the ensemble relaxes to a new equilibrium. By sampling a series of pump-probe time delays, kinetic couplings between conformers and transiently-populated structural states can be observed.

TRX experiments were pioneered on photoactive proteins⁶⁻⁸ and have become more readily accessible with the advent of X-ray free-electron lasers (XFELs), brighter synchrotrons, and serial crystallography⁹⁻¹¹. The scope of TRX has broadened further still through the use of photocaged ligands¹², rapid mix-and-inject experiments¹³, and electric-field-based perturbations⁵. Still, it remains challenging to excite a protein's intrinsic dynamics in a generalizable manner for time-resolved structural studies. While many perturbations are tailored to the protein of interest, protein dynamics are universally coupled to thermal fluctuations of the surrounding solvent¹⁴. Recent multi-temperature-crystallography experiments demonstrated that modifying temperature allows one to tune the conformational ensemble sampled at equilibrium, paving the way for temperature-jump TRX experiments^{15,16}. Infrared laser-induced temperature jumps (T-jump) are routinely used to study protein folding and enzyme dynamics¹⁷⁻¹⁹. In such experiments, a mid-IR laser excites the O-H stretching mode of water molecules, resulting in rapid heating of the sample. Both solvent heating²⁰ and heat transfer through the protein²¹ happen on faster timescales than most functional protein motions, removing the conformational ensemble from thermal equilibrium. Previously, T-jump was coupled to small-angle X-ray scattering (SAXS) to perform time-resolved measurements of structural dynamics^{22,23}. Infrared laser pulses have also been used to study thermal denaturation of an enzyme *in crystallo*, but prior work lacked rigorous time-resolved measurements of the motions induced by rapid heating²⁴.

Here, we present the first time-resolved temperature-jump serial femtosecond crystallography (SFX) experiments on the model system, lysozyme, demonstrating that T-jumps are an effective perturbation for measuring protein conformational dynamics. We used a nanosecond pulsed laser tuned to the mid-IR region of the electromagnetic spectrum to heat the bulk solvent within and around lysozyme microcrystals. These microcrystals were delivered to the pump-probe interaction region using a free-flowing microfluidic stream and were subsequently probed using ultrafast, high-intensity X-ray free-electron laser (XFEL) pulses (**Figure 1**). We detected the introduction of a T-jump directly from singular value decomposition (SVD) of the isotropic diffuse scattering present in diffraction images, and using a repertoire of real space analysis tools including weighted difference electron density maps²⁵ and structure refinement against extrapolated structure factors^{26,27}, we revealed that the rapid heating of the crystals excites the intrinsic dynamics of crystallized lysozyme molecules. At short pump-probe time delays (20 ns), we observe the signatures of widespread atomic vibrations, which dissipate to reveal coordinated motions in functionally-relevant regions of the enzyme structure at longer pump-probe time delays (20-200 μ s). Our observations are consistent with prior work to elucidate the role of

conformational dynamics in lysozyme's function. Furthermore, T-jump TRX allowed us to directly visualize the effect of an inhibitor on the catalytic motions of the enzyme. This work opens the door for future T-jump TRX experiments on diverse protein systems, leveraging the innate connection between temperature and macromolecular dynamics.



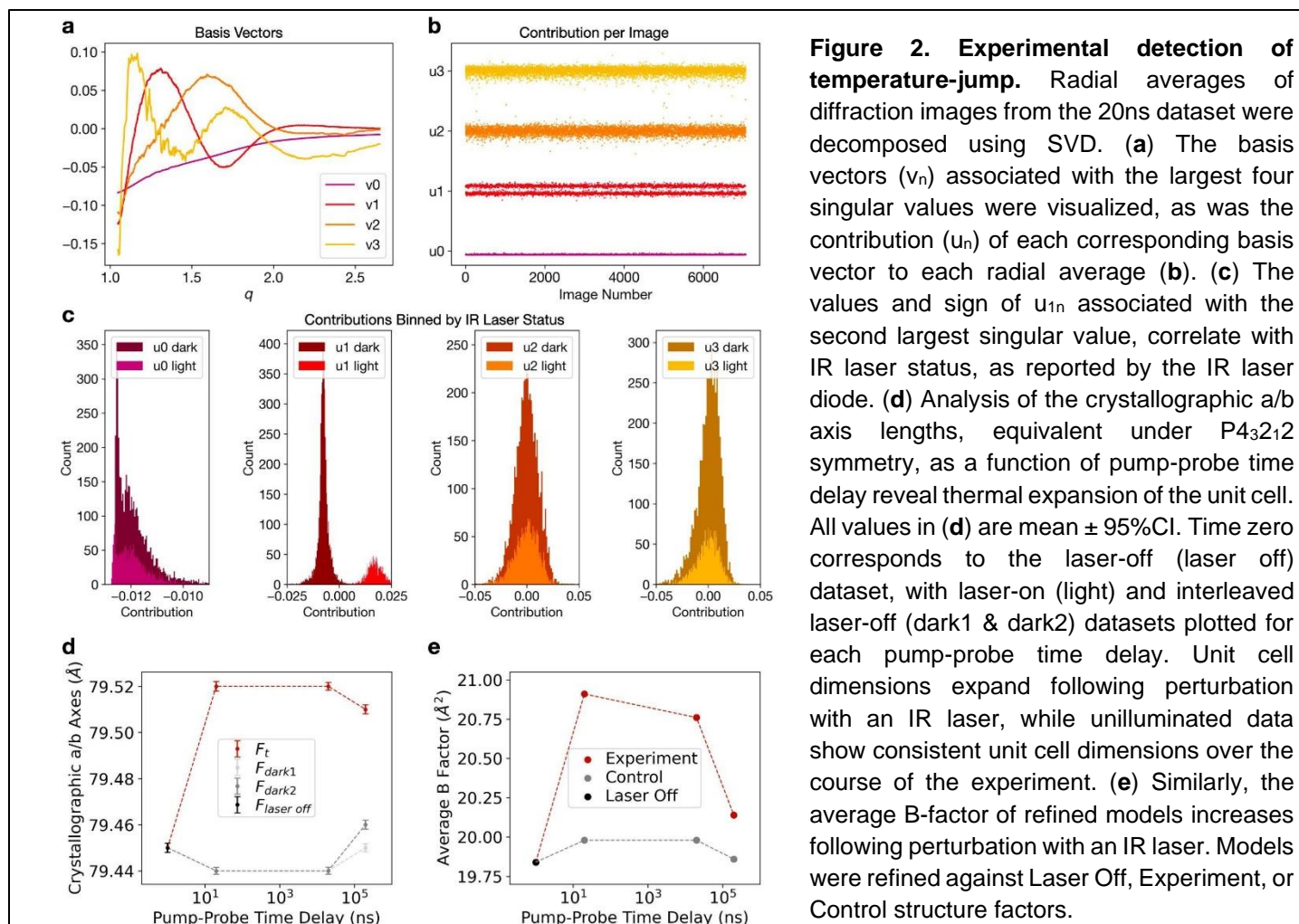
Instrumentation and Data Collection for T-Jump Crystallography

We paired an IR laser with high-resolution serial femtosecond crystallography (SFX)²⁸ in a pump-probe configuration to measure the conformational dynamics of lysozyme in real-time and at atomic resolution. Leveraging instrumentation compatible with standard photoactive TRX experiments^{29,30}; we tuned the pump laser to the mid-IR range to excite the O-H stretch mode of water with a pulse duration of approximately 10 ns, resulting in a T-jump³¹. For SFX measurements, we embedded batch-grown lysozyme microcrystals in an 18% hydroxyethylcellulose carrier medium³² (**Table S1**) and delivered them to the pump-probe interaction region using a viscous extrusion device³³ that formed a free-flowing microfluidic jet (**Figure 1**). Once delivered to the interaction region, crystals were rapidly heated by the IR laser. At defined time delays following the IR heating pulse (20 ns, 20 μ s, and 200 μ s), we probed the sample with ultrafast, high-brilliance X-ray pulses (**Table S1**) from the SPRing-8 Angstrom Compact Linear Accelerator (SACLA) XFEL³⁴, and measured X-ray diffraction using a custom multi-panel CCD detector³⁵. The fastest measurable time delay was 10 ns, limited by the duration of the mid-IR pump laser pulse. In each of our datasets, T-jump measurements were interleaved with two measurements in which the IR laser shutter was closed, providing internal controls (**Figure 1**). We refer to the sequential interleaved dark measurements as dark1 and dark2, and these sets of interleaved control measurements were treated as separate datasets. Therefore, each of our T-jump datasets (20 ns, 20 μ s, 200 μ s) is paired with two internal control datasets (F_{dark1} and F_{dark2}). Additionally, a dataset was collected where the IR laser shutter remained closed (no interleaved T-jumps) which we refer to as $F_{\text{laser off}}$.

T-Jump Detection from Diffuse Scatter

During the experiment, we performed online data analysis with a computational pipeline developed specifically for data collection at SACLA³⁶, which identified, in real-time, detector images that contained X-ray diffraction from crystals and subsequently integrated and merged the growing dataset to provide preliminary feedback on data quality and dataset completeness. Following the experiment, data were processed with more rigorous optimization of parameters used for indexing and integration, as well as post-refinement during merging^{37–40}. A summary of the data quality is available (**Tables S1, S2 & S3**), and a detailed description of both online and offline data processing procedures are provided (**Methods**).

To confirm that the application of the IR pump laser introduced a temperature jump in the sample, we modified tools from previous SAXS experiments²² to analyze the scattering signal resulting from the solvent around and within the protein crystals. Starting from raw diffraction images identified as crystal hits, we azimuthally-averaged the total scattering and applied a median filter to remove the effect from Bragg peaks. This generated a series of one-dimensional scattering curves which contained the isotropic signature from bulk water. These scattering curves were scaled and combined in a matrix that was analyzed using singular value decomposition (SVD). SVD generated a set of right singular vectors (basis vectors) (**Figure 2a**) and a set of left singular vectors that quantified the contribution of each basis vector to every scattering curve used to construct the input matrix (**Figure 2b**). We observed that the contribution of the right singular vector associated with the second largest eigenvalue to each scattering image was highly correlated with whether or not the pump laser pulse had been applied, as determined by the distribution of entries in the corresponding left singular vector. (**Figure 2c**). These laser-dependent changes in the solvent scattering directly confirmed a T-jump had been introduced.



T-Jump Induces Unit Cell Expansion and Increases Global Protein Dynamics

Using the processed diffraction data, we compared the unit cell dimensions as a function of pump-probe time delay. We observed that application of the IR laser results in rapid expansion of the unit cell (**Figure 2d**). This thermal expansion corresponds to <1% of the length of the unit cell axes yet is statistically significant because each serial crystallography dataset contains >10,000 unique crystal measurements (**Table S1**). Furthermore, we observed that the average unit cell parameters for the interleaved F_{dark1} and F_{dark2} datasets matched the $F_{\text{laser off}}$ dataset much more closely than the unit cells seen in F_t datasets. This comparison suggests that the observed unit cell expansion is due to the application of the pump laser rather than variations in other parameters, such as crystal batch or sample delivery conditions. The thermal expansion of the unit cell provides further evidence of a laser-induced T-jump.

As an initial step toward identifying structural changes that were induced by a T-jump, we refined models against the F_t structure factors from each time delay. The resulting atomic coordinates were nearly identical to one another as well as to a structure refined against the $F_{\text{laser off}}$ data; however, we did observe an increase in the average atomic B-factor in the T-jump structures (**Figure 2e**). Collectively, these observations indicate small excited state populations and/or motions that are well-modeled by the harmonic approximation of the B-factor, especially for short (20 ns) pump-probe time delays.

Time-Resolved Electron Density Changes

To gain further insight into time-resolved changes in the protein structure, we created a series of difference electron density maps. These maps were created by subtracting interleaved dark2 measurements (F_{dark2}) from T-jump measurements (F_t) combined with phases from models of the corresponding conformational ground state as refined against (F_{dark2}) data. Additionally, we applied a weighting scheme developed to improve the estimation of difference structure factors calculated from noisy data²⁵. We viewed the resulting maps in the context of the corresponding ground state model and observed features consistent with time-dependent changes in the enzyme's conformational ensemble (**Figure 3a**). Generally, we observed that time-resolved difference electron density evolved from a strong ubiquitous signal centered on atom positions to coordinated positive and negative peaks that suggest correlated motions within the enzyme. Features appearing at the 20 ns time delay were widespread, with negative peaks centered on heavy atoms (non-hydrogens), surrounded by distinct positive halos (**Figure 3a & S1a**). In difference electron density maps corresponding to microsecond time delays (20 and 200 μ s), most difference density features manifested as coupled positive and negative peaks adjacent to the protein molecule. At 20 μ s the largest peaks appeared at sparse locations adjacent to the backbone, indicating the beginning of coordinated motions (**Figure 3a**). These motions continued to evolve into paired positive and negative peaks indicating coordinated shifts of the backbone from the ground state at the 200 μ s pump-probe time delay. Residues 97-100 provide a clear example of such motions (**Figure 3a**).

To test whether the peaks observed in our difference maps were driven by the T-jump rather than experimental noise, we calculated a series of matching control difference maps using the interleaved dark datasets (F_{dark1} and F_{dark2}) (**Figure 1**). Control maps contained very few features, confirming that the signals observed in the time-resolved maps were far above the threshold of experimental noise (**Figure S1a**). To quantify this comparison, we calculated pairwise real space correlation coefficients (RSCC) between all difference maps (**Figure S1b**). We expected maps dominated by random noise to display no correlation, whereas systematic variations or common signals in the map would drive the RSCC towards 1. Pairwise comparisons between control maps revealed RSCC values near 0, indicating the presence of noise alone. Control maps compared to experimental maps revealed RSCC values again near 0, with a minor increase in matched pairs, indicating minor experimental variations common to the interleaved data. Finally, pairwise comparisons between experimental

maps showed much larger RSCC values, ranging between 0.3 and 0.7, indicating common signals distributed over time.

To further characterize the spatial distribution of features observed in our time-resolved difference maps we integrated the absolute difference density above a noise threshold (IADDAT)^{5,41}. In this calculation, difference peaks with an absolute value greater than $0.04 \text{ e}/\text{\AA}^3$ and within 2.5 \AA of an atom (excluding waters) are summed, and an average value is calculated on a per residue basis. Then, the per-residue values are scaled and mapped onto corresponding C-alpha positions (**Figure 3b**). At all pump-probe time delays, the distribution of difference density is non-uniform across the molecule, indicating specific regions of enhanced dynamics (**Figure 3b**). The difference density is also quantitatively strongest in the map corresponding to the 20 ns pump-probe time delay and weakest in the map corresponding to the 20 μs time delay (**Figure 3c**). This spatial analysis revealed which local regions of the enzyme respond most strongly to the T-jump, as well as the timescales of these responses. IADDAT calculations on matched control maps ($F_{\text{dark1}} - F_{\text{dark2}}$), revealed virtually no signal.

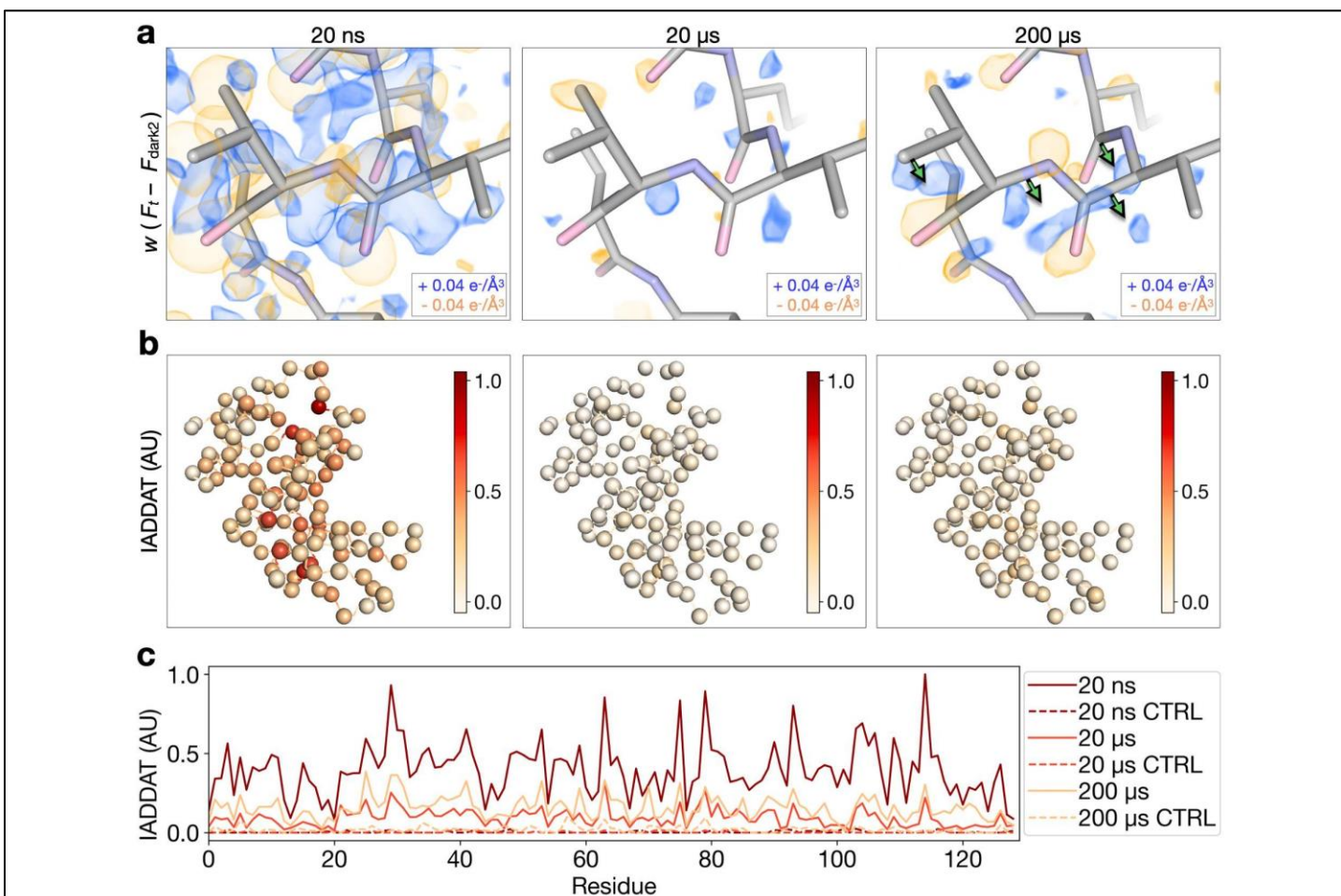


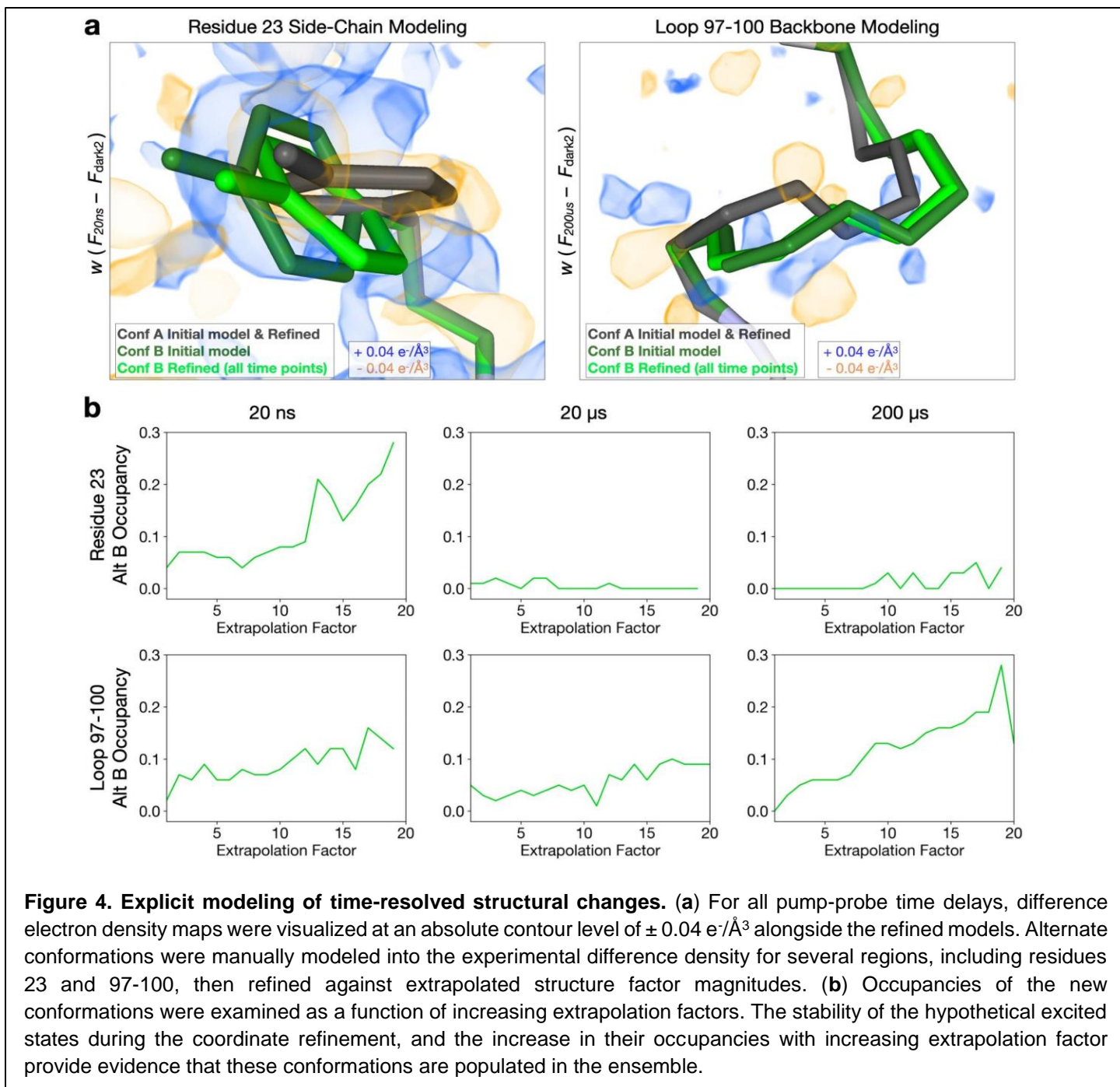
Figure 3. Time-resolved difference electron density evolves over time following T-jump. (a) Comparison of weighted difference electron density maps ($F_{\text{light}} - F_{\text{dark2}}$) for each pump-probe time delay, centered around residues 97-100. Maps were visualized at an absolute contour level of $\pm 0.04 \text{ e}/\text{\AA}^3$ alongside corresponding refined models. While model coordinates appeared stable across pump-probe time delays, difference maps revealed time-resolved changes to the T-jump induced signal, with evidence for coordinated motions (green arrows) apparent by 200 μs . (b) IADDAT was calculated as an average value per residue for each pump-probe time delay, then mapped onto C-alpha positions (spheres) of the respective model, and plotted as a function of residue number (c). Comparison of IADDAT values for experimental maps relative to matched controls revealed low levels of noise across the series.

Modeling Time-Dependent Conformational Changes

Given the time-resolved changes evident in difference electron density maps, we next sought to model the specific structural changes that give rise to those signals. Because the nature of difference density signals differed substantially as a function of pump-probe time delay, we used distinct approaches to model signals appearing on the nanosecond and microsecond timescales.

As noted, the dominant difference density features that we observed at the 20 ns pump-probe time delay manifested as negative peaks over atomic positions, surrounded by positive halos (**Figures 3a and S1a**, left panels). We hypothesized that these features corresponded to an overall increase in atomic B-factors resulting from increased thermal motion following T-jump, because the subtraction of a taller but narrower gaussian function from one that has the same area under the curve but is shorter and broader would produce a difference function with a similar shape. To test this hypothesis, we used two sets of structure factors calculated from our model of the conformational ground state. Specifically, we calculated one set of structure factors directly from the atomic coordinates and refined B-factors, and a second set of structure factors from the same coordinates, but with B-factors that had been scaled by a factor of 1.2, representing a 20% increase. We then used these sets of calculated structure factors to generate a difference map showing how an increase in B-factors due to a T-jump would manifest in the electron density, and noted a striking similarity with the experimentally-derived map (**Figure S2**). We determined the real space correlation coefficient between this hypothetical map and the map calculated from our 20 ns T-jump data and found extremely good agreement (CC=0.67, **Figure S1b**). Systematic comparison of this simulated difference map to experimentally-derived difference maps, via real space correlation coefficients, revealed additional similarities (**Figure S1b**). The simulated map has a weaker, but still significant, correlation with 20 μ s and 200 μ s experimental difference maps, likely corresponding to negative peaks appearing at ground state atom positions as electron density moves away from these locations.

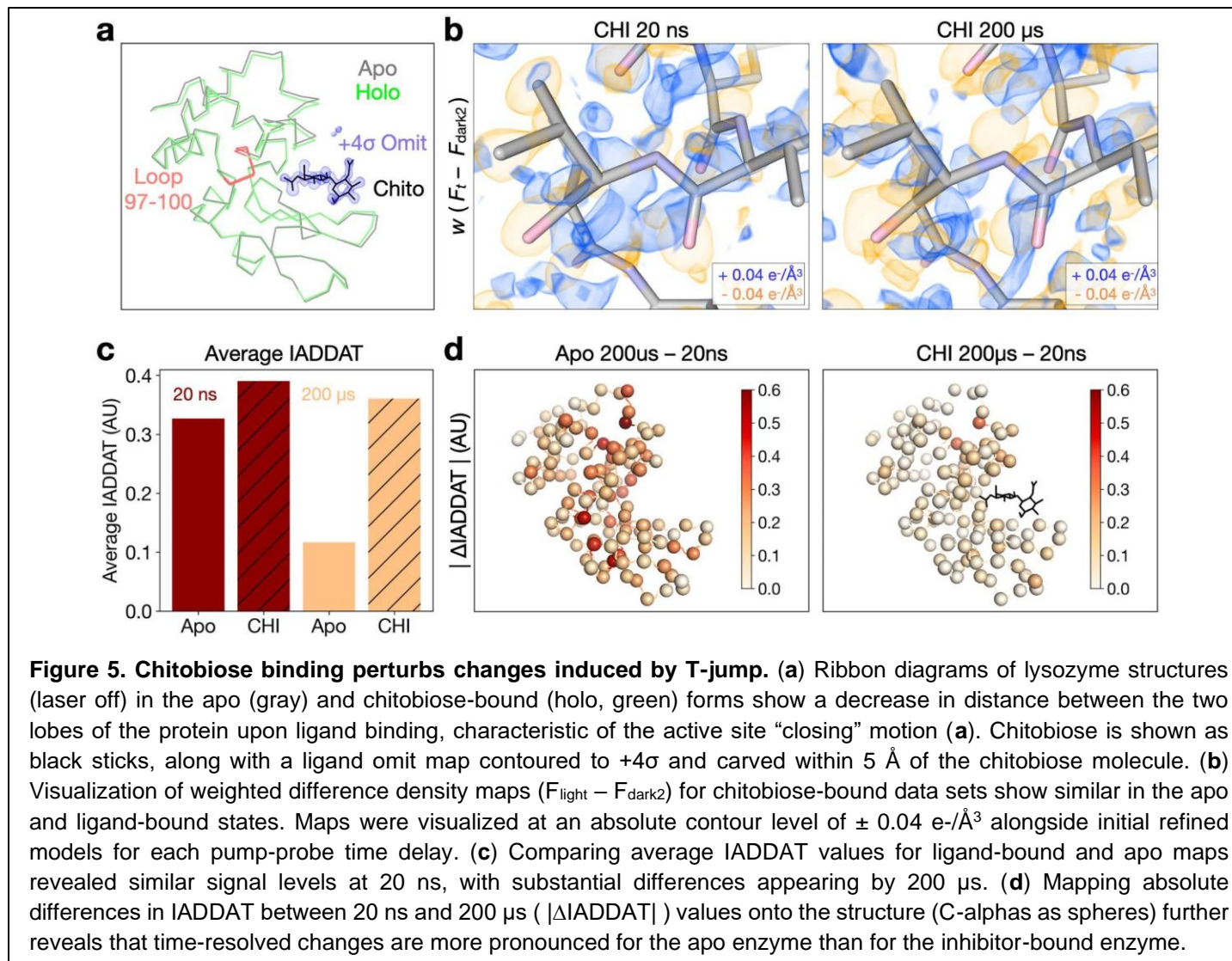
Next, using difference maps as a guide, set at a contour level of $0.04 \text{ e}^-/\text{\AA}^3$ to match our IADDDAT analysis, we manually built alternative conformations for several regions of the protein where the difference density could be interpreted explicitly, including residue 23 (inspired by the 20 ns difference map) as well as a short loop composed of residues 97-100 which lies at the end of an α -helix adjacent to the active site (inspired by the 200 μ s difference map) (**Figure 4b**). We included these alternative conformations in a multi-conformer model, and conducted an additional series of refinements against “extrapolated” structure factor magnitudes (ESFMs)^{26,27} to assess whether the alternative conformations could represent excited states of the enzyme. The procedure used to generate datasets containing ESFMs is described in Figure 1 and Equation 2, and has been implemented by others^{5,6}. Briefly, we multiplied the weighted experimental structure factor difference, $w(F_t - F_{\text{dark2}})$, for a given pump-probe time delay by an arbitrary extrapolation value (N), and then added that product to the structure factors measured for the ground state (F_{dark2}). This manipulation of the experimental data effectively scales up the contribution of excited states of the molecule to the overall structure factor magnitudes. For each pump-probe time delay in our T-jump series, we refined our model, containing the ground state structure and potential excited state conformations, against a series of ESFM sets generated with increasing extrapolation values (**Methods**). Following refinement of coordinates, B-factors, and occupancies, we observed that the ground state conformation was unperturbed and that the newly built conformations moved very little (**Figure 4b**). We investigated the occupancies of these conformations as a function of extrapolation value (**Figure 4c**), and noticed that occupancies of the novel conformers generally increased as a function of extrapolation value, further confirming the correlation between the modeled molecular motions and laser-induced changes to the structure factors. Short amplitude motions (e.g. rotation of Tyr23) were most evident at the 20ns pump-probe time delay, while larger motions (e.g. the backbone shift of loop 97-100) were most evident in the 200 μ s dataset.



Inhibitor Binding Alters T-Jump Induced Dynamics

In addition to the datasets described above, we also examined analogous data for lysozyme bound to a naturally-occurring inhibitor, chitobiose, which is known to bind to the active site and stabilize a “closed” form of the enzyme (**Figure 5a**). Specifically, for chitobiose-bound crystals, we collected T-jump data corresponding to two pump-probe time delays (20 ns and 200 μ s, see **Table S2**). Time-resolved difference maps calculated for chitobiose bound crystals revealed an altered dynamic response to T-jump relative to the apo crystals (**Figure 5b**). Qualitatively, while the 20 ns difference density looks similar for both apo and chitobiose-bound crystals, marked differences are evident by 200 μ s. In the case of the apo enzyme, features in the time-resolved difference maps change substantially between 20 ns and 200 μ s. In contrast, when chitobiose is bound, the features in the time-resolved difference maps change relatively little between 20 ns and 200 μ s (**Figure 5b**). These observations

were confirmed quantitatively using IADDAT calculations. Specifically, we looked at the overall difference in IADDAT ($|\Delta\text{IADDAT}|$) between the 20 ns and 200 μs time delays for both the apo and chitobiose-bound crystals (**Figure 5c & 5d**). We observed that the difference in IADDAT as a function of pump-probe time delay is much more pronounced for the apo enzyme relative to when the inhibitor is bound. RSCC calculations further confirmed these observations, showing high pairwise correlations between the apo 20 ns, chitobiose-bound 20 ns, and chitobiose-bound 200 μs difference maps, each of which have a much weaker correlation with the apo 200 μs difference map (**Figure S1b**).

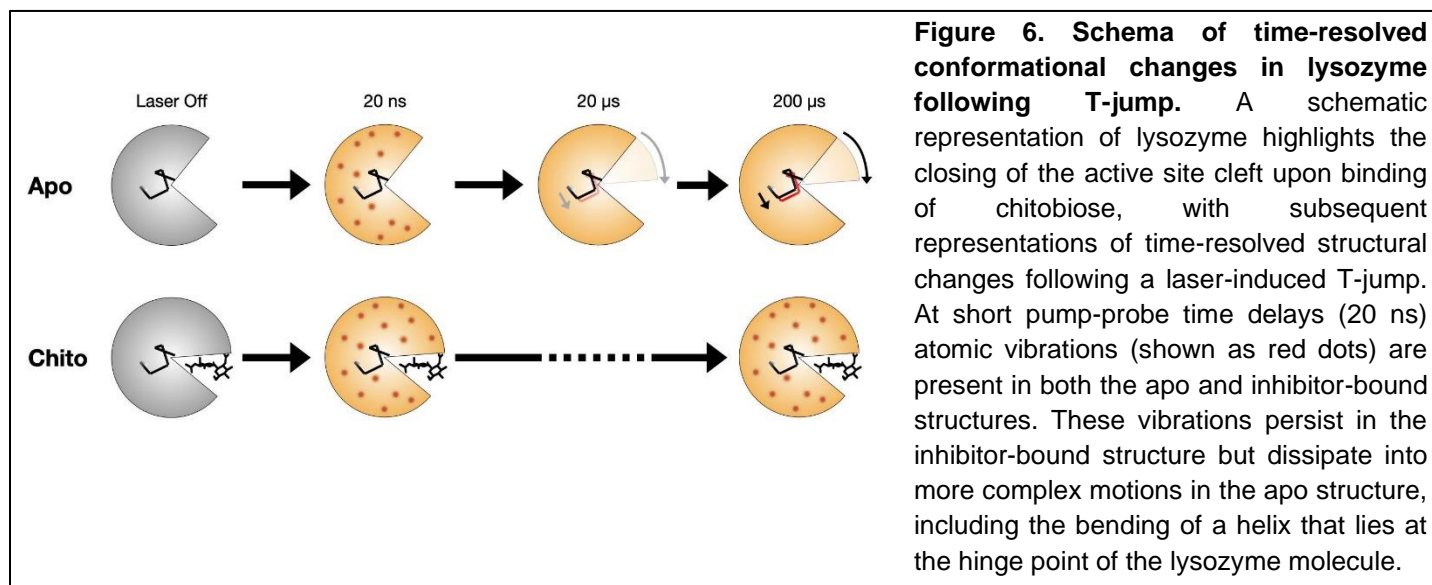


Discussion

The results presented here demonstrate, for the first time, that infrared laser-induced temperature-jump can be used as an effective perturbation method for time-resolved X-ray crystallography to map the dynamics of a biological macromolecule at atomic resolution. We performed pump-probe serial femtosecond crystallography using a nanosecond pulsed laser, tuned to mid-IR wavelengths (1440 nm), to rapidly heat the solvent surrounding and permeating microcrystals of the dynamic enzyme lysozyme (40.7% solvent), and monitored the resulting molecular motions using ultrafast X-ray pulses from an X-ray free-electron laser. Using algebraic tools, leveraged from previous solution X-ray scattering (SAXS/WAXS) experiments²², we detected the introduction of a T-jump, which was corroborated by observations of unit cell thermal expansion and increased atomic displacements (higher refined B-factors). Next, we implemented a series of analyses common in time-resolved protein

crystallography, including calculation of uncertainty-weighted difference electron density maps²⁵, spatial integration of difference electron density^{5,41}, and refinement against extrapolated structure factor magnitudes^{26,27}, allowing us to identify excited state conformations of the protein, and to estimate the timescales on which they are populated.

The goal of a T-jump crystallography experiment is to map the structural dynamics of the crystallized molecule. We selected lysozyme as our subject for this initial study, because it crystallizes easily, diffracts well, and is known to undergo a characteristic hinge-bending motion that results in domain closure around the active site^{42,43}. Although limited in temporal resolution, the data we collected and the analyses we performed provide a coarse-grained model for the evolution of conformational dynamics in lysozyme following T-jump that is consistent with published literature on lysozyme dynamics. Our analysis of experimental maps supports a rapid increase in atomic displacement parameters (B-factors) within 20 ns of the pump laser pulse, evidence of increased harmonic motion resulting from heat transfer to the protein from the thermally-excited solvent. The spatial distribution of difference electron density features at very short pump-probe time delays (e.g. 20 ns) is not uniform (**Figures 3a, 3b, 5b & 5d**) suggesting that heat flows more readily into some regions of the lysozyme molecule than others. We also modeled excited state conformations directly from time-resolved difference electron density maps and refined them against extrapolated structure factor magnitudes. This analysis revealed motions such as rotamer flips on fast timescales (e.g. 20 ns), and larger motions, including correlated shifts of loops spanning multiple residues, on slower timescales (e.g. 200 μ s). The most noticeable of these movements includes a short loop encompassing residues 97-100, which is at the end of an α -helix adjacent to the active site and known to be mobile during lysozyme hinge bending⁴⁴ (**Figure 5a**). These observations yield a model wherein T-jump first excites harmonic thermal motions and short-amplitude anharmonic motions, such as rotamer flips, on the nanosecond time scale. These fast motions are subsequently converted to larger-scale conformational changes that are linked to the catalytic cycle, such as loop displacements (e.g residues 97-100) that occur on the microsecond (or longer) timescale and are coupled to the active site (**Figure 6**). Our observations are in agreement with a variety of other kinetic measurements performed on the architecturally similar, but evolutionarily unrelated, T4 lysozyme⁴⁵, including single-molecule techniques, that demonstrated protein motions with transition times in the range of tens to hundreds of microseconds⁴⁶⁻⁴⁸. Notably, the intermediate pump-probe time delay (20 μ s) in our limited time series contains the least evidence for excited state conformations in both IADDAT and ESFM refinement analyses. The lack of strong difference density at this pump-probe time delay likely results from a mixture of excited states being populated within tens of microseconds, before the ensemble narrows once again as the system approaches a new thermal equilibrium within hundreds of microseconds. This notion is consistent with single-molecule measurements that revealed large amplitude motions in lysozyme occur along multiple distinct trajectories with different transition times and intermediates⁴⁹.



To assess whether our analysis detected functional protein motions, rather than spurious thermal fluctuations, we performed T-jump measurements in the presence of an orthogonal perturbation to the enzyme's functional dynamics; specifically, the binding of chitobiose. Chitobiose is a natural inhibitor of lysozyme that mimics the bound substrate and shifts the enzyme's conformational equilibrium toward the more compact "closed" state in which the two lobes of the enzyme clamp down on the carbohydrate in the active site^{42,43}. We observed, both visually and quantitatively using real-space map correlations (**Figure S2b**), that difference electron density maps corresponding to the 20 ns pump-probe time delay look similar for both the apo and chitobiose-bound data sets, demonstrating that the fast onset of short-amplitude motions is similar in both cases. However, at the long time delay (200 μ s), the difference electron density maps calculated from the chitobiose-bound data do not show evidence for dissipation of short amplitude motions into larger-scale conformational changes, as seen for the apo enzyme, but instead, remain similar to the maps corresponding to short (20 ns) pump-probe time delays (**Figure S1b**). Additionally, the B-factors of the chitobiose-bound model remain high when refined against data corresponding to the 200 μ s time delay relative to the apo model (**Figure S3**). The inhibitor is known to restrict larger-amplitude motions (e.g. hinge bending) related to substrate binding and catalysis, locking it in a "closed" conformation. Accordingly, the presence of the inhibitor does not affect the rapid onset of thermal motion through the enzyme, but it does abolish the time-resolved changes that we attribute to microsecond functional motions (**Figure 6**), likely pushing them to the millisecond or longer timescale, outside the window of observation for our experiment. Corroborating our model, NMR spectroscopy has shown that binding of a similar carbohydrate inhibitor (chitotriose) to lysozyme has little effect on the global ps-ns motions⁵⁰, while FRET experiments reveal that inter-domain dynamics are slowed substantially in the presence of substrate.

The work described here demonstrates, for the first time, that T-jump can be used as an effective perturbation to resolve conformational dynamics at atomic resolution using TRX. While limited in temporal resolution, our results allow the coarse mapping of dynamics in hen egg-white lysozyme (HEWL) across four logarithmic decades of time. While the structure of HEWL has been studied extensively by X-ray crystallography for many years, most experiments that have measured lysozyme dynamics with kinetic detail have been performed on the analogous T4 lysozyme⁴⁵. Our observations begin to close this gap by revealing dynamics on similar timescales in the two enzymes. Because temperature change is a universal method to perturb molecular motion, we anticipate that T-jump crystallography will be applied to other systems that can undergo functional conformational changes in the crystal lattice, opening the door for broad exploration of macromolecular dynamics. While our initial experiments offer promise for the use of T-jump as a perturbation in TRX, they also highlight some of the key challenges that remain. Specifically, the large time requirement per data set in a TRX experiment is a current limitation for achieving high temporal resolution. Improvements in the speed of data collection will enable a more detailed exploration of the time domain, as reported for T-jump X-ray solution scattering experiments²². Additionally, because T-jump induces structural changes that can be distributed across the entire unit cell, rather than concentrated at a specific site (e.g. a chromophore or ligand-binding site), refinement methods that utilize ESFMs do not perform well because there is a significant phase difference between the ground state and excited state structure factors²⁶. Simultaneous refinement of extrapolated structure factor magnitudes and phases will improve our ability to accurately model excited-state conformations from TRX data. With future technological developments forthcoming, and T-jump available as a general perturbation method, TRX experiments will become more relevant to a wider audience of structural biologists.

Acknowledgments

The authors thank Takanori Nakane for assistance with real-time data analysis, Sébastien Boutet for advice on experimental design, and Philip Anfinrud for helpful discussions about T-jump experiments. This work was supported by: grants to MCT and JSF from the NSF BioXFEL Science and Technology Center (STC-1231306); MEXT/JSPS KAKENHI Grants 19H05781 to EN, 19H05784 to MK, and 19H05776 to SI; the Platform Project for Supporting Drug Discovery and Life Science Research (Basis for Supporting Innovative Drug Discovery and Life Science Research) from Japan Agency for Medical Research and Development under Grant JP21am0101070 to SI; and the National Institutes of Health, grant GM117126 to NKS. The XFEL experiments were performed at BL2 of SACLA with the approval of the Japan Synchrotron Radiation Research Institute (JASRI) (Proposal No. 2017B8055 and 2018A8023). We acknowledge members of the Engineering Team of RIKEN SPring-8 Center for technical support.

Methods

Lysozyme Crystallization

Lysozyme was crystallized in batch by mixing a 20 mg ml⁻¹ solution (lyophilized enzyme dissolved in 0.1 M sodium acetate at pH 3.0) with precipitant (28% (w/v) NaCl, 8% (w/v) PEG6000 and 0.1 M sodium acetate at pH 3.0) in a 1:1 ratio as previously described⁵¹. For inhibitor-bound structures N,N'-diacetylchitobiose was included at 10 mg ml⁻¹ with the Lysozyme solution prior to mixture with precipitant. Crystals were approximately 10 μm. Prior to storage, slurries were centrifuged at 4 °C and 3,000g for 3 min, the supernatant was removed and crystals were resuspended in 10% (w/v) NaCl and 1.0 M sodium acetate (pH 3.0).

Sample Delivery and Data Collection

We collected data at SACLA³⁴ using the Diverse Application Platform for Hard X-ray Diffraction in SACLA (DAPHNIS)⁵² at BL2⁵³. Prior to data collection, crystal slurries were centrifuged, the supernatant was removed, and crystals were directly mixed (in a 1:9 ratio) with a viscogen containing crystal stabilization buffer with an additional 18% hydroxyethyl cellulose, as previously described³². The mixture was then loaded into the reservoir of a sample injector device³³. This device amplifies pressure generated by an HPLC to extrude the viscous medium carrying crystals through a microfluidic nozzle with a diameter of 75 μm. The linear flow rate of this stream was 9.43 mm/s, with a volumetric flow rate of 2.5 μL/min. Helium gas was streamed as a sheath for the liquid jet, with He flow adjusted as needed to maintain a stable stream of lysozyme microcrystals.

X-ray diffraction measurements were made using 0.6 mJ XFEL pulses 10 fs in duration, with a peak photon energy of 9.5 keV. Diffraction images were collected at 30 Hz using a custom-built 4M pixel detector with multi-port CCD (mpCCD) sensors³⁵. For time-resolved datasets, crystals were rapidly heated by excitation of the water O-H stretch with mid-IR laser light (1443 nm, 7 ns pulse duration, 540 uJ pulse energy, ~50 μm (FWHM) focus diameter, (see **Figure S4**) at defined time delays prior to X-ray exposure. The IR pump laser operated at a repetition rate of 10 Hz, so data were collected with two dark diffraction measurements interleaved between each T-jump measurement^{29,30}. An IR camera was used to monitor the alignment of the pump laser with the sample, and the firing of the laser was verified by reflecting a small amount of the laser light to a photodiode. Both the jet stream and the pump laser focus were centered on the position of the X-ray beam, which was focused to a diameter of 1.5 μm, much smaller than both the jet and the pump laser.

Processing of Bragg Reflections

Data collection was supported by a real-time data processing pipeline³⁶ developed on Cheetah⁵⁴. Images identified as hits were processed using methods from CCTBX³⁷. For Bragg processing, data were indexed and integrated using *dials.stills_process*³⁸. Initial indexing results were used to refine the detector model, as well as crystal models³⁹. Refinement of the detector distance and panel geometry improved the agreement between measured and predicted spots. Bragg data were then merged and post-refined using *cxi.merge*⁴⁰. Error estimates were treated according to the Ev11 method^{39,55}, wherein error estimates were increased using terms refined from the measurements until they could better explain the uncertainty observed in the merged reflection intensities. A total of 17 merged data sets were produced from our experiment. For the apo enzyme, we collected one “laser off” data set, and explored three pump-probe time delays (20 ns, 20 μs, 200 μs), including a “laser on” data set and two interleaved control data sets (dark1, dark2) for each time delay. For the chitobiose-bound enzyme, we collected one “laser off” data set, and explored two pump-probe time delays (20 ns, 200 μs), with corresponding interleaved control data sets (dark1, dark2).

Processing and Analysis of Solvent Scattering

For analysis of solvent scattering, each image identified as a hit by Cheetah was processed into an azimuthal averages using *dxtbx.radial_average*. The function was modified to include a sliding one-dimensional median filter, with a window size of 15 q bins. The median filter minimized contributions of the Bragg peaks to the radial average while preserving the solvent scattering signal. Individual scattering curves were culled from later SVD analysis based on collection anomalies (clogging of sample jet, etc.), since these contributions dominated variations in the background signal, making detection of T-jumps difficult. A series of custom scripts were written to process and analyze the solvent scattering curves (https://github.com/fraser-lab/xray_thermometer). Briefly, one-dimensional X-ray scattering curves were pooled and scaled using an algebraic (least-squares) procedure²². A mask was applied so that only data between 2.0 Å⁻¹ and 2.5 Å⁻¹ were used for scaling. Scaled curves, containing data between 1.0 Å⁻¹ and 2.7 Å⁻¹, were combined in a 2D matrix, where each row of the matrix represents a unique scattering curve, each column represents a value of q, and the entries represent the corresponding azimuthally-averaged scattering intensities. This matrix was analyzed using SVD^{23,56–58}, where the right singular vectors (v_n) represented basis vectors of the observed scattering curves and the left singular vectors (u_n) described the contribution of each basis vector to each individual scattering curve. By analyzing the values of u_{1n} , the entries in U which quantify the contribution of the temperature-dependent singular vector (v_1) to each scattering curve (n), we determined that u_{1n} correlated with IR laser status.

Initial Model Building

All data as output from *cxi.merge* were converted from intensities to structure factors using *phenix.reflection_file_converter*. Initial phases for each of the 17 data sets (see above) were calculated via MR using Phaser⁵⁹, with PDB entry 1IEE as the search model. R-free flags were carried over from PDB entry 1IEE, and random atomic displacements (0.5 Å) were applied to the coordinates to remove model bias before an initial round of refinement. Iterative model building using Coot followed by refinement in PHENIX⁶⁰ was conducted until the structures converged, following a previously described protocol⁶¹. Data collection and refinement statistics for these structures are provided in **Tables S1, S2 & S3**. Each of the models and the associated reflection data have been deposited in the PDB (8CVU, 8CVV, 8CVW, 8CW0, 8CW1, 8CW3, 8CW5, 8CW6, 8CW7, 8CW8, 8CWB, 8CWC, 8CWD, 8CWE, 8CWF, 8CWG, 8CWH). Additionally, the raw data are publicly available at CXIDB, and the code sufficient to reproduce all analyses described herein is available on GitHub (https://github.com/mthompson-lab/Temperature-Jump-Crystallography_Analysis-for-Paper).

Calculation of Weighted Difference Electron Density Maps

Data were collected in an interleaved fashion (light, dark1, dark2) as described above, thus for each pump-probe time delay we calculated an ($F_t - F_{\text{dark2}}$) and control ($F_{\text{dark1}} - F_{\text{dark2}}$) difference structure factors. Difference structure factors were weighted as previously described^{5,25,62} using ReciprocalSpaceship⁶³:

$$\omega_{hkl} = \left[1 + \frac{\sigma^2(\Delta F)}{\langle \sigma^2(\Delta F) \rangle} + 0.05 \frac{|\Delta F|^2}{\langle |\Delta F|^2 \rangle} \right]^{-1} \text{ (Eq. 1)}$$

Map phases were calculated using the corresponding excited state models.

Calculation of Integrated Absolute Difference Density Above Threshold (IADDAT)

Finalized difference electron density maps were integrated for the experimental and control datasets for each pump-probe time delay. Briefly, maps were calculated on a common grid using ReciprocalSpaceship⁶³, with

the unit cell sampled using a grid resolution factor corresponding to $0.25 \cdot d_{\min}$. Map voxels containing $|p| \geq 0.04$ e/Å and within 2.5 Å of the atomic model were summed and an average value was calculated per residue. These values were mapped back onto the corresponding structure or plotted directly as a function of residue number for visualization.

Simulated Difference Density Calculations

To understand how uniform amplification of B-factors might affect difference maps, we simulated data based on the refined laser off structure. The ADPs present in the model were scaled up linearly 20% using *phenix.pdbtools* and stored in a second model file. Structure factors were then calculated for both models using *phenix.fmodel*, and difference maps ($F_{1,2B} - F_B$) were created using the custom scripts described above.

Difference Electron Density Map Correlations

Finalized difference structure factors were created using custom scripts as described above. Structure factors were converted to difference maps using *ReciprocalSpaceship*⁶³, maps were sampled on a uniform grid corresponding to $0.25 \cdot d_{\min}$ for the first map. Maps were then thresholded at $|p| \geq 0.04$ e/Å. Custom Python scripts using Numpy were used to calculate and visualize pairwise correlation coefficients for light and control datasets.

Excited-state Modeling and Refinement Against Extrapolated Structure Factor Magnitudes

Extrapolated structure factor magnitudes (ESFMs) were calculated using *ReciprocalSpaceship*⁶³ by adding the weighted structure factor differences (see Eq. 1) back to the dark state structure factors, as previously described^{5,6}:

$$|F_{ESF}| = N * w(|F_t| - |F_{dark2}|) + |F_{dark2}| \quad (\text{Eq. 2})$$

R-free flags were carried over from 1IEE as for the original reflection files. Initial models were prepared for each pump-probe time delay by rigid-body refinement of the laser off structure against ESFMs calculated with $N=1$. Initial models were then subjected to refinement of coordinates, B-factors, and occupancies against ESFMs calculated with extrapolation values (N) ranging from 1 to 20.

Excited state models were further developed based on manual interpretation of features in the weighted difference density maps. Alternative conformations that could be interpreted from the difference electron density (e.g. for residues 23 and 97-100, described in the main text) were added to the refined structures. New conformations were labeled as “B” and set to 10% occupancy, while the original refined conformation was set as “A” at 90% occupancy. The resulting multi-conformer structures were then subjected to refinement as described above. Occupancies of relevant conformations were analyzed as a function of extrapolation factor ($N = 1, 2, \dots, 19, 20$) using custom Python scripts built upon the GEMMI library (<https://github.com/project-gemmi/gemmi>). The resulting R-factors from refinement against ESFMs are relatively poor (**Figure S5**), resulting from inadequacies with the scalar approximation implemented in this procedure^{5,26}, however the stability of the excited-state conformations during the refinements support their accuracy.

References

1. Henzler-Wildman, K. & Kern, D. Dynamic personalities of proteins. *Nature* **450**, 964–972 (2007).
2. Bhabha, G., Biel, J. T. & Fraser, J. S. Keep on moving: discovering and perturbing the conformational dynamics of enzymes. *Acc Chem Res* **48**, 423–430 (2015).
3. van den Bedem, H. & Fraser, J. S. Integrative, dynamic structural biology at atomic resolution--it's about time. *Nat Methods* **12**, 307–318 (2015).
4. Coquelle, N. *et al.* Chromophore twisting in the excited state of a photoswitchable fluorescent protein captured by time-resolved serial femtosecond crystallography. *Nature Chem* **10**, 31–37 (2018).
5. Hekstra, D. R. *et al.* Electric-field-stimulated protein mechanics. *Nature* **540**, 400–405 (2016).
6. Genick, U. K. *et al.* Structure of a Protein Photocycle Intermediate by Millisecond Time-Resolved Crystallography. *Science* **275**, 1471–1475 (1997).
7. Schlichting, I. *et al.* Time-resolved X-ray crystallographic study of the conformational change in Ha-Ras p21 protein on GTP hydrolysis. *Nature* **345**, 309–315 (1990).
8. Srajer, V. *et al.* Photolysis of the carbon monoxide complex of myoglobin: nanosecond time-resolved crystallography. *Science* **274**, 1726–1729 (1996).
9. Schmidt, M. Time-Resolved Macromolecular Crystallography at Modern X-Ray Sources. *Methods Mol Biol* **1607**, 273–294 (2017).
10. Neutze, R. & Moffat, K. Time-resolved structural studies at synchrotrons and X-ray free electron lasers: opportunities and challenges. *Curr Opin Struct Biol* **22**, 651–659 (2012).
11. Orville, A. M. Recent results in time resolved serial femtosecond crystallography at XFELs. *Curr Opin Struct Biol* **65**, 193–208 (2020).
12. Josts, I. *et al.* Photocage-initiated time-resolved solution X-ray scattering investigation of protein dimerization. *IUCrJ* **5**, 667–672 (2018).
13. Olmos, J. L. *et al.* Enzyme intermediates captured 'on the fly' by mix-and-inject serial crystallography. *BMC Biol* **16**, 59 (2018).
14. Fenimore, P. W., Frauenfelder, H., McMahon, B. H. & Parak, F. G. Slaving: Solvent fluctuations dominate protein dynamics and functions. *PNAS* **99**, 16047–16051 (2002).
15. Keedy, D. A. *et al.* Mapping the conformational landscape of a dynamic enzyme by multitemperature and

- XFEL crystallography. *eLife* **4**, e07574 (2015).
16. Keedy, D. A. *et al.* An expanded allosteric network in PTP1B by multitemperature crystallography, fragment screening, and covalent tethering. *eLife* **7**, e36307 (2018).
 17. Wang, J. & El-Sayed, M. A. Temperature jump-induced secondary structural change of the membrane protein bacteriorhodopsin in the premelting temperature region: a nanosecond time-resolved Fourier transform infrared study. *Biophys J* **76**, 2777–2783 (1999).
 18. Meadows, C. W., Balakrishnan, G., Kier, B. L., Spiro, T. G. & Klinman, J. P. Temperature-Jump Fluorescence Provides Evidence for Fully Reversible Microsecond Dynamics in a Thermophilic Alcohol Dehydrogenase. *J Am Chem Soc* **137**, 10060–10063 (2015).
 19. Gillespie, B. *et al.* NMR and temperature-jump measurements of de novo designed proteins demonstrate rapid folding in the absence of explicit selection for kinetics. *J Mol Biol* **330**, 813–819 (2003).
 20. Ma, H., Wan, C. & Zewail, A. H. Ultrafast T-Jump in Water: Studies of Conformation and Reaction Dynamics at the Thermal Limit. *J. Am. Chem. Soc.* **128**, 6338–6340 (2006).
 21. Rubtsov, I. V. & Burin, A. L. Ballistic and diffusive vibrational energy transport in molecules. *J Chem Phys* **150**, 020901 (2019).
 22. Thompson, M. C. *et al.* Temperature-jump solution X-ray scattering reveals distinct motions in a dynamic enzyme. *Nat. Chem.* **11**, 1058–1066 (2019).
 23. Cho, H. S. *et al.* Dynamics of Quaternary Structure Transitions in R-State Carbonmonoxyhemoglobin Unveiled in Time-Resolved X-ray Scattering Patterns Following a Temperature Jump. *J. Phys. Chem. B* **122**, 11488–11496 (2018).
 24. Hori, T. *et al.* The initial step of the thermal unfolding of 3-isopropylmalate dehydrogenase detected by the temperature-jump Laue method. *Protein Eng* **13**, 527–533 (2000).
 25. Ursby, T. & Bourgeois, D. Improved Estimation of Structure-Factor Difference Amplitudes from Poorly Accurate Data. *Acta Crystallographica Section A* **53**, 564–575 (1997).
 26. Genick, U. K. Structure-factor extrapolation using the scalar approximation: theory, applications and limitations. *Acta Crystallogr D Biol Crystallogr* **63**, 1029–1041 (2007).
 27. Zitter, E. D., Coquelle, N., Barends, T. R. & Colletier, J.-P. Xtrapol8: automatic elucidation of low-occupancy intermediate-states in crystallographic studies. 2022.01.09.475568 (2022)

doi:10.1101/2022.01.09.475568.

28. Boutet, S. *et al.* High-resolution protein structure determination by serial femtosecond crystallography. *Science* **337**, 362–364 (2012).
29. Kubo, M. *et al.* Nanosecond pump–probe device for time-resolved serial femtosecond crystallography developed at SACLA. *J Synchrotron Rad* **24**, 1086–1091 (2017).
30. Nango, E., Kubo, M., Tono, K. & Iwata, S. Pump-Probe Time-Resolved Serial Femtosecond Crystallography at SACLA: Current Status and Data Collection Strategies. *Applied Sciences* **9**, 5505 (2019).
31. Beitz, J. V., Flynn, G. W., Turner, D. H. & Sutin, N. Stimulated Raman effect. A new source of laser temperature-jump Heating. *J. Am. Chem. Soc.* **92**, 4130–4132 (1970).
32. Sugahara, M. *et al.* Hydroxyethyl cellulose matrix applied to serial crystallography. *Sci Rep* **7**, 703 (2017).
33. Shimazu, Y. *et al.* High-viscosity sample-injection device for serial femtosecond crystallography at atmospheric pressure. *J Appl Cryst* **52**, 1280–1288 (2019).
34. Ishikawa, T. *et al.* A compact X-ray free-electron laser emitting in the sub-ångström region. *Nature Photon* **6**, 540–544 (2012).
35. Kameshima, T. *et al.* Development of an X-ray pixel detector with multi-port charge-coupled device for X-ray free-electron laser experiments. *Rev Sci Instrum* **85**, 033110 (2014).
36. Nakane, T. *et al.* Data processing pipeline for serial femtosecond crystallography at SACLA. *J Appl Cryst* **49**, 1035–1041 (2016).
37. Grosse-Kunstleve, R. W., Sauter, N. K., Moriarty, N. W. & Adams, P. D. The Computational Crystallography Toolbox: crystallographic algorithms in a reusable software framework. *J Appl Cryst* **35**, 126–136 (2002).
38. Winter, G. *et al.* DIALS: implementation and evaluation of a new integration package. *Acta Crystallogr D Struct Biol* **74**, 85–97 (2018).
39. Brewster, A. S. *et al.* Improving signal strength in serial crystallography with DIALS geometry refinement. *Acta Cryst D* **74**, 877–894 (2018).
40. Sauter, N. K. XFEL diffraction: developing processing methods to optimize data quality. *J Synchrotron Rad* **22**, 239–248 (2015).
41. Wickstrand, C. *et al.* A tool for visualizing protein motions in time-resolved crystallography. *Struct Dyn* **7**,

024701 (2020).

42. Mccammon, J. A., Gelin, B. R., Karplus, M. & Wolynes, P. G. The hinge-bending mode in lysozyme. *Nature* **262**, 325–326 (1976).
43. Mchaourab, H. S., Oh, K. J., Fang, C. J. & Hubbell, W. L. Conformation of T4 lysozyme in solution. Hinge-bending motion and the substrate-induced conformational transition studied by site-directed spin labeling. *Biochemistry* **36**, 307–316 (1997).
44. Brooks, B. & Karplus, M. Normal modes for specific motions of macromolecules: application to the hinge-bending mode of lysozyme. *Proc Natl Acad Sci U S A* **82**, 4995–4999 (1985).
45. Matthews, B. W., Remington, S. J., Grütter, M. G. & Anderson, W. F. Relation between hen egg white lysozyme and bacteriophage T4 lysozyme: evolutionary implications. *J Mol Biol* **147**, 545–558 (1981).
46. Yirdaw, R. B. & McHaourab, H. S. Direct observation of T4 lysozyme hinge-bending motion by fluorescence correlation spectroscopy. *Biophys J* **103**, 1525–1536 (2012).
47. Akhterov, M. V. *et al.* Observing lysozyme's closing and opening motions by high-resolution single-molecule enzymology. *ACS Chem Biol* **10**, 1495–1501 (2015).
48. Sanabria, H. *et al.* Resolving dynamics and function of transient states in single enzyme molecules. *Nat Commun* **11**, 1231 (2020).
49. Lu, M. & Lu, H. P. Revealing Multiple Pathways in T4 Lysozyme Substep Conformational Motions by Single-Molecule Enzymology and Modeling. *J. Phys. Chem. B* **121**, 5017–5024 (2017).
50. Moorman, V. R., Valentine, K. G. & Wand, A. J. The dynamical response of hen egg white lysozyme to the binding of a carbohydrate ligand. *Protein Sci* **21**, 1066–1073 (2012).
51. Sugahara, M. *et al.* Grease matrix as a versatile carrier of proteins for serial crystallography. *Nat Methods* **12**, 61–63 (2015).
52. Tono, K. *et al.* Diverse application platform for hard X-ray diffraction in SACLA (DAPHNIS): application to serial protein crystallography using an X-ray free-electron laser. *J Synchrotron Radiat* **22**, 532–537 (2015).
53. Tono, K., Hara, T., Yabashi, M. & Tanaka, H. Multiple-beamline operation of SACLA. *J Synchrotron Radiat* **26**, 595–602 (2019).
54. Barty, A. *et al.* Cheetah: software for high-throughput reduction and analysis of serial femtosecond X-ray diffraction data. *J Appl Cryst* **47**, 1118–1131 (2014).

55. Evans, P. R. An introduction to data reduction: space-group determination, scaling and intensity statistics. *Acta Crystallogr D Biol Crystallogr* **67**, 282–292 (2011).
56. Rimmerman, D. *et al.* Direct Observation of Insulin Association Dynamics with Time-Resolved X-ray Scattering. *J. Phys. Chem. Lett.* **8**, 4413–4418 (2017).
57. Kjær, K. S. *et al.* Introducing a standard method for experimental determination of the solvent response in laser pump, X-ray probe time-resolved wide-angle X-ray scattering experiments on systems in solution. *Phys. Chem. Chem. Phys.* **15**, 15003–15016 (2013).
58. Cammarata, M. *et al.* Impulsive solvent heating probed by picosecond x-ray diffraction. *J. Chem. Phys.* **124**, 124504 (2006).
59. McCoy, A. J. *et al.* Phaser crystallographic software. *J Appl Cryst* **40**, 658–674 (2007).
60. Afonine, P. V. *et al.* Towards automated crystallographic structure refinement with phenix.refine. *Acta Cryst D* **68**, 352–367 (2012).
61. Wolff, A. M. *et al.* Comparing serial X-ray crystallography and microcrystal electron diffraction (MicroED) as methods for routine structure determination from small macromolecular crystals. *IUCrJ* **7**, 306–323 (2020).
62. Srajer, V. *et al.* Protein conformational relaxation and ligand migration in myoglobin: a nanosecond to millisecond molecular movie from time-resolved Laue X-ray diffraction. *Biochemistry* **40**, 13802–13815 (2001).
63. Greisman, J. B., Dalton, K. M. & Hekstra, D. R. Reciprocalspaceship: A Python Library for Crystallographic Data Analysis. *bioRxiv* 2021.02.03.429617 (2021) doi:10.1101/2021.02.03.429617.
64. Biswal, B. K., Sukumar, N. & Vijayan, M. Hydration, mobility and accessibility of lysozyme: structures of a pH 6.5 orthorhombic form and its low-humidity variant and a comparative study involving 20 crystallographically independent molecules. *Acta Cryst D* **56**, 1110–1119 (2000).