

Computationally profiling peptide:MHC recognition by T-cell receptors and T-cell receptor-mimetic antibodies

Matthew I. J. Raybould¹, Daniel A. Nissley¹, Sandeep Kumar², and Charlotte M. Deane¹✉

¹Oxford Protein Informatics Group, Department of Statistics, University of Oxford, 29 Woodstock Road, Oxford, OX1 3LB, United Kingdom

²Boehringer Ingelheim, 900 Ridgebury Rd, Ridgefield, CT 06877, United States

T-cell receptor-mimetic antibodies (TCRms) targeting disease-associated peptides presented by Major Histocompatibility Complexes (pMHCs) are forecast to become a major new drug modality. However, we lack a general understanding of how TCRms engage pMHC targets, which is crucial for predicting their specificity and safety. Several new structures of TCRm:pMHC complexes have become available in the past year, providing sufficient initial data for a holistic analysis of TCRms as a class of pMHC binding agents. Here, we profile the complete set of TCRm:pMHC complexes against representative TCR:pMHC complexes to quantify the TCR-likeness of their pMHC engagement. We find that intrinsic molecular differences between antibodies and TCRs lead to fundamentally different roles for their heavy/light chains and Complementarity-Determining Region loops during antigen recognition. The idiotypic properties of antibodies appear to increase the likelihood of TCRms engaging pMHCs with less peptide selectivity than TCRs. However, the pMHC recognition features of some TCRms, including the first TCRm to enter clinical trials, can be remarkably TCR-like. The insights gained from this study will aid in the rational design and optimisation of next-generation TCRms.

TCR | Mimetic | Antibody | peptide | MHC | HLA | TCR-likeness | Structural Biology

Correspondence: deane@stats.ox.ac.uk

Introduction

The human adaptive immune system relies upon B-cells and T-cells that use characteristic membrane-bound immunoglobulins, B-cell receptors (BCRs) and T-cell receptors (TCRs), to recognise a broad range of pathogenic antigens, many of which are proteinaceous. BCRs, and their secreted soluble analogues, antibodies, recognise complete soluble or membrane-bound extracellular proteins. T-cell receptors (TCRs), meanwhile, are focused through thymic development to recognise fragments of intracellularly- or extracellularly-derived peptides presented on cell surfaces by either a class I or class II polymorphic major histocompatibility complex (pMHCs) (1).

Despite their different natural roles, the binding domains of antibodies and TCRs bear several commonalities. They are both comprised of two analogously gene-recombined chains (termed ‘heavy/light’ (H/L) and ‘beta/alpha’ (B/A) for antibodies and TCRs respectively) and six complementarity-determining region (CDR) loops that together constitute most

of their binding sites. These similarities have long motivated efforts to understand whether antibodies can engage pMHCs with TCR-like specificity (2). ‘TCR-mimetic antibodies’ (TCRms) that specifically recognise fragments of the intracellular proteome could offer pinpoint recognition of aberrant cells, transforming immunohistochemistry and immunotherapy.

TCRms also offer a number of practical advantages over TCRs in terms of therapeutic development. TCR:pMHC binding affinities lie in the 1-100 μ M range (3, 4), meaning they must be affinity-engineered for use as a monovalent binding arm of a therapeutic recognising low copy number pMHCs (5). By contrast, antibody:antigen monovalent binding frequently occurs at the required range of affinities for therapeutic effect (low nM-pM) (6, 7). Therapeutic antibody development pipelines are also more established than their TCR equivalents, facilitating TCRm clinical translation and adaptation to multispecific formats exploiting proven cancer immune-modulation and T-cell redirection strategies (8–11). Early studies sought to elicit natural TCRms *via* allogenic mouse immunisation and established that BCRs can be raised against non-self peptide:non-self MHC complexes. Though most antibodies were able to engage the MHC regardless of presented peptide, a smaller fraction were peptide-dependent (*i.e.* at least somewhat TCR-mimetic) (12–15).

TCRm isolation strategies shifted towards the use of *in vitro* phage-display libraries (14, 16), both sidestepping the need to account for self-tolerance and enabling rounds of positive and negative selection to enrich for stronger, more peptide-dependent binding. By 2020, these libraries had produced a variety of TCRms against a wide range of both class I and class II pMHC targets (15, 17–20), although the extent of their peptide specificity, and thus the breadth of their applicability, was still highly variable. Most have been used as chemical probes, for which the required peptide specificity is lower than that required of a therapeutic administered across heterogeneous (MHC-compatible) populations.

Experimental peptidome binding assays performed on three early-generation TCRms (17, 19, 20) suggested that they were unlikely to achieve the levels of specificity required for therapeutic applications (21, 22). However, several TCRms with apparently high specificity have been reported in the past year, fostering renewed interest in this therapeutic modality and resulting in a near-doubling of the number of crys-

tal structures of TCRm:pMHC complexes (23–26). These include an anti-Wilms' Tumor Antigen 1 (WT1) TCRm that has no apparent off-target human peptidome binding and which has been incorporated in a bispecific antibody currently in Phase-I clinical trials (23). Two neoantigen peptide:MHC-specific TCRms were also identified that achieve complete selectivity over their wildtype peptide equivalents each differing by just a single residue mutation (24, 25).

Here, we harness this recent influx in structural data on TCRm:pMHC complexes to computationally dissect their molecular recognition properties. We outline where and why TCRm:pMHC binding features tend to align with and differ from representative antibody:antigen and TCR:pMHC complexes. High-throughput interaction profiling of static complexes reveals that molecular differences between antibodies and TCRs result in differential CDR involvement in the pMHC binding event. This tends to lead to more variable peptide sensitivity, but does not preclude some TCRms from recognising pMHCs with similar features to those seen across TCRs. We also perform all-atom simulations which reveal that energetic hotspots in the MHC can play a key role in TCRm binding. TCRs seem to avoid this behavior, instead reliably exploiting energy hotspots on the peptide surface. Finally, we highlight TCR-like pMHC recognition features in the first TCRm to achieve sufficient specificity to reach the clinic (11D06) *versus* a TCRm to the same pMHC with known off-targets (ESK1). Overall, our analysis begins to quantify TCR-likeness across TCRms, enabling rational TCRm selection, optimisation, and design based on the natural cognate partners of pMHCs.

Results

We began our analysis by identifying sets of representative antibody:antigen, TCR:pMHC and TCRm:pMHC complexes from SAbDab (6, 7) and STCRDab (4) (see Methods).

We found ten pMHC-binding antibodies, nine of which have binding modes that transect the peptide binding groove (17–20, 23–26) and one alloantibody (27) that contacts only the MHC and so was not classified as a TCRm. After filtering for interface redundancy (see Methods), we identified 8 representative TCRm:pMHC complexes (7 MHC class I, 1 MHC class II), 56 representative TCR:pMHC complexes (48 MHC class I, 8 MHC class II), and 761 representative antibody:antigen complexes. Unless otherwise stated, properties of TCRs or TCRms engaging MHC class I and class II are pooled.

pMHC complexes offer an unusually broad binding surface that is engaged differently by TCR and TCRm CDRs. To quantitatively compare the properties of immunoglobulin:antigen interfaces, we computed the buried surface area (BSA) and patterns of formal interactions across our representative complexes (see Methods, SI Methods).

Global Interface Properties. Calculating BSA over the whole immunoglobulin:antigen interface (Fig. 1A) reveals that pMHC binding events result in atypically broad interfaces

relative to general antigen complexes (TCRs μ : 1858.6Å², sd: 241.8Å² and TCRms μ : 2049.9Å², sd: 153.9Å²; *versus* general antibodies μ : 1508.0Å², sd: 467.1Å²).

The flat pMHC topology appears to place constraints on the CDRH3/CDRB3 length of their cognate immunoglobulins. Though assembled *via* a common VDJ recombination mechanism, TCR CDRB3s only have a length range of 10–17 (28), while antibody CDRH3s span lengths of 5–30+ (29–31). The TCRm CDRH3s range from length 11 to length 15, biased to the lower end of the range sampled in natural antibodies, with a mean value closer to that seen across TCRs, and entirely within the relatively narrow band of TCR CDRB3 or CDRA3 loop lengths (28, 32) (SI Table 2). This suggests that shorter CDR3 lengths render TCRs/TCRms unable to achieve sufficient interactions to bind a pMHC, while longer lengths may result in destabilising clashes with the pMHC surface.

A residue-level interaction analysis of the immunoglobulin:pMHC complexes shows that the broad interface compromises different total numbers of interactions in TCRs and TCRms (μ : 23.5, sd: 6.2; μ : 27.0, sd: 4.0 respectively), however both classes of immunoglobulin use a similar balance of hydrophobic, aromatic, and polar interactions (SI Table 1).

Binding Properties by Immunoglobulin Region. Only considering the immunoglobulin contribution to the BSA, the TCRm profile (μ : 1043.4Å², sd: 83.2Å²) is again closer to typical TCRs (μ : 942.0Å², sd: 129.3Å²) than typical antibodies (μ : 718.3Å², sd: 235.5Å²) (Fig. 1B).

However, dissecting this BSA by CDR contributions demonstrates that antibody and TCR CDR loops play different roles in antigen binding. For example, antibody CDRL2 loops lie unburied in over 50% of general antigen complexes while TCR CDRA2 loops are buried in the pMHC interface to a much greater extent, a greater proportion of the time (Fig. 1C).

Equally, when considering the relative contributions of CDR3s to pMHC recognition, we find that TCRm binding tends to be biased towards burial of CDRH3 and away from CDRL3, more typical of general antibody:antigen complexes (Fig. 1D), while TCRs exploit their CDR3 loops more evenly, if anything with a slight bias towards the CDRA3 loop (the genetic equivalent to CDRL3).

The differences in CDR usage in pMHC binding can be related to the fact that some CDR loops have markedly different length preferences in antibodies than TCRs. For example, antibody CDRH2s and CDRL2s have median IMGT lengths of 8 and 3, respectively (29). In contrast, TCR CDRB2 and CDRA2 loops have median lengths of 6 and 5 (32). Similarly, while antibody CDRH3 and CDRL3 loops have a median length of 15 and 9, TCR CDRB3 and CDRA3 loops have median lengths of 12 and 13 (28, 29, 32). The more even balance in CDR lengths between equivalent CDR loops on the VA and VB chains is consistent with the lower observed bias towards VDJ-chain dominated binding (Fig. 1D).

In summary, the differences in the molecular properties of antibodies and TCRs have a direct impact on the roles of their CDR loops during pMHC recognition, with no apparent functional link between antibody/TCR chains made by analogous

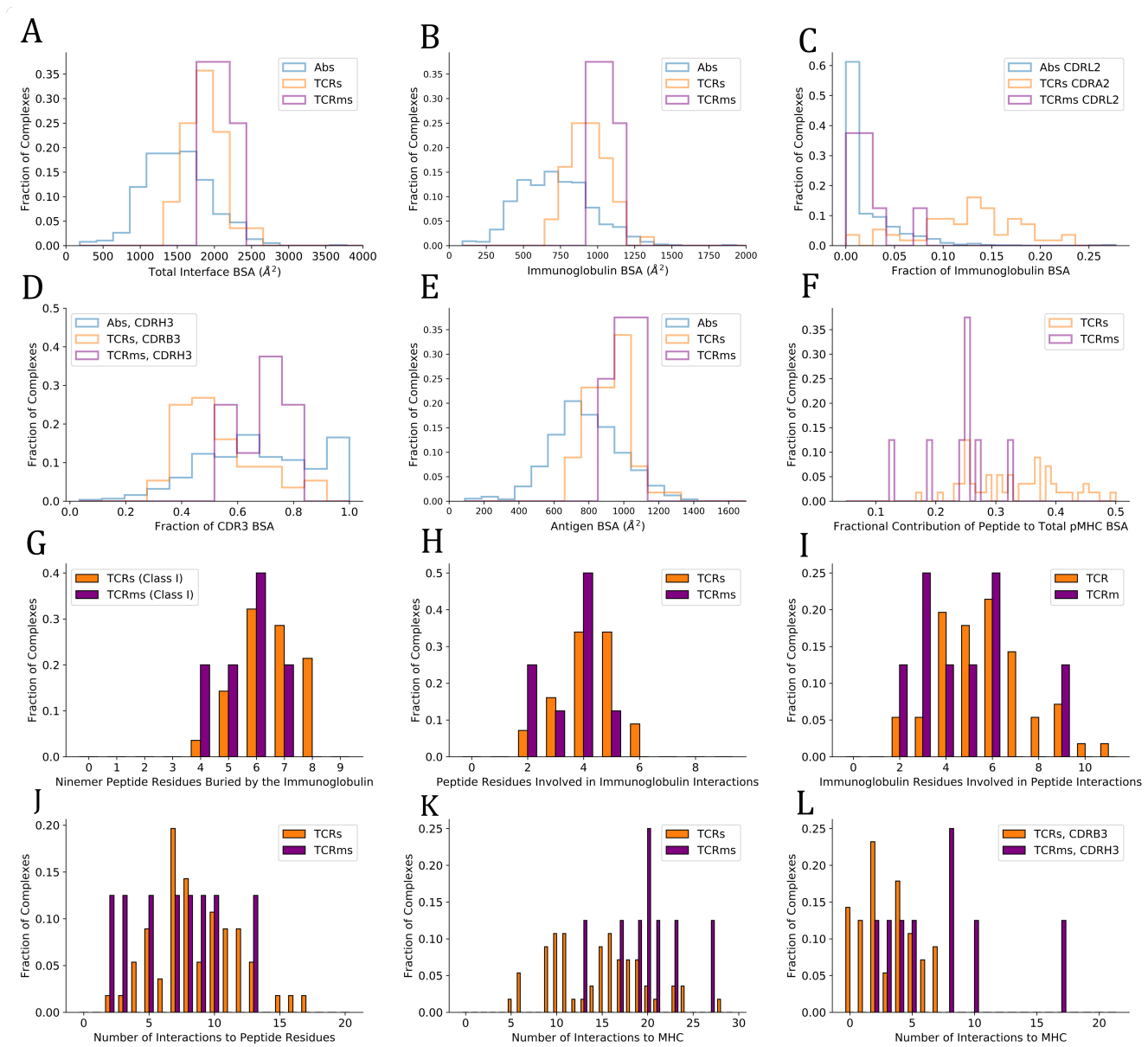


Fig. 1. Buried surface area (BSA) and interaction profiles across the representative complexes from the Structural Antibody Database (6, 7) and Structural T-cell Receptor Database (4). A: The total BSA across the immunoglobulin:antigen interface. B: The immunoglobulin portion of the total interface BSA. C: The fractional contribution of CDR2 (antibodies, TCRms) or CDRA2 (TCRs) to immunoglobulin BSA. D: The fractional contribution of CDRH3 (antibodies, TCRms) or CDRB3 (TCRs) to CDR3 BSA. E: The antigen/pMHC portion of the total interface BSA. F: The fractional contribution of peptide BSA to pMHC BSA. G: The number of peptide residues buried in each immunoglobulin to ninemer peptide:MHC Class I complexes. H: The number of peptide residues involved in binding interactions to the TCRms/TCRs. I: The number of immunoglobulin residues involved in binding interactions to the peptide across the TCRms/TCRs. J: The number of interactions between the immunoglobulin and the peptide across the TCRms/TCRs. K: The number of interactions to MHC residues across the TCRms/TCRs. L: The number of interactions to MHC residues made by the CDRH3 (TCRms) or CDRB3 (TCRs) loop.

gene recombination mechanisms.

Binding Properties by Antigen Region. BSAs computed only across the antigen (Fig. 1E) reveal that the expected result that TCRs (μ : 916.6Å², sd: 119.9Å²) and TCRms (μ : 1006.4Å², sd: 75.4Å²) tend to bury a larger total area of the antigen interface relative to general antibodies (μ : 790.4Å², sd: 220.8Å²).

Although TCRs and TCRms bury a similar area of the pMHC, splitting this area into contributions by the peptide and MHC reveals that the TCRms are strongly biased towards a larger MHC BSA, with the effect that TCRms tend

to recognise a smaller proportion of peptide surface during their pMHC recognition events (Fig. 1F). This can also be expressed as the total number of peptide residues buried at least to some extent. Regardless of peptide length, no cognate TCR or TCRm has yet been found that can bury every peptide residue. However, for example in ninemer peptides presented by MHC class I, burial of eight peptide residues is not uncommon across TCRs (21.4%) but has not yet been observed in any TCRms (Fig. 1G). Only 1/5 ninemer-pMHC class I-binding TCRms buries seven peptide residues (11D06 [7BBG]), while at least this many peptide residues are buried in 14/28 corresponding TCRs.

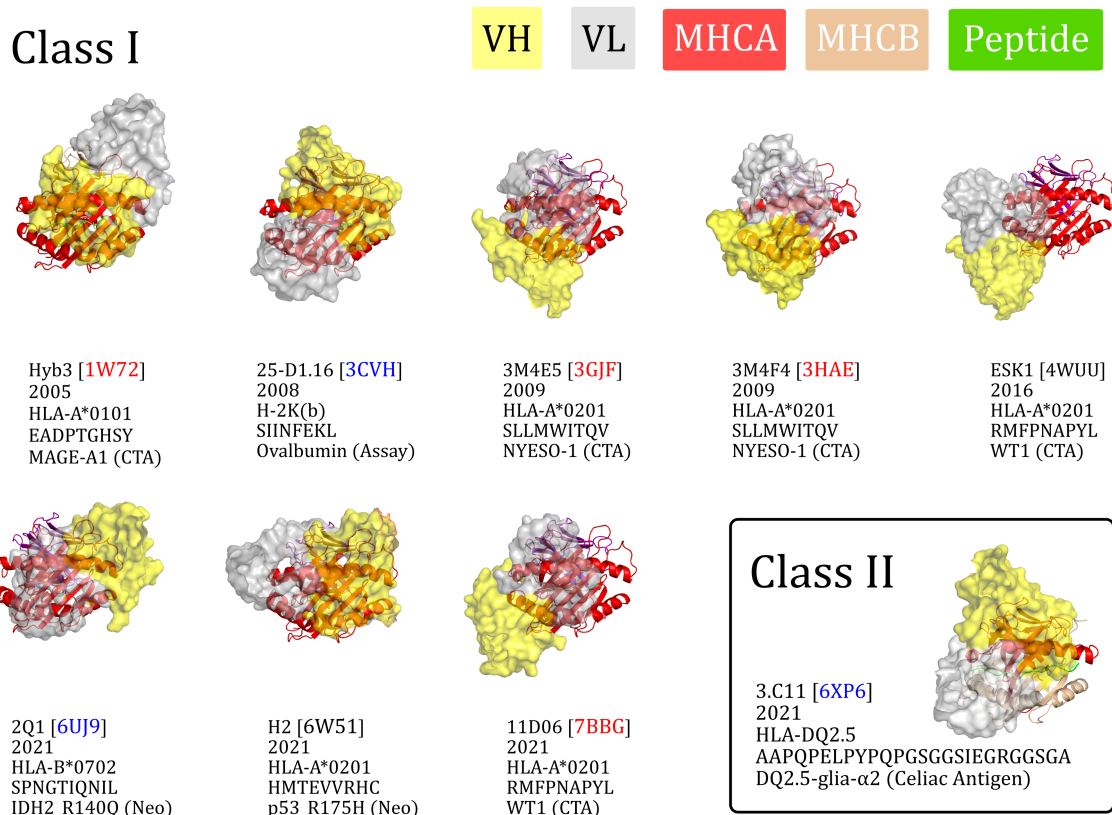


Fig. 2. The nine TCR-mimetic antibodies (TCRms) with solved structures in complex with their cognate pMHC, aligned by the MHC residues. The perspective set so that the x-axis is the vector through the C α atoms of the peptide anchor residues. 3M4E5 and 3M4F4 are closely related and derive from the same screening campaign, so are jointly represented by 3M4E5 in the analysis. Metadata is supplied below each structure: the TCRm name and Protein Data Bank (PDB) identifier, year of release in the PDB, MHC allele, antigen amino acid sequence, and antigen common name. ESK1 and H2 fall outside the range of diagonality seen in TCR:pMHC binding (PDB codes written in black). Diagonally-binding TCRms with VH in the position of VB and VL in the position of VA (canonical polarity binders) have blue PDB codes, while those with VH in the position of VA and VL in the position of VB (polarity binders) have red PDB codes. CTA: cancer testis antigen, MHCA: MHC alpha chain, MHCB: MHC beta chain, Neo: neoantigen.

Though we observe that TCRms have a lower proportion of pMHC BSA from the peptide, they do engage a similar number of peptide residues using a similar number of immunoglobulin residues as TCRs (Figs. 1H, 1I). This also results in a similar number of formal interactions (Fig. 1J). However, the BSA signal that TCRms:pMHC recognition is disproportionately biased towards MHC is recapitulated in the fact that TCRms tend to make more formal interactions to MHC residues than do TCRs (Fig. 1J). Dissecting these contributions by immunoglobulin region shows this predominantly originates in TCRm CDRH3s being less peptide-focused than TCR CDRB3 loops (Fig. 1K). Together, these profiles suggest that current TCRms are likely to be less peptide-selective than a typical TCR.

TCRms can approach pMHCs with a diagonal orientation, but this does not guarantee TCR-like pMHC recognition. It has been previously shown that TCRs converge around diagonal engagement of pMHCs with the centre of mass of the beta chain sitting over the C-terminus of the MHC α_1 helix and the centre of mass of the alpha chain sitting over the C-terminus of the MHC α_2 helix (15, 33). This is quantified by the ‘docking/crossing angle’, calculated as the intercept of the line connecting conserved centres of mass within the variable region and the axis of the peptide bind-

ing groove. Our 56 representative TCR:pMHC complexes almost entirely comply with this canonical binding definition (μ : 46.1°, sd: 17.3°, SI Fig. 2A), with one outlier (Protein Data Bank identifier (PDB ID) 4Y19 (34)) (35) that engages pMHC with a diagonal but reverse polarity mode (136.7°; *i.e.* the VB chain sits above the MHC α_2 helix while the VA chain occludes the MHC α_1 helix, SI Fig. 2B).

To visualise their binding orientations, we aligned our set of TCRm complexes along the canonical peptide binding groove axis (Fig. 2). While two of the TCRms bound in a non-diagonal fashion, the rest (75% of non-redundant TCRms) adopted a diagonal pMHC binding mode that fell within the range of absolute docking angles set by TCRs (Fig. 2). However, in contrast to TCRs, TCRm diagonal pMHC binding is more frequently achieved using reverse polarity (where VH is in the position of VA and VL is in the position of VB), reinforcing the notion that antibody and TCR chains with similar gene recombination mechanisms are not necessarily analogous in terms of pMHC recognition.

Convergence upon diagonal pMHC binding across TCRs is thought to be driven by improved typical TCR specificity, achieved by positioning the most hypervariable loops within interaction distance of the peptide, the key locus of pMHC variability (32). We therefore surveyed the properties of diag-

onally *versus* non-diagonally engaging TCRms to investigate to what extent this property correlates with more TCR-like pMHC recognition (SI Fig. 1).

The property distributions indicate that TCRm diagonal engagement is not systematically linked with total pMHC BSA (SI Fig. 1E) nor a higher fraction of peptide contact area (SI Fig. 1F). Some diagonal modes result in few formal interactions between the TCRm CDR3s and the peptide (e.g. Hyb3, with just two interactions to the peptide from CDRH3), while others result in numbers large even by TCR standards (Fig. 1J; 3M4E5 has three formal interactions to the peptide from CDRH3 and seven from CDRL3). However, one property that appears to be systematically linked to TCRm diagonal engagement is a greater number of peptide residues being buried; where N is the total number of peptide residues, non-diagonal pMHC class-I modes contact a maximum of $N-4$ residues, while diagonal modes frequently bury more, up to a currently-observed maximum of $N-2$ (SI Fig. 1G).

Overall these mixed results show that not all diagonal TCRm pMHC binding modes yield TCR-like pMHC engagement profiles, and that this property alone is likely insufficient for capturing the specificity of a TCRm.

TCRms and TCRs have different trends in binding energetics even in identical pMHC contexts.

We next performed molecular dynamics studies on three pMHC contexts for which we have a crystal structure in the PDB of at least one TCRm partner and at least one natural/affinity-enhanced TCR partner, allowing us to investigate their binding energetics. We selected three cases studies in which HLA-A*0201 presents a different peptide antigen:

(1) Wilms' Tumor 1 (WT1) antigen (RMFPNAPYL), bound to two TCRms and one affinity-enhanced TCR; ESK1 (PDB ID: 4WUU), 11D06 (PDB ID: 7BBG), and a7b2 (PDB ID: 6RSY), respectively.

(2) New York esophageal squamous cell carcinoma 1 (NY-ESO-1) antigen (SLLMWITQV), bound to one TCRm, one natural TCR, and three affinity-enhanced TCRs; 3M4E5 (PDB ID: 3GJF), sp3.4 (PDB ID: 6Q3S), NYE_S1 (PDB ID: 6RPB), NYE_S2 (PDB ID: 6RPA), and NYE_S3 (PDB ID: 6RP9), respectively.

(3) p53_R175H neoantigen (HMTEVVRHC), bound to one TCRm and three natural TCRs; H2 (PDB ID: 6W51), 1a2 (PDB ID: 6VQO), 12-6 (PDB ID: 6VRM), and 38-10 (PDB ID: 6VRN), respectively.

To characterize the energetic differences between the bound and unbound states of each complex, we ran sets of thirty 5-ns all-atom explicit solvent molecular dynamics simulations, using Molecular Mechanic Generalized-Born Surface Area (MMGBSA) (37–39) to compute overall free-energy changes upon binding as well as the per-residue contributions from both the pMHC and TCR/TCRm (see Methods, SI Methods, SI Figs. 3-5).

Quantifying the relative contributions of the peptide, MHC $\alpha 1$ helix, and MHC $\alpha 2$ helix to the overall free energy change of the pMHC (see SI Methods for equations), we find that both natural TCRs and affinity-enhanced TCRs tend to gain a larger proportion of their binding energy through the pep-

ptide than do TCRms (Fig. 3, affinity-enhanced TCRs labelled TCR*). Within a given pMHC case study, no single TCRm achieved a higher proportion of binding energy from the peptide than any TCR. It is striking that some peptide antigens appear more tractable than others in terms of achieving a significant contribution to the overall binding energy. For example, even an affinity-enhanced TCR engaging the WT1 pMHC only reaches around 35% peptide contribution to binding free energy, while natural tumor-infiltrating lymphocytes complementary to p53_R175H achieve up to 60%. We also considered the energies contributed by individual residues to identify interaction hotspots (Table 1, SI Figs. 2-4, SI Table 3). Arbitrarily, we define interaction hotspots as individual residues that have a predicted free energy of -7 kcal/mol or stronger. All the natural TCRs assessed have at least one hotspot residue in the peptide, suggesting this may be a frequent feature of natural peptide recognition and consistent with current hypotheses on TCR recognition (40, 41). That the three p53_R175H specific TCRs found in tumor infiltrate lymphocytes achieve more neoantigen recognition at R7 rather than H8 (the site of somatic mutation) shows that this hotspot does not necessarily lie at the residue that distinguishes self from non-self.

By contrast, only TCRms were found to have hotspots that lie within the MHC (ESK1 and 11D06). Despite their origins in different light chain loci (IGLV2-11 and IGKV1-5), the hotspot occurs at the same residue in the $\alpha 1$ helix (R65), which in both cases forms a salt bridge to D56 of CDRL2. That such non-peptide hotspots were not readily observed in TCR formats provides further evidence that current TCRms may be prone to higher inherent affinity for the MHC and thus poorer typical peptide specificity.

Finally, to characterize the differences in the energetics of CDR binding to the pMHCs, we computed the fractional contributions of each CDR to the total CDR free energy change (Fig. 3). All TCRms and most TCR contexts were CDR3-dominated in their binding energetics. The balance of CDR[H/B]3 to CDR[L/A]3 energy reflected the picture seen in the general analysis of interface properties: TCRms gain more binding energy through CDRH3 than CDRL3, while in TCRs either CDR3 can be energetically dominant.

Discussion

TCRs exhibit a range of pMHC specificities, with a degree of polyspecificity considered an advantageous property to maximise the TCR repertoire's breadth of antigen recognition (42). However, to survive thymic development and achieve downstream signalling, TCRs have converged around several pMHC recognition properties including a canonical docking polarity, orientation, and the positioning of their most variable CDR loops above the peptide binding groove of the MHC (43). This suggests there are conserved properties of pMHC recognition that grant TCRs the basal level of peptide specificity necessary to avoid widespread autoimmunity *in vivo*. The properties of their interfaces should therefore shed light on pMHC recognition features that ought to be generally advantageous to other molecules seeking to mimic them.

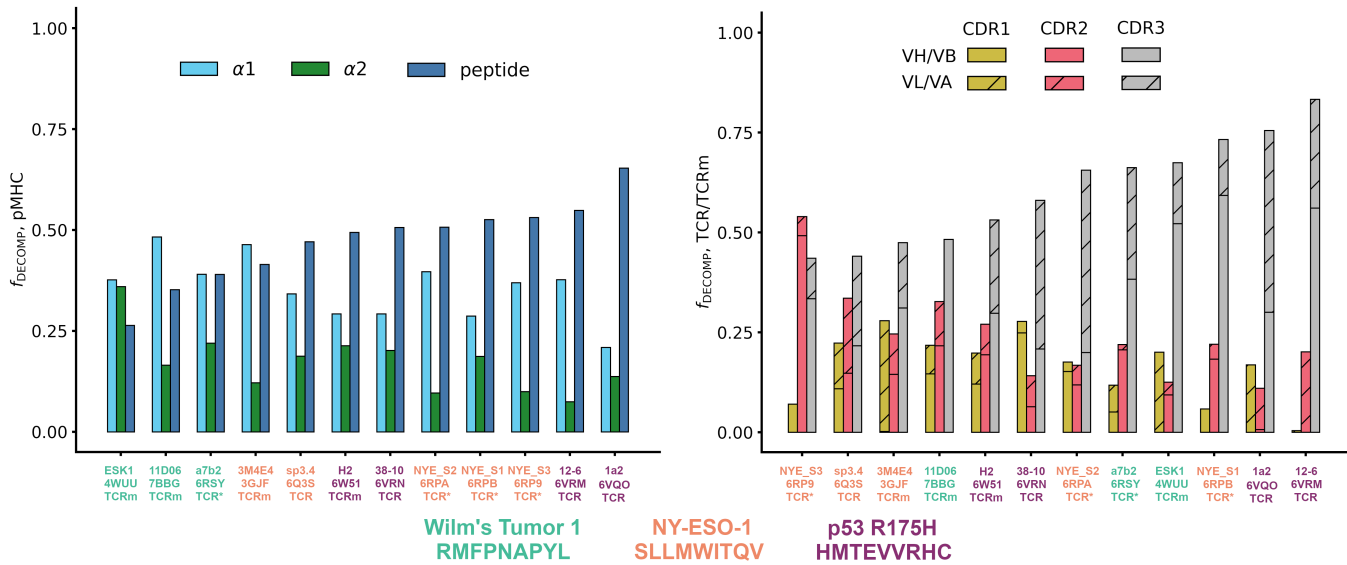


Fig. 3. The energetics of pMHC binding of TCR-mimetic antibodies (TCRms), natural T-cell receptors (TCRs) and affinity-enhanced T-cell Receptors (TCR*s). (LHS) Relative contributions of the peptide, the MHC α_1 helix, and the MHC α_2 helix to the MMGBSA free energy change (36). Individual values were computed with SI Equations 1-3, and then rank ordered by increasing peptide contribution. (RHS) Relative contributions to binding free energy of the CDR1, CDR2, and CDR3 loops for the heavy/beta chain (no hatch) and light/alpha chain (diagonal hatch), calculated as described in Methods. Complexes were rank ordered by increasing CDR3 contribution. Note that the CDR1, CDR2, and CDR3 bars do not sum to exactly one for all complexes as small negative values of the fraction of the DECOMP energy (f_{DECOMP}), representing CDRs that experience repulsive interactions with the pMHC, were passed to zero for visual clarity. NY-ESO-1: New York esophageal squamous cell carcinoma 1.

Antigen	Name [PDB]	TCRm/TCR	Peptide Hotspots/Semi-hotspots ¹	Number of peptide/ α_1 / α_2 Hotspots
WT1	ESK1 [4WUU]	TCRm	RMFPNAPYL	0 / 1 / 0
	11D06 [7BBG]	TCRm	RMFPNAPYL	0 / 1 / 0
	a7b2 [6RSY]	TCR ²	RMFPNAPYL	1 / 0 / 0
NYESO-1	3M4E5 [3GJF]	TCRm	SLLM WITQV	1 / 1 / 0
	sp3.4 [6Q3S]	TCR	SLLM WITQV	2 / 0 / 0
	NYE_S3 [6RP9]	TCR ²	SLLMWITQV	0 / 0 / 0
	NYE_S2 [6RPA]	TCR ²	SLLM WITQV	1 / 0 / 0
	NYE_S1 [6RPB]	TCR ²	SLLM WITQV	1 / 0 / 0
p53_R175H	H2 [6W51]	TCRm	HMTEV VRHC	1 / 0 / 0
	12-6 [6vrm]	TCR	HMTEV VRHC	1 / 0 / 0
	38-10 [6VRN]	TCR	HMTEV VRHC	1 / 0 / 0
	1a2 [6VQO]	TCR	HMTEV VRHC	1 / 0 / 0

Table 1. Decomposed per-residue energetic profiles for the case study TCR and TCRm complexes, grouped by pMHC region (peptide, MHC α_1 helix, or MHC α_2 helix). ¹Hotspots¹ are defined as residues predicted to have an attractive per-residue contribution of ≥ 7 kcal/mol to free energy based on DECOMP analysis (bold red text). ²Semi-hotspots² are defined as residues that contribute between -4 and -7 kcal/mol (bold black text). ²Affinity-enhanced TCRs.

In this paper we have shown that, despite their broader genetic similarities, idiotypic molecular configurations of antibody and TCR CDR loops lead to fundamental differences in their roles during pMHC recognition. Without significant protein engineering, no antibody will be able to precisely mimic a TCR. However, TCRms exhibit a spectrum of TCR-likeness in the way they engage pMHC.

It is difficult to set thresholds for how TCR-like a TCRm needs to be to achieve tolerable specificity for *in vivo* application. Two WT1-binding TCRms, ESK1 and 11D06, may begin to shed light on the answer. ESK1 is potentially the least TCR-like TCRm analysed in this study, engaging the pMHC with an orthogonal binding mode (Fig. 2), the lowest fraction of binding energy to the peptide of any simulated complex (Fig. 3), and several burial/interaction profiles on or outside of the bounds seen previously in TCRs (SI Fig. 6).

By contrast, 11D06 is considerably more TCR-like, engaging the pMHC diagonally (Fig. 2), with fewer MHC interactions than ESK1 and burying the highest fraction of peptide residues of any other class-I TCRm solved to date (SI Fig. 6).

Though ESK1 was discovered many years before 11D06, it has not yet progressed through preclinical development and has several known human proteome off-targets (22), while 11D06 has already advanced to Phase-I clinical trials. Together, this would suggest that increased TCR-likeness may be beneficial for clinical progression. However, 11D06 is certainly not perfectly TCR-like. It harbors an interaction hotspot in the MHC, has a smaller percentage of pMHC binding energy from the peptide than any TCR assessed in the simulation study, and its VJ-recombined CDR3 loop plays no role in binding. This implies that some TCR-like pMHC recognition properties could be more important than others

for specificity.

There are several limitations to this study, primary amongst which is the relative paucity of TCRm structures, and particularly pMHC contexts, upon which to make conclusions about general TCRm pMHC recognition. Selection bias that cannot be accounted for through non-redundancy filtering alone is also likely to influence our conclusions. For example, it is likely that TCRms that have more promising specificity profiles would be more likely to be subjected to crystallographic analysis, which may artificially increase their apparent average TCR-likeness. Additionally, a notable trend in recent years has been to solve TCR:pMHC complexes that ‘break the rules’ rather than adhere to them (44), which may interfere with interpretability of the mean properties of our ‘representative TCRs’ as reflective of typical TCR behavior.

Nevertheless even with these early data, some general properties of TCRms and TCRs, such as their balance of peptide *versus* MHC recognition, appear to be diverging markedly. As more TCRms and immune mobilising monoclonal T-cell receptors against cancer (immTACs) are developed, structurally characterized, and begin to enter clinical trials, it will be important to evaluate their binding properties and assess which pMHC recognition features are most reliably linked with good specificity profiles. For now, our TCR:pMHC complex profiles offer an initial set of benchmarks for the rational computational derisking of novel TCR-mimetic modalities.

Methods

Numbering and Region Definitions. To enable a direct comparison between antibodies and TCRs, and between heavy and light chains, the IMGT numbering scheme and CDR definitions were used throughout this work (CDR1: IMGT residues 27-38, CDR2: IMGT residues 56-65, CDR3: IMGT residues 105-117 (45)). ANARCI was used to number all sequence inputs (46). Where necessary, MHC chains were renumbered to enable a direct comparison between TCRm and TCR complexes.

Structure Datasets. SAbDab (4, 6) and STCRDab (4) were downloaded on 1st January, 2022. All complexes were stripped of explicit hydrogens, heteroatoms, and water molecules, and only immunoglobulins with protein antigens were considered. These databases were then mined for particular subcategories as follows:

1. TCR-mimetic antibody (TCRm) complexes were identified by filtering SAbDab with the search terms ‘HLA’ and ‘MHC’, followed by manual validation.
2. Representative sets of non-redundant high quality antibody:antigen and TCR:pMHC complexes were derived by first filtering SAbDab and STCRDab for structures of complexes solved by X-ray crystallography to ≤ 2.5 Å resolution. For each class of immunoglobulin separately, the IMGT-defined CDR sequences (45) were concatenated in a consistent order and used as inputs to greedy clustering by cd-hit (47) (80% sequence identity threshold), to create

‘paratope clusters’. To identify cases where chemically-similar paratopes bind to significantly different antigens, we performed a second round of clustering over the paratope clusters using the concatenated sequence of the antigen(s) associated with each antibody/nanobody (concatenated in descending length order), or the sequence of the presented peptide for the TCRs. cd-hit was run at an 80% sequence identity threshold, allowing a minimum alignment length of as little as 20%. This ensured truncated antigens were not considered as different targets (e.g. an anti-coronavirus antibody solved in complex with the receptor-binding domain would be considered the same context as a complex of the same antibody binding to the full-length spike protein). This resulted in sets of 761, 233, 48, and 8 representative antibody:antigen, nanobody:antigen, TCR:pMHC (class 1) and TCR:pMHC (class 2) complexes respectively.

3. Complexes of TCRs and TCRms engaging the same peptide were obtained by searching SAbDab and STCRDab by antigen sequence for peptide fragments with 100% sequence identity match.

Buried Surface Area Calculations. Complete immunoglobulins were separated from their antigens (*i.e.* the co-ordinates of the partner were deleted in a copy of the original file), and the difference in solvent-accessible surface area between each residue in the original complex and artificially-generated ‘apo’ state was recorded. Per-residue solvent-accessible surface area was calculated using an in-house implementation of the Shrake and Rupley algorithm (48), applying a probe radius of 1.4Å.

Interaction Mapping. The Arpeggio (49) software package was used to assess complexes for hydrophobic, aromatic, hydrogen bond, and salt bridge interactions. A set of rules were established to interpret the arpeggio outputs at a per-residue level (see SI Methods).

Molecular dynamics simulations and analysis. pMHC-TCR and pMHC-TCRm complexes were prepared in AmberTools21 (50) and all simulations run in OpenMM v7.5 (51). Complexes were solvated in orthorhombic boxes with a minimum of 1.4 nm between protein atoms and the box edge. Sodium and chloride ions were added to neutralize each system and bring the salt concentration to 0.15 M. All simulations were carried out using FF14SB (52) and TIP3P (53) forcefield parameters with a Langevin thermostat (friction coefficient 1 ps^{-1}) and, for constant-pressure simulations, a Monte Carlo barostat (pressure 1 bar). Complexes were minimized and then heated to 298 K at constant volume with protein atoms restrained. These restraints were relaxed over a set of five 100-ps simulations at constant pressure, culminating with 100-ps of unrestrained equilibration. Finally, 5-ns production simulations at constant pressure were run. Thirty independent replicas of this protocol were executed for each complex (54). MMGBSA calculations were performed with MMPBSA.py (55) using 100 frames collected every 40 ps from the final 4 ns of each 5-ns trajectory (*i.e.*, 3000 frames

per complex). Per-residue energy contributions to the binding energy were computed using the MMPBSA.py DECOMP functionality (55). Further detail on all simulation methods can be found in the SI.

Visualisations. All visualisations were created using open-source PyMOL or matplotlib version 3.5.2.

Data Availability. The cleaned, filtered, and IMGT-numbered complexes used for the high-throughput immunoglobulin:antigen complex analysis are available as Dataset S1. PQR-format structures generated with H++ (55) for simulations of case study pMHC-TCR and pMHC-TCRm complexes are available as Dataset S2.

Acknowledgements

MIJR and DAN gratefully acknowledge funding through a postdoctoral research grant sponsored by Boehringer Ingelheim. The authors thank Drs. Nicolas Sabarth, Niksa Kas-trapeli, Andrew Nixon, Justin Scheer, Noah Pefaur, Srinath Kasturirangan, Paul Adams, Renate Konopitzkey and several other researchers at Boehringer Ingelheim for numerous insightful discussions and their critical reading of this manuscript.

Bibliography

- R. L. E. Cano and H. D. E. Lopera. Introduction to T and B lymphocytes. Autoimmunity from bench to bedside, El Rosario University Press, 2013.
- D E Wylie and N R Klinman. The murine B cell repertoire responsive to an influenza-infected syngeneic cell line. *J Immunol*, 127(1):194–198, 1981.
- Jennifer D. Stone, Adam S. Chervin, and David M. Kranz. T-cell receptor binding affinities and kinetics: impact on T-cell activity and specificity. *Immunology*, 126(2):165–176, 2009. doi: 10.1111/j.1365-2567.2008.03015.x.
- Jinwoo Leem, Saulo H. P. de Oliveira, Konrad Krawczyk, and Charlotte M. Deane. STCRDab: the structural T-cell receptor database. *Nucleic Acids Res*, 46(D1):D406–D412, 2018. doi: 10.1093/nar/gkx971.
- Paul Nathan, Jessica C. Hassel, Piotr Rutkowski, Jean-Francois Baurain, Marcus O. Butler, Max Schlaak, Ryan J. Sullivan, Sebastian Ochsenreither, Reinhard Dummer, John M. Kirkwood, Anthony M. Joshua, Joseph J. Sacco, Alexander N. Shoushtari, Marlana Orloff, Josep M. Puilat, Mohammed Milhem, April K.S. Salama, Brendan Curti, Lev Demidov, Lauris Gastaud, Cornelia Mauch, Melinda Yushak, Richard D. Carvajal, Omid Hamid, Shaad E. Abdullah, Chris Holland, Howard Goodall, and Sophie Piperno-Neumann. Overall Survival Benefit with Tebentafusp in Metastatic Uveal Melanoma. *New Engl J Med*, 385(13):1196–1206, 2021. doi: 10.1056/NEJMoa2103485.
- James Dunbar, Krawczyk Konrad, Jinwoo Leem, Terry Baker, Angelika Fuchs, Guy Georges, Jiye Shi, and Charlotte M. Deane. SABDab: the Structural Antibody Database. *Nucleic Acids Res*, 42(D1):D1140–D1146, 2014. doi: 10.1093/nar/gkt1043.
- Constantin Schneider, Matthew I. J. Raybould, and Charlotte M. Deane. SABDab in the Age of Biotherapeutics: Updates including SABDab-Nano, the Nanobody Structure Tracker. *Nucleic Acids Res*, 50(D1):D1368–D1372, 2022. doi: 10.1093/nar/gkab1050.
- Clare Y. Stanley, Pin Wang, Phillip K. Darcy, and Michael H. Kershaw. CARs versus BiTEs: A Comparison between T Cell–Redirection Strategies for Cancer Treatment. *Cancer Discov*, 8(8):924–934, 2018. doi: 10.1158/2159-8290.CD-18-0297.
- Qinghua He, Zhaoyu Liu, Zhihua Liu, Yuxiong Lai, Xinke Zhou, and Jinsheng Weng. TCR-like antibodies in cancer immunotherapy. *J Hematol Oncol*, 12:99, 2019. doi: 10.1186/s13045-019-0788-4.
- Lin Yu and Jianhua Wang. T cell-redirecting bispecific antibodies in cancer immunotherapy: recent advances. *J Cancer Res Clin Oncol*, 145(4):941–956, 2019. doi: 10.1007/s00432-019-02867-6.
- Belén Blanco, Marta Compte, Simon Lykemark, Laura Sanz, and Luis Alvarez-Vallina. T Cell-Redirecting Strategies to ‘STAB’ Tumors: Beyond CARs and Bispecific Antibodies. *Trends Immunol*, 40(3):243–257, 2019. doi: 10.1016/j.it.2019.01.008.
- Gilles Dadaglio, Christopher A. Nelson, M. Brian Deck, Shirley J. Petzold, and Emil R. Unanue. Characterization and Quantitation of Peptide–MHC Complexes Produced from Hen Egg Lysozyme Using a Monoclonal Antibody. *Immunity*, 6(6):727–738, 1997. doi: 10.1016/S1074-7613(00)80448-3.
- Angel Porgador, Jonathan W. Yewdell, Yiping Deng, and Ronald N. Binnink, Jack R. Germain. Localization, Quantitation, and In Situ Detection of Specific Peptide–MHC Class I Complexes Using a Monoclonal Antibody. *Immunity*, 6(6):715–726, 1997. doi: 10.1016/S1074-7613(00)80447-1.
- Galit Denkberg and Yoram Reiter. Recombinant antibodies with T-cell receptor-like specificity: Novel tools to study MHC class I presentation. *Autoimmunity Rev*, 5(4):252–257, 2006. doi: <https://doi.org/10.1016/j.autrev.2005.07.004>.
- Lene S. Høydahl, Rahel Frick, Inder Sandlie, and Geir Å. Løset. Targeting the MHC Ligandome by Use of TCR-Like Antibodies. *Antibodies*, 8(2):32, 2019. doi: 10.3390/antib802032.
- Patrick Chames, Simon E. Hulton, Pierre G. Coulie, Barbara Uchanska-Ziegler, and Hennie R. Hoogenboom. Direct selection of a human antibody fragment directed against the tumor T-cell epitope HLA-A1–MAGE-A1 from a nonimmunized phage-Fab library. *Proc Natl Acad Sci*, 97(14):7969–7974, 2000. doi: 10.1073/pnas.97.14.7969.
- Martin Hulsmeyer, Patrick Chames, Roman C. Hillig, Robyn L. Stanfield, Gerhard Held, Pierre G. Coulie, Claudia Alings, Gabriele Wille, Wolfram Saenger, Barbara Uchanska-Ziegler, Hennie R. Hoogenboom, and Andreas Ziegler. A Major Histocompatibility Complex-Peptide-restricted Antibody and T Cell Receptor Molecules Recognize Their Target by Distinct Binding Modes: CRYSTAL STRUCTURE OF HUMAN LEUKOCYTE ANTIGEN (HLA)-A1-MAGE-A1 IN COMPLEX WITH FAB-HYB3. *J Biol Chem*, 280(4):2972–2980, 2005. doi: 10.1074/jbc.M411323200.
- Tatiana Mareeva, Erik Martínez-Hackert, and Yuri Sykulev. How a T Cell Receptor-like Antibody Recognizes Major Histocompatibility Complex-bound Peptide. *J Biol Chem*, 283(43):29053–29059, 2008. doi: 10.1074/jbc.M804996200.
- Guillaume Stewart-Jones, Andreas Wadle, Anja Hombach, Eugene Shenderov, Gerhard Held, Eliane Fischer, Sascha Kleber, Natko Nuber, Frank Stenner-Liewen, Stefan Bauer, Andrew McMichael, Alexander Knuth, Hinrich Abken, Andreas A. Hombach, Vincenzo Cerundolo, E. Yvonne Jones, and Christoph Renner. Rational development of high-affinity T-cell receptor-like antibodies. *Proc Natl Acad Sci*, 106(14):5784–5788, 2009. doi: 10.1073/pnas.0901425106.
- Niloufar Ataie, Jingyi Xiang, Neal Cheng, Elliot J. Brea, Wenjie Lu, David A. Scheinberg, Cheng Liu, and Ho Leung Ng. Structure of a TCR-Mimic Antibody with Target Predicts Pharmacogenetics. *J Mol Biol*, 428(1):194–205, 2016. doi: 10.1016/j.jmb.2015.12.002.
- Christopher J. Holland, Rory M. Crean, Johanne M. Pentier, Ben de Wet, Angharad Lloyd, Velupillai Srikanthasaran, Nikolai Lissin, Katy A. Lloyd, Thomas H. Blicher, Paul J. Conroy, Miriam Hock, Robert J. Pengelly, Thomas E. Spinner, Brian Cameron, Elizabeth A. Potter, Anitha Jeyanthan, Peter E. Molloy, Malkit Sami, Milos Aleksic, Nathaniel Liddy, Ross A. Robinson, Stephen Harper, Marco Lepore, Chris R. Pudney, Marc W. van der Kamp, Pierre J. Rizkallah, Bent K Jakobsen, Annelise Vuidepot, and David K. Cole. Specificity of bispecific T cell receptors and antibodies targeting peptide-HLA. *J Clin Invest*, 130(5):2673–2688, 2020. doi: 10.1172/JCI130562.
- Ron S. Gejman, Heather F. Jones, Martin G. Klatt, Aaron Y. Chang, Claire Y. Oh, Smita S. Chandran, Tatiana Korontsvit, Viktoriya Zakahleva, Tao Dao, Christopher A. Klebanoff, and David A. Scheinberg. Identification of the Targets of T-cell Receptor Therapeutic Agents and Cells by Use of a High-Throughput Genetic Platform. *Cancer Immunol Res*, 8(5):672–684, 2020. doi: 10.1158/2326-6066.CIR-19-0745.
- Christian Augsberger, Gerulf Hänel, Wei Xu, Vesna Pulko, Lydia Jasmin Hanisch, Angelique Augustin, John Challier, Katharina Hunt, Binje Vick, Pier Eduardo Rovatti, Christina Krupka, Maurine Rothe, Anne Schönle, Johannes Sam, Emmanuelle Lezan, Axel Ducret, Daniela Ortiz-Franyuti, Antje-Christine Walz, Jörg Benz, Alexander Bujotzek, Felix S. Lichtenegger, Christian Gassner, Alejandro Carpy, Victor Lyamichev, Jigar Patel, Nikola Konstandin, Antje Tunger, Marc Schmitz, Michael von Bergwelt-Baldoun, Karsten Spiekermann, Luca Vago, Irmela Jeremias, Estelle Marrer-Berger, Pablo Umaña, Christian Klein, and Marion Subklewe. Targeting intracellular WT1 in AML with a novel RMF-peptide-MHC-specific T-cell bispecific antibody. *Blood*, 138(25):2655–2669, 2021. doi: 10.1182/blood.2020101477.
- Michael S. Hwang, Michelle S. Miller, Puchong Thirawatananond, Jacqueline Douglass, Katharine M. Wright, Emily H.-C. Hsiue, Brian J. Mog, Tihitina Y. Aytenfis, Michael B. Murphy, P. Aitana Azurmendi, Andrew D. Skora, Alexander H. Pearlman, Suman Paul, Sarah R. DiNapoli, Maximilian F. König, Chetan Bettogowda, Drew M. Pardoll, Nickolas Papadopoulos, Kenneth W. Kinzler, Bert Vogelstein, Shubin Zhou, and Sandra B. Gabelli. Structural engineering of chimeric antigen receptors targeting HLA-restricted neoantigens. *Nat Commun*, 12:5271, 2021. doi: 10.1038/s41467-021-25605-4.
- Emily H.-C. Hsiue, Katharine M. Wright, J. Douglass, Michael S. Hwang, Brian J. Mog, Alexander H. Pearlman, Suman Paul, Sarah R. DiNapoli, Maximilian F. König, Qiang Wang, Annika Schaefer, Michelle S. Miller, Andrew D. Skora, Aitana Azurmendi, Michael B. Murphy, Qiang Liu, Evangeline Watson, Yana Li, Drew M. Pardoll, Chetan Bettogowda, Nickolas Papadopoulos, Kenneth W. Kinzler, Bert Vogelstein, Sandra B. Gabelli, and Shubin Zhou. Targeting a neoantigen derived from a common TP53 mutation. *Science*, 371(6533), 2021. doi: 10.1126/science.abc8697.
- Rahel Frick, Lene S. Høydahl, Jan Petersen, Fleur du Pré, Shradha Kumari, Grete Berntsen, Alisa E. Dewan, Jeliacko R. Jeliackov, Kristin S. Gunnarsen, Terje Frigstad, Erik S. Vik, Carmen Llerena, Knut E. A. Lundin, Sheraz Yaquub, Jørgen Johnsen, Jeffrey J. Gray, Jamie Rossjohn, Ludvig M. Sollid, Inger Sandlie, and Geir Å. Løset. A high-affinity human TCR-like antibody detects celiac disease gluten peptide–MHC complexes and inhibits T cell activation. *Sci Immunol*, 6(62):10.1126/sciimmunol.abg4925, 2021. doi: 10.1126/sciimmunol.abg4925.
- Yue Gu, Yee Hwa Wong, Chong Wai Liew, Conrad E. Z. Chan, Tanusya M. Murali, Jiawei Yap, Chien Tei Too, Kiren Purushotorman, Maryam Hamidina, Abbas El Sahli, Angelina T. H. Goh, Rachel Z. C. Teo, Kathryn J. Wood, Brendon J. Hanson, Nicholas R. J. Gascoigne, Julien Lescar, Anantharam Vathsala, and Paul A. MacAry. Defining the structural basis for human alloantibody binding to human leukocyte antigen allele HLA-A*11:01. *Nat Commun*, 10:893, 2019. doi: 10.1038/s41467-019-08790-1.
- Cinque Soto, Robin G. Bombardi, Morgan Kozhenikov, Robert S. Sinkovits, Elaine C. Chen, Andre Branchizio, Nurgun Kose, Samuel B. Day, Mark Pilkinton, Madhusudan Gujral, Simon Mallal, and James E. Crowe. High Frequency of Shared Clonotypes in Human T Cell Receptor Repertoires. *Cell Rep*, 32(2):107882, 2020. doi: <https://doi.org/10.1016/j.celrep.2020.107882>.
- Matthew I. J. Raybould, Claire Marks, Konrad Krawczyk, Bruck Taddese, Jaroslaw Nowak, Alan P. Lewis, Alexander Bujotzek, Jiye Shi, and Charlotte M. Deane. Five computational developability guidelines for therapeutic antibody profiling. *Proc Natl Acad Sci*, 116(10):4025–4030, 2019. doi: 10.1073/pnas.1810571116.

30. Aleksandr Kovaltsuk, Jinwoo Leem, Sebastian Kelm, James Snowden, Charlotte M. Deane, and Konrad Krawczyk. Observed Antibody Space: A Resource for Data Mining Next-Generation Sequencing of Antibody Repertoires. *J Immunol*, 201(7):2502–2509, 2018. doi: 10.4049/jimmunol.1800708.
31. Tobias H. Olsen, Fergus Boyles, and Charlotte M. Deane. Observed Antibody Space: A diverse database of cleaned, annotated, and translated unpaired and paired antibody sequences. *Protein Sci*, 31(1):141–146, 2022. doi: <https://doi.org/10.1002/pro.4205>.
32. Wing Ki Wong, Jinwoo Leem, and Charlotte M. Deane. Comparative Analysis of the CDR Loops of Antigen Receptors. *Frontiers in Immunology*, 10:2454, 2019. doi: 10.3389/fimmu.2019.02454.
33. James Dunbar, Bernhard Knapp, Angelika Fuchs, Jiye Shi, and Charlotte M. Deane. Examining Variable Domain Orientations in Antigen Receptors Gives Insight into TCR-Like Antibody Design. *PLOS Computational Biology*, 10(9):1–10, 2014. doi: 10.1371/journal.pcbi.1003852.
34. Helen M. Berman, John Westbrook, Zikang Feng, Gary Gilliland, T. N. Bhat, Helge Weissig, Ilya N. Shindyalov, and Philip E. Bourne. The Protein Data Bank. *Nucleic Acids Res*, 28(1):235–242, 2000. doi: 10.1093/nar/28.1.235.
35. Dennis X. Bering, Fleur S. Kleijwegt, Florian Wiede, Arno R. van der Slik, Khai Lee Loh, Jan Petersen, Nadine L. Dudek, Gaby Duinkerken, Sandra Laban, Antoinette Joosten, Julian P. Vivian, Zhenjun Chen, Adam P. Uldrich, Dale I. Godfrey, James McCluskey, David A. Price, Kristen J. Radford, Anthony W. Purcell, Tatjana Nikolic, Hugh H. Reid, Tony Tiganis, Bart O. Roep, and Jamie Rossjohn. T cell receptor reversed polarity recognition of a self-antigen major histocompatibility complex. *Nat Immunol*, 16:1153–1161, 2015. doi: 10.1038/ni.3271.
36. Bill R. Miller III, Dwight McGee, Jason M. Swails, Nadine Homeyer, Holger Gohlke, and Adrian E. Roitberg. MMPBSA.py: An Efficient Program for End-State Free Energy Calculations. *J Chem Theory Comput*, 8(9):3314–3321, 2012. doi: 10.1021/ct300418h.
37. Fu Chen, Hui Liu, Huiyong Sun, Peichen Pan, Youyong Li, Dan Li, and Tingjun Hou. Assessing the performance of the MM/PBSA and MM/GBSA methods. 6. Capability to predict protein–protein binding free energies and re-rankbinding poses generated by protein–protein docking. *Phys Chem Chem Phys*, 18:22129, 2016. doi: 10.1039/c6cp03670h.
38. Ercheng Wang, Huiyong Sun, Junmei Wang, Zhe Wang, Hui Liu, John Z. H. Zhang, and Tingjun Hou. End-Point Binding Free Energy Calculation with MM/PBSA and MM/GBSA: Strategies and Applications in Drug Design. *Chem Rev*, 119:9478–9508, 2019. doi: 10.1021/acs.chemrev.9b00055.
39. A. V. Onufriev and D. A. Case. Generalized Born Implicit Solvent Models for Biomolecules. *Annu Rev Biophys*, 48:275–296, 2019. doi: 10.1146/annurev-biophys-052118-115325.
40. Jarrett J. Adams, Samantha Narayanan, Baoyu Liu, Michael E. Birnbaum, Andrew C. Kruse, Natalie A. Bowerman, Wei Chen, Aron M. Levin, Janet M. Connolly, Cheng Zhu, David M. Kranz, and K. Christopher Garcia. T cell receptor signaling is limited by docking geometry to peptide-major histocompatibility complex. *Immunity*, 35(5):681–693, 2011. doi: 10.1016/j.immuni.2011.09.013.
41. Nishant K. Singh, Timothy P. Riley, Sarah Catherine B. Baker, Tyler Borrman, Zhiping Weng, and Brian M. Baker. Emerging Concepts in TCR Specificity: Rationalizing and (Maybe) Predicting Outcomes. *J Immunol*, 199(7):2203–2213, 2017. doi: 10.4049/JIMMUNOL.1700744.
42. Andrew K. Sewell. Why must T cells be cross-reactive? *Nat Rev Immunol*, 12:669–677, 2012.
43. Pirooz Zareie, Christopher Szeto, Carine Farenc, Sachith D. Gunasinghe, Elizabeth M. Kolawole, Angela Nguyen, Chantelle Blyth, Xavier Y. X. Sng, Jasmine Li, Claerwen M. Jones, Alex J. Fulcher, Jessica R. Jacobs, Qianru Wei, Lukasz Wojciech, Jan Petersen, Nicholas R.J. Gascoigne, Brian D. Evavold, Katharina Gaus, Stephanie Gras, Jamie Rossjohn, and Nicole L. La Gruta. Canonical T cell receptor docking on peptide:MHC is essential for T cell signaling. *Science*, 372(6546):eabe9124, 2021. doi: 10.1126/science.abe9124.
44. Christopher Szeto, Christian A. Lobos, Andrea T. Nguyen, and Stephanie Gras. TCR Recognition of Peptide–MHC-I: Rule Makers and Breakers. *Int J Mol Sci*, 22(1):68, 2021. doi: 10.3390/ijms22010068.
45. Marie-Paule Lefranc, Christelle Pommé, Manuel Ruiz, Véronique Giudicelli, Elodie Foulquier, Lisa Truong, Valérie Thouvenin-Contet, and Gérard Lefranc. IMGT unique numbering for immunoglobulin and T cell receptor variable domains and Ig superfamily V-like domains. *Dev Comp Immunol*, 27(1):55–77, 2003. doi: 10.1016/S0145-305X(02)00039-3.
46. James Dunbar and Charlotte M. Deane. ANARCI: antigen receptor numbering and receptor classification. *Bioinformatics*, 32(2):298–300, 2015. doi: 10.1093/bioinformatics/btv552.
47. Weizhong Li and Adam Godzik. Cd-hit: a fast program for clustering and comparing large sets of protein or nucleotide sequences. *Bioinformatics*, 22(13):1658–1659, 2006. doi: 10.1093/bioinformatics/btl1158.
48. A. Shrake and J. A. Rupley. Environment and exposure to solvent of protein atoms. Lysozyme and insulin. *J Mol Biol*, 79(2):351–371, 1973. doi: 10.1016/0022-2836(73)90011-9.
49. Harry C. Jubb, Alicia P. Higuero, Bernardo Ochoa-Montaño, Will R. Pilt, David B. Ascher, and Tom L. Blundell. Arpeggio: A Web Server for Calculating and Visualising Interatomic Interactions in Protein Structures. *J Mol Biol*, 429(3):365–371, 2017. doi: 10.1016/j.jmb.2016.12.004.
50. Zhijun Zhang, Xinzijian Liu, Kangyu Yan, Mark E. Tuckerman, and Jian Liu. Unified Efficient Thermostat Scheme for the Canonical Ensemble with Holonomic or Isokinetic Constraints via Molecular Dynamics. *J Phys Chem A*, 123(28):6056–6079, 2019. doi: 10.1021/acs.jpca.9b02771.
51. Matias R. Machado and Sergio Pantano. Split the Charge Difference in Two! A Rule of Thumb for Adding Proper Amounts of Ions in MD Simulations. *J Chem Theory Comput*, 16(3):1367–1372, 2020. doi: 10.1021/acs.jctc.9b00953.
52. B. R. Brooks, C. L. Brooks III, Jr. A. D. Mackerell, L. Nilsson, R. J. Petrella, B. Roux, Y. Won, G. Archontis, C. Bartels, S. Boresch, A. Caffisch, L. Caves, Q. Cui, A. R. Dinner, M. Feig, S. Fischer, J. Gao, M.W. I. Hodoseck, and M. Karplus. CHARMM: The Biomolecular Simulation Program. *J Comput Chem*, 30(10):1545–1614, 2009. doi: 10.1002/jcc.
53. William L. Jorgensen, Jayaraman Chandrasekhar, and Jeffrey D. Madura. Comparison of simple potential functions for simulating liquid water. *J Chem Phys*, 79(926), 1983. doi: 10.1063/1.445869.
54. Bernhard Knapp, Luis Ospina, and Charlotte M. Deane. Avoiding False Positive Conclusions in Molecular Simulation: The Importance of Replicas. *J Chem Theory Comput*, 14(12):6127–6138, 2018. doi: 10.1021/acs.jctc.8b00391.
55. Ramu Anandakrishnan, Boris Aguilar, and Alexey V. Onufriev. H++ 3.0: Automating pK prediction and the preparation of biomolecular structures for atomistic molecular modeling and simulations. *Nucleic Acids Res*, 40(W1):537–541, 2012. doi: 10.1093/nar/gks375.