

Genome mining unveils a class of ribosomal peptides with two amino termini

Hengqian Ren^{1,3,8}, Shravan R. Dommaraju^{2,3,8}, Chunshuai Huang³, Haiyang Cui³, Yuwei Pan⁴, Marko Nesic^{2,3}, Lingyang Zhu⁵, David Sarlah^{2,3}, Douglas A. Mitchell^{2,3,6,*}, and Huimin Zhao^{1,2,3,7,*}

¹Department of Chemical and Biomolecular Engineering, ²Department of Chemistry, ³Carl R. Woese Institute for Genomic Biology, ⁴Department of Molecular and Cellular Biology, ⁵School of Chemical Sciences, NMR Laboratory, ⁶Department of Microbiology, ⁷Department of Bioengineering, University of Illinois at Urbana-Champaign, Urbana, IL, USA. ⁸These authors contributed equally to this work: Hengqian Ren, Shravan R. Dommaraju.

* To whom correspondence should be addressed: douglasm@illinois.edu, zhao5@illinois.edu

ORCID:

HR: 0000-0001-7045-6036; SRD: 0000-0002-0565-1748; CH: 0000-0002-3126-2340; HC: 0000-0001-8360-0447; MN: 0000-0001-6856-5313; LZ: 0000-0002-6657-271X; DS: 0000-0002-8736-8953; DAM: 0000-0002-9564-0953; HZ: 0000-0002-9069-6739

Abstract

The era of inexpensive genome sequencing and improved bioinformatics tools has reenergized the study of natural products, including the ribosomally synthesized and post-translationally modified peptides (RiPPs). In recent years, RiPP discovery has challenged preconceptions about the scope of post-translational modification chemistry, but genome mining of new RiPP classes remains an unsolved challenge. Here, we report a RiPP class defined by an unusual (*S*)-*N*₂,*N*₂-dimethyl-1,2-propanediamine (Dmp)-modified *C*-terminus, which we term the daptides. Nearly 500 daptide biosynthetic gene clusters (BGCs) were identified by analyzing the RiPP Recognition Element (RRE), a common substrate-binding domain found in half of prokaryotic RiPP classes. A representative daptide BGC from *Microbacterium paraoxydans* DSM 15019 was selected for experimental characterization. Derived from a *C*-terminal threonine residue, the class-defining Dmp is installed over three steps by an oxidative decarboxylase, aminotransferase, and methyltransferase. Daptides uniquely harbor two positively charged termini, and thus we suspect this modification could aid in membrane targeting, as corroborated by hemolysis assays. Our studies further show that the oxidative decarboxylation step requires a functionally unannotated accessory protein. Fused to the *C*-terminus of the accessory protein is an RRE domain, which delivers the unmodified substrate peptide to the oxidative decarboxylase. This discovery of a class-defining post-translational modification in RiPPs may serve as a prototype for unveiling additional RiPP classes through genome mining.

Introduction

Ribosomally synthesized and post-translationally modified peptides (RiPPs) constitute a major family of natural products present in all domains of life^{1, 2}. RiPP biosynthesis starts with the expression of a ribosomal precursor peptide, usually consisting of an N-terminal leader region and a C-terminal core region (**Fig. 1**). The leader region recruits the biosynthetic enzymes that perform post-translational modifications (PTMs) on the core region. Ultimately, the leader region is released from the modified core, often by a peptidase, to yield the final RiPP product. Due to the high variability in the sequences of precursor peptides and the growing list of chemistries performed by the modification enzymes, RiPPs exhibit vast structural diversity and hence a broad range of biological functions. Unlike non-ribosomal peptides, which have large genomic footprints to encode the required megasynthetases, RiPPs are genomically compact, and their ribosome-dependent biosynthetic logic endows RiPPs with attractive engineering potential²⁻⁵. In addition, the frequently observed promiscuous activity of biosynthetic enzymes also brings particular interest to the characterization of biosynthetic gene clusters (BGCs) that produce RiPPs with unknown PTMs^{6, 7}.

Despite the success of genome mining, its direct application in RiPP discovery remains challenging, principally owing to the lack of a ubiquitous feature across RiPP biosynthetic pathways and low accuracy in precursor peptide prediction⁸. Among the 48 classes of RiPPs reported to date, nearly all of the founding members of each class were identified by bioassay-guided screening, and their ribosomal origin was only later identified². While bioassay-guided isolation is a powerful discovery strategy, known shortcomings include high rediscovery rates, inability to identify compounds that differ in activity from those examined by the bioassay, and challenges in specifically targeting natural products from cryptic BGCs^{9, 10}. Therefore, significant effort has been spent to develop bioinformatics tools for RiPP genome mining, using both class-dependent and class-independent strategies⁸.

Broadly speaking, class-dependent RiPP genome mining relies on sequence homology to well-characterized biosynthetic enzymes, affording BGC predictions with high fidelity but potentially reduced

novelty of chemical structures. New RiPP classes, such as the pearlins^{11,12}, ranthipeptides¹³, spliceotides¹⁴, ryptides¹⁵, rotapeptides¹⁶, and tryglycins^{17,18} were discovered using this strategy, but the scope of these genome mining efforts was limited to lanthipeptide dehydratases and radical *S*-adenosylmethionine (SAM)-dependent enzymes that were already well established in RiPP biosynthesis. In addition, key RiPP biosynthetic enzymes, such as cytochrome P450 enzymes for citilins¹⁹, atropitides²⁰, and biarylites²¹, or radical SAM enzymes for additional classes, are widely distributed outside of RiPP BGCs; therefore, the presence of genes encoding such enzymes cannot be used as a reliable RiPP biomarker. In contrast, class-independent genome mining tools have also been developed in recent years using features common across natural product classes, but these have yet to deliver new enzyme families to RiPP biosynthesis¹⁰.

One unexploited approach to identify first-in-class RiPPs is to leverage the RiPP precursor recognition element (RRE), a domain responsible for recruiting the precursor peptide to RiPP biosynthetic enzymes^{22,23,24}. As the most common domain involved in RiPP biosynthesis, the RRE has been found in 19 of the 41 known prokaryotic RiPP classes, and its frequency suggests it could be used as a class-independent handle for RiPP genome mining. The prevalence of the RRE is obscured by its small size and high sequence variability, but the recent report of RRE-Finder, a bioinformatics tool that rapidly and accurately detects RRE domains, offers the potential to discover first-in-class RiPP BGCs by identifying high-confidence RRE domains from public genome databases²³ (**Fig. 1**).

In this work, we employ RRE-Finder²³ and RODEO²⁵ in a class-independent manner to uncover a RiPP class. The identified BGCs are unlike any other reported RiPP and ubiquitously encode a domain of unknown function (DUF)-RRE fusion protein, oxidative decarboxylase, aminotransferase, and methyltransferase. Direct cloning and heterologous expression of a representative BGC from *Microbacterium paraoxydans* DSM 15019 yields peptides containing a native *N*-terminus and an (*S*)-*N*₂,*N*₂-dimethyl-1,2-propanediamine (Dmp)-modified *C*-terminus. These peptides are further identified as synergistic hemolysins, with their bioactivity putatively conferred by helical structure and net positive charge on both termini. Study of the biosynthetic pathway indicates that Dmp is derived from the invariant

C-terminal Thr of the precursor peptide through successive oxidative decarboxylation, transamination, and dimethylation. Subsequent characterization shows that the oxidative decarboxylase is leader peptide-dependent and tolerates variability in the core region. Overall, the discovery of daptides [(*S*)-*N*₂,*N*₂-dimethyl-1,2-propanediamine-containing peptides] showcases class-independent genome mining for RiPP biosynthetic enzyme families and provides a logical route for nature to produce ribosomal peptides with two amino termini.

Results

RRE domains guide RiPP class discovery

RiPP genome mining has primarily focused on known RiPP-modifying enzymes for new BGCs². While this approach continues to yield new biosynthetic pathways, the discovery potential is restricted to known enzyme families. To uncover RiPP classes independent of an established chemistry, we devised an orthogonal approach using the RRE domain²². Initial analysis of all identified RRE domains faced two main challenges: (*i*) the large number of RRE-containing proteins, and (*ii*) the lack of sequence similarity between disparate RRE-containing proteins. These features of RRE analysis made traditional genome mining approaches computationally difficult and not generalizable across all RRE-containing BGCs. To circumvent these challenges, a workflow was devised to leverage the co-occurrence of RRE domains with nearby encoded open-reading frames (ORFs) using the genome mining tool RODEO (**Supplementary Fig. 1, Supplementary Note**)²⁵. All RRE-containing proteins predicted in the RRE-Finder exploratory mode dataset were analyzed by RODEO for local hypothetical short ORFs and gene co-occurrence²³. RRE-containing proteins were then subjected to all-by-all BLASTP and sorted by sequence similarity into large RRE families. Each RRE family was recursively analyzed for highly similar co-occurring ORFs at a series of bitscore similarity thresholds. Using this approach, RRE families with highly similar co-occurring ORFs were generated without requiring any visualization of phylogenetic data or a uniform similarity threshold (**Supplementary Fig. 1**).

Output RRE families were analyzed, and one set of BGCs was selected for further characterization based on the uniqueness of the co-occurring genes. The selected RRE domains were *N*-terminally fused to an intramembrane site-2 protease. A sequence logo of the co-occurring ORFs was generated, showing a conserved *N*-terminal motif (ELEXMEAP), a stretch of residues rich in branched-chain aliphatic amino acids, and an invariant *C*-terminal Thr (**Fig. 1, Supplementary Fig. 2**). This approach identified 184 short ORFs encoded near 80 RRE-peptidase fusion proteins (average of 2.3 ORFs/BGC). The encoding of multiple similar short ORFs within each BGC increased confidence in their prediction as precursor peptides, and the position of the *N*-terminal motif within the putative leader region suggested it may function as the recognition sequence for the associated biosynthetic enzymes. Initial gene co-occurrence analysis identified multiple highly co-occurring genes encoding multi-component ABC transporters, a pyridoxal phosphate (PLP)-dependent aminotransferase, an NAD(P)-dependent alcohol dehydrogenase, and a SAM-dependent methyltransferase (**Fig. 1, Supplementary Table 1**). Each BGC also contained an additional gene, which lacks sequence similarity to any known protein. However, structural similarity analysis using HHpred²⁶ predicted a *C*-terminal RRE domain, suggesting its inclusion in the potential biosynthetic pathway (**Supplementary Fig. 3**).

We next sought to expand the putative class by gathering all predicted BGCs from the NCBI non-redundant database. To gather a comprehensive set of putative modifying enzymes, Position Specific Iterative-Basic Local Alignment Search Tool (PSI-BLAST) methods were applied to each predicted biosynthetic protein, and the resulting BGCs were compiled. The originally identified BGCs of this class were restricted to Actinomycetota, but PSI-BLAST searches using the DUF-RRE fusion protein as a query returned a small number of similar BGCs from the phylum Bacillota. A profile Hidden Markov Model (pHMM) was constructed from the 184 initially predicted precursor peptides from Actinomycetota and used to identify a BGC from *Bacillus cereus* strain B4082 (**Supplementary Fig. 4, Supplementary Dataset 1**). PSI-BLAST searches were conducted using the *B. cereus* DUF-RRE fusion protein as a new query to expand the number of Bacillota BGCs. A phylogenetic comparison of the BGCs revealed both

similarities and differences. One difference pertains to the number of precursor peptides encoded per BGC, with some Bacillota BGCs encoding >10 precursor peptides (**Supplementary Fig. 5**). Actinomycetota BGCs also encode a predicted Fe-dependent alcohol dehydrogenase (Pfam²⁷ identifier PF00465), while Bacillota BGCs encode a different class of oxidoreductase (PF13561) and a shorter protease domain (**Supplementary Fig. 6**). Despite similar RiPP contexts, biosynthetic proteins from Actinomycetota were typically as similar to characterized outgroup proteins as they were to their Bacillota counterparts (**Supplementary Fig. 7**, phyloXML data is provided as **Supplementary Dataset 2**). In total, 1441 putative precursor peptides were identified from 483 BGCs (**Supplementary Dataset 1**, Actinomycetota – 791 precursor peptides in 302 BGCs; Bacillota – 647 precursor peptides in 180 BGCs; Pseudomonadota – 3 precursor peptides in 1 BGC). In general, there is little conservation of gene order or precursor peptide number within these BGCs. Several potential secondary modifying genes were identified, such as YcaO proteins, Lan_K/Lan_J pairs, glycosyltransferases, and nucleotidyltransferases (**Fig. 1, Supplementary Dataset 1, Supplementary Table 1**). This class of BGCs combines a minimal set of primary modifying enzymes, as well as secondary (ancillary) tailoring enzymes from other classes, suggesting the final biosynthetic transformations may work in concert in other RiPP pathways (**Supplementary Fig. 4**). After filtering the dataset for available strains and for BGCs encoding only primary modifying enzymes, we chose the representative from *Microbacterium paraoxydans* DSM 15019 for experimental characterization (**Fig. 1**).

Discovery of peptides with Dmp-modified C-termini

To examine the predicted BGC, we directly cloned the representative BGC from *Microbacterium paraoxydans* DSM 15019 (*mpa*) using the recently developed CAPTURE (Cas12a-assisted precise targeted cloning using *in vivo* Cre-lox recombination) method²⁸. Besides genes in the predicted BGC, flanking genes were also included in the cloning region to ensure successful expression (**Supplementary Fig. 8**). The cloned *mpa* and the pBE45 empty vector were then individually conjugated²⁹ into *Streptomyces lividans* TK24 and *Streptomyces albus* J1074. After cultivation for 5 d, colonies were picked, extracted with

methanol, and analyzed by matrix-assisted laser desorption/ionization-time-of-flight mass spectrometry (MALDI-TOF-MS) (**Fig. 2, Supplementary Fig. 9**). A series of ions only observed in strains transformed with *mpa* corresponded to a loss of 17 Da from the three predicted core regions (MpaA1-A3), with proteolysis C-terminal to the conserved Pro (**Fig. 1**). This consistency suggested that the three products shared the same post-translational modification(s). Larger scale cultures in liquid media were then prepared to afford the material required for structural characterization. After growth for 5 d at 30 °C, bacteria were collected by centrifugation, metabolites extracted with MeOH, and purified by solid-phase extraction and HPLC (**Supplementary Fig. 10**).

The HPLC-purified products were analyzed by high-resolution mass spectrometry and tandem mass spectrometry (HR-MS/MS). Analysis of the collision-induced dissociation spectra indicated that the 17 Da mass loss of modified MpaA1-A3 was confined to the C-terminal Thr (**Fig. 2, Supplementary Fig. 11-13**). Considering the predicted functions of genes encoded by the *mpa* BGC, we proposed that Thr underwent conversion to Dmp. To evaluate this hypothesis, a sufficient amount of **1** was accumulated for structure determination, due to its higher post-purification yield than **2** and **3**. The peptide was only sparingly soluble in commonly used NMR solvents (H₂O, methanol, acetone, acetonitrile, chloroform, DMSO, and pyridine) but was highly soluble in hexafluoroisopropanol (HFIP) which is often used to dissolve aggregated proteins and peptides³⁰. NMR analyses (¹H, ¹³C, ¹H-¹H COSY, ¹H-¹³C HSQC and ¹H-¹³C HMBC) were then conducted in HFIP-*d*₂ and a substructure corresponding to Dmp was deduced. The HMBC correlations from the *N*-methyl (H₃-4 and H₃-5) to C-2 showed the attachment of a dimethylamino group to C-2. Other data, including the HMBC correlations from the H₃-3 to C-1 and C-2, the HMBC correlation from H₂-1 to C-2, and the COSY data, revealed the C-1 to C-3 Dmp substructure. The amide bond between Dmp and Ala-20 is suggested by the HMBC correlation from H₂-1 in Dmp, as well as H₁-1' and H₃-2' in Ala-20, to the carbonyl carbon ($\delta_c = 175.8$) (**Fig. 2, Supplementary Fig. 14, Supplementary Table 2, Supplementary Table 3**).

Extensive signal overlap was observed in the NMR spectra of **1**, so orthogonal methods were employed to confirm the structure of **1**. Accordingly, **1** was hydrolyzed and derivatized by Marfey's reagent³¹ to determine the identity of Dmp and the remaining residues present. While the amino acid standards were obtained commercially, authentic samples of (*R*)-Dmp and (*S*)-Dmp were chemically synthesized (**Supplementary Fig. 15**). Using an LC-MS, all assignable amino acids (Ser, Asp, Phe, Gln, Val, Ile, Leu, Ala, and Tyr) were determined to be in the proteinogenic (*S*)-configuration (**Supplementary Fig. 16**). UHPLC afforded sufficient separation of the derivatized (*R*)-Dmp and (*S*)-Dmp standards, with subsequent co-elution with hydrolyzed **1** confirming the presence of (*S*)-Dmp (**Supplementary Fig. 17**).

To further validate Dmp as the primary and class-defining PTM, a second BGC identified from *Streptomyces capuensis* NRRL B-3501 (*sca*) was selected for experimental characterization. In addition to the primary modifying enzymes, the *sca* BGC also encodes a LanK_C/LanJ_C pair that was predicted to convert *L*-Ser to *D*-Ala via a dehydroalanine intermediate³²⁻³⁴ (**Supplementary Fig. 18**). The *sca* BGC underwent direct cloning by the CAPTURE method²⁸, heterologous expression in *S. albus* J1074, and MALDI-TOF-MS analysis (**Supplementary Fig. 19**). The most prominent ion observed from the *sca*-transformed strain was fragmented using MALDI LIFT-TOF/TOF MS and confirmed to derive from ScaA2. The corresponding fragmentation pattern confirmed the *C*-terminus had been converted to Dmp and the five *L*-Ser residues had been converted to Ala (**Supplementary Fig. 19**). Marfey's assay performed on a mixture of the two major products further showed the peptides contained *D*-Ala residues and (*S*)-Dmp (**Supplementary Fig. 20**). With multiple characterized BGCs producing Dmp-modified peptides, we anticipate that the Dmp modification will be conserved across the RiPP class, hereafter termed daptides.

Examination of daptide bioactivity

As **1-3** contain regions of hydrophobic residues and showed limited solubility in most solvents, we theorized that **1-3** might form hydrophobic α -helical secondary structures. Secondary structure prediction of MpaA1-A3 and circular dichroism spectra of **1-3** support adoption of an α -helical conformation (**Supplementary Fig. 21**). Melittin, the major pain-producing component of honeybee venom, disrupts

membranes via its hydrophobic α -helical structure and a group of positively charged residues near the amidated C-terminus (**Supplementary Fig. 22**), giving it additional antimicrobial and hemolytic activity. Given the positive charge at the (former) C-terminus of **1-3**, we hypothesized that daptides may imitate this strategy to interact with membranes³⁵. Daptides **1-3** were first analyzed for antimicrobial activity by standard agar diffusion assay, but no significant growth inhibition was observed for any of the tested Bacillota, Actinomycetota, Pseudomonadota, and Ascomycota strains (**Supplementary Table 4**). To further evaluate their potential membrane interactions, **1-3** were incubated with bovine erythrocytes and exhibited hemolytic activity (**Supplementary Fig. 23**). Because daptide BGCs mostly encoded multiple precursors (**Supplementary Fig. 5**), combinations of **1-3** were also examined for hemolytic activity. Some combinations (i.e., **1+3**, **2+3**, and **1+2+3**) exhibited higher hemolytic activity than the individual peptides alone, underscoring a collaborative bioactivity (**Supplementary Fig. 23**).

Biosynthesis of Dmp via a three-step pathway

To determine the minimal set of genes responsible for daptide **1-3** biosynthesis, a series of gene omissions in the *mpa* BGC (**Supplementary Fig. 24**) were constructed by the DNA assembler method³⁶ and conjugated into *S. albus* J1074 for expression. The colony extracts were analyzed by MALDI-TOF-MS, which indicated that *mpaABCDMP* were sufficient for synthesizing the fully modified peptides, albeit with compromised signal intensity compared to the *mpa* BGC, suggesting other flanking genes may enhance productivity. No diagnostic intermediates were observed when conserved biosynthetic genes were omitted (**Supplementary Fig. 24**). Therefore, we elected to express the *mpaABCDM* pathway in *E. coli*. Genes were codon-optimized, commercially synthesized, and refactored using a previous method (**Supplementary Table 5, Supplementary Table 6**)³⁷. The precursor peptides (MpaA1-A3) were individually N-terminal His-tagged to facilitate purification by immobilized metal affinity chromatography (IMAC). The purified products were then further desalted using C18 ZipTip and analyzed by MALDI-TOF-MS. During optimization of the expression conditions, we observed that the signals of fully modified products were significantly improved when using M9 medium with extended cultivation and co-expression

of GroES/EL chaperones (**Supplementary Fig. 25-28**)³⁸. MpaA1 routinely delivered the most intense MS peaks; therefore, the following experiments were carried out using *mpaA1* exclusively (hereafter, *mpaA*).

A biosynthetic scheme was next proposed, employing each critical gene in a distinct step in the conversion of a *C*-terminal Thr to Dmp (**Fig. 3**). The unmodified peptide **4**, containing an intact *C*-terminal Thr would undergo oxidative decarboxylation to ketone **5**, followed by transamination to yield primary amine **6**, and finally dimethylation to afford the final tertiary amine-containing Dmp **7**. One advantage of a refactoring strategy is the opportunity to evaluate biosynthetic intermediates by rapidly generating gene omission constructs. Thus, we evaluated the roles of *mpaBCDM* in the proposed biosynthetic route with a panel of gene omissions. Expression of *mpaABCD* (i.e., omission of *mpaM*, predicted involvement in the last step) resulted in the accumulation of a product 45 Da lighter than starting peptide **4**. This result was consistent with primary amine **6** and concurred with the expected role of MpaM in dimethylation. Expression of *mpaABCM* or *mpaABC* resulted in the accumulation of a product 46 Da lighter than starting peptide **4**, consistent with ketone **5** and a transaminase activity for MpaD. Given the mass similarity to amine **6**, and to further support the existence of ketone **5** as a biosynthetic intermediate, we employed the use of aminoxy probe **8**, which would yield an oxime after reaction with aldehyde and ketone functional groups³⁹. The MS data revealed that **5** was converted to oxime **9**, whereas **4** was unreactive under identical conditions (**Fig. 3**). Expression of *mpaABDM*, *mpaAB*, and *mpaAC* constructs yielded only unmodified starting peptide **4**, which taken together implicated MpaB (DUF-RRE fusion) and MpaC (annotated alcohol dehydrogenase) in the first reaction, oxidative decarboxylation of the *C*-terminal Thr.

Oxidative Decarboxylation of the *C*-terminal Thr

The gene omission studies showed that ketone **5** can only form in the presence of MpaB and MpaC. Although the RRE domain fused to the peptidase was used to identify the aptide BGCs, MpaB also contains a predicted RRE domain (**Supplementary Fig. 3**). Therefore, we hypothesized that the MpaB RRE domain might bind the MpaA1-A3 leader region and deliver the *C*-terminal Thr to MpaC for modification. To evaluate this interaction, Ala substitutions were introduced into the conserved motif of the

MpaA1 (i.e., MpaA) leader region, and the resulting products after co-expression with MpaB and MpaC were analyzed by MALDI-TOF-MS (**Fig. 4, Supplementary Fig. 29**). The D(-6)A variant was processed at a level equal to wild-type, while E(-8)A, P(-5)A, E(-3)A, and P(-1)A yielded a reduced level of product formation. Two variants, L(-7)A and M(-4)A, were devoid of detectable oxidative decarboxylation. Removal of the C-terminal RRE domain from MpaB (i.e., expression of MpaB₁₋₂₆₆), also was incapable of generating ketone **5**, further validating a specific interaction between the leader region of MpaA and the RRE domain.

To assess the substrate tolerance of MpaC, the C-terminal Thr of MpaA was replaced with Ser, Cys, Asp, Asn, Val, Ala, and Lys. No mass change was observed for any variant, indicating a stringent selectivity for Thr (**Fig. 4, Supplementary Fig. 30**). Another MpaA variant, T24insA, appended Ala to the C-terminus and was not a substrate for MpaC (**Supplementary Fig. 31**). However, variants that increased or decreased the length of the core region (i.e., A20dup and A20del) were readily tolerated along with all other tested substitutions (**Supplementary Fig. 32**). Thus, while MpaC is highly chemoselective for a C-terminal Thr, the exact positioning of the C-terminal Thr and the identity of the intervening residues are not critical. A high tolerance to core peptide variation was anticipated from the bioinformatics analysis, as high variation of the core peptide sequences was observed even for those within the same BGC, while the C-terminal residue remained a Thr across the daptide class (**Fig. 1**).

To shed more light on the formation of ketone **5**, AlphaFold-Multimer, a recently reported structure prediction tool for protein complexes, was used to calculate the protein-protein interactions between MpaA, MpaB, and MpaC⁴⁰. MpaC is predicted to use NAD(P) as a cofactor, so a structural alignment was used to model NADP from a homologous alcohol dehydrogenase, given the current inability of AlphaFold to predict ligands. The complex with NADP was then relaxed to yield a final predicted structure (**Fig. 4, Supplementary Fig. 33**). These results aligned well with our hypothesis that MpaB recognizes the leader region of MpaA and recruits MpaC to form ketone **5**. Two leader region residues of MpaA, Leu(-7) and Met(-4), putatively interact with MpaB in adjacent hydrophobic pockets, supporting the experimental

findings that ketone **5** formation was abolished with the L(-7)A and M(-4)A variants (**Fig. 4**). Structural and electrostatic potential analysis of the predicted MpaB-MpaC interface shows a high degree of charge and shape complementarity (**Supplementary Fig. 34**). Finally, the AlphaFold prediction directs Thr24 toward the active site NADP at an appropriate distance for catalysis.

Discussion

With recent advances in DNA sequencing and bioinformatics, natural products with diverse structures and bioactivities have been continuously uncovered⁴¹. RiPPs constitute one of the major classes of natural products, and the number of characterized compounds has grown rapidly in the last decade. However, unveiling new PTMs remains a major challenge in the genome mining of RiPPs, as class-independent genome mining methods have only recently received broad attention from the field. With RRE domains being present in 50% of prokaryotic RiPP classes, we saw an opportunity to exploit the RRE as a RiPP biomarker. In this work, RRE domains identified by RRE-Finder were binned into families, guided by co-occurrence with nearby short ORFs. Employing this method led to the discovery of the daptide class from a group of RRE-containing peptidases. Enabled by synthetic biology methods for direct cloning and refactoring, pathway characterization revealed the biosynthetic route to Dmp. Given the generality of the methods used in this study, the success of the daptide discovery could be replicated for yet-undiscovered RiPPs.

To assess the frequency of Dmp-modified *C*-termini in known compounds, we performed a substructure search using Dmp with several adjoining peptide bonds on SciFinder (<https://scifinder-n.cas.org/>). This search identified hominicin, a peptidic natural product produced by *Staphylococcus hominis* MBBL 2-9⁴². Besides a Dmp-modified *C*-terminus, hominicin also contains several dehydrobutyrines and a dimethylated *N*-terminus. Unfortunately, the genome of *S. hominis* MBBL 2-9 is not available, and no sequenced *S. hominis* strains contain a daptide-producing BGC. However, the predicted precursor peptide of hominicin is virtually identical to a precursor peptide identified from *Staphylococcus pseudintermedius* strain B32 (**Supplementary Fig. 35**). The *S. pseudintermedius* BGC

contains DapBCDM homologs (**Supplementary Table 7**), a second methyltransferase, and a lanthipeptide dehydratase, likely accounting for the additional methylations and dehydrobutyrines observed in hominicin. Retrospectively, these similarities identify hominicin as a daptide. Hominicin is growth suppressive towards *Staphylococcus aureus*, an activity which was not observed for daptides **1-3**.

In comparison to the hominicin example, genome mining was critical for the discovery of daptides **1-3** and offers leads for the discovery of further compounds. In our bioinformatics analysis, we found major subgroups of daptide BGCs that encode YcaOs, thiopeptide-like pyridine synthases, radical SAM enzymes, lanthipeptide dehydratases, luciferase-like monooxygenases, glycosyltransferases, and/or nucleotidyltransferases. These secondary PTMs of daptides are expected to confer structural and functional diversity. The bioinformatics survey of the daptide class also demonstrated different paradigms between Actinomycetota and Bacillota BGCs. Functionally equivalent daptide biosynthetic enzymes from different phyla are not phylogenetically similar, despite all surveyed daptide BGCs containing an NAD(P)-dependent oxidative decarboxylase, aminotransferase, and an RRE-containing DUF (now known to be critical for oxidative decarboxylation). The evolutionary distance between the daptide BGCs suggests that the pathways emerged individually in each phylum, and this may further divide the ecological role of daptides by phylum in addition to secondary modifications.

Peptidic natural products with amino-modified *C*-termini are rare, and the corresponding biosynthetic machinery remains elusive. Recently, the non-ribosomal aquimarins, which feature an amino-modified *C*-terminus, were isolated from sponge-derived bacterium *Aquimarina* sp. Aq135⁴³. The amino-modified *C*-terminus was proposed to be generated by thioester reductase-catalyzed release of an aldehyde and subsequent transamination by an aminotransferase. In contrast, our work unveils a strategy for the amino-modification of ribosomal peptide *C*-termini. MpaB and MpaC collaboratively catalyze the oxidative decarboxylation of a *C*-terminal Thr into a ketone with concomitant loss of CO₂. PLP-dependent transamination and SAM-dependent *N,N*-dimethylation by MpaD and MpaM, respectively, yield the terminal (*S*)-*N*₂,*N*₂-dimethyl-1,2-propanediamine. The leader peptide is then removed by an RRE-

dependent intramembrane peptidase (MpaP), yielding the final peptide that has converted a negatively charged *C*-terminal carboxylate into a positively charged tertiary amine.

Within RiPP biosynthesis, there are many other examples of *C*-terminal modifications. Of particular relevance are the oxidative decarboxylation reactions observed in the biosynthesis of mycofactocin (radical SAM), bottromycin (cytochrome P450), micrococcin/thiocillin (*Bacillota* DapC homolog), and Avi(Me)Cys formation (flavin-dependent decarboxylase)². *C*-terminal modifications extend to peptide hormones (e.g., oxytocin and vasopressin) and antimicrobial peptides, which display decreased function without *C*-terminal amidation^{44, 45}. Additionally, GTPases employ a *C*-terminal modification strategy, including esterification of the *C*-terminus, to enhance insertion into cell membranes⁴⁶. Nature has evolved numerous ways to neutralize local charge at the *C*-terminus through PTMs, but daptide biosynthesis goes one step further: generating a positive charge at the terminus. The biophysical implications of peptides with two positively charged amino-termini are not yet understood, but the combined hydrophobicity, helicity, and charge modification of the terminus suggest daptides may share a common membrane-targeting mode of action. Further studies of the substrate scope for Dmp formation will determine whether this charge swapping strategy will be useful for engineering peptides that associate with or penetrate membranes.

Methods

Bacterial strains and reagents. *E. coli* strain NEB10 β was used for all cloning experiments. *E. coli* strain WM6026 which was a gift from William Metcalf (University of Illinois at Urbana-Champaign) was used as a conjugation donor for *Streptomyces* heterologous hosts⁴⁷. *S. albus* J1074 and *S. lividans* TK24 were used for heterologous expression of the cloned *mpa* BGC. *E. coli* BL21(DE3) was used for the expression of refactored *mpa* pathway. *M. paraoxydans* DSM 15019 was obtained from the German Collection of Microorganisms and Cell Cultures GmbH (Braunschweig, Germany). *S. albus* J1074 and *S. lividans* TK24 were obtained from the Agricultural Research Service Culture Collection (Peoria, IL). *E. coli* strain NEB10 β and BL21(DE3) were purchased from New England Biolabs (Ipswich, MA). Chemicals were purchased from Sigma, Fisher Scientific, or GoldBio. Restriction enzymes, NEBuffers, T4 DNA polymerase, *E. coli* DNA ligase, dNTPs, NAD⁺, NEBuilder HiFi DNA assembly mastermix, and Q5 DNA polymerase were purchased from New England Biolabs (Ipswich, MA). All DNA oligonucleotides were ordered from Integrated DNA Technologies (Coralville, IA). Codon optimized genes were synthesized by Twist Bioscience (South San Francisco, CA).

Bioinformatic discovery of the daptides

Initial Analysis by RODEO. All RiPP Recognition Element (RRE)-containing Uniprot identifiers (IDs) that were previously gathered using the exploratory mode of RRE-Finder²³ were converted to GenBank coding sequence (CDS) accession IDs using the Uniprot Retrieve/ID mapping tool. To identify potential precursor peptides in intergenic open reading frames (ORFs), all GenBank IDs were subjected to the genome mining tool Rapid ORF Description and Evaluation Online (RODEO)²⁵. As part of standard RODEO analysis, '.gbk' files for each provided accession ID are downloaded from the National Center for Biotechnology Information (NCBI). From these '.gbk' files, nucleotide sequences were subjected to CDS prediction using Prodigal-shorter to identify ORFs. Prodigal-shorter is an adaptation of Prodigal-short used in the RiPPER workflow⁴⁸ that allows for CDSs to be predicted as short as five amino acids in length, based on recent reports of RiPP precursor peptides of that length²¹. CDS prediction of the RODEO selected region was

performed in Prodigal's meta mode for records with fewer than 100,000 nucleotides. For larger records, a CDS training step was performed on the whole record before CDS prediction on the RODEO selected region. Intergenic ORFs were dereplicated by highest Prodigal score. These Prodigal scoring results were output to a separate '.csv' file, and a FASTA file was generated containing all genes and all possible predicted ORFs that were smaller than 120 amino acids and within 8 genes of an RRE domain.

All-by-all BLAST analysis. The list of GenBank CDS IDs was mapped to protein sequences in FASTA format using epost and efetch commands from the NCBI Entrez E-utilities. The FASTA file was converted to a blastdb using DIAMOND makedb⁴⁹. An all-by-all BLAST search was performed using DIAMOND blastp on very-sensitive mode, a faster version of NCBI's Basic Local Alignment Search Tool (BLAST). The list of all ORFs was checked against the query list of RRE-containing proteins to remove any RRE domains from precursor peptide analysis. Each ORF was also compared to a set of pHMMs adapted from RRE-Finder's precision mode, and all hits were removed. These ORFs were then converted to a blastdb, and an all-by-all BLAST was performed using DIAMOND.

Prediction of paired RRE families and precursor families. All-by-all BLAST results for the set of all RRE domains were parsed and entered into the precursor prediction algorithm (Fig. S1, Note S1). All RRE pairwise BLAST results with a bitscore <50 were removed. ORF all-by-all BLAST results were parsed, and pairwise BLAST results with bitscore <10 were removed. All self-hits were also removed.

All RRE domains were sorted into families using the presence or absence of pairwise BLAST results above the bitscore threshold (starting with 50). Families were sorted by descending order of length. Any RRE families with fewer than 30 members were omitted for simplified analysis of only families with high membership in the dataset. To maximize potential leads, cases where proteins in the RRE family were highly divergent were re-entered into the algorithm at a higher bitscore, increasing the threshold bitscore by 10 with each iteration. RRE divergence was assessed by "enzyme connectivity," which is the ratio of observed pairwise hits in an RRE family above the threshold bitscore to the maximum possible number of

pairwise hits for the RRE family. For RRE families with enzyme connectivity ratios > 0.2 and sufficient size, the size of the largest precursor family was calculated.

The list of ORF pairwise BLAST results was checked for results where both ORFs are encoded near RREs from the same family. Precursor families were generated from each list of related ORFs encoded near members of the same RRE family as above. The size of the precursor family was then compared to the size of the RRE family. When the size of the largest precursor family was within an order of magnitude of the size of the RRE family, the RRE family was output from the algorithm for manual evaluation. For other cases, the RRE family was re-entered into the algorithm recursively, with the bitscore threshold increased by 10. This recursive process resulted in the fractionation of RRE families, with each resultant family re-entered into the algorithm at the more stringent similarity threshold. Output paired families of RRE domains and precursor peptides were assessed based on enzyme connectivity, the relative size of precursor families, enzyme co-occurrence, and precursor peptide sequences for novelty and prioritization.

Generation of pHMMs for daptide precursor peptides and RRE domains. Precursor peptides output from the analysis algorithm were manually analyzed within the daptide family. Within the precursor family, 184 ORFs displayed Thr as the C-terminal residue. The 184 ORFs were aligned by Multiple Alignment using Fast Fourier Transform (MAFFT)⁵⁰ under the G-INS-I method. This alignment was used as input for HMMER3 hmmbuild⁵¹ to create the daptide precursor peptide pHMM, which was subsequently uploaded to Skyline⁵² for visualization.

Representative BGCs from Actinomycetota and Bacillota were selected. The last 100 amino acids (encompassing the entire predicted RRE domain) from the DapB proteins in these BGCs were copied into separate FASTA files by phylum. These files were then aligned using MAFFT under the G-INS-I method. These alignments were used as input for HMMER3 hmmbuild to create the Actino_DapB_RRE and Bacill_DapB_RRE pHMMs. The same approach was applied for DapP proteins from the same representative BGCs, using each protein's first 100 amino acids. Alignment with MAFFT and pHMM generation with hmmbuild generated the Actino_DapP_RRE and Bacill_DapP_RRE pHMMs.

Expansion of daptide BGC family. MpaB was submitted to PSI-BLAST analysis to identify additional BGCs within the daptide class. The first iteration was restricted to 100 protein hits, with subsequent iterations allowing up to 1000 protein results, using an e-value cutoff of 10. After retrieving 1000 sequences, the accession IDs were submitted to RODEO for analysis and compilation.

The daptide precursor peptide pHMM was uploaded to the hmmsearch webtool hosted at EMBL-EBI⁵³. The search was performed against UniProtKB, and the output results were analyzed for taxonomy. Individual IDs were converted to GenBank IDs using UniProt Retrieve/ID Mapping and analyzed by RODEO to confirm membership in the daptide class using local gene conservation. After identifying BGCs from Bacillota, an example DapB protein from *Bacillus cereus* (Genbank ID: KZD28690.1 [<https://www.ncbi.nlm.nih.gov/protein/1017038289>]) was selected for PSI-BLAST analysis using the method described for MpaB. These BGCs were analyzed and compiled with the results from the MpaB PSI-BLAST analysis.

Representative aminotransferase proteins in previously identified daptide BGCs were subjected to BLAST-P analysis on the NCBI's BLAST website. The top 2000 results were gathered for each aminotransferase, and duplicate results were removed. All resulting proteins were analyzed by RODEO. Putative BGCs were checked using local gene co-occurrence. BGCs containing a RODEO annotation for a DapB protein and either an iron-containing alcohol dehydrogenase (PF00465) or an enoyl-(acyl carrier protein) reductase (PF13561) were included as daptide BGCs, with all others removed. After using Prodigal dereplication strategies as described above, daptide precursor peptides were manually identified from ORF output to confirm membership in the daptide class.

Generation of aminotransferase phylogenetic tree. Outgroups for the phylogenetic tree were selected by analyzing the SwissProt database for class III aminotransferases. All daptide aminotransferases and three selected outgroups were aligned by MAFFT using the L-INS-I option. FastTree 2.1.10 was used to generate a maximum likelihood tree with the JTT+CAT model. The tree was visualized using the Interactive Tree of Life (iTOL) website (<https://itol.embl.de/>).

Direct cloning of *mpa* and *sca* BGCs. Direct cloning of *mpa* and *sca* BGCs was achieved by the CAPTURE method²⁸. Both *M. paraoxydans* DSM 15019 and *S. capuensis* NRRL B-3501 were recovered on ISP2 agar medium (malt extract 10 g/L, yeast extract 4 g/L, glucose 4 g/L, agar 20g/L, pH 7.2–7.4) at 37 °C until colony appears (about 3 days). A single colony was inoculated into 5 mL ISP2 liquid medium as seed culture and grown at 37 °C 250 rpm until saturation (3 d). 1 mL of the seed culture was then transferred into 50 mL fresh ISP2 liquid medium and cultivated for 18-20 h. Cells were then harvested by centrifugation at 3000 × g for 15 min and resuspended in 12 mL of cell resuspension buffer (50 mM Tris-HCl pH 8.0, 25 mM EDTA). Cell lysis enzymes (lysozyme 30 mg, mutanolysin 300 U), and 0.6 mg RNase A) were added and the sample was incubated at 37 °C for 18 h. Afterwards, 6 mg proteinase K was added and the sample was incubated at 37 °C for another hour. Following the incubation, 1.2 mL of 10% sodium dodecyl sulphate (SDS) was added and the sample was incubated at 50 °C for 2 h. Genomic DNA was recovered by phenol-chloroform extraction. The cell lysate was gently mixed with 15 mL phenol-chloroform-isoamyl alcohol (25:24:1, v/v, pH 8.0) until the aqueous phase became completely white. The sample was then centrifuged at 22,000 × g for 45 min at room temperature, and the aqueous phase was mixed with 10 mL chloroform. Following the same mixing procedure as described above, the sample was centrifuged at 22,000 × g for 10 min and the aqueous phase was aliquoted into 1.7 mL centrifuge tubes. DNA was recovered using isopropanol and sodium acetate precipitation, washed 3 times with 70% ethanol (v/v), and rehydrated in 10 mM Tris-HCl pH 8.0.

Guide RNA was prepared through *in vitro* transcription. Briefly, 5 μM forward and reverse template oligonucleotides were mixed in NEBuffer 3.1. The mixture was incubated at 98 °C for 5 min, followed by slowly reducing the temperature with the rate of 0.1 °C/s until 10 °C was reached. A 2 μL aliquot of the annealed oligonucleotides was used as template for *in vitro* RNA transcription by HiScribe T7 quick high yield RNA Synthesis kit (New England Biolabs, MA). The transcribed RNA was purified using RNA clean and concentrator kit (Zymo Research, CA). Sequences of the DNA templates for the *in*

in vitro gRNA transcription were shown in **Supplementary Table 1** and synthesized by Integrated DNA Technologies (Coralville, IA).

Genomic DNA was digested by FnCas12a in a 300 μ L reaction containing 15 μ g purified genomic DNA, 2100 ng of each guide RNA, 60 pmol FnCas12a, and 30 μ L of 10 \times NEBuffer 3.1. The reaction was performed at 37 $^{\circ}$ C for 2 h followed by 65 $^{\circ}$ C for 30 min. RNase A was then added to a final concentration of 0.1 mg/mL and the sample was incubated at 37 $^{\circ}$ C for another 30 min. Following RNase treatment, 3 μ L of 20 mg/mL proteinase K solution was added and the sample was incubated at 50 $^{\circ}$ C for 30 min. The reaction was then transferred into 5PRIME PLG light phase-lock gel tubes (Quantbio, MA) and mixed with 300 μ L of phenol-chloroform-isoamyl alcohol (25:24:1, v/v, pH 8.0). After proteins precipitated in the aqueous phase, the sample was centrifuged at 20,000 \times g for 30 s. The aqueous phase was transferred into a new phase-lock tube and the extraction step was repeated. Ethanol and sodium acetate precipitation was then used to recover the DNA in the aqueous phase. The DNA pellets were washed 2 times with 70% ethanol (v/v) and rehydrated in 15 μ L of 10 mM Tris-HCl pH 8.0.

The digested genomic DNA was assembled with DNA receivers by the T4 DNA polymerase exo + fill-in method. DNA receivers were PCR amplified using primers listed in **Supplementary Table 1**. A 15 μ L assembly reaction consists of 3–3.75 μ g of digested genomic DNA, 15 ng of DNA receiver amplified from plasmid pBE44, 35 ng of DNA receiver amplified from plasmid pBE45, 1.5 μ L of NEBuffer 2.1, and 0.75 U of T4 DNA polymerase. Before adding T4 DNA polymerase, the sample was first incubated at 65 $^{\circ}$ C for 10 min followed by 25 $^{\circ}$ C hold without any mixing. T4 DNA polymerase was then added and gently mixed using wide-bore pipette tips. The reaction was performed at 25 $^{\circ}$ C for 1 h, 75 $^{\circ}$ C for 20 min, and 50 $^{\circ}$ C for 30 min. Next, 1 μ L of 1 mM NAD⁺, 0.4 μ L of 10 mM dNTPs, 1 μ L (3 U) of T4 DNA polymerase, and 1 μ L of *E. coli* DNA ligase were added to the reaction, which was incubated at 37 $^{\circ}$ C for 1 h, 75 $^{\circ}$ C for 20 min, and stored at 10 $^{\circ}$ C until transformation.

The assembled DNA fragments were then circularized by Cre-lox *in vivo* recombination. *E. coli* NEB10 β cells containing the pBE14 helper plasmid were grown overnight at 30 $^{\circ}$ C in modified SOB

medium (20 g/L Bacto tryptone, 5 g/L Bacto yeast extract, 10 mM NaCl, 2.5 mM KCl) supplemented with 8 µg/mL tetracycline hydrochloride. A 100 µL aliquot of the overnight culture was used to inoculate 10 mL modified SOB medium supplemented with 8 µg/mL tetracycline hydrochloride and cultured at 30 °C. After 2 h growth (OD₆₀₀ of ~0.2), 100 µL of 1 M L-arabinose was added to the culture and cells continued to grow at 30 °C until the OD₆₀₀ reached 0.45-0.55 (~1.5 h after induction). Cells were then harvested by centrifugation at 3,220×g for 7 min at room temperature and washed using 1 mL of 10% (v/v) glycerol for three times. Cells were then resuspended in a final volume of 70 µL 10% (v/v) glycerol and gently mixed with 2.5 µL assembly reaction using wide-bore pipette tips. Electroporation was performed in 1 mm cuvettes using Gene Pulser XCell Electroporation system (Bio-Rad, CA) set at 1250 V, 100 Ω, 25 µF. Afterwards, cells were resuspended by 1 mL LB medium supplemented with 5 mM MgCl₂ and recovered at 37 °C for 75 min with shaking at 250 rpm. All the cells were plated on LB agar plates containing 50 µg/mL apramycin with blue/white screening and incubated at 37 °C until colonies appeared. White colonies were picked and grown overnight in 5 mL LB medium supplemented with 50 µg/mL apramycin at 37 °C. The plasmid DNA was purified from the cultures using Qiaprep Spin Miniprep Kit (Qiagen, Germany), digested by appropriate restriction enzymes, and analyzed by agarose gel electrophoresis. Correct plasmids were transformed into WM6026 (supplemented with 2,6-diaminopimelic acid at the final concentration 40 µg/mL for growth) and conjugated into *S. lividans* TK24 and *S. albus* J1074 for expression⁵⁴.

Product analysis from colony extracts. The exconjugants of *S. lividans* TK24 and *S. albus* J1074 containing *mpa*, *sca*, or the empty pBE45 vector were picked and restreaked onto fresh MS (mannitol 20 g/L, soybean flour 20 g/L, agar 20 g/L) and ISP4 (soluble starch 10 g/L, K₂HPO₄ 1 g/L, MgSO₄·7H₂O 1 g/L, NaCl 1 g/L, (NH₄)₂SO₄ 2 g/L, CaCO₃ 2 g/L, FeSO₄ 1 mg/L, MnCl₂ 1 mg/L, ZnSO₄ 1 mg/L, agar 20 g/L) agar medium supplied with apramycin at a final concentration of 50 µg/mL and incubated under 30 °C for 5 d. A portion of cell mass (pinhead-sized) was picked from the plate, placed in 20 µL methanol and incubated at room temperature for 1 h. Methanol extract was then mixed equally with 1 µL of 15 mg/mL

70% aq. MeCN solution of α -cyano-4-hydroxycinnamic acid (CHCA) with 0.1% trifluoroacetic acid (TFA) (v/v) on a ground steel MALDI target, and the droplet was dried under ambient conditions. Samples were analyzed using a Bruker UltrafleXtreme MALDI-TOF MS using manufacturer methods for reflector positive mode. The MALDI LIFT-TOF/TOF mass spectra were acquired in the positive ion mode. Metastable fragmentation was induced by a nitrogen laser (337 nm) without the further use of collision gas. Precursor ions were accelerated to 8 kV and selected in a timed ion gate. In the LIFT-cell the fragments were further accelerated to 19 kV. The reflector potential was 29 kV.

Heterologous expression and product isolation. Freshly obtained exconjugants of *S. albus* J1074 containing *mpa* or *sca* were individually restreaked onto MS plates with apramycin and incubated under 30 °C for 5 d. Colonies were verified for producing the daptides by MALDI-TOF MS by the method described above. The colonies were then scratched individually from the plate by sterile cotton swabs, spread on fresh MS medium with apramycin, and allowed to grow for another 5 d. The spores obtained from a single 150 × 20 mm plate were then transferred into 1 mL sterile water. An 100 μ L aliquot of the spore solution was used to inoculate 50 mL bottromycin production medium (BPM; 10 g/L glucose, 15 g/L soluble starch, 5 g/L yeast extract, 10 g/L soy flour, 5 g/L NaCl, 3 g/L CaCO₃) supplied with 50 μ g/mL apramycin in a 250 mL flask, which was shaken at 250 rpm for 4 d at 30 °C. Each 50 mL seed culture was then transferred into 500 mL fresh BPM supplied with 50 μ g/mL apramycin in a 2 L flask and shaken at 250 rpm for another 5 d at 30 °C.

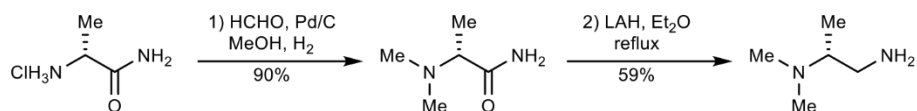
The cells were then harvested by centrifugation and mixed with methanol (1/10 volume of the liquid culture) to homogeneity with continuous stirring under room temperature for at least 1 h. Cell debris was then removed by centrifugation, and the methanol extract was mixed with an equal volume of water and loaded onto an Agilent Bond Elut C18 Solid Phase Extraction (SPE) column (bed mass, 10 g; volume, 60 mL; particle size 120 μ m), which was pre-equilibrated by 50 mL 5% B (solvent A = 0.1% TFA in water; solvent B = 0.1% TFA in acetonitrile). The compounds were then eluted using a step gradient with increasing percentage of solvent B in 150 mL volumes: 5%, 20%, 30%, 40%, 50%, 60%, 70%, 80% and

100% B. The eluted compounds were monitored by MALDI-TOF MS. Fractions containing the compounds (50%, 60% and 70% B) were lyophilized to dryness and powders were redissolved into methanol. Semi-reparative HPLC purification was performed using a 1290 Infinity II Preparative LC System equipped with a Phenomenex Luna C5 column (5 μ m, 100 \AA , 250 \times 10 mm) equilibrated in 5% B. Compounds were eluted by an increase to 100% B over 20 min with a flow rate of 3 mL/min. Under these conditions, daptides **1**, **2**, and **3** were eluted at 16.7, 15.5, and 14.4 min, respectively. All fractions were analyzed by MALDI-TOF MS, lyophilized to dryness, and stored at -80 $^{\circ}$ C until further use. Typical yields were 0.2 – 0.3 mg per liter of BPM.

High-resolution mass spectrometry. Lyophilized, HPLC-purified daptides **1-3** were resuspended in aq. 60% acetonitrile/0.1% acetic acid. Samples were directly infused onto a ThermoFisher Scientific Orbitrap Fusion ESI-MS using an Advion TriVersa Nanomate 100. Calibration was performed with Pierce LTQ Velos ESI Positive Ion Calibration Solution (ThermoFisher). The MS was operated with the following parameters: 100,000 resolution, 2 m/z isolation width (MS/MS), 0.4 activation q value (MS/MS), and 30 ms activation time (MS/MS). Fragmentation was performed using collision-induced dissociation (CID) at normalized collision energy. Each peptide was subjected to 30, 70, and 100 normalized collision energy (MS/MS). Data analysis was conducted using the Qualbrowser application of Xcalibur software (ThermoFisher Scientific).

NMR spectroscopy. The sample was prepared by dissolving \sim 5 mg of **1** (HPLC-purified and lyophilized) in 500 μ L of hexafluoroisopropanol- d_2 (HFIP; $(\text{CF}_3)_2\text{CDOD}$; \geq 99 atom % D, Sigma-Aldrich). NMR spectra were recorded on an Agilent VNMR5 750 MHz narrow bore magnet spectrometer equipped with a 5 mm triple resonance (^1H - ^{13}C - ^{15}N) triaxial gradient probe and pulse-shaping capabilities. Samples were held at 25 $^{\circ}$ C during acquisition. Standard Varian pulse sequences were used for the following experiments: ^1H , ^{13}C , ^1H - ^1H COSY, ^1H - ^{13}C HSQC, and ^1H - ^{13}C HMBC. Spectra were recorded with VNMRJ 3.2A software. All NMR data were processed using MestReNova 11.0.3. Chemical shifts were referenced internally to the solvent peak ($\delta_{\text{H}} = 4.4$ ppm, $\delta_{\text{C}} = 68.1$, HFIP).

Synthetic procedure for the (*R*)-/(*S*)-Dmp standards



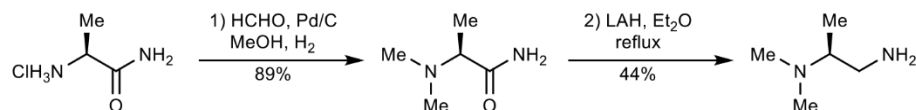
1) (*R*)-2-(dimethylamino)propionamide was prepared according to a known procedure⁵⁵: A mixture of (*R*)-alaninamide hydrochloride (500 mg, 4.01 mmol, 1 equiv.), HCHO (37% aqueous, 0.97 mL) and Pd/C (10% wt, 50 mg) in MeOH (15 mL) was stirred in a flask equipped with a H₂ balloon for 16 h. Upon completion, the mixture was filtered through celite. The filtrate was evaporated, diluted with a mixture of MeOH/DCM (10 mL/10 mL), basified with NH₄OH (28% aqueous, 1 mL), and concentrated. Flash column chromatography (SiO₂) of the residue with DCM/MeOH/28% aqueous NH₄OH (60:10:1) afforded (*R*)-2-(dimethylamino)propionamide (420 mg, 3.62 mmol, 90%).

2) Conditions for amide reduction were reported previously⁵⁶. To a solution of (*R*)-2-(dimethylamino)propionamide (420 mg, 3.62 mmol) in dry ether (18 mL) was added LAH (412 mg, 10.8 mmol, 3 equiv) at 0 °C portionwise. Upon completed addition, the mixture was heated to reflux and left to stir overnight. The mixture was cooled down to 0 °C, followed by sequential addition of water (0.5 mL), 15% aqueous NaOH (0.5 mL) and water (1.5 mL). After 15 min of stirring, the obtained precipitate was removed by filtration, and the filtrate was dried with MgSO₄. Careful evaporation of ether in vacuo (the product is highly volatile) afforded (*R*)-*N,N*-dimethyl-1,2-propanediamine [(*R*)-Dmp] as a colorless oil (218 mg, 2.13 mmol, 59%). Since this compound co-evaporated with diethyl ether, a small amount of ether was always present in the final sample.

$$[\alpha]_{\text{D}}^{22} = -13.1^{\circ} \text{ (c = 0.35 mg/mL, Et}_2\text{O)}$$

¹H NMR (500 MHz, DMSO-*d*₆) δ 3.32 (br, 2H), 2.50 (m, 1H), 2.40 – 2.32 (m, 2H), 2.16 (d, *J* = 2.0 Hz, 1H), 2.12 (s, 6H), 0.82 (d, *J* = 6.3 Hz, 3H).

¹³C NMR (126 MHz, DMSO-*d*₆) δ 64.9, 44.9, 40.3, 10.4.



1) (*S*)-2-(dimethylamino)propionamide was prepared according to a known procedure⁵⁵. A mixture of (*S*)-alaninamide hydrochloride (500 mg, 4.01 mmol, 1 equiv), HCHO (37% aqueous, 0.97 mL) and Pd/C (10% wt, 50 mg) in MeOH (15 mL) was stirred in a flask equipped with a H₂ balloon for 16 h. Upon completion, the mixture was filtered through celite. The filtrate was evaporated, diluted with a mixture of MeOH/DCM (10 mL/10 mL), basified with NH₄OH (28% aqueous, 1 mL), and concentrated. Flash column chromatography (SiO₂) of the residue with DCM/MeOH/28% aqueous NH₄OH (60:10:1) afforded (*S*)-2-(dimethylamino)propionamide (416 mg, 3.58 mmol, 89%).

2) Reduction conditions were reported previously⁵⁶. To a solution of (*S*)-2-(dimethylamino)propionamide (416 mg, 3.62 mmol) in dry ether (18 mL) was added LAH (408 mg, 10.7 mmol, 3 equiv) at 0 °C portionwise. Upon completed addition, the mixture was heated to reflux and left to stir overnight. The mixture was cooled down to 0 °C, followed by sequential addition of water (0.5 mL), 15% aqueous NaOH (0.5 mL) and water (1.5 mL). After 15 min of stirring, the obtained precipitate was removed by filtration, and the filtrate was dried with MgSO₄. Careful evaporation of ether in vacuo (the product is highly volatile) afforded (*S*)-N₂,N₂-dimethyl-1,2-propanediamine [(*S*)-Dmp] as a colorless oil (160 mg, 1.57 mmol, 44%). Since this compound co-evaporated with diethyl ether, a small amount of ether was always present in the final sample.

$$[\alpha]_{\text{D}}^{22} = 16.4^{\circ} \text{ (c = 0.40 mg/mL, Et}_2\text{O)}$$

¹H NMR (500 MHz, DMSO-*d*₆) δ 3.32 (br, 2H), 2.50 (m, 1H), 2.40 – 2.32 (m, 2H), 2.16 (d, *J* = 2.0 Hz, 1H), 2.12 (s, 6H), 0.82 (d, *J* = 6.3 Hz, 3H).

¹³C NMR (126 MHz, DMSO-*d*₆) δ 64.9, 44.9, 40.3, 10.4.

Characterization of stereochemistry by Marfey's assays. Purified **1** (400 μg) was dried in vacuo in a Schlenk flask. To the dried peptide, 300 μL of a 1:1 mixture 12 M DCl (35% w/v, Aldrich) and D_2O (Cambridge Isotope Laboratory) containing 3% phenol (w/v) was added. The solution was equilibrated under nitrogen gas and subjected to one freeze-pump-thaw cycle. The sample was then frozen, subjected to vacuum, and sealed. Once equilibrated back to room temperature, the sample was heated to 95 $^\circ\text{C}$ for 2 h under reduced pressure. For the ScaA1/A2 peptide mixture, the same hydrolysis procedure was conducted in 1.6 mL of the 1:1 mixture 12 M DCl and D_2O and heated at 95 $^\circ\text{C}$ for 16 hr. After cooling back to room temperature, insoluble debris was removed by centrifugation for 5 min, and supernatant was dried using a Speedvac concentrator (Savant ISS110).

The hydrolysate of **1** was dissolved in 150 μL 1M aq. NaHCO_3 and 150 μL acetone containing 4 mg/mL 1-fluoro-2-4-dinitrophenyl-5-L-alanine amide (L-FDAA, Thermo Scientific) was added. For the ScaA1/A2 sample, the hydrolysate was dissolved in 150 μL 1M aq. NaHCO_3 and 150 μL acetone containing 12 mg/mL L-FDAA. Contents were mixed, and the reaction vessel was heated to 60 $^\circ\text{C}$ for 2 h without shaking using an Eppendorf ThermoMixer C. The reaction mixture was then quenched using 40 μL 6 M HCl dropwise. Sample was dried using a Speedvac concentrator (Savant ISS110). Amino acid standards were prepared by drying down 150 μL L-amino acid solution (0.5 $\mu\text{mol/mL}$), followed by dissolution in 1 M aq. NaHCO_3 and mixing with acetone containing 4 mg/mL L-FDAA as above. D-amino standards were generated by reacting the L-amino acid solution with 1-fluoro-2-4-dinitrophenyl-5-D-alanine amide (D-FDAA, Toronto Research Chemicals). These reaction products are enantiomers to the hypothetical D-amino acid and L-FDAA coupled products, where both are chromatographically identical using an achiral stationary phase. Standards for (*R*)- N_2,N_2 -dimethyl-1,2-propanediamine and (*S*)- N_2,N_2 -dimethyl-1,2-propanediamine were prepared by adding 1 μL of synthesized standard to 149 μL 1M aq. NaHCO_3 and mixed with acetone containing 4 mg/mL L-FDAA as above.

Derivatized amino acid standards, Dmp standards, and MpaA1 hydrolysate were reconstituted in 300 μL 15% aq. MeCN + 0.1% formic acid (LC-MS grade). Samples were sonicated for 5 minutes in a

sonication bath and insoluble material was removed by filtration with a 0.2 μm centrifugal filter (Pall Corporation) or by centrifugation for 5 min. Amino acid stereochemistry was determined using a Shimadzu LC-MS 2020 with a quadrupole detector and a Macherey-Nagel Nucleodur C18 column (250 \times 4.6 mm, 5 μm particle size, 100 \AA pore size). Samples were analyzed in batch using the following conditions: solvent A 0.1% aq. formic acid, solvent B MeCN + 0.1% formic acid, 1 mL/min flow rate, and the following method: 15% B for 7 min, 15-50% B over 45 min, hold at 50% B for 5 min followed by wash and re-equilibration in starting conditions. Analyte (20 μL) was injected and the $[\text{M}+\text{H}]^+$ ions of the amino acid-Marfey's reagent adducts were selective monitored as follows (m/z): Ser, 358; Trp, 457; Asp, 386; Phe, 418; Tyr, 434; Glu (amide of Gln hydrolyzed), 400; Val, 370; Ile/Leu, 384; Ala, 342; FDAA(bis)-Tyr, 686. For the ScaA1/A2 sample, the following ions were selectively monitored (m/z): Ala, 342; Phe, 418; Ile/Leu, 384; Thr, 372; Val, 370; FDAA(bis)-Tyr, 686. To clarify Asp and Ser stereochemistry for **1**, amino acid-Marfey's reagent adduct standards were mixed 3:1 with MpaA1 hydrolysate, and 20 μL of the resulting mixtures were injected on the LC-MS as above. Dmp stereochemistry was determined by co-injection of derivatized MpaA1 hydrolysate with derivatized Dmp standards on a Thermo Vanquish Duo binary pump UHPLC system and a Thermo Scientific Accucore C18 column (150 \times 4.6 mm, 2.6 μm particle size, 80 \AA pore size). Samples were analyzed using the following conditions: solvent A 0.1% aq. formic acid, solvent B MeCN + 0.1% formic acid, 2 mL/min flow rate and the following method: 15% B for 0.5 min and 15-22% B over 7 min, followed by wash and re-equilibration in starting conditions. To obtain optimal peak resolution, derivatized Dmp standards and MpaA1 hydrolysate were diluted >100 fold before injection of 20 μL of sample in each run.

Circular dichroism spectrometry. CD spectra were acquired using a JASCO spectropolarimeter J-715 with Peltier temperature control. Stock solutions of **1**, **2**, and **3** (10 mM in HFIP) were diluted by water to 50 μM [final concentration of HFIP at 0.5% (v/v)] immediately prior to data acquisition. Spectra were recorded from 260 to 200 nm at a scan rate of 200 nm/min at 0.1 nm resolution at 10 $^{\circ}\text{C}$. The data shown are the average of three acquisitions.

Antimicrobial activity assay. Daptides were dissolved in DMSO to achieve a concentration of 10 μM . Agar plates were prepared by combining 20 mL of melted solid medium (cooled to 42 $^{\circ}\text{C}$ for 5 min) with 200 μL of stationary phase overnight cell culture. The seeded agar was poured into a sterile 100-mm round dish (VWR) and allowed to solidify at 25 $^{\circ}\text{C}$ for 10 min. Daptides were directly spotted on the solidified agar. Plates were incubated at various temperatures shown in **Supplementary Table 4** for 16 h, and the antimicrobial activity was determined by the presence or absence of zones of growth inhibition.

Hemolytic Assay. Fresh defibrinated whole bovine blood was obtained from Hemostat Laboratories. Whole blood was washed three times in PBS and diluted to a final concentration of 1:25 vol/vol in PBS. Prepared whole blood was then split into 50 μL aliquots in individual 1.7 mL Eppendorf Tubes. Next, stock solutions of concentrations at 1 mM and 200 μM were prepared for **1**, **2**, and **3** in DMSO, and **1+2**, **2+3**, **1+3** and **1+2+3** stock solutions at 1 mM and 200 μM were then prepared by mixing equal volumes of the single daptide stock solutions accordingly. Aliquots of 2.5 μL each stock solution were mixed with the blood, yielding final concentrations at 50 μM and 10 μM . An equal volume of DMSO and Triton X-100 were used as negative and positive controls. The mixtures were then incubated in Eppendorf Thermomixer C with a heated lid for 18 h at 37 $^{\circ}\text{C}$. After incubation, the samples were processed by centrifugation at 500 \times g for 10 min, and the supernatants were measured for hemoglobin absorbance at 410 nm on a NanoDrop Spectrophotometer. Each measurement was performed in biological triplicate, and the percentage of hemolysis was calculated using the following equation:

$$\% \text{ Hemolysis} = (\text{Abs of test sample} - \text{Abs of DMSO}) / (\text{Abs of Triton X} - 100 - \text{Abs of DMSO})$$

Construction and characterization of the minimal *mpa* BGC in *S. albus* J1074. The complete or partial *mpa* operons were PCR amplified from the directly cloned *mpa* BGC as multiple DNA fragments. The primers were designed to generate an 80-bp overlapped region between adjacent DNA fragments (**Supplementary Table 5**). The *E. coli-Streptomyces* shuttle vector pSET152 was digested by *Xba*I and *Eco*RI. The *S. cerevisiae* helper fragment was amplified from the plasmid pRS416. All DNA fragments were gel-purified from 0.7% agarose. For each construct, 200 ng vector was mixed with other DNA

fragments at a 1:1 molar ratio, concentrated by DNA Clean & Concentrator-5 (Zymo Research, CA) and eluted into 6 μ L of water. The DNA mixture was then assembled by DNA assembler³⁶. Single colonies of *S. cerevisiae* YSG50 were inoculated in 2 mL YPAD medium (yeast extract 10 g/L, peptone 20 g/L, glucose 20 g/L, adenine sulfate 40 mg/L) and grown overnight at 30°C and 250 rpm. A 0.5 mL aliquot of the overnight culture was transferred into 50 mL fresh YPAD medium and shaken at 250 rpm and 30°C for 4–5 h until OD 600 reached 0.8–1.0. Cells were harvested by centrifugation at 3000 \times g for 5 min at 4°C. The cell pellet was washed by 50 ml ice-cold water, followed by another wash by cold 1 M sorbitol, and resuspended in 250 μ L cold 1 M sorbitol. An aliquot of 50 μ L of yeast cells was mixed with 4 μ L DNA mixture and electroporated in a 0.2 cm cuvette at 1.5 kV. Afterwards, the cells were resuspended by 1 mL room temperature YPAD medium and recovered at 30°C with shaking at 250 rpm for 1 h. Cells were then harvested by centrifugation, washed by 1 mL of 1 M sorbitol at room temperature for two times, spread on Sc-Ura plates, and incubated at 30°C for 2–4 days until colonies appeared. Single colonies were grown in Sc-Ura medium for 1 d and plasmid DNA was purified using Zymoprep II Yeast plasmid Miniprep kit (Zymo Research, CA). Plasmids were then transformed into *E. coli* NEB10 β , purified by Qiaprep Spin Miniprep Kit (Qiagen, Germany), and analyzed by restriction digestion. Correct plasmids were conjugated into *S. albus* J1074, and colony extracts were analyzed by MALDI-TOF MS as described above.

Refactoring and gene omission of the *mpa* pathway. The *mpaA1-3*, *mpaB*, *mpaC*, *mpaD*, and *mpaM* genes were codon-optimized and synthesized and then subcloned onto helper plasmids for a plug-and-play refactoring strategy (**Supplementary Table 5, Supplementary Table 6**)³⁷. Point mutations to *mpaA1* were introduced by overlap extension PCR. The *mpaA1* and its mutants obtained by PCR were then cloned into T7 His Helper-1 for constructing plasmids with other genes. The refactored pathway was built by the Golden Gate assembly³⁷. The 4-bp adapters affected by gene omission were changed by PCR with primers that anneal to the T7 promoter and terminator region. The resulting PCR fragment was used as the insert in the Golden Gate assembly.

Expression of the refactored *mpa* pathways and product purification. Unless otherwise specified, the following conditions were used for the co-expression of MpaA1 and variants thereof with other biosynthetic genes in *E. coli*. The plasmids containing refactored *mpa* pathways were co-transformed with the chaperone plasmid (pGro7) into *E. coli* BL21(DE3). Cells were grown on Luria–Bertani (LB) agar plates containing 50 µg/mL kanamycin and 20 µg/mL chloramphenicol at 37 °C overnight. Single colonies were picked to inoculate 5 mL LB supplied with the same amount of antibiotics and grown at 37 °C for another 16 h. This culture was used to inoculate 500 mL M9 medium supplied with 50 µg/mL kanamycin, 20 µg/mL chloramphenicol, and 0.5 mg/mL arabinose. The M9 culture was grown at 37 °C to an optical density of 600 nm (OD₆₀₀) of 0.6. Isopropyl β-d-1-thiogalactopyranoside (IPTG) was then added to a final concentration of 0.5 mM. The cell culture was then cooled to 18 °C and grown for an additional 3 d.

Cells were then harvested by centrifugation and resuspended in lysis buffer (6 M guanidine hydrochloride, 20 mM NaH₂PO₄, 500 mM NaCl, 0.5 mM imidazole, pH 7.5) to a final volume of 20 mL and lysed by sonication. The cell lysate was then clarified by centrifugation at 23,700 × g for 30 min at 4 °C, and the supernatant was passed through a syringe filter (0.45 µm). The clarified lysates were loaded onto a 5 mL NiNTA HisTrap column (GE Healthcare). The column was then washed with 25 mL of wash buffer (4 M guanidine hydrochloride, 20 mM NaH₂PO₄, 500 mM NaCl, 30 mM imidazole, pH 7.5) and eluted with 15 mL of elution buffer (4 M guanidine hydrochloride, 20 mM Tris, 100 mM NaCl, 1 M imidazole, pH 7.5). The eluent was desalted by ZipTip or Bond Elut C18 SPE column and analyzed by MALDI-TOF MS.

Derivatization of ketone intermediate. A refactored plasmid containing genes *mpaA1*, *mpaB*, and *mpaC* was heterologously expressed as described above. After desalting by SPE column, 1 mL (sample in aq. 70% acetonitrile/0.1% TFA) was added each to two scintillation vials (reaction vs. control). The pH of the eluent was adjusted to pH 4 using 0.1 M NaOH and checked by pH paper. To one vial, *O*-benzylhydroxylamine was added to 10 mM and scintillation vials were left overnight (~16 h) at room temperature to ensure maximal oxime formation. Reaction products were mixed 1:1 with 50 mg/mL Super-DHB (Sigma-Aldrich)

in aq. 60% acetonitrile/0.1% formic acid and dried under ambient conditions on a polished steel MALDI target. Samples were analyzed using a Bruker UltrafleXtreme MALDI-TOF MS using manufacturer's methods for reflector positive mode.

AlphaFold-Multimer Structural Prediction of MpaA1-MpaB-MpaC Complex. AlphaFold-Multimer was used to predict the MpaB-MpaC-MpaA1 interactions, with each of the five trained model parameters⁴⁰. The MSA generation, AlphaFold-Multimer predictions, and structure relaxation with Amber were run using the code of ColabFold, a publicly available Jupyter notebook⁵⁷, on a Google Colab GPU cluster. The input included the query sequences of MpaB, MpaC, and MpaA1, with an MSA from MMseqs2 (UniRef+Environmental) not using any templates. The Pair mode "unpaired+paired" and the number of recycles, "6," were selected in the advanced settings section. The structure of MpaC with ligand NADP was constructed using a homologous alcohol dehydrogenase (PDB ID: 6C76) as a template followed by energy minimization using software YASARA Structure version 17.8.19⁵⁸⁻⁶⁰. The protein-protein interaction was visualized and analyzed using PyMOL⁶¹.

Data Availability

We declare that all data supporting the findings of this study are presented in the main text, supplementary datasets, and supplementary information. All custom pHMMs are provided on Github (<https://github.com/the-mitchell-lab/rodeo2>). All plasmids and raw data are available upon request. Source data are provided with this paper.

Code Availability

All code and methods necessary to reproduce this work are available in the supplementary information and on Github (<https://github.com/the-mitchell-lab/rodeo2>).

References

1. Arnison, P.G. et al. Ribosomally synthesized and post-translationally modified peptide natural products: overview and recommendations for a universal nomenclature. *Nat Prod Rep* **30**, 108-160 (2013).
2. Montalban-Lopez, M. et al. New developments in RiPP discovery, enzymology and engineering. *Nat Prod Rep* **38**, 130-239 (2021).
3. King, A.M. et al. Selection for constrained peptides that bind to a single target protein. *Nat Commun* **12**, 1-12 (2021).
4. Yang, X. et al. A lanthipeptide library used to identify a protein-protein interaction inhibitor. *Nat Chem Biol* **14**, 375-380 (2018).
5. Schmitt, S. et al. Analysis of modular bioengineered antimicrobial lanthipeptides at nanoliter scale. *Nat Chem Biol* **15**, 437-443 (2019).
6. Goto, Y. & Suga, H. Engineering of RiPP pathways for the production of artificial peptides bearing various non-proteinogenic structures. *Curr Opin Chem Biol* **46**, 82-90 (2018).
7. Wu, C.Y. & van der Donk, W.A. Engineering of new-to-nature ribosomally synthesized and post-translationally modified peptide natural products. *Curr Opin Biotech* **69**, 221-231 (2021).
8. Russell, A.H. & Truman, A.W. Genome mining strategies for ribosomally synthesized and post-translationally modified peptides. *Comput Struct Biotech* **18**, 1838-1851 (2020).
9. Rutledge, P.J. & Challis, G.L. Discovery of microbial natural products by activation of silent biosynthetic gene clusters. *Nat Rev Microbiol* **13**, 509-523 (2015).
10. Hemmerling, F. & Piel, J. Strategies to access biosynthetic novelty in bacterial genomes for drug discovery. *Nat Rev Drug Discov*, 1-20 (2022).
11. Ting, C.P. et al. Use of a scaffold peptide in the biosynthesis of amino acid-derived natural products. *Science* **365**, 280-284 (2019).
12. Daniels, P.N. et al. A biosynthetic pathway to aromatic amines that uses glycyl-tRNA as nitrogen donor. *Nat Chem* **14**, 71-77 (2022).
13. Hudson, G.A. et al. Bioinformatic mapping of radical S-adenosylmethionine-dependent ribosomally synthesized and post-translationally modified peptides identifies new C alpha, C beta, and C gamma-linked thioether-containing peptides. *J Am Chem Soc* **141**, 8228-8238 (2019).
14. Morinaka, B.I. et al. Natural noncanonical protein splicing yields products with diverse beta-amino acid residues. *Science* **359**, 779-782 (2018).
15. Caruso, A., Martinie, R.J., Bushin, L.B. & Seyedsayamdost, M.R. Macrocyclization via an arginine-tyrosine crosslink broadens the reaction scope of radical S-adenosylmethionine enzymes. *J Am Chem Soc* **141**, 16610-16614 (2019).
16. Clark, K.A., Bushin, L.B. & Seyedsayamdost, M.R. Aliphatic ether bond formation expands the scope of radical SAM enzymes in natural product biosynthesis. *J Am Chem Soc* **141**, 10610-10615 (2019).
17. Bushin, L.B., Clark, K.A., Pelczer, I. & Seyedsayamdost, M.R. Charting an unexplored Streptococcal biosynthetic landscape reveals a unique peptide cyclization motif. *J Am Chem Soc* **140**, 17674-17684 (2018).
18. Rued, B.E. et al. Quorum sensing in *Streptococcus mutans* regulates production of tryglysin, a novel RaS-RiPP antimicrobial compound. *mBio* **12**, e02688 (2021).
19. Hug, J.J. et al. Biosynthesis of cittelins, unusual ribosomally synthesized and post-translationally modified peptides from *Myxococcus xanthus*. *Acs Chem Biol* **15**, 2221-2231 (2020).
20. Reisberg, S.H. et al. Total synthesis reveals atypical atropisomerism in a small-molecule natural product, tryptorubin A. *Science* **367**, 458-463 (2020).
21. Hug, J.J. et al. Genome-guided discovery of the first Myxobacterial biaryllytite myxarylin reveals distinct C-N biaryl crosslinking in RiPP biosynthesis. *Molecules* **26**, 7483 (2021).

22. Burkhart, B.J., Hudson, G.A., Dunbar, K.L. & Mitchell, D.A. A prevalent peptide-binding domain guides ribosomal natural product biosynthesis. *Nat Chem Biol* **11**, 564-570 (2015).
23. Kloosterman, A.M., Shelton, K.E., van Wezel, G.P., Medema, M.H. & Mitchell, D.A. RRE-Finder: a genome-mining tool for class-independent RiPP discovery. *Msystems* **5**, e00267 (2020).
24. Shelton, K.E. & Mitchell, D.A. in *Methods in Enzymology* (Academic Press, 2022).
25. Tietz, J.I. et al. A new genome-mining tool redefines the lasso peptide biosynthetic landscape. *Nat Chem Biol* **13**, 470-478 (2017).
26. Zimmermann, L. et al. A completely reimplemented MPI bioinformatics toolkit with a new HHpred server at its core. *J Mol Biol* **430**, 2237-2243 (2018).
27. Mistry, J. et al. Pfam: the protein families database in 2021. *Nucleic Acids Res* **49**, D412-D419 (2021).
28. Enghiad, B. et al. Cas12a-assisted precise targeted cloning using in vivo Cre-lox recombination. *Nat Commun* **12**, 1-11 (2021).
29. Tong, Y. et al. CRISPR-Cas9, CRISPRi and CRISPR-BEST-mediated genetic manipulation in streptomyces. *Nat Protoc* **15**, 2470-2502 (2020).
30. Anguiano, M., Nowak, R.J. & Lansbury, P.T. Protofibrillar islet amyloid polypeptide permeabilizes synthetic vesicles by a pore-like mechanism that may be relevant to type II diabetes. *Biochemistry-U S A* **41**, 11338-11343 (2002).
31. Bhushan, R. & Bruckner, H. Use of Marfey's reagent and analogs for chiral amino acid analysis: assessment and applications to natural products and biological systems. *J Chromatogr B* **879**, 3148-3161 (2011).
32. Kloosterman, A.M. et al. Expansion of RiPP biosynthetic space through integration of pan-genomics and machine learning uncovers a novel class of lanthipeptides. *PLoS Biol* **18**, e3001026 (2020).
33. Walker, M.C. et al. Precursor peptide-targeted mining of more than one hundred thousand genomes expands the lanthipeptide natural product family. *BMC Genomics* **21**, 387 (2020).
34. Xu, M. et al. Functional Genome Mining Reveals a Class V Lanthipeptide Containing a d-Amino Acid Introduced by an F(420) H(2) -Dependent Reductase. *Angew Chem Int Ed Engl* **59**, 18029-18035 (2020).
35. Huan, Y., Kong, Q., Mou, H. & Yi, H. Antimicrobial peptides: classification, design, application and research progress in multiple fields. *Front Microbiol* **11**, 582779 (2020).
36. Shao, Z.Y., Zhao, H. & Zhao, H.M. DNA assembler, an in vivo genetic method for rapid construction of biochemical pathways. *Nucleic Acids Res* **37**, e16 (2009).
37. Ren, H.Q., Hu, P.F. & Zhao, H.M. A plug-and-play pathway refactoring workflow for natural product research in *Escherichia coli* and *Saccharomyces cerevisiae*. *Biotechnol Bioeng* **114**, 1847-1854 (2017).
38. Nishihara, K., Kanemori, M., Kitagawa, M., Yanagi, H. & Yura, T. Chaperone coexpression plasmids: differential and synergistic roles of DnaK-DnaJ-GrpE and GroEL-GroES in assisting folding of an allergen of Japanese cedar pollen, Cryj2 in *Escherichia coli*. *Appl Environ Microb* **64**, 1694-1699 (1998).
39. Maxson, T. et al. Targeting reactive carbonyls for identifying natural products and their biosynthetic origins. *J Am Chem Soc* **138**, 15157-15166 (2016).
40. Evans, R. et al. Protein complex prediction with AlphaFold-Multimer. *BioRxiv* (2021).
41. Miethke, M. et al. Towards the sustainable discovery and development of new antibiotics. *Nat Rev Chem* **5**, 726-749 (2021).
42. Kim, P.I. et al. Characterization and structure identification of an antimicrobial peptide, hominicin, produced by *Staphylococcus hominis* MBBL 2-9. *Biochem Bioph Res Co* **399**, 133-138 (2010).
43. Dieterich, C.L. et al. Aquimarins, peptide antibiotics with amino-modified C-Termini from a sponge-derived *Aquimarina* sp. bacterium. *Angew Chem Int Ed Engl*, e202115802 (2021).

44. Prigge, S.T., Mains, R.E., Eipper, B.A. & Amzel, L.M. New insights into copper monooxygenases and peptide amidation: structure, mechanism and function. *Cell Mol Life Sci* **57**, 1236-1259 (2000).
45. Strandberg, E. et al. Influence of C-terminal amidation on the antimicrobial and hemolytic activities of cationic alpha-helical peptides. *Pure Appl Chem* **79**, 717-728 (2007).
46. Ahearn, I.M., Haigis, K., Bar-Sagi, D. & Philips, M.R. Regulating the regulator: post-translational modification of RAS. *Nat Rev Mol Cell Bio* **13**, 39-51 (2012).
47. Blodgett, J.A. et al. Unusual transformations in the biosynthesis of the antibiotic phosphinothricin tripeptide. *Nat Chem Biol* **3**, 480-485 (2007).
48. Santos-Aberturas, J. et al. Uncovering the unexplored diversity of thioamidated ribosomal peptides in Actinobacteria using the RiPPER genome mining tool. *Nucleic Acids Res* **47**, 4624-4637 (2019).
49. Buchfink, B., Xie, C. & Huson, D.H. Fast and sensitive protein alignment using DIAMOND. *Nat Methods* **12**, 59-60 (2015).
50. Katoh, K., Misawa, K., Kuma, K. & Miyata, T. MAFFT: a novel method for rapid multiple sequence alignment based on fast Fourier transform. *Nucleic Acids Res* **30**, 3059-3066 (2002).
51. Eddy, S.R. Accelerated profile HMM searches. *Plos Comput Biol* **7**, e1002195 (2011).
52. Wheeler, T.J., Clements, J. & Finn, R.D. Skylign: a tool for creating informative, interactive logos representing sequence alignments and profile hidden Markov models. *Bmc Bioinformatics* **15**, 1-9 (2014).
53. Potter, S.C. et al. HMMER web server: 2018 update. *Nucleic Acids Res* **46**, W200-W204 (2018).
54. Kieser, T., Bibb, M.J., Buttner, M.J., Chater, K.F. & Hopwood, D.A. Practical streptomyces genetics (John Innes Foundation, 2000).
55. Gregor, V.E. Tricyclic compound derivatives useful in the treatment of neoplastic diseases, inflammatory disorders and immunomodulatory disorders. *US 2014/0228350 A1*, 314 (2014).
56. Andres, J.M., Manzano, R. & Pedrosa, R. Novel bifunctional chiral urea and thiourea derivatives as organocatalysts: enantioselective nitro-Michael reaction of malonates and diketones. *Chem-Eur J* **14**, 5116-5119 (2008).
57. Mirdita, M. et al. ColabFold-making protein folding accessible to all. *Research Square* (2021).
58. Van Durme, J. et al. A graphical interface for the FoldX forcefield. *Bioinformatics* **27**, 1711-1712 (2011).
59. Schymkowitz, J. et al. The FoldX web server: an online force field. *Nucleic Acids Res* **33**, W382-W388 (2005).
60. Krieger, E. et al. Improving physical realism, stereochemistry, and side-chain accuracy in homology modeling: four approaches that performed well in CASP8. *Proteins* **77**, 114-122 (2009).
61. Pymol: the PyMOL molecular graphics system, version 1.2r3pre, Schrödinger, LLC.

Acknowledgements

We wish to thank Sangeetha Ramesh and Timothy Precord for HR-MS/MS assistance, Lonnie Harris for assistance with Marfey's method, Tom Pires for UHPLC method development, and David Slater for providing access to AlphaFold-Multimer. This work was supported in part by grants from the National Institutes of Health (GM123998 to D.A.M. and AI144967 to D.A.M. and H.Z.).

Author Contributions Statement

H.R. and S.R.D. contributed equally to this work. H.R. performed direct cloning, heterologous expression, mutational analysis, compound purifications, and bioactivity assays. S.R.D. performed bioinformatics, HR-MS/MS analysis, and stereochemical and functional group determinations. Y.P. assisted in the preparation of **1** for NMR. C.H and L.Z. designed, performed, and analyzed NMR experiments. M.N. synthesized Dmp standards with oversight from D.S. S.R.D. and H.C. performed AlphaFold-Multimer analysis. H.R. and S.R.D. wrote the manuscript with editorial oversight from D.A.M. and H.Z., along with input from all other authors. D.A.M. and H.Z. conceived of and supervised the overall project.

Competing Interests Statement

The authors declare no competing interests.

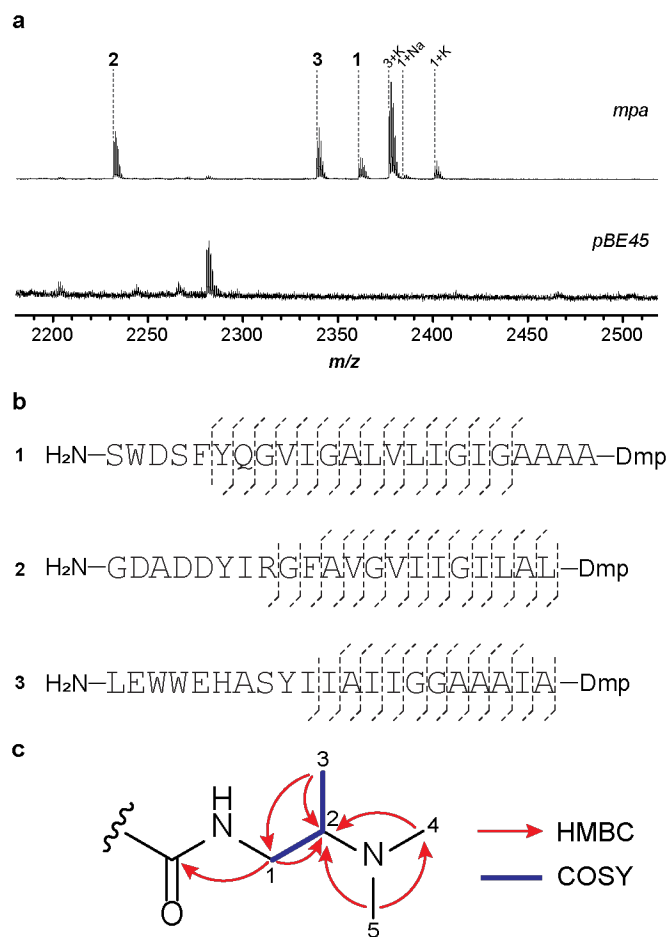


Fig. 2: Heterologous expression and product characterization of *mpa*. **a**, MALDI-TOF mass spectra of the methanol extracts of *S. albus* J1074 containing *mpa* (**1**, m/z 2363; **2**, m/z 2232; **3**, m/z 2339) and the pBE45 empty vector. Sodium and potassium ions are denoted as '+Na' and '+K'. **b**, Summary of the HR-MS/MS results for compound **1-3**. **c**, key HMBC and COSY correlations for the Dmp moiety in **1**. NMR spectra of **1** and assigned signals of Dmp are shown in **Supplementary Fig. 14** and **Supplementary Table 2**, respectively.

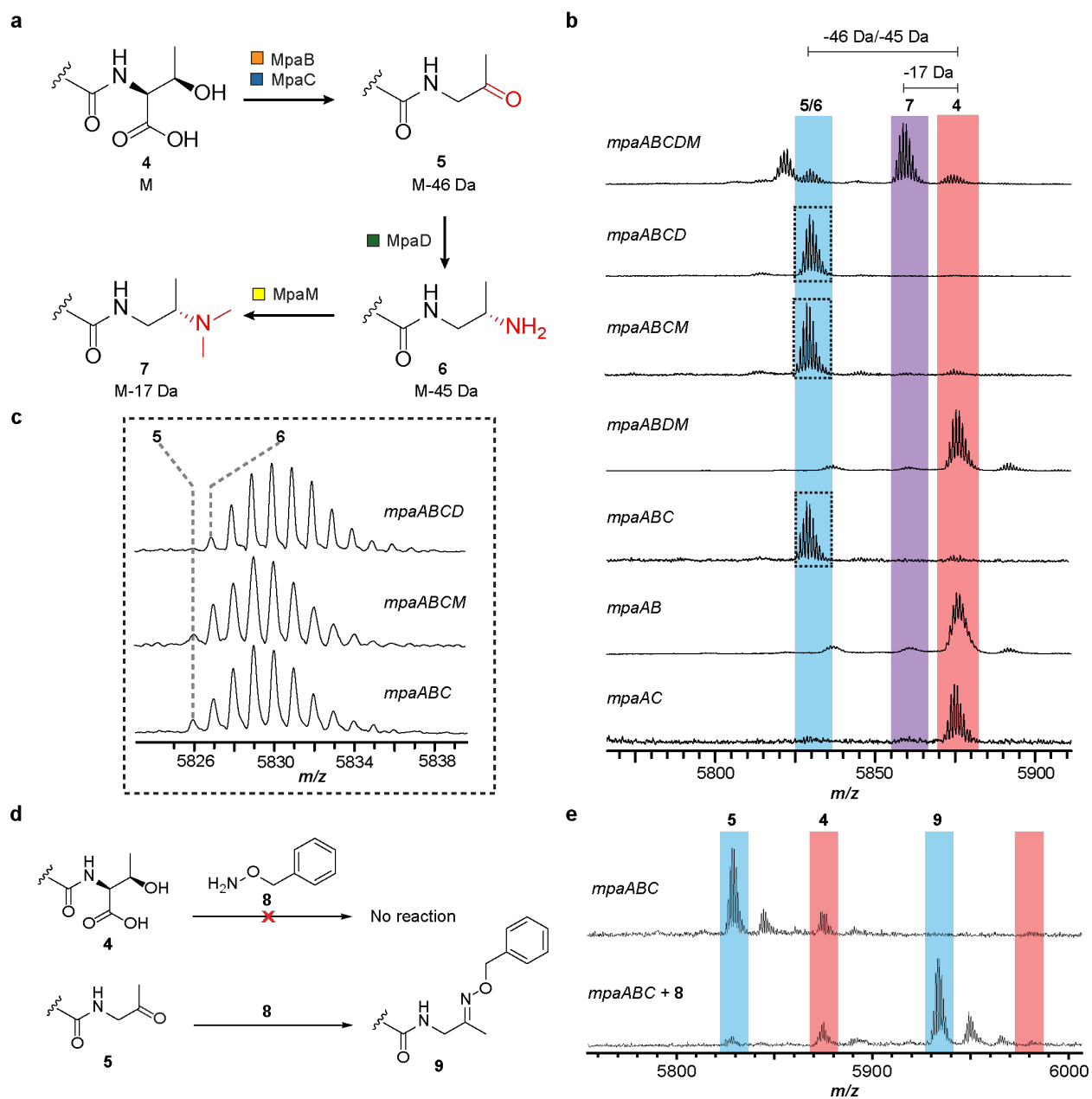


Fig. 3: Characterization of the biosynthetic pathway. **a**, Proposed biosynthetic route for the Dmp modified C-terminus. **b**, MALDI-TOF mass spectra of IMAC-purified MpaA1 that were co-expressed with the indicated Mpa biosynthetic proteins in *E. coli* (**4**, m/z 5872; **5**, m/z 5826; **6**, m/z 5827; **7**, m/z 5855). **c**, Enlarged MALDI-TOF mass spectra of *mpaABCD*, *mpaABCM*, and *mpaABC* co-expressions in panel **b**. **d**, Carbonyl reactivity using aminooxy probe **8**. **e**, MALDI-TOF MS results for the unmodified peptide **4** and ketone intermediate **5** (oxime **9**, m/z 5931).

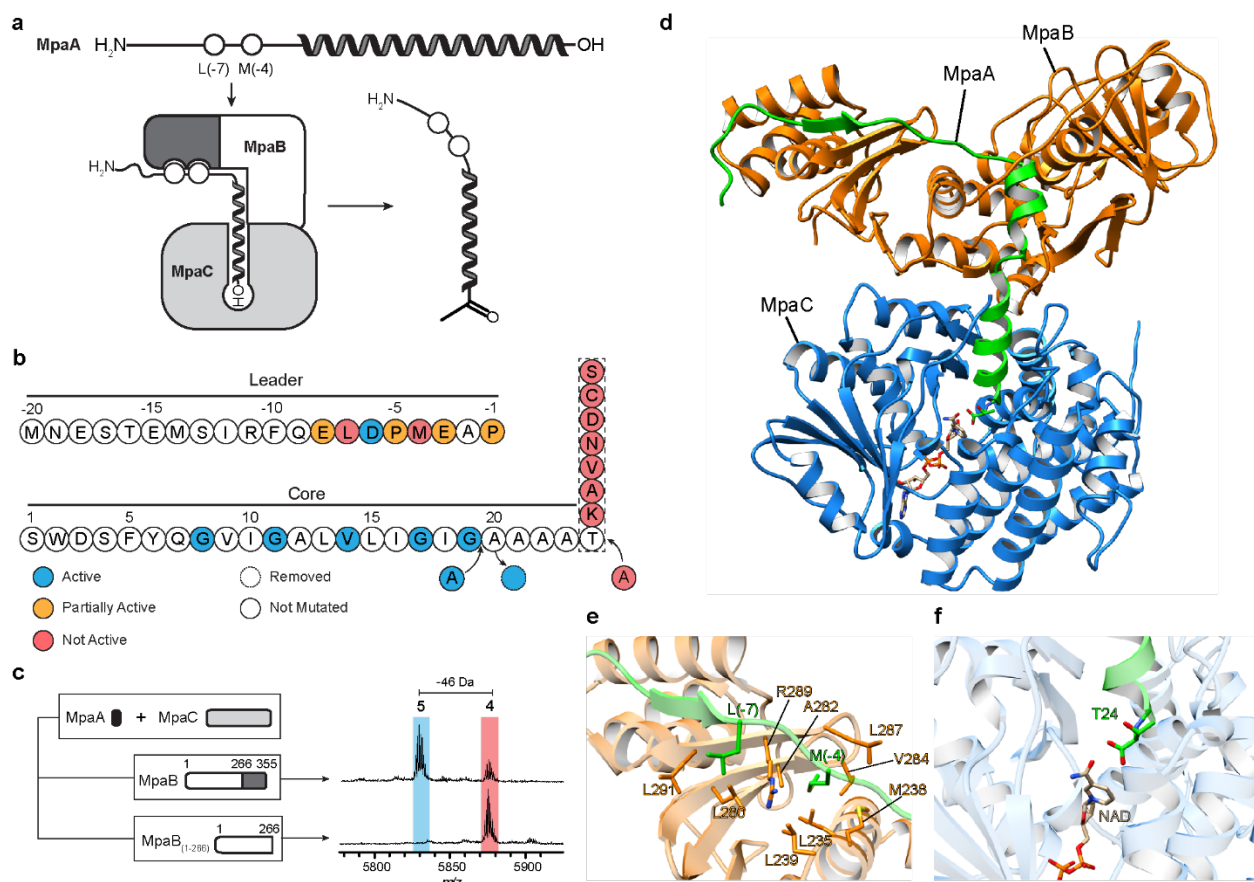


Fig. 4: Characterization of ketone intermediate formation by MpaB and MpaC. **a**, Proposed interaction model for MpaA, MpaB, and MpaC. The RRE domain (dark grey) of MpaB interacts with the conserved leader region of MpaA. The C-terminus (depicted as “-OH”) of MpaA is directed into the active site of MpaC for modification. **b**, Summary of MpaA variant processing upon *E. coli* co-expression with MpaB/C. **c**, Mass spectra of MpaA after co-expression with MpaC, and MpaB or MpaB₁₋₂₆₆. The RRE domain of MpaB is dark grey. **d**, The structure of MpaA1-MpaB-MpaC was predicted using AlphaFold-Multimer⁴⁰. MpaA1, MpaB and MpaC are shown as cartoons in green, orange, and blue, respectively. The positioning of cofactor NADP was imported using a homologous alcohol dehydrogenase (PDB ID: 6C76) as a template. **e**, View of the leader peptide-RRE domain binding interface⁴⁰. Select residues of MpaA and MpaB are in green and orange, respectively. **f**, View of the C-terminal Thr24 of MpaA in the substrate-binding pocket of MpaC.