

TITLE: Hippocampal sharp wave-ripple dynamics in NREM sleep encode motivation for future physical activity

AUTHORS: Chelsea M. Buhler^a, Julia C. Basso^{a,b,c}, Daniel Fine English^a

a School of Neuroscience, Virginia Tech, VA USA

b Department of Human Nutrition, Foods, and Exercise, Virginia Tech, VA, USA

c Center for Health Behaviors Research, Fralin Biomedical Research Institute at VTC, VA, USA

Correspondence should be directed to Drs. Daniel F. English & Julia C. Basso.

Daniel F. English: Life Sciences 1, Washington St SW, Blacksburg, VA 24060

Julia C. Basso: Integrated Life Sciences Building, 1981 Kraft Drive, Blacksburg, VA 2401

Email: englishdaniel@gmail.com; jbasso@vt.edu

ACKNOWLEDGMENTS:

DFE is supported by grants from The Simons Foundation and The Whitehall Foundation. JCB is supported by the iTHRIV Scholars Program, which is supported in part by the National Center for Advancing Translational Sciences of the NIH (UL1TR003015 *and* KL2TR003016). CMB is supported by the Virginia Tech School of Neuroscience.

DISCLOSURES: The authors have no disclosures to report.

ABSTRACT:

Physical activity is an integral part of every mammal's daily life, and as a driver of Darwinian fitness, required coordinated evolution of the body and brain. The human population is currently in its most historically sedentary state, creating a global health crisis - necessitating improved understanding of exercise motivation. The decision to engage in physical activity can be driven by survival needs (e.g., escaping danger) or by the motivation for the rewarding nature of physical activity itself (e.g., running exercise). Rodents exhibit innate and learned motivation for voluntary wheel running exercise, and over time run for longer durations and distances, reflecting increased incentive salience and motivation for this consummatory behavior. Daily motivation for running is highly variable, which necessitates dynamic coordination of neural and somatic physiology (e.g., action planning and associated metabolic demand) to ensure the ability to carry out the planned activity. Hippocampal sharp wave-ripples (SWRs) evolved both cognitive (e.g., action planning) and metabolic (e.g., blood glucose regulation) functions, suggesting a role in such body-brain coordination. Here we monitored hippocampal CA1 local field potential activity and running levels in adult mice, while manipulating the incentive salience of running. During non-REM (NREM) sleep, the duration of SWRs before (but not after) running positively correlated with future time spent running, while in contrast, the rate of SWR occurrence both before and after exhibited a positive correlation. Because SWR durations reflect information content and rates reflect both information and metabolic signaling, our results suggest multiplexing of SWR dynamics as a mechanism supporting both cognitive and metabolic aspects of exercise. We hypothesize that SWRs coordinate body-brain interactions to a greater extent than previously known.

KEYWORDS: exercise; physical activity; voluntary wheel running; hippocampus; CA1; sharp wave-ripples; learning; memory; motivation; incentive salience; metabolism; embodiment

Introduction

Throughout mammalian evolution, physical activity has been a significant driver of Darwinian fitness, with the body and brain co-evolving, concomitantly increasing in complexity at the level of structure and function¹. As spatial navigation behaviors increased, the concurrent need to learn and remember the environment also increased, enhancing success in foraging and reproduction². Today however, physical inactivity in humans has become a global health crisis³, with sedentary behaviors increasing the risk for a range of health issues including obesity, diabetes, heart disease, stroke, and cancer⁴. Conversely, physical activity improves physical and mental health⁵, making understanding exercise motivation a critical and timely scientific and societal issue.

The hippocampus is functionally positioned to play an important yet relatively unexplored role in exercise motivation, as it supports learning and memory⁶ (including reward learning), planning of future actions^{7–11} and although less acknowledged is involved in somatic physiology^{12–14}. Critical to all of these functions are CA1 sharp wave-ripples¹⁰ (SWRs), during which specific populations (i.e. cell assemblies) of CA1 neurons become highly active^{8–10,15–17}, selected by computations involving interaction between excitation and inhibition^{10,18,19}, sending the final product of hippocampal computation to the rest of the brain^{10,20–22}. Interestingly, recent findings have shown that in addition to cognitive functions (largely involving hippocampal-neocortical dialogue), SWRs serve a specific somatic function: dynamically regulating peripheral glucose levels by communicating with the lateral septum¹⁴. The differential translation of hippocampal SWR output by neocortex^{16,21–26} and lateral septum^{14,27} may thus enable multiplexing of cognitive and somatic functions. Furthermore, multiple hippocampal rhythms including SWR and theta are entrained to and driven by respiration^{28–31}, furthering the evidence of the important somatic/metabolic role of SWRs. Considering these dynamic roles of SWRs as modulators between the body and brain, we hypothesized that SWRs serve essential functions in behaviors that require enhanced body-brain coordination including physical activity.

Physical activity, in the form of voluntary (but not forced) wheel running, holds positive incentive salience for rodents^{32–34}. Critically, motivation for wheel running exercise can be quantified through the magnitude of the rebound running response after days of wheel deprivation³⁵. We thus investigated dynamics of SWRs during NREM sleep in a rodent model exhibiting high levels of motivation for this behavior³⁶. We monitored hippocampal local field potentials (LFP) before, during, and after two hours of voluntary exercise; both on consecutive days and after days of wheel deprivation³² (deprivation increases incentive salience and thus running levels). Differences in daily motivation to run were associated with changes in sleep architecture and SWR dynamics including rates and durations. These results suggest a previously unknown role for SWRs in the motivation for physical activity.

Results

Plastic motivation for voluntary wheel running in BL/6J x FVB/NJ hybrid mice chronically implanted with silicon probes

To identify relationships between voluntary physical activity and hippocampal network oscillations we monitored wheel running (Fig 1A) and hippocampal extracellular field potentials (Fig 1B) in freely behaving mice under the SRS protocol (Fig 1A; See Methods). Hybrid mice³⁶ were chosen because they are a more ethologically relevant model compared to inbred strains. We analyzed data only from days after which the wheel running experience was no longer novel (i.e. day 3 and on) because novelty generally produces variability in behavior across animals, and specifically alters SWR dynamics^{8–10,15,16,37} (also see Methods). Time spent running increased over days (Fig 1D; $r=0.59$, $p=0.001$), and deprivation resulted in a subsequent rebound response upon return of the wheel (Fig 1C; $t(3)=-3.798$, $p=0.032$), confirming mice found wheel running rewarding. We observed canonical relationships between behavioral states and hippocampal oscillations^{10,22,38}: theta oscillations were most prevalent

in wake and REM sleep, whereas SWRs were most prevalent in NREM sleep. Importantly, wheel running bouts were accompanied by sustained theta oscillations, resulting in a positive correlation between theta power and time spent running. (Fig 1E; $r = 0.68$, $p=0.001$). The SRS protocol thus meets the need of our study in that mice chronically implanted with silicon probes exhibit normal exercise behaviors and hippocampal activity.

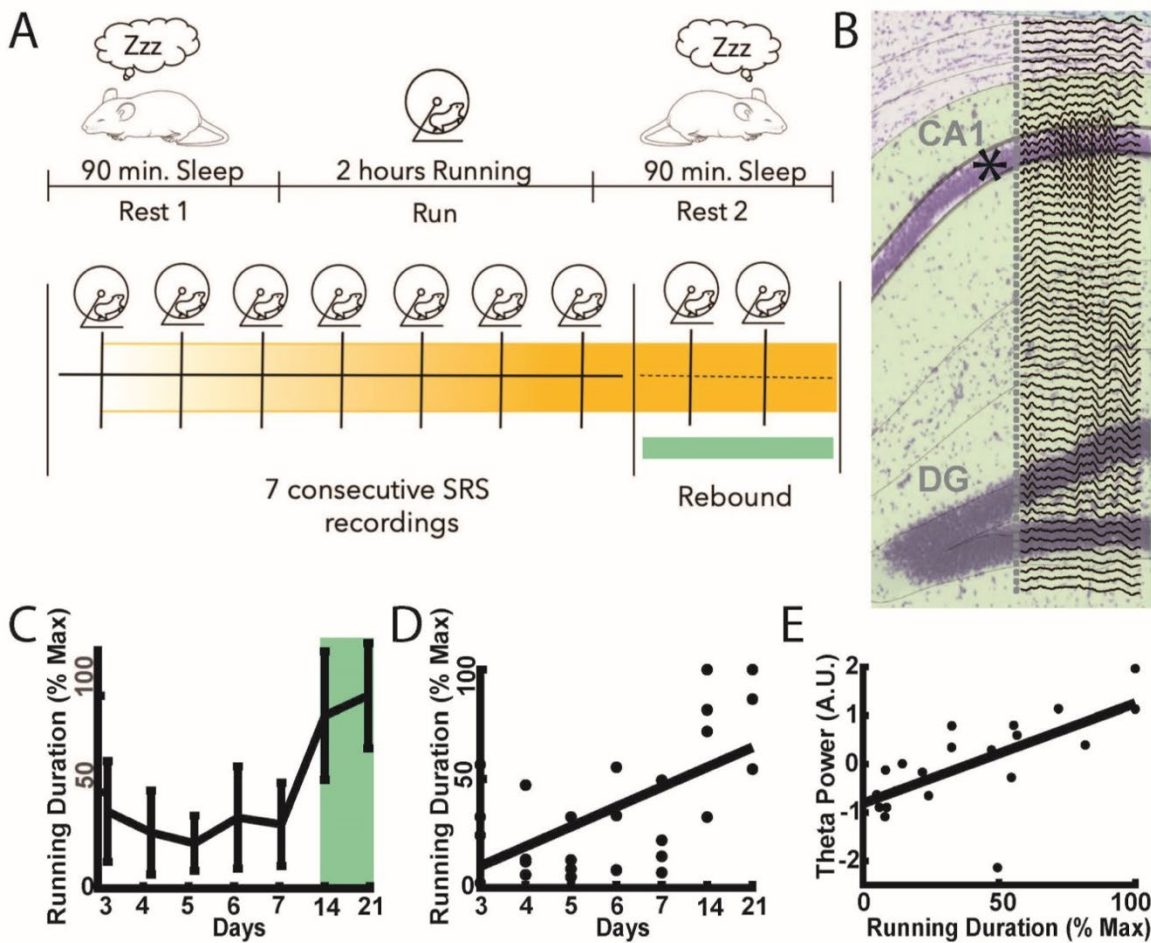


Figure 1: Running behaviors and hippocampal physiology in exercising mice **A.** Behavioral Protocol. **B.** Example silicon probe recording CA1-DG 64 channel probe with 20 micron spacing implanted during SRS protocol. LFP traces are 150 ms illustrating a SWR event. **C.** Mean running on consecutive and rebound days. ($t(3)=-3.798$, $p=0.032$) **D.** Running over Days ($r = 0.59$, $p= 0.001$) **E.** Hippocampal theta correlates with running duration ($r = 0.68$, $p=0.001$).

Anticipation of rewarding exercise results in increased wakefulness and compressed NREM sleep

We quantified relative time spent in different sleep/wake states using established methods³⁹, Fig 2A, and found that on rebound days mice spent significantly more time awake in Pre as compared to *Post* exercise epochs ($p=0.01$). We found the opposite relationship for NREM sleep, and over days the percent time in NREM in Pre epochs was negatively correlated with future time spent running (Fig 2C; $r=-.676$, $p=0.0001$) The opposite was true for NREM in *Post* epochs (Fig 2D; $r=.426$ $p=0.026$). Intriguingly, in Pre there is a significant negative correlation between SWR rates and the % time spent in NREM sleep ($r=-0.6337$, $p=0.0003$), as well as significant negative correlations between inter-SWR-interval (ISI) and future time spent running ($r=-0.50899$, $p=0.006$), suggesting an anticipation driven compression of required SWR mediated computations into a shorter duration of time. This was not the case for *Post* epoch correlations between ISI and running duration ($r=-0.37591$, $p=0.0533$) or SWR rates and the % time spent in NREM ($r=0.363$, $p=0.06$). Thus, periods of increased running were preceded, but not followed, by compressed NREM sleep.

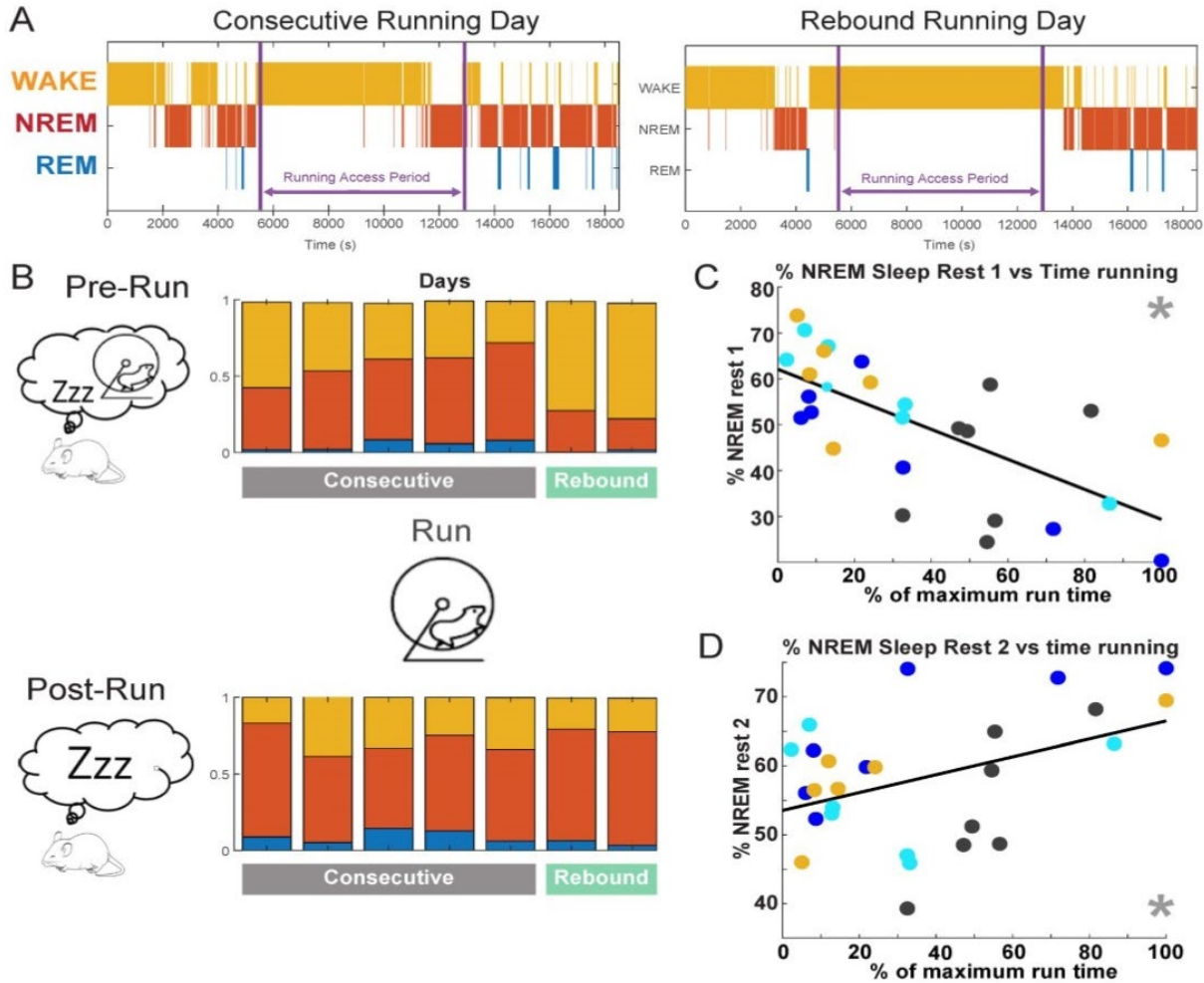


Figure 2: Alterations in wake/sleep dynamics associated with exercise motivation **A.** Representative hypnograms of a consecutive day and a rebound day, for the entire period of recording. Note only one consistent segment of NREM on the rebound day but two on the consecutive day. Also note that on rebound day the mouse was awake the entire period with the wheel, which is not the case on the consecutive day. **B.** Summary figure of the proportion of time spent in wake, NREM and REM states in Pre (top) and Post (bottom) on consecutive and rebound days for one mouse. **C.** Correlation between running and the percentage of time spent in NREM sleep during PRE ($r = -.676$, $p = 0.0001$) **D.** Correlation between running and the percentage of time spent in NREM sleep during POST ($r = .426$, $p = 0.026$).

SWR rates correlate with daily exercise performance while SWR durations correlate with future exercise levels

We compared SWRs in NREM sleep in *Pre* and *Post* run epochs in adult female mice. Neither SWR mean power or frequency exhibited significant correlations with exercise levels (data not shown). Rates and durations of SWRs, however, were related to daily exercise levels (Fig 3). NREM SWR rates in both *Pre* and *Post* epochs were positively correlated with daily running levels (Fig 3: A,B,C), which may be related to the daily energy expenditure of the animals. SWR durations in *Pre* NREM were significantly positively correlated with future exercise levels which was not observed in *Post* NREM epochs (Fig 3: D,E,F). In parallel, the percent of long duration⁴⁰ SWRs were significantly positively correlated with future exercise levels in *Pre* but not *Post* (Fig 3: G,H,I). These data suggest that SWRs dynamically encode the motivation for anticipated exercise.

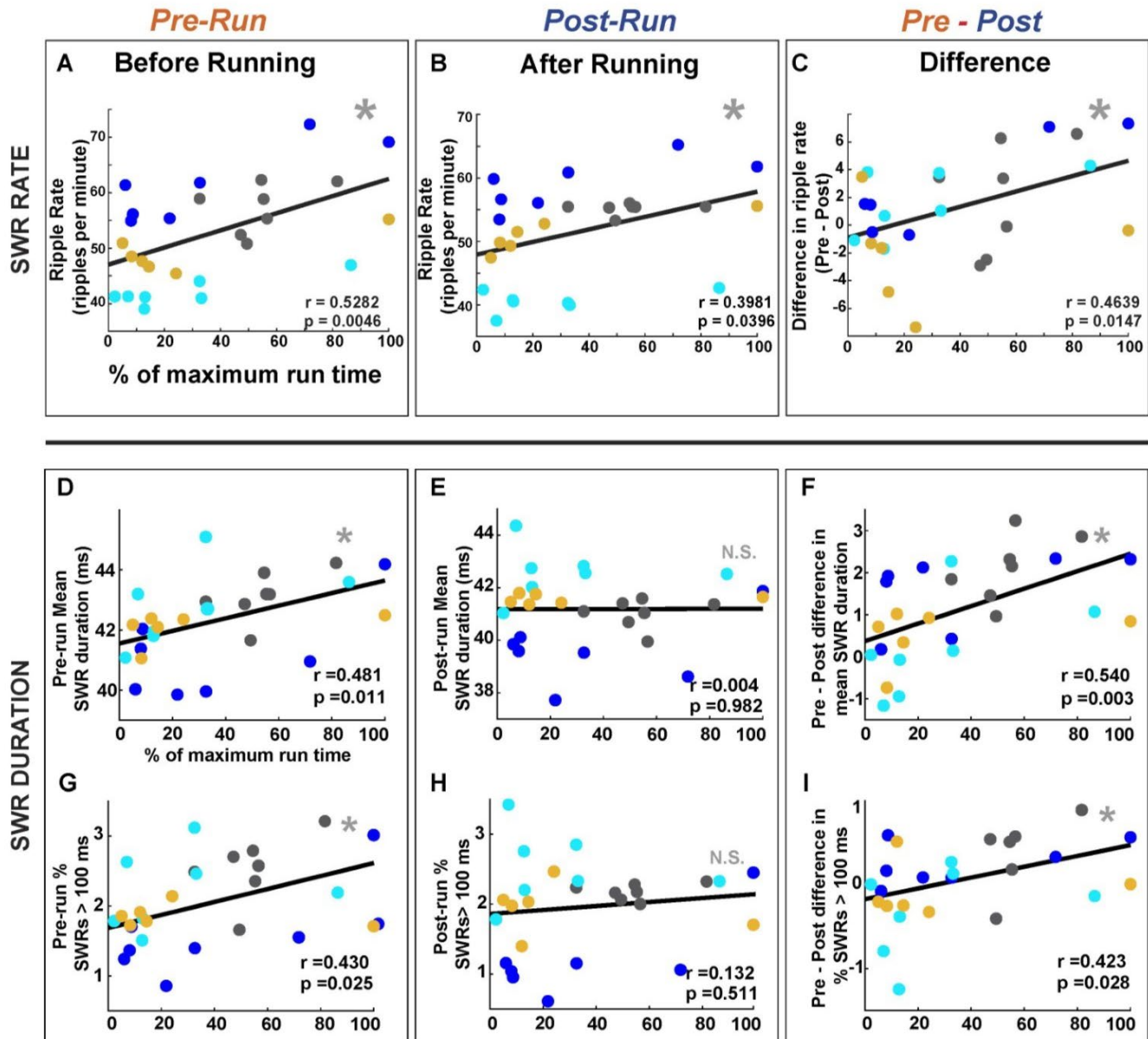


Figure 3: SWR Dynamics correlate with physical activity. SWR rate in Pre and Post correlate with time spent running (A,B,C). Sharp wave-ripple duration in Pre but not Post NREM sleep is correlated with time spent running. Relationships between Pre and Post run SWR duration (D,E,F) or percent of long duration SWRs (G,H,I) and time spent running. Note that SWR activity before but not after running, as well as the differences between these timepoints, are both significantly positively correlated with time spent running each day. Each color is a single mouse and each point is data from a single day. X-axis legend in A is the same for all panels

Discussion

Running is a naturally rewarding consummatory behavior

Our data demonstrate that running is a rewarding behavior in mice. First, we demonstrated that mice increase their running over days. Second, we found that mice exhibit the rebound running response after deprivation, previously only shown in rats^{32,35}. Interestingly, this behavior was observed after only 7 days of acute running experience, while previous studies in rats reported that this behavior only occurs after habitual, plateau levels of running are reached^{32,35}. Specifically, rebound running distance and rates on days 14 and 21 reached peak levels, above those demonstrated on the final consecutive day of running (day 7). This phenomenon is akin to what occurs after deprivation from other natural or pharmacological reinforcers such as food or drugs of abuse. To this point, we previously used a conditioned place preference model to show that running can be as rewarding as cocaine³⁵. These new findings demonstrate that the motivation comes on board with only 7 days of consummatory behavior of the wheel running experience.

Furthermore, it is important to note that although from the perspective of hippocampal rhythms consummatory behaviors are typically associated with a cessation of theta oscillations and the occurrence of SWRs, exercise³²⁻³⁵ and sex^{41,42} are two prominent examples of innately rewarding consummatory behaviors which are associated not with SWRs but with sustained theta oscillations.

Exercise modulates sleep architecture during anticipation of the running experience

When mice are anticipating the reward of running, they spend more time awake and less time asleep, with this effect being most prominent during rebound days to the point where some mice spend their entire anticipatory period awake (Fig.2 A,B). Additionally, when mice fall asleep during this anticipatory period, they spend the majority of their time in NREM (compared to REM) sleep with the percentage of

NREM sleep negatively correlating to the time spent running (Fig 2C). That is, the more the mouse is motivated to run, the more time they spend awake and the less time they spend in NREM sleep before running. However, after the running experience, high levels of exercise motivation (i.e., time spent running) correspond to more NREM sleep (Fig. 2D). This latter finding is consistent with the human literature showing that both acute (a single bout) and chronic exercise produces longer periods of NREM sleep and shorter periods of REM sleep⁴³. Additionally, extant literature has revealed that exercise enhances overall quality of sleep including shorter sleep onset latency⁴⁴, time awake after sleep onset and longer total sleep time⁴⁵. We newly show that during an anticipatory running period, mice will regulate their sleep-wake cycles. That is, the external signal that the experience of running will soon be available alters the circadian pattern of the rodent such that awake periods are more prominent prior to (as compared to after) the running experience. Other literature has shown that such learned responses (e.g., food becoming available at a certain time of day) can alter circadian responses of other consummatory behaviors such as eating/feeding⁴⁶. Our findings reveal a general phenomenon regarding entrainment of natural behaviors (including physical activity and sleep), and that the timing of when these events occur in relation to one another can affect the temporal relationship of said behaviors.

SWR dynamics encode exercise motivation and performance

SWRs are commonly studied using metrics including oscillation frequency, power, event duration, rate, and (ISI). We found that SWR frequency and power were not related to exercise behaviors, as expected since SWR frequency is in general fixed across and during learning and memory tasks¹⁰, with changes in frequency being associated with pathological states^{10,47,48}. In contrast, duration, rate, and ISI demonstrated unique relationships with exercise motivation and performance which suggest a role for SWRs in multiple aspects of exercise behaviors. Of note, in both rate and durations, all correlations

were stronger for *Pre* as compared to *Post*, with the differences in rates (*Pre* - *Post*) showing positive correlation with exercise levels, suggesting anticipatory functions for both SWR rates and durations. Nevertheless, the discrimination between rate and duration of SWRs is paramount, as distinct functions have been ascribed to modulations of each metric. Critically, increased SWR duration is driven by the participation of more neurons (i.e., larger assemblies), which carry more information. These results suggest that the spiking content of SWRs is directly related to the anticipated and rewarding future exercise.

Conclusions

We identified a novel role for SWRs in coordinating neuronal and physical activity: encoding motivation for future exercise in the activity of CA1 cell assemblies in SWRs. This suggests that both motor and cognitive processes are integrated within the same neuronal circuits - evidence for embodied cognition (i.e., the embodied brain). This perspective may help to reconcile the dichotomous theories of the hippocampus as a spatial map versus the seat of learning and memory. The hippocampus may thus be a core embodied center of the brain supporting somatic and cognitive processes, as well as their coordination through time. This perspective directly aligns with the co-evolution of the body and brain.

Importantly these results are novel and separate from SWR preplay⁴⁹ and replay^{8,9,15,16}. These concepts regard the structure of pre-existing and/or learned spatial maps. Our results instead introduce the novel concept that cell assembly dynamics in NREM SWRs encode a plastic representation of the motivation for a future innate consummatory behavior. We further hypothesize that incepting such activity could be used as a method to increase exercise motivation and performance.

1. Hill, T. & Polk, J. D. BDNF, endurance activity, and mechanisms underlying the evolution of hominin brains. *Am. J. Phys. Anthropol.* **168 Suppl 67**, 47–62 (2019).
2. Raichlen, D. A. & Alexander, G. E. Adaptive Capacity: An evolutionary-neuroscience model linking exercise, cognition, and brain health. *Trends Neurosci.* **40**, 408–421 (2017).
3. Santos, A. C., Willumsen, J., Meheus, F., Ilbawi, A. & Bull, F. C. The cost of inaction on physical inactivity to public health-care systems: a population-attributable fraction analysis. *Lancet Glob. Health* **11**, e32–e39 (2023).
4. Lee, I.-M. *et al.* Effect of physical inactivity on major non-communicable diseases worldwide: an analysis of burden of disease and life expectancy. *The Lancet* **380**, 219–229 (2012).
5. Sharma, A., Madaan, V. & Petty, F. D. Exercise for Mental Health. *Prim. Care Companion J. Clin. Psychiatry* **8**, 106 (2006).
6. Eichenbaum, H. The role of the hippocampus in navigation is memory. *J. Neurophysiol.* **117**, 1785–1796 (2017).
7. Johnson, A. & Redish, A. D. Neural Ensembles in CA3 Transiently Encode Paths Forward of the Animal at a Decision Point. *J. Neurosci.* **27**, 12176–12189 (2007).
8. Diba, K. & Buzsáki, G. Forward and reverse hippocampal place-cell sequences during ripples. *Nat. Neurosci.* **10**, 1241–1242 (2007).
9. Foster, D. J. & Wilson, M. A. Reverse replay of behavioural sequences in hippocampal place cells during the awake state. *Nature* **440**, 680–683 (2006).
10. Buzsáki, G. Hippocampal sharp wave-ripple: A cognitive biomarker for episodic memory and planning: HIPPOCAMPAL SHARP WAVE-RIPPLE. *Hippocampus* **25**, 1073–1188 (2015).
11. Pastalkova, E., Itskov, V., Amarasingham, A. & Buzsáki, G. Internally Generated Cell Assembly Sequences in the Rat Hippocampus. *Science* **321**, 1322–1327 (2008).

12. Kanoski, S. E. & Grill, H. J. Hippocampus Contributions to Food Intake Control: Mnemonic, Neuroanatomical, and Endocrine Mechanisms. *Biol. Psychiatry* **81**, 748–756 (2017).
13. Neuronal regulation of hepatic glucose metabolism in mammals - Shimazu - 1987 - Diabetes/Metabolism Reviews - Wiley Online Library.
<https://onlinelibrary.wiley.com/doi/abs/10.1002/dmr.5610030109>.
14. Tingley, D., McClain, K., Kaya, E., Carpenter, J. & Buzsáki, G. A metabolic function of the hippocampal sharp wave-ripple. *Nature* **597**, 82–86 (2021).
15. Nádasdy, Z., Hirase, H., Czurkó, A., Csicsvari, J. & Buzsáki, G. Replay and Time Compression of Recurring Spike Sequences in the Hippocampus. *J. Neurosci.* **19**, 9497–9507 (1999).
16. Lee, A. K. & Wilson, M. A. Memory of Sequential Experience in the Hippocampus during Slow Wave Sleep. *Neuron* **36**, 1183–1194 (2002).
17. Dragoi, G. Cell assemblies, sequences and temporal coding in the hippocampus. *Curr. Opin. Neurobiol.* **64**, 111–118 (2020).
18. English, D. F. *et al.* Excitation and Inhibition Compete to Control Spiking during Hippocampal Ripples: Intracellular Study in Behaving Mice. *J. Neurosci.* **34**, 16509–16517 (2014).
19. Stark, E. *et al.* Pyramidal Cell-Interneuron Interactions Underlie Hippocampal Ripple Oscillations. *Neuron* **83**, 467–480 (2014).
20. Nitzan, N. *et al.* Propagation of hippocampal ripples to the neocortex by way of a subiculum-retrosplenial pathway. *Nat. Commun.* **11**, 1947 (2020).
21. Abadchi, J. K. *et al.* Spatiotemporal patterns of neocortical activity around hippocampal sharp-wave ripples. <http://biorxiv.org/lookup/doi/10.1101/787218> (2019) doi:10.1101/787218.
22. Buzsáki, G. Two-stage model of memory trace formation: a role for ‘noisy’ brain states. *Neuroscience* **31**, 551–570 (1989).

23. Buzsáki, G., Horvath, Z., Urioste, R., Hetke, J. & Wise, K. High-frequency network oscillation in the hippocampus. *Science* **256**, 1025–1027 (1992).
24. Girardeau, G., Benchenane, K., Wiener, S. I., Buzsáki, G. & Zugaro, M. B. Selective suppression of hippocampal ripples impairs spatial memory. *Nat. Neurosci.* **12**, 1222–1223 (2009).
25. van de Ven, G. M., Trouche, S., McNamara, C. G., Allen, K. & Dupret, D. Hippocampal Offline Reactivation Consolidates Recently Formed Cell Assembly Patterns during Sharp Wave-Ripples. *Neuron* **92**, 968–974 (2016).
26. Trouche, S. *et al.* Recoding a cocaine-place memory engram to a neutral engram in the hippocampus. *Nat. Neurosci.* **19**, 564–567 (2016).
27. Tingley, D. & Buzsáki, G. Transformation of a Spatial Map across the Hippocampal-Lateral Septal Circuit. *Neuron* **98**, 1229-1242.e5 (2018).
28. Karalis, N. & Sirota, A. Breathing coordinates cortico-hippocampal dynamics in mice during offline states. *Nat. Commun.* **13**, 467 (2022).
29. Lockmann, A. L. V., Laplagne, D. A., Leão, R. N. & Tort, A. B. L. A Respiration-Coupled Rhythm in the Rat Hippocampus Independent of Theta and Slow Oscillations. *J. Neurosci. Off. J. Soc. Neurosci.* **36**, 5338–5352 (2016).
30. Nguyen Chi, V. *et al.* Hippocampal Respiration-Driven Rhythm Distinct from Theta Oscillations in Awake Mice. *J. Neurosci. Off. J. Soc. Neurosci.* **36**, 162–177 (2016).
31. Yanovsky, Y., Ciatipis, M., Draguhn, A., Tort, A. B. L. & Brankač, J. Slow oscillations in the mouse hippocampus entrained by nasal respiration. *J. Neurosci. Off. J. Soc. Neurosci.* **34**, 5949–5964 (2014).
32. Basso, J. C. & Morrell, J. I. Using wheel availability to shape running behavior of the rat towards improved behavioral and neurobiological outcomes. *J. Neurosci. Methods* **290**, 13–23 (2017).

33. Brené, S. *et al.* Running is rewarding and antidepressive. *Physiol. Behav.* **92**, 136–140 (2007).
34. Greenwood, B. N. *et al.* Long-term voluntary wheel running is rewarding and produces plasticity in the mesolimbic reward pathway. *Behav. Brain Res.* **217**, 354–362 (2011).
35. Basso, J. C. & Morrell, J. I. The medial prefrontal cortex and nucleus accumbens mediate the motivation for voluntary wheel running in the rat. *Behav. Neurosci.* **129**, 457–472 (2015).
36. Sloin, H. E. *et al.* Hybrid Offspring of C57BL/6J Mice Exhibit Improved Properties for Neurobehavioral Research. *eNeuro* **9**, ENEURO.0221-22.2022 (2022).
37. de la Prida, L. M. Potential factors influencing replay across CA1 during sharp-wave ripples. *Philos. Trans. R. Soc. B Biol. Sci.* **375**, 20190236 (2020).
38. Buzsáki, G. Theta Oscillations in the Hippocampus. *Neuron* **33**, 325–340 (2002).
39. Watson, B. O., Levenstein, D., Greene, J. P., Gelinás, J. N. & Buzsáki, G. Network Homeostasis and State Dynamics of Neocortical Sleep. *Neuron* **90**, 839–852 (2016).
40. Fernández-Ruiz, A. *et al.* Long-duration hippocampal sharp wave ripples improve memory. *Science* **364**, 1082–1086 (2019).
41. Kurtz, R. G. Hippocampal and cortical activity during sexual behavior in the female rat. *J. Comp. Physiol. Psychol.* **89**, 158–169 (1975).
42. Kurtz, R. G. & Adler, N. T. Electrophysiological correlates of copulatory behavior in the male rat: evidence for a sexual inhibitory process. *J. Comp. Physiol. Psychol.* **84**, 225–239 (1973).
43. Uchida, S. *et al.* Exercise Effects on Sleep Physiology. *Front. Neurol.* **3**, 48 (2012).
44. Kubitz, K. A., Landers, D. M., Petruzzello, S. J. & Han, M. The effects of acute and chronic exercise on sleep. A meta-analytic review. *Sports Med. Auckl. NZ* **21**, 277–291 (1996).
45. Effects of Acute Exercise on Sleep: A Quantitative Synthesis | SLEEP | Oxford Academic. <https://academic.oup.com/sleep/article/20/3/203/2732097>.

46. SILVER, R. & BALSAM, P. Oscillators entrained by food and the emergence of anticipatory timing behaviors. *Sleep Biol. Rhythms* **8**, 120–136 (2010).
47. Valero, M. *et al.* Mechanisms for Selective Single-Cell Reactivation during Offline Sharp-Wave Ripples and Their Distortion by Fast Ripples. *Neuron* **94**, 1234-1247.e7 (2017).
48. Ibarz, J. M., Foffani, G., Cid, E., Inostroza, M. & Menendez de la Prida, L. Emergent dynamics of fast ripples in the epileptic hippocampus. *J. Neurosci. Off. J. Soc. Neurosci.* **30**, 16249–16261 (2010).
49. Dragoi, G. Preplay of future place cell sequences by hippocampal cellular assemblies. 7.