

KCC2 overexpression prevents the paradoxical seizure-promoting action of somatic inhibition

Vincent Magloire¹, Jonathan Cornford¹, Andreas Lieb¹, Dimitri M. Kullmann¹, Ivan Pavlov^{1*}

¹ Department of Clinical and Experimental Epilepsy, UCL Institute of Neurology, University College London, London, WC1N 3BG, UK

* Corresponding author: i.pavlov@ucl.ac.uk

Abstract

Although cortical interneurons are apparently well-placed to suppress seizures, several recent reports have highlighted a paradoxical role of parvalbumin-positive perisomatic-targeting (PV+) interneurons in ictogenesis. Here, we use an acute *in vivo* model of focal cortical seizures in awake behaving mice, together with closed-loop optogenetic manipulation of PV+ interneurons, to investigate their function during seizures. We show that photo-depolarization of PV+ interneurons rapidly switches from an anti-ictal to a pro-ictal effect within a few seconds of seizure initiation. The pro-ictal effect of delayed photostimulation of PV+ interneurons was not shared with dendrite-targeting somatostatin-positive (SOM+) interneurons. We also show that this switch can be prevented by overexpression of the neuronal potassium-chloride co-transporter KCC2 in principal cortical neurons. These results suggest that strategies aimed at improving the ability of principal neurons to maintain intracellular chloride levels in the face of excessive network activity can prevent interneurons from contributing to seizure perpetuation.

Keywords: seizure, visual cortex, interneuron, parvalbumin, somatostatin, optogenetics, closed-loop, chloride homeostasis, inhibition, GABA.

Introduction

Poor understanding of the cellular and circuit mechanisms underlying the generation and maintenance of seizures continues to limit our ability to treat epilepsy successfully¹. Seizures are readily precipitated by experimental disinhibition, and a loss of interneurons has been documented in chronic epilepsies, providing support to the general principle that impaired interneuron function is a key ictogenic factor. Indeed, failure of an “inhibitory restraint” has been suggested to underlie seizure initiation and propagation in both animal models and human studies^{2–4}. This has justified the enhancement of GABAergic neurotransmission as an anti-epileptic strategy. However, it has recently become apparent that the role of GABAergic interneurons in ictogenesis is more complex. Several studies have shown that GABAergic signalling can sometimes paradoxically contribute to epileptiform discharges^{5–9}, and some have even suggested that activation of the interneuron network alone can elicit epileptiform activity¹⁰.

The controversy regarding the role of GABA-mediated neurotransmission in the generation of epileptiform activity^{11,12} has recently received further impetus from several optogenetic studies, in which photostimulation of interneurons paradoxically promoted ictal discharges^{13–16}. The translational relevance of these observations, made in acute brain slices, is yet to be established, calling for conclusive *in vivo* evidence to clarify the roles of specific types of interneurons in ictogenesis. Surprisingly, both optogenetic activation and inhibition of perisomatic-targeting parvalbumin-positive (PV+) cells, the population of interneurons that provide the main source of somatic inhibition, have been reported to reduce seizures *in vivo*^{17,18}. In both studies, however, the location of photostimulation with respect to the seizure initiation site was undefined, making interpretation of these results difficult in light of potentially different roles of (peri-) focal and distant interneurons¹⁵.

Several mechanisms could potentially account for pro-seizure effects of interneuron activation. Among these, a switch of GABAergic signalling in principal cells from inhibitory to excitatory is a plausible candidate^{19,20}. Such a switch in the action of GABA following intense network activity leads to the prediction that the role of interneurons in ictogenesis should depend critically on the timing of their recruitment during a seizure. Promoting interneuron firing early in a seizure should therefore suppress it, but the same manipulation later in a seizure when postsynaptic chloride accumulation has occurred should facilitate ictal activity. To test this prediction, we used automated seizure onset detection in combination

with closed-loop optogenetic stimulation in a focal model of cortical seizures in awake behaving mice. We show that photo-depolarization of local PV⁺ interneurons switches from an anti- to a pro-ictal effect over the first few seconds of seizure initiation. We further show that the pro-ictal action is not shared with dendrite-targeting somatostatin-positive (SOM⁺) cells, and can be abolished by overexpression of the potassium-chloride co-transporter KCC2 in principal cortical neurons. The results provide compelling evidence for a breakdown of chloride homeostasis as central to the perpetuation of seizures.

RESULTS

To induce focal cortical seizures in awake mice, we performed acute injections of pilocarpine (3.5 M, 0.2-0.4 μ l) into the deep layers of the primary visual cortex, V1, through an implanted cannula (Fig. 1a). The same cannula was then used to position a laser-coupled optic fibre for photostimulation. Electrographic activity was monitored using an electrocorticogram (ECoG) electrode located above the injection site and connected to a subcutaneous wireless transmitter (see Methods). The onset of epileptiform activity was usually characterised by the appearance of brief repetitive negative spikes, which gradually evolved into more complex seizure-like events. These ictal ECoG discharges lasted several seconds and had a distinct high-frequency component. Combined ECoG recording and video monitoring showed that episodes of electrographic ictal activity were often associated with clear behavioural manifestations (see Supplementary Movie 1). Towards the end of an experiment, recurrent seizures either gradually disappeared or, in some cases, developed into continuous epileptiform activity. Overall, as is typical for other epilepsy models, pilocarpine produced a spectrum of pathological epileptiform discharges of diverse lengths, frequencies and morphologies that varied over the course of an experiment and across different animals. Therefore, in order to automate the analysis and remove any potential bias as might arise from manual data selection, we trained a random-forest classifier²¹ to restrict analysis to recordings that displayed discrete electrographic seizures. Briefly, low-level features, such as band-power and standard deviation (see Methods) were extracted from consecutive 10-second ECoG segments to distinguish between the various network states, namely: interictal bursting (brief 100-150 ms-long discharges; State 1), electrographic seizures (State 2), and continuous epileptiform activity (State 3) (Fig. 1b). The classifier was initially trained using a dataset of 740 ECoG epochs ($n = 7$ mice) assigned to States 1, 2 and 3, and then validated on 204 unseen traces from three different animals (f1-score: 0.93, Fig. 1c and d). The trained classifier was then used to categorise the 10 seconds of recording immediately preceding each photostimulation, and if it was not in State 2 (seizures), the trial was rejected. Furthermore, in order to exclude periods of ambiguous or mixed activity, only periods for which classifier confidence for State 2 was more than twice that of the second most likely state were included in the analysis.

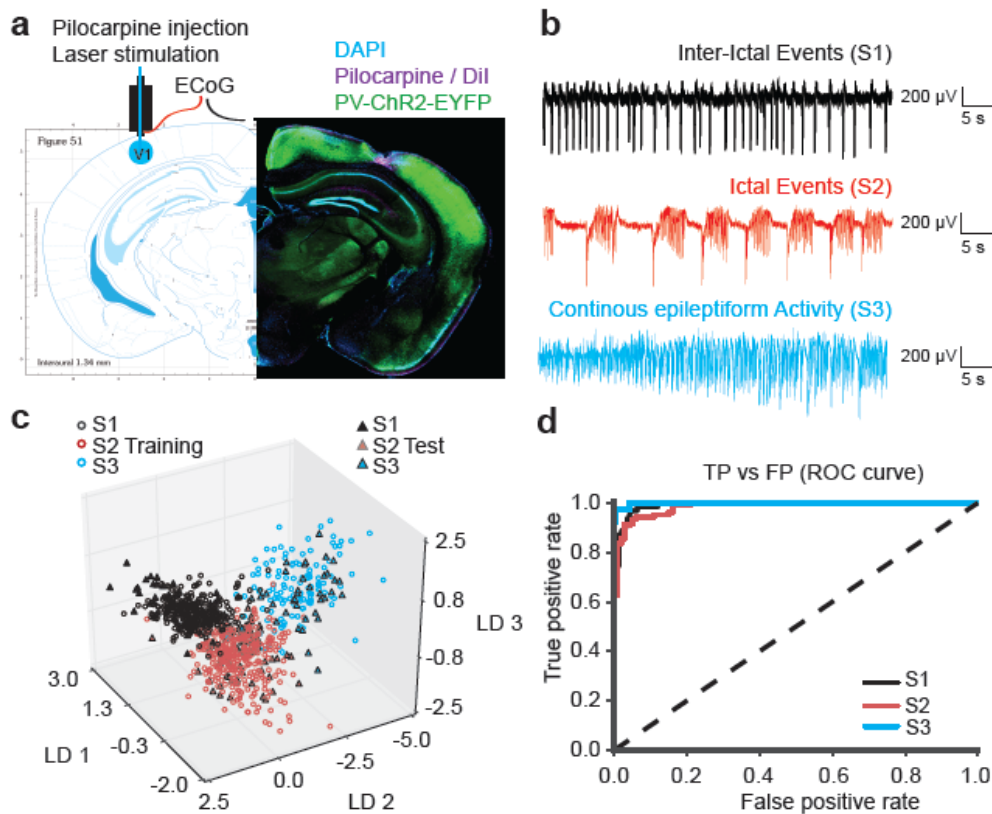


Fig. 1. Acute epileptiform activity induced by pilocarpine injections in the mouse visual cortex

(a) *Left*: A diagram showing the cannula guide location over the site of pilocarpine injection, ECoG recording and photostimulation in the visual cortex V1 area. *Right*: immunofluorescence of PV+ interneurons expressing ChR2-EYFP (green), cell nuclei staining DAPI (blue) and DiI co-injected with pilocarpine (magenta). Restricted DiI spread suggests that pilocarpine has a local action.

(b) ECoG traces showing three different types of epileptiform activity induced by pilocarpine (States 1, 2, 3).

(c) 3D plot of the linear discriminant analysis demonstrates network state separation on the “training” (open circles) and “test” (filled triangles) ECoG samples. Each linear discriminant (LD1, LD2, LD3) corresponds to a particular combination of weights of the 20 features extracted from ECoG traces.

(d) Performance of the random forest network state classifier expressed as a Receiver Operating Characteristic (ROC) curve. TP – true positives; FP – false positives. The dashed line shows random allocation of events.

Continuous photostimulation of PV+ interneurons

We first calibrated the optogenetic stimulation protocol using cell-attached recordings in acute cortical slices from mice conditionally expressing ChR2 in PV+ neurons (*PV::Cre* × *Ai32*). Photostimulation by 470 nm light evoked continuous spiking of ChR2-expressing cells (Fig. 2a). The 10 s-long light pulses ensured that interneuron depolarization exceeded the typical duration of seizures. Although some interneurons exhibited a decrease in action potential current amplitude towards the end of the light pulse suggestive of depolarization block (Fig. 2a, cell 3), we found that with the highest light intensities (12 mW at the slice surface; similar to those used in subsequent *in vivo* experiments) at least 60% of PV+ interneurons reliably fired action potentials for the entire duration of the light exposure (n = 10). Voltage-clamp recordings from layer 5 pyramidal neurons in the visual cortex further confirmed that optogenetic stimulation elicited pure GABAergic currents (Supplementary Fig. 1a). Charge transfer through GABA_A receptors in principal neurons evoked by continuous photostimulation was similar to that produced by intermittent light stimulation of matching duration, as per protocols used in previous studies^{15,17} (Supplementary Fig. 1b).

We then asked if photoactivation of PV+ interneurons *in vivo* through an optic fibre positioned near to the site of pilocarpine injection affects the duration of seizures in awake behaving mice (Fig. 2b). We developed an automated system, in which light pulses were triggered by the onset of ictal discharges, and were separated by at least 20 s non-stimulation intervals to allow collection of 10 s-long pre- and post-stimulation ECoG epochs. Since all electrographic seizures in our model had a characteristic large negative sentinel spike at the beginning of a discharge, we used threshold-crossing for on-line seizure detection.

Photostimulation of PV+ interneurons profoundly reduced the average duration of seizures from 2.98 ± 0.45 s to 1.83 ± 0.40 s (85 trials in 8 mice, one-way repeated measures ANOVA was used to compare seizures before, during and after photostimulation, $F(2, 14) = 15.5$, post hoc Bonferroni correction, $p = 0.0003$). This suppression of pathological electrographic activity was only evident during photostimulation, as the average length of discharges returned to the pre-stimulation level immediately after the termination of the light pulse (3.58 ± 0.63 s, 85 trials in 8 mice, one-way repeated measures ANOVA, $F(2, 14) = 15.5$, post hoc Bonferroni correction, $p = 0.0003$; Fig. 2c-e).

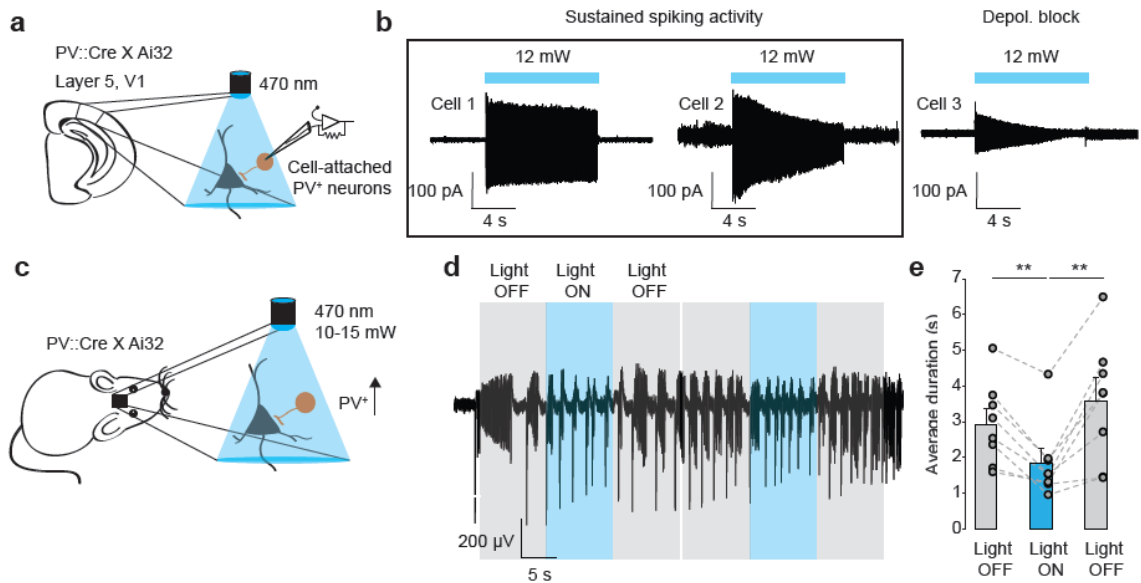


Fig. 2. Photo-depolarization of ChR2-expressing PV+ interneurons reduces the duration of seizure-like discharges

(a) Schematic of *in vitro* experiments and sample traces of cell-attached recordings from V1 layer 5 PV+ interneurons in acute brain slices.

(b) Cell-attached recordings showed that most PV+ neurons are able to sustain firing during the 10 s-long light pulse (cells 1 and 2). Some cells (cell 3) show reduced firing towards the end of the light pulse.

(c) *In vivo* experimental schematic.

(d) ECoG traces showing epileptiform activity before, during and after two consecutive rounds of photostimulation of ChR2-expressing PV+ interneurons. Ictal discharges have reduced duration during optogenetic stimulation, but rapidly recover as soon as the light is switched off.

(e) Average duration of individual ictal discharges during the 10 s periods before, during and after light stimulation (n = 8 mice, * p < 0.05, ** p < 0.01, error bars represent s.e.m.)

Immediate and delayed photostimulation of PV+ interneurons have different effects

We next asked whether the anti-seizure effect of photostimulation of PV+ interneurons depended on the timing of light delivery. To address this question, we systematically varied the delay from the start of the seizure to the light pulse in our closed-loop photostimulation system (Fig. 3a). Furthermore, the light pulse was only triggered on alternate trials, so that the length of each event accompanied by photostimulation could be compared to the length of

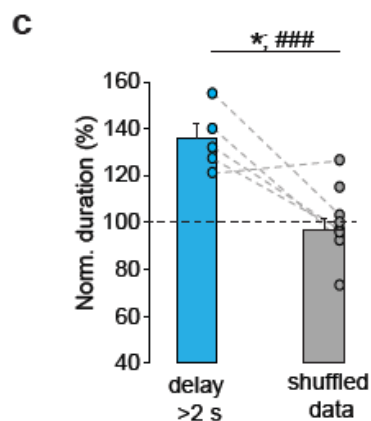
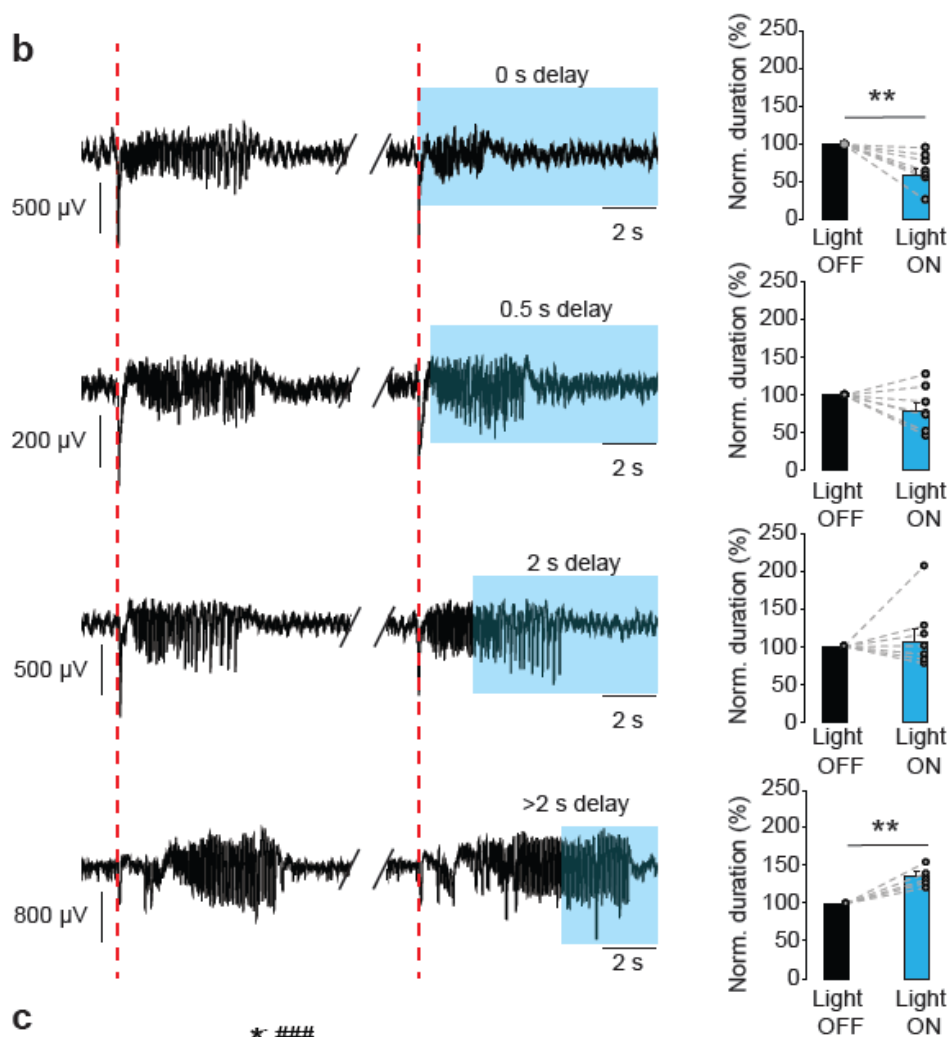
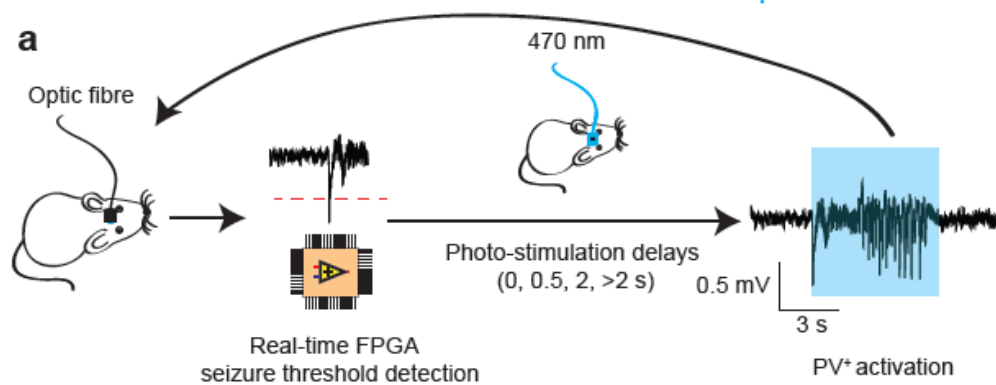


Fig. 3. Biphasic effect of photo-depolarization of ChR2-expressing PV+ interneurons on the duration of seizures

(a) A closed-loop system was used to detect the onset of seizures and to vary the delay of optogenetic stimulation of ChR2-expressing PV+ neurons during pathological ECoG activity.

(b) The effects of photostimulation delivered at varying delays. Sample traces illustrate pairs of consecutive electrographic seizures without and with photostimulation (blue rectangles indicate photostimulation). Intervening periods between seizures are omitted. Note the gradual change from light-induced seizure suppression (0 and 0.5s delays) to prolongation (2 and >2s delays). n = 8, 7, 7 and 5 mice for 0, 0.5, 2 and >2 s delays respectively).

(c) Normalised duration of ictal-like discharges during delayed photostimulation compared to randomized reshuffled data (* p < 0.05 paired t-test, n = 5; ### p < 0.001, unpaired t-test, n = 9, includes data from additional animals in randomized group). Error bars represent s.e.m.

the previous event, which acted as a control (Fig. 3b, Supplementary Fig. 2). Consistent with the results shown in Figure 2d,e, photostimulation of ChR2-expressing interneurons immediately upon seizure detection led to a 34.8 ± 7.7 % reduction in seizure duration (Fig. 3b, 85 trials in 8 mice, p = 0.003, two-tailed paired t-test). This effect was independent from the length of the interval between control and photostimulated events suggesting that slow post-seizure recovery processes did not contribute (Supplementary Fig. 3). The seizure-suppressing action, however, was not observed when photostimulation was delayed by up to 2 seconds. Moreover, light pulses delivered with a delay greater than 2 seconds (median 3.38 s) markedly prolonged seizures by 35.0 ± 5.8 % (Fig. 3b; 21 trials in 5 mice, p = 0.004, two-tailed paired t-test). Average durations of control, non-stimulated seizures for each experimental condition are provided in Table 1. To verify that the prolongation of seizure duration by delayed photostimulation was not a result of a bias introduced by exclusion of shorter seizures from the ECoG analysis, we reshuffled the raw data by randomly assigning longer (>2.5 s) ictal-like events to the experimental group disregarding the information about the light pulse (pseudo-stimulated group). As for the actual photostimulation, the preceding seizure was used for comparison. In contrast to the light-stimulated experimental group, no difference was found between seizure durations in the randomised group (normalised duration observed in the randomised group: 96.4 ± 5.1 %; 59 trials in 5 mice, p = 0.034 for paired comparison, and 84 trials in 9 mice, p = 0.001 for unpaired comparison with the photostimulated group; Fig. 3c).

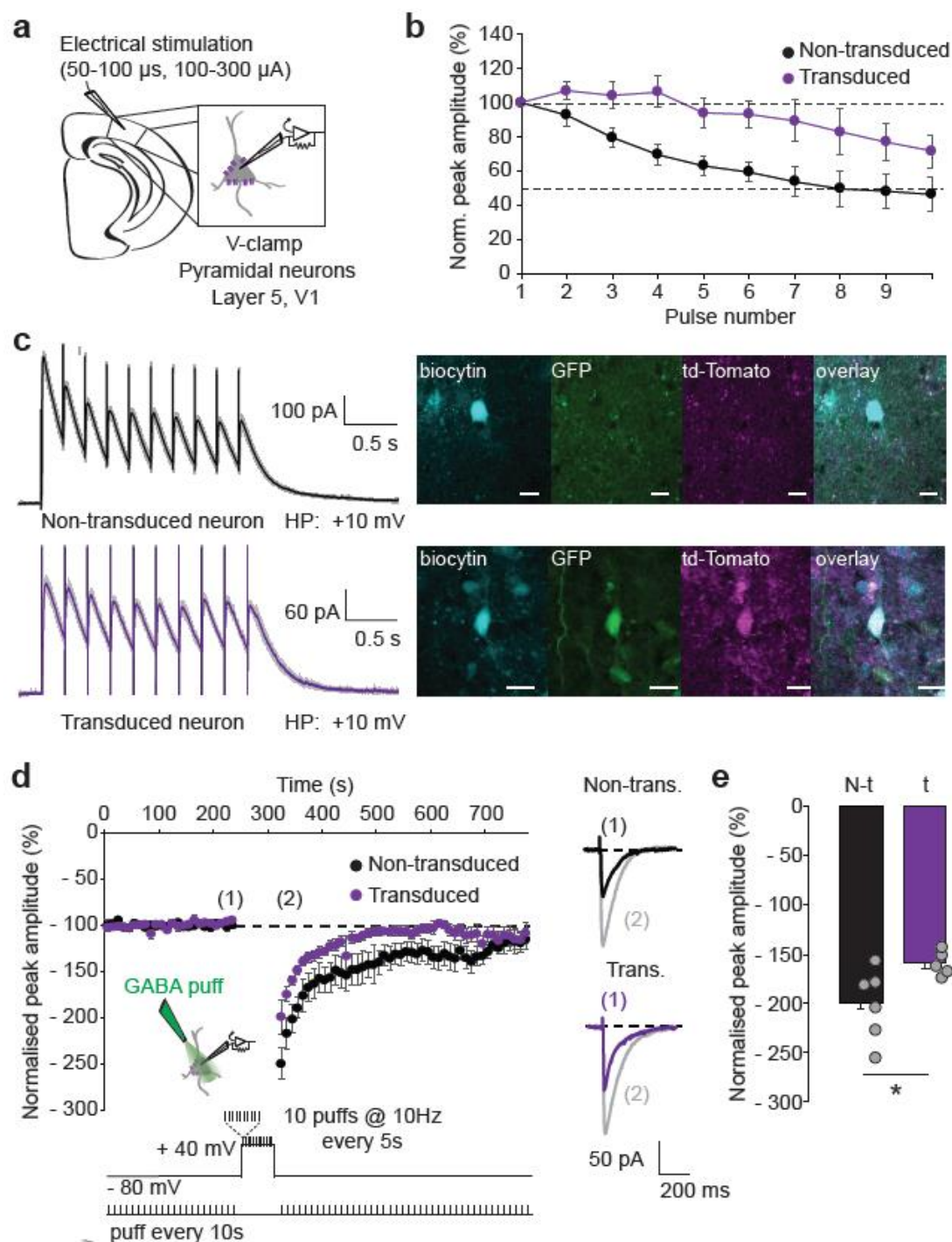


Fig. 4. Overexpression of the KCC2 co-transporter in cortical principal neurons

(a) Experimental schematic.

(b) Normalized peak amplitudes of consecutive evoked GABA_A receptor-mediated currents recorded in the transgene-expressing (*purple*; $n = 7$) and neighbouring non-transduced (*black*; $n = 6$) layer 5 V1 pyramidal neurons in acute brain slices in response to 10 electrical pulses delivered at 10 Hz.

(c) Sample traces show averages of 10 trials from non-transduced and transduced neuron (95% confidence intervals displayed in *grey*) as well as their recovered immunofluorescence, scale bar: 10 μ m. HP: holding potential.

(d) Normalized peak amplitudes of GABA_A receptor-mediated currents evoked by 10 ms GABA puffs (100 μ M) in transgene-expressing (*purple*; n = 5) and neighbouring non-transduced (*black*; n = 6) layer 5 V1 pyramidal neurons in acute brain slices. Sample traces before (1) and after (2) chloride loading are shown on the right. Error bars represent s.e.m..

(e) Normalized GABA-induced current amplitudes during the first minute after chloride loading protocol. * $p < 0.05$, error bars represent s.e.m.

To ensure that the pro-ictal effect of delayed photostimulation was not due to a non-specific light-induced action during seizures or an unaccounted experimental bias, we tested if photoinhibition of PV⁺ interneurons had a different action. We transduced PV⁺ interneurons with the inhibitory opsin Arch3.0 using an AAV2/5 viral vector and confirmed the inhibitory action of photostimulation *in vitro*. The GABA_A receptor-mediated synaptic drive to principal neurons in slices challenged with an aCSF designed to increase spontaneous activity (nominally 0 Mg²⁺, 5 mM K⁺) was profoundly suppressed (Supplementary Fig. 4a), and whole-cell recordings from Arch3.0-expressing PV⁺ interneurons displayed sustained hyperpolarization during photostimulation (Supplementary Fig. 4b). We then repeated closed-loop experiments, photo-hyperpolarizing Arch3.0-expressing cortical PV⁺ interneurons.

Unexpectedly, photo-induced activation of Arch3.0 with no or small (up to 2 s) delay had no detectable impact on seizure duration (Supplementary Fig. 5). This finding is consistent with the view that the inhibitory restraint has already failed to contain runaway excitation in the network by the time a seizure has been detected²⁻⁴. However, when the laser was switched on with more than 2 s delay (median 3.05 s), light-induced hyperpolarization of PV⁺ interneurons significantly reduced the seizure duration by 29.1 ± 4.7 % (Supplementary Fig. 5a-c, 31 trials in 6 mice, $p = 0.003$). Thus, light-induced hyperpolarization of these cells later in the seizure produces the opposite effect to photodepolarization – shortening rather than prolonging seizures. This anti-ictal effect was absent in a randomised control analysis group (normalised duration in the randomised group: 100.8 ± 2.8 %; 45 trials in 6 mice, $p = 0.023$ for paired, and 63 trials in 9 mice, $p = 0.0003$ for unpaired comparison with the photostimulated group; Supplementary Fig. 5d).

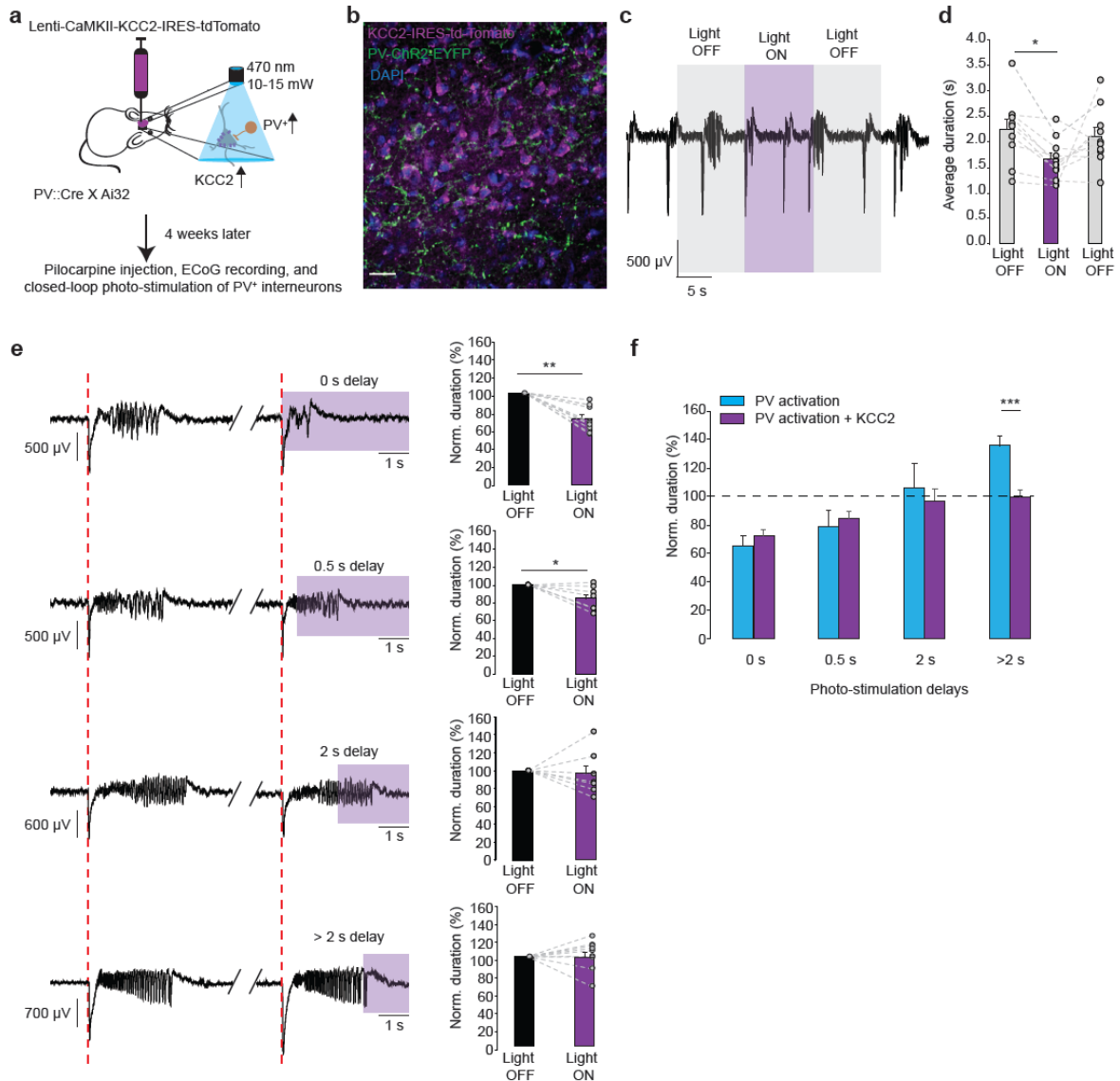


Fig. 5. Overexpression of the KCC2 co-transporter in principal neurons prevents the pro-ictal action of PV⁺ photoactivation during seizures

(a) Experimental schematic.

(b) Immunofluorescence of the PV-ChR2-EYFP (green), the nuclei staining, DAPI (blue), and the KCC2-IRES-tdTomato (magenta) in an overlaid image. Scale bar 25 μm.

(c) ECoG recordings of ictal discharges before, during and after photoactivation of ChR2-expressing PV⁺ interneurons in animals that overexpress KCC2 in the cortical principal neurons at the site of pilocarpine injection.

(d) Average duration of ictal discharges during the 10 s baseline (grey) and photostimulation (purple) periods. KCC2 overexpression does not affect the reduction of seizure duration by PV⁺ photoactivation (c.f. Fig. 2; n = 8 mice).

* p < 0.05, error bars represent the s.e.m.

(e) KCC2 overexpression abolishes prolongation of seizures by the delayed (>2 s) PV+ photoactivation (n = 10, 7, 7 and 8 mice for the delays of 0, 0.5, 2 and >2 s). Sample traces illustrate pairs of consecutive seizures without and with photostimulation (intervening periods between seizures are omitted; purple rectangles indicate photostimulation).

(f) Normalised duration of ictal discharges by photostimulation of PV+ neurons in mice with (*purple*) and without (*blue*) KCC2 overexpression. Note that KCC2 overexpression has no significant effect on the seizure suppression when photostimulation of PV+ interneurons is delivered immediately upon seizure detection.

* p < 0.05, ** p < 0.01, *** p < 0.001; error bars represent s.e.m.

Thus, delaying photo-depolarization or photo-hyperpolarization of PV+ interneurons by more than 2 s leads to paradoxical effects on *in vivo* seizure duration in the focal pilocarpine model. Depolarization, normally expected to enhance GABAergic inhibition, prolongs seizures, whilst hyperpolarization, expected to suppress inhibition, shortens them (Supplementary Fig. 5e). This strongly suggests that the functional role of these cells changes rapidly during sustained pathological network activity.

We asked whether the pro-ictal effect of optogenetic stimulation of interneurons is cell-type specific. We targeted expression of ChR2 to another well-defined, non-overlapping class of interneurons, somatostatin-positive (SOM+) cells. *SOM::Cre* and Ai32 mouse lines were crossed to obtain progeny with conditional ChR2 expression (Supplementary Fig. 6a). Photostimulation initiated immediately upon seizure onset suppressed seizures, albeit less than when PV+ interneurons were photo-activated (normalised duration at 0s delay: 80.9 ± 4.4 %, 124 trials in 11 mice, p = 0.001, Supplementary Fig. 6b, c). Photostimulation delivered with 0.5 and 2 s delays after the onset of ictal discharges was similarly effective in suppressing seizures. With further delay to photostimulation of SOM+ interneurons the shortening of epileptic discharges was no longer seen (normalized duration of seizures photostimulated with >2 s delay: 96.2 ± 6.5 %, 44 trials in 6 mice, p = 0.658). These results suggest that PV+ and SOM+ interneurons have distinct effects in cortical seizure perpetuation: while depolarization of SOM+ interneurons becomes ineffective in reducing seizure duration after 2 seconds of ictal activity, PV+ interneurons rapidly switch their action and begin to promote electrographic seizures.

KCC2 overexpression prevents the pro-ictal action of delayed photostimulation of PV+ interneurons

Activity-induced intracellular chloride accumulation and a consequent depolarizing shift of the GABA_A reversal potential (E_{GABA}) have been suggested to underlie the generation of seizure afterdischarges in response to brief activation of interneurons or GABA uncaging *in vitro*¹⁹. However, chloride regulation critically depends on energy metabolism and could easily be disrupted in cultured neurons and following the trauma of acute brain slice preparation²², and so the degree and impact of seizure-associated changes in E_{GABA} *in vivo* remain uncertain. The capacity of adult neurons to extrude chloride is mainly determined by the neuron-specific potassium-chloride co-transporter KCC2. Therefore, to establish whether regulation of intracellular chloride homeostasis is involved in the rapid conversion of the anti-ictal action of PV+ photostimulation into a pro-ictal one, we overexpressed KCC2 in cortical principal neurons. To drive the expression of the transgene in the target neurons, we designed a lentiviral vector containing a KCC2 construct²³ under the *hCaMKII* promoter (*hCaMKII-KCC2-IRES-TdTomato*), which was injected into the mouse visual cortex. To validate the functional effects of the transgene in the transduced neurons, we first compared the depression of GABA_A receptor-mediated currents during electrical stimulation in control and neighbouring KCC2 overexpressing layer 5 pyramidal neurons from the same slices in the presence of the ionotropic glutamate and GABA_B receptor blockers. GABA_A currents were evoked by trains of electrical stimuli (10 pulses at 10Hz). Cells with transgene expression displayed a reduced depression of GABAergic neurotransmission during stimulation trains compared to non-transduced neurons (two-way ANOVA, $F(1, 11) = 8.035$, $p = 0.016$, $n = 7$ transduced neurons vs. $n = 6$ untransduced neurons, Fig. 4a-c). Transgene-expressing pyramidal neurons also exhibited a reduced enhancement of GABA_A receptor-mediated currents following a chloride loading protocol, and a trend towards accelerated relaxation to baseline (Fig. 4d and e; see methods for details).

We then expressed the KCC2 construct in the cortex of PV::Cre × Ai32 mice. This did not change the effect of continuous optogenetic activation of ChR2-expressing PV+ interneurons on ictal activity (Fig. 5 a-d, c.f. Fig. 2d). In agreement with the earlier experiments, closed-loop photostimulation of PV+ cells immediately after seizure onset and at a 0.5 s delay consistently reduced the duration of epileptiform discharges (0 s delay: 72.4 ± 4.3 %, 88 trials in 10 mice, $p = 0.0001$; 0.5 s delay: 84.6 ± 5.5 %, 62 trials in 7 mice, $p = 0.031$). However, the seizure prolongation by delayed activation of PV+ cells was completely lost (Fig. 5e). The effect of the delayed PV+ photostimulation on seizure duration was significantly different between animals with and without KCC2 overexpression in pyramidal neurons (PV-

ChR2: 135.1 ± 5.9 %, 21 trials in 5 mice versus PV-ChR2/CaMKII-KCC2: 99.4 ± 5.5 %, 52 trials in 8 mice, $p = 0.001$; Fig. 5f). Note that average durations of control, non-stimulated seizures for each experimental condition were not different in PV-ChR2 and PV-ChR2/CaMKII-KCC2 mice (Table 1). We conclude that limited ability of principal neurons to resist chloride loading during excessive network activity contributes to the seizure-promoting action of PV+ interneurons that develops within seconds of seizure onset. Increasing the neuronal capacity to extrude chloride by overexpressing KCC2, therefore, can prevent interneurons from facilitating seizures.

DISCUSSION

Interneurons constitute a highly heterogeneous population of cells characterised by diverse firing properties, projection targets and roles in regulating network dynamics^{24,25}. With a few notable exceptions^{26–30} the firing of individual interneuronal subtypes at different stages of epileptiform activity is largely unknown, as are their relative contributions to seizure initiation and termination. Using a model of acute focal cortical seizures in awake behaving mice, we have shown that optogenetic depolarization of perisomatic-targeting PV+ interneurons can have opposite effects on seizures. Photostimulation of PV+ cells triggered upon seizure onset decreases the duration of ictal discharges. However, photostimulation delayed by 2 seconds or more prolongs electrographic seizures. We have further established that overexpression of KCC2 in pyramidal neurons located close to the seizure initiation site prevents the pro-ictal effect of delayed PV+ photostimulation. This provides strong evidence that the capacity of neurons to extrude chloride is overwhelmed during seizures and that a collapse of voltage inhibition contributes to perpetuating seizures.

The evidence for a causal role of impaired chloride extrusion reported here complements evidence from human epilepsy and animal models. Downregulation of KCC2 and/or upregulation of the chloride importer NKCC1 have been reported in human focal epilepsy, and loss-of-function *KCC2* mutations cause severe early-onset epilepsy^{6,31–36}. Failure of hyperpolarizing inhibition has recently also been proposed to underlie the aggravation of kindling-induced generalised seizures by optogenetic stimulation of subicular interneurons in mice³⁷.

In addition to chronic deficit in GABA_A receptor-mediated inhibition, its loss, and even a switch to excitation, may occur rapidly as a consequence of activity-dependent chloride loading^{38,39}. The latter mechanism has long been postulated to exacerbate seizures, and has

gained experimental support by recent *in vitro* findings that brief activation of GABA_A receptors during electrographic seizures can initiate an afterdischarge¹⁹. Our study provides, to our knowledge, the first *in vivo* demonstration that PV+ interneurons can switch their action *during* a seizure and prolong the on-going ictal activity in non-anaesthetised freely moving animals.

The time point at which PV+ interneurons lose their ability to curtail ictal events depends on multiple factors, including the efficiency of KCC2-mediated chloride extrusion and the rate of GABA_A receptor-mediated neurotransmission. This is likely to vary between human epilepsies and different animal models, possibly explaining why, in a recent study, optogenetic stimulation of PV+ interneurons in anaesthetized mice was only found to curtail seizures induced by topical application of 4-AP onto the neocortex⁴⁰. Alternatively, a pro-seizure action of PV+ cells might have been overlooked in that study, since the delay from seizure onset to the laser pulse was not controlled (2.9 s on average), and the effects of photostimulation were excluded from the analysis if delays were longer than 5 s.

Surprisingly, immediate photo-hyperpolarization of PV+ interneurons at seizure onset had no effect in the present study. This could be explained by postulating that PV+ interneurons already failed to contain seizure spread and their suppression therefore had little additional impact. However, other possible explanations for this unexpected result are worth considering. For example, the experimental design was not exactly comparable, because the hyperpolarizing opsin was expressed with a viral vector, whilst ChR2 was expressed by crossing PV::Cre and Ai32 mice. Furthermore, we cannot exclude the possibility that early in the seizure, our photostimulation mainly hyperpolarized the axons of those interneurons that were still outside the pilocarpine-activated circuit; and that these cells might only become activated later in the seizure as pathological activity spread.

KCC2 overexpression using a very similar construct has previously been demonstrated to convert GABA from depolarizing to hyperpolarizing in neonatal rats⁴¹. Viral overexpression of KCC2 in mature healthy neurons would not, however, be expected to have a major effect on hyperpolarising EGABA⁴², a feature that makes this intervention attractive from a translational perspective⁴³. Further research is required to fully establish the therapeutic potential of KCC2 gene manipulation for epilepsy treatment. A potential concern is that increased co-transport of chloride and potassium ions may exacerbate activity-induced extracellular potassium transients and so facilitate seizure initiation and/or maintenance^{44,45}.

Indeed, it has been suggested that reduced KCC2 expression, often associated with chronic epilepsy, may represent an adaptive anti-epileptic mechanism⁴⁶. We also note in this respect, that the current study concentrated on acute seizures, while various changes associated with chronic condition, including cell type-specific loss of inhibitory interneurons, may contribute to the mechanisms of ictogenesis in various epilepsies.

Intracellular chloride regulation has been shown to differ between axons, somata and dendrites⁴⁷⁻⁵⁰. While the chloride gradient might be expected to collapse more rapidly in thin dendrites compared to the somatic region, we found that delayed optogenetic stimulation of dendritic-targeting SOM+ interneurons did not facilitate seizures. These results are consistent with a previous report that seizure-induced E_{GABA} shifts are more prominent in the soma than in dendrites of pyramidal neurons¹⁹. Our findings are also in accord with the recent demonstration that photoactivation of PV+, but not SOM+ interneurons aggravates seizures in the kindled hippocampus with perturbed KCC2 expression³⁷.

Contrasting actions of PV+ and SOM+ interneurons may also reflect a difference in either the extent of their activation during seizures, the density of GABAergic synapses between perisomatic and dendritic regions⁵¹, or a non-uniform KCC2 distribution along the neuronal membrane. Indeed, the axon initial segment is potentially vulnerable to a shift in E_{GABA} because of its small size and dense innervation by PV+ chandelier cells, and has a critical role in action potential initiation. Irrespective of the exact underlying mechanism, our results suggest that during epileptiform discharges two simultaneous GABA_A receptor-mediated inputs can have very different functional impacts on neuronal excitability depending on their spatial location. This activity-dependent dichotomy between perisomatic-targeting and dendritic targeting GABAergic connections further adds to the complexity of the roles played by this distinct populations of interneurons in modulating the output of pyramidal cells^{52,53}. In addition, in chronic epilepsy, inhibitory control of network excitability may be impaired due to the cell type-specific loss of interneurons. It remains to be established whether reduced dendritic, but maintained perisomatic GABAergic inputs, as observed in animal studies and in humans^{54,55}, contribute to network instability and generation of recurrent spontaneous seizures.

The results of the KCC2 overexpression experiments in this study strongly suggest a role for a seizure-induced E_{GABA} shift in rapid weakening of the inhibitory action of PV+ interneurons during ictal activity. This, however, may not be the only mechanism responsible for the dual

effect of PV+ photostimulation on seizure duration and/or of the anti-seizure effect achieved by photoinhibition of PV+ interneurons. An alternative explanation involves activity-induced depolarization block of action potential firing of PV+ interneurons facilitated by the delayed optogenetic depolarization of these cells^{29,30,56}. The two mechanisms are however not mutually exclusive and may both contribute to sustaining seizures.

In conclusion, the dual effect of optogenetic stimulation of PV+ cells discovered in our study explains existing controversies regarding the role of this group of interneurons in seizure initiation and maintenance.

MATERIALS and METHODS

Animals

Animal experiments were conducted in accordance with the Animals (Scientific Procedures) Act 1986, and approved by the local ethics committee. *PV::Cre* (B6;129P2-Pvalb^{tm1(cre)Arbr}/J, RRID: IMSR_JAX:008069) and *SOM::Cre* (B6N.Cg-Ssttm2.1(cre)Zjh/J, RRID: IMSR_JAX:013044) mice were either bred with the Ai32 mouse line (B6;129S-Gt(ROSA)26Sor^{tm32(CAG-COP4*H134R/EYFP)Hze}/J, RRID: IMSR_JAX:012569) for *Cre*-inducible conditional expression of EYFP-tagged Chr2 in target interneurons, or locally transfected with an adeno-associated viral vector carrying Arch3.0 construct (*AAV-dio-Arch3.0-EYFP*, serotype 2/5, from UNC vector core). Animals were housed individually on 12h/12h dark/light cycle, and food and water were given *ad libitum*.

Surgery and viral injection

Animals of both sexes (P60-P120) were anaesthetized with isoflurane and placed in a stereotaxic frame (David Kopf Instruments Ltd., USA). After removal of the skin and cleaning of the skull, a hole was drilled above the right primary visual cortex to implant a cannula (Bilaney Consultants Ltd.) and place the ECoG electrodes (coordinates: *Antero-Posterior*: -2.8 mm from the bregma; *Lateral*: 2.4 mm). Wireless mouse 512 Hz single channel ECoG transmitters (A3028B-CC, Open Source Instruments Inc., USA) were implanted subcutaneously with the recording electrode positioned on the dura above the injection site and the reference electrode placed on the contralateral side. The cannula and the ECoG electrodes were tightly fixed using cyanoacrylate glue and dental cement. Animals were injected with buprenorphine (0.02 mg/kg) and metacam (0.1 mg/kg) at the beginning of

the surgery and with at least 0.5 ml of saline at the end. Mice were checked daily and allowed to recover for at least a week before experiments commenced.

To overexpress KCC2 in principal cortical neurons, we produced a lentiviral vector (*hCaMKII-KCC2-IRES-TdTomato*, VectorBuilder, USA) containing a KCC2 construct (Addgene, MA, USA, plasmid #61404)²³ under the *hCaMKII* promoter⁵⁷. For Arch3.0 and KCC2 expression, viral injections were performed just prior the implantation of the cannula at two locations (0.55 and 0.35 mm below the pia) using a microinjection pump (WPI Ltd., USA), 5 µl Hamilton syringe (Esslab Ltd., UK), and a needle gauge 33 (Esslab Ltd., UK) (injection volume per site: 200 nl, rate: 100 nl/min). Optogenetic experiments were performed 3-4 weeks after viral injection allowing sufficient time for transgene expression to reach a stable level.

Focal neocortical epilepsy model and closed-loop optogenetic stimulation in vivo

Animals were briefly sedated with isoflurane and placed in a stereotaxic frame. Highly concentrated pilocarpine in sterile saline (3M) was injected 0.5mm below the pia via the implanted cannula guide (Bilaney Consultants Ltd., UK) positioned over the primary visual cortex. Approximately 200 – 400 nl were injected at a rate of 100 nl/min. We waited 10 min before withdrawing the needle to avoid backflow of the solution.

After injection, the needle in the cannula was replaced by an optic fibre (0.22 NA, 200µm Ø, Multimode 190-1200 nm, Thorlabs Inc., UK) inserted into the brain at the same depth. The animal was then transferred to a home cage placed in the experimental setup for ECoG recording, and data acquired at 512 Hz using the Neuroarchiver tool (Open Source Instruments Inc., USA). Epileptiform activity typically appeared 10 min after the animal recovered from the pilocarpine injection performed under anaesthesia. In rare cases where epileptic discharges evolved into continuous activity (see Fig. 1) and persisted for more than an hour, intra-peritoneal injection of diazepam (10 mg/kg) was used to terminate the experiment. Up to 3 injections of pilocarpine on 3 separate days were performed to collect data from each experimental animal. To monitor the motor behaviour and the ECoG simultaneously during pilocarpine-induced seizure, animals implanted with wireless transmitters were placed in a transparent chamber surrounded by 3 IP cameras (MicroSeven). The video stream was synchronised with ECoG using the MicroSeven software.

Optogenetic stimulation was performed through the optic fibre connected to the laser light source (wavelength: 470 nm for photoactivation of ChR2 or 570 nm for photoactivation of

Arch3.0; power intensity at the tip of the fibre: 10 – 15 mW and 5 – 10 mW respectively). The ECoG signal was monitored on-line, and the laser was automatically triggered with various delays in closed-loop by a field-programmable gate array (FPGA) CRIO-9076 integrated controller (National Instruments, USA) upon seizure detection. The seizure detection threshold was adjusted at the start of each experiment depending on the amplitude of the ECoG signal and the magnitude of noise. The correct timing of light stimulations was then confirmed during the off-line analysis of the data.

Automated network state classifier and ECoG analysis

While the pilocarpine-induced epileptiform activity generally fell into the four distinct categories (Fig. 1; S1 - interictal, S2 – ictal-like, S3 – continuous epileptiform discharges and the baseline), a significant proportion of recordings were ambiguous. In order to categorise network activity in an objective manner, and to exclude mixed states from analysis, a supervised machine learning approach was taken. Recordings were first min-max scaled to between 0 and 1, and for every ten seconds 20 features were extracted. Features from unambiguous periods were used to train a random forest classifier²¹ and performance assessed on unseen test periods (>0.9 f1-score). The classifier was then used to objectively categorise activity proceeding photostimulation into one of the four states. To exclude mixed states classifier prediction probability was used: if the probability of the most likely state was less than twice the second most likely state, the period was deemed to be mixed. Manual inspection of mixed data identified in this manner verified this approach as appropriate. For 2D visualisation of features and their corresponding states, linear discriminant analysis was used to project the 20 features to 3 dimensions (Fig. 1c). Features used to discriminate between the different states were as follows: mean, standard deviation, kurtosis, skew, sum-abs-difference, number of peaks, number of valleys, mean valley, mean peak, average range between peak and valley, average wavelet power at 1, 5, 10, 15, 20, 30, 60, 90 Hz, number of baseline points, baseline points mean index difference.

To analyse the effects of photostimulation on the duration of seizures, each photostimulated discharge was compared to the immediately preceding non-stimulated one (Supplementary Figure 2a). However, in 27% of the trials with delays exceeding 2 s, control discharges were shorter than the delay itself. To avoid biasing the results towards photostimulation-induced prolongation of the activity, in these cases the nearest preceding discharge, which exceeded the duration of the delay was used as a control (Supplementary Figure 2b). The average

duration of the photostimulation delay did not differ between the PV-ChR2 group and the other conditions (One way ANOVA, $F(3, 132) = 2.927$, post hoc Bonferroni correction, PV-ChR2 average delay 3.64 ± 0.26 s vs. 3.88 ± 0.34 s for PV-Arch3.0, $p = 1.0$; vs. 3.98 ± 0.27 s for SOM-ChR2, $p = 1.0$; vs. 3.19 ± 0.11 s PV-ChR2-KCC2, $p = 1.0$).

To generate the randomised data for the Fig. 3c and 4c, we re-analysed ECoG recordings disregarding associated information about photostimulation and only included seizures, the duration of which exceeded 2.5 s. Seizures were randomly assigned to the pseudo-stimulated group and their durations were compared to the durations of previous discharges (simulating experimental conditions). If the immediately preceding seizure length was less than 3 s, we searched for the closest qualifying event (Supplementary Figure 2).

In vitro electrophysiology and optogenetic stimulation

For *in vitro* electrophysiological recordings, animals (P60-P120) were sacrificed using an overdose of isoflurane. After decapitation brains were rapidly removed, and acute 350 μm -thick brain slices were prepared on a Leica VT1200S vibratome (Germany). The slicing was performed in ice-cold slicing solution that contained (in mM): 75 sucrose, 87 NaCl, 22 glucose, 2.5 KCl, 7 MgCl_2 , 1.25 NaH_2PO_4 , 0.5 CaCl_2 and 25 NaHCO_3 , had osmolarity of 296 mOsm and bubbled continuously with 95% O_2 + 5% CO_2 to yield a pH of 7.4 (315-330 mOsm). Slices were then placed in a sucrose-free aCSF solution (in mM): 119 NaCl, 2.5 KCl, 1.3 MgSO_4 , 2.5 CaCl_2 , 26.2 NaHCO_3 , 1 NaH_2PO_4 , 22 glucose, bubbled with 95% O_2 and 5% CO_2 , incubated at 34°C for 15 minutes, allowed to equilibrate to room temperature for another 15 min, and then kept in an interface chamber for at least 1 hour at room temperature, before being transferred to a submerged recording chamber. Modified epileptogenic aCSF, which nominally contained 0 mM Mg^{2+} and 5 mM K^+ was used in some experiments to facilitate spontaneous neuronal activity. All recordings were done at 32°C.

Whole-cell patch-clamp recordings were performed from cortical and hippocampal interneurons and pyramidal cells visualized using an infrared differential contrast imaging system. Standard-walled borosilicate glass capillaries were used to fabricate recording electrodes with a resistance of 2.5 – 3.5 M Ω . The intracellular pipette solution for voltage-clamp recordings contained (in mM): 120 Cs-methanesulfonate, 10 HEPES, 0.2 EGTA, 8 NaCl, 0.2 MgCl_2 , 2 Mg-ATP, 0.3 Na-GTP, 5 QX314-Br, 10 phosphocreatine, pH adjusted to 7.2 and osmolality adjusted to 296 mOsm. Series resistance was monitored throughout experiments using a -5 mV step command. Cells showing a series resistance >20 M Ω , more

than 20% change in series resistance, or unstable holding current were rejected. Current-clamp whole-cell recordings were performed using an intracellular solution containing (in mM): K-gluconate (145), NaCl (8), KOH-HEPES (10), EGTA (0.2), Mg-ATP (2), Na₃-GTP (0.3); pH 7.2; 290 mOsm. Cell-attached recordings of neuronal firing were done using patch pipettes (8-12 MΩ) filled with aCSF in the voltage-clamp mode with the voltage set so that no current was injected under baseline conditions.

For experiments shown in Fig. 4, the KCC2 construct was co-injected with a lentivirus carrying *hCaMKII-cop-GFP* since the IRES system on the *hCaMKII-KCC2-IRES-TdTomato* constructs did not allow direct visualisation of the transduced neurons by epifluorescence in non-fixed brain tissue. Using immunohistochemistry staining we found that at least 62.5 ± 4.24 % (n = 3 slices) of GFP-expressing principal neurons were co-labelled with the RFP staining (labelling the tdTomato protein Fig. 4a and c). Therefore, since the GFP-expressing group in these experiments might have had cells with no overexpression of KCC2, the difference between the control and KCC2-overexpressin neurons was likely to be underestimated. AMPA and NMDA receptor blockers, NBQX (10 μM) and D-AP5 (50 μM) respectively, as well as the GABA_B antagonist, CGP55845 (1μM), were bath-applied to isolated GABA_A currents evoked by either electrical stimulation or puff-application of GABA. In experiments with electrical stimulation, neurons were held at +10mV and 10 pulses (duration of 50-100 μs) at 10Hz were applied using a bipolar electrode at 100-300 μA current intensity. For puff-application, 100 μM GABA (dissolved in aCSF) was puffed through a borosilicate glass pipette (resistance 1-2 MΩ) at 3-10 PSI using a pressure injector (npi electronic GmbH). The pipette tip was placed 50-100 μm from the soma of a recorded neuron. GABA_A currents in response to 10 ms puffs were recorded every 10 s at the holding potential of -80mV. After a minimum of 4 min of a stable baseline, the chloride loading protocol was applied. Neurons were held at +40 mV and a train of 10 puffs at 10Hz every 5 s was applied for 2 min. The recovery of GABA_A currents following the chloride loading was then monitored by holding the neuron at -80 mV.

Recordings were obtained using a MultiClamp 700B amplifier (Axon Instruments, Foster City, CA, USA), filtered at 4 kHz and digitized at 10 kHz. Data acquisition and off-line analysis were performed using WinEDR 3.0.1 (University of Strathclyde, Glasgow, UK) and Clampfit 10.0 (Molecular Devices Corporation, USA) software.

Wide-field photostimulation of interneurons in acute brain slices was delivered through 20× water immersion objective (Olympus). Blue (wavelength 470 nm) or yellow (wavelength 570 nm) light was generated using pE-2 LED illumination system (CoolLED); light intensity at the surface of the slice was in the range of 5 – 12 mW.

Immunohistochemistry

For the KCC2 immunostaining, the brains were collected at the end of each experimental session. Animals were perfused with 4% paraformaldehyde (PFA, Santa Cruz), brains were extracted and left in PFA overnight before being washed 3-4 times with PBS sodium azide (0.02%), and stored at 4°C until being processed further. Brain slices (70 µm-thick) were then prepared using Leica VT1200S vibratome (Germany) and first placed in 1 ml PBS 0.1M, pH 7.4, in 12-well plates followed by 1 h incubation at room temperature in a blocking solution containing PBS 0.1M, 0.5% Triton X100, 0.5% BSA and 3% donkey or goat serum. This step was followed by an overnight incubation in the primary polyclonal guinea pig anti-GFP antibody (Synaptic Systems Cat# 132 005 RRID: AB_11042617, 1:1000) and polyclonal rabbit anti-RFP antibody (Rockland Cat# 600-401-379 RRID: AB_2209751, 1:500) at 4°C on a shaking plate (PBS 0.1M, 0.3% triton X100, 0.5% BSA. After this, slices were rinsed 3 times with PBS 0.1M and incubated with the secondary donkey anti-guinea pig antibody conjugated with an alexa fluor 488 and donkey anti-rabbit alexa fluor 568 (in PBS dilution 1:1000, Invitrogen) for 3h at room temperature keep in the dark. For the biocytin filling, slices were also incubated with Alexa Fluor® 405 Streptavidin (ThermoFisher scientific S32351, 1:500). Following 3 rinses with PBS, the slices were incubated with DAPI in PBS 0.1M (Invitrogen, 5mg / ml, 1:5000) for 5 min and rinsed again 3-4 times with PBS 0.1M before being mounted on coverslips using an anti-fade mounting medium (Invitrogen Fluoro gold). After 24h at 4°C, slices were imaged on a confocal microscope (Leica LSM 710) and processed using ImageJ software.

Chemicals

Pilocarpine hydrochloride and γ -aminobutyric acid (GABA) was purchased from Sigma-Aldrich (Dorset, UK) and dissolved in saline on the day of experiment. 2,3-Dioxo-6-nitro-1,2,3,4-tetrahydrobenzo[f]quinoxaline-7-sulfonamide disodium salt (NBQX, 10 µM), DL-2-Amino-5-phosphonopentanoic (DL-AP5; 50 µM), picrotoxin (100 µM) and (2*S*)-3-[[*(1S)*-1-(3,4-Dichlorophenyl)ethyl]amino-2-hydroxypropyl](phenylmethyl) phosphinic acid (CGP55845; 1 µM), used in electrophysiological recordings *in vitro* to block AMPA,

NMDA-, GABA_A- and GABA_B-receptors respectively, were all from Tocris Bioscience (Bristol, UK).

Statistics

All statistical data analyses were performed using IBM SPSS and OriginPro software, or algorithms coded in Python. Results are presented as mean \pm s.e.m. Repeated one- or two-way ANOVA, two-tailed unpaired and paired t-tests were used as appropriate. N values used in statistical analysis represent the number of animals in each experimental group. Statistical differences were considered significant at $P < 0.05$, and this was corrected for multiple comparisons using the post-hoc Bonferroni correction.

Data availability

The data that support the findings of this study are available upon request.

Author Contributions

I.P. and D.M.K. conceived the study and designed experiments with V.M., V.M. performed the experiments and analysed the data, J.C. developed the state classifier, A.L. designed the KCC2 viral vector and optimised transgene overexpression protocols, D.M.K. and I.P. developed the FPGA-based closed-loop stimulation system, I.P. and D.M.K. wrote the manuscript, which was revised by all co-authors.

Acknowledgements

This work was supported by Epilepsy Research UK (I.P. and D.M.K.), the Worshipful Company of Pewterers (Fellowship to I.P.), a Marie Skłodowska-Curie Actions Fellowship from the European Commission (A.L.), the Medical Research Council and the Wellcome Trust (D.M.K.).

| | Control seizure duration (s) | |
|-------|------------------------------|-------------------------------|
| Delay | PV::Cre X Ai32 | PV::Cre X Ai32 CaMKII-KCC2 |
| 0 s | 3.35 ± 0.57 | 2.28 ± 0.23 ^{ns} |
| 0.5 s | 3.66 ± 0.69 | 3.22 ± 0.27 ^{ns} |
| 2 s | 4.20 ± 0.78 | 4.77 ± 0.66 ^{ns} |
| > 2 s | 5.45 ± 0.99 | 5.45 ± 0.46 ^{ns} |

Table 1. Mean duration of baseline ictal discharges in experiments with different delays in different experimental groups. One-way ANOVA followed by a post hoc Bonferroni correction for multiple comparisons. ns – non-significant (compared to PV:Cre x Ai32 group). Data shown as mean ± s.e.m.

REFERENCES

1. Goldberg, E. M. & Coulter, D. A. Mechanisms of epileptogenesis: a convergence on neural circuit dysfunction. *Nat. Rev. Neurosci.* **14**, 337–349 (2013).
2. Trevelyan, A. J., Sussillo, D., Watson, B. O. & Yuste, R. Modular propagation of epileptiform activity: evidence for an inhibitory veto in neocortex. *J Neurosci* **26**, 12447–12455 (2006).
3. Trevelyan, A. J., Sussillo, D. & Yuste, R. Feedforward inhibition contributes to the control of epileptiform propagation speed. *J Neurosci* **27**, 3383–3387 (2007).
4. Schevon, C. A. *et al.* Evidence of an inhibitory restraint of seizure activity in humans. *Nat Commun* **3**, 1060 (2012).
5. Köhling, R. *et al.* Spontaneous sharp waves in human neocortical slices excised from epileptic patients. *Brain* **121**, 1073–1087 (1998).
6. Cohen, I., Navarro, V., Clemenceau, S., Baulac, M. & Miles, R. On the origin of interictal activity in human temporal lobe epilepsy in vitro. *Science* **298**, 1418–1421 (2002).
7. D’Antuono, M. *et al.* GABAA receptor-dependent synchronization leads to ictogenesis in the human dysplastic cortex. *Brain* **127**, 1626–1640 (2004).
8. Köhling, R., Vreugdenhil, M., Bracci, E. & Jefferys, J. G. R. Ictal epileptiform activity is facilitated by hippocampal GABA A receptor-mediated oscillations. *J Neurosci* **20**, 6820–6829 (2000).
9. Gnatkovsky, V., Librizzi, L., Trombin, F. & de Curtis, M. Fast activity at seizure onset is mediated by inhibitory circuits in the entorhinal cortex in vitro. *Ann. Neurol.* **64**, 674–86 (2008).
10. Fujiwara-Tsukamoto, Y. *et al.* Prototypic seizure activity driven by mature hippocampal fast-spiking interneurons. *J Neurosci* **30**, 13679–13689 (2010).
11. Pavlov, I., Kaila, K., Kullmann, D. M. & Miles, R. Cortical inhibition, pH and cell excitability in epilepsy: what are optimal targets for antiepileptic interventions? *J. Physiol.* **591**, 765–74 (2013).
12. Avoli, M. & de Curtis, M. GABAergic synchronization in the limbic system and its role in the generation of epileptiform activity. *Prog Neurobiol* **95**, 104–132 (2011).
13. Shiri, Z., Manseau, F., Lévesque, M., Williams, S. & Avoli, M. Interneuron activity leads to initiation of low-voltage fast-onset seizures. *Ann. Neurol.* **77**, 541–546 (2015).
14. Yekhlief, L., Breschi, G. L., Lagostena, L., Russo, G. & Taverna, S. Selective activation of parvalbumin- or somatostatin-expressing interneurons triggers epileptic seizurelike activity in mouse medial entorhinal cortex. *J. Neurophysiol.* **113**, 1616–1630 (2015).
15. Sessolo, M. *et al.* Parvalbumin-Positive Inhibitory Interneurons Oppose Propagation But Favor Generation of Focal Epileptiform Activity. *J. Neurosci.* **35**, 9544–9557 (2015).
16. Chang, M. *et al.* Brief activation of GABAergic interneurons initiates the transition to

- ictal events through post-inhibitory rebound excitation. *Neurobiol. Dis.* **109**, 102–116 (2018).
17. Krook-Magnuson, E., Armstrong, C., Oijala, M. & Soltesz, I. On-demand optogenetic control of spontaneous seizures in temporal lobe epilepsy. *Nat Commun* **4**, 1376 (2013).
 18. Khoshkhoo, S., Vogt, D. & Sohal, V. S. Dynamic, Cell-Type-Specific Roles for GABAergic Interneurons in a Mouse Model of Optogenetically Inducible Seizures. *Neuron* **93**, 291–298 (2016).
 19. Ellender, T. J., Raimondo, J. V., Irkle, a., Lamsa, K. P. & Akerman, C. J. Excitatory Effects of Parvalbumin-Expressing Interneurons Maintain Hippocampal Epileptiform Activity via Synchronous Afterdischarges. *J. Neurosci.* **34**, 15208–15222 (2014).
 20. Nardou, R. *et al.* Neuronal chloride accumulation and excitatory GABA underlie aggravation of neonatal epileptiform activities by phenobarbital. *Brain* **134**, 987–1002 (2011).
 21. Breiman, L. Random forests. *Mach. Learn.* **45**, 5–32 (2001).
 22. Holmgren, C. D. *et al.* Energy substrate availability as a determinant of neuronal resting potential, GABA signaling and spontaneous network activity in the neonatal cortex in vitro. *J Neurochem* **112**, 900–912 (2010).
 23. Bortone, D. & Polleux, F. KCC2 Expression Promotes the Termination of Cortical Interneuron Migration in a Voltage-Sensitive Calcium-Dependent Manner. *Neuron* **62**, 53–71 (2009).
 24. Klausberger, T. & Somogyi, P. Neuronal diversity and temporal dynamics: the unity of hippocampal circuit operations. *Science* **321**, 53–7 (2008).
 25. Kepecs, A. & Fishell, G. Interneuron cell types are fit to function. *Nature* **505**, 318–326 (2014).
 26. Ziburkus, J., Cressman, J. R., Barreto, E. & Schiff, S. J. Interneuron and pyramidal cell interplay during in vitro seizure-like events. *J Neurophysiol* **95**, 3948–54 (2006).
 27. Velazquez, J. L. & Carlen, P. L. Synchronization of GABAergic interneuronal networks during seizure-like activity in the rat horizontal hippocampal slice. *Eur J Neurosci* **11**, 4110–4118 (1999).
 28. Fujiwara-Tsakamoto, Y., Isomura, Y., Kaneda, K. & Takada, M. Synaptic interactions between pyramidal cells and interneurone subtypes during seizure-like activity in the rat hippocampus. *J Physiol* **557**, 961–79 (2004).
 29. Cammarota, M., Losi, G., Chiavegato, A., Zonta, M. & Carmignoto, G. Fast spiking interneuron control of seizure propagation in a cortical slice model of focal epilepsy. *J Physiol* **591**, 807–822 (2013).
 30. Karlócai, M. R. *et al.* Physiological sharp wave-ripples and interictal events in vitro: what's the difference? *Brain* **137**, 463–85 (2014).
 31. Huberfeld, G. *et al.* Perturbed chloride homeostasis and GABAergic signaling in human temporal lobe epilepsy. *J Neurosci* **27**, 9866–9873 (2007).
 32. Palma, E. *et al.* Anomalous levels of Cl transporters in the hippocampal subiculum

- from temporal lobe epilepsy patients make GABA excitatory. *Proc Natl Acad Sci U S A* **103**, 8465–8468 (2006).
33. Muñoz, A., Méndez, P., DeFelipe, J. & Alvarez-Leefmans, F. J. Cation-chloride cotransporters and GABA-ergic innervation in the human epileptic hippocampus. *Epilepsia* **48**, 663–673 (2007).
 34. Stodberg, T., McTague, A., Ruiz, A., ... & Kurian, M. Mutations in SLC12A5 in epilepsy of infancy with migrating focal seizures. *Nat. Commun.* **6**, 8038 (2015).
 35. Puskarjov, M. *et al.* A variant of KCC2 from patients with febrile seizures impairs neuronal Cl⁻ extrusion and dendritic spine formation. *EMBO Rep.* 1–7 (2014). doi:10.1002/embr.201438749
 36. Kahle, K. T. *et al.* Genetically encoded impairment of neuronal KCC2 cotransporter function in human idiopathic generalized epilepsy. *EMBO Rep.* **15**, 766–774 (2014).
 37. Wang, Y. *et al.* Depolarized GABAergic Signaling in Subicular Microcircuits Mediates Generalized Seizure in Temporal Lobe Epilepsy. *Neuron* **146**, 901–906 (2017).
 38. Staley, K. J., Soldo, B. L. & Proctor, W. R. Ionic mechanisms of neuronal excitation by inhibitory GABAA receptors. *Science* **269**, 977–981 (1995).
 39. Kaila, K., Lamsa, K., Smirnov, S., Taira, T. & Voipio, J. Long-lasting GABA-mediated depolarization evoked by high-frequency stimulation in pyramidal neurons of rat hippocampal slice is attributable to a network-driven, bicarbonate-dependent K⁺ transient. *J Neurosci* **17**, 7662–7672 (1997).
 40. Assaf, F. & Schiller, Y. The antiepileptic and ictogenic effects of optogenetic neurostimulation of PV-expressing interneurons. *J. Neurophysiol.* **116**, 1694–1704 (2016).
 41. Cancedda, L., Fiumelli, H., Chen, K. & Poo, M. M. Excitatory GABA action is essential for morphological maturation of cortical neurons in vivo. *J. Neurosci.* **27**, 5224–5235 (2007).
 42. Pellegrino, C. *et al.* Knocking down of the KCC2 in rat hippocampal neurons increases intracellular chloride concentration and compromises neuronal survival. *J. Physiol.* **589**, 2475–2496 (2011).
 43. Doyon, N., Vinay, L., Prescott, S. A. & De Koninck, Y. Chloride Regulation: A Dynamic Equilibrium Crucial for Synaptic Inhibition. *Neuron* **89**, 1157–1172 (2016).
 44. Viitanen, T., Ruusuvuori, E., Kaila, K. & Voipio, J. The K⁺-Cl⁻ cotransporter KCC2 promotes GABAergic excitation in the mature rat hippocampus. *J Physiol* **588**, 1527–40 (2010).
 45. Hamidi, S. & Avoli, M. KCC2 function modulates in vitro ictogenesis. *Neurobiol. Dis.* **79**, 51–58 (2015).
 46. Kaila, K., Ruusuvuori, E., Seja, P., Voipio, J. & Puskarjov, M. GABA actions and ionic plasticity in epilepsy. *Curr. Opin. Neurobiol.* **26**, 34–41 (2014).
 47. Khirug, S. *et al.* Distinct properties of functional KCC2 expression in immature mouse hippocampal neurons in culture and in acute slices. *Eur J Neurosci* **21**, 899–904

- (2005).
48. Khirug, S. *et al.* GABAergic depolarization of the axon initial segment in cortical principal neurons is caused by the Na-K-2Cl cotransporter NKCC1. *J. Neurosci.* **28**, 4635–9 (2008).
 49. Glykys, J. *et al.* Local impermeant anions establish the neuronal chloride concentration. *Science* **343**, 670–5 (2014).
 50. Szabadics, J. *et al.* Excitatory effect of GABAergic axo-axonic cells in cortical microcircuits. *Science* (80-.). **311**, 233–235 (2006).
 51. Megias, M., Emri, Z., Freund, T. F. & Gulyas, A. I. Total number and distribution of inhibitory and excitatory synapses on hippocampal CA1 pyramidal cells. *Neuroscience* **102**, 527–540 (2001).
 52. Lovett-Barron, M. *et al.* Regulation of neuronal input transformations by tunable dendritic inhibition. *Nat Neurosci* **15**, 423–30 (2012).
 53. Royer, S. *et al.* Control of timing, rate and bursts of hippocampal place cells by dendritic and somatic inhibition. *Nat Neurosci* **15**, 769–775 (2012).
 54. Cossart, R. *et al.* Dendritic but not somatic GABAergic inhibition is decreased in experimental epilepsy. *Nat Neurosci* **4**, 52–62 (2001).
 55. Wittner, L. *et al.* Surviving CA1 pyramidal cells receive intact perisomatic inhibitory input in the human epileptic hippocampus. *Brain* **128**, 138–52 (2005).
 56. Herman, A. M., Huang, L., Murphey, D. K., Garcia, I. & Arenkiel, B. R. Cell type-specific and time-dependent light exposure contribute to silencing in neurons expressing Channelrhodopsin-2. *Elife* **2014**, 1–18 (2014).
 57. Wang, L., Bai, J. & Hu, Y. Identification of the RA response element and transcriptional silencer in human γ -CaMKII promoter. *Mol. Biol. Rep.* **35**, 37–44 (2008).