

Protection of circadian rhythms by the protein folding chaperone, BiP

Adam Pickard^{1*}, Joan Chang¹, Nissrin Alachkar², Ben Calverley^{1,2}, Richa Garva¹, Peter Arvan³, Qing-Jun Meng¹ and Karl E. Kadler^{1*}

Wellcome Centre for Cell-Matrix Research¹, Faculty of Biology, Medicine and Health, Manchester Academic Health Science Centre, and School of Mathematics², Faculty of Science and Engineering, University of Manchester, Manchester, M13 9PT UK

Division of Metabolism, Endocrinology, & Diabetes³, University of Michigan, Ann Arbor, MI 48105 USA

* Co-corresponding author. Correspondence should be addressed to A.P.

(adam.pickard@manchester.ac.uk) or K.E.K (karl.kadler@manchester.ac.uk)

Keywords: 4PBA, BiP, Circadian rhythm, Collagen, ER stress, Per2, TUDCA, SERCA, UDCA

ORCID IDs:

A.P.: <http://orcid.org/0000-0001-9757-143X>

J.C.: <http://orcid.org/0000-0002-7283-9759>

B.C.: <https://orcid.org/0000-0001-9403-0363>

R.G.: <https://orcid.org/0000-0002-0588-7136>

P.A.: <https://orcid.org/0000-0002-4007-8799>

Q.-J.M.: <https://orcid.org/0000-0002-9426-8336>

K.E.K.: <https://orcid.org/0000-0003-4977-4683>

ER stress and dysregulation of collagen synthesis are associated with progression of disease in cancer and fibrosis. Collagen synthesis is co-ordinated by the circadian clock, and in cancer cells, ER stress induces a phase shift in circadian oscillations. We hypothesised that an interplay exists between circadian rhythm, collagen synthesis and ER stress in normal cells. Here we show that fibroblasts with ER stress cannot respond to circadian cues. Conversely, overexpression of BiP or treatment with chemical chaperones strengthen circadian rhythms. The significance of these findings was explored in tendon. We showed that BiP expression is ramped pre-emptively prior to a surge in collagen synthesis at night, thereby preventing protein misfolding and ER stress. In turn, we propose, this forestalls activation of the unfolded protein response in order for circadian rhythms to be maintained. Thus, targeting ER stress could be used to modulate circadian rhythm and restore collagen homeostasis in disease.

Circadian clocks are cell-autonomous time keeping mechanisms that occur in most tissues to optimize cellular activities in anticipation of varying demands on the cell during 24 hours. One such activity is protein synthesis. In a recent study, Yeung and Garva *et al.* showed that the circadian clock regulates Sec61 translocon-dependent ER protein synthesis and membrane trafficking at each node in the secretory pathway of tendon fibroblasts *in vivo*¹. The consequence is a daily surge of collagen-I, which occurs at night in mice. Collagen is the major secreted protein of fibroblasts and, in tendon, accounts for 70% of the mass of the tissue where

it occurs as extracellular fibrils² that can extend the length of the tissue³. Collagens are large trimeric molecules that undergo extensive post-translational modification^{4, 5} and folding in the endoplasmic reticulum (ER, their site of synthesis) in order to generate a thermally-stable triple helix capable of assembling into fibrils. The extensive nature of posttranslational modification of collagen, coupled with a surge in synthesis at night, suggested to us that the cell might have mechanisms to protect against the accumulation of unfolded collagen (e.g. with the unfolded protein response, UPR) and subsequent ER stress, at times of high collagen synthesis. Excessive collagen synthesis occurs in fibrosis and solid tumours where the rate of synthesis exceeds turnover. The result is accumulation of a dense, stiff extracellular matrix that can be a positive fibroproliferative feedback signal to accelerate cell division and the synthesis of additional matrix⁶.

Collagen-I is composed of two $\alpha 1$ chains and one $\alpha 2$ chain encoded by the genes COL1A1 and COL1A2, respectively. These chains come together to form a triple helix, which is assisted by chaperone proteins. Both generic protein chaperones such as BiP/Grp78 and Grp94, and the collagen specific chaperone, Hsp47, aid the formation and stabilisation of the triple helix⁷. Chaperones also have signalling roles associated with their ability to bind newly synthesised proteins. In particular, BiP is known to govern the activation of the UPR⁸. When unfolded proteins accumulate in the ER, BiP is released from three key binding partners on the ER membrane; PERK, IRE1 and ATF6 each activate mechanistically distinct pathways. Combined, the response acts to reduce ER burden, through mRNA decay, and reducing translation, but also drive expression of protein chaperones. However, if the stress is not resolved these same pathways can also promote apoptosis⁹. It has been established that the response to ER stress is regulated in a circadian manner in cancer cells¹⁰ and that activation of UPR in cancer cells induces a 10 hour shift in circadian oscillation¹¹; however it was not known how protein flux through the ER, and in turn how ER stress, regulates circadian rhythm in non-tumorigenic models. Given that collagen secretion is ramped from low levels during the day to high levels in the night in mice¹, we hypothesised that the expression of these chaperones may be governed by circadian rhythm. In the experiments described below, we explored the connection between ER stress and circadian rhythm in fibroblasts actively secreting collagen under the control of the circadian clock.

Results

BiP protein levels are circadian clock rhythmic. BiP is known to interact with collagen in the secretory pathway¹² and is proposed to aid the folding of collagen. As a first experiment, we showed that levels of BiP protein are rhythmic with a 24-hour period and its peak of expression precedes the peak of expression of procollagen-I (the precursor of collagen) protein (Fig. 1A). The circadian nature of BiP protein expression was also observed in mouse embryo fibroblasts (MEFs), isolated tail tendon fibroblasts, and tail tendon tissue (Fig. 1B, Supplementary Fig. 1). This result was the first indication that the circadian clock had a role in pre-emptively preventing ER stress by upregulating BiP in anticipation of a surge in collagen synthesis.

The presence of misfolded protein ablates circadian rhythm. To learn more about the effects of ER stress on the circadian rhythm, we treated ex vivo Per2::luc mice tail tendons with thapsigargin to induce protein misfolding and ER stress¹³. Thapsigargin did not induce a circadian rhythm. However, when cells were subjected to dexamethasone to synchronise the circadian clock, the amplitude of rhythm was markedly reduced after thapsigargin treatment (Fig. 1C). Similarly, when immortalised tail tendon fibroblasts (iTTF) from Per2::luc mice were pre-treated for 1 hour with tunicamycin or thapsigargin, at doses which do not impact on cell growth (Fig. 1D), prior to dexamethasone treatment, the amplitude of Per2 rhythm was suppressed (Fig. 1E).

This connection between ER stress and circadian rhythm was further exemplified in cells that were in the process of resolving ER stress prior to dexamethasone treatment. We used a 5-hour treatment with thapsigargin or tunicamycin to accumulate misfolded proteins in the ER and induce all arms of the UPR (Supplementary Fig. 2) prior to synchronisation of the circadian rhythm. This treatment regime eliminated the synchronisation effect of dexamethasone (Fig. 1F), which suggested that cells undergoing ER stress do not have a functioning circadian clock. This treatment regime also eliminated the circadian rhythm in cells in which the rhythm was pre-established (Supplementary Fig. 3).

To establish if misfolded proteins instigate suppression of circadian rhythms, we used a mutated thyroglobulin which misfolds in the ER, thereby causing ER stress¹⁴. When stably expressed in Per2::luc cells there was dramatic suppression of circadian rhythm (Fig. 1G and H) and induction of ER stress, particularly increasing the splicing of XBP1 (Fig. 1I). Importantly, removal of thapsigargin after 5 hours and allowing the cells to recover for 24 hours allowed dexamethasone to re-synchronise the rhythm, thereby indicating that ER stress had been resolved (Supplementary Fig. 3). Thus, the fact that circadian rhythm is lost in fibroblasts expressing misfolded thyroglobulin, even in the presence of functioning SERCA, shows that the loss of rhythm is the direct consequence of accumulated misfolded protein.

Suppression of the secretory pathway blocks circadian rhythm by induction of ER stress.

The effect of ER stress induction on collagen secretion was examined by western blot analysis of the conditioned medium of thapsigargin and tunicamycin treated cells using an anti-collagen-I antibody. Over 48 hours, both thapsigargin and tunicamycin abolished secretion of collagen-I (Figure 2A). To examine if blockade of the secretory pathway had a similar effect on the secretion of collagen, cells were treated with brefeldin A and monensin (Fig. 2B and C). These treatments suppressed collagen secretion and induced ER stress, as shown by induction of CHOP transcription after 5 hours treatment (Fig. 2D). These effects were comparable to those of thapsigargin and tunicamycin, and likewise, both brefeldin A and monensin suppressed circadian fluctuations in Per2::luc cells (Fig. 2E).

Having demonstrated that short term treatment with thapsigargin or tunicamycin can suppress circadian rhythm we sort to utilise this to assess the importance of circadian rhythm on the secretion and assembly of collagen fibres. Firstly, we showed that 72-hour treatment with 100 nM dexamethasone-induced synchronisation of the circadian rhythm enhances fibril assembly in iTTFs (Supplementary Fig. 4). We used a modified in-cell western approach to

demonstrate the effects of thapsigargin and tunicamycin on collagen secretion. As expected, continuous treatment of fibroblasts with ER stress inducers reduced the assembly of extracellular collagen (Fig. 2F), which was accompanied by accumulation of intracellular collagen (Fig. 2G), in-line with reduced secretion of collagen into the medium (Fig. 2A). Having validated the in-cell western we then suppressed circadian rhythm using a 5-hour pulse of thapsigargin and tunicamycin prior to dexamethasone treatment. The results showed that disruption of rhythm suppressed the accumulation of extracellular collagen, after 72 hours, implicating circadian rhythms in coordinating collagen secretion and assembly. Importantly, the intracellular levels of collagen were unaffected with this treatment regime indicating that collagen had not been held in the ER. A one-hour treatment did not affect either extracellular or intracellular collagen. Together these data show that a circadian rhythm was required for effective collagen fibre assembly.

BiP retains collagen in the ER but maintains circadian rhythm. Given the circadian rhythmicity of BiP protein levels, which peaks ahead of collagen-I (see Fig. 1A), we examined how BiP overexpression affects collagen-I secretion and the circadian rhythm. BiP was overexpressed in immortalised tail tendon fibroblasts (iTTFs) using retroviral transduction (Fig. 3A), which was confirmed by real-time PCR and western blotting (Fig. 3B and C). BiP overexpression led to inhibition of collagen fibre assembly (Fig. 3D and E). This was observed at two different times (24 hours and 30 hours post-synchronisation) following dexamethasone-induced circadian clock synchronisation (Fig. 3D and E). In control cells, fibre assembly was observed at times when BiP levels had peaked (see Fig. 1B). Overexpression of BiP did not alter the transcription of either *Col1a1* or *Col1a2* (Fig. 3F), suggesting that the reduced assembly of collagen fibres is a result of altered collagen transport through the secretory pathway. Immunofluorescent detection of intracellular collagen in BiP overexpressing cells showed that the majority of the collagen co-localises with the ER marker protein disulphide isomerase (PDI), whereas in control cells, regions of the ER are clear from collagen. Thus, collagen is retained in the ER when BiP is overexpressed (Fig. 3G). The use of collagen hybridising peptide¹⁵ indicated that the collagen held in the ER of BiP over-expressing cells is largely unfolded (Supplementary Fig. 5). Therefore, we examined the impact of BiP overexpression on circadian rhythm. To our surprise, the cells have a stronger inherent rhythm (Fig. 4A) and increased amplitude of *Per2::luc* signals following dexamethasone treatment (Fig. 4B and C). BiP is well known to suppress the activation of all three arms of the UPR; therefore, this result implies that the activation of the UPR arms is responsible for the suppression of circadian rhythms in cells undergoing ER stress. Real-time PCR analysis showed that both ATF6 and IRE1-XBP1 arms of the UPR are suppressed in BiP-overexpressing cells; however, there is enhanced activation of the ATF4 arm as shown by elevated CHOP expression (Fig. 4D).

Protein folding in the ER provides a checkpoint where circadian rhythm can be rapidly controlled. The influence of unfolded proteins on circadian clock regulation was explored using clinically-approved chemical chaperones, which aid the folding of proteins within the ER¹⁶. 4-phenylbutyric acid (4PBA) and ursodeoxycholic acid (UDCA) strengthened the inherent

rhythm of fibroblasts, but also greatly increased the amplitude of Per2::luc signals following dexamethasone treatment (Fig. 5A-F). These results resemble the effects observed with BiP overexpression and suggest that misfolded proteins are resident in the ER of cultured cells and through promoting their folding can aid establishment of stronger circadian rhythms. The chaperone inhibitor 2-phenylethanesulfonamide (PES) had the opposite effect which suppressed rhythm likely due to the observed induction of the UPR (Supplementary Fig. 6). Assessment of the ER stress pathways following 4PBA treatment showed that there is suppression of both ATF6 and IRE1-XBP1 arms of the UPR, again mirroring the effects of BiP overexpression, and although ATF4 expression was enhanced, there was no elevated expression of CHOP (Fig. 5G). Treatment of tendon fibroblasts with 4PBA also led to enhanced secretion of collagen fibres (Fig. 5H and I) but without altering transcription of collagen-I (Fig. 5J), together implying that protein folding in the ER is a rate limiting step in collagen biosynthesis but that provides a checkpoint where circadian rhythm can be rapidly controlled.

Discussion

In this study we have shown that BiP is rhythmic in tendon and cultured fibroblasts, and that the peak of BiP protein expression occurs just ahead of the peak of procollagen-I expression. We further showed that ER stress, caused by inhibiting SERCA or expression of misfolded proteins in the ER, eliminates the circadian rhythm and decreases collagen secretion. Whilst thapsigargin is an irreversible inhibitor of SERCA, we found that by removing thapsigargin from cells, circadian rhythms could be reinitiated. This indicated that the loss of response to synchronising cues is not due to inhibition of SERCA but due to the presence of misfolded protein. A recent study by Walton *et al* demonstrated a similar degree of circadian rhythm suppression under hypoxic conditions; whilst not directly address in their report, a strong induction of genes involved in the UPR was observed¹⁷. Hypoxia induction is well known to induce protein misfolding and activation of the UPR^{18, 19}, again implicating ER stress control of circadian rhythm.

The fluctuations in BiP levels appear to play a protective role maintaining circadian rhythms, as BiP overexpression led to a more robust circadian rhythm, presumably because of the saturation of all three sensors of the UPR. Thus, we are proposing that the circadian clock has a role in pre-emptively preventing ER stress in normal cells, by upregulating BiP in anticipation of a surge in protein translation. However, overexpression of BiP led to retention of procollagen in the ER in a non-helical conformation, and reduced assembly of collagen fibres. A balance is therefore struck to have sufficient BiP to allow saturation of the UPR sensors and a robust rhythm, but not too much to inhibit folding of procollagen.

Yeung *et al.* showed that tendon is a peripheral circadian clock tissue. In their time-series microarray study they identified 745 rhythmic transcripts that had a 24-hour oscillation. However, neither *Col1a1* nor *Col1a2*, or indeed any transcripts encoding collagens, were rhythmic²⁰. In a subsequent study, Yeung and Garva *et al.* demonstrated that the levels of intracellular collagen-I oscillate with a 24 hour period, with the majority of synthesis occurring in the evening in mouse tail and Achilles tendon¹. The circadian rhythmicity of collagen-I is

therefore generated in the ER, rather than through transcriptional regulation. The ramp in procollagen concentration in the ER at night might be expected to lead to ER stress if the levels of nascent unfolded protein were allowed to escalate unchecked. However, levels of BiP are also circadian-regulated and peak a few hours ahead of the peak of procollagen. This suggests that the circadian clock prepares the cell for the surge in nascent procollagen chains being synthesised, by ramping the synthesis of BiP in anticipation. We have demonstrated here that induction of ER stress can ablate the circadian rhythm in normal fibroblasts, suggesting that this surge of BiP may influence how cells perceive external circadian cues. The fluctuations in BiP levels appear to play a protective role by maintaining circadian rhythms in normal cells.

BiP overexpression, and chemical chaperones treatment, led to suppression of Xbp1 splicing and ATF6 transcription, and at the same time enhancing circadian rhythm implying that these arms of the UPR are integrated into the feedback control of the peripheral clock during ER stress. The ATF4 arm was in the main unaffected. It has previously been demonstrated that ATF4 knockout MEFs have suppressed amplitude of Per2::luc rhythms²¹, suggesting this pathway is essential for the robust rhythms, and may further explain why these pathways remain active whilst the other arms of the UPR are suppressed. It has previously been demonstrated that Per1 mRNA is a target for the exonuclease activity of IRE1, and its activation is associated with reduced Per1 expression²², presenting a potential feed-in point for controlling the circadian circuitry. In a genome-wide siRNA screen to identify modulators of circadian rhythm, ATF6 siRNA was identified to shorten the circadian period²³ and is also another potential feed-in point. Here, we did not observe a shortening of period as a result of ER stress-induced ATF6 expression; however this is in-line with a recent study which demonstrated a 10 hour shift in circadian rhythm in cancer cells undergoing ER stress¹¹.

In conclusion, we have shown that ER stress or misfolded proteins can dramatically suppress clock activation in normal fibroblasts, and this poses the question of whether cancer cells can negate this suppressive role of the UPR on the clock in order to survive. In normal cells undergoing ER stress, a decision of whether the stress is resolved or the cell dies has to be made. It is plausible that by uncoupling the cell from circadian control, this decision can be made more efficiently. It has been proposed that cancer cell survival is enhanced through suppression of Clock and Bmal1¹¹, however, this may result in survival even when misfolded proteins have not been eliminated. Both ER stress and UPR activation are well documented in many cancers implicating accumulation of misfolded proteins²⁴.

Acknowledgements

We would like to thank Raymond Boot-Handford for expression vectors and Michael Jackson for cell sorting. The research was funded by Wellcome Trust Investigator and Wellcome Centre Core Awards to K.E.K. (110126/Z/15/Z and 203128/Z/16/Z). P.A. is funded by NIH DK40344. B.C. is funded by a Wellcome 4-year PhD studentship (210062/Z/17/Z). Light microscopes in the Bioimaging Facility were additionally supported by the University of Manchester Strategic Fund.

Methods

Cell isolation and culture

Tail tendon fibroblasts were released from 6-8 week Per2::luc C57BL/6J mouse tail tendons by 4 mg/ml bacterial collagenase type 4 (Worthington Biochemical Corporation) in EDTA-free trypsin (2.5 g/l) as previously described²⁵. Cells were cultured in complete media (Dulbecco's modified Eagle's medium: Nutrient Mixture F-12 containing 4500 mg/L glucose, L-glutamine, and sodium bicarbonate, supplemented with 10% foetal calf serum) at 37 °C, in 5% CO₂. Immortalized lines were generated by retroviral expression of mTERT²⁶ (iTTF), similarly to generate BiP overexpressing cells we utilised pCMMP-BiP-IRES-mRFP a gift from Bill Sugden (Addgene plasmid #36975)²⁷, using methods previously described²⁸. BiP overexpressing cells were flow sorted based on mRFP expression. Stable cell lines expressing mutant thyroglobulin were generated by transfecting pcDNA3-neo-ColIII-TgCOG into iTTFs using Fugene 6 (Promega). Forty-eight hours after transfection cells were maintained in 200 µg/mL neomycin for 2 weeks, prior to analysis of luminescence neomycin was removed from culture medium, as controls cells transfected with pEGFP-N1 (Clontech) and selected as above.

Luminometry

LumiCycle apparatus (Actimetrics) was used for real-time quantitative bioluminescence recording. Tail tendons, 10 mg, were placed in 30 mm cell culture inserts (0.4 µm pore size, Millipore) inside 35 mm dishes in recording medium (DMEM without phenol-red (Sigma, D2902), supplemented with 4 g/L glucose, 5% FCS, HEPES, sodium bicarbonate and 0.1 mM Luciferin). iTTFs were seeded 24 hours, as described above, prior to culture in recording medium. 100 nM dexamethasone was added for 30 minutes to synchronise the circadian rhythms. Baseline subtraction was carried out using a 24-hr moving average. Amplitude was calculated as peak-trough difference in bioluminescence of the first and second peak, as indicated, using base-line subtracted data.

Western Blot

Proteins were extracted using urea buffer and analysed by western blotting as previously described²⁹. Primary antibodies used were mouse mAb to BiP (1:1000; sc-376768, Santa Cruz), rabbit pAb to Collagen-I (1:500; OARA02579, Gentaur), mouse mAb to GAPDH (1:10000; clone GAPDH-71.1, Sigma), mouse mAb to vinculin (1:800; V9131, Sigma), mouse mAb to beta-actin (1:2000; sc-8432, Santa Cruz).

Dose response curves

The appropriate dosages of thapsigargin and tunicamycin for *in vitro* treatments were determined in triplicate using the AlamarBlue assay in 96 well format³⁰.

Real time PCR

For qPCR analysis primers designed using Assay Design center (Roche, Germany), the sequences used are indicated in Table 1. Reactions were run using Power-UP Sybr Master mix

(Applied Biosystems) with cDNA generated using Taqman reverse transcription kit (Applied Biosystems). 0.5 µg RNA extracted using Trizol (Life Technologies) was used to generate cDNA which was then diluted 20 fold. PCR reaction were run on the CFX96 Real time system (BioRad). Target transcript expression was normalised to the geometric mean of Rplp0, Gapdh and Actb.

Immunofluorescence and in-cell western

For immunofluorescence analysis cells were fixed with 4% paraformaldehyde and permeabilized with 0.5% Triton-X/PBS. Collagen-I was detected using a rabbit pAb (1:200; OARA02579, Gentaur), and ER was identified using a mouse mAb against protein disulphide isomerase (Pdi) (1:100; ab190883, Abcam). Images were collected on a Leica TCS SP5 AOBS inverted confocal using a 60x / 0.50 Plan Fluotar objective and 3x confocal zoom. The confocal settings were as follows, pinhole 1 airy unit, scan speed 1000 Hz unidirectional, format 1024 x 1024. Images were collected using PMT detectors with the following detection mirror settings; FITC 494-530 nm; Cy5 640-690 nm using the 488 nm (20%), 594 nm (100%) and 633 nm (100%) laser lines respectively. To eliminate crosstalk between channels, the images were collected sequentially. When acquiring 3D optical stacks the confocal software was used to determine the optimal number of Z sections. Only the maximum intensity projections of these 3D stacks are shown in the results. For imaging non-helical collagen, cells were permeabilized as above and stained with anti-Collagen-I (1:200; OARA02579, Gentaur) and 20 µM 5-FAM conjugated collagen hybridizing peptide (F-CHP, 3Helix). Cells were stained for 2 hours at 4 °C. Images were collected on a Zeiss Examiner A1 upright microscope using a 63x / 1.4 N-Acroplan objective and captured using a Coolsnap ES camera (Photometrics) through Metavue v7.8.0.0 software (Molecular Devices). Specific band pass filter sets for DAPI, FITC and Cy3 were used to prevent bleed through from one channel to the next. For in-cell westerns, iTTF were grown in 96 well plates in the presence of 200 µM ascorbic acid, 24 hours after plating cells were treated with tunicamycin and thapsigargin as indicated before removing treatment and adding full medium supplemented with ascorbic acid and dexamethasone. After 72 hours cells were fixed with 4% PFA. To assess extracellular collagen cells were directly stained with an anti-collagen antibody (1:1000; OARA02579, Gentaur) overnight, which was detected using donkey anti-rabbit 800 antibody (1:10,000, #5151s, Cell signal technologies), each well was counterstained with the cell permeating dye DRAQ5. The plate was scanned using the Odyssey CLx (Li-Cor). The collagen signal quantified following normalisation to DRAQ5. To assess intracellular collagen the plates were permeabilised as for immunofluorescence studies before being stained and quantified in the same manner as extracellular collagen.

Figure legends

Figure 1: ER stress suppresses circadian rhythm. **A)** Hspa5 (BiP/GRP78) protein levels fluctuate over the course of 2 days in mouse tail tendons, BiP levels rise prior to the increased synthesis of collagen, indicated by pro-collagen specific peptides. **B)** BiP levels as assessed by western blot in MEFs over the course of 24 hours following synchronisation with 50% horse serum. Lower traces show the fluctuations in BiP protein levels in Tail tendons, iTTFs and MEFs as assessed by circwave (see supplemental Fig. 1). **C)** The effects of ER stress induction on circadian rhythm in tail tendons from Per2::luc mice. **D)** Cell viability after 72 hours in response to the indicated doses of thapsigargin (Upper) and tunicamycin (lower). **E)** Representative luminescence traces (upper) following 1 hour treatment of 10 nM thapsigargin or 100 ng/mL tunicamycin which suppresses the induction of Per2::luc in response to dexamethasone, relative amplitude over 3 days are shown, n=3 (lower) **F)** Thapsigargin and tunicamycin are removed from Per2::luc cells after 5 hours treatment then synchronised with dexamethasone. Relative amplitudes in the first 24 hours are shown (lower chart, n=4). **G)** iTTF expressing mutated Thyroglobulin (CollI-Tg-COG mutant) have suppressed inherent and Dexamethasone-induced rhythms. Amplitudes of Per2::luc traces are quantified in **H)**. **I)** Levels of spliced XBP1 (Xbp1s) indicate that the IRE1-XBP1 arm of the unfolded protein response has been activated in CollI-Tg-COG cells. **p<0.01. paired t-test.

Figure 2: Impact of ER stress on collagen production. **A)** Western blot analysis on conditioned media (CM) collected from iTTFs after 48 hours of treatment with thapsigargin, tunicamycin, brefeldin, monensin suggests secreted collagen I is suppressed in treated cells. **B)** Diagram of the secretory pathway marking the position of action for the inhibitors brefeldin A and monensin. **C)** The effects of brefeldin A and monensin, at various concentrations, on the survival of fibroblasts following 72 hours treatment. **D)** Levels of CHOP/DDIT3 indicate that the unfolded protein response has been activated following 5 hours treatment with brefeldin A and monensin, similar to the effects of thapsigargin and tunicamycin. **E)** The impact of 5 hours treatment of 20 nM brefeldin A and 10 nM monensin on Per2::luc signals in iTTFs. The effects of thapsigargin and tunicamycin on the production of **F)** extracellular collagen and **G)** intracellular collagen, the effects of various treatment times are shown. * p<0.05 **p<0.01. paired t-test.

Figure 3: BiP retains collagen in the ER. **A)** Immortalised tail tendon fibroblasts were transduced with pCMMP-BiP-IRES-mRFP, RFP positive cells were sorted to form a BiP overexpressing cell line (iTTF + BiP). Levels of **B)** BiP mRNA and **C)** protein were assessed in sorted populations. **D)** Immunofluorescence detection of collagen fibres in control and BiP overexpressing immortalised tail tendon fibroblasts, cells were synchronised with dexamethasone and collected at different time points. PS24 and PS30, 24 hours and 30 hours post-synchronisation of the circadian clock by dexamethasone. **E)** the numbers of collagen fibres counted per cell at the indicated times. **F)** The effects of BiP overexpression on the transcript levels of type I collagen. **G)** Co-localisation of collagen I and the ER marker PDI in control and BiP overexpressing iTTFs. * p<0.05 **p<0.01 paired t-test.

Figure 4: BiP overexpression strengthens circadian rhythm. **A)** Cells overexpressing BiP have a more robust circadian rhythm in unsynchronised populations and **B)** following dexamethasone-induced synchronisation. $n=3$, Representative traces are shown. **C)** Quantification of the amplitude of Per2::luc signals from A) and B) in the first 48 hours are quantified. **D)** Activation of the UPR in BiP overexpressing cells was assessed by monitoring the expression of ATF4/CHOP, Xbp1 splicing and ATF6. * $p<0.05$ paired t-test.

Figure 5: Chemical chaperones strengthen circadian rhythm and enhance collagen secretion. **A)** Effects of 4PBA treatment on the survival of immortalised tail tendon fibroblasts. **B)** The effects of 100 μM 4PBA on circadian rhythm in unsynchronised populations (upper panel) and following dexamethasone treatment (lower panel). **C)** Amplitudes of Per2::luc signals following 4PBA treatment. **D)** Effects of UDCA treatment on the survival of immortalised tail tendon fibroblasts. **E)** The effects of 100 μM UDCA on circadian rhythm in unsynchronised populations (upper panel) and following dexamethasone (lower panel). **F)** Amplitudes of Per2::luc signals following UDCA treatment. **G)** Effects of 4PBA on the expression of components of the unfolded protein response after 72 hours treatment. **H)** the effects of 4PBA treatment on the production of collagen fibres following 72 hours treatment, quantified in **I)**. **J)** The impact of 4PBA treatment on collagen I transcripts. * $p<0.05$, ** $p<0.01$ paired t-test.

References

1. Yeung C-YC, et al. Circadian Clock Regulation of the Secretory Pathway. *bioRxiv*, (2018).
2. Kadler KE, Holmes DF, Trotter JA, Chapman JA. Collagen fibril formation. *Biochem J* **316** (Pt 1), 1-11 (1996).
3. Svensson RB, et al. Evidence of structurally continuous collagen fibrils in tendons. *Acta Biomater* **50**, 293-301 (2017).
4. Myllyharju J, Kivirikko KI. Collagens, modifying enzymes and their mutations in humans, flies and worms. *Trends Genet* **20**, 33-43 (2004).
5. Ishikawa Y, Bachinger HP. A molecular ensemble in the rER for procollagen maturation. *Biochim Biophys Acta* **1833**, 2479-2491 (2013).
6. Fang M, Yuan J, Peng C, Li Y. Collagen as a double-edged sword in tumor progression. *Tumour Biol* **35**, 2871-2882 (2014).
7. Makareeva E, Aviles NA, Leikin S. Chaperoning osteogenesis: new protein-folding disease paradigms. *Trends in cell biology* **21**, 168-176 (2011).
8. Bertolotti A, Zhang Y, Hendershot LM, Harding HP, Ron D. Dynamic interaction of BiP and ER stress transducers in the unfolded-protein response. *Nature cell biology* **2**, 326-332 (2000).
9. Szegezdi E, Logue SE, Gorman AM, Samali A. Mediators of endoplasmic reticulum stress-induced apoptosis. *EMBO reports* **7**, 880-885 (2006).
10. Maillo C, et al. Circadian- and UPR-dependent control of CPEB4 mediates a translational response to counteract hepatic steatosis under ER stress. *Nature cell biology* **19**, 94-105 (2017).
11. Bu Y, et al. A PERK-miR-211 axis suppresses circadian regulators and protein synthesis to promote cancer cell survival. *Nature cell biology* **20**, 104-115 (2018).
12. DiChiara AS, Taylor RJ, Wong MY, Doan ND, Rosario AM, Shoulders MD. Mapping and Exploring the Collagen-I Proteostasis Network. *ACS chemical biology* **11**, 1408-1421 (2016).
13. Osowski CM, Urano F. Measuring ER stress and the unfolded protein response using mammalian tissue culture system. *Methods in enzymology* **490**, 71-92 (2011).

14. Kim PS, Hossain SA, Park YN, Lee I, Yoo SE, Arvan P. A single amino acid change in the acetylcholinesterase-like domain of thyroglobulin causes congenital goiter with hypothyroidism in the cog/cog mouse: a model of human endoplasmic reticulum storage diseases. *Proc Natl Acad Sci U S A* **95**, 9909-9913 (1998).
15. Hwang J, et al. In Situ Imaging of Tissue Remodeling with Collagen Hybridizing Peptides. *ACS nano* **11**, 9825-9835 (2017).
16. Cortez L, Sim V. The therapeutic potential of chemical chaperones in protein folding diseases. *Prion* **8**, (2014).
17. Walton ZE, et al. Acid Suspends the Circadian Clock in Hypoxia through Inhibition of mTOR. *Cell*, (2018).
18. Koumenis C. ER stress, hypoxia tolerance and tumor progression. *Curr Mol Med* **6**, 55-69 (2006).
19. Bi M, et al. ER stress-regulated translation increases tolerance to extreme hypoxia and promotes tumor growth. *EMBO J* **24**, 3470-3481 (2005).
20. Yeung CY, et al. Gremlin-2 is a BMP antagonist that is regulated by the circadian clock. *Scientific reports* **4**, 5183 (2014).
21. Koyanagi S, et al. cAMP-response element (CRE)-mediated transcription by activating transcription factor-4 (ATF4) is essential for circadian expression of the Period2 gene. *The Journal of biological chemistry* **286**, 32416-32423 (2011).
22. Pluquet O, et al. Posttranscriptional regulation of PER1 underlies the oncogenic function of IREalpha. *Cancer research* **73**, 4732-4743 (2013).
23. Zhang EE, et al. A genome-wide RNAi screen for modifiers of the circadian clock in human cells. *Cell* **139**, 199-210 (2009).
24. Wang M, Kaufman RJ. The impact of the endoplasmic reticulum protein-folding environment on cancer development. *Nat Rev Cancer* **14**, 581-597 (2014).
25. Yeung CY, Zeef LA, Lallyett C, Lu Y, Canty-Laird EG, Kadler KE. Chick tendon fibroblast transcriptome and shape depend on whether the cell has made its own collagen matrix. *Scientific reports* **5**, 13555 (2015).

26. Alvarez MB, et al. Immortalization and characterization of osteoblast cell lines generated from wild-type and Nmp4-null mouse bone marrow stromal cells using murine telomerase reverse transcriptase (mTERT). *Journal of cellular physiology* **227**, 1873-1882 (2012).
27. Pratt ZL, Zhang J, Sugden B. The latent membrane protein 1 (LMP1) oncogene of Epstein-Barr virus can simultaneously induce and inhibit apoptosis in B cells. *J Virol* **86**, 4380-4393 (2012).
28. Pickard A, McDade SS, McFarland M, McCluggage WG, Wheeler CM, McCance DJ. HPV16 Down-Regulates the Insulin-Like Growth Factor Binding Protein 2 to Promote Epithelial Invasion in Organotypic Cultures. *PLoS Pathog* **11**, e1004988 (2015).
29. Pickard A, Cichon AC, Menges C, Patel D, McCance DJ. Regulation of epithelial differentiation and proliferation by the stroma: a role for the retinoblastoma protein. *The Journal of investigative dermatology* **132**, 2691-2699 (2012).
30. O'Brien J, Wilson I, Orton T, Pognan F. Investigation of the Alamar Blue (resazurin) fluorescent dye for the assessment of mammalian cell cytotoxicity. *European journal of biochemistry* **267**, 5421-5426 (2000).

Figure 1: ER stress suppresses circadian rhythm.

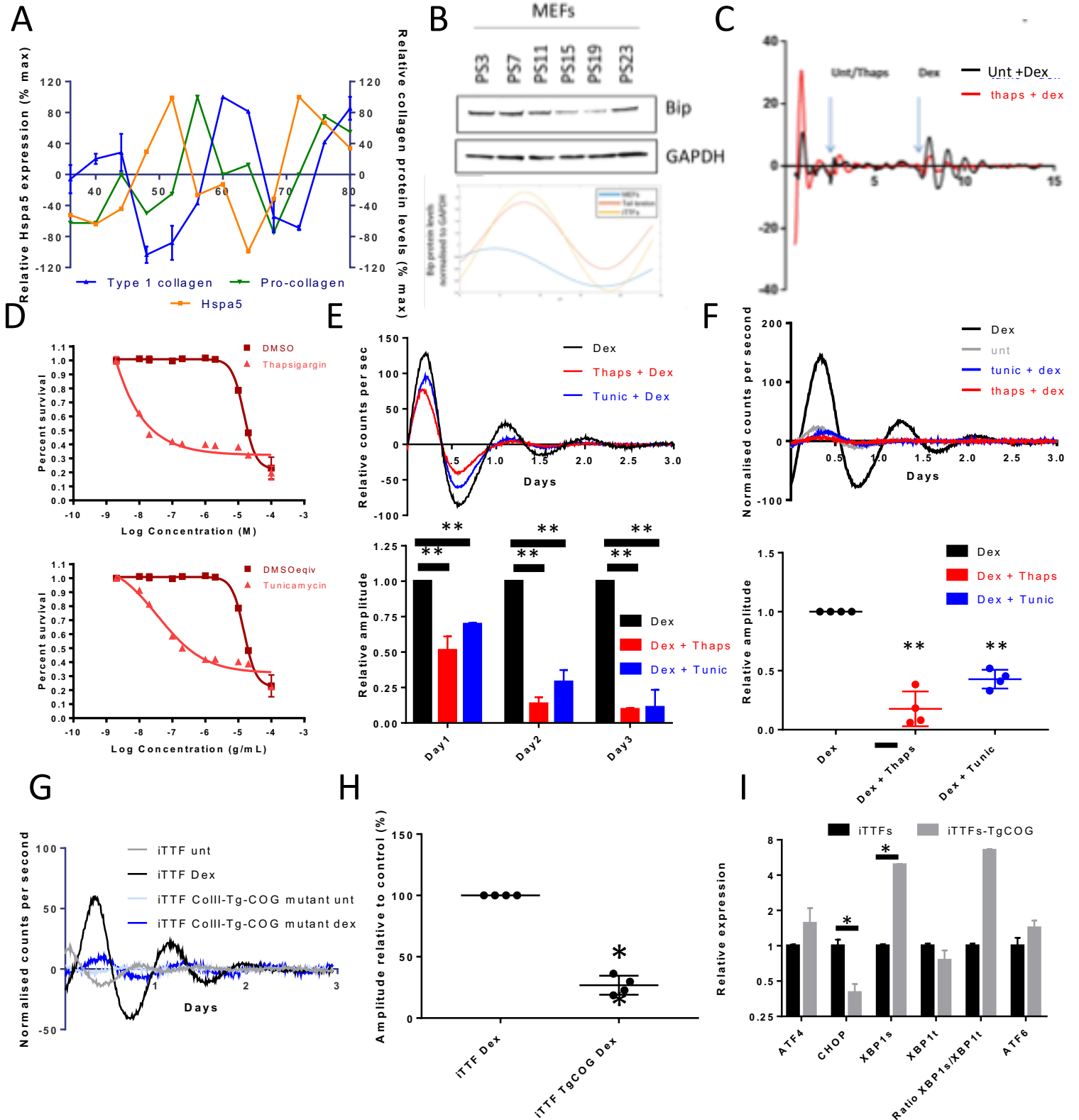


Figure 2: Impact of ER stress on collagen production.

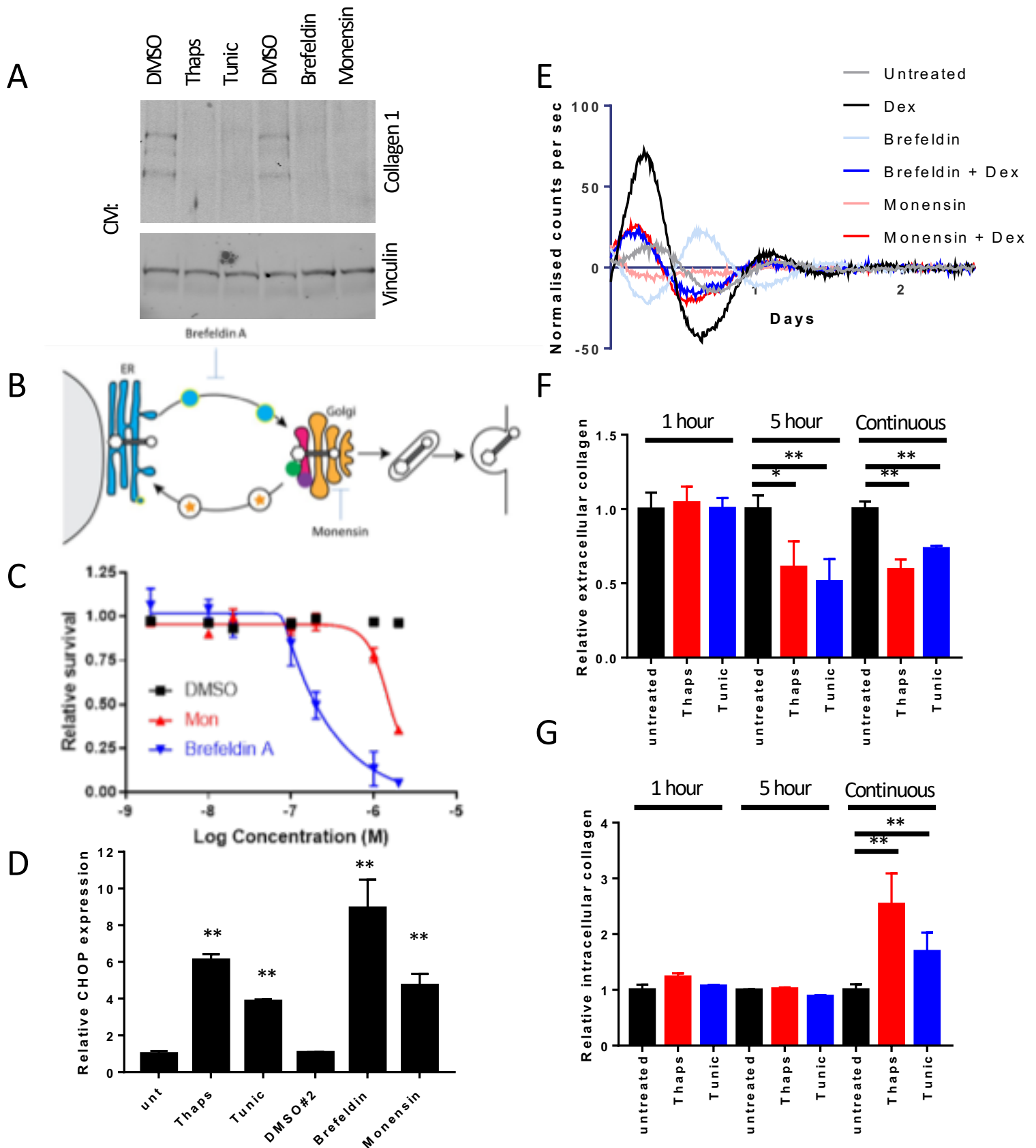


Figure 3: Bip retains collagen in the ER.

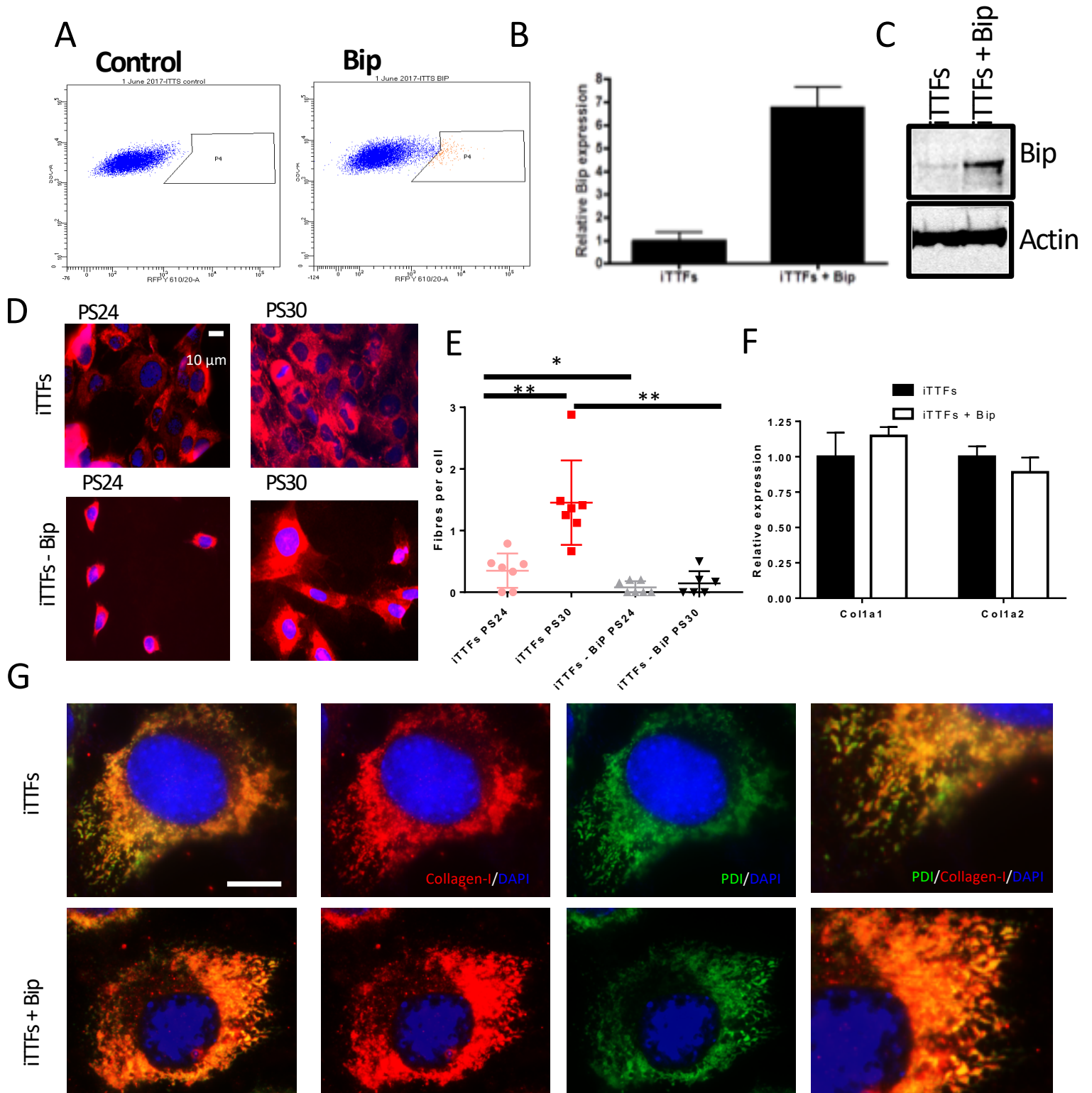


Figure 4: Bip overexpression strengthens circadian rhythm.

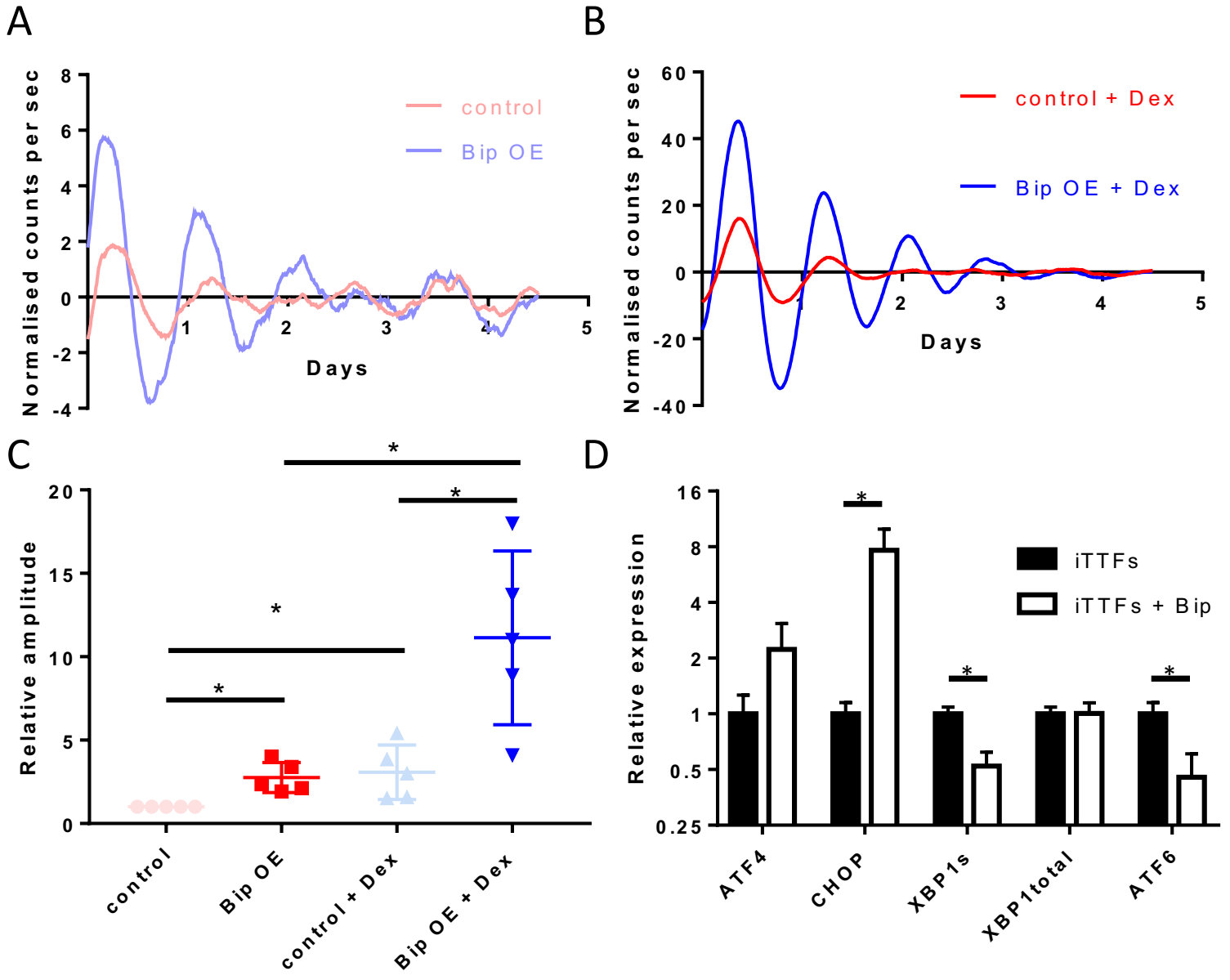


Figure 5: The Impact of chemical chaperones on circadian rhythm

