

1 **Signals of polygenic adaptation on height have been overestimated due**  
2 **to uncorrected population structure in genome-wide association studies**

3  
4 Mashaal Sohail<sup>1,2,3+</sup>, Robert M. Maier<sup>3,4,5+</sup>, Andrea Ganna<sup>3,4,5,6,7</sup>, Alex Bloemendal<sup>3,4,5</sup>,  
5 Alicia R. Martin<sup>3,4,5</sup>, Michael C. Turchin<sup>8,9</sup>, Charleston W. K. Chiang<sup>10</sup>, Joel N.  
6 Hirschhorn<sup>3,11,12</sup>, Mark J. Daly<sup>3,4,5,7</sup>, Nick Patterson<sup>3,13</sup>, Benjamin M. Neale<sup>3,4,5\*</sup>, Iain  
7 Mathieson<sup>14\*</sup>, David Reich<sup>3,13,15\*</sup>, Shamil R. Sunyaev<sup>1,2,3\*</sup>

8  
9  
10 <sup>1</sup> Division of Genetics, Department of Medicine, Brigham and Women's Hospital and Harvard  
11 Medical School, Boston, MA 02115, USA

12 <sup>2</sup> Department of Biomedical Informatics, Harvard Medical School, Boston, MA 02115, USA

13 <sup>3</sup> Program in Medical and Population Genetics, Broad Institute of MIT and Harvard,  
14 Cambridge, MA 02142, USA

15 <sup>4</sup> Stanley Center for Psychiatric Research, Broad Institute of MIT and Harvard, Cambridge,  
16 MA 02142, USA

17 <sup>5</sup> Analytical and Translational Genetics Unit, Massachusetts General Hospital, Boston, MA  
18 02114, USA

19 <sup>6</sup> Department of Medical Epidemiology and Biostatistics, Karolinska Institutet, Stockholm  
20 SE-171 77, Sweden

21 <sup>7</sup> Institute for Molecular Medicine Finland (FIMM), University of Helsinki, Helsinki FI-  
22 00014, Finland

23 <sup>8</sup> Center for Computational Molecular Biology, Brown University, Providence, RI, USA

24 <sup>9</sup> Department of Ecology and Evolutionary Biology, Brown University, Providence, RI, USA

25 <sup>10</sup> Department of Preventive Medicine, Keck School of Medicine, University of Southern  
26 California, Los Angeles, California, USA.

27 <sup>11</sup> Departments of Pediatrics and Genetics, Harvard Medical School, Boston, MA 02115,  
28 USA

29 <sup>12</sup> Division of Endocrinology and Center for Basic and Translational Obesity Research,  
30 Boston Children's Hospital, Boston, MA 02115, USA

31 <sup>13</sup> Department of Genetics, Harvard Medical School, Boston, MA 02115, USA

32 <sup>14</sup> Department of Genetics, Perelman School of Medicine, University of Pennsylvania,  
33 Philadelphia, PA 19103, USA

34 <sup>15</sup> Howard Hughes Medical Institute, Harvard Medical School, Boston, MA 02115, USA  
35

36  
37 + Contributed Equally

38 \* Co-supervised

39  
40  
41 All correspondence should be addressed to: [ssunyaev@rics.bwh.harvard.edu](mailto:ssunyaev@rics.bwh.harvard.edu),

42 [reich@genetics.med.harvard.edu](mailto:reich@genetics.med.harvard.edu), [mathi@pennmedicine.upenn.edu](mailto:mathi@pennmedicine.upenn.edu),

43 [bneale@broadinstitute.org](mailto:bneale@broadinstitute.org)  
44  
45

## 46 Abstract

47

48 Genetic predictions of height differ among human populations and these  
49 differences are too large to be explained by genetic drift. This observation has been  
50 interpreted as evidence of polygenic adaptation. Differences across populations were  
51 detected using SNPs genome-wide significantly associated with height, and many  
52 studies also found that the signals grew stronger when large numbers of sub-  
53 significant SNPs were analyzed. This has led to excitement about the prospect of  
54 analyzing large fractions of the genome to detect subtle signals of selection and  
55 claims of polygenic adaptation for multiple traits. Polygenic adaptation studies of  
56 height have been based on SNP effect size measurements in the GIANT Consortium  
57 meta-analysis. Here we repeat the height analyses in the UK Biobank, a much more  
58 homogeneously designed study. Our results show that polygenic adaptation signals  
59 based on large numbers of SNPs below genome-wide significance are extremely  
60 sensitive to biases due to uncorrected population structure.

61

## 62 Introduction

63

64 Most human complex traits are highly polygenic.[1,2] For example, height  
65 has been estimated to be modulated by as much as 4% of human allelic  
66 variation.[2,3] Polygenic traits are expected to evolve differently from monogenic  
67 ones, through slight but coordinated shifts in the frequencies of a large number of  
68 alleles, each with mostly small effect. In recent years, multiple methods have sought  
69 to detect selection on polygenic traits by evaluating whether shifts in the frequency  
70 of trait-associated alleles are correlated with the signed effects of the alleles  
71 estimated by genome-wide association studies (GWAS).[4–10]

72 Here we focus on a series of recent studies—some involving co-authors of  
73 the present manuscript—that have reported evidence of polygenic adaptation at  
74 alleles associated with height in Europeans. One set of studies observed that height-  
75 increasing alleles are systematically elevated in frequency in northern compared to  
76 southern European populations, a result that has subsequently been extended to  
77 ancient DNA.[4–11] Another study using a very different methodology (singleton  
78 density scores, SDS) found that height-increasing alleles have systematically more  
79 recent coalescent times in the United Kingdom (UK) consistent with selection for  
80 increased height over the last few thousand years.[12]

81 All of these studies have been based on SNP associations, in most cases with  
82 effect sizes discovered by the GIANT Consortium, which most recently combined 79  
83 individual GWAS through meta-analysis, encompassing a total of 253,288  
84 individuals.[13,14] Here, we show that the selection effects described in these  
85 studies are severely attenuated and in some cases no longer significant when using  
86 summary statistics derived from the UK Biobank, an independent and larger single  
87 study that includes 336,474 genetically unrelated individuals who derive their  
88 ancestry almost entirely from British Isles (identified as “white British ancestry” by  
89 the UK Biobank) (**Supplementary Table S1**). The UK Biobank analysis is based on a  
90 single cohort drawn from a relatively homogeneous population enabling excellent  
91 control of potential population stratification. Our analysis of the UK Biobank data  
92 confirms that almost all genome-wide significant loci discovered by the GIANT

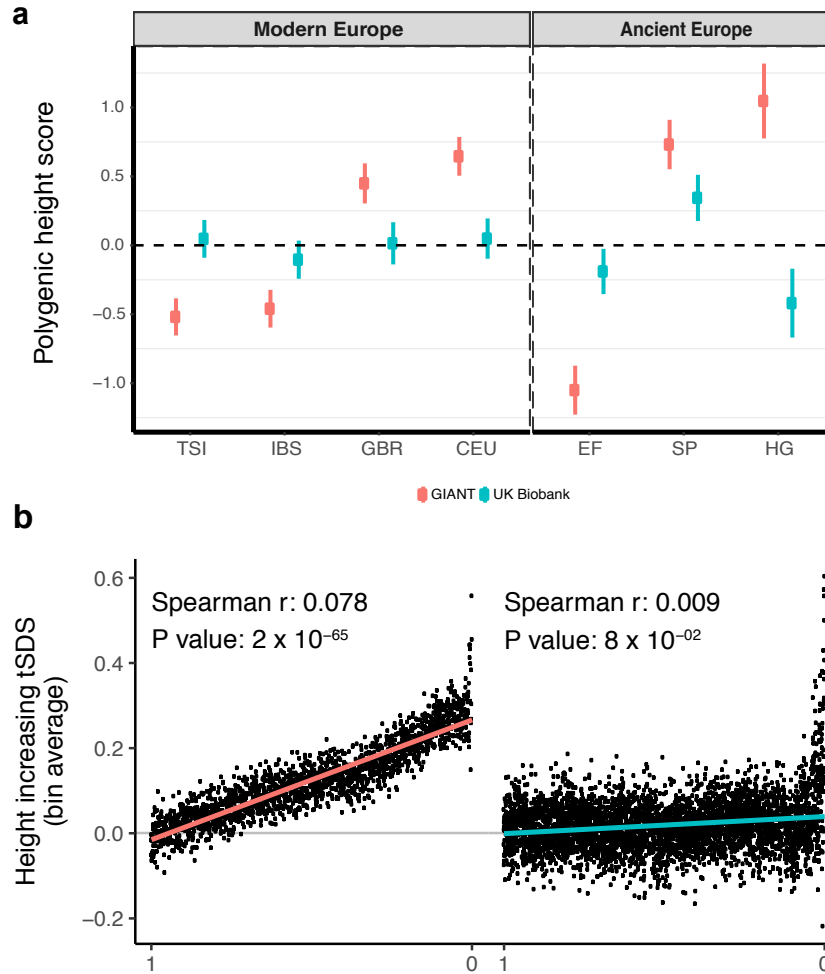
93 consortium are real associations, and that the two datasets have high concordance  
94 for low P value SNPs which do not reach genome-wide significance  
95 (**Supplementary Figure S1**; genetic correlation between the two height studies is  
96 0.94 [se=0.0078]). However, our analysis yields qualitatively different conclusions  
97 with respect to signals of polygenic adaptation.

98

## 99 **Results**

100

101 We began by estimating “polygenic height scores”—sums of allele  
102 frequencies at independent SNPs from GIANT weighted by their effect sizes—to  
103 study population level differences among ancient and present-day European  
104 samples. We used a set of different significance thresholds and strategies to correct  
105 for linkage disequilibrium as employed by previous studies, and replicated their  
106 signals for significant differences in genetic height across populations.[4–11]  
107 (**Figure 1a, Supplementary Figure S2**). We then repeated the analysis using  
108 summary statistics from a GWAS for height in the UK Biobank restricting to  
109 individuals of British Isles ancestry and correcting for population stratification  
110 based on the first ten principal components (UKB).[15] This analysis resulted in a  
111 dramatic attenuation of differences in polygenic height scores (**Figure 1a,**  
112 **Supplementary Figures S2-S4**). The differences between ancient European  
113 populations also greatly attenuated (**Figure 1a, Supplementary Figure S5**).  
114 Strikingly, the ordering of the scores for populations also changed depending on  
115 which GWAS was used to estimate genetic height both within Europe (**Figure 1a,**  
116 **Supplementary Figures S2-S5**) and globally (**Supplementary Figure S6**),  
117 consistent with reports from a recent simulation study.[16] The height scores were  
118 qualitatively similar only when we restricted to independent genome-wide  
119 significant SNPs in GIANT and the UK Biobank ( $P < 5 \times 10^{-8}$ ) (**Supplementary Figure**  
120 **S2b**). This replicates the originally reported significant north-south difference in the  
121 allele frequency of the height-increasing allele[4] or in genetic height[5] across  
122 Europe, as well as the finding of greater genetic height in ancient European steppe  
123 pastoralists than in ancient European farmers,[6] although the signals are  
124 attenuated even here. This suggests that tests of polygenic adaptation based on  
125 genome-wide significant SNPs may be relatively insensitive to confounding  
126 (**Supplementary Figure S2b**), and that confounding due to stratification is a  
127 particular danger for sub-significant SNPs (**Figure 1a, Supplementary Figure S2a**).  
128



129  
130  
131  
132  
133  
134  
135  
136  
137  
138  
139  
140  
141  
142  
143  
144  
145  
146  
147  
148  
149  
150  
151

**Figure 1. Polygenic height scores and tSDS scores based on GIANT and UK Biobank GWAS.**

Polygenic scores in present-day and ancient European populations are shown, centered by the average score across populations and standardized by the square root of the additive variance. Independent SNPs for the polygenic score from both GIANT (*red*) and the UK Biobank (*blue*) were selected by picking the SNP with the lowest P value in each of 1700 independent LD blocks similarly to refs [8,9] (see methods). Present-day populations are shown from Northern Europe (CEU, GBR) and Southern Europe (IBS, TSI) from the 1000 genomes project; Ancient populations are shown in three meta-populations (HG = Hunter-Gatherer (n=162 individuals), EF = Early Farmer (n=485 individuals), and SP = Steppe Ancestry (n=465 individuals)) (see **Supplementary Table S2**). Error bars are drawn at 95% credible intervals. See **Supplementary figures S2-S6** for polygenic height scores computed using other linkage disequilibrium pruning procedures, significance thresholds, summary statistics and populations. (b) tSDS for height-increasing allele in GIANT (left) and UK Biobank (right). The tSDS method was applied using pre-computed Singleton Density Scores for 4,451,435 autosomal SNPs obtained from 3,195 individuals from the UK10K project[12],[17] for SNPs associated with height in GIANT and the UK biobank. SNPs were ordered by GWAS P value and grouped into bins of 1000 SNPs each. The mean tSDS score within each P value bin is shown on the y-axis. The Spearman correlation coefficient between the tSDS scores and GWAS P values, as well as the correlation standard errors and P values, were computed on the un-binned data. The gray line indicates the null-expectation, and the colored lines are the linear regression fit. The correlation is significant for GIANT (Spearman  $r = 0.078$ ,  $P = 1.55 \times 10^{-65}$ ) but not for UK Biobank (Spearman  $r = -0.009$ ,  $P = 0.077$ ).

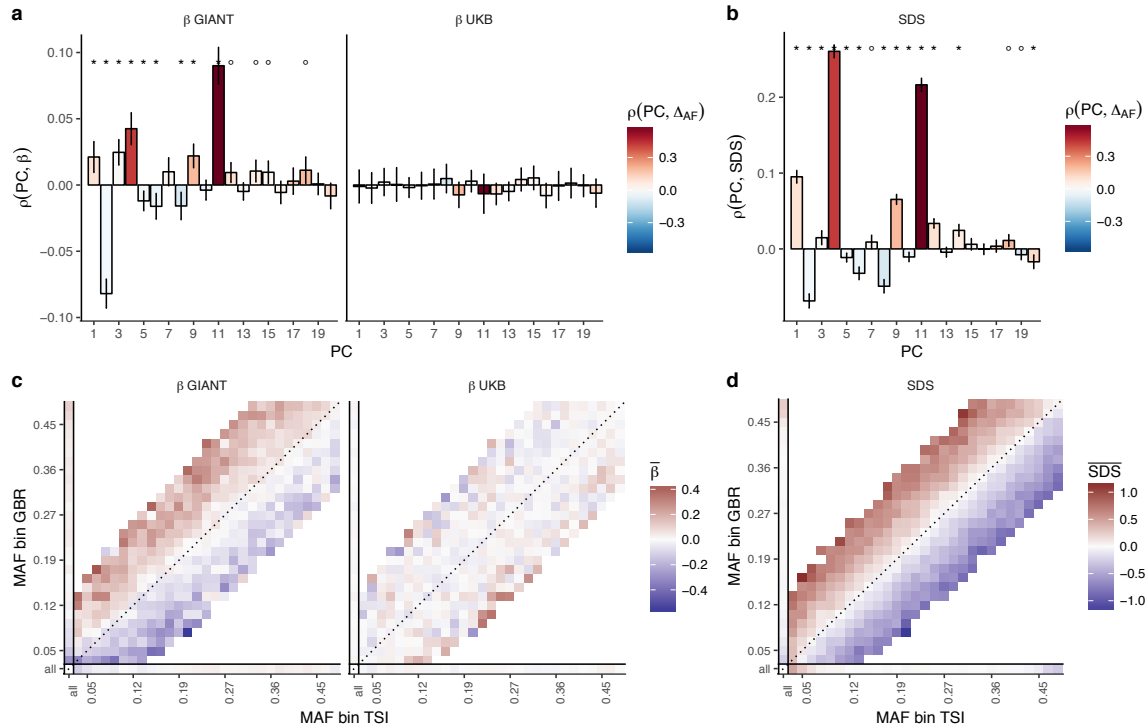
152

153 Next, we looked at polygenic adaptation within the UK using the “singleton  
154 density score” (SDS)—an independent measure that uses the local density of alleles  
155 that occur only once in the sample as a proxy for coalescent branch lengths.[12,17]  
156 SDS can be combined with GWAS effect sizes estimates by aligning the SDS sign to  
157 the trait-increasing allele, after which the score is referred to as tSDS. A tSDS score  
158 larger than zero implies that height-increasing alleles have been increasing in  
159 frequency over time due to natural selection. We replicate the finding that tSDS  
160 computed in the UK10K is positively rank-correlated with GIANT[12] height P  
161 values (Spearman’s  $\rho = 0.078$ ,  $P = 1.55 \times 10^{-65}$ , **Figure 1b**). However, this signal of  
162 polygenic adaptation in the UK attenuated when we used UK Biobank height effect  
163 size estimates and P values and became formally non-significant ( $\rho = 0.009$ ,  $P =$   
164  $0.077$ , **Figure 1b**).

165 We propose that the qualitative difference between the polygenic adaptation  
166 signals in GIANT and the UK Biobank is the cumulative effect of subtle biases in each  
167 of the contributing SNPs in GIANT. This bias can arise due to incomplete control of  
168 the population structure in GWAS.[18] For example, if height were differentiated  
169 along a north-south axis because of differences in environment, any variant that is  
170 differentiated in frequency along the same axis would have an artifactually large  
171 effect size estimated in the GWAS. Population structure is substantially less well  
172 controlled for in the GIANT study than in the UK Biobank study, both because the  
173 GIANT study population is more heterogeneous than that in the UK Biobank, and  
174 because the population structure in GIANT may not have been well controlled in  
175 some component cohorts of GIANT due to the relatively small size of individual  
176 studies (i.e., the ability to detect and correct population structure is dependent on  
177 sample size[19,20]). The GIANT meta-analysis also found that such stratification  
178 effects worsen as SNPs below genome-wide significance are used to estimate height  
179 scores,[14] consistent with our finding that the differences in genetic height  
180 increase when including these SNPs.

181 To obtain further insight into our observed discrepancy between polygenic  
182 adaptation signals in GIANT vs the UK Biobank, we repeated our analyses using  
183 estimates of height effect sizes computed using different methods, and then  
184 interrogated each of these for signs of population structure. Repeating our analysis  
185 with family-based effect size estimates from an independent study (NG2015  
186 sibs),[7] we found evidence for significant differences in polygenic scores between  
187 northern and southern Europeans that were qualitatively similar to those obtained  
188 using GIANT effect size estimates (**Supplementary Figure S4-S5**). Inclusion of  
189 individuals from the UK Biobank who were not of British Isles ancestry without  
190 controlling for population structure (UKB all no PCs) in the measurements of effect  
191 sizes also produced this pattern (**Supplementary Figure S3-S5**). Thus, UK Biobank  
192 estimates that retain population structure show similar patterns to GIANT and  
193 previously published family-based estimates (NG 2015 sibs). In contrast, no  
194 significant signals of genetic stratification of height or a strong tSDS signal are  
195 present across populations from: 1) a genetically homogeneous sample of UK  
196 Biobank with entirely British Isles ancestry without controlling for population

197 structure (UKB WB no PCs), or 2) effect size estimates based on UK Biobank families  
 198 (UKB sibs, UKB sibs WB) (**Supplementary Figures S3-S5, S7-S8**). These analyses  
 199 provide further evidence that the lack of signal in the UK Biobank analysis is  
 200 unlikely to be simply due to over-correction for structure in the original UKB  
 201 estimates.  
 202  
 203



204  
 205 **Figure 2. Evidence of stratification in height summary statistics.**  
 206 Top row: Pearson Correlation coefficients of (a) PC loadings and height beta coefficients  
 207 from GIANT and UKB, and (b) PC loadings and SDS (pre-computed in the UK10K) across all  
 208 SNPs. PCs were computed in all 1000 genomes phase 1 samples. Colors indicate the  
 209 correlation of each PC loading with the allele frequency difference between GBR and TSI, a  
 210 proxy for the European North-South genetic differentiation. PC 4 and 11 are most highly  
 211 correlated with the GBR - TSI allele frequency difference. Confidence intervals and P values  
 212 are based on Jackknife standard errors (1000 blocks). Open circles indicate correlations  
 213 significant at  $\alpha = 0.05$ , stars indicate correlations significant after Bonferroni correction  
 214 in 20 PCs ( $P < 0.0025$ ).  
 215 Bottom row: Heat map after binning all SNPs by GBR and TSI minor allele frequency of (c)  
 216 mean beta coefficients from GIANT and UKB, and (d) SDS scores for all SNPs. Only bins  
 217 with at least 300 SNPs are shown. While the stratification effect in SDS is not unexpected,  
 218 it can lead to false conclusions when applied to summary statistics that exhibit similar  
 219 stratification effects. UKB height betas exhibit stratification effects that are weaker, and  
 220 in the opposite direction of the stratification effects in GIANT (see **Supplementary Figure S9**  
 221 for a possible explanation).  
 222

223 We obtained direct confirmation that population structure is more correlated  
 224 with effect size estimates in GIANT than to those in the UK Biobank. **Figure 2a**  
 225 shows that the effect sizes estimated in GIANT are highly correlated with the SNP

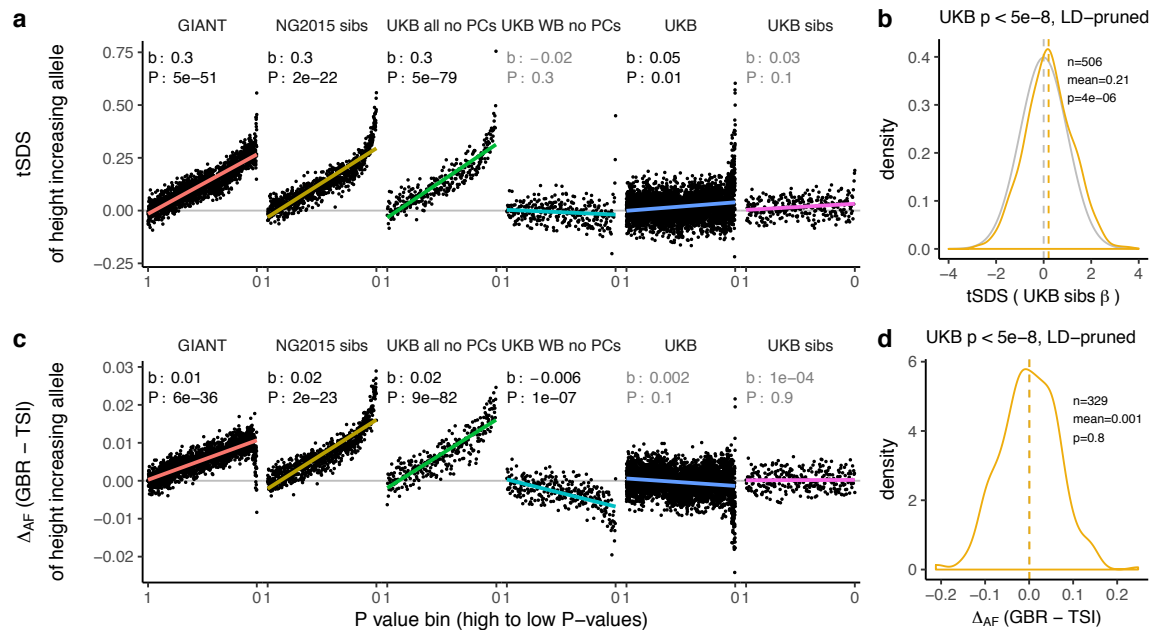


226 loadings of several principal components of population structure (PC loadings).  
227 Previously published family-based effect size estimates[7] (NG 2015 sibs) are  
228 similarly correlated with the PC loadings showing that they are also affected by  
229 population structure despite being computed within families; in other words, these  
230 empirical analyses show that even previously published family-based effect size  
231 estimates are not free from concerns about population structure. The within-family  
232 strategy for eliminating concerns about population stratification is not problematic  
233 on its own as our UK Biobank family estimates (UKB sibs, UKB sibs WB) computed  
234 using the same method do not show any stratification effects (**Supplementary**  
235 **Figures S10-S12**). We also do not see a strong correlation with PC loadings in our  
236 UK Biobank estimates computed using unrelated individuals (UKB)(**Figure 2a**).  
237 However, the UK Biobank estimates including individuals not of British Isles  
238 ancestry and not correcting for population structure (UKB all no PCs) show the  
239 same stratification effects as GIANT and NG2015 sibs (**Supplementary Figure S10-**  
240 **S12**). Similarly, we find that alleles that are more common in the Great Britain  
241 population (GBR) than in the Tuscan population from Italy (TSI) tend to be  
242 preferentially height-increasing according to the GIANT and NG2015 sibs estimates  
243 but not according to the UKB estimates (**Figure 2c, Supplementary Figures S11,**  
244 **S12**).

245 The tSDS analysis should be robust to the type of population structure  
246 discussed above.[12] However, there is a north-south cline in singleton density in  
247 Europe due to the lower genetic diversity in northern than in southern Europeans,  
248 with singleton density being lower in northern than in southern regions.[21] As a  
249 consequence, SDS tends to be higher in alleles more common in GBR than in TSI  
250 (**Figure 2d**). This cline in singleton density coincidentally parallels the phenotypic  
251 cline in height and the major axis of genome-wide genetic variation. Therefore,  
252 when we perform the tSDS test using GIANT-estimated effect sizes and P values, we  
253 find fewer singletons (corresponding to higher SDS) around the inferred height-  
254 increasing alleles which tend, due to the uncontrolled population stratification in  
255 GIANT, to be at high frequency in northern Europe (**Figures 2c**). This effect does not  
256 appear when we use UK Biobank summary statistics because of the much lower  
257 level of population stratification and more modest variation in height. We find that  
258 SDS is not only correlated with GBR-TSI allele frequency differences, but with  
259 several principal component loadings across all SNPs (**Figure 2b**), and that these  
260 SDS-PC correlations often coincide with correlations between GIANT-estimated  
261 effect sizes and PC loadings (**Figure 2a**).

262 We further find that the tSDS signal which is observed across the whole  
263 range of P values in some summary statistics can be mimicked by replacing SDS  
264 with GBR-TSI allele frequency differences (**Figures 3a, 3c, Supplementary Figures**  
265 **S7-S8, S13-S14**), suggesting that the tSDS signal at non-significant SNPs may be  
266 driven in part by residual population stratification. As with the polygenic score  
267 analysis, a small but significant effect is observed when we restrict to genome-wide  
268 significant SNPs ( $P < 5 \times 10^{-8}$ ). This effect persists when using UK Biobank family-  
269 based estimates for genome-wide significant SNPs (**Figure 3b**), and is not driven by  
270 allele frequency differences between GBR and TSI (**Figure 3d**), suggesting a true but  
271 attenuated signal of polygenic adaptation in the UK that is driven by a much smaller

272



273

274

275

### Figure 3. Height tSDS results for different summary statistics.

276

(a) Mean tSDS of the height increasing allele in each P value bin for six different summary statistics.

277

The first two panels are computed analogously to Figure 4A and Figure S22 in

278

Field et al. In contrast to those Figures and to **Figure 1b**, the displayed betas and P values

279

correspond to the slope and P value of the linear regression across all un-binned SNPs

280

(rather than the Spearman correlation coefficient and Jackknife P values). The y-axis has

281

been truncated at 0.75, and does not show the top bin for UKB all no PCs, which has a mean

282

tSDS of 1.5. See **Supplementary Figure S7** for other GWAS summary statistics (b) tSDS

283

distribution of the height increasing allele in 506 LD-independent SNPs which are genome-

284

wide significant in a UKB height GWAS, where the beta coefficient is taken from a within

285

sibling analysis in the UKB. The gray curve represents the standard normal null distribution,

286

and we observe a significant shift providing confirmation of a real SDS signal of polygenic

287

adaptation for height. (c) Allele frequency difference between GBR and TSI of the height

288

increasing allele in each P value bin for six different summary statistics. Betas and P values

289

correspond to the slope and P value of the linear regression across all un-binned SNPs. The

290

lowest P value bin in UKB all no PCs with a y-axis value of 0.06 has been omitted. See

291

**Supplementary Figure S13** for other GWAS summary statistics. (d) Allele frequency

292

difference between GBR and TSI of the height increasing allele in 329 LD-independent SNPs

293

which are genome-wide significant in a UKB height GWAS and were intersecting with our

294

set of 1000 genomes SNPs. There is no significant difference in frequency in these two

295

populations, suggesting that tSDS shift at the gw-significant SNPs is not driven by

296

population stratification.

297

The patterns shown here suggest that the positive tSDS values across the whole range of P

298

values is a consequence of residual stratification. At the same time, the increase in tSDS at

299

genome-wide significant, LD-independent SNPs in (b) cannot be explained by GBR - TSI

300

allele frequency differences as shown in (d). Binning SNPs by P value without LD-pruning

301

can lead to unpredictable patterns at the low P value end, as the SNPs at the low P value end

302

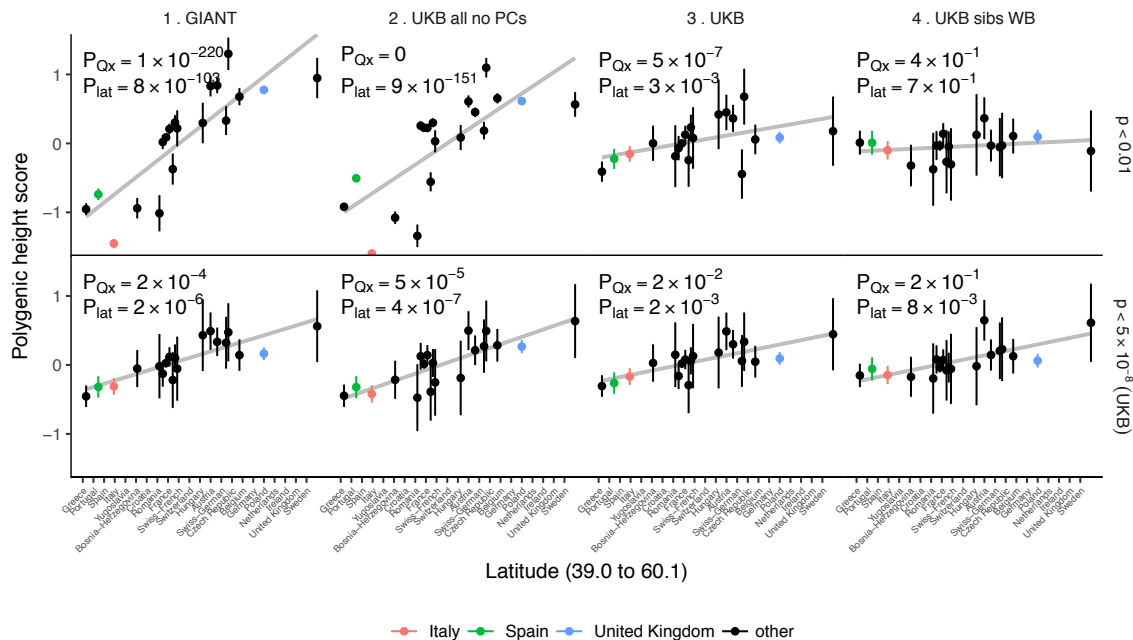
are less independent of each other than higher P value SNPs (**Supplementary Figure S15**).



303 **Supplementary Figures S8 and S14** therefore show the same data for a set of LD-pruned  
 304 SNPs.

305  
 306 number of SNPs than previously thought. Indeed, a tSDS signal which is driven by  
 307 natural selection is not expected to lead to an almost linear increase over the whole  
 308 P value range in a well-powered GWAS. Instead, we would expect to see a greater  
 309 difference between highly significant SNPs and non-significant SNPs, similar to the  
 310 pattern observed in the UK Biobank (**Figure 3a**).

311  
 312



313  
 314 **Figure 4. Polygenic height scores in POPRES populations show a residual albeit**  
 315 **attenuated signal of polygenic adaptation for height.**

316 Standardized polygenic height scores from six summary statistics for 19 POPRES  
 317 populations with at least 10 samples per population, ordered by latitude (see  
 318 **Supplementary Table S3**). The grey line is the linear regression fit to the mean polygenic  
 319 scores per population. Error bars represent 95% confidence intervals and are calculated in  
 320 the same way as in **Figure 1**.

321 SNPs which were overlapping between each set of the summary statistics and the POPRES  
 322 SNPs were clumped using PLINK 1.9 with parameters  $r^2 < 0.1$ , 1 Mb distance,  $P < 1$ .

323 (Top) A number of independent SNPs was chosen for each summary statistic to match the  
 324 number of SNPs which remained when clumping UKB at  $P < 0.01$ .

325 (Bottom) A set of independent SNPs with  $P < 5 \times 10^{-8}$  in the UK Biobank was selected and  
 326 used to compute polygenic scores along with effect size estimates from each of the different  
 327 summary statistics. SNP numbers for each panel ( $P < 0.01$  /  $P < 5 \times 10^{-8}$ ): GIANT: 9463 /  
 328 869; UKB all no PCs: 9341 / 359; UKB: 9341 / 1034; UKB sibs WB: 9391 / 380. The  
 329 numbers on each plot show the  $Q_x$  P value and the latitude covariance P value respectively  
 330 for each summary statistic. See **Supplementary Figures S16-S18** for other clumping  
 331 strategies and GWAS summary statistics.

332

333 Lastly, we asked whether any remaining differences in polygenic height  
334 scores among populations are driven by polygenic selection by using the  $Q_x$   
335 framework to test against a null model of genetic drift.[5] We re-computed  
336 polygenic height scores in the POPRES dataset for this analysis as it has larger  
337 sample sizes of northern and southern Europeans than the 1000 Genomes  
338 project.[22] We computed height scores using independent SNPs that are 1)  
339 genome-wide significant in the UK Biobank (“gw-sig”,  $P < 5 \times 10^{-8}$ ) and 2) sub-  
340 significantly associated with height (“sub-sig”,  $P < 0.01$ ) in different GWAS datasets.  
341 For each of these, we tested if population differences were significant due to an  
342 overall overdispersion ( $P_{Q_x}$ ), and if they were significant along a north-south cline  
343 ( $P_{lat}$ ) (**Figure 4, Supplementary Figure S16-S17**). Both gw-sig and sub-sig SNP-  
344 based scores computed using GIANT effect sizes showed significant overdispersion  
345 of height scores overall and along a latitude cline, consistent with previous results  
346 (**Figure 4, Supplementary Figure S16-S17**). However, the signal attenuated  
347 dramatically between sub-sig ( $Q_x = 1100$ ,  $P_{Q_x} = 1 \times 10^{-220}$ ) and gw-sig ( $Q_x = 48$ ,  $P_{Q_x} =$   
348  $2 \times 10^{-4}$ ) height scores. In comparison, scores that were computed using the UK  
349 Biobank (UKB) effect sizes showed substantially attenuated differences using both  
350 sub-sig ( $Q_x = 64$ ,  $P_{Q_x} = 5 \times 10^{-7}$ ) and gw-sig ( $Q_x = 33$ ,  $P_{Q_x} = 0.02$ ) SNPs, and a smaller  
351 difference between the two scores. This suggests that the attenuation of the signal in  
352 GIANT is not only driven by a loss of power when using fewer gw-sig SNPs, but also  
353 reflects a decrease in stratification effects. The overdispersion signal disappeared  
354 entirely when the UK Biobank family based effect sizes were used (**Figure 4,**  
355 **Supplementary Figure S16-S17**). Moreover,  $Q_x$  P values based on randomly  
356 ascertained SNPs and UK Biobank summary statistics are not uniformly distributed  
357 as would be expected if the theoretical null model is valid and if population  
358 structure is absent (**Supplementary Figure S19**). The possibility of residual  
359 stratification effects even in the UK Biobank is also supported by a recent study [23].  
360 Therefore, we remain cautious about interpreting any residual signals as “real”  
361 signals of polygenic adaptation.

362

## 363 Discussion

364

365 We have shown that estimates of population differences in polygenic height  
366 scores are strikingly attenuated with the UK Biobank GWAS data relative to  
367 previous analyses. We find some evidence for population-level differences in  
368 genetic height, but it can only be robustly seen at highly significant SNPs, because  
369 any signal at less significant P values is dominated by the effect of residual  
370 population structure. Even genome-wide significant SNPs in these analyses may be  
371 subtly affected by population structure, leading to continued overestimation of the  
372 effect. Thus, it is difficult to arrive at any quantitative conclusion regarding the  
373 proportion of the population differences that are due to statistical biases vs.  
374 population stratification of genetic height. It is equally challenging to test whether  
375 differences in genetic height are due to adaptation in response to environmental  
376 differences, migration and admixture (e.g. fraction of Steppe pastoralist ancestry),  
377 or relaxation of negative selection. Further, estimates of the number of independent

378 genetic loci contributing to height variation are sensitive to and likely confounded  
379 by residual population stratification.

380 We conclude that while effect estimates are highly concordant between  
381 GIANT and the UK Biobank when measured individually (**Supplementary Tables**  
382 **S4-S6, Supplementary Figure S1**), they are also influenced by residual population  
383 stratification that can mislead inferences about polygenic selection across  
384 populations in aggregate. Although these biases are subtle, in the context of tests for  
385 polygenic adaptation, which are driven by small systematic shifts in allele  
386 frequency, they can create highly significant artificial signals especially when SNPs  
387 that are not genome-wide significant are used to estimate genetic height. In no way  
388 do our results question the reliability of the genome-wide significant associations  
389 discovered in the GIANT cohort or the validity of the statistical methodology used in  
390 previously reported polygenic tests for adaptation. However, we urge caution in the  
391 interpretation of genome-wide signals of polygenic adaptation that are based on large  
392 number of sub-significant SNPs—particularly when using effect sizes derived from  
393 meta-analysis of heterogeneous cohorts which may be unable to fully control for  
394 population structure.

395

396

## 397 **Materials and Methods**

398

### 399 **Genome-wide association studies (GWAS)**

400 We analyzed height using publicly available summary statistics that were  
401 obtained either by meta-analysis of multiple GWAS or by a GWAS performed on a  
402 single large population. We used results from the GIANT Consortium  
403 (N=253,288)[14] and a GWAS performed on individuals of the UK Biobank (UKB  
404 Neale” or simply “UK Biobank (UKB)”, N=336,474)[15] who derive their ancestry  
405 almost entirely from the British Isles (identified as “white British ancestry” by the  
406 UK Biobank). We also used an independent GWAS that included all UK Biobank  
407 individuals irrespective of ancestry and relatedness (“UKB Loh”, N=459,327)[24].  
408 The Neale lab’s GWAS uses a linear model with sex and 10 principal components as  
409 covariates. Loh *et al.*’s GWAS uses a BOLT-LMM Bayesian mixed model. Association  
410 signals from the three studies are generally correlated for SNPs that are genome-  
411 wide significant in GIANT (see [[25]]).

412

413 We also used previously published family-based effect size estimates[7]  
414 (“NG2015 sibs”) as well as a number of test summary statistics on the UK Biobank  
415 that we generated to study the effects of population stratification. These are: “UKB  
416 Neale new” (Similar to UKB Neale, with less stringent ancestry definition and 20 PCs  
417 calculated within sample), “UKB all no PCs” (All UK Biobank samples included in the  
418 GWAS without correction by principal components), “UKB all 10 PCs” (All UK  
419 Biobank samples included in the GWAS with correction by 10 principal  
420 components), “UK WB no PCs” (Only “white British ancestry” samples included in  
421 the GWAS without correction by principal components), “UKB WB 10 PCs” (Only  
422 “white British ancestry” samples included in the GWAS with correction by 10  
423 principal components), “UKB sibs all” (All UK Biobank siblings included in the

424 GWAS), “UKB sibs WB” (Only UK Biobank “white British ancestry” siblings included  
425 in the GWAS) (Please see **Supplementary Table S1** for sample sizes and other  
426 details).

427

### 428 **Population genetic data for ancient and modern samples**

429 We analyzed ancient and modern populations for which genotype data are  
430 publicly available. For ancient samples[26,27], we computed scores after dividing  
431 populations into three previously described broad ancestry labels (HG = Hunter-  
432 Gatherer (n=162 individuals), EF = Early Farmer (n=485 individuals), and SP =  
433 Steppe Ancestry (n=465 individuals)). For modern samples available through the  
434 1000 genomes phase 3 release[28], we computed scores in 2 populations each from  
435 Northern Europe (GBR, CEU), Southern Europe (IBS, TSI), Africa (YRI, LWK), South  
436 Asia (PJL, BEB) and East Asia (CHB, JPT) (**Figure 1a, Supplementary Figures S2-  
437 S6**). In total, we analyzed 1112 ancient individuals, and 1005 modern individuals  
438 from 10 different populations in the 1000 genomes project (**Supplementary Table  
439 S2**). We used the allele frequency differences between the GBR and TSI populations  
440 for a number of analyses to study population stratification (**Figures 3c, 3d,  
441 Supplementary Figures S11-S14**). We also analyzed 19 European populations  
442 from the POPRES[22] dataset with at least 10 samples per population (**Figure 4,  
443 Supplementary Table S3, Supplementary Figures S16-S18**).

444

445 All ancient samples had ‘pseudo-haploid’ genotype calls at 1240k sites  
446 generated by selecting a single sequence randomly for each individual at each SNP<sup>9</sup>.  
447 Thus, there is only a single allele from each individual at each site, but adjacent  
448 alleles might come from either of the two haplotypes of the individual. We also re-  
449 computed scores in present-day 1000 genomes individuals using only pseudo-  
450 haploid calls at 1240k sites to allow for a fair comparison between ancient and  
451 modern samples (**Supplementary Figure S6**).

452

### 453 **Polygenic scores**

454 The polygenic scores, confidence intervals and test statistics (against the null  
455 model of genetic drift) were computed based on the methodology developed in refs  
456 ([5],[29]). We computed the polygenic score ( $Z$ ) for a trait in a population by taking  
457 the sum of allele frequencies across  $L$  sites associated with the trait, weighting each  
458 allele’s frequency by its effect on the trait ( $\beta_l$ ).

459

$$Z = \sum_l^L \beta_l p_l$$

460

461 All polygenic scores are plotted in centered standardized form ( $\frac{Z-\mu}{\sqrt{V_A}}$ ), where  
462  $\mu = \sum_l \beta_l \bar{p}_l$ ,  $V_A = \sum_l \beta_l^2 \bar{p}_l(1 - \bar{p}_l)$ , and  $\bar{p}_l$  is the mean allele frequency across all  
463 populations analyzed.

464

465 Polygenic scores were computed using independent GWAS SNPs associated

466 with height in three main ways: (1) The genome was divided into ~1700 non-  
467 overlapping linkage disequilibrium (LD) blocks[30], and the SNP with the lowest P  
468 value within each block was picked to give a set of ~1700 independent SNPs for  
469 each height GWAS used (all SNPs for which effect sizes are available were  
470 considered) similarly to ref. [29]. In (2) and (3), Plink's[31,32] clumping procedure  
471 was used to make independent "clumps" of SNPs for each GWAS at different P value  
472 thresholds. This procedure selects SNPs below a given P value threshold as index  
473 SNPs to start clumps around, and then reduces all SNPs ( $P < 0.01$ ) that are in LD  
474 with these index SNPs (above an  $r^2$  threshold, 0.1) and within a physical distance of  
475 them (1 Mb) into clumps with them. Clumps are preferentially formed around index  
476 SNPs with the lowest P value in a greedy manner. The index SNP from each clump is  
477 then picked for further polygenic score analyses. The algorithm is also greedy such  
478 that each SNP will only appear in one clump if at all. We clumped each GWAS to  
479 obtain (2) a set of independent sub-significant SNPs associated with height ( $P <$   
480  $0.01$ ) similarly to ref. [7], and (3) a set of genome-wide significant SNPs associated  
481 with height ( $P < 5 \times 10^{-8}$ ). The 1000 genomes phase 3 dataset was used as the  
482 reference panel for computing LD for the clumping procedure.

483

484 The estimated effect sizes for these three sets of SNPs from each GWAS was  
485 used to compute scores. Only autosomal SNPs were used for all analyses to avoid  
486 creating artificial mean differences between populations with different numbers of  
487 males and females.

488

489 The 95% credible intervals were constructed by assuming that the posterior  
490 of the underlying population allele frequency is independent across loci and  
491 populations and follows a beta distribution. We updated a Uniform prior  
492 distribution with allele counts from ancient and modern populations to obtain the  
493 posterior distribution at each locus in each population. We estimated the variance of  
494 the polygenic score  $V_Z$  using the variance of the posterior distribution at each locus,  
495 and computed the width of 95% credible intervals as  $1.96\sqrt{V_Z}$  for each population.

496

497 The  $Q_x$  test statistic measures the degree of overdispersion of the mean  
498 population polygenic score compared to a null model of genetic drift. It assumes that  
499 the vector of mean centered mean population polygenic score follows a multivariate  
500 normal distribution:  $Z \sim \text{MVN}(0, 2 V_A F)$ , where  $V_A$  is the additive genetic variance of  
501 the ancestral population and  $F$  is a square matrix describing the population  
502 structure. This is equivalent to the univariate case of the test statistic used in ref.  
503 [7]. The latitude test statistic assumes that  $Y'Z \sim N(0, 2 V_A Y'FY)$ , where  $Y$  is a mean  
504 centered vector of latitudes for each population.[33]

505

### 506 **tSDS analysis**

507 The Singleton Density Score (SDS) method identifies signatures of recent  
508 positive selection based on a maximum likelihood estimate of the log-ratio of the  
509 mean tip-branch length of the derived vs. the ancestral allele at a given SNP. The tip-  
510 branch lengths are inferred from the average distance of each allele to the nearest



511 singleton SNP across all individuals in a sequencing panel. When the sign of the SDS  
512 scores is aligned with the trait-increasing or trait-decreasing allele in the effect  
513 estimates of a GWAS, the Spearman correlation between the resulting tSDS scores  
514 and the GWAS P values has been proposed as an estimate of recent positive  
515 selection on polygenic traits.

516  
517 Here, we applied the tSDS method using pre-computed Singleton Density  
518 Scores for 4,451,435 autosomal SNPs obtained from 3,195 individuals from the  
519 UK10K project [12,17] for SNPs associated with height in GIANT and the UK biobank  
520 (**Figure 1b**) and in different summary statistics (**Figure 3, Supplementary Figures**  
521 **S7-S8**). After normalizing SDS scores in each 1% allele frequency bin to mean zero  
522 and unit variance, excluding SNPs from the MHC region on chromosome 6 and  
523 aligning the sign of the SDS scores to the height increasing alleles (resulting in tSDS  
524 scores), we computed the Spearman correlation coefficient between the tSDS score  
525 and the GWAS P value. The tSDS Spearman correlation standard errors and P values  
526 were computed using a block-jackknife approach, where each block of 1% of all  
527 SNPs ordered by genomic location was left out and the Spearman correlation  
528 coefficient was computed on the remaining SNPs. We also compared the tSDS score  
529 distributions for only genome-wide significant SNPs (**Figure 3b**).

530

### 531 **Population structure analysis**

532 To compute SNP loadings of the principal components of population  
533 structure (PC loadings) in the 1000 genomes data (**Figure 2, Supplementary**  
534 **Figure S10**), we first computed PC scores for each individual. We used SNPs that  
535 had matching alleles in 1000 genomes, GIANT and UK Biobank, that had minor allele  
536 frequency > 5% in 1000 genomes, and that were not located in the MHC locus, the  
537 chromosome 8 inversion region, or regions of long LD. After LD pruning to SNPs  
538 with  $r^2 < 0.2$  relative to each other, PCA was performed in PLINK on the 187,160  
539 remaining SNPs. In order to get SNP PC loadings for more SNPs than those that were  
540 used to compute PC scores, we performed linear regressions of the PC scores on the  
541 genotype allele count of each SNP (after controlling for sex) and used the resulting  
542 regression coefficients as the SNP PC loading estimates.

543

544

### 545 **Acknowledgements**

546

547 We thank Alkes Price, Jeremy Berg, Graham Coop, Jonathan Pritchard, Matthew  
548 Robinson, Jian Yang, Peter Visscher, Hilary Finucane, John Novembre and Raymond  
549 Walters for useful discussions and comments that significantly improved the  
550 manuscript. The study was supported by National Institute of Health grants  
551 HG009088, MH101244 (M.S., R.M., B.N. and S.S.) and GM127131 (S.S.). D.R. was  
552 supported by National Institutes of Health grant GM100233 and HG006399, an Allen  
553 Discovery Center of the Paul Allen Foundation, and the Howard Hughes Medical  
554 Institute.

555

556

557

## 558 **Competing interests**

559

560 The authors declare no competing interests.

561

562

## 563 **References**

564

- 565 [1] Yang J, Benyamin B, McEvoy BP, Gordon S, Henders AK, Nyholt DR, Madden P  
566 a, Heath AC, Martin NG, Montgomery GW, Goddard ME, Visscher PM. Common  
567 SNPs explain a large proportion of the heritability for human height. *Nat*  
568 *Genet* 2010;42:565–9. doi:10.1038/ng.608.
- 569 [2] Boyle EA, Li YI, Pritchard JK. An Expanded View of Complex Traits: From  
570 Polygenic to Omnigenic. *Cell* 2017;169:1177–86.  
571 doi:10.1016/j.cell.2017.05.038.
- 572 [3] Zeng J, de Vlaming R, Wu Y, Robinson MR, Lloyd-Jones LR, Yengo L, Yap CX,  
573 Xue A, Sidorenko J, McRae AF, Powell JE, Montgomery GW, Metspalu A, Esko T,  
574 Gibson G, Wray NR, Visscher PM, Yang J. Signatures of negative selection in  
575 the genetic architecture of human complex traits. *Nat Genet* 2018;50:746–53.  
576 doi:10.1038/s41588-018-0101-4.
- 577 [4] Turchin MC, Chiang CWK, Palmer CD, Sankararaman S, Reich D, Hirschhorn  
578 JN. Evidence of widespread selection on standing variation in Europe at  
579 height-associated SNPs. *Nat Genet* 2012;44:1015–9. doi:10.1038/ng.2368.
- 580 [5] Berg JJ, Coop G. A Population Genetic Signal of Polygenic Adaptation. *PLoS*  
581 *Genet* 2014;10:e1004412. doi:10.1371/journal.pgen.1004412.
- 582 [6] Mathieson I et al. Genome-wide patterns of selection in 230 ancient Eurasians.  
583 *Nature* 2016;528:499–503. doi:10.1038/nature16152.Genome-wide.
- 584 [7] Robinson MR, Hemani G, Medina-Gomez C, Mezzavilla M, Esko T, Shakhbazov  
585 K, Powell JE, Vinkhuyzen A, Berndt SI, Gustafsson S, Justice AE, Kahali B, Locke  
586 AE, Pers TH, Vedantam S, Wood AR, Van Rheenen W, Andreassen OA,  
587 Gasparini P, et al. Population genetic differentiation of height and body mass  
588 index across Europe. *Nat Genet* 2015;47:1357–61. doi:10.1038/ng.3401.
- 589 [8] Berg JJ, Zhang X, Coop G. Polygenic Adaptation has Impacted Multiple  
590 Anthropometric Traits. *bioRxiv* 2017. doi:10.1101/167551.
- 591 [9] Racimo F, Berg JJ, Pickrell JK. Detecting polygenic adaptation in admixture  
592 graphs. *Genetics* 2018;208:1565–84. doi:10.1534/genetics.117.300489.
- 593 [10] Guo J, Wu Y, Zhu Z, Zheng Z, Trzaskowski M, Zeng J, Robinson MR, Visscher  
594 PM, Yang J. Global genetic differentiation of complex traits shaped by natural  
595 selection in humans. *Nat Commun* 2018;9:1–9. doi:10.1038/s41467-018-  
596 04191-y.
- 597 [11] Simonti C, Stein J, Thompson P, Fisher SE, Dan J. Polygenic selection underlies  
598 evolution of human brain structure and behavioral traits. *BioRxiv* 2017:1–51.  
599 doi:<https://doi.org/10.1101/164707>.
- 600 [12] Field Y, Boyle EA, Telis N, Gao Z, Gaulton KJ, Golan D, Yengo L, Rocheleau G,  
601 Froguel P, McCarthy MI, Pritchard JK. Detection of human adaptation during  
602 the past 2,000 years. *Science* 2016;354:760–4. doi:10.1126/science.aag0776.

- 603 [13] Allen HL, Estrada K, Lettre G, Berndt SI, Weedon MN, Rivadeneira F, Willer CJ,  
604 Jackson AU, Vedantam S, Raychaudhuri S, Ferreira T, Wood AR, Weyant RJ,  
605 Segrè A V., Speliotes EK, Wheeler E, Soranzo N, Park JH, Yang J, et al. Hundreds  
606 of variants clustered in genomic loci and biological pathways affect human  
607 height. *Nature* 2010;467:832–8. doi:10.1038/nature09410.
- 608 [14] Wood AR, Esko T, Yang J, Vedantam S, Pers TH, Gustafsson S, Chu AY, Estrada  
609 K, Luan J, Kutalik Z, Amin N, Buchkovich ML, Croteau-Chonka DC, Day FR,  
610 Duan Y, Fall T, Fehrmann R, Ferreira T, Jackson AU, et al. Defining the role of  
611 common variation in the genomic and biological architecture of adult human  
612 height. *Nat Genet* 2014;46:1173–86. doi:10.1038/ng.3097.
- 613 [15] Churchhouse C, Neale BM, Abbott L, Anttila V, Aragam K, Baumann A, Bloom J,  
614 Bryant S, Churchhouse C, Cole J, Daly MJ, Damian R, Ganna A, Goldstein J, Haas  
615 M, Hirschhorn J, Howrigan D, Jones E, King D, et al. Rapid gwas of thousands of  
616 phenotypes for 337,000 samples in the uk biobank. 2017.  
617 <https://sites.google.com/broadinstitute.org/ukbbgwasresults/home?authuser=0> (accessed February 11, 2018).
- 618 [16] Martin AR, Gignoux CR, Walters RK, Wojcik GL, Neale BM, Gravel S, Daly MJ,  
619 Bustamante CD. Human Demographic History Impacts Genetic Risk Prediction  
620 across Diverse Populations. *Am J Hum Genet* 2017;100:635–49.  
621 doi:10.1016/j.ajhg.2017.03.004.
- 622 [17] Field Y, Boyle E, Telis N, Gao Z, Gaulton K, Golan D, Yengo L, Rocheleau G,  
623 Froguel P, McCarthy M, Pritchard J. Data from: Detection of human adaptation  
624 during the past 2000 years. Dryad Digital Repository. 2016.  
625 doi:<https://doi.org/10.5061/dryad.kd58f>.
- 626 [18] Novembre J, Barton NH. Tread Lightly Interpreting Polygenic Tests of  
627 Selection. *Genetics* 2018;208:1351–5. doi:10.1534/GENETICS.118.300786.
- 628 [19] Patterson N, Price AL, Reich D. Population structure and eigenanalysis. *PLoS*  
629 *Genet* 2006;2:2074–93. doi:10.1371/journal.pgen.0020190.
- 630 [20] Price AL, Patterson NJ, Plenge RM, Weinblatt ME, Shadick NA, Reich D.  
631 Principal components analysis corrects for stratification in genome-wide  
632 association studies. *Nat Genet* 2006;38:904–9. doi:10.1038/ng1847.
- 633 [21] Sohail M, Vakhrusheva OA, Sul JH, Pulit SL, Francioli LC, Van Den Berg LH,  
634 Veldink JH, De Bakker PIW, Bazykin GA, Kondrashov AS, Sunyaev SR. Negative  
635 selection in humans and fruit flies involves synergistic epistasis. *Science*  
636 2017;356:539–42. doi:10.1126/science.aah5238.
- 637 [22] Nelson MR, Bryc K, King KS, Indap A, Boyko AR, Novembre J, Briley LP,  
638 Maruyama Y, Waterworth DM, Waeber G, Vollenweider P, Oksenberg JR,  
639 Hauser SL, Stirnadel HA, Kooner JS, Chambers JC, Jones B, Mooser V,  
640 Bustamante CD, et al. The Population Reference Sample, POPRES: A Resource  
641 for Population, Disease, and Pharmacological Genetics Research. *Am J Hum*  
642 *Genet* 2008;83:347–58. doi:10.1016/j.ajhg.2008.08.005.
- 643 [23] Haworth S, Mitchell R, Corbin L, Wade KH, Dudding T, Budu-Aggrey A,  
644 Carslake D, Hemani G, Paternoster L, Smith GD, Davies N, Lawson D, Timpson  
645 N. Common genetic variants and health outcomes appear geographically  
646 structured in the UK Biobank sample: Old concerns returning and their  
647 implications. *bioRxiv* 2018:294876. doi:10.1101/294876.
- 648

- 649 [24] Loh P-R, Kichaev G, Gazal S, Schoech A, Price AL. Mixed model association for  
650 biobank-scale data sets. *bioRxiv* 2017. doi:10.1101/194944.
- 651 [25] Yengo L, Sidorenko J, Kemper KE, Zheng Z, Wood AR, Weedon MN, Frayling  
652 TM, Hirschhorn J, Yang J, Peter M. Meta-analysis of genome-wide association  
653 studies for height and body mass index in ~700,000 individuals of European  
654 ancestry. *bioRxiv* 2018. doi:<https://doi.org/10.1101/274654>.
- 655 [26] Haak W, Lazaridis I, Patterson N, Rohland N, Mallick S, Llamas B, Brandt G,  
656 Nordenfelt S, Harney E, Stewardson K, Fu Q, Mittnik A, Bánffy E, Economou C,  
657 Francken M, Friederich S, Pena RG, Hallgren F, Khartanovich V, et al. Massive  
658 migration from the steppe was a source for Indo-European languages in  
659 Europe. *Nature* 2015;522:207–11. doi:10.1038/nature14317.
- 660 [27] Mathieson I, Alpaslan-Roodenberg S, Posth C, Szécsényi-Nagy A, Rohland N,  
661 Mallick S, Olalde I, Broomandkoshbacht N, Candilio F, Cheronet O, Fernandes  
662 D, Ferry M, Gamarra B, Fortes GG, Haak W, Harney E, Jones E, Keating D,  
663 Krause-Kyora B, et al. The genomic history of southeastern Europe. *Nature*  
664 2018. doi:10.1038/nature25778.
- 665 [28] Auton A, Abecasis GR, Altshuler DM, Durbin RM, Bentley DR, Chakravarti A,  
666 Clark AG, Donnelly P, Eichler EE, Flicek P, Gabriel SB, Gibbs RA, Green ED,  
667 Hurles ME, Knoppers BM, Korbel JO, Lander ES, Lee C, Lehrach H, et al. A  
668 global reference for human genetic variation. *Nature* 2015;526:68–74.  
669 doi:10.1038/nature15393.
- 670 [29] Berg JJ, Zhang X, Coop G. Polygenic Adaptation has Impacted Multiple  
671 Anthropometric Traits. *bioRxiv* 2017:1–38. doi:10.1101/167551.
- 672 [30] Berisa T, Pickrell JK. Approximately independent linkage disequilibrium  
673 blocks in human populations. *Bioinformatics* 2015;32:283–5.  
674 doi:10.1093/bioinformatics/btv546.
- 675 [31] Chang CC, Chow CC, Tellier LCAM, Vattikuti S, Purcell SM, Lee JJ. Second-  
676 generation PLINK: Rising to the challenge of larger and richer datasets.  
677 *Gigascience* 2015;4:1–16. doi:10.1186/s13742-015-0047-8.
- 678 [32] Purcell S, Chang C. PLINK 1.9. *Gigascience* 2015. [www.cog-  
genomics.org/plink/1.9/](http://www.cog-<br/>679 genomics.org/plink/1.9/) (accessed May 1, 2018).
- 680 [33] Berg JJ, Harpak A, Sinnott-Armstrong N, Joergensen AM, Mostafavi H, Field Y,  
681 Boyle EA, Zhang X, Racimo F, Pritchard JK, Coop G. Reduced signal for  
682 polygenic adaptation of height in UK Biobank. 2018. doi:10.1101/354951.  
683  
684

685 **Supplementary Note**

686

687

688 **Characterization of stratification effects in GIANT and UK Biobank**

689

690

691

692

693

694

695

696

697

698

699

700

701

702

703

704

To better understand how stratification influences the differences observed between GIANT and UK Biobank, we grouped SNPs by their P value in GIANT and by their P value in UK Biobank (**Supplementary Figure S1**). First, we observe that SNPs with low GIANT P values, but not SNPs with low UK Biobank P values, show greater differences in estimated effect size (**Supplementary Figure S1a**). However, the relative difference in beta values decreases for lower P values, and the correlation among betas approaches one at the most significant SNPs (**Supplementary Figure S1b,c**). In GIANT, more significant SNPs exhibit a greater correlation between effect estimates and GBR-TSI allele frequency differences, while this is not observed in the UK Biobank (**Supplementary Figure S1d**). Consequently, the difference in UK Biobank and GIANT effect size estimates is more correlated to GBR-TSI allele frequency differences at more significant SNPs (**Supplementary Figure S1e**). This suggests that while stratification effects are larger at more significant SNPs, the magnitude of stratification-independent effects is even larger, which may be why polygenic score results converge when using only the most significant SNPs.

705

706

707

708

709

710

711

712

713

714

715

716

717

718

719

Next, we investigated how P value inflation as measured by  $\lambda_{GC}$  is influenced by stratification, by grouping SNPs into deciles based on their GBR-TSI allele frequency difference (**Supplementary Figure S12**). To guard against the effect of observing lower P values at more differentiated SNPs simply because those SNPs are more common on average, we restrict this analysis to SNPs with mean MAF > 20%. We find that  $\lambda_{GC}$  is not much increased for SNPs that are more differentiated between populations. However, in the presence of stratification, there is a large difference between  $\lambda_{GC}$  of height increasing alleles and  $\lambda_{GC}$  of height decreasing alleles (**Supplementary Figure S12b**). Similarly, there are large effects on the frequency with which a SNP is estimated to be height increasing or height decreasing. In GIANT, SNPs in the highest decile of GBR-TSI allele frequency differences are 52% more often estimated to be height increasing than height decreasing, while these rates are close to even in the UK Biobank (**Supplementary Figure S12a**).

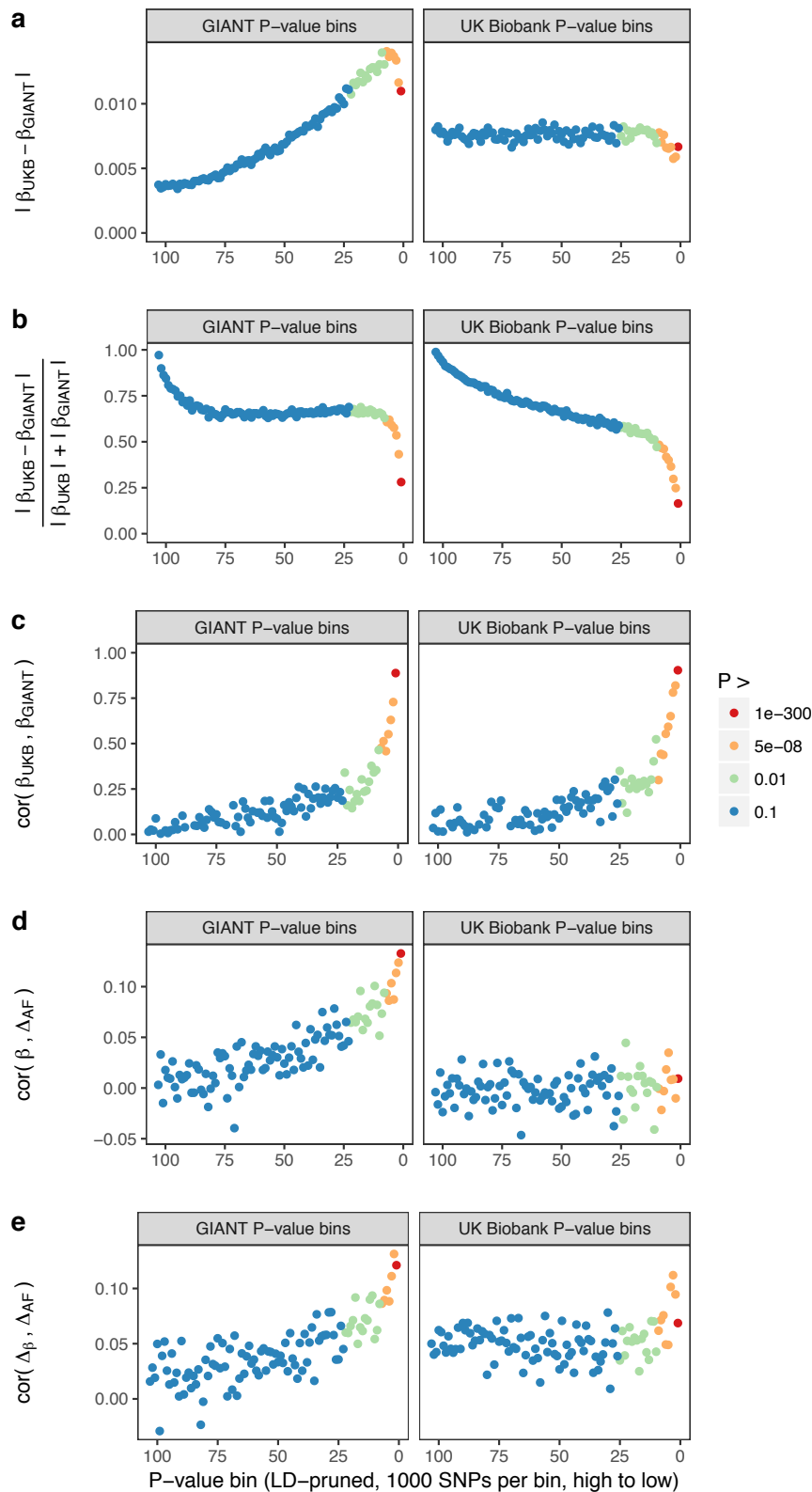


720 **Supplementary figures**

721

722

**Figure S1. Beta concordance between GIANT and UK Biobank by P value bin.**



723

724

725 **Figure S1 (Continued). Beta concordance between GIANT and UK Biobank by P value**  
726 **bin.**

727 SNPs intersecting between GIANT and UKB were LD-pruned (using PLINK 1.9 with  
728 parameters  $r^2 = 0.1$ , window size = 1 Mb, step size 5) and grouped into P value bins of 500  
729 SNPs each, for P values from GIANT (left) and UKB (right). Color is based on the smallest P  
730 value in each bin.

731 (a) Absolute beta difference. As expected, absolute beta and thus the absolute beta  
732 difference increases across P value bins.

733 (b) Absolute beta difference, scaled by the sum of absolute betas. The relative difference of  
734 absolute betas decreases for lower P values.

735 (c) Pearson correlation among betas approaches one for the lowest P values.

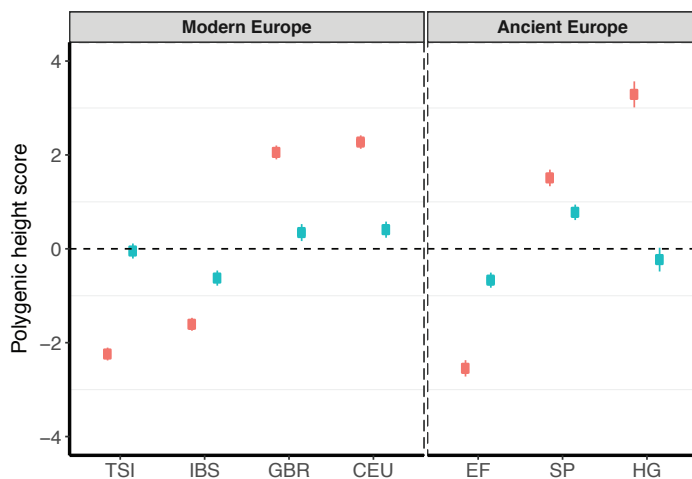
736 (d) Correlation between beta (left GIANT, right UK Biobank) and GBR-TSI allele frequency  
737 difference.

738 (e) Correlation between the GIANT - UK Biobank beta difference and GBR-TSI allele  
739 frequency difference.

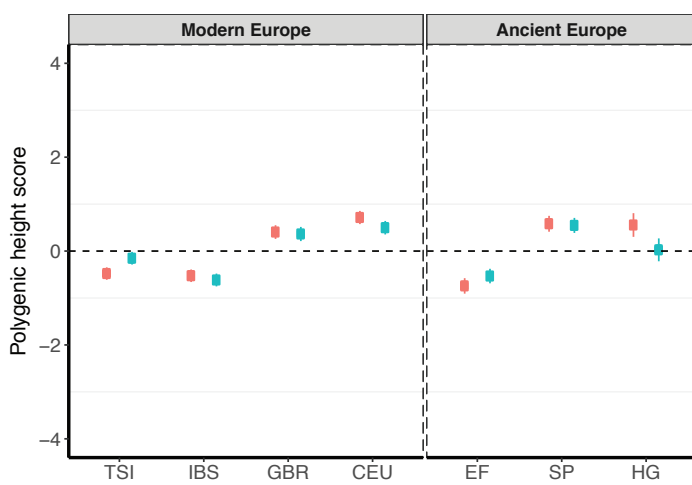
740

741

a. clumped,  $r^2 < 0.1$ , 1Mb,  $P < 0.01$



b. clumped,  $r^2 < 0.1$ , 1Mb,  $P < 5 \times 10^{-8}$



GIANT UK Biobank

742

743

744 **Figure S2. Polygenic scores using height-associated SNPs from GIANT- and UK**

745 **Biobank-based GWA studies for clumped SNPs in present-day and ancient Europeans.**

746 Scores are shown, centered by the average score across modern and ancient populations

747 respectively and standardized by the square root of the additive variance. SNPs were LD-

748 pruned with plink's clumping procedure for parameters: (a)  $r^2 < 0.1$ , 1Mb,  $P < 0.01$  (81,941

749 SNPs in UKB, 22,561 SNPs in GIANT), and (b)  $r^2 < 0.1$ , 1Mb,  $P < 5 \times 10^{-8}$  (4478 SNPs in UKB,

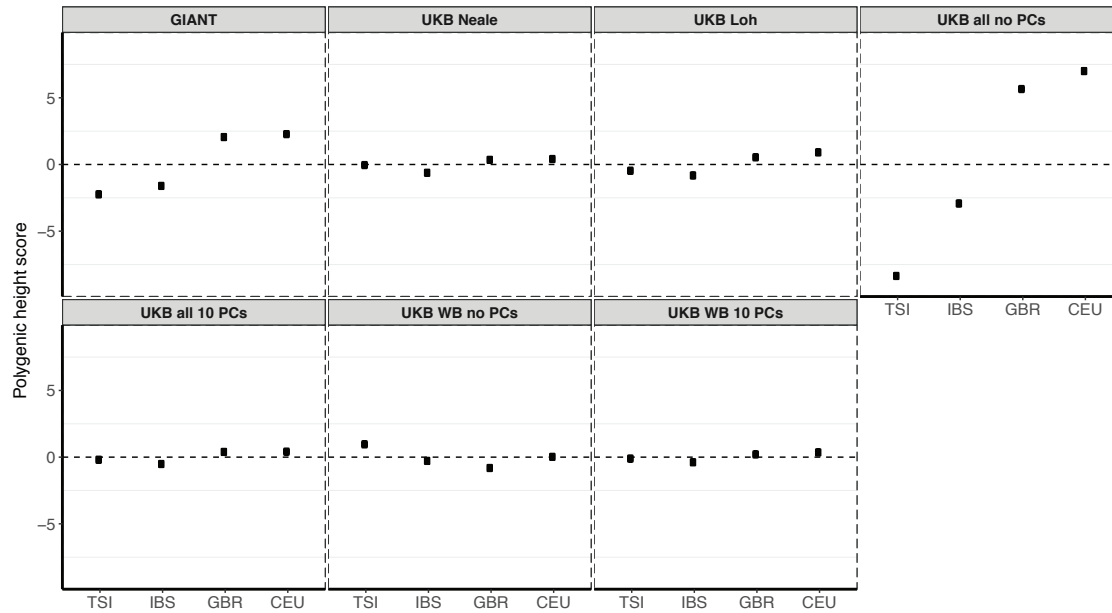
750 1442 SNPs in GIANT). Modern populations are shown from Northern Europe (CEU, GBR)

751 and Southern Europe (IBS, TSI) from the 1000 genomes project. Ancient populations are

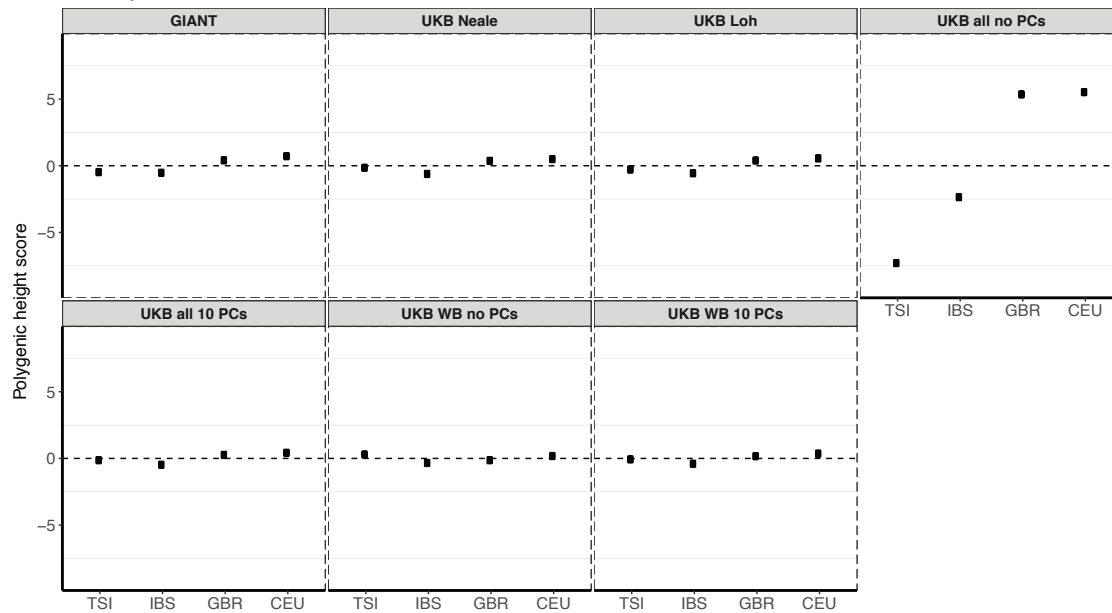
752 shown in three meta-populations, hunter-gatherers (HG), early farmers (EF) and Steppe

Ancestry (SP). Error bars are drawn at 95% credible intervals.

a. clumped,  $r^2 < 0.1$ , 1Mb,  $P < 0.01$



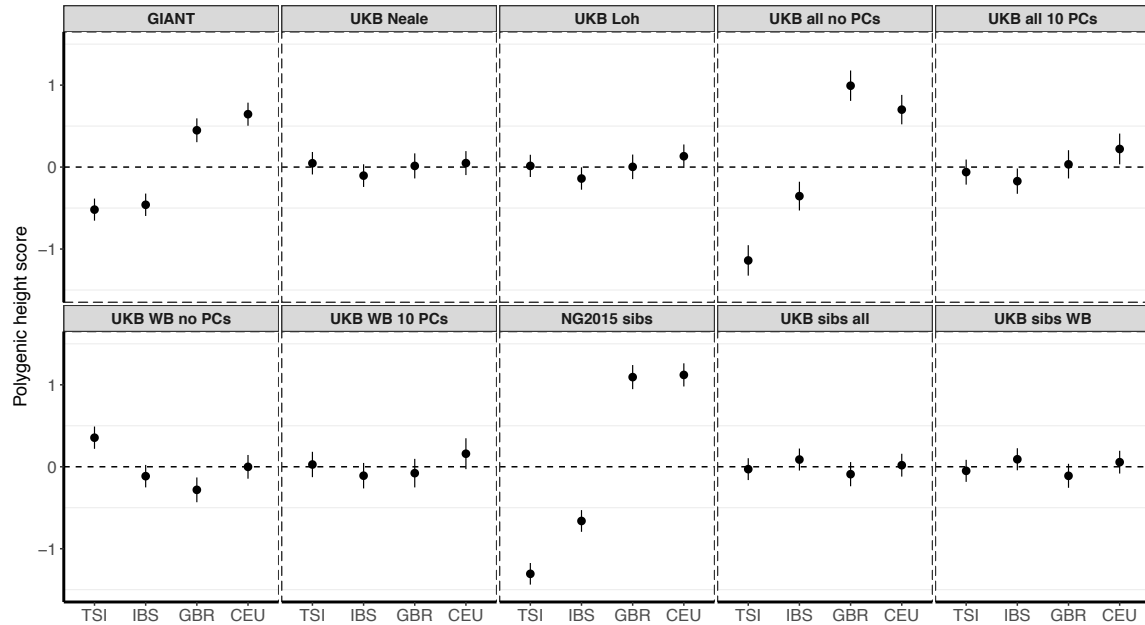
b. clumped,  $r^2 < 0.1$ , 1Mb,  $P < 5 \times 10^{-8}$



753  
754  
755  
756  
757  
758  
759  
760  
761  
762

**Figure S3. Polygenic height scores in 1000 genomes European populations using clumped SNPs and effect sizes from different summary statistics.**

Polygenic scores in modern European populations are shown using SNPs LD-pruned with PLINK's clumping procedure with parameters: (a)  $r^2 < 0.1$ , 1Mb,  $P < 0.01$ , and (b)  $r^2 < 0.1$ , 1Mb,  $P < 5 \times 10^{-8}$ . Scores are centered by the average score across populations and standardized by the square root of the additive variance. Modern populations are shown from Northern Europe (CEU, GBR) and Southern Europe (IBS, TSI) from the 1000 Genomes Project. Error bars are drawn at 95% credible intervals.

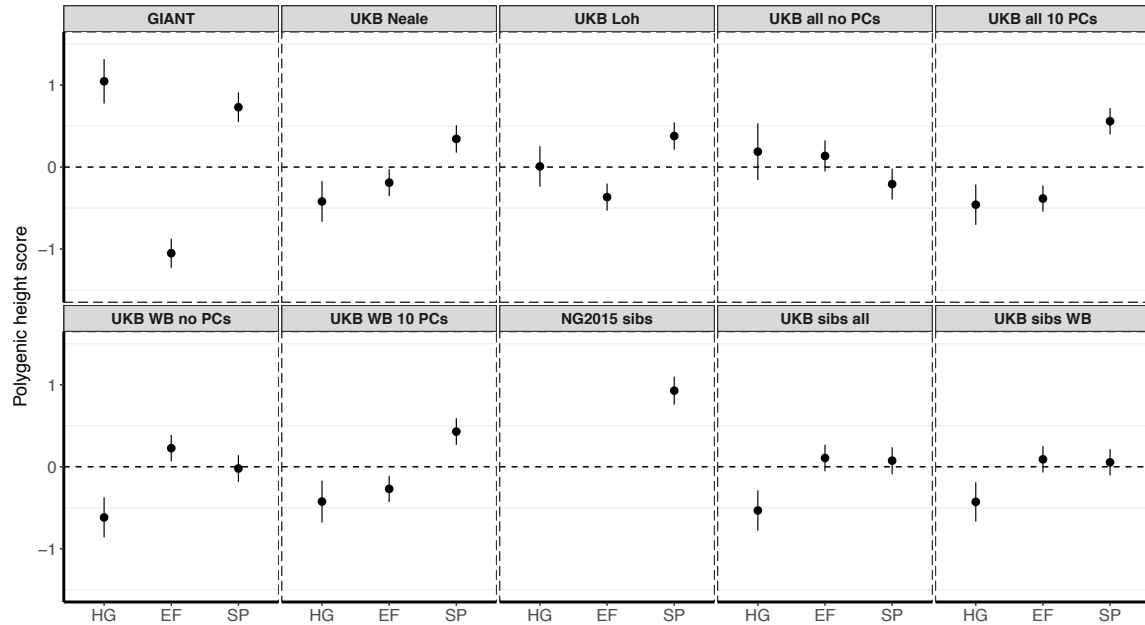


763  
764  
765  
766  
767  
768  
769  
770  
771  
772  
773

**Figure S4. Polygenic height scores in 1000 Genomes Project European populations using ~1700 independent SNPs and effect sizes from different summary statistics.**

Polygenic scores in modern European populations are shown using SNPs LD-pruned by picking the SNP with the lowest P value in each of ~1700 LD-independent blocks genome-wide. Scores are centered by the average score across populations and standardized by the square root of the additive variance. Modern populations are shown from Northern Europe (CEU, GBR) and Southern Europe (IBS, TSI) from the 1000 Genomes Project. Error bars are drawn at 95% credible intervals.

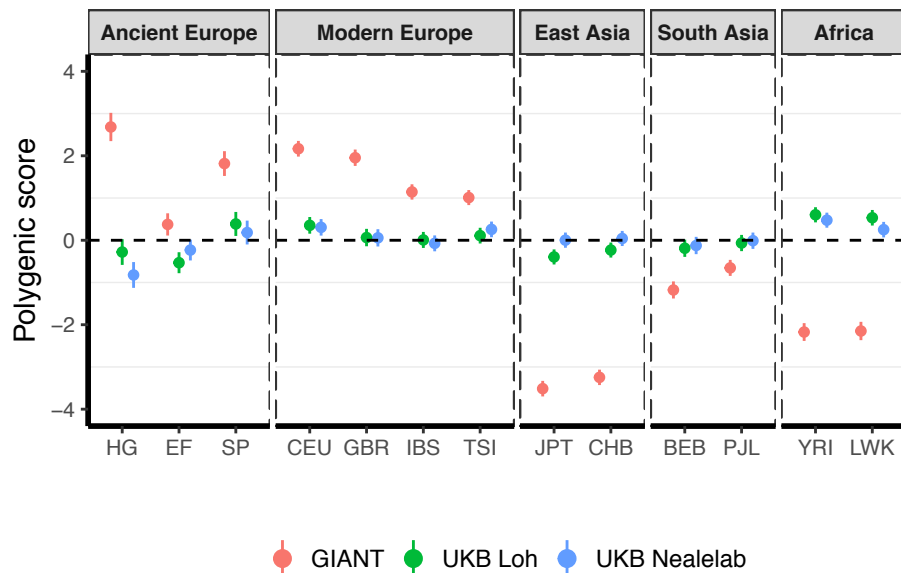




774  
775  
776  
777  
778  
779  
780  
781  
782  
783  
784  
785

**Figure S5. Polygenic height scores in ancient populations using ~1700 independent SNPs and effect sizes from different summary statistics.**

Polygenic scores in ancient meta-populations are shown using SNPs LD-pruned by picking the SNP with the lowest P value in each of ~1700 LD-independent blocks genome-wide. Scores are centered by the average score across populations and standardized by the square root of the additive variance. Error bars are drawn at 95% credible intervals. . Ancient populations are shown in three meta-populations (HG = Hunter-Gatherer (n=162 individuals), EF = Early Farmer (n=485 individuals), and SP = Steppe Ancestry (n=465 individuals)). The y-axis is truncated at (-1.5, 1.5) for all panels – this omits two points in the NG2015 sibs panel: HG [3.86 (CI: 3.60, 4.12)], EF [-2.18(CI: -2.34, -2.02)].



786

787

788 **Figure S6. Polygenic height scores in ancient and global modern populations using**  
789 **three different GWAS.**

790 All scores are centered by the average score across all populations ( $\mu_{GIANT} = 0.645, \mu_{LOH} =$

791  $-0.219, \mu_{NEALELAB} = -0.259$ ) and standardized by the square root of the additive variance.

792 Error bars are drawn at 95% credible intervals. Modern populations are shown from

793 Northern Europe (CEU, GBR), Southern Europe (IBS, TSI), South Asia (PJI, BEB), East Asia

794 (CHB, JPT) and Africa (YRI, LWK). Ancient populations are shown in three meta-

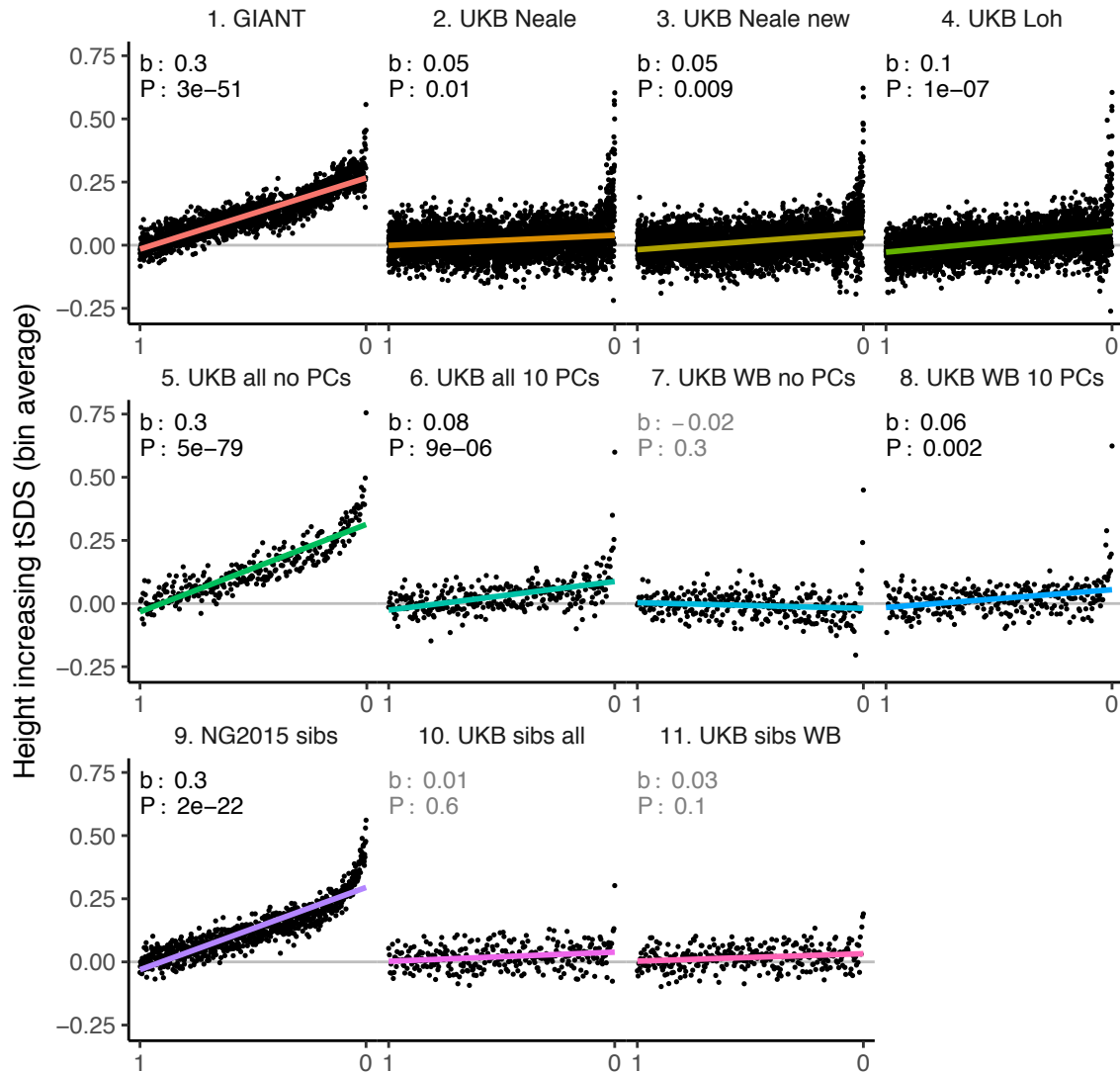
795 populations, hunter-gatherers (HG), early farmers (EF) and Steppe Ancestry (SP). Pseudo-

796 haploid genotype calls were made for modern populations before computing polygenic

797 scores to allow fair comparison with ancient DNA. SNPs were LD-pruned by picking the SNP

798 with the lowest P value in each of  $\sim 1700$  LD-independent blocks genome-wide.

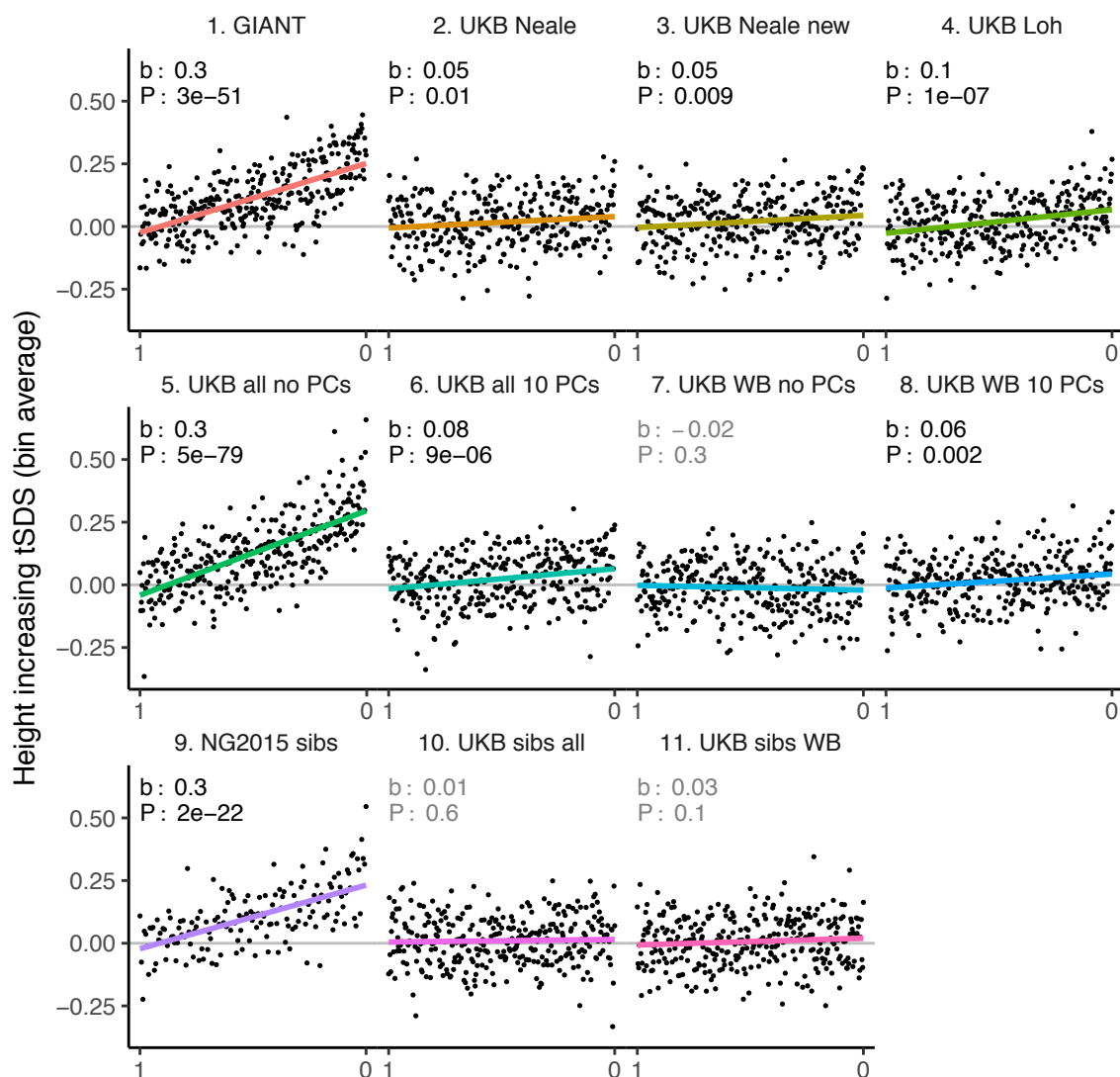
799



800

801 **Figure S7. tSDS for height-increasing alleles using effect sizes from different summary**  
 802 **statistics.**

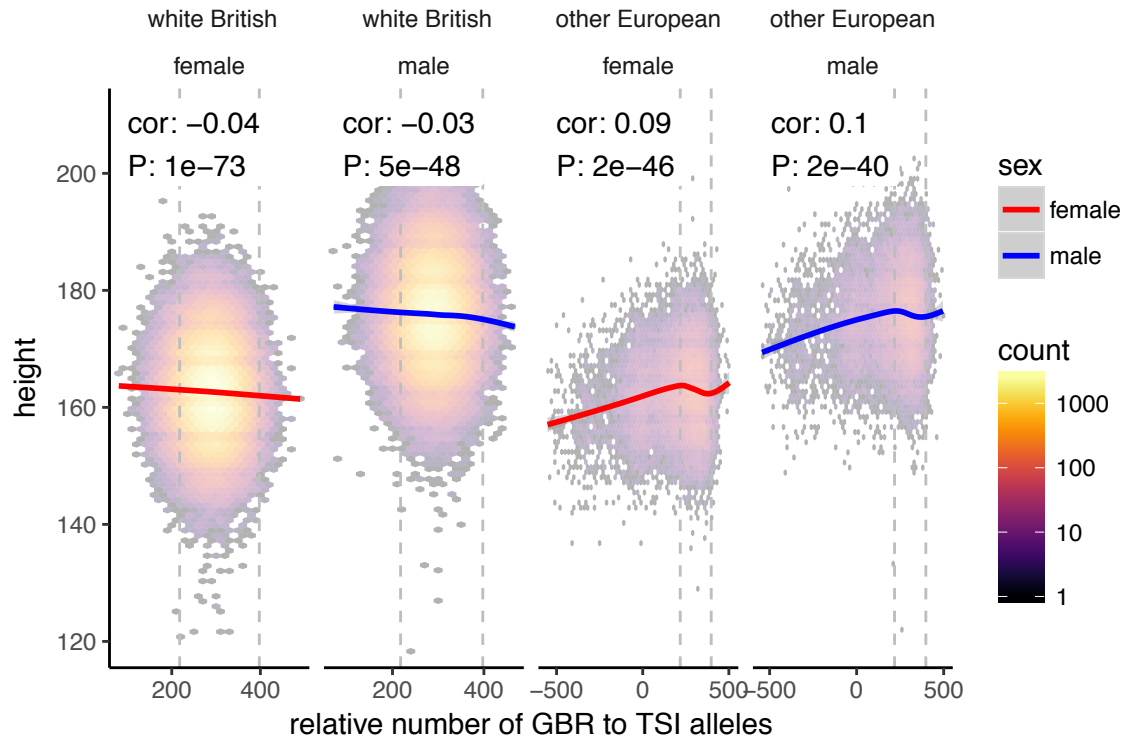
803 SNPs were ordered by GWAS P value and grouped into bins of 1000 SNPs each. The mean  
 804 tSDS score within each P value bin is shown on the y-axis. In contrast to Figure 3, where  
 805 Spearman correlation coefficients and Jackknife standard errors were computed, here we  
 806 show the regression slope and P value, which were computed on the un-binned data. The  
 807 gray line indicates the null-expectation, and the colored lines are the linear regression fit.  
 808 The lowest P value bin in panel 5 with a y-axis value of 1.5 has been omitted.



809  
810  
811  
812  
813  
814  
815  
816  
817  
818  
819  
820

**Figure S8. tSDS for LD-pruned height-increasing alleles using effect sizes from different summary statistics.**

Binning SNPs by P value can lead to spurious results at the low P value bins when SNPs are in LD (Figure S15). Here, LD-pruned SNPs were ordered by GWAS P value and grouped into bins of 100 SNPs each. The mean tSDS score within each P value bin is shown on the y-axis. In contrast to Figure 3, where Spearman correlation coefficients and Jackknife standard errors were computed, here we show the regression slope and P value, which were computed on the un-binned data. The gray line indicates the null-expectation, and the colored lines are the linear regression fit.



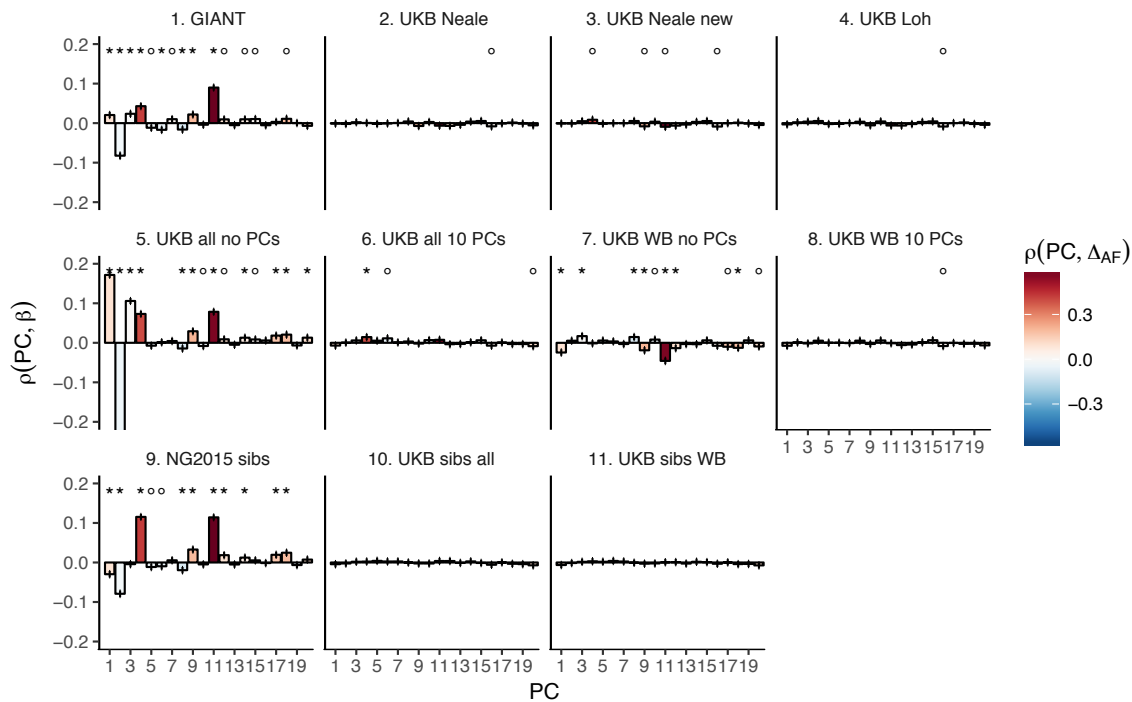
821  
822  
823  
824  
825  
826  
827  
828  
829  
830  
831  
832  
833

**Figure S9. Height (cm) in the UKB as a function of GBR-TSI score.**

We computed the relative number of GBR to TSI related alleles in each sample by multiplying the allele frequency difference by the number of alternative alleles in each sample in the UKB (GBR-TSI score). Vertical lines indicate 5th and 95th percentile of among-white British samples, showing that there is a significant negative relationship between the GBR-TSI allele sharing score and height (in cm). Among all other broadly European samples, this relationship is significantly positive across the whole range, but again significantly negative in the white British range. This can explain why stratification effects go in opposite directions in a UKB height GWAS of white British samples and a UKB height GWAS of all samples. Here, other European samples were defined as those that lie within the mean +/- 24 standard deviations along the first six principal components.



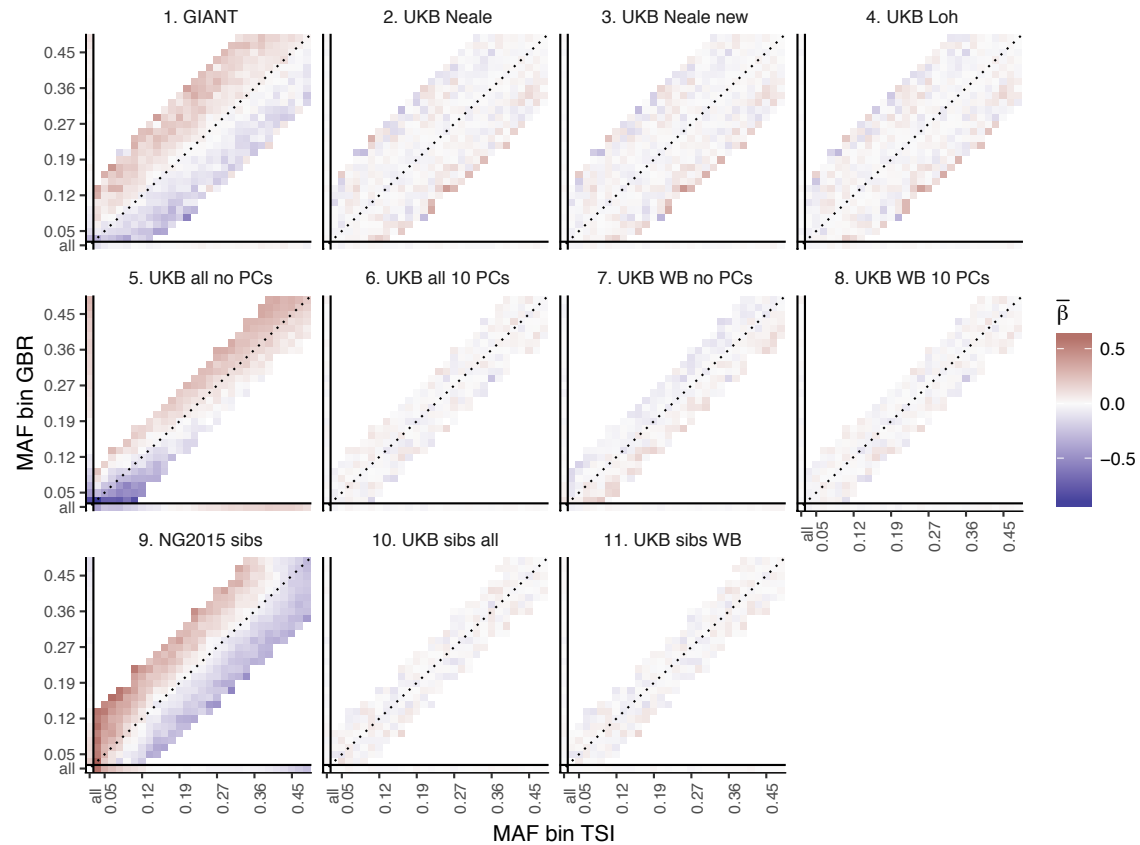
834



835  
836  
837  
838  
839  
840  
841  
842  
843  
844  
845  
846

**Figure S10. Pearson Correlation coefficients of PC loadings and height beta coefficients for different summary statistics.**

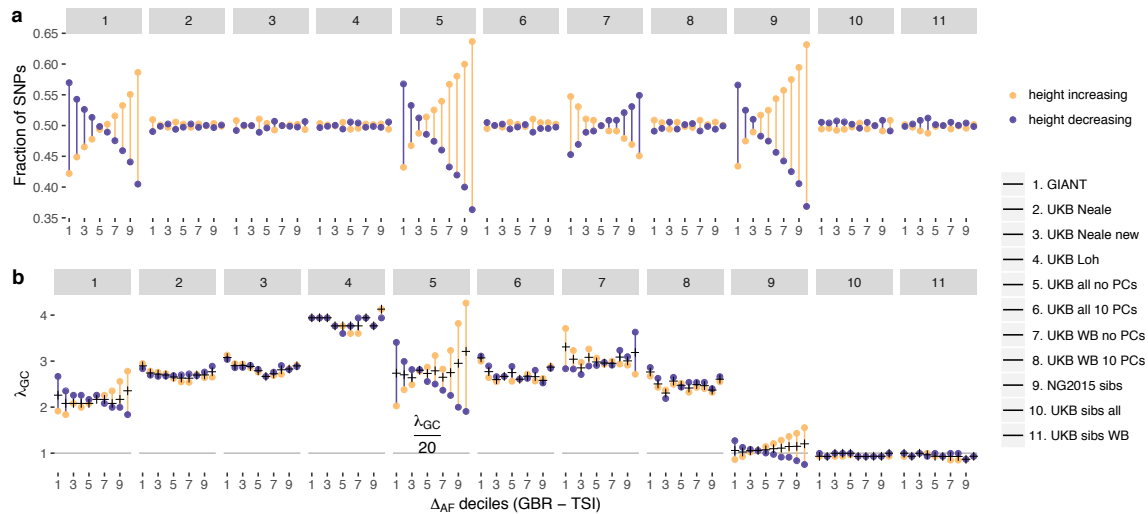
PCs were computed in all 1000 genomes phase 1 samples. Colors indicate the correlation of each PC loading with the allele frequency difference between GBR and TSI, a proxy for the European North-South genetic differentiation. PC 4 and 11 are most highly correlated with the GBR - TSI allele frequency difference. Error bars indicate 95% confidence interval of the correlation coefficient, assuming 60,000 independent genetic markers. We confirmed that the resulting errors are similar to block jackknife standard errors. Open circles indicate correlations significant at  $\alpha = 0.05$ , stars indicate correlations significant after Bonferroni correction in 20 PCs ( $P < 0.0025$ ).



847  
848  
849  
850  
851  
852  
853

**Figure S11. Heat map of mean beta coefficients for different summary statistics.**

All SNPs are binned by GBR and TSI minor allele frequency. Only bins with at least 300 SNPs are shown. Panel 7 (as well as 2, 3 and 4) shows stratification effects in opposite direction to those in GIANT. **Figure S9** illustrates how these opposite-direction stratification effects can arise.



854  
855

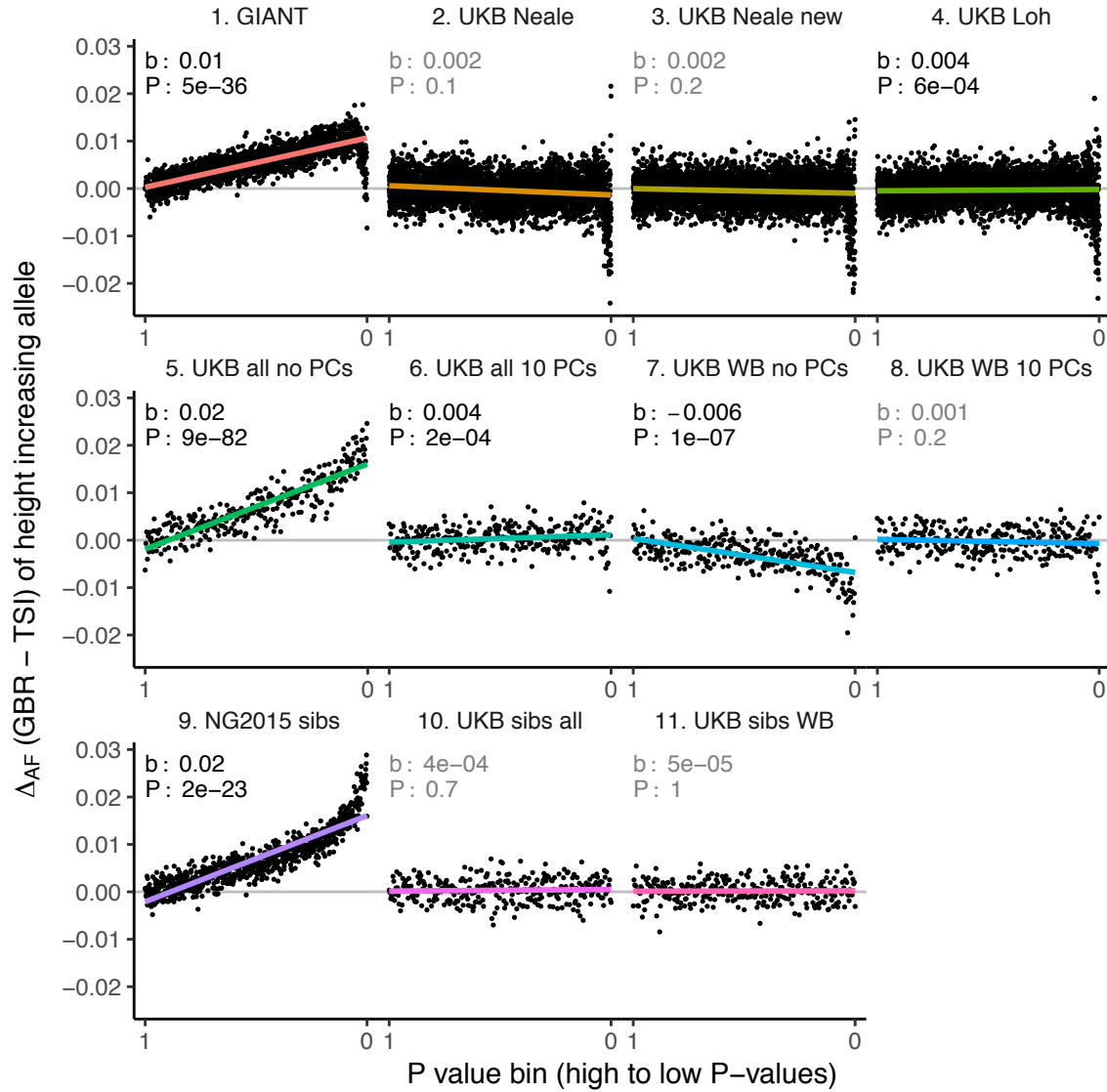
856 **Figure S12. Effect of GBR-TSI allele frequency difference on beta estimates and P**  
857 **values.**

858 SNPs with MAF > 0.2 (based on mean between TSI and GBR) were grouped into GBR-TSI  
859 allele frequency difference deciles, with the first decile representing SNPs less common in  
860 GBR and the last decile representing SNPs more common in GBR.

861 (a) Fraction of height-increasing (yellow dots) vs. height-decreasing SNPs (purple dots) in  
862 each decile. In GIANT, 59% of SNPs in the highest decile are estimated to be height-  
863 increasing, and 41% are estimated to be height-decreasing. In the UK Biobank, this ratio is  
864 close to 50-50.

865 (b) Lambda-GC in each decile for height-increasing (yellow dots) vs. height-decreasing SNPs  
866 (purple dots). In GIANT, the median P value of SNPs in the highest decile is 2.78 for SNPs  
867 estimated to be height-increasing and 1.83 for SNPs estimated to be height-decreasing (a  
868 difference of 52%). In the UK Biobank, the median P value of SNPs in the highest decile is  
869 2.65 for SNPs estimated to be height-increasing and 2.89 for SNPs estimated to be height-  
870 decreasing (a difference of only 9%, going in the opposite direction).

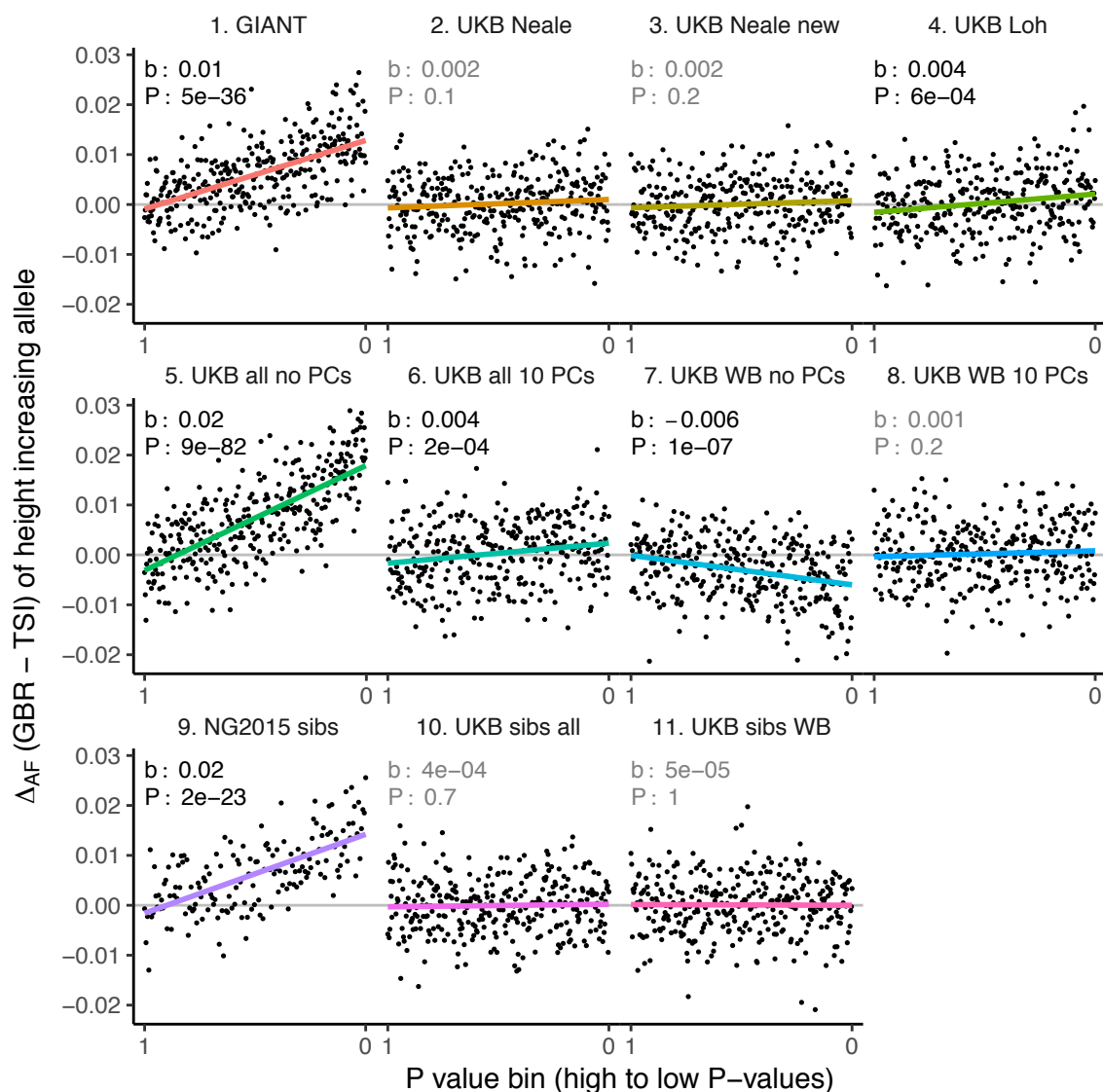
871  
872



873  
874  
875  
876  
877  
878  
879  
880  
881  
882

**Figure S13. Allele frequency difference for height-increasing alleles using different summary statistics.**

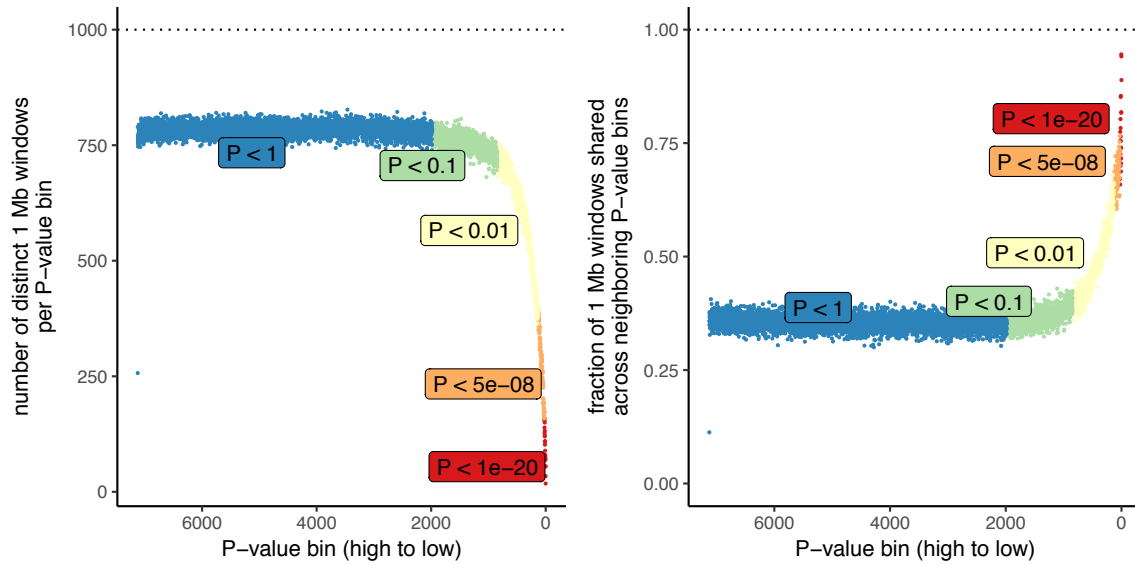
SNPs were ordered by GWAS P value and grouped into bins of 1000 SNPs each. The gray line indicates the null-expectation, and the colored lines are the linear regression fit. The lowest P value bin in panel 5 with a y-axis value of 0.06 has been omitted.



883  
884  
885  
886  
887  
888  
889  
890

**Figure S14. Allele frequency difference for LD-pruned height-increasing alleles using different summary statistics.**

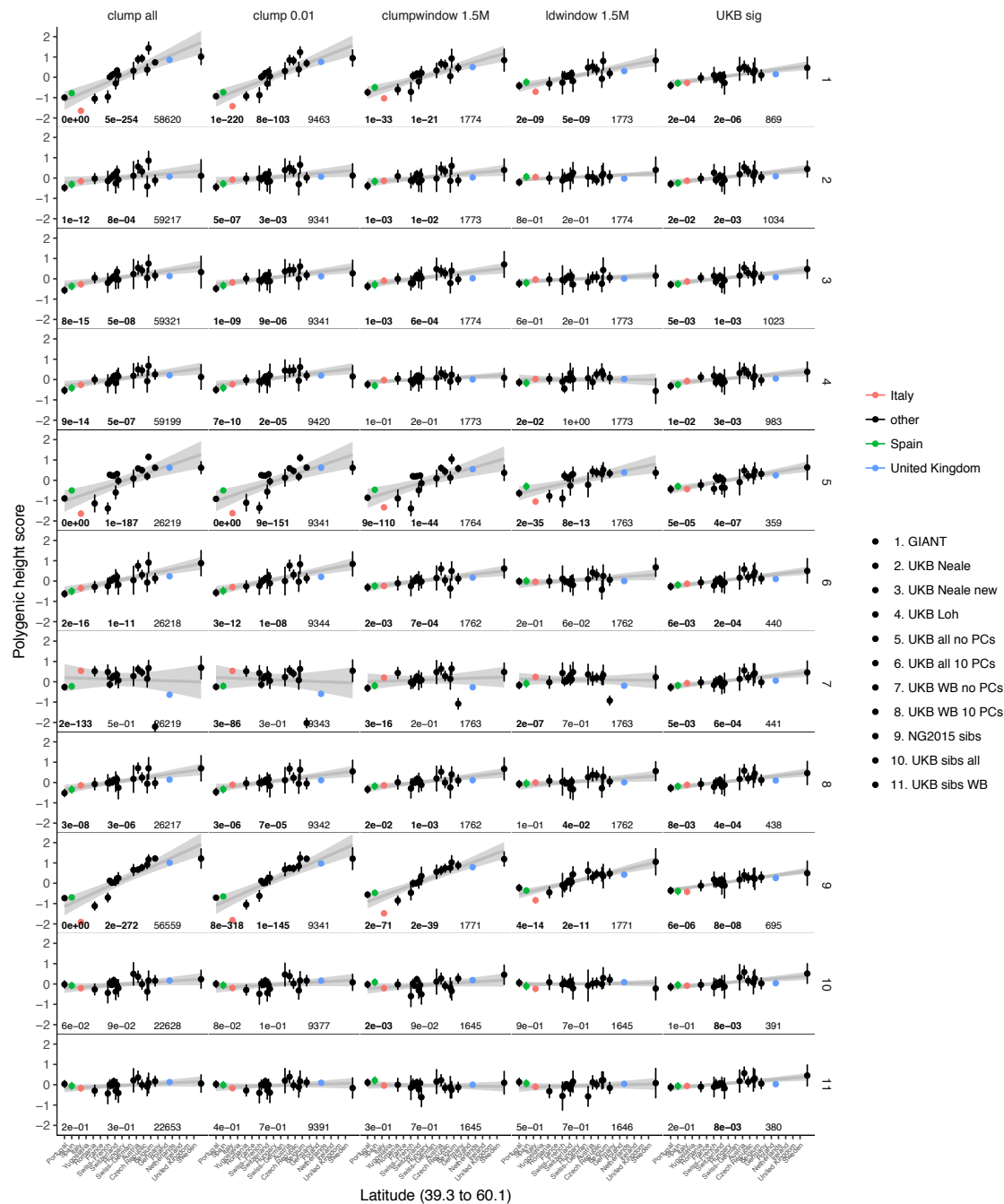
Binning SNPs by P value can lead to spurious results at the low P value bins when SNPs are in LD (**Figure S15**). Here, LD-pruned SNPs were ordered by GWAS P value and grouped into bins of 100 SNPs each. The gray line indicates the null-expectation, and the colored lines are the linear regression fit.



891  
892  
893  
894  
895  
896  
897  
898  
899  
900  
901  
902  
903

**Figure S15. Number of independent regions per GWAS P value bin in the UK Biobank.** SDS results in Field et al. as well as in **Figure 3** in this article are visualized by grouping non-independent SNPs into bins according to their P value. This may lead to unpredictable patterns at the low end of the P value distribution, because the lowest P value bins do not represent independent signals. This is demonstrated here, by grouping all UKB SNPs into bins of 1000 SNPs each, as in the SDS plots in **Figure 1b** and **Figure 3**. Left: The number of independent SNPs per P value bin is much lower at lower P values. Right: Neighboring P value bins share a large fraction of 1Mb regions at lower P values. This demonstrates that the lowest P value bins do not represent independent signals if SNPs are not LD-pruned and can exhibit patterns that are dominated by one or a few LD-regions.

904

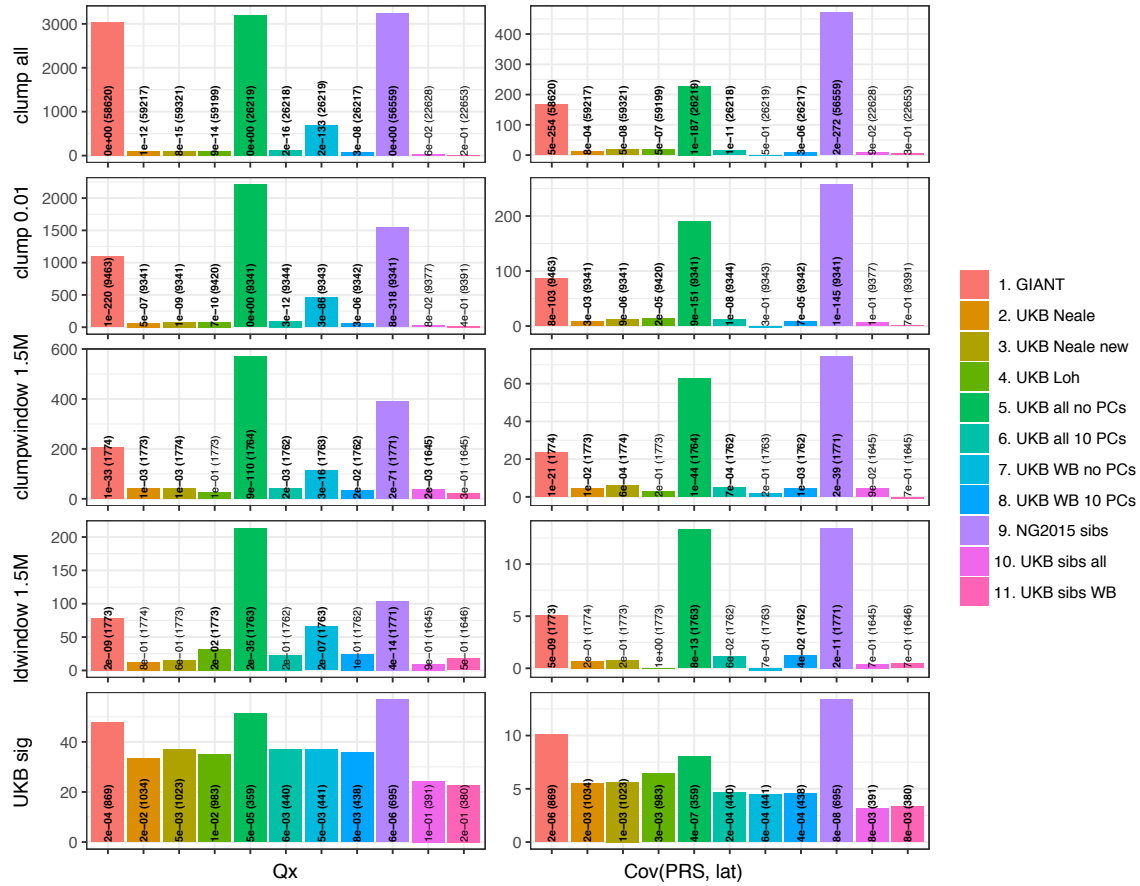


905  
906  
907  
908  
909  
910  
911  
912  
913  
914  
915  
916

**Figure S16. Polygenic height scores in POPRES for different summary statistics.**

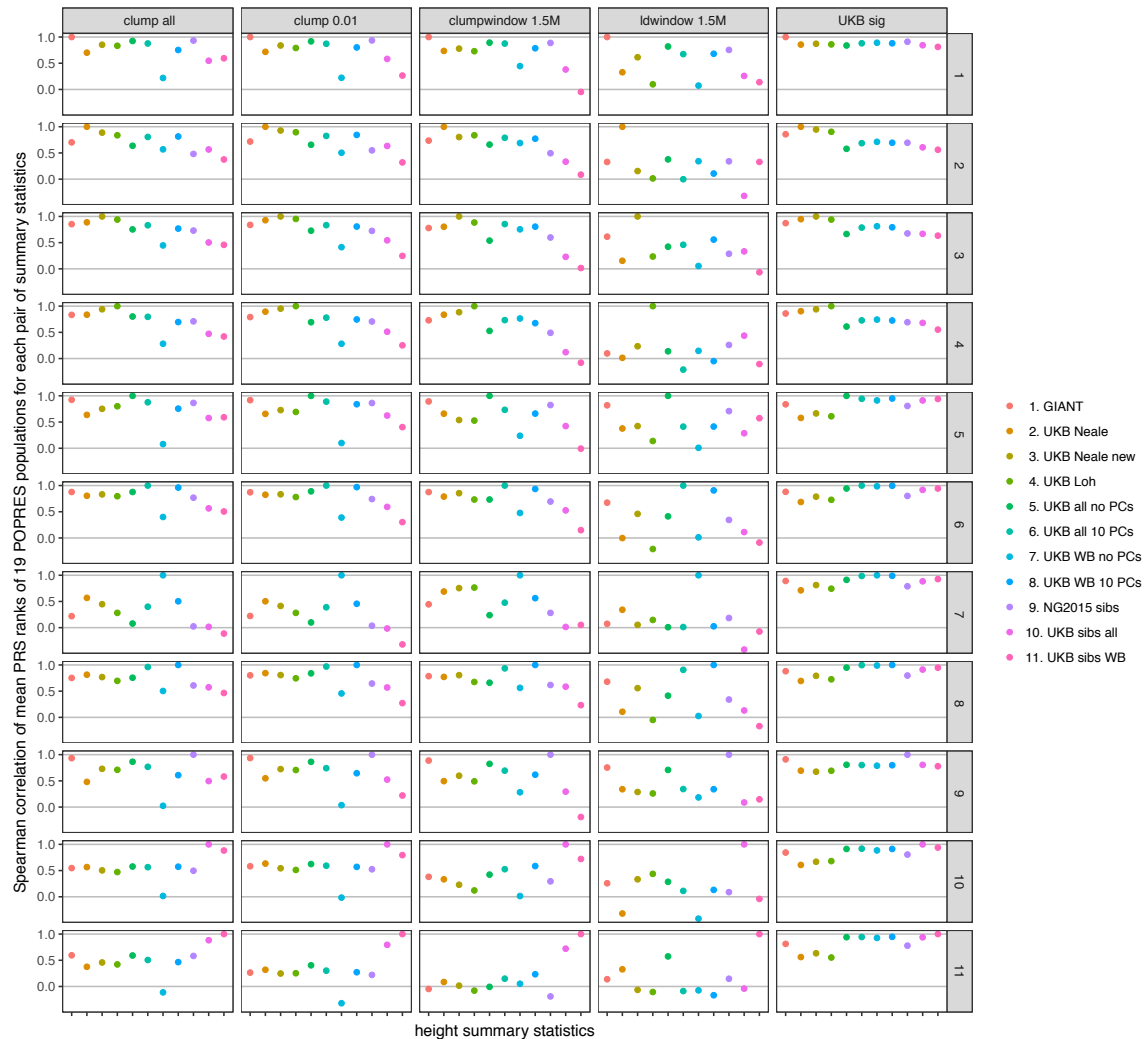
Standardized polygenic height score from diverse summary statistics for 19 POPRES populations with at least 10 samples per population, ordered by latitude (see **Table S3**). Confidence intervals and clumping procedure are the same as in (a). The gray line is the linear regression fit to the mean polygenic height score per population. The numbers on each plot show the  $Q_x$  P value, the latitude covariance P value and the number of SNPs respectively for each summary statistic. Each column shows a different selection of SNPs. clump all: clumped SNPs with no P value threshold; clump 0.01: clumped SNPs with  $P < 0.01$  in UKB and the same number of SNPs in other summary statistics (same as **Figure 4**); clumpwindow 1.5M: genome was split into blocks of 1.5 Mb, lowest P-value SNP was picked in each bin, similar to the 1700 blocks; ldwindow 1.5Mb: genome was split into blocks of 1.5 Mb, random SNP was picked in each bin; UKB sig: LD-pruned SNPs with  $P < 5 \times 10^{-8}$  in UKB.





917  
918  
919  
920  
921  
922  
923  
924

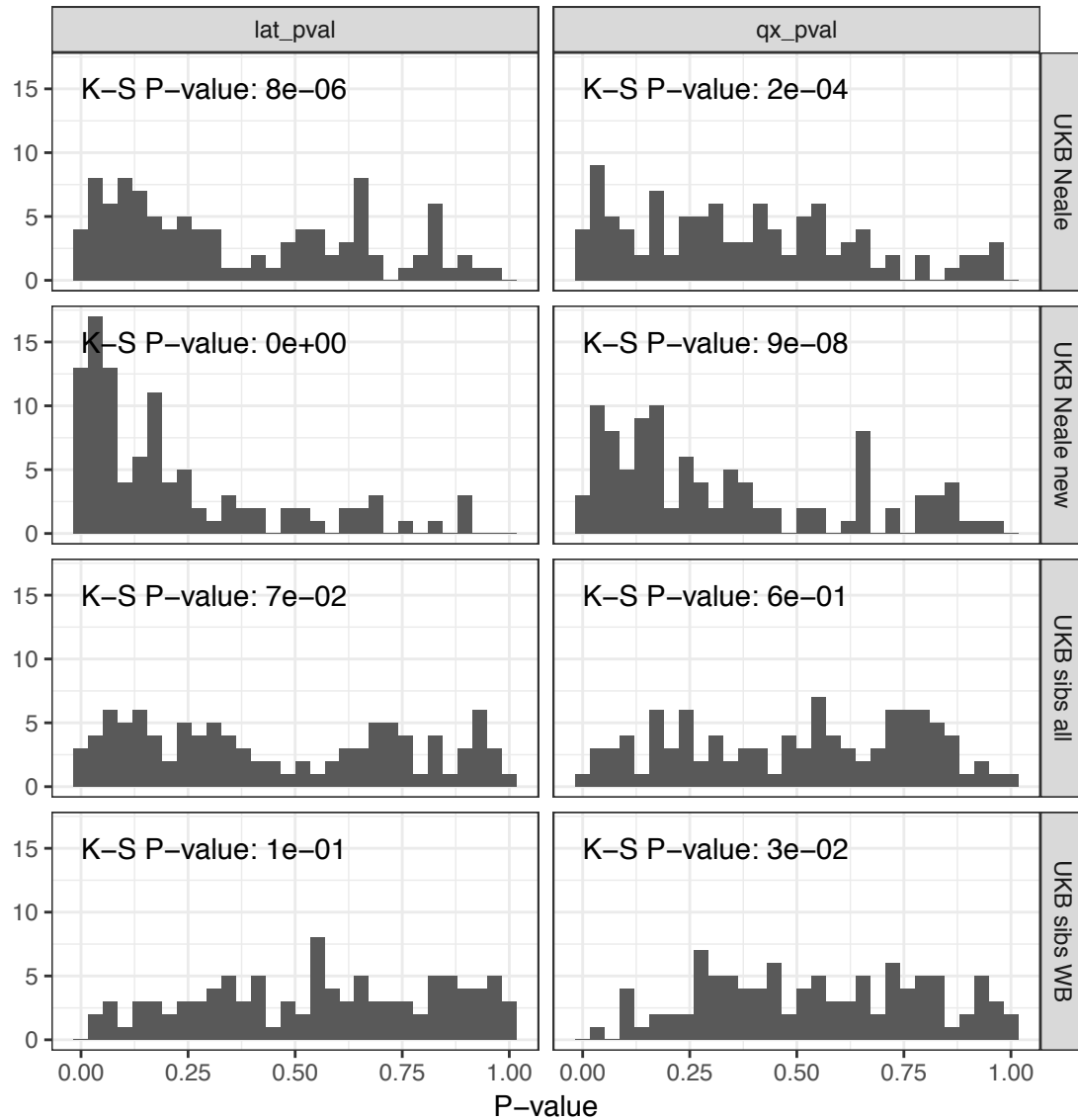
**Figure S17. Test statistics for  $Q_x$  (left) and latitude correlation (right) in the POPRES dataset for different summary statistics.**  
The numbers indicate P values and the number of SNPs, and numbers in bold highlight nominal significance ( $p < 0.05$ ).



925  
926  
927  
928  
929  
930  
931  
932  
933  
934  
935  
936  
937  
938

**Figure S18. Spearman correlations between polygenic height scores in the POPRES dataset computed from different summary statistics.**

Spearman correlation coefficients of mean population polygenic score ranking for all pairs of summary statistics at different SNP selections. Polygenic scores from independent SNPs which are genome-wide significant in UKB lead to more consistent rankings than PRS from other sets of SNPs, despite having lower prediction power. Each column shows a different selection of SNPs. clump all: clumped SNPs with no P value threshold; clump 0.01: clumped SNPs with  $P < 0.01$  in UKB and the same number of SNPs in other summary statistics (same as **Figure 4**); clumpwindow 1.5M: genome was split into blocks of 1.5 Mb, lowest P-value SNP was picked in each bin, similar to the 1700 blocks; ldwindow 1.5Mb: genome was split into blocks of 1.5 Mb, random SNP was picked in each bin; UKB sig: LD-pruned SNPs with  $P < 5 \times 10^{-8}$  in UKB.



939  
940  
941  
942  
943  
944  
945

**Figure S19. P value calibration in the POPRES dataset for  $Q_x$  and latitude covariance tests.** Random sets of around 1700 independent markers were drawn in 100 repetitions for four summary statistics and  $Q_x$  and latitude P values were computed. In UK Biobank sibling estimates this resulted in a uniform P value distribution (non-significant Kolmogorov-Smirnov test), while an inflation was observed for UK Biobank GWAS summary statistics.

946 **Supplementary tables**  
947

| name            | sample size | number of SNPs (before intersecting) | type                      | comments   | used in figures | PMID     | URL   |
|-----------------|-------------|--------------------------------------|---------------------------|--|-----------------|----------|---|
| GIANT           | 253288      | 2550858                              | GWAS (OLS, meta-analysis) |  | 1, 2, 3, 4      | 25282103 | <a href="https://portals.broadinstitute.org/collaboration/giant/images/0/01/GIANT_HEIGHT_Wood_et_al_2014_publicrelease_HapMapCeuFreq.txt.gz">https://portals.broadinstitute.org/collaboration/giant/images/0/01/GIANT_HEIGHT_Wood_et_al_2014_publicrelease_HapMapCeuFreq.txt.gz</a> |
| UKB Neale (UKB) | 336474      | 10894596                             | GWAS (OLS)                |  | 1, 2, 3, 4      |          | <a href="https://www.dropbox.com/s/sbfgb6qd5i4cxku/50.assoc.tsv.gz">https://www.dropbox.com/s/sbfgb6qd5i4cxku/50.assoc.tsv.gz</a>   |
| UKB Neale new   | 360388      | 13791467                             | GWAS (OLS)                | soon be available on <a href="http://www.nealelab.is/">http://www.nealelab.is/</a> | supp only       |          | <a href="https://storage.googleapis.com/ukbb-robert/height_ukb_giant/robert1/50.imputed_v3.results.both_sexes.tsv.gz">https://storage.googleapis.com/ukbb-robert/height_ukb_giant/robert1/50.imputed_v3.results.both_sexes.tsv.gz</a>   |
| UKB Loh         | 458303      | 12007535                             | BOLT-LMM                  |  | supp only       | 25642633 | <a href="https://data.broadinstitute.org/alkesgroup/UKBB/body_HEIGHTz.sumstats.gz">https://data.broadinstitute.org/alkesgroup/UKBB/body_HEIGHTz.sumstats.gz</a>   |
| UKB all no PCs  | 406825      | 729339                               | GWAS (OLS)                | genotyped SNPs   | 3, 4            |          |   |
| UKB all 10 PCs  | 406825      | 729339                               | GWAS (OLS)                | genotyped SNPs   | supp only       |          |   |
| UKB WB no PCs   | 337208      | 729339                               | GWAS (OLS)                | genotyped SNPs   | 3               |          |   |
| UKB WB 10 PCs   | 337208      | 729339                               | GWAS (OLS)                | genotyped SNPs   | supp only       |          |   |
| NG2015 sibs     | 17500       | 1006257                              | within-family (QFAM)      |  | 3               | 26366552 | <a href="http://cnsgenomics.com/data/robinson_et_al_2015_ng/withinfam_summary_ht_bmi_release_March2016.tar.gz">http://cnsgenomics.com/data/robinson_et_al_2015_ng/withinfam_summary_ht_bmi_release_March2016.tar.gz</a>   |
| UKB sibs all    | 20166       | 729339                               | within-family (QFAM)      | genotyped SNPs   | supp only       |          |   |
| UKB sibs WB     | 17358       | 729339                               | within-family (QFAM)      | genotyped SNPs   | 3, 4            |          |   |

948  
949 **Table S1. Description of 11 GWAS summary statistics.**  
950

951  
952

| <b>Population label</b> | <b>Population description</b>                            | <b>Meta-population</b> | <b>N</b> |
|-------------------------|--|------------------------|----------|
| GBR                     | British in England & Scotland                            | Northern Europe        | 92       |
| CEU                     | Utah residents with Northern & Western European Ancestry | Northern Europe        | 99       |
| TSI                     | Toscani in Italia  | Southern Europe        | 108      |
| IBS                     | Iberian population in Spain                              | Southern Europe        | 107      |
| PJL                     | Punjabi from Lahore, Pakistan                            | South Asia             | 96       |
| BEB                     | Bengali from Bangladesh                                  | South Asia             | 86       |
| YRI                     | Yoruba in Ibadan, Nigeria                                | Africa                 | 109      |
| LWK                     | Luhya in Webuye, Kenya                                   | Africa                 | 101      |
| JPT                     | Japanese in Tokyo, Japan                                 | East Asia              | 104      |
| CHB                     | Han Chinese in Beijing, China                            | East Asia              | 103      |
| EF                      | Ancient  | Early farmer           | 485      |
| HG                      | Ancient  | Hunter-gatherer        | 162      |
| STP                     | Ancient  | Steppe ancestry        | 465      |

953  
954  
955  
956

**Table S2. Table of ancient and 1000 genomes modern populations used with sample sizes.**

957  
958

| <b>Population</b> | <b>N</b> | <b>Latitude</b> | <b>Comments</b> |
|-------------------|----------|-----------------|-----------------|
| Austria           | 14       | 47.5            |                 |
| Belgium           | 43       | 50.5            |                 |
| Czech Republic    | 11       | 49.8            |                 |
| France            | 92       | 46.2            |                 |
| Germany           | 75       | 51.1            |                 |
| Hungary           | 19       | 47.1            |                 |
| Ireland           | 62       | 53.1            |                 |
| Italy             | 225      | 41.8            |                 |
| Netherlands       | 17       | 52.1            |                 |
| Poland            | 22       | 51.9            |                 |
| Portugal          | 135      | 39.3            |                 |
| Romania           | 14       | 45.9            |                 |
| Spain             | 137      | 40.4            |                 |
| Sweden            | 11       | 60.1            |                 |
| Swiss-French      | 760      | 46.5            | Lausanne        |
| Swiss-German      | 84       | 47.3            | Zurich          |
| Switzerland       | 168      | 46.8            |                 |
| United Kingdom    | 390      | 55.3            |                 |
| Yugoslavia        | 44       | 43.9            |                 |

959  
960

**Table S3. Table of POPRES populations used with sample sizes and latitude.**



| Name            | h2    | h2 SE | lambda GC | mean chisq | intercept | intercept SE | ratio | n      |
|-----------------|-------|-------|-----------|------------|-----------|--------------|-------|--------|
| GIANT           | 0.31  | 0.01  | 2.00      | 2.92       | 1.28      | 0.02         | 0.15  | 253288 |
| UKB Neale (UKB) | 0.40  | 0.02  | 2.39      | 4.32       | 1.40      | 0.03         | 0.12  | 336474 |
| UKB Neale new   | 0.42  | 0.02  | 2.48      | 4.69       | 1.43      | 0.03         | 0.12  | 360388 |
| UKB Loh         | 0.60  | 0.03  | 3.31      | 7.66       | 1.75      | 0.04         | 0.11  | 458303 |
| UKB all no PCs  | 13.76 | 0.22  | 55.97     | 65.24      | 9.42      | 0.08         | 0.13  | 406825 |
| UKB all 10 PCs  | 0.48  | 0.02  | 2.37      | 4.69       | 1.39      | 0.04         | 0.11  | 406825 |
| UKB WB no PCs   | 0.54  | 0.03  | 2.67      | 4.66       | 1.66      | 0.04         | 0.18  | 337208 |
| UKB WB 10 PCs   | 0.51  | 0.03  | 2.17      | 4.19       | 1.30      | 0.04         | 0.09  | 337208 |
| NG2015 sibs     | 0.49  | 0.03  | 1.07      | 1.08       | 0.90      | 0.01         | -1.21 | 17500  |
| UKB sibs all    | 0.45  | 0.05  | 0.93      | 1.08       | 0.93      | 0.01         | -0.85 | 20166  |
| UKB sibs WB     | 0.47  | 0.06  | 0.93      | 1.06       | 0.93      | 0.01         | -1.18 | 17358  |

961 **Table S4. LD Score regression estimates for 11 different summary statistics.**

962 LD score regression can be used to detect residual stratification effects in summary  
963 statistics, and so we tested whether LDSC confirms our hypothesis of residual stratification.  
964 We detect a greatly inflated intercept estimate of 9.42 in UKB all no PCs, but only a  
965 moderately increased intercept value in GIANT and an intercept less than one in NG2015  
966 sibs. The relatively small GIANT intercept can be explained by cohort-wise lambda-GC  
967 correction, while the low intercept in NG2015 sibs is possibly caused by the adaptive  
968 permutation procedure which does not compute precise p-values for non-significant  
969 associations. In both cases LDSC cannot be expected to pick up stratification effects, since  
970 the generation of summary statistics is not in line with the LDSC model.  
971

|                 | GIANT | UKB Neale (UKB) | UKB Neale new | UKB Loh | UKB all no PCs | UKB all 10 PCs | UKB WB no PCs | UKB WB 10 PCs | NG2015 sibs | UKB sibs all | UKB sibs WB |
|-----------------|-------|-----------------|---------------|---------|----------------|----------------|---------------|---------------|-------------|--------------|-------------|
| GIANT           | 1.000 |                 |               |         |                |                |               |               |             |              |             |
| UKB Neale (UKB) | 0.660 | 1.000           |               |         |                |                |               |               |             |              |             |
| UKB Neale new   | 0.670 | 0.982           | 1.000         |         |                |                |               |               |             |              |             |
| UKB Loh         | 0.691 | 0.912           | 0.924         | 1.000   |                |                |               |               |             |              |             |
| UKB all no PCs  | 0.332 | 0.276           | 0.274         | 0.251   | 1.000          |                |               |               |             |              |             |
| UKB all 10 PCs  | 0.673 | 0.973           | 0.971         | 0.916   | 0.290          | 1.000          |               |               |             |              |             |
| UKB WB no PCs   | 0.635 | 0.952           | 0.933         | 0.865   | 0.270          | 0.929          | 1.000         |               |             |              |             |
| UKB WB 10 PCs   | 0.660 | 0.998           | 0.981         | 0.911   | 0.276          | 0.975          | 0.953         | 1.000         |             |              |             |
| NG2015 sibs     | 0.368 | 0.261           | 0.265         | 0.276   | 0.151          | 0.271          | 0.238         | 0.261         | 1.000       |              |             |
| UKB sibs all    | 0.264 | 0.325           | 0.326         | 0.351   | 0.095          | 0.328          | 0.307         | 0.324         | 0.114       | 1.000        |             |
| UKB sibs WB     | 0.250 | 0.312           | 0.312         | 0.336   | 0.088          | 0.311          | 0.296         | 0.311         | 0.108       | 0.928        | 1.000       |

972  
973

**Table S5. Correlation of beta estimates at all 86,153 shared SNPs.**

|                 | GIANT | UKB Neale (UKB) | UKB Neale new | UKB Loh | UKB all no PCs | UKB all 10 PCs | UKB WB no PCs | UKB WB 10 PCs | NG2015 sibs | UKB sibs all | UKB sibs WB |
|-----------------|-------|-----------------|---------------|---------|----------------|----------------|---------------|---------------|-------------|--------------|-------------|
| GIANT           | 1.000 |                 |               |         |                |                |               |               |             |              |             |
| UKB Neale (UKB) | 0.975 | 1.000           |               |         |                |                |               |               |             |              |             |
| UKB Neale new   | 0.976 | 0.999           | 1.000         |         |                |                |               |               |             |              |             |
| UKB Loh         | 0.972 | 0.986           | 0.986         | 1.000   |                |                |               |               |             |              |             |
| UKB all no PCs  | 0.798 | 0.789           | 0.788         | 0.785   | 1.000          |                |               |               |             |              |             |
| UKB all 10 PCs  | 0.976 | 0.998           | 0.998         | 0.988   | 0.791          | 1.000          |               |               |             |              |             |
| UKB WB no PCs   | 0.971 | 0.996           | 0.995         | 0.984   | 0.788          | 0.995          | 1.000         |               |             |              |             |
| UKB WB 10 PCs   | 0.975 | 1.000           | 0.999         | 0.986   | 0.789          | 0.999          | 0.997         | 1.000         |             |              |             |
| NG2015 sibs     | 0.847 | 0.828           | 0.829         | 0.840   | 0.675          | 0.829          | 0.822         | 0.828         | 1.000       |              |             |
| UKB sibs all    | 0.865 | 0.877           | 0.875         | 0.874   | 0.706          | 0.878          | 0.872         | 0.877         | 0.727       | 1.000        |             |
| UKB sibs WB     | 0.860 | 0.872           | 0.870         | 0.866   | 0.700          | 0.872          | 0.867         | 0.872         | 0.712       | 0.980        | 1.000       |

974 **Table S6. Correlation of beta estimates at 2,251 shared SNPs which are significant in**  
 975 **the UK Biobank.**  
 976