

1 **Molecular phylogeny and diversification timing of the Nemouridae family (Insecta,**
2 **Plecoptera) in the Japanese Archipelago**

3

4 Maribet Gamboa^{1*}, David Muranyi^{1,2}, Shota Kanmori¹, Kozo Watanabe¹

5

6 ¹Department of Civil and Environmental Engineering, Ehime University, 790-0871 Matsuyama,
7 Japan,²Department of Zoology, Plant Protection Institute Centre for Agricultural Research, Hungarian
8 Academy of Sciences, Herman Ottó u. 15, H-1022 Budapest, Hungary

9

10

11 *E-mail: gamboa@cee.ehime-u.ac.jp

12

13 Short Title: Molecular phylogeny and diversification timing of Nemouridae

14

15 **Abstract**

16 The generation of the high species diversity of insects in Japan was profoundly influenced by the
17 formation of the Japanese Archipelago. We explored the species diversification and biogeographical
18 history of the Nemouridae family in the Japanese Archipelago using mitochondrial DNA and nuclear
19 DNA markers. We collected 49 species among four genera: *Indonemoura*, *Protonemura*,
20 *Amphinemura* and *Nemoura* in Japan, China, South Korea and North America. We estimated their
21 divergence times—based on three molecular clock node calibrations—using Bayesian phylogeography
22 approaches. Our results suggested that Japanese Archipelago formation events resulted in
23 diversification events in the middle of the Cretaceous (<120 Ma), speciation in the Paleogene (<50 Ma)
24 and intra-species diversification segregated into eastern and western Japan of the Fossa Magna region
25 at late Neogene (20 Ma). The *Indonemoura* samples were genetically separated into two clades—that
26 of Mainland China and that of Japan. The Japanese clade clustered with the Nemouridae species from
27 North America, suggesting the possibility of a colonisation event prior to the formation of the Japanese
28 Archipelago. We believe that our results enhanced the understanding both of the origin of the species
29 and of local species distribution in the Japanese Archipelago.

30

31 Keywords: stoneflies, Japan, divergence time, molecular phylogeny, speciation

32

33 Introduction

34 The East Asian region—and in particular, the Japanese Archipelago—is considered to have
35 high insect biodiversity [1], [2]. The high degree of Japanese insect biodiversity is a result of several
36 mechanisms—in particular, the complex geological history. The Japanese Archipelago originated in
37 the middle of the Miocene [3] as an independent formation of eastern and western Japanese
38 landmasses. Extensive geographical changes and large-scale climatic changes throughout the islands
39 facilitated the subsequent connection and disconnection of Japanese landmasses from the Eurasian
40 continent, and the formation of tectonic lines (as the median tectonic line, MTL; and the Itoigawa-
41 Shizuoka tectonic line, ISLT) [3], [4], [5]. These geological events—allowing for the colonisation of
42 insects from the continent and their subsequent diversification as endemic lineages (i.e. new
43 species)—contributed substantially to the high diversity of insects in Japan [2].

44 The process of species diversification has been intensively explored through
45 phylogeographical approaches [6], [7]. These approaches have allowed for the observation of the
46 historical process responsible for the current geographical distribution of individuals [6]. Molecular
47 approaches to phylogeographic studies, using specific genes—such as mitochondrial DNA (mtDNA) or
48 nuclear DNA (nDNA)—allow for a better understanding of species diversity by resolving complex
49 taxonomic groups of species (for instance, cryptic species and species groups) [7]. Molecular
50 phylogeography has provided valuable insights into the historical process of Japanese Archipelago
51 formation underlying insect diversification. Previous studies identified genetic differentiation within
52 species between the Japanese landmasses and the Eurasian continent (for instance, the mayflies
53 *Isonychia japonica* [8]; caddisflies *Palaeagapetus* spp. [9]; and beetles *Ohomopterus* spp. [10] and the
54 Carabina subtribe [11]). Dispersal events via land bridges (islands between continents) from the
55 Eurasian continent to the Japanese Archipelago (of, for instance, the orthopteran *Locusta migratoria*,
56 [12]; mayflies *Ephron* spp., [13]) or, in reverse, from the Japanese Archipelago to the Eurasian
57 continent (of, for instance, water bugs *Appasus* spp., [14]) were additionally identified before, during
58 and after the formation of the Japan Archipelago.

59 Aquatic insects have advantages in the studies of phylogeography, as their specialised
60 ecological requirements and habitat range make aquatic insect species susceptible to geological
61 changes. Among the Plecoptera order [15], the family Nemouridae is one of the largest and most
62 dominant aquatic insect groups. The family comprises 20 genera and more than 400 species
63 distributed throughout the Northern Hemisphere and across the equator in the Sunda Archipelago
64 [16]. Several genera of the Nemouridae family have distinct disjunctions in their distribution [15]. For
65 example, *Ostrocerca*, *Prostoia* and *Soyedina* were found in both the extreme western and the extreme
66 eastern regions of North America, but they were absent in the central area [17], [18]. Similar

67 disjunctive distributions were also observed among *Protonemura*, *Indonemoura*, *Sphaeronemoura*
68 and *Illiesonemoura* in the Palaearctic region [19], the western and eastern Himalayan ranges [20] and
69 North and South India [15]. *Podmosta* and *Zapada* are two interesting cases distributed across the
70 Nearctic region and East Asia [21], [22]. Previous studies have suggested that their current habitat
71 distribution could be associated with mountain formation and land bridges. In Japan, the Nemouridae
72 family is widely distributed with four genera [23] —*Indonemoura*; *Protonemura*; *Amphinemura*; and
73 *Nemoura*. To date, 30 *Nemoura* species, 17 *Amphinemura* species, 12 *Protonemura* species and 1
74 *Indonemoura* species have been reported in Japan [16]. However, their evolutionary history in the
75 Japanese Archipelago remains unknown.

76 We studied the molecular phylogeny of the aquatic insect Nemouridae (Plecoptera) in the
77 Japanese Archipelago with comprehensive genera-level sampling using mitochondrial cytochrome c
78 oxidase 1 (*cox1*) and nuclear histone 3 (*H3*) markers. We hypothesised that the Nemouridae family
79 diversification could be linked to the geological formation of the Japanese Archipelago. Therefore, we
80 estimated the phylogenetic relationships among Nemouridae species and genera with reference to
81 their historical biogeography. We focused on geographic events of Japanese Archipelago formation
82 and their influence on the divergence time among the genera and species using a combination of fossil
83 records and the Archipelago formation history. Furthermore, to estimate the historical process of the
84 phylogeography of Nemouridae in Japan, we compared the phylogenetic relationships among the
85 specimens from South Korea, China and North America, that are assumed to be the potential sources
86 of Japanese Nemouridae because of the geological formation history of the Japanese Archipelago.

87

88

89 **Material and methods**

90

91 **Study sites and sample collection**

92 Our sampling sites in Japan comprised 32 sampling sites on Hokkaido Island, 83 on Honshu
93 Island and 27 on Shikoku Island. None of the Nemouridae species was found on Hokkaido Island during
94 sampling. All species reported from Hokkaido are known to occur on either Honshu or Shikoku Islands.
95 Herein, we only reported on the sampling sites wherein specimens were found. We collected 20, 7,
96 8 and 1 species of the genera *Nemoura*, *Amphinemura*, *Protonemura* and *Indonemoura*, respectively,
97 on 110 sampling sites in Japan (Fig 1, S1 Table). Additionally, 14 species distributed from 8 sampling
98 sites of Mainland China and 2 of South Korea (S1 Table, Fig 2) and 100 specimens of the three species
99 *Zapada columbiana*, *Z. cinctipes* and *Podmosta delicatula* (subfamily Nemourinae) collected from 15
100 sampling sites of North America (western United States of America and Alaska) were included in our

101 analysis. We added these samples from outside of Japan because of their geographical proximity to
102 the Japanese Archipelago and their geological formation histories.

103 We collected adult insects using hand nets around riversides. We stored samples in 80%
104 ethanol in the field, and replaced the ethanol with fresh 99.5% ethanol after morphological
105 identification. We identified individuals according to the taxonomical keys of [21], [23], [24], [25], [26],
106 [27], [28], [29], [30], [31] and [32]. Undescribed species resulted in our studied were based on our
107 taxonomic expertise and inconclusive taxonomic keys.

108

109 **DNA extraction, amplification and sequencing**

110 We genetically analysed a total of 289 individuals, out of which 189 were from East Asia
111 (males, 97; females, 92) and 100 were from North America (males, 92; females, 8). We extracted
112 genomic DNA individually using DNeasy tissue kits (Qiagen GmbH, Hilden, Germany), following the
113 manufacturer's instructions. We amplified a 658-bp fragment of mtDNA *cox1* using LCO-1490 and
114 HCO-2198 primers [33] with an annealing temperature of 38°C and 40 PCR cycles. Further, we
115 amplified a 328-bp fragment of nDNA marker histone 3 (*H3*) using the universal primers H3F and H3R
116 [34] with an annealing temperature of 58°C and 40 PCR cycles. We purified the PCR products using
117 the QIAquick PCR Purification Kit (Qiagen GmbH, Hilden, Germany) and sequenced them in both
118 directions using the same primers as mentioned above. *Cox1* and *H3* sequences were sequenced by
119 Eurofins Operon (Tokyo, Japan). All sequence data reported here have been deposited in GenBank.

120

121 **Sequence analysis**

122 We assembled and edited forward and reverse sequences using CodonCode Aligner v 3.5
123 (Codon Code Corporation, Dedham, USA). All sequences were aligned using ClustalW
124 (<https://www.genome.jp/tools-bin/clustalw>) [35]. We calculated the genetic diversity by the number
125 of polymorphic sites, number of haplotypes and both mean nucleotide substitution rate (i.e individuals
126 within species) and pairwise nucleotide substitution rate (i.e between species), with the Kimura 2-
127 parameter model. We performed all analyses using DnaSp v5.10 [36]. All analyses were performed for
128 *cox1* and *h3* separately.

129 All sequences of the mtDNA and nDNA markers were compared with the NCBI nucleotide
130 database using blastn queries (<http://blast.ncbi.nlm.nih.gov>) to corroborate species identification
131 (DNA barcoding, similarity > 98%) and to discard possible sequence errors.

132

133 **DNA species delimitation**

134 To corroborate the morphological species identification match with our molecular data, we
135 implemented a DNA species delimitation analysis. Putative DNA species were delineated using the
136 General Mixed Yule Coalescent model (GMYC; [37]). An ultrametric gene tree of *cox1* gene was
137 constructed using BEST v1.8.3 [38], and the GMYC analysis was performed using the splits package
138 [39] in R ver. 3.3 (R Core Team).

139

140 **Molecular clock analysis**

141 We estimated the evolutionary history of the family in the Japanese Archipelago according to
142 the timing of the divergence of the lineages. For this estimation, we implemented a Bayesian
143 phylogenetic analysis in combination with a molecular clock analysis using BEAST v.2.4.4 [40] with
144 *Zwicknia bifrons* (Capniidae) as an outgroup for *cox1* and *H3* (own sequences) separately. This outgroup
145 was selected owing to their close phylogenetic relationship with Nemouridae [41], [42]. To observed
146 the divergence time, we adopted a relax clock model [43] following a log normal distribution, and
147 calibrated the phylogenetic tree nodes using three types of molecular clock analysis. The first
148 calibration was based on fossil records of the Nemouridae family [44]. We calibrated the nodes at 180
149 million years ago (Ma) and adjusted the parameters with a standard deviation of 20 Ma, as suggested
150 in previous study [45] for a 95% highest posterior density (HPD). For this analysis, we implemented a
151 fossilised birth death model [46] for tree prior parameter. The second calibration was based on the
152 Japanese Archipelago formation events dated from 15 to 30 Ma [3]. We applied several calibrations
153 from 15, 20, 25 and 30 Ma at all nodes representing taxonomic species. All calibrations were adjusted
154 to 5 Ma as a standard deviation for a 95% HPD and a fossilised birth death model [46] for tree prior
155 parameter. Lastly, the third calibration was the time to the most recent common ancestor (TMRCA)
156 to observe species diversification patterns based on the mean substitution rate of *cox1*. Using a Yule
157 model tree prior parameter [47], we applied the substitution rate for insect *cox1* of 1.5% [48] and
158 3.54% [49] per million years for a 95% HPD.

159 For all branch age calibrations (namely, fossil, biogeographic and mtDNA substitution rate),
160 we performed MCMC for 50 million generations, and log dating trees (BEAST parameters) for every
161 5000 generations. We tested the output files for convergence after removing a 10% burn-in by
162 examining the effective sampling size using Tracer v1.5 [50]. We pooled the four resulting output trees
163 from biogeographical calibration analysis into a single tree. We then pooled the resulting single tree
164 from biogeographical branch calibration and the single tree from fossil calibration analyses into a
165 single tree. We performed all pooling analyses using Log Combiner v1.6.1 (BEAST package)
166 summarised with Tree Annotator (BEAST package) and visualised using FigTree v1.3.1 [51]. We
167 performed the analyses for *cox1* and *H3* separately. The incongruence length difference test (ILD) [52]

168 was conducted to test the congruence of tree topologies between *cox1* and *H3* using Tree Analysis
169 Technology (TNT) [53]. ILD test revealed no significant differences in terms of the Bayesian tree
170 topologies between *cox1* and *H3* ($P = 0.8$); therefore, both markers were pooled into a single tree for
171 further analysis.

172

173 **Phylogenetic analysis between Nemoura from Japan and North America**

174 To observe the phylogenetic relationship between Nemouridae from Japan and North
175 America (*Zapada columbiana*, *Z. cinctipes* and *Podmosta delicatula*), we analysed the maximum
176 likelihood (ML) phylogenetic trees of *cox1* and *H3* separately using PhyML 3.1 [54]. The General time-
177 Reversible (GTR) model and gamma distribution were selected for both markers (*cox1* and *H3*) based
178 on separate test performed with jModel Test v.3 [55] and using *Zwicknia bifrons* (Capniidae) as an
179 outgroup as described above. The trees were bootstrapped using 10,000 replications.

180

181 **Results**

182

183 **Genetic diversity and DNA phylogeny**

184 For studying the phylogeny of Nemouridae in the Japanese Archipelago, we analysed two
185 molecular markers. *Cox1* sequences were of 658 bp length, with 247 polymorphic sites, 237
186 parsimony-informative sites, 10 singletons and a mean nucleotide substitution rate of 0.151. *H3*
187 sequences were of 328 bp length, with 67 polymorphic sites, 54 parsimony-informative sites, 13
188 singletons and a mean nucleotide substitution rate of 0.051. No gaps were detected for either *cox1* or
189 *H3* sequences (S1, S2 Fig). In total, for *cox1* and *H3*, we identified 128 and 68 haplotypes, respectively.

190 The GMYC model of *cox1* delimited 61 putative DNA-species (S1 Table). These results agreed
191 with our 34 morphologically identified and 15 undescribed (five species of *Protonemura*, seven of
192 *Nemoura*, one of *Indonemoura* and two of *Amphinemura*) species. Eight species (*I. nohirae*, *A.*
193 *decemseta*, *A. zonata*, *A. longispina*, *A. megaloba*, *N. uenoji*, *N. chinonis* and *N. cf. cercispinosa*) showed
194 two putative DNA-species. While *A. decemseta* showed multiple putative DNA-species (three putative
195 DNA-species), *N. sanbena* and *P. kohnoae* showed two putative DNA-species in the same sampling site
196 suggesting the presence of cryptic species. The congruence of *H3* phylogenetic groups provided
197 confirmation of DNA-based groups detected by GMYC.

198 We observed the genetic diversity of the species per island (Table 1). Honshu had the highest
199 number of species (26 species), haplotype richness (63) and mean nucleotide substitution rate
200 (average 0.027). Five species were found throughout the three Japanese islands (Honshu, Shikoku and
201 Kyushu), i.e. *A. decemseta*, *A. zonata*, *N. cf. cercispinosa*, *N. chinonis* and *I. nohirae*, with a mean

202 nucleotide substitution rate ranging from 0.011 to 0.126 and a total of 23 haplotypes. *N. sanbena*
203 haplotypes were observed in two different branches in the phylogenetic tree, both within *N. cf.*
204 *cercispinosa* and as an isolated branch.

205

206 **Divergence dates**

207 The Bayesian phylogenetic trees for *cox1* and *H3* showed tree topology similarity (ILD test, P
208 = 0.8). Three clades corresponded to the three families—*Protonemura*, *Amphinemura* and
209 *Nemoura*—whereas *Indonemoura* was divided into two clades—the Mainland China clade, clustered
210 with *Protonemura*, and the Japanese clade (Fig 2).

211 The evolutionary divergence between the Nemouridae and Capniidae families was settled at
212 180 Ma, with a 95% HPD interval of 160 to 198 Ma, in the Jurassic geological period (Fig 2, S3 and S4
213 Fig). Genus-level diversifications within Nemouridae occurred in the early and middle Cretaceous.
214 *Indonemoura* from Japan at 119.0 Ma (95% HPD, 125.8 to 100.2 Ma), *Indonemoura* from Mainland
215 China at 112.0 Ma (95% HPD, 90.2 to 115.0 Ma), *Protonemura* at 112.7 Ma (95% HPD, 98.0 to 121.3
216 Ma), *Nemoura* at 107.0 Ma (95% HPD, 98.8 to 110.1 Ma) and *Amphinemura* at 80.0 Ma (95% HPD,
217 75.1 to 92.0 Ma). The speciation process occurred between 25 Ma (early Paleogene) and 90 Ma (late
218 Crustaceous). Out of 35 events of speciation (i.e. nodes), 16 (45%) occurred during late Crustaceous
219 and 19 (54%) occurred during early Paleogene, broadly overlapping with the formation time of the
220 Japanese Archipelago (15 to 30 Ma). We observed intra-species diversification in *I. nohirae*, *A.*
221 *decemseta*, *A. zonata*, *A. longispina*, *A. megaloba*, *N. chinonis*, *N. uenoi* and *N. cf. cercispinosa* (GMYC
222 > 1 species, S1 Table). These species were divided into two clades (S5 Fig), spatially segregated into
223 eastern and western Japan of the Fossa Magna region during the late Neogene period (20 to 22 Ma).
224 Recent diversifications for *Nemoura* and *Amphinemura* species within either eastern or western
225 Japanese branches were additionally revealed by TMRCA analysis of *cox1* (see Methods). *A. decemseta*
226 ranging from 3 to 3.5 Ma (95% HPD, 2.8 to 4.1 Ma); *A. zonata*, ranging from 3 to 4 Ma (95% HPD, 3.5
227 to 5 Ma); *A. longispina*, ranging from 3.6 to 4.5 Ma (95% HPD, 3.9 to 5 Ma); *A. megaloba*, ranging from
228 3.5 to 4 Ma (95% HPD, 2.8 to 4 Ma); *N. uenoi*, ranging from 3 to 4 Ma (95% HPD, 3.5 to 4.2 Ma) and *N.*
229 *cf. cercispinosa*, ranging from 3.5 to 4.1 Ma (95% HPD, 3 to 5 Ma), for 1.5% Ma and 3.54% Ma analysis
230 respectively.

231

232 **Phylogeographic pattern between Nemoura from Japan and North America**

233 DNA sequences in the Japanese clade of *Indonemoura* (single species, *I. nohirae*) showed a
234 high homology with those in the Alaskan species of *Z. columbiana* (*COI*: KM874174; >93% sequence
235 similarity) and *Z. cinctipes* (*H3*: EF622600; >98% sequence similarity) based on blastn results. The ML

236 phylogenetic trees for both *cox1* and *H3* (Fig 3) showed that the *Indonemoura* Japanese clade
237 clustered with three North American species (*Z. columbiana*, *Z. cinctipes* and *P. delicatula*) and the
238 *Indonemoura* Mainland China clade clustered with the East Asian Nemouridae genera (*Nemoura*,
239 *Protonemura* and *Amphinemura*). The pairwise nucleotide substitution rate based on *cox1* between
240 the *Indonemoura* Japanese clade and *Zapada* spp. or *P. delicatula* from North America ranged from
241 0.13 to 0.15, whereas a higher pairwise nucleotide substitution rate based on *cox1* of 0.26 was
242 observed between the *Indonemoura* Japanese and Mainland China clades (Table 2).

243

244 Discussion

245 We studied mitochondrial *cox1* and nuclear *H3* gene sequences to determine the patterns of
246 diversification and phylogenetic relationships of species belonging to four genera of stoneflies of the
247 Nemouridae family in the Japanese Archipelago. We estimated the divergence among *Nemoura*,
248 *Amphinemura*, *Indonemoura* and *Protonemura* to have occurred in the early and mid-Cretaceous
249 (around 100 Ma), which is compatible with previous studies based on fossil records [56], [57]. Our
250 results suggested that these four genera might have dispersed and colonised different areas of the
251 Eurasian continent—including the Japanese landmasses—when they were still connected to the
252 Eurasian continent. Among the four genera, the diversification of *Indonemoura* occurred earlier (120
253 Ma) than that of the other genera (<100 Ma), suggesting that it is an ancient genus. The geological
254 isolation of colonised areas [58], the long evolutionary time [59] and poor dispersal ability of
255 *Indonemoura* [23], [60] might have accounted for their ancient diversification.

256 Based on the phylogenetic relationships of both molecular markers (*cox1* and *H3*), we
257 observed that the three genera *Nemoura*, *Amphinemura* and *Protonemura* were monophyletic and
258 clustered as three independent groups, as previously observed by morphological systematics [16].
259 However, *Indonemoura* was paraphyletic. This genus was divided into two clades corresponding to
260 the Mainland China and the Japanese clades. Surprisingly, the Japanese clade of *Indonemoura* (single
261 species, *I. nohirae*) clustered together with North American species (*Z. columbiana*, *Z. cinctipes* and *P.*
262 *delicatula*), with a low pairwise nucleotide substitution rate (<0.15). The distribution range of these
263 two North America genera covers North America and Eastern Asia. Previous studies suggested that
264 their distribution could be related to the land connection (i.e. the islands) between Alaska and Eastern
265 Asia [15]. Dispersal by island connectivity between Alaska, the Aleutian Islands, the Kamchatka
266 peninsula and the Kuril islands has been observed in other stonefly families (for instance, *Arcynopteryx*
267 *dichroa*, *Capnia nearctica*, *Mesocapnia variabilis* and *Nemoura arctica*) [61]. However, the distribution
268 of *Indonemoura* on these islands is unknown.

269 The complex history of the geological formation of the Japanese Archipelago may provide a
270 possible alternative explanation. The ancestral Japanese landmasses were located on the borders of
271 four major tectonic plates, of which two are continental plates—the Eurasian plate and the North
272 American plate [4] (S6 Fig). The eastern Japanese landmass was located on the North American plate,
273 whereas the western Japanese landmass was located on the Eurasian plate [5]. The dispersal and
274 colonisation of *Indonemoura* might have occurred from the North American plate to the Eurasian
275 continent or vice versa (from the Eurasian continent to the North American plate) before their
276 geographic separation in an ancient time (around 70 to 80 Ma) [62]. Dispersal events between
277 Eurasian and Japanese landmasses are commonly reported for aquatic insects [10], [63]. Particularly,
278 a dispersal event between North America and the Japanese Archipelago was detected by the
279 phylogenetic relationship of the monophyletic group of caddisflies, *Palaeagapetus* spp. [9]. However,
280 no prior studies have observed speciation events of aquatic insects associated with geological events
281 that occurred in ancient times (>12 Ma). Our result suggests an ancient divergence time and a
282 distribution pattern of *Indonemoura*, consistent with a hypothesis of an ancient colonisation
283 influenced by the connection of the Japanese landmass with the North American plate in the Eurasian
284 continent.

285 Nemouridae species diversification, as has been observed in other species of aquatic insects,
286 such as beetles [10], caddisflies [9], water bugs [14] and mayflies [8], [13], was also observed to be
287 affected by the geological formation of the Japanese Archipelago. The diversification of the
288 Nemouridae species occurred during the Paleogene period (<50 Ma). This geological period is
289 consistent with the movement of landmasses (S6 Fig) about 70 Ma ago [4] and the active geological
290 formation of the Japanese Archipelago around 20 Ma ago [5], which could be the cause of the
291 Nemouridae diversification, as previously reported for the mayfly *Dipteromimus flavipterus* (35 Ma)
292 [2].

293 *Indonemoura nohirae* is the single species of *Indonemoura* on the Japanese Archipelago [25],
294 [26]. The morphology of their terminalia resembles that of *Protonemura* rather than of *Indonemoura*,
295 but the characteristic gill formula justifies their taxonomical classification in *Indonemoura* [25], [26].
296 To date, there are 24 *Indonemoura* species from China [16], [24] and 30 species belonging to the
297 Himalayan and Oriental regions in East Asia [15], [20]. These species are morphologically different
298 from *I. nohirae* in Japan [15], [16], [20], [24], [25], [26]. We hypothesise that the *Indonemoura* species
299 of East Asia could be forming separate phylogenetic clades clustered by geographical regions. For the
300 hypothesis testing, further collection of molecular data on *Indonemoura* from wider areas such as
301 Northeast China, Southeast China, Mongolia, Russia and other countries in Asia is needed in future
302 studies.

303 Eight species (*I. nohirae*, *A. decemseta*, *A. zonata*, *A. longispina*, *A. megaloba*, *N. chinonis*, *N.*
304 *uenoi* and *N. cercispinosa*) showed interesting patterns of intra-species separation into two genetic
305 groups corresponding to eastern and western areas of the Fossa Magna region of Honshu Island (S5
306 Fig). Honshu is the centre of insect biodiversity [10]; apart from its extensive territorial space, it is the
307 main island with a geological history [3], [4], [5]. We found supporting evidence on the genetic
308 diversity of these eight species. We found a larger mean nucleotide substitution rate and haplotype
309 number in the Honshu region than in other islands (Table 1). The mean nucleotide substitution rate
310 and haplotype diversity are indications of biodiversity [64], which could lead to evidence of speciation
311 [65]. Out of eight species, the diversification of six species (*A. decemseta*, *A. zonata*, *A. longispina*, *A.*
312 *megaloba*, *N. uenoi* and *N. cercispinosa*) occurred during the late Neogene period (20 to 22 Ma). This
313 event corresponded with the double-door (i.e. the union of eastern and western Japan; S6 Fig)
314 geological model and the formation of the Itoigawa-Shizuoka tectonic line (ISLT) at around 20 Ma [5],
315 [66]. The speciation of aquatic insects was often observed to be influenced by these two geological
316 events [2]. Additionally, species diversification—from eastern or western Japan of the Fossa Magna
317 region—showed recent diversification events (3 to 5 Ma) corresponding with the formation of the
318 small islands in northeastern or southwestern edge areas of Japan (Fig 1). The northeastern islands
319 created land bridges between the Japanese Archipelago and China or Korea, whereas the
320 southwestern islands connected Taiwan or the Philippines with the Japanese Archipelago [5], [66].
321 This connectivity promoted immigration events in Japan that might have contributed to the formation
322 of the current genetic diversity, as previously observed in mayflies [13] and beetles [10].

323 The evolutionary divergence of the Nemouridae family was promoted by the complex
324 geological formation of the Japanese Archipelago. Despite the different evolutionary rate of both
325 molecular markers, Bayesian analysis found congruence between both markers; however, failed to
326 find congruence with their morphological taxonomy. The main morphological character used for
327 identification of adult stoneflies species is its genital morphology. The evolution of genital morphology
328 is, however, governed by within-population sexual selection rather than environmental or geological
329 history of the locations [67]. Conversely, the genetic variation of natural populations has been
330 observed to be directly associated with environmental [68] and geological variations [2]. Therefore,
331 the genetic variation could reflect an independent course in the evolutionary history of *Indonemoura*
332 than do the morphological characters used for their taxonomy. However, we detected that *N. sanbena*
333 shared haplotypes from different lineages, revealing a possible introgression or incomplete sorting of
334 ancestral polymorphisms [10]. This is an often reported phenomenon in stoneflies [40], [69], [70],
335 which remains as unresolved species. Resolving the problems between the process of evolution of

336 morphological characters and the genetic variation within species will improve our future
337 understanding of the origin of the species and the local species distribution.

338 Finally, our inference of divergence time was based on the coalescent simulation approach.
339 Despite the frequent use of this approach, a biased sampling of lineages and extreme state-dependent
340 molecular substitutions rate heterogeneity are known to potentially cause erroneous inference of
341 divergence time [71]. Therefore, combining node calibrations generated by more than one calibration
342 analyses is recommended [71], [72]. A cautious method such as the combined uses of fossil records
343 and biogeographic ages as employed in our analysis may minimise the risk of such erroneous
344 inference.

345

346 **Acknowledgments**

347 We thank the following colleges for contributing Nemouridae specimens for our analysis:
348 Akatsuki Yoshinari, Kobayashi Kyota, Weihai Li and Boris C. Kondratieff. We also acknowledge
349 anonymous reviewers for constructive comments on an earlier version of the manuscript.

350

351 **References**

- 352 1. Konstantinov AS, Korotyaev BA Volkovitsh MG. Insect diversity in the Palearctic region. In:
353 Footitt R, Adler P, editors. *Insect Biodiversity: Science and Society*; 2009, pp. 107-162.
354 Blackwell Publishing.
- 355 2. Tojo K, Sekine K, Takenaka M, Isaka Y, Komaki S, Suzuki T, et al. Species diversity of insects in
356 Japan: their origins and diversification processes. *Entomol Sci.* 2017;20: 357-381.
- 357 3. Otofujii Y, Matsuda T, Nohda S. Opening mode of the Japan Sea inferred from paleomagnetism
358 of the Japan arc. *Nature.* 1985;317: 603–604.
- 359 4. Taira A. Tectonic evolution of the Japanese Island Arc system. *Annu Rev Earth Planet Sci.*
360 2001;29: 109–134.
- 361 5. Yanai S, Aoki K, Akahori Y. Opening of Japan Sea and major tectonic lines of Japan: MTL, TTL
362 and Fossa Magna. *J Geography*, 2010;119: 1079–1124.
- 363 6. Avise JC. *Phylogeography: the history and formation of species*. 1st ed. Cambridge, MA,
364 Harvard University Press; 2000.
- 365 7. Condamine FL, Clapham ME, Kergoat GJ. Global patterns of insects diversification: towards a
366 reconciliation of fossil and molecular evidence?. *Sci Rep.* 2016;6: 19208.
- 367 8. Saito R, Tojo K. Complex geographic and habitat based niche partitioning of an East Asian
368 habitat generalist mayfly *Isonychia japonica* (Ephemeroptera, Isonychiidae), with reference to
369 differences in genetic structure. *Freshwater Sci.* 2016;35: 712–723.
- 370 9. Tojo K, Itoh T. The establishment patterns of the insect fauna of Japan, in comparison to its
371 geological history. In: Oba Y, Osawa S, editors. *The Wonderful and Marvelous World of Insects*
372 *from the Perspective of Genetic Analyses*, Insect DNA Research Society Japan; 2015, pp 105–
373 150. Yushokan, Tokyo.
- 374 10. Sota T, Nagata N. (2008) Diversification in a fluctuating island setting: rapid radiation of
375 *Ohomopterus* ground beetles in the Japanese Islands. *Philos Trans R Soc Lon B Biol Sci.*
376 2008;363: 3377-3390.

- 377 11. Tominaga O, Su Z-H, Kim C-G, Okamoto M, Imura Y, Osawa S. Formation of the Japanese
378 carabina fauna inferred from a phylogenetic tree of mitochondrial ND5 gene sequences
379 (Coleoptera, Carabidae). *Journal of Molecular Evolution*. 2000;50: 541-549.
- 380 12. Tokuda M, Tanaka S, Zhu D-H. Multiple origins of *Locusta migratoria* (Orthoptera: Acrididae)
381 in the Japanese archipelago and the presence of two major clades in the world: evidence from
382 a molecular approach. *Biol J Linn Soc*. 2010;99: 570-581.
- 383 13. Sekine K, Hayashi F, Tojo, K. Phylogeography of the East Asian polymitarcyid mayfly genus
384 *Ephoron* (Ephemeroptera: Polymitarcyidae): a comparative analysis of molecular and
385 ecological characteristics. *Biol J Linn Soc*. 2013;109: 181-202.
- 386 14. Suzuki T, Kitano T, Tojo K. Contrasting genetic structure of closely related giant water bugs:
387 phylogeography of *Appasus japonicus* and *Appasus major* (Insecta: Heteroptera,
388 Belostomatidae). *Mol Phylogenet Evol*. 2014;72: 7-16.
- 389 15. Baumann RW. Revision of the stonefly family Nemouridae (Plecoptera): a study of the World
390 Fauna at the generic level. *Smithson Contr Zool*. 1975;211: 1-74pp.
- 391 16. DeWalt RE, Maehr MD, Neu-Becker U, Stueber G. Plecoptera Species File Online; 2018 [cited
392 6 February 2018]. Version 5.0/5.0. Available from: <http://Plecoptera.speciesfile.org>.
- 393 17. Grubbs SA, Baumann RW, DeWalt RE, Tweddale T. A review of the Nearctic genus *Prostoia*
394 (Ricker) (Plecoptera, Nemouridae), with the description of a new species and a surprising
395 range extension for *P. hallasi* Kondratieff & Kirchner. *ZooKeys*. 2014;401: 11-30.
- 396 18. Verdone CJ, Kondratieff BC, DeWalt RE, South EJ. Studies on the stoneflies of Georgia with the
397 description of a new species of *Soyedina* Ricker, new state records and an annotated checklist.
398 *Illiesia*. 2017;13: 30-49.
- 399 19. Li WH, Murányi D, Yang D. Two new species of *Protonemura* (Plecoptera: Nemouridae) from
400 China, with biogeographical notes on the genus. *Zootaxa*. 2017;4258: 60-68.
- 401 20. Murányi D, Li WH. Two new species of stoneflies (Plecoptera: Nemouridae) from Northeastern
402 India, with a checklist of the family in the Indian Subcontinent. *Zootaxa*. 2013;3694: 167-177.
- 403 21. Zhiltzova LA. Plecoptera, Gruppe Euholognatha. Fauna of Russia and Neighbouring Countries,
404 New Series. 2003;145: 1-538.
- 405 22. Zhiltzova LA, Teslenko VA. *Zapada* Ricker, 1952 – a genus of Nemourinae (Plecoptera:
406 Nemouridae) new for Asia. *Russian Entomol J*. 2001;10: 125-128.
- 407 23. Kawai T, Tanida K. Aquatic insects of Japan: Manual with keys and illustration. Tokai University
408 Press, Japan; 2005.
- 409 24. Yang D, Li WH, Zhu F. Plecoptera: Nemouroidea. *Fauna Sinica*. 2015;58: 1-518.
- 410 25. Shimizu T. *Indonemoura nohirae* (Okamoto, 1922), comb. n. (Plecoptera, Nemouridae) newly
411 recorded from Japan, with a redescription of *Amphinemura longispina* (Okamoto, 1922). *Jap*
412 *J Entomol*. 1994;62: 619-627.
- 413 26. Shimizu T. Taxonomic changes and synonyms for the East Asian species of the genus *Nemoura*
414 (Plecoptera: Nemouridae). *Aquat Insects*. 1994;16: 213-225.
- 415 27. Shimizu T. New name of an *Amphinemura* species for *Nemoura* (*Protonemura*) *spinosa* Kawai,
416 1960, with description of a new species from Japan (Plecoptera, Nemouridae). *Jap J Entomol*.
417 1997;65: 793-798.
- 418 28. Shimizu T. The species of the *Nemoura ovocercia* group (Plecoptera: Nemouridae). *Aquat*
419 *Insects*. 1997;19: 193-218.
- 420 29. Shimizu T. Two new species of the genus *Amphinemura* from Japan and Taiwan (Plecoptera,
421 Nemouridae). *Jap J Entomol*. 1997;3: 77-84.
- 422 30. Shimizu, T. (1998) The genus *Protonemura* in Japan (Insecta: Plecoptera: Nemouridae). *Spec*
423 *Div*. 1998;3: 133-154.
- 424 31. Shimizu T. The group of *Amphinemura flavostigma* (Plecoptera, Nemouridae). *Aquat Insects*.
425 1998;20: 203-208.
- 426 32. Shimizu T. The group of *Amphinemura megaloba* (Plecoptera, Nemouridae). *Jap J Entomol*.
427 1998;4: 227-236.

- 428 33. Folmer O, Black M, Hoeh W, Lutz R, Vrijenhoek R. DNA primers for amplification of
429 mitochondrial cytochrome c oxidase subunit I from diverse metazoan invertebrates. Mol Mar
430 Biol Biotechnol. 1994;3: 294-297.
- 431 34. Colgan DJ, McLauchlan A, Wilson GDF, Livingston SP, Edgecombe GD, Macaranas J, et al.
432 Histone H3 and U2 snRNA DNA sequences and arthropod molecular evolution. Aust J Zool.
433 1998;46: 419-437.
- 434 35. Larkin MA, Blackshields G, Brown NP, Chenna R, McGettigan PA, McWilliam H, et al. Clustal W
435 and Clustal X version 2.0. Bioinformatics. 2007;23: 2947-2948.
- 436 36. Librado P, Rozas J. DnaSP v5: a software for comprehensive analysis of DNA polymorphism
437 data. Bioinformatics. 2009;25: 1451-1452.
- 438 37. Fujisawa T, Barraclough TG. Delimiting species using single-locus data and the generalized
439 mixed yule coalescent approach: a revised method and evaluation on simulated data sets. Syst
440 Biol. 2013;62; 707-724.
- 441 38. Drummond AJ, Suchard MA, Xie D, Rambaut A. Bayesian phylogenetics with BEAUti and the
442 BEAST 1.7. Mol Biol Evol. 2012;29; 1969-1973.
- 443 39. Ezard T, Fujisawa T, Barraclough T. Splits: SPecies llimits; 2014. Available from: [http://R-](http://R-Forge.R-project.org/projects/splits/)
444 [Forge.R-project.org/projects/splits/](http://R-Forge.R-project.org/projects/splits/).
- 445 40. Bouckaert R, Heled J, Kuhnert D, Vaughan T, Wu C-H, Xie D. et al. BEAST 2: A Software Platform
446 for Bayesian Evolutionary Analysis. PLoS Comput Biol. 2014;10: e1003537.
- 447 41. Misof B, Shanlin L, Meusemann K, Peters RS, Donath A, Mayer C. et al. Phylogenomics resolves
448 the timing and pattern of insect evolution. Science. 2014;346: 763-767.
- 449 42. Murányi D, Gamboa M, Orsi KM. *Zwicknia* gen. n., a new genus for the *Capnia bifrons* species
450 group, with descriptions of three new species based on morphology, drumming signals and
451 molecular genetics, and a synopsis of the West Palearctic and Nearctic genera of Capniidae
452 (Plecoptera). Zootaxa. 2014;3812: 1-82.
- 453 43. Drummond AJ, Ho SYW, Phillips MJ, Rambaut A. Relaxed phylogenetics and dating with
454 confidence. PLoS Biol. 2006;4: 699-710.
- 455 44. Zessin W. Variabilität, Merkmalswandel und Phylogenie der Elcanidae im Jungpaläozoikum
456 und Mesozoikum und die Phylogenie der Ensifera (Orthopteroida, Ensifera). Dtsch Entomol Z.
457 2008;34: 1-76.
- 458 45. McCulloch GA, Wallis GP, Waters JM. A time-calibrated phylogeny of southern hemisphere
459 stoneflies: testing for Gondwanan origins. Mol Phylogenetics Evol. 2016;96: 150-160.
- 460 46. Heath TA, Huelsenbeck JP, Stadler T. The fossilized birth-death process for coherent
461 calibration of divergence-time estimates. Proc Natl Acad Sci U S A. 2014;111: E2957-E2966.
- 462 47. Heled J, Drummond AJ. Calibrated tree priors for relaxed phylogenetics and divergence time
463 estimation. Syst Biol. 2012;61: 138-149.
- 464 48. Farrell BD. Evolutionary assembly of the milkweed fauna: cytochrome oxidase I and the age
465 of Tetraopes beetles. Mol Phylogenetics Evol. 2001;18: 467-478.
- 466 49. Papadopoulou A, Anastasiou I, Vogler AP Revisiting the insect mitochondrial molecular clock:
467 the mid-Aegean trench calibration. Mol Biol Evol. 2010;27: 1659-1672.
- 468 50. Rambaut A, Drummond A.J. Tracer v1.4; 2007. Available from:
469 <http://beast.bio.ed.ac.uk/Tracer>
- 470 51. Rambaut, A. FigTree v. 1.3.1; 2009. Available from: <http://tree.bio.ed.ac.uk/software/figtree/>
- 471 52. Farris JS, Källersjö M, Kluge AG, Bult C. Testing significance of incongruence. Cladistics.
472 1994;10: 315-319.
- 473 53. Nixon KC. The parsimony ratchet, a new method for rapid parsimony analysis. Cladistics.
474 1999;15: 407-414.
- 475 54. Guindon S, Gascuel O. PhyML: A simple, fast and accurate algorithm to estimate large
476 phylogenies by maximum likelihood. Syst Biol. 2003;52: 696-704.
- 477 55. Posada D. jModelTest: Phylogenetic Model Averaging. Mol Biol Evol. 2008;25: 1253-1256.

- 478 56. Liu Y-S, Sinitshenkova, ND, Ren D. A revision of the Jurassic stonefly genera *Dobbertiniopteryx*
479 Ansoerge and *Karanemoura* Sinitshenkova (Insecta: Plecoptera), with the description of new
480 species from the Daohugou locality, China. *Paleontol J.* 2009;43: 183-190.
- 481 57. Yushuang L, Sinitshenkova ND, Dong R, Chungkun S. Pronemouridae fam. nov. (Insecta:
482 Plecoptera), the stem group of Nemouridae and Notonemouridae, from the middle of Jurassic
483 of inner Mongolia, China. *Palaentology.* 2011;54: 923-933.
- 484 58. Gustafson GT, Prokin AA, Bukontaite R, Bergsten J, Miller KB. Tip-dated phylogeny of whirligig
485 beetles reveals ancient lineages surviving on Madagascar. *Sci Rep.* 2017;7: 8619.
- 486 59. Brown RM, Siler CD, Oliveros CH. Esselstyn JA, Diesmos AC, Hosner PA, et al. Evolutionary
487 process of diversification in a Model Island Archipelago. *Ann Rev Ecol Evol Syst.* 2013;44: 411-
488 435.
- 489 60. Shimizu, T. Biodiversity of Asian streams with particular reference to stonefly studies in Japan.
490 In: Bae Y, editor. *The 21st Century and Aquatic Entomology in East Asia. Proceedings of the 1st*
491 *Symposium of AESEA; 2001.* pp 11-19. Korean Society of Aquatic Entomologists.
- 492 61. Teslenko V.A. Stoneflies (Plecoptera) of the Russian Far East: diversity and zoogeography.
493 *Aquat Insects.* 2009;31: 693–706.
- 494 62. Condie K.C Plate tectonic and crustal evolution. 4th ed. Butterworth Heinemann. Great
495 Britain; 1997.
- 496 63. Su ZH, Ohama T, Okada TS, Nakamura K, Ishikawa R, Osawa S. Geography-linked phylogeny of
497 the *Damaster* ground beetles inferred from mitochondrial ND5 gene sequences. *J Mol Evol,*
498 1996;43: 662-671.
- 499 64. Goodall-Copestake, W.P., Tarling, G.A. & Murphy, E.J. (2012) On the comparison of
500 population-level estimates of haplotype and nucleotide diversity: a case of study using the
501 gene *cox1* in animals. *Heredity,* 109(1), 50-56.
- 502 65. Hague MT, Routman EJ. Does population size affect genetic diversity? A test with sympatric
503 lizard species. *Heredity.* 2016;116: 92-98.
- 504 66. Ninomiya T, Shimoyama S, Watanabe K, Horie K, Dunkley DJ, Shiraishi K. Age of the Taishu
505 Group, southwestern Japan, and implications for the origin and evolution of the Japan Sea.
506 *Island Arc.* 2014;3: 206–220.
- 507 67. Hosken DJ, Stockley P. Sexual selection and genital evolution. *Trends Ecol Evol.* 2004;19: 87-
508 93.
- 509 68. Schoville SD, Bonin A, Francois O, Lobreaux S, Melodelima C, Manel S. Adaptive genetic
510 variation on the landscape: Methods and cases. *Ann Rev Ecol Evol Syst.* 2012;43: 23-43.
- 511 69. Boumans L, Hogner S, Brittain J, Johnsen A. Ecological speciation by temporal isolation in a
512 population of the stonefly *Leuctra hippopus* (Plecoptera, Leuctridae). *Ecol Evol.* 2017;7: 1635-
513 1649.
- 514 70. Viteck S, Vincon G, Graf W, Pauls SU. High cryptic diversity in aquatic insects: an integrative
515 approach to study the enigmatic *Leuctra inermis* species group (Plecoptera). *Arthropod Syst*
516 *Phylo.* 2017;75: 497-521.
- 517 71. Beaulieu JM, O'Meara BC, Crane P, Donoghue MJ. Heterogeneous rates of molecular evolution
518 and diversification could explain the Triassic age estimate for angiosperms. *Syst Biol.* 2015;64:
519 869-878.
- 520 72. Barba-Montoya J, dos Reis M, Yang Z. Comparison of different strategies for using fossil
521 calibrations to generate the time prior in bayesian molecular clock dating. *Mol Phylogenetics*
522 *Evol.* 2017;114: 386-400.

523
524

525 **Table 1.** Regional distribution of sample size (n), haplotype richness (h) and mean nucleotide
 526 substitution rate of Nemouridae species among the three main islands in Japan, based on
 527 mitochondrial DNA (*cox1*) sequences. Total species richness was 26, 23 and 6 for Honshu, Shikoku and
 528 Kyushu, respectively.
 529

Genus	Species	Honshu			Shikoku			Kyushu		
		n	h	Nucleotide substitution	n	h	Nucleotide substitution	n	h	Nucleotide substitution
<i>Amphinemura</i>	<i>A. bulla</i>	5	4	0.006						
	<i>A. decemseta</i> *	19	13	0.014	9	5	0.02	3	1	0
	<i>A. dentifera</i>	2	1	0	2	2	0.01			
	<i>A. flavostigma</i>	3	3	0.005	3	2	0.01			
	<i>A. longispina</i>	2	1	0						
	<i>A. megaloba</i>	4	2	0.091	3	1	0			
	<i>A. zonata</i> *	2	2	0.053	1	1		1	1	
	<i>A. sp. n.</i>	1	1		3	3	0.03			
<i>Indonemoura</i>	<i>I. nohirae</i> *	9	4	0.059	4	2	0.01	2	1	0
<i>Nemoura</i>	<i>N. akagii</i>	2	1	0						
	<i>N. cf. cercispinosa</i> *	2	2	0.011	13	7	0.01	2	1	0
	<i>N. chinonis</i> *	2	2	0.126	5	3	0.09	1	1	
	<i>N. fulva</i>	3	3	0.043						
	<i>N. cf. hikosan</i>				2	2	0.1			
	<i>N. longicercia</i>	2	1	0	7	5	0			
	<i>N. naraiensis</i>				2	1	0			
	<i>N. ovocercia</i>	1	1							
	<i>N. redimiculum</i>	1	1		3	3	0.01			
	<i>N. sanbena</i>				2	2	0.5			
	<i>N. shikokuensis</i>				4	1	0			
	<i>N. stratum</i>	2	2	0.027						
	<i>N. speciosa</i>	2	2	0.003						
	<i>N. transversospinosa</i>				6	4	0.01			
	<i>N. uenoi</i>	1	1		2	2	0.01			
	<i>N. yakushimana</i>							2	1	0
	<i>N. sp. n. 1</i>				3	1	0			
	<i>N. sp. n. 2</i>	2	2	0.003						
<i>N. sp. n. 3</i>	1	1								
<i>N. sp. n. 4</i>	1	1								
<i>Protonemura</i>	<i>P. kohnoae</i>	6	3	0.043						
	<i>P. orbiculata</i>	6	6	0.029						
	<i>P. sp. n.</i>				2	2	0.01			
	<i>P. sp. n. 1</i>	1	1							
	<i>P. sp. n. 2</i>	2	1	0						
	<i>P. sp. n. 3</i>	1	1							
	<i>P. sp. n. 4</i>						1	1		

530 (*) Species found on the three Japanese islands.

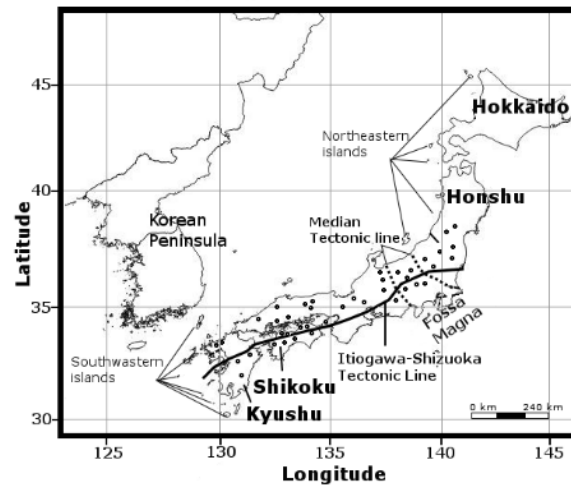
531 **Table 2.** Pairwise nucleotide substitution rate based on *cox1* between the East Asian Nemouridae and North American (western USA and Alaskan) species.

East Asia	<i>Amphinemura</i> spp.	0							
	<i>Nemoura</i> spp.	0.187	0						
	<i>Protonemura</i> spp.	0.197	0.19	0					
	<i>Indonemoura</i> spp. (China)	0.213	0.193	0.197	0				
	<i>Indonemoura</i> spp. (Japan)	0.197	0.183	0.175	0.260	0			
North America	<i>Zapada columbiana</i>	0.178	0.165	0.182	0.190	0.145	0		
	<i>Zapada cinctipes</i>	0.170	0.154	0.156	0.179	0.149	0.133	0	
	<i>Podmosta delicatula</i>	0.202	0.196	0.191	0.205	0.135	0.185	0.201	0

532

533 **Figures**

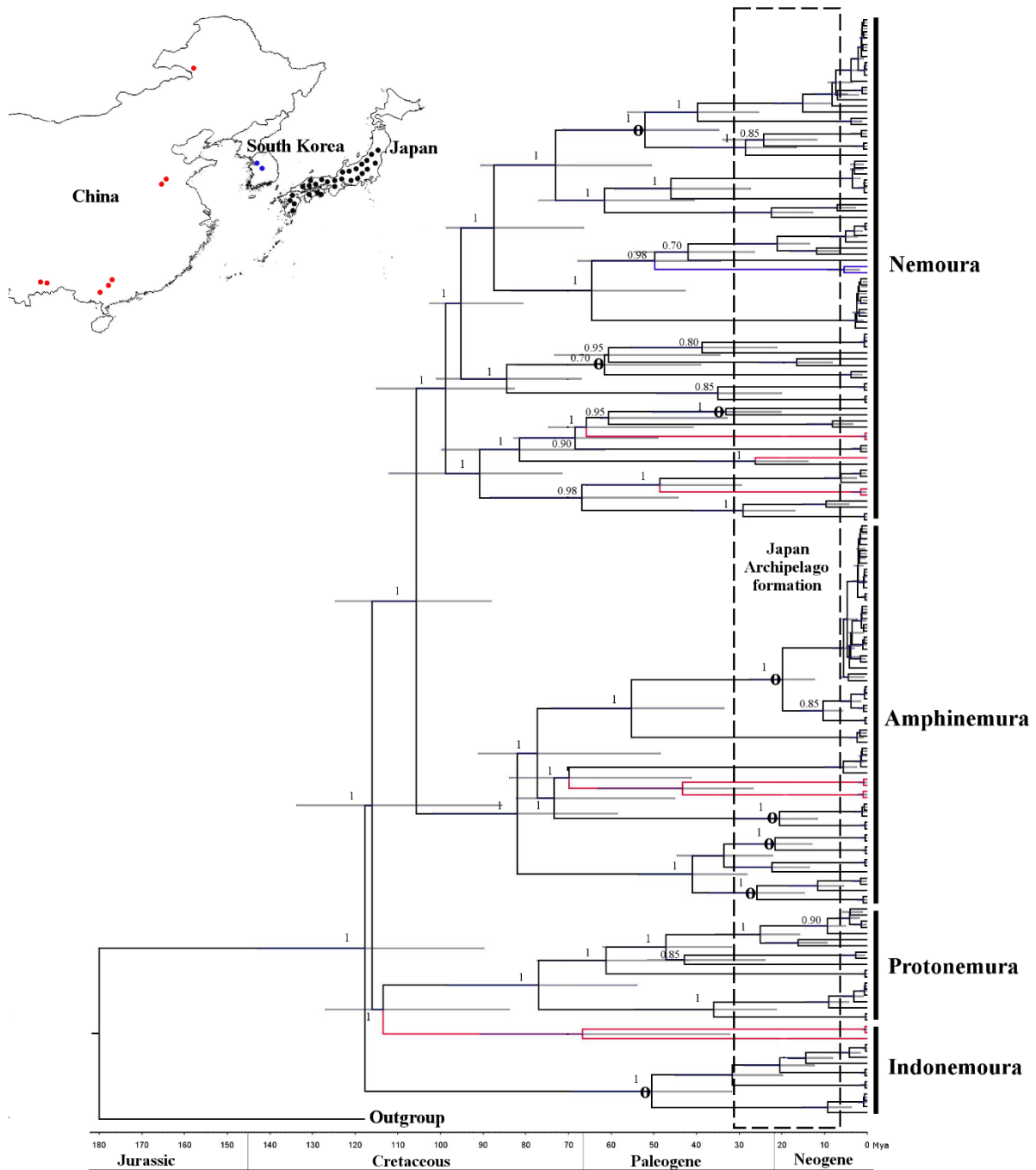
534



535

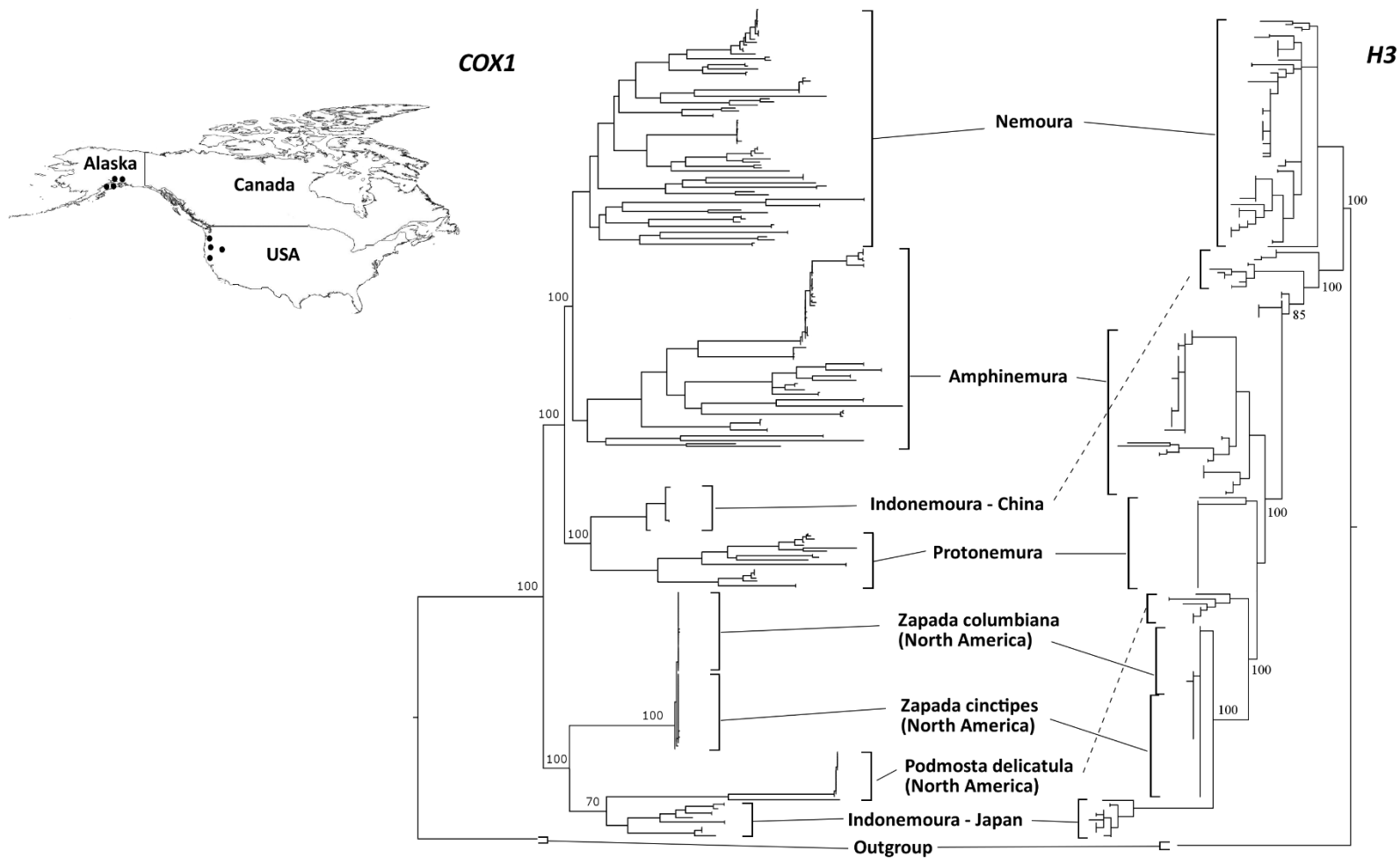
536 **Fig 1.** The Japanese islands and distribution of 110 sampling sites from where Nemouridae samples

537 were collected (open circles).



538

539 **Fig 2.** Concatenated Bayesian phylogeny (*cox1* + *H3*) of the East Asian Nemouridae family. The
540 phylogenetic tree nodes were calibrated using 180 Ma based on fossil records + 15 to 30 Ma based on
541 the Japanese Archipelago formation. Calibration and geological time are shown at the bottom of the
542 tree. A 95% HPD is indicated as a horizontal grey bar and posterior probabilities are shown for each
543 node. Circle symbol (o) in the nodes indicates intra-species diversification based on the eastern and
544 western Japanese boundaries of the Fossa Magna region. Inserted upper map shows sample site
545 locations for Japan (black), China (red) and South Korea (blue) as dots. Colour branches indicate
546 sample location distribution as shown in the map.



547

548 **Fig 3.** Maximum likelihood trees based on both *cox1* and *H3* markers for comparison between the East Asia Nemouridae family and three North American
 549 Nemourinae species: *Zapada cinctipes*, *Z. columbiana* and *Podmosta delicatula*. Inserted upper map shows sampling site locations in North America (western
 550 USA and Alaska) as black dots.

Supplementary information

S1 Table. Location information of samples of East Asia Nemouridae. Numbers of individuals (N), presences of male (M), female (F) and imago (im), DNA-species delimitation (GMYC).

S1 Fig. Multiple alignment of *cox1* region for the 54 Nemouridae genotypes.

S2 Fig. Multiple alignment of *H3* regions for the 54 Nemouridae genotypes.

S3 Fig. *Cox1* Bayesian trees using three types of node calibration. A – fossil, B – island formation and D – TMRCA.

S4 Fig. *H3* Bayesian trees using two types of node calibration. A – fossil and B – islands formation.

S5 Fig. Concatenated Bayesian phylogeny (*cox1* + *H3*) for East Asian Nemouridae family enlarging intra-species diversification in *I. nohirae*, *A. decemseta*, *A. zonata*, *A. longispina*, *A. megaloba*, *N. chinonis*, *N. uenoi* and *N. cf. cercispinosa* (GMYC = 2 species).

S6 Fig. Putative formation of the Japanese Archipelago [2], [3], [4], [5]. (A) Around 30 to 130 Ma, the Japanese landmasses were located in two major tectonic plates from the Eurasian continent. (B) Around 15 to 30 Ma, the Japanese landmasses began to separate from Eurasia and the North American Plates began to separate from the Eurasian continent, and remained separated by a sea zone called Fossa Magna—a geological event called double-door. (C) Current map of the Japanese Archipelago in East Asia, where the names of the main four Japanese islands and the two tectonic lines are shown.