

The orchestration of subcellular alpha-synuclein pathology in the Parkinson's disease brain revealed by STED microscopy

Tim E. Moors¹, Christina A. Maat¹, Daniel Niedieker², Daniel Mona³, Dennis Petersen², Evelien Timmermans-Huisman¹, Jeroen Kole⁴, Samir F. El-Mashtoly², Liz Spycher³, Wagner Zago⁵, Robin Barbour⁵, Olaf Mundigl⁶, Klaus Kaluza⁶, Sylwia Huber⁷, Melanie N. Hug⁷, Thomas Kremer³, Mirko Ritter⁸, Sebastian Dziadek⁹, Jeroen J.G. Geurts¹, Klaus Gerwert², Markus Britschgi³, Wilma D.J. van de Berg^{1}*

¹Amsterdam UMC, Vrije Universiteit Amsterdam, Department of Anatomy and Neurosciences, Section Clinical Neuroanatomy, Amsterdam Neuroscience, De Boelelaan 1108, 1081 HZ Amsterdam, The Netherlands

²Department of Biophysics, Ruhr-University Bochum, Bochum, Germany, Universitätsstrasse 150, 44801 Bochum

³Roche Pharma Research and Early Development; Neuroscience, Ophthalmology, and Rare Diseases Discovery and Translational Area, Roche Innovation Center Basel, Grenzacherstrasse 124, CH – 4070, Basel, Switzerland

⁴Amsterdam UMC, Vrije Universiteit Amsterdam, Department of Physiology, De Boelelaan 1108, 1081 HZ Amsterdam, The Netherlands.

⁵Prothena Biosciences Inc, South San Francisco, California, CA, 94080, USA

⁶Roche Pharma Research and Early Development; Therapeutic Modalities; Large Molecule Research, Roche Innovation Center Munich, Nonnenwald 2, D-82377 Penzberg, Germany

⁷Roche Pharma Research and Early Development; Therapeutic Modalities; Small Molecule Research, Roche Innovation Center Basel, Grenzacherstrasse 124, CH – 4070, Basel, Switzerland

⁸Roche Diagnostics GmbH, Nonnenwald 2, D-82377 Penzberg, Germany

⁹Roche Pharma Research and Early Development; Oncology Discovery and Translational Area, Roche Innovation Center Basel, Grenzacherstrasse 124, CH – 4070, Basel, Switzerland

***Corresponding author:**

Wilma D.J. van de Berg, PhD

Dept. of Anatomy & Neurosciences, chair section Clinical Neuroanatomy and Biobanking
Amsterdam Neuroscience

Amsterdam UMC, location VU University Medical Center

O2 building, room 13 E11

De Boelelaan 1108

1081 HZ Amsterdam, the Netherlands

e-mail: [wdj.vandenberg@vumc.nl](mailto:w.dj.vandenberg@vumc.nl); Tel.nr: +316-25694907

Abstract

Post-translational modifications of alpha-synuclein (aSyn), particularly phosphorylation at Serine 129 (Ser129-p) and truncation of its C-terminus (CTT), have been implicated in Parkinson's disease (PD) pathology. To gain more insight in the relevance of Ser129-p and CTT aSyn under physiological and pathological conditions, we investigated their subcellular distribution patterns in normal aged and PD brains using highly-selective antibodies in combination with 3D multicolor STED microscopy. We show that CTT aSyn localizes in mitochondria in PD patients and controls, whereas the organization of Ser129-p in a cytoplasmic network is strongly associated with pathology. Nigral Lewy bodies show an onion skin-like architecture, with a structured framework of Ser129-p aSyn and neurofilaments encapsulating CTT aSyn in their core, which displayed high content of proteins and lipids by label-free CARS microscopy. The subcellular phenotypes of antibody-labeled pathology identified in this study provide evidence for a crucial role of Ser129-p aSyn in Lewy body formation.

Introduction

The presence of cellular inclusions – termed Lewy Bodies (LBs) and Lewy Neurites (LNs) – in predilected brain regions pathologically defines Parkinson's disease (PD) and dementia with Lewy bodies (DLB). LBs and LNs are defined as eosinophilic inclusions with different morphologies, typically dependent on brain region (brainstem, limbic or cortical) ^{1, 2}. The mechanism determining the formation and morphology of these inclusions remains elusive. LBs and LNs are strongly immunoreactive for alpha-synuclein (aSyn), which is one of their major components ³. aSyn is a 14kDa protein ubiquitously and highly expressed in neurons under physiological conditions. Its enrichment in presynaptic terminals has been established ^{4, 5, 6, 7}, while more recent studies have reported additional intraneuronal localizations for aSyn, including mitochondria, endoplasmatic reticulum (ER) and Golgi ⁷. The primary sequence of aSyn contains 140 amino acids, and is composed of three distinct domains. An important role has been proposed for the lipophilic N-terminus (NT) and non-amyloid component domain (NAC domain) in the interaction of aSyn with lipid membranes ^{7, 8}, while the residues 96-140 encompass the negatively charged, acidic C-terminus (CT) of aSyn for which important roles have been proposed in the interaction of aSyn with other proteins or metal ions ⁹. The CT further harbors the majority of sites where aSyn can be post-translationally modified (PTM) ¹⁰.

The list of aSyn PTMs detected in the human brain has grown extensively in recent years, which highlights the physicochemical and structural flexibility of aSyn ^{11, 12}. Some of these PTMs have been implicated in PD pathology - in particular the phosphorylation at Serine 129 (Ser129-p) and truncations of the C-terminus (CTT). Ser129-p aSyn and different CTT fragments of aSyn, with cleavage sites for instance at residues 119 (119CTT) and 122 (122CTT), were identified in pathology-associated fractions of the DLB brain using mass spectrometry and immuno-based biochemical assays ^{13, 14}. Immunohistochemical analyses in postmortem brain tissue of DLB patients and also aSyn transgenic mouse brains point to a

potential role of 122CTT in axonal and synaptic degeneration¹⁵. Although Ser129-p and CTTaSyn can be detected in small amounts under physiological circumstances¹⁶, these PTMs are enriched under pathological conditions^{13, 14, 17, 18, 19}. Experimental studies have suggested an important role for CTT in aSyn aggregation, as enhanced fibril formation was reported for this PTM with recombinant aSyn *in vitro*^{19, 20, 21, 22, 23}. However, the exact role of CTT modification by either phosphorylation or truncation in aSyn aggregation and toxicity, remains subject of active debate²⁴.

A great interest has emerged for PTM aSyn as a potential biomarker and therapeutic target for PD^{25, 26}, and led to the development of new research tools, including antibodies specifically directed against Ser129-p and CTT aSyn. Although such antibodies were reported to show immunoreactivity in LBs and LNs^{13, 14, 27}, only little is known about their detailed immunoreactivity patterns in the human brain. More information on the subcellular distribution of Ser129-p and CTT aSyn is crucial for a better understanding of their relevance in PD pathology, and therefore highly relevant for ongoing and upcoming immunovaccination therapies targeting different aSyn species. In this study, we aim to define the manifestation of Ser129-p and CTT aSyn in neurons under physiological and pathological conditions. For this purpose, we mapped subcellular immunoreactivity patterns of highly selective antibodies directed against Ser129-p and CTT aSyn in postmortem brain tissue of clinically diagnosed and neuropathologically verified PD patients, as well as donors with incidental Lewy body disease (iLBD) and aged non-neurological subjects, using high-resolution 3D confocal scanning laser microscopy (CSLM) and stimulated emission depletion (STED) microscopy.

Our results provide novel insights into antibody-labeled subcellular pathology in PD, demonstrating a systematic onion skin-like architecture of nigral LBs composed of layers enriched for specific aSyn epitopes. Ser129-p aSyn at the periphery of such onion-skin type LBs is embedded in a structured cage-like framework of cytoskeletal components such as

intermediate neurofilaments. Results of label-free coherent anti-Stokes Raman scattering (CARS) microscopy demonstrate the presence of increased lipid and protein contents in the core of a-Syn immunopositive inclusions. Together, these observations suggest the encapsulation of aggregated proteins and lipids in the core of LBs. Cytoplasmic CTT reactivity is associated with mitochondria in PD patients as well as controls, while Ser129-p aSyn is organized in a cytoplasmic network in neurons specifically in brains with LB pathology. The presence of this network in neurons without inclusions in patients with early PD stages and incidental LB disease (Braak 3) suggests that this feature is an early subcellular manifestation of aSyn pathology. Based on our observations in the different experiments in this study, we identified a subset of subcellular phenotypes associated with pathology, which possibly reflect different maturation stages of Lewy pathology. Our data suggest extensive cellular regulation of Lewy body formation and maturation, and support a key role for Ser129-p aSyn in this process.

Results

aSyn variants highlight distinct aspects of Lewy pathology

In accordance with existing literature^{13, 14, 27}, immunohistochemical (IHC) stainings using antibodies (specified in Supplementary Table 1 and Supplementary Figure 1C) against truncated aSyn species (119 and 122 CTT aSyn) and Ser129-p aSyn labeled pathology-associated morphologies in post-mortem brain tissue from clinically diagnosed and neuropathologically confirmed advanced PD patients (Braak 5/6; Supplementary Table 2), including LBs and LNs. These neuronal inclusions were also detected using antibodies directed against epitopes within specific domains (CT, NT and NAC domain), while this group of antibodies also revealed synaptic-like staining profiles, particularly in the hippocampus and transentorhinal cortex. Representative images of neuronal aSyn-positive inclusions labeled with

antibodies against different epitopes, taken in the substantia nigra (SN), hippocampus and transentorhinal cortex of PD patients, are shown in Supplementary Figure 1, together with KM-51, an antibody commonly used for neuropathological diagnosis²⁸.

We defined two main types of intracytoplasmic aSyn-immunopositive inclusion bodies based on the observed IHC labeling profiles. Many of the spherical LBs in the SN displayed immunoreactivity in a layered appearance, i.e. with a strong immunopositive ring surrounding a central – weakly or unstained - core (Supplementary Figure 1A). Inspection in adjacent brain sections of the same patients suggested that this morphological appearance of LBs was most clearly visualized by antibodies against Ser129-p aSyn and CT aSyn (Supplementary Figure 1A, xiv, xxvi). Antibodies directed against other aSyn epitopes generally revealed less contrast between core and immunoreactive ring. In some LBs, an area of weaker immunoreactivity surrounding the strongest immunopositive portion of the LB could also be observed (f.i. Supplementary Figure 1A, xviii). The layered appearance of LBs has been described with many antibodies against aSyn in literature, and a subset of these morphologies were shown to represent the eosinophilic ‘classical LBs’ unambiguously identified by hematoxylin and eosin stainings². Peripheral immunoreactivity surrounding a weakly stained central core could also be observed in a subset of the dystrophic LNs in the SN (Supplementary Figure 1B).

Other intracytoplasmic aSyn positive inclusions showed diffuse and uniform labeling throughout the structure. This IHC pattern was generally observed for limbic and cortical LBs in the hippocampal CA2 region and transentorhinal cortex, respectively, but also for certain inclusions in the SN^{1,2}. The shapes of this latter group of inclusion bodies showed substantial heterogeneity, including both globular and compact appearing structures (f.i. Supplementary Figure 1A, xxiii), as well as irregularly-shaped expansive-appearing cytoplasmic inclusions (f.i. Supplementary Figure 1A, i&iii).

Onion skin-like distribution of aSyn epitopes in nigral LBs

Triple labeling immunofluorescence experiments demonstrated that Ser129-p aSyn, 119CTT and 122CTT only partially co-localized in nigral LBs, using different combinations of antibodies (Supplementary Table 1). In particular, Ser129-p immunopositive rings in nigral LBs localized consistently more towards their periphery as compared to staining patterns for 119CTT or 122CTT aSyn (Figure 1A, C, Supplementary Video 1,2). Interestingly, different localization patterns were also observed between antibodies against NAC, NT and CT of aSyn, with CT aSyn immunoreactivity surrounding the other domains (Figure 1B, D, Supplementary Video 3). A combination of these antibodies in different multiple labeling protocols revealed a gradual distribution of immunoreactivities in nigral LBs (Figure 2A). This lamellar organization of different concentric rings together revealed an onion skin-like 3D morphology of LBs (Fig 2E, Supplementary Video 4), with pronounced reactivity for CT and Ser129-p aSyn at the periphery, while antibodies against CTT aSyn, NT and NAC aSyn localized more towards the core of these structures (Figure 2A-C). The same build-up was observed using a set of different antibodies directed against similar epitopes (Supplementary Figure 2). The consistency of this observation was semi-quantitatively examined in 30 LBs in SN sections of 8 PD patients. For each LB, relative signal intensities (as % of peak intensity) were plotted per channel over a normalized LB diameter. The resulting average line profile showed a clear separation of peak intensity localizations for the different aSyn epitopes, revealing that this gradual difference in distributions was consistent in the LBs selected for analysis. This was confirmed by the results of Friedman nonparametric tests, which showed that different relative distributions were statistically significant for the studied aSyn epitopes over the LB diameter (χ^2 : 73.912 (4); $p < 0.0001$; Fig 2F; post-hoc tests presented in Supplementary Table 3). 3D CSLM analyses further showed that the lamellar build-up was present throughout the entire structure (Figure 2E, Supplementary Video 4). Converging DAPI reactivity was consistently

observed at the core of these inclusions, although this signal was generally weaker than its staining intensity in neighboring cell nuclei (Figure 2B). Numerous dystrophic LNs in the SN were observed to contain compositions similar to these LBs (Figure 2D).

Distribution patterns for different aSyn epitopes were also analyzed in Ser129-p positive inclusion bodies in which no ring-like appearance was observed, in the same sections (in case of SN) and in other sections of the same patients (hippocampus/transentorhinal cortex). These inclusion bodies were homogeneously labeled for Ser129-p aSyn, except for typical ‘cavities’ lacking Ser129-p reactivity (Supplementary Figure 3A,D). Although such inclusions were unambiguously stained for Ser129-p aSyn, antibodies against other aSyn epitopes (particularly 122CTT, NAC and NT aSyn) generally revealed weak signal intensities that were distributed diffusely throughout the inclusion, while immunoreactivity for DAPI was barely increased compared to the surrounding. Although these inclusions appeared relatively unstructured – e.g. no systematic distribution patterns for aSyn epitopes were observed - their outline was usually sharply demarcated by Ser129-p aSyn immunoreactivity (f.i. Supplementary Figure 3A, Supplementary Video 5). Taken together, our results show morphology-dependent distribution patterns for aSyn epitopes in Ser129-p aSyn-positive inclusions, and provide evidence for a structured lamellar and onion skin-like 3D organization of certain midbrain LBs and LNs.

Lipids and proteins are centralized in nigral LBs

As we observed different localization for antibodies recognizing membrane-associated aSyn domains (NT/NAC domain) and CT recognizing antibodies, we explored whether this differential epitope availability could be explained by the distribution patterns of proteins and lipids in LBs. For this purpose, we used a label-free optical imaging technique, CARS microscopy, in combination with CSLM. In total, 57 Ser129-p aSyn-positive inclusions were scanned in SN sections of 5 PD patients (Supplementary Table 2). Results revealed substantial

heterogeneity in protein and lipid distributions in the Ser129-p immunopositive inclusions, both within and between patients (Figure 3D). We identified inclusions with different chemical compositions: part of the inclusion bodies showed high protein and lipid content as compared to the direct environment (35%), others contained higher protein content but no increased lipid content (30%), and finally inclusions were observed without detectable increases for either lipid or protein content (35%) (Figure 3A-C). In 14 out of 20 inclusions with increased lipid content, lipids clustered at their central portion, while a similar pattern was observed for proteins (28 out of 37 inclusions). In all inclusions with centralized lipids, an increased protein content was also detected in the core (14 out of 14 inclusions). Overall, our results show that in the subset of aSyn-positive inclusion bodies that shows increased protein and lipid content compared to the surrounding, these components are generally found centralized in the structure, suggesting an encapsulation of aggregated material in LBs.

Presence of Ser129-p aSyn in a cytoskeletal LB framework

The previously described results together suggest a structured, lamellar architecture of LBs, which may reflect the encapsulation of aggregated components in their core. As cytoskeletal proteins are a major constituent in organizing cellular organelles and substructures, we therefore explored the distribution of intermediate neurofilaments and beta-tubulin in the described onion-skin type LBs, and their association with aSyn immunoreactivity patterns.

Markers for intermediate neurofilament and beta-tubulin showed immunoreactivity at the periphery of nigral LBs, associated with the immunoreactive band for Ser129-p aSyn (Figure 4). Together with Ser129-p aSyn, cytoskeletal markers visualized a ‘cage-like’ framework at the peripheral portion of LBs (Figure 4D). Although LBs are defined in brightfield microscopy as spherical smooth-edged inclusions, detailed STED imaging revealed that the outline of many LBs revealed a corona of radiating Ser129-p aSyn immunoreactivity,

(Supplementary Figure 4). Beta-tubulin immunoreactivity showed similar radiating reactivity patterns as Ser129-p aSyn, although even more localized towards the outer LB portion (Figure 4B). A particular organization was observed for intermediate neurofilaments, for which two immunopositive rings were labeled in LBs: one ring localized at the central portion of the Ser129-p aSyn immunopositive band, while another ring surrounded the Ser129-p/beta tubulin signals. These rings are connected by neurofilament-immunoreactive elements giving rise to a structure resembling a wheel (Figure 4B). The distribution of cytoskeletal components around the Ser129-p immunopositive band could be best be observed in 3D (Fig 4D, Supplementary Video 6-S8). The wheel-like structure of neurofilaments at the peripheral portion of LBs was a common feature of onion skin-type morphologies in the PD patients analyzed in this study, suggesting that this is a general feature of this LB-type. A gallery of neurofilament distributions in various onion-skin type LBs in different patients is shown in Supplementary Figure 5. For expansive-appearing nigral inclusions, cortical LBs and (dystrophic) LNs, the presence of cytoskeletal markers was less prominent, although diffuse immunoreactivity was generally observed in these morphologies. This suggests that the organization of Ser129-p aSyn and cytoskeletal markers was characteristic for a subset of cytoplasmic inclusions (Supplementary Figure 6 A,C).

Distinct cytoplasmic manifestations of Ser129-p and CTT aSyn

Apart from their localization in aSyn-immunopositive inclusion bodies, Ser129-p and 122CTT aSyn antibodies also revealed cytoplasmic immunoreactivity in neurons outside of these structures. Immunoreactivity for 119CTT was specific for pathological inclusions with limited immunoreactivity in the cytoplasm. The appearance of cytoplasmic reactivity was different for Ser129-p and 122CTT aSyn (Figure 5A). In particular, 122CTT aSyn revealed many immunoreactive punctae throughout the neuronal cytoplasm, while Ser129-p aSyn immunoreactivity visualized an intracytoplasmic network surrounding a nucleus lacking

immunoreactivity (Figure 5A). This cytoplasmic network was sometimes in continuation with Ser129-p immunoreactivity in the proximal portion of the neuronal processes. Limited co-localization was observed between the 122CTT immunopositive punctae and the Ser129-p aSyn network.

122CTT aSyn punctae are associated with mitochondria

122CTT immunopositive punctae were not only observed in PD patients, but also in brain tissue sections of donors without Lewy pathology (Supplementary Figure 7A). The pattern appeared more pronounced in the hippocampus and transentorhinal cortex compared to the SN (Figure 5B). We observed the punctate reactivity pattern of 122CTT aSyn using different antibodies against this epitope (syn105 and asyn-134), while this pattern was not observed for 119CTT aSyn. These 122CTT aSyn-reactive punctae were more pronounced in the cytoplasm of neurons compared to the environment. Analysis with subcellular markers revealed that a subset of the 122CTT-reactive punctae in the cytoplasm of neurons co-localized with mitochondrial morphologies immunoreactive for Porin/VDAC reactivity, which is a marker for the outer membrane of mitochondria (Figure 5B). This association between CTT aSyn and mitochondria was also observed in 3D (Supplementary Video 10). Together, our findings suggest widespread 122CTT aSyn expression in the brain of donors with and without PD, particularly in the neuronal cytoplasm where 122CTT aSyn is possibly associated with mitochondria.

Ser129-p aSyn reveals disease-associated network

The Ser129-p aSyn immunopositive cytoplasmic network was frequently visible in large neuromelanin-containing neurons in the SN (Figure 5C), but also in other cell types, such as pyramidal neurons in the transentorhinal cortex. Most often, the network was observed in neurons containing an expansive-appearing inclusion uniformly stained for Ser129-p aSyn, and

in a smaller fraction of neurons containing onion skin-type LBs. However, this network was also observed in a subset of neuromelanin-containing neurons without apparent inclusion in PD patients (f.i. Figure 6A, 1). Other neurons without inclusion in donors with PD did not reveal a Ser129-p aSyn immunopositive network, while it was not observed in donors without Lewy pathology (Supplementary Figure 7B). The Ser129-p aSyn immunoreactive network showed only limited overlap with other intracytoplasmic networks such as intermediate neurofilaments, beta-tubulin (Figure 5C) or endoplasmatic reticulum (ER; Supplementary Figure 6). This indicates that the alignment of Ser129-p positive elements is not simply explained by localization of Ser129-p aSyn to these networks. The observed diameter of the structures in the network was generally 70-80 nm and probably limited by the resolution of the applied scan settings. Interestingly, the same feature was also identified in donors with iLBD or for PD patients staged as Braak 3, suggesting that the Ser129-p aSyn network manifests already at early stages of LB formation (Supplementary Figure 8, Supplementary Video 9)²⁹. Together, these observations suggest that the Ser129-p aSyn immunopositive network is a pathological feature, possibly representing an early stage of Lewy pathology.

Pathological subcellular phenotypes of Ser129-p aSyn

By comparing cytoplasmic Ser129-p aSyn-immunoreactivity patterns with different specific antibodies within and between patients, we were able to identify several commonly observed reactivity patterns in melanin-containing neurons of brains with Lewy pathology. These subcellular phenotypes were strongly associated with pathology, as they were observed in patients with end-stage PD and in iLBD but not in any of the analyzed neurons in non-neurological control subjects. Representative examples are summarized in Figure 6A, as visualized by CSLM 3D reconstructions of large z-stacks of neuromelanin-containing nigral neurons in adjacent brain sections of the same patient. Commonly observed cellular phenotypes in the SN of PD patients based on Ser129-p aSyn immunoreactivity included: 1) neurons with

Ser129-p aSyn immunopositive cytoplasmic network but without apparent inclusion body; 2/3) neurons with network and smaller (<5 μ m) or larger irregularly shaped expansive-appearing inclusions; 4) neurons revealing a Ser129-p aSyn immunopositive network and (a combination of) and uniformly stained and onion skin-like inclusions; 5) neurons with a Ser129-p aSyn immunopositive network and onion skin-type inclusions; 6) neurons without a network, but with onion skin-type inclusion. These different faces of Ser129-p aSyn immunoreactivity possibly reflect different maturation stages of LBs (Figure 6B, as discussed later in the text), and may suggest a role for Ser129-p aSyn at different stages of Lewy inclusion formation.

Discussion

aSyn has been established as a major component of Lewy pathology, but the subcellular distribution of specific pathology-associated forms of this protein – both within and outside the inclusions - is unclear. Detailed insight into the aSyn-based architecture of neuronal inclusions may allow for a better understanding of Lewy inclusion formation, which is a key event in PD pathophysiology. In the present study we explored the subcellular distribution patterns for CTT and Ser129-p forms of aSyn by means of specific antibody multiple labeling immunostainings in brain sections of PD patients in combination with high-resolution 3D CSLM and STED microscopy. This allowed an unprecedented detailed view on antibody-labeled subcellular pathological phenotypes, revealing several novel aspects of Lewy pathology.

First, we observed a Ser129-p-immunopositive cytoplasmic network in PD patients, using different antibodies directed against this epitope. Diffuse or granular cytoplasmic immunoreactivity has been described as a specific feature of certain antibodies against aSyn in different studies using light microscopy^{2, 28}, including antibodies with a proposed preferential affinity for disease-associated aSyn^{30, 31}. However, to the best of our knowledge this study is the first to visualize and characterize the alignment of Ser129-p immunopositive structures in

an intracytoplasmic network. This network was most often observed in the vicinity of a compact inclusion, although 3D revealed that this network could also be observed in neurons without apparent inclusions, indicating that this feature could represent an early phenotype of LB formation. Interesting in this perspective are the results of a previous study, which found that increased expression levels for Ser129-p aSyn in soluble fractions of cingulate and temporal cortices – as measured by western blotting – preceded the presence of histologically identified Lewy inclusions³². These findings suggest a role of Ser129-p aSyn already at early stages of LB formation - thereby contradicting theories that Ser129-p aSyn occurs after LB formation²⁴ - which may have important implications for the interpretation of results of biomarker studies measuring Ser129-p aSyn in body fluids or peripheral tissues. The notion of a role of Ser129-p aSyn early in inclusion formation is supported by the experimental findings that inclusion formation after administration of recombinant (full-length and CTT) aSyn pre-formed fibrils is induced by recruitment of soluble endogenous aSyn and its intracellular phosphorylation at Ser129³³. Possible roles of Ser129-p at this stage could be a stabilizing effect on aggregating proteins³⁴ - Ser129-p was demonstrated to inhibit aSyn fibrillogenesis *in vitro*^{24, 35} - while Ser129-p aSyn has also been suggested to serve as an activator of autophagic instruments^{36, 37}.

Although the different localization of the Syn105 and 11A5 antibodies in LBs and dystrophic LNs, directed against 122CTT and Ser129-p aSyn, respectively, has been described before²⁷, we now confirm this finding using different antibodies against similar epitopes, and for different CTT aSyn (calpain-cleaved at res. 119 and 122) species. We further observed a separation between antibodies against membrane-associated aSyn domains (NT/NAC domains) of aSyn and antibodies recognizing its CT in LBs. Integrating antibodies against these aSyn PTMs and domains in multiple labeling protocols showed a 3D onion skin-like orchestration of LBs, with concentric lamellar bands enriched for specific aSyn epitopes. The consistency of this lamination was revealed by semi-quantitative analysis in a selection of LBs and different

PD patients. A multilamellar appearance of LBs has been described in different studies that focused on the ultrastructure of LBs using EM techniques^{38,39}, while lamination patterns in LBs and dystrophic LNs were also suggested in studies using light microscopy^{27, 40, 41}. Interestingly, in the present study this lamellar phenotype was visualized by the gradual distribution of immunoreactivities for antibodies directed against different epitopes on one single protein, aSyn.

As we observed clustering of membrane-associated aSyn epitopes mainly at the core of onion skin-like LBs, we explored the distribution of proteins and lipids in LBs using CARS microscopy, a label-free imaging technique. Results showed that increased lipid content could be detected in a fraction of nigral Ser129-p positive inclusions. Unfortunately, due to the limited morphology of the fresh-frozen tissue sections after CARS imaging, a subclassification of LB morphologies by high-resolution CSLM imaging was not possible. However, in the majority of lipid-enriched inclusions, lipids were found to be centralized in the core of this structure together with proteins. In a previous study, we demonstrated the presence of lipid and membraneous structures in LBs using correlative light and electron microscopy (CLEM) and TEM, which was confirmed by CARS and Fourier transform infrared spectroscopy (FTIR)⁴². Moreover, reactivity in the core of LBs has further been described for different lipophilic dyes^{41, 42, 43}. The functional relevance behind clustering of lipids in the center of LBs is not clear at this point. However, extensive experimental evidence has demonstrated the binding of aSyn to (bio)membranes, while the presence of lipid molecules was repeatedly reported to increase the aggregation rate of aSyn⁴⁴.

At the periphery of nigral onion skin-type LBs, the band of Ser129-p aSyn immunoreactivity was embedded in a cage-like framework of cytoskeletal components, including beta-tubulin and intermediate neurofilaments. The structured presence of cytoskeletal components, major constituents in organizing cellular organelles and substructures, at the

periphery of LBs is suggestive of the active encapsulation of proteins and lipids in the core of these structures. This theory was supported by the results of label-free CARS microscopy, which showed increased protein and lipid content mainly at the core of aSyn-positive inclusions. The displacement of intermediate neurofilaments from their normal cellular distribution and their encapsulation of aggregated proteins have been previously described as consistent features of intracellular aggresome formation^{45, 46}. Although the arrangement of cytoskeletal structures at the periphery of LBs has been reported before, this study provides important new detailed insights into the structure of and relation between such components in LBs. Thereby, our results confirm previous studies proposing that LBs share phenotypic features with aggresomes⁴⁷. Our observations indicate that the interplay of Ser129-p aSyn with cytoskeletal proteins may be an important step in the process of LB morphogenesis².

Based on Ser129-p Syn immunoreactivity patterns within and between PD patients, we identified a subset of commonly observed subcellular pathological phenotypes in neuromelanin-containing neurons in the SN of PD patients (Figure 6A), which may reflect different maturation stages of LB pathology. Based on our high-resolution observations in different experimental setups, combined with CARS data, we propose a hypothetical sequence of events in the formation of LBs in the SN (Figure 6B). We speculate that different subcellular phenotypes of aSyn pathology are tightly coupled to the progressive collapse of protein degradation systems⁴⁸. In healthy dopaminergic neurons, the basal proteolytic activity of the intracellular protein degradation systems – in particular the ubiquitin-proteasomal system (UPS) and chaperone-mediated autophagy (CMA)- are able to maintain protein homeostasis (Figure 6B, step 1)⁴⁸. In situations of increased protein burden, these systems are overloaded, and superfluous aSyn could start to aggregate with itself, other proteins, membranes and/or organelles⁴². Extensive phosphorylation of aSyn may take place to stabilize the expanding mass of cellular debris and to activate the macrophagic machinery³⁷. The Ser129-p aSyn-

immunopositive intracytoplasmic network may reflect the alignment and sequestration of aggregated material for focused clearance by means of autophagy and aggrephagy (step 2)⁴⁵.⁴⁶ When the expansive-appearing inclusion cannot be not cleared (step 3), it will continue to grow and occupy an increasing surface in the cytoplasm. At a certain point, cytoskeletal systems may be recruited to the LB to actively restructure the inclusion into a compact and stable morphology (step 4, 5). Interestingly, the idea of a restructuring of LBs during their maturation in a compaction-like manner has been proposed before in literature². In the mature onion skin-like morphology, highly aggregated proteins and lipids are centralized in the core of the structure, encapsulated by a cage-like framework of Ser129-p aSyn and cytoskeletal components (step 5, 6). This hypothetical sequence of events in LB maturation could be further explored in future experimental studies, for instance in cellular and animal models of aSyn aggregation in PD.

In line with previous studies using antibodies against CTT aSyn species, we found this PTM to localize towards the core of LBs^{16, 27, 49}. CTT aSyn was repeatedly found to increase the propensity of aSyn to form amyloid aggregates *in vitro*^{19, 20, 21, 23}, and these observations together have led to the hypothesis that CTT aSyn plays a critical role in the initiation of protein aggregation²⁷. However, as LBs were demonstrated to contain a medley of fragmented membranes and organelles⁴², including components that are able to cleave aSyn, for instance caspase-1²³, it cannot be ruled out that the enrichment of CTT aSyn in the core of LBs and LNs is the result of post-aggregation events.

Punctate cytoplasmic reactivity for 122CTT aSyn only showed limited co-localization with the Ser129-p immunoreactive network, and was independent of the presence of Lewy pathology (Supplementary Figure 6A). This PTM has been previously suggested to be a normal cellular process¹⁹ and, indeed, presence of CTT aSyn was detected in brains of non-neurological control subjects by western blotting¹⁶. Interestingly, a substantial part of the

122CTT aSyn immunoreactive punctae in the cytoplasm was observed to localize at the outer membrane of VDAC/Porin-reactive mitochondria in diseased neurons from PD patients, but also in healthy neurons from non-neurological control subjects. This could be placed in line with the findings of the previously mentioned study, in which a 15kDa band corresponding with CTT aSyn, was observed in fractions enriched for lysosomes and mitochondria derived from SH-SY5Y cells expressing human WT α -synuclein¹⁶. Future experimental studies are necessary to explore the functional relevance of the co-occurrence of 122CTT aSyn and mitochondria.

The immunoreactivity of aSyn antibodies often surrounded an unstained central core, which showed converging immunoreactivity for DAPI - a dye that binds to T-A-rich regions of DNA⁵⁰. This feature has already been reported before⁵¹. Although at this point the relevance of this observation is not clear, it was speculated that this may be the result of mitochondrial DNA incorporated in LBs⁵¹. Alternatively, DAPI may interact with certain aggregated proteins or lipids in the center of LBs. The limited immunoreactivity in the core of LBs may be the result of limited accessibility of antigen in this densely packed domain⁴¹ or of masking or destruction of epitopes by its strong chemical environment. Importantly, LBs were shown to contain many (>300) proteins as identified by proteomics, which are predominantly centralized at the core of LBs based on our CARS results.

In summary, the present study provides a STED perspective on the architecture of Lewy pathology. Our results reveal a structured onion skin-like distribution of different forms of aSyn in nigral LBs and LNs. Our data suggest that LBs are actively regulated, structured encapsulations of aggregated proteins and lipids by a cage-like framework of Ser129-p aSyn and cytoskeletal components. Analysis of subcellular reactivity patterns led to the identification of different pathology-associated, Ser129-p aSyn-immunopositive subcellular phenotypes, suggesting a central role for Ser129-p aSyn in Lewy inclusion formation. The applied

combination of well-characterized highly specific antibodies and super-resolution microscopy techniques in this study allowed an unprecedented detailed phenotyping of antibody-labeled subcellular pathology, which opens exciting opportunities for better characterization and understanding of LB formation in the pathology of PD.

Material and methods

Postmortem human brain tissue

Postmortem human brain tissue from clinically diagnosed and neuropathologically verified donors with advanced PD as well as non-demented controls was collected by the Netherlands Brain Bank (www.brainbank.nl). In compliance with all local ethical and legal guidelines⁵², informed consent for brain autopsy and the use of brain tissue and clinical information for scientific research was given by either the donor or the next of kin. The procedures of the Netherlands Brain Bank (Amsterdam, The Netherlands) were approved by the Institutional Review Board and Medical Ethical Board (METC) from the VU University Medical Center (VUmc), Amsterdam. Brains were dissected in compliance with standard operating protocols of the Netherlands Brain Bank and Brain Net Europe.

The details of all donors included in this study are listed in Supplementary Table 2. Most of these PD donors developed symptoms of dementia during their disease course (Supplementary Table 2), and had extensive α -synuclein pathology throughout the brain (Braak LB stage 5/6)²⁹. In addition, donors with earlier Braak stages (Braak LB stage 3/4) were included in our study, as well as iLBD cases that did not develop clinical Parkinson's disease but displayed Lewy pathology in their brain (Braak LB stage 3)²⁹. Formalin-fixed paraffin-embedded (FFPE) tissue blocks of the substantia nigra (SN) and hippocampus - also containing part of the parahippocampal gyrus- from these donors with PD, iLBD and also 6 non-demented controls (details in Supplementary Table 2) were cut into 10 and 20 μ m thick sections, which

were utilized for immunohistochemistry and multiple labeling experiments. In addition, fresh-frozen tissue blocks of the SN from 5 patients with advanced PD were cut into 10 μm for CARS microscopy (Supplementary Table 2).

Generation and initial characterization of aSyn antibodies

A detailed overview of all utilized antibodies and their epitopes in this study is provided in Supplementary Table 1. Generation and characterization of antibody 11A5 and syn105 was previously described^{14, 15, 53}. Additional novel antibodies were generated by immunizing rabbits either with E. coli derived recombinant full length aggregated aSyn (asyn-055 and asyn-059) or KLH-conjugated peptides representing the C-terminus of 119CTT, 122CTT aSyn, or aSyn derived peptide phosphorylated at Ser129, respectively (for asyn-131, asyn-134, asyn-142). After screening of serum titers, standard B cell cloning was performed to generate rabbit monoclonal antibodies (mAbs). Recombinant mAbs were screened for binding to the peptides representing the aa1-60, 61-95, and aa96-140 by ELISA, respectively (for asyn-055 and asyn-059), or the C-terminus of aSyn119CTT, aSyn122CTT or phosphorylated at Ser129, respectively (for asyn-131, asyn-134, asyn-142), by ELISA and surface plasmon resonance (SPR). For asyn-055 and asyn-059, counter-screen by ELISA was performed with beta- and gamma-synuclein. For asyn-131, and asyn-134 ELISA- or SPR-based counter-screenings using C-terminal elongated peptides were performed to identify mAbs highly specific for the C-termini of 119CTT or 122CTT aSyn. ELISA- or SPR based counter-screenings using the corresponding non-phosphorylated peptide were performed to identify asyn-142 as highly specific for aSyn phosphorylated at Ser129. All animal experiments followed highest animal welfare standards and were performed according to ethics protocols approved by the local animal welfare committee at Roche, while animal experiment licenses were approved by the respective state authorities.

Antibodies included in the multiple labeling experiments were first optimized for immunohistochemistry. In the multiple labeling for the studied aSyn epitope, immunoreactivity patterns were validated using at least one different antibody raised against a similar epitope, with exception of the antibodies against 119CTT and the N-terminus of aSyn, as no other available antibody against a similar epitope could be integrated in the multiple labeling protocol.

Immunohistochemistry

Protocols for the antibodies against aSyn were optimized for light microscopy to characterize their immunoreactivity in human postmortem formalin-fixed paraffin-embedded brain tissue. All IHC protocols could be optimized without antigen retrieval procedure and without addition of Triton. The Envision™+ kit (DAKO, Santa Clara, USA) was used as a high-sensitivity visualization system, with 3,3'-diaminobenzidine (DAB; 1:50 diluted in substrate buffer; DAKO) as the visible chromogen. Stained sections were analyzed using a Leica DM5000 B photo microscope (Leica Microsystems, Heidelberg, Germany). All brightfield images included in Supplementary Figure 1 were acquired using a HC PL APO 63x1.40 oil objective using a Leica DFC450 digital camera (Leica Microsystems).

Development of triple and multiple labeling protocols

1. Immunoreactivity patterns of aSyn epitopes

Using immunofluorescent stainings, antibodies against different domains and PTMs of aSyn were co-visualized and their local distribution patterns were assessed in pathological structures and neurons. Triple labeling experiments, including DAPI and two antibodies against aSyn were performed to obtain insight into their distribution patterns. Moreover, to allow systematic comparison of distribution patterns of different aSyn epitopes, protocols were developed to visualize multiple (4 or 5) antibodies against aSyn in the same section. To validate

findings from the initial multiple labeling experiments, different antibodies against similar epitopes were selected. This ‘validation set’ of antibodies was optimized for additional multiple labeling protocols. The sets of antibodies used in the different protocols are specified in Supplementary Table 1. No antigen retrieval methods or permeabilization steps were applied in any of these experiments.

For each protocol, we made use of a combination of direct and indirect immunodetection methods. Several primary antibodies (specified in Supplementary Table 1) were directly labeled with fluorochromes following standard protocols of different labeling kits (art. no. A20181, A20183, A20186, 21335 for labeling with Alexa 488, Alexa 546, Alexa 647, and biotin, respectively; Thermo Fisher Scientific, Waltham, USA). Each protocol started with an indirect immunolabeling using unlabeled primary antibodies raised in rabbit/mouse using their appropriate secondary antibodies (with different conjugates, specified in Supplementary Table 1). Sections were then blocked for 1 hour in 5% normal rabbit serum and 5% normal mouse serum in PBS. After this, a biotinylated primary antibody (raised in mouse or rabbit) could be incubated, and visualized by fluophore-conjugated streptavidin. Then, sections were incubated in blocking solution (2% normal goat serum) containing the diluted directly labeled antibodies together with DAPI (1 µg/ml). Sections were mounted in Mowiol mounting solution using glass cover slips (Art. No.: 630-2746; Glaswarenfabrik Karl Hecht, Sondheim, Germany). Negative control stainings lacking primary antibodies were performed to control for background/autofluorescence levels and aspecific staining. Single stainings using a directly labeled antibody against Ser129-p aSyn were scanned to determine autofluorescence levels of the studied morphological structures (LBs, LNs), which was found negligible under the applied scan settings.

Association CTT and Ser129-p aSyn with subcellular markers

In order to study the association of immunoreactivity of CTT and Ser129-p aSyn with subcellular structures, additional multiple labeling protocols were further designed. Apart from the described antibodies against aSyn, these protocols also included some commercial antibodies as markers for subcellular structures, including mitochondria, ER and cytoskeletal proteins (Supplementary Table 1). In these protocols, heat-induced epitope retrieval using citrate buffer (pH 6) and a permeabilization step (1hr incubation in 0.1% Triton-x) was included. Negative control stainings lacking primary antibodies were included to control for background/autofluorescence levels and aspecific staining.

Confocal and STED microscopy

CSLM and STED microscopy were performed using a Leica TCS SP8 STED 3X microscope (Leica Microsystems). All images were acquired using a HC PL APO CS2 100× 1.4 NA oil objective lens, with the resolution set to a pixel size of 20 nm x 20 nm. All signals were detected using gated hybrid detectors in counting mode. Sections were sequentially scanned for each fluorophore, by irradiation with a pulsed white light laser at different wavelengths (indicated in Supplementary Table 1). Stacks in the Z-direction were made for each image. To obtain CSLM images of the DAPI signal, sections were irradiated with a solid state laser at a wavelength of 405 nm. For STED imaging, a pulsed STED laser line at a wavelength of 775 nm was used to deplete Abberior (580, 635P), Alexa (594, 647) or Li-Cor (680 nm) fluorophores, while continuous wave (CW) STED lasers with wavelengths of 660 nm and 592 nm were used to deplete the Alexa 546 and Alexa 488 fluorophores, respectively. The DAPI signal was not depleted, so this channel was scanned at the same resolution as the CSLM images.

After scanning, deconvolution was performed using CMLE (for CSLM images) and GMLE algorithms in Huygens Professional (Scientific Volume Imaging; Huygens, The

Netherlands) software. Images were adjusted for brightness/contrast in ImageJ (National Institute of Health, USA). 3D reconstructions were made using the LAS X 3D Visualization package (Leica Microsystems). Final figures were composed using Adobe Photoshop (CS6, Adobe Systems Incorporated).

Image processing and semi-quantitative analysis

Nigral LBs were classified and selected for inclusion in the analysis based on their immunopositivity for Ser129-p in combination with morphological criteria (specified in Results section). Additional criteria for inclusion were 1) the diameter of the structure (at least 5 μ m) and 2) the presence of specific signal for all channels (signal intensity of raw CSLM images substantially higher than autofluorescence or background levels under the applied scan settings). In this selected subset of LBs, distribution patterns of immunoreactivities were analyzed on deconvolved CSLM images of 30 LBs in the SN of 8 patients with advanced PD (Supplementary Table 2). Z-stacks were made for each structure, of which three frames in the central portion of the structure (Z length: 0.30 μ m; step size between frames: 0.15 μ m) were selected to quantify the x-y distribution for different markers. For the analysis, a maximum Z-projection of these selected frames was first made in ImageJ. Subsequently, three 100 px (2 μ m) thick lines were drawn over three equatorial planes of the LBs (similar to ⁴¹) in ImageJ, along which signal intensities for each channel were measured using a script. The average intensity for each channel at each point of the diameter was normalized to its maximum intensity in the same structure, while the position along the diameter was expressed as % diameter. Normalized values were used to generate average line profiles per morphological structure. The center of the LB was defined as the origin of the structure ⁴¹. The position in the LB with the maximum intensity was determined per channel. Ranking of absolute positions of maximum intensities per structure with respect to the origin of the LB were compared between channels (nonparametric Friedman test). P-values for multiple comparisons were adjusted using Dunn's

correction for multiple comparisons. Statistical analyses were done using SPSS software (version 22, IBM) and GraphPad software (version 7.0, Prism).

Coherent anti-Stokes Raman scattering

The workflow used for CARS microscopy is outlined in Supplementary Figure 9. The detection of the lipid and protein distribution was performed on native, dried samples^{54,55}. A commercial setup (Leica TCS SP5 II CARS, Leica Microsystems) was used with an HCX IRAPO L25X/0.95W (Leica Microsystems) objective. For the lipid distribution intensity images were taken at 2850 cm⁻¹ (Pump-wavelength 816 nm, Stokes-wavelength 1064 nm) and for the protein distribution intensity images at 2930 cm⁻¹ (Pump-wavelength 810 nm, Stokes-wavelength 1064 nm). The laser power at the sample was 28 mW (Pump) and 21 mW (Stokes). Integration times of 34 s per image with a pixel dwell time of 32 μs, 1024x1024 pixels and a spatial resolution of 300 nm were used⁵⁶. After the label-free detection of the lipid and protein distribution, immunofluorescent stainings were performed on the same sections (Supplementary Figure 9). Tissue sections were fixed in 4% formaldehyde for 10 minutes and stained for aSyn, using two primary antibodies raised against aSyn (LB509; ab27766, Abcam, Cambridge, UK) and Ser129-p aSyn (ab59264, Abcam) and their appropriate secondary antibodies. After this, sections were incubated in Sudan Black for 30 min and mounted in Mowiol. For fluorescence detection, a commercial setup (Leica TCS SP5 II CARS, Leica Microsystems, Heidelberg, Germany) was used. Data evaluation was done in Matlab with the Image Processing and Statistics toolboxes (The Mathworks, Inc., Mass.,USA). First, large overview CARS-intensity and fluorescence images were manually overlaid by comparison of morphological features. The distribution of aSyn, proteins and lipids was identified by the overlay of both fluorescence images (Supplementary Figure 9). Therewith, autofluorescence of the surrounding tissue and the fluorescent signal of the aSyn-immunopositive inclusions could

be separated. The inclusion bodies were manually identified based on morphology. Only inclusions with a diameter of 5-20 μm were included for analysis.

Image processing and analysis of CARS images

For an objective evaluation of CARS intensity of aSyn-immunopositive inclusion bodies, the mean CARS intensity of the direct surrounding, a donut with a width of 3.5 μm , was compared with the CARS intensity of the inclusion (Supplementary Figure 10A, light blue and yellow area). The areas of aSyn-immunopositivity were transferred into the CARS-intensity images. Areas with no intensity in the CARS intensity images (holes) were excluded by intensity thresholding. CARS-pixel-intensities higher than 1.4 times the mean CARS-intensity of the surrounding were defined as higher protein/lipid content, which was determined based on pilot measurements in a subset of (~40) aSyn-positive inclusions. The ratio between the CARS-pixel-intensities of the LB and the mean CARS intensity of the surrounding were calculated and the areas with higher protein/lipid content were marked in red (Supplementary Figure 10). Morphological filtering and image processing were performed in Matlab R2017a, MathWorks.

Code availability

ImageJ scripts used for image analysis are available upon request.

Data availability

All images and data supporting the findings of this study are available upon request.

Acknowledgements

We are grateful to all individuals that donated their brain to the Netherlands Brain Bank (NBB; www.brainbank.nl). We thank the team of the NBB, in particular Michiel Kooreman, for their cooperation and their help in the selection of brain tissue. We thank the Advanced Optical

Microscopy Core O|2 (www.ao2m.amsterdam) for support with STED imaging. Further, we thank Lidia Janota for performing immunofluorescent stainings of the tissue sections used for CARS microscopy.

Author contributions

T.M. and C.M. performed immunohistochemistry and multiple labeling experiments. T.M., C.M., E.T., J.K. and W.vdB. performed STED imaging, as well as processing and analysis of images. D.N., D.P., S.EM. and K.G. performed experiments and data analysis for CARS microscopy. D.M. performed the labeling of antibodies for multiple labeling experiments and contributed to the experimental design. M.B., L.S., W.Z., R.B., O.M., K.K., S.H., M.H., T.K., M.R., S.D. selected and characterized the aSyn antibodies. T.M., W.vdB, J.G. and M.B. designed research, analyzed and interpreted the data, and contributed to writing the manuscript.

Competing financial interests

The authors declare no competing interests. D.M., L.S., O.M., K.K., S.H., M.H., T.K., M.R., S.D., and M.B. are or were full-time employees of Roche/F. Hoffmann–La Roche Ltd, and they may additionally hold Roche stock/stock options. W.Z. and R.B. are full-time employees of Prothena Biosciences Inc.

Corresponding author:

Correspondence to: Wilma van de Berg (wj.vandeberg@vumc.nl)

References

1. Wakabayashi K, Tanji K, Odagiri S, Miki Y, Mori F, Takahashi H. The Lewy body in Parkinson's disease and related neurodegenerative disorders. *Mol Neurobiol* **47**, 495-508 (2013).

2. Kuusisto E, Parkkinen L, Alafuzoff I. Morphogenesis of Lewy bodies: dissimilar incorporation of alpha-synuclein, ubiquitin, and p62. *J Neuropathol Exp Neurol* **62**, 1241-1253 (2003).
3. Spillantini MG, Crowther RA, Jakes R, Hasegawa M, Goedert M. alpha-Synuclein in filamentous inclusions of Lewy bodies from Parkinson's disease and dementia with lewy bodies. *Proc Natl Acad Sci U S A* **95**, 6469-6473 (1998).
4. Maroteaux L, Campanelli JT, Scheller RH. Synuclein: a neuron-specific protein localized to the nucleus and presynaptic nerve terminal. *J Neurosci* **8**, 2804-2815 (1988).
5. Iwai A, *et al.* The precursor protein of non-A beta component of Alzheimer's disease amyloid is a presynaptic protein of the central nervous system. *Neuron* **14**, 467-475 (1995).
6. George JM, Jin H, Woods WS, Clayton DF. Characterization of a novel protein regulated during the critical period for song learning in the zebra finch. *Neuron* **15**, 361-372 (1995).
7. Burre J, Sharma M, Sudhof TC. Cell Biology and Pathophysiology of alpha-Synuclein. *Cold Spring Harb Perspect Med* **8**, (2018).
8. Eliezer D, Kutluay E, Bussell R, Jr., Browne G. Conformational properties of alpha-synuclein in its free and lipid-associated states. *J Mol Biol* **307**, 1061-1073 (2001).
9. Eliezer D. The mysterious C-terminal tail of alpha-synuclein: nanobody's guess. *J Mol Biol* **425**, 2393-2396 (2013).
10. Oueslati A, Fournier M, Lashuel HA. Role of post-translational modifications in modulating the structure, function and toxicity of alpha-synuclein: implications for Parkinson's disease pathogenesis and therapies. *Prog Brain Res* **183**, 115-145 (2010).
11. Lashuel HA, Overk CR, Oueslati A, Masliah E. The many faces of alpha-synuclein: from structure and toxicity to therapeutic target. *Nat Rev Neurosci* **14**, 38-48 (2013).
12. Mor DE, Ugras SE, Daniels MJ, Ischiropoulos H. Dynamic structural flexibility of alpha-synuclein. *Neurobiol Dis* **88**, 66-74 (2016).
13. Fujiwara H, *et al.* alpha-Synuclein is phosphorylated in synucleinopathy lesions. *Nat Cell Biol* **4**, 160-164 (2002).

14. Anderson JP, *et al.* Phosphorylation of Ser-129 is the dominant pathological modification of alpha-synuclein in familial and sporadic Lewy body disease. *J Biol Chem* **281**, 29739-29752 (2006).
15. Games D, *et al.* Axonopathy in an alpha-synuclein transgenic model of Lewy body disease is associated with extensive accumulation of C-terminal-truncated alpha-synuclein. *Am J Pathol* **182**, 940-953 (2013).
16. Muntane G, Ferrer I, Martinez-Vicente M. alpha-synuclein phosphorylation and truncation are normal events in the adult human brain. *Neuroscience* **200**, 106-119 (2012).
17. Hasegawa M, *et al.* Phosphorylated alpha-synuclein is ubiquitinated in alpha-synucleinopathy lesions. *J Biol Chem* **277**, 49071-49076 (2002).
18. Baba M, *et al.* Aggregation of alpha-synuclein in Lewy bodies of sporadic Parkinson's disease and dementia with Lewy bodies. *Am J Pathol* **152**, 879-884 (1998).
19. Li W, *et al.* Aggregation promoting C-terminal truncation of alpha-synuclein is a normal cellular process and is enhanced by the familial Parkinson's disease-linked mutations. *Proc Natl Acad Sci U S A* **102**, 2162-2167 (2005).
20. Liu CW, Giasson BI, Lewis KA, Lee VM, Demartino GN, Thomas PJ. A precipitating role for truncated alpha-synuclein and the proteasome in alpha-synuclein aggregation: implications for pathogenesis of Parkinson disease. *J Biol Chem* **280**, 22670-22678 (2005).
21. Murray IV, *et al.* Role of alpha-synuclein carboxy-terminus on fibril formation in vitro. *Biochemistry* **42**, 8530-8540 (2003).
22. Hoyer W, Cherny D, Subramaniam V, Jovin TM. Impact of the acidic C-terminal region comprising amino acids 109-140 on alpha-synuclein aggregation in vitro. *Biochemistry* **43**, 16233-16242 (2004).
23. Wang W, *et al.* Caspase-1 causes truncation and aggregation of the Parkinson's disease-associated protein alpha-synuclein. *Proc Natl Acad Sci U S A* **113**, 9587-9592 (2016).
24. Oueslati A. Implication of Alpha-Synuclein Phosphorylation at S129 in Synucleinopathies: What Have We Learned in the Last Decade? *J Parkinsons Dis* **6**, 39-51 (2016).

25. Schmid AW, Fauvet B, Moniatte M, Lashuel HA. Alpha-synuclein post-translational modifications as potential biomarkers for Parkinson disease and other synucleinopathies. *Mol Cell Proteomics* **12**, 3543-3558 (2013).
26. Dehay B, *et al.* Targeting alpha-synuclein for treatment of Parkinson's disease: mechanistic and therapeutic considerations. *Lancet Neurol* **14**, 855-866 (2015).
27. Prasad K, Beach TG, Hedreen J, Richfield EK. Critical role of truncated alpha-synuclein and aggregates in Parkinson's disease and incidental Lewy body disease. *Brain Pathol* **22**, 811-825 (2012).
28. Alafuzoff I, *et al.* Assessment of alpha-synuclein pathology: a study of the BrainNet Europe Consortium. *J Neuropathol Exp Neurol* **67**, 125-143 (2008).
29. Braak H, Del Tredici K, Rub U, de Vos RA, Jansen Steur EN, Braak E. Staging of brain pathology related to sporadic Parkinson's disease. *Neurobiol Aging* **24**, 197-211 (2003).
30. Kovacs GG, *et al.* An antibody with high reactivity for disease-associated alpha-synuclein reveals extensive brain pathology. *Acta Neuropathol* **124**, 37-50 (2012).
31. Puska G, *et al.* Lysosomal response in relation to alpha-synuclein pathology differs between Parkinson's disease and multiple system atrophy. *Neurobiol Dis* **114**, 140-152 (2018).
32. Lue LF, *et al.* Biochemical increase in phosphorylated alpha-synuclein precedes histopathology of Lewy-type synucleinopathies. *Brain Pathol* **22**, 745-756 (2012).
33. Volpicelli-Daley LA, *et al.* Exogenous alpha-synuclein fibrils induce Lewy body pathology leading to synaptic dysfunction and neuron death. *Neuron* **72**, 57-71 (2011).
34. Rezaei-Ghaleh N, Amininasab M, Kumar S, Walter J, Zweckstetter M. Phosphorylation modifies the molecular stability of beta-amyloid deposits. *Nat Commun* **7**, 11359 (2016).
35. Paleologou KE, *et al.* Phosphorylation at Ser-129 but not the phosphomimics S129E/D inhibits the fibrillation of alpha-synuclein. *J Biol Chem* **283**, 16895-16905 (2008).
36. Dahmene M, Berard M, Oueslati A. Dissecting the Molecular Pathway Involved in PLK2 Kinase-mediated alpha-Synuclein-selective Autophagic Degradation. *J Biol Chem* **292**, 3919-3928 (2017).

37. Oueslati A, Schneider BL, Aebischer P, Lashuel HA. Polo-like kinase 2 regulates selective autophagic alpha-synuclein clearance and suppresses its toxicity in vivo. *Proc Natl Acad Sci U S A* **110**, E3945-3954 (2013).
38. Duffy PE. Phase and electron microscopic observations of Lewy bodies and melanin granules in the substantia nigra and locus caeruleus in Parkinson's disease. *Journal of Neuropathology and Experimental Neurology* **24**, 398 (1965).
39. Forno LS. Neuropathology of Parkinson's disease. *J Neuropathol Exp Neurol* **55**, 259-272 (1996).
40. Kanazawa T, Adachi E, Orimo S, Nakamura A, Mizusawa H, Uchihara T. Pale neurites, premature alpha-synuclein aggregates with centripetal extension from axon collaterals. *Brain Pathol* **22**, 67-78 (2012).
41. Gai WP, Yuan HX, Li XQ, Power JT, Blumbergs PC, Jensen PH. In situ and in vitro study of colocalization and segregation of alpha-synuclein, ubiquitin, and lipids in Lewy bodies. *Exp Neurol* **166**, 324-333 (2000).
42. Shahmoradian SH, *et al.* Lewy pathology in Parkinson's disease consists of a crowded organellar membranous medley. *bioRxiv*, (2017).
43. den Hartog Jager WA. Sphingomyelin in lewy inclusion bodies in parkinson's disease. *Archives of Neurology* **21**, 615-619 (1969).
44. Ghio S, Kamp F, Cauchi R, Giese A, Vassallo N. Interaction of alpha-synuclein with biomembranes in Parkinson's disease--role of cardiolipin. *Prog Lipid Res* **61**, 73-82 (2016).
45. Hyttinen JM, Amadio M, Viiri J, Pascale A, Salminen A, Kaarniranta K. Clearance of misfolded and aggregated proteins by autophagy and implications for aggregation diseases. *Ageing Res Rev* **18**, 16-28 (2014).
46. Kopito RR. Aggresomes, inclusion bodies and protein aggregation. *Trends Cell Biol* **10**, 524-530 (2000).
47. Olanow CW, Perl DP, DeMartino GN, McNaught KS. Lewy-body formation is an aggresome-related process: a hypothesis. *Lancet Neurol* **3**, 496-503 (2004).
48. Moors T, *et al.* Lysosomal Dysfunction and alpha-Synuclein Aggregation in Parkinson's Disease: Diagnostic Links. *Mov Disord* **31**, 791-801 (2016).

49. Dufty BM, *et al.* Calpain-cleavage of alpha-synuclein: connecting proteolytic processing to disease-linked aggregation. *Am J Pathol* **170**, 1725-1738 (2007).
50. Williamson DH, Fennell DJ. The use of fluorescent DNA-binding agent for detecting and separating yeast mitochondrial DNA. *Methods Cell Biol* **12**, 335-351 (1975).
51. Power JH, Barnes OL, Chegini F. Lewy Bodies and the Mechanisms of Neuronal Cell Death in Parkinson's Disease and Dementia with Lewy Bodies. *Brain Pathol* **27**, 3-12 (2017).
52. Klioueva NM, *et al.* BrainNet Europe's Code of Conduct for brain banking. *J Neural Transm (Vienna)* **122**, 937-940 (2015).
53. Games D, *et al.* Reducing C-terminal-truncated alpha-synuclein by immunotherapy attenuates neurodegeneration and propagation in Parkinson's disease-like models. *J Neurosci* **34**, 9441-9454 (2014).
54. El-Mashtoly SF, *et al.* Automated identification of subcellular organelles by coherent anti-stokes Raman scattering. *Biophys J* **106**, 1910-1920 (2014).
55. Petersen D, *et al.* Virtual staining of colon cancer tissue by label-free Raman micro-spectroscopy. *Analyst* **142**, 1207-1215 (2017).
56. Niedieker D, *et al.* Label-free identification of myopathological features with coherent anti-Stokes Raman scattering. *Muscle Nerve*, (2018).

Figure legends

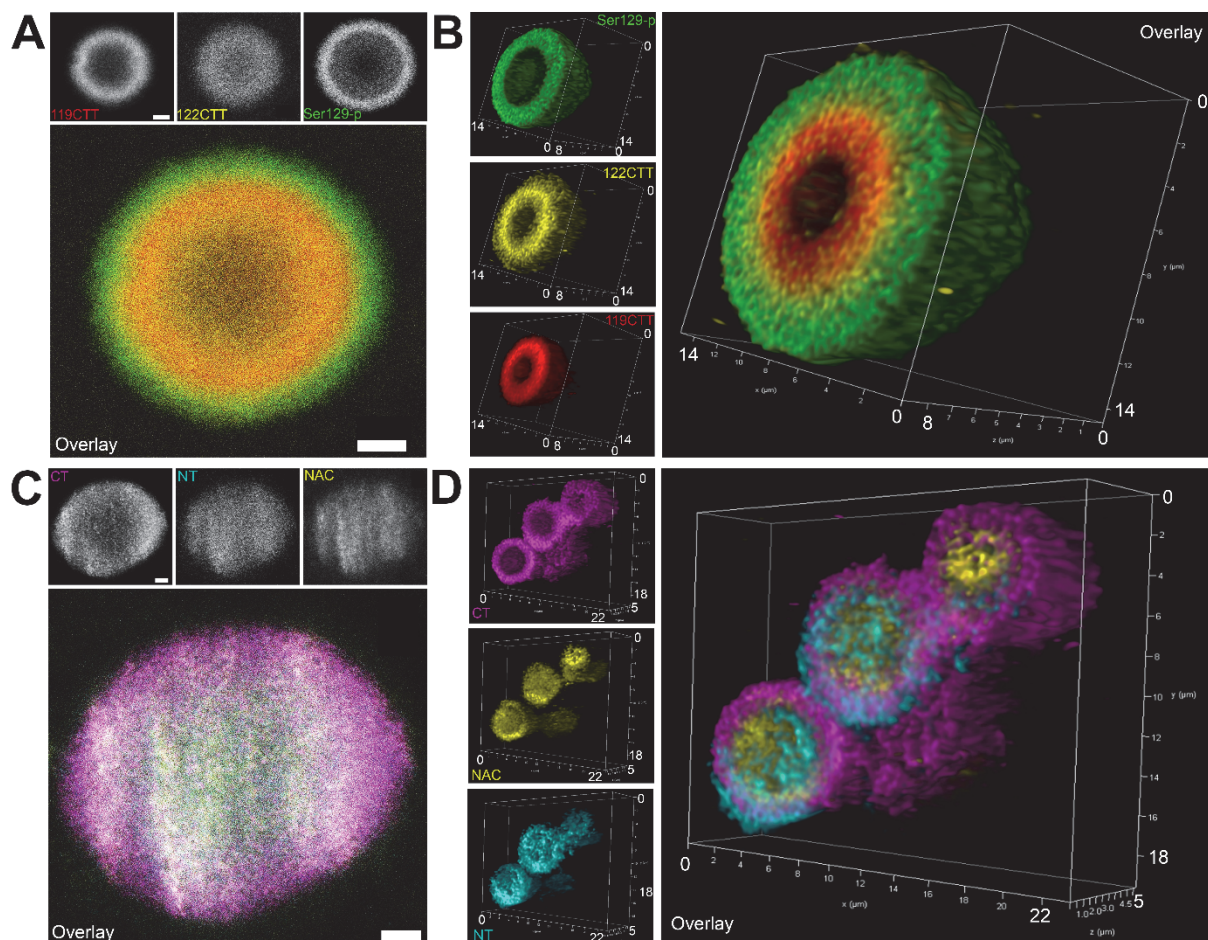


Figure 1: Lamellar distribution patterns of aSyn PTMs and aSyn domains in LBs. A: Triple labeling of aSyn PTMs: representative raw STED image of a nigral LB in patient PD7, showing immunoreactivity for Ser129-p aSyn at the periphery of the LB while 119CTT and 122 CTT aSyn are localized in the core of the structure. **B:** 3D reconstruction based on deconvolved CSLM images showing the lamellar distribution of different aSyn PTMs in a nigral LB in patient PD6. **C:** Triple labeling of different aSyn domains: raw STED image of a nigral LB, showing immunoreactivity for CT aSyn at the periphery of the LB and NT and NAC aSyn staining in the core of the structure, taken in the SN of patient PD8. **C:** 3D reconstruction based on deconvolved CSLM images showing different localization for different aSyn domains in a complex of three LBs in the SN of patient PD8. Scale bar in **A** and **C**: = 2 μm

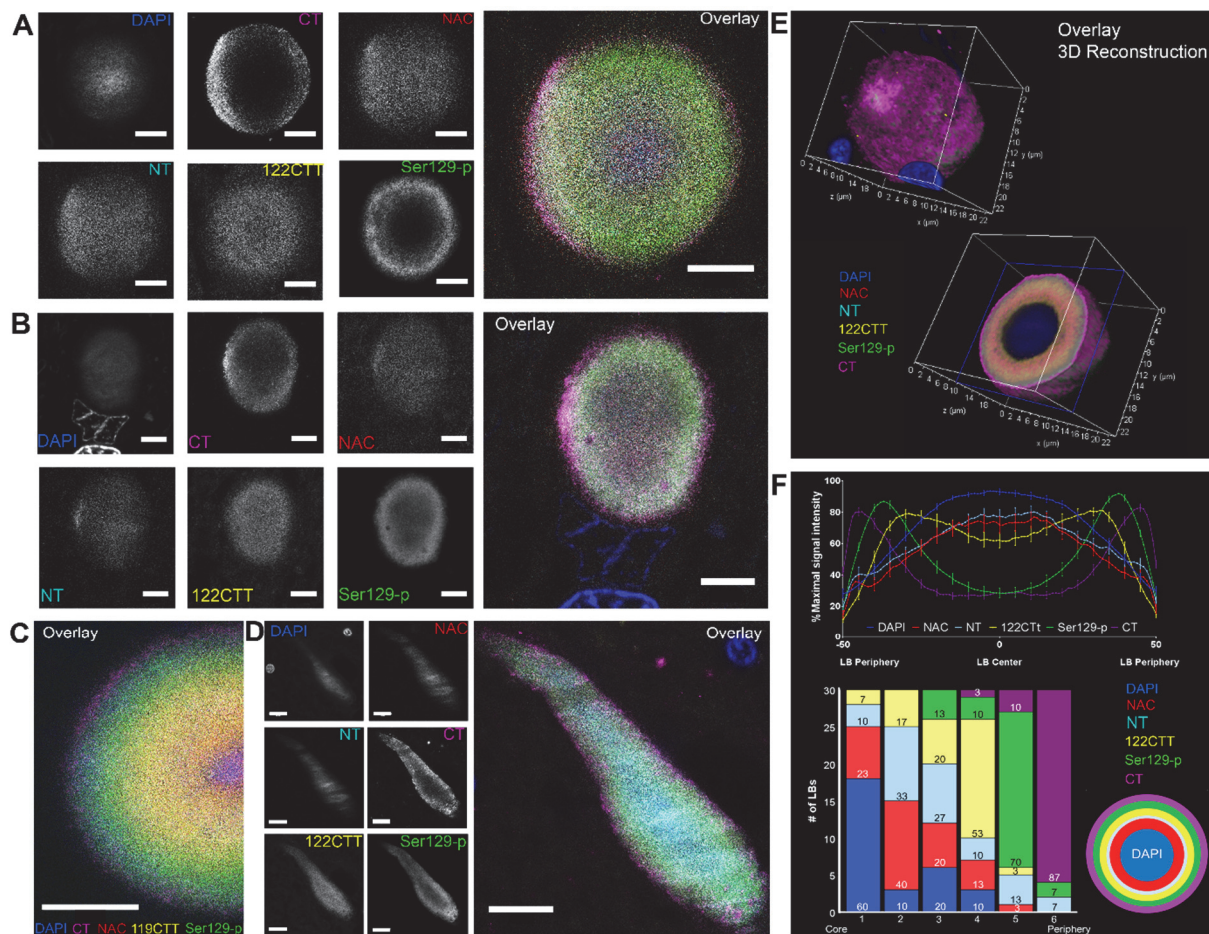


Figure 2: Onion skin-like orchestration of different aSyn epitopes in nigral LBs and LNs.

A, B: Raw STED-images showing immunoreactivities for different aSyn epitopes in onion skin-type LBs in the SN of patient PD1 (**A**) and PD5 (**B**). Immunoreactivities for CT and Ser129-p aSyn are localized at the periphery of the structures, while NT, NAC and 122CTT reactivities were present mainly in their core. **C:** Raw STED image of protocol including an antibody against 119CTT aSyn, taken in the SN of patient PD5. **D:** Raw STED image of a dystrophic LN in the SN of patient PD7. **E:** 3D reconstruction of an entire nigral LB based on deconvolved CSLM images in patient PD1. **F:** Top: Average line profile (\pm SEM) for 30 onion skin-like LBs measured in the SN of 8 PD patients, showing a separation of peak intensities. Bottom: summary of rankings of peak intensity locations from core to periphery for the studied aSyn epitopes, highlighting peripheral localization of CT and Ser129-p aSyn. Right: a

schematic depiction of the lamellar architecture of LBs as revealed by antibodies against different aSyn epitopes. **A-C**: Scale bar = 5 μm ; **D**: Scale bar = 10 μm .

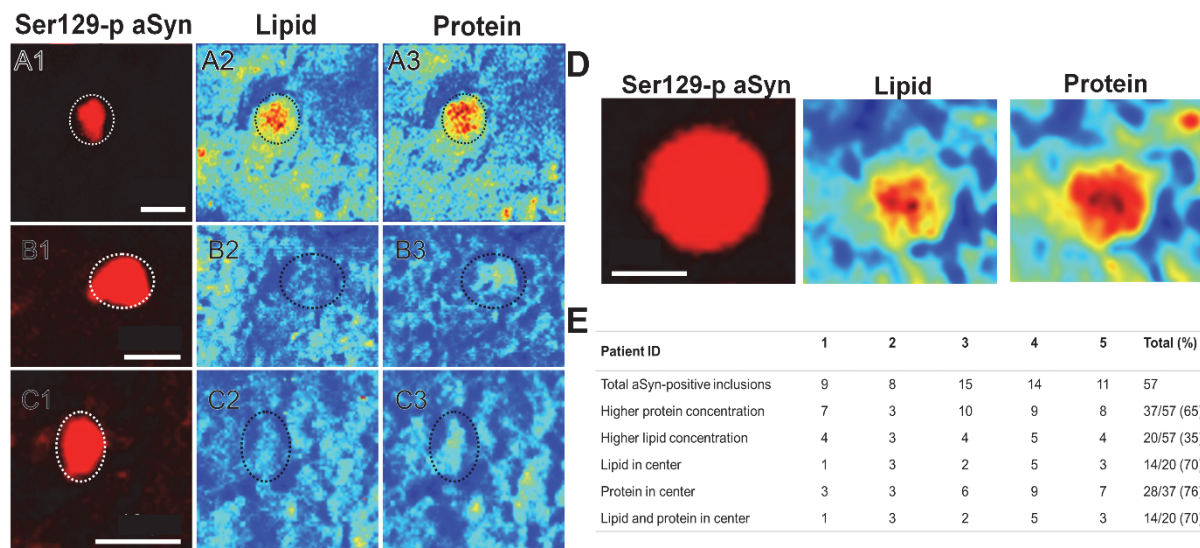


Figure 3: Protein and lipid distribution of nigral LBs. **A-C**: Different compositions of LBs as identified by CARS microscopy. The fluorescence images of Ser129-p aSyn of different LB types are depicted (first column). CARS signal intensities at 2850 cm^{-1} and 2930 cm^{-1} shows lipid (second column) and protein (third column) distributions, respectively. Low CARS-intensities are depicted in blue, whereas high intensities are depicted in red. LBs with different compositions were identified: LBs with high CARS intensities for proteins and lipids compared to the direct environment (A1-3), with high CARS intensity for proteins but not lipids (B1-3), and with low CARS intensity for proteins and lipids (C1-3). **D**: Representative image of a LB with high protein and lipid signal centralized in the structure. **E**: Numbers and proportions of nigral LBs with high (centralized) lipids or proteins per patient. **A-C**: Scale bar = 10 μm ; **D**: Scale bar = 5 μm

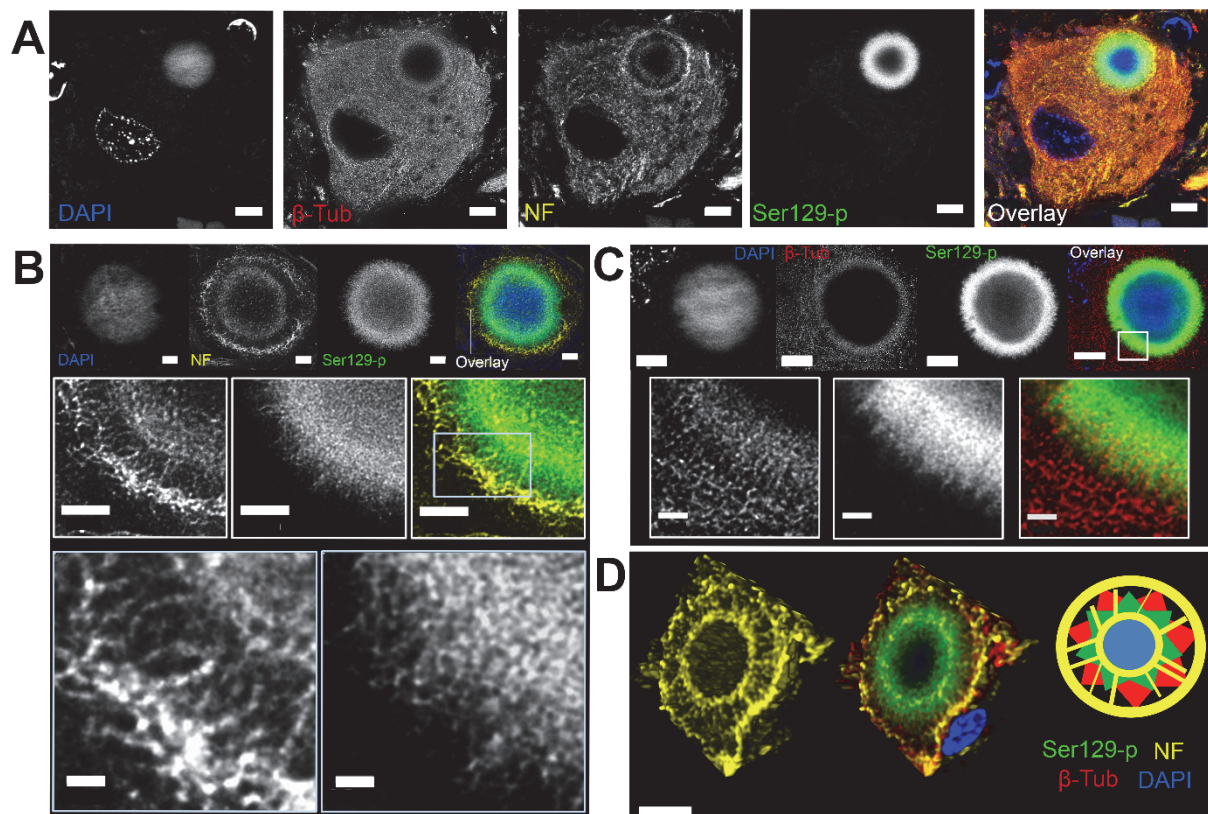


Figure 4: Ser129-p aSyn forms a cage-like framework with cytoskeletal components at the periphery of nigral LBs. **A:** Deconvolved STED image of neuromelanin-containing dopaminergic neuron in the SN with LB. Immunoreactivity for beta-tubulin and neurofilament (in two rings) is observed at the periphery of the LB. **B:** Deconvolved STED images showing the detailed structure of neurofilament in an onion skin-type LB at different magnifications. **C:** Deconvolved STED images showing detailed beta-tubulin reactivity at the periphery of a LB. **D:** Left: 3D reconstruction of the localization of Ser129-p aSyn and cytoskeletal components in a nigral LB, highlighting the wheel-like structure of neurofilament. Right: schematic summary of the results. NF: neurofilament; β -Tub: beta-tubulin. **A:** Scale bar = 5 μ m; **B:** upper and middle row: scale bar = 2 μ m; lower row: scale bar = 0.5 μ m; **C:** Upper row: Scale bar = 5 μ m, lower row: scale bar = 1 μ m. **D:** Scale bar = 5 μ m.

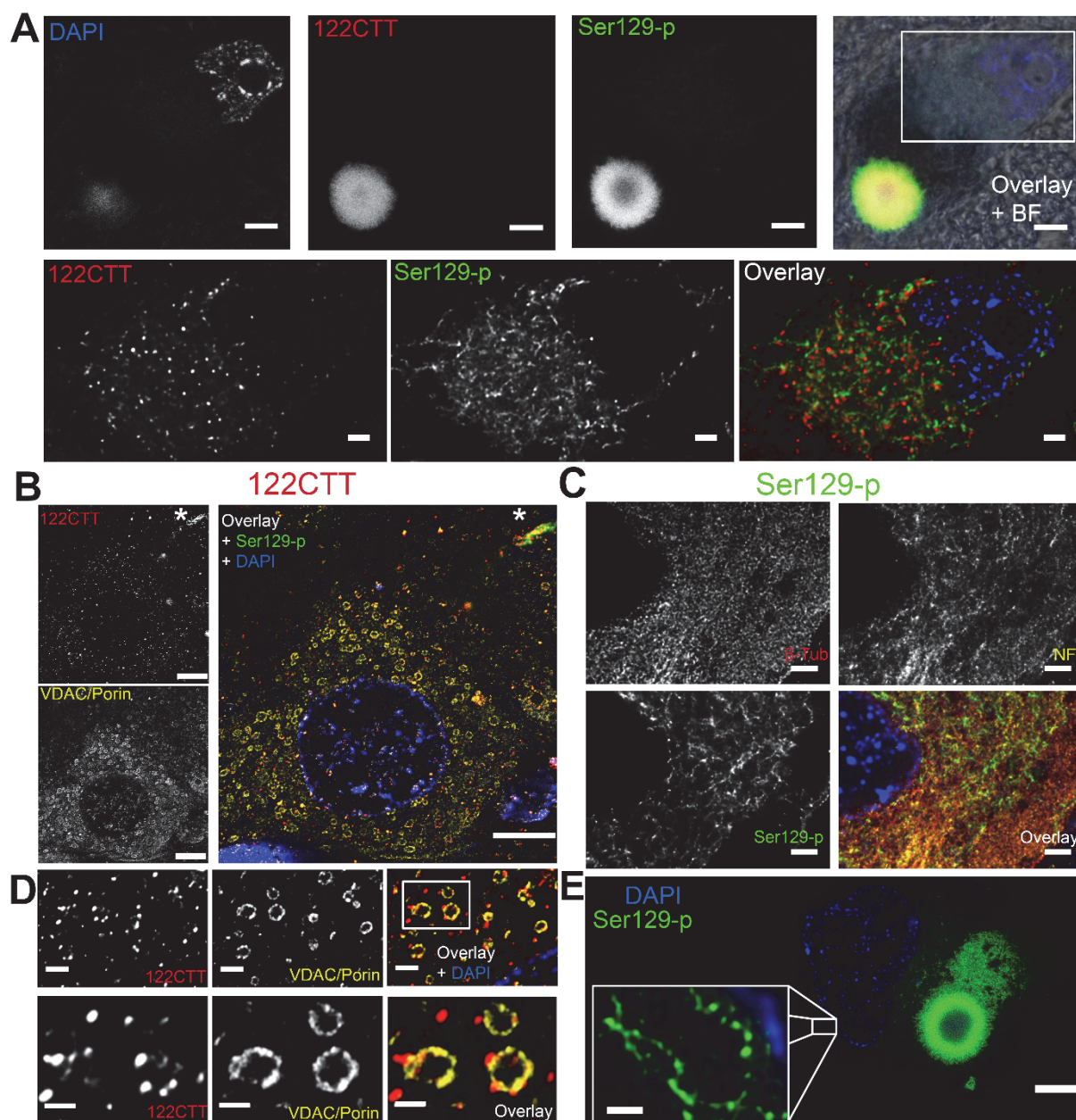


Figure 5: Subcellular manifestation of features containing 122CTT and Ser129-p aSyn.

A: Overview of a neuromelanin-containing dopaminergic neuron in the SN with a LB (upper row) and a zoom-in on its cytoplasm (lower row). Signal intensity for 122CTT and Ser129-p aSyn was highest in the LB, suggesting an enrichment for these PTMs in pathological inclusions. However, cytoplasmic reactivity could also be observed, showing different manifestations for 122CTT and Ser129-p aSyn. **B:** Cytoplasmic 122CTT immunopositive

punctae showed association with staining patterns for VDAC/Porin-immunopositive mitochondria in the hippocampal CA2 of a PD patient. Staining was also observed in a LN (indicated with an asterisk). **C:** Ser129-p aSyn immunopositive network showed limited overlap with intracytoplasmic networks visualized by markers for beta-tubulin and neurofilament in the cytoplasm of a melanin-containing dopaminergic neuron in the SN of a PD patient. **D:** Localization of 122CTT immunopositive punctae at the outer membrane of mitochondria in the hippocampal CA2 of a PD patient at different magnifications. **E:** Dopaminergic neuron in the SN containing a combination of expansive-appearing inclusion and onion-skin type LB surrounded by a Ser129-p aSyn immunoreactive network. Insert: zoom in of Ser129-p aSyn immunoreactive elements with a diameter of ~ 70 nm. **A:** Deconvolved CSLM images; **B-E:** deconvolved STED images. **A:** Upper row: scale bar = 5 μ m; lower row: scale bar = 2 μ m; **B:** scale bar = 5 μ m; **C:** scale bar = 2 μ m; **D:** upper row: scale bar = 1 μ m; lower row: scale bar = 0.5 μ m; **E:** main figure: scale bar = 5 μ m; inset: scale bar = 0.5 μ m.

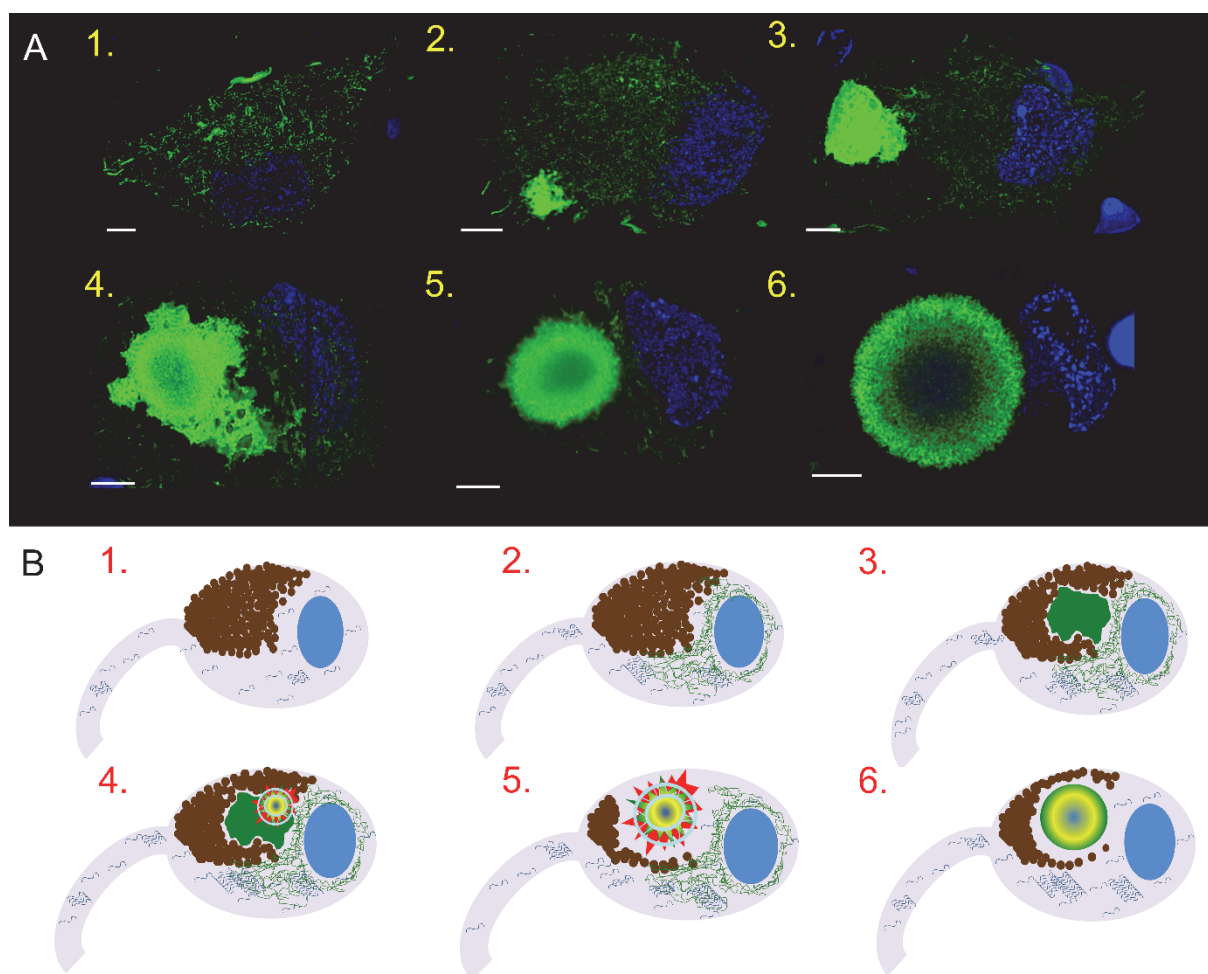


Figure 6: Many intracytoplasmic faces of Ser129-p aSyn hint to different maturation stages of LBs. A: Different patterns of Ser129-p aSyn immunoreactivity in neuromelanin-containing dopaminergic cells in the SN of PD patients, based on Ser129-p aSyn immunoreactivity patterns. Images are 2D visualizations of 3D reconstructions based on CSLM image stacks. The following cellular phenotypes were commonly observed: 1) neurons containing immunopositive intracytoplasmic network but without apparent inclusion; 2,3) neurons with intracytoplasmic immunopositive network and smaller (2) and larger (3) unstructured and expansive-appearing inclusions; 4) neuron with immunopositive intracytoplasmic network and combination of diffusely labeled expansive-appearing inclusion and compact onion skin-type LBs; 5) neuron with intracytoplasmic network and onion skin-type LB; 6) neuron without intracytoplasmic network and onion skin-type LB. Scale bars:

5 μ m. **B)** Hypothetical sequence of events in LB formation in dopaminergic neurons in the SN of PD patients, based on Ser129-p aSyn immunoreactivity patterns (visualized in green; detailed explanation in text). 1) Neuromelanin-containing neuron under conditions of aSyn homeostasis; 2) alignment of Ser129-p aSyn into a cytoplasmic network; 3) sequestration of proteins into expanding inclusion; 4,5) recruitment of cytoskeletal structures to restructure the inclusion in a compaction-like manner, resulting in a multilamellar onion skin-type LB morphology (6) which reflects the encapsulation of highly aggregated proteins and lipids in its core.

Supplementary material

Supplementary Table 1: Antibodies used in final multiple labeling experiments with direct and indirect detection. Exp: experiment. 1) light microscopy; 2) multiple labeling of aSyn epitopes; 3) multiple labeling of aSyn epitopes with CTT119; 4) multiple labeling of aSyn epitopes, validation set; 5) multiple labeling PTMs and cytoskeletal markers; 6) multiple labeling PTMs + ER; 7) multiple labeling PTMs and mitochondria. *: biotinylated antibody used in multiple labeling protocols. **Abbreviations:** AB ID: antibody identifier; Exp: experiment; Ref: reference for additional information on AB characterization; d.l.: antibody directly labeled with fluophore.

Epitope	AB ID (Cat #)	Source	Host species	Exp	Fluorochrome	STED depletion wavelength	Ref
Ser129-p	11A5	Prothena	Mouse	1,2,5,6,7	Alexa 488(d.l.)/Alexa 488	592	¹⁴
Ser129-p	asyn-142	Roche	Rabbit	1,4,5,6,7	Alexa 488 (d.l.)/Alexa 488	592	
122CTT	Syn105	Prothena	Rabbit	1,2*,5*,6*,7	Alexa 547 Alexa 594/Abberior 635p	660 775	¹⁵
122CTT	asyn-134	Roche	Rabbit	1,4*,5*,6*,7	Alexa 547 Alexa 594/Abberior 635p	660 775	
119CTT	asyn-131	Roche	Rabbit	1,3,5,7	Alexa 647 (d.l.)	775	
NT (40-55)	23E8	Prothena	Mouse	1,4	Alexa 647 (d.l.)	775	
NAC	asyn-055	Roche	Rabbit	1,2	Alexa 488 Li-Cor 680	592 775	
NAC	asyn-059	Roche	Rabbit	1,4	Li-Cor 680	775	
CT	5C1	Prothena	Mouse	1,2	Alexa 594	775	⁵³
CT	SC-211	Santa Cruz	Mouse	1,4	Alexa 594	775	
KM-51	MONX10738	Monosan	Mouse	1	- (only light microscopy)	-	
Intermediate neurofilament	837801	BioLegend	Mouse	5,6	Abberior 580	775	
Beta-tubulin	ab18207	Abcam	Rabbit	5	Abberior 635p	775	
Calreticulin	ab2907	Abcam	Rabbit	6	Abberior 635p	775	
VDAC/Porin	ab14734	Abcam	Mouse	7	Abberior 580	775	

Supplementary Table 2: Brain tissue of different donors included in the experiments.

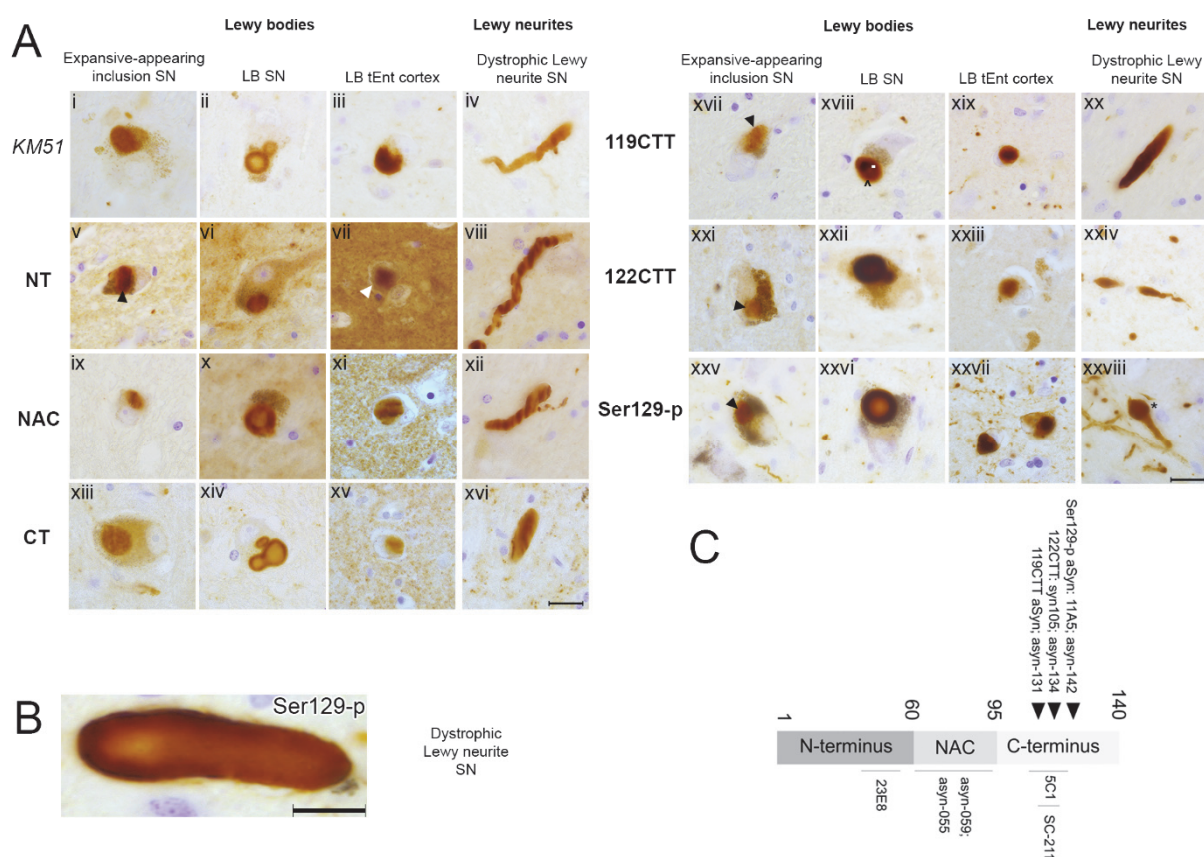
Abbreviations: Diag: clinical diagnosis; CERAD: CERAD age-related score for neuritic plaques; Exp: Experiments: 1) FFPE sections used for immunofluorescence multiple labeling experiments; 2) Snap-frozen sections used for CARS microscopy. Three of these donors (indicated by *) were also included in the study by Shahmoradian et al. (Ref 42). The identifier of these donors in this study is added to the table. PDD: PD with dementia; AD: Alzheimer's Disease; n.a.: not applicable.

ID	Diag.	Age at death	Sex	Braak LB score	Braak NFT score	CERAD score	Age of diagnosis	Age at onset dementia	Exp	Fig	ID in REF 42
PD1	PDD	80	M	6	1	B	55	73	1	2A,E, S5	n.a.
PD2*	PDD	72	M	6	1	O	64	69	1	S1A	J
PD3	PD	72	M	6	1	A	57	-	1	-	
PD4*	PDD	80	M	6	1	O	69	77	1	S1B; 4B,D; S3A,C; S5	L
PD5*	PD	77	M	6	2	O	59	-	1	2B,C	A
PD6	PD+ AD	74	M	6	4	B	64	73	1	1B; 4A,B,D ; 5A,C; S5, S6	n.a.
PD7	PDD	66	F	6	1	A	57	64	1	1A; 2D; 4C,E;5 E; S3D; S2;S4	n.a.
PD8	PDD	87	M	6	3	C	77	86	1	1C	n.a.
PD9	PD	67	F	6	1	B	60	-	2	-	n.a.
PD10	PDD	81	M	6	2	O	72	79	2	3C	n.a.
PD11	PDD	74	M	5	3	O	67	71	2	3D	n.a.
PD12	PDD	76	M	6	1	B	66	71	2	3A, B	n.a.
PD13	PDD	83	M	6	1	B	78	80	1,2	S5	n.a.
PD14	PD	90	F	3	2	A	85	-	1	S8	n.a.
PD15	PDD	85	F	4	2	C	74	82	1	-	n.a.
iLBD1	C	93	F	3	2	O	-	-	1	S8	n.a.
iLBD2	C	86	F	3	3	A	-	-	1	S8	n.a.
iLBD3	C	98	M	3	2	O	-	-	1	S8	n.a.
C1	C	83	F	0	3	A	-	-	1	S6A	n.a.
C2	C	80	M	0	1	B	-	-	1	-	n.a.
C3	C	89	F	0	1	A	-	-	1	S6B	n.a.
C4	C	84	F	0	1	O	-	-	1	-	n.a.
C5	C	81	M	0	2	O	-	-	1	-	n.a.
C6	C	70	F	0	2	A	-	-	1	-	n.a.

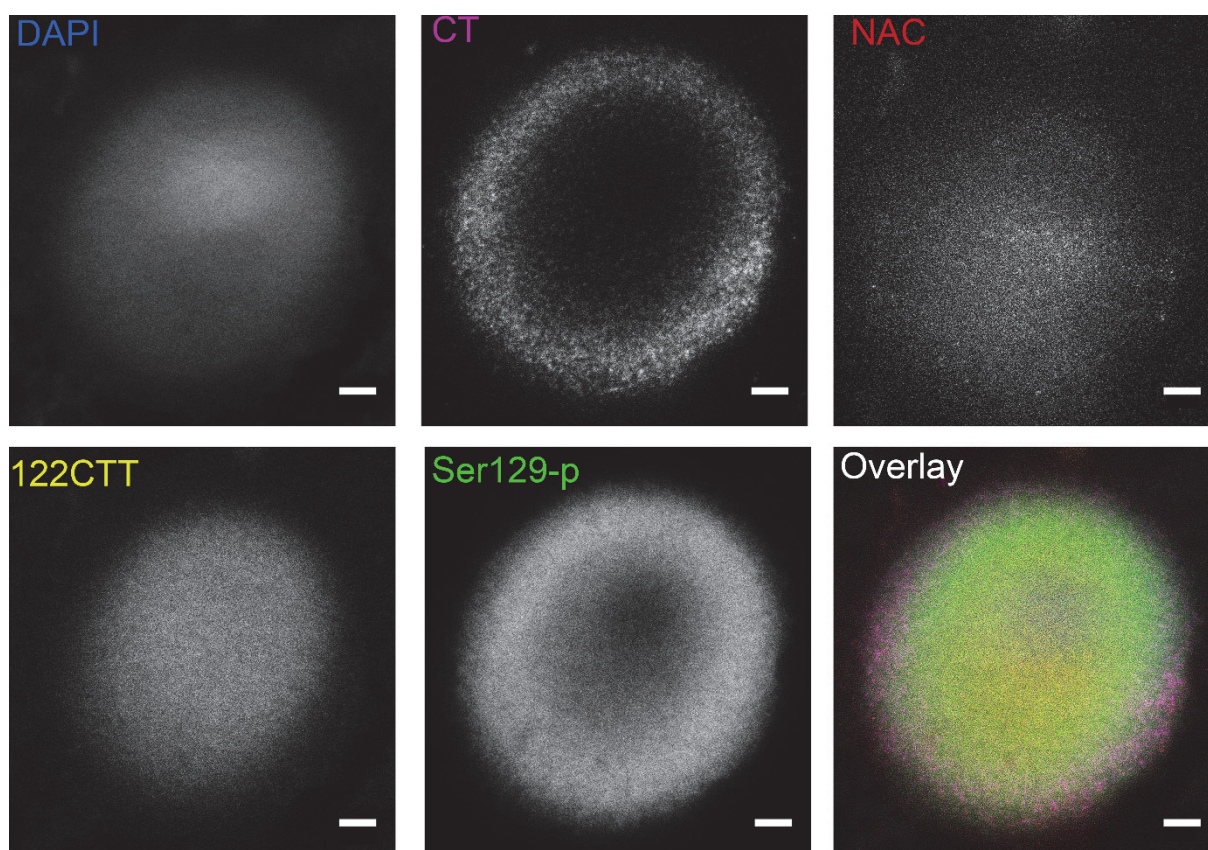
Supplementary Table 3: Different localization of peak intensities between aSyn epitopes.

Overview of Dunn's corrected p-values of multiple comparisons. Ns = not significant; *: $p < 0.05$; **: $p < 0.01$; ***: $p < 0.001$.

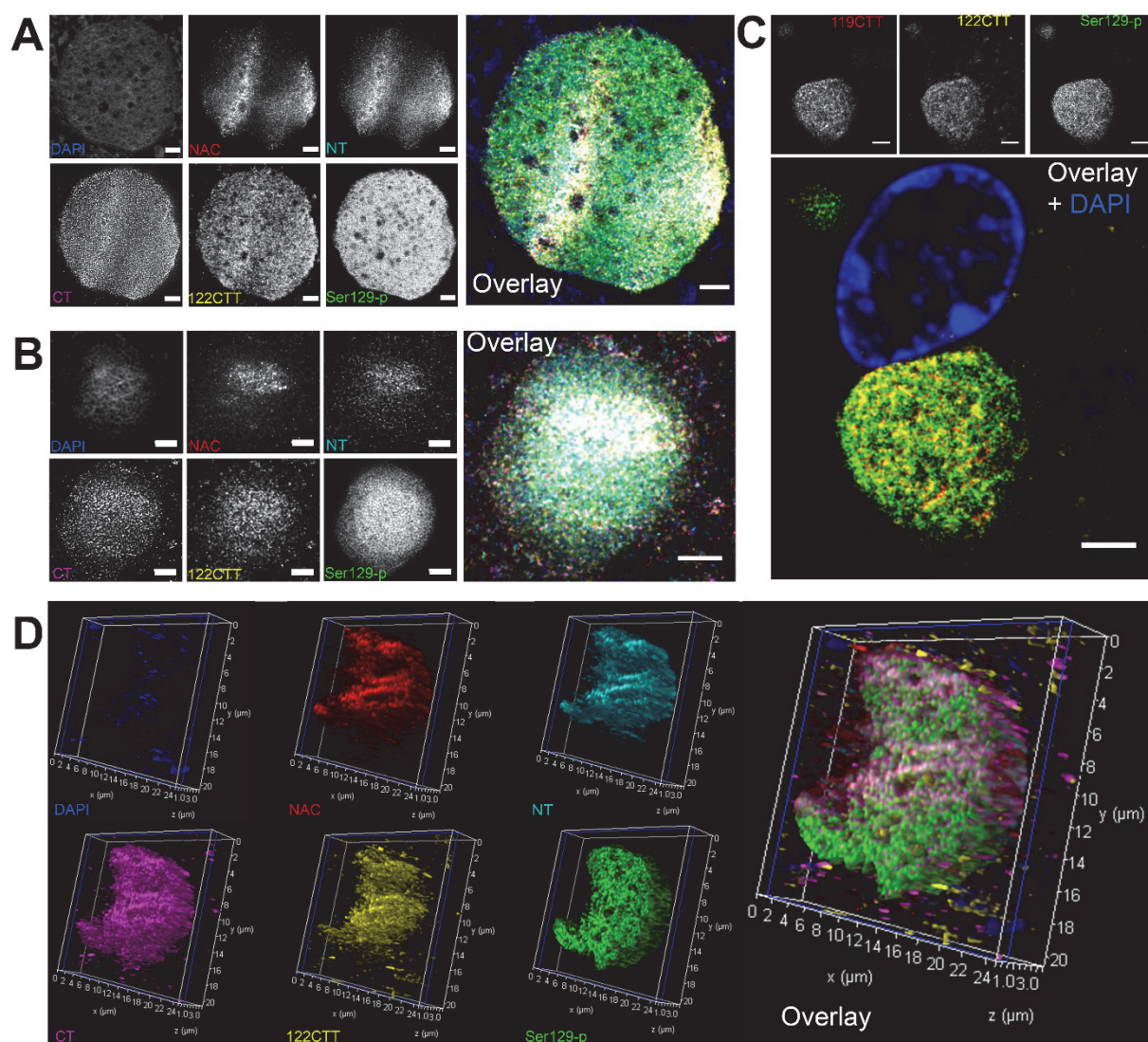
	NAC	NT	122CTT	Ser129-p	CT
NAC	X	1,00	<0.001***	<0.001***	<0.001***
NT	ns	X	ns	0.008**	<0.001***
122CTT	<0.001***	ns	X	0.025*	<0.001***
Ser129-p	<0.001***	0.008**	0.025*	X	0.05*
CT	<0.001***	<0.001***	<0.001***	0.05*	X



Supplementary Figure 1: Characterization of immunoreactivity for antibodies against aSyn domains and PTMs in postmortem brains with advanced PD pathology. A: Representative brightfield images for selected morphological structures detected by antibodies against different aSyn epitopes. All images were taken in the SN or transentorhinal cortex of patient PD2. Different IHC features are flagged (discussed in text). Black and white arrowheads highlight aSyn-immunopositive neuronal inclusions. In xviii, a weaker ring of immunopositivity (white dot) surround the portion with strongest labeling (indicated with a ^). In xxviii, a dystrophic LN is indicated by an asterisk. **B:** Example of a dystrophic LN with with stronger immunolabeling at its periphery compared to its core, as observed using an antibody against Ser129-p aSyn (11A5) in the SN of patient PD4. Scale bar = 10µm. **C:** Schematic outline of the aSyn protein together with the epitopes for the different antibodies used in the present study (See also Supplementary Table 1). **A:** Scale bar = 20µm; **B:** scale bar = 10µm.



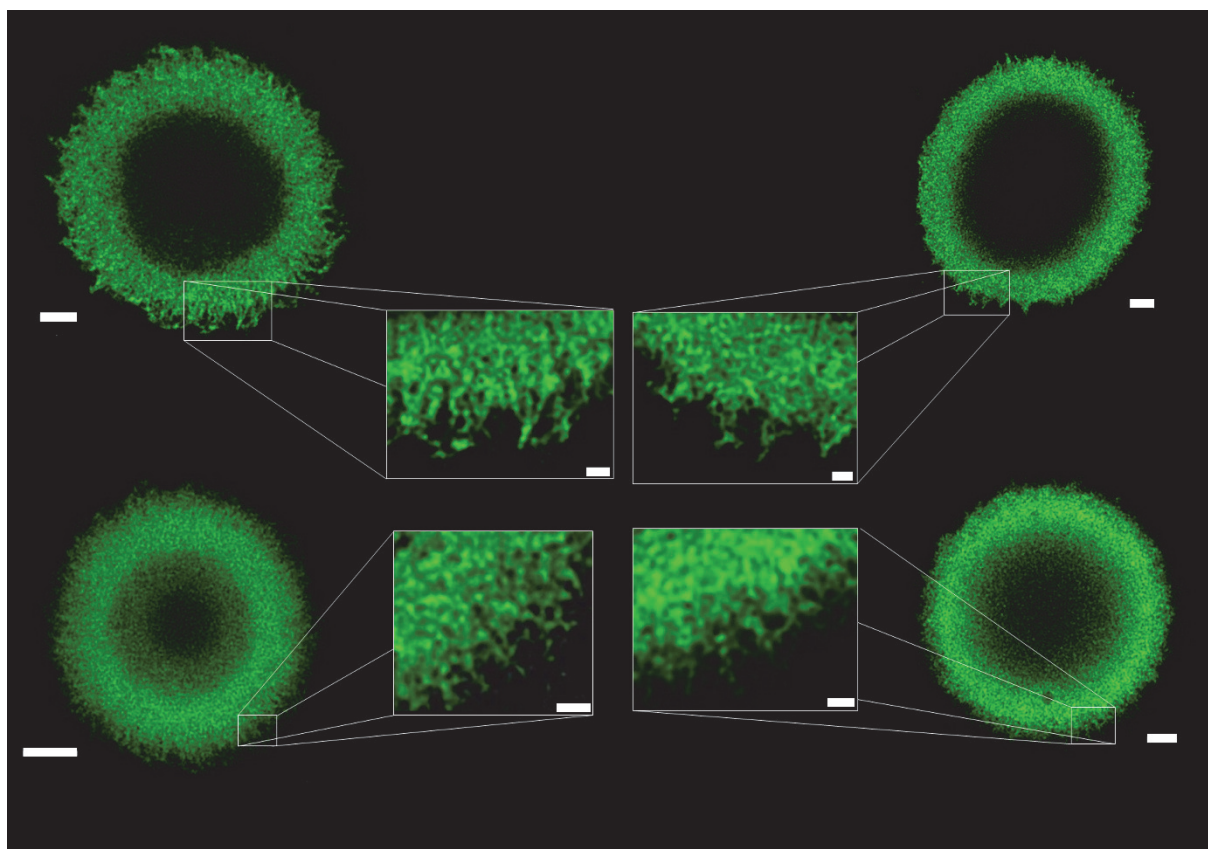
Supplementary Figure 2: Multilamellar pattern of immunoreactivities for different aSyn epitopes in onion-skin like LBs is observed with different antibodies (validation set). Raw STED images taken in the SN of patient PD7. Scale bar: 2 μ m.



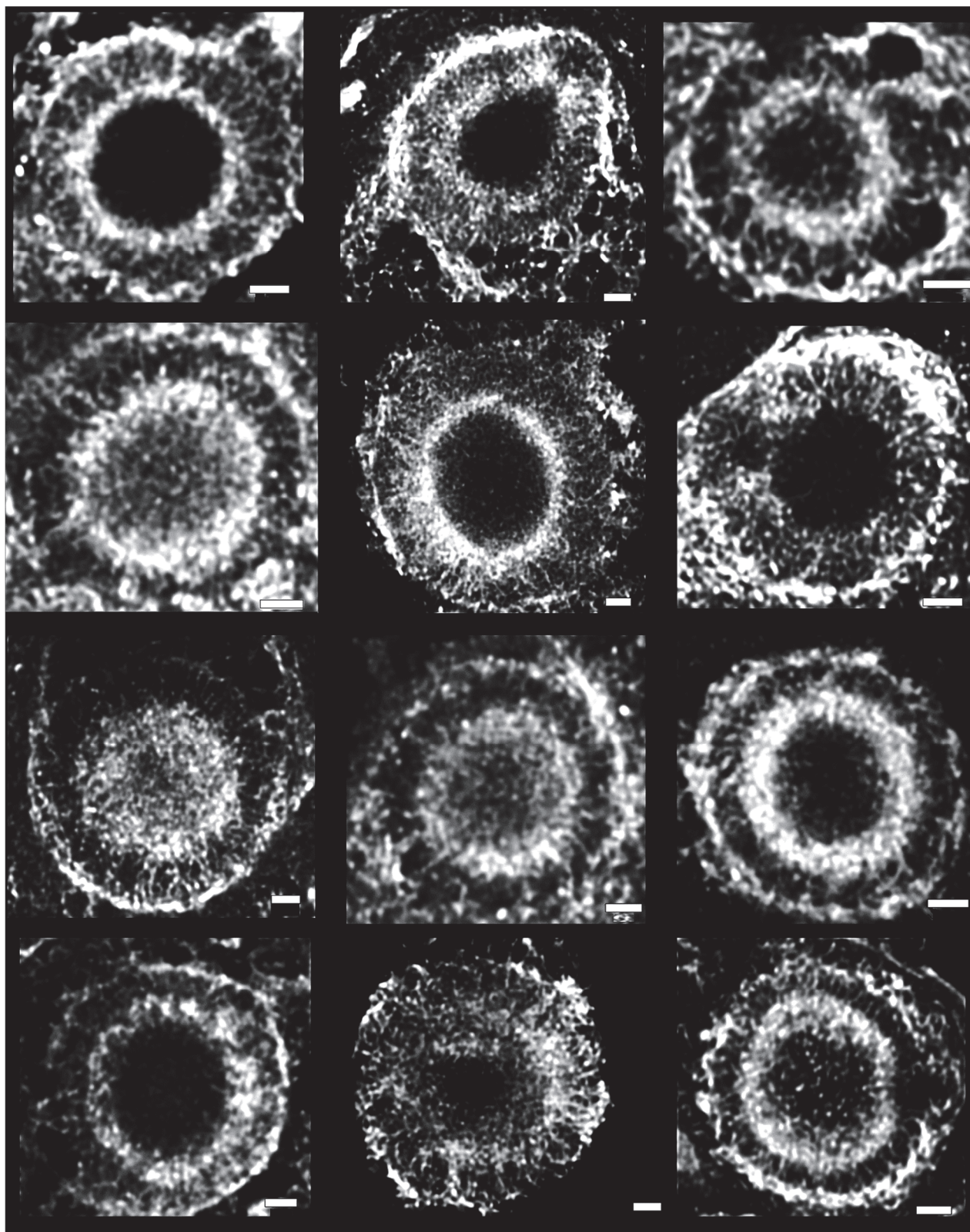
Supplementary Figure 3: Distribution patterns of aSyn PTMs and domains in nigral

expansive-appearing aSyn inclusions and cortical LBs. A. B. C: Representative deconvolved STED images of nigral expansive-appearing inclusions in the SN, and LBs in the transentorhinal cortex, and hippocampus of patient PD4. The distribution of immunoreactivities was generally more diffuse, although CT and Ser129-p aSyn immunoreactivity at the edges of the structure often sharply delineated the inclusion. **D.** 3D reconstruction of an expansive-appearing inclusion body in the SN based on deconvolved CSLM images, taken in patient PD7.

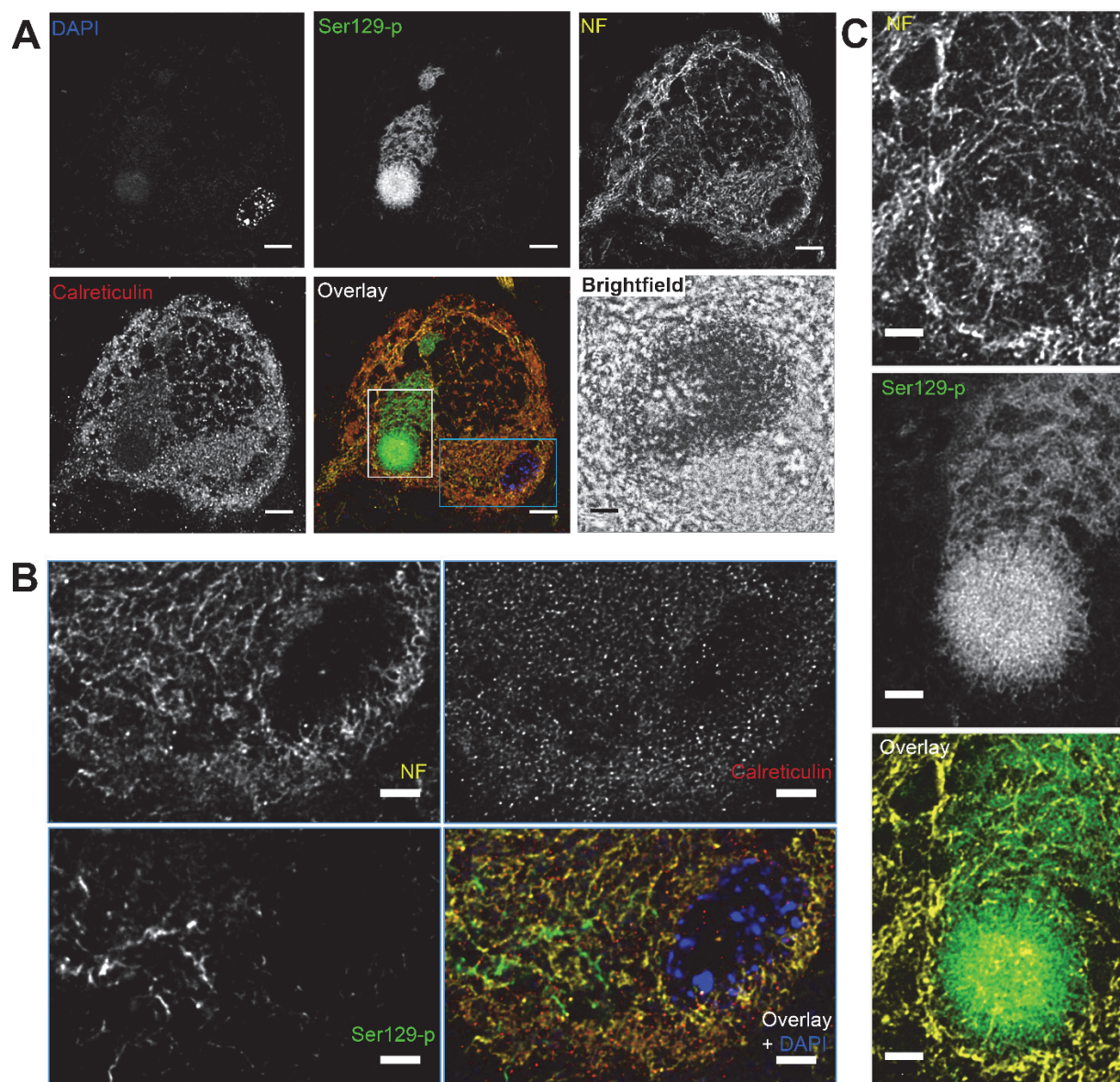
A-C: Scale bar = 2 μ m.



Supplementary Figure 4: Gallery of radiating Ser129-p immunoreactivity patterns at the periphery of nigral LBs. STED deconvolved images taken in the SN of different PD patients. Scale bars main Figure = $2\mu\text{m}$; scale bars insets = $0.5\mu\text{m}$.

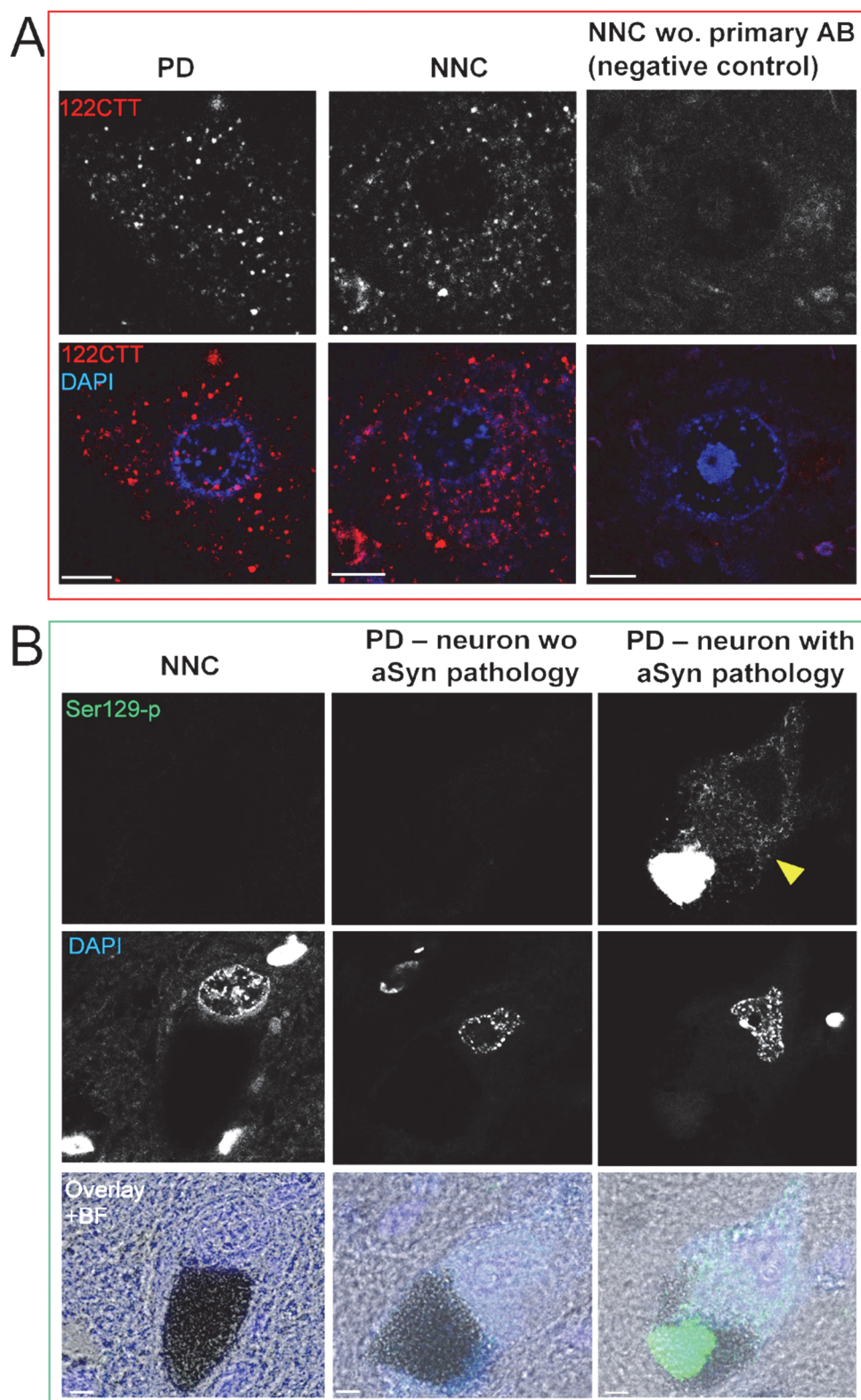


Supplementary Figure 5: Gallery of ‘wheel-like’ neurofilament structures in nigral LBs immunopositive for Ser129-p aSyn (not shown). Deconvolved CSLM images captured in the SN of various patients (indicated in Supplementary Table 2). Scale bars = 2 μ m.



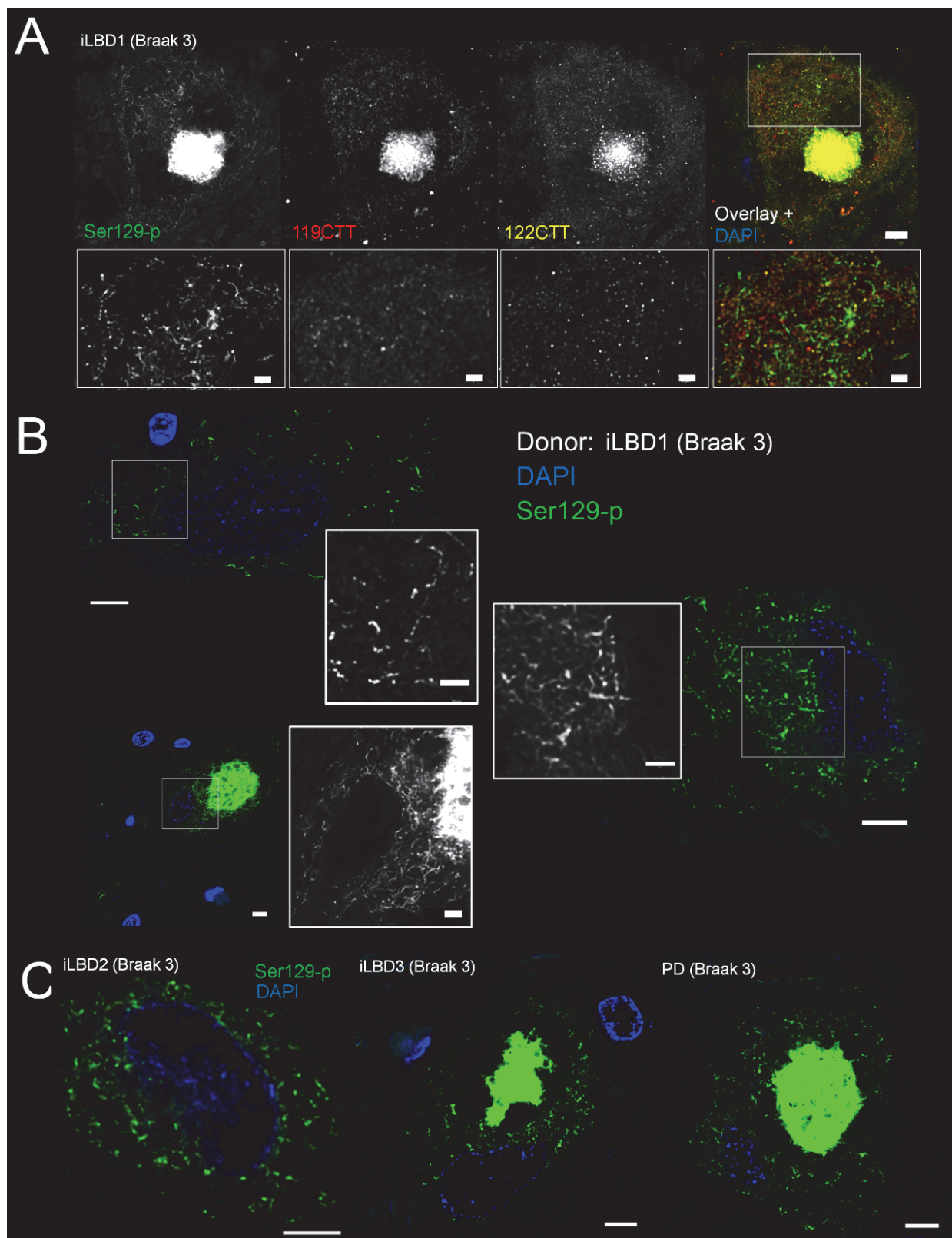
Supplementary Figure 6: Intracytoplasmic 129Ser-p aSyn network shows limited co-localization with other intracytoplasmic networks. Images were taken in a dopaminergic neuron the SN of a PD patient containing a combination of a combination of expansive appearing inclusion and a small LB with a barely distinguishable ring-structure. **A:** Overview: deconvolved CSLM images of the entire neuron showing different intracytoplasmic networks reactive for calreticulin (ER marker), neurofilament and Ser129-p aSyn. Note the limited availability of epitope in the area containing neuromelanin (visible in brightfield image as dark material). **B:** Detailed view on the area in the blue square indicated in A. Deconvolved STED images showing limited co-localization between markers for intracytoplasmic networks of

neurofilament. **C**: Detailed view of the inclusion (area indicated in the grey square in **A**). The compact-appearing spherical LBs shows 1) radiating immunoreactivity patterns for Ser129-p aSyn; 2) a cage-like framework of neurofilament. NF: intermediate neurofilament. **A**: Scale bar = 5 μm ; **B**, **C**: scale bar = 2 μm .



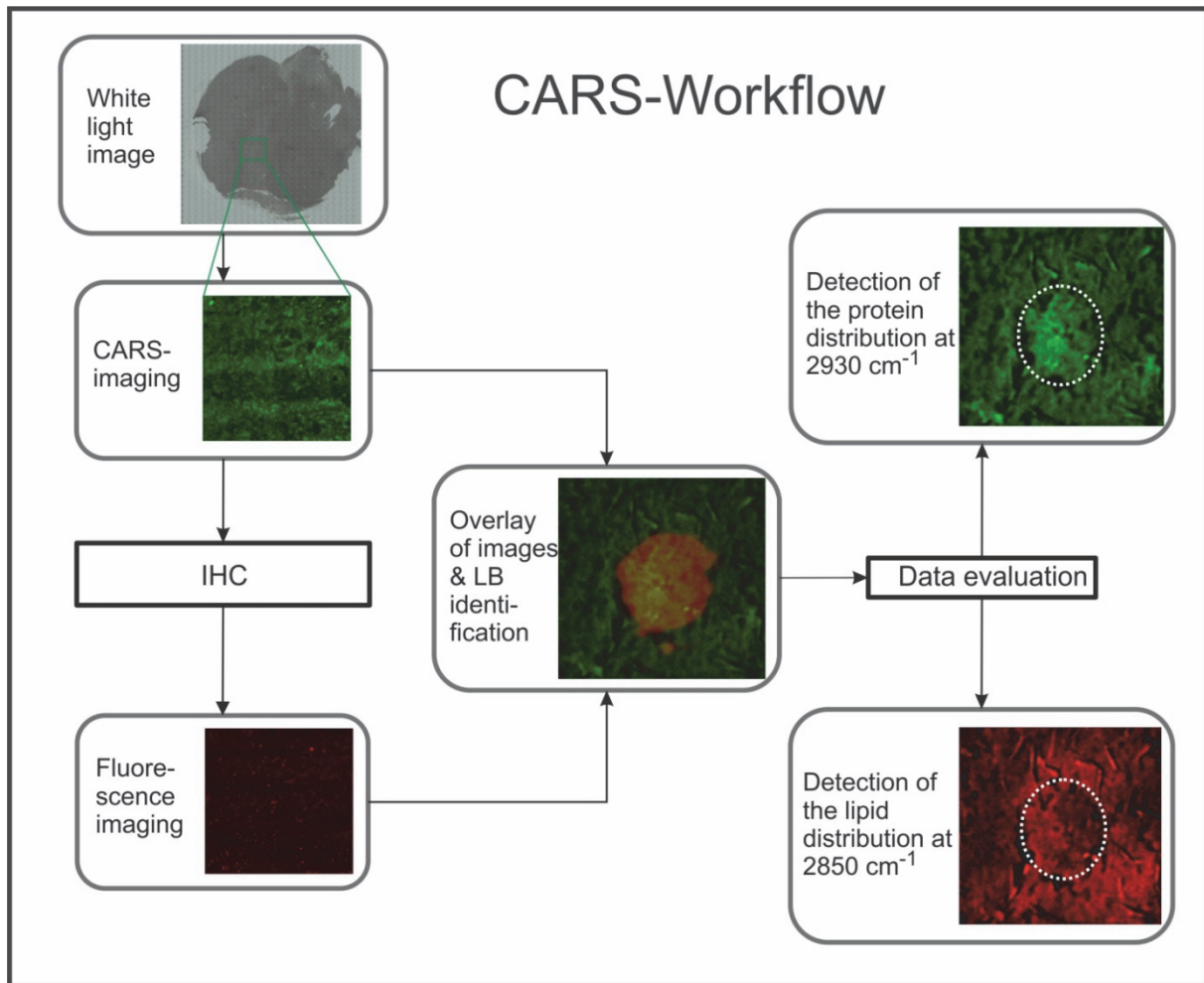
Supplementary Figure 7: Subcellular reactivity patterns for CTT and Ser129-p aSyn in brains without Lewy pathology. A: The dot-like pattern of 122CTT aSyn was visible both in PD patients and brains without Lewy pathology (NNC = non-neurological control). However

this pattern was not observed in negative controls lacking the primary antibody. Images taken in the hippocampus. **B:** The cytoplasmic Ser129-p positive network (indicated by yellow arrowhead) was only observed in certain cells in PD patients – often associated with the presence of an inclusion - and not in non-demented controls. Raw CSLM images that were scanned, processed and visualized in the same way. Images taken in melanin-containing cells in the SN. **A,B:** Scale bar = 5 μ m. Abbreviations: NNC = non-neurological control; BF: brightfield.

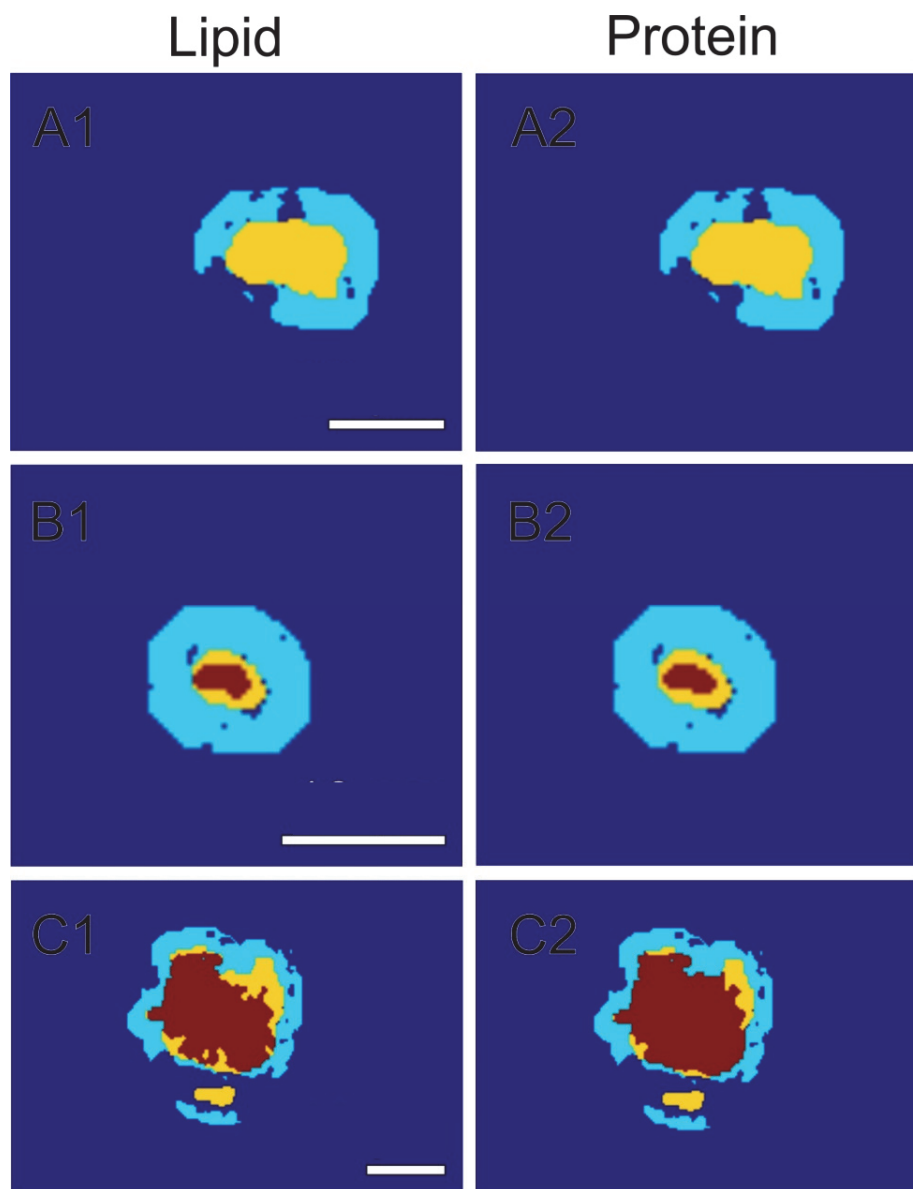


Supplementary Figure 8: PTM aSyn immunoreactivity patterns in donors with iLBD and PD with Braak stage 3 for LBs. A: Ser129-p aSyn immunopositive network is present in the SN of donors with iLBD, but is not highlighted by antibodies against 119CTT or 122CTT aSyn

– despite of strong co-localization of these PTMs in LBs. **B:** More detailed view on some of the Ser129-p aSyn immunopositive cytoplasmic networks in neuromelanin-containing dopaminergic neurons with and without apparent inclusions. Please note that some of these features were very subtle in cells without inclusion (top left) as opposed to the dense network that is visualized in neurons with expansive-appearing inclusion bodies. **C:** Examples of Ser129-p aSyn immunoreactive networks in other iLBD and PD patients (indicated in Supplementary Table 2). Deconvolved CSLM images. **A:** Upper row: scale bar = 5 μm ; lower row: scale bar = 2 μm ; **B:** main image: scale bar = 5 μm ; inset: scale bar = 2 μm ; **C:** scale bar = 5 μm .



Supplementary Figure 9: CARS-Workflow for the detection of the lipid and protein distribution in LBs. White light images were measured to detect the SN. The CARS-intensity was measured as overview images. On the same slide an immunohistological staining was performed and the fluorescence was detected for aSyn and Ser129-p aSyn. The images were manually overlaid. aSyn-positive inclusions were identified and small regions-of-interest (ROIs) were extracted. These ROIs were evaluated and the protein and lipid distribution of aSyn-positive inclusions was detected.



Supplementary Figure 10: Evaluation of the centralization of lipids and proteins by CARS. The LBs were identified by aSyn staining (yellow) in the CARS-intensity images. For an objective evaluation of CARS intensity of the LBs, the mean CARS intensity of the direct surrounding (A, cyan), a donut with a width of 3.5 μm, was compared with the CARS-intensity of each LB pixel (A, yellow). CARS-pixel-intensities higher than 1.4 times the mean CARS-intensity of the surrounding were defined as higher protein/lipid content. The ratio between the CARS-pixel-intensities of the LB and the mean CARS intensity of the surrounding were calculated and areas with higher protein/lipid content were marked in red. Areas without CARS intensity (holes) were excluded by intensity thresholding in the first step. Scale bars = 10 μm.

Legends for supplementary video files:

Supplementary Video 1: 3D reconstruction based on deconvolved CSLM images revealing the distribution of Ser129-p. 119CTT and 122CTT aSyn in an onion-skin type LB in the SN of patient PD7.

Supplementary Video 2: 3D reconstruction based on deconvolved CSLM images revealing the distribution of Ser129-p. 119CTT and 122CTT aSyn in another onion-skin type LB in the SN of another PD patient (PD6).

Supplementary Video 3: 3D reconstruction based on deconvolved CSLM images revealing the distribution of antibodies directed against NT, NAC domain and CT in a onion-skin type LB in the SN of patient PD8.

Supplementary Video 4: 3D reconstruction of an entire onion-skin type LB based on deconvolved CSLM images showing the distribution patterns of antibodies against different PTMs and domains of aSyn in the SN of patient PD1.

Supplementary Video 5: 3D reconstruction based on deconvolved CSLM images of an expansive-appearing aSyn inclusion showing the distribution patterns of antibodies against different PTMs and domains of aSyn in the SN of patient PD8.

Supplementary Video 6: 3D reconstruction based on deconvolved STED images showing the cage-like framework formed by Ser129-p aSyn and cytoskeletal components at the periphery of an onion-skin type LB in the SN of patient PD7.

Supplementary Video 7: z-stack visualization of a cytoskeletal framework at the periphery of nigral LBs in the SN of patient PD7 (deconvolved CSLM images).

Supplementary Video 8: z-stack visualization of a wheel-like structure of neurofilaments at the periphery of nigral LBs in the SN of patient PD6 (deconvolved CSLM images).

Supplementary Video 9: 3D reconstruction based on deconvolved CSLM images showing the Ser129-p aSyn immunopositive cytoplasmic network in an iLBD donor (iLBD1).

Supplementary Video 10: 3D reconstruction based on deconvolved STED images showing localization of a CTT-reactive punctae at the outer membrane of a mitochondrion immunopositive for VDAC/Porin in the hippocampus of patient PD4.