

An individual-based mechanical model of cell movement in heterogeneous tissues and its coarse-grained approximation

R. J. Murphy¹, P. R. Buenzli¹, R. E. Baker² and *M. J. Simpson¹

¹ *Mathematical Sciences, Queensland University of Technology, Brisbane, Australia*

² *Mathematical Institute, University of Oxford, Oxford, UK*

Abstract

Mechanical heterogeneity in biological tissues, in particular stiffness, can be used to distinguish between healthy and diseased states. However, it is often difficult to explore relationships between cellular-level properties and tissue-level outcomes when biological experiments are performed at a single scale only. To overcome this difficulty we develop a multi-scale mathematical model which provides a clear framework to explore these connections across biological scales. Starting with an individual-based mechanical model of cell movement, we subsequently derive a novel coarse-grained system of partial differential equations governing the evolution of the cell density due to heterogeneous cellular properties. We demonstrate that solutions of the individual-based model converge to numerical solutions of the coarse-grained model, for both slowly-varying-in-space and rapidly-varying-in-space cellular properties. Applications of the model are discussed, including determining relative cellular-level properties and an interpretation of data from a breast cancer detection experiment.

Key words: cell-based model; partial differential equation; continuum-limit; multi-scale; discrete model.

1 Introduction

Biological tissues are heterogeneous and multi-scale by their very nature (Figure 1(a)). This heterogeneity exists at all scales from sub-cellular to cellular, and from cellular to tissue levels [1–3]. We focus on cellular interactions driven by mechanical stiffness which is of great importance in a variety of applications including epithelial tissue mechanics, cancer progression [4], cancer invasion and metastasis [5], stiffness as a biomarker in cancer detection [6–8], wound healing [9], and morphogenesis [10]. Tissue-level stiffness information [11] has been available for much longer than cellular-level stiffness data which requires advanced technology, such as atomic force microscopy [12–15]. However, difficulties arise in relating cellular-level data with tissue-level information when experiments

*Corresponding author: matthew.simpson@qut.edu.au

are conducted and analysed at a single scale only. Mathematical modelling with *in silico* simulations provides a clear framework to explore these connections across biological scales.

Mathematical models of cell populations are broadly classified as either discrete or continuum. Discrete models, reviewed in [16,17], include cellular automata models, cellular Potts models, cell-centre models [16], vertex models, subcellular-element models [18], and tensegrity models [19]. Discrete models explicitly describe cellular-level interactions but often lack macroscopic intuition. Continuum models on the other hand often provide no cellular-level information [20] but can be more adept at including concepts of macroscopic stiffness [21,22]. Hybrid intermediate models also exist which consider the multi-scale nature of the problem [23–25]. A range of models specifically examine the role of mechanics [26,27]. However, in this work we focus on models which relate cellular-level details to tissue-level outcomes. These models have been developed with a variety of coarse-graining techniques and assumptions, including the use of slowly varying and periodic assumptions on the heterogeneity in the model [28,29], correlation functions [30,31], and interaction forces from potentials [32]. Few of these models explore the role of stiffness. The work of Murray et al. [33–36] explicitly incorporates cell stiffness; they derive a nonlinear diffusion equation governing the evolution of the cell density in space and time, however the framework focuses exclusively on homogeneous cell populations. Here, we extend this framework to heterogeneous cell populations.

The key focus of this work is to present a novel coarse-grained system of partial differential equations governing the evolution of the cell density, cell stiffness and resting cell length, from a heterogeneous cell-based model of epithelial tissue mechanics. The cell stiffness and resting cell length are constant for each cell and are simply transported in space by cell movements. The motion in this model is governed by cell-cell interaction forces modelled with Hooke's law. In extending the work of Murray et al. [33], we provide a more general derivation of the governing equations, see Section 2, which is robust to the inclusion of both slowly-varying-in-space and rapidly-varying-in-space cellular properties, see Section 3. We show that solutions from the discrete model converge to the corresponding continuum model solution, under appropriate scalings. Additional results in Section 3 show the model can be applied to interpret experimental and clinical observations relating to breast cancer detection.

2 Model description

In this section we describe the individual-based model, which we refer to throughout this work as the discrete model, and derive a corresponding coarse-grained approximation in the form of system of partial differential equations, which we refer to as the continuum description. The continuum limit usually assumes that the number of discrete entities that makes up the system tends to infinity [28,37], while the size of the domain also tends to infinity, as in the thermodynamic limit, or the size of a length scale tends to zero, both in such a way that the ratio of the size of length scale to the number of discrete entities is fixed. Here, to maintain a fixed total tissue length and a fixed total number of cells in the continuum limit, we instead assume that each cell is internally represented by several identical springs. We then take the continuum limit by considering that the number of springs per cell tends to infinity whilst the spring length tends to zero.

2.1 Discrete model

In this work, the discrete model describes an epithelial tissue formed by cells in contact with each other. For simplicity, we assume that the tissue can be modelled as a one-dimensional chain of N cells with fixed total length L . We fix the left tissue boundary at $x = 0$ and the right tissue boundary at $x = L$. Each cell can have distinct mechanical properties (Figure 1). This model could be used to represent a single tissue with intrinsic heterogeneity or multiple adjacent tissues with different properties. Each cell interacts with its neighbour through an effective interaction force which could represent cell-cell adhesion [38] or compressive stresses [39]. We consider cell i , for $i = 1, 2, \dots, N$, to have its left boundary at $x_i(t)$ and its right boundary at $x_{i+1}(t)$, with $x_1(t) = 0$ and $x_{N+1}(t) = L$ at all times. The cell has a prescribed cell stiffness, k_i , and resting cell length, a_i . Inside the tissue, Newton's second law of motion governs the motion of each cell boundary such that

$$M_i \frac{d^2 x_i}{dt^2} = f_{i+1} - f_i + F_i^{\text{visc}}, \quad i = 2, 3, \dots, N, \quad (1)$$

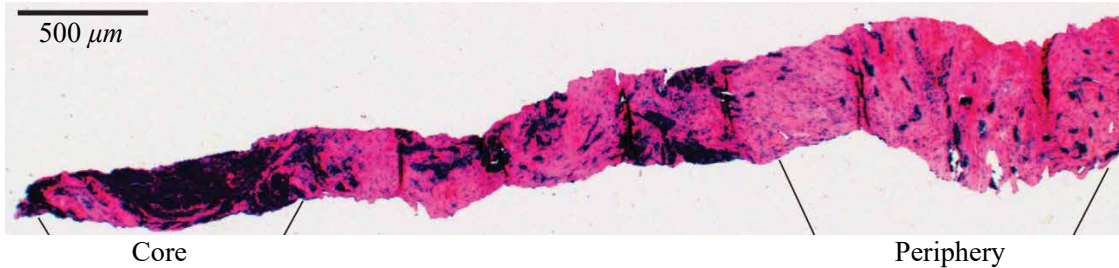
where M_i is the mass associated with cell boundary i , F_i^{visc} is the viscous force associated with cell boundary i , and we model interaction forces at cell boundary i using Hooke's law,

$$f_i = k_{i-1}(x_i - x_{i-1} - a_{i-1}), \quad i = 1, 2, \dots, N. \quad (2)$$

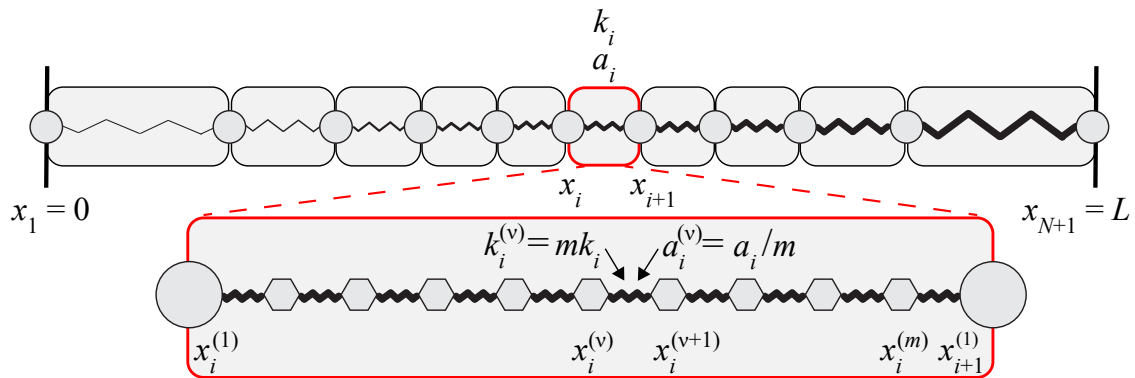
The viscous force experienced by cells, due to cell-medium and cell-matrix interactions, is modelled with $F_i^{\text{visc}} = -\eta dx_i(t)/dt$, where $\eta > 0$ is the viscosity coefficient. Cells migrate in dissipative environments and this is commonly modelled by assuming that the motion is overdamped [33,40], hence the term on the left of Equation (1) is zero, giving,

$$\eta \frac{dx_i}{dt} = f_{i+1} - f_i, \quad i = 2, 3, \dots, N. \quad (3)$$

(a) Stiffness in a human breast cancer biopsy



(b) Model schematic for heterogeneous cells, with m springs per cell



(c) Special case of model schematic with two adjacent tissues

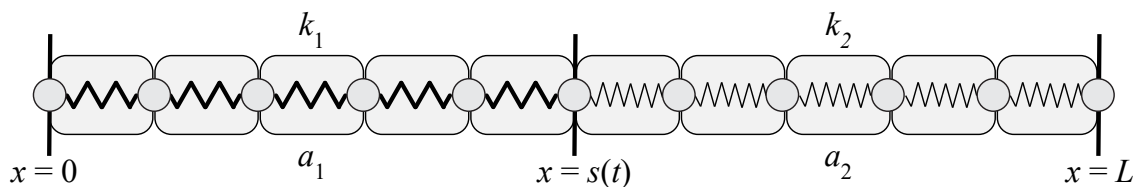


Figure 1: Stiffness heterogeneity in biological tissues. (a) Post atomic force microscopy histological overview of an entire breast cancer biopsy, where dark regions and pink regions are associated with low and high cell stiffness, respectively. Reproduced from [6] with permission. (b) Individual-based model schematic for arbitrarily heterogeneous tissue with N cells and m identical springs per cell. Cell i occupies the region $x_i(t) < x < x_{i+1}(t)$ has cell stiffness k_i and resting cell length a_i . Spring ν in cell i , occupies the region $x_i^{(\nu)}(t) < x < x_{i+1}^{(\nu)}(t)$, is prescribed with spring stiffness $k_i^{(\nu)} = mk_i$ and resting spring length $a_i^{(\nu)} = a_i/m$. The first and final spring boundaries in cell i coincide with the cell boundary positions so that $x_i^{(1)}(t) = x_i(t)$ and $x_{i+1}^{(1)}(t) = x_{i+1}(t)$ for all time. The cell and spring boundaries are shown as discs and hexagons, respectively. (c) Individual-based model schematic for a special case with two adjacent tissues, similarly this could model a heterogeneous tissue with two cell types. Cells in tissue i are prescribed with cell stiffness k_i and resting cell length a_i for $i = 1, 2$. Here each cell is represented with a single spring. The position of the interface between the two tissues is at $x = s(t)$.

This model, as presented thus far, considers each cell to be represented by a single spring [33,41] which is sufficient to describe the discrete model. However, when we derive the continuum model, to maintain L and N , we represent each cell internally with m identical springs and we will later consider $m \gg 1$, which corresponds to the spring length tending to zero, see Section 22.2. The corresponding discrete model for m springs per cell is now described. Cell i with boundaries x_i and x_{i+1} now has $m+1$ inner spring boundaries, $x_i^{(1)}, x_i^{(2)}, \dots, x_i^{(m)}, x_{i+1}^{(1)}$, with $x_i = x_i^{(1)}$ and $x_{i+1} = x_{i+1}^{(1)}$, (Figure 1(c)). The cell length is related to the spring length through the scaling $x_{i+1} - x_i \sim m \left(x_i^{(\nu+1)} - x_i^{(\nu)} \right)$ as $m \rightarrow \infty$, and with equality for all m as $t \rightarrow \infty$. Each spring ν in cell i is prescribed with a spring stiffness $k_i^{(\nu)}$ and resting spring length $a_i^{(\nu)}$ related to cell properties k_i and a_i through

$$k_i^{(\nu)} = mk_i, \quad a_i^{(\nu)} = \frac{a_i}{m}, \quad i = 1, 2, \dots, N, \quad \nu = 1, 2, \dots, m, \quad (4)$$

with corresponding spring boundary equations

$$\begin{aligned} \eta \frac{dx_i^{(\nu)}}{dt} &= f_i^{(\nu+1)} - f_i^{(\nu)}, \\ f_i^{(\nu)} &= k_i^{(\nu-1)} \left[x_i^{(\nu)} - x_i^{(\nu-1)} - a_i^{(\nu-1)} \right]. \end{aligned} \quad (5)$$

The scalings in Equation (4) are chosen such that the overall mechanical properties of a single cell, in particular the forces at the cell boundary i , are independent of m . Specifically, substituting the scalings from Equation (4) into Equation (5), using the spring length scaling and focusing on the leftmost spring, $\nu = 1$, in cell i then $f_i^{(1)} = f_i$ as $m \rightarrow \infty$ and also for all m as $t \rightarrow \infty$. Similarly, for the rightmost spring in cell $i - 1$, $f_{i-1}^{(m)} = f_{i-1}$. This ensures that the cell boundary velocities are maintained and are independent of m .

The discrete model is governed by Equation (3) with the fixed boundary conditions for a system with a single spring per cell, and by Equation (5) with fixed boundary conditions for a system with m springs per cell. In each situation the discrete model forms a deterministic coupled system of ordinary differential equations that we can solve numerically, see Supplementary Material Section 1. We can also solve each system with an eigenmode decomposition to conveniently determine the long-time steady state solution.

2.2 Derivation of continuum model

We now derive a coarse-grained system of partial differential equations describing the evolution of cell density at a larger scale. To do so we take the continuum limit by increasing the number of springs per cell, m , while maintaining the total number of cells, N , and tissue length, L , fixed, and by performing spatial averages over length scales involving a sufficiently large number of cells to define continuous densities, but sufficiently small to retain spatial heterogeneities. We first define

the microscopic cell density, $\hat{q}(x, t)$, in terms of the spring boundary positions, $x_i^{(\nu)}(t)$, as

$$\hat{q}(x, t) = \frac{1}{m} \sum_{i=1}^N \sum_{\nu=1}^m \delta \left(x - x_i^{(\nu)}(t) \right), \quad (6)$$

where δ is the Dirac delta function [37,42]. Integrating Equation (6) over the tissue domain, $0 < x < L$, gives the total number of cells, N , which is independent of m . We introduce a mesoscopic length scale δx such that $a_i^{(\nu)} \ll a_i \ll \delta x \ll L$ and define a local spatial average which, for the microscopic cell density, $q(x, t) = \langle \hat{q}(x, t) \rangle$, is

$$\langle \hat{q}(x, t) \rangle = \frac{1}{2\delta x} \int_{x-\delta x}^{x+\delta x} \hat{q}(y, t) \, dy. \quad (7)$$

Differentiating Equation (7) with respect to time leads to the general conservation law

$$\frac{\partial q(x, t)}{\partial t} = - \frac{\partial}{\partial x} \left\langle \frac{1}{m} \sum_{i=1}^N \sum_{\nu=1}^m \delta \left(x - x_i^{(\nu)}(t) \right) \frac{dx_i^{(\nu)}}{dt} \right\rangle, \quad (8)$$

where we use properties of the Dirac delta distribution [42] and take the spatial derivative outside of the average by making use of the fact that δx is small. The averaged term on the right of Equation (8) is the coarse-grained cell density flux, $j(x, t)$, describing spring migration at the mesoscopic scale, expressed explicitly in terms of the spring boundary positions and velocities [37]. We now introduce three field functions, $f(x, t)$, $k(x, t)$, $a(x, t)$, for the cell-cell interaction force, the cell stiffness and the resting cell length, respectively, defined such that

$$f \left(x_i^{(\nu)}(t), t \right) = \frac{f_i^{(\nu)}}{m}, \quad k \left(x_i^{(\nu)}(t), t \right) = m k_i^{(\nu)}, \quad a \left(x_i^{(\nu)}(t), t \right) = \frac{a_i^{(\nu)}}{m}, \quad (9)$$

where the scalings for k and a , with respect to m , agree with the scalings from the discrete system, see Equation (4). The field functions $k(x, t)$ and $a(x, t)$ capture the assumption that spring properties and respective cell properties are constant along spring boundary trajectories, $x_i^{(\nu)}(t)$. The scaling for f in Equation (9) ensures that cell boundary velocities are independent of m , as we now explain. To represent the distribution of spring lengths across the domain, we introduce a continuously differentiable function, $l(x, t)$, which we define such that

$$l \left(x_i^{(\nu)}(t), t \right) = l_i^{(\nu)}(t) = x_i^{(\nu+1)}(t) - x_i^{(\nu)}(t), \quad (10)$$

where $l_i^{(\nu)} \ll a_i \ll \delta x \ll L$. Writing Equation (5) in terms of these continuous variables, expanding each cell-cell interaction force using the small parameter $l_i^{(\nu)}$, and simplifying to leading order gives,

$$\begin{aligned} \eta \frac{dx_i^{(\nu)}}{dt} &= f_i^{(\nu+1)} - f_i^{(\nu)} = m \left[f \left(x_i^{(\nu+1)}(t), t \right) - f \left(x_i^{(\nu)}(t), t \right) \right] \\ &= m \frac{\partial f \left(x_i^{(\nu)}(t), t \right)}{\partial x} l_i^{(\nu)} + \mathcal{O} \left(\left[l_i^{(\nu)} \right]^2 \right). \end{aligned} \quad (11)$$

Substituting Equation (11) into Equation (8), relating the spring length to the cell density with $l \left(x_i^{(\nu)}(t), t \right) = 1 / \left[m q \left(x_i^{(\nu)}(t), t \right) \right]$, and integrating over the spatial average interval, $(x - \delta x, x + \delta x)$ gives

$$j(x, t) = \frac{1}{\eta} \left(\frac{n}{2\delta x} \right) \frac{1}{n} \sum_{i=1}^n \frac{1}{m} \sum_{\nu=1}^m \frac{\partial f \left(x_i^{(\nu)}(t), t \right)}{\partial x} \frac{1}{q \left(x_i^{(\nu)}(t), t \right)}, \quad (12)$$

where n is the number of cells in the interval $(x - \delta x, x + \delta x)$ and i has been reset to count these cells. Then, taking the limit as $m \rightarrow \infty$ and performing an average over the m springs per cell, gives

$$j(x, t) = \frac{1}{\eta} \left(\frac{n}{2\delta x} \right) \frac{1}{n} \sum_{i=1}^n \frac{\partial f(x_i(t), t)}{\partial x} \frac{1}{q(x_i(t), t)}. \quad (13)$$

We apply a mean field approximation, as $N \gg 1$ in $(x - \delta x, x + \delta x)$ due to $a_i \ll \delta x$, by substituting $q(x_i, t)$ and $\partial f(x_i(t), t)/\partial x$ in the sum with the average density $q(x, t)$ and the average interaction force gradient $\partial f/\partial x$ in the interval $(x - \delta x, x + \delta x)$. The factor $1/q$ is now independent of i and cancels with the factor $n/(2\delta x)$ which represents the density of cells in the spatial average interval. Then the coarse-grained cell density flux is

$$j(x, t) = \frac{1}{\eta} \frac{\partial f(x, t)}{\partial x}, \quad (14)$$

which provides us with an important physical interpretation and is directly related to the velocity, net force and cell-cell interaction force gradient. By inspection of Equation (11) and Equation (14), we see that the cell density flux, j , is an advective flux $j = qu$, where $u(x, t) = \langle dx_i/dt \rangle$ is the average velocity induced by the average force gradient $\langle \partial f/\partial x \rangle$. We also see that the net force is given by $\eta j/q$ and the spatially averaged interaction force gradient is given by ηj .

Under these assumptions Equation (8) becomes

$$\frac{\partial q(x, t)}{\partial t} = -\frac{1}{\eta} \frac{\partial^2 f(x, t)}{\partial x^2}. \quad (15)$$

We now return to Equation (9) and differentiate with respect to time to derive an evolution

equation for the cell stiffness function

$$0 = \frac{d}{dt} \left[k \left(x_i^{(\nu)}(t), t \right) - m k_i^{(\nu)} \right] = \frac{\partial k \left(x_i^{(\nu)}(t), t \right)}{\partial t} + \frac{dx_i^{(\nu)}(t)}{dt} \frac{\partial k \left(x_i^{(\nu)}(t), t \right)}{\partial x}. \quad (16)$$

Using Equation (11) and similar developments, the evolution equations for the cell stiffness and resting cell length expressed in terms of mesoscopic variables become

$$\frac{\partial k(x, t)}{\partial t} + u(x, t) \frac{\partial k(x, t)}{\partial x} = 0, \quad (17)$$

$$\frac{\partial a(x, t)}{\partial t} + u(x, t) \frac{\partial a(x, t)}{\partial x} = 0. \quad (18)$$

Written in terms of velocity we identify the left-hand sides of Equations (17) and (18) as the convective derivatives of the cell properties.

In summary, the governing equations of the coarse-grained model are given by Equations (15), (17) and (18) with the interaction force f given by

$$f(x, t) = k(x, t) \left(\frac{1}{q(x, t)} - a(x, t) \right). \quad (19)$$

This results in a system of four self-consistent equations for the continuous fields $q(x, t)$, $k(x, t)$, $a(x, t)$, $f(x, t)$ in terms of spatial position rather than particle trajectories. The initial conditions for the average cell density, cell stiffness and resting cell length are

$$q(x, 0) = q_0(x), \quad k(x, 0) = k_0(x), \quad a(x, 0) = a_0(x), \quad 0 < x < L, \quad (20)$$

together with no flux boundary conditions for the average cell density, due to the microscopic motion constraints, and Dirichlet boundary conditions for the cell stiffness and resting cell length, as cell properties are constant along cell boundary trajectories,

$$\frac{\partial f(x, t)}{\partial x} = 0, \quad k(x, t) = k_0(x), \quad a(x, t) = a_0(x), \quad x = 0, L. \quad (21)$$

These governing partial differential equations (15), (17), (18), (19) are solved numerically with the initial conditions (20) and boundary conditions (21), see Supplementary Material Section 2. With homogeneous cell populations the governing equations reduce to the single nonlinear density diffusion equation previously derived in [33],

$$\frac{\partial q}{\partial t} = \frac{\partial}{\partial x} \left(\frac{k}{\eta q^2} \frac{\partial q}{\partial x} \right). \quad (22)$$

3 Results and discussion

In this section we compare solutions of the continuum and discrete models with the expectation that as the number of springs per cell, m , increases solutions from the discrete model converge to the corresponding continuum solution.

3.1 Homogeneous cell population

We first consider a homogeneous cell population, with one spring per cell, $m = 1$, to illustrate the time evolution of the cell density flux during mechanical relaxation of the tissue. To compare results from the discrete and continuum systems we choose the initial cell configuration (Figure 2(a)) to represent a normally distributed cell density,

$$q_0(x) = \frac{\lambda}{\sqrt{2\pi\sigma^2}} \exp\left(\frac{-(x-\mu)^2}{2\sigma^2}\right), \quad 0 < x < L, \quad (23)$$

with mean position $\mu = 5$ and variance $\sigma = 3$. We choose λ to satisfy $\int_0^L q_0(x) dx = 40$ so that with $L = 10$ the total number of cells is $N = 40$, see Supplementary Material Section 1. Then, using the discrete model, we observe that the system relaxes to a uniform cell distribution (Figure 2(a)). Figures 2(b) and 2(c) show how the density and velocity, respectively, propagate along the cell boundary characteristics and demonstrate that the system undergoes temporal relaxation to a steady state configuration. With an eigenmode decomposition of the governing equations of the discrete system, given by Equation (3) and the fixed boundary conditions, we find all eigenvalues are negative which explains the exponential decay behaviour.

We determine the discrete cell density as the inverse of the spacing between cell boundary trajectories, $q_i = 1/(x_{i+1} - x_i)$ and we assign this value throughout the region $x_i < x < x_{i+1}$. We now compare this discrete information with the density from the continuum system, q , obtained by solving Equations (15), (17), (18), and (19). In Figure 2(d) we see that the initially normally distributed density tends to the uniform density \mathcal{Q} , given by $\lim_{t \rightarrow \infty} q(x, t) = \mathcal{Q} = N/L$, which is independent of k and a . From Equation (15) we see that this motion is driven by imbalances in the local interaction force field. We relate this to the velocity, $u = (\partial f / \partial x) / (\eta q)$ from Section 2, and we see that as the local imbalances tend to zero the cell boundary velocities tend to zero (Figure 2(e)). This agrees with the interpretation of the discrete system from Equation (3).

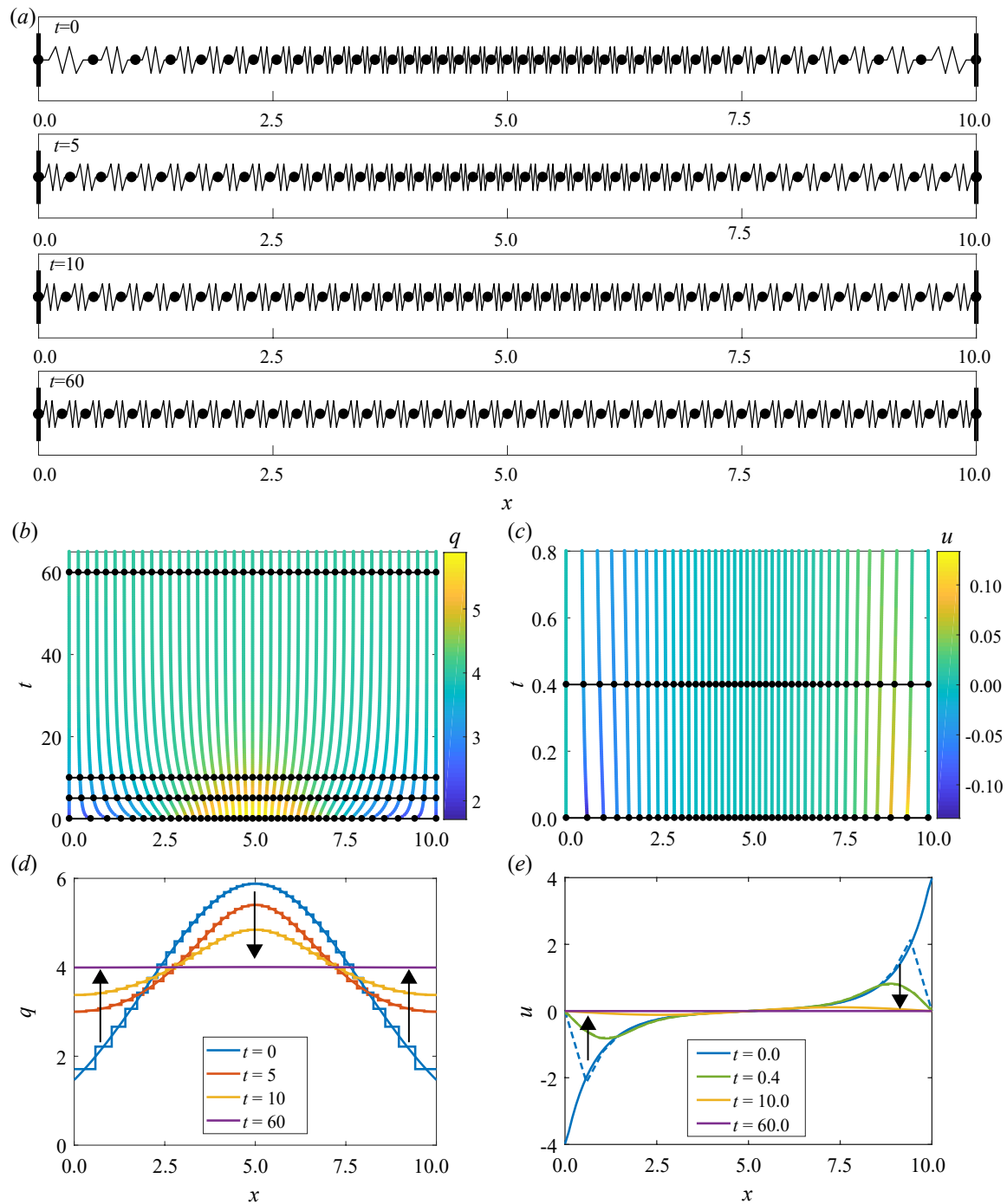


Figure 2: Results for homogeneous k and a , with $N = 40$ and $m = 1$. (a) Snapshots of cell boundary positions and cell lengths at $t = 0, 5, 15, 60$. (b) Characteristic diagram for cell boundary position evolution for $0 \leq t \leq 65$. Colour denotes the cell density. Black lines with dots represent snapshots in (a) and (d). (c) Characteristic diagram for cell position evolution for $0.0 \leq t \leq 0.8$. Colour denotes velocity. Black lines and dots represent snapshots in (e). (d) Cell density snapshots at $t = 0, 5, 10, 60$. Results from discrete/continuum system displayed as stepped/solid lines. (e) Velocity snapshots at $t = 0.0, 0.4, 10.0, 60.0$. Results from discrete simulation and continuum system displayed as dashed/solid lines. Arrows indicate the direction of increasing time.

3.2 Heterogeneous cell population

Here we present results for slowly-varying-in-space and piecewise constant heterogeneous cell populations.

3.2.1 Slowly varying cell population

For slowly-varying-in-space cellular properties, we explore how solutions of the discrete system converge to the solution of the continuum system as m increases. We consider heterogeneity in both k and a . Figure 3 depicts how the system relaxes to a non-uniform density distribution, due to cell stiffness and resting cell length heterogeneity, as the velocity field u tends to zero. From this simulation, we observe higher density in regions of higher k and lower density in regions of higher a . This prediction agrees with the steady state solution to the coarse-grained model, governed by Equations (15), (17), (18), and (19),

$$\mathcal{Q}(x) = \frac{\mathcal{K}(x)}{b\eta + \mathcal{K}(x)\mathcal{A}(x)}, \quad (24)$$

where $\mathcal{Q}(x) = \lim_{t \rightarrow \infty} q(x, t)$, $\mathcal{K}(x) = \lim_{t \rightarrow \infty} k(x, t)$ and $\mathcal{A}(x) = \lim_{t \rightarrow \infty} a(x, t)$, are steady-state solutions and b is a constant of integration that is related to N . We also observe that, as cell properties are constant along trajectories, the cell stiffness evolves at a fixed location in space. We see in Figure 3(d-l) that there is close agreement between the discrete model and the continuum solutions as m increases. It is notable that even for low m we have excellent agreement between the discrete density and the continuum density at the centre of each spring. We see similar discrete-continuum agreement when we consider examples with heterogeneous k and homogeneous a , and with homogeneous k and heterogeneous a (Supplementary Figures S3-S5 and S6).

3.2.2 Piecewise constant cell population

In this section, we consider a simple scenario with two adjacent tissues, modelled by assuming sharp inhomogeneities in cellular properties. This may represent the boundary between a malignant tissue and a normal tissue. We first explore how solutions from the discrete system converge to the corresponding continuum solution as m increases, under these rapidly-varying-in-space conditions. Each tissue has homogeneous cell properties given by cell stiffnesses k_1, k_2 and resting cell lengths a_1, a_2 in the left and right tissue, respectively, with interface position $s(t)$ (Figure 1(b)). For initial conditions, we choose a uniform density, $q_0(x) = 1$, cell properties $k_1 = 1/2, k_2 = 1, a_1 = a_2 = 0$, $L = 10$ and $s(0) = 5$, respectively. The cell stiffness discontinuity rapidly induces a sharp change in the density at $s(t)$ followed by slower dynamics until reaching a piecewise constant steady state as $t \rightarrow \infty$ (Figure 4). Even with these sharp inhomogeneities we again observe close agreement between solutions of the discrete and continuum models, especially given that the numerical discretisation of the continuum model does not explicitly follow the location of the interface, see Supplementary Material Section 2. It could however be determined by evaluating the velocity, $ds(t)/dt = u$, at the

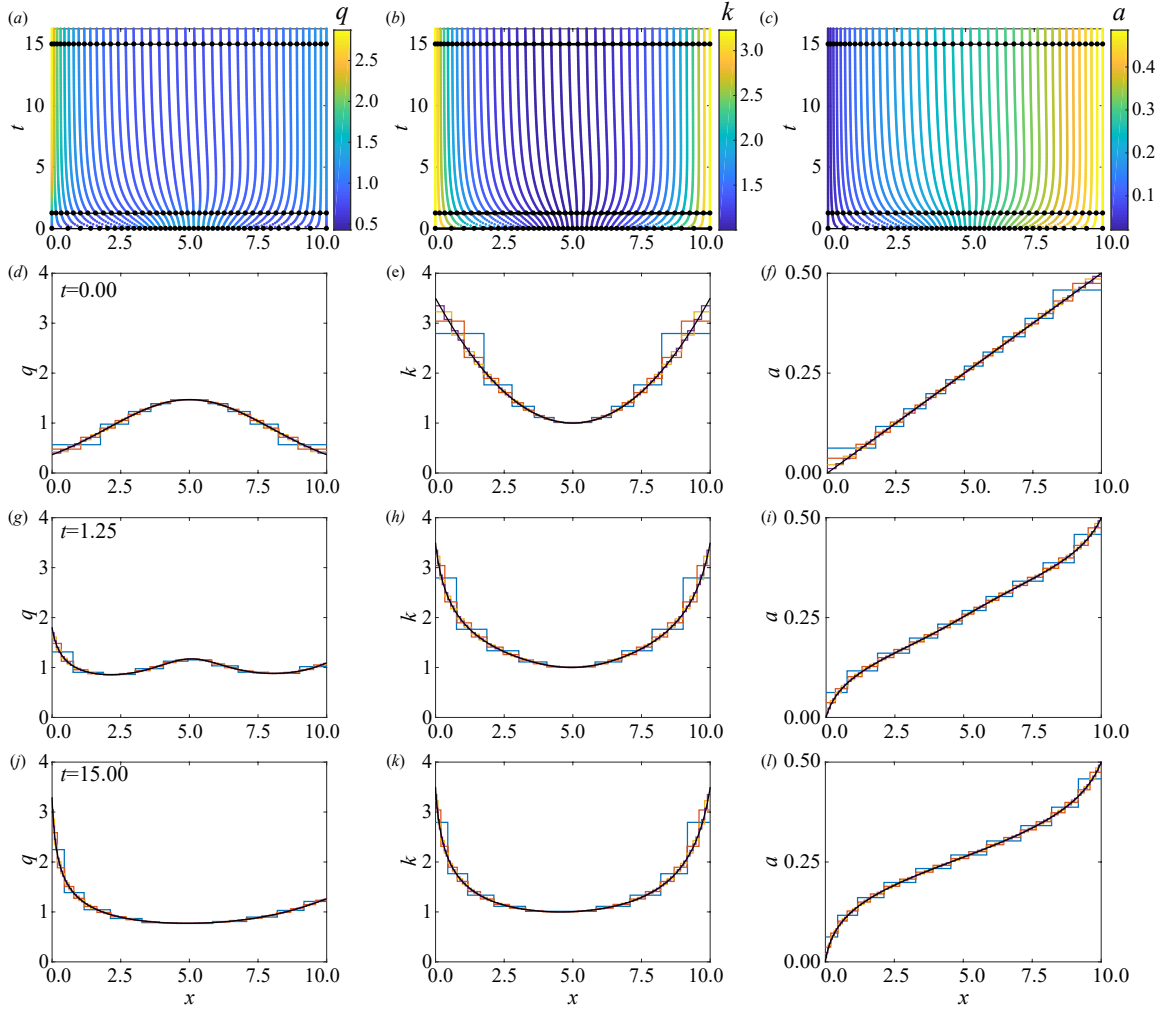


Figure 3: Results for heterogeneous cell stiffness and heterogeneous resting cell length, with $N = 10$, $k_0(x) = 1 + 0.1(x - 5)^2$ and $a_0(x) = 0.05x$. (a,b,c) Characteristic diagram for spring boundary position evolution for $0.00 \leq t \leq 16.25$ with $m = 4$ so that every fourth trajectory represents a cell boundary. Colour denotes (a) cell density, (b) cell stiffness, (c) resting cell length. In (a,b,c) black lines and dots represent times for snapshots in (d-l). (d,g,j) Cell density snapshots at $t = 0.00, 1.25, 15.00$. (e,h,k) Cell stiffness snapshots at $t = 0.00, 1.25, 15.00$. (f,i,l) Resting cell length snapshots at $t = 0.00, 1.25, 15.00$. In (d-l) lines display results from $m = 1$ (blue), 2 (red), 4 (yellow), 8 (purple), and continuum system (black).

interface position.

This simple mechanical relaxation scenario between two tissues enables us to infer some information on the cellular-level properties k_i and a_i by considering the evolution of the interface position, $s(t)$. The steady state interface position, $\mathcal{S} = \lim_{t \rightarrow \infty} s(x, t)$, is given by

$$\mathcal{S} = \frac{\frac{k_1 a_1}{k_2} + \frac{L}{N_2} - a_2}{\frac{k_1}{k_2 N_1} + \frac{1}{N_2}}, \quad (25)$$

which depends on k_1/k_2 , a_1 and a_2 . Here N_1 and N_2 represent the total number of cells in the left and right tissues, respectively, see Supplementary Material Section 3. We can identify \mathcal{S} and $L - \mathcal{S}$

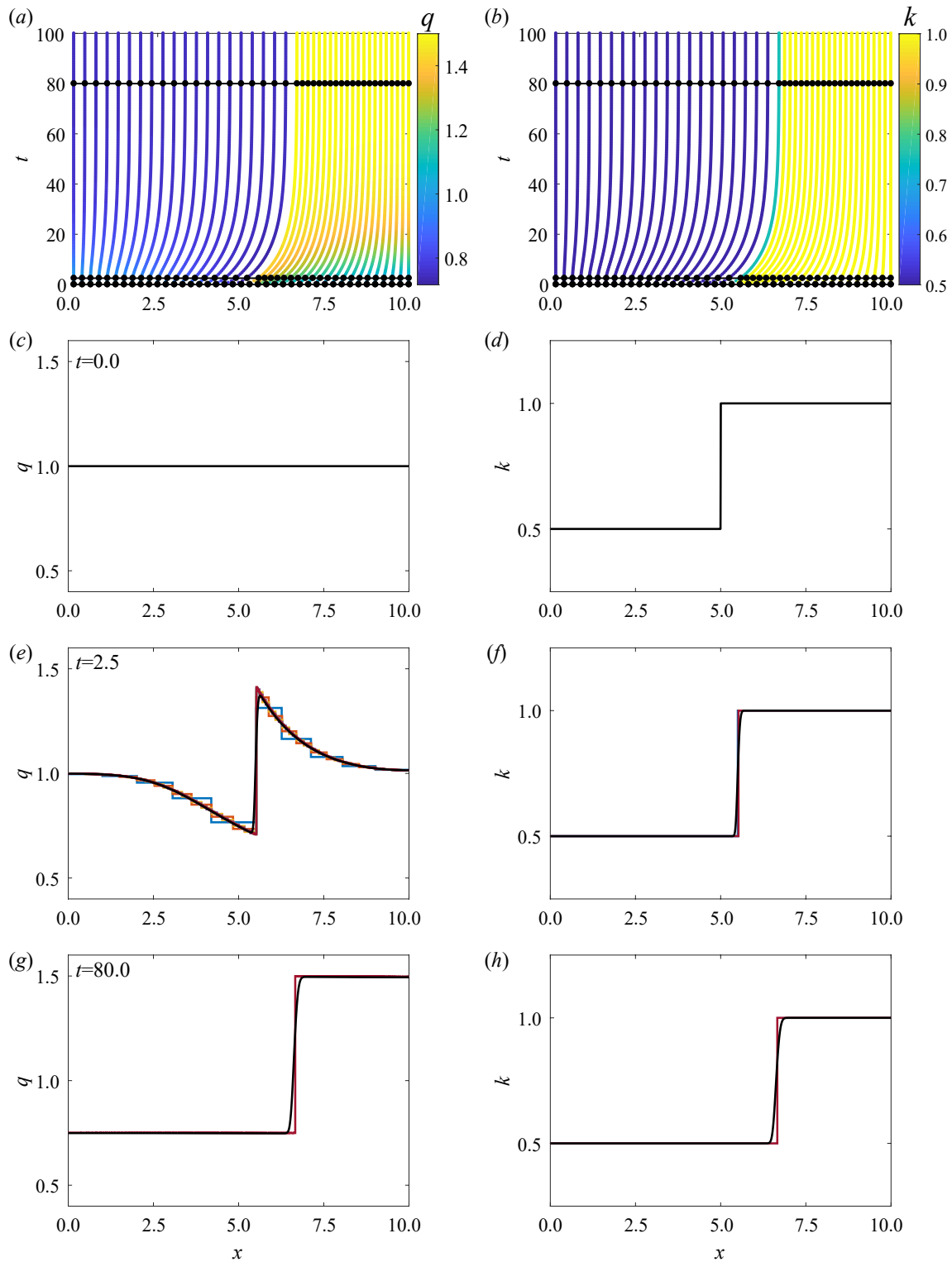


Figure 4: Results for piecewise constant cell properties, with $N = 10$. (a,b) Characteristic diagram for spring boundary position evolution for $0 \leq t \leq 100$, with $m = 4$ so that every fourth trajectory represents a cell boundary. Colour denotes (a) cell density, (b) cell stiffness. In (a,b) black lines and dots represent times for snapshots in (c-h). (c,e,g) Cell density snapshots at $t = 0.0, 2.5, 80.0$. (d,f,h) Cell stiffness snapshots at $t = 0.0, 2.5, 80.0$. In (c-h) lines display results from $N = 10$ with $m = 1$ (blue), 2 (red), 4 (yellow), 8 (purple), 16 (green), 32 (cyan), 64 (magenta) and continuum system (black).

as the lengths of the left and right tissues, respectively, after their mechanical relaxation.

To investigate the influence of k_1/k_2 we vary k_1 and set $k_2 = 1$. As we have fixed boundaries at $x = 0$ and $x = L$, we set $a_1 = a_2 = 0$ to emphasise properties when we vary k_1 , and choose a uniform density initial condition and $N_1 = N_2 = 5$. Evaluating $s(t)$ numerically, for efficiency with the discrete model from Equation (3), and \mathcal{S} from Equation (25), shows that if $k_1 = 0$ then $\mathcal{S} = L$ and the left tissue occupies the entire domain. As $k_1 \rightarrow \infty$ then $\mathcal{S} \rightarrow 0$ the length of the left tissue decreases (Figures 5(a,c)).

Similarly, to investigate the influence of a_1, a_2 we consider a_1/a_2 , vary a_1 and set $a_2 = 1$. We set $k_1 = k_2 = 1$ which only impacts the rate at which we reach the long-time solution. In contrast to varying k_1/k_2 , steady state results depend on the choice of a_2 , not just the ratio a_1/a_2 , see Equation (25). For example, when $a_1 = 0$ then $\mathcal{S} = 2.5$ which corresponds to a non-zero minimum left tissue length and a maximum length for the right tissue. We also observe that \mathcal{S} is proportional to a_1 (Figures 5(b,d)).

We find that we can use the interface boundary velocities to infer cellular-level properties. Plotting $|\mathcal{S} - s(t)|$ on a logarithmic scale against time shows that we can determine k_1/k_2 from the gradient of the linear section and we can determine a_1/a_2 from the y -intercept (Figure 5(e,f)). We find that it is easier to distinguish the ratio k_1/k_2 than it is to distinguish the ratio a_1/a_2 . If the second tissue was a reference material with known k_2, a_2 we could then determine k_1, a_1 .

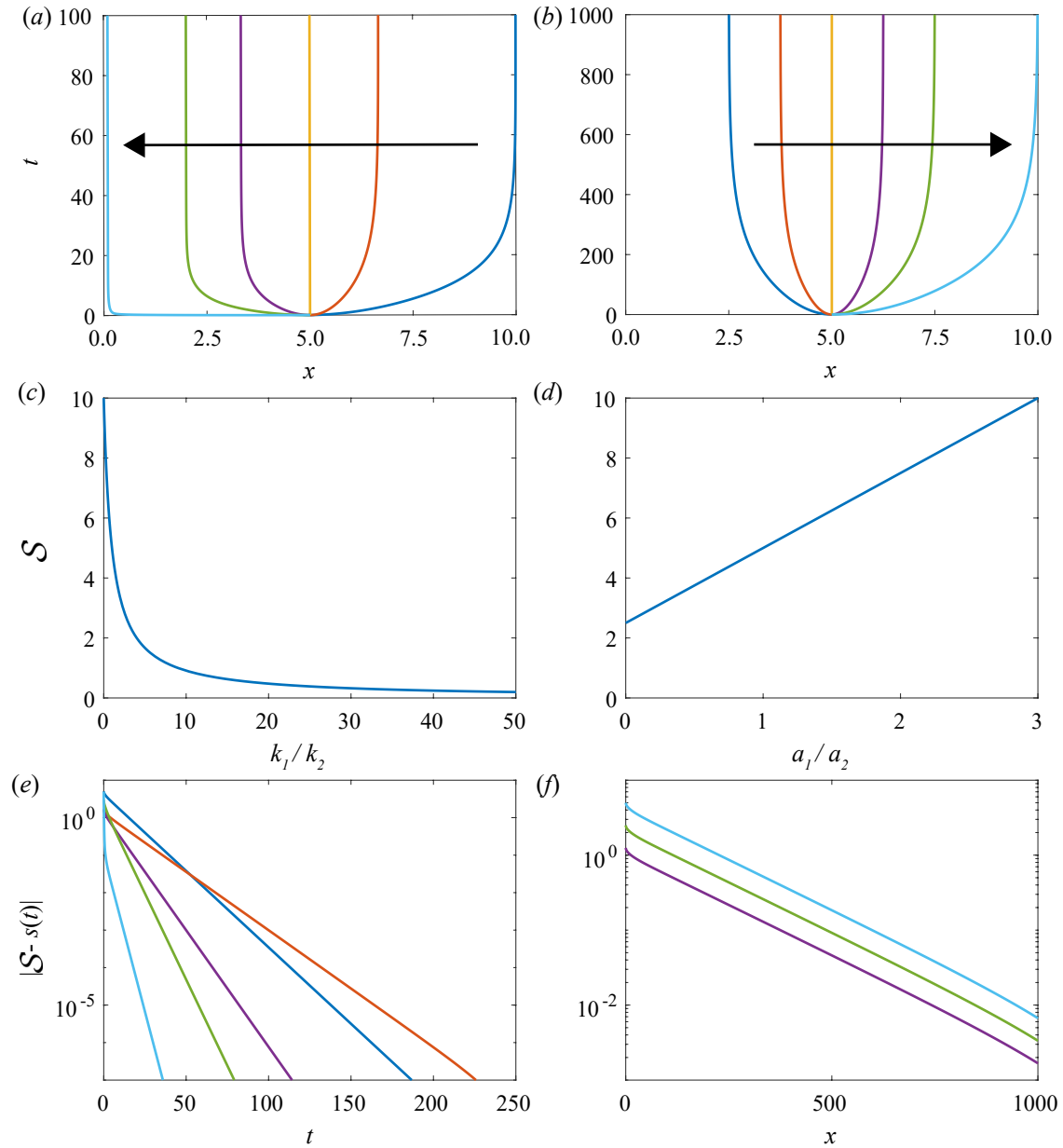


Figure 5: Variation of relative cell stiffness, k_1/k_2 , and relative resting cell length, a_1/a_2 , in a model with two adjacent tissues and a constant density initial condition. (a) Characteristics of the interface position for varying k_1/k_2 . The right tissue has fixed cell stiffness $k_2 = 1$ while the left tissue cell stiffness is varied with the six values $k_1 = 0$ (blue), 0.5 (red), 1 (yellow), 2 (purple), 4 (green), 100 (cyan). The arrow indicates the direction of increasing k_1 . (b) Characteristics of the interface particle for varying a_1/a_2 . The right tissue has fixed resting cell length $a_2 = 1$ while the resting cell length of the left tissue is varied with the six values $a_1 = 0$ (blue), 0.5 (red), 1 (yellow), 1.5 (purple), 2 (green), 3 (cyan). The arrow indicates the direction of increasing a_1 . Analytical solution for the steady state position of the interface position with given (c) relative cell stiffness and (d) relative resting cell length. (e,f) Absolute difference between position and steady state for interface position for increasing time for varying (e) relative cell stiffness and (f) relative resting cell length.

3.3 Case study: breast cancer detection

Recent experiments have proposed a new method to classify breast biopsies in situations where standard histological analysis is inconclusive [6,12,13]. The method is based on determining the stiffness histogram distribution of the tissue using atomic force microscopy. Normal tissues are associated with a single, well-defined unimodal stiffness peak, whereas malignant tissues are associated with a bimodal distribution with a prominent low-stiffness peak. Using our mathematical model, we are able to gain more insight into the differences in mechanical properties of normal and malignant tissues at the cellular level, in particular, the role of the resting cell length, which is not an easy quantity to measure experimentally.

For this case study we use the discrete model, which we consider to be a sufficiently simple yet insightful portrayal of the biological details. We set the initial state of the system by assuming a uniform initial density distribution and by assigning the cell stiffness of the i^{th} cell, k_i , so as to reconstruct the unimodal stiffness profile from Figure 1b (top) in [6]. To do so, we normalise the experimental stiffness histogram and interpret the normalised value as the length fraction of the tissue containing stiffness in the given histogram bin (Figure 6(a)). To estimate k_i , we randomly sample the unimodal stiffness distribution and arbitrarily assign them to cells $i = 1, 2, \dots, N$ in ascending order. Note that the ordering of the cells does not affect our results or the interpretation of our results in any way. We assume $N = 1000$, $m = 1$ and $L = 10$ for illustration purposes. In order for this initial setup to be in equilibrium despite the heterogeneity in stiffness in the tissue, the resting cell lengths a_i must be chosen heterogeneously, per the steady state system of discrete equations, see Supplementary Material Section 4.

We proceed to consider how a bimodal stiffness distribution, associated with malignant tissues, could arise from such an initial state with a unimodal stiffness distribution. Clearly, a bimodal stiffness distribution may arise as a result of changes to individual cell stiffnesses, k_i , e.g. due to some pre-cancerous biological mechanisms. However, our model shows that it is also possible to interpret the bimodal distribution as arising from changes in the resting cell lengths only. Specifically, when we simulate the discrete model with the initial conditions as above, but modify the heterogeneity in the resting cell lengths, a_i , to a bimodal profile with high a_i for very low k_i , without changing their stiffnesses, k_i , the cells redistribute themselves in the tissue in such a way that the tissue stiffness histogram develops a bimodal distribution at mechanical equilibrium (Figure 6(c)). We note here that changes in the resting cell lengths have been assumed in other works [44] to model two-way feedback between mechanical tensions and signalling and here could similarly represent some unknown underlying pre-cancerous biological mechanisms.

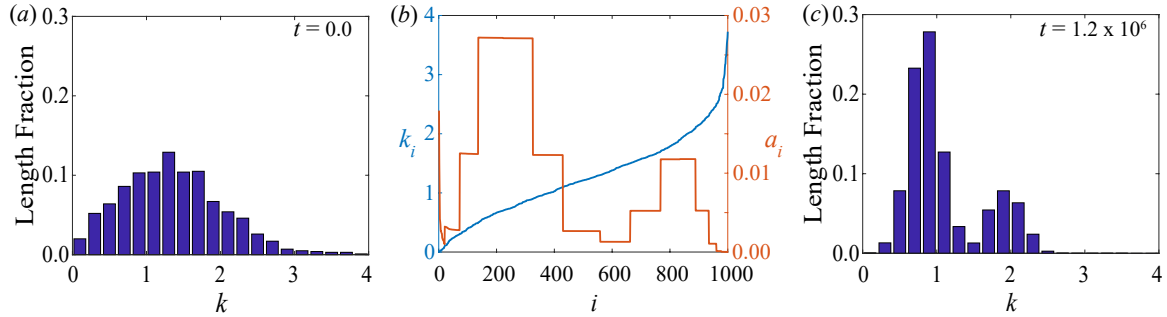


Figure 6: Breast cancer detection case study. (a) Initial unimodal stiffness distribution, normalised by tissue length fraction, associated with normal tissues. (b) Initial cell stiffness k_i and modified resting cell length a_i for each cell $i = 1, 2, \dots, 1000$, leading to a bimodal stiffness distribution. (c) Steady-state stiffness distribution obtained with the modified resting cell lengths, exhibiting a bimodal distribution associated with malignant tissues.

4 Conclusion and future work

In this work, we present a one-dimensional cell-based model with heterogeneous cell properties, and its coarse-grained continuum approximation. The motion of cells is driven by cell-cell interaction forces which could represent cell-cell adhesion [38] or compressive stresses [39]. Heterogeneous cell properties, cell stiffness and resting cell length, are constant for each cell and are transported in space by cell movements. The continuum limit is taken by increasing the number of springs per cell, while maintaining the number of cells in the tissue and its fixed total length, and by considering spatial averages over length scales involving a large enough number of cells to define continuous densities but small enough to retain spatial heterogeneities.

Our results shows that solutions of the discrete model approach the solution of the continuum model as the number of springs per cell increases whilst the spring length tends to zero, even for rapidly varying spatial cell properties. Excellent agreement is observed even for few springs per cell. For the examples presented in this work, we find that the solution of the discrete model can be obtained much faster than the solution of the continuum model. However, the advantage of working with the coarse-grained continuum model is that it provides a very simple intuitive interpretation of the discrete model, namely that the cell density flux is explicitly related to the gradient of the cell-cell interaction force.

By dealing explicitly with heterogeneous cell populations, this model has many potential applications. The first application we consider is a simple tissue relaxation simulation, where we track the position of the interface between two distinct adjacent tissues as the system mechanically relaxes, to infer cellular-level properties. Results suggest it is easier to determine the relative cell stiffnesses than it is to determine the relative resting cell lengths. Results also show that when cells are, on average, in tension a tissue with lower stiffness extends and compresses a tissue with higher stiffness. In the second application, we use the model to interpret recent experiments in breast cancer detection which reveal distinct stiffness profiles associated with normal, benign and malignant tissues [6]. We show that a bimodal stiffness distribution, associated with a malignant tissue, could

arise from a unimodal stiffness distribution, associated with a normal tissue, from changes not just in cell stiffnesses but from changes in the resting cell length's only. The resting cell length is not an easily measured experimental quantity and these results suggest that this could be an important variable to consider.

Many extensions of this work are possible, both mathematically and biologically. An important extension will be to introduce cell proliferation and apoptosis [33,41]. Another interesting extension will be to generalise the cell-cell interaction force law to include nonlinear effects for large separations [34,41]. These extensions will be the subject of future works. Finally, the model's ability to relate cellular-level stiffness data and tissue-level information has many potential extensions biologically including applying the model to particular scenarios such as epithelial tissue mechanics, cancer progression [4,5], cancer detection [6–8], wound healing [9], and morphogenesis [10].

Data Access

This article does not contain any additional data.

Author Contributions

All authors conceived and designed the study; R.J.M. performed numerical simulations and drafted the article; all authors provided comments and gave final approval for publication.

Competing Interests

We have no competing interests.

Funding

This work is supported by the Australian Research Council (DP170100474). REB is a Royal Society Wolfson Research Merit Award holder, would like to thank the Leverhulme Trust for a Research Fellowship and also acknowledges the BBSRC for funding via grant no. BB/R000816/1.

References

- [1] Trepap X, Sahai E. 2018 Mesoscale physical principles of collective cell organisation. *Nat. Phys.* **14**. 671-682. (doi:10.1038/s41567-018-0194-9)
- [2] Altschuler SJ, Wu LF. 2010 Cellular heterogeneity: when do differences make a difference? *Cell.* **141**. 559-563. (doi:10.1016/j.cell.2010.04.033)
- [3] Gallaher JA, Enriquez-Navas PM, Luddy KA, Gatenby RA, Anderson ARA. 2018 Spatial heterogeneity and evolutionary dynamics modulate time to recurrence in continuous and adaptive cancer therapies. *Cancer Res.* **78**. 2127-2139. (doi:10.1158/0008-5472.CAN-17-2649)
- [4] Samuel MS, Lopez JI, McGhee EJ, Croft DR, Strachan D, Timpson P, Munro J, Schröder E, Zhou J, Brunton, VJ, et al. 2011 Actomyosin-mediated cellular tension drives increased tissue stiffness and β -catenin activation to induce epidermal hyperplasia and tumor growth. *Cancer Cell.* **19**. 776-791. (doi:10.1016/j.ccr.2011.05.008)
- [5] Nguyen AV, Nyberg KD, Scott MB, Welsh AM, Nguyen AH, Wu N, Hohlbauch SV, Geisse NA, Gibb EA, Robertson AG, et al. Stiffness of pancreatic cancer cells is associated with increased invasive potential. *Integr. Biol.* **8**. 1232-1245. (doi:10.1039/c6ib00135a)
- [6] Plodinec M, Loparic M, Monnier CA, Obermann EC, Zanetti-Dallenbach R, Oertle P, Hyotyla JT, Aebi U, Bentires-Alj M, Lim RYH, et al. 2012 The nanomechanical signature of breast cancer. *Nat. Nanotechnol.* **7**. 757-764. (doi:10.1038/nnano.2012.167)
- [7] Huo CW, Chew GL, Britt KL, Ingman WV, Henderson MA, Hopper JL, Thompson EW. 2014 Mammographic density—a review on the current understanding of its association with breast cancer. *Breast Cancer Res. Tr.* **144**. 479-502. (doi:10.1007/s10549-014-2901-)
- [8] Suresh S. 2007 Elastic clues in cancer detection. *Nat. Nanotechnol.* **2**. 748-749. (doi:10.1038/nnano.2007.397)
- [9] Evans ND, Oreffo ROC, Healy E, Thurner PJ, Man YH. 2013 Epithelial mechanobiology, skin wound healing, and the stem cell niche. *J. Mech. Behav. Biomed.* **28**. 397-409. (doi:10.1016/j.jmbbm.2013.04.023)
- [10] Fletcher AG, Cooper F, Baker RE. 2017 Mechanocellular models of epithelial morphogenesis. *Phil. Trans. R. Soc. B.* **372**. 20150519. (doi:10.1098/rstb.2015.0519)
- [11] Levental I, Georges PC, Janmey PA. 2006 Soft biological materials and their impact on cell function. *Soft Matter.* **3**. 299-306. (doi:10.1039/b610522j)
- [12] Lekka M, Gil D, Pogoda K, Dulińska-Litewka J, Jach R, Gostek J, Klymenko O, Prauzner-Bechcicki S, Stachura Z, Wiltowska-Zuber J, et al. 2012 Cancer cell detection in tissue sections using AFM. *Arch. Biochem. Biophys.* **518**. 151-156. (doi:10.1016/j.abb.2011.12.013)

- [13] Lekka M. 2012 Atomic force microscopy: a tip for diagnosing cancer. *Nat. Nanotechnol.* **7**. 691-692. (doi:10.1038/nnano.2012.196)
- [14] Lekka M. 2016 Discrimination between normal and cancerous cells using AFM. *BioNanoSci.* **6**. 65-80. (doi:10.1007/s12668-016-0191-3)
- [15] Cross SE, Jin Y, Rao J, Gimzewski JK. 2007 Nanomechanical analysis of cells from cancer patients. *Nat. Nanotechnol.* **2**. 780-783. (doi:10.1038/nnano.2007.388)
- [16] Pathmanathan P, Cooper J, Fletcher A, Mirams G, Murray P, Osborne J, Pitt-Francis J, Walter A, Chapman SJ. 2009 A computational study of discrete mechanical tissue models. *Phys. Biol.* **6**. 036001. (doi:10.1088/1478-3975/6/3/036001)
- [17] Osborne JM, Fletcher AG, Pitt-Francis JM, Maini PK, Gavaghan DJ. 2017 Comparing individual-based approaches to modelling the self-organization of multicellular tissues. *PLoS Comput. Biol.* **13**. e1005387. (doi:10.1371/journal.pcbi.1005387)
- [18] Sandersius SA, Weijer CJ, Newman TJ. 2011 Emergent cell and tissue dynamics from sub-cellular modeling of active biomechanical processes. *Phys. Biol.* **8**. 045007. (doi:10.1088/1478-3975/8/4/045007)
- [19] Ingber DE. 2003 Tensegrity I. Cell structure and hierarchical systems biology. *J. Cell Sci.* **116**. 1157-1173. (doi:10.1242/jcs.00359)
- [20] Armstrong NJ, Painter KJ, Sherratt JA. 2006 A continuum approach to modelling cell-cell adhesion. *J. Theor. Biol.* **243**. 98-113. (doi:10.1016/j.jtbi.2006.05.030)
- [21] Collis J, Brown DL, Hubbard ME, O'Dea RD. 2017 Effective equations governing an active poroelastic medium. *Proc. R. Soc. A.* **473**. 20160755. (doi:10.1098/rspa.2016.0755)
- [22] Penta R, Ambrosi D, Shipley RJ. 2013 Effective governing equations for poroelastic growing media. *Q. J. Mech. Appl. Math.* **67**. 69-91. (doi:10.1093/qjmam/hbt024)
- [23] Osborne JM, Walter A, Kershaw SK, Mirams GR, Fletcher AG, Pathmanathan P, Gavaghan D, Jensen OE, Maini PK, Byrne HM. 2010 A hybrid approach to multi-scale modelling of cancer. *Phil. Trans. R. Soc. A.* **368**. 5013-5028. (doi:10.1098/rsta.2010.0173)
- [24] Anderson ARA. 2005 A hybrid mathematical model of solid tumour invasion: the importance of cell adhesion. *Math. Med. Biol.* **22**. 163-186. (doi:10.1093/imammb/dqi005)
- [25] Vavourakis V, Wijeratne PA, Shipley R, Loizidou M, Stylianopoulos T, Hawkes DJ. 2017 A validated multiscale in-silico model for mechano-sensitive tumour angiogenesis and growth. *PLoS Comput. Biol.* **13**. e1005259. (doi:10.1371/journal.pcbi.1005259)
- [26] Rajagopal V, Holmes WR, Lee PVS. 2018 Computational modeling of single-cell mechanics and cytoskeletal mechanobiology. *Wires. Syst. Biol. Med.* **10**. 5-7. (doi:10.1002/wsbm.1407)

- [27] Tambe DT, Hardin CC, Angelini TE, Rajendran K, Park CY, Serra-Picamal X, Zhou EH, Zaman MH, Butler JP, Weitz DA, et al. 2011 Collective cell guidance by cooperative intercellular forces. *Nat. Mater.* **10**. 469-475. (doi:10.1038/nmat3025)
- [28] Fozard JA, Byrne HM, Jensen OE, King JR. 2010 Continuum approximations of individual-based models for epithelial monolayers. *Math. Med. Biol.* **27**. 39-74. (doi:10.1093/imammb/dqp015)
- [29] O’Dea RD, King JR. 2012 Continuum limits of pattern formation in hexagonal-cell monolayers. *J. Math. Biol.* **64**. 579-610. (doi:10.1007/s00285-011-0427-3)
- [30] Middleton AM, Fleck C, Grima R. 2014 A continuum approximation to an off-lattice individual-cell based model of cell migration and adhesion. *J. Theor. Biol.* **359**. 220-232. (doi:10.1016/j.jtbi.2014.06.011)
- [31] Matsiaka OM, Penington CJ, Baker RE, Simpson MJ. 2018 Discrete and continuum approximations for collective cell migration in a scratch assay with cell size dynamics. *B. Math. Biol.* **80**. 738-757. (doi:10.1007/s11538-018-0398-2)
- [32] Bodnar M, Velazquez JLL. 2005 Derivation of macroscopic equations for individual cell-based models: a formal approach. *Math. Method Appl. Sci.* **28**. 1757-1779. (doi:10.1002/mma.638)
- [33] Murray PJ, Edwards CM, Tindall MJ, Maini PK. 2009 From a discrete to a continuum model of cell dynamics in one dimension. *Phys. Rev. E.* **80**. 031912. (doi:10.1103/PhysRevE.80.031912)
- [34] Murray PJ, Edwards CM, Tindall MJ, Maini PK. 2012 Classifying general nonlinear force laws in cell-based models via the continuum limit. *Phys. Rev. E.* **85**. 021921. (doi:10.1103/PhysRevE.85.021921)
- [35] Murray PJ, Kang J, Mirams GR, Shin S-Y, Byrne HM, Maini PK, Cho KH. 2010 Modelling spatially regulated β -catenin dynamics and invasion in intestinal crypts. *Biophys. J.* **99**. 716-725. (doi:10.1016/j.bpj.2010.05.016)
- [36] Murray PJ, Walter A, Fletcher AG, Edwards CM, Tindall MJ, Maini PK. 2011 Comparing a discrete and continuum model of the intestinal crypt. *Phys. Biol.* **8**. 026011. (doi:10.1088/1478-3975/8/2/026011)
- [37] Evans DJ, Morriss, G. 2008 *Statistical Mechanics of Nonequilibrium Liquids*. Cambridge, UK: Cambridge University Press.
- [38] Johnston ST, Simpson MJ, Plank MJ. 2013 Lattice-free descriptions of collective motion with crowding and adhesion. *Phys. Rev E.* **88**. 062720. (doi:10.1103/PhysRevE.88.062720)
- [39] Tse JM, Cheng G, Tyrrell JA, Wilcox-Adelman SA, Boucher Y, Jain RK, Minn LL. 2011 Mechanical compression drives cancer cells toward invasive phenotype. *P. Natl. Acad. Sci. USA.* **109**. 911-916. (doi:10.1073/pnas.1118910109)

- [40] Meineke FA, Potten CS, Loeffler M. 2001 Cell migration and organisation in the intestinal crypt using a lattice-free model. *Cell Prolif.* **34**. 253-266. (doi:10.1046/j.0960-7722.2001.00216.x)
- [41] Baker RE, Parker A, Simpson MJ. 2018 A free boundary model of epithelial dynamics. *BioRxiv*. (doi:10.1101/433813)
- [42] Lighthill MJ. 1958 *An Introduction to Fourier Analysis and Generalised Functions*. Cambridge, UK: Cambridge University Press.
- [43] Alibert C, Goud, B, Manneville J-B. 2017 Are cancer cells really softer than normal cells? *Biol. Cell.* **109**. 167-189. (doi:10.1111/boc.201600078)
- [44] Zmurchok C, Bhaskar D, Edelstein-Keshet L. 2018 Coupling mechanical tension and GTPase signaling to generate cell and tissue dynamics. *Phys. Biol.* **15**. 046004. (doi:10.1088/1478-3975/aab1c0)