

Consistent alterations of human fecal microbes after transplanted to germ-free mice

Yanze Li ¹, Wenming Cao ¹, Na L Gao ¹, Xing-Ming Zhao ^{2, §}, Wei-Hua Chen ^{1, 3, 4, §}

¹ Key Laboratory of Molecular Biophysics of the Ministry of Education, Hubei Key Laboratory of Bioinformatics and Molecular-imaging, Department of Bioinformatics and Systems Biology, College of Life Science and Technology, Huazhong University of Science and Technology, 430074 Wuhan, Hubei, China

² Institute of Science and Technology for Brain-Inspired Intelligence (ISTBI), Fudan University, 200433 Shanghai, China

³ College of Life Science, HeNan Normal University, 453007 Xinxiang, Henan, China

⁴ Huazhong University of Science and Technology Ezhou Industrial Technology Research Institute, 436044 Ezhou, Hubei, China

§ Correspondence should be addressed to Wei-Hua Chen (weihuachen@hust.edu.cn) or Xing-Ming Zhao (xmzhao@fudan.edu.cn)

Abstract

Background

Fecal microbiota transplant (FMT) of human fecal samples to germ-free (GF) mice is useful for establishing causal relationships between gut microbiota and human

phenotypes. However, due to intrinsic differences between human and mouse intestines and distinct diets between the two organisms, replicating human phenotypes in mouse through FMT is not guaranteed; similarly, treatments that are effective in mouse models do not guarantee their success in human either.

Results

In this study, we aimed to identify human gut microbes that have undergone significant and consistent changes after transplanted to GF mice across multiple experimental settings. By comparing gut microbiota profiles in 1,713 human-mouse pairs, we found strikingly on average <50% of the human gut microbes can be re-established in mice at the species level; among which, more than 1/3 have undergone significant changes (referred as to “variable microbes”), most of which were consistent across multiple human-mouse pairs and experimental settings. Consistently, one-third of human samples had changed their enterotypes, i.e. significant changes in their leading species after FMT. Mice fed with controlled diet showed significant decrease in the enterotype change rate (~25%) as compared those with non-controlled diet (~50%), suggesting a possible solution for rescue. Strikingly, most of the variable microbes have been implicated in human diseases, with some being recognized as causing species.

Conclusions

Our results highlighted the challenges of using mouse model in replicating human gut microbiota-associated phenotypes, provided useful information for researchers using mice in their gut microbiota studies and call for additional validations after FMT.

Keywords

Germfree mice, Fecal microbiota transplant (FMT), Gut microbes, Enterotype, 16s rDNA, metagenomics

Background

In recent years, it has been well established that alterations in gut microbiota can be linked to many aspects of human health and diseases [1-5], with many playing causal roles. For example, microbiota may play a fundamental role on the induction, training, and function of the host immune system, several studies have shown that gut microbes are associated with the occurrence and development of diseases [6-8]. However, establishing causal relationships between gut microbiota alterations and human phenotypes have proved to be difficult, despite advances in computational and experimental techniques [9].

Fecal microbiota transplant (FMT) of human fecal samples (fresh or frozen) to germfree (GF-) mice is one of the few available methods to establish causal relationships between human phenotypes and altered gut microbiota [10, 11]. Such “humanized” mice could be used to replicate human phenotypes at both physiological and molecular levels, study the relative contribution of the respective microbiota to host dysfunctions or disease phenotypes, and test the effects of the perturbation of certain species (often by addition of lab-cultured species into the mice) on the phenotypes of interests [12, 13]; they are thus also extremely valuable for finding possible intervention methods for human diseases. There have been numerous successful applications of such methods for the past a few years [14-17]. For example, recent studies have shown that the addition of

Bifidobacterium longum, *Collinsella aerofaciens*, and/or *Enterococcus faecium* to GF-mice receiving FMTs from non-responding patients can greatly increase the efficacy of anti-PD-L1 therapy [18]. Similarly, age-associated differences in IgA responses can be repeated in young GF mice, those receiving FMTs from infant can demonstrate the influence of genetic factors on development of the gut microbiota and mucosal IgA responses [19].

However, engraftment of fecal microbial communities from human feces into germ-free mice results in only a partial resemblance to the donor microbiota [14], favoring those phylotypes adapted to the recipient species, due to the genetic, behavioral, physiological, and anatomical differences between the guts of mice and human [20, 21]. For example, mouse intestinal villi are taller than those of human, and intestinal pH is lower than human; mouse has a large cecum which is an important site for fermentation, while the human cecum is relatively small [20, 21]. Consequently, human and mouse native gut microbes are vastly different; for example, a recent study showed only 4% of human and mouse gut microbes were found to share 95% identity and a coverage of 90% [10, 11, 20, 22]. These results are consistent with the fact that most pathogens are able to infect multiple hosts but some are highly adapted to a single-host species [23].

Having becoming aware of the differences in human and mouse guts and their important implications, researchers have been taking measures to reduce their impacts on FMT, by either taking pre-experimental methods to select the most suitable model animals for studying certain bacteria, and/or feeding mice with human food [24]. The use of other models has also been considered recently [25]. Many studies have demonstrated that gut

microbes can be (at least partially) influenced by diet [26]. For example, increased abundance of *Prevotella* is associated with increased dietary fiber in human [27]. These efforts are unfortunately not pain-free, and call for systematic analysis on the alterations in human fecal samples after transplanted to mice.

In this research we investigated the changes of human gut microbes after FMT by comparing abundances of the same species/genus in 1,713 human-mouse pairs. We focused on consistently changed species, i.e. those that are abundantly present in a significant proportion of human-mouse pairs with relative abundance higher than 0.1% and showed significant changes (with median $|\text{Log}_2\text{FC}| > 1$; FC, fold change). We found strikingly over one-third human gut microbes have been significantly and consistently changed after FMT at both species and genus levels. Consequently, about one-third of human samples changed their enterotypes after FMT, i.e. significant changes in the leading species [28]. Strikingly, we found that most of the significantly changed species (referred to as “variable species” below) were implicated in human diseases (Tables 1 and S1). Human samples transplanted to recipient mice fed with human food (referred to as “controlled diet” group below) showed significant decreased in enterotype changes, suggesting possible methods of rescue; however, the latter may result in additional variable taxa. Our results would be informative to researchers that use (or plan to use) GF-mice in their gut microbiota studies. In addition, these results also call for additional validations of species of interests after FMT, e.g. to check if significantly changed species in different phenotype groups are still significantly changed after transplanted to FMT. So far, such validation has been mostly conveniently ignored.

Results and discussion

Less than 50% human gut microbes could re-establish in mice after FMT

We collected data from in total 1,713 human-to-mouse FMT experiments and analyzed the relative microbe abundances in fecal samples of the human donors and the corresponding germ-free mouse recipients (Materials and Methods). For each human-to-mouse pair, we computed the relative abundance changes before and after FMT. We first checked how many gut microbes could be re-established in mice after FMT. We limited our analysis to taxa that were supported by at least five sequencing reads in both samples of the human-mouse pairs. As shown in Figure 1, we estimated that on average only 47% human gut microbes could be re-established in mouse gut at species level after FMT; at genus level, ~60% could re-established. These numbers are consistent with some previous results [29] but differ significantly from others [30, 31]. For example, using 64 human-mouse pairs, Ridaura *et al*/estimated 50~90% of human gut microbes at genus level could be re-established in mice after FMT, while others have found slightly higher re-establishment rates (>85% [30, 31]). However, they were all based on much smaller number of FMT experiments.

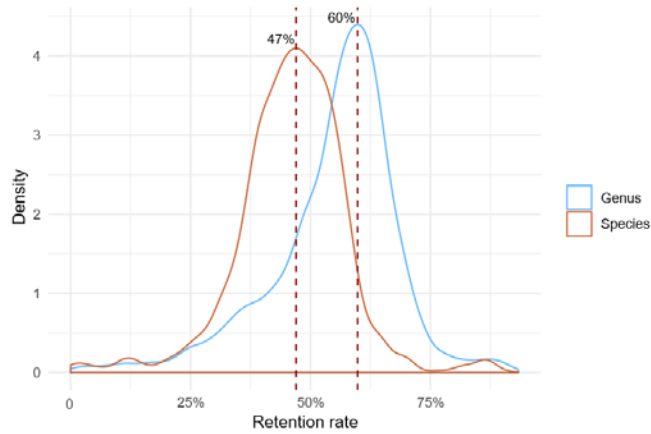


Fig1. 47% and 60% human gut microbes could be re-established in mouse gut after FMT at species (red) and genus (blue) levels respectively. We limited our analysis to taxa that were supported by at least five sequencing reads in both samples in each of the human-mouse pairs.

Over one-third human gut microbes have been significantly and consistently changed after FMT to germ-free mice

To capture consistent changes in gut microbes we also required that a species or genus should be presented in at least five FMT pairs and two experimental conditions with minimal relative abundance of 0.1% in each sample (before and after FMT). We estimated that over one-third of the gut microbes have been significantly and consistently changed after the FMT. For example, at the genus level, we found that 37 out of in total 95 genera identified in our study been significantly changed after the FMT, i.e. their median abundance changes have been at least two-fold, accounting for 39.36% of the total genera (Figure 2). At species level, we found 84 (38.53%) out of 218 species have been

significantly changed after FMT (Figure S1). We referred these significantly changed taxonomic groups as to “variable genera” and “variable species” respectively below, referred them together as to “variable taxa”; conversely, we referred others as to “stable taxa”. As shown in Figures 3 and S2, the variable taxa indeed showed consistent changes across experimental conditions.

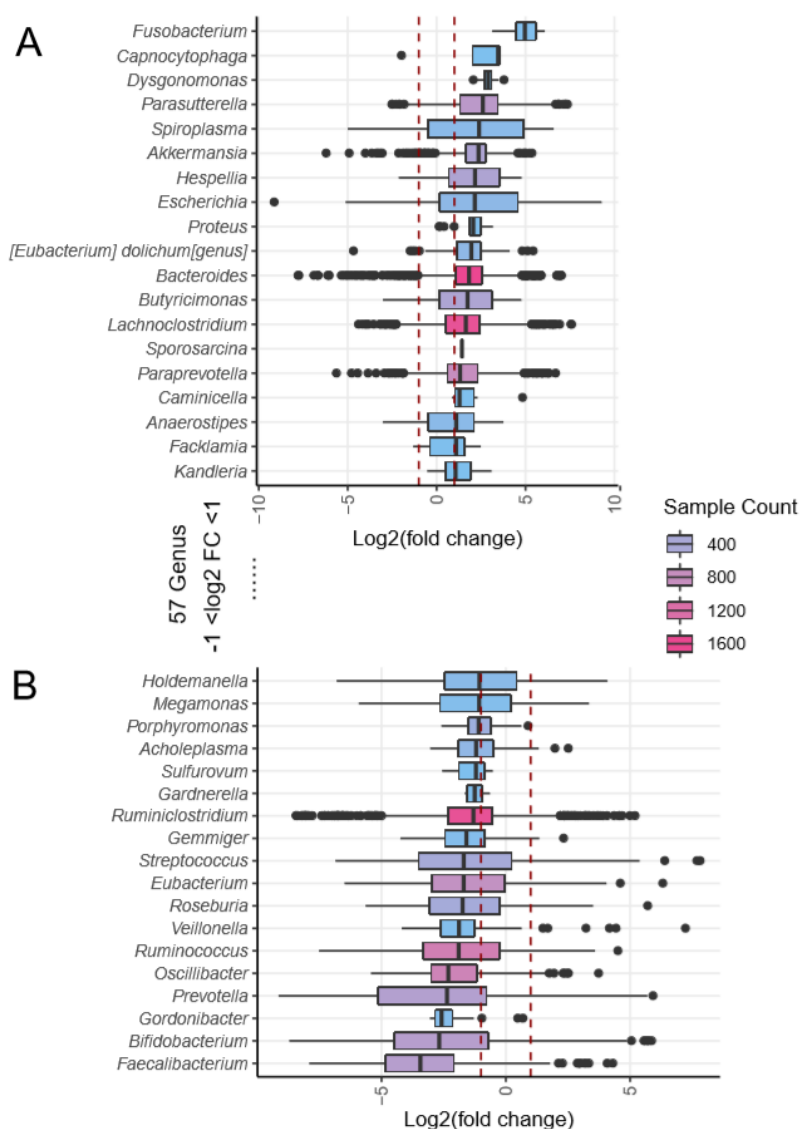
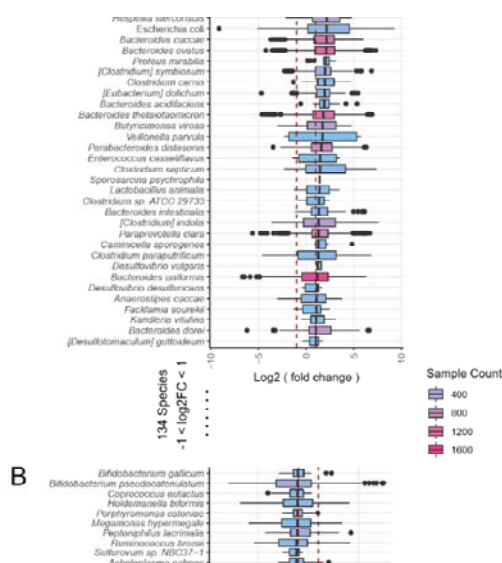


Fig.2| Over one-third of the genera of human gut microbes were significantly and

consistently altered after transplanted to germ-free mice. The box plot shows the relative abundances changes (log₂-transformed; Log₂FC) at genus level in the 1,713 human-mouse pairs we have collected (see Materials and Methods for details). Boxes were colored according to the number of samples (sample count) in which a genus was found; sample counts in this plot range from 81 to 1,713. If the median Log₂FC value of a genus is higher (panel A) or lower (panel B) than 1, it is considered to be significantly altered after FMT.



Supplementary Fig.1| Over one-third of the species of human gut microbes were significantly and consistently altered after transplanted to mice. The box plot shows the relative abundances changes (log₂-transformed; Log₂FC) at species level in the 1,713 human-mouse pairs of samples we have collected. Boxes were colored according to the number of samples (sample count) in which a genus was found; sample counts in this plot range from 26 to 1,697. If the median Log₂FC value of a

species is higher (panel A) or lower (panel B) than 1, it is considered to be significantly altered after FMT.

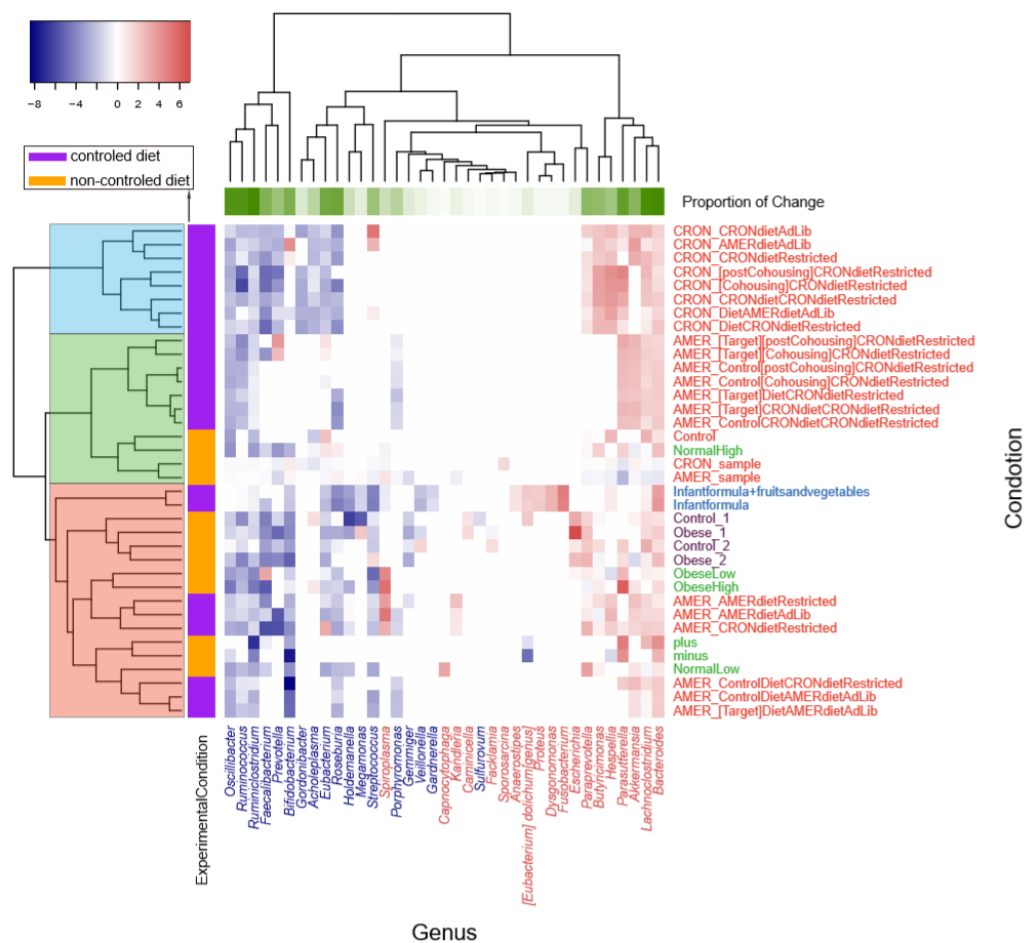
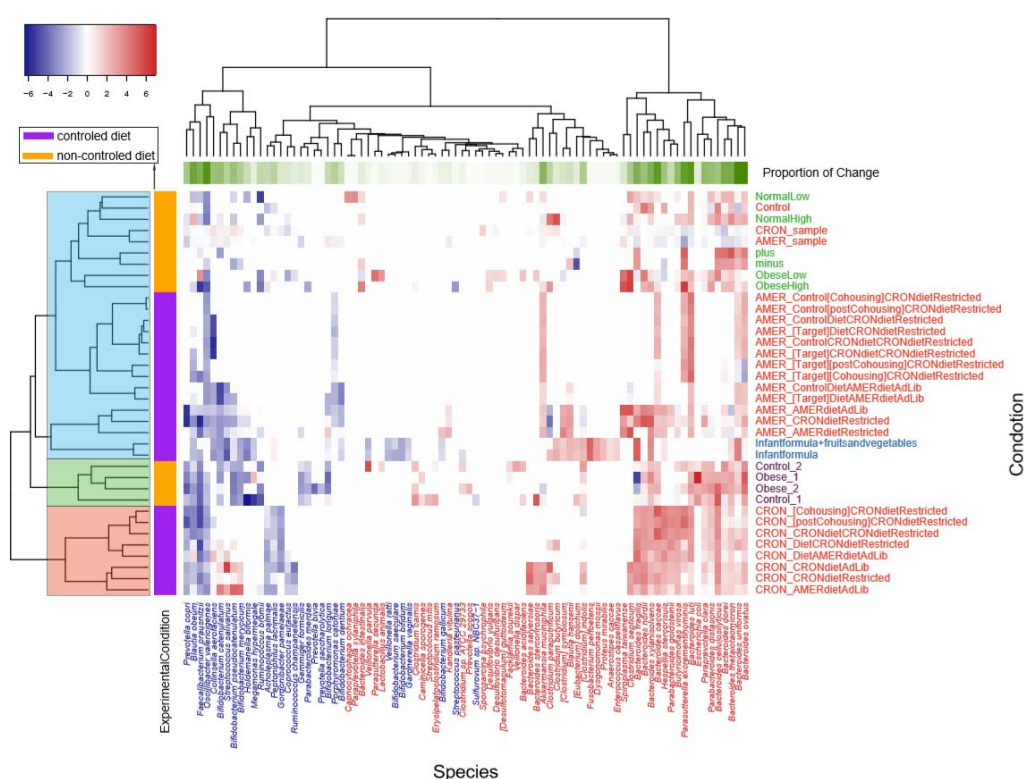


Fig.3| Variable genera showed consistent changes across experiment conditions.

Shown here is the median fold changes (log2 transformed; Log2FC) at genus level in samples of the same experiment conditions, i.e. for each of the 33 experiment conditions, we calculated the median Log2FC of each genus in human-mouse pairs, and plotted the results as a heatmap. The experimental conditions from the same studies are marked with the same color (Y-axis labels on the right). Significantly

increased and decreased genera are marked in red and blue respectively (X-axis labels). The heatmap is colored according to the Log2FC values. Row-side colors are used to show whether controlled diets were used in the experiments, while column-side colors are used to show proportion of experimental conditions in which the genus has been significantly changed.



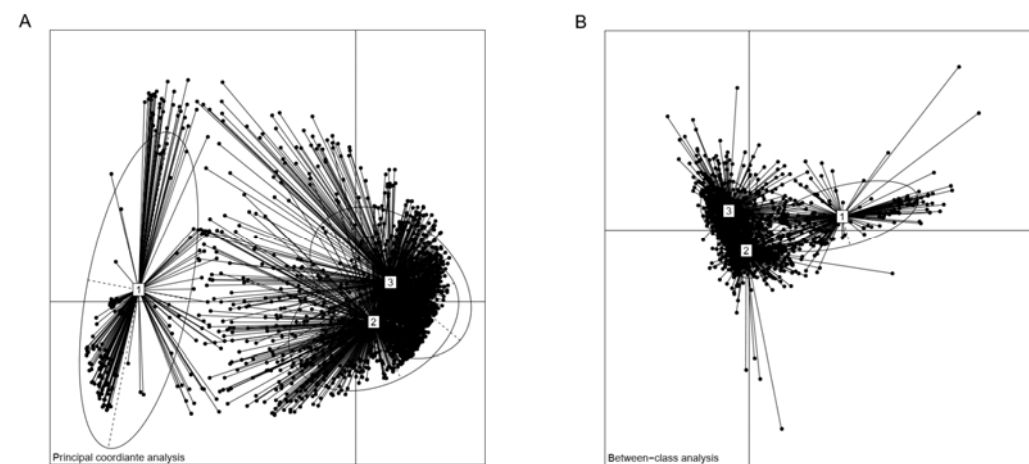
Supplementary Fig.2| Variable species showed consistent changes across experiment conditions. This figure is similar to Figure 2, only that the results of variable species are plotted. Shown here is the median fold changes (log2 transformed; Log2FC) at species level in samples of the same experiment conditions, i.e. for each of the 33 experiment conditions, we calculated the median Log2FC of each species in human-mouse pairs, and plotted the results as a heatmap. The

experimental conditions from the same studies are marked with the same color (Y-axis labels on the right). Significantly increased and decreased species are marked in red and blue respectively (X-axis labels). The heatmap is colored according to the Log2FC. Row-side colors are used to show whether controlled diets were used in the experiments, while column-side colors are used to show proportion of experimental conditions in which the genus has been significantly changed.

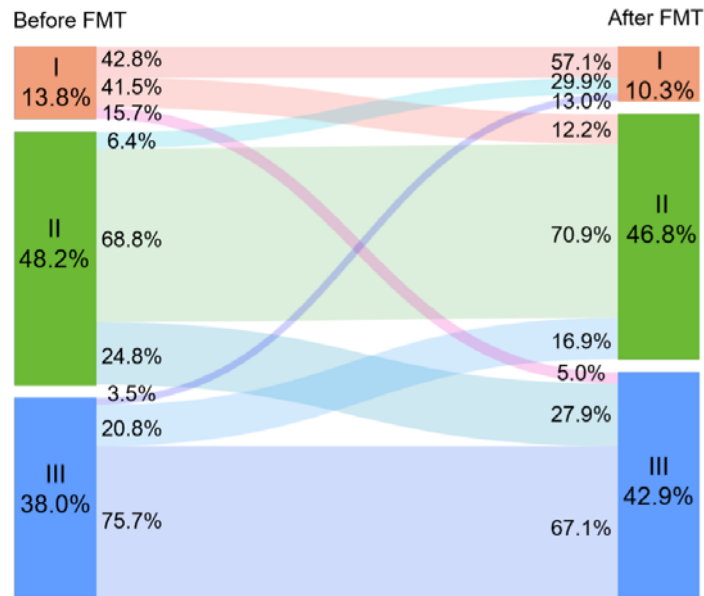
Changes in enterotypes were relatively stable over time but significantly affected by diet

We also checked the changes in enterotypes after FMT. Human gut microbes could be classified into three enterotypes, each with distinct leading species [28]. Our results showed that the mixed data from humans and mice can also form three enterotypes, as shown in Figure S3. Although the concept of enterotypes has been hotly debated recently, they are nevertheless a useful approach for a better understanding of complex biological problems [32]. Changes from one enterotype to the other often indicate significant alterations in overall gut microbe profiles [28]. We calculated the enterotypes for all fecal samples before and after FMT using a method previously described (<http://enterotype.embl.de/enterotypes.html>); the overall classification of all samples is shown in Figure S3. Strikingly, we found that 32.17% of the human samples changed their enterotypes after FMT (Figure 2A). These results are consistent with the results that 1/3 of the species and/or genera have been significantly altered after FMT. For example, the top

three driving genera of enterotype I, namely *Bifidobacterium*, *Clostridiodes* and *Dysgonomonas* increased significantly after FMT (Figure 2). For enterotype II, two of the top three driving genera, namely *Alistipes* and *Bacteroides* increased significantly after FMT, while *Lactonifactor*. Similarly, the top three driving genera of enterotype III, namely *Butyricimonas*, *Odoribacter* and *Paraprevotella* were all significantly changed, although with different trends. As shown in Figure S4, 57.2% of type I samples changed their enterotypes after FMT, followed by type II (31.2%) and then type III (24.3%).



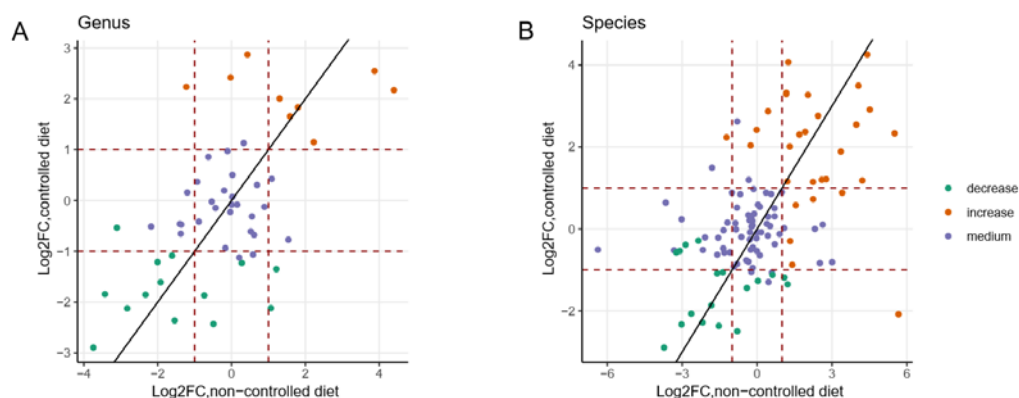
Supplementary Fig.3| Enterotypes of all human fecal samples sequenced before and after FMTs. A. Principal coordinates analysis (PCoA), B. Between-class analysis (BCA).



Supplementary Fig.4| Enterotype changes in samples whose original enterotypes are I, II and III before FMT. Enterotype changes in all samples, i.e. recipient mice were fed with both human food and mouse food.

We next examined factors contributing to the enterotype changes. Previous studies have revealed that diet has a great influence on intestinal microbes [33]. After divided the human-mouse pairs into two groups according to whether the mice were fed with a controlled diet (i.e. human food, see Materials and Methods for details), we found that mice with controlled diet showed significant decrease in the enterotype change rate (23.52%) as compared those with non-controlled diet (48.97%). As shown in Figure 4B and 4C, in the non-controlled diet group, ~95.6%, 49.2% and 26.8% of the human samples of enterotypes I, II and III changed their enterotypes after transplanted to mice, respectively. These numbers decreased to 33.1%, 21.2% and 23.2% respectively in the controlled diet group, largely due to decreased changes in the leading taxa of the

respective enterotypes (Table S1). These results are consistent with previous results that diets have significant impact on gut microbiota [33, 34], and may provide useful hints on the better retention of human gut microbiota in the humanized mice. However, we found that controlled diet may induce additional variable taxa at both species and genus levels (Figure S5), indicating complex reactions of mouse gut microbiota to human diets, and limited capacity of controlled diets on recipient mice.



Supplementary Fig.5] Complex interactions of mouse gut microbiota to human diets. As compared to non-controlled diet, controlled diet could reduce differences in human microbiota at both genus (A) and species (B) levels after FMT; however, the latter may result in additional variable taxa. Each dot represents a genus/species; green and red indicate variable taxa in Figure 2, while blue indicate non-variable taxa.

We also checked whether changes in the gut profiles could be different at different time points after translated to mice. Surprisingly, dividing human-mouse pairs into subgroups according to the days after FMTs, we found that the enterotype change rate

was the relatively stable over time, with the exception of human samples with initial enterotype II (the green lines in Figure 4D), which showed the highest rates of enterotype change at the first 10~20 days; we found similar trends in mice with controlled and non-controlled diets (Figure 4D). These results suggest a possible “shock” period immediate after by transplants of the fecal microbiota, followed by adaptation and a stable state [19, 35].

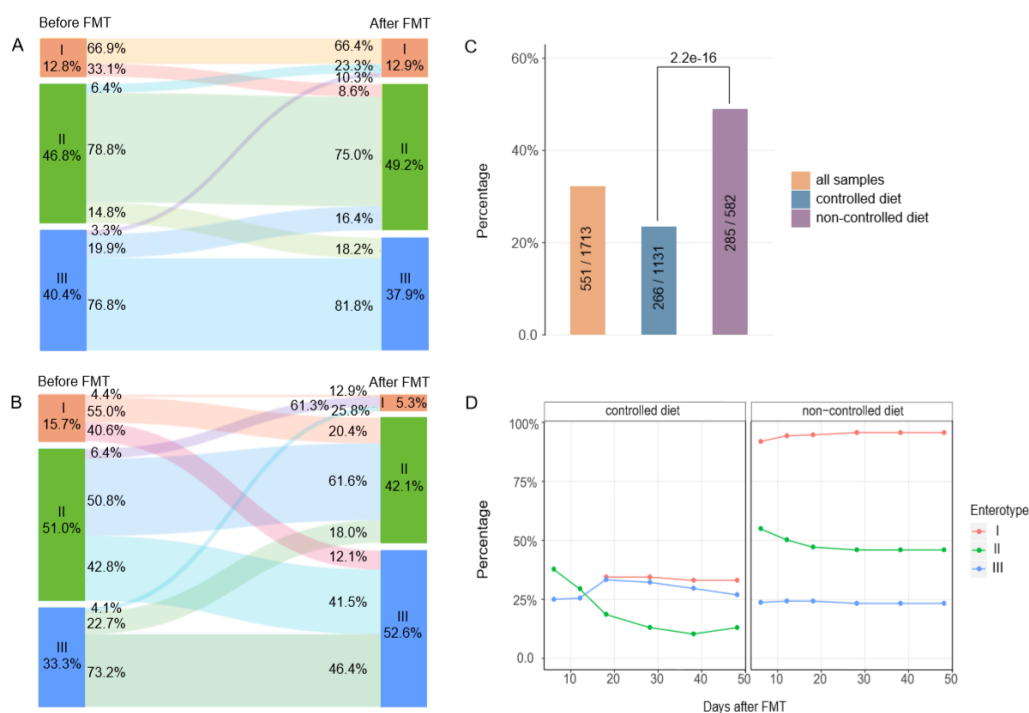


Fig.4| A significant proportion of samples changed their enterotypes after FMT, such change is significantly affected by diets of recipient mice. A, enterotype changes in the “controlled diet” group, i.e. recipient mice were fed with human food. B, enterotype changes in the “uncontrolled diet” group, i.e. recipient mice were fed with mouse food. C, Overall enterotype change rates of all samples (left) and samples in

the “controlled diet” group (middle) and “non-controlled diet” group (right); enterotype changes have been significantly decreased in the “controlled diet” group. D, Enterotype changes in groups with the two diet types as a function of time (days after FMT) at which fecal samples were sequenced.

Distinct changes in species of the same genus

We next sought to check whether or not species in the same genus tend to have similar trends after FMTs. As shown in Figure 5, we identified four typical patterns among in total 27 genera that contained multiple species. Pattern one (Figure 5A and S6A) consists of nine genera; in this group, all species and very often the corresponding genus are “stable taxa”. Pattern two (Figure 5B and S6B) also consists of five stable genera. However, they included both increased- and decreased- variable species, sometimes also stable species; the overall abundances of the genera were not changed after FMT. Pattern three (Figure 5C and S6C) and four (Figure 5D and S6D) consists of five increased- and eight decreased- “variable genera” respectively; their included species are either increased/decreased variable- species, or stable species. They account for 33.33%, 18.52%, 18.52% and 29.63% of the multi-species genera respectively. These results indicated distinct species preferences within the genera between human and mouse.

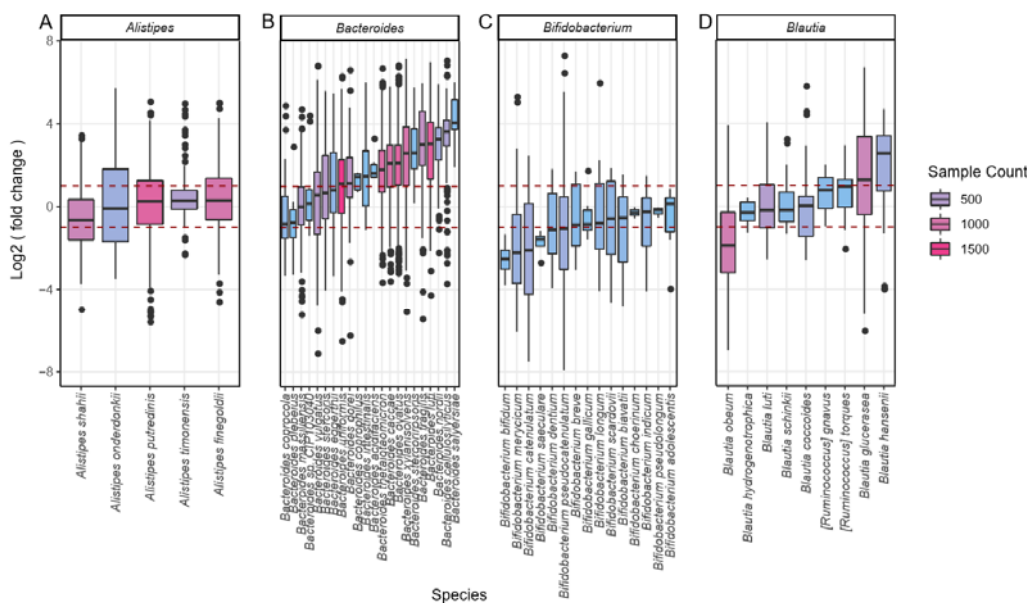
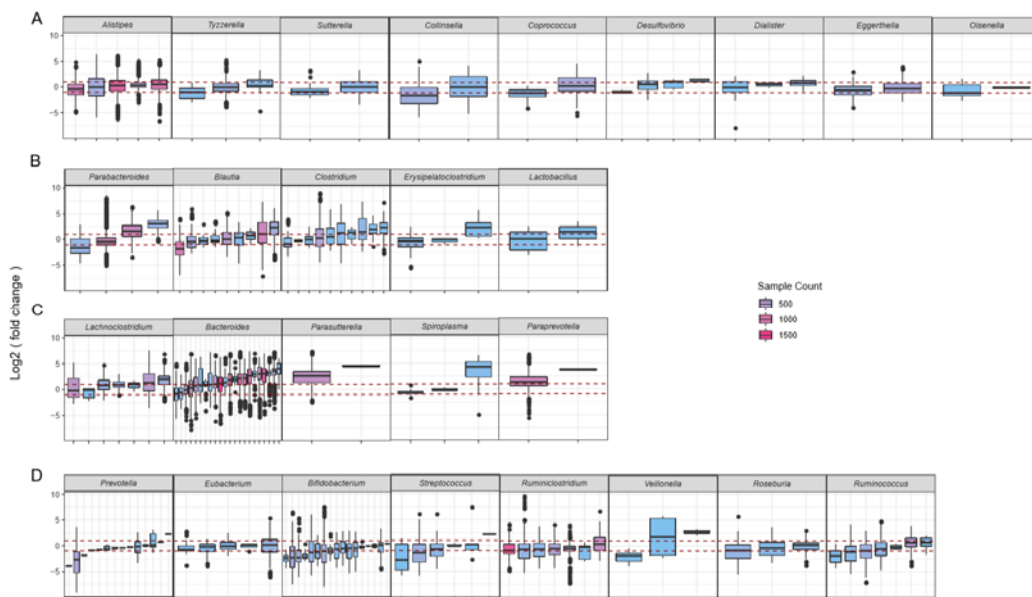


Fig.5| Species of the same genus may undergo distinct changes after FMT. Four typical genus types of change. The vertical axis is the ratio of human donor abundance to post-transplant rate of change, and the horizontal axis is the different species under the same genus.



Supplementary Fig.6| Four types of multi-species genus with distinct change patterns at

species levels. **A** stable genus whose member species are all stable species. **B** stable genera whose member species also include variable species. **C** variable genera significantly increased in abundances after FMT whose member species are either stable- or increased variable- species. **D** variable genera significantly decreased in abundances after FMT whose member species are either stable- or decreased variable- species.

Most variable taxa are linked to human health and diseases

Strikingly, we found most of the identified variable taxa were previously implicated in various human diseases and/or can be used in disease intervention and treatment (Table 1 and S1). Shown in Figure 6 are eight selected variable taxa (four genera and four species) that were relatively well studied in human diseases. Among which, *Bifidobacterium* has been implicated in obese, and can protect humans from enteropathogenic infection through production of acetate [36]; recently, *Bifidobacterium*, *Akkermansia muciniphila* and other species were found to be able promote antitumor immunity and facilitates anti-PD-L1 efficacy [37]. *Ruminococcus obeum* was shown to be able to competitively inhibit and control the infection of *Vibrio cholerae* [38]. *Prevotella copri* can induce insulin resistance, aggravate glucose intolerance and augment circulating levels of branched-chain amino acids [39]. *Faecalibacterium prausnitzii* exhibits anti-inflammatory effects on cellular and [2,4,6trinitrobenzenesulphonic acid (TNBS)-induced] colitis models, partly due to secreted metabolites able to block NF-KB

activation and IL-8 production [40].

These results highlight the challenges in the use of the mouse model in gut microbiota studies: not only it will be difficult to have similar human phenotypes (at both philological and molecular levels) in recipient mice if the suspected causal species would be significantly decreased in abundances after FMT, but also that it would be difficult to transfer the treatment methods back to human if the interventional species adapts much better to the mouse than that of the humans (e.g. *Akkermansia muciniphila*).

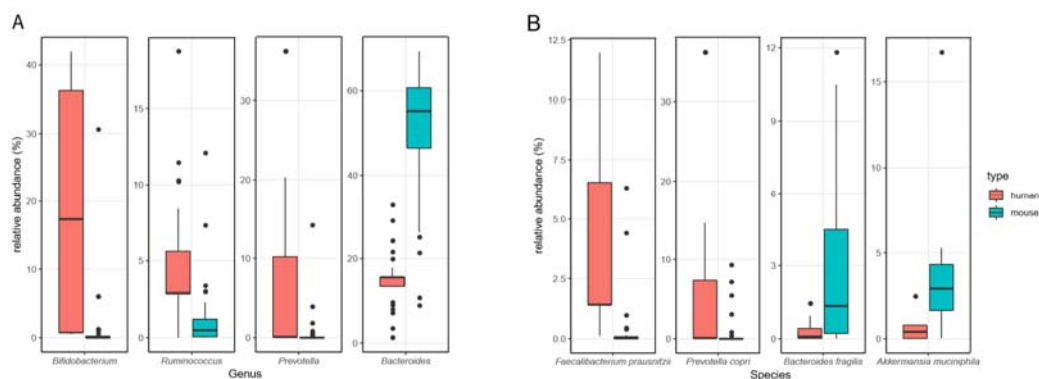
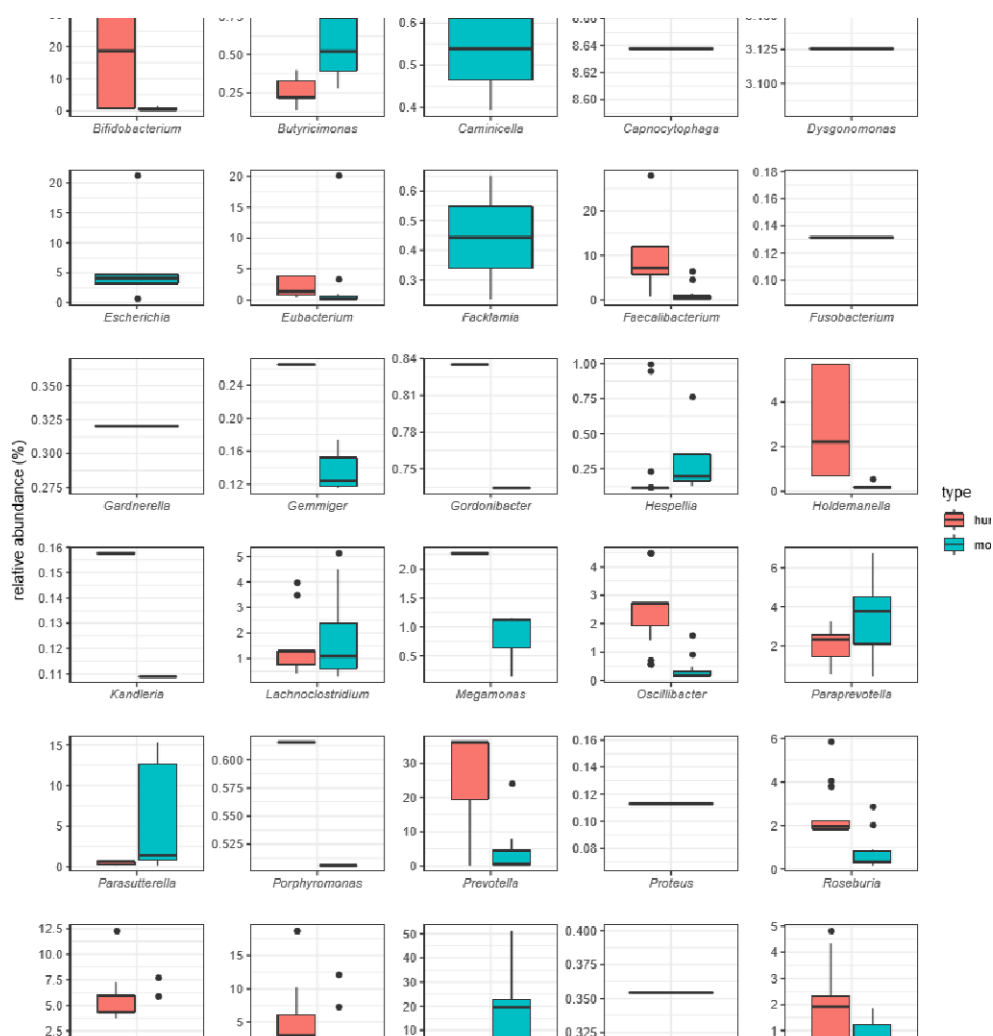


Fig.6| Exemplary variable genus (A) and species (B) that showed significant changes before and after FMTs. Boxplots show their relative abundances in human (before FMT, red) and mouse (after FMT, blue). Please consult Table 1 and S1 for more details of their associations with human diseases; please consult Figures S7 and S8 for all the variable genera and species that showed significant changes before and after FMTs.



Supplementary Fig.7| Variable genera and their relative abundances in human (before FMT) and mouse (after FMT). All genera with $|\text{Log}_2\text{FC}| > 1$ were shown here. Please consult Table 1 and S1 for more details of their associations with human diseases.



Supplementary Fig.8| Variable species and their relative abundances in human (before FMT) and mouse (after FMT). All species with $|\text{Log}_2\text{FC}| > 1$ were shown here. Please consult Table 1 and S1 for their association with human diseases.

Conclusions

Mice have been widely used in human disease studies and are one of the few available experimental methods for establishing causal relationships between altered microbial abundances in human gut and diseases, and finding intervention and treatment methods for gut-microbiota related diseases. However, due to intrinsic differences between mouse and human guts, transplantation of fecal microbial communities from human feces into GF-mice could only re-establish part of the donor microbiota, most of which are those had been adapted to the recipient species [14]. Despite widespread awareness of the

differences and a handful of differential species identified in small-scale studies, a systematic analysis on the alterations in human fecal samples after transplanted to mice is yet to be conducted.

In this study we collected and analyzed more than 1,713 FMT experiments, and identified microbial abundance changes in before and after the transplantation (hence referred to as human-mouse pairs). We focused on species that are abundantly present in more than 400 human-mouse pairs with relative abundance higher than 0.1% and showed significant changes (with median $|\text{Log}_2\text{FC}| > 1$; FC, fold change); these changes are thus more likely to be consistent across experimental conditions. Strikingly, we found over one-third human gut microbes have been significantly and consistently changed after FMT at both species and genus levels, including those that are leading species in enterotype analysis. Human feces transplanted to recipient mice fed with human food (the “controlled diet” group) showed significant decreased in enterotype changes, suggesting a possible method for reduce such differences; however, controlled diet may induce additional variable taxa at both species and genus levels (Figure S5), indicating complex reactions of mouse gut microbiota to human diets, and limited capacity of controlled diets on recipient mice.

These results highlighted the challenges of selecting mice as the animal models in gut microbiota studies. That is, it will be difficult to replicate human phenotypes that we thought to be caused by certain increased microbes, if the suspected species are to be significantly decreased in abundances after FMT solely due to the differences in human and mouse intestines. In addition, when transferring findings in mice back to humans, it

would difficult if the interventional species adapts much better to the mouse but than that of the humans.

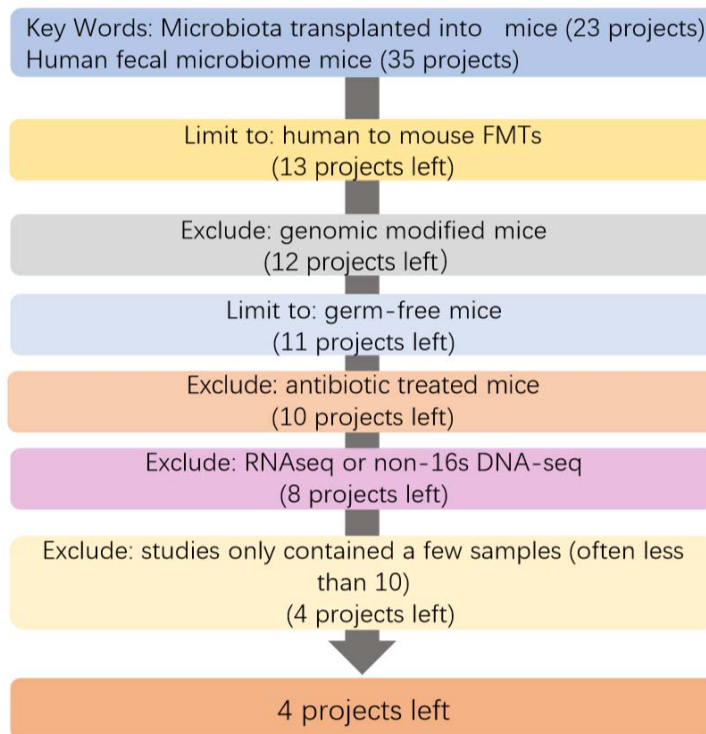
More strikingly, most of the variable taxa were implicated in human diseases. Our results thus would be informative to researchers that use (or plan to use) GF-mice in their gut microbiota and disease association studies. In addition, our results also call for additional validations of species of interests after FMT. For example, researchers should also check if significantly changed species in different human phenotype groups are still significantly changed after transplanted to FMT. In other words, fecal samples from both human patients and healthy controls should be transplanted to GF-mice; researchers should then be concerned with not only if the phenotypes of interests are replicated in mice, but also if the differentially abundant taxa in the GF-mice receiving patient and healthy feces are the same ones found in human samples. So far, such validation has been mostly conveniently ignored.

Methods

Data

We performed an extensive search in PubMed and NCBI SRA database to search for publications and/or deposited metagenomic sequencing data from human-to-mouse FMT experiments. Since the number of published data of the relevant experiments is relatively small, we used two keywords “microbiota transplanted into mice” and “human fecal microbiome mice” to expand the range of searching results. We limited our search for studies published in the last five years (from Jan 01, 2014 to date). We obtained in total 58

studies, however among which only 13 were human to mouse FMTs (Figure S9). We excluded experiments in which the recipient mice were genetically modified, not germ-free, or treated with antibiotics; we also excluded experiments in which the human donors were treated with antibiotics, or only a few (less than ten) human donors were used (Figure S9). In the end, we found four studies that met our searching criteria (Table 2), and all of which used 16S sequencing to survey gut microbiota before and after FMTs. These studies included in total 1,713 human-mouse pairs. We downloaded 16S DNA sequencing data from the NCBI SRA database using a command-line tool fastq-dump of the SRA-tools (<https://github.com/ncbi/sra-tools>, accessed in July 2018). We obtained the related meta-data, including human-mouse pairing, experimental conditions, dates of sampling after FMT from the corresponding publications and/or the NCBI SRA database.



Supplementary Fig.9| An extensive search of public data for human to mouse fecal

transplantation experiments. A graphical workflow showed our searching and excluding criteria.

Table 2. a lists of studies (with their NCBI BioProject IDs) that met our search criteria.

NCBI BioProject Accession	Nr. Human-mouse pairs	Published Date	Phenotypes of donors	Reference
PRJNA314018	420	2-Mar-2016	Obese and healthy	[29]
PRJEB7604	161	28-Oct-2014	Obese and healthy	[41]
PRJEB11697	184	15-Mar-2016	Healthy	[19]
PRJEB15481	948	21-Dec-2016	Healthy	[26]

Data processing, taxonomic assignments

We used FastQC (downloaded from <http://www.bioinformatics.babraham.ac.uk/projects/fastqc/>; ver 0.11.8) to evaluate the overall quality of the downloaded data, followed by the use of Trimmomatic [42] to remove vector sequences and low-quality bases. We used the single-ended sequencing reads directly for subsequent analysis, and merged the pair-ended reads first using Casper [43]. We then used Qiime [44] to check and remove possible chimeras.

We used Mapseq [45] to analyze the obtained clean data and assign taxonomic classification information to the reads. It was previously shown that at the genus level

Mapseq has higher accuracy than other popular tools such as Qiime [44] and Mothur [46]. Mapseq is also advantageous in our study as compared with *de novo* clustering methods. The clean reads after the removal of low-quality and/or sequencing-primer sequences often have uneven ends, 16S sequences belonging to the same species/genus cannot be reliably clustered together. Consequently the retention rate, i.e. the proportion of human gut microbes that can be found in the recipient mice after FMT, will be significantly inflated. This is also part of the reason that EBI Metagenomics [47], a popular metagenomic database and analysis platform, has recently adopted Mapseq as the main tool for taxonomy assignment. We removed reads with a cutoff value at the genus level less than 0.4 (the combined score) as recommended by the authors of Mapseq [45]. We then calculated relative abundances calculated at the genus and species levels for each sample, with the totaling abundances values of 100% respectively.

Supplementary Table 2 listed all human-mouse pairs used in this study, along with their NCBI run IDs in the NCBI SRA database, corresponding enterotypes, experimental conditions and diet types.

Statistical analysis

We loaded all processed data to R (version 3.5.1; downloaded from <https://www.r-project.org>; accessed in July 2018) for further analysis. To focus more on abundant species/genus and avoid false dramatic fold-changes in the calculation due to low-abundance species, we removed genera and species with abundance less than 0.1% from subsequent analysis. In order to make the results more accurate, we also removed

genera and species supported by less than 5 reads.

We used a web-based tool (<http://enterotype.embl.de/enterotypes.html>) to determine the enterotype type for each sample by using the relative abundances of that sample as input.

Abbreviations

FMT: Fecal microbiota transplant

GF mice: Germ-free mice

FC: Fold change

ASD: Autism Spectrum Disorder

Declarations

Acknowledgements

We are very grateful to Qianhui Zhu and Chengwei Zhang for their help in downloading 16S DNA sequencing data.

Funding

No funding was received.

Availability of data and materials

All runIDs from the four NCBI BioProjects are provided in Additional file 3: Table S2, they can be download from NCBI.

Authors' contributions

Wei-Hua Chen conceived the project. Yanze Li collected and analyzed the data. Wenming Cao contributed to the data download and analysis. Na L Gao helped with setting up the data analysis pipelines especially for the raw data processing. Wei-Hua Chen and Yanze Li wrote and revised the manuscript.

Ethics approval and consent to participate

Not applicable.

Consent for publication

Not applicable.

Competing interests

The authors declare that they have no competing interests.

Tables and supplementary tables

Table 1. Selected variable taxa, their responses to diet changes and associations with

human diseases.

Genus	Log2 Fold Change (all samples)	Log2 Fold Change (controlled diet group)	Associated Diseases Reported in the Literature
<i>Bifidobacterium</i>	-2.68	-1.85	Obese [48-50]
			Behcet's Disease [48, 49, 51]
			Autism Spectrum Disorders(ASD) [7, 48, 49]
			Enteropathogenic Infection [36, 48, 49]
			Cancer [18, 37, 48, 49]
<i>Prevotella</i>	-2.37	-2.12	Type 2 Diabetes [27, 39]
			Obese [27, 52]
			Rheumatoid Arthritis [53]
			Autoinflammatory Disease [54]
			Bechet's Disease [51]
			Chronic Kidney Disease [55]
<i>Ruminococcus</i>	-1.9	-1.86	Obese [56-58]
			Inflammatory Bowel Disease [38, 56, 59, 60]
			Psoriatic Arthritis [60]

			ASD [7]
			Vibrio Cholerae Infection [38]
			Cancer [61]
<i>Streptococcus</i>	-1.7	-1.87	Pediatric Asthma [62]
			Allergic Diseases [62]
			Colorectal Cancer [63]
			ASD [7]
<i>Bacteroides</i>	1.83	1.83	Abscess Formation [64]
			Bacteremia [64]
			ASD [7]
			Type2 Diabets [39]
			Cancer [65]
Species	Log2 Fold Change (all samples)	Log2 Fold Change (controlled diet group)	Associated Diseases Reported in the Literature
<i>Bacteroides fragilis</i>	3.00	3.31	Cancer [66-69]
			Type 2 Diabets [69]
<i>Collinsella aerofaciens</i>	-1.52	-1.52	Inflammatory Bowel Disease [70]
			Rheumatic Diseases [38]
			Obese [71]
<i>Prevotella copri</i>	-2.67	-2.33	Type 2 Diabets [39, 72]

			Metabolic Disorder [39, 73, 74]
			Rheumatoid Arthritis [74-76]
			Cancer [72]
<i>Faecalibacteriu</i>	-3.44	-2.9	Type 2 Diabets [17]
<i>m prausnitzii</i>			Metabolic Disorder [16, 77]
			Gut Dysbiosis [15, 40]
			Inflammatory Bowel Disease [16]
			Cancer [78]
<i>Akkermansia</i>	2.36	2.41	Metabolic Disorder [79, 80]
<i>muciniphila</i>			Obese [80, 81]
			Cancer [82]
			Type 2 Diabets [17, 83]
			Inflammatory Bowel Disease [80]
			Rheumatoid Arthritis [84]

Supplementary Table 1. A complete list of variable taxa, their responses to diet changes and associations with human diseases.

Genus	Log2 Fold Change (all samples)	Log2 Fold Change (controlled diet group)	Associated Diseases Reported in the Literature
<i>[Eubacterium] dolichum[genus]</i>	1.95	2.00	Obese [85]

<i>Akkermansia</i>	2.36	2.42	Metabolic Disorder [79, 80]
			Obese [80, 81]
			Cancer [82]
			Type 2 Diabets [17, 83]
			Inflammatory Bowel Disease [80]
			Rheumatoid Arthritis [84]
<i>Anaerostipes</i>	1.10	1.10	Obese [86]
<i>Bacteroides</i>	1.83	1.83	Abscess Formation [64]
			Bacteremia [64]
			ASD [7]
			Type2 Diabets [39]
			Cancer [65]
<i>Butyricimonas</i>	1.74	2.87	Bowel Disease [87]
			Bacteremia [88]
<i>Camnicella</i>	1.29	NA	NA
<i>Capnocytophaga</i>	3.46	NA	NA
<i>Dysgonomonas</i>	2.90	2.90	NA

<i>Escherichia</i>	2.15	NA	Crohn's Disease [89, 90]
			Colon Cancer [90]
<i>Facklamia</i>	1.09	NA	NA
<i>Fusobacterium</i>	4.96	4.96	NA
<i>Hespellia</i>	2.16	2.23	NA
<i>Kandleria</i>	1.07	1.07	NA
<i>Lachnoclostridium</i>	1.64	1.65	ASD [91]
<i>Paraprevotella</i>	1.32	1.15	Irritable Bowel Syndrome [31]
<i>Parasutterella</i>	2.60	2.55	Irritable Bowel Syndrome [92]
			Intestinal Chronic Inflammation [93]
			Crohn's Disease [94]
<i>Proteus</i>	2.06	2.06	NA
<i>Spiroplasma</i>	2.39	2.17	NA
<i>Sporosarcina</i>	1.42	1.42	NA
<i>Acholeplasma</i>	-1.20	-1.23	NA
<i>Bifidobacterium</i>	-2.68	-1.85	Obese [38-40]
			Enteropathogenic Infection [32, 38, 39]

			Behcet's Disease [38, 39, 41]
			Autism Spectrum Disorder(ASD) [5, 38, 39]
			Cancer [16, 33, 38, 39]
<i>Eubacterium</i>	-1.69	-1.61	NA
<i>Faecalibacterium</i>	-3.44	-2.90	Inflammatory Bowel Disease [95] [16]
			ASD [7]
			Type 2 Diabets [17]
			Metabolic Disorder [16, 77]
			Gut Dysbiosis [15, 40]
			Cancer [78]
<i>Gardnerella</i>	-1.25	-1.25	NA
<i>Gemmiger</i>	-1.59	-1.09	Cancer [96]
			ASD [7]
<i>Gordonibacter</i>	-2.59	-2.59	Inflammatory Bowel Disease [97]
<i>Holdemanella</i>	-1.06	-0.54	Chronic Kidney

			Disease [55]
<i>Megamonas</i>	-1.07	-1.35	Behcet's Disease [86]
			Chronic Kidney Disease [55]
<i>Oscillibacter</i>	-2.31	-2.36	Crohn's Disease [98]
			Bacteremia [99]
<i>Porphyromonas</i>	-1.09	-1.09	NA
<i>Prevotella</i>	-2.37	-2.12	Type 2 diabetes [27, 39]
			Obese [27, 52]
			Rheumatoid Arthritis [53]
			Autoinflammatory Disease [54]
			Behcet's Disease [51]
			Chronic Kidney Disease [55]
<i>Roseburia</i>	-1.74	-2.43	Obese [100]
			Colitis [100, 101]
			Gut Inflammation [100, 101]

<i>Ruminiclostridium</i>	-1.30	-1.21	Obese [102]
<i>Ruminococcus</i>	-1.90	-1.86	Obese [56-58]
			Inflammatory Bowel Disease [38, 56, 59, 60]
			Psoriatic Arthritis [60]
			ASD [7]
			Vibrio Cholerae Infection [38]
Cancer [61]			
<i>Streptococcus</i>	-1.69	-1.87	Pediatric Asthma [62]
			Allergic Diseases [62]
			Colorectal Cancer [63]
			ASD [7]
<i>Sulfurovum</i>	-1.20	NA	NA
<i>Veillonella</i>	-1.89	-2.12	Liver Cirrhosis [103]
Species	Log2 Fold Change (all samples)	Log2 Fold Change (controlled diet group)	Associated Diseases Reported in the Literature
<i>[Clostridium] indolis</i>	1.32	0.58	NA
<i>[Clostridium] symbiosum</i>	2.00	2.03	Type 2 Diabetes [17]

<i>[Desulfotomaculum] guttoideum</i>	1.03	NA	NA
<i>[Eubacterium] dolichum</i>	1.95	2.01	Obesity [104]
<i>Akkermansia muciniphila</i>	2.36	2.41	Metabolic Disorder [79, 80]
			Obese [80, 81]
			Cancer [82]
			Type 2 Diabets [17, 83]
			Inflammatory Bowel Disease [80]
Rheumatoid Arthritis [84]			
<i>Anaerostipes caccae</i>	1.10	1.10	NA
<i>Bacteroides acidifaciens</i>	1.91	NA	Bacteremia [105]
			Bypass graft infection [105]
<i>Bacteroides caccae</i>	2.14	2.30	NA
<i>Bacteroides cellulosilyticus</i>	3.57	3.49	NA
<i>Bacteroides dorei</i>	1.04	0.72	NA
<i>Bacteroides fragilis</i>	3.00	3.31	Cancer [66-69]
			Clostridium Difficile [106]

			Type 2 Diabets [69]
<i>Bacteroides intestinalis</i>	1.35	NA	Inflammatory Bowel Disease [107]
<i>Bacteroides luti</i>	3.03	3.27	NA
<i>Bacteroides nordii</i>	3.18	3.29	NA
<i>Bacteroides ovatus</i>	2.12	1.89	Inflammatory Bowel Disease [108]
<i>Bacteroides salyersiae</i>	4.03	4.07	NA
<i>Bacteroides stercorisoris</i>	2.94	2.91	NA
<i>Bacteroides thetaiotaomicron</i>	1.80	1.21	Chronic Intestinal Inflammation [109]
<i>Bacteroides uniformis</i>	1.16	1.16	Obese [110]
<i>Bacteroides xylanisolvens</i>	2.64	2.75	NA
<i>Blautia hansenii</i>	2.28	2.37	Crohn's Disease [111]
<i>Butyricimonas virosa</i>	1.74	2.87	Bowel Disease [87]
			Bacteremia [88]
<i>Caminicella sporogenes</i>	1.29	NA	NA
<i>Capnocytophaga ochracea</i>	3.46	NA	NA
<i>Clostridium butyricum</i>	2.37	2.33	NA
<i>Clostridium carnis</i>	1.97	NA	NA
<i>Clostridium paraputrificum</i>	1.28	0.88	NA

<i>Clostridium septicum</i>	1.46	1.18	Colorectal neoplasm [112]
<i>Clostridium sp. ATCC 29733</i>	1.37	-0.88	NA
<i>Desulfovibrio desulfuricans</i>	1.12	-0.30	Bacteremia [113]
<i>Desulfovibrio vulgaris</i>	1.20	NA	NA
<i>Dysgonomonas mossii</i>	2.90	2.90	NA
<i>Enterococcus casseliflavus</i>	1.47	1.47	Bloodstream Infections [114]
<i>Erysipelatoclostridium ramosum</i>	2.35	NA	Pediatric Crohn's Disease Cohort [115]
<i>Escherichia coli</i>	2.15	NA	Inflammatory Bowel Diseases [116]
			Haemolytic-uremic Syndrome [117]
			Ulcerative Colitis [118]
			Crohn's disease [118]
			Cancer [119]
<i>Facklamia sourekii</i>	1.10	NA	NA
<i>Fusobacterium perfoetens</i>	4.95	4.95	NA
<i>Hespellia stercorisuis</i>	2.16	2.23	NA

<i>Kandleria vitulina</i>	1.07	1.07	NA
<i>Lactobacillus animalis</i>	1.41	NA	NA
<i>Parabacteroides distasonis</i>	1.61	1.20	NA
<i>Parabacteroides goldsteinii</i>	3.07	3.07	Obese [120]
<i>Paraprevotella clara</i>	1.32	1.14	NA
<i>Paraprevotella xylaniphila</i>	3.66	NA	NA
<i>Parasutterella excrementihominis</i>	2.60	2.54	NA
<i>Parasutterella secunda</i>	4.56	NA	NA
<i>Prevotella scopos</i>	2.27	NA	NA
<i>Proteus mirabilis</i>	2.06	2.06	Urinary Tract Infection [121]
<i>Spiroplasma taiwanense</i>	4.32	4.25	NA
<i>Sporosarcina psychrophila</i>	1.43	1.43	NA
<i>Streptococcus mitis</i>	2.18	NA	NA
<i>Veillonella dispar</i>	2.77	NA	NA
<i>Veillonella parvula</i>	1.73	-2.09	NA
<i>Acholeplasma palmae</i>	-1.18	-1.19	NA
<i>Bifidobacterium bifidum</i>	-2.39	-2.39	Irritable Bowel Syndrome [122]
			Eczema [123]
			Cancer [124]
<i>Bifidobacterium catenulatum</i>	-2.27	-2.29	Irritable Bowel

			Syndrome [125]
<i>Bifidobacterium dentium</i>	-1.26	-1.27	NA
<i>Bifidobacterium gallicum</i>	-1.03	-1.03	NA
<i>Bifidobacterium longum</i>	-1.32	-0.29	Cancer [126]
<i>Bifidobacterium merycicum</i>	-2.25	-2.07	NA
<i>Bifidobacterium pseudocatenulatum</i>	-1.05	-0.39	Atopic Eczema [127]
			Obese [128]
<i>Bifidobacterium saeculare</i>	-2.19	-2.19	NA
<i>Blautia obeum</i>	-1.86	-1.86	Clostridium Difficile Infection [129]
<i>Collinsella aerofaciens</i>	-1.52	-1.52	Inflammatory Bowel Disease [70]
			Rheumatic Diseases [38]
			Obese [71]
<i>Coprococcus eutactus</i>	-1.06	-1.06	Irritable Bowel Syndrome [107]
<i>Faecalibacterium prausnitzii</i>	-3.44	-2.90	Type 2 Diabets [17]
			Metabolic Disorder [16, 77]
			Gut Dysbiosis [15, 40]
			Inflammatory Bowel

			Disease [16]
			Cancer [78]
<i>Gardnerella vaginalis</i>	-1.25	-1.25	Bacteremia [130]
<i>Gemmiger formicilis</i>	-1.59	-1.09	NA
<i>Gordonibacter pamelaee</i>	-2.59	-2.59	NA
<i>Holdemanella biformis</i>	-1.07	-0.54	NA
<i>Megamonas hypermegale</i>	-1.07	-1.35	NA
<i>Oscillibacter valericigenes</i>	-2.32	-2.37	NA
<i>Parabacteroides merdae</i>	-1.57	NA	NA
<i>Peptoniphilus lacrimalis</i>	-1.09	-1.13	NA
<i>Porphyromonas catoniae</i>	-1.07	-1.07	NA
<i>Prevotella bivia</i>	-3.94	NA	Rheumatoid Arthritis [131]
			Clostridium Difficile [106]
<i>Prevotella copri</i>	-2.67	-2.33	Type 2 Diabets [39, 72]
			Metabolic Disorder [39, 73, 74]
			Rheumatoid Arthritis [74-76]
			Cancer [72]

<i>Prevotella saccharolytica</i>	-1.86	NA	NA
<i>Ruminococcus bromii</i>	-1.18	-0.57	NA
<i>Ruminococcus champanellensis</i>	-1.91	-2.50	NA
<i>Streptococcus pasteurianus</i>	-2.78	NA	NA
<i>Streptococcus salivarius</i>	-1.43	-1.44	NA
<i>Sulfurovum sp. NBC37-1</i>	-1.18	NA	NA
<i>Veillonella ratti</i>	-1.86	-1.86	NA

Supplementary Table 2 (submitted separately as an additional Excel file). A complete list of human-mouse pairs (before and after FMT) and their corresponding experimental conditions, enterotypes and diet types

References

Uncategorized References

1. Clemente JC, Ursell LK, Parfrey LW, Knight R: **The impact of the gut microbiota on human health: an integrative view.** *Cell* 2012, **148**(6):1258-1270.
2. Schmidt TSB, Raes J, Bork P: **The Human Gut Microbiome: From Association to Modulation.** *Cell* 2018, **172**(6):1198-1215.
3. Lee YK, Mazmanian SK: **Has the microbiota played a critical role in the evolution of the adaptive immune system?** *Science* 2010, **330**(6012):1768-1773.
4. Wu H, Esteve E, Tremaroli V, Khan MT, Caesar R, Manneras-Holm L, Stahlman M, Olsson LM, Serino M, Planas-Felix M *et al*: **Metformin alters the gut microbiome of individuals with treatment-naive type 2 diabetes, contributing to the therapeutic effects of the drug.** *Nat Med* 2017, **23**(7):850-858.
5. Wang J, Thingholm LB, Skieceviciene J, Rausch P, Kummel M, Hov JR, Degenhardt F, Heinsen FA, Ruhlemann MC, Szymczak S *et al*: **Genome-wide association analysis identifies variation in vitamin D receptor and other host factors influencing the gut microbiota.** *Nat Genet* 2016, **48**(11):1396-1406.

6. Belkaid Y, Hand TW: **Role of the microbiota in immunity and inflammation.** *Cell* 2014, **157**(1):121-141.
7. Strati F, Cavalieri D, Albanese D, De Felice C, Donati C, Hayek J, Jousson O, Leoncini S, Renzi D, Calabro A *et al.* **New evidences on the altered gut microbiota in autism spectrum disorders.** *Microbiome* 2017, **5**(1):24.
8. Chung H, Pamp SJ, Hill JA, Surana NK, Edelman SM, Troy EB, Reading NC, Villablanca EJ, Wang S, Mora JR *et al.* **Gut immune maturation depends on colonization with a host-specific microbiota.** *Cell* 2012, **149**(7):1578-1593.
9. Liang D, Leung RK, Guan W, Au WW: **Involvement of gut microbiome in human health and disease: brief overview, knowledge gaps and research opportunities.** *Gut Pathog* 2018, **10**:3.
10. Wrzosek L, Ciocan D, Borentain P, Spatz M, Puchois V, Hugot C, Ferrere G, Mayeur C, Perlemuter G, Cassard AM: **Transplantation of human microbiota into conventional mice durably reshapes the gut microbiota.** *Sci Rep* 2018, **8**(1):6854.
11. Seekatz AM, Aas J, Gessert CE, Rubin TA, Saman DM, Bakken JS, Young VB: **Recovery of the gut microbiome following fecal microbiota transplantation.** *MBio* 2014, **5**(3):e00893-00814.
12. Hormannspenger G, Schaubeck M, Haller D: **Intestinal Microbiota in Animal Models of Inflammatory Diseases.** *ILAR J* 2015, **56**(2):179-191.
13. Turnbaugh PJ, Hamady M, Yatsunencko T, Cantarel BL, Duncan A, Ley RE, Sogin ML, Jones WJ, Roe BA, Affourtit JP *et al.* **A core gut microbiome in obese and lean twins.** *Nature* 2009, **457**(7228):480-484.
14. Arrieta MC, Walter J, Finlay BB: **Human Microbiota-Associated Mice: A Model with Challenges.** *Cell Host Microbe* 2016, **19**(5):575-578.
15. Le Bastard Q, Ward T, Sidiropoulos D, Hillmann BM, Chun CL, Sadowsky MJ, Knights D, Montassier E: **Fecal microbiota transplantation reverses antibiotic and chemotherapy-induced gut dysbiosis in mice.** *Sci Rep* 2018, **8**(1):6219.
16. Miquel S, Martin R, Lashermes A, Gillet M, Meleine M, Gelot A, Eschalier A, Ardid D, Bermudez-Humaran LG, Sokol H *et al.* **Anti-nociceptive effect of Faecalibacterium prausnitzii in non-inflammatory IBS-like models.** *Sci Rep* 2016, **6**:19399.
17. Qin J, Li Y, Cai Z, Li S, Zhu J, Zhang F, Liang S, Zhang W, Guan Y, Shen D *et al.* **A metagenome-wide association study of gut microbiota in type 2 diabetes.** *Nature* 2012, **490**(7418):55-60.
18. Matson V, Fessler J, Bao R, Chongsuwat T, Zha Y, Alegre ML, Luke JJ, Gajewski TF: **The commensal microbiome is associated with anti-PD-1 efficacy in metastatic melanoma patients.** *Science* 2018, **359**(6371):104-108.
19. Planer JD, Peng Y, Kau AL, Blanton LV, Ndao IM, Tarr PI, Warner BB, Gordon JI: **Development of the gut microbiota and mucosal IgA responses in twins and gnotobiotic mice.** *Nature* 2016, **534**(7606):263-266.
20. Hugenholtz F, de Vos WM: **Mouse models for human intestinal microbiota research: a critical evaluation.** *Cell Mol Life Sci* 2018, **75**(1):149-160.
21. Nguyen TL, Vieira-Silva S, Liston A, Raes J: **How informative is the mouse for human gut microbiota research?** *Dis Model Mech* 2015, **8**(1):1-16.
22. Wang J, Kalyan S, Steck N, Turner LM, Harr B, Kunzel S, Vallier M, Hasler R, Franke

- A, Oberg HH *et al*: **Analysis of intestinal microbiota in hybrid house mice reveals evolutionary divergence in a vertebrate hologenome.** *Nature communications* 2015, **6**:6440.
23. Baumler A, Fang FC: **Host specificity of bacterial pathogens.** *Cold Spring Harb Perspect Med* 2013, **3**(12):a010041.
24. Kumar R, Herold JL, Taylor J, Xu J, Xu Y: **Variations among *Streptococcus gallolyticus* subsp. *gallolyticus* strains in connection with colorectal cancer.** *Sci Rep* 2018, **8**(1):1514.
25. Coelho LP, Kultima JR, Costea PI, Fournier C, Pan Y, Czarnecki-Maulden G, Hayward MR, Forslund SK, Schmidt TSB, Descombes P *et al*: **Similarity of the dog and human gut microbiomes in gene content and response to diet.** *Microbiome* 2018, **6**(1):72.
26. Griffin NW, Ahern PP, Cheng J, Heath AC, Ilkayeva O, Newgard CB, Fontana L, Gordon JI: **Prior Dietary Practices and Connections to a Human Gut Microbial Metacommunity Alter Responses to Diet Interventions.** *Cell Host Microbe* 2017, **21**(1):84-96.
27. Kovatcheva-Datchary P, Nilsson A, Akrami R, Lee YS, De Vadder F, Arora T, Hallen A, Martens E, Bjorck I, Backhed F: **Dietary Fiber-Induced Improvement in Glucose Metabolism Is Associated with Increased Abundance of *Prevotella*.** *Cell Metab* 2015, **22**(6):971-982.
28. Arumugam M, Raes J, Pelletier E, Le Paslier D, Yamada T, Mende DR, Fernandes GR, Tap J, Bruls T, Batto JM *et al*: **Enterotypes of the human gut microbiome.** *Nature* 2011, **473**(7346):174-180.
29. Zhang L, Bahl MI, Roager HM, Fonvig CE, Hellgren LI, Frandsen HL, Pedersen O, Holm JC, Hansen T, Licht TR: **Environmental spread of microbes impacts the development of metabolic phenotypes in mice transplanted with microbial communities from humans.** *ISME J* 2017, **11**(3):676-690.
30. Turnbaugh PJ, Ridaura VK, Faith JJ, Rey FE, Knight R, Gordon JI: **The effect of diet on the human gut microbiome: a metagenomic analysis in humanized gnotobiotic mice.** *Sci Transl Med* 2009, **1**(6):6ra14.
31. Zhu SW, Liu ZJ, Li M, Zhu HQ, Duan LP: **[Comparison of gut microbial compositional analysis of patients with irritable bowel syndrome through different bioinformatics pipelines].** *Beijing Da Xue Xue Bao Yi Xue Ban* 2018, **50**(2):231-238.
32. Costea PI, Hildebrand F, Arumugam M, Backhed F, Blaser MJ, Bushman FD, de Vos WM, Ehrlich SD, Fraser CM, Hattori M *et al*: **Enterotypes in the landscape of gut microbial community composition.** *Nat Microbiol* 2018, **3**(1):8-16.
33. David LA, Maurice CF, Carmody RN, Gootenberg DB, Button JE, Wolfe BE, Ling AV, Devlin AS, Varma Y, Fischbach MA *et al*: **Diet rapidly and reproducibly alters the human gut microbiome.** *Nature* 2014, **505**(7484):559-563.
34. Wu GD, Chen J, Hoffmann C, Bittinger K, Chen YY, Keilbaugh SA, Bewtra M, Knights D, Walters WA, Knight R *et al*: **Linking long-term dietary patterns with gut microbial enterotypes.** *Science* 2011, **334**(6052):105-108.
35. Staley C, Kaiser T, Beura LK, Hamilton MJ, Weingarden AR, Bobr A, Kang J,

- Masopust D, Sadowsky MJ, Khoruts A: **Stable engraftment of human microbiota into mice with a single oral gavage following antibiotic conditioning.** *Microbiome* 2017, **5**(1):87.
36. Fukuda S, Toh H, Hase K, Oshima K, Nakanishi Y, Yoshimura K, Tobe T, Clarke JM, Topping DL, Suzuki T *et al*: **Bifidobacteria can protect from enteropathogenic infection through production of acetate.** *Nature* 2011, **469**(7331):543-547.
37. Sivan A, Corrales L, Hubert N, Williams JB, Aquino-Michaels K, Earley ZM, Benyamin FW, Lei YM, Jabri B, Alegre ML *et al*: **Commensal Bifidobacterium promotes antitumor immunity and facilitates anti-PD-L1 efficacy.** *Science* 2015, **350**(6264):1084-1089.
38. Hsiao A, Ahmed AM, Subramanian S, Griffin NW, Drewry LL, Petri WA, Jr., Haque R, Ahmed T, Gordon JI: **Members of the human gut microbiota involved in recovery from *Vibrio cholerae* infection.** *Nature* 2014, **515**(7527):423-426.
39. Pedersen HK, Gudmundsdottir V, Nielsen HB, Hyotylainen T, Nielsen T, Jensen BA, Forslund K, Hildebrand F, Prifti E, Falony G *et al*: **Human gut microbes impact host serum metabolome and insulin sensitivity.** *Nature* 2016, **535**(7612):376-381.
40. Lopez-Siles M, Duncan SH, Garcia-Gil LJ, Martinez-Medina M: **Faecalibacterium prausnitzii: from microbiology to diagnostics and prognostics.** *ISME J* 2017, **11**(4):841-852.
41. Goodrich JK, Waters JL, Poole AC, Sutter JL, Koren O, Blekhman R, Beaumont M, Van Treuren W, Knight R, Bell JT *et al*: **Human genetics shape the gut microbiome.** *Cell* 2014, **159**(4):789-799.
42. Bolger AM, Lohse M, Usadel B: **Trimmomatic: a flexible trimmer for Illumina sequence data.** *Bioinformatics* 2014, **30**(15):2114-2120.
43. Kwon S, Lee B, Yoon S: **CASPER: context-aware scheme for paired-end reads from high-throughput amplicon sequencing.** *BMC Bioinformatics* 2014, **15** Suppl 9:S10.
44. Caporaso JG, Kuczynski J, Stombaugh J, Bittinger K, Bushman FD, Costello EK, Fierer N, Pena AG, Goodrich JK, Gordon JI *et al*: **QIIME allows analysis of high-throughput community sequencing data.** *Nature methods* 2010, **7**(5):335-336.
45. Matias Rodrigues JF, Schmidt TSB, Tackmann J, von Mering C: **MAPseq: highly efficient k-mer search with confidence estimates, for rRNA sequence analysis.** *Bioinformatics* 2017, **33**(23):3808-3810.
46. Schloss PD, Westcott SL, Ryabin T, Hall JR, Hartmann M, Hollister EB, Lesniewski RA, Oakley BB, Parks DH, Robinson CJ *et al*: **Introducing mothur: open-source, platform-independent, community-supported software for describing and comparing microbial communities.** *Appl Environ Microbiol* 2009, **75**(23):7537-7541.
47. Mitchell AL, Scheremetjew M, Denise H, Potter S, Tarkowska A, Qureshi M, Salazar GA, Pesseat S, Boland MA, Hunter FMI *et al*: **EBI Metagenomics in 2017: enriching the analysis of microbial communities, from sequence reads to assemblies.** *Nucleic Acids Res* 2018, **46**(D1):D726-D735.
48. Esaiassen E, Hjerde E, Cavanagh JP, Simonsen GS, Klingenberg C, Norwegian Study Group on Invasive Bifidobacterial I: **Bifidobacterium Bacteremia: Clinical**

- Characteristics and a Genomic Approach To Assess Pathogenicity.** *J Clin Microbiol* 2017, **55**(7):2234-2248.
49. O'Callaghan A, van Sinderen D: **Bifidobacteria and Their Role as Members of the Human Gut Microbiota.** *Frontiers in microbiology* 2016, **7**:925.
50. Salazar N, Dewulf EM, Neyrinck AM, Bindels LB, Cani PD, Mahillon J, de Vos WM, Thissen JP, Gueimonde M, de Los Reyes-Gavilan CG *et al*: **Inulin-type fructans modulate intestinal Bifidobacterium species populations and decrease fecal short-chain fatty acids in obese women.** *Clin Nutr* 2015, **34**(3):501-507.
51. Shimizu J, Kubota T, Takada E, Takai K, Fujiwara N, Arimitsu N, Ueda Y, Wakisaka S, Suzuki T, Suzuki N: **Bifidobacteria Abundance-Featured Gut Microbiota Compositional Change in Patients with Behcet's Disease.** *PLoS One* 2016, **11**(4):e0153746.
52. Hjorth MF, Roager HM, Larsen TM, Poulsen SK, Licht TR, Bahl MI, Zohar Y, Astrup A: **Pre-treatment microbial Prevotella-to-Bacteroides ratio, determines body fat loss success during a 6-month randomized controlled diet intervention.** *Int J Obes (Lond)* 2018, **42**(2):284.
53. Pianta A, Arvikar S, Strle K, Drouin EE, Wang Q, Costello CE, Steere AC: **Evidence of the Immune Relevance of Prevotella copri, a Gut Microbe, in Patients With Rheumatoid Arthritis.** *Arthritis Rheumatol* 2017, **69**(5):964-975.
54. Lukens JR, Gurung P, Vogel P, Johnson GR, Carter RA, McGoldrick DJ, Bandi SR, Calabrese CR, Vande Walle L, Lamkanfi M *et al*: **Dietary modulation of the microbiome affects autoinflammatory disease.** *Nature* 2014, **516**(7530):246-249.
55. Lun H, Yang W, Zhao S, Jiang M, Xu M, Liu F, Wang Y: **Altered gut microbiota and microbial biomarkers associated with chronic kidney disease.** *Microbiologyopen* 2018:e00678.
56. La Reau AJ, Suen G: **The Ruminococci: key symbionts of the gut ecosystem.** *J Microbiol* 2018, **56**(3):199-208.
57. Le Chatelier E, Nielsen T, Qin J, Prifti E, Hildebrand F, Falony G, Almeida M, Arumugam M, Batto JM, Kennedy S *et al*: **Richness of human gut microbiome correlates with metabolic markers.** *Nature* 2013, **500**(7464):541-546.
58. Cann I, Bernardi RC, Mackie RI: **Cellulose degradation in the human gut: Ruminococcus champanellensis expands the cellulosome paradigm.** *Environ Microbiol* 2016, **18**(2):307-310.
59. Liu TC, Stappenbeck TS: **Genetics and Pathogenesis of Inflammatory Bowel Disease.** *Annu Rev Pathol* 2016, **11**:127-148.
60. Scher JU, Ubeda C, Artacho A, Attur M, Isaac S, Reddy SM, Marmon S, Neimann A, Brusca S, Patel T *et al*: **Decreased bacterial diversity characterizes the altered gut microbiota in patients with psoriatic arthritis, resembling dysbiosis in inflammatory bowel disease.** *Arthritis Rheumatol* 2015, **67**(1):128-139.
61. Gopalakrishnan V, Spencer CN, Nezi L, Reuben A, Andrews MC, Karpinets TV, Prieto PA, Vicente D, Hoffman K, Wei SC *et al*: **Gut microbiome modulates response to anti-PD-1 immunotherapy in melanoma patients.** *Science* 2018, **359**(6371):97-103.
62. Johnson CC, Ownby DR: **The infant gut bacterial microbiota and risk of pediatric asthma and allergic diseases.** *Transl Res* 2017, **179**:60-70.

63. Boleij A, van Gelder MM, Swinkels DW, Tjalsma H: **Clinical Importance of Streptococcus gallolyticus infection among colorectal cancer patients: systematic review and meta-analysis.** *Clin Infect Dis* 2011, **53**(9):870-878.
64. Wexler HM: **Bacteroides: the good, the bad, and the nitty-gritty.** *Clin Microbiol Rev* 2007, **20**(4):593-621.
65. Vetizou M, Pitt JM, Daillere R, Lepage P, Waldschmitt N, Flament C, Rusakiewicz S, Routy B, Roberti MP, Duong CP *et al*: **Anticancer immunotherapy by CTLA-4 blockade relies on the gut microbiota.** *Science* 2015, **350**(6264):1079-1084.
66. Choi VM, Herrou J, Hecht AL, Teoh WP, Turner JR, Crosson S, Bubeck-Wardenburg J: **Activation of Bacteroides fragilis toxin by a novel bacterial protease contributes to anaerobic sepsis in mice.** *Nat Med* 2016, **22**(5):563-567.
67. Deng H, Li Z, Tan Y, Guo Z, Liu Y, Wang Y, Yuan Y, Yang R, Bi Y, Bai Y *et al*: **A novel strain of Bacteroides fragilis enhances phagocytosis and polarises M1 macrophages.** *Sci Rep* 2016, **6**:29401.
68. Gagnaire A, Nadel B, Raoult D, Neefjes J, Gorvel JP: **Collateral damage: insights into bacterial mechanisms that predispose host cells to cancer.** *Nat Rev Microbiol* 2017, **15**(2):109-128.
69. Zakhazhevskaya NB, Vanyushkina AA, Altukhov IA, Shavarda AL, Butenko IO, Rakitina DV, Nikitina AS, Manolov AI, Egorova AN, Kulikov EE *et al*: **Outer membrane vesicles secreted by pathogenic and nonpathogenic Bacteroides fragilis represent different metabolic activities.** *Sci Rep* 2017, **7**(1):5008.
70. Owens B: **Gut bacteria link to immunotherapy sparks interest.** *Nat Biotechnol* 2018, **36**(2):121-123.
71. de la Cuesta-Zuluaga J, Corrales-Agudelo V, Carmona JA, Abad JM, Escobar JS: **Body size phenotypes comprehensively assess cardiometabolic risk and refine the association between obesity and gut microbiota.** *Int J Obes (Lond)* 2018, **42**(3):424-432.
72. Thaiss CA, Zmora N, Levy M, Elinav E: **The microbiome and innate immunity.** *Nature* 2016, **535**:65.
73. Honda K, Littman DR: **The microbiota in adaptive immune homeostasis and disease.** *Nature* 2016, **535**(7610):75-84.
74. Lloyd-Price J, Mahurkar A, Rahnavard G, Crabtree J, Orvis J, Hall AB, Brady A, Creasy HH, McCracken C, Giglio MG *et al*: **Strains, functions and dynamics in the expanded Human Microbiome Project.** *Nature* 2017, **550**(7674):61-66.
75. Bernard NJ: **Rheumatoid arthritis: Prevotella copri associated with new-onset untreated RA.** *Nat Rev Rheumatol* 2014, **10**(1):2.
76. **Gut microbes linked to arthritis.** *Nature* 2013, **503**:169.
77. Tremaroli V, Backhed F: **Functional interactions between the gut microbiota and host metabolism.** *Nature* 2012, **489**(7415):242-249.
78. Rossi O, van Berkel LA, Chain F, Tanweer Khan M, Taverne N, Sokol H, Duncan SH, Flint HJ, Harmsen HJ, Langella P *et al*: **Faecalibacterium prausnitzii A2-165 has a high capacity to induce IL-10 in human and murine dendritic cells and modulates T cell responses.** *Sci Rep* 2016, **6**:18507.
79. Chelakkot C, Choi Y, Kim DK, Park HT, Ghim J, Kwon Y, Jeon J, Kim MS, Jee YK, Gho

- YS *et al.* **Akkermansia muciniphila-derived extracellular vesicles influence gut permeability through the regulation of tight junctions.** *Exp Mol Med* 2018, **50**(2):e450.
80. Dao MC, Everard A, Aron-Wisnewsky J, Sokolovska N, Prifti E, Verger EO, Kayser BD, Levenez F, Chilloux J, Hoyles L *et al.* **Akkermansia muciniphila and improved metabolic health during a dietary intervention in obesity: relationship with gut microbiome richness and ecology.** *Gut* 2016, **65**(3):426-436.
81. Schneeberger M, Everard A, Gomez-Valades AG, Matamoros S, Ramirez S, Delzenne NM, Gomis R, Claret M, Cani PD: **Akkermansia muciniphila inversely correlates with the onset of inflammation, altered adipose tissue metabolism and metabolic disorders during obesity in mice.** *Sci Rep* 2015, **5**:16643.
82. Cani PD, de Vos WM: **Next-Generation Beneficial Microbes: The Case of Akkermansia muciniphila.** *Front Microbiol* 2017, **8**:1765.
83. Plovier H, Everard A, Druart C, Depommier C, Van Hul M, Geurts L, Chilloux J, Ottman N, Duparc T, Lichtenstein L *et al.* **A purified membrane protein from Akkermansia muciniphila or the pasteurized bacterium improves metabolism in obese and diabetic mice.** *Nat Med* 2017, **23**(1):107-113.
84. Stoll ML, Pierce MK, Watkins JA, Zhang M, Weiss PF, Weiss JE, Elson CO, Cron RQ, Kumar R, Morrow CD *et al.* **Akkermansia muciniphila is permissive to arthritis in the K/BxN mouse model of arthritis.** *Genes Immun* 2018.
85. Turnbaugh PJ, Backhed F, Fulton L, Gordon JI: **Diet-induced obesity is linked to marked but reversible alterations in the mouse distal gut microbiome.** *Cell Host Microbe* 2008, **3**(4):213-223.
86. Zacarias MF, Collado MC, Gomez-Gallego C, Flinck H, Aittoniemi J, Isolauri E, Salminen S: **Pregestational overweight and obesity are associated with differences in gut microbiota composition and systemic inflammation in the third trimester.** *PLoS One* 2018, **13**(7):e0200305.
87. Enemchukwu CU, Ben-Faras H, Gialanella P, Szymczak WA, Nosanchuk JD, Madaline TF: **Butyricimonas virosa bacteraemia and bowel disease: case report and review.** *New Microbes New Infect* 2016, **13**:34-36.
88. Ulger Toprak N, Bozan T, Birkan Y, Isbir S, Soyletir G: **Butyricimonas virosa: the first clinical case of bacteraemia.** *New Microbes New Infect* 2015, **4**:7-8.
89. Darfeuille-Michaud A, Boudeau J, Bulois P, Neut C, Glasser A-L, Barnich N, Bringer M-A, Swidsinski A, Beaugerie L, Colombel J-F: **High prevalence of adherent-invasive Escherichia coli associated with ileal mucosa in Crohn's disease.** *Gastroenterology* 2004, **127**(2):412-421.
90. Martin HM, Campbell BJ, Hart CA, Mpofu C, Nayar M, Singh R, Englyst H, Williams HF, Rhodes JM: **Enhanced Escherichia coli adherence and invasion in Crohn's disease and colon cancer.** *Gastroenterology* 2004, **127**(1):80-93.
91. Luna RA, Oezguen N, Balderas M, Venkatachalam A, Runge JK, Versalovic J, Veenstra-VanderWeele J, Anderson GM, Savidge T, Williams KC: **Distinct Microbiome-Neuroimmune Signatures Correlate With Functional Abdominal Pain in Children With Autism Spectrum Disorder.** *Cell Mol Gastroenterol Hepatol* 2017, **3**(2):218-230.

92. Carding S, Verbeke K, Vipond DT, Corfe BM, Owen LJ: **Dysbiosis of the gut microbiota in disease.** *Microb Ecol Health Dis* 2015, **26**:26191.
93. Chen YJ, Wu H, Wu SD, Lu N, Wang YT, Liu HN, Dong L, Liu TT, Shen XZ: **Parasutterella, in association with irritable bowel syndrome and intestinal chronic inflammation.** *J Gastroenterol Hepatol* 2018, **33**(11):1844-1852.
94. Chiodini RJ, Dowd SE, Chamberlin WM, Galandiuk S, Davis B, Glassing A: **Microbial Population Differentials between Mucosal and Submucosal Intestinal Tissues in Advanced Crohn's Disease of the Ileum.** *PLoS One* 2015, **10**(7):e0134382.
95. Lopez-Siles M, Enrich-Capo N, Aldeguer X, Sabat-Mir M, Duncan SH, Garcia-Gil LJ, Martinez-Medina M: **Alterations in the Abundance and Co-occurrence of Akkermansia muciniphila and Faecalibacterium prausnitzii in the Colonic Mucosa of Inflammatory Bowel Disease Subjects.** *Front Cell Infect Microbiol* 2018, **8**:281.
96. Saleh K, Khalife-Saleh N, Kourie HR: **Is gut microbiome a predictive marker to response to immune checkpoint inhibitors?** *Immunotherapy* 2017, **9**(11):865-866.
97. Romo-Vaquero M, García-Villalba R, González-Sarrías A, Beltrán D, Tomás-Barberán FA, Espín JC, Selma MV: **Interindividual variability in the human metabolism of ellagic acid: Contribution of Gordonibacter to urolithin production.** *Journal of Functional Foods* 2015, **17**:785-791.
98. Man SM, Kaakoush NO, Mitchell HM: **The role of bacteria and pattern-recognition receptors in Crohn's disease.** *Nat Rev Gastroenterol Hepatol* 2011, **8**(3):152-168.
99. Sydenham TV, Arpi M, Klein K, Justesen US: **Four cases of bacteremia caused by Oscillibacter ruminantium, a newly described species.** *J Clin Microbiol* 2014, **52**(4):1304-1307.
100. Patterson AM, Mulder IE, Travis AJ, Lan A, Cerf-Bensussan N, Gaboriau-Routhiau V, Garden K, Logan E, Delday MI, Coutts AGP *et al*: **Human Gut Symbiont Roseburia hominis Promotes and Regulates Innate Immunity.** *Front Immunol* 2017, **8**:1166.
101. Zhu C, Song K, Shen Z, Quan Y, Tan B, Luo W, Wu S, Tang K, Yang Z, Wang X: **Roseburia intestinalis inhibits interleukin17 excretion and promotes regulatory T cells differentiation in colitis.** *Mol Med Rep* 2018, **17**(6):7567-7574.
102. Jin M, Zhang H, Zhao K, Xu C, Shao D, Huang Q, Shi J, Yang H: **Responses of Intestinal Mucosal Barrier Functions of Rats to Simulated Weightlessness.** *Front Physiol* 2018, **9**:729.
103. Qin N, Yang F, Li A, Prifti E, Chen Y, Shao L, Guo J, Le Chatelier E, Yao J, Wu L *et al*: **Alterations of the human gut microbiome in liver cirrhosis.** *Nature* 2014, **513**(7516):59-64.
104. Sanz Y, Santacruz A, De Palma G: **Insights into the roles of gut microbes in obesity.** *Interdiscip Perspect Infect Dis* 2008, **2008**:829101.
105. Workneh M, Wang F, Romagnoli M, Simner PJ, Carroll K: **Bypass graft infection and bacteremia caused by Anaerostipes caccae: First report of human infection caused by a recently described gut anaerobe.** *Anaerobe* 2016, **42**:98-100.
106. Citron DM, Tyrrell KL, Warren YA, Fernandez H, Merriam CV, Goldstein EJ: **In vitro activities of tinidazole and metronidazole against Clostridium difficile, Prevotella bivia and Bacteroides fragilis.** *Anaerobe* 2005, **11**(6):315-317.

107. Lyra A, Krogius-Kurikka L, Nikkila J, Malinen E, Kajander K, Kurikka K, Korpela R, Palva A: **Effect of a multispecies probiotic supplement on quantity of irritable bowel syndrome-related intestinal microbial phylotypes.** *BMC Gastroenterol* 2010, **10**:110.
108. Saitoh S, Noda S, Aiba Y, Takagi A, Sakamoto M, Benno Y, Koga Y: **Bacteroides ovatus as the Predominant Commensal Intestinal Microbe Causing a Systemic Antibody Response in Inflammatory Bowel Disease.** *Clinical and Vaccine Immunology* 2002, **9**(1):54-59.
109. Curtis MM, Hu Z, Klimko C, Narayanan S, Deberardinis R, Sperandio V: **The gut commensal Bacteroides thetaiotaomicron exacerbates enteric infection through modification of the metabolic landscape.** *Cell Host Microbe* 2014, **16**(6):759-769.
110. Gauffin Cano P, Santacruz A, Moya A, Sanz Y: **Bacteroides uniformis CECT 7771 ameliorates metabolic and immunological dysfunction in mice with high-fat-diet induced obesity.** *PLoS One* 2012, **7**(7):e41079.
111. Takahashi K, Nishida A, Fujimoto T, Fujii M, Shioya M, Imaeda H, Inatomi O, Bamba S, Sugimoto M, Andoh A: **Reduced Abundance of Butyrate-Producing Bacteria Species in the Fecal Microbial Community in Crohn's Disease.** *Digestion* 2016, **93**(1):59-65.
112. Corredoira J, Grau I, Garcia-Rodriguez JF, Garcia-Pais MJ, Rabunal R, Ardanuy C, Garcia-Garrote F, Coira A, Alonso MP, Boleij A *et al*: **Colorectal neoplasm in cases of Clostridium septicum and Streptococcus gallolyticus subsp. gallolyticus bacteraemia.** *Eur J Intern Med* 2017, **41**:68-73.
113. Goldstein EJ, Citron DM, Peraino VA, Cross SA: **Desulfovibrio desulfuricans bacteremia and review of human Desulfovibrio infections.** *J Clin Microbiol* 2003, **41**(6):2752-2754.
114. Britt NS, Potter EM: **Clinical epidemiology of vancomycin-resistant Enterococcus gallinarum and Enterococcus casseliflavus bloodstream infections.** *J Glob Antimicrob Resist* 2016, **5**:57-61.
115. Sprockett D, Fischer N, Boneh RS, Turner D, Kierkus J, Sladek M, Escher J, Wine E, Yerushalmi B, Dias JA *et al*: **Treatment-Specific Composition of Gut Microbiota Is Associated with Disease Remission in a Pediatric Crohn's Disease Cohort.** 2018.
116. Hand TW, Dos Santos LM, Bouladoux N, Molloy MJ, Pagan AJ, Pepper M, Maynard CL, Elson CO, 3rd, Belkaid Y: **Acute gastrointestinal infection induces long-lived microbiota-specific T cell responses.** *Science* 2012, **337**(6101):1553-1556.
117. Wong CS, Jelacic S, Habeeb RL, Watkins SL, Tarr PI: **The risk of the hemolytic-uremic syndrome after antibiotic treatment of Escherichia coli O157:H7 infections.** *N Engl J Med* 2000, **342**(26):1930-1936.
118. Rolhion N, Darfeuille-Michaud A: **Adherent-invasive Escherichia coli in inflammatory bowel disease.** *Inflamm Bowel Dis* 2007, **13**(10):1277-1283.
119. Arthur JC, Perez-Chanona E, Muhlbauer M, Tomkovich S, Uronis JM, Fan TJ, Campbell BJ, Abujamel T, Dogan B, Rogers AB *et al*: **Intestinal inflammation targets cancer-inducing activity of the microbiota.** *Science* 2012, **338**(6103):120-123.
120. Kang Y, Li Y, Du Y, Guo L, Chen M, Huang X, Yang F, Hong J, Kong X: **Konjaku flour reduces obesity in mice by modulating the composition of the gut microbiota.**

- International Journal of Obesity* 2018.
121. Jacobsen SM, Stickler DJ, Mobley HL, Shirtliff ME: **Complicated catheter-associated urinary tract infections due to Escherichia coli and Proteus mirabilis.** *Clin Microbiol Rev* 2008, **21**(1):26-59.
 122. Guglielmetti S, Mora D, Gschwender M, Popp K: **Randomised clinical trial: Bifidobacterium bifidum MIMBb75 significantly alleviates irritable bowel syndrome and improves quality of life--a double-blind, placebo-controlled study.** *Aliment Pharmacol Ther* 2011, **33**(10):1123-1132.
 123. Kim JY, Kwon JH, Ahn SH, Lee SI, Han YS, Choi YO, Lee SY, Ahn KM, Ji GE: **Effect of probiotic mix (Bifidobacterium bifidum, Bifidobacterium lactis, Lactobacillus acidophilus) in the primary prevention of eczema: a double-blind, randomized, placebo-controlled trial.** *Pediatr Allergy Immunol* 2010, **21**(2 Pt 2):e386-393.
 124. Chitapanarux I, Chitapanarux T, Traisathit P, Kudumpee S, Tharavichitkul E, Lorvidhaya V: **Randomized controlled trial of live lactobacillus acidophilus plus bifidobacterium bifidum in prophylaxis of diarrhea during radiotherapy in cervical cancer patients.** *Radiat Oncol* 2010, **5**:31.
 125. Malinen E, Krogus-Kurikka L, Lyra A, Nikkila J, Jaaskelainen A, Rinttila T, Vilpponen-Salmela T, von Wright AJ, Palva A: **Association of symptoms with gastrointestinal microbiota in irritable bowel syndrome.** *World J Gastroenterol* 2010, **16**(36):4532-4540.
 126. Yazawa K, Fujimori M, Amano J, Kano Y, Taniguchi S: **Bifidobacterium longum as a delivery system for cancer gene therapy: selective localization and growth in hypoxic tumors.** *Cancer Gene Ther* 2000, **7**(2):269-274.
 127. Gore C, Munro K, Lay C, Bibiloni R, Morris J, Woodcock A, Custovic A, Tannock GW: **Bifidobacterium pseudocatenulatum is associated with atopic eczema: a nested case-control study investigating the fecal microbiota of infants.** *J Allergy Clin Immunol* 2008, **121**(1):135-140.
 128. Moya-Perez A, Neef A, Sanz Y: **Bifidobacterium pseudocatenulatum CECT 7765 Reduces Obesity-Associated Inflammation by Restoring the Lymphocyte-Macrophage Balance and Gut Microbiota Structure in High-Fat Diet-Fed Mice.** *PLoS One* 2015, **10**(7):e0126976.
 129. Mullish BH, McDonald JA, Kao DH, Allegretti JR, Petrof EO, Pechlivanis A, Atkinson SR, Williams HR, Thursz MR, Marchesi J: **Understanding the Mechanisms of Efficacy of Fecal Microbiota Transplantation in the Treatment of Clostridium Difficile Infection: The Potential Role of Bilemetabolising Enzymes.** *Gastroenterology* 2017, **152**(5).
 130. Reimer LG, Reller LB: **Gardnerella vaginalis bacteremia: a review of thirty cases.** *Obstet Gynecol* 1984, **64**(2):170-172.
 131. Alegre-Sancho JJ, Juanola X, Narvaez FJ, Roig-Escofet D: **Septic arthritis due to Prevotella bivia in a patient with rheumatoid arthritis.** *Joint Bone Spine* 2000, **67**(3):228-229.