

SEPARATIONS-ENCODED MICROPARTICLES FOR SINGLE-CELL WESTERN BLOTTING

Burcu Gumuscu, Amy E. Herr

Department of Bioengineering, University of California Berkeley, Berkeley, USA

Author emails: b.gumuscu@utwente.nl (Burcu Gumuscu), aeh@berkeley.edu (Amy E. Herr)

Statement of significance (120/120 words)

Direct measurement of proteins from single cells has been realized at the microscale using microfluidic channels, capillaries, and semi-enclosed microwell arrays. Although powerful, these formats are constrained, with the enclosed geometries proving cumbersome for multistage assays, including electrophoresis followed by immunoprobings. We introduce a hybrid microfluidic format that toggles between a planar microwell array and a suspension of microparticles. The planar array is stippled in a thin sheet of polyacrylamide gel, for efficient single-cell isolation and protein electrophoresis of hundreds-to-thousands of cells. Upon mechanical release, array elements become a suspension of separations-encoded microparticles for more efficient immunoprobings due to enhanced mass transfer. Dehydrating microparticles offer improved analytical sensitivity owing to in-gel concentration of fluorescence signal for high-throughput single-cell targeted proteomics.

Abstract (250/250 words)

Widely used in research and clinical medicine, immunoblots (e.g., western blot) provide target specificity by combining an electrophoretic separation of target species with subsequent immunoassaying steps. While miniaturization has benefited immunoblots in both separation efficiency and applicability to single cells, the widely used ‘microchannel’ and capillary devices make access to resolved targets cumbersome. To design a single-cell immunoblot with the most favorable mass transport conditions at each assay stage, we introduce a microfluidic format that toggles from a planar array of single-cell electrophoresis separations to a suspension of microparticles, with each rectangular microparticle housing one separation. For single-cell electrophoresis, a thin-layer hydrogel on a glass slide is stippled with microwells for cell isolation, each abutting a region for polyacrylamide gel electrophoresis (PAGE) and photocapture of separated proteins to the gel matrix. Array elements are defined by perforations around each rectangular single-cell PAGE region which, upon mechanical release, toggles into a separations-encoded microparticle. The microparticles measure estrogen receptor and 5 protein targets in hundreds of single breast cancer cells and kidney cells. For immunoassays, holding separations-encoded microparticles in suspension enhances diffusion into the gel making single-cell immunoblotting steps (i.e., immunoprobe introduction and wash out) more efficient by 4x. Dehydrating the microparticles from suspension results in isotropic shrinkage of each separations-encoded particle (10% in length), yielding a 1.6x increase in immunoblot fluorescence signal with no penalty on separation resolution. Designed for optimal mass transport and scaling at each assay stage, separations-encoded microparticles provide an adaptable new form factor for precision single-cell analysis.

Introduction

The analysis of proteins in single cells plays a central role in identifying the link between cellular heterogeneity and disease states.(1,2) Like single-cell genomics and transcriptomics, single-cell protein analysis reports information that is concealed in bulk experiments.(3,4) For detection of protein targets known *a priori*, immunoassays are widely used in both analysis of large samples and to achieve single-cell resolution. Historically, heterogeneous immunoassays have been performed using a wide range of immobilizing substrates, including paper strips,(5) membranes,(6) and nozzle arrays.(7) Conventional immunoassays (e.g., ELISAs,(8) immunohistochemistry(9)) form the basis for the immobilizing substrates to study single-cell behavior, although specific protein types (such as protein isoforms that are crucial for cancer studies) cannot be detected in the absence of high specificity probes.(10) Other conventional immunoassays such as flow cytometry(11,12) and mass cytometry/CyTOF(13,13) can spatially resolve most protein isoforms, but

intracellular protein targets are still difficult to measure in multiplexed runs and therefore analytical sensitivity remains insufficient for detection of key signaling proteins.(15) Macroscale immunoassays have been downscaled in order to improve sample detection and analysis capabilities by controlling mass and heat transport. At the microscale, heterogeneous immunoassays have used photopolymerized gel constructs,(16) microfluidic capillaries,(17) enclosed microfluidic channels,(18-20) microwell arrays,(21,22) and immuno-barcoding(23). These approaches greatly simplified the target labeling process, facilitating a stepwise workflow of protein electrophoresis and antibody probing to discern off-target signals. However, a tradeoff still exists between maintaining satisfactory assay sensitivity and multiplexed analysis of > 1000 samples within the same batch that is required for measuring cell-to-cell variability in large populations.(24) Microparticles including barcoded hydrogel microparticles,(25) suspensions of particles,(26-28) and droplets(29) have also found utility in immunoassays; yet, the detection of target proteins directly from single cells could not be achieved in microparticle systems.

Miniaturization is well suited to electrophoretic separations owing to favorable scaling of physical phenomena including (1) efficient dissipation of Joule heating owing to high surface area to volume ratios found in microscale separation channels and (2) precision isolation and manipulation of individual cells (diameters $\sim 30 \mu\text{m}$) – even among large populations of cells. For rapid electrophoretic analysis of single cell lysate, microchannel junctions and microwells prove useful for seamless handling of 1-5 pL of cell lysate. When an immunoassay is appended to a completed electrophoretic analysis, several additional advantages of miniaturization accrue. First, mass-based separation of proteins prior to an immunoassay separates any off-target, non-specific signal from that of the target (30) Second, controlled mass transport at the microscale shortens the probing and washout times of immunoassays. compared to surface-based immunoassay (e.g., microtiter plates). Suspended surfaces, such as microparticles, offer even more efficient mass transport owing to 3D access of reagents to the surfaces of the particle and, hence, reduced diffusion-length scales to the interior of the particle. Increasing the concentration of an immunoprobe can enhance immunoassay sensitivity via improved partitioning of immunoprobe into the particle.

Here, we introduce separations-encoded microparticles for single-cell immunoblotting, a hybrid approach that brings the selectivity of separations to the efficient compartmentalization of microparticles. The basis of the separation-encoded microparticles is a hydrogel molding and release technique, in which a planar array of microparticles is created with perforations delineating each microparticle perimeter. After use of the planar array for cell isolation and protein electrophoresis, the arrayed microparticles are mechanically released to create suspensions of microparticles, each encoded with a single-cell protein separation. By design, the hybrid device is designed for optimal performance at each assay stage. First, the planar hydrogel arrays are well-suited to sample preparation (i.e., isolation of a single cell in each microparticle using a microwell feature molded into each microparticle, in-microwell chemical cell lysis) and PAGE of single-cell lysate from the microwell into the abutting hydrogel and finally photoblotting-based protein target immobilization to hydrogel (Fig. 1A, Fig. 1B). Second, the microparticle form factor is well-suited to heterogeneous immunoassays (i.e., immunoprobings, washing) and further manipulation of hundreds-to-thousands of single-cell immunoblots. Dehydration of the microparticles shrinks the dimensions, yielding geometry-enhanced analytical sensitivity, with PAGE resolving power scale-invariant after blotting (immobilization). Lastly, we assess oncoprotein isoform expression across a range of cancer cell phenotypes. Separations-encoded microparticles bring performance benefits from both microarrays and microparticles to offer new avenues for high-throughput, high-selectivity protein cytometry.

Results and discussion

Releasable separations-encoded microparticles: Single-cell immunoblots

Immunoblotting integrates PAGE of each single-cell lysate with a subsequent immunoassay to confer selectivity beyond PAGE alone.(24) In conventional protein immunoblotting, protein peaks are transferred from the PAGE hydrogel onto a hydrophobic membrane using electro-transfer or diffusion.(31) Hydrophobic interactions immobilize the protein separation on the blotting membrane, thus retaining separation information on a material with larger pore size than polyacrylamide molecular sieving gels. The larger pore size of blotting membranes (polyvinylidene difluoride (PVDF), nitrocellulose) reduces thermodynamic partitioning and enhances transport of immunoreagents to the immobilized protein material, thus underpinning efficient immunoprobng during the immunoassay.

We developed a method to create a planar array of **releasable** microparticles comprised of a dual-function hydrogel that, when comprising the planar array, acts as a molecular sieving matrix for electrophoresis and, when in a suspension of microparticles, acts as an immobilization scaffold for heterogeneous immunoassays performed on the separated protein targets. On silanized glass microscope slides (Fig. S1A), we chemically polymerized polyacrylamide on an SU-8 mold to create planar microparticles, with perforations defining the perimeter of each microparticle. In selecting the microparticle shape, we sized each microparticle to house a microwell (15 μm radius, 40 μm depth) for mammalian cell isolation with an abutting region for protein PAGE. After single-cell PAGE analysis and photocapture of proteins to the hydrogel, the microparticles are released from the array by mechanical shearing, using a razor blade (Fig. S1B).

To **determine microparticle geometries**, we sought to develop single-cell protein PAGE to analyze five ER-associated cancer signaling protein targets, spanning 35 kDa to 100 kDa (see Table 1) with a minimum mass difference between neighboring targets of 8% (i.e., β -tubulin and ER α 46). The long axis of the rectangular microparticle (L_{sep}) was determined using two separations-driven design criteria: (i) a target separation resolution (SR , defined as $SR = \Delta L / 4\sigma$, where ΔL is the separation length, σ is the average peak width) of 0.5 for the closest neighbors ($\Delta L = \Delta L_{\text{min}}$) and (ii) the maximum electromigration distance (L_{max}) for the protein target with the fastest electrophoretic mobility (μ , in-gel mobility, defined as $\mu = \mu_0 10^{-KT}$, where K is the retardation coefficient of an analyte and T is the total acrylamide concentration in the gel.(16,32) According to Ferguson analysis results, estimated electrophoretic mobility of proteins at 40 V cm^{-1} for 30 s in 8%T, 2.6%C gel is determined as shown in Table 1, (more details on electric field distribution in the array in SI)). Using these design rules, we fabricated planar arrays of rectangular microparticles $\sim 950\text{-}\mu\text{m}$ long, 250- μm wide, and 40- μm thick (Fig. 1C). Upon mechanical release, we observed 94% yield of microparticles at hydrated state ($n = 3$ chips; 3500 microparticles per chip), with 91.4% of the successfully released microparticles exhibiting damage by visual inspection (Fig. S2). Signal acquisition can be performed on the microparticle array or suspended microparticles (Fig. 1D and Fig. 1E), in either the hydrated or dehydrated state (Fig. 1F).

Table 1. Protein targets in separations-encoded microparticles.

Protein target	Molecular mass (kDa)	Mass difference between neighboring protein markers (%)	Electrophoretic mobility ($\text{m}^2 \text{V}^{-1} \text{s}^{-1}$)
GAPDH	35	24	9.0×10^{-9}
ER α 46	46	8	6.8×10^{-9}
β -tubulin	50	25	6.0×10^{-9}
ER α 66	66	34	5.1×10^{-9}
Actinin	100	-	2.2×10^{-9}

We next **validated the microparticle immunoblots** through analysis of a range of breast cancer cell morphologies and types, using a panel of well-established breast cancer and kidney cell lines (breast adenocarcinoma, MCF 7; invasive

breast adenocarcinoma, MDA MB 291; embryonic kidney cells, HEK 293). Average diameters of MCF 7, MDA MB 291, and HEK 293 cells were measured as 16 μm , 18 μm , and 16 μm , respectively; microwell diameters of 30 μm were used for all experiments. Based on the distribution of cell diameters in each cell population, cell settling resulted in zero, one, or multiple cells in microwells and perforations. In single-cell handling, we observed an average of 95% single-cell microwell occupancy for MCF 7, MDA MB 291 and HEK 293 cells, with 0.2% spurious isolation of cells in the perforations when a cell suspension of $\sim 10^6$ cells mL^{-1} in 1 \times PBS was introduced to the array ($n = 4$ devices, 3500 microwells per device), using a 10 min settling period (Fig. S3A). A small number of microwells housed more than one cell (0.4%).

Two housekeeping protein targets, GAPDH and β -tubulin, were probed in the same microparticle assay using 10x diluted AlexaFluor 647 and AlexaFluor 555, respectively, and the resulting signal intensities were correlated with microwell occupancy (Fig. S3B). Cells settled in the perforations did not have a detectable signal, which we attribute to rapid lysate dilution by convective flow (Fig. S3B). After settling, in-microwell chemical lysis (30 s) and single-cell protein PAGE (20 s, $E = 40$ V/cm) were completed for GAPDH and β -tubulin across all cell types. Microparticle arrays were immunoprobed with a cocktail of GAPDH and β -tubulin (primary probing duration 3h, secondary probing duration 1h, washout periods 20 min; more details in Experimental Procedures). Observed electromigration behavior agreed with estimates (electromigration distances varying 0.9% and 1.1% for GAPDH and β -tubulin, respectively, 2 devices, $n = 40$ microparticles). With microparticles fabricated on silanized glass slides (Fig. S4), electrophoretic mobilities of GAPDH and β -Tubulin were $\sim 9.0 \times 10^{-9}$ $\text{m}^2 \text{V}^{-1} \text{s}^{-1}$ and $\sim 6.0 \times 10^{-9}$ $\text{m}^2 \text{V}^{-1} \text{s}^{-1}$, respectively (Fig. S3B), corroborated by previous observations (16) As expected, no protein signal was detected for empty microwells ($n = 2$ devices, 3500 microwells per device, Fig. S3B).

In considering **diffusive transport during immunoprobing**, we hypothesized that immunoprobing of a suspension of microparticles would be more efficient than immunoprobing of the surface-attached planar microparticle array. The probing and washing steps dominate the planar assay duration. As context, conventional single-cell western blotting sees 75% assay duration devoted to probing and 25% to washout steps. Long durations are required owing to the limited mass-transport of antibody probes into the gel. In contrast, when in suspension the surface area of each microparticle is available for diffusion-based antibody probe introduction; whereas, transport into the hydrogel array is inhibited on the surface side that is attached to the glass slide. Then with $\tau_{diffusion} = 4 \frac{x^2}{2D}$ (where $\tau_{diffusion}$ is the transport time, x is the gel thickness, and D is the diffusion coefficient for antibody in an 8 %T gel (33)), x is the half-thickness of the microparticle thickness when the microparticle is in suspension and the full-thickness when the microparticle is anchored to a glass slide in the planar array. The geometric argument applies to all stages of immunoprobing and washout, suggesting that the microparticle format could reduce the duration of the ~ 4 hr immunoprobing-related steps by 25%.

Background signal is also important to detection performance. Background is dictated by the efficacy of the washout process after probing. In comparing the planar array to the suspended microparticles, we observed background signal reduction of 1.3x in microparticles, and we indeed observed effective performance with reduced washout times (~ 5 min vs. ~ 20 min; $n = 1$ device, 3500 microparticles, CV = 0.2) in the suspension of microparticles versus the attached array (Fig. S5A).

Next, in considering the immunoassay which is a **reaction between a protein target and immunoprobe**, as well as the transport during immunoprobing, we write $\tau_{reaction} = 1/(k_{on}[Ab]_{gel} + k_{off})$ and $[Ab]_{gel} = K[Ab]_0$, where τ is the reaction time, k_{on} is the reaction coefficient, k_{on} is forward reaction rate constant, k_{off} is backward reaction rate constant, $[Ab]_{gel}$ is antibody concentration in gel, $[Ab]_0$ is antibody concentration in solution—including partitioning coefficient for the hydrogel, $K = 0.17$ for 8%T PAG.(34) We use the Damköhler number (Da , with $Da = \tau_{transport}/\tau_{reaction}$)(35) for low-affinity ($K_D \sim 10^{-6}$), medium-affinity ($K_D \sim 10^{-9}$), and high-affinity ($K_D \sim 10^{-11}$) immunoprobes.

Given this physical framework, we **estimate that immunoprobings** with low-affinity antibodies will be reaction-limited ($D_a \sim 0.7$), while immunoprobings with medium-affinity ($D_a \sim 280$) and high-affinity antibodies is mass-transport-limited ($D_a \sim 475$).⁽³⁴⁾ From this analysis, we conclude that as long as medium- and high-affinity antibodies are used, the expedited diffusion into a 40- μm thick gel benefits the immunoprobings duration 4x faster in microparticle format when compared to the planar array format, according to $\tau_{diffusion}$ calculations.

We next sought to **use the suspension of separations-encoded microparticles to overcome an important multiplexing limitation inherent to immunoblotting**. In immunoprobings, an antibody pair is typically used to (i) detect the protein target (unlabeled primary antibody probe) and (ii) detect the unlabeled primary antibody (fluorescently labeled secondary antibody probe). The secondary antibody probe needs to be selective for the animal species in which the primary antibody probe was raised. Herein lies the detection challenge: primary antibodies are raised in just a handful of animal species. If multiple primary antibodies of the same species are used for target detection, the secondary antibody probes must be applied to the PAGE separation serially (not as one cocktail). The serial application demands multiple secondary antibody probing rounds and multiple gel stripping rounds, to ensure selective readout.⁽²⁾ For example, two rounds of probing and stripping takes +50 hours for slab gel Westerns, and +9 hrs for conventional single-cell western blotting.⁽²⁴⁾

To **overcome this target multiplexing limitation**, we fractionate the microparticle suspension into aliquots and apply distinct antibody probe solutions to each (i.e., ER α , Actinin). As a negative control, we performed two rounds of probing (for each probing round, 3 h primary and 1 h secondary antibody probing steps with 20 min washing time after the probing steps) and stripping (1h) for ER α and Actinin antibodies separately (see Experimental Procedures). Fig. 2A shows ER α expression level decreases in previously Actinin-probed microparticles, compared to microparticles probed for ER α alone. We calculated a 15.8% decrease in average expression quantified from negative control group ($p > 0.05$, $n = 40$ microparticles). In multiplexed single-cell immunoassays, off-target probe binding is a substantial challenge (e.g., immunocytochemistry, flow cytometry).^(8,9,12,13) Performing a separation, followed by immunoprobings helps to overcome this challenge by spatially separating the off-target signal. We investigated the off-target signal for both the ER α isoform and Actinin in separations-encoded microparticles and observed off-target signals for ER α (Fig. 2B).

PAGE resolves two protein isoforms reactive to one ER α antibody probe: full-length (ER α 66) estrogen receptor isoform (66 kDa) and truncated (ER α 46) estrogen receptor isoform (46 kDa).^(36,37) We validated the separation of ER α 46 and ER α 66 isoforms using three housekeeping proteins—Actinin (100 kDa), β -tubulin (50 kDa), and GAPDH (35 kDa)—as reference standards in a Ferguson plot analysis. We observed a linear relationship between migration distance and molecular mass for both the planar array and the suspended microparticles ($R^2 = 0.97$, $n = 121$ microparticles and $R^2 = 0.95$, $n = 34$ microparticles, respectively; Fig. 2C). Separation resolution between the two ER α isoforms was 1.77 ± 0.33 (Fig. 2D; $n = 34$ microparticles), which is considered to be bottomline separated and therefore quantitatively measurable.

Dehydrated separations-encoded microparticles: Single-cell proteoform profiling

We next sought to explore **unique performance gains** possible in single-cell immunoblotting using the microparticle system. Specifically, we sought to understand analytical performance enhancements conferred by the isotropic shrinking of separation-encoded microparticles through dehydration of the microparticles from suspension. In a hydrogel microparticle that shrinks isotropically, we expect two potentially favorable scaling phenomena. First, we anticipate **no sacrifice in separation resolution** (SR , $SR = \Delta L / 4\sigma$), as both ΔL and σ should shrink by equal factors, assuming a detector with sufficient spatial resolution to resolve the final separation. At the hydrated state, the polymer network in separation-encoded microparticles is distributed uniformly. Shrinking develops upon evaporation of the aqueous phase (in this case water), initiating from the surface uniformly and resulting in a higher density polymer film formation at the outer interfaces.⁽³⁸⁾ Film formation may slow down the subsequent shrinking process

under constant temperature and humidity levels, because the volume fraction of the polymer network in the film turns out to be much higher than in other portions of the gel.(38-40). However, the water molecules inside the gel can still evaporate constantly even after the formation of the film layer since the molecules are small enough (Å-scale) compared to the pores in an 8%T 2.6%C polyacrylamide gel (nm-scale). After evaporation of all liquid content, the gel reaches a compact, uniform, and dehydrated state that does not impact *SR*.(41) Second, we expect improved **analytical sensitivity** of an immunoblot as the local concentration of fluorophores is inversely correlated with the volume (L^3) of microparticles.(42) The average fluorescence signal increase (SI) can be calculated as follows, $SI = \frac{X_p \text{ dehydrated} - X_{bg} \text{ dehydrated}}{X_p \text{ hydrated} - X_{bg} \text{ hydrated}}$, where χ is the intensity of the fluorescence signal, p is the location of the analyte peak, and bg is background.(43-45)

To understand the **mechanism of hydrogel shrinkage**, we performed single-cell immunoblots as described, then dehydrated the microparticle suspension by evaporation through heating on a hot plate. We measured a reduction of $83 \pm 8 \mu\text{m}$ in microparticle length ($950 \mu\text{m}$ to $866 \mu\text{m}$; $n = 250$ microparticles) and $31 \pm 5 \mu\text{m}$ in microparticle width ($254 \mu\text{m}$ to $223 \mu\text{m}$; $n = 250$ microparticles) suggesting isotropic shrinkage of each microparticle. The degree of circularity of the microwells was assessed (i.e., *Degree of circularity* $= 2\sqrt{\pi A}/C$, where A is the particle area including hole, C is the perimeter of the microwell).(46) Accordingly, a circular feature has a degree of circularity of 1.0, with non-circular features having values of <1.0 . When comparing suspensions of hydrated microparticles to dehydrated microparticles, we observed no significant difference in the degree of circularity for the microwells (p -value <0.00001 , $n = 2881, 1823, 276$, and 110 , respectively; Fig. S5B).

To next assess the **impact of dehydration on the PAGE performance of separations-encoded microparticles**, we assessed *SR* using GAPDH and β -tubulin in hydrated and dehydrated microparticles. We first considered the peak width of each target (4σ) probed and measured a 10% and 7% reduction in peak width ($140 \mu\text{m}$ to $125 \mu\text{m}$ for GAPDH, $106 \mu\text{m}$ to $99 \mu\text{m}$ for β -tubulin; $n = 121$) (Fig. 3A), consistent with observed shrinkage of the microparticle extents. We scrutinized any changes to ΔL between the two markers stemming from dehydration-induced shrinkage of the separations-encoded microparticles.

We found a **median fluorescence signal intensity** increase of 1.6x ($CV = 1.2$, $n = 121$) on the dehydrated microparticles relative to the hydrated ones (Fig. 3B). According to the measured reduction in the dimensions of the dehydrated microparticles, fluorescence signal intensity increase (intensity/ μm^3) is expected to be 1.4x. Therefore, the measured increase is found to be in accordance with the calculated increase. Consequently, the measured *SR* values for the two markers were $SR = 0.72$ ($CV = 22.86$, $n = 16$ microparticles) in hydrated microparticle suspensions and $SR = 0.72$ ($CV = 21.43$, $n = 62$ microparticles) in dehydrated microparticles from suspension, which are not significantly different (two sample t-test $p = 0.18$), as anticipated from geometric arguments.

To understand the impact of microparticle shrinkage on **analytical sensitivity and overall detection performance**, we **assessed the target signal (AUC) and the background signal**. The impact of increased local concentration of fluorescence signal in dehydrated microparticles was characterized using GAPDH and β -tubulin. We found the median normalized AUC for dehydrated microparticles was ~ 1.3 to 1.7 x higher than hydrated microparticles (Mann-Whitney U-test p -value < 0.05 for each antibody type used, Fig. 3C) (see SI).

In understanding **the effect of dehydration on the background signal**, we compared the background fluorescence signal intensities obtained from hydrated/probed, hydrated/not probed, dehydrated/probed microparticles (Fig. S5C). We probed separations-encoded microparticles with a secondary antibody (labeled with AlexaFluor 647) solution for 3 h and washed the excess solution for 1 h in TBST solution before imaging at 635 nm wavelength. Background fluorescence intensity of dehydrated/probed microparticles was ~ 2 x higher than hydrated/probed microparticles at the central regions, while this difference increases to be ~ 40 x relative to hydrated/not probed microparticles. The increase in the fluorescence intensity resulted in an enhanced SNR, defined as the ratio of the average fluorescence

signal minus the mean background signal to the standard deviation of the background.(47) The noise on the dehydrated microparticles was noted to decrease by 1.5x (median SNR = 9.8, CV = 0.8, n = 392 microparticles) relative to the hydrated microparticles, SNR = 6.4 (CV = 0.4, n = 342 microparticles). The lower noise in dehydrated microparticles yields an improved analytical sensitivity. This result is in accordance with our observations regarding the effect of microparticle shrinkage on the target detection signal. The geometry-induced performance changes made target signal detectable in 17% more dehydrated microparticles versus detectable in hydrated microparticles. Reduced noise in the separations-encoded microparticles is attributed to the enhanced mass-transport of antibodies during the washout step, although dehydration (shrinkage) process increases the signal intensity in microparticles.

Next, **we measured ER α protein isoform expression differences using the separations-encoded microparticles**, ER α 46 (46 kDa) and ER α 66 (66 kDa) isoforms, in MCF 7 (estrogen sensitive), MDA MB 231 (estrogen resistant), and HEK 293 (non-expressing) cells at different confluency levels. For the estrogen-sensitive cell line, we expect an inverse correlation between ER α 46 expression and ER α 66 expression if hormonal resistance increases with ER α 46 expression.(36) We first confirmed that the gradual increase in cell confluency levels agrees with the gradual increase in housekeeping protein expression levels for all cell lines (Fig. 4A and Fig. S6A). On the basis of separations-encoded microparticle assay results, we compared SNR of ER α 46 and ER α 66 in MCF 7 cells and found that the average of both SNR values was above SNR = 3 threshold. Particularly, the SNR average was 4.79 for ER α 46 (n = 385) and 6.41 for ER α 66 (n = 93) (Fig. 4B). Importantly, AUC analysis in separations-encoded microparticles revealed a 2.8x increase in truncated isoform (ER α 46) and 6.4x decrease in full-length isoform (ER α 66) over a 14-day period in estrogen sensitive cells (Fig. 4C, n = 478 cells); therefore, confirmed that higher confluency increases ER α 46 expression that suppresses the expression of ER α 66 in MCF 7 cells.(36,37) Surprisingly, separations-encoded microparticles reported minute levels of ER α 46 isoform-expressing cells in the estrogen resistant cell line (see Table 2), while this population remained masked in slab gel westerns (Fig. S7). ER α 66 isoform was not detected in estrogen resistant cell line as it is in the class of highly invasive phenotype that reportedly lacks ER α 66 isoform.(37) Neither of the isoforms was detected in the non-expressing cell line, which has been used as a negative control in this experiment.

Quantification of ER α expression changes in MCF 7 cells benefited from the use of releasable separations-encoded microparticles in two key aspects. First, enhanced mass transport in microparticles helped to reduce the total immunoprobng time from ~50 hours to ~14 hours, even though we employed two probing and stripping rounds for a total of 5 protein species. Second, we achieved to discriminate minor cell populations representing ER α 46 expressing MCF 7 cells, (e.g. 6 cells on day 3, 54 cells on day 5, and 163 cells on day 7 from a large cell population of 478 cells, see SI).

In summary, we have designed, developed, and applied separations-encoded microparticles to advance performance and utility of single-cell immunoblotting, which has been limited by microscale mass transport considerations particularly during immunoprobng. Mass transport limitations are a bottleneck of immunoassays, requiring substantial dedication of assay time to the probing and washout steps. Separations-encoded microparticles reduce mass transport restrictions, boost analytical performance, and bring handling flexibility by combining normally disparate microarray and microparticle formats. Furthermore, protein immunoblotting with separations-encoded microparticles confers selectivity suitable for isoform detection while allowing selective probing and multiplexing by isolation individual cell readouts. Merging microparticles with biomolecular separations surmounts measurement challenges where (1) immunoassays are insufficient owing to limited probe selectivity and (2) powerful mass spectrometry tools lack analytical sensitivity and throughput. The unique capabilities of the separations-encoded microparticles should provide a tunable, versatile format for cytometry.

Experimental Procedures

Chemicals and reagents. Acrylamide/bis-acrylamide, 30% (wt/wt) solution (Sigma-Aldrich, cat. no. A3699), sodium dodecyl sulfate (SDS) (cat. no. L3771), sodium deoxycholate (NaDOC) (cat. no. D6750), Triton X-100, N,N,N',N'-tetramethylethylenediamine (TEMED) (cat. no. T9281), ammonium persulfate (APS) (cat. no. A3678), and bovine serum albumin (BSA) (cat. no. L3771) were purchased from Sigma Aldrich. Goat anti-GAPDH primary antibody (Sigma-Aldrich, cat. no. SAB2500450), mouse anti- β Tubulin (Genetex, cat no. GTX11312), rabbit anti-ER α SP1 (Thermo Scientific, cat. no. RM-9101-S0), rabbit anti-actinin (Cell Signaling, cat no. 6487) were purchased from the suppliers. N-[3-[(3-Benzoylphenyl)-formamido]propyl] methacrylamide (BPMAC) was synthesized by PharmAgra Laboratories. Tris-glycine (10 \times) EP buffer was procured from Bio-Rad (25 mM Tris, pH 8.3; 192 mM glycine, cat. no. 1610734). Phosphate-buffered saline was acquired from VWR (10 \times PBS) (cat. no. 45001-130). Petroleum jelly was purchased from Cumberland Swan Petroleum Jelly (cat. no. 18-999-1829). Tris-buffered saline with Tween (TBST) was obtained from Santa Cruz Biotechnology (20 \times TBST) (cat. no. 281695). Deionized water (18.2 M Ω) was obtained from an Ultrapure Millipore filtration system.

Fabrication of SU-8 mold and separations-encoded microparticles. The SU-8 mold fabrication was performed by following the manufacturer's instructions (MicroChem) and previous publications.⁽⁴⁸⁾ Approximately 7000 microparticles (250 \times 1000 \times 40 μ m) can be fabricated from a 70 \times 48-mm mini-slab polyacrylamide gel. Each microparticle contained a microwell (30 μ m in diameter), a separation lane (950 μ m in length) and 50- μ m wide perforations defining the microparticles. 8%T, 2.6%C polyacrylamide gel containing 5 mM BPMAC was layered on an acrylate-silanized microscope glass slide by the help of the SU-8 mold. The gel was synthesized by chemical polymerization using 0.08% APS as the initiator and 0.08% TEMED as the catalyst. The gels were incubated in distilled water for 10 min at room temperature prior to releasing the glass slide from the SU-8 mold. After following single-cell western blotting procedure, microparticles were released from the glass slide by shearing using a razor blade when the microparticles are in the hydrated state. Thanks to the perforations, individual particles can be released easily.

Cell culture. The MCF 7 cells were cultured in RPMI 1640 media (ThermoFisher Scientific, cat. no. 11875093) supplemented with 10% Charcoal-stripped serum (Sigma-Aldrich, cat. no. F6765), and 1% penicillin/streptomycin (ThermoFisher Scientific, cat. no. 15140122). MDA MB 231 cells were cultured in the same culture media with MCF 7 cells. U251-GFP cells were cultured in high glucose DMEM (Life Technologies, cat. no. 11965) supplemented with 1% penicillin/streptomycin, 1 \times MEM nonessential amino acids (11140050), 1 mM sodium pyruvate (Life Technologies, cat. no. 11360-070), and 10% FBS. and HEK 293 cells were cultured in the same culture media with U251-GFP cells, except 10% Charcoal-stripped serum (Sigma-Aldrich, cat. no. F6765) was used instead of 10% FBS. All cells were grown in a humidified atmosphere containing 5% CO₂ at 37 °C. All cells were cultured in flasks.

Single-cell western blotting using separations-encoded microparticles

Single-cell resolution western blotting. Approximately 1 \times 10⁶ U251-GFP cells were settled by gravity into the wells located on microparticles for 10 min, and the gel was washed three times with 1 mL 1 \times PBS to remove excess cells off the gel surface. Then, settled cells were lysed by directly pouring the RIPA-like lysis buffer at 55 °C over the slide. Cell lysates were electrophoresed at 40 V cm⁻¹ for 30 s, and immediately after protein bands were immobilized by UV activation (Lightningcure LC5, Hamamatsu) of the BPMAC. The microparticle array was incubated in TBST buffer overnight at room temperature.

Immunoprobng and imaging of separation-encoded microparticles after single-cell western blotting. Donkey Anti-Goat IgG (H+L) Cross-Adsorbed Cross-Adsorbed Antibody, Alexa Fluor 555-labeled antibody (cat. no. A21432), Donkey Anti-Rabbit IgG (H+L) Cross-Adsorbed antibody, Alexa Fluor 555-labeled (cat. no.A21432), and Donkey Anti-Rabbit IgG (H+L) Cross-Adsorbed Secondary antibody, Alexa Fluor 647-labeled (cat. no. A31573) were purchased from Thermo Fisher Scientific. After the electrophoretic separation and UV-induced covalent attachment of proteins to

benzophenone in microparticles, the gel was washed for overnight in 1× TBST on an orbital shaker. Separations-encoded microparticles were incubated in 30 µL of a 1:10 dilution of primary antibodies in 1× TBST with 2% BSA solution for three hours, and washed three times for 20 min in 1× TBST. Secondary antibodies were incubated for two hours in a 1:10 dilution and gels were washed three times for 20 min in 1× TBST and dried using nitrogen stream. After the immunoprobings, the hydrated microparticle array was released from the glass slide surface using a razor blade. During this process, microparticles were completely peeled off from the glass surface without any remaining parts attached to the surface. Separations-encoded microparticles can be imaged in the released format or in the array format. For all cases (attached, released, hydrated, and dehydrated states), we imaged the gel particles using a fluorescence microarray scanner (Molecular Devices, Genepix 4300A) with an Alexa-Fluor 555 filter (532 laser excitation, 650 PMT), and an Alexa-Fluor 647 filter (647 laser excitation, 550 PMT).

Data analysis and simulations. Protein bands were quantified using in-house developed MATLAB scripts as described in Kang et al.(21) Peak widths were characterized by Gaussian curve fitting in MATLAB (R2017b, Curve Fitting Toolbox). The integrated intensity of a marker was calculated if its R^2 value was larger than 0.7 for the given region of interest. For all quantified results, the protein peaks with Gaussian fitting R^2 value larger than 0.7 and SNR value larger than 3 were analyzed. Electric field distribution simulations were performed in COMSOL Multiphysics 5.3a (Burlington, MA) to characterize protein mobility during electromigration in separations-encoded microparticles. A 2D asymmetric model was used. The gel width was 250 µm and the length was 1000 µm. The diameter of the microwell was set to 30 µm. The maximum and minimum mesh element sizes were 30 and 0.3 µm, respectively. The model was solved in stationary mode by applying a constant electric field through the matrix, where hydrogel and solution conductivities were set to 4304.0 µS m⁻¹ estimated experimentally.(49) The goal of the simulations was to estimate the electric field instabilities caused by discontinuous surface area created by arrayed microparticles.

Slab gel western blotting

Imaging of living cells. The confluency of the cells was determined by imaging the culture dishes in bright field using an Olympus IX71 inverted fluorescence microscope equipped with an EMCCD camera (iXon3 885, Andor, Belfast, Ireland), motorized stage (Applied Scientific Instrumentation, Eugene, OR), and automated filter cube turret controlled through MetaMorph software (Molecular Devices, Sunnyvale, CA).

Cell lysate preparation for slab gel western blotting. At the desired confluency level, cells were trypsinized using 1 mL of trypsin EDTA solution for 1-2 min at 37 °C and 4 mL culture medium was added to the 25 cm² (T-25) culture flask. After centrifuging the cells at 1000 rpm for 5 min in a 15 mL tube, the culture medium was aspirated. Cells were resuspended in 1 mL PBS and counted using trypan blue stain. Cells were washed two times more with ice-cold PBS to remove all the loosely bound serum proteins in the media before adding 1mL of ice-cold protease inhibitor-contained RIPA buffer (0.15 mmol L⁻¹ NaCl, 5 mmol L⁻¹ EDTA, 1% Triton-X 100, 10 mmol L⁻¹ Tris-HCl. Cells were incubated on ice for 15 min while vortexing in every 5 min. The suspension was transferred to an Eppendorf tube and centrifuged at 25,000 x g for 30 min at 4 °C. The supernatant containing 30 µg mL⁻¹ of cellular proteins were used in slab gel western blotting.

Slab gel western blotting. 4-12% gradient gel (Novex WedgeWell Tris-Glycine, cat. no. XP04125BOX) and a Bio-Rad electrophoresis chamber connected to a Bio-Rad high voltage power supply set at 200 V were utilized for protein separation from cell lysates. Each well was loaded with 30 µg protein labeled with a 9:1 mixture of 4× Lamelli buffer and 10× NuPAGE reducing agent at 1:1 ratio. After the electrophoresis, Pierce PowerBlot Rapid Transfer System (ThermoFisher Scientific, cat. no. PB0112) was used to transfer the proteins to a PVDF membrane according to the manufacturer's instructions. The PVDF membrane was blocked in 5% BSA (w/v) solution for 30 min and was incubated in 10 mL solution with a 1:1000 dilution of primary antibodies in 1× TBST with 5% BSA solution for overnight at 4 °C. The membrane was rinsed three times with TBST for 10 min each round. Secondary antibodies were incubated in a 5% BSA solution with a 1:10000 dilution for 1 h and PVDF membrane was rinsed using TBST three times with TBST for

10 min each round. After the rinsing step, Western Lightning (PerkinElmer, cat. no. NEL120E001EA) was utilized as described in manufacturer's protocol for obtaining chemiluminescence images using a Chemidoc XRS system (Bio-Rad, cat. no. 170-8265).

Acknowledgments

This work was supported by the grant from the United States National Institutes of Health (NIH Grant R21EB019880 to A.E.H.) and Chan Zuckerberg Biohub. We thank Dr. John J. Kim for fruitful discussions on ER α isoform separations and selection of regarding cell lines. We thank all the Herr lab members for helpful discussions and suggestions throughout the study.

References

1. Schubert C (2011) Single-cell analysis: The deepest differences. *Nature* 480:133.
2. Chattopadhyay PK, Gierahn TM, Roederer M, Love JC (2014) Single-cell technologies for monitoring immune systems. *Nat Immunol* 15:128.
3. Smits WK, Kuipers OP, Veening JW (2006) Phenotypic variation in bacteria: the role of feedback regulation. *Nat Rev Microbiol* 4:259.
4. Dubnau D, Losick R (2006) Bistability in bacteria. *Mol Microbiol* 61:564-572.
5. Luo L, Li X, Crooks RM (2014) Low-voltage origami-paper-based electrophoretic device for rapid protein separation. *Anal Chem* 86:12390-12397.
6. Kumar PS, Kannan PS, More A, Shingte R, Wadgaonkar P, Sastry M (2007) U.S. Patent No. 7,182,894. Washington, DC: U.S. Patent and Trademark Office.
7. Mao P, Gomez-Sjoberg R, Wang D (2012) Multinozzle emitter array chips for small-volume proteomics. *Anal Chem* 85:816-819.
8. Sevecka M, MacBeath G (2006) State-based discovery: a multidimensional screen for small-molecule modulators of EGF signaling. *Nature Methods* 3:825-831.
9. Ng AH, Chamberlain MD, Situ H, Lee V, Wheeler AR (2015) Digital microfluidic immunocytochemistry in single cells. *Nature Commun* 6:7513.
10. Ward TM, Iorns E, Liu X, Hoe N, Kim P, Singh S, Dean S, Jegg AM, Gallas M, Rodriguez C, Lippman M (2013) Truncated p110 ERBB2 induces mammary epithelial cell migration, invasion and orthotopic xenograft formation, and is associated with loss of phosphorylated STAT5. *Oncogene* 32:2463.
11. Perfetto, S. P., Chattopadhyay, P. K. & Roederer, M. Seventeen-colour flow cytometry: unravelling the immune system. *Nat. Rev. Immunol.* 4, 648–655 (2004). Perfetto SP, Chattopadhyay PK, Roederer M (2004) Seventeen-colour flow cytometry: unravelling the immune system. *Nat. Rev. Immunol.* 4:648.
12. Lombard-Banek C, Moody SA, Nemes P (2016) Single-cell mass spectrometry for discovery proteomics: Quantifying translational cell heterogeneity in the 16-cell frog (*Xenopus*) embryo. *Angew Chem Int Ed* 55:2454-2458.
13. Bendall SC, Simonds EF, Qiu P, El-ad DA, Krutzik PO, Finck R, Bruggner RV, Melamed R, Trejo A, Ornatsky OI, Balderas RS (2011) Single-cell mass cytometry of differential immune and drug responses across a human hematopoietic continuum. *Science* 332:687-696.
14. Yang M, Nelson R, Ros A (2016) Toward analysis of proteins in single cells: a quantitative approach employing isobaric tags with MALDI mass spectrometry realized with a microfluidic platform. *Anal. Chem.* 88:6672-6679.
15. Spitzer MH, Nolan GP (2016) Mass cytometry: single cells, many features. *Cell*, 165:780-791.
16. Duncombe TA, Herr AE (2013) Photopatterned free-standing polyacrylamide gels for microfluidic protein electrophoresis. *Lab Chip* 13:2115-2123.

17. Chen B, Lim S, Kannan A, Alford SC, Sunden F, Herschlag D, Dimov IK, Baer TM, Cochran JR (2016) High-throughput analysis and protein engineering using microcapillary arrays. *Nat Chem Biol* 12:76.
18. Dawod M, Arvin NE, Kennedy RT (2017) Recent advances in protein analysis by capillary and microchip electrophoresis. *Analyst* 142:1847-1866.
19. Prakadan SM, Shalek AK, Weitz DA (2017) Scaling by shrinking: empowering single-cell 'omics' with microfluidic devices. *Nature Rev Genet*, 18:345.
20. Dugan CE, Grinias JP, Parlee SD, El-Azzouny M, Evans CR, Kennedy RT (2017) Monitoring cell secretions on microfluidic chips using solid-phase extraction with mass spectrometry. *Anal. Bioanal. Chem.* 409:169-178.
21. Kang CC, Yamauchi KA, Vlassakis JV, Sinkala E, Duncombe TA, Herr AE (2016) Single cell-resolution western blotting. *Nature Protoc* 11:1508.
22. Wood DK, Weingeist DM, Bhatia SN, Engelward BP (2010) Single cell trapping and DNA damage analysis using microwell arrays. *Proc Natl Acad Sci USA* 107:10008-10013.
23. Fan R, Vermesh O, Srivastava A, Yen BK, Qin L, Ahmad H, Kwong GA, Liu CC, Gould J, Hood L, Heath JR (2008) Integrated barcode chips for rapid, multiplexed analysis of proteins in microliter quantities of blood. *Nature Biotechnol* 26:1373.
24. Hughes AJ, Spelke DP, Xu Z, Kang CC, Schaffer DV, Herr AE (2014) Single-cell western blotting. *Nature Met*, 11:749.
25. Appleyard DC, Chapin SC, Srinivas RL, Doyle PS (2011) Bar-coded hydrogel microparticles for protein detection: synthesis, assay and scanning. *Nature Protoc* 6:1761.
26. Meiring JE, Schmid MJ, Grayson SM, Rathsack BM, Johnson DM, Kirby R, Kannappan R, Manthiram K, Hsia B, Hogan ZL, Ellington AD (2004) Hydrogel biosensor array platform indexed by shape. *Chem Mater*, 16:5574-5580.
27. Lee W, Choi D, Kim J, Koh W (2008) Suspension arrays of hydrogel microparticles prepared by photopatterning for multiplexed protein-based bioassays. *Biomed Microdevices* 10:813-822.
28. Moorthy J, Burgess R, Yethiraj A, Beebe D (2007) Microfluidic based platform for characterization of protein interactions in hydrogel nanoenvironments. *Anal Chem* 79:5322-5327.
29. Wen N, Zhao Z, Fan B, Chen D, Men D, Wang J, Chen J (2016) Development of droplet microfluidics enabling high-throughput single-cell analysis. *Molecules* 21:881.
30. Mahmood T, Yang PC (2012) Western blot: technique, theory, and trouble shooting. *N Am J Med Sci* 4:429.
31. Kinoshita E, Kinoshita-Kikuta E, Koike T (2009) Separation and detection of large phosphoproteins using Phos-tag SDS-PAGE. *Nature Protoc* 4:1513.
32. Butterman M, Tietz D, Orbán L, Chrambach A (1988) Ferguson plots based on absolute mobilities in polyacrylamide gel electrophoresis: Dependence of linearity of polymerization conditions and application to the determination of free mobility. *Electrophoresis* 9: 293-298.
33. Tong J, Anderson JL (1996) Partitioning and diffusion of proteins and linear polymers in polyacrylamide gels. *Biophys J* 70:1505.
34. Vlassakis JV, Herr AE (2015) Effect of polymer hydration state on in-gel immunoassays. *Anal Chem* 87:11030-11038.
35. Probst RF (2005). *Physicochemical hydrodynamics: an introduction* (John Wiley & Sons)
36. Kimmerling RJ, Szeto GL, Li JW, Genshaft AS, Kazer SW, Payer KR, de Riba Borrajo J, Blainey PC, Irvine DJ, Shalek AK, Manalis SR (2016) A microfluidic platform enabling single-cell RNA-seq of multigenerational lineages. *Nat Comm* 7:10220.
37. Beech JP, Holm SH, Adolfsson K, Tegenfeldt JO (2012) Sorting cells by size, shape and deformability. *Lab Chip* 12:1048-1051.
38. Waje SS, Meshram MW, Chaudhary V, Pandey R, Mahanawar PA, Thorat BN (2005) Drying and shrinkage of polymer gels. *Braz J Chem Eng* 22:209-216.
39. Tokita M, Suzuki S, Miyamoto K, Komai T (1999) Confocal laser scanning microscope imaging of a pattern in shrinking gel. *J Phys Soc Jpn*, 68:330-333.

40. Suzuki A, Yoshikawa S, Bai G (1999) Shrinking pattern and phase transition velocity of poly (N-isopropylacrylamide) gel. *J Chem Phys* 111:360-367.
41. Tokita M, Miyamoto K, Komai T (2000) Polymer network dynamics in shrinking patterns of gels. *J Chem Phys* 113:1647-1650.
42. Caster AH, Kahn RA (2012) Computational method for calculating fluorescence intensities within three-dimensional structures in cells. *Cell Logistics* 2:176-188.
43. Lin S, Sharma H, Khine M (2013) Shrink-Induced Silica Structures for Far-field Fluorescence Enhancements. *Adv Opt Mater* 1:568-572.
44. Nguyen D, Taylor D, Qian K, Norouzi N, Rasmussen J, Botzet S, Lehmann M, Halverson K, Khine M (2010) Better shrinkage than shrinky-dinks. *Lab Chip* 10:1623-1626.
45. Zhu P, Craighead HG (2012) Zero-mode waveguides for single-molecule analysis. *Annu Rev Biophys* 41:269-293.
46. Carvalho JO, Silva LP, Sartori R, Dode MA (2013) Nanoscale differences in the shape and size of x and y chromosome-bearing bovine sperm heads assessed by atomic force microscopy. *PLoS one* 8:e59387.
47. Sharma H, Wood JB, Lin S, Corn RM, Khine M (2014) Shrink-induced silica multiscale structures for enhanced fluorescence from DNA microarrays. *Langmuir* 30:10979-10983.
48. Hughes AJ, Herr AE (2012) Microfluidic western blotting. *Proc Natl Acad Sci USA*, 109:21450-21455.
49. Yamauchi KA, Herr AE (2017) Subcellular western blotting of single cells. *Microsys Nanoeng* 3:16079.

Figures

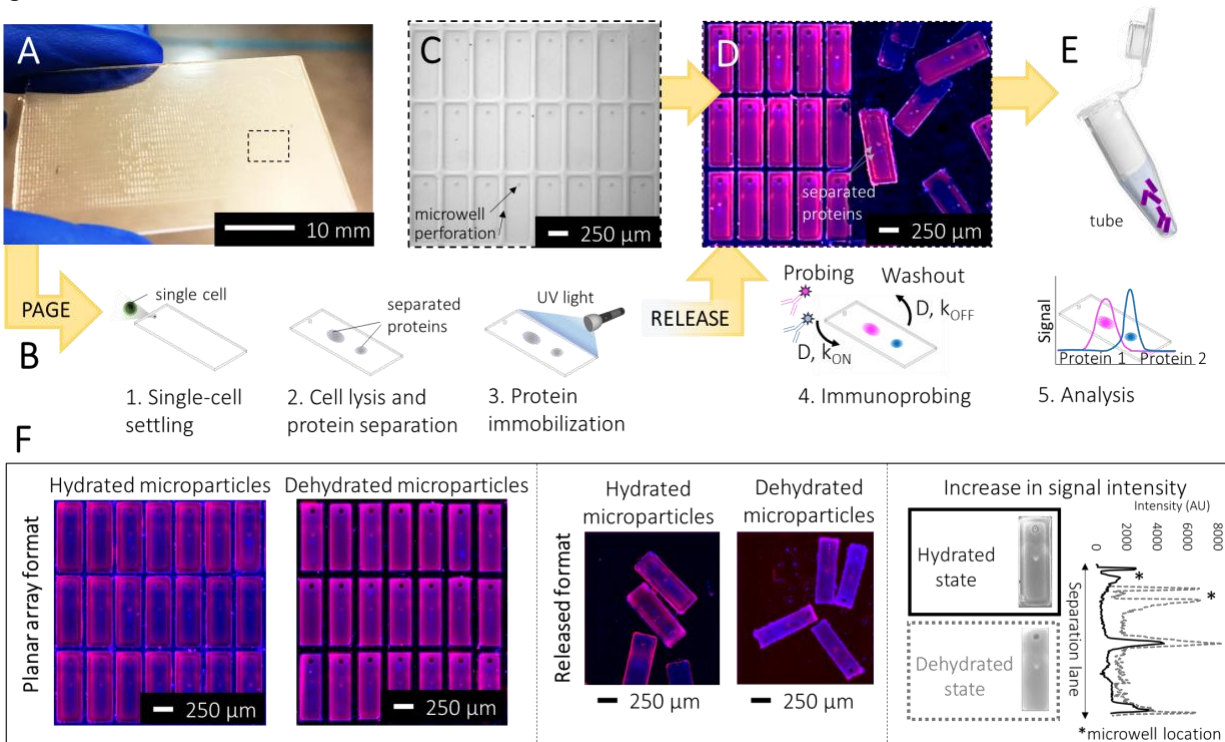


Fig. 1. Design and operation of the separations-encoded microparticles for high specificity protein isoform analysis. **(A)** Separations-encoded microparticle array consisting of approximately 3500 releasable units fabricated on a half glass slide. **(B)** Schematic view of single-cell resolution western blotting workflow in microparticles. After performing the single-cell settling, electrophoresis, protein photocapture to the gel (immobilization), and immunoprobing, microparticles are released from the microscope glass slide by the help of a blade. Bands of separated proteins in each microparticle are visualized using a fluorescence scanner for quantification. **(C)** The array is comprised of a thin layer of polyacrylamide gel. Each microparticle contains a 30 μ m diameter well where single cells are housed. **(E)** Single-cell resolution western blotting assay is ran on microparticles, which can be released and collected for downstream analysis. Multiple protein markers can be probed in individual microparticles, the image shows false-colored micrographs of microparticles. **(F)** False-colored microscopy images of microparticle array attached on and released from a glass slide was probed and imaged in both hydrated and dehydrated states. Microparticles were probed for two housekeeping protein markers β -Tubulin (50 kDa, magenta) and GAPDH (35 kDa, blue) from single U251 cells. Dehydrating microparticles boosts analytical sensitivity thanks to the geometry-enhanced concentration of fluorescence signal.

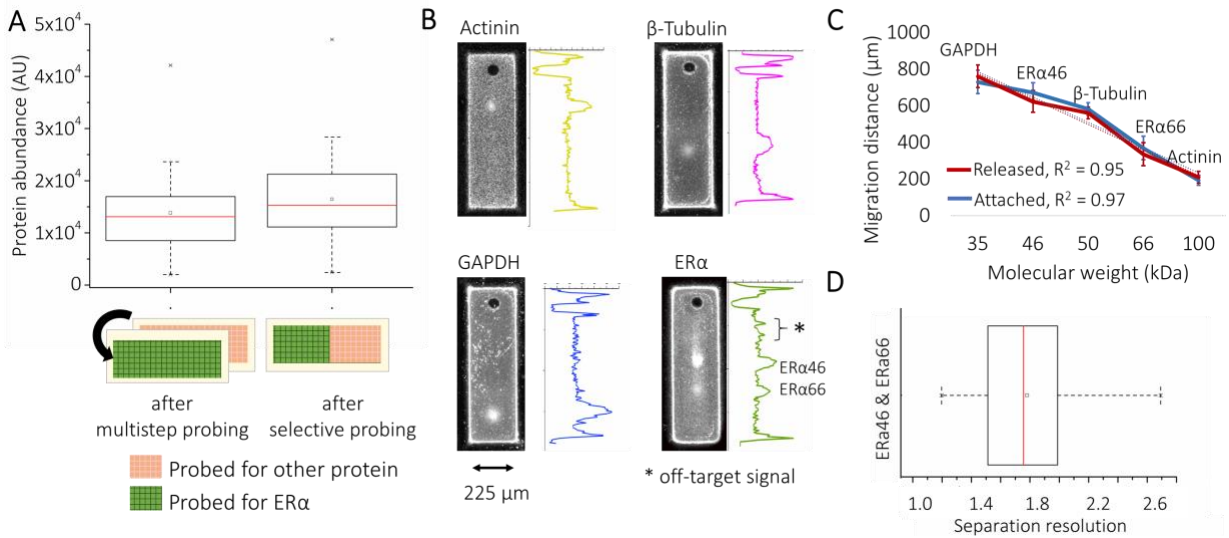


Fig. 2. Characterization of ER α isoform expression in microparticle assay. **(A)** Measured ER α expression from the same array after a multistep probing (including one stripping round), and after probing of designated microparticles ($p > 0.05$, $n = 40$ microparticles). **(B)** Fluorescence micrographs of microparticles for Actinin, β -Tubulin, GAPDH and ER α isoforms in MCF 7 cells. RFU, relative fluorescence units. The off-target peak (via ER α antibody) does not coincide with the ER α isoform bands. **(C)** Log-linear plot of species molecular weight against migration distance in 8%T PAG the fluorescently labeled species in panel A. (x-axis error bars within point size (\pm S.D., $n = 3$ separations); GAPDH, 35 kDa; ER α 46, 46 kDa; β -Tubulin, 50 kDa; ER α 66, 66 kDa; Actinin, 100 kDa). **(D)** Box plot demonstrating the separation resolution between ER α isoforms ($n = 34$ cells).

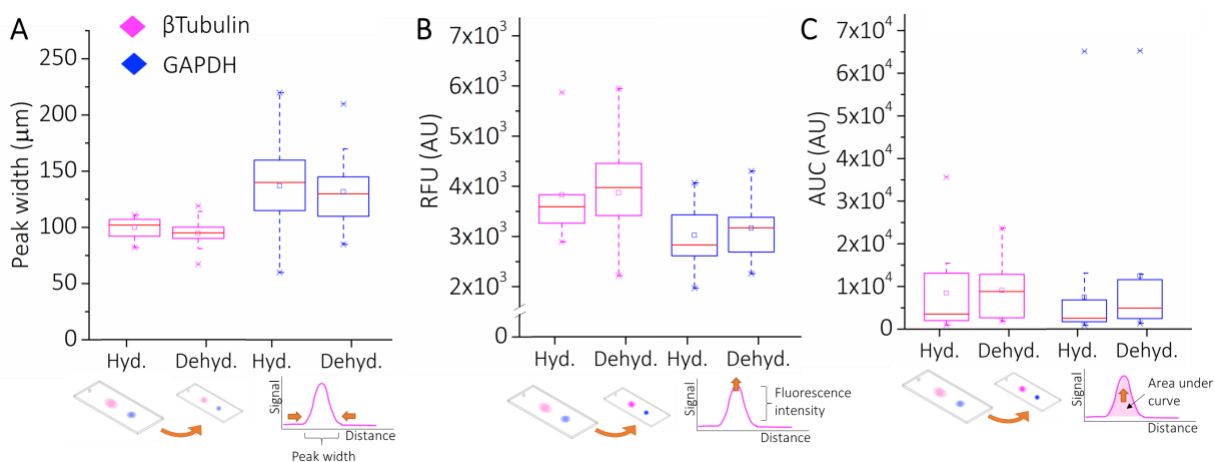


Fig. 3. Characterization of microparticles with different morphologies. **(A)** Separation performance, as measured by peak width, does not significantly change with dehydrated and hydrated states of microparticles. Mann-Whitney U-test p value was found to be lower than 0.05 ($n = 121$). **(B)** Fluorescence intensity comparison of β -tubulin and GAPDH proteins suggests that no statistically significant difference exists between the combinations of dehydrated and hydrated states of microparticles. Mann-Whitney U-test p value was found to be lower than 0.05 ($n = 121$). **(C)** Quantified β -Tubulin and GAPDH expression in microparticles from U251 glioblastoma cells shows that released and attached microparticles in hydrated and dehydrated states do not demonstrate statistically significant differences. For all combinations, Mann-Whitney U-test p value was found to be lower than 0.05 ($n = 121$).

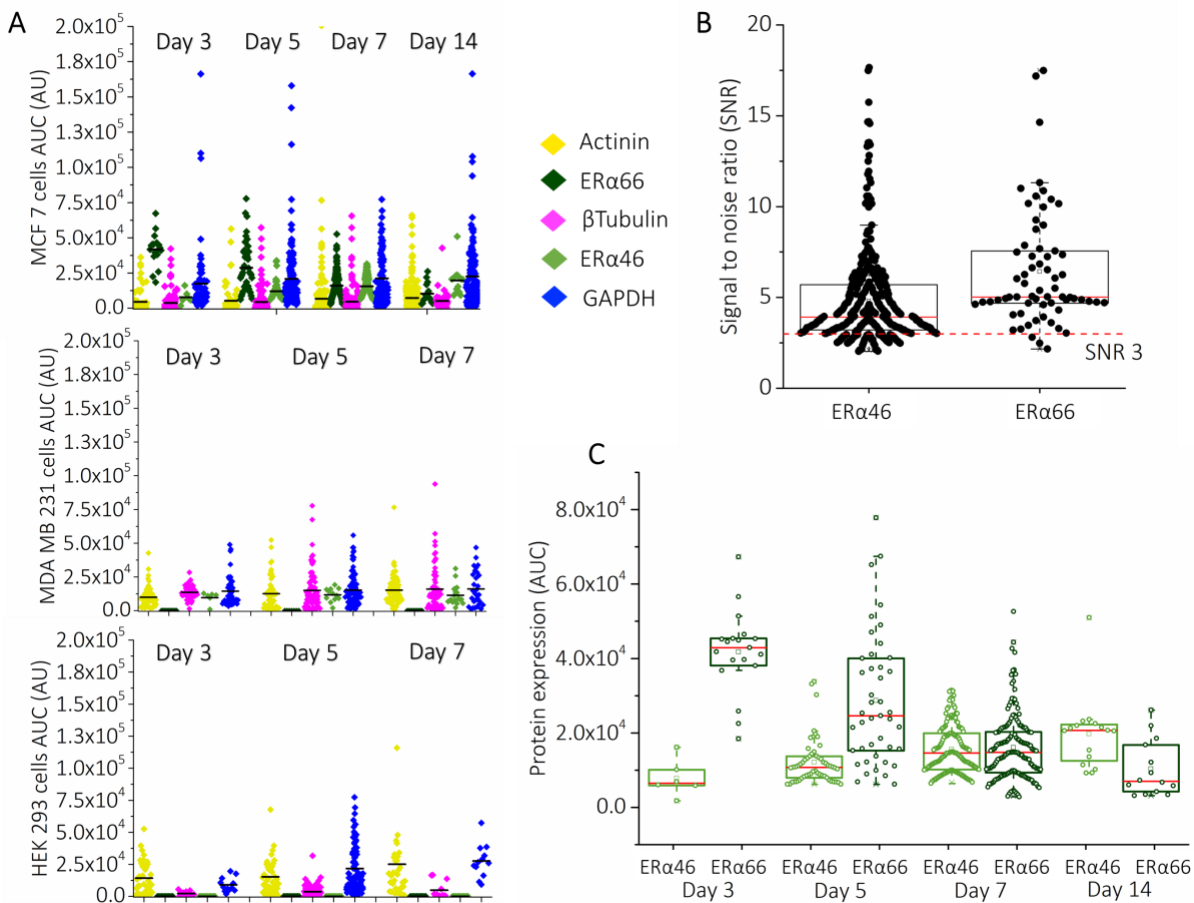


Fig. 4. Expression of ER α isoforms change over confluency of cell culture. MCF 7 cells are shown as the model ER α positive organisms, whereas MDA MB 231 and HEK 293 serve as the ER α negative control cell lines. **(A)** Color-coded beeswarm graphs show single-cell protein measurements in subsequent cell culturing days for MCF 7, MDA MB 231, and HEK 293 cell lines. The black bars present the median protein expression level for each group. **(B)** Signal-to-noise ratio (SNR) for ER α isoforms. Red dashed line presents SNR = 3, above which protein quantification was employed for all measurements, $n_{\text{total}} = 447$. **(C)** The grouped box plots show fluctuations in ER α isoform expression over 14 days in MCF 7 cells ($n = 478$ cells). Microparticles reported an gradual increase in the number of cells expressing ER α 46 (green), while the expression of ER α 66 (blue) dropped gradually over 14 days.