

# Genetic Monitoring and Molecular Phylogeny for Cymothoid Isopod Invasion in Egyptian Lake Qarun Fishes by Using adopted taxonomic marker (COI).

Mohamed A. Hassan<sup>1</sup>

1- Central Research Lab of General Authority For Fish Resources Development (GAFRD), Egypt.

**Abstract:** Different types of aquatic ecosystem is abundant by a lot of crustaceans. There are species adapted to maximum of temperature, pressure and salinity. Isopods are a marine parasitic organism and commonly live in warmer seas. They are feeding on blood. Several species settle in the buccal cavity of fish. Parasite became a morbidity case in lake Qarun, GAFRD (General Authority for fish resources development, Fish Statistics yearbook, 2015). DNA barcoding gene (COI gene) was used to make the genetic characterization for the invasive species of Cymothoidae, *Cymothoidae sp* and recorded in the Genbank. Constructing a phylogeny depending on the degree of similarity between the new record (LC138010.1) and the other records of Cymothoidae species in the Genebank then the environmental conditions were compared according to the analysis of the constructed tree. Suez canal is the primary resource for the fingers of mullet which transferred to Qarun Lake (salinity, 49 ppt). Ballast water have an environmental effect by transferring the alien species in the Suez Gulf which have a warm weather. This study suggests that the Cymothoidae is expanded invasive species came from its habitat regions to a closed lakes which have a similar condition of water environment, temperature and depth to live and to be a morbidity in Lake Qarun. Ballast water is a risky way to transfer the invasive species to Suez Canal then New Suez Canal poses and lead to biodiversity risks. Using eDNA techniques to diagnose the invasive species is very important unit which must be established in general authorities of fish resources and development in Egypt and other countries which invaded by different alien species.

**Key words:** Ballast water, Cymothoidae, DNA barcoding gene, invasive species.

## 1. Introduction

Lake Qarun (Birket Qarun), is known as an old natural lake in Egypt, located in Fayoum and the distance from Cairo is about 90 kilo meter southern Cairo. It is an inland closed sink of water with surface area of about 330 Km<sup>2</sup>, described by high salinity and the increasing of evaporation during summer [1]. The Cymothoidae is an ectoparasite which became a morbidity case in Lake Qarun in the summer of year 2015 [2]. The problem was gradually propagated reaching a terrible invasion causing fish mass loss, great marketing problem and drop of fish stock that lead to economic losses in addition to the impact on fishermen who working in this area [3]. The species of

*Tilapia zillii* (important fishes are infested by Cymothoids (Crustacean: Isopoda; Cymothoidae), Cymothoids are hermaphrodites and nurturing on blood and different tissues of their suitable host [4]. Isopod species occupy the buccal cavity, inhabit the respiratory cavity or attached to the surface of body. The water salinity in Lake Qarun ranged between 42 and 49 ppt. and in Gulf of Suez ranged between 40 and 42 ppt. Water Temperature ranged between 25.5 and 35.7 °C in Lake Qarun but ranged between 29.3 and 33.4 °C in Gulf of Suez [5]. Shifting host species happened to Cymothoids species and the molecular phylogeny for 27 Cymothoid species using 16s rDNA and COI gene recommended that Cymothoids may have originated in deep seas, then diffused to shallow seas, and then to brackish or freshwater [6]. Host specificity and host range vary among. In general, however, cymothoids that attach to

---

**Corresponding author:** Mohamed Ahmed Ezzelreagl Hassan, M.Sc of Genetics and PhD in bioinformatics, Freelance Bioinformatics, Research specialist in GAFRD (Molecular taxonomy and ecology research lab at the General Authority for Fish Resources Development).

**Genetic Monitoring and Molecular Phylogeny for Cymothoid Isopod Invasion in Lake Qarun Fishes by Using DNA Barcoding gene**

## Genetic Monitoring and Molecular Phylogeny for Cymothoid Isopod Invasion in Lake Qarun Fishes by Using DNA Barcoding gene

### 2.3 PCR and sequencing

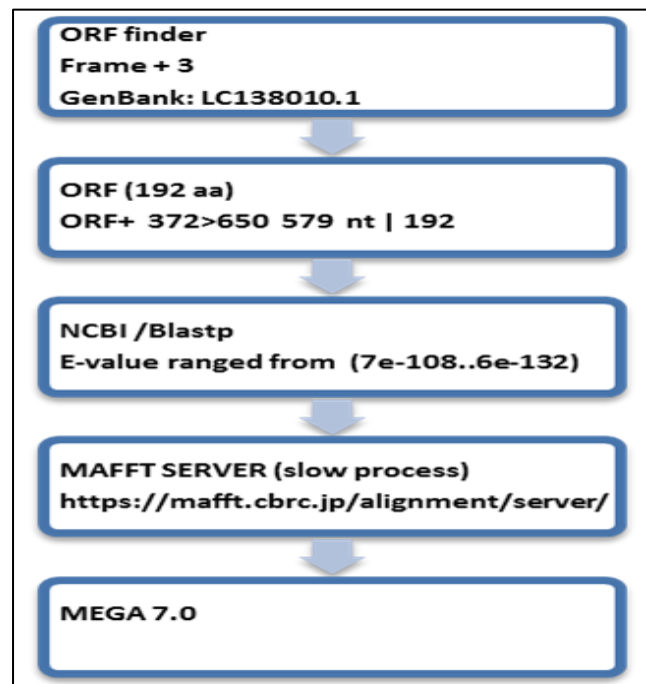
PCR amplification for the the COI regions of mtDNA was performed by using the forward primer, LCO1490 (5' ggtaacaaatcataaagatattgg 3') and reverse primer, HCO2198 (5' taaacttcagggtgaccaaataca 3') according to [16] . PCR was performed in 50 µl reaction volume containing 25µl of Taq Master (2x), Jena bioscience, 1-2 µl each primer (0.05 µM for each primer) and DNA template (DNA concentration ≈35-50 ng/ µl) .The thermal cycle profile was as follows: initial denaturation at 94 °C for 10 min; 30 cycles of 94 °C for 30 s, 48 °C for 1 min, and 72 °C for 1 min; and a final extension at 72 °C for 10 min. PCR products were purified from agarose gel using kit of jena bioscience (kiT# PP-202S) then subjected to direct cycle sequencing by using BigDye Terminator technology (Applied- Biosystems)

### 2.4 Sequence analysis and submission to DDBJ

The COI fragment of *Cymothoidae sp* which sequenced was submitted to DNA Data Bank of Japan under accession number (LC138010.1) and used as a query sequence to hit the database of gene bank then downloaded as local aligned sequences. All the steps of analysis started by a tool named open reading frame finder (ORFfinder), <https://www.ncbi.nlm.nih.gov/orffinder/>. Using translated table amino acid 5.0 of invertebrates which returned the range of each ORF (Open Reading Frames), along with its protein translation then the Blastp program was available as an online server of Protein Blast (<https://blast.ncbi.nlm.nih.gov/Blast.cgi>) was used to find the homologues sequences which recorded in the Genbank. The Mafft sever for multiple sequences alignment (using the slow option of the algorithm , G-INS-1 (Slow; progressive method with an accurate guide tree). MEGA program ver 7.0 was used to Estimate Maximum-Likelihood Phylogenies: by using maximum likelihood ML statistical method and adjusted the value of bootstrapping option to be 500. The main steps were concluded in (Fig. 4).

### 2.5 sequence analysis to find pattern

The GenBank record (BAU78233.1), of protein sequence, cytochrome c oxidase subunit I, partial (mitochondrion) [*Elthusa vulgaris*] was a cross reference for the accession number (LC138010.1) nucleotide sequence and retrieved to hit the protein database sequence by using Blastp to find the homologues protein records(The Sequences which produced a significant alignments were 100 records of Cymothoidae isopods). The protein homologus sequences were aligned by MAFFT server to construct the multiple sequence alignment blocks where the longest and conserved block was copied and past from the MAFFT result of multiple sequence alignment by using Jalview viewer (version 2.10.5) and exported to be as a fast format records of the detected conserved block .The exported fasta records of the conserved block were processed by an online server which used to expect a perect pattern of proteins fasta format records, Pratt algorithm of EBI analysis tool. The Pratt algorithm (<https://www.ebi.ac.uk/Tools/pfa/pratt/>) was used to find a specific pattern among the cymothiodae species.



(Fig. 4) The main steps to construct the phylogeny.

## Genetic Monitoring and Molecular Phylogeny for Cymothoid Isopod Invasion in Lake Qarun Fishes by Using DNA Barcoding gene

### 3.0 Results and discussions

#### 3.1 Expected size of PCR

The expected size of COI gene which produced by PCR was 672 and after trimming 20 bp (right and left sequences) of chromatogram curve the processed file of ABI file of the sequencer was 652 bp and then converted to fasta format file. The file was processed and annotated then submitted to gene bank under accession number (LC138010.1).

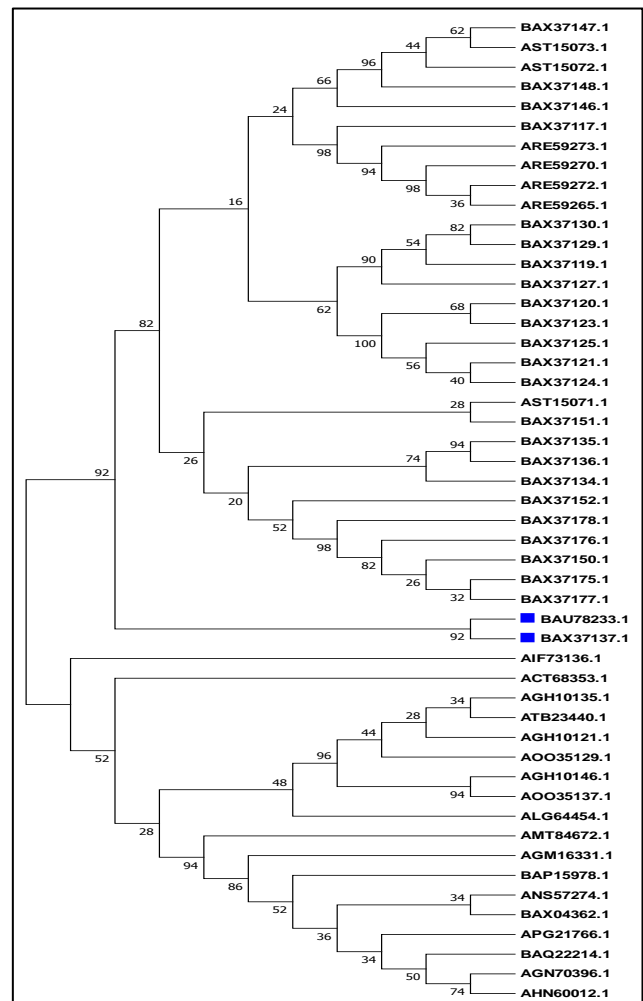
#### 3.2 Construction of Cymothoids phylogeny

In the present study, the tree was constructed depending on COI genes and the combined dataset. The translated frame of the accession number (LC138010.1) was used as a query sequence (192 a.a) to target the database of protein records of COI gene. The homologues amino acid sequences which gave significant score of pairwise alignment where the E-values were ranged from ( $7e^{-108}$ .. $6e^{-132}$ ) to indicate for high a similarity between the recorded sequences and the translated query sequence (LC138010.1). The local aligned amino acid sequences were downloaded and aligned by Mafft algorithm to produce MSA, Multiple Sequence Alignment. The output of multiple sequence alignment was used to construct the tree by MEGA 7.0 as illustrated in (Fig. 5). The evolutionary history was inferred by using the Maximum Likelihood method based on the JTT matrix-based model. The bootstrap consensus tree inferred from 50 replicates. Was taken to represent the evolutionary history of the taxa analysed. Branches corresponding to partitions reproduced in less than 50% bootstrap replicates are collapsed. The percentage of replicate trees in which the associated taxa clustered together in the bootstrap test (50 replicates) are shown next to the branches. Initial tree(s) for the heuristic search were obtained automatically by applying Neighbor-Join and BioNJ algorithms to a matrix of pairwise distances estimated using a JTT model, and then selecting the topology with superior log likelihood value. The analysis involved 50 amino acid sequences.

All positions containing gaps and missing data were eliminated. There were a total of 184 positions in the final dataset. Evolutionary. analyses were conducted in MEGA7 [14].

#### 3.3 phylogeny analysis and interpretation

The trees indicated that the invasive species (*Cymothoidae* sp) in Lake Qarun (BAU78233.1, translated in silicon of submitted accession number LC138010.1) was closely related to the *Cymothoidae* sp. Cy150091 which had the accession number (BAX37137). The environment in Lake Qarun was increased in salinity and reducing in dissolved oxygen where the DO was 3.5 ppm at depth 3m [4] and [5], which is a suitable environment for *Elthusa* sp. to be more in the lake. Marine cymothoids are almost limited occupant of shallow water, little of them being known



(Fig. 5) Molecular Phylogenetic analysis by Maximum Likelihood method.

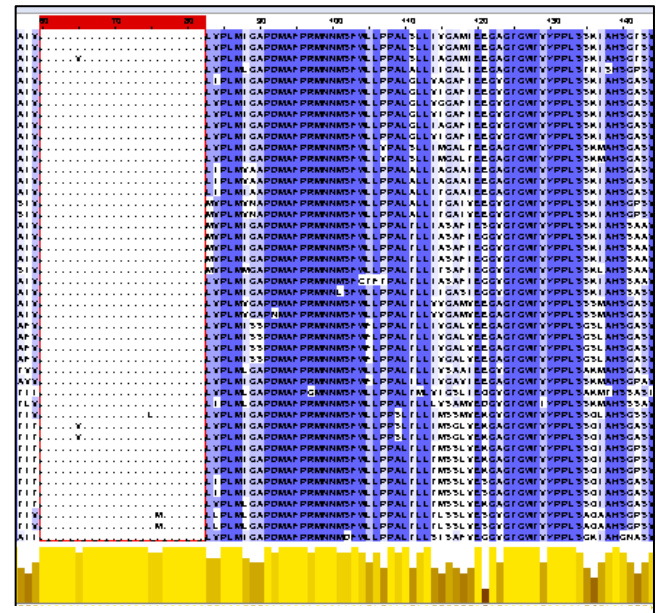
Genetic Monitoring and Molecular Phylogeny for Cymothoid Isopod Invasion in Lake Qarun Fishes by Using DNA Barcoding gene

from long depths [11]. The depth of the collected Cymothoidae from the shallower (eastern basin) Location of Qarun Lake was 7m [17] that was approximately similar to the environments of (Cymothoidae sp. Cy150091, (BAX37137)). Cymothoidae sp. Cy150091 was located at 12 m in the location : unabe, Okinawa, JPN) [6]. The protein accession number was coded by its nucleotide accession number and annotated in the GenBank as follows : the nucleotide accession number was translated by “/transl\_table=5” and coded as follows, “/coded\_by=LC138010.1: 45..>652”. All the previous annotations were used to annotate the accession number (LC138010.1) and produced the protein accession number (BAU78233.1). The depth of the shallower (eastern basin) Location of Qarun Lake, Fayoum, Egypt has a depth from 5m to 8.4m [17]. The main problem came from the Transferring the fingers of *Mugil cephalus* from Suez Gulf which infested by the Cymothoidae species. The water environment in Lake Qarun is similar to the environment of Suez Gulf; the water salinity in Lake Qarun ranged between 42 and 49 ppt. and in Gulf of Suez ranged between 40 and 42 ppt [5]. Water Temperature ranged between 25.5 and 35.7 C° in Lake Qarun but ranged between 29.3 and 33.4 C° in Gulf of Suez [5]. Ballast Water Bringing Invasive Species to Coasts. Maritime traffic could bring alien species as Cymothoidae alien species · New Suez Canal poses biodiversity risks for Malta [12]. Historically, the bio fouling of ships’ hulls has always been considered the oldest tools that causing the bringing of marine invasive species. in the last few years, studies have been concentrated mainly towards the introduction of non-indigenous species (invasive species) via ballast water [13].

**3.4 Pattern of the highly conserved blocks**

Patterns of DNA variation were connected to function of the amino acid sequence in an important parts of the enzyme. Six amino acid sites show variation with possible effects on enzyme function [19]

The aligned sequences (100 records of Cymothoidae which similar to the query sequence (BAU78233) produced by MAFFT sever where 100 sequences had 528 total sites, 123 gap-free sites and 123 conserved sites. The longest and highest conserved block had 23



(Fig. 6) The conserved block between the cytochrome c oxidase subunit 1 and illustrated the different 6 amino acids across the conserved column.

>Consensus/1-23 Percentage Identity Consensus: (TAHAF[I/V]MIFFMVMPPI[M/L][I/M]JGGFGNW) as illustrated in (Fig. 6).

The best pattern which produced by Pratt algorithm was characterized and processed to be a best patterns with alignments(A-H-A-F-x-M-I-F-F-M-V-M-P-I-x(2)-G-G-F-G-N-W)

**4. Conclusion**

Ballast Water Bringing Invasive Species to Coasts. Maritime traffic could bring alien species as Cymothoidae alien species · New Suez Canal poses biodiversity risks. Using eDNA techniques to diagnose the invasive species is very important unit which must be established in general authorities of fish resources and development in Egypt and other countries which invaded by different alien species. Searching for motifs which related to cytochrome c oxidase subunit 1 of

## Genetic Monitoring and Molecular Phylogeny for Cymothoid Isopod Invasion in Lake Qarun Fishes by Using DNA Barcoding gene

Cymothoidae and linked to environment which invaded by marine isopods

### 5. Acknowledgement

My deepest thanks to the Chemist Mona Habib, the manager of central lab of General Authority For Fish Resources Development (GAFRD), Egypt and Dr., Doae Mohamed , Department of ecology and environmental research (GAFRD) to support me during the collection of the samples from Lake Qarun and supporting me by the environmental references.

### 6. References

- 1- Gupta, G., & Abd El-Hamid, Z. (2003). Water quality of lake Qarun, Egypt. *International journal of environmental studies*, 60(6), 651-657.
- 2- General Authority for Fish Resources GAFRD, Cairo, Egypt. (2015). **Fish Statistics yearbook**.
- 3- Nisreen E Mahmoud, M M Fahmy and Mai Abuowarda, M (2017): An Investigation of Cymothoid Isopod Invasion in Lake Qarun Fishes with Preliminary Trial for Biological Control . *International Journal of Chem Tech Research*, Vol.10, No.12, pp 409-416.
- 4- Nisreen E. Mahmoud, M.M.Fahmy, Mai Abuowarda.M and Marwa S. Khattab2 (2017): Parasitic Cymothoid Isopods and their Impacts in Commercially Important Fishes From Lake Qarun, Egypt. *International Journal of Chem Tech Research*, Vol.9, No.12, pp 221-229.
- 4- Gupta, G., & Abd El- Hamid, Z. (2003). Water quality of lake Qarun, Egypt. *Intern. J. Environ. Studies*, 60(6), 651-657.
- 5- Abdelaziz, M., Ibrahim, M. D., Ibrahim, M. A., Abu-Elala, N. M., & Abdel-moneam, D. A. (2017). Monitoring of different vibrio species affecting marine fishes in Lake Qarun and Gulf of Suez: Phenotypic and molecular characterization. *The Egyptian Journal of Aquatic Research*, 43(2), 141-146.
- 6-Hata, H., Sogabe, A., Tada, S., Nishimoto, R., Nakano, R., Kohya, N. & Kawanishi, R. (2017). Molecular phylogeny of obligate fish parasites of the family Cymothoidae (Isopoda, Crustacea): evolution of the attachment mode to host fish and the habitat shift from saline water to freshwater. *Marine Biology*, 164(5), 105.
- 7-Ketmaier V, Joyce DA, Horton T, Mariani S (2008) A molecular phylogenetic framework for the evolution of parasitic strategies in cymothoid isopods (Crustacea). *J Zool Syst Evol Res* 46:19–23.
- 8-Hadfield KA, Bruce NL, Smit NJ (2015) Review of *Mothocya* Costa in Hope 1851 Crustacea Isopoda Cymothoidae from southern Africa, with the description of a new species. *Afr Zool* 50:147–163.
- 9-Tsai, M. L., & Dai, C. F. (1999). *Ichthyoxenus fushanensis*, new species (Isopoda: Cymothoidae), parasite of the fresh-water fish *Varicorhinus barbatulus* from northern Taiwan. *Journal of Crustacean Biology*, 19(4), 917-923.
- 10- Por, F. D. "The Influx of Red Sea Biota into the Mediterranean by way of the Suez Canal, vol. 23." (1978).
- 11- Brusca, R. C. (1981). A monograph on the Isopoda Cymothoidae (Crustacea) of the eastern Pacific. *Zoological Journal of the Linnean Society*, 73(2), 117-199.
- 12- Fuchs, C. (2008). Convention on International Trade in Endangered Species of Wild Fauna and Flora (CITES)-Conservation Efforts Undermine the Legality Principle. *German LJ*, 9, 1565.
- 13- Bouda, A., el Islam Bachari, N., Nacef, L., & Bensari, B. (2017). Risk Analysis of Invasive Species Introduction in the Port of Arzew, by Calculation of Biofouling Surface on Ships' Hulls. *Environmental Modeling & Assessment*, 1-8. Chicago.
- 14- Sudhir Kumar, Glen Stecher, and Koichiro Tamura (2015) MEGA7: Molecular Evolutionary Genetics Analysis version 7.0. *Molecular Biology and Evolution* (submitted).

**Genetic Monitoring and Molecular Phylogeny for Cymothoid Isopod Invasion in Lake Qarun Fishes by Using DNA Barcoding gene**

15- Ota, Y., Hoshino, O., Hirose, M., Tanaka, K., & Hirose, E. (2012). Third-stage larva shifts host fish from teleost to elasmobranch in the temporary parasitic isopod, *Gnathia trimaculata* (Crustacea; Gnathiidae). *Marine biology*, 159(10), 2333-2347.

16- Vrijenhoek, R. "DNA primers for amplification of mitochondrial cytochrome c oxidase subunit I from diverse metazoan invertebrates." *Mol Mar Biol Biotechnol* 3.5 (1994): 294-9.

17- Abdel-Satar, A. M., & Sayed, M. F. (2010). Sequential fractionation of phosphorus in sediments of El-Fayum lakes—Egypt. *Environmental monitoring and assessment*, 169(1-4), 169-178.

18- Mohamed, F. A. (2009). Histopathological studies on *Tilapia zillii* and *Solea vulgaris* from Lake Qarun, Egypt. *World Journal of Fish and Marine Sciences*, 1(1), 29-39.

Pentinsaari, M., Salmela, H., Mutanen, M., & Roslin, T. (2016). Molecular evolution of a widely-adopted taxonomic marker (COI) across the animal tree of life. *Scientific Reports*, 6, 35275.