

Loss of interplay: Frontoparietal dynamics underlie working memory deficits in multiple sclerosis

Working memory dynamics in multiple sclerosis

Authors:

Alejandra Figueroa-Vargas^{*1}, Claudia Cárcamo², Rodrigo Henríquez³, Francisco Zamorano¹, Ethel Ciampi^{2,4}, Reinaldo Uribe^{2,4}, Vásquez Macarena², Francisco Aboitiz³, Pablo Billeke^{*1}

1 Laboratorio de Neurociencia Social y Neuromodulación, Centro de Investigación en Complejidad Social (neuroCICS), Universidad del Desarrollo, Santiago de Chile.

2 Departamento de Neurología, Hospital Clínico de la Pontificia Universidad Católica de Chile.

3 Departamento de Psiquiatría, Escuela de Medicina, and Centro Interdisciplinario de Neurociencias, Pontificia Universidad Católica de Chile.

4 Servicio de Neurología, Hospital Dr. Sótero del Río, Santiago de Chile.

* Corresponding authors: Alejandra Figueroa V. , amfigueroa@udd.cl and Pablo Billeke, pbilleke@udd.cl, Avenida Las Condes #12461, Torre 3, oficina #307, Las Condes, Santiago de Chile, CP: 7550000

Abstract

Multiple sclerosis is a chronic demyelinating disease of the central nervous system that provokes motor, cognitive and neuropsychiatric symptoms. Cognitive symptoms are a core feature of the disease, affecting everyday life functioning in 40 to 70% of patients. Working Memory impairment is one of the most common cognitive deficits, crucially affecting goal-directed behavior. However, evidence of the neurobiological mechanisms underlying these impairments is scarce. To address this issue, we investigated a working memory task concomitantly with electroencephalographic records in twenty patients with relapsing-remitting multiple sclerosis who had minimal clinical cognitive alteration, and in twenty healthy control subjects. Participants first watched a memory set of two, four, or six consonants that had to be memorized and, after a black screen that was shown for two seconds, a target stimulus was displayed. We correlated both time-frequency and functional brain connectivity with memory load and behavioral performance. We found that patients and healthy controls presented similar accuracy rates. For high memory loads, patients demonstrated longer reaction times for incorrect responses when the probe was part of the memory set, revealing an increase in cognitive effort. We then evaluated the single trial correlation between the power of the oscillatory activity and the memory load. The healthy control group showed an increase of left frontal and parietal theta activity, while the patient group did not show this increase. The analysis of the successful memory performances demonstrated that controls presented a greater medial theta activity during the maintenance stage; whereas, the patient group showed a decrease in this activity. Interestingly, cortical connectivity analyses using Granger Causality revealed that healthy controls presented a load-modulated progression of the frontal-to-parietal connectivity that indicated successful memory performance, while the patients did not show this pattern. Consistently, phase-amplitude coupling analyses showed that this connectivity was carried out by frontal delta/theta phase to parietal gamma amplitude modulation. Frontal-to-parietal connectivity correlated with working memory capacity in patients measure by Paced Auditory Serial Addition Test. These results indicate that patients with multiple sclerosis present alterations in their capacity to sustain oscillatory dynamics that maintain information in working memory. Thus, differences in brain oscillations and connectivity could be useful for early detection and to study working memory alterations in multiple sclerosis, as well as to implement new therapeutic interventions using non-invasive brain stimulation.

Keywords:

EEG, Theta activity, Cognitive Deficit, Neurodegenerative Disease.

Abbreviations:

BVMT-R = Brief Visuospatial Memory Test-Revised

CBP = Cluster-based permutation

CCC = Circular Correlation Coefficient

CSD = Current Source Density

CVLT-VII = California Verbal Learning Test

EDSS = Expanded Disability Status Scale

GC = Granger Causality

GLM = General Linear Model

ICA = Independent Component Analysis

PAC = Phase-amplitude Coupling

PASAT = Paced Auditory Serial Addition Test

PFC = prefrontal cortex

RR = relapsing-remitting

RT = Reaction Time

SDMT = Symbol Digit Modalities Test

WM = Working Memory

Introduction

Multiple Sclerosis is a chronic demyelinating disease of the Central Nervous System (Ntranos and Lublin, 2016). The physiopathology is based on deregulation of the immune system generating motor, cognitive, and neuropsychiatric symptoms (Rottoli et al. 2017, Chiaravalloti et al., 2008, Ferreira et al., 2010, Rogers et al., 2007, Squillace et al., 2015, Burschka et al., 2014; Keune et al., 2017). Multiple sclerosis pathology contains focal lesions, normal-appearing tissue damage, and atrophy that affects both the white and grey matter tissue (Eijlers et al., 2018), altering the processing and transferring of information among cortical and subcortical regions (Filippi et al., 2018). Cognitive impairments are present in 40 to 70% of patients, affecting their professional development, personal relationships, mood and quality of life (Amato et al., 2001; Benito-León et al., 2002; Leavitt et al., 2018; Hansen et al., 2015; Benedict and Zivadinov, 2011; Rocca et al., 2015). These symptoms can be detected from early phases of the disease and may include alterations in information processing speed, attention, executive functions, and working memory (WM) (Amato and Zipoli, 2010; Amato and Goretti, 2016; Korakas and Tsolaki, 2016; Sumowski, 2015). Since human cognition critically depends on WM, an ability that enables us to adaptively maintain and manipulate information according to the demands of the environment, alterations in this process seem to be a key step in cognitive alterations in patients with multiple sclerosis. Researchers confirmed WM alterations are a habitual impairment, affecting patients early in the course of the disease (Lengenfelder et al., 2006; Leavitt et al., 2018; Costa et al., 2017; Chiaravalloti and DeLuca, 2008).

WM is a hierarchical process that links sensory representations to specific responses, through intermediate representations relevant to the task and action plans (Christophel et al., 2017). A distributed network of brain areas participates in this process, exhibiting sustained activity during the period of WM maintenance in the absence of sensory stimuli (Constantinidis and Klingberg, 2016). Researchers believe this sustained activity is generated by reverberant discharges in an interconnected prefrontal cortex (PFC) network, and between the PFC and other brain areas, such as the posterior parietal lobe, the inferior temporal cortex, and subcortical structures (Constantinidis and Klingberg, 2016). PFC activity is involved not only in the storage of information but also in a control process that sustains reverberant activity and eventually manipulates WM information (Johnson et al., 2017; Ester et al., 2015). Electrophysiological studies have revealed the crucial participation of oscillatory activity in theta (4-8 Hz), alpha (8-12 Hz), and gamma (30-100 Hz) bands in WM (Lisman, 2010; Hsieh and Ranganath, 2014; Johnson et al., 2017; Albouy et al., 2017). During the maintenance stage, memory load increases theta activity and theta-gamma coupling in frontal and temporo-parietal regions (Lisman, 2010; Siebenhühner et al., 2016; Daume et al., 2016; Larrain-Valenzuela et al., 2017; Alekseichuk et al., 2016), and, related medial frontal theta activity controls processes and successful memory storage (Daume et al., 2017). EEG and MEG studies have shown a greater synchrony between the frontal and parietal regions associated with the amount of information successfully maintained in WM (Kawasaki et al., 2014; Daume et al., 2017; Siebenhühner et al., 2016).

Along this, the neurobiological mechanism underlying WM alterations in multiple sclerosis are not well known. Successful WM needs the coordination of distributed brain networks that are especially sensitive to the diffuse damage of white and grey matter found in multiple sclerosis (Feuillet et al., 2007; Damasceno et al., 2015; Damasceno et al., 2016). Several reports indicate very early alterations in cortico-cortical connectivity in multiple sclerosis (Rimkus et al., 2018). Both functional and structural brain imaging techniques have revealed alterations in brain network connectivity patterns in patients with minimal or low cognitive disabilities (Rimkus et al., 2018; Gamboa et al., 2014; Zito et al., 2014). EEG studies have found a decrease in alpha and theta band coherence between the anterior and posterior electrodes, as well as between inter-hemispheric regions during rest. These alterations seem to be related to both cognitive deficits and subcortical lesion burden (Leocani and Comi, 2000; Leocani, 2000). In early stages of multiple sclerosis, adaptive functional changes occur to compensate for structural damage (Strober et al., 2014; Rao et al., 2014; Dineen et al., 2009;

Gamboa et al., 2014) and thus limit the clinical manifestations of damaged tissue (Audoin et al., 2005). Thus, a functional marker of the cognitive alterations for early stages of the disease with minimal clinical manifestations would be relevant to address early cognitive rehabilitation. Additionally, the identification of the precise functional alterations in the oscillatory patterns opens the opportunity to plan specific interventions using, for example, non-invasive brain stimulation. Therefore, the aim of our study was to assess the neurophysiological underpinnings of alterations in the cortical circuits that support WM in multiple sclerosis. We hypothesized that WM impairments in patients with multiple sclerosis are due to an impairment in the maintenance of activity in the fronto-parietal network that is reflected in a reorganization of cortical oscillatory dynamics. Specifically, we predicted that i) multiple sclerosis alters the progressive increases of power of both theta and alpha oscillatory activity in relation to the increases of memory load; and that ii) fronto-parietal theta connectivity underlying successful memory information maintenance is impaired in patients with multiple sclerosis.

To address this issue, we recorded EEG activity of forty individuals. Twenty patients had relapsing-remitting multiple sclerosis with minimal clinical cognitive alterations and twenty healthy control subjects solved working memory tasks. Importantly, the identification of the precise neurophysiological dynamics underlying WM alteration in patients with multiple sclerosis could contribute to both early detection and development of specific cognitive rehabilitation interventions (Constantinidis and Klingberg, 2016; Kucewicz et al., 2017)

Materials and methods

Design and Participants

Our study is a case-control design that include 40 participants. A sample consists of 20 patients with relapsing-remitting multiple sclerosis in an early stage, with minimal to no clinical evidence of cognitive alterations (Table 1). According to the 2010 McDonald Criteria, the medical diagnosis was made by a Neurologist (Polman, 2011). Stable patients without episodes of relapses in the last month, with scores of three or more on the Expanded Disability Status Scale (EDSS) (Kurtzke, 1983), with less than -1.5 z-score of Paced Auditory Serial Addition Test (PASAT), with non-correctable visual alterations, with a history of traumatic brain injury, neurological and/or psychiatric pathologies, and abuse or regular consumption of drugs or alcohol were excluded. The patients participated in the study while on their usual disease modifying therapies. The control group was composed of 20 healthy

volunteers, comparable in age, sex, manual preference, and educational level (Table 1). As well as in the patient group, healthy subjects with non-correctable visual alterations, with a history of neurological and/or psychiatric pathologies, traumatic brain injury, and abuse or regular consumption of drugs or alcohol were excluded. All participants were Spanish native speakers and provided signed informed consent prior to participation in the study. All the experimental protocols were approved by the Ethics Committee of the Pontificia Universidad Católica de Chile.

Patients underwent neuropsychological assessment during the month previous to the EEG session (Sumowski et al., 2018). These assessments included PASAT (Rao et al., 1989) that measures cognitive processing speed and working memory, Symbol Digit Modalities Test (SDMT) that measures cognitive processing speed, the Brief Visuospatial Memory Test-Revised (BVM-T-R) that measures visuospatial memory, and the California Verbal Learning Test (CVLT-VII) that measures verbal memory. Details are summarized in Table 1.

Experimental Task

A task based on the Sternberg's Memory Scanning task (Jensen and Tesche, 2002) was used. This task consisted of a list of consonants simultaneously presented and displayed in a circular arrangement with a fixation cross in the center of a computer monitor located 57 cm from the subject. The letter "Y" was not included in the memory set to avoid the generation of words that could be used as clues by the subjects. Each memory set arrangement consisted of groups of two, four, or six consonants. All the stimuli were placed foveally, minimizing the effect generated by saccadic movements (see the experimental task outlined in Figure 1). Each memory set was presented for 1800 ms (encoding period), followed by a black screen with the fixation cross (maintenance period) of 2000 ms and then a recovery period in which the fixation point was replaced by a target stimulus for 1000 ms. The subjects were instructed to memorize the memory set and then report whether the target stimulus was present or absent in the memory set, using the right or left hand alternately. Subjects had 2200 ms to answer. Each subject had to respond 270 trials (90 trials for each memory load set). The trials were presented in two main blocks divided by a pause regulated by the subject. In addition, each main block was constituted by 15 sub-blocks, formed by 9 trials of the same memory load each. The order of the memory load was randomized. Both the presentation of the stimuli and the recording of the test responses were done with the Software Presentation® (Version 13.0, www.neurobs.com).

Electrophysiological Recordings

Continuous EEG recordings were obtained with a 40-electrode EEG System (NuAmps , Neuroscan). All impedances were kept under 5k Ω . Electrode impedance was retested during pauses to ensure stable values throughout the experiment. All electrodes were referenced to averaged mastoids during acquisition and the signal was digitized at 1 kHz. Electro-oculogram was obtained with four electrodes. All recordings were acquired using Scan 4.3 and stored for off-line analysis. At the end of each session, electrode position and head points were digitalized using a 3D tracking system (Polhemus Isotrak).

Electrophysiological data analysis

EEG signals were preprocessed using a 0.1–100 Hz band-pass filter. Eye blinks were identified by a threshold criterion of ± 100 μ V, and their contribution was removed from each dataset using Independent Component Analysis (ICA). Other remaining artifacts (e.g., muscular artifacts) were detected by visual inspection of both the raw signal and the spectrogram. We thus obtained 243 ± 28 artifact-free trials per subject. All artifact-free trials were transformed into current source density (CSD) that was estimated using the spherical spline surface Laplacian algorithm suggested by Perrin et al., (1989) and implemented by Kayser and Tenke (2006a) and Kayser and Tenke (2006b). CSD computes the second spatial derivative of voltage between nearby electrode sites, acting as a high-pass spatial filter. The CSD transformation highlights local electrical activities at the expense of diminishing the representation of distal activities. Induced power distribution was computed using Wavelet transform, with a 5-cycle Morlet wavelet, in a -0.5 to 3.8 s window around the onset of the memory set stimuli. This time-window includes 0.5 seconds of inter stimulus interval, 1.8 seconds of the stimulus of the memory set and 2 seconds of maintenance period. For all analyses, we used the dB of power related to the baseline (15 seconds acquired in the beginning of each block).

Source Reconstruction

The neural current density time series at source levels were calculated by applying a weighted minimum norm to estimate inverse solution (Baillet et al., 2001) with unconstrained dipole orientations in single trials. We used a default anatomy of the Montreal Neurological Institute (MNI/Colin27) wrapped to the individual head shape (using ~ 300 head points per subject). We defined 3×4000 sources constrained to the segmented gray cortical volume (3 orthogonal

sources at each spatial location) in order to compute a three-layer (scalp, inner skull, outer skull) boundary element conductivity model and the physical forward model (Gramfort et al., 2010). The measured electrode level data $X(t) = [x_1(t), \dots, x_{n_electrode}(t)]$ is assumed to be linearly related to a set of cortical sources $Y(t) = [y_1(t), \dots, y_{m_source}(t)]$ and additive noise $N(t)$: $X(t) = LY(t) + N(t)$, where L is the physical forward model. The inverse solution was then derived $Y(t) = WX(t) = RL^T(LRL^T + \lambda^2 C)^{-1}X(t)$, where W is the inverse operator, R and C are the source and noise covariances, respectively, and the superscript T indicates the matrix transpose, and λ^2 is the regularization parameter, R is the identity matrix that was modified in order to implement depth-weighting (weighting exponent: 0.8, Lin et al., 2006). The regularization parameter λ was set 1/3. In order to estimate cortical activity at the cortical sources, the recorded raw EEG time series at the sensors $X(t)$ were multiplied by the inverse operator W to yield the estimated source current $Y(t)$ as a function of time. Since this is a linear transformation, it does not modify the spectral content of the underlying sources. Therefore, it is possible to undertake time–frequency analyses directly in the source space. Finally, we reduced the number of sources by keeping a single source at each spatial location that pointed into the direction of maximal variance. For this, we applied a principal component analysis to the covariance matrix obtained from the 3 orthogonal time series estimated at each source location. This resulted in a single filter for each spatial location that was then applied to the complex valued data in order to derive frequency specific single trial source estimates. This approach has been successfully used by our group, as well as by other groups (Billeke et al., 2015; Supp et al., 2011; Billeke et al., 2014). Since we used a small number of electrodes (40) and no individual anatomy for head model calculation, the spatial precision of the source estimations is limited. In order to minimize the possibility of erroneous results, we only present source estimations if there are both statistically significant differences at the electrode level and the differences at the source levels survive a multiple comparison correction (cluster based permutation test and vertex correction using false discovery rate, $q=0.05$).

Statistical analysis

We used the Kolmogorov-Smirnoff to test for normality. When the data did not meet the normal assumption, we used non-parametric tests. We evaluated pair comparisons using Wilcoxon test and Bonferroni correction. For the EEG statistical analysis, we first fitted a General Linear Model (GLM) of the power of the oscillatory activity per trial in each subject

(first level analysis, see (Larrain-Valenzuela et al., 2017; Soto-Icaza et al., 2019; Billeke et al., 2014)).

$$Power(f, t) = b_1 + b_2 * ML + b_{31} * SMP$$

where b_1 is the intercept, and b_2 is the slope or coefficient for the variable Memory Load (ML, ordinal variable that takes the value 2, 4, or 6 depending on the memory load condition) and b_3 is the slope for the variable Successful Memory Performance (SMP, dummy variable that takes the value 0 if the subject makes a mistake in this trail or 1 if the target stimulus is correctly identified). We thus obtained a 3D matrix of t-values (sensor, time, frequency) for each regressor and subject. We then explored for differences between groups and conditions using the Wilcoxon test (second level analysis). To correct for multiple comparisons in time-frequency charts, we used the Cluster-based Permutation (CBP) test (Maris and Oostenveld, 2007). Briefly, in this method, the clusters of significant areas were defined by pooling neighboring sites (in the time-frequency chart) that showed the same effect (uncorrected $p < .05$). The cluster-level statistics were computed as the sum of the statistics of all sites within the corresponding cluster (e.g., Z value for Wilcoxon test). We evaluated the cluster-level significance under the permutation distribution of the cluster that had the largest cluster-level statistics. The permutation distribution was obtained by randomly permuting the original data (i.e., permuting memory load label per trial for within-subject analyses or group label for between-subject analyses). After each permutation, the original statistics test was computed (i.e., Wilcoxon test), and the cluster-level statistics of the largest resulting cluster were used for the permutation distribution. After 1000 permutations, the cluster-level significance for each observed cluster was estimated as the proportion of elements of the permutation distribution larger than the cluster-level statistics of the corresponding cluster.

Casual interactions

To evaluate the influence of frontal regions over temporo-parietal regions, we estimated Granger Causality (GC) (Bressler and Seth, 2011) between selected electrodes (Fz and CP3). The causality was calculated over time series per trials. Each time-series was then detrended, demeaned, and first-order differencing was applied. The stationarity of the processed data was tested using the autocorrelation function for each electrode. Only trials with no violations of covariance stationarity were used in the analyses. Since neither the Akaike nor Bayesian

information (Seth 2005) criterion yielded conclusively an optimal model order, the lowest order that led to 80% of the data to be captured by the autoregressive model was used. Then, the GC terms were computed. Thus, we obtained a GC term per trial that was then used in the modeling analyses (see below).

Phase-amplitude coupling (PAC)

To evaluate cross-frequency modulation, we carried out a phase-amplitude coupling analysis (PAC) as described in (Billeke et al., 2017). Briefly, for a given frequency pair, the raw signal was filtered separately in both frequencies (zero phase shift non-causal finite impulse filter with 0.5 Hz roll-off). The lower frequency ranged from 1 to 35 Hz (0.4 Hz increments, 0.8 Hz filtered bandwidth) and the higher ranged from 5 to 120 Hz (1 Hz increments, 5 Hz filtered bandwidth). The phase of the lower frequency range and the amplitude of the higher frequency range were computed using Hilbert transformation. For each epoch of maintenance per each trial (1.8 to 3.8 s), we computed the circular-linear correlation between the phase of lower frequencies and the amplitude of higher frequencies. Thus, we obtained a circular correlation coefficient (CCC) per each trial and per each combination of pairs between the selected electrodes (Fz-Fz, Fz-Cp3, Cp3-Fz, Cp3-Cp3). Thus, we obtained a CCC per each trial and pair of electrodes that were used in the modeling analyses (see below).

GC and PAC modeling

For both GC and PAC analyses, we used the following modeling. At subject level analysis (first level analysis), we compared if the circular correlation coefficient (CCC) or granger coefficient (GC) variation correlated with the task parameters using multiple linear regression as the following equations depict:

$$CCC(phase, amplitude) = b_1 + b_2 * ML + b_3 * SMP + b_4 * SMP * ML$$

$$GC = b_1 + b_2 * ML + b_3 * SMP + b_4 * SMP * ML$$

At group level analysis per each frequency pair, we compared whether t values of each regressor were statistically different from zero using the Wilcoxon signed-rank test. For PAC analyses, we corrected for multiple comparisons using a CBP test (Maris and Oostenveld, 2007). The initial threshold for cluster detection was $p < 0.05$, and the final threshold for significant cluster was $p < 0.01$. For between-group comparison we used Wilcoxon rank-sum test and Bonferroni correction.

Software

All behavioral statistical analyses were performed in R. The EEG signal processing was implemented in MATLAB using CSD toolbox, in-house scripts (available online as LANtoolbox <http://neuroCICS.udd.cl/LANtoolbox.html>), BrainStorm (Tadel et al., 2011) and open MEEG toolboxes (Gramfort et al., 2010).

Data availability

All Data and script used for data analyses are free available on <http://neuroCICS.udd.cl>

Results

Behavioral

Both groups had over chance performance in all memory load conditions (Wilcoxon test, $p < 0.001$, Bonferroni corrected), without differences between groups ($p > 0.2$, uncorrected). Patients with multiple sclerosis presented a tendency to have less decrease in their performance in relation to the load increases (difference between load 2 and 6, control mean 0.14, patient mean 0.09, $p = 0.06$). In the following analysis, we focused on the high load memory condition because there were more errors and there were no differences between groups. We studied the reaction time (RT) as an index of cognitive effort, especially when an error occurred. Both groups presented longer RT for incorrect responses than for correct responses (Wilcoxon test, $p < 0.003$, Bonferroni corrected) without difference between groups. Additionally, we found that patients presented longer RT for incorrect responses when the probe was part of the memory set (incorrect match responses, EM), which led to significant differences between groups (Wilcoxon tests, $p = 0.047$).

Time-Frequency EEG Analysis

We studied the effect of both memory load and successful memory performance on the power of brain oscillatory activity. Regarding the effect of memory load, in the control group we found two effects as expected, a positive modulation in theta activity and a negative modulation in alpha/beta activity (Larrain-Valenzuela et al., 2017; Daume et al., 2017). In

contrast, we did not find modulations of theta band (6-11 Hz) in patients with multiple sclerosis, leading to a significant difference ($p=7 \times 10^{-7}$ CBP test) between groups in the initial stage of encoding in this frequency band (between 0.3 and 1 s, Figure 3 D-F). This difference in theta had a topographic distribution located in electrodes of the left hemisphere (Figure 3 I). When analyzing group differences during the maintenance stage, we observed differences in theta activity (5-9 Hz) in the period of 1.3 to 3.3 seconds ($p=0.008$), which corresponded to the final part of the encoding stage and the entire maintenance phase. The topographic distribution of this modulation was placed over frontoparietal regions with left predominance (Figure 3 M).

Next, we analyzed the oscillatory activity related to successful memory performance, that is, the specific activity in the trials in which subjects correctly respond to the target stimuli in relation to those trials where subjects make mistakes (Figure 4). We found that during the maintenance period (2.3 to 2.7 s), patients with multiple sclerosis showed a negative modulation in theta activity (5-11 Hz), while healthy subjects presented a positive modulation (Figure 4A). This led to a significant difference between groups ($p=0.01$) showing a medial frontal topographic distribution (Fig. 4C). Regarding the analysis of alpha activity (10 -15 Hz), we observed that healthy subjects presented a decrease in oscillatory activity in this band in the final period of encoding and beginning of maintenance with an occipital distribution, which was not observed in patients with multiple sclerosis (Figure 4 right). This led to differences between both groups ($p=0.008$) in parieto-occipital electrodes (Figure 4C right).

Source reconstruction

We carried out source reconstructions of the significant differences between groups in theta activity. For encoding we found that theta modulation was placed in left parietal and temporal cortex ($FDR < 0.05$ vertex corrected, and $p < 0.05$ cluster-corrected). Two additional clusters were found in right temporal and medial frontal cortex ($p < 0.05$ cluster-corrected). For maintenance, we found that the main modulation was placed again in left temporal and parietal lobes ($FDR < 0.05$ vertex corrected, and $p < 0.05$ cluster-corrected). Additionally, we found a cluster in right orbitofrontal cortex and right parietal cortex ($FDR < 0.05$ vertex corrected, and $p < 0.05$ cluster-corrected). For the modulation related to successful memory performance, the source of theta was placed over the medial prefrontal cortex ($FDR < 0.05$ vertex corrected, and $p < 0.05$ cluster corrected).

Connectivity

Considering the results of the oscillatory activity, we carried out a connectivity analysis. We selected a frontal electrode (Fz) and a left parietal electrode (Cp3), since modulation in theta for both memory load and successful memory maintenance were found in these electrodes. The following source reconstruction enabled us to infer that they represent frontal and temporo-parietal activity respectively. We first used GC that measures statistic dependency between signals (e.i., if one signal is useful in forecasting another signal). During the maintenance stage, we found that healthy subjects presented an increase in the parietal-to-frontal connectivity in the time domain, as an indicator of successful memory performance (-0.72 , $p=0.01$). This led to a significant difference in patients with multiple sclerosis, who did not present this modulation (diff, $p=0.009$, Figure 6 and Table 2). Additionally, this modulation changed in the interaction between memory load and successful memory performance, reversing the direction on high memory loads from frontal-to-parietal ($p=0.0089$, see Table 2 and Figure 6). Patients with multiple sclerosis did not show this pattern, demonstrating a significant difference when compared to healthy subjects ($p=0.04$, see Table 2). No significant modulations were found for the encoding period in both groups (Table 2).

We then used a complementary approach to infer directionality of the information. Brain connectivity between cortical regions is regulated principally by the projections between supragranular and infragranular layers (Jensen et al., 2015; Barbas and García-Cabezas, 2016). Connections originating in superficial and deep layers have distinct spectral fingerprints (Kopell et al., 2010; Buffalo et al., 2011). Thus, the interactions between frequency bands (analyzed by mean of cross-frequency coupling or PAC) can reveal the direction of information flow (Hillebrand et al., 2016; Bosman and Aboitiz, 2015). Thus, it is possible to infer that if the phase of a low frequency of one cortical area correlates with the amplitude of a higher frequency of another cortical area, the information flow could have this direction. Using a similar single trial modeling as in GC analyses, we found similar results. In healthy subjects, we found a modulation between the delta/theta phase of frontal area (Fz) and the gamma amplitude of parietal areas (CP3). This modulation correlated negatively with

successful memory performance but positively with the interaction between successful memory performance and memory load (Figure 6C). In contrast, we found a second modulation between the theta/alpha phase of parietal areas (CP3) and the beta amplitude of frontal areas (Fz), with the opposite patterns. This second modulation correlated positively with successful memory performance and memory load, but negatively with the interaction between successful memory performance and memory load (Figure 6C). None of these modulations were observed in patients with Multiple Sclerosis, leading to significant differences between groups.

Clinical Correlations

Finally, we explore whether the frontal to parietal connectivity correlated with clinical assessment. We used the regressor of the interaction between memory load and successful memory performance in Granger Causality analysis and the Neuropsychological test. Interestingly, in the patient group, the frontal-to-parietal connectivity was correlated with PASAT that measure WM capacity (Spearman correlation, $\rho=0.58$, $p=0.04$ Bonferroni corrected). None of the other tests showed significant correlation (SDMT, $\rho=0.03$, $p=0.8$; BVMTC, $\rho=-0.3$ $p=0.1$; CVLT-VII, $\rho=0.13$, $p=0.58$; Stroop, $\rho=-0.25$, $p=0.3$; all p s uncorrected).

Discussion

In this study we assessed the cortical circuits that support verbal working memory in patients with relapsing-remitting multiple sclerosis with minimal or no burden of neurological disability ($EDSS \leq 3$). These patients report a common clinical pattern of difficulties in the performance of daily cognitive tasks involving working memory, but without clear evidence in the clinical tests applied in their evaluation routines (Louapre et al., 2014; Schoonheim et al., 2015; Schoonhoven et al., 2018; Eijlers et al., 2018). Accordingly, we observed no significant differences in WM performance, but clear neurophysiological differences between patient and control groups. In the early stage of the disease, the clinical evaluations applied to multiple sclerosis patients without impairment often do not detect a deterioration of this cognitive function (Rimkus et al., 2018; Rao et al., 1989; Rao et al., 1991; Chiaravalloti and DeLuca, 2008). It has been proposed that in these early stages of disease, adaptive functional changes occur to compensate for network damage (Strober et al., 2014; Rao et al., 2014; Dineen et al., 2009; Gamboa et al., 2014) limiting clinical manifestations (Audoin et al., 2005). When

analyzing reaction times, we observed a significant increase in reaction times of incorrect responses when the stimulus was present in the encoding phase in the condition of high memory load. This could reflect an increase in the cognitive effort necessary to correctly solve the task and could be an early behavioral marker of WM impairment. In fact, reaction time analyses are a good marker of attention and cognitive control dynamics (Henríquez-Henríquez et al., 2014; Zamorano et al., 2017; Yordanova et al., 2011; Henríquez et al., 2016; Zamorano et al., 2014).

In spite of no clear evidence for behavioral impairments in WM, patients with multiple sclerosis demonstrated a distributed oscillatory activity reorganization. The ability to maintain a sustained activity in the fronto-parietal network in the absence of sensory stimuli depends on the synchronous structured activity of different frequency ranges (Roux and Uhlhaas, 2014). Our working memory task elicited a recognized oscillatory activity in a frontal and parietal network (Constantinidis and Klingberg, 2016; Nee and Brown, 2013; Rottschy et al., 2012; Palva et al., 2010). The power of the theta oscillatory activity correlated with the memory load increase and showed left lateralization, which could be related to the areas involved in language, i.e., the phonological loop, required for the specific information of our stimuli (consonants) (Makuuchi and Friederici, 2013; Larrain-Valenzuela et al., 2017). Additionally, when we correlated oscillatory activity with the subsequent memory performance, we found a modulation in theta activity in the medial frontal area. Low frequency synchronization between the medial frontal region and temporal cortex has been demonstrated in non-verbal WM tasks, probably reflecting cognitive control (Daume et al., 2016, 2017). Indeed, our connectivity analyses using both Granger Causality and PAC showed specific dynamics, in which frontal to parietal/temporal influences increased in function of memory load when a subsequent successful memory performance occurs. These findings are in line with several recent reports indicating that frontal interactions with other cortical areas are key aspects of successful memory performance (Johnson et al., 2018; Postle, 2017; Alekseichuk et al., 2016; Li et al., 2012).

In contrast, when we analyzed the oscillatory activity in patients with multiple sclerosis, we found a loss of the dynamics demonstrated in healthy subjects. The patient group did not present an increase in theta activity modulated by the memory load in parietal and temporal areas. In relation to the subsequent memory performance, the patient group presented an inverse pattern with a decrease in theta activity. These patterns could represent an additional and inefficient cognitive effort to keep the stimuli information active in WM, which

would be in accordance with the longer reaction times for erroneous responses in high memory load. In addition to this, the connectivity results showed that the patient group did not present an increase in frontal-to-parietal connectivity modulated by memory load and successful memory performance (Covey et al., 2017; Baltruschat et al., 2015). WM requires the synchronization of neural network connections distributed in the prefrontal and parietal regions in order to integrate complex information for generating appropriate responses. These distributed brain networks are especially sensitive to the diffuse damage of white and gray substance found in multiple sclerosis (Damasceno et al., 2015; Feuillet et al., 2007; Kim et al., 2017) .

Thus, our reported differences in the patient group are in accordance with recent findings in patients with mild or minimal cognitive deficit that show reorganization in electrophysiological activity (Covey et al., 2017; Forn et al., 2007). Patients could have fewer resources to maintain the stimuli in WM, but the presence of compensatory mechanisms may allow them to redistribute the remaining and available resources to achieve a similar performance to healthy subjects, as long as the tasks are not too demanding. It has been proposed that the central executive may be the main component of WM that is disrupted in cognitively impaired multiple sclerosis patients (Lengenfelder et al., 2006). This proposition is supported indirectly by evidence that suggests that the dorsolateral prefrontal cortex, which is thought to underlie executive control, is commonly recruited when there is heavy demand placed on WM in individuals with brain injury (Hillary et al., 2006). Our findings give further evidence to support this interpretation. Specifically, our results indicate that frontal theta activity related to successful memory performance is altered in patients with multiple sclerosis. Indeed, the frontal low frequency influences the gamma power in parietal and temporal areas, and this influence increases in relation to memory load increase. Patients fail to display this influence, and this failure could reflect the loss of the mechanisms by which the control process carried out by frontal areas produces a successful memory performance.

Studies using fMRI have found several changes in brain activity during WM tasks including decrease and increase in both connectivity and activity (Kolindorfer et al., 2013; Colorado et al., 2012). Early changes in the connectivity patterns have been interpreted as compensatory changes in prefrontal cortical regions underlying modulations of executive aspects of WM (Audoin et al., 2005; Au et al., 2005; Audoin et al., 2005). Other interpretations imply that intact structural/functional components may be adaptively altered to provide compensation

for loss of function and that additional recruitment of prefrontal cortical resources may play an integral role in this process. Thus, studies in very early states of multiple sclerosis have found medial PFC activity increases, although later meta-analyses studies have revealed a decrease in medial prefrontal activity.

In this context, our study gives several insights into the participation of medial prefrontal activity in working memory and its relationship with the cognitive dysfunction in patients with multiple sclerosis. Medial prefrontal theta activity is related specifically to subsequent successful memory performances. As this oscillatory activity has been generally related to cognitive control in several tasks (Cavanagh and Frank, 2014), it is possible to interpret this activity index as the cognitive effort related to successful performance. Interestingly, patients present more activity for errors and also present an increase of reaction time for incorrect responses. Thus, the inverse patterns demonstrated by patients with multiple sclerosis indicate a related to the detection for additional cognitive control (Shenhav et al., 2013, 2016), but this control is of need inefficiently in leading to a successful performance. In line with this, patients do not present an increase of frontal to parietal influences in relation to successful memory performance revealed by Granger Causality analysis. Indeed, patients with Multiple Sclerosis and cognitive impairments demonstrate low frequency amplitude decreases during cognitive tasks (Dineen et al., 2009). Along with this, it has been observed that the nested frequencies between theta and gamma can represent the way in which multiple maintenance items are organized into WM (Roux and Uhlhaas, 2014). The nested frequencies or PAC refers to a specific type of oscillatory activity, which would reflect a general mechanism by which the cortical areas organize and structure information (Staresina et al., 2015; Helfrich et al., 2018; Billeke et al., 2017; Voytek et al., 2015). Accordingly, we observed a modulation between delta/theta and gamma frequencies in healthy subjects. This communication channel seems specific to the frontal to parietal communication and shows an increase in relation to memory load. Patients did not demonstrate these dynamics, reflecting the poor or inefficient frontal control. Interestingly, this loss of interplay between the frontal and parietal oscillatory dynamics could be an early marker of working memory deficits in multiple sclerosis patients. Thus, these patients' performance suggests an impairment in the establishment and maintenance of a fluid oscillatory dialogue between the areas involved in the successful development of a working memory task.

In summary, in spite of a high incidence of cognitive deficits multiple sclerosis and a large body of literature investigating cognitive dysfunction, the specific oscillatory features that drive cognitive deterioration in multiple sclerosis remain unclear (Meijer et al., 2017). Hence, our results demonstrate a specific electrophysiological mechanism underlying the WM deficit in Patients with Multiple Sclerosis. Several investigations have revealed that cerebral oscillatory activity supports different cognitive processes and have indexed their alteration in clinical populations (Soto-Icaza et al., 2019; Larrain-Valenzuela et al., 2017; Melloni et al., 2016; Billeke et al., 2015). Indeed, recent evidence indicates that increasing theta activity by means of transcranial Alternating Current Stimulation can improve WM performance in healthy and aging subjects (Reinhart and Nguyen, 2019; Alekseichuk et al., 2016). It has been seen that cognitive training can increase memory capacity and that this increase correlates with changes in connectivity of distant brain areas, specifically between frontal and parietal regions. Therefore, the specific oscillatory features related to WM deficits identified in our study could serve to implement non-pharmacological treatments using non-invasive brain stimulation and cognitive training, in order to contribute to the improvement of the quality of life of these patients.

Funding

This study was supported by Chilean National Scientific and Technological Research Commission (CONICYT) (FONDECYT 1181295 and 1190513) and funds provided by the Centre for Cognitive Neuroscience of the Pontificia Universidad Católica de Chile and the Centro de Investigación en Complejidad Social (CICS) of the Universidad del Desarrollo de Chile.

Conflicts of interest

The researchers who participated in this study had no conflicts of interest during the conduct of this research.

References

Albouy P, Weiss A, Baillet S, Zatorre RJ. Selective Entrainment of Theta Oscillations in the Dorsal Stream Causally Enhances Auditory Working Memory Performance. *Neuron* 2017; 94: 193–206.e5.

Alekseichuk I, Turi Z, Amador de LG, Antal A, Paulus W. Spatial Working Memory in Humans Depends on Theta and High Gamma Synchronization in the Prefrontal Cortex.. *Curr Biol* 2016; 26: 1513–1521.

Amato MP, Goretti B. Cognitive Impairment in Multiple Sclerosis. In: *Translational Neuroimmunology in Multiple Sclerosis*. Elsevier; 2016. p. 365–384.

Amato MP, Ponziani G, Rossi F, Liedl CL, Stefanile C, Rossi L. Quality of life in multiple sclerosis: the impact of depression, fatigue and disability.. *Mult Scler* 2001; 7: 340–4.

Amato MP, Zipoli V. Cognitive and Psychiatric Disorders in Multiple Sclerosis. In: *MULTIPLE SCLEROSIS 3*. Elsevier; 2010. p. 147–158.

Au DMV, Audoin B, Boulanouar K, Ibarrola D, Malikova I, Confort-Gouny S, et al. Altered functional connectivity related to white matter changes inside the working memory network at the very early stage of MS.. *J Cereb Blood Flow Metab* 2005; 25: 1245–53.

Au DMV, Boulanouar K, Audoin B, Treseras S, Ibarrola D, Malikova I, et al. Modulation of effective connectivity inside the working memory network in patients at the earliest stage of multiple sclerosis.. *Neuroimage* 2005; 24: 533–8.

Audoin B, Au DMV, Ranjeva JP, Ibarrola D, Malikova I, Confort-Gouny S, et al. Magnetic resonance study of the influence of tissue damage and cortical reorganization on PASAT performance at the earliest stage of multiple sclerosis.. *Hum Brain Mapp* 2005; 24: 216–28.

Audoin B, Ibarrola D, Au DMV, Pelletier J, Confort-Gouny S, Malikova I, et al. Functional MRI study of PASAT in normal subjects.. *MAGMA* 2005; 18: 96–102.

Baillet S, Riera JJ, Marin G, Mangin JF, Aubert J, Garnero L. Evaluation of inverse methods and head models for EEG source localization using a human skull phantom.. *Phys Med Biol* 2001; 46: 77–96.

Baltruschat SA, Ventura-Campos N, Cruz-Gómez ÁJ, Belenguer A, Forn C. Gray matter atrophy is associated with functional connectivity reorganization during the Paced Auditory Serial Addition Test (PASAT) execution in Multiple Sclerosis (MS).. *J Neuroradiol* 2015; 42: 141–9.

Barbas H, García-Cabezas M Ángel. How the prefrontal executive got its stripes. *Current Opinion in Neurobiology* 2016; 40: 125–134.

Benedict RH, Zivadinov R. Risk factors for and management of cognitive dysfunction in multiple sclerosis.. *Nat Rev Neurol* 2011; 7: 332–42.

Benito-León J, Morales JM, Rivera-Navarro J. Health-related quality of life and its relationship to cognitive and emotional functioning in multiple sclerosis patients.. *Eur J Neurol* 2002; 9: 497–502.

Billeke P, Armijo A, Castillo D, López T, Zamorano F, Cosmelli D, et al. Paradoxical Expectation: Oscillatory Brain Activity Reveals Social Interaction Impairment in Schizophrenia.. *Biol Psychiatry* 2015; 78: 421–31.

Billeke P, Ossandon T, Stockle M, Perrone-Bertolotti M, Kahane P, Lachaux JP, et al. Brain state-dependent recruitment of high-frequency oscillations in the human hippocampus.. *Cortex* 2017; 94: 87–99.

Billeke P, Zamorano F, Chavez M, Cosmelli D, Aboitiz F. Functional cortical network in alpha band correlates with social bargaining.. *PLoS One* 2014; 9: e109829.

Billeke P, Zamorano F, Cosmelli D, Aboitiz F. Oscillatory brain activity correlates with risk perception and predicts social decisions.. *Cereb Cortex* 2013; 23: 2872–83.

Billeke P, Zamorano F, López T, Rodriguez C, Cosmelli D, Aboitiz F. Someone has to give in: theta oscillations correlate with adaptive behavior in social bargaining.. *Soc Cogn Affect Neurosci* 2014; 9: 2041–8.

Bosman CA, Aboitiz F. Functional constraints in the evolution of brain circuits [Internet]. *Frontiers in Neuroscience* 2015; 9

Bressler SL, Seth AK. Wiener Granger Causality: A well established methodology. *NeuroImage* 2011; 58: 323–329.

Buffalo EA, Fries P, Landman R, Buschman TJ, Desimone R. Laminar differences in gamma and alpha coherence in the ventral stream. *Proceedings of the National Academy of Sciences* 2011; 108: 11262–11267.

Cavanagh JF, Frank MJ. Frontal theta as a mechanism for cognitive control.. *Trends Cogn Sci* 2014; 18: 414–21.

Chiaravalloti ND, DeLuca J. Cognitive impairment in multiple sclerosis.. *Lancet Neurol* 2008; 7: 1139–51.

Christophel TB, Klink PC, Spitzer B, Roelfsema PR, Haynes J-D. The Distributed Nature of Working Memory. *Trends in Cognitive Sciences* 2017; 21: 111–124.

Colorado RA, Shukla K, Zhou Y, Wolinsky JS, Narayana PA. Multi-task functional MRI in multiple sclerosis patients without clinical disability.. *Neuroimage* 2012; 59: 573–81.

Constantinidis C, Klingberg T. The neuroscience of working memory capacity and training.. *Nat Rev Neurosci* 2016; 17: 438–49.

Costa SL, Genova HM, DeLuca J, Chiaravalloti ND. Information processing speed in multiple sclerosis: Past, present, and future.. *Mult Scler* 2017; 23: 772–789.

Covey TJ, Shucard JL, Shucard DW. Event-related brain potential indices of cognitive function and brain resource reallocation during working memory in patients with Multiple Sclerosis.. *Clin Neurophysiol* 2017; 128: 604–621.

Damasceno A, Damasceno BP, Cendes F. Subclinical MRI disease activity influences cognitive performance in MS patients.. *Mult Scler Relat Disord* 2015; 4: 137–43.

Damasceno A, Damasceno BP, Cendes F. No evidence of disease activity in multiple sclerosis: Implications on cognition and brain atrophy.. *Mult Scler* 2016; 22: 64–72.

Daume J, Graetz S, Gruber T, Engel AK, Fries U. Cognitive control during audiovisual working memory engages frontotemporal theta-band interactions. *Scientific Reports* 2017; 7

Daume J, Gruber T, Engel AK, Fries U. Phase-Amplitude Coupling and Long-Range Phase Synchronization Reveal Frontotemporal Interactions during Visual Working Memory. *The Journal of Neuroscience* 2016; 37: 313–322.

Daume J, Gruber T, Engel AK, Fries U. Phase-Amplitude Coupling and Long-Range Phase Synchronization Reveal Frontotemporal Interactions during Visual Working Memory.. *J Neurosci* 2017; 37: 313–322.

Dineen RA, Vilisaar J, Hlinka J, Bradshaw CM, Morgan PS, Constantinescu CS, et al. Disconnection as a mechanism for cognitive dysfunction in multiple sclerosis.. *Brain* 2009; 132: 239–49.

Eijlers AJC, van GQ, Dekker I, Steenwijk MD, Meijer KA, Hulst HE, et al. Predicting cognitive decline in multiple sclerosis: a 5-year follow-up study.. *Brain* 2018; 141: 2605–2618.

Eijlers AJC, Geest Q van, Dekker I, Steenwijk MD, Meijer KA, Hulst HE, et al. Predicting cognitive decline in multiple sclerosis: a 5-year follow-up study . *Brain* 2018

Ester EF, Sprague TC, Serences JT. Parietal and Frontal Cortex Encode Stimulus-Specific Mnemonic Representations during Visual Working Memory. *Neuron* 2015; 87: 893–905.

Feuillet L, Reuter F, Audoin B, Malikova I, Barrau K, Cherif AA, et al. Early cognitive impairment in patients with clinically isolated syndrome suggestive of multiple sclerosis.. *Mult Scler* 2007; 13: 124–7.

Filippi M, Bar-Or A, Piehl F, Preziosa P, Solari A, Vukusic S, et al. Author Correction: Multiple sclerosis . *Nature Reviews Disease Primers* 2018; 4

Forn C, Barros-Loscertales A, Escudero J, Benlloch V, Campos S, Antònia PM, et al. Compensatory activations in patients with multiple sclerosis during preserved performance on the auditory N-back task.. *Hum Brain Mapp* 2007; 28: 424–30.

Gamboa OL, Tagliazucchi E, von WF, Jurcoane A, Wahl M, Laufs H, et al. Working memory performance of early MS patients correlates inversely with modularity increases in resting state functional connectivity networks.. *Neuroimage* 2014; 94: 385–395.

Gramfort A, Papadopoulos T, Olivi E, Clerc M. OpenMEEG: opensource software for quasistatic bioelectromagnetics.. *Biomed Eng Online* 2010; 9: 45.

Hansen S, Muenssinger J, Kronhofmann S, Lautenbacher S, Oschmann P, Keune PM. Cognitive screening tools in multiple sclerosis revisited: sensitivity and specificity of a short version of Rao’s Brief Repeatable Battery.. *BMC Neurol* 2015; 15: 246.

Helfrich RF, Mander BA, Jagust WJ, Knight RT, Walker MP. Old Brains Come Uncoupled in Sleep: Slow Wave-Spindle Synchrony, Brain Atrophy, and Forgetting.. *Neuron* 2018; 97: 221–230.e4.

Henríquez RA, Chica AB, Billeke P, Bartolomeo P. Fluctuating Minds: Spontaneous Psychophysical Variability during Mind-Wandering.. *PLoS One* 2016; 11: e0147174.

Henríquez-Henríquez MP, Billeke P, Henríquez H, Zamorano FJ, Rothhammer F, Aboitiz F. Intra-Individual Response Variability Assessed by Ex-Gaussian Analysis may be a New Endophenotype for Attention-Deficit/Hyperactivity Disorder.. *Front Psychiatry* 2014; 5: 197.

Hillary FG, Genova HM, Chiaravalloti ND, Rypma B, DeLuca J. Prefrontal modulation of working memory performance in brain injury and disease.. *Hum Brain Mapp* 2006; 27: 837–47.

Hillebrand A, Tewarie P, Dellen E van, Yu M, Carbo EWS, Douw L, et al. Direction of information flow in large-scale resting-state networks is frequency-dependent. *Proceedings of the National Academy of Sciences* 2016; 113: 3867–3872.

Hsieh L-T, Ranganath C. Frontal midline theta oscillations during working memory maintenance and episodic encoding and retrieval. *NeuroImage* 2014; 85: 721–729.

Jensen O, Bonnefond M, Marshall TR, Tiesinga P. Oscillatory mechanisms of feedforward and feedback visual processing. *Trends in Neurosciences* 2015; 38: 192–194.

Jensen O, Tesche CD. Frontal theta activity in humans increases with memory load in a working memory task. *European Journal of Neuroscience* 2002; 15: 1395–1399.

Johnson EL, Dewar CD, Solbakk A-K, Endestad T, Meling TR, Knight RT. Bidirectional Frontoparietal Oscillatory Systems Support Working Memory. *Current Biology* 2017; 27: 1829–1835.e4.

Johnson EL, Tang L, Yin Q, Asano E, Ofen N. Direct brain recordings reveal prefrontal cortex dynamics of memory development. *Science Advances* 2018; 4: eaat3702.

Kawasaki M, Kitajo K, Yamaguchi Y. Fronto-parietal and fronto-temporal theta phase synchronization for visual and auditory-verbal working memory.. *Front Psychol* 2014; 5: 200.

Kayser J, Tenke CE. Principal components analysis of Laplacian waveforms as a generic method for identifying ERP generator patterns: I. Evaluation with auditory oddball tasks.. *Clin Neurophysiol* 2006; 117: 348–68.

Kayser J, Tenke CE. Principal components analysis of Laplacian waveforms as a generic method for identifying ERP generator patterns: II. Adequacy of low-density estimates.. *Clin Neurophysiol* 2006; 117: 369–80.

Kim S, Zemon V, Rath JF, Picone MA, Gromisch ES, Glubo H, et al. Screening Instruments for the Early Detection of Cognitive Impairment in Patients with Multiple Sclerosis. *International Journal of MS Care* 2017; 19: 1–10.

Kollndorfer K, Krajnik J, Woitek R, Freiherr J, Prayer D, Schöpf V. Altered likelihood of brain activation in attention and working memory networks in patients with multiple sclerosis: an ALE meta-analysis.. *Neurosci Biobehav Rev* 2013; 37: 2699–708.

Kopell N, Kramer MA, Malerba P, Whittington MA. Are Different Rhythms Good for Different Functions?. *Frontiers in Human Neuroscience* 2010; 4

Korakas N, Tsolaki M. Cognitive Impairment in Multiple Sclerosis. *Cognitive And Behavioral Neurology* 2016; 29: 55–67.

Kucewicz MT, Berry BM, Kremen V, Brinkmann BH, Sperling MR, Jobst BC, et al. Dissecting gamma frequency activity during human memory processing.. *Brain* 2017; 140: 1337–1350.

Kurtzke JF. Rating neurologic impairment in multiple sclerosis: an expanded disability status scale (EDSS). *Neurology* 1983; 33: 1444–52.

Larrain-Valenzuela J, Zamorano F, Soto-Icaza P, Carrasco X, Herrera C, Daiber F, et al. Theta and Alpha Oscillation Impairments in Autistic Spectrum Disorder Reflect Working Memory Deficit. *Scientific Reports* 2017; 7

Larrain-Valenzuela J, Zamorano F, Soto-Icaza P, Carrasco X, Herrera C, Daiber F, et al. Theta and Alpha Oscillation Impairments in Autistic Spectrum Disorder Reflect Working Memory Deficit.. *Sci Rep* 2017; 7: 14328.

Leavitt VM, Tosto G, Riley CS. Cognitive phenotypes in multiple sclerosis.. *J Neurol* 2018; 265: 562–566.

Lengenfelder J, Bryant D, Diamond BJ, Kalmar JH, Moore NB, DeLuca J. Processing speed interacts with working memory efficiency in multiple sclerosis.. *Arch Clin Neuropsychol* 2006; 21: 229–38.

Leocani L. Electroencephalographic coherence analysis in multiple sclerosis: correlation with clinical neuropsychological, and MRI findings. *Journal of Neurology, Neurosurgery & Psychiatry* 2000; 69: 192–198.

Leocani L, Comi G. Neurophysiological investigations in multiple sclerosis. *Current Opinion in Neurology* 2000; 13: 255–261.

Li S, Bai W, Liu T, Yi H, Tian X. Increases of the low gamma coupling in rat medial prefrontal cortex during working memory task. *Brain Research Bulletin* 2012; 89: 115–123.

Lin F-H, Witzel T, Ahlfors SP, Stufflebeam SM, Belliveau JW, Hämäläinen MS. Assessing and improving the spatial accuracy in MEG source localization by depth-weighted minimum-norm estimates. *NeuroImage* 2006; 31: 160–171.

Lisman J. Working Memory: The Importance of Theta and Gamma Oscillations. *Current Biology* 2010; 20: R490–R492.

Louapre C, Perlberg V, García-Lorenzo D, Urbanski M, Benali H, Assouad R, et al. Brain networks disconnection in early multiple sclerosis cognitive deficits: an anatomofunctional study.. *Hum Brain Mapp* 2014; 35: 4706–17.

Makuuchi M, Friederici AD. Hierarchical functional connectivity between the core language system and the working memory system.. *Cortex* 2013; 49: 2416–23.

Maris E, Oostenveld R. Nonparametric statistical testing of EEG- and MEG-data.. *J Neurosci Methods* 2007; 164: 177–90.

Maris E, Oostenveld R. Nonparametric statistical testing of EEG- and MEG-data. *Journal of Neuroscience Methods* 2007; 164: 177–190.

Meijer KA, Eijlers AJC, Douw L, Uitdehaag BMJ, Barkhof F, Geurts JJG, et al. Increased connectivity of hub networks and cognitive impairment in multiple sclerosis.. *Neurology* 2017; 88: 2107–2114.

Melloni M, Billeke P, Baez S, Hesse E, de la FL, Forno G, et al. Your perspective and my benefit: multiple lesion models of self-other integration strategies during social bargaining.. *Brain* 2016; 139: 3022–3040.

Nee DE, Brown JW. Dissociable frontal-striatal and frontal-parietal networks involved in updating hierarchical contexts in working memory.. *Cereb Cortex* 2013; 23: 2146–58.

Ntranos A, Lublin F. Diagnostic Criteria, Classification and Treatment Goals in Multiple Sclerosis: The Chronicles of Time and Space.. *Current neurology neuroscience reports* 2016; 16: 90.

Palva JM, Monto S, Kulashekhar S, Palva S. Neuronal synchrony reveals working memory networks and predicts individual memory capacity.. *Proc Natl Acad Sci U S A* 2010; 107: 7580–5.

Perrin F, Pernier J, Bertrand O, Echallier JF. Spherical splines for scalp potential and current density mapping.. *Electroencephalogr Clin Neurophysiol* 1989; 72: 184–7.

Polman CH, and XM. Reply. *Annals of Neurology* 2011; 70: 183–184.

Postle BR. Working Memory Functions of the Prefrontal Cortex. In: *The Prefrontal Cortex as an Executive Emotional, and Social Brain*. Springer Japan; 2017. p. 39–48.

Rao SM, Leo GJ, Bernardin L, Unverzagt F. Cognitive dysfunction in multiple sclerosis. I. Frequency, patterns, and prediction.. *Neurology* 1991; 41: 685–91.

Rao SM, Leo GJ, Haughton VM, St A-FP, Bernardin L. Correlation of magnetic resonance imaging with neuropsychological testing in multiple sclerosis.. *Neurology* 1989; 39: 161–6.

Rao SM, Leo GJ, St A-FP. On the nature of memory disturbance in multiple sclerosis.. *J Clin Exp Neuropsychol* 1989; 11: 699–712.

Rao SM, Martin AL, Huelin R, Wissinger E, Khankhel Z, Kim E, et al. Correlations between MRI and Information Processing Speed in MS: A Meta-Analysis.. *Mult Scler Int* 2014; 2014: 975803.

Reinhart RMG, Nguyen JA. Working memory revived in older adults by synchronizing rhythmic brain circuits.. *Nat Neurosci* 2019

Rimkus CM, Avolio IMB, Miotto EC, Pereira SA, Mendes MF, Callegaro D, et al. The protective effects of high-education levels on cognition in different stages of multiple sclerosis.. *Mult Scler Relat Disord* 2018; 22: 41–48.

Rimkus CM, Schoonheim MM, Steenwijk MD, Vrenken H, Eijlers AJ, Killestein J, et al. Gray matter networks and cognitive impairment in multiple sclerosis.. *Mult Scler* 2018: 1352458517751650.

Rocca MA, Pravatà E, Valsasina P, Radaelli M, Colombo B, Vacchi L, et al. Hippocampal-DMN disconnectivity in MS is related to WM lesions and depression.. *Hum Brain Mapp* 2015; 36: 5051–63.

Rottschy C, Langner R, Dogan I, Reetz K, Laird AR, Schulz JB, et al. Modelling neural correlates of working memory: a coordinate-based meta-analysis.. *Neuroimage* 2012; 60: 830–46.

Roux F, Uhlhaas PJ. Working memory and neural oscillations: α - γ versus θ - γ codes for distinct WM information?. Trends Cogn Sci 2014; 18: 16–25.

Schoonheim MM, Meijer KA, Geurts JJ. Network collapse and cognitive impairment in multiple sclerosis.. Front Neurol 2015; 6: 82.

Schoonhoven DN, Frascini M, Tewarie P, Uitdehaag BM, Eijlers AJ, Geurts JJ, et al. Resting-state MEG measurement of functional activation as a biomarker for cognitive decline in MS.. Mult Scler 2018: 1352458518810260.

Shenhav A, Botvinick MM, Cohen JD. The expected value of control: an integrative theory of anterior cingulate cortex function.. Neuron 2013; 79: 217–40.

Shenhav A, Cohen JD, Botvinick MM. Dorsal anterior cingulate cortex and the value of control.. Nat Neurosci 2016; 19: 1286–91.

Siebenhühner F, Wang SH, Palva JM, Palva S. Cross-frequency synchronization connects networks of fast and slow oscillations during visual working memory maintenance. eLife 2016; 5

Siebenhühner F, Wang SH, Palva JM, Palva S. Cross-frequency synchronization connects networks of fast and slow oscillations during visual working memory maintenance. Elife 2016; 5

Soto-Icaza P, Vargas L, Aboitiz F, Billeke P. Beta oscillations precede joint attention and correlate with mentalization in typical development and autism.. Cortex 2019; 113: 210–228.

Staresina BP, Bergmann TO, Bonnefond M, van der MR, Jensen O, Deuker L, et al. Hierarchical nesting of slow oscillations, spindles and ripples in the human hippocampus during sleep.. Nat Neurosci 2015; 18: 1679–1686.

Strober LB, Rao SM, Lee JC, Fischer E, Rudick R. Cognitive impairment in multiple sclerosis: An 18 year follow-up study.. Mult Scler Relat Disord 2014; 3: 473–81.

Sumowski JF. Cognitive Reserve as a Useful Concept for Early Intervention Research in Multiple Sclerosis [Internet]. Frontiers in Neurology 2015; 6

Sumowski, J. F., Benedict, R., Enzinger, C., Filippi, M., Geurts, J. J., Hamalainen, P., Hulst, H., et al. (2018). Cognition in multiple sclerosis: State of the field and priorities for the future. Neurology, 90(6), 278–288.

Supp GG, Siegel M, Hipp JF, Engel AK. Cortical Hypersynchrony Predicts Breakdown of Sensory Processing during Loss of Consciousness. *Current Biology* 2011; 21: 1988–1993.

Tadel F, Baillet S, Mosher JC, Pantazis D, Leahy RM. Brainstorm: a user-friendly application for MEG/EEG analysis.. *Comput Intell Neurosci* 2011; 2011: 879716.

Villena-González M, Moënné-Loccoz C, Lagos RA, Alliende LM, Billeke P, Aboitiz F, et al. Attending to the heart is associated with posterior alpha band increase and a reduction in sensitivity to concurrent visual stimuli.. *Psychophysiology* 2017; 54: 1483–1497.

Voytek B, Kayser AS, Badre D, Fegen D, Chang EF, Crone NE, et al. Oscillatory dynamics coordinating human frontal networks in support of goal maintenance.. *Nat Neurosci* 2015; 18: 1318–24.

Yordanova J, Albrecht B, Uebel H, Kirov R, Banaschewski T, Rothenberger A, et al. Independent oscillatory patterns determine performance fluctuations in children with attention deficit/hyperactivity disorder.. *Brain* 2011; 134: 1740–50.

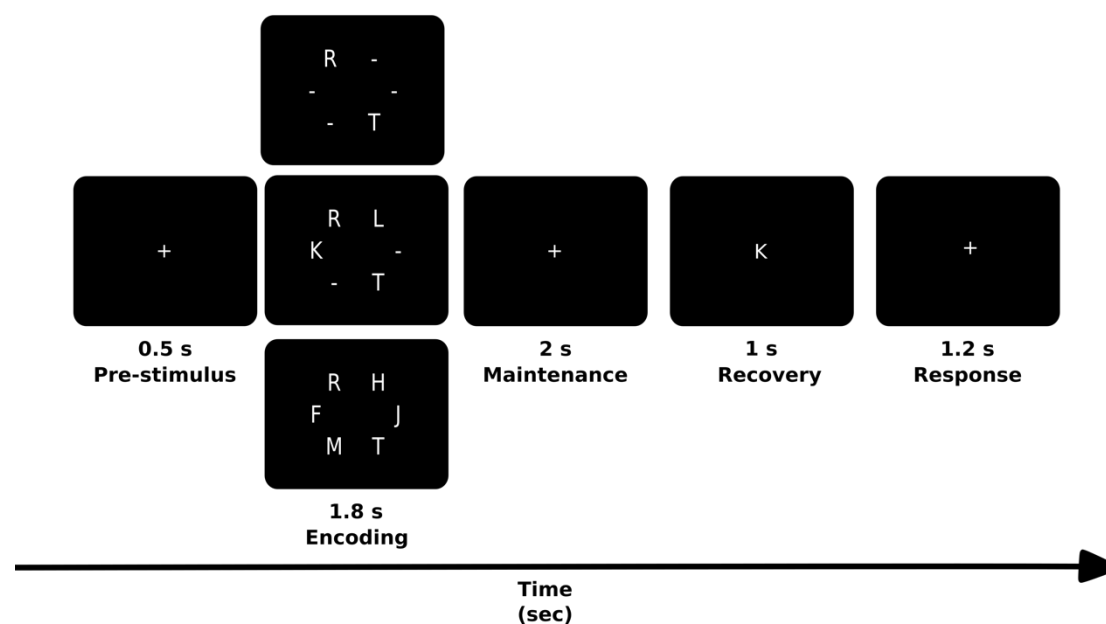
Zamorano F, Billeke P, Hurtado JM, López V, Carrasco X, Ossandón T, et al. Temporal constraints of behavioral inhibition: relevance of inter-stimulus interval in a Go-Nogo task.. *PLoS One* 2014; 9: e87232.

Zamorano F, Billeke P, Kausel L, Larrain J, Stecher X, Hurtado JM, et al. Lateral prefrontal activity as a compensatory strategy for deficits of cortical processing in Attention Deficit Hyperactivity Disorder.. *Sci Rep* 2017; 7: 7181.

Zito G, Luders E, Tomasevic L, Lupoi D, Toga AW, Thompson PM, et al. Inter-hemispheric functional connectivity changes with corpus callosum morphology in multiple sclerosis.. *Neuroscience* 2014; 266: 47–55.

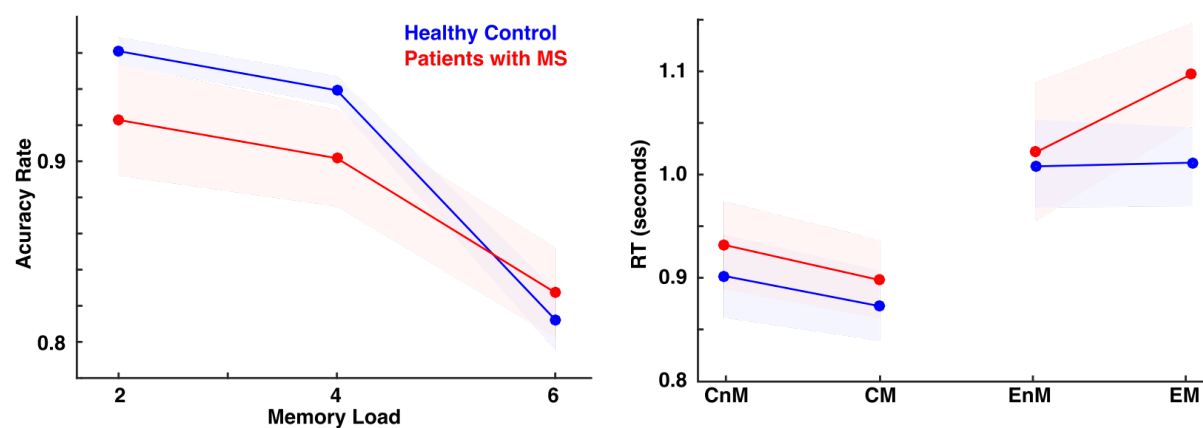
Figures Legends

Figure 1.



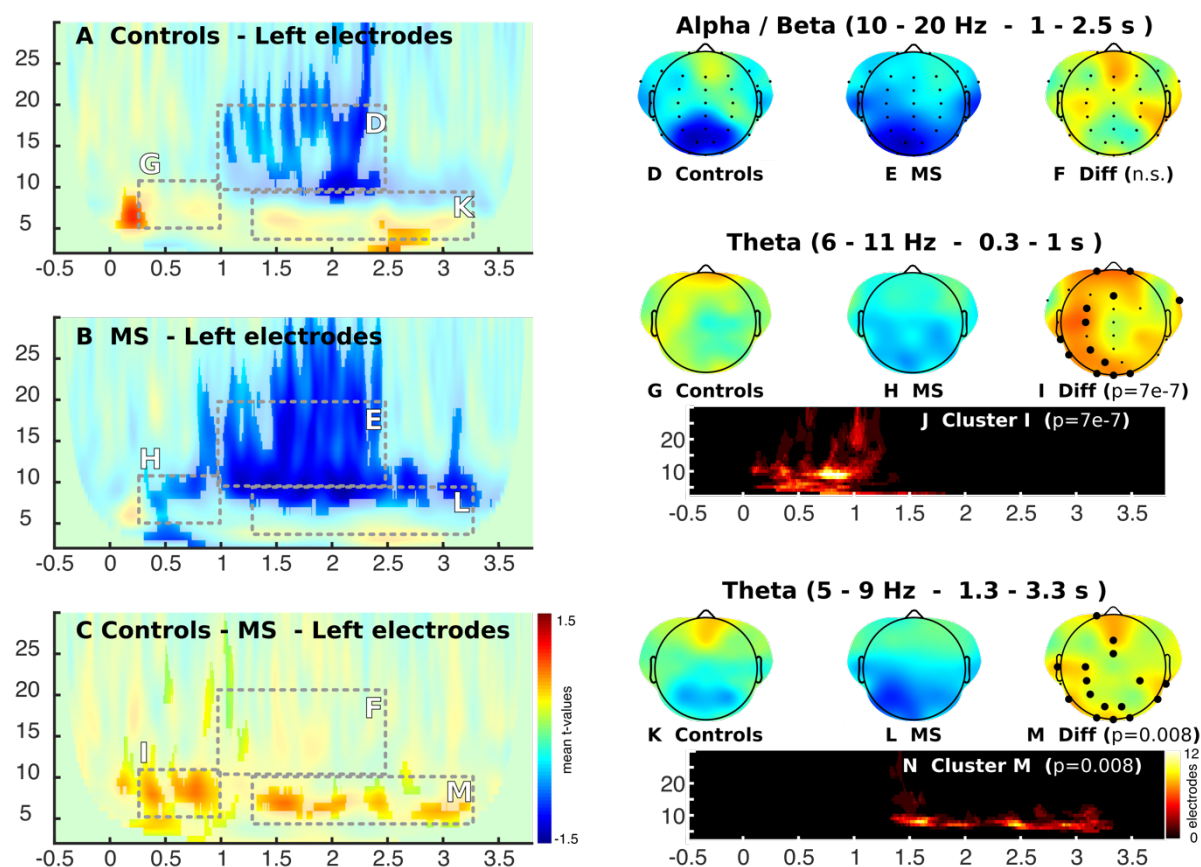
Scheme of the experimental task, adapted from the Sternberg's Memory Scanning Task described by Jensen et al (2002).

Figure 2.



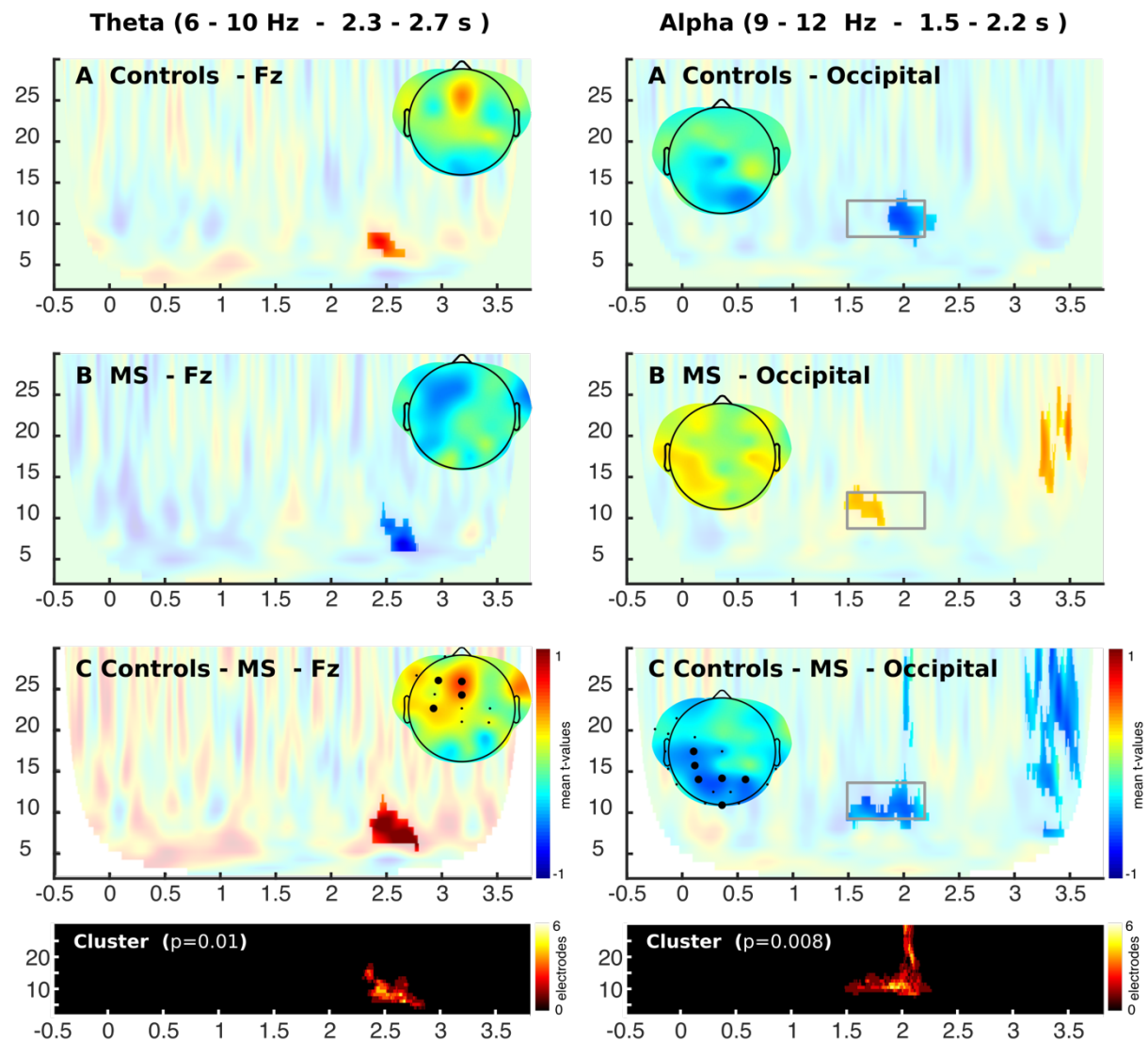
Behavioral Analyses. Left panel shows the Accuracy Rate per memory load. Right panel shows the reaction time (RT) for memory load 6 separated by correct responses for no-matched target (CnM), correct responses for matched target (CM), incorrect responses for no-matched targets (EnM), incorrect responses for matched targets (EM). Red represents patients with multiple sclerosis (MS) and blue healthy control. Colored areas represent standard error of mean.

Figure 3



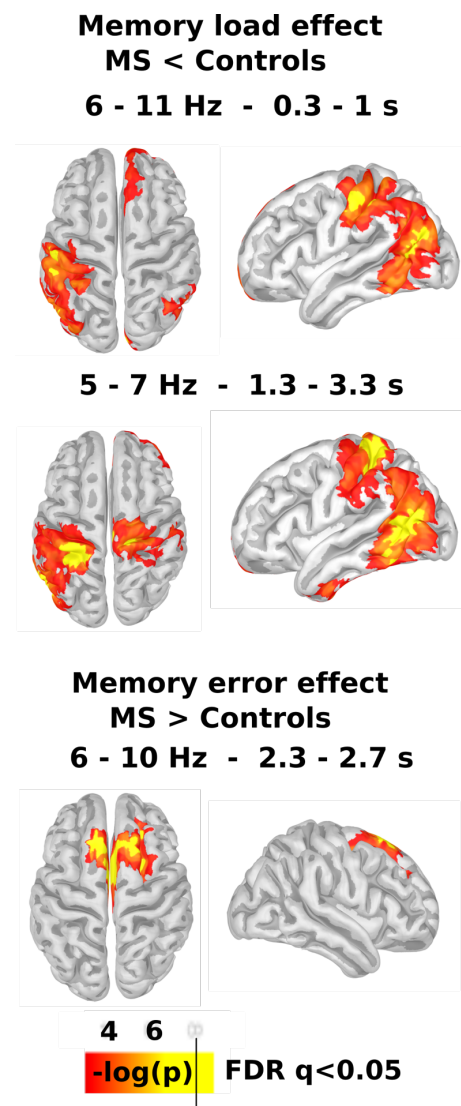
Time-frequency analysis of the effect of memory load (ML) on the difference between multiple sclerosis patients (MS) and healthy control (HC), for the different stages of the adapted Sternberg's Memory Scanning Task described by Jensen et al (2002). Color represents the mean T-value of the single trial regressions per each subjects given by the following equation ($\text{Power}(f,t) = b_1 + b_2 \cdot \text{ML} + b_3 \cdot \text{SMP}$). Significant regions are highlighted (CBP test p).

Figure 4.



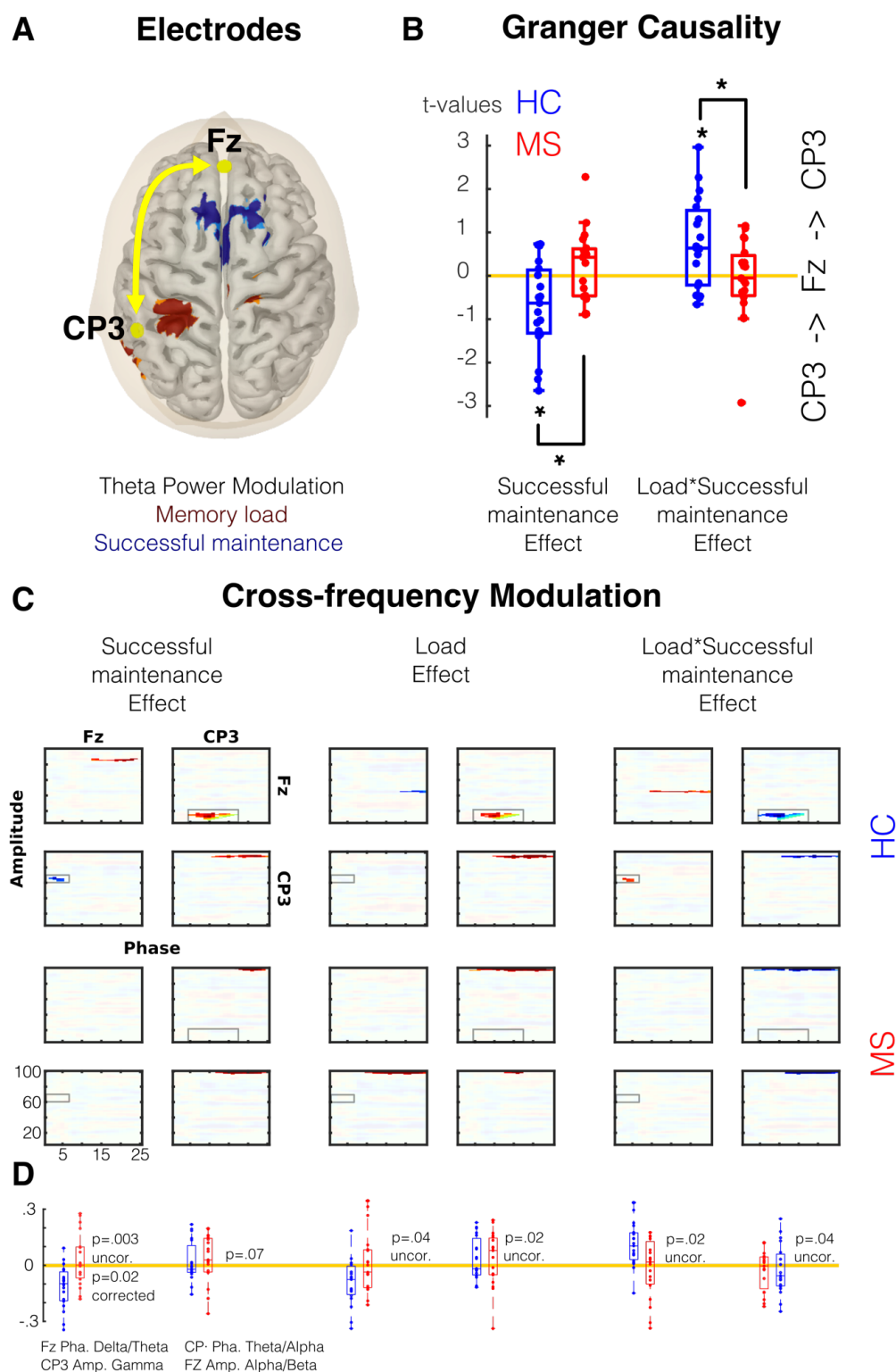
Time-frequency analysis of the effect of successful memory performance (SMP). Colors represent the mean T-value of the single trial regressions per each subjects given by the following equation ($\text{Power}(f,t) = b_1 + b_2 \cdot \text{ML} + b_3 \cdot \text{SMP}$). Significant regions are highlighted (CBP test).

Figure 5.



Source reconstruction of the differences between groups . The upper panel shows the differences in the memory load modulation in theta activity during encoding as is highlighted in I. The middle panel shows the differences in the memory load modulation in theta activity during maintenance as is highlighted in Figure 3 M. The top panel shows the differences in the modulation in theta activity related to unsuccessful memory performance during maintenance as is highlighted in Figure 4 C. Only significant clusters ($p < 0.05$ cluster corrected), and vertexes that survive vertex-based correction are shown in yellow (FDR<0.05).

Figure 6



Connectivity Analysis. A. Selected electrode and the source of the theta modulation as showed in Figure 5. B. the t values resulting of single trial models of the Granger Causality between Fz and CP3 electrodes during maintenance (See also table 2.). C Cross-frequency modulation

using PAC analysis. Significant areas are highlighted (CBP test $p < 0.05$). D. Comparison between groups in areas where healthy control showed significant modulation. Red depicts Multiple Sclerosis (MS) group and blue Healthy Control (HC) group.

Tables

Table 1. Demographic and clinical description of the sample. PASAT (Paced Auditory Serial Addition Task) and SDMT (Symbol Digit Modalities Test) evaluate attention, processing speed, and working memory.

	Patients with Multiple sclerosis (n=20)	Healthy subjects (n=20)
Age, years	31.5 (7.34)	31.1 (8.3)
Gender (F/M)	13/7	12/8
Years of Education	17 (0.63)	17.25 (1.01)
Duration of disease, months	45.07 (33.75)	
EDSS	1.0 (0.95)	
PASAT	-0.6 (0.88)	
SDMT	0.2 (0.95)	
BVMT-R	-0.9 (0.9)	
CVLT-VII	-0.4 (1.1)	
Stroop	0.4 (0.8)	

Table 2 Single trial regression with both groups Granger Causality between frontal (FZ) and parietal (CP3) electrodes. Positive values indicate frontal to parietal connectivity.

Frontal to Parietal Connectivity										
Encoding					Maintenance					
		int	SMP	ML	ML * SMP			int	SMP	ML * SMP
HC		-0.54	-0.31	0.23	0.24			-0.39	-0.73	0.25
p		ns	ns	ns	ns			ns	0.01	0.01
MS		0.3	0.36	-0.2	-0.34			0.07	0.2	0.04
p		ns	ns	ns	ns			ns	ns	ns
diff										
p		ns	ns	ns	Ns			ns	0.01	0.04
SMP: Successful memory performance, ML: Memory load, HC: healthy controls, MS: patients with Multiple Sclerosis, ns: non-significant.										