

Characterizing the temporal dynamics of gene expression in single cells with sci-fate

Junyue Cao¹, Wei Zhou^{1,2}, Frank Steemers³, Cole Trapnell^{1,4}, Jay Shendure^{1,4,5,6*}

1. Department of Genome Sciences, University of Washington, Seattle WA, USA.
2. Molecular and Cellular Biology Program, University of Washington, Seattle WA, USA.
3. Illumina, San Diego CA, USA.
4. Brotman Baty Institute for Precision Medicine, Seattle WA, USA.
5. Allen Discovery Center for Cell Lineage Tracing, Seattle WA, USA.
6. Howard Hughes Medical Institute, Seattle WA, USA.

*Correspondence to: Jay Shendure (shendure@uw.edu)

1 **Abstract**

2

3 Gene expression programs are dynamic, *e.g.* the cell cycle, response to stimuli, normal differentiation and
4 development, etc. However, nearly all techniques for profiling gene expression in single cells fail to
5 directly capture the dynamics of transcriptional programs, which limits the scope of biology that can be
6 effectively investigated. Towards addressing this, we developed *sci-fate*, a new technique that combines
7 S4U labeling of newly synthesized mRNA with single cell combinatorial indexing (*sci-*), in order to
8 concurrently profile the whole and newly synthesized transcriptome in each of many single cells. As a
9 proof-of-concept, we applied *sci-fate* to a model system of cortisol response and characterized expression
10 dynamics in over 6,000 single cells. From these data, we quantify the dynamics of the cell cycle and
11 glucocorticoid receptor activation, while also exploring their intersection. We furthermore use these data
12 to develop a framework for inferring the distribution of cell state transitions. We anticipate *sci-fate* will
13 be broadly applicable to quantitatively characterize transcriptional dynamics in diverse systems.

1 Main

2

3 During organismal development, as well as during myriad physiological and pathophysiological
4 processes, individual cells traverse a manifold of molecularly and functionally distinct states. The accurate
5 characterization of these trajectories is key to advancing our understanding of each such process, for
6 identifying the causal factors that drive them, and for rationally designing effective perturbations of them.
7 However, although experimental methods for profiling various aspects of single cell biology have recently
8 proliferated, nearly all such methods deliver only a static snapshot of each cell, *e.g.* of gene expression at
9 the moment of fixation.

10

11 To recover temporal dynamics, several groups have developed computational methods that place
12 individual cells along a continuous trajectory based on single cell RNA-seq data, *i.e.* the concept of
13 pseudotime¹⁻⁶. However, such methods are inherently limited in several important ways, including that
14 they are inferring rather than directly measuring dynamics, that they are dependent on sufficient
15 representation across the trajectory, and that they may fail to capture the detailed dynamics of individual
16 cells (*e.g.* directionality, multiple superimposed potentials, etc.)⁷. Although time-lapse microscopy is a
17 distinct technology that overcomes some of these limitations, it is limited in throughput and scope (*e.g.*
18 enabling visualization of a few marker genes in a few cells), and as such may be insufficient to decipher
19 the complexity of many biological systems.

20

21 Here we describe a novel technique, *sci-fate*, to measure the dynamics of gene expression in single cells
22 at the level of the whole transcriptome. In brief, we integrated protocols for labeling newly synthesized
23 mRNA with 4-thiouridine (S4U)^{8,9} with single cell combinatorial indexing RNA-seq (*sci*-RNA-seq¹⁰). As
24 a proof-of-concept, we applied *sci-fate* to a model system of cortisol response, and characterized
25 expression dynamics in over 6,000 single cells. From these data, we quantify the dynamics of the
26 transcription factor modules that underpin the cell cycle, glucocorticoid receptor activation, and other
27 processes. We furthermore use these data to develop a framework for inferring the distribution of cell state
28 transitions. The experimental and computational methods described here may be broadly applicable to
29 quantitatively characterize transcriptional dynamics in diverse systems.

30

31 Overview of *sci-fate*

32 Briefly, *sci-fate* relies on the following steps (**Fig. 1a**): (i) Cells are incubated with 4-thiouridine (S4U), a
33 thymidine analog, to label newly synthesized RNA¹¹⁻¹⁷. (ii) Cells are harvested, fixed with 4%
34 paraformaldehyde, and then subjected to a thiol(SH)-linked alkylation reaction which covalently attaches
35 a carboxyamidomethyl group to S4U by nucleophilic substitution⁸. (iii) Cells are distributed by dilution
36 to 4 x 96 well plates. The first *sci*-RNA-seq molecular index is introduced via *in situ* reverse transcription
37 (RT) with a poly(T) primer bearing both a well-specific barcode and a degenerate unique molecular
38 identifier (UMI). During first strand cDNA synthesis, modified S4U templates guanine rather than adenine
39 incorporations. (iv) Cells from all wells are pooled and then redistributed by fluorescence-activated cell
40 sorting (FACS) to multiple 96-well plates. Cells are gated on DAPI (4',6-diamidino-2-phenylindole) to

1 distinguish singlets from doublets. (v) Double-stranded cDNA is generated by RNA degradation and
2 second-strand synthesis. After Tn5 transposition, cDNA is PCR amplified via primers recognizing the
3 Tn5 adaptor on the 5' end and the RT primer on the 3' end. These primers also bear a well-specific barcode
4 that introduces the second sci-RNA-seq molecular index. (vi) PCR amplicons are subjected to massively
5 parallel DNA sequencing. As with other sci- methods¹⁸⁻²⁵, most cells pass through a unique combination
6 of wells, such that their contents are marked by a unique combination of barcodes that can be used to
7 group reads derived from the same cell. (vii) The subset of each cell's transcriptome corresponding to
8 newly synthesized transcripts is distinguished by T → C conversions in reads mapping to mRNAs
9 (**Methods**).

10
11 For quality control, we first tested sci-fate with a mixture of HEK293T (human) and NIH/3T3 (mouse)
12 cells under four conditions: with vs. without S4U labeling (200 nM, 6 hrs), and with vs. without the
13 thiol(SH)-linked alkylation reaction. Under all four conditions, transcriptomes from human/mouse cells
14 were overwhelmingly species-coherent (>99% purity for both human and mouse cells, 2.7% collisions;
15 **Extended Data Fig. 1ab**) with similar mRNA recovery rates (overall median 21,342 UMIs per cell;
16 **Extended Data Fig. 1c**). However, only with S4U labeling and the thiol(SH)-linked alkylation reaction
17 did we observe a substantial proportion of reads bearing one or more T → C conversions, *i.e.* newly
18 synthesized transcripts (46% for human and 31% for mouse cells, as compared with 0.8% for both species
19 in untreated cells; **Extended Data Fig. 1d**). The aggregated transcriptomes of cells derived from sci-fate
20 and conventional sci-RNA-seq on the same cell types were highly correlated (Spearman's correlation $r =$
21 0.99; **Extended Data Fig. 1ef**), suggesting that the short term labeling and conversion process do not
22 substantially bias transcript counts.

23 24 Joint profiling of the total and newly synthesized transcriptome in cortisol response

25 Cortisol influences the activity of almost every cell in the body, regulating genes involved in diverse
26 processes including development, metabolism and immune response²⁶. To investigate the dynamics of
27 cortisol response, we applied sci-fate to an *in vitro* model wherein dexamethasone (DEX), a synthetic
28 mimic of cortisol, activates glucocorticoid receptor (GR), which binds to thousands of locations across
29 the genome and significantly alters cell state within a rapid timeframe²⁷⁻³⁰. Specifically, we treated lung
30 adenocarcinoma-derived A549 cells for 0, 2, 4, 6, 8 or 10 hrs with 100 nM DEX. In each condition, cells
31 were incubated with S4U (200 nM) for the two hours immediately preceding harvest. We then performed
32 384 x 192 sci-fate (**Fig. 1b**). Each of the six conditions was represented by 64 wells during the first round
33 of indexing, such that all samples could be processed in a single sci-RNA-seq experiment to minimize
34 batch effects.

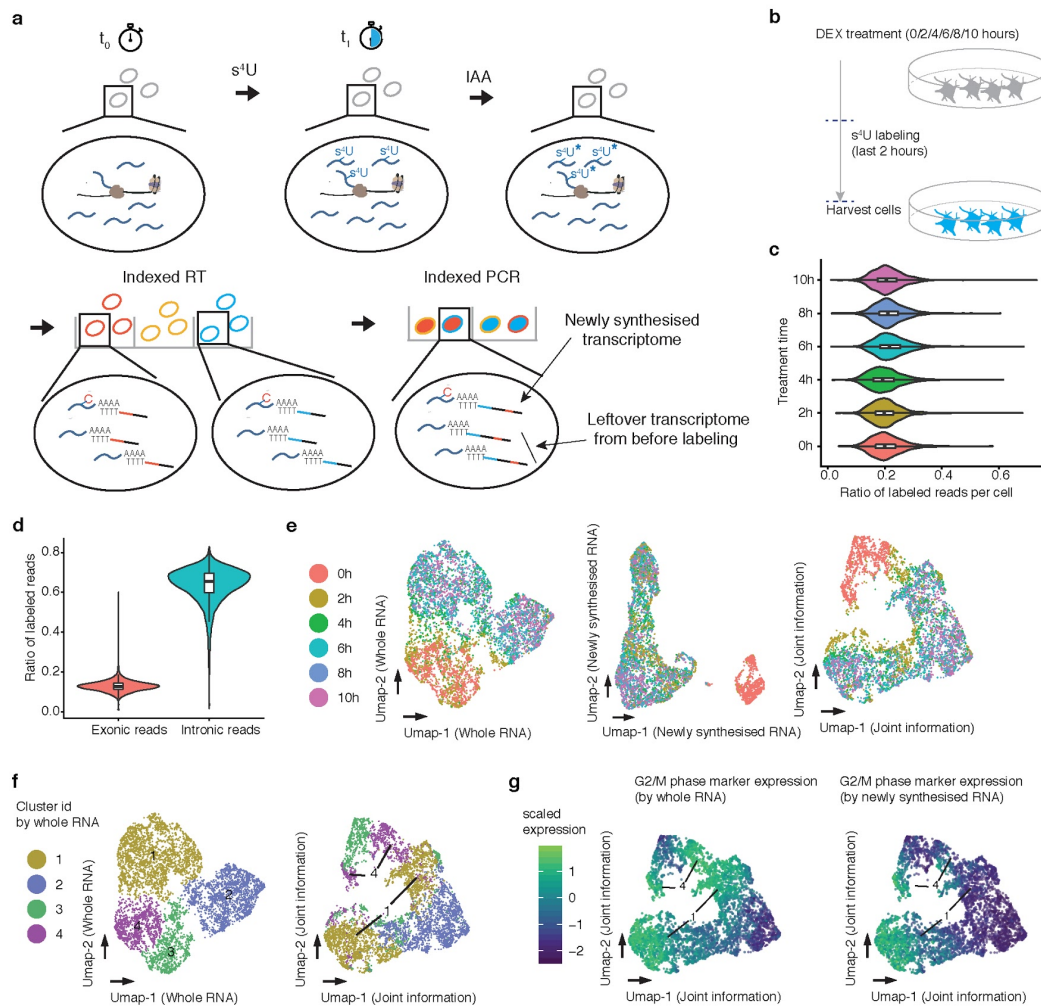
35
36 After filtering out low quality cells, potential doublets and a small subgroup of differentiated cells
37 (**Methods**), we obtained single cell profiles for 6,680 cells (median of 26,176 UMIs corresponding to
38 mRNAs detected per cell). A median of 20% of mRNA UMIs were labeled per cell (**Fig. 1c**; **Extended**
39 **Data Fig. 2a-c**). The proportion of newly synthesized mRNAs was markedly higher in reads mapping to

1 intronic (65%) vs. exonic (13%) regions (p-value < 2.2e-16, Wilcoxon signed rank test; **Fig. 1d**),
2 consistent with the expectation that the intronic reads are more likely to have been recently synthesized.

3
4 In exploring these data, we first asked whether the newly synthesized vs. whole transcriptome data convey
5 identical or distinct information with respect to cell state. For each condition, we generated pseudobulk
6 transcriptomes for either the newly synthesized or whole transcriptomes (*i.e.* aggregating across cells),
7 and compared these in a pairwise fashion between conditions (*e.g.* whole transcriptome at 0 hrs vs. 4 hrs;
8 newly synthesized transcriptome at 2 hrs vs. 6 hrs, etc.) (**Extended Data Fig. 2d**). The lowest correlations
9 corresponded to the newly synthesized transcriptome with no DEX treatment (0 hrs) vs. the newly
10 synthesized transcriptomes of any DEX treated condition (**Extended Data Fig. 2d**). Consistent with this,
11 performing dimensionality reduction with Uniform Manifold Approximation and Projection (UMAP)³¹
12 on whole transcriptomes failed to separate DEX untreated (0 hrs) vs. treated (2+ hrs) cells (**Fig. 1e**, left).
13 In contrast, applying UMAP to the newly synthesized subset of the single cell transcriptomes readily
14 separated DEX untreated vs. treated cells (**Fig. 1e**, center). These patterns are likely a consequence of the
15 fact that in DEX treated cells, the newly synthesized transcriptome more faithfully reflects the GR
16 response itself. Illustrative of this, the classic markers for GR response, *FGD4*²⁷ and *FKBP5*³², exhibit the
17 highest fold induction in comparing the newly synthesized transcriptome at 0 hrs vs. 2 hrs, but the
18 magnitude of their induction is dampened when comparing the whole transcriptome between the same
19 time points (**Extended Data Fig. 2ef**; **Supplementary Table 1**).

20
21 To jointly make use of the information conveyed by the whole and newly synthesized transcriptomes, we
22 combined their top principal components (PCs) for UMAP analysis. This approach separates cells that
23 had experienced no DEX treatment (0 hrs), recent treatment (2 hrs) or extended treatment (4+ hrs) (**Fig.**
24 **1e**, right). Interestingly, with this joint approach, the cells corresponding to two clusters defined by
25 analysis of whole transcriptomes (clusters 1 & 4 in **Fig. 1f**) each split into two groups (**Fig. 1f**). By
26 examining the levels of newly synthesized mRNAs corresponding to cell cycle markers³³, we found that
27 one pair of these new groups corresponds to cells in G2/M phase (high levels of both overall and newly
28 synthesized G2/M markers), and the other to early G0/G1 phase cells (high levels of overall but low levels
29 of newly synthesized G2/M markers) (**Fig. 1g**; **Extended Data Fig. 2gh**). These analyses indicate that
30 joint analysis of the newly synthesized and whole single cell transcriptomes can recover cell state
31 information that is not easily obtained from whole transcriptomes alone.

1



2

3 **Fig. 1. Sci-fate enables joint profiling of whole and newly synthesized transcriptomes.** (a) The sci-fate
 4 workflow. Key steps are outlined in text. (b) Experimental scheme. A549 cells were treated with dexamethasone
 5 for varying amounts of time ranging from 0 to 10 hrs. Cells from all treatment conditions were labeled with S4U
 6 two hours before harvest for sci-fate. (c) Violin plot showing the fraction of S4U labeled reads per cell for each of
 7 the six treatment conditions. For all violin plots in this figure: thick horizontal lines, medians; upper and lower box
 8 edges, first and third quartiles, respectively; whiskers, 1.5 times the interquartile range; circles, outliers. (d)
 9 Violin plot showing the fraction of S4U labeled reads per cell, split out by the subsets that map to exons vs. introns. (e)
 10 UMAP visualization of A549 cells based on their whole transcriptomes (left), newly synthesized transcriptomes
 11 (middle) or with joint analysis, *i.e.* combining the top PCAs from each (right). (f) Same as left and right of panel E,
 12 respectively, but colored by cluster id from UMAP based on whole transcriptomes. (g) Same as right of panel E,
 13 but colored by normalized expression of G2/M marker genes by their overall expression levels (left) or their levels
 14 of newly synthesized transcripts (right). UMI counts for these genes are scaled by library size, log-transformed,
 15 aggregated and then mapped to Z-scores.

16

17

1 TF module activity decomposes GR response, cell cycle, and other cellular processes

2

3 Multiple dynamic gene regulatory processes are concurrently underway in this *in vitro* GR response
4 system -- minimally, the GR response itself and the cell cycle. We speculated that these might be
5 disentangled, and their intersection probed, by first identifying the transcription factor (TF) modules
6 driving new mRNA synthesis in relation to each such process.

7

8 Towards identifying such modules, candidate links between TFs and their regulated genes were identified
9 as follows. For each gene, across the 6,680 cells, we computed correlations between the levels of newly
10 synthesized mRNA for that gene and the overall expression level of each of 859 transcription factors,
11 using LASSO (least absolute shrinkage and selection operator) regression. Out of 1,086 links with TFs
12 characterized by ENCODE³⁴, 807 were validated by TF binding sites near the genes' promoters³⁴, a 4.3-
13 fold enrichment relative to background expectation (odds ratio for validation = 2.89 for links identified in
14 LASSO regression vs. 0.67 for background, p-value < 2.2e-16, Fisher's Exact test). These covariance
15 links were further filtered by ChIP-seq binding³⁵ and motif³⁶ enrichment analysis (**Fig. 2a, Methods**). In
16 total, we identified 986 links between 29 TFs and 532 genes (**Fig. 2ab, Supplementary Table 2**). As a
17 control analysis, we permuted the cell IDs of the TF expression matrix and repeated the analysis. Under
18 the same thresholds, no links were identified after permutation. Some of the identified TF and gene
19 regulatory relationships are readily validated in a manually curated database of TF networks (TRRUST³⁷),
20 such as E2F1 (top enriched TF of E2F1 linked genes = E2F1, adjusted p-value = 8e-7)³⁸, NFE2L2 (top
21 enriched TF of NFE2L2 linked genes = NFE2L2, adjusted p-value = 0.003)³⁸, and SREBF2 (top enriched
22 TF of SREBF2 linked genes: SREBF2, adjusted p-value = 0.0006)³⁸.

23

24 The 29 TFs with one or more gene links included well-established GR response effectors such as
25 *CEBPB*³⁹, *FOXO1*⁴⁰, and *JUNB*⁴¹ (**Fig. 2b; Extended Data Fig. 3ab**). This group also included several
26 TFs that have not previously been implicated in GR response, including *YOD1* and *GTF2IRD1*, both of
27 which exhibited greater expression and activity in DEX treated cells (**Extended Data Fig. 3cd**). The main
28 TFs driving cell cycle progression were also identified, including *E2F1*, *E2F2*, *E2F7*, *BRCAl*, and
29 *MYBL2*⁴². Notably, the expression levels of TFs such as *E2F1* were more highly correlated with the levels
30 of newly synthesized target gene mRNA than the overall levels of target gene mRNA (**Extended Data**
31 **Fig. 3e**). We also observed regulatory links corresponding to TFs involved in cell differentiation such as
32 *GATA3*⁴³, mostly expressed in a subset of quiescent cells, as well as TFs involved in oxidative stress
33 response such as *NRF1*⁴⁴ and *NFE2L2* (*NRF2*)⁴⁵.

34

35 We calculated a measure of each of these 29 TFs' activities in each cell, based on the normalized
36 aggregation of the levels of newly synthesized mRNA for all of its target genes. We then computed the
37 absolute correlation coefficient between each possible pair of TFs with respect to their activity across the
38 6,680 cells. Hierarchical clustering of these pairwise correlations resulted in the identification of several
39 major TF modules, *i.e.* sets of TFs that appear to be regulating the same process (**Fig. 2c**). A first TF
40 module corresponds to all cell cycle-related TFs in the set, *e.g.* *E2F1* and *FOXMI*⁴². A second large

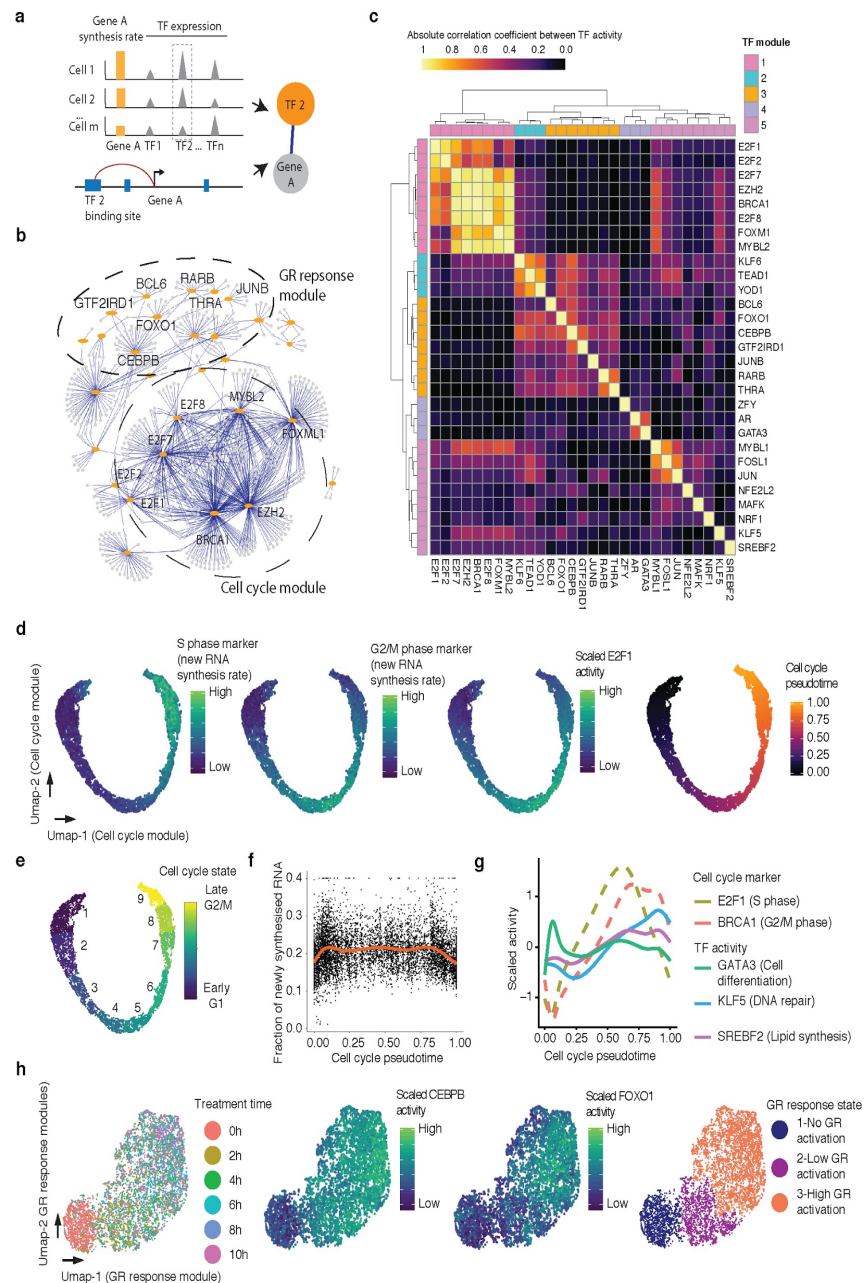
1 module corresponds to GR response-related TFs including *FOXO1*, *CEBPB*, *JUNB* and *RARB*³⁹⁻⁴¹. The
2 other modules include one corresponding to GR-activated G1/G2/M phase cells (*KLF6*, *TEAD1*, and
3 *YOD1*; **Extended Data Fig. 3f**), and another corresponding to likely-differentiating GR-activated G1
4 phase cells *GATA3* and *AR*; **Extended Data Fig. 3f**)^{43,46}. Additional TFs or TF modules appear to capture
5 other processes that are heterogeneous in this population of cells, including *NRF1* and *NFE2L2* for stress
6 response/apoptosis (top enriched pathway of *NFE2L2* linked genes: ferroptosis, adjusted p-value = 1e-
7 5)^{38,44,45,47}; *KLF5* for DNA damage repair (top pathway: ATM signaling, adjusted p-value = 0.018)^{38,48};
8 and *SREBF2* for cholesterol homeostasis (top pathway: “SREBF and miR33 in cholesterol and lipid
9 homeostasis”, adjusted p-value = 9e-6)^{38,49}.

10
11 To assign cell cycle states to individual cells, we first ordered cells by their cell cycle-linked TF module
12 activity. This resulted in a smooth, nearly circular trajectory, in which the levels of newly synthesized
13 mRNA corresponding to known cell cycle markers was dynamic (**Fig. 2d**)³³. We observed a gap between
14 late G2/M phase and early G1 phase, consistent with the dramatic cell state change during cell division.
15 By unsupervised clustering of the activities of individual TFs within the cell cycle-linked TF module, we
16 identified 9 cell cycle states spanning the early, middle and late cell cycle phases (**Fig. 2e**). Early G1 and
17 late G2/M phase cells exhibited decreased synthesis of new RNA relative to other parts of the cell cycle,
18 possibly due to chromosomal condensation during mitosis (**Fig. 2f**)⁵⁰⁻⁵². Other (*i.e.* non-cell-cycle) TF
19 modules exhibited different dynamics in relation to cell cycle progression (**Fig. 2g**). For example, *GATA3*
20 activity peaks in early G1 phase, potentially reflecting a cell differentiation pathway distinct from cell
21 cycle reentry⁴³. In contrast, the modules of *KLF5* and *SREBF2*, associated with DNA repair and lipid
22 homeostasis, respectively, exhibit greater activity from S to G2 phase, possibly related to roles in DNA
23 replication and cell division, respectively⁵³.

24
25 With similar approaches, the cells can also be ordered into a smooth trajectory based on GR response-
26 linked TF module activity. As expected, this trajectory correlates well with DEX treatment time, as well
27 as the activity of GR response-related TFs (**Fig. 2h**). By unsupervised clustering of the activities of
28 individual TFs within the GR response-linked TF module, we identified GR response states corresponding
29 to no, low and high levels of activation (**Fig. 2h**).

30
31 We next sought to explore the intersection of the 9 cell cycle states (**Fig. 2e**) and the three GR response
32 states (**Fig. 2h**). Each of their 27 possible state combinations were represented by some cells, with the
33 smallest group corresponding to 1.1% of the overall dataset (n = 74 cells, intersection of “early G2/M”
34 cell cycle state and “no GR activation” state; **Extended Data Fig. 4ab**). Although we observe several TF
35 modules that appear specific to certain intersections of the cell cycle and GR response
36 (*KLF6/TEAD1/YOD1* and *GATA3/AR*, discussed above), several observations support the conclusion that
37 the dynamics of the cell cycle and GR response operate largely independently. First, we observe minimal
38 correlation between the activities of the primary TF modules for cell cycle and GR response across the
39 6,680 cells (Pearson’s correlation $r = 0.004$; **Fig. 2c**). Second, the relative proportions of each of the 27

1 possible state combinations are readily predicted by proportions of cell cycle and GR response states
 2 (Extended Data Fig. 4b).
 3



4
 5 **Fig. 2. Characterizing TF modules driving concurrent, dynamic gene regulatory processes in populations of**
 6 **single cells.** (a) Schematic of approach used to identify links between TFs and their regulated genes. (b) Identified
 7 links (blue) between TFs (orange) and regulated genes (grey). TF modules related to cell cycle progression and GR
 8 response are labeled. (c) Heatmap showing the absolute Pearson's correlation coefficient between the activities of
 9 pairs of TFs. (d) UMAP visualization of A549 cells based on activity of cell cycle-related TF module, colored by
 10 levels of newly synthesized mRNA corresponding to, from left to right, S phase markers, G2/M phase markers, and
 11 *E2F1* activity. Rightmost panel is colored by pseudotime based on point position on the principal curve estimated

1 by printrcurve package⁵⁴. (e) Same as panel d, but colored according to nine cell cycle states defined by unsupervised
2 clustering analysis. In broad terms, cell cycle states 1-3 correspond to G1 phase, 4-6 to S phase, and 7-9 to G2/M
3 phase. (f) Scatter plot showing the changes in the fraction of newly synthesized mRNA in each cell along cell cycle
4 progression. The blue line is the smoothed curve estimated by the `geom_smooth` function⁵⁵. (g) Similar to panel F,
5 but showing smoothed activity of selected TF modules as a function of cell cycle pseudotime. (h) UMAP
6 visualization of A549 cells based on activity of GR response-related TF module, colored by DEX treatment time
7 (left), *CEBPB* or *FOXO1* activity (middle panels), or cluster id from unsupervised clustering (right). Throughout
8 figure, to calculate TF module activity, newly synthesized UMI counts for genes linked to module-assigned TFs are
9 scaled by library size, log-transformed, aggregated and then mapped to Z-scores.

10 Inferring single cell transcriptional dynamics with sci-fate

11 We next sought to develop a strategy to use sci-fate data to infer the *past* transcriptional state of each cell,
12 *i.e.* at the onset of S4U labeling, which might in turn allow us to relate cells derived from different
13 timepoints. The inference of this past transcriptional state requires knowledge of two parameters -- first,
14 the detection rate of newly synthesized transcripts, and second, the degradation rate of each mRNA
15 species. Below, we discuss how each of these parameters can be estimated directly from the sci-fate data
16 generated for this experiment. A more detailed consideration is provided in the **Methods**.

17 Under the assumption that mRNA degradation rates are not affected by DEX treatment (this assumption
18 is validated further below), it is relatively straightforward to estimate sci-fate's detection rate for newly
19 synthesized transcripts. Each sci-fate transcriptome in this dataset consists of two components -- the newly
20 synthesized transcriptome, whose detection rate we are hoping to estimate, and the 'leftover'
21 transcriptome, *i.e.* transcripts that were present at the onset of 4SU labeling, minus any degradation over
22 the course of the two hours. Comparing the 0 hr (untreated) and 2 hr DEX treatment groups, we expect
23 that their leftover transcriptomes should be identical, as should sci-fate's detection rate for newly
24 synthesized transcripts. As such, an equation can be constructed relating the transcriptomes of these
25 treatment groups to one another (**Methods**). For each of 186 genes exhibiting the largest differences in
26 new transcription between the two conditions, we solved this equation to estimate sci-fate's detection rate.
27 As these estimates were largely consistent across genes (**Extended Data Fig. 5ab**), we used their median
28 value (82%) as sci-fate's estimated detection rate for all subsequent analyses.

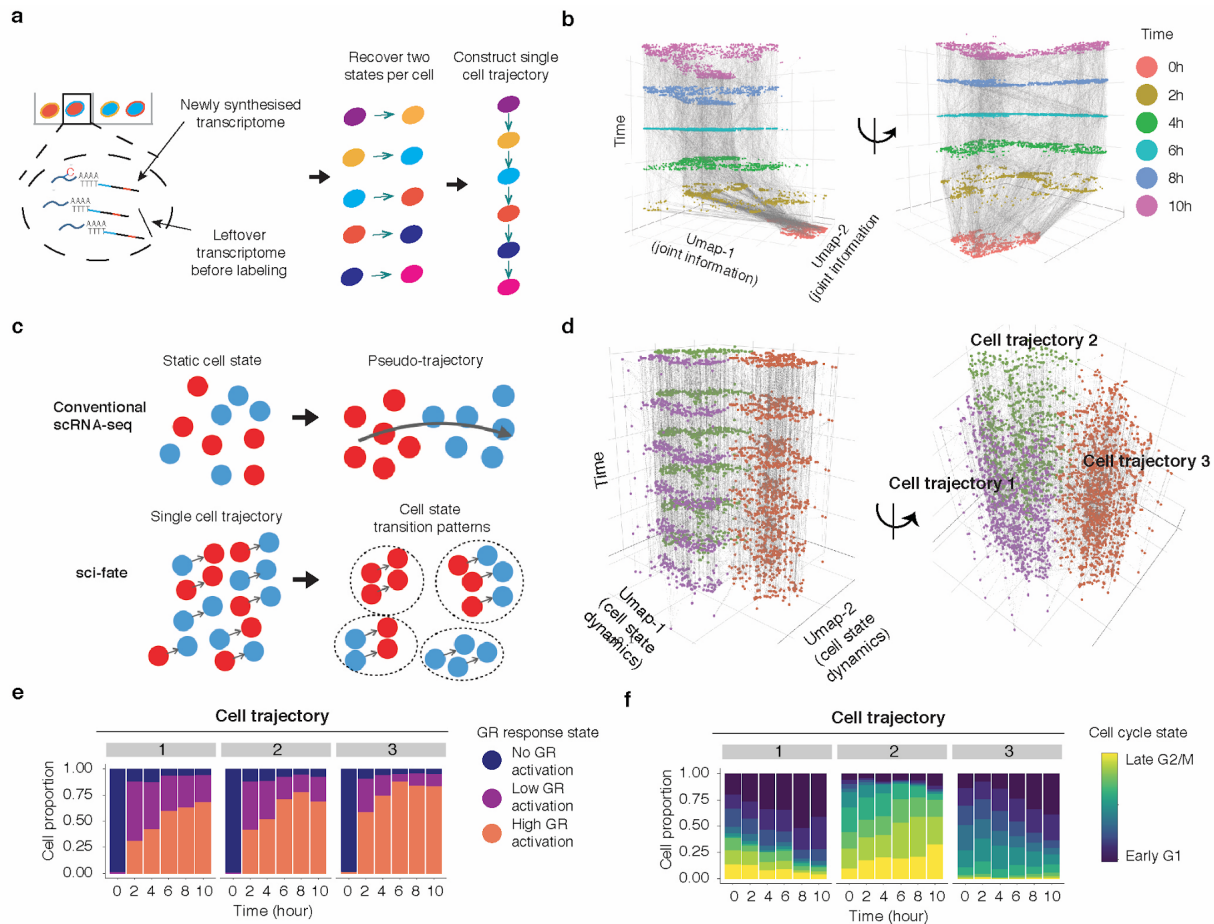
29 We next sought to estimate the degradation rate of each mRNA species. As noted above, the bulk
30 transcriptome at each timepoint in our experiment can be decomposed into the newly synthesized
31 transcriptome and the leftover transcriptome. Furthermore, the leftover transcriptome should equal the
32 bulk transcriptome from the timepoint two hours earlier, but corrected for mRNA degradation over that
33 interval. From these assumptions, an equation can be constructed and solved to estimate the mRNA half-
34 life of each gene, which we did independently for each two hour interval of the experiment (**Methods**;
35 **Supplementary Table 3**). As a first quality check, we simply compared these estimated mRNA half-lives
36 between timepoints, and found them to be highly consistent (**Extended Data Fig. 5c**; median Pearson's r
37 = 0.92). As a second quality check, we compared them to orthogonally generated estimates of mRNA
38
39
40
41

1 half-lives from the literature⁹. Despite the fact that different technologies were used on different cell lines
2 (A549 vs. K562), the estimates of mRNA half-lives were reasonably consistent (**Extended Data Fig. 5d**;
3 Pearson's $r = 0.76$).

4
5 With these parameters in hand, we next estimated the *past* transcriptional state of each cell in our dataset
6 (**Methods**), and sought to use these estimated states to link individual cells to one another across
7 timepoints (**Fig. 3a**). Specifically, for each cell B (*e.g.* a cell from the 2 hr timepoint), we used a recently
8 developed alignment method³³ to identify a cell A profiled at an earlier timepoint (*e.g.* a cell from the 0
9 hr timepoint), wherein A's current state was closest to B's estimated past state. In this framework, A can
10 be regarded as the parent state of B. Applying this strategy to each of the five intervals comprising our
11 experiment, we constructed a set of linkages spanning the entire dataset and time course (**Fig. 3b**).

12
13 A key contrast with conventional pseudotime is that with sci-fate, each cell is now characterized not only
14 by its present state, but also by specific linkages to a series of distinct cells matching its predicted past
15 and/or future states (**Fig. 3c**). To evaluate whether there is structure to these mini-trajectories, we applied
16 UMAP and unsupervised clustering, which resulted in three distinct trajectory clusters (**Fig. 3d**). To
17 annotate these, we checked the proportions of each of the aforementioned three GR response states and
18 nine cell cycle states in each of them, as a function of time. As expected, all three trajectories exhibited a
19 rapid transition from no GR activation to low/high GR activation (**Fig. 3e**). However, each trajectory
20 appears to correspond to a different starting point with respect to the cell cycle (**Fig. 3f**). Trajectory 1
21 corresponds to cells that transition from G2/M to G1 phase over the course of the 10 hr experiment.
22 Trajectory 2 corresponds to cells that transition from late S phase to G2/M phase over the course of the
23 experiment. Finally, trajectory 3 corresponds to cells that transition from G1 to either S phase or G1 arrest
24 over the course of the experiment. The inference of G1 arrest subsequent to DEX treatment is consistent
25 with the dynamics of cell state proportions in this experiment as well as with previous research^{56,57}.

26



1
 2 **Fig. 3. Inferring single cell transcriptional dynamics with sci-fate.** (a) Schematic of approach for linking cells
 3 based on estimated past transcriptional states to reconstruct single cell transition trajectories. (b) 3D plot of all cells.
 4 The x and y coordinates correspond to the joint information UMAP space shown in the rightmost panel of Fig. 1e.
 5 The z coordinate as well as colors correspond to DEX treatment time. Linked parent and child cells are connected
 6 with grey lines. (c) Schematic comparing conventional scRNA-seq and sci-fate for cell trajectory analysis. (d)
 7 Similar to panel b, except the x and y coordinates correspond to the UMAP space based on the single cell transition
 8 trajectories across the six time points. (e-f) Barplots showing the contributions of the 3 GR response states (e) and
 9 the 9 different cell cycle states (f) to each of three cell trajectory clusters.

1 Inferred single cell state transition links recapitulate expected dynamics

2

3 We next sought to evaluate whether the distribution of cell state transitions inferred by sci-fate are
4 consistent with the expected dynamics. We assigned each cell into one of the 27 states (3 GR response x
5 9 cell cycle states) and computed a cell state transition network (**Fig. 4a**), with the assumption that the cell
6 state transitions in this experiment follow a Markov process with a distribution that does not change over
7 time. This assumption is validated in part by the observation that the distribution of predicted cell state
8 transitions estimated from part of the data (0 hrs to 6 hrs) are highly correlated with similar estimates from
9 the full data (**Extended Data Fig. 6a**). Although the cell state proportions were highly dynamic over the
10 ten hour experiment (**Extended Data Fig. 6b**), the cell state transition network accurately predicted these
11 proportions across all later timepoints based on the proportions from the first timepoint alone (**Extended**
12 **Data Fig. 6c**). Consistent with the DEX treatment, transitions are highly biased from no/low to high GR
13 activation states, as well as from G1 to S, S to G2/M, and G2/M to G1 phase of the cell cycle (**Fig. 4a**).
14 As a control analysis, the cell state transition network based on randomly permuted cell state transition
15 links failed to recapitulate these expected dynamics (**Extended Data Fig. 6d**).
16

17

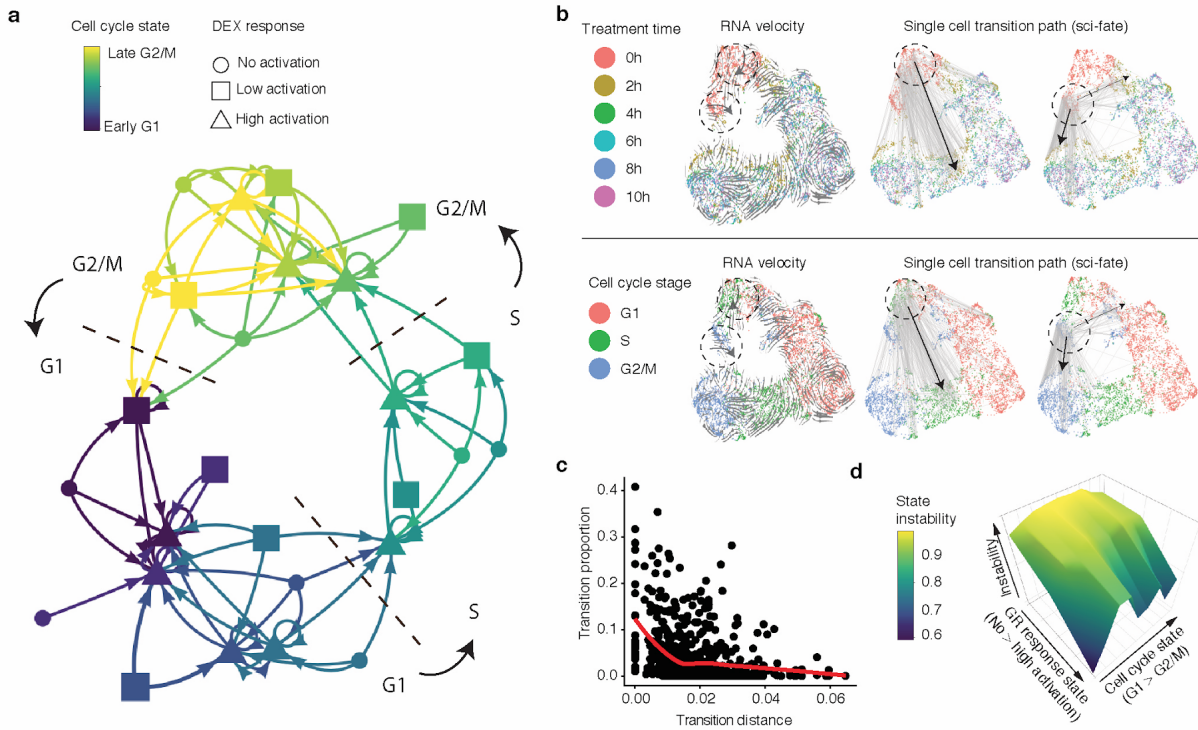
18 The 27 states shown in **Fig. 4a** each correspond to subsets of cells whose transcriptomes are similar,
19 making use of the joint information provided by distinguishing between old (> 2 hrs) vs. new (< 2 hrs)
20 transcripts. Importantly, the distribution of transitions are inferred, rather than explicitly known, but
21 supported by the fact that they correspond to expected phenomena, *e.g.* irreversible progression through
22 GR response, as well as irreversible progression through the cell cycle. As an example, S phase cells
23 without GR activation (0 hrs treatment) mostly transit into cell state in S phase with GR activation (2 hrs
24 treatment), while G2/M phase cells with no GR activation (0 hrs treatment) mostly transit to G2/M or G1
25 phase cells with GR activation (2 hrs treatment) (**Fig. 4b**, upper). For comparison, reanalyzing the data
26 with the RNA velocity method⁵⁸, which infers transcriptional dynamics in single cell data from the
27 proportion of intronic vs. exonic reads, failed to recover these expected patterns (**Fig. 4b**, lower). This
28 could be because RNA velocity depends on the relative coordinates of cells in a low dimensional space,
29 which is not a limitation of sci-fate.

30

31 Can we use this framework to better understand the characteristics of transcriptional states that govern
32 their dynamics? As a first approach, we calculated the pairwise Pearson's distance between the aggregated
33 transcriptomes of each of the 27 states. As expected, the greater the distance between any pair of states,
34 the lower the proportional representation of that transition in the network (Spearman's correlation
35 coefficient = -0.38; **Fig. 4c**). As a second approach, we computed "instability" as the proportion of cells
36 inferred to be moving out of a given state between timepoints (**Fig. 4d**). As expected, states corresponding
37 to no GR activation were the least stable by this metric. Furthermore, amongst high GR activation states,
38 states corresponding to early G1 were the most stable. These representations of the data are consistent
39 with the transition network, wherein the states corresponding to high GR activation and early G1 are a
40 frequent "destination" of all nearby states (purple triangles in **Fig. 4a**).

40

1



2

3

4 **Fig. 4. Constructing a state transition network for GR response and cell cycle.** (a) Cell state transition network.
 5 The nodes are 27 cell states characterized by combinations of cell cycle and GR activation states. The links
 6 represents frequent cell state transition trajectories (transition proportion > 10%) between cell states. This threshold
 7 for defining a link corresponds to approximately two standard deviations from the mean transition proportion
 8 calculated after permuting cell transition links. (b) The x and y coordinates correspond to the joint information
 9 UMAP space shown in the rightmost panel of **Fig. 1e**, colored by DEX treatment time (top) or inferred cell cycle
 10 state (bottom). Grey lines represent inferred cell state transition directions by RNA velocity⁵⁸ (left) or cell state
 11 transition links between parent and child cells in sci-fate (middle: cell state transition links starting from cells at S
 12 phase and no GR activation stage; right: cell state transition links starting from cells at G2/M phase and no GR
 13 activation stage). Black arrows show main cell state transition directions. (c) Scatter plot showing the relationship
 14 between transition distance (Pearson's distance) and transition proportion, together with the red LOESS smoothed
 15 line by ggplot2⁵⁵. (d) 3D plot showing the cell state stability landscape. X-axis represents GR response states (from
 16 no to low to high activation state). Y-axis represents the cell cycle states ordered from G1 to G2/M. Z-axis represents
 17 cell state instability, defined as the proportion of cells inferred to be moving out of a given state between time points.

1 Discussion

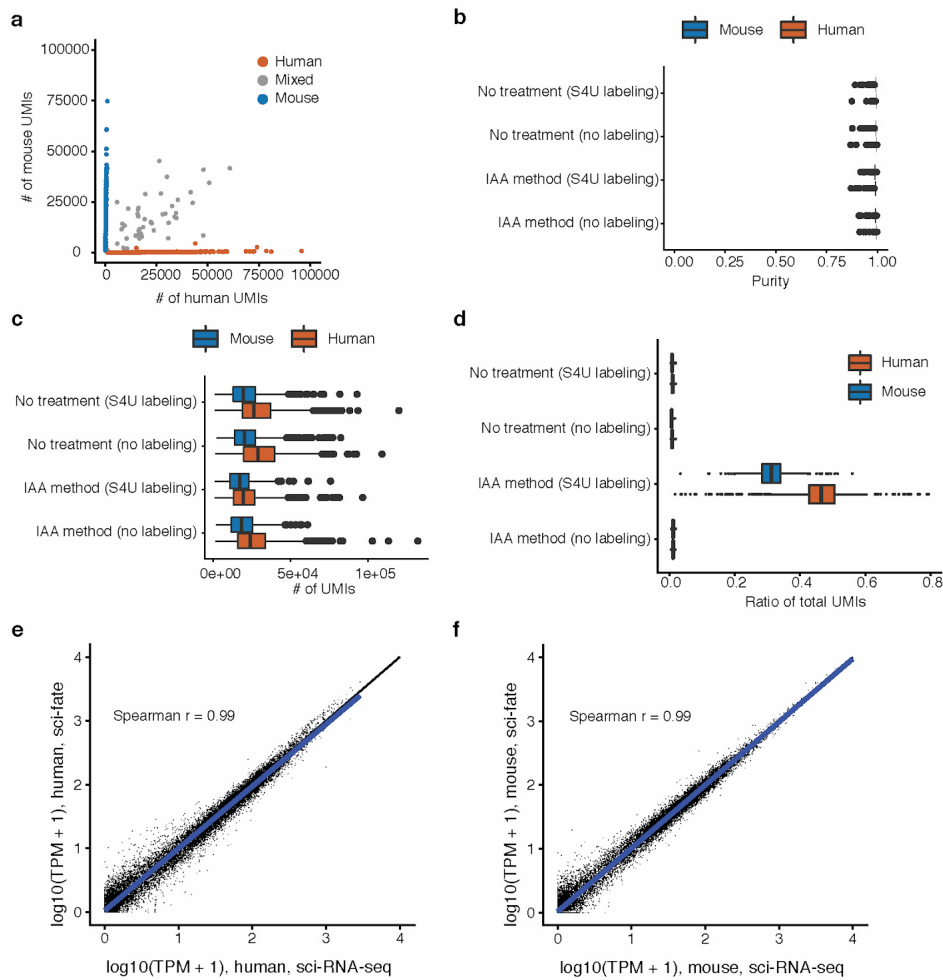
2
3 Experimental methods that recover not only the current state of any given cell, but also its vector, are
4 distinct and potentially more powerful than computational methods for inferring such vectors, *e.g.*
5 pseudotime. To that end, we developed sci-fate, a novel method for concurrently profiling the whole and
6 newly synthesized transcriptome in each of many single cells. In applying sci-fate to a model system of
7 cortisol response, we found that the joint analysis of whole and newly synthesized single cell
8 transcriptomes enabled greater discrimination of cell states than was possible with whole transcriptomes
9 alone. Most notably, it became straightforward to distinguish between the dynamic transcriptional
10 modules underlying GR activation vs. progression through the cell cycle. By analyzing covariance
11 between TF expression and *new* RNA synthesis across many single cells, we identified regulatory links
12 between 27 TFs and nearly one thousand target genes. These separated into several modules, including
13 the GR response, cell cycle and others, reflecting cellular processes that were heterogeneous across this
14 population of cells and that appeared to operate largely independently of one another. We were also able
15 to infer the past state of each single cell in the experiment, and to use links between cells based on these
16 inferences to construct a cell state transition network. Thus, sci-fate could in principle help overcome
17 limitations of conventional single-cell RNA-seq when inferring causal regulatory networks and should
18 help drive development of computational methods towards this end⁵⁹.

19
20 Sci-fate captures information that is analogous to RNA velocity⁵⁸, which distinguishes ‘older’ vs. ‘newer’
21 transcripts based on their splicing status. On one hand, RNA velocity is more straightforward than sci-
22 fate, as it makes use of information that is indirectly captured by many single cell profiling technologies,
23 whereas sci-fate requires S4U labeling steps that cannot necessarily be used in all contexts. On the other
24 hand, sci-fate lends itself to experimental control in a way that RNA velocity does not, as the timing and
25 length of S4U labeling can be specified whereas with RNA velocity it is a product of endogenous splicing
26 dynamics. Furthermore, as we show, gene-specific mRNA degradation rates as well as the past
27 transcriptional state of each cell can be inferred, which may enable the quantitative analysis of cells with
28 complex transcriptional histories and futures (*e.g.* multiple dynamics modules).

29
30 Because it is based on combinatorial indexing, sci-fate will be straightforward to scale to millions of
31 cells⁶⁰. It is also potentially compatible with concurrent profiling of the epigenomes from the same cells⁶¹,
32 although ideally, we would be able to profile not only nascent transcription but also nascent epigenetic
33 events. A major limitation of sci-fate is that S4U labeling experiments are generally performed *in vitro*.
34 However, recent studies have shown that S4U can be used in conjunction with transgenic *UPRT*-
35 expressing mice to stably label cell type-specific nascent RNA transcription *in vivo*⁶²⁻⁶⁴, suggesting that
36 sci-fate, with further optimizations to enhance S4U incorporation and detection rate, can potentially be
37 used to profile single transcriptional dynamics *in vivo* and at scale.

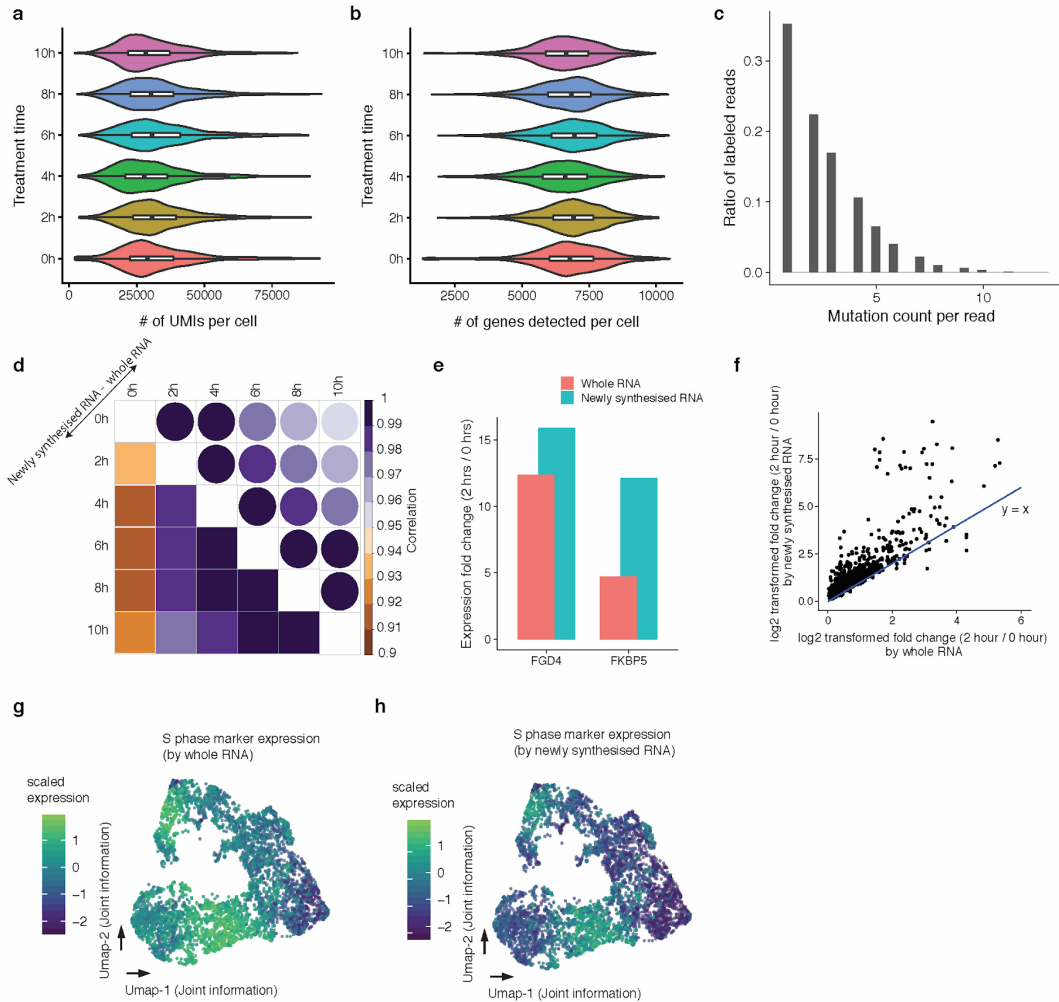
1 Supplementary Figures

2



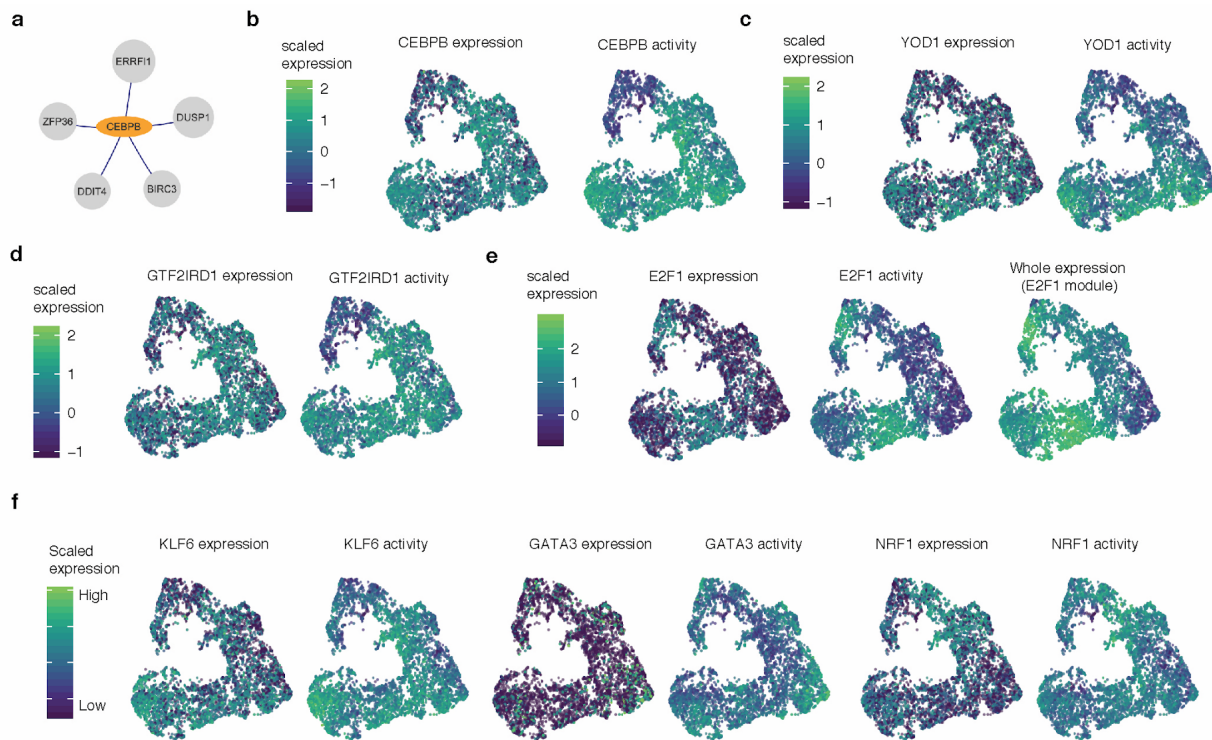
3

4 **Extended Data Fig. 1. Performance and QC-related analyses for sci-fate.** (a) Scatter plot of mouse
5 (NIH/3T3) vs. human (HEK293T) UMI counts per cell in sci-fate. (b-d) Boxplot showing the proportion
6 of reads mapping to the expected species (b), number of UMIs (c) and ratio of S4U labeled reads (d) per
7 cell from HEK293T ($n = 932$) and NIH/3T3 ($n = 438$) cells. For all box plots: thick horizontal lines,
8 medians; upper and lower box edges, first and third quartiles, respectively; whiskers, 1.5 times the
9 interquartile range; circles, outliers. (e-f) Spearman's correlation between gene expression measurements
10 in aggregated profiles of HEK293T (e) and NIH/3T3 cells (f) from sci-fate (y-axis) vs. sci-RNA-seq (x-
11 axis) cells.



1
2 **Extended Data Fig. 2. Performance of sci-fate on dexamethasone-treated A549 cells.** (a, b) Violin
3 plot showing the number of UMIs (a) and genes (b) per cell in each of six treatment conditions. For all
4 box plots: thick horizontal lines, medians; upper and lower box edges, first and third quartiles,
5 respectively; whiskers, 1.5 times the interquartile range; circles, outliers. (c) Histogram showing the
6 distribution of of $T > C$ mutation counts across labeled reads, estimated using reads from 100 randomly
7 sampled cells and normalized by the total read number. (d) Correlation plot showing the Pearson's
8 correlation between different treatment conditions, using either whole transcriptomes (upper right; circles)
9 or newly synthesized transcriptomes (bottom left; squares). (e) Bar plot showing the expression fold-
10 change before and after 2 hour DEX treatment for *FGD4* and *FKBP5*, calculated using either whole RNA
11 and newly synthesised RNA. (f) Scatter plot showing the expression fold-change before and after 2 hour
12 DEX treatment for differentially expressed (DE) genes identified using either whole transcriptomes or
13 newly synthesized transcriptomes. The blue line represent $y = x$ line. (g-h) UMAP visualization of A549
14 cells via joint information of the whole and newly synthesized transcriptomes, colored by normalized
15 expression of S phase marker genes in the whole (g) and newly synthesized (h) transcriptomes. UMI
16 counts for these genes are scaled for library size, log-transformed, aggregated and then mapped to Z-
17 scores.

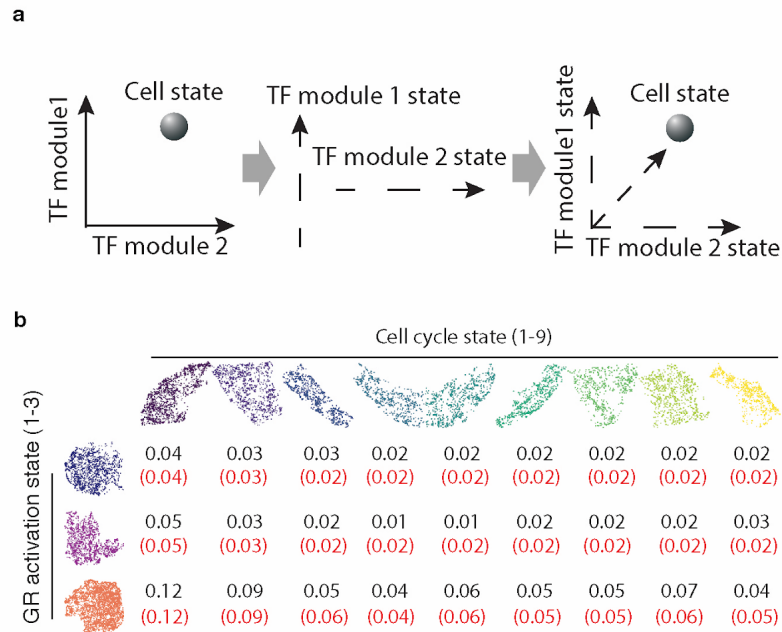
1



2

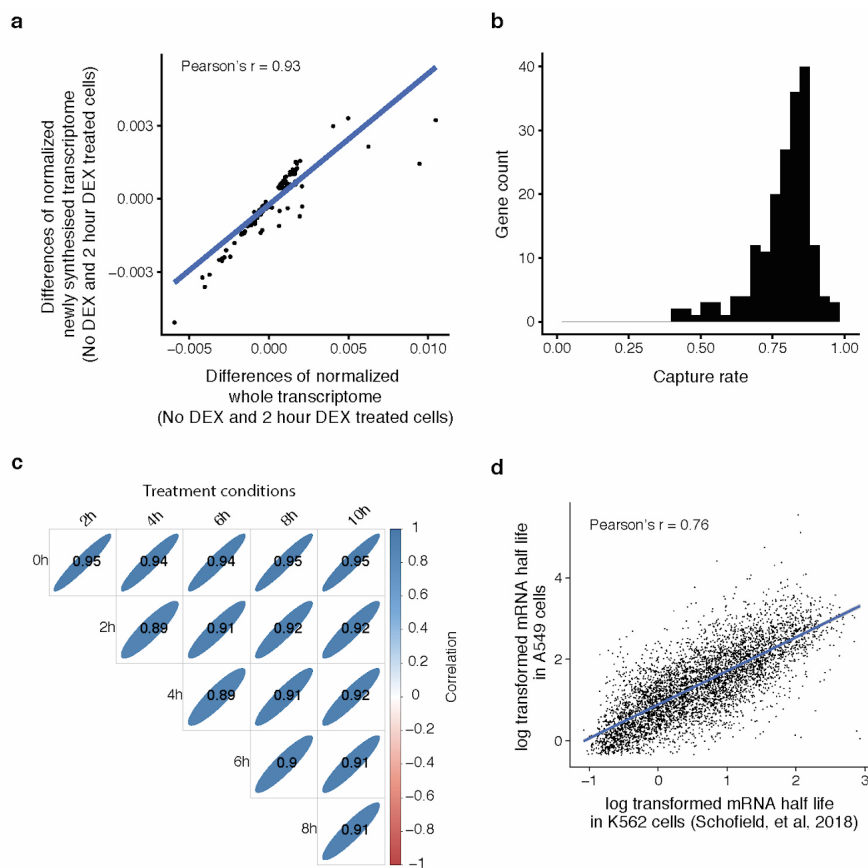
3

4 **Extended Data Fig. 3. TF modules driving cell state transitions in DEX-treated A549 cells.** (a)
5 Identified gene targets (grey) of *CEBPB* (orange). Only links with regularized correlation coefficients
6 from LASSO > 0.06 are shown. (b) UMAP visualization of A549 cells via joint information of the whole
7 and newly synthesized transcriptomes, colored by *CEBPB* expression (left) and activity (right). (c) similar
8 to (b), colored by the *YOD1* expression (left) or activity (right). (d) similar to (b), colored by the
9 *GTF2IRD1* expression (left) or activity (right). (e) similar to (b), colored by the *E2F1* expression (left),
10 activity (middle) or aggregated whole transcriptome expression of *E2F1* linked genes (right). (f) similar
11 to (b), colored by the expression and activity of *KLF6* (left two panels), *GATA3* (middle two panels) or
12 *NRF1* (right two panels).



1

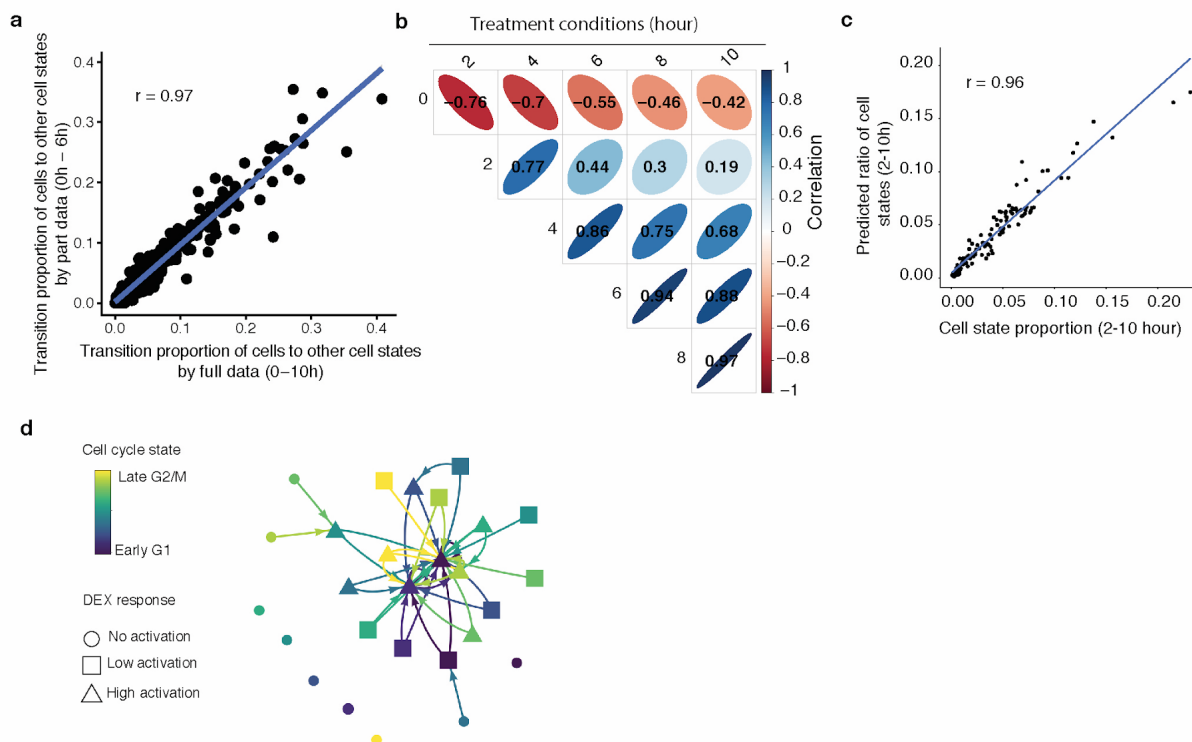
2 **Extended Data Fig. 4. Twenty-seven cell states defined by combinations of TF module-defined**
3 **states. (a)** Schematic of strategy for characterizing cell states as the combination of TF modules. **(b)**
4 Supplementary Table showing the observed proportion of cells (black numbers) falling into each of 27
5 cell states that correspond each correspond to one of 3 states defined by GR response (rows) and one of 9
6 states defined by the cell cycle module (columns). The red numbers in parentheses correspond to the
7 expected proportions, assuming that the distributions are independent.



1

2 **Extended Data Fig. 5. Estimating the rate of new RNA detection and the rates of RNA degradation.**

3 (a) Scatter plot showing differences between the normalized transcriptomes with no DEX treatment vs. 2
4 hours DEX treatment for each of 186 genes exhibiting the largest differences in new transcription between
5 the two conditions. X-axis shows differences between the conditions in the whole transcriptome. Y-axis
6 shows differences between the conditions in the newly synthesized transcriptome. Blue line is the linear
7 regression line. Both whole transcriptome and newly synthesized transcriptome of each time point are
8 normalized by the library size of whole transcriptome. (b) Histogram showing the distribution of the
9 estimated capture rate of newly synthesised mRNA for each of 186 genes. (c) Correlation plot showing
10 the Pearson's correlation (r) of log-transformed gene degradation rate between treatment conditions.
11 Positive correlations are displayed in blue and negative correlations in red. The shape of the ellipses are
12 illustrative, determined by the correlation coefficients shown. (d) Scatter plot showing the correlation
13 between estimated per-gene mRNA half lives (log transformed) in K562 cells from the literature (x-axis)⁹
14 vs. as estimated by sci-fate in A549 cells (y-axis).



1

2 **Extended Data Fig. 6. Constructing a state transition network for GR response and cell cycle. (a)**

3 Scatter plot showing the correlation of distribution of inferred cell state transitionscalculated by the full

4 data (x-axis; 0-10 hours) vs. partial data (y-axis; 0-4 hours). The blue line represents the linear regression.

5 **(b)** Correlation plot showing the Pearson's correlation (r) of cell state proportions between treatment

6 conditions. Positive correlations are displayed in blue and negative correlations in red. The shape of the

7 ellipses are illustrative, determined by the correlation coefficients shown. **(c)** Scatter plots showing the

8 observed vs. predicted cell state proportions for the 2, 4, 6, 8 and 10 hr DEX treatment groups. The

9 predicted values are based on using a cell state transition network constructed from the full data. **(d)** Cell

10 state transition network similar to Fig. 4a, but after permuting the parent and child cell links. During

11 permutation, each child cell of each time point is linked to a randomly selected parent cell from the

12 immediately preceding time point.

1 **Endnotes**

2 **Acknowledgements:** We thank members of the Shendure labs for helpful discussions, particularly
3 Xingfan Huang, Ronnie Blecher, Beth Martin, Flo Chardon and Ruolan Qiu.

4
5 **Competing interests:** F.J.S. declares competing financial interests in the form of stock ownership and
6 paid employment by Illumina, Inc. One or more embodiments of one or more patents and patent
7 applications filed by Illumina may encompass the methods, reagents, and data disclosed in this manuscript.

8
9 **Funding:** This work was funded by the Paul G. Allen Frontiers Foundation (Allen Discovery Center grant
10 to JS and CT), grants from the NIH (DP1HG007811 and R01HG006283 to JS; DP2 HD088158 to CT),
11 the W. M. Keck Foundation (to CT and JS), the Dale. F. Frey Award for Breakthrough Scientists (to CT),
12 the Alfred P. Sloan Foundation Research Fellowship (to CT), and the Brotman Baty Institute for Precision
13 Medicine. JS is an Investigator of the Howard Hughes Medical Institute.

14
15 **Author contributions:** J.S. and J.C. designed the research; J.C. developed technique and performed
16 experiments with assistance from F.S.; J.C. performed computation analysis with suggestions from W.Z.
17 and C.T.; J.S. and J.C. wrote the paper.

18

1 **Materials and Methods:**

2 Mammalian cell culture

3 All mammalian cells were cultured at 37°C with 5% CO₂, and were maintained in high glucose DMEM
4 (Gibco cat. no. 11965) for HEK293T and NIH/3T3 cells or DMEM/F12 medium for A549 cells, both
5 supplemented with 10% FBS and 1X Pen/Strep (Gibco cat. no. 15140122; 100U/ml penicillin, 100 µg/ml
6 streptomycin). Cells were trypsinized with 0.25% trypsin-EDTA (Gibco cat. no. 25200-056) and split 1:10
7 three times per week.

8 Sample processing for sci-fate

9 A549 cells were treated with 100 nM DEX for 0 hrs, 2 hrs, 4 hrs, 6 hrs, 8 hrs or 10 hrs. Cells in all
10 treatment conditions were incubated with 200µM S4U for the last two hours before cell harvest. For
11 HEK293T and NIH/3T3 cells, cells were incubated with 200µM S4U for 6 hours before cell harvest.

12 All cell lines (A549, HEK293T and NIH/3T3 cells) were trypsinized, spun down at 300xg for 5 min (4°C)
13 and washed once in 1X ice-cold PBS. All cells were fixed with 4ml ice cold 4% paraformaldehyde (EMS)
14 for 15 min on ice. After fixation, cells were pelleted at 500xg for 3 min (4°C) and washed once with 1ml
15 PBSR (1 x PBS, pH 7.4, 1% BSA, 1% SuperRnaseIn, 1% 10mM DTT). After wash, cells were
16 resuspended in PBSR at 10 million cells per ml, and flash frozen and stored in liquid nitrogen.
17 Paraformaldehyde fixed cells were thawed on 37°C water bath, spun down at 500xg for 5 min, and
18 incubated with 500ul PBSR including 0.2% Triton X-100 for 3min on ice. Cells were pelleted and
19 resuspended in 500ul nuclease free water including 1% SuperRnaseIn. 3ml 0.1N HCl were added into the
20 cells for 5min incubation on ice²⁵. 3.5ml Tris-HCl (pH = 8.0) and 35ul 10% Triton X-100 were added
21 into cells to neutralize HCl. Cells were pelleted and washed with 1ml PBSR. Cells were resuspended in
22 100ul PBSR. 100ul PBSR with fixed cells were incubated with mixture including 40ul Iodoacetamide
23 (IAA, 100mM), 40ul sodium phosphate buffer (500mM, pH = 8.0), 200ul DMSO and 20ul H₂O, at 50°C
24 for 15min. The reaction was quenched by 8ul DTT (1M) and 8.5ml PBS⁶⁵. Cells were pelleted and
25 resuspended in 100ul PBSI (1 x PBS, pH 7.4, 1% BSA, 1% SuperRnaseIn). For all later washes, nuclei
26 were pelleted by centrifugation at 500xg for 5 min (4°C).

27 The following steps are similar with sci-RNA-seq protocol with paraformaldehyde fixed nuclei^{19,20}.
28 Briefly, cells were distributed into four 96-well plates. For each well, 5,000 nuclei (2 µL) were mixed with
29 1 µl of 25 µM anchored oligo-dT primer (5'-ACGACGCTCTCCGATCTNNNNNNNN[10bp
30 index]TTTTTTTTTTTTTTTTTTTTTTTTTTTTTTTTTTVN-3', where "N" is any base and "V" is either "A",
31 "C" or "G"; IDT) and 0.25 µL 10 mM dNTP mix (Thermo), denatured at 55°C for 5 min and immediately
32 placed on ice. 1.75 µL of first-strand reaction mix, containing 1 µL 5X Superscript IV First-Strand Buffer
33 (Invitrogen), 0.25 µl 100 mM DTT (Invitrogen), 0.25 µl SuperScript IV reverse transcriptase (200 U/µl,
34 Invitrogen), 0.25 µL RNaseOUT Recombinant Ribonuclease Inhibitor (Invitrogen), was then added to
35 each well. Reverse transcription was carried out by incubating plates at the following temperature
36 gradient: 4°C 2 minutes, 10°C 2 minutes, 20°C 2 minutes, 30°C 2 minutes, 40°C 2 minutes, 50°C 2
37 minutes and 55°C 10 minutes. All cells (or nuclei) were then pooled, stained with 4',6-diamidino-2-

1 phenylindole (DAPI, Invitrogen) at a final concentration of 3 μ M, and sorted at 25 nuclei per well into 5
2 μ L EB buffer. Cells were gated based on DAPI stain such that singlets were discriminated from doublets
3 and sorted into each well. 0.66 μ L mRNA Second Strand Synthesis buffer (NEB) and 0.34 μ L mRNA
4 Second Strand Synthesis enzyme (NEB) were then added to each well, and second strand synthesis was
5 carried out at 16°C for 180 min. Each well was then mixed with 5 μ L Nextera™ TD buffer (Illumina) and
6 1 μ L i7 only TDE1 enzyme (25 nM, Illumina, diluted in Nextera™ TD buffer), and then incubated at 55°C
7 for 5 min to carry out tagmentation. The reaction was stopped by adding 12 μ L DNA binding buffer
8 (Zymo) and incubating at room temperature for 5 min. Each well was then purified using 36 μ L AMPure
9 XP beads (Beckman Coulter), eluted in 16 μ L of buffer EB (Qiagen), then transferred to a fresh multi-
10 well plate.

11 For PCR reactions, each well was mixed with 2 μ L of 10 μ M P5 primer (5'-
12 AATGATACGGCGACCACCGAGATCTACAC[i5]ACACTCTTCCCTACACGACGCTCTTCCGA
13 TCT-3'; IDT), 2 μ L of 10 μ M P7 primer (5'-
14 CAAGCAGAAGACGGCATAACGAGAT[i7]GTCTCGTGGGCTCGG-3'; IDT), and 20 μ L NEBNext
15 High-Fidelity 2X PCR Master Mix (NEB). Amplification was carried out using the following program:
16 72°C for 5 min, 98°C for 30 sec, 18-22 cycles of (98°C for 10 sec, 66°C for 30 sec, 72°C for 1 min) and
17 a final 72°C for 5 min. After PCR, samples were pooled and purified using 0.8 volumes of AMPure XP
18 beads. Library concentrations were determined by Qubit (Invitrogen) and the libraries were visualized by
19 electrophoresis on a 6% TBE-PAGE gel. Libraries were sequenced on the NextSeq™ 500 platform
20 (Illumina) using a V2 150 cycle kit (Read 1: 18 cycles, Read 2: 130 cycles, Index 1: 10 cycles, Index 2:
21 10 cycles).

22 Read alignment and downstream processing

23 Read alignment and gene count matrix generation for the single cell RNA-seq was performed using the
24 pipeline that we developed for sci-RNA-seq¹⁰ with minor modifications. Reads were first mapped to a
25 reference genome with STAR/v2.5.2b⁶⁶, with gene annotations from GENCODE V19 for human, and
26 GENCODE VM11 for mouse. For experiments with HEK293T and NIH/3T3 cells, we used an index
27 combining chromosomes from both human (hg19) and mouse (mm10). For the A549 experiment, we used
28 human genome build hg19.

29 The single cell sam files were first converted into alignment tsv file using sam2tsv function in jvarkit⁶⁷.
30 Next, for each single cell alignment file, mutations matching the background SNPs were filtered out. For
31 background SNP reference of A549 cells, we downloaded the paired-end bulk RNA-seq data for A549
32 cells from ENCODE³⁵ (sampled name: ENCFF542FVG, ENCFF538ZTA, ENCFF214JEZ,
33 ENCFF629LOL, ENCFF149CJD, ENCFF006WNO, ENCFF828WTU, ENCFF380VGD). Each paired-
34 end fastq files were first adaptor-clipped using trim_galore/0.4.1⁶⁸ with default settings, aligned to human
35 hg19 genome build with STAR/v2.5.2b⁶⁶. Unmapped and multiple mapped reads were removed by
36 samtools/v1.3⁶⁹. Duplicated reads were filtered out by MarkDuplicates function in picard/1.105⁷⁰. De-
37 duplicated reads from all samples were combined and sorted with samtools/v1.3⁶⁹. Background SNPs
38 were called by mpileup function in samtools/v1.3⁶⁹ and mpileup2snp function in VarScan/2.3.9⁷¹. For
39 HEK293T and NIH/3T3 test experiment, background SNP reference was generated in a similar pipeline

1 above, with the aggregated single cell sam data from control condition (no S4U labeling and no IAA
2 treatment condition).

3 For each single cell alignment file, all mutations with quality score ≤ 13 were removed. Mutations at the
4 both ends of each reads were mostly due to sequencing errors, and thus also were filtered out. For each
5 read, we checked if there are T > C mutations for sense strand or A > G mutations for antisense strand,
6 and labeled these mutated reads as newly synthesized.

7 Each cell was characterized by two digital gene expression matrixes from the full sequencing data and
8 newly synthesized RNA data as described above. Genes with expression in equal or less than 5 cells were
9 filtered out. Cells with fewer than 2,000 UMIs or more than 80,000 UMIs were discarded. Cells with
10 doublet score > 0.2 by doublet analysis pipeline Scrublet/0.2⁷² were removed.

11 The dimensionality of the data was first reduced with PCA (after selecting the top 2,000 genes with highest
12 variance) on digital gene expression matrixes on either full gene expression data or the newly synthesized
13 gene expression data by Monocle 3^{2,73}. The top 10 PCs were selected for dimensionality reduction analysis
14 with uniform manifold approximation and projection (UMAP/0.3.2), a recently proposed algorithm based
15 on Riemannian geometry and algebraic topology to perform dimension reduction and data visualization³¹.
16 For joint analysis, we combined top 10 PCs calculated on the whole transcriptome and top 10 PCs on the
17 newly synthesized transcriptome for each single cell before dimension reduction with UMAP. Cell
18 clusters were done via densityPeak algorithm implemented in Monocle 3^{2,73}. We first performed UMAP
19 analysis on joint information of all processed cells, and identified an outlier cluster (724 out of 7,404
20 cells). These cells were marked by high level expression of *GATA3*, a marker of differentiated cells⁴³, and
21 were filtered out before downstream analysis.

22 Linking transcription factors (TFs) to their regulated genes

23 We sought to identify links between TFs and their regulated genes based on expression covariance. Cells
24 with more than 10,000 UMIs detected, and genes with newly synthesis reads detected in more than 10%
25 of all cells were selected. The full gene expression and newly synthesized gene count per cell were
26 normalized by cell-specific library size factors computed on the full gene expression matrix by
27 `estimateSizeFactors` in Monocle 3^{2,73}, log transformed, centered, then scaled by `scale()` function in R. For
28 each gene detected, a LASSO regression model was constructed with package `glmnet`⁷⁴ to predict the
29 normalized expression levels, based on the normalized expression of 853 TFs annotated in the
30 “`motifAnnotations_hgnc`” data from package `RcisTarget`³⁶, by fitting the following model:

$$31 \quad G_i = \beta_0 + \beta_t T_i$$

32 where G_i is the adjusted gene expression value for gene i. It is calculated by the newly synthesized mRNA
33 count for each cell, normalized by cell specific size factor (SG_i) estimate by `estimateSizeFactors` in
34 Monocle 3^{2,73} on the full expression matrix of each cell, and log transformed:

$$35 \quad G_i = \ln\left(\frac{g_i}{SG_i} + 0.1\right)$$

1 To simplify downstream comparison between genes, we standardize the response G_i prior to fitting the
2 model for each gene i with the `scale()` function in R.

3 Similar with G_i , T_i is the adjusted TF expression value for each cell. It is calculated by the full TF
4 expression count for each cell, normalized by cell specific size factor (SG_i) estimate by
5 `estimateSizeFactors` in Monocle 3^{2,73} on the full expression matrix of each cell, and log transformed:

$$6 \quad T_i = \ln\left(\frac{t_i}{SG_i} + 0.1\right)$$

7 Prior to fitting, T_i is standardized with the `scale()` function in R.

8 Although negative correlations between a TF's expression and a gene's new synthesis rate could reflect
9 the activity of a transcriptional repressor, we felt that the more likely explanation for negative links
10 reported by `glmnet` was mutually exclusive patterns of cell-state specific expression and TF activity. Thus
11 during prediction, we excluded TFs with negatively correlated expression with a potential target gene's
12 synthesis rate, and also low correlation coefficient (≤ 0.03) links. We identified a total of 6,103 links
13 between TFs and regulated genes.

14 Our approach aims to identify TFs that may regulate each gene, by finding the subset that can be used to
15 predict its expression in a regression model. However, a TF with expression correlated with a gene's
16 expression does not definitively mean that it is directly regulating that gene. To identify putatively direct
17 targets within this set, we intersected the links with TFs profiled in ENCODE ChIP-seq experiments³⁵.
18 Out of 1,086 links with TFs characterized in ENCODE, 807 were validated by TF binding sites near gene
19 promoters³⁴, a 4.3-fold enrichment relative to background expectation (odds ratio for validation = 2.89 for
20 links identified in LASSO regression vs. 0.67 for background, p-value < 2.2e-16, Fisher's Exact test).
21 Only gene sets with significant enrichment of the correct TF ChIP-seq binding sites were retained (Fisher's
22 Exact test, FDR of 5%), and further pruned to remove indirect target genes without TF binding data
23 support. Ultimately, 591 links were retained by this approach.

24 To expand the set of validated TF-gene links, we further applied package SCENIC³⁶, a pipeline to
25 construct gene regulatory networks based on the enrichment of target TF motifs in the 10 kb window
26 around genes' promoters. Each co-expression module identified by LASSO regression was analyzed using
27 cis-regulatory motif analysis using `RcisTarget`³⁶. Only modules with significant motif enrichment of the
28 correct TF regulator were retained, and pruned to remove indirect target genes without motif support. We
29 filtered the TF-gene links by three correlation coefficient thresholds (0.3, 0.4 and 0.5), and combined all
30 links validated by `RcisTarget`³⁶. In total, there were 509 links validated this motif-based approach.

31 Combining both approaches, we identified a total of 986 TF-gene regulatory links by the covariance
32 between TF expression and gene synthesis rate, validated by DNA binding data or motif analysis. To
33 evaluate the possibility that the links were artifacts of regularized regression, we permuted the sample IDs
34 of the TF expression matrix and performed the same analyses. No links were identified after this
35 permutation.

1 Ordering cells based on the activity of functional TF modules

2 To calculate TF “activity” in each cell, newly synthesized UMI counts for genes linked to each of the 27
3 TFs were scaled by library size, log-transformed, aggregated and then mapped to Z-scores. As TFs with
4 highly correlated or anti-correlated activity suggest they may function in linked biological processes, we
5 calculated the absolute Pearson’s correlation coefficient between each pair of TF activity, and based on
6 this we clustered TFs by ward.d2 clustering method in package pheatmap/1.0.12⁷⁵. Five functional TF
7 modules were identified and annotated based on their functions.

8 To characterize the dynamics of cells in relation to potentially independent cellular processes, cells were
9 ordered by the activity of cell cycle related TFs (TF module 1) or GR activity related TFs (TF module 3)
10 with UMAP (metric = “cosine”, n_neighbors = 30, min_dist = 0.01). The cell cycle progression trajectory
11 were validated by cell cycle gene markers in Seurat/2.3.4³³. Three cell cycle phases were identified by
12 densityPeak algorithm implemented in Monocle 3^{2,73}, on the UMAP coordinates ordered by cell cycle TF
13 modules. As each main cell cycle phase still showed variable TF activity and cell cycle marker expression,
14 we segmented each phase to early/middle/late states by k-means clustering (k = 3), and recovered a total
15 of nine cell cycle states. Three GR reponse states were identified by densityPeak algorithm implemented
16 in Monocle 3^{2,73}.

17

18 Past transcriptome state recovery from sci-fate

19 To infer the past transcriptome state (*i.e.* the cell state before S4U labeling commenced), we assume
20 mRNA half lives are consistent across different DEX treatment conditions. This assumption is further
21 validated by self-consistency check later. Under this assumption, the partly degraded bulk transcriptome
22 before the 2 hour S4U labeling should be the same between no DEX and 2 hour DEX treated cells. Thus,
23 for any given gene, differences in whole transcriptomes (bulk) between these timepoints should be equal
24 to differences in the newly synthesized transcriptomes (bulk), corrected by technique’s detection rate:

$$25 \quad A_{0h} / S_{0h} - (N_{0h} / S_{0h}) / \alpha = A_{2h} / S_{2h} - (N_{2h} / S_{2h}) / \alpha$$

26

27 A_{0h} is the aggregated UMI count for all cells in no DEX treatment group; S_{0h} is the library size (total UMI
28 count of cells) at no DEX treatment; N_{0h} is the aggregated newly synthesized UMI count for all cells in
29 no DEX treatment group; A_{2h} is the aggregated UMI count for all cells in 2 hour DEX treatment group;
30 S_{2h} is the library size (total UMI count of cells) in 2 hour DEX treatment group; N_{2h} is the aggregated
31 newly synthesized UMI count for all cells in 2 hour DEX treatment group; α is the detection rate for sci-
32 fate. In theory, one detection rate can be calculated for each gene. However, for genes with minor
33 differences of newly synthesis rate between two conditions, the estimated α is dominated by noise. We
34 thus selected genes showing higher differences in normalized newly synthesis rate between two
35 conditions: we first tested a series of threshold for gene filtering and calculated the α for each gene. We
36 then plotted the relationship between threshold and the ratio of genes with out-range α values (< 0 or $>$
37 1). We selected the threshold that was at the knee point of the plot, resulting in 186 genes selected. The

1 differences in newly synthesized mRNA of these genes highly correlates with the differences in mRNA
2 expression level (Pearson's $r = 0.93$, **Extended Data Fig. 5a**), suggesting the new RNA detection rate is
3 stable across genes (**Extended Data Fig. 5b**). We therefore moved forward with the median estimate
4 (82%) of the proportion of newly synthesized RNA captured by sci-fate.

5 We next computed the mRNA degradation rate across each 2 hour interval. As the A549 cell population
6 can be regarded stable without external perturbation, for 2 hour DEX treated cells, its past state (before 2
7 hour S4U labeling) should be the same as the 0 hour DEX treated cells. Expanding on this logic, the past
8 state (before S4U labeling) for $T = 0/2/4/6/8/10$ hour DEX treated cells should be similar to the profiled
9 $T = 0/0/2/4/6/8$ hour cells, respectively:

$$A_{t1} / S_{t1} - (N_{t1} / S_{t1}) / \alpha = A_{t0} / S_{t0} * \beta$$

10
11

12 A_{t1} is the aggregated UMI count for all cells in $t1$; S_{t1} is the library size (the total UMI count of cells)
13 at $t1$; N_{t1} is the aggregated newly synthesized UMI count for all cells at $t1$; α is the estimated detection
14 rate of sci-fate; A_{t0} is the aggregated UMI count for all cells in $t0$; S_{t0} is the library size (the total UMI
15 count of cells) at $t0$; β is 1 - gene specific degradation rate between $t0$ and $t1$, and is related with the
16 mRNA half life γ by:

$$\beta = 1 - (1 / 2)^{(t1 - t0) / \gamma}$$

17
18 The gene degradation rate β can be calculated for each 2 hour interval of DEX treatment. As a self-
19 consistency check mentioned above, the gene degradation rates are highly correlated across different DEX
20 treatment times (**Extended Data Fig. 5c**). We therefore used the average degradation rate for each gene
21 for downstream analysis.

22 With the overall sci-fate detection rate as well as per-gene degradation rates estimated, the past
23 transcriptome state of each cell can be estimated by:

$$a_{t1} - n_{t1} / \alpha = a_{t0} * \beta$$

24
25 a_{t1} is the single cell UMI count in $t1$; n_{t1} is the single cell newly synthesized UMI count at $t1$; α is the
26 estimated detection rate of sci-fate; β is 1 - gene specific degradation rate between $t0$ and $t1$. a_{t0} is the
27 estimated single cell transcriptome in a past time point $t0$, with all negative values converted to 0.

28 Linkage analysis to build single cell state trajectory

29 The goal of what we call here "linkage analysis" is to associate each cell with parent and child cells at
30 different timepoints, *i.e.* single cell state trajectories. Our approach is based on a fact that the past
31 transcriptome states (before 2 hour S4U labeling) of cells at $t1$ should share the same cell population
32 distribution with the profiled transcriptome states of cells at $t0$ (2 hours earlier than $t1$), assuming there is
33 no cell apoptosis. We thus applied a published manifold alignment strategy to identify common cell states
34 between two data sets, based on common sources of variation³³. As a result, whole transcriptomes from
35 $t0$ cells and recovered past transcriptomes from $t1$ cells are aligned in the same UMAP space. This analysis
36 is based on an assumption that for intermediate timepoints, we are oversampling the space of

1 physiologically distinct states in this timecourse. Violation of this and other assumptions can be detected
2 by outliers during alignment of the two data sets. For each cell A from t1, we selected its nearest neighbour
3 in t0 as its parent state in the alignment UMAP space. Similarly, for each cell from t0, we selected its
4 nearest neighbour in t1 as its child cell state. Of note, the link is not necessary to be bi-directional: the
5 parent state of one cell may be linked to a different child cell. After the parent and child states were
6 identified for each cell (except cells at the start and end time points), we then extend each cell trajectory
7 by searching for the linked parent cell of each cell's parent, and similarly the linked child cell of each cell's
8 child. Thus each single cell can be characterized by a single cell state transition path across all six time
9 points spanning 10 hours. As multiple cells (>50) are profiled for each of the 27 defined cell state,
10 stochastic cell state transition processes can also potentially be captured.

11 Dimensionality reduction and clustering analysis

12 For dimensionality reduction on single cell transcriptomes, the top 5 PCs for full transcriptomes and top
13 5 PCs for newly synthesized transcriptomes were selected for each state, and combined in temporal order
14 along single cell state trajectory for UMAP analysis. Main cell trajectory types were identified by density
15 peak clustering algorithm⁷⁶.

16 With cell state proportion at the beginning time point (0 hour treatment) and cell state transition
17 probabilities estimated from the data, we first predicted the cell state distribution after 2 hours, assuming
18 the cell state transitions in DEX treatment are cell-autonomous, time-independent, Markovian processes.
19 Similarly, the cell state distribution at later time points can be predicted from the cell state distribution 2
20 hours before.

21 For RNA velocity analysis of these same data, single cell spliced/unspliced expression matrices were
22 generated using the command line interface of velocity/v.0.17⁵⁸ with the default run_smartseq2 mode on
23 single cell bam files. Cell transition direction inference were performed with an optimized scalable RNA
24 velocity analysis toolkit scVelo/v.0.1.17 and scanpy/v.1.4.1 with default settings^{58,77}.

25 Cell state instability and cell state distance calculations

26 We defined cell state instability as the proportion of cells in a given state 'moving' to any other state at
27 the next time point. To calculate cell state distances, we first sampled equal number ($n = 50$) of cells from
28 each state, and separately aggregated the full transcriptome and newly synthesized transcriptome of
29 sampled cells of that state (*i.e.* in this 'joint transcriptome', each gene is represented by two columns, one
30 for the whole transcriptome and one for the newly synthesized transcriptome). The cell state distance is
31 calculated as the Pearson's correlation coefficient between the joint transcriptomes of two different states.

32 **Code Availability**

33 Scripts for processing sci-fate sequencing were written in python and R with code available at
34 <https://github.com/JunyueC/scifate>.

35

- 1 **Legends for Supplementary Table 1-3 (tables are provided separately as an Excel file)**
- 2 Supplementary Table 1: Differentially expressed (DE) genes between 0 hour and 2 hour DEX timepoints.
- 3 Supplementary Table 2: Links between 27 TFs and 986 putatively regulated genes.
- 4 Supplementary Table 3: Gene degradation rate in each 2 hour time window estimated by sci-fate.

References

1. Trapnell, C. *et al.* The dynamics and regulators of cell fate decisions are revealed by pseudotemporal ordering of single cells. *Nat. Biotechnol.* **32**, 381–386 (2014).
2. Qiu, X. *et al.* Reversed graph embedding resolves complex single-cell trajectories. *Nat. Methods* **14**, 979–982 (2017).
3. Wolf, F. A. *et al.* PAGA: graph abstraction reconciles clustering with trajectory inference through a topology preserving map of single cells. *Genome Biol.* **20**, 59 (2019).
4. Haghverdi, L., Büttner, M., Wolf, F. A., Buettner, F. & Theis, F. J. Diffusion pseudotime robustly reconstructs lineage branching. *Nat. Methods* **13**, 845–848 (2016).
5. Setty, M. *et al.* Wishbone identifies bifurcating developmental trajectories from single-cell data. *Nat. Biotechnol.* **34**, 637–645 (2016).
6. Street, K. *et al.* Slingshot: cell lineage and pseudotime inference for single-cell transcriptomics. *BMC Genomics* **19**, 477 (2018).
7. Moris, N., Pina, C. & Arias, A. M. Transition states and cell fate decisions in epigenetic landscapes. *Nat. Rev. Genet.* **17**, 693–703 (2016).
8. Herzog, V. A. *et al.* Thiol-linked alkylation of RNA to assess expression dynamics. *Nat. Methods* **14**, 1198–1204 (2017).
9. Schofield, J. A., Duffy, E. E., Kiefer, L., Sullivan, M. C. & Simon, M. D. TimeLapse-seq: adding a temporal dimension to RNA sequencing through nucleoside recoding. *Nat. Methods* **15**, 221–225 (2018).
10. Cao, J. *et al.* Comprehensive single-cell transcriptional profiling of a multicellular organism. *Science* **357**, 661–667 (2017).
11. Cleary, M. D., Meiering, C. D., Jan, E., Guymon, R. & Boothroyd, J. C. Biosynthetic labeling of

- RNA with uracil phosphoribosyltransferase allows cell-specific microarray analysis of mRNA synthesis and decay. *Nat. Biotechnol.* **23**, 232–237 (2005).
12. Dolken, L. *et al.* High-resolution gene expression profiling for simultaneous kinetic parameter analysis of RNA synthesis and decay. *RNA* **14**, 1959–1972 (2008).
 13. Miller, C. *et al.* Dynamic transcriptome analysis measures rates of mRNA synthesis and decay in yeast. *Mol. Syst. Biol.* **7**, 458–458 (2014).
 14. Duffy, E. E. *et al.* Tracking Distinct RNA Populations Using Efficient and Reversible Covalent Chemistry. *Mol. Cell* **59**, 858–866 (2015).
 15. Schwalb, B. *et al.* TT-seq maps the human transient transcriptome. *Science* **352**, 1225–1228 (2016).
 16. Rabani, M. *et al.* Metabolic labeling of RNA uncovers principles of RNA production and degradation dynamics in mammalian cells. *Nat. Biotechnol.* **29**, 436–442 (2011).
 17. Miller, M. R., Robinson, K. J., Cleary, M. D. & Doe, C. Q. TU-tagging: cell type-specific RNA isolation from intact complex tissues. *Nat. Methods* **6**, 439–441 (2009).
 18. Cusanovich, D. A. *et al.* Multiplex single cell profiling of chromatin accessibility by combinatorial cellular indexing. *Science* **348**, 910–914 (2015).
 19. Cao, J. *et al.* Comprehensive single-cell transcriptional profiling of a multicellular organism. *Science* **357**, 661–667 (2017).
 20. Cao, J. *et al.* Joint profiling of chromatin accessibility and gene expression in thousands of single cells. *Science* **361**, 1380–1385 (2018).
 21. Ramani, V. *et al.* Massively multiplex single-cell Hi-C. (2016). doi:10.1101/065052
 22. Mulqueen, R. M. *et al.* Highly scalable generation of DNA methylation profiles in single cells. *Nat. Biotechnol.* **36**, 428–431 (2018).
 23. Vitak, S. A. *et al.* Sequencing thousands of single-cell genomes with combinatorial indexing. *Nat.*

- Methods* **14**, 302–308 (2017).
24. Yin, Y. *et al.* High-throughput mapping of meiotic crossover and chromosome mis-segregation events in interspecific hybrid mice. (2018). doi:10.1101/338053
 25. Rosenberg, A. B. *et al.* Single-cell profiling of the developing mouse brain and spinal cord with split-pool barcoding. *Science* **360**, 176–182 (2018).
 26. Buckingham, J. C. Glucocorticoids: exemplars of multi-tasking. *Br. J. Pharmacol.* **147**, S258 (2006).
 27. Reddy, T. E. *et al.* Genomic determination of the glucocorticoid response reveals unexpected mechanisms of gene regulation. *Genome Res.* **19**, 2163–2171 (2009).
 28. John, S. *et al.* Chromatin accessibility pre-determines glucocorticoid receptor binding patterns. *Nat. Genet.* **43**, 264–268 (2011).
 29. Reddy, T. E., Gertz, J., Crawford, G. E., Garabedian, M. J. & Myers, R. M. The Hypersensitive Glucocorticoid Response Specifically Regulates Period 1 and Expression of Circadian Genes. *Mol. Cell. Biol.* **32**, 3756–3767 (2012).
 30. Vockley, C. M. *et al.* Direct GR Binding Sites Potentiate Clusters of TF Binding across the Human Genome. *Cell* **166**, 1269–1281.e19 (2016).
 31. McInnes, L., Healy, J., Saul, N. & Großberger, L. UMAP: Uniform Manifold Approximation and Projection. *Journal of Open Source Software* **3**, 861 (2018).
 32. Binder, E. B. The role of FKBP5, a co-chaperone of the glucocorticoid receptor in the pathogenesis and therapy of affective and anxiety disorders. *Psychoneuroendocrinology* **34**, S186–S195 (2009).
 33. Butler, A., Hoffman, P., Smibert, P., Papalexi, E. & Satija, R. Integrating single-cell transcriptomic data across different conditions, technologies, and species. *Nat. Biotechnol.* **36**, 411–420 (2018).
 34. Dataset - ENCODE Transcription Factor Binding Site Profiles. Available at:

<http://amp.pharm.mssm.edu/Harmonizome/dataset/ENCODE+Transcription+Factor+Binding+Site+Profiles>. (Accessed: 27th January 2019)

35. The ENCODE Project Consortium. The ENCODE (ENCyclopedia Of DNA Elements) Project. *Science* **306**, 636–640 (2004).
36. Aibar, S. *et al.* SCENIC: single-cell regulatory network inference and clustering. *Nat. Methods* **14**, 1083–1086 (2017).
37. Han, H. *et al.* TRRUST v2: an expanded reference database of human and mouse transcriptional regulatory interactions. *Nucleic Acids Res.* **46**, D380–D386 (2018).
38. Kuleshov, M. V. *et al.* Enrichr: a comprehensive gene set enrichment analysis web server 2016 update. *Nucleic Acids Research* **44**, W90–W97 (2016).
39. Boruk, M., Savory, J. G. A. & Haché, R. J. G. AF-2-Dependent Potentiation of CCAAT Enhancer Binding Protein β -Mediated Transcriptional Activation by Glucocorticoid Receptor. *Mol. Endocrinol.* **12**, 1749–1763 (1998).
40. Qin, W. *et al.* Identification of functional glucocorticoid response elements in the mouse FoxO1 promoter. *Biochem. Biophys. Res. Commun.* **450**, 979–983 (2014).
41. Sheela Rani, C. S., Elango, N., Wang, S.-S., Kobayashi, K. & Strong, R. Identification of an Activator Protein-1-Like Sequence as the Glucocorticoid Response Element in the Rat Tyrosine Hydroxylase Gene. *Mol. Pharmacol.* **75**, 589 (2009).
42. Fischer, M. & Müller, G. A. Cell cycle transcription control: DREAM/MuvB and RB-E2F complexes. *Crit. Rev. Biochem. Mol. Biol.* **52**, 638–662 (2017).
43. Chou, J., Provot, S. & Werb, Z. GATA3 in development and cancer differentiation: cells GATA have it! *J. Cell. Physiol.* **222**, 42–49 (2010).
44. Madhurima Biswas, J. Y. C. Role of Nrf1 in antioxidant response element-mediated gene

- expression and beyond. *Toxicol. Appl. Pharmacol.* **244**, 16 (2010).
45. Ryoo, I.-G. & Kwak, M.-K. Regulatory crosstalk between the oxidative stress-related transcription factor Nfe2l2/Nrf2 and mitochondria. *Toxicol. Appl. Pharmacol.* **359**, 24–33 (2018).
 46. Heer, R., Robson, C. N., Shenton, B. K. & Leung, H. Y. The role of androgen in determining differentiation and regulation of androgen receptor expression in the human prostatic epithelium transient amplifying population. *J. Cell. Physiol.* **212**, 572–578 (2007).
 47. Meixner, A., Karreth, F., Kenner, L., Penninger, J. M. & Wagner, E. F. Jun and JunD-dependent functions in cell proliferation and stress response. *Cell Death Differ.* **17**, 1409–1419 (2010).
 48. Li, M. *et al.* Krüppel-Like Factor 5 Promotes Epithelial Proliferation and DNA Damage Repair in the Intestine of Irradiated Mice. *Int. J. Biol. Sci.* **11**, 1458–1468 (2015).
 49. Eberlé, D., Hegarty, B., Bossard, P., Ferré, P. & Foufelle, F. SREBP transcription factors: master regulators of lipid homeostasis. *Biochimie* **86**, 839–848 (2004).
 50. Shermoen, A. W. & O’Farrell, P. H. Progression of the cell cycle through mitosis leads to abortion of nascent transcripts. *Cell* **67**, 303–310 (1991).
 51. Palozola, K. C. *et al.* Mitotic transcription and waves of gene reactivation during mitotic exit. *Science* **358**, 119–122 (2017).
 52. Parsons, G. G. & Spencer, C. A. Mitotic repression of RNA polymerase II transcription is accompanied by release of transcription elongation complexes. *Mol. Cell. Biol.* **17**, 5791–5802 (1997).
 53. Sanchez-Alvarez, M., Zhang, Q., Finger, F., Wakelam, M. J. O. & Bakal, C. Cell cycle progression is an essential regulatory component of phospholipid metabolism and membrane homeostasis. *Open Biol.* **5**, 150093 (2015).
 54. Hastie, T. & Stuetzle, W. Principal Curves. *Journal of the American Statistical Association* **84**, 502

- (1989).
55. Wickham, H. *ggplot2: Elegant Graphics for Data Analysis*. (Springer, 2016).
 56. Harmon, J. M., Norman, M. R., Fowlkes, B. J. & Thompson, E. B. Dexamethasone induces irreversible G1 arrest and death of a human lymphoid cell line. *J. Cell. Physiol.* **98**, 267–278 (1979).
 57. Greenberg, A. K. *et al.* Glucocorticoids inhibit lung cancer cell growth through both the extracellular signal-related kinase pathway and cell cycle regulators. *Am. J. Respir. Cell Mol. Biol.* **27**, 320–328 (2002).
 58. La Manno, G. *et al.* RNA velocity of single cells. *Nature* **560**, 494 (2018).
 59. Qiu, X. *et al.* Towards inferring causal gene regulatory networks from single cell expression measurements. doi:10.1101/426981
 60. Cao, J. *et al.* Comprehensive single-cell transcriptional profiling of a multicellular organism. *Science* **357**, 661–667 (2017).
 61. Cao, J. *et al.* Joint profiling of chromatin accessibility and gene expression in thousands of single cells. *Science* **361**, 1380–1385 (2018).
 62. Matsushima, W. *et al.* SLAM-ITseq: sequencing cell type-specific transcriptomes without cell sorting. *Development* **145**, (2018).
 63. Sharma, U. *et al.* Small RNAs are trafficked from the epididymis to developing mammalian sperm. (2017). doi:10.1101/194522
 64. Gay, L. *et al.* Mouse TU tagging: a chemical/genetic intersectional method for purifying cell type-specific nascent RNA. *Genes Dev.* **27**, 98–115 (2013).
 65. Muhar, M. *et al.* SLAM-seq defines direct gene-regulatory functions of the BRD4-MYC axis. *Science* **360**, 800–805 (2018).

66. Dobin, A. *et al.* STAR: ultrafast universal RNA-seq aligner. *Bioinformatics* **29**, 15–21 (2013).
67. Lindenbaum, P. Jvarkit: java-based utilities for Bioinformatics. *figshare* (2015).
68. FelixKrueger. FelixKrueger/TrimGalore. *GitHub* Available at: <https://github.com/FelixKrueger/TrimGalore>. (Accessed: 28th January 2019)
69. Li, H. *et al.* The Sequence Alignment/Map format and SAMtools. *Bioinformatics* **25**, 2078–2079 (2009).
70. Picard Tools - By Broad Institute. Available at: <http://broadinstitute.github.io/picard/>. (Accessed: 27th January 2019)
71. Koboldt, D. C. *et al.* VarScan 2: somatic mutation and copy number alteration discovery in cancer by exome sequencing. *Genome Res.* **22**, 568–576 (2012).
72. Wolock, S. L., Lopez, R. & Klein, A. M. Scrublet: computational identification of cell doublets in single-cell transcriptomic data. (2018). doi:10.1101/357368
73. cole-trapnell-lab. cole-trapnell-lab/monocle-release. *GitHub* Available at: <https://github.com/cole-trapnell-lab/monocle-release>. (Accessed: 28th January 2019)
74. Friedman, J., Hastie, T. & Tibshirani, R. Regularization Paths for Generalized Linear Models via Coordinate Descent. *J. Stat. Softw.* **33**, (2010).
75. raivokolde. raivokolde/pheatmap. *GitHub* Available at: <https://github.com/raivokolde/pheatmap>. (Accessed: 27th January 2019)
76. Rodriguez, A. & Laio, A. Clustering by fast search and find of density peaks. *Science* **344**, 1492–1496 (2014).
77. Wolf, F. A., Angerer, P. & Theis, F. J. SCANPY: large-scale single-cell gene expression data analysis. *Genome Biol.* **19**, 15 (2018).