

Developing a rapid and highly efficient cowpea regeneration and transformation system using embryonic axis explants

Ping Che^{1*}, Shujun Chang^{1, a}, Marissa K. Simon¹, Zhifen Zhang², Ahmed Shaharyar^a, Jesse Ourada^{1, a}, Dennis O'Neill¹, Mijael Torres-Mendoza³, Yinping Guo², Kathleen M. Marasigan², Jean-Philippe Vielle-Calzada³, Peggy Ozias-Akins², Marc C. Albertsen¹ and Todd J. Jones¹

¹ Corteva Agriscience, Johnston, Iowa 50131 USA.

² Department of Horticulture and Institute of Plant Breeding, Genetics & Genomics, University of Georgia Tifton Campus, Tifton, GA 31973

³ Group of Reproductive Development and Apomixis, UGA Laboratorio Nacional de Genómica para la Biodiversidad, CINVESTAV Irapuato, Guanajuato 36821, México

*Correspondence Author:

Ping Che

8305 NW 62nd Ave

Johnston, IA 50131 USA

Phone: +1-515-535-6105

Email: ping.che@corteva.com

^a Present address: Benson Hill Biosystems, 1100 Corporate Square Dr. Suite 150 St. Louis, MO 63132. USA

Running Title: Cowpea Transformation

Keywords: Cowpea transformation, Embryonic axis, Cotyledonary node (cot-node), Shoot organogenesis, Spectinomycin, *Agrobacterium*.

Abbreviations:

Cot-node: Cotyledonary node; EA: Embryonic axis; SAM: Shoot apical misterm; CTP: Chloroplast transit peptide; Spec: Spectinomycin; NPTII: Neomycin phosphotransferase II; Kan: kanamycin; SIM: Shoot induction medium; RIM: Root induction medium; SEM: shoot elongation medium; Vir: Virulence; NPGS: National Plant Germplasm System.

Summary

Cowpea is one of the most important legume crops planted worldwide, especially in Sub-Saharan Africa and Asia. Despite decades of effort, genetic engineering of cowpea is still challenging due to inefficient *in vitro* shoot regeneration, *Agrobacterium*-mediated T-DNA delivery and transgenic selection. Here, we report a rapid and highly efficient cowpea transformation system using embryonic axis explants isolated from imbibed mature seeds. We found that removal of the shoot apical meristem by cutting through the middle of the epicotyl stimulated direct multiple shoot organogenesis from the cotyledonary node tissue. Furthermore, the application of a ternary transformation vector system using an optimized pVIR accessory plasmid provided high levels of *Agrobacterium*-mediated gene delivery. The utilization of spectinomycin as the selection agent enabled more efficient transgenic selection and plant recovery. Transgenic cowpea shoots developed exclusively from the cotyledonary nodes at high frequencies of 4.5 to 37% across a wide range of cowpea genotypes. We believe that the transformation principles established in this study could also be applied to other legumes to increase transformation efficiencies.

Introduction

Domesticated in Africa and widely cultivated in the tropical and subtropical zones of the world, cowpea (*Vigna unguiculata* (L.) Walp.), also known as black-eyed pea, is one of the most valuable grain legumes for high-quality dietary protein, carbohydrates, lipids, minerals and vitamins for people in developing countries of Africa and Asia (Abdu Sani *et al.*, 2015; Phillips *et*

al., 2003; Singh, 2014). It is estimated that over 200 million people consume cowpea daily in Africa (Phillips *et al.*, 2003; Singh, 2014). Despite its high tolerance to heat, dry conditions and soil acidity, cowpea is highly susceptible to insect pest and pathogen infestations resulting in lower productivity (Abdu Sani *et al.*, 2015; Boukar *et al.*, 2016; Obembe, 2008; Singh, 2014; Solleti *et al.*, 2008a). Due to limited genetic variability of cowpea and strong cross-incompatibility between wild *Vigna* species and cultivated cowpea, little progress has been made in genetic improvement through conventional breeding to achieve desirable agronomic traits (Abdu Sani *et al.*, 2015; Fang *et al.*, 2007; Gomathinayagam *et al.*, 1998; Latunde-Dada, 1990; Wamalwa *et al.*, 2016). Hence, plant biotechnology provides an alternative approach to overcome those production constraints for improving the agronomic performance and developing better cowpea cultivars with higher grain quality and yield (Carlos Popelka *et al.*, 2004; Zaidi *et al.*, 2005). The development of insect-resistant cowpea, unsuccessful through conventional breeding, was successfully achieved by introducing *Bt* genes through genetic transformation and is a good example of plant biotechnology application in an orphan crop (Bakshi *et al.*, 2011; Bett *et al.*, 2017; Zaidi *et al.*, 2005). Recently, significant progress has been made establishing genomic and gene expression data resources for two cowpea varieties, IT86D-1010 (Spriggs *et al.*, 2018) and IT97K-499-35 (Lonardi *et al.*, 2019; Munoz-Amatriain *et al.*, 2017; Yao *et al.*, 2016). However, the absence of an efficient genetic transformation system (Popelka *et al.*, 2006; Somers *et al.*, 2003) has impeded the full utilization of these resources for cowpea functional genomic studies to elucidate the mechanisms of heat and drought stress tolerance and to improve the agronomic traits, such as insect and pathogen resistances and increased productivity.

Legumes, especially cowpea, are known to be recalcitrant for genetic manipulation (Manman *et al.*, 2013; Popelka *et al.*, 2006; Solleti *et al.*, 2008b; Somers *et al.*, 2003). This is due to the absence of an amenable *in vitro* shoot regeneration system, the inadequate *Agrobacterium*-mediated T-DNA delivery to the targeted tissue and the inefficient transgenic selection methods for viable transgenic plant recovery. Therefore, published frequencies of *Agrobacterium*-mediated transformation are lower than 3.9% (Bett *et al.*, 2019; Chaudhury *et al.*, 2007; Manman *et al.*, 2013; Mellor *et al.*, 2012) and the process often requires more than 5 to 8 months (Chaudhury *et al.*, 2007; Popelka *et al.*, 2006). To overcome those obstacles and improve cowpea transformation efficiency, we evaluated shoot regeneration using embryonic axis (EA) explants isolated from imbibed mature seeds and identified that only cotyledonary node (cot-node) cells of the EA explants undergo rapid cell division and dedifferentiation to acquire organogenetic competence for shoot regeneration. Based on that observation, a rapid and highly efficient *in vitro* adventitious shoot regeneration system using EA explants was developed for direct *de novo* shoot organogenesis.

Next, we demonstrated that a ternary vector system developed previously (Anand *et al.*, 2018) provided enhanced gene delivery not only for corn and sorghum transformation as we previously demonstrated (Anand *et al.*, 2018; Che *et al.*, 2018), but also for cowpea transformation using an auxotrophic *Agrobacterium* strain LBA4404 Thy⁻ (thymidine mutant), a strain that reduces bacterial overgrowth during tissue culture compared to wild-type LBA4404. This ternary vector system contains the T-DNA binary vector and the optimized pVIR accessory (pPHP71539) plasmid with additional *vir* (Virulence) genes (Anand *et al.*, 2018). The pVIR accessory plasmid and T-DNA binary vector have many desirable features, including smaller

vector sizes, enhanced vector stability and amended *vir* genes for enhanced T-DNA gene delivery and ultimately higher transformation efficiency for all crops tested (Anand *et al.*, 2018; Che *et al.*, 2018).

To identify an optimal selection system for the EA-based *de novo* organogenesis, we also tested and compared the selection efficiency of *chloroplast transit peptide (CTP)-NPTII/kanamycin (kan)*, *CTP-NPTII/G418* and *CTP-spcN* (GenBank Accession No. AAD50455)/spectinomycin (spec) (Anada *et al.*, 2017) selectable marker systems based on selection stringency and transgenic plant recovery. We found that the utilization of *CTP-spcN* combined with spec as the selectable marker facilitated the recovery of transgenic cowpea and provided more efficient and stringent transgenic selection and identification through the transformation process.

Finally, in order to test the robustness and flexibility of the protocol, an alternate spec selection system, *CTP-aadA/spec* (Martinell *et al.*, 2017), and a hypervirulent *Agrobacterium* strain AGL1 (Lazo *et al.*, 1991), which was previously used in cowpea transformation (Popelka *et al.*, 2006), were utilized to test the transformability of nine cowpea genotypes for transgenic shoot regeneration and demonstrated the broad application potential of the transformation system.

Overall, we developed a rapid, robust and highly efficient *Agrobacterium*-mediated EA-based cowpea regeneration, transformation and selection system for generating transgenic cowpea exclusively from the cot-nodes of EA explants at a high frequency, between 4.5 to 37%, across a wide range of cowpea genotypes.

Results and discussion

De novo shoot organogenesis using EA as explants

A rapid, efficient and reproducible regeneration system is a prerequisite for establishment of an efficient cowpea genetic transformation system. Although several studies of *in vitro* regeneration of cowpea based on organogenesis have been reported (Aasim *et al.*, 2010; Abdu Sani *et al.*, 2015; Mamadou *et al.*, 2008; Manman *et al.*, 2013; Odutayo *et al.*, 2005; Raveendar *et al.*, 2009; Sani *et al.*, 2018; Tie *et al.*, 2013; Yusuf *et al.*, 2008), an efficient cowpea regeneration system that enables highly efficient transformation is still lacking (Manman *et al.*, 2013). Soybean transformation based on the preexisting meristems of EA explants has been well established and provides a reliable and highly efficient mean for introducing transgenes (Aragão *et al.*, 2000; Liu *et al.*, 2004; Turlapati *et al.*, 2008). To test the regeneration efficiency of EA explants in cowpea, EA explants were isolated from imbibed mature seeds of cowpea variety IT86D-1010 by excising the cotyledons at the nodal points (Figure 1a). Those EA explants with the plumule excised (Figure 1b) were then cultured directly onto shoot induction medium (SIM) (Table S5) without selection in a vertical upright position with roots embedded in the media to induce shoot development. In most of the cases (> 95%), a single primary shoot was developed per EA when the shoot apical meristem (SAM) of the EA explants was kept intact (non-decapitated EA explants) during regeneration (Figure 1c). However, multiple shoot development was observed occasionally for a small number of explants (< 5%) (Figure 1d). Compared to the morphology of EA explants with single primary shoot development (Figure 1c), the EA explants with multiple shoots, regenerated exclusively around cot-nodes (Figure 1d),

were much shorter and lacked both epicotyls and SAMs. The lack of epicotyls and SAMs could be due to the accidental damage of those tissues during EA isolation and plumule excision. This finding indicated that the *de novo* organogenesis of shoots around the cot-nodes could be inhibited by apical dominance. To confirm this hypothesis that multiple shoot development was more efficient from the cot-node tissue, SAMs were purposely removed by cutting through the middle of each epicotyl (decapitated EA explants) (Figure 1a and e) and the isolated EA was cultured for regeneration on SIM. Indeed, removal of the SAM purposely by cutting through the middle of each epicotyl (decapitated EA explants) (Fig. 1a and e) induced 78% of explants to initiate multiple shoot regeneration in IT86D-1010 (Figure 1f, g and Table 1).

To test if the regeneration principle described above was applicable to other cowpea germplasm accessions and even common bean, we further tested tissue culture and *in vitro* regeneration procedures for eight additional cowpea accessions from the U.S. National Plant Germplasm System (NPGS), two non-conventional cowpea germplasm lines (TPC-001 and MRS-001) and two common bean (*Phaseolus vulgaris* L) varieties, *black* bean (CBB-001) and *pinto* bean (CBP-001), collected from tropical and subtropical regions of Mexico (Figure S3). Consistent with observations in IT86D-1010, shoot regeneration also developed exclusively from cot-node regions for all ten cowpea germplasm lines and two bean germplasm lines tested (Figure S4). In most cases, the number of EA explants showing multiple shoot regeneration exceeded those showing a single regenerated shoot, suggesting that multiple individuals can be recovered from a single EA explant (Table 1 and Figure S4). The overall regeneration efficiency ranged from 55% to 81% for eight additional cowpea accessions from the NPGS, 36 to 38% for Mexican cowpeas and 30% for common beans (Table 1). These results demonstrated that tissue

culture and regeneration procedures can be applied to a wide collection of cowpea germplasm and extended to other legumes such as common bean.

Regeneration optimization under Agrobacterium-mediated transformation

Generally, the EA-based dicot transformation procedure consists of the following main steps: explant preparation, *Agrobacterium* infection, co-cultivation, shoot regeneration with selection and root induction (Figure S2. Also see Experimental Procedures for detail). As described above, although EA explants per se have been described for soybean transformation, the cowpea EA-based regeneration system has a key difference. While the soybean EA transformation system relies on preexisting apical meristematic tissue for regeneration and transformation (Aragão *et al.*, 2000; Liu *et al.*, 2004; Turlapati *et al.*, 2008), the cowpea system shows that removal of the SAM stimulated multiple shoot organogenesis from the cot-node. This key difference raises the question of how well the decapitated-EA explants will be able to survive and regenerate throughout the *Agrobacterium*-mediated transformation procedure.

To evaluate how the decapitation of EA explants affects the survival and regeneration capability, we conducted sonication, *Agrobacterium* infection and co-cultivation treatments, (Figure S2. Also see Experimental Procedures for detail) either with or without *Agrobacterium*, followed by regeneration on SIM. This allowed us to measure the survival and regeneration of the decapitated and non-decapitated EA explants and assess possible damage caused by the early steps of transformation, such as sonication-associated wounding, potential medium component toxicity, sensitivity to *Agrobacterium* and the length of the treatment steps before regeneration. As shown in Figure 2a, the decapitated EA explants were extremely sensitive to

the treatments and none of the EA explants survived on SIM without selection after mimicking all the treatment steps without *Agrobacterium* infection. On the contrary, all the non-decapitated EA explants survived and formed elongated epicotyls with a single primary shoot. The further decapitation of those primary shoots by cutting through the middle of the elongated epicotyls after 4-days of regeneration stimulated multiple shoot organogenesis around the cot-nodes (Figure 2b). Collectively, those observations suggest that although the SAM negatively regulates multiple shoot organogenesis from cot-node tissue because of the apical dominance effect, the SAM is essential for EA explant survival through the transformation treatments before regeneration and the SAM should not be removed until fully recovered after 4 days of regeneration.

It has been reported that *Agrobacterium*-mediated infection leads to cell damage and tissue necrosis (Norkunas *et al.*, 2018). To determine the survival rate of EA explants after infection and co-cultivation with *Agrobacterium*, non-decapitated EA explants were subjected to the transformation procedure (Figure S2. Also see Experimental Procedures for transformation procedure) using LBA4404 Thy^r- carrying the pPHP86170/pPHP71539 vector system as described below. As shown in Figure 2c, about $70 \pm 10\%$ EA explants (based on the average of 3 replicates and total 75 EA explants) survived and formed elongated epicotyls after 4-day regeneration on SIM with selection (Table S5). Compared to the 100% survival rate without *Agrobacterium* inoculation (Figure 2b), the 30% rate of the explant loss was most likely due to the sensitivity of EA explants to the *Agrobacterium*.

Based on those studies, the decapitation of EA explants after 4 or 5 days of regeneration on SIM was routinely performed for all the subsequent transformation optimization experiments throughout this study.

Agrobacterium-mediated gene delivery using ternary vector system

A dramatic increase of T-DNA delivery efficiency was reported in cowpea by constitutive expression of additional *vir* genes in a resident pSB1 vector in *Agrobacterium* strain LBA4404 (Solleti *et al.*, 2008b). Recently, we demonstrated that a newly designed ternary vector containing the T-DNA binary vector and the optimized pVIR accessory (pPHP71539) plasmid with additional *vir* genes enhanced gene delivery and ultimately the transformation efficiency for both corn and sorghum (Anand *et al.*, 2018; Che *et al.*, 2018). This encouraged us to assess the gene delivery efficiency of the ternary vector for cowpea transformation.

To evaluate T-DNA delivery using the ternary vector system in cowpea, we transformed binary vector pPHP86170 (Figure S1a) containing the *proDMMV:TagRFP* as visual marker and *proGM-UBQ:CTP-spcN* as the selectable marker into the *Agrobacterium* strain LBA4404 Thy- harboring the pVIR accessory plasmid pPHP71539. Transient gene delivery was assessed by visually evaluating the number of fluorescent foci on the surface of cowpea EA explants after 3 days of shoot induction on SIM containing 25 mg/l spec as selection. As shown in Figure 3b, strong gene delivery based on the number of infected cells was visualized across the entire explant for those surviving EA explants with elongated epicotyls (Figure 3a and b), especially around the cot-node tissue (Figure 3b and c), demonstrating highly efficient gene delivery in cowpea EA explants using the ternary vector system. Although gene delivery was efficient

across the entire EA explant, only those fluorescent foci within the cot-node tissue showed subsequent development and substantially enhanced fluorescence intensity during regeneration (Figure 3b and c). This observation supported the hypothesis that only those cells within the cot-node tissue, but not any other tissues of the EA explant, actively undergo rapid cell division and dedifferentiation to acquire organogenetic competence for shoot regeneration.

In vitro regeneration and transgenic selection of cowpea

Several selection systems have been reported for cowpea transformation with different explant types (Manman *et al.*, 2013), such as *NPTII/kan* (Bett *et al.*, 2019; Chaudhury *et al.*, 2007), *NPTII/G418* (Solleti *et al.*, 2008b), *PMI/mannose* (Bakshi *et al.*, 2012), *HPT/hygromycin* (Kumar *et al.*, 1996), *BAR/glufosinate* (Popelka *et al.*, 2006) and *ahas/imazapyr* (Citadin *et al.*, 2013; Ivo *et al.*, 2008). It was reported that incomplete selection and tissue necrosis were associated with those selection systems and resulted in lower transgenic plant recovery in cowpea (Bakshi *et al.*, 2011; Chaudhury *et al.*, 2007; Solleti *et al.*, 2008b). To identify more efficient selection agents for the *de novo* organogenesis described above, we tested and compared the selection efficiency of *CTP-NPTII/kan*, *CTP-NPTII/G418* and *CTP-spcN/spec* after *Agrobacterium*-mediated transformation using *Agrobacterium* strain LBA4404 Thy-. We found that the utilization of *CTP-spcN/spec* system provided more efficient and stringent transgenic selection than either *CTP-NPTII/kan* or *CTP-NPTII/G418* and without non-transgenic escapes and chimeric tissue formation. As described above, strong gene delivery was observed around the cot-node target tissue on the third day of regeneration as shown in Figure 3b and c. Those fluorescent foci grew

quickly and single or multiple shoot buds emerged exclusively around the cot-nodes within 2 weeks following removal of the SAM on the fourth day of regeneration (Figure 3d and e). Transgenic shoots were fully developed from the buds within another 3 weeks in which all the shoots displayed strong fluorescence evenly across the entire regenerated shoot (Figure 3f and g) compared to the regenerated shoots from wild-type cowpea IT86D-1010 EA explants that showed no fluorescence at all (Figure S5 a and b). The elongated shoots were excised from the EA explants and transferred to root induction medium (RIM) (Table S6) for root development. Because of the stringent selection during shoot organogenesis, selection was not required for rooting. Approximately 95% (Table 2) of the elongated shoots fully rooted in the RIM (Table S6) within 2-3 weeks and all the regenerated shoots and roots displayed strong fluorescence (Figure 3h and i). The total time from inoculation of the EA explants to transplantation of a fully developed transgenic plantlet in the greenhouse took approximately 2-3 months. The frequency of shoot formation was about 21% for IT86D-1010, of which about 23% of the events were single-copy quality events (Table 2) (see Experimental Procedures for “quality events” definition and event quality determination).

Conversely, cowpea IT86D-1010 EA explants showed a high degree of resistance to kan as a selection agent and no selection pressure could be built up by culturing non-transformed EA explants on SIM containing kan at concentrations as high as 600 mg/l. Although, an optimal concentration of G418 at 20 mg/l for selection of transformed shoots was established by culturing non-transformed EA explants on SIM containing different concentrations of G418 (10-40 mg/l), the G418 selection was not as stringent as spec and only chimeric events (Figure S6a and b) were observed using the binary vector pPHP94518 (Figure S1b) containing *proGM-*

EF1A2:Ds-RED as a visual marker and *proGM-UBQ:CTP-NPTII* as the selectable marker. Chimera formation was indicated by uneven and partial fluorescence of the regenerated shoot in Figure S6a and b.

Transgene inheritance in the progeny

To evaluate the inheritance of T-DNA integration events, we selected three independent single-copy quality T0 transgenic events in the IT86D-1010 background (see Experimental Procedures for “quality events” definition and event quality determination) transformed with construct pPHP92782 (Figure S1c) containing the *proGM-EF1A2:Ds-RED* as a visual marker gene and *proGM-UBQ:CTP-spcN* as the selectable marker. Those T0 plants were self-pollinated in the greenhouse and the resultant T1 seeds displayed either red color (similar seed color with *Ds-RED* expression was reported in soybean (Nishizawa *et al.*, 2006)) or no visual pigmentation difference from the wild-type as shown in Figure S7a and b, demonstrating the transmission and segregation of the transgene in the progeny. To further determine the segregation ratio, one hundred T1 seeds from each of the three independent events were randomly chosen regardless of seed color and advanced to the T1 generation. The zygosity (homozygous, hemizygous and null) of individual T1 plants was characterized by determining the copy number of the integrated T-DNA based on the assays described in the Experimental Procedures. As shown in Table 3, the segregation pattern of these transgenic events showed typical 1:2:1 and 3:1 Mendelian ratio based on Chi-square test (χ^2) for all the copy number assays performed (Figure S1c and Table S9). Those results demonstrate that all the transgenic events analyzed

possessed stably integrated T-DNA and the T-DNA was faithfully inherited to the next generation.

Transformability evaluation of different cowpea genotypes

Genotype dependence is a major limitation of regeneration and *Agrobacterium*-mediated transformation for both monocots and dicots (Abdu Sani *et al.*, 2015; Che *et al.*, 2018; Jia *et al.*, 2015; Manman *et al.*, 2013). To evaluate the robustness of the protocol and broaden the application of this cowpea transformation technology for different cowpea genotypes, we performed a quick transformability assay to evaluate the formation of fluorescent transgenic shoots after 2 weeks of culture on SIM with selection. This quick transformability assay was conducted using a hypervirulent *Agrobacterium* strain AGL1 carrying RC2717 plasmid with *CTP-aadA* as the selectable marker (Figure S1d). As shown in Table 4, transgenic shoot regeneration frequency (defined as transformability) of IT86D-1010 determined by the quick transformability assay was in a range of 11 to 26% (average $19\% \pm 7.5\%$) (Table 4). This was comparable to the $21\% \pm 2\%$ transformation efficiency described earlier using LBA4404 Thy- carrying the pVIR accessory plasmid for transformation and *CTP-spcN/spec* for selection (Table 2), indicating the reliability of this quick assay for predicating transformation efficiency of different genotypes. The application of this quick transformability assay to eight more cowpea genotypes showed the transformability in a range of 4.5 to 37%. Similar to the observation of transgenic shoot development for IT86D-1010, all the eight cowpea genotypes also formed transgenic shoots exclusively and rapidly at the cot-node region and, in most of the cases, no more than two transgenic shoots per explants were developed (Figure S8). These results demonstrate that the

transformation protocol developed for IT86D-1010 described herein is transferable to other genotypes even with an alternative *Agrobacterium*-mediated transformation system.

In general, better shoot organogenesis response tends to produce higher transgenic shoot regeneration frequency, but this is not always the case. As shown in Table 4 and 1, although all five genotypes, IT86D-1010 and PI 527675, PI 580227, PI 582835 and TVu 79, showed very good and comparable shoot organogenesis response in the range of 78 to 81% efficiency, only IT86D-1010, PI 527675 and PI 582835 demonstrated significant high transformability ($19\% \pm 7.5\%$, 31% and 37%, respectively), but not PI 580227 and TVu 79 (5.6% and 4.5%, respectively). In contrast, all three genotypes, TVu 3562, TVu 9693 and PI 583259, had relatively low shoot organogenesis response (68%, 61% and 56%, respectively) (Table 1), but their transformability was relatively high (18%, 22% and 26%, respectively) (Table 4). Therefore, the transformability of those germplasm lines is determined not only by the shoot organogenesis capability, but also by the combination of the susceptibility to *Agrobacterium*-mediated T-DNA delivery and sensitivity to the *Agrobacterium* infection and sonication related damages.

Taken together, we have developed a rapid, robust, flexible and highly efficient cowpea transformation system using EA as explants. The principles established in this study have the potential to increase the transformation efficiencies of other legume species and, potentially, other dicot crops. With recent progress establishing cowpea genetic and genomic resources (Lonardi *et al.*, 2019; Munoz-Amatriain *et al.*, 2017; Spriggs *et al.*, 2018; Yao *et al.*, 2016), we

believe that the broad application of this cowpea transformation system will have immediate and far-reaching impact on cowpea research that will improve cowpea productivity.

Experimental Procedures

Agrobacterium strain and vectors

Two *Agrobacterium* strains, the auxotrophic strain LBA4404 Thy⁻ and AGL1, were used in this study. *Agrobacterium* auxotrophic strain LBA4404 Thy⁻ was used with the ternary vector transformation system for cowpea IT86D-1010 transformation. The ternary vector system contains the T-DNA binary vector and the optimized pVIR accessory (pPHP71539) plasmid as previously described by Che *et al.* (2018) and Anand *et al.* (2018). The T-DNA binary plasmid pPHP86170 (Figure S1a) contains the PUC ORI, the *NPTIII* bacterial selectable marker, the *TagRFP* reporter gene and *spcN* (Anada *et al.*, 2017) as plant selectable marker gene. The binary plasmid pPHP94518 (Figure S1b) contains the PVS1 ORI, the spec bacterial selectable marker, the *Ds-RED* reporter gene and *NPTII* as plant selectable marker gene. The binary plasmid pPHP92782 contains the PVS1 ORI, the *NPTIII* bacterial selectable marker, the *Ds-RED* reporter gene, *spcN* (Anada *et al.*, 2017) as plant selectable marker gene (Figure S1c). The ternary design was assembled by first mobilizing the accessory plasmid pPHP71539 in the *Agrobacterium* auxotrophic strain LBA4404 Thy⁻ and selected on media supplemented with gentamycin (25mg/l). Subsequently the binary constructs were electroporated into *Agrobacterium* strain LBA4404 Thy⁻ containing the accessory plasmid and recombinant colonies were selected on media supplemented with gentamycin plus either kan for pPHP86170 and pPHP92782 or spec

for pPHP94518. All constructs were then subjected to next generation sequencing and sequence confirmation before conducting transformation experiments.

AGL1 carrying RC2717, a modified pCAMBIA vector (Figure S1d), was used for testing transformation on different cowpea germplasm other than IT86D-1010. The T-DNA region of the binary vector RC2717 contained a soybean-codon-optimized *aadA1* gene (Martinell *et al.*, 2017) as a selectable marker and a reporter cassette in which a *TdTomato* reporter cassette flanked by two *loxP* sites was placed in a reversed orientation between a soybean-codon-optimized *ZsGreen* gene and the *Arabidopsis Ubiquitin 10* promoter (Figure S1d). The *TdTomato* gene provided a visible fluorescence marker to identify transgenic shoots after transformation. With the use of the freeze-thaw method (Chen *et al.*, 1994), the binary vector was introduced into AGL1 and the recombinant colonies were selected on medium containing 100 mg/l kan.

Materials reported in this paper may contain components subject to third party ownership (e.g., *TagRFP* and *Ds-RED*). Transgenic and genome edited materials may be subject to governmental regulations. Availability of materials described in this paper to academic investigators for non-commercial research purposes under an applicable material transfer agreement will be subject to proof of permission from any third-party owners of all or parts of the material and to governmental regulation considerations. Obtaining the applicable permission from such third-party owners will be the responsibility of the requestor. Transgenic materials reported in this paper may only be made available if in full accordance with all applicable governmental regulations.

Plant materials and growth conditions

Cowpea varieties IT86D-1010, PI 527675, PI 580227, PI 582835, PI583259, TVu 8670, TVu 3562, TVu 9693, and TVu 79 originally obtained from the U.S. NPGS (<https://www.ars-grin.gov/npgs/>) were used for this study. Mexican cowpea accessions TPC1-001 and MRS-001 were collected from local farming communities of Tabasco and Morelos States, respectively; common bean (*Phaseolus vulgaris* L) varieties *black* bean (CBB-001) and *pinto* bean (CBP-001) were obtained from local producers in Guanajuato State. Those varieties were maintained in the greenhouse to collect mature seeds for EA explant isolation.

Cowpea transformation procedure

The main steps of cowpea transformation mediated by *Agrobacterium* were illustrated in Figure S2. The detailed cowpea transformation protocol including *Agrobacterium* preparation, cowpea EA isolation, transformation procedure and medium preparation were described in the Supporting information.

Microscopy and imaging

Images were taken using a dissecting Leica M165 FC stereo-epifluorescence microscope, with RFP and Ds-RED filters for detection of fluorescence, using the PLANAPO 1.0× objective, 0.63× zoom, and Leica Application Suite V4.7 acquisition software. The autofluorescence of the wild-type regenerated cowpea was evaluated using the same system. For testing transformation on the eight additional cowpea germplasm lines from NPGS, transgenic shoots expressing TdTomato were monitored with a Stemi SVII dissection stereoscope equipped with a HBO illuminator (Carl Zeiss, Thornwood, NY) and a Ds-RED filter (excitation: 545/25 nm, emission: 605/70 nm, Chroma Technology, Bellows Falls, VT). Images were taken by using an AxioCam

camera (Carl Zeiss, Oberkochen, Germany) and the AxioVision LE64 software, and composed by using Photoshop CC (Adobe, San Jose, CA).

Evaluation of transgenic plants

The integrated copy number of the T-DNA of the binary vector in the transgenic plants was determined by a series of Quantitative PCR (qPCR) analyses based on the method previously described by Wu *et al.* (2014). In this study, an endogenous control qPCR assay (*LBS*) (Table S9) was developed using a house-keeping gene annotated as *3-isopropylmalate dehydrogenase* (Vigun05g298700) in the leucine biosynthetic pathway from cowpea (Misra *et al.*, 2017). Four qPCR assays (*PINII_TERM*, *spcN_SO*, *CTP* and *UBQ14_TERM*) for pPHP86170 (Figure S1a and Table S9) and two qPCR assays (*Ds-RED*, *spcN_SO*) for pPHP92782 (Figure S1c and Table S9) were developed to determine T-DNA copy number by normalizing with endogenous control *LBS* assay.

Outside the border integration sites, PCR backbone-specific assays were developed to check for any border read-through (Wu *et al.*, 2014). The presence and absence of *Agrobacterium* vector backbone integration of the binary vector was detected based on screening for sequences from three regions outside of the T-DNA integration sites for each vector, such as *SPC*, *LEFTBORDER* and *NPTIII* for plasmid pPHP92782 and *HYG*, *VIRG* and *HYGROMYCIN* for plasmid pPHP86170 (Figure S1a, c and Table S9).

Stable T-DNA integration was confirmed by copy number determination using genomic DNA extracted from the putative T0 transgenic events. The T0 transgenic plants carrying a single-copy of the intact T-DNA integrations without vector backbone for all assays described were defined as quality events (Anand *et al.*, 2018; Che *et al.*, 2018; Zhi *et al.*, 2015). The

percentage of quality events was divided by the total number of events analyzed to calculate the quality event frequency. Only quality events were advanced to the greenhouse for the next generation. The zygosity of the T1 plants was established by determining the copy number of the T-DNA for all the event quality assays (Figure S1a, c and Table S9). Chi-square analysis (χ^2) was performed to determine whether the difference between the observed and expected ratio was statistically significant.

Acknowledgements

We thank the super binary vector construction team from Corteva Agriscience for their support with vector construction and environmental control group for cowpea planting in the greenhouse. We thank Dr. Hyeon-Je Cho from Corteva Agriscience for developing the soybean transformation procedure which provided instrumental knowledge for this study. We also thank Drs. Ray Collier and Michael Petersen from the Wisconsin Crop Innovation Center for constructing the RC2717 vector. The study was funded by a sub-award from the CSIRO to Corteva, UGA and LANGEBIO under the Capturing Heterosis for Smallholder Farmers grant from the Bill and Melinda Gates Foundation (BMGF). Corteva Agriscience provided funding and in-kind donations for this project as well.

Author contributions

P.C., S.C., M.S., M.A. and T.J. conceptualized the methods. P.C., S.C., M.S., Z.Z., J.V., P.O., M.A. and T.J. designed research, analyzed the data and wrote the paper. A.S. conducted cowpea transformation and collected the data for IT86D-1010. Z.Z. Y.G. and K.M. conducted transformation and genotyping for other cowpea genotypes collected from NPGS. J.O. and D.O. developed event quality assays. M.T. conducted regeneration experiment for Mexican cowpeas and beans.

Conflict of Interest: The authors have no conflict of interest to declare.

References

- Aasim, M., Khawar, K.M. and Özcan, S. (2010) Efficient in vitro propagation from preconditioned embryonic axes of Turkish cowpea (*Vigna unguiculata* L.) cultivar Akkiz. *Archives of Biological Sciences* **62**, 1047-1052.
- Abdu Sani, L., Usman, I.S., Ishiaku Faguji, M. and Muhammad Bugaje, S. (2015) Towards Efficient In vitro Regeneration of Cowpea (*Vigna unguiculata* L. Walp): A Review. *British Biotechnology Journal* **7**, 174-182.
- Anada, A., Bass, S.H., Bertain, S.M., Cho, H.-J., Kinney, A.J., Klein, T.M., Lassner, M., McBride, K.E., Moy, Y., Rosen, B.A.M. and Wei, J.-Z. (2017) Ochrobactrum-mediated transformation of plants. (WO/2017/040343 ed).
- Anand, A., Bass, S.H., Wu, E., Wang, N., McBride, K.E., Annaluru, N., Miller, M., Hua, M. and Jones, T.J. (2018) An improved ternary vector system for Agrobacterium-mediated rapid maize transformation. *Plant molecular biology* **97**, 187-200.
- Aragão, F.J.L., Sarokin, L., Vianna, G.R. and Rech, E.L. (2000) Selection of transgenic meristematic cells utilizing a herbicidal molecule results in the recovery of fertile transgenic soybean [*Glycine max* (L.) Merril] plants at a high frequency. *Theoretical and Applied Genetics* **101**, 1-6.
- Bakshi, S., Sadhukhan, A., Mishra, S. and Sahoo, L. (2011) Improved Agrobacterium-mediated transformation of cowpea via sonication and vacuum infiltration. *Plant cell reports* **30**, 2281-2292.

- Bakshi, S., Saha, B., Roy, N.K., Mishra, S., Panda, S.K. and Sahoo, L. (2012) Successful recovery of transgenic cowpea (*Vigna unguiculata*) using the 6-phosphomannose isomerase gene as the selectable marker. *Plant cell reports* **31**, 1093-1103.
- Bett, B., Gollasch, S., Moore, A., Harding, R. and Higgins, T.J.V. (2019) An Improved Transformation System for Cowpea (*Vigna unguiculata* L. Walp) via Sonication and a Kanamycin-Geneticin Selection Regime. *Frontiers in plant science* **10**, 219.
- Bett, B., Gollasch, S., Moore, A., James, W., Armstrong, J., Walsh, T., Harding, R. and Higgins, T.J.V. (2017) Transgenic cowpeas (*Vigna unguiculata* L. Walp) expressing *Bacillus thuringiensis* Vip3Ba protein are protected against the Maruca pod borer (*Maruca vitrata*). *Plant Cell, Tissue and Organ Culture (PCTOC)* **131**, 335-345.
- Boukar, O., Fatokun, C.A., Huynh, B.L., Roberts, P.A. and Close, T.J. (2016) Genomic Tools in Cowpea Breeding Programs: Status and Perspectives. *Frontiers in plant science* **7**, 757.
- Carlos Popelka, J., Terryn, N. and Higgins, T.J.V. (2004) Gene technology for grain legumes: can it contribute to the food challenge in developing countries? *Plant Science* **167**, 195-206.
- Chaudhury, D., Madanpotra, S., Jaiwal, R., Saini, R., Kumar, P.A. and Jaiwal, P.K. (2007) Agrobacterium tumefaciens-mediated high frequency genetic transformation of an Indian cowpea (*Vigna unguiculata* L. Walp.) cultivar and transmission of transgenes into progeny. *Plant Science* **172**, 692-700.
- Che, P., Anand, A., Wu, E., Sander, J.D., Simon, M.K., Zhu, W., Sigmund, A.L., Zastrow-Hayes, G., Miller, M., Liu, D., Lawit, S.J., Zhao, Z.Y., Albertsen, M.C. and Jones, T.J. (2018) Developing a flexible, high-efficiency Agrobacterium-mediated sorghum transformation system with broad application. *Plant biotechnology journal* **16**, 1388-1395.
- Chen, H., Nelson, R.S. and Sherwood, J.L. (1994) Enhanced recovery of transformants of *Agrobacterium tumefaciens* after freeze-thaw transformation and drug selection. *BioTechniques* **16**, 664-668, 670.
- Citadin, C.T., Cruz, A.R. and Aragao, F.J. (2013) Development of transgenic imazapyr-tolerant cowpea (*Vigna unguiculata*). *Plant cell reports* **32**, 537-543.
- Fang, J., Chao, C.-C.T., Roberts, P.A. and Ehlers, J.D. (2007) Genetic diversity of cowpea [*Vigna unguiculata* (L.) Walp.] in four West African and USA breeding programs as determined by AFLP analysis. *Genetic Resources and Crop Evolution* **54**, 1197-1209.
- Gomathinayagam, P., Ganesh ram, S., Rathnaswamy, R. and Ramaswamy, N.M. (1998) Interspecific hybridization between *Vigna unguiculata* (L.) Walp. and *V. vexillata* (L.) A. Rich. through in vitro embryo culture. *Euphytica* **102**, 203-209.
- Ivo, N.L., Nascimento, C.P., Vieira, L.S., Campos, F.A. and Aragao, F.J. (2008) Biolistic-mediated genetic transformation of cowpea (*Vigna unguiculata*) and stable Mendelian inheritance of transgenes. *Plant cell reports* **27**, 1475-1483.
- Jia, Y., Yao, X., Zhao, M., Zhao, Q., Du, Y., Yu, C. and Xie, F. (2015) Comparison of Soybean Transformation Efficiency and Plant Factors Affecting Transformation during the Agrobacterium Infection Process. *Int J Mol Sci* **16**, 18522-18543.
- Kumar, M., Mariamma, M., Veluthambi, K. and Gnanam, A. (1996) Genetic transformation of cotyledon explants of cowpea (*Vigna unguiculata* L. Walp) using *Agrobacterium tumefaciens*. *Plant Cell Rep.* **15**, 980-985.
- Latunde-Dada, A.O. (1990) Genetic Manipulation of the Cowpea (*Vigna unguiculata* [L.] Walp.) for Enhanced Resistance to Fungal Pathogens and Insect Pests. In: *Advances in Agronomy* (Brady, N.C. ed) pp. 133-154. Academic Press.
- Lazo, G.R., Stein, P.A. and Ludwig, R.A. (1991) A DNA transformation-competent Arabidopsis genomic library in Agrobacterium. *Bio/technology* **9**, 963-967.

- Liu, H.K., Yang, C. and Wei, Z.M. (2004) Efficient *Agrobacterium tumefaciens*-mediated transformation of soybeans using an embryonic tip regeneration system. *Planta* **219**, 1042-1049.
- Lonardi, S., Munoz-Amatriain, M., Liang, Q., Shu, S., Wanamaker, S.I., Lo, S., Tanskanen, J., Schulman, A.H., Zhu, T., Luo, M.C., Alhakami, H., Ounit, R., Hasan, A.M., Verdier, J., Roberts, P.A., Santos, J.R.P., Ndeve, A., Dolezel, J., Vrana, J., Hokin, S.A., Farmer, A.D., Cannon, S.B. and Close, T.J. (2019) The genome of cowpea (*Vigna unguiculata* [L.] Walp.). *The Plant journal : for cell and molecular biology* **98**, 767-782.
- Mamadou, S., Diallo, Ndiaye, A., Sagna, M. and Kène Gassama-Dia, Y. (2008) Plants regeneration from African cowpea variety (*Vigna unguiculata* L. Walp.). *African Journal of Biotechnology* **7**, 2828-2833.
- Manman, T., Qian, L., Huaqiang, T., Yongpeng, Z., Jia, L.F. and Huanxiu, L. (2013) A review of regeneration and genetic transformation in cowpea (*Vigna unguiculata* L. Walp). *African Journal of Agricultural Research* **8**, 1115-1122.
- Martinell, B.J., Petersen, M.W., Somers, D.A., Wan, Y., Williams, E. and Ye, X. (2017) Methods for plant transformation using spectinomycin selection. In: *US8466345B2*. United States: MONSANTO TECHNOLOGY LLC (St. Louis, MO, US).
- Mellor, K.E., Hoffman, A.M. and Timko, M.P. (2012) Use of ex vitro composite plants to study the interaction of cowpea (*Vigna unguiculata* L.) with the root parasitic angiosperm *Striga gesnerioides*. *Plant methods* **8**, 22-22.
- Misra, V.A., Wang, Y. and Timko, M.P. (2017) A compendium of transcription factor and Transcriptionally active protein coding gene families in cowpea (*Vigna unguiculata* L.). *BMC genomics* **18**, 898.
- Munoz-Amatriain, M., Mirebrahim, H., Xu, P., Wanamaker, S.I., Luo, M., Alhakami, H., Alpert, M., Atokple, I., Batieno, B.J., Boukar, O., Bozdog, S., Cisse, N., Drabo, I., Ehlers, J.D., Farmer, A., Fatokun, C., Gu, Y.Q., Guo, Y.N., Huynh, B.L., Jackson, S.A., Kusi, F., Lawley, C.T., Lucas, M.R., Ma, Y., Timko, M.P., Wu, J., You, F., Barkley, N.A., Roberts, P.A., Lonardi, S. and Close, T.J. (2017) Genome resources for climate-resilient cowpea, an essential crop for food security. *The Plant journal : for cell and molecular biology* **89**, 1042-1054.
- Nishizawa, K., Kita, Y., Kitayama, M. and Ishimoto, M. (2006) A red fluorescent protein, DsRed2, as a visual reporter for transient expression and stable transformation in soybean. *Plant cell reports* **25**, 1355-1361.
- Norkunas, K., Harding, R., Dale, J. and Dugdale, B. (2018) Improving agroinfiltration-based transient gene expression in *Nicotiana benthamiana*. *Plant Methods* **14**, 71.
- Obembe, O.O. (2008) Exciting times for cowpea genetic transformation research. *Life Sci J* **5**, 50-52.
- Odutayo, O.I., Akinrimisi, F.B., Ogunbosoye, I. and Oso, R.T. (2005) Multiple shoot induction from embryo derived callus cultures of cowpea (*Vigna unguiculata* L.) Walp. *African Journal of Biotechnology* **4**, 1214-1216.
- Phillips, R.D., McWatters, K.H., Chinnan, M.S., Hung, Y.-C., Beuchat, L.R., Sefa-Dedeh, S., Sakyi-Dawson, E., Ngoddy, P., Nnanyelugo, D., Enwere, J., Komey, N.S., Liu, K., Mensa-Wilmot, Y., Nnanna, I.A., Okeke, C., Prinyawiwatkul, W. and Saalia, F.K. (2003) Utilization of cowpeas for human food. *Field Crops Research* **82**, 193-213.
- Popelka, J.C., Gollasch, S., Moore, A., Molvig, L. and Higgins, T.J. (2006) Genetic transformation of cowpea (*Vigna unguiculata* L.) and stable transmission of the transgenes to progeny. *Plant cell reports* **25**, 304-312.
- Raveendar, S., Premkumar, A., Sasikumar, S., Ignacimuthu, S. and Agastian, P. (2009) Development of a rapid, highly efficient system of organogenesis in cowpea *Vigna unguiculata* (L.) Walp. *South African Journal of Botany* **75**, 17-21.

- Sani, L.A., Usman, I.S., Ishiyaku, M. and Bugaje, S.M. (2018) Optimization of protocol for multiple shoots regeneration from apical meristem of embryonic axes in cowpea (*Vigna unguiculata* L. Walp). *Bayero Journal of Pure and Applied Sciences* **10**, 428-433.
- Singh, B.B. (2014) Cowpea: The Food Legume of the 21st Century. *Madison, WI: Crop Science Society of America, Inc. DOI: 10.2135/2014.cowpea*.
- Solleti, S.K., Bakshi, S., Purkayastha, J., Panda, S.K. and Sahoo, L. (2008a) Transgenic cowpea (*Vigna unguiculata*) seeds expressing a bean alpha-amylase inhibitor 1 confer resistance to storage pests, bruchid beetles. *Plant cell reports* **27**, 1841-1850.
- Solleti, S.K., Bakshi, S. and Sahoo, L. (2008b) Additional virulence genes in conjunction with efficient selection scheme, and compatible culture regime enhance recovery of stable transgenic plants in cowpea via *Agrobacterium tumefaciens*-mediated transformation. *Journal of biotechnology* **135**, 97-104.
- Somers, D.A., Samac, D.A. and Olhoft, P.M. (2003) Recent advances in legume transformation. *Plant physiology* **131**, 892-899.
- Spriggs, A., Henderson, S.T., Hand, M.L., Johnson, S.D., Taylor, J.M. and Koltunow, A. (2018) Assembled genomic and tissue-specific transcriptomic data resources for two genetically distinct lines of Cowpea (*Vigna unguiculata* (L.) Walp). *Gates open research* **2**, 7.
- Tie, M., Luo, Q., Zhu, Y. and Li, H. (2013) Effect of 6-BA on the Plant Regeneration via Organogenesis from Cotyledonary Node of Cowpea (*Vigna unguiculata* L. Walp). *Journal of Agricultural Science* **5**, 1-5.
- Turlapati, S.A., S.K, J., M R, B. and P.B, K. (2008) Cotyledonary Node and Embryo Axes as Explants in Legume Transformation with Special Reference to Peanut. In: *Handbook of New Technologies for Genetic Improvement of Legumes* pp. 253-271.
- Wamalwa, E.N., Muoma, J. and Wekesa, C. (2016) Genetic Diversity of Cowpea (*Vigna unguiculata* (L.) Walp.) Accession in Kenya Gene Bank Based on Simple Sequence Repeat Markers. *International journal of genomics* **2016**, 8956412.
- Wu, E., Lenderts, B., Glassman, K., Berezowska-Kaniewska, M., Christensen, H., Asmus, T., Zhen, S., Chu, U., Cho, M.J. and Zhao, Z.Y. (2014) Optimized *Agrobacterium*-mediated sorghum transformation protocol and molecular data of transgenic sorghum plants. *In vitro cellular & developmental biology. Plant : journal of the Tissue Culture Association* **50**, 9-18.
- Yao, S., Jiang, C., Huang, Z., Torres-Jerez, I., Chang, J., Zhang, H., Udvardi, M., Liu, R. and Verdier, J. (2016) The *Vigna unguiculata* Gene Expression Atlas (VuGEA) from de novo assembly and quantification of RNA-seq data provides insights into seed maturation mechanisms. *The Plant journal : for cell and molecular biology* **88**, 318-327.
- Yusuf, M., A. Raji, A., Ingelbrecht, I. and D. Katung, M. (2008) Regeneration efficiency of cowpea (*Vigna unguiculata* (L.) Walp.) via embryonic axes explants. *African Journal of Plant Science* **2**, 105-108.
- Zaidi, M.A., Mohammadi, M., Postel, S., Masson, L. and Altosaar, I. (2005) The Bt gene cry2Aa2 driven by a tissue specific ST-LS1 promoter from potato effectively controls *Heliothis virescens*. *Transgenic research* **14**, 289-298.
- Zhi, L., TeRonde, S., Meyer, S., Arling, M.L., Register, J.C., 3rd, Zhao, Z.Y., Jones, T.J. and Anand, A. (2015) Effect of *Agrobacterium* strain and plasmid copy number on transformation frequency, event quality and usable event quality in an elite maize cultivar. *Plant cell reports* **34**, 745-754.

Figure Legends

Figure 1 The regeneration origin of cowpea EA explants *via* organogenesis. (a) The structure of cowpea IT86D-1010 EA extracted from imbibed mature seed. The red line through the middle of epicotyl represents the decapitation process of EA explant to remove the SAM. (b-d) The single (c) and multiple (d) shoot development from non-decapitated EA explants (b). (e-f) The multiple shoot regeneration (f) from decapitated EA explants (e). (g) Close look of multiple shoot regeneration and the cutting site of the epicotyl indicated by the arrow. The percentages in pictures (c, d and f) represent the population of single and multiple shoot development determined from 100 non-decapitated and 100 decapitated EA explants after 10 days on SIM.

Figure 2 Explant sensitivity to the infection and co-cultivation treatments. (a-b) The survival and regeneration capability of decapitated (a) and non-decapitated (b) EA explants after 10-day shoot induction without selection following infection and co-cultivation steps without *Agrobacterium* inoculation. (c) The susceptibility of non-decapitated EA explants to the *Agrobacterium* inoculation following infection and co-cultivation steps. Image was taken on 4-day SIM. Arrow and circle indicates one of the survived explants with elongated epicotyl and one of the dying explant without elongated epicotyl, respectively.

Figure 3 Different stages of transgenic cowpea IT86D-1010 development using *CTP-spcN/spec* selection system. (a-b) T-DNA delivery determined by transient assay after 3-day shoot induction. (c) Close look the number, size and intensity of fluorescent foci around the cot-node region. (d-e) Transgenic shoot budding after 2-week regeneration on SIM with spec selection. (f-g) Fully developed transgenic shoot after 5-week regeneration with spec selection. (h-i) Root

development of regenerated transgenic shoot after 3-week root induction on RIM. (a, d, f and h) Bright field images. (b, c, e, g and i) Fluorescence images under RFP filter.

Supporting information

Additional Supporting Information may be found online in the supporting information tab for this article:

Cowpea transformation protocol

Figure S1 Schematic representation of the molecular components of constructs used in this study.

Figure S2 Flow diagram of the cowpea EA-based *Agrobacterium*-mediated transformation process.

Figure S3 Dry mature seeds of selected accessions of cowpea and common bean.

Figure S4 Shoot organogenesis of selected accessions of cowpea and common bean.

Figure S5 Autofluorescence evaluation. (a) The bright field image and (b) fluorescence image under RFP filter of regenerated wild-type cowpea IT86D-1010. The arrow indicates the regenerated roots.

Figure S6 Development of chimeric event using *CTP-NPTII*/G418 selection system. (a) Bright field image. (b) Fluorescence image under RFP filter.

Figure S7 Transgene segregation in the progeny. (a) Mature wild-type cowpea IT86D-1010 seeds. (b) Segregated T1 seeds in IT86D-1010 background harvested from T0 plant containing the *proGM-EF1A2:Ds-RED* as visual marker.

Figure S8 Formation of transgenic shoots expressing *TdTomato* on the EA explants of nine cowpea germplasm lines after 14-d culture on SIM, bar = 1 mm.

Table S1 Master plate medium

Table S2 Working plate medium

Table S3 Infection medium (IM)

Table S4 Bean germination medium (BGM)

Table S5 Shoot induction medium (SIM)

Table S6 Root induction medium (RIM)

Table S7 Shoot elongation medium (SEM)

Table S8 OMS

Table S9 Primers used for event quality assays

Table 1 Shoot organogenesis of selected accessions of cowpea and common bean

Germplasm accessions	# of EAs	# of EAs with single shoot (%)	# of EAs with multiple shoots (%)	Explants forming shoots (%)
<i>Cowpea</i>				
IT86D-1010	36	0 (0)	28 (78)	78
PI 527675	36	0 (0)	29 (81)	81
PI 580227	36	2 (6)	26 (72)	78
PI 582835	29	1 (3)	22 (76)	79
PI 583259	36	3 (8)	17 (47)	56
TVu 8670	36	2 (6)	22 (61)	67
TVu 3562	37	4 (11)	21 (57)	68
TVu 9693	36	0 (0)	22 (61)	61
TVu 79	36	1 (3)	28 (78)	81
<i>Mexican cowpea</i>				
TPC-001	50	6 (12)	12 (24)	36
MRS-001	50	5 (10)	14 (28)	38
<i>Common bean</i>				
CBB-001	50	4 (8)	11 (22)	30
CBP-001	50	6 (12)	8 (16)	30

Table 2 Transformation efficiency and event quality for IT86D-1010

# of EAs	Transgenic shoots	Transgenic shoots with root developed	Rooting efficiency (%)	Transformation efficiency (%)	Quality events (%)
30	7	6	86	20	23
30	7	7	100	23	
20	4	4	100	20	
Average*			95 ± 8	21 ± 2	

*Data were presented as the average ± SD.

Table 3 Segregation analysis of self-fertilized IT86D-1010 transgenic cowpea plant in the T1 generation

Event ID	Total plants analyzed	# of Two-copy plants*	# of single-copy plants*	# of null plants*	$P (\chi^2_{1:2:1})$	$P (\chi^2_{3:1})$
125739938	100	17	54	29	0.17 (3.52)	0.36 (0.85)
125739949	98	28	37	33	0.04 (6.39)	0.05 (3.93)
125739950	99	17	57	25	0.17 (3.57)	0.95 (0.0033)

*Copy numbers were determined by both *Ds-RED* and *spcN-SO* qPCR assays.

Table 4 Transformability evaluation of nine cowpea accessions

Germplasm	# of EAs	# of EAs with fluorescent shoots in 2 weeks	Transformability (%)
<i>Exp 1</i>			
IT86D-1010	123	14	11
PI 527675	166	52	31
PI 580227	178	10	5.6
TVu 9693	160	35	22
<i>Exp 2</i>			
IT86D-1010	117	22	19
PI 583259	119	31	26
TVu 79	157	7	4.5
TVu 8670	125	11	8.8
<i>Exp 3</i>			
IT86D-1010	102	27	26
PI 582835	90	33	37
TVu 3562	177	32	18

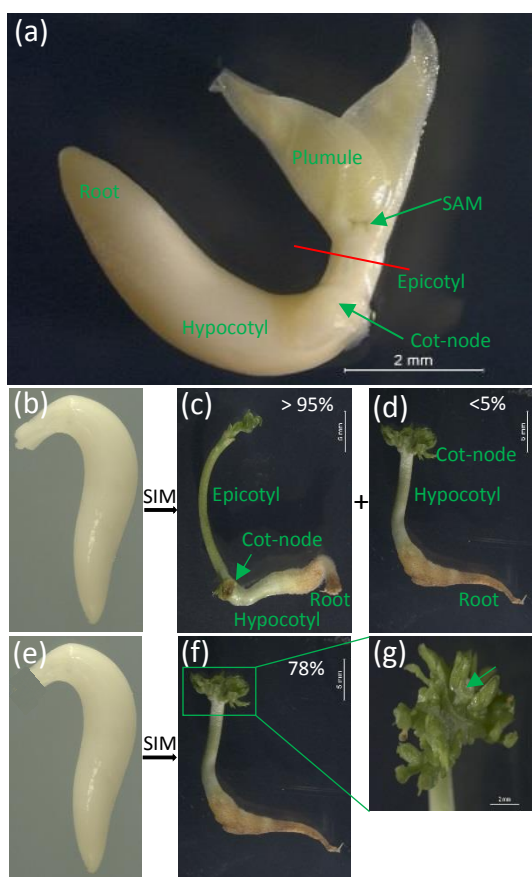


Figure 1 The regeneration origin of cowpea EA explants *via* organogenesis.

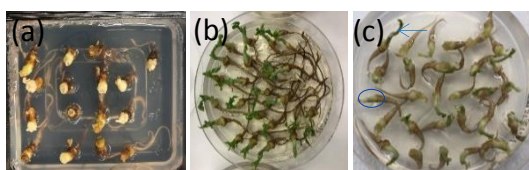


Figure 2 Explant sensitivity to the infection and co-cultivation treatments.

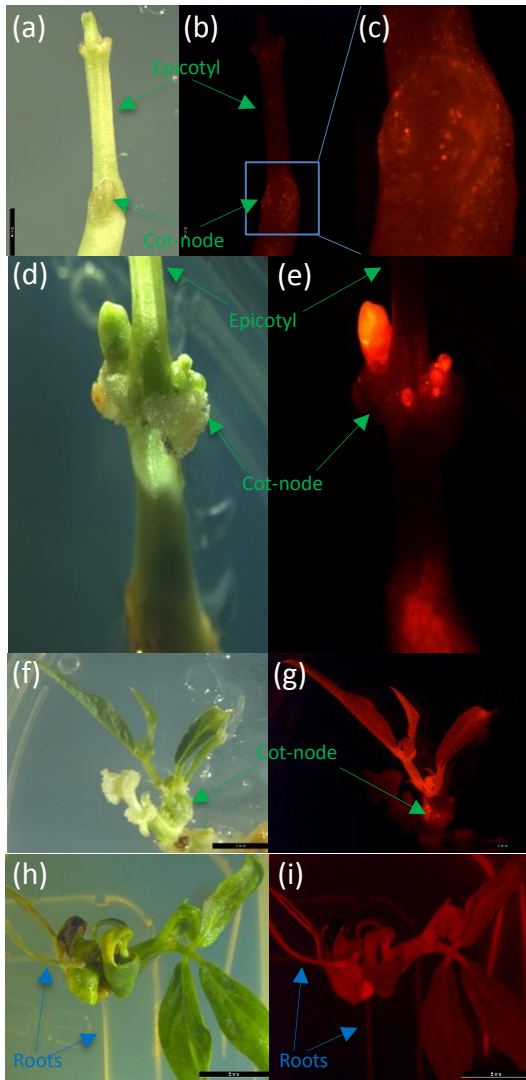


Figure 3 Different stages of transgenic cowpea IT86D-1010 development using *CTP-spcN/spec* selection system.