

Reference glycan structure libraries of primary human cardiomyocytes and pluripotent stem cell-derived cardiomyocytes reveal cell-type and culture stage-specific glycan phenotypes

Christopher Ashwood^{1,3}, Matthew Waas^{1,3}, Ranjuna Weerasekera¹, Rebekah L. Gundry^{1,2,3}

¹Department of Biochemistry, Medical College of Wisconsin, Milwaukee, WI 53226, USA

²Center for Biomedical Mass Spectrometry Research, Medical College of Wisconsin, Milwaukee, WI 53226, USA

³Current Address: CardiOmics Program, Center for Heart and Vascular Research; Division of Cardiovascular Medicine; and Department of Cellular and Integrative Physiology, University of Nebraska Medical Center, Omaha, NE, 68198, USA

Corresponding author:

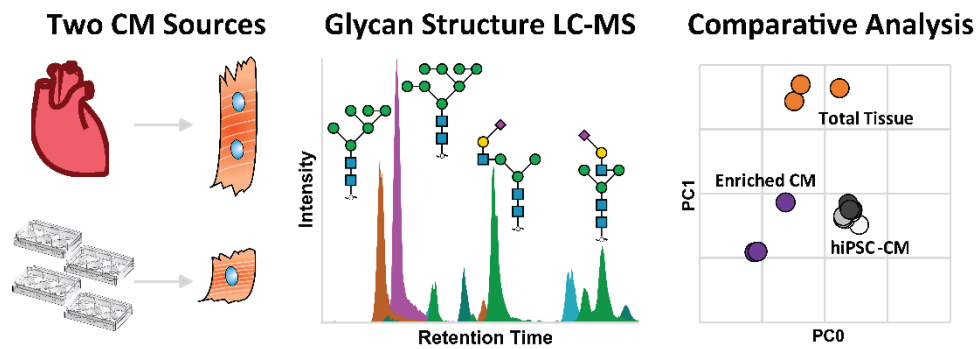
Rebekah L. Gundry, PhD
University of Nebraska Medical Center
Department of Cellular and Integrative Physiology
985850 Nebraska Medical Center
Omaha, NE, 68198-5850, USA
Telephone: 402-559-4426
Fax: 402-559-4438
Email: rebekah.gundry@unmc.edu

Running Title: Comparative glycomics of primary cardiac tissue, cardiomyocytes, and hiPSC-cardiomyocytes

Highlights (submitted as separate file)

- First reference structure libraries of the human cardiac glycome
- Cell-type specific analyses reveal glycans enriched in cardiomyocytes
- 261 *N*-glycan and 4 *O*-glycan structures were identified
- Glycan profiles are dynamic throughout *in vitro* differentiation
- Differences between glycans in primary cardiomyocytes and hiPSC-CM are revealed

Graphical Abstract (submitted as separate file)



Abstract

Cell surface glycoproteins play critical roles in maintaining cardiac structure and function in health and disease and the glycan-moiety attached to the protein is critical for proper protein folding, stability and signaling. However, despite mounting evidence that glycan structures are key modulators of heart function and must be considered when developing cardiac biomarkers, we currently do not have a comprehensive view of the glycans present in the normal human heart. In the current study, we used porous graphitized carbon liquid chromatography interfaced with mass spectrometry (PGC-LC-MS) to generate glycan structure libraries for primary human heart tissue homogenate, cardiomyocytes (CM) enriched from human heart tissue, and human induced pluripotent stem cell derived CM (hiPSC-CM). Altogether, we established the first reference structure libraries of the cardiac glycome containing 265 *N*- and *O*-glycans. These data will benefit future functional glycomics studies by informing the genes, proteins and metabolites responsible for the end-result structures and the glycan isomer libraries defined in this study are necessary for interpretation of future intact glycopeptide data. The cell-type specific glycan differences observed here will support the generation of cell-type specific protein glycoform maps of the human heart, thereby promoting the development of cell type-specific targeting strategies. Moreover, by comparing primary CM to hiPSC-CM collected during 20-100 days of differentiation, dynamic changes in the glycan profile throughout *in vitro* differentiation and differences between primary and hiPSC-CM are revealed. These observations are an important complement to current genomic, transcriptomic, and proteomic profiling and reveal new considerations for the use and interpretation of hiPSC-CM models for studies of human development, disease, and drug testing. Finally, these data are expected to support future regenerative medicine efforts by informing targets for evaluating the immunogenic potential of hiPSC-CM and harnessing differences between immature, proliferative hiPSC-CM and adult primary CM.

Keywords: protein glycosylation, glycan structures, mass spectrometry, cardiomyocytes, hPSC-CM, heart

Abbreviations

CDG - Congenital Disorders of Glycosylation

Neu5Ac - *N*-Acetylneuraminic acid

Neu5Gc – *N*-Glycolylneuraminic acid

MALDI – Matrix Assisted Laser Desorption Ionization

MS – Mass Spectrometry

LC – Liquid Chromatography

ESI – Electrospray ionization

PGC - Porous Graphitized Carbon

hiPSC-CM – Human induced Pluripotent Stem Cell derived Cardiomyocyte

MeCN - Acetonitrile

PVDF - PolyVinylidene DiFluoride

CFG - Consortium of Functional Glycomics

GlcNAc – *N*-Acetyl Glucosamine

LacDiNAc – *N*-Acetyl Glucosamine attached to *N*-Acetyl Galactosamine

PCA – Principal Component Analysis

WGA – Wheat Germ Agglutinin

ConA – Concanavalin A

Introduction

Glycoproteins play critical roles in a wide range of biological functions and disease processes. In the heart, multiple cell surface glycoproteins, including calcium, potassium and sodium ion channels, work in concert to propagate electrical impulses to generate proper action potentials and subsequent contraction of the myocardium [2]. Glycoproteins are also required for maintaining intracellular substrate concentrations [3] and responding to perturbations in heart homeostasis [4]. To properly function, the appropriate abundance, distribution, and post-translational modifications of these glycoproteins are required. Specifically, the glycan-moiety attached to the protein is critical for proper protein folding, stability and signaling [5]. For example, genetic defects that impact ion channel glycosylation sites result in impaired heart function [6]. Enzymatic removal of cell-surface *N*-glycan structures has a pronounced effect on mouse heart electrophysiology [7] and distinct glycan profiles have been reported for rat neonatal and adult ventricles [8]. Further supporting the role of glycosylation in heart maturation, sialidase treatment to remove only a specific terminal monosaccharide (sialic acid) from adult ventricles results in sodium channel gating characteristics more similar to neonatal ventricles [7]. In humans, congenital disorders of glycosylation (CDG) which affect the glycan biosynthetic pathway and therefore the surface presentation of these sugars, have been associated with heart impairment in 16% (21 of 133) of disorders, with 10 CDGs affecting protein glycosylation specifically [9]. Finally, the glycosylation status of cardiac disease biomarkers such as natriuretic peptides (atrial (ANP), brain (BNP)) affects their function, stability in circulation, detectability by antibody-based methods, and interpretation of their clinical utility as it relates to specificity of disease [10–14].

Despite mounting evidence that glycan structures are key modulators of heart function and must be considered when developing cardiac biomarkers, we currently do not have a comprehensive view of the glycans present in the normal human heart. Ultimately, to understand the specific biological roles of glycoproteins, it is often necessary to define the population of each

molecular species that arises from combinations of site-specific glycan diversity (*i.e.* microheterogeneity) at multiple sites of glycosylation, as this site-specific glycosylation may promote or interfere with interactions and signaling [1]. Moreover, in a complex organ like the heart, cell type specificity is a critical piece of the puzzle, as the context and directionality of glycan-mediated events defines, for example, how cells propagate action potentials [15] and multiple cell types interact during human development to properly form tissues [16]. Hence, defining the structures produced by the human cardiomyocyte protein glycosylation pathway, for example, could provide specific targets for studying glycoproteins involved in regulating cardiac development, electrophysiology, disease biomarkers, and regenerative medicine efforts.

While rodent models have practical advantages for providing accessible source material for research applications, they do not accurately represent human protein glycosylation owing to two specific enzymes: CMAH and GGTA1. The lack of CMAH in humans shifts the monosaccharide compositions to Neu5Ac rather than Neu5Gc, although Neu5Gc can still be obtained through diet [17]. The lack of GGTA1 in humans means that this biosynthetic pathway of terminal di-galactosylation is absent in humans and cells featuring the glycan motifs produced by GGTA1 are immunogenic [18]. In both cases, non-human glycan structures found in animal models may confound studies of protein glycosylation of human cells. For these reasons, human source material, including primary cardiac tissue and stem cell derivatives, are most appropriate for generating reference glycan structure libraries to support future studies of glycoproteins within the context of human cardiac biology.

Modern mass spectrometry (MS) approaches enable the systematic discovery, characterization, and quantitation of glycopeptides and glycans. Specifically, methods for intact glycopeptide analysis by MS are becoming more readily available [19]. However, while native glycopeptides can be analyzed by these techniques, glycans must be released from their protein backbone for isomers to be individually quantified. Moreover, the analysis of intact glycopeptide

data requires that the search space be defined *a priori*, including both protein and glycan databases [20]. Briefly, accurate databases that reflect glycan compositions present within a sample are critical for sensitivity (probability of a correct glycopeptide match to a spectrum) and specificity (probability of an unassigned spectrum given that the spectrum is not actually a glycopeptide), as a glycan composition must be within the search space for corresponding glycopeptides to be identified. While glycans released from homogenized human heart tissue have been profiled using MALDI-MS [21], this approach does not resolve structural isomers or provide cell-type specific information.

In the current study, we used porous graphitized carbon (PGC) LC interfaced with MS (PGC-LC-MS), a technique that resolves glycan structures and enables characterization and quantification of individual structures [22], to generate glycan structure libraries. By applying this approach to primary human heart tissue homogenate, cardiomyocytes (CM) enriched from human heart tissue, and human induced pluripotent stem cell derived CM (hiPSC-CM), we established the first reference structure libraries of the human cardiac glycome containing 265 *N*- and *O*-glycans. These data will benefit future functional glycomics studies of CDG as the glycan structural data will inform lectin- and glycan-array mapping approaches and inform the genes, proteins and metabolites responsible for the end-result structures. The glycan isomer libraries defined in this study are necessary for interpretation of future intact glycopeptide data and the cell-type specific glycan differences observed here will support the generation of cell-type specific protein glycoform maps of the human heart, thereby promoting the development of cell type-specific targeting strategies. Moreover, by comparing primary CM to hiPSC-CM collected during 20-100 days of differentiation, dynamic changes in the glycan profile throughout *in vitro* differentiation and differences between primary and hiPSC-CM are revealed. These observations are an important complement to current genomic, transcriptomic, and proteomic profiling and reveal new considerations for the use and interpretation of hiPSC-CM models for studies of human development, disease, and drug testing. Finally, these data are expected to support future

regenerative medicine efforts by informing targets for evaluating the immunogenic potential of hiPSC-CM and harnessing differences between immature, proliferative hiPSC-CM and adult primary CM.

Methods

Study design

An overview of the study design is shown in Figure 1. A comparison of CM enriched from human cardiac tissue to matching tissue homogenate was used to identify glycan structures preferentially expressed in CM over other cell types in the heart. Three donors (2 male, 1 female) were used to evaluate inter-donor similarity. For hiPSC-CM, cells were collected across 20 timepoints of differentiation to enable assessment of temporal differences. Finally, as hiPSC-CM culture includes eukaryotic cell culture components which may be glycosylated [23], we profiled the constitutive glycan structures in all cell culture reagents used and developed a method to confirm that these culture components do not directly contribute to the glycan profile of hiPSC-CM (Figure S1).

Cardiomyocyte enrichment from human tissue

Frozen right ventricle myocardial tissues (500 mg) from three non-failing adult human donors (Table S1) were thawed at 37°C for 5 min followed by dissection in 5 mL of Ca²⁺ free solution to ~1mm³ pieces. The tissue piece suspension was placed in a spinner flask (Integra Biosciences, Hudson NH) and washed 3x with warm Ca²⁺ free PBS solution. Tissue pieces were resuspended in 20 mL of collagenase solution, digested for 10 min at 37°C then supplemented by 10mM CaCl₂ followed by an additional 30 min of digestion at 37°C. The digested tissue pieces were then triturated and filtered (300 µm filter, pluriSelect, Leipzig, Germany). The filtrate was

collected, resuspended in storage solution and centrifuged at 95 x g for 10 min. The pellet was collected and resuspended in PBS.

Cell culture and validation of cardiomyocyte identity in hPSC-CM cultures

DF6-9-9T hiPSCs were maintained in monolayer culture and differentiation was performed as described [24], generating predominantly ventricular-like cells. Quality control (QC) evaluation of hiPSC-CM differentiation was performed by following the Standard Operating Procedure for flow cytometry-based assessment of troponin positivity within hPSC-CM cultures as previously described [25] and experimental details are provided in the Supplementary Methods. hiPSC-CM were collected as a pellet ($\sim 1 \times 10^7$ cells) and frozen at -80°C until use.

Sample preparation for glycan analysis

Primary enriched CM and hiPSC-CM were lysed in 1X Invitrosol (Thermo Fisher Scientific, IL, USA), 100 mM ammonium bicarbonate (NH_4HCO_3), 20% acetonitrile (MeCN) and were disrupted by sonication (3x 10 sec sonication bursts at 62% amplitude (or 182W power) with 10s pause between each sonication and tubes placed in ice for a 1 min pause. This was repeated three times. Tissue pieces were lysed similarly and were disrupted by sonication (10x 10 sec sonication bursts as above). This was repeated three times. Proteins in cell lysates were reduced with 5 mM final concentration tris(2-carboxyethyl) phosphine at 37°C for 45 min and alkylated with a 10 mM final concentration of iodoacetamide for 45 min in dark at room temperature followed by Qubit protein quantitation to estimate protein content.

N- and O-glycan release

For hiPSC-CM, enriched CM, and primary tissue homogenate, 64 μg of protein was immobilized on a polyvinylidene difluoride (PVDF) membrane with subsequent *N*- and *O*-glycan release as previously described [26]. For the cell culture media analysis, a maximum of 30 μL of sample was used with the aim of immobilizing 40 μg of protein. In brief, protein spots were stained

with Direct Blue (Sigma-Aldrich, MO, USA). Membrane spots were excised and washed in separate wells in a flat bottom polypropylene 96-well plate. *N*-glycans were released from the membrane-bound protein using 2 U PNGase F (Promega, WI, USA) with overnight incubation at 37°C. Following *N*-glycan removal, 500 mM NaBH₄ in a 50 mM KOH solution was added to the membrane spots for 16 h to release reduced *O*-linked glycans by reductive β-elimination. Released *N*-glycans were reduced with 1 M NaBH₄ in a 50 mM KOH solution for 3 h at 50°C, after which the reaction was neutralized by adding equimolar glacial acetic acid. Both *N*-glycans and *O*-glycans were desalted and enriched offline using Dowex 50WX8 (200-400 mesh) strong cation exchange resin followed by PGC solid phase extraction micro-columns (Thermo Fisher Scientific) prior to analysis.

N- and O-glycan data acquisition

Samples were dissolved in 65 μL 10mM NH₄HCO₃ containing 1 μL of dextran ladder internal standard (ISTD, 26 ng), centrifuged to remove particulates, and 60 μL transferred to autosampler vials. For hiPSC-CM time course, a pooled QC sample was generated by combining 3 μL from each sample. Samples were batched by replicate and samples within each batch were randomized prior to injection. An internal standard only sample was analyzed between each replicate block to verify no carry-over. PGC-LC-ESI-MS/MS experiments were performed using a nanoLC-2D high performance liquid chromatography system (Eksigent, CA, USA) interfaced with an LTQ Orbitrap Velos hybrid mass spectrometer (Thermo Fisher Scientific). Released glycans were separated on a PGC-LC column (3 μm, 100 mm × 0.18 mm, Hypercarb, Thermo Fisher Scientific) maintained at 80°C for *N*-glycans and 40°C for *O*-glycans. To enhance ionization and improve detection of low abundance glycans, post-column make-up flow consisting of 100% methanol was utilized. All methodological details are provided in Supplemental Methods.

Glycan data analysis and library construction

Normalized retention time (RT) by dextran ladder was determined using Skyline (length 4-9 for *N*-glycans and length 3-9 for *O*-glycans) and proprietary raw files were converted to an open and vendor neutral file format, mzML, using Proteowizard v3.0.8725 [27]. The pooled QC samples were used as representative files for *N*- and *O*-glycan library construction as these samples contained all glycans from one replicate sample for each timepoint. MS2 scans, required for confirmation of glycan identity, were filtered to include only precursor masses consistent with probable human glycan compositions (searched within 20 ppm error with GlycoMod [28]). For *N*-glycans, MS2 scans with assigned glucose unit (GU) values less than 3.5 GU and greater than 18 GU were removed. For *O*-glycans, MS2 scans with assigned GU values less than 2 GU and greater than 18 GU were removed. Redundant MS2 scans for each glycan structure were removed, leaving the most intense MS2 scan for each observed glycan structure. Based on the accurate precursor mass and most probable composition, chemical formulae were assigned to each MS2 scan. The MS2 scan metadata were then used to develop a transition list for Skyline-based quantitation.

Glycan quantitation

Skyline v4.2.1.19095 [29] was used for all glycan quantitation. 99.999% of the isotopic envelope with a centroid mass accuracy value of 20 ppm was used for peak integration for glycan structure quantitation. All observed charge states for each glycan were used for quantitation. Peak picking was largely automated based on explicit retention time and integration bounds were supervised. Peak areas for each quantified glycan structure were exported and normalized to relative signal in Excel. Glycan structure relative signal was calculated as the specific glycan structure's peak area as a percentage of the total peak area for all glycan structures quantified for each sample.

Glycan structure assignment

MS/MS scans representing detected glycan precursors were assigned glycan structures based on the existence of A-, B-, C-, X-, Y-, and Z-product ions matched using GlycoWorkBench v2.1 [30] (available from <https://code.google.com/archive/p/glycoworkbench/>, maximum of 3 glycosidic cleavages and 1 cross-ring cleavage with 0.6 Da mass accuracy). For all MS/MS scans, at least two probable glycan structures were used for comparative annotation to assign the most suitable structure assignment.

Glycoproteomic data analysis

An *N*-glycan composition library was constructed by combining the Byonic (v3.4.0, Protein Metrics, CA, USA) standard glycan library with a list of the glycan compositions reduced from the structures identified in this study. Raw files were downloaded from PXD005736 and searched in Byonic with the following settings: Protein database file (Human Swiss-Prot retrieved 2018), decoys used, fully tryptic peptides, no missed cleavages, 10 ppm precursor mass tolerance, 20 ppm product ion mass tolerance, fragmentation type HCD. Fixed modification: Carbamidomethyl on C. Rare (variable) modifications: Acetyl (N-term), Oxidation (M), Deamidation (N) and N-glycosylation (NXS/T).

Data Availability

To promote utility of the glycan structure libraries generated here, all raw and processed data as well as annotated MS/MS spectra are available on Glycopost (GPST000030) and Panorama Public (<https://panoramaweb.org/GlycoCM.url>). File S-1 lists all identified structures with their composition and structural features.

Results and Discussion

An optimized analytical platform provides deep glycan structure characterization of human cardiomyocytes

Following release of *N*- and *O*-glycans from glycoproteins, structures were separated and detected using a PGC-LC-MS configuration that incorporates post-column make-up flow [31]. Advantages of this approach are that PGC enables quantification of structural isomers that cannot be resolved by MS alone and the make-up flow achieves an average of a 6-fold increase in glycan signal intensity over the standard method (Figure 2A). Demonstrating utility of this approach, 95 *N*-glycan structures, which represent all major *N*-glycan biosynthetic classes over 3 orders of magnitude (Figure 2B), and 4 *O*-glycan structures (Figure S1) were identified in primary enriched CM. Altogether, there was no clear relationship between glycan class and relative signal as structures from the high mannose and complex bi-antennary classes spanned 3 orders of magnitude; however, paucimannosidic and complex mono-antennary class structures both had relative signals less than 1%. Based on signal-to-noise ratios, it is predicted that 42 glycan structures would have been undetectable without the use of the optimized post-column make-up flow configuration (Figure 2B).

Having established that our method provides a sensitive view of the glycome, we assessed the orthogonality of our data to those from a previous report by the Consortium of Functional Glycomics (CFG) [21], which applied matrix assisted laser desorption/ionization tandem mass spectrometry (MALDI-MS/MS) to identify 104 derivatized *N*-glycan compositions from >100mg of homogenized human heart tissue. Overall, our analysis of CM enriched from primary heart tissue identified 98 *N*-glycan structures which covered the majority of *N*-glycans identified by the CFG (Figure 2C, 64%). The high mannose, hybrid and complex mono-antennary classes, found in the early stages of the protein glycosylation biosynthetic pathway, had over 90% overlap between studies; however, the paucimannose class, a newly validated glycan class in humans [32], was only detected in our study. In contrast, only 25% of the complex tetra-antennary class reported by the CFG were detected and characterized in our study. The differences in glycans identified between these studies could be due to differences in amount of starting material

(64ug vs >100mg), differences in analyte (derivatized vs native) and ionization technique (ESI vs MALDI) [33], and possible patient blood group differences which result in unique glycan structures [34].

Quantitative differences between primary enriched CMs and heart tissue homogenate

To identify glycan structures that can be specifically attributed to CM, we compared the *N*-glycome of CM enriched from primary heart tissue to that of tissue homogenate from adjacent sections of the same donor hearts. Of the quantified glycan structures, 22 (23%) were significantly different ($p < 0.05$ and greater than 2-fold difference in CM/tissue average signal, Figure 3A) between enriched CM and homogenized heart tissue. Sixteen glycans were found with higher signal in the enriched CM, including 12 structures from the high mannose class (ranging from 2- to 6- fold differences; Figure 3B). Of the five glycans with higher signal in the tissue homogenate, three structures feature the LacDiNAc motif (2- to 7- fold differences; Figure 3C). Notably, the LacDiNAc motif is difficult to elucidate with a composition-based approach [35] and the identification of these structures based on their unique fragmentation pattern highlights an advantage of our structure-based approach. The high mannose *N*-glycans which correlated to enriched CM represent the beginning of the glycan biosynthetic pathway and can be found attached to glycoproteins transitioning through the glycosylation pathway and glycoproteins with insufficient solvent accessibility for further biosynthetic processing [36]. In contrast, the glycan structures enriched in tissue homogenate (*i.e.* prevalent in non-CM cell types) have undergone further processing involving the addition of GalNAc to the glycan non-reducing terminus by β 4GalNAc-T3 [37]. Altogether, these results demonstrate there are significant glycosylation differences among cell types within the heart, with CM preferentially exhibiting glycans that are less mature. To our knowledge, this is the first cell-type specific view of the human cardiac glycome. By defining the specific glycan structures that are similar and different among cell types in the heart, these data inform future studies that use genomic, transcriptomic, metabolomic, and

proteomic approaches to study the genes (enzymes) and metabolites involved in protein glycosylation that are necessary for normal heart development and which are aberrant in disease.

Contrasting primary enriched CM and hiPSC-CM glycan structures

The use of hiPSC-CM as a model system has shown promise for a variety of applications including cardiotoxicity screening and channelopathy modeling [38,39]. However, differences in morphology, metabolic and functional properties, transcriptome, and proteome between hiPSC-CM and primary CM have been widely reported (reviewed in [40–42]). As glycans are important for cell proliferation [43], histocompatibility of transplanted tissue [44], and maintenance of cardiac homeostasis [10,45], *N*-glycans observed in primary enriched CM and hiPSC-CM were compared with the expectation that differences could be exploited for future cell and tissue engineering efforts to enhance the accuracy of the culture model. In these analyses, we considered data at both the structural (identity, order, and linkages of monosaccharides in the glycan) and compositional level (identity of monosaccharides in the glycan). This was included because although the structural data are expected to provide detail not revealed by a compositional view, compositional information is more facile to obtain and is achievable by a larger number of analytical techniques (*e.g.* HILIC LC-FLR/MS or CE-FLR/MS[46] on released glycans or C18 LC-MS on intact glycopeptides [47]). Therefore, we aimed to evaluate whether the benefits provided by a structure-based approach balance the additional effort necessary to achieve it. Finally, to confirm that cell culture components are not contributing to observed differences between hiPSC-CM and primary enriched CM, all culture components were subjected to glycan analysis and glycan structures specific for the culture components were identified. Subsequently, targeted data analysis confirmed these glycan structures were not found in hiPSC-CM glycan profiles (Figure S2).

Overall, 23% of the structures were shared between primary enriched CM and hiPSC-CM (Figure 4A). Sample-specific glycans are observed in every class, and most of the differences

appear to be proportional to the size of the glycan classes, with the complex bi-/tri-/tetra-antennary classes featuring the largest number of differences. Although the reason for the differences in *N*-glycan profile between these samples is not known, they could be related to the relative immaturity of the hiPSC-CM or the possibility that hiPSC-CM phenotype is “ventricular-like” and not specifically right ventricle as the enriched CM, among others. Nevertheless, by linking these structural data to the specific metabolites (nucleotide sugars), glycosyltransferases, and glycosidases that are required to generate these structures (Figure S7), we identify candidate enzymes responsible for the sample-specific unique structures (Figure 4B). For example, different sialylation linkages are found in primary CM compared to those structures found in the hiPSC-CM (Figure 4B). Based on the known actions of enzymes required to achieve these structures, these data reveal that a core-fucose glycosyltransferase (FUT8) and α 2,6 sialic acid glycosyltransferases (ST6GAL1-2) are required for primary enriched CM, and B1,4 N-acetyl glucosamine glycosyltransferases (MGAT4A/B) is required for hiPSC-CM. These present pathways that could be targeted in future efforts aimed at generating hiPSC-CM that more closely resemble the adult phenotype. Moreover, these data illustrate why a structure-based approach is important when evaluating cell-type specific differences. Specifically, if only glycan compositions (agnostic of linkages) were considered, the diversity of glycan structures would be underestimated. For example, the complexity caused by different sialic acid linkages results in 62 unique complex tri-antennary structures but only 20 unique compositions for hiPSC-CM (Figure 4A). Overall, our data reveal 237 *N*-glycan structures corresponding to 119 *N*-glycan compositions in hPSC-CM, including nearly all 49 *N*-glycan structures previously described for hiPSC-CM that were detected using 2D HPLC mapping [48]. Altogether, our study identifies additional structures compared to this previous view, and, among others, adds 39 complex tetra-antennary structures not previously reported in hPSC-CM.

Glycome dynamics during hiPSC-CM time in culture and relationship to primary CM

It is well established that hiPSC-CM cultures are not static. Rather, their metabolic requirements and functional properties are dynamic throughout early differentiation and with extended culturing [49–52]. To complement the qualitative glycome differences between primary enriched CM and hiPSC-CM observed here and previous efforts to map the transcriptome and proteome throughout hiPSC-CM differentiation [53–56], we quantified the *N*- and *O*-glycome of hiPSC-CM throughout 20-100 days in culture. These timepoints represent cells that have undergone CM commitment and avoid changes attributed to early stages of differentiation (e.g. mesoderm commitment) which could confound interpretations related specifically to CM dynamics. Overall, >30% of the *N*-glycome (184 structures) significantly differs (ANOVA, $p < 0.01$) across these timepoints (Figure 5A, Figures S4, S5) and conversely, the *O*-glycan profile does not significantly change (Figure S3). These quantitative differences in *N*-glycan structures range from 4-fold decreases to 100-fold increases (Figure 5B). The high-mannose and hybrid classes had few significant changes across the time-course, whereas all complex mono-antennary class structures that significantly changed, decreased over time. The complex bi-, tri- and tetra-antennary classes all contained structures which significantly changed over the time-course. While most structures of the bi-antennary class increased over time, the tetra-antennary class largely decreased with extended culturing. However, the directionality is not universally observed across all members of each class. For example, the complex tri-antennary class contains structures that exhibit the largest increases (e.g. fucosylated and tetra-sialylated) as well as the largest decreases (e.g. fucosylated and di-sialylated). To link these results to the glycan biosynthetic pathway, structural motifs (*i.e.* pattern) were evaluated. Overall, the relative signal of total sialylation, sialic acid linkages, bisecting GlcNAc and LacDiNAc structural motifs did not significantly change (Figure S6). While core-fucosylation and outer-arm fucosylation also did not significantly change, the relative motif signal for structures featuring both forms of fucosylation decreased 7-fold over the time-course (Figure S6). Notably, this observation would not be revealed by lectin arrays, as they can detect either core-fucose or outer arm fucose, but not both

localized to the same structure. Altogether, these results demonstrate that the glycome is dynamic during differentiation. Given the biological relevance of glycosylation in cellular function and physiology, these data suggest that future studies aimed at evaluating hiPSC-CM models should consider the glycome as an important complement to other -omic data. Finally, when these dynamic changes during hPSC-CM culture are considered in light of previous findings that protein glycosylation modulates adult vs neonatal CM electrophysiology [57] and there are significant protein glycosylation differences between neonatal and adult rat heart tissue [8], they support the possibility that glycan signatures may be useful for evaluating hPSC-CM maturation stage and specific structures may be necessary to achieve more mature cellular phenotypes.

To explore whether extended culturing results in a hiPSC-CM glycome that more closely resembles the adult glycan phenotype, a principal component analysis (PCA) was performed. As shown in Figure 6A, hiPSC-CM across all time-points examined here are similar to each other, though increasing time in culture results in a subtle shift towards primary human CMs. As expected based on differences summarized in Figure 3, the tissue homogenate and primary enriched CM cluster by sample type rather than by patient (Figure 6A), although biological variation appears to have an impact on *N*-glycome variation. To understand the glycan structures responsible for this separation, the glycan structures that have the greatest contribution to each sample set in the PCA are annotated in a loading plot (Figure 6B). High mannose glycan structures were found to be predominantly responsible for the separation of the primary enriched CM from tissue homogenate, which is consistent with our earlier stated findings (Figure 3). Sialylated bi-antennary structures contribute towards the separation of tissue homogenate from the primary enriched CM and hiPSC-CM and the LacDiNAc motif contributes to the separation of hiPSC-CM from both primary sample types.

Structural glycomic data enable orthogonal glycan-based approaches for future cardiac glycomics

Overall, our data represent the most in-depth view of the glycome of human heart tissue reported to date and provides the first glycan library that can be directly used to inform future cardiac glycoproteomics studies. By establishing a publicly available reference library of glycan structures in the human heart, and specifically CM, these data will support future studies of cardiomyocyte model comparisons and glycan-targeted immunohistochemistry (Figure 7). First, elucidation of the glycan structures and underlying compositions present on primary CM and hiPSC-CM provides a knowledge base for future efforts to identify, characterize and differentially compare glycosylated proteins present in cardiac samples. Included in this are glyco-engineering efforts to increase the similarity of hiPSC-CM models to that of primary CM [58]. Second, these data can be used to inform glycoproteomic approaches aimed at characterizing proteoforms, which includes elucidating the specific glycan structures present at specific amino acid residues within a protein. Importantly, standard glycoproteomic strategies are limited to compositional information which may not distinguish among isomers [19] and glycan structure is not template derived nor predicible. Therefore, empirically derived glycan structure libraries are critical for enabling accurate glycoproteomic analyses aimed at characterizing proteoforms. To demonstrate the utility of these new cardiac glycan structure libraries for glycoproteomic applications, we analyzed the MS data from a recently described proteomic analysis of a human 3D cardiac organoid model and human heart tissue homogenate that were not originally interrogated for glycopeptides [59]. Because the MS approach used in the study is limited to informing glycan compositions, a library of 124 glycan compositions derived from this study (Figure 4) were used to inform the search space (*i.e.*, possible modifications attached to peptides).

Glycopeptide spectral matches corresponding to 356 unique glycopeptides were identified. Of these, glycopeptides from Heparan Sulfate Proteoglycan 2 (HSPG2), fibronectin (FINC), and Galectin-3 binding protein (LG3BP) were detected in both the primary tissue and 3D-organoids. These proteins have been previously described as having roles in maintaining heart

function and cardiovascular disease [60–62]. Looking in-depth at these glycoproteins, HSPG2 glycopeptides identified in both the heart and 3D-organoid samples feature identical glycan compositions with no detected differences in their profiles (Figure 8A). As this protein is critical for heart development and mediating injury-based vascular response [63], the conserved glycosylation between the hiPSC-CM model and the human heart may support its necessity. This contrasts with that observed for FINC and LG3BP, where different glycopeptide profiles were observed between the sample types. FINC, a protein that plays a critical role in cardiac remodeling after infarction, was found to have different glycan compositions at the same glycosite. This glycosite (N1007) has been found to be glycosylated in previous intact glycopeptide [64] and deglycosylated peptide analyses [65–67]. Our results are in agreement with those identified in the previous studies and we provide structural candidates for the glycan compositions identified by intact glycopeptide analysis, including bi-antennary *N*-glycans. LG3BP, a candidate biomarker of heart failure and carotid plaques [68,69], was found to have one glycosite with different glycan compositions between the two samples (N69) and one glycosite uniquely identified in the heart sample (N398). These glycan compositions are the first to be identified for this protein, as previous studies have only focused on deglycosylated glycopeptide analysis. Overall, our study contributes possible structural candidates for the glycoproteins discussed, catalyzing the application of these glycan structure reference libraries towards understanding the possible structural variants of glycoproteins involved in essential cardiac functions.

Beyond these data which provide further details regarding similarities and differences between primary cells and those derived *in vitro*, these glycopeptides may also be useful for interpreting the dynamic glycan profile observed here for hPSC-CM during days 20-100 of differentiation. Specifically, 14 glycopeptides found in the Mills et al study [59] featured glycan compositions that were positively correlated to time of hiPSC-CM differentiation in our study (Table S2). These include HSPG2, laminin subunit alpha 2, versican core protein, and decorin –

where all but two feature the concurrent core- and outer-arm fucosylation motif. The majority of these proteins are localized to the extracellular matrix, which has been demonstrated to coordinate the form and function of the developing heart [70] and regulate cardiomyocyte differentiation from pluripotent stem cells [71]. Therefore, it is possible that specific glycosylation structures on these glycoproteins are involved in, or are reflective of, cardiomyocyte maturation stage.

Finally, these glycan structure libraries will inform orthogonal methods, such as the use of lectins for array-based screening or microscopy. To demonstrate, the high mannose class found preferentially in enriched CM compared to tissue homogenate was visualized using the lectin Concanavalin A (ConA). Imaging of right ventricle heart tissue sections (Figure 7 and Figure 8B) demonstrates preferential labeling of the CM, consistent with our glycomics data. Complementing our glycomics data, imaging of tissue sections and primary enriched CM provides visualization of the high mannose structures localized to the cell surface and intracellular organelles (Figure 7), information which is difficult to discern from glycomics analyses of cell lysates. Overall, ConA is a viable alternative to a widely used lectin, WGA, which recognizes sialic acids and is widely used to visualize the plasma membrane. Whereas ConA preferentially labels CM, WGA predominantly labels non-CM and is only faintly detected on CM (Figure 8B). Altogether, ConA represents a lectin that can be used in future imaging studies to localize CM.

Considerations for future studies

While these data present the most extensive view of the human cardiac glycome reported to date and enable the linking of identified structures to the glycan biosynthetic pathway, the analysis of released glycans does not preserve information regarding the glycoproteins to which they were formerly attached. Therefore, future intact glycopeptide studies will be required to fully map the glycoproteome in the heart, including site-specific glycan structures in health and disease. Our method is specific for the analysis of *N*- and *O*-glycosylation and other glycosylated

molecules, such as proteoglycans and glycolipids, are not detected. Finally, failure to detect specific glycan structures does not equate to their absence, rather, they could be present at levels below detection limits for this method. Regarding biological samples, the use of additional patient samples will be required to fully assess inter-patient variability, although it is noted that availability of non-diseased human heart tissue for research is a limited resource. Finally, future studies using different pluripotent stem cell lines and differentiation strategies would be required to determine if the observations presented here are broadly applicable. However, having generated the glycan libraries and shared them in a public repository, future studies can use targeted analyses to rapidly and directly test hypotheses that emerge from this and other studies regarding the role of glycans in the heart and cardiomyocyte differentiation.

Conclusion

The quantitative structural analyses of cell-type specific glycans presented here provide a key link that is necessary to understand the biosynthetic pathway of glycosylation that is present among the various cell types in the heart. Ultimately, these sample-specific glycan reference libraries provide the fundamental first step towards understanding the role glycosylation plays in cardiac disease and cell-type specific functions. The structural differences observed here, either among cell types or stages of differentiation, require complex regulation of multiple enzymes in the biosynthetic pathway, and therefore would be challenging to measure with bulk motif strategies such as lectin arrays or glycosyltransferase monitoring strategies such as RNAseq or targeted proteomics. Therefore, continued application of structure-based glycomics approaches, such as the method used here, will be essential for elucidation of the roles that glycans and glycoproteins play during developmental and disease processes in the human heart.

Acknowledgements

This work was supported by the National Institutes of Health [R01-HL126785 and R01-HL134010 to RLG; F31-HL140914 to MW]; Funding sources were not involved in study design, data collection, interpretation, analysis or publication. Mass spectrometry analyses were performed using instrumentation in the Center for Biomedical Mass Spectrometry Research at the Medical College of Wisconsin. Flow cytometry analyses were performed using instrumentation in the Blood Center of Wisconsin Flow Cytometry Core.

References

- [1] R.C. Ajit Varki, Jeffrey Esko, Hudson Freeze, Gerald Hart, Jamey Marth, *Essentials of Glycobiology*, 1999.
- [2] B.J. van Meer, L.G.J. Tertoolen, C.L. Mummery, *Concise Review: Measuring Physiological Responses of Human Pluripotent Stem Cell Derived Cardiomyocytes to Drugs and Disease*, *Stem Cells*. 34 (2016) 2008–2015. doi:10.1002/stem.2403.
- [3] K. Meissner, B. Sperker, C. Karsten, H.M. zu Schwabedissen, U. Seeland, M. Böhm, S. Bien, P. Dazert, C. Kunert-Keil, S. Vogelgesang, R. Warzok, W. Siegmund, I. Cascorbi, M. Wendt, H.K. Kroemer, *Expression and Localization of P-glycoprotein in Human Heart*, *J. Histochem. Cytochem.* 50 (2011) 1351–1356. doi:10.1177/002215540205001008.
- [4] N. Riaz, S.L. Wolden, D.Y. Gelblum, J. Eric, *The varying faces of IL-6: from cardiac protection to cardiac failure*, 118 (2016) 6072–6078. doi:10.1002/cncr.27633.Percutaneous.
- [5] L.F. Zacchi, B.L. Schulz, *N-glycoprotein macroheterogeneity: biological implications and proteomic characterization*, *Glycoconj. J.* 33 (2016) 359–376. doi:10.1007/s10719-015-9641-3.
- [6] T. Bas, G.Y. Gao, A. Lvov, K.D. Chandrasekhar, R. Gilmore, W.R. Kobertz, *Post-translational N-glycosylation of type I transmembrane KCNE1 peptides: Implications for membrane protein biogenesis and disease*, *J. Biol. Chem.* 286 (2011) 28150–28159. doi:10.1074/jbc.M111.235168.
- [7] P.J. Stocker, E.S. Bennett, *Differential Sialylation Modulates Voltage-gated Na⁺ Channel Gating throughout the Developing Myocardium*, *J. Gen. Physiol.* 127 (2006) 253–265. doi:10.1085/jgp.200509423.
- [8] P. Contessotto, B. Ellis, C. Jin, N.G. Karlsson, P. Zorlutuna, M. Kilcoyne, A. Pandit,

- Distinct glycosylation in membrane proteins within neonatal versus adult myocardial tissue, *Matrix Biol.* (2019). doi:10.1016/j.matbio.2019.05.001.
- [9] D. Marques-da-Silva, R. Francisco, D. Webster, V. dos Reis Ferreira, J. Jaeken, T. Pulinilkunnil, Cardiac complications of congenital disorders of glycosylation (CDG): a systematic review of the literature, *J. Inherit. Metab. Dis.* 40 (2017) 657–672. doi:10.1007/s10545-017-0066-y.
- [10] L.H. Hansen, T.D. Madsen, C.K. Goth, H. Clausen, Y. Chen, N. Dzhyoyashvili, S.R. Iyer, S.J. Sangaralingham, J.C. Burnett, J.F. Rehfeld, S.Y. Vakhrushev, K.T. Schjoldager, J.P. Goetze, Discovery of O-glycans on atrial natriuretic peptide (ANP) that affect both its proteolytic degradation and potency at its cognate receptor, *J. Biol. Chem.* (2019) jbc.RA119.008102. doi:10.1074/jbc.RA119.008102.
- [11] L.K. Lewis, S.D. Raudsepp, T.C.R. Prickett, T.G. Yandle, R.N. Doughty, C.M. Frampton, C.J. Pemberton, A.M. Richards, ProBNP That Is Not Glycosylated at Threonine 71 Is Decreased With Obesity in Patients with Heart Failure, *Clin. Chem.* (2019) clinchem.2019.302547. doi:10.1373/clinchem.2019.302547.
- [12] B. Halfinger, A. Hammerer-Lercher, B. Amplatz, B. Sarg, L. Kremser, H.H. Lindner, Unraveling the molecular complexity of o-glycosylated endogenous (N-terminal) pro-B-type natriuretic peptide forms in blood plasma of patients with severe heart failure, *Clin. Chem.* 63 (2017) 359–368. doi:10.1373/clinchem.2016.265397.
- [13] T. Nishikimi, M. Ikeda, Y. Takeda, T. Ishimitsu, I. Shibasaki, H. Fukuda, H. Kinoshita, Y. Nakagawa, K. Kuwahara, K. Nakao, The effect of glycosylation on plasma N-terminal proBNP-76 levels in patients with heart or renal failure, *Heart.* 98 (2012) 152–161. doi:10.1136/heartjnl-2011-300102.
- [14] J. Barallobre-Barreiro, S.K. Gupta, A. Zoccarato, R. Kitazume-Taneike, M. Fava, X. Yin,

- T. Werner, M.N. Hirt, A. Zampetaki, A. Viviano, M. Chong, M. Bern, A. Kourliouros, N. Domenech, P. Willeit, A.M. Shah, M. Jahangiri, L. Schaefer, J.W. Fischer, R. V. Iozzo, R. Viner, T. Thum, J. Heineke, A. Kichler, K. Otsu, M. Mayr, Glycoproteomics Reveals Decorin Peptides with Anti-Myostatin Activity in Human Atrial Fibrillation, *Circulation*. 134 (2016) 817–832. doi:10.1161/CIRCULATIONAHA.115.016423.
- [15] H.A. Fozzard, J.W. Kyle, Do Defects in Ion Channel Glycosylation Set the Stage for Lethal Cardiac Arrhythmias?, *Sci. Signal*. 2002 (2002) pe19–pe19. doi:10.1126/scisignal.1302002pe19.
- [16] R. Iwamoto, N. Mine, T. Kawaguchi, S. Minami, K. Saeki, E. Mekada, HB-EGF function in cardiac valve development requires interaction with heparan sulfate proteoglycans, *Development*. 137 (2010) 2205–2214. doi:10.1242/dev.048926.
- [17] A. Varki, Loss of N-glycolylneuraminic acid in humans: Mechanisms, consequences, and implications for hominid evolution, *Am. J. Phys. Anthropol.* 116 (2001) 54–69. doi:10.1002/ajpa.10018.
- [18] C. J. Phelps et al., Production of alpha-1,3-galactosyltransferase-deficient pigs, *Science* (80-.). 299 (2003) 411–414. doi:10.1126/science.1078942.Production.
- [19] N. Leymarie, J. Zaia, Effective Use of Mass Spectrometry for Glycan and Glycopeptide Structural Analysis, *Anal. Chem.* 84 (2012) 3040–3048.
- [20] M.P. Campbell, R. Peterson, J. Mariethoz, E. Gasteiger, Y. Akune, K.F. Aoki-Kinoshita, F. Lisacek, N.H. Packer, UniCarbKB: Building a knowledge platform for glycoproteomics, *Nucleic Acids Res.* 42 (2014) 215–221. doi:10.1093/nar/gkt1128.
- [21] Consortium for Functional Glycomics, Glycan Profiling Dataset Human Heart A004, [Http://Www.Functionalglycomics.Org/Glycomics/Publicdata/Glycoprofilng-New.Jsp](http://www.Functionalglycomics.Org/Glycomics/Publicdata/Glycoprofilng-New.Jsp).

- (2009). <http://www.functionalglycomics.org/glycomics/publicdata/glycoprofiling-new.jsp>.
- [22] P.H. Jensen, N.G. Karlsson, D. Kolarich, N.H. Packer, Structural analysis of N- and O-glycans released from glycoproteins, *Nat. Protoc.* 7 (2012) 1299–1310.
doi:10.1038/nprot.2012.063.
- [23] T. Hayase, Y.C. Lee, K.G. Rice, K.M. Dziegielewska, K. Mark, R. Thomas, Comparison of N-Glycosides of Fetuins from Different Species and Human α 2-HS-Glycoprotein, *Biochemistry.* 31 (1992) 4915–4921. doi:10.1021/bi00135a024.
- [24] S. Bhattacharya, P.W. Burridge, E.M. Kropp, S.L. Chuppa, W.-M. Kwok, J.C. Wu, K.R. Boheler, R.L. Gundry, High Efficiency Differentiation of Human Pluripotent Stem Cells to Cardiomyocytes and Characterization by Flow Cytometry, *JoVE.* (2014) e52010.
doi:doi:10.3791/52010.
- [25] M. Waas, R. Weerasekera, E.M. Kropp, M. Romero-Tejeda, E. Poon, K.R. Boheler, P.W. Burridge, R. Gundry, Are these cardiomyocytes? Protocol development reveals impact of sample preparation on the accuracy of identifying cardiomyocytes by flow cytometry, *BioRxiv.* (2018) 388926. doi:10.1101/388926.
- [26] M.P. Jensen, P. Karoly, S. Braver, The measurement of clinical pain intensity: a comparison of six methods, *Pain.* 27 (1986) 117–126. doi:10.1016/0304-3959(86)90228-9.
- [27] D. Kessner, M. Chambers, R. Burke, D. Agus, P. Mallick, ProteoWizard: Open source software for rapid proteomics tools development, *Bioinformatics.* 24 (2008) 2534–2536.
doi:10.1093/bioinformatics/btn323.
- [28] C.A. Cooper, E. Gasteiger, N.H. Packer, GlycoMod--a software tool for determining glycosylation compositions from mass spectrometric data., *Proteomics.* 1 (2001) 340–

349. doi:10.1002/1615-9861(200102)1:2<340::AID-PROT340>3.0.CO;2-B.
- [29] B. MacLean, D.M. Tomazela, N. Shulman, M. Chambers, G.L. Finney, B. Frewen, R. Kern, D.L. Tabb, D.C. Liebler, M.J. MacCoss, Skyline: An open source document editor for creating and analyzing targeted proteomics experiments, *Bioinformatics*. 26 (2010) 966–968. doi:10.1093/bioinformatics/btq054.
- [30] A. Ceroni, K. Maass, H. Geyer, R. Geyer, A. Dell, S.M. Haslam, GlycoWorkbench: A tool for the computer-assisted annotation of mass spectra of glycans, *J. Proteome Res.* 7 (2008) 1650–1659. doi:10.1021/pr7008252.
- [31] H. Hinneburg, S. Chatterjee, F. Schirmeister, T. Nguyen-Khuong, N.H. Packer, E. Rapp, M. Thaysen-Andersen, Post-Column Make-Up Flow (PCMF) Enhances the Performance of Capillary-Flow PGC-LC-MS/MS-Based Glycomics, *Anal. Chem.* 91 (2019) 4559–4567. doi:10.1021/acs.analchem.8b05720.
- [32] I. Loke, O. Østergaard, N.H.H. Heegaard, N.H. Packer, M. Thaysen-Andersen, Paucimannose-Rich N-glycosylation of Spatiotemporally Regulated Human Neutrophil Elastase Modulates Its Immune Functions, *Mol. Cell. Proteomics*. 16 (2017) 1507–1527. doi:10.1074/mcp.M116.066746.
- [33] H. Ito, H. Kaji, A. Togayachi, P. Azadi, M. Ishihara, R. Geyer, C. Galuska, H. Geyer, K. Kakehi, M. Kinoshita, N.G. Karlsson, C. Jin, K. Kato, H. Yagi, S. Kondo, N. Kawasaki, N. Hashii, D. Kolarich, K. Stavenhagen, N.H. Packer, M. Thaysen-Andersen, M. Nakano, N. Taniguchi, A. Kurimoto, Y. Wada, M. Tajiri, P. Yang, W. Cao, H. Li, P.M. Rudd, H. Narimatsu, Comparison of analytical methods for profiling N- and O-linked glycans from cultured cell lines: HUPO Human Disease Glycomics/Proteome Initiative multi-institutional study, *Glycoconj. J.* 33 (2016) 405–415. doi:10.1007/s10719-015-9625-3.
- [34] F. Yamamoto, Review: ABO blood group system - ABH oligosaccharide antigens, anti-A

- and anti-B, A and B glycosyltransferases, and ABO genes, *Immunohematology*. 20 (2004) 3–22.
- [35] P.F. Cheng, S. Snovida, M.Y. Ho, C.W. Cheng, A.M. Wu, K.H. Khoo, Increasing the depth of mass spectrometry-based glycomic coverage by additional dimensions of sulfoglycomics and target analysis of permethylated glycans, *Anal. Bioanal. Chem.* 405 (2013) 6683–6695. doi:10.1007/s00216-013-7128-2.
- [36] L.Y. Lee, C.H. Lin, S. Fanayan, N.H. Packer, M. Thaysen-Andersen, Differential site accessibility mechanistically explains subcellular specific N-glycosylation determinants, *Front. Immunol.* 5 (2014) 1–13. doi:10.3389/fimmu.2014.00404.
- [37] N. Sasaki, M. Shinomi, K. Hirano, K. Ui-Tei, S. Nishihara, LacdiNAc (GalNAcB1-4GlcNAc) contributes to self-renewal of mouse embryonic stem cells by regulating leukemia inhibitory factor/STAT3 signaling, *Stem Cells*. 29 (2011) 641–650. doi:10.1002/stem.615.
- [38] T. Magdy, A.J.T. Schuldt, J.C. Wu, D. Bernstein, P.W. Burridge, Human Induced Pluripotent Stem Cell (hiPSC)-Derived Cells to Assess Drug Cardiotoxicity: Opportunities and Problems, *Annu. Rev. Pharmacol. Toxicol.* 58 (2018) 22.1-22.21. doi:10.1146/annurev-pharmtox-010617-053110.
- [39] R.M.E.M. Van Putten, I. Mengarelli, K. Guan, J.G. Zegers, A.C.G. Van Ginneken, A.O. Verkerk, R. Wilders, Ion channelopathies in human induced pluripotent stem cell derived cardiomyocytes: A dynamic clamp study with virtual IK1, *Front. Physiol.* 6 (2015) 1–16. doi:10.3389/fphys.2015.00007.
- [40] C. Kane, C.M.N. Terracciano, Concise Review: Criteria for Chamber-Specific Categorization of Human Cardiac Myocytes Derived from Pluripotent Stem Cells, *Stem Cells*. 35 (2017) 1881–1897. doi:10.1002/stem.2649.

- [41] C. Robertson, D.D. Tran, S.C. George, Concise review: Maturation phases of human pluripotent stem cell-derived cardiomyocytes, *Stem Cells*. 31 (2013) 829–837.
doi:10.1002/stem.1331.
- [42] S.D. Lundy, W.-Z. Zhu, M. Regnier, M.A. Laflamme, Structural and Functional Maturation of Cardiomyocytes Derived From Human Pluripotent Stem Cells, *Stem Cells Dev*. 22 (2013) 1991–2002. doi:10.1165/rcmb.2009-0241OC.
- [43] K.S. Lau, E.A. Partridge, A. Grigorian, C.I. Silvescu, V.N. Reinhold, M. Demetriou, J.W. Dennis, Complex N-Glycan Number and Degree of Branching Cooperate to Regulate Cell Proliferation and Differentiation, *Cell*. 129 (2007) 123–134.
doi:10.1016/j.cell.2007.01.049.
- [44] T. Eastlund, The histo-blood group ABO system and tissue transplantation, *Transfusion*. 38 (2003) 975–988. doi:10.1046/j.1537-2995.1998.381098440863.x.
- [45] N. Vodovar, M.F. Séronde, S. Laribi, E. Gayat, J. Lassus, R. Boukef, S. Nouria, P. Manivet, J.L. Samuel, D. Logeart, S. Ishihara, A.C. Solal, J.L. Januzzi, A.M. Richards, J.M. Launay, A. Mebazaa, Post-translational modifications enhance NT-proBNP and BNP production in acute decompensated heart failure, *Eur. Heart J*. 35 (2014) 3434–3441.
doi:10.1093/eurheartj/ehu314.
- [46] K.R. Reiding, A. Bondt, R. Hennig, R.A. Gardner, R. O’Flaherty, I. Trbojević-Akmačić, A. Shubhakar, J.M.W. Hazes, U. Reichl, D.L. Fernandes, M. Pučić-Baković, E. Rapp, D.I.R. Spencer, R.J.E.M. Dolhain, P.M. Rudd, G. Lauc, M. Wuhrer, High-throughput Serum N - Glycomics: Method Comparison and Application to Study Rheumatoid Arthritis and Pregnancy-associated Changes , *Mol. Cell. Proteomics*. 18 (2019) 3–15.
doi:10.1074/mcp.ra117.000454.
- [47] M. Thaysen-andersen, N.H. Packer, B.L. Schulz, Maturing glycoproteomics technologies

- provide unique structural insights into the N-glycoproteome and its regulation in health and disease, 2 (n.d.) 1–38.
- [48] T. Kawamura, S. Miyagawa, S. Fukushima, N. Kashiyama, A. Kawamura, E. Ito, A. Saito, A. Maeda, H. Eguchi, K. Toda, S. Miyagawa, H. Okuyama, Y. Sawa, Structural Changes in N-Glycans on Induced Pluripotent Stem Cells Differentiating Toward Cardiomyocytes, *Stem Cells Transl. Med.* 4 (2015) 12. doi:10.1002/stem.788.
- [49] E.M. Kropp, K.A. Broniowska, M. Waas, A. Nycz, J.A. Corbett, R.L. Gundry, Cardiomyocyte differentiation promotes cell survival during nicotinamide phosphoribosyltransferase inhibition through increased maintenance of cellular energy stores, *Stem Cells Transl. Med.* 6 (2017). doi:10.1002/sctm.16-0151.
- [50] J.R. Hom, R.A. Quintanilla, D.L. Hoffman, K.L. de Mesy Bentley, J.D. Molkenin, S.S. Sheu, G.A. Porter, The permeability transition pore controls cardiac mitochondrial maturation and myocyte differentiation, *Dev. Cell.* 21 (2011) 469–478. doi:10.1016/j.devcel.2011.08.008.
- [51] G.D. Lopaschuk, J.S. Jaswal, Energy Metabolic Phenotype of the Cardiomyocyte During Development, Differentiation, and Postnatal Maturation, *J Cardiovasc Pharmacol.* 56 (2010) 130–140. papers3://publication/uuid/3774b333-df69-4492-8268-82b62188fd9e.
- [52] T. Kamakura, T. Makiyama, K. Sasaki, Y. Yoshida, Y. Wuriyanghai, J. Chen, T. Hattori, S. Ohno, T. Kita, M. Horie, S. Yamanaka, T. Kimura, Ultrastructural maturation of human-induced pluripotent stem cell-derived cardiomyocytes in a long-term culture., *Circ. J.* 77 (2013) 1307–14. doi:10.1253/circj.CJ-12-0987.
- [53] C.W. van den Berg, S. Okawa, S.M. Chuva de Sousa Lopes, L. van Iperen, R. Passier, S.R. Braam, L.G. Tertoolen, A. del Sol, R.P. Davis, C.L. Mummery, Transcriptome of human foetal heart compared with cardiomyocytes from pluripotent stem cells,

- Development. 142 (2015) 3231–3238. doi:10.1242/dev.123810.
- [54] E. Matsa, P.W. Burridge, K.H. Yu, J.H. Ahrens, V. Termglinchan, H. Wu, C. Liu, P. Shukla, N. Sayed, J.M. Churko, N. Shao, N.A. Woo, A.S. Chao, J.D. Gold, I. Karakikes, M.P. Snyder, J.C. Wu, Transcriptome Profiling of Patient-Specific Human iPSC-Cardiomyocytes Predicts Individual Drug Safety and Efficacy Responses In Vitro, *Cell Stem Cell*. 19 (2016) 311–325. doi:10.1016/j.stem.2016.07.006.
- [55] S. Kim, J.M. Jeon, O.K. Kwon, M.S. Choe, H.C. Yeo, X. Peng, Z. Cheng, M.Y. Lee, S. Lee, Comparative Proteomic Analysis Reveals the Upregulation of Ketogenesis in Cardiomyocytes Differentiated from Induced Pluripotent Stem Cells, *Proteomics*. 19 (2019) 1–12. doi:10.1002/pmic.201800284.
- [56] S.A. Konze, S. Cajic, A. Oberbeck, R. Hennig, A. Pich, E. Rapp, F.F.R. Buettner, Quantitative Assessment of Sialo-Glycoproteins and N-Glycans during Cardiomyogenic Differentiation of Human Induced Pluripotent Stem Cells, *ChemBioChem*. 18 (2017) 1317–1331. doi:10.1002/cbic.201700100.
- [57] A.R. Ednie, A.R. Parrish, M.J. Sonner, E.S. Bennett, Reduced hybrid/complex N-glycosylation disrupts cardiac electrical signaling and calcium handling in a model of dilated cardiomyopathy, *J. Mol. Cell. Cardiol.* 132 (2019) 13–23. doi:10.1016/j.yjmcc.2019.05.001.
- [58] K.M. Heffner, Q. Wang, D. Hizal Baycin, Ö. Can, M.J. Betenbaugh, Glycoengineering of Mammalian Expression Systems on a Cellular Level, *Adv. Biochem. Eng. Biotechnol.* 123 (2018) 127–141. doi:10.1007/10.
- [59] R.J. Mills, D.M. Titmarsh, X. Koenig, B.L. Parker, J.G. Ryall, G.A. Quaife-Ryan, H.K. Voges, M.P. Hodson, C. Ferguson, L. Drowley, A.T. Plowright, E.J. Needham, Q.-D. Wang, P. Gregorevic, M. Xin, W.G. Thomas, R.G. Parton, L.K. Nielsen, B.S. Launikonis,

- D.E. James, D.A. Elliott, E.R. Porrello, J.E. Hudson, Functional screening in human cardiac organoids reveals a metabolic mechanism for cardiomyocyte cell cycle arrest., *Proc. Natl. Acad. Sci. U. S. A.* 114 (2017) E8372–E8381. doi:10.1073/pnas.1707316114.
- [60] L. -c. Li, J. Li, J. Gao, Functions of Galectin-3 and Its Role in Fibrotic Diseases, *J. Pharmacol. Exp. Ther.* 351 (2014) 336–343. doi:10.1124/jpet.114.218370.
- [61] F. Arslan, M.B. Smeets, P.W. Riem Vis, J.C. Karper, P.H. Quax, L.G. Bongartz, J.H. Peters, I.E. Hoefler, P.A. Doevendans, G. Pasterkamp, D.P. De Kleijn, Lack of fibronectin-EDA promotes survival and prevents adverse remodeling and heart function deterioration after myocardial infarction, *Circ. Res.* 108 (2011) 582–592. doi:10.1161/CIRCRESAHA.110.224428.
- [62] V. V. Kunjathoor, D.S. Chiu, K.D. O'Brien, R.C. LeBoeuf, Accumulation of biglycan and perlecan, but not versican, in lesions of murine models of atherosclerosis, *Arterioscler. Thromb. Vasc. Biol.* 22 (2002) 462–468. doi:10.1161/hq0302.105378.
- [63] P. Sasse, D. Malan, M. Fleischmann, W. Roell, E. Gustafsson, T. Bostani, Y. Fan, T. Kolbe, M. Breitbach, K. Addicks, A. Welz, G. Brem, J. Hescheler, A. Aszodi, M. Costell, W. Bloch, B.K. Fleischmann, Perlecan is critical for heart stability, *Cardiovasc. Res.* 80 (2008) 435–444. doi:10.1093/cvr/cvn225.
- [64] M. Tajiri, S. Yoshida, Y. Wada, Differential analysis of site-specific glycans on plasma and cellular fibronectins : application of a hydrophilic affinity method for glycopeptide enrichment, *Glycobiology.* 15 (2005) 1332–1340. doi:10.1093/glycob/cwj019.
- [65] R. Chen, X. Jiang, D. Sun, G. Han, F. Wang, M. Ye, L. Wang, H. Zou, Glycoproteomics Analysis of Human Liver Tissue by Combination of Multiple Enzyme Digestion and Hydrazide Chemistry, *J. Proteome Res.* 8 (2009) 651–661.

- [66] W. Jia, Z. Lu, Y. Fu, H. Wang, L. Wang, H. Chi, Z. Yuan, Z. Zheng, L. Song, H. Han, Y. Liang, J. Wang, Y. Cai, Y. Zhang, Y. Deng, W. Ying, S. He, X. Qian, A Strategy for Precise and Large Scale Identification of Core Fucosylated Glycoproteins, *Mol. Cell.* 8 (2009) 913–923. doi:10.1074/mcp.M800504-MCP200.
- [67] T. Liu, W.J. Qian, M. a. Gritsenko, D.G. Camp, M.E. Monroe, R.J. Moore, R.D. Smith, Human plasma N-glycoproteome analysis by immunoaffinity subtraction, hydrazide chemistry, and mass spectrometry, *J. Proteome Res.* 4 (2005) 2070–2080. doi:10.1021/pr0502065.
- [68] S.R. Langley, K. Willeit, A. Didangelos, L.P. Matic, P. Skroblin, J. Barallobre-Barreiro, M. Lengquist, G. Rungger, A. Kapustin, L. Kedenko, C. Molenaar, R. Lu, T. Barwari, G. Suna, X. Yin, B. Iglseder, B. Paulweber, P. Willeit, J. Shalhoub, G. Pasterkamp, A.H. Davies, C. Monaco, U. Hedin, C.M. Shanahan, J. Willeit, S. Kiechl, M. Mayr, Extracellular matrix proteomics identifies molecular signature of symptomatic carotid plaques, *J. Clin. Invest.* 127 (2017) 1546–1560. doi:10.1172/JCI86924.
- [69] G. Yang, C. Sau, W. Lai, J. Cichon, W. Li, Glycoproteins identified from heart failure and treatment models, *Proteomics.* 15 (2015) 567–579. doi:10.1126/science.1249098.Sleep.
- [70] J.A. Schroeder, L.F. Jackson, D.C. Lee, T.D. Camenisch, Form and function of developing heart valves: Coordination by extracellular matrix and growth factor signaling, *J. Mol. Med.* 81 (2003) 392–403. doi:10.1007/s00109-003-0456-5.
- [71] S.S. Chen, W. Fitzgerald, J. Zimmerberg, H.K. Kleinman, L. Margolis, Cell-Cell and Cell-Extracellular Matrix Interactions Regulate Embryonic Stem Cell Differentiation, *Stem Cells.* 25 (2007) 553–561. doi:10.1634/stemcells.2006-0419.
- [72] B.N. Puente, W. Kimura, S.A. Muralidhar, J. Moon, J.F. Amatruda, K.L. Phelps, D. Grinsfelder, B.A. Rothermel, R. Chen, J.A. Garcia, C.X. Santos, S. Thet, E. Mori, M.T.

- Kinter, P.M. Rindler, S. Zacchigna, S. Mukherjee, D.J. Chen, A.I. Mahmoud, M. Giacca, P.S. Rabinovitch, A. Aroumougame, A.M. Shah, L.I. Szweda, H.A. Sadek, The oxygen-rich postnatal environment induces cardiomyocyte cell-cycle arrest through DNA damage response, *Cell*. 157 (2014) 565–579. doi:10.1016/j.cell.2014.03.032.
- [73] L.W. van Laake, R. Passier, J. Monshouwer-Kloots, A.J. Verkleij, D.J. Lips, C. Freund, K. den Ouden, D. Ward-van Oostwaard, J. Korving, L.G. Tertoolen, C.J. van Echteld, P.A. Doevendans, C.L. Mummery, Human embryonic stem cell-derived cardiomyocytes survive and mature in the mouse heart and transiently improve function after myocardial infarction, *Stem Cell Res*. 1 (2007) 9–24. doi:10.1016/j.scr.2007.06.001.
- [74] W. Kimura, F. Xiao, D.C. Canseco, S. Muralidhar, S. Thet, H.M. Zhang, Y. Abderrahman, R. Chen, J.A. Garcia, J.M. Shelton, J.A. Richardson, A.M. Ashour, A. Asaithamby, H. Liang, C. Xing, Z. Lu, C.C. Zhang, H.A. Sadek, Hypoxia fate mapping identifies cycling cardiomyocytes in the adult heart, *Nature*. 523 (2015) 226–230. doi:10.1038/nature14582.

Figure 1. Schematic outline of study design investigating protein glycosylation in human cardiomyocytes. Glycans from cardiomyocytes enriched from human heart tissue, matched tissue homogenate, hiPSC-CM collected across days 20-100 of differentiation, and hiPSC-CM culture components were analyzed using PGC-LC-ESI-MS/MS for structure-based glycan characterization and quantitation. Glycan structure libraries are publicly available in Panorama to facilitate future glycoproteomic and glycomic efforts.

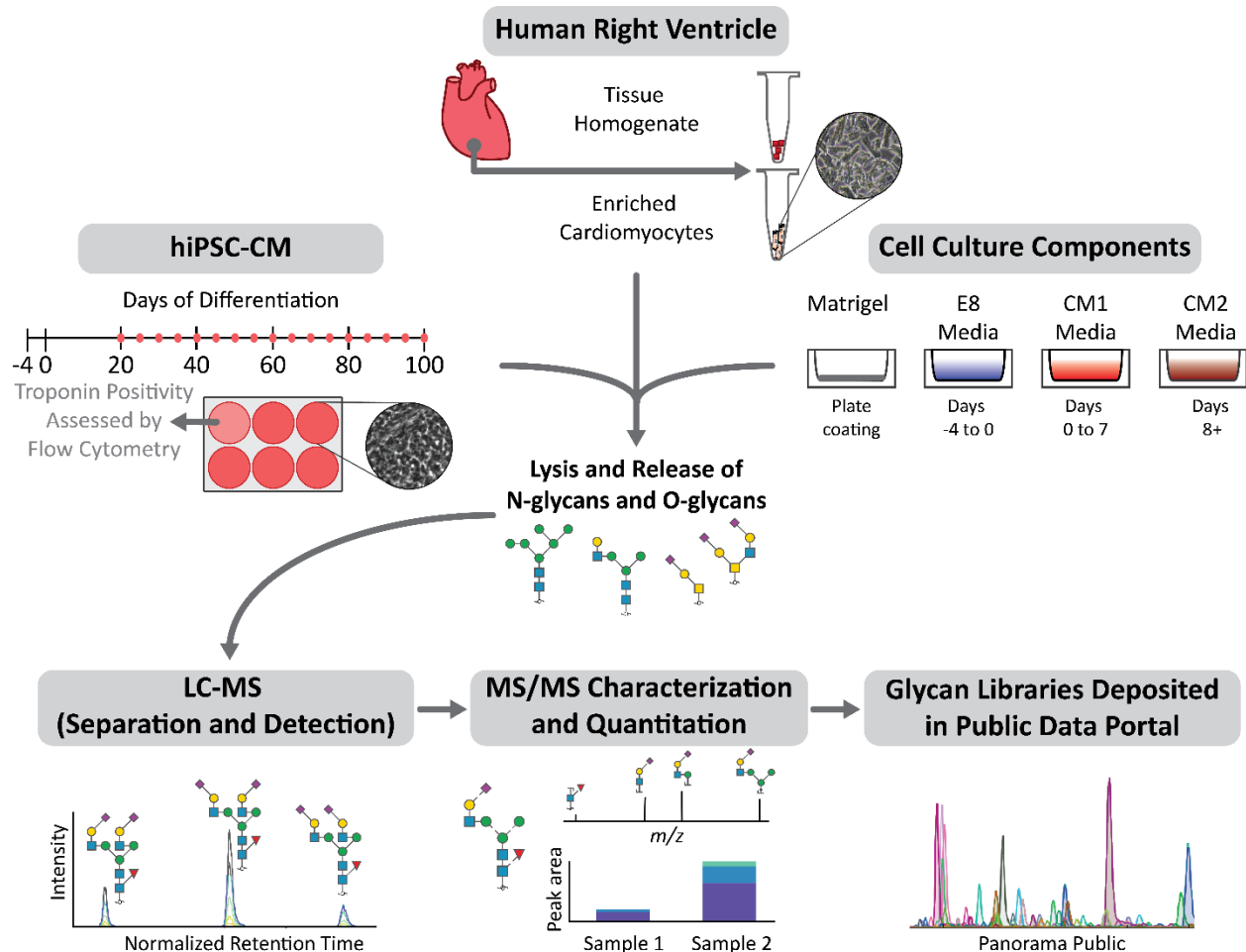


Figure 2. Optimization of LC-MS parameters expand the dynamic range for improved detection of glycan structures. **A** Base peak chromatogram of separated glycan structures with and without make-up flow. **B** Scatter plot of average glycan structure signal for each biosynthetic class from primary enriched CM with distribution shown on right. **C** Number of quantified glycan structures across biosynthetic classes for heart tissue and primary CM for our study in comparison to CFG Heart Dataset [21]

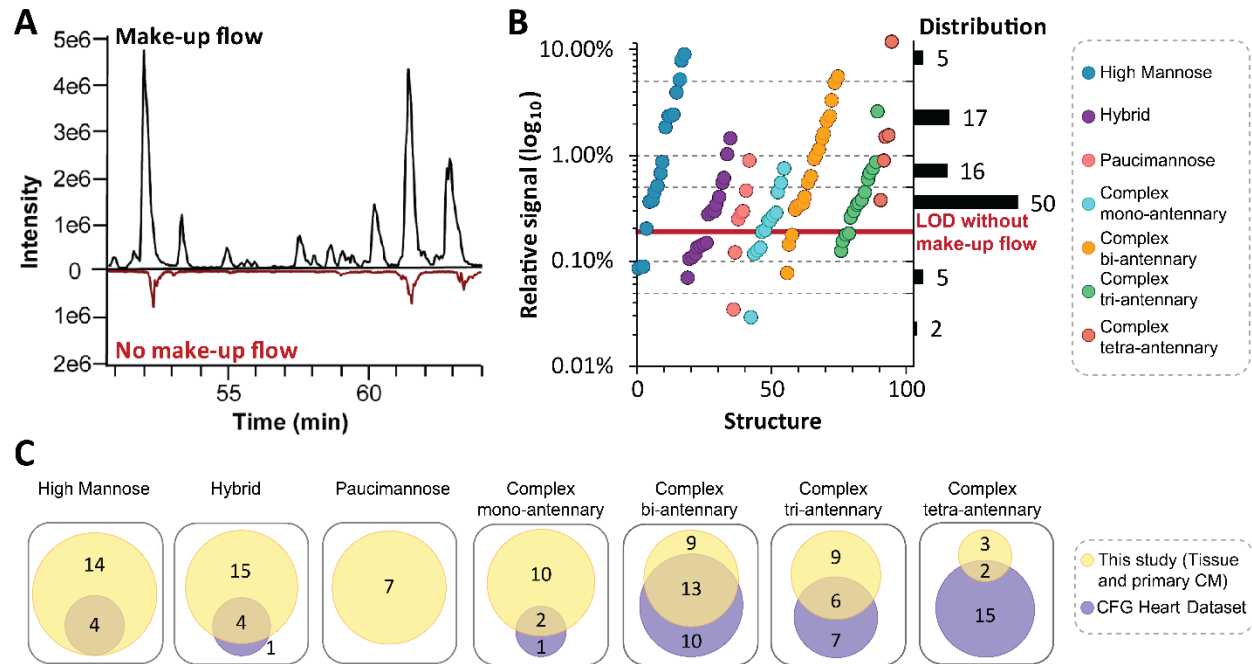


Figure 3. Comparison of *N*-glycans in primary enriched CM and tissue homogenate. **A** Volcano plot of quantified *N*-glycans with thresholds (shading) applied for significance ($p < 0.05$) and fold change (> 2 fold) between heart tissue homogenate and primary enriched CM samples. Colored data points are glycans selected for display in B. **B** *N*-glycan structures that are significantly increased in the tissue homogenate. **C** *N*-glycan structures that are significantly increased in the enriched CM.

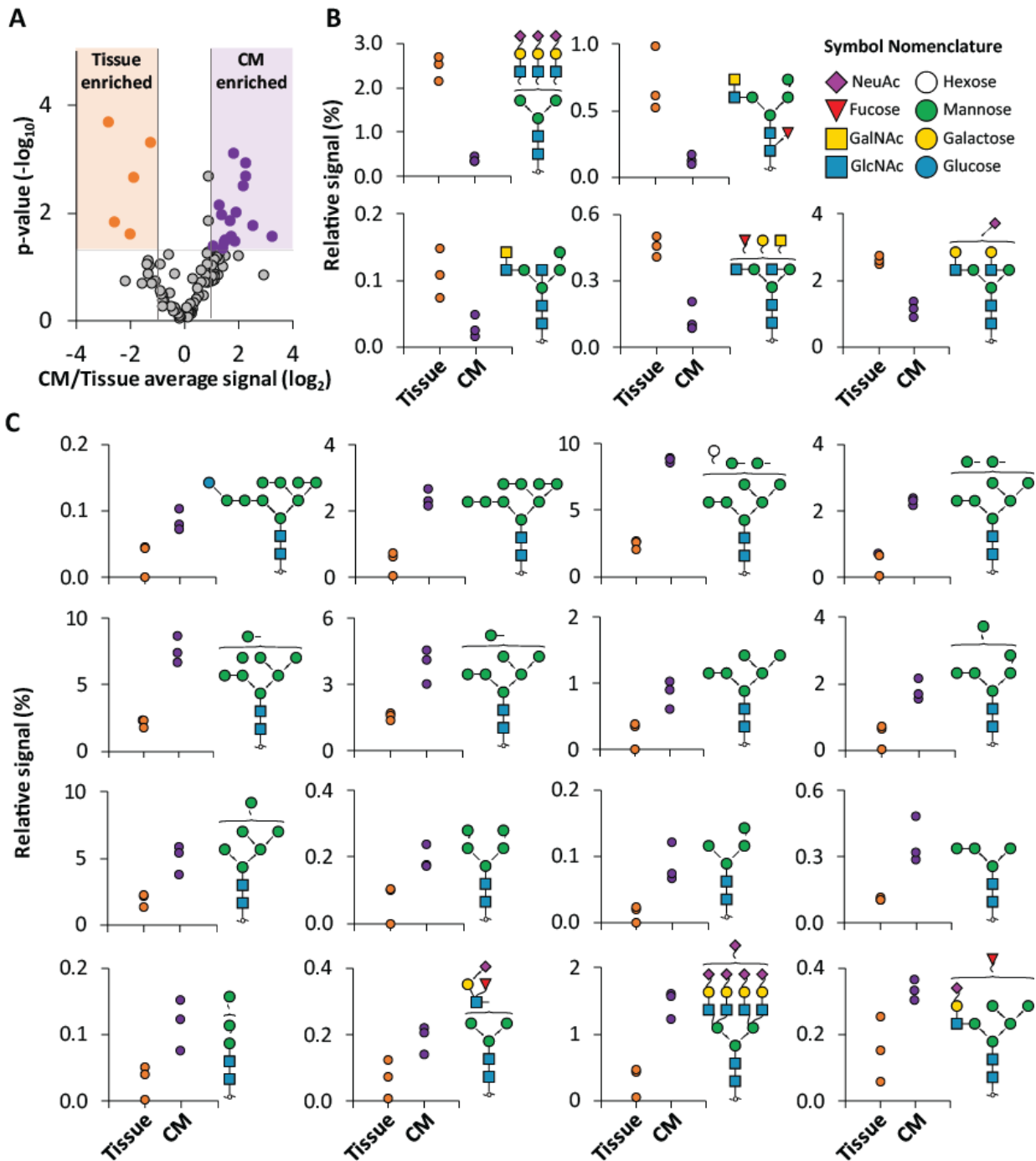


Figure 4. Comparison of *N*-glycan structures and classes identified in hiPSC-CM and primary enriched CM sample sets. **A** Characterized glycan structures for each sample and respective classes compared to their respective reduced compositions. **B** Examples of sample-specific and non-specific glycan structural isomers and responsible glycosyltransferases. **C** Comparison of glycan structures identified in hiPSC-CM compared to Kawamura *et al* [48].

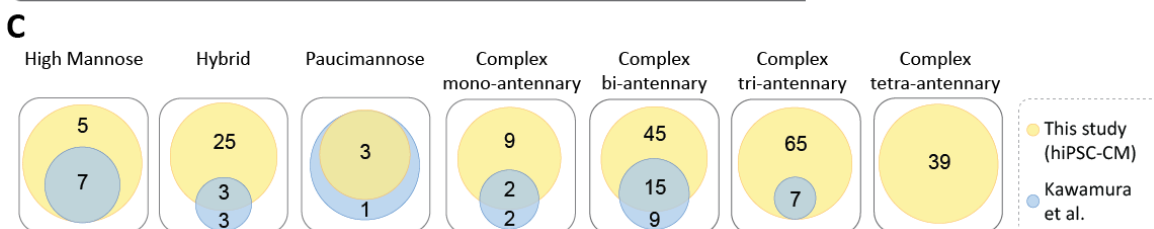
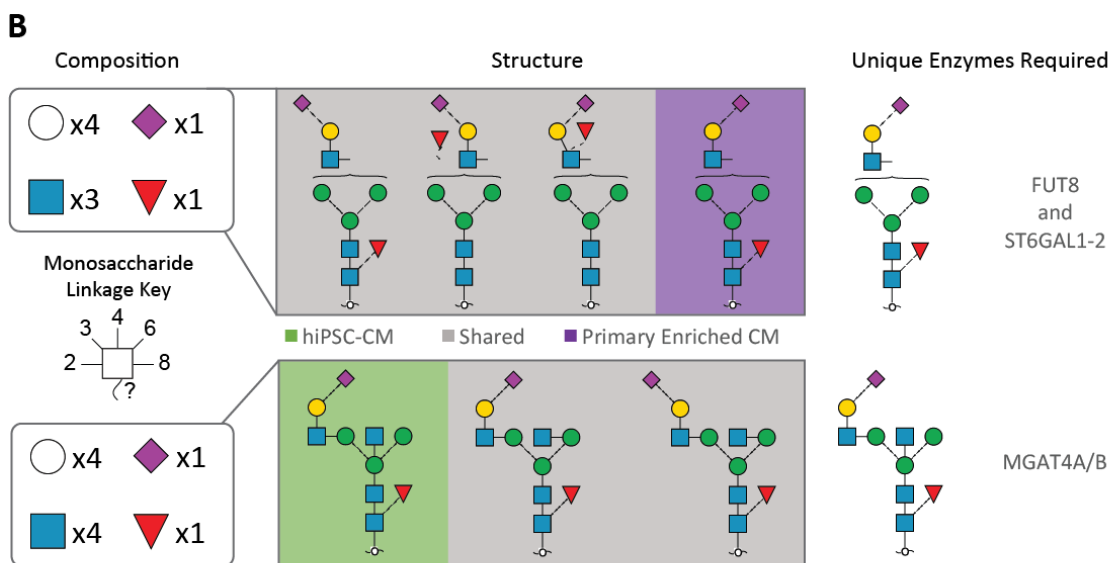
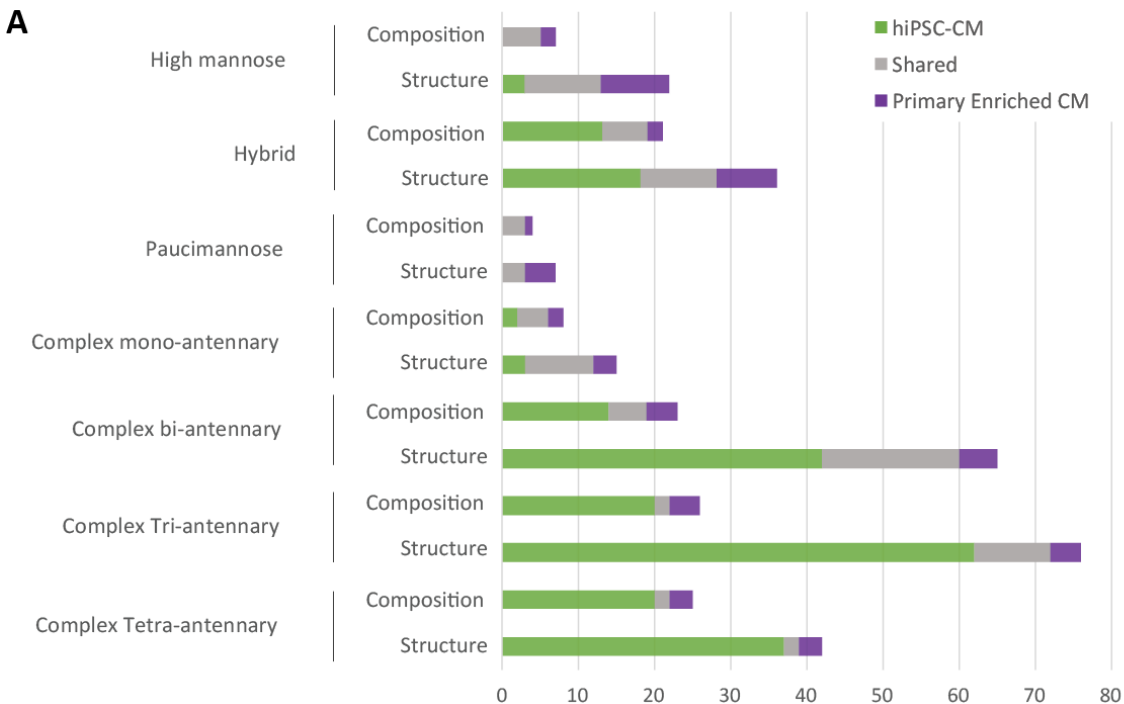


Figure 6. PCA analysis of *N*-glycan profiles from heart tissue homogenate, primary enriched CM, and hiPSC-CM. **A** PCA plot of total *N*-glycome profiles for all sample types covering 93% of all observed variation. **B** Loading plot showing major *N*-glycan structure contributors to each cluster plotted with vectors (line length and angle) proportional to PCA dimension contribution strength and direction.

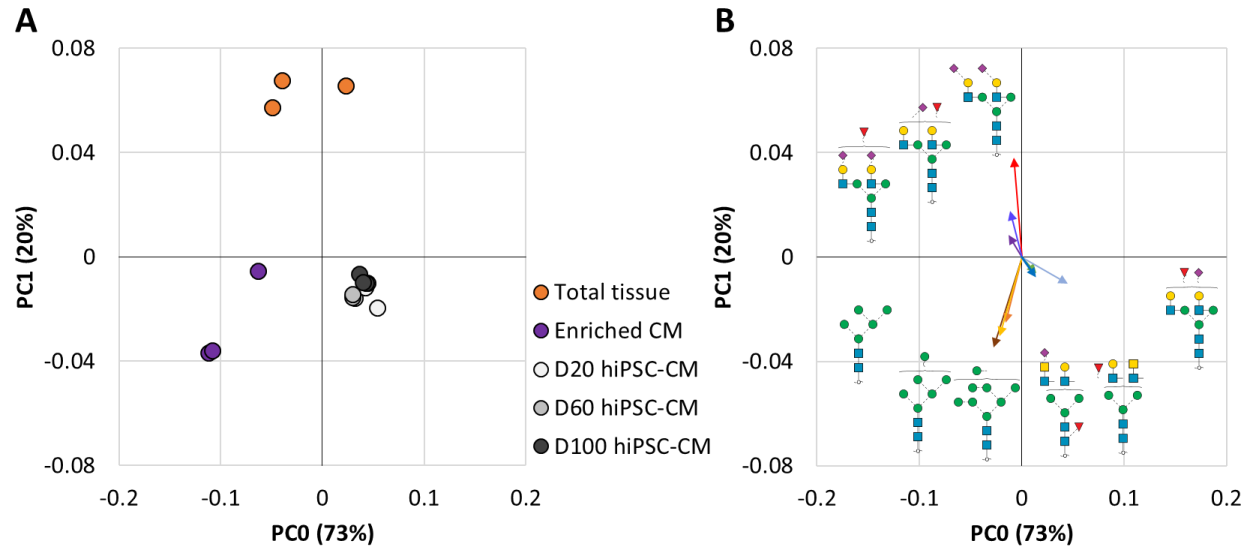


Figure 7. Overview of outcome and future approaches enabled by the current study. Primary CM, hiPSC-CM, and cell culture component glycan profile datasets are available in an accessible platform, with future demonstrated applications towards identification of previously unidentified glycopeptides in published proteomics datasets and localization of glycan structures using lectin-based glycoimaging.

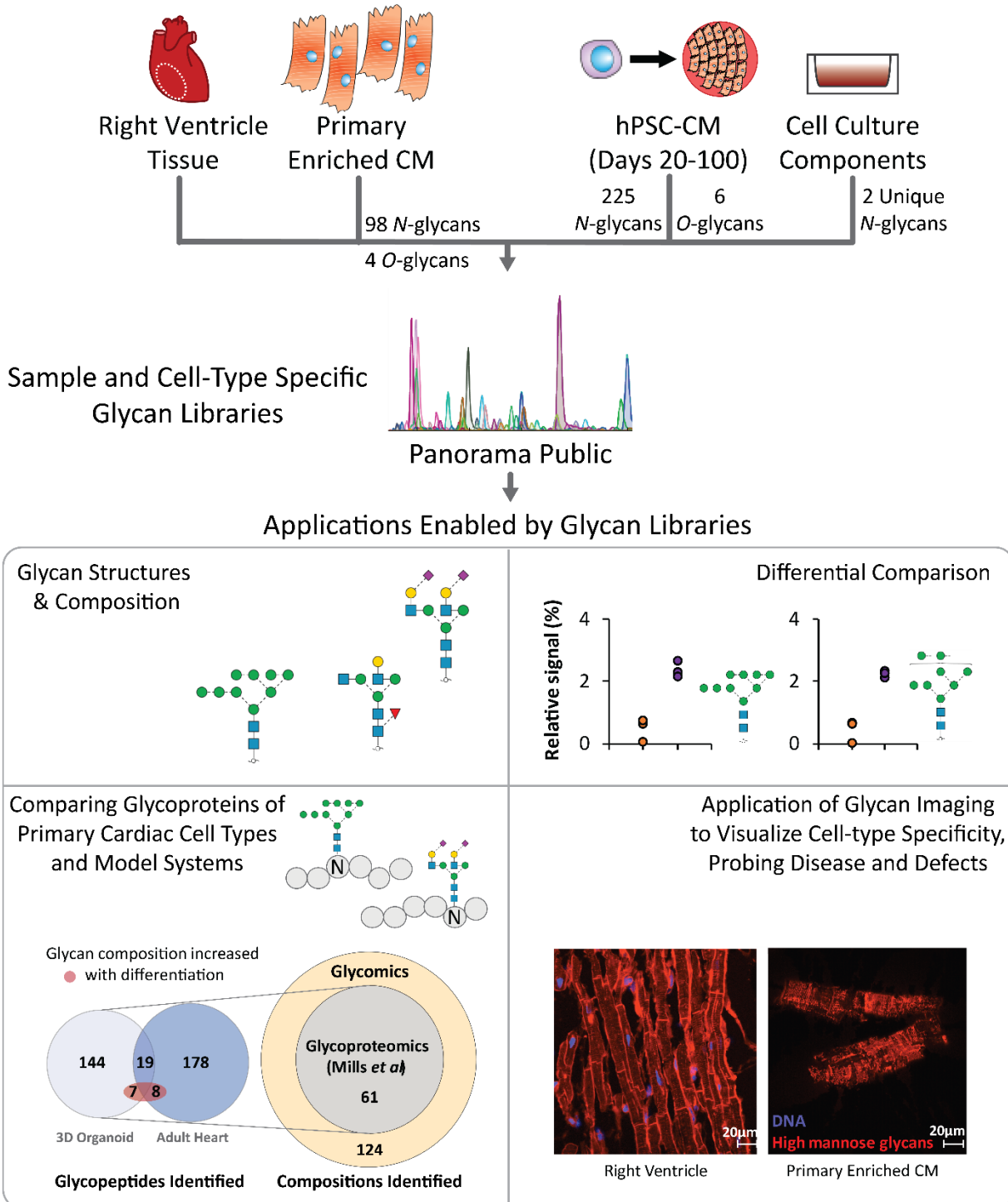


Figure 8. Examples of orthogonal approaches enabled by our cardiac glycan reference libraries. **A** Glycopeptide compositions identified in primary human heart vs 3D-organoid are the same for HSPG2 (top), distinct for FINC (middle) and mixed for LG3BP. **B** Immunohistochemistry images of ConA, a lectin specific for high mannose and WGA, a commonly used [72–74] membrane marker lectin specific for sialic acids.

