

The Rho/Rac guanine nucleotide exchange factor Vav1 regulates HIF-1 α and GLUT-1 expression and glucose uptake in the brain

Jaewoo Hong¹, Yurim Kim^{1,2}, Sudhirkumar Yanpallewar³, P. Charles Lin¹

¹Cancer and Inflammation Program, Center for Cancer Research, National Cancer Institute, Frederick, Maryland, 21702, USA; ²Department of Biology, University of Maryland, College Park, MD 20742, USA; ³Mouse Cancer Genetics Program, Center for Cancer Research, National Cancer Institute, Frederick, MD 21702, USA

Correspondence to Jaewoo Hong (jaewoo.hong@nih.gov) or P. Charles Lin (p.lin@nih.gov)

Keywords: Vav1, HIF-1 α , GLUT-1, learning deficiency

Document Word Count: 5021

Vav1 controls HIF-1 α and GLUT-1 in the brain

Vav1 controls HIF-1 α and GLUT-1 in the brain

Abstract.

Vav1 is a Rho/Rac guanine nucleotide exchange factor expressed in hematopoietic and endothelial cells that are involved in a wide range of cellular functions. It is also stabilized under hypoxic conditions when it regulates the accumulation of the transcription factor HIF-1 α , which activates the transcription of target genes to orchestrate a cellular response to low oxygen. One of the genes induced by HIF-1 α is GLUT-1, which is the major glucose transporter expressed in vessels that supply energy to the brain. Here, we identify a role for Vav1 in providing glucose to the brain. We found that Vav1 deficiency downregulates HIF-1 α and GLUT-1 levels in endothelial cells, including blood-brain barrier cells. This downregulation of GLUT-1, in turn, reduced glucose uptake to endothelial cells both in vitro and in vivo, and reduced glucose levels in the brain.

Furthermore, endothelial cell-specific Vav1 knock-out in mice, which caused glucose uptake deficiency, also led to a learning delay in fear conditioning experiments. Our results suggest that Vav1 promotes learning by activating HIF-1 α and GLUT-1 and thereby distributing glucose to the brain. They further demonstrate the importance of glucose transport by endothelial cells in brain functioning and reveal a potential new axis for targeting GLUT-1 deficiency syndromes and other related brain diseases.

Vav1 controls HIF-1 α and GLUT-1 in the brain

Introduction.

Introduction.

Energy sources and oxygen are delivered to organs and tissues throughout an organism via the vascular system, which acts as a critical lifeline for cellular metabolism. For the delivery of these substrates to parenchymal cells, they must pass across the endothelium [1-4]. Glucose is one of the primary sources of cellular energy, and endothelium plays a vital role in tissue glucose metabolism. A key regulator of this endothelial metabolic function is the oxygen-sensing transcription factor, HIF-1 α [5]. HIF-1 α maintains glucose homeostasis and is a well-known regulator of GLUT-1, which is the primary transporter of glucose across the endothelial blood-brain barrier [6]. It has been reported that endothelial cells from HIF-1 α knock-out mice showed decreased GLUT-1 levels, followed by reduced glucose uptake [5]

The endothelium regulates glucose metabolism in parenchymal cells via two major pathways: by transporting glucose from blood to tissue; and by presenting endothelial endocrine or paracrine factors to the parenchyma. The first pathway involves the uptake of primary glucose across the membrane, which occurs by facilitated diffusion in an energy-independent manner by glucose transporters [3]. Glucose transporters are a structurally homologous family of proteins that are expressed in a tissue-specific way [7, 8]. Among the family members, GLUT-1 is the major glucose transporter in endothelial cells including the blood-brain barrier [7, 9-11]. Human GLUT-1 malfunctioning mutations are associated with a reduction of glucose uptake to the brain and the tendency of seizures [2, 12]. GLUT-1 mutation is also a potential cause of CNS syndromes, including learning disabilities [9]. Vav1 controls HIF-1 α and GLUT-1 in the brain

GLUT-1 is also expressed in glia but to a lesser extent than in endothelial cells [10]. Although the major glucose transporter of neurons is GLUT-3, defective regulation of the massive influx of glucose from endothelial cells to the parenchyma, including neurons, is likely to be an underestimated cause of neurological dysfunctions.

Vav proteins are a family of Rho/Rac guanine nucleotide exchange factors (GEF) that mediate a wide variety of cellular functions. They consist of three highly conserved members in vertebrates. Vav1 is restricted mainly to hematopoietic cells, where it acts as an essential signaling factor involved in hematopoietic cell activation, growth, and differentiation [13, 14]. Mice lacking Vav1 are viable and fertile and generally develop except for a partial defect in lymphocyte development [15-17]. Vav1 is also expressed in endothelial cells where it activates Rac1 and Cdc42 in association with δ -catenin, which may be involved in regulating cell motility and vascular network formation [18]. In our recent study, Vav1 was identified as a critical regulator of the vascular response to hypoxia: hypoxia blocks Vav1 degradation, whereas it is continually produced and degraded under normoxic conditions. This accumulation of Vav1 leads to hypoxia-induced HIF-1 α accumulation. Indeed, in mice lacking Vav1 that were subjected to cardiac ischemic stress, the absence of HIF-1 α activation led to death [19].

The brain is directly affected by energy regulation [20, 21]. It utilizes glucose at a high rate, and a lack of glucose has been linked to various brain-related diseases, including dementia [22-24]. The dysregulation of glucose metabolism in brain damage has been a focus of therapeutic strategies because of the possibility to administer soluble molecules that stimulate glucose metabolisms, such as insulin or glucagon-like peptide 1 (GLP-1). These molecules improve cognitive responses in humans diagnosed with Alzheimer's disease, as Vav1 controls HIF-1 α and GLUT-1 in the brain

well as in mouse models [25-31]. These reports suggest that the dysregulation of glucose in the brain is crucial in neurologic diseases, as well as the progression of other metabolic diseases, including diabetes.

Given that Vav1 increases the stability of HIF-1 α and HIF-1 α is the critical transcription factor for GLUT-1 [19], we hypothesized that Vav1 regulates the expression and function of GLUT-1 via HIF-1 α , thereby regulating glucose metabolism in the brain. Glucose deficiency in the brain is directly related to various neurologic dysfunctions, including learning disability. In this study, we suggest the regulation of glucose distribution is Vav1 dependent, and Vav1 is an important factor for the brain function.

Results.

Vav1 regulates HIF-1 α and GLUT-1 in endothelial cells

In order to verify whether Vav1 regulates HIF-1 α in endothelial cells, we incubated human umbilical vein endothelial cells (HUVEC) after knocking down Vav1 in normoxic or 1% O₂ hypoxic conditions for 5 hours. HIF-1 α was strongly upregulated in hypoxic conditions in control cells, whereas it remained largely undetectable in Vav1 knock-down cells (Figure 1A). Vav1 was also upregulated when cells were incubated in hypoxic conditions, consistent with our previous findings [19]. Since HIF-1 α induces the transcription of GLUT-1, only 5-hours of hypoxia did not show any increase in GLUT-1 expression, as expected. Therefore, we incubated Vav1 knock-down HUVEC in hypoxic conditions for 16 hours and measured GLUT-1 levels. In control cells, GLUT-1 levels increased compared to normoxic conditions, whereas there was no difference in the Vav1 deficient Vav1 controls HIF-1 α and GLUT-1 in the brain

HUVEC (Figure 1B). Next, we performed a similar experiment in the human blood-brain barrier endothelial hCMEC/d3 cells to validate whether GLUT-1 is controlled by Vav1 and HIF-1 α . As expected, there was no upregulation of HIF-1 α or GLUT-1 under hypoxic conditions in the Vav1 knock-down cells (Figure 1C). We further verified that HIF-1 α controls GLUT-1 at the mRNA rather than the protein level by overexpressing HIF-1 α in HUVEC. We found that the mRNAs of HIF responsible element (HRE) genes, including GLUT-1 and VEGF, were upregulated by HIF-1 α overexpression in both normoxic and hypoxic conditions (Supplementary Figure 1). To further verify that GLUT-1 is controlled by Vav1, we overexpressed HIF-1 α in control or Vav1 shRNA-introduced hCMEC/d3 cells. Consistent with our previous results, Vav1 shRNA transfected cells showed downregulated HIF-1 α , followed by GLUT-1 levels compared to control shRNA transfected cells (Figure 1D). However, overexpression of HIF-1 α blocked this downregulation. This GLUT-1 rescue shows that Vav1 controls HIF-1 α , which in turn regulates GLUT-1 transcription in endothelial cells.

Vav1 regulates glucose uptake in endothelial cells

Next, we determined whether Vav1 affects the ability of GLUT-1 to take up glucose. Vav1 shRNA or control shRNA were introduced into HUVEC or hCMEC/d3 cells. We treated these cells with 2-NBDG, a fluorescent glucose analog, after starvation in the glucose-free medium for 2 hours. The Vav1-deficient groups of both HUVEC and hCMEC/d3 showed a decreased 2-NBDG signal (Figure 2A). To quantify this, we measured the mean fluorescent intensity of 2-NBDG from both HUVEC (Figure 2B) and hCMEC/d3 cells (Figure 2C). Compared to control cells, the Vav1 knock-down cells showed a significantly Vav1 controls HIF-1 α and GLUT-1 in the brain

reduced 2-NBDG signal. This reduction was comparable to that seen upon treatment with the GLUT-1 inhibitor, apigenin. These results demonstrate that, under hypoxic conditions, Vav1 regulates glucose uptake through GLUT-1 in endothelial cells.

Vav1 deficiency delays glucose uptake in vivo

We next determined whether Vav1 regulates glucose uptake also in vivo by testing glucose uptake from the bloodstream in endothelial-specific Vav1-deficient mice. VE-Cadherin-cre/ERT-Vav1^{flox/flox} mice were treated with 4-OH tamoxifen for two weeks to generate endothelial-specific Vav1-deficient mice. First, we measured basal levels of blood glucose in wild type and Vav1-deficient mice. In the absence of endothelial Vav1, blood glucose levels were relatively upregulated, even without glucose administration (Figure 3A). Next, an intraperitoneal glucose tolerance test was performed to compare the uptake of administered glucose. Compared to the wild type group, Vav1-deficient mice showed significantly increased levels of blood glucose and delayed recovery back to basal levels (Figure 3B). Over 50% of the Vav1-deficient mice had basal blood glucose levels of 126 mg/dl or more, compared to less than 20% of the wild type mice (Figure 3C). Furthermore, Vav1-deficient animals were significantly heavier than wild type animals (Figure 4D). These characteristics are found in diabetic mice, although we could not detect any related histological structural changes in the tissues of Vav1-deficient mice (Supplementary Figure 2).

Vav1 deficiency downregulates glucose distribution in the brain

Vav1 controls HIF-1 α and GLUT-1 in the brain

We focused on the brain of endothelial Vav1-deficient mice because the brain is one of the major organs that utilizes glucose. As expected, GLUT-1 was expressed in the brain of wild type mice, but, notably, was mostly undetectable in the endothelial Vav1-deficient mice (Figure 4A). Typically, Vav1 levels increase under stressful conditions such as hypoxia (Figure 1A-C) or starvation (Supplementary Figure 3). 18F- Fludeoxyglucose (FDG) is widely used in positron emission tomography (PET) to measure inflammatory regions, especially in cancer patients. FDG is also an analog of glucose, which is taken up by glucose transporters. We compared the signal of injected FDG in wild type and endothelial Vav1-deficient mice using PET. The FDG signal was significantly lower in the brains of Vav1-deficient mice compared to wild type mice. The dilated heart also showed a high signal as it contains high amounts of blood, as well as the gall bladder and urinary bladder, which contain high levels of FDG metabolite. When the PET image was superimposed onto the CT image, the lower amount of FDG was more easily observed in the Vav1-deficient mouse (Figure 4B). Both the mean and total standardized uptake value (SUV) was significantly lower in Vav1-deficient mice (Figure 4C and D). Next, we evaluated the effect of endothelial Vav1-deficiency on the brain function by subjecting wild type and endothelial Vav1-deficient mice to a fear conditioning test, see methods, which represent a form of learning [32]. We found a significant decrease in the percentage of time spent freezing to context, i.e., in the same environment as the conditioning in the endothelial Vav1-deficient mice compared to the wild type mice. This difference was lost when the mice were analyzed for freezing to cue, i.e., in a different environment but with the same stimulus (Figure 4E). This suggests that there is some impairment of learning

Vav1 controls HIF-1 α and GLUT-1 in the brain

when Vav1 is deficient. These results show that Vav1 in the endothelium regulates glucose distribution to the brain as well as the function of the brain, such as learning.

Vav1 controls HIF-1 α and GLUT-1 in the brain

Discussion

Since GLUT-1 is a component of HIF Responsible Elements (HRE) and highly expressed in endothelial cells, we focused on glucose uptake in endothelial cells. As we expected, the Vav1 knock-down led to the downregulation of both HIF-1 α and GLUT-1. In our experiments, HIF-1 α was upregulated by hypoxia in 5 hours, but GLUT-1 was not increased. Since HIF-1 α controls the transcription of GLUT-1, the upregulation of proteins was not shown at the same time in HUVEC. We could observe upregulated GLUT-1 after 16-hour incubation of cells in hypoxia, unlike HIF-1 α in HUVEC.

Interestingly, hCMEC/d3 showed a slightly different pattern than HUVEC. hCMEC/d3 showed increased HIF-1 α and GLUT-1 together after 16-hour incubation in hypoxia. This difference may be dependent on cell type. Notably, the upregulation of HIF-1 α and GLUT-1 was abrogated by Vav1 knock-down in two kinds of cells. Additionally, the GLUT-1 decrease was rescued when HIF-1 α was overexpressed in Vav1 knock-down cells, which demonstrates that Vav1 is upstream of both HIF-1 α and GLUT-1.

The basal blood glucose level of Vav1 knock out mice was significantly lower than that of wild type mice, which may be because of a lower uptake of glucose from the bloodstream to the endothelial cells. In the Vav1-deficient group, exogenously administered glucose was not taken up as quickly as wild type mice. Additionally, the increase in glucose levels after injection was higher than in the wild type mice. This in vivo data indicates that glucose uptake in Vav1-knockout mice is delayed. Furthermore, more than 50% of Vav1-knockout mice had over 125 mg/dl of blood glucose, while less than 20% of wild type mice had these high levels. Vav1-knockout mice also showed increased body weight compared to wild type mice. High blood glucose and body weight are characteristics of diabetic mice. Other Vav1 controls HIF-1 α and GLUT-1 in the brain

than this, the endothelial-specific Vav1-knockout mice were fertile and had no gross phenotypic abnormalities.

The brain requires a consistent supply of energy to maintain proper functioning, and it is the second most glucose-consuming organ after the liver. GLUT-1 is the main route to supply glucose from the bloodstream to the brain. Thus, loss of GLUT-1 in endothelial cells of the brain is directly linked to brain damage and related to several diseases, including GLUT-1 deficiency syndrome and Alzheimer's disease [33, 34]. Because Vav1 deficiency leads to the loss of GLUT-1, the distribution of glucose to the brain is remarkably decreased. In our studies, we observed that Vav1 deficiency not only downregulates glucose distribution to the brain but also memory deficiency observing the behavioral experiment. Considering these findings, we propose that endothelial Vav1 is a critical factor that controls brain function, including memory.

GLUT-1 deficiency syndrome is a genetic disorder that varies in symptoms and severity between individuals. For example, some individuals with GLUT-1 deficiency syndrome do not develop epilepsy. Other possible symptoms include abnormal eye-head movements, body movement disorders, developmental delays, and varying degrees of cognitive impairment, slurred speech, and language abnormalities [33]. Although Vav1 has not been previously associated with conditions caused by the mutation of SLC2A1, which encodes GLUT-1, the phenotype of endothelial Vav1-deficient mice was very close to GLUT-1 deficiency syndrome, supporting further studies such as discovering the pathological mechanism and in vivo experiments. Glucose uptake deficiency in the brain is not only related to GLUT-1 deficiency syndrome but also Alzheimer's disease associated with type

Vav1 controls HIF-1 α and GLUT-1 in the brain

2 diabetes and various other brain disorders [18, 22, 23]. In light of our results, it will be interesting to study the potential role of Vav1 in these disorders.

It is well-known that HIF-1 α is a crucial transcription factor for GLUT-1. Our previous study revealed that Vav1 is continuously produced and degraded under normoxic conditions, whereas under hypoxic conditions, it is stabilized and required for HIF-1 α activation via activation of p38 MAPK [19]. We now take the next step and show that Vav1-mediated HIF1 α activation is required for glucose uptake in the brain.

Vav1 controls HIF-1 α and GLUT-1 in the brain

Materials and Methods.

Cell culture and bioassays

Human umbilical vein endothelial cells (HUVECs) and the hCMEC/d3 human blood-brain barrier cell line were obtained from Lonza (Walkersville, MD) and Sigma (St. Louise, MO), respectively. The cells were cultured according to the manufacturer's protocols. For hypoxia, cells were incubated in 1% O₂ adjusted incubator (Thermo, Waltham, MA) for 5 hours or 16 hours. Control and Vav1 shRNA constructs were obtained from Sigma. The HIF-1 α construct was obtained from Addgene (Watertown, MA). Glucose uptake assay was performed with Glucose Uptake Cell-based Assay Kit (Cayman Chemical, Ann Arbor, MI) following the manufacturer's description.

Western blot and RT-qPCR

Cells were lysed with sample buffer and briefly ultrasonicated. Specific antibodies for HIF-1 α , GLUT-1, and Vav1 were purchased from Cell Signaling Technology (Danvers, MA). Total RNA was isolated with RNeasy mini for RT-qPCR from cell lines. RT-qPCR was performed using 1-Step Quantitative Reverse Transcription PCR from RNA (Biorad, Hercules, CA) following the manufacturer's description. The relative mRNA level was measured with primers purchased against GLUT-1, VEGF, and HIF-1 α (Sigma).

Experimental animals

The mice were maintained in pathogen-free facilities in the National Cancer Institute (Frederick, MD). The study was approved by the NCI Animal Care and Use Committee and in accordance with the ARRIVE guidelines. VE-Cadherin-cre/ERT2 and Vav1^{flox/flox} mice were obtained from the Jackson Laboratory (Bar Harbor, ME) and crossed to establish the colony and backcrossed to C57BL/6 mice. Age and sex-matched mice were used for experiments. Blood glucose was measured with blood drops from tail tips of mice using a glucometer (Roche, Basel, Switzerland).

Fear Conditioning

Vav1 controls HIF-1 α and GLUT-1 in the brain

The conditioning apparatus consisted of a mouse shock chamber (Coulbourn Instruments) set up in a sound-attenuated box. On day 1, the conditioning day, after a 2 min acclimation period to the conditioning chamber, mice received three conditioning trials consisting of a 30 s presentation of a 5 kHz, 70-dB tone [conditioning stimulus (CS)] that co-terminated with a 0.7 mA foot shock delivered through the grid floor during the last 1.0 s of the sound. Each conditioning trial was separated by a 30 s intertrial interval (ITI). After conditioning, mice were returned to their home cages. Mice were traced with infrared beam cue for subsequent quantification of behavior. Time spent “freezing” before and during the presentation of the CS tone was measured during the CS presentation as well as during a 30 s baseline period before the first tone trial. This latter measure served as an assay for unconditioned effects of the CS on general activity levels. Memory for the context and the tone was evaluated on days 2 and 3, respectively (~24 and 48 h after conditioning). For the contextual test, mice were placed in the conditioning chamber and allowed to explore for 2 min, after which freezing to the context was assessed for the remaining 4.5 min. For the tone test, mice were placed in a novel chamber with green walls. Mice could acclimate to the chamber for 2 min and be then presented with the CS (tone) on three consecutive trials (30 s, 5 kHz, 70 dB; ITI of 40 s). Freezing was evaluated during the 2 min acclimation period, during each presentation of the tone CS, and during the 40 s intertrial interval. After the memory tests, animals were returned to their home cage and colony. Memory for either the context or tone CS was quantified by the percentage of time engaged in a fear-related behavior (freezing) during context testing or CS presentation.

PET/CT Scanning

PET/CT scanning was performed after mice were fasted for 12 h but had free access to water. Following determination of body weights (28.0 ± 3 g on average), mice were anesthetized using vaporized isoflurane (4% for induction; 2.5% for maintenance). Sterile normal saline (0.1 ml) was injected subcutaneously to ensure adequate hydration. Following administration of ^{18}F -FDG (< 200 μCi) via lateral tail vein injection, mice were awakened and returned to individual holding cages. Precisely 60 min post-FDG

Vav1 controls HIF-1 α and GLUT-1 in the brain

injection, anesthetized mice were placed prone in a heated (36 °C) multimodality chamber) in the PET scanner's gantry. PET list-mode data were acquired for 15 min, using a small-animal PET/CT imaging system (GE Healthcare, Laurel, MD). In the same workflow, a CT image was acquired for attenuation correction purposes. Images were reconstructed using a three-dimensional OP-MAP algorithm (Siemens Medical Solutions USA, Inc., Malvern, PA, USA). Scanner reconstructions using this algorithm were calibrated back to a National Institute of Standards and Technology (NIST)-traceable positron-emitting dose calibrator source to assure quantitative accuracy. Standard Uptake Value (SUV) was normalized by injection activity (μCi) and animal body weight (g).

Histology

Brain, heart, skeletal muscle, and pancreas were obtained from both wild type and endothelial Vav1-deficient mice after perfusion with PBS. For standard histology, formalin-fixed tissues were embedded in paraffin, sectioned, and stained (H&E) by the NCI-Frederick Histology Core.

Statistical analysis

All statistical analyses were carried out using Prism 7 (La Jolla, CA). Quantitative variables were analyzed by the paired Student's t-test and two-way ANOVA test with multiple comparisons. All statistical analysis was two-sided, and $p < 0.05$ was considered statistically significant.

Vav1 controls HIF-1 α and GLUT-1 in the brain

Acknowledgments.

This research was supported by the Intramural Research Program of the NIH, Cancer and Inflammation Program, Center for Cancer Research, National Cancer Institute.

References

- 1 Carruthers, A., DeZutter, J., Ganguly, A. and Devaskar, S. U. (2009) Will the original glucose transporter isoform please stand up! *Am J Physiol Endocrinol Metab.* **297**, E836-848
- 2 Seidner, G., Alvarez, M. G., Yeh, J. I., O'Driscoll, K. R., Klepper, J., Stump, T. S., Wang, D., Spinner, N. B., Birnbaum, M. J. and De Vivo, D. C. (1998) GLUT-1 deficiency syndrome caused by haploinsufficiency of the blood-brain barrier hexose carrier. *Nat Genet.* **18**, 188-191
- 3 Thorens, B. and Mueckler, M. (2010) Glucose transporters in the 21st Century. *Am J Physiol Endocrinol Metab.* **298**, E141-145
- 4 Westermeier, F., Puebla, C., Vega, J. L., Farias, M., Escudero, C., Casanello, P. and Sobrevia, L. (2009) Equilibrative nucleoside transporters in fetal endothelial dysfunction in diabetes mellitus and hyperglycaemia. *Curr Vasc Pharmacol.* **7**, 435-449
- 5 Huang, Y., Lei, L., Liu, D., Jovin, I., Russell, R., Johnson, R. S., Di Lorenzo, A. and Giordano, F. J. (2012) Normal glucose uptake in the brain and heart requires an endothelial cell-specific HIF-1 α -dependent function. *Proc Natl Acad Sci U S A.* **109**, 17478-17483
- 6 Loike, J. D., Cao, L., Brett, J., Ogawa, S., Silverstein, S. C. and Stern, D. (1992) Hypoxia induces glucose transporter expression in endothelial cells. *Am J Physiol.* **263**, C326-333
- 7 Olson, A. L. and Pessin, J. E. (1996) Structure, function, and regulation of the mammalian facilitative glucose transporter gene family. *Annu Rev Nutr.* **16**, 235-256

Vav1 controls HIF-1 α and GLUT-1 in the brain

- 8 Wood, I. S. and Trayhurn, P. (2003) Glucose transporters (GLUT and SGLT): expanded families of sugar transport proteins. *Br J Nutr.* **89**, 3-9
- 9 Guo, X., Geng, M. and Du, G. (2005) Glucose transporter 1, distribution in the brain and in neural disorders: its relationship with transport of neuroactive drugs through the blood-brain barrier. *Biochem Genet.* **43**, 175-187
- 10 Maher, F., Vannucci, S. J. and Simpson, I. A. (1993) Glucose transporter isoforms in brain: absence of GLUT3 from the blood-brain barrier. *J Cereb Blood Flow Metab.* **13**, 342-345
- 11 Pardridge, W. M., Boado, R. J. and Farrell, C. R. (1990) Brain-type glucose transporter (GLUT-1) is selectively localized to the blood-brain barrier. Studies with quantitative western blotting and in situ hybridization. *J Biol Chem.* **265**, 18035-18040
- 12 Wang, D., Pascual, J. M., Yang, H., Engelstad, K., Jhung, S., Sun, R. P. and De Vivo, D. C. (2005) Glut-1 deficiency syndrome: clinical, genetic, and therapeutic aspects. *Ann Neurol.* **57**, 111-118
- 13 Turner, M. and Billadeau, D. D. (2002) VAV proteins as signal integrators for multi-subunit immune-recognition receptors. *Nat Rev Immunol.* **2**, 476-486
- 14 Tybulewicz, V. L., Ardouin, L., Prisco, A. and Reynolds, L. F. (2003) Vav1: a key signal transducer downstream of the TCR. *Immunol Rev.* **192**, 42-52
- 15 Fischer, K. D., Zmudzinas, A., Gardner, S., Barbacid, M., Bernstein, A. and Gidos, C. (1995) Defective T-cell receptor signalling and positive selection of Vav-deficient CD4⁺ CD8⁺ thymocytes. *Nature.* **374**, 474-477

Vav1 controls HIF-1 α and GLUT-1 in the brain

- 16 Turner, M., Mee, P. J., Walters, A. E., Quinn, M. E., Mellor, A. L., Zamoyska, R. and Tybulewicz, V. L. (1997) A requirement for the Rho-family GTP exchange factor Vav in positive and negative selection of thymocytes. *Immunity*. **7**, 451-460
- 17 Zhang, R., Alt, F. W., Davidson, L., Orkin, S. H. and Swat, W. (1995) Defective signalling through the T- and B-cell antigen receptors in lymphoid cells lacking the vav proto-oncogene. *Nature*. **374**, 470-473
- 18 DeBusk, L. M., Boelte, K., Min, Y. and Lin, P. C. (2010) Heterozygous deficiency of delta-catenin impairs pathological angiogenesis. *J Exp Med*. **207**, 77-84
- 19 Min, Y., Hong, J., Wuest, T. R. and Lin, P. C. (2019) Vav1 is essential for HIF-1 α activation in vascular response to ischemic stress. *bioRxiv*, 727677
- 20 Roh, E., Song, D. K. and Kim, M. S. (2016) Emerging role of the brain in the homeostatic regulation of energy and glucose metabolism. *Exp Mol Med*. **48**, e216
- 21 Roh, E. and Kim, M. S. (2016) Brain Regulation of Energy Metabolism. *Endocrinol Metab (Seoul)*. **31**, 519-524
- 22 Chen, Z. and Zhong, C. (2013) Decoding Alzheimer's disease from perturbed cerebral glucose metabolism: implications for diagnostic and therapeutic strategies. *Prog Neurobiol*. **108**, 21-43
- 23 Cunnane, S., Nugent, S., Roy, M., Courchesne-Loyer, A., Croteau, E., Tremblay, S., Castellano, A., Pifferi, F., Bocti, C., Paquet, N., Begdouri, H., Bentourkia, M., Turcotte, E., Allard, M., Barberger-Gateau, P., Fulop, T. and Rapoport, S. I. (2011) Brain fuel metabolism, aging, and Alzheimer's disease. *Nutrition*. **27**, 3-20
- 24 Nugent, S., Croteau, E., Pifferi, F., Fortier, M., Tremblay, S., Turcotte, E. and Cunnane, S. C. (2011) Brain and systemic glucose metabolism in the healthy elderly Vav1 controls HIF-1 α and GLUT-1 in the brain

following fish oil supplementation. *Prostaglandins Leukot Essent Fatty Acids*. **85**, 287-291

25 Craft, S., Baker, L. D., Montine, T. J., Minoshima, S., Watson, G. S., Claxton, A., Arbuckle, M., Callaghan, M., Tsai, E., Plymate, S. R., Green, P. S., Leverenz, J., Cross, D. and Gerton, B. (2012) Intranasal insulin therapy for Alzheimer disease and amnesic mild cognitive impairment: a pilot clinical trial. *Arch Neurol*. **69**, 29-38

26 Holscher, C. (2014) Central effects of GLP-1: new opportunities for treatments of neurodegenerative diseases. *J Endocrinol*. **221**, T31-41

27 Morris, J. K. and Burns, J. M. (2012) Insulin: an emerging treatment for Alzheimer's disease dementia? *Curr Neurol Neurosci Rep*. **12**, 520-527

28 Parthasarathy, V. and Holscher, C. (2013) Chronic treatment with the GLP1 analogue liraglutide increases cell proliferation and differentiation into neurons in an AD mouse model. *PLoS One*. **8**, e58784

29 Reger, M. A., Watson, G. S., Green, P. S., Wilkinson, C. W., Baker, L. D., Cholerton, B., Fishel, M. A., Plymate, S. R., Breitner, J. C., DeGroot, W., Mehta, P. and Craft, S. (2008) Intranasal insulin improves cognition and modulates beta-amyloid in early AD. *Neurology*. **70**, 440-448

30 Shingo, A. S., Kanabayashi, T., Kito, S. and Murase, T. (2013) Intracerebroventricular administration of an insulin analogue recovers STZ-induced cognitive decline in rats. *Behav Brain Res*. **241**, 105-111

31 Talbot, K. and Wang, H. Y. (2014) The nature, significance, and glucagon-like peptide-1 analog treatment of brain insulin resistance in Alzheimer's disease. *Alzheimers Dement*. **10**, S12-25

Vav1 controls HIF-1 α and GLUT-1 in the brain

- 32 Carim-Todd, L., Bath, K. G., Fulgenzi, G., Yanpallewar, S., Jing, D., Barrick, C. A., Becker, J., Buckley, H., Dorsey, S. G., Lee, F. S. and Tessarollo, L. (2009) Endogenous truncated TrkB.T1 receptor regulates neuronal complexity and TrkB kinase receptor function in vivo. *J Neurosci.* **29**, 678-685
- 33 Gras, D., Roze, E., Caillet, S., Meneret, A., Doummar, D., Billette de Villemeur, T., Vidailhet, M. and Mochel, F. (2014) GLUT1 deficiency syndrome: an update. *Rev Neurol (Paris).* **170**, 91-99
- 34 Wijesekara, N., Goncalves, R. A., De Felice, F. G. and Fraser, P. E. (2018) Impaired peripheral glucose homeostasis and Alzheimer's disease. *Neuropharmacology.* **136**, 172-181

1 **Figure Legends.**

2

3 **Figure 1. Vav1 regulates HIF-1 α and GLUT-1 in endothelial cells**

4 (A) HUVEC cells with control or Vav1 shRNA were incubated under normoxia or 1% O₂
5 conditions for 5 hours, or (B) 16 hours. Cells were lysed to measure HIF-1 α , Vav1, and GLUT-1
6 levels by Western blotting. (C) hCMEC/d3 cells with control or Vav1 shRNA were incubated
7 under normoxia or 1% O₂ conditions for 16 hours. Cells were lysed to measure HIF-1 α , Vav1,
8 and GLUT-1 levels by Western blotting. (D) Control or Vav1 shRNA expressing hCMEC/d3
9 cells were transfected with an empty vector or HIF-1 α overexpression vector. Cells were
10 incubated under normoxia or 1% O₂ conditions for 16 hours and then subjected to Western blot.

11

12 **Figure 2. Vav1 regulates glucose uptake in endothelial cells**

13 (A) HUVEC and hCMEC/d3 cells with control or Vav1 shRNA were starved in serum-free
14 RPMI for 1 hour before the addition of 2-NBDG under hypoxic conditions. After 1 hour of
15 incubation, cells were fixed with paraformaldehyde and observed by confocal microscopy (A).
16 (B) HUVEC and (C) hCMEC/d3 cells with control or Vav1 shRNA in a 96-well plate were
17 starved in serum-free RPMI for 1 hour and then treated with 2-NBDG with or without apigenin
18 under hypoxic conditions for an hour. Mean fluorescence intensity (MFI) was measured to
19 quantify 2-NBDG uptake levels (quadruplet mean \pm SD). ***p<0.001

20

21 **Figure 3. Vav1 deficiency delays glucose uptake in vivo**

22 Wild type or endothelial Vav1-deficient mice have fasted for 12 hours in the presence of water.

23 (A) Blood glucose levels were measured from the tail tip of each mouse (n=10/group). (B) After

1 12 hours' fasting, mice were given with 2g/kg of glucose intraperitoneally. The blood glucose
2 level was measured at each designated time point (n=10/group). (C) The ratio of animals with
3 126 mg/dl or higher blood glucose in the basal state is displayed (n=12/group). (D) The weight
4 of mice measured after 12-hour fasting (n=12/group). Mean \pm SD , *p<0.05, **p<0.01,
5 ***p<0.001

6

7 **Figure 4. Vav1 deficiency downregulates glucose distribution in the brain**

8 (A) The total lysate of mouse brain was subjected to Western blot to measure GLUT-1 protein
9 expression levels (n=3/group). (B) Wild type or endothelial Vav1-deficient mice were subjected
10 to a PET/CT scan to measure the distribution of 18F-FDG. Mice fasted for 12 hours before
11 intravenous injection of 18F-FDG. One hour after 18F-FDG injection, the whole body of mice
12 was scanned. The scanned signal in brains was normalized and then numerated as mean (C) and
13 total (D) standardized uptake value (SUV) (n=10/group). (E) Wild type or endothelial Vav1-
14 deficient mice were subjected to a fear conditioning test. Both contextual and cued conditions
15 were given to measure the percentage of time in a frozen state. Mean \pm SD, *p<0.05

16

17

18

19

20

21

22

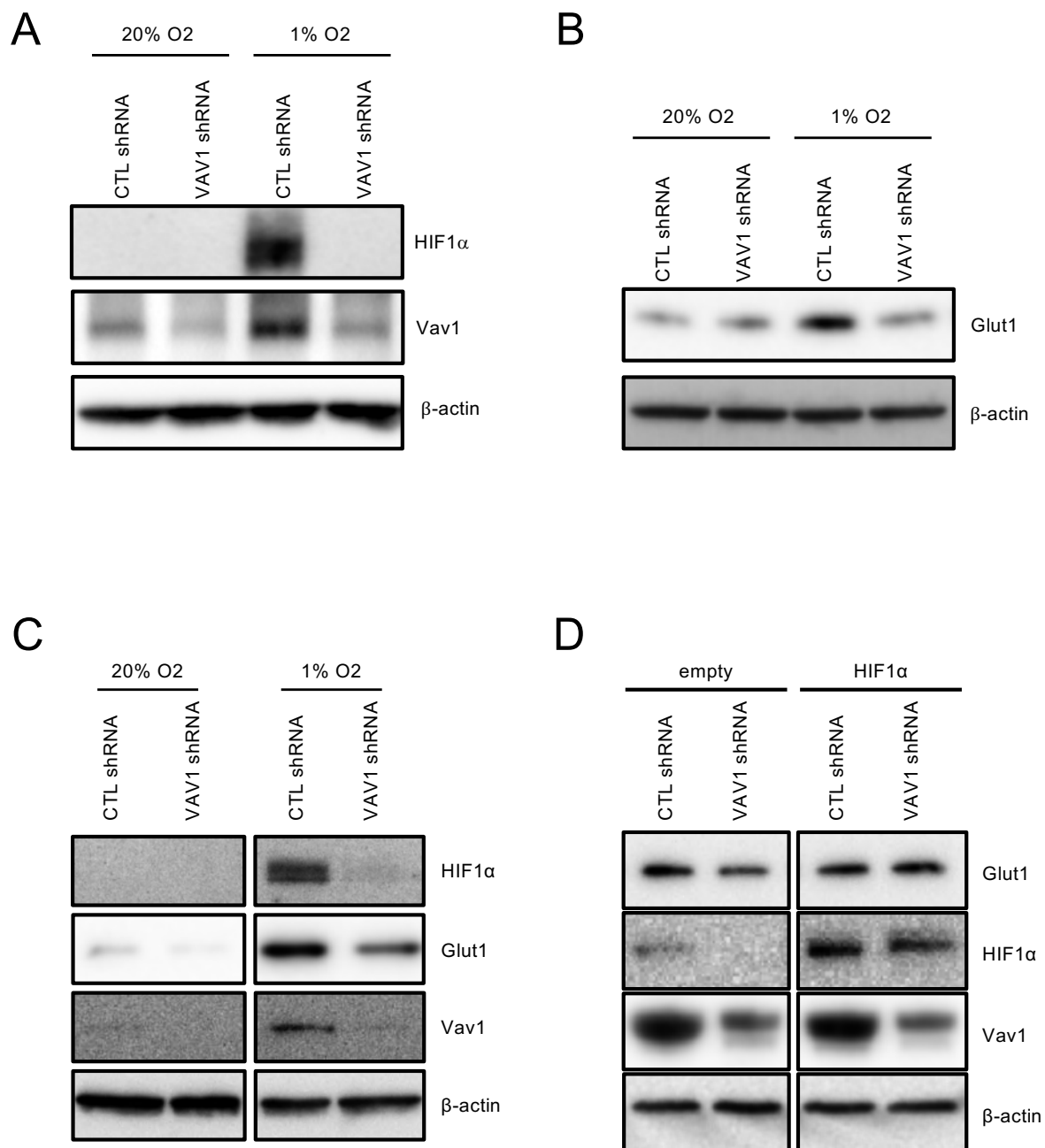
23

1 **Supplementary Figure 1.** HUVEC were transfected with empty vector (blank bar) or HIF-1 α
2 (filled bar). Cells were incubated in normoxia or hypoxia (1% O₂) for 16 hours. GLUT-1,
3 VEGF, and HIF-1 α mRNA were measured by RT-qPCR. Mean \pm SD, *p<0.05

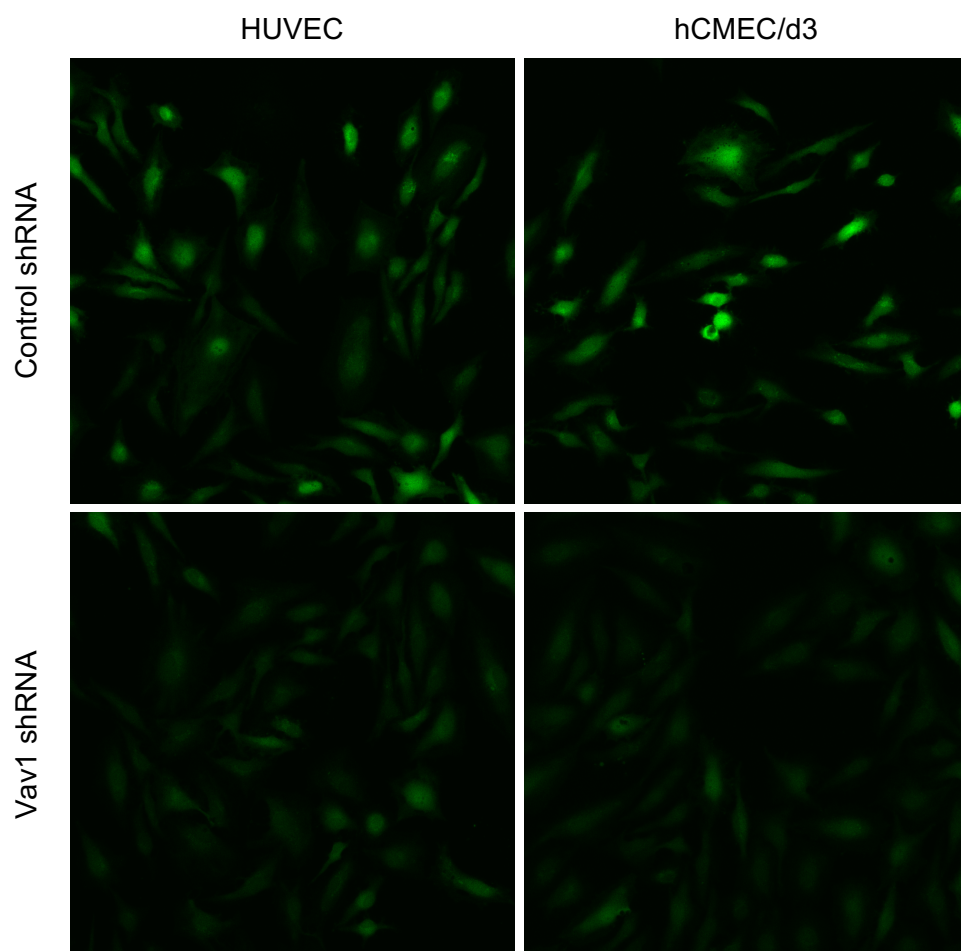
4
5 **Supplementary Figure 2.** Brain, heart, skeletal muscle, and pancreas were obtained from wild
6 type or endothelial Vav1-deficient mice after perfusion. Tissues were fixed with 4%
7 paraformaldehyde and then embedded in paraffin. Slides were stained with hematoxylin and
8 eosin to visualize the basal structure of organs. Representative figures are shown from three
9 independent experiments.

10
11 **Supplementary Figure 3.** HUVEC were incubated in serum-free medium or complete medium
12 for 4 hours and then subjected to Western blot to measure Vav1 protein.

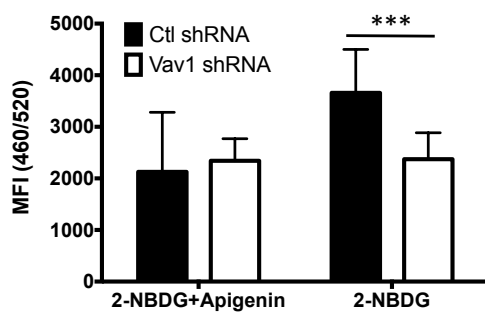
13



A



B



C

