

1 Integrative analysis of 10,000 epigenomic maps across 800 samples for 2 regulatory genomics and disease dissection.

3 Carles B. Adsera¹⁻³, Yongjin P. Park^{1,2}, Wouter Meuleman⁴, Manolis Kellis^{1,2}

- 4 1. Computer Science and Artificial Intelligence Laboratory, Massachusetts Institute of Technology, Cambridge, MA, USA
5 2. Broad Institute of MIT and Harvard, Cambridge, MA, USA
6 3. Computational and Systems Biology Program, Massachusetts Institute of Technology, Cambridge, MA, USA
7 4. Altius Institute for Biomedical Sciences, United States

8 **Abstract**

9 To help elucidate genetic variants underlying complex traits, we develop EpiMap, a compendium of 833
10 reference epigenomes across 18 uniformly-processed and computationally-completed assays. We
11 define chromatin states, high-resolution enhancers, activity patterns, enhancer modules, upstream
12 regulators, and downstream target gene functions. We annotate 30,247 genetic variants associated
13 with 534 traits, recognize principal and partner tissues underlying each trait, infer trait-tissue, tissue-
14 tissue and trait-trait relationships, and partition multifactorial traits into their tissue-specific contributing
15 factors. Our results demonstrate the importance of dense, rich, and high-resolution epigenomic
16 annotations for complex trait dissection, and yield numerous new insights for understanding the
17 molecular basis of human disease.

18 **Introduction**

19 Genome-wide association studies (GWAS) have been extremely successful in discovering more than
20 100,000 genomic loci containing common single-nucleotide polymorphisms (SNPs) associated with
21 complex traits and disease-related phenotypes, providing a very important starting point for the
22 systematic dissection of the molecular mechanism of human disease^{1,2}. However, the vast majority of
23 these genetic associations remain devoid of any mechanistic hypothesis underlying their molecular and
24 cellular functions, as more than 90% of them lie outside protein-coding exons and likely play non-
25 coding roles in gene-regulatory regions whose annotation remains incomplete³⁻⁶.

26 To help annotate non-coding regions of the genome, large-scale experimental mapping of epigenomic
27 modifications associated with diverse classes of gene-regulatory elements has been undertaken by
28 several large consortia, including the ENCyclopedia of DNA Elements (ENCODE), Roadmap
29 Epigenomics, and the Genomics of Gene Regulation (GGR)⁷⁻⁹. Integration of these datasets, and in
30 particular histone modification marks and DNA accessibility maps, has helped infer chromatin states
31 and annotate diverse classes of gene-regulatory elements, including distal-acting and tissue-specific
32 enhancer regions and proximal-acting and mostly-constitutive promoter regions¹⁰⁻¹² across 16 cell
33 types by ENCODE in 2012^{7,8}, and 111 cell and tissue types by Roadmap Epigenomics in 2015^{7,8},

1 These maps have been widely used to gain insights into the molecular basis of complex traits by
2 recognizing the preferential localization (enrichment) of genetic variants associated with the same traits
3 within gene-regulatory elements active in the same tissue or cell type^{3,8,13–16}. These enrichments can
4 help gain insights into the tissues and cell types that may underlie complex disorders, and within which
5 the molecular effects of these genetic variants may first manifest^{17–19}. They can also help fine-map
6 likely causal genetic variants in regions of linkage disequilibrium^{20,21} by prioritizing those variants that lie
7 within enriched annotations^{16,22–24}.

8 However, these maps also have great limitations. First, they remain highly incomplete, covering only a
9 small fraction of human tissue diversity, and missing many tissues of great relevance to human
10 disease. Second, the quality of reference epigenomes is highly variable, as each reference epigenome
11 typically relies on only 1-2 replicates, making them more prone to experimental noise and even
12 variation between experimental protocols, experimentalists, labs, antibody lots, or reagent batches.
13 Third, in addition to experimental noise, differences in the computational processing pipelines of
14 different consortia and across different versions of processing software and integration pipelines can
15 lead to dramatic differences in the regions annotated in different chromatin states, or within accessible
16 regions called by different peak-calling algorithms. Fourth, maps that rely on multiple epigenomic marks
17 are inherently limited in their dimensionality, as they need to exclude samples that do not contain all
18 marks incorporated, or marks that are not present in all the samples. Lastly, epigenomic reference
19 profiling projects must balance exploring biological space with exhaustively performing assays in each
20 sample, leading to incomplete epigenomic annotation matrices with few marks across many samples,
21 and few samples with many marks.

22 Here, we overcome these limitations and present a new reference of the human epigenome, EpiMap,
23 by incorporation of 1698 new datasets across three consortia, joint uniform re-processing of a total of
24 3030 reference datasets, and computational completion of 14,952 epigenomic maps across 859 tissues
25 and 18 marks. We rely on epigenomic imputation^{25–27}, which maximizes the consistency and quality of
26 an ensemble of epigenomic maps by leveraging correlation patterns between related assays and
27 between related cell types to infer missing datasets, and to generate high-quality predictions of
28 experimentally-profiled datasets using all experimentally-profiled datasets.

29 We show that EpiMap greatly surpasses previous reference maps in scope, scale, and coverage of
30 biological space. We combine single-mark maps into a multi-mark chromatin state reference for each of
31 833 high-quality epigenomes, combine multiple enhancer chromatin states with DNA accessibility to
32 infer a high-resolution enhancer map for each cell type, group enhancers into modules based on their
33 common activity patterns across cell types, and use these modules to infer candidate upstream

1 regulators based on motif enrichments, and downstream gene functions based on gene ontology
2 enrichments, providing an important reference for studies of gene regulation both for disease dissection
3 and for basic biological studies of human tissues.

4 Lastly, we use EpiMap to increase our understanding of the molecular processes underlying complex
5 traits and human disease by systematic integration of genetic variants associated with 926 traits and
6 high-resolution enhancer annotations across 833 tissues. Compared to the Roadmap Epigenomics
7 resource analysis⁸, we achieve a nearly 10-fold increase in the number of traits showing significant
8 epigenomic enrichments (N=534) and a dramatic increase in the number of loci with putative causal
9 variants within enriched enhancer annotations (N=30k). We also exploit the greatly-increased number
10 of samples by developing a new hierarchical approach for narrowing down the tissue-level resolution of
11 GWAS enrichments thus resulting in many new enriched traits and loci, to distinguish multifactorial and
12 polyfactorial traits from unifactorial traits, to learn principal-partner tissue pairs that cooperate to explain
13 multifactorial traits, to partition multifactorial-trait SNPs by tissue thus revealing the distinct biological
14 processes and explaining trait comorbidity patterns, and to learn a trait-trait relationship network that
15 helps guide the interpretation of unifactorial and multifactorial traits.

16 These results indicate that EpiMap is a valuable new reference for both gene-regulatory studies and
17 disease studies seeking to elucidate the molecular basis of complex disorders.

18 **Results**

19 **Generation and validation of EpiMap reference epigenome compendium**

20 We generated EpiMap, the largest integrated compendium of epigenomics maps to-date, spanning 859
21 epigenomes across 18 epigenomic assays (**Fig. 1a, Supp. Fig. S1**) by aggregation, uniform
22 processing, and computational completion of three major resources: Roadmap Epigenomics⁸ (425
23 samples, of which 241 were generated since the 2015 data freeze), ENCODE⁷ (434 samples of which
24 381 were generated since the 2012 data release), and Genomics of Gene Regulation (GGR)
25 consortium²⁸ (25 samples). We uniformly processed a total of 3,030 datasets, including 1994 ChIP-seq
26 experiments for 33 histone marks, 701 experiments for DNA accessibility (DNase-seq, ATAC-seq), and
27 335 experiments for chromatin-associated general factors. We used each unique combination of
28 biosample, donor, sex, age, and lifestage, and removed samples with genetic perturbations
29 (Supplementary Table S1).

30 We classified these 3,030 assays into multiple tiers, according to their completeness. Tier 1 assays (7
31 marks, 2197 total experiments, 36% complete on average) include DNase-seq (accessible chromatin),
32 H3K4me3 (promoters), H3K36me3 (transcribed), H3K4me1 (poised enhancers), H3K9me3

1 (heterochromatin), H3K27ac (active enhancers/promoters), and H3K27me3 (polycomb repression). Tier
2 2 assays (6 marks, 365 experiments, 7% complete on average) include H3K9ac, ATAC-seq, H3K4me2,
3 H2AFZ, H3K79me2, and H4K20me1, in order of abundance. Tier 3 assays consist of general factors
4 associated with key biological processes (5 factors, 335 total experiments, 8% complete on average),
5 including POLR2A (transcription initiation), EP300 (enhancer activation), CTCF (insulation, chromatin
6 looping), SMC3 (cohesin), and RAD21 (cohesin component, double-stranded-break repair). Lastly, Tier
7 4 assays (22 marks, 133 experiments, 0.7% complete on average) consist of 16 acetylation marks, 4
8 methylation marks (H3K9me2, H3K79me1, H3K9me1, H3K23me2), H3F3A, and H3T11ph.

9 We generated a total of 14,952 imputed datasets covering 18 marks and assays across 859 samples
10 using ChromImpute²⁵. We constructed genome-wide browser visualization tracks available from the
11 WashU Epigenome Browser²⁹. Imputed tracks showed strong agreement with high-quality observed
12 tracks, individual enhancer elements, precise boundaries in histone modification peaks, and finer-
13 grained features of epigenomic assays, such as dips in H3K27ac peaks indicative of nucleosome
14 displacement (**Fig. 1b**). They also captured the density, location, intensity, and cell-type-specificity of
15 both active and repressed marks across thousands of regions and all 859 samples (**Fig. 1c**). We found
16 85% peak recovery and 75% average genome-wide correlation for punctate marks representing 59% of
17 tracks (**Supp. Fig. S2**).

18 Disagreement between imputed and observed tracks helped flag 138 potentially problematic datasets
19 which showed markedly lower QC scores (**Supp. Fig. S2, S3**), and revealed potential sample or
20 antibody swaps (**Supp. Fig S4, S5**) some of which were independently flagged by the data producers.
21 We also used the difference between observed and imputed datasets to recognize 15 experiments with
22 potential antibody cross-reactivity or secondary specificity (**Supp. Fig S6-S8**). We removed from
23 subsequent analyses the 138 flagged datasets and 442 tracks based solely on ATAC-seq or low-quality
24 DNase-seq data as they showed lower correlations, resulting in 2,850 observed and 14,510 imputed
25 marks across 833 samples used in the remainder of this work.

26 **Sample relationships, chromatin states, and high-resolution enhancer mapping.**

27 The resulting compendium of 833 high-quality epigenomes represents a major increase in biological
28 space coverage, with 75% of epigenomes (624 of 833) corresponding to new biological specimens
29 across 33 tissue groups (categories), providing the opportunity to study their relationships
30 systematically, providing insights into the primary determinants of the epigenomic landscape. Both
31 hierarchical and two-dimensional embedding³⁰ clustering of the genome-wide correlation patterns of
32 multiple marks (**Fig. 2a,b, Supp. Fig. S9-S11**) grouped these samples firstly by lifestage (adult vs.
33 embryonic) and sample type (complex tissues vs. primary cells vs. cell lines), and secondly by distinct

1 groups of brain, blood, immune, stem-cell, epithelial, stromal, and endothelial samples within them. By
2 contrast, donor sex was not a primary factor in sample grouping.

3 We clustered samples using each individual mark (**Fig. 2a,b**) evaluated within mark-specific relevant
4 genomic regions. We found that active marks (H3K27ac, H3K4me1, H3K9ac) primarily group samples
5 by differentiation lineage, leading to separate blood, immune, spleen, thymus, epithelial, stromal, and
6 endothelial clusters. These marks also grouped lung, kidney, heart, muscle, and brain samples each
7 into distinct clusters, regardless of whether they were adult or embryonic. By contrast, repressive marks
8 (H3K27me3, H3K9me3) better captured the stage of differentiation, grouping together pluripotent,
9 iPSC-derived, and embryonic samples, which were separated into different groups by active marks. In
10 each case, observed and imputed data co-clustered, but imputed datasets better captured the
11 continuity between different sample types, and more clearly revealed the grouping of sample types,
12 likely driven both by their cleaner signal tracks and their sheer number.

13 We generated a reference epigenomic annotations for each for the 833 samples, using combinations of
14 histone modification maps to map genome-wide locations of 18 chromatin states^{7,8,10} (**Fig. 2c**),
15 including multiple types of enhancer, promoter, transcribed, bivalent, and repressed regions (**Supp.**
16 **Fig. S12**). We applied this model on a scaled mixture of observed and imputed data, excluding the 138
17 flagged observed datasets (see Methods). We found broad consistency in state coverage (**Supp. Fig.**
18 **S13, S14**) and state definitions (**Supp. Fig. S15**) across cell types.

19 We also generated a high-resolution annotation of active enhancer regions by intersecting 3.5M
20 accessible DNA regions from 733 DNase-seq experiments (Meuleman et al., in preparation) with five
21 active enhancer states, resulting in 2.1M high-resolution enhancer regions (57% of all DNase regions),
22 covering 0.8% of the genome in each sample on average, and together capturing 13% of the human
23 genome (**Fig. 3a, Supp. Fig. S18**) a 31% increase from previous maps (**Supp. Fig S19**), and
24 constructed an ‘enhancer-sharing tree’ (**Fig. 2d, Supp. Fig. S16, S17**) relating all 833 samples in a
25 nested set of binary groupings based on their number of shared active enhancers.

26 Regulatory genomics of enhancer modules, target biological processes, and upstream regulators

27 For each high-resolution enhancer region, we defined its activation state in each of the 833
28 epigenomes using flanking nucleosome H3K27ac levels, and used it to group enhancers with
29 coordinated activity into 300 enhancer modules (**Fig. 3a and Supp. Fig S20-S22**). We distinguished
30 290 tissue-specific modules (1.8M enhancers, 88%) with activity in only 2% of samples on average,
31 and 10 broadly-active modules (251k enhancers, 12%) showing activity across 77% of sample
32 categories on average. Embryonic modules combined multiple tissue types, including heart, lung,
33 kidney, muscle, and digestive system, while adult modules separated internal organs.

1 We predicted candidate gene-regulatory roles of each enhancer module based on highly-significant
2 gene ontology enrichment of its target genes³¹, revealing fine-grained tissue-specific biological
3 processes (**Fig. 3b and Supp. Fig S23**), including: ion channels (for brain modules), camera-type eye
4 development (eye modules), neural precursor cell proliferation (neurosphere modules), endothelial
5 proliferation, hemidesmosomes, and digit morphogenesis (endothelial, stromal, and epithelial modules),
6 and organ development and morphogenesis (embryonic modules). These enrichments can help guide
7 the elucidation of target genes and biological processes controlled by individual enhancers within each
8 module. Endocrine, mesenchymal, pancreas, and reproductive modules lacked any gene ontology
9 enrichments, possibly due to small counts or still underexplored areas of biology.

10 We found significant motif enrichments for 202 modules (67% of 300) across 86 motifs (**Fig. 3c**), both
11 suggesting potential new regulators, and confirming known roles for well-studied factors, including:
12 GATA and SPI1 for blood and immune groups³²; NEUROD2 and RFX4 for brain and nervous
13 system^{33,34}; POU5F1 for iPSCs³⁵; KLF4 for digestive tissues³⁶; MEF2D for skeletal and digestive
14 muscle³⁷; TEAD3 for placenta, myosatellite and epithelial cells³⁸; and HIC1 in heart, HSC, and B-cells³⁹.
15 Several motifs distinguished developmental vs. adult tissues, including: NEUROD2 for embryonic-only
16 brain; NFIB for embryonic-only heart, lung, and muscle; MEF2D for adult-only heart, lung, and muscle;
17 and AR for adult-only adipose, heart, liver, and muscle. Motifs were generally highly specific, with 95%
18 (N=82) enriched in only 3% of modules on average, but 4 “promiscuous” motifs were enriched across
19 79 modules on average, including: RFX1-5 (44 modules) in brain and testis⁴⁰; GRHL1 (52 modules) in
20 trophoblast and epithelial differentiation^{41,42}; HNF1A/B (67 modules) in liver, kidney, and pancreas⁴³;
21 and JDP2/AP-1 (152 modules) in immune and bone development, cancer, and response to diverse
22 stimuli^{44,45}.

23 [New enhancer annotations help interpret trait-associated SNPs from genome-wide associations](#) 24 [studies.](#)

25 We next used our 2.1M enhancer annotations and their tissue specificity to interpret genetic variants
26 associated with complex traits, which are increasingly recognized to play gene-regulatory roles^{3,8,13}. We
27 assembled a compendium of 926 well-powered genome-wide association studies (GWAS) from the
28 NHGRI/Ensembl GWAS catalog¹ that have at least 20,000 cases in the initial study sample. These
29 capture 66,801 associations in 33,417 regions, corresponding to 59% of the 113,655 pruned
30 associations in the GWAS catalog⁴⁶ (even though these studies only account for 17% of the 5,454
31 GWAS publications to date), providing an important benchmark for epigenomic enrichment studies.

32 For each trait, we calculated the enrichment of trait-associated SNPs in active enhancers from each of
33 our 833 epigenomes, resulting in 30,844 significant trait-tissue pairs, implicating 534 unique traits and

1 all 833 samples (hypergeometric statistic, $FDR < 1\%$) (**Fig. 4a and Supp. Fig. S24**). These capture
2 30,247 SNPs in enriched annotations (45% of all loci 66,801 loci), providing invaluable insights for
3 epigenomics-based fine-mapping of SNPs within regions of extended linkage disequilibrium. The
4 number of enriched traits represents a nearly 10-fold increase from 58 traits⁸ enriched in H3K4me1 and
5 54 traits²⁵ enriched in H3K27ac reported by the Roadmap Epigenomics project, due to methodological
6 improvements, increases in GWAS results and power, and more available epigenomes. Quantifying the
7 latter component, the new reference epigenomes capture the strongest GWAS enrichment in 75% of
8 cases (402 of 534 traits) (**Fig. 4b**), and provide the only significant enrichment in 22% of cases (116
9 traits) (**Fig. 4c**).

10 We also studied the number of traits for which enrichments are found with increasing numbers of
11 epigenomes (**Fig. 4d**). New epigenomes represent 71 of the top 98 epigenomes that together capture
12 at least one significant GWAS enrichment, and 174 of the top 238 reference epigenomes that together
13 capture all maximal GWAS enrichments (**Supp. Fig. S25**). The tissue categories represented in top
14 contributing samples are very diverse, including blood (which captures several blood traits), heart right
15 atrium (atrial fibrillation, PR interval), liver (cholesterol, metabolites), skin fibroblasts (baldness, hair
16 color), neural cells (educational attainment), adenocarcinoma cells (breast cancer), and LCLs (immune
17 traits). To capture the full space of enriched GWAS traits, nearly the entire tree of sample types was
18 needed, highlighting the importance of broadly sampling cells and tissues to understand the molecular
19 basis of complex disorders.

20 Clustering and hierarchical analysis of GWAS enrichments and tissue sharing

21 Given the block-like structure of the trait-tissue enrichment matrix (**Fig. 4a**), with many biologically-
22 similar traits showing enrichment in samples of common tissue groups, we also calculated trait
23 enrichments for enhancer modules, seeking to capture the sharing between epigenomes (**Supp. Fig.**
24 **S26, S27**). This resulted in a 51% increase in the number of traits showing epigenomic enrichments
25 (from 534 to 804 at 1% FDR) (**Fig. 4e and Supp. Fig. S28**), indicating that the common biological
26 processes captured by enhancer modules are also relevant to complex trait interpretation.

27 Beyond the single-resolution grouping of our modules, we also carried out a multi-resolution analysis of
28 GWAS enrichments using our enhancer-sharing tree (**Fig. 2d**) and reporting significant internal node
29 enrichments relative to parent nodes, thus pinpointing the likely biological specificity at which genetic
30 variants may act (see Methods). This further increased the number of traits showing epigenomic
31 enrichments to 836 (51% relative to individual epigenomes, 4% relative to modules), and substantially
32 increased the number of lead SNPs falling in enriched annotations to 33,706 (11% relative to individual
33 epigenomes, 169% relative to modules) at the same FDR (1%), indicating that multi-resolution

1 approaches can capture SNP-enhancer intersections missed by other approaches (**Fig. 4e, Supp. Fig.**
2 **S28**).

3 We next studied the fraction of GWAS traits for which a tissue showed maximal enrichment to
4 distinguish 'principal' tissues (e.g. immune cells, liver, heart, brain, adipose) that typically showed the
5 strongest enrichments in GWAS traits they are enriched in, suggesting they more frequently play driver
6 roles (**Fig. 5a**). By contrast, 'partner' tissues (e.g. digestive, lung, muscle, epithelial) were enriched in
7 many traits but rarely showed the maximal enrichment, suggesting they may play auxiliary roles.
8 Several tissue pairs showed common trait enrichments significantly more frequently than expected by
9 chance (**Fig. 5b**) in the context of distinct and biologically-meaningful traits (**Fig. 5c**), including liver and
10 adipose (in the context of cholesterol and triglyceride traits), liver and digestive (metabolite traits), liver
11 and immune cells (eating disorders), adipose and endothelial (sleep duration, waist-to-hip ratio),
12 adipose and heart (atrial fibrillation), and adipose and muscle (gestational age), providing a guide for
13 understanding multifactorial traits.

14 Partitioning multifactorial traits and trait combinations into their tissues and pathways of action

15 We used the number of distinct tissue categories enriched in each trait (**Fig. 4a; Supp. Data S1**) to
16 distinguish 303 'unifactorial' traits (56%) with most enriched nodes in only one tissue group (e.g. QT
17 interval in heart, educational attainment in brain, hypothyroidism in immune cells), indicating a more
18 constrained set of biological processes involved (**Fig. 6a**). Another 146 'multifactorial' traits (27%) were
19 enriched on average in 5 different tissue categories indicating multiple modes of action, including:
20 Alzheimer's disease (AD) in both immune and brain tissues^{47,48}; waist-to-hip ratio (adjusted for BMI)⁴⁹ in
21 adipose, muscle, kidney, and digestive tissues; and healthspan in ES, T cells, adipose, and digestive
22 tissues. A subset of 92 'polyfactorial' traits (17%) implicated an average of 14 tissue categories each
23 (**Fig. 6c**), including coronary artery disease (CAD)⁵⁰ with 19 different tissue groups, including liver,
24 heart, adipose, muscle, and endocrine samples.

25 We next used the enriched tissues of multifactorial traits to partition their associated SNPs into
26 (potentially-overlapping) sub-groups, which were enriched in distinct biological pathways, thus revealing
27 distinct processes through which multifactorial traits may act (**Fig. 6d, Supp. Fig. S29**). For example,
28 339 CAD-associated SNPs in enriched enhancers partitioned into: 212 SNPs in heart enhancers that
29 preferentially localized near artery, cardiac, and vessel morphogenesis genes; 121 SNPs in endocrine
30 enhancers, which enriched in lipid homeostasis; 122 SNPs in adipose enhancers, which enriched in
31 axon guidance/extension and focal adhesion, consistent with adipose tissue innervation processes; 169
32 SNPs in liver enhancers, which enriched in cholesterol/lipid metabolism and transport; and 112 SNPs in
33 ES-derived muscle cells, which enriched in septum morphogenesis, cardiac chamber and aorta

1 development.

2 This partitioning of genetic loci into tissues also helped inform the shared genetic risk between pairs of
3 co-enriched traits, by revealing the tissues that may underlie their common biological basis (**Fig. 6d**).
4 For example, the same partitioning of CAD loci showed that CAD loci in heart, muscle, and endothelial
5 enhancers were preferentially also associated with high blood pressure and atrial fibrillation risk loci.
6 However, CAD loci in liver and endocrine enhancers were instead associated with systolic blood
7 pressure⁵¹. Similarly CAD loci also associated with waist-to-hip ratio^{49,51,52} overlapped adipose but not
8 liver, endocrine, or heart enhancers, and CAD loci associated with HDL cholesterol⁵³ overlapped liver,
9 adipose, and endocrine enhancer but not heart tissues.

10 Tissue enrichment and co-enrichment patterns paint network of complex trait associations.

11 We next classified each GWAS trait according to its enriched tissues, and linked traits showing similar
12 enrichment patterns into a trait-trait co-enrichment network (**Fig. 7**, and **Supp. Fig. S30, S31**).
13 Unifactorial traits formed the cores of highly-connected communities, including: cognitive and
14 psychiatric traits in brain and neurons; heart beat intervals in heart; cholesterol measures in liver;
15 filtration rate in kidney; immune traits in T-cells; and blood cell counts in hematopoietic cells.
16 Multifactorial traits connected these communities, including: CAD linking heart, endocrine, and liver;
17 HDL and triglycerides levels linking liver and adipose; lung function-related traits linking lung, heart, and
18 digestive tissues; blood pressure measurements surrounding heart and linking to endocrine,
19 endothelial, and liver; cell count fraction traits implicated principally blood often partnered with liver,
20 digestive, and other tissues. Polyfactorial traits (e.g. waist-to-hip ratio and heel bone mineral density)
21 were centrally located linking diverse categories.

22 We found that this trait-trait co-enrichment network captures many biologically-meaningful relationships
23 that are missed by genetic information alone (**Supp Fig. S32, S33, S34**). A genetic overlap network
24 connecting any two traits that share even 5% of their loci (Jaccard index, 10kb resolution) results in
25 only 934 edges, and only captures 5% of the edges captured by our epigenomics-centered analysis
26 (N=283 of 5547), highlighting the importance of our epigenomics lens in capturing the common
27 biological basis of complex traits.

28 Discussion

29 In this work, we presented EpiMap, the most complete and comprehensive map of the human
30 epigenome, encompassing ~15k uniformly-processed, QC-metric pruned, and computationally-
31 completed datasets. Our resource encompasses 833 distinct biological samples, each with 18
32 epigenomic marks, painting a rich epigenomic landscape. For each reference epigenome, we generate

1 a chromatin state annotation based on multiple chromatin marks and distinguish diverse classes of
2 enhancer, promoter, transcribed, repressed, repetitive, heterochromatic, and quiescent states. We also
3 provide a high-resolution enhancer annotation track, that combines multiple active enhancer states and
4 DNase-accessible regions, covering only 0.8% of each reference epigenome, and collectively 13% of
5 the genome across all 833 tissues.

6 EpiMap greatly expands the biological space covered by previous reference epigenome maps, by
7 incorporating samples of the endocrine system, placenta, extraembryonic membranes, reproductive
8 system, stromal and endothelial primary cells, and a large collection of widely-used cancer cell lines.
9 We also greatly increase the coverage of embryonic and adult brain, heart, muscle, kidney, lung, and
10 liver tissues, as well as blood, immune, lymphoblastoid, and epithelial cells. This broader biological
11 space has important implications both in capturing gene-regulatory elements and upstream regulators
12 of an increased set of tissue-specific biological pathways, and in annotating gene-regulatory variants
13 across a broader biological spectrum that now capture many more traits and disease phenotypes that
14 were previously uncaptured.

15 The integration and uniform processing of these samples enabled us to paint a detailed picture of
16 biological sample relationships, both outlining the relationships between our 33 broad tissue categories,
17 and detailing the relationships of individual samples within these categories. For example, we found
18 that lifestage played an important role in establishing high-level organization of sample similarities, that
19 primary cells clustered separately from their tissue of origin, that adult samples separated by tissue but
20 embryonic samples clustered together. We also recognized differences in the epigenomic relationships
21 painted by different marks, with repressive marks better distinguishing developmental stages, and
22 active marks better distinguishing different tissues and lineages. These relationships can help guide the
23 prioritization of new biological samples to profile for gene-regulatory or disease studies, by studying
24 gene-regulatory motif enrichments, downstream-gene pathway enrichments, and GWAS trait
25 enrichments in the context of the coverage of biological space by closely- and distantly-related
26 samples.

27 Our analysis enabled us to elucidate important gene-regulatory relationships between enhancers, their
28 gene-regulatory targets, and their upstream regulators. By recognizing modules of common enhancer
29 activity, we partitioned 2.1 million gene-regulatory elements into 300 co-regulated sets, distinguishing
30 broadly-active enhancer modules vs. tissue-specific modules, and their distinct gene-regulatory circuitry
31 and biological roles. Gene-regulatory sequence motifs enriched in modules of common activity patterns
32 enabled us to recognize upstream regulators of these modules, including many newly-profiled tissues
33 such as TEAD3 in placenta and epithelial cells and NFIB in various embryonic organs, and

1 distinguishing tissue-specific vs. promiscuous gene-regulatory motifs such as RFX1-5, GRHL1,
2 HNF1A/B, and AP-1. Similarly, common gene ontology enrichments of genes proximal to these
3 modules enabled us to pinpoint the common biological pathways they likely control in tissue-specific,
4 lineage-specific, and broadly-active biological roles.

5 Our work also provided the most comprehensive analysis to date of the gene-regulatory underpinnings
6 of complex traits and human disease. We found statistically-significant enrichments between 534 traits
7 and all 833 tissues, shedding light on 30,247 loci containing SNPs within enriched annotations, and
8 thus providing meaningful insights into their potential mechanisms of action. These enrichments helped
9 distinguish unifactorial, multifactorial, and polyfactorial traits, based on the number of distinct tissue
10 types they implicate, and revealed principal vs. partner tissues that play likely driver vs. auxiliary roles
11 across traits. The multiple enriched tissues in multifactorial traits allowed us to dissect their complexity,
12 by partitioning SNPs by tissues, which showed distinct gene pathway enrichments and shared genetic
13 risks with different related traits. Finally, we used these tissue-trait enrichment and co-enrichment
14 patterns to reveal the shared biological basis of hundreds of complex traits through the lens of their
15 enriched tissues, providing an important basis for studying the common and distinct components of
16 disease comorbidity relationships.

17 We expect EpiMap to enable many new methodological developments in the study of gene regulation
18 and disease. For example, the much more densely-populated tree of samples enabled us to develop a
19 new hierarchical approach to GWAS trait-tissue enrichment analysis that directly compares the
20 enrichment of parent-child tree node pairs, thus finding the appropriate level of tissue specificity where
21 genetic traits may act. The approach itself is general, and likely also applicable to hierarchical analyses
22 of motif and gene pathway enrichments across the tree. We expect that many additional multi-
23 resolution approaches will be applicable to these datasets, enabling us to recognize variability between
24 and within group rigorously and systematically. Similarly, the large number of traits and tissues enabled
25 us to infer networks of tissue-trait, trait-trait, and tissue-tissue relationships, and we expect that many
26 additional graph algorithms and analysis approaches will be applicable to the study of these networks.

27 EpiMap also has several limitations that we hope will be overcome with continued technological
28 improvements. First, outside cancer lines and isolated primary cells, our tissue samples are primarily
29 from bulk dissections, which combine multiple underlying cell types, thus hiding the individual
30 contributions and distinct biology of each cell type, and sometimes missing altogether the contribution
31 of lower-abundance cell types. As single-cell ATAC-seq⁵⁵ and single-cell ChIP-seq^{56,57} approaches
32 mature, we expect that new cell-type-specific maps will become possible, enabling us to partition the
33 enhancers and chromatin states discovered here into their constituent cell types, and also to discover

1 new enhancers and gene-regulatory elements from lower-abundance cell types that are currently not
2 detectable in bulk samples. The presence of such single-cell maps should also allow systematic
3 methods for epigenomic deconvolution⁵⁸. In addition, our current approach for uniformly processing and
4 imputing missing marks does not take into consideration the genotype of different individuals, which
5 contains important information for inferring the activity pattern of genes or gene-regulatory regions in a
6 new individual based on their genotype, but also their phenotypic variables. Lastly, while EpiMap
7 represents a substantial increase relative to previous maps, we are still missing many tissues,
8 environmental stimulation conditions and developmental stages that may activate enhancers and other
9 gene-regulatory elements that may not be currently visible in our compendium.

10 **Acknowledgements**

11 We thank the ENCODE, Roadmap, and GGR consortia for generating high-quality public datasets and
12 rapidly disseminating their results to the broader community. We thank Daofeng Li and Ting Wang, and
13 Idan Gabdank and J. Seth Strattan for making our observed and imputed genome-wide tracks and
14 chromatin state annotations available through the WashU Epigenome Browser and the ENCODE portal
15 respectively. We thank Jason Ernst for advice, guidance, and for developing the ChromImpute
16 methodology and code base. We thank Pouya Kheradpour for help with motif enrichment analysis
17 software. We thank Luke Ward for incorporating our annotations in HaploReg. We thank the Charles
18 Epstein, Xihong Lin, Hufeng Zhou, Corbin Quick, Jacob Schreiber, Bill Noble, Martin Hirst, Zhiping
19 Weng, Mark Gerstein, ENCODE, IHEC, Roadmap, GENCODE, GTEx, GSP, and TopMed consortia for
20 feedback on early versions of this work. We thank Irwin Jungreis, Lei Hou, Leandro Agudelo, Shahin
21 Mohammadi, Xinchun Wang, Azim Amirabad, Max Wolf, Alvin Shi, Khoi Nguyen for feedback on the
22 work and the resource. This work was supported by National Institutes of Health grants HG008155,
23 HG009446, HG009088, HG007234, HG007610, GM113708, MH109978, MH119509, and AG058002
24 (M.K.) and NIH training grant GM087237 (C.B.).

References

1. MacArthur, J. *et al.* The new NHGRI-EBI Catalog of published genome-wide association studies (GWAS Catalog). *Nucleic Acids Res.* **45**, D896–D901 (2017).
2. Visscher, P. M. *et al.* 10 Years of GWAS Discovery: Biology, Function, and Translation. *Am. J. Hum. Genet.* **101**, 5–22 (2017).
3. Ward, L. D. & Kellis, M. Interpreting noncoding genetic variation in complex traits and human disease. *Nat. Biotechnol.* **30**, 1095–1106 (2012).
4. Claussnitzer, M. *et al.* FTO Obesity Variant Circuitry and Adipocyte Browning in Humans. *N. Engl. J. Med.* **373**, 895–907 (2015).
5. Zhang, F. & Lupski, J. R. Non-coding genetic variants in human disease. *Hum. Mol. Genet.* **24**, R102–10 (2015).
6. Gallagher, M. D. & Chen-Plotkin, A. S. The Post-GWAS Era: From Association to Function. *Am. J. Hum. Genet.* **102**, 717–730 (2018).
7. ENCODE Project Consortium. An integrated encyclopedia of DNA elements in the human genome. *Nature* **489**, 57–74 (2012).
8. Roadmap Epigenomics Consortium *et al.* Integrative analysis of 111 reference human epigenomes. *Nature* **518**, 317–330 (2015).
9. Stunnenberg, H. G., International Human Epigenome Consortium & Hirst, M. The International Human Epigenome Consortium: A Blueprint for Scientific Collaboration and Discovery. *Cell* **167**, 1897 (2016).
10. Ernst, J. & Kellis, M. Discovery and characterization of chromatin states for systematic annotation of the human genome. *Nat. Biotechnol.* **28**, 817–825 (2010).
11. Ernst, J. & Kellis, M. ChromHMM: automating chromatin-state discovery and characterization. *Nat. Methods* **9**, 215–216 (2012).
12. Hoffman, M. M. *et al.* Unsupervised pattern discovery in human chromatin structure through genomic segmentation. *Nat. Methods* **9**, 473–476 (2012).
13. Ernst, J. *et al.* Mapping and analysis of chromatin state dynamics in nine human cell types. *Nature* **473**, 43–49 (2011).
14. Ward, L. D. & Kellis, M. HaploReg: a resource for exploring chromatin states, conservation, and regulatory motif alterations within sets of genetically linked variants. *Nucleic Acids Res.* **40**, D930–4 (2012).
15. Maurano, M. T. *et al.* Systematic localization of common disease-associated variation in regulatory DNA. *Science* **337**, 1190–1195 (2012).
16. Finucane, H. K. *et al.* Partitioning heritability by functional annotation using genome-wide

- association summary statistics. *Nat. Genet.* **47**, 1228–1235 (2015).
17. Cantor, R. M., Lange, K. & Sinsheimer, J. S. Prioritizing GWAS results: A review of statistical methods and recommendations for their application. *Am. J. Hum. Genet.* **86**, 6–22 (2010).
 18. Gjonneska, E. *et al.* Conserved epigenomic signals in mice and humans reveal immune basis of Alzheimer's disease. *Nature* **518**, 365–369 (2015).
 19. Farh, K. K.-H. *et al.* Genetic and epigenetic fine mapping of causal autoimmune disease variants. *Nature* **518**, 337–343 (2015).
 20. Wall, J. D. & Pritchard, J. K. Haplotype blocks and linkage disequilibrium in the human genome. *Nat. Rev. Genet.* **4**, 587–597 (2003).
 21. Zöllner, S. & Pritchard, J. K. Coalescent-based association mapping and fine mapping of complex trait loci. *Genetics* **169**, 1071–1092 (2005).
 22. Pickrell, J. K. Joint analysis of functional genomic data and genome-wide association studies of 18 human traits. *Am. J. Hum. Genet.* **94**, 559–573 (2014).
 23. Li, Y. & Kellis, M. Joint Bayesian inference of risk variants and tissue-specific epigenomic enrichments across multiple complex human diseases. *Nucleic Acids Res.* **44**, e144 (2016).
 24. Gusev, A. *et al.* Partitioning heritability of regulatory and cell-type-specific variants across 11 common diseases. *Am. J. Hum. Genet.* **95**, 535–552 (2014).
 25. Ernst, J. & Kellis, M. Large-scale imputation of epigenomic datasets for systematic annotation of diverse human tissues. *Nat. Biotechnol.* **33**, 364–376 (2015).
 26. Durham, T. J., Libbrecht, M. W., Howbert, J. J., Bilmes, J. & Noble, W. S. PREDICTD PaRallel Epigenomics Data Imputation with Cloud-based Tensor Decomposition. *Nat. Commun.* **9**, 1402 (2018).
 27. Schreiber, J., Durham, T., Bilmes, J. & Noble, W. S. Multi-scale deep tensor factorization learns a latent representation of the human epigenome. doi:10.1101/364976
 28. Genomics of Gene Regulation. *Genome.gov* Available at: <https://www.genome.gov/Funded-Programs-Projects/Genomics-of-Gene-Regulation>. (Accessed: 4th October 2019)
 29. Li, D., Hsu, S., Purushotham, D., Sears, R. L. & Wang, T. WashU Epigenome Browser update 2019. *Nucleic Acids Research* **47**, W158–W165 (2019).
 30. Becht, E. *et al.* Dimensionality reduction for visualizing single-cell data using UMAP. *Nat. Biotechnol.* (2018). doi:10.1038/nbt.4314
 31. McLean, C. Y. *et al.* GREAT improves functional interpretation of cis-regulatory regions. *Nat. Biotechnol.* **28**, 495–501 (2010).
 32. Laslo, P. *et al.* Multilineage transcriptional priming and determination of alternate hematopoietic cell fates. *Cell* **126**, 755–766 (2006).
 33. Blackshear, P. J. *et al.* Graded phenotypic response to partial and complete deficiency of a brain-

- specific transcript variant of the winged helix transcription factor RFX4. *Development* **130**, 4539–4552 (2003).
34. Olson, J. M. *et al.* NeuroD2 is necessary for development and survival of central nervous system neurons. *Dev. Biol.* **234**, 174–187 (2001).
 35. Chew, J.-L. *et al.* Reciprocal transcriptional regulation of Pou5f1 and Sox2 via the Oct4/Sox2 complex in embryonic stem cells. *Mol. Cell. Biol.* **25**, 6031–6046 (2005).
 36. Katz, J. P. *et al.* The zinc-finger transcription factor Klf4 is required for terminal differentiation of goblet cells in the colon. *Development* **129**, 2619–2628 (2002).
 37. Ohkawa, Y., Marfella, C. G. A. & Imbalzano, A. N. Skeletal muscle specification by myogenin and Mef2D via the SWI/SNF ATPase Brg1. *EMBO J.* **25**, 490–501 (2006).
 38. Jacquemin, P., Martial, J. A. & Davidson, I. Human TEF-5 is preferentially expressed in placenta and binds to multiple functional elements of the human chorionic somatomammotropin-B gene enhancer. *J. Biol. Chem.* **272**, 12928–12937 (1997).
 39. Burrows, K. *et al.* The transcriptional repressor HIC1 regulates intestinal immune homeostasis. *Mucosal Immunol.* **10**, 1518–1528 (2017).
 40. Sugiaman-Trapman, D. *et al.* Characterization of the human RFX transcription factor family by regulatory and target gene analysis. *BMC Genomics* **19**, 181 (2018).
 41. Kubota, K., Kent, L. N., Rumi, M. A. K., Roby, K. F. & Soares, M. J. Dynamic Regulation of AP-1 Transcriptional Complexes Directs Trophoblast Differentiation. *Mol. Cell. Biol.* **35**, 3163–3177 (2015).
 42. Wang, S. & Samakovlis, C. Grainy head and its target genes in epithelial morphogenesis and wound healing. *Curr. Top. Dev. Biol.* **98**, 35–63 (2012).
 43. Tanaka, T. *et al.* Dysregulated expression of P1 and P2 promoter-driven hepatocyte nuclear factor-4 α in the pathogenesis of human cancer. *The Journal of Pathology: A Journal of the Pathological Society of Great Britain and Ireland* **208**, 662–672 (2006).
 44. Hess, J., Angel, P. & Schorpp-Kistner, M. AP-1 subunits: quarrel and harmony among siblings. *J. Cell Sci.* **117**, 5965–5973 (2004).
 45. Wagner, E. F. & Eferl, R. Fos/AP-1 proteins in bone and the immune system. *Immunol. Rev.* **208**, 126–140 (2005).
 46. Buniello, A. *et al.* The NHGRI-EBI GWAS Catalog of published genome-wide association studies, targeted arrays and summary statistics 2019. *Nucleic Acids Res.* **47**, D1005–D1012 (2019).
 47. Heppner, F. L., Ransohoff, R. M. & Becher, B. Immune attack: the role of inflammation in Alzheimer disease. *Nat. Rev. Neurosci.* **16**, 358–372 (2015).
 48. Henstridge, C. M., Hyman, B. T. & Spires-Jones, T. L. Beyond the neuron-cellular interactions early in Alzheimer disease pathogenesis. *Nat. Rev. Neurosci.* **20**, 94–108 (2019).

49. Winkler, T. W. *et al.* The Influence of Age and Sex on Genetic Associations with Adult Body Size and Shape: A Large-Scale Genome-Wide Interaction Study. *PLoS Genet.* **11**, e1005378 (2015).
50. van der Harst, P. & Verweij, N. Identification of 64 Novel Genetic Loci Provides an Expanded View on the Genetic Architecture of Coronary Artery Disease. *Circ. Res.* **122**, 433–443 (2018).
51. Kichaev, G. *et al.* Leveraging Polygenic Functional Enrichment to Improve GWAS Power. *Am. J. Hum. Genet.* **104**, 65–75 (2019).
52. Nielsen, J. B. *et al.* Biobank-driven genomic discovery yields new insight into atrial fibrillation biology. *Nat. Genet.* **50**, 1234–1239 (2018).
53. Hoffmann, T. J. *et al.* A large electronic-health-record-based genome-wide study of serum lipids. *Nat. Genet.* **50**, 401–413 (2018).
54. Heller, K. A. & Ghahramani, Z. Bayesian hierarchical clustering. *of the 22nd international conference on ...* (2005).
55. Buenrostro, J. D. *et al.* Single-cell chromatin accessibility reveals principles of regulatory variation. *Nature* **523**, 486–490 (2015).
56. Rotem, A. *et al.* Single-cell ChIP-seq reveals cell subpopulations defined by chromatin state. *Nat. Biotechnol.* **33**, 1165–1172 (2015).
57. Grosselin, K. *et al.* High-throughput single-cell ChIP-seq identifies heterogeneity of chromatin states in breast cancer. *Nat. Genet.* **51**, 1060–1066 (2019).
58. Guo, S. *et al.* Identification of methylation haplotype blocks aids in deconvolution of heterogeneous tissue samples and tumor tissue-of-origin mapping from plasma DNA. *Nat. Genet.* **49**, 635–642 (2017).
59. Ashburner, M. *et al.* Gene ontology: tool for the unification of biology. The Gene Ontology Consortium. *Nat. Genet.* **25**, 25–29 (2000).
60. Karimzadeh, M., Ernst, C., Kundaje, A. & Hoffman, M. M. Umap and Bismap: quantifying genome and methylome mappability. *Nucleic Acids Res.* **46**, e120 (2018).
61. Rosenbloom, K. R. *et al.* The UCSC Genome Browser database: 2015 update. *Nucleic Acids Res.* **43**, D670–81 (2015).
62. Feng, J., Liu, T., Qin, B., Zhang, Y. & Liu, X. S. Identifying ChIP-seq enrichment using MACS. *Nat. Protoc.* **7**, 1728–1740 (2012).
63. Kharchenko, P. V., Tolstorukov, M. Y. & Park, P. J. Design and analysis of ChIP-seq experiments for DNA-binding proteins. *Nat. Biotechnol.* **26**, 1351–1359 (2008).
64. Gu, Z., Gu, L., Eils, R., Schlesner, M. & Brors, B. circlize Implements and enhances circular visualization in R. *Bioinformatics* **30**, 2811–2812 (2014).
65. Melville, J. uwot: The Uniform Manifold Approximation and Projection (UMAP) Method for Dimensionality Reduction. (2019).

66. Kheradpour, P. & Kellis, M. Systematic discovery and characterization of regulatory motifs in ENCODE TF binding experiments. *Nucleic Acids Res.* **42**, 2976–2987 (2014).
67. Yu, G., Wang, L.-G., Han, Y. & He, Q.-Y. clusterProfiler: an R package for comparing biological themes among gene clusters. *OMICS* **16**, 284–287 (2012).
68. Csardi, G., Nepusz, T. & Others. The igraph software package for complex network research. *InterJournal, Complex Systems* **1695**, 1–9 (2006).

1 **Figure legends:**

2 **Figure 1. EpiMap resource overview.** **a.** EpiMap data matrix across 859 samples (columns) and 35 assays
3 (rows), ordered by number of experiments (parentheses) and colored by metadata. **b.** Paired observed (blue) and
4 imputed (red) tracks for all Tier 1 and Tier 2 assays in three regions at different resolutions for randomly-selected
5 samples. Full tracks at <https://epigenome.wustl.edu/epimap>. **c.** Heatmap of paired observed and imputed signal
6 intensity across all punctate Tier 1 and Tier 2 assays across 2000 highest-max-signal bins among 5000 randomly-
7 selected 25bp bins. Samples (rows) and bins (columns) are clustered and diagonalized using maximum imputed
8 signal intensity, with broadly-active regions shown first.

9 **Figure 2. Reference epigenome relationships.** **a.** Genome-wide correlation across all 833 samples using all
10 Tier 1 marks, hierarchically clustered (left), only H3K27ac (middle), and only H3K27me3 (right). **b.** Two-
11 dimensional embeddings of Tier 1 and 2 marks colored by tissue group, using Spearman correlation within
12 matched chromatin states. Arrows point to average of specified groups. **c.** Chromatin state annotations for 98
13 Roadmap (left) and 833 EpiMap (right) epigenomes using an 18-state ChromHMM model⁸ based on all Tier 1
14 histone marks, with colored lines connecting matched epigenomes. **d.** Hierarchical clustering of 833 reference
15 epigenomes based on enhancer activity distances (Supp. Fig. S19). Subtrees enriched for specific sample types
16 are highlighted and labeled (colors). Samples labeled with reduced sample names and colored by metadata
17 (**Supp. Table S1**).

18 **Figure 3. Enhancer module circuitry.** **a.** Clustering of 2.1M enhancer elements (top) into 300 modules
19 (columns) using enhancer activity levels (heatmap) across 833 samples (rows), quantified by H3K27ac levels
20 within accessible enhancer chromatin states. Bottom panel shows enrichment of each module for each metadata
21 annotation, highlighting 34 groups of modules (separated by dotted lines): 33 sample-type-specific (colored
22 boxes) and 1 multiply-enriched (left-most). **b.** Gene ontology^{31,59} (GO) enrichments (heatmap) for each module
23 (columns) across 865 terms (rows) with $P < e-4$. GO terms colored by maximal enrichment group. Only 72
24 representative terms are shown, chosen by a bag-of-words approach within each tissue group. **c.** Motif
25 enrichment (heatmap) for each module (columns) across 86 motif clusters (rows) with enrichment $\log_2FC > 1.5$.
26 Motifs colored by module of maximal enrichment.

27 **Figure 4. GWAS tissue-prioritization.** **a.** Trait-tissue enrichment (center, heatmap) between reported lead
28 single-nucleotide polymorphisms (SNPs) from 534 genome-wide association studies (rows) and accessible active

1 enhancers across 833 epigenomes (columns) (FDR<1%). Enriched tissue groups (left) and number of enriched
2 epigenomes (right) shown for each trait. Only 100 representative traits labeled, using a bag-of-words approach
3 (full list of traits in **Supplementary Fig. S30**). Traits colored by sample with maximal trait-tissue enrichment. **b.**
4 Contribution of each project to the maximum GWAS trait-tissue enrichment for the 534 traits with significant
5 enrichments. **c.** Number of traits (y-axis) with significant GWAS trait-tissue enrichments for each combination
6 (column) of projects (rows). **d.** Increase in the cumulative number of GWAS traits (y-axis) with significant trait-
7 tissue enrichments with increasing numbers of epigenomes (x-axis), ordered to maximize the number of novel
8 trait annotations captured with each new epigenome. Top 25 samples labeled and colored by tissue group, with
9 top 6 GWAS traits shown for the first 8 samples. Points colored by project. All 534 traits are captured after
10 inclusion of 98 samples. **e.** Comparison of GWAS enrichments found (y-axis, left) and number of lead SNPs in
11 significantly-enriched annotations (y-axis, right) using different methodologies (x-axis) for three FDR cutoffs
12 (shades).

13 **Figure 5. Principal and partner tissue enrichments. a.** For each tree node label (rows), the number of GWAS
14 traits (black x-axis, bottom) showing maximum enrichment in that tree node (dark bars, principal tissue) or any
15 enrichment in that tree node (light bars, partner tissue), and the percentage of tissue-enriched traits for which the
16 tissue shows the maximal enrichment (red x-axis, top) across 538 traits. **b.** Overlap in enriched GWAS traits
17 between pairs of tissues with maximal enrichment in the trait (principal tissue, rows) and lower enrichment in the
18 same trait (partner tissue, columns), using tree node labels. **c.** Top traits in significant interactions for selected
19 tissue pairs (Liver, Endocrine, Muscle, Heart, Adipose, PNS). For each pair of co-enriched tissue groups we
20 reported the top 5 GWAS by their percent of significant enrichments coming from either group.

21 **Figure 6.** Examples of trait epigenomic enrichments on enhancer sharing tree, including **a.** single-tissue (QT,
22 Macular) and **b.** multi-tissue (AD, WHR) traits, highlighting nodes with FDR < 0.1% (labels = top 5 by $-\log_{10}p$). **c.**
23 Epigenomic enrichments for Coronary Artery Disease (CAD, PubMedID 29212778) on enhancer activity tree.
24 Nodes passing FDR < 0.1% are labeled by rank, tissue group, and top components, and their subtrees are drawn
25 with solid lines (large circles = top 20 nodes by $-\log_{10}p$). Leaves annotated by metadata and number of enriched
26 parent nodes (outer, red=1, black=2). **d.** Top 20 enriched nodes for CAD with nominal p-values (heatmap) and
27 shared enhancer set sizes (barplot) with number at the subtree (full bar) and number of differential enhancers
28 between the node and its parent (tested set, dark bar). **e.** GO enrichments of node enhancers with lead SNPs

- 1 (nearest expressed genes), colored by each node's tissue group and diagonalized (over-representation test). **f.**
- 2 Enrichment for significant loci in overlap of CAD loci with loci from five related traits, within enriched enhancers in
- 3 each node (heatmap, $-\log_{10}p$ of one-tailed Mann-Whitney test against each trait's loci in enhancer annotations).
- 4 **Figure 7.** Trait-trait network across 538 traits by similarity of epigenetic enrichments (cosine sim. ≥ 0.75), laid
- 5 out using the Fruchterman-Reingold algorithm. Traits (nodes) are colored by contributing groups (pie chart by
- 6 fraction of $-\log_{10}p$, size by maximal $-\log_{10}p$) and interactions (edges) by the group with maximal dot product of
- 7 enrichments between two traits.

1 **Methods:**

2 **Epigenomic datasets and processing**

3 **Primary data sources and metadata information:** We analyzed 3,030 datasets, including 2329
4 epigenomic ChIP-seq datasets, 635 DNase-seq datasets, and 66 ATAC-seq datasets from ENCODE at
5 <https://www.encodeproject.org/>, released as of Sept. 24th 2018. These marks include: Tier 1 assays:
6 DNase-seq, H3K4me1, H3K4me3, H3K27ac, H3K36me3, H3K9me3, and H3K27me3; Tier 2 assays:
7 ATAC-seq, H3K9ac, H3K4me2, H2AFZ, H3K79me2, and H4K20me1; Tier 3 assays: POLR2A, EP300,
8 CTCF, SMC3, RAD21; and Tier 4 histone marks: 16 non-imputed histone acetylation marks, 4
9 methylation marks (H3K9me2, H3K79me1, H3K9me1, H3K23me2), H3F3A, and H3T11ph. We
10 assigned unique sample IDs to each unique combination of: extended biosample summary, donor, sex,
11 age, and lifestage, wherever each attribute was available. We removed samples with genetic
12 perturbations, and kept only samples with appropriately matched ChIP-seq controls. We provide a
13 metadata matrix including the mapping between ENCODE accessions and our unique sample IDs
14 (Supp. Table S1, also at compbio.mit.edu/epimap). We mapped the 111 Roadmap epigenomes and 16
15 ENCODE 2012 epigenomes to any of our samples with overlapping dataset accessions if the
16 accessions were used in the flagship Roadmap epigenomics analysis. This mapping assigned 25
17 samples to ENCODE 2012 and 184 samples to Roadmap 2015, some of which were merged multi-
18 donor samples in Roadmap, out of the final 833 samples that passed QC. These were merged into 16
19 and 111 tissue types respectively in the Roadmap 2015 publication.

20 **Uniform data processing:** We downloaded one alignment file per replicate, prioritizing filtered
21 alignments in hg19 whenever possible. We uniformly processed ChIP-seq and DNase-seq datasets

1 according to the processing pipelines established by the Roadmap Epigenomics Consortium⁸. Briefly,
2 we filtered out improperly paired and non-uniquely mapped reads, truncated reads to 36 base pairs,
3 filtered out a blacklist of low complexity and artifact regions (ENCODE accession ENCSR636HFF), and
4 filtered reads against a mappability track of uniquely mappable regions for 36bp reads⁶⁰. We converted
5 bam files to tagAlign, used liftOver⁶¹ to map GRCh38 alignments to hg19, and pooled all experiments
6 within each ID and assay combination. We subsampled pooled ChIP-seq data sets to a maximum of 30
7 million reads and DNase-seq and ATAC-seq data sets to a maximum of 50 million reads. We used SPP
8 to estimate fragment length. In cases with extremely low fragment length in ATAC-seq and DNase-seq
9 datasets we used the average fragment length (73) from the average of the rest of the tracks. We
10 generated -log₁₀ p-value signal tracks against matched whole cell extract (WCE) for both ChIP-seq
11 and accessibility data sets using the MACS2⁶² and the SPP⁶³ peak caller and cross correlation analysis
12 to identify the proper fragment length as in the Roadmap analysis.

13 Epigenomic Imputation

14 **Imputation:** We carried out epigenomic imputation on 859 unique cell types using ChromImpute²⁵ for a
15 total of 10,778 imputed datasets over thirteen Tier 1 and Tier 2 assays using predictors trained on all 35
16 epigenomic assays across 859 samples. We additionally imputed 4,345 datasets for the five DNA
17 associated factors, using only the 35 epigenomic assays as features to train predictors with
18 ChromImpute. We provide all imputed and processed observed tracks along with tracksets for the 833
19 QCed samples at <https://epigenome.wustl.edu/epimap>²⁹.

20 **Quality control:** For imputation quality control (QC) and validation, we compare observed tracks to
21 imputed tracks when both were available (i.e. when at least two original observed datasets were
22 available for that cell type). We calculated all imputation QC metrics from the original ChromImpute
23 publication²⁵, including genome-wide correlation, % imputed and observed peak recovery, and AUC for
24 all pairs of imputed and observed tracks. In addition to quantitative metrics, we visually inspected
25 epigenomic predictions as part of our quality control. We show (Fig. 1B) three dense and varied regions

1 of different resolutions (25kb, 200kb, 1.5Mb) for each of two randomly chosen samples containing both
2 observed and imputed tracks for each assay. We calculated epigenomic profile quality metrics NSC,
3 RSC, and read depth for all datasets and compared these to the imputation QC metrics (tables in Supp.
4 Table S1). We flagged low-quality tracks by detecting the elbow in the ranked correlation metrics, which
5 we calculated as the point where the change in correlation exceeded 5% of the correlation.

6 **Sample and antibody swap detection:** To systematically identify both potential sample or antibody
7 (Ab) swaps and poor quality experiments, we computed the correlation of each observed experiment
8 against all 10,734 imputed tracks for histone marks and assays (all imputed tracks before removing
9 samples by QC). We then calculated the average correlation among the top 10 most similar tracks to
10 each observed track. We flagged potential Ab swaps by comparing the average correlation against
11 samples of the putative mark against those computed for other marks. We fit an OLS model to each
12 mark comparison, flagged datasets with residuals greater than 3 standard deviations of the average
13 correlation, and visually confirmed 7 Ab swaps (6 low-quality tracks). Similarly, we flagged potential
14 sample swaps by comparing the correlation between imputed and observed tracks against the average
15 correlation in the top 10 tracks in the same mark. We fit an OLS model and flagged datasets with
16 residuals greater than 3 standard deviations of the residuals distribution. We report 19 potentially
17 swapped samples, of which 5 were also flagged as low-quality tracks (**Supp. Fig. S8**).

18 **Secondary reactivities:** In addition to genome-wide QC of imputed tracks, we also focused on the
19 specific differences between observed and imputed tracks. For each observed mark, we generated a
20 genome-wide 'delta' track, computed as the difference in signal intensity between observed and
21 imputed data, re-scaling imputed tracks to match signal intensity properties of the observed tracks, as
22 observed tracks showed a general bias for higher intensity. Some of these 'delta' tracks showed
23 surprisingly high correlations with 'primary' tracks of non-putative marks, indicating potential secondary
24 antibody reactivities. In order to flag these reactivities, we compared the average correlation of each of
25 the delta tracks to the top 10 closest imputed tracks for each mark. As with antibody swaps, we fit an

1 OLS model in each mark combination to flag outliers. We flagged 19 tracks and report 15 after visual
2 inspection as potential secondary reactivities or single replicate swaps (e.g. in the case of DNase-seq)
3 (**Supp. Fig. S7 and S8**). We noted that some cases showed clear difference tracks that don't match
4 available antibodies, suggesting that the secondary reactivity is not a common mark in our
5 compendium.

6 **Biological space coverage:** To evaluate the similarity of imputed and observed tracks across
7 samples, we calculated the pairwise genomic correlations between all pairs of imputed and observed
8 signal tracks. We hierarchically clustered each individual mark's imputed or observed correlation matrix
9 using Ward's method. We averaged all imputed matrices for the six main marks (H3K27ac, H3K4me1,
10 H3K4me3, H3K36me3, H3K27me3, H3K9me3) to create a fused correlation matrix, which we similarly
11 clustered. We plotted the hierarchically clustered tree for the fused matrix alongside the metadata
12 information for each epigenome using the circlize R package⁶⁴.

13 Additionally, we calculated mark-specific spearman correlations restricted to relevant features within all
14 observed and imputed tracks per mark. We mapped each of 13 marks to its top state by emission
15 probability in the ChromHMM 25 state model and any other states with emission probability over 80%.
16 For ATAC-seq, we use the same region list as DNase-seq. For each mark, we averaged and reduced
17 each 25bp signal track to any 200bp regions that were labeled as one of the states associated with the
18 mark in any of the 127 imputed Roadmap epigenomes under the 25-state model^{8,25}. We calculated the
19 spearman correlation between sets of these region-restricted mark signal tracks and generate similarity
20 matrices across all datasets for a mark. Using these spearman correlation matrices on all observed and
21 imputed signal tracks, we computed UMAP dimensionality reductions for each mark and assay using
22 with the uwot R package⁶⁵ with the default parameters except for `n_neighbors=250`, `min_dist=0.25`, and
23 `repulsion_strength=0.25`.

24 [Epigenomic annotations](#)

25 **Chromatin state annotations:** We computed epigenomic annotations on 3,533 imputed and 1,465

1 observed datasets for six marks on 833 samples using ChromHMM with the fixed 18-state model from
2 Roadmap⁸ with the same mnemonics and colors. We use observed data wherever possible, except in
3 cases with no observed data or where observed data was removed in QC. The table of signal tracks
4 used to calculate annotations is available as Supplementary Table S2. Observed data was binarized
5 from signal tracks with a $-\log_{10}$ p-value signal cutoff of 2. In order to binarize imputed data and facilitate
6 the comparison with observed data, we established mark-specific binarization cutoffs. We first
7 separately calculated the overall probability distributions of all imputed and observed tracks for each
8 mark. Then for each mark, we set the imputed binarization cutoff value to the value of the quantile
9 matching the quantile in observed data for the $-\log_{10}$ p-value > 2 cutoff. We used liftOver⁶¹ to map all
10 833 (after QC) ChromHMM annotations to GRCh38 and provide these alongside hg19 annotations and
11 binarized imputed and observed datasets and as tracksets at <https://epigenome.wustl.edu/epimap>.

12 **Defining active enhancers:** We define active enhancers as the intersection of DHS (DNase I
13 Hypersensitive Sites) regions with enhancer annotations and high H3K27ac signal (average signal > 2
14 in the region containing the DHS ± 100 bp). We define DHS regions from an index list of 3,568,912
15 DHS consensus locations determined from 733 DNase-seq experiments. We intersect these regions
16 with the 833 imputed enhancer annotations (states 7,8,9,10,11, and 15 in the 18-state model). This
17 results in 2,842,995 regions with at least one enhancer annotation in any epigenome. Finally, we
18 intersect this matrix with the H3K27ac signal in the ± 100 bp region encompassing each DHS from the
19 same tissue-specific imputed and observed datasets used to calculate the ChromHMM annotations.
20 This procedure results in 2,356,914 active enhancer regions. We created an equivalent promoter
21 element region using the promoter annotations (states 1,2,3,4, and 14 in the 18-state model). We
22 noticed that a number of regions share both enhancer and promoter annotations. As a conservative
23 cutoff, we assign all regions to either enhancers or promoters if 75% or more of its active occurrences
24 are labeled as that type of element (**Supp. Fig. S18**). This final thresholding procedure yields 2,069,090
25 enhancers, 204,104 promoters, and 122,358 dyadic elements (neither specifically promoter or
26 enhancer). Matrices and enhancer locations are available through compbio.mit.edu/epimap.

1 For all images using tissue group order, including ChromHMM tracks and modules heatmaps, groups
2 are ordered alphabetically within six major groups: Tissue/Organs (Adipose, Bone, Digestive,
3 Endocrine, Heart, Kidney, Liver, Lung, Mesench, Muscle, Myosat, Pancreas, Placenta & EEM,
4 Reproductive, Sm. Muscle, and Urinary), Other Primary Cells (Endothelial, Epithelial, and Stromal),
5 Blood + Immune (Blood & T-cell, HSC & B-cell, Lymphoblastoid, Spleen, and Thymus), Nervous
6 system (Brain, Eye, Neurosph, and PNS), Stem (ES-deriv, ESC, iPSC), and Other (Cancer, Other).

7 **Defining enhancer modules:** In order to define enhancer modules, we clustered the binary enhancer
8 matrix defined by intersecting enhancer annotations with DHS regions and with average centered and
9 flanking (+/- 100 bp) H3K27ac signal above a $-\log_{10}$ pval of 2 using the k-centroids algorithm with the
10 Jaccard distance with the number of clusters set to $k=300$. The average module contains 6,897
11 enhancers, and the largest module (enumerating constitutive elements) contains 93,554 enhancer
12 regions. In all heatmap plots of module centers (and associated enrichment figures), we diagonalize the
13 matrix by ordering each column in the heatmap (module centers) by the epigenome which contributes
14 the maximal signal. All columns which have signal over 25% in more than 50% of rows are shown first.
15 We use this diagonalization procedure for all diagonalized heatmaps. We colored each module by the
16 tissue group which contains its maximal signal. Modules highlight sample groupings and organize
17 according to cell type and tissue. Major groups are ordered alphabetically within six major groups and
18 samples are ordered within groups according to Ward method's clustering of the Jaccard distance of of
19 the modules centers matrix. We performed enrichment on the module centers against the metadata of
20 included samples (signal over 25%) by the hypergeometric test, and show enrichments with $-\log_{10}p > 2$.

21 **Gene ontology enrichment:** We performed gene ontology (GO) enrichments on each enhancer
22 module using GREAT v3.0.0 for the Biological Process, Cellular Component, and Molecular Function
23 ontologies³¹. We analyzed and visualized the results in the same manner as in the Roadmap core
24 paper⁸. We only considered enrichments of 2 or greater with a multiple testing-corrected p-value less
25 than 0.01. For Figure 4C, we reduced the enrichments by modules matrix to terms with a maximal -

1 $\log_{10}p$ -value > 4 that were enriched in less than 10% of modules. The full enrichment matrix is shown
2 as **Supp. Figure S27**. As in the case of the diagonalized module centers, we labeled each term
3 according to the module containing its maximal signal. We used a bag of words approach (as described
4 in Roadmap⁸) to pick 72 representative terms out of 865 total terms for **Figure 3B** such that each tissue
5 group has at least one term and the rest are representatively allocated across groups.

6 **Motif enrichment:** We performed motif enrichment analysis across enhancer modules as described in
7 the Roadmap paper. Briefly, we measured enrichments for 1,772 motifs against a background of all
8 enhancers. We report the motif with the highest enrichment in any module for each of 300 previously
9 identified motif clusters^{8,66}. We only report motifs with a maximal \log_2 enrichment ratio of at least 1.5,
10 resulting in 86 motifs, which we show with their PWM logos against all 300 modules as **Figure 3C**.

11 GWAS enrichment analysis

12 We pruned the NHGRI-EBI GWAS catalog¹ (downloaded from [https://www.ebi.ac.uk/gwas/docs/file-](https://www.ebi.ac.uk/gwas/docs/file-downloads)
13 [downloads](https://www.ebi.ac.uk/gwas/docs/file-downloads) on May 3rd, 2019) using a greedy approach: within each trait + PMID combination, we
14 ranked associations by their significance (p-value), and added SNPs iteratively if they were not within
15 5kb of previously added SNPs. We also removed all associations in the HLA locus (for hg19:
16 chr6:29,691,116-33,054,976). This reduced the catalog from 121k to 113k associations. Finally, we
17 reduced the catalog to 926 unique GWAS (from 5454 GWAS) with an initial sample size of at least
18 20,000 cases or individuals (wherever cases and controls were not annotated). This resulted in 66,801
19 lead SNPs, which landed in 33,417 unique genome intervals when we split the genome into 10,000bp
20 intervals.

21 **Flat epigenome enrichments and module epigenome enrichments:** We performed the hyper-
22 geometric test to evaluate GWAS enrichments on full epigenomes and on modules. For these flat
23 enrichments, we compare each number of SNP-enhancer intersections for each enhancer set
24 (epigenome or module) to the full set of intersections in all M enhancers. As above, we correct for
25 multiple testing for each GWAS and enhancer set combination by computing and correcting with null

1 association p-values for epigenomes and modules using the null catalogs generated for the tree
2 enrichment. Rarefaction curves were calculated on the epigenome enrichments by iteratively adding
3 the sample that was either (**Fig. 4D**) significantly enriched or (**Supp. Fig. S29**) the maximal enrichment
4 for the most remaining GWAS until all GWAS were accounted for.

5 **Tree epigenome enrichments:** We constructed a tree by hierarchically clustering the Jaccard
6 similarity of the binary enhancer by epigenomes matrix using complete-linkage clustering. Then, for
7 each node in the tree, we calculated its consensus epigenomic set, defined as the set of all enhancers
8 present in all leaves of the subtree, such that each node's set was a superset of that of its parent. For
9 each GWAS, we asked whether the novel consensus enhancers at a node were significantly enriched
10 for lead SNPs by comparing the enrichment between each node and its parent as measured by the
11 likelihood ratio test between two logistic regressions.

12 Briefly, for each GWAS catalog unique trait and PubMedID, we find all intersections of its pruned SNPs
13 with $M=2,069,090$ enhancers. Then \mathbf{Y} is an indicator vector of size M which shows the intersected
14 enhancers. We find all consensus enhancers (intersection of epigenomes in the subtree) in the node of
15 interest (vector \mathbf{X}_N) and in its parent (\mathbf{X}_P). All vectors are $1 \times M$. We calculate $\mathbf{X}_D = \mathbf{X}_N - \mathbf{X}_P$ (specific
16 enhancers), which is also in $\{0,1\}^{(1 \times M)}$ as each node contains a superset of its parent's enhancers.

17 We then calculate following two logistic regressions:

18 $M1: \mathbf{Y} \sim \mathbf{X}_P + 1$

19 $M2: \mathbf{Y} \sim \mathbf{X}_P + \mathbf{X}_D + 1$

20 We calculated the log-likelihood difference and apply the likelihood ratio test to test whether adding the
21 specific enhancers (M2) is significantly different from the parent model (M1). To correct for multiple
22 testing on a per GWAS and node basis, we generated 1000 null GWAS catalogs by shuffling the
23 associations across GWAS. We used these catalogs to compute the null association p-values for each
24 permuted GWAS and used the 1st, 5th, and 10th smallest p-values for each GWAS and node

1 combination as their 0.1%, 0.5%, and 1% FDR cutoff.

2 For the CAD example, GO terms⁶⁷ were calculated using the nearest gene of each enhancer hit by a
3 lead SNP. We pruned genes to expressed genes by calculating average RNA-seq profiles for each
4 tissue group and excluded genes that had \log_2 FPKM of less than 2 in the average RNA-seq of each
5 sample's group. 341 of 833 samples have matched RNA-seq, which we list in addition to releasing the
6 processed data at compbio.mit.edu/epimap. We kept only the GO terms that were significant in 25% or
7 less of nodes, report the top 2 GO terms per node in **Figure 6C**, and all GO terms in **Supp. Fig. S37**.

8 **Tissue similarity:** We assigned each internal node in the tree to a unique tissue if its subtree's leaves
9 are more than 50% of that tissue and as "Multiple" if the subtree is not majority one tissue. We assigned
10 tissue labels to 641 of 832 (77%) internal nodes where the majority of leaves corresponded to a single
11 group. Using these assignments, we created a tissue by GWAS matrix by adding the $-\log_{10}$ p-values
12 for each tissue node set from all of the GWAS enrichments on the tree. We binarized this matrix and
13 computed the jaccard similarity across tissues to calculate a tissue similarity matrix. To assess
14 significance of tissue overlap, we compared each overlap value against the overlaps from 10,000
15 permuted enrichments. We collapsed each permuted matrix into a tissue by GWAS matrix to compute
16 the overlaps under the null. We performed the permutations for each tissue against other tissues by
17 shuffling the enrichment p-values on the node by GWAS matrix. Specifically, we (a) binarized the
18 enrichment matrix, (b) fixed the column of the group of interest and (c) permuted the remainder of the
19 matrix keeping its row and column marginals the same and then (d) calculated the cosine distance
20 between the permuted and the original matrix of enrichments.

21 **Cross-GWAS Network:** To evaluate the cross-GWAS similarity, we normalized the tissue by GWAS
22 matrix for each GWAS to obtain the proportion of significance attributed to each tissue for each GWAS
23 (**Supp. Fig S38**). We reduced the matrix to 538 significant GWAS with at least 20,000 cases (or
24 individuals when no cases were specified). We created a GWAS-GWAS network using the cosine
25 distance matrix as an adjacency matrix, keeping 5,547 links with a cosine distance of 0.25 or less. We

1 used the Fruchterman-Reingold algorithm to lay out the graph⁶⁸. We use the tissue by GWAS matrix to
2 color links according to the maximum tissue in the product between each pair of nodes and to color
3 nodes according to the maximal tissue for each node (**Supp Fig. S39**).

4 In order to compare the epigenetic network to trait genetic similarity, we binned snps in the GWAS
5 catalog into 10kb windows starting from the beginning of each chromosome. We counted the number of
6 intersecting bins between two traits and keep any trait pairs with jaccard similarity of at least 1%. To
7 compare this to the epigenetic network, we plotted only links in the epigenetic network that coincide
8 with any SNP-sharing GWAS pairs. Additionally, we plotted the heatmaps of the tree enrichments
9 distance matrix and the genetic similarity matrix side by side, first organized by hierarchically clustering
10 the enrichments matrix and then by clustering the genetic similarity matrix (**Supp. Fig. S41 and S42**).

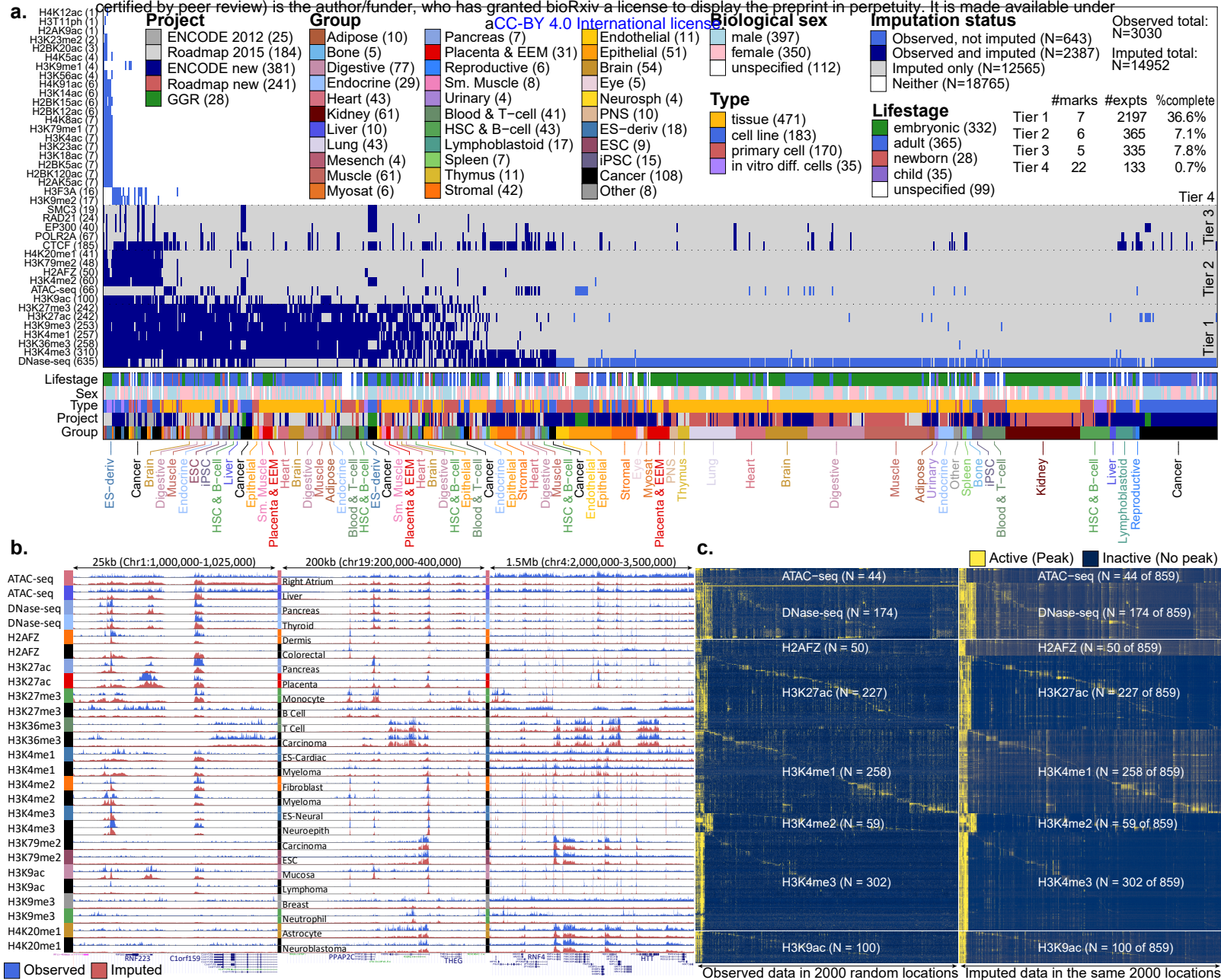


Figure 1

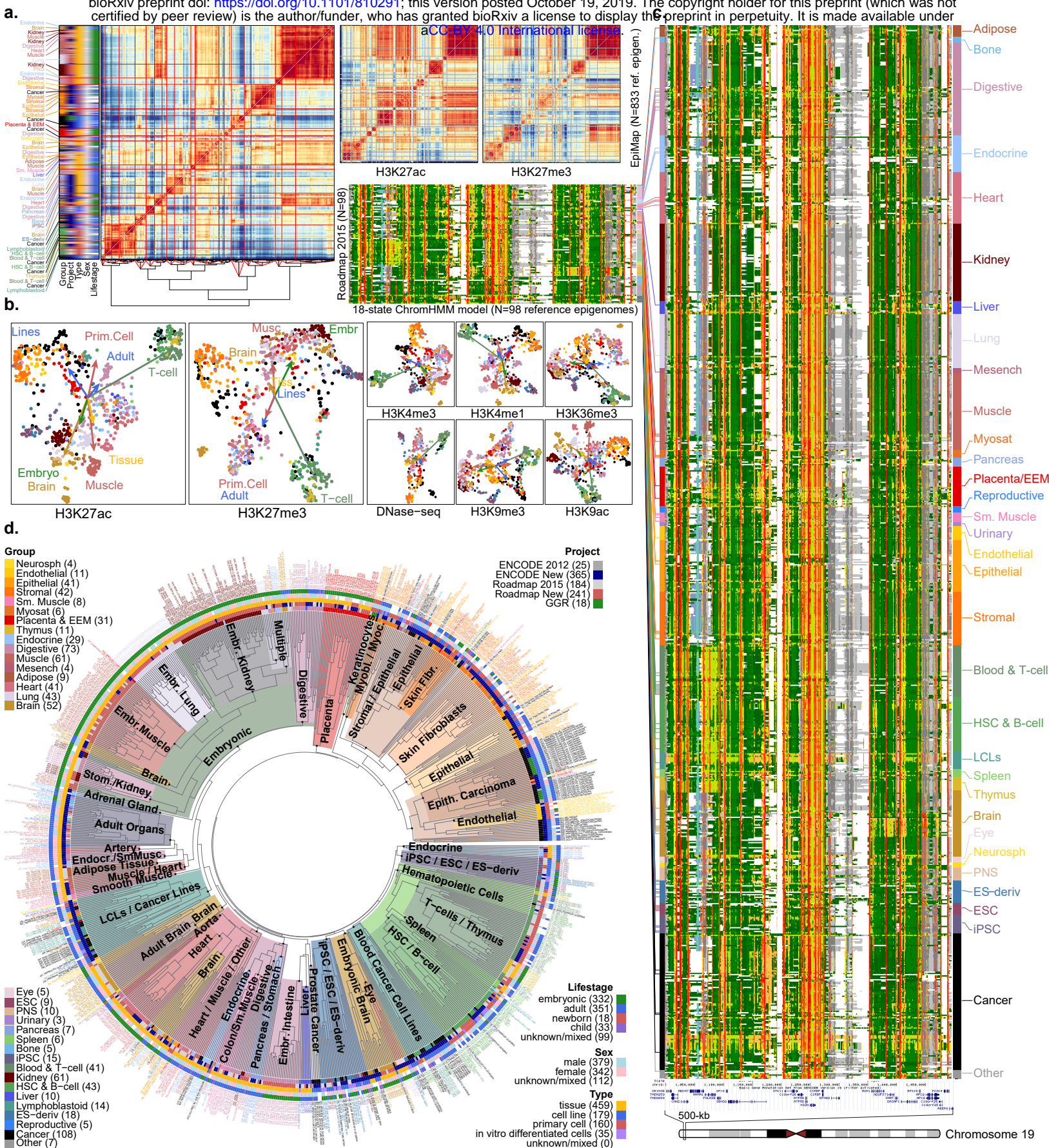


Figure 2

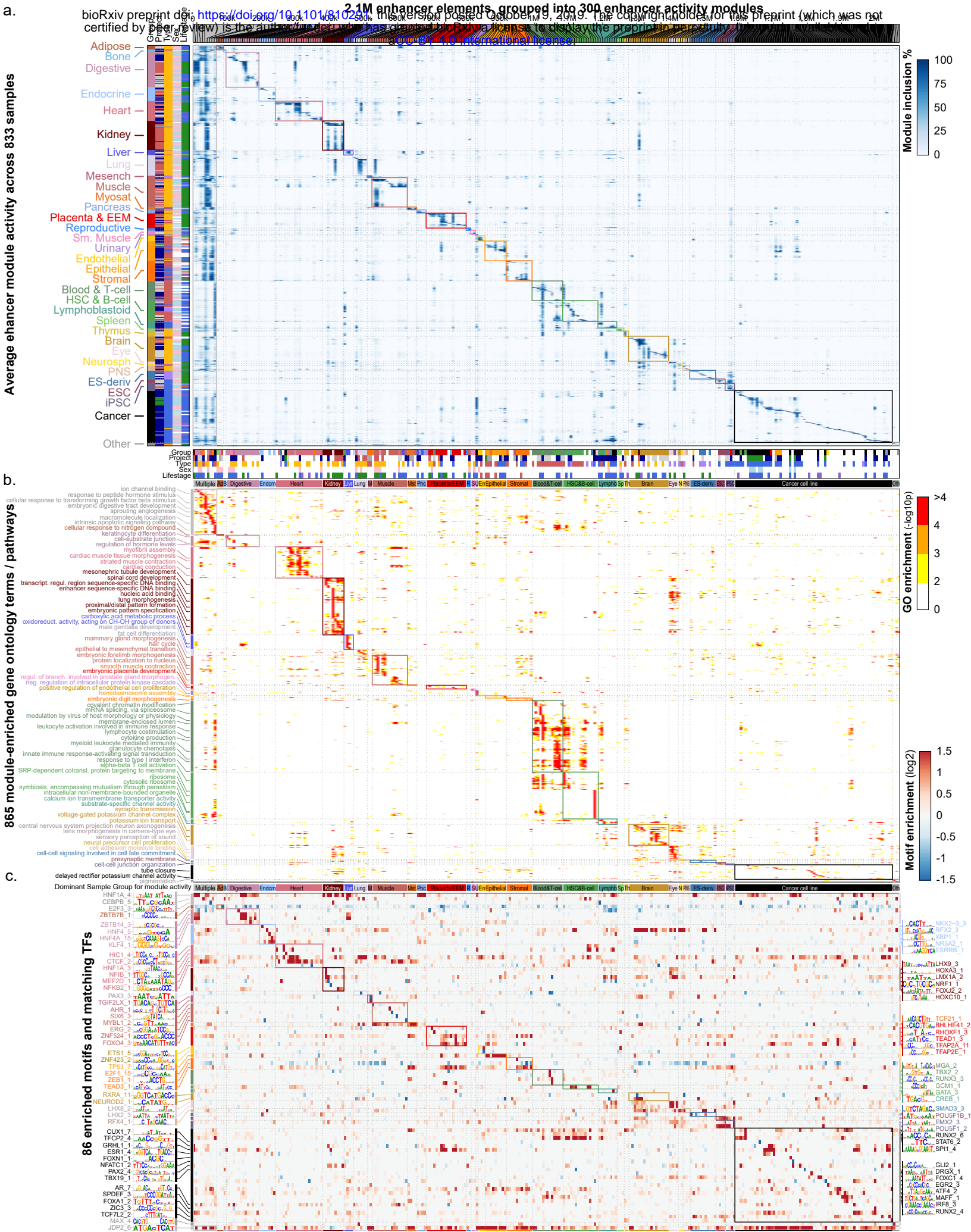


Figure 3

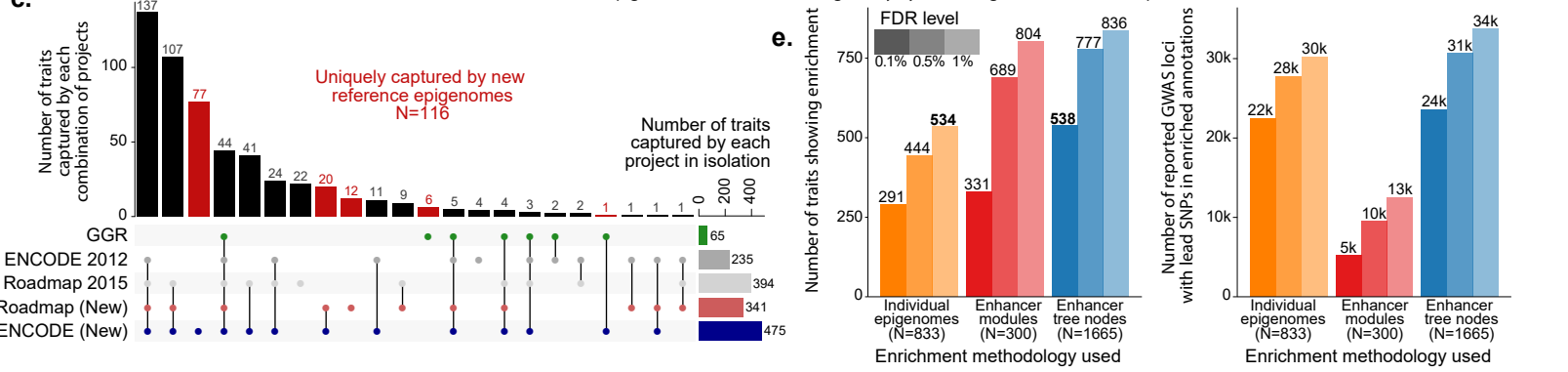
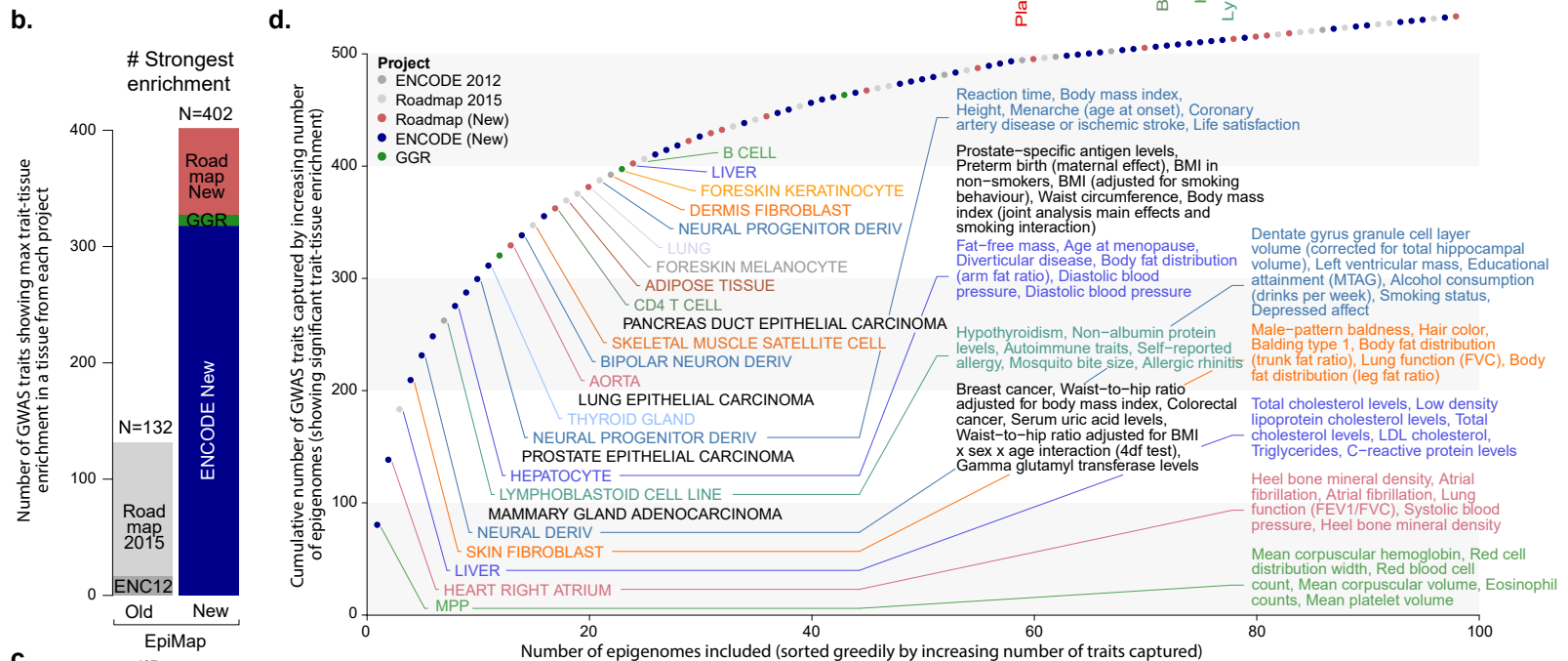
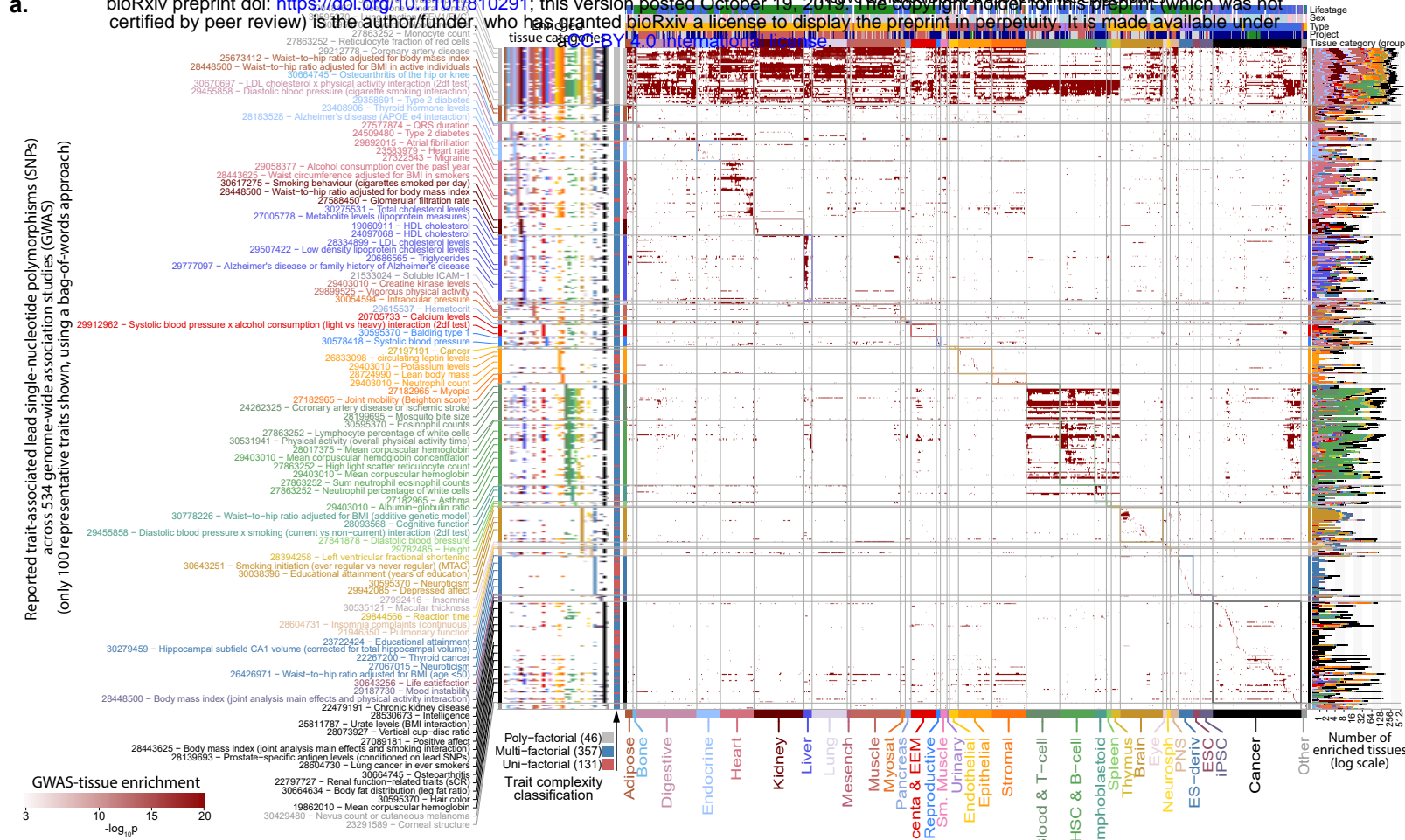


Figure 4

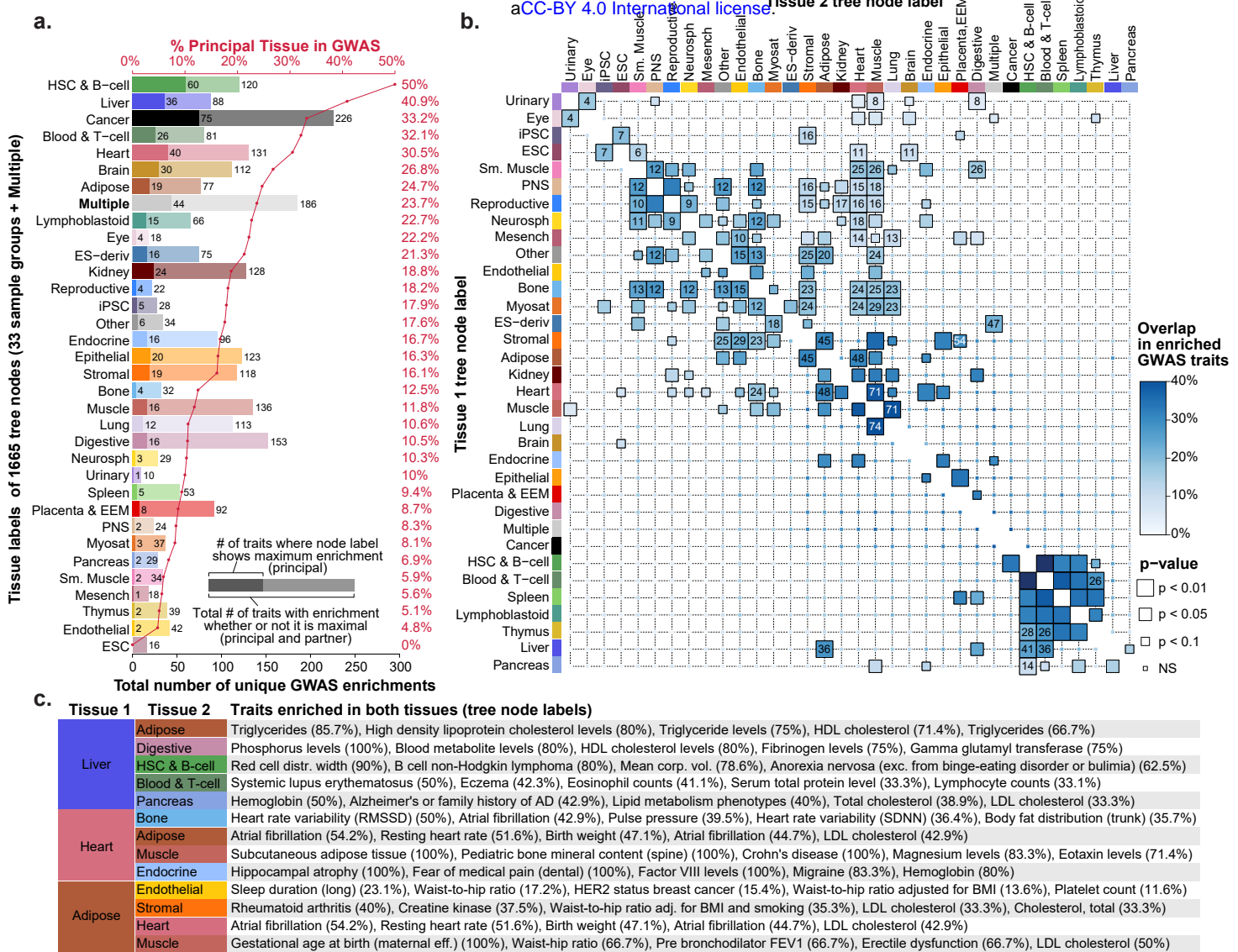


Figure 5

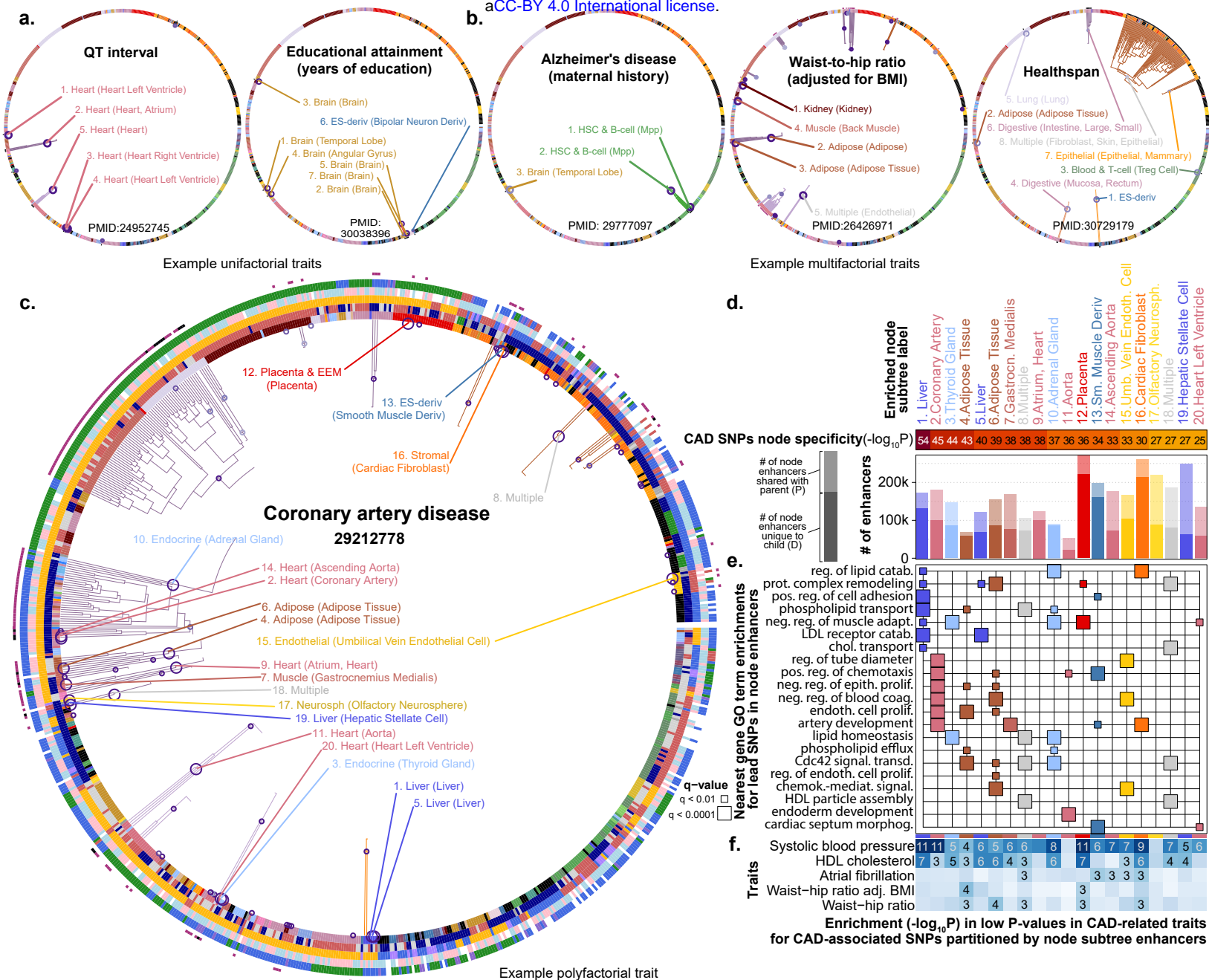


Figure 6

