

# ***Wolbachia* strain wAu efficiently blocks arbovirus transmission in *Aedes albopictus***

Novel *Wolbachia* transinfection in *Aedes albopictus*

## **Authors:**

Maria Vittoria Mancini<sup>1</sup>, Christie S. Herd<sup>1,2</sup>, Thomas H. Ant<sup>1</sup>, Shivan M. Murdochy<sup>1</sup>, Steven P. Sinkins<sup>1</sup>

<sup>1</sup>MRC- University of Glasgow- Centre for Virus Research, Glasgow, UK

<sup>2</sup>Current address: Dept. of Veterinary Pathobiology, University of Missouri, Columbia, MO, USA

## **Abstract**

The global incidence of arboviral diseases transmitted by *Aedes* mosquitoes, including dengue, chikungunya, yellow fever, and Zika, has increased dramatically in recent decades. The release of *Aedes aegypti* carrying the maternally inherited symbiont *Wolbachia* as an intervention to control arboviruses is being trialled in several countries. However, these efforts are compromised in many endemic regions due to the co-localization of the secondary vector *Aedes albopictus*, the Asian tiger mosquito. *Ae. albopictus* has an expanding global distribution following incursions into a number of new territories. To date, only the wMel and wPip strains of *Wolbachia* have been reported to be transferred into and characterized in this vector. A *Wolbachia* strain naturally infecting *Drosophila simulans*, wAu, was selected for transfer into a Malaysian *Ae. albopictus* line to create a novel triple-strain infection. The newly generated line showed self-compatibility, moderate fitness cost and complete resistance to Zika and dengue infections.

## **Author summary**

*Aedes albopictus*, the invasive Asian tiger mosquito, is responsible for numerous outbreaks of important viruses such as dengue and Zika in various regions of the world. The need for alternative control interventions propelled the development of a novel approach that exploits a

natural insect symbiont, *Wolbachia*; when transferred into non-native hosts, these maternally-inherited bacteria are able to interfere with the transmission of mosquito-borne viruses, and also provide reproductive advantages to the host, offering a promising tool for self-sustaining field applications. Currently, several field trials are ongoing for the primary vector of dengue and several other arboviruses, *Aedes aegypti*, providing encouraging results. In this study, *Ae. albopictus* has been targeted for a similar approach: this mosquito species naturally carries two strains of *Wolbachia*. The artificial introduction of a third, non-native strain made this line less able to transmit dengue and Zika viruses and had an impact on its fitness.

## Introduction

The Asian tiger mosquito *Aedes albopictus* is an increasingly prominent vector of arboviruses. This anthropophilic and peridomestic mosquito species is an aggressive daytime biter with a capacity to invade both temperate and tropical areas by adapting to different climates and producing overwintering eggs. It originates in Asia, but is now widely distributed across Europe, Africa, the Americas and the Pacific, and the identified transboundary mechanisms involved in its expansion contribute to a high invasiveness and ever-increasing geographic range (1, 2).

*Ae. albopictus* has been incriminated as a vector of more than 20 arboviruses (3); it acted as the primary vector of some lineages of chikungunya virus (CHIKV) during outbreaks in La Reunion (4, 5) and Italy (6). It is also a well-characterized secondary vector of dengue virus (DENV) (7), with similar competence to the primary vector *Ae. aegypti* (although a lower propensity to bite humans), and is responsible for autochthonous DENV transmission in Europe (8, 9). Furthermore, in addition to a capacity to be artificially infected with Zika virus (ZIKV) in a laboratory setting (10), field-collected *Ae. albopictus* in the Americas were recently found to be Zika-positive (11).

Given the enormous impact on public health, and economic impacts imposed by the management of outbreaks in terms of direct and indirect medical costs, there is a need for investment in arbovirus prevention programmes (12, 13). Due to the compromised efficacy and sustainability of traditional vector control approaches – mainly based on the use of insecticides - novel control strategies are being explored, such as biological control using transmission-blocking symbionts. Among the most promising candidates are *Wolbachia*, maternally inherited intracellular alpha-proteobacteria commonly found in a wide variety of arthropods; several strains have been shown to provide resistance to different RNA-viruses (14-18), especially when artificially transferred into non-native hosts (19, 20). Many strains of *Wolbachia* induce a reproductive distortion in the host known as cytoplasmic incompatibility (CI)(21), which occurs when the sperm of *Wolbachia*-carrying males is modified, resulting in early embryonic death when these sperm fertilize eggs from non-carrier females. In contrast, females carrying the same *Wolbachia* strain are able to ‘rescue’ the sperm modification, producing viable offspring.

*Ae. albopictus* naturally carries two strains of *Wolbachia*, *wAlbA* and *wAlbB* (22), although at a relatively low overall density and mostly confined to the reproductive organs. There is evidence that density and bacterial tissue tropism play a role in *Wolbachia* virus-blocking ability. In fact, when *wAlbB* is transferred from *Ae. albopictus* into the non-native host *Ae. aegypti*, its density and tissue tropism increase, together with the ability to protect the host against arboviruses (17, 23).

Several strains of *Wolbachia* have been characterized in different hosts, revealing considerable diversity in terms of intracellular density, fitness effects, susceptibility to high temperatures, expression of CI and pathogen inhibition (24-27). The attributes of each strain within a novel host must be thoroughly characterised to ensure optimal deployment *Wolbachia* for disease control; there may be a balance between the level of virus blocking and host fitness costs, which

will increase the threshold frequency that must be exceeded before it will spread and become established in populations. A stable *Ae. albopictus* line carrying the wMel strain, transferred from its natural host *Drosophila melanogaster*, showed reduced vector competence for DENV and CHIKV(28, 29). However, this strain has been shown to be susceptible to density reductions and maternal leakage in *Ae. aegypti*, when larval stages were exposed to high temperatures (24, 30).

A *Wolbachia* strain from *Drosophila simulans*, wAu, has been stably transferred into *Ae. aegypti*, to which it provides unusually high level of inhibition of Semliki Forest Virus (SFV), DENV and ZIKV; additionally, there is evidence that this strain is less susceptible to heat-stress more than wMel (17). Similarly in its natural host, this strain reaches high densities and protects against a wide range of *Drosophila* viruses. Although it does not induce CI, spread to relatively high frequency has been reported in field populations of *D. simulans* in Australia; this may be a consequence of increased host fitness (31). In light of this, wAu was selected for transfer into a Malaysian *Ae. albopictus* line to create a novel triple-strain infection and characterized for parameters relevant to its potential field application for disease control.

## Methods

### Mosquito rearing

The *Ae. albopictus* wild-type strain (JF), origin Jalan Fletcher area of Kuala Lumpur, Malaysia, and maintained for >20 generations, was kindly provided by W.A. Nazni, Institute for Medical Research, Kuala Lumpur. A wAu-infected *Ae. aegypti* line (17) was used as the *Wolbachia* source. The wMel single-infected *Ae. albopictus* line was generated as previously described (28). Mosquito colonies were maintained at standard 27°C and 70% relative humidity with a 12-hour light/dark cycle. Larvae were fed on tropical fish pellets (Tetramin, Tetra, Melle, Germany) and adults were offered 5% sucrose solution *ad libitum*. Blood meals were provided

using a Hemotek artificial blood-feeding system (Hemotek, UK) using defibrinated sheep blood (TCS Biosciences, UK). Eggs were collected on wet filter paper (Grade 1 filter paper, Whatman plc, GE healthcare, UK) and desiccated for 5–10 days before hatching in de-ionized water containing 1g/L bovine liver powder (MP Biomedicals, Santa Ana, California, USA).

# Generation of JF.Neg and JF.wAu (wAlbA-wAlbB-wAu) lines

The *Wolbachia*-free JF.Neg was generated by treating adults with 1.25 mg/ml tetracycline dissolved in 5% sugar solution (32). After 4 generations, antibiotic-treated mosquitoes were 100% negative when analysed by qPCR, with no impact on general fitness, egg hatchability, larvae mortality and fecundity.

The generation of a triple-strain (wAlbA-wAlbB-wAu) line in *Ae. albopictus* involved the transfer of cytoplasm from embryos of the *Ae. aegypti* line carrying wAu; microinjections were performed as previously described (17). Female survivors (G<sub>0</sub>) were back-crossed to JF.Neg males, blood-fed and separated individually for oviposition. Strain specific-PCRs for target *Wolbachia* strains were performed, and only eggs from positive G<sub>0</sub> were hatched. Progeny were also assayed for *Wolbachia* using PCR to assess germ-line transmission. Positive females were backcrossed with JF.Neg males and their progeny were selected until G<sub>5</sub>, when the line was self-compatible and stable for maintenance.

# *Wolbachia* strain-specific PCR and qPCR in whole mosquitoes and tissues

gDNA was extracted from 5-day old whole mosquitoes and tissues (ovaries, guts and salivary glands) using STE buffer (10uM Tris HCL pH 8, 100mm NaCl, 1mm EDTA) and diluted to 100 ng/μl using a NanoDrop spectrophotometer (Thermo Scientific, Waltham, Massachusetts, USA). Strain specific PCR was used for the screening of the newly generated line. Primers sequences are summarized in Table S1.

PCR reactions were set up using 1x Taqmaster mix (Vazyme) according to the manufacturer's protocol. DNA was amplified with an initial denaturation at 94 °C for 3 min, followed by 30 cycles consisting of denaturation at 94 °C for 30 s, annealing at 55 °C for 30 s, extension at 72 °C for 30s, and a final step at 72 °C for 10 min. Samples were then visualized on a 1% agarose gel stained with SYBR safe DNA Gel Stain (ThermoScientific, UK).

*Wolbachia* density was assessed by qPCR using the relative quantification of the *Wolbachia* surface protein (*wsp*) gene against the homothorax gene (HTH) as reference gene. To specifically quantify the *wAlbA*, *wAlbB*, and *wAu* strains, and for the measurement of total *Wolbachia* density the following primers were used: *wAlbA* – qAlbAF and qAlbAR; *wAlbB* - 183F and QBrev2; *wAu*– *wAuT3F* and *wAuT3R*; *wsp*- WSP-F and WSP-R. The following program was used to run the qPCRs: 95 °C for 5 min, 40× cycles of 95 °C for 15 s and 60 °C for 30 s, followed by a melt-curve analysis. A Rotor Gene Q (Qiagen) was used with 2x QuantiNova SYBR.

#### Adult Longevity

A cohort of 25 females and 25 males of JF.*wAu*, JF.Neg and JF was used for assessing adult survival. Individuals were maintained in 24.5x24.5x24.5cm rearing cages in the insectary, under standardized control conditions. Cages were blood-fed once a week and eggs were collected regularly. Mortality was monitored daily until no individuals were alive. Three biological replicates were performed.

#### Fecundity and egg survival

Fecundity rate and egg survival were assessed using blood fed, fully engorged JF.*wAu* females. JF and *wAu*- *Ae.aegypti* were included as controls. 20 individuals were individualized inside up-turned cups on top of filter paper. After 3 days, the number of eggs laid per female was counted under a stereoscope.

Additionally, the impact of desiccation on egg survival was measured on collected eggs from blood-fed 5-day old females. Sections of filter papers with 300-400 eggs were cut and stored at 27°C and 70% relative humidity. After 5, 15, 30, 50 days post oviposition, sections were floated in water containing 1g/L bovine liver powder. Hatch rates were assessed by counting hatched eggs and L3-L4 instar larvae.

# Maternal inheritance and CI

CI induction between crosses with JF, JF.Neg and JF.wAu was evaluated between 25 males and 25 females in separated cages. Females were offered a blood meal and individualised for oviposition. Eggs were collected, desiccated for 5 days, counted and then, hatched in water containing 1 g/l bovine liver powder. Hatched larvae were counted to estimate egg hatch rates.

Maternal transmission of each of the three *Wolbachia* strains present (wAlbA, wAlbB and wAu) was evaluated by backcrossing JF.wAu females with JF.Neg males. Females were blood-fed and individualized for oviposition. Eggs, collected on damp filter papers were desiccated for 5 days and added to water for hatching. A selection of progeny was randomly sampled and analysed with strain-specific PCR.

# Fluorescent *in situ*-hybridization

Ovaries were dissected from 5 day old females using sterile forceps and needles in a drop of sterile PBS buffer for *Fluorescent In Situ Hybridization* (FISH) and then transferred in Carnoy's buffer (chloroform:ethanol:acetic acid, 6:3:1) and fixed at 4°C overnight. Samples were then rinsed in PBS and incubated in a hybridization buffer containing 50% formamide, 25% 20xSSC, 0.2% (w/v) Dextran Sulphate, 2.5% Herring Sperm DNA, 1% (w/v) tRNA, 0.015% (w/v) DTT, 1% Denhardt's solution, and 100 ng/ml of each probe. General *Wolbachia* probes annealing on the *wsp* gene were used as described before (16).

Samples were left to hybridize overnight in a dark-humid box at 37°C, washed twice in a solution containing 5% 20xSSC, 0.015% (w/v) DTT, and twice in a solution of 2.5% SSC, 0.015% (w/v) DTT in dH<sub>2</sub>O, at 55°C for 20 minutes. Tissues were then placed on a slide containing a drop of VECTASHIELD Antifade Mounting Medium with DAPI (Vector Laboratories, California, USA) and were visualized using a Zeiss LSM 880 confocal microscope (Zeiss, Oberkochen, Germany).

# Heat-stress response

Eggs from wild-type colonies, JF.wAu and wMel-carrying *Ae. albopictus* were hatched and separated into experimental groups: larval density (200 larvae per 500 mL of water) and food were consistent between conditions. Heat-challenged larvae were maintained in Panasonic MLR-352-H Plant Growth Chamber incubator (Panasonic, Osaka, Japan). The temperature regime replicated in cabinets was a diurnal cycle of 27-37°C, while control larvae were reared at constant 27°C. Adults were all maintained at constant 27°C. *Wolbachia* density was quantified by qPCR on whole-bodies of 5-day old females and males, using *wsp* primers and wAu-specific primers.

# Virus challenge

7-day old JF.wAu and JF females were blood-fed with human blood, 5mM of phagostimulant ATP and virus suspension. Dengue virus was serotype 2 (New Guinea C Strain) at the final concentration in the blood meal of 10<sup>8</sup> FFU/ml, while Zika virus was strain MP1751, obtained from Public Health England culture collections, at a final concentration in the blood-meal of 4x10<sup>7</sup> FFU/ml. Engorged females were transferred in a climactic chamber at 27 C and 70% humidity for 14 days with access to 5% sucrose-soaked cotton wool. At the same time, a different cohort of females was anaesthetised on ice and injected with 10<sup>9</sup> FFU/ml of DENV-2 in the thorax using a Nanoject II (Drummond Scientific, USA) hand-held microinjector. Similarly, 1.4x10<sup>7</sup> FFU/ml of ZIKV virus was injected in the thorax of females.



After 14 days, whole-bodies of virus-injected females (DENV and ZIKV-infected) were homogenised with glass beads in Trizol (Sigma-Aldrich, MA, USA) on a Precellys 24 homogeniser (VWR).

Salivary glands of ZIKV blood-fed and heads of DENV blood-fed females were dissected in sterile conditions and transferred in Dulbecco's Modified Eagle Medium (DMEM) medium supplemented with 2% fetal bovine serum (FBS). After being homogenized, the solution was transferred onto a monolayer of Vero cells for fluorescent focus assay (FFA). Primary antibody for Zika was a Mouse Monoclonal antibody DIII1B kindly provided by Prof. Arvind Patel (MRC-University of Glasgow-CVR); secondary antibody was the Goat anti-mouse Alexa Fluor 488, A-11001 (Thermo Scientific, Waltham, Massachusetts, USA). Celigo Imaging Cytometer (Nexcelom Bioscience, Lawrence, Massachusetts) was used for imaging plates.

Carcasses of dissected females were sampled in Trizol for quantification of ZIKV infection. RNA was extracted with Trizol according to manufacturer's guidelines and diluted to 100ng/ul with ddH<sub>2</sub>O; cDNA was synthesised All-In-One cDNA Synthesis SuperMix (Biotools, TX, USA). DENV-2 was quantified by qPCR using NS5-F and NS5-R set, while ZIKV 835 and ZIKV 911c primers were used for ZIKV quantification. Values were normalised to the RpS17 as reference by relative expression (Pfaffl method).

#### Statistical analysis

Graphics were generated using the 'ggplot2' package of R Studio (RStudio Inc., Boston, Massachusetts, USA) of the R software (version 3.6.1). All statistical analyses were run using Prism version 7. Shapiro-Wilk Test was used for assessing normality distribution of data, and parametric and non-parametric tests were selected accordingly. Multiple comparisons were performed using Multiple t-tests and one-way ANOVA using Holm-Sivak's or Bartlett's tests. Survivals were statistically analysed using proportional hazard ratio model (Log-rank - Mantel-

Cox test). Analysis of virus-challenged mosquitoes was performed using a Fisher's exact test comparing rates of virus-positive and virus-negative samples.

## Results

### Strain generation and characterization

#### Maternal transmission and CI

The JF.*wAu* line was created by transferring cytoplasm from *wAu*-carrying *Ae. aegypti* into wild-type (*wAlbA* and *wAlbB*-carrying) *Ae. albopictus*, obtaining a stable triple-strain infection. From  $G_1$  to  $G_5$ , females were backcrossed with JF males, blood-fed and individualized; the progeny were pooled only if the mother was positive for all the three strains. From  $G_5$ , colonies were maintained without backcrossing and selecting females: random individuals tested positive in the following generations, indicating that the maternal vertical transmission of the three strains was complete under standard rearing conditions.

Crosses were set up in order to investigate patterns of compatibility and/or CI between the groups. As expected, *wAu* was not able to induce unidirectional CI when males of JF.*wAu* were crossed to wild-type females (JF). The JF.*wAu* line was self-compatible with a similar hatching rate when compared to wild-type. Complete CI was observed between *Wolbachia*-cured females mated with wild-type or triple-strain males, confirming that the *wAlbA* / *wAlbB* strains are still able to induce sterility in the presence of *wAu*.

		Males		
		JF	JF. wAu	JF.Neg
Females	JF	79 (1106)	57.3 (2093)	51.6 (1176)
	JF. wAu	70 (2652)	65.6 (1564)	75 (1616)
	JF.Neg	0 (2039)	0 (1838)	81 (2051)

Table 1: **Crosses and CI patterns.** *Wolbachia* triple-strain (JF.wAu), wild-type (JF) and tetracycline-treated *Ae. albopictus* (JF.Neg) were crossed to evaluate strains compatibility and CI phenotypes. Numbers represent percentages of hatch rates, while the total number of analysed eggs is shown in parentheses.

As observed during line selection, JF.wAu showed complete maternal transmission of all three *Wolbachia* strains to progeny: wAlbA, wAlbB and wAu were found in 100% of the 100 individuals analysed among the progeny of individualized females.

#### *Wolbachia* density and tissue distribution

*Wolbachia* density from the whole-bodies of mosquitoes was quantified 5, 10 and 20 days post-eclosion (Fig.1A). Total *Wolbachia* in JF.wAu was found to be significantly higher than wild-type after 10 and 20 days post eclosion, similar to what was previously described in wMel-single and triple infection in *Ae. albopictus* (28, 33). Nevertheless, when compared to wAu in *Ae. aegypti*, density is significantly lower, lending further support to previous findings that, when transferred into non-native hosts such as *Ae. aegypti*, *Wolbachia* undergo density modulations (17, 34). The density of the native wAlbA and wAlbB infections appeared to be unaffected by wAu co-infection. (Fig.1B).

There is evidence that the strength of viral blockage and the ability to be maternally inherited can also depend on *Wolbachia* tissue tropism (35). Total *Wolbachia* density was quantified on dissected ovaries, salivary glands and midguts (Fig. 1C): generally, the JF.wAu line showed relatively higher densities in somatic tissues, reaching very high density in the ovaries when compared to wild-type.

**Fig. 1. *Wolbachia* density and tissue distribution.** A) 5, 10 and 15 day-old adults were tested for total *Wolbachia* density. Boxplots represent 6 biological replicates: the centre indicates the median of densities and whiskers represent upper and lower extremes. B) Strain-specific qPCR was used for assessing the density of each strain of the triple infection. Bars represent the average of 6 biological replicates. Error bars show SE. C) *Wolbachia* tissue distribution was measured in 6 pools of 3 sets of dissected ovaries, salivary glands and midguts. t-test and Mann-Whitney test were used for statistical analyses. \* $p < 0.05$ , \*\* $p < 0.001$ , \*\*\* $p < 0.0001$ . Non-significant differences are not indicated.

# Fitness characterization

Additionally, several traits of the fitness of the newly generated line were characterized: adult lifespan, fecundity and fertility of females (Fig.2). Although significantly reduced when compared to wild-type, JF.wAu females showed a similar life span to the *Wolbachia*-cured *Ae. albopictus* (Fig.2A). The survival of JF.wAu males, on the contrary, was not affected by wAu and was not different from the wild-type strains (Fig. 2B). Fertility of individualized females was compared between JF.wAu, JF and *Ae. aegypti*-wAu showing no significant difference on the amount of laid eggs (Fig. 2C). In contrast, the co-infection of wAu seemed to have an impact on the hatching rate of desiccated eggs of the JF.wAu line. After 15 days, the number of hatched eggs notably dropped with respect to wild-type eggs, similarly to *Ae. aegypti*-wAu, further confirming that high density strains have an impact on egg quiescence (Fig. 2D).

**Fig 2. Fitness traits characterization.** A-B) Females and males life span of JF, JF.wAu and JF.Neg was measured and compared using proportional hazard ratio model (Log-rank - Mantel-Cox test). C) Fecundity of lines determined by counting the number of eggs from individual females. SE is indicated. One-way ANOVA with Bartlett's test was used for measuring statistical differences. D) Mean hatching rate over time. Statistical differences between datasets was measured using Two-way ANOVA with Dunnett's comparison.

## **Effects of high temperature exposure**

Exposure to high temperatures during larval development is known to reduce the density of some strains of *Wolbachia* in *Ae. aegypti*, including the wMel strain (17, 24). Consequently, the effects of high temperature exposure were investigated in a previously generated *Ae. albopictus* line carrying only the wMel strain (28, 29), and in the newly generated JF.wAu. Larvae were exposed to a diurnal cycle with fluctuations from 27 to 37°C in a programmable incubator. The general *Wolbachia* density in different lines was assessed by qPCR in 5-day old females and males. As observed in *Ae. aegypti*, the wMel strain was particularly sensitive to exposure to high temperatures, showing a decrease in density of several orders of magnitude (Fig. 3).

When transferred into *Ae. aegypti*, wAu was somewhat sensitive to thermal stress, and its density in adults underwent a significant decrease (17). Similarly, the total *Wolbachia* density of the JF.wAu lines displayed a drop in heat-treated individuals compared to controls maintained at constant 27°C, although mean density remained considerably higher than observed for wMel (Fig. 3). The density of the native strains in *Ae. albopictus* wild-type, wAlbA and wAlbB, did not appear to be perturbed by exposure to high temperatures. Consequently, the specific contribution of wAu to the drop in density was further investigated: the quantitative analysis confirmed a significant decrease in wAu in females and males, suggesting a similar response to that observed in *Ae. aegypti*.

**Fig. 3. Exposure to high larval breeding temperatures.** Larvae from *wMel-Ae. albopictus*, JF.*wAu* and JF lines were reared with a diurnal cycle of 27-37°C. Controls were maintained at constant 27°C. Boxplots represent 8 biological replicates: the centre indicates the median of densities and whiskers represent upper and lower extremes. T-test and Mann-Whitney test were used for statistical analyses. \* $p < 0.05$ , \*\* $p < 0.001$ , \*\*\* $p < 0.0001$ . Non-significant differences are not indicated.

### **Virus inhibition**

DENV-2 and ZIKV were used to evaluate the ability of this line to transmit arboviruses. Mosquitoes were infected through intra-thoracic injection of the virus or through an infected blood-meal. Whole bodies of blood-fed JF.*wAu* showed significantly reduced DENV-2 loads in whole carcasses (abdomens, heads and thoraxes), compared to JF, confirming the ability of the *wAu* strain to be an efficient viral blocker in *Ae. albopictus* (Fig.4A). This was further demonstrated when high viral loads ( $10^9$  FFU/ml) were intra-thoracically injected directly into the mosquito haemolymph, bypassing the natural midgut barrier: a significant reduction of DENV-2 genome copies was observed between the triple-strain line compared to wild-type (Fig.4A). A second independent DENV challenge (Fig. 4B) was performed: in this instance, after 14 days, mosquito heads and thoraxes were analysed by FFA in order to assess virus dissemination, while abdomens were analysed separately by qPCR. This replicate provided further validation, confirming the complete blockage of the virus in both tissues.

The high blocking phenotype was found to be consistent when mosquitoes were challenged with ZIKV. Similar to the DENV challenges, even when very high viral titers were directly injected into the female hemolymph, the *wAu* strain is able to block the dissemination and the transmission of the virus (Fig 4C). Similarly, no virus was detected by qPCR on carcasses or by FFA on salivary glands of the JF.*wAu* line after three independent ZIKV-infected blood meals, compared to the wild-type (Fig 4D).

**Fig. 4. DENV2 and ZIKV challenges of JF.*wAu* and wild-type mosquitoes.** A) DENV2 genome copies were quantified in whole bodies of 3-5 day old mosquitoes using qPCR on

injected and blood-fed females after 14 days. B) Viral genome copies and foci number were quantified after a DENV2-infected blood meal on abdomens and heads. C) ZIKV genome copies (in carcasses) and viral foci number (in dissected salivary glands) of injected and D) blood-fed 3-5 day old mosquitoes. The latter graph summarises three independent biological replicates; different shapes represent data points from each replicate.  $p < 0.001$ , \*\*\* $p < 0.00001$ .

## Discussion

*Wolbachia*-based field interventions to control arboviruses are under investigation in a number of countries for *Ae. aegypti*, demonstrating promising efficacy for mosquito population suppression and replacement strategies. Nevertheless, dengue control in many endemic regions still remains a challenge due to the sympatric secondary vector *Ae. albopictus*. Its abundance in many urban and suburban spaces, and its low active dispersal activity makes this vector a suitable candidate for releases in confined urban sites of endemic regions (36, 37). Recently, the use of an artificial triple- *Wolbachia* infection combined with the sterile insect technique (SIT) for population suppression interventions demonstrated a successful reduction of *Ae. albopictus* population density in open field trials in China (38). Additionally, positive results of IIT (Incompatible Insect Technique) for population suppression were also obtained after preliminary trials in Italy of released of *Ae. albopictus* carrying the strain wPip (39, 40).

As a promising option for population replacement transmission-blocking approaches, a line carrying only the *Ae. albopictus* wMel strain was previously shown to produce no detectable fitness costs in this host, to induce bidirectional CI and to be refractory to DENV and CHICK in laboratory tests (28, 29). To develop a line with greater invasiveness, a triple-strain infection combining wMel with the native strains, wAlbA and wAlbB, was also subsequently created with the aim of generating unidirectional CI: surprisingly however, the line was found to be self-incompatible and thus, not a practical option to be deployed in the field (33). Additionally, as previously demonstrated in *Ae. aegypti*, and now also here in *Ae. albopictus*, the exposure of wMel-carrying larvae to high temperatures during rearing produces large decreases in

overall *Wolbachia* density. The deployment of *wMel* in *Ae. albopictus* for dengue control is therefore likely to be impractical in tropical areas where larval stages experience very high larval site temperatures. The exposure of JF.*wAu* to cyclical high temperatures during the larval stages resulted in a moderate impact on the overall density of this *Wolbachia* strain, in this respect offering a more suitable dengue control tool for use in hotter equatorial areas when compared to *wMel*.

The novel JF.*wAu* line generated in this study was completely refractory to DENV and ZIKV, and *wAu* consistently demonstrated complete viral inhibition in both injected and blood-fed mosquitoes. JF.*wAu* displayed a higher overall *Wolbachia* density when compared to wild type, confirmed in the dissected midgut epithelia, salivary glands and ovaries; this higher overall density is mostly a result of the *wAu* strain, as was previously observed in *Ae. aegypti* (17), while the densities of the two native strains are comparable to their wild-type counterparts. The presence of *wAu* does not cause exclusion or significant density reduction of either of the native strains, ensuring complete maternal transmission of the three strains. In contrast to what was previously observed for the *wMelwAlbAwAlbB* triple-infection, the JF.*wAu* line displayed full self-compatibility, and JF.*wAu* females were fully compatible when crossed with wild-type males.

The intricate pattern of interactions between different *Wolbachia* strains and their hosts determines the trade-offs between pathogen blocking, host fitness and invasiveness. High density strains are often associated with some detrimental costs for the host: the example of *wMelPop*, as single and triple strain lines in *Ae. albopictus*, shows how strong viral blockers can be pathogenic for the host (41, 42). In this case, the JF.*wAu* line imposes a moderate fitness cost in terms of fecundity and survival rate, when compared to JF, although no difference was observed in the number of eggs laid by individual females when *wAu* is present.



An important factor to be considered with respect to the potential utilization of *wAu* for dengue control is of course the lack of CI induced by this strain. Nevertheless, despite this absence, *wAu* has been shown to be able to rapidly spread and remain at high frequency in *Drosophila simulans* natural populations (31), hypothesised to be a result of providing fitness advantages to its host under some conditions. Further investigation into the ecological circumstances in which fitness benefits could be provided by *wAu* in *Aedes* could offer insights into whether and how this strain could be deployed for population replacement approaches, in light of the very efficient virus blocking it produces.

## Acknowledgments

We thank W. A. Nazni for providing *Ae. albopictus* wild-type eggs. We also thank Giuditta de Lorenzo and Arvind Patel for providing ZIKV antibody.

## References

1. Benedict MQ, Levine RS, Hawley WA, Lounibos LP. Spread of the tiger: global risk of invasion by the mosquito *Aedes albopictus*. *Vector Borne Zoonotic Dis.* 2007;7:76-85.
2. Kraemer MUG, Reiner RC, Brady OJ, Messina JP, Gilbert M, Pigott DM, et al. Past and future spread of the arbovirus vectors *Aedes aegypti* and *Aedes albopictus*. *Nat Microbiol.* 2019;4:854-63.
3. Bonizzoni M, Gasperi G, Chen X, James AA. The invasive mosquito species *Aedes albopictus*: current knowledge and future perspectives. *Trends Parasitol.* 2013;29:460-8.
4. Renault P, Solet JL, Sissoko D, Balleydier E, Larrieu S, Filleul L, et al. A major epidemic of chikungunya virus infection on Reunion Island, France, 2005-2006. *Am J Trop Med Hyg.* 2007;77:727-31.
5. Tsetsarkin K, Higgs S, McGee CE, De Lamballerie X, Charrel RN, Vanlandingham DL. Infectious clones of Chikungunya virus (La Réunion isolate) for vector competence studies. *Vector Borne Zoonotic Dis.* 2006;6:325-37.
6. Bonilauri P, Bellini R, Calzolari M, Angelini R, Venturi L, Fallacara F, et al. Chikungunya virus in *Aedes albopictus*, Italy. *Emerg Infect Dis.* 2008;14:852-4.
7. Guzman MG, Kouri G. Dengue and dengue hemorrhagic fever in the Americas: lessons and challenges. *J Clin Virol.* 2003;27:1-13.
8. La Ruche G, Souarès Y, Armengaud A, Peloux-Petiot F, Delaunay P, Desprès P, et al. First two autochthonous dengue virus infections in metropolitan France, September 2010. *Euro Surveill.* 2010;15:19676.
9. Gjenero-Margan I, Aleraj B, Krajcar D, Lesnikar V, Klobučar A, Pem-Novosel I, et al. Autochthonous dengue fever in Croatia, August-September 2010. *Euro Surveill.* 2011;16.

10. Ciota AT, Bialosuknia SM, Zink SD, Brecher M, Ehrbar DJ, Morrisette MN, et al. Effects of Zika virus strain and *Aedes* mosquito species on vector competence. *Emerg Infect Dis.* 2017;23:1110-7.
11. Lozano-Fuentes S, Kenney JL, Varnado W, Byrd BD, Burkhalter KL, Savage HM. Susceptibility and Vectorial Capacity of American *Aedes albopictus* and *Aedes aegypti* (Diptera: Culicidae) to American Zika Virus Strains. *J Med Entomol.* 2019;56:233-240
12. Soumahoro MK, Boelle PY, Gaüzere BA, Atsou K, Pelat C, Lambert B, et al. The Chikungunya epidemic on La Réunion Island in 2005-2006: a cost-of-illness study. *PLoS Negl Trop Dis.* 2011;5:e1197.
13. Liumbruno GM, Calteri D, Petropulacos K, Mattivi A, Po C, Macini P, et al. The Chikungunya epidemic in Italy and its repercussion on the blood system. *Blood Transfus.* 2008;6:199-210.
14. Teixeira L, Ferreira A, Ashburner M. The bacterial symbiont *Wolbachia* induces resistance to RNA viral infections in *Drosophila melanogaster*. *PLoS Biol.* 2008;6(12):e2.
15. Hedges LM, Brownlie JC, O'Neill SL, Johnson KN. *Wolbachia* and virus protection in insects. *Science.* 2008;322:702.
16. Moreira LA, Iturbe-Ormaetxe I, Jeffery JA, Lu G, Pyke AT, Hedges LM, et al. A *Wolbachia* symbiont in *Aedes aegypti* limits infection with dengue, Chikungunya, and *Plasmodium*. *Cell.* 2009;139:1268-78.
17. Ant TH, Herd CS, Geoghegan V, Hoffmann AA, Sinkins SP. The *Wolbachia* strain wAu provides highly efficient virus transmission blocking in *Aedes aegypti*. *PLoS Pathog.* 2018;14:e1006815.
18. Bian G, Xu Y, Lu P, Xie Y, Xi Z. The endosymbiotic bacterium *Wolbachia* induces resistance to dengue virus in *Aedes aegypti*. *PLoS Pathog.* 2010;6:e1000833.
19. Walker T, Johnson PH, Moreira LA, Iturbe-Ormaetxe I, Frentiu FD, McMeniman CJ, et al. The wMel *Wolbachia* strain blocks dengue and invades caged *Aedes aegypti* populations. *Nature.* 2011;476:450-3.
20. Hoffmann AA, Montgomery BL, Popovici J, Iturbe-Ormaetxe I, Johnson PH, Muzzi F, et al. Successful establishment of *Wolbachia* in *Aedes* populations to suppress dengue transmission. *Nature.* 2011;476:454-7.
21. Werren JH, Baldo L, Clark ME. *Wolbachia*: master manipulators of invertebrate biology. *Nat Rev Microbiol.* 2008;6:741-51.
22. Sinkins SP, Braig HR, O'Neill SL. *Wolbachia* superinfections and the expression of cytoplasmic incompatibility. *Proc Biol Sci.* 1995;261:325-30.
23. Lu P, Bian G, Pan X, Xi Z. *Wolbachia* induces density-dependent inhibition to dengue virus in mosquito cells. *PLoS Negl Trop Dis.* 2012;6:e1754.
24. Ross PA, Wiwatanaratnabutr I, Axford JK, White VL, Endersby-Harshman NM, Hoffmann AA. *Wolbachia* infections in *Aedes aegypti* differ markedly in their response to cyclical heat stress. *PLoS Pathog.* 2017;13:e1006006.
25. Osborne SE, Leong YS, O'Neill SL, Johnson KN. Variation in antiviral protection mediated by different *Wolbachia* strains in *Drosophila simulans*. *PLoS Pathog.* 2009;5:e1000656.
26. Hoffmann AA, Ross PA, Rašić G. *Wolbachia* strains for disease control: ecological and evolutionary considerations. *Evol Appl.* 2015;8:751-68.
27. Martinez J, Longdon B, Bauer S, Chan YS, Miller WJ, Bourtzis K, et al. Symbionts commonly provide broad spectrum resistance to viruses in insects: a comparative analysis of *Wolbachia* strains. *PLoS Pathog.* 2014;10:e1004369.
28. Blagrove MS, Arias-Goeta C, Failloux AB, Sinkins SP. *Wolbachia* strain wMel induces cytoplasmic incompatibility and blocks dengue transmission in *Aedes albopictus*. *Proc Natl Acad Sci U S A.* 2012;109:255-60.

29. Blagrove MS, Arias-Goeta C, Di Genua C, Failloux AB, Sinkins SP. A *Wolbachia* wMel transinfection in *Aedes albopictus* is not detrimental to host fitness and inhibits Chikungunya virus. PLoS Negl Trop Dis. 2013;7:e2152.
30. Ulrich JN, Beier JC, Devine GJ, Hugo LE. Heat sensitivity of wMel *Wolbachia* during *Aedes aegypti* development. PLoS Negl Trop Dis. 2016;10:e0004873.
31. Kriesner P, Hoffmann AA, Lee SF, Turelli M, Weeks AR. Rapid sequential spread of two *Wolbachia* variants in *Drosophila simulans*. PLoS Pathog. 2013;9:e1003607.
32. Joanne S, Vythilingam I, Yugavathy N, Doss JI. Modified technique of *Wolbachia* removal from Malaysian *Aedes albopictus*. Asian Pac J Trop Biomed. 2014;4:557-60.
33. Ant TH, Sinkins SP. A *Wolbachia* triple-strain infection generates self-incompatibility in *Aedes albopictus* and transmission instability in *Aedes aegypti*. Parasit Vectors. 2018;11:295.
34. Chouin-Carneiro T, Ant TH, Herd C, Louis F, Failloux AB, Sinkins SP. *Wolbachia* strain wAlbA blocks Zika virus transmission in *Aedes aegypti*. Med Vet Entomol. 2019; doi: 10.1111/mve.12384
35. Osborne SE, Iturbe-Ormaetxe I, Brownlie JC, O'Neill SL, Johnson KN. Antiviral protection and the importance of *Wolbachia* density and tissue tropism in *Drosophila simulans*. Appl Environ Microbiol. 2012;78:6922-9.
36. Marini F, Caputo B, Pombi M, Tarsitani G, della Torre A. Study of *Aedes albopictus* dispersal in Rome, Italy, using sticky traps in mark-release-recapture experiments. Med Vet Entomol. 2010;24:361-8.
37. Honório NA, Silva WaC, Leite PJ, Gonçalves JM, Lounibos LP, Lourenço-de-Oliveira R. Dispersal of *Aedes aegypti* and *Aedes albopictus* (Diptera: Culicidae) in an urban endemic dengue area in the State of Rio de Janeiro, Brazil. Mem Inst Oswaldo Cruz. 2003;98:191-8.
38. Zheng X, Zhang D, Li Y, Yang C, Wu Y, Liang X, et al. Incompatible and sterile insect techniques combined eliminate mosquitoes. Nature. 2019;572:56-61.
39. Calvitti M, Moretti R, Lampazzi E, Bellini R, Dobson SL. Characterization of a new *Aedes albopictus* (Diptera: Culicidae)-*Wolbachia pipientis* (Rickettsiales: Rickettsiaceae) symbiotic association generated by artificial transfer of the wPip strain from *Culex pipiens* (Diptera: Culicidae). J Med Entomol. 2010;47:179-87.
40. Caputo B, Moretti R, Manica M, Serini P, Lampazzi E, Bonanni M, et al. A bacterium against the tiger: preliminary evidence of fertility reduction after release of *Aedes albopictus* males with manipulated *Wolbachia* infection in an Italian urban area. Pest Manag Sci. 2019; doi: 10.1002/ps.5643
41. Suh E, Mercer DR, Fu Y, Dobson SL. Pathogenicity of life-shortening *Wolbachia* in *Aedes albopictus* after transfer from *Drosophila melanogaster*. Appl Environ Microbiol. 2009;75:7783-8.
42. Suh E, Fu Y, Mercer DR, Dobson SL. Interaction of *Wolbachia* and bloodmeal type in artificially infected *Aedes albopictus* (Diptera: Culicidae). J Med Entomol. 2016; doi: 10.1093/jme/tjw084
43. Braig HR, Zhou W, Dobson SL, O'Neill SL. Cloning and characterization of a gene encoding the major surface protein of the bacterial endosymbiont *Wolbachia pipientis*. J Bacteriol. 1998;180:2373-8.
44. Tortosa P, Courtiol A, Moutailler S, Failloux AB, Weill M. Chikungunya-*Wolbachia* interplay in *Aedes albopictus*. Insect Mol Biol. 2008;17:677-84.
45. Dzaki N, Azzam G. Assessment of *Aedes albopictus* reference genes for quantitative PCR at different stages of development. PLoS One. 2018;13:e0194664.
46. Lanciotti RS, Kosoy OL, Laven JJ, Velez JO, Lambert AJ, Johnson AJ, et al. Genetic and serologic properties of Zika virus associated with an epidemic, Yap State, Micronesia, 2007. Emerg Infect Dis. 2008;14:1232-9.

## Supplementary Information

**Fig S1: Fluorescent *in situ* hybridization.** Visualization of distributions of general *Wolbachia* (green) in ovaries of 5-day old females from the wild-type (A), JF.wAu (B), *Ae. aegypti*-wAu lines (C) and a no-probe control on wild-type (D). Blue stain is DAPI.

**Table S1: List of sequences of oligonucleotides and probes.**

Primer name	5'-3' Sequence
wAlbA-F (17)	GTAGTATTTACCCCAGCAG
wAlbA-R (17)	ATCTGCACCAGTAGTTTCG
wAlbB-F (17)	GCAATACCTATGCCGTTTA
wAlbB-R (17)	GACGAAGGGGATAGGTTAATATC
Au F (18F) (17)	TGGTCCAATAAGTGATGAAGAAAC
AuWSP R (17)	TTTGCTGGGTCAAATGTTACATCTT
qHTH-F (43)	TGGTCCTATATTGGCGAGCTA
qHTH-R (43)	TCGTTTTTGCAAGAAGGTCA
qWSP-F (16)	ATCTTTTATAGCTGGTGGTGGT
qWSP-R (43)	GGAGTGATAGGCATATCTTCAAT
qAlbAF	CAAGAATTGGCGGGCATTGA
qAlbAR	AATGTTGCACCACCAACGTC
183F (43)	AAGGAACCGAAGTTCATG
QBrev2 (44)	AGTTGTGAGTAAAGTCCC
qwAuTF	CGAAATTAGTTGGTTTGGTGC
qwAuTR	GCTTGTAGTTTATGCTTTCTCTC
AlboRpS17-F (45)	GAACGACAGCAGCGAAACTT
AlboRpS17-R (45)	GTCACGAAACCAGCGATCTT
DENV-NS5-F (16)	ACAAGTCGAACAACCTGGTCCAT
DENV-NS5-R (16)	GCCGCACCATTGGTCTTCTC
ZIKV-835 (46)	TTGGTCATGATACTGCTGATTGC
ZIKV-911c (46)	CCTTCCACAAAGTCCCTATTGC
wsp probe W2(16)	5'-CTTCTGTGAGTACCGTCATTATC-(Alexa Fluor 488)-3'
wsp probe W3 (16)	5'- AACCGACCCTATCCCTTCGAATA-( Alexa Fluor 488)-3'

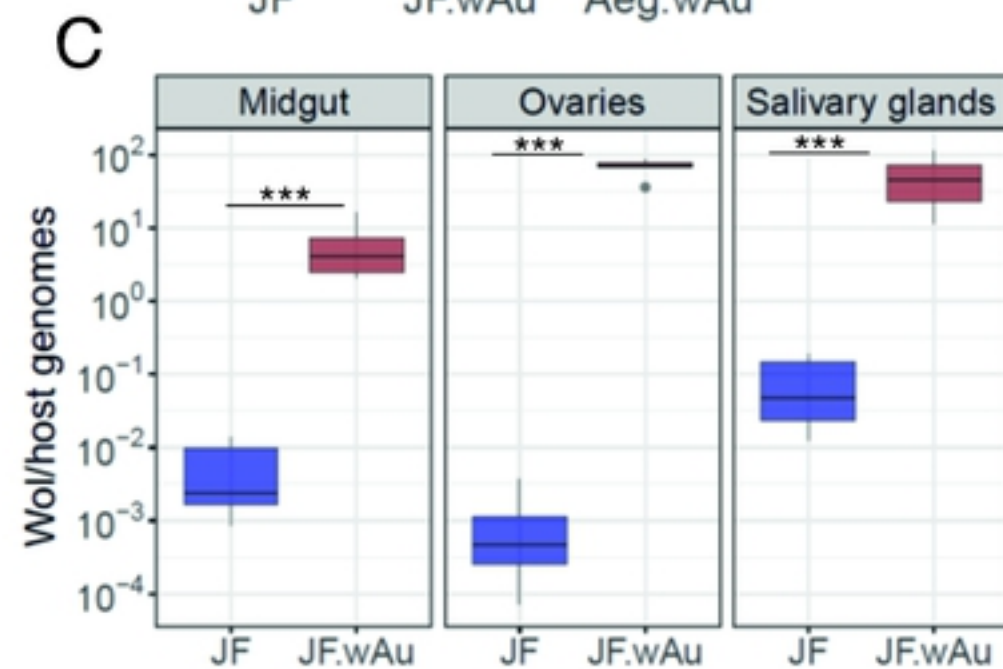
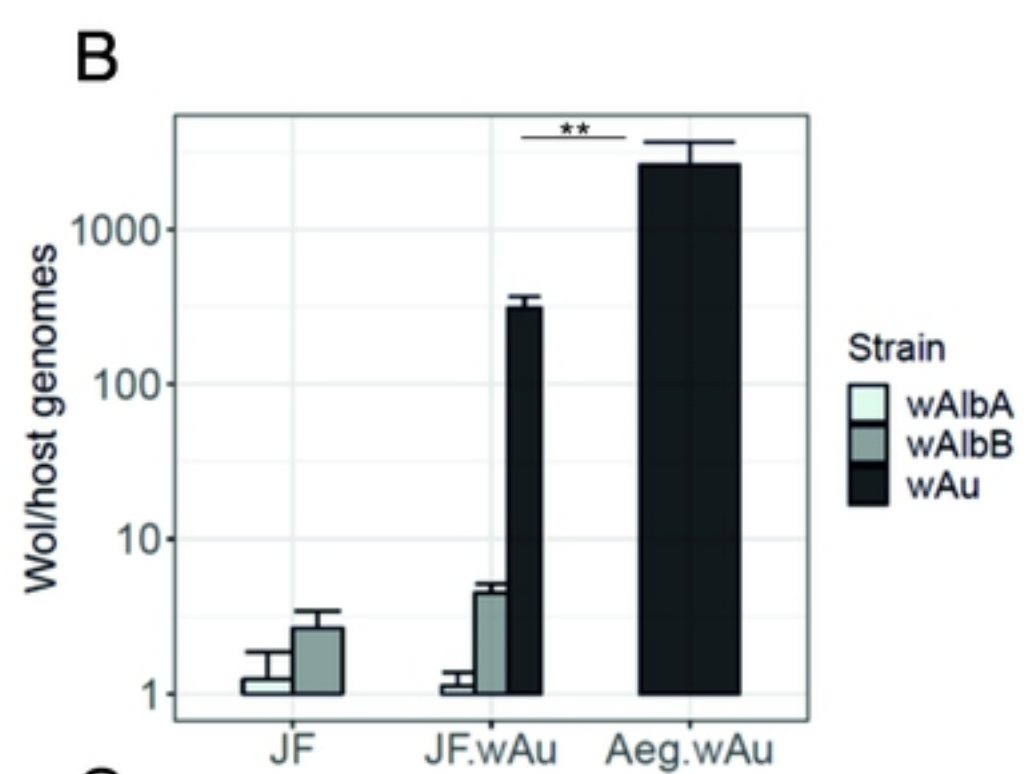
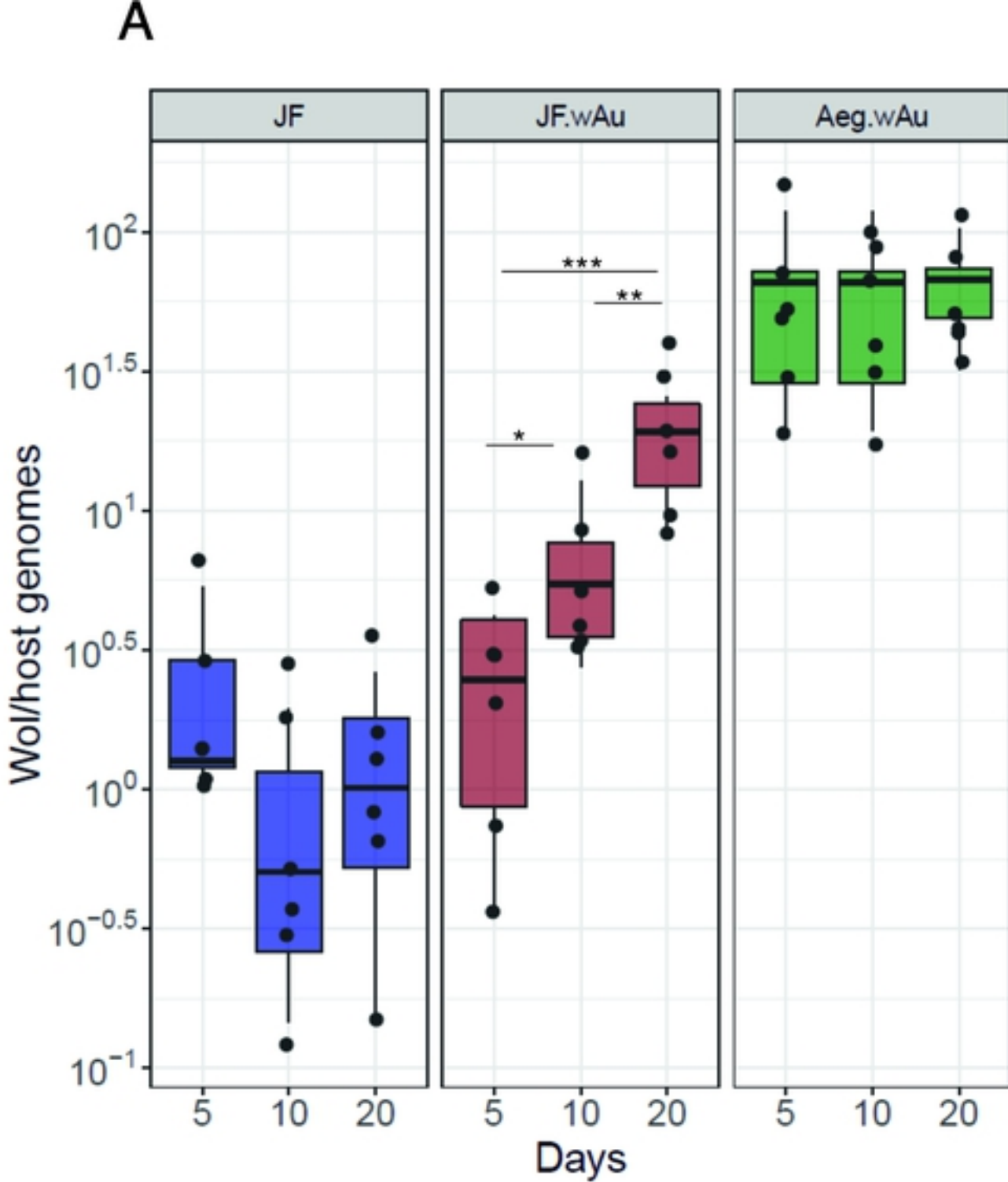


Figure 1



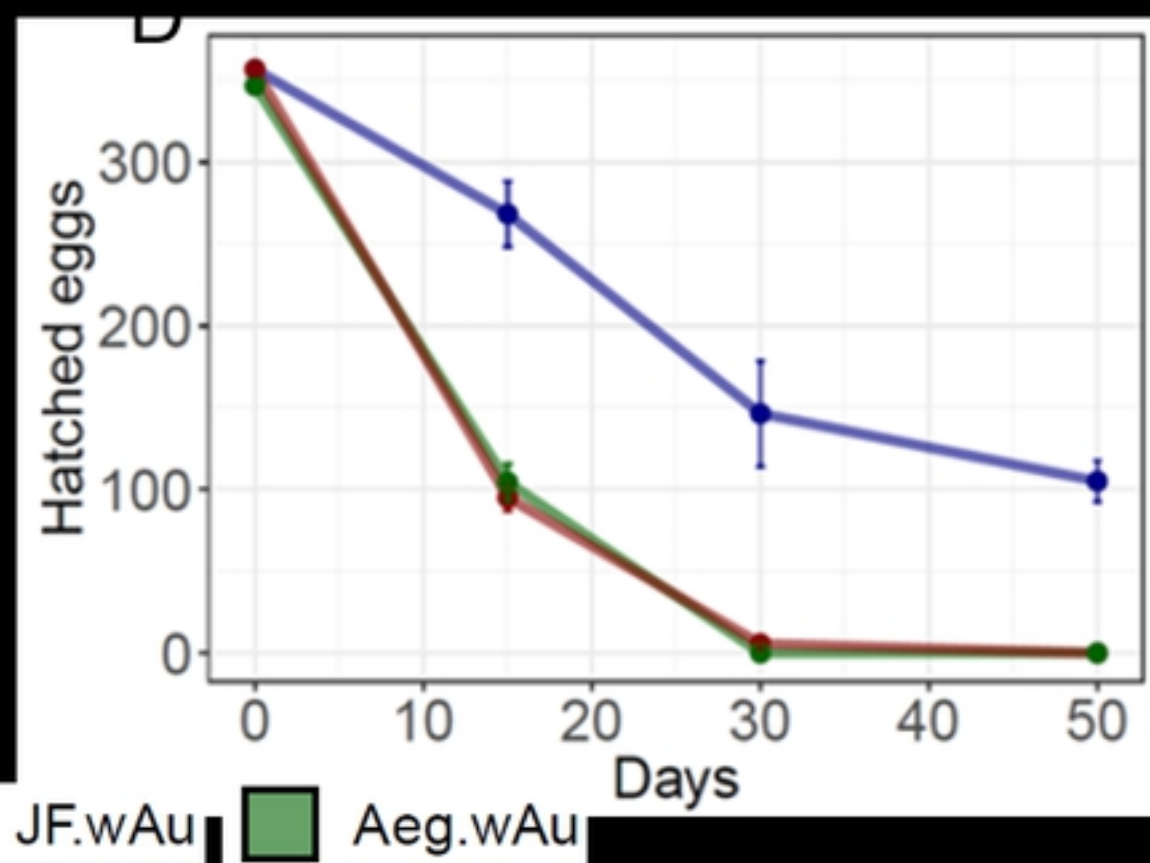
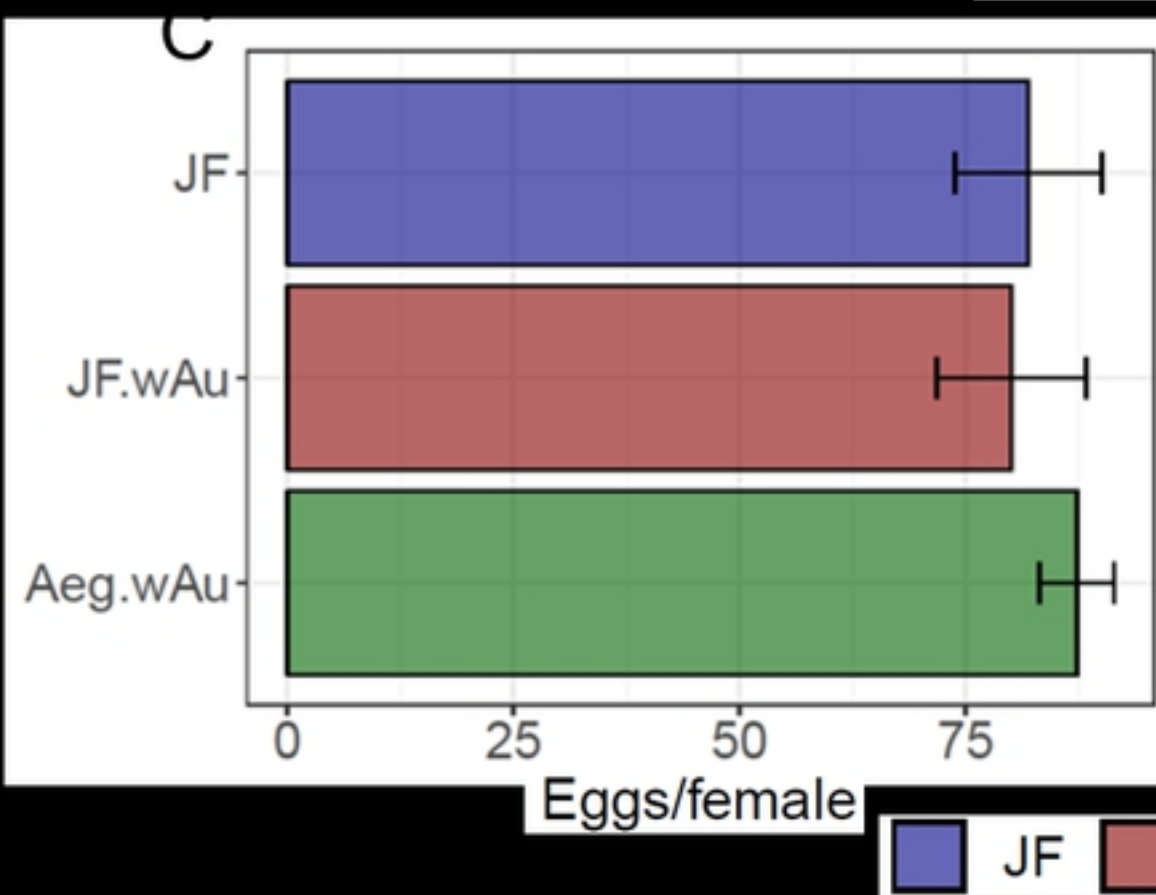
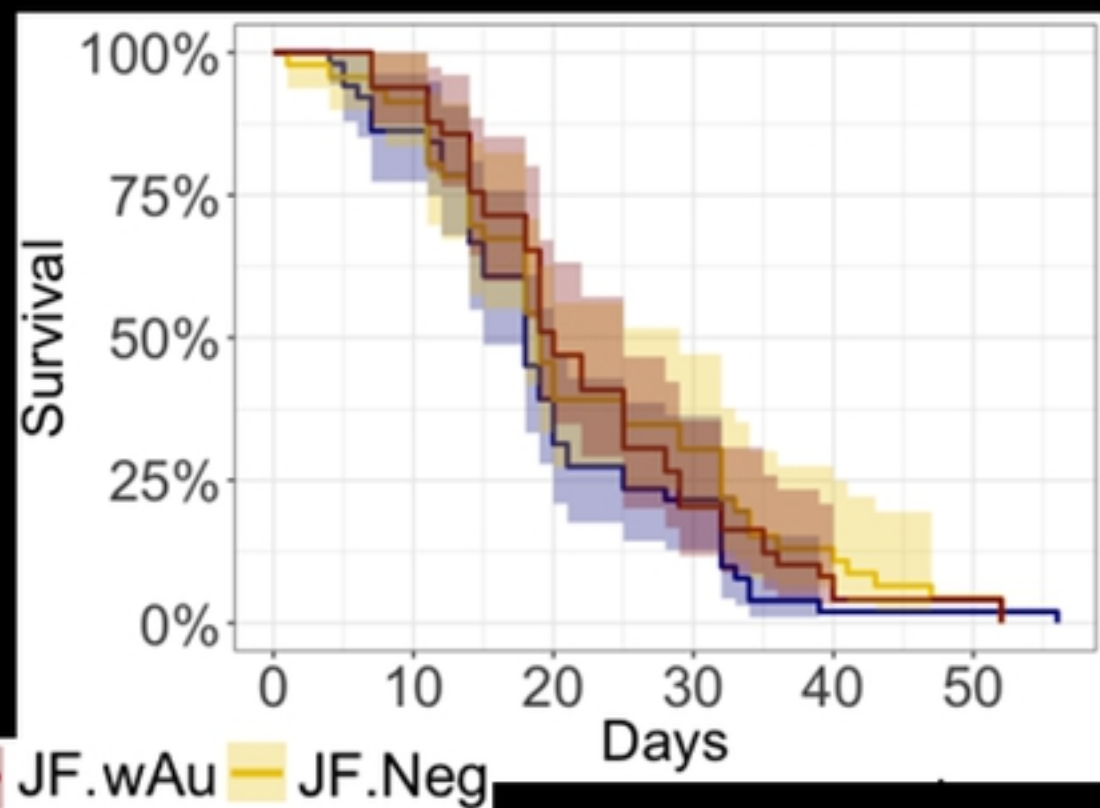
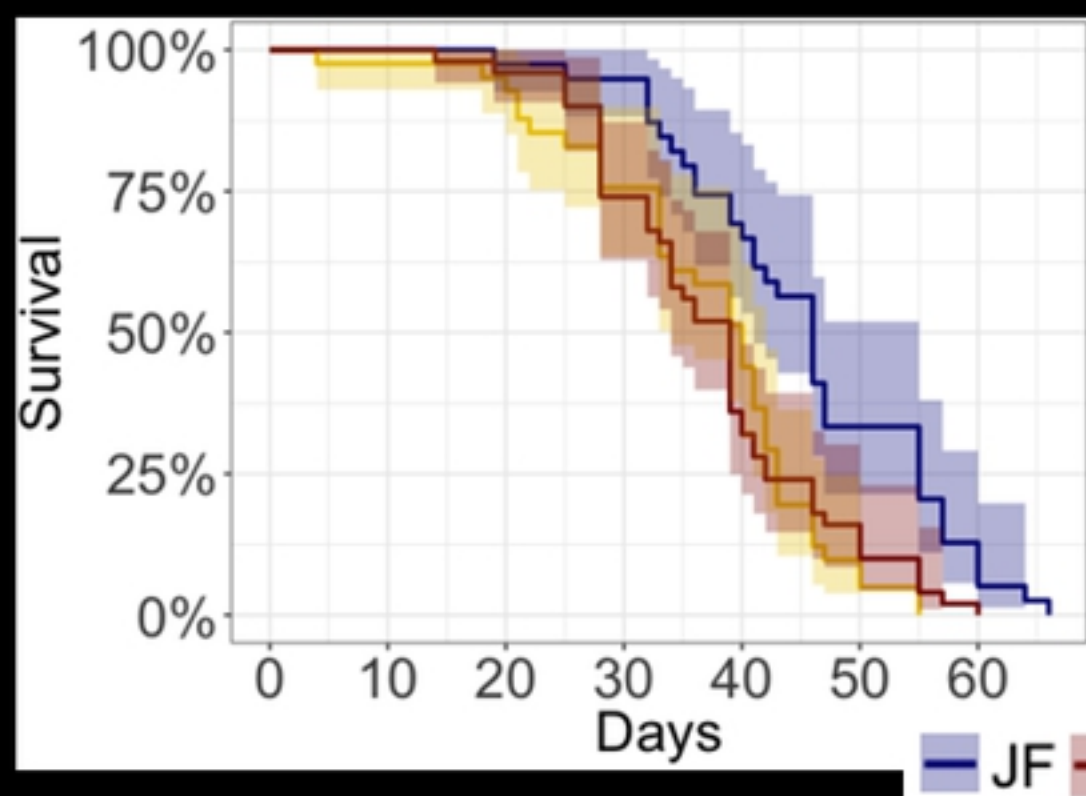


Figure 2

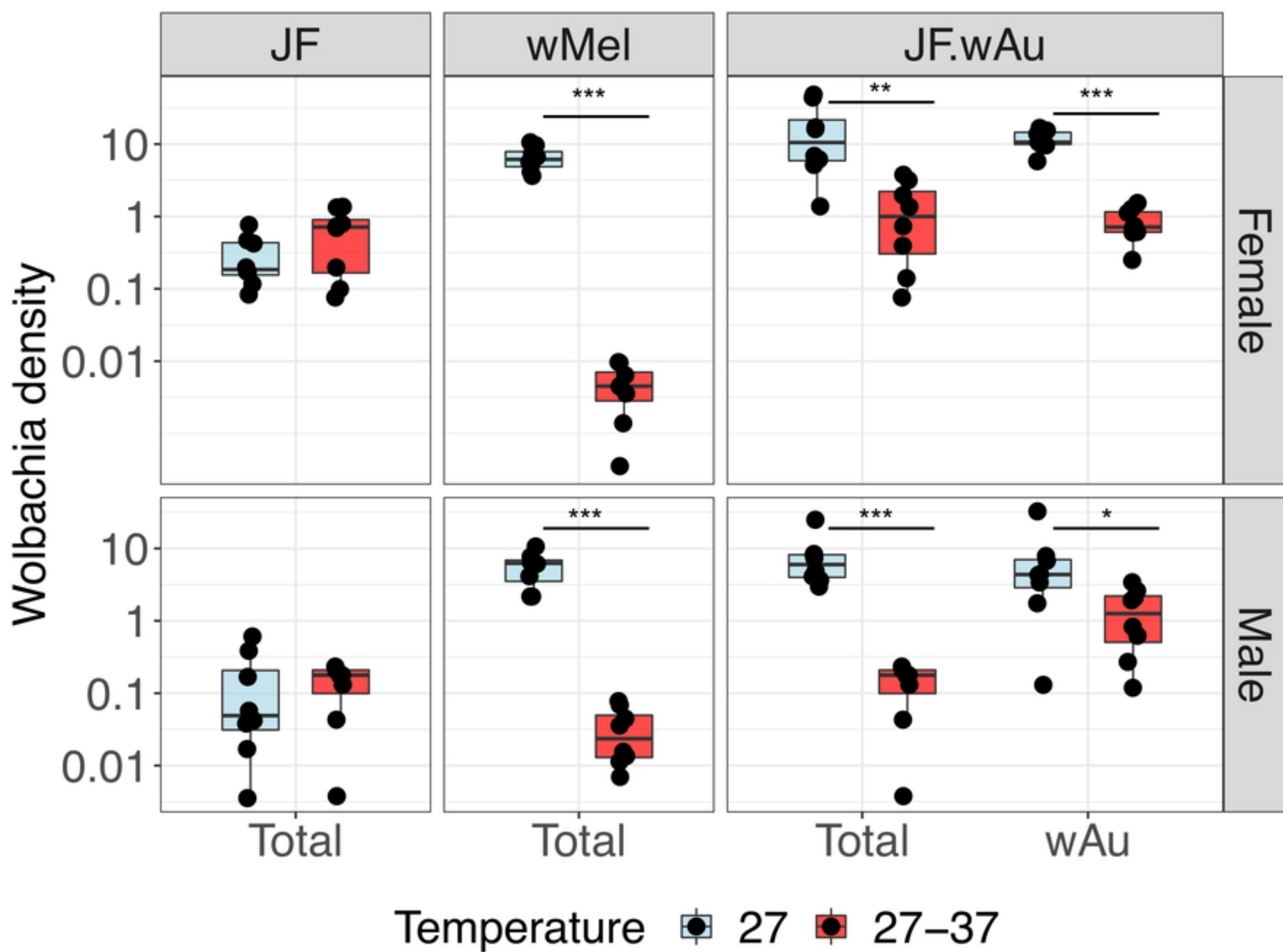


Figure 3

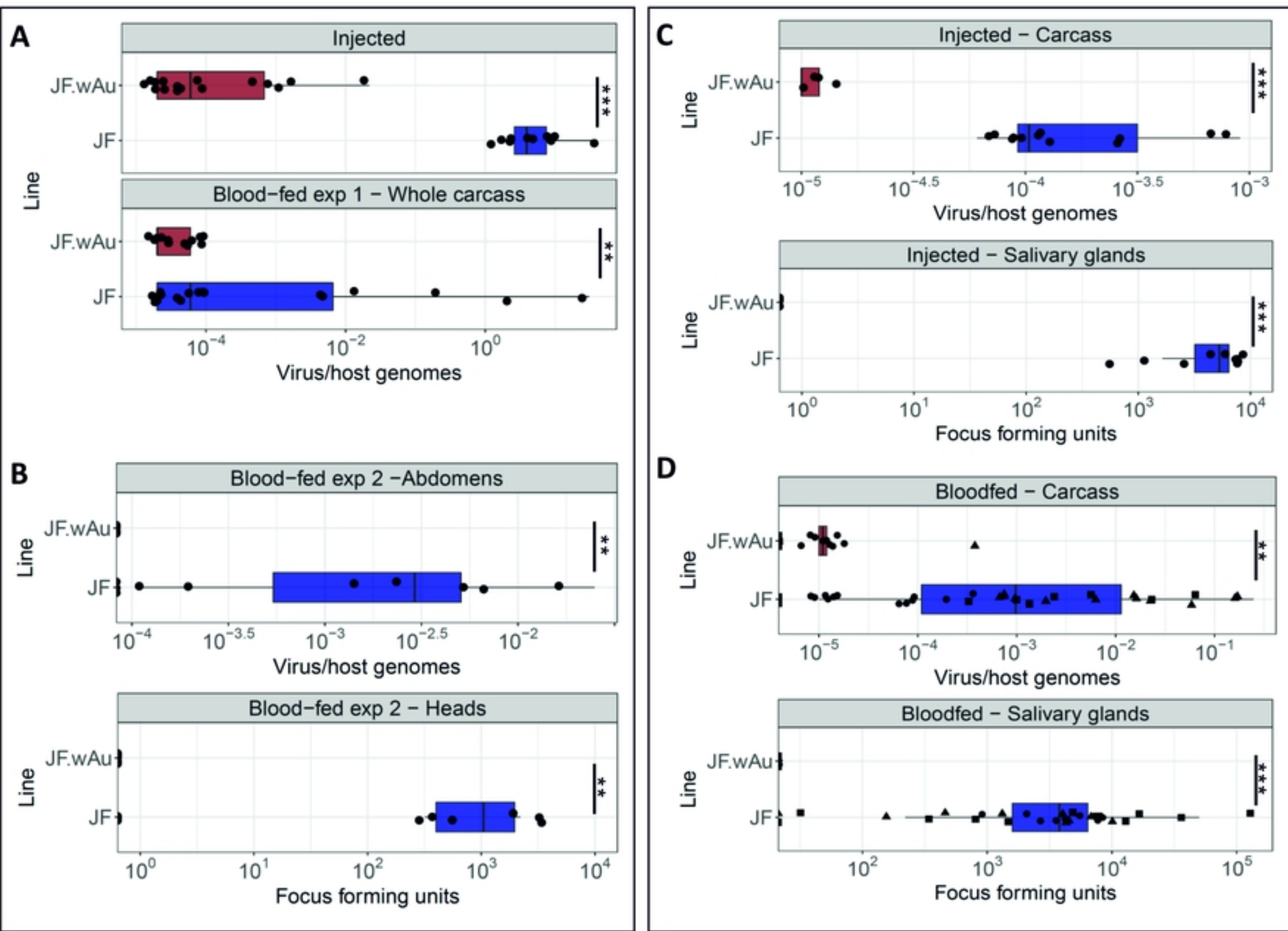


Figure 4



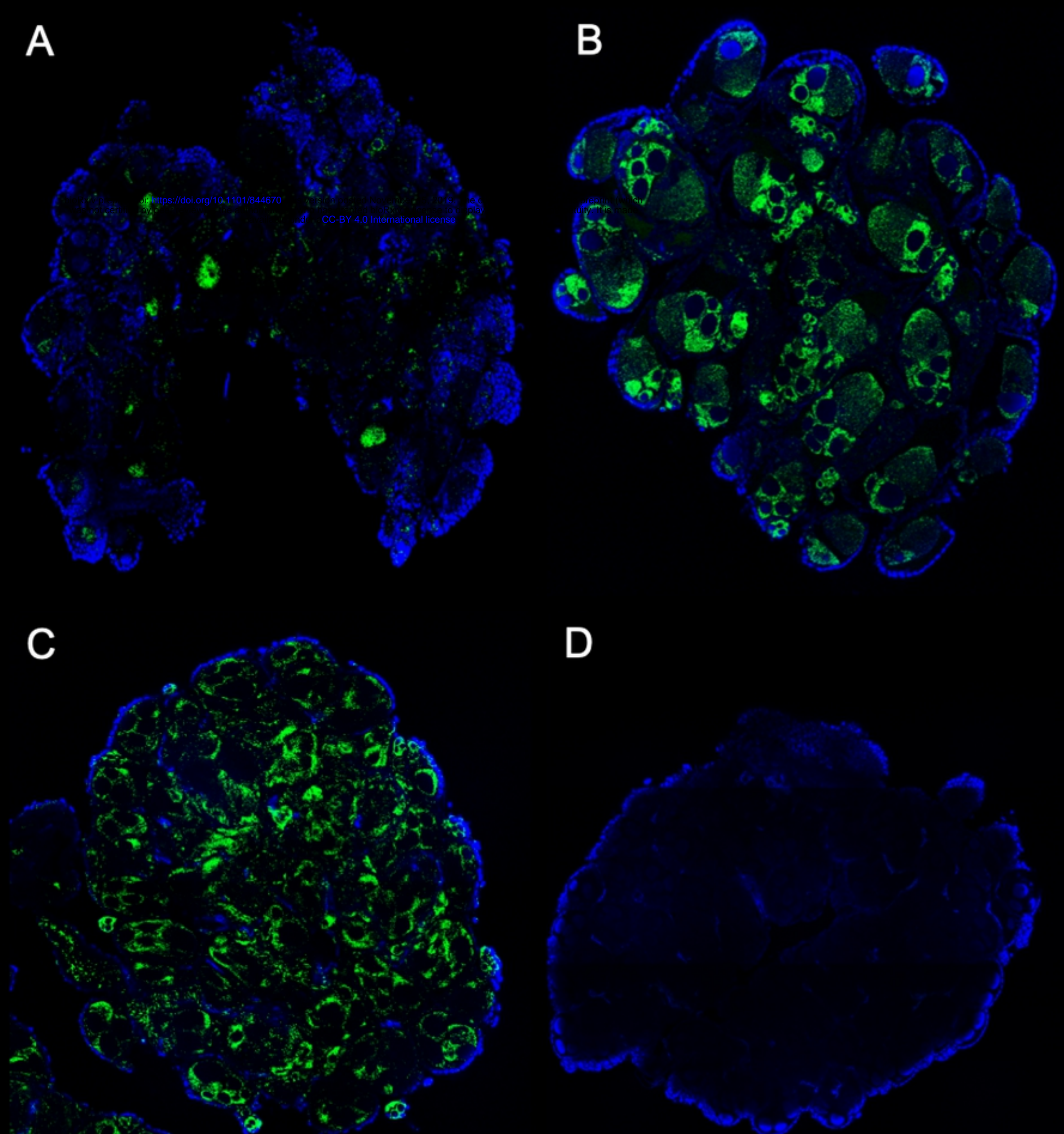


Figure S1