

1 **Unravelling the modulation of intracortical inhibition during motor imagery:**
2 **An adaptive threshold-hunting study**

3

4 Cécilia Neige¹, Dylan Rannaud Monany¹, Cathy M. Stinear², Winston D. Byblow³,
5 Charalambos Papaxanthis¹, Florent Lebon¹

6

7 ¹ INSERM UMR1093-CAPS, Université Bourgogne Franche-Comté, UFR des Sciences du
8 Sport, F-21000, Dijon, France.

9 ² Department of Medicine, University of Auckland, Auckland, New Zealand

10 ³ Department of Exercise Sciences, University of Auckland, Auckland, New Zealand

11

12 **Corresponding Author:**

13 Cécilia Neige, Université de Bourgogne Franche-Comté, Dijon, Campus Universitaire, UFR
14 STAPS, BP 27877, F-21078 Dijon, France.

15 cecilia.neige@u-bourgogne.fr, Tel.: +333 80396754, Fax: +333 80396749

16

17

1 **Highlights**

2

3 • Excitatory and inhibitory neural processes interact during motor imagery, as the motor
4 regions are activated but no movement is produced.

5

6 • The current study investigated the extent of short interval intracortical inhibition
7 modulation (SICI) during motor imagery.

8

9 • When using optimal settings, SICI increased during motor imagery, likely to prevent the
10 production of an overt movement.

11

1 **Abstract**

2 Motor imagery (MI) is the mental simulation of an action without any apparent muscular
3 contraction. By means of transcranial magnetic stimulation, few studies revealed a decrease of
4 short-interval intracortical inhibition (SICI) within the primary motor cortex. However, this
5 decrease is ambiguous, as one would expect greater inhibition during MI to prevent overt motor
6 output. The current study investigated the extent of SICI modulation during MI through a
7 methodological and a conceptual reconsideration of i) the importance of parameters to assess SICI
8 (Exp.1) and ii) the inhibitory process within the primary motor cortex as an inherent feature of MI
9 (Exp.2). Participants performed two tasks: 1) rest and 2) imagery of isometric abduction of the
10 right index finger. Using transcranial magnetic stimulation, motor evoked potentials were elicited
11 in the right first dorsal interosseous muscle. An adaptive threshold-hunting paradigm was used,
12 where the stimulus intensity required to maintain a fixed motor evoked potential amplitude was
13 quantified. To test SICI, we conditioned the test stimulus with a conditioning stimulus (CS) of
14 different intensities. Results revealed an Intensity by Task interaction showing that SICI
15 decreased during MI as compared to rest only for the higher CS intensity (Exp.1). At the lowest
16 CS intensities, a Task main effect revealed that SICI increased during MI (Exp.2). SICI
17 modulation during MI depends critically on the CS intensity. By optimising CS intensity, we have
18 shown that SICI circuits may increase during MI, revealing a potential mechanism to prevent the
19 production of a movement while the motor system is activated.

20

21 **Key words:** Transcranial magnetic stimulation, motor cortex, inhibition, motor imagery.

22

1 **1 Introduction**

2 Interactions between excitatory and inhibitory neural processes within the primary motor
3 cortex (M1) are crucial in various cognitive and motor functions (Reis et al., 2008). For
4 example, during motor imagery (MI), the mental simulation of a movement without any
5 apparent muscular contraction, excitatory and inhibitory processes subtly interact as the motor
6 regions are activated but no movement is produced.

7 Paired-pulse transcranial magnetic stimulation (TMS) protocols provide a quantification
8 of the intracortical processes at the time of the stimulation (Bestmann and Krakauer, 2015).
9 Short-interval intracortical inhibition (SICI) measurements can be obtained by delivering a
10 subthreshold conditioning stimulus (CS), followed 1 to 6 ms later by a second supra-threshold
11 test stimulus (TS) applied through the same coil over M1 (Kujirai et al., 1993). This produces
12 a decrease of motor-evoked potential (MEP) amplitude in comparison to MEP induced by
13 unconditioned TS.

14 In the conventional paired-pulse TMS paradigm, the peak-to-peak amplitude of the
15 conditioned MEP is expressed as a percentage of the amplitude of the unconditioned MEP,
16 indicating the amount of SICI (Kujirai et al., 1993). This measure depends critically on the CS
17 and TS intensities (Ilić et al., 2002; Peurala et al., 2008; Vucic et al., 2009). First, the TS
18 intensity must be sufficient to recruit the later I-waves suppressed by SICI (Garry and
19 Thomson, 2009; Di Lazzaro et al., 2017). Moreover, changing the CS intensity for a given TS
20 intensity results in a U-shaped SICI curve. In the descending part of this curve, the amount of
21 SICI increases when increasing CS intensity from 50% of the resting motor threshold (rMT),
22 with a peak of inhibition occurring at CS about 80%rMT (Kujirai et al., 1993; Ilić et al.,
23 2002). Then, increasing the CS intensity toward the rMT (i.e., CS intensity >80 rMT (Ilić et
24 al., 2002; Kossev et al., 2003)) leads to the progressive decrease of SICI. This decrease is
25 thought to reflect a “contamination” of the neural process involved in SICI by the recruitment
26 of high-threshold excitatory interneurons. The latter have the potential to override the
27 inhibitory system and are known to contribute to the short interval intracortical facilitation
28 (SICF) phenomenon (Ilić et al., 2002; Kossev et al., 2003; Peurala et al., 2008; Vucic et al.,
29 2009; Wagle-Shukla et al., 2009). Importantly, it must be pointed out that rMT is not a static
30 but rather a state-dependent measure that is subject to the excitability of several cortical and
31 spinal elements excited by the TMS pulse (Groppa et al., 2012; Karabanov et al., 2015). For
32 example, MI decreases the rMT (Facchini et al., 2002; Li, 2007; Grosprêtre et al., 2016) and
33 enhances MEP amplitude (Kasai et al., 1997; Yahagi and Kasai, 1998; Lebon et al., 2012;

1 Grosprêtre et al., 2016) when compared to rest. As suggested by Grosprêtre et al. (2015),
2 these findings bring evidence that cortical cell responsiveness to TMS may increase during
3 MI and this could be mediated, at least in part, by a decrease of inhibitory activity within M1
4 (Grosprêtre et al., 2016). Indeed, some studies found a reduction of SICI during MI in
5 comparison to rest when using the conventional SICI paradigms (Abbruzzese et al., 1999;
6 Patuzzo et al., 2003; Stinear and Byblow, 2004; Kumru et al., 2008; Liepert and Neveling,
7 2009). Conversely, other studies failed to observe SICI modulation (Ridding and Rothwell,
8 1999; Stinear and Byblow, 2004; Sohn et al., 2006; Lebon et al., 2012), indicating that
9 mechanisms underlying SICI modulation during MI remain poorly understood. Notably, the
10 difference between these contradictory results seems to rely on the CS intensity. It appears
11 that only studies fixing the CS intensity at ≥ 75 rMT found a reduction of SICI during MI.

12 The aim of the present study was to unravel the SICI modulation observed during MI
13 through a methodological and conceptual reconsideration of: (i) the importance of CS
14 intensity and (ii) the inhibitory process within M1 as an inherent feature of MI. To do so, we
15 designed a pair of experiments in which we varied the CS intensity and determined the TS
16 intensity required to maintain a fixed MEP amplitude for each condition using an adaptive
17 threshold hunting technique (Awiszus et al., 1999; Fisher et al., 2002; Awiszus, 2003;
18 Samusyte et al., 2018; Vucic et al., 2018). This method has been recently developed in order
19 to overcome the potential limitations of conventional paired-pulse TMS protocols, such as
20 large variability in MEP amplitude and a “floor/ceiling effect” when the observed inhibition
21 leads to complete MEP suppression (Cirillo and Byblow, 2016; Cirillo et al., 2018; Van den
22 Bos et al., 2018). The adaptive threshold-hunting technique provides a new opportunity to
23 extend our understanding of physiological mechanisms underlying intracortical inhibition in
24 healthy subjects and it has been recently shown to be more reliable with shorter acquisition
25 time than conventional SICI techniques (Samusyte et al., 2018).

26 Taking advantage of the adaptive threshold-hunting approach, two different experiments
27 were conducted in order to investigate the evolution of SICI during MI as compared to rest.
28 We used the adaptive threshold-hunting technique in its original form (Fisher et al., 2002) to
29 measure SICI using three CS intensities. We hypothesized a decrease of SICI during MI when
30 compared to rest, as previously observed in the literature with conventional SICI techniques
31 when CS intensity is high (Exp 1). Then, we optimized the adaptive threshold-hunting
32 technique and measure SICI using two low CS intensities. We expected an increase of SICI
33 during MI with low CS when compared to rest, as MI is thought to suppress neural commands

1 at some level of the motor system by inhibitory mechanisms (Jeannerod and Decety, 1995;
2 Jeannerod, 2001).

3

4 **2 Experimental Procedures**

5 **2.1 Participants**

6 Twenty healthy volunteers (five females; mean age 24.3 years, range 22-27 years; eighteen
7 right-handed as assessed by the Edinburgh Handedness Inventory (Oldfield, 1971))
8 participated in the current study after providing written informed consent. All volunteers were
9 screened for contraindications to TMS by a medical doctor. The protocol was approved by the
10 University of Burgundy Committee on Human Research and complied with the Declaration of
11 Helsinki. Ten participants were included in Experiment 1 and three of them plus ten other
12 participants were included in Experiment 2.

13 **2.2 General procedure**

14 For the two Experiments, participants were comfortably seated on a chair with the
15 forearms supported by a pillow and palms facing down. They were instructed to stay at rest
16 throughout the experiments. For MI trials, participants performed kinesthetic MI of a right
17 tonic index abduction for 3s after an auditory cue. It has been shown that a kinesthetic MI
18 strategy produces a greater muscle-specific and temporally modulated facilitation of the
19 corticospinal pathway, as compared with a visual MI strategy (Stinear et al., 2006). At the
20 beginning of the experiment, participants performed and practiced actual abduction of the
21 right index finger. They then received the following instructions (in French): “When you hear
22 the auditory cue, imagine making an abduction of the right index finger. Try to feel the
23 movement, imagining the muscle contraction and tension that you would expect to experience
24 in actual action. Be sure not to contract any muscles during the task and keep your eyes open”
25 (Lebon et al., 2019).

26

27 **TMS and EMG recordings**

28 Electromyographic (EMG) recordings of the right first dorsal interosseous (FDI)
29 muscle were made with surface Ag/AgCl disposable electrodes in a belly-tendon montage. A
30 ground electrode was placed on the styloid process of the ulna. The EMG signals were
31 amplified and band-pass filtered (10–1000 Hz, Biopac Systems Inc.) and digitized at a

1 sampling rate of 2000 Hz for off-line analysis. Background EMG was monitored for the 100
2 ms preceding every TMS pulse to ensure a complete muscle relaxation throughout the
3 experiments.

4 Single-pulse and paired-pulse stimulations were applied with a 70-mm figure-of-eight
5 coil connected to a monophasic Magstim BiStim² stimulator (The Magstim Co., Whitland,
6 UK). The coil was placed over the left M1, tangentially to the scalp with the handle pointing
7 backward and laterally at 45° away from the midsagittal line, resulting in a posterior-anterior
8 current flow within M1. The optimal stimulation site on the scalp (hotspot) was defined as the
9 location eliciting the largest MEP amplitude in the FDI and was marked on the scalp. The
10 conventional rMT was determined as the lowest stimulation intensity required to evoke at
11 least 5 MEPs of 50 μ V out of 10 stimulations (Rossini et al., 1999) and then was used to set
12 CS intensities.

13

14 **Adaptive threshold-hunting technique**

15 In Experiment 1, based on the corresponding literature, the hunting-threshold was
16 defined as the TS intensity (expressed in percentage of the maximal stimulator output
17 (%MSO)) required to elicit a MEP_{target} in the relaxed FDI of 0.2 mV in peak-to-peak
18 amplitude. This 0.2 mV MEP amplitude was chosen in accordance to numerous previous
19 studies using the adaptive threshold-hunting technique (Fisher et al., 2002; Awiszus, 2003;
20 Vucic et al., 2006; Menon et al., 2015; Cirillo and Byblow, 2016; Cirillo et al., 2018;
21 Samusyte et al., 2018; Van den Bos et al., 2018). This 0.2mV fixed MEP value has been
22 shown to lie on the middle of the steepest portion of the stimulus response curve plotted on a
23 logarithmic scale (Fisher et al., 2002; Vucic et al., 2006, 2018). In the current study, the TS
24 intensity required to elicit the MEP_{target} at rest corresponded on average to 109% rMT (range
25 103-118 % rMT), which is similar to a previous study (Cirillo and Byblow, 2016). The
26 adaptive threshold-tracking single-pulse TMS technique was used to first compare the
27 unconditioned TS intensity (%MSO) required to maintain this fixed MEP_{target} amplitude at
28 rest vs. during MI.

29 The adaptive threshold-hunting paired-pulse TMS technique was then used to
30 investigate SICI at rest and during MI. To elicit SICI at rest and during MI in Experiment 1,
31 we delivered high CS intensities: 60%, 70% and 80% of the rMT. The TS intensity was
32 adjusted to reach the MEP_{target}. A 2 ms interstimulus interval between CS and TS was chosen
33 based on a similar previous study investigating SICI modulation during motor imagery
34 (Lebon et al., 2012).

1 In Experiment 2, the hunting threshold was defined as the TS intensity (%MSO)
2 required to elicit a MEP in the relaxed FDI of at least 50% of MEP_{max} in peak-to-peak
3 amplitude. This MEP_{target} amplitude in Experiment 2 has been chosen since a TS delivered at
4 a low intensity (i.e., below 110% rMT, as it was the case in Experiment 1), could fail to evoke
5 late indirect waves, and limit SICI magnitude (Garry and Thomson, 2009). This subject-
6 specific relative MEP value is half of the individual's maximum MEP amplitude value.
7 MEP_{max} was calculated with a stimulus/response curve performed at the beginning of the
8 experiment. We recorded eight MEPs for each stimulus intensity starting at 110% of rMT
9 with incrementing steps of 10% rMT up to MEP_{max} (Kukke et al., 2014; Pitcher et al., 2015).
10 In the current study, the TS Intensity required to elicit the MEP_{target} at rest (mean MEP
11 amplitude: $1.4 \text{ mV} \pm 0.81$) corresponded on average to 124% rMT (range 112-150 %rMT). In
12 the same way as for Experiment 1, the adaptive threshold-hunting single-pulse TMS
13 technique was used to compare the unconditioned TS intensity (%MSO) needed to elicit the
14 MEP_{target} at rest vs. during MI.

15 To elicit SICI at rest and during MI in Experiment 2, we delivered low-intensity CS,
16 i.e. 50% and 60% rMT. The CS was delivered 2 ms prior to TS. TS intensity was adjusted in
17 each condition.

18
19 For both experiments, the order of the experimental conditions was randomized across
20 participants. An available online freeware (TMS Motor Threshold Assessment Tool, MTAT
21 2.0), based on a maximum-likelihood Parameter Estimation by Sequential Testing (PEST)
22 strategy was used with “assessment without a priori information” in line with previous studies
23 (Cirillo and Byblow, 2016; Cirillo et al., 2018). The stimulation sequence always began with
24 the TS at 37 %MSO. One experimenter held the coil over M1, while the other indicated
25 whether or not the MEP amplitude was $\geq 0.2 \text{ mV}$ (Experiment 1) or $\geq 50\%MEP_{max}$
26 (Experiment 2). The predictive algorithm then determined the next TS intensity to be
27 delivered and was stopped after thirty stimulations, which provides sufficient accuracy for the
28 threshold estimate according to previous studies (Awiszus, 2003, 2014; Ah Sen et al., 2017).

29 **3 Data analysis**

30 First, the unconditioned TS intensity required to elicit the MEP_{target} , at rest and during MI
31 was quantified and expressed in %MSO in both experiments.

1 Then, to probe the influence of the different CS on TS intensity, the amount of SICI
2 (expressed in INH%) was quantified for each condition using the following equation (Fisher
3 et al., 2002):

$$INH(\%) = \frac{(\text{conditioned TS Intensity}) - (\text{unconditioned TS Intensity})}{(\text{unconditioned TS Intensity})} \times 100$$

4 where positive values indicate inhibition and negative values indicate facilitation.

5 Background root mean square (RMS) of the surface EMG was calculated during the 100 ms
6 epoch prior to TMS to ensure the absence of muscle contraction in each condition.

7 **4 Statistical analysis**

8 Statistical analyses were performed using Statistical Program for the Social Sciences
9 (SPSS) version 24 software (SPSS Inc., Chicago, IL, USA). Normality of the data
10 distributions was verified using the Shapiro-Wilk test. Homogeneity of variances was
11 assessed by Mauchly's test and a Greenhouse-Geiser correction was applied if the sphericity
12 assumption was violated. Pre-planned post-hoc analyses were performed on significant
13 interactions after applying a Bonferroni correction for multiple comparisons. Corrected p
14 values for multiple comparisons are reported in the results section. The α level for all analyses
15 was fixed at .05. Partial eta squared (η^2) values are reported when results are statistically
16 significant to express the portion of the total variance attributable to the tested factor or
17 interaction. Values in parentheses in the text represent mean \pm SD.

18 First, a Student's two-tailed paired sample *t*-test was used to compare the unconditioned TS
19 Intensity (%MSO) between Rest and MI for both experiments. Then, an analysis of variance
20 (ANOVA) was performed on SICI measurements (INH %) with two within-subject factors:
21 Task₂ (Rest vs. MI) and CS Intensity₃ (CS 60% rMT vs. CS 70% rMT vs. CS 80% rMT) for
22 Experiment 1.

23 For Experiment 2, ANOVA was performed on SICI measurements (INH %) with two within-
24 subject factors: Task₂ (Rest vs. MI) and CS Intensity₂ (CS 50% rMT vs. CS 60% rMT).

25 Additional analyses were performed to control for potential methodological biases. The RMS
26 values were compared across conditions in both experiments, using the same analyses
27 described above.

1 5 Results

2 5.1 Methodological considerations

3 The analysis of the pre-trigger background EMG level for the unconditioned TS (Table
 4 1) yielded no significant difference between rest and MI neither in Experiment 1 ($t(9) =$
 5 1.133 ; $p=.287$) nor in Experiment 2 ($t(12) = -1.017$; $p=.329$). In addition, the ANOVAs for
 6 RMS values for conditioned TS revealed no significant main effects or interactions for
 7 Experiment 1 (all $p > .07$) and Experiment 2 (all $p > .14$). Therefore, any changes observed in
 8 the subsequent measurements cannot be attributed to differences in EMG levels prior to the
 9 TMS pulse.

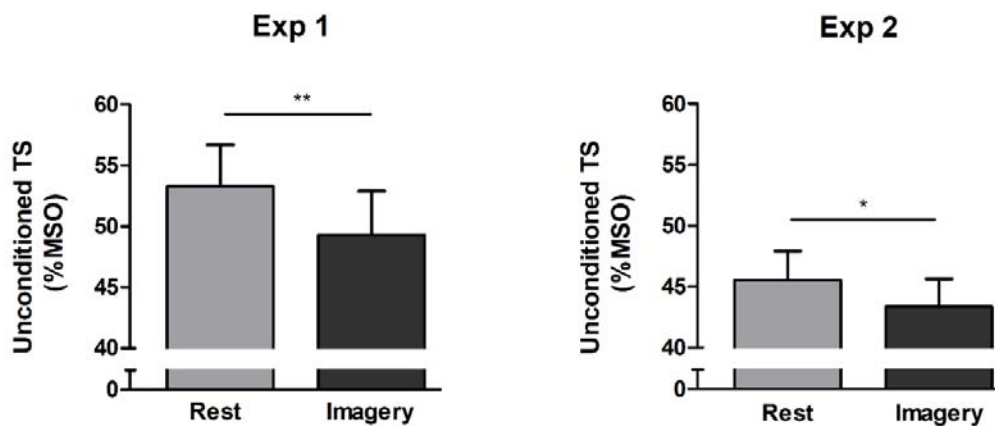
Experiment 1				
	Unconditioned TS	Conditioned TS		
		CS 60%	CS 70%	CS 80%
Rest	6.99 ± 4.2	7.05 ± 4.2	7.66 ± 4.6	7.47 ± 4.5
Motor Imagery	6.64 ± 4	7.68 ± 4.4	7.80 ± 4.8	7.75 ± 4.6
Experiment 2				
	Unconditioned TS	Conditioned TS		
		CS 50%	CS 60%	
Rest	3.19 ± 1.7	3.09 ± 1.7	3.04 ± 1.6	
Motor Imagery	3.29 ± 1.8	3.48 ± 1.8	3.18 ± 1.7	

10 **Table 1:** Pre-trigger root mean squared EMG expressed in μV (mean \pm SD).

11

1 5.2 Unconditioned TS Intensity

2 Figure 1 illustrates the unconditioned TS Intensity obtained at rest and during MI in
3 Experiment 1 (left panel) and Experiment 2 (right panel) in both groups of participants.
4 Two-tailed paired sample *t*-tests revealed that the unconditioned TS Intensity required to
5 reach the MEP_{target} was significantly lower during MI than at rest in both Experiment 1 ($49.3 \pm$
6 11.3 vs. 53.3 ± 10.6 ; $t(9) = 3.381$; $p=.008$) and Experiment 2 (43.4 ± 8.7 vs. 45.5 ± 13.6 ; $t(12)$
7 $= 2.976$; $p=.012$). This result indicates that MI leads to increase corticospinal excitability.
8 Note that unconditioned TS Intensity at rest was higher in Experiment 1 in comparison to
9 Experiment 2 ($t(21) = 3.364$; $p=.003$), due to greater rMT for individuals recruited in the first
10 experiment (Experiment 1, mean rMT = 48.6 %MSO (range 27-59); Experiment 2, mean rMT
11 = 36.7 %MSO (range 28-47)).



12

13 **Figure 1:** Mean \pm SE for the Unconditioned TS Intensity obtained with the hunting-threshold
14 technique at rest and during motor imagery in the two Experiments. * $p < .05$; ** $p < .01$

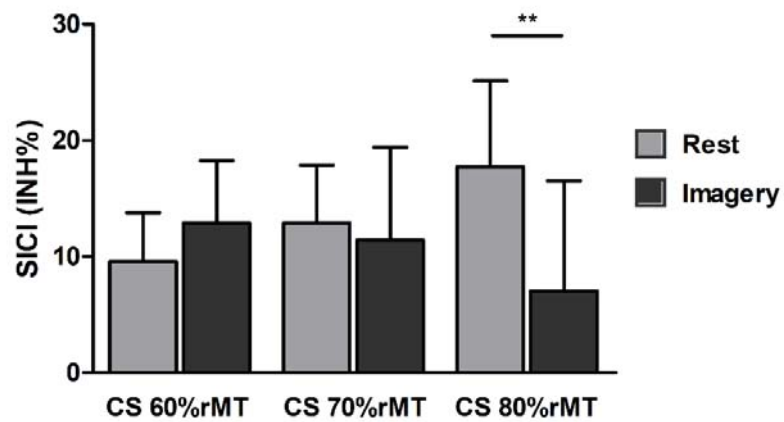
15

16 5.3 Conditioned TS Intensity (SICI)

17 Experiment 1

18 Figure 2 illustrates the percentage of inhibition (SICI) obtained at rest and during MI
19 for the three CS intensities. ANOVA revealed no main effects of Task ($F_{(1,9)} < 1$, $p = .582$) or
20 CS intensity ($F_{(2,18)} < 1$, $p = .871$). However, there was a Task by CS intensity interaction
21 ($F_{(2,18)} = 9.086$, $p = .002$; $\eta^2 = .502$). Post-hoc analyses revealed that there was less SICI

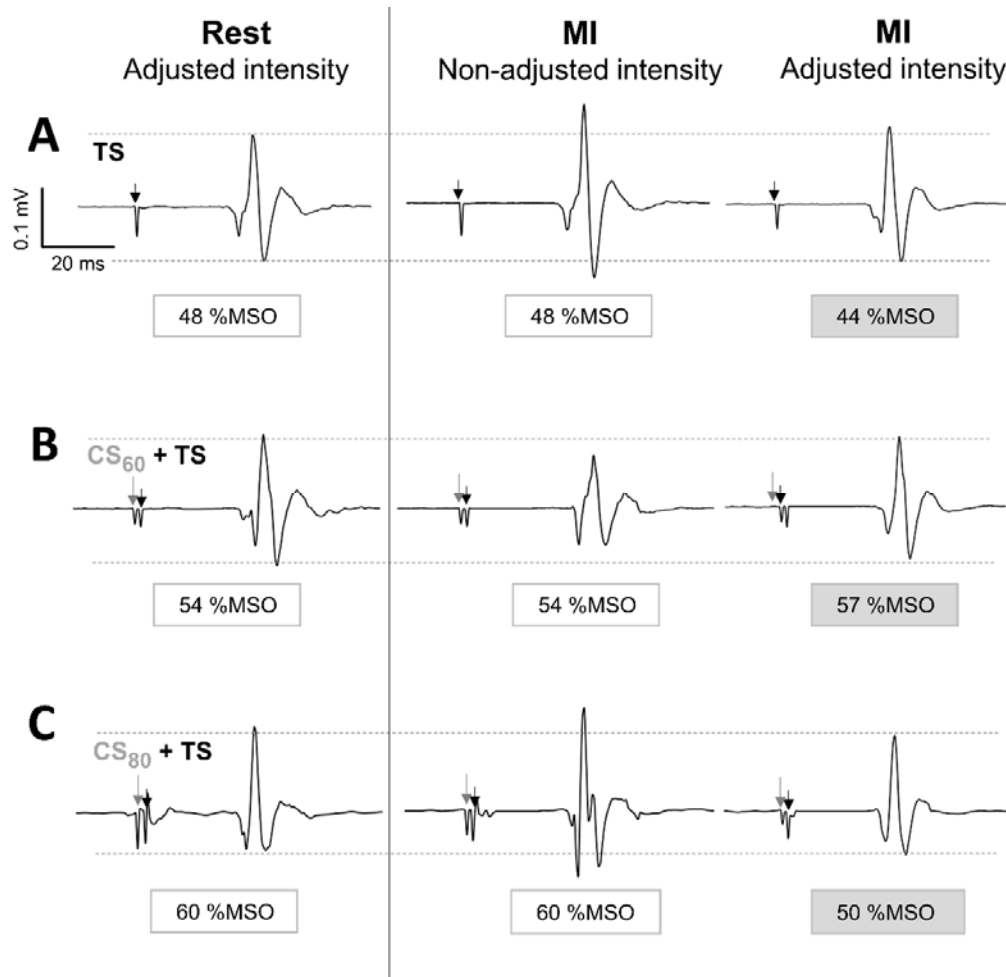
1 during MI than at rest only for the CS intensity of 80% rMT ($p = .004$; Figure 3 for typical
2 raw MEP recordings).



3

4 **Figure 2:** Mean \pm SE for SICI obtained in Experiment 1 with the hunting-threshold
5 technique and according to the three conditioning stimulus (CS) intensities expressed in
6 percentage of the rMT at rest and during motor imagery. ** $p < .01$

7



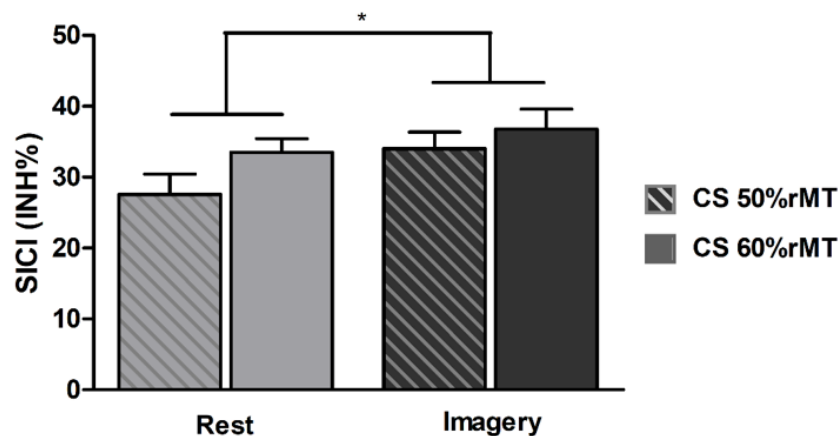
1
2
3
4
5
6
7
8
9
10
11
12
13
14

Figure 3: Typical raw MEP recordings of the right FDI muscle in Experiment 1. (A) Unconditioned Test Stimulus (TS, black arrow). At rest, the TS intensity was adjusted to elicit the MEP_{target} (0.2 mV). During motor imagery (MI), the same TS intensity elicited a greater MEP amplitude; it was therefore decreased to evoke the MEP_{target} . (B) Paired-pulse protocol where the conditioning stimulus (CS, grey arrow) was delivered at an intensity of 60% of resting motor threshold (CS₆₀). In comparison to rest, TS intensity during MI was increased to evoke the MEP_{target} . (C) Paired-pulse protocol where the CS was delivered at an intensity of 80%rMT (CS₈₀). In comparison to rest, TS intensity during MI was decreased to evoke the MEP_{target} .

1 Experiment 2

2 Figure 4 illustrates SICI results (INH%) obtained at rest and during MI for two
3 different CS intensities. ANOVA revealed a main effect of Task showing that SICI is higher
4 during MI when compared to rest ($+35.4 \pm 9.3$ INH% vs. $+30.5 \pm 10.3$ INH%, $F_{(1,12)} = 4,838$;
5 $p = .048$; $\eta p^2 = .287$). However, no significant main effect of CS intensity ($F_{(1,12)} = 2,543$, $p =$
6 $.137$) nor Task by CS Intensity interaction ($F_{(1,12)} < 1$, $p = .467$) was found.

7



8

9 **Figure 4:** Mean \pm SE for SICI obtained in Experiment 2 with the hunting-threshold
10 technique and according to the two conditioning stimulus (CS) intensities expressed in
11 percentage of the rMT at rest (grey) and during motor imagery (black). * $p < .05$

12

13 6 Discussion

14 The main objective of the present study was to investigate the modulation of SICI during
15 MI, with a particular focus on the effect of the CS intensity. For the first time, we reported
16 that the CS intensity chosen to evaluate SICI led to opposite conclusions regarding SICI
17 modulation during MI. When tested with a high CS intensity there is less SICI during MI, as
18 compared to rest. On the contrary, when tested with optimizing low CS intensities there is a
19 greater SICI during MI than at rest. These findings are the first to strength the idea that MI
20 requires motor command inhibition by active processes acting at a cortical level.

21 **Corticospinal excitability increases during MI**

1 While the major objective of this study was to focus on SICI, we also analyzed the level of
2 corticospinal excitability (unconditioned TS intensity) at rest and during MI for the two
3 experiments. By using the adaptive hunting threshold single-pulse TMS technique, we found
4 that the minimum TS intensity required to elicit the MEP_{target} was lower during MI when
5 compared to rest. This result replicates and extends earlier findings showing that corticospinal
6 excitability is higher during MI (Karabanov et al., 2015; Grosprêtre et al., 2016; Ruffino et
7 al., 2017), regardless of the MEP_{target} amplitude.

8 **SICI is lower during motor imagery when tested with high CS intensity**

9 In Experiment 1, SICI decreased during MI as compared to rest only for the highest
10 CS intensity (CS intensity set at 80% rMT), as previously observed in the literature with
11 conventional SICI techniques. This decrease has been suggested to explain the corticospinal
12 excitability increase observed during MI (Abbruzzese et al., 1999; Patuzzo et al., 2003;
13 Stinear and Byblow, 2004; Kumru et al., 2008; Liepert and Neveling, 2009).

14 However, there is now compelling evidence that cortical cell responsiveness to TMS
15 increased during MI, as observed by a decrease of the rMT in comparison to rest (Grosprêtre
16 et al., 2016). Therefore, for a similar subthreshold CS intensity based on the rMT calculated
17 when the subject is at rest, this same CS intensity for the MI condition is closer to the motor
18 threshold. The investigations of SICI at rest have found that increasing the CS intensity leads
19 to the recruitment of high-threshold excitatory interneurons that may contaminate SICI,
20 motivating us to carry out the current study. The result obtained here does indeed show that
21 SICI was lower during MI when compared to rest only for high CS intensity (80% rMT). We
22 may therefore suggest that this decrease in SICI could be the result of using CS intensities that
23 were too high and that produced an unwanted recruitment of excitatory interneurons. These
24 findings lead us to reconsider the modulation of SICI underlying MI, taking into account the
25 selection of CS intensity.

26 **SICI is higher during motor imagery when tested with low CS intensities**

27 In Experiment 2, we found for the first time that SICI was greater during MI (vs. at
28 rest) when using low CS intensities (i.e. 50% rMT and 60% rMT). With optimal TMS
29 settings, we revealed an important component of neural processes within M1 during MI.

30 Neuroimaging studies have shown that brain networks underlying MI and actual
31 movement execution extensively overlap, supporting the elaboration of motor commands

1 during MI (Héту et al., 2013). During MI, however, motor commands may be stopped at some
2 level of the motor system by active inhibitory mechanisms to prevent them from being sent to
3 peripheral effectors (Jeannerod and Decety, 1995). It has been hypothesized that the neural
4 activation within motor and pre-motor areas during MI is blocked by inhibitory mechanisms
5 preventing the overt action (Jeannerod and Decety, 1995; Jeannerod, 2001). Because
6 intracortical networks within M1 could be considered as the final cortical modulators of
7 motor output (Cowie et al., 2016), a possible explanation for these findings is that the
8 increased SICI would prevent the production of an overt movement when the mental
9 representation of that movement is activated. These findings strengthen the idea that MI
10 requires motor command inhibition by active processes acting at a cortical level.

11 One could argue that the SICI increase, i.e. more inhibition, cannot be at play simultaneously
12 to the corticospinal excitability increase, i.e. more facilitation, in the specific effector involved
13 during MI. However, it is important to keep in mind that MEP amplitude results from the
14 balance between inhibitory and excitatory processes along the corticospinal tract including
15 both cortical and spinal-segmental contributions. Moreover, neuroimaging studies provide
16 evidence that MI is also supported by a network involving motor and premotor regions
17 including cortical and subcortical structures (Héту et al., 2013). Therefore, corticospinal
18 facilitation could possibly originate from these regions, outside M1 and exert their influence
19 via direct or indirect pathways (Reis et al., 2008). By contrast, the modulation of SICI
20 observed in this study could reflect the crucial role played by cortical interneurons within M1
21 in the fine-tuning neural processes required during MI.

22 **MEP_{target} amplitude considerations**

23 In the current study, different MEP_{target} amplitudes were chosen for the two
24 experiments and this deserves discussion. In Experiment 1, based on the existing literature, a
25 fixed MEP amplitude value of at least 0.2 mV was tracked for all participants (Fisher et al.,
26 2002; Vucic et al., 2018), corresponding to an average TS intensity of 109% rMT (range 103-
27 118 %rMT), a relatively low intensity. It is known that SICI predominately inhibits the late I-
28 waves (I₂, I₃ and I₄) and that a TS delivered at a low TMS intensity (i.e., below 110% rMT)
29 could fail to evoke late I-waves and thus limits the detection of SICI (Garry and Thomson,
30 2009; Di Lazzaro et al., 2017).

31 In order to answer our second hypothesis and to optimize the conditions of SICI measure, a
32 subject-specific MEP amplitude of at least 50% of MEP_{max} was tracked for all participants in
33 Experiment 2, corresponding on average to 124 % rMT (range 112-150 %rMT), a moderate

1 TS intensity known to generate the greatest measure of (Garry and Thomson, 2009; Wagle-
2 Shukla et al., 2009; Amandusson et al., 2017; Van den Bos et al., 2018). Reliable stimulus-
3 response curves can be acquired in less than 4 minutes (van de Ruit et al., 2019) and allow
4 personalisation of the hunting MEP_{target} amplitude. Therefore, future studies using the
5 adaptive threshold hunting technique to investigate intracortical mechanisms could consider
6 target 50% MEP_{max} .

7 **Perspective**

8 The results obtained in the current study have demonstrated that modulation of SICI
9 during MI depends critically on CS intensity. Importantly, other cognitive conditions that
10 share analogous control mechanisms and neural circuits with overt movements, such as motor
11 preparation or action observation, are known to selectively modulate corticospinal excitability
12 and to affect SICI (Naish et al., 2014; Duque et al., 2017). Supporting this view, a recent
13 study measured SICI using a range of CS intensities at rest and during a warned simple
14 reaction time task (Ibáñez et al., 2019). The results showed that show that SICI changes that
15 occurred during the task could be either larger or smaller than at rest depending on the
16 intensity of the CS. Together, these findings also confirmed that testing SICI using a wide
17 range of CS intensities provides a more nuanced interpretation of possible GABAergic
18 changes in M1 than testing with a single CS intensity (Ibáñez et al., 2019). We believe that
19 the adaptive threshold hunting paradigm could be useful in further studies to assess SICI
20 during various cognitive and motor states.

21 **Conclusion**

22 Overall, this study provides initial evidence that the intensity of the CS crucially affects
23 SICI measurement during MI when compared to rest. The previously reported decrease in
24 SICI during MI could be due to inappropriate TMS settings, with high CS intensities leading
25 to the unwanted recruitment of excitatory interneurons. With low CS intensities, we show that
26 SICI is greater during MI than at rest, probably to prevent the production of an overt
27 movement when the mental representation of that movement is activated. Future studies
28 should consider optimizing the SICI stimulation protocol by careful adjustment of the CS
29 intensity.

30 **Declaration/conflicts of interest:**

31 No conflicts of interest, financial or otherwise, are declared by the authors.

32

1 **Funding:**

2 This work was supported by the French “Investissements d’Avenir” program, project ISITE-

3 BFC (contract ANR-15-IDEX-0003).

4

5

1 **References**

- 2 Abbruzzese G, Assini A, Buccolieri A, Marchese R, Trompetto C (1999) Changes of intracortical
3 inhibition during motor imagery in human subjects. *Neurosci Lett* 263:113–116.
- 4 Ah Sen CB, Fassett HJ, El-Sayes J, Turco C V., Hameer MM, Nelson AJ (2017) Active and resting
5 motor threshold are efficiently obtained with adaptive threshold hunting. *PLoS One* 12:1–9.
- 6 Amandusson, Flink R, Axelson HW (2017) Comparison between adaptive and fixed stimulus paired-
7 pulse transcranial magnetic stimulation (ppTMS) in normal subjects. *Clin Neurophysiol Pract*
8 2:91–97 Available at: <https://doi.org/10.1016/j.cnp.2017.04.001>.
- 9 Awiszus F (2003) TMS and threshold hunting. *Suppl Clin Neurophysiol* 56:13–23.
- 10 Awiszus F (2014) Using relative frequency estimation of transcranial magnetic stimulation motor
11 threshold does not allow to draw any conclusions about true threshold. *Clin Neurophysiol*
12 125:1285–1286 Available at: <http://dx.doi.org/10.1016/j.clinph.2013.09.046>.
- 13 Awiszus F, Feistner H, Urbach D, Bostock H (1999) Characterisation of paired-pulse transcranial
14 magnetic stimulation conditions yielding intracortical inhibition or i-wave facilitation using a
15 threshold-hunting paradigm. *Exp Brain Res* 129:317–324 Available at:
16 [http://ovidsp.ovid.com/ovidweb.cgi?T=JS&CSC=Y&NEWS=N&PAGE=fulltext&D=med4&AN](http://ovidsp.ovid.com/ovidweb.cgi?T=JS&CSC=Y&NEWS=N&PAGE=fulltext&D=med4&AN=10591905)
17 [=10591905](http://ovidsp.ovid.com/ovidweb.cgi?T=JS&CSC=Y&NEWS=N&PAGE=fulltext&D=med4&AN=10591905).
- 18 Bestmann S, Krakauer JW (2015) The uses and interpretations of the motor-evoked potential for
19 understanding behaviour. *Exp Brain Res* 233:679–689.
- 20 Cirillo J, Byblow WD (2016) Threshold tracking primary motor cortex inhibition: The influence of
21 current direction. *Eur J Neurosci* 44:2614–2621 Available at:
22 <http://www.embase.com/search/results?subaction=viewrecord&from=export&id=L611975606>.
- 23 Cirillo J, Semmler JG, Mooney RA, Byblow WD (2018) Conventional or threshold-hunting TMS? A
24 tale of two SICIs. *Brain Stimul* 11:1296–1305 Available at:
25 <https://doi.org/10.1016/j.brs.2018.07.047>.
- 26 Cowie MJ, MacDonald HJ, Cirillo J, Byblow WD (2016) Proactive modulation of long-interval
27 intracortical inhibition during response inhibition. *J Neurophysiol* 116:859–867 Available at:
28 <http://www.embase.com/search/results?subaction=viewrecord&from=export&id=L611936196>.
- 29 Di Lazzaro V, Rothwell J, Capogna M (2017) Noninvasive Stimulation of the Human Brain:
30 Activation of Multiple Cortical Circuits. *Neurosci*:107385841771766 Available at:
31 <http://journals.sagepub.com/doi/10.1177/1073858417717660>.

- 1 Duque J, Greenhouse I, Labruna L, Ivry RB (2017) Physiological Markers of Motor Inhibition during
2 Human Behavior. *Trends Neurosci* 40:1–18 Available at:
3 <http://linkinghub.elsevier.com/retrieve/pii/S0166223617300279>.
- 4 Facchini S, Muellbacher W, Battaglia F, Boroojerdi B, Hallett M (2002) Focal enhancement of motor
5 cortex excitability during motor imagery: A transcranial magnetic stimulation study. *Acta Neurol*
6 *Scand* 105:146–151.
- 7 Fisher RJ, Nakamura Y, Bestmann S, Rothwell JC, Bostock H (2002) Two phases of intracortical
8 inhibition revealed by transcranial magnetic threshold tracking. *Exp Brain Res* 143:240–248
9 Available at:
10 [http://ovidsp.ovid.com/ovidweb.cgi?T=JS&CSC=Y&NEWS=N&PAGE=fulltext&D=med4&AN](http://ovidsp.ovid.com/ovidweb.cgi?T=JS&CSC=Y&NEWS=N&PAGE=fulltext&D=med4&AN=11880900)
11 [=11880900](http://ovidsp.ovid.com/ovidweb.cgi?T=JS&CSC=Y&NEWS=N&PAGE=fulltext&D=med4&AN=11880900).
- 12 Garry MI, Thomson RHS (2009) The effect of test TMS intensity on short-interval intracortical
13 inhibition in different excitability states. *Exp Brain Res* 193:267–274.
- 14 Groppa S, Oliviero A, Eisen A, Quartarone A, Cohen LG, Mall V, Kaelin-Lang A, Mima T, Rossi S,
15 Thickbroom GW, Rossini PM, Ziemann U, Valls-Solé J, Siebner HR (2012) A practical guide to
16 diagnostic transcranial magnetic stimulation: Report of an IFCN committee. *Clin Neurophysiol*
17 123:858–882 Available at: <http://dx.doi.org/10.1016/j.clinph.2012.01.010>.
- 18 Grosprêtre S, Ruffino C, Lebon F (2016) Motor imagery and cortico-spinal excitability: A review. *Eur*
19 *J Sport Sci* 16:317–324 Available at: <http://dx.doi.org/10.1080/17461391.2015.1024756>.
- 20 Héту S, Grégoire M, Saimpont A, Coll MP, Eugène F, Michon PE, Jackson PL (2013) The neural
21 network of motor imagery: An ALE meta-analysis. *Neurosci Biobehav Rev* 37:930–949
22 Available at: <http://dx.doi.org/10.1016/j.neubiorev.2013.03.017>.
- 23 Ibáñez J, Spampinato DA, Paraneetharan V, Rothwell JC (2019) SICI during changing brain states:
24 Differences in methodology can lead to different conclusions. *Brain Stimul*:9–12.
- 25 Ilić T V., Meintzschel F, Cleff U, Ruge D, Kessler KR, Ziemann U (2002) Short-interval paired-pulse
26 inhibition and facilitation of human motor cortex: The dimension of stimulus intensity. *J Physiol*
27 545:153–167.
- 28 Jeannerod M (2001) Neural simulation of action: a unifying mechanism for motor cognition.
29 *Neuroimage* 14:S103-9.
- 30 Jeannerod M, Decety J (1995) Mental motor imagery: a window into the representational stages of
31 action. *Curr Opin Neurobiol* 5:727–732 Available at:
32 <https://linkinghub.elsevier.com/retrieve/pii/0959438895800999>.

- 1 Karabanov AN, Raffin E, Siebner HR (2015) The resting motor threshold - Restless or resting? A
2 repeated threshold hunting technique to track dynamic changes in resting motor threshold. *Brain*
3 *Stimul* 8:1191–1194.
- 4 Kasai T, Kawai S, Kawanishi M, Yahagi S (1997) Evidence for facilitation of motor evoked potentials
5 (MEPs) induced by motor imagery. *Brain Res* 744:147–150 Available at:
6 [http://ovidsp.ovid.com/ovidweb.cgi?T=JS&CSC=Y&NEWS=N&PAGE=fulltext&D=med4&AN](http://ovidsp.ovid.com/ovidweb.cgi?T=JS&CSC=Y&NEWS=N&PAGE=fulltext&D=med4&AN=9030424)
7 [=9030424](http://ovidsp.ovid.com/ovidweb.cgi?T=JS&CSC=Y&NEWS=N&PAGE=fulltext&D=med4&AN=9030424).
- 8 Kossev AR, Siggelkow S, Dengler R, Rollnik JD (2003) Intracortical inhibition and facilitation in
9 paired-pulse transcranial magnetic stimulation: Effect of conditioning stimulus intensity on sizes
10 and latencies of motor evoked potentials. *J Clin Neurophysiol* 20:54–58.
- 11 Kujirai T, Caramia MD, Rothwell JC, Day BL, Thompson PD, Ferbert A, Wroe S, Asselman P,
12 Marsden CD (1993) Corticocortical inhibition in human motor cortex. *J Physiol* 471:501–519.
- 13 Kukke SN, Paine RW, Chao CC, De Campos AC, Hallett M (2014) Efficient and reliable
14 characterization of the corticospinal system using transcranial magnetic stimulation. *J Clin*
15 *Neurophysiol* 31:246–252.
- 16 Kumru H, Soto O, Casanova J, Valls-Sole J (2008) Motor cortex excitability changes during imagery
17 of simple reaction time. *Exp Brain Res* 189:373–378 Available at:
18 [http://ovidsp.ovid.com/ovidweb.cgi?T=JS&CSC=Y&NEWS=N&PAGE=fulltext&D=med5&AN](http://ovidsp.ovid.com/ovidweb.cgi?T=JS&CSC=Y&NEWS=N&PAGE=fulltext&D=med5&AN=18512049)
19 [=18512049](http://ovidsp.ovid.com/ovidweb.cgi?T=JS&CSC=Y&NEWS=N&PAGE=fulltext&D=med5&AN=18512049).
- 20 Lebon F, Byblow WD, Collet C, Guillot A, Stinear CM (2012) The modulation of motor cortex
21 excitability during motor imagery depends on imagery quality. *Eur J Neurosci* 35:323–331
22 Available at:
23 [http://ovidsp.ovid.com/ovidweb.cgi?T=JS&CSC=Y&NEWS=N&PAGE=fulltext&D=med1&AN](http://ovidsp.ovid.com/ovidweb.cgi?T=JS&CSC=Y&NEWS=N&PAGE=fulltext&D=med1&AN=22172012)
24 [=22172012](http://ovidsp.ovid.com/ovidweb.cgi?T=JS&CSC=Y&NEWS=N&PAGE=fulltext&D=med1&AN=22172012).
- 25 Lebon F, Ruffino C, Greenhouse I, Labruna L, Ivry RB, Papaxanthis C (2019) The Neural Specificity
26 of Movement Preparation During Actual and Imagined Movements. *Cereb Cortex* 29:689–700
27 Available at: <https://academic.oup.com/cercor/article/29/2/689/4788773>.
- 28 Li S (2007) Movement-specific enhancement of corticospinal excitability at subthreshold levels during
29 motor imagery. *Exp Brain Res* 179:517–524.
- 30 Liepert J, Neveling N (2009) Motor excitability during imagination and observation of foot
31 dorsiflexions. *J Neural Transm* 116:1613–1619 Available at:
32 [http://ovidsp.ovid.com/ovidweb.cgi?T=JS&CSC=Y&NEWS=N&PAGE=fulltext&D=med5&AN](http://ovidsp.ovid.com/ovidweb.cgi?T=JS&CSC=Y&NEWS=N&PAGE=fulltext&D=med5&AN=19680596)
33 [=19680596](http://ovidsp.ovid.com/ovidweb.cgi?T=JS&CSC=Y&NEWS=N&PAGE=fulltext&D=med5&AN=19680596).

- 1 Menon P, Geevasinga N, Yiannikas C, Howells J, Kiernan MC, Vucic S (2015) Sensitivity and
2 specificity of threshold tracking transcranial magnetic stimulation for diagnosis of amyotrophic
3 lateral sclerosis: A prospective study. *Lancet Neurol* 14:478–484.
- 4 Naish KR, Houston-Price C, Bremner AJ, Holmes NP (2014) Effects of action observation on
5 corticospinal excitability: Muscle specificity, direction, and timing of the mirror response.
6 *Neuropsychologia* 64:331–348 Available at:
7 <http://dx.doi.org/10.1016/j.neuropsychologia.2014.09.034>.
- 8 Oldfield RC (1971) The assessment and analysis of handedness: The Edinburgh inventory.
9 *Neuropsychologia* 9:97–113.
- 10 Patuzzo S, Fiaschi A, Manganotti P (2003) Modulation of motor cortex excitability in the left
11 hemisphere during action observation: A single- and paired-pulse transcranial magnetic
12 stimulation study of self- and non-self-action observation. *Neuropsychologia* 41:1272–1278
13 Available at:
14 [http://ovidsp.ovid.com/ovidweb.cgi?T=JS&CSC=Y&NEWS=N&PAGE=fulltext&D=med4&AN](http://ovidsp.ovid.com/ovidweb.cgi?T=JS&CSC=Y&NEWS=N&PAGE=fulltext&D=med4&AN=12753966)
15 [=12753966](http://ovidsp.ovid.com/ovidweb.cgi?T=JS&CSC=Y&NEWS=N&PAGE=fulltext&D=med4&AN=12753966).
- 16 Pellegrini M, Zoghi M, Jaberzadeh S (2018) The effect of transcranial magnetic stimulation test
17 intensity on the amplitude, variability and reliability of motor evoked potentials. *Brain Res*
18 1700:190–198 Available at: <https://doi.org/10.1016/j.brainres.2018.09.002>.
- 19 Peurala SH, Müller-Dahlhaus JF, Arai N, Ziemann U (2008) Interference of short-interval
20 intracortical inhibition (SICI) and short-interval intracortical facilitation (SICF). *Clin*
21 *Neurophysiol* 119:2291–2297.
- 22 Pitcher JB, Doeltgen SH, Goldsworthy MR, Schneider LA, Vallence AM, Smith AE, Semmler JG,
23 McDonnell MN, Ridding MC (2015) A comparison of two methods for estimating 50% of the
24 maximal motor evoked potential. *Clin Neurophysiol* 126:2337–2341 Available at:
25 <http://dx.doi.org/10.1016/j.clinph.2015.02.011>.
- 26 Reis J, Swayne OB, Vandermeeren Y, Camus M, Dimyan MA, Harris-Love M, Perez MA, Ragert P,
27 Rothwell JC, Cohen LG (2008) Contribution of transcranial magnetic stimulation to the
28 understanding of cortical mechanisms involved in motor control. *J Physiol* 586:325–351.
- 29 Ridding MC, Rothwell JC (1999) Afferent input and cortical organisation: a study with magnetic
30 stimulation. *Exp Brain Res* 126:536–544.
- 31 Rossini PM, Berardelli A, Deuschl G, Hallett, M, MaertensdeNoordhout AM, Paulus W, Pauri F
32 (1999) Applications of magnetic cortical stimulation. *Int Fed Clin Neurophysiol* 52:171–185.
- 33 Ruffino C, Papaxanthis C, Lebon F (2017) Neural plasticity during motor learning with motor imagery

- 1 practice: Review and perspectives. *Neuroscience* 341:61–78 Available at:
2 <http://dx.doi.org/10.1016/j.neuroscience.2016.11.023>.
- 3 Samusyte G, Bostock H, Rothwell J, Koltzenburg M (2018) Short-interval intracortical inhibition:
4 Comparison between conventional and threshold-tracking techniques. *Brain Stimul* 11:806–817
5 Available at: <https://doi.org/10.1016/j.brs.2018.03.002>.
- 6 Sohn YH, Dang N, Hallett M (2006) Suppression of Corticospinal Excitability During Negative Motor
7 Imagery. *J Neurophysiol* 90:2303–2309.
- 8 Stinear CM, Byblow WD (2004) Modulation of corticospinal excitability and intracortical inhibition
9 during motor imagery is task-dependent. *Exp Brain Res* 157:351–358.
- 10 Stinear CM, Byblow WD, Steyvers M, Levin O, Swinnen SP (2006) Kinesthetic, but not visual, motor
11 imagery modulates corticomotor excitability. *Exp Brain Res* 168:157–164 Available at:
12 [http://ovidsp.ovid.com/ovidweb.cgi?T=JS&CSC=Y&NEWS=N&PAGE=fulltext&D=med5&AN](http://ovidsp.ovid.com/ovidweb.cgi?T=JS&CSC=Y&NEWS=N&PAGE=fulltext&D=med5&AN=16078024)
13 [=16078024](http://ovidsp.ovid.com/ovidweb.cgi?T=JS&CSC=Y&NEWS=N&PAGE=fulltext&D=med5&AN=16078024).
- 14 van de Ruit M, Pearson T, Grey MJ (2019) Novel tools for rapid online data acquisition of the TMS
15 stimulus-response curve. *Brain Stimul* 12:192–194.
- 16 Van den Bos MAJ, Menon P, Howells J, Geevasinga N, Kiernan MC, Vucic S (2018) Physiological
17 processes underlying short interval intracortical facilitation in the human motor cortex. *Front*
18 *Neurosci* 12:1–11.
- 19 Vucic S, Cheah BC, Krishnan A V., Burke D, Kiernan MC (2009) The effects of alterations in
20 conditioning stimulus intensity on short interval intracortical inhibition. *Brain Res* 1273:39–47
21 Available at: <http://dx.doi.org/10.1016/j.brainres.2009.03.043>.
- 22 Vucic S, Howells J, Trevillion L, Kiernan MC (2006) Assessment of cortical excitability using
23 threshold tracking techniques. *Muscle and Nerve* 33:477–486.
- 24 Vucic S, van den Bos M, Menon P, Howells J, Dharmadasa T, Kiernan MC (2018) Utility of threshold
25 tracking transcranial magnetic stimulation in ALS. *Clin Neurophysiol Pract* 3:164–172 Available
26 at: <https://doi.org/10.1016/j.cnp.2018.10.002>.
- 27 Wagle-Shukla A, Ni Z, Gunraj CA, Bahl N, Chen R (2009) Effects of short interval intracortical
28 inhibition and intracortical facilitation on short interval intracortical facilitation in human
29 primary motor cortex. *J Physiol* 587:5665–5678.
- 30 Yahagi S, Kasai T (1998) Facilitation of motor evoked potentials (MEPs) in first dorsal interosseous
31 (FDI) muscle is dependent on different motor images. *Electroencephalogr Clin Neurophysiol*
32 109:409–417.

