

Stromal cell-contact dependent PI3K and APRIL induced NF- κ B signaling complement each other to prevent mitochondrial- and endoplasmic reticulum stress induced cell death of bone marrow plasma cells

Rebecca Cornelis# (1), Stefanie Hahne# (1), Adriano Taddeo (1, 3), Georg Petkau (1), Darya Malko (1), Pawel Durek (1), Manja Thiem (1), Lukas Heiberger (1), Elodie Mohr (1), Cora Klaeden (1), Koji Tokoyoda (1), Francesco Siracusa (1,4), Bimba Franziska Hoyer (1,2), Falk Hiepe (1,2), Mir-Farzin Mashreghi (1), Fritz Melchers (1), Hyun-Dong Chang* (1), Andreas Radbruch* (1)

(1) Deutsches Rheuma-Forschungszentrum Berlin (DRFZ), a Leibniz Institute, Chariteplatz1, 10117 Berlin, Germany

(2) Charité - Universitätsmedizin Berlin, Department of Rheumatology and Clinical Immunology, 10117 Berlin, Germany

(3) current address: : Institute of Life Technologies, University of Applied Sciences and Arts Western Switzerland

(4) current address: Department of General, Visceral and Thoracic Surgery, University Medical Center Hamburg-Eppendorf

#equal contribution

*equal contribution

Corresponding Author: Andreas Radbruch, radbruch@drfz.de

Keywords up to ten keywords

Long-lived memory plasma cell, bone marrow, stromal cell, FoxO, APRIL, PI3K/AKT, IRF4, caspase 3, caspase 7, caspase 12, BCMA

Summary

Persistence of long-lived, memory plasma cells in the bone marrow depends on survival factors available in the bone marrow, provided in niches organized by stromal cells. Here we describe that *ex vivo* we can prevent apoptosis of bone marrow plasma cells by supplying direct cell contact with stromal cells and the soluble cytokine APRIL. Integrin-mediated contact of bone marrow plasma cells with stromal cells activates the PI3K signaling pathway, leading to critical inactivation of FoxO1/3 and preventing the activation of mitochondrial stress-associated effector caspases 3 and 7. Likely, inhibition of PI3K signaling *in vivo* ablates bone marrow plasma cells. APRIL signaling, via the NF- κ B pathway, blocks activation of the endoplasmic reticulum stress-associated initiator caspase 12. Thus, stromal cell-contact induced PI3K and APRIL-induced NF- κ B signaling provide necessary and complementary signals to maintain bone marrow memory plasma cells.

Introduction

Plasma cells can persist for long time periods in the bone marrow. However, plasma cells are not intrinsically long-lived (Makela & Nossal, 1962; Schooley, 1961) and die quickly when isolated and cultured *in vitro*, suggesting that their persistence in the bone marrow depends on survival factors provided in the bone marrow (Cassese et al., 2003). In the bone marrow, plasma cells are located individually in direct contact to mesenchymal stromal cells, and it has been postulated that these stromal cells organize a survival niche for the plasma cell (Manz & Radbruch, 2002; Radbruch et al., 2006; Tokoyoda, Egawa, Sugiyama, Choi, & Nagasawa, 2004; Zehentmeier et al., 2014). How the survival is mediated at a molecular level has remained unclear. Essential for plasma cell survival is signaling through the B cell maturation antigen (BCMA, CD269) receptor of the plasma cell (O'Connor et al., 2004a) induced by its two ligands a proliferation-inducing ligand (APRIL, CD256) or B cell activating factor (BAFF, BLys, CD257) (Benson et al., 2008), and the anti-apoptotic protein myeloid cell leukemia 1 (MCL-1) (Peperzak et al., 2013). There is evidence that stromal cells might contribute directly to plasma cell survival in the bone marrow. Antibodies against the adhesion molecules integrin α L β 2 (lymphocyte function-associated antigen, LFA-1, CD11a/CD18) and integrin α 4 β 1 (very late antigen, VLA-4, CD49d/CD29), expressed by the plasma cells, ablate plasma cells from the bone marrow (DiLillo et al., 2008). Ligands for both of these integrins, vascular cell adhesion molecule 1 (VCAM, CD106) and intercellular adhesion molecule 1 (ICAM, CD54), are expressed by bone marrow stromal cells, suggesting that integrin-mediated binding of plasma cells to stromal cells might directly, via the focal adhesion kinase/Phosphatidylinositol-4,5-bisphosphate 3-kinase (PI3K) pathway (Giancotti, 1999; Parsons, Martin, Slack, Taylor, & Weed, 2000) promote plasma cell persistence in the bone marrow. In line with this, CD37-deficient antibody secreting cells, which show impaired clustering of VLA-4 have diminished PI3K signaling and impaired survival (Spriel et al., 2012). Whether or not BCMA signaling and contact to stromal cells are sufficient to

maintain survival of memory plasma cells, and how they prevent death of the plasma cells, has not been elucidated so far.

Here we demonstrate both *in vivo* and *ex vivo*, that bone marrow plasma cell survival is dependent on PI3K signaling. PI3K signaling is induced in plasma cells by direct contact to stromal cells and leads to inactivation of Forkhead-Box-Protein O1/3 (FoxO1/3), which is essential for the survival of the plasma cells. Plasma cell survival also depends on nuclear factor 'kappa-light-chain-enhancer' of activated B-cells (NF- κ B) signaling, that is induced by APRIL. Pan-caspase inhibition can substitute for both signaling pathways and rescues plasma cell survival *in vitro*. Interestingly, stromal cell contact alone but not APRIL prevents activation of the mitochondrial stress-associated caspases 3 and 7, whereas APRIL prevents activation of the endoplasmic reticulum (ER)-associated caspase 12.

Results

Contact to stromal cells and APRIL-induced signaling pathways prevent caspase-mediated cell death of plasma cells

Memory plasma cells were isolated from the bone marrow of chicken gamma globulin (CGG) immunized C57BL/6J mice more than 30 days after the last immunization, by magnetic depletion of CD49b⁺ and B220⁺ cells, followed by magnetic enrichment of CD138⁺ cells. Using this protocol, purities of more than 90% and recovery rates of about 35% of viable bone marrow plasma cells were achieved. Isolated plasma cells expressed the plasma cell transcription factor BLIMP-1 and were Ki-67 negative, the latter indicating that the cells were resting in terms of proliferation (suppl. Figure 1A,B). The cells were cultured *in vitro* with or without murine stromal cell line ST2 at an initial ratio of 1:1 in the presence or absence APRIL. On days 1, 3 and 6 of the culture, viable plasma cells (CD138⁺⁺/DAPI⁻) were enumerated and analyzed by flow cytometry. All cultures were performed under physiological oxygen levels of 4.2% O₂ to mimic the bone marrow environment (Spencer et al., 2014). Plasma cells rapidly died within days, when isolated from the bone marrow and cultured in RPMI 1640/FCS (median viability: d1: 43.27%/ d3: 7.095%/ d6: 0%). However, plasma cell survival was significantly improved, when the cells were co-cultured with ST2 stromal cells and in the presence of the cytokine APRIL (median viability: d1: 83.14%/ d3: 72.19%/ d6: 51.20%). Co-culture of plasma cells with ST2 cells alone (median viability: d1: 67.47%/ d3: 25.42% / d6: 19.07%) or with APRIL alone (median viability: d1: 55.24% / d3: 43.15%/ d6: 23.27%) were not sufficient to maintain plasma cells alive (Figure 1A). The expression of CD138 and BLIMP-1 on the plasma cells was not altered during the 6 days of *in vitro* culture with ST2 stromal cells and APRIL, and antibody secretion was maintained (suppl. Figure 1C,D). To confirm that the identity of plasma cells was maintained for 3 days in co-culture with ST2 stromal cells and APRIL, we compared their global transcriptomes to those of *ex vivo* isolated plasma cells (suppl. Figure 1E, F). Of 10.000 genes expressed at

statistically significant levels, only 41 genes showed a significant difference ($p < 0.01$) in expression before and after culture (suppl. Figure 2). The transcription factor AP-1 (JunB, Jun, Fos) was highly expressed in plasma cells isolated from bone marrow, but not or only marginally in plasma cells cultivated for 3 days. Expression of AP-1 and other stress inducible genes (12, group A) may reflect stress induced by the tedious isolation procedure of plasma cells from the bone marrow, as compared to their isolation from cell culture. A number of hypoxia-related and metabolic genes (15 genes, group B) were upregulated in 3 days cultivated plasma cells, as compared to plasma cells directly isolated from the bone marrow. This may reflect the extended time the plasma cells had spent in normoxic conditions during the isolation period. Finally, other genes (12 genes, group C), most prominently CXCL12, not expressed in plasma cells isolated directly from the bone marrow, but in those isolated from cell culture on day 3, may indicate contaminating stromal cells which were abundant in cell culture due to the ST2 cell line. Expression of the genes *CD138*, *Foxo1* and *3*, *Prdm1*, *Irf4*, *Noxa*, *Bcl2l11*, *Bcl2* and *Mcl1* was not significantly different (suppl. Figure 1 G).

The survival of *ex vivo* isolated bone marrow plasma cells cultured with APRIL or ST2 stromal cells alone was rescued by pan-caspase inhibitors (Fig. 1B), suggesting that co-culture of plasma cells with ST2 stromal cells and APRIL prevents caspase-mediated cell death.

Interaction between stromal cells and plasma cells has been suggested to be mediated by direct cell contact (Manz & Radbruch, 2002; Radbruch et al., 2006; Tokoyoda et al., 2004; Zehentmeier et al., 2014) via VCAM1/VLA4 and ICAM/LFA1 interaction (DiLillo et al., 2008). When culturing plasma cells and ST2 stromal cells in a transwell assay, survival of plasma cells was significantly decreased (median viability: d1: 66% / d3: 51% and d1: 30%/ d3: 22%, respectively) as compared to co-culturing conditions (Fig. 1C). siRNA-mediated knock-down of integrin $\beta 1$ (CD29/ITGB1), a subunit of the VLA4 (Integrin $\alpha 4\beta 1$) heterodimer, significantly reduced the survival of plasma cells in co-culture with ST2 stromal cells and APRIL *ex vivo* (Fig.

1D), indicating that direct cell contact is required for survival and that contact-mediated survival is in part mediated by integrin $\beta 1$ (median viability: scr d1: 100%, d3: 109% / ITGB1 d1: 100%, d3: 87%).

Inhibition of PI3K signaling results in plasma cell death ex vivo

Preincubation of ex vivo isolated bone marrow plasma cells with the irreversible PI3K inhibitor Wortmannin resulted in a dose-dependent decrease in survival of the plasma cells, when co-cultured with ST2 stromal cells in the presence of APRIL (viability: ST2+A: d1 101%, d3 76% /+Wortmannin 0.6 μM : d1 100% d3 66% / +Wortmannin 3 μM : d1 102%, d3 66% / +Wortmannin 15 μM : d1 73%, d3 37% / +Wortmannin 77 μM : d1 68%, d3 20%) (Figure 2A). Using the pan-PI3K inhibitor, LY294002, plasma cell survival was decreased to a similar degree (viability: ST2+A, +LY29400 10 μM : d1 62%, d3 68% / +LY29400 20 μM : d1 44%, d3 37% / +LY29400 40 μM : d1 24%, d3 5.7%) (Fig. 2B). More specific inhibition of any of the four known PI3K subunits α , β , γ or δ did not impact the survival of plasma cells (suppl. Fig. 3). Only when any three subunits were simultaneously inhibited, plasma cell survival was reduced to a similar degree as it was observed in the presence of Wortmannin (Fig. 2C). Apparently, plasma cells have no particular requirement regarding the subunit composition of their PI3K. Inhibition of the NF- κB pathway downstream of BCMA, the receptor for APRIL, with the pan-NF- κB inhibitor IKK16 (Thein, Pham, Bayer, Tao-Cheng, & Dosemeci, 2008; Waelchli et al., 2006) also resulted in a dose-dependent death of the plasma cells (suppl. Fig. 4), demonstrating that both signaling pathways downstream of stromal cell contacts and BCMA are non-redundant and essential for plasma cell survival.

Inhibition of PI3K signaling ablates resident memory plasma cells of the bone marrow

To verify the relevance of PI3K-signaling for the persistence of plasma cells *in vivo*, we treated mice with an established immune memory with 1.2 mg/kg of Wortmannin (Nobs et al., 2015), 7 weeks following the last immunization and enumerated memory plasma cells in the bone marrow

on day 95 (Figure 2D, E). Counts of total bone marrow cells did not differ between mice treated with Wortmannin and control mice (2.46×10^8 versus 2.37×10^8) (Figure 2F). However, plasma cells were significantly reduced by about 67% (5.1×10^5 versus 3.4×10^5). These results show that persistence of memory plasma cells in the bone marrow, like in the *ex vivo* niche provided by ST2 stromal cells and APRIL, is conditional on continued PI3K-signaling.

Stromal cell contact downregulates the FoxO1/3 pathway

PI3K activation leads to the downregulation of the transcription factors forkhead box protein O1 and O3 (FoxO1 and 3) (Haftmann et al., 2012; Huang et al., 2005; Plas & Thompson, 2003). Bone marrow plasma cells, when co-cultured with ST2 stromal cells significantly downregulated the expression of FoxO1 and FoxO3 independently of APRIL, already on day 1 of co-culture (FoxO1 geometric mean expression: APRIL: 1820 ± 62 , ST2: 1374 ± 76 , ST2+A: 1348 ± 35 / FoxO3a geometric mean expression: APRIL: 2446 ± 282 , ST2: 1777 ± 134 , ST2+A: 1960 ± 106) (Figure 3A, B). Adding APRIL alone or in combination with ST2 cells did not affect the expression of FoxO1/3 proteins. To determine whether downregulation of FoxO1/3 expression is the critical event downstream of PI3K activation, FoxO1/3 expression was knocked-down using specific siRNA. Knock-down of FoxO1/3 in plasma cells could completely restore plasma cell survival in the absence of ST2 stromal cells when plasma cells were cultured with APRIL alone (mean viability: day1, APRIL+ scr: $99\% \pm 13$, APRIL+ FoxO: $102\% \pm 14$, ST2+A+scr: $101\% \pm 33$ / day3, APRIL+ scr: $52\% \pm 26$, APRIL+ FoxO: $79\% \pm 18$, ST2+A+scr: $89\% \pm 24$) (Figure 3C). These results demonstrate that stromal cell contact is supporting survival of plasma cells by downregulation of FoxO1/3.

Stromal cell contact and APRIL signaling pathways address distinct caspases

As the survival of *ex vivo* isolated bone marrow plasma cells cultured with APRIL or ST2 stromal cells alone was rescued by pan-caspase inhibitors (Figure 1B), we aimed at determining which caspases are affected by stromal cell contact and APRIL, respectively. Activation of the caspases was measured on the single-cell level using fluorescent caspase-specific peptides. Co-culture of plasma cells with ST2 stromal cells led to significantly reduced levels of cleavage and activation of the effector caspases 3 and 7 (Figure 4A, B). APRIL by itself or in combination with ST2 stromal cells did not impact on activation of caspase 3 or 7. APRIL, together with ST2 stromal cells, led to a significant reduction of the activation of the ER-associated caspase 12 (Figure 4C).

Stromal cell contact and APRIL synergize to induce the expression of IRF4

ST2 stromal cells and APRIL also synergized to upregulate the expression of IRF4 on the single cell level (Fig. 5C). IRF4 has been demonstrated previously to be indispensable for the survival of plasma cells *in vivo* (Tellier, 2016). Inhibition of either signaling pathways downstream of stromal cell contact or APRIL, i.e. PI3K using Wortmannin or NF- κ B using IKK16 resulted in a decrease in IRF4 expression (Fig. 5).

Discussion

Long-lived memory plasma cells persist for a lifetime in mice (Manz, Thiel, & Radbruch, 1997; Slifka, Antia, Whitmire, & Ahmed, 1998), non-human primates (Hammarlund et al., 2017) and in humans (Landsverk et al., 2017). They form an independent population of memory cells (Chang, Tokoyoda, & Radbruch, 2018; Radbruch et al., 2006). Memory plasma cells are evenly distributed throughout the bone marrow and most if not all of them directly contact a mesenchymal stromal cell (Zehentmeier et al., 2014). It is suggestive that these stromal cells organize a survival niche, which supports longevity of the plasma cell (Manz & Radbruch, 2002).

It is still enigmatic, however, how stromal cells organize the plasma cell survival niche. It has been postulated, that they attract cells secreting the cytokines APRIL and/or BAFF, both ligands for the receptor B cell maturation antigen (BCMA, CD269), signaling via the NF- κ B pathway (Chu et al., 2011; Hatzoglou et al., 2000; O'Connor et al., 2004b). Blocking both cytokines ablates plasma cells from the bone marrow (Benson et al., 2008). The stromal cell may also contribute directly to the survival of plasma cells by integrin-mediated cell contact signaling (DiLillo et al., 2008) inducing PI3K signaling (Spriel et al., 2012). Here we show that indeed both signaling pathways are essential and complementary for plasma cell survival, and that cell contact-induced PI3K signaling acts through downregulation of FoxO1/3 and blocks activation of caspases 3 and 7, but not 12. In complementation, APRIL signaling blocks activation of caspase 12, but not 3 and 7. Direct contact between the stromal cell and the plasma cell, and APRIL signaling thus in synergy prevent apoptosis of the plasma cell induced by ER and mitochondrial stress.

Analysis of the lifestyle of memory plasma cells has been hampered by their low frequency in the bone marrow, as well as by the fact that they die rapidly, when isolated and cultured *ex vivo* (Cassese et al., 2003), as we confirm here. Cytokines prolonging their survival *ex vivo* have been reported (Cassese et al., 2003; Cocco et al., 2012; Jourdan et al., 2014). Here we describe a culture system mimicking their physiological niche as close as possible. When cultured on ST2 stromal cells, in the presence of the cytokine APRIL, 50 to 80% of *ex vivo* isolated bone marrow plasma cells survived for more than 5 days. The plasma cells maintained their transcriptional identity, with less than 41 transcripts differentially expressed between plasma cells directly isolated from the bone marrow, and those cultured for 3 days.

In vivo, it remains unclear, which cells provide the cytokines APRIL and/or BAFF to the plasma cells. Eosinophilic granulocytes have been proposed (Chu et al., 2011), but their role has been questioned (Haberland et al., 2018). We have shown recently, that a subpopulation of bone

marrow stromal cells does produce BAFF (Addo et al., 2019). Plasma cells are known to have two receptors for the cytokines APRIL and BAFF, namely TACI and BCMA (O'Connor et al., 2004a; Peperzak, 2013). Among them, BCMA signaling has been suggested to be vital for plasma cells survival in the bone marrow (Benson et al., 2008; O'Connor et al., 2004a). It is known that the BCMA receptor, when activated by APRIL, signals via the TRAF/NF- κ B/p38 pathway (Hatzoglou et al., 2000). Similarly, inhibition of the NF- κ B pathway blocks survival of plasma cells in the *ex vivo* niche described here. In the presence of stromal cells, APRIL significantly inhibits the activation of caspase 12, but not of caspases 3 and 7. Caspase 12 is localized at the ER and is activated by ER stress, e.g. by an insufficient unfolded protein response (UPR) (Nakagawa et al., 2000). It was previously shown that managing the UPR is essential for plasma cell survival (Iwakoshi, 2003; Pelletier et al., 2006) since they are cells producing several thousand antibody molecules per second (Hibi & Dosch, 1986).

The original notion, that direct cell contact between stromal cell and plasma cell is essential for the survival of plasma cells in the bone marrow, comes from their ablation *in vivo*, by antibodies against integrin α 4 β 1 (VLA-4), a ligand of the stromal cell receptor VCAM1, and integrin α L β 2 (LFA-1), a ligand of the stromal cell receptor ICAM-1, both expressed by bone marrow plasma cells (DiLillo et al., 2008). At a molecular level, it has been demonstrated that integrins can signal via the FAK/PI3K-pathway (Giancotti, 1999). An indication that this may also happen in plasma cells comes from mice deficient for the tetraspanin CD37. In these mice, antibody secreting cells showed impaired clustering of VLA4, and diminished PI3K-signaling *ex vivo* (Spriel et al., 2012). Here we demonstrate by transwell separation of plasma cells and stromal cells in the *ex vivo* niche, that direct contact of bone marrow plasma cells to ST2 stromal cells is required for survival of the plasma cells. The contact induces PI3K signaling in the plasma cells, which is required for their survival. Inhibitors specific for the α -, β -, γ - or δ -subunits of PI3K (p110- α : BYL719, p110- β : GSK2636771, p110- δ : IC-87114, p110- γ : CZC24832), in any combination of three blocked plasma cell survival, suggesting that plasma cells can use any two

of the four different PI3K-subunits for survival signaling, in a redundant fashion. Also the PI3K inhibitors LY29400 and Wortmannin block survival of the plasma cells *ex vivo* efficiently. Wortmannin also ablates plasma cells from bone marrow, *in vivo*, with the same efficiency as in the *ex vivo* niche. Considering the different spectra of off-target effects of all those inhibitors, the results strongly suggest that indeed stromal cell-contact induced PI3K signaling is vital for memory plasma cell survival. The cell-contact in part is mediated by β 1-integrin, since siRNA-mediated knock down of β 1 integrin in plasma cells impairs survival of these cells in the *ex vivo* niche, as we show here.

PI3K signaling via activation of AKT, has several downstream targets. One of them is the mechanistic target of rapamycin complex 1 (mTORC1). This has previously been shown to be not involved in memory plasma cell survival (Jones et al., 2016). Others are the transcription factors FoxO1/3. Activated AKT phosphorylates FoxO1/3, thus inactivating them as transcription factors. Inactivation of FoxO1/3 has been shown to be essential for survival and proliferation of activated lymphocytes, although the exact molecular mechanisms remain enigmatic (Haftmann et al., 2012; Stittrich et al., 2010). Here, we show, that inactivation of FoxO1/3 is essential for survival of memory plasma cells, since siRNA-mediated knock down of FoxO1/3 in the plasma cells nearly fully compensates for stromal cell contact in the *ex vivo* niche.

Unlike APRIL, stromal cells block activation of the caspases 3 and 7, but not 12 in bone marrow plasma cells, in the *ex vivo* niche. Caspases 3 and 7 have been reported to be activated upon mitochondrial stress (Lakhani et al., 2006). Inhibition of caspases 3 and 7 by stromal cell contact, and of caspase 12 by APRIL seems to be necessary and sufficient to prevent apoptosis of memory plasma cells in the *ex vivo* niche. Pan-caspase inhibition can compensate for either one, ST2 cells or APRIL. While stromal cell contact blocks the effector caspases of mitochondrial stress induced apoptosis, APRIL blocks the initiator caspase of ER stress induced apoptosis, caspase 12, apparently the two major stress factors limiting the lifetime of memory

plasma cells. Also, the expression of the essential survival factor of plasma cells IRF4 (Tellier et al., 2016) is upregulated by stromal cell contact and APRIL in synergy, as we show here. Taken together, we demonstrate that stromal cells are not just organizing memory plasma cell survival niches in the bone marrow. By integrin-mediated cell contact, they actively provide an essential survival signal to memory plasma cells, complementing the survival signal provided by APRIL/BAFF. Both signals efficiently prevent mitochondrial and ER-stress induced apoptosis of memory plasma cells.

STAR METHODS

- Contact for reagent and resource sharing
- Experimental model
 - o Mice
- Method details
 - o Immunization
 - o *In vivo* treatment with PI3K-inhibitor
 - o Magnetic isolation of long-lived plasma cells from the bone marrow
 - o Cell culture of long-lived plasma cells and treatment with inhibitors
 - o siRNA treatment of plasma cells *in vitro*
 - o CaspGlow staining
 - o Flow cytometric measurement of surface and intracellular antigens
 - o ELISA
 - o Transwell-Assay
 - o Gene Expression Microarray Analysis
- Quantification and statistical analysis
- Key resources table

CONTACT FOR REAGENT AND RESOURCE SHARING

Further information and requests for resources and reagents should be directed to and will be fulfilled by the Lead Contact, Andreas Radbruch (radbruch@drfz.de).

EXPERIMENTAL MODELS

Mice

C57BL/6J wild type strain was purchased from Charles River Laboratories. Mice expressing GFP under the control of the Prdm1 promoter (Blimp-1:GFP) were bred and maintained at the “Bundesinstitut für Risikobewertung” (BfR, Berlin, Germany), a gift from S. Nutt (Walter and Eliza Hall Institute, Melbourne, Australia). All mice were maintained under specific pathogen free conditions. All experiments were performed according to German law for animal protection and with the permission from the local veterinary offices, and in compliance with the guidelines of the Institutional Animal Care and Use Committee.

METHOD DETAILS

Immunization

Mice were primed with 100µg 4-hydroxy-3-nitrophenylacetyl hapten coupled chicken gamma globulin (NP-CGG) in incomplete Freund’s Adjuvants (IFA) intraperitoneally (i.p.). In total 200µl (100µl of NP-CGG diluted in PBS + 100µl IFA) have been injected per mouse. Mice were challenged twice after the prime with the same injection in cycles of 21 days.

***In vivo* treatment with PI3K-inhibitor**

Immunized mice were used and Wortmannin in DMSO or PBS in DMSO injected i.p. with a total volume of 100µl on day 90, 92 and 94. Concentration of Wortmannin was 1.2mg/kg. Mice were killed by cervical dislocation and analyzed on day 95.

Magnetic isolation of long-lived plasma cells from the bone marrow

Plasma cells were magnetically isolated from immunized mice more than 30 days after 2nd boost using a two-step protocol, including depletion of B220 and CD49b expressing cells and subsequent positive enrichment of CD138^{high} plasma cells.

Cell culture of long-lived plasma cells and treatment with inhibitors

Isolated long-lived plasma cells from the bone marrow were cultured in RPMI1640 medium supplemented with 10% FCS, 100 U/ml Penicillin, 100 µg/ml streptomycin, 0.1% β-Mercaptoethanol, 25 mM HEPES buffer and 50 ng/ml multimeric APRIL. Cultures were kept under physiological oxygen levels in a hypoxia chamber with 4.2% O₂ and 5% CO₂ at 37°C. Cells were pre-treated with pan PI3K inhibitors at different concentrations including Wortmannin, Ly294002 and to block NF-κB pathway the inhibitor, IKK16, was used.

siRNA treatment of plasma cells *in vitro*

Isolated long-lived plasma cells from the bone marrow were cultured in Accell Medium with 2 µM siRNA or scr control (Bardua et al., 2018; Haftmann et al., 2015, 2015) and 100 ng/ml multimeric APRIL. After 1 hour RPMI1640 medium supplemented with 5% FCS, 200 U/ml Penicillin, 200 µg/ml streptomycin, 0.2% β-Mercaptoethanol, 50 mM HEPES buffer was added to the cells. Cultures were kept under physiological oxygen levels in a hypoxia chamber with 4.2% O₂ and 5% CO₂ at 37°C.

CaspGlow staining

CaspGlow assays were performed by staining the cells in cell culture medium with the CaspGlow FITC labeled peptide for 30 minutes at 37°C. Cells were washed two times, stained for CD138 and measured by flow cytometry.

Flow cytometric measurement of surface and intracellular antigens

Single cell suspension was prepared; cells were pre-incubated with uncoupled anti-FCyRII/III antibody to block unspecific binding, followed by direct addition of antibodies for 15 minutes on ice. For staining of intracellular antigens, cells were fixed with PFA and permeabilized with methanol. To prevent unspecific binding, cells were pre-incubated with blocking buffer containing rabbit or rat serum and subsequently stained with primary antibody for 1 hour and, if necessary, with secondary antibody for 30 minutes. Samples were analyzed using a MacsQuant analyzer and FlowJo software. Cytometric procedures followed the recommendations of the “Guidelines for use of flow cytometry and cell sorting in immunological studies” (Cossarizza et al., 2017).

ELISA

Enzyme-linked immunosorbent assay was used to detect secreted antibodies in supernatants at different time points of the plasma cell culture. Supernatant was incubated in plates coated with unlabeled IgG, IgM or IgA. Isotype specific antibodies were detected using biotinylated IgG, IgM or IgA and streptavidin-peroxidase.

Transwell-Assay

Isolated plasma cells were cultured in transwell plates with pore size of 0.5µm. Plasma cells were plated at the bottom and stromal cells on top of the transwell culture. As control of direct contact effects plasma cells and stromal cells were both plated on the top of the filter.

Processing and analysis of oligonucleotide microarray data

Memory plasma cells were isolated by magnetic cell sorting or after 3 days of culture in the *in vitro* system were processed for RNA preparation. RNA was prepared using the RNeasy Micro KIT and hybridized to mouse 430 2 GeneChips according to the whole-transcriptome pico KIT. Raw signals were processed by the affy R package using RMA for normalization (Gautier, Cope,

Bolstad, & Irizarry, 2004). Sample similarity was evaluated by Pearson correlation and Principle component analysis based on un-scaled log₂ expression values. For the differentially expressed gene analysis the limma R package was used (Ritchie et al., 2015). Genes with an adjusted P-value < 0.05 were considered to be statistically differentially expressed. Microarray data is available through Gene Expression Omnibus (GEO:GSE107206; code for reviewer: sfctqoakblqhpyp).

QUANTIFICATION AND STATISTICAL ANALYSIS

Data are presented as median. Data was tested for normality and significant differences between two or more groups were determined by performing Mann-Whitney test, Kruskal-Wallis test or ordinary one-way ANOVA. Differences were considered statistically significant when $p < 0.05$.

KEY RESOURCES TABLE

REAGENT or RESOURCE	SOURCE	IDENTIFIER
Antibodies		
Anti-mouse active caspase 3	Cell Signaling Technology	Catalog # 8788
Anti-mouse active caspase 7	Cell Signaling Technology	Catalog # 8438T
Anti-mouse BCL2, APC, REA356	Miltenyi Biotec	Catalog # 130-105-474
Anti-mouse BIM, 14A8	Milipore	Catalog # MAB17001
Anti-mouse CD138, PE-vio770, REA104	Miltenyi Biotec	Catalog # 130-102-318
Anti-mouse FoxO1, C29H4	Cell Signaling Technology	Catalog # 2880
Anti-mouse FoxO3a, D19A7	Cell Signaling Technology	Catalog # 12829
Anti-mouse IRF4, APC, REA201	Miltenyi Biotec	Catalog # 130-100-913
Anti-mouse MCL1, Y37	Abcam	Catalog # ab32087
Anti-mouse NOXA, 114C307	Abcam	Catalog # ab13654
Anti-mouse ki67, A488, B56	BD	Catalog # 558616
Anti-mouse B220, PE, REA755	Miltenyi Biotec	Catalog # 130-110-709
Anti-mouse B220, Bio, RA3-6B2	Miltenyi Biotec	Catalog # 130-101-928
Anti-mouse CD19, APC, REA749	Miltenyi Biotec	Catalog # 130-112-036
Anti-mouse CD49d, bio, R1-2	Miltenyi Biotec	Catalog # 130-101-912
Anti-mouse IgA, polyclonal	Southern Biotech	Catalog # 1040-08
Anti-mouse IgG, polyclonal	Southern Biotech	Catalog # 1036-01
Anti-mouse IgM, polyclonal	Southern Biotech	Catalog # 1021-01
Anti-mouse CD19, PacB, 1D3	DRFZ	
Chemicals, Peptides, and Recombinant Proteins		
4-hydroxy-3-nitrophenylacetyl hapten coupled chicken gamma globulin	Biomol	Catalog # D602-0100
Incomplete Freud's Adjuvans	SIGMA	Catalog # F5506
Wortmannin	Selleckchem	Catalog # S2758
Ly294002	Selleckchem	Catalog # S1105
IKK16	Selleckchem	Catalog # S2882
Formaldehyde solution	Electron microscopy	Catalog # 15713S
Recombinant APRIL mouse multimeric	Adipo gen Life Sciences	Catalog # AG-40B-0089-3010
Anti-mouse CD138 microbeads	Miltenyi Biotec	Catalog # 130-098-257
Anti-Streptavidin microbeads	Miltenyi Biotec	Catalog # 130-048-101
siRNAs		
FoxO1	SMARTPool	Catalog # E-041127-00-0010
FoxO3	SMARTPool	Catalog # E-040728-00-0010
ITGB1	Individual siRNA	Catalog # A-040783-13-0020
Non-Targeting	Individual siRNA	Catalog # D-001910-04-20
Critical Commercial Assays		
RNeasy Micro KIT	Quiagen	Catalog # 74004
Whole-transcriptome pico KIT	ThermoFisher Scientific	Catalog # 902622
Cell Signaling Buffer Set A	Miltenyi Biotec	Catalog # 130-100-827
CaspGLOW Fluorescein Active Caspase-12 Staining Kit	Biovision GmbH	Catalog # K172-100
Deposited Data		
Transcriptome data	This paper	GEO: GSE107206
Experimental Models: Cell Lines		
ST2 stromal cell line	Riken BioResource Center	Catalog # RCB0224

Experimental Models: Organisms/Strains		
Mouse: C57BL/6J	Charles River Laboratories	Catalog # 000664
Mouse: C57BL/6J Blimp-1:GFP	S. Nutt (Walter and Eliza Hall Institute, Melbourne, Australia)	NA
Software and Algorithms		
FlowJo10	FlowJo LLC	Flowjo.com
Prism	GraphPad Software, Inc	Graphpad.com
Other		
MG_U430_2 GeneChips	ThermoFisher Scientific	Catalog # 900495

Author contributions

R.C and S.H. designed and performed the experiments, analyzed and interpreted the data and wrote the manuscript. D.M, M.T., C.K., L.H., F.S. carried out and analyzed certain experiments, B.H and F.H. provided mouse strains and helped to write the manuscript, G.P., A.T., P.D., E.M., K.T., F.M., and M.F.M. analyzed data and provided scientific suggestions. H.D.C. and A.R. conceived the study and wrote the manuscript.

Acknowledgements

Tuula Geske, Heidi Hecker-Kia and Heidi Schliemann we want to thank for expert technical help, Toralf Kaiser and Jenny Kirsch as operators of the flow cytometry core facility (FCCF), Patrick Thiemann and Manuela Ohde for assistance with animal care. This work was supported by European Research Council Advanced Grant IMMOMO (ERC-2010-AdG.20100317 Grant 268987; to A.R.) and by the Deutsche Forschungsgemeinschaft (TRR130; to A.R. and H.D.C.), Innovative Medicines Initiative 2 Joint Undertaking under grant agreement no. 777357. G.P. and M.F.M were supported by the state of Berlin and the “European Regional Development Fund” (ERDF 2014–2020, EFRE 1.8/11, Deutsches Rheuma-Forschungszentrum Berlin). F.S. was supported by Osteoimmune, a FP7 Marie Curie Initial Training Network (FP7-PEOPLE-2011-ITN-289150). E.M. was supported by the Deutsche Forschungsgemeinschaft (MO 2934/1-1-1). This work was supported by the Leibniz ScienceCampus Chronic Inflammation (www.chronische-entzuendung.org).

References

- Addo, R. K., Heinrich, F., Heinz, G. A., Schulz, D., Sercan-Alp, Ö., Lehmann, K., ... Mashreghi, M. (2019). Single-cell transcriptomes of murine bone marrow stromal cells reveal niche-associated heterogeneity. *European Journal of Immunology*, 11(Cadherin 11), eji.201848053. <https://doi.org/10.1002/eji.201848053>
- Bardua, M., Haftmann, C., Durek, P., Westendorf, K., Buttgereit, A., Tran, C. L., ... Mashreghi, M. F. (2018). MicroRNA-31 Reduces the Motility of Proinflammatory T Helper 1 Lymphocytes. *Frontiers in Immunology*, 9(December), 2813. <https://doi.org/10.3389/fimmu.2018.02813>
- Benson, M. J., Dillon, S. R., Castigli, E., Geha, R. S., Xu, S., Lam, K.-P., & Noelle, R. J. (2008). Cutting Edge: The Dependence of Plasma Cells and Independence of Memory B Cells on BAFF and APRIL. *The Journal of Immunology*, 180(6), 3655–3659. <https://doi.org/10.4049/jimmunol.180.6.3655>
- Carrington, E. M., Zhan, Y., Brady, J. L., Zhang, J.-G., Sutherland, R. M., Anstee, N. S., ... Lew, A. M. (2017). Anti-apoptotic proteins BCL-2, MCL-1 and A1 summate collectively to maintain survival of immune cell populations both in vitro and in vivo. *Cell Death and Differentiation*, 24, 878–888. <https://doi.org/10.1038/cdd.2017.30>
- Cassese, G., Arce, S., Hauser, A. E., Lehnert, K., Moewes, B., Mostarac, M., ... Manz, R. A. (2003). Plasma Cell Survival Is Mediated by Synergistic Effects of Cytokines and Adhesion-Dependent Signals. *The Journal of Immunology*, 171(4), 1684–1690. <https://doi.org/10.4049/jimmunol.171.4.1684>
- Chang, H. D., Tokoyoda, K., & Radbruch, A. (2018). Immunological memories of the bone marrow. *Immunological Reviews*, 283(1), 86–98. <https://doi.org/10.1111/imr.12656>
- Chu, V. T., Frohlich, A., Steinhauser, G., Scheel, T., Roch, T., Fillatreau, S., ... Berek, C. (2011). Eosinophils are required for the maintenance of plasma cells in the bone marrow. *Nature Immunology*, 12(2), 151–159. <https://doi.org/10.1038/ni.1981>
- Cocco, M., Stephenson, S., Care, M. A., Newton, D., Barnes, N. A., Davison, A., ... Tooze, R. M. (2012). In Vitro Generation of Long-lived Human Plasma Cells. *The Journal of Immunology*, 189(12), 5773–5785. <https://doi.org/10.4049/jimmunol.1103720>
- Cossarizza, A., Chang, H.-D., Radbruch, A., Andrä, I., Annunziato, F., Bacher, P., ... Zimmermann, J. (2017). Guidelines for the use of flow cytometry and cell sorting in immunological studies. *European Journal of Immunology*, 47(10), 1584–1797. <https://doi.org/10.1002/eji.201646632>
- DiLillo, D. J., Hamaguchi, Y., Ueda, Y., Yang, K., Uchida, J., Haas, K. M., ... Tedder, T. F. (2008). Maintenance of long-lived plasma cells and serological memory despite mature and memory B cell depletion during CD20 immunotherapy in mice. *Journal of Immunology (Baltimore, Md. : 1950)*, 180(1), 361–371. <https://doi.org/10.1093/immk/180/1/361> [pii]
- Gautier, L., Cope, L., Bolstad, B. M., & Irizarry, R. A. (2004). Affy - Analysis of Affymetrix GeneChip data at the probe level. *Bioinformatics*, 20(3), 307–315. <https://doi.org/10.1093/bioinformatics/btg405>

- Giancotti, F. G. (1999). Integrin signaling. *Science (New York, N.Y.)*, *285*(5430), 1028–1032. <https://doi.org/10.1126/science.285.5430.1028>
- Haberland, K., Ackermann, J. A., Ipseiz, N., Culemann, S., Pracht, K., Englbrecht, M., ... Krönke, G. (2018). Eosinophils are not essential for maintenance of murine plasma cells in the bone marrow. *European Journal of Immunology*, *48*(5), 822–828. <https://doi.org/10.1002/eji.201747227>
- Haftmann, C., Riedel, R., Porstner, M., Wittmann, J., Chang, H. D., Radbruch, A., & Mashreghi, M. F. (2015). Direct uptake of Antagomirs and efficient knockdown of miRNA in primary B and T lymphocytes. *Journal of Immunological Methods*, *426*, 128–133. <https://doi.org/10.1016/j.jim.2015.07.006>
- Haftmann, C., Stittrich, A. B., Sgouroudis, E., Matz, M., Chang, H. D., Radbruch, A., & Mashreghi, M. F. (2012). Lymphocyte signaling: Regulation of FoxO transcription factors by microRNAs. *Annals of the New York Academy of Sciences*, *1247*(1), 46–55. <https://doi.org/10.1111/j.1749-6632.2011.06264.x>
- Hammarlund, E., Thomas, A., Amanna, I. J., Holden, L. A., Slayden, O. D., Park, B., ... Slifka, M. K. (2017). Plasma cell survival in the absence of B cell memory. *Nature Communications*, *8*(1). <https://doi.org/10.1038/s41467-017-01901-w>
- Hatzoglou, A., Roussel, J., Bourgeade, M. F., Rogier, E., Madry, C., Inoue, J., ... Tsapis, A. (2000). TNF receptor family member BCMA (B cell maturation) associates with TNF receptor-associated factor (TRAF) 1, TRAF2, and TRAF3 and activates NF-kappa B, elk-1, c-Jun N-terminal kinase, and p38 mitogen-activated protein kinase. *J Immunol*, *165*(3), 1322–1330. <https://doi.org/10.4049/jimmunol.165.3.1322>
- Hibi, T., & Dosch, H. -M. (1986). Limiting dilution analysis of the B cell compartment in human bone marrow. *European Journal of Immunology*, *16*(2), 139–145. <https://doi.org/10.1002/eji.1830160206>
- Huang, H., Regan, K. M., Wang, F., Wang, D., Smith, D. I., van Deursen, J. M. a, & Tindall, D. J. (2005). Skp2 inhibits FOXO1 in tumor suppression through ubiquitin-mediated degradation. *Proceedings of the National Academy of Sciences of the United States of America*, *102*(5), 1649–1654. <https://doi.org/10.1073/pnas.0406789102>
- Iwakoshi, N. N. (2003). The X-box binding protein-1 transcription factor is required for plasma cell differentiation and the unfolded protein response. *Immunological Reviews*, *194*, 29–38. <https://doi.org/10.1034/j.1600-065X.2003.00057.x>
- Jones, D. D., Gaudette, B. T., Wilmore, J. R., Chernova, I., Bortnick, A., Weiss, B. M., & Allman, D. (2016). MTOR has distinct functions in generating versus sustaining humoral immunity. *Journal of Clinical Investigation*, *126*(11), 4250–4261. <https://doi.org/10.1172/JCI86504>
- Jourdan, M., Cren, M., Robert, N., Bolloré, K., Fest, T., Duperray, C., ... Klein, B. (2014). IL-6 supports the generation of human long-lived plasma cells in combination with either APRIL or stromal cell-soluble factors. *Leukemia*, *28*(8), 1647–1656. <https://doi.org/10.1038/leu.2014.61>
- Lakhani, S. A., Masud, A., Kuida, K., Porter, G. A., Booth, C. J., Mehal, W. Z., ... Flavell, R. A. (2006). Caspases 3 and 7: Key mediators of mitochondrial events of apoptosis. *Science*, *311*(5762), 847–851. <https://doi.org/10.1126/science.1115035>
- Landsverk, O. J. B., Snir, O., Casado, R. B., Richter, L., Mold, J. E., Réu, P., ... Jahnsen, F. L.

- (2017). Antibody-secreting plasma cells persist for decades in human intestine. *The Journal of Experimental Medicine*, 214(2), 309–317. <https://doi.org/10.1084/jem.20161590>
- Makela, O., & Nossal, J. V. (1962). Autoradiographic Studies on the Immune Response, 231–245.
- Manz, R. A., & Radbruch, A. (2002). Plasma cells for a lifetime? *European Journal of Immunology*, 32(4), 923–927. [https://doi.org/10.1002/1521-4141\(200204\)32:4<923::AID-IMMU923>3.0.CO;2-1](https://doi.org/10.1002/1521-4141(200204)32:4<923::AID-IMMU923>3.0.CO;2-1)
- Manz, R. A., Thiel, A., & Radbruch, A. (1997). Lifetime of plasma cells in the bone marrow. *Nature*, 388(6638), 133–134. <https://doi.org/10.1038/40540>
- Nakagawa, T., Zhu, H., Morishima, N., Li, E., Xu, J., Yankner, B. a, & Yuan, J. (2000). Caspase-12 mediates endoplasmic-reticulum-specific apoptosis and cytotoxicity by amyloid-beta. *Letters to Nature*, 403(6765), 98–103. <https://doi.org/10.1038/47513>
- Nobs, S. P., Schneider, C., Dietrich, M. G., Brocker, T., Rolink, A., Hirsch, E., & Kopf, M. (2015). PI3-Kinase- γ Has a Distinct and Essential Role in Lung-Specific Dendritic Cell Development. *Immunity*, 43(4), 674–689. <https://doi.org/10.1016/j.immuni.2015.09.006>
- O'Connor, B. P., Raman, V. S., Erickson, L. D., Cook, W. J., Weaver, L. K., Ahonen, C., ... Noelle, R. J. (2004a). BCMA is essential for the survival of long-lived bone marrow plasma cells. *The Journal of Experimental Medicine*, 199(1), 91–98. <https://doi.org/10.1084/jem.20031330>
- O'Connor, B. P., Raman, V. S., Erickson, L. D., Cook, W. J., Weaver, L. K., Ahonen, C., ... Noelle, R. J. (2004b). BCMA Is Essential for the Survival of Long-lived Bone Marrow Plasma Cells. *The Journal of Experimental Medicine*, 199(1), 91–98. <https://doi.org/10.1084/jem.20031330>
- Parsons, J. T., Martin, K. H., Slack, J. K., Taylor, J. M., & Weed, S. a. (2000). Focal adhesion kinase: a regulator of focal adhesion dynamics and cell movement. *Oncogene*, 19(49), 5606–5613. <https://doi.org/10.1038/sj.onc.1203877>
- Pelletier, N., Casamayor-Pallejà, M., De Luca, K., Mondière, P., Saltel, F., Jurdic, P., ... Defrance, T. (2006). The endoplasmic reticulum is a key component of the plasma cell death pathway. *Journal of Immunology (Baltimore, Md.: 1950)*, 176(3), 1340–1347. <https://doi.org/10.4049/jimmunol.176.3.1340>
- Peperzak, V. (2013). Mcl-1 is essential for the survival of plasma cells. *Nature Immunology*, 14(3). <https://doi.org/10.1038/ni.2527>
- Peperzak, V., Vikström, I., Walker, J., Glaser, S. P., LePage, M., Coquery, C. M., ... Tarlinton, D. M. (2013). Mcl-1 is essential for the survival of plasma cells. *Nature Immunology*, 14(3), 290–297. <https://doi.org/10.1038/ni.2527>
- Plas, D. R., & Thompson, C. B. (2003). Akt activation promotes degradation of tuberlin and FOXO3a via the proteasome. *Journal of Biological Chemistry*, 278(14), 12361–12366. <https://doi.org/10.1074/jbc.M213069200>
- Radbruch, A., Muehlinghaus, G., Luger, E. O., Inamine, A., Smith, K. G. C., Dörner, T., & Hiepe, F. (2006). Competence and competition: the challenge of becoming a long-lived plasma cell. *Nature Reviews Immunology*, 6(10), 741–750. <https://doi.org/10.1038/nri1886>

- Ritchie, M. E., Phipson, B., Wu, D., Hu, Y., Law, C. W., Shi, W., & Smyth, G. K. (2015). Limma powers differential expression analyses for RNA-sequencing and microarray studies. *Nucleic Acids Research*, *43*(7), e47. <https://doi.org/10.1093/nar/gkv007>
- Schooley, J. C. (1961). Autoradiographic observations of plasma cell formation. *J Immunol*, *86*(3), 331-?
- Slifka, M. K., Antia, R., Whitmire, J. K., & Ahmed, R. (1998). Humoral immunity due to long-lived plasma cells. *Immunity*, *8*(3), 363–372. [https://doi.org/10.1016/S1074-7613\(00\)80541-5](https://doi.org/10.1016/S1074-7613(00)80541-5)
- Spencer, J. A., Ferraro, F., Roussakis, E., Klein, A., Wu, J., Runnels, J. M., ... Lin, C. P. (2014). Direct measurement of local oxygen concentration in the bone marrow of live animals. *Nature*, *508*(7495), 269–273. <https://doi.org/10.1038/nature13034>
- Spriel, A. B. Van, Keijzer, S. De, Schaaf, A. Van Der, Gartlan, K. H., Sofi, M., Light, A., ... Wright, M. D. (2012). The Tetraspanin CD37 Orchestrates the $\alpha 4 \beta 1$ Integrin – Akt Signaling Axis and Supports Long-Lived Plasma Cell Survival. *Science Signaling*, *5*(250). <https://doi.org/10.1126/scisignal.2003113>
- Stittrich, A. B., Haftmann, C., Sgouroudis, E., Köhl, A. A., Hegazy, A. N., Panse, I., ... Mashreghi, M. F. (2010). The microRNA miR-182 is induced by IL-2 and promotes clonal expansion of activated helper T lymphocytes. *Nature Immunology*, *11*(11), 1057–1062. <https://doi.org/10.1038/ni.1945>
- Tellier, J. (2016). Blimp-1 controls plasma cell function through regulation of immunoglobulin secretion and the unfolded protein response. *Nature Immunology*, *17*(3), 323–330. <https://doi.org/10.1038/ni.3348>.Blimp-1
- Tellier, J., Shi, W., Minnich, M., Liao, Y., Crawford, S., Smyth, G. K., ... Nutt, S. L. (2016). Blimp-1 controls plasma cell function through the regulation of immunoglobulin secretion and the unfolded protein response. *Nature Immunology*, *17*(3), 323–330. <https://doi.org/10.1038/ni.3348>
- Thein, S., Pham, A., Bayer, K. U., Tao-Cheng, J.-H., & Dosemeci, A. (2008). IKK Regulates the Deubiquitinase CYLD at the Postsynaptic Density. *Bone*, *23*(1), 1–7. <https://doi.org/10.1038/jid.2014.371>
- Tokoyoda, K., Egawa, T., Sugiyama, T., Choi, B.-I., & Nagasawa, T. (2004). Cellular Niches Controlling B Lymphocyte Behavior within Bone Marrow during Development. *Immunity*, *20*, 707–718.
- Waelchli, R., Bollbuck, B., Bruns, C., Buhl, T., Eder, J., Feifel, R., ... Schlapbach, A. (2006). Design and preparation of 2-benzamido-pyrimidines as inhibitors of IKK. *Bioorganic and Medicinal Chemistry Letters*, *16*(1), 108–112. <https://doi.org/10.1016/j.bmcl.2005.09.035>
- Zehentmeier, S., Roth, K., Cseresnyes, Z., Sercan, Ö., Horn, K., Niesner, R. A., ... Hauser, A. E. (2014). Static and dynamic components synergize to form a stable survival niche for bone marrow plasma cells. *European Journal of Immunology*, *1*(1), 3–6. <https://doi.org/10.1002/eji.201344313>.This

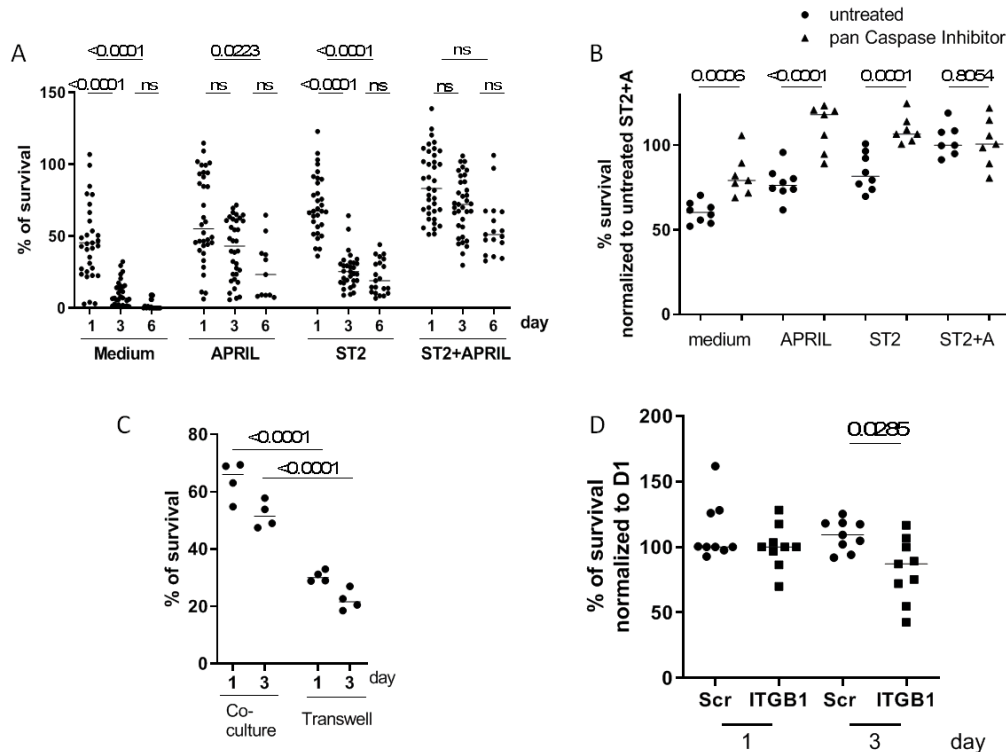


Figure 1. Survival of bone marrow memory plasma cells is dependent on direct cell contact with stromal cells and the presence of APRIL.

(A) Survival of primary plasma cells isolated from immunized C57BL/6J mice cultured with or without ST2 stromal cell lines and with or without APRIL for up to 6 days at 4.2% O₂. Viable plasma cells (CD138⁺⁺/DAPI⁻) were enumerated by flow cytometry and data are represented as median (pooled from a minimum of 5 independent experiments with a minimum of n=14 for each group). (B) Isolated plasma cells were treated with or without pan-caspase inhibitor when cultured with or without ST2 stromal cell lines and with or without APRIL. Viable plasma cells were counted on day 1 of culture (pooled from two independent experiments with a minimum of n=7 for each group). (C) Survival of plasma cells in the presence of APRIL on day 1 and day 3, when cultured in transwell or in direct contact to stromal cells (pooled from two independent experiments with n=4 for each group). (D) Survival of plasma cells on day 1 and day 3 treated with specific siRNA directed against ITGB1 and scrambled controls (pooled from three independent experiments with n=9 for each group).

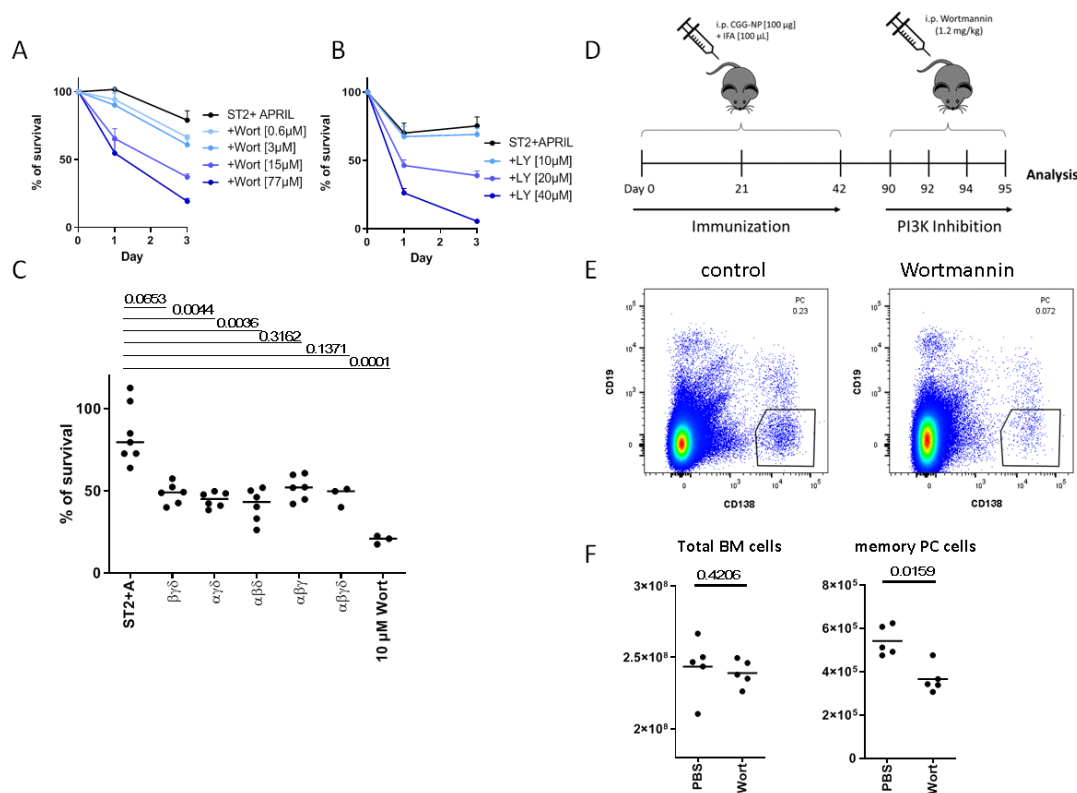


Figure 2. Stromal cell contact-induced PI3K signaling is essential for survival of memory bone marrow plasma cells *ex vivo* and *in vivo*.

Survival of plasma cells (A) pre-incubated with different concentrations of the irreversible PI3K-inhibitor Wortmannin or (B) directly treated during culture with the inhibitor LY294002 or (C) with combinations of three subunit-specific PI3K-inhibitors determined by enumeration of viable CD138⁺/DAPI⁻ plasma cells by flow cytometry (pooled from two independent experiments with n=6 for each group). (D) Experimental design: C57BL/6J were primed and boosted twice (days 21 and 42) with CGG-NP/IFA and treated with the PI3K-inhibitor Wortmannin on days 90, 92, and 94. On day 95, the mice were analyzed. (E) Representative plot of B220⁻/CD138⁺/CD19⁻ plasma cells in the bone marrow from control and Wortmannin-treated mice gated on DAPI⁻ viable cells. (F) Absolute cell counts of total bone marrow cells and memory plasma cells, in the bone marrow in control and Wortmannin-treated mice, data are represented as median (pooled from two independent experiments with n=5).

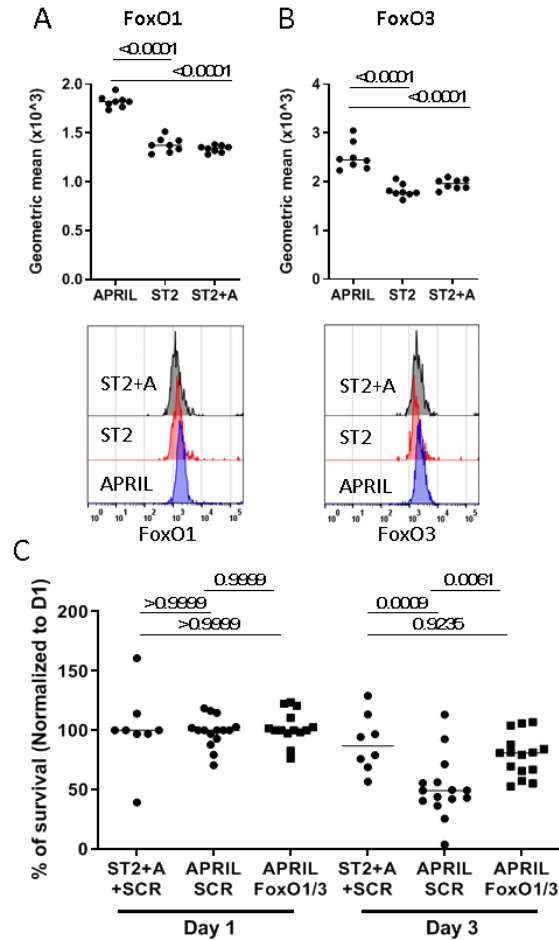


Figure 3. Stromal cell contact-induced PI3K signaling downregulates FoxO1/3 protein expression and is essential for survival of memory bone marrow plasma cells.

FoxO1 (A) and FoxO3 (B) expression as determined by flow cytometry (geometric mean fluorescence intensity, pooled from two independent experiments with $n=8$ for each group). (C) Survival of plasma cells treated with siRNA specific for FoxO1/FoxO3 or scrambled control on day 1 and 3 of culture with APRIL alone or ST2 and APRIL as enumerated by flow cytometry. Data are represented as median (pooled from a minimum of three independent experiments with $n=3$ for each group).

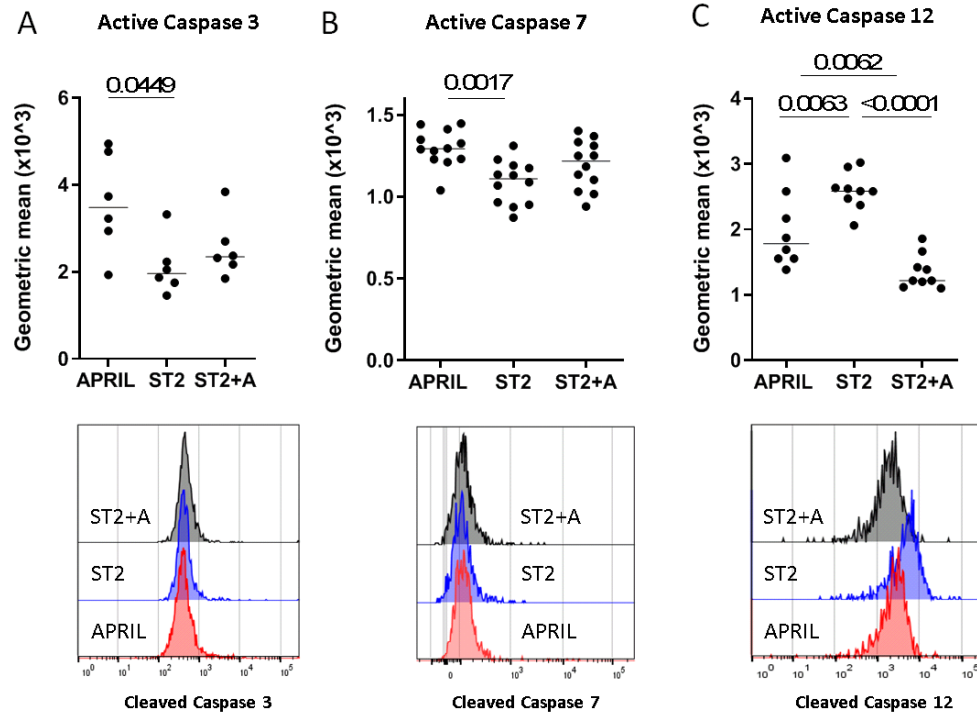


Figure 4. Contact with stromal cells inhibits activation of caspase 3 and 7, while APRIL inhibits activation of caspase 12.

Expression of activated (A) caspase 3, (B) caspase 7 and (C) caspase 12 determined by flow cytometry, shown as geometric mean fluorescence intensity, on day 1 in plasma cells cultured under the indicated conditions (pooled from a minimum of two independent experiments with n=6-12 for each group).

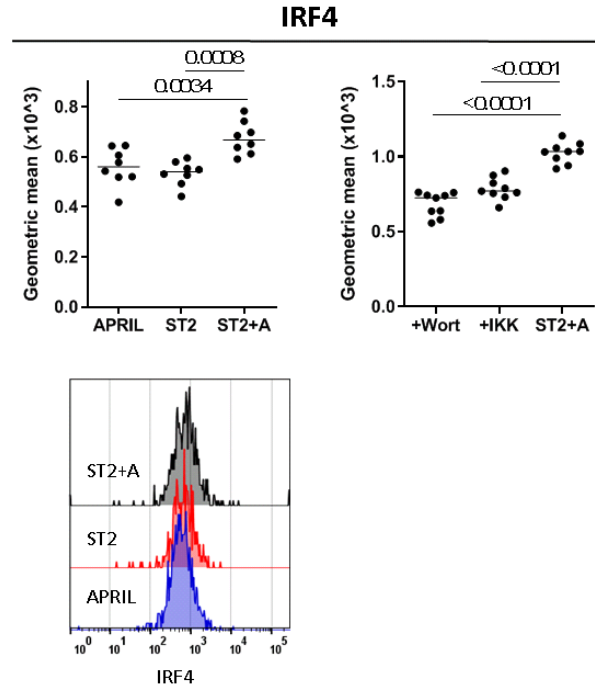


Figure 5. Both PI3K and NF- κ B signaling synergize to upregulate expression of IRF4 in memory plasma cells.

IRF4 protein expression, shown as geometric mean, in plasma cells cultured for 1 day with or without ST2 cells, with or without APRIL or pre-treated with either 10 μ M Wortmannin or 2.5 μ M of IKK16 (pooled from two independent experiments with n=6-8 for each group).