

Title:

**Recombinant DNA resources for the comparative genomics of *Ancylostoma ceylanicum*.**

**Authors:**

**Wadim J. Kapulkin<sup>1,5,6#</sup>, Adriana Magalska<sup>1</sup>, Ewa Janecka<sup>1</sup>, Arkadiusz Ciesielski<sup>2,4</sup>, Malgorzata Lobočka<sup>2</sup>, Jerzy M. Behnke<sup>3</sup>, Halina Wedrychowicz<sup>1</sup>**

# corresponding author

1. Faculty of Veterinary Medicine, Grochowska 272, 03-849 Warsaw, Poland
2. Institute for Biochemistry and Biophysics –PAS, Pawinskiego 5a, 02-106 Warsaw, Poland
3. School of Life Science, University of Nottingham, University Park, NG7 2RD Nottingham, U.K.
4. Department of Chemistry, University of Warsaw, Pasteura 1, 02-093 Warsaw, Poland

Present affiliation:

5. Veterinary Consultancy, Conrada 16/65, 01-922 Warsaw, Poland
  6. Mobile Veterinary Consultancy, Nottingham, U.K.
- Phone: (+44)7466449215  
e-mail: wadim\_kapulkin@yahoo.co.uk

**Keywords:** *Ancylostoma ceylanicum*, Recombinant DNA library, SL1 spliced leader, cDNA, Bacterial Artificial Chromosome library, NUMTs

**Abbreviations:** cDNA, complementary DNA; polyA+, poly-adenylated mRNA, EST, expressed sequence tag; GSS, genome survey sequence; RT-PCR reverse transcriptase-polymerase chain reaction; SL1 spliced leader ; PFGE, pulsed field gel electrophoresis ; BAC, Bacterial Artificial Chromosome; NUMTs, nuclear mitochondrial DNA segment

Abstract:

We describe the construction and initial characterization of genomic resources (a set of recombinant DNA libraries, representing in total over 90,000 independent plasmid clones), originating from the genome of a hamster adapted hookworm, *Ancylostoma ceylanicum*. First, with the improved methodology, we generated sets of SL1 (5'-linker - GGTTAATTACCCAAGTTTGAG), and captured cDNAs from two different hookworm developmental stages: pre-infective L3 and parasitic adults. Second, we constructed a small insert (2-10kb) genomic library. Third, we generated a Bacterial Artificial Chromosome library (30-60kb). To evaluate the quality of our libraries we characterized sequence tags on randomly chosen clones and with first pass screening we generated almost a hundred novel hookworm sequence tags. The sequence tags detected two broad classes of genes: i. conserved nematode genes and ii. putative hookworm-specific proteins. Importantly, some of the identified genes encode proteins of general interest including potential targets for hookworm control. Additionally, we identified a syntenic region in the mitochondrial genome, where the gene order is shared between the free-living nematode *C. elegans* and *A. ceylanicum*. Our results validate the use of recombinant DNA resources for comparative genomics of nematodes, including the free-living genetic model organism *C. elegans* and closely related parasitic species. We discuss the potential and relevance of *Ancylostoma ceylanicum* data and resources generated by the recombinant DNA approach.

## Introduction:

Hookworm infections are widely distributed in human and domesticated animal populations and pose a significant threat to global public health (Hotez 1995). The two anthropophilic species *Necator americanus* and *Ancylostoma duodenale* are responsible for most human infections, but hookworms of the genus *Ancylostoma* (i.e. *A. caninum*, *A. braziliense* and *A. tubaeforme*) also infect wild canids and felids, and are of importance in veterinary medicine through infections in small companion animals such as dogs and cats (Miller, 1971, 1979; Behnke 1990).

Unlike the two principal anthropophilic hookworm species, *Ancylostoma ceylanicum* predominantly infects wild as well as domesticated felids and canine hosts, but this species can also cause zoonotic infections in humans (Yoshida et al 1968; Areekul et al 1970; Behnke 1991;). The broad host range of *A. ceylanicum*, has allowed the establishment of a strain which can complete its life cycle in the golden hamster (Ray et al. 1972, Garside & Behnke 1989). This rodent adapted strain provides a unique opportunity for experimental studies on pathogenesis of hookworm infections in a convenient laboratory host (Menon et al. 1985, Behnke et al. 1997) and is a useful reference laboratory model for other hookworm infections and for studies that focus on host-immunity to hookworm infections (Behnke 1990, 1991, Alkazmi & Behnke, 2013). The major symptoms of hookworm infection, principally develop as a consequence of

blood loss due to bleeding ulcerations and mucosal abrasions caused by adult worms browsing on the intestinal mucosa and feeding on blood from damaged blood vessels (Roche & Layrisse 1966, Kahn & Line 2010), resulting in an iron-deficiency anemia. Such lesions are also observed in the laboratory model of hookworm infection and are accompanied by other secondary signs i.e hypoproteinemia resulting from blood loss and weight loss (Garside & Behnke 1989). *Ancylostoma ceylanicum* infection induces immunological responses that have been shown to be protective in dogs and hamsters (Menon et al. 1985, Behnke et al. 1997), resulting in persistent acquired immunity and also in pups vaccinated with attenuated *A. caninum* larvae (Miller 1965).

Unlike the parasitic stages (activated L3 larvae, L4 and adults), the early larval stages that develop from eggs shed externally into the environment (L1, L2 and L3 larvae) are free-living. These early developmental stages are morphologically very similar in their microscopic appearance to the corresponding stages observed in *C. elegans*. Hookworms are evolutionarily and taxonomically closely related to the free-living nematode *C. elegans* (Blaxter et al. 1998), which is regarded widely as a highly informative and convenient manipulable laboratory model organism for a wide range of biological disciplines including developmental biology and genetics (Brenner 1974). *C. elegans* was the first metazoan animal to have its chromosomal genome sequenced (Sulston and Waterston, *C.elegans* Sequencing Consortium 1998) and its genome sequence is now considered a valuable reference in comparative analyses of gene and chromosome sequences of other nematodes, including hookworms. Moreover the transgenic technologies developed in *C. elegans* (reviewed in Mello & Fire 1995) have

now been successfully exploited in developing recombinant genes from nematodes other than *C. elegans* (i.e. Kwa et al. 1995).

As part of our long term interests in comparative genome analyses of parasitic nematodes and also of our associated interests in the exploration of the potential of existing *C. elegans*-based transgenic technologies for the functional analysis of recombinant hookworm genes, we have constructed a set of the recombinant DNA libraries from the hamster adapted strain of *A. ceylanicum*. These recombinant DNA resources are described herein, as well as the methods that we used for the preparation of *E. coli* recombinants. We discuss the potential and relevance of data derived from work on *Ancylostoma ceylanicum* and the resources generated by the recombinant DNA approach.

#### Materials and methods:

##### Isolation of nucleic acids and the recombinant library construction.

Parasitic material was obtained from a strain of *A. ceylanicum* (referred as ‘Warsaw-strain’), maintained in Syrian hamsters for at least a hundred generations (the above hamster adapted strain was provide by Jerzy Behnke, University of Nottingham, UK, who originally obtained the strain in 1983 from Dr Rajasekariah of Hindustan CIBA-Geigy Ltd., Bombay, India. Hookworms were maintained in hamsters as described (Behnke et al. 1997). Adult worms were obtained from dissected intestines and harvested during necropsy. Pre-infective larvae were grown from synchronized eggs collected from dissected gravid females. Hatched larvae were kept in liquid media containing HBSS (Hanks’ balanced salt solution) at 25°C for two weeks. Nematode tissue samples were frozen at -80°C until further processing. The animal studies were approved by the Animal Care and Use Committee (R-508/98).

#### Preparation and isolation of Nucleic acids:

RNA isolation and SL1-cDNA preparation. mRNA was isolated using the Oligotex direct mRNA kit (Qiagen), from 20 adults or 2000 infective L3 larvae. Isolated poly A+ mRNA was converted to cDNA with *Thermus thermophilus* (rTth) DNA Pol I (reverse transcriptase activity), and PCR amplified using One-Step RT-PCR system (Gibco-BRL). PCR was carried out using the spliced leader (SL1 primer 5'-GGTTAATTACCCAAGTTTGAG) and oligo T (dT17) linker primers and the following amplification reaction profile: 45°C for 30 min, followed by 20 cycles of 94°C for 30 s; 55°C for 30 s; 70°C for 10 min followed by final extension 72°C for 30 min.

DNA isolation and preparation. DNA isolation was performed in agarose plugs according to the protocols of Osoegawa et al. (1998). Frozen adult worms tissues were shredded with micro dissecting scissors, inside a microfuge tube kept on ice. The contents of the tube were mixed 1:1 with melted 1% agarose in a 45°C water bath, then immediately poured into the acrylic glass (methyl methacrylate resin) McMaster chamber (0.15 ml). Solidified plugs were then extruded into the extraction buffer (2% SLS, 0.5M EDTA) supplemented with 2mg/ml of proteinase K (Sigma). Deproteinisation was continued at 50°C for 48h. After equilibration DNA was stored in 0.5M EDTA (pH 8.0) at 4°C. The quality of DNA was checked by analytical PFGE. Agarose embedded DNA was either electro-eluted into the dialysis bag as described (Strong et al. 1997), and sheared with a nebulizer and concentrated with an Amicon-50 spin dialysis filter (small insert genomic DNA library), or used directly for the construction of a Bacterial Artificial Chromosome

library (according to protocols and vectors pBACe3.6 (Frengen et al. 1999) established by BACPAC-CHORI, Pieter de Jong personal communication).

Isolated nucleic acids (both RT-PCR amplified SL1-capped cDNA and sheared genomic DNA) were subsequently fractionated by preparative agarose gel electrophoresis. Briefly, after the preparative electrophoresis (45 min at 4°C at 5V/cm, TAE) the gels were sliced into three pieces and only two side fragments (containing molecular mass markers) were stained with ethidium bromide. Based on the marker bands the middle (unstained) part of the gel was sliced with subsequent vertical cuts and successive preparative fractions (a 0.3-0.5 cm of gel length) were taken covering the size range from 0.5-5.0kb). DNAs were released from the agarose gel matrix. Individual fractions were then used to build sub libraries. Both SL1-PCR cDNA and genomic DNA fractions were ligated in batches (containing fractions taken from the same preparative gel) into topoisomerase I based plasmid vectors [pCR-XL-TOPO™ and pCR-4blunt-TOPO™ vector (Invitrogen)] following the manufacturer's instructions. 2µl of the ligation reaction was electroporated into freshly thawed aliquots of the electro-competent DH10B *E.coli* cells using the 1mm cuvette with a BTX ECM600 Electro Cell Manipulator. The resulting colonies were picked into 96 well plates containing LB media with 12.5% glycerol and stored at -80°C. Clones and libraries resulting from this work have been indexed, freeze-archived and distributed to the scientific community.

Sequencing and sequence analysis.

Sequencing reactions of library clones were outsourced to Microsynth Sequencing Service in Switzerland ([www.microsynth.ch](http://www.microsynth.ch)). In general in the first –pass sequence homology search, sequences scoring *E*-value of  $< 10^{-5}$  were considered as having significant homology. The sequences with homology to *C. elegans* proteins were identified by searching WormBase. Nucleotide sequence data without flanking primer sequences are available at dbEST/dbGSS GenBank™ under accession numbers (BI068132, BM536441- BM536500, BH739287- BH739307, BH739419) and analyzed with NCBI sequence suite ([www.ncbi.nlm.nih.gov/genbank/](http://www.ncbi.nlm.nih.gov/genbank/)). Where indicated individual sequences were conceptually translated into frames, and aligned with MAFFT multiple sequence alignment ([mafft.cbrc.jp](http://mafft.cbrc.jp)) with GUIDANCE confidence score ([guidance.tau.ac.il](http://guidance.tau.ac.il)). ER-routing signal sequence were identified on frame translated single letter coded string with SignalP ([www.cbs.dtu.dk](http://www.cbs.dtu.dk)). GeneBank graphics or Ensembl BLAT/BLAST output representation were respectively used to generate graphical display of the relevant genomic annotations.

The sequences of the recombinant plasmids, were analyzed and searched against genome scale data sets. In the first step using the EST data from Mitreva et al. (2005) on *A. ceylanicum* SL1-ESTs (datasets generated using the SL1-cDNA libraries, we provided as material for sequencing) were aligned, to infer on allelic variants and correct for the first-pass sequencing and PCR errors. In the second step data from an *A. ceylanicum* scaffold assembly (Schwarz et al. 2015) [www.ncbi.nlm.nih.gov/biosample/SAMN02585415](http://www.ncbi.nlm.nih.gov/biosample/SAMN02585415) were used to anchor the first pass sequence-tags within genomic scaffolds and infer on



locally duplicated loci. The results of both steps of analysis with the genome scale data are summarized in Table 2.

Results:

**Recombinant DNA library construction.** The four recombinant DNA libraries prepared from the hamster adapted *Ancylostoma ceylanicum* strain are summarized in the Table 1. The first two libraries are SL1 (spliced leader 1) PCR captured cDNA libraries and the remaining two libraries are genomic DNA libraries.

The cDNA libraries represent *E. coli* colonies electro-transformed with ligated PCR products. The PCR products were derived from synthesis of the poly-adenylated mRNA material isolated from infective L3 larvae and adult nematodes (respectively), using the the Tth DNA polymerase and oligo-dT and 5' SL1 primers. The PCR products robustly amplified the material, typically rendering the fairly uniform range of products (0.25-10kb and 0.25-3.5kb, respectively for larval and adult isolated material) as visualized by agarose gel electrophoresis (not shown). Provided the SL1-dT PCR products rendered intensively amplifying bands (apparent after the gel electrophoresis), we sized the gel fractionated material by horizontal slicing of the gel after the preparative electrophoresis. This procedure was implemented as an improvement in the quality of the constructed libraries and intended to remove the over-amplifying by-products from the PCR material. The material extracted from consecutive gel-sized fractions was subsequently ligated in 6 and 4 (respectively for larval and adult extracted material, were fraction third and second were respectively labeled as containing the over-amplifying bands) independent reactions and later treaded as separate library segments.

The genomic DNA libraries were prepared according to established protocols, using the agarose-gel embedded/extracted DNA and gel fractionation following DNA electroelution (Osoegawa et al. 1998). The blunt-end small insert library was prepared from mechanically sheared DNA molecules while the BAC library was prepared using the DNA digested with EcoRI restriction enzyme.

**Recombinant DNA library characterization.** The initial characterization of the prepared libraries was performed by the EcoRI restriction enzyme digestion of isolated plasmid DNAs. To evaluate plasmid insert integrity and diversity the EcoRI digestion products were size compared using the estimates from routine agarose gel analysis (not shown). In this step, we immediately confirmed the cDNA libraries were >95% recombinant and therefore concluded that the prepared collection was of adequate quality. This conclusion was based on: first on size polymorphism of individual plasmids, and secondly on presence of internal EcoRI sites. At this stage we confirmed the two amplified SL1-cDNA fractions, corresponding to fraction three and two (respectively for larval and adult extracted material) originally labeled as containing the over-amplified PCR products lacking the required EcoRI size polymorphisms (not shown). In the case of plasmids prepared from colonies grown for the blunt-end small insert genomic library we could not confirm the same level of integrity. Instead we observed that the overall rate of ~75% recombinants was retrieved across all fractions tested. In contrast plasmids grown for the colonies of the transformed BAC library were of the expected size at 30-60kb and were ~95% recombinant.

In order to confirm the estimates from the agarose gel analysis we subjected the initial preparations to automated Sanger DNA sequencing (this was done by the outsourcing to the commercial DNA sequencing service). Analysis of the sequencing products is summarized in the Table 2. We initially proceeded with six plasmids per SL1- cDNA fraction. This step resulted in sequence based identification of the over-amplified PCR products (listed with Table 1. as over represented inserts.) avoiding the potentially problematic segments of libraries. In the case of the adult SL1-cDNA library the identified over-amplified insert corresponds to *A. ceylanicum* cysteine proteinase. The particular *A. ceylanicum* cysteine proteinase has been reported by our group previously (Mieszczanek et al. 2000) using RACE PCR. In the case of the larval SL1-cDNA library the over-amplified product corresponds to *A. ceylanicum* protein homologous to *mlc-5 C. elegans* gene. Those unwanted and non-polymorphic segments (where in each case the sequencing of six out of six attempted clones confirmed the same cDNA sequence) were subsequently excluded from the set of freeze archived colonies.

The results of the sequencing of plasmids from the genomic DNA libraries are included in Table 2. In addition to a lower than expected fraction of recombinant plasmids from the blunt-end small insert genomic library (above) we observed that some of the *E. coli* colonies grew poorly (with apparent growth delay in over-night mini-cultures) resulting in lower quality templates for sequencing reactions. These colonies were verified as containing the rearranged vector sequences (~25%) and were excluded from further analysis. However, despite the above difficulties, we managed to generate informative

reads of truly recombinant plasmids from this library. Notably, with sequence based characterization we identified a plasmid corresponding to a segment of *A. ceylanicum* mitochondrial DNA. This result indicated that the fraction of the blunt-end small insert library is contaminated with non-nuclear *A. ceylanicum* DNA. At this stage we attempted to generate paired-end sequences of the BAC library clones, however at the time the sequencing reactions were attempted, of six confirmed EcoRI polymorphic clones, sequencing reactions resulted in only a single informative read (conducted at the Institute for Biochemistry and Biophysics- PAS). Because of limited resources, as well as a restricted time frame for the project, we were forced to abandon the further characterization of the constructed and freeze archived *A. ceylanicum* BAC library.

**Sequence based identification of the evolutionary conserved nematode factors.** Based on the *A. ceylanicum* sequences generated during the initial characterization of the recombinant DNA library, we sought confirmation of the presence of the evolutionarily conserved factors i.e. genes present in nematodes other than hookworms. We therefore first compared the generated sequences to genes known to exist in the model organism *C. elegans* (Table 2.). In addition to the two over-represented factors mentioned above (Table 1.) we identified the following *C. elegans* homologues: rps-12, F54E7.2; rps-30, C26F1.4; ife-4, C05D9.5; C14B9.10; F32D1.2; far-1/far-2, F02A9.2/F02A9.3; hsp-16.48, T27E4.3; cri-2, K07C11.5; rpl-16, M01F1.2; idh-2, C34F6.8; rps-21, F37C12.11 and rps-8, F42C5.8 in adult SL1-cDNA library and syx-6, C15C7.1; pbs-4, T20F5.2; F47B7.1; F56F11.4; rpl-29, B0513.3; hsp-12.6, F38E11.2 in infective L3 SL1-cDNA library and Y39F10A.3 in the *A. ceylanicum* genomic DNA library.

If any of these conserved factors were later reported by others in descriptions of material from our libraries (Mitreva et al. 2005), we do not here repeat analysis of relevant genes. However we have attempted to retrospectively identify which of the above conserved factors are most prevalent when sampled with the larger SL1-cDNA set (Mitreva et al. 2005). Based on the data included in Table 2, we have weighted the relative abundance of individual factors by counting absolute numbers of the SL1 ESTs generated by our collaborators. We have established that small heat shock proteins exceed in number other factors, with homologues of *C. elegans* hsp-12.6 (F38E11.2) protein and hsp-16.48, T27E4.3 accounting for 140 SL1 ESTs and 42 uncapped ESTs and 40 SL1 ESTs and 31 uncapped ESTs in larval and adult libraries respectively. Interestingly the identified homologue of F47B7.1, poorly characterized *C. elegans* gene of uncertain function appears also highly represented (accounting for 81 SL1 ESTs found exclusively amongst clones from the library we provided). For comparison abundant ribosomal protein rpl-29, B0513.3 is represented by 81 SL1 ESTs amongst sequences derived from clones from ours SL1-cDNA library. Table 2 lists additional homologues of *C. elegans* genes derived from clones from the SL1-capped cDNA libraries we provided, but strikingly absent from uncapped libraries provided by other collaborators. This class of SL1-capped *A. ceylanicum* genes includes homologues of the following *C. elegans* genes: C14B9.10 and pbs-4 (supported by respectively 12 and 16 combined SL1 ESTs identified in both adult and L3 libraries); far-1/far-2 and cri-2 (supported by respectively 12 and 2 SL1 ESTs identified specifically in adult SL1-cDNA library) and syx-6 (supported by 23 SL1 ESTs identified specifically in larval SL1-cDNA library). This analysis has further revealed

that some conserved factors identified by our pilot analysis as homologous to predicted *C. elegans* genes (*ife-4*, C05D9.5; *idh-2*, C34F6.8 and F56F11.4) were apparently not sampled with the larger set (Mitreva et al. 2005). We note specifically that the current description is so far the only report on those conserved trans-spliced, nematode factors present in *A. ceylanicum*.

**Sequence based identification of the taxonomically restricted genes encoded by the *A. ceylanicum* genome.** In contrast to the above evolutionarily conserved nematode factors, where sequence homology with known *C. elegans* genes (and often with other predicted nematode genes other than caenorhabdids, typically including genes described in hookworms other than *A. ceylanicum*) could be established, within the set of the initial sequences derived from the recombinant libraries, we identified a number of predictions where homology to known *C. elegans* genes could not be inferred. Provided the genome of *C. elegans* is complete, and all predicted sequences have been deposited in public databases, we regard the other sequences derived from our libraries (examples where homology to *C. elegans* genes could not be established) as taxonomically restricted. Those taxonomically restricted sequences contributed to approximately half (20 of 39 sequences derived from the combined larval and adult SL1 capped cDNA libraries) of the sequences we generated while characterizing the recombinant DNA libraries. The above trend is more prominent in the SL1 capped adult set (13 of 30 unique sequences) when compared to larval SL1 set (7 of 9 unique sequences) but unexpectedly absent from the control set of genomic sequences (where there is only one sequence matching the predicted *C. elegans* gene Y39F10A.3 amongst 19 unique genomic reads).

In view of the above set of the taxonomically restricted genes encoded by *A. ceylanicum*, in the larger sampling of our SL1-capped cDNA libraries, we again attempted to retrospectively identify which of the taxonomically restricted factors are most prevalent in the larger SL1-cDNA set (Mitreva et al. 2005). We therefore repeated the type of analysis we had conducted for hookworm genes evolutionarily conserved with *C. elegans* and weighted the relative abundance of individual taxonomically restricted genes by counting the absolute numbers of the SL1 ESTs generated by our collaborators (Table 2). Based on the above analysis we observed that again certain SL1-capped transcripts of *A. ceylanicum* (denoted here as plasmid clones pAG5, pAE2 and pAA3) were apparently not sampled in the larger set described by (Mitreva et al. 2005). The above three examples of adult SL1-capped cDNAs (pAG5, pAE2 and pAA3) were assigned as homologous to different sets of hypothetical proteins / protein families of *A. ceylanicum* (represented by Y032\_0504g2644, Y032\_0009g563 and Y032\_0018g3628 respectively, based on the relative homology score, sequence coverage and percent identity in the aligned region), presumably expressed from at least three different genomic loci (Table 2). Strikingly, those homologues of the three hypothetical proteins predicted in *A. ceylanicum* appeared taxonomically restricted i.e. where the sequence homologies were strictly species specific or where the only homologues were identified in hookworms other than *A. ceylanicum*. Based on this analysis, we interpret these unique SL1-capped ESTs as representing adult worm enriched trans-spliced transcripts of relatively low abundance. We note specifically that this description is so far the only report on these taxonomically restricted trans-spliced factors recovered from adult stages of *A.*



*ceylanicum* identified explicitly by our pilot analysis of clones derived from the recombinant DNA resources. The above analysis was further extended into the sequences derived from other plasmid clones prepared in parallel during the initial characterization of our *A. ceylanicum* recombinant DNA resources. This analysis confirmed further that the additional examples of SL1-capped transcripts identified in our preliminary characterization were specifically recovered from the libraries we provided for the more extensive sampling reported by our collaborators (Mitreva et al. 2005). Of the factors listed in Table 2, based on the assignment guided by the homology search, we further included the following plasmid clones (pAA6, pAF6, pAE1, pAH6, pAB2, pAF2, pAA1, pAH1, pAD5 and pAH5 homologous to *A. ceylanicum* hypothetical protein / protein families represented by Y032\_0001g1111, Y032\_0017g3335, Y032\_0010g983, Y032\_0009g606, Y032\_0009g704, Y032\_0009g606, Y032\_0651g1154, Y032\_0009g704, Y032\_0009g580 and Y032\_1033g3448 respectively) into the above group of taxonomically restricted factors derived exclusively from SL1-capped cDNAs recovered from adult stage of *A. ceylanicum*. We note that these ten SL1-capped transcripts represent novel proteins of mostly unknown function presumably specific to the adult stage of *A. ceylanicum*. However in contrast to the SL1-capped transcripts uniquely defined by our pilot characterization, the above group of ten factors is supported by the more extensive sampling reported by Mitreva et al. (2005). Specifically, the dataset described by our collaborators includes further examples of SL1-capped transcripts corresponding to the above adult specific factors (supported by 33, 65, 8, 66, 48, 11, 19, 46, 68 and 8 trans-spliced cDNAs respectively) suggesting a pattern typical for abundantly expressed transcripts. In the particular examples of SL1-capped cDNAs

from plasmid clones pAF6, pAH6 and pAD5, these were represented by >60 ESTs in the larger set of sampling from the library we provided, suggesting that those exceed in relative numbers other transcripts recovered from adult stage. Our analysis suggests that the proteins defined by the above abundant transcripts are likely hookworm or even species specific and that they perform presumably relevant (collectively essential) functions in the parasitic adult stages *A. ceylanicum*. We suggest therefore that the above sampling of the SL1-capped trans spliced cDNAs are biased toward taxonomically restricted factors expressed in the adult stage of *A. ceylanicum*. This perspective appears plausible in the context of the two other examples of SL1-capped transcripts identified in the preliminary characterization of recombinant DNA clones from our libraries. First, sampling from the SL1-capped adult library included a sequence derived from cDNA clone pAB1 (supported by 4 SL1-capped ESTs derived from the library that we provided and one EST derived from uncapped cDNA library provided by other collaborators). pAB1 encodes for factor markedly homologous to *A. ceylanicum* hypothetical protein Y032\_0014g2377, which in contrast to the above factors appear taxonomically unrestricted. While factor encoded by pAB1 appears taxonomically excluded from caenorabids (paraphyletic with respect to), predictions homologous to *A. ceylanicum* hypothetical protein Y032\_0014g2377 could be found in *Necator americanus* (NECAME\_00160), *Dictyocaulus viviparus* (DICVIV\_13749), *Oesophagostomum dentatum* (OESDEN\_11368) and *Haemonchus contortus* (CDJ80097.1, unnamed protein product)(not shown). Second, in our sampling there appears to be the only larval match (supported by two trans spliced cDNAs pLE4 and pLC2, independently recovered from the infective L3 larvae SL1-capped library we provided and represented further by total 5

SL1-capped ESTs in larger set of samplings reported by ours collaborators in 2005) representing a potential example of a taxonomically restricted gene present in a non-adult stage. We note however in the latter case that confidence appears low and that this is due to a very limited (below the threshold of the relative homology score) homology to the predicted *A. ceylanicum* hypothetical protein Y032\_0708g1711.

**The clues retrieved from mapping of the *A. ceylanicum* recombinant DNA clones onto the scaffolds corresponding to the genome sequence.** While conducting the previous steps of the analysis on the sequences derived from the preliminary characterization of the recombinant DNA resources, we have observed that sequences derived from certain clones could not be discretely assigned into different clusters in an unambiguous manner using the available cDNA samplings from Mitreva et al. (2005). We have observed that a subset of sequences derived from apparently different trans-spliced transcripts from the adult SL1-capped cDNA library, appear mutually homologous in sequence based searches. This behavior is indicative for transcripts encoded by multi-allelic loci or transcripts encoded by the gene families (i.e. *C. elegans* small heat shock proteins) and because of the absence of a draft of the genomic sequence, this poses a particular challenge for taxonomically restricted genes and reads from clones derived from genomic libraries. Among the highly expressed taxonomically restricted genes that we initially noted, three different SL1-capped cDNA clones pAB2, pAH6 and pAF2 were mutually homologous. Using those sequences as specific identifiers, with a re-iterated search, we established that three additional sequences derived from clones pAD5, pAF6 and pAH1. generated during our preliminary characterization attempt. could

be assigned into the same homology clade. Subsequently using SL1-capped cDNA sequences deposited in public databases, we identified further pAA3, pAH5 and pAA6 by aligning with overlapping sets of *A. ceylanicum* predicted proteins. We termed those groups of predicted *A. ceylanicum* proteins LKIN-motif family proteins, after the distinct Leu-Lys-Ile-Asn tetrapeptide motif which occurred in the predicted sequence of the first discovered member derived from SL1-cDNA pAB2 (Fig 1. and 2.). In order to assign the individual members of the LKIN-family into individual loci we took advantage of the scaffold-based assembly corresponding to the *A. ceylanicum* genome sequence deposited in a public database by Schwartz et al. (2015). The results of mapping of the sequences generated during the preliminary characterization of the recombinant DNA resources onto *A. ceylanicum* genomic scaffolds described in Schwartz et al. (2015) are summarized in the last column of the Table 2.

Based on the above scaffold-mapping data analysis that we generated, we then retrieved the genomic coordinates aligning to the sequences we generated during the preliminary characterization stage, and initially focused on SL1-capped cDNAs encoding for the LKIN-motif family members. We have established that two of the LKIN-motif family members (represented here by SL1-capped cDNA clones pAB2 and pAF2) specify duplicated pairs of loci linked on single genomic scaffold Acey\_s0009 (JARK01001345.1) (Figure 3.). This analysis has identified SL1-capped cDNA clone pAB2 as encoding two predicted proteins Y032\_0009g704 and Y032\_0009g716 as encoded by the locally duplicated pair of genes, predicted at positions Acey\_s0009.g704-JARK01001345.1[2,052,912..2,053,464] and Acey\_s0009.g716-

JARK01001345.1[2,086,709..2,097,446]. We termed that pair of genes the LKIN-motif family locus AB2. Next, we have established the second identified SL1-capped cDNA clone pAF2 specified by two predicted proteins Y032\_0009g606 and Y032\_0009g591 as encoded by the second pair of presumably duplicated genes, predicted at positions Acey\_s0009.g606-JARK01001345.1[1,423,074..1,425,309] and Acey\_s0009.g591-JARK01001345.1[1,399,607..1,400,045]. We refer to that pair of genes as the locus AF2. Based on genomic coordinates, the genomic position of two locally duplicated gene pairs spanning a < 0,7 MB interval, located in the middle of the single genomic scaffold Acey\_s0009, constitutes the locus encoding for the major class of the abundant SL1-capped transcripts specific to adult stage of the *A. ceylanicum*. Conducting the same type of analysis, with the other clones corresponding to the above class of adult specific SL1-capped transcripts, revealed that unlike clone pAH1 (supporting the LKIN-motif locus AB2) , clones pAD5, pAH6, pAF6 and pAH5 could not be assigned to specific scaffolds described by Schwartz et al. (2015) despite apparently encoding for proteins homologous with other members of the LKIN-motif family of proteins (Table 2.). However, the homology based search, indicated that those adult specific SL1-capped cDNA were predicted to support the placement of the LKIN-motif family locus on the single genomic scaffold Acey\_s0009. Moreover, the same search indicated that around and within the specified 0,7 MB interval there are apparent (albeit more distant) additional genes encoding for hypothetical proteins homologous with the LKIN-motif family members. Specifically, those gene predictions supported the additional hypothetical proteins encoded by the predicted genes grouped in the proximal (referring to scaffold coordinates) part of Acey\_s0009. Y032\_0009g537, Y032\_0009g542, Y032\_0009g544,

Y032\_0009g545, Y032\_0009g580, Y032\_0009g585 and Y032\_0009g586 were positioned outside of the locus AF2 (Fig. 3. A and B), while Y032\_0009g594 was predicted to lie between Y032\_0009g591 and Y032\_0009g606, and is therefore positioned internally within the AF2 locus (Fig. 3. C). Next, genes encoding for hypothetical proteins Y032\_0009g610, Y032\_0009g612, Y032\_0009g678, Y032\_0009g683, Y032\_0009g686 are predicted to span the interval between AF2 and AB2 loci (Fig. 3. D and E) and Y032\_0009g705 was predicted to lie between Y032\_0009g704 and Y032\_0009g716 and therefore positioned internally within the AB2 locus (Fig. 3. F and G). Collectively, by conducting repeated searches we have confirmed at least 18 distinct predicted genes as encoding for adult specific, diverse protein LKIN-motif members, all being predicted to occur within the defined interval (~1MB in length) of the single genomic scaffold Acey\_s0009. Provided this type of distribution is characteristic for gene families expanded by local duplications, we have established that the genomic scaffold Acey\_s0009 encodes for a hookworm specific multi-allelic locus. In this phase of the analysis we concluded that some of the most abundant hookworm specific SL1-capped transcripts, encoding for highly diverged and presumably secreted proteins (based on the N-terminal SignalP predictions of the ER-routing signal, not shown) are likely to be encoded by clustered genes that have arisen through local gene duplications.

Based on the above analysis, we note further that the assignment of the LKIN-motif family to the expanded locus on genomic scaffold Acey\_s0009 is not absolute. Specifically we emphasize that two other adult specific SL1-capped cDNA clones pAA3

and pAA6 map to scaffolds other than Acey\_s0009 (embedding in the expanded AF2-AB2 locus). Instead SL1-capped cDNA clones pAA3 and pAA6 map to at least two different *A. ceylanicum* scaffolds Acey\_s0018 (JARK01001354.1) and Acey\_s0001 (JARK01001337.1) respectively (Table 2.), suggesting even greater genomic diversity of loci encoding for the LKIN-motif protein family. This perspective is also indirectly supported by our analysis suggesting that the additional locally duplicated clusters of presently uncertain significance, are encoded by scaffolds dispersed across the *A. ceylanicum* chromosomes. Finally, we note, that data summarized in Table 2 indicate that at least two other additional mutually homologous adult specific SL1-capped cDNAs pAE2 and pAG6 map onto the same genomic scaffold Acey\_s0009 which includes the expanded locus AF2-AB2 encoding for the LKIN-motif protein family, both supporting the hypothetical protein prediction Y032\_0009g563. While presently the function of neither of these factors remains clear, pAG6 appears distantly related to *C. elegans* protein *cri-2*, which is described as a Conserved Regulator of Inate immunity (Alper et al. 2008). However, this assignment is based on the results of the large scale RNAi screen and therefore requires further verification. Moreover, the significance of the grouping implied by the genetic linkage with LKIN-motif family encoding locus remains presently unclear.

In the broader perspective of the genomic distribution of the *A. ceylanicum* sequences identified by the output from the preliminary characterization, we note that the sequences we generated (table 2) fall into two main categories. The first category involves factors that we mapped with a high stringency search onto genomic scaffolds

with a resulting high degree of confidence (described below). The second category involves factors which we could not map unambiguously to specific scaffolds. The second category will not be described in detail herein however the original data are included in Table 2. This second category is not uniform however, since it groups sequences where no genomic scaffold could be assigned (i.e. some of the LKIN-motif members described above), sequences where the relative homology score is weak or coverage is partial and sequences with ambiguous assignments (i.e. where several high scoring matches specify multiple scaffolds). We note that the last category may include some false negatives i.e. as mentioned above, small heat shock protein genes encoded by multiple dispersed paralogous genes, possibly explaining some of the mapping difficulties experienced in the analysis.

Within the set of SL1-capped cDNAs derived from adults, 20 sequences mapped with high confidence to genomic scaffolds (this was supported by typically high homology based search scores, sequence coverage and identity over the discrete region of single specific scaffold) including 5 described above which mapped to the scaffold encoding for the LKIN-motif protein family. Using the same criteria, we have established that 8 SL1-capped cDNAs, derived from the infective larvae, map with high confidence to specific genomic scaffolds other than Acey\_s0009. In the case of the set of reads we generated using plasmid clones from genomic DNA, we established that 13 map with a high degree of confidence to specific genomic scaffolds other than Acey\_s0009, including a read from the BAC library (supported by the scaffold Acey\_s0211). Within that set, two paired reads from genomic DNA clone pVB11, unexpectedly aligned with high confidence to a region of genomic scaffold Acey\_s0161 (JARK01001497.1) over



the 60-69% of the insert length (Table 2.). The reason why we find this behavior unexpected, is that this clone was previously identified as contamination of mitochondrial origin, and therefore derived from non-chromosomal DNA molecules. Upon close examination, provided the Acey\_s0161 scaffold is 476,687kb long, we exclude the possibility that this could represent a mis-annotated mtDNA genome fragment. Detailed alignment identified this 507bp mitochondrial DNA fragment of the insert aligning with high stringency (99% of identity with the DNA alignment) over positions 21,264-21,771 of the genomic scaffold Acey\_s0161 (Figure 4.A. and C.). (This was independently confirmed by repeated searches with the entire mtDNA genome of *N. americanus* (Figure 4.B.), and expectedly turned out to be highly conserved with the mtDNA genome of *A. ceylanicum*. Only the above 507bp segment of the mitochondrial genome appears to be included in the specified position of the above genomic scaffold). We interpret this observation as being attributable either to fragmentation of the mitochondrial genome and translocation into the nuclear locus in scaffold Acey\_s0161 or alternatively representing an artifactual error of the genomic assembly. If the later possibility can be confidently excluded, the former explanation has precedent in that so called NUMTs (“nuclear mitochondrial DNA segment”)(Lopez et al. 1994) have been described in eukaryotic genomes (Richly and Leister 2004).

#### Discussion:

Given the value of recombinant DNA resources, our primary motivation in this study was to develop useful molecular reagents to facilitate subsequent research exploiting transgenic *C. elegans* to study the genes of parasitic nematodes, and notably hookworms. The genetic model organism *C. elegans* is a robust system for the transgenic expression

of parasite genes, with numerous genetic tools available, such as RNA interference, fluorescent reporter protein fusions and transgenic complementation (referred as ‘mutant rescue’). At the time when the current project was initiated only a very limited set of hookworms genes had been deposited in the publicly available databases (and these were mostly fragments of mitochondrial DNA and other sequences used for phylogenetic reconstructions).

The resources that we have generated have already contributed greatly to gene discovery in parasitic nematodes (Parkinson et al. 2003), resulting in hundreds of new sequences being deposited in public databases. Since the major resources for gene discovery, the recombinant SL1-cDNA libraries that we generated, have already been described and discussed in some detail (Mitreva et al. 2005), here we will limit the discussion to aspects which have only been discussed poorly so far or have not been described previously at all (recombinants of the genomic DNA).

We note that the approach we implemented for SL1 capped transcripts and for the recovery of plasmid SL1-cDNA clones enables specific identification of the transcripts that engage the nematode specific 5’ end processing referred as trans-splicing (reviewed in, Blumenthal 2012). In nematodes trans-splicing has been mainly implicated in shifts in gene expression associated with the transition of major developmental stages, such as transitions between the successive larval stages or diapausal exit (Zaslaver et al. 2005) and with processing of poly-cistronic transcripts (Blumenthal 2012). The precise physiological role of the 5’ end trans-splicing remains largely elusive and mostly speculative. In *C. elegans* the majority of pre-mRNA transcripts engage in some form of the 5’-end trans-splicing reactions (Blumenthal 2012). While a broad discussion of the role of trans-splicing in developmental transitions and poly-cistronic processing is beyond the scope of this paper, below we concentrate on a few examples directly inferred from our study.

The particular SL1-capped cDNA clone (plasmid pAG1) recovered from the adult stage *Ancylostoma* cDNA library was initially annotated as being homologous with *C.*

*elegans* gene F02A9.2. This SL1 capped cDNA is indeed homologous to each of the locally duplicated pair of *C. elegans* genes F02A9.2/ F02A9.3, listed in Table 2 but not covered in the results section. Mitreva (2005) described a larger set of SL1-capped sequences derived from the cDNA libraries that we had provided (and have described herein), and those transcripts are more correctly classified as encoding for hookworm fatty acid and retinol binding (FAR) proteins. Secreted nematode FAR proteins have drawn the attention of others, due to their postulated role in pathogenesis (Garofalo et al. 2003). In particular, Fairfax et al. (2009) have published on *A. ceylanicum* FAR-1, yet another transcript reported from the larger cDNA set described by Mitreva et al. (2005). We note here that the cDNA that was the subject of those studies, clearly constitutes a different FAR protein from the one described here. The cDNA described in the current work encodes the SL1-capped hookworm FAR protein which is clearly distinct and only partially homologous (approximately 60% identity at the amino acid level) with the one reported by Fairfax et al.(2009). Moreover our SL1-FAR appears to be encoded by different and separate locus (because of their assignment into a different genomic scaffold) in the assembly reported by Schwartz et al. (2015), than the protein described as FAR-1. Nematode FAR proteins are structurally and functionally divergent and therefore typically grouped into clans or subtypes (Garofalo et al. 2003). Therefore it is not surprising in our opinion that detailed analysis has revealed a greater complexity than that previously considered. In the larger SL1-cDNA set (Mitreva et al. 2005) at least twelve other SL1-capped transcripts appear to align with the prototype SL1-FAR sequence that we deposited in the GeneBank database in 2000-2001. Provided that some other cDNAs encoding for FAR proteins exist in the larger set (recovered from the uncapped cDNA libraries provided by other collaborators) and align with the sequence reported by Fairfax et al.(2009) we propose here that the observed SL1 bias represents specific subtypes of the hookworm FAR proteins that will form the basis for future classification of these proteins and their genes.

The set of sequences generated from our recombinant DNA libraries that we have described, includes also another example of an unusual use of the 5'-end transcript processing. This example concerns the SL1-cDNA encoding the hookworm small heat

shock protein (plasmid pAF1 in the adult SL1-cDNA set). Small heat shock proteins are encoded by stress sensitive genes and have been extensively characterized in *C. elegans* (Russnak et al. 1983, Stringham et al. 1992, Candido 2002). They form an adaptation to heat stress but also constitute a safeguard against misfolded protein stress (Fonte et al. 2002). Our results suggest that the parasitic adult stages of *A. ceylanicum*, express small heat shock proteins constitutively. This differs from the reported expression pattern of small heat shock protein in *C. elegans* and might reflect an adaptation of the parasitic stages of hookworms to the elevated temperatures that the parasitic stages experience within endothermic hosts. The presence of a trans-spliced SL1 sequence on 5'-end of *A. ceylanicum* messenger RNA encoding a small heat shock protein indicates a radical difference to currently accepted view of the small HSP mRNA in *C. elegans* (where small heat shock protein transcripts are regarded as being excluded from 5' end trans-splicing). This observation appears to be consistent with what has been reported for other parasitic nematodes i.e. *Nippostrongylus braziliensis* (Tweedie et al. 1993), where SL1 is trans-spliced onto the 5'-end of developmentally regulated small heat shock protein mRNA.

We also note that the anecdotal, proposed association that elevated expression of small heat shock proteins correlates with life-span extension in *C. elegans* (Mendenhall et al. 2012), might also be plausible here (since hookworms are long lived nematodes when compared to *C. elegans* (Beaver, 1988; Plmer 1955; Gems 2000)). In an evolutionary context, the adaptation to elevated temperatures and its possible association of 5' end trans-splicing with a small heat shock protein gene expression in parasitic nematodes remains a phenomenon of fundamental interest. Adaptation to elevated temperatures has been reported also in tropical isolates of some free-living nematode species i.e. *C. briggsae* but also recently in *Pristionchus pacificus* (Leaver et al. 2016), however none of the free-living species survives at the range of temperatures maintained by the endothermic hosts of adult hookworms. While studies on free-living nematodes were designed to identify the genetic component involved in higher temperature adaptation, no single specific locus has been reported to-date. This suggests that adaptation to elevated temperatures may require highly pleiotropic effects, likely resulting from co-ordinated changes to gene expression at a multiple of levels and involving multiple genes. For

example, the genome of *C. elegans* is expected to encode around two-hundred molecular chaperones (Guisbert et al. 2013), including a number of heat shock proteins (Kapulkin et al. 2005). We postulate that the adaptation of certain isolates to elevated temperatures is based on a requirement for global alterations to gene expression and we suggest that alterations to the trans-splicing patterns might fulfill the above adaptive requirement. We propose that some of the above aspects could possibly be studied in transgenic *Caenorhabditis* model. In particular, transgenic lines expressing the hookworm small heat shock protein genes could be assayed for an association of trans-splicing with physiological phenomena related to elevated temperature adaptation, i.e. thermotolerance, malformed protein response, stress resistance and longevity.

The 5'-SL1 trans-spliced set of sequences described herein includes also SL1-cDNA in which homology to genes known in *C. elegans* could not be detected. Again, the scope of this communication as well as limitations of the manuscript size, precludes us from providing a detailed description of all the factors that were detected. Among the clones sampled there are examples of SL1-cDNAs where some detectable homology is restricted to hookworm species (Table 2.). These genes, presumably hookworm specific, are of great interest, as they may encode novel factors involved in pathogenesis, interactions with the host and host immune response, but also, as taxonomically restricted factors, they may yield the promise of specific therapy targets and perhaps may enable improvement in current therapeutics and control strategies.

From the perspective of hookworm specific genes, collectively we identified thirteen examples of *A. ceylanicum* transcripts within the 5' trans-spliced cDNA set, where the sequence homology is strictly species specific or where the only homologues are identified in hookworms other than *A. ceylanicum*. Those several examples of the SL1-capped, trans-spliced transcripts (encoding mostly for uncharacterized hypothetical proteins, see results section) could be regarded as examples of SL1-capped transcripts encoding for hookworm specific factors (or possibly events of *A. ceylanicum* specific factors). We emphasize that the retrospective analysis described herein indicates that a number of those hookworm specific factors were detected exclusively within the clones

sampled from the SL1-capped cDNA libraries that we provided. Those transcripts encoding for hookworm specific factors were absent from the uncapped cDNA libraries provided by other collaborators. The above perspective, provides an unbiased validation of our results and clearly and specifically indicates the distinct advantage of the approach we implemented.

Remarkably, when the project was initiated, amongst the hookworm specific SL1-cDNAs at least three identified sequences were found to represent a distinct clade of mutually homologous factors. Among these, homology with other species of nematodes was weak or marginal, confirming that these represent the species expanded gene clade. The homology of the three initially identified SL1-cDNAs (mutually homologous, represented by plasmids pAH6, pAB2 and pAF2) was then extended by the iterated species restricted search. This re-iterated search assigned further pAD5 and pAF6, and pAH1 (in iterated searches on pAH6 and pAB2 respectively), to the hookworm specific SL1-cDNA clade described here, along with three more distantly related SL1-cDNA clones and the number of the re-sampled SL1-cDNAs including the larger set of sequences (Mitreva et al. 2005) generated on SL1- captured clones from the libraries that we had provided. We note that such an extensive representation of the taxon-specific hookworm transcripts (accounting for an estimated ~10-20% of all transcripts) recovered from the relatively small initial set, is possibly indicative of vital relevant physiological function in *A. ceylanicum*. Based on the distinct Leu-Lys-Ile-Asn motif detected in the conceptually translated sequence of the first SL1-cDNA plasmid pAB2, we refer the above polypeptides derived from an adult specific SL1-capped transcripts to the LKIN-motif protein family.

The above clade of the SL1-capped, trans-spliced cDNAs encoding for the LKIN-motif protein family, appears remarkable in the scope and context of the recent assembly of the whole genome assembly of *A. ceylanicum* (Schwartz et al. 2015). While loci encoding for SL1-cDNAs, pAB2 and pAF2 (and further pAH6) are clearly identifiable within the set of genomic scaffolds, in contrast genes encoding for the SL1-cDNA pAH1 (and further pAD5 and pAF6) do not seem to exist within the preset whole genome

assembly of the *A. ceylanicum* genome. This strongly suggests that the present whole genome assembly is not entirely complete (although we note here that the present assembly provided us with fair representation across all other factors listed in Table 2.). Curiously, mapping of the above *A. ceylanicum* trans-spliced SL1-capped transcripts, has demonstrated that, where genomic scaffolds could be attributed, the above factors appear to be linked on the single genomic scaffold Acey\_s0009 (with the locally duplicated gene pairs spaced at ~1MB located in the middle of (3,042 546 MB) scaffold). While a detailed description of the complexity at the locus encoding the species-specific trans-spliced hookworm factors was covered only superficially in the result section (more comprehensive description will be submitted under separate cover), we note here that based on our results, the above clade must represent a family of proteins encoded by genes subjected to local chromosomal expansion. On the basis of the above considerations concerning the group of genes subjected to the local chromosomal expansion, we foresee that the above genes encoding for the related, adult hookworm specific, factors grouped in relatively narrow genetic interval, might be regarded as metazoan form of pathogenicity island (as often referred in pathogenic prokaryotes i.e. reviewed Schmidt & Hensel 2004). Given the parasitic lifestyle of adult stages, we speculate those abundant, presumably secreted factors, would be involved in host-parasite relationships possibly relevant in pathogenesis. Provided hookworms are known to secrete copious amounts of immunogenic material including small proteins, we suggest the highly diverged members of the LKIN-motif protein family encoded by multiple expanded loci in hookworm genome (including one described above on scaffold Acey\_s0009 and at least two other loci referred in the result section) might collectively act as the immunological smokescreen diverting the host immune response. We further propose the highly diverged members of the LKIN-motif family could engage the attention of the host immune system by exposing the secreted cloud of epitopes to cause the immunological mischief leading to the immune evasion.

Another issue regarding the above clade of trans-spliced hookworm specific proteins which became apparent during sequence analysis, concerns a similar sequence reported by Bungiro et al. (2002). Those authors described one of the sequences

originating from our SL1-cDNA libraries, as the ‘Excretory/Secretory protein 2’. Bungiro et al. (2002) indicated that the protein corresponding to single EST deposited in GeneBank is found in the material shed by *A. ceylanicum* adults and that the relevant gene product engages the humoral antibody response in laboratory hosts. However, these authors failed to specify the source and origins of the SL1-cDNA sequence (instead, these authors, acknowledged the names of 35 other collaborators). In conclusion, we note that the SL1-cDNA plasmids that we generated and provided through collaborators to the scientific community could possibly have the following practical application. Provided that the SL1 capped full length cDNA are selected by the procedure that we implemented, and given that the vector sequence provides T7 polymerase binding sites immediately adjacent to SL1-cDNA cloning site, we suggest that the plasmids from the libraries we provided are suited as templates for *in vitro* transcription of the messenger RNAs (i.e. constitute material directly suitable for use as the so called mRNA vaccines i.e. Weiner 2013). Otherwise these and other recombinant DNA libraries we have constructed may serve as useful reagents for the T7 polymerase dependent *in vivo* synthesis of double-stranded RNA synthesis in *E. coli* (Timmons et al. 1998), established as a mediator in RNA silencing and RNA interference (Fire et al. 1998). Libraries of the plasmid clones expressing dsRNA are established screening reagents applied widely in *C. elegans* (i.e. relevant references in Kapulkin et al. 2005) and it is therefore expected that these tools could be applied with *C. elegans* lines expressing transgenic hookworm genes.

So far we have generated and described two types of recombinants (*E. coli* replicons) with inserts derived from genomic *A. ceylanicum* DNA: a small insert library and a Bacterial Artificial Chromosome library. Genomic DNA libraries comprise a valuable resource for follow-up analysis in transgenic *C. elegans*. First, gene expression controlling regions could be recovered and assayed with reporter genes (Chalfie et al. 1994). Screens, such as ‘promoter-trapping’ were established to identify *de novo* regions controlling gene activity. Alternatively, candidate genes could be replaced or tagged in genomic constructs to form functional chimaeric reporter genes, suitable for testing in transgenic *C. elegans*. Second, gene encoding sequences in genomic DNA, which are interrupted by introns, could be assayed in transgenic *C. elegans* for correct splicing in



cis- but also trans-splicing assays. Third, functional genes of interests could be introduced into *C. elegans* as transgenes, and assayed for expression and specific functions.

Together, the constructed libraries of genomic DNA of *A. ceylanicum*, should suit all the above purposes.

During the process of construction of genomic DNA recombinants a few nuances became apparent which we briefly discuss below. The sequence tags generated on the plasmid clones recovered from the small insert library included mitochondrial DNA fragments. While at the time these were interesting due to their conserved synteny with other nematodes, these fragments are presently regarded as unwanted contamination. The particular fragment of the *A. ceylanicum* mitochondrial DNA we described, is unexpectedly found in the nuclear genomic scaffold Acey\_s0161 (Schwartz 2015). The inserted segment of the mitochondrial DNA includes fragments of two mitochondrial protein genes and three mitochondrial tRNA sequences, located in the non-alternative intron of *A. ceylanicum* gene Acey\_s0161.g3363. We note that it is presently uncertain whether this sequence can be regarded as NUMTs or whether it represents a whole genome assembly artifact. NUMTs have not been previously reported in hookworms. Nevertheless, it is interesting that in filarial nematodes non-chromosomal DNA (i.e. DNA originating from endosymbionts) has been found in the nuclear genome (Dunning Hotopp et al. 2007, McNulty et al. 2010). While hookworms, including *A. ceylanicum* are thought not to have prokaryotic endosymbionts, we think it would be interesting if the NUMTs in *A. ceylanicum* were to have been acquired via a similar mechanism to that responsible for segments of *Wolbachia* DNA being acquired into filarial chromosomes. We note however that the incontrovertible demonstration of the potential existence of NUMTs in the hookworm genome will require further investigation. We note also that NUMTs pose a specific challenge with *de novo* whole genome assembly, as mitochondrial DNA could easily contaminate raw nuclear DNA preparations used for PCR based whole genome sequencing. Indeed mtDNA contaminations could be avoided if more careful size exclusion DNA fractionation were to be exploited (Osoegawa et al. 2001).

The other aspect that we feel needs addressing is cloning efficiency. Based on a positive experience with the RT-PCR amplified SL1-cDNA, we were encouraged with the commercially provided vaccinia virus topoisomerase system (see materials and methods), which consistently yielded a low level of non-recombinant clones. However when we attempted to use a parallel product from the same supplier, we were discouraged with an unexpectedly high background of non-recombinant colonies or mis-recombinant plasmids (detected with sequencing, not shown). We initially attributed this unwanted and unforeseen obstacle to some intrinsic properties of hookworm DNA. However our later experience with constructing other plasmid libraries entailing inserts derived from hookworm DNA, with conventional T4 ligase and restriction enzymes, suggested that in the above instance, the supplier provided a vaccinia virus topoisomerase based on the TOPO-plasmid ligation system that performed sub-optimally. While, detailed consideration of the reasons for this dysfunctional performance are outside the scope of this paper, we consider that the overall kinetics of the blunt end (versus T/A) topoisomerase mediated insert-plasmid ligation was impaired or affected by other factors significantly reducing its efficiency.

Despite the above limitations, we have nevertheless managed to construct a Bacterial Artificial Chromosome library in a low-copy vector. Bacterial Artificial Chromosomes (BAC) are large plasmids derived from the bacteriophage P1 or *E. coli* F factor plasmid (Osoegawa et al. 2001) and have proved to be supreme tools in modern genomic analysis. BACs incorporate recombinant DNA fragments sufficiently large to detect haplotype differences over fingerprinted maps of the genomic regions. The so called paired-end sequences of BAC clones are important in genomic reconstruction of chromosomal regions of interest, as the paired-ends provide higher order contig/scaffold coordinates. We have described the construction of a fosmid size recombinant DNA library of *A. ceylanicum* using the BACPAC-CHORI protocol, with slight modifications as applied in another parasitic nematode (Jeremy Foster, NEB, personal communication (Foster et al. 2004)). Importantly BAC accommodated genomic DNA inserts, could be modified via DNA engineering using recombination in *E. coli* methods (Zhang et al. 1998) rendering the recombined clones suitable for expression analysis in transgenic *C.*

*elegans* (i.e. Sarov et al. 2006). While we are aware that the constructed *A. ceylanicum* BAC library referred to above, is limited by insufficient characterization at the sequence level, we nevertheless consider that the available permanent recombinant DNA resource will provide a valuable reference for an improved genome assembly as well as for the recombinant platform for future gene expression studies in transgenic *C. elegans*.

Literature cited:

Alkazmi L.M.M. & Behnke J.M. (2013). The mucosal response of hamsters exposed to weekly repeated infections with the hookworm *Ancylostoma ceylanicum*. *Journal of Helminthology* 87, 309-317.

Areekul S., Radomyos P. & Viravan C. (1970). Experimental infection of *Ancylostoma ceylanicum* in man. *Journal of the Medical Association of Thailand* 53, 190-194.

Alper, S., Laws, R., Lackford, B., Boyd, W. A., Dunlap, P., Freedman, J. H., & Schwartz, D. A. (2008). Identification of innate immunity genes and pathways using a comparative genomics approach. *Proceedings of the National Academy of Sciences of the United States of America*, 105(19), 7016–7021. <http://doi.org/10.1073/pnas.0802405105>

Beaver, P.C. (1988). Light, long-lasting *Necator* infection in a volunteer. *American Journal of Tropical Medicine and Hygiene* 39: 369-372.

Behnke J. M. (1990). Laboratory animal models. In : *Hookworm Disease. Current Status and New Directions*, (Edited by Schad G. A. & Warren K. S.), pp. 105-128. Taylor and Francis, London, U.K.

Behnke J. M. (1991). Pathology. In : Human Parasitic Diseases, Volume 4, Hookworm Infections, (Edited by Gilles H.M. & Ball P.A.J.),pp.51-91. Elsevier, Amsterdam, The Netherlands.

Behnke IM, Guest J, Rose R. Expression of acquired immunity to the hookworm *Ancylostoma ceylanicum* in hamsters. *Parasite Immunol* 1997;19:309-18

Blumenthal T. 2012 Trans-splicing and operons (June 25, 2005), WormBook, ed. The C. elegans Research Community, WormBook, doi/10.1895/wormbook.1.5.1

Blaxter ML, De Ley P, Garey JR, Liu LX, Scheldeman P, Vierstraete A, Vanfleteren JR, Mackey LY, Dorris M, Frisse LM, Vida JT, Thomas WK. A molecular evolutionary framework for the phylum Nematoda. *Nature* 1998; 392: 71-5.

Brenner, S. (1974). The Genetics of CAENORHABDITIS ELEGANS. *Genetics*, 77(1), 71–94.

Bungiro, R. D., Solis, C. V., Harrison, L. M., & Cappello, M. (2004). Purification and Molecular Cloning of and Immunization with *Ancylostoma ceylanicum* Excretory-Secretory Protein 2, an Immunoreactive Protein Produced by Adult Hookworms . *Infection and Immunity*, 72(4), 2203–2213. <http://doi.org/10.1128/IAI.72.4.2203-2213.2004>

Candido EP. The small heat shock proteins of the nematode *Caenorhabditis elegans*: structure, regulation and biology. *Prog Mol Subcell Biol*. 2002;28:61-78.

Chalfie M, Tu Y, Euskirchen G, Ward WW, Prasher DC. Green fluorescent protein as a marker for gene expression. *Science*. 1994 Feb 11;263(5148):802-5.

Dunning Hotopp JC, Clark ME, Oliveira DC, Foster JM, Fischer P, Muñoz Torres MC, Giebel JD, Kumar N, Ishmael N, Wang S, Ingram J, Nene RV, Shepard J, Tomkins J,

Richards S, Spiro DJ, Ghedin E, Slatko BE, Tettelin H, Werren JH. Widespread lateral gene transfer from intracellular bacteria to multicellular eukaryotes. *Science*. 2007 Sep 21;317(5845):1753-6. Epub 2007 Aug 30.

Fairfax, K. C., Vermeire, J. J., Harrison, L. M., Bungiro, R. D., Grant, W., Husain, S. Z., & Cappello, M. (2009). Characterization of a fatty acid and retinol binding protein orthologue from the hookworm *Ancylostoma ceylanicum*. *International Journal for Parasitology*, 39(14), 1561–1571. <http://doi.org/10.1016/j.ijpara.2009.06.005>

Fire A, Xu S, Montgomery MK, Kostas SA, Driver SE, Mello CC. Potent and specific genetic interference by double-stranded RNA in *Caenorhabditis elegans*. *Nature*. 1998 Feb 19;391(6669):806-11.

Fonte, V., Kapulkin, W. J., Taft, A., Fluet, A., Friedman, D., & Link, C. D. (2002). Interaction of intracellular  $\beta$  amyloid peptide with chaperone proteins. *Proceedings of the National Academy of Sciences of the United States of America*, 99(14), 9439–9444. <http://doi.org/10.1073/pnas.152313999>

Foster JM, Kumar S, Ganatra MB, Kamal IH, Ware J, Ingram J, Pope-Chappell J, Guiliano D, Whitton C, Daub J, Blaxter ML, Slatko BE. Construction of bacterial artificial chromosome libraries from the parasitic nematode *Brugia malayi* and physical mapping of the genome of its *Wolbachia* endosymbiont. *Int J Parasitol*. 2004 May;34(6):733-46.

Frengen E, Weichenhan D, Zhao B, Osoegawa K, van Geel M, de Jong PJ. A modular, positive selection bacterial artificial chromosome vector with multiple cloning sites. *Genomics*. 1999 Jun 15;58(3):250-3.

Garofalo A, Kennedy MW, Bradley JE. The FAR proteins of parasitic nematodes: their possible involvement in the pathogenesis of infection and the use of *Caenorhabditis*

*C. elegans* as a model system to evaluate their function. *Med Microbiol Immunol.* 2003 Feb;192(1):47-52.

Garside P, Behnke JM. *Ancylostoma ceylanicum* in the hamster: observations on the host-parasite relationship during primary infection. *Parasitology* 1989;98:283-9

Gems D. Longevity and ageing in parasitic and free-living nematodes. *Biogerontology.* 2000;1(4):289-307.

Guisbert, E., Czyz, D. M., Richter, K., McMullen, P. D., & Morimoto, R. I. (2013). Identification of a Tissue-Selective Heat Shock Response Regulatory Network. *PLoS Genetics*, 9(4), e1003466. <http://doi.org/10.1371/journal.pgen.1003466>

Hotez PJ. Human hookworm infection. In: Farthing MJG, Keusch GT, Wakelin D, editors. *Enteric Infection: Mechanisms, Manifestations, and Management. II.* London: Chapman and Hall; 1995. pp. 129–150. *Intestinal Helminths.*

Kahn, C. M., Line, S., & Merck & Co. (2010). *The Merck veterinary manual.* Whitehouse Station, N.J: Merck & Co.

Kapulkin WJ, Hiester BG, Link CD. Compensatory regulation among ER chaperones in *C. elegans*. *FEBS Lett.* 2005 Jun 6;579(14):3063-8.

Kwa MS, Veenstra JG, Van Dijk M, Roos MH. Beta-tubulin genes from the parasitic nematode *Haemonchus contortus* modulate drug resistance in *Caenorhabditis elegans*. *J Mol Biol.* 1995 Mar 3;246(4):500-10.

Leaver, M., Kienle, S., Begasse, M. L., Sommer, R. J., & Hyman, A. A. (2016). A locus in *Pristionchus pacificus* that is responsible for the ability to give rise to fertile offspring at higher temperatures. *Biology Open*, 5(8), 1111–1117. <http://doi.org/10.1242/bio.018127>

Lopez, J. V., N. Yuhki, R. Masuda, W. Modi, and S. J. O'Brien. 1994. Numt, a recent transfer and tandem amplification of mitochondrial DNA to the nuclear genome of the domestic cat. *J. Mol. Evol.* 39:174-190.

McNulty, S. N., Foster, J. M., Mitreva, M., Dunning Hotopp, J. C., Martin, J., Fischer, K., ... Fischer, P. U. (2010). Endosymbiont DNA in Endobacteria-Free Filarial Nematodes Indicates Ancient Horizontal Genetic Transfer. *PLoS ONE*, 5(6), e11029. <http://doi.org/10.1371/journal.pone.0011029>

Mello C, Fire A. DNA transformation. *Methods Cell Biol.* 1995;48:451-82.

Menon S, Bhopale MK. *Ancylostoma ceylanicum* (Looss, 1911) in golden hamsters (*Mesocricetus auratus*): pathogenicity and humoral immune response to a primary infection. *J Helminthol* 1985;59(2):143-6

Mendenhall, A. R., Tedesco, P. M., Taylor, L. D., Lowe, A., Cypser, J. R., & Johnson, T. E. (2012). Expression of a Single-Copy hsp-16.2 Reporter Predicts Life span. *The Journals of Gerontology Series A: Biological Sciences and Medical Sciences*, 67(7), 726–733. <http://doi.org/10.1093/gerona/blr225>

Mieszczanek J, Kofta W, Wedrychowicz H (2000). Molecular cloning of a cysteine proteinase cDNA from adult *Ancylostoma ceylanicum* by the method of rapid amplification of cDNA ends using polymerase chain reaction. *Parasitol Res.* Dec;86(12):993-8.

Miller TA. Persistence of immunity following double vaccination of pups with x-irradiated *Ancylostoma caninum* larvae. *J Parasitol* 1965;51(5):705-11

Miller, T.A. (1971). Vaccination against the canine hookworm diseases. *Advances in Parasitology* 9, 153-183.

Miller T.A. (1979). Hookworm infection in man. *Advances in Parasitology* 17, 315-384.

Mitreva, M., McCarter, J. P., Arasu, P., Hawdon, J., Martin, J., Dante, M., Wylie T, Xu J, Stajich JE, Kapulkin W, Clifton SW, Waterston RH, Wilson, R. K. (2005). Investigating hookworm genomes by comparative analysis of two *Ancylostoma* species. *BMC Genomics*, 6, 58. <http://doi.org/10.1186/1471-2164-6-58>

Osoegawa K, Woon PY, Zhao B, Frengen E, Tateno M, Catanese JJ, de Jong PJ. An improved approach for construction of bacterial artificial chromosome libraries. *Genomics* 1998;52(1):1-8

Osoegawa K, de Jong PJ, Frengen E, Ioannou PA. Construction of bacterial artificial chromosome (BAC/PAC) libraries. *Curr Protoc Hum Genet*. 2001 May;Chapter 5:Unit 5.15. doi: 10.1002/0471142905.hg0515s21.

PALMER E.D. (1955). Course of egg output over a 15 year period in a case of experimentally induced necatoriasis americanus, in the absence of hyperinfection. *American Journal of Tropical Medicine and Hygiene* 4 : 756-757.

Parkinson J, Mitreva M, Hall N, Blaxter M, McCarter JP. 400000 nematode ESTs on the Net. *Trends Parasitol*. 2003 Jul;19(7):283-6.

Ray DK, Bhopale KK, Shrivastava VB. Migration and growth of *Ancylostoma ceylanicum* in golden hamsters *Mesocricetus auratus*. *J Helminthol* 1972;46(4):357-62

Richly E, Leister D: NUMTs in sequenced eukaryotic genomes. *Mol Biol Evol*. 2004, 21: 1081-1084. [10.1093/molbev/msh110](https://doi.org/10.1093/molbev/msh110).

Roche M. & Layrresse M. (1966). The nature and causes of hookworm anemia. *American Journal of Tropical Medicine and Hygiene* 15: 1031-1100.



Russnak, R. H., Jones, D., & Candido, E. P. (1983). Cloning and analysis of cDNA sequences coding for two 16 kilodalton heat shock proteins (hsps) in *Caenorhabditis elegans*: homology with the small hsps of *Drosophila*. *Nucleic Acids Research*, 11(10), 3187–3205.

Sarov, M., S. Schneider, A. Pozniakovski, A. Roguev, S. Ernst, Y. Zhang, A. A. Hyman and A. F. Stewart (2006). A recombineering pipeline for functional genomics applied to *Caenorhabditis elegans*. *Nat Methods* 3: 839-44.

Schmidt, H., & Hensel, M. (2004). Pathogenicity Islands in Bacterial Pathogenesis. *Clinical Microbiology Reviews*, 17(1), 14–56. <http://doi.org/10.1128/CMR.17.1.14-56.2004>

Schwarz, E. M., Hu, Y., Antoshechkin, I., Miller, M. M., Sternberg, P. W., & Aroian, R. V. (2015). The genome and transcriptome of the zoonotic hookworm *Ancylostoma ceylanicum* identify infection-specific gene families. *Nature Genetics*, 47(4), 416–422. <http://doi.org/10.1038/ng.3237>

Stringham, E. G., Dixon, D. K., Jones, D., & Candido, E. P. (1992). Temporal and spatial expression patterns of the small heat shock (hsp16) genes in transgenic *Caenorhabditis elegans*. *Molecular Biology of the Cell*, 3(2), 221–233.

Strong SJ, Ohta Y, Litman GW, Amemiya CT. Marked improvement of PAC and BAC cloning is achieved using electroelution of pulsed-field gel-separated partial digests of genomic DNA. *Nucleic Acids Res.* 1997 Oct 1;25(19):3959-61.

Sulston J., Waterston R, and C. ELEGANS SEQUENCING CONSORTIUM Genome sequence of the nematode *Caenorhabditis elegans*: A platform for investigating biology. *Science* 1998;282: 2012-2018.

Timmons L, Fire A. Specific interference by ingested dsRNA. *Nature*. 1998 Oct 29;395(6705):854.

Tweedie S, Grigg ME, Ingram L, Selkirk ME. The expression of a small heat shock protein homologue is developmentally regulated in *Nippostrongylus brasiliensis*. *Mol Biochem Parasitol*. 1993 Sep;61(1):149-53.

Weiner, David B. (2013). RNA-Based Vaccination: Sending a Strong Message. *Mol Ther* 2013/03 The American Society of Gene & Cell Therapy. [dx.doi.org/10.1038/mt.2013.26](https://doi.org/10.1038/mt.2013.26)

Yoshida Y., Okamoto, K. & Chiu JK (1968). *Ancylostoma ceylanicum* infection in dogs, cats and man in Taiwan. *American Journal of Tropical Medicine* 1, 378-381.

Zaslaver, A., Baugh, L. R., & Sternberg, P. W. (2011). Metazoan operons accelerate recovery from growth arrested states. *Cell*, 145(6), 981–992.  
<http://doi.org/10.1016/j.cell.2011.05.013>

Zhang, Y., Buchholz, F., Muyrers, J. P. and Stewart, A. F. (1998). A new logic for DNA engineering using recombination in *Escherichia coli*. *Nat Genet* 20: 123-8.

Author's contribution:

WJK and HW conceived, designed and implemented the experiments and analyzed the data, AM assisted with SL1-library preparation and arraying the plasmid clones, AC performed PFGE DNA fractionation, ML performed sequencing on the BAC clone. WJK and JB drafted a manuscript. HW (Parasitology Department Chair) managed the awards and grants. WJK covered the costs of the external sequencing service ([www.microsynth.ch](http://www.microsynth.ch)).

## Acknowledgements

We thank Ludger Altrogge and Ruth Chiquet (Friedrich Miescher Institute, Basel Switzerland) for introducing us to vaccinia virus based topoisomerase plasmid construction system (Invitrogen) and supporting Wadim Kapulkin visit to FMI in 1998 (respectively). We thank Pieter De Jong (BACPAC resources CHORI, Oakland) for providing pBACe3.6 vector and advice on Bacterial Artificial Chromosome library construction. We are indebted to Christopher Link and Patricia Tedesco (Institute for Behavioral Genetics, Colorado University-Boulder) for suggestions with an initial version of the manuscript (2000-2002). The *Ancylostoma ceylanicum* strain used in this work (referred as ‘Warsaw strain’) was originally provided by Jerzy Behnke (Nottingham University) and was maintained by Ewa Janecka at the Faculty of Veterinary Medicine in Warsaw. The animal studies were approved by the Animal Care and Use Committee (R-508/98). The work was partly supported by the KBN grant nr 5PO6K 006 15 and the special award BNW-N-Vb-56/01 of Faculty of Veterinary Medicine, Warsaw to Wadim Kapulkin (to cover the costs of the outsourcing of the sequencing reactions with external facility service).

## Tables and Figures:

Figure 1. Color coded alignment of LKIN-motif proteins identified based on recombinant SL1-capped cDNA clones described in the study. Sequences deduced from the first seven SL1-capped clones of adult *A. ceylanicum* library are shown. Sequences are given in the following order: pAB2, pAF6, pAH6, pAD5, pAA3, pAF6 and pAH1. The top four (pAB2, pAF6, pAH6, pAD5) representing conceptually translated sequences are included as directly deduced from high quality reads. The remaining three (pAA3, pAF6, pAH1) include uncertain bases (masked with X). pAF6 may also include an artifact and represent truncation of the actual sequence. The pAH1 sequence derived from low quality reads were edited to remove frame-shifts. All sequences are presented as mature peptides (SignalP predicted N-terminal ER routing signal is trimmed). A. MAFT-7 multiple sequence alignment color coded by GUIDANCE confidence score of LKIN-motif proteins <[guidance.tau.ac.il](http://guidance.tau.ac.il)>. B. The N-terminal part of the detailed colored alignment, C. The C-terminal part of the detailed colored alignment. Note that the LKIN-motif in pAB2 and pAH1 is framed in the red box.

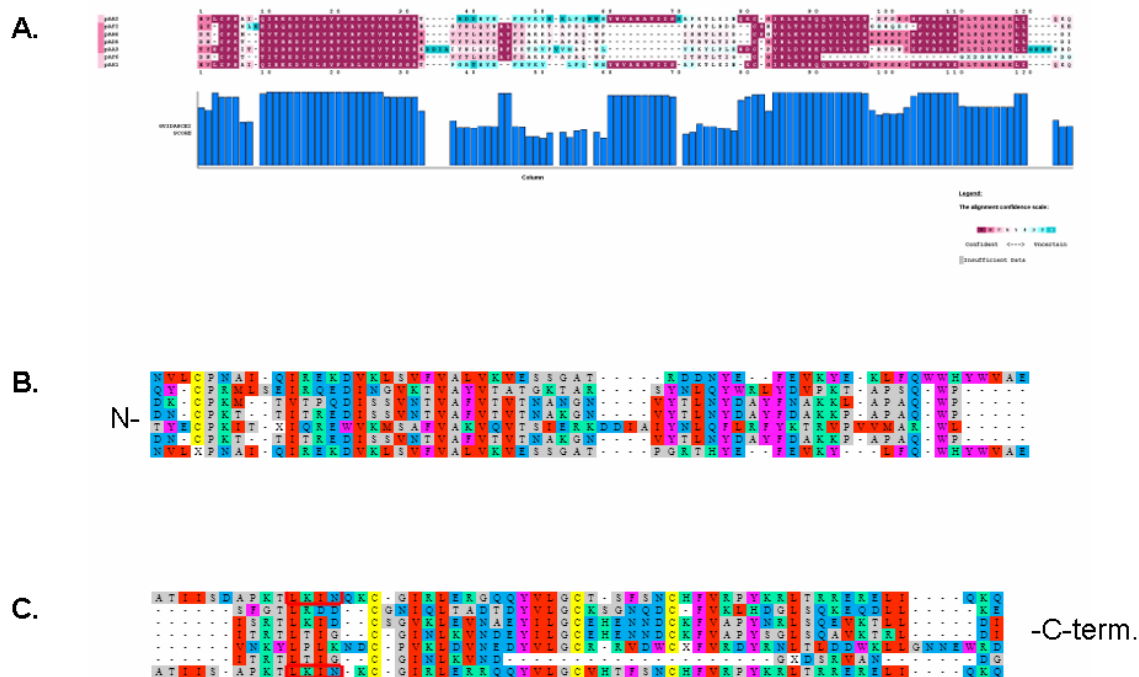


Figure 2. LKIN-motif proteins identified in the study, presented as CLUSTAL format alignment by MAFFT (v7.306b) of sequences presented with Fig.1., generated by ‘G-INS-1’ method (Kato et al. 2005) <mafft.cbrc.jp/alignment/software>. A. Original MAFFT-7 alignment. B. MAFFT-7 alignment, manually edited, based on SL1-capped EST (p\_j15c02.y1) concordant with pAH1. Residues conceptually translated from ambiguous bases of first pass reads are coded as lowercase ‘x’. LKIN-motif is underlined.

A.

```

pAB2      NVLCPNAI-QIREKDVKLSVFVALVKVESSGAT-----RDDNYE--FEVKYE-KLFQWWH
pAF2      QY-CPRMLSEIRQEDINGVKTVAIVTATGKTAR----SYNLQYWRLYDVPKT-APSQ-WP
pAH6      DK-CPKM--TVTPQDISSVNTVAFVTVTNANGN----VYTLNYDAYFNAKKL-APAQ-WP
pAD5      DN-CPKT--TITREDISSVNTVAFVTVTNAKGN----VYTLNYDAYFDAKKP-APAQ-WP
pAA3      TYECPKIT-XIQREWVKMSAFVAKVQVTSIERKDDIAIYNLQFLRFYKTRVPVVMAR-WL
pAF6      DN-CPKT--TITREDISSVNTVAFVTVTNAKGN----VYTLNYDAYFDAKKP-APAQ-WP
pAH1      NVLXPNAI-QIREKDVKLSVFVALVKVESSGAT-----PGRTHYE--FEVKY---LFQ-WH
          * .      : : : .      ** * . .      : :      : : .      : *

pAB2      YWVAEATIISDAPKTLKINQKC-GIRLERGQQYVLGCT-SFSNCHFVRPYKRLTRREREL
pAF2      -----SFGTLRDD--CGNIQLTADTDYVLGCKSGNQDC-FVKLHDGLSQEKQDL
pAH6      -----ISRTLKID--CSGVKLEVNAEYILGCEHENNDCKFVAPYNRLSQEVKTL
pAD5      -----I TRTLTIG--C-GINLKVND EYILGCEHENNDCKFVAPYSGLSQAVKTR
pAA3      -----VNKYLPLKND C-PVKLDVNEDYVLGCR-RVDWCXFVRDYRNLTLDDWKL
pAF6      -----I TRTLTIG--C-GINLKVND-----GXDSRVAN-
pAH1      YWVAEATIIS-APKTLKIN-KC-GIRLERRQQYVLGCVHTFSNCHFVRPYKRLTRREREL
          *      *      : . *

pAB2      I----QKQ
pAF2      L-----KE
pAH6      L-----DI
pAD5      L-----DI
pAA3      LGNNEWRD
pAF6      -----DG
pAH1      I----QKQ
    
```

B.

```

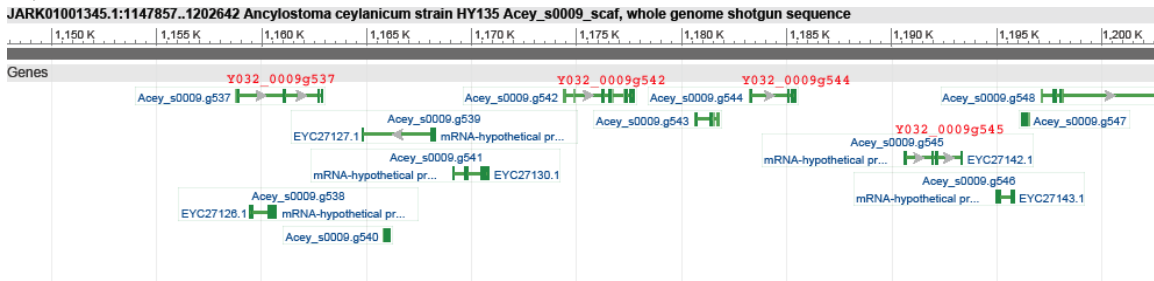
pAB2      NVLCPNAI-QIREKDVKLSVFVALVKVESSGAT-----RDDNYE--FEVKYE-KLFQWWH
pAF2      QY-CPRMLSEIRQEDINGVKTVAIVTATGKTAR----SYNLQYWRLYDVPKT-APSQ-WP
pAH6      DK-CPKM--TVTPQDISSVNTVAFVTVTNANGN----VYTLNYDAYFNAKKL-APAQ-WP
pAD5      DN-CPKT--TITREDISSVNTVAFVTVTNAKGN----VYTLNYDAYFDAKKP-APAQ-WP
pAA3      TYECPKIT-xIQREWVKMSAFVAKVQVTSIERKDDIAIYNLQFLRFYKTRVPVVMAR-WL
pAF6      DN-CPKT--TITREDISSVNTVAFVTVTNAKGN----VYTLNYDAYFDAKKP-APAQ-WP
pAH1      NVLCPNAI-QIREKDVKLSVFVALVKVESSGAT-----RDGNYE--FEVKYE-KLFQWWH
          ** .      : : : .      ** * . .      : :      : : .      : *

pAB2      YWVAEATIISDAPKTLKINQKC-GIRLERGQQYVLGCT-SFSNCHFVRPYKRLTRRERE-
pAF2      -----SFGTLRDD--CGNIQLTADTDYVLGCKSGNQDC-FVKLHDGLSQEKQDL
pAH6      -----ISRTLKID--CSGVKLEVNAEYILGCEHENNDCKFVAPYNRLSQEVKTL
pAD5      -----I TRTLTIG--C-GINLKVND EYILGCEHENNDCKFVAPYSGLSQAVKTR
pAA3      -----VNKYLPLKND C-PVKLDVNEDYVLGCR-RVDWCx FVRDYRNLTLDDWKL
pAF6      -----I TRTLTIG--C-GINLKVND-----GXDSRVAN-
pAH1      YWVAEATIISDAPKTLKINQKC-GIRLERRQQYVLGCVHTFSNCHFVRPYKRLTRRERE-
          *      *      : . *      * * *      * *

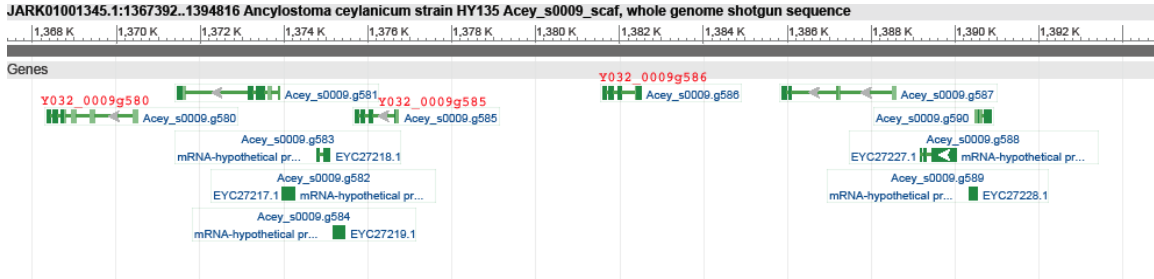
pAB2      LI---QKQ
pAF2      L-----KE
pAH6      L-----DI
pAD5      L-----DI
pAA3      LGNNEWRD
pAF6      -----DG
pAH1      LI---QKQ
          *
    
```

Figure 3. LKIN-motif protein family locus architecture on Acey\_s0009 scaffold. LKIN-motif family protein names are written in red font, above the predicted genes represented by GeneBank graphics. Proteins predictions directly supported by the SL1-capped cDNA pAB2 (Y032\_0009g704 and Y032\_0009g716) and pAF2 (Y032\_0009g591 and Y032\_0009g606) are marked by red oblique font. A. LKIN-motif family proteins Y032\_0009g537, Y032\_0009g542, Y032\_0009g544 and Y032\_0009g545 identified in the most proximal part of scaffold Acey\_s0009 in region corresponding to JARK01001345.1 [1,147,858..1,202,642]. B. LKIN-motif family proteins Y032\_0009g580, Y032\_0009g585 and Y032\_0009g586 identified in the proximal part of Acey\_s0009 region corresponding to JARK01001345.1[1,367,393..1,394,816] region, immediately adjacent to AF2 locus. C. LKIN-motif family protein Y032\_0009g594 predicted to lay internally in the AF2 locus, between Y032\_0009g591 (red oblique font) identified at Acey\_s0009 scaffold, corresponding to positions in JARK01001345.1 [1,390,386..1,415,404]. and immediately adjacent, D. LKIN-motif family protein Y032\_0009g606 (red oblique font) located in the same panel as LKIN-motif family proteins Y032\_0009g610 and Y032\_0009g612 located at Acey\_s0009 positions corresponding to JARK01001345.1[1,420,759..1,448,188]. E. LKIN-motif family proteins Y032\_0009g678, Y032\_0009g683 and Y032\_0009g686 predicted to lay in the interval between locus AF2 and AB2 on Acey\_s0009 at positions corresponding to JARK01001345.1[1,978,782..2,033,870]. F. LKIN-motif family protein Y032\_0009g705 predicted to lay internally in the AB2 locus, between Y032\_0009g704 (red oblique font) located at the Acey\_s0009 corresponding to positions in JARK01001345.1 [2,046,816..2,082,833] and immediately adjacent, G. LKIN-motif protein Y032\_0009g716 (red oblique font) located at the scaffold Acey\_s0009 at positions corresponding to JARK01001345.1[2,076,229..2,112,237]. The cluster position and the scale (in kb) corresponding to the grid is given in the heading above each panel. Note that genes encoding for the LKIN-motif family proteins do differ in overall length , number and the size of the introns spanning the coding sequences i.e. LKIN-motif protein genes presented at panels F. and G. (both panels are drawn at the same scale indicated by the vertical grid) are different in the overall length by approximately the order of magnitude, while encoded for the relatively small protein products of comparable length.

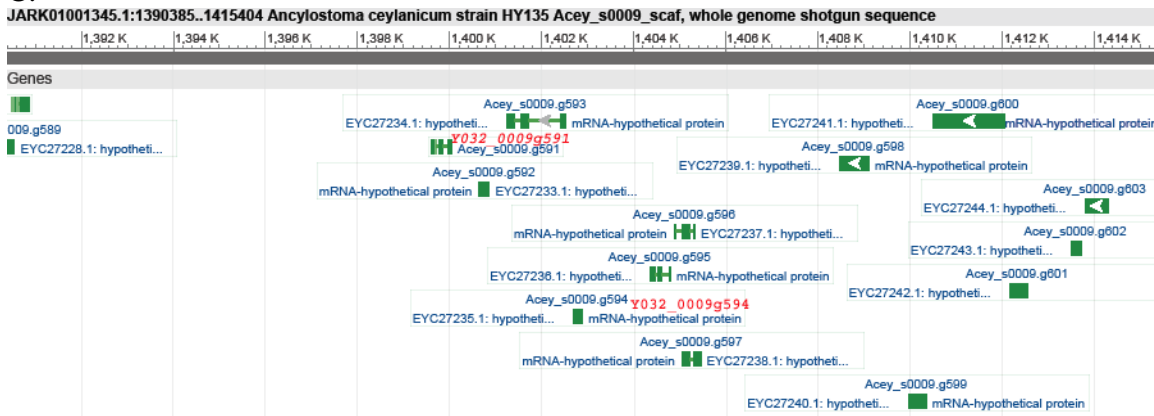
A.



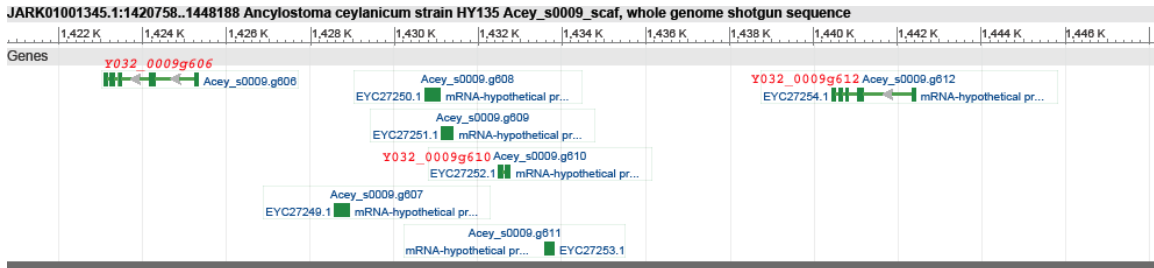
B.



C.



D.



E.



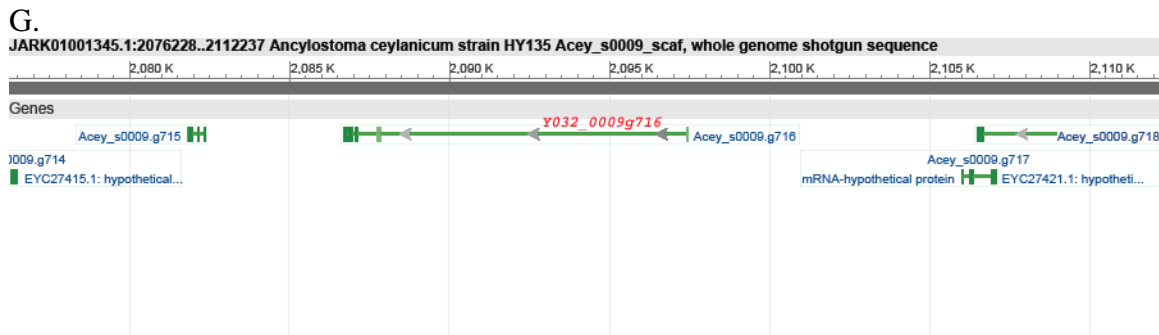
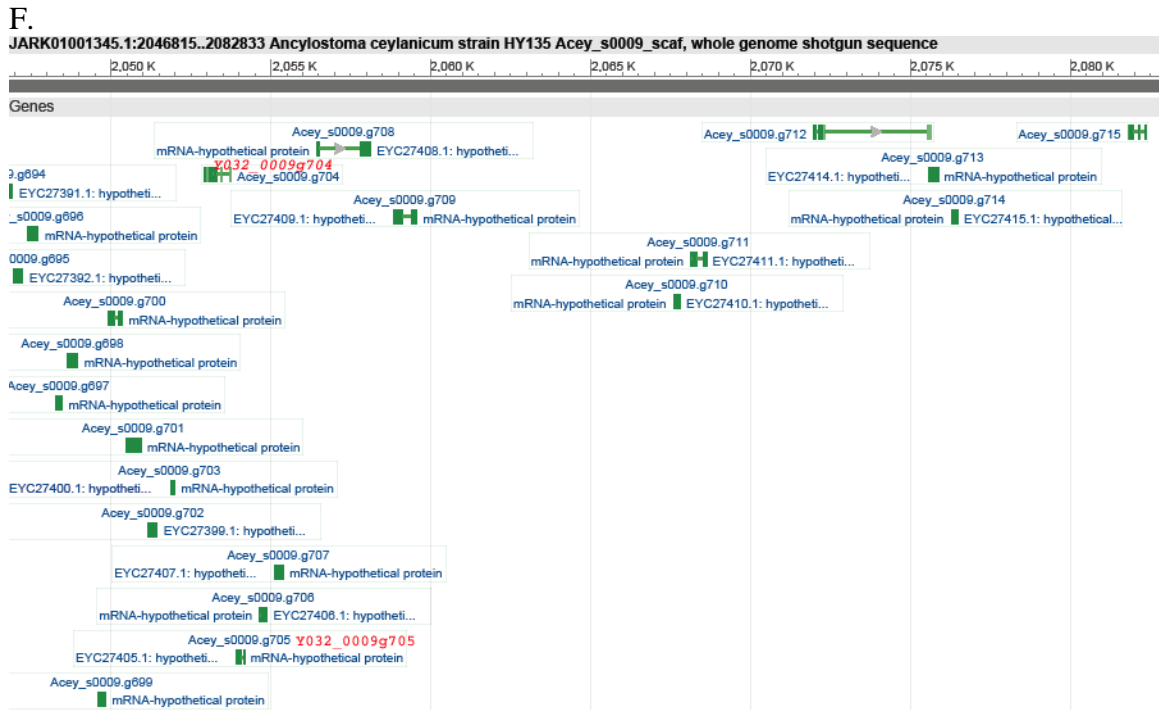
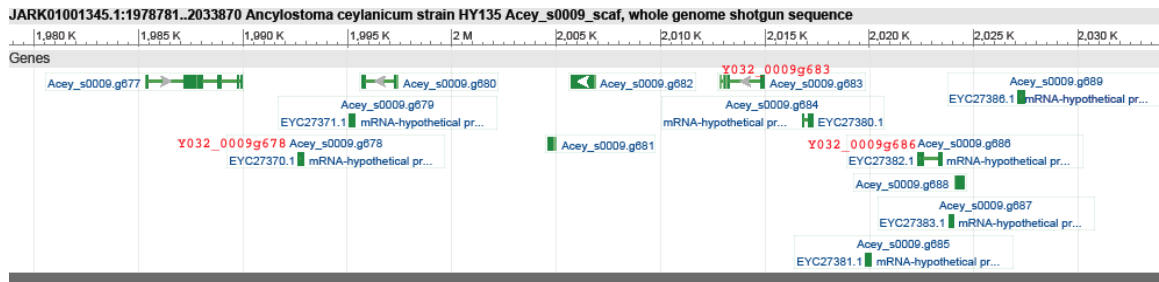


Figure 4. Ensembl representation of pVB11 alignment (the possible nuclear insertion of the mitochondrial segment) onto genomic scaffold Acey\_s0161 at position corresponding to JARK01001497.1 [21,264..21,771]. A. *A. ceylanicum* mitochondrial segment 507bp (Ensembl BLASTN match shown as a horizontal red bar, according to color coded BLAST scale) is found inserted into non-alternative intron of the predicted gene Acey\_s0161.g3363. B. Corresponding segment of *N. americanus* mitochondrial DNA (AJ417719.2) aligning with same region of the genomic scaffold Acey\_s0161 is represented as GeneBank graphics (specific positions of the alignment are given in the image headings). Note fragments of two mitochondrial protein genes at the insert termini and three mitochondrial tRNA genes, present in the segment (position and sequence of all three *A. ceylanicum* tRNA genes identified in the genomic scaffold Acey\_s0161 is given in the legend to supplementary Fig.4). C. Position of the intronic insertion of the mtDNA segment is indicated by dotted lines, connecting insertion termini as presented with panel A. and B. (C. is a version of the Ensembl image view of the BLAST alignment shown in panel A., sufficiently enlarged to cover the entire sequence of the Acey\_s0161.g3363 gene ~ca 50kb).

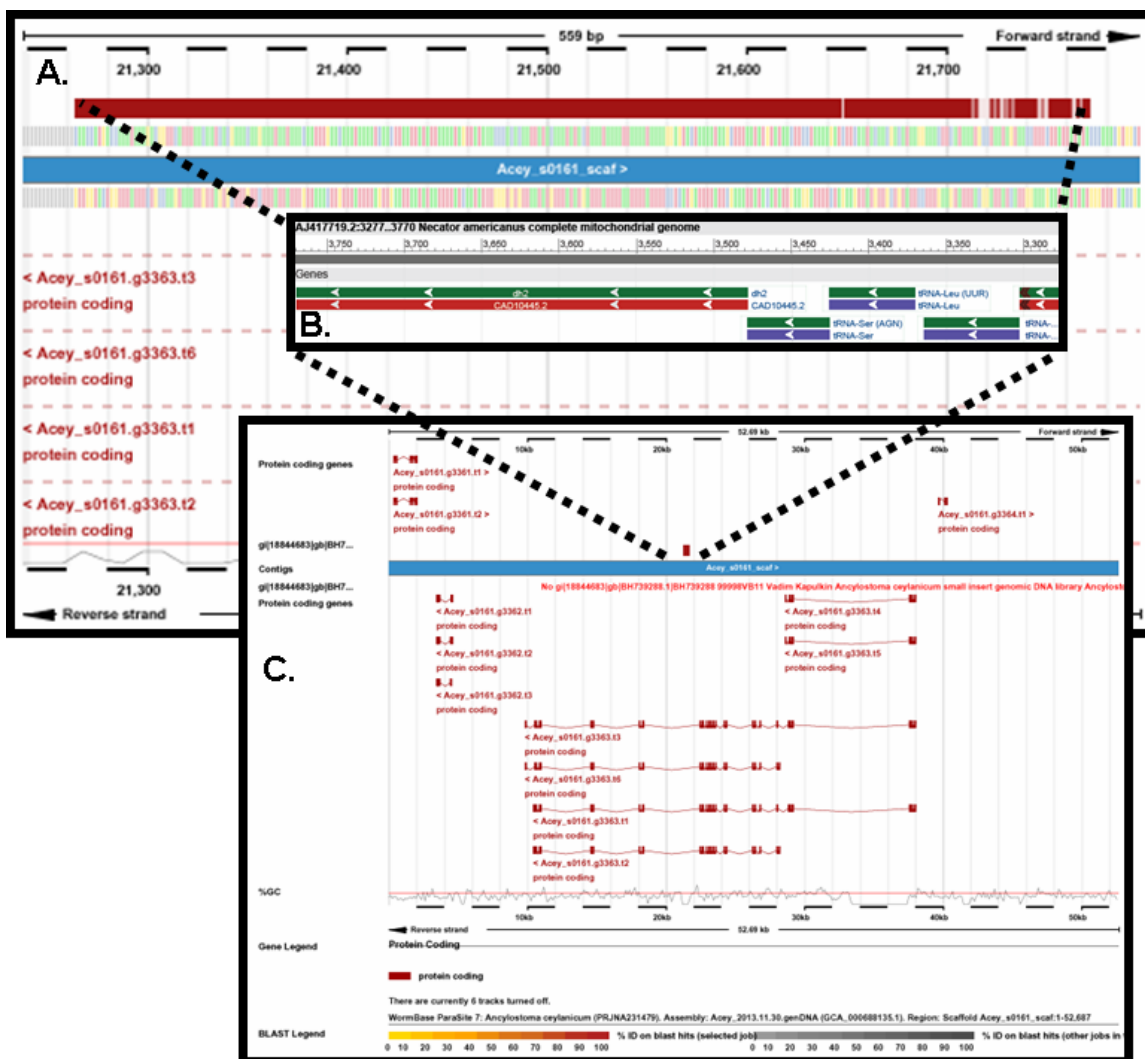


Figure 4. Supplementary information and supplement legend. A. Text view of the pair-wise dotted alignment of the query region (729bp) of pVB11 plasmid sequence [gi|18844682|gb|BH739287.1|BH739287 32248 pVB11 *Ancylostoma ceylanicum* small insert genomic DNA library] against *Ancylostoma ceylanicum* strain HY135 Acey\_s0161\_scaf, whole genome shotgun sequence [JARK01001497.1, Length: 476687] resulting in single match on (-) strand in range 1: 21264 to 21771bp, with match alignment statistics (E value 0.0, 507/509 identities). Position and type of the three identified *A. ceylanicum* mitochondrial tRNAs is underlined and tRNA start indicated by '>'. B. GeneBank extracted 708bp reverse-complement sequence (embedding the above segment of genomic Acey\_s0161\_scaffold, with 100bp flanks on each side (25-MAR-2014)) with underlined bases corresponding to three mitochondrial tRNA genes. Note the gap of 73bp present at one side of the insert-scaffold junction.

A.

```

                                     >tRNA-Lys
Query  38      ttaatztatattatatttaAATGAATAAAAGAGATGTTAACTTAAGTTTAAAGTGTCAAAT  97
Sbjct 21771      .....

                                     >tRNA-Leu
Query  98      TTTAAATTGAAAATGTTTTTACACATCTTATTTGTTTCGGTTTTGGGTTAATATAGCA 157
Sbjct 21711      .....

                                     >tRNA-Ser
Query  158     TAAGAAGTGCATTTGTTTTAAGCGCAAAAGATATAAGTTAACTAATGAGTTTATACAAG  217
Sbjct 21651      .....

Query  218     TCTTCTAAatattgtttaggattatcctgctcatttttgttattgttttaaatatattttt  277
Sbjct 21591      .....

Query  278     gttatatttttaagtttattaagtttggtgtaataatatttagttgatggagagtt  337
Sbjct 21531      .....

Query  338     tttttattaATAACTTTATTATTGTAATATTAATAAAAAGTATTAAGTTTATAGAACT  397
Sbjct 21471      .....

Query  398     ttatttaattattttgttatacaagaaagtttaggtttattatttttaagttttctttt  457
Sbjct 21411      .....

Query  458     ggatattttcagtttagtaatattgatattaAAAATTGGTATAGCACCGttttcatttttga  517
Sbjct 21351      .....

Query  518     attttttagtgttaccaatagggggttttg  546
Sbjct 21291     .....T-..... 21264

```

**B.** *Ancylostoma ceylanicum* strain HY135 Acey\_s0161\_scaf, whole genome shotgun sequence. REGION: complement(21164..21871)

```
1 catttcattt taatcaacc cctgttgtga gatgcgtcac gcgttcgact tcactctgtga
61 atcgtagagg ttttgaggcc gcaagcagtt atttggggag ttaatttatt tatatttaa
121 tgaataaaag agatgttaac ttaagtttaa agtgtcaaat ttttaatttg aaaatgtttt
181 ttacacatct tatttgtttc ggttttgggt taatatagca taagaagtgc atttgttta
241 agcgcaaaag atataagtta actaatgagt tttatacaag tcttctaaat ttgttttagg
301 attatcctgc tcatttttgt tattgttttt aatatttttt gttatttttt taagtttatt
361 aagtttggtg gtaataaata ttttagtttg atggagagtt tttttattaa taactttatt
421 atttgtaata ttaaataaaa gtattaaaag ttatagaact ttatttaatt attttgttat
481 acaagaaagt ttaggtttat tatttttaat gttttctttt ggatattttc agttagtaat
541 tttgatatta aaaattggtg tagcaccggt tcatttttga attttttagtg ttaccaatag
601 ggtttttg [gap 73 bp] Expand Ns
682 atccgaagt accaaggcag cgcttcat
```

Tables:

Table 1. The recombinant DNA libraries prepared from the hamster adapted *Ancylostoma ceylanicum*. pBACe3.6 is described in (Frengen et al. 1999).

Library type	Nematode material	Cloning enzyme	Cloning vector	Insert range (kb)	<i>E.coli</i> colonies archived	Over - represented insert
SL1-cDNA (PCR)	Infective L3 larvae	Vaccinia virus DNA topoisomerase	pCR-XL-TOPO™	0.25-10	20 000	<i>mlc-5</i> (T12D8.6) homologue
SL1-cDNA (PCR)	Adults	Vaccinia virus DNA topoisomerase	pCR-XL-TOPO™	0.25-3.5	20 000	Cysteine proteinase (F57F5.1) homologue
Genomic DNA	Adults	Vaccinia virus DNA topoisomerase	pCR4blunt-TOPO™	2-10	20 000	Mitochondrial DNA
Genomic DNA	Adults	EcoRI / T4 DNA ligase	pBACe3.6	30-60	30 000	-

Table 2. Column 1<sup>st</sup> : *E. coli* plasmid clone name and GeneBank (short reads are indicated by #). ; Column 2<sup>nd</sup> : *C. elegans* homologue gene name and database identifier (cosmid name). Column 3<sup>rd</sup> *A. ceylanicum* EST-score. Number of ESTs re-sampled from SL1-cDNA library / all EST reported by (Mitreva et al. 2005) and library-of-origin (infective L3 and / or adult). Column 4<sup>th</sup> : hypothetical proteins predicted by assembly described in (Schwartz et al. 2015) supported by conceptually translated homology based search. Best protein match is typically shown (except for pV53 where two non overlapping regions of homology were detected across single sequencing read and reads from pVB11 where two non overlapping regions of homology were detected across single sequencing read derived from BAV82618.1), with following disclaimers : ‘\*’ indicates where other protein matches were predicted on the same scaffold i.e. in case pADA1.2 cysteine proteinase homologues, indicating locally duplicated gene clusters, possibly forming multi-allelic loci; ‘\*\*’ match below significance threshold, concordant with scaffold ID; ‘\*\*\*’ indicates where other protein matches were predicted on the different scaffold i.e. Acey 0009 scaffold; . Column 5<sup>th</sup> : unique matches are shown when possible, otherwise top three scaffold matches are listed (except for pAF1 hsp-16 homologues, where first 4 putative candidates are listed and pVA5, where two non overlapping regions of homology were detected across single sequencing read, specifying a single scaffold Acey\_s0190 on the left and three other scaffolds on the right). Positive hypothetical protein identifications are highlighted in yellow in cases if they match with the identified scaffold (total 33 tentative pairs). Hypothetical proteins predicted on the Acey 0009 scaffold, are highlighted in green. Mitochondrial segment pVB11 sequences identified as matching the scaffold Acey 0161, with high confidence are highlighted in red.

plasmid name gi number gb number	<i>C. elegans</i> homologue Gene name / Cosmid name	<i>A. ceylanicum</i> EST-score (Mitreva et al. 2005) SL1 EST / All ESTs Library	<i>A. ceylanicum</i> predicted protein (Schwartz et al. 2015) hypothetical protein ID Coverage %   e-value   Identity	<i>A. ceylanicum</i> whole genome scaffold (Schwartz et al. 2015) Scaffold ID   Coverage %   e-value   Identity gb number
<b>SL1-capped cDNA of adult stage</b>				
pADA1.2 gi 18815930 gb BM536481.1	F57F5.1	33 (SL1) / 33 Adult	Y032_0154g3007 * 90% 2e-137 99%	Acey_s0154 100% 4e-75 99% JARK01001490.1
pAG5 gi 18815929 gb BM536480.1	None	1 (SL1) / 1 Adult	Y032_0504g2644 * 64% 2e-28 84%	Acey_s0504 94% 9e-52 95% JARK01000104.1
pAE4 # gi 18815927 gb BM536479.1	None	14 (SL1) / 14 mixed	-	Acey_s0232 43% 3e-21 100% JARK01001568.1
pAC6 gi 18815925 gb BM536478.1	None	2 (SL1) / 2 Adult	Y032_0053g2395 ** 7% 0.73 100%	Acey_s0053 11% 7e-18 96% JARK01001389.1
pAA5 gi 18815923 gb BM536477.1	None	2 (SL1) / 2 Adult	-	Acey_s0024 50% 1e-69 89% JARK01001360.1
pAD1 gi 18815922	<i>rps-12</i>	5 (SL1) / 20 Mixed	Y032_0008g384	Acey_s0008 96% 3e-151 99%

gb BM536476.1	F54E7.2		79% 7e-84 100%	JARK01001344.1
pAA6 gi 18815920  gb BM536475.1	None	33 (SL1) / 33 Adult	Y032_0001g1111 * 55% 1e-53 85%	Acey_s0001 99% 2e-72 100% JARK01001337.1
pAH5s gi 18815919 gb BM536474.1	None	8 (SL1) / 8 Adult	Y032_1033g3448 *** 78% 5e-22 44%	No match to whole genome shotgun sequence
pAF6 gi 18815917 gb BM536473.1	None	65 (SL1) / 65 Adult	Y032_0017g3335 *** 63% 4e-18 58%	No match to whole genome shotgun sequence
pAE1 gi 18815915 gb BM536472.1	None	8 (SL1) / 8 Adult	Y032_0010g983 82% 6e-57 98%	Acey_s0010 99% 5e-64 99% JARK01001346.1
pAH6 gi 18815913 gb BM536471.1	None	66 (SL1) / 66 Adult	Y032_0009g606 *** 69% 1e-25 45%	No match to whole genome shotgun sequence
pAB4 gi 18815912 gb BM536470.1	rps-30 C26F1.4	2 (SL1) / 15 Mixed	Y032_0106g3766 38% 4e-34 97%	Acey_s0106 80% 5e-129 99% JARK01001442.1
pAE2 gi 18815910 gb BM536469.1	None	2 (SL1) / 2 Adult	Y032_0009g563 * 80% 2e-32 70%	Acey_s0009 68% 2e-97 96% JARK01001345.1
pAB2 gi 18815909 gb BM536468.1	None	48 (SL1) / 48 Adult	Y032_0009g704 * 55% 2e-65 98%	Acey_s0009 100% 2e-78 100% JARK01001345.1
pAF2 gi 18815907 gb BM536467.1	None	11 (SL1) / 11 Adult	Y032_0009g606 * 84% 7e-95 98%	Acey_s0009 100% 2e-73 99% JARK01001345.1
pAC5 gi 18815905 gb BM536466.1	ife-4 C05D9.5	1 (SL1) / 1 Adult	Y032_0057g2734 67% 4e-23 41%	Acey_s0392 72% 0.0 98% JARK01001728.1 Acey_s0161 26% 2e-67 99% JARK01001497.1 Acey_s1110 64% 5e-64 100% JARK01000710.1
pAD2 gi 18815904 gb BM536465.1	C14B9.10	12 (SL1) / 12 Mixed	Y032_0108g47 76% 1e-40 100%	Acey_s0108 100% 4e-65 100% JARK01001444.1
pAA1 gi 18815903 gb BM536464.1	None	19 (SL1) / 19 Adult	Y032_0651g1154 * 85% 2e-76 71%	Acey_s0651 89% 1e-60 99% JARK01000251.1
pAC4 # gi 18815901 gb BM536463.1	F32D1.2	2 (SL1) / 2 Mixed	-	Acey_s0067 28% 4e-45 92% JARK01001403.1
pAG1 gi 18815899 gb BM536462.1	far-1/far-2 F02A9.2 F02A9.3	12 (SL1) / 12 Adult	Y032_0005g2645 * 82% 5e-95 85%	Acey_s0005 100% 9e-82 99% JARK01001341.1
pAH1 gi 18815897 gb BM536461.1	None	46 (SL1) / 46 Adult	Y032_0009g704 * 45% 1e-15 61%	Acey_s0009 92% 1e-74 98% JARK01001345.1
pAF1 gi 18815895 gb BM536460.1	hsp-16.48 T27E4.3	40 (SL1) / 71 Adult	Y032_0072g714 * 75% 2e-53 100%	Acey_s0148 90% 2e-168 99% JARK01001484.1 Acey_s0072 90% 4e-160 98% JARK01001408.1 Acey_s0022 85% 2e-142 89% JARK01001358.1 Acey_s0031 66% 2e-132 93% JARK01001367.1
pAD5 gi 18815894 gb BM536459.1	None	68 (SL1) / 68 Adult	Y032_0009g580 *** 48% 2e-25 47%	No match to whole genome shotgun sequence
pAG6 gi 18815892 gb BM536458.1	cri-2 K07C11.5	2 (SL1) / 2 Adult	Y032_0009g563 * 75% 6e-88 93%	Acey_s0009 99% 1e-84 92% JARK01001345.1
pAB1 gi 18815890 gb BM536457.1	None	4 (SL1) / 5 Adult	Y032_0014g2377 75% 2e-81 99%	Acey_s0014 100% 1e-69 99% JARK01001350.1
pADA_8 gi 18815874 gb BM536448.1	rpl-16 M01F1.2	3 (SL1) / 7 Mixed	Y032_0227g2834 98% 8e-102 99%	Acey_s0227 98% 6e-133 99% JARK01001563.1

pADA_12 gi 18815872 gb BM536447.1	idh-2 C34F6.8	1 (SL1) / 1 Adult	Y032_0545g3246 * 56% 1e-46 96%	Acey_s0545 100% 2e-87 98% JARK01000145.1
pAF3 gi 18815870 gb BM536446.1	rps-21 F37C12.11	1 (SL1) / 3 Adult	-	Acey_s0333 98% 1e-65 98% JARK01001669.1
pAA3 gi 18815866 gb BM536444.1	None	1 (SL1) / 1 Adult	Y032_0018g3628 * / *** 44% 3e-61 98%	Acey_s0018 87% 2e-83 96% JARK01001354.1
pAH2 gi 18815864 gb BM536443.1	rps-8 F42C5.8	6 (SL1) / 14 Mixed	Y032_0175g487 61% 1e-33 52%	Acey_s0175 59% 4e-85 92% JARK01001511.1
<b>SL1-capped cDNA of infective larval L3 stage</b>				
pLE4 gi 18815962 gb BM536500.1	None	5 (SL1) / 5 Larval	Y032_0708g1711 28% 1e-05 100%	Acey_s0708 69% 4e-58 98% JARK01000308.1
pLB2 # gi 18815960 gb BM536499.1	None	1 (SL1) / 1 Adult	-	No match to whole genome shotgun sequence
pLD1 gi 18815956 gb BM536497.1	mhc-5 T12D8.6	1 (SL1) / 3 Adult	Y032_0253g261 58% 7e-35 45%	Acey_s0250 98% 9e-159 97% JARK01001586.1
pLH1 gi 18815947 gb BM536492.1	None	-	none	No match to whole genome shotgun sequence
pADA313.10 gi 18815945 gb BM536491.1	syx-6 C15C7.1	23 (SL1) / 23 Larval	Y032_0038g3563 67% 7e-73 97%	Acey_s0038 100% 2e-86 98% JARK01001374.1
pADA213.10 gi 18815944 gb BM536490.1	pbs-4 T20F5.2	15 (SL1) / 16 Mixed	Y032_0545g3242 65% 5e-70 100%	Acey_s0545 100% 1e-57 99% JARK01000145.1
pLG4 gi 18815941 gb BM536488.1	F47B7.1	81 (SL1) / 81 Larval	Y032_0708g1711 14% 9e-04 67%	Acey_s0806 59% 3e-149 99% JARK01000406.1
pLC4 gi 18815939 gb BM536487.1	F56F11.4	1 (SL1) / 1 Larval	Y032_0310g2102 82% 8e-33 85%	Acey_s0310 99% 1e-78 100% JARK01001646.1
pLA1 gi 18815938 gb BM536486.1	rpl-29 B0513.3	64 (SL1) / 64 Larval	Y032_0059g3012 73% 2e-33 81%	Acey_s0059 98% 3e-94 99% JARK01001395.1
pADA113.10 gi 14485935 gb BI068132.1	hsp-12.6 F38E11.2	140 (SL1) / 182 Larval	Y032_0337g2897 56% 9e-60 99%	Acey_s0337 100% 3e-99 99% JARK01001673.1
<b>Genomic DNA recombinants</b>				
pV45 gi 18847325 gb BH739419.1	Y39F10A.3	None	Y032_0139g2105 71% 2e-10 38%	Acey_s0139 98% 0.0 98% JARK01001475.1
pV45 gi 18844702 gb BH739307.1	None	None	Y032_0004g1975 37% 7e-31 75%	Acey_s0104 100% 0.0 100% JARK01001440.1
pV46 gi 18844701 gb BH739306.1	None	None	Y032_0002g807 66% 4e-95 100%	Acey_s0002 91% 0.0 95% JARK01001338.1
pV41 gi 18844700 gb BH739305.1	None	None	**	Acey_s0564 99% 0.0 96% JARK01000164.1
pV38 gi 18844699 gb BH739304.1	None	None	None	Acey_s0399 52% 1e-73 88% JARK01001735.1 Acey_s0293 52% 1e-73 88% JARK01001629.1 Acey_s0004 52% 1e-73 88% JARK01001340.1
pV42 gi 18844698 gb BH739303.1	None	None	**	Acey_s0181_ 100% 0.0 100% JARK01001517.1



pVA2 gi 18844693 gb BH739298.1	None	None	Y032_0348g3182 99% 1e-53 100%	Acey_s0348_ 100% 0.0 100% JARK01001684.1
pVB1 gi 18844692 gb BH739297.1	None	None	None	Acey_s0771_ 94% 0.0 97% JARK01000371.1
pVA6 gi 18844691 gb BH739296.1	None	None	Y032_0239g3307 22% 1e-19 83%	Acey_s0023 31% 2e-91 97% JARK01001359.1 Acey_s0238 31% 2e-90 97% JARK01001574.1 Acey_s0239 31% 8e-90 97% JARK01001575.1
pVB4 gi 18844690 gb BH739295.1	None	None	Y032_0001g212 27% 2e-06 60%	Acey_s0546 100% 0.0 99% JARK01000146.1
pVA5 gi 18844689 gb BH739294.1	None	None	Y032_0010g949 16% 2e-06 59%	Acey_s0190 57% 3e-173 95% JARK01001526.1 AND Acey_s0026 39% 2e-76 87% JARK01001362.1 Acey_s0566 41% 2e-76 86% JARK01000166.1 Acey_s0069 40% 6e-76 86% JARK01001405.1
pV45 gi 18844688 gb BH739293.1	None	None	Y032_0082g1603 42% 3e-06 43%	Acey_s0139 99% 0.0 100% JARK01001475.1
pV33 gi 18844687 gb BH739292.1	None	None	None	Acey_s0006 100% 0.0 100% JARK01001342.1
pV50 gi 18844686 gb BH739291.1	None	None	Y032_0924g3058 61% 4e-31 66%	Acey_s0845 98% 0.0 99% JARK01000445.1 Acey_s0017 98% 0.0 95% JARK01001353.1 Acey_s0924 98% 0.0 95% JARK01000524.1
pV51 gi 18844685 gb BH739290.1	None	None	None	Acey_s0213 100% 0.0 94% JARK01001549.1
pV53 gi 18844684 gb BH739289.1	None	None	Y032_0132g1698 36% 5e-20 79% AND Y032_0387g476 29% 1e-17 92%	Acey_s0387 100% 0.0 98% JARK01001723.1 Acey_s0085 100% 1e-162 94% JARK01001421.1 Acey_s0192 100% 3e-159 93% JARK01001528.1
pVB11 gi 18844683 gb BH739288.1	Mitochondrial NADH dehydrogenase subunit 2	None	NADH dehydrogenase subunit 2 63% 4e-49 79%	Acey_s0161 60% 0.0 99% JARK01001497.1
pVB11 gi 18844682 gb BH739287.1	Mitochondrial NADH dehydrogenase subunit 2	None	NADH dehydrogenase subunit 2 44% 3e-14 74% AND ATP synthase F0 subunit 6 8% 5e-04 100%	Acey_s0161 69% 0.0 99% JARK01001497.1
pAc_BAC007 gi 21618362 gb BH854493.1	None	None	Y032_0569g87 35% 2e-09 40%	Acey_s0211 100% 3e-154 92% JARK01001547.1

