

The Ras-like GTPase Rem2 is a potent endogenous inhibitor of calcium/calmodulin-dependent kinase II activity

Leandro Royer^a, Josiah J. Herzog^a, Katelyn Kenny^a, Boriana Tzvetkova^a, Jesse C. Cochrane^b, Michael T. Marr, II^{a,c,1}, and Suzanne Paradis^{a,d,e,1}

^aDepartment of Biology, Brandeis University, Waltham, Massachusetts 02454

^bDepartment of Molecular Biology and Genetics, Massachusetts General Hospital and Harvard Medical School, Boston, Massachusetts 02114

^cRosenstiel Basic Medical Sciences Research Center

^dVolen Center for Complex Systems

^eNational Center for Behavioral Genomics, Brandeis University, Waltham, Massachusetts 02454

¹Co-Corresponding Authors:

Michael T. Marr, II

Department of Biology and Rosenstiel Basic Medical Sciences Research Center

Brandeis University

415 South Street

Waltham, MA 02454

781-736-2481 (Phone)

mmarr@brandeis.edu

Suzanne Paradis

Department of Biology, National Center for Behavioral Genomics, and Volen Center for Complex Systems

Brandeis University

415 South Street

Waltham, MA 02454

781-736-5305 (Phone)

781-736-3107 (Fax)

paradis@brandeis.edu

Running Title: The GTPase Rem2 inhibits CaMKII activity

Keywords: calcium, Ca²⁺/calmodulin-dependent protein kinase II, GTPase, inhibitor, phosphorylation, Rem2, RGK family

Abstract

CaMKII is a well-characterized, abundant protein kinase that regulates a diverse set of functions in a tissue specific manner. For example, in heart muscle, CaMKII regulates Ca^{2+} homeostasis while in neurons CaMKII regulates activity-dependent dendritic remodeling and Long Term Potentiation (LTP), a biological correlate of learning and memory. Previously, we identified the noncanonical GTPase Rem2 as a critical regulator of dendrite branching and synapse formation in the vertebrate nervous system. Here, we report that Rem2 directly interacts with CaMKII and potently inhibits the activity of the intact holoenzyme, a previously undescribed function for the Rem2 protein. To date, only one other endogenous inhibitor of CaMKII has been described: CaMKIIN, which blocks CaMKII activity through binding to the catalytic domain. Our data suggest that Rem2 inhibits CaMKII through a novel mechanism, as inhibition requires the presence of the association domain of CaMKII. Our biochemical finding that Rem2 is a direct, endogenous inhibitor of CaMKII activity, coupled with known functions of Rem2 in neurons, provides a framework which will enable future experiments probing the physiological role of CaMKII inhibition in a cellular context.

The GTPase Rem2 inhibits CaMKII activity

Introduction

Calcium/calmodulin-dependent kinase II (CaMKII)² is an abundant, multifunctional serine-threonine kinase whose regulation and activity is uniquely sensitive to intracellular Ca²⁺ levels (1-3). Modulation of CaMKII by Ca²⁺ is one of its most interesting features: Ca²⁺/calmodulin binds to the regulatory region of CaMKII leading to exposure of the catalytic domain and activation of the enzyme (4). Subsequent phosphorylation at Thr286 on the regulatory domain by an adjacent CaMKII monomer in the holoenzyme leads to an autonomous, Ca²⁺-independent kinase activity. Importantly, autonomous CaMKII is temporally uncoupled from the original cellular signal that led to its activation, potentially allowing the enzyme to act as a molecular memory of previous Ca²⁺ signaling events (5,6).

The functions of CaMKII are best understood in excitable cell types such as neurons and heart muscle, where Ca²⁺ signaling plays a critical role in the functional output of these cells. The unique properties of CaMKII activation allow the enzyme to integrate both the frequency and amplitude of Ca²⁺ signaling, and translate this information into specific cellular outcomes (7-9). Well-studied substrates of CaMKII include ion channels such as AMPA receptors, voltage-gated calcium and potassium channels, and the transcription factor CREB (10-12). In the nervous system, activation of CaMKII by Ca²⁺ entry during high-frequency stimulus plays a crucial role in synaptic plasticity induction and maintenance (1,9,13). This fact, in conjunction with CaMKII's autonomous function, led to the hypothesis that this kinase is a major molecular determinant of learning and memory (14). In heart muscle CaMKII is a major actor in Ca²⁺ homeostasis, regulating the cardiomyocyte excitability and contractility through the modulation of several channels including the L-type voltage-gated Ca²⁺ channel (15,16). Accordingly, recent studies determined that CaMKII deregulation is an important element in the pathogenesis of arrhythmias and heart failure

(17-21), with CaMKII inhibition suggested as a potential therapy. Despite intense research in several fields for over thirty years, we still do not completely understand how the activation status of CaMKII is regulated. Thus, there is intense interest in achieving a better understanding of CaMKII regulation both from a basic science and human health perspective.

The kinase activity of CaMKII is regulated in part by cytosolic phosphatases (22). However, during certain cellular processes such as synaptic potentiation, CaMKII accumulates in cellular regions with low local concentration of phosphatases (23,24). How uncontrolled kinase activity is avoided in those circumstances is still not completely understood. One potential mechanism would be the activity-regulated expression of endogenous CaMKII inhibitors. Nevertheless, despite intensive research into CaMKII regulation, molecular mechanisms of CaMKII inhibition are not well understood. In fact, only one endogenous inhibitor has been described in mammals (25,26). Here we present data demonstrating that the small GTPase Rem2 interacts with CaMKII and is a novel, endogenous inhibitor of CaMKII activity.

Rem2 is a member of the RGK sub-family (Rem2, Rad, Rem and Gem/Kir) of the Ras superfamily of monomeric G-proteins (27). A number of features differentiate RGK family members from the Ras superfamily. For example, the crystal structures of several RGK proteins, including Rem2, reveal differences between this family and classical GTPases in the structure of their nucleotide binding domains (28,29). For the most part, neither GTPase activating proteins (GAPs) nor guanine nucleotide exchange factors (GEFs) have been identified for this family (30) (the only exception being the identification of NmeI as a Rad GAP (31)). RGK proteins contain extended N and C-termini relative to other Ras family members (30), but lack the C-terminal CAAX domain, which serves as a prenylation signal and targeting to the plasma membrane (32).

The GTPase Rem2 inhibits CaMKII activity

For these and other reasons, Rem2 and the RGK family members in general may not behave as classical Ras-like GTPases regulated by their nucleotide binding state.

Overexpression of RGK family members in various cell types has been shown to profoundly inhibit high voltage-activated Ca²⁺ channels (30,33-35). The functional consequences of the decreased Ca²⁺ influx through voltage-gated calcium channels caused by RGK proteins is not completely characterized, nor is the mechanism by which RGK proteins mediate this effect. We have previously shown that Rem2 mRNA expression is upregulated by neuronal activity (36). Moreover, using gene knockdown approaches in cultured cortical neurons and *X. laevis* optic tectum we have established key functions of Rem2 in the nervous system: Rem2 acts as a positive regulator of synapse formation and a negative regulator of dendritic branching (36,37). As an inroad to obtaining a detailed understanding of Rem2 signaling we took an unbiased approach to identifying Rem2 interacting proteins and found that Rem2 directly interacts with CaMKII. Further, using *in vitro* kinase assays, we demonstrate that Rem2 inhibits the activity of CaMKII, and that inhibition requires the CaMKII association domain, suggesting a unique mechanism. Our finding that Rem2 is a direct, endogenous inhibitor of CaMKII activity has important implications for regulation of synaptic plasticity and activity-dependent neuronal remodeling in the mammalian brain.

Results and Discussion

To identify molecules that potentially interact with Rem2 in cells, we performed a biochemical enrichment of Rem2-interacting proteins followed by mass spectrometry identification. We passed a whole brain lysate from P14 rats over a column containing a Maltose Binding Protein (MBP)-Rem2 fusion protein bound to amylose-agarose or a control MBP alone column. We identified specifically bound proteins by mass spectrometry.

Using this approach, we found that all four isozymes of CaMKII interact with Rem2 (Fig. 1A). Although Rem2 is a substrate of CaMKII *in vitro* (38) our ability to detect the CaMKII-Rem2 interaction by affinity chromatography suggests a more stable interaction between Rem2 and CaMKII than that which is typical between a kinase and substrate. Consistent with this, Rem2 has been previously shown to interact with CaMKII α (39). We went on to confirm this interaction by co-immunoprecipitating an HA epitope-tagged Rem2 protein (HA-Rem2) and a myc epitope-tagged CaMKII α protein expressed in HEK 293T cells using an anti-HA antibody (Fig. 1B).

To examine the relationship between Rem2 and CaMKII we took an *in vitro* approach to ask what effect Rem2 has on CaMKII activity. We purified recombinant Rem2 and CaMKII α holoenzyme, the main isozyme expressed in the adult brain (40), from *E. coli*. Negative stained EM images of the peak fraction confirmed that the purified CaMKII α is present as the holoenzyme dodecamer (Fig. S1). To test the kinase activity of the enzyme we employed the classic Pyruvate Kinase/Lactate Dehydrogenase coupled assay (PK/LDH) (9,41). In this assay, the production of ADP by the phosphorylation reaction of the kinase is coupled to the decay of NADH to NAD⁺ in a one to one molar ratio. Thus, monitoring the rate of NADH decay by spectrophotometry provides a quantification of ADP production and thus ATPase activity. Using this assay, we determined that our preparation of CaMKII α is active using syntide-2 as a substrate (Fig. 1C-D).

Interestingly, CaMKII α is strongly inhibited by addition of Rem2 to the assay (Fig. 1C-D, Fig. S2). In fact, Rem2 completely inhibits CaMKII α , limiting ADP production to a level equal to our control condition that lacks CaMKII α . Using non-hydrolyzable analogs of GTP (GMP-PCP) or GDP (GDP- β -S) we found no difference in the ability of Rem2 to inhibit CaMKII (Fig. 1C-D). It is

The GTPase Rem2 inhibits CaMKII activity

important to note that under our experimental conditions, the concentration of guanine nucleotides used (40 μ M) is saturating for Rem2 but has been shown to not affect the activity of CaMKII α (27,42). Accordingly, addition of the nucleotides in the absence of Rem2 did not alter the kinase activity of CaMKII (Fig. 1C-D). This result suggests that the mechanism of inhibition is independent of which nucleotide is bound to Rem2. Members of the RGK family have been shown to be non-canonical G-proteins with respect to the regulatory role of their G-domain (43). To confirm this result using an independent method, we performed a kinase assay using [γ - 32 P]ATP under the same conditions. In agreement with our observations using the PK/LDH assay, we found that phosphorylation of the syntide-2 substrate by CaMKII α is significantly decreased in the presence of Rem2 (Fig. 1E-F). In addition, titration of Rem2 protein in our PK/LDH assay indicates that Rem2 is a potent inhibitor of CaMKII with an apparent IC₅₀ of \sim 6 nM using the peptide syntide-2 as substrate (Fig. 1G-H). For comparison, the IC₅₀ on the same substrate of the only other mammalian, endogenous CaMKII inhibitor, CaMKIIN, is 50 nM (26).

CaMKII inhibition could occur via a number of possible mechanisms, which would have different functional consequences for CaMKII signaling. For example, an inhibitor could act on the activation step, block the autophosphorylation of CaMKII, or block the catalytic activity. In the first case, the block of enzyme activation would result in silencing all signaling events mediated by CaMKII. Alternatively, interfering with the autophosphorylation of CaMKII would allow the enzyme to be active only when Ca²⁺/CaM is bound, effectively converting CaMKII into a signaling component without autonomous activity, preventing the creation of molecular memory. Finally, an inhibitor of the catalytic activity against exogenous substrates would allow the autophosphorylation of CaMKII but would prevent phosphorylation of other targets. This type

of inhibition could be relevant in repetitive stimulation, permitting the formation of molecular memory but avoiding excessive phosphorylation of protein targets. Thus, in order to clarify the potential functional consequences of CaMKII inhibition by Rem2 we began an investigation of the properties of this inhibition.

First, we sought to determine if Rem2 interferes with the activation of CaMKII by Ca²⁺/CaM. We titrated the amount of CaM present in the PK/LDH assay in the presence or absence of 500 nM Rem2 (Fig. 2A-B, Fig. S3A). We found that Rem2 efficiently inhibited CaMKII activity over a wide range of CaM concentrations equal to or above the Rem2 concentration in the assay (i.e., 40-fold, 0.5- 20 μ M), indicating that Rem2 is unlikely to act simply as a CaM scavenger. Next, we asked if Rem2 inhibited CaMKII autophosphorylation. In this experiment, autophosphorylation of CaMKII α was induced by incubation of the enzyme with Ca²⁺/CaM and [γ - 32 P]ATP in the presence or absence of 500 nM Rem2 for 2 min. This incubation time has been shown to produce strong phosphorylation at the CaMKII autophosphorylation site residue Thr286 (44). The reaction mixture was separated by SDS-PAGE followed by autoradiography of 32 P-labeled CaMKII α (Fig. 2C-D). We found no difference in CaMKII autophosphorylation in the presence or absence of Rem2. This result indicates that Rem2 does not inhibit CaMKII autophosphorylation suggesting that it is very unlikely that Rem2 acts by hindering CaM binding to the regulatory domain of CaMKII. In addition, we observed phosphorylation of Rem2 by CaMKII as expected (38). Taken together, these experiments suggest that Rem2 acts as an inhibitor of CaMKII catalytic activity onto substrates other than the CaMKII regulatory domain.

To test this hypothesis, we sought to determine if Rem2 interferes with CaMKII catalytic activity on syntide-2 by asking if Rem2 inhibits the Ca²⁺/CaM-independent, autonomous form of the enzyme. CaMKII α was pre-incubated

The GTPase Rem2 inhibits CaMKII activity

with ATP and Ca²⁺/CaM for 2 min to promote CaMKII α autophosphorylation at residue Thr286 and CaMKII α autonomous activity (44). After the incubation, free calcium in the solution was brought to values below 50 nM by addition of EGTA to suppress any Ca²⁺/CaM dependent activity. The pre-incubated mix was then immediately used in the PK/LDH assay in the presence or absence of 500 nM Rem2 using syntide-2 as a substrate (Fig. 2E-F, Fig. S3B). As a negative control, we added EGTA during the CaMKII pre-incubation to confirm that only the CaMKII autonomous activity was assayed (Fig. 2E, black triangles). We found that addition of Rem2 after CaMKII pre-incubation caused a severe decrease in total ATP consumption, indicating a strong inhibition of the autonomous activity of CaMKII α .

All CaMKII substrates bind to the S-site on the catalytic domain of the enzyme. However, a subset of the substrates also bind to the Thr286-binding site on the catalytic domain, known as the T-site (45). Thus, the two types of substrates, S-type and T-type, have different interactions with the catalytic domain of CaMKII and selective modulation of the function of these sites could potentially provide an additional layer of regulation on CaMKII signaling. In neurons, the two classes of ionotropic glutamate receptors involved in synaptic plasticity, AMPA receptors and NMDA receptors, are examples of S- and T-type substrates, respectively (45). Since we observed that Rem2 inhibits the catalytic activity of CaMKII, we next asked whether Rem2 selectively inhibits CaMKII phosphorylation of specific types of substrates. Using the PK/LDH assay we compared the efficacy of Rem2 inhibition of CaMKII using the peptides syntide-2 or autocalmitide-2 as models of S- and T-type substrates, respectively (Fig. 3A-B, Fig. S4A). We found that Rem2 is a much more potent inhibitor of CaMKII activity on syntide-2, indicating a preference for Rem2 inhibition of S-type substrates, thus hinting at a substrate specific role

for Rem2 inhibition. A similar selectivity has been described for the CN21a inhibitory peptide (46).

We sought to gain insight into the functional implications of Rem2 inhibition of CaMKII by investigating whether Rem2 inhibition is CaMKII isozyme specific, or if Rem2 is able to inhibit multiple CaMKII isozymes. Rem2 is expressed in several tissues including the brain, where all four CaMKII isozymes are present (47). Interestingly, peptides from all four CaMKII isozymes were identified in our mass spectrometry analysis, suggesting that Rem2 does not interact exclusively with the α isoform. Thus, we chose to extend our inhibition studies to the CaMKII δ isozyme, which is expressed in neuronal and non-neuronal cells, but is also the major cardiac CaMKII (47) (Fig. 3C-D, F, Fig. S4B). We found that Rem2 is also a potent inhibitor of CaMKII δ , similar to its effect on CaMKII α , demonstrating that Rem2 inhibition of CaMKII is not restricted to the α isoform. This finding raises the possibility that inhibition of CaMKII might be a conserved feature of other RGK family members.

As CaMKII α and CaMKII δ differ by only a few amino acids in the variable domain, the inhibition data argue that the regions required for Rem2 inhibition are likely contained within conserved segments of the protein. To test this idea we used a monomeric truncated version of CaMKII that contains only the catalytic domain and Ca²⁺/CaM binding region. Rem2 displays only a minor inhibitory effect on syntide-2 phosphorylation using this truncated version of CaMKII α (Fig. 3E-F, Fig. S4B). This result strongly suggest that the inhibition requires the association domain and is specific for the holoenzyme, the physiologically relevant form of the enzyme.

In this report, we demonstrate that Rem2 is a potent, endogenous inhibitor of CaMKII activity. These data represent a paradigm shift in our understanding of both RGK family and CaMKII function. Interestingly, Flynn *et al.* (2012) observed an NMDAR-dependent clustering of

The GTPase Rem2 inhibits CaMKII activity

Rem2 and CaMKII in neurons, suggesting that the association of these proteins is responsive to changes in cellular activity. Thus, one possibility is that upon neuronal depolarization, Rem2 acts in a negative feedback loop to control autonomous CaMKII activity, perhaps modulating long-term potentiation or other cellular outputs of CaMKII signaling.

To date, only the 79 amino acid CaMKIIN isoforms α and β have been demonstrated to be endogenous inhibitors of CaMKII in mammals (25,26). However, the physiological role of CaMKIIN and the biological significance of the CaMKII-CaMKIIN interaction, remain unclear. Work from our lab using loss of function approaches in neurons demonstrated that Rem2 is a positive regulator of synapse formation and dendritic branching (36,37). Going forward these findings provide a framework for understanding the physiological significance of Rem2 inhibition of CaMKII in the context of synapse formation and dendritic branching.

Furthermore, our findings may provide a deeper understanding of calcium channel regulation. The inhibition of high-voltage Ca^{2+} channels by overexpression of Rem2 and other members of the RGK family have been extensively characterized. However, neither the precise mechanism of inhibition is known, nor is the relevance of this inhibition understood in more physiological context. CaMKII is an important modulator of high-voltage calcium channels and is directly involved in the frequency facilitation of the channel: phosphorylation of channels by CaMKII affects the channel conductance and inactivation properties (48-55). We speculate that by being a powerful inhibitor of both, Rem2 might facilitate the interaction between CaMKII and high-voltage calcium channels, perhaps by acting as a scaffold to bridge between CaMKII and VGCCs, thereby providing a layer of channel regulation that is activity-dependent.

Interestingly, the RGK family member Rad interacts with CaMKII δ in cardiac myocytes and

further, Rad knockdown leads to increased CaMKII activity in these cells (56,57). Thus, it is possible that inhibition of CaMKII is a conserved function of RGK family members and is relevant to other tissues where the RGK family members are strongly expressed: heart muscle, skeletal muscle, kidney, and pancreas. In particular, we hypothesize that understanding RGK regulation of CaMKII in other excitable cell types such as heart muscle, where Ca^{2+} signaling plays a critical role in the functional output of these cells, will yield important insights into the physiology of these cells.

The GTPase Rem2 inhibits CaMKII activity

Materials and Methods

Detailed Materials and Methods are described in the Supplemental Data.

CaMKII Activity Assays

The kinase activity of CaMKII was assessed using a continuous spectrophotometric assay. The standard assay (150 μ L total volume) contained: 50 mM Tris (pH 7.5), 150 mM NaCl, 2 mM MgCl₂, 1 mM CaCl₂, 3.33 μ M CaM, 400 μ M sodium ATP, 200 μ M phosphoenolpyruvate, 400 μ M NADH, 9-15 units of pyruvate kinase, 13.5-21 units of lactate dehydrogenase, and 40 μ M of either GDP- β -S (Fig. 1C, 1G, 2A-E, 3A-E) or GMP-PCP (Fig. 1D). The substrate peptides used were either syntide-2 (PLARTLSVAGLPGKK) or autocaamide-2 (AC-2 - KKALRRQETVDAL), both at 200 μ M. The reaction was started by the addition of 20 nM CaMKII (monomer concentration) and the decrease in absorbance at 340 nm at room temperature monitored in a microplate spectrophotometer. Full-length human CaMKII α and δ were purified as described in the supplemental data. Rat truncated CaMKII α was obtained from New England Biolabs (Ipswich, MA). A calibration curve was used to convert the NADH absorbance readings at 340 nm into moles of ATP based on the 1:1 coupling of NADH:ATP consumption of the PK/LDH assay. Subsequently, the moles of ATP consumed in each step were used to construct a cumulative plot of ATP consumption. Then the kinase activity in pmols/s was calculated from the slopes of this plot.

Autonomous CaMKII

In order to obtain autonomous CaMKII activity (i.e. Ca²⁺-independent kinase activity), the purified enzyme (60 nM) was pre-incubated with sodium ATP (500 μ M) and CaM (10 μ M) in 50 mM Tris buffer (pH 7.5) containing 150 mM NaCl, 1 mM CaCl₂, and 2 mM MgCl₂ in a total volume of 50 μ L. After 2 min, 6 μ L of 100 mM sodium EGTA

was added to stop the autophosphorylation of CaMKII. The reaction mix was immediately added to 96 μ L of a solution containing 200 μ M syntide-2, 400 μ M NADH, 200 μ M phosphoenolpyruvate, 500 μ M sodium ATP, 40 μ M GDP- β -S, 9-15 units of pyruvate kinase, and 13.5-21 units of lactate dehydrogenase in 50 mM Tris buffer (pH 7.5) containing 150 mM NaCl. Addition of sodium EGTA lowered the final concentration of free Ca²⁺ to < 20 nM while decreasing the free Mg²⁺ to ~ 1.2 mM.

Radioactive in vitro Kinase Assays

The kinase activity of CaMKII α was monitored by measurement of the incorporation of radiolabeled phosphate from [γ -³²P]ATP into the substrate peptide syntide-2. The kinase assay (150 μ L total volume) contained 50 mM Tris (pH 7.5), 150 mM NaCl, 2 mM MgCl₂, 1 mM CaCl₂, 3.33 μ M CaM, 400 μ M [γ -³²P]ATP (~0.8 Ci/mmol), 200 μ M syntide-2 peptide, and 40 μ M of either GDP- β -S or GMP-PCP. The reaction was initiated by addition of purified CaMKII (20 nM final) and incubated at room temperature for 8 min. The reaction was stopped by addition of 600 μ L 75 mM phosphoric acid and slot-blotted onto Whatman P81 phosphocellulose paper. After additional washes with 75 mM phosphoric acid, the paper was rinsed in acetone, dried and the radioactivity of bound syntide-2 measured using a phosphorimager. The intensities of the detected bands were quantified using the software ImageJ (NIH, Bethesda, MD).

CaMKII Autophosphorylation

CaMKII autophosphorylation was assessed by measurement of the incorporation of radiolabeled phosphate from [γ -³²P]ATP. The assay contained 50 mM Tris (pH 7.5), 150 mM NaCl, 2 mM MgCl₂, 1 mM CaCl₂, 3.33 μ M CaM, 100 μ M [γ -³²P]ATP (~16 Ci/mmol), and 40 μ M GMP-PCP. The reaction was initiated by addition of CaMKII (80 nM final) and incubated at 30°C for 2 min. The

The GTPase Rem2 inhibits CaMKII activity

reaction was stopped by addition of 4x Laemmli loading buffer followed by incubation at 90 °C for 2 min. The samples were separated by SDS-PAGE and the gel blotted onto a Whatman 1 filter paper and dried. Radioactivity of protein bands was measured using a phosphorimager. The intensities of the detected bands were quantified using the software ImageJ (NIH, Bethesda, MD).

The GTPase Rem2 inhibits CaMKII activity

Acknowledgements

We thank Dr. Leslie C. Griffith for critical comments on the manuscript. We are grateful to Dr. Stephen Van Hooser and members of the Paradis and Marr labs for resources and discussions. This work was supported by NIH grants R01NS065856 (S.P.), R21GM117034 (M.T.M), and R01GM117034 (M.T.M.). The content is solely the responsibility of the authors and does not necessarily represent the official views of the National Institutes of Health.

Conflict of Interest

The authors state that they have no competing financial interests.

Author Contributions

L.R, J.J.H., M.T.M., and S.P. designed research; L.R, J.J.H., K.K., B.T., J.C.C., and M.T.M. performed research; L.R, J.J.H., and M.T.M. analyzed data; L.R., M.T.M., and S.P. wrote the paper.

References

1. Lisman, J., Yasuda, R., and Raghavachari, S. (2012) Mechanisms of CaMKII action in long-term potentiation. *Nat Rev Neurosci* **13**, 169-182
2. Hudmon, A., and Schulman, H. (2002) Neuronal Ca²⁺/calmodulin-dependent protein kinase II: the role of structure and autoregulation in cellular function. *Annu Rev Biochem* **71**, 473-510
3. Stratton, M. M., Chao, L. H., Schulman, H., and Kuriyan, J. (2013) Structural studies on the regulation of Ca²⁺/calmodulin dependent protein kinase II. *Curr Opin Struct Biol* **23**, 292-301
4. Chao, L. H., Stratton, M. M., Lee, I. H., Rosenberg, O. S., Levitz, J., Mandell, D. J., Kortemme, T., Groves, J. T., Schulman, H., and Kuriyan, J. (2011) A mechanism for tunable autoinhibition in the structure of a human Ca²⁺/calmodulin-dependent kinase II holoenzyme. *Cell* **146**, 732-745
5. Coultrap, S. J., and Bayer, K. U. (2012) CaMKII regulation in information processing and storage. *Trends Neurosci* **35**, 607-618
6. Stratton, M., Lee, I. H., Bhattacharyya, M., Christensen, S. M., Chao, L. H., Schulman, H., Groves, J. T., and Kuriyan, J. (2014) Activation-triggered subunit exchange between CaMKII holoenzymes facilitates the spread of kinase activity. *Elife* **3**, e01610
7. Mayford, M., Wang, J., Kandel, E. R., and O'Dell, T. J. (1995) CaMKII regulates the frequency-response function of hippocampal synapses for the production of both LTD and LTP. *Cell* **81**, 891-904
8. De Koninck, P., and Schulman, H. (1998) Sensitivity of CaM kinase II to the frequency of Ca²⁺ oscillations. *Science* **279**, 227-230
9. Chao, L. H., Pellicena, P., Deindl, S., Barclay, L. A., Schulman, H., and Kuriyan, J. (2010) Intersubunit capture of regulatory segments is a component of cooperative CaMKII activation. *Nat Struct Mol Biol* **17**, 264-272
10. Barria, A., Muller, D., Derkach, V., Griffith, L. C., and Soderling, T. R. (1997) Regulatory phosphorylation of AMPA-type glutamate receptors by CaM-KII during long-term potentiation. *Science* **276**, 2042-2045
11. Bers, D. M., and Grandi, E. (2009) Calcium/calmodulin-dependent kinase II regulation of cardiac ion channels. *J Cardiovasc Pharmacol* **54**, 180-187
12. Sun, P., Enslin, H., Myung, P. S., and Maurer, R. A. (1994) Differential activation of CREB by Ca²⁺/calmodulin-dependent protein kinases type II and type IV involves phosphorylation of a site that negatively regulates activity. *Genes Dev* **8**, 2527-2539
13. Shonesy, B. C., Jalan-Sakrikar, N., Cavener, V. S., and Colbran, R. J. (2014) CaMKII: a molecular substrate for synaptic plasticity and memory. *Prog Mol Biol Transl Sci* **122**, 61-87
14. Sanhueza, M., and Lisman, J. (2013) The CaMKII/NMDAR complex as a molecular memory. *Mol Brain* **6**, 10
15. Maier, L. S., Bers, D. M., and Brown, J. H. (2007) Calmodulin and Ca²⁺/calmodulin kinases in the heart - physiology and pathophysiology. *Cardiovasc Res* **73**, 629-630
16. Erickson, J. R. (2014) Mechanisms of CaMKII Activation in the Heart. *Front Pharmacol* **5**, 59
17. Duan, D. D. (2015) Calm down when the heart is stressed: Inhibiting calmodulin-dependent protein kinase II for antiarrhythmias. *Trends Cardiovasc Med* **25**, 398-400

The GTPase Rem2 inhibits CaMKII activity

18. Hund, T. J., and Mohler, P. J. (2015) Role of CaMKII in cardiac arrhythmias. *Trends Cardiovasc Med* **25**, 392-397
19. Swaminathan, P. D., Purohit, A., Hund, T. J., and Anderson, M. E. (2012) Calmodulin-dependent protein kinase II: linking heart failure and arrhythmias. *Circ Res* **110**, 1661-1677
20. Mustroph, J., Neef, S., and Maier, L. S. (2016) CaMKII as a target for arrhythmia suppression. *Pharmacol Ther*, 10.1016/j.pharmthera.2016.1010.1006
21. Zhang, R., Khoo, M. S., Wu, Y., Yang, Y., Grueter, C. E., Ni, G., Price, E. E., Jr., Thiel, W., Guatimosim, S., Song, L. S., Madu, E. C., Shah, A. N., Vishnivetskaya, T. A., Atkinson, J. B., Gurevich, V. V., Salama, G., Lederer, W. J., Colbran, R. J., and Anderson, M. E. (2005) Calmodulin kinase II inhibition protects against structural heart disease. *Nat Med* **11**, 409-417
22. Lisman, J., and Raghavachari, S. (2015) Biochemical principles underlying the stable maintenance of LTP by the CaMKII/NMDAR complex. *Brain Res* **1621**, 51-61
23. Zhabotinsky, A. M. (2000) Bistability in the Ca(2+)/calmodulin-dependent protein kinase-phosphatase system. *Biophys J* **79**, 2211-2221
24. Mullasseril, P., Dosemeci, A., Lisman, J. E., and Griffith, L. C. (2007) A structural mechanism for maintaining the 'on-state' of the CaMKII memory switch in the post-synaptic density. *J Neurochem* **103**, 357-364
25. Chang, B. H., Mukherji, S., and Soderling, T. R. (2001) Calcium/calmodulin-dependent protein kinase II inhibitor protein: localization of isoforms in rat brain. *Neuroscience* **102**, 767-777
26. Chang, B. H., Mukherji, S., and Soderling, T. R. (1998) Characterization of a calmodulin kinase II inhibitor protein in brain. *Proc Natl Acad Sci U S A* **95**, 10890-10895
27. Finlin, B. S., Shao, H., Kadono-Okuda, K., Guo, N., and Andres, D. A. (2000) Rem2, a new member of the Rem/Rad/Gem/Kir family of Ras-related GTPases. *Biochem J* **347 Pt 1**, 223-231
28. Reymond, P., Coquard, A., Chenon, M., Zeghouf, M., El Marjou, A., Thompson, A., and Menetrey, J. (2012) Structure of the GDP-bound G domain of the RGK protein Rem2. *Acta Crystallogr Sect F Struct Biol Cryst Commun* **68**, 626-631
29. Sasson, Y., Navon-Perry, L., Huppert, D., and Hirsch, J. A. (2011) RGK family G-domain:GTP analog complex structures and nucleotide-binding properties. *J Mol Biol* **413**, 372-389
30. Correll, R. N., Pang, C., Niedowicz, D. M., Finlin, B. S., and Andres, D. A. (2008) The RGK family of GTP-binding proteins: regulators of voltage-dependent calcium channels and cytoskeleton remodeling. *Cell Signal* **20**, 292-300
31. Zhu, J., Tseng, Y. H., Kantor, J. D., Rhodes, C. J., Zetter, B. R., Moyers, J. S., and Kahn, C. R. (1999) Interaction of the Ras-related protein associated with diabetes rad and the putative tumor metastasis suppressor NM23 provides a novel mechanism of GTPase regulation. *Proc Natl Acad Sci U S A* **96**, 14911-14918
32. Kelly, K. (2005) The RGK family: a regulatory tail of small GTP-binding proteins. *Trends Cell Biol* **15**, 640-643
33. Buraei, Z., and Yang, J. (2015) Inhibition of Voltage-Gated Calcium Channels by RGK Proteins. *Curr Mol Pharmacol* **8**, 180-187
34. Yang, T., and Colecraft, H. M. (2013) Regulation of voltage-dependent calcium channels by RGK proteins. *Biochim Biophys Acta* **1828**, 1644-1654

The GTPase Rem2 inhibits CaMKII activity

35. Flynn, R., and Zamponi, G. W. (2010) Regulation of calcium channels by RGK proteins. *Channels (Austin)* **4**, 434-439
36. Ghiretti, A. E., Moore, A. R., Brenner, R. G., Chen, L. F., West, A. E., Lau, N. C., Van Hooser, S. D., and Paradis, S. (2014) Rem2 is an activity-dependent negative regulator of dendritic complexity in vivo. *J Neurosci* **34**, 392-407
37. Ghiretti, A. E., and Paradis, S. (2011) The GTPase Rem2 regulates synapse development and dendritic morphology. *Dev Neurobiol* **71**, 374-389
38. Liput, D. J., Lu, V. B., Davis, M. I., Puhl, H. L., and Ikeda, S. R. (2016) Rem2, a member of the RGK family of small GTPases, is enriched in nuclei of the basal ganglia. *Sci Rep* **6**, 25137
39. Flynn, R., Labrie-Dion, E., Bernier, N., Colicos, M. A., De Koninck, P., and Zamponi, G. W. (2012) Activity-dependent subcellular cotrafficking of the small GTPase Rem2 and Ca²⁺/CaM-dependent protein kinase IIalpha. *PLoS One* **7**, e41185
40. Ochiishi, T., Terashima, T., and Yamauchi, T. (1994) Specific distribution of Ca²⁺/calmodulin-dependent protein kinase II alpha and beta isoforms in some structures of the rat forebrain. *Brain Res* **659**, 179-193
41. Kiiianitsa, K., Solinger, J. A., and Heyer, W. D. (2003) NADH-coupled microplate photometric assay for kinetic studies of ATP-hydrolyzing enzymes with low and high specific activities. *Anal Biochem* **321**, 266-271
42. Bostrom, S. L., Dore, J., and Griffith, L. C. (2009) CaMKII uses GTP as a phosphate donor for both substrate and autophosphorylation. *Biochem Biophys Res Commun* **390**, 1154-1159
43. Chang, D. D., and Colecraft, H. M. (2015) Rad and Rem are non-canonical G-proteins with respect to the regulatory role of guanine nucleotide binding in Ca(V)1.2 channel regulation. *J Physiol* **593**, 5075-5090
44. Hashimoto, Y., Schworer, C. M., Colbran, R. J., and Soderling, T. R. (1987) Autophosphorylation of Ca²⁺/calmodulin-dependent protein kinase II. Effects on total and Ca²⁺-independent activities and kinetic parameters. *J Biol Chem* **262**, 8051-8055
45. Coultrap, S. J., Buard, I., Kulbe, J. R., Dell'Acqua, M. L., and Bayer, K. U. (2010) CaMKII autonomy is substrate-dependent and further stimulated by Ca²⁺/calmodulin. *J Biol Chem* **285**, 17930-17937
46. Vest, R. S., Davies, K. D., O'Leary, H., Port, J. D., and Bayer, K. U. (2007) Dual mechanism of a natural CaMKII inhibitor. *Mol Biol Cell* **18**, 5024-5033
47. Bayer, K. U., Lohler, J., Schulman, H., and Harbers, K. (1999) Developmental expression of the CaM kinase II isoforms: ubiquitous gamma- and delta-CaM kinase II are the early isoforms and most abundant in the developing nervous system. *Brain Res Mol Brain Res* **70**, 147-154
48. Picht, E., DeSantiago, J., Huke, S., Kaetzel, M. A., Dedman, J. R., and Bers, D. M. (2007) CaMKII inhibition targeted to the sarcoplasmic reticulum inhibits frequency-dependent acceleration of relaxation and Ca²⁺ current facilitation. *J Mol Cell Cardiol* **42**, 196-205
49. Hudmon, A., Schulman, H., Kim, J., Maltez, J. M., Tsien, R. W., and Pitt, G. S. (2005) CaMKII tethers to L-type Ca²⁺ channels, establishing a local and dedicated integrator of Ca²⁺ signals for facilitation. *J Cell Biol* **171**, 537-547

The GTPase Rem2 inhibits CaMKII activity

50. Blaich, A., Welling, A., Fischer, S., Wegener, J. W., Kostner, K., Hofmann, F., and Moosmang, S. (2010) Facilitation of murine cardiac L-type Ca(v)1.2 channel is modulated by calmodulin kinase II-dependent phosphorylation of S1512 and S1570. *Proc Natl Acad Sci U S A* **107**, 10285-10289
51. Abiria, S. A., and Colbran, R. J. (2010) CaMKII associates with CaV1.2 L-type calcium channels via selected beta subunits to enhance regulatory phosphorylation. *J Neurochem* **112**, 150-161
52. Grueter, C. E., Abiria, S. A., Dzhura, I., Wu, Y., Ham, A. J., Mohler, P. J., Anderson, M. E., and Colbran, R. J. (2006) L-type Ca²⁺ channel facilitation mediated by phosphorylation of the beta subunit by CaMKII. *Mol Cell* **23**, 641-650
53. Grueter, C. E., Abiria, S. A., Wu, Y., Anderson, M. E., and Colbran, R. J. (2008) Differential regulated interactions of calcium/calmodulin-dependent protein kinase II with isoforms of voltage-gated calcium channel beta subunits. *Biochemistry* **47**, 1760-1767
54. Jenkins, M. A., Christel, C. J., Jiao, Y., Abiria, S., Kim, K. Y., Usachev, Y. M., Obermair, G. J., Colbran, R. J., and Lee, A. (2010) Ca²⁺-dependent facilitation of Cav1.3 Ca²⁺ channels by densin and Ca²⁺/calmodulin-dependent protein kinase II. *J Neurosci* **30**, 5125-5135
55. Pasek, J. G., Wang, X., and Colbran, R. J. (2015) Differential CaMKII regulation by voltage-gated calcium channels in the striatum. *Mol Cell Neurosci* **68**, 234-243
56. Chang, L., Zhang, J., Tseng, Y. H., Xie, C. Q., Ilany, J., Bruning, J. C., Sun, Z., Zhu, X., Cui, T., Youker, K. A., Yang, Q., Day, S. M., Kahn, C. R., and Chen, Y. E. (2007) Rad GTPase deficiency leads to cardiac hypertrophy. *Circulation* **116**, 2976-2983
57. Moyers, J. S., Bilan, P. J., Zhu, J., and Kahn, C. R. (1997) Rad and Rad-related GTPases interact with calmodulin and calmodulin-dependent protein kinase II. *J Biol Chem* **272**, 11832-11839

Footnotes

The abbreviations used are: CaM, calmodulin; CaMKII, Ca²⁺/calmodulin-dependent protein kinase II; CREB, cAMP response element-binding protein; GAP, GTPase-activating protein; GDP-β-S, Guanosine 5'-[β-thio]diphosphate; GEF, guanine nucleotide exchange factor; GMP-PCP, Guanosine-5'-[(β,γ)-methylene]triphosphate; LTP, long-term potentiation; MBP, maltose-binding protein; PK/LDH, pyruvate kinase/lactate dehydrogenase.

The GTPase Rem2 inhibits CaMKII activity

Figures

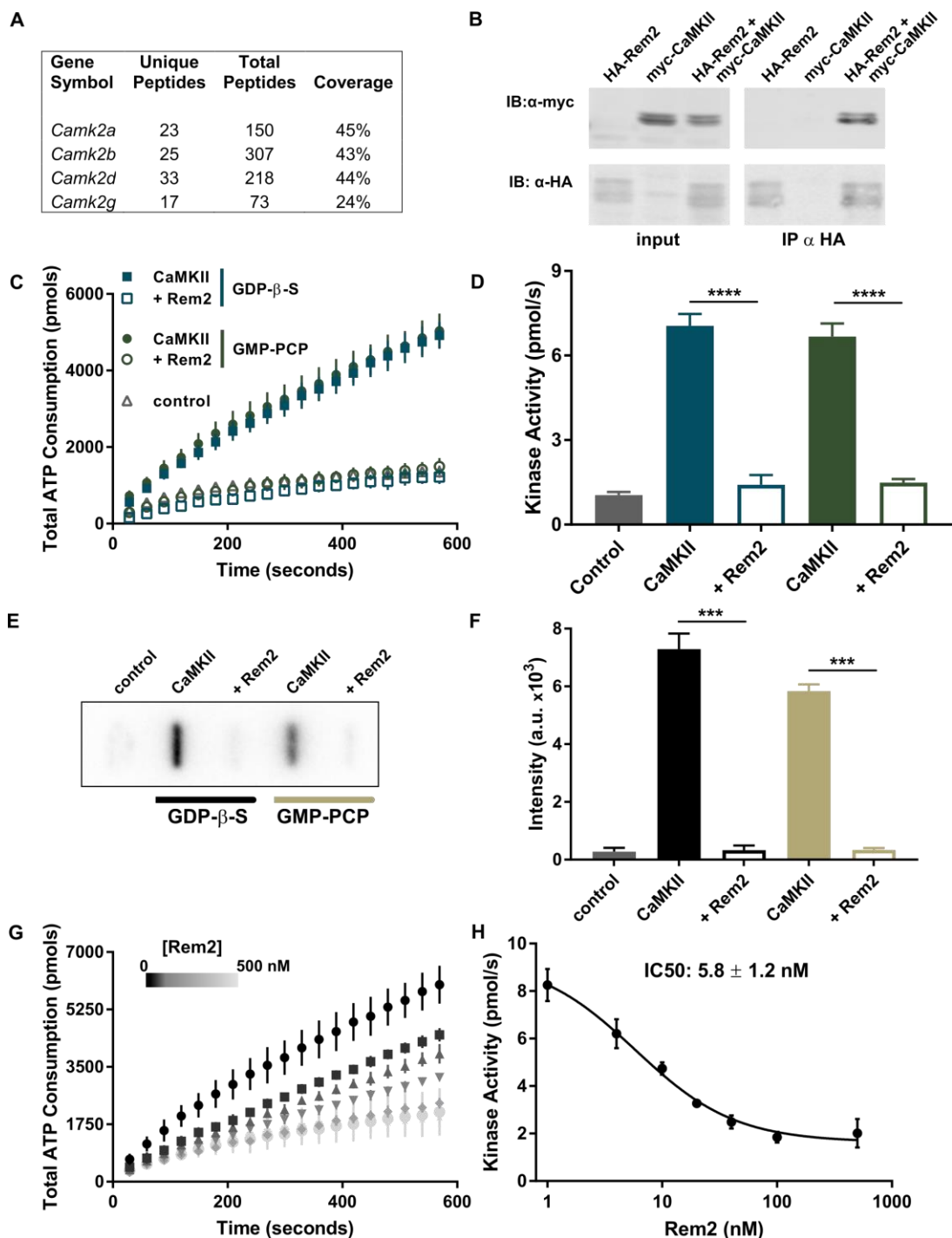


Figure 1

The GTPase Rem2 inhibits CaMKII activity

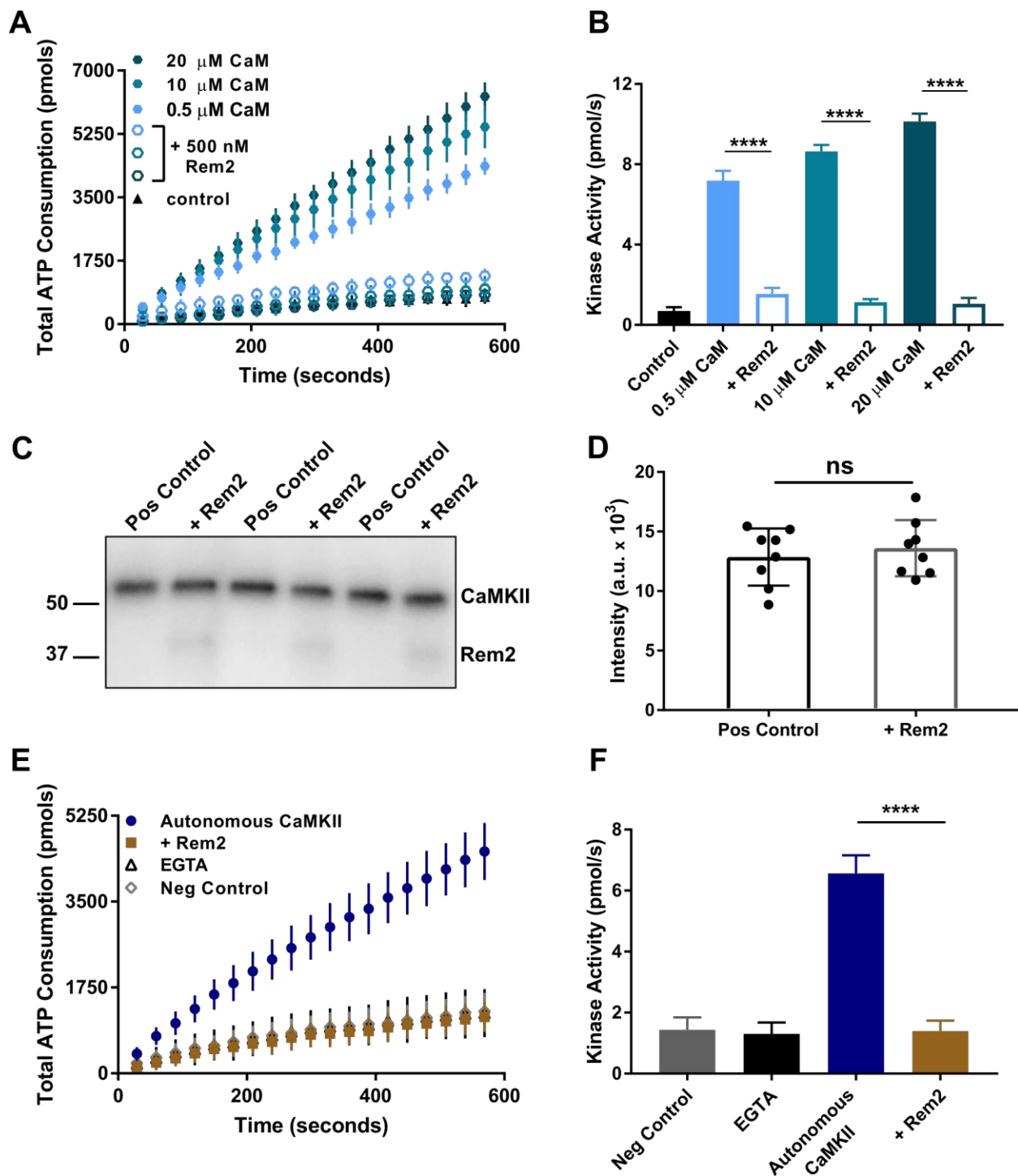


Figure 2

The GTPase Rem2 inhibits CaMKII activity

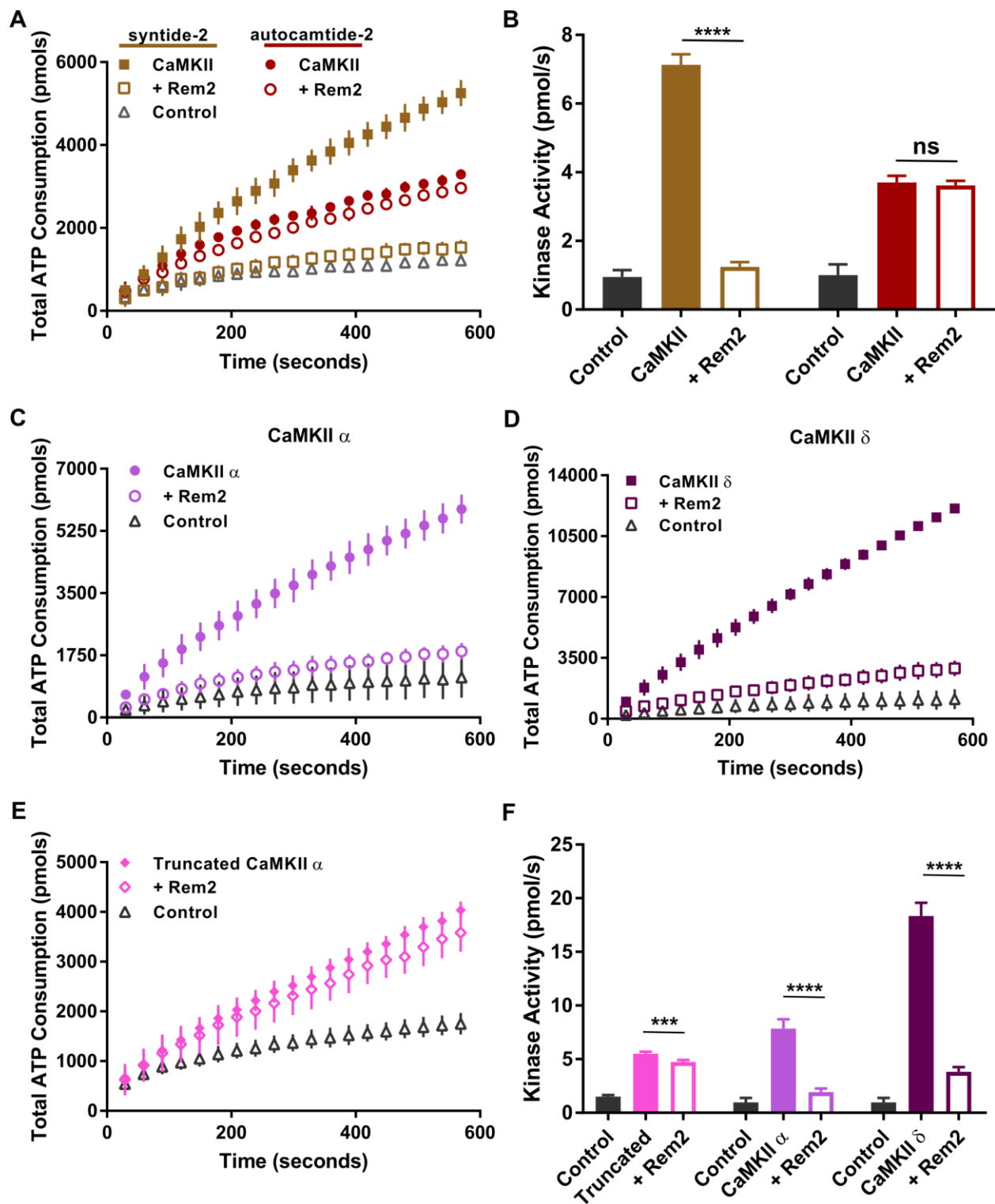


Figure 3

Figure Legends

Figure 1. Rem2 binds to CaMKII and inhibits its kinase activity. (A) Mass spectrometry data identifies CaMKII isozymes retained by a Rem2 affinity matrix after loading with total brain lysate from P14 wild-type rats. The number of unique and total peptides and the percentage of the protein sequence covered for each isoform is shown. (B) Co-immunoprecipitation of Rem2 and CaMKII from HEK293T cells transfected with HA-tagged Rem2, myc-tagged CaMKII α or both. Rem2 was immunoprecipitated using an anti-HA antibody and anti-myc and anti-HA immunoblotting was performed to detect CaMKII and Rem2, respectively. (C) ATP consumption by purified CaMKII α (20 nM monomer) monitored using the PK/LDH assay with syntide-2 as a substrate (200 μ M) with 500 nM Rem2 (filled symbols) or without 500 nM Rem2 (hollow symbols) in the presence (blue squares) of 40 μ M GDP- β -S or 40 μ M GMP-PCP (green circles). Samples devoid of CaMKII α were used as negative controls (gray triangle). (D) Quantification (see methods) of CaMKII α kinase activity shown in (C) (N = 6 reactions; bars indicate standard deviations; ****, $p < 0.0001$, using Student's t-test – see Materials and Methods for details on the statistical analysis). (E) Representative autoradiograph of a slot blot of 32 P-labeled syntide-2. The phosphorylation of syntide-2 (200 μ M) by CaMKII α (20 nM) was conducted in the presence of radiolabeled ATP for 8 min in the presence (500 nM) or absence of Rem2 in the presence or either 40 μ M GDP- β -S or 40 μ M GMP-PCP as indicated. Sample without syntide-2 was used as a control. (F) Quantification of all syntide-2 autoradiographies as in panel (E) by densitometry of the bands. (N = 4; standard deviations shown; ***, $p < 0.001$, using Student's t-test). (G) Concentration-dependence of Rem2 inhibition of CaMKII α kinase activity towards syntide-2. Black circles 0 nM Rem2; black squares, 4 nM Rem2; upward triangles 10 nM Rem2; downward triangles 20 nM Rem2; gray diamonds 40 nM Rem2; light grey circles 100 nM Rem2. (H) Dose-response plot of the data shown in panel (G). The average value of the slope of each curve was plotted as a function of Rem2 concentration (anti-log scale). The half-maximal inhibitory concentration (IC₅₀) is found at 5.8 ± 1.2 nM and was obtained from the non-linear fit of the points (see Materials and Methods).

Figure 2. Rem2 inhibits autonomous CaMKII α activity but not its autophosphorylation. (A) Total ATP consumption during the phosphorylation of syntide-2 (200 μ M) by α (20 nM) was monitored at different concentrations of CaM (filled circles; 40-fold range). Addition of 500 nM Rem2 (open circles) reduced the ATP consumption to control levels (triangles) at any CaM concentration tested. (B) Quantification of the CaMKII α kinase activity shown in (A) using the same color code (N = 6 for all CaM only conditions; N = 4 for 0.5 μ M + Rem2 condition; N = 5 for all other conditions; error bars depict standard deviations; ****, $p < 0.0001$, using Student's t-test). (C) Autophosphorylation of CaMKII α (80 nM) was induced by incubation of the enzyme with Ca²⁺/ CaM (1 mM/3.33 μ M) and [γ -³²P]ATP (100 μ M) in the presence or absence of 500 nM Rem2 for 2 min. The reaction mix was separated by SDS-PAGE, the gel was dried and visualization of ³²P-labeled proteins was obtained using a phosphorimager. One representative experiment is shown; experiment was performed in triplicate. The numbers represent the position of protein molecular weight standards in kDa. (D) Quantification of all CaMKII α autophosphorylation experiments as in (C) by densitometry (N = 8; standard deviations shown; ns, not significantly different ($p = 0.5440$), using Student's t-test). (E) CaMKII α (60 nM) was pre-incubated with ATP (500 μ M) and Ca²⁺/ CaM (1 mM/10 μ M) for 2 min at room temperature to promote CaMKII α autophosphorylation and CaMKII α autonomous activity. The pre-incubated mix was then exposed to syntide-2 (500 μ M) ([Ca²⁺] <

The GTPase Rem2 inhibits CaMKII activity

50 nM). The total ATP consumption as a function of time in the absence (blue circles) or presence of Rem2 (500 nM, gold squares) is shown. Addition of EGTA during the pre-incubation was used to confirm that only the autonomous activity was assayed (black triangles). A negative control (gray diamonds) was conducted in the absence of CaMKII α . (F) The kinase activity of CaMKII α in each of the conditions described in panel (E) is shown. The same color code used in (E) is applied (N = 6; error bars depict standard deviations; ****, $p < 0.0001$, using Student's t-test).

Figure 3. Conservation of Rem2 inhibition of CaMKII. (A) ATP consumption by purified CaMKII α (20 nM monomer) monitored using the PK/LDH assay with syntide-2 (S-type substrate, 200 μ M; gold filled squares) and autocalmitide-2 (T-type substrate, 200 μ M; red filled circles). Addition of 500 nM Rem2 produced a strong inhibition of syntide-2 phosphorylation (gold hollow squares) but not of autocalmitide-2 (red hollow circles). Control is reaction minus CaMKII α (gray triangles). For clarity, only the syntide-2 control is shown. (B) Quantification of the CaMKII α kinase activity described in (A) using the same color code. (N = 5; standard deviations shown; ****, $p < 0.0001$; ns, not significantly different ($p = 0.4449$), using Student's t-test). (C) and (D) ATP consumption by 20 nM purified CaMKII α (Panel C, filled circles) and CaMKII δ isoforms (Panel D, filled squares) onto syntide-2 (200 μ M) in the absence or presence of Rem2 (500 nM, hollow circles and squares, respectively). Negative controls (gray triangles) did not contain the respective CaMKII isoform. (E) ATP consumption by monomer of rat CaMKII α that lacks the association domain (residues 1-325) (20 nM monomer) monitored using the PK/LDH assay with syntide-2 (200 μ M) in the absence (filled diamonds) or presence of 500 nM Rem2 (hollow diamonds) (F) Quantification of the kinase activity of CaMKII shown in panels (C), (D), and (E) using the same color code (N = 6 for all groups; standard deviations shown; ***, $p = 0.001$; ****, $p < 0.0001$, using Student's t-test).