

1 **Berberine chloride ameliorated PI3K/Akt-p/SIRT-1/PTEN signaling**  
2 **pathway in insulin resistance syndrome-induced rats**

3 Short running title:

4 **Berberine chloride targeting PI3K/Akt-p/SIRT-1/PTEN pathway in HFD-**  
5 **treated rats**

6 Marwa El-Zeftawy<sup>1\*</sup>, Doaa Ghareeb<sup>2,3</sup>, Rasha Saad<sup>2&</sup>, Salma Mahmoud<sup>2&</sup>, Nihal  
7 Elguindy<sup>2</sup>, Mohammed El-Sayed<sup>2</sup>

8 <sup>1</sup>Biochemistry Department, Faculty of Veterinary Medicine, The New Valley  
9 University, New Valley, Egypt.

10 <sup>2</sup>Biochemistry Department, Faculty of Science, Alexandria University, Alexandria,  
11 Egypt.

12 <sup>3</sup>Pharmaceutical and Fermentation Industries Development Center, General Authority  
13 of City of Scientific Research and Technology Applications, Alexandria, Egypt.

14 \*Corresponding author

15 E-mail: [marwa@vetnv.au.edu.eg](mailto:marwa@vetnv.au.edu.eg); [marwa\\_3\\_1983@yahoo.com](mailto:marwa_3_1983@yahoo.com),

16 <https://orcid.org/0000-0002-2884-8148>

17 &Theses authors contribute equally to this work

## 18 **Abstract:**

19 Insulin resistance is one of dangerous factors as it leads to numerous metabolic  
20 disorders such as non-insulin dependent diabetes mellitus. It affects most tissues  
21 mainly adipose tissue, liver and muscle. Nowadays, berberine has several medical  
22 applications against diseases. The current study was carried out to identify the effect  
23 of berberine chloride (BER-chloride) on phosphatidyl inositol-3-kinase/  
24 phosphorylated protein kinase B/ sirtuin type 1/ phosphatase and tension homologue  
25 (PI3K/Akt-p/SIRT-1/PTEN) pathway during insulin resistance phenomena. Insulin  
26 resistance model was performed in experimental rats by using high fat diet. Plasma  
27 glucose, serum insulin, lipid profiles, hepatic oxidative stress markers were estimated.  
28 Serum transaminases activities and kidney function tests were determined. Further,  
29 hepatic PI3K, AKt-p, SIRT-1; PTEN levels were assayed. The concentration of  
30 adiponectin in serum, hepatic tissue and white adipose tissue was determined.  
31 Moreover, fold change in hepatic insulin, insulin receptor and retinol binding protein-  
32 4 (RBP4) at molecular level was performed. Histopathological study of white adipose  
33 tissue was also determined. The results showed increase the rats' body weights, blood  
34 glucose, homeostatic model assessment, glycated hemoglobin, insulin and lipid  
35 profiles levels in group of rats fed on high fat diet for eight weeks and this elevation  
36 was decreased after administration of BER-chloride for two weeks. Further, BER-  
37 chloride administration exhibited improvement of oxidative stress parameters, PI3K,  
38 AKt-p, SIRT-1 and PTEN. This was associated with down-regulation of RBP4.  
39 According to these data we conclude that, BER-chloride mediated several insulin  
40 signaling pathways that could be of therapeutic significance to insulin resistance.

## 41 **Key words**

42 Berberine chloride, insulin resistance, adiponectin, insulin receptor.

## 43        **1. Introduction**

44        The increased prevalence of obesity between individuals has become a serious health  
45        problem worldwide. Under normal conditions,  $\beta$ -cell of pancreas maintains the  
46        normal glucose tolerance by increasing insulin release to overcome the reduction of  
47        insulin efficiency. One of the predisposing risk factor to obesity is the amount of fat in  
48        the diet due to modern life styles. Obesity usually accompanied by insulin resistance  
49        and hyperglycemia [1]. Insulin resistance defined as a disease condition in which  
50        insulin is secreted from  $\beta$ -cell of pancreas but its function is impaired in peripheral  
51        tissues such as liver, adipose tissue and skeletal muscle. Insulin resistance usually  
52        associated with metabolic disorders such as hyperlipidemia, type II diabetes mellitus,  
53        non-alcoholic fatty liver and cardiovascular disease and early mortality is considered  
54        one of insulin resistance prognosis in some individuals [2]. Phosphatidyl inositol-3-  
55        kinase/ phosphorylated protein kinase B (PI3K/Akt) pathway is one of the most  
56        important signaling pathways which involved in metabolic effect of insulin [3].  
57        Therefore any treatment strategy of insulin resistance should be associated with  
58        targeting of insulin signaling pathway complications. Nowadays, using of herbal  
59        compounds occupied a huge importance in medical field.

60        Berberine (BER) is a natural isoquinoline alkaloid isolated from different plants such  
61        as *Berberis vulgaris* [4]. BER is a strong base which is usually unstable when present  
62        in free form so it usually accompanied with chloride ion in form of BER-chloride [5,  
63        6]. BER has several pharmacological activities, it acts as anticancer [6, 7], anti-  
64        inflammatory [7, 8], antileishmanial [8, 9] and anti-human immunodeficiency virus  
65        [5, 10]. BER can be used for improving some cardiac diseases and intestinal  
66        infections especially bacterial diarrhea [9, 10]. Furthermore, recently it is used as a

67 neuroprotective agent against some neurodegenerative diseases such as *Alzheimer's* and  
68 *Parkinson's* diseases as it has the ability to pass the blood brain barrier [4].  
69 To investigate whether BER-chloride has a protective effect on insulin resistance, we  
70 set up *in vivo* model for insulin resistance by High fat diet (HFD) feeding. The effects  
71 of BER-chloride on various insulin signaling pathway were investigated.

## 72        **2. Materials and methods:**

### 73        **1.1.        Materials:**

74        BER-chloride was obtained from Sigma-Aldrich Chemical Co. (USA). Kits and  
75        reagents for the assay of blood glucose level (BGL), protein, lipid profiles [total  
76        cholesterol (TC), triacylglycerol (TG) and high density lipoprotein-cholesterol (HDL-  
77        c)] and glycated hemoglobin (HbA1C), as well as both kidney function tests  
78        (creatinine and urea) and liver enzymes [alanine aminotransferase (ALT) and  
79        aspartate aminotransferase (AST)] were obtained from Spinreact (Spain), Human  
80        (Germany), Biosystem (Egypt), and Biolabo (France), respectively. Ribonucleic acid  
81        (RNA) extraction kit, Maxime reverse transcription (RT) premix kit, 2x Taq master  
82        mix, deoxyribonucleic acid (DNA) Ladder, ribonuclease (RNase)-free water, and the  
83        primer sequences of  $\beta$ -actin, insulin, insulin receptor (IR) and rat retinol binding  
84        protein-4 (RBP4) were obtained from Qiagen (Germany), Intron Biotechnology (Korea)  
85        and Fermentas, Thermo fisher scientific (Germany), respectively.

86        Enzyme linked immunoassay (ELISA) kit of insulin, PI3K, AKt-P, sirtuin type 1  
87        (SIRT-1), phosphatase and tension homologue (PTEN) and adiponectin were  
88        purchased from DRG (USA), Wuhan Fine Biological Technology Co. (China), Ray  
89        Biotech (Georgia), MyBiosource (USA), Abcam (USA), Bioscience (USA),  
90        respectively. Foline reagent, thiobarbituric acid (TBA), reduced glutathione (GSH),  
91        5,5'-dithio-bis-2-nitrobenzoic acid (DTNB), cumene hydroxide, methyle green,  
92        sodium pentobarbital and poly ethylene glycol (PEG) were obtained from Sigma-  
93        Aldrich Chemical Co. (St. Louis, Mo, USA). Organic solvents; ethanol 95% and  
94        methanol were of high pressure liquid chromatography (HPLC)-grade and brought  
95        from Merck (USA). Other reagents were obtained with high grade.

## 96        **1.2.        Experimental animal protocol and samples**

### 97        **preparation:**

98        Female albino Sprague-Dawley rats (*Rattus norvegicus*), of body weight (130 – 150)  
99        g and aged (10 - 12) weeks old, were obtained from the experimental animal house of  
100        Medical Research Institute, Alexandria University, Egypt. Rats were housed in  
101        polycarbonate cages in groups of six rats per cage. They were kept under conventional  
102        conditions of temperature and humidity with a 12-h photoperiod. Food and water were  
103        supplied *ad libitum*. The experimental animals were conducted in accordance with the  
104        National Institutes of Health Guide for the Care and Use of Laboratory Animals (NIH  
105        1996). This study was carried out in strict accordance with the recommendations in  
106        the Guide for the Care and Use of Laboratory Animals. The protocol was approved  
107        according to the Ethics of Animal House in Medical Technology Center, Alexandria  
108        University, Egypt.

109        All the animals were acclimatized for one week before the start of the experiment.  
110        After that, thirty animals were divided into five groups (n = 6 per group), Group 1  
111        (Sham control group) that were healthy and free from any disease, rats of this group  
112        were fed standard diet for 10 weeks, Group 2 (Control vehicle) fed low fat diet (LFD)  
113        for eight weeks then received 20% PEG by intragastric tube (10 ml/kg Bwt) for two  
114        weeks [11, 12]. Group 3 (Control BER-chloride) fed LFD for eight weeks then orally  
115        given BER-chloride dissolved in 20% PEG (100 mg/kg Bwt) for two weeks. Group 4  
116        (Induction group) fed HFD for eight weeks then orally given 20% PEG (10 ml/kg  
117        Bwt) for two weeks [11, 12]. Group 5 (Induction treated group) fed HFD for eight  
118        weeks then orally given BER-chloride dissolved in 20% PEG (100 mg/kg Bwt) for  
119        two weeks [13].

120 Rat's body weights were recorded at the first and last week of treatment. Blood  
121 sampling and animal scarification were performed under sodium pentobarbital anesthesia, and  
122 all efforts were made to minimize suffering. At the end of the study, animals were fasted  
123 overnight after 8-h, blood samples were collected in sodium fluoride tubes for  
124 assessment of fasting BGL. After full fasting period (12-h), blood samples were  
125 collected, and then centrifuged at 3000 rpm for 10 min. The obtained serum was kept  
126 at -20°C until analyzed. Hepatic tissues and white adipose tissue from control and  
127 experimently groups were exised immediately and washed with ice-cold saline.  
128 Homogenization was carried out in 0.1M sodium phosphate-buffer, pH 7.4 (for  
129 hepatic tissue) and in 0.15M potassium chloride (for white adipose tissue). The  
130 homogenate was centrifuged at 4000 rpm for 15 min at 4°C and supernatant was  
131 stored at -80°C until analysis [14, 15]. In each group, part of liver was preserved in  
132 liquid nitrogen, and stored at -80°C for total RNA isolation and polymerase chain  
133 reaction (PCR) analysis and part of white adipose tissue was fixed in 10% neutral  
134 buffered formalin solution for histopathological examination.

### 135 **1.3. Biochemical, molecular, histopathological studies** 136 **and statistical analysis:**

#### 137 **1.3.1. Biochemical and molecular studies:**

138 Glucose levels in all groups were measured by a glucose assay kit that is dependent on  
139 glucose oxidase-peroxidase method. Serum insulin of all groups was assayed by DRG  
140 insulin ELISA kit. The insulin resistance was evaluated by calculating the  
141 homeostatic model assessment-insulin resistance (HOMA-IR) as previously  
142 described [16]. HbA1C % was determined by Biosystem kit. Total protein  
143 concentration was determined spectrophotometrically using Beirut assay based kit.  
144 Serum lipid profile (TC, TG, and HDL-c), kidney function tests (urea and creatinine)

145 and liver function tests (ALT and AST) were carried out according to commercial kits  
146 manufacturer's instructions. LDL-c and very low density lipoprotein cholesterol  
147 (vLDL-c) levels were calculated by using a specific formula [17]. Standardized  
148 methods were used to determine the level of thiobarbituric acid reactive substances  
149 (TBARS) [18] and GSH [19] in liver. In addition, hepatic activities of xanthine  
150 oxidase (XO) [20], glutathione peroxidase (GPx) [21, 22] and adenine triphosphatase  
151 (ATPase) [23] were carried out.

152 PI3K, Akt-P, SIRT-1 and PTEN levels in liver homogenate and adiponectin level in  
153 serum, liver homogenate and white adipose tissue were determined by using ELISA  
154 kits. These assays employ the quantitative sandwich enzyme immunoassay technique.  
155 Primers used for PCR technique were designed using the known sequences for the  
156 respective genes (Table 1). Programs are given as denaturation temperature/  
157 denaturation times/ annealing temperature/ annealing times/ extension temperature/  
158 extension times/ number of cycles. The primers were run on Mini Cyclor (Eppendorf,  
159 Labcaire, Germany).

160 Total RNA was extracted from hepatic tissue by using total RNA extraction Kit and  
161 processed according to kit manufacturer's instructions. After that the concentration of  
162 total RNA was measured by spectrophotometer at 260 and 280 nm. One microgram of  
163 the isolated RNA was reverse transcribed into single-strand complementary DNA  
164 (cDNA) using reverse transcriptase (Maxime RT Pre-Mix kit, Fermentas, EU). For  
165 gene expression, the gene specific primers were used and the programs (Table 1) were  
166 optimized for each primer pair and all programs started with a 30s period at 95°C and  
167 ended with a 60s extension at 72°C. The PCR products were resolved on 1.5%  
168 agarose gel. Gels were stained with ethidium bromide, visualized by 30 nm  
169 Ultraviolet Radiator (Alpha-Chem. Imager, USA), and photographic record was



170 made. The optical density and the microgram content of bands were calculated by the  
171 UVIBAND MAX software program.

172 **Table 1. Primer sequences and PCR conditions**

Gene	Primer sequence		PCR conditions			Number of cycles
			Denature (°C)	Anneal (°C)	Extend (°C)	
β-actin	F	5 '-CAT CAC TAT CGG CAA TGA GC-3 '	95°C/30 s.	52.5	72°C/60 s.	40
	R	5 '-GAC AGC ACT GTG TTG GCA TA-3 '				
RBP4	F	5 '-TTTTCTGTGGACGAGAAGGGT-3 '	95°C/30 s.	51.5	72°C/60 s.	40
	R	5 '-TGGTCATCGTTTCCTCGCTTG-3 '				
IR	F	5 '-TGA CAA TGA GGA ATG TGG GGA C-3 '	95°C/30 s.	50	72°C/60 s.	40
	R	5 '-GGG CAA ACT TTC TGA CAA TGA CTG-3 '				
Insulin	F	5 '-TTC TAC ACA CCC AAG TCC CGT C-3 '	95°C/30 s.	52	72°C/60 s.	40
	R	5 '-ATC CAC AAT GCC ACG CTT CTG C-3 '				

173 PCR conditions (denaturation temperature/ denaturation times/ annealing temperature/ annealing times/ extension temperature/ extension times/

174 number of cycles of PCR program) and gene specific primers which used in PCR program were illustrated in Table 1.

### 175 **2.3.2. Histopathological preparation of white adipose tissue:**

176 White adipose tissue of each rat from each group was excised and immediately fixed  
177 at 10% neutral buffered formalin solution after washing with ice cold normal saline.  
178 The resultant fixed tissue samples were used for histological examination in the  
179 Histopathology Laboratory of Medical Technology Center, Alexandria University,  
180 using the routine procedures developed in the respective laboratories. The tissue was  
181 cut at 3 mm thick, and the blocks were embedded in paraffin. Using a rotary  
182 microtome, sections of 8  $\mu$ m thickness were cut. The sections were stained with  
183 hematoxylin and eosin and examined under Olympus microscope (Olympus, Tokyo,  
184 Japan) at (40X) magnification for any histopathological changes.

### 185 **2.2.3. Statistical analysis:**

186 Data were analyzed using Primer of Biostatistics software program (Version 5.0) by  
187 one-way analysis of variance (ANOVA). Significance of means  $\pm$  SD was detected  
188 groups by using multiple comparisons Student-Newman-keuls test at  $p < 0.05$ .  
189 Adiponectin correlation was analyzed by SPSS (Version 20.0) software program,  
190 using person coefficient (r).

## 191 **3. Results:**

### 192 **3.1. Body weight, BGL, insulin resistance, lipid** 193 **profiles, oxidative stress markers, serum** 194 **transaminases activity and kidney function tests**

#### 195 **3.1.1. Body weight, BGL and insulin resistance parameters**

196 Feeding of HFD for 8-weeks leads to increase the body weight of the rats than control  
197 level. Fasting BGL, HOMA-IR and HbA1C were also elevated 1.4, 3.7 and 45.2-

198 folds, compared to sham control rats. Moreover, elevation of insulin level was  
199 reported in HFD group 1.0-fold in serum and 72.3-fold in hepatic tissue.  
200 Administration of BER-chloride leads to decrease fasting BGL, serum insulin,  
201 HOMA-IR and HbA1C to 0.5, 0.2, 0.6 and 0.2-folds, respectively compared with  
202 HFD rats (Table 2). Moreover, HFD up regulated insulin gene expression in liver  
203 tissue and the treatment with BER-chloride for two weeks did not showed any  
204 positive effect on insulin expression (Fig 1).

205 **Table 2. Effect of BER-chloride on body weight, BGL, serum insulin, HOMA-IR and HbA1C after the treatment of diabetic induced**  
 206 **experimental animals.**

	<b>Body weight (g)</b>	<b>BGL (mg/dl)</b>	<b>Serum insulin (<math>\mu</math>IU/ml)</b>	<b>HOMA-IR (mg/dl)</b>	<b>HbA1C (%)</b>
<b>Sham control</b>	141.0 $\pm$ 7.4 <sup>a</sup>	76.0 $\pm$ 1.4 <sup>a</sup>	10.0 $\pm$ 0.2 <sup>a</sup>	1.91 $\pm$ 0.061 <sup>a</sup>	4.2 $\pm$ 0.4 <sup>a</sup>
<b>Control vehicle</b>	142.2 $\pm$ 8.04 <sup>a</sup>	73.33 $\pm$ 2.6 <sup>a</sup>	10.1 $\pm$ 0.6 <sup>a</sup>	1.9 $\pm$ 0.13 <sup>a</sup>	4.4 $\pm$ 0.42 <sup>a</sup>
<b>Control BER-chloride</b>	144.0 $\pm$ 6.07 <sup>a</sup>	75.2 $\pm$ 3.31 <sup>a</sup>	10.45 $\pm$ 0.33 <sup>a</sup>	1.92 $\pm$ 0.12 <sup>a</sup>	4.0 $\pm$ 0.24 <sup>a</sup>
<b>Induction</b>	202.3 $\pm$ 5.39 <sup>b</sup>	180.1 $\pm$ 4.38 <sup>c</sup>	20.17 $\pm$ 2.93 <sup>c</sup>	8.97 $\pm$ 1.37 <sup>c</sup>	6.1 $\pm$ 0.39 <sup>c</sup>
<b>Induction treated with BER-chloride</b>	200.5 $\pm$ 8.02 <sup>b</sup>	97.7 $\pm$ 5.61 <sup>b</sup>	15.67 $\pm$ 2.42 <sup>b</sup>	3.76 $\pm$ 0.48 <sup>b</sup>	5.1 $\pm$ 0.18 <sup>b</sup>

207 Values represent the mean  $\pm$  SD of six rats. ANOVA (one way) followed by Student-Newman-keuls test.

208 Means with letters (a), (b) and (c) were statistical represented compared to sham control group as follow: a= p < 0.001, b= p < 0.01, c= p < 0.05.

209 **3.1.2. Lipid profiles parameters**

210 Lipid profile in this study showed significant increase in HFD group than that of sham control where TC increased 1.2-fold and TG, LDL-c and  
 211 vLDL-c were 0.9-fold increase, while HDL-c was significantly decreased by 43%. The disturbance which occurred in lipid profiles was partially  
 212 repaired after using BER-chloride as treatment for two weeks (Table 3).

213 **Table 3. Effect of BER-chloride on lipid profiles after the treatment of diabetic induced experimental animals.**

	<b>TC (mg/dl)</b>	<b>TG (mg/dl)</b>	<b>HDL-c (mg/dl)</b>	<b>LDL-c (mg/dl)</b>	<b>vLDL-c (mg/dl)</b>
<b>Sham control</b>	130.5 ± 2.79 <sup>a</sup>	110.3 ± 3.6 <sup>a</sup>	59.33 ± 3.14 <sup>a</sup>	110.33 ± 3.62 <sup>a</sup>	22.1 ± 0.7 <sup>a</sup>
<b>Control vehicle</b>	127.3 ± 4.41 <sup>a</sup>	110.0 ± 4.47 <sup>a</sup>	64.3 ± 3.01 <sup>a</sup>	41.0 ± 3.74 <sup>a</sup>	22.3 ± 1.2 <sup>a</sup>
<b>Control BER-chloride</b>	129.3 ± 2.25 <sup>a</sup>	111.2 ± 2.40 <sup>a</sup>	63.2 ± 2.56 <sup>a</sup>	43.9 ± 4.24 <sup>a</sup>	21.77 ± 0.5 <sup>a</sup>
<b>Induction</b>	282.2 ± 3.31 <sup>c</sup>	210.5 ± 3.73 <sup>c</sup>	33.3 ± 2.88 <sup>c</sup>	206.7 ± 2.78 <sup>c</sup>	42.9 ± 0.4 <sup>c</sup>
<b>Induction treated with BER-chloride</b>	164.5 ± 4.14 <sup>b</sup>	141.5 ± 2.26 <sup>b</sup>	42.8 ± 3.37 <sup>b</sup>	93.4 ± 6.20 <sup>b</sup>	28.133 ± 0.7 <sup>b</sup>

214 Values represent the mean ± SD of six rats. ANOVA (one way) followed by Student-Newman-keuls test.

215 Means with letters (a), (b) and (c) were statistical represented compared to sham control group as follow: a= p < 0.001, b= p < 0.01, c= p < 0.05.

216                    **3.1.3. Oxidative stress markers, serum transaminases activity**  
217                    **and kidney function tests**

218    Experimental HFD rats showed elevation of TBARS and XO (1.5 and 0.8-folds)  
219    compared to sham control. Both TBARS and XO were decreased nearly 0.4 and 0.2  
220    folds after two weeks from BER-chloride treatment. On the other hand, the GSH, GPx  
221    and ATPase were decreased by 50.9%, 41.9% and 35.2% in HFD group compared  
222    with sham control and after administration of BER-chloride; those previous  
223    parameters were increased by percentage 42.9, 33.7 and 26.1 respectively (Table 4).  
224    Also, HFD intake increased both liver function parameters and kidney function test  
225    comparing to sham control one. Administration of 100 mg/kg Bwt BER-chloride in  
226    HFD rats for two weeks leads to reduction of liver enzymes activities and kidney  
227    function tests nearly 0.3 and 0.2-folds (Table 5).

228 **Table 4. Effect of BER-chloride on hepatocyte prooxidants/antioxidants status after the treatment of diabetic induced experimental**  
 229 **animals.**

	<b>TBARS (nmol/mg protein)</b>	<b>GSH (mg/mg protein)</b>	<b>XO (IU/mg protein)</b>	<b>GPx (U/mg protein)</b>	<b>ATPase (<math>\mu</math>mol/pi/min/mg protein)</b>
<b>Sham control</b>	2.1 $\pm$ 0.02 <sup>a</sup>	0.285 $\pm$ 0.05 <sup>a</sup>	128.0 $\pm$ 1.6 <sup>a</sup>	7.06 $\pm$ 0.3 <sup>a</sup>	0.71 $\pm$ 0.02 <sup>a</sup>
<b>Control vehicle</b>	2.03 $\pm$ 0.04 <sup>a</sup>	0.29 $\pm$ 0.06 <sup>a</sup>	130.17 $\pm$ 4.26 <sup>a</sup>	7.02 $\pm$ 0.55 <sup>a</sup>	0.73 $\pm$ 0.01 <sup>a</sup>
<b>Control BER-chloride</b>	2.12 $\pm$ 0.28 <sup>a</sup>	0.29 $\pm$ 0.05 <sup>a</sup>	129.67 $\pm$ 4.46 <sup>a</sup>	7.17 $\pm$ 0.22 <sup>a</sup>	0.71 $\pm$ 0.01 <sup>a</sup>
<b>Induction</b>	5.25 $\pm$ 0.35 <sup>c</sup>	0.14 $\pm$ 0.02 <sup>c</sup>	231.5 $\pm$ 7.56 <sup>c</sup>	4.1 $\pm$ 0.33 <sup>c</sup>	0.46 $\pm$ 0.05 <sup>c</sup>
<b>Induction treated with BER-chloride</b>	3.15 $\pm$ 0.24 <sup>b</sup>	0.20 $\pm$ 0.03 <sup>b</sup>	171.3 $\pm$ 3.83 <sup>b</sup>	5.48 $\pm$ 0.33 <sup>b</sup>	0.58 $\pm$ 0.03 <sup>b</sup>

230 Values represent the mean  $\pm$  SD of six rats. ANOVA (one way) followed by Student-Newman-keuls test.

231 Means with letters (a), (b) and (c) were statistical represented compared to sham control group as follow: a= p < 0.001, b= p < 0.01, c= p < 0.05.



232 **Table 5. Effect of BER-chloride on serum transaminases activities and kidney function tests after the treatment of diabetic induced**  
 233 **experimental animals.**

	<b>ALT (U/ml)</b>	<b>AST (U/ml)</b>	<b>Urea (mg/dl)</b>	<b>Creatinine (mg/dl)</b>
<b>Sham control</b>	33.5 ± 2.1 <sup>a</sup>	46.0 ± 3.2 <sup>a</sup>	33.4 ± 2.3 <sup>a</sup>	0.71 ± 0.1 <sup>a</sup>
<b>Control vehicle</b>	34.2 ± 4.6 <sup>a</sup>	49.3 ± 1.8 <sup>a</sup>	31.83 ± 4.6 <sup>a</sup>	0.72 ± 0.04 <sup>a</sup>
<b>Control BER-chloride</b>	32.2 ± 1.94 <sup>a</sup>	49.5 ± 3.78 <sup>a</sup>	29.67 ± 2.16 <sup>a</sup>	0.71 ± 0.04 <sup>a</sup>
<b>Induction</b>	58.5 ± 5.09 <sup>c</sup>	85.7 ± 5.68 <sup>c</sup>	56.17 ± 2.14 <sup>c</sup>	0.90 ± 0.05 <sup>b</sup>
<b>Induction treated with BER-chloride</b>	40.8 ± 3.71 <sup>b</sup>	62.5 ± 6.80 <sup>b</sup>	39.83 ± 3.49 <sup>b</sup>	0.75 ± 0.06 <sup>a</sup>

234 Values represent the mean ± SD of six rats. ANOVA (one way) followed by Student-Newman-keuls test.

235 Means with letters (a), (b) and (c) were statistical represented compared to sham control group as follow: a= p < 0.001, b= p < 0.01, c= p < 0.05.

236        **3.2.     Insulin   signaling   pathway   parameters   and**  
237                    **adiponectin concentration**

238                    **3.2.1. Insulin signaling pathway parameters**

239     Marked significant reduction of PI3K, AKt-p and SIRT-1 by 57.1%, 42.9% and  
240     61.9%, was reported in HFD rats compared to sham control. The treatment of rats  
241     with BER-chloride leads to increase PI3K, AKt-p and SIRT-1 to 84.4%, 49% and  
242     120%, respectively. However, PTEN was increased in HFD rats by 66.6% and  
243     decreased to 27.5% after BER-chloride treatment (Table 6). Also, RBP4 was  
244     decreased from 1.5-fold to 0.4-fold after BER-chloride treatment. However, BER-  
245     chloride failed to affect the HFD adverse effect on IR expression (Fig.1).

246 **Table 6. Effect of BER-chloride on PI3K, Akt-p, SIRT-1 and PTEN levels in hepatocyte after the treatment of diabetic induced**  
 247 **experimental animals.**

	<b>PI3K (pg/g)</b>	<b>Akt-p (pg/g)</b>	<b>SIRT-1 (ng/g)</b>	<b>PTEN (pg/g)</b>
<b>Sham control</b>	493.0 ± 12.3 <sup>c</sup>	350.0 ± 23.5 <sup>c</sup>	105.0 ± 10.2 <sup>c</sup>	1200±28.9 <sup>a</sup>
<b>Control vehicle</b>	486.0 ± 12.0 <sup>c</sup>	335.0 ± 19.3 <sup>c</sup>	110.0 ± 6.9 <sup>c</sup>	1250.0 ± 25.3 <sup>a</sup>
<b>Control BER-chloride</b>	491.0 ± 23.5 <sup>c</sup>	342.0 ± 18.9 <sup>c</sup>	109.0 ± 9.7 <sup>c</sup>	1150.0 ± 65.3 <sup>a</sup>
<b>Induction</b>	211.5 ± 21.5 <sup>a</sup>	200.0 ± 12.1 <sup>a</sup>	40.0 ± 1.2 <sup>a</sup>	2000.0 ± 28.9 <sup>c</sup>
<b>Induction treated with BER-chloride</b>	390.0 ± 31.2 <sup>b</sup>	298.0 ± 14.2 <sup>b</sup>	86.0 ± 8.5 <sup>b</sup>	1450.0 ± 23.5 <sup>b</sup>

248 Values represent the mean ± SD of six rats. ANOVA (one way) followed by Student-Newman-keuls test.

249 Means with letters (a), (b) and (c) were statistical represented compared to sham control group as follow: a= p < 0.001, b= p < 0.01, c= p < 0.05.

### 3.2.2. Adiponectin concentration

Adiponectin percentage in serum, liver and white adipose tissue of HFD rats was reduced (52%, 80% and 45%), and this percentage was elevated after two weeks of BER-chloride treatment (48%, 385% and 65.3%), respectively (Table 7).

**Table 7. Effect of BER-chloride on adiponectin level in serum, liver and white adipose tissue homogenates after the treatment of diabetic induced experimental animals.**

	Adiponectin (ng/ml)		
	Serum	Liver	White adipose tissue
<b>Sham control</b>	1.42 ± 0.49 <sup>a</sup>	11.03 ± 0.97 <sup>a</sup>	21.42 ± 1.65 <sup>a</sup>
<b>Control vehicle</b>	1.39 ± 0.49 <sup>a</sup>	10.67 ± 0.97 <sup>a</sup>	22.97 ± 1.12 <sup>a</sup>
<b>Control BER-chloride</b>	1.59 ± 0.26 <sup>a</sup>	10.77 ± 1.15 <sup>a</sup>	23.43 ± 1.51 <sup>a</sup>
<b>Induction</b>	0.682 ± 0.11 <sup>b</sup>	2.0 ± 0.7 <sup>b</sup>	11.78 ± 1.89 <sup>b</sup>
<b>Induction treated with BER-chloride</b>	1.01 ± 0.18 <sup>a</sup>	9.7 ± 0.9 <sup>a</sup>	19.47 ± 1.67 <sup>a</sup>

Values represent the mean ± SD of six rats. SPSS (Version 20.0).

Means with letters (a), (b) and (c) were statistical represented compared to sham control group as follow: a= p < 0.001, b= p < 0.01, c= p < 0.05.

### 257 **3.3. Histological results**

258 The biochemical results were confirmed by the histological studies in white adipose  
259 tissue (Figs. 2A-2E). Control rat's white adipose tissue revealed normal tissue (Fig  
260 2A). Both PEG and BER-chloride administrated groups after feeding LFD were  
261 similar to control rats (Fig 2B and 2C). However, adipose tissue of HFD rats revealed  
262 multiple fibrosis and degeneration for the architecture of the adipocytes (Fig 2D).  
263 Treatment of HFD rats with BER-chloride for two weeks lead to regeneration of the  
264 cells and reduction of the lipids droplets inside it (Fig 2E).

### 265 **4. Discussion:**

266 In recent years insulin resistance has a huge challenge, it represented one of the risk  
267 metabolic conditions, and in many cases it occurs due to bad dietary habits such as  
268 junk foods which is characterized by huge percentage of fats [24] or due to some  
269 diseases like non-insulin dependent diabetes mellitus [25]. In present study HFD  
270 feeding for eight weeks induced hyperinsulinaemia which is attributed to inability of  
271 liver to utilize the secreted insulin although the normal function of pancreatic  $\beta$ -cell  
272 [26]. During this period the rats become more obese compared to LFD controls due to  
273 elevation of insulin level which inhibit fatty acid oxidation so fats accumulated  
274 mainly in liver because it is the main organ of oxidation process [27]. Elevated levels  
275 of fasting insulin, glucose, and HOMA-IR index confirming the state of insulin  
276 resistance. Furthermore increasing of HbA1c is another indicator of insulin resistance  
277 and correlated with renal function parameters elevation [28].

278 Additionally, results of current study showed up regulation of RBP4 expression in  
279 HFD rats. From previous studies RBP4 i: elevates the process of gluconeogenesis in  
280 liver so hyperglycemia is occurred [29], ii: hindered the insulin signaling in muscle

281 and iii: decreased the uptake of glucose by reduction the activity of PI3K [30].  
282 Defects in PI3K demonstrated in other findings [31]. Previous studies showed highest  
283 level of RBP4 are associated with body mass index increase, insulin resistance and  
284 hypertriglyceridemia [32].  
285 Study of PTEN in this research had a significant importance. PTEN is lipid  
286 phosphatase inhibits insulin signaling by dephosphorylating phosphatidylinositol  
287 (3,4,5) triphosphate (PIP<sub>3</sub>) to phosphatidylinositol (4,5) diphosphate (PIP<sub>2</sub>) [33].  
288 Hence, PTEN is antagonizing the action of PI3K and inhibits Akt as appear in current  
289 results, where HFD rats showed elevation in PTEN level and reduction of PI3K [34].  
290 It is known that, SIRT1 is a key regulator of lipid mobilization through its action  
291 together with adenosine monophosphate (AMPK) by increasing fatty acid metabolism  
292 [35]. So, reduction of SIRT1 concentration in HFD rats is linked by hyperlipidemia  
293 and insulin resistance due to decrease in phosphorylated and/or activated AMPK  
294 resulting in lipid synthesis increase [36]. Results of current study are in accordance  
295 with previous studies [37]. Further, SIRT1 has several roles in insulin signaling  
296 pathway it i: regulates secretion of insulin from  $\beta$ -cell of pancreas by reduction the  
297 expression of uncoupling protein-2 (UCP2) and improvement the depolarization in  $\beta$ -  
298 cell of pancreas [38] and ii: regulates the insulin signaling pathway by deacetylation  
299 of insulin receptor substrate-2 (IRS2) and activation of Akt in cells [39]. From those  
300 mentioned mechanisms of SIRT1 and PTEN, the current study showed reduction of  
301 Akt-p concentration in hepatic cells of HFD rats.  
302 Moreover adiponectin has an important role in insulin resistance pathway; it is a  
303 member of adipocytokines which secreted by adipocytes and has a regulating effect  
304 on insulin sensitivity [40]. It was reported that disturbance in lipid metabolism and  
305 excessive fat deposition leads to abnormal synthesis of adipocytokines [41]. HFD rats

306 associated with reduction of adiponectin level in serum, hepatic and adipose tissues  
307 which may be attributed to disruption of both adiponectin receptor-1 and 2 leading to  
308 elevation of glucose level and reduction the activity of peroxisome proliferator  
309 activated receptor  $\alpha$ -signaling pathways respectively, and finally insulin resistance  
310 occurs [42]. Further, there are some studies suggest the role of SIRT1 in regulation of  
311 adiponectin secretion from the adipocytes by deacetylating of fork head transcription  
312 factor O1 (FOXO-1) protein and enhancement the transcription of gene that encodes  
313 adiponectin in adipocytes [43]. Hence, reduction of SIRT1 effect on adiponectin  
314 secretion.

315 Role of SIRT1 is extended to control the production of reactive oxygen species (ROS)  
316 [44] as SIRT1 is considered one of the important proteins that protect cells from stress  
317 damage [37]. Under normal condition the hepatocyte balance the oxidative stress by  
318 the action of antioxidant enzymes such as GPx which converts hydrogen peroxide  
319 ( $H_2O_2$ ) to water [45]. Rats suffer from insulin resistance have low GPx activity so  
320  $H_2O_2$  accumulated and hepatic cells damaged. These results were confirmed by  
321 elevation of liver enzymes (ALT and AST).  $H_2O_2$  accumulation also affected on renal  
322 tissue which confirmed by increase both urea and creatinine levels. Another cause of  
323 elevation of ROS in case of insulin resistance is attributed to the dysregulated  
324 production of adipocytokines where plasma adiponectin concentration is inversely  
325 correlated with systemic oxidative stress [46].

326 In recent years with regard to the adverse effects of synthetic drugs, increasing  
327 attention has been paid by researchers to herbal medicines. BER is a major form of  
328 isoquinoline alkaloid isolated from several herbal plants and it has several biological  
329 effects [47]. Nowadays, BER is manufactured by chemical synthesis, chloride or  
330 sulfate salt of BER is used for clinical purposes [48].

331 Our *in vivo* study revealed that treatment with BER-chloride has negative effect on  
332 insulin resistance by activating two proteins involved in several physiological  
333 processes, SIRT-1 and AMPK [49]. Those two proteins able to activate each other,  
334 AMPK activates SIRT-1 by elevation the level of nicotinamide  
335 phosphoribosyltransferase and SIRT-1 stimulates AMPK through deacetylation of  
336 serine-threonine kinase LKB1 [50, 51]. Also, BER has the ability to improve insulin  
337 resistance through other mechanisms, where it i: protects  $\beta$ -cell of islet of *Langerhans*  
338 from damage, ii: allows glucose uptake of skeletal muscle, iii: improves hepatic  
339 gluconeogenesis and iv: decreases the level of lipids in blood [52, 53].

340 As a result of SIRT-1 and AMPK pathways activation, adiponectin level was restored  
341 after BER-chloride administration in our study which similar to results obtained by  
342 [54]. Elevation of adiponectin level is linked by regulation of  $\beta$ -oxidation of fatty  
343 acids and glucose metabolism [55, 56]. Hence, treated rats with BER-chloride showed  
344 significant reduction of lipid profiles and BGL. Also, BER-chloride ameliorates  
345 hyperlipidemia results from insulin resistance via different mechanisms i: BER lowers  
346 blood cholesterol levels through inhibiting cholesterol uptake and absorption in the  
347 intestine [57], ii: BER reduces the secretion of cholesterol from enterocytes into the  
348 blood by down regulation acetyl CoA transferase II enzyme [58] and lastly iii: BER  
349 increases the regulation of LDL-receptor and hence, BER decreases the level of LDL-  
350 c [59]. Further, BER chloride is able to improve glucose control by stimulation the  
351 glycolysis in peripheral tissue [60], inhibition of FOXO-1 and hepatic nuclear factor  
352 4, lead to suppression of glucose-6-phosphatase and phosphoenolpyruvate  
353 carboxykinase enzymes which responsible for liver gluconeogenesis [61, 62] and  
354 activation of glucose transport-1 (GLUT1) [63].



355 The current study showed BER-chloride has the ability to increase the level of  
356 antioxidant enzymes (GSH, GPx and XO) by reducing the elevated level of lipid  
357 peroxidation [64]. Also it was reported that BER has the ability to prevent  
358 nicotinamide adenine dinucleotide phosphate (NADPH) oxidase which is a major  
359 source of ROS production [65]. These results in accordance with previous studies  
360 which proved that BER is a strong antioxidant molecule due to its ability to scavenge  
361 free radicals [66]. Moreover, BER-chloride exerts protective effect against ROS  
362 through SIRT-1 activation where SIRT-1 able to modulate NOX4/NADPH oxidative  
363 subunit [67]. Reduction of ROS production lead to decrease the level of liver enzymes  
364 in group of rats administrated BER-chloride.

365 In current study, BER-chloride down regulates RBP4 which acts as an effective  
366 insulin sensitizing function [68]. From previous studies, it was reported that reduction  
367 the level of RBP4 is related to elevation of HDL-c and decrease TG levels in some  
368 patients [69]. Also as result of reduction of SIRT1 in HFD rats, elevation of TBARS  
369 and XO and reduction of GPx and GSH was noticed and this was improved after  
370 BER-chloride administration.

## 371 **5. Conclusions:**

372 Berberine chloride can be considered one of therapeutics used to decrease insulin  
373 resistance through its effect on several insulin signaling pathways. A schematic  
374 representation was designed (Fig 3) to summarize the modification of insulin  
375 resistance by BER-chloride.

## 376 **Acknowledgements**

377 This work is financially supported by Alexandria University, Egypt.

## 378 **References**

- 379 1. Steven EK, Rebecca LH, Kristina MU. Mechanisms linking obesity to insulin  
380 resistance and type 2 diabetes. *Nature*. 2006;444: 840-846.
- 381 2. Joshua AD, William JR, Piul SR, Daniel JC. The Nrf2/Keap1/ARE pathway  
382 and oxidative stress as a therapeutic target in type II diabetes mellitus. *J*  
383 *Diabetes Res*. 2017;2017: 1-15.
- 384 3. Gao YF, Zhang MN, Wang TX, Wu TC, Ai RD, Zhang ZS. Hypoglycemic  
385 effect of D-chiro-inositol in type 2 diabetes mellitus rats through the PI3K/Akt  
386 signaling pathway. *Mol Cell Endocrinol*. 2016;433: 26-34.
- 387 4. Jiang WX, Li SH, Li XJ. Therapeutic potential of berberine against  
388 neurodegenerative diseases. *Life Sci*. 2015;58: 564-569.
- 389 5. Bodiwala HS, Sabde S, Mitra D, Bhutani KK. Synthesis of 9-substituted  
390 derivatives of berberine as anti-HIV agents. *Eur J Med Chem*. 2011;46: 1045-  
391 1049.
- 392 6. Li J-W, Yuan K, Shang S-C, Guo Y. A safer hypoglycemic agent for type 2  
393 diabetes-Berberine organic acid salt. *J Funct Foods*. 2017;38: 399-408.
- 394 7. Liu Q, Xu X, Zhao M, Wei Z, Li X, Zhang X, et al. Berberine induces  
395 senescence of human glioblastoma cells by down regulating the EGFR–MEK–  
396 ERK signaling pathway. *Mol Cancer Ther*. 2015;14: 355-363.
- 397 8. Vuddanda PR, Chakraborty S, Singh S. Berberine: A potential phytochemical  
398 with multispectrum therapeutic activities. *Expert Opin Investig Drugs*.  
399 2010;19: 1297-1307.
- 400 9. Zhang S, Wang X, Yin W, Liu Z, Zhou M, Xiao D, Liu Y, Peng, D. Synthesis  
401 and hypoglycemic activity of 9-O-(lipophilic group substituted) berberine  
402 derivatives. *Bioorg Med Chem Lett*. 2016;26: 4799-4803.

- 403 10. Dong SF, Hong Y, Liu M, Hao YZ, Yu HS, Liu Y, Sun JN. Berberine  
404 attenuates cardiac dysfunction in hyperglycemic and hypercholesterolemic  
405 rats. *Eur J Pharmacol*. 2011;660: 368-374.
- 406 11. El-Sayed M, Ghareeb D, Talat H, Sarhan E. High fat diet induced insulin  
407 resistance and elevated retinol binding protein 4 in female rats; treatment and  
408 protection with *Berberis vulgaris* extract and vitamin A. *PJPS*. 2013;26: 1189-  
409 1195.
- 410 12. Ghareeb D, Khalil S, Hafez H, Bajorath J, Ahmed H, Sarhan E, Elwakeel E,  
411 El-Demellawy M. Berberine reduces neurotoxicity related to nonalcoholic  
412 steatohepatitis in rats. *Evid Based Complement Alternat Med*. 2015;2015: 1-  
413 13.
- 414 13. Saleh SR, Attia R, Ghareeb DA. The ameliorating effect of *Berberine*-rich  
415 fraction against gossypol-induced testicular inflammation and oxidative Stress.  
416 *Oxid Med Cell Longev*. 2018;2018. 1056173.
- 417 14. Steinberg D, Vaughan M, Margolis S. Studies of triglyceride in homogenates  
418 of adipose tissue. *Biol Chem*. 1961;236: 1631-1637.
- 419 15. Anuradha CV, Pavikumar P. Anti-lipid peroxidative activity of seeds of  
420 fenugreek (*Trigonella foenum graecum*). *Med Sci Res*. 1998;26: 317-321.
- 421 16. Han SJ, Boyko EJ, Kim S-K, Fujimoto WY, Kahn, SE, Leonetti, DL.  
422 Association of thigh muscle mass with insulin resistance and incident type 2  
423 diabetes mellitus in Japanese Americans. *Diabetes Metab J*. 2018;42: 1-8.
- 424 17. Friedewald WT, Levy RI, Fredrickson DS. Estimation of the concentration of  
425 low density lipoprotein cholesterol in plasma without use of the preparative  
426 ultracentrifuge. *Clin Chem*. 1972;18: 499-502.

- 427 18. Tappel AL, Zalkin H. Inhibition of lipid peroxidation in mitochondria by  
428 vitamin E. Arch. Biochem. Biophys. 1959;80: 333-336.
- 429 19. Ellman GL. Tissue sulfhydryl groups. Arch Biochem Biophys.1959; 82: 70-  
430 77.
- 431 20. Litwack G, Bothwell JW, Williams JN, Elvehjem JrCA. A colorimetric assay  
432 for xanthine oxidase in rat liver homogenates. J Biol Chem. 1953;200: 303-  
433 310.
- 434 21. Paglia E, Valentine N. Studies on the quantitative and qualitative  
435 characterization of erythrocyte glutathione peroxidase. J Lab Clin Med.  
436 1967;70: 158-169.
- 437 22. Chiu DTY, Stults FH, Tappel AL. Purification and properties of rat lung  
438 soluble glutathione peroxidase. Biochim. Biophys. Acta. 1976;445: 558-566.
- 439 23. Candeias MF, Abreu P, Pereira A, Cruz-Morais J. Effects of strictosamide on  
440 mouse brain and kidney Na<sup>+</sup>, K<sup>+</sup>-ATPase and Mg<sup>2+</sup>-ATPase activities. J  
441 Ethnopharmacol. 2009;121: 117-122.
- 442 24. Haslam DW, James WP. Obesity. Lancet. 2005;366: 1197-1209.
- 443 25. Seko Y, Sumida Y, Tanaka S, Mori K, Taketani H, Ishiba H, et al. Insulin  
444 resistance increases the risk of incident type 2 diabetes mellitus in patients  
445 with non-alcoholic fatty liver disease. Hepatol Res. 2018;48: E42-E51.
- 446 26. Arnold SE, Arvanitakis Z, Macauley-Rambach SL, Koenig AM, Wang H-Y,  
447 Ahima RS, et al. Brain insulin resistance in type 2 diabetes and Alzheimer  
448 disease: concepts and conundrums. Nat Rev Neurol. 2018;14: 168-181.
- 449 27. Liu R, Li H, Fan W, Jin Q, Chao T, Wu Y, et al. Leucine supplementation  
450 differently modulates branched-chain amino acid catabolism, mitochondrial

- 451 function and metabolic profiles at the different stage of insulin resistance in  
452 rats on high-fat diet. *Nutrients*. 2017;9: 565-585.
- 453 28. Fiorentino TV, Marini MA, Succurro E, Sciacqua A, Andreozzi F, Perticone  
454 F, Sesti G. Elevated hemoglobin glycation index identify non-diabetic  
455 individuals at increased risk of kidney dysfunction. *Oncotarget*. 2017;8:  
456 79576-79586.
- 457 29. Hutchison SK, Harrison C, Stepto N, Meyer C, Teede HJ. Retinol binding  
458 protein 4 and insulin resistance in polycystic ovary syndrome. *Diabetes Care*.  
459 2008;31: 1427-1432.
- 460 30. Yousefi MR, TaheriChadorneshin H. The effect of moderate endurance  
461 training on gastrocnemius retinol-binding protein 4 and insulin resistance in  
462 streptozotocin-induced diabetic rats. *Interv Med Appl Sci*. 2017;9: 1-5.
- 463 31. Jiang G, Zhang BB. Pi 3-kinase and its up- and down-stream modulators as  
464 potential targets for the treatment of type II diabetes. *Front. Biosci*. 2002;7:  
465 d903 - d907.
- 466 32. Domingos MAM, Queiroz M, Lotufo PA, Benseñor IJ, Titan SMO. Serum  
467 RBP4 and CKD: Association with insulin resistance and lipids. *J Diabetes*  
468 *Complications*. 2017;31: 1132-1138.
- 469 33. Cully M, You H, Levine AJ, Mak TW. Beyond PTEN mutations: the PI3K  
470 pathway as an integrator of multiple inputs during tumorigenesis. *Nat Rev*  
471 *Cancer*. 2006;6: 184-192.
- 472 34. Yao XH, Nyomba BLG. Hepatic insulin resistance induced by prenatal  
473 alcohol exposure is associated with reduced PTEN and TRB3 acetylation in  
474 adult rat offspring. *Am J Physiol Regul Integr Comp Physiol*. 2008;294:  
475 R1797-R1806.

- 476 35. Merksamer PI, Liu Y, He W, Hirschey MD, Chen D, Verdin E. The sirtuins,  
477 oxidative stress and aging: an emerging link. *Aging (Albany NY)*. 2013;5:  
478 144-150.
- 479 36. Boulet MM, Chevrier G, Grenier-Larouche T, Pelletier M, Nadeau M, Scarpa  
480 J. et al. Alterations of plasma metabolite profiles related to adipose tissue  
481 distribution and cardiometabolic risk. *Am J Physiol Endocrinol Metab*.  
482 2015;309: E736-E746.
- 483 37. Deng XQ, Chen LL, Li NX. The expression of SIRT1 in nonalcoholic fatty  
484 liver disease induced by high-fat diet in rats. *Liver Int*. 2007;27: 708-715.
- 485 38. Liang F, Kume S, Koya D. SirT1 and insulin resistance. *Nat Rev Endocrinol*.  
486 2009;5: 367-373.
- 487 39. Yoshizaki T, Milne JC, Imamura T, Schenk S, Sonoda N, Babendure JL.  
488 SirT1 exerts anti-inflammatory effects and improves insulin sensitivity in  
489 adipocytes. *Mol. Cell Biol*. 2009;29: 1363-1374.
- 490 40. Wu Q-M, Ni H-X, Lu X. Changes of adipocytokine expression after diabetic  
491 rats received sitagliptin and the molecular mechanism. *Asian Pac J Trop Med*.  
492 2016;9: 893-897.
- 493 41. Boulet MM, Chevrier G, Grenier-Larouche T, Pelletier M, Nadeau M, Scarpa  
494 J. et al. Alterations of plasma metabolite profiles related to adipose tissue  
495 distribution and cardiometabolic risk. *Am J Physiol Endocrinol Metab*.  
496 2015;309: E736-E746.
- 497 42. Li S, Shin HJ, Ding EL, van Dam RM. Adiponectin levels and risk of type 2  
498 diabetes. A systematic review and meta-analysis. *JAMA*. 2009;302: 179-188.

- 499 43. Qiao L, Shao J. Sirt1 regulates adiponectin gene expression through Foxo1-  
500 C/enhancer binding protein alpha transcriptional complex. *J Biol Chem.*  
501 2006;281: 39915-39924.
- 502 44. Colak Y, Ozturk O, Senates E, Tuncer I, Yorulmaz E, Adali G, et al. SIRT1  
503 as a potential therapeutic target for treatment of nonalcoholic fatty liver  
504 disease. *Med Sci Monit.* 2011;17: HY5-HY9.
- 505 45. Flores C, Adhami N, Martins-Green M. THS toxins induce hepatic steatosis  
506 by altering oxidative stress and SIRT1 levels. *J Clin Toxicol.* 2016;6: 318.
- 507 46. Furukawa S, Fujita T, Shimabukuro M, Iwaki M, Yamada Y, Nakajima Y, et  
508 al. Increased oxidative stress in obesity and its impact on metabolic syndrome.  
509 *J Clin Invest.* 2004;114: 1752-1761.
- 510 47. Jin Y, Khadka DB, Cho WJ. Pharmacological effects of berberine and its  
511 derivatives: a patent update. *Expert Opin Ther Pat.* 2016;26: 229 - 243.
- 512 48. Battu SK, Repka MA, Maddineni S, Chittiboyina AG, Avery MA. Majumdar  
513 S. Physicochemical characterization of berberine chloride: a perspective in the  
514 development of a solution dosage form for oral delivery. *AAPS*  
515 *PharmSciTech.* 2010;11: 1466-1475
- 516 49. Lin Y, Sheng M, Ding Y, Zhang N, Song Y, · Du H, et al. Berberine protects  
517 renal tubular cells against hypoxia / reoxygenation injury via the Sirt1/p53  
518 pathway. *J Nat Med.* 2018;72: 715-723.
- 519 50. Sun Y, Li J, Xiao N, Wang M, Kou J, Qi L, et al. Pharmacological activation  
520 of AMPK ameliorates perivascular adipose/endothelial dysfunction in a  
521 manner interdependent on AMPK and SIRT1. *Pharmacol Res.* 2014;89: 19 -  
522 28.

- 523 51. Hardie DG. AMPK: positive and negative regulation, and its role in whole-  
524 body energy homeostasis. *Curr Opin Cell Biol.* 2015;33: 1-7.
- 525 52. Yang TC, Chao HF, Shi LS, Chang TC, Lin HC, Chang WL. Alkaloids from  
526 *Coptis chinensis* root promote glucose uptake in C2C12 myotubes. *Fitoterapia.*  
527 2014;93: 239-244.
- 528 53. Pirillo A, Catapano AL. Berberine, a plant alkaloid with lipid-and glucose-  
529 lowering properties: From *in vitro* evidence to clinical studies.  
530 *Atherosclerosis.* 2015;243: 449-461.
- 531 54. Wu Y, Cha Y, Huang X, Liu J, Chen Z, Wang F, et al. Protective effects of  
532 berberine on high fat-induced kidney damage by increasing serum adiponectin  
533 and promoting insulin sensitivity. *Int J Clin Exp Pathol.* 2015;8: 14486-14492.
- 534 55. Yamauchi T, Kamon J, Minokoshi Y, Ito Y, Waki H, Uchida S, et al.  
535 Adiponectin stimulates glucose utilization and fatty-acid oxidation by  
536 activating AMP activated protein kinase. *Nat. Med.* 2002;8: 1288-1295.
- 537 56. Lin H, Li Z. Adiponectin self-regulates its expression and multimerization in  
538 adipose tissue: An autocrine/paracrine mechanism? *Med Hypotheses.* 2012;78:  
539 75-78.
- 540 57. Wang Y, Yi X, Ghanam K, Zhang S, Zhao T, Zhu X. Berberine decreases  
541 cholesterol levels in rats through multiple mechanisms, including inhibition of  
542 cholesterol absorption. *Metb Clin Exp.* 2014;63: 1167-1177.
- 543 58. Wang H, Zhu C, Ying Y, Luo L, Huang D, Luo Z. Metformin and berberine,  
544 two versatile drugs in treatment of common metabolic diseases. *Oncotarget.*  
545 2018;9: 10135-10146.
- 546 59. Abidi P, Zhou Y, Jiang JD, Liu J. Extracellular signal-regulated kinase-  
547 dependent stabilization of hepatic low-density lipoprotein receptor mRNA by



- 548           herbal medicine berberine. *Arterioscler Thromb Vasc Biol.* 2005;25: 2170-  
549           2176.
- 550       60. Yin J, Gao Z, Liu D, Liu Z, Ye J. Berberine improves glucose metabolism  
551           through induction of glycolysis. *Am J Physiol Endocrinol Metab.* 2008;294:  
552           148-156.
- 553       61. Kim WS, Lee YS, Cha SH, Jeong HW, Choe SS, Lee MR, et al. Berberine  
554           improves lipid dysregulation in obesity by controlling central and peripheral  
555           AMPK activity. *Am J Physiol Endocrinol Metab.* 2009;296: 812-819.
- 556       62. Xia X, Yan J, Shen Y, Tang K, Yin J, Zhang Y, et al. Berberine improves  
557           glucose metabolism in diabetic rats by inhibition of hepatic gluconeogenesis.  
558           *PLoS. One.* 2011; 6: 16556.
- 559       63. Cok A, Plaisier C, Salie MJ, Oram DS, Chenge J, Louters LL. Berberine  
560           acutely activates the glucose transport activity of GLUT1. *Biochimie.*  
561           2011;93: 1187-1192.
- 562       64. Lao-ong T, Chatuphonprasert W, Nemoto N, Jarukamjorn K. Alteration of  
563           hepatic glutathione peroxidase and superoxide dismutase expression in  
564           streptozotocin-induced diabetic mice by berberine. *Pharm Biol.* 2012;50:  
565           1007-1012.
- 566       65. Cheng F, Wang Y, Li J, Su C, Wu F, Xia WH. et al. Berberine improves  
567           endothelial function by reducing endothelial microparticles-mediated  
568           oxidative stress in humans. *Int J Cardiol.* 2013;167: 936-942.
- 569       66. Kumar A, Ekavali, Chopra K, Mukherjee M, Pottabathini R, Dhull DK.  
570           Current knowledge and pharmacological profile of berberine: An update. *Eur J*  
571           *Pharmacol.* 2015;761: 288-297.

- 572 67. Karbasforooshan H, Karimi G. The role of SIRT1 in diabetic retinopathy.  
573 Biomed. Pharmacother. 2018;97: 190-194.
- 574 68. Zhang W, Xu YC, Guo FJ, Meng Y, Li ML. Antidiabetic effects of  
575 cinnamaldehyde and berberine and their impacts on retinol-binding protein 4  
576 expression in rats with type 2 diabetes mellitus. Chin Med J. 2008;121: 2124-  
577 2128.
- 578 69. Broch M, Gomez JM, Auguet MT, Vilarrasa N, Pastor R, Elio I, et al.  
579 Association of retinol-binding protein-4 (RBP4) with lipid parameters in obese  
580 women. Obes Surg. 2010;20: 1258-1264.

## 581 **Figure Legends**



582 **Fig 1.** Effect of BER-chloride on the fold change of insulin, IR and RBP4 genes.

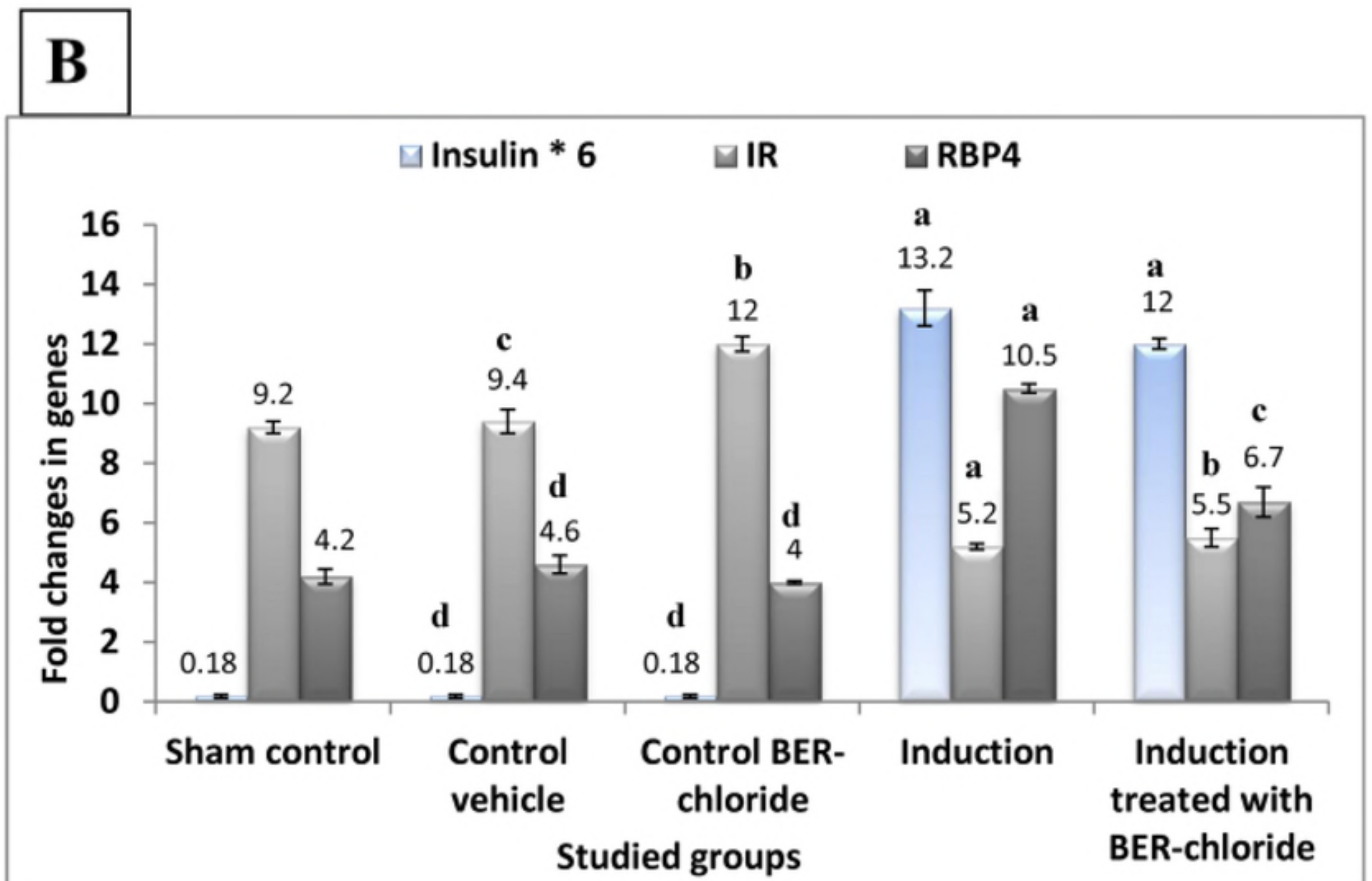
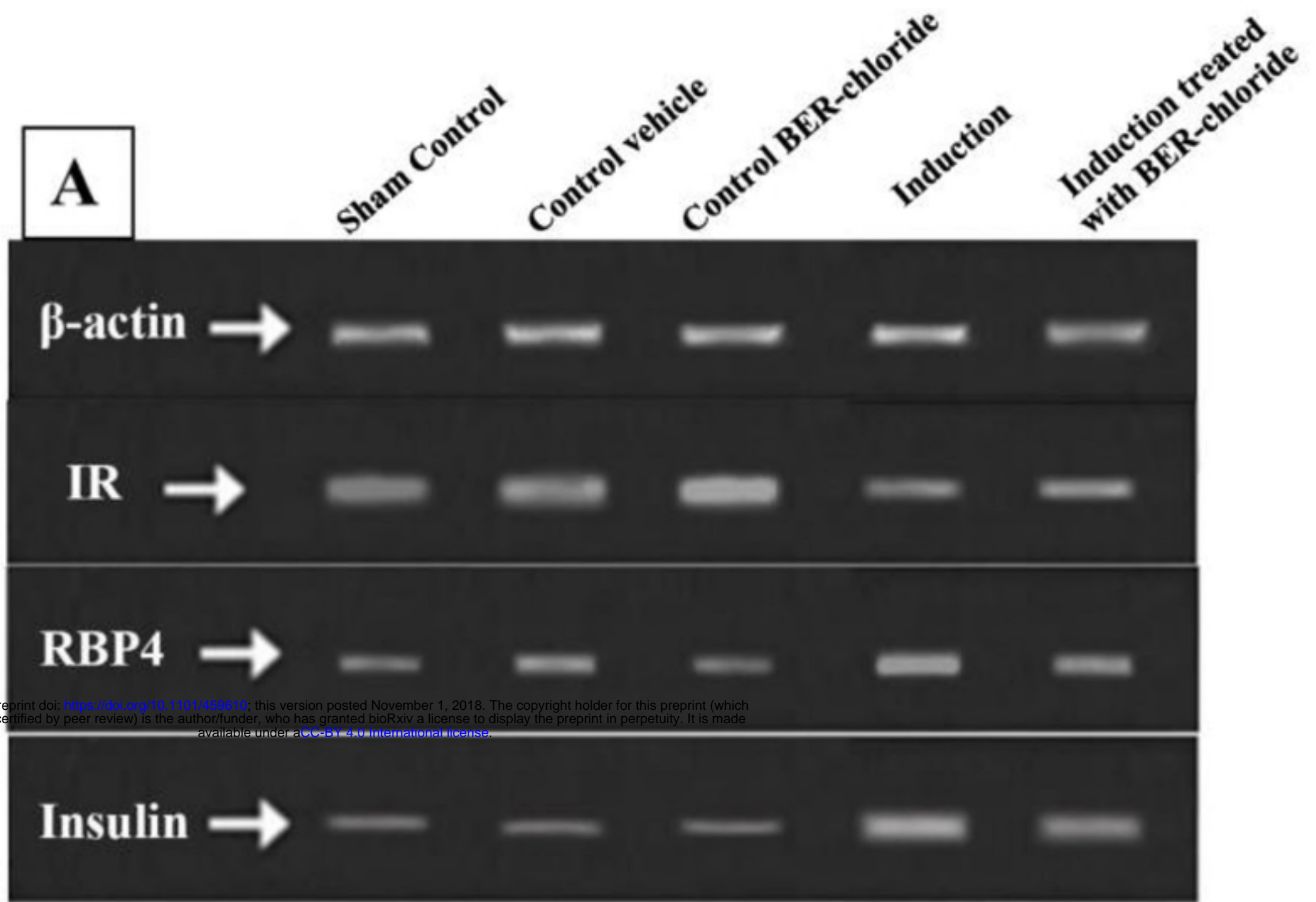
583 (A) Agrose gel electrophoresis of gene expression of insulin (293 bp), IR (129 bp) and  
584 RBP4 (392 bp) compared to  $\beta$ -actin (300 bp). (B) Fold change of gene expression in  
585 liver homogenate after the treatment of diabetic induced experimental animals  
586 represented as 6 rats  $\pm$  SE. ANOVA (one way) followed by Student-Newman-keuls  
587 test. Means with letters (a), (b), (c) and (d) were statistically represented compared to  
588 sham control group as a at  $p < 0.001$ , b at  $p < 0.01$ , c at  $p < 0.05$  and d at  $p > 0.05$ .

589 **Fig 2.** White adipocyte sections pictures in the different groups of rats, stained with  
590 hematoxelin and eosin.

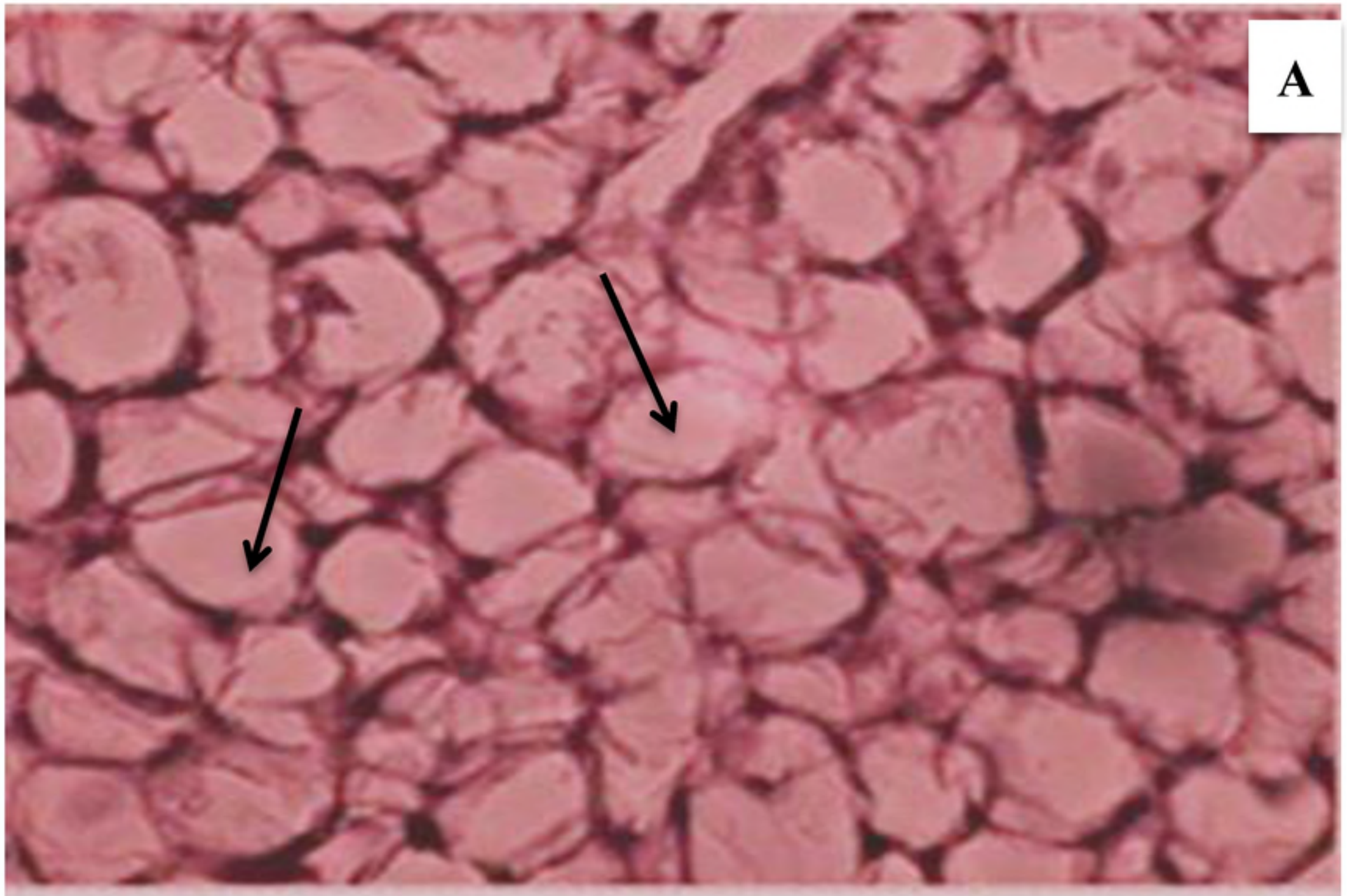
591 (A) Sham control rats, (B) Control vehicle (PEG) rats, (C) Control BER-chloride, (D)  
592 HFD-fed rats and (E) HFD-fed rats and treated with BER-chloride ( $X = 400$ ).

593 **Fig 3.** Schematic diagram for the effect of BER-chloride on insulin signaling in HFD-  
594 insulin resistance induced rats.

595 Blue arrows  means inhibition and violet arrows  means activation.

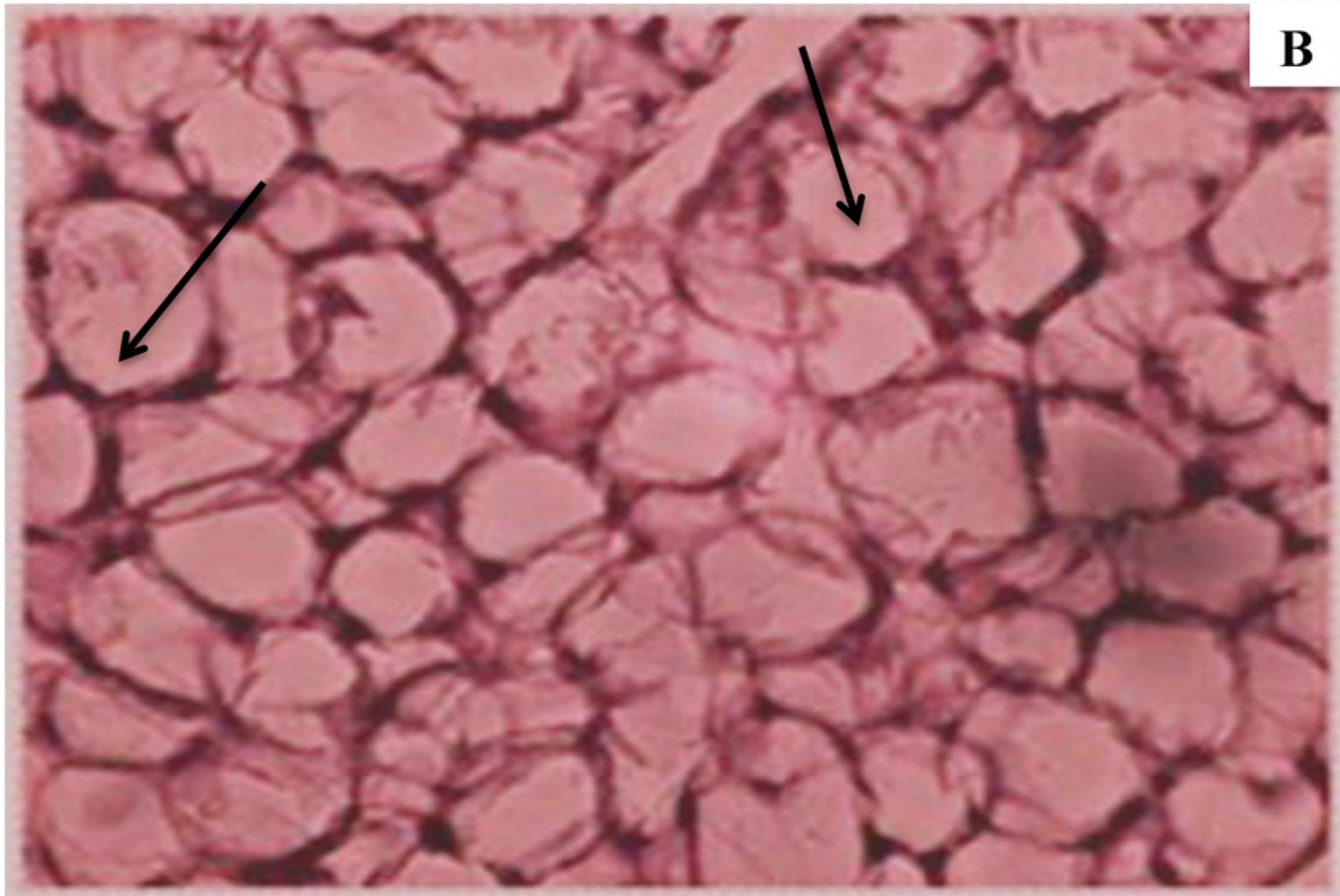


Figure

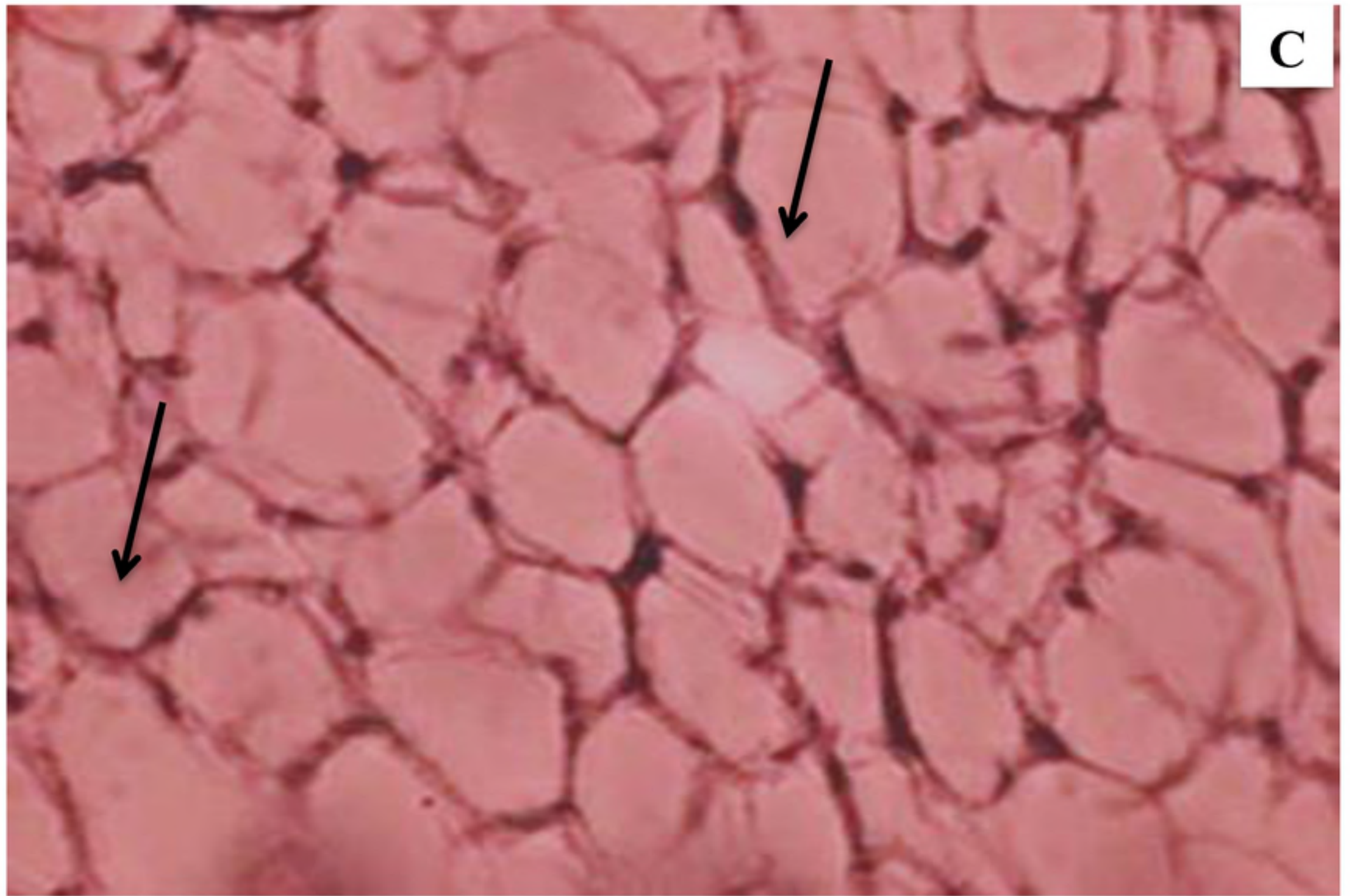


Figure



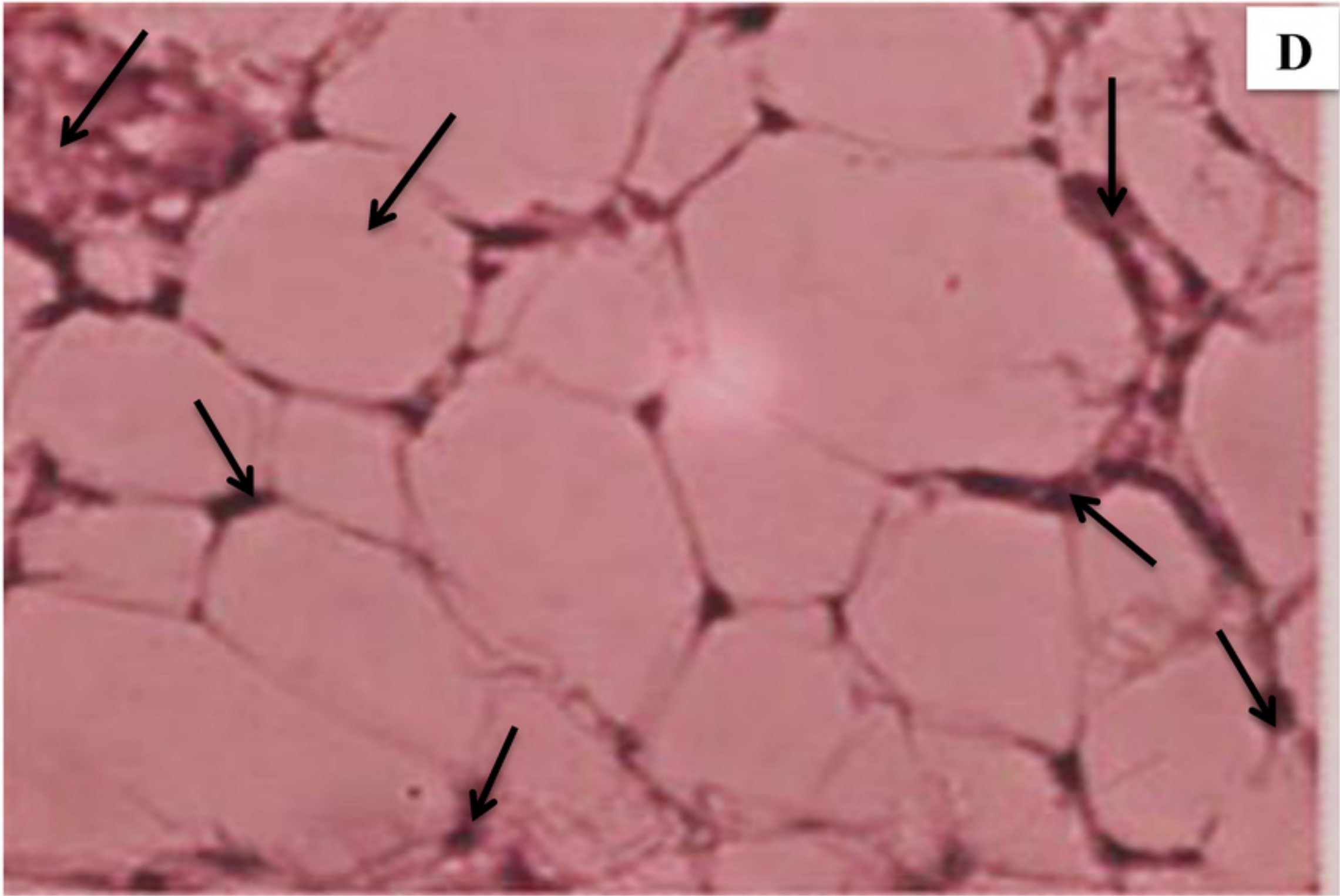


Figure

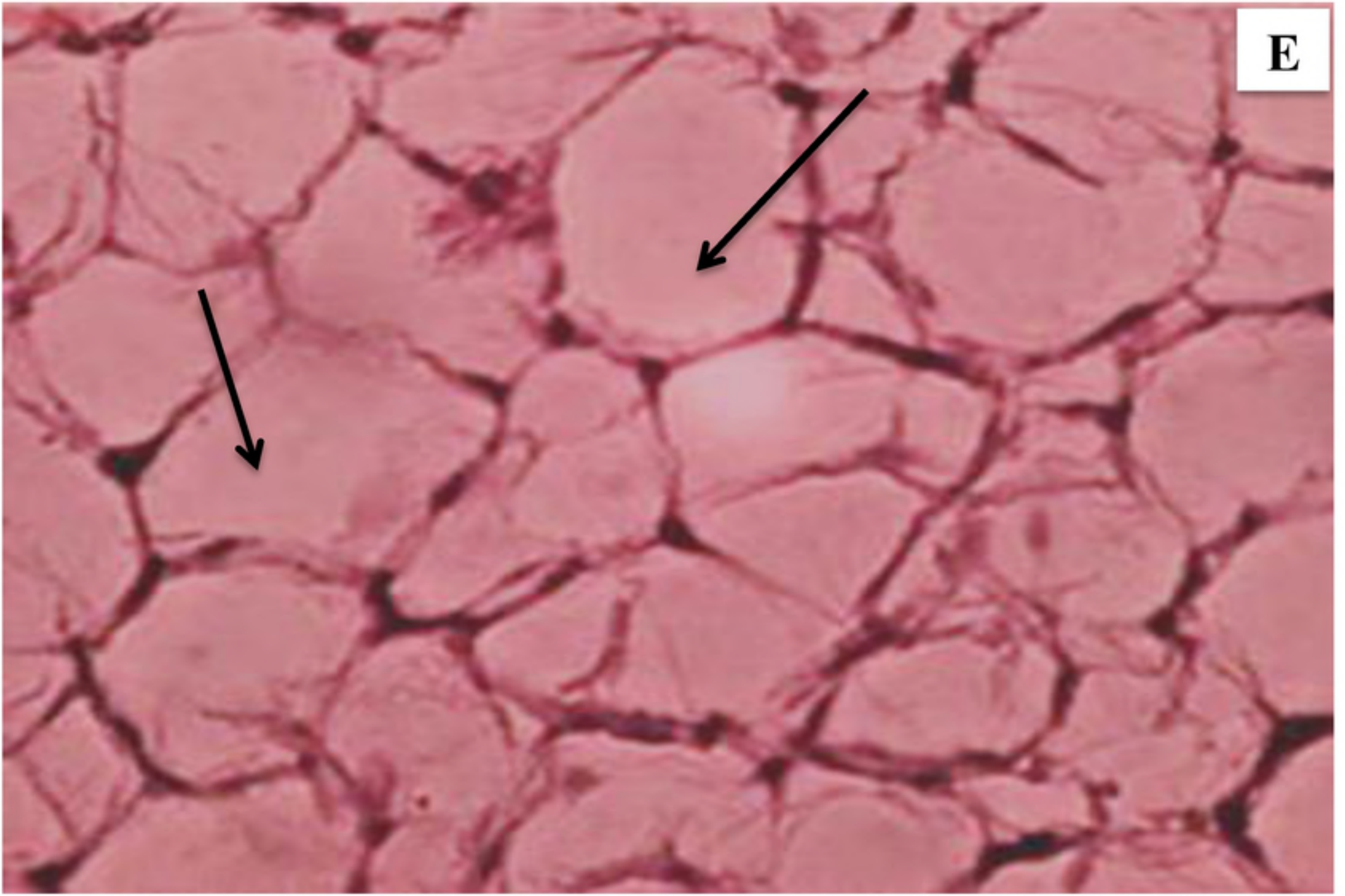


Figure



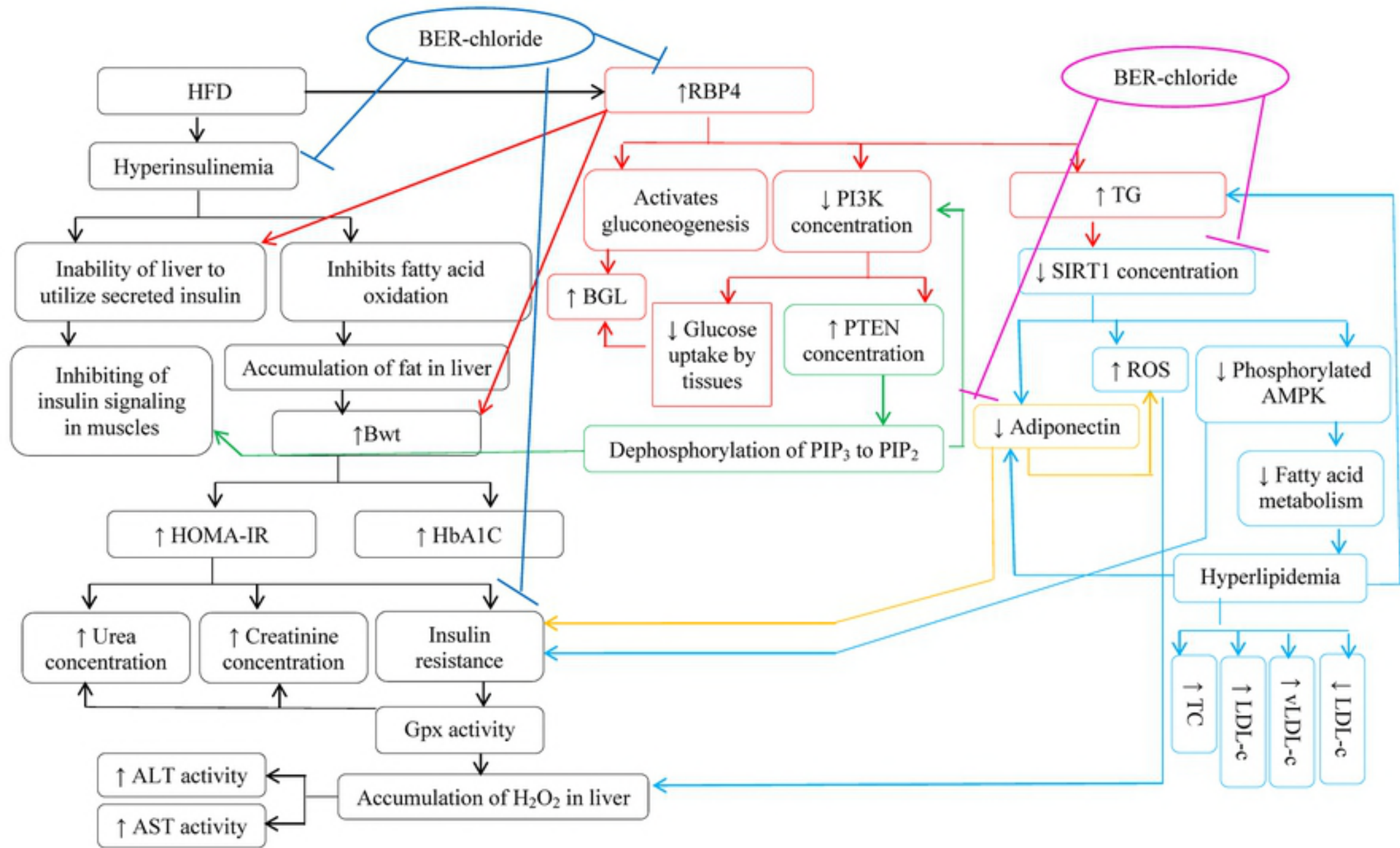


Figure



Figure





Figure