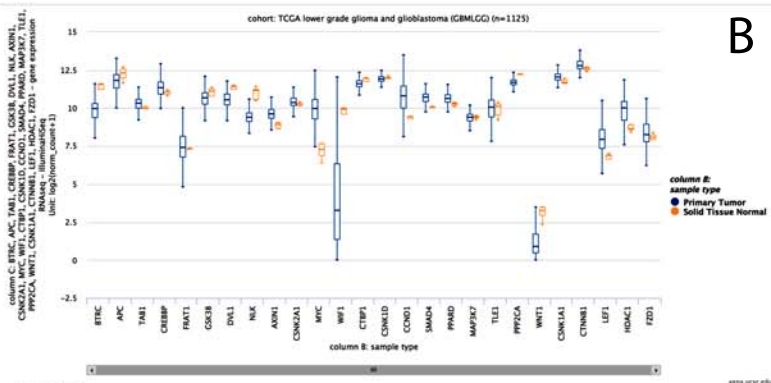


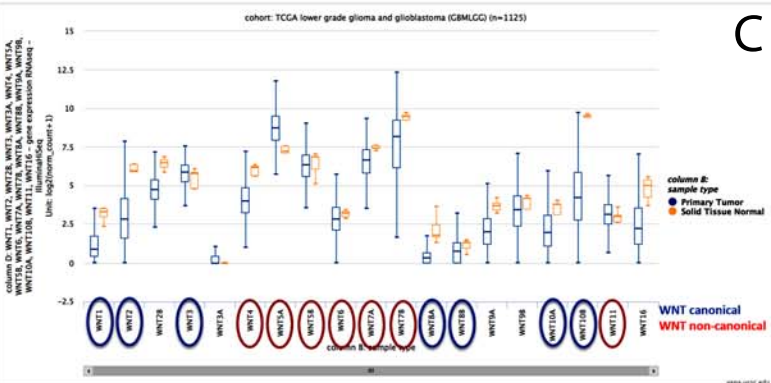
A COSMIC Database

Gene	Cases with mutations	Number of analyzed GBMs	% of mutations
WNT2	6	922	0,650759219
WNT2B	2	922	0,21691974
WNT2B_ENST00000369686	1	902	0,110864745
WNT3	1	922	0,10845987
WNT5B_ENST00000397196	1	902	0,110864745
WNT8A	1	922	0,10845987
WNT8B_ENST00000343737	1	902	0,110864745
WNT9A	3	922	0,32537961
WNT9B	2	922	0,21691974
WNT9B_ENST00000575372	2	902	0,22172949
WNT10A	2	922	0,21691974
WNT10B	1	922	0,10845987
WNT11	1	922	0,10845987
SUM WNT			2,615061252
FZD1	3	922	0,32537961
FZD3	3	922	0,32537961
FZD5	1	922	0,10845987
FZD6	3	923	0,325027086
FZD7	1	922	0,10845987
FZD8	3	902	0,332594235
FZD9	4	922	0,433839479
FZD10	5	922	0,542299349
SUM FZD			2,501439108
ASCL1	1	922	0,10845987
DVL2	2	922	0,21691974
FOXM1	5	922	0,542299349
Genes without mutations in GBMs			
WNT1	0	922	
WNT3A	0	922	
WNT3A_ENST00000366753	0	902	
WNT4	0	922	
WNT4_ENST00000374655	0	902	
WNT5A	0	922	
WNT5B	0	922	
WNT6	0	922	
WNT6_ENST00000233948	0	902	
WNT7A	0	922	
WNT7B	0	922	
WNT8B	0	922	
WNT16	0	922	
WNT16_ENST00000361301	0	902	
FZD2	0	922	
FZD4	0	922	



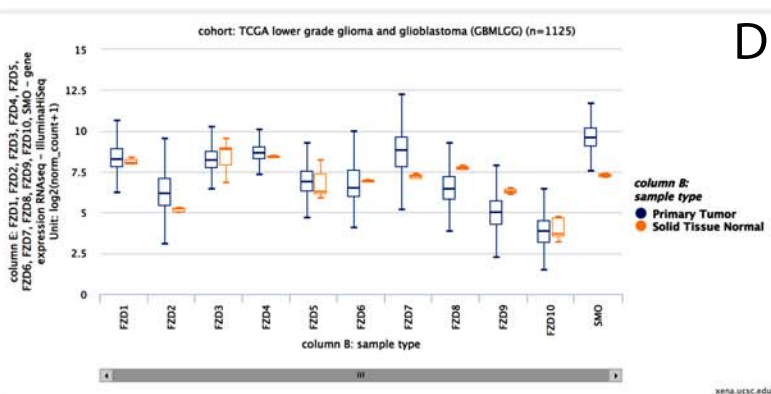
Welch's t-test

BTRC t = -4.799 p = 0.008313	APC t = -2.037 p = 0.04003	TAB1 t = 0.8518 p = 0.4414	CREBBP t = 4.042 p = 0.009591	FRAT1 t = 1.549 p = 0.1892	GSK3B t = -1.270 p = 0.2716	DVL1 t = 15.32 p = 0.00001040
NLK t = -8.926 p = 0.0007450	AXIN1 t = 2.989 p = 0.03962	CSNK2A1 t = 2.677 p = 0.04488	MYC t = 6.296 p = 0.003012	WIF1 t = -5.076 p = 0.006803	CTBP1 t = -5.677 p = 0.003085	CSNK1D t = -0.7610 p = 0.4874
CCND1 t = 4.926 p = 0.006881	SMAD4 t = 8.597 p = 0.0005964	PPAR4 t = 7.193 p = 0.0009659	MAP3K7 t = -0.6991 p = 0.5226	TLE1 t = 0.3668 p = 0.7315	PPP2CA t = -6.207 p = 0.003009	
WNT1 t = -4.209 p = 0.01336	CSNK1A1 t = 5.543 p = 0.004005	CTNNB1 t = 4.675 p = 0.006656	LEF1 t = 7.816 p = 0.001002	HDAC1 t = 4.405 p = 0.01068	FZD1 t = 2.547 p = 0.05957	



Welch's t-test

WNT1 t = -4.209 p = 0.01336	WNT2 t = -8.086 p = 0.0009206	WNT2B t = -10.12 p = 0.0002710	WNT3 t = 1.105 p = 0.3291	WNT3A t = 13.50 p = 0.000	WNT4 t = -11.94 p = 0.00006337	WNT5A t = 6.866 p = 0.001762	WNT5B t = -0.3102 p = 0.7715	WNT6 t = -2.360 p = 0.05761
WNT7A t = -4.725 p = 0.007457	WNT7B t = -3.700 p = 0.01734	WNT8A t = -4.806 p = 0.008486	WNT8B t = -1.705 p = 0.1587	WNT9A t = -9.615 p = 0.0002432	WNT9B t = -0.1077 p = 0.9193	WNT10A t = -2.320 p = 0.07898	WNT10B t = -13.69 p = 0.00008213	WNT11 t = 1.062 p = 0.3412
							WNT16 t = -6.564 p = 0.001849	



Welch's t-test

FZD1 t = 2.547 p = 0.05957	FZD2 t = 7.873 p = 0.0003746	FZD3 t = -0.4067 p = 0.7048	FZD4 t = 1.944 p = 0.1212	FZD5 t = 0.5511 p = 0.6105
FZD6 t = 0.2234 p = 0.8329	FZD7 t = 11.55 p = 0.00001613	FZD8 t = -11.42 p = 0.00001797	FZD9 t = -16.90 p = 2.315e-7	FZD10 t = -0.3254 p = 0.7606
				SMO t = 19.65 p = 0.000007692

B

C

D