

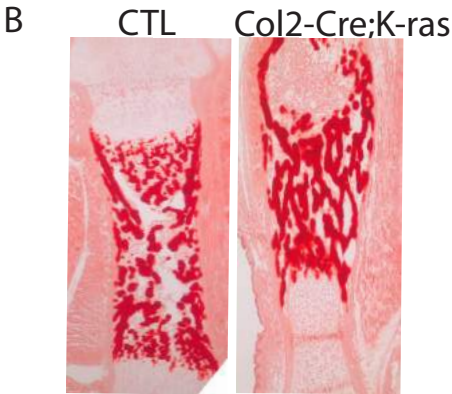
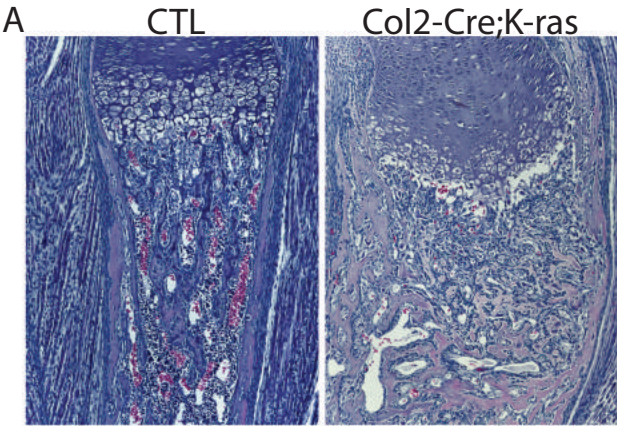
Supplemental Figure Legends

Supplemental Figure 1. *Col2-Cre;K-ras^{G12D}* mice display similar bone defects to *Prx1-Cre;K-ras^{G12D}* mutant animals. (A) H&E sections and (B) Alizarin Red staining of representative long bones from control versus *Col2-Cre;K-ras^{G12D}* mice at P1.

Supplemental Figure 2. Long bone defects in E16.5 *Prx1-Cre; K-ras^{G12D}* mutant embryos. H&E sections of representative humeri of control and *Prx1-Cre;K-ras^{G12D}* mice.

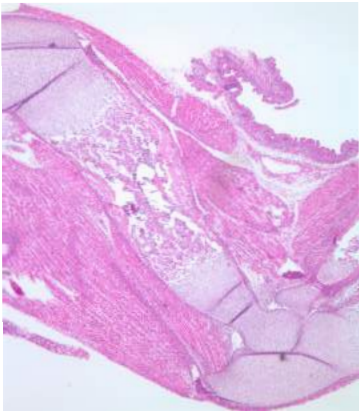
Supplemental Figure 3. Vehicle injections during embryonic development does not affect the bone phenotypes in *Prx1-Cre;K-ras^{G12D}* mutants. Histological analysis of representative long bones from E18.5 control (CTL) and *Prx1-Cre;K-ras^{G12D}* mutant littermate embryos after vehicle injections during the indicated time windows indicates no effect on the phenotype.

Supplementary Figure 1

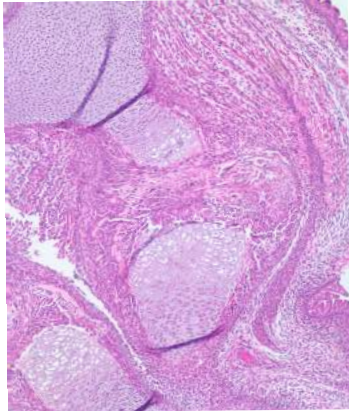


Supplementary Figure 2

CTL



K-ras



Supplementary Figure 3

