

Protein expression of prenyltransferase subunits in postmortem schizophrenia dorsolateral prefrontal cortex

Anita L. Pinner*¹, Toni M. Mueller¹, Khaled Alganem², Robert McCullumsmith², and James H. Meador-Woodruff¹

¹Department of Psychiatry and Behavioral Neurobiology, University of Alabama at Birmingham, Birmingham, AL, 35294-0021, USA

²Department of Neurosciences, University of Toledo, Toledo, OH, 43614-2598, USA

*Corresponding author: Anita Pinner, University of Alabama at Birmingham, Department of Psychiatry and Behavioral Neurobiology, 1719 6th Avenue South, CIRC593, Birmingham, AL 35294-0021, USA; Tel: 205 996-6212; Fax: 205 934-2500; Email:

anitapinner@uabmc.edu

Abstract

The pathophysiology of schizophrenia includes altered neurotransmission, dysregulated intracellular signaling pathway activity, and abnormal dendritic morphology that contribute to deficits of synaptic plasticity in the disorder. These processes all require dynamic protein-protein interactions at cell membranes. Lipid modifications target proteins to membranes by increasing substrate hydrophobicity by the addition of a fatty acid or isoprenyl moiety, and recent evidence suggests that dysregulated post-translational lipid modifications may play a role in multiple neuropsychiatric disorders including schizophrenia. Consistent with these emerging findings, we have recently reported decreased protein S-palmitoylation in schizophrenia. Protein prenylation is a lipid modification that occurs upstream of S-palmitoylation on many protein substrates, facilitating membrane localization and activity of key intracellular signaling proteins. Accordingly, we hypothesized that in addition to palmitoylation, protein prenylation may be abnormal in schizophrenia. To test this, we assayed protein expression of the five prenyltransferase subunits (FNTA, FNTB, PGGT1B, RABGGTA, and RABGGTB) in postmortem dorsolateral prefrontal cortex from patients with schizophrenia and paired comparison subjects (N = 13 pairs). We found decreased levels of FNTA (14%), PGGT1B (13%), and RABGGTB (8%) in schizophrenia. To determine if upstream or downstream factors may be driving these changes, we also assayed protein expression of the isoprenoid synthases FDPS and GGPS1, and prenylation-dependent processing enzymes REC and ICMT. We found these upstream and downstream enzymes to have normal protein expression. To rule out effects from chronic antipsychotic treatment, we assayed FNTA, PGGT1B and RABGGTB in cortex from rats treated long-term with haloperidol decanoate, and found no change in the expression of these proteins. Given the role prenylation plays in localization of key signaling proteins found at the synapse, these data offer a potential mechanism underlying abnormal protein-protein interactions and protein localization in schizophrenia.

Introduction

Altered neurotransmission is central to the pathophysiology of schizophrenia. Normal neurotransmission depends on regulation of receptor membrane localization and protein-protein interactions that regulate intracellular signaling activity.^{1, 2} Post-translational modifications (PTMs), including lipid modification of proteins, have been shown to regulate neuronal functions and intracellular pathways by facilitating dynamic protein-protein interactions at membranes.³⁻⁵ Altered post translational lipid modifications may mechanistically contribute to intracellular signaling abnormalities reported in schizophrenia.⁶

Post-translational lipid modifications include the enzymatic addition of an isoprenyl group such as farnesyl or geranylgeranyl (collectively called prenylation), or a fatty acid moiety, such as a palmitoyl or myristoyl group. Dysregulated lipid modifications of proteins have been implicated in neuropsychiatric disorders, including Alzheimer's disease,⁷ Huntington's disease,^{8, 9} and in a mouse model of schizophrenia.¹⁰ Abnormal lipid modifications have been reported in schizophrenia in dorsolateral prefrontal cortex (DLPFC), including decreased protein S-palmitoylation¹¹ and altered levels of a key N-myristoylated protein.¹² While S-palmitoylation, N-myristoylation, and prenylation pathways can act independently, in some cases combinations of these lipid modifications are necessary for efficient membrane targeting, protein-protein interactions, and conformational dynamics of essential intracellular signaling proteins such as heterotrimeric G-proteins and small monomeric GTPases.^{4, 5, 13-16} Abnormal G-protein signaling has been implicated in schizophrenia,^{6, 17-19} and heterotrimeric G-protein subunits have been shown to require modifications by each one of these lipid modifications.²⁰⁻²⁴ Dysregulated prenylation could be a mechanism contributing to this illness via altered G-protein signaling.

Prenylation involves the addition of either farnesyl or geranylgeranyl isoprenoid group(s). Three prenylation enzymes are responsible for the thioether linkage of isoprenoid moieties—15-carbon farnesyl

pyrophosphate (FPP) or 20-carbon geranylgeranyl pyrophosphate (GGPP)—to C-terminal cysteines: farnesyl transferase (FTase), geranylgeranyl transferase I (GGTase I), and geranylgeranyl transferase II (GGTase II).^{25, 26} Each enzyme is comprised of an α and β subunit. FTase and GGTase I have the same α subunit, FNTA, but have different β subunits: FNTB is the FTase β subunit, and PGGT1B the β subunit of GGTase I. GGTase II, which specifically geranylgeranylates Rab family proteins, is made of the RABGGTA and RABGGTB subunits.²⁶ The addition of isoprenyl moieties leads to increased protein hydrophobicity, which facilitates targeted localization to membranes, lateral movement within membranes, and substrate conformational changes that can influence dynamic protein-protein interactions.^{15, 16}

Given that prenylation occurs upstream of S-palmitoylation,²⁷ which is decreased in schizophrenia,¹¹ and facilitates the membrane targeting and resulting protein-protein interactions of key molecules associated with dynamic intracellular signaling,^{4, 5, 28} we hypothesized that farnesylation and/or geranylgeranylation is also dysregulated in schizophrenia. Our own bioinformatic analysis of publically available datasets reflects a pattern of transcript expression differences for prenylation-associated enzymes and substrates in schizophrenia that further suggests dysregulation of this pathway. Accordingly, we assayed protein expression of the prenyltransferases subunits FNTA, FNTB, PGGT1B, RABGGTA and RABGGTB, in DLPFC from schizophrenia and matched comparison subjects. To further characterize the regulation of this modification, we also assayed protein expression of the upstream isoprenoid synthases farnesyl diphosphate synthase (FDPS) and geranylgeranyl pyrophosphate synthase (GGPS1), and the prenylation-dependent downstream processing enzymes Ras-converting enzyme (RCE) and isoprenylcysteine carboxyl methyltransferase (ICMT) in the same subjects. To identify potential effects of antipsychotic treatment, we measured enzymes that were found altered in schizophrenia in cortex from rats chronically treated with haloperidol decanoate.

Methods and Materials

Human subjects

Samples of DLPFC (Brodmann Area (BA) 9/46) from schizophrenia and matched comparison subjects (N = 13 pairs) were obtained from the Mount Sinai School of Medicine (MSSM) NIH Brain and Tissue Repository (Table 1) as previously described.^{12, 29} Neuropathological examination of all subjects was conducted, and each subject's medical history was reviewed extensively; detailed information regarding assessment is available <http://icahn.mssm.edu/research/labs/neuropathology-and-brain-banking/neuropathology-evaluation>. Subjects with previous drug or alcohol abuse, coma greater than 6 hours, suicide, or any evidence of neurodegenerative disease were excluded from the study. Next of kin consent was obtained for each subject. Subjects with schizophrenia all met DSM-III-R criteria, diagnosed by at least two clinicians, with documented onset of psychosis prior to 40 years of age, and a minimum of 10 years hospitalization for the illness. Comparison

Table 1. Paired Subject Demographics

Pair	Subject	Sex/Age	pH	PMI (hrs)
1	Comparison	M/95	6.53	4.1
	Schizophrenia	M/97	6.5	9.3
2	Comparison	F/66	6.85	22.6
	Schizophrenia	F/62	6.74	23.7
3	Comparison	F/73	6.98	3
	Schizophrenia	F/70	6.51	13.2
4	Comparison	M/70	6.1	6.7
	Schizophrenia	M/70	6.35	7.2
5	Comparison	F/74	6.32	4.8
	Schizophrenia	F/75	6.49	21.5
6	Comparison	M/73	6.17	14.9
	Schizophrenia	M/73	6.5	7.9
7	Comparison	F/80	6.63	3.8
	Schizophrenia	F/81	6.67	15.1
8	Comparison	F/79	6.38	5
	Schizophrenia	F/77	6.01	26.1
9	Comparison	M/76	6.32	10.1
	Schizophrenia	M/80	6.37	9.7
10	Comparison	F/85	7.27	2.9
	Schizophrenia	F/84	6.8	15.4
11	Comparison	M/93	6.28	8
	Schizophrenia	M/92	6.67	21.9
12	Comparison	F/89	6.72	4.2
	Schizophrenia	F/89	6.2	17.7
13	Comparison	M/75	6.43	2.3
	Schizophrenia	M/78	6.64	9.6
Subject Summary				
Comparison (N=13)		79.1 ± 8.9	6.5 ± 0.3	7.1 ± 5.8
Schizophrenia (N=13)		79.1 ± 9.7	6.5 ± 0.2	15.3 ± 6.5
Abbreviations: postmortem interval (PMI), hours (hrs), female (F), male (M).				

subjects were similarly evaluated and free of any neurological or psychiatric conditions. Based on our previous protein postmortem studies, power analysis determined this sample size was adequate to detect a moderate effect size ≥ 0.3 ($\alpha = 0.05$, $\beta = 0.2$). We performed data analyses assuming equal variance as the subjects were matched pairs. Experimenters were blinded until data analyses.

Antipsychotic Treated Rats

Animal studies and procedures were performed in accordance to institutional

guidelines and approved by the Institutional Animal Care and Use Committee of the University of Alabama at Birmingham. Twenty male Sprague-Dawley rats (250g) were housed in pairs during the 9 month course of study. Haloperidol deconate (28.5mg/kg, N=10) or vehicle (sesame oil, N=10) was administered every three weeks via intramuscular injection, for a total of 12 injections.^{30, 31} Animals were sacrificed by rapid decapitation, and the brains were harvested immediately. The right frontal cortex was dissected on wet ice, snap frozen in liquid nitrogen, and stored at -80°C . Sample sizes were determined by previous studies, experimenters were blinded until data analyses, and sample groups were randomized.

Tissue Homogenization

Tissue samples from both human subjects and rats were homogenized in ice cold homogenization buffer (5mM Tris-HCl pH 7.5, 0.32M sucrose) supplemented with protease and phosphatase inhibitor tablets (Complete Mini, EDTA-free and PhosSTOP; Roche Diagnostics, Mannheim, Germany), using A Power Gen 125 (ThermoFisher Scientific, Rockford, Illinois) homogenizer at speed setting 5 for 60 seconds. A BCA protein assay kit (ThermoFisher Scientific) was used to determine protein concentration, and samples were stored at -80°C .

Western Blot Analysis

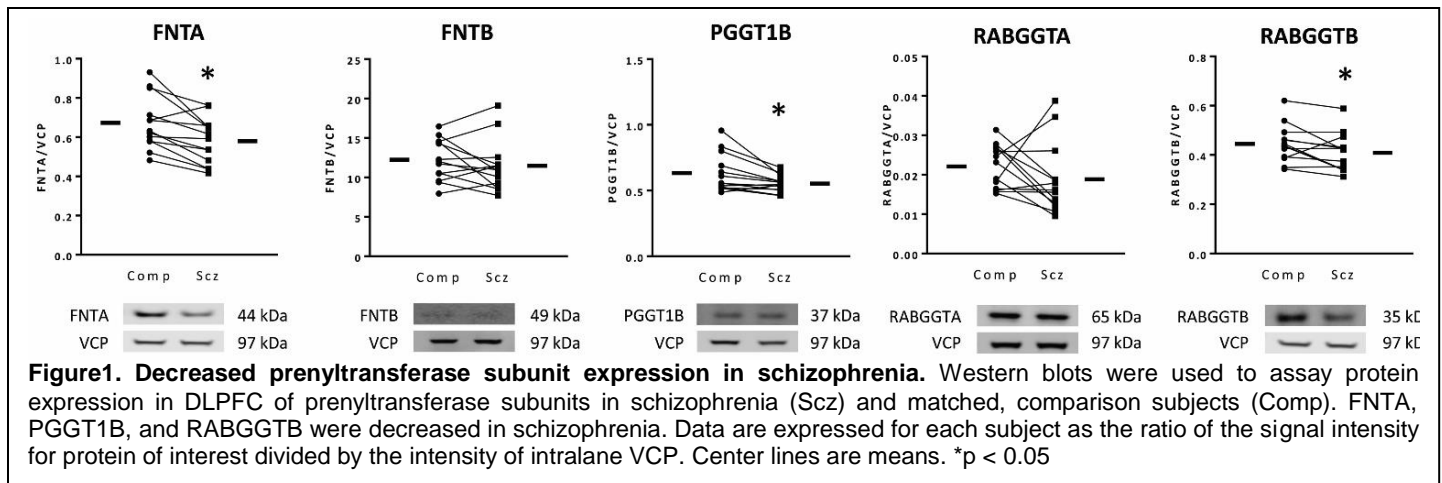
Thawed homogenates were denatured at 70°C for 10min under reducing conditions, and stored at -20°C . Duplicate samples were loaded onto NuPAGE 4-12% Bis-Tris gels (Invitrogen, Carlsbad, CA) and transferred to nitrocellulose membranes using a BioRad Semi-Dry Transblotter (Hercules, CA). Membranes were incubated in Odyssey blocking buffer (LI-COR, Lincoln, NE) for 1 hr at room temperature (RT) before being probed with the primary antibody diluted in LI-COR blocking buffer with 0.1% Tween-20, using the conditions indicated in Table 2. After incubation in primary antibody, membranes were washed in cold Tris-buffered Saline + 0.05% Tween-20 (TBST) before being probed with IR-dye labeled secondary antibody diluted in LI-COR blocking buffer + 0.1% Tween-20 for 1 hr at RT. Finally, membranes were washed in cold TBST, then briefly rinsed in MilliQ water before being scanned with a LI-COR Odyssey imager. All antibodies were optimized for ideal conditions of each target protein within the linear range of detection for each assay, and ensuring the primary antibody was present in excess (Table 2). Valosin-containing protein (VCP) has been shown to be unchanged in multiple regions of schizophrenia brain^{32, 33} and was used as an intralane loading control for western blot normalization.

Data Analysis

Protein expression was determined using LI-COR Odyssey 3.0 analytical software (Lincoln, NE). Intensity values were normalized to the intralane VCP intensity value after verifying that VCP was not changed between these schizophrenia and comparison subjects, consistent with previous reports.³² Duplicate values were averaged for each subject. All dependent measures were tested for normal distribution with the D'Agostino-Pearson omnibus normality test. Normally distributed data were analyzed using two-tailed paired Student's t-tests, and Wilcoxon matched-pairs signed rank tests were used for non-normally distributed data using GraphPad Prism software (GraphPad Software, La Jolla, CA). No dependent measures were found to be associated with age, pH, or postmortem interval (PMI) using *post hoc* linear regression analyses. For all statistical tests, $\alpha = 0.05$.

Table 2. Antibodies

Target Protein	Host Species	Dilution	Incubation	Company	Catalog #
FNTA	Rabbit	1 : 1 000	16 hr 4°C	Abcam	ab109738
FNTB	Rabbit	1 : 5 000	16 hr 4°C	Abcam	ab109625
RABGGTA	Rabbit	1 : 500	16 hr 4°C	Abcam	ab118781
RABGGTB	Mouse	1 : 1 000	16 hr 4°C	Abnova	H00005876-M02
PGGT1B	Mouse	1 : 1 000	16 hr 4°C	Abnova	H00005229-M02
FDPS	Rabbit	1 : 1 000	16 hr 4°C	Abcam	ab153805
GGPS1	Rabbit	1 : 1 000	16 hr 4°C	Abcam	ab167168
RCE1	Rabbit	1 : 500	16 hr 4°C	Abcam	ab62531
CMT	Rabbit	1 : 500	16 hr 4°C	Abcam	ab80872
VCP	Mouse	1 : 25 000	1 hr RT	Abcam	ab11433
VCP	Rabbit	1 : 25 000	1 hr RT	Abcam	ab109240



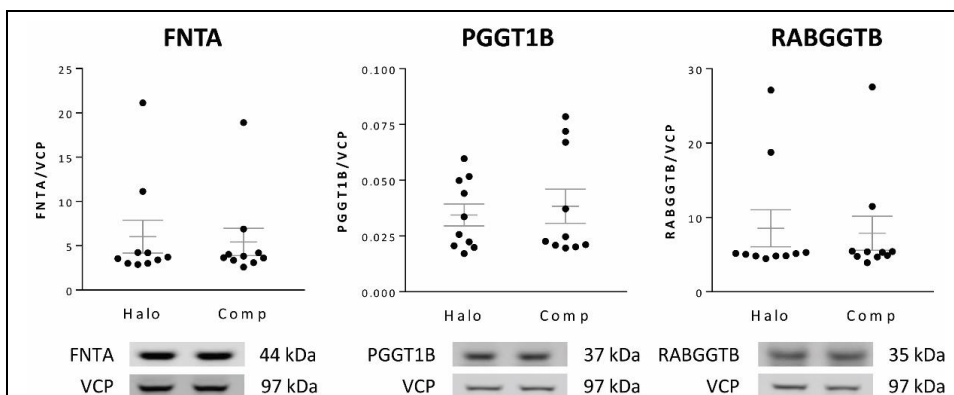
Bioinformatic Analysis

We evaluated prenylation-associated targets for patterns of differential gene expression in schizophrenia using six publically available transcriptomic datasets generated from samples from the MSSM NIH Brain and Tissue Repository. These datasets include studies in gray matter homogenates from the middle temporal area (MTA; BA 21), temporopolar area (TPA; BA 38), anterior cingulate cortex (ACC; BA 32), and DLPFC (BA 46).³⁴ Two datasets examined transcript levels in laser capture microdissected pyramidal neurons from superficial (lamina II-III) or deep (lamina V-VI) cortical layers of the DLPFC.³⁵ The data were processed and analyzed using various R packages for differential expression analysis such as edgeR, DESeq2, and limma.³⁶⁻³⁸ The datasets are then aggregated and uniquely titled for processing. To visualize patterns of differential expression, a heatmap of log2 fold change values has been constructed to present harmonized data across all of the different datasets. Harmonization was achieved using empirical cumulative probabilities based on each dataset, and final harmonized values presented as standardized values that range from -1 to 1.³⁹ The unsupervised clustering and construction of heatmaps were done using the pheatmap R package.⁴⁰

Results

Prenyltransferase subunits are abnormally expressed in schizophrenia.

We found that each prenyltransferase enzyme had decreased expression of either or both of its respective α and β subunits in schizophrenia relative to comparison subjects. The FTase and GGTase I α subunit, FNTA, was decreased 14% ($t(12) = 3.74$, $p = 0.003$). The GGTase I β subunit PGGT1B was decreased 13% ($W = -77$, $p = 0.004$) and the Rab protein-specific GGTase II β subunit RABGGTB was decreased 8% ($t(12) = 2.29$, $p = 0.04$) in schizophrenia (Figure 1). We also assayed FNTA, PGGT1B, and RABGGTB in rats chronically treated with haloperidol decanoate and found that haloperidol treatment did not affect expression of these proteins in these rats (Figure 2).



Expression of upstream isoprenoid synthases and downstream prenylation-dependent enzymes is normal in schizophrenia.

To determine if upstream lipid donor synthesis of FPP or GGPP was altered in schizophrenia, we assayed the synthases for these lipid-pyrophosphate molecules, farnesyl diphosphate synthase (FDPS) and geranylgeranyl pyrophosphate synthase (GPPS1). No differences in the expression of FDPS or GPPS1 were identified in schizophrenia (Table 3). To

Table 3. Prenylation-associated enzyme expression levels in schizophrenia and comparison subjects

	Comparison	Schizophrenia	Test statistic	p value
Prenylsynthases				
FDPS	0.649 ± 0.067	0.641 ± 0.067	<i>t</i> (12) = 0.35	0.73
GGPS1	0.194 ± 0.066	0.189 ± 0.059	<i>t</i> (12) = 0.36	0.72
Prenyltransferase subunits				
FNTA	0.673 ± 0.136	0.580 ± 0.117	<i>t</i> (12) = 3.74	0.003*
FNTB	12.24 ± 2.618	11.47 ± 3.235	W = -25	0.41
PGGT1B	0.633 ± 0.146	0.553 ± 0.063	W = -77	0.004*
RABGGTA	0.022 ± 0.006	0.019 ± 0.009	<i>t</i> (12) = 1.14	0.28
RABGGTB	0.445 ± 0.076	0.409 ± 0.078	<i>t</i> (12) = 2.29	0.04*
Prenylcysteine processing enzymes				
RCE	0.127 ± 0.038	0.119 ± 0.033	W = -11	0.74
ICMT	0.197 ± 0.061	0.188 ± 0.055	<i>t</i> (12) = 0.68	0.51

Values are reported as means ± S.D.

determine if enzymes downstream of prenyl attachment that are involved in the secondary processing of prenylproteins were altered, we measured protein expression of Ras-converting enzyme (RCE) and isoprenylcysteine carboxyl methyltransferase (ICMT) in schizophrenia and found normal expression of both (Table 3).

Transcript levels of prenylation-associated enzymes and prenylated substrates are altered in schizophrenia.

Bioinformatic analysis of transcriptomic datasets generated from samples from the MSSM NIH

Brain and Tissue Repository revealed that genes associated with prenylation demonstrate altered patterns of gene expression in schizophrenia. Genes encoding for upstream prenyl synthases, prenyltransferase subunits, prenylcysteine processing enzymes, and some GTPases (substrates of prenylation) exhibit differential expression relative to comparison subjects in one or more of the datasets evaluated (Supplementary Figure S1, Supplementary Table S1).

Discussion

Neurotransmission, synaptic plasticity, dendritic dynamics, and protein subcellular localization have all been reported to be abnormal in schizophrenia. Prenylation is a cytosolic PTM that enables many GTPases associated with these processes to correctly localize for signaling transduction.^{16, 19, 21, 26, 41-44} GTPases have been shown to require combinations of lipid modifications including S-palmitoylation, N-myristoylation, and prenylation, which facilitate membrane-dependent GTPase activity.²⁰⁻²⁴ Given that a deficit in protein S-palmitoylation has been reported in schizophrenia,⁴⁵ we hypothesized that abnormal prenylation may also contribute to altered G-protein signaling pathways implicated in the illness.^{6, 17-19} We found protein expression of FNTA, PGGT1B, and RABGGTB prenyltransferase subunits decreased in schizophrenia DLPFC relative to paired comparison subjects, changes not likely due to chronic antipsychotic treatment. Bioinformatic assessments identified patterns of differential gene expression of prenylation-associated enzymes and substrates in schizophrenia. For individual genes the direction and magnitude of differences appears to vary by brain region and cortical layer, however, identification of prenylation-associated differences across multiple datasets suggests that this functional pathway is involved in this illness. Together, these data are consistent with our previous findings of abnormal lipid modifications in schizophrenia, including abnormal S-palmitoylation and decreased expression of an N-myristoylated protein in schizophrenia DLPFC.^{11, 12}

Given that FNTA, PGGT1B, and RABGGTB were decreased, each prenyltransferase enzyme $\alpha\beta$ complex then has at least one abnormally expressed subunit, and GGTase I has reduced expression of both its α and β subunits. Previous reports demonstrated transcript-level upregulation of two of these subunits, FNTA and RABGGTB, in schizophrenia superior temporal gyrus (STG; Brodmann area 22)⁴⁶ and prefrontal cortex (Brodmann areas 9 and 10),⁴⁷ respectively. These changes reported for transcript expression are in the opposite direction of the protein expression changes identified in the current study, which might suggest that upstream or downstream regulatory molecules may also be altered in schizophrenia, or may reflect cellular compensation.

Since upstream or downstream factors could be driving changes in prenyltransferase expression, we also assayed protein expression of the isoprenoid synthases, FDPS and GGPS1, and prenylprotein processing enzymes, RCE and ICMT. FDPS and GGPS1 catalyze the production of the key intermediates in the mevalonate pathway that are the lipid donors for farnesylation and geranylgeranylation, FPP and GGPP, which are attached to proteins by their respective prenyltransferase(s).²⁶ Following cytosolic prenylation, many prenylproteins are targeted to the endoplasmic reticulum (ER), where they are subject to additional processing steps before they can ultimately be trafficked to the correct membrane destination.²⁵ For substrates of FTase and GGTase I that contain a C-terminal "CAAX" amino acid sequence (where C is cysteine, A is any aliphatic amino acid, and X is

any amino acid), RCE cleaves the AAX residues from the prenyl-cysteine, and ICMT subsequently catalyzes the methylation of the prenyl-cysteine.²⁵ These upstream and downstream enzymes, however, were not found to be differently expressed in schizophrenia DLPFC. Together, these data suggest that isoprenoid lipid donor synthesis and prenyl-cysteine modifications that occur following prenylation are normal in schizophrenia, but the actual attachment of prenyl groups to protein substrates could be impaired.

Many prenylproteins belong to the superfamily of G-proteins which play key roles in synaptic regulation. Heterotrimeric G-protein α , β , and γ subunits require lipid modifications for membrane targeting, protein interaction, and activity. G α subunits can be N-myristoylated and/or S-palmitoylated,^{14, 22, 48} and G γ subunits are prenylated.¹⁶ Prenylation is also required for some proteins involved with the regulation of Ca²⁺ signaling, spinogenesis, and synaptogenesis,^{49, 50} pathways which have been implicated in schizophrenia.^{18, 43, 51, 52}

Many members of the Ras protein superfamily of small GTPases, which include Ras, Rho, Rab, Rap, Arf, Ran, and Rheb subfamilies, are also prenylated.⁴ The Rab and Rho protein subfamilies regulate membrane trafficking and cytoskeletal dynamics, as well as spatiotemporal aspects of vesicular recycling within the cell.⁵³ These proteins require prenylation for correct interactions with their effector proteins at cell membranes.^{54, 55} Ras subfamily GTPases are involved in signal transduction and the regulation of gene expression⁵⁶ and recent studies suggest Ras family protein signaling plays a role in memory formation.⁵⁷ Given that pharmacological inhibition of Ras farnesylation prevents signal transduction to downstream targets in cell culture,⁵⁸ decreased expression of functional FTases could inhibit the interaction of Ras proteins with their effectors and contribute to altered intracellular signaling and working memory in schizophrenia. Age-related downregulation of PGGT1B in mice is associated with decreased membrane-associated Rho-GTPases involved in synaptic plasticity. Inhibition of GGTase I *in vitro* leads to decreased protein levels of synaptophysin and GAP-43,⁵⁹ and these proteins are also decreased in schizophrenia brain.⁶⁰⁻⁶² Studies using statins, which inhibit the activity of the mevalonate pathway that produces FPP and GGPP, and prenylation-specific inhibitors in neuronal cultures, have reported decreased dendritic arborization^{63, 64} and increased axonal growth.^{65, 66} These reports emphasize that morphological abnormalities can arise from altered prenylation and suggest one potential mechanism contributing to dendritic spine abnormalities in schizophrenia brain.^{43, 67}

Often the isoprenyl PTM by itself is not sufficient to maintain a strong membrane association, and many prenylated proteins require a second signal for membrane localization. This second signal is typically the addition of a palmitoyl group or the presence of a polybasic domain.^{4, 68} We have previously reported a deficit of protein S-palmitoylation in schizophrenia¹¹ and it is likely that the subset of proteins which require both prenylation and S-palmitoylation are more susceptible to dysfunction if both of these pathways are impaired. Some members of the Ras subfamily are known to be both prenylated and S-palmitoylated, with prenylation occurring upstream of S-palmitoylation.^{4, 27, 28} Our prior report of decreased S-palmitoylation identified a widespread decrease of S-palmitoylation across many proteins, including Ras, but did not identify alterations in the expression levels of enzymes that attach or cleave palmitoyl groups that would explain the reduction.¹¹ Our current finding of reduced prenyltransferase expression suggests that defective prenylation of Ras could potentially prevent the appropriate S-palmitoylation of these molecules, consistent with the findings of our previous study. If this is indeed the case, altered Ras lipidation might impair correct intracellular localization and/or signaling of these small GTPases. Deficits in DLPFC function, circuitry and working memory have been repeatedly implicated in schizophrenia.^{69, 70} Considering Ras family signaling contributes to memory formation,⁵⁷ abnormal lipid modifications in this brain region may contribute to memory-associated deficits in the disorder.

Postmortem brain studies in schizophrenia inherently have limitations. We evaluated gene expression differences and measured protein expression levels in aged subjects, and these data may not generalize to different age groups or earlier stages of the illness. Our protein study is also restricted to the DLPFC, thus additional brain regions will need to be examined to determine if these findings are widespread or brain region-specific. Furthermore, given that some enzymes measured in this study demonstrate cell type-specific patterns of expression, prenylation pathway alterations identified here may preferentially impact a distinct subpopulation of cells and cell-type specific protein measures will be necessary to investigate this possibility. Another major limitation of schizophrenia postmortem studies is that chronic antipsychotic treatment may affect expression of some proteins independent of the disorder. To rule out potential effects of long-term antipsychotic use, we assayed these proteins in frontal cortex of rats chronically treated with haloperidol decanoate. We did not find any effects of long-term haloperidol treatment on protein levels of FNTA, PGGT1B, or RABGGTB, which suggests that reduced prenyltransferase subunit expression identified in schizophrenia is likely due to the illness and not a result of chronic antipsychotic treatment. However, it is important to note that the haloperidol studies were not performed in an animal model of schizophrenia, and potential interactions between disease

pathophysiology and long-term antipsychotic use that may influence protein prenylation cannot be completely ruled out.

In summary, we found decreased protein expression of the prenyltransferase subunits FNTA, PGGT1B, and RABGGTB in schizophrenia DLPFC as well as evidence from a bioinformatic analysis of differential gene expression of prenylation-associated genes across multiple brain regions and cortical layers. These data are consistent with other evidence of abnormal lipid modifications in schizophrenia^{11, 12} and suggest a potential mechanism for our report of reduced Ras S-palmitoylation in the face of normal palmitoyltransferase expression. Because of its importance in G protein signaling and small GTPase activity, abnormal prenylation is also a potential mechanism underlying altered intracellular signaling, dendritic dynamics, and subcellular protein localization previously reported in schizophrenia. Decreased protein expression of these prenyltransferase subunits could contribute to many facets of the pathophysiology of schizophrenia by its important role in multiple cell biological processes.

Acknowledgements

The authors gratefully acknowledge Dr. Rosalinda Roberts and the Alabama Brain Collection for providing materials used to optimize conditions used in this study.

Conflict of Interest Statement

All authors declare that they have no conflicts of interest.

References

1. Hamm HE. The many faces of G protein signaling. *The Journal of biological chemistry* 1998; 273(2): 669-672.
2. Ferguson SS. Evolving concepts in G protein-coupled receptor endocytosis: the role in receptor desensitization and signaling. *Pharmacological reviews* 2001; 53(1): 1-24.
3. Resh MD. Trafficking and signaling by fatty-acylated and prenylated proteins. *Nature chemical biology* 2006; 2(11): 584-590.
4. Resh MD. Covalent lipid modifications of proteins. *Current biology: CB* 2013; 23(10): R431-435.
5. Resh MD. Palmitoylation of ligands, receptors, and intracellular signaling molecules. *Science's STKE: signal transduction knowledge environment* 2006; 2006(359): re14.
6. Mirnics K, Middleton FA, Stanwood GD, Lewis DA, Levitt P. Disease-specific changes in regulator of G-protein signaling 4 (RGS4) expression in schizophrenia. *Molecular psychiatry* 2001; 6(3): 293-301.
7. Hottman DA, Li L. Protein prenylation and synaptic plasticity: implications for Alzheimer's disease. *Molecular neurobiology* 2014; 50(1): 177-185.
8. Yanai A, Huang K, Kang R, Singaraja RR, Arstikaitis P, Gan L, et al. Palmitoylation of huntingtin by HIP14 is essential for its trafficking and function. *Nature neuroscience* 2006; 9(6): 824-831.
9. Singaraja RR, Huang K, Sanders SS, Milnerwood AJ, Hines R, Lerch JP, et al. Altered palmitoylation and neuropathological deficits in mice lacking HIP14. *Human molecular genetics* 2011; 20(20): 3899-3909.
10. Mukai J, Dhillia A, Drew LJ, Stark KL, Cao L, MacDermott AB, et al. Palmitoylation-dependent neurodevelopmental deficits in a mouse model of 22q11 microdeletion. *Nature neuroscience* 2008; 11(11): 1302-1310.
11. Pinner AL, Tucholski J, Haroutunian V, McCullumsmith RE, Meador-Woodruff JH. Decreased protein S-palmitoylation in dorsolateral prefrontal cortex in schizophrenia. *Schizophrenia research* 2016; 177(1-3): 78-87.
12. Pinner AL, Haroutunian V, Meador-Woodruff JH. Alterations of the myristoylated, alanine-rich C kinase substrate (MARCKS) in prefrontal cortex in schizophrenia. *Schizophrenia research* 2014; 154(1-3): 36-41.
13. Buss JE, Mumby SM, Casey PJ, Gilman AG, Sefton BM. Myristoylated alpha subunits of guanine nucleotide-binding regulatory proteins. *Proceedings of the National Academy of Sciences of the United States of America* 1987; 84(21): 7493-7497.
14. Chen CA, Manning DR. Regulation of G proteins by covalent modification. *Oncogene* 2001; 20(13): 1643-1652.
15. Escriba PV, Wedegaertner PB, Goni FM, Vogler O. Lipid-protein interactions in GPCR-associated signaling. *Biochimica et biophysica acta* 2007; 1768(4): 836-852.
16. Higgins JB, Casey PJ. The role of prenylation in G-protein assembly and function. *Cellular signalling* 1996; 8(6): 433-437.

17. Bychkov ER, Ahmed MR, Gurevich VV, Benovic JL, Gurevich EV. Reduced expression of G protein-coupled receptor kinases in schizophrenia but not in schizoaffective disorder. *Neurobiology of disease* 2011; 44(2): 248-258.
18. Catapano LA, Manji HK. G protein-coupled receptors in major psychiatric disorders. *Biochimica et biophysica acta* 2007; 1768(4): 976-993.
19. Datta D, Arion D, Corradi JP, Lewis DA. Altered Expression of CDC42 Signaling Pathway Components in Cortical Layer 3 Pyramidal Cells in Schizophrenia. *Biological psychiatry* 2015.
20. Casey PJ. Lipid modifications of G proteins. *Current opinion in cell biology* 1994; 6(2): 219-225.
21. Casey PJ, Moomaw JF, Zhang FL, Higgins YB, Thissen JA. Prenylation and G protein signaling. *Recent progress in hormone research* 1994; 49: 215-238.
22. Wedegaertner PB, Wilson PT, Bourne HR. Lipid modifications of trimeric G proteins. *The Journal of biological chemistry* 1995; 270(2): 503-506.
23. Milligan G, Parenti M, Magee AI. The dynamic role of palmitoylation in signal transduction. *Trends in biochemical sciences* 1995; 20(5): 181-187.
24. McCallum JF, Wise A, Grassie MA, Magee AI, Guzzi F, Parenti M, et al. The role of palmitoylation of the guanine nucleotide binding protein G11 alpha in defining interaction with the plasma membrane. *The Biochemical journal* 1995; 310 (Pt 3): 1021-1027.
25. Clarke S. Protein isoprenylation and methylation at carboxyl-terminal cysteine residues. *Annual review of biochemistry* 1992; 61: 355-386.
26. Zhang FL, Casey PJ. Protein prenylation: molecular mechanisms and functional consequences. *Annual review of biochemistry* 1996; 65: 241-269.
27. Rocks O, Gerauer M, Vartak N, Koch S, Huang ZP, Pechlivanis M, et al. The palmitoylation machinery is a spatially organizing system for peripheral membrane proteins. *Cell* 2010; 141(3): 458-471.
28. Resh MD. Targeting protein lipidation in disease. *Trends in molecular medicine* 2012; 18(4): 206-214.
29. Powchik P, Davidson M, Haroutunian V, Gabriel SM, Purohit DP, Perl DP, et al. Postmortem studies in schizophrenia. *Schizophrenia bulletin* 1998; 24(3): 325-341.
30. Harte MK, Bachus SB, Reynolds GP. Increased N-acetylaspartate in rat striatum following long-term administration of haloperidol. *Schizophrenia research* 2005; 75(2-3): 303-308.
31. Kashiwara K, Sato M, Fujiwara Y, Harada T, Ogawa T, Otsuki S. Effects of intermittent and continuous haloperidol administration on the dopaminergic system in the rat brain. *Biological psychiatry* 1986; 21(7): 650-656.
32. Bauer DE, Haroutunian V, McCullumsmith RE, Meador-Woodruff JH. Expression of four housekeeping proteins in elderly patients with schizophrenia. *Journal of neural transmission* 2009; 116(4): 487-491.
33. Stan AD, Ghose S, Gao XM, Roberts RC, Lewis-Amezcuca K, Hatanpaa KJ, et al. Human postmortem tissue: what quality markers matter? *Brain research* 2006; 1123(1): 1-11.
34. Roussos P, Katsel P, Davis KL, Siever LJ, Haroutunian V. A system-level transcriptomic analysis of schizophrenia using postmortem brain tissue samples. *Archives of general psychiatry* 2012; 69(12): 1205-1213.
35. Sullivan CR, Koene RH, Hasselfeld K, O'Donovan SM, Ramsey A, McCullumsmith RE. Neuron-specific deficits of bioenergetic processes in the dorsolateral prefrontal cortex in schizophrenia. *Molecular psychiatry* 2018.
36. Robinson MD, McCarthy DJ, Smyth GK. edgeR: a Bioconductor package for differential expression analysis of digital gene expression data. *Bioinformatics* 2010; 26(1): 139-140.
37. Love MI, Huber W, Anders S. Moderated estimation of fold change and dispersion for RNA-seq data with DESeq2. *Genome Biol* 2014; 15(12): 550.
38. Ritchie ME, Phipson B, Wu D, Hu Y, Law CW, Shi W, et al. limma powers differential expression analyses for RNA-sequencing and microarray studies. *Nucleic acids research* 2015; 43(7): e47.
39. Rouillard AD, Gundersen GW, Fernandez NF, Wang Z, Monteiro CD, McDermott MG, et al. The harmonizome: a collection of processed datasets gathered to serve and mine knowledge about genes and proteins. *Database (Oxford)* 2016; 2016.
40. Kolde R. pheatmap: Pretty Heatmaps. R package version 1.0. 10 <https://www.rdocumentation.org/packages/pheatmap/versions/1.0.10.2018>.
41. Moghaddam B, Javitt D. From revolution to evolution: the glutamate hypothesis of schizophrenia and its implication for treatment. *Neuropsychopharmacology: official publication of the American College of Neuropsychopharmacology* 2012; 37(1): 4-15.

42. Mueller TM, Remedies CE, Haroutunian V, Meador-Woodruff JH. Abnormal subcellular localization of GABAA receptor subunits in schizophrenia brain. *Translational psychiatry* 2015; 5: e612.
43. Ide M, Lewis DA. Altered cortical CDC42 signaling pathways in schizophrenia: implications for dendritic spine deficits. *Biological psychiatry* 2010; 68(1): 25-32.
44. Stephan KE, Baldeweg T, Friston KJ. Synaptic plasticity and dysconnection in schizophrenia. *Biological psychiatry* 2006; 59(10): 929-939.
45. Pinner AL, Tucholski J, Haroutunian V, McCullumsmith RE, Meador-Woodruff JH. Decreased protein S-palmitoylation in dorsolateral prefrontal cortex in schizophrenia. *Schizophrenia research* 2016.
46. Bowden NA, Scott RJ, Tooney PA. Altered gene expression in the superior temporal gyrus in schizophrenia. *BMC genomics* 2008; 9: 199.
47. Maycox PR, Kelly F, Taylor A, Bates S, Reid J, Logendra R, et al. Analysis of gene expression in two large schizophrenia cohorts identifies multiple changes associated with nerve terminal function. *Molecular psychiatry* 2009; 14(12): 1083-1094.
48. Wedegaertner PB. Lipid modifications and membrane targeting of G alpha. *Biological signals and receptors* 1998; 7(2): 125-135.
49. Toliás KF, Duman JG, Um K. Control of synapse development and plasticity by Rho GTPase regulatory proteins. *Progress in neurobiology* 2011; 94(2): 133-148.
50. Cullen PJ, Lockyer PJ. Integration of calcium and Ras signalling. *Nature reviews Molecular cell biology* 2002; 3(5): 339-348.
51. Lidow MS. Calcium signaling dysfunction in schizophrenia: a unifying approach. *Brain research Brain research reviews* 2003; 43(1): 70-84.
52. Datta D, Arion D, Corradi JP, Lewis DA. Altered expression of CDC42 signaling pathway components in cortical layer 3 pyramidal cells in schizophrenia. *Biological psychiatry* 2015; 78(11): 775-785.
53. Takai Y, Sasaki T, Tanaka K, Nakanishi H. Rho as a regulator of the cytoskeleton. *Trends in biochemical sciences* 1995; 20(6): 227-231.
54. Seabra MC. Membrane association and targeting of prenylated Ras-like GTPases. *Cellular signalling* 1998; 10(3): 167-172.
55. Nishimura A, Linder ME. Identification of a novel prenyl and palmitoyl modification at the CaaX motif of Cdc42 that regulates RhoGDI binding. *Molecular and cellular biology* 2013; 33(7): 1417-1429.
56. Hancock JF. Ras proteins: Different signals from different locations. *Nat Rev Mol Cell Bio* 2003; 4(5): 373-384.
57. Ye X, Carew TJ. Small G protein signaling in neuronal plasticity and memory formation: the specific role of ras family proteins. *Neuron* 2010; 68(3): 340-361.
58. Cox AD, Garcia AM, Westwick JK, Kowalczyk JJ, Lewis MD, Brenner DA, et al. The CAAX peptidomimetic compound B581 specifically blocks farnesylated, but not geranylgeranylated or myristylated, oncogenic ras signaling and transformation. *The Journal of biological chemistry* 1994; 269(30): 19203-19206.
59. Afshordel S, Wood WG, Igbavboa U, Muller WE, Eckert GP. Impaired geranylgeranyltransferase-I regulation reduces membrane-associated Rho protein levels in aged mouse brain. *Journal of neurochemistry* 2014; 129(4): 732-742.
60. Tian SY, Wang JF, Bezchlibnyk YB, Young LT. Immunoreactivity of 43 kDa growth-associated protein is decreased in post mortem hippocampus of bipolar disorder and schizophrenia. *Neuroscience letters* 2007; 411(2): 123-127.
61. Fung SJ, Sivagnanasundaram S, Weickert CS. Lack of change in markers of presynaptic terminal abundance alongside subtle reductions in markers of presynaptic terminal plasticity in prefrontal cortex of schizophrenia patients. *Biological psychiatry* 2011; 69(1): 71-79.
62. Glantz LA, Lewis DA. Reduction of synaptophysin immunoreactivity in the prefrontal cortex of subjects with schizophrenia. Regional and diagnostic specificity. *Archives of general psychiatry* 1997; 54(10): 943-952.
63. Kim WY, Gonsiorek EA, Barnhart C, Davare MA, Engebose AJ, Lauridsen H, et al. Statins decrease dendritic arborization in rat sympathetic neurons by blocking RhoA activation. *Journal of neurochemistry* 2009; 108(4): 1057-1071.
64. Schulz JG, Bosel J, Stoeckel M, Megow D, Dirnagl U, Endres M. HMG-CoA reductase inhibition causes neurite loss by interfering with geranylgeranylpyrophosphate synthesis. *Journal of neurochemistry* 2004; 89(1): 24-32.
65. Li H, Kuwajima T, Oakley D, Nikulina E, Hou J, Yang WS, et al. Protein Prenylation Constitutes an Endogenous Brake on Axonal Growth. *Cell reports* 2016; 16(2): 545-558.

66. Pooler AM, Xi SC, Wurtman RJ. The 3-hydroxy-3-methylglutaryl co-enzyme A reductase inhibitor pravastatin enhances neurite outgrowth in hippocampal neurons. *Journal of neurochemistry* 2006; 97(3): 716-723.
67. Glausier JR, Lewis DA. Dendritic spine pathology in schizophrenia. *Neuroscience* 2013; 251: 90-107.
68. Hancock JF, Paterson H, Marshall CJ. A polybasic domain or palmitoylation is required in addition to the CAAX motif to localize p21ras to the plasma membrane. *Cell* 1990; 63(1): 133-139.
69. Lewis DA, Gonzalez-Burgos G. Neuroplasticity of neocortical circuits in schizophrenia. *Neuropsychopharmacology: official publication of the American College of Neuropsychopharmacology* 2008; 33(1): 141-165.
70. Potkin SG, Turner JA, Brown GG, McCarthy G, Greve DN, Glover GH, et al. Working memory and DLPFC inefficiency in schizophrenia: the FBIRN study. *Schizophrenia bulletin* 2009; 35(1): 19-31.